



<http://www.ebiz-tcf.eu>

DRAFT

Extract from IMPLEMENTATION GUIDE
TRANSACTION "TEXTILE ORDER RESPONSE"

Version: draft

Date of release: 9/10/2022

Document code: G002e

technical Documentation: <http://www.ebiz.enea.it>

XML Schemas repository: <http://www.ebiz.enea.it/moda-ml/repository/schema/draft/default.asp>

Guides repository: <http://www.ebiz.enea.it/moda-ml/repository/guide/draft/default.asp>

Guide filename: G002-eBIZ-TextileOrderResponse.pdf

0. PREMISE

This document contains a proposal for the updating and extension of eBIZ specifications starting from the eBIZ version 2018. Under the name of 'Draft version' it is reported the result of an extensive work of analysis and consultation aimed at developing and maintaining eBIZ specifications.

In particular, the content of this proposal is the result of various activities, mainly those carried out within the framework of the **TRICK project** funded by the European Commission: grant agreement 958352, call H2020-LOW-CARBON-CIRCULAR-INDUSTRIES-2020 / H2020-LCCI-2020-EASME-twostage.

The technical contents are backwards compatible with the latest official published version, with the exclusion of the totally new concepts added explicitly for the version that are thought as incremental evolution of the knowledge base.

1. BUSINESS DESCRIPTION

1.1 Scope

The present guide has been issued to assist the companies of the Textile-Clothing sector in the implementation of the standard XML document type "Textile ORDER RESPONSE ", providing all the instruction required for its use in any context of e-commerce between Apparel Producers and Fabric Producers.

All the rules required for the construction and validation of the document are embedded into the specific XML-Schema, which is detailed in section "Implementation guide".

1.2 Generalities

The message is issued by the Fabric Producer in response to a purchase order.

The Producer must, in any case, return an Order Response for any Order received, where, for each item, he notifies the acceptance as it is (C), the variation (V) or the cancellation (A).

Basic function of the message is to notify acceptance or to request modifications or cancellations concerning:

- 1) suppliable quantities
- 2) dates and places of delivery
- 3) prices

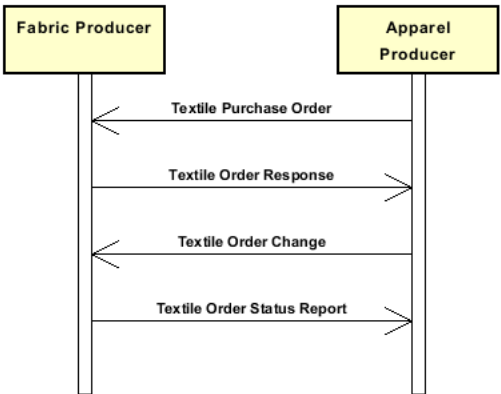
The Order Response can show a number of lines different from the related Purchase Order, when variations/cancellations have occurred so as to create the splitting of an Order Line.

However the sum of the quantities of the lines in the Order Change (confirmed + varied + cancelled) must always not less than the sum of the quantities in the original Order.

When the quantity is change the original line must be splitted and the confirmed amount and canceled amount should be explicated through the 'act' flag.

1.3. Possible scenario

Purchase of fabrics



2. IMPLEMENTATION GUIDE

2.1 General structure of XML document

All the business data that can be exchanged through this class of documents are shown in the following "document structure", that provides a simplified vision of the Schema.

In particular:

- the two numbers following each element define its "cardinality" (minimum and maximum number of occurrences); the minimum equal zero indicates that the element is optional, the minimum greater than zero indicates that is mandatory;
- the bold character denotes the complex elements (aggregates of simple elements) that were built for the sake of functionality and re-usability of some complex informations sets. The child elements in each parent element are easily spotted as "indented";
- the symbol "@" denotes an attribute of the preceding element; here "the usage indicator (optional, required, ...)" is shown in square brackets.

Structure

TEXOrdResponse

@Totype [Optional]

@msgfunction [Optional] [Default= OR]

@version [Optional] [Default= 2018-1]

@useProfile [Optional]

| **TXheader 1-1**

| | msgN 1-1

| - choose -

| | msgID 0-1

| - or -

| | docID 0-1

| | @numberingOrg [Optional]

| - end choose -

| | msgDate 1-1

| | @dateForm [Optional]

| | validityEnd 0-1

| | @dateForm [Optional]

| | msgCurrency 0-1

| | otherCurrency 0-9

| | @currencyUseQualifier [Required]

| | @exchangeRate [Optional]

| | **refDoc 1-9**

| | @docType [Required]

| | docID 1-2

| | @numberingOrg [Optional]

| | docDate 0-1

| | @dateForm [Optional]

| | season 0-1

| | @numberingOrg [Optional]

| | @codeList [Optional]

| | @listName [Optional]

| | @listVersion [Optional]

| | itemID 0-1

| | **attachment 0-1**

| | @uid [Optional]

| | | fileName 0-1

| | | @numberingOrg [Optional]

| | | binaryObject 0-1

| | | @format [Optional]

| | | @mime [Optional]

| | | @encoding [Optional]

| | | @characterSet [Optional]

| | | **externalReference 0-99**

| | | | uri 1-1

| | | | @isURL [Optional] [Default= true]

| | | | mimeTypeCode 0-1

| | | | formatCode 0-1

| | | | encodingCode 0-1

| | | | characterSetCode 0-1

buyer 1-1

@logo [Optional]
@sender [Optional]
id 1-1
| *@numberingOrg [Optional]*
| additionalIdentifier 0-9
| *@numberingOrg [Optional]*
| *@idQualifier [Optional]*
| legalName 0-1
| dept 0-1
| subDept 0-1
| person 0-1
| *@email [Optional]*
| *@phone [Optional]*
| *@fax [Optional]*
| street 0-1
| city 0-1
| subCountry 0-1
| country 0-1
| postCode 0-1
geoCoordinates 0-1
| *@um [Optional] [Default= DEGD]*
| *@geoReferenceSystem [Optional]*
| | xGeoCoord 1-1
| | yGeoCoord 1-1
| | zGeoCoord 0-0

supplier 1-1

@logo [Optional]
@sender [Optional]
id 1-1
| *@numberingOrg [Optional]*
| additionalIdentifier 0-9
| *@numberingOrg [Optional]*
| *@idQualifier [Optional]*
| legalName 0-1
| dept 0-1
| subDept 0-1
| person 0-1
| *@email [Optional]*
| *@phone [Optional]*
| *@fax [Optional]*
| street 0-1
| city 0-1
| subCountry 0-1
| country 0-1
| postCode 0-1
geoCoordinates 0-1
| *@um [Optional] [Default= DEGD]*
| *@geoReferenceSystem [Optional]*
| | xGeoCoord 1-1
| | yGeoCoord 1-1
| | zGeoCoord 0-0

thirdParty 0-5

@VAT [Optional]
@role [Required]
@sender [Optional]
id 1-1
| *@numberingOrg [Optional]*
| legalName 0-1
| dept 0-1
| subDept 0-1
| person 0-1
| *@email [Optional]*
| *@phone [Optional]*
| *@fax [Optional]*
| street 0-1
| city 0-1
| subCountry 0-1

| | | country 0-1
 | | | postCode 0-1
 | | | **geoCoordinates 0-1**
 | | | @um [Optional] [Default= DEGD]
 | | | @geoReferenceSystem [Optional]
 | | | | xGeoCoord 1-1
 | | | | yGeoCoord 1-1
 | | | | zGeoCoord 0-0
 | | | note 0-99
 | | | @numberingOrg [Optional]
 | | | @codeList [Optional]
 | | | @noteLabel [Optional]

terms 0-1

| | | **payment 0-5**
 | | | @finDiscount [Optional]
 | | | @finSurcharge [Optional]
 | | | - choose -
 | | | | payTerm 1-1
 | | | - or -
 | | | | payTermText 1-1
 | | | - end choose -
 | | | | payMode 0-1
 | | | **insPayment 0-5**
 | | | @part [Required]
 | | | - choose -
 | | | | payTerm 1-1
 | | | - or -
 | | | | payTermText 1-1
 | | | - end choose -
 | | | | payMode 0-1
 | | | **trade 0-1**
 | | | - choose -
 | | | | incoTermText 1-1
 | | | - or -
 | | | | incoTerm 1-1
 | | | - end choose -
 | | | | location 0-1
 | | | | @LRI [Optional]
 | | | **transInfo 0-5**
 | | | @transReason [Optional]
 | | | @progr [Optional]
 | | | | transMode 1-1
 | | | | carrier 0-1
 | | | - choose -
 | | | | **deliveryLocation 0-1**
 | | | | | location 0-1
 | | | | | @LRI [Optional]
 | | | | | legalName 0-1
 | | | | | dept 0-1
 | | | | | subDept 0-1
 | | | | | person 0-1
 | | | | | @email [Optional]
 | | | | | @phone [Optional]
 | | | | | @fax [Optional]
 | | | | | street 0-1
 | | | | | city 0-1
 | | | | | subCountry 0-1
 | | | | | country 0-1
 | | | | | postCode 0-1
 | | | | | **geoCoordinates 0-1**
 | | | | | @um [Optional] [Default= DEGD]
 | | | | | @geoReferenceSystem [Optional]
 | | | | | | xGeoCoord 1-1
 | | | | | | yGeoCoord 1-1
 | | | | | | zGeoCoord 0-0
 | | | - or -
 | | | | deliveryPlace 0-1

```

- end choose -
| | grossWeight 0-1
| | @um [Required]
| | netWeight 0-1
| | @um [Required]
| | transMeans 0-1
| | @propulsionSystemCode [Optional]
| | transCondition 0-3
| | transConditionText 0-1
- choose -
| | despatchPlace 0-1
- or -
| | despatchLocation 0-1
| | | legalName 0-1
| | | dept 0-1
| | | subDept 0-1
| | | person 0-1
| | | @email [Optional]
| | | @phone [Optional]
| | | @fax [Optional]
| | | street 0-1
| | | city 0-1
| | | subCountry 0-1
| | | country 0-1
| | | postCode 0-1
| | | geoCoordinates 0-1
| | | @um [Optional] [Default= DEGD]
| | | @geoReferenceSystem [Optional]
| | | | xGeoCoord 1-1
| | | | yGeoCoord 1-1
| | | | zGeoCoord 0-0
- end choose -
| | despatchDate 0-1
| | @dateForm [Optional]
| | delEffectiveDate 0-1
| | @dateForm [Optional]
| | routeLength 0-1
| | @um [Required]
| | allowanceCharge 0-9
| | @um [Optional]
| | @VAT [Optional]
| | @minQty [Optional]
| | @currency [Optional]
| | @maxQty [Optional]
| | @isCharge [Optional]
- choose -
| | AC_category 1-1
- or -
| | AC_categoryText 1-1
- end choose -
- choose -
| | AC_percent 1-1
- or -
| | AC_amount 1-1
| | @currency [Optional]
- end choose -
| | dtScheme 0-1
| | @taxType [Required]
| | | taxCategory 0-1
| | | taxRate 0-1
| | | legalRef 0-1
| | | @numberingOrg [Optional]
| | | @codeList [Optional]
| | | @listName [Optional]
| | | @listVersion [Optional]
| | | note 0-99
| | | @numberingOrg [Optional]
| | | @codeList [Optional]

```

| | | | @noteLabel [Optional]

| **texComInfo 0-1**

| @endUse [Optional] [Default= PR]

| @IC [Optional]

| @techSheet [Optional]

| season 0-1

| | @numberingOrg [Optional]

| | @codeList [Optional]

| | @listName [Optional]

| | @listVersion [Optional]

| brand 0-1

| | @numberingOrg [Optional]

| | @codeList [Optional]

| | @listName [Optional]

| | @listVersion [Optional]

| productLine 0-1

| | @numberingOrg [Optional]

| | @codeList [Optional]

| | @listName [Optional]

| | @listVersion [Optional]

| project 0-1

| operationalCode 0-19

| | @numberingOrg [Optional]

| | @codeList [Optional]

| | @listName [Optional]

| | @listVersion [Optional]

| | @codeQualifier [Optional]

| deliveryDate 0-1

| | @dateForm [Optional]

| specDate 0-1

| | @dateForm [Optional]

| fabricWidth 0-1

| | @um [Optional] [Default= CMT]

| pieceLength 0-1

| | @um [Optional] [Default= MTR]

| **piecePack 0-1**

| - choose -

| | piecePackText 1-1

| - or -

| | pieceInnWrap1 1-1

| | pieceInnWrap2 0-1

| | pieceOutWrap 0-1

| - end choose -

| note 0-99

| | @numberingOrg [Optional]

| | @codeList [Optional]

| | @noteLabel [Optional]

| **TXbody 1-1**

| **TXitem 1-unbounded**

| | @act [Required]

| | lineN 1-1

| | | @VAT [Optional]

| | **refDoc 1-9**

| | | @docType [Required]

| | | docID 1-2

| | | | @numberingOrg [Optional]

| | | docDate 0-1

| | | | @dateForm [Optional]

| | | season 0-1

| | | | @numberingOrg [Optional]

| | | | @codeList [Optional]

| | | | @listName [Optional]

| | | | @listVersion [Optional]

| | | itemID 0-1

| | | **attachment 0-1**

| | | | @uid [Optional]

- | fileName 0-1
- | | @numberingOrg [Optional]
- | binaryObject 0-1
- | | @format [Optional]
- | | @mime [Optional]
- | | @encoding [Optional]
- | | @characterSet [Optional]
- | **externalReference 0-99**
- | | uri 1-1
- | | | @isURL [Optional] [Default= true]
- | | mimeTypeCode 0-1
- | | formatCode 0-1
- | | encodingCode 0-1
- | | characterSetCode 0-1

texCode 0-2

- | @numberingOrg [Optional]
- | | art 1-1
- | | | @numberingOrg [Optional]
- | | | @codeList [Optional]
- | | | @listName [Optional]
- | | | @listVersion [Optional]
- | | pattern 0-1
- | | | @numberingOrg [Optional]
- | | | @codeList [Optional]
- | | | @listName [Optional]
- | | | @listVersion [Optional]
- | | color 0-1
- | | | @numberingOrg [Optional]
- | | | @codeList [Optional]
- | | | @listName [Optional]
- | | | @listVersion [Optional]
- | | added 0-9
- | | | @numberingOrg [Optional]
- | | | @addType [Optional]
- | | description 0-unbounded
- | | @ln [Optional]

selvedge 0-1

- | selvedgeText 1-1
- | selvedgeColor 0-1

fabricTreat 0-1

- | surfaceTreatment 0-1
- | finishCycle 0-1
- | oneLot 0-1
- | metricMark 0-1

qty 0-2

- | @um [Required]
- | price 0-1
- | | @um [Optional]
- | | @priceQualifier [Optional] [Default= NET]
- | | @currency [Optional]
- | comDiscount 0-1

thirdParty 0-3

- | @VAT [Optional]
- | @role [Required]
- | @sender [Optional]
- | | id 1-1
- | | | @numberingOrg [Optional]
- | | legalName 0-1
- | | dept 0-1
- | | subDept 0-1
- | | person 0-1
- | | | @email [Optional]
- | | | @phone [Optional]
- | | | @fax [Optional]
- | | street 0-1
- | | city 0-1
- | | subCountry 0-1
- | | country 0-1

```

| | | | postCode 0-1
| | | | geoCoordinates 0-1
| | | | @um [Optional] [Default= DEGD]
| | | | @geoReferenceSystem [Optional]
| | | | | xGeoCoord 1-1
| | | | | yGeoCoord 1-1
| | | | | zGeoCoord 0-0
| | | | texComInfo 0-1
| | | | @endUse [Optional] [Default= PR]
| | | | @IC [Optional]
| | | | @techSheet [Optional]
| | | | | season 0-1
| | | | | @numberingOrg [Optional]
| | | | | @codeList [Optional]
| | | | | @listName [Optional]
| | | | | @listVersion [Optional]
| | | | | brand 0-1
| | | | | @numberingOrg [Optional]
| | | | | @codeList [Optional]
| | | | | @listName [Optional]
| | | | | @listVersion [Optional]
| | | | | productLine 0-1
| | | | | @numberingOrg [Optional]
| | | | | @codeList [Optional]
| | | | | @listName [Optional]
| | | | | @listVersion [Optional]
| | | | | project 0-1
| | | | | operationalCode 0-19
| | | | | @numberingOrg [Optional]
| | | | | @codeList [Optional]
| | | | | @listName [Optional]
| | | | | @listVersion [Optional]
| | | | | @codeQualifier [Optional]
| | | | | deliveryDate 0-1
| | | | | @dateForm [Optional]
| | | | | specDate 0-1
| | | | | @dateForm [Optional]
| | | | | fabricWidth 0-1
| | | | | @um [Optional] [Default= CMT]
| | | | | pieceLength 0-1
| | | | | @um [Optional] [Default= MTR]
| | | | | piecePack 0-1
| | | | | - choose -
| | | | | | piecePackText 1-1
| | | | | - or -
| | | | | | pieceInnWrap1 1-1
| | | | | | pieceInnWrap2 0-1
| | | | | | pieceOutWrap 0-1
| | | | | - end choose -
| | | | | note 0-99
| | | | | @numberingOrg [Optional]
| | | | | @codeList [Optional]
| | | | | @noteLabel [Optional]
| | | | | dtScheme 0-1
| | | | | @taxType [Required]
| | | | | | taxCategory 0-1
| | | | | | taxRate 0-1
| | | | | | legalRef 0-1
| | | | | | @numberingOrg [Optional]
| | | | | | @codeList [Optional]
| | | | | | @listName [Optional]
| | | | | | @listVersion [Optional]
| | | | | | note 0-99
| | | | | | @numberingOrg [Optional]
| | | | | | @codeList [Optional]
| | | | | | @noteLabel [Optional]
| | | | | note 0-99
| | | | | @numberingOrg [Optional]

```

| | | @codeList [Optional]
| | | @noteLabel [Optional]

| **totals 0-1**

| | totQty 0-1
| | @um [Required]
| | goodsAmount 1-1
| | @currency [Optional]

2.2 Detailed description of document elements

Following tables show all elements (complex and simple) used in this document. Description includes: 1) element's information: xml tag, name, brief description, data type and syntax constraints; 2) information about use of the element in a particular position in the document: xpath and possible associated notes.

2.2.1 Complex elements (Aggregate Business Information Entities)

Complex elements are those elements whose content is composed of other elements (childs).Complex elements are alphabetically ordered.

allowanceCharge	Allowances and Charges related to an Order or a contract
attachment	an attached document. An attachment can refer to an external document or be included with the document being exchanged
buyer	details of the Buyer (party that buys the good or service that is object of the current collaborative process) - base type: Nad,
deliveryLocation	data relating to a place of delivery - base type: Nad,
despatchLocation	data relating to a place of despatch - base type: Nad,
dtScheme	set of data usable to declare the duty or tax applied
externalReference	details about an external object, such as a document stored at a remote location
fabricTreat	information on the treatments and finishing of fabric
geoCoordinates	geographical coordinates
insPayment	payment details for payment by installments
payment	payment details for payment all in one
piecePack	type of wrapping or packing of the fabric pieces
refDoc	identification of a document and of an item thereof, to which the message makes reference
selvedge	text and colour related to a fabric selvedge
supplier	details of the Supplier (party that supplies the good or service that is object of the current collaborative process) - base type: Nad,
terms	details of the commercial obligations for payment and delivery
texCode	full codification of the textile product
texComInfo	miscellaneous trade information, that can be specified in a textile Order, referred either to the whole document or to the single item
thirdParty	identification and details of the Third Party, different from Sender and Receiver of the document - base type: Nad,
totals	monetary and quantity totals of the Order
trade	general terms of trade for the specified supply
transInfo	details of transport: mode, carrier and delivery place
TXbody	body of the document TEXTILES ORDER RESPONSE and CHANGE
TXheader	header of the TEXTILES ORDER RESPONSE and TEXTILES ORDER CHANGE

TXitem	line item of the message TEXTILE ORDER RESPONSE and TEXTILE ORDER CHANGE
---------------	--

2.2.2 Simple elements (Basic Business Information Entities)

Simple elements are those elements whose content is characterized by a data type plus a domain of possible values. Simple elements are alphabetically ordered.

AC_amount	amount of an Allowance or Charge - base type: decimal, fraction digits: 2,
AC_category	coded specification of an Allowance or Charge - base type: string, cod. table: T41 http://www.ebiz.enea.it/moda-ml/repository/codelist/draft/gc_T41.xml
AC_categoryText	free text description of an Allowance or Charge - base type: string, max length: 250,
AC_percent	amount of an Allowance or Charge as a percentage (always non negative value) - base type: decimal, max inclusive: 100, fraction digits: 2,
@act	status that the current line assigns to the line addressed in the reference document; if it is already canceled it maintains the status. - base type: string, cod. table: NT5 http://www.ebiz.enea.it/moda-ml/repository/codelist/draft/gc_NT5.xml
added	additional code of the product (complementing the formers) - base type: string, max length: 80,
additionalIdentifier	additional identification code of a Party, for example customs registries or others - base type: string, max length: 15,
@addType	qualifier of the additional coding of a product - base type: string, cod. table: T44 http://www.ebiz.enea.it/moda-ml/repository/codelist/draft/gc_T44.xml
art	article number of the product - base type: string, max length: 80,
binaryObject	a binary large object containing an attached document, Coding 'base64Binary' is recommended. - base type: base64Binary,
brand	A brand name. - base type: string,
carrier	identification of the transport carrier - base type: string, max length: 40,
@characterSet	the character set of the binary object (examples UTF-8, UTF-16, Windows-1252, ISO-8859-7,..) - base type: normalizedString,
characterSetCode	the character set of an external document (examples UTF-8, UTF-16, Windows-1252, ISO-8859-7,..) - base type: normalizedString,
city	name of the city (town, village) - base type: string, max length: 40,
@codeList	it specifies the URL where the list of codes used to make an instance of the element can be found - base type: string, max length: 255,
@codeQualifier	operational code qualifier: it states if the code is related to a project, an event, an initiative, a sales channel, a management type (eg CITES), - base type: string, cod. table: NT43 http://www.ebiz.enea.it/moda-ml/repository/codelist/draft/gc_NT43.xml

color	colour number of the product, when not included in the model or fabric code - base type: string, max length: 15,
comDiscount	percent discount applied to the related unit price or amount - base type: decimal, min inclusive: 0, max inclusive: 100, fraction digits: 2,
country	code of the nation - base type: string, cod. table: T10 http://www.ebiz.enea.it/moda-ml/repository/codelist/draft/gc_T10.xml
@currency	currency in which a specified monetary data is expressed - base type: string, cod. table: T9 http://www.ebiz.enea.it/moda-ml/repository/codelist/draft/gc_T9.xml
@currencyUseQualifier	qualification of another currency used in the document - base type: string, cod. table: NT19 http://www.ebiz.enea.it/moda-ml/repository/codelist/draft/gc_NT19.xml
@dateForm	format used for the date - base type: string, cod. table: NT29 http://www.ebiz.enea.it/moda-ml/repository/codelist/draft/gc_NT29.xml
delEffectiveDate	estimated date for actual delivery, which may be different from what is foreseen by the agreements between the parties. Formatted according to one of the patterns indicated by the dateForm attribute: YYYY-MM-DD, YYYY-MM-DD:HH-MM or YYYY-WW. - base type: string,
deliveryDate	date of delivery of goods, requested or promised in the purchase process, according to one of the patterns YYYY-MM-DD, YYYY-MM-DD:HH-MM or YYYY-WW. - base type: string,
deliveryPlace	place of delivery of goods, ultimate or related to a given leg - base type: string, max length: 250,
dept	name or code of a department - base type: string, max length: 40,
description	free text description. The content of the element must be unique, it might be translated and repeated into more languages (thus no more than one instance for each language). - base type: string, max length: 250,
despatchDate	date of despatch of goods, requested or promised in the purchase process, according to one of the patterns YYYY-MM-DD, YYYY-MM-DD:HH-MM or YYYY-WW. - base type: string,
despatchPlace	place of despatch of goods, origin or related to a given leg - base type: string, max length: 250,
docDate	date of issue of the referenced document, according to one of the patterns YYYY-MM-DD, YYYY-MM-DD:HH-MM or YYYY-WW. - base type: string,
docID	identification number of the referenced document - base type: string, max length: 80,
@docType	type or class to which the referenced document belongs - base type: string, cod. table: T21 http://www.ebiz.enea.it/moda-ml/repository/codelist/draft/gc_T21.xml
@email	electronic mail address of the contact person within a Party - base type: string, max length: 250,
@encoding	specifies the decoding algorithm of the binary object - base type: normalizedString,
encodingCode	the encoding/decoding algorithm used with the external object (example is 'base64Binary') - base type: normalizedString,
@endUse	specifies the final use of the fabric - base type: string, cod. table: NT4 http://www.ebiz.enea.it/moda-ml/repository/codelist/draft/gc_NT4.xml

@exchangeRate	Currency exchange rate - base type: decimal, min inclusive: 0,
fabricWidth	width of the fabric as technical specification - base type: decimal, min inclusive: 0, fraction digits: 2,
@fax	fax number of the contact person within a Party - base type: string, max length: 35,
fileName	unique identifier (name) of the file - base type: string, max length: 255,
@finDiscount	financial discount rate applied for payment by the date specified - base type: decimal, min inclusive: 0, max inclusive: 100, fraction digits: 2,
finishCycle	process of finishing applied to the fabric - base type: string, max length: 40,
@finSurcharge	financial surcharge rate applied for payment after the date specified - base type: decimal, min inclusive: 0, max inclusive: 100, fraction digits: 2,
@format	the format of the binary content (examples xml, pdf, doc,...) - base type: string,
formatCode	the format of the external object (examples xml, pdf, doc,...) - base type: normalizedString,
@geoReferenceSystem	georeference system adopted for the coordinate (in example wgs84 with decimal degree or degree with minute and seconds) - base type: string,
goodsAmount	total monetary value of the goods and services considered in the message - base type: decimal, min inclusive: 0, fraction digits: 2,
grossWeight	the gross weight, declared for transport or customs purpose - base type: decimal, min inclusive: 0, fraction digits: 2,
@IC	specifies if the "illustrated confirmation" is needed - base type: boolean,
id	primary identification code of a Party; it is recommended the format: nation code (ISO 3166) + VAT identification number (11 crt), with the qualifier "numberingOrg"= MF - base type: string, max length: 15,
@idQualifier	Qualification of the identifier. - base type: string,
incoTerm	specification of the terms of trade (INCOTERMS) - base type: string, cod. table: T3 http://www.ebiz.enea.it/moda-ml/repository/codelist/draft/gc_T3.xml
incoTermText	free text specifying the terms of trade (incoterm, location) - base type: string, max length: 250,
@isCharge	Indicates if the element to which it refers is a charge (true = charge, false = allowance) - base type: boolean,
@isURL	it indicates if the referred element is an URL (true) or not (false) - base type: boolean,
itemID	number of the line/item of the referenced document - base type: string, max length: 40,
legalName	legal name - base type: string, max length: 250,
legalRef	legal reference of the duty or tax or fee category - base type: string,
lineN	number of the line item of the present message (xml document); it is set by the role that produces the document. Usually it is a progressive number, but not always. - base type: positiveInteger, min inclusive: 1, max inclusive: 9999,

<i>@listName</i>	the name of the list of codes used to make an instance of the element (it might be thought as descriptive element, i.e. 'fabric printing technologies', or not, i.e. "T264") - base type: string, max length: 40,
<i>@listVersion</i>	it specifies the version of the list of codes used to make an instance of the element - base type: string, max length: 6,
<i>@ln</i>	Language code. - base type: string, cod. table: NT60 http://www.ebiz.enea.it/moda-ml/repository/codelist/draft/gc_NT60.xml
location	specification of a location - base type: string, max length: 40,
<i>@logo</i>	company logo (URL of the image jpeg or gif). It is recommended that the width of the image does not exceed 640 pixel. - base type: string, max length: 255,
<i>@LRI</i>	attribute usable to format a string according to a customized User rule (local rule) - base type: string, cod. table: NT3 http://www.ebiz.enea.it/moda-ml/repository/codelist/draft/gc_NT3.xml
<i>@maxQty</i>	maximum product quantity - base type: decimal, min inclusive: 0, fraction digits: 2,
metricMark	specifies if the fabric piece must have the metric marks - base type: boolean,
<i>@mime</i>	the mime type of the binary object - base type: normalizedString,
mimeCode	mime type of the external object - base type: normalizedString,
<i>@minQty</i>	minimum product quantity - base type: decimal, min inclusive: 0, fraction digits: 2,
msgCurrency	currency used to express the monetary amounts of the message - base type: string, cod. table: T9 http://www.ebiz.enea.it/moda-ml/repository/codelist/draft/gc_T9.xml
msgDate	date of issue of the present message (xml document), according to one of the patterns YYYY-MM-DD, YYYY-MM-DD:HH-MM or YYYY-WW. - base type: string,
<i>@msgfunction</i>	function performed by the present message with regards to the transmission - base type: string, cod. table: NT18 http://www.ebiz.enea.it/moda-ml/repository/codelist/draft/gc_NT18.xml
msgID	key identifier of the business document in the information system of the issuing Party. In case of more despatches of the same business document, it is unchanged. - base type: string, max length: 35,
msgN	identification number given to the message (xml document) by its issuer. In case of more despatches of the same business document, it changes. - base type: string, max length: 35,
netWeight	the net weight declared for transport or customs purpose - base type: decimal, min inclusive: 0, fraction digits: 2,
note	free text or structured (computer processing) note. For note structuring use the attributes "noteLabel" and "codelist" - base type: string, max length: 350,
<i>@noteLabel</i>	subject qualifier of a note - base type: string, max length: 35,
<i>@numberingOrg</i>	code specifying the organisation who has created or owns the coding or numbering system - base type: string, cod. table: NT6 http://www.ebiz.enea.it/moda-ml/repository/codelist/draft/gc_NT6.xml
oneLot	specifies if the order line must be supplied with one production lot

	- base type: boolean,
operationalCode	operational code: it is the code of a project, an event, an initiative, a sales channel, a management type (eg CITES), ... the document, or product, is connected with. - base type: string,
otherCurrency	other currency used in the document - base type: string, cod. table: T9 http://www.ebiz.enea.it/moda-ml/repository/codelist/draft/gc_T9.xml
@part	percent fraction - base type: decimal, min inclusive: 1, max inclusive: 100, fraction digits: 2,
pattern	pattern/design number of the product, when not included in the article code - base type: string, max length: 15,
payMode	way or means of payment - base type: string, cod. table: T2 http://www.ebiz.enea.it/moda-ml/repository/codelist/draft/gc_T2.xml
payTerm	code specifying the terms or time by which the payment must be done - base type: string, cod. table: T1 http://www.ebiz.enea.it/moda-ml/repository/codelist/draft/gc_T1.xml
payTermText	free text specifying the terms by which the payment must be done (time/mode or means) - base type: string, max length: 250,
person	name of a person (e.g. contact person within an organization) - base type: string, max length: 40,
@phone	phone number of the contact person within a Party - base type: string, max length: 35,
pieceInnWrap1	code specifying the type of inner wrapping/packing used for the fabric piece - base type: string, cod. table: T4 http://www.ebiz.enea.it/moda-ml/repository/codelist/draft/gc_T4.xml
pieceInnWrap2	code sub-specifying the type of inner wrapping/packing used for the fabric piece - base type: string, cod. table: T5 http://www.ebiz.enea.it/moda-ml/repository/codelist/draft/gc_T5.xml
pieceLength	length of the piece - base type: decimal, min inclusive: 0, fraction digits: 2,
pieceOutWrap	code specifying the type of outer wrapping or packing used for the fabric piece - base type: string, cod. table: T6 http://www.ebiz.enea.it/moda-ml/repository/codelist/draft/gc_T6.xml
piecePackText	free text specifying the type of wrapping or packing used for the fabric piece - base type: string, max length: 250,
postCode	code defining the postal zone - base type: string, max length: 10,
price	unit price of the article, object or service specified - base type: decimal, min inclusive: 0, fraction digits: 4,
@priceQualifier	type of price with reference to discount and taxes - base type: string, cod. table: NT20 http://www.ebiz.enea.it/moda-ml/repository/codelist/draft/gc_NT20.xml
productLine	the product line name of a fashion product. - base type: string,
@progr	progressive number in the sequence - base type: positiveInteger, min inclusive: 1,
project	code used to assign the items ordered (fabric pieces, accessories, garments...) to a specific project of the Client - base type: string, max length: 40,
@propulsionSystemCode	propulsion system type

	- base type: string, cod. table: NT324 http://www.ebiz.enea.it/moda-ml/repository/codelist/draft/gc_NT324.xml
qty	net quantity of the article or object correlated, qualified by the function of the document (ordering, delivering, ..) and by the context - base type: decimal, min inclusive: 0, fraction digits: 2,
@role	Third Party role qualifier - base type: string, cod. table: NT2 http://www.ebiz.enea.it/moda-ml/repository/codelist/draft/gc_NT2.xml
routeLength	length of a route - base type: decimal, min inclusive: 0, fraction digits: 2,
season	sale season; defined as: season (1 crt) + year (4 crt) - season: S/S=1 A/W=2 Spring=3 Summer=4 Autumn=5 Winter=6: for more than four seasons use alphabetic sequence: 1st season=A 2nd season=B etc.etc. - base type: string, max length: 15,
selvedgeColor	colour of the text displayed on the selvedge - base type: string, max length: 15,
selvedgeText	text to be written on the selvedge - base type: string, max length: 300,
@sender	qualifier that specifies the Party issuing of the document - base type: boolean,
specDate	date by which the referenced blanket order must receive full product specifications (e.g. : colour), according to one of the patterns YYYY-MM-DD, YYYY-MM-DD:HH-MM or YYY-WW. - base type: string,
street	street and building number identifying a location - base type: string, max length: 80,
subCountry	short name or code of the sub-country entity - base type: string, max length: 9,
subDept	name or code of a department - base type: string, max length: 40,
surfaceTreatment	surface treatment applied to the fabric, as end result - base type: string, max length: 40,
taxCategory	duty or tax or fee category - base type: string, cod. table: T62 http://www.ebiz.enea.it/moda-ml/repository/codelist/draft/gc_T62.xml
taxRate	duty or tax or fee percent rate - base type: string,
@taxType	duty or tax or fee type - base type: string, cod. table: T61 http://www.ebiz.enea.it/moda-ml/repository/codelist/draft/gc_T61.xml
@techSheet	specifies if the " technical characteristics of fabric" document must provided - base type: boolean,
totQty	total quantity of the articles related to the whole document - base type: decimal, min inclusive: 0, fraction digits: 2,
@TOtype	type of Order - base type: string, cod. table: NT1 http://www.ebiz.enea.it/moda-ml/repository/codelist/draft/gc_NT1.xml
transCondition	special condition of transport or special service requested to the Forwarder - base type: string, cod. table: T38 http://www.ebiz.enea.it/moda-ml/repository/codelist/draft/gc_T38.xml
transConditionText	free text description of the special condition of transport or special service requested to the Forwarder - base type: string, max length: 250,

transMeans	means of transport, in general or referred to a specific leg - base type: string, cod. table: T40 http://www.ebiz.enea.it/moda-ml/repository/codelist/draft/gc_T40.xml
transMode	way of transport, in general or referred to the specified leg - base type: string, cod. table: T8 http://www.ebiz.enea.it/moda-ml/repository/codelist/draft/gc_T8.xml
@transReason	reason for the transport - base type: string, cod. table: NT11 http://www.ebiz.enea.it/moda-ml/repository/codelist/draft/gc_NT11.xml
@uid	unique element identifier within the xml document - base type: string,
@um	specification of the unit of measure - base type: string, cod. table: NT7 http://www.ebiz.enea.it/moda-ml/repository/codelist/draft/gc_NT7.xml
uri	Uniform Resource Identifier (URI) that identifies the external object as an Internet resource - base type: normalizedString,
@useProfile	use profile to which the present document is compliant if it was agreed by the parties. It is suggested a URI with reference to the firms or the URL of the profile. - base type: string,
validityEnd	date by which the validity ends, according to one of the patterns YYYY-MM-DD, YYYY-MM-DD:HH-MM or YYYY-WW. - base type: string,
@VAT	VAT rate or code (DEPRECATED, use dtScheme element) - base type: string, cod. table: NT16 http://www.ebiz.enea.it/moda-ml/repository/codelist/draft/gc_NT16.xml
@version	Dictionary version from which the instance has been created - base type: string, cod. table: NT100 http://www.ebiz.enea.it/moda-ml/repository/codelist/draft/gc_NT100.xml
xGeoCoord	geographical coordinate x , corresponding to latitude - base type: decimal,
yGeoCoord	geographical coordinate y , corresponding to longitude - base type: decimal,
zGeoCoord	geographical coordinate z , corresponding to altitude - base type: decimal,

2.3 Suggested best practices

TEXOrdResponse/TXheader/refDoc/docID (identification number of the referenced document)

numberingOrg indicates the role that produced the document identifier (it is allowed to declare two different ones -e.g. customer and supplier - with two docID with different numberingOrg

TEXOrdResponse/TXbody/TXitem/refDoc/docID (identification number of the referenced document)

numberingOrg indicates the role that produced the document identifier (it is allowed to declare two different ones -e.g. customer and supplier - with two docID with different numberingOrg

**TEXOrdResponse/TXbody/TXitem/refDoc/attachment/
externalReference/mimeCode (mime type of the external object)**

Use coding from IANA <http://www.iana.org/assignments/media-types/media-types.xml>

**TEXOrdResponse/TXheader/refDoc/attachment/
externalReference/mimeCode (mime type of the external object)**

Use coding from IANA <http://www.iana.org/assignments/media-types/media-types.xml>

TEXOrdResponse/TXbody/TXitem/qty (net quantity of the article or object correlated, qualified by the function of the document (ordering, delivering, ..) and by the context)

this element can have two instances only if the units of measure are different

2.4 Enumeration tables

List of enumeration tables used in the XML document. You can find all the tables with the corresponding codes at:
<http://www.ebiz.enea.it/eBIZ/imple/eBIZTCU-draft.asp?lingua=en&pag=6>

NT1 - Order type
NT100 - eBIZ TCFUpstream version
NT11 - transport causal
NT16 - VAT rate or code
NT18 - message function
NT19 - currency use qualifier
NT2 - third party qualifier
NT20 - price qualifier
NT29 - format of a date
NT3 - data format
NT324 - propulsion system type
NT4 - end use
NT43 - operational code qualifier
NT5 - action code
NT6 - coding system owner/issuer
NT60 - language, codes from ISO 639-1 (subset)
NT7 - unit of measure
T1 - terms of payment
T10 - ISO3166 - Country
T2 - Modes of payment
T21 - type of document
T3 - terms of delivery - IncoTerms
T38 - transport conditions
T4 - fabric piece inner packing (wrapping) 1
T40 - type of transport means
T41 - type of Allowance or Charge
T44 - additional code type
T5 - fabric piece inner packing (wrapping) 2
T6 - fabric piece outer packing
T61 - duty or tax or fee type
T62 - duty or tax or fee category
T8 - Modes of Transport
T9 - ISO4217 - Currency

ACKNOWLEDGEMENT



This action is part of the TRICK project, which has received funding from Horizon 2020 research and innovation programme under grant agreement No. 958352 of the European Union.

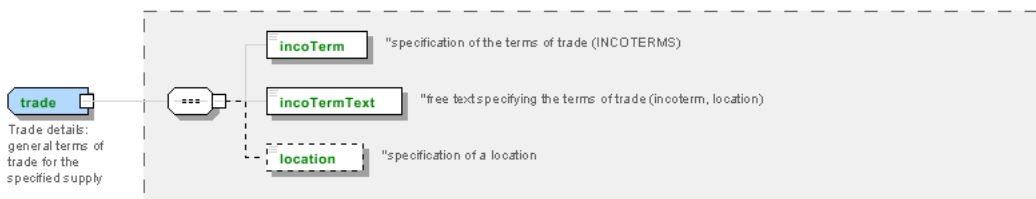
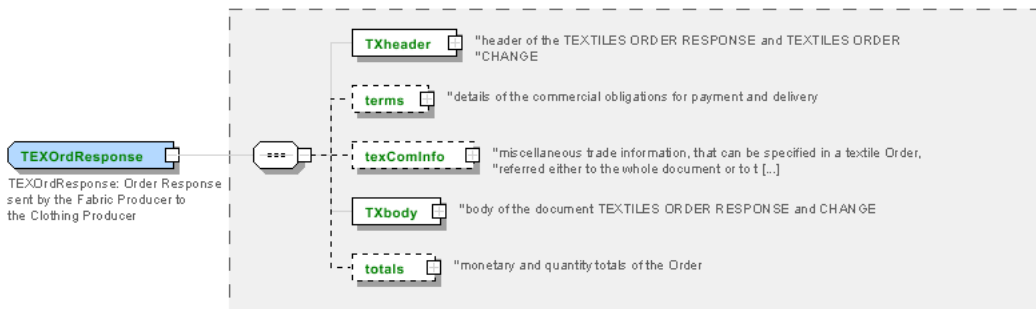
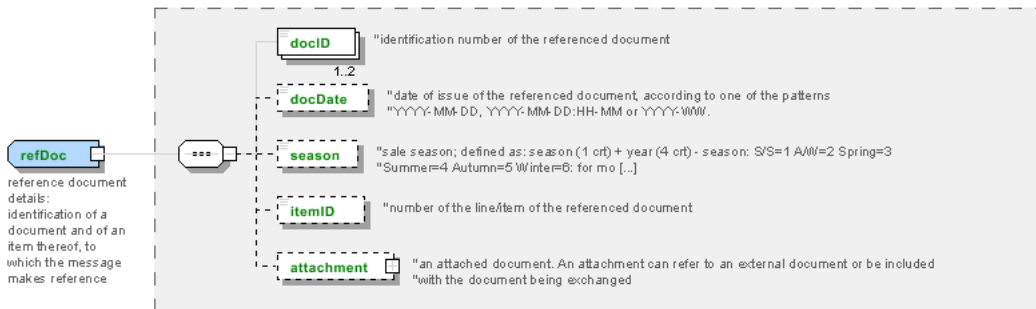
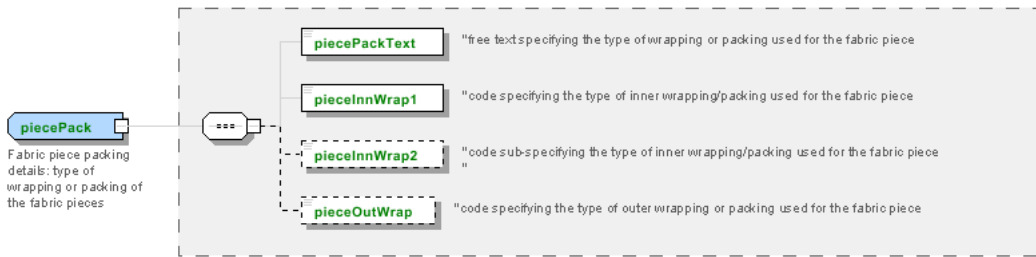
DISCLAIMER

The content of this document represents the views of the authors only and is their sole responsibility; it cannot be considered to reflect the views of the European Commission or any other body of the European Union.

The European Commission does not accept any responsibility for use that may be made of the information it contains.

Annex A

Representative images of the principal complex elements' structure.



TXheader
TX header:
header of
the
TEXTILES
ORDER
RESPONSE
and
TEXTILES
ORDER
CHANGE



TXitem
TX item:
line item
of the
message
TEXTILE
ORDER
RESPONSE
and
TEXTILE
ORDER
CHANGE



