



<http://www.ebiz-tcf.eu>

DRAFT

Extract from IMPLEMENTATION GUIDE  
TRANSACTION "TEXTILE DESPATCH ADVICE"

Version: draft

Date of release: 9/10/2022

Document code: G006e

technical Documentation: <http://www.ebiz.enea.it>

XML Schemas repository: <http://www.ebiz.enea.it/moda-ml/repository/schema/draft/default.asp>

Guides repository: <http://www.ebiz.enea.it/moda-ml/repository/guide/draft/default.asp>

Guide filename: G006-eBIZ-TextileDespatchAdvice.pdf

## 0. PREMISE

This document contains a proposal for the updating and extension of eBIZ specifications starting from the eBIZ version 2018. Under the name of 'Draft version' it is reported the result of an extensive work of analysis and consultation aimed at developing and maintaining eBIZ specifications.

In particular, the content of this proposal is the result of various activities, mainly those carried out within the framework of the **TRICK project** funded by the European Commission: grant agreement 958352, call H2020-LOW-CARBON-CIRCULAR-INDUSTRIES-2020 / H2020-LCCI-2020-EASME-twostage.

The technical contents are backwards compatible with the latest official published version, with the exclusion of the totally new concepts added explicitly for the version that are thought as incremental evolution of the knowledge base.

## 1. BUSINESS DESCRIPTION

### 1.1 Scope

The present guide has been issued to assist the companies of the Textile-Clothing sector in the implementation of the standard XML document type "Textile DESPATCH ADVISE", providing all the instruction required for its use in any context of e-commerce between Apparel Producers, Fabric Producers and their Subcontractors. All the rules required for the construction and validation of the document are embedded into the specific XML-Schema, which is detailed in section "Implementation guide".

### 1.2 Generalities

The message is issued to anticipate the details the articles actually despatched. The same message can be used with the client for sale and with the subcontractor for working operation (eg. darn disposition).

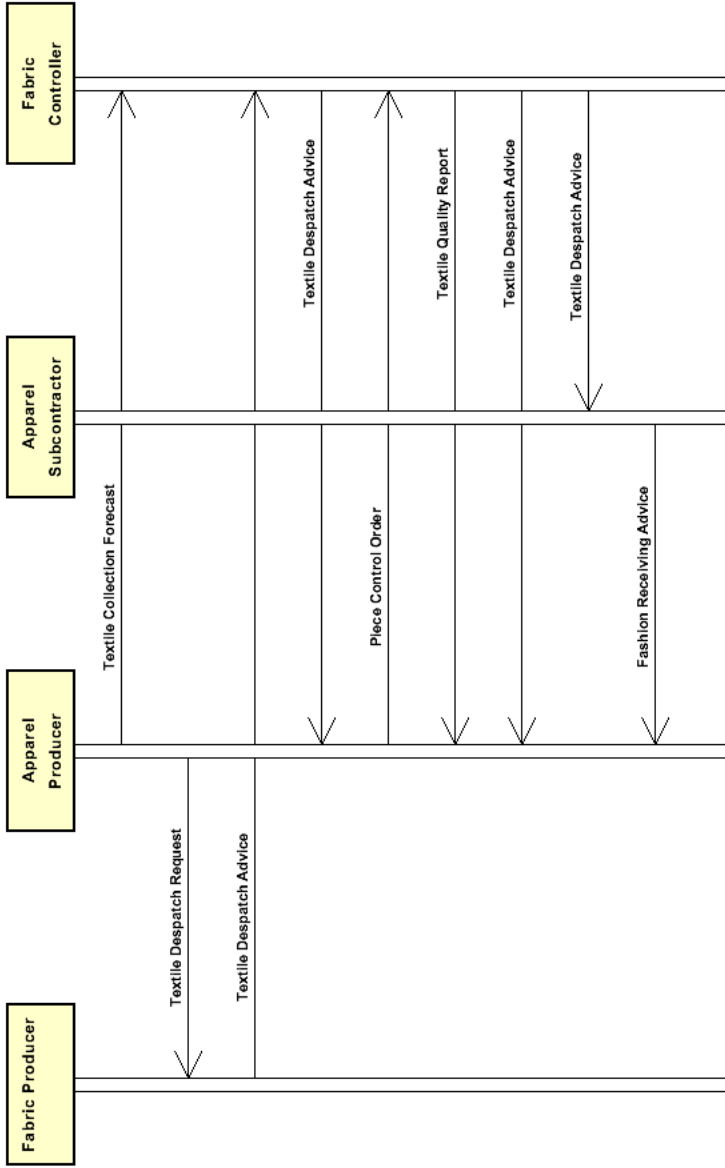
This document can be used:

- as a standard despatch advice
- as a pre-despatch notification of the goods that are to be despatched.

Each document item must correspond with a well defined fabric article (article + pattern + color) and must identify the actual pieces that make it up; for each item is possible to reference the Order line that is delivered.

### 1.3. Possible scenario

Fabric delivery with quality reporting by controller



## 2. IMPLEMENTATION GUIDE

### 2.1 General structure of XML document

All the business data that can be exchanged through this class of documents are shown in the following "document structure", that provides a simplified vision of the Schema.

In particular:

- the two numbers following each element define its "cardinality" (minimum and maximum number of occurrences); the minimum equal zero indicates that the element is optional, the minimum greater than zero indicates that is mandatory;
- the bold character denotes the complex elements (aggregates of simple elements) that were built for the sake of functionality and re-usability of some complex informations sets. The child elements in each parent element are easily spotted as "indented";
- the symbol "@" denotes an attribute of the preceding element; here "the usage indicator (optional, required, ...) is shown in square brackets.

### Structure

#### TEXDesAdvise

```
@TAType [Optional] [Default= STD]
@msgfunction [Optional] [Default= OR]
@version [Optional] [Default= 2018-1]
@useProfile [Optional]
| TAheader 1-1
| | msgN 1-1
| | - choose -
| | | msgID 0-1
| | | - or -
| | | docID 0-1
| | | @numberingOrg [Optional]
| | | - end choose -
| | | msgDate 1-1
| | | @dateForm [Optional]
| | | refDoc 0-9
| | | @docType [Required]
| | | | docID 1-2
| | | | @numberingOrg [Optional]
| | | | docDate 0-1
| | | | @dateForm [Optional]
| | | | season 0-1
| | | | @numberingOrg [Optional]
| | | | @codeList [Optional]
| | | | @listName [Optional]
| | | | @listVersion [Optional]
| | | | itemID 0-1
| | | | attachment 0-1
| | | | @uid [Optional]
| | | | | fileName 0-1
| | | | | @numberingOrg [Optional]
| | | | | binaryObject 0-1
| | | | | @format [Optional]
| | | | | @mime [Optional]
| | | | | @encoding [Optional]
| | | | | @characterSet [Optional]
| | | | | externalReference 0-99
| | | | | | uri 1-1
| | | | | | @isURL [Optional] [Default= true]
| | | | | | mimeTypeCode 0-1
| | | | | | formatCode 0-1
| | | | | | encodingCode 0-1
| | | | | | characterSetCode 0-1
| | | buyer 1-1
| | | @logo [Optional]
| | | @sender [Optional]
| | | | id 1-1
| | | | @numberingOrg [Optional]
| | | | additionalIdentifier 0-9
```

| @numberingOrg [Optional]  
 | @idQualifier [Optional]  
 | legalName 0-1  
 | dept 0-1  
 | subDept 0-1  
 | person 0-1  
 | @email [Optional]  
 | @phone [Optional]  
 | @fax [Optional]  
 | street 0-1  
 | city 0-1  
 | subCountry 0-1  
 | country 0-1  
 | postCode 0-1  
 | **geoCoordinates 0-1**  
 | @um [Optional] [Default= DEGD]  
 | @geoReferenceSystem [Optional]  
 | | xGeoCoord 1-1  
 | | yGeoCoord 1-1  
 | | zGeoCoord 0-0  
 | **supplier 1-1**  
 | @logo [Optional]  
 | @sender [Optional]  
 | | id 1-1  
 | | @numberingOrg [Optional]  
 | | additionalIdentifier 0-9  
 | | @numberingOrg [Optional]  
 | | @idQualifier [Optional]  
 | | legalName 0-1  
 | | dept 0-1  
 | | subDept 0-1  
 | | person 0-1  
 | | @email [Optional]  
 | | @phone [Optional]  
 | | @fax [Optional]  
 | | street 0-1  
 | | city 0-1  
 | | subCountry 0-1  
 | | country 0-1  
 | | postCode 0-1  
 | | **geoCoordinates 0-1**  
 | | @um [Optional] [Default= DEGD]  
 | | @geoReferenceSystem [Optional]  
 | | | xGeoCoord 1-1  
 | | | yGeoCoord 1-1  
 | | | zGeoCoord 0-0  
 | **thirdParty 0-5**  
 | @VAT [Optional]  
 | @role [Required]  
 | @sender [Optional]  
 | | id 1-1  
 | | @numberingOrg [Optional]  
 | | legalName 0-1  
 | | dept 0-1  
 | | subDept 0-1  
 | | person 0-1  
 | | @email [Optional]  
 | | @phone [Optional]  
 | | @fax [Optional]  
 | | street 0-1  
 | | city 0-1  
 | | subCountry 0-1  
 | | country 0-1  
 | | postCode 0-1  
 | | **geoCoordinates 0-1**  
 | | @um [Optional] [Default= DEGD]  
 | | @geoReferenceSystem [Optional]  
 | | | xGeoCoord 1-1

```

| | | | yGeoCoord 1-1
| | | | zGeoCoord 0-0
| | note 0-99
| | @numberingOrg [Optional]
| | @codeList [Optional]
| | @noteLabel [Optional]

```

**trade 0-1**

```

- choose -
| | incoTermText 1-1
- or -
| | incoTerm 1-1
- end choose -
| | location 0-1
| | @LRI [Optional]

```

**shiplInfo 0-1**

```

| | transInfo 0-9
| | @transReason [Optional]
| | @progr [Optional]
| | | transMode 1-1
| | | carrier 0-1
- choose -
| | | deliveryLocation 0-1
| | | | location 0-1
| | | | @LRI [Optional]
| | | | legalName 0-1
| | | | dept 0-1
| | | | subDept 0-1
| | | | person 0-1
| | | | @email [Optional]
| | | | @phone [Optional]
| | | | @fax [Optional]
| | | | street 0-1
| | | | city 0-1
| | | | subCountry 0-1
| | | | country 0-1
| | | | postCode 0-1
| | | | geoCoordinates 0-1
| | | | @um [Optional] [Default= DEGD]
| | | | @geoReferenceSystem [Optional]
| | | | | xGeoCoord 1-1
| | | | | yGeoCoord 1-1
| | | | | zGeoCoord 0-0
- or -
| | | deliveryPlace 0-1
- end choose -
| | | grossWeight 0-1
| | | | @um [Required]
| | | netWeight 0-1
| | | | @um [Required]
| | | transMeans 0-1
| | | | @propulsionSystemCode [Optional]
| | | transCondition 0-3
| | | transConditionText 0-1
- choose -
| | | despatchPlace 0-1
- or -
| | | despatchLocation 0-1
| | | | legalName 0-1
| | | | dept 0-1
| | | | subDept 0-1
| | | | person 0-1
| | | | @email [Optional]
| | | | @phone [Optional]
| | | | @fax [Optional]
| | | | street 0-1
| | | | city 0-1

```

```

| | | | subCountry 0-1
| | | | country 0-1
| | | | postCode 0-1
| | | | geoCoordinates 0-1
| | | | @um [Optional] [Default= DEGD]
| | | | @geoReferenceSystem [Optional]
| | | | | xGeoCoord 1-1
| | | | | yGeoCoord 1-1
| | | | | zGeoCoord 0-0
| | | - end choose -
| | | | despatchDate 0-1
| | | | @dateForm [Optional]
| | | | delEffectiveDate 0-1
| | | | @dateForm [Optional]
| | | | routeLength 0-1
| | | | @um [Required]
| | delEffectiveDate 0-1
| | @dateForm [Optional]
| | packages 0-99
| | @packageLevel [Optional]
| | - choose -
| | | packageText 1-1
| | - or -
| | | package 1-1
| | - end choose -
| | | packageModelCode 0-1
| | | @numberingOrg [Optional]
| | | description 0-unbounded
| | | @ln [Optional]
| | | packageDim 0-1
| | | | length 1-1
| | | | @um [Required]
| | | | width 0-1
| | | | @um [Required]
| | | | height 0-1
| | | | @um [Required]
| | | handlingChar 0-1
| | | - choose -
| | | | yarnPack 0-1
| | | | | yarnReel 1-1
| | | | | @reelType [Required]
| | | | | @reelMat [Optional]
| | | | | | yarnReelD 0-1
| | | | | | @um [Required]
| | | | | | yarnReelH 0-1
| | | | | | @um [Required]
| | | | | | yarnConeAngle 0-1
| | | | | | yarnReelQty 0-2
| | | | | | @um [Required]
| | | | | | label 0-1
| | | | | | labelWrit 0-1
| | | | | | yarnInWrap 0-1
| | | | | | | yarnReelWrap 1-1
| | | | | | | label 0-1
| | | | | | | labelWrit 0-1
| | | | - choose -
| | | | | yarnOutWrapText 0-1
| | | | - or -
| | | | | yarnOutWrap 0-1
| | | | - end choose -
| | | - or -
| | | | piecePack 0-1
| | | | - choose -
| | | | | piecePackText 1-1
| | | | - or -
| | | | | pieceInnWrap1 1-1
| | | | | pieceInnWrap2 0-1
| | | | | pieceOutWrap 0-1

```

```

- end choose -
- or -
| | | | acsPack 0-1
- choose -
| | | | | acsPackCode 1-1
| | | | | | @numberingOrg [Optional]
| | | | | | @codeList [Optional]
| | | | | | @listName [Optional]
| | | | | | @listVersion [Optional]
- or -
| | | | | acsPackText 1-1
- end choose -
- or -
| | | | | garPack 0-1
- choose -
| | | | | | garPackCode 1-1
| | | | | | | @numberingOrg [Optional]
| | | | | | | @codeList [Optional]
| | | | | | | @listName [Optional]
| | | | | | | @listVersion [Optional]
- or -
| | | | | | garPackText 1-1
- end choose -
- end choose -
| | | | | | sortableIndicator 0-1
| | | | | | | stackabilityLevel 0-1
| | | | | | | handlingType 0-1
| | | | | | | | @ln [Optional]
| | | | | | | volume 0-1
| | | | | | | | @um [Required]
| | | | | | | netWeight 0-1
| | | | | | | | @um [Required]
| | | | | | | grossWeight 0-1
| | | | | | | | @um [Required]
| | | | | | | note 0-99
| | | | | | | | @numberingOrg [Optional]
| | | | | | | | @codeList [Optional]
| | | | | | | | @noteLabel [Optional]
| | | | | | itemsPerPackage 0-1
| | | | | | | @um [Required]
| | | | | | minItemsPerPackage 0-1
| | | | | | | @um [Required]
| | | | | | fillingCriterion 0-9
| | | | | | | @progr [Optional]
| | | | | | packageQty 0-1
| | | | | | packageN 0-unbounded
| | | | | | | @numberingOrg [Optional]
| | | | | | | @packageContainerN [Optional]
| | | | | | EPCList 0-1
| | | | | | | EPC 1-unbounded
| | | | | | | | @numberingOrg [Optional]
| | | | | | | | @TID [Optional]
| | | | | | actualPackageUnit 0-unbounded
| | | | | | | @packageLevel [Optional]
| | | | | | | packageIdentification 1-1
| | | | | | | | packageN 1-1
| | | | | | | | | @numberingOrg [Optional]
| | | | | | | | | @packageContainerN [Optional]
| | | | | | | | serialN 0-9
| | | | | | | | | @numberingOrg [Optional]
| | | | | | | | | @idQualifier [Optional]
- choose -
| | | | | packageText 0-1
- or -
| | | | | package 0-1
- end choose -
| | | | | packageModelCode 0-1
| | | | | | @numberingOrg [Optional]

```



```

| | | volume 0-1
| | |   @um [Required]
| | | netWeight 0-1
| | |   @um [Required]
| | | grossWeight 0-1
| | |   @um [Required]
| | | packageDim 0-1
| | |   | length 1-1
| | |   |   @um [Required]
| | |   | width 0-1
| | |   |   @um [Required]
| | |   | height 0-1
| | |   |   @um [Required]
| | | actualItemsPerPackage 0-1
| | | packagesList 0-1
| | |   | packageIdentification 1-unbounded
| | |   |   | packageN 1-1
| | |   |   |   @numberingOrg [Optional]
| | |   |   |   @packageContainerN [Optional]
| | |   |   | serialN 0-9
| | |   |   |   @numberingOrg [Optional]
| | |   |   |   @idQualifier [Optional]
| | |   | itemsList 0-1
| | |   |   | qualityLevel 0-1
| | |   |   |   @numberingOrg [Optional]
| | |   |   |   @codeList [Optional]
| | |   |   |   @listName [Optional]
| | |   |   |   @listVersion [Optional]
| | |   |   | itemIdentification 1-unbounded
| | |   |   |   | serialN 1-9
| | |   |   |   |   @numberingOrg [Optional]
| | |   |   |   |   @idQualifier [Optional]
| | | note 0-99
| | |   @numberingOrg [Optional]
| | |   @codeList [Optional]
| | |   @noteLabel [Optional]

```

**piecePack 0-1**

```

- choose -
| | piecePackText 1-1
- or -
| | pieceInnWrap1 1-1
| | pieceInnWrap2 0-1
| | pieceOutWrap 0-1
- end choose -

```

**TABody 1-1**

```

| | TAitem 1-unbounded
| | @extinction [Optional] [Default= 0]
| | | lineN 1-1
| | |   @VAT [Optional]
| | | refDoc 0-9
| | |   @docType [Required]
| | |   | docID 1-2
| | |   |   @numberingOrg [Optional]
| | |   | docDate 0-1
| | |   |   @dateForm [Optional]
| | |   | season 0-1
| | |   |   @numberingOrg [Optional]
| | |   |   @codeList [Optional]
| | |   |   @listName [Optional]
| | |   |   @listVersion [Optional]
| | |   | itemID 0-1
| | |   | attachment 0-1
| | |   |   @uid [Optional]
| | |   |   | fileName 0-1
| | |   |   |   @numberingOrg [Optional]
| | |   |   | binaryObject 0-1

```

- | | @format [Optional]
- | | @mime [Optional]
- | | @encoding [Optional]
- | | @characterSet [Optional]
- | | **externalReference 0-99**
- | | uri 1-1
- | | | @isURL [Optional] [Default= true]
- | | | mimeTypeCode 0-1
- | | | formatCode 0-1
- | | | encodingCode 0-1
- | | | characterSetCode 0-1

**texCode 1-2**

- | @numberingOrg [Optional]
- | | art 1-1
- | | | @numberingOrg [Optional]
- | | | @codeList [Optional]
- | | | @listName [Optional]
- | | | @listVersion [Optional]
- | | pattern 0-1
- | | | @numberingOrg [Optional]
- | | | @codeList [Optional]
- | | | @listName [Optional]
- | | | @listVersion [Optional]
- | | color 0-1
- | | | @numberingOrg [Optional]
- | | | @codeList [Optional]
- | | | @listName [Optional]
- | | | @listVersion [Optional]
- | | added 0-9
- | | | @numberingOrg [Optional]
- | | | @addType [Optional]
- | | description 0-unbounded
- | | @ln [Optional]

qty 1-2

@um [Required]

**piece 1-unbounded**

- | @endUse [Optional]
- | | serialN 0-9
- | | | @numberingOrg [Optional]
- | | | @idQualifier [Optional]
- | | EPC 0-1
- | | | @numberingOrg [Optional]
- | | | @TID [Optional]
- | | totFault 0-1
- | | pieceStatus 0-1
- | | pieceLength 0-1
- | | | @um [Optional] [Default= MTR]
- | | pieceWidth 0-1
- | | | @um [Optional] [Default= CMT]
- | | pieceCutWidth 0-1
- | | | @um [Optional] [Default= CMT]
- | | pieceWeight 0-1
- | | | @um [Optional] [Default= KGM]
- | | pieceWeightM 0-1
- | | | @um [Optional] [Default= GRM]
- | | grossWeight 0-1
- | | | @um [Required]
- | | pieceAllow 0-1
- | | | @um [Required]
- | | lotN 0-2
- | | | @numberingOrg [Optional]
- | | dyeN 0-1
- | | | @numberingOrg [Optional]
- | | mixMatch 0-1
- | | | @numberingOrg [Optional]
- | | packageN 0-1
- | | | @numberingOrg [Optional]
- | | | @packageContainerN [Optional]

```

| | | | piecePack 0-1
| | | | - choose -
| | | | | piecePackText 1-1
| | | | | - or -
| | | | | pieceInnWrap1 1-1
| | | | | pieceInnWrap2 0-1
| | | | | pieceOutWrap 0-1
| | | | | - end choose -
| | | | thirdParty 0-3
| | | | @VAT [Optional]
| | | | @role [Required]
| | | | @sender [Optional]
| | | | | id 1-1
| | | | | @numberingOrg [Optional]
| | | | | legalName 0-1
| | | | | dept 0-1
| | | | | subDept 0-1
| | | | | person 0-1
| | | | | @email [Optional]
| | | | | @phone [Optional]
| | | | | @fax [Optional]
| | | | | street 0-1
| | | | | city 0-1
| | | | | subCountry 0-1
| | | | | country 0-1
| | | | | postCode 0-1
| | | | | geoCoordinates 0-1
| | | | | @um [Optional] [Default= DEGD]
| | | | | @geoReferenceSystem [Optional]
| | | | | | xGeoCoord 1-1
| | | | | | yGeoCoord 1-1
| | | | | | zGeoCoord 0-0
| | | | shiplInfo 0-1
| | | | | transInfo 0-9
| | | | | @transReason [Optional]
| | | | | @progr [Optional]
| | | | | | transMode 1-1
| | | | | | carrier 0-1
| | | | | - choose -
| | | | | | deliveryLocation 0-1
| | | | | | | location 0-1
| | | | | | | @LRI [Optional]
| | | | | | | legalName 0-1
| | | | | | | dept 0-1
| | | | | | | subDept 0-1
| | | | | | | person 0-1
| | | | | | | @email [Optional]
| | | | | | | @phone [Optional]
| | | | | | | @fax [Optional]
| | | | | | | street 0-1
| | | | | | | city 0-1
| | | | | | | subCountry 0-1
| | | | | | | country 0-1
| | | | | | | postCode 0-1
| | | | | | | geoCoordinates 0-1
| | | | | | | @um [Optional] [Default= DEGD]
| | | | | | | @geoReferenceSystem [Optional]
| | | | | | | | xGeoCoord 1-1
| | | | | | | | yGeoCoord 1-1
| | | | | | | | zGeoCoord 0-0
| | | | | | - or -
| | | | | | deliveryPlace 0-1
| | | | | | - end choose -
| | | | | | grossWeight 0-1
| | | | | | | @um [Required]
| | | | | | netWeight 0-1
| | | | | | | @um [Required]
| | | | | | transMeans 0-1

```

```

| | | | @propulsionSystemCode [Optional]
| | | | transCondition 0-3
| | | | transConditionText 0-1
| | | - choose -
| | | | despatchPlace 0-1
| | | - or -
| | | | despatchLocation 0-1
| | | | | legalName 0-1
| | | | | dept 0-1
| | | | | subDept 0-1
| | | | | person 0-1
| | | | | @email [Optional]
| | | | | @phone [Optional]
| | | | | @fax [Optional]
| | | | | street 0-1
| | | | | city 0-1
| | | | | subCountry 0-1
| | | | | country 0-1
| | | | | postCode 0-1
| | | | | geoCoordinates 0-1
| | | | | | @um [Optional] [Default= DEGD]
| | | | | | @geoReferenceSystem [Optional]
| | | | | | xGeoCoord 1-1
| | | | | | yGeoCoord 1-1
| | | | | | zGeoCoord 0-0
| | | - end choose -
| | | | despatchDate 0-1
| | | | | @dateForm [Optional]
| | | | delEffectiveDate 0-1
| | | | | @dateForm [Optional]
| | | | routeLength 0-1
| | | | | @um [Required]
| | | | delEffectiveDate 0-1
| | | | | @dateForm [Optional]
| | | | packages 0-99
| | | | | @packageLevel [Optional]
| | | - choose -
| | | | packageText 1-1
| | | - or -
| | | | package 1-1
| | | - end choose -
| | | | packageModelCode 0-1
| | | | | @numberingOrg [Optional]
| | | | description 0-unbounded
| | | | | @ln [Optional]
| | | | | packageDim 0-1
| | | | | | length 1-1
| | | | | | | @um [Required]
| | | | | | width 0-1
| | | | | | | @um [Required]
| | | | | | height 0-1
| | | | | | | @um [Required]
| | | | | handlingChar 0-1
| | | - choose -
| | | | yarnPack 0-1
| | | | | yarnReel 1-1
| | | | | | @reelType [Required]
| | | | | | @reelMat [Optional]
| | | | | | yarnReelID 0-1
| | | | | | | @um [Required]
| | | | | | yarnReelH 0-1
| | | | | | | @um [Required]
| | | | | | yarnConeAngle 0-1
| | | | | | yarnReelQty 0-2
| | | | | | | @um [Required]
| | | | | | label 0-1
| | | | | | labelWrit 0-1
| | | | | yarnInWrap 0-1

```

					yarnReelWrap 1-1
					label 0-1
					labelWrit 0-1
					- choose -
					yarnOutWrapText 0-1
					- or -
					yarnOutWrap 0-1
					- end choose -
					- or -
					<b>piecePack 0-1</b>
					- choose -
					piecePackText 1-1
					- or -
					pieceInnWrap1 1-1
					pieceInnWrap2 0-1
					pieceOutWrap 0-1
					- end choose -
					- or -
					<b>acsPack 0-1</b>
					- choose -
					acsPackCode 1-1
					@numberingOrg [Optional]
					@codeList [Optional]
					@listName [Optional]
					@listVersion [Optional]
					- or -
					acsPackText 1-1
					- end choose -
					- or -
					<b>garPack 0-1</b>
					- choose -
					garPackCode 1-1
					@numberingOrg [Optional]
					@codeList [Optional]
					@listName [Optional]
					@listVersion [Optional]
					- or -
					garPackText 1-1
					- end choose -
					- end choose -
					sortableIndicator 0-1
					stackabilityLevel 0-1
					handlingType 0-1
					@ln [Optional]
					volume 0-1
					@um [Required]
					netWeight 0-1
					@um [Required]
					grossWeight 0-1
					@um [Required]
					note 0-99
					@numberingOrg [Optional]
					@codeList [Optional]
					@noteLabel [Optional]
					itemsPerPackage 0-1
					@um [Required]
					minItemsPerPackage 0-1
					@um [Required]
					fillingCriterion 0-9
					@progr [Optional]
					packageQty 0-1
					packageN 0-unbounded
					@numberingOrg [Optional]
					@packageContainerN [Optional]
					<b>EPCList 0-1</b>
					EPC 1-unbounded
					@numberingOrg [Optional]
					@TID [Optional]

```

| | | | actualPackageUnit 0-unbounded
| | | | | @packageLevel [Optional]
| | | | | packageIdentification 1-1
| | | | | | packageN 1-1
| | | | | | | @numberingOrg [Optional]
| | | | | | | @packageContainerN [Optional]
| | | | | | | serialN 0-9
| | | | | | | @numberingOrg [Optional]
| | | | | | | @idQualifier [Optional]
| | | | | - choose -
| | | | | | packageText 0-1
| | | | | - or -
| | | | | | package 0-1
| | | | | - end choose -
| | | | | | packageModelCode 0-1
| | | | | | | @numberingOrg [Optional]
| | | | | | | volume 0-1
| | | | | | | | @um [Required]
| | | | | | | | netWeight 0-1
| | | | | | | | | @um [Required]
| | | | | | | | grossWeight 0-1
| | | | | | | | | @um [Required]
| | | | | | packageDim 0-1
| | | | | | | length 1-1
| | | | | | | | @um [Required]
| | | | | | | | width 0-1
| | | | | | | | | @um [Required]
| | | | | | | | height 0-1
| | | | | | | | | @um [Required]
| | | | | | actualItemsPerPackage 0-1
| | | | | | packagesList 0-1
| | | | | | | packageIdentification 1-unbounded
| | | | | | | | packageN 1-1
| | | | | | | | | @numberingOrg [Optional]
| | | | | | | | | @packageContainerN [Optional]
| | | | | | | | | serialN 0-9
| | | | | | | | | @numberingOrg [Optional]
| | | | | | | | | @idQualifier [Optional]
| | | | | | | itemsList 0-1
| | | | | | | | qualityLevel 0-1
| | | | | | | | | @numberingOrg [Optional]
| | | | | | | | | @codeList [Optional]
| | | | | | | | | @listName [Optional]
| | | | | | | | | @listVersion [Optional]
| | | | | | | | itemIdentification 1-unbounded
| | | | | | | | | serialN 1-9
| | | | | | | | | | @numberingOrg [Optional]
| | | | | | | | | | @idQualifier [Optional]
| | | | | | | | note 0-99
| | | | | | | | | @numberingOrg [Optional]
| | | | | | | | | @codeList [Optional]
| | | | | | | | | @noteLabel [Optional]
| | | | | | note 0-99
| | | | | | | @numberingOrg [Optional]
| | | | | | | @codeList [Optional]
| | | | | | | @noteLabel [Optional]

```

## 2.2 Detailed description of document elements

Following tables show all elements (complex and simple) used in this document. Description includes: 1) element's information: xml tag, name, brief description, data type and syntax constraints; 2) information about use of the element in a particular position in the document: xpath and possible associated notes.

### 2.2.1 Complex elements (Aggregate Business Information Entities)

Complex elements are those elements whose content is composed of other elements (childs).Complex elements are alphabetically ordered.

<b>acsPack</b>	type of wrapping or packing of the accessory
<b>actualPackageUnit</b>	description and identification of a single transport package
<b>attachment</b>	an attached document. An attachment can refer to an external document or be included with the document being exchanged
<b>buyer</b>	details of the Buyer (party that buys the good or service that is object of the current collaborative process) - base type: Nad,
<b>deliveryLocation</b>	data relating to a place of delivery - base type: Nad,
<b>despatchLocation</b>	data relating to a place of despatch - base type: Nad,
<b>EPCList</b>	list of identifiers used for tracing a physical item with RFID technology
<b>externalReference</b>	details about an external object, such as a document stored at a remote location
<b>garPack</b>	the packaging mode of the item or a part of it.
<b>geoCoordinates</b>	geographical coordinates
<b>handlingChar</b>	features of an item (item or package) useful for its transport and warehouse management.
<b>itemIdentification</b>	serial identification of a product unit
<b>itemsList</b>	list of the single product units
<b>packageDim</b>	dimensions of a transport package
<b>packageIdentification</b>	serial identification of a package
<b>packages</b>	describes the composition of the transport packaging. Each element corresponds to a type of package: type, quantity, hierarchic level, list of identifiers of the single packages
<b>packagesList</b>	list of single packages
<b>piece</b>	Identification data and measurement of the fabric piece.
<b>piecePack</b>	type of wrapping or packing of the fabric pieces
<b>refDoc</b>	identification of a document and of an item thereof, to which the message makes reference
<b>shipInfo</b>	miscellaneous information on transport and transport packages, referred either to the whole document or to the single item
<b>supplier</b>	details of the Supplier (party that supplies the good or service that is object of the current collaborative process) - base type: Nad,
<b>TABody</b>	body of the document TEXTILES DESPATCH ADVISE
<b>TAheader</b>	header of the TEXTILES (YARN) DESPATCH ADVISE

<b>TAitem</b>	line item of the message TEXTILES DESPATCH ADVISE
<b>texCode</b>	full codification of the textile product
<b>thirdParty</b>	identification and details of the Third Party, different from Sender and Receiver of the document - base type: Nad,
<b>trade</b>	general terms of trade for the specified supply
<b>transInfo</b>	details of transport: mode, carrier and delivery place
<b>yarnInWrap</b>	details specifying the inner wrapping of a yarn product
<b>yarnPack</b>	details of type of presentation used for the yarn
<b>yarnReel</b>	details of the packaging of a yarn product (bobbin and reel,...)

## 2.2.2 Simple elements (Basic Business Information Entities)

Simple elements are those elements whose content is characterized by a data type plus a domain of possible values. Simple elements are alphabetically ordered.

<b>acsPackCode</b>	code specifying the type of wrapping or packing used for the accessory - base type: string,
<b>acsPackText</b>	free text specifying the type of wrapping or packing used for the accessory - base type: string, max length: 250,
<b>actualItemsPerPackage</b>	the quantity of items actually contained in the package - base type: decimal,
<b>added</b>	additional code of the product (complementing the formers) - base type: string, max length: 80,
<b>additionalIdentifier</b>	additional identification code of a Party, for example customs registries or others - base type: string, max length: 15,
<b>@addType</b>	qualifier of the additional coding of a product - base type: string, cod. table: T44 <a href="http://www.ebiz.enea.it/moda-ml/repository/codelist/draft/gc_T44.xml">http://www.ebiz.enea.it/moda-ml/repository/codelist/draft/gc_T44.xml</a>
<b>art</b>	article number of the product - base type: string, max length: 80,
<b>binaryObject</b>	a binary large object containing an attached document, Coding 'base64Binary' is recommended. - base type: base64Binary,
<b>carrier</b>	identification of the transport carrier - base type: string, max length: 40,
<b>@characterSet</b>	the character set of the binary object (examples UTF-8, UTF-16, Windows-1252, ISO-8859-7,..) - base type: normalizedString,
<b>characterSetCode</b>	the character set of an external document (examples UTF-8, UTF-16, Windows-1252, ISO-8859-7,..) - base type: normalizedString,
<b>city</b>	name of the city (town, village) - base type: string, max length: 40,
<b>@codeList</b>	it specifies the URL where the list of codes used to make an instance of the element can be found - base type: string, max length: 255,
<b>color</b>	colour number of the product, when not included in the model or fabric code - base type: string, max length: 15,



country	code of the nation - base type: string, cod. table: T10 <a href="http://www.ebiz.enea.it/moda-ml/repository/codelist/draft/gc_T10.xml">http://www.ebiz.enea.it/moda-ml/repository/codelist/draft/gc_T10.xml</a>
@dateForm	format used for the date - base type: string, cod. table: NT29 <a href="http://www.ebiz.enea.it/moda-ml/repository/codelist/draft/gc_NT29.xml">http://www.ebiz.enea.it/moda-ml/repository/codelist/draft/gc_NT29.xml</a>
delEffectiveDate	estimated date for actual delivery, which may be different from what is foreseen by the agreements between the parties. Formatted according to one of the patterns indicated by the dateForm attribute: YYYY-MM-DD, YYYY-MM-DD:HH-MM or YYYY-WW. - base type: string,
deliveryPlace	place of delivery of goods, ultimate or related to a given leg - base type: string, max length: 250,
dept	name or code of a department - base type: string, max length: 40,
description	free text description. The content of the element must be unique, it might be translated and repeated into more languages (thus no more than one instance for each language ). - base type: string, max length: 250,
despatchDate	date of despatch of goods, requested or promised in the purchase process, according to one of the patterns YYYY-MM-DD, YYYY-MM-DD:HH-MM or YYYY-WW. - base type: string,
despatchPlace	place of despatch of goods, origin or related to a given leg - base type: string, max length: 250,
docDate	date of issue of the referenced document, according to one of the patterns YYYY-MM-DD, YYYY-MM-DD:HH-MM or YYYY-WW. - base type: string,
docID	identification number of the referenced document - base type: string, max length: 80,
@docType	type or class to which the referenced document belongs - base type: string, cod. table: T21 <a href="http://www.ebiz.enea.it/moda-ml/repository/codelist/draft/gc_T21.xml">http://www.ebiz.enea.it/moda-ml/repository/codelist/draft/gc_T21.xml</a>
dyeN	number of the dying batch of a textile product - base type: string, max length: 15,
@email	electronic mail address of the contact person within a Party - base type: string, max length: 250,
@encoding	specifies the decoding algorithm of the binary object - base type: normalizedString,
encodingCode	the encoding/decoding algorithm used with the external object (example is 'base64Binary') - base type: normalizedString,
@endUse	specifies the final use of the fabric - base type: string, cod. table: NT4 <a href="http://www.ebiz.enea.it/moda-ml/repository/codelist/draft/gc_NT4.xml">http://www.ebiz.enea.it/moda-ml/repository/codelist/draft/gc_NT4.xml</a>
EPC	serial identifier used for tracing a physical item with RFID technology - base type: string,
@extinction	specified if the referred position (document/line) in refDoc is cleared (exhausted) by this line item. Value: True = exhausted, False = not exhausted - base type: boolean,
@fax	fax number of the contact person within a Party - base type: string, max length: 35,
fileName	unique identifier (name) of the file - base type: string, max length: 255,
fillingCriterion	the assortment criterion to fill the specified kind of package: it states the homogeneity

	<p>criero (eg: "model", "color", "size").  - base type: string, cod. table: NT51  <a href="http://www.ebiz.enea.it/moda-ml/repository/codelist/draft/gc_NT51.xml">http://www.ebiz.enea.it/moda-ml/repository/codelist/draft/gc_NT51.xml</a></p>
@format	<p>the format of the binary content (examples xml, pdf, doc,...)  - base type: string,</p>
formatCode	<p>the format of the external object (examples xml, pdf, doc,...)  - base type: normalizedString,</p>
garPackCode	<p>a code specifying the type of packaging used for the item.  - base type: string,</p>
garPackText	<p>a free text specifying the type of packaging used for the item.  - base type: string,</p>
@geoReferenceSystem	<p>georeference system adopted for the coordinate (in example wgs84 with decimal degree o degree with minute and seconds)  - base type: string,</p>
grossWeight	<p>the gross weight, declared for transport or customs purpose  - base type: decimal, min inclusive: 0, fraction digits: 2,</p>
handlingType	<p>information to handle the item (eg "breakable").  - base type: string,</p>
height	<p>effective height of a specified object  - base type: decimal, min inclusive: 0, fraction digits: 2,</p>
id	<p>primary identification code of a Party; it is recommended the format: nation code (ISO 3166) + VAT identification number (11 crt), with the qualifier "numberingOrg"= MF  - base type: string, max length: 15,</p>
@idQualifier	<p>Qualification of the identifier.  - base type: string,</p>
incoTerm	<p>specification of the terms of trade (INCOTERMS)  - base type: string, cod. table: T3  <a href="http://www.ebiz.enea.it/moda-ml/repository/codelist/draft/gc_T3.xml">http://www.ebiz.enea.it/moda-ml/repository/codelist/draft/gc_T3.xml</a></p>
incoTermText	<p>free text specifying the terms of trade (incoterm, location)  - base type: string, max length: 250,</p>
@isURL	<p>it indicates if the referred element is an URL (true) or not (false)  - base type: boolean,</p>
itemID	<p>number of the line/item of the referenced document  - base type: string, max length: 40,</p>
itemsPerPackage	<p>the quantity of items that can be contained in a package.  - base type: decimal,</p>
label	<p>indicates if the physical object specified has to be labelled  - base type: boolean,</p>
labelWrit	<p>text that must be written on the lable of a specified physical object when its customization is required  - base type: string, max length: 350,</p>
legalName	<p>legal name  - base type: string, max length: 250,</p>
length	<p>effective length of a specified object  - base type: decimal, min inclusive: 0, fraction digits: 2,</p>
lineN	<p>number of the line item of the present message (xml document); it is set by the role that produces the document. Usually it is a progressive number, but not always.  - base type: positiveInteger, min inclusive: 1, max inclusive: 9999,</p>
@listName	<p>the name of the list of codes used to make an instance of the element (it might be thought as descriptive element, i.e. 'fabric printing technologies', or not, i.e. "T264")  - base type: string, max length: 40,</p>

<i>@listVersion</i>	it specifies the version of the list of codes used to make an instance of the element - base type: string, max length: 6,
<i>@ln</i>	Language code. - base type: string, cod. table: NT60 <a href="http://www.ebiz.enea.it/moda-ml/repository/codelist/draft/gc_NT60.xml">http://www.ebiz.enea.it/moda-ml/repository/codelist/draft/gc_NT60.xml</a>
location	specification of a location - base type: string, max length: 40,
<i>@logo</i>	company logo (URL of the image jpeg or gif). It is recommended that the width of the image does not exceed 640 pixel. - base type: string, max length: 255,
lotN	lot number of a product or batch number of the raw material - base type: string, max length: 15,
<i>@LRI</i>	attribute usable to format a string according to a customized User rule (local rule) - base type: string, cod. table: NT3 <a href="http://www.ebiz.enea.it/moda-ml/repository/codelist/draft/gc_NT3.xml">http://www.ebiz.enea.it/moda-ml/repository/codelist/draft/gc_NT3.xml</a>
<i>@mime</i>	the mime type of the binary object - base type: normalizedString,
mimeCode	mime type of the external object - base type: normalizedString,
minItemsPerPackage	the minimum quantity of items for the specified kind of package. - base type: decimal, min inclusive: 0,
mixMatch	colour hue used for the match of garments - base type: string, max length: 15,
msgDate	date of issue of the present message (xml document), according to one of the patterns YYYY-MM-DD, YYYY-MM-DD:HH-MM or YYYY-WW. - base type: string,
<i>@msgfunction</i>	function performed by the present message with regards to the transmission - base type: string, cod. table: NT18 <a href="http://www.ebiz.enea.it/moda-ml/repository/codelist/draft/gc_NT18.xml">http://www.ebiz.enea.it/moda-ml/repository/codelist/draft/gc_NT18.xml</a>
msgID	key identifier of the business document in the information system of the issuing Party. In case of more despatches of the same business document, it is unchanged. - base type: string, max length: 35,
msgN	identification number given to the message (xml document) by its issuer. In case of more despatches of the same business document, it changes. - base type: string, max length: 35,
netWeight	the net weight declared for transport or customs purpose - base type: decimal, min inclusive: 0, fraction digits: 2,
note	free text or structured (computer processing) note. For note structuring use the attributes "noteLabel" and "codelist" - base type: string, max length: 350,
<i>@noteLabel</i>	subject qualifier of a note - base type: string, max length: 35,
<i>@numberingOrg</i>	code specifying the organisation who has created or owns the coding or numbering system - base type: string, cod. table: NT6 <a href="http://www.ebiz.enea.it/moda-ml/repository/codelist/draft/gc_NT6.xml">http://www.ebiz.enea.it/moda-ml/repository/codelist/draft/gc_NT6.xml</a>
package	code specifying the type of transport package - base type: string, cod. table: T11 <a href="http://www.ebiz.enea.it/moda-ml/repository/codelist/draft/gc_T11.xml">http://www.ebiz.enea.it/moda-ml/repository/codelist/draft/gc_T11.xml</a>
<i>@packageContainerN</i>	reference usable to indicate the outer package containing this package - base type: string, max length: 40,
<i>@packageLevel</i>	level used to indicate the hierarchical structure of the packages (from outer to inner levels)

	- base type: positiveInteger, min inclusive: 1, max inclusive: 9,
packageModelCode	a code (eg a barcode) identifying the type of packaging - base type: string,
packageN	serial number used to identify a transport package - base type: string, max length: 40,
packageQty	quantity of the specified transport packages - base type: positiveInteger,
packageText	denomination of the type of transport package (text) - base type: string, max length: 80,
pattern	pattern/design number of the product, when not included in the article code - base type: string, max length: 15,
person	name of a person (e.g. contact person within an organization) - base type: string, max length: 40,
@phone	phone number of the contact person within a Party - base type: string, max length: 35,
pieceAllow	allowance required or accorded for the piece - base type: decimal, fraction digits: 2,
pieceCutWidth	effective usable width of the fabric piece (for garment manufacturing) - base type: decimal, min inclusive: 0, fraction digits: 2,
pieceInnWrap1	code specifying the type of inner wrapping/packing used for the fabric piece - base type: string, cod. table: T4 <a href="http://www.ebiz.enea.it/moda-ml/repository/codelist/draft/gc_T4.xml">http://www.ebiz.enea.it/moda-ml/repository/codelist/draft/gc_T4.xml</a>
pieceInnWrap2	code sub-specifying the type of inner wrapping/packing used for the fabric piece - base type: string, cod. table: T5 <a href="http://www.ebiz.enea.it/moda-ml/repository/codelist/draft/gc_T5.xml">http://www.ebiz.enea.it/moda-ml/repository/codelist/draft/gc_T5.xml</a>
pieceLength	length of the piece - base type: decimal, min inclusive: 0, fraction digits: 2,
pieceOutWrap	code specifying the type of outer wrapping or packing used for the fabric piece - base type: string, cod. table: T6 <a href="http://www.ebiz.enea.it/moda-ml/repository/codelist/draft/gc_T6.xml">http://www.ebiz.enea.it/moda-ml/repository/codelist/draft/gc_T6.xml</a>
piecePackText	free text specifying the type of wrapping or packing used for the fabric piece - base type: string, max length: 250,
pieceStatus	code used to describe the status of a fabric piece after the control - base type: string, cod. table: T52 <a href="http://www.ebiz.enea.it/moda-ml/repository/codelist/draft/gc_T52.xml">http://www.ebiz.enea.it/moda-ml/repository/codelist/draft/gc_T52.xml</a>
pieceWeight	effective total weight of the fabric piece - base type: decimal, min inclusive: 0, fraction digits: 2,
pieceWeightM	effective weight per metre of the fabric piece - base type: decimal, min inclusive: 0, fraction digits: 2,
pieceWidth	effective width of the fabric piece - base type: decimal, min inclusive: 0, fraction digits: 2,
postCode	code defining the postal zone - base type: string, max length: 10,
@progr	progressive number in the sequence - base type: positiveInteger, min inclusive: 1,
@propulsionSystemCode	propulsion system type - base type: string, cod. table: NT324 <a href="http://www.ebiz.enea.it/moda-ml/repository/codelist/draft/gc_NT324.xml">http://www.ebiz.enea.it/moda-ml/repository/codelist/draft/gc_NT324.xml</a>
qty	net quantity of the article or object correlated, qualified by the function of the document (ordering, delivering, ..) and by the context - base type: decimal, min inclusive: 0, fraction digits: 2,

qualityLevel	the product quality level (first choice, second choice,...). - base type: string,
@reelMat	type of material of which a package for yarn is made - base type: string, cod. table: T30 <a href="http://www.ebiz.enea.it/moda-ml/repository/codelist/draft/gc_T30.xml">http://www.ebiz.enea.it/moda-ml/repository/codelist/draft/gc_T30.xml</a>
@reelType	type of package used for a yarn product - base type: string, cod. table: T29 <a href="http://www.ebiz.enea.it/moda-ml/repository/codelist/draft/gc_T29.xml">http://www.ebiz.enea.it/moda-ml/repository/codelist/draft/gc_T29.xml</a>
@role	Third Party role qualifier - base type: string, cod. table: NT2 <a href="http://www.ebiz.enea.it/moda-ml/repository/codelist/draft/gc_NT2.xml">http://www.ebiz.enea.it/moda-ml/repository/codelist/draft/gc_NT2.xml</a>
routeLength	length of a route - base type: decimal, min inclusive: 0, fraction digits: 2,
season	sale season; defined as: season (1 crt) + year (4 crt) - season: S/S=1 A/W=2 Spring=3 Summer=4 Autumn=5 Winter=6: for more than four seasons use alphabetic sequence: 1st season=A 2nd season=B etc.etc. - base type: string, max length: 15,
@sender	qualifier that specifies the Party issuing of the document - base type: boolean,
serialN	serial number used for the identification of a physical unit - base type: string, max length: 250,
sortableIndicator	It states if the item can be automatically sorted. - base type: boolean,
stackabilityLevel	This value indicates the level at which the item can be stacked. - base type: integer,
street	street and building number identifying a location - base type: string, max length: 80,
subCountry	short name or code of the sub-country entity - base type: string, max length: 9,
subDept	name or code of a department - base type: string, max length: 40,
@TAtype	type of Despatch advise - base type: string, cod. table: NT10 <a href="http://www.ebiz.enea.it/moda-ml/repository/codelist/draft/gc_NT10.xml">http://www.ebiz.enea.it/moda-ml/repository/codelist/draft/gc_NT10.xml</a>
@TID	serial number wired into the RFID chip - base type: string,
totFault	total number of faults: the 1st/2nd digit count the "Large faults", the 3rd/4th the "Medium faults" and the 5th/6th the "Small faults" - base type: positiveInteger,
transCondition	special condition of transport or special service requested to the Forwarder - base type: string, cod. table: T38 <a href="http://www.ebiz.enea.it/moda-ml/repository/codelist/draft/gc_T38.xml">http://www.ebiz.enea.it/moda-ml/repository/codelist/draft/gc_T38.xml</a>
transConditionText	free text description of the special condition of transport or special service requested to the Forwarder - base type: string, max length: 250,
transMeans	means of transport, in general or referred to a specific leg - base type: string, cod. table: T40 <a href="http://www.ebiz.enea.it/moda-ml/repository/codelist/draft/gc_T40.xml">http://www.ebiz.enea.it/moda-ml/repository/codelist/draft/gc_T40.xml</a>
transMode	way of transport, in general or referred to the specified leg - base type: string, cod. table: T8 <a href="http://www.ebiz.enea.it/moda-ml/repository/codelist/draft/gc_T8.xml">http://www.ebiz.enea.it/moda-ml/repository/codelist/draft/gc_T8.xml</a>
@transReason	reason for the transport - base type: string, cod. table: NT11

	<a href="http://www.ebiz.enea.it/moda-ml/repository/codelist/draft/gc_NT11.xml">http://www.ebiz.enea.it/moda-ml/repository/codelist/draft/gc_NT11.xml</a>
@uid	unique element identifier within the xml document - base type: string,
@um	specification of the unit of measure - base type: string, cod. table: NT7 <a href="http://www.ebiz.enea.it/moda-ml/repository/codelist/draft/gc_NT7.xml">http://www.ebiz.enea.it/moda-ml/repository/codelist/draft/gc_NT7.xml</a>
uri	Uniform Resource Identifier (URI) that identifies the external object as an Internet resource - base type: normalizedString,
@useProfile	use profile to which the present document is compliant if it was agreed by the parties. It is suggested a URI with reference to the firms or the URL of the profile. - base type: string,
@VAT	VAT rate or code (DEPRECATED, use dtScheme element) - base type: string, cod. table: NT16 <a href="http://www.ebiz.enea.it/moda-ml/repository/codelist/draft/gc_NT16.xml">http://www.ebiz.enea.it/moda-ml/repository/codelist/draft/gc_NT16.xml</a>
@version	Dictionary version from which the instance has been created - base type: string, cod. table: NT100 <a href="http://www.ebiz.enea.it/moda-ml/repository/codelist/draft/gc_NT100.xml">http://www.ebiz.enea.it/moda-ml/repository/codelist/draft/gc_NT100.xml</a>
volume	effective volume of a specified object - base type: decimal, min inclusive: 0, fraction digits: 2,
width	effective width of a specified object - base type: decimal, min inclusive: 0, fraction digits: 2,
xGeoCoord	geographical coordinate x , corresponding to latitude - base type: decimal,
yarnConeAngle	tapering angle of the cone on which a yarn is reeled - base type: positiveInteger,
yarnOutWrap	code specifying the type of outer wrapping or packing of a yarn - base type: string, cod. table: T33 <a href="http://www.ebiz.enea.it/moda-ml/repository/codelist/draft/gc_T33.xml">http://www.ebiz.enea.it/moda-ml/repository/codelist/draft/gc_T33.xml</a>
yarnOutWrapText	free text specifying the type of outer wrapping or packing of a yarn - base type: string, max length: 250,
yarnReelID	diameter of the bobbin used for a yarn product - base type: decimal, min inclusive: 0, fraction digits: 2,
yarnReelH	height of the bobbin used a yarn product - base type: decimal, min inclusive: 0, fraction digits: 2,
yarnReelQty	quantity of yarn (by weight or length) wound upon a bobbin - base type: decimal, min inclusive: 0, fraction digits: 2,
yarnReelWrap	type of wrapping in which a package of yarn is wrapped - base type: string, cod. table: T32 <a href="http://www.ebiz.enea.it/moda-ml/repository/codelist/draft/gc_T32.xml">http://www.ebiz.enea.it/moda-ml/repository/codelist/draft/gc_T32.xml</a>
yGeoCoord	geographical coordinate y , corresponding to longitude - base type: decimal,
zGeoCoord	geographical coordinate z , corresponding to altitude - base type: decimal,

## 2.3 Suggested best practices

**TEXDesAdvise/TAheader/refDoc/docID (identification number of the referenced document)**

numberingOrg indicates the role that produced the document identifier (it is allowed to declare two different ones -e.g. customer and supplier - with two docID with different numberingOrg

**TEXDesAdvise/TAbody/TAitem/refDoc/docID (identification number of the referenced document)**

numberingOrg indicates the role that produced the document identifier (it is allowed to declare two different ones -e.g. customer and supplier - with two docID with different numberingOrg

**TEXDesAdvise/TAheader/refDoc/attachment/  
externalReference/mimeCode (mime type of the external object)**

Use coding from IANA <http://www.iana.org/assignments/media-types/media-types.xml>

**TEXDesAdvise/TAbody/TAitem/refDoc/attachment/  
externalReference/mimeCode (mime type of the external object)**

Use coding from IANA <http://www.iana.org/assignments/media-types/media-types.xml>

**TEXDesAdvise/TAbody/TAitem/qty (net quantity of the article or object correlated, qualified by the function of the document (ordering, delivering, ..) and by the context)**

this element can have two instances only if the units of measure are different

**TEXDesAdvise/shipInfo/actualPackageUnit/  
itemsList/itemIdentification/serialN (serial number used for the identification of a physical unit)**

in the case of garment with RFID for anti-counterfeiting, RFID EPCGlobal for logistics and NFC for the customer experience there should be three serial elements with pairs of attributes numberingOrg/idQualifier: "CL"/"RFID", "GS1"/"RFID", "CL"/"NFC".

**TEXDesAdvise/TAbody/TAitem/piece/serialN (serial number used for the identification of a physical unit)**

This element might contain also codes for RFID devices.

**TEXDesAdvise/TAbody/TAitem/shipInfo/actualPackageUnit/itemsList/itemIdentification/serialN (serial number used for the identification of a physical unit)**

in the case of garment with RFID for anti-counterfeiting, RFID EPCGlobal for logistics and NFC for the customer experience there should be three serial elements with pairs of attributes numberingOrg/idQualifier: "CL"/"RFID", "GS1"/"RFID", "CL"/"NFC".

## 2.4 Enumeration tables

List of enumeration tables used in the XML document. You can find all the tables with the corresponding codes at:  
<http://www.ebiz.enea.it/eBIZ/imple/eBIZTCU-draft.asp?lingua=en&pag=6>

NT10 - Despatch Advise type  
NT100 - eBIZ TCFUpstream version  
NT11 - transport causal  
NT16 - VAT rate or code  
NT18 - message function  
NT2 - third party qualifier  
NT29 - format of a date  
NT3 - data format  
NT324 - propulsion system type  
NT4 - end use  
NT51 - Filling Criterion for Package homogeneity  
NT6 - coding system owner/issuer  
NT60 - language, codes from ISO 639-1 (subset)  
NT7 - unit of measure  
T10 - ISO3166 - Country  
T11 - transport package type  
T21 - type of document  
T29 - type of yarn package  
T3 - terms of delivery - IncoTerms  
T30 - support of yarn package - material  
T32 - yarn reel wrapping type  
T33 - yarn outer packing  
T38 - transport conditions  
T4 - fabric piece inner packing (wrapping) 1  
T40 - type of transport means  
T44 - additional code type  
T5 - fabric piece inner packing (wrapping) 2  
T52 - fabric piece status  
T6 - fabric piece outer packing  
T8 - Modes of Transport



## ACKNOWLEDGEMENT



This action is part of the TRICK project, which has received funding from Horizon 2020 research and innovation programme under grant agreement No. 958352 of the European Union.

## DISCLAIMER

The content of this document represents the views of the authors only and is their sole responsibility; it cannot be considered to reflect the views of the European Commission or any other body of the European Union.

The European Commission does not accept any responsibility for use that may be made of the information it contains.

# Annex A

Representative images of the principal complex elements' structure.

