



<http://www.ebiz-tcf.eu>

DRAFT

Extract from IMPLEMENTATION GUIDE
TRANSACTION "TEXTILE QUALITY REPORT"

Version: draft

Date of release: 9/10/2022

Document code: G007e

technical Documentation: <http://www.ebiz.enea.it>

XML Schemas repository: <http://www.ebiz.enea.it/moda-ml/repository/schema/draft/default.asp>

Guides repository: <http://www.ebiz.enea.it/moda-ml/repository/guide/draft/default.asp>

Guide filename: G007-eBIZ-TextileQualityReport.pdf

0. PREMISE

This document contains a proposal for the updating and extension of eBIZ specifications starting from the eBIZ version 2018. Under the name of 'Draft version' it is reported the result of an extensive work of analysis and consultation aimed at developing and maintaining eBIZ specifications.

In particular, the content of this proposal is the result of various activities, mainly those carried out within the framework of the **TRICK project** funded by the European Commission: grant agreement 958352, call H2020-LOW-CARBON-CIRCULAR-INDUSTRIES-2020 / H2020-LCCI-2020-EASME-twostage.

The technical contents are backwards compatible with the latest official published version, with the exclusion of the totally new concepts added explicitly for the version that are thought as incremental evolution of the knowledge base.

1. BUSINESS DESCRIPTION

1.1 Scope

The present guide has been issued to assist the companies of the Textile-Clothing sector in the implementation of the standard XML document type "Textile QUALITY REPORT", providing all the instructions required for its use in any context of e-commerce between Apparel Producers and Fabric Producers.

All the rules required for the construction and validation of the document are embedded into the specific XML-Schema, which is detailed in section "Implementation guide".

1.2 Generalities

The message is issued either by the Fabric Producer and/or by the Fabric Quality Controller as "quality certificate" of the fabric piece, mainly to anticipate the details on the existence, position and classification of faults in order to accelerate and improve the following apparel manufacturing.

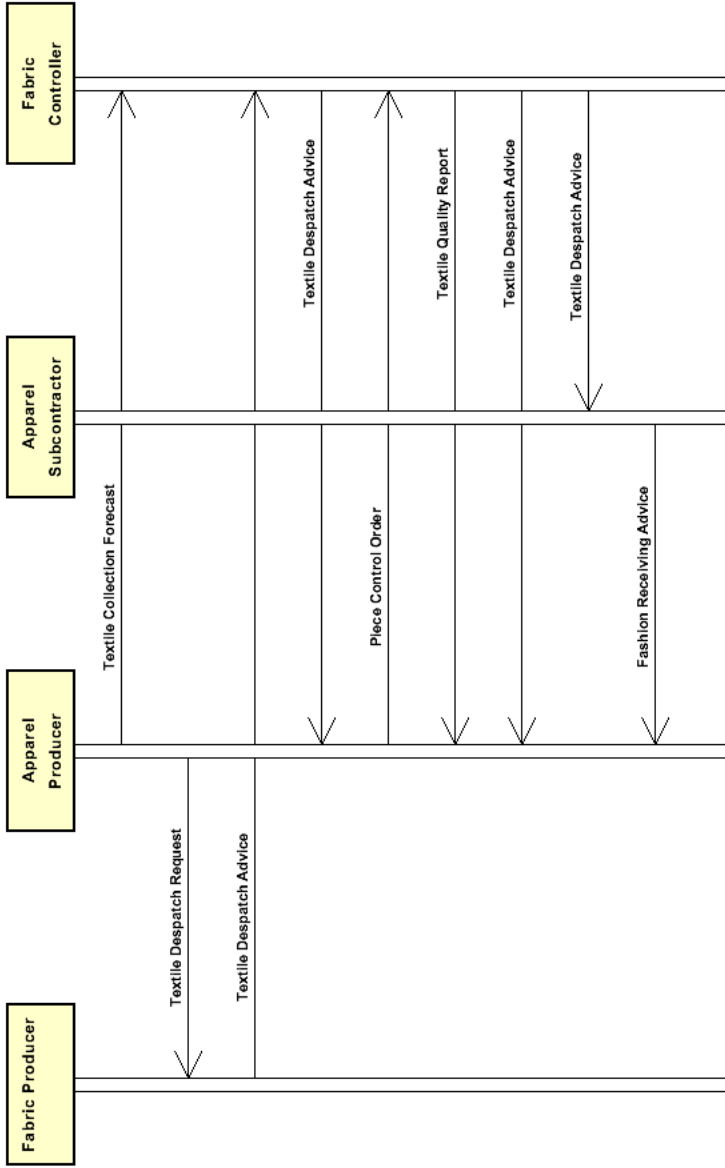
Each document refers either to one piece of fabric, identified by its id. number (TQ type ="S"ingle) or to several pieces belonging to the same shipment (TQ type="M"ultiple) and likewise identified.

The following classes of data can be reported in the document:

- physical dimensions and overall allowance
- fabric faults and their positions
- test value of conformance to specifications and tailorability
- the reporting of the inspection.

1.3. Possible scenario

Fabric delivery with quality reporting by controller



2. IMPLEMENTATION GUIDE

2.1 General structure of XML document

All the business data that can be exchanged through this class of documents are shown in the following "document structure", that provides a simplified vision of the Schema.

In particular:

- the two numbers following each element define its "cardinality" (minimum and maximum number of occurrences); the minimum equal zero indicates that the element is optional, the minimum greater than zero indicates that is mandatory;
- the bold character denotes the complex elements (aggregates of simple elements) that were built for the sake of functionality and re-usability of some complex informations sets. The child elements in each parent element are easily spotted as "indented";
- the symbol "@" denotes an attribute of the preceding element; here "the usage indicator (optional, required, ...) is shown in square brackets.

Structure

TEXQualityRpt

```
@TQtype [Optional]
@msgfunction [Optional] [Default= OR]
@version [Optional] [Default= 2018-1]
@useProfile [Optional]
| TQheader 1-1
| | msgN 1-1
| | - choose -
| | | msgID 0-1
| | | - or -
| | | docID 0-1
| | | @numberingOrg [Optional]
| | | - end choose -
| | | msgDate 1-1
| | | @dateForm [Optional]
| | | refDoc 0-9
| | | @docType [Required]
| | | | docID 1-2
| | | | @numberingOrg [Optional]
| | | | docDate 0-1
| | | | @dateForm [Optional]
| | | | season 0-1
| | | | @numberingOrg [Optional]
| | | | @codeList [Optional]
| | | | @listName [Optional]
| | | | @listVersion [Optional]
| | | | itemID 0-1
| | | | attachment 0-1
| | | | @uid [Optional]
| | | | | fileName 0-1
| | | | | @numberingOrg [Optional]
| | | | | binaryObject 0-1
| | | | | @format [Optional]
| | | | | @mime [Optional]
| | | | | @encoding [Optional]
| | | | | @characterSet [Optional]
| | | | | externalReference 0-99
| | | | | | uri 1-1
| | | | | | @isURL [Optional] [Default= true]
| | | | | | mimeTypeCode 0-1
| | | | | | formatCode 0-1
| | | | | | encodingCode 0-1
| | | | | | characterSetCode 0-1
| | | buyer 1-1
| | | @logo [Optional]
| | | @sender [Optional]
| | | | id 1-1
| | | | @numberingOrg [Optional]
| | | | additionalIdentifier 0-9
```

| @numberingOrg [Optional]
 | @idQualifier [Optional]
 | legalName 0-1
 | dept 0-1
 | subDept 0-1
 | person 0-1
 | @email [Optional]
 | @phone [Optional]
 | @fax [Optional]
 | street 0-1
 | city 0-1
 | subCountry 0-1
 | country 0-1
 | postCode 0-1
 | **geoCoordinates 0-1**
 | @um [Optional] [Default= DEGD]
 | @geoReferenceSystem [Optional]
 | | xGeoCoord 1-1
 | | yGeoCoord 1-1
 | | zGeoCoord 0-0
 | **supplier 1-1**
 | @logo [Optional]
 | @sender [Optional]
 | | id 1-1
 | | @numberingOrg [Optional]
 | | additionalIdentifier 0-9
 | | @numberingOrg [Optional]
 | | @idQualifier [Optional]
 | | legalName 0-1
 | | dept 0-1
 | | subDept 0-1
 | | person 0-1
 | | @email [Optional]
 | | @phone [Optional]
 | | @fax [Optional]
 | | street 0-1
 | | city 0-1
 | | subCountry 0-1
 | | country 0-1
 | | postCode 0-1
 | | **geoCoordinates 0-1**
 | | @um [Optional] [Default= DEGD]
 | | @geoReferenceSystem [Optional]
 | | | xGeoCoord 1-1
 | | | yGeoCoord 1-1
 | | | zGeoCoord 0-0
 | **thirdParty 0-5**
 | @VAT [Optional]
 | @role [Required]
 | @sender [Optional]
 | | id 1-1
 | | @numberingOrg [Optional]
 | | legalName 0-1
 | | dept 0-1
 | | subDept 0-1
 | | person 0-1
 | | @email [Optional]
 | | @phone [Optional]
 | | @fax [Optional]
 | | street 0-1
 | | city 0-1
 | | subCountry 0-1
 | | country 0-1
 | | postCode 0-1
 | | **geoCoordinates 0-1**
 | | @um [Optional] [Default= DEGD]
 | | @geoReferenceSystem [Optional]
 | | | xGeoCoord 1-1

- | | | yGeoCoord 1-1
- | | | zGeoCoord 0-0
- | note 0-99
- | | @numberingOrg [Optional]
- | | @codeList [Optional]
- | | @noteLabel [Optional]

TQbody 1-1

TQitem 1-unbounded

- | serialN 1-9
- | | @numberingOrg [Optional]
- | | @idQualifier [Optional]

texCode 0-2

- | | @numberingOrg [Optional]
- | | art 1-1
- | | | @numberingOrg [Optional]
- | | | @codeList [Optional]
- | | | @listName [Optional]
- | | | @listVersion [Optional]
- | | pattern 0-1
- | | | @numberingOrg [Optional]
- | | | @codeList [Optional]
- | | | @listName [Optional]
- | | | @listVersion [Optional]
- | | color 0-1
- | | | @numberingOrg [Optional]
- | | | @codeList [Optional]
- | | | @listName [Optional]
- | | | @listVersion [Optional]
- | | added 0-9
- | | | @numberingOrg [Optional]
- | | | @addType [Optional]
- | | description 0-unbounded
- | | | @ln [Optional]

refDoc 0-9

- | | @docType [Required]
- | | docID 1-2
- | | | @numberingOrg [Optional]
- | | docDate 0-1
- | | | @dateForm [Optional]
- | | season 0-1
- | | | @numberingOrg [Optional]
- | | | @codeList [Optional]
- | | | @listName [Optional]
- | | | @listVersion [Optional]
- | | itemID 0-1

attachment 0-1

- | | | @uid [Optional]
- | | | fileName 0-1
- | | | | @numberingOrg [Optional]
- | | | binaryObject 0-1
- | | | | @format [Optional]
- | | | | @mime [Optional]
- | | | | @encoding [Optional]
- | | | | @characterSet [Optional]

externalReference 0-99

- | | | uri 1-1
- | | | | @isURL [Optional] [Default= true]
- | | | mimeTypeCode 0-1
- | | | formatCode 0-1
- | | | encodingCode 0-1
- | | | characterSetCode 0-1

- | testDate 0-1
- | | @dateForm [Optional]
- | lotN 0-1
- | | @numberingOrg [Optional]
- | dyeN 0-1
- | | @numberingOrg [Optional]

```

| | | mixMatch 0-1
| | |   @numberingOrg [Optional]
| | | pieceMeasures 1-3
| | |   @source [Required]
| | |     | pieceLength 0-1
| | |     |   @um [Optional] [Default= MTR]
| | |     | pieceWeight 0-1
| | |     |   @um [Optional] [Default= KGM]
| | |     | grossWeight 0-1
| | |     |   @um [Required]
| | |     | pieceCutWidth 0-1
| | |     |   @um [Optional] [Default= CMT]
| | |     | pieceWeightM 0-1
| | |     |   @um [Optional] [Default= GRM]
| | |     | pieceWidth 0-1
| | |     |   @um [Optional] [Default= CMT]
| | |     | pieceAllow 0-1
| | |     |   @um [Required]
| | | pieceAllowMea 0-2
| | |   @source [Required]
| | |     | pieceAllowM 0-1
| | |     |   @um [Required]
| | |     | pieceAllowF 0-1
| | |     |   @um [Required]
| | |     | pieceAllow 1-1
| | |     |   @um [Required]
| | | pieceMap 1-2
| | |   @source [Required]
| | |     | totFault 1-1
| | |     | pieceFault 0-99
| | |     |   @faultRank [Required]
| | |     |   @faultShape [Optional]
| | |     | - choose -
| | |     |   | fabricFaultText 1-1
| | |     | - or -
| | |     |   | fabricFault 1-1
| | |     | - end choose -
| | |     |   | warpStart 1-1
| | |     |   |   @um [Optional] [Default= MTR]
| | |     |   | warpEnd 0-1
| | |     |   |   @um [Optional] [Default= MTR]
| | |     |   | weftStart 0-1
| | |     |   |   @um [Optional] [Default= CMT]
| | |     |   | weftEnd 0-1
| | |     |   |   @um [Optional] [Default= CMT]
| | |     |   | pieceAllow 0-1
| | |     |   |   @um [Required]
| | |     |   | note 0-99
| | |     |   |   @numberingOrg [Optional]
| | |     |   |   @codeList [Optional]
| | |     |   |   @noteLabel [Optional]
| | | pieceTestRpt 0-2
| | |   @source [Required]
| | |     | fabricTest 1-99
| | |     | - choose -
| | |     |   | fabricChar 1-1
| | |     | - or -
| | |     |   | fabricCharText 1-1
| | |     | - end choose -
| | |     |   | experimValue 0-9
| | |     |   |   @um [Optional]
| | |     |   |   @method [Optional]
| | |     |   |   @application [Optional]
| | |     |   |   @idCO [Optional]
| | |     |   | comply 0-1
| | |     |   | note 0-99
| | |     |   |   @numberingOrg [Optional]
| | |     |   |   @codeList [Optional]

```

| | | | | |
|--|--|--|--|---------------------------------|
| | | | | @noteLabel [Optional] |
| | | | | fabricTaylorability 0-99 |
| | | | | taylorabilityChar 1-1 |
| | | | | experimValue 0-9 |
| | | | | @um [Optional] |
| | | | | @method [Optional] |
| | | | | @application [Optional] |
| | | | | @idCO [Optional] |
| | | | | comply 0-1 |
| | | | | note 0-99 |
| | | | | @numberingOrg [Optional] |
| | | | | @codeList [Optional] |
| | | | | @noteLabel [Optional] |
| | | | | pieceControlRpt 1-1 |
| | | | | pieceControl 0-1 |
| | | | | @numberingOrg [Optional] |
| | | | | @codeList [Optional] |
| | | | | @listName [Optional] |
| | | | | @listVersion [Optional] |
| | | | | pieceStatus 0-1 |
| | | | | registrationDate 0-1 |
| | | | | @dateForm [Optional] |
| | | | | preexaminationDate 0-1 |
| | | | | @dateForm [Optional] |
| | | | | inspectionDate 0-1 |
| | | | | @dateForm [Optional] |
| | | | | rollUpDate 0-1 |
| | | | | @dateForm [Optional] |

2.2 Detailed description of document elements

Following tables show all elements (complex and simple) used in this document. Description includes: 1) element's information: xml tag, name, brief description, data type and syntax constraints; 2) information about use of the element in a particular position in the document: xpath and possible associated notes.

2.2.1 Complex elements (Aggregate Business Information Entities)

Complex elements are those elements whose content is composed of other elements (childs).Complex elements are alphabetically ordered.

| | |
|----------------------------|--|
| attachment | an attached document. An attachment can refer to an external document or be included with the document being exchanged |
| buyer | details of the Buyer (party that buys the good or service that is object of the current collaborative process) - base type: Nad, |
| externalReference | details about an external object, such as a document stored at a remote location |
| fabricTaylorability | taylorability data. Include the type and the value of the taylorability parameter |
| fabricTest | details of the test performed on a fabric. Include the parameter evaluated, the experimental value (one or more) and the declaration of conformity |
| geoCoordinates | geographical coordinates |
| pieceAllowMea | allowance measure for a fabric piece |
| pieceControlRpt | report of the control operations executed on a fabric piece |
| pieceFault | classification, position and allowance of the piece faults. The reference point (0,0) for the position is the lower left corner of the piece (selvedge excluded) |
| pieceMap | mapping of the piece faults: type, rank and location |
| pieceMeasures | basic measurements of the piece; include width, length, weight and allowance. |
| pieceTestRpt | details of the quality test performed on the piece. Includes two sections: test upon the technical characteristics of fabric in general and the taylorability test |
| refDoc | identification of a document and of an item thereof, to which the message makes reference |
| supplier | details of the Supplier (party that supplies the good or service that is object of the current collaborative process) - base type: Nad, |
| texCode | full codification of the textile product |
| thirdParty | identification and details of the Third Party, different from Sender and Receiver of the document - base type: Nad, |
| TQbody | body of the document TEXTILES QUALITY REPORT. It contains one TQitem element for each textile quality report. |
| TQheader | header of the TEXTILES QUALITY REPORT. |
| TQitem | line item of the document TEXTILES QUALITY REPORT. It includes 5 sections: identification data-measurements-faults map- test results-inspection report |

2.2.2 Simple elements (Basic Business Information Entities)

Simple elements are those elements whose content is characterized by a data type plus a domain of possible values. Simple elements are alphabetically ordered.

| | |
|----------------------|---|
| added | additional code of the product (complementing the formers) - base type: string, max length: 80, |
| additionalIdentifier | additional identification code of a Party, for example customs registries or others - base type: string, max length: 15, |
| @addType | qualifier of the additional coding of a product - base type: string, cod. table: T44 http://www.ebiz.enea.it/moda-ml/repository/codelist/draft/gc_T44.xml |
| @application | force or similar condition (e.g. no. of revolutions) applied in a test as specified within the standard - base type: string, max length: 15, |
| art | article number of the product - base type: string, max length: 80, |
| binaryObject | a binary large object containing an attached document, Coding 'base64Binary' is recommended. - base type: base64Binary, |
| @characterSet | the character set of the binary object (examples UTF-8, UTF-16, Windows-1252, ISO-8859-7,..) - base type: normalizedString, |
| characterSetCode | the character set of an external document (examples UTF-8, UTF-16, Windows-1252, ISO-8859-7,..) - base type: normalizedString, |
| city | name of the city (town, village) - base type: string, max length: 40, |
| @codeList | it specifies the URL where the list of codes used to make an instance of the element can be found - base type: string, max length: 255, |
| color | colour number of the product, when not included in the model or fabric code - base type: string, max length: 15, |
| comply | specifies if the experimental value complies with the standard requirement (target value) - base type: boolean, |
| country | code of the nation - base type: string, cod. table: T10 http://www.ebiz.enea.it/moda-ml/repository/codelist/draft/gc_T10.xml |
| @dateForm | format used for the date - base type: string, cod. table: NT29 http://www.ebiz.enea.it/moda-ml/repository/codelist/draft/gc_NT29.xml |
| dept | name or code of a department - base type: string, max length: 40, |
| description | free text description. The content of the element must be unique, it might be translated and repeated into more languages (thus no more than one instance for each language). - base type: string, max length: 250, |
| docDate | date of issue of the referenced document, according to one of the patterns YYYY-MM-DD, YYYY-MM-DD:HH-MM or YYYY-WW. - base type: string, |
| docID | identification number of the referenced document - base type: string, max length: 80, |
| @docType | type or class to which the referenced document belongs - base type: string, cod. table: T21 http://www.ebiz.enea.it/moda-ml/repository/codelist/draft/gc_T21.xml |
| dyeN | number of the dying batch of a textile product - base type: string, max length: 15, |

| | |
|----------------------------|--|
| <i>@email</i> | electronic mail address of the contact person within a Party - base type: string, max length: 250, |
| <i>@encoding</i> | specifies the decoding algorithm of the binary object - base type: normalizedString, |
| encodingCode | the encoding/decoding algorithm used with the external object (example is 'base64Binary') - base type: normalizedString, |
| experimValue | experimental value of the measurement - base type: decimal, |
| fabricChar | code of the physical or mechanical parameter used to define a "technical characteristic of the fabric" (see Fabric technical sheet) - base type: string, cod. table: T13 http://www.ebiz.enea.it/moda-ml/repository/codelist/draft/gc_T13.xml |
| fabricCharText | free text describing the physical or mechanical parameter used to define a "technical characteristic of the fabric" - base type: string, max length: 80, |
| fabricFault | code specifying the type or class of fabric fault - base type: string, cod. table: T12 http://www.ebiz.enea.it/moda-ml/repository/codelist/draft/gc_T12.xml |
| fabricFaultText | free text describing the type or class of the fabric fault - base type: string, max length: 250, |
| <i>@faultRank</i> | ranking class of the fabric fault - base type: string, cod. table: NT13 http://www.ebiz.enea.it/moda-ml/repository/codelist/draft/gc_NT13.xml |
| <i>@faultShape</i> | shape classification of the fabric fault - base type: string, cod. table: NT14 http://www.ebiz.enea.it/moda-ml/repository/codelist/draft/gc_NT14.xml |
| <i>@fax</i> | fax number of the contact person within a Party - base type: string, max length: 35, |
| fileName | unique identifier (name) of the file - base type: string, max length: 255, |
| <i>@format</i> | the format of the binary content (examples xml, pdf, doc,...) - base type: string, |
| formatCode | the format of the external object (examples xml, pdf, doc,...) - base type: normalizedString, |
| <i>@geoReferenceSystem</i> | georeference system adopted for the coordinate (in example wgs84 with decimal degree or degree with minute and seconds) - base type: string, |
| grossWeight | the gross weight, declared for transport or customs purpose - base type: decimal, min inclusive: 0, fraction digits: 2, |
| id | primary identification code of a Party; it is recommended the format: nation code (ISO 3166) + VAT identification number (11 crt), with the qualifier "numberingOrg"= MF - base type: string, max length: 15, |
| <i>@idCO</i> | primary identification code of the Party executing the test; it is recommended the format: nation code (ISO 3166) + VAT identification number (11 crt). - base type: string, max length: 15, |
| <i>@idQualifier</i> | Qualification of the identifier. - base type: string, |
| inspectionDate | date of inspection (normally of a fabric piece), according to one of the patterns YYYY-MM-DD, YYYY-MM-DD:HH-MM or YYYY-WW. - base type: string, |
| <i>@isURL</i> | it indicates if the referred element is an URL (true) or not (false) - base type: boolean, |

| | |
|---------------|--|
| itemID | number of the line/item of the referenced document - base type: string, max length: 40, |
| legalName | legal name - base type: string, max length: 250, |
| @listName | the name of the list of codes used to make an instance of the element (it might be thought as descriptive element, i.e. 'fabric printing technologies', or not, i.e. "T264") - base type: string, max length: 40, |
| @listVersion | it specifies the version of the list of codes used to make an instance of the element - base type: string, max length: 6, |
| @ln | Language code. - base type: string, cod. table: NT60 http://www.ebiz.enea.it/moda-ml/repository/codelist/draft/gc_NT60.xml |
| @logo | company logo (URL of the image jpeg or gif). It is recommended that the width of the image does not exceed 640 pixel. - base type: string, max length: 255, |
| lotN | lot number of a product or batch number of the raw material - base type: string, max length: 15, |
| @method | standard protocol or method employed in a test to evaluate a characteristic or a parameter - base type: string, max length: 80, |
| @mime | the mime type of the binary object - base type: normalizedString, |
| mimeCode | mime type of the external object - base type: normalizedString, |
| mixMatch | colour hue used for the match of garments - base type: string, max length: 15, |
| msgDate | date of issue of the present message (xml document), according to one of the patterns YYYY-MM-DD, YYYY-MM-DD:HH-MM or YYYY-WW. - base type: string, |
| @msgfunction | function performed by the present message with regards to the transmission - base type: string, cod. table: NT18 http://www.ebiz.enea.it/moda-ml/repository/codelist/draft/gc_NT18.xml |
| msgID | key identifier of the business document in the information system of the issuing Party. In case of more despatches of the same business document, it is unchanged. - base type: string, max length: 35, |
| msgN | identification number given to the message (xml document) by its issuer. In case of more despatches of the same business document, it changes. - base type: string, max length: 35, |
| note | free text or structured (computer processing) note. For note structuring use the attributes "noteLabel" and "codelist" - base type: string, max length: 350, |
| @noteLabel | subject qualifier of a note - base type: string, max length: 35, |
| @numberingOrg | code specifying the organisation who has created or owns the coding or numbering system - base type: string, cod. table: NT6 http://www.ebiz.enea.it/moda-ml/repository/codelist/draft/gc_NT6.xml |
| pattern | pattern/design number of the product, when not included in the article code - base type: string, max length: 15, |
| person | name of a person (e.g. contact person within an organization) - base type: string, max length: 40, |
| @phone | phone number of the contact person within a Party |

| | |
|--------------------|---|
| | - base type: string, max length: 35, |
| pieceAllow | allowance required or accorded for the piece - base type: decimal, fraction digits: 2, |
| pieceAllowF | allowance required/accorded for fabric faults - base type: decimal, fraction digits: 2, |
| pieceAllowM | allowance required/accorded for missing measures - base type: decimal, fraction digits: 2, |
| pieceControl | code assigned to a fabric piece to specify the type of control required/performed - base type: string, max length: 7, |
| pieceCutWidth | effective usable width of the fabric piece (for garment manufacturing) - base type: decimal, min inclusive: 0, fraction digits: 2, |
| pieceLength | length of the piece - base type: decimal, min inclusive: 0, fraction digits: 2, |
| pieceStatus | code used to describe the status of a fabric piece after the control - base type: string, cod. table: T52 http://www.ebiz.enea.it/moda-ml/repository/codelist/draft/gc_T52.xml |
| pieceWeight | effective total weight of the fabric piece - base type: decimal, min inclusive: 0, fraction digits: 2, |
| pieceWeightM | effective weight per metre of the fabric piece - base type: decimal, min inclusive: 0, fraction digits: 2, |
| pieceWidth | effective width of the fabric piece - base type: decimal, min inclusive: 0, fraction digits: 2, |
| postCode | code defining the postal zone - base type: string, max length: 10, |
| preexaminationDate | date of preexamination (normally of a fabric piece), according to one of the patterns Y YYY-MM-DD, YYYY-MM-DD:HH-MM or YYYY-WW. - base type: string, |
| registrationDate | date of registration (normally of a fabric piece), according to one of the patterns YYYY- MM-DD, YYYY-MM-DD:HH-MM or YYYY-WW. - base type: string, |
| @role | Third Party role qualifier - base type: string, cod. table: NT2 http://www.ebiz.enea.it/moda-ml/repository/codelist/draft/gc_NT2.xml |
| rollUpDate | date of rolling up (normally of a fabric piece), according to one of the patterns YYYY-M M-DD, YYYY-MM-DD:HH-MM or YYYY-WW. - base type: string, |
| season | sale season; defined as: season (1 crt) + year (4 crt) - season: S/S=1 A/W=2 Spring=3 Summer=4 Autumn=5 Winter=6: for more than four seasons use alphabetic sequence: 1st season=A 2nd season=B etc.etc. - base type: string, max length: 15, |
| @sender | qualifier that specifies the Party issuing of the document - base type: boolean, |
| serialN | serial number used for the identification of a physical unit - base type: string, max length: 250, |
| @source | party who has provided the data - base type: string, cod. table: NT12 http://www.ebiz.enea.it/moda-ml/repository/codelist/draft/gc_NT12.xml |
| street | street and building number identifying a location - base type: string, max length: 80, |
| subCountry | short name or code of the sub-country entity - base type: string, max length: 9, |

| | |
|-------------------|--|
| subDept | name or code of a department - base type: string, max length: 40, |
| taylorabilityChar | taylorability parameter for fabric - base type: string, cod. table: T14 http://www.ebiz.enea.it/moda-ml/repository/codelist/draft/gc_T14.xml |
| testDate | date on which the quality test of goods has been made, according to one of the patterns YYYY-MM-DD, YYYY-MM-DD:HH-MM or YYYY-WW. - base type: string, |
| totFault | total number of faults: the 1st/2nd digit count the "Large faults", the 3rd/4th the "Medium faults" and the 5th/6th the "Small faults" - base type: positiveInteger, |
| @TQtype | type of Textiles quality report - base type: string, cod. table: NT15 http://www.ebiz.enea.it/moda-ml/repository/codelist/draft/gc_NT15.xml |
| @uid | unique element identifier within the xml document - base type: string, |
| @um | specification of the unit of measure - base type: string, cod. table: NT7 http://www.ebiz.enea.it/moda-ml/repository/codelist/draft/gc_NT7.xml |
| uri | Uniform Resource Identifier (URI) that identifies the external object as an Internet resource - base type: normalizedString, |
| @useProfile | use profile to which the present document is compliant if it was agreed by the parties. It is suggested a URI with reference to the firms or the URL of the profile. - base type: string, |
| @VAT | VAT rate or code (DEPRECATED, use dtScheme element) - base type: string, cod. table: NT16 http://www.ebiz.enea.it/moda-ml/repository/codelist/draft/gc_NT16.xml |
| @version | Dictionary version from which the instance has been created - base type: string, cod. table: NT100 http://www.ebiz.enea.it/moda-ml/repository/codelist/draft/gc_NT100.xml |
| warpEnd | end point of the fabric fault in the warp direction - base type: decimal, min inclusive: 0, fraction digits: 2, |
| warpStart | start point of the fabric fault in the warp direction - base type: decimal, min inclusive: 0, fraction digits: 2, |
| weftEnd | end point of the fabric fault in the weft direction - base type: decimal, min inclusive: 0, fraction digits: 2, |
| weftStart | start point of the fabric fault in the weft direction - base type: decimal, min inclusive: 0, fraction digits: 2, |
| xGeoCoord | geographical coordinate x , corresponding to latitude - base type: decimal, |
| yGeoCoord | geographical coordinate y , corresponding to longitude - base type: decimal, |
| zGeoCoord | geographical coordinate z , corresponding to altitude - base type: decimal, |

2.3 Suggested best practices

TEXQualityRpt/TQheader/refDoc/docID (identification number of the referenced document)

numberingOrg indicates the role that produced the document identifier (it is allowed to declare two different ones -e.g. customer and supplier - with two docID with different numberingOrg)

TEXQualityRpt/TQbody/TQitem/refDoc/docID (identification number of the referenced document)

numberingOrg indicates the role that produced the document identifier (it is allowed to declare two different ones -e.g. customer and supplier - with two docID with different numberingOrg)

**TEXQualityRpt/TQbody/TQitem/refDoc/attachment/
externalReference/mimeCode (mime type of the external object)**

Use coding from IANA <http://www.iana.org/assignments/media-types/media-types.xml>

**TEXQualityRpt/TQheader/refDoc/attachment/
externalReference/mimeCode (mime type of the external object)**

Use coding from IANA <http://www.iana.org/assignments/media-types/media-types.xml>

2.4 Enumeration tables

List of enumeration tables used in the XML document. You can find all the tables with the corresponding codes at:
<http://www.ebiz.enea.it/eBIZ/imple/eBIZTCU-draft.asp?lingua=en&pag=6>

NT100 - eBIZ TCFUpstream version
NT12 - data source
NT13 - fabric fault category
NT14 - fabric fault shape
NT15 - Textiles Quality Report type
NT16 - VAT rate or code
NT18 - message function
NT2 - third party qualifier
NT29 - format of a date
NT6 - coding system owner/issuer
NT60 - language, codes from ISO 639-1 (subset)
NT7 - unit of measure
T10 - ISO3166 - Country
T12 - fabric faults
T13 - CFM properties of fabric
T14 - FAST tests
T21 - type of document
T44 - additional code type
T52 - fabric piece status

ACKNOWLEDGEMENT



This action is part of the TRICK project, which has received funding from Horizon 2020 research and innovation programme under grant agreement No. 958352 of the European Union.

DISCLAIMER

The content of this document represents the views of the authors only and is their sole responsibility; it cannot be considered to reflect the views of the European Commission or any other body of the European Union.

The European Commission does not accept any responsibility for use that may be made of the information it contains.

Annex A

Representative images of the principal complex elements' structure.

