



<http://www.ebiz-tcf.eu>

DRAFT

Extract from IMPLEMENTATION GUIDE
TRANSACTION "TEXTILE CATALOGUE"

Version: draft

Date of release: 9/10/2022

Document code: G009e

technical Documentation: <http://www.ebiz.enea.it>

XML Schemas repository: <http://www.ebiz.enea.it/moda-ml/repository/schema/draft/default.asp>

Guides repository: <http://www.ebiz.enea.it/moda-ml/repository/guide/draft/default.asp>

Guide filename: G009-eBIZ-TextileCatalogue.pdf

0. PREMISE

This document contains a proposal for the updating and extension of eBIZ specifications starting from the eBIZ version 2018. Under the name of 'Draft version' it is reported the result of an extensive work of analysis and consultation aimed at developing and maintaining eBIZ specifications.

In particular, the content of this proposal is the result of various activities, mainly those carried out within the framework of the **TRICK project** funded by the European Commission: grant agreement 958352, call H2020-LOW-CARBON-CIRCULAR-INDUSTRIES-2020 / H2020-LCCI-2020-EASME-twostage.

The technical contents are backwards compatible with the latest official published version, with the exclusion of the totally new concepts added explicitly for the version that are thought as incremental evolution of the knowledge base.

1. BUSINESS DESCRIPTION

1.1 Scope

The present guide has been issued to assist the companies of the Textile-Clothing sector in the implementation of the standard XML document type "Textile CATALOGUE", providing all the instruction required for its use in any context of e-commerce between Apparel Producers and Fabric Producers.

All the rules required for the construction and validation of the document are embedded into the specific XML-Schema, which is detailed in section "Implementation guide".

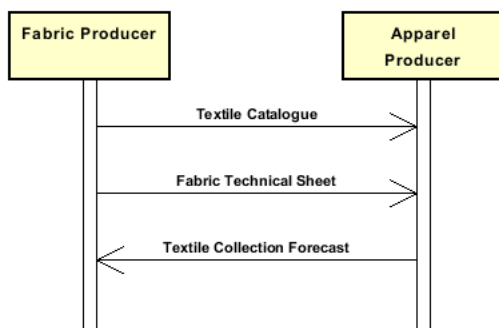
1.2 Generalities

This document is usable less for a sales catalogue than to exchange in advance the product data between the Supplier and the Customer, in order to synchronize their product data-bases.

It lists the articles composing the Fabric Producer's offer (codes, descriptions, prices and sales conditions) and can include some of the technical data (composition, weight and width, construction specifications, . . .).

1.3. Possible scenario

Selection of fabrics



2. IMPLEMENTATION GUIDE

2.1 General structure of XML document

All the business data that can be exchanged through this class of documents are shown in the following "document structure", that provides a simplified vision of the Schema.

In particular:

- the two numbers following each element define its "cardinality" (minimum and maximum number of occurrences); the minimum equal zero indicates that the element is optional, the minimum greater than zero indicates that is mandatory;
- the bold character denotes the complex elements (aggregates of simple elements) that were built for the sake of functionality and re-usability of some complex informations sets. The child elements in each parent element are easily spotted as "indented";
- the symbol "@" denotes an attribute of the preceding element; here "the usage indicator (optional, required, ...)" is shown in square brackets.

Structure

TEXCatalog

@msgfunction [Optional] [Default= OR]

@version [Optional] [Default= 2018-1]

@useProfile [Optional]

| THeader 1-1

| msgN 1-1

- choose -

| msgID 0-1

- or -

| docID 0-1

| @numberingOrg [Optional]

- end choose -

| msgDate 1-1

| @dateForm [Optional]

| msgCurrency 0-1

| refDoc 0-9

| @docType [Required]

| docID 1-2

| @numberingOrg [Optional]

| docDate 0-1

| @dateForm [Optional]

| season 0-1

| @numberingOrg [Optional]

| @codeList [Optional]

| @listName [Optional]

| @listVersion [Optional]

| itemID 0-1

| attachment 0-1

| @uid [Optional]

| fileName 0-1

| @numberingOrg [Optional]

| binaryObject 0-1

| @format [Optional]

| @mime [Optional]

| @encoding [Optional]

| @characterSet [Optional]

| externalReference 0-99

| uri 1-1

| @isURL [Optional] [Default= true]

| mimeTypeCode 0-1

| formatCode 0-1

| encodingCode 0-1

| characterSetCode 0-1

| picture 0-9

| pictureCode 0-1

| title 0-unbounded

| @ln [Optional]

| description 0-unbounded

| @ln [Optional]

- | validityStart 0-1
- | | @dateForm [Optional]
- | validityEnd 0-1
- | | @dateForm [Optional]
- | alternativeText 0-unbounded
- | | @ln [Optional]
- | rendering 0-1
- | resolution 0-1
- | | @resolutionType [Optional] [Default= dpi]
- | width 0-1
- | | @um [Required]
- | height 0-1
- | | @um [Required]
- | nominalWidth 0-2
- | | @um [Optional]
- | nominalHeight 0-2
- | | @um [Optional]
- | pictureUse 0-1
- | pictureQualifier 0-1
- | **attachment 0-1**
- | | @uid [Optional]
- | | | fileName 0-1
- | | | | @numberingOrg [Optional]
- | | | binaryObject 0-1
- | | | | @format [Optional]
- | | | | @mime [Optional]
- | | | | @encoding [Optional]
- | | | | @characterSet [Optional]
- | | | **externalReference 0-99**
- | | | | uri 1-1
- | | | | | @isURL [Optional] [Default= true]
- | | | | mimeTypeCode 0-1
- | | | | formatCode 0-1
- | | | | encodingCode 0-1
- | | | | characterSetCode 0-1
- | | note 0-99
- | | | @numberingOrg [Optional]
- | | | @codeList [Optional]
- | | | @noteLabel [Optional]
- | season 0-1
- | | @numberingOrg [Optional]
- | | @codeList [Optional]
- | | @listName [Optional]
- | | @listVersion [Optional]
- | validityStart 0-1
- | | @dateForm [Optional]
- | validityEnd 0-1
- | | @dateForm [Optional]
- | **buyer 0-1**
- | | @logo [Optional]
- | | @sender [Optional]
- | | | id 1-1
- | | | | @numberingOrg [Optional]
- | | | additionalIdentifier 0-9
- | | | | @numberingOrg [Optional]
- | | | | @idQualifier [Optional]
- | | | legalName 0-1
- | | | dept 0-1
- | | | subDept 0-1
- | | | person 0-1
- | | | | @email [Optional]
- | | | | @phone [Optional]
- | | | | @fax [Optional]
- | | | street 0-1
- | | | city 0-1
- | | | subCountry 0-1
- | | | country 0-1
- | | | postCode 0-1

| | **geoCoordinates 0-1**
| | @um [Optional] [Default= DEGD]
| | @geoReferenceSystem [Optional]
| | | xGeoCoord 1-1
| | | yGeoCoord 1-1
| | | zGeoCoord 0-0

| **supplier 1-1**

| @logo [Optional]
| @sender [Optional]
| | id 1-1
| | | @numberingOrg [Optional]
| | additionalIdentifier 0-9
| | | @numberingOrg [Optional]
| | | @idQualifier [Optional]
| | legalName 0-1
| | dept 0-1
| | subDept 0-1
| | person 0-1
| | | @email [Optional]
| | | @phone [Optional]
| | | @fax [Optional]
| | street 0-1
| | city 0-1
| | subCountry 0-1
| | country 0-1
| | postCode 0-1

| | **geoCoordinates 0-1**

| | | @um [Optional] [Default= DEGD]
| | | @geoReferenceSystem [Optional]
| | | | xGeoCoord 1-1
| | | | yGeoCoord 1-1
| | | | zGeoCoord 0-0

| **thirdParty 0-5**

| @VAT [Optional]
| @role [Required]
| @sender [Optional]
| | id 1-1
| | | @numberingOrg [Optional]
| | legalName 0-1
| | dept 0-1
| | subDept 0-1
| | person 0-1
| | | @email [Optional]
| | | @phone [Optional]
| | | @fax [Optional]
| | street 0-1
| | city 0-1
| | subCountry 0-1
| | country 0-1
| | postCode 0-1

| | **geoCoordinates 0-1**

| | | @um [Optional] [Default= DEGD]
| | | @geoReferenceSystem [Optional]
| | | | xGeoCoord 1-1
| | | | yGeoCoord 1-1
| | | | zGeoCoord 0-0

| note 0-99

| | @numberingOrg [Optional]
| | @codeList [Optional]
| | @noteLabel [Optional]

| **terms 0-1**

| | **payment 0-5**

| | | @finDiscount [Optional]
| | | @finSurcharge [Optional]
| | | - choose -
| | | payTerm 1-1
| | | - or -

```

| | | payTermText 1-1
| | | - end choose -
| | | | payMode 0-1
| | | insPayment 0-5
| | | | @part [Required]
| | | | - choose -
| | | | | payTerm 1-1
| | | | | - or -
| | | | | | payTermText 1-1
| | | | | | - end choose -
| | | | | | payMode 0-1
| | | trade 0-1
| | | | - choose -
| | | | | incoTermText 1-1
| | | | | - or -
| | | | | | incoTerm 1-1
| | | | | | - end choose -
| | | | | | | location 0-1
| | | | | | | @LRI [Optional]
| | | transInfo 0-5
| | | | @transReason [Optional]
| | | | @progr [Optional]
| | | | | transMode 1-1
| | | | | carrier 0-1
| | | | - choose -
| | | | | deliveryLocation 0-1
| | | | | | location 0-1
| | | | | | | @LRI [Optional]
| | | | | | | legalName 0-1
| | | | | | | dept 0-1
| | | | | | | subDept 0-1
| | | | | | | person 0-1
| | | | | | | @email [Optional]
| | | | | | | @phone [Optional]
| | | | | | | @fax [Optional]
| | | | | | | street 0-1
| | | | | | | city 0-1
| | | | | | | subCountry 0-1
| | | | | | | country 0-1
| | | | | | | postCode 0-1
| | | | | | | geoCoordinates 0-1
| | | | | | | | @um [Optional] [Default= DEGD]
| | | | | | | | @geoReferenceSystem [Optional]
| | | | | | | | | xGeoCoord 1-1
| | | | | | | | | yGeoCoord 1-1
| | | | | | | | | zGeoCoord 0-0
| | | | - or -
| | | | | deliveryPlace 0-1
| | | | - end choose -
| | | | | grossWeight 0-1
| | | | | | @um [Required]
| | | | | netWeight 0-1
| | | | | | @um [Required]
| | | | | transMeans 0-1
| | | | | | @propulsionSystemCode [Optional]
| | | | | transCondition 0-3
| | | | | transConditionText 0-1
| | | | - choose -
| | | | | despatchPlace 0-1
| | | | - or -
| | | | | despatchLocation 0-1
| | | | | | legalName 0-1
| | | | | | dept 0-1
| | | | | | subDept 0-1
| | | | | | person 0-1
| | | | | | | @email [Optional]
| | | | | | | @phone [Optional]
| | | | | | | @fax [Optional]

```

```

| | | | street 0-1
| | | | city 0-1
| | | | subCountry 0-1
| | | | country 0-1
| | | | postCode 0-1
| | | | geoCoordinates 0-1
| | | |   @um [Optional] [Default= DEGD]
| | | |   @geoReferenceSystem [Optional]
| | | |     xGeoCoord 1-1
| | | |     yGeoCoord 1-1
| | | |     zGeoCoord 0-0
| | | - end choose -
| | | | despatchDate 0-1
| | | |   @dateForm [Optional]
| | | | delEffectiveDate 0-1
| | | |   @dateForm [Optional]
| | | | routeLength 0-1
| | | |   @um [Required]
| | | allowanceCharge 0-9
| | | @um [Optional]
| | | @VAT [Optional]
| | | @minQty [Optional]
| | | @currency [Optional]
| | | @maxQty [Optional]
| | | @isCharge [Optional]
| | | - choose -
| | | | AC_category 1-1
| | | - or -
| | | | AC_categoryText 1-1
| | | - end choose -
| | | - choose -
| | | | AC_percent 1-1
| | | - or -
| | | | AC_amount 1-1
| | | |   @currency [Optional]
| | | - end choose -
| | | | dtScheme 0-1
| | | | @taxType [Required]
| | | |   taxCategory 0-1
| | | |   taxRate 0-1
| | | |   legalRef 0-1
| | | |   @numberingOrg [Optional]
| | | |   @codeList [Optional]
| | | |   @listName [Optional]
| | | |   @listVersion [Optional]
| | | |   note 0-99
| | | |   @numberingOrg [Optional]
| | | |   @codeList [Optional]
| | | |   @noteLabel [Optional]
| | |
| | | texComInfo 0-1
| | | @endUse [Optional] [Default= PR]
| | | @IC [Optional]
| | | @techSheet [Optional]
| | |   season 0-1
| | |   @numberingOrg [Optional]
| | |   @codeList [Optional]
| | |   @listName [Optional]
| | |   @listVersion [Optional]
| | |   brand 0-1
| | |   @numberingOrg [Optional]
| | |   @codeList [Optional]
| | |   @listName [Optional]
| | |   @listVersion [Optional]
| | |   productLine 0-1
| | |   @numberingOrg [Optional]
| | |   @codeList [Optional]
| | |   @listName [Optional]

```

```

| | @listVersion [Optional]
| | project 0-1
| | operationalCode 0-19
| | @numberingOrg [Optional]
| | @codeList [Optional]
| | @listName [Optional]
| | @listVersion [Optional]
| | @codeQualifier [Optional]
| | deliveryDate 0-1
| | @dateForm [Optional]
| | specDate 0-1
| | @dateForm [Optional]
| | fabricWidth 0-1
| | @um [Optional] [Default= CMT]
| | pieceLength 0-1
| | @um [Optional] [Default= MTR]
| | piecePack 0-1
| | - choose -
| | | piecePackText 1-1
| | - or -
| | | pieceInnWrap1 1-1
| | | pieceInnWrap2 0-1
| | | pieceOutWrap 0-1
| | - end choose -
| | note 0-99
| | @numberingOrg [Optional]
| | @codeList [Optional]
| | @noteLabel [Optional]
|
| TCbody 1-1
| | TCgroup 1-unbounded
| | | artGroup 0-1
| | | @numberingOrg [Optional]
| | | @codeList [Optional]
| | | @listName [Optional]
| | | @listVersion [Optional]
| | | artGroupName 0-1
| | | description 0-unbounded
| | | @ln [Optional]
| | | extendedDescription 0-unbounded
| | | @ln [Optional]
| | | refDoc 0-9
| | | @docType [Required]
| | | | docID 1-2
| | | | @numberingOrg [Optional]
| | | | docDate 0-1
| | | | @dateForm [Optional]
| | | | season 0-1
| | | | @numberingOrg [Optional]
| | | | @codeList [Optional]
| | | | @listName [Optional]
| | | | @listVersion [Optional]
| | | | itemID 0-1
| | | | attachment 0-1
| | | | @uid [Optional]
| | | | | fileName 0-1
| | | | | @numberingOrg [Optional]
| | | | | binaryObject 0-1
| | | | | @format [Optional]
| | | | | @mime [Optional]
| | | | | @encoding [Optional]
| | | | | @characterSet [Optional]
| | | | | externalReference 0-99
| | | | | | uri 1-1
| | | | | | @isURL [Optional] [Default= true]
| | | | | | mimeTypeCode 0-1
| | | | | | formatCode 0-1
| | | | | | encodingCode 0-1

```



```

| | | | characterSetCode 0-1
| | | picture 0-99
| | | | pictureCode 0-1
| | | | title 0-unbounded
| | | | @ln [Optional]
| | | | description 0-unbounded
| | | | @ln [Optional]
| | | | validityStart 0-1
| | | | @dateForm [Optional]
| | | | validityEnd 0-1
| | | | @dateForm [Optional]
| | | | alternativeText 0-unbounded
| | | | @ln [Optional]
| | | | rendering 0-1
| | | | resolution 0-1
| | | | @resolutionType [Optional] [Default= dpi]
| | | | width 0-1
| | | | @um [Required]
| | | | height 0-1
| | | | @um [Required]
| | | | nominalWidth 0-2
| | | | @um [Optional]
| | | | nominalHeight 0-2
| | | | @um [Optional]
| | | | pictureUse 0-1
| | | | pictureQualifier 0-1
| | | | attachment 0-1
| | | | @uid [Optional]
| | | | | fileName 0-1
| | | | | @numberingOrg [Optional]
| | | | | binaryObject 0-1
| | | | | @format [Optional]
| | | | | @mime [Optional]
| | | | | @encoding [Optional]
| | | | | @characterSet [Optional]
| | | | | externalReference 0-99
| | | | | | uri 1-1
| | | | | | @isURL [Optional] [Default= true]
| | | | | | mimeTypeCode 0-1
| | | | | | formatCode 0-1
| | | | | | encodingCode 0-1
| | | | | | characterSetCode 0-1
| | | | note 0-99
| | | | @numberingOrg [Optional]
| | | | @codeList [Optional]
| | | | @noteLabel [Optional]
| | | | allowanceCharge 0-9
| | | | @um [Optional]
| | | | @VAT [Optional]
| | | | @minQty [Optional]
| | | | @currency [Optional]
| | | | @maxQty [Optional]
| | | | @isCharge [Optional]
| | | | - choose -
| | | | | AC_category 1-1
| | | | - or -
| | | | | AC_categoryText 1-1
| | | | - end choose -
| | | | - choose -
| | | | | AC_percent 1-1
| | | | - or -
| | | | | AC_amount 1-1
| | | | | @currency [Optional]
| | | | - end choose -
| | | | | dtScheme 0-1
| | | | | @taxType [Required]
| | | | | taxCategory 0-1
| | | | | taxRate 0-1

```

```

| | | | legalRef 0-1
| | | | @numberingOrg [Optional]
| | | | @codeList [Optional]
| | | | @listName [Optional]
| | | | @listVersion [Optional]
| | | | note 0-99
| | | | @numberingOrg [Optional]
| | | | @codeList [Optional]
| | | | @noteLabel [Optional]
| | | | texComInfo 0-1
| | | | @endUse [Optional] [Default= PR]
| | | | @IC [Optional]
| | | | @techSheet [Optional]
| | | | | season 0-1
| | | | | @numberingOrg [Optional]
| | | | | @codeList [Optional]
| | | | | @listName [Optional]
| | | | | @listVersion [Optional]
| | | | | brand 0-1
| | | | | @numberingOrg [Optional]
| | | | | @codeList [Optional]
| | | | | @listName [Optional]
| | | | | @listVersion [Optional]
| | | | | productLine 0-1
| | | | | @numberingOrg [Optional]
| | | | | @codeList [Optional]
| | | | | @listName [Optional]
| | | | | @listVersion [Optional]
| | | | | project 0-1
| | | | | operationalCode 0-19
| | | | | @numberingOrg [Optional]
| | | | | @codeList [Optional]
| | | | | @listName [Optional]
| | | | | @listVersion [Optional]
| | | | | @codeQualifier [Optional]
| | | | | deliveryDate 0-1
| | | | | @dateForm [Optional]
| | | | | specDate 0-1
| | | | | @dateForm [Optional]
| | | | | fabricWidth 0-1
| | | | | @um [Optional] [Default= CMT]
| | | | | pieceLength 0-1
| | | | | @um [Optional] [Default= MTR]
| | | | | piecePack 0-1
| | | | | - choose -
| | | | | | piecePackText 1-1
| | | | | - or -
| | | | | | pieceInnWrap1 1-1
| | | | | | pieceInnWrap2 0-1
| | | | | | pieceOutWrap 0-1
| | | | | - end choose -
| | | | | note 0-99
| | | | | @numberingOrg [Optional]
| | | | | @codeList [Optional]
| | | | | @noteLabel [Optional]
| | | | | TCitem 0-unbounded
| | | | | lineN 0-1
| | | | | @VAT [Optional]
| | | | | refDoc 0-9
| | | | | @docType [Required]
| | | | | | docID 1-2
| | | | | | @numberingOrg [Optional]
| | | | | | docDate 0-1
| | | | | | @dateForm [Optional]
| | | | | | season 0-1
| | | | | | @numberingOrg [Optional]
| | | | | | @codeList [Optional]
| | | | | | @listName [Optional]

```

```

| @listVersion [Optional]
| itemID 0-1
| attachment 0-1
| @uid [Optional]
|   fileName 0-1
|     @numberingOrg [Optional]
|   binaryObject 0-1
|     @format [Optional]
|     @mime [Optional]
|     @encoding [Optional]
|     @characterSet [Optional]
|   externalReference 0-99
|     uri 1-1
|       @isURL [Optional] [Default= true]
|     mimeTypeCode 0-1
|     formatCode 0-1
|     encodingCode 0-1
|     characterSetCode 0-1
| picture 0-99
|   pictureCode 0-1
|   title 0-unbounded
|   @ln [Optional]
|   description 0-unbounded
|   @ln [Optional]
|   validityStart 0-1
|   @dateForm [Optional]
|   validityEnd 0-1
|   @dateForm [Optional]
|   alternativeText 0-unbounded
|   @ln [Optional]
|   rendering 0-1
|   resolution 0-1
|   @resolutionType [Optional] [Default= dpi]
|   width 0-1
|   @um [Required]
|   height 0-1
|   @um [Required]
|   nominalWidth 0-2
|   @um [Optional]
|   nominalHeight 0-2
|   @um [Optional]
|   pictureUse 0-1
|   pictureQualifier 0-1
| attachment 0-1
| @uid [Optional]
|   fileName 0-1
|     @numberingOrg [Optional]
|   binaryObject 0-1
|     @format [Optional]
|     @mime [Optional]
|     @encoding [Optional]
|     @characterSet [Optional]
|   externalReference 0-99
|     uri 1-1
|       @isURL [Optional] [Default= true]
|     mimeTypeCode 0-1
|     formatCode 0-1
|     encodingCode 0-1
|     characterSetCode 0-1
|   note 0-99
|     @numberingOrg [Optional]
|     @codeList [Optional]
|     @noteLabel [Optional]
| fabricNameSupplier 0-1
| fabricNameBuyer 0-1
| art 0-1
| @numberingOrg [Optional]
| @codeList [Optional]

```

```

| | | | @listName [Optional]
| | | | @listVersion [Optional]
| | | | pattern 0-unbounded
| | | | @numberingOrg [Optional]
| | | | @codeList [Optional]
| | | | @listName [Optional]
| | | | @listVersion [Optional]
| | | | color 0-unbounded
| | | | @numberingOrg [Optional]
| | | | @codeList [Optional]
| | | | @listName [Optional]
| | | | @listVersion [Optional]
| | | | added 0-unbounded
| | | | @numberingOrg [Optional]
| | | | @addType [Optional]
| | | | description 0-unbounded
| | | | @ln [Optional]
| | | | extendedDescription 0-unbounded
| | | | @ln [Optional]
- choose -
| | | | marketPrice 0-unbounded
| | | | | catalogPrice 1-1
| | | | | | @um [Required]
| | | | | | @minQty [Optional]
| | | | | | @currency [Optional]
| | | | | | @garmentMarket [Optional]
| | | | | | @maxQty [Optional]
| | | | | allowanceCharge 0-9
| | | | | | @um [Optional]
| | | | | | @VAT [Optional]
| | | | | | @minQty [Optional]
| | | | | | @currency [Optional]
| | | | | | @maxQty [Optional]
| | | | | | @isCharge [Optional]
- choose -
| | | | | AC_category 1-1
- or -
| | | | | AC_categoryText 1-1
- end choose -
- choose -
| | | | | AC_percent 1-1
- or -
| | | | | AC_amount 1-1
| | | | | | @currency [Optional]
- end choose -
| | | | | dtScheme 0-1
| | | | | | @taxType [Required]
| | | | | | taxCategory 0-1
| | | | | | taxRate 0-1
| | | | | | legalRef 0-1
| | | | | | | @numberingOrg [Optional]
| | | | | | | @codeList [Optional]
| | | | | | | @listName [Optional]
| | | | | | | @listVersion [Optional]
| | | | | | note 0-99
| | | | | | | @numberingOrg [Optional]
| | | | | | | @codeList [Optional]
| | | | | | | @noteLabel [Optional]
| | | | | geographicArea 0-9
- choose -
| | | | | | geographicAreaCode 1-1
- or -
| | | | | | geographicAreaText 1-1
- end choose -
- or -
| | | | | catalogPrice 0-99
| | | | | | @um [Required]
| | | | | | @minQty [Optional]

```

```

| | | | @currency [Optional]
| | | | @garmentMarket [Optional]
| | | | @maxQty [Optional]
| | | - end choose -
| | | | allowanceCharge 0-9
| | | | @um [Optional]
| | | | @VAT [Optional]
| | | | @minQty [Optional]
| | | | @currency [Optional]
| | | | @maxQty [Optional]
| | | | @isCharge [Optional]
| | | - choose -
| | | | AC_category 1-1
| | | - or -
| | | | AC_categoryText 1-1
| | | - end choose -
| | | - choose -
| | | | AC_percent 1-1
| | | - or -
| | | | AC_amount 1-1
| | | | @currency [Optional]
| | | - end choose -
| | | | dtScheme 0-1
| | | | @taxType [Required]
| | | | taxCategory 0-1
| | | | taxRate 0-1
| | | | legalRef 0-1
| | | | @numberingOrg [Optional]
| | | | @codeList [Optional]
| | | | @listName [Optional]
| | | | @listVersion [Optional]
| | | | note 0-99
| | | | @numberingOrg [Optional]
| | | | @codeList [Optional]
| | | | @noteLabel [Optional]
| | | | generalChar 0-1
| | | | fabricNameSupplier 0-1
| | | | fabricNameBuyer 0-1
| | | | season 0-1
| | | | @numberingOrg [Optional]
| | | | @codeList [Optional]
| | | | @listName [Optional]
| | | | @listVersion [Optional]
| | | | tradeMark 0-1
| | | | customsStat 0-1
| | | | fabricCompos 1-1
| | | | percCompos 1-9
| | | | @fibre [Required]
| | | | @materialSource [Optional]
| | | | @recyclingProcessMethod [Optional]
| | | | @percSourcesRenewable [Optional]
| | | | dyeProcess 0-1
| | | | dyeStuff 0-1
| | | | careLabel 0-1
| | | | minLot 0-1
| | | | @um [Required]
| | | | minLotExclusive 0-1
| | | | @um [Required]
| | | | avgDeliveryDD 0-1
| | | | estFaultiness 0-1
| | | | note 0-99
| | | | @numberingOrg [Optional]
| | | | @codeList [Optional]
| | | | @noteLabel [Optional]
| | | | construction 0-1
| | | | fabricWeightM 1-1
| | | | @um [Optional] [Default= GRM]
| | | | fabricWeightM2 0-1

```

```

| | | | @um [Optional] [Default= GRM]
| | | | fabricWidth 0-1
| | | | @um [Optional] [Default= CMT]
| | | | fabricCutWidth 0-1
| | | | @um [Optional] [Default= CMT]
| | | | pieceLength 0-1
| | | | @um [Optional] [Default= MTR]
| | | | weave 0-1
| | | | warpCount 0-9
| | | | @method [Optional] [Default= ISO-2060]
| | | | @fibre [Optional]
| | | | weftCount 0-9
| | | | @method [Optional] [Default= ISO-2060]
| | | | @fibre [Optional]
| | | | warpEndsN 0-1
| | | | weftEndsN 0-1
| | | | bowingWarp 0-1
| | | | @method [Optional]
| | | | bowingWeft 0-1
| | | | @method [Optional]
| | | | checksFlaw 0-1
| | | | @method [Optional]
| | | | weftDev 0-1
| | | | @method [Optional]
| | | | resin 0-1
| | | | texComInfo 0-1
| | | | @endUse [Optional] [Default= PR]
| | | | @IC [Optional]
| | | | @techSheet [Optional]
| | | | | season 0-1
| | | | | @numberingOrg [Optional]
| | | | | @codeList [Optional]
| | | | | @listName [Optional]
| | | | | @listVersion [Optional]
| | | | | brand 0-1
| | | | | @numberingOrg [Optional]
| | | | | @codeList [Optional]
| | | | | @listName [Optional]
| | | | | @listVersion [Optional]
| | | | | productLine 0-1
| | | | | @numberingOrg [Optional]
| | | | | @codeList [Optional]
| | | | | @listName [Optional]
| | | | | @listVersion [Optional]
| | | | | project 0-1
| | | | | operationalCode 0-19
| | | | | @numberingOrg [Optional]
| | | | | @codeList [Optional]
| | | | | @listName [Optional]
| | | | | @listVersion [Optional]
| | | | | @codeQualifier [Optional]
| | | | | deliveryDate 0-1
| | | | | @dateForm [Optional]
| | | | | specDate 0-1
| | | | | @dateForm [Optional]
| | | | | fabricWidth 0-1
| | | | | @um [Optional] [Default= CMT]
| | | | | pieceLength 0-1
| | | | | @um [Optional] [Default= MTR]
| | | | | piecePack 0-1
| | | | | - choose -
| | | | | | piecePackText 1-1
| | | | | - or -
| | | | | | pieceInnWrap1 1-1
| | | | | | pieceInnWrap2 0-1
| | | | | | pieceOutWrap 0-1
| | | | | - end choose -
| | | | | note 0-99

```

```

| | | | @numberingOrg [Optional]
| | | | @codeList [Optional]
| | | | @noteLabel [Optional]
| | | | dtScheme 0-1
| | | | @taxType [Required]
| | | | taxCategory 0-1
| | | | taxRate 0-1
| | | | legalRef 0-1
| | | | @numberingOrg [Optional]
| | | | @codeList [Optional]
| | | | @listName [Optional]
| | | | @listVersion [Optional]
| | | | note 0-99
| | | | @numberingOrg [Optional]
| | | | @codeList [Optional]
| | | | @noteLabel [Optional]
| | | | note 0-99
| | | | @numberingOrg [Optional]
| | | | @codeList [Optional]
| | | | @noteLabel [Optional]
| | | | note 0-99
| | | | @numberingOrg [Optional]
| | | | @codeList [Optional]
| | | | @noteLabel [Optional]

```

2.2 Detailed description of document elements

Following tables show all elements (complex and simple) used in this document. Description includes: 1) element's information: xml tag, name, brief description, data type and syntax constraints; 2) information about use of the element in a particular position in the document: xpath and possible associated notes.

2.2.1 Complex elements (Aggregate Business Information Entities)

Complex elements are those elements whose content is composed of other elements (childs).Complex elements are alphabetically ordered.

| | |
|--------------------------|--|
| allowanceCharge | Allowances and Charges related to an Order or a contract |
| attachment | an attached document. An attachment can refer to an external document or be included with the document being exchanged |
| buyer | details of the Buyer (party that buys the good or service that is object of the current collaborative process) - base type: Nad, |
| construction | construction data and features included in the technical sheet of the fabric article |
| deliveryLocation | data relating to a place of delivery - base type: Nad, |
| despatchLocation | data relating to a place of despatch - base type: Nad, |
| dtScheme | set of data usable to declare the duty or tax applied |
| externalReference | details about an external object, such as a document stored at a remote location |
| fabricCompos | composition of the fabric according to the Directory 97/37/CE |
| generalChar | general data included in the technical sheet of the fabric article |
| geoCoordinates | geographical coordinates |
| geographicArea | identification of a geographic area - base type: string, |
| insPayment | payment details for payment by installments |
| marketPrice | price shown for a specific market catalogue |
| payment | payment details for payment all in one |
| picture | picture; image features and its representation or link to it - base type: , |
| piecePack | type of wrapping or packing of the fabric pieces |
| refDoc | identification of a document and of an item thereof, to which the message makes reference |
| supplier | details of the Supplier (party that supplies the good or service that is object of the current collaborative process) - base type: Nad, |
| TCbody | body of the document TEXTILES CATALOGUE |
| TCgroup | articles grouping of the TEXTILES CATALOGUE - base type: , |
| TChheader | header of the document TEXTILES CATALOGUE |
| TCitem | line item of the message TEXTILES CATALOGUE - base type: , |
| terms | details of the commercial obligations for payment and delivery |

| | |
|-------------------|--|
| texComInfo | miscellaneous trade information, that can be specified in a textile Order, referred either to the whole document or to the single item |
| thirdParty | identification and details of the Third Party, different from Sender and Receiver of the document - base type: Nad, |
| trade | general terms of trade for the specified supply |
| transInfo | details of transport: mode, carrier and delivery place |

2.2.2 Simple elements (Basic Business Information Entities)

Simple elements are those elements whose content is characterized by a data type plus a domain of possible values. Simple elements are alphabetically ordered.

| | |
|----------------------|--|
| AC_amount | amount of an Allowance or Charge - base type: decimal, fraction digits: 2, |
| AC_category | coded specification of an Allowance or Charge - base type: string, cod. table: T41 http://www.ebiz.enea.it/moda-ml/repository/codelist/draft/gc_T41.xml |
| AC_categoryText | free text description of an Allowance or Charge - base type: string, max length: 250, |
| AC_percent | amount of an Allowance or Charge as a percentage (always non negative value) - base type: decimal, max inclusive: 100, fraction digits: 2, |
| added | additional code of the product (complementing the formers) - base type: string, max length: 80, |
| additionalIdentifier | additional identification code of a Party, for example customs registries or others - base type: string, max length: 15, |
| @addType | qualifier of the additional coding of a product - base type: string, cod. table: T44 http://www.ebiz.enea.it/moda-ml/repository/codelist/draft/gc_T44.xml |
| alternativeText | alternative text of the picture - base type: string, max length: 255, |
| art | article number of the product - base type: string, max length: 80, |
| artGroup | code identifying a class of products - base type: string, max length: 40, |
| artGroupName | description of a class of products - base type: string, max length: 80, |
| avgDeliveryDD | average time (workdays) between order receipt and delivery of an article, specified by the Supplier - base type: duration, |
| binaryObject | a binary large object containing an attached document, Coding 'base64Binary' is recommended. - base type: base64Binary, |
| bowingWarp | warp bowing - base type: decimal, min inclusive: 0, |
| bowingWeft | weft bowing - base type: decimal, min inclusive: 0, |
| brand | A brand name. - base type: string, |
| careLabel | codification of the care instructions printed on the label (ISO 3758) |

| | |
|------------------|--|
| | - base type: string, length: 5, |
| carrier | identification of the transport carrier - base type: string, max length: 40, |
| catalogPrice | price shown in the Supplier's Catalogue - base type: decimal, fraction digits: 2, |
| @characterSet | the character set of the binary object (examples UTF-8, UTF-16, Windows-1252, ISO-8859-7,..) - base type: normalizedString, |
| characterSetCode | the character set of an external document (examples UTF-8, UTF-16, Windows-1252, ISO-8859-7,..) - base type: normalizedString, |
| checksFlaw | flaw in checks - base type: decimal, min inclusive: 0, |
| city | name of the city (town, village) - base type: string, max length: 40, |
| @codeList | it specifies the URL where the list of codes used to make an instance of the element can be found - base type: string, max length: 255, |
| @codeQualifier | operational code qualifier: it states if the code is related to a project, an event, an initiative, a sales channel, a management type (eg CITES), - base type: string, cod. table: NT43 http://www.ebiz.enea.it/moda-ml/repository/codelist/draft/gc_NT43.xml |
| color | colour number of the product, when not included in the model or fabric code - base type: string, max length: 15, |
| country | code of the nation - base type: string, cod. table: T10 http://www.ebiz.enea.it/moda-ml/repository/codelist/draft/gc_T10.xml |
| @currency | currency in which a specified monetary data is expressed - base type: string, cod. table: T9 http://www.ebiz.enea.it/moda-ml/repository/codelist/draft/gc_T9.xml |
| customsStat | statistic code assigned by Customs to a specified product (TARIC code) - base type: string, max length: 15, |
| @dateForm | format used for the date - base type: string, cod. table: NT29 http://www.ebiz.enea.it/moda-ml/repository/codelist/draft/gc_NT29.xml |
| delEffectiveDate | estimated date for actual delivery, which may be different from what is foreseen by the agreements between the parties. Formatted according to one of the patterns indicated by the dateForm attribute: YYYY-MM-DD, YYYY-MM-DD:HH-MM or YYYY-WW. - base type: string, |
| deliveryDate | date of delivery of goods, requested or promised in the purchase process, according to one of the patterns YYYY-MM-DD, YYYY-MM-DD:HH-MM or YYYY-WW. - base type: string, |
| deliveryPlace | place of delivery of goods, ultimate or related to a given leg - base type: string, max length: 250, |
| dept | name or code of a department - base type: string, max length: 40, |
| description | free text description. The content of the element must be unique, it might be translated and repeated into more languages (thus no more than one instance for each language). - base type: string, max length: 250, |
| despatchDate | date of despatch of goods, requested or promised in the purchase process, according to one of the patterns YYYY-MM-DD, YYYY-MM-DD:HH-MM or YYYY-WW. - base type: string, |

| | |
|---------------------|--|
| despatchPlace | place of despatch of goods, origin or related to a given leg - base type: string, max length: 250, |
| docDate | date of issue of the referenced document, according to one of the patterns YYYY-MM-DD, YYYY-MM-DD:HH-MM or YYYY-WW. - base type: string, |
| docID | identification number of the referenced document - base type: string, max length: 80, |
| @docType | type or class to which the referenced document belongs - base type: string, cod. table: T21 http://www.ebiz.enea.it/moda-ml/repository/codelist/draft/gc_T21.xml |
| dyeProcess | dye process applied to the fabric - base type: string, cod. table: T15 http://www.ebiz.enea.it/moda-ml/repository/codelist/draft/gc_T15.xml |
| dyeStuff | dye stuff used in the fabric dye process - base type: string, cod. table: T16 http://www.ebiz.enea.it/moda-ml/repository/codelist/draft/gc_T16.xml |
| @email | electronic mail address of the contact person within a Party - base type: string, max length: 250, |
| @encoding | specifies the decoding algorithm of the binary object - base type: normalizedString, |
| encodingCode | the encoding/decoding algorithm used with the external object (example is 'base64Binary') - base type: normalizedString, |
| @endUse | specifies the final use of the fabric - base type: string, cod. table: NT4 http://www.ebiz.enea.it/moda-ml/repository/codelist/draft/gc_NT4.xml |
| estFaultiness | percent faultiness of an article, estimated by the Supplier - base type: decimal, min inclusive: 0, max inclusive: 100, fraction digits: 2, |
| extendedDescription | extended free text description. The content of the element must be unique, it might be translated and repeated into more languages (thus no more than one instance for each language). This element might contain HTML code (must be managed as CDATA) - base type: string, |
| fabricCutWidth | usable width of the fabric (for garments manufacturing) as technical specification - base type: decimal, min inclusive: 0, fraction digits: 2, |
| fabricNameBuyer | name given to the fabric (article/pattern) by the Buyer - base type: string, max length: 250, |
| fabricNameSupplier | name given to the fabric (article/pattern) by the Supplier - base type: string, max length: 250, |
| fabricWeightM | weight per metre of the fabric as technical specification - base type: decimal, min inclusive: 0, fraction digits: 2, |
| fabricWeightM2 | weight per square metre of the fabric as technical specification - base type: decimal, min inclusive: 0, fraction digits: 2, |
| fabricWidth | width of the fabric as technical specification - base type: decimal, min inclusive: 0, fraction digits: 2, |
| @fax | fax number of the contact person within a Party - base type: string, max length: 35, |
| @fibre | type of fibre used in a textile product - base type: string, cod. table: T19 http://www.ebiz.enea.it/moda-ml/repository/codelist/draft/gc_T19.xml |
| fileName | unique identifier (name) of the file - base type: string, max length: 255, |
| @finDiscount | financial discount rate applied for payment by the date specified |

| | |
|----------------------------|---|
| | - base type: decimal, min inclusive: 0, max inclusive: 100, fraction digits: 2, |
| <i>@finSurcharge</i> | financial surcharge rate applied for payment after the date specified - base type: decimal, min inclusive: 0, max inclusive: 100, fraction digits: 2, |
| <i>@format</i> | the format of the binary content (examples xml, pdf, doc,...) - base type: string, |
| formatCode | the format of the external object (examples xml, pdf, doc,...) - base type: normalizedString, |
| <i>@garmentMarket</i> | market segment for the product - base type: string, min length: 0, max length: 255, |
| geographicAreaCode | code identifying a geographic area - base type: string, cod. table: T10 http://www.ebiz.enea.it/moda-ml/repository/codelist/draft/gc_T10.xml |
| geographicAreaText | text identifying a geographic area - base type: string, |
| <i>@geoReferenceSystem</i> | georeference system adopted for the coordinate (in example wgs84 with decimal degree o degree with minute and seconds) - base type: string, |
| grossWeight | the gross weight, declared for transport or customs purpose - base type: decimal, min inclusive: 0, fraction digits: 2, |
| height | effective height of a specified object - base type: decimal, min inclusive: 0, fraction digits: 2, |
| <i>@IC</i> | specifies if the "illustrated confirmation" is needed - base type: boolean, |
| id | primary identification code of a Party; it is recommended the format: nation code (ISO 3166) + VAT identification number (11 crt), with the qualifier "numberingOrg"= MF - base type: string, max length: 15, |
| <i>@idQualifier</i> | Qualification of the identifier. - base type: string, |
| incoTerm | specification of the terms of trade (INCOTERMS) - base type: string, cod. table: T3 http://www.ebiz.enea.it/moda-ml/repository/codelist/draft/gc_T3.xml |
| incoTermText | free text specifying the terms of trade (incoterm, location) - base type: string, max length: 250, |
| <i>@isCharge</i> | Indicates if the element to which it refers is a charge (true = charge, false = allowance) - base type: boolean, |
| <i>@isURL</i> | it indicates if the referred element is an URL (true) or not (false) - base type: boolean, |
| itemID | number of the line/item of the referenced document - base type: string, max length: 40, |
| legalName | legal name - base type: string, max length: 250, |
| legalRef | legal reference of the duty or tax or fee category - base type: string, |
| lineN | number of the line item of the present message (xml document); it is set by the role that produces the document. Usually it is a progressive number, but not always. - base type: positiveInteger, min inclusive: 1, max inclusive: 9999, |
| <i>@listName</i> | the name of the list of codes used to make an instance of the element (it might be thought as descriptive element, i.e. 'fabric printing technologies', or not, i.e. "T264") - base type: string, max length: 40, |
| <i>@listVersion</i> | it specifies the version of the list of codes used to make an instance of the element - base type: string, max length: 6, |

| | |
|-----------------|---|
| @ln | Language code. - base type: string, cod. table: NT60 http://www.ebiz.enea.it/moda-ml/repository/codelist/draft/gc_NT60.xml |
| location | specification of a location - base type: string, max length: 40, |
| @logo | company logo (URL of the image jpeg or gif). It is recommended that the width of the image does not exceed 640 pixel. - base type: string, max length: 255, |
| @LRI | attribute usable to format a string according to a customized User rule (local rule) - base type: string, cod. table: NT3 http://www.ebiz.enea.it/moda-ml/repository/codelist/draft/gc_NT3.xml |
| @materialSource | Indicates whether the material is virgin or comes from recycling or reuse processes - base type: string, cod. table: T306 http://www.ebiz.enea.it/moda-ml/repository/codelist/draft/gc_T306.xml |
| @maxQty | maximum product quantity - base type: decimal, min inclusive: 0, fraction digits: 2, |
| @method | standard protocol or method employed in a test to evaluate a characteristic or a parameter - base type: string, max length: 80, |
| @mime | the mime type of the binary object - base type: normalizedString, |
| mimeCode | mime type of the external object - base type: normalizedString, |
| minLot | minimum order quantity of a product requested by the Supplier - base type: decimal, min inclusive: 0, fraction digits: 2, |
| minLotExclusive | minimum order quantity of a product requested by the Supplier for an exclusive color - base type: decimal, min inclusive: 0, fraction digits: 2, |
| @minQty | minimum product quantity - base type: decimal, min inclusive: 0, fraction digits: 2, |
| msgCurrency | currency used to express the monetary amounts of the message - base type: string, cod. table: T9 http://www.ebiz.enea.it/moda-ml/repository/codelist/draft/gc_T9.xml |
| msgDate | date of issue of the present message (xml document), according to one of the patterns YYYY-MM-DD, YYYY-MM-DD:HH-MM or YYYY-WW. - base type: string, |
| @msgfunction | function performed by the present message with regards to the transmission - base type: string, cod. table: NT18 http://www.ebiz.enea.it/moda-ml/repository/codelist/draft/gc_NT18.xml |
| msgID | key identifier of the business document in the information system of the issuing Party. In case of more despatches of the same business document, it is unchanged. - base type: string, max length: 35, |
| msgN | identification number given to the message (xml document) by its issuer. In case of more despatches of the same business document, it changes. - base type: string, max length: 35, |
| netWeight | the net weight declared for transport or customs purpose - base type: decimal, min inclusive: 0, fraction digits: 2, |
| nominalHeight | nominal height of a specified object - base type: decimal, min inclusive: 0, fraction digits: 2, |
| nominalWidth | nominal width of a specified object - base type: decimal, min inclusive: 0, fraction digits: 2, |
| note | free text or structured (computer processing) note. For note structuring use the attributes "noteLabel" and "codelist" - base type: string, max length: 350, |

| | |
|-----------------------|--|
| @noteLabel | subject qualifier of a note - base type: string, max length: 35, |
| @numberingOrg | code specifying the organisation who has created or owns the coding or numbering system - base type: string, cod. table: NT6 http://www.ebiz.enea.it/moda-ml/repository/codelist/draft/gc_NT6.xml |
| operationalCode | operational code: it is the code of a project, an event, an initiative, a sales channel, a management type (eg CITES), ... the document, or product, is connected with. - base type: string, |
| @part | percent fraction - base type: decimal, min inclusive: 1, max inclusive: 100, fraction digits: 2, |
| pattern | pattern/design number of the product, when not included in the article code - base type: string, max length: 15, |
| payMode | way or means of payment - base type: string, cod. table: T2 http://www.ebiz.enea.it/moda-ml/repository/codelist/draft/gc_T2.xml |
| payTerm | code specifying the terms or time by which the payment must be done - base type: string, cod. table: T1 http://www.ebiz.enea.it/moda-ml/repository/codelist/draft/gc_T1.xml |
| payTermText | free text specifying the terms by which the payment must be done (time/mode or means) - base type: string, max length: 250, |
| percCompos | fiber rate in the product composition - base type: decimal, min inclusive: 0, max inclusive: 100, fraction digits: 2, |
| @percSourcesRenewable | indicates the percentage of renewable sources - base type: decimal, |
| person | name of a person (e.g. contact person within an organization) - base type: string, max length: 40, |
| @phone | phone number of the contact person within a Party - base type: string, max length: 35, |
| pictureCode | picture code (it might be shared among more files) - base type: string, max length: 80, |
| pictureQualifier | qualifies the image from the business point of view (i.e. main image, detail image,...) - base type: string, |
| pictureUse | picture final use - base type: string, cod. table: NT72 http://www.ebiz.enea.it/moda-ml/repository/codelist/draft/gc_NT72.xml |
| pieceInnWrap1 | code specifying the type of inner wrapping/packing used for the fabric piece - base type: string, cod. table: T4 http://www.ebiz.enea.it/moda-ml/repository/codelist/draft/gc_T4.xml |
| pieceInnWrap2 | code sub-specifying the type of inner wrapping/packing used for the fabric piece - base type: string, cod. table: T5 http://www.ebiz.enea.it/moda-ml/repository/codelist/draft/gc_T5.xml |
| pieceLength | length of the piece - base type: decimal, min inclusive: 0, fraction digits: 2, |
| pieceOutWrap | code specifying the type of outer wrapping or packing used for the fabric piece - base type: string, cod. table: T6 http://www.ebiz.enea.it/moda-ml/repository/codelist/draft/gc_T6.xml |
| piecePackText | free text specifying the type of wrapping or packing used for the fabric piece - base type: string, max length: 250, |
| postCode | code defining the postal zone - base type: string, max length: 10, |

| | |
|-------------------------|---|
| productLine | the product line name of a fashion product. - base type: string, |
| @progr | progressive number in the sequence - base type: positiveInteger, min inclusive: 1, |
| project | code used to assign the items ordered (fabric pieces, accessories, garments...) to a specific project of the Client - base type: string, max length: 40, |
| @propulsionSystemCode | propulsion system type - base type: string, cod. table: NT324 http://www.ebiz.enea.it/moda-ml/repository/codelist/draft/gc_NT324.xml |
| @recyclingProcessMethod | recycling process method - base type: string, cod. table: T307 http://www.ebiz.enea.it/moda-ml/repository/codelist/draft/gc_T307.xml |
| rendering | rendering information about the image - base type: string, |
| resin | resin (coating) percentage in finished weight - base type: decimal, min inclusive: 0, |
| resolution | measure of spatial density of the picture - base type: string, max length: 255, |
| @resolutionType | it indicates the type of density of the picture - base type: string, cod. table: NT71 http://www.ebiz.enea.it/moda-ml/repository/codelist/draft/gc_NT71.xml |
| @role | Third Party role qualifier - base type: string, cod. table: NT2 http://www.ebiz.enea.it/moda-ml/repository/codelist/draft/gc_NT2.xml |
| routeLength | length of a route - base type: decimal, min inclusive: 0, fraction digits: 2, |
| season | sale season; defined as: season (1 crt) + year (4 crt) - season: S/S=1 AW=2 Spring=3 Summer=4 Autumn=5 Winter=6: for more than four seasons use alphabetic sequence: 1st season=A 2nd season=B etc.etc. - base type: string, max length: 15, |
| @sender | qualifier that specifies the Party issuing of the document - base type: boolean, |
| specDate | date by which the referenced blanket order must receive full product specifications (e.g.: colour), according to one of the patterns YYYY-MM-DD, YYYY-MM-DD:HH-MM or YYYY-WW. - base type: string, |
| street | street and building number identifying a location - base type: string, max length: 80, |
| subCountry | short name or code of the sub-country entity - base type: string, max length: 9, |
| subDept | name or code of a department - base type: string, max length: 40, |
| taxCategory | duty or tax or fee category - base type: string, cod. table: T62 http://www.ebiz.enea.it/moda-ml/repository/codelist/draft/gc_T62.xml |
| taxRate | duty or tax or fee percent rate - base type: string, |
| @taxType | duty or tax or fee type - base type: string, cod. table: T61 http://www.ebiz.enea.it/moda-ml/repository/codelist/draft/gc_T61.xml |
| @techSheet | specifies if the "technical characteristics of fabric" document must be provided - base type: boolean, |

| | |
|--------------------|---|
| title | document title - base type: string, |
| tradeMark | name of the official trademark of a specified product (DEPRECATED, use Brand or Product Line). - base type: string, max length: 50, |
| transCondition | special condition of transport or special service requested to the Forwarder - base type: string, cod. table: T38 http://www.ebiz.enea.it/moda-ml/repository/codelist/draft/gc_T38.xml |
| transConditionText | free text description of the special condition of transport or special service requested to the Forwarder - base type: string, max length: 250, |
| transMeans | means of transport, in general or referred to a specific leg - base type: string, cod. table: T40 http://www.ebiz.enea.it/moda-ml/repository/codelist/draft/gc_T40.xml |
| transMode | way of transport, in general or referred to the specified leg - base type: string, cod. table: T8 http://www.ebiz.enea.it/moda-ml/repository/codelist/draft/gc_T8.xml |
| @transReason | reason for the transport - base type: string, cod. table: NT11 http://www.ebiz.enea.it/moda-ml/repository/codelist/draft/gc_NT11.xml |
| @uid | unique element identifier within the xml document - base type: string, |
| @um | specification of the unit of measure - base type: string, cod. table: NT7 http://www.ebiz.enea.it/moda-ml/repository/codelist/draft/gc_NT7.xml |
| uri | Uniform Resource Identifier (URI) that identifies the external object as an Internet resource - base type: normalizedString, |
| @useProfile | use profile to which the present document is compliant if it was agreed by the parties. It is suggested a URI with reference to the firms or the URL of the profile. - base type: string, |
| validityEnd | date by which the validity ends, according to one of the patterns YYYY-MM-DD, YYYY-MM-DD:HH-MM or YYYY-WW. - base type: string, |
| validityStart | date by which the validity starts, according to one of the patterns YYYY-MM-DD, YYYY-MM-DD:HH-MM or YYYY-WW. - base type: string, |
| @VAT | VAT rate or code (DEPRECATED, use dtScheme element) - base type: string, cod. table: NT16 http://www.ebiz.enea.it/moda-ml/repository/codelist/draft/gc_NT16.xml |
| @version | Dictionary version from which the instance has been created - base type: string, cod. table: NT100 http://www.ebiz.enea.it/moda-ml/repository/codelist/draft/gc_NT100.xml |
| warpCount | measure of thinness of the warp thread - base type: string, max length: 10, |
| warpEndsN | number of warp threads in 1 centimetre - base type: decimal, min inclusive: 0, fraction digits: 1, |
| weave | type of weaving used in the manufacturing of fabric - base type: string, cod. table: T17 http://www.ebiz.enea.it/moda-ml/repository/codelist/draft/gc_T17.xml |
| weftCount | measure of thinness of the weft thread - base type: string, max length: 10, |
| weftDev | deviation from right angle in weft - base type: decimal, min inclusive: 0, |

| | |
|-----------|---|
| weftEndsN | number of weft threads in 1 centimetre - base type: decimal, min inclusive: 0, fraction digits: 1, |
| width | effective width of a specified object - base type: decimal, min inclusive: 0, fraction digits: 2, |
| xGeoCoord | geographical coordinate x , corresponding to latitude - base type: decimal, |
| yGeoCoord | geographical coordinate y , corresponding to longitude - base type: decimal, |
| zGeoCoord | geographical coordinate z , corresponding to altitude - base type: decimal, |

2.3 Suggested best practices

TEXCatalog/TCbody/TCgroup/refDoc/docID (identification number of the referenced document)

numberingOrg indicates the role that produced the document identifier (it is allowed to declare two different ones -e.g. customer and supplier - with two docID with different numberingOrg

TEXCatalog/THeader/refDoc/docID (identification number of the referenced document)

numberingOrg indicates the role that produced the document identifier (it is allowed to declare two different ones -e.g. customer and supplier - with two docID with different numberingOrg

TEXCatalog/TCbody/TCgroup/TCitem/refDoc/docID (identification number of the referenced document)

numberingOrg indicates the role that produced the document identifier (it is allowed to declare two different ones -e.g. customer and supplier - with two docID with different numberingOrg

**TEXCatalog/TCbody/TCgroup/TCitem/marketPrice/
geographicArea/geographicAreaText (text identifying a geographic area)**

using a code (geographicAreaCode) is preferable when the area coincides with a state

TEXCatalog/THeader/refDoc/attachment/externalReference/mimeType (mime type of the external object)

Use coding from IANA <http://www.iana.org/assignments/media-types/media-types.xml>

**TEXCatalog/TCbody/TCgroup/TCitem/refDoc/
attachment/externalReference/mimeType (mime type of the external object)**

Use coding from IANA <http://www.iana.org/assignments/media-types/media-types.xml>

TEXCatalog/THeader/picture/attachment/externalReference/mimeType (mime type of the external object)

Use coding from IANA <http://www.iana.org/assignments/media-types/media-types.xml>

**TEXCatalog/TCbody/TCgroup/TCitem/picture/
attachment/externalReference/mimeType (mime type of the external object)**

Use coding from IANA <http://www.iana.org/assignments/media-types/media-types.xml>

**TEXCatalog/TCbody/TCgroup/picture/attachment/
externalReference/mimeType (mime type of the external object)**

Use coding from IANA <http://www.iana.org/assignments/media-types/media-types.xml>

**TEXCatalog/TCbody/TCgroup/refDoc/attachment/
externalReference/mimeType (mime type of the external object)**

Use coding from IANA <http://www.iana.org/assignments/media-types/media-types.xml>

2.4 Enumeration tables

List of enumeration tables used in the XML document. You can find all the tables with the corresponding codes at:
<http://www.ebiz.enea.it/eBIZ/imple/eBIZTCU-draft.asp?lingua=en&pag=6>

NT100 - eBIZ TCFUpstream version
NT11 - transport causal
NT16 - VAT rate or code
NT18 - message function
NT2 - third party qualifier
NT29 - format of a date
NT3 - data format
NT324 - propulsion system type
NT4 - end use
NT43 - operational code qualifier
NT6 - coding system owner/issuer
NT60 - language, codes from ISO 639-1 (subset)
NT7 - unit of measure
NT71 - picture resolution type
NT72 - picture final use type
T1 - terms of payment
T10 - ISO3166 - Country
T15 - dye/print process type
T16 - dyestuff type
T17 - weave type
T19 - fibre type
T2 - Modes of payment
T21 - type of document
T3 - terms of delivery - IncoTerms
T306 - material circularity attribute
T307 - recycling process method
T38 - transport conditions
T4 - fabric piece inner packing (wrapping) 1
T40 - type of transport means
T41 - type of Allowance or Charge
T44 - additional code type
T5 - fabric piece inner packing (wrapping) 2
T6 - fabric piece outer packing
T61 - duty or tax or fee type
T62 - duty or tax or fee category
T8 - Modes of Transport
T9 - ISO4217 - Currency

ACKNOWLEDGEMENT



This action is part of the TRICK project, which has received funding from Horizon 2020 research and innovation programme under grant agreement No. 958352 of the European Union.

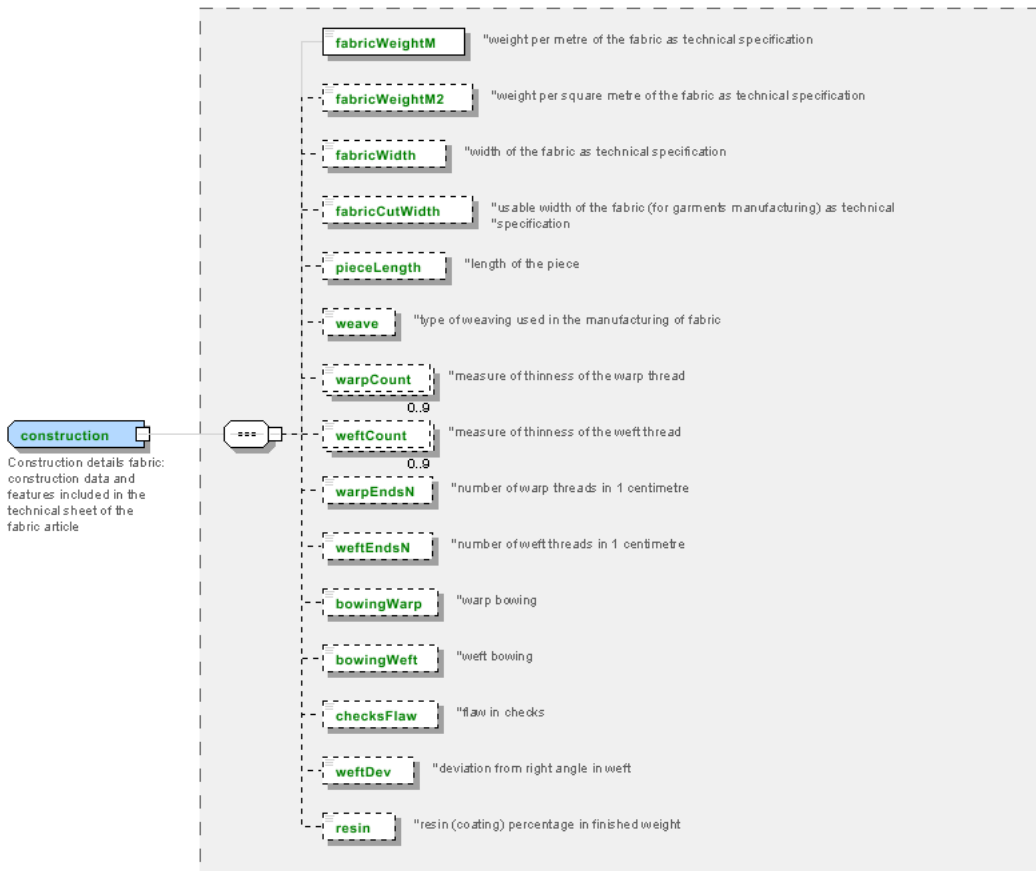
DISCLAIMER

The content of this document represents the views of the authors only and is their sole responsibility; it cannot be considered to reflect the views of the European Commission or any other body of the European Union.

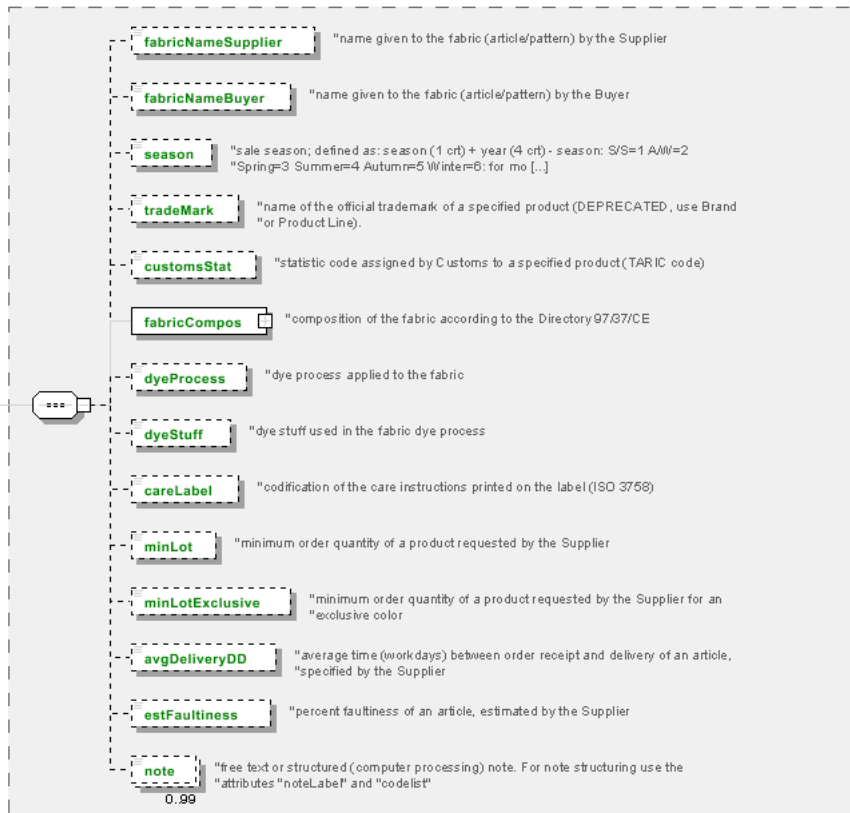
The European Commission does not accept any responsibility for use that may be made of the information it contains.

Annex A

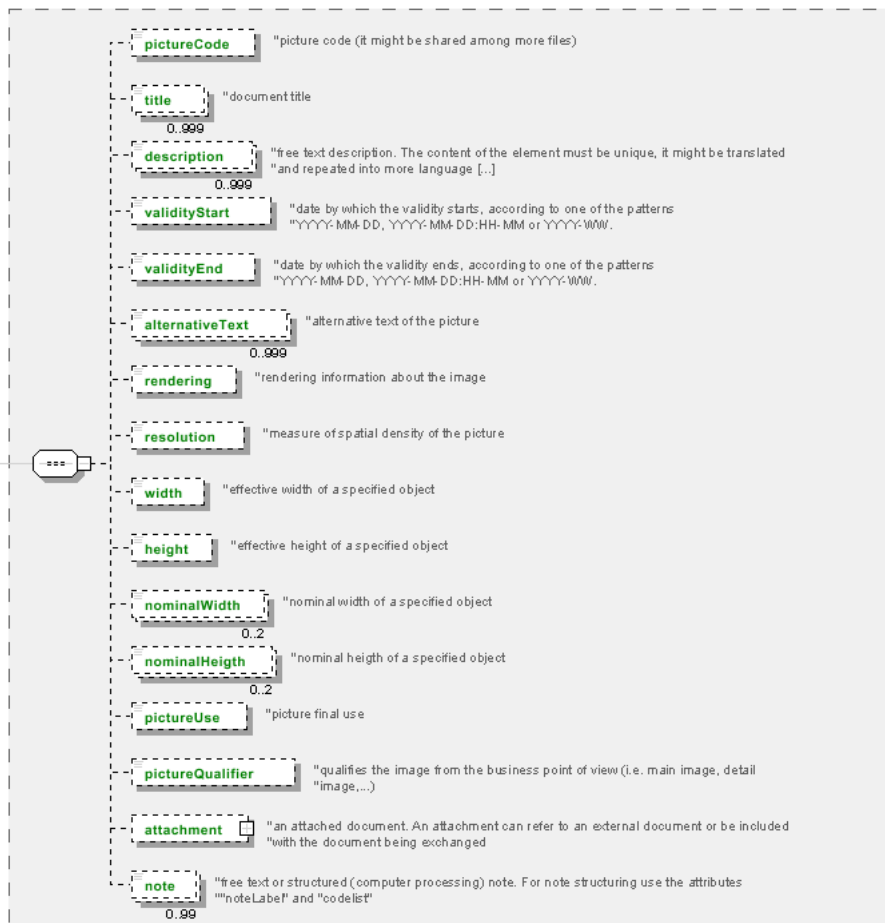
Representative images of the principal complex elements' structure.

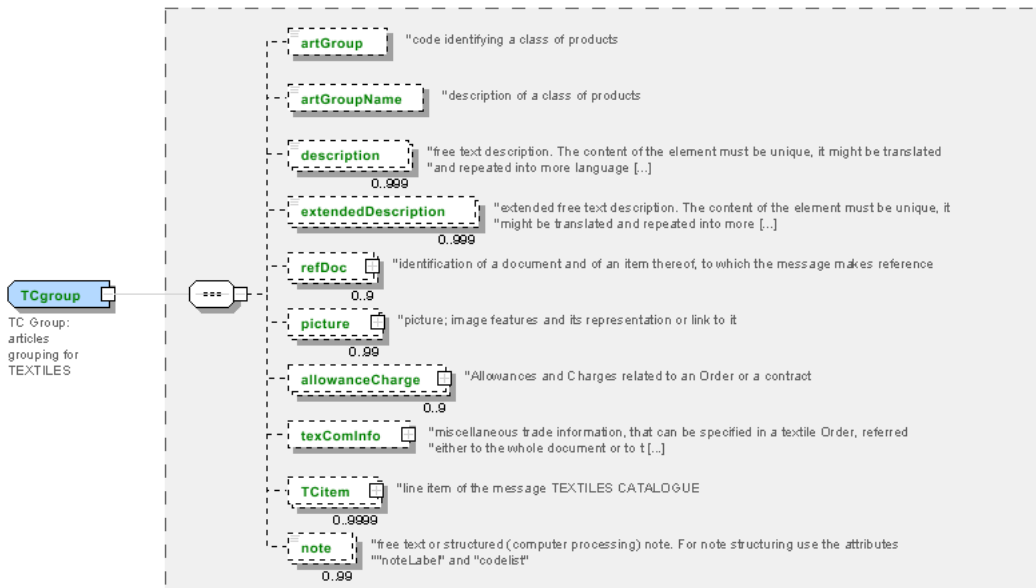
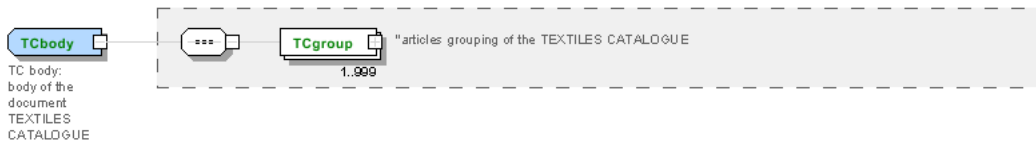
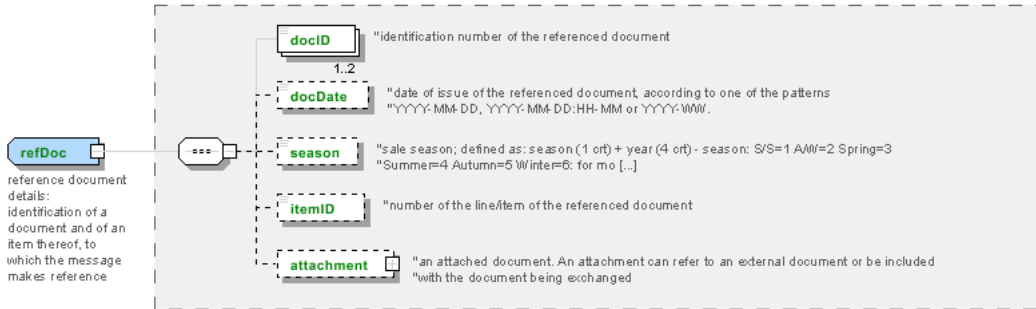
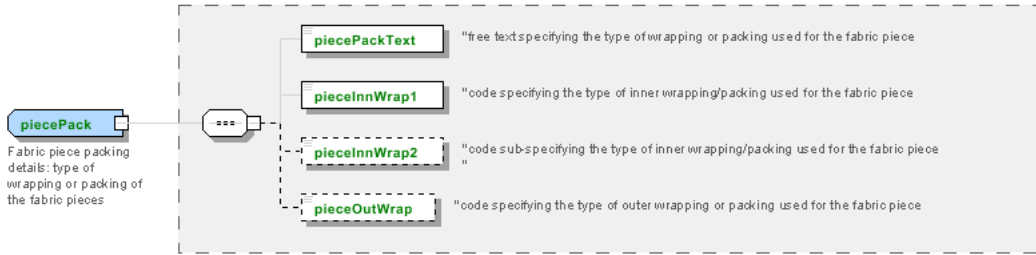


generalChar
 General characteristics
 fabric: general data
 included in the technical
 sheet of the fabric article



picture
 picture: picture;
 image features and
 its representation or
 link to it





TChheader
 TC header:
 header of the
 document
 TEXTILES
 CATALOGUE

