



<http://www.ebiz-tcf.eu>

DRAFT

Extract from IMPLEMENTATION GUIDE
TRANSACTION "TEXTILE DARN ORDER"

Version: draft

Date of release: 9/10/2022

Document code: G012e

technical Documentation: <http://www.ebiz.enea.it>

XML Schemas repository: <http://www.ebiz.enea.it/moda-ml/repository/schema/draft/default.asp>

Guides repository: <http://www.ebiz.enea.it/moda-ml/repository/guide/draft/default.asp>

Guide filename: G012-eBIZ-TextileDarnOrder.pdf

0. PREMISE

This document contains a proposal for the updating and extension of eBIZ specifications starting from the eBIZ version 2018. Under the name of 'Draft version' it is reported the result of an extensive work of analysis and consultation aimed at developing and maintaining eBIZ specifications.

In particular, the content of this proposal is the result of various activities, mainly those carried out within the framework of the **TRICK project** funded by the European Commission: grant agreement 958352, call H2020-LOW-CARBON-CIRCULAR-INDUSTRIES-2020 / H2020-LCCI-2020-EASME-twostage.

The technical contents are backwards compatible with the latest official published version, with the exclusion of the totally new concepts added explicitly for the version that are thought as incremental evolution of the knowledge base.

1. BUSINESS DESCRIPTION

1.1 Scope

The present guide has been issued to assist the companies of the Textile-Clothing sector in the implementation of the standard XML document type "Textile DARN ORDER", providing all the instruction required for its use in any context of e-commerce between Fabric Producers and Darn Subcontractors.

All the rules required for the construction and validation of the document are embedded into the specific XML-Schema, which is detailed in section "Implementation guide".

1.2 Generalities

The document "Textile Darn Order" is used by the Fabric Producer to specify the darning operations required on each fabric piece and possibly the standard (or maximum) worktimes allowed with the related prices.

The Order can refer to one or more pieces and can be used either in conjunction with the "Textile Despatch Advise" (1 DA : 1 Order) or independently.

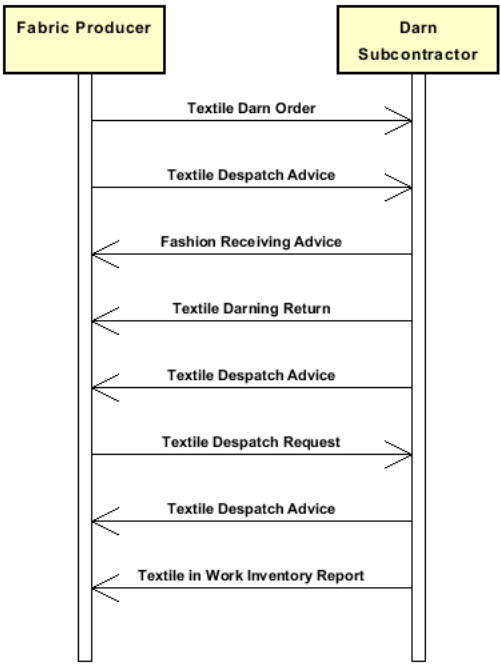
In the first instance the reference to the Despatch Advise must be given in the Header; in the second each piece can have at item level its reference to the transport document with which was sent to the Subcontractor.

EACH ITEM CONTAINS A JOB ORDER FOR ONE OR MORE PIECES OF THE SAME TEXTILE ARTICLE.

The Job cost can be calculated from a metre rate or from an hourly rate times a given operation time or from a combination of both.

1.3. Possible scenario

Subcontracted fabric darning



2. IMPLEMENTATION GUIDE

2.1 General structure of XML document

All the business data that can be exchanged through this class of documents are shown in the following "document structure", that provides a simplified vision of the Schema.

In particular:

- the two numbers following each element define its "cardinality" (minimum and maximum number of occurrences); the minimum equal zero indicates that the element is optional, the minimum greater than zero indicates that is mandatory;
- the bold character denotes the complex elements (aggregates of simple elements) that were built for the sake of functionality and re-usability of some complex informations sets. The child elements in each parent element are easily spotted as "indented";
- the symbol "@" denotes an attribute of the preceding element; here "the usage indicator (optional, required, ...) is shown in square brackets.

Structure

TEXDarnOrder

@msgfunction [Optional] [Default= OR]

@version [Optional] [Default= 2018-1]

@useProfile [Optional]

```
| MOheader 1-1
| | msgN 1-1
| | - choose -
| | | msgID 0-1
| | | - or -
| | | docID 0-1
| | | @numberingOrg [Optional]
| | | - end choose -
| | | msgDate 1-1
| | | @dateForm [Optional]
| | | refDoc 0-9
| | | @docType [Required]
| | | | docID 1-2
| | | | @numberingOrg [Optional]
| | | | docDate 0-1
| | | | @dateForm [Optional]
| | | | season 0-1
| | | | @numberingOrg [Optional]
| | | | @codeList [Optional]
| | | | @listName [Optional]
| | | | @listVersion [Optional]
| | | | itemID 0-1
| | | | attachment 0-1
| | | | @uid [Optional]
| | | | | fileName 0-1
| | | | | @numberingOrg [Optional]
| | | | | binaryObject 0-1
| | | | | @format [Optional]
| | | | | @mime [Optional]
| | | | | @encoding [Optional]
| | | | | @characterSet [Optional]
| | | | | externalReference 0-99
| | | | | | uri 1-1
| | | | | | @isURL [Optional] [Default= true]
| | | | | | mimeTypeCode 0-1
| | | | | | formatCode 0-1
| | | | | | encodingCode 0-1
| | | | | | characterSetCode 0-1
| | | buyer 1-1
| | | @logo [Optional]
| | | @sender [Optional]
| | | | id 1-1
| | | | @numberingOrg [Optional]
| | | | additionalIdentifier 0-9
| | | | @numberingOrg [Optional]
```

| @idQualifier [Optional]
 | legalName 0-1
 | dept 0-1
 | subDept 0-1
 | person 0-1
 | @email [Optional]
 | @phone [Optional]
 | @fax [Optional]
 | street 0-1
 | city 0-1
 | subCountry 0-1
 | country 0-1
 | postCode 0-1
 | **geoCoordinates 0-1**
 | @um [Optional] [Default= DEGD]
 | @geoReferenceSystem [Optional]
 | | xGeoCoord 1-1
 | | yGeoCoord 1-1
 | | zGeoCoord 0-0
 | **subContractor 1-1**
 | @sender [Optional]
 | id 1-1
 | @numberingOrg [Optional]
 | legalName 0-1
 | dept 0-1
 | subDept 0-1
 | person 0-1
 | @email [Optional]
 | @phone [Optional]
 | @fax [Optional]
 | street 0-1
 | city 0-1
 | subCountry 0-1
 | country 0-1
 | postCode 0-1
 | **geoCoordinates 0-1**
 | @um [Optional] [Default= DEGD]
 | @geoReferenceSystem [Optional]
 | | xGeoCoord 1-1
 | | yGeoCoord 1-1
 | | zGeoCoord 0-0
 | **thirdParty 0-5**
 | @VAT [Optional]
 | @role [Required]
 | @sender [Optional]
 | id 1-1
 | @numberingOrg [Optional]
 | legalName 0-1
 | dept 0-1
 | subDept 0-1
 | person 0-1
 | @email [Optional]
 | @phone [Optional]
 | @fax [Optional]
 | street 0-1
 | city 0-1
 | subCountry 0-1
 | country 0-1
 | postCode 0-1
 | **geoCoordinates 0-1**
 | @um [Optional] [Default= DEGD]
 | @geoReferenceSystem [Optional]
 | | xGeoCoord 1-1
 | | yGeoCoord 1-1
 | | zGeoCoord 0-0
 | note 0-99
 | @numberingOrg [Optional]
 | @codeList [Optional]

```

| | @noteLabel [Optional]
|
| MObody 1-1
| | MOitem 1-unbounded
| | @transReason [Optional]
| | | lineN 1-1
| | | | @VAT [Optional]
| | | | texCode 0-2
| | | | @numberingOrg [Optional]
| | | | | art 1-1
| | | | | | @numberingOrg [Optional]
| | | | | | @codeList [Optional]
| | | | | | @listName [Optional]
| | | | | | @listVersion [Optional]
| | | | | pattern 0-1
| | | | | | @numberingOrg [Optional]
| | | | | | @codeList [Optional]
| | | | | | @listName [Optional]
| | | | | | @listVersion [Optional]
| | | | | color 0-1
| | | | | | @numberingOrg [Optional]
| | | | | | @codeList [Optional]
| | | | | | @listName [Optional]
| | | | | | @listVersion [Optional]
| | | | | added 0-9
| | | | | | @numberingOrg [Optional]
| | | | | | @addType [Optional]
| | | | | description 0-unbounded
| | | | | | @ln [Optional]
| | | qty 1-2
| | | | @um [Required]
| | - choose -
| | | pieceChain 1-1
| | | | serialN 1-9
| | | | | @numberingOrg [Optional]
| | | | | @idQualifier [Optional]
| | | | | pieceLength 0-1
| | | | | | @um [Optional] [Default= MTR]
| | | | | | pieceWidth 0-1
| | | | | | | @um [Optional] [Default= CMT]
| | | | | | pieceWeight 0-1
| | | | | | | @um [Optional] [Default= KGM]
| | | | | lotN 0-1
| | | | | | @numberingOrg [Optional]
| | | | | dyeN 0-1
| | | | | | @numberingOrg [Optional]
| | | | | packageN 0-1
| | | | | | @numberingOrg [Optional]
| | | | | | @packageContainerN [Optional]
| | | | piecePack 0-1
| | | | - choose -
| | | | | piecePackText 1-1
| | | | - or -
| | | | | pieceInnWrap1 1-1
| | | | | pieceInnWrap2 0-1
| | | | | pieceOutWrap 0-1
| | | | - end choose -
| | | | pieceCut 0-99
| | | | | serialN 1-9
| | | | | | @numberingOrg [Optional]
| | | | | | @idQualifier [Optional]
| | | | | | pieceLength 0-1
| | | | | | | @um [Optional] [Default= MTR]
| | | | | | pieceWeight 0-1
| | | | | | | @um [Optional] [Default= KGM]
| | | - or -
| | | piece 1-3
| | | | @endUse [Optional]

```

```

| | | | serialN 0-9
| | | |   @numberingOrg [Optional]
| | | |   @idQualifier [Optional]
| | | | EPC 0-1
| | | |   @numberingOrg [Optional]
| | | |   @TID [Optional]
| | | | totFault 0-1
| | | | pieceStatus 0-1
| | | | pieceLength 0-1
| | | |   @um [Optional] [Default= MTR]
| | | | pieceWidth 0-1
| | | |   @um [Optional] [Default= CMT]
| | | | pieceCutWidth 0-1
| | | |   @um [Optional] [Default= CMT]
| | | | pieceWeight 0-1
| | | |   @um [Optional] [Default= KGM]
| | | | pieceWeightM 0-1
| | | |   @um [Optional] [Default= GRM]
| | | | grossWeight 0-1
| | | |   @um [Required]
| | | | pieceAllow 0-1
| | | |   @um [Required]
| | | | lotN 0-2
| | | |   @numberingOrg [Optional]
| | | | dyeN 0-1
| | | |   @numberingOrg [Optional]
| | | | mixMatch 0-1
| | | |   @numberingOrg [Optional]
| | | | packageN 0-1
| | | |   @numberingOrg [Optional]
| | | |   @packageContainerN [Optional]
| | | | piecePack 0-1
| | | | - choose -
| | | | | piecePackText 1-1
| | | | - or -
| | | | | pieceInnWrap1 1-1
| | | | | pieceInnWrap2 0-1
| | | | | pieceOutWrap 0-1
| | | | - end choose -
| | | | - end choose -
| | | | pieceMap 0-1
| | | |   @source [Required]
| | | |   totFault 1-1
| | | |   pieceFault 0-99
| | | |   @faultRank [Required]
| | | |   @faultShape [Optional]
| | | | - choose -
| | | | | fabricFaultText 1-1
| | | | - or -
| | | | | fabricFault 1-1
| | | | - end choose -
| | | |   warpStart 1-1
| | | |   @um [Optional] [Default= MTR]
| | | |   warpEnd 0-1
| | | |   @um [Optional] [Default= MTR]
| | | |   weftStart 0-1
| | | |   @um [Optional] [Default= CMT]
| | | |   weftEnd 0-1
| | | |   @um [Optional] [Default= CMT]
| | | |   pieceAllow 0-1
| | | |   @um [Required]
| | | |   note 0-99
| | | |   @numberingOrg [Optional]
| | | |   @codeList [Optional]
| | | |   @noteLabel [Optional]
| | | | darnJobTicket 0-9
| | | |   job 1-1
| | | |   jobTime 0-1

```

```

| | | | jobTimeBasis 0-1
| | | | @um [Required]
| | | | darnJobPrice 0-2
| | | | | jobPrice 0-1
| | | | | @currency [Optional]
| | | | | priceBasis 0-1
| | | | | @um [Required]
| | | | deliveryDate 0-1
| | | | @dateForm [Optional]
| | | | dtScheme 0-1
| | | | @taxType [Required]
| | | | | taxCategory 0-1
| | | | | taxRate 0-1
| | | | | legalRef 0-1
| | | | | @numberingOrg [Optional]
| | | | | @codeList [Optional]
| | | | | @listName [Optional]
| | | | | @listVersion [Optional]
| | | | | note 0-99
| | | | | @numberingOrg [Optional]
| | | | | @codeList [Optional]
| | | | | @noteLabel [Optional]
| | | | note 0-99
| | | | @numberingOrg [Optional]
| | | | @codeList [Optional]
| | | | @noteLabel [Optional]

```

```

| MOtotals 0-1
| | totQty 2-2
| | @um [Required]

```


2.2 Detailed description of document elements

Following tables show all elements (complex and simple) used in this document. Description includes: 1) element's information: xml tag, name, brief description, data type and syntax constraints; 2) information about use of the element in a particular position in the document: xpath and possible associated notes.

2.2.1 Complex elements (Aggregate Business Information Entities)

Complex elements are those elements whose content is composed of other elements (childs).Complex elements are alphabetically ordered.

attachment	an attached document. An attachment can refer to an external document or be included with the document being exchanged
buyer	details of the Buyer (party that buys the good or service that is object of the current collaborative process) - base type: Nad,
darnJobPrice	pricing of a darn work
darnJobTicket	job ticket for the execution of a darn work
dtScheme	set of data usable to declare the duty or tax applied
externalReference	details about an external object, such as a document stored at a remote location
geoCoordinates	geographical coordinates
MObody	body of the document TEXTILES DARN ORDER
MOheader	header of the document TEXTILES DARN ORDER
MOitem	line item of the document TEXTILES DARN ORDER
MOtotals	monetary and quantity totals of the Order
piece	Identification data and measurement of the fabric piece.
pieceChain	identification data and measurements of a chain of pieces still to be cut
pieceCut	identification data and measurements of a fabric piece belonging to a chain still to be cut
pieceFault	classification, position and allowance of the piece faults. The reference point (0,0) for the position is the lower left corner of the piece (selvedge excluded)
pieceMap	mapping of the piece faults: type, rank and location
piecePack	type of wrapping or packing of the fabric pieces
refDoc	identification of a document and of an item thereof, to which the message makes reference
subContractor	details of the Sub-contractor - base type: Nad,
texCode	full codification of the textile product
thirdParty	identification and details of the Third Party, different from Sender and Receiver of the document - base type: Nad,

2.2.2 Simple elements (Basic Business Information Entities)

Simple elements are those elements whose content is characterized by a data type plus a domain of possible values. Simple elements are alphabetically ordered.

added	additional code of the product (complementing the formers) - base type: string, max length: 80,
additionalIdentifier	additional identification code of a Party, for example customs registries or others - base type: string, max length: 15,
@addType	qualifier of the additional coding of a product - base type: string, cod. table: T44 http://www.ebiz.enea.it/moda-ml/repository/codelist/draft/gc_T44.xml
art	article number of the product - base type: string, max length: 80,
binaryObject	a binary large object containing an attached document, Coding 'base64Binary' is recommended. - base type: base64Binary,
@characterSet	the character set of the binary object (examples UTF-8, UTF-16, Windows-1252, ISO-8859-7,...) - base type: normalizedString,
characterSetCode	the character set of an external document (examples UTF-8, UTF-16, Windows-1252, ISO-8859-7,...) - base type: normalizedString,
city	name of the city (town, village) - base type: string, max length: 40,
@codeList	it specifies the URL where the list of codes used to make an instance of the element can be found - base type: string, max length: 255,
color	colour number of the product, when not included in the model or fabric code - base type: string, max length: 15,
country	code of the nation - base type: string, cod. table: T10 http://www.ebiz.enea.it/moda-ml/repository/codelist/draft/gc_T10.xml
@currency	currency in which a specified monetary data is expressed - base type: string, cod. table: T9 http://www.ebiz.enea.it/moda-ml/repository/codelist/draft/gc_T9.xml
@dateForm	format used for the date - base type: string, cod. table: NT29 http://www.ebiz.enea.it/moda-ml/repository/codelist/draft/gc_NT29.xml
deliveryDate	date of delivery of goods, requested or promised in the purchase process, according to one of the patterns YYYY-MM-DD, YYYY-MM-DD:HH-MM or YYYY-WW. - base type: string,
dept	name or code of a department - base type: string, max length: 40,
description	free text description. The content of the element must be unique, it might be translated and repeated into more languages (thus no more than one instance for each language). - base type: string, max length: 250,
docDate	date of issue of the referenced document, according to one of the patterns YYYY-MM-DD, YYYY-MM-DD:HH-MM or YYYY-WW. - base type: string,
docID	identification number of the referenced document - base type: string, max length: 80,
@docType	type or class to which the referenced document belongs - base type: string, cod. table: T21 http://www.ebiz.enea.it/moda-ml/repository/codelist/draft/gc_T21.xml
dyeN	number of the dyeing batch of a textile product - base type: string, max length: 15,

@email	electronic mail address of the contact person within a Party - base type: string, max length: 250,
@encoding	specifies the decoding algorithm of the binary object - base type: normalizedString,
encodingCode	the encoding/decoding algorithm used with the external object (example is 'base64Binary') - base type: normalizedString,
@endUse	specifies the final use of the fabric - base type: string, cod. table: NT4 http://www.ebiz.enea.it/moda-ml/repository/codelist/draft/gc_NT4.xml
EPC	serial identifier used for tracing a physical item with RFID technology - base type: string,
fabricFault	code specifying the type or class of fabric fault - base type: string, cod. table: T12 http://www.ebiz.enea.it/moda-ml/repository/codelist/draft/gc_T12.xml
fabricFaultText	free text describing the type or class of the fabric fault - base type: string, max length: 250,
@faultRank	ranking class of the fabric fault - base type: string, cod. table: NT13 http://www.ebiz.enea.it/moda-ml/repository/codelist/draft/gc_NT13.xml
@faultShape	shape classification of the fabric fault - base type: string, cod. table: NT14 http://www.ebiz.enea.it/moda-ml/repository/codelist/draft/gc_NT14.xml
@fax	fax number of the contact person within a Party - base type: string, max length: 35,
fileName	unique identifier (name) of the file - base type: string, max length: 255,
@format	the format of the binary content (examples xml, pdf, doc,...) - base type: string,
formatCode	the format of the external object (examples xml, pdf, doc,...) - base type: normalizedString,
@geoReferenceSystem	georeference system adopted for the coordinate (in example wgs84 with decimal degree or degree with minute and seconds) - base type: string,
grossWeight	the gross weight, declared for transport or customs purpose - base type: decimal, min inclusive: 0, fraction digits: 2,
id	primary identification code of a Party; it is recommended the format: nation code (ISO 3166) + VAT identification number (11 crt), with the qualifier "numberingOrg"= MF - base type: string, max length: 15,
@idQualifier	Qualification of the identifier. - base type: string,
@isURL	it indicates if the referred element is an URL (true) or not (false) - base type: boolean,
itemID	number of the line/item of the referenced document - base type: string, max length: 40,
job	element of a work cycle - base type: string, cod. table: T20 http://www.ebiz.enea.it/moda-ml/repository/codelist/draft/gc_T20.xml
jobPrice	price of a hired job operation - base type: decimal, min inclusive: 0, fraction digits: 4,
jobTime	worktime of the elementary operation of a work cycle in hours and minutes (nnnHnnM) - base type: duration,

jobTimeBasis	reference basis for the time of an operation (e.g.: 1 metre, 50 metres, 30 kilos, etc...) - base type: positiveInteger, min inclusive: 1,
legalName	legal name - base type: string, max length: 250,
legalRef	legal reference of the duty or tax or fee category - base type: string,
lineN	number of the line item of the present message (xml document); it is set by the role that produces the document. Usually it is a progressive number, but not always. - base type: positiveInteger, min inclusive: 1, max inclusive: 9999,
@listName	the name of the list of codes used to make an instance of the element (it might be thought as descriptive element, i.e. 'fabric printing technologies', or not, i.e. "T264") - base type: string, max length: 40,
@listVersion	it specifies the version of the list of codes used to make an instance of the element - base type: string, max length: 6,
@ln	Language code. - base type: string, cod. table: NT60 http://www.ebiz.enea.it/moda-ml/repository/codelist/draft/gc_NT60.xml
@logo	company logo (URL of the image jpeg or gif). It is recommended that the width of the image does not exceed 640 pixel. - base type: string, max length: 255,
lotN	lot number of a product or batch number of the raw material - base type: string, max length: 15,
@mime	the mime type of the binary object - base type: normalizedString,
mimeCode	mime type of the external object - base type: normalizedString,
mixMatch	colour hue used for the match of garments - base type: string, max length: 15,
msgDate	date of issue of the present message (xml document), according to one of the patterns YYYY-MM-DD, YYYY-MM-DD:HH-MM or YYYY-WW. - base type: string,
@msgfunction	function performed by the present message with regards to the transmission - base type: string, cod. table: NT18 http://www.ebiz.enea.it/moda-ml/repository/codelist/draft/gc_NT18.xml
msgID	key identifier of the business document in the information system of the issuing Party. In case of more despatches of the same business document, it is unchanged. - base type: string, max length: 35,
msgN	identification number given to the message (xml document) by its issuer. In case of more despatches of the same business document, it changes. - base type: string, max length: 35,
note	free text or structured (computer processing) note. For note structuring use the attributes "noteLabel" and "codelist" - base type: string, max length: 350,
@noteLabel	subject qualifier of a note - base type: string, max length: 35,
@numberingOrg	code specifying the organisation who has created or owns the coding or numbering system - base type: string, cod. table: NT6 http://www.ebiz.enea.it/moda-ml/repository/codelist/draft/gc_NT6.xml
@packageContainerN	reference usable to indicate the outer package containing this package - base type: string, max length: 40,
packageN	serial number used to identify a transport package

	- base type: string, max length: 40,
pattern	pattern/design number of the product, when not included in the article code - base type: string, max length: 15,
person	name of a person (e.g. contact person within an organization) - base type: string, max length: 40,
@phone	phone number of the contact person within a Party - base type: string, max length: 35,
pieceAllow	allowance required or accorded for the piece - base type: decimal, fraction digits: 2,
pieceCutWidth	effective usable width of the fabric piece (for garment manufacturing) - base type: decimal, min inclusive: 0, fraction digits: 2,
pieceInnWrap1	code specifying the type of inner wrapping/packing used for the fabric piece - base type: string, cod. table: T4 http://www.ebiz.enea.it/moda-ml/repository/codelist/draft/gc_T4.xml
pieceInnWrap2	code sub-specifying the type of inner wrapping/packing used for the fabric piece - base type: string, cod. table: T5 http://www.ebiz.enea.it/moda-ml/repository/codelist/draft/gc_T5.xml
pieceLength	length of the piece - base type: decimal, min inclusive: 0, fraction digits: 2,
pieceOutWrap	code specifying the type of outer wrapping or packing used for the fabric piece - base type: string, cod. table: T6 http://www.ebiz.enea.it/moda-ml/repository/codelist/draft/gc_T6.xml
piecePackText	free text specifying the type of wrapping or packing used for the fabric piece - base type: string, max length: 250,
pieceStatus	code used to describe the status of a fabric piece after the control - base type: string, cod. table: T52 http://www.ebiz.enea.it/moda-ml/repository/codelist/draft/gc_T52.xml
pieceWeight	effective total weight of the fabric piece - base type: decimal, min inclusive: 0, fraction digits: 2,
pieceWeightM	effective weight per metre of the fabric piece - base type: decimal, min inclusive: 0, fraction digits: 2,
pieceWidth	effective width of the fabric piece - base type: decimal, min inclusive: 0, fraction digits: 2,
postCode	code defining the postal zone - base type: string, max length: 10,
priceBasis	reference basis for the price (e.g.: 1 metre, 1 hour, 1 minute, etc...) - base type: positiveInteger, min inclusive: 1,
qty	net quantity of the article or object correlated, qualified by the function of the document (ordering, delivering, ..) and by the context - base type: decimal, min inclusive: 0, fraction digits: 2,
@role	Third Party role qualifier - base type: string, cod. table: NT2 http://www.ebiz.enea.it/moda-ml/repository/codelist/draft/gc_NT2.xml
season	sale season; defined as: season (1 crt) + year (4 crt) - season: S/S=1 A/W=2 Spring=3 Summer=4 Autumn=5 Winter=6: for more than four seasons use alphabetic sequence: 1st season=A 2nd season=B etc.etc. - base type: string, max length: 15,
@sender	qualifier that specifies the Party issuing of the document - base type: boolean,
serialN	serial number used for the identification of a physical unit - base type: string, max length: 250,

@source	party who has provided the data - base type: string, cod. table: NT12 http://www.ebiz.enea.it/moda-ml/repository/codelist/draft/gc_NT12.xml
street	street and building number identifying a location - base type: string, max length: 80,
subCountry	short name or code of the sub-country entity - base type: string, max length: 9,
subDept	name or code of a department - base type: string, max length: 40,
taxCategory	duty or tax or fee category - base type: string, cod. table: T62 http://www.ebiz.enea.it/moda-ml/repository/codelist/draft/gc_T62.xml
taxRate	duty or tax or fee percent rate - base type: string,
@taxType	duty or tax or fee type - base type: string, cod. table: T61 http://www.ebiz.enea.it/moda-ml/repository/codelist/draft/gc_T61.xml
@TID	serial number wired into the RFID chip - base type: string,
totFault	total number of faults: the 1st/2nd digit count the "Large faults", the 3rd/4th the "Medium faults" and the 5th/6th the "Small faults" - base type: positiveInteger,
totQty	total quantity of the articles related to the whole document - base type: decimal, min inclusive: 0, fraction digits: 2,
@transReason	reason for the transport - base type: string, cod. table: NT11 http://www.ebiz.enea.it/moda-ml/repository/codelist/draft/gc_NT11.xml
@uid	unique element identifier within the xml document - base type: string,
@um	specification of the unit of measure - base type: string, cod. table: NT7 http://www.ebiz.enea.it/moda-ml/repository/codelist/draft/gc_NT7.xml
uri	Uniform Resource Identifier (URI) that identifies the external object as an Internet resource - base type: normalizedString,
@useProfile	use profile to which the present document is compliant if it was agreed by the parties. It is suggested a URI with reference to the firms or the URL of the profile. - base type: string,
@VAT	VAT rate or code (DEPRECATED, use dtScheme element) - base type: string, cod. table: NT16 http://www.ebiz.enea.it/moda-ml/repository/codelist/draft/gc_NT16.xml
@version	Dictionary version from which the instance has been created - base type: string, cod. table: NT100 http://www.ebiz.enea.it/moda-ml/repository/codelist/draft/gc_NT100.xml
warpEnd	end point of the fabric fault in the warp direction - base type: decimal, min inclusive: 0, fraction digits: 2,
warpStart	start point of the fabric fault in the warp direction - base type: decimal, min inclusive: 0, fraction digits: 2,
weftEnd	end point of the fabric fault in the weft direction - base type: decimal, min inclusive: 0, fraction digits: 2,
weftStart	start point of the fabric fault in the weft direction - base type: decimal, min inclusive: 0, fraction digits: 2,

xGeoCoord	geographical coordinate x , corresponding to latitude - base type: decimal,
yGeoCoord	geographical coordinate y , corresponding to longitude - base type: decimal,
zGeoCoord	geographical coordinate z , corresponding to altitude - base type: decimal,

2.3 Suggested best practices

TEXDarnOrder/MOheader/refDoc/docID (identification number of the referenced document)

numberingOrg indicates the role that produced the document identifier (it is allowed to declare two different ones -e.g. customer and supplier - with two docID with different numberingOrg)

TEXDarnOrder/MOheader/refDoc/attachment/

externalReference/mimeCode (mime type of the external object)

Use coding from IANA <http://www.iana.org/assignments/media-types/media-types.xml>

TEXDarnOrder/MObody/MOitem/qty (net quantity of the article or object correlated, qualified by the function of the document (ordering, delivering, ..) and by the context)

this element can have two instances only if the units of measure are different

TEXDarnOrder/MObody/MOitem/piece/serialN (serial number used for the identification of a physical unit)

This element might contain also codes for RFID devices.

2.4 Enumeration tables

List of enumeration tables used in the XML document. You can find all the tables with the corresponding codes at:
<http://www.ebiz.enea.it/eBIZ/imple/eBIZTCU-draft.asp?lingua=en&pag=6>

NT100 - eBIZ TCFUpstream version
NT11 - transport causal
NT12 - data source
NT13 - fabric fault category
NT14 - fabric fault shape
NT16 - VAT rate or code
NT18 - message function
NT2 - third party qualifier
NT29 - format of a date
NT4 - end use
NT6 - coding system owner/issuer
NT60 - language, codes from ISO 639-1 (subset)
NT7 - unit of measure
T10 - ISO3166 - Country
T12 - fabric faults
T20 - type of darning operation
T21 - type of document
T4 - fabric piece inner packing (wrapping) 1
T44 - additional code type
T5 - fabric piece inner packing (wrapping) 2
T52 - fabric piece status
T6 - fabric piece outer packing
T61 - duty or tax or fee type
T62 - duty or tax or fee category
T9 - ISO4217 - Currency

ACKNOWLEDGEMENT



This action is part of the TRICK project, which has received funding from Horizon 2020 research and innovation programme under grant agreement No. 958352 of the European Union.

DISCLAIMER

The content of this document represents the views of the authors only and is their sole responsibility; it cannot be considered to reflect the views of the European Commission or any other body of the European Union.

The European Commission does not accept any responsibility for use that may be made of the information it contains.

Annex A

Representative images of the principal complex elements' structure.

