



<http://www.ebiz-tcf.eu>

DRAFT

Extract from IMPLEMENTATION GUIDE
TRANSACTION "GARMENT STOCK OFFER CHANGE"

Version: draft

Date of release: 9/10/2022

Document code: G030e

technical Documentation: <http://www.ebiz.enea.it>

XML Schemas repository: <http://www.ebiz.enea.it/moda-ml/repository/schema/draft/default.asp>

Guides repository: <http://www.ebiz.enea.it/moda-ml/repository/guide/draft/default.asp>

Guide filename: G030-eBIZ-GarmentStockOfferChange.pdf

0. PREMISE

This document contains a proposal for the updating and extension of eBIZ specifications starting from the eBIZ version 2018. Under the name of 'Draft version' it is reported the result of an extensive work of analysis and consultation aimed at developing and maintaining eBIZ specifications.

In particular, the content of this proposal is the result of various activities, mainly those carried out within the framework of the **TRICK project** funded by the European Commission: grant agreement 958352, call H2020-LOW-CARBON-CIRCULAR-INDUSTRIES-2020 / H2020-LCCI-2020-EASME-twostage.

The technical contents are backwards compatible with the latest official published version, with the exclusion of the totally new concepts added explicitly for the version that are thought as incremental evolution of the knowledge base.

1. BUSINESS DESCRIPTION

1.1 Scope

The document Garment Stock OfferChange can be used for the electronic transmission from the Trade organisation or the Garment company of modifications of the stock data already into the e-Stockflow service.

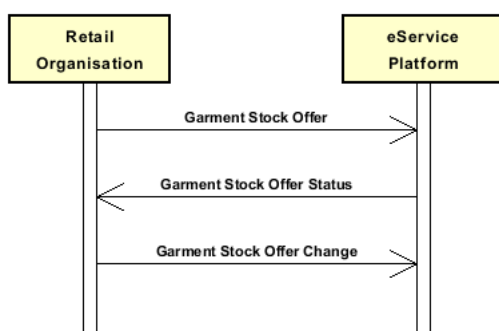
1.2 Generalities

The document is issued by the Trade organisation or the Garment company to modify an offer of garment stock through the e-Stockflow service.

Each document line must refer to one line of a former "Stock Offer", that can be cancelled (attribute "act" = A) or modified (attribute "act" = V); in the latter case the definition and classification of the article, the new assortment color/size as well as the new quantity and/or price should be specified

1.3. Possible scenario

On-line stocks offer



2. IMPLEMENTATION GUIDE

2.1 General structure of XML document

All the business data that can be exchanged through this class of documents are shown in the following "document structure", that provides a simplified vision of the Schema.

In particular:

- the two numbers following each element define its "cardinality" (minimum and maximum number of occurrences); the minimum equal zero indicates that the element is optional, the minimum greater than zero indicates that is mandatory;
- the bold character denotes the complex elements (aggregates of simple elements) that were built for the sake of functionality and re-usability of some complex informations sets. The child elements in each parent element are easily spotted as "indented";
- the symbol "@" denotes an attribute of the preceding element; here "the usage indicator (optional, required, ...) is shown in square brackets.

Structure

GARStockChange

@msgfunction [Optional] [Default= OR]

@version [Optional] [Default= 2018-1]

@useProfile [Optional]

GSOheader 1-1

msgN 1-1

msgID 0-1

msgDate 1-1

@dateForm [Optional]

refDoc 0-9

@docType [Required]

docID 1-2

@numberingOrg [Optional]

docDate 0-1

@dateForm [Optional]

season 0-1

@numberingOrg [Optional]

@codeList [Optional]

@listName [Optional]

@listVersion [Optional]

itemID 0-1

attachment 0-1

@uid [Optional]

fileName 0-1

@numberingOrg [Optional]

binaryObject 0-1

@format [Optional]

@mime [Optional]

@encoding [Optional]

@characterSet [Optional]

externalReference 0-99

uri 1-1

@isURL [Optional] [Default= true]

mimeCode 0-1

formatCode 0-1

encodingCode 0-1

characterSetCode 0-1

supplier 1-1

@logo [Optional]

@sender [Optional]

id 1-1

@numberingOrg [Optional]

additionalIdentifier 0-9

@numberingOrg [Optional]

@idQualifier [Optional]

legalName 0-1

dept 0-1

subDept 0-1

person 0-1

| @email [Optional]
 | @phone [Optional]
 | @fax [Optional]
 | street 0-1
 | city 0-1
 | subCountry 0-1
 | country 0-1
 | postCode 0-1
 | **geoCoordinates 0-1**
 | @um [Optional] [Default= DEGD]
 | @geoReferenceSystem [Optional]
 | | xGeoCoord 1-1
 | | yGeoCoord 1-1
 | | zGeoCoord 0-0
buyer 0-1
 | @logo [Optional]
 | @sender [Optional]
 | | id 1-1
 | | @numberingOrg [Optional]
 | | additionalIdentifier 0-9
 | | @numberingOrg [Optional]
 | | @idQualifier [Optional]
 | | legalName 0-1
 | | dept 0-1
 | | subDept 0-1
 | | person 0-1
 | | @email [Optional]
 | | @phone [Optional]
 | | @fax [Optional]
 | | street 0-1
 | | city 0-1
 | | subCountry 0-1
 | | country 0-1
 | | postCode 0-1
 | | **geoCoordinates 0-1**
 | | @um [Optional] [Default= DEGD]
 | | @geoReferenceSystem [Optional]
 | | | xGeoCoord 1-1
 | | | yGeoCoord 1-1
 | | | zGeoCoord 0-0
thirdParty 0-5
 | @VAT [Optional]
 | @role [Required]
 | @sender [Optional]
 | | id 1-1
 | | @numberingOrg [Optional]
 | | legalName 0-1
 | | dept 0-1
 | | subDept 0-1
 | | person 0-1
 | | @email [Optional]
 | | @phone [Optional]
 | | @fax [Optional]
 | | street 0-1
 | | city 0-1
 | | subCountry 0-1
 | | country 0-1
 | | postCode 0-1
 | | **geoCoordinates 0-1**
 | | @um [Optional] [Default= DEGD]
 | | @geoReferenceSystem [Optional]
 | | | xGeoCoord 1-1
 | | | yGeoCoord 1-1
 | | | zGeoCoord 0-0
 | note 0-99
 | @numberingOrg [Optional]
 | @codeList [Optional]
 | @noteLabel [Optional]

GSXbody 1-1

GSXitem 1-unbounded

@act [Required]

lineN 1-1

@VAT [Optional]

lineID 0-1

refDoc 1-9

@docType [Required]

docID 1-2

@numberingOrg [Optional]

docDate 0-1

@dateForm [Optional]

season 0-1

@numberingOrg [Optional]

@codeList [Optional]

@listName [Optional]

@listVersion [Optional]

itemID 0-1

attachment 0-1

@uid [Optional]

fileName 0-1

@numberingOrg [Optional]

binaryObject 0-1

@format [Optional]

@mime [Optional]

@encoding [Optional]

@characterSet [Optional]

externalReference 0-99

uri 1-1

@isURL [Optional] [Default= true]

mimeCode 0-1

formatCode 0-1

encodingCode 0-1

characterSetCode 0-1

garmentCategory 0-1

@numberingOrg [Optional]

artGroup 0-1

@numberingOrg [Optional]

@codeList [Optional]

@listName [Optional]

@listVersion [Optional]

artSubGroup 0-1

@numberingOrg [Optional]

@codeList [Optional]

@listName [Optional]

@listVersion [Optional]

artSex 0-1

@numberingOrg [Optional]

@codeList [Optional]

@listName [Optional]

@listVersion [Optional]

season 0-1

@numberingOrg [Optional]

@codeList [Optional]

@listName [Optional]

@listVersion [Optional]

goodsClassification 0-9

macroClass 0-1

@numberingOrg [Optional]

@codeList [Optional]

@listName [Optional]

@listVersion [Optional]

class 0-1

@numberingOrg [Optional]

@codeList [Optional]

@listName [Optional]

@listVersion [Optional]

```

| | | | subClass 0-1
| | | | | @numberingOrg [Optional]
| | | | | @codeList [Optional]
| | | | | @listName [Optional]
| | | | | @listVersion [Optional]
| | | | note 0-99
| | | | | @numberingOrg [Optional]
| | | | | @codeList [Optional]
| | | | | @noteLabel [Optional]
| | | | tradeMark 0-1
| | | | commerceText 0-unbounded
| | | | | @ln [Optional]
| | | | garmentCode 0-1
| | | | | @numberingOrg [Optional]
| | | | - choose -
| | | | | garmentCodeB 1-1
| | | | | | @numberingOrg [Optional]
| | | | | | mod 1-1
| | | | | | | @numberingOrg [Optional]
| | | | | | | @codeList [Optional]
| | | | | | | @listName [Optional]
| | | | | | | @listVersion [Optional]
| | | | | | fabric 0-1
| | | | | | | @numberingOrg [Optional]
| | | | | | | @codeList [Optional]
| | | | | | | @listName [Optional]
| | | | | | | @listVersion [Optional]
| | | | | | color 0-1
| | | | | | | @numberingOrg [Optional]
| | | | | | | @codeList [Optional]
| | | | | | | @listName [Optional]
| | | | | | | @listVersion [Optional]
| | | | | | garmentVariant 0-9
| | | | | | | variantType 1-1
| | | | | | | | @numberingOrg [Optional]
| | | | | | | | @codeList [Optional]
| | | | | | | | @listName [Optional]
| | | | | | | | @listVersion [Optional]
| | | | | | | variantCode 1-1
| | | | | | | | @numberingOrg [Optional]
| | | | | | | | @codeList [Optional]
| | | | | | | | @listName [Optional]
| | | | | | | | @listVersion [Optional]
| | | | | | drop 0-1
| | | | | | | @numberingOrg [Optional]
| | | | | | | @codeList [Optional]
| | | | | | | @listName [Optional]
| | | | | | | @listVersion [Optional]
| | | | | | size 0-1
| | | | | | | @numberingOrg [Optional]
| | | | | | | @codeList [Optional]
| | | | | | | @listName [Optional]
| | | | | | | @listVersion [Optional]
| | | | | | artGroup 0-1
| | | | | | | @numberingOrg [Optional]
| | | | | | | @codeList [Optional]
| | | | | | | @listName [Optional]
| | | | | | | @listVersion [Optional]
| | | | | | added 0-9
| | | | | | | @numberingOrg [Optional]
| | | | | | | @addType [Optional]
| | | | | | description 0-unbounded
| | | | | | | @ln [Optional]
| | | | - or -
| | | | | garmentCodeA 1-1
| | | | | | art 1-1
| | | | | | | @numberingOrg [Optional]
| | | | | | | @codeList [Optional]

```

```

| | | | @listName [Optional]
| | | | @listVersion [Optional]
| | | | description 0-unbounded
| | | | @ln [Optional]
- end choose -
| | | | qty 0-1
| | | | @um [Required]
| | | | readyToSendDate 0-1
| | | | @dateForm [Optional]
| | | | price 0-1
| | | | @um [Optional]
| | | | @priceQualifier [Optional] [Default= NET]
| | | | @currency [Optional]
| | | | csRange 0-99
| | | | @numberingOrg [Optional]
| | | | @sizeSystemNat [Optional]
| | | | @sizeSystemSeg [Optional]
| | | | @sizeSystemBase [Optional]
| | | | @sizeSystemID [Optional]
| | | | | color 0-1
| | | | | @numberingOrg [Optional]
| | | | | @codeList [Optional]
| | | | | @listName [Optional]
| | | | | @listVersion [Optional]
| | | | | garmentVariant 0-9
| | | | | | variantType 1-1
| | | | | | @numberingOrg [Optional]
| | | | | | @codeList [Optional]
| | | | | | @listName [Optional]
| | | | | | @listVersion [Optional]
| | | | | | variantCode 1-1
| | | | | | @numberingOrg [Optional]
| | | | | | @codeList [Optional]
| | | | | | @listName [Optional]
| | | | | | @listVersion [Optional]
| | | | | drop 0-1
| | | | | @numberingOrg [Optional]
| | | | | @codeList [Optional]
| | | | | @listName [Optional]
| | | | | @listVersion [Optional]
| | | | | sizeMatrix 1-1
| | | | | | sizeRow 1-99
| | | | | | | additionalComponentCode 0-9
| | | | | | | @numberingOrg [Optional]
| | | | | | | @codeList [Optional]
| | | | | | | @listName [Optional]
| | | | | | | @listVersion [Optional]
| | | | | | | drop 0-1
| | | | | | | @numberingOrg [Optional]
| | | | | | | @codeList [Optional]
| | | | | | | @listName [Optional]
| | | | | | | @listVersion [Optional]
| | | | | | | size 1-1
| | | | | | | @numberingOrg [Optional]
| | | | | | | @codeList [Optional]
| | | | | | | @listName [Optional]
| | | | | | | @listVersion [Optional]
| | | | | | | qty 0-1
| | | | | | | @um [Required]
| | | | | | | itemsList 0-1
| | | | | | | | qualityLevel 0-1
| | | | | | | | @numberingOrg [Optional]
| | | | | | | | @codeList [Optional]
| | | | | | | | @listName [Optional]
| | | | | | | | @listVersion [Optional]
| | | | | | | | itemIdentification 1-unbounded
| | | | | | | | | serialN 1-9
| | | | | | | | | @numberingOrg [Optional]

```

```

| | | | | | | | @idQualifier [Optional]
| | | | | | | | stockAddress 0-1
| | | | | | | | @numberingOrg [Optional]
| | | | | | | | | city 1-1
| | | | | | | | | subCountry 1-1
| | | | | | | | | country 1-1
| | | | | | | | dtScheme 0-1
| | | | | | | | @taxType [Required]
| | | | | | | | | taxCategory 0-1
| | | | | | | | | taxRate 0-1
| | | | | | | | | legalRef 0-1
| | | | | | | | | @numberingOrg [Optional]
| | | | | | | | | @codeList [Optional]
| | | | | | | | | @listName [Optional]
| | | | | | | | | @listVersion [Optional]
| | | | | | | | | note 0-99
| | | | | | | | | @numberingOrg [Optional]
| | | | | | | | | @codeList [Optional]
| | | | | | | | | @noteLabel [Optional]
| | | | | | | | note 0-99
| | | | | | | | @numberingOrg [Optional]
| | | | | | | | @codeList [Optional]
| | | | | | | | @noteLabel [Optional]

```


2.2 Detailed description of document elements

Following tables show all elements (complex and simple) used in this document. Description includes: 1) element's information: xml tag, name, brief description, data type and syntax constraints; 2) information about use of the element in a particular position in the document: xpath and possible associated notes.

2.2.1 Complex elements (Aggregate Business Information Entities)

Complex elements are those elements whose content is composed of other elements (childs).Complex elements are alphabetically ordered.

attachment	an attached document. An attachment can refer to an external document or be included with the document being exchanged
buyer	details of the Buyer (party that buys the good or service that is object of the current collaborative process) - base type: Nad,
csRange	range of color-size for a fashion article
dtScheme	set of data usable to declare the duty or tax applied
externalReference	details about an external object, such as a document stored at a remote location
garmentCategory	classification of a garment article
garmentCode	codification of the garment product
garmentCodeA	codification of the garment product- type A
garmentCodeB	codification of the garment product - type B
garmentVariant	garment product variant
geoCoordinates	geographical coordinates
goodsClassification	goods classification of the item.
GSOheader	Header of a document for on-line FASHION STOCK management
GSXbody	body of the document GARMENT STOCK OFFER CHANGE
GSXitem	line item of the document GARMENT STOCK OFFER CHANGE
itemIdentification	serial identification of a product unit
itemsList	list of the single product units
refDoc	identification of a document and of an item thereof, to which the message makes reference
sizeMatrix	size matrix of an apparel product
sizeRow	size matrix row of an apparel product
stockAddress	physical location of a stock
supplier	details of the Supplier (party that supplies the good or service that is object of the current collaborative process) - base type: Nad,
thirdParty	identification and details of the Third Party, different from Sender and Receiver of the document - base type: Nad,

2.2.2 Simple elements (Basic Business Information Entities)

Simple elements are those elements whose content is characterized by a data type plus a domain of possible values.

Simple elements are alphabetically ordered.

@act	status that the current line assigns to the line addressed in the reference document; if it is already canceled it maintains the status. - base type: string, cod. table: NT5 http://www.ebiz.enea.it/moda-ml/repository/codelist/draft/gc_NT5.xml
added	additional code of the product (complementing the formers) - base type: string, max length: 80,
additionalComponentCode	an additional code to identify a fashion product or a part of it (it is a way to codify the item, but it is not one of the codes to identify it). It is not a serial identifier. - base type: string,
additionalIdentifier	additional identification code of a Party, for example customs registries or others - base type: string, max length: 15,
@addType	qualifier of the additional coding of a product - base type: string, cod. table: T44 http://www.ebiz.enea.it/moda-ml/repository/codelist/draft/gc_T44.xml
art	article number of the product - base type: string, max length: 80,
artGroup	code identifying a class of products - base type: string, max length: 40,
artSex	code identifying the sex for which a fashion product is intended - base type: string, max length: 15,
artSubGroup	code identifying a sub-class of products - base type: string, max length: 40,
binaryObject	a binary large object containing an attached document, Coding 'base64Binary' is recommended. - base type: base64Binary,
@characterSet	the character set of the binary object (examples UTF-8, UTF-16, Windows-1252, ISO-8859-7,..) - base type: normalizedString,
characterSetCode	the character set of an external document (examples UTF-8, UTF-16, Windows-1252, ISO-8859-7,..) - base type: normalizedString,
city	name of the city (town, village) - base type: string, max length: 40,
class	a code indicating the category (macro-class, class or sub-class) of a commodity classification system the article belongs to. - base type: string,
@codeList	it specifies the URL where the list of codes used to make an instance of the element can be found - base type: string, max length: 255,
color	colour number of the product, when not included in the model or fabric code - base type: string, max length: 15,
commerceText	text usable for the full commercial description of a product - base type: string, max length: 400,
country	code of the nation - base type: string, cod. table: T10 http://www.ebiz.enea.it/moda-ml/repository/codelist/draft/gc_T10.xml
@currency	currency in which a specified monetary data is expressed - base type: string, cod. table: T9 http://www.ebiz.enea.it/moda-ml/repository/codelist/draft/gc_T9.xml
@dateForm	format used for the date - base type: string, cod. table: NT29

	http://www.ebiz.enea.it/moda-ml/repository/codelist/draft/gc_NT29.xml
dept	name or code of a department - base type: string, max length: 40,
description	free text description. The content of the element must be unique, it might be translated and repeated into more languages (thus no more than one instance for each language). - base type: string, max length: 250,
docDate	date of issue of the referenced document, according to one of the patterns YYYY-MM-DD, YYYY-MM-DD:HH-MM or YYYY-WW. - base type: string,
docID	identification number of the referenced document - base type: string, max length: 80,
@docType	type or class to which the referenced document belongs - base type: string, cod. table: T21 http://www.ebiz.enea.it/moda-ml/repository/codelist/draft/gc_T21.xml
drop	drop number of the garment - base type: string, max length: 15,
@email	electronic mail address of the contact person within a Party - base type: string, max length: 250,
@encoding	specifies the decoding algorithm of the binary object - base type: normalizedString,
encodingCode	the encoding/decoding algorithm used with the external object (example is 'base64Binary') - base type: normalizedString,
fabric	fabric number of the garment - base type: string, max length: 15,
@fax	fax number of the contact person within a Party - base type: string, max length: 35,
fileName	unique identifier (name) of the file - base type: string, max length: 255,
@format	the format of the binary content (examples xml, pdf, doc,...) - base type: string,
formatCode	the format of the external object (examples xml, pdf, doc,...) - base type: normalizedString,
@geoReferenceSystem	georeference system adopted for the coordinate (in example wgs84 with decimal degree or degree with minute and seconds) - base type: string,
id	primary identification code of a Party; it is recommended the format: nation code (ISO 3166) + VAT identification number (11 crt), with the qualifier "numberingOrg"= MF - base type: string, max length: 15,
@idQualifier	Qualification of the identifier. - base type: string,
@isURL	it indicates if the referred element is an URL (true) or not (false) - base type: boolean,
itemID	number of the line/item of the referenced document - base type: string, max length: 40,
legalName	legal name - base type: string, max length: 250,
legalRef	legal reference of the duty or tax or fee category - base type: string,
lineID	unique identifier of the line item of the business document; it is set by the role that prod

	uces the document. - base type: string, max length: 30,
lineN	number of the line item of the present message (xml document); it is set by the role that produces the document. Usually it is a progressive number, but not always. - base type: positiveInteger, min inclusive: 1, max inclusive: 9999,
@listName	the name of the list of codes used to make an instance of the element (it might be thought as descriptive element, i.e. 'fabric printing technologies', or not, i.e. "T264") - base type: string, max length: 40,
@listVersion	it specifies the version of the list of codes used to make an instance of the element - base type: string, max length: 6,
@ln	Language code. - base type: string, cod. table: NT60 http://www.ebiz.enea.it/moda-ml/repository/codelist/draft/gc_NT60.xml
@logo	company logo (URL of the image jpeg or gif). It is recommended that the width of the image does not exceed 640 pixel. - base type: string, max length: 255,
macroClass	a code indicating the category (macro-class, class or sub-class) of a commodity classification system the article belongs to. - base type: string,
@mime	the mime type of the binary object - base type: normalizedString,
mimeCode	mime type of the external object - base type: normalizedString,
mod	model number of the garment - base type: string, max length: 15,
msgDate	date of issue of the present message (xml document), according to one of the patterns YYYY-MM-DD, YYYY-MM-DD:HH-MM or YYYY-WW. - base type: string,
@msgfunction	function performed by the present message with regards to the transmission - base type: string, cod. table: NT18 http://www.ebiz.enea.it/moda-ml/repository/codelist/draft/gc_NT18.xml
msgID	key identifier of the business document in the information system of the issuing Party. In case of more despatches of the same business document, it is unchanged. - base type: string, max length: 35,
msgN	identification number given to the message (xml document) by its issuer. In case of more despatches of the same business document, it changes. - base type: string, max length: 35,
note	free text or structured (computer processing) note. For note structuring use the attributes "noteLabel" and "codelist" - base type: string, max length: 350,
@noteLabel	subject qualifier of a note - base type: string, max length: 35,
@numberingOrg	code specifying the organisation who has created or owns the coding or numbering system - base type: string, cod. table: NT6 http://www.ebiz.enea.it/moda-ml/repository/codelist/draft/gc_NT6.xml
person	name of a person (e.g. contact person within an organization) - base type: string, max length: 40,
@phone	phone number of the contact person within a Party - base type: string, max length: 35,
postCode	code defining the postal zone - base type: string, max length: 10,

price	unit price of the article, object or service specified - base type: decimal, min inclusive: 0, fraction digits: 4,
@priceQualifier	type of price with reference to discount and taxes - base type: string, cod. table: NT20 http://www.ebiz.enea.it/moda-ml/repository/codelist/draft/gc_NT20.xml
qty	net quantity of the article or object correlated, qualified by the function of the document (ordering, delivering, ..) and by the context - base type: decimal, min inclusive: 0, fraction digits: 2,
qualityLevel	the product quality level (first choice, second choice,...). - base type: string,
readyToSendDate	date of goods ready to despatch, according to one of the patterns YYYY-MM-DD, YYYY-MM-DD:HH-MM or YYYY-WW. - base type: string,
@role	Third Party role qualifier - base type: string, cod. table: NT2 http://www.ebiz.enea.it/moda-ml/repository/codelist/draft/gc_NT2.xml
season	sale season; defined as: season (1 crt) + year (4 crt) - season: S/S=1 A/W=2 Spring=3 Summer=4 Autumn=5 Winter=6: for more than four seasons use alphabetic sequence: 1st season=A 2nd season=B etc.etc. - base type: string, max length: 15,
@sender	qualifier that specifies the Party issuing of the document - base type: boolean,
serialN	serial number used for the identification of a physical unit - base type: string, max length: 250,
size	size number of a fashion product (knitwear, clothing, ..) - base type: string, max length: 15,
@sizeSystemBase	base of the size system - base type: string, cod. table: T423 http://www.ebiz.enea.it/moda-ml/repository/codelist/draft/gc_T423.xml
@sizeSystemID	the identifier of the size system. - base type: string,
@sizeSystemNat	nation or agency identifying the size system - base type: string, cod. table: T421 http://www.ebiz.enea.it/moda-ml/repository/codelist/draft/gc_T421.xml
@sizeSystemSeg	market segment identifying the size system - base type: string, cod. table: T422 http://www.ebiz.enea.it/moda-ml/repository/codelist/draft/gc_T422.xml
street	street and building number identifying a location - base type: string, max length: 80,
subClass	a code indicating the category (macro-class, class or sub-class) of a commodity classification system the article belongs to. - base type: string,
subCountry	short name or code of the sub-country entity - base type: string, max length: 9,
subDept	name or code of a department - base type: string, max length: 40,
taxCategory	duty or tax or fee category - base type: string, cod. table: T62 http://www.ebiz.enea.it/moda-ml/repository/codelist/draft/gc_T62.xml
taxRate	duty or tax or fee percent rate - base type: string,
@taxType	duty or tax or fee type - base type: string, cod. table: T61

	http://www.ebiz.enea.it/moda-ml/repository/codelist/draft/gc_T61.xml
tradeMark	name of the official trademark of a specified product (DEPRECATED, use Brand or Product Line). - base type: string, max length: 50,
@uid	unique element identifier within the xml document - base type: string,
@um	specification of the unit of measure - base type: string, cod. table: NT7 http://www.ebiz.enea.it/moda-ml/repository/codelist/draft/gc_NT7.xml
uri	Uniform Resource Identifier (URI) that identifies the external object as an Internet resource - base type: normalizedString,
@useProfile	use profile to which the present document is compliant if it was agreed by the parties. It is suggested a URI with reference to the firms or the URL of the profile. - base type: string,
variantCode	Code of variant used for fashion product. - base type: string,
variantType	Type of variant used for fashion product (examples: 'treatment', 'washing type', 'size class',...) - base type: string,
@VAT	VAT rate or code (DEPRECATED, use dtScheme element) - base type: string, cod. table: NT16 http://www.ebiz.enea.it/moda-ml/repository/codelist/draft/gc_NT16.xml
@version	Dictionary version from which the instance has been created - base type: string, cod. table: NT100 http://www.ebiz.enea.it/moda-ml/repository/codelist/draft/gc_NT100.xml
xGeoCoord	geographical coordinate x , corresponding to latitude - base type: decimal,
yGeoCoord	geographical coordinate y , corresponding to longitude - base type: decimal,
zGeoCoord	geographical coordinate z , corresponding to altitude - base type: decimal,

2.3 Suggested best practices

GARStockChange/GSOheader/refDoc/docID (identification number of the referenced document)

numberingOrg indicates the role that produced the document identifier (it is allowed to declare two different ones -e.g. customer and supplier - with two docID with different numberingOrg

GARStockChange/GSXbody/GSXitem/refDoc/docID (identification number of the referenced document)

numberingOrg indicates the role that produced the document identifier (it is allowed to declare two different ones -e.g. customer and supplier - with two docID with different numberingOrg

**GARStockChange/GSOheader/refDoc/attachment/
externalReference/mimeCode (mime type of the external object)**

Use coding from IANA <http://www.iana.org/assignments/media-types/media-types.xml>

**GARStockChange/GSXbody/GSXitem/refDoc/attachment/
externalReference/mimeCode (mime type of the external object)**

Use coding from IANA <http://www.iana.org/assignments/media-types/media-types.xml>

**GARStockChange/GSXbody/GSXitem/csRange/sizeMatrix/
sizeRow/itemsList/itemIdentification/serialN (serial number used for the identification of a physical unit)**

in the case of garment with RFID for anti-counterfeiting, RFID EPCGlobal for logistics and NFC for the customer experience there should be three serial elements with pairs of attributes numberingOrg/idQualifier: "CL"/"RFID", "GS1"/"RFID", "CL"/"NFC".

2.4 Enumeration tables

List of enumeration tables used in the XML document. You can find all the tables with the corresponding codes at:
<http://www.ebiz.enea.it/eBIZ/imple/eBIZTCU-draft.asp?lingua=en&pag=6>

NT100 - eBIZ TCFUpstream version
NT16 - VAT rate or code
NT18 - message function
NT2 - third party qualifier
NT20 - price qualifier
NT29 - format of a date
NT5 - action code
NT6 - coding system owner/issuer
NT60 - language, codes from ISO 639-1 (subset)
NT7 - unit of measure
T10 - ISO3166 - Country
T21 - type of document
T421 - size system: nationality
T422 - size system: market segment
T423 - size system: base
T44 - additional code type
T61 - duty or tax or fee type
T62 - duty or tax or fee category
T9 - ISO4217 - Currency

ACKNOWLEDGEMENT



This action is part of the TRICK project, which has received funding from Horizon 2020 research and innovation programme under grant agreement No. 958352 of the European Union.

DISCLAIMER

The content of this document represents the views of the authors only and is their sole responsibility; it cannot be considered to reflect the views of the European Commission or any other body of the European Union.

The European Commission does not accept any responsibility for use that may be made of the information it contains.

Annex A

Representative images of the principal complex elements' structure.

