



<http://www.ebiz-tcf.eu>

DRAFT

Extract from IMPLEMENTATION GUIDE
TRANSACTION "GARMENT IN WORK INVENTORY REPORT"

Version: draft

Date of release: 9/10/2022

Document code: G044e

technical Documentation: <http://www.ebiz.enea.it>

XML Schemas repository: <http://www.ebiz.enea.it/moda-ml/repository/schema/draft/default.asp>

Guides repository: <http://www.ebiz.enea.it/moda-ml/repository/guide/draft/default.asp>

Guide filename: G044-eBIZ-GarmentInWorkInventoryReport.pdf

0. PREMISE

This document contains a proposal for the updating and extension of eBIZ specifications starting from the eBIZ version 2018. Under the name of 'Draft version' it is reported the result of an extensive work of analysis and consultation aimed at developing and maintaining eBIZ specifications.

In particular, the content of this proposal is the result of various activities, mainly those carried out within the framework of the **TRICK project** funded by the European Commission: grant agreement 958352, call H2020-LOW-CARBON-CIRCULAR-INDUSTRIES-2020 / H2020-LCCI-2020-EASME-twostage.

The technical contents are backwards compatible with the latest official published version, with the exclusion of the totally new concepts added explicitly for the version that are thought as incremental evolution of the knowledge base.

1. BUSINESS DESCRIPTION

1.1 Scope

The present guide has been issued to assist the companies of the Textile-Clothing sector in the implementation of the standard XML document type "GARMENT IN WORK INVENTORY REPORT", providing all the instruction required for its use in the context of e-commerce in the Textile industry, as shown in the enclosed diagrams. All the rules required for the construction and validation of the document are embedded into the specific XML-Schema, which is detailed in section "Implementation guide".

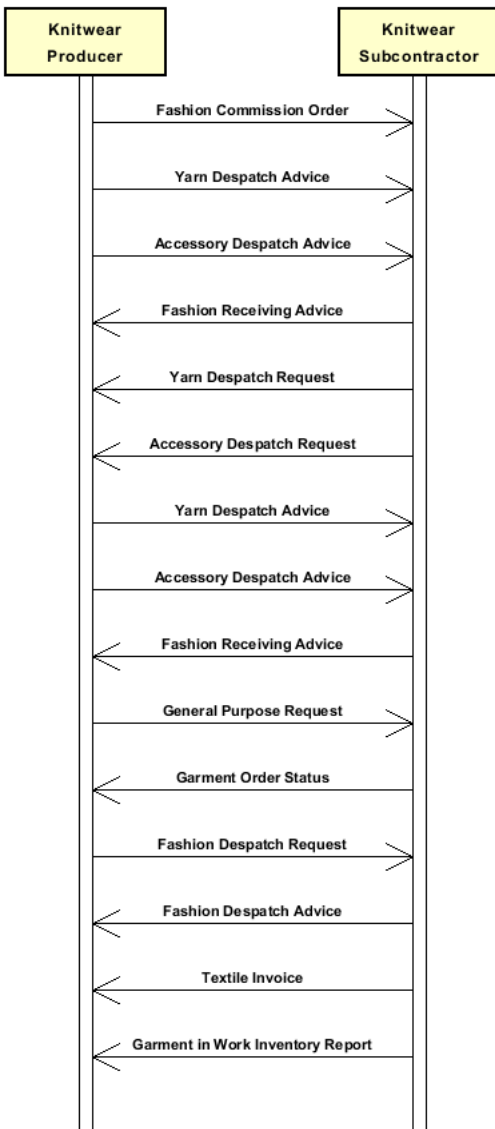
1.2 Generalities

The present document can be used by a Knitwear or Clothing Subcontractor to inform his Client (Commission issuer), periodically or on demand, about the quantity of pre-works or in-work Textile items (Client's property) stocked at the Subcontractor's premises.

This inventory may refer to all the goods of one Commission issuer or just to those related to one Commission order; item quantities may be subdivided by type of stock and physical location.

1.3. Possible scenario

Knitting and assembling



2. IMPLEMENTATION GUIDE

2.1 General structure of XML document

All the business data that can be exchanged through this class of documents are shown in the following "document structure", that provides a simplified vision of the Schema.

In particular:

- the two numbers following each element define its "cardinality" (minimum and maximum number of occurrences); the minimum equal zero indicates that the element is optional, the minimum greater than zero indicates that is mandatory;
- the bold character denotes the complex elements (aggregates of simple elements) that were built for the sake of functionality and re-usability of some complex informations sets. The child elements in each parent element are easily spotted as "indented";
- the symbol "@" denotes an attribute of the preceding element; here "the usage indicator (optional, required, ...)" is shown in square brackets.

Structure

GARWorkInv

@msgfunction [Optional] [Default= OR]

@version [Optional] [Default= 2018-1]

@useProfile [Optional]

```
| GWIheader 1-1
| | msgN 1-1
| | - choose -
| | | msgID 0-1
| | | - or -
| | | docID 0-1
| | | @numberingOrg [Optional]
| | - end choose -
| | | msgDate 1-1
| | | @dateForm [Optional]
| | | inventoryDate 1-1
| | | @dateForm [Optional]
| | refDoc 0-9
| | | @docType [Required]
| | | | docID 1-2
| | | | | @numberingOrg [Optional]
| | | | | docDate 0-1
| | | | | @dateForm [Optional]
| | | | | season 0-1
| | | | | @numberingOrg [Optional]
| | | | | @codeList [Optional]
| | | | | @listName [Optional]
| | | | | @listVersion [Optional]
| | | | | itemID 0-1
| | | | attachment 0-1
| | | | | @uid [Optional]
| | | | | | fileName 0-1
| | | | | | | @numberingOrg [Optional]
| | | | | | | binaryObject 0-1
| | | | | | | @format [Optional]
| | | | | | | @mime [Optional]
| | | | | | | @encoding [Optional]
| | | | | | | @characterSet [Optional]
| | | | | externalReference 0-99
| | | | | | uri 1-1
| | | | | | | @isURL [Optional] [Default= true]
| | | | | | | mimeTypeCode 0-1
| | | | | | | formatCode 0-1
| | | | | | | encodingCode 0-1
| | | | | | | characterSetCode 0-1
| | buyer 1-1
| | | @logo [Optional]
| | | @sender [Optional]
| | | | id 1-1
| | | | | @numberingOrg [Optional]
```

| additionalIdentifier 0-9
 | @numberingOrg [Optional]
 | @idQualifier [Optional]
 | legalName 0-1
 | dept 0-1
 | subDept 0-1
 | person 0-1
 | @email [Optional]
 | @phone [Optional]
 | @fax [Optional]
 | street 0-1
 | city 0-1
 | subCountry 0-1
 | country 0-1
 | postCode 0-1
 | **geoCoordinates 0-1**
 | @um [Optional] [Default= DEGD]
 | @geoReferenceSystem [Optional]
 | | xGeoCoord 1-1
 | | yGeoCoord 1-1
 | | zGeoCoord 0-0
 | **subContractor 1-1**
 | @sender [Optional]
 | id 1-1
 | @numberingOrg [Optional]
 | legalName 0-1
 | dept 0-1
 | subDept 0-1
 | person 0-1
 | @email [Optional]
 | @phone [Optional]
 | @fax [Optional]
 | street 0-1
 | city 0-1
 | subCountry 0-1
 | country 0-1
 | postCode 0-1
 | **geoCoordinates 0-1**
 | @um [Optional] [Default= DEGD]
 | @geoReferenceSystem [Optional]
 | | xGeoCoord 1-1
 | | yGeoCoord 1-1
 | | zGeoCoord 0-0
 | **thirdParty 0-5**
 | @VAT [Optional]
 | @role [Required]
 | @sender [Optional]
 | id 1-1
 | @numberingOrg [Optional]
 | legalName 0-1
 | dept 0-1
 | subDept 0-1
 | person 0-1
 | @email [Optional]
 | @phone [Optional]
 | @fax [Optional]
 | street 0-1
 | city 0-1
 | subCountry 0-1
 | country 0-1
 | postCode 0-1
 | **geoCoordinates 0-1**
 | @um [Optional] [Default= DEGD]
 | @geoReferenceSystem [Optional]
 | | xGeoCoord 1-1
 | | yGeoCoord 1-1
 | | zGeoCoord 0-0
 | note 0-99

| | @numberingOrg [Optional]
| | @codeList [Optional]
| | @noteLabel [Optional]

GWtbody 1-1

GWitem 1-unbounded

| lineN 1-1

| | @VAT [Optional]

| lineID 0-1

refDoc 0-9

| | @docType [Required]

| | docID 1-2

| | | @numberingOrg [Optional]

| | docDate 0-1

| | | @dateForm [Optional]

| | season 0-1

| | | @numberingOrg [Optional]

| | | @codeList [Optional]

| | | @listName [Optional]

| | | @listVersion [Optional]

| | itemID 0-1

attachment 0-1

| | | @uid [Optional]

| | | | fileName 0-1

| | | | | @numberingOrg [Optional]

| | | | binaryObject 0-1

| | | | | @format [Optional]

| | | | | @mime [Optional]

| | | | | @encoding [Optional]

| | | | | @characterSet [Optional]

externalReference 0-99

| | | | uri 1-1

| | | | | @isURL [Optional] [Default= true]

| | | | mimeTypeCode 0-1

| | | | formatCode 0-1

| | | | encodingCode 0-1

| | | | characterSetCode 0-1

- choose -

garmentPartCode 1-1

| | @numberingOrg [Optional]

| | gPart 1-1

| | mod 1-1

| | | @numberingOrg [Optional]

| | | @codeList [Optional]

| | | @listName [Optional]

| | | @listVersion [Optional]

| | fabric 0-1

| | | @numberingOrg [Optional]

| | | @codeList [Optional]

| | | @listName [Optional]

| | | @listVersion [Optional]

| | color 0-1

| | | @numberingOrg [Optional]

| | | @codeList [Optional]

| | | @listName [Optional]

| | | @listVersion [Optional]

| | added 0-19

| | | @numberingOrg [Optional]

| | | @addType [Optional]

| | size 0-1

| | | @numberingOrg [Optional]

| | | @codeList [Optional]

| | | @listName [Optional]

| | | @listVersion [Optional]

| | description 0-unbounded

| | | @ln [Optional]

- or -

garmentCode 1-1

```

| | | @numberingOrg [Optional]
| | | - choose -
| | | | garmentCodeB 1-1
| | | | @numberingOrg [Optional]
| | | | | mod 1-1
| | | | | | @numberingOrg [Optional]
| | | | | | @codeList [Optional]
| | | | | | @listName [Optional]
| | | | | | @listVersion [Optional]
| | | | | fabric 0-1
| | | | | | @numberingOrg [Optional]
| | | | | | @codeList [Optional]
| | | | | | @listName [Optional]
| | | | | | @listVersion [Optional]
| | | | | color 0-1
| | | | | | @numberingOrg [Optional]
| | | | | | @codeList [Optional]
| | | | | | @listName [Optional]
| | | | | | @listVersion [Optional]
| | | | | garmentVariant 0-9
| | | | | | variantType 1-1
| | | | | | | @numberingOrg [Optional]
| | | | | | | @codeList [Optional]
| | | | | | | @listName [Optional]
| | | | | | | @listVersion [Optional]
| | | | | | variantCode 1-1
| | | | | | | @numberingOrg [Optional]
| | | | | | | @codeList [Optional]
| | | | | | | @listName [Optional]
| | | | | | | @listVersion [Optional]
| | | | | drop 0-1
| | | | | | @numberingOrg [Optional]
| | | | | | @codeList [Optional]
| | | | | | @listName [Optional]
| | | | | | @listVersion [Optional]
| | | | | size 0-1
| | | | | | @numberingOrg [Optional]
| | | | | | @codeList [Optional]
| | | | | | @listName [Optional]
| | | | | | @listVersion [Optional]
| | | | | artGroup 0-1
| | | | | | @numberingOrg [Optional]
| | | | | | @codeList [Optional]
| | | | | | @listName [Optional]
| | | | | | @listVersion [Optional]
| | | | | added 0-9
| | | | | | @numberingOrg [Optional]
| | | | | | @addType [Optional]
| | | | | description 0-unbounded
| | | | | | @ln [Optional]
| | | | - or -
| | | | garmentCodeA 1-1
| | | | | art 1-1
| | | | | | @numberingOrg [Optional]
| | | | | | @codeList [Optional]
| | | | | | @listName [Optional]
| | | | | | @listVersion [Optional]
| | | | | description 0-unbounded
| | | | | | @ln [Optional]
| | | | - end choose -
| | | - end choose -
| | | inventory 1-9
| | | | @invType [Required]
| | | | | qty 1-2
| | | | | | @um [Required]
| | | | | location 0-1
| | | | | | @LRI [Optional]
| | | | - choose -

```

```

| | | | serialN 0-unbounded
| | | | @numberingOrg [Optional]
| | | | @idQualifier [Optional]
- or -
| | | | itemsList 0-1
| | | | | qualityLevel 0-1
| | | | | @numberingOrg [Optional]
| | | | | @codeList [Optional]
| | | | | @listName [Optional]
| | | | | @listVersion [Optional]
| | | | | itemIdentification 1-unbounded
| | | | | | serialN 1-9
| | | | | | @numberingOrg [Optional]
| | | | | | @idQualifier [Optional]
- end choose -
| | | | actualPackageUnit 0-unbounded
| | | | | @packageLevel [Optional]
| | | | | packageIdentification 1-1
| | | | | | packageN 1-1
| | | | | | @numberingOrg [Optional]
| | | | | | @packageContainerN [Optional]
| | | | | | serialN 0-9
| | | | | | @numberingOrg [Optional]
| | | | | | @idQualifier [Optional]
- choose -
| | | | | packageText 0-1
- or -
| | | | | package 0-1
- end choose -
| | | | | packageModelCode 0-1
| | | | | | @numberingOrg [Optional]
| | | | | | volume 0-1
| | | | | | @um [Required]
| | | | | | netWeight 0-1
| | | | | | @um [Required]
| | | | | | grossWeight 0-1
| | | | | | @um [Required]
| | | | | | packageDim 0-1
| | | | | | | length 1-1
| | | | | | | @um [Required]
| | | | | | | width 0-1
| | | | | | | @um [Required]
| | | | | | | height 0-1
| | | | | | | @um [Required]
| | | | | | actualItemsPerPackage 0-1
| | | | | | packagesList 0-1
| | | | | | | packageIdentification 1-unbounded
| | | | | | | | packageN 1-1
| | | | | | | | @numberingOrg [Optional]
| | | | | | | | @packageContainerN [Optional]
| | | | | | | | serialN 0-9
| | | | | | | | @numberingOrg [Optional]
| | | | | | | | @idQualifier [Optional]
| | | | | | | itemsList 0-1
| | | | | | | | qualityLevel 0-1
| | | | | | | | @numberingOrg [Optional]
| | | | | | | | @codeList [Optional]
| | | | | | | | @listName [Optional]
| | | | | | | | @listVersion [Optional]
| | | | | | | | itemIdentification 1-unbounded
| | | | | | | | | serialN 1-9
| | | | | | | | | @numberingOrg [Optional]
| | | | | | | | | @idQualifier [Optional]
| | | | | | | note 0-99
| | | | | | | | @numberingOrg [Optional]
| | | | | | | | @codeList [Optional]
| | | | | | | | @noteLabel [Optional]
| | | | EPCList 0-1

```



```
| | | | EPC 1-unbounded
| | | | @numberingOrg [Optional]
| | | | @TID [Optional]
| | | | note 0-99
| | | | @numberingOrg [Optional]
| | | | @codeList [Optional]
| | | | @noteLabel [Optional]
```

2.2 Detailed description of document elements

Following tables show all elements (complex and simple) used in this document. Description includes: 1) element's information: xml tag, name, brief description, data type and syntax constraints; 2) information about use of the element in a particular position in the document: xpath and possible associated notes.

2.2.1 Complex elements (Aggregate Business Information Entities)

Complex elements are those elements whose content is composed of other elements (childs). Complex elements are alphabetically ordered.

actualPackageUnit	description and identification of a single transport package
attachment	an attached document. An attachment can refer to an external document or be included with the document being exchanged
buyer	details of the Buyer (party that buys the good or service that is object of the current collaborative process) - base type: Nad,
EPClist	list of identifiers used for tracing a physical item with RFID technology
externalReference	details about an external object, such as a document stored at a remote location
garmentCode	codification of the garment product
garmentCodeA	codification of the garment product- type A
garmentCodeB	codification of the garment product - type B
garmentPartCode	codification of the component or part of a fashion article
garmentVariant	garment product variant
geoCoordinates	geographical coordinates
GWlbody	body of the document GARMENT IN WORK INVENTORY REPORT
GWlheader	header of the document GARMENT IN WORK INVENTORY REPORT
GWlitem	line item of the document GARMENT IN WORK INVENTORY REPORT
inventory	details of a stock of goods with reference to the manufacturing process: item quantity per class of stock
itemIdentification	serial identification of a product unit
itemsList	list of the single product units
packageDim	dimensions of a transport package
packageIdentification	serial identification of a package
packagesList	list of single packages
refDoc	identification of a document and of an item thereof, to which the message makes reference
subContractor	details of the Sub-contractor - base type: Nad,
thirdParty	identification and details of the Third Party, different from Sender and Receiver of the document - base type: Nad,

2.2.2 Simple elements (Basic Business Information Entities)

Simple elements are those elements whose content is characterized by a data type plus a domain of possible values.

Simple elements are alphabetically ordered.

actualItemsPerPackage	the quantity of items actually contained in the package - base type: decimal,
added	additional code of the product (complementing the formers) - base type: string, max length: 80,
additionalIdentifier	additional identification code of a Party, for example customs registries or others - base type: string, max length: 15,
@addType	qualifier of the additional coding of a product - base type: string, cod. table: T44 http://www.ebiz.enea.it/moda-ml/repository/codelist/draft/gc_T44.xml
art	article number of the product - base type: string, max length: 80,
artGroup	code identifying a class of products - base type: string, max length: 40,
binaryObject	a binary large object containing an attached document, Coding 'base64Binary' is recommended. - base type: base64Binary,
@characterSet	the character set of the binary object (examples UTF-8, UTF-16, Windows-1252, ISO-8859-7,..) - base type: normalizedString,
characterSetCode	the character set of an external document (examples UTF-8, UTF-16, Windows-1252, ISO-8859-7,..) - base type: normalizedString,
city	name of the city (town, village) - base type: string, max length: 40,
@codeList	it specifies the URL where the list of codes used to make an instance of the element can be found - base type: string, max length: 255,
color	colour number of the product, when not included in the model or fabric code - base type: string, max length: 15,
country	code of the nation - base type: string, cod. table: T10 http://www.ebiz.enea.it/moda-ml/repository/codelist/draft/gc_T10.xml
@dateForm	format used for the date - base type: string, cod. table: NT29 http://www.ebiz.enea.it/moda-ml/repository/codelist/draft/gc_NT29.xml
dept	name or code of a department - base type: string, max length: 40,
description	free text description. The content of the element must be unique, it might be translated and repeated into more languages (thus no more than one instance for each language). - base type: string, max length: 250,
docDate	date of issue of the referenced document, according to one of the patterns YYYY-MM-DD, YYYY-MM-DD:HH-MM or YYYY-WW. - base type: string,
docID	identification number of the referenced document - base type: string, max length: 80,
@docType	type or class to which the referenced document belongs - base type: string, cod. table: T21 http://www.ebiz.enea.it/moda-ml/repository/codelist/draft/gc_T21.xml
drop	drop number of the garment - base type: string, max length: 15,

@email	electronic mail address of the contact person within a Party - base type: string, max length: 250,
@encoding	specifies the decoding algorithm of the binary object - base type: normalizedString,
encodingCode	the encoding/decoding algorithm used with the external object (example is 'base64Binary') - base type: normalizedString,
EPC	serial identifier used for tracing a physical item with RFID technology - base type: string,
fabric	fabric number of the garment - base type: string, max length: 15,
@fax	fax number of the contact person within a Party - base type: string, max length: 35,
fileName	unique identifier (name) of the file - base type: string, max length: 255,
@format	the format of the binary content (examples xml, pdf, doc,...) - base type: string,
formatCode	the format of the external object (examples xml, pdf, doc,...) - base type: normalizedString,
@geoReferenceSystem	georeference system adopted for the coordinate (in example wgs84 with decimal degree o degree with minute and seconds) - base type: string,
gPart	code specifying the type of component or part of a fashion product (sleeve, neck, ...) - base type: string, cod. table: T48 http://www.ebiz.enea.it/moda-ml/repository/codelist/draft/gc_T48.xml
grossWeight	the gross weight, declared for transport or customs purpose - base type: decimal, min inclusive: 0, fraction digits: 2,
height	effective height of a specified object - base type: decimal, min inclusive: 0, fraction digits: 2,
id	primary identification code of a Party; it is recommended the format: nation code (ISO 3166) + VAT identification number (11 crt), with the qualifier "numberingOrg"= MF - base type: string, max length: 15,
@idQualifier	Qualification of the identifier. - base type: string,
inventoryDate	date in which the inventory was done, according to one of the patterns YYYY-MM-DD, YYYY-MM-DD:HH-MM or YYYY-WW. - base type: string,
@invType	code classifying a stock of goods with reference to the manufacturing process - base type: string, cod. table: T47 http://www.ebiz.enea.it/moda-ml/repository/codelist/draft/gc_T47.xml
@isURL	it indicates if the referred element is an URL (true) or not (false) - base type: boolean,
itemID	number of the line/item of the referenced document - base type: string, max length: 40,
legalName	legal name - base type: string, max length: 250,
length	effective length of a specified object - base type: decimal, min inclusive: 0, fraction digits: 2,
lineID	unique identifier of the line item of the business document; it is set by the role that produces the document. - base type: string, max length: 30,

lineN	number of the line item of the present message (xml document); it is set by the role that produces the document. Usually it is a progressive number, but not always. - base type: positiveInteger, min inclusive: 1, max inclusive: 9999,
@listName	the name of the list of codes used to make an instance of the element (it might be thought as descriptive element, i.e. 'fabric printing technologies', or not, i.e. "T264") - base type: string, max length: 40,
@listVersion	it specifies the version of the list of codes used to make an instance of the element - base type: string, max length: 6,
@ln	Language code. - base type: string, cod. table: NT60 http://www.ebiz.enea.it/moda-ml/repository/codelist/draft/gc_NT60.xml
location	specification of a location - base type: string, max length: 40,
@logo	company logo (URL of the image jpeg or gif). It is recommended that the width of the image does not exceed 640 pixel. - base type: string, max length: 255,
@LRI	attribute usable to format a string according to a customized User rule (local rule) - base type: string, cod. table: NT3 http://www.ebiz.enea.it/moda-ml/repository/codelist/draft/gc_NT3.xml
@mime	the mime type of the binary object - base type: normalizedString,
mimeCode	mime type of the external object - base type: normalizedString,
mod	model number of the garment - base type: string, max length: 15,
msgDate	date of issue of the present message (xml document), according to one of the patterns YYYY-MM-DD, YYYY-MM-DD:HH-MM or YYYY-WW. - base type: string,
@msgfunction	function performed by the present message with regards to the transmission - base type: string, cod. table: NT18 http://www.ebiz.enea.it/moda-ml/repository/codelist/draft/gc_NT18.xml
msgID	key identifier of the business document in the information system of the issuing Party. In case of more despatches of the same business document, it is unchanged. - base type: string, max length: 35,
msgN	identification number given to the message (xml document) by its issuer. In case of more despatches of the same business document, it changes. - base type: string, max length: 35,
netWeight	the net weight declared for transport or customs purpose - base type: decimal, min inclusive: 0, fraction digits: 2,
note	free text or structured (computer processing) note. For note structuring use the attributes "noteLabel" and "codelist" - base type: string, max length: 350,
@noteLabel	subject qualifier of a note - base type: string, max length: 35,
@numberingOrg	code specifying the organisation who has created or owns the coding or numbering system - base type: string, cod. table: NT6 http://www.ebiz.enea.it/moda-ml/repository/codelist/draft/gc_NT6.xml
package	code specifying the type of transport package - base type: string, cod. table: T11 http://www.ebiz.enea.it/moda-ml/repository/codelist/draft/gc_T11.xml
@packageContainerN	reference usable to indicate the outer package containing this package - base type: string, max length: 40,

@packageLevel	level used to indicate the hierarchical structure of the packages (from outer to inner levels) - base type: positiveInteger, min inclusive: 1, max inclusive: 9,
packageModelCode	a code (eg a barcode) identifying the type of packaging - base type: string,
packageN	serial number used to identify a transport package - base type: string, max length: 40,
packageText	denomination of the type of transport package (text) - base type: string, max length: 80,
person	name of a person (e.g. contact person within an organization) - base type: string, max length: 40,
@phone	phone number of the contact person within a Party - base type: string, max length: 35,
postCode	code defining the postal zone - base type: string, max length: 10,
qty	net quantity of the article or object correlated, qualified by the function of the document (ordering, delivering, ..) and by the context - base type: decimal, min inclusive: 0, fraction digits: 2,
qualityLevel	the product quality level (first choice, second choice,...). - base type: string,
@role	Third Party role qualifier - base type: string, cod. table: NT2 http://www.ebiz.enea.it/moda-ml/repository/codelist/draft/gc_NT2.xml
season	sale season; defined as: season (1 crt) + year (4 crt) - season: S/S=1 A/W=2 Spring=3 Summer=4 Autumn=5 Winter=6: for more than four seasons use alphabetic sequence: 1st season=A 2nd season=B etc.etc. - base type: string, max length: 15,
@sender	qualifier that specifies the Party issuing of the document - base type: boolean,
serialN	serial number used for the identification of a physical unit - base type: string, max length: 250,
size	size number of a fashion product (knitwear, clothing, ..) - base type: string, max length: 15,
street	street and building number identifying a location - base type: string, max length: 80,
subCountry	short name or code of the sub-country entity - base type: string, max length: 9,
subDept	name or code of a department - base type: string, max length: 40,
@TID	serial number wired into the RFID chip - base type: string,
@uid	unique element identifier within the xml document - base type: string,
@um	specification of the unit of measure - base type: string, cod. table: NT7 http://www.ebiz.enea.it/moda-ml/repository/codelist/draft/gc_NT7.xml
uri	Uniform Resource Identifier (URI) that identifies the external object as an Internet resource - base type: normalizedString,
@useProfile	use profile to which the present document is compliant if it was agreed by the parties. It is suggested a URI with reference to the firms or the URL of the profile.

	- base type: string,
variantCode	Code of variant used for fashion product. - base type: string,
variantType	Type of variant used for fashion product (examples: 'treatment', 'washing type', 'size class',...) - base type: string,
@VAT	VAT rate or code (DEPRECATED, use dtScheme element) - base type: string, cod. table: NT16 http://www.ebiz.enea.it/moda-ml/repository/codelist/draft/gc_NT16.xml
@version	Dictionary version from which the instance has been created - base type: string, cod. table: NT100 http://www.ebiz.enea.it/moda-ml/repository/codelist/draft/gc_NT100.xml
volume	effective volume of a specified object - base type: decimal, min inclusive: 0, fraction digits: 2,
width	effective width of a specified object - base type: decimal, min inclusive: 0, fraction digits: 2,
xGeoCoord	geographical coordinate x , corresponding to latitude - base type: decimal,
yGeoCoord	geographical coordinate y , corresponding to longitude - base type: decimal,
zGeoCoord	geographical coordinate z , corresponding to altitude - base type: decimal,

2.3 Suggested best practices

GARWorkInv/GWlbody/GWlitem/refDoc/docID (identification number of the referenced document)

numberingOrg indicates the role that produced the document identifier (it is allowed to declare two different ones -e.g. customer and supplier - with two docID with different numberingOrg

GARWorkInv/GWlheader/refDoc/docID (identification number of the referenced document)

numberingOrg indicates the role that produced the document identifier (it is allowed to declare two different ones -e.g. customer and supplier - with two docID with different numberingOrg

GARWorkInv/GWlheader/refDoc/attachment/externalReference/mimeType (mime type of the external object)

Use coding from IANA <http://www.iana.org/assignments/media-types/media-types.xml>

GARWorkInv/GWlbody/GWlitem/refDoc/attachment/externalReference/mimeType (mime type of the external object)

Use coding from IANA <http://www.iana.org/assignments/media-types/media-types.xml>

GARWorkInv/GWlbody/GWlitem/inventory/qty (net quantity of the article or object correlated, qualified by the function of the document (ordering, delivering, ..) and by the context)

this element can have two instances only if the units of measure are different

GARWorkInv/GWlbody/GWlitem/inventory/actualPackageUnit/itemsList/itemIdentification/serialN (serial number used for the identification of a physical unit)

in the case of garment with RFID for anti-counterfeiting, RFID EPCGlobal for logistics and NFC for the customer experience there should be three serial elements with pairs of attributes numberingOrg/idQualifier: "CL"/"RFID", "GS1"/"RFID", "CL"/"NFC".

GARWorkInv/GWlbody/GWlitem/inventory/itemsList/itemIdentification/serialN (serial number used for the identification of a physical unit)

in the case of garment with RFID for anti-counterfeiting, RFID EPCGlobal for logistics and NFC for the customer experience there should be three serial elements with pairs of attributes numberingOrg/idQualifier: "CL"/"RFID", "GS1"/"RFID", "CL"/"NFC".

2.4 Enumeration tables

List of enumeration tables used in the XML document. You can find all the tables with the corresponding codes at:
<http://www.ebiz.enea.it/eBIZ/imple/eBIZTCU-draft.asp?lingua=en&pag=6>

NT100 - eBIZ TCFUpstream version
NT16 - VAT rate or code
NT18 - message function
NT2 - third party qualifier
NT29 - format of a date
NT3 - data format
NT6 - coding system owner/issuer
NT60 - language, codes from ISO 639-1 (subset)
NT7 - unit of measure
T10 - ISO3166 - Country
T11 - transport package type
T21 - type of document
T44 - additional code type
T47 - stock type
T48 - garment part type

ACKNOWLEDGEMENT



This action is part of the TRICK project, which has received funding from Horizon 2020 research and innovation programme under grant agreement No. 958352 of the European Union.

DISCLAIMER

The content of this document represents the views of the authors only and is their sole responsibility; it cannot be considered to reflect the views of the European Commission or any other body of the European Union.

The European Commission does not accept any responsibility for use that may be made of the information it contains.

Annex A

Representative images of the principal complex elements' structure.

