



<http://www.ebiz-tcf.eu>

DRAFT

Extract from IMPLEMENTATION GUIDE  
TRANSACTION "WARPING REQUEST"

Version: draft

Date of release: 9/10/2022

Document code: G051e

technical Documentation: <http://www.ebiz.enea.it>

XML Schemas repository: <http://www.ebiz.enea.it/moda-ml/repository/schema/draft/default.asp>

Guides repository: <http://www.ebiz.enea.it/moda-ml/repository/guide/draft/default.asp>

Guide filename: G051-eBIZ-WarpingRequest.pdf

## 0. PREMISE

This document contains a proposal for the updating and extension of eBIZ specifications starting from the eBIZ version 2018. Under the name of 'Draft version' it is reported the result of an extensive work of analysis and consultation aimed at developing and maintaining eBIZ specifications.

In particular, the content of this proposal is the result of various activities, mainly those carried out within the framework of the **TRICK project** funded by the European Commission: grant agreement 958352, call H2020-LOW-CARBON-CIRCULAR-INDUSTRIES-2020 / H2020-LCCI-2020-EASME-twostage.

The technical contents are backwards compatible with the latest official published version, with the exclusion of the totally new concepts added explicitly for the version that are thought as incremental evolution of the knowledge base.

## 1. BUSINESS DESCRIPTION

### 1.1 Scope

The present guide has been issued to assist the companies of the Textile-Clothing sector in the implementation of the standard XML document "WARPING REQUEST", providing all the instruction required for its use in the context of e-commerce between Subcontractors and their Customers shown in the enclosed diagram  
All the rules required for the construction and validation of the document are embedded into the specific XML-Schema, which is detailed in section "Implementation guide".

### 1.2 Generalities

The Request is used by a Yarn Producer to request from a Subcontractor an Offer for the warping.

The Request is structured in four levels:

Macro-type of Work Requested = document root (7 types of Request)

Product Family = document qualifier (type of product with reference to the manufacturing process; e.g.: combed yarn, jacquard weaved fabric, ..)

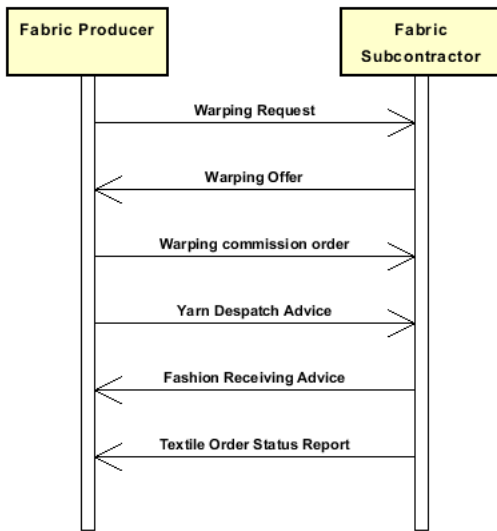
Product Specifications = "xxxSpecs" (technical characteristics and properties of the product)

Operations requested 0 "XXXMnfrOperation" (details of the works requested)

Quantities, unit measures and prices must be referred to the third level (Line Item)

### 1.3. Possible scenario

Subcontracted warping



## 2. IMPLEMENTATION GUIDE

### 2.1 General structure of XML document

All the business data that can be exchanged through this class of documents are shown in the following "document structure", that provides a simplified vision of the Schema.

In particular:

- the two numbers following each element define its "cardinality" (minimum and maximum number of occurrences); the minimum equal zero indicates that the element is optional, the minimum greater than zero indicates that is mandatory;
- the bold character denotes the complex elements (aggregates of simple elements) that were built for the sake of functionality and re-usability of some complex informations sets. The child elements in each parent element are easily spotted as "indented";
- the symbol "@" denotes an attribute of the preceding element; here "the usage indicator (optional, required, ...)" is shown in square brackets.

### Structure

#### WARPRequest

```
@msgfunction [Optional] [Default= OR]
@fabProcQualifier [Required]
@version [Optional] [Default= 2018-1]
@useProfile [Optional]
| RQheader 1-1
| | msgN 1-1
| | - choose -
| | | msgID 0-1
| | | - or -
| | | docID 0-1
| | | @numberingOrg [Optional]
| | | - end choose -
| | | msgDate 1-1
| | | @dateForm [Optional]
| | | season 0-1
| | | @numberingOrg [Optional]
| | | @codeList [Optional]
| | | @listName [Optional]
| | | @listVersion [Optional]
| | | validityStart 0-1
| | | @dateForm [Optional]
| | | validityEnd 1-1
| | | @dateForm [Optional]
| | | refDoc 0-9
| | | @docType [Required]
| | | | docID 1-2
| | | | @numberingOrg [Optional]
| | | | docDate 0-1
| | | | @dateForm [Optional]
| | | | season 0-1
| | | | @numberingOrg [Optional]
| | | | @codeList [Optional]
| | | | @listName [Optional]
| | | | @listVersion [Optional]
| | | | itemID 0-1
| | | | attachment 0-1
| | | | @uid [Optional]
| | | | | fileName 0-1
| | | | | @numberingOrg [Optional]
| | | | | binaryObject 0-1
| | | | | @format [Optional]
| | | | | @mime [Optional]
| | | | | @encoding [Optional]
| | | | | @characterSet [Optional]
| | | | | externalReference 0-99
| | | | | uri 1-1
| | | | | @isURL [Optional] [Default= true]
| | | | | mimeTypeCode 0-1
```

| | | | formatCode 0-1  
| | | | encodingCode 0-1  
| | | | characterSetCode 0-1

**buyer 1-1**

| @logo [Optional]  
| @sender [Optional]  
| | id 1-1  
| | | @numberingOrg [Optional]  
| | additionalIdentifier 0-9  
| | | @numberingOrg [Optional]  
| | | @idQualifier [Optional]  
| | legalName 0-1  
| | dept 0-1  
| | subDept 0-1  
| | person 0-1  
| | | @email [Optional]  
| | | @phone [Optional]  
| | | @fax [Optional]  
| | street 0-1  
| | city 0-1  
| | subCountry 0-1  
| | country 0-1  
| | postCode 0-1  
| | **geoCoordinates 0-1**  
| | | @um [Optional] [Default= DEGD]  
| | | @geoReferenceSystem [Optional]  
| | | | xGeoCoord 1-1  
| | | | yGeoCoord 1-1  
| | | | zGeoCoord 0-0

- choose -

**supplier 0-1**

| @logo [Optional]  
| @sender [Optional]  
| | id 1-1  
| | | @numberingOrg [Optional]  
| | additionalIdentifier 0-9  
| | | @numberingOrg [Optional]  
| | | @idQualifier [Optional]  
| | legalName 0-1  
| | dept 0-1  
| | subDept 0-1  
| | person 0-1  
| | | @email [Optional]  
| | | @phone [Optional]  
| | | @fax [Optional]  
| | street 0-1  
| | city 0-1  
| | subCountry 0-1  
| | country 0-1  
| | postCode 0-1  
| | **geoCoordinates 0-1**  
| | | @um [Optional] [Default= DEGD]  
| | | @geoReferenceSystem [Optional]  
| | | | xGeoCoord 1-1  
| | | | yGeoCoord 1-1  
| | | | zGeoCoord 0-0

- or -

**subContractor 0-1**

| @sender [Optional]  
| | id 1-1  
| | | @numberingOrg [Optional]  
| | legalName 0-1  
| | dept 0-1  
| | subDept 0-1  
| | person 0-1  
| | | @email [Optional]  
| | | @phone [Optional]  
| | | @fax [Optional]

```

| | | street 0-1
| | | city 0-1
| | | subCountry 0-1
| | | country 0-1
| | | postCode 0-1
| | | geoCoordinates 0-1
| | |   @um [Optional] [Default= DEGD]
| | |   @geoReferenceSystem [Optional]
| | |     | xGeoCoord 1-1
| | |     | yGeoCoord 1-1
| | |     | zGeoCoord 0-0

```

- end choose -

```

| | thirdParty 0-5
| |   @VAT [Optional]
| |   @role [Required]
| |   @sender [Optional]
| |     | id 1-1
| |     |   @numberingOrg [Optional]
| |     | legalName 0-1
| |     | dept 0-1
| |     | subDept 0-1
| |     | person 0-1
| |     |   @email [Optional]
| |     |   @phone [Optional]
| |     |   @fax [Optional]
| |     | street 0-1
| |     | city 0-1
| |     | subCountry 0-1
| |     | country 0-1
| |     | postCode 0-1
| |     | geoCoordinates 0-1
| |     |   @um [Optional] [Default= DEGD]
| |     |   @geoReferenceSystem [Optional]
| |     |     | xGeoCoord 1-1
| |     |     | yGeoCoord 1-1
| |     |     | zGeoCoord 0-0
| |   note 0-99
| |   @numberingOrg [Optional]
| |   @codeList [Optional]
| |   @noteLabel [Optional]

```

**terms 0-1**

```

| | payment 0-5
| |   @finDiscount [Optional]
| |   @finSurcharge [Optional]
| |   - choose -
| |     | payTerm 1-1
| |     - or -
| |     | payTermText 1-1
| |     - end choose -
| |     | payMode 0-1
| |   insPayment 0-5
| |   @part [Required]
| |   - choose -
| |     | payTerm 1-1
| |     - or -
| |     | payTermText 1-1
| |     - end choose -
| |     | payMode 0-1
| |   trade 0-1
| |   - choose -
| |     | incoTermText 1-1
| |     - or -
| |     | incoTerm 1-1
| |     - end choose -
| |     | location 0-1
| |     | @LRI [Optional]
| | transInfo 0-5

```

```

| | @transReason [Optional]
| | @progr [Optional]
| | | transMode 1-1
| | | carrier 0-1
| | - choose -
| | | deliveryLocation 0-1
| | | | location 0-1
| | | | | @LRI [Optional]
| | | | | legalName 0-1
| | | | | dept 0-1
| | | | | subDept 0-1
| | | | | person 0-1
| | | | | | @email [Optional]
| | | | | | @phone [Optional]
| | | | | | @fax [Optional]
| | | | | street 0-1
| | | | | city 0-1
| | | | | subCountry 0-1
| | | | | country 0-1
| | | | | postCode 0-1
| | | | | geoCoordinates 0-1
| | | | | | @um [Optional] [Default= DEGD]
| | | | | | @geoReferenceSystem [Optional]
| | | | | | | xGeoCoord 1-1
| | | | | | | yGeoCoord 1-1
| | | | | | | zGeoCoord 0-0
| | - or -
| | | deliveryPlace 0-1
| | - end choose -
| | | grossWeight 0-1
| | | | @um [Required]
| | | netWeight 0-1
| | | | @um [Required]
| | | transMeans 0-1
| | | | @propulsionSystemCode [Optional]
| | | transCondition 0-3
| | | transConditionText 0-1
| | - choose -
| | | despatchPlace 0-1
| | - or -
| | | despatchLocation 0-1
| | | | legalName 0-1
| | | | dept 0-1
| | | | subDept 0-1
| | | | person 0-1
| | | | | @email [Optional]
| | | | | @phone [Optional]
| | | | | @fax [Optional]
| | | | | street 0-1
| | | | | city 0-1
| | | | | subCountry 0-1
| | | | | country 0-1
| | | | | postCode 0-1
| | | | | geoCoordinates 0-1
| | | | | | @um [Optional] [Default= DEGD]
| | | | | | @geoReferenceSystem [Optional]
| | | | | | | xGeoCoord 1-1
| | | | | | | yGeoCoord 1-1
| | | | | | | zGeoCoord 0-0
| | - end choose -
| | | despatchDate 0-1
| | | | @dateForm [Optional]
| | | delEffectiveDate 0-1
| | | | @dateForm [Optional]
| | | routeLength 0-1
| | | | @um [Required]
| | allowanceCharge 0-9
| | | @um [Optional]

```

```

| | @VAT [Optional]
| | @minQty [Optional]
| | @currency [Optional]
| | @maxQty [Optional]
| | @isCharge [Optional]
| | - choose -
| | | AC_category 1-1
| | - or -
| | | AC_categoryText 1-1
| | - end choose -
| | - choose -
| | | AC_percent 1-1
| | - or -
| | | AC_amount 1-1
| | | @currency [Optional]
| | - end choose -
| | | dtScheme 0-1
| | | @taxType [Required]
| | | | taxCategory 0-1
| | | | taxRate 0-1
| | | | legalRef 0-1
| | | | @numberingOrg [Optional]
| | | | @codeList [Optional]
| | | | @listName [Optional]
| | | | @listVersion [Optional]
| | | | note 0-99
| | | | @numberingOrg [Optional]
| | | | @codeList [Optional]
| | | | @noteLabel [Optional]
| | WPRQbody 1-1
| | | WPRQitem 1-unbounded
| | | | lineN 1-1
| | | | @VAT [Optional]
| | | | warpSpecs 0-1
| | | | | warpDiagram 1-1
| | | | | warpYarnQty 1-1
| | | | qty 1-2
| | | | @um [Required]
| | | | deliveryDate 1-1
| | | | @dateForm [Optional]
| | | | notBeforeDate 0-1
| | | | @dateForm [Optional]
| | | | thirdParty 0-3
| | | | @VAT [Optional]
| | | | @role [Required]
| | | | @sender [Optional]
| | | | | id 1-1
| | | | | @numberingOrg [Optional]
| | | | | legalName 0-1
| | | | | dept 0-1
| | | | | subDept 0-1
| | | | | person 0-1
| | | | | @email [Optional]
| | | | | @phone [Optional]
| | | | | @fax [Optional]
| | | | | street 0-1
| | | | | city 0-1
| | | | | subCountry 0-1
| | | | | country 0-1
| | | | | postCode 0-1
| | | | | geoCoordinates 0-1
| | | | | @um [Optional] [Default= DEGD]
| | | | | @geoReferenceSystem [Optional]
| | | | | | xGeoCoord 1-1
| | | | | | yGeoCoord 1-1
| | | | | | zGeoCoord 0-0
| | | fabMnfrOperation 1-9

```



```

- choose -
| | | | | jobName 1-1
- or -
| | | | | texJob 1-1
- end choose -
| | | | | texJobTech 0-9
| | | | | refDoc 0-9
| | | | |   @docType [Required]
| | | | |   docID 1-2
| | | | |   @numberingOrg [Optional]
| | | | |   docDate 0-1
| | | | |   @dateForm [Optional]
| | | | |   season 0-1
| | | | |   @numberingOrg [Optional]
| | | | |   @codeList [Optional]
| | | | |   @listName [Optional]
| | | | |   @listVersion [Optional]
| | | | |   itemID 0-1
| | | | |   attachment 0-1
| | | | |   @uid [Optional]
| | | | |   | fileName 0-1
| | | | |   | @numberingOrg [Optional]
| | | | |   | binaryObject 0-1
| | | | |   | @format [Optional]
| | | | |   | @mime [Optional]
| | | | |   | @encoding [Optional]
| | | | |   | @characterSet [Optional]
| | | | |   | externalReference 0-99
| | | | |   | uri 1-1
| | | | |   | @isURL [Optional] [Default= true]
| | | | |   | mimeTypeCode 0-1
| | | | |   | formatCode 0-1
| | | | |   | encodingCode 0-1
| | | | |   | characterSetCode 0-1
| | | | | texMachine 0-1
| | | | | texMachineSpecs 0-9
| | | | |   texMachineParam 1-1
| | | | |   specValue 0-1
| | | | |   @um [Optional]
| | | | |   @source [Optional]
| | | | |   @method [Optional]
| | | | |   @application [Optional]
| | | | |   @CV [Optional]
- choose -
| | | | | | pcTolerance 0-2
| | | | | | @um [Optional]
- or -
| | | | | | tolerance 0-2
| | | | | | @um [Required]
- end choose -
| | | | | | note 0-99
| | | | | | @numberingOrg [Optional]
| | | | | | @codeList [Optional]
| | | | | | @noteLabel [Optional]
| | | | | note 0-99
| | | | | @numberingOrg [Optional]
| | | | | @codeList [Optional]
| | | | | @noteLabel [Optional]

```

## 2.2 Detailed description of document elements

Following tables show all elements (complex and simple) used in this document. Description includes: 1) element's information: xml tag, name, brief description, data type and syntax constraints; 2) information about use of the element in a particular position in the document: xpath and possible associated notes.

### 2.2.1 Complex elements (Aggregate Business Information Entities)

Complex elements are those elements whose content is composed of other elements (childs). Complex elements are alphabetically ordered.

<b>allowanceCharge</b>	Allowances and Charges related to an Order or a contract
<b>attachment</b>	an attached document. An attachment can refer to an external document or be included with the document being exchanged
<b>buyer</b>	details of the Buyer (party that buys the good or service that is object of the current collaborative process) - base type: Nad,
<b>deliveryLocation</b>	data relating to a place of delivery - base type: Nad,
<b>despatchLocation</b>	data relating to a place of despatch - base type: Nad,
<b>dtScheme</b>	set of data usable to declare the duty or tax applied
<b>externalReference</b>	details about an external object, such as a document stored at a remote location
<b>fabMnfrOperation</b>	details of a manufacturing operation used for fabric production
<b>geoCoordinates</b>	geographical coordinates
<b>insPayment</b>	payment details for payment by installments
<b>payment</b>	payment details for payment all in one
<b>refDoc</b>	identification of a document and of an item thereof, to which the message makes reference
<b>RQheader</b>	header of the document REQUEST FOR OFFER
<b>subContractor</b>	details of the Sub-contractor - base type: Nad,
<b>supplier</b>	details of the Supplier (party that supplies the good or service that is object of the current collaborative process) - base type: Nad,
<b>terms</b>	details of the commercial obligations for payment and delivery
<b>texMachineSpecs</b>	technical specifications of a machine used in an operation of a work cycle for fabric (type and settings)
<b>thirdParty</b>	identification and details of the Third Party, different from Sender and Receiver of the document - base type: Nad,
<b>trade</b>	general terms of trade for the specified supply
<b>transInfo</b>	details of transport: mode, carrier and delivery place
<b>warpSpecs</b>	technical characteristics of a warp, usually linked to a commissioned production
<b>WPRQbody</b>	body of the document REQUEST FOR WARPING
<b>WPRQitem</b>	line of the document REQUEST FOR WARPING

## 2.2.2 Simple elements (Basic Business Information Entities)

Simple elements are those elements whose content is characterized by a data type plus a domain of possible values. Simple elements are alphabetically ordered.

AC_amount	amount of an Allowance or Charge - base type: decimal, fraction digits: 2,
AC_category	coded specification of an Allowance or Charge - base type: string, cod. table: T41 <a href="http://www.ebiz.enea.it/moda-ml/repository/codelist/draft/gc_T41.xml">http://www.ebiz.enea.it/moda-ml/repository/codelist/draft/gc_T41.xml</a>
AC_categoryText	free text description of an Allowance or Charge - base type: string, max length: 250,
AC_percent	amount of an Allowance or Charge as a percentage (always non negative value) - base type: decimal, max inclusive: 100, fraction digits: 2,
additionalIdentifier	additional identification code of a Party, for example customs registries or others - base type: string, max length: 15,
@application	force or similar condition (e.g. no. of revolutions) applied in a test as specified within the standard - base type: string, max length: 15,
binaryObject	a binary large object containing an attached document, Coding 'base64Binary' is recommended. - base type: base64Binary,
carrier	identification of the transport carrier - base type: string, max length: 40,
@characterSet	the character set of the binary object (examples UTF-8, UTF-16, Windows-1252, ISO-8859-7,..) - base type: normalizedString,
characterSetCode	the character set of an external document (examples UTF-8, UTF-16, Windows-1252, ISO-8859-7,..) - base type: normalizedString,
city	name of the city (town, village) - base type: string, max length: 40,
@codeList	it specifies the URL where the list of codes used to make an instance of the element can be found - base type: string, max length: 255,
country	code of the nation - base type: string, cod. table: T10 <a href="http://www.ebiz.enea.it/moda-ml/repository/codelist/draft/gc_T10.xml">http://www.ebiz.enea.it/moda-ml/repository/codelist/draft/gc_T10.xml</a>
@currency	currency in which a specified monetary data is expressed - base type: string, cod. table: T9 <a href="http://www.ebiz.enea.it/moda-ml/repository/codelist/draft/gc_T9.xml">http://www.ebiz.enea.it/moda-ml/repository/codelist/draft/gc_T9.xml</a>
@CV	coefficient of variation (CV) of a measurement - base type: decimal,
@dateForm	format used for the date - base type: string, cod. table: NT29 <a href="http://www.ebiz.enea.it/moda-ml/repository/codelist/draft/gc_NT29.xml">http://www.ebiz.enea.it/moda-ml/repository/codelist/draft/gc_NT29.xml</a>
delEffectiveDate	estimated date for actual delivery, which may be different from what is foreseen by the agreements between the parties. Formatted according to one of the patterns indicated by the dateForm attribute: YYYY-MM-DD, YYYY-MM-DD:HH-MM or YYYY-WW. - base type: string,
deliveryDate	date of delivery of goods, requested or promised in the purchase process, according to one of the patterns YYYY-MM-DD, YYYY-MM-DD:HH-MM or YYYY-WW. - base type: string,

deliveryPlace	place of delivery of goods, ultimate or related to a given leg - base type: string, max length: 250,
dept	name or code of a department - base type: string, max length: 40,
despatchDate	date of despatch of goods, requested or promised in the purchase process, according to one of the patterns YYYY-MM-DD, YYYY-MM-DD:HH-MM or YYYY-WW. - base type: string,
despatchPlace	place of despatch of goods, origin or related to a given leg - base type: string, max length: 250,
docDate	date of issue of the referenced document, according to one of the patterns YYYY-MM-DD, YYYY-MM-DD:HH-MM or YYYY-WW. - base type: string,
docID	identification number of the referenced document - base type: string, max length: 80,
@docType	type or class to which the referenced document belongs - base type: string, cod. table: T21 <a href="http://www.ebiz.enea.it/moda-ml/repository/codelist/draft/gc_T21.xml">http://www.ebiz.enea.it/moda-ml/repository/codelist/draft/gc_T21.xml</a>
@email	electronic mail address of the contact person within a Party - base type: string, max length: 250,
@encoding	specifies the decoding algorithm of the binary object - base type: normalizedString,
encodingCode	the encoding/decoding algorithm used with the external object (example is 'base64Binary') - base type: normalizedString,
@fabProcQualifier	type of fabric with reference to the manufacturing process - base type: string, cod. table: NT32 <a href="http://www.ebiz.enea.it/moda-ml/repository/codelist/draft/gc_NT32.xml">http://www.ebiz.enea.it/moda-ml/repository/codelist/draft/gc_NT32.xml</a>
@fax	fax number of the contact person within a Party - base type: string, max length: 35,
fileName	unique identifier (name) of the file - base type: string, max length: 255,
@finDiscount	financial discount rate applied for payment by the date specified - base type: decimal, min inclusive: 0, max inclusive: 100, fraction digits: 2,
@finSurcharge	financial surcharge rate applied for payment after the date specified - base type: decimal, min inclusive: 0, max inclusive: 100, fraction digits: 2,
@format	the format of the binary content (examples xml, pdf, doc,...) - base type: string,
formatCode	the format of the external object (examples xml, pdf, doc,...) - base type: normalizedString,
@geoReferenceSystem	georeference system adopted for the coordinate (in example wgs84 with decimal degree or degree with minute and seconds) - base type: string,
grossWeight	the gross weight, declared for transport or customs purpose - base type: decimal, min inclusive: 0, fraction digits: 2,
id	primary identification code of a Party; it is recommended the format: nation code (ISO 3166) + VAT identification number (11 crt), with the qualifier "numberingOrg"= MF - base type: string, max length: 15,
@idQualifier	Qualification of the identifier. - base type: string,
incoTerm	specification of the terms of trade (INCOTERMS) - base type: string, cod. table: T3 <a href="http://www.ebiz.enea.it/moda-ml/repository/codelist/draft/gc_T3.xml">http://www.ebiz.enea.it/moda-ml/repository/codelist/draft/gc_T3.xml</a>

incoTermText	free text specifying the terms of trade (incoterm, location) - base type: string, max length: 250,
@isCharge	Indicates if the element to which it refers is a charge (true = charge, false = allowance) - base type: boolean,
@isURL	it indicates if the referred element is an URL (true) or not (false) - base type: boolean,
itemID	number of the line/item of the referenced document - base type: string, max length: 40,
jobName	description of the elementary job - base type: string, max length: 40,
legalName	legal name - base type: string, max length: 250,
legalRef	legal reference of the duty or tax or fee category - base type: string,
lineN	number of the line item of the present message (xml document); it is set by the role that produces the document. Usually it is a progressive number, but not always. - base type: positiveInteger, min inclusive: 1, max inclusive: 9999,
@listName	the name of the list of codes used to make an instance of the element (it might be thought as descriptive element, i.e. 'fabric printing technologies', or not, i.e. "T264") - base type: string, max length: 40,
@listVersion	it specifies the version of the list of codes used to make an instance of the element - base type: string, max length: 6,
location	specification of a location - base type: string, max length: 40,
@logo	company logo (URL of the image jpeg or gif). It is recommended that the width of the image does not exceed 640 pixel. - base type: string, max length: 255,
@LRI	attribute usable to format a string according to a customized User rule (local rule) - base type: string, cod. table: NT3 <a href="http://www.ebiz.enea.it/moda-ml/repository/codelist/draft/gc_NT3.xml">http://www.ebiz.enea.it/moda-ml/repository/codelist/draft/gc_NT3.xml</a>
@maxQty	maximum product quantity - base type: decimal, min inclusive: 0, fraction digits: 2,
@method	standard protocol or method employed in a test to evaluate a characteristic or a parameter - base type: string, max length: 80,
@mime	the mime type of the binary object - base type: normalizedString,
mimeCode	mime type of the external object - base type: normalizedString,
@minQty	minimum product quantity - base type: decimal, min inclusive: 0, fraction digits: 2,
msgDate	date of issue of the present message (xml document), according to one of the patterns YYYY-MM-DD, YYYY-MM-DD:HH-MM or YYYY-WW. - base type: string,
@msgfunction	function performed by the present message with regards to the transmission - base type: string, cod. table: NT18 <a href="http://www.ebiz.enea.it/moda-ml/repository/codelist/draft/gc_NT18.xml">http://www.ebiz.enea.it/moda-ml/repository/codelist/draft/gc_NT18.xml</a>
msgID	key identifier of the business document in the information system of the issuing Party. In case of more despatches of the same business document, it is unchanged. - base type: string, max length: 35,
msgN	identification number given to the message (xml document) by its issuer. In case of mo

	re despatches of the same business document, it changes. - base type: string, max length: 35,
netWeight	the net weight declared for transport or customs purpose - base type: decimal, min inclusive: 0, fraction digits: 2,
notBeforeDate	earliest date possible to begin an activity, according to one of the patterns YYYY-MM-DD, YYYY-MM-DD:HH-MM or YYYY-WW. - base type: string,
note	free text or structured (computer processing) note. For note structuring use the attributes "noteLabel" and "codelist" - base type: string, max length: 350,
@noteLabel	subject qualifier of a note - base type: string, max length: 35,
@numberingOrg	code specifying the organisation who has created or owns the coding or numbering system - base type: string, cod. table: NT6 <a href="http://www.ebiz.enea.it/moda-ml/repository/codelist/draft/gc_NT6.xml">http://www.ebiz.enea.it/moda-ml/repository/codelist/draft/gc_NT6.xml</a>
@part	percent fraction - base type: decimal, min inclusive: 1, max inclusive: 100, fraction digits: 2,
payMode	way or means of payment - base type: string, cod. table: T2 <a href="http://www.ebiz.enea.it/moda-ml/repository/codelist/draft/gc_T2.xml">http://www.ebiz.enea.it/moda-ml/repository/codelist/draft/gc_T2.xml</a>
payTerm	code specifying the terms or time by which the payment must be done - base type: string, cod. table: T1 <a href="http://www.ebiz.enea.it/moda-ml/repository/codelist/draft/gc_T1.xml">http://www.ebiz.enea.it/moda-ml/repository/codelist/draft/gc_T1.xml</a>
payTermText	free text specifying the terms by which the payment must be done (time/mode or means) - base type: string, max length: 250,
pcTolerance	percent deviation tolerated on the value of a measurement (it must have a plus or minus sign) - base type: decimal, min inclusive: 0, max inclusive: 100, total digits: 2,
person	name of a person (e.g. contact person within an organization) - base type: string, max length: 40,
@phone	phone number of the contact person within a Party - base type: string, max length: 35,
postCode	code defining the postal zone - base type: string, max length: 10,
@progr	progressive number in the sequence - base type: positiveInteger, min inclusive: 1,
@propulsionSystemCode	propulsion system type - base type: string, cod. table: NT324 <a href="http://www.ebiz.enea.it/moda-ml/repository/codelist/draft/gc_NT324.xml">http://www.ebiz.enea.it/moda-ml/repository/codelist/draft/gc_NT324.xml</a>
qty	net quantity of the article or object correlated, qualified by the function of the document (ordering, delivering, ..) and by the context - base type: decimal, min inclusive: 0, fraction digits: 2,
@role	Third Party role qualifier - base type: string, cod. table: NT2 <a href="http://www.ebiz.enea.it/moda-ml/repository/codelist/draft/gc_NT2.xml">http://www.ebiz.enea.it/moda-ml/repository/codelist/draft/gc_NT2.xml</a>
routeLength	length of a route - base type: decimal, min inclusive: 0, fraction digits: 2,
season	sale season; defined as: season (1 crt) + year (4 crt) - season: S/S=1 A/W=2 Spring=3 Summer=4 Autumn=5 Winter=6: for more than four seasons use alphabetic sequence: 1st season=A 2nd season=B etc.etc. - base type: string, max length: 15,

@sender	qualifier that specifies the Party issuing of the document - base type: boolean,
@source	party who has provided the data - base type: string, cod. table: NT12 <a href="http://www.ebiz.enea.it/moda-ml/repository/codelist/draft/gc_NT12.xml">http://www.ebiz.enea.it/moda-ml/repository/codelist/draft/gc_NT12.xml</a>
specValue	value requested for a property or a parameter that is measured - base type: decimal,
street	street and building number identifying a location - base type: string, max length: 80,
subCountry	short name or code of the sub-country entity - base type: string, max length: 9,
subDept	name or code of a department - base type: string, max length: 40,
taxCategory	duty or tax or fee category - base type: string, cod. table: T62 <a href="http://www.ebiz.enea.it/moda-ml/repository/codelist/draft/gc_T62.xml">http://www.ebiz.enea.it/moda-ml/repository/codelist/draft/gc_T62.xml</a>
taxRate	duty or tax or fee percent rate - base type: string,
@taxType	duty or tax or fee type - base type: string, cod. table: T61 <a href="http://www.ebiz.enea.it/moda-ml/repository/codelist/draft/gc_T61.xml">http://www.ebiz.enea.it/moda-ml/repository/codelist/draft/gc_T61.xml</a>
texJob	operation of a work cycle for fabric - base type: string, cod. table: T202 <a href="http://www.ebiz.enea.it/moda-ml/repository/codelist/draft/gc_T202.xml">http://www.ebiz.enea.it/moda-ml/repository/codelist/draft/gc_T202.xml</a>
texJobTech	operation technology for fabric - base type: string, cod. table: T262 <a href="http://www.ebiz.enea.it/moda-ml/repository/codelist/draft/gc_T262.xml">http://www.ebiz.enea.it/moda-ml/repository/codelist/draft/gc_T262.xml</a>
texMachine	machine used in an operation of a work cycle for fabric - base type: string, cod. table: T272 <a href="http://www.ebiz.enea.it/moda-ml/repository/codelist/draft/gc_T272.xml">http://www.ebiz.enea.it/moda-ml/repository/codelist/draft/gc_T272.xml</a>
texMachineParam	setting parameter of a machine used in an operation of a work cycle for fabric - base type: string, cod. table: T282 <a href="http://www.ebiz.enea.it/moda-ml/repository/codelist/draft/gc_T282.xml">http://www.ebiz.enea.it/moda-ml/repository/codelist/draft/gc_T282.xml</a>
tolerance	deviation tolerated on the value of a measurement (it must have a plus or minus sign) - base type: decimal,
transCondition	special condition of transport or special service requested to the Forwarder - base type: string, cod. table: T38 <a href="http://www.ebiz.enea.it/moda-ml/repository/codelist/draft/gc_T38.xml">http://www.ebiz.enea.it/moda-ml/repository/codelist/draft/gc_T38.xml</a>
transConditionText	free text description of the special condition of transport or special service requested to the Forwarder - base type: string, max length: 250,
transMeans	means of transport, in general or referred to a specific leg - base type: string, cod. table: T40 <a href="http://www.ebiz.enea.it/moda-ml/repository/codelist/draft/gc_T40.xml">http://www.ebiz.enea.it/moda-ml/repository/codelist/draft/gc_T40.xml</a>
transMode	way of transport, in general or referred to the specified leg - base type: string, cod. table: T8 <a href="http://www.ebiz.enea.it/moda-ml/repository/codelist/draft/gc_T8.xml">http://www.ebiz.enea.it/moda-ml/repository/codelist/draft/gc_T8.xml</a>
@transReason	reason for the transport - base type: string, cod. table: NT11 <a href="http://www.ebiz.enea.it/moda-ml/repository/codelist/draft/gc_NT11.xml">http://www.ebiz.enea.it/moda-ml/repository/codelist/draft/gc_NT11.xml</a>
@uid	unique element identifier within the xml document - base type: string,
@um	specification of the unit of measure - base type: string, cod. table: NT7

	<a href="http://www.ebiz.enea.it/moda-ml/repository/codelist/draft/gc_NT7.xml">http://www.ebiz.enea.it/moda-ml/repository/codelist/draft/gc_NT7.xml</a>
uri	Uniform Resource Identifier (URI) that identifies the external object as an Internet resource - base type: normalizedString,
@useProfile	use profile to which the present document is compliant if it was agreed by the parties. It is suggested a URI with reference to the firms or the URL of the profile. - base type: string,
validityEnd	date by which the validity ends, according to one of the patterns YYYY-MM-DD, YYYY-MM-DD:HH-MM or YYYY-WW. - base type: string,
validityStart	date by which the validity starts, according to one of the patterns YYYY-MM-DD, YYYY-MM-DD:HH-MM or YYYY-WW. - base type: string,
@VAT	VAT rate or code (DEPRECATED, use dtScheme element) - base type: string, cod. table: NT16 <a href="http://www.ebiz.enea.it/moda-ml/repository/codelist/draft/gc_NT16.xml">http://www.ebiz.enea.it/moda-ml/repository/codelist/draft/gc_NT16.xml</a>
@version	Dictionary version from which the instance has been created - base type: string, cod. table: NT100 <a href="http://www.ebiz.enea.it/moda-ml/repository/codelist/draft/gc_NT100.xml">http://www.ebiz.enea.it/moda-ml/repository/codelist/draft/gc_NT100.xml</a>
warpDiagram	construction specification of a warp - base type: string, max length: 35,
warpYarnQty	number of ground yarns making a warp - base type: positiveInteger,
xGeoCoord	geographical coordinate x , corresponding to latitude - base type: decimal,
yGeoCoord	geographical coordinate y , corresponding to longitude - base type: decimal,
zGeoCoord	geographical coordinate z , corresponding to altitude - base type: decimal,



## 2.3 Suggested best practices

**WARPRequest/RQheader/refDoc/docID (identification number of the referenced document)**

numberingOrg indicates the role that produced the document identifier (it is allowed to declare two different ones -e.g. customer and supplier - with two docID with different numberingOrg

**WARPRequest/WPRQbody/WPRQitem/fabMnfrOperation/**

**refDoc/docID (identification number of the referenced document)**

numberingOrg indicates the role that produced the document identifier (it is allowed to declare two different ones -e.g. customer and supplier - with two docID with different numberingOrg

**WARPRequest/RQheader/refDoc/attachment/externalReference/mimeCode (mime type of the external object)**

Use coding from IANA <http://www.iana.org/assignments/media-types/media-types.xml>

**WARPRequest/WPRQbody/WPRQitem/fabMnfrOperation/**

**refDoc/attachment/externalReference/mimeCode (mime type of the external object)**

Use coding from IANA <http://www.iana.org/assignments/media-types/media-types.xml>

**WARPRequest/WPRQbody/WPRQitem/qty (net quantity of the article or object correlated, qualified by the function of the document (ordering, delivering, ..) and by the context)**

this element can have two instances only if the units of measure are different

## 2.4 Enumeration tables

List of enumeration tables used in the XML document. You can find all the tables with the corresponding codes at:  
<http://www.ebiz.enea.it/eBIZ/imple/eBIZTCU-draft.asp?lingua=en&pag=6>

NT100 - eBIZ TCFUpstream version  
NT11 - transport causal  
NT12 - data source  
NT16 - VAT rate or code  
NT18 - message function  
NT2 - third party qualifier  
NT29 - format of a date  
NT3 - data format  
NT32 - fabric family  
NT324 - propulsion system type  
NT6 - coding system owner/issuer  
NT7 - unit of measure  
T1 - terms of payment  
T10 - ISO3166 - Country  
T2 - Modes of payment  
T202 - type of job on fabric  
T21 - type of document  
T262 - type of job technology for fabric  
T272 - machine type for fabric operation  
T282 - parameter type for fabric operation  
T3 - terms of delivery - IncoTerms  
T38 - transport conditions  
T40 - type of transport means  
T41 - type of Allowance or Charge  
T61 - duty or tax or fee type  
T62 - duty or tax or fee category  
T8 - Modes of Transport  
T9 - ISO4217 - Currency

## ACKNOWLEDGEMENT



This action is part of the TRICK project, which has received funding from Horizon 2020 research and innovation programme under grant agreement No. 958352 of the European Union.

## DISCLAIMER

The content of this document represents the views of the authors only and is their sole responsibility; it cannot be considered to reflect the views of the European Commission or any other body of the European Union.

The European Commission does not accept any responsibility for use that may be made of the information it contains.

# Annex A

Representative images of the principal complex elements' structure.

