



<http://www.ebiz-tcf.eu>

DRAFT

Extract from IMPLEMENTATION GUIDE
TRANSACTION "FASHION MASTER DATA"

Version: draft

Date of release: 9/10/2022

Document code: G078e

technical Documentation: <http://www.ebiz.enea.it>

XML Schemas repository: <http://www.ebiz.enea.it/moda-ml/repository/schema/draft/default.asp>

Guides repository: <http://www.ebiz.enea.it/moda-ml/repository/guide/draft/default.asp>

Guide filename: G078-eBIZ-FashionMasterData.pdf

0. PREMISE

This document contains a proposal for the updating and extension of eBIZ specifications starting from the eBIZ version 2018. Under the name of 'Draft version' it is reported the result of an extensive work of analysis and consultation aimed at developing and maintaining eBIZ specifications.

In particular, the content of this proposal is the result of various activities, mainly those carried out within the framework of the **TRICK project** funded by the European Commission: grant agreement 958352, call H2020-LOW-CARBON-CIRCULAR-INDUSTRIES-2020 / H2020-LCCI-2020-EASME-twostage.

The technical contents are backwards compatible with the latest official published version, with the exclusion of the totally new concepts added explicitly for the version that are thought as incremental evolution of the knowledge base.

1. BUSINESS DESCRIPTION

1.1 Scope

The present guide has been issued to assist the companies of the FASHION sector in the implementation of the standard XML document type "FASHION MASTER DATA", providing all the instruction required for its use in any context of e-commerce between Brands, Apparel Producers, subcontractors or logistic or retail organisations.

All the rules required for the construction and validation of the document are embedded into the specific XML-Schema, which is detailed in section "Implementation guide".

1.2 Generalities

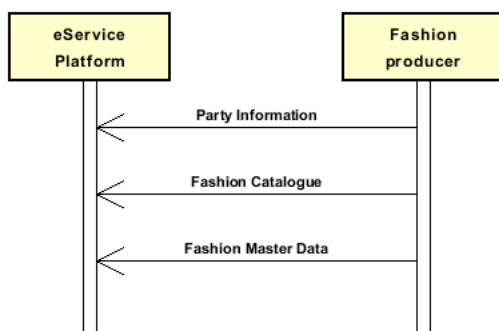
The message can have various uses: for example it can be issued by the Supplier of goods to communicate the technical-logistical characteristics of an article that the Receiver will receive; otherwise it might be issued by the Brand to communicate the technical characteristics of an article to the Subcontractor that he will receive to transform or which he will have to produce.

The sender forwards this document when he has to feed a registry of the characteristics of the goods that will then be treated in some way (sold or stored or processed for example).

The main function of the message is to provide information of various kinds: logistics (dimensions, packaging, handling, stackability), commercial (category, line or group of products), technical (size, treatments, ..), operational (eg CITES).

1.3. Possible scenario

Initial transmission of information to eService



2. IMPLEMENTATION GUIDE

2.1 General structure of XML document

All the business data that can be exchanged through this class of documents are shown in the following "document structure", that provides a simplified vision of the Schema.

In particular:

- the two numbers following each element define its "cardinality" (minimum and maximum number of occurrences); the minimum equal zero indicates that the element is optional, the minimum greater than zero indicates that is mandatory;
- the bold character denotes the complex elements (aggregates of simple elements) that were built for the sake of functionality and re-usability of some complex informations sets. The child elements in each parent element are easily spotted as "indented";
- the symbol "@" denotes an attribute of the preceding element; here "the usage indicator (optional, required, ...)" is shown in square brackets.

Structure

GARMasterData

@msgfunction [Optional] [Default= OR]

@version [Optional] [Default= 2018-1]

@useProfile [Optional]

GMheader 1-1

msgN 1-1

msgID 1-1

msgDate 1-1

@dateForm [Optional]

season 0-1

@numberingOrg [Optional]

@codeList [Optional]

@listName [Optional]

@listVersion [Optional]

validityStart 0-1

@dateForm [Optional]

validityEnd 0-1

@dateForm [Optional]

refDoc 0-unbounded

@docType [Required]

docID 1-2

@numberingOrg [Optional]

docDate 0-1

@dateForm [Optional]

season 0-1

@numberingOrg [Optional]

@codeList [Optional]

@listName [Optional]

@listVersion [Optional]

itemID 0-1

attachment 0-1

@uid [Optional]

fileName 0-1

@numberingOrg [Optional]

binaryObject 0-1

@format [Optional]

@mime [Optional]

@encoding [Optional]

@characterSet [Optional]

externalReference 0-99

uri 1-1

@isURL [Optional] [Default= true]

mimeCode 0-1

formatCode 0-1

encodingCode 0-1

characterSetCode 0-1

senderParty 1-1

@role [Optional]

@sender [Optional]

```

| id 1-1
|   @numberingOrg [Optional]
| legalName 0-1
| dept 0-1
| subDept 0-1
| person 0-1
|   @email [Optional]
|   @phone [Optional]
|   @fax [Optional]
| street 0-1
| city 0-1
| subCountry 0-1
| country 0-1
| postCode 0-1
| geoCoordinates 0-1
|   @um [Optional] [Default= DEGD]
|   @geoReferenceSystem [Optional]
|     | xGeoCoord 1-1
|     | yGeoCoord 1-1
|     | zGeoCoord 0-0
| receiverParty 1-1
|   @role [Optional]
|   @sender [Optional]
|     | id 1-1
|     |   @numberingOrg [Optional]
|     | legalName 0-1
|     | dept 0-1
|     | subDept 0-1
|     | person 0-1
|     |   @email [Optional]
|     |   @phone [Optional]
|     |   @fax [Optional]
|     | street 0-1
|     | city 0-1
|     | subCountry 0-1
|     | country 0-1
|     | postCode 0-1
|     | geoCoordinates 0-1
|     |   @um [Optional] [Default= DEGD]
|     |   @geoReferenceSystem [Optional]
|     |     | xGeoCoord 1-1
|     |     | yGeoCoord 1-1
|     |     | zGeoCoord 0-0
| thirdParty 0-unbounded
|   @VAT [Optional]
|   @role [Required]
|   @sender [Optional]
|     | id 1-1
|     |   @numberingOrg [Optional]
|     | legalName 0-1
|     | dept 0-1
|     | subDept 0-1
|     | person 0-1
|     |   @email [Optional]
|     |   @phone [Optional]
|     |   @fax [Optional]
|     | street 0-1
|     | city 0-1
|     | subCountry 0-1
|     | country 0-1
|     | postCode 0-1
|     | geoCoordinates 0-1
|     |   @um [Optional] [Default= DEGD]
|     |   @geoReferenceSystem [Optional]
|     |     | xGeoCoord 1-1
|     |     | yGeoCoord 1-1
|     |     | zGeoCoord 0-0
| note 0-unbounded

```

```

| | @numberingOrg [Optional]
| | @codeList [Optional]
| | @noteLabel [Optional]
|
| packages 0-99
| @packageLevel [Optional]
| - choose -
| | packageText 1-1
| - or -
| | package 1-1
| - end choose -
| | packageModelCode 0-1
| | @numberingOrg [Optional]
| | description 0-unbounded
| | @ln [Optional]
| | packageDim 0-1
| | | length 1-1
| | | @um [Required]
| | | width 0-1
| | | @um [Required]
| | | height 0-1
| | | @um [Required]
| | handlingChar 0-1
| | - choose -
| | | yarnPack 0-1
| | | | yarnReel 1-1
| | | | | @reelType [Required]
| | | | | @reelMat [Optional]
| | | | | yarnReelD 0-1
| | | | | @um [Required]
| | | | | yarnReelH 0-1
| | | | | @um [Required]
| | | | | yarnConeAngle 0-1
| | | | | yarnReelQty 0-2
| | | | | @um [Required]
| | | | | label 0-1
| | | | | labelWrit 0-1
| | | | | yarnInWrap 0-1
| | | | | | yarnReelWrap 1-1
| | | | | | label 0-1
| | | | | | labelWrit 0-1
| | | - choose -
| | | | yarnOutWrapText 0-1
| | | - or -
| | | | yarnOutWrap 0-1
| | | - end choose -
| | - or -
| | | piecePack 0-1
| | | - choose -
| | | | piecePackText 1-1
| | | - or -
| | | | pieceInnWrap1 1-1
| | | | pieceInnWrap2 0-1
| | | | pieceOutWrap 0-1
| | | - end choose -
| | - or -
| | | acsPack 0-1
| | | - choose -
| | | | acsPackCode 1-1
| | | | | @numberingOrg [Optional]
| | | | | @codeList [Optional]
| | | | | @listName [Optional]
| | | | | @listVersion [Optional]
| | | - or -
| | | | acsPackText 1-1
| | | - end choose -
| | - or -
| | | garPack 0-1

```

```

- choose -
| | | | garPackCode 1-1
| | | |   @numberingOrg [Optional]
| | | |   @codeList [Optional]
| | | |   @listName [Optional]
| | | |   @listVersion [Optional]
- or -
| | | | garPackText 1-1
- end choose -
- end choose -
| | | | sortableIndicator 0-1
| | | | stackabilityLevel 0-1
| | | | handlingType 0-1
| | | |   @ln [Optional]
| | | | volume 0-1
| | | |   @um [Required]
| | | | netWeight 0-1
| | | |   @um [Required]
| | | | grossWeight 0-1
| | | |   @um [Required]
| | | | note 0-99
| | | |   @numberingOrg [Optional]
| | | |   @codeList [Optional]
| | | |   @noteLabel [Optional]
| | itemsPerPackage 0-1
| |   @um [Required]
| | minItemsPerPackage 0-1
| |   @um [Required]
| | fillingCriterion 0-9
| |   @progr [Optional]
| | packageQty 0-1
| | packageN 0-unbounded
| |   @numberingOrg [Optional]
| |   @packageContainerN [Optional]
| | EPCList 0-1
| |   EPC 1-unbounded
| |   @numberingOrg [Optional]
| |   @TID [Optional]

```

GMbody 1-1

```

| GMgroup 1-unbounded
| | artGroup 0-1
| |   @numberingOrg [Optional]
| |   @codeList [Optional]
| |   @listName [Optional]
| |   @listVersion [Optional]
| | artGroupName 0-1
| | description 0-unbounded
| |   @ln [Optional]
| | refDoc 0-9
| |   @docType [Required]
| |   docID 1-2
| |   @numberingOrg [Optional]
| |   docDate 0-1
| |   @dateForm [Optional]
| |   season 0-1
| |   @numberingOrg [Optional]
| |   @codeList [Optional]
| |   @listName [Optional]
| |   @listVersion [Optional]
| |   itemID 0-1
| |   attachment 0-1
| |   @uid [Optional]
| |   fileName 0-1
| |   @numberingOrg [Optional]
| |   binaryObject 0-1
| |   @format [Optional]
| |   @mime [Optional]

```

- | | | | @encoding [Optional]
- | | | | @characterSet [Optional]
- | | | | **externalReference 0-99**
- | | | | | uri 1-1
- | | | | | @isURL [Optional] [Default= true]
- | | | | | mimeTypeCode 0-1
- | | | | | formatCode 0-1
- | | | | | encodingCode 0-1
- | | | | | characterSetCode 0-1

GMitem 1-unbounded

- | | lineN 0-1
- | | | | @VAT [Optional]
- | | lineID 0-1
- | | **refDoc 0-9**
- | | | | @docType [Required]
- | | | | | docID 1-2
- | | | | | @numberingOrg [Optional]
- | | | | | docDate 0-1
- | | | | | @dateForm [Optional]
- | | | | | season 0-1
- | | | | | @numberingOrg [Optional]
- | | | | | @codeList [Optional]
- | | | | | @listName [Optional]
- | | | | | @listVersion [Optional]
- | | | | itemID 0-1
- | | | | **attachment 0-1**
- | | | | | @uid [Optional]
- | | | | | | fileName 0-1
- | | | | | | @numberingOrg [Optional]
- | | | | | | binaryObject 0-1
- | | | | | | @format [Optional]
- | | | | | | @mime [Optional]
- | | | | | | @encoding [Optional]
- | | | | | | @characterSet [Optional]
- | | | | | | **externalReference 0-99**
- | | | | | | | uri 1-1
- | | | | | | | @isURL [Optional] [Default= true]
- | | | | | | | mimeTypeCode 0-1
- | | | | | | | formatCode 0-1
- | | | | | | | encodingCode 0-1
- | | | | | | | characterSetCode 0-1

- | | brand 0-1
- | | | | @numberingOrg [Optional]
- | | | | @codeList [Optional]
- | | | | @listName [Optional]
- | | | | @listVersion [Optional]

- | | productLine 0-1
- | | | | @numberingOrg [Optional]
- | | | | @codeList [Optional]
- | | | | @listName [Optional]
- | | | | @listVersion [Optional]

- | | operationalCode 0-19
- | | | | @numberingOrg [Optional]
- | | | | @codeList [Optional]
- | | | | @listName [Optional]
- | | | | @listVersion [Optional]
- | | | | @codeQualifier [Optional]

garmentCategory 0-1

- | | | | @numberingOrg [Optional]
- | | | | | artGroup 0-1
- | | | | | @numberingOrg [Optional]
- | | | | | @codeList [Optional]
- | | | | | @listName [Optional]
- | | | | | @listVersion [Optional]
- | | | | | artSubGroup 0-1
- | | | | | @numberingOrg [Optional]
- | | | | | @codeList [Optional]
- | | | | | @listName [Optional]

| @listVersion [Optional]
 | artSex 0-1
 | @numberingOrg [Optional]
 | @codeList [Optional]
 | @listName [Optional]
 | @listVersion [Optional]
 | season 0-1
 | @numberingOrg [Optional]
 | @codeList [Optional]
 | @listName [Optional]
 | @listVersion [Optional]

goodsClassification 0-9

| macroClass 0-1
 | @numberingOrg [Optional]
 | @codeList [Optional]
 | @listName [Optional]
 | @listVersion [Optional]
 | class 0-1
 | @numberingOrg [Optional]
 | @codeList [Optional]
 | @listName [Optional]
 | @listVersion [Optional]
 | subClass 0-1
 | @numberingOrg [Optional]
 | @codeList [Optional]
 | @listName [Optional]
 | @listVersion [Optional]

| note 0-99
 | @numberingOrg [Optional]
 | @codeList [Optional]
 | @noteLabel [Optional]

fashionProd 1-1

| additionalComponentCode 0-9
 | @numberingOrg [Optional]
 | @codeList [Optional]
 | @listName [Optional]
 | @listVersion [Optional]

- choose -

yarnCode 1-2

| @numberingOrg [Optional] [Default= CL]
 | art 1-1
 | @numberingOrg [Optional]
 | @codeList [Optional]
 | @listName [Optional]
 | @listVersion [Optional]
 | color 0-1
 | @numberingOrg [Optional]
 | @codeList [Optional]
 | @listName [Optional]
 | @listVersion [Optional]
 | added 0-9
 | @numberingOrg [Optional]
 | @addType [Optional]
 | description 0-unbounded
 | @ln [Optional]

- or -

texCode 1-2

| @numberingOrg [Optional]
 | art 1-1
 | @numberingOrg [Optional]
 | @codeList [Optional]
 | @listName [Optional]
 | @listVersion [Optional]
 | pattern 0-1
 | @numberingOrg [Optional]
 | @codeList [Optional]
 | @listName [Optional]
 | @listVersion [Optional]

| | | | | color 0-1
 | | | | | @numberingOrg [Optional]
 | | | | | @codeList [Optional]
 | | | | | @listName [Optional]
 | | | | | @listVersion [Optional]
 | | | | | added 0-9
 | | | | | @numberingOrg [Optional]
 | | | | | @addType [Optional]
 | | | | | description 0-unbounded
 | | | | | @ln [Optional]

- or -

| | | | | **acsCode 1-2**
 | | | | | @numberingOrg [Optional]
 | | | | | art 1-1
 | | | | | @numberingOrg [Optional]
 | | | | | @codeList [Optional]
 | | | | | @listName [Optional]
 | | | | | @listVersion [Optional]
 | | | | | pattern 0-1
 | | | | | @numberingOrg [Optional]
 | | | | | @codeList [Optional]
 | | | | | @listName [Optional]
 | | | | | @listVersion [Optional]
 | | | | | color 0-1
 | | | | | @numberingOrg [Optional]
 | | | | | @codeList [Optional]
 | | | | | @listName [Optional]
 | | | | | @listVersion [Optional]
 | | | | | added 0-9
 | | | | | @numberingOrg [Optional]
 | | | | | @addType [Optional]
 | | | | | description 0-unbounded
 | | | | | @ln [Optional]

- or -

| | | | | **garmentPartCode 1-2**
 | | | | | @numberingOrg [Optional]
 | | | | | gPart 1-1
 | | | | | mod 1-1
 | | | | | @numberingOrg [Optional]
 | | | | | @codeList [Optional]
 | | | | | @listName [Optional]
 | | | | | @listVersion [Optional]
 | | | | | fabric 0-1
 | | | | | @numberingOrg [Optional]
 | | | | | @codeList [Optional]
 | | | | | @listName [Optional]
 | | | | | @listVersion [Optional]
 | | | | | color 0-1
 | | | | | @numberingOrg [Optional]
 | | | | | @codeList [Optional]
 | | | | | @listName [Optional]
 | | | | | @listVersion [Optional]
 | | | | | added 0-19
 | | | | | @numberingOrg [Optional]
 | | | | | @addType [Optional]
 | | | | | size 0-1
 | | | | | @numberingOrg [Optional]
 | | | | | @codeList [Optional]
 | | | | | @listName [Optional]
 | | | | | @listVersion [Optional]
 | | | | | description 0-unbounded
 | | | | | @ln [Optional]

- or -

| | | | | **garmentCode 1-2**
 | | | | | @numberingOrg [Optional]

- choose -

| | | | | **garmentCodeB 1-1**
 | | | | | @numberingOrg [Optional]

```

| | | | | mod 1-1
| | | | |   @numberingOrg [Optional]
| | | | |   @codeList [Optional]
| | | | |   @listName [Optional]
| | | | |   @listVersion [Optional]
| | | | | fabric 0-1
| | | | |   @numberingOrg [Optional]
| | | | |   @codeList [Optional]
| | | | |   @listName [Optional]
| | | | |   @listVersion [Optional]
| | | | | color 0-1
| | | | |   @numberingOrg [Optional]
| | | | |   @codeList [Optional]
| | | | |   @listName [Optional]
| | | | |   @listVersion [Optional]
| | | | | garmentVariant 0-9
| | | | |   variantType 1-1
| | | | |     @numberingOrg [Optional]
| | | | |     @codeList [Optional]
| | | | |     @listName [Optional]
| | | | |     @listVersion [Optional]
| | | | |   variantCode 1-1
| | | | |     @numberingOrg [Optional]
| | | | |     @codeList [Optional]
| | | | |     @listName [Optional]
| | | | |     @listVersion [Optional]
| | | | | drop 0-1
| | | | |   @numberingOrg [Optional]
| | | | |   @codeList [Optional]
| | | | |   @listName [Optional]
| | | | |   @listVersion [Optional]
| | | | | size 0-1
| | | | |   @numberingOrg [Optional]
| | | | |   @codeList [Optional]
| | | | |   @listName [Optional]
| | | | |   @listVersion [Optional]
| | | | | artGroup 0-1
| | | | |   @numberingOrg [Optional]
| | | | |   @codeList [Optional]
| | | | |   @listName [Optional]
| | | | |   @listVersion [Optional]
| | | | | added 0-9
| | | | |   @numberingOrg [Optional]
| | | | |   @addType [Optional]
| | | | | description 0-unbounded
| | | | |   @ln [Optional]
| | | | |
| | | | | - or -
| | | | | garmentCodeA 1-1
| | | | |   art 1-1
| | | | |     @numberingOrg [Optional]
| | | | |     @codeList [Optional]
| | | | |     @listName [Optional]
| | | | |     @listVersion [Optional]
| | | | |   description 0-unbounded
| | | | |   @ln [Optional]
| | | | |
| | | | | - end choose -
| | | | | - end choose -
| | | | | csRange 0-unbounded
| | | | |   @numberingOrg [Optional]
| | | | |   @sizeSystemNat [Optional]
| | | | |   @sizeSystemSeg [Optional]
| | | | |   @sizeSystemBase [Optional]
| | | | |   @sizeSystemID [Optional]
| | | | |   color 0-1
| | | | |     @numberingOrg [Optional]
| | | | |     @codeList [Optional]
| | | | |     @listName [Optional]
| | | | |     @listVersion [Optional]

```

garmentVariant 0-9

variantType 1-1
@numberingOrg [Optional]
@codeList [Optional]
@listName [Optional]
@listVersion [Optional]
variantCode 1-1
@numberingOrg [Optional]
@codeList [Optional]
@listName [Optional]
@listVersion [Optional]

drop 0-1
@numberingOrg [Optional]
@codeList [Optional]
@listName [Optional]
@listVersion [Optional]

sizeMatrix 1-1

sizeRow 1-99

additionalComponentCode 0-9
@numberingOrg [Optional]
@codeList [Optional]
@listName [Optional]
@listVersion [Optional]
drop 0-1
@numberingOrg [Optional]
@codeList [Optional]
@listName [Optional]
@listVersion [Optional]
size 1-1
@numberingOrg [Optional]
@codeList [Optional]
@listName [Optional]
@listVersion [Optional]

qty 0-1
@um [Required]

itemsList 0-1

qualityLevel 0-1
@numberingOrg [Optional]
@codeList [Optional]
@listName [Optional]
@listVersion [Optional]

itemIdentification 1-unbounded

serialN 1-9
@numberingOrg [Optional]
@idQualifier [Optional]

note 0-unbounded
@numberingOrg [Optional]
@codeList [Optional]
@noteLabel [Optional]

thirdParty 0-3

@VAT [Optional]
@role [Required]
@sender [Optional]
id 1-1
@numberingOrg [Optional]
legalName 0-1
dept 0-1
subDept 0-1
person 0-1
@email [Optional]
@phone [Optional]
@fax [Optional]
street 0-1
city 0-1
subCountry 0-1
country 0-1
postCode 0-1

geoCoordinates 0-1

```

| | | | | @um [Optional] [Default= DEGD]
| | | | | @geoReferenceSystem [Optional]
| | | | | | xGeoCoord 1-1
| | | | | | yGeoCoord 1-1
| | | | | | zGeoCoord 0-0
| | | | | composition 0-1
| | | | | | garmentCompos 0-1
| | | | | | | percCompos 1-99
| | | | | | | | @fibre [Required]
| | | | | | | | @materialSource [Optional]
| | | | | | | | @recyclingProcessMethod [Optional]
| | | | | | | | @percSourcesRenewable [Optional]
| | | | | | | description 0-unbounded
| | | | | | | | @ln [Optional]
| | | | | | unitOfMeasure 0-99
| | | | | | | @numberingOrg [Optional] [Default= EB]
| | | | | | | @codeList [Optional] [Default= http://www.ebiz.enea.it/moda-ml/repository/codelist/v2013-
1/gc_NT7.xml] | | | | | @listName [Optional] [Default= NT7]
| | | | | | | @listVersion [Optional]
| | | | | | | @measureQualifier [Optional]
| | | | | | measureConversion 0-99
| | | | | | | unitOfSourceMeasure 1-1
| | | | | | | | @numberingOrg [Optional] [Default= EB]
| | | | | | | | @codeList [Optional] [Default= http://www.ebiz.enea.it/moda-ml/repository/codelist/v2013-
1/gc_NT7.xml] | | | | | @listName [Optional] [Default= NT7]
| | | | | | | @listVersion [Optional]
| | | | | | | @measureQualifier [Optional]
| | | | | | | unitOfTargetMeasure 1-1
| | | | | | | | @numberingOrg [Optional] [Default= EB]
| | | | | | | | @codeList [Optional] [Default= http://www.ebiz.enea.it/moda-ml/repository/codelist/v2013-
1/gc_NT7.xml] | | | | | @listName [Optional] [Default= NT7]
| | | | | | | @listVersion [Optional]
| | | | | | | @measureQualifier [Optional]
| | | | | | | conversionRate 1-1
| | | | | | productDim 0-1
| | | | | | | length 1-1
| | | | | | | | @um [Required]
| | | | | | | | width 0-1
| | | | | | | | | @um [Required]
| | | | | | | | height 0-1
| | | | | | | | | @um [Required]
| | | | | | handlingChar 0-1
| | | | | | - choose -
| | | | | | | yarnPack 0-1
| | | | | | | | yarnReel 1-1
| | | | | | | | | @reelType [Required]
| | | | | | | | | @reelMat [Optional]
| | | | | | | | | | yarnReelID 0-1
| | | | | | | | | | | @um [Required]
| | | | | | | | | | | yarnReelH 0-1
| | | | | | | | | | | | @um [Required]
| | | | | | | | | | | | yarnConeAngle 0-1
| | | | | | | | | | | | yarnReelQty 0-2
| | | | | | | | | | | | | @um [Required]
| | | | | | | | | | | | label 0-1
| | | | | | | | | | | | labelWrit 0-1
| | | | | | | | | | | yarnInWrap 0-1
| | | | | | | | | | | | yarnReelWrap 1-1
| | | | | | | | | | | | | label 0-1
| | | | | | | | | | | | | labelWrit 0-1
| | | | | | | | | | | - choose -
| | | | | | | | | | | | yarnOutWrapText 0-1
| | | | | | | | | | | - or -
| | | | | | | | | | | | yarnOutWrap 0-1
| | | | | | | | | | | - end choose -

```

```

- or -
| | | | | piecePack 0-1
| | | | | - choose -
| | | | | | piecePackText 1-1
| | | | | - or -
| | | | | | pieceInnWrap1 1-1
| | | | | | pieceInnWrap2 0-1
| | | | | | pieceOutWrap 0-1
| | | | | - end choose -
- or -
| | | | | acsPack 0-1
| | | | | - choose -
| | | | | | acsPackCode 1-1
| | | | | | | @numberingOrg [Optional]
| | | | | | | @codeList [Optional]
| | | | | | | @listName [Optional]
| | | | | | | @listVersion [Optional]
| | | | | - or -
| | | | | | acsPackText 1-1
| | | | | - end choose -
- or -
| | | | | garPack 0-1
| | | | | - choose -
| | | | | | garPackCode 1-1
| | | | | | | @numberingOrg [Optional]
| | | | | | | @codeList [Optional]
| | | | | | | @listName [Optional]
| | | | | | | @listVersion [Optional]
| | | | | - or -
| | | | | | garPackText 1-1
| | | | | - end choose -
- end choose -
| | | | | | sortableIndicator 0-1
| | | | | | | stackabilityLevel 0-1
| | | | | | | handlingType 0-1
| | | | | | | | @ln [Optional]
| | | | | | | volume 0-1
| | | | | | | | @um [Required]
| | | | | | | netWeight 0-1
| | | | | | | | @um [Required]
| | | | | | | grossWeight 0-1
| | | | | | | | @um [Required]
| | | | | | | note 0-99
| | | | | | | | @numberingOrg [Optional]
| | | | | | | | @codeList [Optional]
| | | | | | | | @noteLabel [Optional]
| | | | | | packages 0-99
| | | | | | | @packageLevel [Optional]
| | | | | - choose -
| | | | | | packageText 1-1
| | | | | - or -
| | | | | | package 1-1
| | | | | - end choose -
| | | | | | packageModelCode 0-1
| | | | | | | @numberingOrg [Optional]
| | | | | | | description 0-unbounded
| | | | | | | | @ln [Optional]
| | | | | | | packageDim 0-1
| | | | | | | | length 1-1
| | | | | | | | | @um [Required]
| | | | | | | | width 0-1
| | | | | | | | | @um [Required]
| | | | | | | | height 0-1
| | | | | | | | | @um [Required]
| | | | | | | handlingChar 0-1
| | | | | - choose -
| | | | | | yarnPack 0-1
| | | | | | | yarnReel 1-1

```

```

| | | | | | | | @reelType [Required]
| | | | | | | | @reelMat [Optional]
| | | | | | | | | yarnReelID 0-1
| | | | | | | | | @um [Required]
| | | | | | | | | yarnReelH 0-1
| | | | | | | | | @um [Required]
| | | | | | | | | yarnConeAngle 0-1
| | | | | | | | | yarnReelQty 0-2
| | | | | | | | | @um [Required]
| | | | | | | | | label 0-1
| | | | | | | | | labelWrit 0-1
| | | | | | | | | yarnInWrap 0-1
| | | | | | | | | | yarnReelWrap 1-1
| | | | | | | | | | label 0-1
| | | | | | | | | | labelWrit 0-1
| | | | | | | | - choose -
| | | | | | | | | yarnOutWrapText 0-1
| | | | | | | | - or -
| | | | | | | | | yarnOutWrap 0-1
| | | | | | | | - end choose -
| | | | | | | | - or -
| | | | | | | | | piecePack 0-1
| | | | | | | | - choose -
| | | | | | | | | piecePackText 1-1
| | | | | | | | - or -
| | | | | | | | | pieceInnWrap1 1-1
| | | | | | | | | pieceInnWrap2 0-1
| | | | | | | | | pieceOutWrap 0-1
| | | | | | | | - end choose -
| | | | | | | | - or -
| | | | | | | | | acsPack 0-1
| | | | | | | | - choose -
| | | | | | | | | acsPackCode 1-1
| | | | | | | | | @numberingOrg [Optional]
| | | | | | | | | @codeList [Optional]
| | | | | | | | | @listName [Optional]
| | | | | | | | | @listVersion [Optional]
| | | | | | | | - or -
| | | | | | | | | acsPackText 1-1
| | | | | | | | - end choose -
| | | | | | | | - or -
| | | | | | | | | garPack 0-1
| | | | | | | | - choose -
| | | | | | | | | garPackCode 1-1
| | | | | | | | | @numberingOrg [Optional]
| | | | | | | | | @codeList [Optional]
| | | | | | | | | @listName [Optional]
| | | | | | | | | @listVersion [Optional]
| | | | | | | | - or -
| | | | | | | | | garPackText 1-1
| | | | | | | | - end choose -
| | | | | | | | - end choose -
| | | | | | | | | sortableIndicator 0-1
| | | | | | | | | stackabilityLevel 0-1
| | | | | | | | | handlingType 0-1
| | | | | | | | | @ln [Optional]
| | | | | | | | | volume 0-1
| | | | | | | | | @um [Required]
| | | | | | | | | netWeight 0-1
| | | | | | | | | @um [Required]
| | | | | | | | | grossWeight 0-1
| | | | | | | | | @um [Required]
| | | | | | | | | note 0-99
| | | | | | | | | @numberingOrg [Optional]
| | | | | | | | | @codeList [Optional]
| | | | | | | | | @noteLabel [Optional]
| | | | | | | | | itemsPerPackage 0-1
| | | | | | | | | @um [Required]

```

```

| | | | minItemsPerPackage 0-1
| | | |   @um [Required]
| | | | fillingCriterion 0-9
| | | |   @progr [Optional]
| | | | packageQty 0-1
| | | | packageN 0-unbounded
| | | |   @numberingOrg [Optional]
| | | |   @packageContainerN [Optional]
| | | | | EPCList 0-1
| | | | |   EPC 1-unbounded
| | | | |   @numberingOrg [Optional]
| | | | |   @TID [Optional]
| | | | extendedDescription 0-unbounded
| | | |   @ln [Optional]
| | | | | dtScheme 0-1
| | | | |   @taxType [Required]
| | | | |   taxCategory 0-1
| | | | |   taxRate 0-1
| | | | |   legalRef 0-1
| | | | |   @numberingOrg [Optional]
| | | | |   @codeList [Optional]
| | | | |   @listName [Optional]
| | | | |   @listVersion [Optional]
| | | | |   note 0-99
| | | | |   @numberingOrg [Optional]
| | | | |   @codeList [Optional]
| | | | |   @noteLabel [Optional]
| | | | note 0-99
| | | |   @numberingOrg [Optional]
| | | |   @codeList [Optional]
| | | |   @noteLabel [Optional]
| | | | | packages 0-99
| | | | |   @packageLevel [Optional]
| | | | | - choose -
| | | | |   packageText 1-1
| | | | | - or -
| | | | |   package 1-1
| | | | | - end choose -
| | | | |   packageModelCode 0-1
| | | | |   @numberingOrg [Optional]
| | | | | description 0-unbounded
| | | | |   @ln [Optional]
| | | | | | packageDim 0-1
| | | | | |   length 1-1
| | | | | |   @um [Required]
| | | | | |   width 0-1
| | | | | |   @um [Required]
| | | | | |   height 0-1
| | | | | |   @um [Required]
| | | | | | handlingChar 0-1
| | | | | | - choose -
| | | | | | | yarnPack 0-1
| | | | | | | | yarnReel 1-1
| | | | | | | |   @reelType [Required]
| | | | | | | |   @reelMat [Optional]
| | | | | | | |   yarnReelD 0-1
| | | | | | | |   @um [Required]
| | | | | | | |   yarnReelH 0-1
| | | | | | | |   @um [Required]
| | | | | | | |   yarnConeAngle 0-1
| | | | | | | |   yarnReelQty 0-2
| | | | | | | |   @um [Required]
| | | | | | | |   label 0-1
| | | | | | | |   labelWrit 0-1
| | | | | | | | | yarnInWrap 0-1
| | | | | | | | |   yarnReelWrap 1-1
| | | | | | | | |   label 0-1
| | | | | | | | |   labelWrit 0-1

```



```

- choose -
| | | | | | yarnOutWrapText 0-1
- or -
| | | | | | yarnOutWrap 0-1
- end choose -
- or -
| | | | | | piecePack 0-1
- choose -
| | | | | | piecePackText 1-1
- or -
| | | | | | pieceInnWrap1 1-1
| | | | | | pieceInnWrap2 0-1
| | | | | | pieceOutWrap 0-1
- end choose -
- or -
| | | | | | acsPack 0-1
- choose -
| | | | | | acsPackCode 1-1
| | | | | | @numberingOrg [Optional]
| | | | | | @codeList [Optional]
| | | | | | @listName [Optional]
| | | | | | @listVersion [Optional]
- or -
| | | | | | acsPackText 1-1
- end choose -
- or -
| | | | | | garPack 0-1
- choose -
| | | | | | garPackCode 1-1
| | | | | | @numberingOrg [Optional]
| | | | | | @codeList [Optional]
| | | | | | @listName [Optional]
| | | | | | @listVersion [Optional]
- or -
| | | | | | garPackText 1-1
- end choose -
- end choose -
| | | | | | sortableIndicator 0-1
| | | | | | stackabilityLevel 0-1
| | | | | | handlingType 0-1
| | | | | | @ln [Optional]
| | | | | | volume 0-1
| | | | | | @um [Required]
| | | | | | netWeight 0-1
| | | | | | @um [Required]
| | | | | | grossWeight 0-1
| | | | | | @um [Required]
| | | | | | note 0-99
| | | | | | @numberingOrg [Optional]
| | | | | | @codeList [Optional]
| | | | | | @noteLabel [Optional]
| | | | | | itemsPerPackage 0-1
| | | | | | @um [Required]
| | | | | | minItemsPerPackage 0-1
| | | | | | @um [Required]
| | | | | | fillingCriterion 0-9
| | | | | | @progr [Optional]
| | | | | | packageQty 0-1
| | | | | | packageN 0-unbounded
| | | | | | @numberingOrg [Optional]
| | | | | | @packageContainerN [Optional]
| | | | | | EPCList 0-1
| | | | | | EPC 1-unbounded
| | | | | | @numberingOrg [Optional]
| | | | | | @TID [Optional]
| | | | | | note 0-99
| | | | | | @numberingOrg [Optional]
| | | | | | @codeList [Optional]

```

| | | @noteLabel [Optional]

2.2 Detailed description of document elements

Following tables show all elements (complex and simple) used in this document. Description includes: 1) element's information: xml tag, name, brief description, data type and syntax constraints; 2) information about use of the element in a particular position in the document: xpath and possible associated notes.

2.2.1 Complex elements (Aggregate Business Information Entities)

Complex elements are those elements whose content is composed of other elements (childs).Complex elements are alphabetically ordered.

acsCode	full codification identifying an accessory product usually coupled with garment or other fashion product
acsPack	type of wrapping or packing of the accessory
attachment	an attached document. An attachment can refer to an external document or be included with the document being exchanged
composition	Composition of a garment product or of a part of it
csRange	range of color-size for a fashion article
dtScheme	set of data usable to declare the duty or tax applied
EPCList	list of identifiers used for tracing a physical item with RFID technology
externalReference	details about an external object, such as a document stored at a remote location
fashionProd	identification of the fashion product or its part (fabric, yarn, accessory, final product or part of it, ...).
garmentCategory	classification of a garment article
garmentCode	codification of the garment product
garmentCodeA	codification of the garment product- type A
garmentCodeB	codification of the garment product - type B
garmentCompos	Quantitative composition of a garment product (of its part)
garmentPartCode	codification of the component or part of a fashion article
garmentVariant	garment product variant
garPack	the packaging mode of the item or a part of it.
geoCoordinates	geographical coordinates
GMbody	Body of the document Fashion Master Data.
GMgroup	Articles grouping of the fashion products or their parts.
GMheader	Header of the document Fashion Master Data.
GMitem	Details of a fashion product or part or component (i.e. fabric, yarn, accessory).
goodsClassification	goods classification of the item.
handlingChar	features of an item (item or package) useful for its transport and warehouse management.
itemIdentification	serial identification of a product unit
itemsList	list of the single product units
measureConversion	Details to convert two different unit of measure.
packageDim	dimensions of a transport package

packages	describes the composition of the transport packaging. Each element corresponds to a type of package: type, quantity, hierarchic level, list of identifiers of the single packages
piecePack	type of wrapping or packing of the fabric pieces
productDim	Dimensions of an object.
receiverParty	Details of the party receiving the document. - base type: Nad,
refDoc	identification of a document and of an item thereof, to which the message makes reference
senderParty	Details of the party sending the document. - base type: Nad,
sizeMatrix	size matrix of an apparel product
sizeRow	size matrix row of an apparel product
texCode	full codification of the textile product
thirdParty	identification and details of the Third Party, different from Sender and Receiver of the document - base type: Nad,
yarnCode	full codification of a yarn product
yarnInWrap	details specifying the inner wrapping of a yarn product
yarnPack	details of type of presentation used for the yarn
yarnReel	details of the packaging of a yarn product (bobbin and reel,...)

2.2.2 Simple elements (Basic Business Information Entities)

Simple elements are those elements whose content is characterized by a data type plus a domain of possible values. Simple elements are alphabetically ordered.

acsPackCode	code specifying the type of wrapping or packing used for the accessory - base type: string,
acsPackText	free text specifying the type of wrapping or packing used for the accessory - base type: string, max length: 250,
added	additional code of the product (complementing the formers) - base type: string, max length: 80,
additionalComponentCode	an additional code to identify a fashion product or a part of it (it is a way to codify the item, but it is not one of the codes to identify it). It is not a serial identifier. - base type: string,
@addType	qualifier of the additional coding of a product - base type: string, cod. table: T44 http://www.ebiz.enea.it/moda-ml/repository/codelist/draft/gc_T44.xml
art	article number of the product - base type: string, max length: 80,
artGroup	code identifying a class of products - base type: string, max length: 40,
artGroupName	description of a class of products - base type: string, max length: 80,
artSex	code identifying the sex for which a fashion product is intended - base type: string, max length: 15,
artSubGroup	code identifying a sub-class of products - base type: string, max length: 40,

binaryObject	a binary large object containing an attached document, Coding 'base64Binary' is recommended. - base type: base64Binary,
brand	A brand name. - base type: string,
@characterSet	the character set of the binary object (examples UTF-8, UTF-16, Windows-1252, ISO-8859-7,...) - base type: normalizedString,
characterSetCode	the character set of an external document (examples UTF-8, UTF-16, Windows-1252, ISO-8859-7,...) - base type: normalizedString,
city	name of the city (town, village) - base type: string, max length: 40,
class	a code indicating the category (macro-class, class or sub-class) of a commodity classification system the article belongs to. - base type: string,
@codeList	it specifies the URL where the list of codes used to make an instance of the element can be found - base type: string, max length: 255,
@codeQualifier	operational code qualifier: it states if the code is related to a project, an event, an initiative, a sales channel, a management type (eg CITES), - base type: string, cod. table: NT43 http://www.ebiz.enea.it/moda-ml/repository/codelist/draft/gc_NT43.xml
color	colour number of the product, when not included in the model or fabric code - base type: string, max length: 15,
conversionRate	Conversion parameter between two sizes. - base type: decimal,
country	code of the nation - base type: string, cod. table: T10 http://www.ebiz.enea.it/moda-ml/repository/codelist/draft/gc_T10.xml
@dateForm	format used for the date - base type: string, cod. table: NT29 http://www.ebiz.enea.it/moda-ml/repository/codelist/draft/gc_NT29.xml
dept	name or code of a department - base type: string, max length: 40,
description	free text description. The content of the element must be unique, it might be translated and repeated into more languages (thus no more than one instance for each language). - base type: string, max length: 250,
docDate	date of issue of the referenced document, according to one of the patterns YYYY-MM-DD, YYYY-MM-DD:HH-MM or YYYY-WW. - base type: string,
docID	identification number of the referenced document - base type: string, max length: 80,
@docType	type or class to which the referenced document belongs - base type: string, cod. table: T21 http://www.ebiz.enea.it/moda-ml/repository/codelist/draft/gc_T21.xml
drop	drop number of the garment - base type: string, max length: 15,
@email	electronic mail address of the contact person within a Party - base type: string, max length: 250,
@encoding	specifies the decoding algorithm of the binary object - base type: normalizedString,

encodingCode	the encoding/decoding algorithm used with the external object (example is 'base64Binary') - base type: normalizedString,
EPC	serial identifier used for tracing a physical item with RFID technology - base type: string,
extendedDescription	extended free text description. The content of the element must be unique, it might be translated and repeated into more languages (thus no more than one instance for each language). This element might contain HTML code (must be managed as CDATA) - base type: string,
fabric	fabric number of the garment - base type: string, max length: 15,
@fax	fax number of the contact person within a Party - base type: string, max length: 35,
@fibre	type of fibre used in a textile product - base type: string, cod. table: T19 http://www.ebiz.enea.it/moda-ml/repository/codelist/draft/gc_T19.xml
fileName	unique identifier (name) of the file - base type: string, max length: 255,
fillingCriterion	the assortment criterion to fill the specified kind of package: it states the homogeneity criterion (eg: "model", "color", "size"). - base type: string, cod. table: NT51 http://www.ebiz.enea.it/moda-ml/repository/codelist/draft/gc_NT51.xml
@format	the format of the binary content (examples xml, pdf, doc,...) - base type: string,
formatCode	the format of the external object (examples xml, pdf, doc,...) - base type: normalizedString,
garPackCode	a code specifying the type of packaging used for the item. - base type: string,
garPackText	a free text specifying the type of packaging used for the item. - base type: string,
@geoReferenceSystem	georeference system adopted for the coordinate (in example wgs84 with decimal degree or degree with minute and seconds) - base type: string,
gPart	code specifying the type of component or part of a fashion product (sleeve, neck, ...) - base type: string, cod. table: T48 http://www.ebiz.enea.it/moda-ml/repository/codelist/draft/gc_T48.xml
grossWeight	the gross weight, declared for transport or customs purpose - base type: decimal, min inclusive: 0, fraction digits: 2,
handlingType	information to handle the item (eg "breakable"). - base type: string,
height	effective height of a specified object - base type: decimal, min inclusive: 0, fraction digits: 2,
id	primary identification code of a Party; it is recommended the format: nation code (ISO 3166) + VAT identification number (11 crt), with the qualifier "numberingOrg"= MF - base type: string, max length: 15,
@idQualifier	Qualification of the identifier. - base type: string,
@isURL	it indicates if the referred element is an URL (true) or not (false) - base type: boolean,
itemID	number of the line/item of the referenced document - base type: string, max length: 40,
itemsPerPackage	the quantity of items that can be contained in a package.

	- base type: decimal,
label	indicates if the physical object specified has to be labelled - base type: boolean,
labelWrit	text that must be written on the lable of a specified physical object when its customizati on is required - base type: string, max length: 350,
legalName	legal name - base type: string, max length: 250,
legalRef	legal reference of the duty or tax or fee category - base type: string,
length	effective length of a specified object - base type: decimal, min inclusive: 0, fraction digits: 2,
lineID	unique identifier of the line item of the business document; it is set by the role that prod uces the document. - base type: string, max length: 30,
lineN	number of the line item of the present message (xml document); it is set by the role tha t produces the document. Usually it is a progressive number, but not always. - base type: positiveInteger, min inclusive: 1, max inclusive: 9999,
@listName	the name of the list of codes used to make an instance of the element (it might be thou ght as descriptive element, i.e. 'fabric printing technologies', or not, i.e. "T264") - base type: string, max length: 40,
@listVersion	it specifie the version of the list of codes used to make an instance of the element - base type: string, max length: 6,
@ln	Language code. - base type: string, cod. table: NT60 http://www.ebiz.enea.it/moda-ml/repository/codelist/draft/gc_NT60.xml
macroClass	a code indicating the category (macro-class, class or sub-class) of a commodity classif ication system the article belongs to. - base type: string,
@materialSource	Indicates whether the material is virgin or comes from recycling or reuse processes - base type: string, cod. table: T306 http://www.ebiz.enea.it/moda-ml/repository/codelist/draft/gc_T306.xml
@measureQualifier	Unit of measure qualifier. - base type: string,
@mime	the mime type of the binary object - base type: normalizedString,
mimeCode	mime type of the external object - base type: normalizedString,
minItemsPerPackage	the minimun quantity of items for the specified kind of package. - base type: decimal, min inclusive: 0,
mod	model number of the garment - base type: string, max length: 15,
msgDate	date of issue of the present message (xml document), according to one of the patterns YYYY-MM-DD, YYYY-MM-DD:HH-MM or YYYY-WW. - base type: string,
@msgfunction	function performed by the present message with regards to the transmission - base type: string, cod. table: NT18 http://www.ebiz.enea.it/moda-ml/repository/codelist/draft/gc_NT18.xml
msgID	key identifier of the business document in the information system of the issuing Party. I n case of more despatches of the same business document, it is unchanged. - base type: string, max length: 35,
msgN	identification number given to the message (xml document) by its issuer. In case of mo

	re despatches of the same business document, it changes. - base type: string, max length: 35,
netWeight	the net weight declared for transport or customs purpose - base type: decimal, min inclusive: 0, fraction digits: 2,
note	free text or structured (computer processing) note. For note structuring use the attributes "noteLabel" and "codelist" - base type: string, max length: 350,
@noteLabel	subject qualifier of a note - base type: string, max length: 35,
@numberingOrg	code specifying the organisation who has created or owns the coding or numbering system - base type: string, cod. table: NT6 http://www.ebiz.enea.it/moda-ml/repository/codelist/draft/gc_NT6.xml
operationalCode	operational code: it is the code of a project, an event, an initiative, a sales channel, a management type (eg CITES), ... the document, or product, is connected with. - base type: string,
package	code specifying the type of transport package - base type: string, cod. table: T11 http://www.ebiz.enea.it/moda-ml/repository/codelist/draft/gc_T11.xml
@packageContainerN	reference usable to indicate the outer package containing this package - base type: string, max length: 40,
@packageLevel	level used to indicate the hierarchical structure of the packages (from outer to inner levels) - base type: positiveInteger, min inclusive: 1, max inclusive: 9,
packageModelCode	a code (eg a barcode) identifying the type of packaging - base type: string,
packageN	serial number used to identify a transport package - base type: string, max length: 40,
packageQty	quantity of the specified transport packages - base type: positiveInteger,
packageText	denomination of the type of transport package (text) - base type: string, max length: 80,
pattern	pattern/design number of the product, when not included in the article code - base type: string, max length: 15,
percCompos	fiber rate in the product composition - base type: decimal, min inclusive: 0, max inclusive: 100, fraction digits: 2,
@percSourcesRenewable	indicates the percentage of renewable sources - base type: decimal,
person	name of a person (e.g. contact person within an organization) - base type: string, max length: 40,
@phone	phone number of the contact person within a Party - base type: string, max length: 35,
pieceInnWrap1	code specifying the type of inner wrapping/packing used for the fabric piece - base type: string, cod. table: T4 http://www.ebiz.enea.it/moda-ml/repository/codelist/draft/gc_T4.xml
pieceInnWrap2	code sub-specifying the type of inner wrapping/packing used for the fabric piece - base type: string, cod. table: T5 http://www.ebiz.enea.it/moda-ml/repository/codelist/draft/gc_T5.xml
pieceOutWrap	code specifying the type of outer wrapping or packing used for the fabric piece - base type: string, cod. table: T6 http://www.ebiz.enea.it/moda-ml/repository/codelist/draft/gc_T6.xml
piecePackText	free text specifying the type of wrapping or packing used for the fabric piece

	- base type: string, max length: 250,
postCode	code defining the postal zone - base type: string, max length: 10,
productLine	the product line name of a fashion product. - base type: string,
@progr	progressive number in the sequence - base type: positiveInteger, min inclusive: 1,
qty	net quantity of the article or object correlated, qualified by the function of the document (ordering, delivering, ..) and by the context - base type: decimal, min inclusive: 0, fraction digits: 2,
qualityLevel	the product quality level (first choice, second choice,...). - base type: string,
@recyclingProcessMethod	recycling process method - base type: string, cod. table: T307 http://www.ebiz.enea.it/moda-ml/repository/codelist/draft/gc_T307.xml
@reelMat	type of material of which a package for yarn is made - base type: string, cod. table: T30 http://www.ebiz.enea.it/moda-ml/repository/codelist/draft/gc_T30.xml
@reelType	type of package used for a yarn product - base type: string, cod. table: T29 http://www.ebiz.enea.it/moda-ml/repository/codelist/draft/gc_T29.xml
@role	Third Party role qualifier - base type: string, cod. table: NT2 http://www.ebiz.enea.it/moda-ml/repository/codelist/draft/gc_NT2.xml
season	sale season; defined as: season (1 crt) + year (4 crt) - season: S/S=1 A/W=2 Spring=3 Summer=4 Autumn=5 Winter=6: for more than four seasons use alphabetic sequence: 1st season=A 2nd season=B etc.etc. - base type: string, max length: 15,
@sender	qualifier that specifies the Party issuing of the document - base type: boolean,
serialN	serial number used for the identification of a physical unit - base type: string, max length: 250,
size	size number of a fashion product (knitwear, clothing, ..) - base type: string, max length: 15,
@sizeSystemBase	base of the size system - base type: string, cod. table: T423 http://www.ebiz.enea.it/moda-ml/repository/codelist/draft/gc_T423.xml
@sizeSystemID	the identifier of the size system. - base type: string,
@sizeSystemNat	nation or agency identifying the size system - base type: string, cod. table: T421 http://www.ebiz.enea.it/moda-ml/repository/codelist/draft/gc_T421.xml
@sizeSystemSeg	market segment identifying the size system - base type: string, cod. table: T422 http://www.ebiz.enea.it/moda-ml/repository/codelist/draft/gc_T422.xml
sortableIndicator	It states if the item can be automatically sorted. - base type: boolean,
stackabilityLevel	This value indicates the level at which the item can be stacked. - base type: integer,
street	street and building number identifying a location - base type: string, max length: 80,
subClass	a code indicating the category (macro-class, class or sub-class) of a commodity classif

	ication system the article belongs to. - base type: string,
subCountry	short name or code of the sub-country entity - base type: string, max length: 9,
subDept	name or code of a department - base type: string, max length: 40,
taxCategory	duty or tax or fee category - base type: string, cod. table: T62 http://www.ebiz.enea.it/moda-ml/repository/codelist/draft/gc_T62.xml
taxRate	duty or tax or fee percent rate - base type: string,
@taxType	duty or tax or fee type - base type: string, cod. table: T61 http://www.ebiz.enea.it/moda-ml/repository/codelist/draft/gc_T61.xml
@TID	serial number wired into the RFID chip - base type: string,
@uid	unique element identifier within the xml document - base type: string,
@um	specification of the unit of measure - base type: string, cod. table: NT7 http://www.ebiz.enea.it/moda-ml/repository/codelist/draft/gc_NT7.xml
unitOfMeasure	unit of measure. - base type: string,
unitOfSourceMeasure	unit of measure. - base type: string,
unitOfTargetMeasure	unit of measure. - base type: string,
uri	Uniform Resource Identifier (URI) that identifies the external object as an Internet resource - base type: normalizedString,
@useProfile	use profile to which the present document is compliant if it was agreed by the parties. It is suggested a URI with reference to the firms or the URL of the profile. - base type: string,
validityEnd	date by which the validity ends, according to one of the patterns YYYY-MM-DD, YYYY-MM-DD:HH-MM or YYYY-WW. - base type: string,
validityStart	date by which the validity starts, according to one of the patterns YYYY-MM-DD, YYYY-MM-DD:HH-MM or YYYY-WW. - base type: string,
variantCode	Code of variant used for fashion product. - base type: string,
variantType	Type of variant used for fashion product (examples: 'treatment', 'washing type', 'size class',...) - base type: string,
@VAT	VAT rate or code (DEPRECATED, use dtScheme element) - base type: string, cod. table: NT16 http://www.ebiz.enea.it/moda-ml/repository/codelist/draft/gc_NT16.xml
@version	Dictionary version from which the instance has been created - base type: string, cod. table: NT100 http://www.ebiz.enea.it/moda-ml/repository/codelist/draft/gc_NT100.xml
volume	effective volume of a specified object - base type: decimal, min inclusive: 0, fraction digits: 2,

width	effective width of a specified object - base type: decimal, min inclusive: 0, fraction digits: 2,
xGeoCoord	geographical coordinate x , corresponding to latitude - base type: decimal,
yarnConeAngle	tapering angle of the cone on which a yarn is reeled - base type: positiveInteger,
yarnOutWrap	code specifying the type of outer wrapping or packing of a yarn - base type: string, cod. table: T33 http://www.ebiz.enea.it/moda-ml/repository/codelist/draft/gc_T33.xml
yarnOutWrapText	free text specifying the type of outer wrapping or packing of a yarn - base type: string, max length: 250,
yarnReelD	diameter of the bobbin used for a yarn product - base type: decimal, min inclusive: 0, fraction digits: 2,
yarnReelH	height of the bobbin used a yarn product - base type: decimal, min inclusive: 0, fraction digits: 2,
yarnReelQty	quantity of yarn (by weight or length) wound upon a bobbin - base type: decimal, min inclusive: 0, fraction digits: 2,
yarnReelWrap	type of wrapping in which a package of yarn is wrapped - base type: string, cod. table: T32 http://www.ebiz.enea.it/moda-ml/repository/codelist/draft/gc_T32.xml
yGeoCoord	geographical coordinate y , corresponding to longitude - base type: decimal,
zGeoCoord	geographical coordinate z , corresponding to altitude - base type: decimal,

2.3 Suggested best practices

GARMasterData/GMbody/GMgroup/refDoc/docID (identification number of the referenced document)

numberingOrg indicates the role that produced the document identifier (it is allowed to declare two different ones -e.g. customer and supplier - with two docID with different numberingOrg

GARMasterData/GMbody/GMgroup/GMitem/refDoc/docID (identification number of the referenced document)

numberingOrg indicates the role that produced the document identifier (it is allowed to declare two different ones -e.g. customer and supplier - with two docID with different numberingOrg

GARMasterData/GMheader/refDoc/docID (identification number of the referenced document)

numberingOrg indicates the role that produced the document identifier (it is allowed to declare two different ones -e.g. customer and supplier - with two docID with different numberingOrg

**GARMasterData/GMbody/GMgroup/refDoc/attachment/
externalReference/mimeCode (mime type of the external object)**

Use coding from IANA <http://www.iana.org/assignments/media-types/media-types.xml>

**GARMasterData/GMbody/GMgroup/GMitem/refDoc/
attachment/externalReference/mimeCode (mime type of the external object)**

Use coding from IANA <http://www.iana.org/assignments/media-types/media-types.xml>

**GARMasterData/GMheader/refDoc/attachment/
externalReference/mimeCode (mime type of the external object)**

Use coding from IANA <http://www.iana.org/assignments/media-types/media-types.xml>

**GARMasterData/GMbody/GMgroup/GMitem/fashionProd/
csRange/sizeMatrix/sizeRow/itemsList/itemIdentification/serialN (serial number used for the identification of a physical unit)**

in the case of garment with RFID for anti-counterfeiting, RFID EPCGlobal for logistics and NFC for the customer experience there should be three serial elements with pairs of attributes numberingOrg/idQualifier: "CL"/"RFID", "GS1"/"RFID", "CL"/"NFC".

2.4 Enumeration tables

List of enumeration tables used in the XML document. You can find all the tables with the corresponding codes at:
<http://www.ebiz.enea.it/eBIZ/imple/eBIZTCU-draft.asp?lingua=en&pag=6>

NT100 - eBIZ TCFUpstream version
NT16 - VAT rate or code
NT18 - message function
NT2 - third party qualifier
NT29 - format of a date
NT43 - operational code qualifier
NT51 - Filling Criterion for Package homogeneity
NT6 - coding system owner/issuer
NT60 - language, codes from ISO 639-1 (subset)
NT7 - unit of measure
T10 - ISO3166 - Country
T11 - transport package type
T19 - fibre type
T21 - type of document
T29 - type of yarn package
T30 - support of yarn package - material
T306 - material circularity attribute
T307 - recycling process method
T32 - yarn reel wrapping type
T33 - yarn outer packing
T4 - fabric piece inner packing (wrapping) 1
T421 - size system: nationality
T422 - size system: market segment
T423 - size system: base
T44 - additional code type
T48 - garment part type
T5 - fabric piece inner packing (wrapping) 2
T6 - fabric piece outer packing
T61 - duty or tax or fee type
T62 - duty or tax or fee category

ACKNOWLEDGEMENT



This action is part of the TRICK project, which has received funding from Horizon 2020 research and innovation programme under grant agreement No. 958352 of the European Union.

DISCLAIMER

The content of this document represents the views of the authors only and is their sole responsibility; it cannot be considered to reflect the views of the European Commission or any other body of the European Union.

The European Commission does not accept any responsibility for use that may be made of the information it contains.

Annex A

Representative images of the principal complex elements' structure.

