



<http://www.ebiz-tcf.eu>

DRAFT

Extract from IMPLEMENTATION GUIDE
TRANSACTION "PARTY INFORMATION"

Version: draft

Date of release: 9/10/2022

Document code: G079e

technical Documentation: <http://www.ebiz.enea.it>

XML Schemas repository: <http://www.ebiz.enea.it/moda-ml/repository/schema/draft/default.asp>

Guides repository: <http://www.ebiz.enea.it/moda-ml/repository/guide/draft/default.asp>

Guide filename: G079-eBIZ-PartyInformation.pdf

0. PREMISE

This document contains a proposal for the updating and extension of eBIZ specifications starting from the eBIZ version 2018. Under the name of 'Draft version' it is reported the result of an extensive work of analysis and consultation aimed at developing and maintaining eBIZ specifications.

In particular, the content of this proposal is the result of various activities, mainly those carried out within the framework of the **TRICK project** funded by the European Commission: grant agreement 958352, call H2020-LOW-CARBON-CIRCULAR-INDUSTRIES-2020 / H2020-LCCI-2020-EASME-twostage.

The technical contents are backwards compatible with the latest official published version, with the exclusion of the totally new concepts added explicitly for the version that are thought as incremental evolution of the knowledge base.

1. BUSINESS DESCRIPTION

1.1 Scope

This guide is intended to illustrate to FASHION companies the standard XML form of the document type "Party Information", providing instructions for its use in any context of electronic commerce between different subjects of the production and sales chain.

All the rules necessary for the construction and validation of the document are expressed through a specific XML schema, which is presented in detail in the paragraph "Implementation Guide".

1.2 Generalities

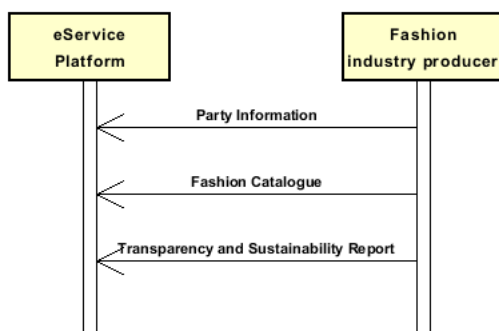
The message is issued to communicate information about people or organisations (for example, lists of customers enabled to operate on an eCommerce site).

The sender forwards this document when he has to feed a registry of persons or organizations.

Main function of the message is transferring information about people or companies: personal or business data (name, address, contacts, billing information, categories of belonging to subjects useful for commercial purposes).

1.3. Possible scenario

P1.A1 Products, processes and facilities static data collection



2. IMPLEMENTATION GUIDE

2.1 General structure of XML document

All the business data that can be exchanged through this class of documents are shown in the following "document structure", that provides a simplified vision of the Schema.

In particular:

- the two numbers following each element define its "cardinality" (minimum and maximum number of occurrences); the minimum equal zero indicates that the element is optional, the minimum greater than zero indicates that is mandatory;
- the bold character denotes the complex elements (aggregates of simple elements) that were built for the sake of functionality and re-usability of some complex informations sets. The child elements in each parent element are easily spotted as "indented";
- the symbol "@" denotes an attribute of the preceding element; here "the usage indicator (optional, required, ...)" is shown in square brackets.

Structure

PARTIn

@msgfunction [Optional] [Default= OR]

@version [Optional] [Default= 2018-1]

@useProfile [Optional]

```
| PIheader 1-1
| | msgN 1-1
| | msgID 0-1
| | msgDate 1-1
| |   @dateForm [Optional]
| | validityEnd 0-1
| |   @dateForm [Optional]
| | refDoc 0-9
| |   @docType [Required]
| |   docID 1-2
| |     @numberingOrg [Optional]
| |   docDate 0-1
| |     @dateForm [Optional]
| |   season 0-1
| |     @numberingOrg [Optional]
| |     @codeList [Optional]
| |     @listName [Optional]
| |     @listVersion [Optional]
| |   itemID 0-1
| |   attachment 0-1
| |     @uid [Optional]
| |     fileName 0-1
| |       @numberingOrg [Optional]
| |     binaryObject 0-1
| |       @format [Optional]
| |       @mime [Optional]
| |       @encoding [Optional]
| |       @characterSet [Optional]
| |     externalReference 0-99
| |       uri 1-1
| |         @isURL [Optional] [Default= true]
| |       mimeTypeCode 0-1
| |       formatCode 0-1
| |       encodingCode 0-1
| |       characterSetCode 0-1
| | senderParty 1-1
| |   @role [Optional]
| |   @sender [Optional]
| |   id 1-1
| |     @numberingOrg [Optional]
| |   legalName 0-1
| |   dept 0-1
| |   subDept 0-1
| |   person 0-1
| |   @email [Optional]
```

```

| | | @phone [Optional]
| | | @fax [Optional]
| | | street 0-1
| | | city 0-1
| | | subCountry 0-1
| | | country 0-1
| | | postCode 0-1
| | | geoCoordinates 0-1
| | | | @um [Optional] [Default= DEGD]
| | | | @geoReferenceSystem [Optional]
| | | | | xGeoCoord 1-1
| | | | | yGeoCoord 1-1
| | | | | zGeoCoord 0-0
| | | receiverParty 1-1
| | | | @role [Optional]
| | | | @sender [Optional]
| | | | | id 1-1
| | | | | | @numberingOrg [Optional]
| | | | | legalName 0-1
| | | | | dept 0-1
| | | | | subDept 0-1
| | | | | person 0-1
| | | | | | @email [Optional]
| | | | | | @phone [Optional]
| | | | | | @fax [Optional]
| | | | | street 0-1
| | | | | city 0-1
| | | | | subCountry 0-1
| | | | | country 0-1
| | | | | postCode 0-1
| | | | | geoCoordinates 0-1
| | | | | | @um [Optional] [Default= DEGD]
| | | | | | @geoReferenceSystem [Optional]
| | | | | | | xGeoCoord 1-1
| | | | | | | yGeoCoord 1-1
| | | | | | | zGeoCoord 0-0
| | | | thirdParty 0-5
| | | | | @VAT [Optional]
| | | | | @role [Required]
| | | | | @sender [Optional]
| | | | | | id 1-1
| | | | | | | @numberingOrg [Optional]
| | | | | | legalName 0-1
| | | | | | dept 0-1
| | | | | | subDept 0-1
| | | | | | person 0-1
| | | | | | | @email [Optional]
| | | | | | | @phone [Optional]
| | | | | | | @fax [Optional]
| | | | | | street 0-1
| | | | | | city 0-1
| | | | | | subCountry 0-1
| | | | | | country 0-1
| | | | | | postCode 0-1
| | | | | | geoCoordinates 0-1
| | | | | | | @um [Optional] [Default= DEGD]
| | | | | | | @geoReferenceSystem [Optional]
| | | | | | | | xGeoCoord 1-1
| | | | | | | | yGeoCoord 1-1
| | | | | | | | zGeoCoord 0-0
| | | | note 0-99
| | | | | @numberingOrg [Optional]
| | | | | @codeList [Optional]
| | | | | @noteLabel [Optional]
| | PIbody 1-1
| | | Plitem 1-unbounded
| | | | @logo [Optional]

```

```

| | @legalEntity [Required]
| | | partyQualifiedID 0-unbounded
| | | | @numberingOrg [Optional]
| | | | @idQualifier [Optional]
| | - choose -
| | | individual 1-1
| | | | firstName 0-1
| | | | lastName 1-1
| | | | birthDate 0-1
| | | | | @dateForm [Optional]
| | | | gender 0-1
| | - or -
| | | legalName 1-1
| | - end choose -
| | | partyCategory 0-unbounded
| | | | @partyCategoryType [Required]
| | | brand 0-unbounded
| | | | @numberingOrg [Optional]
| | | | @codeList [Optional]
| | | | @listName [Optional]
| | | | @listVersion [Optional]
| | | partyDescription 0-unbounded
| | | | @ln [Optional]
| | | language 0-unbounded
| | | partyReference 0-unbounded
| | | | @refQualifier [Optional]
| | | | brand 0-unbounded
| | | | | @numberingOrg [Optional]
| | | | | @codeList [Optional]
| | | | | @listName [Optional]
| | | | | @listVersion [Optional]
| | | | legalName 0-1
| | | | person 0-1
| | | | | @email [Optional]
| | | | | @phone [Optional]
| | | | | @fax [Optional]
| | | | dept 0-1
| | | | street 0-1
| | | | city 0-1
| | | | subCountry 0-1
| | | | country 0-1
| | | | postCode 0-1
| | | | note 0-unbounded
| | | | | @numberingOrg [Optional]
| | | | | @codeList [Optional]
| | | | | @noteLabel [Optional]
| | | | invoicee 0-1
| | | | | partyQualifiedID 0-1
| | | | | | @numberingOrg [Optional]
| | | | | | @idQualifier [Optional]
| | | | | additionalIdentifier 0-9
| | | | | | @numberingOrg [Optional]
| | | | | | @idQualifier [Optional]
| | | - choose -
| | | | legalName 1-1
| | | - or -
| | | | | firstName 1-1
| | | | | lastName 1-1
| | | - end choose -
| | | | street 0-1
| | | | city 0-1
| | | | subCountry 0-1
| | | | country 0-1
| | | | postCode 0-1
| | | | note 0-unbounded
| | | | | @numberingOrg [Optional]
| | | | | @codeList [Optional]
| | | | | @noteLabel [Optional]

```

```

| | | payTermText 0-unbounded
| | | payment 0-5
| | |   @finDiscount [Optional]
| | |   @finSurcharge [Optional]
| | | - choose -
| | |   | payTerm 1-1
| | | - or -
| | |   | payTermText 1-1
| | | - end choose -
| | |   | payMode 0-1
| | | finInfo 0-9
| | |   | accountName 0-1
| | |     | bank 0-1
| | |       | legalName 0-1
| | |       | dept 0-1
| | |       | subDept 0-1
| | |       | person 0-1
| | |       | @email [Optional]
| | |       | @phone [Optional]
| | |       | @fax [Optional]
| | |       | street 0-1
| | |       | city 0-1
| | |       | subCountry 0-1
| | |       | country 0-1
| | |       | postCode 0-1
| | |       | geoCoordinates 0-1
| | |         | @um [Optional] [Default= DEGD]
| | |         | @geoReferenceSystem [Optional]
| | |           | xGeoCoord 1-1
| | |           | yGeoCoord 1-1
| | |           | zGeoCoord 0-0
| | | - choose -
| | |   | iban 1-1
| | | - or -
| | |   | bankIT 1-1
| | |     | legalName 0-1
| | |     | cin 0-1
| | |     | abi 1-1
| | |     | cab 1-1
| | |     | accountN 1-1
| | | - end choose -
| | |   | swift 0-1
| | |   | note 0-99
| | |     | @numberingOrg [Optional]
| | |     | @codeList [Optional]
| | |     | @noteLabel [Optional]
| | |   | note 0-99
| | |     | @numberingOrg [Optional]
| | |     | @codeList [Optional]
| | |     | @noteLabel [Optional]

```

2.2 Detailed description of document elements

Following tables show all elements (complex and simple) used in this document. Description includes: 1) element's information: xml tag, name, brief description, data type and syntax constraints; 2) information about use of the element in a particular position in the document: xpath and possible associated notes.

2.2.1 Complex elements (Aggregate Business Information Entities)

Complex elements are those elements whose content is composed of other elements (childs).Complex elements are alphabetically ordered.

attachment	an attached document. An attachment can refer to an external document or be included with the document being exchanged
bank	details of the financial institution - base type: Nad,
bankIT	Italian bank operations code (DEPRECATED, use IBAN)
externalReference	details about an external object, such as a document stored at a remote location
finInfo	bank details relevant for the payment: bank coordinates, SWIFT code, account
geoCoordinates	geographical coordinates
individual	Data of an individual.
invoicee	Whole data of the invoicee.
partyReference	Reference.
payment	payment details for payment all in one
PIbody	Body of the "Party Information" document.
PIheader	Header of the "Party Information" document.
PIitem	Party details.
receiverParty	Details of the party receiving the document. - base type: Nad,
refDoc	identification of a document and of an item thereof, to which the message makes reference
senderParty	Details of the party sending the document. - base type: Nad,
thirdParty	identification and details of the Third Party, different from Sender and Receiver of the document - base type: Nad,

2.2.2 Simple elements (Basic Business Information Entities)

Simple elements are those elements whose content is characterized by a data type plus a domain of possible values. Simple elements are alphabetically ordered.

abi	ABI code - base type: string, length: 5,
accountN	account number - base type: string, max length: 15,
accountName	account name - base type: string, max length: 250,

additionalIdentifier	additional identification code of a Party, for example customs registries or others - base type: string, max length: 15,
binaryObject	a binary large object containing an attached document, Coding 'base64Binary' is recommended. - base type: base64Binary,
birthDate	Birth date (in case of individuals). - base type: string,
brand	A brand name. - base type: string,
cab	CAB code - base type: string, length: 5,
@characterSet	the character set of the binary object (examples UTF-8, UTF-16, Windows-1252, ISO-8859-7,..) - base type: normalizedString,
characterSetCode	the character set of an external document (examples UTF-8, UTF-16, Windows-1252, ISO-8859-7,..) - base type: normalizedString,
cin	CIN code - base type: string, length: 5,
city	name of the city (town, village) - base type: string, max length: 40,
@codeList	it specifies the URL where the list of codes used to make an instance of the element can be found - base type: string, max length: 255,
country	code of the nation - base type: string, cod. table: T10 http://www.ebiz.enea.it/moda-ml/repository/codelist/draft/gc_T10.xml
@dateForm	format used for the date - base type: string, cod. table: NT29 http://www.ebiz.enea.it/moda-ml/repository/codelist/draft/gc_NT29.xml
dept	name or code of a department - base type: string, max length: 40,
docDate	date of issue of the referenced document, according to one of the patterns YYYY-MM-DD, YYYY-MM-DD:HH-MM or YYYY-WW. - base type: string,
docID	identification number of the referenced document - base type: string, max length: 80,
@docType	type or class to which the referenced document belongs - base type: string, cod. table: T21 http://www.ebiz.enea.it/moda-ml/repository/codelist/draft/gc_T21.xml
@email	electronic mail address of the contact person within a Party - base type: string, max length: 250,
@encoding	specifies the decoding algorithm of the binary object - base type: normalizedString,
encodingCode	the encoding/decoding algorithm used with the external object (example is 'base64Binary') - base type: normalizedString,
@fax	fax number of the contact person within a Party - base type: string, max length: 35,
fileName	unique identifier (name) of the file - base type: string, max length: 255,
@finDiscount	financial discount rate applied for payment by the date specified

	- base type: decimal, min inclusive: 0, max inclusive: 100, fraction digits: 2,
<i>@finSurcharge</i>	financial surcharge rate applied for payment after the date specified - base type: decimal, min inclusive: 0, max inclusive: 100, fraction digits: 2,
firstName	Person first name. - base type: string,
<i>@format</i>	the format of the binary content (examples xml, pdf, doc,...) - base type: string,
formatCode	the format of the external object (examples xml, pdf, doc,...) - base type: normalizedString,
gender	The state of being male or female (in case of individual). - base type: string, length: 1, cod. table: NT73 http://www.ebiz.enea.it/moda-ml/repository/codelist/draft/gc_NT73.xml
<i>@geoReferenceSystem</i>	georeference system adopted for the coordinate (in example wgs84 with decimal degree or degree with minute and seconds) - base type: string,
iban	international bank and account identifier, used for fund transfer - base type: string, max length: 35,
id	primary identification code of a Party; it is recommended the format: nation code (ISO 3166) + VAT identification number (11 crt), with the qualifier "numberingOrg"= MF - base type: string, max length: 15,
<i>@idQualifier</i>	Qualification of the identifier. - base type: string,
<i>@isURL</i>	it indicates if the referred element is an URL (true) or not (false) - base type: boolean,
itemID	number of the line/item of the referenced document - base type: string, max length: 40,
language	Language. - base type: string, cod. table: NT60 http://www.ebiz.enea.it/moda-ml/repository/codelist/draft/gc_NT60.xml
lastName	Person last name. - base type: string,
<i>@legalEntity</i>	It indicates whether the party is a legal entity or individual ("True" = legal entity, "False" = individual). - base type: boolean,
legalName	legal name - base type: string, max length: 250,
<i>@listName</i>	the name of the list of codes used to make an instance of the element (it might be thought as descriptive element, i.e. 'fabric printing technologies', or not, i.e. "T264") - base type: string, max length: 40,
<i>@listVersion</i>	it specifies the version of the list of codes used to make an instance of the element - base type: string, max length: 6,
<i>@ln</i>	Language code. - base type: string, cod. table: NT60 http://www.ebiz.enea.it/moda-ml/repository/codelist/draft/gc_NT60.xml
<i>@logo</i>	company logo (URL of the image jpeg or gif). It is recommended that the width of the image does not exceed 640 pixel. - base type: string, max length: 255,
<i>@mime</i>	the mime type of the binary object - base type: normalizedString,
mimeCode	mime type of the external object - base type: normalizedString,

msgDate	date of issue of the present message (xml document), according to one of the patterns YYYY-MM-DD, YYYY-MM-DD:HH-MM or YYYY-WW. - base type: string,
@msgfunction	function performed by the present message with regards to the transmission - base type: string, cod. table: NT18 http://www.ebiz.enea.it/moda-ml/repository/codelist/draft/gc_NT18.xml
msgID	key identifier of the business document in the information system of the issuing Party. In case of more despatches of the same business document, it is unchanged. - base type: string, max length: 35,
msgN	identification number given to the message (xml document) by its issuer. In case of more despatches of the same business document, it changes. - base type: string, max length: 35,
note	free text or structured (computer processing) note. For note structuring use the attributes "noteLabel" and "codelist" - base type: string, max length: 350,
@noteLabel	subject qualifier of a note - base type: string, max length: 35,
@numberingOrg	code specifying the organisation who has created or owns the coding or numbering system - base type: string, cod. table: NT6 http://www.ebiz.enea.it/moda-ml/repository/codelist/draft/gc_NT6.xml
partyCategory	Code qualifying the Party respect with reference to a category (for example: cluster, market, ...). - base type: string,
@partyCategoryType	Category type for party classification. - base type: string,
partyDescription	Free text description of a party. - base type: string,
partyQualifiedID	Identification code of a Party. - base type: string,
payMode	way or means of payment - base type: string, cod. table: T2 http://www.ebiz.enea.it/moda-ml/repository/codelist/draft/gc_T2.xml
payTerm	code specifying the terms or time by which the payment must be done - base type: string, cod. table: T1 http://www.ebiz.enea.it/moda-ml/repository/codelist/draft/gc_T1.xml
payTermText	free text specifying the terms by which the payment must be done (time/mode or means) - base type: string, max length: 250,
person	name of a person (e.g. contact person within an organization) - base type: string, max length: 40,
@phone	phone number of the contact person within a Party - base type: string, max length: 35,
postCode	code defining the postal zone - base type: string, max length: 10,
@refQualifier	Reference qualifier (for ex. main contact, operating headquarters, invoicing, shipping, purchasing department, storage, ...). - base type: string,
@role	Third Party role qualifier - base type: string, cod. table: NT2 http://www.ebiz.enea.it/moda-ml/repository/codelist/draft/gc_NT2.xml
season	sale season; defined as: season (1 crt) + year (4 crt) - season: S/S=1 A/W=2 Spring=3 Summer=4 Autumn=5 Winter=6: for more than four seasons use alphabetic sequence: 1st season=A 2nd season=B etc.etc.

	- base type: string, max length: 15,
@sender	qualifier that specifies the Party issuing of the document - base type: boolean,
street	street and building number identifying a location - base type: string, max length: 80,
subCountry	short name or code of the sub-country entity - base type: string, max length: 9,
subDept	name or code of a department - base type: string, max length: 40,
swift	swift code relevant to the financial transaction - base type: string, max length: 15,
@uid	unique element identifier within the xml document - base type: string,
@um	specification of the unit of measure - base type: string, cod. table: NT7 http://www.ebiz.enea.it/moda-ml/repository/codelist/draft/gc_NT7.xml
uri	Uniform Resource Identifier (URI) that identifies the external object as an Internet resource - base type: normalizedString,
@useProfile	use profile to which the present document is compliant if it was agreed by the parties. It is suggested a URI with reference to the firms or the URL of the profile. - base type: string,
validityEnd	date by which the validity ends, according to one of the patterns YYYY-MM-DD, YYYY-MM-DD:HH-MM or YYYY-WW. - base type: string,
@VAT	VAT rate or code (DEPRECATED, use dtScheme element) - base type: string, cod. table: NT16 http://www.ebiz.enea.it/moda-ml/repository/codelist/draft/gc_NT16.xml
@version	Dictionary version from which the instance has been created - base type: string, cod. table: NT100 http://www.ebiz.enea.it/moda-ml/repository/codelist/draft/gc_NT100.xml
xGeoCoord	geographical coordinate x , corresponding to latitude - base type: decimal,
yGeoCoord	geographical coordinate y , corresponding to longitude - base type: decimal,
zGeoCoord	geographical coordinate z , corresponding to altitude - base type: decimal,

2.3 Suggested best practices

PARTIn/PIheader/refDoc/docID (identification number of the referenced document)

numberingOrg indicates the role that produced the document identifier (it is allowed to declare two different ones -e.g. customer and supplier - with two docID with different numberingOrg

PARTIn/PIheader/refDoc/attachment/externalReference/mimeCode (mime type of the external object)

Use coding from IANA <http://www.iana.org/assignments/media-types/media-types.xml>

2.4 Enumeration tables

List of enumeration tables used in the XML document. You can find all the tables with the corresponding codes at:
<http://www.ebiz.enea.it/eBIZ/imple/eBIZTCU-draft.asp?lingua=en&pag=6>

NT100 - eBIZ TCFUpstream version
NT16 - VAT rate or code
NT18 - message function
NT2 - third party qualifier
NT29 - format of a date
NT6 - coding system owner/issuer
NT60 - language, codes from ISO 639-1 (subset)
NT7 - unit of measure
NT73 - Gender
T1 - terms of payment
T10 - ISO3166 - Country
T2 - Modes of payment
T21 - type of document

ACKNOWLEDGEMENT



This action is part of the TRICK project, which has received funding from Horizon 2020 research and innovation programme under grant agreement No. 958352 of the European Union.

DISCLAIMER

The content of this document represents the views of the authors only and is their sole responsibility; it cannot be considered to reflect the views of the European Commission or any other body of the European Union.

The European Commission does not accept any responsibility for use that may be made of the information it contains.

Annex A

Representative images of the principal complex elements' structure.

