



<http://www.ebiz-tcf.eu>

DRAFT

Extract from IMPLEMENTATION GUIDE
TRANSACTION "DOCUMENT AVAILABILITY ADVISE"

Version: draft

Date of release: 9/10/2022

Document code: TRC005e

technical Documentation: <http://www.ebiz.enea.it>

XML Schemas repository: <http://www.ebiz.enea.it/moda-ml/repository/schema/draft/default.asp>

Guides repository: <http://www.ebiz.enea.it/moda-ml/repository/guide/draft/default.asp>

Guide filename: TRC005-eBIZ-DocumentAvailabilityAdvise.pdf

0. PREMISE

This document contains a proposal for the updating and extension of eBIZ specifications starting from the eBIZ version 2018. Under the name of 'Draft version' it is reported the result of an extensive work of analysis and consultation aimed at developing and maintaining eBIZ specifications.

In particular, the content of this proposal is the result of various activities, mainly those carried out within the framework of the **TRICK project** funded by the European Commission: grant agreement 958352, call H2020-LOW-CARBON-CIRCULAR-INDUSTRIES-2020 / H2020-LCCI-2020-EASME-twostage.

The technical contents are backwards compatible with the latest official published version, with the exclusion of the totally new concepts added explicitly for the version that are thought as incremental evolution of the knowledge base.

1. BUSINESS DESCRIPTION

1.1 Scope

This guide aims to illustrate to fashion companies the standard XML format of the document type "NEW DOCUMENT ADVISE", providing instructions for its use in the context of a TRACEABILITY SYSTEM involving Fashion Manufacturers, their customers, third parties and in case customs authorities, eBusiness and eCommerce platforms. All the rules necessary for the construction and validation of the document are expressed through a specific XML schema, which is presented in detail in the paragraph "Implementation Guide".

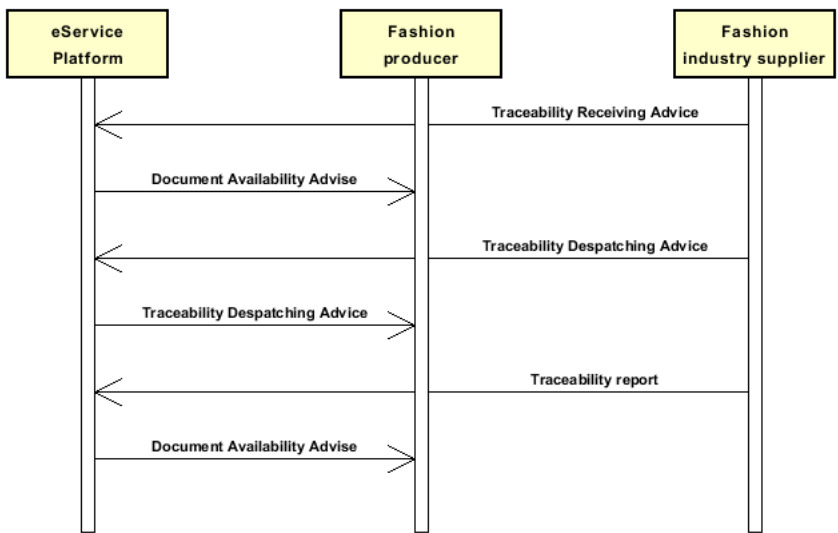
1.2 Generalities

This document is intended to inform a party, be it a company or a service platform, that one or more (new) documents are available and to provide some metadata, including information on where they can be found. For each reported document, among the metadata, there is a flag that indicates whether the availability of the document requires taking some specific action, indications on any document to which it refers and finally an indication of traceable objects to which it refers.

The document could be included in the message as a binary object, choice not recommended for practical reasons, or it could be indicated with a file name or with an external reference through a URI.

1.3. Possible scenario

P1.A2 Incoming material



2. IMPLEMENTATION GUIDE

2.1 General structure of XML document

All the business data that can be exchanged through this class of documents are shown in the following "document structure", that provides a simplified vision of the Schema.

In particular:

- the two numbers following each element define its "cardinality" (minimum and maximum number of occurrences); the minimum equal zero indicates that the element is optional, the minimum greater than zero indicates that is mandatory;
- the bold character denotes the complex elements (aggregates of simple elements) that were built for the sake of functionality and re-usability of some complex informations sets. The child elements in each parent element are easily spotted as "indented";
- the symbol "@" denotes an attribute of the preceding element; here "the usage indicator (optional, required, ...)" is shown in square brackets.

Structure

GPDdocAvailability

@msgfunction [Optional]

@version [Optional] [Default= 2018-1]

@useProfile [Optional]

GPDheader 1-1

msgN 1-1

msgDate 1-1

@dateForm [Optional]

refDoc 0-9

@docType [Required]

docID 1-2

@numberingOrg [Optional]

docDate 0-1

@dateForm [Optional]

season 0-1

@numberingOrg [Optional]

@codeList [Optional]

@listName [Optional]

@listVersion [Optional]

itemID 0-1

attachment 0-1

@uid [Optional]

fileName 0-1

@numberingOrg [Optional]

binaryObject 0-1

@format [Optional]

@mime [Optional]

@encoding [Optional]

@characterSet [Optional]

externalReference 0-99

uri 1-1

@isURL [Optional] [Default= true]

mimeCode 0-1

formatCode 0-1

encodingCode 0-1

characterSetCode 0-1

senderParty 1-1

@role [Optional]

@sender [Optional]

id 1-1

@numberingOrg [Optional]

legalName 0-1

dept 0-1

subDept 0-1

person 0-1

@email [Optional]

@phone [Optional]

@fax [Optional]

street 0-1

- | city 0-1
- | subCountry 0-1
- | country 0-1
- | postCode 0-1
- | **geoCoordinates 0-1**
- | | @um [Optional] [Default= DEGD]
- | | @geoReferenceSystem [Optional]
- | | | xGeoCoord 1-1
- | | | yGeoCoord 1-1
- | | | zGeoCoord 0-0

GPDAbody 1-1

GDPAitem 1-unbounded

- | docID 1-1
- | | @numberingOrg [Optional]
- | docDate 1-1
- | | @dateForm [Optional]
- | title 0-unbounded
- | | @ln [Optional]
- | description 0-unbounded
- | | @ln [Optional]
- | validityStart 0-1
- | | @dateForm [Optional]
- | validityEnd 0-1
- | | @dateForm [Optional]
- | **issuerParty 0-1**
- | | id 0-1
- | | | @numberingOrg [Optional]
- | | legalName 0-1
- | | dept 0-1
- | | subDept 0-1
- | | person 0-1
- | | | @email [Optional]
- | | | @phone [Optional]
- | | | @fax [Optional]
- | | street 0-1
- | | city 0-1
- | | subCountry 0-1
- | | country 0-1
- | | postCode 0-1
- | | **geoCoordinates 0-1**
- | | | @um [Optional] [Default= DEGD]
- | | | @geoReferenceSystem [Optional]
- | | | | xGeoCoord 1-1
- | | | | yGeoCoord 1-1
- | | | | zGeoCoord 0-0
- | | issuerAccreditationInfo 0-1
- | availabilityDateTime 0-1
- | | @dateForm [Required]

refDoc 0-9

- | | @docType [Required]
- | | docID 1-2
- | | | @numberingOrg [Optional]
- | | docDate 0-1
- | | | @dateForm [Optional]
- | | season 0-1
- | | | @numberingOrg [Optional]
- | | | @codeList [Optional]
- | | | @listName [Optional]
- | | | @listVersion [Optional]
- | | itemID 0-1

attachment 0-1

- | | @uid [Optional]
- | | | fileName 0-1
- | | | | @numberingOrg [Optional]
- | | | binaryObject 0-1
- | | | | @format [Optional]
- | | | | @mime [Optional]

```

| | | | @encoding [Optional]
| | | | @characterSet [Optional]
| | | | externalReference 0-99
| | | | | uri 1-1
| | | | | @isURL [Optional] [Default= true]
| | | | | mimeTypeCode 0-1
| | | | | formatCode 0-1
| | | | | encodingCode 0-1
| | | | | characterSetCode 0-1
| | | | tracedObjects 0-unbounded
| | | | | uniqueProductID 1-1
| | | | | @schemeID [Required]
| | | | | objectTypeCode 1-1
| | | | | qty 0-2
| | | | | @um [Required]
| | | | | objectInstanceList 1-1
| | | | | | objectInstanceIdentification 1-unbounded
| | | | | | | @objectInstanceTypeCode [Required]
| | | | | | | objectID 1-9
| | | | | | | @schemeID [Required]
| | | | | actionRequired 0-1
| | | | | signatureInformation 0-1
| | | | | | signatureTypeCode 1-1
| | | | | | signatoryParty 0-unbounded
| | | | | | | id 0-1
| | | | | | | @numberingOrg [Optional]
| | | | | | | legalName 0-1
| | | | | | | dept 0-1
| | | | | | | subDept 0-1
| | | | | | | person 0-1
| | | | | | | @email [Optional]
| | | | | | | @phone [Optional]
| | | | | | | @fax [Optional]
| | | | | | | street 0-1
| | | | | | | city 0-1
| | | | | | | subCountry 0-1
| | | | | | | country 0-1
| | | | | | | postCode 0-1
| | | | | | | geoCoordinates 0-1
| | | | | | | @um [Optional] [Default= DEGD]
| | | | | | | @geoReferenceSystem [Optional]
| | | | | | | | xGeoCoord 1-1
| | | | | | | | yGeoCoord 1-1
| | | | | | | | zGeoCoord 0-0
| | | | | attachment 0-1
| | | | | | @uid [Optional]
| | | | | | | fileName 0-1
| | | | | | | @numberingOrg [Optional]
| | | | | | | binaryObject 0-1
| | | | | | | @format [Optional]
| | | | | | | @mime [Optional]
| | | | | | | @encoding [Optional]
| | | | | | | @characterSet [Optional]
| | | | | | | externalReference 0-99
| | | | | | | | uri 1-1
| | | | | | | | @isURL [Optional] [Default= true]
| | | | | | | | mimeTypeCode 0-1
| | | | | | | | formatCode 0-1
| | | | | | | | encodingCode 0-1
| | | | | | | | characterSetCode 0-1
| | | | | note 0-99
| | | | | | @numberingOrg [Optional]
| | | | | | @codeList [Optional]
| | | | | | @noteLabel [Optional]

```

2.2 Detailed description of document elements

Following tables show all elements (complex and simple) used in this document. Description includes: 1) element's information: xml tag, name, brief description, data type and syntax constraints; 2) information about use of the element in a particular position in the document: xpath and possible associated notes.

2.2.1 Complex elements (Aggregate Business Information Entities)

Complex elements are those elements whose content is composed of other elements (childs).Complex elements are alphabetically ordered.

attachment	an attached document. An attachment can refer to an external document or be included with the document being exchanged
externalReference	details about an external object, such as a document stored at a remote location
GDPItem	line item of the document named "DOCUMENT AVAILABILITY ADVISE", it signals the availability of a document on which it also gives some information - base type: ,
geoCoordinates	geographical coordinates
GPDAbody	body of the document "DOCUMENT AVAILABILITY ADVISE"
GPDheader	header of the "DOCUMENT AVAILABILITY ADVISE"
issuerParty	Details of the party that issued the document. - base type: Nad,
objectInstanceIdentification	Identification of an object instance, it could contain more than one identifier of the same object as long as they refer to different identification schemes
objectInstanceList	list of object instances (it contains the identifiers of each lot or instance managed)
refDoc	identification of a document and of an item thereof, to which the message makes reference
senderParty	Details of the party sending the document. - base type: Nad,
signatoryParty	Details of the party that signed the document. - base type: Nad,
signatureInformation	information about the document signature
tracedObjects	container of one or more instances of traced objects of the same type together with information on their type (it is corresponding to a single sku, for example the product defined as article-variant-color-size) . - base type: ,

2.2.2 Simple elements (Basic Business Information Entities)

Simple elements are those elements whose content is characterized by a data type plus a domain of possible values. Simple elements are alphabetically ordered.

actionRequired	indicates that some action is required by the element it is associated with - base type: boolean,
availabilityDateTime	The value of the date, or date and time, starting from when the element to which it is associated was made available; according to one of the patterns YYYY-MM-DD, YYYY-MM-DD:HH-MM or YYYY-WW. - base type: string,
binaryObject	a binary large object containing an attached document, Coding 'base64Binary' is recommended.

	- base type: base64Binary,
<i>@characterSet</i>	the character set of the binary object (examples UTF-8, UTF-16, Windows-1252, ISO-8859-7,...) - base type: normalizedString,
characterSetCode	the character set of an external document (examples UTF-8, UTF-16, Windows-1252, ISO-8859-7,...) - base type: normalizedString,
city	name of the city (town, village) - base type: string, max length: 40,
<i>@codeList</i>	it specifies the URL where the list of codes used to make an instance of the element can be found - base type: string, max length: 255,
country	code of the nation - base type: string, cod. table: T10 http://www.ebiz.enea.it/moda-ml/repository/codelist/draft/gc_T10.xml
<i>@dateForm</i>	format used for the date - base type: string, cod. table: NT29 http://www.ebiz.enea.it/moda-ml/repository/codelist/draft/gc_NT29.xml
dept	name or code of a department - base type: string, max length: 40,
description	free text description. The content of the element must be unique, it might be translated and repeated into more languages (thus no more than one instance for each language). - base type: string, max length: 250,
docDate	date of issue of the referenced document, according to one of the patterns YYYY-MM-DD, YYYY-MM-DD:HH-MM or YYYY-WW. - base type: string,
docID	identification number of the referenced document - base type: string, max length: 80,
<i>@docType</i>	type or class to which the referenced document belongs - base type: string, cod. table: T21 http://www.ebiz.enea.it/moda-ml/repository/codelist/draft/gc_T21.xml
<i>@email</i>	electronic mail address of the contact person within a Party - base type: string, max length: 250,
<i>@encoding</i>	specifies the decoding algorithm of the binary object - base type: normalizedString,
encodingCode	the encoding/decoding algorithm used with the external object (example is 'base64Binary') - base type: normalizedString,
<i>@fax</i>	fax number of the contact person within a Party - base type: string, max length: 35,
fileName	unique identifier (name) of the file - base type: string, max length: 255,
<i>@format</i>	the format of the binary content (examples xml, pdf, doc,...) - base type: string,
formatCode	the format of the external object (examples xml, pdf, doc,...) - base type: normalizedString,
<i>@geoReferenceSystem</i>	georeference system adopted for the coordinate (in example wgs84 with decimal degree or degree with minute and seconds) - base type: string,
id	primary identification code of a Party; it is recommended the format: nation code (ISO 3166) + VAT identification number (11 crt), with the qualifier "numberingOrg"= MF

	- base type: string, max length: 15,
issuerAccreditationInfo	accrediting information of the issuer of the document - base type: string,
@isURL	it indicates if the referred element is an URL (true) or not (false) - base type: boolean,
itemID	number of the line/item of the referenced document - base type: string, max length: 40,
legalName	legal name - base type: string, max length: 250,
@listName	the name of the list of codes used to make an instance of the element (it might be thought as descriptive element, i.e. 'fabric printing technologies', or not, i.e. "T264") - base type: string, max length: 40,
@listVersion	it specifies the version of the list of codes used to make an instance of the element - base type: string, max length: 6,
@ln	Language code. - base type: string, cod. table: NT60 http://www.ebiz.enea.it/moda-ml/repository/codelist/draft/gc_NT60.xml
@mime	the mime type of the binary object - base type: normalizedString,
mimeCode	mime type of the external object - base type: normalizedString,
msgDate	date of issue of the present message (xml document), according to one of the patterns YYYY-MM-DD, YYYY-MM-DD:HH-MM or YYYY-WW. - base type: string,
@msgfunction	function performed by the present message with regards to the transmission - base type: string, cod. table: NT18 http://www.ebiz.enea.it/moda-ml/repository/codelist/draft/gc_NT18.xml
msgN	identification number given to the message (xml document) by its issuer. In case of more despatches of the same business document, it changes. - base type: string, max length: 35,
note	free text or structured (computer processing) note. For note structuring use the attributes "noteLabel" and "codelist" - base type: string, max length: 350,
@noteLabel	subject qualifier of a note - base type: string, max length: 35,
@numberingOrg	code specifying the organisation who has created or owns the coding or numbering system - base type: string, cod. table: NT6 http://www.ebiz.enea.it/moda-ml/repository/codelist/draft/gc_NT6.xml
objectID	Object identifier - base type: string,
@objectInstanceTypeCode	code that identifies the type of object instance - base type: string, cod. table: NT202 http://www.ebiz.enea.it/moda-ml/repository/codelist/draft/gc_NT202.xml
objectTypeCode	code that identifies the type of object - base type: string, cod. table: T302 http://www.ebiz.enea.it/moda-ml/repository/codelist/draft/gc_T302.xml
person	name of a person (e.g. contact person within an organization) - base type: string, max length: 40,
@phone	phone number of the contact person within a Party - base type: string, max length: 35,
postCode	code defining the postal zone

	- base type: string, max length: 10,
qty	net quantity of the article or object correlated, qualified by the function of the document (ordering, delivering, ..) and by the context - base type: decimal, min inclusive: 0, fraction digits: 2,
@role	Third Party role qualifier - base type: string, cod. table: NT2 http://www.ebiz.enea.it/moda-ml/repository/codelist/draft/gc_NT2.xml
@schemeID	identifier of an identification scheme - base type: string,
season	sale season; defined as: season (1 crt) + year (4 crt) - season: S/S=1 A/W=2 Spring=3 Summer=4 Autumn=5 Winter=6: for more than four seasons use alphabetic sequence: 1st season=A 2nd season=B etc.etc. - base type: string, max length: 15,
@sender	qualifier that specifies the Party issuing of the document - base type: boolean,
signatureTypeCode	indicator of existing and type of signature - base type: string,
street	street and building number identifying a location - base type: string, max length: 80,
subCountry	short name or code of the sub-country entity - base type: string, max length: 9,
subDept	name or code of a department - base type: string, max length: 40,
title	document title - base type: string,
@uid	unique element identifier within the xml document - base type: string,
@um	specification of the unit of measure - base type: string, cod. table: NT7 http://www.ebiz.enea.it/moda-ml/repository/codelist/draft/gc_NT7.xml
uniqueProductID	Unique product identifier. It identifies the product completely, differentiating any variants, sizes, colors, etc. It should be unique throughout the whole value chain. (It can be the GTIN) - base type: string, max length: 80,
uri	Uniform Resource Identifier (URI) that identifies the external object as an Internet resource - base type: normalizedString,
@useProfile	use profile to which the present document is compliant if it was agreed by the parties. It is suggested a URI with reference to the firms or the URL of the profile. - base type: string,
validityEnd	date by which the validity ends, according to one of the patterns YYYY-MM-DD, YYYY-MM-DD:HH-MM or YYYY-WW. - base type: string,
validityStart	date by which the validity starts, according to one of the patterns YYYY-MM-DD, YYYY-MM-DD:HH-MM or YYYY-WW. - base type: string,
@version	Dictionary version from which the instance has been created - base type: string, cod. table: NT100 http://www.ebiz.enea.it/moda-ml/repository/codelist/draft/gc_NT100.xml
xGeoCoord	geographical coordinate x , corresponding to latitude - base type: decimal,
yGeoCoord	geographical coordinate y , corresponding to longitude

	- base type: decimal,
zGeoCoord	geographical coordinate z , corresponding to altitude - base type: decimal,

2.3 Suggested best practices

GPDocAvailability/GPDABody/GDPAitem/refDoc/docID (identification number of the referenced document)

numberingOrg indicates the role that produced the document identifier (it is allowed to declare two different ones -e.g. customer and supplier - with two docID with different numberingOrg

GPDocAvailability/GPDheader/refDoc/docID (identification number of the referenced document)

numberingOrg indicates the role that produced the document identifier (it is allowed to declare two different ones -e.g. customer and supplier - with two docID with different numberingOrg

**GPDocAvailability/GPDABody/GDPAitem/attachment/
externalReference/mimeCode (mime type of the external object)**

Use coding from IANA <http://www.iana.org/assignments/media-types/media-types.xml>

**GPDocAvailability/GPDABody/GDPAitem/refDoc/
attachment/externalReference/mimeCode (mime type of the external object)**

Use coding from IANA <http://www.iana.org/assignments/media-types/media-types.xml>

**GPDocAvailability/GPDheader/refDoc/attachment/
externalReference/mimeCode (mime type of the external object)**

Use coding from IANA <http://www.iana.org/assignments/media-types/media-types.xml>

2.4 Enumeration tables

List of enumeration tables used in the XML document. You can find all the tables with the corresponding codes at:
<http://www.ebiz.enea.it/eBIZ/imple/eBIZTCU-draft.asp?lingua=en&pag=6>

NT100 - eBIZ TCFUpstream version
NT18 - message function
NT2 - third party qualifier
NT202 - Type of the object Instance
NT29 - format of a date
NT6 - coding system owner/issuer
NT60 - language, codes from ISO 639-1 (subset)
NT7 - unit of measure
T10 - ISO3166 - Country
T21 - type of document
T302 - type of object

ACKNOWLEDGEMENT



This action is part of the TRICK project, which has received funding from Horizon 2020 research and innovation programme under grant agreement No. 958352 of the European Union.

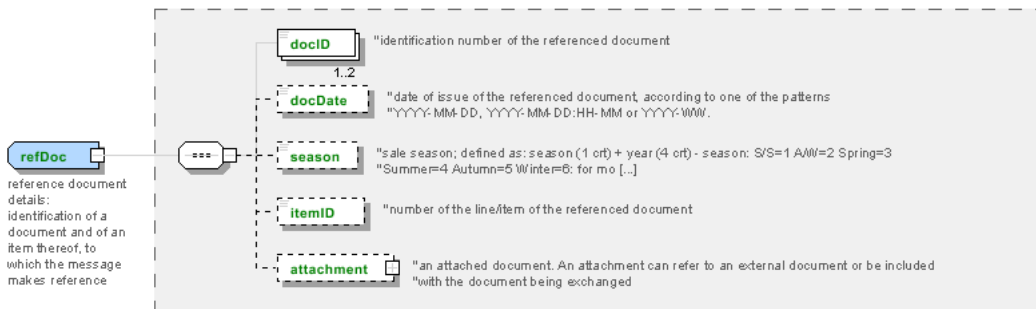
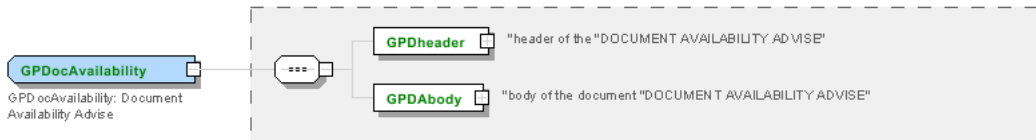
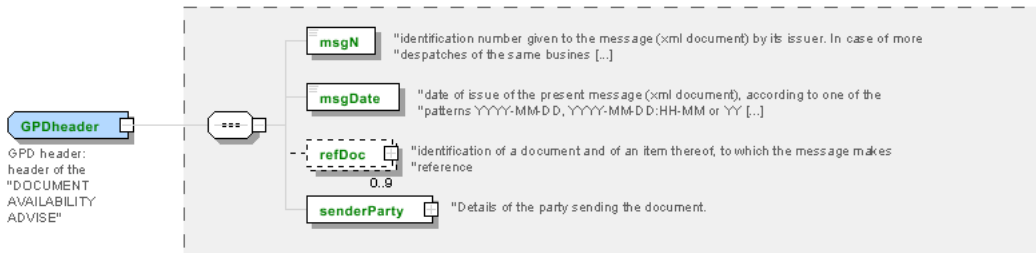
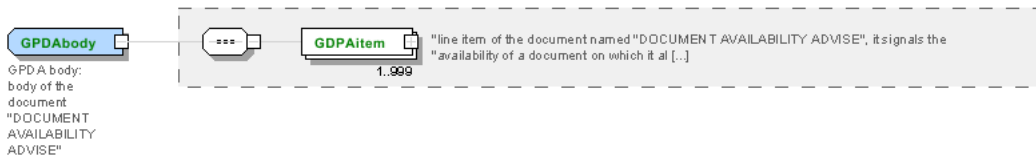
DISCLAIMER

The content of this document represents the views of the authors only and is their sole responsibility; it cannot be considered to reflect the views of the European Commission or any other body of the European Union.

The European Commission does not accept any responsibility for use that may be made of the information it contains.

Annex A

Representative images of the principal complex elements' structure.



tracedObjects

traced objects: container of one or more instances of objects of the same type together with information on their type (it is corresponding to a single sku, for example the product defined as article-variant-color-size).

