



<http://www.ebiz-tcf.eu>

DRAFT

Extract from IMPLEMENTATION GUIDE
TRANSACTION "SERVICE FINAL RESPONSE"

Version: draft

Date of release: 9/10/2022

Document code: TRC009e

technical Documentation: <http://www.ebiz.enea.it>

XML Schemas repository: <http://www.ebiz.enea.it/moda-ml/repository/schema/draft/default.asp>

Guides repository: <http://www.ebiz.enea.it/moda-ml/repository/guide/draft/default.asp>

Guide filename: TRC009-eBIZ-ServiceFinalResponse.pdf

0. PREMISE

This document contains a proposal for the updating and extension of eBIZ specifications starting from the eBIZ version 2018. Under the name of 'Draft version' it is reported the result of an extensive work of analysis and consultation aimed at developing and maintaining eBIZ specifications.

In particular, the content of this proposal is the result of various activities, mainly those carried out within the framework of the **TRICK project** funded by the European Commission: grant agreement 958352, call H2020-LOW-CARBON-CIRCULAR-INDUSTRIES-2020 / H2020-LCCI-2020-EASME-twostage.

The technical contents are backwards compatible with the latest official published version, with the exclusion of the totally new concepts added explicitly for the version that are thought as incremental evolution of the knowledge base.

1. BUSINESS DESCRIPTION

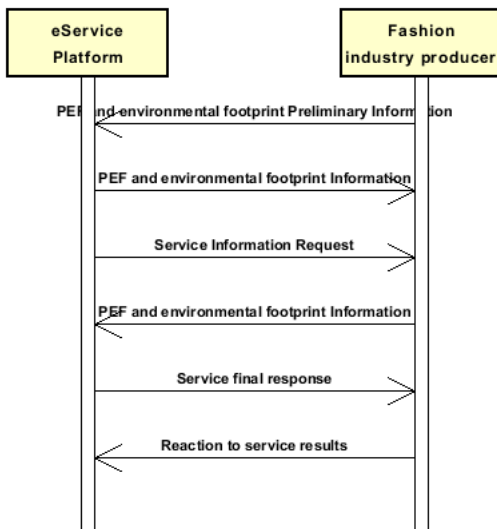
1.1 Scope

This guide aims to illustrate the standard XML format of the document type originated by a service, providing instructions for its use in the context of a TRANSPARENCY SYSTEM involving Fashion Manufacturers, their customers, third parties and in case customs authorities, eBusiness and eCommerce platforms.

All the rules necessary for the construction and validation of the document are expressed through a specific XML schema, which is presented in detail in the paragraph "Implementation Guide".

1.2. Possible scenario

S3.1 PEF and environmental footprint assessment service execution



2. IMPLEMENTATION GUIDE

2.1 General structure of XML document

All the business data that can be exchanged through this class of documents are shown in the following "document structure", that provides a simplified vision of the Schema.

In particular:

- the two numbers following each element define its "cardinality" (minimum and maximum number of occurrences); the minimum equal zero indicates that the element is optional, the minimum greater than zero indicates that is mandatory;
- the bold character denotes the complex elements (aggregates of simple elements) that were built for the sake of functionality and re-usability of some complex informations sets. The child elements in each parent element are easily spotted as "indented";
- the symbol "@" denotes an attribute of the preceding element; here "the usage indicator (optional, required, ...)" is shown in square brackets.

Structure

SRVFinalResponse

@version [Optional] [Default= 2018-1]

@useProfile [Optional]

```
| SRVheader 1-1
| | msgID 0-1
| | msgDate 0-1
| | @dateForm [Optional]
| | senderParty 1-1
| | @role [Optional]
| | @sender [Optional]
| | | id 1-1
| | | | @numberingOrg [Optional]
| | | | legalName 0-1
| | | | dept 0-1
| | | | subDept 0-1
| | | | person 0-1
| | | | @email [Optional]
| | | | @phone [Optional]
| | | | @fax [Optional]
| | | | street 0-1
| | | | city 0-1
| | | | subCountry 0-1
| | | | country 0-1
| | | | postCode 0-1
| | | | geoCoordinates 0-1
| | | | | @um [Optional] [Default= DEGD]
| | | | | @geoReferenceSystem [Optional]
| | | | | | xGeoCoord 1-1
| | | | | | yGeoCoord 1-1
| | | | | | zGeoCoord 0-0
| | receiverParty 1-1
| | @role [Optional]
| | @sender [Optional]
| | | id 1-1
| | | | @numberingOrg [Optional]
| | | | legalName 0-1
| | | | dept 0-1
| | | | subDept 0-1
| | | | person 0-1
| | | | @email [Optional]
| | | | @phone [Optional]
| | | | @fax [Optional]
| | | | street 0-1
| | | | city 0-1
| | | | subCountry 0-1
| | | | country 0-1
| | | | postCode 0-1
| | | | geoCoordinates 0-1
| | | | | @um [Optional] [Default= DEGD]
```

- | | | @geoReferenceSystem [Optional]
- | | | | xGeoCoord 1-1
- | | | | yGeoCoord 1-1
- | | | | zGeoCoord 0-0
- | | **platformServiceRef 1-1**
- | | | platformService 1-1
- | | | | @schemeID [Optional]
- | | | serviceTicketIdentifierID 0-1
- | | | serviceRequestedAction 1-1

| **finalReport 0-9**

| | @docStatusCode [Optional]

- | | | docID 1-1
- | | | | @numberingOrg [Optional]
- | | | title 0-unbounded
- | | | | @ln [Optional]
- | | | description 0-unbounded
- | | | | @ln [Optional]
- | | | validityStart 0-1
- | | | | @dateForm [Optional]
- | | | validityEnd 0-1
- | | | | @dateForm [Optional]

| | **issuerParty 1-9**

- | | | id 0-1
- | | | | @numberingOrg [Optional]
- | | | legalName 0-1
- | | | dept 0-1
- | | | subDept 0-1
- | | | person 0-1
- | | | | @email [Optional]
- | | | | @phone [Optional]
- | | | | @fax [Optional]
- | | | street 0-1
- | | | city 0-1
- | | | subCountry 0-1
- | | | country 0-1
- | | | postCode 0-1
- | | | **geoCoordinates 0-1**
- | | | | @um [Optional] [Default= DEGD]
- | | | | @geoReferenceSystem [Optional]
- | | | | | xGeoCoord 1-1
- | | | | | yGeoCoord 1-1
- | | | | | zGeoCoord 0-0
- | | | issuerAccreditationInfo 0-1

| | **signatureInformation 0-9**

| | | signatureTypeCode 1-1

| | | **signatoryParty 0-unbounded**

- | | | | id 0-1
- | | | | | @numberingOrg [Optional]
- | | | | legalName 0-1
- | | | | dept 0-1
- | | | | subDept 0-1
- | | | | person 0-1
- | | | | | @email [Optional]
- | | | | | @phone [Optional]
- | | | | | @fax [Optional]
- | | | | street 0-1
- | | | | city 0-1
- | | | | subCountry 0-1
- | | | | country 0-1
- | | | | postCode 0-1
- | | | | **geoCoordinates 0-1**
- | | | | | @um [Optional] [Default= DEGD]
- | | | | | @geoReferenceSystem [Optional]
- | | | | | | xGeoCoord 1-1
- | | | | | | yGeoCoord 1-1
- | | | | | | zGeoCoord 0-0

| | **attachment 0-1**

```

| | @uid [Optional]
| | | fileName 0-1
| | | @numberingOrg [Optional]
| | | binaryObject 0-1
| | | @format [Optional]
| | | @mime [Optional]
| | | @encoding [Optional]
| | | @characterSet [Optional]
| | | externalReference 0-99
| | | | uri 1-1
| | | | @isURL [Optional] [Default= true]
| | | | mimeTypeCode 0-1
| | | | formatCode 0-1
| | | | encodingCode 0-1
| | | | characterSetCode 0-1
| | note 0-99
| | | @numberingOrg [Optional]
| | | @codeList [Optional]
| | | @noteLabel [Optional]
|
| note 0-9
| | @numberingOrg [Optional]
| | @codeList [Optional]
| | @noteLabel [Optional]

```

2.2 Detailed description of document elements

Following tables show all elements (complex and simple) used in this document. Description includes: 1) element's information: xml tag, name, brief description, data type and syntax constraints; 2) information about use of the element in a particular position in the document: xpath and possible associated notes.

2.2.1 Complex elements (Aggregate Business Information Entities)

Complex elements are those elements whose content is composed of other elements (childs).Complex elements are alphabetically ordered.

attachment	an attached document. An attachment can refer to an external document or be included with the document being exchanged
externalReference	details about an external object, such as a document stored at a remote location
finalReport	service final report and proposed further actions - base type: ,
geoCoordinates	geographical coordinates
issuerParty	Details of the party that issued the document. - base type: Nad,
platformServiceRef	service instruction and reference - base type: string,
receiverParty	Details of the party receiving the document. - base type: Nad,
senderParty	Details of the party sending the document. - base type: Nad,
signatoryParty	Details of the party that signed the document. - base type: Nad,
signatureInformation	information about the document signature
SRVheader	header of documents supporting ePlatform services

2.2.2 Simple elements (Basic Business Information Entities)

Simple elements are those elements whose content is characterized by a data type plus a domain of possible values. Simple elements are alphabetically ordered.

binaryObject	a binary large object containing an attached document, Coding 'base64Binary' is recommended. - base type: base64Binary,
@characterSet	the character set of the binary object (examples UTF-8, UTF-16, Windows-1252, ISO-8859-7,..) - base type: normalizedString,
characterSetCode	the character set of an external document (examples UTF-8, UTF-16, Windows-1252, ISO-8859-7,..) - base type: normalizedString,
city	name of the city (town, village) - base type: string, max length: 40,
@codeList	it specifies the URL where the list of codes used to make an instance of the element can be found - base type: string, max length: 255,
country	code of the nation

	- base type: string, cod. table: T10 http://www.ebiz.enea.it/moda-ml/repository/codelist/draft/gc_T10.xml
@dateForm	format used for the date - base type: string, cod. table: NT29 http://www.ebiz.enea.it/moda-ml/repository/codelist/draft/gc_NT29.xml
dept	name or code of a department - base type: string, max length: 40,
description	free text description. The content of the element must be unique, it might be translated and repeated into more languages (thus no more than one instance for each language). - base type: string, max length: 250,
docID	identification number of the referenced document - base type: string, max length: 80,
@docStatusCode	current status of the document - base type: decimal, cod. table: NT313 http://www.ebiz.enea.it/moda-ml/repository/codelist/draft/gc_NT313.xml
@email	electronic mail address of the contact person within a Party - base type: string, max length: 250,
@encoding	specifies the decoding algorithm of the binary object - base type: normalizedString,
encodingCode	the encoding/decoding algorithm used with the external object (example is 'base64Binary') - base type: normalizedString,
@fax	fax number of the contact person within a Party - base type: string, max length: 35,
fileName	unique identifier (name) of the file - base type: string, max length: 255,
@format	the format of the binary content (examples xml, pdf, doc,...) - base type: string,
formatCode	the format of the external object (examples xml, pdf, doc,...) - base type: normalizedString,
@geoReferenceSystem	georeference system adopted for the coordinate (in example wgs84 with decimal degree o degree with minute and seconds) - base type: string,
id	primary identification code of a Party; it is recommended the format: nation code (ISO 3166) + VAT identification number (11 crt), with the qualifier "numberingOrg"= MF - base type: string, max length: 15,
issuerAccreditationInfo	accrediting information of the issuer of the document - base type: string,
@isURL	it indicates if the referred element is an URL (true) or not (false) - base type: boolean,
legalName	legal name - base type: string, max length: 250,
@ln	Language code. - base type: string, cod. table: NT60 http://www.ebiz.enea.it/moda-ml/repository/codelist/draft/gc_NT60.xml
@mime	the mime type of the binary object - base type: normalizedString,
mimeCode	mime type of the external object - base type: normalizedString,
msgDate	date of issue of the present message (xml document), according to one of the patterns YYYY-MM-DD, YYYY-MM-DD:HH-MM or YYYY-WW.

	- base type: string,
msgID	key identifier of the business document in the information system of the issuing Party. In case of more despatches of the same business document, it is unchanged. - base type: string, max length: 35,
note	free text or structured (computer processing) note. For note structuring use the attributes "noteLabel" and "codelist" - base type: string, max length: 350,
@noteLabel	subject qualifier of a note - base type: string, max length: 35,
@numberingOrg	code specifying the organisation who has created or owns the coding or numbering system - base type: string, cod. table: NT6 http://www.ebiz.enea.it/moda-ml/repository/codelist/draft/gc_NT6.xml
person	name of a person (e.g. contact person within an organization) - base type: string, max length: 40,
@phone	phone number of the contact person within a Party - base type: string, max length: 35,
platformService	available service - base type: string, cod. table: TRK01 http://www.ebiz.enea.it/moda-ml/repository/codelist/draft/gc_TRK01.xml
postCode	code defining the postal zone - base type: string, max length: 10,
@role	Third Party role qualifier - base type: string, cod. table: NT2 http://www.ebiz.enea.it/moda-ml/repository/codelist/draft/gc_NT2.xml
@schemeID	identifier of an identification scheme - base type: string,
@sender	qualifier that specifies the Party issuing of the document - base type: boolean,
serviceRequestedAction	requested service action - base type: string, cod. table: TRK02 http://www.ebiz.enea.it/moda-ml/repository/codelist/draft/gc_TRK02.xml
serviceTicketIdentifierID	service ticket identifier - base type: string,
signatureTypeCode	indicator of existing and type of signature - base type: string,
street	street and building number identifying a location - base type: string, max length: 80,
subCountry	short name or code of the sub-country entity - base type: string, max length: 9,
subDept	name or code of a department - base type: string, max length: 40,
title	document title - base type: string,
@uid	unique element identifier within the xml document - base type: string,
@um	specification of the unit of measure - base type: string, cod. table: NT7 http://www.ebiz.enea.it/moda-ml/repository/codelist/draft/gc_NT7.xml
uri	Uniform Resource Identifier (URI) that identifies the external object as an Internet resource - base type: normalizedString,

<i>@useProfile</i>	use profile to which the present document is compliant if it was agreed by the parties. It is suggested a URI with reference to the firms or the URL of the profile. - base type: string,
validityEnd	date by which the validity ends, according to one of the patterns YYYY-MM-DD, YYYY-MM-DD:HH-MM or YYYY-WW. - base type: string,
validityStart	date by which the validity starts, according to one of the patterns YYYY-MM-DD, YYYY-MM-DD:HH-MM or YYYY-WW. - base type: string,
<i>@version</i>	Dictionary version from which the instance has been created - base type: string, cod. table: NT100 http://www.ebiz.enea.it/moda-ml/repository/codelist/draft/gc_NT100.xml
xGeoCoord	geographical coordinate x , corresponding to latitude - base type: decimal,
yGeoCoord	geographical coordinate y , corresponding to longitude - base type: decimal,
zGeoCoord	geographical coordinate z , corresponding to altitude - base type: decimal,

2.3 Suggested best practices

SRVFinalResponse/finalReport/attachment/

externalReference/mimeCode (mime type of the external object)

Use coding from IANA <http://www.iana.org/assignments/media-types/media-types.xml>

2.4 Enumeration tables

List of enumeration tables used in the XML document. You can find all the tables with the corresponding codes at:
<http://www.ebiz.enea.it/eBIZ/imple/eBIZTCU-draft.asp?lingua=en&pag=6>

NT100 - eBIZ TCFUpstream version
NT2 - third party qualifier
NT29 - format of a date
NT313 - status of the document
NT6 - coding system owner/issuer
NT60 - language, codes from ISO 639-1 (subset)
NT7 - unit of measure
T10 - ISO3166 - Country
TRK01 - list of available services
TRK02 - list of services functions

ACKNOWLEDGEMENT



This action is part of the TRICK project, which has received funding from Horizon 2020 research and innovation programme under grant agreement No. 958352 of the European Union.

DISCLAIMER

The content of this document represents the views of the authors only and is their sole responsibility; it cannot be considered to reflect the views of the European Commission or any other body of the European Union.

The European Commission does not accept any responsibility for use that may be made of the information it contains.

Annex A

Representative images of the principal complex elements' structure.

