



<http://www.ebiz-tcf.eu>

DRAFT

Extract from IMPLEMENTATION GUIDE
TRANSACTION "REACTION TO SERVICE RESULTS"

Version: draft

Date of release: 9/10/2022

Document code: TRC012e

technical Documentation: <http://www.ebiz.enea.it>

XML Schemas repository: <http://www.ebiz.enea.it/moda-ml/repository/schema/draft/default.asp>

Guides repository: <http://www.ebiz.enea.it/moda-ml/repository/guide/draft/default.asp>

Guide filename: TRC012-eBIZ-ReactionToServiceResults.pdf

0. PREMISE

This document contains a proposal for the updating and extension of eBIZ specifications starting from the eBIZ version 2018. Under the name of 'Draft version' it is reported the result of an extensive work of analysis and consultation aimed at developing and maintaining eBIZ specifications.

In particular, the content of this proposal is the result of various activities, mainly those carried out within the framework of the **TRICK project** funded by the European Commission: grant agreement 958352, call H2020-LOW-CARBON-CIRCULAR-INDUSTRIES-2020 / H2020-LCCI-2020-EASME-twostage.

The technical contents are backwards compatible with the latest official published version, with the exclusion of the totally new concepts added explicitly for the version that are thought as incremental evolution of the knowledge base.

1. BUSINESS DESCRIPTION

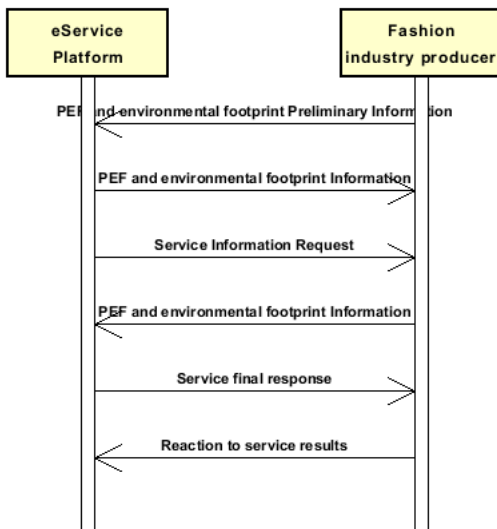
1.1 Scope

This guide aims to illustrate the standard XML format of the document type originated by a service, providing instructions for its use in the context of a TRANSPARENCY SYSTEM involving Fashion Manufacturers, their customers, third parties and in case customs authorities, eBusiness and eCommerce platforms.

All the rules necessary for the construction and validation of the document are expressed through a specific XML schema, which is presented in detail in the paragraph "Implementation Guide".

1.2. Possible scenario

S3.1 PEF and environmental footprint assessment service execution



2. IMPLEMENTATION GUIDE

2.1 General structure of XML document

All the business data that can be exchanged through this class of documents are shown in the following "document structure", that provides a simplified vision of the Schema.

In particular:

- the two numbers following each element define its "cardinality" (minimum and maximum number of occurrences); the minimum equal zero indicates that the element is optional, the minimum greater than zero indicates that is mandatory;
- the bold character denotes the complex elements (aggregates of simple elements) that were built for the sake of functionality and re-usability of some complex informations sets. The child elements in each parent element are easily spotted as "indented";
- the symbol "@" denotes an attribute of the preceding element; here "the usage indicator (optional, required, ...)" is shown in square brackets.

Structure

SRVServiceResultsReaction

@version [Optional] [Default= 2018-1]

@useProfile [Optional]

```
| SRVheader 1-1
| | msgID 0-1
| | msgDate 0-1
| | @dateForm [Optional]
| | senderParty 1-1
| | @role [Optional]
| | @sender [Optional]
| | | id 1-1
| | | | @numberingOrg [Optional]
| | | | legalName 0-1
| | | | dept 0-1
| | | | subDept 0-1
| | | | person 0-1
| | | | @email [Optional]
| | | | @phone [Optional]
| | | | @fax [Optional]
| | | | street 0-1
| | | | city 0-1
| | | | subCountry 0-1
| | | | country 0-1
| | | | postCode 0-1
| | | | geoCoordinates 0-1
| | | | | @um [Optional] [Default= DEGD]
| | | | | @geoReferenceSystem [Optional]
| | | | | | xGeoCoord 1-1
| | | | | | yGeoCoord 1-1
| | | | | | zGeoCoord 0-0
| | receiverParty 1-1
| | @role [Optional]
| | @sender [Optional]
| | | id 1-1
| | | | @numberingOrg [Optional]
| | | | legalName 0-1
| | | | dept 0-1
| | | | subDept 0-1
| | | | person 0-1
| | | | @email [Optional]
| | | | @phone [Optional]
| | | | @fax [Optional]
| | | | street 0-1
| | | | city 0-1
| | | | subCountry 0-1
| | | | country 0-1
| | | | postCode 0-1
| | | | geoCoordinates 0-1
| | | | | @um [Optional] [Default= DEGD]
```

| | | @geoReferenceSystem [Optional]
| | | | xGeoCoord 1-1
| | | | yGeoCoord 1-1
| | | | zGeoCoord 0-0
| | **platformServiceRef 1-1**
| | | platformService 1-1
| | | | @schemeID [Optional]
| | | serviceTicketIdentifierID 0-1
| | | serviceRequestedAction 1-1

| **instructionsOnDocument 1-99**
| | docID 1-1
| | | @numberingOrg [Optional]
| | discloseTo 0-99
| | | @schemeID [Optional]
| | assignStatusCode 0-1
| | notBeforeDate 0-9
| | | @dateForm [Optional]

2.2 Detailed description of document elements

Following tables show all elements (complex and simple) used in this document. Description includes: 1) element's information: xml tag, name, brief description, data type and syntax constraints; 2) information about use of the element in a particular position in the document: xpath and possible associated notes.

2.2.1 Complex elements (Aggregate Business Information Entities)

Complex elements are those elements whose content is composed of other elements (childs).Complex elements are alphabetically ordered.

geoCoordinates	geographical coordinates
instructionsOnDocument	instructions on the referred document (might include disclosure policy or status change).
platformServiceRef	service instruction and reference - base type: string,
receiverParty	Details of the party receiving the document. - base type: Nad,
senderParty	Details of the party sending the document. - base type: Nad,
SRVheader	header of documents supporting ePlatform services

2.2.2 Simple elements (Basic Business Information Entities)

Simple elements are those elements whose content is characterized by a data type plus a domain of possible values. Simple elements are alphabetically ordered.

assignStatusCode	code of the status to be assigned to the document it refers - base type: decimal, cod. table: NT313 http://www.ebiz.enea.it/moda-ml/repository/codelist/draft/gc_NT313.xml
city	name of the city (town, village) - base type: string, max length: 40,
country	code of the nation - base type: string, cod. table: T10 http://www.ebiz.enea.it/moda-ml/repository/codelist/draft/gc_T10.xml
@dateForm	format used for the date - base type: string, cod. table: NT29 http://www.ebiz.enea.it/moda-ml/repository/codelist/draft/gc_NT29.xml
dept	name or code of a department - base type: string, max length: 40,
discloseTo	Specifies to whom allow the access of the content to which it is associated. Use the values of NT311 table or indicate the type of actor or subject ID to be granted access - base type: string, cod. table: NT311 http://www.ebiz.enea.it/moda-ml/repository/codelist/draft/gc_NT311.xml
docID	identification number of the referenced document - base type: string, max length: 80,
@email	electronic mail address of the contact person within a Party - base type: string, max length: 250,
@fax	fax number of the contact person within a Party - base type: string, max length: 35,
@geoReferenceSystem	georeference system adopted for the coordinate (in example wgs84 with decimal degree o degree with minute and seconds)

	- base type: string,
id	primary identification code of a Party; it is recommended the format: nation code (ISO 3166) + VAT identification number (11 crt), with the qualifier "numberingOrg"= MF - base type: string, max length: 15,
legalName	legal name - base type: string, max length: 250,
msgDate	date of issue of the present message (xml document), according to one of the patterns YYYY-MM-DD, YYYY-MM-DD:HH-MM or YYYY-WW. - base type: string,
msgID	key identifier of the business document in the information system of the issuing Party. In case of more despatches of the same business document, it is unchanged. - base type: string, max length: 35,
notBeforeDate	earliest date possible to begin an activity, according to one of the patterns YYYY-MM-DD, YYYY-MM-DD:HH-MM or YYYY-WW. - base type: string,
@numberingOrg	code specifying the organisation who has created or owns the coding or numbering system - base type: string, cod. table: NT6 http://www.ebiz.enea.it/moda-ml/repository/codelist/draft/gc_NT6.xml
person	name of a person (e.g. contact person within an organization) - base type: string, max length: 40,
@phone	phone number of the contact person within a Party - base type: string, max length: 35,
platformService	available service - base type: string, cod. table: TRK01 http://www.ebiz.enea.it/moda-ml/repository/codelist/draft/gc_TRK01.xml
postCode	code defining the postal zone - base type: string, max length: 10,
@role	Third Party role qualifier - base type: string, cod. table: NT2 http://www.ebiz.enea.it/moda-ml/repository/codelist/draft/gc_NT2.xml
@schemeID	identifier of an identification scheme - base type: string,
@sender	qualifier that specifies the Party issuing of the document - base type: boolean,
serviceRequestedAction	requested service action - base type: string, cod. table: TRK02 http://www.ebiz.enea.it/moda-ml/repository/codelist/draft/gc_TRK02.xml
serviceTicketIdentifierID	service ticket identifier - base type: string,
street	street and building number identifying a location - base type: string, max length: 80,
subCountry	short name or code of the sub-country entity - base type: string, max length: 9,
subDept	name or code of a department - base type: string, max length: 40,
@um	specification of the unit of measure - base type: string, cod. table: NT7 http://www.ebiz.enea.it/moda-ml/repository/codelist/draft/gc_NT7.xml
@useProfile	use profile to which the present document is compliant if it was agreed by the parties. It is suggested a URI with reference to the firms or the URL of the profile. - base type: string,

@version	Dictionary version from which the instance has been created - base type: string, cod. table: NT100 http://www.ebiz.enea.it/moda-ml/repository/codelist/draft/gc_NT100.xml
xGeoCoord	geographical coordinate x , corresponding to latitude - base type: decimal,
yGeoCoord	geographical coordinate y , corresponding to longitude - base type: decimal,
zGeoCoord	geographical coordinate z , corresponding to altitude - base type: decimal,

2.3 Enumeration tables

List of enumeration tables used in the XML document. You can find all the tables with the corresponding codes at:
<http://www.ebiz.enea.it/eBIZ/imple/eBIZTCU-draft.asp?lingua=en&pag=6>

NT100 - eBIZ TCFUpstream version
NT2 - third party qualifier
NT29 - format of a date
NT311 - information disclosure level
NT313 - status of the document
NT6 - coding system owner/issuer
NT7 - unit of measure
T10 - ISO3166 - Country
TRK01 - list of available services
TRK02 - list of services functions

ACKNOWLEDGEMENT



This action is part of the TRICK project, which has received funding from Horizon 2020 research and innovation programme under grant agreement No. 958352 of the European Union.

DISCLAIMER

The content of this document represents the views of the authors only and is their sole responsibility; it cannot be considered to reflect the views of the European Commission or any other body of the European Union.

The European Commission does not accept any responsibility for use that may be made of the information it contains.

Annex A

Representative images of the principal complex elements' structure.

