



<http://www.ebiz-tcf.eu>

DRAFT

IMPLEMENTATION GUIDE

TRANSACTION "TEXTILE DESPATCH ADVICE"

Version: draft

Date of release: 17/5/2019

Document code: G006

technical Documentation: <http://www.ebiz.enea.it>

XML Schemas repository: <http://www.ebiz.enea.it/moda-ml/repository/schema/draft/default.asp>

Guides repository: <http://www.ebiz.enea.it/moda-ml/repository/guide/draft/default.asp>

Guide filename: G006-eBIZ-TextileDespatchAdvice.pdf

0. PREMISE

This document contains a proposal for the updating and extension of eBIZ specifications starting from the eBIZ version released as CEN CWA 16667 in 2013. Under the name of 'Draft version' it is reported the result of an extensive work of analysis and consultation aimed at developing and maintaining eBIZ specifications.

In particular, the content of this proposal is the result of various activities, mainly those carried out within the framework of the **eBIZ 4.0 project** funded by the European Commission, call COS-DESIGN-2015-3-06, topic COS-2015-DESIGN-2.

The technical contents are backwards compatible with the latest official published version.

1. BUSINESS DESCRIPTION

1.1 Scope

The present guide has been issued to assist the companies of the Textile-Clothing sector in the implementation of the standard XML document type "Textile DESPATCH ADVISE", providing all the instruction required for its use in any context of e-commerce between Apparel Producers, Fabric Producers and their Subcontractors.

All the rules required for the construction and validation of the document are embedded into the specific XML-Schema, which is detailed in section "Implementation guide".

1.2 Generalities

The message is issued to anticipate the details the articles actually despatched. The same message can be used with the client for sale and with the subcontractor for working operation (eg. darn disposition).

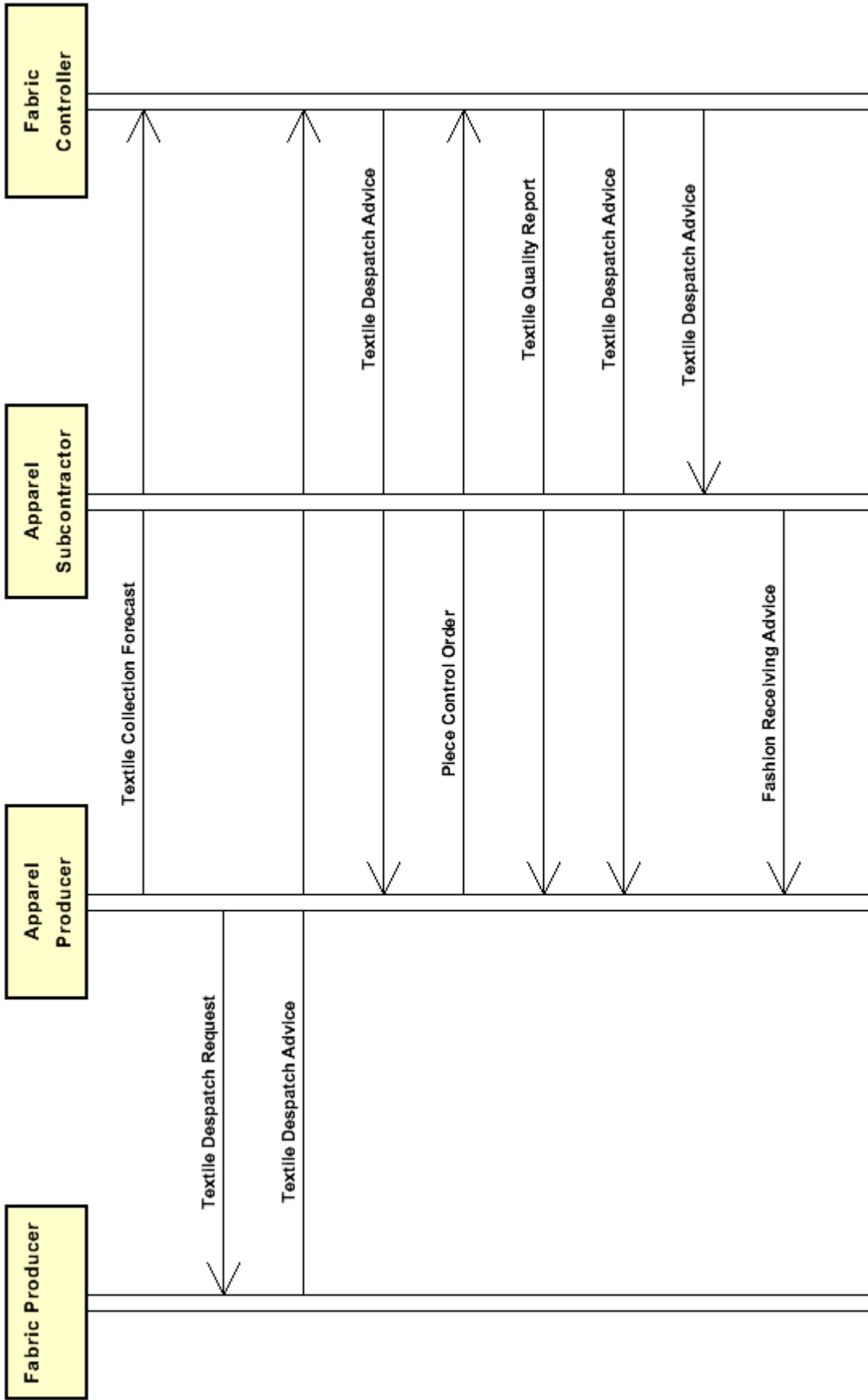
This document can be used:

- as a standard despatch advice
- as a pre-despatch notification of the goods that are to be despatched.

Each document item must correspond with a well defined fabric article (article + pattern + color) and must identify the actual pieces that make it up; for each item is possible to reference the Order line that is delivered.

1.3. Possible scenario

Fabric delivery with quality reporting by controller



2. IMPLEMENTATION GUIDE

2.1 General structure of XML document

All the business data that can be exchanged through this class of documents are shown in the following "document structure", that provides a simplified vision of the Schema.

In particular:

- the two numbers following each element define its "cardinality" (minimum and maximum number of occurrences); the minimum equal zero indicates that the element is optional, the minimum greater than zero indicates that is mandatory;
- the bold character denotes the complex elements (aggregates of simple elements) that were built for the sake of functionality and re-usability of some complex informations sets. The child elements in each parent element are easily spotted as "indented";
- the symbol "@" denotes an attribute of the preceding element; here "the usage indicator (optional, required, ...)" is shown in square brackets.

Structure

TEXDesAdvise

```
@TAType [Optional] [Default= STD]
@msgfunction [Optional] [Default= OR]
@version [Optional] [Default= draft]
@useProfile [Optional]
| TAheader 1-1
| | msgN 1-1
| | - choose -
| | msgID 0-1
| | - or -
| | docID 0-1
| | @numberingOrg [Optional]
| | - end choose -
| | msgDate 1-1
| | @dateForm [Optional]
| | refDoc 0-9
| | @docType [Required]
| | | docID 1-2
| | | @numberingOrg [Optional]
| | | docDate 0-1
| | | @dateForm [Optional]
| | | season 0-1
| | | @numberingOrg [Optional]
| | | @codeList [Optional]
| | | @listName [Optional]
| | | @listVersion [Optional]
| | | itemID 0-1
| | | attachment 0-1
| | | @uid [Optional]
| | | | fileName 0-1
| | | | @numberingOrg [Optional]
| | | | binaryObject 0-1
| | | | @format [Optional]
| | | | @mime [Optional]
| | | | @encoding [Optional]
| | | | @characterSet [Optional]
| | | | externalReference 0-99
| | | | | uri 1-1
| | | | | @isURL [Optional] [Default= true]
| | | | | mimeTypeCode 0-1
| | | | | formatCode 0-1
```

			encodingCode 0-1
			characterSetCode 0-1
			buyer 1-1
			@logo [Optional]
			@sender [Optional]
			id 1-1
			@numberingOrg [Optional]
			additionalIdentifier 0-9
			@numberingOrg [Optional]
			@idQualifier [Optional]
			legalName 0-1
			dept 0-1
			subDept 0-1
			person 0-1
			@email [Optional]
			@phone [Optional]
			@fax [Optional]
			street 0-1
			city 0-1
			subCountry 0-1
			country 0-1
			postCode 0-1
			supplier 1-1
			@logo [Optional]
			@sender [Optional]
			id 1-1
			@numberingOrg [Optional]
			additionalIdentifier 0-9
			@numberingOrg [Optional]
			@idQualifier [Optional]
			legalName 0-1
			dept 0-1
			subDept 0-1
			person 0-1
			@email [Optional]
			@phone [Optional]
			@fax [Optional]
			street 0-1
			city 0-1
			subCountry 0-1
			country 0-1
			postCode 0-1
			thirdParty 0-5
			@VAT [Optional]
			@role [Required]
			@sender [Optional]
			id 1-1
			@numberingOrg [Optional]
			legalName 0-1
			dept 0-1
			subDept 0-1
			person 0-1
			@email [Optional]
			@phone [Optional]
			@fax [Optional]
			street 0-1
			city 0-1
			subCountry 0-1
			country 0-1
			postCode 0-1
			note 0-99

| | @numberingOrg [Optional]
| | @codeList [Optional]
| | @noteLabel [Optional]

| **trade 0-1**

- choose -

| | incoTermText 1-1

- or -

| | incoTerm 1-1

- end choose -

| | location 0-1

| | @LRI [Optional]

| **shiplInfo 0-1**

| | **transInfo 0-9**

| | @transReason [Optional]

| | @progr [Optional]

| | | transMode 1-1

| | | carrier 0-1

| | | deliveryPlace 0-1

| | | grossWeight 0-1

| | | | @um [Required]

| | | netWeight 0-1

| | | | @um [Required]

| | | transMeans 0-1

| | | transCondition 0-3

| | | transConditionText 0-1

| | | despatchPlace 0-1

| | | despatchDate 0-1

| | | | @dateForm [Optional]

| | | delEffectiveDate 0-1

| | | | @dateForm [Optional]

| | delEffectiveDate 0-1

| | | @dateForm [Optional]

| | **packages 0-99**

| | @packageLevel [Optional]

- choose -

| | | packageText 1-1

- or -

| | | package 1-1

- end choose -

| | | packageModelCode 0-1

| | | | @numberingOrg [Optional]

| | | description 0-unbounded

| | | | @ln [Optional]

| | | **packageDim 0-1**

| | | | length 1-1

| | | | | @um [Required]

| | | | width 0-1

| | | | | @um [Required]

| | | | height 0-1

| | | | | @um [Required]

| | | **handlingChar 0-1**

- choose -

| | | **yarnPack 0-1**

| | | | **yarnReel 1-1**

| | | | | @reelType [Required]

| | | | | @reelMat [Optional]

| | | | | yarnReelD 0-1

| | | | | | @um [Required]

| | | | | yarnReelH 0-1

```

| | | | | @um [Required]
| | | | | yarnConeAngle 0-1
| | | | | yarnReelQty 0-2
| | | | | @um [Required]
| | | | | label 0-1
| | | | | labelWrit 0-1
| | | | | yarnInWrap 0-1
| | | | | | yarnReelWrap 1-1
| | | | | | label 0-1
| | | | | | labelWrit 0-1
| | | | | - choose -
| | | | | | yarnOutWrapText 0-1
| | | | | - or -
| | | | | | yarnOutWrap 0-1
| | | | | - end choose -
| | | | | - or -
| | | | | piecePack 0-1
| | | | | - choose -
| | | | | | piecePackText 1-1
| | | | | - or -
| | | | | | pieceInnWrap1 1-1
| | | | | | pieceInnWrap2 0-1
| | | | | | pieceOutWrap 0-1
| | | | | - end choose -
| | | | | - or -
| | | | | acsPack 0-1
| | | | | - choose -
| | | | | | acsPackCode 1-1
| | | | | - or -
| | | | | | acsPackText 1-1
| | | | | - end choose -
| | | | | - or -
| | | | | garPack 0-1
| | | | | - choose -
| | | | | | garPackCode 1-1
| | | | | - or -
| | | | | | garPackText 1-1
| | | | | - end choose -
| | | | | - end choose -
| | | | | sortableIndicator 0-1
| | | | | stackabilityLevel 0-1
| | | | | handlingType 0-1
| | | | | @In [Optional]
| | | | | volume 0-1
| | | | | @um [Required]
| | | | | netWeight 0-1
| | | | | @um [Required]
| | | | | grossWeight 0-1
| | | | | @um [Required]
| | | | | note 0-99
| | | | | @numberingOrg [Optional]
| | | | | @codeList [Optional]
| | | | | @noteLabel [Optional]
| | | | | itemsPerPackage 0-1
| | | | | @um [Required]
| | | | | minItemsPerPackage 0-1
| | | | | @um [Required]
| | | | | fillingCriterion 0-9
| | | | | @progr [Optional]
| | | | | packageQty 0-1
| | | | | packageN 0-unbounded

```



```

| | | @numberingOrg [Optional]
| | | @packageContainerN [Optional]
| | | EPCList 0-1
| | | | EPC 1-unbounded
| | | | @numberingOrg [Optional]
| | | | @TID [Optional]
| | | actualPackageUnit 0-unbounded
| | | | @packageLevel [Optional]
| | | | packageIdentification 1-1
| | | | | packageN 1-1
| | | | | @numberingOrg [Optional]
| | | | | @packageContainerN [Optional]
| | | | | serialN 0-9
| | | | | @numberingOrg [Optional]
| | | | | @idQualifier [Optional]
| | | - choose -
| | | | packageText 0-1
| | | - or -
| | | | package 0-1
| | | - end choose -
| | | | packageModelCode 0-1
| | | | | @numberingOrg [Optional]
| | | | | volume 0-1
| | | | | @um [Required]
| | | | | netWeight 0-1
| | | | | @um [Required]
| | | | | grossWeight 0-1
| | | | | @um [Required]
| | | | packageDim 0-1
| | | | | length 1-1
| | | | | | @um [Required]
| | | | | | width 0-1
| | | | | | @um [Required]
| | | | | | height 0-1
| | | | | | @um [Required]
| | | | actualItemsPerPackage 0-1
| | | | packagesList 0-1
| | | | | packageIdentification 1-unbounded
| | | | | | packageN 1-1
| | | | | | @numberingOrg [Optional]
| | | | | | @packageContainerN [Optional]
| | | | | | serialN 0-9
| | | | | | @numberingOrg [Optional]
| | | | | | @idQualifier [Optional]
| | | | | itemsList 0-1
| | | | | | qualityLevel 0-1
| | | | | | @numberingOrg [Optional]
| | | | | | @codeList [Optional]
| | | | | | @listName [Optional]
| | | | | | @listVersion [Optional]
| | | | | | itemIdentification 1-unbounded
| | | | | | | serialN 1-9
| | | | | | | @numberingOrg [Optional]
| | | | | | | @idQualifier [Optional]
| | | | | note 0-99
| | | | | | @numberingOrg [Optional]
| | | | | | @codeList [Optional]
| | | | | | @noteLabel [Optional]

```

```

| piecePack 0-1

```

```

- choose -

```

```

| | piecePackText 1-1
- or -
| | pieceInnWrap1 1-1
| | pieceInnWrap2 0-1
| | pieceOutWrap 0-1
- end choose -

```

TAbody 1-1

```

| | TItem 1-unbounded
| | @extinction [Optional] [Default= 0]
| | | lineN 1-1
| | | @VAT [Optional]
| | | refDoc 0-9
| | | @docType [Required]
| | | | docID 1-2
| | | | @numberingOrg [Optional]
| | | | docDate 0-1
| | | | @dateForm [Optional]
| | | | season 0-1
| | | | @numberingOrg [Optional]
| | | | @codeList [Optional]
| | | | @listName [Optional]
| | | | @listVersion [Optional]
| | | | itemID 0-1
| | | | attachment 0-1
| | | | | @uid [Optional]
| | | | | | fileName 0-1
| | | | | | @numberingOrg [Optional]
| | | | | | binaryObject 0-1
| | | | | | @format [Optional]
| | | | | | @mime [Optional]
| | | | | | @encoding [Optional]
| | | | | | @characterSet [Optional]
| | | | | externalReference 0-99
| | | | | | uri 1-1
| | | | | | @isURL [Optional] [Default= true]
| | | | | | mimeTypeCode 0-1
| | | | | | formatCode 0-1
| | | | | | encodingCode 0-1
| | | | | | characterSetCode 0-1
| | | | |
| | | | texCode 1-2
| | | | | @numberingOrg [Optional]
| | | | | | art 1-1
| | | | | | @numberingOrg [Optional]
| | | | | | @codeList [Optional]
| | | | | | @listName [Optional]
| | | | | | @listVersion [Optional]
| | | | | | pattern 0-1
| | | | | | @numberingOrg [Optional]
| | | | | | @codeList [Optional]
| | | | | | @listName [Optional]
| | | | | | @listVersion [Optional]
| | | | | | color 0-1
| | | | | | @numberingOrg [Optional]
| | | | | | @codeList [Optional]
| | | | | | @listName [Optional]
| | | | | | @listVersion [Optional]
| | | | | | added 0-9
| | | | | | @numberingOrg [Optional]
| | | | | | @addType [Optional]
| | | | | | description 0-unbounded

```

| @In [Optional]
 qty 1-2
 @um [Required]
piece 1-unbounded
 @endUse [Optional]
 | serialN 0-9
 | @numberingOrg [Optional]
 | @idQualifier [Optional]
 EPC 0-1
 | @numberingOrg [Optional]
 | @TID [Optional]
 totFault 0-1
 pieceStatus 0-1
 pieceLength 0-1
 | @um [Optional] [Default= MTR]
 pieceWidth 0-1
 | @um [Optional] [Default= CMT]
 pieceCutWidth 0-1
 | @um [Optional] [Default= CMT]
 pieceWeight 0-1
 | @um [Optional] [Default= KGM]
 pieceWeightM 0-1
 | @um [Optional] [Default= GRM]
 grossWeight 0-1
 | @um [Required]
 pieceAllow 0-1
 | @um [Required]
 lotN 0-2
 | @numberingOrg [Optional]
 dyeN 0-1
 | @numberingOrg [Optional]
 mixMatch 0-1
 | @numberingOrg [Optional]
 packageN 0-1
 | @numberingOrg [Optional]
 | @packageContainerN [Optional]
piecePack 0-1
 - choose -
 | | piecePackText 1-1
 - or -
 | | pieceInnWrap1 1-1
 | | pieceInnWrap2 0-1
 | | pieceOutWrap 0-1
 - end choose -
thirdParty 0-1
 @VAT [Optional]
 @role [Required]
 @sender [Optional]
 | id 1-1
 | @numberingOrg [Optional]
 legalName 0-1
 dept 0-1
 subDept 0-1
 person 0-1
 | @email [Optional]
 | @phone [Optional]
 | @fax [Optional]
 street 0-1
 city 0-1
 subCountry 0-1
 country 0-1

```

| | | | postCode 0-1
| | | | shipInfo 0-1
| | | |   transInfo 0-9
| | | |     @transReason [Optional]
| | | |     @progr [Optional]
| | | |       transMode 1-1
| | | |       carrier 0-1
| | | |       deliveryPlace 0-1
| | | |       grossWeight 0-1
| | | |       @um [Required]
| | | |       netWeight 0-1
| | | |       @um [Required]
| | | |       transMeans 0-1
| | | |       transCondition 0-3
| | | |       transConditionText 0-1
| | | |       despatchPlace 0-1
| | | |       despatchDate 0-1
| | | |       @dateForm [Optional]
| | | |       delEffectiveDate 0-1
| | | |       @dateForm [Optional]
| | | |   delEffectiveDate 0-1
| | | |   @dateForm [Optional]
| | | |   packages 0-99
| | | |   @packageLevel [Optional]
| | | | - choose -
| | | |   | packageText 1-1
| | | | - or -
| | | |   | package 1-1
| | | | - end choose -
| | | |   | packageModelCode 0-1
| | | |   | @numberingOrg [Optional]
| | | |   | description 0-unbounded
| | | |   | @ln [Optional]
| | | |   | packageDim 0-1
| | | |   |   length 1-1
| | | |   |   @um [Required]
| | | |   |   width 0-1
| | | |   |   @um [Required]
| | | |   |   height 0-1
| | | |   |   @um [Required]
| | | |   | handlingChar 0-1
| | | | - choose -
| | | |   | yarnPack 0-1
| | | |   |   yarnReel 1-1
| | | |   |   @reelType [Required]
| | | |   |   @reelMat [Optional]
| | | |   |   yarnReelID 0-1
| | | |   |   @um [Required]
| | | |   |   yarnReelH 0-1
| | | |   |   @um [Required]
| | | |   |   yarnConeAngle 0-1
| | | |   |   yarnReelQty 0-2
| | | |   |   @um [Required]
| | | |   |   label 0-1
| | | |   |   labelWrit 0-1
| | | |   |   yarnInWrap 0-1
| | | |   |   yarnReelWrap 1-1
| | | |   |   label 0-1
| | | |   |   labelWrit 0-1
| | | | - choose -
| | | |   | yarnOutWrapText 0-1

```

```

- or -
| | | | | | | | yarnOutWrap 0-1
- end choose -
- or -
| | | | | | | | piecePack 0-1
- choose -
| | | | | | | | piecePackText 1-1
- or -
| | | | | | | | pieceInnWrap1 1-1
| | | | | | | | pieceInnWrap2 0-1
| | | | | | | | pieceOutWrap 0-1
- end choose -
- or -
| | | | | | | | acsPack 0-1
- choose -
| | | | | | | | acsPackCode 1-1
- or -
| | | | | | | | acsPackText 1-1
- end choose -
- or -
| | | | | | | | garPack 0-1
- choose -
| | | | | | | | garPackCode 1-1
- or -
| | | | | | | | garPackText 1-1
- end choose -
- end choose -
| | | | | | | | sortableIndicator 0-1
| | | | | | | | stackabilityLevel 0-1
| | | | | | | | handlingType 0-1
| | | | | | | | @ln [Optional]
| | | | | | | | volume 0-1
| | | | | | | | @um [Required]
| | | | | | | | netWeight 0-1
| | | | | | | | @um [Required]
| | | | | | | | grossWeight 0-1
| | | | | | | | @um [Required]
| | | | | | | | note 0-99
| | | | | | | | @numberingOrg [Optional]
| | | | | | | | @codeList [Optional]
| | | | | | | | @noteLabel [Optional]
| | | | | | | | itemsPerPackage 0-1
| | | | | | | | @um [Required]
| | | | | | | | minItemsPerPackage 0-1
| | | | | | | | @um [Required]
| | | | | | | | fillingCriterion 0-9
| | | | | | | | @progr [Optional]
| | | | | | | | packageQty 0-1
| | | | | | | | packageN 0-unbounded
| | | | | | | | @numberingOrg [Optional]
| | | | | | | | @packageContainerN [Optional]
| | | | | | | | EPCList 0-1
| | | | | | | | EPC 1-unbounded
| | | | | | | | @numberingOrg [Optional]
| | | | | | | | @TID [Optional]
| | | | | | | | actualPackageUnit 0-unbounded
| | | | | | | | @packageLevel [Optional]
| | | | | | | | packageIdentification 1-1
| | | | | | | | packageN 1-1
| | | | | | | | @numberingOrg [Optional]
| | | | | | | | @packageContainerN [Optional]

```

```

| | | | | serialN 0-9
| | | | |   @numberingOrg [Optional]
| | | | |   @idQualifier [Optional]
- choose -
| | | | | packageText 0-1
- or -
| | | | | package 0-1
- end choose -
| | | | | packageModelCode 0-1
| | | | |   @numberingOrg [Optional]
| | | | | volume 0-1
| | | | |   @um [Required]
| | | | | netWeight 0-1
| | | | |   @um [Required]
| | | | | grossWeight 0-1
| | | | |   @um [Required]
| | | | | packageDim 0-1
| | | | |   length 1-1
| | | | |     @um [Required]
| | | | |   width 0-1
| | | | |     @um [Required]
| | | | |   height 0-1
| | | | |     @um [Required]
| | | | | actualItemsPerPackage 0-1
| | | | | packagesList 0-1
| | | | |   packageIdentification 1-unbounded
| | | | |     packageN 1-1
| | | | |       @numberingOrg [Optional]
| | | | |       @packageContainerN [Optional]
| | | | |     serialN 0-9
| | | | |       @numberingOrg [Optional]
| | | | |       @idQualifier [Optional]
| | | | |   itemsList 0-1
| | | | |     qualityLevel 0-1
| | | | |       @numberingOrg [Optional]
| | | | |       @codeList [Optional]
| | | | |       @listName [Optional]
| | | | |       @listVersion [Optional]
| | | | |     itemIdentification 1-unbounded
| | | | |       serialN 1-9
| | | | |         @numberingOrg [Optional]
| | | | |         @idQualifier [Optional]
| | | | | note 0-99
| | | | |   @numberingOrg [Optional]
| | | | |   @codeList [Optional]
| | | | |   @noteLabel [Optional]
note 0-99
@numberingOrg [Optional]
@codeList [Optional]
@noteLabel [Optional]

```

2.2 Detailed description of document elements

Following tables show all elements (complex and simple) used in this document. Description includes: 1) element's information: xml tag, name, brief description, data type and syntax constraints; 2) information about use of the element in a particular position in the document: xpath and possible associated notes.

2.2.1 Complex elements (Aggregate Business Information Entities)

Complex elements are those elements whose content is composed of other elements (childs).Complex elements are alphabetically ordered.

acsPack	type of wrapping or packing of the accessory (XPath <code>TEXDesAdvise/TABody/TAitem/shipInfo/packages/handlingChar/acsPack</code>) 0-1 (XPath <code>TEXDesAdvise/shipInfo/packages/handlingChar/acsPack</code>) 0-1
actualPackageUnit	description and identification of a single transport package (XPath <code>TEXDesAdvise/TABody/TAitem/shipInfo/actualPackageUnit</code>) 0-unbounded - note: <i>this element might be repeated for listing each single package of the shipment</i> (XPath <code>TEXDesAdvise/shipInfo/actualPackageUnit</code>) 0-unbounded - note: <i>this element might be repeated for listing each single package of the shipment</i>
attachment	an attached document. An attachment can refer to an external document or be included with the document being exchanged (XPath <code>TEXDesAdvise/TAheader/refDoc/attachment</code>) 0-1 (XPath <code>TEXDesAdvise/TABody/TAitem/refDoc/attachment</code>) 0-1
buyer	details of the Buyer (party that buys the good or service that is object of the current collaborative process) - base type: Nad, (XPath <code>TEXDesAdvise/TAheader/buyer</code>) 1-1
EPCList	list of identifiers used for tracing a physical item with RFID technology (XPath <code>TEXDesAdvise/TABody/TAitem/shipInfo/packages/EPCList</code>) 0-1 - note: <i>this element is DEPRECATED, please use the specific elements</i> (XPath <code>TEXDesAdvise/shipInfo/packages/EPCList</code>) 0-1 - note: <i>this element is DEPRECATED, please use the specific elements</i>
externalReference	details about an external object, such as a document stored at a remote location (XPath <code>TEXDesAdvise/TAheader/refDoc/attachment/externalReference</code>) 0-99 (XPath <code>TEXDesAdvise/TABody/TAitem/refDoc/attachment/externalReference</code>) 0-99
garPack	the packaging mode of the item or a part of it. (XPath <code>TEXDesAdvise/shipInfo/packages/handlingChar/garPack</code>) 0-1 (XPath <code>TEXDesAdvise/TABody/TAitem/shipInfo/packages/handlingChar/garPack</code>) 0-1
handlingChar	features of an item (item or package) useful for its transport and warehouse management. (XPath <code>TEXDesAdvise/shipInfo/packages/handlingChar</code>) 0-1 - note: <i>in this case the characteristics are related to the package.</i> (XPath <code>TEXDesAdvise/TABody/TAitem/shipInfo/packages/handlingChar</code>) 0-1 - note: <i>in this case the characteristics are related to the package.</i>
itemIdentification	serial identification of a product unit (XPath <code>TEXDesAdvise/TABody/TAitem/shipInfo/actualPackageUnit/itemsList/itemIdentification</code>) 1-unbounded - note: <i>identification of the single product unit contained in the list</i>

	(XPath TEXDesAdvise/shipInfo/actualPackageUnit/itemsList/itemIdentification) 1-unbounded - note: <i>identification of the single product unit contained in the list</i>
itemsList	list of the single product units (XPath TEXDesAdvise/shipInfo/actualPackageUnit/itemsList) 0-1 (XPath TEXDesAdvise/TAbody/TAitem/shipInfo/actualPackageUnit/itemsList) 0-1
packageDim	dimensions of a transport package (XPath TEXDesAdvise/shipInfo/actualPackageUnit/packageDim) 0-1 (XPath TEXDesAdvise/TAbody/TAitem/shipInfo/packages/packageDim) 0-1 (XPath TEXDesAdvise/TAbody/TAitem/shipInfo/actualPackageUnit/packageDim) 0-1 (XPath TEXDesAdvise/shipInfo/packages/packageDim) 0-1
packageIdentification	serial identification of a package (XPath TEXDesAdvise/shipInfo/actualPackageUnit/packageIdentification) 1-1 (XPath TEXDesAdvise/TAbody/TAitem/shipInfo/actualPackageUnit/packagesList/packageIdentification) 1-unbounded - note: <i>identification of the single package contained in the list</i> (XPath TEXDesAdvise/TAbody/TAitem/shipInfo/actualPackageUnit/packageIdentification) 1-1 (XPath TEXDesAdvise/shipInfo/actualPackageUnit/packagesList/packageIdentification) 1-unbounded - note: <i>identification of the single package contained in the list</i>
packages	describes the composition of the transport packaging. Each element corresponds to a type of package: type, quantity, hierarchic level, list of identifiers of the single packages (XPath TEXDesAdvise/TAbody/TAitem/shipInfo/packages) 0-99 - note: <i>this element must be iterated for each type of package</i> (XPath TEXDesAdvise/shipInfo/packages) 0-99 - note: <i>this element must be iterated for each type of package</i>
packagesList	list of single packages (XPath TEXDesAdvise/TAbody/TAitem/shipInfo/actualPackageUnit/packagesList) 0-1 - note: <i>list of packages contained within the actual package (thus with lower level). All the packages in the list should preferably have the same level.</i> (XPath TEXDesAdvise/shipInfo/actualPackageUnit/packagesList) 0-1 - note: <i>list of packages contained within the actual package (thus with lower level). All the packages in the list should preferably have the same level.</i>
piece	Identification data and measurement of the fabric piece. (XPath TEXDesAdvise/TAbody/TAitem/piece) 1-unbounded
piecePack	type of wrapping or packing of the fabric pieces (XPath TEXDesAdvise/shipInfo/packages/handlingChar/piecePack) 0-1 (XPath TEXDesAdvise/TAbody/TAitem/piece/piecePack) 0-1 (XPath TEXDesAdvise/TAbody/TAitem/shipInfo/packages/handlingChar/piecePack) 0-1 (XPath TEXDesAdvise/piecePack) 0-1
refDoc	identification of a document and of an item thereof, to which the message makes reference (XPath TEXDesAdvise/TAheader/refDoc) 0-9 (XPath TEXDesAdvise/TAbody/TAitem/refDoc) 0-9 - note: <i>here the number of the order line executed can be identified</i>
shipInfo	miscellaneous information on transport and transport packages, referred either to the whole document or to the single item (XPath TEXDesAdvise/shipInfo) 0-1

	(XPath <code>TEXDesAdvise/TABody/TAitem/shipInfo</code>) 0-1 - note: <i>here the infos valid for the single item must be specified</i>
supplier	details of the Supplier (party that supplies the good or service that is object of the current collaborative process) - base type: Nad, (XPath <code>TEXDesAdvise/TAheader/supplier</code>) 1-1
TABody	body of the document TEXTILES DESPATCH ADVISE (XPath <code>TEXDesAdvise/TABody</code>) 1-1
TAheader	header of the TEXTILES (YARN) DESPATCH ADVISE (XPath <code>TEXDesAdvise/TAheader</code>) 1-1 - note: <i>the attribute "logo" should be used only in conjunction with Supplier</i>
TAitem	line item of the message TEXTILES DESPATCH ADVISE (XPath <code>TEXDesAdvise/TABody/TAitem</code>) 1-unbounded
texCode	full codification of the textile product (XPath <code>TEXDesAdvise/TABody/TAitem/texCode</code>) 1-2
thirdParty	details of the Third Party, different from Buyer or Supplier - base type: Nad, (XPath <code>TEXDesAdvise/TAheader/thirdParty</code>) 0-5 - note: <i>here the Consignee when different from the Client must be specified</i> (XPath <code>TEXDesAdvise/TABody/TAitem/thirdParty</code>) 0-1 - note: <i>here the Consignee of the item, different from the one in header, must be specified</i>
trade	general terms of trade for the specified supply (XPath <code>TEXDesAdvise/trade</code>) 0-1
transInfo	details of transport: mode, carrier and delivery place (XPath <code>TEXDesAdvise/TABody/TAitem/shipInfo/transInfo</code>) 0-9 - note: <i>this data group can be iterated for each transport leg. They have to be in ordered sequence from initial place up to the final delivery place.</i> (XPath <code>TEXDesAdvise/shipInfo/transInfo</code>) 0-9 - note: <i>this data group can be iterated for each transport leg. They have to be in ordered sequence from initial place up to the final delivery place.</i>
yarnInWrap	details specifying the inner wrapping of a yarn product (XPath <code>TEXDesAdvise/shipInfo/packages/handlingChar/yarnPack/yarnInWrap</code>) 0-1 (XPath <code>TEXDesAdvise/TABody/TAitem/shipInfo/packages/handlingChar/yarnPack/yarnInWrap</code>) 0-1
yarnPack	details of type of presentation used for the yarn (XPath <code>TEXDesAdvise/TABody/TAitem/shipInfo/packages/handlingChar/yarnPack</code>) 0-1 (XPath <code>TEXDesAdvise/shipInfo/packages/handlingChar/yarnPack</code>) 0-1
yarnReel	details of the packaging of a yarn product (bobbin and reel,...) (XPath <code>TEXDesAdvise/TABody/TAitem/shipInfo/packages/handlingChar/yarnPack/yarnReel</code>) 1-1 (XPath <code>TEXDesAdvise/shipInfo/packages/handlingChar/yarnPack/yarnReel</code>) 1-1

2.2.2 Simple elements (Basic Business Information Entities)

Simple elements are those elements whose content is characterized by a data type plus a domain of possible values. Simple elements are alphabetically ordered.

acsPackCode	code specifying the type of wrapping or packing used for the accessory - base type: string,
--------------------	--

	(XPath TEXTDesAdvise/TABody/TAitem/shipInfo/packages/handlingChar/acsPack/acsPackCode) 1-1 (XPath TEXTDesAdvise/shipInfo/packages/handlingChar/acsPack/acsPackCode) 1-1
acsPackText	free text specifying the type of wrapping or packing used for the accessory - base type: string, max length: 250, (XPath TEXTDesAdvise/TABody/TAitem/shipInfo/packages/handlingChar/acsPack/acsPackText) 1-1 (XPath TEXTDesAdvise/shipInfo/packages/handlingChar/acsPack/acsPackText) 1-1
actualItemsPerPackage	the quantity of items actually contained in the package - base type: decimal, (XPath TEXTDesAdvise/shipInfo/actualPackageUnit/actualItemsPerPackage) 0-1 (XPath TEXTDesAdvise/TABody/TAitem/shipInfo/actualPackageUnit/actualItemsPerPackage) 0-1
added	additional code of the product (complementing the formers) - base type: string, max length: 80, (XPath TEXTDesAdvise/TABody/TAitem/texCode/added) 0-9 - note: <i>here an additional codification (see table T44) can be specified</i>
additionalIdentifier	additional identification code of a Party, for example customs registries or others - base type: string, max length: 15, (XPath TEXTDesAdvise/TAheader/supplier/additionalIdentifier) 0-9 - note: <i>identifiers for example for exports, such as MID (Manufacturer Identification Code), EORI (E.O.R.I. - Economic Operator Registration and Identification)</i> (XPath TEXTDesAdvise/TAheader/buyer/additionalIdentifier) 0-9 - note: <i>identifiers for example for exports, such as MID (Manufacturer Identification Code), EORI (E.O.R.I. - Economic Operator Registration and Identification)</i>
@addType	qualifier of the additional coding of a product - base type: string, cod. table: T44 http://www.ebiz.enea.it/moda-ml/repository/codelist/draft/gc_T44.xml (XPath TEXTDesAdvise/TABody/TAitem/texCode/added/@addType) [Optional] - nota: <i>addType allows the clarification of the meaning of the added element content; it is strongly suggested to use it always.</i>
art	article number of the product - base type: string, max length: 80, (XPath TEXTDesAdvise/TABody/TAitem/texCode/art) 1-1 - note: <i>can be used either for the base-article (excluding pattern/colour) or for the SKU</i>
binaryObject	a binary large object containing an attached document - base type: base64Binary, (XPath TEXTDesAdvise/TABody/TAitem/refDoc/attachment/binaryObject) 0-1 (XPath TEXTDesAdvise/TAheader/refDoc/attachment/binaryObject) 0-1
carrier	identification of the transport carrier - base type: string, max length: 40, (XPath TEXTDesAdvise/shipInfo/transInfo/carrier) 0-1 (XPath TEXTDesAdvise/TABody/TAitem/shipInfo/transInfo/carrier) 0-1
@characterSet	the character set of the binary object if the mime type is text - base type: normalizedString, (XPath TEXTDesAdvise/TABody/TAitem/refDoc/attachment/binaryObject/@characterSet) [Optional] (XPath TEXTDesAdvise/TAheader/refDoc/attachment/binaryObject/@characterSet) [Optional]

characterSetCode	<p>the character set of an external document</p> <ul style="list-style-type: none"> - base type: normalizedString, (XPath <code>TEXDesAdvise/TABody/TAitem/refDoc/attachment/externalReference/characterSetCode</code>) 0-1 (XPath <code>TEXDesAdvise/TAheader/refDoc/attachment/externalReference/characterSetCode</code>) 0-1
city	<p>name of the city (town, village)</p> <ul style="list-style-type: none"> - base type: string, max length: 40, (XPath <code>TEXDesAdvise/TABody/TAitem/thirdParty/city</code>) 0-1 (XPath <code>TEXDesAdvise/TAheader/buyer/city</code>) 0-1 (XPath <code>TEXDesAdvise/TAheader/thirdParty/city</code>) 0-1 (XPath <code>TEXDesAdvise/TAheader/supplier/city</code>) 0-1
@codeList	<p>it specifies the URL where the list of codes used to make an instance of the element can be found</p> <ul style="list-style-type: none"> - base type: string, max length: 255, (XPath <code>TEXDesAdvise/shipInfo/actualPackageUnit/itemsList/qualityLevel/@codeList</code>) [Optional] (XPath <code>TEXDesAdvise/TABody/TAitem/shipInfo/actualPackageUnit/itemsList/qualityLevel/@codeList</code>) [Optional] (XPath <code>TEXDesAdvise/TABody/TAitem/note/@codeList</code>) [Optional] - nota: <i>must be used to provide (URL) the list of codes used in "noteLabel"</i> (XPath <code>TEXDesAdvise/TABody/TAitem/shipInfo/actualPackageUnit/note/@codeList</code>) [Optional] - nota: <i>must be used to provide (URL) the list of codes used in "noteLabel"</i> (XPath <code>TEXDesAdvise/shipInfo/actualPackageUnit/note/@codeList</code>) [Optional] - nota: <i>must be used to provide (URL) the list of codes used in "noteLabel"</i> (XPath <code>TEXDesAdvise/TAheader/refDoc/season/@codeList</code>) [Optional] (XPath <code>TEXDesAdvise/TABody/TAitem/shipInfo/packages/handlingChar/note/@codeList</code>) [Optional] - nota: <i>must be used to provide (URL) the list of codes used in "noteLabel"</i> (XPath <code>TEXDesAdvise/shipInfo/packages/handlingChar/note/@codeList</code>) [Optional] - nota: <i>must be used to provide (URL) the list of codes used in "noteLabel"</i> (XPath <code>TEXDesAdvise/TABody/TAitem/refDoc/season/@codeList</code>) [Optional] (XPath <code>TEXDesAdvise/TAheader/note/@codeList</code>) [Optional] - nota: <i>must be used to provide (URL) the list of codes used in "noteLabel"</i> (XPath <code>TEXDesAdvise/TABody/TAitem/texCode/art/@codeList</code>) [Optional] - nota: <i>this attribute should be ALTERNATIVE to the others</i> (XPath <code>TEXDesAdvise/TABody/TAitem/texCode/pattern/@codeList</code>) [Optional] - nota: <i>this attribute should be ALTERNATIVE to the others</i> (XPath <code>TEXDesAdvise/TABody/TAitem/texCode/color/@codeList</code>) [Optional] - nota: <i>this attribute could be used as alternative to the others</i>
color	<p>colour number of the product, when not included in the model or fabric code</p> <ul style="list-style-type: none"> - base type: string, max length: 15, (XPath <code>TEXDesAdvise/TABody/TAitem/texCode/color</code>) 0-1
country	<p>code of the nation</p> <ul style="list-style-type: none"> - base type: string, cod. table: T10 http://www.ebiz.enea.it/moda-ml/repository/codelist/draft/gc_T10.xml (XPath <code>TEXDesAdvise/TAheader/thirdParty/country</code>) 0-1 (XPath <code>TEXDesAdvise/TAheader/supplier/country</code>) 0-1 (XPath <code>TEXDesAdvise/TAheader/buyer/country</code>) 0-1 (XPath <code>TEXDesAdvise/TABody/TAitem/thirdParty/country</code>) 0-1
@dateForm	<p>format used for the date</p> <ul style="list-style-type: none"> - base type: string, cod. table: NT29 http://www.ebiz.enea.it/moda-ml/repository/codelist/draft/gc_NT29.xml (XPath <code>TEXDesAdvise/shipInfo/delEffectiveDate/@dateForm</code>) [Optional] (XPath <code>TEXDesAdvise/TABody/TAitem/shipInfo/transInfo/despatchDate/@dateForm</code>) [Optional] (XPath <code>TEXDesAdvise/TAheader/msgDate/@dateForm</code>) [Optional] (XPath <code>TEXDesAdvise/shipInfo/transInfo/despatchDate/@dateForm</code>) [Optional] (XPath <code>TEXDesAdvise/shipInfo/transInfo/delEffectiveDate/@dateForm</code>) [Optional]

	(XPath TEXTDesAdvise/TAheader/refDoc/docDate/@dateForm) [Optional] (XPath TEXTDesAdvise/TAbody/TAitem/shipInfo/delEffectiveDate/@dateForm) [Optional] (XPath TEXTDesAdvise/TAbody/TAitem/refDoc/docDate/@dateForm) [Optional] (XPath TEXTDesAdvise/TAbody/TAitem/shipInfo/transInfo/delEffectiveDate/@dateForm) [Optional]
delEffectiveDate	effective date of delivery of goods (declared in Despatch), according to one of the patterns YYYY-MM-DD, YYYY-MM-DD:HH-MM or YYYY-WW. - base type: string, (XPath TEXTDesAdvise/TAbody/TAitem/shipInfo/delEffectiveDate) 0-1 (XPath TEXTDesAdvise/TAbody/TAitem/shipInfo/transInfo/delEffectiveDate) 0-1 (XPath TEXTDesAdvise/shipInfo/delEffectiveDate) 0-1 (XPath TEXTDesAdvise/shipInfo/transInfo/delEffectiveDate) 0-1
deliveryPlace	place of delivery of goods, ultimate or related to a given leg - base type: string, max length: 250, (XPath TEXTDesAdvise/shipInfo/transInfo/deliveryPlace) 0-1 (XPath TEXTDesAdvise/TAbody/TAitem/shipInfo/transInfo/deliveryPlace) 0-1
dept	name or code of a contact department within a Party - base type: string, max length: 40, (XPath TEXTDesAdvise/TAheader/thirdParty/dept) 0-1 (XPath TEXTDesAdvise/TAheader/buyer/dept) 0-1 (XPath TEXTDesAdvise/TAbody/TAitem/thirdParty/dept) 0-1 (XPath TEXTDesAdvise/TAheader/supplier/dept) 0-1
description	free text description. The content of the element must be unique, it might be translated and repeated into more languages (thus no more than one instance for each language). - base type: string, max length: 250, (XPath TEXTDesAdvise/shipInfo/packages/description) 0-unbounded (XPath TEXTDesAdvise/TAbody/TAitem/shipInfo/packages/description) 0-unbounded (XPath TEXTDesAdvise/TAbody/TAitem/texCode/description) 0-unbounded - note: <i>Product description</i>
despatchDate	date of despatch of goods, requested or promised in the purchase process, according to one of the patterns YYYY-MM-DD, YYYY-MM-DD:HH-MM or YYYY-WW. - base type: string, (XPath TEXTDesAdvise/shipInfo/transInfo/despatchDate) 0-1 (XPath TEXTDesAdvise/TAbody/TAitem/shipInfo/transInfo/despatchDate) 0-1
despatchPlace	place of despatch of goods, origin or related to a given leg - base type: string, max length: 250, (XPath TEXTDesAdvise/TAbody/TAitem/shipInfo/transInfo/despatchPlace) 0-1 (XPath TEXTDesAdvise/shipInfo/transInfo/despatchPlace) 0-1
docDate	date of issue of the referenced document, according to one of the patterns YYYY-MM-DD, YYYY-MM-DD:HH-MM or YYYY-WW. - base type: string, (XPath TEXTDesAdvise/TAheader/refDoc/docDate) 0-1 (XPath TEXTDesAdvise/TAbody/TAitem/refDoc/docDate) 0-1
docID	identification number of the referenced document SINCE 2008-1 ITS USE IN THE HEADER IS DISCOURAGED (REPLACED BY msgID) - base type: string, max length: 80, (XPath TEXTDesAdvise/TAheader/docID) 0-1 (XPath TEXTDesAdvise/TAheader/refDoc/docID) 1-2 (XPath TEXTDesAdvise/TAbody/TAitem/refDoc/docID) 1-2
@docType	type or class to which the referenced document belongs - base type: string, cod. table: T21 http://www.ebiz.enea.it/moda-ml/repository/codelist/draft/gc_T21.xml (XPath TEXTDesAdvise/TAheader/refDoc/@docType) [Required] (XPath TEXTDesAdvise/TAbody/TAitem/refDoc/@docType) [Required]

dyeN	number of the dyeing batch of a textile product - base type: string, max length: 15, (XPath TEXDesAdvise/TABody/TAitem/piece/dyeN) 0-1
@email	electronic mail address of the contact person within a Party - base type: string, max length: 250, (XPath TEXDesAdvise/TAheader/buyer/person/@email) [Optional] (XPath TEXDesAdvise/TAheader/thirdParty/person/@email) [Optional] (XPath TEXDesAdvise/TAheader/supplier/person/@email) [Optional] (XPath TEXDesAdvise/TABody/TAitem/thirdParty/person/@email) [Optional]
@encoding	specifies the decoding algorithm of the binary object - base type: normalizedString, (XPath TEXDesAdvise/TAheader/refDoc/attachment/binaryObject/@encoding) [Optional] (XPath TEXDesAdvise/TABody/TAitem/refDoc/attachment/binaryObject/@encoding) [Optional]
encodingCode	the encoding/decoding algorithm used with the external object - base type: normalizedString, (XPath TEXDesAdvise/TAheader/refDoc/attachment/externalReference/encodingCode) 0-1 (XPath TEXDesAdvise/TABody/TAitem/refDoc/attachment/externalReference/encodingCode) 0-1
@endUse	specifies the final use of the fabric - base type: string, cod. table: NT4 http://www.ebiz.enea.it/moda-ml/repository/codelist/draft/gc_NT4.xml (XPath TEXDesAdvise/TABody/TAitem/piece/@endUse) [Optional]
EPC	serial identifier used for tracing a physical item with RFID technology - base type: string, (XPath TEXDesAdvise/shipInfo/packages/EPCList/EPC) 1-unbounded (XPath TEXDesAdvise/TABody/TAitem/shipInfo/packages/EPCList/EPC) 1-unbounded (XPath TEXDesAdvise/TABody/TAitem/piece/EPC) 0-1 - note: <i>the use of this element is DEPRECATED, use the appropriate elements (serialN)</i>
@extinction	specified if the referred position (document/line) in refDoc is cleared (exhausted) by this line item. Value: True = exhausted, False = not exhausted - base type: boolean, (XPath TEXDesAdvise/TABody/TAitem/@extinction) [Optional] [Default= 0]
@fax	fax number of the contact person within a Party - base type: string, max length: 35, (XPath TEXDesAdvise/TABody/TAitem/thirdParty/person/@fax) [Optional] (XPath TEXDesAdvise/TAheader/thirdParty/person/@fax) [Optional] (XPath TEXDesAdvise/TAheader/supplier/person/@fax) [Optional] (XPath TEXDesAdvise/TAheader/buyer/person/@fax) [Optional]
fileName	unique identifier (name) of the file - base type: string, max length: 255, (XPath TEXDesAdvise/TAheader/refDoc/attachment/fileName) 0-1 (XPath TEXDesAdvise/TABody/TAitem/refDoc/attachment/fileName) 0-1
fillingCriterion	the assortment criterion to fill the specified kind of package: it states the homogeneity criterion (eg: "model", "color", "size"). - base type: string, cod. table: NT51 http://www.ebiz.enea.it/moda-ml/repository/codelist/draft/gc_NT51.xml (XPath TEXDesAdvise/TABody/TAitem/shipInfo/packages/fillingCriterion) 0-9 (XPath TEXDesAdvise/shipInfo/packages/fillingCriterion) 0-9
@format	the format of the binary content - base type: string, (XPath TEXDesAdvise/TABody/TAitem/refDoc/attachment/binaryObject/@format) [Optional]

	(XPath TEXTDesAdvise/TAheader/refDoc/attachment/binaryObject/@format) [Optional]
formatCode	the format of the external object - base type: normalizedString, (XPath TEXTDesAdvise/TAheader/refDoc/attachment/externalReference/formatCode) 0-1 (XPath TEXTDesAdvise/TAbody/TAitem/refDoc/attachment/externalReference/formatCode) 0-1
garPackCode	a code specifying the type of packaging used for the item. - base type: string, (XPath TEXTDesAdvise/shipInfo/packages/handlingChar/garPack/garPackCode) 1-1 (XPath TEXTDesAdvise/TAbody/TAitem/shipInfo/packages/handlingChar/garPack/garPackCode) 1-1
garPackText	a free text specifying the type of packaging used for the item. - base type: string, (XPath TEXTDesAdvise/shipInfo/packages/handlingChar/garPack/garPackText) 1-1 (XPath TEXTDesAdvise/TAbody/TAitem/shipInfo/packages/handlingChar/garPack/garPackText) 1-1
grossWeight	the gross weight, declared for transport or customs purpose - base type: decimal, min inclusive: 0, fraction digits: 2, (XPath TEXTDesAdvise/shipInfo/actualPackageUnit/grossWeight) 0-1 (XPath TEXTDesAdvise/TAbody/TAitem/piece/grossWeight) 0-1 - note: <i>gross Weight is related to the weight of the piece after packing.</i> (XPath TEXTDesAdvise/TAbody/TAitem/shipInfo/actualPackageUnit/grossWeight) 0-1 (XPath TEXTDesAdvise/shipInfo/packages/handlingChar/grossWeight) 0-1 (XPath TEXTDesAdvise/TAbody/TAitem/shipInfo/transInfo/grossWeight) 0-1 (XPath TEXTDesAdvise/shipInfo/transInfo/grossWeight) 0-1 (XPath TEXTDesAdvise/TAbody/TAitem/shipInfo/packages/handlingChar/grossWeight) 0-1
handlingType	information to handle the item (eg "breakable"). - base type: string, (XPath TEXTDesAdvise/shipInfo/packages/handlingChar/handlingType) 0-1 (XPath TEXTDesAdvise/TAbody/TAitem/shipInfo/packages/handlingChar/handlingType) 0-1
height	effective height of a specified object - base type: decimal, min inclusive: 0, fraction digits: 2, (XPath TEXTDesAdvise/shipInfo/actualPackageUnit/packageDim/height) 0-1 (XPath TEXTDesAdvise/TAbody/TAitem/shipInfo/actualPackageUnit/packageDim/height) 0-1 (XPath TEXTDesAdvise/TAbody/TAitem/shipInfo/packages/packageDim/height) 0-1 (XPath TEXTDesAdvise/shipInfo/packages/packageDim/height) 0-1
id	primary identification code of a Party; it is recommended the format: nation code (ISO 3166) + VAT identification number (11 crt), with the qualifier "numbingOrg"= MF - base type: string, max length: 15, (XPath TEXTDesAdvise/TAheader/buyer/id) 1-1 (XPath TEXTDesAdvise/TAheader/supplier/id) 1-1 (XPath TEXTDesAdvise/TAbody/TAitem/thirdParty/id) 1-1 (XPath TEXTDesAdvise/TAheader/thirdParty/id) 1-1
@idQualifier	Qualification of the identifier. - base type: string, (XPath TEXTDesAdvise/shipInfo/actualPackageUnit/packageIdentification/serialN/@idQualifier) [Optional]

	<p>- nota: <i>this attribute should be used when the numberingOrg attribute is not enough to declare the type of serial identifier</i> (XPath <code>TEXDesAdvise/TABody/TAitem/piece/serialN/@idQualifier</code>) [Optional]</p> <p>- nota: <i>this attribute should be used when the numberingOrg attribute is not enough to declare the type of serial identifier</i> (XPath <code>TEXDesAdvise/shipInfo/actualPackageUnit/itemsList/itemIdentification/serialN/@idQualifier</code>) [Optional]</p> <p>- nota: <i>this attribute should be used when the numberingOrg attribute is not enough to declare the type of serial identifier</i> (XPath <code>TEXDesAdvise/TAheader/buyer/additionalIdentifier/@idQualifier</code>) [Optional]</p> <p>- nota: <i>this attribute should be used when the numberingOrg attribute is not enough to declare the type of identifier</i> (XPath <code>TEXDesAdvise/TABody/TAitem/shipInfo/actualPackageUnit/itemsList/itemIdentification/serialN/@idQualifier</code>) [Optional]</p> <p>- nota: <i>this attribute should be used when the numberingOrg attribute is not enough to declare the type of serial identifier</i> (XPath <code>TEXDesAdvise/shipInfo/actualPackageUnit/packagesList/packageIdentification/serialN/@idQualifier</code>) [Optional]</p> <p>- nota: <i>this attribute should be used when the numberingOrg attribute is not enough to declare the type of serial identifier</i> (XPath <code>TEXDesAdvise/TAheader/supplier/additionalIdentifier/@idQualifier</code>) [Optional]</p> <p>- nota: <i>this attribute should be used when the numberingOrg attribute is not enough to declare the type of identifier</i> (XPath <code>TEXDesAdvise/TABody/TAitem/shipInfo/actualPackageUnit/packagesList/packageIdentification/serialN/@idQualifier</code>) [Optional]</p> <p>- nota: <i>this attribute should be used when the numberingOrg attribute is not enough to declare the type of serial identifier</i> (XPath <code>TEXDesAdvise/TABody/TAitem/shipInfo/actualPackageUnit/packageIdentification/serialN/@idQualifier</code>) [Optional]</p> <p>- nota: <i>this attribute should be used when the numberingOrg attribute is not enough to declare the type of serial identifier</i></p>
incoTerm	<p>specification of the terms of trade (INCOTERMS) - base type: string, cod. table: T3 http://www.ebiz.enea.it/moda-ml/repository/codelist/draft/gc_T3.xml (XPath <code>TEXDesAdvise/trade/incoTerm</code>) 1-1</p>
incoTermText	<p>free text specifying the terms of trade (incoterm, location) - base type: string, max length: 250, (XPath <code>TEXDesAdvise/trade/incoTermText</code>) 1-1</p>
@isURL	<p>it indicates if the referred element is an URL (true) or not (false) - base type: boolean, (XPath <code>TEXDesAdvise/TABody/TAitem/refDoc/attachment/externalReference/uri/@isURL</code>) [Optional] [Default= true] - nota: <i>usage of URLs is recommended</i> (XPath <code>TEXDesAdvise/TAheader/refDoc/attachment/externalReference/uri/@isURL</code>) [Optional] [Default= true] - nota: <i>usage of URLs is recommended</i></p>
itemID	<p>number of the line/item of the referenced document - base type: string, max length: 6, (XPath <code>TEXDesAdvise/TAheader/refDoc/itemID</code>) 0-1 (XPath <code>TEXDesAdvise/TABody/TAitem/refDoc/itemID</code>) 0-1</p>
itemsPerPackage	<p>the quantity of items that can be contained in a package. - base type: decimal, (XPath <code>TEXDesAdvise/shipInfo/packages/itemsPerPackage</code>) 0-1 (XPath <code>TEXDesAdvise/TABody/TAitem/shipInfo/packages/itemsPerPackage</code>) 0-1</p>

label	<p>indicates if the physical object specified has to be labelled</p> <ul style="list-style-type: none"> - base type: boolean, (XPath TEXDesAdvise/shipInfo/packages/handlingChar/yarnPack/yarnInWrap/label) 0-1 (XPath TEXDesAdvise/TABody/TAitem/shipInfo/packages/handlingChar/yarnPack/yarnInWrap/label) 0-1 (XPath TEXDesAdvise/TABody/TAitem/shipInfo/packages/handlingChar/yarnPack/yarnReel/label) 0-1 (XPath TEXDesAdvise/shipInfo/packages/handlingChar/yarnPack/yarnReel/label) 0-1
labelWrit	<p>text that must be written on the lable of a specified physical object when its customization is required</p> <ul style="list-style-type: none"> - base type: string, max length: 350, (XPath TEXDesAdvise/shipInfo/packages/handlingChar/yarnPack/yarnReel/labelWrit) 0-1 (XPath TEXDesAdvise/shipInfo/packages/handlingChar/yarnPack/yarnInWrap/labelWrit) 0-1 (XPath TEXDesAdvise/TABody/TAitem/shipInfo/packages/handlingChar/yarnPack/yarnInWrap/labelWrit) 0-1 (XPath TEXDesAdvise/TABody/TAitem/shipInfo/packages/handlingChar/yarnPack/yarnReel/labelWrit) 0-1
legalName	<p>legal name of a Party</p> <ul style="list-style-type: none"> - base type: string, max length: 250, (XPath TEXDesAdvise/TAheader/thirdParty/legalName) 0-1 (XPath TEXDesAdvise/TAheader/supplier/legalName) 0-1 (XPath TEXDesAdvise/TAheader/buyer/legalName) 0-1 (XPath TEXDesAdvise/TABody/TAitem/thirdParty/legalName) 0-1
length	<p>effective length of a specified object</p> <ul style="list-style-type: none"> - base type: decimal, min inclusive: 0, fraction digits: 2, (XPath TEXDesAdvise/shipInfo/packages/packageDim/length) 1-1 - note: <i>here the maximum dimension must also be specified</i> (XPath TEXDesAdvise/shipInfo/actualPackageUnit/packageDim/length) 1-1 - note: <i>here the maximum dimension must also be specified</i> (XPath TEXDesAdvise/TABody/TAitem/shipInfo/actualPackageUnit/packageDim/length) 1-1 - note: <i>here the maximum dimension must also be specified</i> (XPath TEXDesAdvise/TABody/TAitem/shipInfo/packages/packageDim/length) 1-1 - note: <i>here the maximum dimension must also be specified</i>
lineN	<p>number of the line item of the present message (xml document); it is set by the role that produces the document. Usually it is a progressive number, but not always.</p> <ul style="list-style-type: none"> - base type: positiveInteger, min inclusive: 1, max inclusive: 9999, (XPath TEXDesAdvise/TABody/TAitem/lineN) 1-1
@listName	<p>the name of the list of codes used to make an instance of the element (it might be thought as descriptive element, i.e. 'fabric printing technologies', or not, i.e. "T264")</p> <ul style="list-style-type: none"> - base type: string, max length: 40, (XPath TEXDesAdvise/shipInfo/actualPackageUnit/itemsList/qualityLevel/@listName) [Optional] (XPath TEXDesAdvise/TABody/TAitem/texCode/art/@listName) [Optional] - nota: <i>this attribute should always be used coupled with "numberingOrg"</i> (XPath TEXDesAdvise/TABody/TAitem/shipInfo/actualPackageUnit/itemsList/qualityLevel/@listName) [Optional] (XPath TEXDesAdvise/TAheader/refDoc/season/@listName) [Optional] (XPath TEXDesAdvise/TABody/TAitem/texCode/color/@listName) [Optional] - nota: <i>this attribute should always be used coupled with "numberingOrg"</i> (XPath TEXDesAdvise/TABody/TAitem/texCode/pattern/@listName) [Optional] - nota: <i>this attribute should always be used coupled with "numberingOrg"</i>

	(XPath TEXDesAdvise/TAbody/TAitem/refDoc/season/@listName) [Optional]
@listVersion	<p>it specifies the version of the list of codes used to make an instance of the element</p> <ul style="list-style-type: none"> - base type: string, max length: 6, (XPath TEXDesAdvise/TAbody/TAitem/texCode/pattern/@listVersion) [Optional] - nota: <i>this attribute should always be used coupled with "numberingOrg" and "listName"</i> (XPath TEXDesAdvise/TAheader/refDoc/season/@listVersion) [Optional] (XPath TEXDesAdvise/shipInfo/actualPackageUnit/itemsList/qualityLevel/@listVersion) [Optional] (XPath TEXDesAdvise/TAbody/TAitem/texCode/art/@listVersion) [Optional] - nota: <i>this attribute should always be used coupled with "numberingOrg" and "listName"</i> (XPath TEXDesAdvise/TAbody/TAitem/texCode/color/@listVersion) [Optional] - nota: <i>this attribute should always be used coupled with "numberingOrg" and "listName"</i> (XPath TEXDesAdvise/TAbody/TAitem/shipInfo/actualPackageUnit/itemsList/qualityLevel/@listVersion) [Optional] (XPath TEXDesAdvise/TAbody/TAitem/refDoc/season/@listVersion) [Optional]
@ln	<p>Language code.</p> <ul style="list-style-type: none"> - base type: string, (XPath TEXDesAdvise/shipInfo/packages/handlingChar/handlingType/@ln) [Optional] (XPath TEXDesAdvise/TAbody/TAitem/shipInfo/packages/handlingChar/handlingType/@ln) [Optional] (XPath TEXDesAdvise/shipInfo/packages/description/@ln) [Optional] (XPath TEXDesAdvise/TAbody/TAitem/texCode/description/@ln) [Optional] (XPath TEXDesAdvise/TAbody/TAitem/shipInfo/packages/description/@ln) [Optional]
location	<p>specification of a location</p> <ul style="list-style-type: none"> - base type: string, max length: 40, (XPath TEXDesAdvise/trade/location) 0-1 - note: <i>place to which the INCOTERM applies</i>
@logo	<p>company logo (URL of the image jpeg or gif). It is recommended that the width of the image does not exceed 640 pixel.</p> <ul style="list-style-type: none"> - base type: string, max length: 255, (XPath TEXDesAdvise/TAheader/buyer/@logo) [Optional] (XPath TEXDesAdvise/TAheader/supplier/@logo) [Optional]
lotN	<p>lot number of a product or batch number of the raw material</p> <ul style="list-style-type: none"> - base type: string, max length: 15, (XPath TEXDesAdvise/TAbody/TAitem/piece/lotN) 0-2 - note: <i>The lotN instances must differ by value of the numberingOrg attribute</i>
@LRI	<p>attribute usable to format a string according to a customized User rule (local rule)</p> <ul style="list-style-type: none"> - base type: string, cod. table: NT3 http://www.ebiz.enea.it/moda-ml/repository/codelist/draft/gc_NT3.xml (XPath TEXDesAdvise/trade/location/@LRI) [Optional]
@mime	<p>the mime type of the binary object</p> <ul style="list-style-type: none"> - base type: normalizedString, (XPath TEXDesAdvise/TAbody/TAitem/refDoc/attachment/binaryObject/@mime) [Optional] (XPath TEXDesAdvise/TAheader/refDoc/attachment/binaryObject/@mime) [Optional]
mimeCode	<p>mime type of the external object</p> <ul style="list-style-type: none"> - base type: normalizedString, (XPath TEXDesAdvise/TAheader/refDoc/attachment/externalReference/mimeCode) 0-1

	(XPath TEXTDesAdvise/TAbody/TAitem/refDoc/attachment/externalReference/mimeType) 0-1
minItemsPerPackage	the minimum quantity of items for the specified kind of package. - base type: decimal, min inclusive: 0, (XPath TEXTDesAdvise/shipInfo/packages/minItemsPerPackage) 0-1 (XPath TEXTDesAdvise/TAbody/TAitem/shipInfo/packages/minItemsPerPackage) 0-1
mixMatch	colour hue used for the match of garments - base type: string, max length: 15, (XPath TEXTDesAdvise/TAbody/TAitem/piece/mixMatch) 0-1
msgDate	date of issue of the present message (xml document), according to one of the patterns YYYY-MM-DD, YYYY-MM-DD:HH-MM or YYYY-WW. - base type: string, (XPath TEXTDesAdvise/TAheader/msgDate) 1-1
@msgfunction	function performed by the present message with regards to the transmission - base type: string, cod. table: NT18 http://www.ebiz.enea.it/moda-ml/repository/codelist/draft/gc_NT18.xml (XPath TEXTDesAdvise/@msgfunction) [Optional] [Default= OR]
msgID	key identifier of the business document in the information system of the issuing Party. In case of more despatches of the same business document, it is unchanged. - base type: string, max length: 35, (XPath TEXTDesAdvise/TAheader/msgID) 0-1
msgN	identification number given to the message (xml document) by its issuer. In case of more despatches of the same business document, it changes. - base type: string, max length: 35, (XPath TEXTDesAdvise/TAheader/msgN) 1-1
netWeight	the net weight declared for transport or customs purpose - base type: decimal, min inclusive: 0, fraction digits: 2, (XPath TEXTDesAdvise/TAbody/TAitem/shipInfo/actualPackageUnit/netWeight) 0-1 (XPath TEXTDesAdvise/TAbody/TAitem/shipInfo/packages/handlingChar/netWeight) 0-1 (XPath TEXTDesAdvise/shipInfo/transInfo/netWeight) 0-1 (XPath TEXTDesAdvise/shipInfo/actualPackageUnit/netWeight) 0-1 (XPath TEXTDesAdvise/shipInfo/packages/handlingChar/netWeight) 0-1 (XPath TEXTDesAdvise/TAbody/TAitem/shipInfo/transInfo/netWeight) 0-1
note	free text or structured (computer processing) note. For note structuring use the attributes "noteLabel" and "codelist" - base type: string, max length: 350, (XPath TEXTDesAdvise/TAheader/note) 0-99 (XPath TEXTDesAdvise/shipInfo/actualPackageUnit/note) 0-99 (XPath TEXTDesAdvise/TAbody/TAitem/shipInfo/actualPackageUnit/note) 0-99 (XPath TEXTDesAdvise/TAbody/TAitem/note) 0-99 (XPath TEXTDesAdvise/shipInfo/packages/handlingChar/note) 0-99 (XPath TEXTDesAdvise/TAbody/TAitem/shipInfo/packages/handlingChar/note) 0-99
@noteLabel	subject qualifier of a note - base type: string, max length: 35, (XPath TEXTDesAdvise/shipInfo/actualPackageUnit/note/@noteLabel) [Optional] - nota: <i>must be used to qualify the subject of the note</i> (XPath TEXTDesAdvise/TAheader/note/@noteLabel) [Optional] - nota: <i>must be used to qualify the subject of the note</i> (XPath TEXTDesAdvise/shipInfo/packages/handlingChar/note/@noteLabel) [Optional] - nota: <i>must be used to qualify the subject of the note</i> (XPath TEXTDesAdvise/TAbody/TAitem/shipInfo/packages/handlingChar/note/@noteLabel) [Optional] - nota: <i>must be used to qualify the subject of the note</i>

	<p>(XPath TEXDesAdvise/TABody/TAitem/shipInfo/actualPackageUnit/note/@noteLabel) [Optional] - nota: <i>must be used to qualify the subject of the note</i> (XPath TEXDesAdvise/TABody/TAitem/note/@noteLabel) [Optional] - nota: <i>must be used to qualify the subject of the note</i></p>
@numberingOrg	<p>code specifying the organisation who has created or owns the coding or numbering system - base type: string, cod. table: NT6 http://www.ebiz.enea.it/moda-ml/repository/codelist/draft/gc_NT6.xml (XPath TEXDesAdvise/TABody/TAitem/shipInfo/packages/handlingChar/note/@numberingOrg) [Optional] (XPath TEXDesAdvise/TABody/TAitem/shipInfo/packages/EPClist/EPC/@numberingOrg) [Optional] (XPath TEXDesAdvise/TABody/TAitem/shipInfo/packages/packageN/@numberingOrg) [Optional] (XPath TEXDesAdvise/TABody/TAitem/texCode/@numberingOrg) [Optional] (XPath TEXDesAdvise/TAheader/refDoc/attachment/fileName/@numberingOrg) [Optional] (XPath TEXDesAdvise/TABody/TAitem/texCode/pattern/@numberingOrg) [Optional] - nota: <i>this attribute should be used either single or coupled with "listName" and "listVersion"</i> (XPath TEXDesAdvise/TABody/TAitem/texCode/art/@numberingOrg) [Optional] - nota: <i>this attribute should be used either single or coupled with "listName" and "listVersion"</i> (XPath TEXDesAdvise/TAheader/refDoc/season/@numberingOrg) [Optional] (XPath TEXDesAdvise/TABody/TAitem/piece/serialN/@numberingOrg) [Optional] - nota: <i>here the issuer of the serial number must be specified (when different from the Supplier)</i> (XPath TEXDesAdvise/TABody/TAitem/piece/mixMatch/@numberingOrg) [Optional] (XPath TEXDesAdvise/TAheader/supplier/additionalIdentifier/@numberingOrg) [Optional] - nota: <i>here the issuer of the identifier must be specified</i> (XPath TEXDesAdvise/TABody/TAitem/piece/packageN/@numberingOrg) [Optional] (XPath TEXDesAdvise/TABody/TAitem/piece/dyeN/@numberingOrg) [Optional] (XPath TEXDesAdvise/TABody/TAitem/piece/lotN/@numberingOrg) [Optional] (XPath TEXDesAdvise/TABody/TAitem/piece/EPC/@numberingOrg) [Optional] (XPath TEXDesAdvise/TABody/TAitem/shipInfo/actualPackageUnit/packageModelCode/@numberingOrg) [Optional] (XPath TEXDesAdvise/TABody/TAitem/shipInfo/actualPackageUnit/packageIdentification/serialN/@numberingOrg) [Optional] - nota: <i>here the issuer of the serial number must be specified (when different from the Supplier)</i> (XPath TEXDesAdvise/TABody/TAitem/texCode/color/@numberingOrg) [Optional] - nota: <i>this attribute should be used either single or coupled with "listName" and "listVersion"</i> (XPath TEXDesAdvise/TAheader/buyer/id/@numberingOrg) [Optional] (XPath TEXDesAdvise/TABody/TAitem/shipInfo/actualPackageUnit/packageIdentification/packageN/@numberingOrg) [Optional] (XPath TEXDesAdvise/TABody/TAitem/shipInfo/packages/packageModelCode/@numberingOrg) [Optional] (XPath TEXDesAdvise/TAheader/supplier/id/@numberingOrg) [Optional] (XPath TEXDesAdvise/TABody/TAitem/thirdParty/id/@numberingOrg) [Optional] (XPath TEXDesAdvise/TAheader/buyer/additionalIdentifier/@numberingOrg) [Optional] - nota: <i>here the issuer of the identifier must be specified</i> (XPath TEXDesAdvise/TABody/TAitem/texCode/added/@numberingOrg) [Optional] (XPath TEXDesAdvise/shipInfo/actualPackageUnit/packagesList/packageIdentification/serialN/@numberingOrg) [Optional] - nota: <i>here the issuer of the serial number must be specified (when different from the Supplier)</i></p>

	<p>(XPath TEXDesAdvise/shipInfo/actualPackageUnit/itemsList/qualityLevel/@numberingOrg) [Optional]</p> <p>(XPath TEXDesAdvise/shipInfo/actualPackageUnit/packagesList/packageIdentification/packageN/@numberingOrg) [Optional]</p> <p>(XPath TEXDesAdvise/shipInfo/packages/EPCList/EPC/@numberingOrg) [Optional]</p> <p>(XPath TEXDesAdvise/TAheader/refDoc/docID/@numberingOrg) [Optional]</p> <p>- nota: here can be specified whose document numbering is used (e.g.: Client, Supplier, ..)</p> <p>(XPath TEXDesAdvise/TAbody/TAitem/refDoc/docID/@numberingOrg) [Optional]</p> <p>- nota: here can be specified whose document numbering is used (e.g.: Client, Supplier, ..)</p> <p>(XPath TEXDesAdvise/shipInfo/actualPackageUnit/itemsList/itemIdentification/serialN/@numberingOrg) [Optional]</p> <p>- nota: here the issuer of the serial number must be specified (when different from the Supplier)</p> <p>(XPath TEXDesAdvise/shipInfo/actualPackageUnit/note/@numberingOrg) [Optional]</p> <p>(XPath TEXDesAdvise/TAbody/TAitem/shipInfo/actualPackageUnit/itemsList/qualityLevel/@numberingOrg) [Optional]</p> <p>(XPath TEXDesAdvise/shipInfo/actualPackageUnit/packageModelCode/@numberingOrg) [Optional]</p> <p>(XPath TEXDesAdvise/shipInfo/actualPackageUnit/packageIdentification/packageN/@numberingOrg) [Optional]</p> <p>(XPath TEXDesAdvise/shipInfo/actualPackageUnit/packageIdentification/serialN/@numberingOrg) [Optional]</p> <p>- nota: here the issuer of the serial number must be specified (when different from the Supplier)</p> <p>(XPath TEXDesAdvise/shipInfo/packages/packageModelCode/@numberingOrg) [Optional]</p> <p>(XPath TEXDesAdvise/TAbody/TAitem/shipInfo/actualPackageUnit/packagesList/packageIdentification/serialN/@numberingOrg) [Optional]</p> <p>- nota: here the issuer of the serial number must be specified (when different from the Supplier)</p> <p>(XPath TEXDesAdvise/TAheader/docID/@numberingOrg) [Optional]</p> <p>- nota: here can be specified whose document numbering is used (e.g.: Client, Supplier, ..)</p> <p>(XPath TEXDesAdvise/TAbody/TAitem/shipInfo/actualPackageUnit/packagesList/packageIdentification/packageN/@numberingOrg) [Optional]</p> <p>(XPath TEXDesAdvise/shipInfo/packages/handlingChar/note/@numberingOrg) [Optional]</p> <p>(XPath TEXDesAdvise/TAheader/note/@numberingOrg) [Optional]</p> <p>(XPath TEXDesAdvise/TAbody/TAitem/refDoc/season/@numberingOrg) [Optional]</p> <p>(XPath TEXDesAdvise/TAheader/thirdParty/id/@numberingOrg) [Optional]</p> <p>(XPath TEXDesAdvise/TAbody/TAitem/shipInfo/actualPackageUnit/note/@numberingOrg) [Optional]</p> <p>(XPath TEXDesAdvise/TAbody/TAitem/refDoc/attachment/fileName/@numberingOrg) [Optional]</p> <p>(XPath TEXDesAdvise/TAbody/TAitem/note/@numberingOrg) [Optional]</p> <p>(XPath TEXDesAdvise/shipInfo/packages/packageN/@numberingOrg) [Optional]</p> <p>(XPath TEXDesAdvise/TAbody/TAitem/shipInfo/actualPackageUnit/itemsList/itemIdentification/serialN/@numberingOrg) [Optional]</p> <p>- nota: here the issuer of the serial number must be specified (when different from the Supplier)</p>
package	<p>code specifying the type of transport package</p> <p>- base type: string, cod. table: T11</p> <p>http://www.ebiz.enea.it/moda-ml/repository/codelist/draft/gc_T11.xml</p> <p>(XPath TEXDesAdvise/shipInfo/packages/package) 1-1</p> <p>(XPath TEXDesAdvise/TAbody/TAitem/shipInfo/packages/package) 1-1</p> <p>(XPath TEXDesAdvise/shipInfo/actualPackageUnit/package) 0-1</p> <p>(XPath TEXDesAdvise/TAbody/TAitem/shipInfo/actualPackageUnit/package) 0-1</p>

<p>@packageContainerN</p>	<p>reference usable to indicate the outer package containing this package</p> <ul style="list-style-type: none"> - base type: string, max length: 40, (XPath <code>TEXDesAdvise/shipInfo/packages/packageN/@packageContainerN</code>) [Optional] (XPath <code>TEXDesAdvise/shipInfo/actualPackageUnit/packageIdentification/packageN/@packageContainerN</code>) [Optional] (XPath <code>TEXDesAdvise/TAbody/TAitem/shipInfo/actualPackageUnit/packagesList/packageIdentification/packageN/@packageContainerN</code>) [Optional] (XPath <code>TEXDesAdvise/shipInfo/actualPackageUnit/packagesList/packageIdentification/packageN/@packageContainerN</code>) [Optional] (XPath <code>TEXDesAdvise/TAbody/TAitem/shipInfo/packages/packageN/@packageContainerN</code>) [Optional] (XPath <code>TEXDesAdvise/TAbody/TAitem/shipInfo/actualPackageUnit/packageIdentification/packageN/@packageContainerN</code>) [Optional] (XPath <code>TEXDesAdvise/TAbody/TAitem/piece/packageN/@packageContainerN</code>) [Optional]
<p>@packageLevel</p>	<p>level used to indicate the hierarchical structure of the packages (from outer to inner levels)</p> <ul style="list-style-type: none"> - base type: positiveInteger, min inclusive: 1, max inclusive: 9, (XPath <code>TEXDesAdvise/TAbody/TAitem/shipInfo/packages/@packageLevel</code>) [Optional] - nota: <i>number fixing the level of the package in the transport stucture (from inner to outer). Must either be used for all package types or not be used</i> (XPath <code>TEXDesAdvise/shipInfo/packages/@packageLevel</code>) [Optional] - nota: <i>number fixing the level of the package in the transport stucture (from inner to outer). Must either be used for all package types or not be used</i> (XPath <code>TEXDesAdvise/TAbody/TAitem/shipInfo/actualPackageUnit/@packageLevel</code>) [Optional] (XPath <code>TEXDesAdvise/shipInfo/actualPackageUnit/@packageLevel</code>) [Optional]
<p>packageModelCode</p>	<p>a code (eg a barcode) identifying the type of packaging</p> <ul style="list-style-type: none"> - base type: string, (XPath <code>TEXDesAdvise/TAbody/TAitem/shipInfo/actualPackageUnit/packageModelCode</code>) 0-1 (XPath <code>TEXDesAdvise/shipInfo/actualPackageUnit/packageModelCode</code>) 0-1 (XPath <code>TEXDesAdvise/TAbody/TAitem/shipInfo/packages/packageModelCode</code>) 0-1 (XPath <code>TEXDesAdvise/shipInfo/packages/packageModelCode</code>) 0-1
<p>packageN</p>	<p>serial number used to identify a transport package</p> <ul style="list-style-type: none"> - base type: string, max length: 40, (XPath <code>TEXDesAdvise/shipInfo/packages/packageN</code>) 0-unbounded - note: <i>here the serial no.s of the packages can be identified</i> (XPath <code>TEXDesAdvise/TAbody/TAitem/shipInfo/actualPackageUnit/packageIdentification/packageN</code>) 1-1 (XPath <code>TEXDesAdvise/shipInfo/actualPackageUnit/packagesList/packageIdentification/packageN</code>) 1-1 (XPath <code>TEXDesAdvise/TAbody/TAitem/shipInfo/packages/packageN</code>) 0-unbounded - note: <i>here the serial no.s of the packages can be identified</i> (XPath <code>TEXDesAdvise/TAbody/TAitem/shipInfo/actualPackageUnit/packagesList/packageIdentification/packageN</code>) 1-1 (XPath <code>TEXDesAdvise/TAbody/TAitem/piece/packageN</code>) 0-1 - note: <i>here the transport package containing the piece can be identified</i> (XPath <code>TEXDesAdvise/shipInfo/actualPackageUnit/packageIdentification/packageN</code>) 1-1
<p>packageQty</p>	<p>quantity of the specified transport packages</p> <ul style="list-style-type: none"> - base type: positiveInteger, (XPath <code>TEXDesAdvise/shipInfo/packages/packageQty</code>) 0-1 - note: <i>total for the type of package</i>

	(XPath TEXDesAdvise/TABody/TAitem/shipInfo/packages/packageQty) 0-1 - note: <i>total for the type of package</i>
packageText	denomination of the type of transport package (text) - base type: string, max length: 80, (XPath TEXDesAdvise/shipInfo/actualPackageUnit/packageText) 0-1 (XPath TEXDesAdvise/shipInfo/packages/packageText) 1-1 (XPath TEXDesAdvise/TABody/TAitem/shipInfo/packages/packageText) 1-1 (XPath TEXDesAdvise/TABody/TAitem/shipInfo/actualPackageUnit/packageText) 0-1
pattern	pattern/design number of the product, when not included in the article code - base type: string, max length: 15, (XPath TEXDesAdvise/TABody/TAitem/texCode/pattern) 0-1
person	name of the contact person within a Party - base type: string, max length: 40, (XPath TEXDesAdvise/TAheader/supplier/person) 0-1 (XPath TEXDesAdvise/TAheader/thirdParty/person) 0-1 (XPath TEXDesAdvise/TABody/TAitem/thirdParty/person) 0-1 (XPath TEXDesAdvise/TAheader/buyer/person) 0-1
@phone	phone number of the contact person within a Party - base type: string, max length: 35, (XPath TEXDesAdvise/TAheader/thirdParty/person/@phone) [Optional] (XPath TEXDesAdvise/TABody/TAitem/thirdParty/person/@phone) [Optional] (XPath TEXDesAdvise/TAheader/supplier/person/@phone) [Optional] (XPath TEXDesAdvise/TAheader/buyer/person/@phone) [Optional]
pieceAllow	allowance required or accorded for the piece - base type: decimal, fraction digits: 2, (XPath TEXDesAdvise/TABody/TAitem/piece/pieceAllow) 0-1
pieceCutWidth	effective usable width of the fabric piece (for garment manufacturing) - base type: decimal, min inclusive: 0, fraction digits: 2, (XPath TEXDesAdvise/TABody/TAitem/piece/pieceCutWidth) 0-1
pieceInnWrap1	code specifying the type of inner wrapping/packing used for the fabric piece - base type: string, cod. table: T4 http://www.ebiz.enea.it/moda-ml/repository/codelist/draft/gc_T4.xml (XPath TEXDesAdvise/TABody/TAitem/piece/piecePack/pieceInnWrap1) 1-1 (XPath TEXDesAdvise/piecePack/pieceInnWrap1) 1-1 (XPath TEXDesAdvise/shipInfo/packages/handlingChar/piecePack/pieceInnWrap1) 1-1 (XPath TEXDesAdvise/TABody/TAitem/shipInfo/packages/handlingChar/piecePack/pieceInnWrap1) 1-1
pieceInnWrap2	code sub-specifying the type of inner wrapping/packing used for the fabric piece - base type: string, cod. table: T5 http://www.ebiz.enea.it/moda-ml/repository/codelist/draft/gc_T5.xml (XPath TEXDesAdvise/piecePack/pieceInnWrap2) 0-1 (XPath TEXDesAdvise/TABody/TAitem/piece/piecePack/pieceInnWrap2) 0-1 (XPath TEXDesAdvise/TABody/TAitem/shipInfo/packages/handlingChar/piecePack/pieceInnWrap2) 0-1 (XPath TEXDesAdvise/shipInfo/packages/handlingChar/piecePack/pieceInnWrap2) 0-1
pieceLength	length of the piece - base type: decimal, min inclusive: 0, fraction digits: 2, (XPath TEXDesAdvise/TABody/TAitem/piece/pieceLength) 0-1
pieceOutWrap	code specifying the type of outer wrapping or packing used for the fabric piece - base type: string, cod. table: T6 http://www.ebiz.enea.it/moda-ml/repository/codelist/draft/gc_T6.xml

	<p>(XPath TEXDesAdvise/TABody/TAitem/shipInfo/packages/handlingChar/piecePack/pieceOutWrap) 0-1 (XPath TEXDesAdvise/shipInfo/packages/handlingChar/piecePack/pieceOutWrap) 0-1 (XPath TEXDesAdvise/TABody/TAitem/piece/piecePack/pieceOutWrap) 0-1 (XPath TEXDesAdvise/piecePack/pieceOutWrap) 0-1</p>
piecePackText	<p>free text specifying the type of wrapping or packing used for the fabric piece - base type: string, max length: 250, (XPath TEXDesAdvise/TABody/TAitem/shipInfo/packages/handlingChar/piecePack/piecePackText) 1-1 (XPath TEXDesAdvise/TABody/TAitem/piece/piecePack/piecePackText) 1-1 (XPath TEXDesAdvise/piecePack/piecePackText) 1-1 (XPath TEXDesAdvise/shipInfo/packages/handlingChar/piecePack/piecePackText) 1-1</p>
pieceStatus	<p>code used to describe the status of a fabric piece after the control - base type: string, cod. table: T52 http://www.ebiz.enea.it/moda-ml/repository/codelist/draft/gc_T52.xml (XPath TEXDesAdvise/TABody/TAitem/piece/pieceStatus) 0-1</p>
pieceWeight	<p>effective total weight of the fabric piece - base type: decimal, min inclusive: 0, fraction digits: 2, (XPath TEXDesAdvise/TABody/TAitem/piece/pieceWeight) 0-1 - note: <i>It is the net weight of the piece.</i></p>
pieceWeightM	<p>effective weight per metre of the fabric piece - base type: decimal, min inclusive: 0, fraction digits: 2, (XPath TEXDesAdvise/TABody/TAitem/piece/pieceWeightM) 0-1</p>
pieceWidth	<p>effective width of the fabric piece - base type: decimal, min inclusive: 0, fraction digits: 2, (XPath TEXDesAdvise/TABody/TAitem/piece/pieceWidth) 0-1</p>
postCode	<p>code defining the postal zone - base type: string, max length: 10, (XPath TEXDesAdvise/TAheader/supplier/postCode) 0-1 (XPath TEXDesAdvise/TAheader/thirdParty/postCode) 0-1 (XPath TEXDesAdvise/TAheader/buyer/postCode) 0-1 (XPath TEXDesAdvise/TABody/TAitem/thirdParty/postCode) 0-1</p>
@progr	<p>progressive number in the sequence - base type: positiveInteger, min inclusive: 1, (XPath TEXDesAdvise/shipInfo/packages/fillingCriterion/@progr) [Optional] (XPath TEXDesAdvise/TABody/TAitem/shipInfo/transInfo/@progr) [Optional] - nota: <i>Indicates the position of the leg in a sequence of transport legs.</i> (XPath TEXDesAdvise/TABody/TAitem/shipInfo/packages/fillingCriterion/@progr) [Optional] (XPath TEXDesAdvise/shipInfo/transInfo/@progr) [Optional] - nota: <i>Indicates the position of the leg in a sequence of transport legs.</i></p>
qty	<p>net quantity of the article or object correlated, qualified by the function of the document (ordering, delivering, ..) and by the context - base type: decimal, min inclusive: 0, fraction digits: 2, (XPath TEXDesAdvise/TABody/TAitem/qty) 1-2</p> <hr/> <p>AAAA-WARNING! - text not AVAILABLE n. 245 - In=en</p>
qualityLevel	<p>the product quality level (first choice, second choice,...). - base type: string, (XPath TEXDesAdvise/TABody/TAitem/shipInfo/actualPackageUnit/itemsList/qualityLevel) 0-1 (XPath TEXDesAdvise/shipInfo/actualPackageUnit/itemsList/qualityLevel) 0-1</p>
@reelMat	<p>type of material of which a package for yarn is made - base type: string, cod. table: T30 http://www.ebiz.enea.it/moda-ml/repository/codelist/draft/gc_T30.xml</p>

	<p>(XPath <code>TEXDesAdvise/shipInfo/packages/handlingChar/yarnPack/yarnReel/@reelMat</code>) [Optional]</p> <p>(XPath <code>TEXDesAdvise/TABody/TAitem/shipInfo/packages/handlingChar/yarnPack/yarnReel/@reelMat</code>) [Optional]</p>
@reelType	<p>type of package used for a yarn product</p> <p>- base type: string, cod. table: T29</p> <p>http://www.ebiz.enea.it/moda-ml/repository/codelist/draft/gc_T29.xml</p> <p>(XPath <code>TEXDesAdvise/shipInfo/packages/handlingChar/yarnPack/yarnReel/@reelType</code>) [Required]</p> <p>(XPath <code>TEXDesAdvise/TABody/TAitem/shipInfo/packages/handlingChar/yarnPack/yarnReel/@reelType</code>) [Required]</p>
@role	<p>Third Party role qualifier</p> <p>- base type: string, cod. table: NT2</p> <p>http://www.ebiz.enea.it/moda-ml/repository/codelist/draft/gc_NT2.xml</p> <p>(XPath <code>TEXDesAdvise/TABody/TAitem/thirdParty/@role</code>) [Required]</p> <p>(XPath <code>TEXDesAdvise/TAheader/thirdParty/@role</code>) [Required]</p>
season	<p>sale season; defined as: season (1 crt) + year (4 crt) - season: S/S=1 A/W=2 Spring=3 Summer=4 Autumn=5 Winter=6: for more than four seasons use alphabetic sequence: 1st season=A 2nd season=B etc.etc.</p> <p>- base type: string, max length: 15,</p> <p>(XPath <code>TEXDesAdvise/TABody/TAitem/refDoc/season</code>) 0-1</p> <p>- note: <i>here indicates the season to which the referenced document belongs</i></p> <p>(XPath <code>TEXDesAdvise/TAheader/refDoc/season</code>) 0-1</p> <p>- note: <i>here indicates the season to which the referenced document belongs</i></p>
@sender	<p>qualifier that specifies the Party issuing of the document</p> <p>- base type: boolean,</p> <p>(XPath <code>TEXDesAdvise/TAheader/buyer/@sender</code>) [Optional]</p> <p>- nota: <i>This attribute is mandatory when the STYLESHEET must be used</i></p> <p>(XPath <code>TEXDesAdvise/TABody/TAitem/thirdParty/@sender</code>) [Optional]</p> <p>- nota: <i>This attribute is mandatory when the STYLESHEET must be used</i></p> <p>(XPath <code>TEXDesAdvise/TAheader/thirdParty/@sender</code>) [Optional]</p> <p>- nota: <i>This attribute is mandatory when the STYLESHEET must be used</i></p> <p>(XPath <code>TEXDesAdvise/TAheader/supplier/@sender</code>) [Optional]</p> <p>- nota: <i>This attribute is mandatory when the STYLESHEET must be used</i></p>
serialN	<p>serial number used for the identification of a physical unit</p> <p>- base type: string, max length: 250,</p> <p>(XPath <code>TEXDesAdvise/shipInfo/actualPackageUnit/packageIdentification/serialN</code>) 0-9</p> <p>- note: <i>multiple values of serialN are allowed in order to provide different representations of the serial identifier of the same package unit. Different instances of serialN must differ at least for one value of idQualifier or numberingOrg</i></p> <p>(XPath <code>TEXDesAdvise/shipInfo/actualPackageUnit/itemsList/itemIdentification/serialN</code>) 1-9</p> <hr/> <p>AAAA-WARNING! - text not AVAILABLE n. 245 - In=en</p> <p>- note: <i>multiple values of serialN are allowed for different representations of the serial identifier of the same product unit. Instances of serialN must differ at least for one value of numberingOrg and idQualifier.</i></p> <p>(XPath <code>TEXDesAdvise/TABody/TAitem/shipInfo/actualPackageUnit/itemsList/itemIdentification/serialN</code>) 1-9</p> <hr/> <p>AAAA-WARNING! - text not AVAILABLE n. 245 - In=en</p> <p>- note: <i>multiple values of serialN are allowed for different representations of the serial identifier of the same product unit. Instances of serialN must differ at least for one value of numberingOrg and idQualifier.</i></p> <p>(XPath <code>TEXDesAdvise/TABody/TAitem/piece/serialN</code>) 0-9</p> <hr/> <p>AAAA-WARNING! - text not AVAILABLE n. 245 - In=en</p> <p>- note: <i>multiple values of serialN are allowed for different representations of the serial identifier of the same piece. Instances of serialN must differ at least for one value of numberingOrg and idQualifier.</i></p> <p>(XPath <code>TEXDesAdvise/shipInfo/actualPackageUnit/packagesList/packageIdentification/serialN</code>) 0-9</p>

	<p>- note: multiple values of serialN are allowed in order to provide different representations of the serial identifier of the same package unit. Different instances of serialN must differ at least for one value of idQualifier or numberingOrg (XPath TEXDesAdvise/TAbody/TAitem/shipInfo/actualPackageUnit/packageIdentification/serialN) 0-9</p> <p>- note: multiple values of serialN are allowed in order to provide different representations of the serial identifier of the same package unit. Different instances of serialN must differ at least for one value of idQualifier or numberingOrg (XPath TEXDesAdvise/TAbody/TAitem/shipInfo/actualPackageUnit/packagesList/packageIdentification/serialN) 0-9</p> <p>- note: multiple values of serialN are allowed in order to provide different representations of the serial identifier of the same package unit. Different instances of serialN must differ at least for one value of idQualifier or numberingOrg</p>
sortableIndicator	<p>It states if the item can be automatically sorted. - base type: boolean, (XPath TEXDesAdvise/shipInfo/packages/handlingChar/sortableIndicator) 0-1 (XPath TEXDesAdvise/TAbody/TAitem/shipInfo/packages/handlingChar/sortableIndicator) 0-1</p>
stackabilityLevel	<p>This value indicates the level at which the item can be stacked. - base type: integer, (XPath TEXDesAdvise/TAbody/TAitem/shipInfo/packages/handlingChar/stackabilityLevel) 0-1 (XPath TEXDesAdvise/shipInfo/packages/handlingChar/stackabilityLevel) 0-1</p>
street	<p>street and building number identifying a location - base type: string, max length: 80, (XPath TEXDesAdvise/TAheader/thirdParty/street) 0-1 (XPath TEXDesAdvise/TAheader/buyer/street) 0-1 (XPath TEXDesAdvise/TAheader/supplier/street) 0-1 (XPath TEXDesAdvise/TAbody/TAitem/thirdParty/street) 0-1</p>
subCountry	<p>short name or code of the sub-country entity - base type: string, max length: 9, (XPath TEXDesAdvise/TAheader/thirdParty/subCountry) 0-1 (XPath TEXDesAdvise/TAbody/TAitem/thirdParty/subCountry) 0-1 (XPath TEXDesAdvise/TAheader/buyer/subCountry) 0-1 (XPath TEXDesAdvise/TAheader/supplier/subCountry) 0-1</p>
subDept	<p>name or code of a contact department within a Party - base type: string, max length: 40, (XPath TEXDesAdvise/TAheader/thirdParty/subDept) 0-1 (XPath TEXDesAdvise/TAheader/supplier/subDept) 0-1 (XPath TEXDesAdvise/TAbody/TAitem/thirdParty/subDept) 0-1 (XPath TEXDesAdvise/TAheader/buyer/subDept) 0-1</p>
@TAtype	<p>type of Despatch advise - base type: string, cod. table: NT10 http://www.ebiz.enea.it/moda-ml/repository/codelist/draft/gc_NT10.xml (XPath TEXDesAdvise/@TAtype) [Optional] [Default= STD]</p>
@TID	<p>serial number wired into the RFID chip - base type: string, (XPath TEXDesAdvise/shipInfo/packages/EPCList/EPC/@TID) [Optional] (XPath TEXDesAdvise/TAbody/TAitem/shipInfo/packages/EPCList/EPC/@TID) [Optional] (XPath TEXDesAdvise/TAbody/TAitem/piece/EPC/@TID) [Optional]</p>
totFault	<p>total number of faults: the 1st/2nd digit count the "Large faults", the 3rd/4th the "Medium faults" and the 5th/6th the "Small faults" - base type: positiveInteger, (XPath TEXDesAdvise/TAbody/TAitem/piece/totFault) 0-1</p>
transCondition	<p>special condition of transport or special service requested to the Forwarder - base type: string, cod. table: T38 http://www.ebiz.enea.it/moda-ml/repository/codelist/draft/gc_T38.xml (XPath TEXDesAdvise/shipInfo/transInfo/transCondition) 0-3</p>

	(XPath <code>TEXDesAdvise/TABody/TAitem/shipInfo/transInfo/transCondition</code>) 0-3
transConditionText	free text description of the special condition of transport or special service requested to the Forwarder - base type: string, max length: 250, (XPath <code>TEXDesAdvise/shipInfo/transInfo/transConditionText</code>) 0-1 (XPath <code>TEXDesAdvise/TABody/TAitem/shipInfo/transInfo/transConditionText</code>) 0-1
transMeans	means of transport, in general or referred to a specific leg - base type: string, cod. table: T40 http://www.ebiz.enea.it/moda-ml/repository/codelist/draft/gc_T40.xml (XPath <code>TEXDesAdvise/shipInfo/transInfo/transMeans</code>) 0-1 (XPath <code>TEXDesAdvise/TABody/TAitem/shipInfo/transInfo/transMeans</code>) 0-1
transMode	way of transport, in general or referred to the specified leg - base type: string, cod. table: T8 http://www.ebiz.enea.it/moda-ml/repository/codelist/draft/gc_T8.xml (XPath <code>TEXDesAdvise/TABody/TAitem/shipInfo/transInfo/transMode</code>) 1-1 (XPath <code>TEXDesAdvise/shipInfo/transInfo/transMode</code>) 1-1
@transReason	reason for the transport - base type: string, cod. table: NT11 http://www.ebiz.enea.it/moda-ml/repository/codelist/draft/gc_NT11.xml (XPath <code>TEXDesAdvise/shipInfo/transInfo/@transReason</code>) [Optional] (XPath <code>TEXDesAdvise/TABody/TAitem/shipInfo/transInfo/@transReason</code>) [Optional]
@uid	unique element identifier within the xml document - base type: string, (XPath <code>TEXDesAdvise/TABody/TAitem/refDoc/attachment/@uid</code>) [Optional] (XPath <code>TEXDesAdvise/TAheader/refDoc/attachment/@uid</code>) [Optional]
@um	specification of the unit of measure - base type: string, cod. table: NT7 http://www.ebiz.enea.it/moda-ml/repository/codelist/draft/gc_NT7.xml (XPath <code>TEXDesAdvise/TABody/TAitem/shipInfo/actualPackageUnit/packageDim/width/@um</code>) [Required] (XPath <code>TEXDesAdvise/TABody/TAitem/shipInfo/actualPackageUnit/packageDim/height/@um</code>) [Required] (XPath <code>TEXDesAdvise/TABody/TAitem/shipInfo/actualPackageUnit/grossWeight/@um</code>) [Required] (XPath <code>TEXDesAdvise/TABody/TAitem/shipInfo/actualPackageUnit/packageDim/length/@um</code>) [Required] (XPath <code>TEXDesAdvise/TABody/TAitem/shipInfo/actualPackageUnit/netWeight/@um</code>) [Required] (XPath <code>TEXDesAdvise/TABody/TAitem/shipInfo/packages/minItemsPerPackage/@um</code>) [Required] (XPath <code>TEXDesAdvise/TABody/TAitem/shipInfo/actualPackageUnit/volume/@um</code>) [Required] (XPath <code>TEXDesAdvise/TABody/TAitem/shipInfo/packages/itemsPerPackage/@um</code>) [Required] (XPath <code>TEXDesAdvise/TABody/TAitem/piece/pieceCutWidth/@um</code>) [Optional] [Default= CMT] (XPath <code>TEXDesAdvise/TABody/TAitem/piece/pieceWeight/@um</code>) [Optional] [Default = KGM] (XPath <code>TEXDesAdvise/shipInfo/packages/itemsPerPackage/@um</code>) [Required] (XPath <code>TEXDesAdvise/TABody/TAitem/piece/pieceLength/@um</code>) [Optional] [Default = MTR] (XPath <code>TEXDesAdvise/TABody/TAitem/piece/pieceWidth/@um</code>) [Optional] [Default= CMT] (XPath <code>TEXDesAdvise/shipInfo/packages/handlingChar/grossWeight/@um</code>) [Required]

	<p>(XPath TEXTDesAdvise/TABody/TAitem/shipInfo/transInfo/grossWeight/@um) [Required]</p> <p>(XPath TEXTDesAdvise/TABody/TAitem/piece/pieceAllow/@um) [Required]</p> <p>(XPath TEXTDesAdvise/TABody/TAitem/piece/pieceWeightM/@um) [Optional] [Default= GRM]</p> <p>(XPath TEXTDesAdvise/TABody/TAitem/piece/grossWeight/@um) [Required]</p> <p>(XPath TEXTDesAdvise/shipInfo/actualPackageUnit/packageDim/height/@um) [Required]</p> <p>(XPath TEXTDesAdvise/shipInfo/actualPackageUnit/netWeight/@um) [Required]</p> <p>(XPath TEXTDesAdvise/shipInfo/actualPackageUnit/packageDim/width/@um) [Required]</p> <p>(XPath TEXTDesAdvise/shipInfo/actualPackageUnit/packageDim/length/@um) [Required]</p> <p>(XPath TEXTDesAdvise/shipInfo/actualPackageUnit/grossWeight/@um) [Required]</p> <p>(XPath TEXTDesAdvise/shipInfo/packages/minItemsPerPackage/@um) [Required]</p> <p>(XPath TEXTDesAdvise/TABody/TAitem/qty/@um) [Required]</p> <p>(XPath TEXTDesAdvise/shipInfo/actualPackageUnit/volume/@um) [Required]</p> <p>(XPath TEXTDesAdvise/shipInfo/transInfo/netWeight/@um) [Required]</p> <p>(XPath TEXTDesAdvise/shipInfo/transInfo/grossWeight/@um) [Required]</p> <p>(XPath TEXTDesAdvise/shipInfo/packages/handlingChar/yarnPack/yarnReel/yarnReelQty/@um) [Required]</p> <p>(XPath TEXTDesAdvise/shipInfo/packages/handlingChar/yarnPack/yarnReel/yarnReelH/@um) [Required]</p> <p>(XPath TEXTDesAdvise/shipInfo/packages/packageDim/width/@um) [Required]</p> <p>(XPath TEXTDesAdvise/TABody/TAitem/shipInfo/packages/handlingChar/yarnPack/yarnReel/yarnReelQty/@um) [Required]</p> <p>(XPath TEXTDesAdvise/shipInfo/packages/handlingChar/yarnPack/yarnReel/yarnReelD/@um) [Required]</p> <p>(XPath TEXTDesAdvise/TABody/TAitem/shipInfo/packages/handlingChar/netWeight/@um) [Required]</p> <p>(XPath TEXTDesAdvise/TABody/TAitem/shipInfo/packages/handlingChar/grossWeight/@um) [Required]</p> <p>(XPath TEXTDesAdvise/shipInfo/packages/packageDim/height/@um) [Required]</p> <p>(XPath TEXTDesAdvise/TABody/TAitem/shipInfo/packages/handlingChar/volume/@um) [Required]</p> <p>(XPath TEXTDesAdvise/TABody/TAitem/shipInfo/packages/packageDim/width/@um) [Required]</p> <p>(XPath TEXTDesAdvise/TABody/TAitem/shipInfo/packages/packageDim/height/@um) [Required]</p> <p>(XPath TEXTDesAdvise/shipInfo/packages/handlingChar/volume/@um) [Required]</p> <p>(XPath TEXTDesAdvise/TABody/TAitem/shipInfo/transInfo/netWeight/@um) [Required]</p> <p>(XPath TEXTDesAdvise/TABody/TAitem/shipInfo/packages/packageDim/length/@um) [Required]</p> <p>(XPath TEXTDesAdvise/shipInfo/packages/handlingChar/netWeight/@um) [Required]</p> <p>(XPath TEXTDesAdvise/shipInfo/packages/packageDim/length/@um) [Required]</p> <p>(XPath TEXTDesAdvise/TABody/TAitem/shipInfo/packages/handlingChar/yarnPack/yarnReel/yarnReelH/@um) [Required]</p> <p>(XPath TEXTDesAdvise/TABody/TAitem/shipInfo/packages/handlingChar/yarnPack/yarnReel/yarnReelD/@um) [Required]</p>
uri	<p>Uniform Resource Identifier (URI) that identifies the external object as an Internet resource</p> <p>- base type: normalizedString,</p> <p>(XPath TEXTDesAdvise/TAheader/refDoc/attachment/externalReference/uri) 1-1</p> <p>(XPath TEXTDesAdvise/TABody/TAitem/refDoc/attachment/externalReference/uri) 1-1</p>
@useProfile	<p>use profile to which the present document is compliant if it was agreed by the parties. It is suggested a URI with reference to the firms or the URL of the profile.</p> <p>- base type: string,</p> <p>(XPath TEXTDesAdvise/@useProfile) [Optional]</p>

@VAT	VAT rate or code (DEPRECATED, use dtScheme element) - base type: string, cod. table: NT16 http://www.ebiz.enea.it/moda-ml/repository/codelist/draft/gc_NT16.xml (XPath TEXDesAdvise/TAheader/thirdParty/@VAT) [Optional] (XPath TEXDesAdvise/TAbody/TAitem/thirdParty/@VAT) [Optional] (XPath TEXDesAdvise/TAbody/TAitem/lineN/@VAT) [Optional] - nota: <i>Deprecated, prefer dtScheme when available.</i>
@version	Dictionary version from which the instance has been created - base type: string, cod. table: NT100 http://www.ebiz.enea.it/moda-ml/repository/codelist/draft/gc_NT100.xml (XPath TEXDesAdvise/@version) [Optional] [Default= draft]
volume	effective volume of a specified object - base type: decimal, min inclusive: 0, fraction digits: 2, (XPath TEXDesAdvise/TAbody/TAitem/shipInfo/packages/handlingChar/volume) 0-1 (XPath TEXDesAdvise/shipInfo/packages/handlingChar/volume) 0-1 (XPath TEXDesAdvise/shipInfo/actualPackageUnit/volume) 0-1 (XPath TEXDesAdvise/TAbody/TAitem/shipInfo/actualPackageUnit/volume) 0-1
width	effective width of a specified object - base type: decimal, min inclusive: 0, fraction digits: 2, (XPath TEXDesAdvise/shipInfo/packages/packageDim/width) 0-1 (XPath TEXDesAdvise/shipInfo/actualPackageUnit/packageDim/width) 0-1 (XPath TEXDesAdvise/TAbody/TAitem/shipInfo/actualPackageUnit/packageDim/width) 0-1 (XPath TEXDesAdvise/TAbody/TAitem/shipInfo/packages/packageDim/width) 0-1
yarnConeAngle	tapering angle of the cone on which a yarn is reeled - base type: positiveInteger, (XPath TEXDesAdvise/shipInfo/packages/handlingChar/yarnPack/yarnReel/yarnConeAngle) 0-1 (XPath TEXDesAdvise/TAbody/TAitem/shipInfo/packages/handlingChar/yarnPack/yarnReel/yarnConeAngle) 0-1
yarnOutWrap	code specifying the type of outer wrapping or packing of a yarn - base type: string, cod. table: T33 http://www.ebiz.enea.it/moda-ml/repository/codelist/draft/gc_T33.xml (XPath TEXDesAdvise/TAbody/TAitem/shipInfo/packages/handlingChar/yarnPack/yarnOutWrap) 0-1 (XPath TEXDesAdvise/shipInfo/packages/handlingChar/yarnPack/yarnOutWrap) 0-1
yarnOutWrapText	free text specifying the type of outer wrapping or packing of a yarn - base type: string, max length: 250, (XPath TEXDesAdvise/TAbody/TAitem/shipInfo/packages/handlingChar/yarnPack/yarnOutWrapText) 0-1 (XPath TEXDesAdvise/shipInfo/packages/handlingChar/yarnPack/yarnOutWrapText) 0-1
yarnReelD	diameter of the bobbin used for a yarn product - base type: decimal, min inclusive: 0, fraction digits: 2, (XPath TEXDesAdvise/TAbody/TAitem/shipInfo/packages/handlingChar/yarnPack/yarnReel/yarnReelD) 0-1 (XPath TEXDesAdvise/shipInfo/packages/handlingChar/yarnPack/yarnReel/yarnReelD) 0-1
yarnReelH	height of the bobbin used a yarn product - base type: decimal, min inclusive: 0, fraction digits: 2, (XPath TEXDesAdvise/TAbody/TAitem/shipInfo/packages/handlingChar/yarnPack/yarnReel/yarnReelH) 0-1 (XPath TEXDesAdvise/shipInfo/packages/handlingChar/yarnPack/yarnReel/yarnReelH) 0-1

yarnReelQty	<p>quantity of yarn (by weight or length) wound upon a bobbin</p> <p>- base type: decimal, min inclusive: 0, fraction digits: 2,</p> <p>(XPath TEXDesAdvise/TABody/TAitem/shipInfo/packages/handlingChar/yarnPack/yarnReel/yarnReelQty) 0-2</p> <p>(XPath TEXDesAdvise/shipInfo/packages/handlingChar/yarnPack/yarnReel/yarnReelQty) 0-2</p>
yarnReelWrap	<p>type of wrapping in which a package of yarn is wrapped</p> <p>- base type: string, cod. table: T32</p> <p>http://www.ebiz.enea.it/moda-ml/repository/codelist/draft/gc_T32.xml</p> <p>(XPath TEXDesAdvise/shipInfo/packages/handlingChar/yarnPack/yarnInWrap/yarnReelWrap) 1-1</p> <p>(XPath TEXDesAdvise/TABody/TAitem/shipInfo/packages/handlingChar/yarnPack/yarnInWrap/yarnReelWrap) 1-1</p>

2.3 Suggested best practices

TEXDesAdvise/TABody/TAitem/qty (net quantity of the article or object correlated, qualified by the function of the document (ordering, delivering, ..) and by the context)

this element can have two instances only if the units of measure are different

TEXDesAdvise/shipInfo/actualPackageUnit/

itemsList/itemIdentification/serialN (serial number used for the identification of a physical unit)

in the case of garment with RFID for anti-counterfeiting, RFID EPCGlobal for logistics and NFC for the customer experience there should be three serial elements with pairs of attributes numberingOrg/idQualifier: "CL"/"RFID", "GS1"/"RFID", "CL"/"NFC".

TEXDesAdvise/TABody/TAitem/shipInfo/actualPackageUnit/itemsList/itemIdentification/serialN (serial number used for the identification of a physical unit)

in the case of garment with RFID for anti-counterfeiting, RFID EPCGlobal for logistics and NFC for the customer experience there should be three serial elements with pairs of attributes numberingOrg/idQualifier: "CL"/"RFID", "GS1"/"RFID", "CL"/"NFC".

TEXDesAdvise/TABody/TAitem/piece/serialN (serial number used for the identification of a physical unit)

This element might contain also codes for RFID devices.

2.4 Enumeration tables

List of enumeration tables used in the XML document. You can find the corresponding codes at:
<http://www.ebiz-tcf.eu/moda-ml/imple/moda-ml-draft.asp?lingua=en&pag=6>

NT10 - Despatch Advise type
NT100 - eBIZ TCFUpstream version
NT11 - transport causal
NT16 - VAT rate or code
NT18 - message function
NT2 - third party qualifier
NT29 - format of a date
NT3 - data format
NT4 - end use
NT51 - Filling Criterion for Package homogeneity
NT6 - coding system owner/issuer
NT7 - unit of measure
T10 - ISO3166 - Country
T11 - transport package type
T21 - type of document
T29 - type of yarn package
T3 - terms of delivery
T30 - support of yarn package - material
T32 - yarn reel wrapping type
T33 - yarn outer packing
T38 - transport conditions
T4 - fabric piece inner packing (wrapping) 1
T40 - type of transport means
T44 - additional code type
T5 - fabric piece inner packing (wrapping) 2
T52 - fabric piece status
T6 - fabric piece outer packing
T8 - Modes of Transport

ACKNOWLEDGEMENT



This action is part of the eBIZ-4.0 project, which has received funding from the European Union's COSME Programme (2014 - 2020).

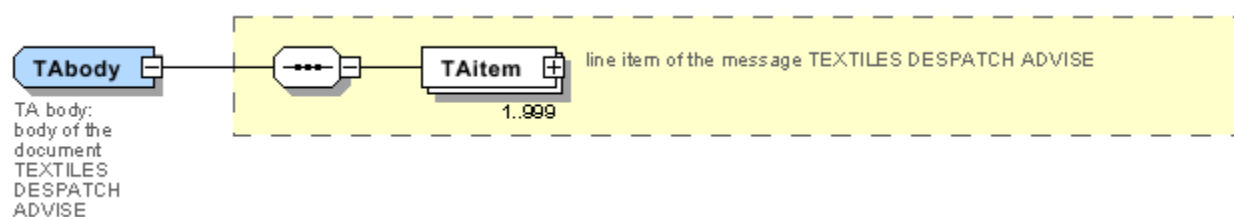
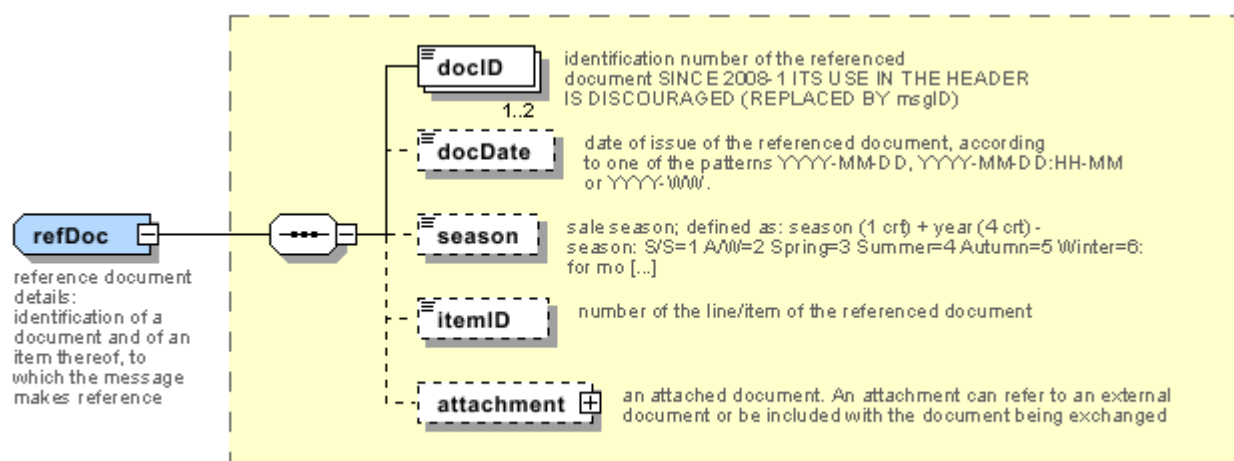
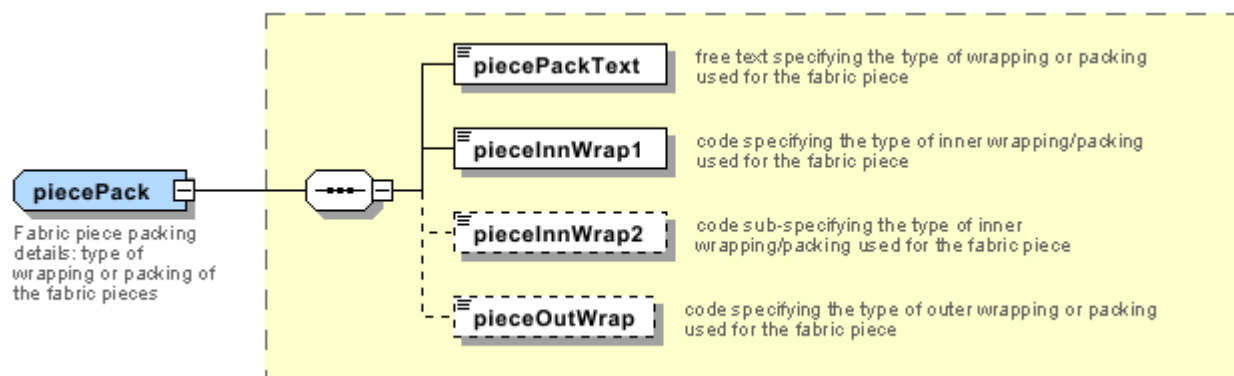
DISCLAIMER

The content of this document represents the views of the authors only and is their sole responsibility; it cannot be considered to reflect the views of the European Commission and/or the Executive Agency for Small and Medium-sized Enterprises (EASME) or any other body of the European Union.

The European Commission and the Agency do not accept any responsibility for use that may be made of the information it contains.

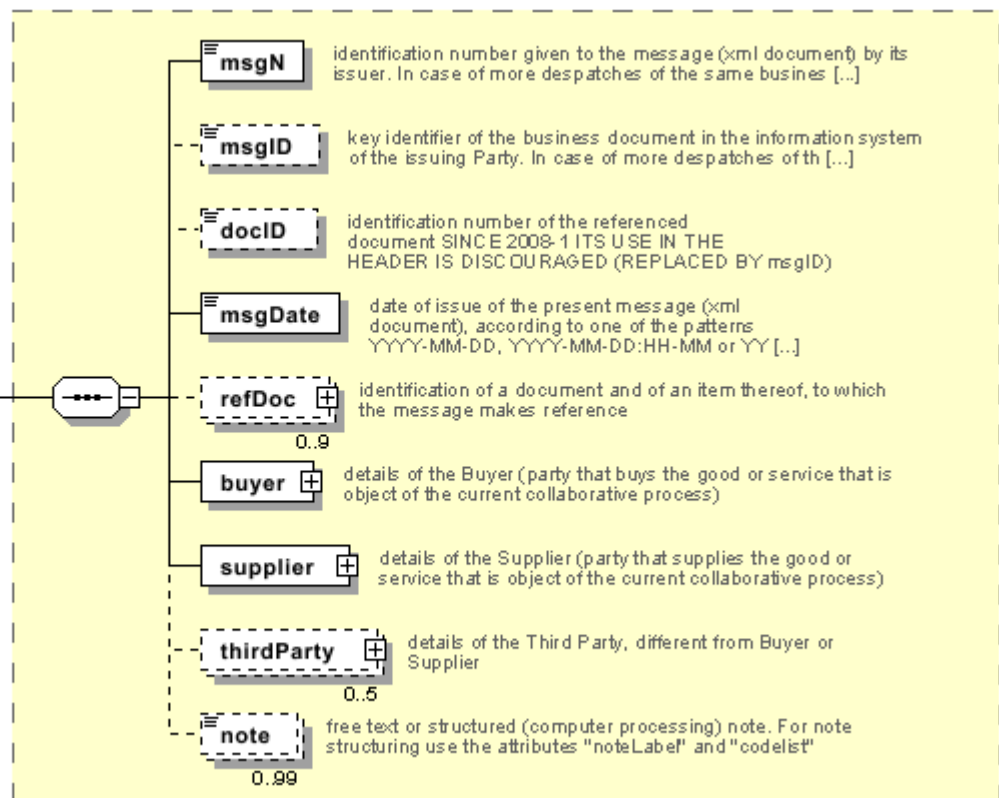
Annex A

Representative images of the principal complex elements' structure.



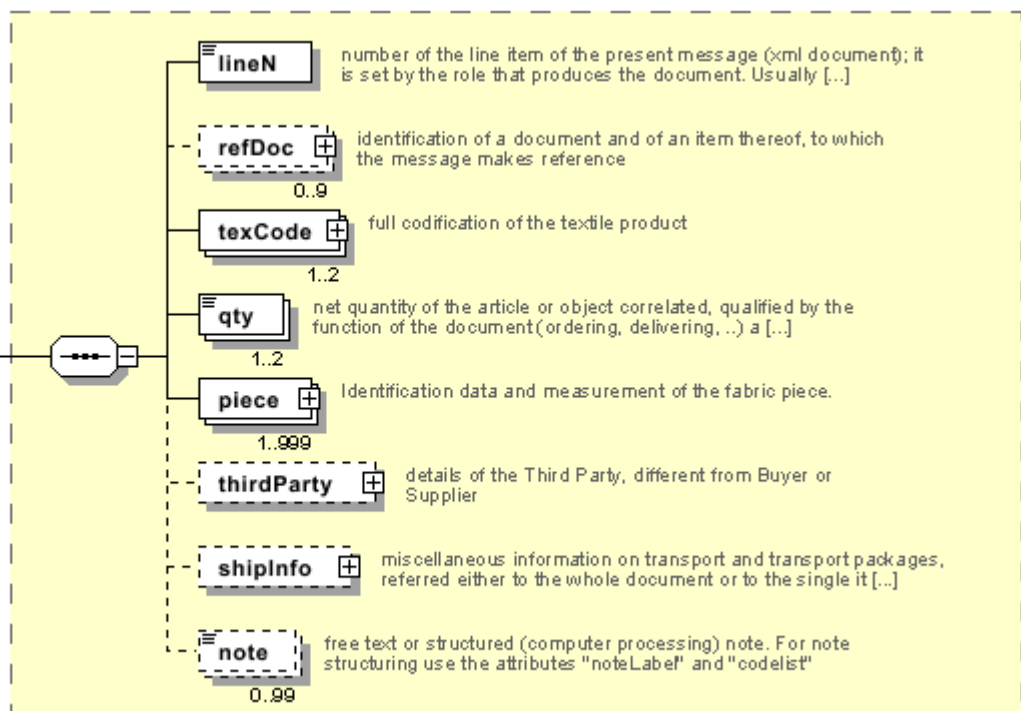
TAheader

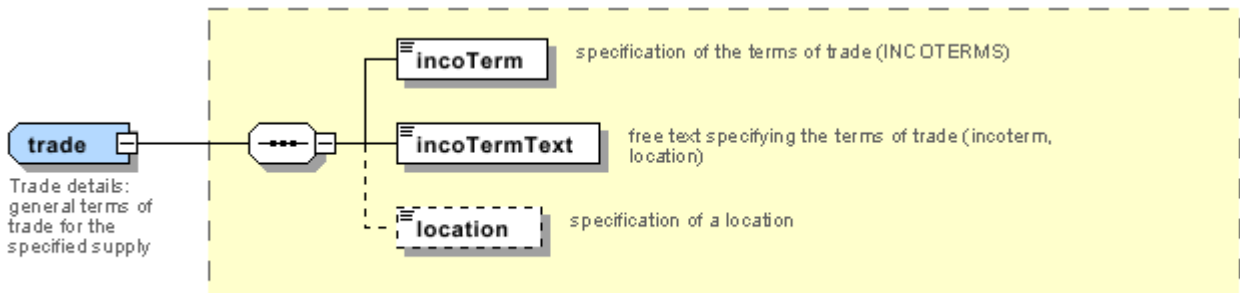
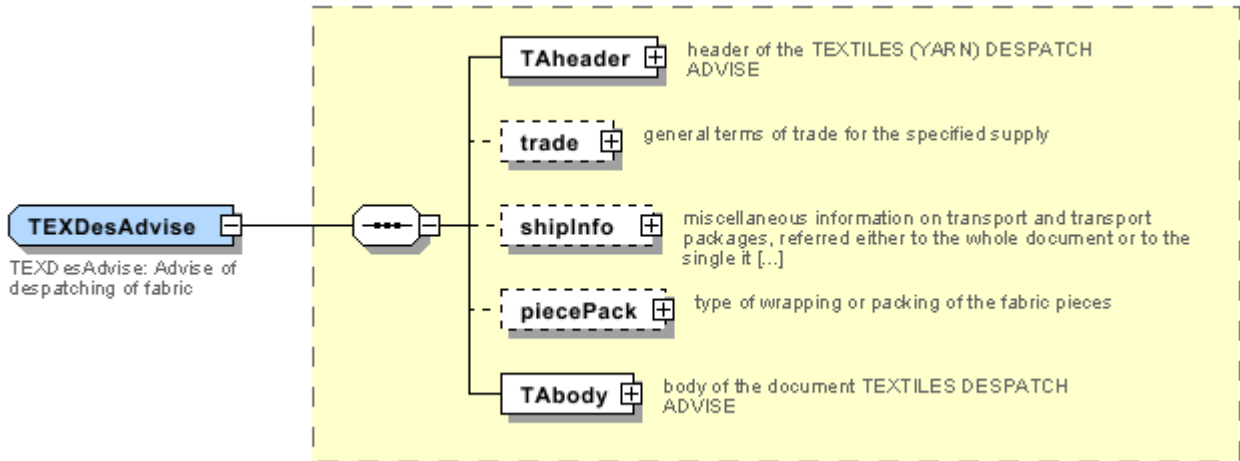
TA header:
header of
the TEXTILES
(YARN)
DESPATCH
ADVISE



TAitem

TA item:
line item of
the message
TEXTILES
DESPATCH
ADVISE





Annex B

NT10 - Despatch Advise type

type of Despatch advise

Agency name: eBIZ

tabella cod.: NT10

File codes list (Generic code): http://www.ebiz.enea.it/moda-ml/repository/codelist/draft/gc_NT10.xml

Code	Description	Adoption note	Date of insertion
BRG	re-worked no-charge		01/07/2013
CLP	for work		05/12/2013
DDT	return from work		01/07/2013
DDV	for demonstration		01/07/2013
PKL	packing list		05/02/2018
PRE	pre-advise		
RCD	storage return		01/07/2013
RDV	return from demonstration		05/12/2013
RNL	not worked return		01/07/2013
RRG	return from re-worked no-charge		05/12/2013
RSB	return from sale		05/12/2013
SBT	for sale		01/07/2013
SCD	for storage		05/12/2013
STD	standard		

NT100 - eBIZ TCFUpstream version

dictionary version

Agency name: eBIZ

tabella cod.: NT100

File codes list (Generic code): http://www.ebiz.enea.it/moda-ml/repository/codelist/draft/gc_NT100.xml

Code	Description	Adoption note	Date of insertion
2013-1	v2013-1		01/07/2013
2018-1	v2018-1		04/11/2018
draft	draft		08/09/2017

NT11 - transport causal

reason for the transport

Agency name: eBIZ

tabella cod.: NT11

File codes list (Generic code): http://www.ebiz.enea.it/moda-ml/repository/codelist/draft/gc_NT11.xml

Code	Description	Adoption note	Date of insertion
FOC	free of charge		
FRW	return from re-works		
FST	return from storage		
FVW	return from view		
FWK	return from works		
IST	in storage		
NWK	return non-worked		
RJC	return from rejection		
SEL	to sell		
STO	to storage		
VEW	to view		
WRK	to works		

NT16 - VAT rate or code

VAT rate or code (DEPRECATED, use dtScheme element)

tabella cod.: NT16

File codes list (Generic code): http://www.ebiz.enea.it/moda-ml/repository/codelist/draft/gc_NT16.xml

NT18 - message function

function performed by the present message with regards to the transmission

Agency name: eBIZ

tabella cod.: NT18

File codes list (Generic code): http://www.ebiz.enea.it/moda-ml/repository/codelist/draft/gc_NT18.xml

Code	Description	Adoption note	Date of insertion
CA	delete this document		01/07/2013

CP	copy		
OR	original		
RC	re-transmission for data correction		
RT	re-transmission		

NT2 - third party qualifier

Third Party role qualifier

Agency name: eBIZ

tabella cod.: NT2

File codes list (Generic code): http://www.ebiz.enea.it/moda-ml/repository/codelist/draft/gc_NT2.xml

Code	Description	Adoption note	Date of insertion
AG	Sales Agent		
CO	Quality Controller		
DC	Response to		
DF	Invoicee		
DI	Copy to (CC)		28/10/2014
DM	Consignee		
DP	Consignment address (Delivery Party)		
IM	Importer		
OR	Originator		10/09/2014
SP	Forwarder		
TX	Tax Representative		

NT29 - format of a date

format used for the date

Agency name: eBIZ

tabella cod.: NT29

File codes list (Generic code): http://www.ebiz.enea.it/moda-ml/repository/codelist/draft/gc_NT29.xml

Code	Description	Adoption note	Date of insertion
D	YYYY-MM-DD		
M	YYYY-MM-DD:HH-MM		
W	YYYY-WW		

NT3 - data format

format of a string according to a customized User rule (local rule)

Agency name: eBIZ

tabella cod.: NT3

File codes list (Generic code): http://www.ebiz.enea.it/moda-ml/repository/codelist/draft/gc_NT3.xml

Code	Description	Adoption note	Date of insertion
EN4	GS1-GLN		01/07/2013
MD	mutually agreed		

NT4 - end use

specifies the final use of the product

Agency name: eBIZ

tabella cod.: NT4

File codes list (Generic code): http://www.ebiz.enea.it/moda-ml/repository/codelist/draft/gc_NT4.xml

Code	Description	Adoption note	Date of insertion
PC	test piece		
PR	production		
SA	Sample		10/09/2014
SC	samples card		
TI	patch		
TP	(test cut)		

NT51 - Filling Criterion for Package homogeneity

Filling Criterion for Package homogeneity

Agency name: eBIZ

tabella cod.: NT51

File codes list (Generic code): http://www.ebiz.enea.it/moda-ml/repository/codelist/draft/gc_NT51.xml

Code	Description	Adoption note	Date of insertion
COL	Colour		08/09/2017

MOD	Model		08/09/2017
SIZ	Size		08/09/2017

NT6 - coding system owner/issuer

code specifying the organisation who has created or owns the coding or numbering system

Agency name: eBIZ

tabella cod.: NT6

File codes list (Generic code): http://www.ebiz.enea.it/moda-ml/repository/codelist/draft/gc_NT6.xml

Code	Description	Adoption note	Date of insertion
CL	Customer/buyer		
CO	Quality Controller		
EN	GS1 (ex-EAN International)		
ES	e-Stockflow		
FO	Supplier		
GS	GS1		01/07/2013
MF	VAT identifier		
ML	Moda-ML		
SP	Service Provider		

NT7 - unit of measure

specification of the unit of measure, it is a sub set of table Unit of Measure Code - UN/ECE REC 20 delivered by United Nations Economic Commission for Europe (UN/ECE)

Agency name: eBIZ / UN/ECE

tabella cod.: NT7

File codes list (Generic code): http://www.ebiz.enea.it/moda-ml/repository/codelist/draft/gc_NT7.xml

Other link: <http://docs.oasis-open.org/ubl/os-UBL-2.1/cl/gc/default/UnitOfMeasureCode-2.1.gc#>

Code	Description	Adoption note	Date of insertion
CMK	square centimetre		20/12/2017
CMQ	cubic centimetre		20/12/2017
CMT	centimetre		
CNE	centiNewton		
CO2TON	ton of CO2		10/09/2014
COUPLES	couples		

DMQ	cubic decimetre		
E37	pixel		11/04/2018
GRM	gram		
HUR	hour		
INH	inch		
KGM	kilogram		
KMT	kilometer		
KWH	kilowatthours		10/09/2014
LBR	pound		
MIN	minute		
MMK	centimetre		20/12/2017
MMK	square millimetre		20/12/2017
MTK	square metre		20/12/2017
MTQ	cubic metre		
MTR	metre		
NMB	numero		
ONZ	ounce		
P1	percent		
PPM	parts per milion		
PZ	piece		
RPM	rounds per metre		
YRD	yard		

T10 - ISO3166 - Country

code of the nation

Agency name: ISO

tabella cod.: T10

File codes list (Generic code): http://www.ebiz.enea.it/moda-ml/repository/codelist/draft/gc_T10.xml

Table not printed: there are 239 elements, more than the maximum specified for printing: 99.

T11 - transport package type

code specifying the type of package used for transport and delivery (subset of UN/ECE 8053 and UBL TransportEquipmentTypeCode-2.1)

Agency name: eBIZ

tabella cod.: T11

File codes list (Generic code): http://www.ebiz.enea.it/moda-ml/repository/codelist/draft/gc_T11.xml

Other link: <http://docs.oasis-open.org/ubl/os-UBL-2.1/cl/gc/default/TransportEquipmentTypeCode-2.1.gc#>

Code	Description	Adoption note	Date of insertion
4A	box, steel		
4C	box, wood		
4G	Box, fibreboard		01/08/2018
4H	Box, plastic		01/08/2018
5H	Bag, woven plastic		01/08/2018
5L	Bag, textile		01/08/2018
5M	Bag, paper		
AJ	Cone		01/08/2018
BL	Bale, compressed		01/08/2018
BN	Bale, non-compressed		01/08/2018
BX	Box		
CI	Canister		01/08/2018
CL	Coil		01/08/2018
CN	Container, not otherwise specified as transport equipment		01/08/2018
CS	Case		01/08/2018
CT	Carton		01/08/2018
EC	Bag, plastic		01/08/2018
ED	Case, with pallet base		01/08/2018
EE	Case, with pallet base, wooden		01/08/2018
EF	Case, with pallet base, cardboard		01/08/2018
EG	Case, with pallet base, plastic		01/08/2018
EH	Case, with pallet base, metal		01/08/2018
FX	Bag, flexible container		01/08/2018
HN	Hanger		01/08/2018
NE	unpacked		
NF	Unpacked or unpackaged, single unit		01/08/2018
NG	Unpacked or unpackaged, multiple units		01/08/2018
OA	Pallet, CHEP 40 cm x 60 cm		01/08/2018
OB	Pallet, CHEP 80 cm x 120 cm		01/08/2018
OC	Pallet, CHEP 100 cm x 120 cm		01/08/2018

OD	Pallet, AS 4068-1993		01/08/2018
OE	Pallet, ISO T11		01/08/2018
PE	europallet (80x120)		
PX	pallet		
QS	box, plastic, solid		
RJ	Rack, clothing hanger		01/08/2018
RL	Reel		01/08/2018
SO	Spool		01/08/2018
TU	tube		
XD	bag, plastics film		
XK	bag,paper, multi-wall, water resistant		
ZZ	Mutually defined		01/08/2018

T21 - type of document

type or class to which the referenced document belongs

Agency name: eBIZ

tabella cod.: T21

File codes list (Generic code): http://www.ebiz.enea.it/moda-ml/repository/codelist/draft/gc_T21.xml

Code	Description	Adoption note	Date of insertion
BOR	blanket order		01/02/2018
CAT	Price catalogue - tech sheet		
CEO	Certificate of origin		13/04/2018
CER	Certificate		13/04/2018
COC	colour card		
CRN	Credit note		08/09/2017
CTO	Checking order		01/07/2013
CTR	Contract		
CXF	CxF3 file		01/07/2013
DAD	Darn order		
DDT	ddt		
DEA	Despatch advise		
DER	Despatch request		
DR	Document Request		02/12/2014
FOR	Forecast		02/12/2014

GSO	Garment stock offer		
GSX	Garment stock offer change		
INV	Invoice		
KCC	Knitting-Clothing Commission Order		02/12/2014
KCI	Garment in Work Inventory Report		02/12/2014
M2M	Made to Measure Production Order		02/12/2014
MAS	Master marker		
MCI	Visual merchandising instruction		13/04/2018
OCH	Order change		
OFF	Offer		
ORD	Purchase order		
ORP	Order response		
OSR	order status request		
OSS	Offer status		02/12/2014
OST	Order status		
OUR	our reference		
QR	Quality Report		02/12/2014
RAI	Raw Material in Work Inventory Report		02/12/2014
RDC	Raw dyeing commission order		
RDH	Raw dyeing order change		
RDR	Raw dyeing order response		
REA	Receiving advise		
REQ	Request for Offer		
RET	Return		02/12/2014
RSC	Spinning commission order		
RSH	Spinning order change		
RSR	Spinning order response		
SCL	process sheet		
TFC	Textile dyeing-finishing commission order		
TFX	Textile Dyeing-Finishing Order Change		02/12/2014
TPC	Textile printing commission order		
TPX	Textile Printing Order Change		02/12/2014
TWI	Textile in work inventory		
VMI	visual merchandising instructions		01/02/2018
WAC	Warping commission order		

WEC	Weaving commission order		
YDC	Yarn dyeing commission order		
YDH	Yarn dyeing order change		
YDR	Yarn dyeing order response		
YTC	Twisting commission order		
YWI	Yarn in work inventory		

T29 - type of yarn package

type of package (roll-up) used for a yarn product

Agency name: eBIZ

tabella cod.: T29

File codes list (Generic code): http://www.ebiz.enea.it/moda-ml/repository/codelist/draft/gc_T29.xml

Code	Description	Adoption note	Date of insertion
CIL	bobbin		
CON	cone		
HNK	hank, skein		01/07/2013
MUF	muff, cake		01/07/2013
SPL	spool		
TUB	tube		
XCO	supercone		

T3 - terms of delivery

specification of the terms of trade (INCOTERMS)

Agency name: Incoterms

tabella cod.: T3

File codes list (Generic code): http://www.ebiz.enea.it/moda-ml/repository/codelist/draft/gc_T3.xml

Code	Description	Adoption note	Date of insertion
CFR	COST AND FREIGHT (named port of destination)		
CIF	COST, INSURANCE AND FREIGHT (named port of destination)		
CIP	CARRIAGE AND INSURANCE PAID (named place of destination)		

CP T	CARRIAGE PAID (named place of destination)		
DA F	DELIVERED AT FRONTIER (named place)	according to Incoterms® 2010 it is obsolete	08/12/2017
DA P	Delivered at Place of destination (named place of destination)	according to Incoterms® 2010	08/12/2017
DA T	Delivered at Terminal (named place of destination)	according to Incoterms® 2010	08/12/2017
DD P	DELIVERED DUTY PAID (named place of destination)		
DD U	DELIVERED DUTY UNPAID (named place of destination)	according to Incoterms® 2010 it is obsolete, use DAP	08/12/2017
DE Q	DELIVERED EX-QUAY (named port of destination)	according to Incoterms® 2010 it is obsolete	08/12/2017
DE S	DELIVERED EX-SHIP (named port of destination)	according to Incoterms® 2010 it is obsolete	08/12/2017
EX W	EX WORKS (named place)		
FA S	FREE ALONGSIDE SHIP (named port of shipment)		
FC A	FREE CARRIER (named place)		
FO B	FREE ON BOARD (named port of shipment)		

T30 - support of yarn package - material

type of material of which a package for yarn is made

Agency name: eBIZ

tabella cod.: T30

File codes list (Generic code): http://www.ebiz.enea.it/moda-ml/repository/codelist/draft/gc_T30.xml

Code	Description	Adoption note	Date of insertion
CA	cartoon		
DY	for soft package dyeing		
MT	metallic		01/07/2013
PL	plastic		

T32 - yarn reel wrapping type

type of wrapping in which a package of yarn is wrapped

Agency name: eBIZ

tabella cod.: T32

File codes list (Generic code): http://www.ebiz.enea.it/moda-ml/repository/codelist/draft/gc_T32.xml

Code	Description	Adoption note	Date of insertion
XA	without bag		
XB	paper bag		01/07/2013
XD	plastic film bag		

T33 - yarn outer packing

code specifying the type of outer wrapping or packing of a yarn

Agency name: eBIZ

tabella cod.: T33

File codes list (Generic code): http://www.ebiz.enea.it/moda-ml/repository/codelist/draft/gc_T33.xml

Code	Description	Adoption note	Date of insertion
00			
CB	cartoon box		
CC	cartoon box 18 reels		
CD	cartoon box 36 reels		
XD	plastic film		

T38 - transport conditions

special condition of transport or special service requested to the Forwarder

tabella cod.: T38

File codes list (Generic code): http://www.ebiz.enea.it/moda-ml/repository/codelist/draft/gc_T38.xml

Code	Description	Adoption note	Date of insertion
ACC	arrange customs clearance		
CAL	Carrier loads		
CAU	Carrier unloads		
CMR	CMR carnet		
FFN	freight forwarders national conditions		
FLD	special agreement for full loading		

NCC	do not arrange customs clearance		
PPB	packaging paid by Buyer		
PPS	packaging paid by Supplier		
PRO	proof of delivery		
RFR	return container free		
RPC	return container paid by Customer		
RPS	return container paid by Supplier		
SHL	Shipper loads		
SHU	Consignee unloads		

T4 - fabric piece inner packing (wrapping) 1

code specifying the type of inner wrapping/packing used for the fabric piece

Agency name: eBIZ

tabella cod.: T4

File codes list (Generic code): http://www.ebiz.enea.it/moda-ml/repository/codelist/draft/gc_T4.xml

Code	Description	Adoption note	Date of insertion
A	Folded, whole width		
B	Folded, doubled		
C	Folded, tube products		
D	Spoiled, whole width		
E	Spoiled, doubled, pli: left		
F	Spoiled, doubled, pli: right		
G	Rolled, whole width, single item		
H	Rolled, whole width, several items		
I	Rolled, doubled		
J	Rolled, tube products		

T40 - type of transport means

means of transport, in general or referred to a specific leg

Agency name: eBIZ

tabella cod.: T40

File codes list (Generic code): http://www.ebiz.enea.it/moda-ml/repository/codelist/draft/gc_T40.xml

Code	Description	Adoption note	Date of insertion
AIR	aircraft		
SHP	ship		
TRU	truck		
VAN	van		

T44 - additional code type

qualifier of the additional coding of a product

Agency name: eBIZ

tabella cod.: T44

File codes list (Generic code): http://www.ebiz.enea.it/moda-ml/repository/codelist/draft/gc_T44.xml

Code	Description	Adoption note	Date of insertion
CC	colour card		
CL	sales collection		
CO	company identification code		08/09/2017
DY	dye number		
LT	lot number		
MDI	Made in		08/09/2017
MS	manufacturing state		
PKG	packaging		09/09/2014
PL	product line		
RGB	RGB value		
SE	selvedge code		

T5 - fabric piece inner packing (wrapping) 2

code specifying the sub-type of inner wrapping/packing used for the fabric piece

Agency name: eBIZ

tabella cod.: T5

File codes list (Generic code): http://www.ebiz.enea.it/moda-ml/repository/codelist/draft/gc_T5.xml

Code	Description	Adoption note	Date of insertion
A	Open		

B	Folded once, not looped		
C	Folded twice, not looped		
H	Folded once, looped		
I	Folded twice, looped		
J	Without inner object, right side inside		
K	On carton or spooling plank, right side inside		
L	On spool (for pressure sensitive products), right side inside		
M	Without inner object, left side inside		
N	On carton or spooling plank, left side inside		
O	On spool (for pressure sensitive products), left side inside		
P	Without inner object, right side inside (deprecated code)		
Q	On carton, right side inside		
R	On wooden stick, right side inside		
S	Without inner object, left side inside (deprecated code)		
T	On carton, left side inside		
U	On wooden stick, left side inside		

T52 - fabric piece status

code used to describe the status of a fabric piece with reference to the control

Agency name: eBIZ

tabella cod.: T52

File codes list (Generic code): http://www.ebiz.enea.it/moda-ml/repository/codelist/draft/gc_T52.xml

Code	Description	Adoption note	Date of insertion
0	first registration		
C	registration from return		
F	stopped		
H	handling		
R	returned		
S	held		
T	deliverable		

T6 - fabric piece outer packing

code specifying the type of outer wrapping or packing used for the fabric piece

Agency name: eBIZ

tabella cod.: T6

File codes list (Generic code): http://www.ebiz.enea.it/moda-ml/repository/codelist/draft/gc_T6.xml

Code	Description	Adoption note	Date of insertion
0	Not wrapped		
1	Totally wrapped		
2	Wrapped, one side open		
3	Wrapped, both sides open		
4	Wrapped, one side open, with show corner		
5	Wrapped in cartons		
6	Double wrapped		

T8 - Modes of Transport

way of transport, in general or referred to the specified leg

Agency name: eBIZ

tabella cod.: T8

File codes list (Generic code): http://www.ebiz.enea.it/moda-ml/repository/codelist/draft/gc_T8.xml

Code	Description	Adoption note	Date of insertion
1	MARITIME TRANSPORT		
10	Courier		01/07/2013
2	RAIL TRANSPORT		
3	ROAD TRANSPORT		
4	AIR TRANSPORT		
5	MAIL		
6	AIR + SHIP TRANSPORT		
8	INLAND WATER TRANSPORT		
9	MODE UNKNOWN		