



<http://www.ebiz-tcf.eu>

**DRAFT**

**IMPLEMENTATION GUIDE**

**TRANSACTION "ACCESSORY PURCHASE ORDER RESPONSE"**

Version: draft

Date of release: 17/5/2019

Document code: G035

technical Documentation: <http://www.ebiz.enea.it>

XML Schemas repository: <http://www.ebiz.enea.it/moda-ml/repository/schema/draft/default.asp>

Guides repository: <http://www.ebiz.enea.it/moda-ml/repository/guide/draft/default.asp>

Guide filename: G035-eBIZ-AccessoryPurchaseOrderResponse.pdf

## 0. PREMISE

This document contains a proposal for the updating and extension of eBIZ specifications starting from the eBIZ version released as CEN CWA 16667 in 2013. Under the name of 'Draft version' it is reported the result of an extensive work of analysis and consultation aimed at developing and maintaining eBIZ specifications.

In particular, the content of this proposal is the result of various activities, mainly those carried out within the framework of the **eBIZ 4.0 project** funded by the European Commission, call COS-DESIGN-2015-3-06, topic COS-2015-DESIGN-2.

The technical contents are backwards compatible with the latest official published version.

## 1. BUSINESS DESCRIPTION

### 1.1 Scope

The present guide has been issued to assist the companies of the Textile-Clothing sector in the implementation of the standard XML document type "GARMENT ACCESSORY PURCHASE ORDER RESPONSE", providing all the instruction required for its use in any context of e-commerce between Apparel or Fabric Producers and Garment Accessory Producer.

All the rules required for the construction and validation of the document are embedded into the specific XML-Schema, which is detailed in section "Implementation guide".

### 1.2 Generalities

The message is issued by the Garment Accessory Producer (Supplier) in response to a purchase order. The Producer must, in any case, return an Order Response for any Order received, where, for each item, he notifies the acceptance as it is (C), the variation (V) or the cancellation (A).

Basic function of the message is to notify acceptance or to request modifications or cancellations concerning:

- 1) suppliable quantities
- 2) dates and places of delivery
- 3) prices

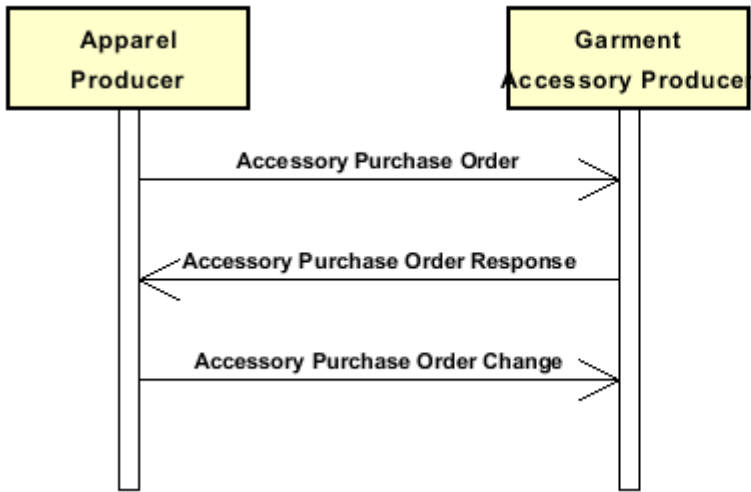
The Order Response can show a number of lines different from the related Purchase Order, when variations/cancellations have occurred so as to create the splitting of an Order Line.

However the sum of the quantities of the lines in the Order Change (confirmed + varied + cancelled) must always not less than the sum of the quantities in the original Order.

When the quantity is change the original line must be splitted and the confirmed amount and canceled amount should be explicated through the 'act' flag.

### 1.3. Possible scenario

Purchase of garment accessory



## 2. IMPLEMENTATION GUIDE

### 2.1 General structure of XML document

All the business data that can be exchanged through this class of documents are shown in the following "document structure", that provides a simplified vision of the Schema.

In particular:

- the two numbers following each element define its "cardinality" (minimum and maximum number of occurrences); the minimum equal zero indicates that the element is optional, the minimum greater than zero indicates that is mandatory;
- the bold character denotes the complex elements (aggregates of simple elements) that were built for the sake of functionality and re-usability of some complex informations sets. The child elements in each parent element are easily spotted as "indented";
- the symbol "@" denotes an attribute of the preceding element; here "the usage indicator (optional, required, ...)" is shown in square brackets.

### Structure

#### **ACSOrdResponse**

*@Totype [Optional]*

*@msgfunction [Optional] [Default= OR]*

*@version [Optional] [Default= draft]*

*@useProfile [Optional]*

#### | **TXheader 1-1**

| | msgN 1-1

| | - choose -

| | msgID 0-1

| | - or -

| | docID 0-1

| | *@numberingOrg [Optional]*

| | - end choose -

| | msgDate 1-1

| | *@dateForm [Optional]*

| | validityEnd 0-1

| | *@dateForm [Optional]*

| | msgCurrency 0-1

| | otherCurrency 0-9

| | *@currencyUseQualifier [Required]*

| | *@exchangeRate [Optional]*

#### | | **refDoc 1-9**

| | *@docType [Required]*

| | | docID 1-2

| | | *@numberingOrg [Optional]*

| | | docDate 0-1

| | | *@dateForm [Optional]*

| | | season 0-1

| | | *@numberingOrg [Optional]*

| | | *@codeList [Optional]*

| | | *@listName [Optional]*

| | | *@listVersion [Optional]*

| | | itemID 0-1

#### | | | **attachment 0-1**

| | | *@uid [Optional]*

| | | | fileName 0-1

| | | | *@numberingOrg [Optional]*

| | | | binaryObject 0-1

| | | | *@format [Optional]*

| | | | *@mime [Optional]*

| | | | *@encoding [Optional]*

| | | | @characterSet [Optional]  
| | | | **externalReference 0-99**  
| | | | | uri 1-1  
| | | | | @isURL [Optional] [Default= true]  
| | | | | mimeTypeCode 0-1  
| | | | | formatCode 0-1  
| | | | | encodingCode 0-1  
| | | | | characterSetCode 0-1

| **buyer 1-1**

| @logo [Optional]  
| @sender [Optional]  
| | id 1-1  
| | | @numberingOrg [Optional]  
| | additionalIdentifier 0-9  
| | | @numberingOrg [Optional]  
| | | @idQualifier [Optional]  
| | legalName 0-1  
| | dept 0-1  
| | subDept 0-1  
| | person 0-1  
| | | @email [Optional]  
| | | @phone [Optional]  
| | | @fax [Optional]  
| | street 0-1  
| | city 0-1  
| | subCountry 0-1  
| | country 0-1  
| | postCode 0-1

| **supplier 1-1**

| @logo [Optional]  
| @sender [Optional]  
| | id 1-1  
| | | @numberingOrg [Optional]  
| | additionalIdentifier 0-9  
| | | @numberingOrg [Optional]  
| | | @idQualifier [Optional]  
| | legalName 0-1  
| | dept 0-1  
| | subDept 0-1  
| | person 0-1  
| | | @email [Optional]  
| | | @phone [Optional]  
| | | @fax [Optional]  
| | street 0-1  
| | city 0-1  
| | subCountry 0-1  
| | country 0-1  
| | postCode 0-1

| **thirdParty 0-5**

| @VAT [Optional]  
| @role [Required]  
| @sender [Optional]  
| | id 1-1  
| | | @numberingOrg [Optional]  
| | legalName 0-1  
| | dept 0-1  
| | subDept 0-1  
| | person 0-1  
| | | @email [Optional]  
| | | @phone [Optional]  
| | | @fax [Optional]

- | | | street 0-1
- | | | city 0-1
- | | | subCountry 0-1
- | | | country 0-1
- | | | postCode 0-1
- | | note 0-99
- | | @numberingOrg [Optional]
- | | @codeList [Optional]
- | | @noteLabel [Optional]

| **terms 0-1**

- | | **payment 0-5**
- | | @finDiscount [Optional]
- | | @finSurcharge [Optional]

- choose -

- | | | payTerm 1-1

- or -

- | | | payTermText 1-1

- end choose -

- | | | payMode 0-1

- | | **insPayment 0-5**

- | | @part [Required]

- choose -

- | | | payTerm 1-1

- or -

- | | | payTermText 1-1

- end choose -

- | | | payMode 0-1

- | | **trade 0-1**

- choose -

- | | | incoTermText 1-1

- or -

- | | | incoTerm 1-1

- end choose -

- | | | location 0-1

- | | | @LRI [Optional]

- | | **transInfo 0-5**

- | | @transReason [Optional]

- | | @progr [Optional]

- | | | transMode 1-1

- | | | carrier 0-1

- | | | deliveryPlace 0-1

- | | | grossWeight 0-1

- | | | @um [Required]

- | | | netWeight 0-1

- | | | @um [Required]

- | | | transMeans 0-1

- | | | transCondition 0-3

- | | | transConditionText 0-1

- | | | despatchPlace 0-1

- | | | despatchDate 0-1

- | | | @dateForm [Optional]

- | | | delEffectiveDate 0-1

- | | | @dateForm [Optional]

- | | **allowanceCharge 0-9**

- | | @um [Optional]

- | | @VAT [Optional]

- | | @minQty [Optional]

- | | @currency [Optional]

- | | @maxQty [Optional]

- choose -

- | | | AC\_category 1-1
- | | | - or -
- | | | AC\_categoryText 1-1
- | | | - end choose -
- | | | - choose -
- | | | AC\_percent 1-1
- | | | - or -
- | | | AC\_amount 1-1
- | | | - end choose -
- | | | **dtScheme 0-1**
- | | | @taxType [Required]
- | | | | taxCategory 0-1
- | | | | taxRate 0-1
- | | | | legalRef 0-1
- | | | | @codeList [Required]
- | | | | note 0-99
- | | | | @numberingOrg [Optional]
- | | | | @codeList [Optional]
- | | | | @noteLabel [Optional]

| **acsComInfo 0-1**  
 | @endUse [Optional] [Default= PR]

- | | season 0-1
- | | | @numberingOrg [Optional]
- | | | @codeList [Optional]
- | | | @listName [Optional]
- | | | @listVersion [Optional]
- | | brand 0-1
- | | | @numberingOrg [Optional]
- | | | @codeList [Optional]
- | | | @listName [Optional]
- | | | @listVersion [Optional]
- | | productLine 0-1
- | | | @numberingOrg [Optional]
- | | | @codeList [Optional]
- | | | @listName [Optional]
- | | | @listVersion [Optional]
- | | collection 0-1
- | | project 0-1
- | | operationalCode 0-19
- | | | @numberingOrg [Optional]
- | | | @codeList [Optional]
- | | | @listName [Optional]
- | | | @listVersion [Optional]
- | | | @codeQualifier [Optional]
- | | deliveryDate 0-1
- | | | @dateForm [Optional]
- | | specDate 0-1
- | | | @dateForm [Optional]

| | **acsPack 0-1**

- | | | - choose -
- | | | acsPackCode 1-1
- | | | - or -
- | | | acsPackText 1-1
- | | | - end choose -
- | | | note 0-99
- | | | | @numberingOrg [Optional]
- | | | | @codeList [Optional]
- | | | | @noteLabel [Optional]

| **AXbody 1-1**

**AXitem 1-unbounded**

**@act** [Required]  
lineN 1-1  
  @VAT [Optional]  
lineID 0-1  
**refDoc 1-9**  
  @docType [Required]  
    docID 1-2  
      @numberingOrg [Optional]  
    docDate 0-1  
      @dateForm [Optional]  
    season 0-1  
      @numberingOrg [Optional]  
      @codeList [Optional]  
      @listName [Optional]  
      @listVersion [Optional]  
    itemID 0-1  
**attachment 0-1**  
  @uid [Optional]  
    fileName 0-1  
      @numberingOrg [Optional]  
    binaryObject 0-1  
      @format [Optional]  
      @mime [Optional]  
      @encoding [Optional]  
      @characterSet [Optional]  
**externalReference 0-99**  
  uri 1-1  
    @isURL [Optional] [Default= true]  
    mimeTypeCode 0-1  
    formatCode 0-1  
    encodingCode 0-1  
    characterSetCode 0-1  
**acsCode 0-2**  
  @numberingOrg [Optional]  
  art 1-1  
    @numberingOrg [Optional]  
    @codeList [Optional]  
    @listName [Optional]  
    @listVersion [Optional]  
  pattern 0-1  
    @numberingOrg [Optional]  
    @codeList [Optional]  
    @listName [Optional]  
    @listVersion [Optional]  
  color 0-1  
    @numberingOrg [Optional]  
    @codeList [Optional]  
    @listName [Optional]  
    @listVersion [Optional]  
  added 0-9  
    @numberingOrg [Optional]  
    @addType [Optional]  
  description 0-unbounded  
    @ln [Optional]  
qty 0-2  
  @um [Required]  
**csRange 0-99**  
  @numberingOrg [Optional]  
  @sizeSystemNat [Optional]  
  @sizeSystemSeg [Optional]



@sizeSystemBase [Optional]  
 @sizeSystemID [Optional]  
 | color 0-1  
 | @numberingOrg [Optional]  
 | @codeList [Optional]  
 | @listName [Optional]  
 | @listVersion [Optional]  
 | **garmentVariant 0-9**  
 | | variantType 1-1  
 | | @numberingOrg [Optional]  
 | | @codeList [Optional]  
 | | @listName [Optional]  
 | | @listVersion [Optional]  
 | | variantCode 1-1  
 | | @numberingOrg [Optional]  
 | | @codeList [Optional]  
 | | @listName [Optional]  
 | | @listVersion [Optional]  
 | drop 0-1  
 | @codeList [Optional]  
 | **sizeMatrix 1-1**  
 | | **sizeRow 1-99**  
 | | | additionalComponentCode 0-9  
 | | | @numberingOrg [Optional]  
 | | | @codeList [Optional]  
 | | | @listName [Optional]  
 | | | @listVersion [Optional]  
 | | | drop 0-1  
 | | | @codeList [Optional]  
 | | | size 1-1  
 | | | @codeList [Optional]  
 | | | qty 0-1  
 | | | @um [Required]  
 | | | **itemsList 0-1**  
 | | | | qualityLevel 0-1  
 | | | | @numberingOrg [Optional]  
 | | | | @codeList [Optional]  
 | | | | @listName [Optional]  
 | | | | @listVersion [Optional]  
 | | | | **itemIdentification 1-unbounded**  
 | | | | | serialN 1-9  
 | | | | | @numberingOrg [Optional]  
 | | | | | @idQualifier [Optional]  
 | price 0-1  
 | @um [Optional]  
 | @priceQualifier [Optional] [Default= NET]  
 | @currency [Optional]  
 | comDiscount 0-1  
 | **thirdParty 0-1**  
 | @VAT [Optional]  
 | @role [Required]  
 | @sender [Optional]  
 | | id 1-1  
 | | @numberingOrg [Optional]  
 | | legalName 0-1  
 | | dept 0-1  
 | | subDept 0-1  
 | | person 0-1  
 | | @email [Optional]  
 | | @phone [Optional]  
 | | @fax [Optional]

```

| | | | street 0-1
| | | | city 0-1
| | | | subCountry 0-1
| | | | country 0-1
| | | | postCode 0-1
| | | | acsComInfo 0-1
| | | | @endUse [Optional] [Default= PR]
| | | | | season 0-1
| | | | | @numberingOrg [Optional]
| | | | | @codeList [Optional]
| | | | | @listName [Optional]
| | | | | @listVersion [Optional]
| | | | | brand 0-1
| | | | | @numberingOrg [Optional]
| | | | | @codeList [Optional]
| | | | | @listName [Optional]
| | | | | @listVersion [Optional]
| | | | | productLine 0-1
| | | | | @numberingOrg [Optional]
| | | | | @codeList [Optional]
| | | | | @listName [Optional]
| | | | | @listVersion [Optional]
| | | | | collection 0-1
| | | | | project 0-1
| | | | | operationalCode 0-19
| | | | | @numberingOrg [Optional]
| | | | | @codeList [Optional]
| | | | | @listName [Optional]
| | | | | @listVersion [Optional]
| | | | | @codeQualifier [Optional]
| | | | | deliveryDate 0-1
| | | | | @dateForm [Optional]
| | | | | specDate 0-1
| | | | | @dateForm [Optional]
| | | | | acsPack 0-1
| | | | | - choose -
| | | | | | acsPackCode 1-1
| | | | | | - or -
| | | | | | acsPackText 1-1
| | | | | | - end choose -
| | | | | | note 0-99
| | | | | | @numberingOrg [Optional]
| | | | | | @codeList [Optional]
| | | | | | @noteLabel [Optional]
| | | | | | finInfo 0-1
| | | | | | | accountName 0-1
| | | | | | | bank 0-1
| | | | | | | | legalName 0-1
| | | | | | | | dept 0-1
| | | | | | | | subDept 0-1
| | | | | | | | person 0-1
| | | | | | | | @email [Optional]
| | | | | | | | @phone [Optional]
| | | | | | | | @fax [Optional]
| | | | | | | | street 0-1
| | | | | | | | city 0-1
| | | | | | | | subCountry 0-1
| | | | | | | | country 0-1
| | | | | | | | postCode 0-1
| | | | | | - choose -
| | | | | | | iban 1-1

```

```

- or -
| | | | bankIT 1-1
| | | | | legalName 0-1
| | | | | cin 0-1
| | | | | abi 1-1
| | | | | cab 1-1
| | | | | accountN 1-1
- end choose -
| | | | | swift 0-1
| | | | | note 0-99
| | | | | @numberingOrg [Optional]
| | | | | @codeList [Optional]
| | | | | @noteLabel [Optional]
| | | | | note 0-99
| | | | | @numberingOrg [Optional]
| | | | | @codeList [Optional]
| | | | | @noteLabel [Optional]
| | | | | dtScheme 0-1
| | | | | @taxType [Required]
| | | | | | taxCategory 0-1
| | | | | | taxRate 0-1
| | | | | | legalRef 0-1
| | | | | | @codeList [Required]
| | | | | | note 0-99
| | | | | | @numberingOrg [Optional]
| | | | | | @codeList [Optional]
| | | | | | @noteLabel [Optional]

| totals 0-1
| | | totQty 0-1
| | | @um [Required]
| | | goodsAmount 1-1

```

## 2.2 Detailed description of document elements

Following tables show all elements (complex and simple) used in this document. Description includes: 1) element's information: xml tag, name, brief description, data type and syntax constraints; 2) information about use of the element in a particular position in the document: xpath and possible associated notes.

### 2.2.1 Complex elements (Aggregate Business Information Entities)

Complex elements are those elements whose content is composed of other elements (childs).Complex elements are alphabetically ordered.

<b>acsCode</b>	full codification identifying an accessory product usually coupled with garment or other fashion product (XPath ACSOrdResponse/AXbody/AXitem/acsCode) 0-2
<b>acsComInfo</b>	miscellaneous trade information, that can be specified in a garment accessories Order, referred either to the whole document or to the single item (XPath ACSOrdResponse/acsComInfo) 0-1 (XPath ACSOrdResponse/AXbody/AXitem/acsComInfo) 0-1
<b>acsPack</b>	type of wrapping or packing of the accessory (XPath ACSOrdResponse/AXbody/AXitem/acsComInfo/acsPack) 0-1 (XPath ACSOrdResponse/acsComInfo/acsPack) 0-1
<b>allowanceCharge</b>	Allowances and Charges related to an Order or a contract (XPath ACSOrdResponse/terms/allowanceCharge) 0-9
<b>attachment</b>	an attached document. An attachment can refer to an external document or be included with the document being exchanged (XPath ACSOrdResponse/AXbody/AXitem/refDoc/attachment) 0-1 (XPath ACSOrdResponse/TXheader/refDoc/attachment) 0-1
<b>AXbody</b>	body of the document ACCESSORY ORDER RESPONSE and CHANGE (XPath ACSOrdResponse/AXbody) 1-1
<b>AXitem</b>	line item of the message ACCESSORY ORDER RESPONSE and ORDER CHANGE (XPath ACSOrdResponse/AXbody/AXitem) 1-unbounded
<b>bank</b>	details of the financial institution - base type: Nad, (XPath ACSOrdResponse/AXbody/AXitem/finInfo/bank) 0-1
<b>bankIT</b>	Italian bank operations code (DEPRECATED, use IBAN) (XPath ACSOrdResponse/AXbody/AXitem/finInfo/bankIT) 1-1
<b>buyer</b>	details of the Buyer (party that buys the good or service that is object of the current collaborative process) - base type: Nad, (XPath ACSOrdResponse/TXheader/buyer) 1-1
<b>csRange</b>	range of color-size for a fashion article (XPath ACSOrdResponse/AXbody/AXitem/csRange) 0-99
<b>dtScheme</b>	set of data usable to declare the duty or tax applied (XPath ACSOrdResponse/AXbody/AXitem/dtScheme) 0-1 - note: <i>recommended alternative to the attribute @VAT</i> (XPath ACSOrdResponse/terms/allowanceCharge/dtScheme) 0-1
<b>externalReference</b>	details about an external object, such as a document stored at a remote location (XPath ACSOrdResponse/AXbody/AXitem/refDoc/attachment/externalReference) 0-99 (XPath ACSOrdResponse/TXheader/refDoc/attachment/externalReference) 0-99

<b>finInfo</b>	bank details relevant for the payment: bank coordinates, SWIFT code, account (XPath ACSOrdResponse/AXbody/AXitem/finInfo) 0-1
<b>garmentVariant</b>	garment product variant (XPath ACSOrdResponse/AXbody/AXitem/csRange/garmentVariant) 0-9 - note: <i>used only if not already specified in the article code</i>
<b>insPayment</b>	payment details for payment by installments (XPath ACSOrdResponse/terms/insPayment) 0-5 - note: <i>excluded the case of offers, this set of data is alternative to payment set and must be iterated for each payment installment</i>
<b>itemIdentification</b>	serial identification of a product unit (XPath ACSOrdResponse/AXbody/AXitem/csRange/sizeMatrix/sizeRow/itemsList/itemIdentification) 1-unbounded - note: <i>identification of the single product unit contained in the list</i>
<b>itemsList</b>	list of the single product units (XPath ACSOrdResponse/AXbody/AXitem/csRange/sizeMatrix/sizeRow/itemsList) 0-1 - note: <i>the usage in this position is alternative to its usage within the document line element</i>
<b>payment</b>	payment details for payment all in one (XPath ACSOrdResponse/terms/payment) 0-5 - note: <i>excluded the case of offers, this set of data is alternative to insPayment, it can be iterated to specify alternative terms of payment (e.g.: 60 days or 30 days with 3% discount)</i>
<b>refDoc</b>	identification of a document and of an item thereof, to which the message makes reference (XPath ACSOrdResponse/AXbody/AXitem/refDoc) 1-9 - note: <i>Use to link the line of the present document to the line of the order, use refDoc element; numberingOrg indicates the role that produced the document and such reference, customer or supplier (both might be reported through two instances of refDoc)</i> (XPath ACSOrdResponse/TXheader/refDoc) 1-9
<b>sizeMatrix</b>	size matrix of an apparel product (XPath ACSOrdResponse/AXbody/AXitem/csRange/sizeMatrix) 1-1
<b>sizeRow</b>	size matrix row of an apparel product (XPath ACSOrdResponse/AXbody/AXitem/csRange/sizeMatrix/sizeRow) 1-99
<b>supplier</b>	details of the Supplier (party that supplies the good or service that is object of the current collaborative process) - base type: Nad, (XPath ACSOrdResponse/TXheader/supplier) 1-1
<b>terms</b>	details of the commercial obligations for payment and delivery (XPath ACSOrdResponse/terms) 0-1
<b>thirdParty</b>	details of the Third Party, different from Buyer or Supplier - base type: Nad, (XPath ACSOrdResponse/AXbody/AXitem/thirdParty) 0-1 (XPath ACSOrdResponse/TXheader/thirdParty) 0-5
<b>totals</b>	monetary and quantity totals of the Order (XPath ACSOrdResponse/totals) 0-1
<b>trade</b>	general terms of trade for the specified supply (XPath ACSOrdResponse/terms/trade) 0-1
<b>transInfo</b>	details of transport: mode, carrier and delivery place (XPath ACSOrdResponse/terms/transInfo) 0-5

<b>TXheader</b>	header of the TEXTILES ORDER RESPONSE and TEXTILES ORDER CHANGE (XPath ACSOrdResponse/TXheader) 1-1
-----------------	--

## 2.2.2 Simple elements (Basic Business Information Entities)

Simple elements are those elements whose content is characterized by a data type plus a domain of possible values. Simple elements are alphabetically ordered.

abi	ABI code - base type: string, length: 5, (XPath ACSOrdResponse/AXbody/AXitem/finInfo/bankIT/abi) 1-1
AC_amount	amount of an Allowance or Charge - base type: decimal, fraction digits: 2, (XPath ACSOrdResponse/terms/allowanceCharge/AC_amount) 1-1
AC_category	coded specification of an Allowance or Charge - base type: string, cod. table: T41 <a href="http://www.ebiz.enea.it/moda-ml/repository/codelist/draft/gc_T41.xml">http://www.ebiz.enea.it/moda-ml/repository/codelist/draft/gc_T41.xml</a> (XPath ACSOrdResponse/terms/allowanceCharge/AC_category) 1-1
AC_categoryText	free text description of an Allowance or Charge - base type: string, max length: 250, (XPath ACSOrdResponse/terms/allowanceCharge/AC_categoryText) 1-1
AC_percent	amount of an Allowance or Charge as a percentage - base type: decimal, max inclusive: 100, fraction digits: 2, (XPath ACSOrdResponse/terms/allowanceCharge/AC_percent) 1-1
accountN	account number - base type: string, max length: 15, (XPath ACSOrdResponse/AXbody/AXitem/finInfo/bankIT/accountN) 1-1
accountName	account name - base type: string, max length: 250, (XPath ACSOrdResponse/AXbody/AXitem/finInfo/accountName) 0-1
acsPackCode	code specifying the type of wrapping or packing used for the accessory - base type: string, (XPath ACSOrdResponse/acsComInfo/acsPack/acsPackCode) 1-1 (XPath ACSOrdResponse/AXbody/AXitem/acsComInfo/acsPack/acsPackCode) 1-1
acsPackText	free text specifying the type of wrapping or packing used for the accessory - base type: string, max length: 250, (XPath ACSOrdResponse/acsComInfo/acsPack/acsPackText) 1-1 (XPath ACSOrdResponse/AXbody/AXitem/acsComInfo/acsPack/acsPackText) 1-1
@act	status that the current line assigns to the line addressed in the reference document; if it is already canceled it maintains the status. - base type: string, cod. table: NT5 <a href="http://www.ebiz.enea.it/moda-ml/repository/codelist/draft/gc_NT5.xml">http://www.ebiz.enea.it/moda-ml/repository/codelist/draft/gc_NT5.xml</a> (XPath ACSOrdResponse/AXbody/AXitem/@act) [Required]
added	additional code of the product (complementing the formers) - base type: string, max length: 80, (XPath ACSOrdResponse/AXbody/AXitem/acsCode/added) 0-9 - note: <i>here an additional codification (see table T44) can be specified</i>
additionalComponentCode	an additional code to identify a fashion product or a part of it (it is a way to codify the item, but it is not one of the codes to identify it). It is not a serial identifier. - base type: string,

	(XPath ACSOrdResponse/AXbody/AXitem/csRange/sizeMatrix/sizeRow/additionalComponentCode) 0-9
additionalIdentifier	<p>additional identification code of a Party, for example customs registries or others</p> <p>- base type: string, max length: 15, (XPath ACSOrdResponse/TXheader/supplier/additionalIdentifier) 0-9</p> <p>- note: <i>identifiers for example for exports, such as MID (Manufacturer Identification Code), EORI (E.O.R.I. - Economic Operator Registration and Identification)</i> (XPath ACSOrdResponse/TXheader/buyer/additionalIdentifier) 0-9</p> <p>- note: <i>identifiers for example for exports, such as MID (Manufacturer Identification Code), EORI (E.O.R.I. - Economic Operator Registration and Identification)</i></p>
@addType	<p>qualifier of the additional coding of a product</p> <p>- base type: string, cod. table: T44 <a href="http://www.ebiz.enea.it/moda-ml/repository/codelist/draft/gc_T44.xml">http://www.ebiz.enea.it/moda-ml/repository/codelist/draft/gc_T44.xml</a> (XPath ACSOrdResponse/AXbody/AXitem/acsCode/added/@addType) [Optional]</p> <p>- nota: <i>addType allows the clarification of the meaning of the added element content; it is strongly suggested to use it always.</i></p>
art	<p>article number of the product</p> <p>- base type: string, max length: 80, (XPath ACSOrdResponse/AXbody/AXitem/acsCode/art) 1-1</p>
binaryObject	<p>a binary large object containing an attached document</p> <p>- base type: base64Binary, (XPath ACSOrdResponse/AXbody/AXitem/refDoc/attachment/binaryObject) 0-1 (XPath ACSOrdResponse/TXheader/refDoc/attachment/binaryObject) 0-1</p>
brand	<p>A brand name.</p> <p>- base type: string, (XPath ACSOrdResponse/AXbody/AXitem/acsComInfo/brand) 0-1 (XPath ACSOrdResponse/acsComInfo/brand) 0-1</p>
cab	<p>CAB code</p> <p>- base type: string, length: 5, (XPath ACSOrdResponse/AXbody/AXitem/finInfo/bankIT/cab) 1-1</p>
carrier	<p>identification of the transport carrier</p> <p>- base type: string, max length: 40, (XPath ACSOrdResponse/terms/transInfo/carrier) 0-1</p>
@characterSet	<p>the character set of the binary object if the mime type is text</p> <p>- base type: normalizedString, (XPath ACSOrdResponse/AXbody/AXitem/refDoc/attachment/binaryObject/@characterSet) [Optional] (XPath ACSOrdResponse/TXheader/refDoc/attachment/binaryObject/@characterSet) [Optional]</p>
characterSetCode	<p>the character set of an external document</p> <p>- base type: normalizedString, (XPath ACSOrdResponse/TXheader/refDoc/attachment/externalReference/characterSetCode) 0-1 (XPath ACSOrdResponse/AXbody/AXitem/refDoc/attachment/externalReference/characterSetCode) 0-1</p>
cin	<p>CIN code</p> <p>- base type: string, length: 5, (XPath ACSOrdResponse/AXbody/AXitem/finInfo/bankIT/cin) 0-1</p>
city	<p>name of the city (town, village)</p> <p>- base type: string, max length: 40, (XPath ACSOrdResponse/AXbody/AXitem/finInfo/bank/city) 0-1 (XPath ACSOrdResponse/TXheader/thirdParty/city) 0-1 (XPath ACSOrdResponse/TXheader/buyer/city) 0-1</p>

	<p>(XPath ACSOrdResponse/TXheader/supplier/city) 0-1  (XPath ACSOrdResponse/AXbody/AXitem/thirdParty/city) 0-1</p>
@codeList	<p>it specifies the URL where the list of codes used to make an instance of the element can be found</p> <ul style="list-style-type: none"> <li>- base type: string, max length: 255,</li> <li>(XPath ACSOrdResponse/acsComInfo/brand/@codeList) [Optional]</li> <li>(XPath ACSOrdResponse/acsComInfo/season/@codeList) [Optional]</li> <li>(XPath ACSOrdResponse/AXbody/AXitem/refDoc/season/@codeList) [Optional]</li> <li>(XPath ACSOrdResponse/AXbody/AXitem/csRange/color/@codeList) [Optional]</li> <li>- nota: <i>this attribute could be used as alternative to the others</i>  (XPath ACSOrdResponse/terms/allowanceCharge/dtScheme/note/@codeList) [Optional]</li> <li>- nota: <i>must be used to provide (URL) the list of codes used in "noteLabel"</i>  (XPath ACSOrdResponse/AXbody/AXitem/csRange/garmentVariant/variantType/@codeList) [Optional]</li> <li>- nota: <i>this attribute should be ALTERNATIVE to the others</i>  (XPath ACSOrdResponse/AXbody/AXitem/acsCode/color/@codeList) [Optional]</li> <li>- nota: <i>this attribute could be used as alternative to the others</i>  (XPath ACSOrdResponse/terms/allowanceCharge/dtScheme/legalRef/@codeList) [Required]</li> <li>(XPath ACSOrdResponse/AXbody/AXitem/acsCode/art/@codeList) [Optional]</li> <li>- nota: <i>this attribute should be ALTERNATIVE to the others</i>  (XPath ACSOrdResponse/AXbody/AXitem/acsCode/pattern/@codeList) [Optional]</li> <li>- nota: <i>this attribute should be ALTERNATIVE to the others</i>  (XPath ACSOrdResponse/AXbody/AXitem/csRange/sizeMatrix/sizeRow/size/@codeList) [Optional]</li> <li>(XPath ACSOrdResponse/TXheader/note/@codeList) [Optional]</li> <li>- nota: <i>must be used to provide (URL) the list of codes used in "noteLabel"</i>  (XPath ACSOrdResponse/AXbody/AXitem/csRange/sizeMatrix/sizeRow/itemsList/qualityLevel/@codeList) [Optional]</li> <li>(XPath ACSOrdResponse/AXbody/AXitem/csRange/sizeMatrix/sizeRow/drop/@codeList) [Optional]</li> <li>(XPath ACSOrdResponse/AXbody/AXitem/csRange/garmentVariant/variantCode/@codeList) [Optional]</li> <li>- nota: <i>this attribute should be ALTERNATIVE to the others</i>  (XPath ACSOrdResponse/AXbody/AXitem/csRange/drop/@codeList) [Optional]</li> <li>(XPath ACSOrdResponse/AXbody/AXitem/csRange/sizeMatrix/sizeRow/additionalComponentCode/@codeList) [Optional]</li> <li>(XPath ACSOrdResponse/AXbody/AXitem/acsComInfo/note/@codeList) [Optional]</li> <li>- nota: <i>must be used to provide (URL) the list of codes used in "noteLabel"</i>  (XPath ACSOrdResponse/acsComInfo/operationalCode/@codeList) [Optional]</li> <li>(XPath ACSOrdResponse/AXbody/AXitem/acsComInfo/operationalCode/@codeList) [Optional]</li> <li>(XPath ACSOrdResponse/AXbody/AXitem/acsComInfo/brand/@codeList) [Optional]</li> <li>(XPath ACSOrdResponse/AXbody/AXitem/acsComInfo/productLine/@codeList) [Optional]</li> <li>(XPath ACSOrdResponse/AXbody/AXitem/finInfo/note/@codeList) [Optional]</li> <li>- nota: <i>must be used to provide (URL) the list of codes used in "noteLabel"</i>  (XPath ACSOrdResponse/AXbody/AXitem/note/@codeList) [Optional]</li> <li>- nota: <i>must be used to provide (URL) the list of codes used in "noteLabel"</i>  (XPath ACSOrdResponse/AXbody/AXitem/dtScheme/legalRef/@codeList) [Required]</li> <li>(XPath ACSOrdResponse/AXbody/AXitem/dtScheme/note/@codeList) [Optional]</li> <li>- nota: <i>must be used to provide (URL) the list of codes used in "noteLabel"</i>  (XPath ACSOrdResponse/TXheader/refDoc/season/@codeList) [Optional]</li> <li>(XPath ACSOrdResponse/acsComInfo/note/@codeList) [Optional]</li> <li>- nota: <i>must be used to provide (URL) the list of codes used in "noteLabel"</i>  (XPath ACSOrdResponse/acsComInfo/productLine/@codeList) [Optional]</li> <li>(XPath ACSOrdResponse/AXbody/AXitem/acsComInfo/season/@codeList) [Optional]</li> </ul>
@codeQualifier	<p>operational code qualifier: it states if the code is related to a project, an event, an initiative, a sales channel, a management type (eg CITES), .....</p>



	<p>- base type: string, cod. table: NT43  <a href="http://www.ebiz.enea.it/moda-ml/repository/codelist/draft/gc_NT43.xml">http://www.ebiz.enea.it/moda-ml/repository/codelist/draft/gc_NT43.xml</a>  (XPath ACSOrdResponse/acsComInfo/operationalCode/@codeQualifier) [Optional]  (XPath ACSOrdResponse/AXbody/AXitem/acsComInfo/operationalCode/@codeQualifier) [Optional]</p>
collection	<p>identifier of collection (i.e.a clothing)  - base type: string, max length: 250,  (XPath ACSOrdResponse/acsComInfo/collection) 0-1  (XPath ACSOrdResponse/AXbody/AXitem/acsComInfo/collection) 0-1</p>
color	<p>colour number of the product, when not included in the model or fabric code  - base type: string, max length: 15,  (XPath ACSOrdResponse/AXbody/AXitem/csRange/color) 0-1  - note: <i>used only if not already specified in the article code</i>  (XPath ACSOrdResponse/AXbody/AXitem/acsCode/color) 0-1</p>
comDiscount	<p>percent discount applied to the related unit price or amount  - base type: decimal, min inclusive: 0, max inclusive: 100, fraction digits: 2,  (XPath ACSOrdResponse/AXbody/AXitem/comDiscount) 0-1</p>
country	<p>code of the nation  - base type: string, cod. table: T10  <a href="http://www.ebiz.enea.it/moda-ml/repository/codelist/draft/gc_T10.xml">http://www.ebiz.enea.it/moda-ml/repository/codelist/draft/gc_T10.xml</a>  (XPath ACSOrdResponse/TXheader/buyer/country) 0-1  (XPath ACSOrdResponse/AXbody/AXitem/finInfo/bank/country) 0-1  (XPath ACSOrdResponse/AXbody/AXitem/thirdParty/country) 0-1  (XPath ACSOrdResponse/TXheader/thirdParty/country) 0-1  (XPath ACSOrdResponse/TXheader/supplier/country) 0-1</p>
@currency	<p>currency in which a specified monetary data is expressed  - base type: string, cod. table: T9  <a href="http://www.ebiz.enea.it/moda-ml/repository/codelist/draft/gc_T9.xml">http://www.ebiz.enea.it/moda-ml/repository/codelist/draft/gc_T9.xml</a>  (XPath ACSOrdResponse/AXbody/AXitem/price/@currency) [Optional]  - nota: <i>Currency referred by the price.</i>  (XPath ACSOrdResponse/terms/allowanceCharge/@currency) [Optional]</p>
@currencyUseQualifier	<p>qualification of another currency used in the document  - base type: string, cod. table: NT19  <a href="http://www.ebiz.enea.it/moda-ml/repository/codelist/draft/gc_NT19.xml">http://www.ebiz.enea.it/moda-ml/repository/codelist/draft/gc_NT19.xml</a>  (XPath ACSOrdResponse/TXheader/otherCurrency/@currencyUseQualifier) [Required]</p>
@dateForm	<p>format used for the date  - base type: string, cod. table: NT29  <a href="http://www.ebiz.enea.it/moda-ml/repository/codelist/draft/gc_NT29.xml">http://www.ebiz.enea.it/moda-ml/repository/codelist/draft/gc_NT29.xml</a>  (XPath ACSOrdResponse/TXheader/validityEnd/@dateForm) [Optional]  (XPath ACSOrdResponse/acsComInfo/deliveryDate/@dateForm) [Optional]  (XPath ACSOrdResponse/acsComInfo/specDate/@dateForm) [Optional]  (XPath ACSOrdResponse/TXheader/msgDate/@dateForm) [Optional]  (XPath ACSOrdResponse/AXbody/AXitem/acsComInfo/specDate/@dateForm) [Optional]  (XPath ACSOrdResponse/AXbody/AXitem/refDoc/docDate/@dateForm) [Optional]  (XPath ACSOrdResponse/AXbody/AXitem/acsComInfo/deliveryDate/@dateForm) [Optional]  (XPath ACSOrdResponse/terms/transInfo/delEffectiveDate/@dateForm) [Optional]  (XPath ACSOrdResponse/TXheader/refDoc/docDate/@dateForm) [Optional]  (XPath ACSOrdResponse/terms/transInfo/despatchDate/@dateForm) [Optional]</p>
delEffectiveDate	<p>effective date of delivery of goods (declared in Despatch), according to one of the patterns YYYY-MM-DD, YYYY-MM-DD:HH-MM or YYYY-WW.  - base type: string,  (XPath ACSOrdResponse/terms/transInfo/delEffectiveDate) 0-1</p>
deliveryDate	<p>date of delivery of goods, requested or promised in the purchase process, according to one of the patterns YYYY-MM-DD, YYYY-MM-DD:HH-MM or YY-YY-WW.  - base type: string,</p>

	(XPath ACSOrdResponse/AXbody/AXitem/acsComInfo/deliveryDate) 0-1 (XPath ACSOrdResponse/acsComInfo/deliveryDate) 0-1
deliveryPlace	place of delivery of goods, ultimate or related to a given leg - base type: string, max length: 250, (XPath ACSOrdResponse/terms/transInfo/deliveryPlace) 0-1
dept	name or code of a contact department within a Party - base type: string, max length: 40, (XPath ACSOrdResponse/AXbody/AXitem/thirdParty/dept) 0-1 (XPath ACSOrdResponse/TXheader/supplier/dept) 0-1 (XPath ACSOrdResponse/TXheader/buyer/dept) 0-1 (XPath ACSOrdResponse/TXheader/thirdParty/dept) 0-1 (XPath ACSOrdResponse/AXbody/AXitem/finInfo/bank/dept) 0-1
description	free text description. The content of the element must be unique, it might be translated and repeated into more languages (thus no more than one instance for each language). - base type: string, max length: 250, (XPath ACSOrdResponse/AXbody/AXitem/acsCode/description) 0-unbounded - note: <i>Product description</i>
despatchDate	date of despatch of goods, requested or promised in the purchase process, according to one of the patterns YYYY-MM-DD, YYYY-MM-DD:HH-MM or YYYY-WW. - base type: string, (XPath ACSOrdResponse/terms/transInfo/despatchDate) 0-1
despatchPlace	place of despatch of goods, origin or related to a given leg - base type: string, max length: 250, (XPath ACSOrdResponse/terms/transInfo/despatchPlace) 0-1
docDate	date of issue of the referenced document, according to one of the patterns YYYY-MM-DD, YYYY-MM-DD:HH-MM or YYYY-WW. - base type: string, (XPath ACSOrdResponse/TXheader/refDoc/docDate) 0-1 (XPath ACSOrdResponse/AXbody/AXitem/refDoc/docDate) 0-1
docID	identification number of the referenced document SINCE 2008-1 ITS USE IN THE HEADER IS DISCOURAGED (REPLACED BY msgID) - base type: string, max length: 80, (XPath ACSOrdResponse/AXbody/AXitem/refDoc/docID) 1-2 (XPath ACSOrdResponse/TXheader/refDoc/docID) 1-2 (XPath ACSOrdResponse/TXheader/docID) 0-1
@docType	type or class to which the referenced document belongs - base type: string, cod. table: T21 <a href="http://www.ebiz.enea.it/moda-ml/repository/codelist/draft/gc_T21.xml">http://www.ebiz.enea.it/moda-ml/repository/codelist/draft/gc_T21.xml</a> (XPath ACSOrdResponse/TXheader/refDoc/@docType) [Required] (XPath ACSOrdResponse/AXbody/AXitem/refDoc/@docType) [Required]
drop	drop number of the garment - base type: string, max length: 15, (XPath ACSOrdResponse/AXbody/AXitem/csRange/drop) 0-1 - note: <i>used only if not already specified in the article code</i> (XPath ACSOrdResponse/AXbody/AXitem/csRange/sizeMatrix/sizeRow/drop) 0-1 - note: <i>DEPRECATED, anyhow it is used only if not already specified in the article code or csRange</i>
@email	electronic mail address of the contact person within a Party - base type: string, max length: 250, (XPath ACSOrdResponse/AXbody/AXitem/thirdParty/person/@email) [Optional] (XPath ACSOrdResponse/TXheader/supplier/person/@email) [Optional] (XPath ACSOrdResponse/AXbody/AXitem/finInfo/bank/person/@email) [Optional] (XPath ACSOrdResponse/TXheader/buyer/person/@email) [Optional] (XPath ACSOrdResponse/TXheader/thirdParty/person/@email) [Optional]

@encoding	<p>specifies the decoding algorithm of the binary object</p> <ul style="list-style-type: none"> <li>- base type: normalizedString,</li> <li>(XPath ACSOrdResponse/AXbody/AXitem/refDoc/attachment/binaryObject/@encoding) [Optional]</li> <li>(XPath ACSOrdResponse/TXheader/refDoc/attachment/binaryObject/@encoding) [Optional]</li> </ul>
encodingCode	<p>the encoding/decoding algorithm used with the external object</p> <ul style="list-style-type: none"> <li>- base type: normalizedString,</li> <li>(XPath ACSOrdResponse/AXbody/AXitem/refDoc/attachment/externalReference/encodingCode) 0-1</li> <li>(XPath ACSOrdResponse/TXheader/refDoc/attachment/externalReference/encodingCode) 0-1</li> </ul>
@endUse	<p>specifies the final use of the fabric</p> <ul style="list-style-type: none"> <li>- base type: string, cod. table: NT4</li> <li><a href="http://www.ebiz.enea.it/moda-ml/repository/codelist/draft/gc_NT4.xml">http://www.ebiz.enea.it/moda-ml/repository/codelist/draft/gc_NT4.xml</a></li> <li>(XPath ACSOrdResponse/AXbody/AXitem/acsComInfo/@endUse) [Optional] [Default= PR]</li> <li>- nota: <i>When used for accessory, use only PR: Production or SA: Sample codes.</i></li> <li>(XPath ACSOrdResponse/acsComInfo/@endUse) [Optional] [Default= PR]</li> <li>- nota: <i>When used for accessory, use only PR: Production or SA: Sample codes.</i></li> </ul>
@exchangeRate	<p>Currency exchange rate</p> <ul style="list-style-type: none"> <li>- base type: decimal, min inclusive: 0,</li> <li>(XPath ACSOrdResponse/TXheader/otherCurrency/@exchangeRate) [Optional]</li> <li>- nota: <i>Set the exchange rate of this currency to be applied on the message currency (msgCurrecy) to obtain the final value in this currency.</i></li> </ul>
@fax	<p>fax number of the contact person within a Party</p> <ul style="list-style-type: none"> <li>- base type: string, max length: 35,</li> <li>(XPath ACSOrdResponse/TXheader/thirdParty/person/@fax) [Optional]</li> <li>(XPath ACSOrdResponse/AXbody/AXitem/finInfo/bank/person/@fax) [Optional]</li> <li>(XPath ACSOrdResponse/TXheader/buyer/person/@fax) [Optional]</li> <li>(XPath ACSOrdResponse/AXbody/AXitem/thirdParty/person/@fax) [Optional]</li> <li>(XPath ACSOrdResponse/TXheader/supplier/person/@fax) [Optional]</li> </ul>
fileName	<p>unique identifier (name) of the file</p> <ul style="list-style-type: none"> <li>- base type: string, max length: 255,</li> <li>(XPath ACSOrdResponse/TXheader/refDoc/attachment/fileName) 0-1</li> <li>(XPath ACSOrdResponse/AXbody/AXitem/refDoc/attachment/fileName) 0-1</li> </ul>
@finDiscount	<p>financial discount rate applied for payment by the date specified</p> <ul style="list-style-type: none"> <li>- base type: decimal, min inclusive: 0, max inclusive: 100, fraction digits: 2,</li> <li>(XPath ACSOrdResponse/terms/payment/@finDiscount) [Optional]</li> </ul>
@finSurcharge	<p>financial surcharge rate applied for payment after the date specified</p> <ul style="list-style-type: none"> <li>- base type: decimal, min inclusive: 0, max inclusive: 100, fraction digits: 2,</li> <li>(XPath ACSOrdResponse/terms/payment/@finSurcharge) [Optional]</li> </ul>
@format	<p>the format of the binary content</p> <ul style="list-style-type: none"> <li>- base type: string,</li> <li>(XPath ACSOrdResponse/AXbody/AXitem/refDoc/attachment/binaryObject/@format) [Optional]</li> <li>(XPath ACSOrdResponse/TXheader/refDoc/attachment/binaryObject/@format) [Optional]</li> </ul>
formatCode	<p>the format of the external object</p> <ul style="list-style-type: none"> <li>- base type: normalizedString,</li> <li>(XPath ACSOrdResponse/AXbody/AXitem/refDoc/attachment/externalReference/formatCode) 0-1</li> <li>(XPath ACSOrdResponse/TXheader/refDoc/attachment/externalReference/formatCode) 0-1</li> </ul>

goodsAmount	total monetary value of the goods and services considered in the message - base type: decimal, min inclusive: 0, fraction digits: 2, (XPath ACSOrdResponse/totals/goodsAmount) 1-1
grossWeight	the gross weight, declared for transport or customs purpose - base type: decimal, min inclusive: 0, fraction digits: 2, (XPath ACSOrdResponse/terms/transInfo/grossWeight) 0-1
iban	international bank and account identifier, used for fund transfer - base type: string, max length: 35, (XPath ACSOrdResponse/AXbody/AXitem/finInfo/iban) 1-1
id	primary identification code of a Party; it is recommended the format: nation code (ISO 3166) + VAT identification number (11 crt), with the qualifier "numberingOrg"= MF - base type: string, max length: 15, (XPath ACSOrdResponse/TXheader/buyer/id) 1-1 (XPath ACSOrdResponse/TXheader/supplier/id) 1-1 (XPath ACSOrdResponse/TXheader/thirdParty/id) 1-1 (XPath ACSOrdResponse/AXbody/AXitem/thirdParty/id) 1-1
@idQualifier	Qualification of the identifier. - base type: string, (XPath ACSOrdResponse/TXheader/buyer/additionalIdentifier/@idQualifier) [Optional] - nota: <i>this attribute should be used when the numberingOrg attribute is not enough to declare the type of identifier</i> (XPath ACSOrdResponse/AXbody/AXitem/csRange/sizeMatrix/sizeRow/itemsList/itemIdentification/serialN/@idQualifier) [Optional] - nota: <i>this attribute should be used when the numberingOrg attribute is not enough to declare the type of serial identifier</i> (XPath ACSOrdResponse/TXheader/supplier/additionalIdentifier/@idQualifier) [Optional] - nota: <i>this attribute should be used when the numberingOrg attribute is not enough to declare the type of identifier</i>
incoTerm	specification of the terms of trade (INCOTERMS) - base type: string, cod. table: T3 <a href="http://www.ebiz.enea.it/moda-ml/repository/codelist/draft/gc_T3.xml">http://www.ebiz.enea.it/moda-ml/repository/codelist/draft/gc_T3.xml</a> (XPath ACSOrdResponse/terms/trade/incoTerm) 1-1
incoTermText	free text specifying the terms of trade (incoterm, location) - base type: string, max length: 250, (XPath ACSOrdResponse/terms/trade/incoTermText) 1-1
@isURL	it indicates if the referred element is an URL (true) or not (false) - base type: boolean, (XPath ACSOrdResponse/AXbody/AXitem/refDoc/attachment/externalReference/uri/@isURL) [Optional] [Default= true] - nota: <i>usage of URLs is recommended</i> (XPath ACSOrdResponse/TXheader/refDoc/attachment/externalReference/uri/@isURL) [Optional] [Default= true] - nota: <i>usage of URLs is recommended</i>
itemID	number of the line/item of the referenced document - base type: string, max length: 6, (XPath ACSOrdResponse/AXbody/AXitem/refDoc/itemID) 0-1 (XPath ACSOrdResponse/TXheader/refDoc/itemID) 0-1
legalName	legal name of a Party - base type: string, max length: 250, (XPath ACSOrdResponse/AXbody/AXitem/finInfo/bankIT/legalName) 0-1 (XPath ACSOrdResponse/TXheader/supplier/legalName) 0-1 (XPath ACSOrdResponse/TXheader/thirdParty/legalName) 0-1 (XPath ACSOrdResponse/AXbody/AXitem/thirdParty/legalName) 0-1

	(XPath ACSOrdResponse/AXbody/AXitem/finInfo/bank/legalName) 0-1 (XPath ACSOrdResponse/TXheader/buyer/legalName) 0-1
legalRef	legal reference of the duty or tax or fee category - base type: string, (XPath ACSOrdResponse/terms/allowanceCharge/dtScheme/legalRef) 0-1 (XPath ACSOrdResponse/AXbody/AXitem/dtScheme/legalRef) 0-1
lineID	unique identifier of the line item of the business document; it is set by the role that produces the document. - base type: string, max length: 30, (XPath ACSOrdResponse/AXbody/AXitem/lineID) 0-1
lineN	number of the line item of the present message (xml document); it is set by the role that produces the document. Usually it is a progressive number, but not always. - base type: positiveInteger, min inclusive: 1, max inclusive: 9999, (XPath ACSOrdResponse/AXbody/AXitem/lineN) 1-1
@listName	the name of the list of codes used to make an instance of the element (it might be thought as descriptive element, i.e. 'fabric printing technologies', or not, i.e. "T264") - base type: string, max length: 40, (XPath ACSOrdResponse/AXbody/AXitem/csRange/sizeMatrix/sizeRow/itemsList/qualityLevel/@listName) [Optional] (XPath ACSOrdResponse/AXbody/AXitem/acsCode/pattern/@listName) [Optional] - nota: <i>this attribute should always be used coupled with "numberingOrg"</i> (XPath ACSOrdResponse/acsComInfo/productLine/@listName) [Optional] (XPath ACSOrdResponse/AXbody/AXitem/csRange/garmentVariant/variantType/@listName) [Optional] - nota: <i>this attribute should always be used coupled with "numberingOrg"</i> (XPath ACSOrdResponse/AXbody/AXitem/acsComInfo/season/@listName) [Optional] (XPath ACSOrdResponse/acsComInfo/brand/@listName) [Optional] (XPath ACSOrdResponse/AXbody/AXitem/csRange/garmentVariant/variantCode/@listName) [Optional] - nota: <i>this attribute should always be used coupled with "numberingOrg"</i> (XPath ACSOrdResponse/AXbody/AXitem/refDoc/season/@listName) [Optional] (XPath ACSOrdResponse/AXbody/AXitem/acsCode/art/@listName) [Optional] - nota: <i>this attribute should always be used coupled with "numberingOrg"</i> (XPath ACSOrdResponse/AXbody/AXitem/csRange/color/@listName) [Optional] - nota: <i>this attribute should always be used coupled with "numberingOrg"</i> (XPath ACSOrdResponse/acsComInfo/season/@listName) [Optional] (XPath ACSOrdResponse/AXbody/AXitem/acsComInfo/brand/@listName) [Optional] (XPath ACSOrdResponse/AXbody/AXitem/csRange/sizeMatrix/sizeRow/additionalComponentCode/@listName) [Optional] (XPath ACSOrdResponse/AXbody/AXitem/acsComInfo/productLine/@listName) [Optional] (XPath ACSOrdResponse/AXbody/AXitem/acsComInfo/operationalCode/@listName) [Optional] (XPath ACSOrdResponse/AXbody/AXitem/acsCode/color/@listName) [Optional] - nota: <i>this attribute should always be used coupled with "numberingOrg"</i> (XPath ACSOrdResponse/TXheader/refDoc/season/@listName) [Optional] (XPath ACSOrdResponse/acsComInfo/operationalCode/@listName) [Optional]
@listVersion	it specifies the version of the list of codes used to make an instance of the element - base type: string, max length: 6, (XPath ACSOrdResponse/AXbody/AXitem/csRange/garmentVariant/variantType/@listVersion) [Optional] - nota: <i>this attribute should always be used coupled with "numberingOrg" and "listName"</i> (XPath ACSOrdResponse/TXheader/refDoc/season/@listVersion) [Optional]

	<p>(XPath ACSOrdResponse/AXbody/AXitem/acsComInfo/operationalCode/@listVersion) [Optional]</p> <p>(XPath ACSOrdResponse/AXbody/AXitem/acsCode/color/@listVersion) [Optional]</p> <p>- nota: <i>this attribute should always be used coupled with “numberingOrg” and “listName”</i></p> <p>(XPath ACSOrdResponse/AXbody/AXitem/acsComInfo/brand/@listVersion) [Optional]</p> <p>(XPath ACSOrdResponse/AXbody/AXitem/acsComInfo/productLine/@listVersion) [Optional]</p> <p>(XPath ACSOrdResponse/AXbody/AXitem/csRange/color/@listVersion) [Optional]</p> <p>- nota: <i>this attribute should always be used coupled with “numberingOrg” and “listName”</i></p> <p>(XPath ACSOrdResponse/AXbody/AXitem/acsCode/art/@listVersion) [Optional]</p> <p>- nota: <i>this attribute should always be used coupled with “numberingOrg” and “listName”</i></p> <p>(XPath ACSOrdResponse/AXbody/AXitem/acsComInfo/season/@listVersion) [Optional]</p> <p>(XPath ACSOrdResponse/AXbody/AXitem/acsCode/pattern/@listVersion) [Optional]</p> <p>- nota: <i>this attribute should always be used coupled with “numberingOrg” and “listName”</i></p> <p>(XPath ACSOrdResponse/AXbody/AXitem/csRange/sizeMatrix/sizeRow/itemsList/qualityLevel/@listVersion) [Optional]</p> <p>(XPath ACSOrdResponse/AXbody/AXitem/refDoc/season/@listVersion) [Optional]</p> <p>(XPath ACSOrdResponse/acsComInfo/season/@listVersion) [Optional]</p> <p>(XPath ACSOrdResponse/acsComInfo/brand/@listVersion) [Optional]</p> <p>(XPath ACSOrdResponse/acsComInfo/productLine/@listVersion) [Optional]</p> <p>(XPath ACSOrdResponse/AXbody/AXitem/csRange/sizeMatrix/sizeRow/additionalComponentCode/@listVersion) [Optional]</p> <p>(XPath ACSOrdResponse/acsComInfo/operationalCode/@listVersion) [Optional]</p> <p>(XPath ACSOrdResponse/AXbody/AXitem/csRange/garmentVariant/variantCode/@listVersion) [Optional]</p> <p>- nota: <i>this attribute should always be used coupled with “numberingOrg” and “listName”</i></p>
@ln	<p>Language code.</p> <p>- base type: string,</p> <p>(XPath ACSOrdResponse/AXbody/AXitem/acsCode/description/@ln) [Optional]</p>
location	<p>specification of a location</p> <p>- base type: string, max length: 40,</p> <p>(XPath ACSOrdResponse/terms/trade/location) 0-1</p> <p>- note: <i>place to which the INCOTERM applies</i></p>
@logo	<p>company logo (URL of the image jpeg or gif). It is recommended that the width of the image does not exceed 640 pixel.</p> <p>- base type: string, max length: 255,</p> <p>(XPath ACSOrdResponse/TXheader/buyer/@logo) [Optional]</p> <p>(XPath ACSOrdResponse/TXheader/supplier/@logo) [Optional]</p>
@LRI	<p>attribute usable to format a string according to a customized User rule (local rule)</p> <p>- base type: string, cod. table: NT3</p> <p><a href="http://www.ebiz.enea.it/moda-ml/repository/codelist/draft/gc_NT3.xml">http://www.ebiz.enea.it/moda-ml/repository/codelist/draft/gc_NT3.xml</a></p> <p>(XPath ACSOrdResponse/terms/trade/location/@LRI) [Optional]</p>
@maxQty	<p>maximum product quantity</p> <p>- base type: decimal, min inclusive: 0, fraction digits: 2,</p> <p>(XPath ACSOrdResponse/terms/allowanceCharge/@maxQty) [Optional]</p> <p>- nota: <i>maximum quantity of product for the application of this allowance or charge</i></p>
@mime	<p>the mime type of the binary object</p> <p>- base type: normalizedString,</p> <p>(XPath ACSOrdResponse/AXbody/AXitem/refDoc/attachment/binaryObject/@mime) [Optional]</p>



	(XPath ACSOrdResponse/TXheader/refDoc/attachment/binaryObject/@mime) [Optional]
mimeCode	mime type of the external object - base type: normalizedString, (XPath ACSOrdResponse/AXbody/AXitem/refDoc/attachment/externalReference/mimeCode) 0-1 (XPath ACSOrdResponse/TXheader/refDoc/attachment/externalReference/mimeCode) 0-1
@minQty	minimum product quantity - base type: decimal, min inclusive: 0, fraction digits: 2, (XPath ACSOrdResponse/terms/allowanceCharge/@minQty) [Optional] - nota: <i>minimum quantity of product for the application of this allowance or charge</i>
msgCurrency	currency used to express the monetary amounts of the message - base type: string, cod. table: T9 <a href="http://www.ebiz.enea.it/moda-ml/repository/codelist/draft/gc_T9.xml">http://www.ebiz.enea.it/moda-ml/repository/codelist/draft/gc_T9.xml</a> (XPath ACSOrdResponse/TXheader/msgCurrency) 0-1
msgDate	date of issue of the present message (xml document), according to one of the patterns YYYY-MM-DD, YYYY-MM-DD:HH-MM or YYYY-WW. - base type: string, (XPath ACSOrdResponse/TXheader/msgDate) 1-1
@msgfunction	function performed by the present message with regards to the transmission - base type: string, cod. table: NT18 <a href="http://www.ebiz.enea.it/moda-ml/repository/codelist/draft/gc_NT18.xml">http://www.ebiz.enea.it/moda-ml/repository/codelist/draft/gc_NT18.xml</a> (XPath ACSOrdResponse/@msgfunction) [Optional] [Default= OR]
msgID	key identifier of the business document in the information system of the issuing Party. In case of more despatches of the same business document, it is unchanged. - base type: string, max length: 35, (XPath ACSOrdResponse/TXheader/msgID) 0-1
msgN	identification number given to the message (xml document) by its issuer. In case of more despatches of the same business document, it changes. - base type: string, max length: 35, (XPath ACSOrdResponse/TXheader/msgN) 1-1
netWeight	the net weight declared for transport or customs purpose - base type: decimal, min inclusive: 0, fraction digits: 2, (XPath ACSOrdResponse/terms/transInfo/netWeight) 0-1
note	free text or structured (computer processing) note. For note structuring use the attributes "noteLabel" and "codelist" - base type: string, max length: 350, (XPath ACSOrdResponse/terms/allowanceCharge/dtScheme/note) 0-99 (XPath ACSOrdResponse/TXheader/note) 0-99 (XPath ACSOrdResponse/acsComInfo/note) 0-99 (XPath ACSOrdResponse/AXbody/AXitem/acsComInfo/note) 0-99 (XPath ACSOrdResponse/AXbody/AXitem/note) 0-99 (XPath ACSOrdResponse/AXbody/AXitem/finInfo/note) 0-99 (XPath ACSOrdResponse/AXbody/AXitem/dtScheme/note) 0-99
@noteLabel	subject qualifier of a note - base type: string, max length: 35, (XPath ACSOrdResponse/TXheader/note/@noteLabel) [Optional] - nota: <i>must be used to qualify the subject of the note</i> (XPath ACSOrdResponse/AXbody/AXitem/acsComInfo/note/@noteLabel) [Optional] - nota: <i>must be used to qualify the subject of the note</i> (XPath ACSOrdResponse/AXbody/AXitem/note/@noteLabel) [Optional] - nota: <i>must be used to qualify the subject of the note</i> (XPath ACSOrdResponse/terms/allowanceCharge/dtScheme/note/@noteLabel) [Optional]

	<p>- nota: <i>must be used to qualify the subject of the note</i> (XPath ACSOrdResponse/AXbody/AXitem/finInfo/note/@noteLabel) [Optional]</p> <p>- nota: <i>must be used to qualify the subject of the note</i> (XPath ACSOrdResponse/AXbody/AXitem/dtScheme/note/@noteLabel) [Optional]</p> <p>- nota: <i>must be used to qualify the subject of the note</i> (XPath ACSOrdResponse/acsComInfo/note/@noteLabel) [Optional]</p> <p>- nota: <i>must be used to qualify the subject of the note</i></p>
@numberingOrg	<p>code specifying the organisation who has created or owns the coding or numbering system</p> <p>- base type: string, cod. table: NT6 <a href="http://www.ebiz.enea.it/moda-ml/repository/codelist/draft/gc_NT6.xml">http://www.ebiz.enea.it/moda-ml/repository/codelist/draft/gc_NT6.xml</a> (XPath ACSOrdResponse/TXheader/refDoc/docID/@numberingOrg) [Optional]</p> <p>- nota: <i>here can be specified whose document numbering is used (e.g.: Client, Supplier, ..)</i> (XPath ACSOrdResponse/AXbody/AXitem/finInfo/note/@numberingOrg) [Optional] (XPath ACSOrdResponse/TXheader/note/@numberingOrg) [Optional] (XPath ACSOrdResponse/TXheader/refDoc/season/@numberingOrg) [Optional] (XPath ACSOrdResponse/AXbody/AXitem/dtScheme/note/@numberingOrg) [Optional] (XPath ACSOrdResponse/TXheader/docID/@numberingOrg) [Optional]</p> <p>- nota: <i>here can be specified whose document numbering is used (e.g.: Client, Supplier, ..)</i> (XPath ACSOrdResponse/AXbody/AXitem/csRange/sizeMatrix/sizeRow/itemsList/qualityLevel/@numberingOrg) [Optional] (XPath ACSOrdResponse/AXbody/AXitem/note/@numberingOrg) [Optional] (XPath ACSOrdResponse/AXbody/AXitem/acsComInfo/brand/@numberingOrg) [Optional] (XPath ACSOrdResponse/AXbody/AXitem/acsComInfo/operationalCode/@numberingOrg) [Optional] (XPath ACSOrdResponse/AXbody/AXitem/acsComInfo/note/@numberingOrg) [Optional] (XPath ACSOrdResponse/AXbody/AXitem/acsComInfo/productLine/@numberingOrg) [Optional] (XPath ACSOrdResponse/TXheader/supplier/additionalIdentifier/@numberingOrg) [Optional]</p> <p>- nota: <i>here the issuer of the identifier must be specified</i> (XPath ACSOrdResponse/TXheader/supplier/id/@numberingOrg) [Optional] (XPath ACSOrdResponse/TXheader/buyer/additionalIdentifier/@numberingOrg) [Optional]</p> <p>- nota: <i>here the issuer of the identifier must be specified</i> (XPath ACSOrdResponse/AXbody/AXitem/thirdParty/id/@numberingOrg) [Optional] (XPath ACSOrdResponse/AXbody/AXitem/csRange/sizeMatrix/sizeRow/itemsList/itemIdentification/serialN/@numberingOrg) [Optional]</p> <p>- nota: <i>here the issuer of the serial number must be specified (when different from the Supplier)</i> (XPath ACSOrdResponse/TXheader/refDoc/attachment/fileName/@numberingOrg) [Optional] (XPath ACSOrdResponse/TXheader/buyer/id/@numberingOrg) [Optional] (XPath ACSOrdResponse/AXbody/AXitem/acsComInfo/season/@numberingOrg) [Optional] (XPath ACSOrdResponse/TXheader/thirdParty/id/@numberingOrg) [Optional] (XPath ACSOrdResponse/AXbody/AXitem/csRange/garmentVariant/variantCode/@numberingOrg) [Optional]</p> <p>- nota: <i>this attribute should be used either single or coupled with "listName" and "listVersion"</i> (XPath ACSOrdResponse/AXbody/AXitem/acsCode/pattern/@numberingOrg) [Optional]</p> <p>- nota: <i>this attribute should be used either single or coupled with "listName" and "listVersion"</i> (XPath ACSOrdResponse/AXbody/AXitem/acsCode/art/@numberingOrg) [Optional]</p> <p>- nota: <i>this attribute should be used either single or coupled with "listName" and "listVersion"</i></p>



	<p>(XPath ACSOrdResponse/terms/allowanceCharge/dtScheme/note/@numberingOrg) [Optional]  (XPath ACSOrdResponse/AXbody/AXitem/acsCode/@numberingOrg) [Optional]  (XPath ACSOrdResponse/AXbody/AXitem/csRange/color/@numberingOrg) [Optional]</p> <p>- nota: <i>this attribute should be used either single or coupled with "listName" and "listVersion"</i></p> <p>(XPath ACSOrdResponse/AXbody/AXitem/csRange/garmentVariant/variantType/@numberingOrg) [Optional]  - nota: <i>this attribute should be used either single or coupled with "listName" and "listVersion"</i></p> <p>(XPath ACSOrdResponse/AXbody/AXitem/csRange/@numberingOrg) [Optional]  (XPath ACSOrdResponse/AXbody/AXitem/acsCode/color/@numberingOrg) [Optional]</p> <p>- nota: <i>this attribute should be used either single or coupled with "listName" and "listVersion"</i></p> <p>(XPath ACSOrdResponse/AXbody/AXitem/acsCode/added/@numberingOrg) [Optional]</p> <p>(XPath ACSOrdResponse/acsComInfo/operationalCode/@numberingOrg) [Optional]  (XPath ACSOrdResponse/AXbody/AXitem/refDoc/docID/@numberingOrg) [Optional]</p> <p>- nota: <i>here can be specified whose document numbering is used (e.g.: Client, Supplier, ..)</i></p> <p>(XPath ACSOrdResponse/acsComInfo/note/@numberingOrg) [Optional]  (XPath ACSOrdResponse/AXbody/AXitem/csRange/sizeMatrix/sizeRow/additionalComponentCode/@numberingOrg) [Optional]  (XPath ACSOrdResponse/AXbody/AXitem/refDoc/season/@numberingOrg) [Optional]</p> <p>(XPath ACSOrdResponse/AXbody/AXitem/refDoc/attachment/fileName/@numberingOrg) [Optional]  (XPath ACSOrdResponse/acsComInfo/brand/@numberingOrg) [Optional]  (XPath ACSOrdResponse/acsComInfo/season/@numberingOrg) [Optional]  (XPath ACSOrdResponse/acsComInfo/productLine/@numberingOrg) [Optional]</p>
operationalCode	<p>operational code: it is the code of a project, an event, an initiative, a sales channel, a management type (eg CITES), ... the document, or product, is connected with.</p> <p>- base type: string,  (XPath ACSOrdResponse/acsComInfo/operationalCode) 0-19  (XPath ACSOrdResponse/AXbody/AXitem/acsComInfo/operationalCode) 0-19</p>
otherCurrency	<p>other currency used in the document</p> <p>- base type: string, cod. table: T9  <a href="http://www.ebiz.enea.it/moda-ml/repository/codelist/draft/gc_T9.xml">http://www.ebiz.enea.it/moda-ml/repository/codelist/draft/gc_T9.xml</a>  (XPath ACSOrdResponse/TXheader/otherCurrency) 0-9</p>
@part	<p>percent fraction of a total payment</p> <p>- base type: decimal, min inclusive: 1, max inclusive: 99, fraction digits: 2,  (XPath ACSOrdResponse/terms/insPayment/@part) [Required]  - nota: <i>here the % value of each installment must be indicated</i></p>
pattern	<p>pattern/design number of the product, when not included in the article code</p> <p>- base type: string, max length: 15,  (XPath ACSOrdResponse/AXbody/AXitem/acsCode/pattern) 0-1</p>
payMode	<p>way or means of payment</p> <p>- base type: string, cod. table: T2  <a href="http://www.ebiz.enea.it/moda-ml/repository/codelist/draft/gc_T2.xml">http://www.ebiz.enea.it/moda-ml/repository/codelist/draft/gc_T2.xml</a>  (XPath ACSOrdResponse/terms/insPayment/payMode) 0-1  (XPath ACSOrdResponse/terms/payment/payMode) 0-1</p>
payTerm	<p>code specifying the terms or time by which the payment must be done</p> <p>- base type: string, cod. table: T1  <a href="http://www.ebiz.enea.it/moda-ml/repository/codelist/draft/gc_T1.xml">http://www.ebiz.enea.it/moda-ml/repository/codelist/draft/gc_T1.xml</a>  (XPath ACSOrdResponse/terms/payment/payTerm) 1-1  (XPath ACSOrdResponse/terms/insPayment/payTerm) 1-1</p>

payTermText	free text specifying the terms by which the payment must be done (time/mode or means) - base type: string, max length: 250, (XPath ACSOrdResponse/terms/payment/payTermText) 1-1 (XPath ACSOrdResponse/terms/insPayment/payTermText) 1-1
person	name of the contact person within a Party - base type: string, max length: 40, (XPath ACSOrdResponse/TXheader/supplier/person) 0-1 (XPath ACSOrdResponse/TXheader/buyer/person) 0-1 (XPath ACSOrdResponse/AXbody/AXitem/finInfo/bank/person) 0-1 (XPath ACSOrdResponse/TXheader/thirdParty/person) 0-1 (XPath ACSOrdResponse/AXbody/AXitem/thirdParty/person) 0-1
@phone	phone number of the contact person within a Party - base type: string, max length: 35, (XPath ACSOrdResponse/AXbody/AXitem/thirdParty/person/@phone) [Optional] (XPath ACSOrdResponse/TXheader/buyer/person/@phone) [Optional] (XPath ACSOrdResponse/TXheader/supplier/person/@phone) [Optional] (XPath ACSOrdResponse/AXbody/AXitem/finInfo/bank/person/@phone) [Optional] (XPath ACSOrdResponse/TXheader/thirdParty/person/@phone) [Optional]
postCode	code defining the postal zone - base type: string, max length: 10, (XPath ACSOrdResponse/TXheader/thirdParty/postCode) 0-1 (XPath ACSOrdResponse/TXheader/buyer/postCode) 0-1 (XPath ACSOrdResponse/AXbody/AXitem/finInfo/bank/postCode) 0-1 (XPath ACSOrdResponse/TXheader/supplier/postCode) 0-1 (XPath ACSOrdResponse/AXbody/AXitem/thirdParty/postCode) 0-1
price	unit price of the article, object or service specified - base type: decimal, min inclusive: 0, fraction digits: 4, (XPath ACSOrdResponse/AXbody/AXitem/price) 0-1
@priceQualifier	type of price with reference to discount and taxes - base type: string, cod. table: NT20 <a href="http://www.ebiz.enea.it/moda-ml/repository/codelist/draft/gc_NT20.xml">http://www.ebiz.enea.it/moda-ml/repository/codelist/draft/gc_NT20.xml</a> (XPath ACSOrdResponse/AXbody/AXitem/price/@priceQualifier) [Optional] [Default = NET]
productLine	the product line name of a fashion product. - base type: string, (XPath ACSOrdResponse/AXbody/AXitem/acsComInfo/productLine) 0-1 (XPath ACSOrdResponse/acsComInfo/productLine) 0-1
@progr	progressive number in the sequence - base type: positiveInteger, min inclusive: 1, (XPath ACSOrdResponse/terms/transInfo/@progr) [Optional] - nota: <i>Indicates the position of the leg in a sequence of transport legs.</i>
project	code used to assign the items ordered (fabric pieces, accessories, garments ...) to a specific project of the Client - base type: string, max length: 40, (XPath ACSOrdResponse/acsComInfo/project) 0-1 (XPath ACSOrdResponse/AXbody/AXitem/acsComInfo/project) 0-1
qty	net quantity of the article or object correlated, qualified by the function of the document (ordering, delivering, ..) and by the context - base type: decimal, min inclusive: 0, fraction digits: 2, (XPath ACSOrdResponse/AXbody/AXitem/csRange/sizeMatrix/sizeRow/qty) 0-1 (XPath ACSOrdResponse/AXbody/AXitem/qty) 0-2 <hr/> <b>AAAA-WARNING! - text not AVAILABLE n. 245 - In=en</b>
qualityLevel	the product quality level (first choice, second choice,...). - base type: string,

	(XPath ACSOrdResponse/AXbody/AXitem/csRange/sizeMatrix/sizeRow/itemsList/qualityLevel) 0-1
@role	Third Party role qualifier - base type: string, cod. table: NT2 <a href="http://www.ebiz.enea.it/moda-ml/repository/codelist/draft/gc_NT2.xml">http://www.ebiz.enea.it/moda-ml/repository/codelist/draft/gc_NT2.xml</a> (XPath ACSOrdResponse/TXheader/thirdParty/@role) [Required] (XPath ACSOrdResponse/AXbody/AXitem/thirdParty/@role) [Required]
season	sale season; defined as: season (1 crt) + year (4 crt) - season: S/S=1 A/W=2 Spring=3 Summer=4 Autumn=5 Winter=6: for more than four seasons use alphabetic sequence: 1st season=A 2nd season=B etc.etc. - base type: string, max length: 15, (XPath ACSOrdResponse/acsComInfo/season) 0-1 (XPath ACSOrdResponse/AXbody/AXitem/acsComInfo/season) 0-1 (XPath ACSOrdResponse/AXbody/AXitem/refDoc/season) 0-1 - note: <i>here indicates the season to which the referenced document belongs</i> (XPath ACSOrdResponse/TXheader/refDoc/season) 0-1 - note: <i>here indicates the season to which the referenced document belongs</i>
@sender	qualifier that specifies the Party issuing of the document - base type: boolean, (XPath ACSOrdResponse/TXheader/supplier/@sender) [Optional] - nota: <i>This attribute is mandatory when the STYLESHEET must be used</i> (XPath ACSOrdResponse/TXheader/buyer/@sender) [Optional] - nota: <i>This attribute is mandatory when the STYLESHEET must be used</i> (XPath ACSOrdResponse/AXbody/AXitem/thirdParty/@sender) [Optional] - nota: <i>This attribute is mandatory when the STYLESHEET must be used</i> (XPath ACSOrdResponse/TXheader/thirdParty/@sender) [Optional] - nota: <i>This attribute is mandatory when the STYLESHEET must be used</i>
serialN	serial number used for the identification of a physical unit - base type: string, max length: 250, (XPath ACSOrdResponse/AXbody/AXitem/csRange/sizeMatrix/sizeRow/itemsList/itemIdentification/serialN) 1-9 <hr/> <b>AAAA-WARNING! - text not AVAILABLE n. 245 - In=en</b> - note: <i>multiple values of serialN are allowed for different representations of the serial identifier of the same product unit. Instances of serialN must differ at least for one value of numberingOrg and idQualifier.</i>
size	size number of a fashion product (knitwear, clothing, ..) - base type: string, max length: 15, (XPath ACSOrdResponse/AXbody/AXitem/csRange/sizeMatrix/sizeRow/size) 1-1
@sizeSystemBase	base of the size system - base type: string, cod. table: T423 <a href="http://www.ebiz.enea.it/moda-ml/repository/codelist/draft/gc_T423.xml">http://www.ebiz.enea.it/moda-ml/repository/codelist/draft/gc_T423.xml</a> (XPath ACSOrdResponse/AXbody/AXitem/csRange/@sizeSystemBase) [Optional]
@sizeSystemID	the identifier of the size system. - base type: string, (XPath ACSOrdResponse/AXbody/AXitem/csRange/@sizeSystemID) [Optional]
@sizeSystemNat	nation or agency identifying the size system - base type: string, cod. table: T421 <a href="http://www.ebiz.enea.it/moda-ml/repository/codelist/draft/gc_T421.xml">http://www.ebiz.enea.it/moda-ml/repository/codelist/draft/gc_T421.xml</a> (XPath ACSOrdResponse/AXbody/AXitem/csRange/@sizeSystemNat) [Optional]
@sizeSystemSeg	market segment identifying the size system - base type: string, cod. table: T422 <a href="http://www.ebiz.enea.it/moda-ml/repository/codelist/draft/gc_T422.xml">http://www.ebiz.enea.it/moda-ml/repository/codelist/draft/gc_T422.xml</a> (XPath ACSOrdResponse/AXbody/AXitem/csRange/@sizeSystemSeg) [Optional]
specDate	date by which the referenced blanket order must receive full product specifications (e.g.: colour), according to one of the patterns YYYY-MM-DD, YYYY-

	MM-DD:HH-MM or YYYY-WW. - base type: string, (XPath ACSOrdResponse/AXbody/AXitem/acsComInfo/specDate) 0-1 (XPath ACSOrdResponse/acsComInfo/specDate) 0-1
street	street and building number identifying a location - base type: string, max length: 80, (XPath ACSOrdResponse/AXbody/AXitem/finInfo/bank/street) 0-1 (XPath ACSOrdResponse/TXheader/thirdParty/street) 0-1 (XPath ACSOrdResponse/TXheader/buyer/street) 0-1 (XPath ACSOrdResponse/AXbody/AXitem/thirdParty/street) 0-1 (XPath ACSOrdResponse/TXheader/supplier/street) 0-1
subCountry	short name or code of the sub-country entity - base type: string, max length: 9, (XPath ACSOrdResponse/AXbody/AXitem/finInfo/bank/subCountry) 0-1 (XPath ACSOrdResponse/TXheader/supplier/subCountry) 0-1 (XPath ACSOrdResponse/AXbody/AXitem/thirdParty/subCountry) 0-1 (XPath ACSOrdResponse/TXheader/buyer/subCountry) 0-1 (XPath ACSOrdResponse/TXheader/thirdParty/subCountry) 0-1
subDept	name or code of a contact department within a Party - base type: string, max length: 40, (XPath ACSOrdResponse/AXbody/AXitem/thirdParty/subDept) 0-1 (XPath ACSOrdResponse/TXheader/buyer/subDept) 0-1 (XPath ACSOrdResponse/TXheader/supplier/subDept) 0-1 (XPath ACSOrdResponse/TXheader/thirdParty/subDept) 0-1 (XPath ACSOrdResponse/AXbody/AXitem/finInfo/bank/subDept) 0-1
swift	swift code relevant to the financial transaction - base type: string, max length: 15, (XPath ACSOrdResponse/AXbody/AXitem/finInfo/swift) 0-1
taxCategory	duty or tax or fee category - base type: string, cod. table: T62 <a href="http://www.ebiz.enea.it/moda-ml/repository/codelist/draft/gc_T62.xml">http://www.ebiz.enea.it/moda-ml/repository/codelist/draft/gc_T62.xml</a> (XPath ACSOrdResponse/AXbody/AXitem/dtScheme/taxCategory) 0-1 (XPath ACSOrdResponse/terms/allowanceCharge/dtScheme/taxCategory) 0-1
taxRate	duty or tax or fee percent rate - base type: string, (XPath ACSOrdResponse/AXbody/AXitem/dtScheme/taxRate) 0-1 (XPath ACSOrdResponse/terms/allowanceCharge/dtScheme/taxRate) 0-1
@taxType	duty or tax or fee type - base type: string, cod. table: T61 <a href="http://www.ebiz.enea.it/moda-ml/repository/codelist/draft/gc_T61.xml">http://www.ebiz.enea.it/moda-ml/repository/codelist/draft/gc_T61.xml</a> (XPath ACSOrdResponse/AXbody/AXitem/dtScheme/@taxType) [Required] (XPath ACSOrdResponse/terms/allowanceCharge/dtScheme/@taxType) [Required]
totQty	total quantity of the articles related to the whole document - base type: decimal, min inclusive: 0, fraction digits: 2, (XPath ACSOrdResponse/totals/totQty) 0-1
@TOtype	type of Order - base type: string, cod. table: NT1 <a href="http://www.ebiz.enea.it/moda-ml/repository/codelist/draft/gc_NT1.xml">http://www.ebiz.enea.it/moda-ml/repository/codelist/draft/gc_NT1.xml</a> (XPath ACSOrdResponse/@TOtype) [Optional]
transCondition	special condition of transport or special service requested to the Forwarder - base type: string, cod. table: T38 <a href="http://www.ebiz.enea.it/moda-ml/repository/codelist/draft/gc_T38.xml">http://www.ebiz.enea.it/moda-ml/repository/codelist/draft/gc_T38.xml</a> (XPath ACSOrdResponse/terms/transInfo/transCondition) 0-3
transConditionText	free text description of the special condition of transport or special service requested to the Forwarder - base type: string, max length: 250, (XPath ACSOrdResponse/terms/transInfo/transConditionText) 0-1

transMeans	means of transport, in general or referred to a specific leg - base type: string, cod. table: T40 <a href="http://www.ebiz.enea.it/moda-ml/repository/codelist/draft/gc_T40.xml">http://www.ebiz.enea.it/moda-ml/repository/codelist/draft/gc_T40.xml</a> (XPath ACSOrdResponse/terms/transInfo/transMeans) 0-1
transMode	way of transport, in general or referred to the specified leg - base type: string, cod. table: T8 <a href="http://www.ebiz.enea.it/moda-ml/repository/codelist/draft/gc_T8.xml">http://www.ebiz.enea.it/moda-ml/repository/codelist/draft/gc_T8.xml</a> (XPath ACSOrdResponse/terms/transInfo/transMode) 1-1
@transReason	reason for the transport - base type: string, cod. table: NT11 <a href="http://www.ebiz.enea.it/moda-ml/repository/codelist/draft/gc_NT11.xml">http://www.ebiz.enea.it/moda-ml/repository/codelist/draft/gc_NT11.xml</a> (XPath ACSOrdResponse/terms/transInfo/@transReason) [Optional]
@uid	unique element identifier within the xml document - base type: string, (XPath ACSOrdResponse/TXheader/refDoc/attachment/@uid) [Optional] (XPath ACSOrdResponse/AXbody/AXitem/refDoc/attachment/@uid) [Optional]
@um	specification of the unit of measure - base type: string, cod. table: NT7 <a href="http://www.ebiz.enea.it/moda-ml/repository/codelist/draft/gc_NT7.xml">http://www.ebiz.enea.it/moda-ml/repository/codelist/draft/gc_NT7.xml</a> (XPath ACSOrdResponse/totals/totQty/@um) [Required] (XPath ACSOrdResponse/AXbody/AXitem/price/@um) [Optional] - nota: <i>Unit of measure of the product to which the price is referred (price per meter)</i> (XPath ACSOrdResponse/terms/allowanceCharge/@um) [Optional] (XPath ACSOrdResponse/terms/transInfo/netWeight/@um) [Required] (XPath ACSOrdResponse/terms/transInfo/grossWeight/@um) [Required] (XPath ACSOrdResponse/AXbody/AXitem/qty/@um) [Required] (XPath ACSOrdResponse/AXbody/AXitem/csRange/sizeMatrix/sizeRow/qty/@um) [Required]
uri	Uniform Resource Identifier (URI) that identifies the external object as an Internet resource - base type: normalizedString, (XPath ACSOrdResponse/AXbody/AXitem/refDoc/attachment/externalReference/uri) 1-1 (XPath ACSOrdResponse/TXheader/refDoc/attachment/externalReference/uri) 1-1
@useProfile	use profile to which the present document is compliant if it was agreed by the parties. It is suggested a URI with reference to the firms or the URL of the profile. - base type: string, (XPath ACSOrdResponse/@useProfile) [Optional]
validityEnd	date by which the validity ends, according to one of the patterns YYYY-MM-DD, YYYY-MM-DD:HH-MM or YYYY-WW. - base type: string, (XPath ACSOrdResponse/TXheader/validityEnd) 0-1
variantCode	Code of variant used for fashion product. - base type: string, (XPath ACSOrdResponse/AXbody/AXitem/csRange/garmentVariant/variantCode) 1-1
variantType	Type of variant used for fashion product (examples: 'treatment', 'washing type', 'size class',...) - base type: string, (XPath ACSOrdResponse/AXbody/AXitem/csRange/garmentVariant/variantType) 1-1

@VAT	<p>VAT rate or code (DEPRECATED, use dtScheme element)</p> <ul style="list-style-type: none"> <li>- base type: string, cod. table: NT16</li> <li><a href="http://www.ebiz.enea.it/moda-ml/repository/codelist/draft/gc_NT16.xml">http://www.ebiz.enea.it/moda-ml/repository/codelist/draft/gc_NT16.xml</a></li> <li>(XPath ACSOrdResponse/terms/allowanceCharge/@VAT) [Optional]</li> <li>(XPath ACSOrdResponse/TXheader/thirdParty/@VAT) [Optional]</li> <li>(XPath ACSOrdResponse/AXbody/AXitem/lineN/@VAT) [Optional]</li> <li>- nota: <i>Deprecated, prefer dtScheme when available.</i></li> <li>(XPath ACSOrdResponse/AXbody/AXitem/thirdParty/@VAT) [Optional]</li> </ul>
@version	<p>Dictionary version from which the instance has been created</p> <ul style="list-style-type: none"> <li>- base type: string, cod. table: NT100</li> <li><a href="http://www.ebiz.enea.it/moda-ml/repository/codelist/draft/gc_NT100.xml">http://www.ebiz.enea.it/moda-ml/repository/codelist/draft/gc_NT100.xml</a></li> <li>(XPath ACSOrdResponse/@version) [Optional] [Default= draft]</li> </ul>

## 2.3 Suggested best practices

**ACSOrdResponse/AXbody/AXitem/qty** (net quantity of the article or object correlated, qualified by the function of the document (ordering, delivering, ..) and by the context)

this element can have two instances only if the units of measure are different

**ACSOrdResponse/AXbody/AXitem/csRange/sizeMatrix/**

**sizeRow/itemsList/itemIdentification/serialN** (serial number used for the identification of a physical unit)

in the case of garment with RFID for anti-counterfeiting, RFID EPCGlobal for logistics and NFC for the customer experience there should be three serial elements with pairs of attributes numberingOrg/idQualifier: "CL"/"RFID", "GS1"/"RFID", "CL"/"NFC".

## 2.4 Enumeration tables

List of enumeration tables used in the XML document. You can find the corresponding codes at:  
<http://www.ebiz-tcf.eu/moda-ml/imple/moda-ml-draft.asp?lingua=en&pag=6>

NT1 - Order type  
NT100 - eBIZ TCFUpstream version  
NT11 - transport causal  
NT16 - VAT rate or code  
NT18 - message function  
NT19 - currency use qualifier  
NT2 - third party qualifier  
NT20 - price qualifier  
NT29 - format of a date  
NT3 - data format  
NT4 - end use  
NT43 - operational code qualifier  
NT5 - action code  
NT6 - coding system owner/issuer  
NT7 - unit of measure  
T1 - terms of payment  
T10 - ISO3166 - Country  
T2 - Modes of payment  
T21 - type of document  
T3 - terms of delivery  
T38 - transport conditions  
T40 - type of transport means  
T41 - type of Allowance or Charge  
T421 - size system: nationality  
T422 - size system: market segment  
T423 - size system: base  
T44 - additional code type  
T61 - duty or tax or fee type  
T62 - duty or tax or fee category  
T8 - Modes of Transport  
T9 - ISO4217 - Currency



## ACKNOWLEDGEMENT



This action is part of the eBIZ-4.0 project, which has received funding from the European Union's COSME Programme (2014 - 2020).

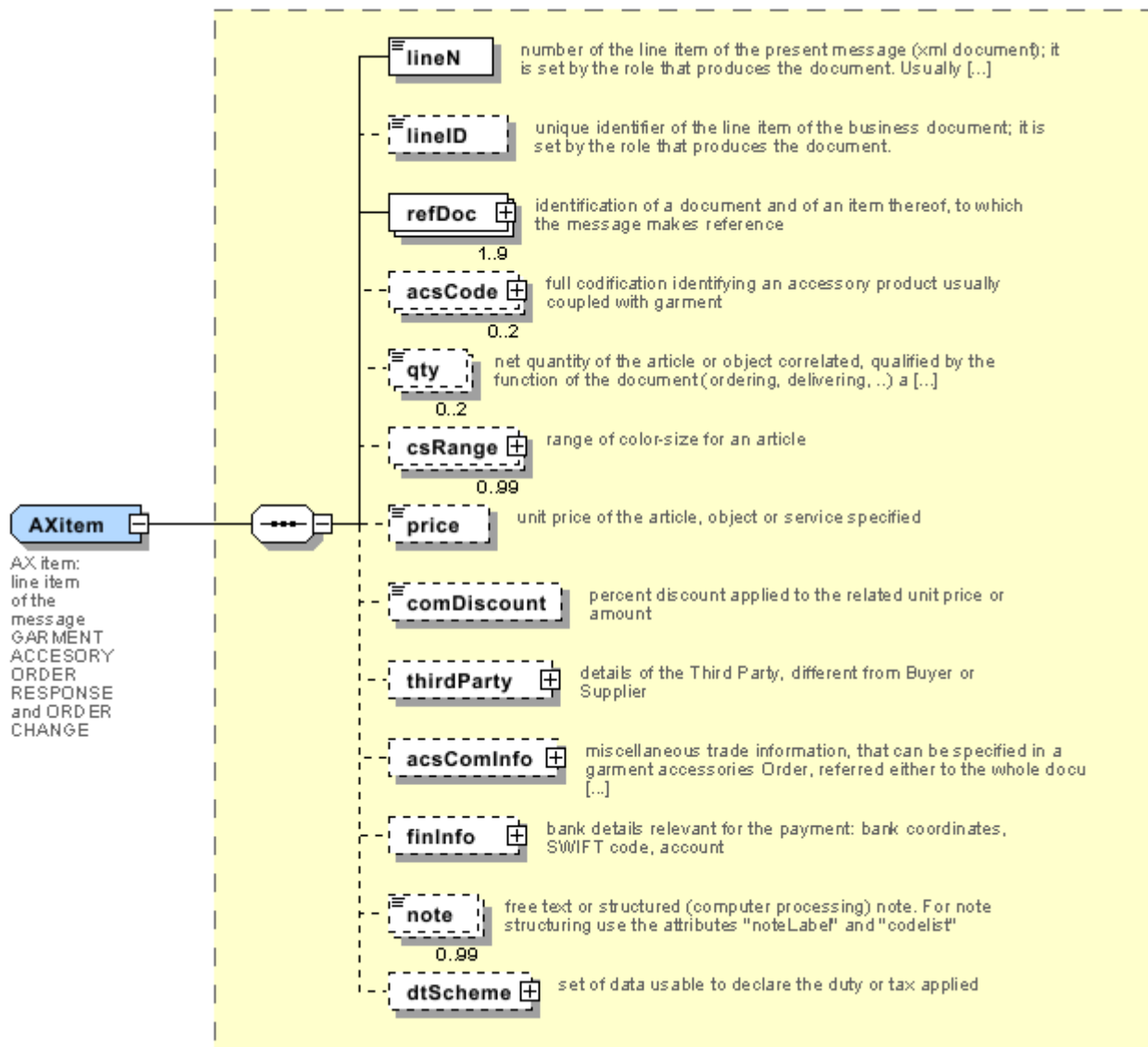
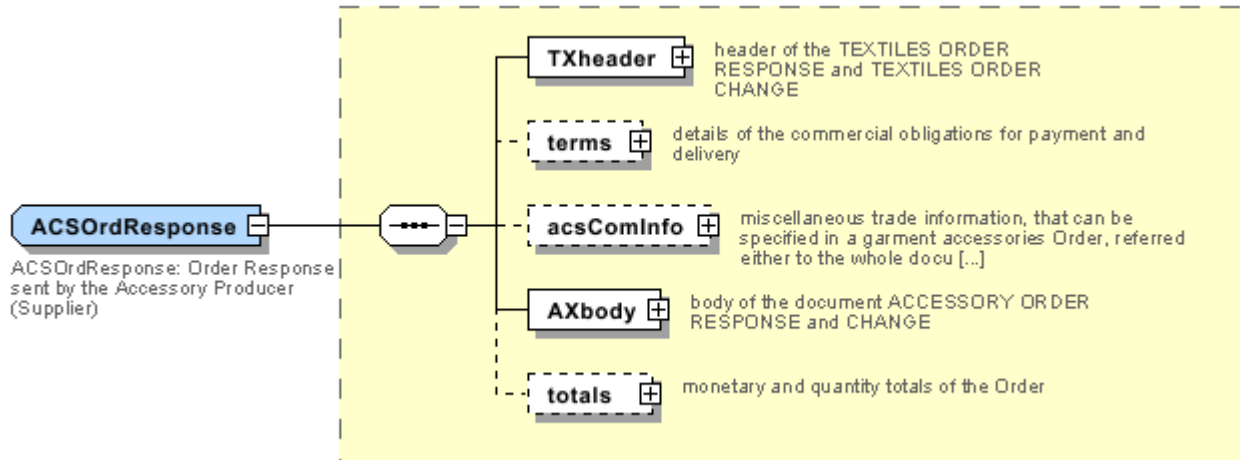
## DISCLAIMER

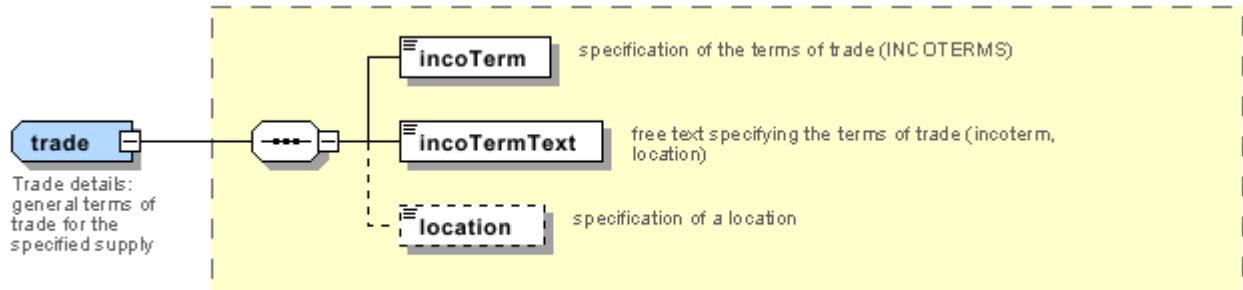
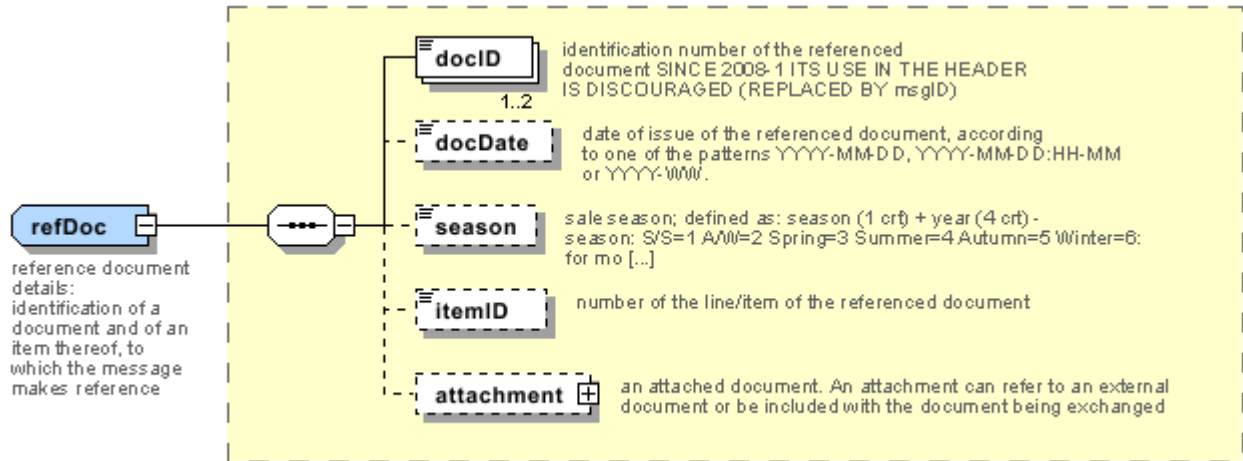
The content of this document represents the views of the authors only and is their sole responsibility; it cannot be considered to reflect the views of the European Commission and/or the Executive Agency for Small and Medium-sized Enterprises (EASME) or any other body of the European Union.

The European Commission and the Agency do not accept any responsibility for use that may be made of the information it contains.

# Annex A

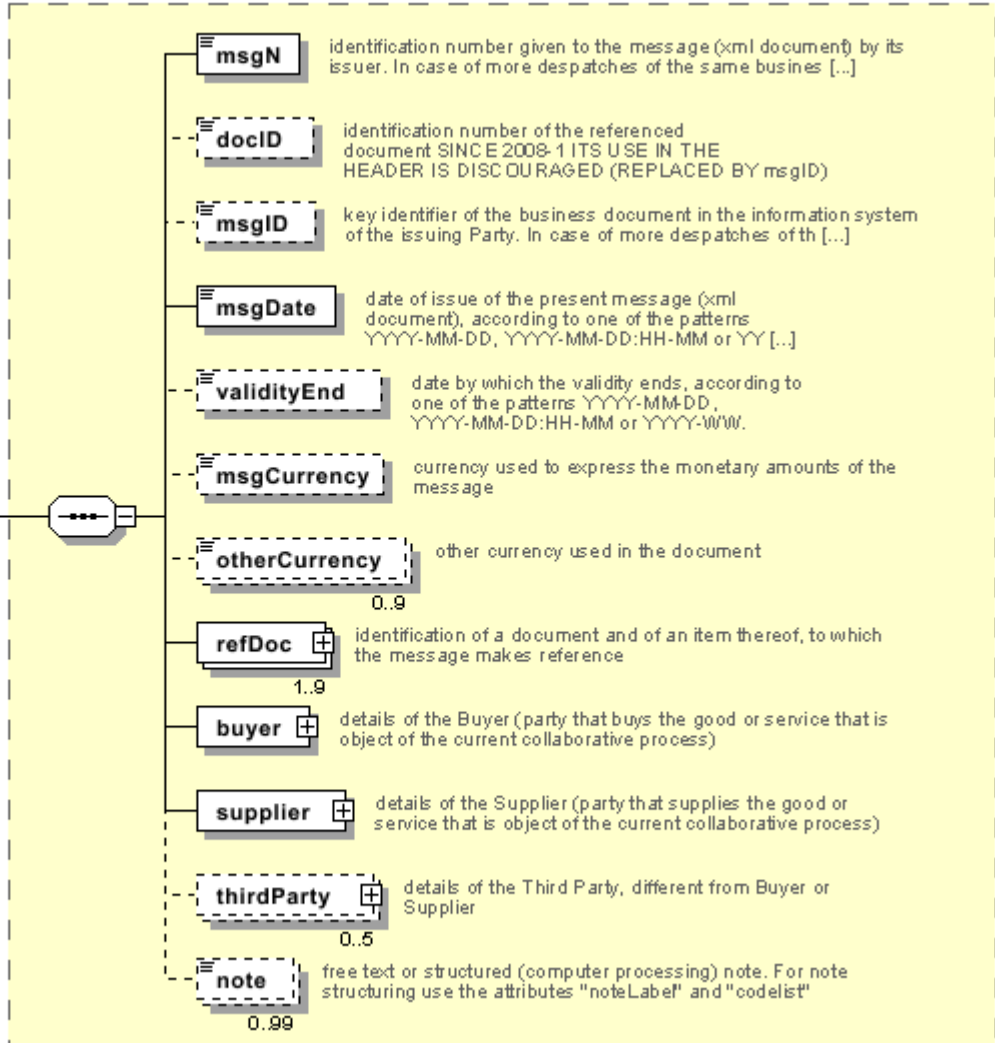
Representative images of the principal complex elements' structure.





**TXheader**

TX header:  
header of  
the  
TEXTILES  
ORDER  
RESPONSE  
and  
TEXTILES  
ORDER  
CHANGE





## Annex B

### NT1 - Order type

type of Order

Agency name: eBIZ

tabella cod.: NT1

File codes list (Generic code): [http://www.ebiz.enea.it/moda-ml/repository/codelist/draft/gc\\_NT1.xml](http://www.ebiz.enea.it/moda-ml/repository/codelist/draft/gc_NT1.xml)

Code	Description	Adoption note	Date of insertion
A	blanket	the order is open without a concrete delivery of product; it establishes an amount of goods to be produced in a future	
D	call-off	orders an amount of goods to be delivered (and invoiced and produced if necessary); it is important that it is clear that this amount should be subtracted from the amount of the blanket order referred in the refDoc element	
P	reservation		
STD	standard		

### NT100 - eBIZ TCFUpstream version

dictionary version

Agency name: eBIZ

tabella cod.: NT100

File codes list (Generic code): [http://www.ebiz.enea.it/moda-ml/repository/codelist/draft/gc\\_NT100.xml](http://www.ebiz.enea.it/moda-ml/repository/codelist/draft/gc_NT100.xml)

Code	Description	Adoption note	Date of insertion
2013-1	v2013-1		01/07/2013
2018-1	v2018-1		04/11/2018
draft	draft		08/09/2017

### NT11 - transport causal

reason for the transport

Agency name: eBIZ

tabella cod.: NT11

File codes list (Generic code): [http://www.ebiz.enea.it/moda-ml/repository/codelist/draft/gc\\_NT11.xml](http://www.ebiz.enea.it/moda-ml/repository/codelist/draft/gc_NT11.xml)

Code	Description	Adoption note	Date of insertion
FOC	free of charge		
FRW	return from re-works		
FST	return from storage		
FVW	return from view		
FWK	return from works		
IST	in storage		
NWK	return non-worked		
RJC	return from rejection		
SEL	to sell		
STO	to storage		
VEW	to view		
WRK	to works		

#### NT16 - VAT rate or code

VAT rate or code ( DEPRECATED, use dtScheme element )

tabella cod.: NT16

File codes list (Generic code): [http://www.ebiz.enea.it/moda-ml/repository/codelist/draft/gc\\_NT16.xml](http://www.ebiz.enea.it/moda-ml/repository/codelist/draft/gc_NT16.xml)

#### NT18 - message function

function performed by the present message with regards to the transmission

Agency name: eBIZ

tabella cod.: NT18

File codes list (Generic code): [http://www.ebiz.enea.it/moda-ml/repository/codelist/draft/gc\\_NT18.xml](http://www.ebiz.enea.it/moda-ml/repository/codelist/draft/gc_NT18.xml)

Code	Description	Adoption note	Date of insertion
CA	delete this document		01/07/2013
CP	copy		
OR	original		
RC	re-transmission for data correction		
RT	re-transmission		

### NT19 - currency use qualifier

qualification of another currency used in the document

Agency name: eBIZ

tabella cod.: NT19

File codes list (Generic code): [http://www.ebiz.enea.it/moda-ml/repository/codelist/draft/gc\\_NT19.xml](http://www.ebiz.enea.it/moda-ml/repository/codelist/draft/gc_NT19.xml)

Code	Description	Adoption note	Date of insertion
CAT	pricelist currency		
INV	invoicing currency		
ORD	order currency		
PAY	payment currency		
SAL	sales currency		

### NT2 - third party qualifier

Third Party role qualifier

Agency name: eBIZ

tabella cod.: NT2

File codes list (Generic code): [http://www.ebiz.enea.it/moda-ml/repository/codelist/draft/gc\\_NT2.xml](http://www.ebiz.enea.it/moda-ml/repository/codelist/draft/gc_NT2.xml)

Code	Description	Adoption note	Date of insertion
AG	Sales Agent		
CO	Quality Controller		
DC	Response to		
DF	Invoicee		
DI	Copy to (CC)		28/10/2014
DM	Consignee		
DP	Consignment address (Delivery Party)		
IM	Importer		
OR	Originator		10/09/2014
SP	Forwarder		
TX	Tax Representative		



### NT20 - price qualifier

type of price with reference to discount and taxes

Agency name: eBIZ

tabella cod.: NT20

File codes list (Generic code): [http://www.ebiz.enea.it/moda-ml/repository/codelist/draft/gc\\_NT20.xml](http://www.ebiz.enea.it/moda-ml/repository/codelist/draft/gc_NT20.xml)

Code	Description	Adoption note	Date of insertion
GET	gross excluding taxes		
GIT	gross including taxes		
NET	net excluding taxes		
NIT	net including taxes		

### NT29 - format of a date

format used for the date

Agency name: eBIZ

tabella cod.: NT29

File codes list (Generic code): [http://www.ebiz.enea.it/moda-ml/repository/codelist/draft/gc\\_NT29.xml](http://www.ebiz.enea.it/moda-ml/repository/codelist/draft/gc_NT29.xml)

Code	Description	Adoption note	Date of insertion
D	YYYY-MM-DD		
M	YYYY-MM-DD:HH-MM		
W	YYYY-WW		

### NT3 - data format

format of a string according to a customized User rule (local rule)

Agency name: eBIZ

tabella cod.: NT3

File codes list (Generic code): [http://www.ebiz.enea.it/moda-ml/repository/codelist/draft/gc\\_NT3.xml](http://www.ebiz.enea.it/moda-ml/repository/codelist/draft/gc_NT3.xml)

Code	Description	Adoption note	Date of insertion
EN4	GS1-GLN		01/07/2013
MD	mutually agreed		

#### NT4 - end use

specifies the final use of the product

Agency name: eBIZ

tabella cod.: NT4

File codes list (Generic code): [http://www.ebiz.enea.it/moda-ml/repository/codelist/draft/gc\\_NT4.xml](http://www.ebiz.enea.it/moda-ml/repository/codelist/draft/gc_NT4.xml)

Code	Description	Adoption note	Date of insertion
PC	test piece		
PR	production		
SA	Sample		10/09/2014
SC	samples card		
TI	patch		
TP	(test cut)		

#### NT43 - operational code qualifier

Agency name: eBIZ

tabella cod.: NT43

File codes list (Generic code): [http://www.ebiz.enea.it/moda-ml/repository/codelist/draft/gc\\_NT43.xml](http://www.ebiz.enea.it/moda-ml/repository/codelist/draft/gc_NT43.xml)

Code	Description	Adoption note	Date of insertion
1	event		08/09/2017
2	sales channel		08/09/2017
3	goods management type		08/09/2017
4	special initiative		08/09/2017

#### NT5 - action code

action performed by the present line upon the referenced document line

Agency name: eBIZ

tabella cod.: NT5

File codes list (Generic code): [http://www.ebiz.enea.it/moda-ml/repository/codelist/draft/gc\\_NT5.xml](http://www.ebiz.enea.it/moda-ml/repository/codelist/draft/gc_NT5.xml)

Code	Description	Adoption note	Date of insertion
A	CANCELLED		

C	CONFIRMED		
N	NEW ORDER LINE (created by an order change)		
R	PROVISIONAL CONFIRMATION		
S	DEFINITIVE CONFIRMATION		
SA	suspension accepted		
SN	suspension not accepted		
SR	suspension request		
V	AMENDED		

### NT6 - coding system owner/issuer

code specifying the organisation who has created or owns the coding or numbering system

Agency name: eBIZ

tabella cod.: NT6

File codes list (Generic code): [http://www.ebiz.enea.it/moda-ml/repository/codelist/draft/gc\\_NT6.xml](http://www.ebiz.enea.it/moda-ml/repository/codelist/draft/gc_NT6.xml)

Code	Description	Adoption note	Date of insertion
CL	Customer/buyer		
CO	Quality Controller		
EN	GS1 ( ex-EAN International )		
ES	e-Stockflow		
FO	Supplier		
GS	GS1		01/07/2013
MF	VAT identifier		
ML	Moda-ML		
SP	Service Provider		

### NT7 - unit of measure

specification of the unit of measure, it is a sub set of table Unit of Measure Code - UN/ECE REC 20 delivered by United Nations Economic Commission for Europe (UN/ECE)

Agency name: eBIZ / UN/ECE

tabella cod.: NT7

File codes list (Generic code): [http://www.ebiz.enea.it/moda-ml/repository/codelist/draft/gc\\_NT7.xml](http://www.ebiz.enea.it/moda-ml/repository/codelist/draft/gc_NT7.xml)

Other link: <http://docs.oasis-open.org/ubl/os-UBL-2.1/cl/gc/default/UnitOfMeasureCode-2.1.gc#>

Code	Description	Adoption note	Date of insertion
------	-------------	---------------	-------------------

CMK	square centimetre		20/12/2017
CMQ	cubic centimetre		20/12/2017
CMT	centimetre		
CNE	centiNewton		
CO2TON	ton of CO2		10/09/2014
COUPLES	couples		
DMQ	cubic decimetre		
E37	pixel		11/04/2018
GRM	gram		
HUR	hour		
INH	inch		
KGM	kilogram		
KMT	kilometer		
KWH	kilowatthours		10/09/2014
LBR	pound		
MIN	minute		
MMK	centimetre		20/12/2017
MMK	square millimetre		20/12/2017
MTK	square metre		20/12/2017
MTQ	cubic metre		
MTR	metre		
NMB	numero		
ONZ	ounce		
P1	percent		
PPM	parts per milion		
PZ	piece		
RPM	rounds per metre		
YRD	yard		

### T1 - terms of payment

code specifying the terms or time by which the payment must be done

Agency name: eBIZ

tabella cod.: T1

File codes list (Generic code): [http://www.ebiz.enea.it/moda-ml/repository/codelist/draft/gc\\_T1.xml](http://www.ebiz.enea.it/moda-ml/repository/codelist/draft/gc_T1.xml)

<b>Code</b>	<b>Description</b>	<b>Adoption note</b>	<b>Date of insertion</b>
ANTICIP	PAYMENT IN ADVANCE		
BLCOLLECT/120D	BILL OF LADING 120 DD		
BLCOLLECT/30D	BILL OF LADING 30 DD		
BLCOLLECT/60D	BILL OF LADING 60 DD		
BLCOLLECT/90D	BILL OF LADING 90 DD		
CASH	PAYMENT ON DELIVERY		
CASHINV	PAYMENT ON RECEIPT OF INVOICE		
CREDOC/0D	DOCUMENTARY CREDIT FOR PAYM. AT SIGHT		
CREDOC/120	DOCUMENTARY CREDIT FOR PAYM. AT 120 DD		
CREDOC/150	DOCUMENTARY CREDIT FOR PAYM. AT 150 DD		
CREDOC/180	DOCUMENTARY CREDIT FOR PAYM. AT 180 DD		
CREDOC/30D	DOCUMENTARY CREDIT FOR PAYM. AT 30 DD		
CREDOC/45D	DOCUMENTARY CREDIT FOR PAYM. AT 45 DD		
CREDOC/60	DOCUMENTARY CREDIT FOR PAYM. AT 60 DD		
CREDOC/90	DOCUMENTARY CREDIT FOR PAYM. AT 90 DD		
DEL/10	PAYMENT AT 10 DD AFTER DELIVERY		
DOCOLLECT/120D	DOCUMENTARY COLLECTION AT 120 DD		
DOCOLLECT/30D	DOCUMENTARY COLLECTION AT 30 DD		
DOCOLLECT/60D	DOCUMENTARY COLLECTION AT 60 DD		
DOCOLLECT/90D	DOCUMENTARY COLLECTION AT 90 DD		
INV/120D	PAYMENT AT 120 DD AFTER RECEIPT OF INVOICE		
INV/150D	PAYMENT AT 150 DD AFTER RECEIPT OF INVOICE		
INV/180D	PAYMENT AT 180 DD AFTER RECEIPT OF INVOICE		
INV/30D	PAYMENT AT 30 DD AFTER RECEIPT OF INVOICE		
INV/45D	PAYMENT AT 45 DD AFTER RECEIPT OF INVOICE		
INV/60D	PAYMENT AT 60 DD AFTER RECEIPT OF INVOICE		
INV/90D	PAYMENT AT 90 DD AFTER RECEIPT OF INVOICE		
INVULTIMO	PAYMENT AT END MONTH RECEIPT INVOICE		
INVULTIMO/10D	PAYMENT 10 DD AFTER END MONTH RECEIPT INVOICE		
INVULTIMO/120D	PAYMENT 120 DD AFTER END MONTH RECEIPT INVOICE		
INVULTIMO/150D	PAYMENT 150 DD AFTER END MONTH RECEIPT INVOICE		
INVULTIMO/180D	PAYMENT 180 DD AFTER END MONTH RECEIPT INVOICE		
INVULTIMO/240D	PAYMENT 240 DD AFTER END MONTH RECEIPT INVOICE		
INVULTIMO/30D	PAYMENT 30 DD AFTER END MONTH RECEIPT INVOICE		

INVULTIMO/45D	PAYMENT 45 DD AFTER END MONTH RECEIPT INVOICE		
INVULTIMO/60D	PAYMENT 60 DD AFTER END MONTH RECEIPT INVOICE		
INVULTIMO/90D	PAYMENT 90 DD AFTER END MONTH RECEIPT INVOICE		
NOPAY	WITHOUT PAYMENT		
RECREDOC/0D	IRREVOC. DOCUMENTARY CREDIT FOR PAYM. AT SIGHT		
RECREDOC/120D	IRREVOC. DOCUMENTARY CREDIT FOR PAYM. AT 120 DD		
RECREDOC/150D	IRREVOC. DOCUMENTARY CREDIT FOR PAYM. AT 150 DD		
RECREDOC/180D	IRREVOC. DOCUMENTARY CREDIT FOR PAYM. AT 180 DD		
RECREDOC/30D	IRREVOC. DOCUMENTARY CREDIT FOR PAYM. AT 30 DD		
RECREDOC/45D	IRREVOC. DOCUMENTARY CREDIT FOR PAYM. AT 45 DD		
RECREDOC/60D	IRREVOC. DOCUMENTARY CREDIT FOR PAYM. AT 60 DD		
RECREDOC/90D	IRREVOC. DOCUMENTARY CREDIT FOR PAYM. AT 90 DD		
ULTIMO	PAYMENT BY END MONTH OF DELIVERY		
ULTIMO/10	PAYMENT AT 10 DD AFTER END MONTH OF DELIVERY		

### T10 - ISO3166 - Country

code of the nation

Agency name: ISO

tabella cod.: T10

File codes list (Generic code): [http://www.ebiz.enea.it/moda-ml/repository/codelist/draft/gc\\_T10.xml](http://www.ebiz.enea.it/moda-ml/repository/codelist/draft/gc_T10.xml)

Table not printed: there are 239 elements, more than the maximum specified for printing: 99.

### T2 - Modes of payment

way or means of payment

Agency name: eBIZ

tabella cod.: T2

File codes list (Generic code): [http://www.ebiz.enea.it/moda-ml/repository/codelist/draft/gc\\_T2.xml](http://www.ebiz.enea.it/moda-ml/repository/codelist/draft/gc_T2.xml)

Code	Description	Adoption note	Date of insertion
BB	bank transfer		
IA	collection through Agent		
IS	collection through Forwarder		
RB	bank receipt		

RD	remittance		
SW	bank SWIFT		
TR	bank draft		

## T21 - type of document

type or class to which the referenced document belongs

Agency name: eBIZ

tabella cod.: T21

File codes list (Generic code): [http://www.ebiz.enea.it/moda-ml/repository/codelist/draft/gc\\_T21.xml](http://www.ebiz.enea.it/moda-ml/repository/codelist/draft/gc_T21.xml)

Code	Description	Adoption note	Date of insertion
BOR	blanket order		01/02/2018
CAT	Price catalogue - tech sheet		
CEO	Certificate of origin		13/04/2018
CER	Certificate		13/04/2018
COC	colour card		
CRN	Credit note		08/09/2017
CTO	Checking order		01/07/2013
CTR	Contract		
CXF	CxF3 file		01/07/2013
DAD	Darn order		
DDT	ddt		
DEA	Despatch advise		
DER	Despatch request		
DR	Document Request		02/12/2014
FOR	Forecast		02/12/2014
GSO	Garment stock offer		
GSX	Garment stock offer change		
INV	Invoice		
KCC	Knitting-Clothing Commission Order		02/12/2014
KCI	Garment in Work Inventory Report		02/12/2014
M2M	Made to Measure Production Order		02/12/2014
MAS	Master marker		
MCI	Visual merchandising instruction		13/04/2018
OCH	Order change		

OFF	Offer		
ORD	Purchase order		
ORP	Order response		
OSR	order status request		
OSS	Offer status		02/12/2014
OST	Order status		
OUR	our reference		
QR	Quality Report		02/12/2014
RAI	Raw Material in Work Inventory Report		02/12/2014
RDC	Raw dyeing commission order		
RDH	Raw dyeing order change		
RDR	Raw dyeing order response		
REA	Receiving advise		
REQ	Request for Offer		
RET	Return		02/12/2014
RSC	Spinning commission order		
RSH	Spinning order change		
RSR	Spinning order response		
SCL	process sheet		
TFC	Textile dyeing-finishing commission order		
TFX	Textile Dyeing-Finishing Order Change		02/12/2014
TPC	Textile printing commission order		
TPX	Textile Printing Order Change		02/12/2014
TWI	Textile in work inventory		
VMI	visual merchandising instructions		01/02/2018
WAC	Warping commission order		
WEC	Weaving commission order		
YDC	Yarn dyeing commission order		
YDH	Yarn dyeing order change		
YDR	Yarn dyeing order response		
YTC	Twisting commission order		
YWI	Yarn in work inventory		

### T3 - terms of delivery



specification of the terms of trade (INCOTERMS)

Agency name: Incoterms

tabella cod.: T3

File codes list (Generic code): [http://www.ebiz.enea.it/moda-ml/repository/codelist/draft/gc\\_T3.xml](http://www.ebiz.enea.it/moda-ml/repository/codelist/draft/gc_T3.xml)

Code	Description	Adoption note	Date of insertion
CFR	COST AND FREIGHT (named port of destination)		
CIF	COST, INSURANCE AND FREIGHT (named port of destination)		
CIP	CARRIAGE AND INSURANCE PAID (named place of destination)		
CPA	CARRIAGE PAID (named place of destination)		
DAF	DELIVERED AT FRONTIER (named place)	according to Incoterms® 2010 it is obsolete	08/12/2017
DAP	Delivered at Place of destination (named place of destination)	according to Incoterms® 2010	08/12/2017
DAT	Delivered at Terminal (named place of destination)	according to Incoterms® 2010	08/12/2017
DDP	DELIVERED DUTY PAID (named place of destination)		
DDU	DELIVERED DUTY UNPAID (named place of destination)	according to Incoterms® 2010 it is obsolete, use DAP	08/12/2017
DEQ	DELIVERED EX-QUAY (named port of destination)	according to Incoterms® 2010 it is obsolete	08/12/2017
DES	DELIVERED EX-SHIP (named port of destination)	according to Incoterms® 2010 it is obsolete	08/12/2017
EXW	EX WORKS (named place)		
FAS	FREE ALONGSIDE SHIP (named port of shipment)		
FCA	FREE CARRIER (named place)		
FOB	FREE ON BOARD (named port of shipment)		

### T38 - transport conditions

special condition of transport or special service requested to the Forwarder

tabella cod.: T38

File codes list (Generic code): [http://www.ebiz.enea.it/moda-ml/repository/codelist/draft/gc\\_T38.xml](http://www.ebiz.enea.it/moda-ml/repository/codelist/draft/gc_T38.xml)

Code	Description	Adoption note	Date of insertion
ACC	arrange customs clearance		
CAL	Carrier loads		
CAU	Carrier unloads		
CMR	CMR carnet		
FFN	freight forwarders national conditions		
FLD	special agreement for full loading		
NCC	do not arrange customs clearance		
PPB	packaging paid by Buyer		
PPS	packaging paid by Supplier		
PRO	proof of delivery		
RFR	return container free		
RPC	return container paid by Customer		
RPS	return container paid by Supplier		
SHL	Shipper loads		
SHU	Consignee unloads		

#### T40 - type of transport means

means of transport, in general or referred to a specific leg

Agency name: eBIZ

tabella cod.: T40

File codes list (Generic code): [http://www.ebiz.enea.it/moda-ml/repository/codelist/draft/gc\\_T40.xml](http://www.ebiz.enea.it/moda-ml/repository/codelist/draft/gc_T40.xml)

Code	Description	Adoption note	Date of insertion
AIR	aircraft		
SHP	ship		
TRU	truck		
VAN	van		

#### T41 - type of Allowance or Charge

coded specification of an Allowance or Charge (elaborated from UNECE 4465)

Agency name: eBIZ

tabella cod.: T41

File codes list (Generic code): [http://www.ebiz.enea.it/moda-ml/repository/codelist/draft/gc\\_T41.xml](http://www.ebiz.enea.it/moda-ml/repository/codelist/draft/gc_T41.xml)

<b>Code</b>	<b>Description</b>	<b>Adoption note</b>	<b>Date of insertion</b>
1	Agreed settlement		19/08/2018
10	Costs for draft		19/08/2018
11	Bank charges	DEPRECATED, use C BK	19/08/2018
12	Agent commission		19/08/2018
14	Wrong delivery		19/08/2018
15	Goods returned to agent		19/08/2018
16	Goods partly returned		19/08/2018
17	Transport damage		19/08/2018
19	Trade discount		19/08/2018
2	Below specification goods		19/08/2018
20	Deduction for late delivery	DEPRECATED, use C WB	19/08/2018
21	Advertising costs		19/08/2018
22	Customs duties		19/08/2018
23	Telephone and postal costs		19/08/2018
24	Repair costs		19/08/2018
25	Attorney fees		19/08/2018
26	Taxes		19/08/2018
3	Damaged goods		19/08/2018
30	Direct payment to seller		19/08/2018

32	Goods not delivered		19/08/2018
33	Late delivery		19/08/2018
35	Goods returned		19/08/2018
36	Invoice not received		19/08/2018
37	Credit note to debtor/not to us		19/08/2018
38	Deducted bonus		19/08/2018
39	Deducted discount		19/08/2018
4	Short delivery		19/08/2018
40	Deducted freight costs		19/08/2018
41	Deduction against other invoices		19/08/2018
42	Credit balance(s)		19/08/2018
45	Debit note to seller		19/08/2018
46	Discount beyond terms		19/08/2018
48	Allowance/charge error		19/08/2018
49	Substitute product		19/08/2018
50	Terms of sale error		19/08/2018
52	Wrong invoice		19/08/2018
53	Duplicate invoice		19/08/2018
54	Weight error		19/08/2018
55	Additional charge not authorized		19/08/2018
56	Incorrect discount		19/08/2018
57	Price change		19/08/2018

58	Variation		19/08/2018
59	Chargeback		19/08/2018
65	Settlement to agent		19/08/2018
66	Cash discount		19/08/2018
7	Payment on account		19/08/2018
70	Wrong monetary amount resulting from incorrect free goods quantity		19/08/2018
72	Temporary special promotion		19/08/2018
73	Difference in tax rate		19/08/2018
74	Quantity discount		19/08/2018
75	Promotion discount		19/08/2018
76	Cancellation deadline passed		19/08/2018
77	Pricing discount		19/08/2018
78	Volume discount		19/08/2018
79	Sundry discount		19/08/2018
8	Returnable container charge included		19/08/2018
9	Invoice error		19/08/2018
AW A	bonus for works ahead of schedule		
CBK	bank charges		
CCR	servizio di corriere		
CIN	insurance		
CLB	labelling		
CPK	packing		
CSP	special packing		
CW B	penalty for works behind schedule		

**T421 - size system: nationality**

nation or agency identifying the size system

Agency name: eBIZ

tabella cod.: T421

File codes list (Generic code): [http://www.ebiz.enea.it/moda-ml/repository/codelist/draft/gc\\_T421.xml](http://www.ebiz.enea.it/moda-ml/repository/codelist/draft/gc_T421.xml)

Code	Description	Adoption note	Date of insertion
DE	Germany		
ES	Spain		
EU	Europe		
FR	France		
IT	Italy		
UK	United Kingdom		
US	USA		
XX	International		

**T422 - size system: market segment**

market segment identifying the size system

Agency name: eBIZ

tabella cod.: T422

File codes list (Generic code): [http://www.ebiz.enea.it/moda-ml/repository/codelist/draft/gc\\_T422.xml](http://www.ebiz.enea.it/moda-ml/repository/codelist/draft/gc_T422.xml)

Code	Description	Adoption note	Date of insertion
B	baby		
C	child		
K	kid		
M	man		
U	unisex		
W	woman		

**T423 - size system: base**

base of the size system

Agency name: eBIZ

tabella cod.: T423

File codes list (Generic code): [http://www.ebiz.enea.it/moda-ml/repository/codelist/draft/gc\\_T423.xml](http://www.ebiz.enea.it/moda-ml/repository/codelist/draft/gc_T423.xml)

Code	Description	Adoption note	Date of insertion
1	arab numbers		
2	latin numbers		
3	symbols		
4	letters		
H	height		
L	length		
U	unic		
W	weight		

#### T44 - additional code type

qualifier of the additional coding of a product

Agency name: eBIZ

tabella cod.: T44

File codes list (Generic code): [http://www.ebiz.enea.it/moda-ml/repository/codelist/draft/gc\\_T44.xml](http://www.ebiz.enea.it/moda-ml/repository/codelist/draft/gc_T44.xml)

Code	Description	Adoption note	Date of insertion
CC	colour card		
CL	sales collection		
CO	company identification code		08/09/2017
DY	dye number		
LT	lot number		
MDI	Made in		08/09/2017
MS	manufacturing state		
PKG	packaging		09/09/2014
PL	product line		
RGB	RGB value		
SE	seldge code		

#### T61 - duty or tax or fee type

duty or tax or fee type

Agency name: eBIZ

tabella cod.: T61

File codes list (Generic code): [http://www.ebiz.enea.it/moda-ml/repository/codelist/draft/gc\\_T61.xml](http://www.ebiz.enea.it/moda-ml/repository/codelist/draft/gc_T61.xml)

Code	Description	Adoption note	Date of insertion
BOL	stamp duty		01/07/2013
CUD	customs duty		01/07/2013
ENV	environmental tax		01/07/2013
FRE	no tax		01/07/2013
OTH	other tax charges		01/07/2013
VAT	value added tax		01/07/2013

### T62 - duty or tax or fee category

duty or tax or fee category

Agency name: eBIZ

tabella cod.: T62

File codes list (Generic code): [http://www.ebiz.enea.it/moda-ml/repository/codelist/draft/gc\\_T62.xml](http://www.ebiz.enea.it/moda-ml/repository/codelist/draft/gc_T62.xml)

Code	Description	Adoption note	Date of insertion
AA	lower than standard rate		01/07/2013
E	tax not applicable		01/07/2013
H	higher than standard rate		01/07/2013
O	outside scope of tax		01/07/2013
S	standard rate		01/07/2013
Z	zero rate goods		01/07/2013

### T8 - Modes of Transport

way of transport, in general or referred to the specified leg

Agency name: eBIZ

tabella cod.: T8

File codes list (Generic code): [http://www.ebiz.enea.it/moda-ml/repository/codelist/draft/gc\\_T8.xml](http://www.ebiz.enea.it/moda-ml/repository/codelist/draft/gc_T8.xml)

Code	Description	Adoption note	Date of insertion
1	MARITIME TRANSPORT		



10	Courier		01/07/2013
2	RAIL TRANSPORT		
3	ROAD TRANSPORT		
4	AIR TRANSPORT		
5	MAIL		
6	AIR + SHIP TRANSPORT		
8	INLAND WATER TRANSPORT		
9	MODE UNKNOWN		

### T9 - ISO4217 - Currency

currency code

Agency name: ISO

tabella cod.: T9

File codes list (Generic code): [http://www.ebiz.enea.it/moda-ml/repository/codelist/draft/gc\\_T9.xml](http://www.ebiz.enea.it/moda-ml/repository/codelist/draft/gc_T9.xml)

Table not printed: there are 205 elements, more than the maximum specified for printing: 99.