



<http://www.ebiz-tcf.eu>

DRAFT

IMPLEMENTATION GUIDE

TRANSACTION "GARMENT ORDER STATUS"

Version: draft

Date of release: 17/5/2019

Document code: G041

technical Documentation: <http://www.ebiz.enea.it>

XML Schemas repository: <http://www.ebiz.enea.it/moda-ml/repository/schema/draft/default.asp>

Guides repository: <http://www.ebiz.enea.it/moda-ml/repository/guide/draft/default.asp>

Guide filename: G041-eBIZ-GarmentOrderStatus.pdf

0. PREMISE

This document contains a proposal for the updating and extension of eBIZ specifications starting from the eBIZ version released as CEN CWA 16667 in 2013. Under the name of 'Draft version' it is reported the result of an extensive work of analysis and consultation aimed at developing and maintaining eBIZ specifications.

In particular, the content of this proposal is the result of various activities, mainly those carried out within the framework of the **eBIZ 4.0 project** funded by the European Commission, call COS-DESIGN-2015-3-06, topic COS-2015-DESIGN-2.

The technical contents are backwards compatible with the latest official published version.

1. BUSINESS DESCRIPTION

1.1 Scope

The present guide has been issued to assist the companies of the Apparel (Knitting/Clothing) sector in the implementation of the standard XML document type "GARMENT ORDER STATUS REPORT", providing all the instruction required for its use in any context of e-commerce between Apparel Producers and their Subcontractors.

All the rules required for the construction and validation of the document are embedded into the specific XML-Schema, which is detailed in section "Implementation guide".

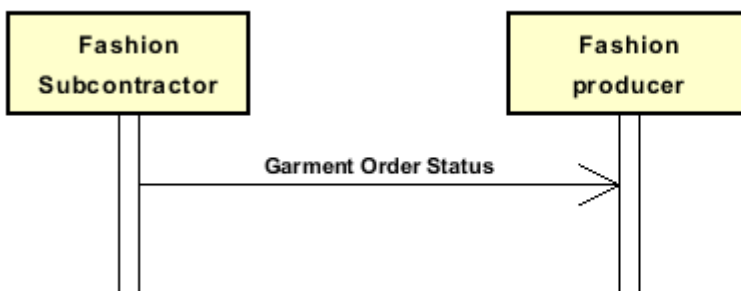
1.2 Generalities

The message is issued by the Subcontractor to report to his Client (Apparel Producer) the status of his Commission Orders and the updated delivery dates, with the possibility of splitting an order line into several consignements.

The message may concern all the articles ordered (Type = H "historic"), all the articles ordered and not yet delivered (type = C "complete") or just the articles in the "ready for shipment" status (type = S "for shipping"). For each article, the status report can be consolidated or partial for each Order line.

1.3. Possible scenario

Fashion commission order status



2. IMPLEMENTATION GUIDE

2.1 General structure of XML document

All the business data that can be exchanged through this class of documents are shown in the following "document structure", that provides a simplified vision of the Schema.

In particular:

- the two numbers following each element define its "cardinality" (minimum and maximum number of occurrences); the minimum equal zero indicates that the element is optional, the minimum greater than zero indicates that is mandatory;
- the bold character denotes the complex elements (aggregates of simple elements) that were built for the sake of functionality and re-usability of some complex informations sets. The child elements in each parent element are easily spotted as "indented";
- the symbol "@" denotes an attribute of the preceding element; here "the usage indicator (optional, required, ...)" is shown in square brackets.

Structure

KCOrdStatus

@msgfunction [Optional] [Default= OR]

@version [Optional] [Default= draft]

@useProfile [Optional]

| **KCSheader 1-1**

| | msgN 1-1

| - choose -

| | msgID 0-1

| - or -

| | docID 0-1

| | *@numberingOrg [Optional]*

| - end choose -

| | msgDate 1-1

| | *@dateForm [Optional]*

| **refDoc 0-9**

| | *@docType [Required]*

| | docID 1-2

| | *@numberingOrg [Optional]*

| | docDate 0-1

| | *@dateForm [Optional]*

| | season 0-1

| | *@numberingOrg [Optional]*

| | *@codeList [Optional]*

| | *@listName [Optional]*

| | *@listVersion [Optional]*

| | itemID 0-1

| **attachment 0-1**

| | *@uid [Optional]*

| | fileName 0-1

| | *@numberingOrg [Optional]*

| | binaryObject 0-1

| | *@format [Optional]*

| | *@mime [Optional]*

| | *@encoding [Optional]*

| | *@characterSet [Optional]*

| **externalReference 0-99**

| | uri 1-1

| | *@isURL [Optional] [Default= true]*

| | mimeTypeCode 0-1

| | formatCode 0-1

| | encodingCode 0-1

```

| | | | characterSetCode 0-1
| buyer 1-1
| @logo [Optional]
| @sender [Optional]
| | id 1-1
| | | @numberingOrg [Optional]
| | additionalIdentifier 0-9
| | | @numberingOrg [Optional]
| | | @idQualifier [Optional]
| | legalName 0-1
| | dept 0-1
| | subDept 0-1
| | person 0-1
| | | @email [Optional]
| | | @phone [Optional]
| | | @fax [Optional]
| | street 0-1
| | city 0-1
| | subCountry 0-1
| | country 0-1
| | postCode 0-1
| subContractor 1-1
| @sender [Optional]
| | id 1-1
| | | @numberingOrg [Optional]
| | legalName 0-1
| | dept 0-1
| | subDept 0-1
| | person 0-1
| | | @email [Optional]
| | | @phone [Optional]
| | | @fax [Optional]
| | street 0-1
| | city 0-1
| | subCountry 0-1
| | country 0-1
| | postCode 0-1
| thirdParty 0-9
| @VAT [Optional]
| @role [Required]
| @sender [Optional]
| | id 1-1
| | | @numberingOrg [Optional]
| | legalName 0-1
| | dept 0-1
| | subDept 0-1
| | person 0-1
| | | @email [Optional]
| | | @phone [Optional]
| | | @fax [Optional]
| | street 0-1
| | city 0-1
| | subCountry 0-1
| | country 0-1
| | postCode 0-1
| qualityLevel 0-1
| @numberingOrg [Optional]
| @codeList [Optional]
| @listName [Optional]
| @listVersion [Optional]
| statusReason 0-1

```

note 0-99
@numberingOrg [Optional]
@codeList [Optional]
@noteLabel [Optional]

KCSbody 1-1

KCSitem 1-unbounded

@extinction [Optional]
lineN 1-1
@VAT [Optional]
lineID 0-1
refDoc 0-9
@docType [Required]
docID 1-2
@numberingOrg [Optional]
docDate 0-1
@dateForm [Optional]
season 0-1
@numberingOrg [Optional]
@codeList [Optional]
@listName [Optional]
@listVersion [Optional]
itemID 0-1
attachment 0-1
@uid [Optional]
fileName 0-1
@numberingOrg [Optional]
binaryObject 0-1
@format [Optional]
@mime [Optional]
@encoding [Optional]
@characterSet [Optional]
externalReference 0-99
uri 1-1
@isURL [Optional] [Default= true]
mimeType 0-1
formatCode 0-1
encodingCode 0-1
characterSetCode 0-1

- choose -

garmentPartCode 1-1

@numberingOrg [Optional]
gPart 1-1
mod 1-1
@numberingOrg [Optional]
@codeList [Optional]
@listName [Optional]
@listVersion [Optional]
fabric 0-1
@numberingOrg [Optional]
@codeList [Optional]
@listName [Optional]
@listVersion [Optional]
color 0-1
@numberingOrg [Optional]
@codeList [Optional]
@listName [Optional]
@listVersion [Optional]
added 0-19
@numberingOrg [Optional]
@addType [Optional]

```

| | | size 0-1
| | | @codeList [Optional]
| | | description 0-unbounded
| | | @ln [Optional]
- or -
| | | garmentCode 1-2
| | | @numberingOrg [Optional]
- choose -
| | | garmentCodeB 1-1
| | | @numberingOrg [Optional]
| | | mod 1-1
| | | @numberingOrg [Optional]
| | | @codeList [Optional]
| | | @listName [Optional]
| | | @listVersion [Optional]
| | | fabric 0-1
| | | @numberingOrg [Optional]
| | | @codeList [Optional]
| | | @listName [Optional]
| | | @listVersion [Optional]
| | | color 0-1
| | | @numberingOrg [Optional]
| | | @codeList [Optional]
| | | @listName [Optional]
| | | @listVersion [Optional]
| | | garmentVariant 0-9
| | | variantType 1-1
| | | @numberingOrg [Optional]
| | | @codeList [Optional]
| | | @listName [Optional]
| | | @listVersion [Optional]
| | | variantCode 1-1
| | | @numberingOrg [Optional]
| | | @codeList [Optional]
| | | @listName [Optional]
| | | @listVersion [Optional]
| | | drop 0-1
| | | @codeList [Optional]
| | | size 0-1
| | | @codeList [Optional]
| | | artGroup 0-1
| | | @numberingOrg [Optional]
| | | @codeList [Optional]
| | | @listName [Optional]
| | | @listVersion [Optional]
| | | added 0-9
| | | @numberingOrg [Optional]
| | | @addType [Optional]
| | | description 0-unbounded
| | | @ln [Optional]
- or -
| | | garmentCodeA 1-1
| | | art 1-1
| | | @numberingOrg [Optional]
| | | @codeList [Optional]
| | | @listName [Optional]
| | | @listVersion [Optional]
| | | description 0-unbounded
| | | @ln [Optional]
- end choose -
- end choose -

```

csRange 0-99

@numberingOrg [Optional]
@sizeSystemNat [Optional]
@sizeSystemSeg [Optional]
@sizeSystemBase [Optional]
@sizeSystemID [Optional]

color 0-1

@numberingOrg [Optional]
@codeList [Optional]
@listName [Optional]
@listVersion [Optional]

garmentVariant 0-9

variantType 1-1

@numberingOrg [Optional]
@codeList [Optional]
@listName [Optional]
@listVersion [Optional]

variantCode 1-1

@numberingOrg [Optional]
@codeList [Optional]
@listName [Optional]
@listVersion [Optional]

drop 0-1

@codeList [Optional]

sizeMatrix 1-1

sizeRow 1-99

additionalComponentCode 0-9

@numberingOrg [Optional]
@codeList [Optional]
@listName [Optional]
@listVersion [Optional]

drop 0-1

@codeList [Optional]

size 1-1

@codeList [Optional]

qty 0-1

@um [Required]

itemsList 0-1

qualityLevel 0-1

@numberingOrg [Optional]
@codeList [Optional]
@listName [Optional]
@listVersion [Optional]

itemIdentification 1-unbounded

serialN 1-9

@numberingOrg [Optional]
@idQualifier [Optional]

- choose -

phaseProgress 0-unbounded

phase 1-1

@progr [Required]

phaseCode 1-1

@numberingOrg [Optional]
@codeList [Optional]
@listName [Optional]
@listVersion [Optional]

criticalityIndicator 0-1

finalIndicator 0-1

qty 0-2

@um [Required]

lotDetails 0-99

| lotN 1-1
 | @numberingOrg [Optional]
 | qty 0-1
 | @um [Required]
 | **csRange 0-99**
 | @numberingOrg [Optional]
 | @sizeSystemNat [Optional]
 | @sizeSystemSeg [Optional]
 | @sizeSystemBase [Optional]
 | @sizeSystemID [Optional]
 | | color 0-1
 | | @numberingOrg [Optional]
 | | @codeList [Optional]
 | | @listName [Optional]
 | | @listVersion [Optional]
 | | **garmentVariant 0-9**
 | | | variantType 1-1
 | | | @numberingOrg [Optional]
 | | | @codeList [Optional]
 | | | @listName [Optional]
 | | | @listVersion [Optional]
 | | | variantCode 1-1
 | | | @numberingOrg [Optional]
 | | | @codeList [Optional]
 | | | @listName [Optional]
 | | | @listVersion [Optional]
 | | drop 0-1
 | | @codeList [Optional]
 | | **sizeMatrix 1-1**
 | | | **sizeRow 1-99**
 | | | | additionalComponentCode 0-9
 | | | | @numberingOrg [Optional]
 | | | | @codeList [Optional]
 | | | | @listName [Optional]
 | | | | @listVersion [Optional]
 | | | | drop 0-1
 | | | | @codeList [Optional]
 | | | | size 1-1
 | | | | @codeList [Optional]
 | | | | qty 0-1
 | | | | @um [Required]
 | | | | **itemsList 0-1**
 | | | | | qualityLevel 0-1
 | | | | | @numberingOrg [Optional]
 | | | | | @codeList [Optional]
 | | | | | @listName [Optional]
 | | | | | @listVersion [Optional]
 | | | | | **itemIdentification 1-unbounded**
 | | | | | | serialN 1-9
 | | | | | | @numberingOrg [Optional]
 | | | | | | @idQualifier [Optional]
 | **refDoc 0-99**
 | @docType [Required]
 | docID 1-2
 | @numberingOrg [Optional]
 | docDate 0-1
 | @dateForm [Optional]
 | season 0-1
 | @numberingOrg [Optional]
 | @codeList [Optional]
 | @listName [Optional]

```

| | | | @listVersion [Optional]
| | | | itemID 0-1
| | | | attachment 0-1
| | | | | @uid [Optional]
| | | | | | fileName 0-1
| | | | | | | @numberingOrg [Optional]
| | | | | | binaryObject 0-1
| | | | | | | @format [Optional]
| | | | | | | @mime [Optional]
| | | | | | | @encoding [Optional]
| | | | | | | @characterSet [Optional]
| | | | | | externalReference 0-99
| | | | | | | uri 1-1
| | | | | | | | @isURL [Optional] [Default= true]
| | | | | | | | mimeTypeCode 0-1
| | | | | | | | formatCode 0-1
| | | | | | | | encodingCode 0-1
| | | | | | | | characterSetCode 0-1
| | | | notBeforeDate 0-1
| | | | | @dateForm [Optional]
| | | | | deliveryDate 0-1
| | | | | | @dateForm [Optional]
| | | | | delGrantedDate 0-1
| | | | | | @dateForm [Optional]
| | | | | price 0-1
| | | | | | @um [Optional]
| | | | | | @priceQualifier [Optional] [Default= NET]
| | | | | | @currency [Optional]
| | | | | thirdParty 0-9
| | | | | | @VAT [Optional]
| | | | | | @role [Required]
| | | | | | @sender [Optional]
| | | | | | | id 1-1
| | | | | | | | @numberingOrg [Optional]
| | | | | | | | legalName 0-1
| | | | | | | | dept 0-1
| | | | | | | | subDept 0-1
| | | | | | | | person 0-1
| | | | | | | | | @email [Optional]
| | | | | | | | | @phone [Optional]
| | | | | | | | | @fax [Optional]
| | | | | | | | street 0-1
| | | | | | | | city 0-1
| | | | | | | | subCountry 0-1
| | | | | | | | country 0-1
| | | | | | | | postCode 0-1
| | | | | garConsumptionSet 0-99
| | | | | - choose -
| | | | | | acsCode 1-1
| | | | | | | @numberingOrg [Optional]
| | | | | | | | art 1-1
| | | | | | | | | @numberingOrg [Optional]
| | | | | | | | | @codeList [Optional]
| | | | | | | | | @listName [Optional]
| | | | | | | | | @listVersion [Optional]
| | | | | | | | pattern 0-1
| | | | | | | | | @numberingOrg [Optional]
| | | | | | | | | @codeList [Optional]
| | | | | | | | | @listName [Optional]
| | | | | | | | | @listVersion [Optional]
| | | | | | | | color 0-1

```

| | | | | | @numberingOrg [Optional]
| | | | | | @codeList [Optional]
| | | | | | @listName [Optional]
| | | | | | @listVersion [Optional]
| | | | | | added 0-9
| | | | | | @numberingOrg [Optional]
| | | | | | @addType [Optional]
| | | | | | description 0-unbounded
| | | | | | @ln [Optional]

- or -

| | | | | | **texCode 1-1**
| | | | | | @numberingOrg [Optional]
| | | | | | art 1-1
| | | | | | @numberingOrg [Optional]
| | | | | | @codeList [Optional]
| | | | | | @listName [Optional]
| | | | | | @listVersion [Optional]
| | | | | | pattern 0-1
| | | | | | @numberingOrg [Optional]
| | | | | | @codeList [Optional]
| | | | | | @listName [Optional]
| | | | | | @listVersion [Optional]
| | | | | | color 0-1
| | | | | | @numberingOrg [Optional]
| | | | | | @codeList [Optional]
| | | | | | @listName [Optional]
| | | | | | @listVersion [Optional]
| | | | | | added 0-9
| | | | | | @numberingOrg [Optional]
| | | | | | @addType [Optional]
| | | | | | description 0-unbounded
| | | | | | @ln [Optional]

- or -

| | | | | | **yarnCode 1-1**
| | | | | | @numberingOrg [Optional] [Default= CL]
| | | | | | art 1-1
| | | | | | @numberingOrg [Optional]
| | | | | | @codeList [Optional]
| | | | | | @listName [Optional]
| | | | | | @listVersion [Optional]
| | | | | | color 0-1
| | | | | | @numberingOrg [Optional]
| | | | | | @codeList [Optional]
| | | | | | @listName [Optional]
| | | | | | @listVersion [Optional]
| | | | | | added 0-9
| | | | | | @numberingOrg [Optional]
| | | | | | @addType [Optional]
| | | | | | description 0-unbounded
| | | | | | @ln [Optional]

- or -

| | | | | | **garmentPartCode 1-1**
| | | | | | @numberingOrg [Optional]
| | | | | | gPart 1-1
| | | | | | mod 1-1
| | | | | | @numberingOrg [Optional]
| | | | | | @codeList [Optional]
| | | | | | @listName [Optional]
| | | | | | @listVersion [Optional]
| | | | | | fabric 0-1
| | | | | | @numberingOrg [Optional]

						@codeList [Optional]
						@listName [Optional]
						@listVersion [Optional]
						color 0-1
						@numberingOrg [Optional]
						@codeList [Optional]
						@listName [Optional]
						@listVersion [Optional]
						added 0-19
						@numberingOrg [Optional]
						@addType [Optional]
						size 0-1
						@codeList [Optional]
						description 0-unbounded
						@ln [Optional]

- or -

						garmentCode 1-1
						@numberingOrg [Optional]

- choose -

						garmentCodeB 1-1
						@numberingOrg [Optional]
						mod 1-1
						@numberingOrg [Optional]
						@codeList [Optional]
						@listName [Optional]
						@listVersion [Optional]
						fabric 0-1
						@numberingOrg [Optional]
						@codeList [Optional]
						@listName [Optional]
						@listVersion [Optional]
						color 0-1
						@numberingOrg [Optional]
						@codeList [Optional]
						@listName [Optional]
						@listVersion [Optional]
						garmentVariant 0-9
						variantType 1-1
						@numberingOrg [Optional]
						@codeList [Optional]
						@listName [Optional]
						@listVersion [Optional]
						variantCode 1-1
						@numberingOrg [Optional]
						@codeList [Optional]
						@listName [Optional]
						@listVersion [Optional]

						drop 0-1
						@codeList [Optional]
						size 0-1
						@codeList [Optional]
						artGroup 0-1
						@numberingOrg [Optional]
						@codeList [Optional]
						@listName [Optional]
						@listVersion [Optional]
						added 0-9
						@numberingOrg [Optional]
						@addType [Optional]
						description 0-unbounded
						@ln [Optional]

```

- or -
| | | | | | | garmentCodeA 1-1
| | | | | | | | art 1-1
| | | | | | | | | @numberingOrg [Optional]
| | | | | | | | | @codeList [Optional]
| | | | | | | | | @listName [Optional]
| | | | | | | | | @listVersion [Optional]
| | | | | | | | | description 0-unbounded
| | | | | | | | | @ln [Optional]
- end choose -
- end choose -
| | | | | | | | lotN 0-99
| | | | | | | | | @numberingOrg [Optional]
| | | | | | | | | dyeN 0-99
| | | | | | | | | @numberingOrg [Optional]
| | | | | | | | | garConsumption 1-9
| | | | | | | | | @numberingOrg [Optional]
| | | | | | | | | @consumptionType [Optional]
| | | | | | | | | | garSizeCode 0-1
| | | | | | | | | | qty 1-1
| | | | | | | | | | | @um [Required]
| | | | | | | | | | | qtyVariance 0-1
| | | | | | | | | | | @um [Optional]
| | | | | | | | | | | @varReason [Optional]
| | | | | | | | | packages 0-99
| | | | | | | | | | @packageLevel [Optional]
- choose -
| | | | | | | | | | packageText 1-1
- or -
| | | | | | | | | | package 1-1
- end choose -
| | | | | | | | | | packageModelCode 0-1
| | | | | | | | | | | @numberingOrg [Optional]
| | | | | | | | | | | description 0-unbounded
| | | | | | | | | | | @ln [Optional]
| | | | | | | | | | | packageDim 0-1
| | | | | | | | | | | | length 1-1
| | | | | | | | | | | | | @um [Required]
| | | | | | | | | | | | | width 0-1
| | | | | | | | | | | | | @um [Required]
| | | | | | | | | | | | | height 0-1
| | | | | | | | | | | | | @um [Required]
| | | | | | | | | | | handlingChar 0-1
- choose -
| | | | | | | | | | yarnPack 0-1
| | | | | | | | | | | yarnReel 1-1
| | | | | | | | | | | | @reelType [Required]
| | | | | | | | | | | | @reelMat [Optional]
| | | | | | | | | | | | | yarnReelD 0-1
| | | | | | | | | | | | | | @um [Required]
| | | | | | | | | | | | | yarnReelH 0-1
| | | | | | | | | | | | | | @um [Required]
| | | | | | | | | | | | | yarnConeAngle 0-1
| | | | | | | | | | | | | yarnReelQty 0-2
| | | | | | | | | | | | | | @um [Required]
| | | | | | | | | | | | | label 0-1
| | | | | | | | | | | | | labelWrit 0-1
| | | | | | | | | | | | | yarnInWrap 0-1
| | | | | | | | | | | | | yarnReelWrap 1-1
| | | | | | | | | | | | | label 0-1
| | | | | | | | | | | | | labelWrit 0-1

```

```

      - choose -
| | | | | | | | | yarnOutWrapText 0-1
      - or -
| | | | | | | | | yarnOutWrap 0-1
      - end choose -
- or -
| | | | | | | | | piecePack 0-1
      - choose -
| | | | | | | | | piecePackText 1-1
      - or -
| | | | | | | | | pieceInnWrap1 1-1
| | | | | | | | | pieceInnWrap2 0-1
| | | | | | | | | pieceOutWrap 0-1
      - end choose -
- or -
| | | | | | | | | acsPack 0-1
      - choose -
| | | | | | | | | acsPackCode 1-1
      - or -
| | | | | | | | | acsPackText 1-1
      - end choose -
- or -
| | | | | | | | | garPack 0-1
      - choose -
| | | | | | | | | garPackCode 1-1
      - or -
| | | | | | | | | garPackText 1-1
      - end choose -
- end choose -
| | | | | | | | | sortableIndicator 0-1
| | | | | | | | | stackabilityLevel 0-1
| | | | | | | | | handlingType 0-1
| | | | | | | | | @In [Optional]
| | | | | | | | | volume 0-1
| | | | | | | | | @um [Required]
| | | | | | | | | netWeight 0-1
| | | | | | | | | @um [Required]
| | | | | | | | | grossWeight 0-1
| | | | | | | | | @um [Required]
| | | | | | | | | note 0-99
| | | | | | | | | @numberingOrg [Optional]
| | | | | | | | | @codeList [Optional]
| | | | | | | | | @noteLabel [Optional]
| | | | | | | | | itemsPerPackage 0-1
| | | | | | | | | @um [Required]
| | | | | | | | | minItemsPerPackage 0-1
| | | | | | | | | @um [Required]
| | | | | | | | | fillingCriterion 0-9
| | | | | | | | | @progr [Optional]
| | | | | | | | | packageQty 0-1
| | | | | | | | | packageN 0-unbounded
| | | | | | | | | @numberingOrg [Optional]
| | | | | | | | | @packageContainerN [Optional]
| | | | | | | | | EPCList 0-1
| | | | | | | | | EPC 1-unbounded
| | | | | | | | | @numberingOrg [Optional]
| | | | | | | | | @TID [Optional]
| | | | | | | | | note 0-99
| | | | | | | | | @numberingOrg [Optional]
| | | | | | | | | @codeList [Optional]
| | | | | | | | | @noteLabel [Optional]

```

csRange 0-99

@numberingOrg [Optional]
@sizeSystemNat [Optional]
@sizeSystemSeg [Optional]
@sizeSystemBase [Optional]
@sizeSystemID [Optional]

color 0-1

@numberingOrg [Optional]
@codeList [Optional]
@listName [Optional]
@listVersion [Optional]

garmentVariant 0-9

variantType 1-1

@numberingOrg [Optional]
@codeList [Optional]
@listName [Optional]
@listVersion [Optional]

variantCode 1-1

@numberingOrg [Optional]
@codeList [Optional]
@listName [Optional]
@listVersion [Optional]

drop 0-1

@codeList [Optional]

sizeMatrix 1-1

sizeRow 1-99

additionalComponentCode 0-9

@numberingOrg [Optional]
@codeList [Optional]
@listName [Optional]
@listVersion [Optional]

drop 0-1

@codeList [Optional]

size 1-1

@codeList [Optional]

qty 0-1

@um [Required]

itemsList 0-1

qualityLevel 0-1

@numberingOrg [Optional]
@codeList [Optional]
@listName [Optional]
@listVersion [Optional]

itemIdentification 1-unbounded

serialN 1-9

@numberingOrg [Optional]
@idQualifier [Optional]

itemsList 0-1

qualityLevel 0-1

@numberingOrg [Optional]
@codeList [Optional]
@listName [Optional]
@listVersion [Optional]

itemIdentification 1-unbounded

serialN 1-9

@numberingOrg [Optional]
@idQualifier [Optional]

qualityLevel 0-1

@numberingOrg [Optional]
@codeList [Optional]
@listName [Optional]

```

| | | | @listVersion [Optional]
| | | | statusReason 0-1
- or -
| | | | progress 0-99
| | | | qty 1-2
| | | | @um [Required]
| | | | deliveryDate 0-1
| | | | @dateForm [Optional]
| | | | delGrantedDate 0-1
| | | | @dateForm [Optional]
- choose -
| | | | mfrStatus 0-1
- or -
| | | | mfrStatusText 0-1
- end choose -
| | | | itemsList 0-1
| | | | qualityLevel 0-1
| | | | @numberingOrg [Optional]
| | | | @codeList [Optional]
| | | | @listName [Optional]
| | | | @listVersion [Optional]
| | | | itemIdentification 1-unbounded
| | | | serialN 1-9
| | | | @numberingOrg [Optional]
| | | | @idQualifier [Optional]
- end choose -
| | | | note 0-99
| | | | @numberingOrg [Optional]
| | | | @codeList [Optional]
| | | | @noteLabel [Optional]

```


2.2 Detailed description of document elements

Following tables show all elements (complex and simple) used in this document. Description includes: 1) element's information: xml tag, name, brief description, data type and syntax constraints; 2) information about use of the element in a particular position in the document: xpath and possible associated notes.

2.2.1 Complex elements (Aggregate Business Information Entities)

Complex elements are those elements whose content is composed of other elements (childs). Complex elements are alphabetically ordered.

acsCode	full codification identifying an accessory product usually coupled with garment or other fashion product (XPath KCOrdStatus/KCSbody/KCSitem/phaseProgress/phase/garConsumptionSet/acsCode) 1-1
acsPack	type of wrapping or packing of the accessory (XPath KCOrdStatus/KCSbody/KCSitem/phaseProgress/phase/packages/handlingChar/acsPack) 0-1
attachment	an attached document. An attachment can refer to an external document or be included with the document being exchanged (XPath KCOrdStatus/KCSheader/refDoc/attachment) 0-1 (XPath KCOrdStatus/KCSbody/KCSitem/refDoc/attachment) 0-1 (XPath KCOrdStatus/KCSbody/KCSitem/phaseProgress/phase/refDoc/attachment) 0-1
buyer	details of the Buyer (party that buys the good or service that is object of the current collaborative process) - base type: Nad, (XPath KCOrdStatus/KCSheader/buyer) 1-1
csRange	range of color-size for a fashion article (XPath KCOrdStatus/KCSbody/KCSitem/phaseProgress/csRange) 0-99 - note: <i>the csRange matrix is used to detail the mix of the quantities of the production lot EXPECTED from the phase.</i> (XPath KCOrdStatus/KCSbody/KCSitem/csRange) 0-99 - note: <i>Don't use this element if the mix quality/color is detailed at phase level using the csRange element in phaseProgress.</i> (XPath KCOrdStatus/KCSbody/KCSitem/phaseProgress/phase/lotDetails/csRange) 0-99
EPCList	list of identifiers used for tracing a physical item with RFID technology (XPath KCOrdStatus/KCSbody/KCSitem/phaseProgress/phase/packages/EPCList) 0-1 - note: <i>this element is DEPRECATED, please use the specific elements</i>
externalReference	details about an external object, such as a document stored at a remote location (XPath KCOrdStatus/KCSheader/refDoc/attachment/externalReference) 0-99 (XPath KCOrdStatus/KCSbody/KCSitem/phaseProgress/phase/refDoc/attachment/externalReference) 0-99 (XPath KCOrdStatus/KCSbody/KCSitem/refDoc/attachment/externalReference) 0-99
garConsumption	consumption of the component for the given size range (XPath KCOrdStatus/KCSbody/KCSitem/phaseProgress/phase/garConsumptionSet/garConsumption) 1-9
garConsumptionSet	components and average prescribed or effective consumptions for a garment (XPath KCOrdStatus/KCSbody/KCSitem/phaseProgress/phase/garConsumptionSet) 0-99

garmentCode	codification of the garment product (XPath KCOrdStatus/KCSbody/KCSitem/phaseProgress/ phase/garConsumptionSet/garmentCode) 1-1 (XPath KCOrdStatus/KCSbody/KCSitem/garmentCode) 1-2
garmentCodeA	codification of the garment product- type A (XPath KCOrdStatus/KCSbody/KCSitem/phaseProgress/ phase/garConsumptionSet/garmentCode/garmentCodeA) 1-1 - note: <i>here the barcode EAN-13 or EAN-8 should be specified</i> (XPath KCOrdStatus/KCSbody/KCSitem/garmentCode/garmentCodeA) 1-1 - note: <i>here the barcode EAN-13 or EAN-8 should be specified</i>
garmentCodeB	codification of the garment product - type B (XPath KCOrdStatus/KCSbody/KCSitem/garmentCode/garmentCodeB) 1-1 (XPath KCOrdStatus/KCSbody/KCSitem/phaseProgress/ phase/garConsumptionSet/garmentCode/garmentCodeB) 1-1
garmentPartCode	codification of the component or part of a fashion article (XPath KCOrdStatus/KCSbody/KCSitem/phaseProgress/ phase/garConsumptionSet/garmentPartCode) 1-1 (XPath KCOrdStatus/KCSbody/KCSitem/garmentPartCode) 1-1
garmentVariant	garment product variant (XPath KCOrdStatus/KCSbody/KCSitem/garmentCode/ garmentCodeB/garmentVariant) 0-9 (XPath KCOrdStatus/KCSbody/KCSitem/csRange/garmentVariant) 0-9 - note: <i>used only if not already specified in the article code</i> (XPath KCOrdStatus/KCSbody/KCSitem/phaseProgress/ phase/lotDetails/csRange/garmentVariant) 0-9 - note: <i>used only if not already specified in the article code</i> (XPath KCOrdStatus/KCSbody/KCSitem/phaseProgress/csRange/garmentVariant) 0-9 - note: <i>used only if not already specified in the article code</i> (XPath KCOrdStatus/KCSbody/KCSitem/phaseProgress/ phase/garConsumptionSet/garmentCode/garmentCodeB/garmentVariant) 0-9
garPack	the packaging mode of the item or a part of it. (XPath KCOrdStatus/KCSbody/KCSitem/phaseProgress/ phase/packages/handlingChar/garPack) 0-1
handlingChar	features of an item (item or package) useful for its transport and warehouse management. (XPath KCOrdStatus/KCSbody/KCSitem/phaseProgress/ phase/packages/handlingChar) 0-1 - note: <i>in this case the characteristics are related to the package.</i>
itemIdentification	serial identification of a product unit (XPath KCOrdStatus/KCSbody/KCSitem/phaseProgress/ csRange/sizeMatrix/sizeRow/itemsList/itemIdentification) 1-unbounded - note: <i>identification of the single product unit contained in the list</i> (XPath KCOrdStatus/KCSbody/KCSitem/phaseProgress/ phase/lotDetails/csRange/sizeMatrix/sizeRow/itemsList/itemIdentification) 1-unbounded - note: <i>identification of the single product unit contained in the list</i> (XPath KCOrdStatus/KCSbody/KCSitem/csRange/sizeMatrix/ sizeRow/itemsList/itemIdentification) 1-unbounded - note: <i>identification of the single product unit contained in the list</i> (XPath KCOrdStatus/KCSbody/KCSitem/progress/itemsList/itemIdentification) 1-unbounded - note: <i>identification of the single product unit contained in the list</i> (XPath KCOrdStatus/KCSbody/KCSitem/phaseProgress/ itemsList/itemIdentification) 1-unbounded - note: <i>identification of the single product unit contained in the list</i>
itemsList	list of the single product units

	<p>(XPath KCOrdStatus/KCSbody/KCSitem/phaseProgress/csRange/sizeMatrix/sizeRow/itemsList) 0-1</p> <p>- note: <i>the usage in this position is alternative to its usage within the document line element</i></p> <p>(XPath KCOrdStatus/KCSbody/KCSitem/progress/itemsList) 0-1</p> <p>(XPath KCOrdStatus/KCSbody/KCSitem/phaseProgress/itemsList) 0-1</p> <p>- note: <i>the usage in this position is alternative to its usage within sizeRow</i></p> <p>(XPath KCOrdStatus/KCSbody/KCSitem/csRange/sizeMatrix/sizeRow/itemsList) 0-1</p> <p>- note: <i>the usage in this position is alternative to its usage within the document line element</i></p> <p>(XPath KCOrdStatus/KCSbody/KCSitem/phaseProgress/phase/lotDetails/csRange/sizeMatrix/sizeRow/itemsList) 0-1</p> <p>- note: <i>the usage in this position is alternative to its usage within the document line element</i></p>
KCSbody	body of the document GARMENT ORDER STATUS (XPath KCOrdStatus/KCSbody) 1-1
KCSheader	header of the document GARMENT ORDER STATUS (XPath KCOrdStatus/KCSheader) 1-1
KCSitem	line of the document GARMENT ORDER STATUS (XPath KCOrdStatus/KCSbody/KCSitem) 1-unbounded
lotDetails	details about the lot to be assigned to a group of items. (XPath KCOrdStatus/KCSbody/KCSitem/phaseProgress/phase/lotDetails) 0-99
packageDim	dimensions of a transport package (XPath KCOrdStatus/KCSbody/KCSitem/phaseProgress/phase/packages/packageDim) 0-1
packages	describes the composition of the transport packaging. Each element corresponds to a type of package: type, quantity, hierarchic level, list of identifiers of the single packages (XPath KCOrdStatus/KCSbody/KCSitem/phaseProgress/phase/packages) 0-99
phase	a production phase of a fashion product. (XPath KCOrdStatus/KCSbody/KCSitem/phaseProgress/phase) 1-1 - note: <i>this element is used to identify the production phase and, optionally, the granted delivery date and/or the total quantity of product expected from the phase.</i>
phaseProgress	description of the progress of a production phase (XPath KCOrdStatus/KCSbody/KCSitem/phaseProgress) 0-unbounded
piecePack	type of wrapping or packing of the fabric pieces (XPath KCOrdStatus/KCSbody/KCSitem/phaseProgress/phase/packages/handlingChar/piecePack) 0-1
progress	description of the progress of a production lot in a manufacturing process (XPath KCOrdStatus/KCSbody/KCSitem/progress) 0-99
refDoc	identification of a document and of an item thereof, to which the message makes reference (XPath KCOrdStatus/KCSbody/KCSitem/phaseProgress/phase/refDoc) 0-99 (XPath KCOrdStatus/KCSheader/refDoc) 0-9 (XPath KCOrdStatus/KCSbody/KCSitem/refDoc) 0-9
sizeMatrix	size matrix of an apparel product (XPath KCOrdStatus/KCSbody/KCSitem/csRange/sizeMatrix) 1-1 (XPath KCOrdStatus/KCSbody/KCSitem/phaseProgress/csRange/sizeMatrix) 1-1 (XPath KCOrdStatus/KCSbody/KCSitem/phaseProgress/phase/lotDetails/csRange/sizeMatrix) 1-1
sizeRow	size matrix row of an apparel product (XPath KCOrdStatus/KCSbody/KCSitem/csRange/sizeMatrix/sizeRow) 1-99

	(XPath KCOrdStatus/KCSbody/KCSitem/phaseProgress/ csRange/sizeMatrix/sizeRow) 1-99 (XPath KCOrdStatus/KCSbody/KCSitem/phaseProgress/ phase/lotDetails/csRange/sizeMatrix/sizeRow) 1-99
subContractor	details of the Sub-contractor - base type: Nad, (XPath KCOrdStatus/KCSheader/subContractor) 1-1
texCode	full codification of the textile product (XPath KCOrdStatus/KCSbody/KCSitem/phaseProgress/ phase/garConsumptionSet/texCode) 1-1
thirdParty	details of the Third Party, different from Buyer or Supplier - base type: Nad, (XPath KCOrdStatus/KCSheader/thirdParty) 0-9 (XPath KCOrdStatus/KCSbody/KCSitem/phaseProgress/phase/thirdParty) 0-9
yarnCode	full codification of a yarn product (XPath KCOrdStatus/KCSbody/KCSitem/phaseProgress/ phase/garConsumptionSet/yarnCode) 1-1
yarnInWrap	details specifying the inner wrapping of a yarn product (XPath KCOrdStatus/KCSbody/KCSitem/phaseProgress/ phase/packages/handlingChar/yarnPack/yarnInWrap) 0-1
yarnPack	details of type of presentation used for the yarn (XPath KCOrdStatus/KCSbody/KCSitem/phaseProgress/ phase/packages/handlingChar/yarnPack) 0-1
yarnReel	details of the packaging of a yarn product (bobbin and reel...) (XPath KCOrdStatus/KCSbody/KCSitem/phaseProgress/ phase/packages/handlingChar/yarnPack/yarnReel) 1-1

2.2.2 Simple elements (Basic Business Information Entities)

Simple elements are those elements whose content is characterized by a data type plus a domain of possible values. Simple elements are alphabetically ordered.

acsPackCode	code specifying the type of wrapping or packing used for the accessory - base type: string, (XPath KCOrdStatus/KCSbody/KCSitem/phaseProgress/ phase/packages/handlingChar/acsPack/acsPackCode) 1-1
acsPackText	free text specifying the type of wrapping or packing used for the accessory - base type: string, max length: 250, (XPath KCOrdStatus/KCSbody/KCSitem/phaseProgress/ phase/packages/handlingChar/acsPack/acsPackText) 1-1
added	additional code of the product (complementing the formers) - base type: string, max length: 80, (XPath KCOrdStatus/KCSbody/KCSitem/garmentPartCode/added) 0-19 (XPath KCOrdStatus/KCSbody/KCSitem/phaseProgress/ phase/garConsumptionSet/yarnCode/added) 0-9 - note: <i>here an additional codification (see table T44) can be specified</i> (XPath KCOrdStatus/KCSbody/KCSitem/phaseProgress/ phase/garConsumptionSet/garmentPartCode/added) 0-19 (XPath KCOrdStatus/KCSbody/KCSitem/phaseProgress/ phase/garConsumptionSet/texCode/added) 0-9 - note: <i>here an additional codification (see table T44) can be specified</i> (XPath KCOrdStatus/KCSbody/KCSitem/phaseProgress/ phase/garConsumptionSet/acsCode/added) 0-9 - note: <i>here an additional codification (see table T44) can be specified</i>

	<p>(XPath KCOrdStatus/KCSbody/KCSitem/phaseProgress/phase/garConsumptionSet/garmentCode/garmentCodeB/added) 0-9 (XPath KCOrdStatus/KCSbody/KCSitem/garmentCode/garmentCodeB/added) 0-9</p>
additionalComponentCode	<p>an additional code to identify a fashion product or a part of it (it is a way to codify the item, but it is not one of the codes to identify it). It is not a serial identifier.</p> <p>- base type: string, (XPath KCOrdStatus/KCSbody/KCSitem/csRange/sizeMatrix/sizeRow/additionalComponentCode) 0-9 (XPath KCOrdStatus/KCSbody/KCSitem/phaseProgress/csRange/sizeMatrix/sizeRow/additionalComponentCode) 0-9 (XPath KCOrdStatus/KCSbody/KCSitem/phaseProgress/phase/lotDetails/csRange/sizeMatrix/sizeRow/additionalComponentCode) 0-9</p>
additionalIdentifier	<p>additional identification code of a Party, for example customs registries or others</p> <p>- base type: string, max length: 15, (XPath KCOrdStatus/KCSheader/buyer/additionalIdentifier) 0-9</p> <p>- note: <i>identifiers for example for exports, such as MID (Manufacturer Identification Code), EORI (E.O.R.I. - Economic Operator Registration and Identification)</i></p>
@addType	<p>qualifier of the additional coding of a product</p> <p>- base type: string, cod. table: T44 http://www.ebiz.enea.it/moda-ml/repository/codelist/draft/gc_T44.xml (XPath KCOrdStatus/KCSbody/KCSitem/phaseProgress/phase/garConsumptionSet/texCode/added/@addType) [Optional]</p> <p>- nota: <i>addType allows the clarification of the meaning of the added element content; it is strongly suggested to use it always.</i> (XPath KCOrdStatus/KCSbody/KCSitem/phaseProgress/phase/garConsumptionSet/acsCode/added/@addType) [Optional]</p> <p>- nota: <i>addType allows the clarification of the meaning of the added element content; it is strongly suggested to use it always.</i> (XPath KCOrdStatus/KCSbody/KCSitem/phaseProgress/phase/garConsumptionSet/garmentPartCode/added/@addType) [Optional]</p> <p>- nota: <i>addType allows the clarification of the meaning of the added element content; it is strongly suggested to use it always.</i> (XPath KCOrdStatus/KCSbody/KCSitem/phaseProgress/phase/garConsumptionSet/garmentCode/garmentCodeB/added/@addType) [Optional]</p> <p>- nota: <i>addType allows the clarification of the meaning of the added element content; it is strongly suggested to use it always.</i> (XPath KCOrdStatus/KCSbody/KCSitem/garmentCode/garmentCodeB/added/@addType) [Optional]</p> <p>- nota: <i>addType allows the clarification of the meaning of the added element content; it is strongly suggested to use it always.</i> (XPath KCOrdStatus/KCSbody/KCSitem/phaseProgress/phase/garConsumptionSet/yarnCode/added/@addType) [Optional]</p> <p>- nota: <i>addType allows the clarification of the meaning of the added element content; it is strongly suggested to use it always.</i> (XPath KCOrdStatus/KCSbody/KCSitem/garmentPartCode/added/@addType) [Optional]</p> <p>- nota: <i>addType allows the clarification of the meaning of the added element content; it is strongly suggested to use it always.</i></p>
art	<p>article number of the product</p> <p>- base type: string, max length: 80, (XPath KCOrdStatus/KCSbody/KCSitem/phaseProgress/phase/garConsumptionSet/garmentCode/garmentCodeA/art) 1-1 (XPath KCOrdStatus/KCSbody/KCSitem/garmentCode/garmentCodeA/art) 1-1 (XPath KCOrdStatus/KCSbody/KCSitem/phaseProgress/phase/garConsumptionSet/yarnCode/art) 1-1</p>

	<p>(XPath KCOrdStatus/KCSbody/KCSitem/phaseProgress/phase/garConsumptionSet/acsCode/art) 1-1 (XPath KCOrdStatus/KCSbody/KCSitem/phaseProgress/phase/garConsumptionSet/texCode/art) 1-1 - note: <i>can be used either for the base-article (excluding pattern/colour) or for the SKU</i></p>
artGroup	<p>code identifying a class of products - base type: string, max length: 40, (XPath KCOrdStatus/KCSbody/KCSitem/phaseProgress/phase/garConsumptionSet/garmentCode/garmentCodeB/artGroup) 0-1 (XPath KCOrdStatus/KCSbody/KCSitem/garmentCode/garmentCodeB/artGroup) 0-1</p>
binaryObject	<p>a binary large object containing an attached document - base type: base64Binary, (XPath KCOrdStatus/KCSbody/KCSitem/phaseProgress/phase/refDoc/attachment/binaryObject) 0-1 (XPath KCOrdStatus/KCSheader/refDoc/attachment/binaryObject) 0-1 (XPath KCOrdStatus/KCSbody/KCSitem/refDoc/attachment/binaryObject) 0-1</p>
@characterSet	<p>the character set of the binary object if the mime type is text - base type: normalizedString, (XPath KCOrdStatus/KCSheader/refDoc/attachment/binaryObject/@characterSet) [Optional] (XPath KCOrdStatus/KCSbody/KCSitem/refDoc/attachment/binaryObject/@characterSet) [Optional] (XPath KCOrdStatus/KCSbody/KCSitem/phaseProgress/phase/refDoc/attachment/binaryObject/@characterSet) [Optional]</p>
characterSetCode	<p>the character set of an external document - base type: normalizedString, (XPath KCOrdStatus/KCSbody/KCSitem/refDoc/attachment/externalReference/characterSetCode) 0-1 (XPath KCOrdStatus/KCSbody/KCSitem/phaseProgress/phase/refDoc/attachment/externalReference/characterSetCode) 0-1 (XPath KCOrdStatus/KCSheader/refDoc/attachment/externalReference/characterSetCode) 0-1</p>
city	<p>name of the city (town, village) - base type: string, max length: 40, (XPath KCOrdStatus/KCSheader/thirdParty/city) 0-1 (XPath KCOrdStatus/KCSheader/buyer/city) 0-1 (XPath KCOrdStatus/KCSbody/KCSitem/phaseProgress/phase/thirdParty/city) 0-1 (XPath KCOrdStatus/KCSheader/subContractor/city) 0-1</p>
@codeList	<p>it specifies the URL where the list of codes used to make an instance of the element can be found - base type: string, max length: 255, (XPath KCOrdStatus/KCSbody/KCSitem/garmentCode/garmentCodeB/artGroup/@codeList) [Optional] - nota: <i>this attribute should be ALTERNATIVE to the others</i> (XPath KCOrdStatus/KCSbody/KCSitem/phaseProgress/phase/garConsumptionSet/garmentPartCode/color/@codeList) [Optional] - nota: <i>this attribute could be used as alternative to the others</i> (XPath KCOrdStatus/KCSbody/KCSitem/phaseProgress/csRange/sizeMatrix/sizeRow/drop/@codeList) [Optional] (XPath KCOrdStatus/KCSbody/KCSitem/phaseProgress/csRange/sizeMatrix/sizeRow/size/@codeList) [Optional] (XPath KCOrdStatus/KCSbody/KCSitem/garmentPartCode/fabric/@codeList) [Optional] - nota: <i>this attribute should be ALTERNATIVE to the others</i> (XPath KCOrdStatus/KCSbody/KCSitem/garmentPartCode/color/@codeList) [Optional] - nota: <i>this attribute could be used as alternative to the others</i></p>

(XPath KCOrdStatus/KCSbody/KCSitem/phaseProgress/
csRange/sizeMatrix/sizeRow/itemsList/qualityLevel/@codeList) [Optional]

(XPath KCOrdStatus/KCSbody/KCSitem/phaseProgress/
phase/lotDetails/csRange/drop/@codeList) [Optional]

(XPath KCOrdStatus/KCSbody/KCSitem/phaseProgress/
phase/garConsumptionSet/garmentPartCode/size/@codeList) [Optional]

(XPath KCOrdStatus/KCSbody/KCSitem/garmentPartCode/size/@codeList) [Optional]

(XPath KCOrdStatus/KCSbody/KCSitem/phaseProgress/
phase/garConsumptionSet/garmentCode/garmentCodeB/mod/@codeList) [Optional]

- nota: *this attribute should be ALTERNATIVE to the others*

(XPath KCOrdStatus/KCSbody/KCSitem/csRange/sizeMatrix/
sizeRow/size/@codeList) [Optional]

(XPath KCOrdStatus/KCSbody/KCSitem/phaseProgress/
phase/lotDetails/csRange/color/@codeList) [Optional]

- nota: *this attribute could be used as alternative to the others*

(XPath KCOrdStatus/KCSbody/KCSitem/phaseProgress/
phase/lotDetails/csRange/garmentVariant/variantCode/@codeList) [Optional]

- nota: *this attribute should be ALTERNATIVE to the others*

(XPath KCOrdStatus/KCSbody/KCSitem/phaseProgress/
phase/lotDetails/csRange/garmentVariant/variantType/@codeList) [Optional]

- nota: *this attribute should be ALTERNATIVE to the others*

(XPath KCOrdStatus/KCSbody/KCSitem/note/@codeList) [Optional]

- nota: *must be used to provide (URL) the list of codes used in "noteLabel"*

(XPath KCOrdStatus/KCSbody/KCSitem/garmentCode/
garmentCodeB/garmentVariant/variantType/@codeList) [Optional]

- nota: *this attribute should be ALTERNATIVE to the others*

(XPath KCOrdStatus/KCSbody/KCSitem/csRange/garmentVariant/
variantType/@codeList) [Optional]

- nota: *this attribute should be ALTERNATIVE to the others*

(XPath KCOrdStatus/KCSbody/KCSitem/progress/itemsList/
qualityLevel/@codeList) [Optional]

(XPath KCOrdStatus/KCSbody/KCSitem/phaseProgress/
phase/garConsumptionSet/texCode/color/@codeList) [Optional]

- nota: *this attribute could be used as alternative to the others*

(XPath KCOrdStatus/KCSbody/KCSitem/garmentCode/
garmentCodeB/drop/@codeList) [Optional]

(XPath KCOrdStatus/KCSbody/KCSitem/phaseProgress/
phase/garConsumptionSet/texCode/art/@codeList) [Optional]

- nota: *this attribute should be ALTERNATIVE to the others*

(XPath KCOrdStatus/KCSbody/KCSitem/garmentCode/
garmentCodeB/size/@codeList) [Optional]

(XPath KCOrdStatus/KCSbody/KCSitem/garmentCode/
garmentCodeB/garmentVariant/variantCode/@codeList) [Optional]

- nota: *this attribute should be ALTERNATIVE to the others*

(XPath KCOrdStatus/KCSbody/KCSitem/phaseProgress/
phase/garConsumptionSet/texCode/pattern/@codeList) [Optional]

- nota: *this attribute should be ALTERNATIVE to the others*

(XPath KCOrdStatus/KCSbody/KCSitem/phaseProgress/
phase/garConsumptionSet/yarnCode/art/@codeList) [Optional]

- nota: *this attribute should be ALTERNATIVE to the others*

(XPath KCOrdStatus/KCSbody/KCSitem/garmentCode/
garmentCodeB/mod/@codeList) [Optional]

- nota: *this attribute should be ALTERNATIVE to the others*

(XPath KCOrdStatus/KCSbody/KCSitem/phaseProgress/
qualityLevel/@codeList) [Optional]

(XPath KCOrdStatus/KCSbody/KCSitem/phaseProgress/
phase/garConsumptionSet/garmentPartCode/mod/@codeList) [Optional]

- nota: *this attribute should be ALTERNATIVE to the others*

(XPath KCOrdStatus/KCSbody/KCSitem/phaseProgress/
phase/garConsumptionSet/garmentPartCode/fabric/@codeList) [Optional]

- nota: *this attribute should be ALTERNATIVE to the others*

(XPath KCOrdStatus/KCSbody/KCSitem/phaseProgress/
itemsList/qualityLevel/@codeList) [Optional]

(XPath KCOrdStatus/KCSheader/refDoc/season/@codeList) [Optional]

(XPath KCOrdStatus/KCSbody/KCSitem/phaseProgress/phase/garConsumptionSet/yarnCode/color/@codeList) [Optional]

- nota: *this attribute could be used as alternative to the others*

(XPath KCOrdStatus/KCSbody/KCSitem/garmentCode/garmentCodeB/color/@codeList) [Optional]

- nota: *this attribute could be used as alternative to the others*

(XPath KCOrdStatus/KCSbody/KCSitem/csRange/color/@codeList) [Optional]

- nota: *this attribute could be used as alternative to the others*

(XPath KCOrdStatus/KCSbody/KCSitem/phaseProgress/phase/refDoc/season/@codeList) [Optional]

(XPath KCOrdStatus/KCSbody/KCSitem/garmentCode/garmentCodeB/fabric/@codeList) [Optional]

- nota: *this attribute should be ALTERNATIVE to the others*

(XPath KCOrdStatus/KCSbody/KCSitem/phaseProgress/phase/garConsumptionSet/acsCode/color/@codeList) [Optional]

- nota: *this attribute could be used as alternative to the others*

(XPath KCOrdStatus/KCSbody/KCSitem/phaseProgress/csRange/garmentVariant/variantType/@codeList) [Optional]

- nota: *this attribute should be ALTERNATIVE to the others*

(XPath KCOrdStatus/KCSbody/KCSitem/phaseProgress/csRange/color/@codeList) [Optional]

- nota: *this attribute could be used as alternative to the others*

(XPath KCOrdStatus/KCSbody/KCSitem/refDoc/season/@codeList) [Optional]

(XPath KCOrdStatus/KCSbody/KCSitem/phaseProgress/phase/lotDetails/csRange/sizeMatrix/sizeRow/drop/@codeList) [Optional]

(XPath KCOrdStatus/KCSbody/KCSitem/phaseProgress/phase/garConsumptionSet/garmentCode/garmentCodeB/artGroup/@codeList) [Optional]

- nota: *this attribute should be ALTERNATIVE to the others*

(XPath KCOrdStatus/KCSbody/KCSitem/phaseProgress/phase/packages/handlingChar/note/@codeList) [Optional]

- nota: *must be used to provide (URL) the list of codes used in "noteLabel"*

(XPath KCOrdStatus/KCSbody/KCSitem/phaseProgress/csRange/garmentVariant/variantCode/@codeList) [Optional]

- nota: *this attribute should be ALTERNATIVE to the others*

(XPath KCOrdStatus/KCSheader/note/@codeList) [Optional]

- nota: *must be used to provide (URL) the list of codes used in "noteLabel"*

(XPath KCOrdStatus/KCSbody/KCSitem/csRange/sizeMatrix/sizeRow/additionalComponentCode/@codeList) [Optional]

(XPath KCOrdStatus/KCSbody/KCSitem/phaseProgress/phase/garConsumptionSet/acsCode/pattern/@codeList) [Optional]

- nota: *this attribute should be ALTERNATIVE to the others*

(XPath KCOrdStatus/KCSbody/KCSitem/phaseProgress/phase/note/@codeList) [Optional]

- nota: *must be used to provide (URL) the list of codes used in "noteLabel"*

(XPath KCOrdStatus/KCSbody/KCSitem/phaseProgress/phase/garConsumptionSet/acsCode/art/@codeList) [Optional]

- nota: *this attribute should be ALTERNATIVE to the others*

(XPath KCOrdStatus/KCSbody/KCSitem/phaseProgress/phase/lotDetails/csRange/sizeMatrix/sizeRow/additionalComponentCode/@codeList) [Optional]

(XPath KCOrdStatus/KCSbody/KCSitem/garmentCode/garmentCodeA/art/@codeList) [Optional]

- nota: *this attribute should be ALTERNATIVE to the others*

(XPath KCOrdStatus/KCSbody/KCSitem/csRange/drop/@codeList) [Optional]

(XPath KCOrdStatus/KCSbody/KCSitem/phaseProgress/phase/garConsumptionSet/garmentCode/garmentCodeA/art/@codeList) [Optional]

- nota: *this attribute should be ALTERNATIVE to the others*

(XPath KCOrdStatus/KCSbody/KCSitem/phaseProgress/phase/lotDetails/csRange/sizeMatrix/sizeRow/size/@codeList) [Optional]

(XPath KCOrdStatus/KCSbody/KCSitem/phaseProgress/phase/lotDetails/csRange/sizeMatrix/sizeRow/itemsList/qualityLevel/@codeList) [Optional]

	<p>(XPath KCOrdStatus/KCSbody/KCSitem/phaseProgress/phase/garConsumptionSet/garmentCode/garmentCodeB/garmentVariant/variantType/@codeList) [Optional] - nota: <i>this attribute should be ALTERNATIVE to the others</i> (XPath KCOrdStatus/KCSbody/KCSitem/csRange/sizeMatrix/sizeRow/itemsList/qualityLevel/@codeList) [Optional] (XPath KCOrdStatus/KCSheader/qualityLevel/@codeList) [Optional] (XPath KCOrdStatus/KCSbody/KCSitem/phaseProgress/phase/garConsumptionSet/garmentCode/garmentCodeB/fabric/@codeList) [Optional] - nota: <i>this attribute should be ALTERNATIVE to the others</i> (XPath KCOrdStatus/KCSbody/KCSitem/phaseProgress/phase/garConsumptionSet/garmentCode/garmentCodeB/color/@codeList) [Optional] - nota: <i>this attribute could be used as alternative to the others</i> (XPath KCOrdStatus/KCSbody/KCSitem/garmentPartCode/mod/@codeList) [Optional] - nota: <i>this attribute should be ALTERNATIVE to the others</i> (XPath KCOrdStatus/KCSbody/KCSitem/phaseProgress/csRange/sizeMatrix/sizeRow/additionalComponentCode/@codeList) [Optional] (XPath KCOrdStatus/KCSbody/KCSitem/phaseProgress/csRange/drop/@codeList) [Optional] (XPath KCOrdStatus/KCSbody/KCSitem/phaseProgress/phase/garConsumptionSet/garmentCode/garmentCodeB/drop/@codeList) [Optional] (XPath KCOrdStatus/KCSbody/KCSitem/phaseProgress/phase/garConsumptionSet/garmentCode/garmentCodeB/size/@codeList) [Optional] (XPath KCOrdStatus/KCSbody/KCSitem/csRange/garmentVariant/variantCode/@codeList) [Optional] - nota: <i>this attribute should be ALTERNATIVE to the others</i> (XPath KCOrdStatus/KCSbody/KCSitem/phaseProgress/phase/phaseCode/@codeList) [Optional] (XPath KCOrdStatus/KCSbody/KCSitem/phaseProgress/phase/garConsumptionSet/garmentCode/garmentCodeB/garmentVariant/variantCode/@codeList) [Optional] - nota: <i>this attribute should be ALTERNATIVE to the others</i> (XPath KCOrdStatus/KCSbody/KCSitem/csRange/sizeMatrix/sizeRow/drop/@codeList) [Optional]</p>
color	<p>colour number of the product, when not included in the model or fabric code - base type: string, max length: 15, (XPath KCOrdStatus/KCSbody/KCSitem/phaseProgress/phase/garConsumptionSet/texCode/color) 0-1 (XPath KCOrdStatus/KCSbody/KCSitem/phaseProgress/phase/garConsumptionSet/yarnCode/color) 0-1 (XPath KCOrdStatus/KCSbody/KCSitem/phaseProgress/phase/garConsumptionSet/garmentCode/garmentCodeB/color) 0-1 (XPath KCOrdStatus/KCSbody/KCSitem/phaseProgress/csRange/color) 0-1 - note: <i>used only if not already specified in the article code</i> (XPath KCOrdStatus/KCSbody/KCSitem/phaseProgress/phase/garConsumptionSet/garmentPartCode/color) 0-1 - note: <i>when a garment component, it should be the code assigned to the garment article</i> (XPath KCOrdStatus/KCSbody/KCSitem/phaseProgress/phase/lotDetails/csRange/color) 0-1 - note: <i>used only if not already specified in the article code</i> (XPath KCOrdStatus/KCSbody/KCSitem/garmentPartCode/color) 0-1 - note: <i>when a garment component, it should be the code assigned to the garment article</i> (XPath KCOrdStatus/KCSbody/KCSitem/phaseProgress/phase/garConsumptionSet/acsCode/color) 0-1 (XPath KCOrdStatus/KCSbody/KCSitem/csRange/color) 0-1 - note: <i>used only if not already specified in the article code</i></p>

	(XPath KCOrdStatus/KCSbody/KCSitem/garmentCode/garmentCodeB/color) 0-1
@consumptionType	<p>indicates what the indicated quantity is referred to (for example, required quantity for unit of product -BoM- or required quantity to obtain the indicated total amount of product -BoL-)</p> <p>- base type: string, cod. table: NT39 http://www.ebiz.enea.it/moda-ml/repository/codelist/draft/gc_NT39.xml (XPath KCOrdStatus/KCSbody/KCSitem/phaseProgress/phase/garConsumptionSet/garConsumption/@consumptionType) [Optional]</p>
country	<p>code of the nation</p> <p>- base type: string, cod. table: T10 http://www.ebiz.enea.it/moda-ml/repository/codelist/draft/gc_T10.xml (XPath KCOrdStatus/KCSheader/thirdParty/country) 0-1 (XPath KCOrdStatus/KCSbody/KCSitem/phaseProgress/phase/thirdParty/country) 0-1 (XPath KCOrdStatus/KCSheader/subContractor/country) 0-1 (XPath KCOrdStatus/KCSheader/buyer/country) 0-1</p>
criticalityIndicator	<p>criticality indicator (it can be "true" or "false": true = criticality, false = non criticality)</p> <p>- base type: boolean, (XPath KCOrdStatus/KCSbody/KCSitem/phaseProgress/phase/criticalityIndicator) 0-1</p>
@currency	<p>currency in which a specified monetary data is expressed</p> <p>- base type: string, cod. table: T9 http://www.ebiz.enea.it/moda-ml/repository/codelist/draft/gc_T9.xml (XPath KCOrdStatus/KCSbody/KCSitem/phaseProgress/phase/price/@currency) [Optional] - nota: <i>Currency referred by the price.</i></p>
@dateForm	<p>format used for the date</p> <p>- base type: string, cod. table: NT29 http://www.ebiz.enea.it/moda-ml/repository/codelist/draft/gc_NT29.xml (XPath KCOrdStatus/KCSbody/KCSitem/phaseProgress/phase/refDoc/docDate/@dateForm) [Optional] (XPath KCOrdStatus/KCSbody/KCSitem/progress/deliveryDate/@dateForm) [Optional] (XPath KCOrdStatus/KCSheader/refDoc/docDate/@dateForm) [Optional] (XPath KCOrdStatus/KCSbody/KCSitem/refDoc/docDate/@dateForm) [Optional] (XPath KCOrdStatus/KCSbody/KCSitem/phaseProgress/phase/deliveryDate/@dateForm) [Optional] (XPath KCOrdStatus/KCSbody/KCSitem/phaseProgress/phase/delGrantedDate/@dateForm) [Optional] (XPath KCOrdStatus/KCSbody/KCSitem/progress/delGrantedDate/@dateForm) [Optional] (XPath KCOrdStatus/KCSheader/msgDate/@dateForm) [Optional] (XPath KCOrdStatus/KCSbody/KCSitem/phaseProgress/phase/notBeforeDate/@dateForm) [Optional]</p>
delGrantedDate	<p>effective granted date of delivery of goods; in case of doubt delivery must be understood as the event when the ownership of goods is transferred, according to one of the patterns YYYY-MM-DD, YYYY-MM-DD:HH-MM or YYYY-WW.</p> <p>- base type: string, (XPath KCOrdStatus/KCSbody/KCSitem/progress/delGrantedDate) 0-1 (XPath KCOrdStatus/KCSbody/KCSitem/phaseProgress/phase/delGrantedDate) 0-1</p>
deliveryDate	<p>date of delivery of goods, requested or promised in the purchase process, according to one of the patterns YYYY-MM-DD, YYYY-MM-DD:HH-MM or YY-YY-WW.</p> <p>- base type: string, (XPath KCOrdStatus/KCSbody/KCSitem/phaseProgress/phase/deliveryDate) 0-1 (XPath KCOrdStatus/KCSbody/KCSitem/progress/deliveryDate) 0-1</p>

dept	<p>name or code of a contact department within a Party</p> <ul style="list-style-type: none"> - base type: string, max length: 40, (XPath KCOrdStatus/KCShheader/thirdParty/dept) 0-1 (XPath KCOrdStatus/KCSbody/KCSitem/phaseProgress/phase/thirdParty/dept) 0-1 (XPath KCOrdStatus/KCShheader/buyer/dept) 0-1 (XPath KCOrdStatus/KCShheader/subContractor/dept) 0-1
description	<p>free text description. The content of the element must be unique, it might be translated and repeated into more languages (thus no more than one instance for each language).</p> <ul style="list-style-type: none"> - base type: string, max length: 250, (XPath KCOrdStatus/KCSbody/KCSitem/phaseProgress/phase/garConsumptionSet/garmentCode/garmentCodeA/description) 0-unbounded - note: <i>Product description</i> (XPath KCOrdStatus/KCSbody/KCSitem/phaseProgress/phase/packages/description) 0-unbounded (XPath KCOrdStatus/KCSbody/KCSitem/garmentPartCode/description) 0-unbounded - note: <i>Product part description</i> (XPath KCOrdStatus/KCSbody/KCSitem/garmentCode/garmentCodeB/description) 0-unbounded - note: <i>Product description</i> (XPath KCOrdStatus/KCSbody/KCSitem/phaseProgress/phase/garConsumptionSet/acsCode/description) 0-unbounded - note: <i>Product description</i> (XPath KCOrdStatus/KCSbody/KCSitem/phaseProgress/phase/garConsumptionSet/garmentPartCode/description) 0-unbounded - note: <i>Product part description</i> (XPath KCOrdStatus/KCSbody/KCSitem/phaseProgress/phase/garConsumptionSet/texCode/description) 0-unbounded - note: <i>Product description</i> (XPath KCOrdStatus/KCSbody/KCSitem/garmentCode/garmentCodeA/description) 0-unbounded - note: <i>Product description</i> (XPath KCOrdStatus/KCSbody/KCSitem/phaseProgress/phase/garConsumptionSet/garmentCode/garmentCodeB/description) 0-unbounded - note: <i>Product description</i> (XPath KCOrdStatus/KCSbody/KCSitem/phaseProgress/phase/garConsumptionSet/yarnCode/description) 0-unbounded - note: <i>Product description</i>
docDate	<p>date of issue of the referenced document, according to one of the patterns YYYY-MM-DD, YYYY-MM-DD:HH-MM or YYYY-WW.</p> <ul style="list-style-type: none"> - base type: string, (XPath KCOrdStatus/KCSbody/KCSitem/phaseProgress/phase/refDoc/docDate) 0-1 (XPath KCOrdStatus/KCSbody/KCSitem/refDoc/docDate) 0-1 (XPath KCOrdStatus/KCShheader/refDoc/docDate) 0-1
docID	<p>identification number of the referenced document SINCE 2008-1 ITS USE IN THE HEADER IS DISCOURAGED (REPLACED BY msgID)</p> <ul style="list-style-type: none"> - base type: string, max length: 80, (XPath KCOrdStatus/KCSbody/KCSitem/refDoc/docID) 1-2 (XPath KCOrdStatus/KCShheader/docID) 0-1 (XPath KCOrdStatus/KCShheader/refDoc/docID) 1-2 (XPath KCOrdStatus/KCSbody/KCSitem/phaseProgress/phase/refDoc/docID) 1-2
@docType	<p>type or class to which the referenced document belongs</p> <ul style="list-style-type: none"> - base type: string, cod. table: T21 http://www.ebiz.enea.it/moda-ml/repository/codelist/draft/gc_T21.xml (XPath KCOrdStatus/KCSbody/KCSitem/refDoc/@docType) [Required]

	<p>(XPath KCOrdStatus/KCSbody/KCSitem/phaseProgress/phase/refDoc/@docType) [Required]</p> <p>(XPath KCOrdStatus/KCSheader/refDoc/@docType) [Required]</p>
drop	<p>drop number of the garment</p> <ul style="list-style-type: none"> - base type: string, max length: 15, (XPath KCOrdStatus/KCSbody/KCSitem/phaseProgress/phase/lotDetails/csRange/sizeMatrix/sizeRow/drop) 0-1 - note: <i>DEPRECATED</i>, anyhow it is used only if not already specified in the article code or csRange (XPath KCOrdStatus/KCSbody/KCSitem/phaseProgress/csRange/drop) 0-1 - note: used only if not already specified in the article code (XPath KCOrdStatus/KCSbody/KCSitem/phaseProgress/phase/lotDetails/csRange/drop) 0-1 - note: used only if not already specified in the article code (XPath KCOrdStatus/KCSbody/KCSitem/phaseProgress/csRange/sizeMatrix/sizeRow/drop) 0-1 - note: <i>DEPRECATED</i>, anyhow it is used only if not already specified in the article code or csRange (XPath KCOrdStatus/KCSbody/KCSitem/csRange/sizeMatrix/sizeRow/drop) 0-1 - note: <i>DEPRECATED</i>, anyhow it is used only if not already specified in the article code or csRange (XPath KCOrdStatus/KCSbody/KCSitem/csRange/drop) 0-1 - note: used only if not already specified in the article code (XPath KCOrdStatus/KCSbody/KCSitem/garmentCode/garmentCodeB/drop) 0-1 - note: Fill this element if the drop is the same for all the sizes of the model. Otherway specify it within the csRange element (XPath KCOrdStatus/KCSbody/KCSitem/phaseProgress/phase/garConsumptionSet/garmentCode/garmentCodeB/drop) 0-1 - note: Fill this element if the drop is the same for all the sizes of the model. Otherway specify it within the csRange element
dyeN	<p>number of the dying batch of a textile product</p> <ul style="list-style-type: none"> - base type: string, max length: 15, (XPath KCOrdStatus/KCSbody/KCSitem/phaseProgress/phase/garConsumptionSet/dyeN) 0-99
@email	<p>electronic mail address of the contact person within a Party</p> <ul style="list-style-type: none"> - base type: string, max length: 250, (XPath KCOrdStatus/KCSheader/buyer/person/@email) [Optional] (XPath KCOrdStatus/KCSheader/subContractor/person/@email) [Optional] (XPath KCOrdStatus/KCSheader/thirdParty/person/@email) [Optional] (XPath KCOrdStatus/KCSbody/KCSitem/phaseProgress/phase/thirdParty/person/@email) [Optional]
@encoding	<p>specifies the decoding algorithm of the binary object</p> <ul style="list-style-type: none"> - base type: normalizedString, (XPath KCOrdStatus/KCSbody/KCSitem/phaseProgress/phase/refDoc/attachment/binaryObject/@encoding) [Optional] (XPath KCOrdStatus/KCSheader/refDoc/attachment/binaryObject/@encoding) [Optional] (XPath KCOrdStatus/KCSbody/KCSitem/refDoc/attachment/binaryObject/@encoding) [Optional]
encodingCode	<p>the encoding/decoding algorithm used with the external object</p> <ul style="list-style-type: none"> - base type: normalizedString, (XPath KCOrdStatus/KCSbody/KCSitem/phaseProgress/phase/refDoc/attachment/externalReference/encodingCode) 0-1 (XPath KCOrdStatus/KCSbody/KCSitem/refDoc/attachment/externalReference/encodingCode) 0-1 (XPath KCOrdStatus/KCSheader/refDoc/attachment/externalReference/encodingCode) 0-1

EPC	serial identifier used for tracing a physical item with RFID technology - base type: string, (XPath KCOrdStatus/KCSbody/KCSitem/phaseProgress/ phase/packages/EPCList/EPC) 1-unbounded
@extinction	specified if the referred position (document/line) in refDoc is cleared (exhausted) by this line item. Value: True = exhausted, False = not exhausted - base type: boolean, (XPath KCOrdStatus/KCSbody/KCSitem/@extinction) [Optional]
fabric	fabric number of the garment - base type: string, max length: 15, (XPath KCOrdStatus/KCSbody/KCSitem/phaseProgress/ phase/garConsumptionSet/garmentPartCode/fabric) 0-1 - note: <i>when a garment component, it should be the code assigned to the garment article</i> (XPath KCOrdStatus/KCSbody/KCSitem/garmentCode/ garmentCodeB/fabric) 0-1 (XPath KCOrdStatus/KCSbody/KCSitem/phaseProgress/ phase/garConsumptionSet/garmentCode/garmentCodeB/fabric) 0-1 (XPath KCOrdStatus/KCSbody/KCSitem/garmentPartCode/fabric) 0-1 - note: <i>when a garment component, it should be the code assigned to the garment article</i>
@fax	fax number of the contact person within a Party - base type: string, max length: 35, (XPath KCOrdStatus/KCSheader/buyer/person/@fax) [Optional] (XPath KCOrdStatus/KCSheader/thirdParty/person/@fax) [Optional] (XPath KCOrdStatus/KCSheader/subContractor/person/@fax) [Optional] (XPath KCOrdStatus/KCSbody/KCSitem/phaseProgress/ phase/thirdParty/person/@fax) [Optional]
fileName	unique identifier (name) of the file - base type: string, max length: 255, (XPath KCOrdStatus/KCSheader/refDoc/attachment/fileName) 0-1 (XPath KCOrdStatus/KCSbody/KCSitem/refDoc/attachment/fileName) 0-1 (XPath KCOrdStatus/KCSbody/KCSitem/phaseProgress/ phase/refDoc/attachment/fileName) 0-1
fillingCriterion	the assortment criterion to fill the specified kind of package: it states the homogeneity criterion (eg: "model", "color", "size"). - base type: string, cod. table: NT51 http://www.ebiz.enea.it/moda-ml/repository/codelist/draft/gc_NT51.xml (XPath KCOrdStatus/KCSbody/KCSitem/phaseProgress/ phase/packages/fillingCriterion) 0-9
finalIndicator	final phase indicator. - base type: boolean, (XPath KCOrdStatus/KCSbody/KCSitem/phaseProgress/phase/finalIndicator) 0-1
@format	the format of the binary content - base type: string, (XPath KCOrdStatus/KCSheader/refDoc/attachment/ binaryObject/@format) [Optional] (XPath KCOrdStatus/KCSbody/KCSitem/refDoc/attachment/ binaryObject/@format) [Optional] (XPath KCOrdStatus/KCSbody/KCSitem/phaseProgress/ phase/refDoc/attachment/binaryObject/@format) [Optional]
formatCode	the format of the external object - base type: normalizedString, (XPath KCOrdStatus/KCSheader/refDoc/attachment/ externalReference/formatCode) 0-1 (XPath KCOrdStatus/KCSbody/KCSitem/refDoc/attachment/ externalReference/formatCode) 0-1 (XPath KCOrdStatus/KCSbody/KCSitem/phaseProgress/ phase/refDoc/attachment/externalReference/formatCode) 0-1

garPackCode	a code specifying the type of packaging used for the item. - base type: string, (XPath KCOrdStatus/KCSbody/KCSitem/phaseProgress/ phase/packages/handlingChar/garPack/garPackCode) 1-1
garPackText	a free text specifying the type of packaging used for the item. - base type: string, (XPath KCOrdStatus/KCSbody/KCSitem/phaseProgress/ phase/packages/handlingChar/garPack/garPackText) 1-1
garSizeCode	code of a range of sizes - base type: string, max length: 15, (XPath KCOrdStatus/KCSbody/KCSitem/phaseProgress/ phase/garConsumptionSet/garConsumption/garSizeCode) 0-1
gPart	code specifying the type of component or part of a fashion product (sleeve, neck, ...) - base type: string, cod. table: T48 http://www.ebiz.enea.it/moda-ml/repository/codelist/draft/gc_T48.xml (XPath KCOrdStatus/KCSbody/KCSitem/phaseProgress/ phase/garConsumptionSet/garmentPartCode/gPart) 1-1 (XPath KCOrdStatus/KCSbody/KCSitem/garmentPartCode/gPart) 1-1
grossWeight	the gross weight, declared for transport or customs purpose - base type: decimal, min inclusive: 0, fraction digits: 2, (XPath KCOrdStatus/KCSbody/KCSitem/phaseProgress/ phase/packages/handlingChar/grossWeight) 0-1
handlingType	information to handle the item (eg "breakable"). - base type: string, (XPath KCOrdStatus/KCSbody/KCSitem/phaseProgress/ phase/packages/handlingChar/handlingType) 0-1
height	effective height of a specified object - base type: decimal, min inclusive: 0, fraction digits: 2, (XPath KCOrdStatus/KCSbody/KCSitem/phaseProgress/ phase/packages/packageDim/height) 0-1
id	primary identification code of a Party; it is recommended the format: nation code (ISO 3166) + VAT identification number (11 crt), with the qualifier "numberingOrg"= MF - base type: string, max length: 15, (XPath KCOrdStatus/KCSheader/buyer/id) 1-1 (XPath KCOrdStatus/KCSbody/KCSitem/phaseProgress/ phase/thirdParty/id) 1-1 (XPath KCOrdStatus/KCSheader/subContractor/id) 1-1 (XPath KCOrdStatus/KCSheader/thirdParty/id) 1-1
@idQualifier	Qualification of the identifier. - base type: string, (XPath KCOrdStatus/KCSbody/KCSitem/progress/itemsList/ itemIdentification/serialN/@idQualifier) [Optional] - nota: <i>this attribute should be used when the numberingOrg attribute is not enough to declare the type of serial identifier</i> (XPath KCOrdStatus/KCSbody/KCSitem/phaseProgress/ itemsList/itemIdentification/serialN/@idQualifier) [Optional] - nota: <i>this attribute should be used when the numberingOrg attribute is not enough to declare the type of serial identifier</i> (XPath KCOrdStatus/KCSbody/KCSitem/phaseProgress/ csRange/sizeMatrix/sizeRow/itemsList/itemIdentification/serialN/@idQualifier) [Optional] - nota: <i>this attribute should be used when the numberingOrg attribute is not enough to declare the type of serial identifier</i> (XPath KCOrdStatus/KCSheader/buyer/additionalIdentifier/@idQualifier) [Optional] - nota: <i>this attribute should be used when the numberingOrg attribute is not enough to declare the type of identifier</i>

	<p>(XPath KCOrdStatus/KCSbody/KCSitem/phaseProgress/phase/lotDetails/csRange/sizeMatrix/sizeRow/itemsList/itemIdentification/serialN/@idQualifier) [Optional]</p> <p>- nota: <i>this attribute should be used when the numberingOrg attribute is not enough to declare the type of serial identifier</i></p> <p>(XPath KCOrdStatus/KCSbody/KCSitem/csRange/sizeMatrix/sizeRow/itemsList/itemIdentification/serialN/@idQualifier) [Optional]</p> <p>- nota: <i>this attribute should be used when the numberingOrg attribute is not enough to declare the type of serial identifier</i></p>
@isURL	<p>it indicates if the referred element is an URL (true) or not (false)</p> <p>- base type: boolean,</p> <p>(XPath KCOrdStatus/KCSbody/KCSitem/phaseProgress/phase/refDoc/attachment/externalReference/uri/@isURL) [Optional] [Default = true]</p> <p>- nota: <i>usage of URLs is recommended</i></p> <p>(XPath KCOrdStatus/KCSheader/refDoc/attachment/externalReference/uri/@isURL) [Optional] [Default= true]</p> <p>- nota: <i>usage of URLs is recommended</i></p> <p>(XPath KCOrdStatus/KCSbody/KCSitem/refDoc/attachment/externalReference/uri/@isURL) [Optional] [Default= true]</p> <p>- nota: <i>usage of URLs is recommended</i></p>
itemID	<p>number of the line/item of the referenced document</p> <p>- base type: string, max length: 6,</p> <p>(XPath KCOrdStatus/KCSbody/KCSitem/phaseProgress/phase/refDoc/itemID) 0-1</p> <p>(XPath KCOrdStatus/KCSbody/KCSitem/refDoc/itemID) 0-1</p> <p>(XPath KCOrdStatus/KCSheader/refDoc/itemID) 0-1</p>
itemsPerPackage	<p>the quantity of items that can be contained in a package.</p> <p>- base type: decimal,</p> <p>(XPath KCOrdStatus/KCSbody/KCSitem/phaseProgress/phase/packages/itemsPerPackage) 0-1</p>
label	<p>indicates if the physical object specified has to be labelled</p> <p>- base type: boolean,</p> <p>(XPath KCOrdStatus/KCSbody/KCSitem/phaseProgress/phase/packages/handlingChar/yarnPack/yarnInWrap/label) 0-1</p> <p>(XPath KCOrdStatus/KCSbody/KCSitem/phaseProgress/phase/packages/handlingChar/yarnPack/yarnReel/label) 0-1</p>
labelWrit	<p>text that must be written on the lable of a specified physical object when its customization is required</p> <p>- base type: string, max length: 350,</p> <p>(XPath KCOrdStatus/KCSbody/KCSitem/phaseProgress/phase/packages/handlingChar/yarnPack/yarnReel/labelWrit) 0-1</p> <p>(XPath KCOrdStatus/KCSbody/KCSitem/phaseProgress/phase/packages/handlingChar/yarnPack/yarnInWrap/labelWrit) 0-1</p>
legalName	<p>legal name of a Party</p> <p>- base type: string, max length: 250,</p> <p>(XPath KCOrdStatus/KCSheader/buyer/legalName) 0-1</p> <p>(XPath KCOrdStatus/KCSheader/thirdParty/legalName) 0-1</p> <p>(XPath KCOrdStatus/KCSheader/subContractor/legalName) 0-1</p> <p>(XPath KCOrdStatus/KCSbody/KCSitem/phaseProgress/phase/thirdParty/legalName) 0-1</p>
length	<p>effective length of a specified object</p> <p>- base type: decimal, min inclusive: 0, fraction digits: 2,</p> <p>(XPath KCOrdStatus/KCSbody/KCSitem/phaseProgress/phase/packages/packageDim/length) 1-1</p> <p>- note: <i>here the maximum dimension must also be specified</i></p>
lineID	<p>unique identifier of the line item of the business document; it is set by the role that produces the document.</p> <p>- base type: string, max length: 30,</p>

	(XPath KCOrdStatus/KCSbody/KCSitem/lineID) 0-1
lineN	<p>number of the line item of the present message (xml document); it is set by the role that produces the document. Usually it is a progressive number, but not always.</p> <p>- base type: positiveInteger, min inclusive: 1, max inclusive: 9999, (XPath KCOrdStatus/KCSbody/KCSitem/lineN) 1-1</p>
@listName	<p>the name of the list of codes used to make an instance of the element (it might be thought as descriptive element, i.e. 'fabric printing technologies', or not, i.e. "T264")</p> <p>- base type: string, max length: 40, (XPath KCOrdStatus/KCSbody/KCSitem/phaseProgress/phase/lotDetails/csRange/garmentVariant/variantType/@listName) [Optional]</p> <p>- nota: <i>this attribute should always be used coupled with "numberingOrg"</i> (XPath KCOrdStatus/KCSbody/KCSitem/garmentCode/garmentCodeB/artGroup/@listName) [Optional]</p> <p>- nota: <i>this attribute should always be used coupled with "numberingOrg"</i> (XPath KCOrdStatus/KCSbody/KCSitem/garmentCode/garmentCodeA/art/@listName) [Optional]</p> <p>- nota: <i>this attribute should always be used coupled with "numberingOrg"</i> (XPath KCOrdStatus/KCSbody/KCSitem/phaseProgress/phase/garConsumptionSet/acsCode/color/@listName) [Optional]</p> <p>- nota: <i>this attribute should always be used coupled with "numberingOrg"</i> (XPath KCOrdStatus/KCSbody/KCSitem/phaseProgress/phase/garConsumptionSet/texCode/art/@listName) [Optional]</p> <p>- nota: <i>this attribute should always be used coupled with "numberingOrg"</i> (XPath KCOrdStatus/KCSbody/KCSitem/phaseProgress/phase/garConsumptionSet/texCode/pattern/@listName) [Optional]</p> <p>- nota: <i>this attribute should always be used coupled with "numberingOrg"</i> (XPath KCOrdStatus/KCSheader/qualityLevel/@listName) [Optional]</p> <p>(XPath KCOrdStatus/KCSbody/KCSitem/garmentCode/garmentCodeB/garmentVariant/variantCode/@listName) [Optional]</p> <p>- nota: <i>this attribute should always be used coupled with "numberingOrg"</i> (XPath KCOrdStatus/KCSbody/KCSitem/csRange/garmentVariant/variantType/@listName) [Optional]</p> <p>- nota: <i>this attribute should always be used coupled with "numberingOrg"</i> (XPath KCOrdStatus/KCSbody/KCSitem/phaseProgress/csRange/garmentVariant/variantType/@listName) [Optional]</p> <p>- nota: <i>this attribute should always be used coupled with "numberingOrg"</i> (XPath KCOrdStatus/KCSbody/KCSitem/phaseProgress/csRange/garmentVariant/variantCode/@listName) [Optional]</p> <p>- nota: <i>this attribute should always be used coupled with "numberingOrg"</i> (XPath KCOrdStatus/KCSbody/KCSitem/csRange/sizeMatrix/sizeRow/additionalComponentCode/@listName) [Optional]</p> <p>(XPath KCOrdStatus/KCSbody/KCSitem/csRange/garmentVariant/variantCode/@listName) [Optional]</p> <p>- nota: <i>this attribute should always be used coupled with "numberingOrg"</i> (XPath KCOrdStatus/KCSbody/KCSitem/phaseProgress/csRange/color/@listName) [Optional]</p> <p>- nota: <i>this attribute should always be used coupled with "numberingOrg"</i> (XPath KCOrdStatus/KCSbody/KCSitem/phaseProgress/phase/garConsumptionSet/acsCode/art/@listName) [Optional]</p> <p>- nota: <i>this attribute should always be used coupled with "numberingOrg"</i> (XPath KCOrdStatus/KCSbody/KCSitem/phaseProgress/phase/garConsumptionSet/acsCode/pattern/@listName) [Optional]</p> <p>- nota: <i>this attribute should always be used coupled with "numberingOrg"</i> (XPath KCOrdStatus/KCSbody/KCSitem/phaseProgress/phase/lotDetails/csRange/garmentVariant/variantCode/@listName) [Optional]</p> <p>- nota: <i>this attribute should always be used coupled with "numberingOrg"</i> (XPath KCOrdStatus/KCSbody/KCSitem/phaseProgress/phase/lotDetails/csRange/color/@listName) [Optional]</p> <p>- nota: <i>this attribute should always be used coupled with "numberingOrg"</i> (XPath KCOrdStatus/KCSbody/KCSitem/csRange/color/@listName) [Optional]</p>

- nota: *this attribute should always be used coupled with “numberingOrg”*
(XPath KCOrdStatus/KCSbody/KCSitem/phaseProgress/
phase/garConsumptionSet/texCode/color/@listName) [Optional]
- nota: *this attribute should always be used coupled with “numberingOrg”*
(XPath KCOrdStatus/KCSbody/KCSitem/garmentPartCode/fabric/@listName) [Optional]
- nota: *this attribute should always be used coupled with “numberingOrg”*
(XPath KCOrdStatus/KCSbody/KCSitem/phaseProgress/
phase/garConsumptionSet/garmentCode/garmentCodeB/mod/@listName) [Optional]
- nota: *this attribute should always be used coupled with “numberingOrg”*
(XPath KCOrdStatus/KCSbody/KCSitem/garmentPartCode/color/@listName) [Optional]
- nota: *this attribute should always be used coupled with “numberingOrg”*
(XPath KCOrdStatus/KCSbody/KCSitem/phaseProgress/
phase/garConsumptionSet/garmentPartCode/color/@listName) [Optional]
- nota: *this attribute should always be used coupled with “numberingOrg”*
(XPath KCOrdStatus/KCSbody/KCSitem/phaseProgress/
phase/garConsumptionSet/garmentCode/garmentCodeB/artGroup/@listName) [Optional]
- nota: *this attribute should always be used coupled with “numberingOrg”*
(XPath KCOrdStatus/KCSbody/KCSitem/phaseProgress/
phase/garConsumptionSet/garmentCode/garmentCodeB/color/@listName) [Optional]
- nota: *this attribute should always be used coupled with “numberingOrg”*
(XPath KCOrdStatus/KCSbody/KCSitem/phaseProgress/
phase/garConsumptionSet/garmentCode/garmentCodeB/garmentVariant/variantType/@listName) [Optional]
- nota: *this attribute should always be used coupled with “numberingOrg”*
(XPath KCOrdStatus/KCSbody/KCSitem/garmentPartCode/mod/@listName) [Optional]
- nota: *this attribute should always be used coupled with “numberingOrg”*
(XPath KCOrdStatus/KCSbody/KCSitem/phaseProgress/
phase/garConsumptionSet/garmentCode/garmentCodeB/garmentVariant/variantCode/@listName) [Optional]
- nota: *this attribute should always be used coupled with “numberingOrg”*
(XPath KCOrdStatus/KCSbody/KCSitem/phaseProgress/
phase/garConsumptionSet/garmentCode/garmentCodeB/fabric/@listName) [Optional]
- nota: *this attribute should always be used coupled with “numberingOrg”*
(XPath KCOrdStatus/KCSbody/KCSitem/phaseProgress/
phase/garConsumptionSet/yarnCode/color/@listName) [Optional]
- nota: *this attribute should always be used coupled with “numberingOrg”*
(XPath KCOrdStatus/KCSbody/KCSitem/garmentCode/
garmentCodeB/fabric/@listName) [Optional]
- nota: *this attribute should always be used coupled with “numberingOrg”*
(XPath KCOrdStatus/KCSbody/KCSitem/garmentCode/
garmentCodeB/color/@listName) [Optional]
- nota: *this attribute should always be used coupled with “numberingOrg”*
(XPath KCOrdStatus/KCSbody/KCSitem/garmentCode/
garmentCodeB/garmentVariant/variantType/@listName) [Optional]
- nota: *this attribute should always be used coupled with “numberingOrg”*
(XPath KCOrdStatus/KCSbody/KCSitem/phaseProgress/
phase/garConsumptionSet/yarnCode/art/@listName) [Optional]
- nota: *this attribute should always be used coupled with “numberingOrg”*
(XPath KCOrdStatus/KCSbody/KCSitem/refDoc/season/@listName) [Optional]
- nota: *this attribute should always be used coupled with “numberingOrg”*
(XPath KCOrdStatus/KCSbody/KCSitem/phaseProgress/
phase/garConsumptionSet/garmentPartCode/fabric/@listName) [Optional]
- nota: *this attribute should always be used coupled with “numberingOrg”*
(XPath KCOrdStatus/KCSbody/KCSitem/phaseProgress/
phase/garConsumptionSet/garmentPartCode/mod/@listName) [Optional]
- nota: *this attribute should always be used coupled with “numberingOrg”*
(XPath KCOrdStatus/KCSbody/KCSitem/phaseProgress/
phase/garConsumptionSet/garmentCode/garmentCodeA/art/@listName) [Optional]
- nota: *this attribute should always be used coupled with “numberingOrg”*

	<p>(XPath KCOrdStatus/KCSbody/KCSitem/garmentCode/garmentCodeB/mod/@listName) [Optional]</p> <p>- nota: <i>this attribute should always be used coupled with “numberingOrg”</i></p> <p>(XPath KCOrdStatus/KCSheader/refDoc/season/@listName) [Optional]</p> <p>(XPath KCOrdStatus/KCSbody/KCSitem/phaseProgress/qualityLevel/@listName) [Optional]</p> <p>(XPath KCOrdStatus/KCSbody/KCSitem/phaseProgress/phase/lotDetails/csRange/sizeMatrix/sizeRow/itemsList/qualityLevel/@listName) [Optional]</p> <p>(XPath KCOrdStatus/KCSbody/KCSitem/phaseProgress/phase/phaseCode/@listName) [Optional]</p> <p>(XPath KCOrdStatus/KCSbody/KCSitem/phaseProgress/csRange/sizeMatrix/sizeRow/itemsList/qualityLevel/@listName) [Optional]</p> <p>(XPath KCOrdStatus/KCSbody/KCSitem/progress/itemsList/qualityLevel/@listName) [Optional]</p> <p>(XPath KCOrdStatus/KCSbody/KCSitem/phaseProgress/phase/refDoc/season/@listName) [Optional]</p> <p>(XPath KCOrdStatus/KCSbody/KCSitem/csRange/sizeMatrix/sizeRow/itemsList/qualityLevel/@listName) [Optional]</p> <p>(XPath KCOrdStatus/KCSbody/KCSitem/phaseProgress/itemsList/qualityLevel/@listName) [Optional]</p> <p>(XPath KCOrdStatus/KCSbody/KCSitem/phaseProgress/phase/lotDetails/csRange/sizeMatrix/sizeRow/additionalComponentCode/@listName) [Optional]</p> <p>(XPath KCOrdStatus/KCSbody/KCSitem/phaseProgress/csRange/sizeMatrix/sizeRow/additionalComponentCode/@listName) [Optional]</p>
<p>@listVersion</p>	<p>it specifie the version of the list of codes used to make an instance of the element</p> <p>- base type: string, max length: 6,</p> <p>(XPath KCOrdStatus/KCSbody/KCSitem/garmentPartCode/color/@listVersion) [Optional]</p> <p>- nota: <i>this attribute should always be used coupled with “numberingOrg” and “listName”</i></p> <p>(XPath KCOrdStatus/KCSbody/KCSitem/phaseProgress/phase/phaseCode/@listVersion) [Optional]</p> <p>(XPath KCOrdStatus/KCSbody/KCSitem/progress/itemsList/qualityLevel/@listVersion) [Optional]</p> <p>(XPath KCOrdStatus/KCSbody/KCSitem/phaseProgress/phase/garConsumptionSet/acsCode/art/@listVersion) [Optional]</p> <p>- nota: <i>this attribute should always be used coupled with “numberingOrg” and “listName”</i></p> <p>(XPath KCOrdStatus/KCSheader/refDoc/season/@listVersion) [Optional]</p> <p>(XPath KCOrdStatus/KCSbody/KCSitem/phaseProgress/phase/garConsumptionSet/yarnCode/art/@listVersion) [Optional]</p> <p>- nota: <i>this attribute should always be used coupled with “numberingOrg” and “listName”</i></p> <p>(XPath KCOrdStatus/KCSbody/KCSitem/garmentCode/garmentCodeA/art/@listVersion) [Optional]</p> <p>- nota: <i>this attribute should always be used coupled with “numberingOrg” and “listName”</i></p> <p>(XPath KCOrdStatus/KCSbody/KCSitem/phaseProgress/phase/garConsumptionSet/acsCode/pattern/@listVersion) [Optional]</p> <p>- nota: <i>this attribute should always be used coupled with “numberingOrg” and “listName”</i></p> <p>(XPath KCOrdStatus/KCSbody/KCSitem/garmentCode/garmentCodeB/color/@listVersion) [Optional]</p> <p>- nota: <i>this attribute should always be used coupled with “numberingOrg” and “listName”</i></p> <p>(XPath KCOrdStatus/KCSbody/KCSitem/phaseProgress/phase/lotDetails/csRange/color/@listVersion) [Optional]</p> <p>- nota: <i>this attribute should always be used coupled with “numberingOrg” and “listName”</i></p> <p>(XPath KCOrdStatus/KCSbody/KCSitem/phaseProgress/phase/garConsumptionSet/texCode/art/@listVersion) [Optional]</p>

- nota: *this attribute should always be used coupled with “numberingOrg” and “listName”*
 (XPath KCOrdStatus/KCSbody/KCSitem/phaseProgress/phase/garConsumptionSet/texCode/color/@listVersion) [Optional]

- nota: *this attribute should always be used coupled with “numberingOrg” and “listName”*
 (XPath KCOrdStatus/KCSheader/qualityLevel/@listVersion) [Optional]
 (XPath KCOrdStatus/KCSbody/KCSitem/phaseProgress/itemsList/qualityLevel/@listVersion) [Optional]
 (XPath KCOrdStatus/KCSbody/KCSitem/phaseProgress/phase/garConsumptionSet/texCode/pattern/@listVersion) [Optional]

- nota: *this attribute should always be used coupled with “numberingOrg” and “listName”*
 (XPath KCOrdStatus/KCSbody/KCSitem/garmentCode/garmentCodeB/garmentVariant/variantCode/@listVersion) [Optional]

- nota: *this attribute should always be used coupled with “numberingOrg” and “listName”*
 (XPath KCOrdStatus/KCSbody/KCSitem/garmentPartCode/fabric/@listVersion) [Optional]

- nota: *this attribute should always be used coupled with “numberingOrg” and “listName”*
 (XPath KCOrdStatus/KCSbody/KCSitem/phaseProgress/phase/lotDetails/csRange/garmentVariant/variantType/@listVersion) [Optional]

- nota: *this attribute should always be used coupled with “numberingOrg” and “listName”*
 (XPath KCOrdStatus/KCSbody/KCSitem/phaseProgress/phase/garConsumptionSet/acsCode/color/@listVersion) [Optional]

- nota: *this attribute should always be used coupled with “numberingOrg” and “listName”*
 (XPath KCOrdStatus/KCSbody/KCSitem/phaseProgress/phase/refDoc/season/@listVersion) [Optional]
 (XPath KCOrdStatus/KCSbody/KCSitem/garmentCode/garmentCodeB/artGroup/@listVersion) [Optional]

- nota: *this attribute should always be used coupled with “numberingOrg” and “listName”*
 (XPath KCOrdStatus/KCSbody/KCSitem/garmentCode/garmentCodeB/garmentVariant/variantType/@listVersion) [Optional]

- nota: *this attribute should always be used coupled with “numberingOrg” and “listName”*
 (XPath KCOrdStatus/KCSbody/KCSitem/phaseProgress/phase/garConsumptionSet/garmentCode/garmentCodeB/garmentVariant/variantCode/@listVersion) [Optional]

- nota: *this attribute should always be used coupled with “numberingOrg” and “listName”*
 (XPath KCOrdStatus/KCSbody/KCSitem/phaseProgress/csRange/sizeMatrix/sizeRow/itemsList/qualityLevel/@listVersion) [Optional]
 (XPath KCOrdStatus/KCSbody/KCSitem/phaseProgress/phase/garConsumptionSet/yarnCode/color/@listVersion) [Optional]

- nota: *this attribute should always be used coupled with “numberingOrg” and “listName”*
 (XPath KCOrdStatus/KCSbody/KCSitem/phaseProgress/csRange/garmentVariant/variantType/@listVersion) [Optional]

- nota: *this attribute should always be used coupled with “numberingOrg” and “listName”*
 (XPath KCOrdStatus/KCSbody/KCSitem/phaseProgress/phase/garConsumptionSet/garmentCode/garmentCodeB/color/@listVersion) [Optional]

- nota: *this attribute should always be used coupled with “numberingOrg” and “listName”*
 (XPath KCOrdStatus/KCSbody/KCSitem/csRange/garmentVariant/variantType/@listVersion) [Optional]

- nota: *this attribute should always be used coupled with “numberingOrg” and “listName”*

	<p>(XPath KCOrdStatus/KCSbody/KCSitem/phaseProgress/phase/garConsumptionSet/garmentPartCode/mod/@listVersion) [Optional] - nota: <i>this attribute should always be used coupled with “numberingOrg” and “listName”</i></p> <p>(XPath KCOrdStatus/KCSbody/KCSitem/phaseProgress/phase/garConsumptionSet/garmentPartCode/color/@listVersion) [Optional] - nota: <i>this attribute should always be used coupled with “numberingOrg” and “listName”</i></p> <p>(XPath KCOrdStatus/KCSbody/KCSitem/phaseProgress/csRange/color/@listVersion) [Optional] - nota: <i>this attribute should always be used coupled with “numberingOrg” and “listName”</i></p> <p>(XPath KCOrdStatus/KCSbody/KCSitem/phaseProgress/phase/garConsumptionSet/garmentCode/garmentCodeB/garmentVariant/variantType/@listVersion) [Optional] - nota: <i>this attribute should always be used coupled with “numberingOrg” and “listName”</i></p> <p>(XPath KCOrdStatus/KCSbody/KCSitem/phaseProgress/phase/garConsumptionSet/garmentPartCode/fabric/@listVersion) [Optional] - nota: <i>this attribute should always be used coupled with “numberingOrg” and “listName”</i></p> <p>(XPath KCOrdStatus/KCSbody/KCSitem/csRange/sizeMatrix/sizeRow/additionalComponentCode/@listVersion) [Optional] (XPath KCOrdStatus/KCSbody/KCSitem/refDoc/season/@listVersion) [Optional] (XPath KCOrdStatus/KCSbody/KCSitem/phaseProgress/qualityLevel/@listVersion) [Optional] (XPath KCOrdStatus/KCSbody/KCSitem/phaseProgress/csRange/garmentVariant/variantCode/@listVersion) [Optional] - nota: <i>this attribute should always be used coupled with “numberingOrg” and “listName”</i></p> <p>(XPath KCOrdStatus/KCSbody/KCSitem/phaseProgress/csRange/sizeMatrix/sizeRow/additionalComponentCode/@listVersion) [Optional] (XPath KCOrdStatus/KCSbody/KCSitem/csRange/garmentVariant/variantCode/@listVersion) [Optional] - nota: <i>this attribute should always be used coupled with “numberingOrg” and “listName”</i></p> <p>(XPath KCOrdStatus/KCSbody/KCSitem/phaseProgress/phase/lotDetails/csRange/sizeMatrix/sizeRow/itemsList/qualityLevel/@listVersion) [Optional] (XPath KCOrdStatus/KCSbody/KCSitem/garmentPartCode/mod/@listVersion) [Optional] - nota: <i>this attribute should always be used coupled with “numberingOrg” and “listName”</i></p> <p>(XPath KCOrdStatus/KCSbody/KCSitem/garmentCode/garmentCodeB/mod/@listVersion) [Optional] - nota: <i>this attribute should always be used coupled with “numberingOrg” and “listName”</i></p> <p>(XPath KCOrdStatus/KCSbody/KCSitem/phaseProgress/phase/garConsumptionSet/garmentCode/garmentCodeA/art/@listVersion) [Optional] - nota: <i>this attribute should always be used coupled with “numberingOrg” and “listName”</i></p> <p>(XPath KCOrdStatus/KCSbody/KCSitem/phaseProgress/phase/garConsumptionSet/garmentCode/garmentCodeB/mod/@listVersion) [Optional] - nota: <i>this attribute should always be used coupled with “numberingOrg” and “listName”</i></p> <p>(XPath KCOrdStatus/KCSbody/KCSitem/garmentCode/garmentCodeB/fabric/@listVersion) [Optional] - nota: <i>this attribute should always be used coupled with “numberingOrg” and “listName”</i></p> <p>(XPath KCOrdStatus/KCSbody/KCSitem/csRange/sizeMatrix/sizeRow/itemsList/qualityLevel/@listVersion) [Optional]</p>
--	---

	<p>(XPath KCOrdStatus/KCSbody/KCSitem/phaseProgress/phase/lotDetails/csRange/garmentVariant/variantCode/@listVersion) [Optional]</p> <p>- nota: <i>this attribute should always be used coupled with “numberingOrg” and “listName”</i></p> <p>(XPath KCOrdStatus/KCSbody/KCSitem/phaseProgress/phase/garConsumptionSet/garmentCode/garmentCodeB/fabric/@listVersion) [Optional]</p> <p>- nota: <i>this attribute should always be used coupled with “numberingOrg” and “listName”</i></p> <p>(XPath KCOrdStatus/KCSbody/KCSitem/phaseProgress/phase/garConsumptionSet/garmentCode/garmentCodeB/artGroup/@listVersion) [Optional]</p> <p>- nota: <i>this attribute should always be used coupled with “numberingOrg” and “listName”</i></p> <p>(XPath KCOrdStatus/KCSbody/KCSitem/csRange/color/@listVersion) [Optional]</p> <p>- nota: <i>this attribute should always be used coupled with “numberingOrg” and “listName”</i></p> <p>(XPath KCOrdStatus/KCSbody/KCSitem/phaseProgress/phase/lotDetails/csRange/sizeMatrix/sizeRow/additionalComponentCode/@listVersion) [Optional]</p>
@ln	<p>Language code.</p> <p>- base type: string,</p> <p>(XPath KCOrdStatus/KCSbody/KCSitem/phaseProgress/phase/garConsumptionSet/garmentCode/garmentCodeA/description/@ln) [Optional]</p> <p>(XPath KCOrdStatus/KCSbody/KCSitem/garmentPartCode/description/@ln) [Optional]</p> <p>(XPath KCOrdStatus/KCSbody/KCSitem/phaseProgress/phase/garConsumptionSet/garmentCode/garmentCodeB/description/@ln) [Optional]</p> <p>(XPath KCOrdStatus/KCSbody/KCSitem/phaseProgress/phase/garConsumptionSet/yarnCode/description/@ln) [Optional]</p> <p>(XPath KCOrdStatus/KCSbody/KCSitem/phaseProgress/phase/garConsumptionSet/garmentPartCode/description/@ln) [Optional]</p> <p>(XPath KCOrdStatus/KCSbody/KCSitem/phaseProgress/phase/garConsumptionSet/texCode/description/@ln) [Optional]</p> <p>(XPath KCOrdStatus/KCSbody/KCSitem/phaseProgress/phase/packages/description/@ln) [Optional]</p> <p>(XPath KCOrdStatus/KCSbody/KCSitem/garmentCode/garmentCodeB/description/@ln) [Optional]</p> <p>(XPath KCOrdStatus/KCSbody/KCSitem/garmentCode/garmentCodeA/description/@ln) [Optional]</p> <p>(XPath KCOrdStatus/KCSbody/KCSitem/phaseProgress/phase/garConsumptionSet/acsCode/description/@ln) [Optional]</p> <p>(XPath KCOrdStatus/KCSbody/KCSitem/phaseProgress/phase/packages/handlingChar/handlingType/@ln) [Optional]</p>
@logo	<p>company logo (URL of the image jpeg or gif). It is recommended that the width of the image does not exceed 640 pixel.</p> <p>- base type: string, max length: 255,</p> <p>(XPath KCOrdStatus/KCSheader/buyer/@logo) [Optional]</p>
lotN	<p>lot number of a product or batch number of the raw material</p> <p>- base type: string, max length: 15,</p> <p>(XPath KCOrdStatus/KCSbody/KCSitem/phaseProgress/phase/lotDetails/lotN) 1-1</p> <p>(XPath KCOrdStatus/KCSbody/KCSitem/phaseProgress/phase/garConsumptionSet/lotN) 0-99</p>
mfrStatus	<p>code of the manufacturing stage used to describe the progress in the production cycle</p> <p>- base type: string, cod. table: T7</p> <p>http://www.ebiz.enea.it/moda-ml/repository/codelist/draft/gc_T7.xml</p> <p>(XPath KCOrdStatus/KCSbody/KCSitem/progress/mfrStatus) 0-1</p>

mfrStatusText	free text description of the manufacturing stage used to specify the progress in the production cycle - base type: string, max length: 250, (XPath KCOrdStatus/KCSbody/KCSitem/progress/mfrStatusText) 0-1
@mime	the mime type of the binary object - base type: normalizedString, (XPath KCOrdStatus/KCSbody/KCSitem/phaseProgress/phase/refDoc/attachment/binaryObject/@mime) [Optional] (XPath KCOrdStatus/KCSbody/KCSitem/refDoc/attachment/binaryObject/@mime) [Optional] (XPath KCOrdStatus/KCSheader/refDoc/attachment/binaryObject/@mime) [Optional]
mimeCode	mime type of the external object - base type: normalizedString, (XPath KCOrdStatus/KCSbody/KCSitem/phaseProgress/phase/refDoc/attachment/externalReference/mimeCode) 0-1 (XPath KCOrdStatus/KCSbody/KCSitem/refDoc/attachment/externalReference/mimeCode) 0-1 (XPath KCOrdStatus/KCSheader/refDoc/attachment/externalReference/mimeCode) 0-1
minItemsPerPackage	the minimum quantity of items for the specified kind of package. - base type: decimal, min inclusive: 0, (XPath KCOrdStatus/KCSbody/KCSitem/phaseProgress/phase/packages/minItemsPerPackage) 0-1
mod	model number of the garment - base type: string, max length: 15, (XPath KCOrdStatus/KCSbody/KCSitem/garmentPartCode/mod) 1-1 - note: <i>when a garment component, it should be the code assigned to the garment article</i> (XPath KCOrdStatus/KCSbody/KCSitem/phaseProgress/phase/garConsumptionSet/garmentPartCode/mod) 1-1 - note: <i>when a garment component, it should be the code assigned to the garment article</i> (XPath KCOrdStatus/KCSbody/KCSitem/garmentCode/garmentCodeB/mod) 1-1 (XPath KCOrdStatus/KCSbody/KCSitem/phaseProgress/phase/garConsumptionSet/garmentCode/garmentCodeB/mod) 1-1
msgDate	date of issue of the present message (xml document), according to one of the patterns YYYY-MM-DD, YYYY-MM-DD:HH-MM or YYYY-WW. - base type: string, (XPath KCOrdStatus/KCSheader/msgDate) 1-1
@msgfunction	function performed by the present message with regards to the transmission - base type: string, cod. table: NT18 http://www.ebiz.enea.it/moda-ml/repository/codelist/draft/gc_NT18.xml (XPath KCOrdStatus/@msgfunction) [Optional] [Default= OR]
msgID	key identifier of the business document in the information system of the issuing Party. In case of more despatches of the same business document, it is unchanged. - base type: string, max length: 35, (XPath KCOrdStatus/KCSheader/msgID) 0-1
msgN	identification number given to the message (xml document) by its issuer. In case of more despatches of the same business document, it changes. - base type: string, max length: 35, (XPath KCOrdStatus/KCSheader/msgN) 1-1
netWeight	the net weight declared for transport or customs purpose - base type: decimal, min inclusive: 0, fraction digits: 2, (XPath KCOrdStatus/KCSbody/KCSitem/phaseProgress/phase/packages/handlingChar/netWeight) 0-1

notBeforeDate	<p>earliest date possible to begin an activity, according to one of the patterns YYYY-MM-DD, YYYY-MM-DD:HH-MM or YYYY-WW.</p> <p>- base type: string, (XPath KCOrdStatus/KCSbody/KCSitem/phaseProgress/phase/notBeforeDate) 0-1</p>
note	<p>free text or structured (computer processing) note. For note structuring use the attributes "noteLabel" and "codelist"</p> <p>- base type: string, max length: 350, (XPath KCOrdStatus/KCSbody/KCSitem/phaseProgress/phase/packages/handlingChar/note) 0-99 (XPath KCOrdStatus/KCSbody/KCSitem/note) 0-99 (XPath KCOrdStatus/KCSheader/note) 0-99 (XPath KCOrdStatus/KCSbody/KCSitem/phaseProgress/phase/note) 0-99</p>
@noteLabel	<p>subject qualifier of a note</p> <p>- base type: string, max length: 35, (XPath KCOrdStatus/KCSheader/note/@noteLabel) [Optional]</p> <p>- nota: <i>must be used to qualify the subject of the note</i> (XPath KCOrdStatus/KCSbody/KCSitem/note/@noteLabel) [Optional]</p> <p>- nota: <i>must be used to qualify the subject of the note</i> (XPath KCOrdStatus/KCSbody/KCSitem/phaseProgress/phase/note/@noteLabel) [Optional]</p> <p>- nota: <i>must be used to qualify the subject of the note</i> (XPath KCOrdStatus/KCSbody/KCSitem/phaseProgress/phase/packages/handlingChar/note/@noteLabel) [Optional]</p> <p>- nota: <i>must be used to qualify the subject of the note</i></p>
@numberingOrg	<p>code specifying the organisation who has created or owns the coding or numbering system</p> <p>- base type: string, cod. table: NT6 http://www.ebiz.enea.it/moda-ml/repository/codelist/draft/gc_NT6.xml (XPath KCOrdStatus/KCSbody/KCSitem/progress/itemsList/qualityLevel/@numberingOrg) [Optional] (XPath KCOrdStatus/KCSbody/KCSitem/garmentPartCode/@numberingOrg) [Optional] (XPath KCOrdStatus/KCSheader/refDoc/season/@numberingOrg) [Optional] (XPath KCOrdStatus/KCSbody/KCSitem/refDoc/attachment/fileName/@numberingOrg) [Optional] (XPath KCOrdStatus/KCSheader/docID/@numberingOrg) [Optional]</p> <p>- nota: <i>here can be specified whose document numbering is used (e.g.: Client, Supplier, ..)</i> (XPath KCOrdStatus/KCSbody/KCSitem/phaseProgress/phase/garConsumptionSet/garmentCode/garmentCodeB/garmentVariant/variantCode/@numberingOrg) [Optional]</p> <p>- nota: <i>this attribute should be used either single or coupled with "listName" and "listVersion"</i> (XPath KCOrdStatus/KCSheader/refDoc/docID/@numberingOrg) [Optional]</p> <p>- nota: <i>here can be specified whose document numbering is used (e.g.: Client, Supplier, ..)</i> (XPath KCOrdStatus/KCSbody/KCSitem/phaseProgress/phase/garConsumptionSet/garmentCode/garmentCodeB/artGroup/@numberingOrg) [Optional]</p> <p>- nota: <i>this attribute should be used either single or coupled with "listName" and "listVersion"</i> (XPath KCOrdStatus/KCSbody/KCSitem/phaseProgress/phase/note/@numberingOrg) [Optional] (XPath KCOrdStatus/KCSbody/KCSitem/phaseProgress/csRange/sizeMatrix/sizeRow/itemsList/qualityLevel/@numberingOrg) [Optional] (XPath KCOrdStatus/KCSbody/KCSitem/phaseProgress/csRange/@numberingOrg) [Optional] (XPath KCOrdStatus/KCSbody/KCSitem/phaseProgress/phase/packages/EPCList/EPC/@numberingOrg) [Optional] (XPath KCOrdStatus/KCSheader/thirdParty/id/@numberingOrg) [Optional] (XPath KCOrdStatus/KCSbody/KCSitem/phaseProgress/phase/packages/handlingChar/note/@numberingOrg) [Optional]</p>

	<p>(XPath KCOrdStatus/KCSbody/KCSitem/phaseProgress/phase/packages/packageN/@numberingOrg) [Optional]</p> <p>(XPath KCOrdStatus/KCSbody/KCSitem/phaseProgress/csRange/color/@numberingOrg) [Optional]</p> <p>- nota: <i>this attribute should be used either single or coupled with "listName" and "listVersion"</i></p> <p>(XPath KCOrdStatus/KCSbody/KCSitem/progress/itemsList/itemIdentification/serialN/@numberingOrg) [Optional]</p> <p>- nota: <i>here the issuer of the serial number must be specified (when different from the Supplier)</i></p> <p>(XPath KCOrdStatus/KCSbody/KCSitem/phaseProgress/csRange/sizeMatrix/sizeRow/additionalComponentCode/@numberingOrg) [Optional]</p> <p>(XPath KCOrdStatus/KCSheader/buyer/additionalIdentifier/@numberingOrg) [Optional]</p> <p>- nota: <i>here the issuer of the identifier must be specified</i></p> <p>(XPath KCOrdStatus/KCSheader/buyer/id/@numberingOrg) [Optional]</p> <p>(XPath KCOrdStatus/KCSheader/subContractor/id/@numberingOrg) [Optional]</p> <p>(XPath KCOrdStatus/KCSbody/KCSitem/phaseProgress/csRange/garmentVariant/variantType/@numberingOrg) [Optional]</p> <p>- nota: <i>this attribute should be used either single or coupled with "listName" and "listVersion"</i></p> <p>(XPath KCOrdStatus/KCSbody/KCSitem/phaseProgress/csRange/garmentVariant/variantCode/@numberingOrg) [Optional]</p> <p>- nota: <i>this attribute should be used either single or coupled with "listName" and "listVersion"</i></p> <p>(XPath KCOrdStatus/KCSbody/KCSitem/note/@numberingOrg) [Optional]</p> <p>(XPath KCOrdStatus/KCSbody/KCSitem/phaseProgress/qualityLevel/@numberingOrg) [Optional]</p> <p>(XPath KCOrdStatus/KCSbody/KCSitem/phaseProgress/itemsList/itemIdentification/serialN/@numberingOrg) [Optional]</p> <p>- nota: <i>here the issuer of the serial number must be specified (when different from the Supplier)</i></p> <p>(XPath KCOrdStatus/KCSbody/KCSitem/phaseProgress/phase/garConsumptionSet/lotN/@numberingOrg) [Optional]</p> <p>(XPath KCOrdStatus/KCSbody/KCSitem/refDoc/docID/@numberingOrg) [Optional]</p> <p>- nota: <i>here can be specified whose document numbering is used (e.g.: Client, Supplier, ..)</i></p> <p>(XPath KCOrdStatus/KCSbody/KCSitem/phaseProgress/phase/garConsumptionSet/garmentCode/garmentCodeB/added/@numberingOrg) [Optional]</p> <p>(XPath KCOrdStatus/KCSbody/KCSitem/refDoc/season/@numberingOrg) [Optional]</p> <p>(XPath KCOrdStatus/KCSbody/KCSitem/phaseProgress/phase/garConsumptionSet/garmentCode/garmentCodeA/art/@numberingOrg) [Optional]</p> <p>- nota: <i>this attribute should be used either single or coupled with "listName" and "listVersion"</i></p> <p>(XPath KCOrdStatus/KCSbody/KCSitem/phaseProgress/phase/garConsumptionSet/dyeN/@numberingOrg) [Optional]</p> <p>(XPath KCOrdStatus/KCSheader/refDoc/attachment/fileName/@numberingOrg) [Optional]</p> <p>(XPath KCOrdStatus/KCSbody/KCSitem/phaseProgress/csRange/sizeMatrix/sizeRow/itemsList/itemIdentification/serialN/@numberingOrg) [Optional]</p> <p>- nota: <i>here the issuer of the serial number must be specified (when different from the Supplier)</i></p> <p>(XPath KCOrdStatus/KCSheader/qualityLevel/@numberingOrg) [Optional]</p> <p>(XPath KCOrdStatus/KCSbody/KCSitem/phaseProgress/phase/packages/packageModelCode/@numberingOrg) [Optional]</p> <p>(XPath KCOrdStatus/KCSbody/KCSitem/phaseProgress/phase/garConsumptionSet/garConsumption/@numberingOrg) [Optional]</p> <p>- nota: <i>to be used for garSizeCode</i></p> <p>(XPath KCOrdStatus/KCSheader/note/@numberingOrg) [Optional]</p> <p>(XPath KCOrdStatus/KCSbody/KCSitem/phaseProgress/itemsList/qualityLevel/@numberingOrg) [Optional]</p>
--	---

(XPath KCOrdStatus/KCSbody/KCSitem/phaseProgress/phase/refDoc/attachment/fileName/@numberingOrg) [Optional]

(XPath KCOrdStatus/KCSbody/KCSitem/csRange/sizeMatrix/sizeRow/itemsList/itemIdentification/serialN/@numberingOrg) [Optional]

- nota: here the issuer of the serial number must be specified (when different from the Supplier)

(XPath KCOrdStatus/KCSbody/KCSitem/phaseProgress/phase/refDoc/season/@numberingOrg) [Optional]

(XPath KCOrdStatus/KCSbody/KCSitem/csRange/sizeMatrix/sizeRow/itemsList/qualityLevel/@numberingOrg) [Optional]

(XPath KCOrdStatus/KCSbody/KCSitem/phaseProgress/phase/garConsumptionSet/texCode/pattern/@numberingOrg) [Optional]

- nota: this attribute should be used either single or coupled with "listName" and "listVersion"

(XPath KCOrdStatus/KCSbody/KCSitem/phaseProgress/phase/garConsumptionSet/texCode/color/@numberingOrg) [Optional]

- nota: this attribute should be used either single or coupled with "listName" and "listVersion"

(XPath KCOrdStatus/KCSbody/KCSitem/csRange/sizeMatrix/sizeRow/additionalComponentCode/@numberingOrg) [Optional]

(XPath KCOrdStatus/KCSbody/KCSitem/phaseProgress/phase/refDoc/docID/@numberingOrg) [Optional]

- nota: here can be specified whose document numbering is used (e.g.: Client, Supplier, ..)

(XPath KCOrdStatus/KCSbody/KCSitem/phaseProgress/phase/phaseCode/@numberingOrg) [Optional]

(XPath KCOrdStatus/KCSbody/KCSitem/phaseProgress/phase/garConsumptionSet/yarnCode/art/@numberingOrg) [Optional]

- nota: this attribute should be used either single or coupled with "listName" and "listVersion"

(XPath KCOrdStatus/KCSbody/KCSitem/phaseProgress/phase/garConsumptionSet/yarnCode/@numberingOrg) [Optional] [Default=CL]

(XPath KCOrdStatus/KCSbody/KCSitem/garmentCode/garmentCodeB/garmentVariant/variantCode/@numberingOrg) [Optional]

- nota: this attribute should be used either single or coupled with "listName" and "listVersion"

(XPath KCOrdStatus/KCSbody/KCSitem/phaseProgress/phase/garConsumptionSet/texCode/added/@numberingOrg) [Optional]

(XPath KCOrdStatus/KCSbody/KCSitem/garmentCode/garmentCodeB/garmentVariant/variantType/@numberingOrg) [Optional]

- nota: this attribute should be used either single or coupled with "listName" and "listVersion"

(XPath KCOrdStatus/KCSbody/KCSitem/csRange/garmentVariant/variantCode/@numberingOrg) [Optional]

- nota: this attribute should be used either single or coupled with "listName" and "listVersion"

(XPath KCOrdStatus/KCSbody/KCSitem/csRange/@numberingOrg) [Optional]

(XPath KCOrdStatus/KCSbody/KCSitem/phaseProgress/phase/garConsumptionSet/acsCode/added/@numberingOrg) [Optional]

(XPath KCOrdStatus/KCSbody/KCSitem/garmentCode/garmentCodeB/added/@numberingOrg) [Optional]

(XPath KCOrdStatus/KCSbody/KCSitem/phaseProgress/phase/garConsumptionSet/acsCode/art/@numberingOrg) [Optional]

- nota: this attribute should be used either single or coupled with "listName" and "listVersion"

(XPath KCOrdStatus/KCSbody/KCSitem/phaseProgress/phase/garConsumptionSet/acsCode/pattern/@numberingOrg) [Optional]

- nota: this attribute should be used either single or coupled with "listName" and "listVersion"

(XPath KCOrdStatus/KCSbody/KCSitem/phaseProgress/phase/garConsumptionSet/acsCode/color/@numberingOrg) [Optional]

- nota: this attribute should be used either single or coupled with "listName" and "listVersion"

(XPath KCOrdStatus/KCSbody/KCSitem/garmentCode/garmentCodeA/art/@numberingOrg) [Optional]
- nota: *this attribute should be used either single or coupled with "listName" and "listVersion"*

(XPath KCOrdStatus/KCSbody/KCSitem/garmentCode/garmentCodeB/artGroup/@numberingOrg) [Optional]
- nota: *this attribute should be used either single or coupled with "listName" and "listVersion"*

(XPath KCOrdStatus/KCSbody/KCSitem/csRange/garmentVariant/variantType/@numberingOrg) [Optional]
- nota: *this attribute should be used either single or coupled with "listName" and "listVersion"*

(XPath KCOrdStatus/KCSbody/KCSitem/phaseProgress/phase/garConsumptionSet/texCode/art/@numberingOrg) [Optional]
- nota: *this attribute should be used either single or coupled with "listName" and "listVersion"*

(XPath KCOrdStatus/KCSbody/KCSitem/phaseProgress/phase/thirdParty/id/@numberingOrg) [Optional]
(XPath KCOrdStatus/KCSbody/KCSitem/phaseProgress/phase/garConsumptionSet/acsCode/@numberingOrg) [Optional]
(XPath KCOrdStatus/KCSbody/KCSitem/csRange/color/@numberingOrg) [Optional]
- nota: *this attribute should be used either single or coupled with "listName" and "listVersion"*

(XPath KCOrdStatus/KCSbody/KCSitem/phaseProgress/phase/garConsumptionSet/texCode/@numberingOrg) [Optional]
(XPath KCOrdStatus/KCSbody/KCSitem/phaseProgress/phase/garConsumptionSet/yarnCode/color/@numberingOrg) [Optional]
- nota: *this attribute should be used either single or coupled with "listName" and "listVersion"*

(XPath KCOrdStatus/KCSbody/KCSitem/phaseProgress/phase/lotDetails/csRange/sizeMatrix/sizeRow/additionalComponentCode/@numberingOrg) [Optional]
(XPath KCOrdStatus/KCSbody/KCSitem/phaseProgress/phase/garConsumptionSet/garmentCode/@numberingOrg) [Optional]
(XPath KCOrdStatus/KCSbody/KCSitem/phaseProgress/phase/garConsumptionSet/garmentCode/garmentCodeB/@numberingOrg) [Optional]
(XPath KCOrdStatus/KCSbody/KCSitem/phaseProgress/phase/lotDetails/csRange/color/@numberingOrg) [Optional]
- nota: *this attribute should be used either single or coupled with "listName" and "listVersion"*

(XPath KCOrdStatus/KCSbody/KCSitem/phaseProgress/phase/lotDetails/lotN/@numberingOrg) [Optional]
(XPath KCOrdStatus/KCSbody/KCSitem/garmentPartCode/added/@numberingOrg) [Optional]
(XPath KCOrdStatus/KCSbody/KCSitem/garmentPartCode/color/@numberingOrg) [Optional]
- nota: *this attribute should be used either single or coupled with "listName" and "listVersion"*

(XPath KCOrdStatus/KCSbody/KCSitem/phaseProgress/phase/lotDetails/csRange/@numberingOrg) [Optional]
(XPath KCOrdStatus/KCSbody/KCSitem/garmentPartCode/mod/@numberingOrg) [Optional]
- nota: *this attribute should be ALTERNATIVE to the others*

(XPath KCOrdStatus/KCSbody/KCSitem/phaseProgress/phase/lotDetails/csRange/garmentVariant/variantCode/@numberingOrg) [Optional]
- nota: *this attribute should be used either single or coupled with "listName" and "listVersion"*

(XPath KCOrdStatus/KCSbody/KCSitem/phaseProgress/phase/garConsumptionSet/garmentCode/garmentCodeB/garmentVariant/variantType/@numberingOrg) [Optional]
- nota: *this attribute should be used either single or coupled with "listName" and "listVersion"*

	<p>(XPath KCOrdStatus/KCSbody/KCSitem/phaseProgress/phase/lotDetails/csRange/garmentVariant/variantType/@numberingOrg) [Optional]</p> <p>- nota: <i>this attribute should be used either single or coupled with “listName” and “listVersion”</i></p> <p>(XPath KCOrdStatus/KCSbody/KCSitem/garmentPartCode/fabric/@numberingOrg) [Optional]</p> <p>- nota: <i>this attribute should be used either single or coupled with “listName” and “listVersion”</i></p> <p>(XPath KCOrdStatus/KCSbody/KCSitem/phaseProgress/phase/garConsumptionSet/garmentCode/garmentCodeB/mod/@numberingOrg) [Optional]</p> <p>- nota: <i>this attribute should be ALTERNATIVE to the others</i></p> <p>(XPath KCOrdStatus/KCSbody/KCSitem/phaseProgress/phase/garConsumptionSet/garmentCode/garmentCodeB/color/@numberingOrg) [Optional]</p> <p>- nota: <i>this attribute should be used either single or coupled with “listName” and “listVersion”</i></p> <p>(XPath KCOrdStatus/KCSbody/KCSitem/phaseProgress/phase/garConsumptionSet/garmentCode/garmentCodeB/fabric/@numberingOrg) [Optional]</p> <p>- nota: <i>this attribute should be used either single or coupled with “listName” and “listVersion”</i></p> <p>(XPath KCOrdStatus/KCSbody/KCSitem/garmentCode/garmentCodeB/mod/@numberingOrg) [Optional]</p> <p>- nota: <i>this attribute should be ALTERNATIVE to the others</i></p> <p>(XPath KCOrdStatus/KCSbody/KCSitem/phaseProgress/phase/lotDetails/csRange/sizeMatrix/sizeRow/itemsList/qualityLevel/@numberingOrg) [Optional]</p> <p>(XPath KCOrdStatus/KCSbody/KCSitem/phaseProgress/phase/lotDetails/csRange/sizeMatrix/sizeRow/itemsList/itemIdentification/serialN/@numberingOrg) [Optional]</p> <p>- nota: <i>here the issuer of the serial number must be specified (when different from the Supplier)</i></p> <p>(XPath KCOrdStatus/KCSbody/KCSitem/phaseProgress/phase/garConsumptionSet/garmentPartCode/color/@numberingOrg) [Optional]</p> <p>- nota: <i>this attribute should be used either single or coupled with “listName” and “listVersion”</i></p> <p>(XPath KCOrdStatus/KCSbody/KCSitem/phaseProgress/phase/garConsumptionSet/garmentPartCode/fabric/@numberingOrg) [Optional]</p> <p>- nota: <i>this attribute should be used either single or coupled with “listName” and “listVersion”</i></p> <p>(XPath KCOrdStatus/KCSbody/KCSitem/garmentCode/garmentCodeB/@numberingOrg) [Optional]</p> <p>(XPath KCOrdStatus/KCSbody/KCSitem/garmentCode/@numberingOrg) [Optional]</p> <p>(XPath KCOrdStatus/KCSbody/KCSitem/garmentCode/garmentCodeB/fabric/@numberingOrg) [Optional]</p> <p>- nota: <i>this attribute should be used either single or coupled with “listName” and “listVersion”</i></p> <p>(XPath KCOrdStatus/KCSbody/KCSitem/phaseProgress/phase/garConsumptionSet/yarnCode/added/@numberingOrg) [Optional]</p> <p>(XPath KCOrdStatus/KCSbody/KCSitem/garmentCode/garmentCodeB/color/@numberingOrg) [Optional]</p> <p>- nota: <i>this attribute should be used either single or coupled with “listName” and “listVersion”</i></p> <p>(XPath KCOrdStatus/KCSbody/KCSitem/phaseProgress/phase/garConsumptionSet/garmentPartCode/added/@numberingOrg) [Optional]</p> <p>(XPath KCOrdStatus/KCSbody/KCSitem/phaseProgress/phase/garConsumptionSet/garmentPartCode/mod/@numberingOrg) [Optional]</p> <p>- nota: <i>this attribute should be ALTERNATIVE to the others</i></p>
--	--

	(XPath KCOrdStatus/KCSbody/KCSitem/phaseProgress/phase/garConsumptionSet/garmentPartCode/@numberingOrg) [Optional]
package	code specifying the type of transport package - base type: string, cod. table: T11 http://www.ebiz.enea.it/moda-ml/repository/codelist/draft/gc_T11.xml (XPath KCOrdStatus/KCSbody/KCSitem/phaseProgress/phase/packages/package) 1-1
@packageContainerN	reference usable to indicate the outer package containing this package - base type: string, max length: 40, (XPath KCOrdStatus/KCSbody/KCSitem/phaseProgress/phase/packages/packageN/@packageContainerN) [Optional]
@packageLevel	level used to indicate the hierarchical structure of the packages (from outer to inner levels) - base type: positiveInteger, min inclusive: 1, max inclusive: 9, (XPath KCOrdStatus/KCSbody/KCSitem/phaseProgress/phase/packages/@packageLevel) [Optional] - nota: <i>number fixing the level of the package in the transport structure (from inner to outer). Must either be used for all package types or not be used</i>
packageModelCode	a code (eg a barcode) identifying the type of packaging - base type: string, (XPath KCOrdStatus/KCSbody/KCSitem/phaseProgress/phase/packages/packageModelCode) 0-1
packageN	serial number used to identify a transport package - base type: string, max length: 40, (XPath KCOrdStatus/KCSbody/KCSitem/phaseProgress/phase/packages/packageN) 0-unbounded - note: <i>here the serial no.s of the packages can be identified</i>
packageQty	quantity of the specified transport packages - base type: positiveInteger, (XPath KCOrdStatus/KCSbody/KCSitem/phaseProgress/phase/packages/packageQty) 0-1 - note: <i>total for the type of package</i>
packageText	denomination of the type of transport package (text) - base type: string, max length: 80, (XPath KCOrdStatus/KCSbody/KCSitem/phaseProgress/phase/packages/packageText) 1-1
pattern	pattern/design number of the product, when not included in the article code - base type: string, max length: 15, (XPath KCOrdStatus/KCSbody/KCSitem/phaseProgress/phase/garConsumptionSet/texCode/pattern) 0-1 (XPath KCOrdStatus/KCSbody/KCSitem/phaseProgress/phase/garConsumptionSet/acsCode/pattern) 0-1
person	name of the contact person within a Party - base type: string, max length: 40, (XPath KCOrdStatus/KCSheader/buyer/person) 0-1 (XPath KCOrdStatus/KCSheader/thirdParty/person) 0-1 (XPath KCOrdStatus/KCSheader/subContractor/person) 0-1 (XPath KCOrdStatus/KCSbody/KCSitem/phaseProgress/phase/thirdParty/person) 0-1
phaseCode	Code that identifies a production phase of a fashion product. - base type: string, (XPath KCOrdStatus/KCSbody/KCSitem/phaseProgress/phase/phaseCode) 1-1
@phone	phone number of the contact person within a Party - base type: string, max length: 35, (XPath KCOrdStatus/KCSheader/subContractor/person/@phone) [Optional] (XPath KCOrdStatus/KCSheader/thirdParty/person/@phone) [Optional]

	(XPath KCOrdStatus/KCSbody/KCSitem/phaseProgress/phase/thirdParty/person/@phone) [Optional] (XPath KCOrdStatus/KCSheader/buyer/person/@phone) [Optional]
pieceInnWrap1	code specifying the type of inner wrapping/packing used for the fabric piece - base type: string, cod. table: T4 http://www.ebiz.enea.it/moda-ml/repository/codelist/draft/gc_T4.xml (XPath KCOrdStatus/KCSbody/KCSitem/phaseProgress/phase/packages/handlingChar/piecePack/pieceInnWrap1) 1-1
pieceInnWrap2	code sub-specifying the type of inner wrapping/packing used for the fabric piece - base type: string, cod. table: T5 http://www.ebiz.enea.it/moda-ml/repository/codelist/draft/gc_T5.xml (XPath KCOrdStatus/KCSbody/KCSitem/phaseProgress/phase/packages/handlingChar/piecePack/pieceInnWrap2) 0-1
pieceOutWrap	code specifying the type of outer wrapping or packing used for the fabric piece - base type: string, cod. table: T6 http://www.ebiz.enea.it/moda-ml/repository/codelist/draft/gc_T6.xml (XPath KCOrdStatus/KCSbody/KCSitem/phaseProgress/phase/packages/handlingChar/piecePack/pieceOutWrap) 0-1
piecePackText	free text specifying the type of wrapping or packing used for the fabric piece - base type: string, max length: 250, (XPath KCOrdStatus/KCSbody/KCSitem/phaseProgress/phase/packages/handlingChar/piecePack/piecePackText) 1-1
postCode	code defining the postal zone - base type: string, max length: 10, (XPath KCOrdStatus/KCSbody/KCSitem/phaseProgress/phase/thirdParty/postCode) 0-1 (XPath KCOrdStatus/KCSheader/buyer/postCode) 0-1 (XPath KCOrdStatus/KCSheader/subContractor/postCode) 0-1 (XPath KCOrdStatus/KCSheader/thirdParty/postCode) 0-1
price	unit price of the article, object or service specified - base type: decimal, min inclusive: 0, fraction digits: 4, (XPath KCOrdStatus/KCSbody/KCSitem/phaseProgress/phase/price) 0-1
@priceQualifier	type of price with reference to discount and taxes - base type: string, cod. table: NT20 http://www.ebiz.enea.it/moda-ml/repository/codelist/draft/gc_NT20.xml (XPath KCOrdStatus/KCSbody/KCSitem/phaseProgress/phase/price/@priceQualifier) [Optional] [Default= NET]
@progr	progressive number in the sequence - base type: positiveInteger, min inclusive: 1, (XPath KCOrdStatus/KCSbody/KCSitem/phaseProgress/phase/packages/fillingCriterion/@progr) [Optional] (XPath KCOrdStatus/KCSbody/KCSitem/phaseProgress/phase/@progr) [Required]
qty	net quantity of the article or object correlated, qualified by the function of the document (ordering, delivering, ..) and by the context - base type: decimal, min inclusive: 0, fraction digits: 2, (XPath KCOrdStatus/KCSbody/KCSitem/progress/qty) 1-2 <hr/> AAAA-WARNING! - text not AVAILABLE n. 245 - In=en (XPath KCOrdStatus/KCSbody/KCSitem/phaseProgress/phase/qty) 0-2 <hr/> AAAA-WARNING! - text not AVAILABLE n. 245 - In=en - note: Total quantity produced by this phase. (XPath KCOrdStatus/KCSbody/KCSitem/csRange/sizeMatrix/sizeRow/qty) 0-1 (XPath KCOrdStatus/KCSbody/KCSitem/phaseProgress/csRange/sizeMatrix/sizeRow/qty) 0-1 (XPath KCOrdStatus/KCSbody/KCSitem/phaseProgress/phase/garConsumptionSet/garConsumption/qty) 1-1

	<p>- note: <i>here is the provisional consumption</i> (XPath KCOrdStatus/KCSbody/KCSitem/phaseProgress/phase/lotDetails/qty) 0-1 (XPath KCOrdStatus/KCSbody/KCSitem/phaseProgress/phase/lotDetails/csRange/sizeMatrix/sizeRow/qty) 0-1</p>
qtyVariance	<p>difference between two quantities qualified by the context (e.g.: delivered vs . ordered; received vs. despatched etc..) - base type: decimal, fraction digits: 2, (XPath KCOrdStatus/KCSbody/KCSitem/phaseProgress/phase/garConsumptionSet/garConsumption/qtyVariance) 0-1 - note: <i>here is the difference between provisional and effective consumption</i></p>
qualityLevel	<p>the product quality level (first choice, second choice,...). - base type: string, (XPath KCOrdStatus/KCSbody/KCSitem/phaseProgress/itemsList/qualityLevel) 0-1 (XPath KCOrdStatus/KCSheader/qualityLevel) 0-1 (XPath KCOrdStatus/KCSbody/KCSitem/progress/itemsList/qualityLevel) 0-1 (XPath KCOrdStatus/KCSbody/KCSitem/phaseProgress/csRange/sizeMatrix/sizeRow/itemsList/qualityLevel) 0-1 (XPath KCOrdStatus/KCSbody/KCSitem/csRange/sizeMatrix/sizeRow/itemsList/qualityLevel) 0-1 (XPath KCOrdStatus/KCSbody/KCSitem/phaseProgress/qualityLevel) 0-1 (XPath KCOrdStatus/KCSbody/KCSitem/phaseProgress/phase/lotDetails/csRange/sizeMatrix/sizeRow/itemsList/qualityLevel) 0-1</p>
@reelMat	<p>type of material of which a package for yarn is made - base type: string, cod. table: T30 http://www.ebiz.enea.it/moda-ml/repository/codelist/draft/gc_T30.xml (XPath KCOrdStatus/KCSbody/KCSitem/phaseProgress/phase/packages/handlingChar/yarnPack/yarnReel/@reelMat) [Optional]</p>
@reelType	<p>type of package used for a yarn product - base type: string, cod. table: T29 http://www.ebiz.enea.it/moda-ml/repository/codelist/draft/gc_T29.xml (XPath KCOrdStatus/KCSbody/KCSitem/phaseProgress/phase/packages/handlingChar/yarnPack/yarnReel/@reelType) [Required]</p>
@role	<p>Third Party role qualifier - base type: string, cod. table: NT2 http://www.ebiz.enea.it/moda-ml/repository/codelist/draft/gc_NT2.xml (XPath KCOrdStatus/KCSheader/thirdParty/@role) [Required] (XPath KCOrdStatus/KCSbody/KCSitem/phaseProgress/phase/thirdParty/@role) [Required]</p>
season	<p>sale season; defined as: season (1 crt) + year (4 crt) - season: S/S=1 A/W=2 Spring=3 Summer=4 Autumn=5 Winter=6: for more than four seasons use alphabetic sequence: 1st season=A 2nd season=B etc.etc. - base type: string, max length: 15, (XPath KCOrdStatus/KCSheader/refDoc/season) 0-1 - note: <i>here indicates the season to which the referenced document belongs</i> (XPath KCOrdStatus/KCSbody/KCSitem/phaseProgress/phase/refDoc/season) 0-1 - note: <i>here indicates the season to which the referenced document belongs</i> (XPath KCOrdStatus/KCSbody/KCSitem/refDoc/season) 0-1 - note: <i>here indicates the season to which the referenced document belongs</i></p>
@sender	<p>qualifier that specifies the Party issuing of the document - base type: boolean, (XPath KCOrdStatus/KCSheader/buyer/@sender) [Optional] - nota: <i>This attribute is mandatory when the STYLESHEET must be used</i> (XPath KCOrdStatus/KCSbody/KCSitem/phaseProgress/phase/thirdParty/@sender) [Optional] - nota: <i>This attribute is mandatory when the STYLESHEET must be used</i> (XPath KCOrdStatus/KCSheader/subContractor/@sender) [Optional] - nota: <i>This attribute is mandatory when the STYLESHEET must be used</i></p>

	<p>(XPath KCOrdStatus/KCShheader/thirdParty/@sender) [Optional] - nota: <i>This attribute is mandatory when the STYLESHEET must be used</i></p>
serialN	<p>serial number used for the identification of a physical unit - base type: string, max length: 250, (XPath KCOrdStatus/KCSbody/KCSitem/progress/itemsList/itemIdentification/serialN) 1-9</p> <hr/> <p>AAAA-WARNING! - text not AVAILABLE n. 245 - In=en - note: <i>multiple values of serialN are allowed for different representations of the serial identifier of the same product unit. Instances of serialN must differ at least for one value of numberingOrg and idQualifier.</i></p> <p>(XPath KCOrdStatus/KCSbody/KCSitem/phaseProgress/phase/lotDetails/csRange/sizeMatrix/sizeRow/itemsList/itemIdentification/serialN) 1-9</p> <hr/> <p>AAAA-WARNING! - text not AVAILABLE n. 245 - In=en - note: <i>multiple values of serialN are allowed for different representations of the serial identifier of the same product unit. Instances of serialN must differ at least for one value of numberingOrg and idQualifier.</i></p> <p>(XPath KCOrdStatus/KCSbody/KCSitem/phaseProgress/itemsList/itemIdentification/serialN) 1-9</p> <hr/> <p>AAAA-WARNING! - text not AVAILABLE n. 245 - In=en - note: <i>multiple values of serialN are allowed for different representations of the serial identifier of the same product unit. Instances of serialN must differ at least for one value of numberingOrg and idQualifier.</i></p> <p>(XPath KCOrdStatus/KCSbody/KCSitem/phaseProgress/csRange/sizeMatrix/sizeRow/itemsList/itemIdentification/serialN) 1-9</p> <hr/> <p>AAAA-WARNING! - text not AVAILABLE n. 245 - In=en - note: <i>multiple values of serialN are allowed for different representations of the serial identifier of the same product unit. Instances of serialN must differ at least for one value of numberingOrg and idQualifier.</i></p> <p>(XPath KCOrdStatus/KCSbody/KCSitem/csRange/sizeMatrix/sizeRow/itemsList/itemIdentification/serialN) 1-9</p> <hr/> <p>AAAA-WARNING! - text not AVAILABLE n. 245 - In=en - note: <i>multiple values of serialN are allowed for different representations of the serial identifier of the same product unit. Instances of serialN must differ at least for one value of numberingOrg and idQualifier.</i></p>
size	<p>size number of a fashion product (knitwear, clothing, ..) - base type: string, max length: 15, (XPath KCOrdStatus/KCSbody/KCSitem/csRange/sizeMatrix/sizeRow/size) 1-1 (XPath KCOrdStatus/KCSbody/KCSitem/phaseProgress/phase/garConsumptionSet/garmentPartCode/size) 0-1 (XPath KCOrdStatus/KCSbody/KCSitem/phaseProgress/csRange/sizeMatrix/sizeRow/size) 1-1 (XPath KCOrdStatus/KCSbody/KCSitem/garmentCode/garmentCodeB/size) 0-1 (XPath KCOrdStatus/KCSbody/KCSitem/garmentPartCode/size) 0-1 (XPath KCOrdStatus/KCSbody/KCSitem/phaseProgress/phase/garConsumptionSet/garmentCode/garmentCodeB/size) 0-1 (XPath KCOrdStatus/KCSbody/KCSitem/phaseProgress/phase/lotDetails/csRange/sizeMatrix/sizeRow/size) 1-1</p>
@sizeSystemBase	<p>base of the size system - base type: string, cod. table: T423 http://www.ebiz.enea.it/moda-ml/repository/codelist/draft/gc_T423.xml (XPath KCOrdStatus/KCSbody/KCSitem/phaseProgress/csRange/@sizeSystemBase) [Optional] (XPath KCOrdStatus/KCSbody/KCSitem/csRange/@sizeSystemBase) [Optional] (XPath KCOrdStatus/KCSbody/KCSitem/phaseProgress/phase/lotDetails/csRange/@sizeSystemBase) [Optional]</p>
@sizeSystemID	<p>the identifier of the size system. - base type: string, (XPath KCOrdStatus/KCSbody/KCSitem/csRange/@sizeSystemID) [Optional] (XPath KCOrdStatus/KCSbody/KCSitem/phaseProgress/phase/lotDetails/csRange/@sizeSystemID) [Optional]</p>

	(XPath KCOrdStatus/KCSbody/KCSitem/phaseProgress/csRange/@sizeSystemID) [Optional]
@sizeSystemNat	nation or agency identifying the size system - base type: string, cod. table: T421 http://www.ebiz.enea.it/moda-ml/repository/codelist/draft/gc_T421.xml (XPath KCOrdStatus/KCSbody/KCSitem/phaseProgress/csRange/@sizeSystemNat) [Optional] (XPath KCOrdStatus/KCSbody/KCSitem/phaseProgress/phase/lotDetails/csRange/@sizeSystemNat) [Optional] (XPath KCOrdStatus/KCSbody/KCSitem/csRange/@sizeSystemNat) [Optional]
@sizeSystemSeg	market segment identifying the size system - base type: string, cod. table: T422 http://www.ebiz.enea.it/moda-ml/repository/codelist/draft/gc_T422.xml (XPath KCOrdStatus/KCSbody/KCSitem/phaseProgress/phase/lotDetails/csRange/@sizeSystemSeg) [Optional] (XPath KCOrdStatus/KCSbody/KCSitem/phaseProgress/csRange/@sizeSystemSeg) [Optional] (XPath KCOrdStatus/KCSbody/KCSitem/csRange/@sizeSystemSeg) [Optional]
sortableIndicator	It states if the item can be automatically sorted. - base type: boolean, (XPath KCOrdStatus/KCSbody/KCSitem/phaseProgress/phase/packages/handlingChar/sortableIndicator) 0-1
stackabilityLevel	This value indicates the level at which the item can be stacked. - base type: integer, (XPath KCOrdStatus/KCSbody/KCSitem/phaseProgress/phase/packages/handlingChar/stackabilityLevel) 0-1
statusReason	the reason for the indicated status. - base type: string, (XPath KCOrdStatus/KCSheader/statusReason) 0-1 (XPath KCOrdStatus/KCSbody/KCSitem/phaseProgress/statusReason) 0-1
street	street and building number identifying a location - base type: string, max length: 80, (XPath KCOrdStatus/KCSbody/KCSitem/phaseProgress/phase/thirdParty/street) 0-1 (XPath KCOrdStatus/KCSheader/subContractor/street) 0-1 (XPath KCOrdStatus/KCSheader/buyer/street) 0-1 (XPath KCOrdStatus/KCSheader/thirdParty/street) 0-1
subCountry	short name or code of the sub-country entity - base type: string, max length: 9, (XPath KCOrdStatus/KCSbody/KCSitem/phaseProgress/phase/thirdParty/subCountry) 0-1 (XPath KCOrdStatus/KCSheader/buyer/subCountry) 0-1 (XPath KCOrdStatus/KCSheader/subContractor/subCountry) 0-1 (XPath KCOrdStatus/KCSheader/thirdParty/subCountry) 0-1
subDept	name or code of a contact department within a Party - base type: string, max length: 40, (XPath KCOrdStatus/KCSheader/thirdParty/subDept) 0-1 (XPath KCOrdStatus/KCSbody/KCSitem/phaseProgress/phase/thirdParty/subDept) 0-1 (XPath KCOrdStatus/KCSheader/subContractor/subDept) 0-1 (XPath KCOrdStatus/KCSheader/buyer/subDept) 0-1
@TID	serial number wired into the RFID chip - base type: string, (XPath KCOrdStatus/KCSbody/KCSitem/phaseProgress/phase/packages/EPClist/EPC/@TID) [Optional]
@uid	unique element identifier within the xml document - base type: string, (XPath KCOrdStatus/KCSbody/KCSitem/refDoc/attachment/@uid) [Optional]

	<p>(XPath KCOrdStatus/KCSbody/KCSitem/phaseProgress/phase/refDoc/attachment/@uid) [Optional]</p> <p>(XPath KCOrdStatus/KCSheader/refDoc/attachment/@uid) [Optional]</p>
@um	<p>specification of the unit of measure</p> <p>- base type: string, cod. table: NT7</p> <p>http://www.ebiz.enea.it/moda-ml/repository/codelist/draft/gc_NT7.xml</p> <p>(XPath KCOrdStatus/KCSbody/KCSitem/phaseProgress/phase/lotDetails/csRange/sizeMatrix/sizeRow/qty/@um) [Required]</p> <p>(XPath KCOrdStatus/KCSbody/KCSitem/phaseProgress/phase/packages/handlingChar/volume/@um) [Required]</p> <p>(XPath KCOrdStatus/KCSbody/KCSitem/phaseProgress/phase/packages/handlingChar/grossWeight/@um) [Required]</p> <p>(XPath KCOrdStatus/KCSbody/KCSitem/phaseProgress/phase/packages/handlingChar/netWeight/@um) [Required]</p> <p>(XPath KCOrdStatus/KCSbody/KCSitem/phaseProgress/phase/qty/@um) [Required]</p> <p>(XPath KCOrdStatus/KCSbody/KCSitem/phaseProgress/phase/packages/packageDim/width/@um) [Required]</p> <p>(XPath KCOrdStatus/KCSbody/KCSitem/phaseProgress/phase/packages/packageDim/length/@um) [Required]</p> <p>(XPath KCOrdStatus/KCSbody/KCSitem/phaseProgress/phase/packages/handlingChar/yarnPack/yarnReel/yarnReelQty/@um) [Required]</p> <p>(XPath KCOrdStatus/KCSbody/KCSitem/phaseProgress/phase/packages/itemsPerPackage/@um) [Required]</p> <p>(XPath KCOrdStatus/KCSbody/KCSitem/phaseProgress/phase/packages/handlingChar/yarnPack/yarnReel/yarnReelD/@um) [Required]</p> <p>(XPath KCOrdStatus/KCSbody/KCSitem/phaseProgress/csRange/sizeMatrix/sizeRow/qty/@um) [Required]</p> <p>(XPath KCOrdStatus/KCSbody/KCSitem/phaseProgress/phase/garConsumptionSet/garConsumption/qtyVariance/@um) [Optional]</p> <p>(XPath KCOrdStatus/KCSbody/KCSitem/csRange/sizeMatrix/sizeRow/qty/@um) [Required]</p> <p>(XPath KCOrdStatus/KCSbody/KCSitem/phaseProgress/phase/lotDetails/qty/@um) [Required]</p> <p>(XPath KCOrdStatus/KCSbody/KCSitem/phaseProgress/phase/price/@um) [Optional]</p> <p>- nota: <i>Unit of measure of the product to which the price is referred (price per meter)</i></p> <p>(XPath KCOrdStatus/KCSbody/KCSitem/progress/qty/@um) [Required]</p> <p>(XPath KCOrdStatus/KCSbody/KCSitem/phaseProgress/phase/packages/minItemsPerPackage/@um) [Required]</p> <p>(XPath KCOrdStatus/KCSbody/KCSitem/phaseProgress/phase/packages/packageDim/height/@um) [Required]</p> <p>(XPath KCOrdStatus/KCSbody/KCSitem/phaseProgress/phase/packages/handlingChar/yarnPack/yarnReel/yarnReelH/@um) [Required]</p> <p>(XPath KCOrdStatus/KCSbody/KCSitem/phaseProgress/phase/garConsumptionSet/garConsumption/qty/@um) [Required]</p>
uri	<p>Uniform Resource Identifier (URI) that identifies the external object as an Internet resource</p> <p>- base type: normalizedString,</p> <p>(XPath KCOrdStatus/KCSbody/KCSitem/refDoc/attachment/externalReference/uri) 1-1</p> <p>(XPath KCOrdStatus/KCSheader/refDoc/attachment/externalReference/uri) 1-1</p> <p>(XPath KCOrdStatus/KCSbody/KCSitem/phaseProgress/phase/refDoc/attachment/externalReference/uri) 1-1</p>
@useProfile	<p>use profile to which the present document is compliant if it was agreed by the parties. It is suggested a URI with reference to the firms or the URL of the profile.</p> <p>- base type: string,</p> <p>(XPath KCOrdStatus/@useProfile) [Optional]</p>

variantCode	Code of variant used for fashion product. - base type: string, (XPath KCOrdStatus/KCSbody/KCSitem/phaseProgress/ csRange/garmentVariant/variantCode) 1-1 (XPath KCOrdStatus/KCSbody/KCSitem/csRange/garmentVariant/variantCode) 1-1 (XPath KCOrdStatus/KCSbody/KCSitem/phaseProgress/ phase/lotDetails/csRange/garmentVariant/variantCode) 1-1 (XPath KCOrdStatus/KCSbody/KCSitem/phaseProgress/ phase/garConsumptionSet/garmentCode/garmentCodeB/garmentVariant/var iantCode) 1-1 (XPath KCOrdStatus/KCSbody/KCSitem/garmentCode/ garmentCodeB/garmentVariant/variantCode) 1-1
variantType	Type of variant used for fashion product (examples: 'treatment', 'washing typ e', 'size class',...) - base type: string, (XPath KCOrdStatus/KCSbody/KCSitem/csRange/garmentVariant/variantType) 1-1 (XPath KCOrdStatus/KCSbody/KCSitem/phaseProgress/ csRange/garmentVariant/variantType) 1-1 (XPath KCOrdStatus/KCSbody/KCSitem/phaseProgress/ phase/garConsumptionSet/garmentCode/garmentCodeB/garmentVariant/var iantType) 1-1 (XPath KCOrdStatus/KCSbody/KCSitem/garmentCode/ garmentCodeB/garmentVariant/variantType) 1-1 (XPath KCOrdStatus/KCSbody/KCSitem/phaseProgress/ phase/lotDetails/csRange/garmentVariant/variantType) 1-1
@varReason	reason for the difference between the two quantities specified by the context - base type: string, cod. table: T46 http://www.ebiz.enea.it/moda-ml/repository/codelist/draft/gc_T46.xml (XPath KCOrdStatus/KCSbody/KCSitem/phaseProgress/ phase/garConsumptionSet/garConsumption/qtyVariance/@varReason) [Opti onal]
@VAT	VAT rate or code (DEPRECATED, use dtScheme element) - base type: string, cod. table: NT16 http://www.ebiz.enea.it/moda-ml/repository/codelist/draft/gc_NT16.xml (XPath KCOrdStatus/KCSbody/KCSitem/phaseProgress/ phase/thirdParty/@VAT) [Optional] (XPath KCOrdStatus/KCSbody/KCSitem/lineN/@VAT) [Optional] - nota: <i>Deprecated, prefer dtScheme when available.</i> (XPath KCOrdStatus/KCSheader/thirdParty/@VAT) [Optional]
@version	Dictionary version from which the instance has been created - base type: string, cod. table: NT100 http://www.ebiz.enea.it/moda-ml/repository/codelist/draft/gc_NT100.xml (XPath KCOrdStatus/@version) [Optional] [Default= draft]
volume	effective volume of a specified object - base type: decimal, min inclusive: 0, fraction digits: 2, (XPath KCOrdStatus/KCSbody/KCSitem/phaseProgress/ phase/packages/handlingChar/volume) 0-1
width	effective width of a specified object - base type: decimal, min inclusive: 0, fraction digits: 2, (XPath KCOrdStatus/KCSbody/KCSitem/phaseProgress/ phase/packages/packageDim/width) 0-1
yarnConeAngle	tapering angle of the cone on which a yarn is reeled - base type: positiveInteger, (XPath KCOrdStatus/KCSbody/KCSitem/phaseProgress/ phase/packages/handlingChar/yarnPack/yarnReel/yarnConeAngle) 0-1
yarnOutWrap	code specifying the type of outer wrapping or packing of a yarn - base type: string, cod. table: T33 http://www.ebiz.enea.it/moda-ml/repository/codelist/draft/gc_T33.xml (XPath KCOrdStatus/KCSbody/KCSitem/phaseProgress/ phase/packages/handlingChar/yarnPack/yarnOutWrap) 0-1

yarnOutWrapText	free text specifying the type of outer wrapping or packing of a yarn - base type: string, max length: 250, (XPath KCOrdStatus/KCSbody/KCSitem/phaseProgress/ phase/packages/handlingChar/yarnPack/yarnOutWrapText) 0-1
yarnReelID	diameter of the bobbin used for a yarn product - base type: decimal, min inclusive: 0, fraction digits: 2, (XPath KCOrdStatus/KCSbody/KCSitem/phaseProgress/ phase/packages/handlingChar/yarnPack/yarnReel/yarnReelID) 0-1
yarnReelH	height of the bobbin used a yarn product - base type: decimal, min inclusive: 0, fraction digits: 2, (XPath KCOrdStatus/KCSbody/KCSitem/phaseProgress/ phase/packages/handlingChar/yarnPack/yarnReel/yarnReelH) 0-1
yarnReelQty	quantity of yarn (by weight or length) wound upon a bobbin - base type: decimal, min inclusive: 0, fraction digits: 2, (XPath KCOrdStatus/KCSbody/KCSitem/phaseProgress/ phase/packages/handlingChar/yarnPack/yarnReel/yarnReelQty) 0-2
yarnReelWrap	type of wrapping in which a package of yarn is wrapped - base type: string, cod. table: T32 http://www.ebiz.enea.it/moda-ml/repository/codelist/draft/gc_T32.xml (XPath KCOrdStatus/KCSbody/KCSitem/phaseProgress/ phase/packages/handlingChar/yarnPack/yarnInWrap/yarnReelWrap) 1-1

2.3 Suggested best practices

KCOrdStatus/KCSbody/KCSitem/progress/qty (net quantity of the article or object correlated, qualified by the function of the document (ordering, delivering, ..) and by the context)

this element can have two instances only if the units of measure are different

KCOrdStatus/KCSbody/KCSitem/phaseProgress/phase/qty (net quantity of the article or object correlated, qualified by the function of the document (ordering, delivering, ..) and by the context)

this element can have two instances only if the units of measure are different

KCOrdStatus/KCSbody/KCSitem/progress/itemsList/

itemIdentification/serialN (serial number used for the identification of a physical unit)

in the case of garment with RFID for anti-counterfeiting, RFID EPCGlobal for logistics and NFC for the customer experience there should be three serial elements with pairs of attributes numberingOrg/idQualifier: "CL"/"RFID", "GS1"/"RFID", "CL"/"NFC".

KCOrdStatus/KCSbody/KCSitem/phaseProgress/

phase/lotDetails/csRange/sizeMatrix/sizeRow/itemsList/itemIdentification/serialN (serial number used for the identification of a physical unit)

in the case of garment with RFID for anti-counterfeiting, RFID EPCGlobal for logistics and NFC for the customer experience there should be three serial elements with pairs of attributes numberingOrg/idQualifier: "CL"/"RFID", "GS1"/"RFID", "CL"/"NFC".

KCOrdStatus/KCSbody/KCSitem/phaseProgress/

itemsList/itemIdentification/serialN (serial number used for the identification of a physical unit)

in the case of garment with RFID for anti-counterfeiting, RFID EPCGlobal for logistics and NFC for the customer experience there should be three serial elements with pairs of attributes numberingOrg/idQualifier: "CL"/"RFID", "GS1"/"RFID", "CL"/"NFC".

KCOrdStatus/KCSbody/KCSitem/phaseProgress/

csRange/sizeMatrix/sizeRow/itemsList/itemIdentification/serialN (serial number used for the identification of a physical unit)

in the case of garment with RFID for anti-counterfeiting, RFID EPCGlobal for logistics and NFC for the customer experience there should be three serial elements with pairs of attributes numberingOrg/idQualifier: "CL"/"RFID", "GS1"/"RFID", "CL"/"NFC".

KCOrdStatus/KCSbody/KCSitem/csRange/sizeMatrix/

sizeRow/itemsList/itemIdentification/serialN (serial number used for the identification of a physical unit)

in the case of garment with RFID for anti-counterfeiting, RFID EPCGlobal for logistics and NFC for the customer experience there should be three serial elements with pairs of attributes numberingOrg/idQualifier: "CL"/"RFID", "GS1"/"RFID", "CL"/"NFC".

2.4 Enumeration tables

List of enumeration tables used in the XML document. You can find the corresponding codes at:
<http://www.ebiz-tcf.eu/moda-ml/imple/moda-ml-draft.asp?lingua=en&pag=6>

NT100 - eBIZ TCFUpstream version
NT16 - VAT rate or code
NT18 - message function
NT2 - third party qualifier
NT20 - price qualifier
NT29 - format of a date
NT39 - consumption type
NT51 - Filling Criterion for Package homogeneity
NT6 - coding system owner/issuer
NT7 - unit of measure
T10 - ISO3166 - Country
T11 - transport package type
T21 - type of document
T29 - type of yarn package
T30 - support of yarn package - material
T32 - yarn reel wrapping type
T33 - yarn outer packing
T4 - fabric piece inner packing (wrapping) 1
T421 - size system: nationality
T422 - size system: market segment
T423 - size system: base
T44 - additional code type
T46 - quantity variance reason
T48 - garment part type
T5 - fabric piece inner packing (wrapping) 2
T6 - fabric piece outer packing
T7 - manufacturing status
T9 - ISO4217 - Currency

ACKNOWLEDGEMENT



This action is part of the eBIZ-4.0 project, which has received funding from the European Union's COSME Programme (2014 - 2020).

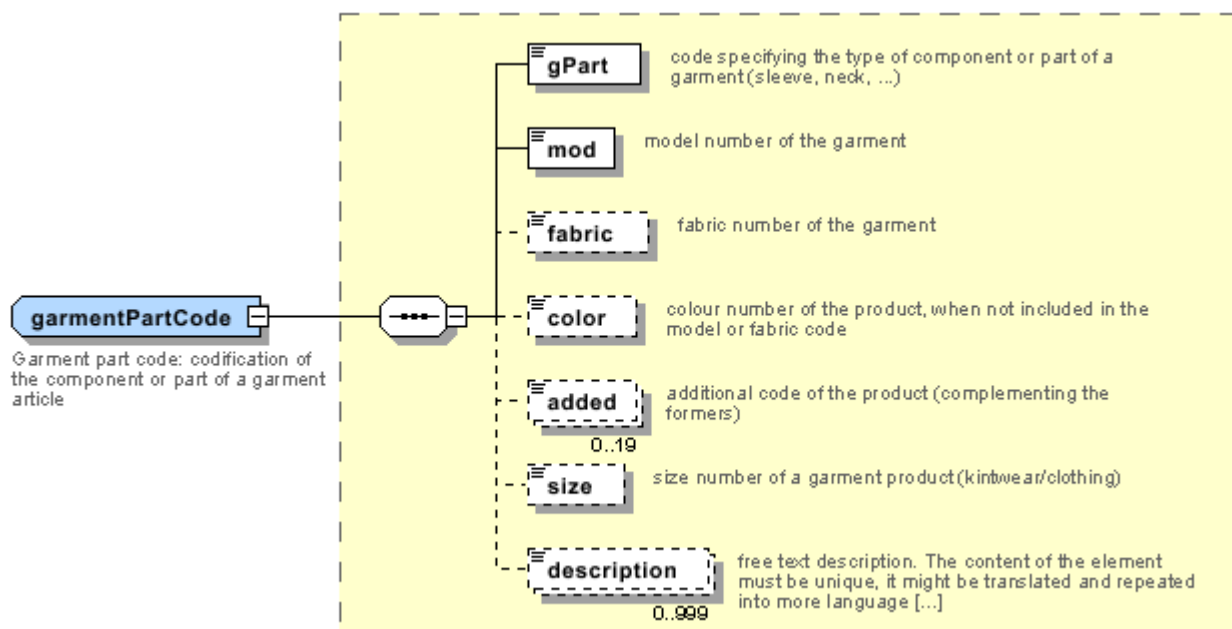
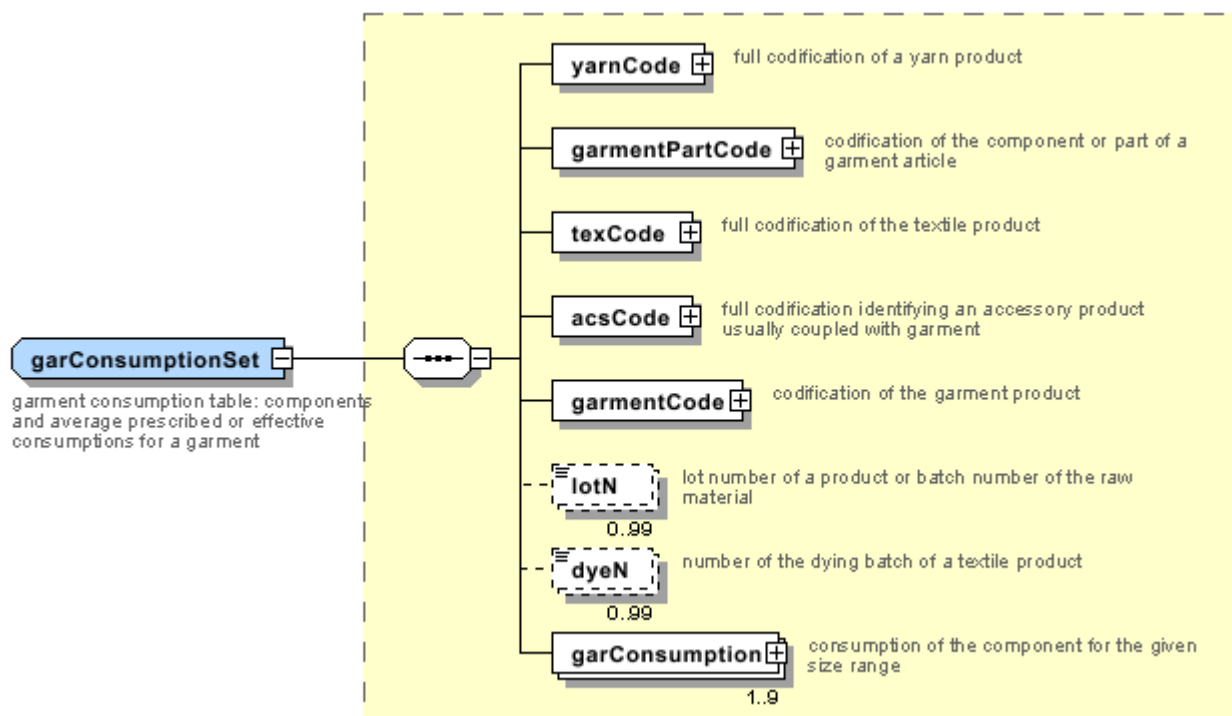
DISCLAIMER

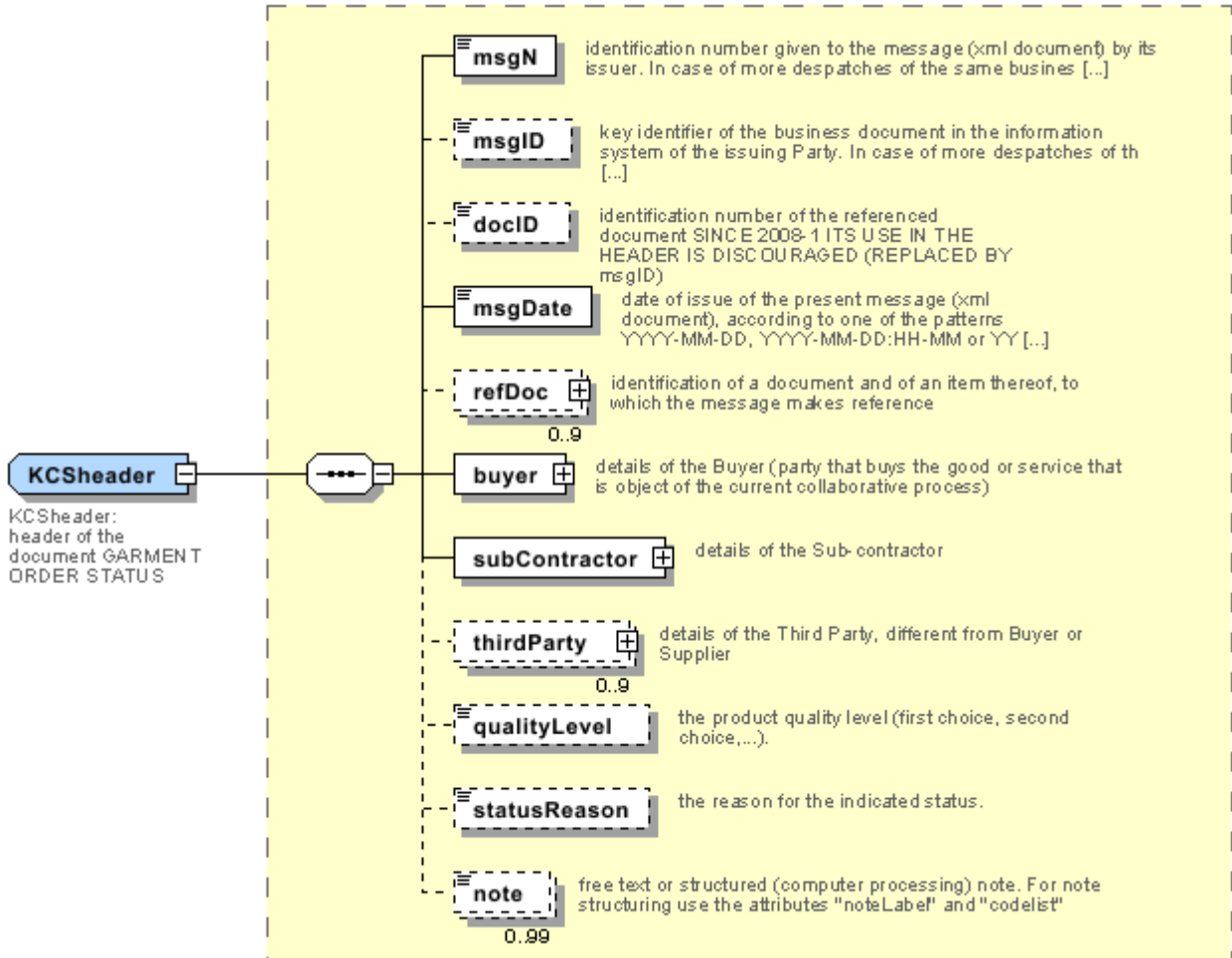
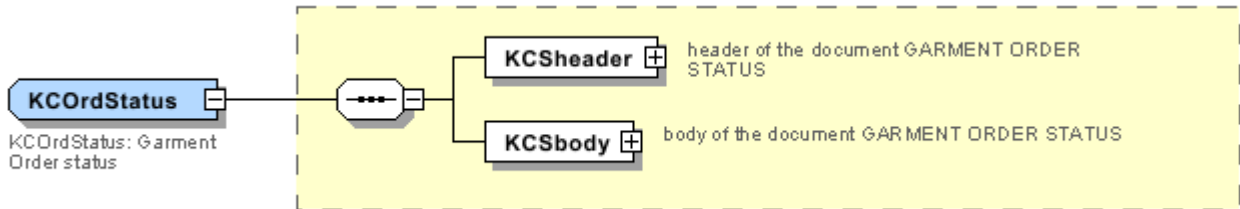
The content of this document represents the views of the authors only and is their sole responsibility; it cannot be considered to reflect the views of the European Commission and/or the Executive Agency for Small and Medium-sized Enterprises (EASME) or any other body of the European Union.

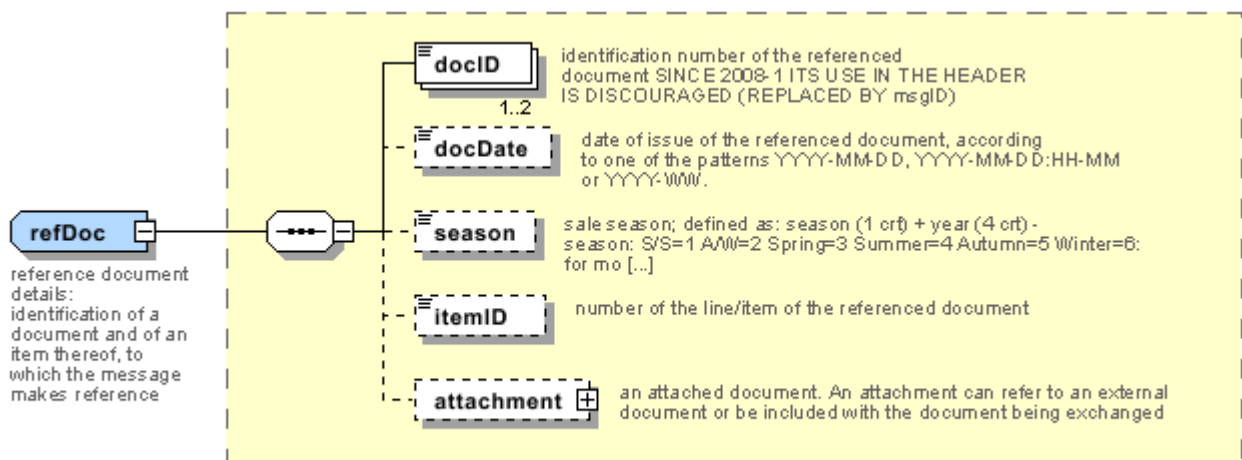
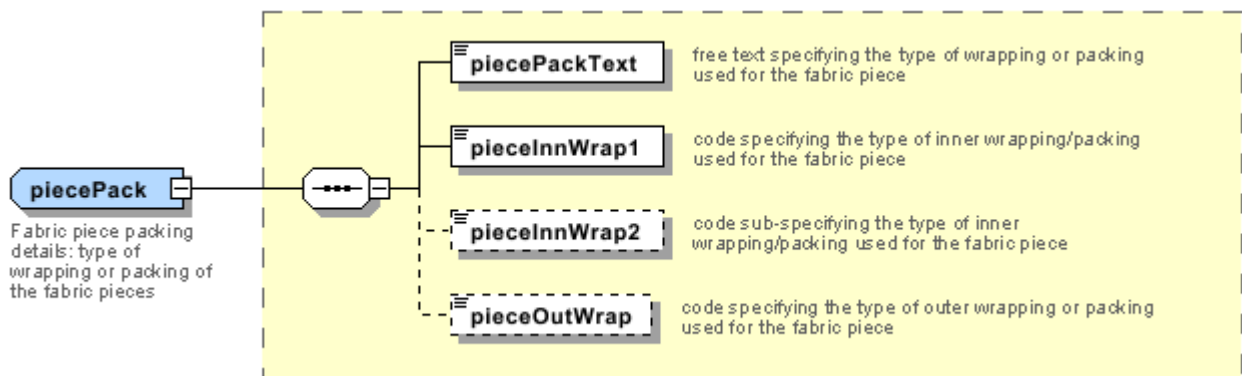
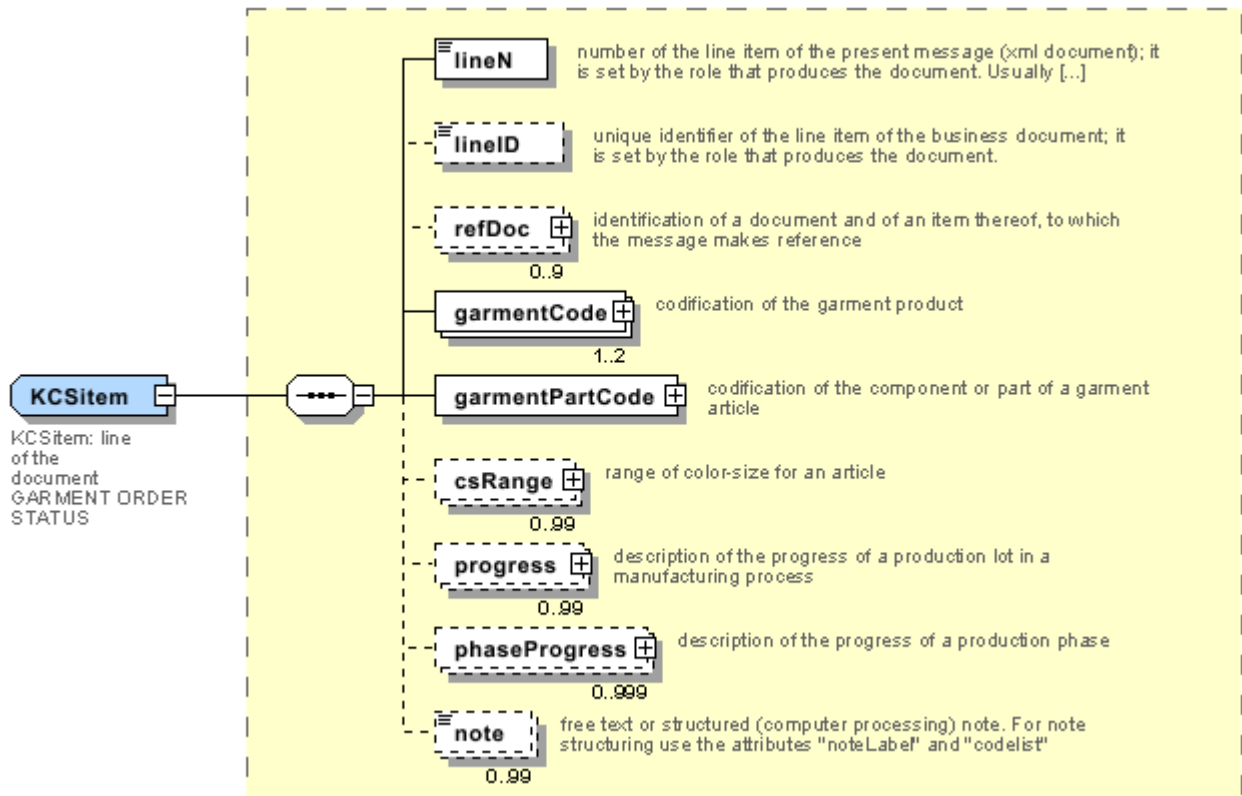
The European Commission and the Agency do not accept any responsibility for use that may be made of the information it contains.

Annex A

Representative images of the principal complex elements' structure.







Annex B

NT100 - eBIZ TCFUpstream version

dictionary version

Agency name: eBIZ

tabella cod.: NT100

File codes list (Generic code): http://www.ebiz.enea.it/moda-ml/repository/codelist/draft/gc_NT100.xml

Code	Description	Adoption note	Date of insertion
2013-1	v2013-1		01/07/2013
2018-1	v2018-1		04/11/2018
draft	draft		08/09/2017

NT16 - VAT rate or code

VAT rate or code (DEPRECATED, use dtScheme element)

tabella cod.: NT16

File codes list (Generic code): http://www.ebiz.enea.it/moda-ml/repository/codelist/draft/gc_NT16.xml

NT18 - message function

function performed by the present message with regards to the transmission

Agency name: eBIZ

tabella cod.: NT18

File codes list (Generic code): http://www.ebiz.enea.it/moda-ml/repository/codelist/draft/gc_NT18.xml

Code	Description	Adoption note	Date of insertion
CA	delete this document		01/07/2013
CP	copy		
OR	original		
RC	re-transmission for data correction		
RT	re-transmission		

NT2 - third party qualifier

Third Party role qualifier

Agency name: eBIZ

tabella cod.: NT2

File codes list (Generic code): http://www.ebiz.enea.it/moda-ml/repository/codelist/draft/gc_NT2.xml

Code	Description	Adoption note	Date of insertion
AG	Sales Agent		
CO	Quality Controller		
DC	Response to		
DF	Invoicee		
DI	Copy to (CC)		28/10/2014
DM	Consignee		
DP	Consignment address (Delivery Party)		
IM	Importer		
OR	Originator		10/09/2014
SP	Forwarder		
TX	Tax Representative		

NT20 - price qualifier

type of price with reference to discount and taxes

Agency name: eBIZ

tabella cod.: NT20

File codes list (Generic code): http://www.ebiz.enea.it/moda-ml/repository/codelist/draft/gc_NT20.xml

Code	Description	Adoption note	Date of insertion
GET	gross excluding taxes		
GIT	gross including taxes		
NET	net excluding taxes		
NIT	net including taxes		

NT29 - format of a date

format used for the date

Agency name: eBIZ

tabella cod.: NT29

File codes list (Generic code): http://www.ebiz.enea.it/moda-ml/repository/codelist/draft/gc_NT29.xml

Code	Description	Adoption note	Date of insertion
D	YYYY-MM-DD		
M	YYYY-MM-DD:HH-MM		
W	YYYY-WW		

NT39 - consumption type

indicates what the indicated consumption quantity is referred to

Agency name: eBIZ

tabella cod.: NT39

File codes list (Generic code): http://www.ebiz.enea.it/moda-ml/repository/codelist/draft/gc_NT39.xml

Code	Description	Adoption note	Date of insertion
BOL	required quantity to obtain the indicated total amount of product (Bill of Loading)		25/07/2018
BO M	required quantity for unit of product (Bill of material)		25/07/2018

NT51 - Filling Criterion for Package homogeneity

Filling Criterion for Package homogeneity

Agency name: eBIZ

tabella cod.: NT51

File codes list (Generic code): http://www.ebiz.enea.it/moda-ml/repository/codelist/draft/gc_NT51.xml

Code	Description	Adoption note	Date of insertion
COL	Colour		08/09/2017
MOD	Model		08/09/2017
SIZ	Size		08/09/2017

NT6 - coding system owner/issuer

code specifying the organisation who has created or owns the coding or numbering system

Agency name: eBIZ

tabella cod.: NT6

File codes list (Generic code): http://www.ebiz.enea.it/moda-ml/repository/codelist/draft/gc_NT6.xml

Code	Description	Adoption note	Date of insertion
CL	Customer/buyer		
CO	Quality Controller		
EN	GS1 (ex-EAN International)		
ES	e-Stockflow		
FO	Supplier		
GS	GS1		01/07/2013
MF	VAT identifier		
ML	Moda-ML		
SP	Service Provider		

NT7 - unit of measure

specification of the unit of measure, it is a sub set of table Unit of Measure Code - UN/ECE REC 20 delivered by United Nations Economic Commission for Europe (UN/ECE)

Agency name: eBIZ / UN/ECE

tabella cod.: NT7

File codes list (Generic code): http://www.ebiz.enea.it/moda-ml/repository/codelist/draft/gc_NT7.xml

Other link: <http://docs.oasis-open.org/ubl/os-UBL-2.1/cl/gc/default/UnitOfMeasureCode-2.1.gc#>

Code	Description	Adoption note	Date of insertion
CMK	square centimetre		20/12/2017
CMQ	cubic centimetre		20/12/2017
CMT	centimetre		
CNE	centiNewton		
CO2TON	ton of CO2		10/09/2014
COUPLES	couples		
DMQ	cubic decimetre		
E37	pixel		11/04/2018
GRM	gram		
HUR	hour		
INH	inch		

KGM	kilogram		
KMT	kilometer		
KWH	kilowatthours		10/09/2014
LBR	pound		
MIN	minute		
MMK	centimetre		20/12/2017
MMK	square millimetre		20/12/2017
MTK	square metre		20/12/2017
MTQ	cubic metre		
MTR	metre		
NMB	numero		
ONZ	ounce		
P1	percent		
PPM	parts per milion		
PZ	piece		
RPM	rounds per metre		
YRD	yard		

T10 - ISO3166 - Country

code of the nation

Agency name: ISO

tabella cod.: T10

File codes list (Generic code): http://www.ebiz.enea.it/moda-ml/repository/codelist/draft/gc_T10.xml

Table not printed: there are 239 elements, more than the maximum specified for printing: 99.

T11 - transport package type

code specifying the type of package used for transport and delivery (subset of UN/ECE 8053 and UBL TransportEquipmentTypeCode-2.1)

Agency name: eBIZ

tabella cod.: T11

File codes list (Generic code): http://www.ebiz.enea.it/moda-ml/repository/codelist/draft/gc_T11.xml

Other link: <http://docs.oasis-open.org/ubl/os-UBL-2.1/cl/gc/default/TransportEquipmentTypeCode-2.1.gc#>

Code	Description	Adoption note	Date of insertion
------	-------------	---------------	-------------------

4A	box, steel		
4C	box, wood		
4G	Box, fibreboard		01/08/2018
4H	Box, plastic		01/08/2018
5H	Bag, woven plastic		01/08/2018
5L	Bag, textile		01/08/2018
5M	Bag, paper		
AJ	Cone		01/08/2018
BL	Bale, compressed		01/08/2018
BN	Bale, non-compressed		01/08/2018
BX	Box		
CI	Canister		01/08/2018
CL	Coil		01/08/2018
CN	Container, not otherwise specified as transport equipment		01/08/2018
CS	Case		01/08/2018
CT	Carton		01/08/2018
EC	Bag, plastic		01/08/2018
ED	Case, with pallet base		01/08/2018
EE	Case, with pallet base, wooden		01/08/2018
EF	Case, with pallet base, cardboard		01/08/2018
EG	Case, with pallet base, plastic		01/08/2018
EH	Case, with pallet base, metal		01/08/2018
FX	Bag, flexible container		01/08/2018
HN	Hanger		01/08/2018
NE	unpacked		
NF	Unpacked or unpackaged, single unit		01/08/2018
NG	Unpacked or unpackaged, multiple units		01/08/2018
OA	Pallet, CHEP 40 cm x 60 cm		01/08/2018
OB	Pallet, CHEP 80 cm x 120 cm		01/08/2018
OC	Pallet, CHEP 100 cm x 120 cm		01/08/2018
OD	Pallet, AS 4068-1993		01/08/2018
OE	Pallet, ISO T11		01/08/2018
PE	europallet (80x120)		
PX	pallet		
QS	box, plastic, solid		

RJ	Rack, clothing hanger		01/08/2018
RL	Reel		01/08/2018
SO	Spool		01/08/2018
TU	tube		
XD	bag, plastics film		
XK	bag,paper, multi-wall, water resistant		
ZZ	Mutually defined		01/08/2018

T21 - type of document

type or class to which the referenced document belongs

Agency name: eBIZ

tabella cod.: T21

File codes list (Generic code): http://www.ebiz.enea.it/moda-ml/repository/codelist/draft/gc_T21.xml

Code	Description	Adoption note	Date of insertion
BOR	blanket order		01/02/2018
CAT	Price catalogue - tech sheet		
CEO	Certificate of origin		13/04/2018
CER	Certificate		13/04/2018
COC	colour card		
CRN	Credit note		08/09/2017
CTO	Checking order		01/07/2013
CTR	Contract		
CXF	CxF3 file		01/07/2013
DAD	Darn order		
DDT	ddt		
DEA	Despatch advise		
DER	Despatch request		
DR	Document Request		02/12/2014
FOR	Forecast		02/12/2014
GSO	Garment stock offer		
GSX	Garment stock offer change		
INV	Invoice		
KCC	Knitting-Clothing Commission Order		02/12/2014
KCI	Garment in Work Inventory Report		02/12/2014

M2M	Made to Measure Production Order		02/12/2014
MAS	Master marker		
MCI	Visual merchandising instruction		13/04/2018
OCH	Order change		
OFF	Offer		
ORD	Purchase order		
ORP	Order response		
OSR	order status request		
OSS	Offer status		02/12/2014
OST	Order status		
OUR	our reference		
QR	Quality Report		02/12/2014
RAI	Raw Material in Work Inventory Report		02/12/2014
RDC	Raw dyeing commission order		
RDH	Raw dyeing order change		
RDR	Raw dyeing order response		
REA	Receiving advise		
REQ	Request for Offer		
RET	Return		02/12/2014
RSC	Spinning commission order		
RSH	Spinning order change		
RSR	Spinning order response		
SCL	process sheet		
TFC	Textile dyeing-finishing commission order		
TFX	Textile Dyeing-Finishing Order Change		02/12/2014
TPC	Textile printing commission order		
TPX	Textile Printing Order Change		02/12/2014
TWI	Textile in work inventory		
VMI	visual merchandising instructions		01/02/2018
WAC	Warping commission order		
WEC	Weaving commission order		
YDC	Yarn dyeing commission order		
YDH	Yarn dyeing order change		
YDR	Yarn dyeing order response		
YTC	Twisting commission order		

YWI	Yarn in work inventory		
-----	------------------------	--	--

T29 - type of yarn package

type of package (roll-up) used for a yarn product

Agency name: eBIZ

tabella cod.: T29

File codes list (Generic code): http://www.ebiz.enea.it/moda-ml/repository/codelist/draft/gc_T29.xml

Code	Description	Adoption note	Date of insertion
CIL	bobbin		
CON	cone		
HNK	hank, skein		01/07/2013
MUF	muff, cake		01/07/2013
SPL	spool		
TUB	tube		
XCO	supercone		

T30 - support of yarn package - material

type of material of which a package for yarn is made

Agency name: eBIZ

tabella cod.: T30

File codes list (Generic code): http://www.ebiz.enea.it/moda-ml/repository/codelist/draft/gc_T30.xml

Code	Description	Adoption note	Date of insertion
CA	cartoon		
DY	for soft package dyeing		
MT	metallic		01/07/2013
PL	plastic		

T32 - yarn reel wrapping type

type of wrapping in which a package of yarn is wrapped

Agency name: eBIZ

tabella cod.: T32

File codes list (Generic code): http://www.ebiz.enea.it/moda-ml/repository/codelist/draft/gc_T32.xml

Code	Description	Adoption note	Date of insertion
XA	without bag		
XB	paper bag		01/07/2013
XD	plastic film bag		

T33 - yarn outer packing

code specifying the type of outer wrapping or packing of a yarn

Agency name: eBIZ

tabella cod.: T33

File codes list (Generic code): http://www.ebiz.enea.it/moda-ml/repository/codelist/draft/gc_T33.xml

Code	Description	Adoption note	Date of insertion
00			
CB	cartoon box		
CC	cartoon box 18 reels		
CD	cartoon box 36 reels		
XD	plastic film		

T4 - fabric piece inner packing (wrapping) 1

code specifying the type of inner wrapping/packing used for the fabric piece

Agency name: eBIZ

tabella cod.: T4

File codes list (Generic code): http://www.ebiz.enea.it/moda-ml/repository/codelist/draft/gc_T4.xml

Code	Description	Adoption note	Date of insertion
A	Folded, whole width		
B	Folded, doubled		
C	Folded, tube products		
D	Spoiled, whole width		
E	Spoiled, doubled, pli: left		
F	Spoiled, doubled, pli: right		

G	Rolled, whole width, single item		
H	Rolled, whole width, several items		
I	Rolled, doubled		
J	Rolled, tube products		

T421 - size system: nationality

nation or agency identifying the size system

Agency name: eBIZ

tabella cod.: T421

File codes list (Generic code): http://www.ebiz.enea.it/moda-ml/repository/codelist/draft/gc_T421.xml

Code	Description	Adoption note	Date of insertion
DE	Germany		
ES	Spain		
EU	Europe		
FR	France		
IT	Italy		
UK	United Kingdom		
US	USA		
XX	International		

T422 - size system: market segment

market segment identifying the size system

Agency name: eBIZ

tabella cod.: T422

File codes list (Generic code): http://www.ebiz.enea.it/moda-ml/repository/codelist/draft/gc_T422.xml

Code	Description	Adoption note	Date of insertion
B	baby		
C	child		
K	kid		
M	man		
U	unisex		
W	woman		

T423 - size system: base

base of the size system

Agency name: eBIZ

tabella cod.: T423

File codes list (Generic code): http://www.ebiz.enea.it/moda-ml/repository/codelist/draft/gc_T423.xml

Code	Description	Adoption note	Date of insertion
1	arab numbers		
2	latin numbers		
3	symbols		
4	letters		
H	height		
L	length		
U	unic		
W	weight		

T44 - additional code type

qualifier of the additional coding of a product

Agency name: eBIZ

tabella cod.: T44

File codes list (Generic code): http://www.ebiz.enea.it/moda-ml/repository/codelist/draft/gc_T44.xml

Code	Description	Adoption note	Date of insertion
CC	colour card		
CL	sales collection		
CO	company identification code		08/09/2017
DY	dye number		
LT	lot number		
MDI	Made in		08/09/2017
MS	manufacturing state		
PKG	packaging		09/09/2014
PL	product line		
RGB	RGB value		

SE	selvedge code		
----	---------------	--	--

T46 - quantity variance reason

reason for the difference between the two quantities specified by the context

Agency name: eBIZ

tabella cod.: T46

File codes list (Generic code): http://www.ebiz.enea.it/moda-ml/repository/codelist/draft/gc_T46.xml

Code	Description	Adoption note	Date of insertion
DAM	damaged on receipt		
DIF	different article		
NAC	not acceptable for quality or conformance		
NRC	not received		

T48 - garment part type

code specifying the type of component or part of a garment (sleeve, neck, ...)

Agency name: eBIZ

tabella cod.: T48

File codes list (Generic code): http://www.ebiz.enea.it/moda-ml/repository/codelist/draft/gc_T48.xml

Code	Description	Adoption note	Date of insertion
BB	bottom back		01/08/2018
BF	bottom fore/front		01/08/2018
CO	collar		01/08/2018
CU	cuff		01/08/2018
DV	fore		
EM	embroidery		01/08/2018
OC	other component		01/08/2018
PO	pocket		01/08/2018
SC	back		
SL	sleeve		01/08/2018
TB	top back		01/08/2018
TF	top fore/front		01/08/2018

T5 - fabric piece inner packing (wrapping) 2

code specifying the sub-type of inner wrapping/packing used for the fabric piece

Agency name: eBIZ

tabella cod.: T5

File codes list (Generic code): http://www.ebiz.enea.it/moda-ml/repository/codelist/draft/gc_T5.xml

Code	Description	Adoption note	Date of insertion
A	Open		
B	Folded once, not looped		
C	Folded twice, not looped		
H	Folded once, looped		
I	Folded twice, looped		
J	Without inner object, right side inside		
K	On carton or spooling plank, right side inside		
L	On spool (for pressure sensitive products), right side inside		
M	Without inner object, left side inside		
N	On carton or spooling plank, left side inside		
O	On spool (for pressure sensitive products), left side inside		
P	Without inner object, right side inside (deprecated code)		
Q	On carton, right side inside		
R	On wooden stick, right side inside		
S	Without inner object, left side inside (deprecated code)		
T	On carton, left side inside		
U	On wooden stick, left side inside		

T6 - fabric piece outer packing

code specifying the type of outer wrapping or packing used for the fabric piece

Agency name: eBIZ

tabella cod.: T6

File codes list (Generic code): http://www.ebiz.enea.it/moda-ml/repository/codelist/draft/gc_T6.xml

Code	Description	Adoption note	Date of insertion
0	Not wrapped		

1	Totally wrapped		
2	Wrapped, one side open		
3	Wrapped, both sides open		
4	Wrapped, one side open, with show corner		
5	Wrapped in cartons		
6	Double wrapped		

T7 - manufacturing status

code of the manufacturing stage used to describe the progress in the production cycle

Agency name: eBIZ

tabella cod.: T7

File codes list (Generic code): http://www.ebiz.enea.it/moda-ml/repository/codelist/draft/gc_T7.xml

Code	Description	Adoption note	Date of insertion
000	to be launched		
001	launched		01/07/2013
010	knitted		
020	packed		
090	preparing		01/07/2013
095	prepared		01/07/2013
100	warping		
199	warped		
200	weaving		
299	woven		
300	dyeing		
399	dyed		
400	finishing		
499	finished		
500	printing		
599	printed		
600	darning		
640	preparing for printing		01/07/2013
650	prepared for printing		01/07/2013
660	checking		01/07/2013
670	checked		01/07/2013

700	spinning		
799	spun		
800	twisting		
899	twisted		
900	despatch-ready		
950	despatched		
999	other, see note if any		01/07/2013

T9 - ISO4217 - Currency

currency code

Agency name: ISO

tabella cod.: T9

File codes list (Generic code): http://www.ebiz.enea.it/moda-ml/repository/codelist/draft/gc_T9.xml

Table not printed: there are 205 elements, more than the maximum specified for printing: 99.