



<http://www.ebiz-tcf.eu>

**DRAFT**

**IMPLEMENTATION GUIDE**

**TRANSACTION "RAW MATERIAL DESPATCH ADVICE"**

Version: draft

Date of release: 17/5/2019

Document code: G042

technical Documentation: <http://www.ebiz.enea.it>

XML Schemas repository: <http://www.ebiz.enea.it/moda-ml/repository/schema/draft/default.asp>

Guides repository: <http://www.ebiz.enea.it/moda-ml/repository/guide/draft/default.asp>

Guide filename: G042-eBIZ-RawMaterialDespatchAdvice.pdf

## 0. PREMISE

This document contains a proposal for the updating and extension of eBIZ specifications starting from the eBIZ version released as CEN CWA 16667 in 2013. Under the name of 'Draft version' it is reported the result of an extensive work of analysis and consultation aimed at developing and maintaining eBIZ specifications.

In particular, the content of this proposal is the result of various activities, mainly those carried out within the framework of the **eBIZ 4.0 project** funded by the European Commission, call COS-DESIGN-2015-3-06, topic COS-2015-DESIGN-2.

The technical contents are backwards compatible with the latest official published version.

## 1. BUSINESS DESCRIPTION

### 1.1 Scope

The present guide has been issued to assist the companies of the Textile-Clothing sector in the implementation of the standard XML document type "RAW MATERIAL DESPATCH ADVISE", providing all the instruction required for its use in any context of e-commerce between Yarn Producers (or Subcontractors) and their Clients.

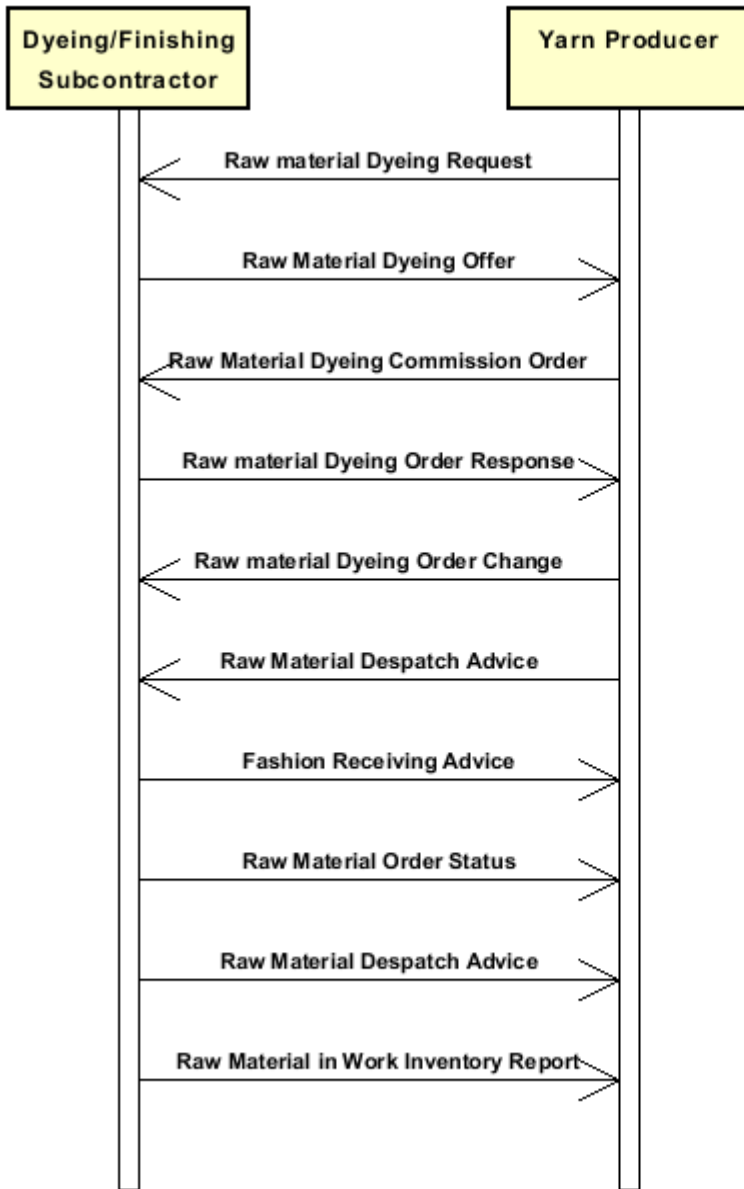
All the rules required for the construction and validation of the document are embedded into the specific XML-Schema, which is detailed in section "Implementation guide".

### 1.2 Generalities

Document usable by the Commissioner to inform the Subcontractor about the shipment of raw material to be worked

### 1.3. Possible scenario

Subcontracted dyeing of raw material



## 2. IMPLEMENTATION GUIDE

### 2.1 General structure of XML document

All the business data that can be exchanged through this class of documents are shown in the following "document structure", that provides a simplified vision of the Schema.

In particular:

- the two numbers following each element define its "cardinality" (minimum and maximum number of occurrences); the minimum equal zero indicates that the element is optional, the minimum greater than zero indicates that is mandatory;
- the bold character denotes the complex elements (aggregates of simple elements) that were built for the sake of functionality and re-usability of some complex informations sets. The child elements in each parent element are easily spotted as "indented";
- the symbol "@" denotes an attribute of the preceding element; here "the usage indicator (optional, required, ...)" is shown in square brackets.

### Structure

#### RAWDesAdvise

```
@TAtype [Optional] [Default= STD]
@msgfunction [Optional] [Default= OR]
@version [Optional] [Default= draft]
@useProfile [Optional]
| TAheader 1-1
| | msgN 1-1
| | - choose -
| | msgID 0-1
| | - or -
| | docID 0-1
| | @numberingOrg [Optional]
| | - end choose -
| | msgDate 1-1
| | @dateForm [Optional]
| | refDoc 0-9
| | @docType [Required]
| | | docID 1-2
| | | @numberingOrg [Optional]
| | | docDate 0-1
| | | @dateForm [Optional]
| | | season 0-1
| | | @numberingOrg [Optional]
| | | @codeList [Optional]
| | | @listName [Optional]
| | | @listVersion [Optional]
| | | itemID 0-1
| | | attachment 0-1
| | | @uid [Optional]
| | | | fileName 0-1
| | | | @numberingOrg [Optional]
| | | | binaryObject 0-1
| | | | @format [Optional]
| | | | @mime [Optional]
| | | | @encoding [Optional]
| | | | @characterSet [Optional]
| | | | externalReference 0-99
| | | | | uri 1-1
| | | | | @isURL [Optional] [Default= true]
| | | | | mimeTypeCode 0-1
| | | | | formatCode 0-1
```

			encodingCode 0-1
			characterSetCode 0-1
			<b>buyer 1-1</b>
			@logo [Optional]
			@sender [Optional]
			id 1-1
			@numberingOrg [Optional]
			additionalIdentifier 0-9
			@numberingOrg [Optional]
			@idQualifier [Optional]
			legalName 0-1
			dept 0-1
			subDept 0-1
			person 0-1
			@email [Optional]
			@phone [Optional]
			@fax [Optional]
			street 0-1
			city 0-1
			subCountry 0-1
			country 0-1
			postCode 0-1
			<b>supplier 1-1</b>
			@logo [Optional]
			@sender [Optional]
			id 1-1
			@numberingOrg [Optional]
			additionalIdentifier 0-9
			@numberingOrg [Optional]
			@idQualifier [Optional]
			legalName 0-1
			dept 0-1
			subDept 0-1
			person 0-1
			@email [Optional]
			@phone [Optional]
			@fax [Optional]
			street 0-1
			city 0-1
			subCountry 0-1
			country 0-1
			postCode 0-1
			<b>thirdParty 0-5</b>
			@VAT [Optional]
			@role [Required]
			@sender [Optional]
			id 1-1
			@numberingOrg [Optional]
			legalName 0-1
			dept 0-1
			subDept 0-1
			person 0-1
			@email [Optional]
			@phone [Optional]
			@fax [Optional]
			street 0-1
			city 0-1
			subCountry 0-1
			country 0-1
			postCode 0-1
			note 0-99

| | @numberingOrg [Optional]  
| | @codeList [Optional]  
| | @noteLabel [Optional]

| **trade 0-1**

- choose -

| | incoTermText 1-1

- or -

| | incoTerm 1-1

- end choose -

| | location 0-1

| | @LRI [Optional]

| **shiplInfo 0-1**

| | **transInfo 0-9**

| | @transReason [Optional]

| | @progr [Optional]

| | | transMode 1-1

| | | carrier 0-1

| | | deliveryPlace 0-1

| | | grossWeight 0-1

| | | | @um [Required]

| | | netWeight 0-1

| | | | @um [Required]

| | | transMeans 0-1

| | | transCondition 0-3

| | | transConditionText 0-1

| | | despatchPlace 0-1

| | | despatchDate 0-1

| | | | @dateForm [Optional]

| | | delEffectiveDate 0-1

| | | | @dateForm [Optional]

| | delEffectiveDate 0-1

| | | @dateForm [Optional]

| | **packages 0-99**

| | @packageLevel [Optional]

- choose -

| | | packageText 1-1

- or -

| | | package 1-1

- end choose -

| | | packageModelCode 0-1

| | | | @numberingOrg [Optional]

| | | description 0-unbounded

| | | | @ln [Optional]

| | | **packageDim 0-1**

| | | | length 1-1

| | | | | @um [Required]

| | | | width 0-1

| | | | | @um [Required]

| | | | height 0-1

| | | | | @um [Required]

| | | **handlingChar 0-1**

- choose -

| | | **yarnPack 0-1**

| | | | **yarnReel 1-1**

| | | | | @reelType [Required]

| | | | | @reelMat [Optional]

| | | | | yarnReelD 0-1

| | | | | | @um [Required]

| | | | | yarnReelH 0-1

```

| | | | | @um [Required]
| | | | | yarnConeAngle 0-1
| | | | | yarnReelQty 0-2
| | | | | @um [Required]
| | | | | label 0-1
| | | | | labelWrit 0-1
| | | | | yarnInWrap 0-1
| | | | | yarnReelWrap 1-1
| | | | | label 0-1
| | | | | labelWrit 0-1
| | | | | - choose -
| | | | | | yarnOutWrapText 0-1
| | | | | - or -
| | | | | | yarnOutWrap 0-1
| | | | | - end choose -
| | | | | - or -
| | | | | piecePack 0-1
| | | | | - choose -
| | | | | | piecePackText 1-1
| | | | | - or -
| | | | | | pieceInnWrap1 1-1
| | | | | | pieceInnWrap2 0-1
| | | | | | pieceOutWrap 0-1
| | | | | - end choose -
| | | | | - or -
| | | | | acsPack 0-1
| | | | | - choose -
| | | | | | acsPackCode 1-1
| | | | | - or -
| | | | | | acsPackText 1-1
| | | | | - end choose -
| | | | | - or -
| | | | | garPack 0-1
| | | | | - choose -
| | | | | | garPackCode 1-1
| | | | | - or -
| | | | | | garPackText 1-1
| | | | | - end choose -
| | | | | - end choose -
| | | | | sortableIndicator 0-1
| | | | | stackabilityLevel 0-1
| | | | | handlingType 0-1
| | | | | @In [Optional]
| | | | | volume 0-1
| | | | | @um [Required]
| | | | | netWeight 0-1
| | | | | @um [Required]
| | | | | grossWeight 0-1
| | | | | @um [Required]
| | | | | note 0-99
| | | | | @numberingOrg [Optional]
| | | | | @codeList [Optional]
| | | | | @noteLabel [Optional]
| | | | | itemsPerPackage 0-1
| | | | | @um [Required]
| | | | | minItemsPerPackage 0-1
| | | | | @um [Required]
| | | | | fillingCriterion 0-9
| | | | | @progr [Optional]
| | | | | packageQty 0-1
| | | | | packageN 0-unbounded

```

```

| | | @numberingOrg [Optional]
| | | @packageContainerN [Optional]
| | | EPCList 0-1
| | | | EPC 1-unbounded
| | | | @numberingOrg [Optional]
| | | | @TID [Optional]
| | | actualPackageUnit 0-unbounded
| | | | @packageLevel [Optional]
| | | | packageIdentification 1-1
| | | | | packageN 1-1
| | | | | @numberingOrg [Optional]
| | | | | @packageContainerN [Optional]
| | | | | serialN 0-9
| | | | | @numberingOrg [Optional]
| | | | | @idQualifier [Optional]
| | | - choose -
| | | | packageText 0-1
| | | - or -
| | | | package 0-1
| | | - end choose -
| | | | packageModelCode 0-1
| | | | | @numberingOrg [Optional]
| | | | volume 0-1
| | | | | @um [Required]
| | | | netWeight 0-1
| | | | | @um [Required]
| | | | grossWeight 0-1
| | | | | @um [Required]
| | | | packageDim 0-1
| | | | | length 1-1
| | | | | | @um [Required]
| | | | | width 0-1
| | | | | | @um [Required]
| | | | | height 0-1
| | | | | | @um [Required]
| | | | actualItemsPerPackage 0-1
| | | | packagesList 0-1
| | | | | packageIdentification 1-unbounded
| | | | | | packageN 1-1
| | | | | | | @numberingOrg [Optional]
| | | | | | | @packageContainerN [Optional]
| | | | | | serialN 0-9
| | | | | | | @numberingOrg [Optional]
| | | | | | | @idQualifier [Optional]
| | | | | itemsList 0-1
| | | | | | qualityLevel 0-1
| | | | | | | @numberingOrg [Optional]
| | | | | | | @codeList [Optional]
| | | | | | | @listName [Optional]
| | | | | | | @listVersion [Optional]
| | | | | | itemIdentification 1-unbounded
| | | | | | | serialN 1-9
| | | | | | | | @numberingOrg [Optional]
| | | | | | | | @idQualifier [Optional]
| | | | note 0-99
| | | | | @numberingOrg [Optional]
| | | | | @codeList [Optional]
| | | | | @noteLabel [Optional]

```

```

| RAbody 1-1
| | RAitem 1-unbounded

```



```

| | @extinction [Optional]
| | lineN 1-1
| | @VAT [Optional]
| | refDoc 0-1
| | @docType [Required]
| | | docID 1-2
| | | | @numberingOrg [Optional]
| | | docDate 0-1
| | | | @dateForm [Optional]
| | | season 0-1
| | | | @numberingOrg [Optional]
| | | | @codeList [Optional]
| | | | @listName [Optional]
| | | | @listVersion [Optional]
| | | itemID 0-1
| | | attachment 0-1
| | | | @uid [Optional]
| | | | | fileName 0-1
| | | | | | @numberingOrg [Optional]
| | | | | binaryObject 0-1
| | | | | | @format [Optional]
| | | | | | @mime [Optional]
| | | | | | @encoding [Optional]
| | | | | | @characterSet [Optional]
| | | | | externalReference 0-99
| | | | | | uri 1-1
| | | | | | | @isURL [Optional] [Default= true]
| | | | | | mimeCode 0-1
| | | | | | formatCode 0-1
| | | | | | encodingCode 0-1
| | | | | | characterSetCode 0-1
| | rawCode 1-2
| | | @numberingOrg [Optional]
| | | | art 1-1
| | | | | @numberingOrg [Optional]
| | | | | @codeList [Optional]
| | | | | @listName [Optional]
| | | | | @listVersion [Optional]
| | | | color 0-1
| | | | | @numberingOrg [Optional]
| | | | | @codeList [Optional]
| | | | | @listName [Optional]
| | | | | @listVersion [Optional]
| | | | added 0-9
| | | | | @numberingOrg [Optional]
| | | | | @addType [Optional]
| | | | description 0-unbounded
| | | | | @ln [Optional]
| | rawSpecs 0-9
| | - choose -
| | | rawCharText 1-1
| | - or -
| | | rawChar 1-1
| | - end choose -
| | | specValue 0-1
| | | | @um [Optional]
| | | | @source [Optional]
| | | | @method [Optional]
| | | | @application [Optional]
| | | | @CV [Optional]
| | - choose -

```

```

| | | | pcTolerance 0-2
| | | | @um [Optional]
- or -
| | | | tolerance 0-2
| | | | @um [Required]
- end choose -
| | | | lotN 0-2
| | | | @numberingOrg [Optional]
| | | | dyeN 0-1
| | | | @numberingOrg [Optional]
| | | | qty 1-2
| | | | @um [Required]
| | | | thirdParty 0-1
| | | | @VAT [Optional]
| | | | @role [Required]
| | | | @sender [Optional]
| | | | | id 1-1
| | | | | @numberingOrg [Optional]
| | | | | legalName 0-1
| | | | | dept 0-1
| | | | | subDept 0-1
| | | | | person 0-1
| | | | | @email [Optional]
| | | | | @phone [Optional]
| | | | | @fax [Optional]
| | | | | street 0-1
| | | | | city 0-1
| | | | | subCountry 0-1
| | | | | country 0-1
| | | | | postCode 0-1
| | | | shipInfo 0-1
| | | | | transInfo 0-9
| | | | | @transReason [Optional]
| | | | | @progr [Optional]
| | | | | | transMode 1-1
| | | | | | carrier 0-1
| | | | | | deliveryPlace 0-1
| | | | | | grossWeight 0-1
| | | | | | @um [Required]
| | | | | | netWeight 0-1
| | | | | | @um [Required]
| | | | | | transMeans 0-1
| | | | | | transCondition 0-3
| | | | | | transConditionText 0-1
| | | | | | despatchPlace 0-1
| | | | | | despatchDate 0-1
| | | | | | @dateForm [Optional]
| | | | | | delEffectiveDate 0-1
| | | | | | @dateForm [Optional]
| | | | | delEffectiveDate 0-1
| | | | | @dateForm [Optional]
| | | | | packages 0-99
| | | | | @packageLevel [Optional]
- choose -
| | | | | packageText 1-1
- or -
| | | | | package 1-1
- end choose -
| | | | | packageModelCode 0-1
| | | | | @numberingOrg [Optional]
| | | | | description 0-unbounded

```

```

| | | | | @In [Optional]
| | | | | packageDim 0-1
| | | | | | length 1-1
| | | | | | | @um [Required]
| | | | | | width 0-1
| | | | | | | @um [Required]
| | | | | | height 0-1
| | | | | | | @um [Required]
| | | | | | handlingChar 0-1
- choose -
| | | | | | yarnPack 0-1
| | | | | | | yarnReel 1-1
| | | | | | | | @reelType [Required]
| | | | | | | | @reelMat [Optional]
| | | | | | | | | yarnReelID 0-1
| | | | | | | | | | @um [Required]
| | | | | | | | | yarnReelH 0-1
| | | | | | | | | | @um [Required]
| | | | | | | | | yarnConeAngle 0-1
| | | | | | | | | yarnReelQty 0-2
| | | | | | | | | | @um [Required]
| | | | | | | | | label 0-1
| | | | | | | | | labelWrit 0-1
| | | | | | | | yarnInWrap 0-1
| | | | | | | | | yarnReelWrap 1-1
| | | | | | | | | label 0-1
| | | | | | | | | labelWrit 0-1
- choose -
| | | | | | | | yarnOutWrapText 0-1
- or -
| | | | | | | | yarnOutWrap 0-1
- end choose -
- or -
| | | | | | | | piecePack 0-1
- choose -
| | | | | | | | | piecePackText 1-1
- or -
| | | | | | | | | | pieceInnWrap1 1-1
| | | | | | | | | | pieceInnWrap2 0-1
| | | | | | | | | | pieceOutWrap 0-1
- end choose -
- or -
| | | | | | | | acsPack 0-1
- choose -
| | | | | | | | | acsPackCode 1-1
- or -
| | | | | | | | | acsPackText 1-1
- end choose -
- or -
| | | | | | | | garPack 0-1
- choose -
| | | | | | | | | garPackCode 1-1
- or -
| | | | | | | | | garPackText 1-1
- end choose -
- end choose -
| | | | | | | | sortableIndicator 0-1
| | | | | | | | stackabilityLevel 0-1
| | | | | | | | handlingType 0-1
| | | | | | | | | @In [Optional]
| | | | | | | | volume 0-1

```

```

| | | | | @um [Required]
| | | | | netWeight 0-1
| | | | | @um [Required]
| | | | | grossWeight 0-1
| | | | | @um [Required]
| | | | | note 0-99
| | | | | @numberingOrg [Optional]
| | | | | @codeList [Optional]
| | | | | @noteLabel [Optional]
| | | | | itemsPerPackage 0-1
| | | | | @um [Required]
| | | | | minItemsPerPackage 0-1
| | | | | @um [Required]
| | | | | fillingCriterion 0-9
| | | | | @progr [Optional]
| | | | | packageQty 0-1
| | | | | packageN 0-unbounded
| | | | | @numberingOrg [Optional]
| | | | | @packageContainerN [Optional]
| | | | | EPCLIST 0-1
| | | | | | EPC 1-unbounded
| | | | | | @numberingOrg [Optional]
| | | | | | @TID [Optional]
| | | | | actualPackageUnit 0-unbounded
| | | | | | @packageLevel [Optional]
| | | | | | packageIdentification 1-1
| | | | | | | packageN 1-1
| | | | | | | @numberingOrg [Optional]
| | | | | | | @packageContainerN [Optional]
| | | | | | | serialN 0-9
| | | | | | | @numberingOrg [Optional]
| | | | | | | @idQualifier [Optional]
| | | | | - choose -
| | | | | | packageText 0-1
| | | | | - or -
| | | | | | package 0-1
| | | | | - end choose -
| | | | | packageModelCode 0-1
| | | | | | @numberingOrg [Optional]
| | | | | volume 0-1
| | | | | | @um [Required]
| | | | | netWeight 0-1
| | | | | | @um [Required]
| | | | | grossWeight 0-1
| | | | | | @um [Required]
| | | | | packageDim 0-1
| | | | | | length 1-1
| | | | | | | @um [Required]
| | | | | | width 0-1
| | | | | | | @um [Required]
| | | | | | height 0-1
| | | | | | | @um [Required]
| | | | | actualItemsPerPackage 0-1
| | | | | packagesList 0-1
| | | | | | packageIdentification 1-unbounded
| | | | | | | packageN 1-1
| | | | | | | @numberingOrg [Optional]
| | | | | | | @packageContainerN [Optional]
| | | | | | | serialN 0-9
| | | | | | | @numberingOrg [Optional]
| | | | | | | @idQualifier [Optional]

```

```

| | | | | itemsList 0-1
| | | | | | qualityLevel 0-1
| | | | | | @numberingOrg [Optional]
| | | | | | @codeList [Optional]
| | | | | | @listName [Optional]
| | | | | | @listVersion [Optional]
| | | | | | itemIdentification 1-unbounded
| | | | | | | serialN 1-9
| | | | | | | @numberingOrg [Optional]
| | | | | | | @idQualifier [Optional]
| | | | | note 0-99
| | | | | | @numberingOrg [Optional]
| | | | | | @codeList [Optional]
| | | | | | @noteLabel [Optional]
| | | itemsList 0-1
| | | | qualityLevel 0-1
| | | | | @numberingOrg [Optional]
| | | | | @codeList [Optional]
| | | | | @listName [Optional]
| | | | | @listVersion [Optional]
| | | | | itemIdentification 1-unbounded
| | | | | | serialN 1-9
| | | | | | @numberingOrg [Optional]
| | | | | | @idQualifier [Optional]
| | | packageN 0-unbounded
| | | | @numberingOrg [Optional]
| | | | @packageContainerN [Optional]
| | | note 0-99
| | | | @numberingOrg [Optional]
| | | | @codeList [Optional]
| | | | @noteLabel [Optional]

```

## 2.2 Detailed description of document elements

Following tables show all elements (complex and simple) used in this document. Description includes: 1) element's information: xml tag, name, brief description, data type and syntax constraints; 2) information about use of the element in a particular position in the document: xpath and possible associated notes.

### 2.2.1 Complex elements (Aggregate Business Information Entities)

Complex elements are those elements whose content is composed of other elements (childs).Complex elements are alphabetically ordered.

<b>acsPack</b>	type of wrapping or packing of the accessory (XPath RAWDesAdvise/RABody/RAitem/shipInfo/packages/handlingChar/acsPack) 0-1 (XPath RAWDesAdvise/shipInfo/packages/handlingChar/acsPack) 0-1
<b>actualPackageUnit</b>	description and identification of a single transport package (XPath RAWDesAdvise/shipInfo/actualPackageUnit) 0-unbounded - note: <i>this element might be repeated for listing each single package of the shipment</i> (XPath RAWDesAdvise/RABody/RAitem/shipInfo/actualPackageUnit) 0-unbounded - note: <i>this element might be repeated for listing each single package of the shipment</i>
<b>attachment</b>	an attached document. An attachment can refer to an external document or be included with the document being exchanged (XPath RAWDesAdvise/TAheader/refDoc/attachment) 0-1 (XPath RAWDesAdvise/RABody/RAitem/refDoc/attachment) 0-1
<b>buyer</b>	details of the Buyer (party that buys the good or service that is object of the current collaborative process) - base type: Nad, (XPath RAWDesAdvise/TAheader/buyer) 1-1
<b>EPCList</b>	list of identifiers used for tracing a physical item with RFID technology (XPath RAWDesAdvise/shipInfo/packages/EPCList) 0-1 - note: <i>this element is DEPRECATED, please use the specific elements</i> (XPath RAWDesAdvise/RABody/RAitem/shipInfo/packages/EPCList) 0-1 - note: <i>this element is DEPRECATED, please use the specific elements</i>
<b>externalReference</b>	details about an external object, such as a document stored at a remote location (XPath RAWDesAdvise/TAheader/refDoc/attachment/externalReference) 0-99 (XPath RAWDesAdvise/RABody/RAitem/refDoc/attachment/externalReference) 0-99
<b>garPack</b>	the packaging mode of the item or a part of it. (XPath RAWDesAdvise/RABody/RAitem/shipInfo/packages/handlingChar/garPack) 0-1 (XPath RAWDesAdvise/shipInfo/packages/handlingChar/garPack) 0-1
<b>handlingChar</b>	features of an item (item or package) useful for its transport and warehouse management. (XPath RAWDesAdvise/shipInfo/packages/handlingChar) 0-1 - note: <i>in this case the characteristics are related to the package.</i> (XPath RAWDesAdvise/RABody/RAitem/shipInfo/packages/handlingChar) 0-1 - note: <i>in this case the characteristics are related to the package.</i>
<b>itemIdentification</b>	serial identification of a product unit (XPath RAWDesAdvise/shipInfo/actualPackageUnit/itemsList/itemIdentification) 1-unbounded - note: <i>identification of the single product unit contained in the list</i>

	<p>(XPath RAWDesAdvise/RABody/RAitem/shipInfo/actualPackageUnit/itemsList/itemId entification) 1-unbounded</p> <p>- note: <i>identification of the single product unit contained in the list</i></p> <p>(XPath RAWDesAdvise/RABody/RAitem/itemsList/itemId entification) 1-unbounded</p> <p>- note: <i>identification of the single product unit contained in the list</i></p>
<b>itemsList</b>	<p>list of the single product units</p> <p>(XPath RAWDesAdvise/shipInfo/actualPackageUnit/itemsList) 0-1</p> <p>(XPath RAWDesAdvise/RABody/RAitem/shipInfo/actualPackageUnit/itemsList) 0-1</p> <p>(XPath RAWDesAdvise/RABody/RAitem/itemsList) 0-1</p>
<b>packageDim</b>	<p>dimensions of a transport package</p> <p>(XPath RAWDesAdvise/shipInfo/packages/packageDim) 0-1</p> <p>(XPath RAWDesAdvise/RABody/RAitem/shipInfo/packages/packageDim) 0-1</p> <p>(XPath RAWDesAdvise/RABody/RAitem/shipInfo/actualPackageUnit/packageDim) 0-1</p> <p>(XPath RAWDesAdvise/shipInfo/actualPackageUnit/packageDim) 0-1</p>
<b>packageIdentification</b>	<p>serial identification of a package</p> <p>(XPath RAWDesAdvise/shipInfo/actualPackageUnit/packageIdentification) 1-1</p> <p>(XPath RAWDesAdvise/shipInfo/actualPackageUnit/packagesList/packageIdentification) 1-unbounded</p> <p>- note: <i>identification of the single package contained in the list</i></p> <p>(XPath RAWDesAdvise/RABody/RAitem/shipInfo/actualPackageUnit/packagesList/packageIdentification) 1-unbounded</p> <p>- note: <i>identification of the single package contained in the list</i></p> <p>(XPath RAWDesAdvise/RABody/RAitem/shipInfo/actualPackageUnit/packageIdentification) 1-1</p>
<b>packages</b>	<p>describes the composition of the transport packaging. Each element corresponds to a type of package: type, quantity, hierarchic level, list of identifiers of the single packages</p> <p>(XPath RAWDesAdvise/shipInfo/packages) 0-99</p> <p>- note: <i>this element must be iterated for each type of package</i></p> <p>(XPath RAWDesAdvise/RABody/RAitem/shipInfo/packages) 0-99</p> <p>- note: <i>this element must be iterated for each type of package</i></p>
<b>packagesList</b>	<p>list of single packages</p> <p>(XPath RAWDesAdvise/RABody/RAitem/shipInfo/actualPackageUnit/packagesList) 0-1</p> <p>- note: <i>list of packages contained within the actual package (thus with lower level). All the packages in the list should preferably have the same level.</i></p> <p>(XPath RAWDesAdvise/shipInfo/actualPackageUnit/packagesList) 0-1</p> <p>- note: <i>list of packages contained within the actual package (thus with lower level). All the packages in the list should preferably have the same level.</i></p>
<b>piecePack</b>	<p>type of wrapping or packing of the fabric pieces</p> <p>(XPath RAWDesAdvise/shipInfo/packages/handlingChar/piecePack) 0-1</p> <p>(XPath RAWDesAdvise/RABody/RAitem/shipInfo/packages/handlingChar/piecePack) 0-1</p>
<b>RABody</b>	<p>body of the document RAW MATERIAL DESPATCH ADVISE</p> <p>(XPath RAWDesAdvise/RABody) 1-1</p>
<b>RAitem</b>	<p>line item of the document RAW MATERIAL DESPATCH ADVISE</p> <p>(XPath RAWDesAdvise/RABody/RAitem) 1-unbounded</p>
<b>rawCode</b>	<p>full codification of a raw material</p> <p>(XPath RAWDesAdvise/RABody/RAitem/rawCode) 1-2</p>

<b>rawSpecs</b>	technical characteristics of a raw material linked to an operation of the sub-contracted production of yarn or to the purchase of yarn (XPath RAWDesAdvise/RABody/RAitem/rawSpecs) 0-9
<b>refDoc</b>	identification of a document and of an item thereof, to which the message makes reference (XPath RAWDesAdvise/RABody/RAitem/refDoc) 0-1 (XPath RAWDesAdvise/TAheader/refDoc) 0-9
<b>shipInfo</b>	miscellaneous information on transport and transport packages, referred either to the whole document or to the single item (XPath RAWDesAdvise/shipInfo) 0-1 (XPath RAWDesAdvise/RABody/RAitem/shipInfo) 0-1
<b>supplier</b>	details of the Supplier (party that supplies the good or service that is object of the current collaborative process) - base type: Nad, (XPath RAWDesAdvise/TAheader/supplier) 1-1
<b>TAheader</b>	header of the TEXTILES (YARN) DESPATCH ADVISE (XPath RAWDesAdvise/TAheader) 1-1
<b>thirdParty</b>	details of the Third Party, different from Buyer or Supplier - base type: Nad, (XPath RAWDesAdvise/RABody/RAitem/thirdParty) 0-1 (XPath RAWDesAdvise/TAheader/thirdParty) 0-5 - note: <i>here the Consignee when different from the Client must be specified</i>
<b>trade</b>	general terms of trade for the specified supply (XPath RAWDesAdvise/trade) 0-1
<b>transInfo</b>	details of transport: mode, carrier and delivery place (XPath RAWDesAdvise/RABody/RAitem/shipInfo/transInfo) 0-9 - note: <i>this data group can be iterated for each transport leg. They have to be in ordered sequence from initial place up to the final delivery place.</i> (XPath RAWDesAdvise/shipInfo/transInfo) 0-9 - note: <i>this data group can be iterated for each transport leg. They have to be in ordered sequence from initial place up to the final delivery place.</i>
<b>yarnInWrap</b>	details specifying the inner wrapping of a yarn product (XPath RAWDesAdvise/shipInfo/packages/handlingChar/yarnPack/yarnInWrap) 0-1 (XPath RAWDesAdvise/RABody/RAitem/shipInfo/packages/handlingChar/yarnPack/yarnInWrap) 0-1
<b>yarnPack</b>	details of type of presentation used for the yarn (XPath RAWDesAdvise/shipInfo/packages/handlingChar/yarnPack) 0-1 (XPath RAWDesAdvise/RABody/RAitem/shipInfo/packages/handlingChar/yarnPack) 0-1
<b>yarnReel</b>	details of the packaging of a yarn product (bobbin and reel,...) (XPath RAWDesAdvise/shipInfo/packages/handlingChar/yarnPack/yarnReel) 1-1 (XPath RAWDesAdvise/RABody/RAitem/shipInfo/packages/handlingChar/yarnPack/yarnReel) 1-1

## 2.2.2 Simple elements (Basic Business Information Entities)

Simple elements are those elements whose content is characterized by a data type plus a domain of possible values. Simple elements are alphabetically ordered.

<b>acsPackCode</b>	code specifying the type of wrapping or packing used for the accessory - base type: string,
--------------------	--



	(XPath RAWDesAdvise/RABody/RAitem/shipInfo/packages/handlingChar/acsPack/acsPackCode) 1-1 (XPath RAWDesAdvise/shipInfo/packages/handlingChar/acsPack/acsPackCode) 1-1
acsPackText	free text specifying the type of wrapping or packing used for the accessory - base type: string, max length: 250, (XPath RAWDesAdvise/RABody/RAitem/shipInfo/packages/handlingChar/acsPack/acsPackText) 1-1 (XPath RAWDesAdvise/shipInfo/packages/handlingChar/acsPack/acsPackText) 1-1
actualItemsPerPackage	the quantity of items actually contained in the package - base type: decimal, (XPath RAWDesAdvise/shipInfo/actualPackageUnit/actualItemsPerPackage) 0-1 (XPath RAWDesAdvise/RABody/RAitem/shipInfo/actualPackageUnit/actualItemsPerPackage) 0-1
added	additional code of the product (complementing the formers) - base type: string, max length: 80, (XPath RAWDesAdvise/RABody/RAitem/rawCode/added) 0-9
additionalIdentifier	additional identification code of a Party, for example customs registries or others - base type: string, max length: 15, (XPath RAWDesAdvise/TAheader/supplier/additionalIdentifier) 0-9 - note: <i>identifiers for example for exports, such as MID (Manufacturer Identification Code), EORI (E.O.R.I. - Economic Operator Registration and Identification)</i> (XPath RAWDesAdvise/TAheader/buyer/additionalIdentifier) 0-9 - note: <i>identifiers for example for exports, such as MID (Manufacturer Identification Code), EORI (E.O.R.I. - Economic Operator Registration and Identification)</i>
@addType	qualifier of the additional coding of a product - base type: string, cod. table: T44 <a href="http://www.ebiz.enea.it/moda-ml/repository/codelist/draft/gc_T44.xml">http://www.ebiz.enea.it/moda-ml/repository/codelist/draft/gc_T44.xml</a> (XPath RAWDesAdvise/RABody/RAitem/rawCode/added/@addType) [Optional] - nota: <i>addType allows the clarification of the meaning of the added element content; it is strongly suggested to use it always.</i>
@application	force or similar condition (e.g. no. of revolutions) applied in a test as specified within the standard - base type: string, max length: 15, (XPath RAWDesAdvise/RABody/RAitem/rawSpecs/specValue/@application) [Optional]
art	article number of the product - base type: string, max length: 80, (XPath RAWDesAdvise/RABody/RAitem/rawCode/art) 1-1
binaryObject	a binary large object containing an attached document - base type: base64Binary, (XPath RAWDesAdvise/RABody/RAitem/refDoc/attachment/binaryObject) 0-1 (XPath RAWDesAdvise/TAheader/refDoc/attachment/binaryObject) 0-1
carrier	identification of the transport carrier - base type: string, max length: 40, (XPath RAWDesAdvise/RABody/RAitem/shipInfo/transInfo/carrier) 0-1 (XPath RAWDesAdvise/shipInfo/transInfo/carrier) 0-1
@characterSet	the character set of the binary object if the mime type is text - base type: normalizedString, (XPath RAWDesAdvise/RABody/RAitem/refDoc/attachment/binaryObject/@characterSet) [Optional]

	(XPath RAWDesAdvise/TAheader/refDoc/attachment/binaryObject/@characterSet) [Optional]
characterSetCode	the character set of an external document - base type: normalizedString, (XPath RAWDesAdvise/RABody/RAitem/refDoc/attachment/externalReference/characterSetCode) 0-1 (XPath RAWDesAdvise/TAheader/refDoc/attachment/externalReference/characterSetCode) 0-1
city	name of the city (town, village) - base type: string, max length: 40, (XPath RAWDesAdvise/RABody/RAitem/thirdParty/city) 0-1 (XPath RAWDesAdvise/TAheader/thirdParty/city) 0-1 (XPath RAWDesAdvise/TAheader/supplier/city) 0-1 (XPath RAWDesAdvise/TAheader/buyer/city) 0-1
@codeList	it specifies the URL where the list of codes used to make an instance of the element can be found - base type: string, max length: 255, (XPath RAWDesAdvise/TAheader/refDoc/season/@codeList) [Optional] (XPath RAWDesAdvise/TAheader/note/@codeList) [Optional] - nota: <i>must be used to provide (URL) the list of codes used in "noteLabel"</i> (XPath RAWDesAdvise/RABody/RAitem/itemsList/qualityLevel/@codeList) [Optional] (XPath RAWDesAdvise/shipInfo/packages/handlingChar/note/@codeList) [Optional] - nota: <i>must be used to provide (URL) the list of codes used in "noteLabel"</i> (XPath RAWDesAdvise/RABody/RAitem/shipInfo/packages/handlingChar/note/@codeList) [Optional] - nota: <i>must be used to provide (URL) the list of codes used in "noteLabel"</i> (XPath RAWDesAdvise/RABody/RAitem/rawCode/color/@codeList) [Optional] - nota: <i>this attribute could be used as alternative to the others</i> (XPath RAWDesAdvise/RABody/RAitem/rawCode/art/@codeList) [Optional] - nota: <i>this attribute should be ALTERNATIVE to the others</i> (XPath RAWDesAdvise/RABody/RAitem/refDoc/season/@codeList) [Optional] (XPath RAWDesAdvise/RABody/RAitem/note/@codeList) [Optional] - nota: <i>must be used to provide (URL) the list of codes used in "noteLabel"</i> (XPath RAWDesAdvise/shipInfo/actualPackageUnit/note/@codeList) [Optional] - nota: <i>must be used to provide (URL) the list of codes used in "noteLabel"</i> (XPath RAWDesAdvise/RABody/RAitem/shipInfo/actualPackageUnit/itemsList/qualityLevel/@codeList) [Optional] (XPath RAWDesAdvise/RABody/RAitem/shipInfo/actualPackageUnit/note/@codeList) [Optional] - nota: <i>must be used to provide (URL) the list of codes used in "noteLabel"</i> (XPath RAWDesAdvise/shipInfo/actualPackageUnit/itemsList/qualityLevel/@codeList) [Optional]
color	colour number of the product, when not included in the model or fabric code - base type: string, max length: 15, (XPath RAWDesAdvise/RABody/RAitem/rawCode/color) 0-1
country	code of the nation - base type: string, cod. table: T10 <a href="http://www.ebiz.enea.it/moda-ml/repository/codelist/draft/gc_T10.xml">http://www.ebiz.enea.it/moda-ml/repository/codelist/draft/gc_T10.xml</a> (XPath RAWDesAdvise/TAheader/thirdParty/country) 0-1 (XPath RAWDesAdvise/TAheader/buyer/country) 0-1 (XPath RAWDesAdvise/TAheader/supplier/country) 0-1 (XPath RAWDesAdvise/RABody/RAitem/thirdParty/country) 0-1
@CV	coefficient of variation (CV) of a measurement - base type: decimal, (XPath RAWDesAdvise/RABody/RAitem/rawSpecs/specValue/@CV) [Optional]

@dateForm	<p>format used for the date</p> <p>- base type: string, cod. table: NT29  <a href="http://www.ebiz.enea.it/moda-ml/repository/codelist/draft/gc_NT29.xml">http://www.ebiz.enea.it/moda-ml/repository/codelist/draft/gc_NT29.xml</a>  (XPath RAWDesAdvise/RABody/RAitem/shipInfo/transInfo/delEffectiveDate/@dateForm) [Optional]  (XPath RAWDesAdvise/TAheader/msgDate/@dateForm) [Optional]  (XPath RAWDesAdvise/TAheader/refDoc/docDate/@dateForm) [Optional]  (XPath RAWDesAdvise/RABody/RAitem/shipInfo/delEffectiveDate/@dateForm) [Optional]  (XPath RAWDesAdvise/shipInfo/transInfo/delEffectiveDate/@dateForm) [Optional]  (XPath RAWDesAdvise/shipInfo/delEffectiveDate/@dateForm) [Optional]  (XPath RAWDesAdvise/RABody/RAitem/refDoc/docDate/@dateForm) [Optional]  (XPath RAWDesAdvise/shipInfo/transInfo/despatchDate/@dateForm) [Optional]  (XPath RAWDesAdvise/RABody/RAitem/shipInfo/transInfo/despatchDate/@dateForm) [Optional]</p>
delEffectiveDate	<p>effective date of delivery of goods (declared in Despatch), according to one of the patterns YYYY-MM-DD, YYYY-MM-DD:HH-MM or YYYY-WW.</p> <p>- base type: string,  (XPath RAWDesAdvise/RABody/RAitem/shipInfo/delEffectiveDate) 0-1  (XPath RAWDesAdvise/RABody/RAitem/shipInfo/transInfo/delEffectiveDate) 0-1  (XPath RAWDesAdvise/shipInfo/delEffectiveDate) 0-1  (XPath RAWDesAdvise/shipInfo/transInfo/delEffectiveDate) 0-1</p>
deliveryPlace	<p>place of delivery of goods, ultimate or related to a given leg</p> <p>- base type: string, max length: 250,  (XPath RAWDesAdvise/RABody/RAitem/shipInfo/transInfo/deliveryPlace) 0-1  (XPath RAWDesAdvise/shipInfo/transInfo/deliveryPlace) 0-1</p>
dept	<p>name or code of a contact department within a Party</p> <p>- base type: string, max length: 40,  (XPath RAWDesAdvise/TAheader/supplier/dept) 0-1  (XPath RAWDesAdvise/TAheader/thirdParty/dept) 0-1  (XPath RAWDesAdvise/TAheader/buyer/dept) 0-1  (XPath RAWDesAdvise/RABody/RAitem/thirdParty/dept) 0-1</p>
description	<p>free text description. The content of the element must be unique, it might be translated and repeated into more languages (thus no more than one instance for each language).</p> <p>- base type: string, max length: 250,  (XPath RAWDesAdvise/RABody/RAitem/shipInfo/packages/description) 0-unbounded  (XPath RAWDesAdvise/shipInfo/packages/description) 0-unbounded  (XPath RAWDesAdvise/RABody/RAitem/rawCode/description) 0-unbounded  - note: <i>Raw material description</i></p>
despatchDate	<p>date of despatch of goods, requested or promised in the purchase process, according to one of the patterns YYYY-MM-DD, YYYY-MM-DD:HH-MM or YYYY-WW.</p> <p>- base type: string,  (XPath RAWDesAdvise/RABody/RAitem/shipInfo/transInfo/despatchDate) 0-1  (XPath RAWDesAdvise/shipInfo/transInfo/despatchDate) 0-1</p>
despatchPlace	<p>place of despatch of goods, origin or related to a given leg</p> <p>- base type: string, max length: 250,  (XPath RAWDesAdvise/RABody/RAitem/shipInfo/transInfo/despatchPlace) 0-1  (XPath RAWDesAdvise/shipInfo/transInfo/despatchPlace) 0-1</p>
docDate	<p>date of issue of the referenced document, according to one of the patterns YYYY-MM-DD, YYYY-MM-DD:HH-MM or YYYY-WW.</p> <p>- base type: string,  (XPath RAWDesAdvise/RABody/RAitem/refDoc/docDate) 0-1  (XPath RAWDesAdvise/TAheader/refDoc/docDate) 0-1</p>



@format	<p>the format of the binary content</p> <ul style="list-style-type: none"> <li>- base type: string,</li> </ul> <p>(XPath RAWDesAdvise/THeader/refDoc/attachment/binaryObject/@format) [Optional]  (XPath RAWDesAdvise/RABody/RAitem/refDoc/attachment/binaryObject/@format) [Optional]</p>
formatCode	<p>the format of the external object</p> <ul style="list-style-type: none"> <li>- base type: normalizedString,</li> </ul> <p>(XPath RAWDesAdvise/RABody/RAitem/refDoc/attachment/externalReference/formatCode) 0-1  (XPath RAWDesAdvise/THeader/refDoc/attachment/externalReference/formatCode) 0-1</p>
garPackCode	<p>a code specifying the type of packaging used for the item.</p> <ul style="list-style-type: none"> <li>- base type: string,</li> </ul> <p>(XPath RAWDesAdvise/shipInfo/packages/handlingChar/garPack/garPackCode) 1-1  (XPath RAWDesAdvise/RABody/RAitem/shipInfo/packages/handlingChar/garPack/garPackCode) 1-1</p>
garPackText	<p>a free text specifying the type of packaging used for the item.</p> <ul style="list-style-type: none"> <li>- base type: string,</li> </ul> <p>(XPath RAWDesAdvise/RABody/RAitem/shipInfo/packages/handlingChar/garPack/garPackText) 1-1  (XPath RAWDesAdvise/shipInfo/packages/handlingChar/garPack/garPackText) 1-1</p>
grossWeight	<p>the gross weight, declared for transport or customs purpose</p> <ul style="list-style-type: none"> <li>- base type: decimal, min inclusive: 0, fraction digits: 2,</li> </ul> <p>(XPath RAWDesAdvise/RABody/RAitem/shipInfo/transInfo/grossWeight) 0-1  (XPath RAWDesAdvise/shipInfo/packages/handlingChar/grossWeight) 0-1  (XPath RAWDesAdvise/shipInfo/actualPackageUnit/grossWeight) 0-1  (XPath RAWDesAdvise/RABody/RAitem/shipInfo/actualPackageUnit/grossWeight) 0-1  (XPath RAWDesAdvise/RABody/RAitem/shipInfo/packages/handlingChar/grossWeight) 0-1  (XPath RAWDesAdvise/shipInfo/transInfo/grossWeight) 0-1</p>
handlingType	<p>information to handle the item (eg "breakable").</p> <ul style="list-style-type: none"> <li>- base type: string,</li> </ul> <p>(XPath RAWDesAdvise/RABody/RAitem/shipInfo/packages/handlingChar/handlingType) 0-1  (XPath RAWDesAdvise/shipInfo/packages/handlingChar/handlingType) 0-1</p>
height	<p>effective height of a specified object</p> <ul style="list-style-type: none"> <li>- base type: decimal, min inclusive: 0, fraction digits: 2,</li> </ul> <p>(XPath RAWDesAdvise/RABody/RAitem/shipInfo/actualPackageUnit/packageDim/height) 0-1  (XPath RAWDesAdvise/shipInfo/actualPackageUnit/packageDim/height) 0-1  (XPath RAWDesAdvise/shipInfo/packages/packageDim/height) 0-1  (XPath RAWDesAdvise/RABody/RAitem/shipInfo/packages/packageDim/height) 0-1</p>
id	<p>primary identification code of a Party; it is recommended the format: nation code (ISO 3166) + VAT identification number (11 crt), with the qualifier "numberingOrg"= MF</p> <ul style="list-style-type: none"> <li>- base type: string, max length: 15,</li> </ul> <p>(XPath RAWDesAdvise/THeader/supplier/id) 1-1  (XPath RAWDesAdvise/THeader/buyer/id) 1-1  (XPath RAWDesAdvise/RABody/RAitem/thirdParty/id) 1-1  (XPath RAWDesAdvise/THeader/thirdParty/id) 1-1</p>
@idQualifier	<p>Qualification of the identifier.</p> <ul style="list-style-type: none"> <li>- base type: string,</li> </ul>

	<p>(XPath RAWDesAdvise/TAheader/buyer/additionalIdentifier/@idQualifier) [Optional]  - nota: <i>this attribute should be used when the numberingOrg attribute is not enough to declare the type of identifier</i>  (XPath RAWDesAdvise/RABody/RAitem/shipInfo/actualPackageUnit/packagesList/packageIdentification/serialN/@idQualifier) [Optional]  - nota: <i>this attribute should be used when the numberingOrg attribute is not enough to declare the type of serial identifier</i>  (XPath RAWDesAdvise/shipInfo/actualPackageUnit/packagesList/packageIdentification/serialN/@idQualifier) [Optional]  - nota: <i>this attribute should be used when the numberingOrg attribute is not enough to declare the type of serial identifier</i>  (XPath RAWDesAdvise/RABody/RAitem/shipInfo/actualPackageUnit/itemsList/itemIdentification/serialN/@idQualifier) [Optional]  - nota: <i>this attribute should be used when the numberingOrg attribute is not enough to declare the type of serial identifier</i>  (XPath RAWDesAdvise/RABody/RAitem/itemsList/itemIdentification/serialN/@idQualifier) [Optional]  - nota: <i>this attribute should be used when the numberingOrg attribute is not enough to declare the type of serial identifier</i>  (XPath RAWDesAdvise/shipInfo/actualPackageUnit/itemsList/itemIdentification/serialN/@idQualifier) [Optional]  - nota: <i>this attribute should be used when the numberingOrg attribute is not enough to declare the type of serial identifier</i>  (XPath RAWDesAdvise/shipInfo/actualPackageUnit/packageIdentification/serialN/@idQualifier) [Optional]  - nota: <i>this attribute should be used when the numberingOrg attribute is not enough to declare the type of serial identifier</i>  (XPath RAWDesAdvise/TAheader/supplier/additionalIdentifier/@idQualifier) [Optional]  - nota: <i>this attribute should be used when the numberingOrg attribute is not enough to declare the type of identifier</i>  (XPath RAWDesAdvise/RABody/RAitem/shipInfo/actualPackageUnit/packageIdentification/serialN/@idQualifier) [Optional]  - nota: <i>this attribute should be used when the numberingOrg attribute is not enough to declare the type of serial identifier</i></p>
incoTerm	<p>specification of the terms of trade (INCOTERMS)  - base type: string, cod. table: T3  <a href="http://www.ebiz.enea.it/moda-ml/repository/codelist/draft/gc_T3.xml">http://www.ebiz.enea.it/moda-ml/repository/codelist/draft/gc_T3.xml</a>  (XPath RAWDesAdvise/trade/incoTerm) 1-1</p>
incoTermText	<p>free text specifying the terms of trade (incoterm, location)  - base type: string, max length: 250,  (XPath RAWDesAdvise/trade/incoTermText) 1-1</p>
@isURL	<p>it indicates if the referred element is an URL (true) or not (false)  - base type: boolean,  (XPath RAWDesAdvise/TAheader/refDoc/attachment/externalReference/uri/@isURL) [Optional] [Default= true]  - nota: <i>usage of URLs is recommended</i>  (XPath RAWDesAdvise/RABody/RAitem/refDoc/attachment/externalReference/uri/@isURL) [Optional] [Default= true]  - nota: <i>usage of URLs is recommended</i></p>
itemID	<p>number of the line/item of the referenced document  - base type: string, max length: 6,  (XPath RAWDesAdvise/TAheader/refDoc/itemID) 0-1  (XPath RAWDesAdvise/RABody/RAitem/refDoc/itemID) 0-1</p>
itemsPerPackage	<p>the quantity of items that can be contained in a package.  - base type: decimal,</p>



	(XPath RAWDesAdvise/shipInfo/packages/itemsPerPackage) 0-1 (XPath RAWDesAdvise/RABody/RAitem/shipInfo/packages/itemsPerPackage) 0-1
label	indicates if the physical object specified has to be labelled - base type: boolean, (XPath RAWDesAdvise/RABody/RAitem/shipInfo/packages/handlingChar/yarnPack/yarnReel/label) 0-1 (XPath RAWDesAdvise/shipInfo/packages/handlingChar/yarnPack/yarnReel/label) 0-1 (XPath RAWDesAdvise/shipInfo/packages/handlingChar/yarnPack/yarnInWrap/label) 0-1 (XPath RAWDesAdvise/RABody/RAitem/shipInfo/packages/handlingChar/yarnPack/yarnInWrap/label) 0-1
labelWrit	text that must be written on the lable of a specified physical object when its customization is required - base type: string, max length: 350, (XPath RAWDesAdvise/shipInfo/packages/handlingChar/yarnPack/yarnReel/labelWrit) 0-1 (XPath RAWDesAdvise/shipInfo/packages/handlingChar/yarnPack/yarnInWrap/labelWrit) 0-1 (XPath RAWDesAdvise/RABody/RAitem/shipInfo/packages/handlingChar/yarnPack/yarnInWrap/labelWrit) 0-1 (XPath RAWDesAdvise/RABody/RAitem/shipInfo/packages/handlingChar/yarnPack/yarnReel/labelWrit) 0-1
legalName	legal name of a Party - base type: string, max length: 250, (XPath RAWDesAdvise/RABody/RAitem/thirdParty/legalName) 0-1 (XPath RAWDesAdvise/TAheader/supplier/legalName) 0-1 (XPath RAWDesAdvise/TAheader/thirdParty/legalName) 0-1 (XPath RAWDesAdvise/TAheader/buyer/legalName) 0-1
length	effective length of a specified object - base type: decimal, min inclusive: 0, fraction digits: 2, (XPath RAWDesAdvise/RABody/RAitem/shipInfo/packages/packageDim/length) 1-1 - note: <i>here the maximum dimension must also be specified</i> (XPath RAWDesAdvise/shipInfo/packages/packageDim/length) 1-1 - note: <i>here the maximum dimension must also be specified</i> (XPath RAWDesAdvise/shipInfo/actualPackageUnit/packageDim/length) 1-1 - note: <i>here the maximum dimension must also be specified</i> (XPath RAWDesAdvise/RABody/RAitem/shipInfo/actualPackageUnit/packageDim/length) 1-1 - note: <i>here the maximum dimension must also be specified</i>
lineN	number of the line item of the present message (xml document); it is set by the role that produces the document. Usually it is a progressive number, but not always. - base type: positiveInteger, min inclusive: 1, max inclusive: 9999, (XPath RAWDesAdvise/RABody/RAitem/lineN) 1-1
@listName	the name of the list of codes used to make an instance of the element (it might be thought as descriptive element, i.e. 'fabric printing technologies', or not, i.e. "T264") - base type: string, max length: 40, (XPath RAWDesAdvise/RABody/RAitem/refDoc/season/@listName) [Optional] (XPath RAWDesAdvise/RABody/RAitem/shipInfo/actualPackageUnit/itemsList/qualityLevel/@listName) [Optional] (XPath RAWDesAdvise/RABody/RAitem/itemsList/qualityLevel/@listName) [Optional] (XPath RAWDesAdvise/shipInfo/actualPackageUnit/itemsList/qualityLevel/@listName) [Optional] (XPath RAWDesAdvise/RABody/RAitem/rawCode/color/@listName) [Optional] - nota: <i>this attribute should always be used coupled with "numberingOrg"</i>

	<p>(XPath RAWDesAdvise/TAheader/refDoc/season/@listName) [Optional]  (XPath RAWDesAdvise/RABody/RAitem/rawCode/art/@listName) [Optional]  - nota: <i>this attribute should always be used coupled with “numberingOrg”</i></p>
@listVersion	<p>it specifies the version of the list of codes used to make an instance of the element  - base type: string, max length: 6,  (XPath RAWDesAdvise/RABody/RAitem/shipInfo/actualPackageUnit/itemsList/qualityLevel/@listVersion) [Optional]  (XPath RAWDesAdvise/shipInfo/actualPackageUnit/itemsList/qualityLevel/@listVersion) [Optional]  (XPath RAWDesAdvise/RABody/RAitem/itemsList/qualityLevel/@listVersion) [Optional]  (XPath RAWDesAdvise/RABody/RAitem/rawCode/art/@listVersion) [Optional]  - nota: <i>this attribute should always be used coupled with “numberingOrg” and “listName”</i>  (XPath RAWDesAdvise/RABody/RAitem/refDoc/season/@listVersion) [Optional]  (XPath RAWDesAdvise/TAheader/refDoc/season/@listVersion) [Optional]  (XPath RAWDesAdvise/RABody/RAitem/rawCode/color/@listVersion) [Optional]  - nota: <i>this attribute should always be used coupled with “numberingOrg” and “listName”</i></p>
@ln	<p>Language code.  - base type: string,  (XPath RAWDesAdvise/shipInfo/packages/description/@ln) [Optional]  (XPath RAWDesAdvise/RABody/RAitem/shipInfo/packages/handlingChar/handlingType/@ln) [Optional]  (XPath RAWDesAdvise/RABody/RAitem/shipInfo/packages/description/@ln) [Optional]  (XPath RAWDesAdvise/shipInfo/packages/handlingChar/handlingType/@ln) [Optional]  (XPath RAWDesAdvise/RABody/RAitem/rawCode/description/@ln) [Optional]</p>
location	<p>specification of a location  - base type: string, max length: 40,  (XPath RAWDesAdvise/trade/location) 0-1  - note: <i>place to which the INCOTERM applies</i></p>
@logo	<p>company logo (URL of the image jpeg or gif). It is recommended that the width of the image does not exceed 640 pixel.  - base type: string, max length: 255,  (XPath RAWDesAdvise/TAheader/supplier/@logo) [Optional]  (XPath RAWDesAdvise/TAheader/buyer/@logo) [Optional]</p>
lotN	<p>lot number of a product or batch number of the raw material  - base type: string, max length: 15,  (XPath RAWDesAdvise/RABody/RAitem/lotN) 0-2  - note: <i>The lotN instances must differ by value of the numberingOrg attribute</i></p>
@LRI	<p>attribute usable to format a string according to a customized User rule (local rule)  - base type: string, cod. table: NT3  <a href="http://www.ebiz.enea.it/moda-ml/repository/codelist/draft/gc_NT3.xml">http://www.ebiz.enea.it/moda-ml/repository/codelist/draft/gc_NT3.xml</a>  (XPath RAWDesAdvise/trade/location/@LRI) [Optional]</p>
@method	<p>standard protocol or method employed in a test to evaluate a characteristic or a parameter  - base type: string, max length: 80,  (XPath RAWDesAdvise/RABody/RAitem/rawSpecs/specValue/@method) [Optional]</p>
@mime	<p>the mime type of the binary object  - base type: normalizedString,  (XPath RAWDesAdvise/TAheader/refDoc/attachment/binaryObject/@mime) [Optional]  (XPath RAWDesAdvise/RABody/RAitem/refDoc/attachment/binaryObject/@mime) [Optional]</p>



mimeCode	mime type of the external object - base type: normalizedString, (XPath RAWDesAdvise/TAheader/refDoc/attachment/ externalReference/mimeCode) 0-1 (XPath RAWDesAdvise/RABody/RAitem/refDoc/attachment/ externalReference/mimeCode) 0-1
minItemsPerPackage	the minimum quantity of items for the specified kind of package. - base type: decimal, min inclusive: 0, (XPath RAWDesAdvise/shipInfo/packages/minItemsPerPackage) 0-1 (XPath RAWDesAdvise/RABody/RAitem/shipInfo/packages/minItemsPerPackage) 0-1
msgDate	date of issue of the present message (xml document), according to one of the patterns YYYY-MM-DD, YYYY-MM-DD:HH-MM or YYYY-WW. - base type: string, (XPath RAWDesAdvise/TAheader/msgDate) 1-1
@msgfunction	function performed by the present message with regards to the transmission - base type: string, cod. table: NT18 <a href="http://www.ebiz.enea.it/moda-ml/repository/codelist/draft/gc_NT18.xml">http://www.ebiz.enea.it/moda-ml/repository/codelist/draft/gc_NT18.xml</a> (XPath RAWDesAdvise/@msgfunction) [Optional] [Default= OR]
msgID	key identifier of the business document in the information system of the issuing Party. In case of more despatches of the same business document, it is unchanged. - base type: string, max length: 35, (XPath RAWDesAdvise/TAheader/msgID) 0-1
msgN	identification number given to the message (xml document) by its issuer. In case of more despatches of the same business document, it changes. - base type: string, max length: 35, (XPath RAWDesAdvise/TAheader/msgN) 1-1
netWeight	the net weight declared for transport or customs purpose - base type: decimal, min inclusive: 0, fraction digits: 2, (XPath RAWDesAdvise/RABody/RAitem/shipInfo/transInfo/netWeight) 0-1 (XPath RAWDesAdvise/shipInfo/packages/handlingChar/netWeight) 0-1 (XPath RAWDesAdvise/shipInfo/actualPackageUnit/netWeight) 0-1 (XPath RAWDesAdvise/RABody/RAitem/shipInfo/packages/ handlingChar/netWeight) 0-1 (XPath RAWDesAdvise/RABody/RAitem/shipInfo/actualPackageUnit/netWeight) 0-1 (XPath RAWDesAdvise/shipInfo/transInfo/netWeight) 0-1
note	free text or structured (computer processing) note. For note structuring use the attributes "noteLabel" and "codelist" - base type: string, max length: 350, (XPath RAWDesAdvise/RABody/RAitem/note) 0-99 (XPath RAWDesAdvise/RABody/RAitem/shipInfo/packages/ handlingChar/note) 0-99 (XPath RAWDesAdvise/TAheader/note) 0-99 (XPath RAWDesAdvise/shipInfo/packages/handlingChar/note) 0-99 (XPath RAWDesAdvise/shipInfo/actualPackageUnit/note) 0-99 (XPath RAWDesAdvise/RABody/RAitem/shipInfo/actualPackageUnit/note) 0-99
@noteLabel	subject qualifier of a note - base type: string, max length: 35, (XPath RAWDesAdvise/RABody/RAitem/note/@noteLabel) [Optional] - nota: <i>must be used to qualify the subject of the note</i> (XPath RAWDesAdvise/RABody/RAitem/shipInfo/packages/ handlingChar/note/@noteLabel) [Optional] - nota: <i>must be used to qualify the subject of the note</i> (XPath RAWDesAdvise/RABody/RAitem/shipInfo/actualPackageUnit/note/@noteLabel) [Optional]

	<p>- nota: <i>must be used to qualify the subject of the note</i> (XPath RAWDesAdvise/shipInfo/packages/handlingChar/note/@noteLabel) [Optional]</p> <p>- nota: <i>must be used to qualify the subject of the note</i> (XPath RAWDesAdvise/shipInfo/actualPackageUnit/note/@noteLabel) [Optional]</p> <p>- nota: <i>must be used to qualify the subject of the note</i> (XPath RAWDesAdvise/TAheader/note/@noteLabel) [Optional]</p> <p>- nota: <i>must be used to qualify the subject of the note</i></p>
@numberingOrg	<p>code specifying the organisation who has created or owns the coding or numbering system</p> <p>- base type: string, cod. table: NT6 <a href="http://www.ebiz.enea.it/moda-ml/repository/codelist/draft/gc_NT6.xml">http://www.ebiz.enea.it/moda-ml/repository/codelist/draft/gc_NT6.xml</a> (XPath RAWDesAdvise/shipInfo/packages/packageN/@numberingOrg) [Optional]</p> <p>(XPath RAWDesAdvise/RABody/RAitem/shipInfo/actualPackageUnit/packageIdentification/serialN/@numberingOrg) [Optional]</p> <p>- nota: <i>here the issuer of the serial number must be specified (when different from the Supplier)</i> (XPath RAWDesAdvise/RABody/RAitem/dyeN/@numberingOrg) [Optional] (XPath RAWDesAdvise/RABody/RAitem/lotN/@numberingOrg) [Optional] (XPath RAWDesAdvise/RABody/RAitem/itemsList/qualityLevel/@numberingOrg) [Optional] (XPath RAWDesAdvise/shipInfo/packages/EPClist/EPC/@numberingOrg) [Optional] (XPath RAWDesAdvise/shipInfo/actualPackageUnit/packageIdentification/packageN/@numberingOrg) [Optional] (XPath RAWDesAdvise/RABody/RAitem/rawCode/added/@numberingOrg) [Optional]</p> <p>(XPath RAWDesAdvise/shipInfo/actualPackageUnit/packageIdentification/serialN/@numberingOrg) [Optional]</p> <p>- nota: <i>here the issuer of the serial number must be specified (when different from the Supplier)</i> (XPath RAWDesAdvise/RABody/RAitem/shipInfo/packages/handlingChar/note/@numberingOrg) [Optional] (XPath RAWDesAdvise/TAheader/refDoc/season/@numberingOrg) [Optional] (XPath RAWDesAdvise/TAheader/note/@numberingOrg) [Optional]</p> <p>(XPath RAWDesAdvise/RABody/RAitem/shipInfo/actualPackageUnit/packageIdentification/packageN/@numberingOrg) [Optional] (XPath RAWDesAdvise/TAheader/refDoc/attachment/fileName/@numberingOrg) [Optional] (XPath RAWDesAdvise/TAheader/supplier/id/@numberingOrg) [Optional]</p> <p>(XPath RAWDesAdvise/TAheader/supplier/additionalIdentifier/@numberingOrg) [Optional]</p> <p>- nota: <i>here the issuer of the identifier must be specified</i> (XPath RAWDesAdvise/shipInfo/packages/packageModelCode/@numberingOrg) [Optional]</p> <p>(XPath RAWDesAdvise/RABody/RAitem/shipInfo/actualPackageUnit/packagesList/packageIdentification/packageN/@numberingOrg) [Optional]</p> <p>(XPath RAWDesAdvise/RABody/RAitem/shipInfo/actualPackageUnit/itemsList/qualityLevel/@numberingOrg) [Optional]</p> <p>(XPath RAWDesAdvise/RABody/RAitem/shipInfo/actualPackageUnit/packagesList/packageIdentification/serialN/@numberingOrg) [Optional]</p> <p>- nota: <i>here the issuer of the serial number must be specified (when different from the Supplier)</i> (XPath RAWDesAdvise/RABody/RAitem/shipInfo/packages/packageModelCode/@numberingOrg) [Optional] (XPath RAWDesAdvise/shipInfo/packages/handlingChar/note/@numberingOrg) [Optional]</p> <p>(XPath RAWDesAdvise/RABody/RAitem/shipInfo/actualPackageUnit/note/@numberingOrg) [Optional] (XPath RAWDesAdvise/RABody/RAitem/thirdParty/id/@numberingOrg) [Optional]</p>

	<p>(XPath RAWDesAdvise/TAheader/buyer/id/@numberingOrg) [Optional]  (XPath RAWDesAdvise/RABody/RAitem/shipInfo/actualPackageUnit/itemsList/itemIdentification/serialN/@numberingOrg) [Optional]  - nota: here the issuer of the serial number must be specified (when different from the Supplier)  (XPath RAWDesAdvise/TAheader/buyer/additionalIdentifier/@numberingOrg) [Optional]  - nota: here the issuer of the identifier must be specified  (XPath RAWDesAdvise/RABody/RAitem/shipInfo/actualPackageUnit/packageModelCode/@numberingOrg) [Optional]  (XPath RAWDesAdvise/RABody/RAitem/rawCode/color/@numberingOrg) [Optional]  - nota: this attribute should be used either single or coupled with "listName" and "listVersion"  (XPath RAWDesAdvise/RABody/RAitem/itemsList/itemIdentification/serialN/@numberingOrg) [Optional]  - nota: here the issuer of the serial number must be specified (when different from the Supplier)  (XPath RAWDesAdvise/RABody/RAitem/shipInfo/packages/packageN/@numberingOrg) [Optional]  (XPath RAWDesAdvise/shipInfo/actualPackageUnit/itemsList/qualityLevel/@numberingOrg) [Optional]  (XPath RAWDesAdvise/RABody/RAitem/rawCode/@numberingOrg) [Optional]  (XPath RAWDesAdvise/RABody/RAitem/refDoc/attachment/fileName/@numberingOrg) [Optional]  (XPath RAWDesAdvise/TAheader/docID/@numberingOrg) [Optional]  - nota: here can be specified whose document numbering is used (e.g.: Client, Supplier, ..)  (XPath RAWDesAdvise/shipInfo/actualPackageUnit/itemsList/itemIdentification/serialN/@numberingOrg) [Optional]  - nota: here the issuer of the serial number must be specified (when different from the Supplier)  (XPath RAWDesAdvise/RABody/RAitem/note/@numberingOrg) [Optional]  (XPath RAWDesAdvise/shipInfo/actualPackageUnit/note/@numberingOrg) [Optional]  (XPath RAWDesAdvise/TAheader/thirdParty/id/@numberingOrg) [Optional]  (XPath RAWDesAdvise/RABody/RAitem/packageN/@numberingOrg) [Optional]  (XPath RAWDesAdvise/TAheader/refDoc/docID/@numberingOrg) [Optional]  - nota: here can be specified whose document numbering is used (e.g.: Client, Supplier, ..)  (XPath RAWDesAdvise/shipInfo/actualPackageUnit/packagesList/packageIdentification/serialN/@numberingOrg) [Optional]  - nota: here the issuer of the serial number must be specified (when different from the Supplier)  (XPath RAWDesAdvise/shipInfo/actualPackageUnit/packageModelCode/@numberingOrg) [Optional]  (XPath RAWDesAdvise/RABody/RAitem/refDoc/docID/@numberingOrg) [Optional]  - nota: here can be specified whose document numbering is used (e.g.: Client, Supplier, ..)  (XPath RAWDesAdvise/RABody/RAitem/shipInfo/packages/EPClist/EPC/@numberingOrg) [Optional]  (XPath RAWDesAdvise/RABody/RAitem/refDoc/season/@numberingOrg) [Optional]  (XPath RAWDesAdvise/shipInfo/actualPackageUnit/packagesList/packageIdentification/packageN/@numberingOrg) [Optional]  (XPath RAWDesAdvise/RABody/RAitem/rawCode/art/@numberingOrg) [Optional]  - nota: this attribute should be used either single or coupled with "listName" and "listVersion"</p>
package	<p>code specifying the type of transport package  - base type: string, cod. table: T11  <a href="http://www.ebiz.enea.it/moda-ml/repository/codelist/draft/gc_T11.xml">http://www.ebiz.enea.it/moda-ml/repository/codelist/draft/gc_T11.xml</a>  (XPath RAWDesAdvise/shipInfo/actualPackageUnit/package) 0-1  (XPath RAWDesAdvise/shipInfo/packages/package) 1-1  (XPath RAWDesAdvise/RABody/RAitem/shipInfo/packages/package) 1-1</p>

	(XPath RAWDesAdvise/RABody/RAitem/shipInfo/actualPackageUnit/package) 0-1
@packageContainerN	reference usable to indicate the outer package containing this package - base type: string, max length: 40, (XPath RAWDesAdvise/shipInfo/actualPackageUnit/packagesList/packageIdentification/packageN/@packageContainerN) [Optional] (XPath RAWDesAdvise/RABody/RAitem/shipInfo/packages/packageN/@packageContainerN) [Optional] (XPath RAWDesAdvise/RABody/RAitem/shipInfo/actualPackageUnit/packageIdentification/packageN/@packageContainerN) [Optional] (XPath RAWDesAdvise/shipInfo/packages/packageN/@packageContainerN) [Optional] (XPath RAWDesAdvise/shipInfo/actualPackageUnit/packageIdentification/packageN/@packageContainerN) [Optional] (XPath RAWDesAdvise/RABody/RAitem/packageN/@packageContainerN) [Optional] (XPath RAWDesAdvise/RABody/RAitem/shipInfo/actualPackageUnit/packagesList/packageIdentification/packageN/@packageContainerN) [Optional]
@packageLevel	level used to indicate the hierarchical structure of the packages (from outer to inner levels) - base type: positiveInteger, min inclusive: 1, max inclusive: 9, (XPath RAWDesAdvise/shipInfo/actualPackageUnit/@packageLevel) [Optional] (XPath RAWDesAdvise/RABody/RAitem/shipInfo/packages/@packageLevel) [Optional] - nota: <i>number fixing the level of the package in the transport structure (from inner to outer). Must either be used for all package types or not be used</i> (XPath RAWDesAdvise/shipInfo/packages/@packageLevel) [Optional] - nota: <i>number fixing the level of the package in the transport structure (from inner to outer). Must either be used for all package types or not be used</i> (XPath RAWDesAdvise/RABody/RAitem/shipInfo/actualPackageUnit/@packageLevel) [Optional]
packageModelCode	a code (eg a barcode) identifying the type of packaging - base type: string, (XPath RAWDesAdvise/RABody/RAitem/shipInfo/packages/packageModelCode) 0-1 (XPath RAWDesAdvise/shipInfo/packages/packageModelCode) 0-1 (XPath RAWDesAdvise/RABody/RAitem/shipInfo/actualPackageUnit/packageModelCode) 0-1 (XPath RAWDesAdvise/shipInfo/actualPackageUnit/packageModelCode) 0-1
packageN	serial number used to identify a transport package - base type: string, max length: 40, (XPath RAWDesAdvise/RABody/RAitem/shipInfo/actualPackageUnit/packagesList/packageIdentification/packageN) 1-1 (XPath RAWDesAdvise/shipInfo/packages/packageN) 0-unbounded - note: <i>here the serial no.s of the packages can be identified</i> (XPath RAWDesAdvise/RABody/RAitem/shipInfo/actualPackageUnit/packageIdentification/packageN) 1-1 (XPath RAWDesAdvise/shipInfo/actualPackageUnit/packageIdentification/packageN) 1-1 (XPath RAWDesAdvise/RABody/RAitem/packageN) 0-unbounded (XPath RAWDesAdvise/shipInfo/actualPackageUnit/packagesList/packageIdentification/packageN) 1-1 (XPath RAWDesAdvise/RABody/RAitem/shipInfo/packages/packageN) 0-unbounded - note: <i>here the serial no.s of the packages can be identified</i>
packageQty	quantity of the specified transport packages - base type: positiveInteger,

	(XPath RAWDesAdvise/shipInfo/packages/packageQty) 0-1 - note: <i>total for the type of package</i> (XPath RAWDesAdvise/RABody/RAitem/shipInfo/packages/packageQty) 0-1 - note: <i>total for the type of package</i>
packageText	denomination of the type of transport package (text) - base type: string, max length: 80, (XPath RAWDesAdvise/shipInfo/packages/packageText) 1-1 (XPath RAWDesAdvise/shipInfo/actualPackageUnit/packageText) 0-1 (XPath RAWDesAdvise/RABody/RAitem/shipInfo/packages/packageText) 1-1 (XPath RAWDesAdvise/RABody/RAitem/shipInfo/actualPackageUnit/packageText) 0-1
pcTolerance	percent deviation tolerated on the value of a measurement (it must have a plus or minus sign) - base type: decimal, min inclusive: 0, max inclusive: 100, total digits: 2, (XPath RAWDesAdvise/RABody/RAitem/rawSpecs/pcTolerance) 0-2
person	name of the contact person within a Party - base type: string, max length: 40, (XPath RAWDesAdvise/TAheader/buyer/person) 0-1 (XPath RAWDesAdvise/TAheader/supplier/person) 0-1 (XPath RAWDesAdvise/RABody/RAitem/thirdParty/person) 0-1 (XPath RAWDesAdvise/TAheader/thirdParty/person) 0-1
@phone	phone number of the contact person within a Party - base type: string, max length: 35, (XPath RAWDesAdvise/TAheader/buyer/person/@phone) [Optional] (XPath RAWDesAdvise/TAheader/supplier/person/@phone) [Optional] (XPath RAWDesAdvise/RABody/RAitem/thirdParty/person/@phone) [Optional] (XPath RAWDesAdvise/TAheader/thirdParty/person/@phone) [Optional]
pieceInnWrap1	code specifying the type of inner wrapping/packing used for the fabric piece - base type: string, cod. table: T4 <a href="http://www.ebiz.enea.it/moda-ml/repository/codelist/draft/gc_T4.xml">http://www.ebiz.enea.it/moda-ml/repository/codelist/draft/gc_T4.xml</a> (XPath RAWDesAdvise/RABody/RAitem/shipInfo/packages/handlingChar/piecePack/pieceInnWrap1) 1-1 (XPath RAWDesAdvise/shipInfo/packages/handlingChar/piecePack/pieceInnWrap1) 1-1
pieceInnWrap2	code sub-specifying the type of inner wrapping/packing used for the fabric piece - base type: string, cod. table: T5 <a href="http://www.ebiz.enea.it/moda-ml/repository/codelist/draft/gc_T5.xml">http://www.ebiz.enea.it/moda-ml/repository/codelist/draft/gc_T5.xml</a> (XPath RAWDesAdvise/RABody/RAitem/shipInfo/packages/handlingChar/piecePack/pieceInnWrap2) 0-1 (XPath RAWDesAdvise/shipInfo/packages/handlingChar/piecePack/pieceInnWrap2) 0-1
pieceOutWrap	code specifying the type of outer wrapping or packing used for the fabric piece - base type: string, cod. table: T6 <a href="http://www.ebiz.enea.it/moda-ml/repository/codelist/draft/gc_T6.xml">http://www.ebiz.enea.it/moda-ml/repository/codelist/draft/gc_T6.xml</a> (XPath RAWDesAdvise/RABody/RAitem/shipInfo/packages/handlingChar/piecePack/pieceOutWrap) 0-1 (XPath RAWDesAdvise/shipInfo/packages/handlingChar/piecePack/pieceOutWrap) 0-1
piecePackText	free text specifying the type of wrapping or packing used for the fabric piece - base type: string, max length: 250, (XPath RAWDesAdvise/shipInfo/packages/handlingChar/piecePack/piecePackText) 1-1 (XPath RAWDesAdvise/RABody/RAitem/shipInfo/packages/handlingChar/piecePack/piecePackText) 1-1
postCode	code defining the postal zone - base type: string, max length: 10,

	<p>(XPath RAWDesAdvise/THeader/buyer/postCode) 0-1  (XPath RAWDesAdvise/RABody/RAitem/thirdParty/postCode) 0-1  (XPath RAWDesAdvise/THeader/thirdParty/postCode) 0-1  (XPath RAWDesAdvise/THeader/supplier/postCode) 0-1</p>
@progr	<p>progressive number in the sequence  - base type: positiveInteger, min inclusive: 1,  (XPath RAWDesAdvise/RABody/RAitem/shipInfo/transInfo/@progr) [Optional]  - nota: <i>Indicates the position of the leg in a sequence of transport legs.</i>  (XPath RAWDesAdvise/shipInfo/transInfo/@progr) [Optional]  - nota: <i>Indicates the position of the leg in a sequence of transport legs.</i>  (XPath RAWDesAdvise/RABody/RAitem/shipInfo/packages/  fillingCriterion/@progr) [Optional]  (XPath RAWDesAdvise/shipInfo/packages/fillingCriterion/@progr) [Optional]</p>
qty	<p>net quantity of the article or object correlated, qualified by the function of the document (ordering, delivering, ..) and by the context  - base type: decimal, min inclusive: 0, fraction digits: 2,  (XPath RAWDesAdvise/RABody/RAitem/qty) 1-2</p> <hr/> <p>AAAA-WARNING! - text not AVAILABLE n. 245 - In=en</p>
qualityLevel	<p>the product quality level (first choice, second choice,...).  - base type: string,  (XPath RAWDesAdvise/RABody/RAitem/shipInfo/actualPackageUnit/itemsList/qualityLevel) 0-1  (XPath RAWDesAdvise/shipInfo/actualPackageUnit/itemsList/qualityLevel) 0-1  (XPath RAWDesAdvise/RABody/RAitem/itemsList/qualityLevel) 0-1</p>
rawChar	<p>physical or mechanical parameter used to define a characteristics of a raw material  - base type: string, cod. table: T22  <a href="http://www.ebiz.enea.it/moda-ml/repository/codelist/draft/gc_T22.xml">http://www.ebiz.enea.it/moda-ml/repository/codelist/draft/gc_T22.xml</a>  (XPath RAWDesAdvise/RABody/RAitem/rawSpecs/rawChar) 1-1</p>
rawCharText	<p>free text describing the physical or mechanical parameter used to define a characteristics of a raw material  - base type: string, max length: 250,  (XPath RAWDesAdvise/RABody/RAitem/rawSpecs/rawCharText) 1-1</p>
@reelMat	<p>type of material of which a package for yarn is made  - base type: string, cod. table: T30  <a href="http://www.ebiz.enea.it/moda-ml/repository/codelist/draft/gc_T30.xml">http://www.ebiz.enea.it/moda-ml/repository/codelist/draft/gc_T30.xml</a>  (XPath RAWDesAdvise/RABody/RAitem/shipInfo/packages/  handlingChar/yarnPack/yarnReel/@reelMat) [Optional]  (XPath RAWDesAdvise/shipInfo/packages/handlingChar/  yarnPack/yarnReel/@reelMat) [Optional]</p>
@reelType	<p>type of package used for a yarn product  - base type: string, cod. table: T29  <a href="http://www.ebiz.enea.it/moda-ml/repository/codelist/draft/gc_T29.xml">http://www.ebiz.enea.it/moda-ml/repository/codelist/draft/gc_T29.xml</a>  (XPath RAWDesAdvise/shipInfo/packages/handlingChar/  yarnPack/yarnReel/@reelType) [Required]  (XPath RAWDesAdvise/RABody/RAitem/shipInfo/packages/  handlingChar/yarnPack/yarnReel/@reelType) [Required]</p>
@role	<p>Third Party role qualifier  - base type: string, cod. table: NT2  <a href="http://www.ebiz.enea.it/moda-ml/repository/codelist/draft/gc_NT2.xml">http://www.ebiz.enea.it/moda-ml/repository/codelist/draft/gc_NT2.xml</a>  (XPath RAWDesAdvise/THeader/thirdParty/@role) [Required]  (XPath RAWDesAdvise/RABody/RAitem/thirdParty/@role) [Required]</p>
season	<p>sale season; defined as: season (1 crt) + year (4 crt) - season: S/S=1 A/W=2 Spring=3 Summer=4 Autumn=5 Winter=6: for more than four seasons use alphabetic sequence: 1st season=A 2nd season=B etc.etc.  - base type: string, max length: 15,  (XPath RAWDesAdvise/THeader/refDoc/season) 0-1</p>



	<p>- note: <i>here indicates the season to which the referenced document belongs</i> (XPath RAWDesAdvise/RABody/RAitem/refDoc/season) 0-1</p> <p>- note: <i>here indicates the season to which the referenced document belongs</i></p>
@sender	<p>qualifier that specifies the Party issuing of the document</p> <p>- base type: boolean, (XPath RAWDesAdvise/THeader/supplier/@sender) [Optional]</p> <p>- nota: <i>This attribute is mandatory when the STYLESHEET must be used</i> (XPath RAWDesAdvise/THeader/thirdParty/@sender) [Optional]</p> <p>- nota: <i>This attribute is mandatory when the STYLESHEET must be used</i> (XPath RAWDesAdvise/THeader/buyer/@sender) [Optional]</p> <p>- nota: <i>This attribute is mandatory when the STYLESHEET must be used</i> (XPath RAWDesAdvise/RABody/RAitem/thirdParty/@sender) [Optional]</p> <p>- nota: <i>This attribute is mandatory when the STYLESHEET must be used</i></p>
serialN	<p>serial number used for the identification of a physical unit</p> <p>- base type: string, max length: 250, (XPath RAWDesAdvise/RABody/RAitem/shipInfo/actualPackageUnit/packagesList/packageIdentification/serialN) 0-9</p> <p>- note: <i>multiple values of serialN are allowed in order to provide different representations of the serial identifier of the same package unit. Different instances of serialN must differ at least for one value of idQualifier or numberingOrg</i> (XPath RAWDesAdvise/shipInfo/actualPackageUnit/packageIdentification/serialN) 0-9</p> <p>- note: <i>multiple values of serialN are allowed in order to provide different representations of the serial identifier of the same package unit. Different instances of serialN must differ at least for one value of idQualifier or numberingOrg</i> (XPath RAWDesAdvise/RABody/RAitem/shipInfo/actualPackageUnit/packageIdentification/serialN) 0-9</p> <p>- note: <i>multiple values of serialN are allowed in order to provide different representations of the serial identifier of the same package unit. Different instances of serialN must differ at least for one value of idQualifier or numberingOrg</i> (XPath RAWDesAdvise/RABody/RAitem/itemsList/itemIdentification/serialN) 1-9</p> <hr/> <p><b>AAAA-WARNING! - text not AVAILABLE n. 245 - In=en</b></p> <p>- note: <i>multiple values of serialN are allowed for different representations of the serial identifier of the same product unit. Instances of serialN must differ at least for one value of numberingOrg and idQualifier.</i> (XPath RAWDesAdvise/shipInfo/actualPackageUnit/packagesList/packageIdentification/serialN) 0-9</p> <p>- note: <i>multiple values of serialN are allowed in order to provide different representations of the serial identifier of the same package unit. Different instances of serialN must differ at least for one value of idQualifier or numberingOrg</i> (XPath RAWDesAdvise/shipInfo/actualPackageUnit/itemsList/itemIdentification/serialN) 1-9</p> <hr/> <p><b>AAAA-WARNING! - text not AVAILABLE n. 245 - In=en</b></p> <p>- note: <i>multiple values of serialN are allowed for different representations of the serial identifier of the same product unit. Instances of serialN must differ at least for one value of numberingOrg and idQualifier.</i> (XPath RAWDesAdvise/RABody/RAitem/shipInfo/actualPackageUnit/itemsList/itemIdentification/serialN) 1-9</p> <hr/> <p><b>AAAA-WARNING! - text not AVAILABLE n. 245 - In=en</b></p> <p>- note: <i>multiple values of serialN are allowed for different representations of the serial identifier of the same product unit. Instances of serialN must differ at least for one value of numberingOrg and idQualifier.</i></p>
sortableIndicator	<p>It states if the item can be automatically sorted.</p> <p>- base type: boolean, (XPath RAWDesAdvise/RABody/RAitem/shipInfo/packages/handlingChar/sortableIndicator) 0-1 (XPath RAWDesAdvise/shipInfo/packages/handlingChar/sortableIndicator) 0-1</p>

@source	party who has provided the data - base type: string, cod. table: NT12 <a href="http://www.ebiz.enea.it/moda-ml/repository/codelist/draft/gc_NT12.xml">http://www.ebiz.enea.it/moda-ml/repository/codelist/draft/gc_NT12.xml</a> (XPath RAWDesAdvise/RABody/RAitem/rawSpecs/specValue/@source) [Optional]
specValue	value requested for a property or a parameter that is measured - base type: decimal, (XPath RAWDesAdvise/RABody/RAitem/rawSpecs/specValue) 0-1
stackabilityLevel	This value indicates the level at which the item can be stacked. - base type: integer, (XPath RAWDesAdvise/shipInfo/packages/handlingChar/stackabilityLevel) 0-1 (XPath RAWDesAdvise/RABody/RAitem/shipInfo/packages/handlingChar/stackabilityLevel) 0-1
street	street and building number identifying a location - base type: string, max length: 80, (XPath RAWDesAdvise/TAheader/supplier/street) 0-1 (XPath RAWDesAdvise/TAheader/buyer/street) 0-1 (XPath RAWDesAdvise/RABody/RAitem/thirdParty/street) 0-1 (XPath RAWDesAdvise/TAheader/thirdParty/street) 0-1
subCountry	short name or code of the sub-country entity - base type: string, max length: 9, (XPath RAWDesAdvise/TAheader/thirdParty/subCountry) 0-1 (XPath RAWDesAdvise/TAheader/buyer/subCountry) 0-1 (XPath RAWDesAdvise/TAheader/supplier/subCountry) 0-1 (XPath RAWDesAdvise/RABody/RAitem/thirdParty/subCountry) 0-1
subDept	name or code of a contact department within a Party - base type: string, max length: 40, (XPath RAWDesAdvise/TAheader/thirdParty/subDept) 0-1 (XPath RAWDesAdvise/TAheader/buyer/subDept) 0-1 (XPath RAWDesAdvise/TAheader/supplier/subDept) 0-1 (XPath RAWDesAdvise/RABody/RAitem/thirdParty/subDept) 0-1
@TAtype	type of Despatch advise - base type: string, cod. table: NT10 <a href="http://www.ebiz.enea.it/moda-ml/repository/codelist/draft/gc_NT10.xml">http://www.ebiz.enea.it/moda-ml/repository/codelist/draft/gc_NT10.xml</a> (XPath RAWDesAdvise/@TAtype) [Optional] [Default= STD]
@TID	serial number wired into the RFID chip - base type: string, (XPath RAWDesAdvise/shipInfo/packages/EPClist/EPC/@TID) [Optional] (XPath RAWDesAdvise/RABody/RAitem/shipInfo/packages/EPClist/EPC/@TID) [Optional]
tolerance	deviation tolerated on the value of a measurement (it must have a plus or minus sign) - base type: decimal, (XPath RAWDesAdvise/RABody/RAitem/rawSpecs/tolerance) 0-2
transCondition	special condition of transport or special service requested to the Forwarder - base type: string, cod. table: T38 <a href="http://www.ebiz.enea.it/moda-ml/repository/codelist/draft/gc_T38.xml">http://www.ebiz.enea.it/moda-ml/repository/codelist/draft/gc_T38.xml</a> (XPath RAWDesAdvise/RABody/RAitem/shipInfo/transInfo/transCondition) 0-3 (XPath RAWDesAdvise/shipInfo/transInfo/transCondition) 0-3
transConditionText	free text description of the special condition of transport or special service requested to the Forwarder - base type: string, max length: 250, (XPath RAWDesAdvise/RABody/RAitem/shipInfo/transInfo/transConditionText) 0-1 (XPath RAWDesAdvise/shipInfo/transInfo/transConditionText) 0-1
transMeans	means of transport, in general or referred to a specific leg - base type: string, cod. table: T40 <a href="http://www.ebiz.enea.it/moda-ml/repository/codelist/draft/gc_T40.xml">http://www.ebiz.enea.it/moda-ml/repository/codelist/draft/gc_T40.xml</a> (XPath RAWDesAdvise/shipInfo/transInfo/transMeans) 0-1



	(XPath RAWDesAdvise/RABody/RAitem/shipInfo/transInfo/transMeans) 0-1
transMode	way of transport, in general or referred to the specified leg - base type: string, cod. table: T8 <a href="http://www.ebiz.enea.it/moda-ml/repository/codelist/draft/gc_T8.xml">http://www.ebiz.enea.it/moda-ml/repository/codelist/draft/gc_T8.xml</a> (XPath RAWDesAdvise/RABody/RAitem/shipInfo/transInfo/transMode) 1-1 (XPath RAWDesAdvise/shipInfo/transInfo/transMode) 1-1
@transReason	reason for the transport - base type: string, cod. table: NT11 <a href="http://www.ebiz.enea.it/moda-ml/repository/codelist/draft/gc_NT11.xml">http://www.ebiz.enea.it/moda-ml/repository/codelist/draft/gc_NT11.xml</a> (XPath RAWDesAdvise/RABody/RAitem/shipInfo/transInfo/@transReason) [Optional] (XPath RAWDesAdvise/shipInfo/transInfo/@transReason) [Optional]
@uid	unique element identifier within the xml document - base type: string, (XPath RAWDesAdvise/RABody/RAitem/refDoc/attachment/@uid) [Optional] (XPath RAWDesAdvise/TAheader/refDoc/attachment/@uid) [Optional]
@um	specification of the unit of measure - base type: string, cod. table: NT7 <a href="http://www.ebiz.enea.it/moda-ml/repository/codelist/draft/gc_NT7.xml">http://www.ebiz.enea.it/moda-ml/repository/codelist/draft/gc_NT7.xml</a> (XPath RAWDesAdvise/RABody/RAitem/shipInfo/actualPackageUnit/packageDim/width/@um) [Required] (XPath RAWDesAdvise/RABody/RAitem/shipInfo/actualPackageUnit/packageDim/height/@um) [Required] (XPath RAWDesAdvise/RABody/RAitem/shipInfo/actualPackageUnit/netWeight/@um) [Required] (XPath RAWDesAdvise/RABody/RAitem/shipInfo/actualPackageUnit/volume/@um) [Required] (XPath RAWDesAdvise/RABody/RAitem/shipInfo/actualPackageUnit/packageDim/length/@um) [Required] (XPath RAWDesAdvise/RABody/RAitem/shipInfo/actualPackageUnit/grossWeight/@um) [Required] (XPath RAWDesAdvise/RABody/RAitem/shipInfo/transInfo/grossWeight/@um) [Required] (XPath RAWDesAdvise/RABody/RAitem/shipInfo/transInfo/netWeight/@um) [Required] (XPath RAWDesAdvise/shipInfo/packages/handlingChar/yarnPack/yarnReel/yarnReelQty/@um) [Required] (XPath RAWDesAdvise/shipInfo/packages/handlingChar/grossWeight/@um) [Required] (XPath RAWDesAdvise/shipInfo/packages/handlingChar/netWeight/@um) [Required] (XPath RAWDesAdvise/shipInfo/packages/handlingChar/volume/@um) [Required] (XPath RAWDesAdvise/RABody/RAitem/shipInfo/packages/packageDim/width/@um) [Required] (XPath RAWDesAdvise/RABody/RAitem/shipInfo/packages/packageDim/height/@um) [Required] (XPath RAWDesAdvise/shipInfo/packages/packageDim/height/@um) [Required] (XPath RAWDesAdvise/shipInfo/packages/handlingChar/yarnPack/yarnReel/yarnReelH/@um) [Required] (XPath RAWDesAdvise/shipInfo/packages/handlingChar/yarnPack/yarnReel/yarnReelD/@um) [Required] (XPath RAWDesAdvise/RABody/RAitem/shipInfo/packages/packageDim/length/@um) [Required] (XPath RAWDesAdvise/shipInfo/actualPackageUnit/grossWeight/@um) [Required] (XPath RAWDesAdvise/shipInfo/actualPackageUnit/netWeight/@um) [Required] (XPath RAWDesAdvise/shipInfo/actualPackageUnit/volume/@um) [Required]

	<p>(XPath RAWDesAdvise/shipInfo/actualPackageUnit/packageDim/height/@um) [Required]</p> <p>(XPath RAWDesAdvise/shipInfo/actualPackageUnit/packageDim/width/@um) [Required]</p> <p>(XPath RAWDesAdvise/shipInfo/actualPackageUnit/packageDim/length/@um) [Required]</p> <p>(XPath RAWDesAdvise/RABody/RAitem/qty/@um) [Required]</p> <p>(XPath RAWDesAdvise/shipInfo/packages/minItemsPerPackage/@um) [Required]</p> <p>(XPath RAWDesAdvise/shipInfo/packages/itemsPerPackage/@um) [Required]</p> <p>(XPath RAWDesAdvise/RABody/RAitem/rawSpecs/specValue/@um) [Optional]</p> <p>(XPath RAWDesAdvise/RABody/RAitem/rawSpecs/pcTolerance/@um) [Optional]</p> <p>- nota: <i>to be used when it has to be soecified if the declared percentage is by weight, volume, etc...</i></p> <p>(XPath RAWDesAdvise/RABody/RAitem/rawSpecs/tolerance/@um) [Required]</p> <p>(XPath RAWDesAdvise/RABody/RAitem/shipInfo/packages/handlingChar/yarnPack/yarnReel/yarnReelH/@um) [Required]</p> <p>(XPath RAWDesAdvise/RABody/RAitem/shipInfo/packages/handlingChar/volume/@um) [Required]</p> <p>(XPath RAWDesAdvise/RABody/RAitem/shipInfo/packages/handlingChar/grossWeight/@um) [Required]</p> <p>(XPath RAWDesAdvise/RABody/RAitem/shipInfo/packages/handlingChar/netWeight/@um) [Required]</p> <p>(XPath RAWDesAdvise/RABody/RAitem/shipInfo/packages/handlingChar/yarnPack/yarnReel/yarnReelQty/@um) [Required]</p> <p>(XPath RAWDesAdvise/shipInfo/packages/packageDim/length/@um) [Required]</p> <p>(XPath RAWDesAdvise/shipInfo/transInfo/grossWeight/@um) [Required]</p> <p>(XPath RAWDesAdvise/shipInfo/transInfo/netWeight/@um) [Required]</p> <p>(XPath RAWDesAdvise/RABody/RAitem/shipInfo/packages/itemsPerPackage/@um) [Required]</p> <p>(XPath RAWDesAdvise/RABody/RAitem/shipInfo/packages/minItemsPerPackage/@um) [Required]</p> <p>(XPath RAWDesAdvise/shipInfo/packages/packageDim/width/@um) [Required]</p> <p>(XPath RAWDesAdvise/RABody/RAitem/shipInfo/packages/handlingChar/yarnPack/yarnReel/yarnReelD/@um) [Required]</p>
uri	<p>Uniform Resource Identifier (URI) that identifies the external object as an Internet resource</p> <p>- base type: normalizedString,</p> <p>(XPath RAWDesAdvise/RABody/RAitem/refDoc/attachment/externalReference/uri) 1-1</p> <p>(XPath RAWDesAdvise/TAheader/refDoc/attachment/externalReference/uri) 1-1</p>
@useProfile	<p>use profile to which the present document is compliant if it was agreed by the parties. It is suggested a URI with reference to the firm or the URL of the profile.</p> <p>- base type: string,</p> <p>(XPath RAWDesAdvise/@useProfile) [Optional]</p>
@VAT	<p>VAT rate or code (DEPRECATED, use dtScheme element)</p> <p>- base type: string, cod. table: NT16</p> <p><a href="http://www.ebiz.enea.it/moda-ml/repository/codelist/draft/gc_NT16.xml">http://www.ebiz.enea.it/moda-ml/repository/codelist/draft/gc_NT16.xml</a></p> <p>(XPath RAWDesAdvise/RABody/RAitem/thirdParty/@VAT) [Optional]</p> <p>(XPath RAWDesAdvise/RABody/RAitem/lineN/@VAT) [Optional]</p> <p>- nota: <i>Deprecated, prefer dtScheme when available.</i></p> <p>(XPath RAWDesAdvise/TAheader/thirdParty/@VAT) [Optional]</p>
@version	<p>Dictionary version from which the instance has been created</p> <p>- base type: string, cod. table: NT100</p> <p><a href="http://www.ebiz.enea.it/moda-ml/repository/codelist/draft/gc_NT100.xml">http://www.ebiz.enea.it/moda-ml/repository/codelist/draft/gc_NT100.xml</a></p> <p>(XPath RAWDesAdvise/@version) [Optional] [Default= draft]</p>
volume	<p>effective volume of a specified object</p> <p>- base type: decimal, min inclusive: 0, fraction digits: 2,</p> <p>(XPath RAWDesAdvise/shipInfo/actualPackageUnit/volume) 0-1</p> <p>(XPath RAWDesAdvise/RABody/RAitem/shipInfo/packages/handlingChar/volume) 0-1</p>

	<p>(XPath RAWDesAdvise/RABody/RAitem/shipInfo/actualPackageUnit/volume) 0-1  (XPath RAWDesAdvise/shipInfo/packages/handlingChar/volume) 0-1</p>
width	<p>effective width of a specified object  - base type: decimal, min inclusive: 0, fraction digits: 2,  (XPath RAWDesAdvise/RABody/RAitem/shipInfo/actualPackageUnit/packageDim/wid  dth) 0-1  (XPath RAWDesAdvise/RABody/RAitem/shipInfo/packages/  packageDim/width) 0-1  (XPath RAWDesAdvise/shipInfo/actualPackageUnit/packageDim/width) 0-1  (XPath RAWDesAdvise/shipInfo/packages/packageDim/width) 0-1</p>
yarnConeAngle	<p>tapering angle of the cone on which a yarn is reeled  - base type: positiveInteger,  (XPath RAWDesAdvise/shipInfo/packages/handlingChar/  yarnPack/yarnReel/yarnConeAngle) 0-1  (XPath RAWDesAdvise/RABody/RAitem/shipInfo/packages/  handlingChar/yarnPack/yarnReel/yarnConeAngle) 0-1</p>
yarnOutWrap	<p>code specifying the type of outer wrapping or packing of a yarn  - base type: string, cod. table: T33  <a href="http://www.ebiz.enea.it/moda-ml/repository/codelist/draft/gc_T33.xml">http://www.ebiz.enea.it/moda-ml/repository/codelist/draft/gc_T33.xml</a>  (XPath RAWDesAdvise/RABody/RAitem/shipInfo/packages/  handlingChar/yarnPack/yarnOutWrap) 0-1  (XPath RAWDesAdvise/shipInfo/packages/handlingChar/  yarnPack/yarnOutWrap) 0-1</p>
yarnOutWrapText	<p>free text specifying the type of outer wrapping or packing of a yarn  - base type: string, max length: 250,  (XPath RAWDesAdvise/RABody/RAitem/shipInfo/packages/  handlingChar/yarnPack/yarnOutWrapText) 0-1  (XPath RAWDesAdvise/shipInfo/packages/handlingChar/  yarnPack/yarnOutWrapText) 0-1</p>
yarnReelID	<p>diameter of the bobbin used for a yarn product  - base type: decimal, min inclusive: 0, fraction digits: 2,  (XPath RAWDesAdvise/shipInfo/packages/handlingChar/  yarnPack/yarnReel/yarnReelID) 0-1  (XPath RAWDesAdvise/RABody/RAitem/shipInfo/packages/  handlingChar/yarnPack/yarnReel/yarnReelID) 0-1</p>
yarnReelH	<p>height of the bobbin used a yarn product  - base type: decimal, min inclusive: 0, fraction digits: 2,  (XPath RAWDesAdvise/shipInfo/packages/handlingChar/  yarnPack/yarnReel/yarnReelH) 0-1  (XPath RAWDesAdvise/RABody/RAitem/shipInfo/packages/  handlingChar/yarnPack/yarnReel/yarnReelH) 0-1</p>
yarnReelQty	<p>quantity of yarn (by weight or length) wound upon a bobbin  - base type: decimal, min inclusive: 0, fraction digits: 2,  (XPath RAWDesAdvise/RABody/RAitem/shipInfo/packages/  handlingChar/yarnPack/yarnReel/yarnReelQty) 0-2  (XPath RAWDesAdvise/shipInfo/packages/handlingChar/  yarnPack/yarnReel/yarnReelQty) 0-2</p>
yarnReelWrap	<p>type of wrapping in which a package of yarn is wrapped  - base type: string, cod. table: T32  <a href="http://www.ebiz.enea.it/moda-ml/repository/codelist/draft/gc_T32.xml">http://www.ebiz.enea.it/moda-ml/repository/codelist/draft/gc_T32.xml</a>  (XPath RAWDesAdvise/RABody/RAitem/shipInfo/packages/  handlingChar/yarnPack/yarnInWrap/yarnReelWrap) 1-1  (XPath RAWDesAdvise/shipInfo/packages/handlingChar/  yarnPack/yarnInWrap/yarnReelWrap) 1-1</p>

## 2.3 Suggested best practices

**RAWDesAdvise/RABody/RAitem/qty** (net quantity of the article or object correlated, qualified by the function of the document (ordering, delivering, ..) and by the context)

this element can have two instances only if the units of measure are different

**RAWDesAdvise/RABody/RAitem/itemsList/itemIdentification/serialN** (serial number used for the identification of a physical unit)

in the case of garment with RFID for anti-counterfeiting, RFID EPCGlobal for logistics and NFC for the customer experience there should be three serial elements with pairs of attributes numberingOrg/idQualifier: "CL"/"RFID", "GS1"/"RFID", "CL"/"NFC".

**RAWDesAdvise/shipInfo/actualPackageUnit/**

**itemsList/itemIdentification/serialN** (serial number used for the identification of a physical unit)

in the case of garment with RFID for anti-counterfeiting, RFID EPCGlobal for logistics and NFC for the customer experience there should be three serial elements with pairs of attributes numberingOrg/idQualifier: "CL"/"RFID", "GS1"/"RFID", "CL"/"NFC".

**RAWDesAdvise/RABody/RAitem/shipInfo/actualPackageUnit/itemsList/itemIdentification/serialN** (serial number used for the identification of a physical unit)

in the case of garment with RFID for anti-counterfeiting, RFID EPCGlobal for logistics and NFC for the customer experience there should be three serial elements with pairs of attributes numberingOrg/idQualifier: "CL"/"RFID", "GS1"/"RFID", "CL"/"NFC".

## 2.4 Enumeration tables

List of enumeration tables used in the XML document. You can find the corresponding codes at:  
<http://www.ebiz-tcf.eu/moda-ml/imple/moda-ml-draft.asp?lingua=en&pag=6>

NT10 - Despatch Advise type  
NT100 - eBIZ TCFUpstream version  
NT11 - transport causal  
NT12 - data source  
NT16 - VAT rate or code  
NT18 - message function  
NT2 - third party qualifier  
NT29 - format of a date  
NT3 - data format  
NT51 - Filling Criterion for Package homogeneity  
NT6 - coding system owner/issuer  
NT7 - unit of measure  
T10 - ISO3166 - Country  
T11 - transport package type  
T21 - type of document  
T22 - raw material characteristics type  
T29 - type of yarn package  
T3 - terms of delivery  
T30 - support of yarn package - material  
T32 - yarn reel wrapping type  
T33 - yarn outer packing  
T38 - transport conditions  
T4 - fabric piece inner packing (wrapping) 1  
T40 - type of transport means  
T44 - additional code type  
T5 - fabric piece inner packing (wrapping) 2  
T6 - fabric piece outer packing  
T8 - Modes of Transport

## ACKNOWLEDGEMENT



This action is part of the eBIZ-4.0 project, which has received funding from the European Union's COSME Programme (2014 - 2020).

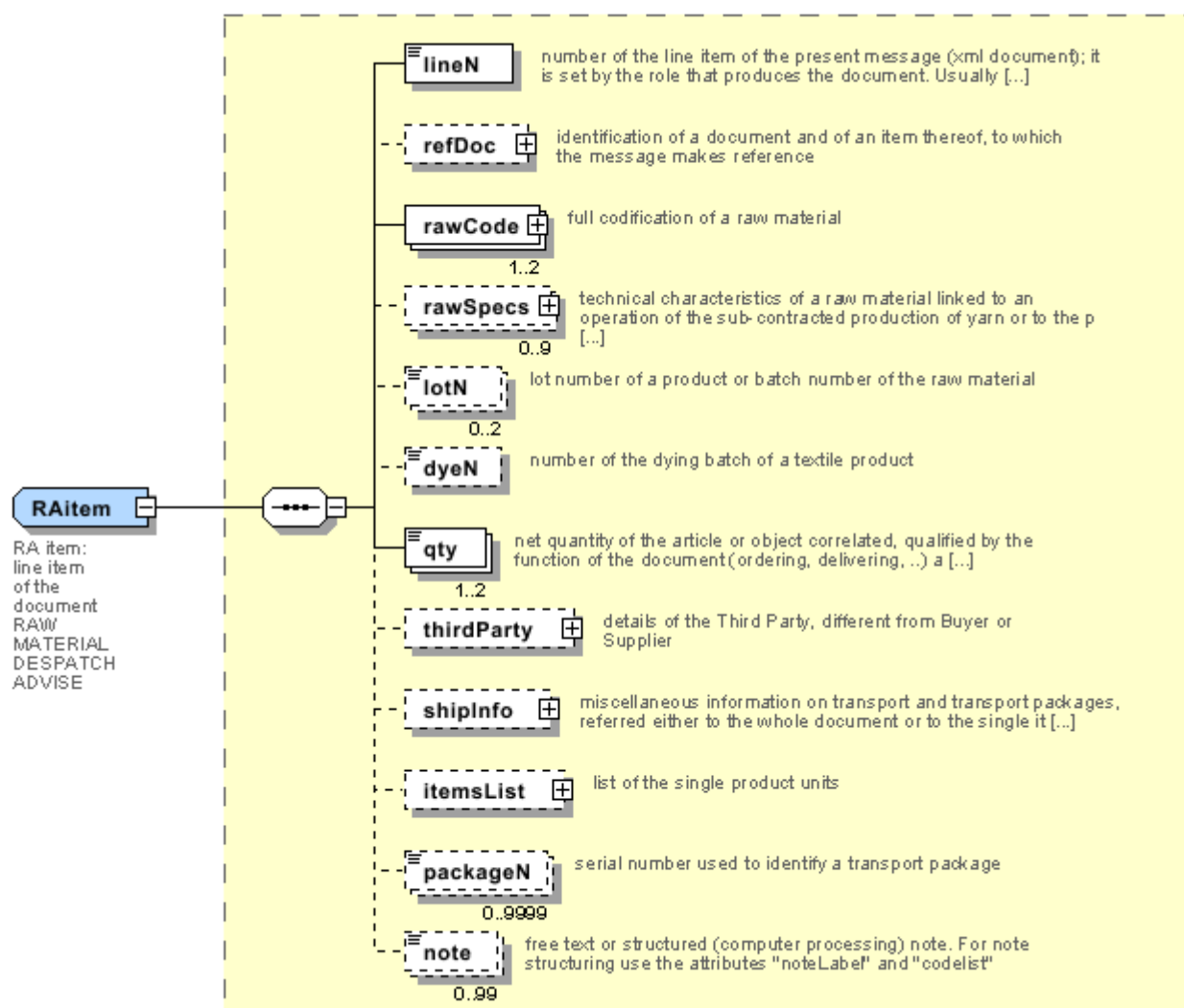
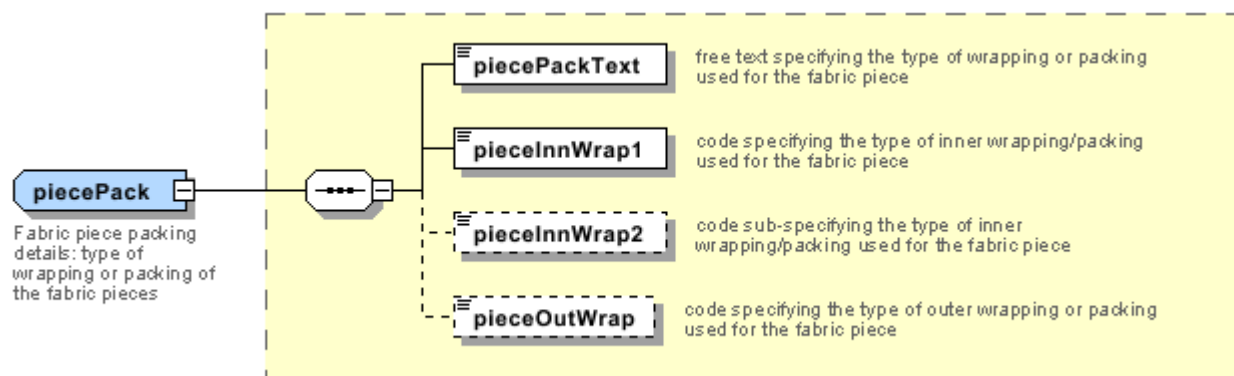
## DISCLAIMER

The content of this document represents the views of the authors only and is their sole responsibility; it cannot be considered to reflect the views of the European Commission and/or the Executive Agency for Small and Medium-sized Enterprises (EASME) or any other body of the European Union.

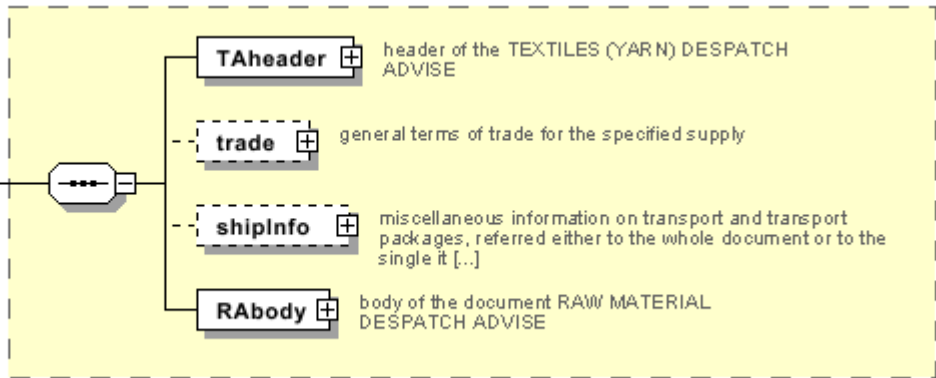
The European Commission and the Agency do not accept any responsibility for use that may be made of the information it contains.

## Annex A

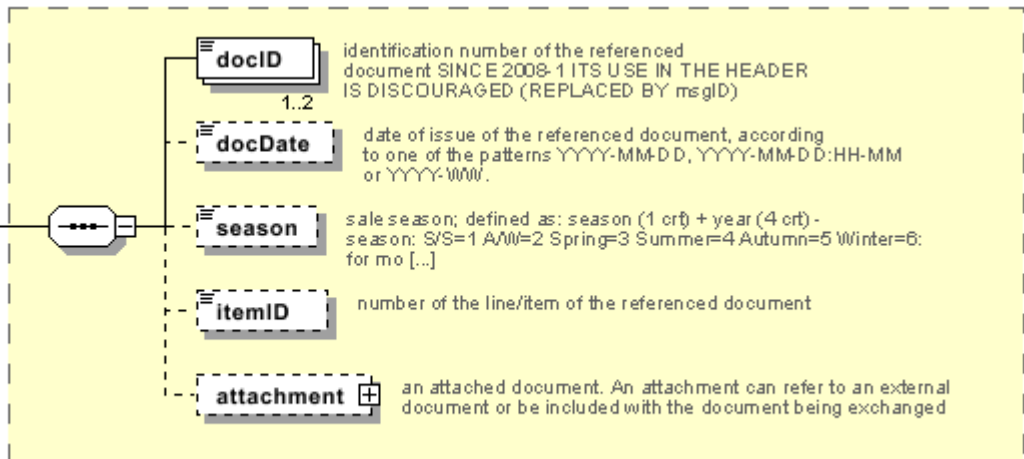
Representative images of the principal complex elements' structure.



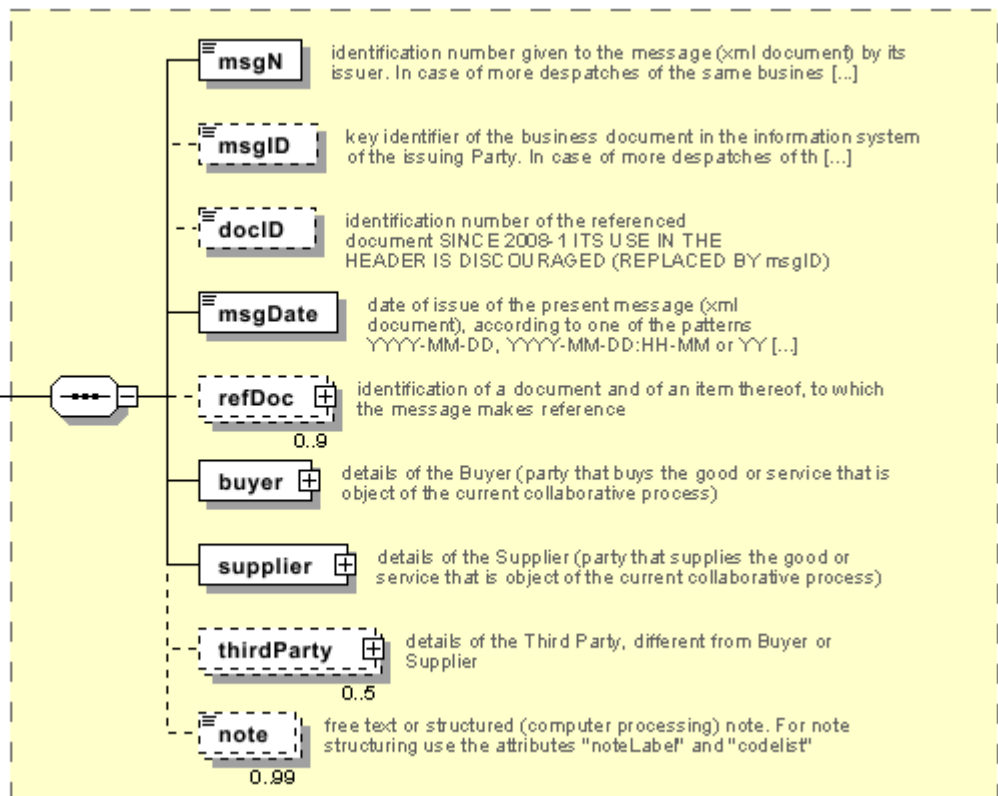
**RAWDesAdvise**  
 RAWDesAdvise: Despatch  
 advise of the raw material



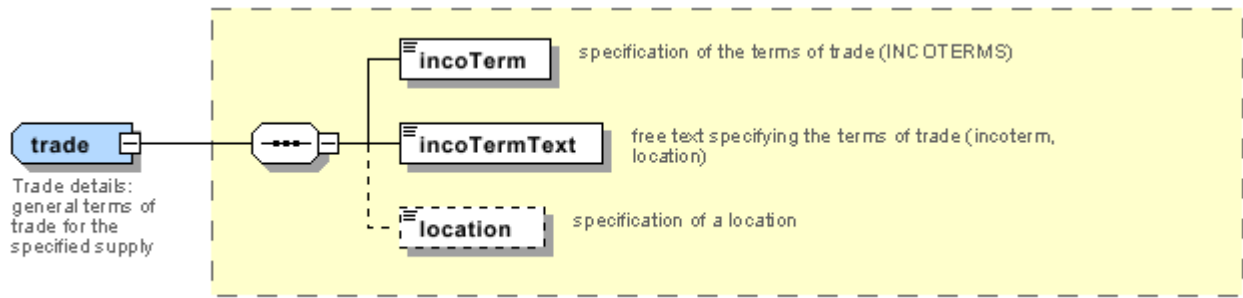
**refDoc**  
 reference document  
 details:  
 identification of a  
 document and of an  
 item thereof, to  
 which the message  
 makes reference



**TAheader**  
 TA header:  
 header of  
 the TEXTILES  
 (YARN)  
 DESPATCH  
 ADVISE









## Annex B

### NT10 - Despatch Advise type

type of Despatch advise

Agency name: eBIZ

tabella cod.: NT10

File codes list (Generic code): [http://www.ebiz.enea.it/moda-ml/repository/codelist/draft/gc\\_NT10.xml](http://www.ebiz.enea.it/moda-ml/repository/codelist/draft/gc_NT10.xml)

Code	Description	Adoption note	Date of insertion
BRG	re-worked no-charge		01/07/2013
CLP	for work		05/12/2013
DDT	return from work		01/07/2013
DDV	for demonstration		01/07/2013
PKL	packing list		05/02/2018
PRE	pre-advise		
RCD	storage return		01/07/2013
RDV	return from demonstration		05/12/2013
RNL	not worked return		01/07/2013
RRG	return from re-worked no-charge		05/12/2013
RSB	return from sale		05/12/2013
SBT	for sale		01/07/2013
SCD	for storage		05/12/2013
STD	standard		

### NT100 - eBIZ TCFUpstream version

dictionary version

Agency name: eBIZ

tabella cod.: NT100

File codes list (Generic code): [http://www.ebiz.enea.it/moda-ml/repository/codelist/draft/gc\\_NT100.xml](http://www.ebiz.enea.it/moda-ml/repository/codelist/draft/gc_NT100.xml)

Code	Description	Adoption note	Date of insertion
2013-1	v2013-1		01/07/2013
2018-1	v2018-1		04/11/2018
draft	draft		08/09/2017

### NT11 - transport causal

reason for the transport

Agency name: eBIZ

tabella cod.: NT11

File codes list (Generic code): [http://www.ebiz.enea.it/moda-ml/repository/codelist/draft/gc\\_NT11.xml](http://www.ebiz.enea.it/moda-ml/repository/codelist/draft/gc_NT11.xml)

Code	Description	Adoption note	Date of insertion
FOC	free of charge		
FRW	return from re-works		
FST	return from storage		
FVW	return from view		
FWK	return from works		
IST	in storage		
NWK	return non-worked		
RJC	return from rejection		
SEL	to sell		
STO	to storage		
VEW	to view		
WRK	to works		

### NT12 - data source

party who has provided the data

Agency name: eBIZ

tabella cod.: NT12

File codes list (Generic code): [http://www.ebiz.enea.it/moda-ml/repository/codelist/draft/gc\\_NT12.xml](http://www.ebiz.enea.it/moda-ml/repository/codelist/draft/gc_NT12.xml)

Code	Description	Adoption note	Date of insertion
AC	internal test		
CO	external test		
CV	test after steaming		

### NT16 - VAT rate or code

VAT rate or code ( DEPRECATED, use dtScheme element )

tabella cod.: NT16

File codes list (Generic code): [http://www.ebiz.enea.it/moda-ml/repository/codelist/draft/gc\\_NT16.xml](http://www.ebiz.enea.it/moda-ml/repository/codelist/draft/gc_NT16.xml)

### NT18 - message function

function performed by the present message with regards to the transmission

Agency name: eBIZ

tabella cod.: NT18

File codes list (Generic code): [http://www.ebiz.enea.it/moda-ml/repository/codelist/draft/gc\\_NT18.xml](http://www.ebiz.enea.it/moda-ml/repository/codelist/draft/gc_NT18.xml)

Code	Description	Adoption note	Date of insertion
CA	delete this document		01/07/2013
CP	copy		
OR	original		
RC	re-transmission for data correction		
RT	re-transmission		

### NT2 - third party qualifier

Third Party role qualifier

Agency name: eBIZ

tabella cod.: NT2

File codes list (Generic code): [http://www.ebiz.enea.it/moda-ml/repository/codelist/draft/gc\\_NT2.xml](http://www.ebiz.enea.it/moda-ml/repository/codelist/draft/gc_NT2.xml)

Code	Description	Adoption note	Date of insertion
AG	Sales Agent		
CO	Quality Controller		
DC	Response to		
DF	Invoicee		
DI	Copy to (CC)		28/10/2014
DM	Consignee		
DP	Consignment address (Delivery Party)		
IM	Importer		
OR	Originator		10/09/2014
SP	Forwarder		
TX	Tax Representative		

### NT29 - format of a date

format used for the date

Agency name: eBIZ

tabella cod.: NT29

File codes list (Generic code): [http://www.ebiz.enea.it/moda-ml/repository/codelist/draft/gc\\_NT29.xml](http://www.ebiz.enea.it/moda-ml/repository/codelist/draft/gc_NT29.xml)

Code	Description	Adoption note	Date of insertion
D	YYYY-MM-DD		
M	YYYY-MM-DD:HH-MM		
W	YYYY-WW		

### NT3 - data format

format of a string according to a customized User rule (local rule)

Agency name: eBIZ

tabella cod.: NT3

File codes list (Generic code): [http://www.ebiz.enea.it/moda-ml/repository/codelist/draft/gc\\_NT3.xml](http://www.ebiz.enea.it/moda-ml/repository/codelist/draft/gc_NT3.xml)

Code	Description	Adoption note	Date of insertion
EN4	GS1-GLN		01/07/2013
MD	mutually agreed		

### NT51 - Filling Criterion for Package homogeneity

Filling Criterion for Package homogeneity

Agency name: eBIZ

tabella cod.: NT51

File codes list (Generic code): [http://www.ebiz.enea.it/moda-ml/repository/codelist/draft/gc\\_NT51.xml](http://www.ebiz.enea.it/moda-ml/repository/codelist/draft/gc_NT51.xml)

Code	Description	Adoption note	Date of insertion
COL	Colour		08/09/2017
MOD	Model		08/09/2017
SIZ	Size		08/09/2017

## NT6 - coding system owner/issuer

code specifying the organisation who has created or owns the coding or numbering system

Agency name: eBIZ

tabella cod.: NT6

File codes list (Generic code): [http://www.ebiz.enea.it/moda-ml/repository/codelist/draft/gc\\_NT6.xml](http://www.ebiz.enea.it/moda-ml/repository/codelist/draft/gc_NT6.xml)

Code	Description	Adoption note	Date of insertion
CL	Customer/buyer		
CO	Quality Controller		
EN	GS1 ( ex-EAN International )		
ES	e-Stockflow		
FO	Supplier		
GS	GS1		01/07/2013
MF	VAT identifier		
ML	Moda-ML		
SP	Service Provider		

## NT7 - unit of measure

specification of the unit of measure, it is a sub set of table Unit of Measure Code - UN/ECE REC 20 delivered by United Nations Economic Commission for Europe (UN/ECE)

Agency name: eBIZ / UN/ECE

tabella cod.: NT7

File codes list (Generic code): [http://www.ebiz.enea.it/moda-ml/repository/codelist/draft/gc\\_NT7.xml](http://www.ebiz.enea.it/moda-ml/repository/codelist/draft/gc_NT7.xml)

Other link: <http://docs.oasis-open.org/ubl/os-UBL-2.1/cl/gc/default/UnitOfMeasureCode-2.1.gc#>

Code	Description	Adoption note	Date of insertion
CMK	square centimetre		20/12/2017
CMQ	cubic centimetre		20/12/2017
CMT	centimetre		
CNE	centiNewton		
CO2TON	ton of CO2		10/09/2014
COUPLES	couples		
DMQ	cubic decimetre		
E37	pixel		11/04/2018
GRM	gram		

HUR	hour		
INH	inch		
KGM	kilogram		
KMT	kilometer		
KWH	kilowatthours		10/09/2014
LBR	pound		
MIN	minute		
MMK	centimetre		20/12/2017
MMK	square millimetre		20/12/2017
MTK	square metre		20/12/2017
MTQ	cubic metre		
MTR	metre		
NMB	numero		
ONZ	ounce		
P1	percent		
PPM	parts per milion		
PZ	piece		
RPM	rounds per metre		
YRD	yard		

### T10 - ISO3166 - Country

code of the nation

Agency name: ISO

tabella cod.: T10

File codes list (Generic code): [http://www.ebiz.enea.it/moda-ml/repository/codelist/draft/gc\\_T10.xml](http://www.ebiz.enea.it/moda-ml/repository/codelist/draft/gc_T10.xml)

Table not printed: there are 239 elements, more than the maximum specified for printing: 99.

### T11 - transport package type

code specifying the type of package used for transport and delivery (subset of UN/ECE 8053 and UBL TransportEquipmentTypeCode-2.1)

Agency name: eBIZ

tabella cod.: T11

File codes list (Generic code): [http://www.ebiz.enea.it/moda-ml/repository/codelist/draft/gc\\_T11.xml](http://www.ebiz.enea.it/moda-ml/repository/codelist/draft/gc_T11.xml)

Other link: <http://docs.oasis-open.org/ubl/os-UBL-2.1/cl/gc/default/TransportEquipmentTypeCode-2.1.gc#>



<b>Code</b>	<b>Description</b>	<b>Adoption note</b>	<b>Date of insertion</b>
4A	box, steel		
4C	box, wood		
4G	Box, fibreboard		01/08/2018
4H	Box, plastic		01/08/2018
5H	Bag, woven plastic		01/08/2018
5L	Bag, textile		01/08/2018
5M	Bag, paper		
AJ	Cone		01/08/2018
BL	Bale, compressed		01/08/2018
BN	Bale, non-compressed		01/08/2018
BX	Box		
CI	Canister		01/08/2018
CL	Coil		01/08/2018
CN	Container, not otherwise specified as transport equipment		01/08/2018
CS	Case		01/08/2018
CT	Carton		01/08/2018
EC	Bag, plastic		01/08/2018
ED	Case, with pallet base		01/08/2018
EE	Case, with pallet base, wooden		01/08/2018
EF	Case, with pallet base, cardboard		01/08/2018
EG	Case, with pallet base, plastic		01/08/2018
EH	Case, with pallet base, metal		01/08/2018
FX	Bag, flexible container		01/08/2018
HN	Hanger		01/08/2018
NE	unpacked		
NF	Unpacked or unpackaged, single unit		01/08/2018
NG	Unpacked or unpackaged, multiple units		01/08/2018
OA	Pallet, CHEP 40 cm x 60 cm		01/08/2018
OB	Pallet, CHEP 80 cm x 120 cm		01/08/2018
OC	Pallet, CHEP 100 cm x 120 cm		01/08/2018
OD	Pallet, AS 4068-1993		01/08/2018
OE	Pallet, ISO T11		01/08/2018
PE	europallet (80x120)		
PX	pallet		

QS	box, plastic, solid		
RJ	Rack, clothing hanger		01/08/2018
RL	Reel		01/08/2018
SO	Spool		01/08/2018
TU	tube		
XD	bag, plastics film		
XK	bag,paper, multi-wall, water resistant		
ZZ	Mutually defined		01/08/2018

## T21 - type of document

type or class to which the referenced document belongs

Agency name: eBIZ

tabella cod.: T21

File codes list (Generic code): [http://www.ebiz.enea.it/moda-ml/repository/codelist/draft/gc\\_T21.xml](http://www.ebiz.enea.it/moda-ml/repository/codelist/draft/gc_T21.xml)

Code	Description	Adoption note	Date of insertion
BOR	blanket order		01/02/2018
CAT	Price catalogue - tech sheet		
CEO	Certificate of origin		13/04/2018
CER	Certificate		13/04/2018
COC	colour card		
CRN	Credit note		08/09/2017
CTO	Checking order		01/07/2013
CTR	Contract		
CXF	CxF3 file		01/07/2013
DAD	Darn order		
DDT	ddt		
DEA	Despatch advise		
DER	Despatch request		
DR	Document Request		02/12/2014
FOR	Forecast		02/12/2014
GSO	Garment stock offer		
GSX	Garment stock offer change		
INV	Invoice		
KCC	Knitting-Clothing Commission Order		02/12/2014

KCI	Garment in Work Inventory Report		02/12/2014
M2M	Made to Measure Production Order		02/12/2014
MAS	Master marker		
MCI	Visual merchandising instruction		13/04/2018
OCH	Order change		
OFF	Offer		
ORD	Purchase order		
ORP	Order response		
OSR	order status request		
OSS	Offer status		02/12/2014
OST	Order status		
OUR	our reference		
QR	Quality Report		02/12/2014
RAI	Raw Material in Work Inventory Report		02/12/2014
RDC	Raw dyeing commission order		
RDH	Raw dyeing order change		
RDR	Raw dyeing order response		
REA	Receiving advise		
REQ	Request for Offer		
RET	Return		02/12/2014
RSC	Spinning commission order		
RSH	Spinning order change		
RSR	Spinning order response		
SCL	process sheet		
TFC	Textile dyeing-finishing commission order		
TFX	Textile Dyeing-Finishing Order Change		02/12/2014
TPC	Textile printing commission order		
TPX	Textile Printing Order Change		02/12/2014
TWI	Textile in work inventory		
VMI	visual merchandising instructions		01/02/2018
WAC	Warping commission order		
WEC	Weaving commission order		
YDC	Yarn dyeing commission order		
YDH	Yarn dyeing order change		
YDR	Yarn dyeing order response		

YTC	Twisting commission order		
YWI	Yarn in work inventory		

### T22 - raw material characteristics type

physical or mechanical parameter used to define a characteristics of a raw material

Agency name: eBIZ

tabella cod.: T22

File codes list (Generic code): [http://www.ebiz.enea.it/moda-ml/repository/codelist/draft/gc\\_T22.xml](http://www.ebiz.enea.it/moda-ml/repository/codelist/draft/gc_T22.xml)

Code	Description	Adoption note	Date of insertion
FIN	fineness		
LNG	length		
RTR	shrinkage		
YLD	yeld		

### T29 - type of yarn package

type of package (roll-up) used for a yarn product

Agency name: eBIZ

tabella cod.: T29

File codes list (Generic code): [http://www.ebiz.enea.it/moda-ml/repository/codelist/draft/gc\\_T29.xml](http://www.ebiz.enea.it/moda-ml/repository/codelist/draft/gc_T29.xml)

Code	Description	Adoption note	Date of insertion
CIL	bobbin		
CON	cone		
HNK	hank, skein		01/07/2013
MUF	muff, cake		01/07/2013
SPL	spool		
TUB	tube		
XCO	supercone		

### T3 - terms of delivery

specification of the terms of trade (INCOTERMS)

Agency name: Incoterms

tabella cod.: T3

File codes list (Generic code): [http://www.ebiz.enea.it/moda-ml/repository/codelist/draft/gc\\_T3.xml](http://www.ebiz.enea.it/moda-ml/repository/codelist/draft/gc_T3.xml)

Code	Description	Adoption note	Date of insertion
CFR	COST AND FREIGHT (named port of destination)		
CIF	COST, INSURANCE AND FREIGHT (named port of destination)		
CIP	CARRIAGE AND INSURANCE PAID (named place of destination)		
CP T	CARRIAGE PAID (named place of destination)		
DAF	DELIVERED AT FRONTIER (named place)	according to Incoterms® 2010 it is obsolete	08/12/2017
DAP	Delivered at Place of destination (named place of destination)	according to Incoterms® 2010	08/12/2017
DAT	Delivered at Terminal (named place of destination)	according to Incoterms® 2010	08/12/2017
DDP	DELIVERED DUTY PAID (named place of destination)		
DDU	DELIVERED DUTY UNPAID (named place of destination)	according to Incoterms® 2010 it is obsolete, use DAP	08/12/2017
DEQ	DELIVERED EX-QUAY (named port of destination)	according to Incoterms® 2010 it is obsolete	08/12/2017
DES	DELIVERED EX-SHIP (named port of destination)	according to Incoterms® 2010 it is obsolete	08/12/2017
EXW	EX WORKS (named place)		
FAS	FREE ALONGSIDE SHIP (named port of shipment)		
FC A	FREE CARRIER (named place)		
FOB	FREE ON BOARD (named port of shipment)		

### T30 - support of yarn package - material

type of material of which a package for yarn is made

Agency name: eBIZ

tabella cod.: T30

File codes list (Generic code): [http://www.ebiz.enea.it/moda-ml/repository/codelist/draft/gc\\_T30.xml](http://www.ebiz.enea.it/moda-ml/repository/codelist/draft/gc_T30.xml)

Code	Description	Adoption note	Date of insertion
CA	cartoon		
DY	for soft package dyeing		
MT	metallic		01/07/2013
PL	plastic		

### T32 - yarn reel wrapping type

type of wrapping in which a package of yarn is wrapped

Agency name: eBIZ

tabella cod.: T32

File codes list (Generic code): [http://www.ebiz.enea.it/moda-ml/repository/codelist/draft/gc\\_T32.xml](http://www.ebiz.enea.it/moda-ml/repository/codelist/draft/gc_T32.xml)

Code	Description	Adoption note	Date of insertion
XA	without bag		
XB	paper bag		01/07/2013
XD	plastic film bag		

### T33 - yarn outer packing

code specifying the type of outer wrapping or packing of a yarn

Agency name: eBIZ

tabella cod.: T33

File codes list (Generic code): [http://www.ebiz.enea.it/moda-ml/repository/codelist/draft/gc\\_T33.xml](http://www.ebiz.enea.it/moda-ml/repository/codelist/draft/gc_T33.xml)

Code	Description	Adoption note	Date of insertion
00			
CB	cartoon box		
CC	cartoon box 18 reels		
CD	cartoon box 36 reels		
XD	plastic film		

### T38 - transport conditions

special condition of transport or special service requested to the Forwarder

tabella cod.: T38

File codes list (Generic code): [http://www.ebiz.enea.it/moda-ml/repository/codelist/draft/gc\\_T38.xml](http://www.ebiz.enea.it/moda-ml/repository/codelist/draft/gc_T38.xml)

Code	Description	Adoption note	Date of insertion
ACC	arrange customs clearance		
CAL	Carrier loads		
CAU	Carrier unloads		
CMR	CMR carnet		
FFN	freight forwarders national conditions		
FLD	special agreement for full loading		
NCC	do not arrange customs clearance		
PPB	packaging paid by Buyer		
PPS	packaging paid by Supplier		
PRO	proof of delivery		
RFR	return container free		
RPC	return container paid by Customer		
RPS	return container paid by Supplier		
SHL	Shipper loads		
SHU	Consignee unloads		

#### T4 - fabric piece inner packing (wrapping) 1

code specifying the type of inner wrapping/packing used for the fabric piece

Agency name: eBIZ

tabella cod.: T4

File codes list (Generic code): [http://www.ebiz.enea.it/moda-ml/repository/codelist/draft/gc\\_T4.xml](http://www.ebiz.enea.it/moda-ml/repository/codelist/draft/gc_T4.xml)

Code	Description	Adoption note	Date of insertion
A	Folded, whole width		
B	Folded, doubled		
C	Folded, tube products		
D	Spoiled, whole width		
E	Spoiled, doubled, pli: left		
F	Spoiled, doubled, pli: right		
G	Rolled, whole width, single item		
H	Rolled, whole width, several items		

I	Rolled, doubled		
J	Rolled, tube products		

#### T40 - type of transport means

means of transport, in general or referred to a specific leg

Agency name: eBIZ

tabella cod.: T40

File codes list (Generic code): [http://www.ebiz.enea.it/moda-ml/repository/codelist/draft/gc\\_T40.xml](http://www.ebiz.enea.it/moda-ml/repository/codelist/draft/gc_T40.xml)

Code	Description	Adoption note	Date of insertion
AIR	aircraft		
SHP	ship		
TRU	truck		
VAN	van		

#### T44 - additional code type

qualifier of the additional coding of a product

Agency name: eBIZ

tabella cod.: T44

File codes list (Generic code): [http://www.ebiz.enea.it/moda-ml/repository/codelist/draft/gc\\_T44.xml](http://www.ebiz.enea.it/moda-ml/repository/codelist/draft/gc_T44.xml)

Code	Description	Adoption note	Date of insertion
CC	colour card		
CL	sales collection		
CO	company identification code		08/09/2017
DY	dye number		
LT	lot number		
MDI	Made in		08/09/2017
MS	manufacturing state		
PKG	packaging		09/09/2014
PL	product line		
RGB	RGB value		
SE	selvedge code		



## T5 - fabric piece inner packing (wrapping) 2

code specifying the sub-type of inner wrapping/packing used for the fabric piece

Agency name: eBIZ

tabella cod.: T5

File codes list (Generic code): [http://www.ebiz.enea.it/moda-ml/repository/codelist/draft/gc\\_T5.xml](http://www.ebiz.enea.it/moda-ml/repository/codelist/draft/gc_T5.xml)

Code	Description	Adoption note	Date of insertion
A	Open		
B	Folded once, not looped		
C	Folded twice, not looped		
H	Folded once, looped		
I	Folded twice, looped		
J	Without inner object, right side inside		
K	On carton or spooling plank, right side inside		
L	On spool (for pressure sensitive products), right side inside		
M	Without inner object, left side inside		
N	On carton or spooling plank, left side inside		
O	On spool (for pressure sensitive products), left side inside		
P	Without inner object, right side inside (deprecated code)		
Q	On carton, right side inside		
R	On wooden stick, right side inside		
S	Without inner object, left side inside (deprecated code)		
T	On carton, left side inside		
U	On wooden stick, left side inside		

## T6 - fabric piece outer packing

code specifying the type of outer wrapping or packing used for the fabric piece

Agency name: eBIZ

tabella cod.: T6

File codes list (Generic code): [http://www.ebiz.enea.it/moda-ml/repository/codelist/draft/gc\\_T6.xml](http://www.ebiz.enea.it/moda-ml/repository/codelist/draft/gc_T6.xml)

Code	Description	Adoption note	Date of insertion
0	Not wrapped		

1	Totally wrapped		
2	Wrapped, one side open		
3	Wrapped, both sides open		
4	Wrapped, one side open, with show corner		
5	Wrapped in cartons		
6	Double wrapped		

### T8 - Modes of Transport

way of transport, in general or referred to the specified leg

Agency name: eBIZ

tabella cod.: T8

File codes list (Generic code): [http://www.ebiz.enea.it/moda-ml/repository/codelist/draft/gc\\_T8.xml](http://www.ebiz.enea.it/moda-ml/repository/codelist/draft/gc_T8.xml)

Code	Description	Adoption note	Date of insertion
1	MARITIME TRANSPORT		
10	Courier		01/07/2013
2	RAIL TRANSPORT		
3	ROAD TRANSPORT		
4	AIR TRANSPORT		
5	MAIL		
6	AIR + SHIP TRANSPORT		
8	INLAND WATER TRANSPORT		
9	MODE UNKNOWN		