



<http://www.ebiz-tcf.eu>

DRAFT

IMPLEMENTATION GUIDE

TRANSACTION "RAW MATERIAL DYEING COMMISSION ORDER"

Version: draft

Date of release: 17/5/2019

Document code: G046

technical Documentation: <http://www.ebiz.enea.it>

XML Schemas repository: <http://www.ebiz.enea.it/moda-ml/repository/schema/draft/default.asp>

Guides repository: <http://www.ebiz.enea.it/moda-ml/repository/guide/draft/default.asp>

Guide filename: G046-eBIZ-RawMaterialDyeingCommissionOrder.pdf

0. PREMISE

This document contains a proposal for the updating and extension of eBIZ specifications starting from the eBIZ version released as CEN CWA 16667 in 2013. Under the name of 'Draft version' it is reported the result of an extensive work of analysis and consultation aimed at developing and maintaining eBIZ specifications.

In particular, the content of this proposal is the result of various activities, mainly those carried out within the framework of the **eBIZ 4.0 project** funded by the European Commission, call COS-DESIGN-2015-3-06, topic COS-2015-DESIGN-2.

The technical contents are backwards compatible with the latest official published version.

1. BUSINESS DESCRIPTION

1.1 Scope

The present guide has been issued to assist the companies of the Textile-Clothing sector in the implementation of the standard XML document type "RAW MATERIAL DYEING COMMISSION ORDER", providing all the instruction required for its use in the context of e-commerce between Dyeing Subcontractors and their Customers shown in the enclosed diagram

All the rules required for the construction and validation of the document are embedded into the specific XML-Schema, which is detailed in section "Implementation guide".

1.2 Generalities

The Raw material Dyeing commission order is used by a Yarn Producer to commit to a Subcontractor the dyeing of a raw material required to transform the material into yarn usable for fabric production. This work order can include one or several operations of the dyeing cycle.

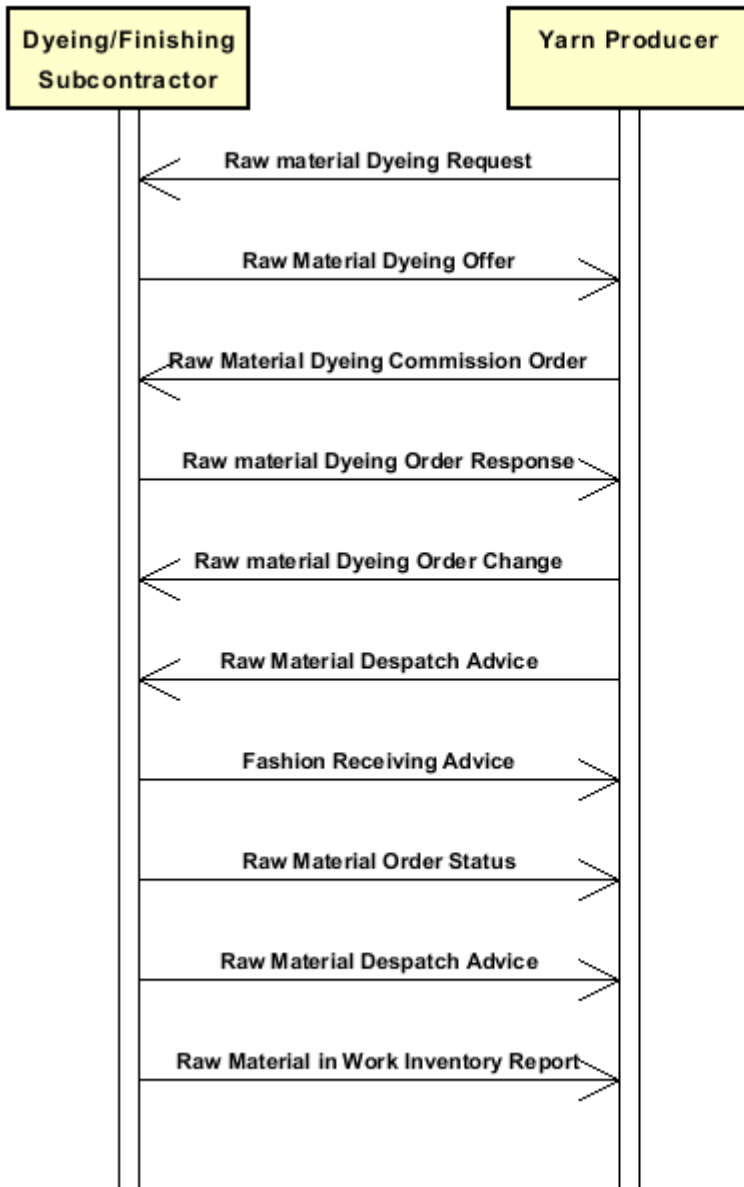
When the Issuer of the Commission requires different manufacturing operations in sequence to different Subcontractors, he can use this document not only as work order but also as a despatch order to send the semi-finished product to a successive Subcontractor

As a general rule, the Raw material dyeing commission order specifies only the characteristics of the end product of each operation and specifies the components used to manufacture that product

It must be noted that this end product can be, in turn, a component for a successive manufacturing operation

1.3. Possible scenario

Subcontracted dyeing of raw material



2. IMPLEMENTATION GUIDE

2.1 General structure of XML document

All the business data that can be exchanged through this class of documents are shown in the following "document structure", that provides a simplified vision of the Schema.

In particular:

- the two numbers following each element define its "cardinality" (minimum and maximum number of occurrences); the minimum equal zero indicates that the element is optional, the minimum greater than zero indicates that is mandatory;
- the bold character denotes the complex elements (aggregates of simple elements) that were built for the sake of functionality and re-usability of some complex informations sets. The child elements in each parent element are easily spotted as "indented";
- the symbol "@" denotes an attribute of the preceding element; here "the usage indicator (optional, required, ...)" is shown in square brackets.

Structure

RAWDyeOrder

@msgfunction [Optional] [Default= OR]

@version [Optional] [Default= draft]

@useProfile [Optional]

RDCOheader 1-1

| | msgN 1-1

- choose -

| | msgID 0-1

- or -

| | docID 0-1

| | *@numberingOrg [Optional]*

- end choose -

| | msgDate 1-1

| | *@dateForm [Optional]*

| | season 0-1

| | *@numberingOrg [Optional]*

| | *@codeList [Optional]*

| | *@listName [Optional]*

| | *@listVersion [Optional]*

| | msgCurrency 0-1

refDoc 0-9

| | *@docType [Required]*

| | docID 1-2

| | *@numberingOrg [Optional]*

| | docDate 0-1

| | *@dateForm [Optional]*

| | season 0-1

| | *@numberingOrg [Optional]*

| | *@codeList [Optional]*

| | *@listName [Optional]*

| | *@listVersion [Optional]*

| | itemID 0-1

attachment 0-1

| | *@uid [Optional]*

| | fileName 0-1

| | *@numberingOrg [Optional]*

| | binaryObject 0-1

| | *@format [Optional]*

| | *@mime [Optional]*

| | *@encoding [Optional]*

| | *@characterSet [Optional]*

```

| | | | externalReference 0-99
| | | | | uri 1-1
| | | | | @isURL [Optional] [Default= true]
| | | | | mimeTypeCode 0-1
| | | | | formatCode 0-1
| | | | | encodingCode 0-1
| | | | | characterSetCode 0-1
| | buyer 1-1
| | | @logo [Optional]
| | | @sender [Optional]
| | | | id 1-1
| | | | | @numberingOrg [Optional]
| | | | | additionalIdentifier 0-9
| | | | | @numberingOrg [Optional]
| | | | | @idQualifier [Optional]
| | | | | legalName 0-1
| | | | | dept 0-1
| | | | | subDept 0-1
| | | | | person 0-1
| | | | | | @email [Optional]
| | | | | | @phone [Optional]
| | | | | | @fax [Optional]
| | | | | street 0-1
| | | | | city 0-1
| | | | | subCountry 0-1
| | | | | country 0-1
| | | | | postCode 0-1
| | subContractor 1-1
| | | @sender [Optional]
| | | | id 1-1
| | | | | @numberingOrg [Optional]
| | | | | legalName 0-1
| | | | | dept 0-1
| | | | | subDept 0-1
| | | | | person 0-1
| | | | | | @email [Optional]
| | | | | | @phone [Optional]
| | | | | | @fax [Optional]
| | | | | street 0-1
| | | | | city 0-1
| | | | | subCountry 0-1
| | | | | country 0-1
| | | | | postCode 0-1
| | thirdParty 0-5
| | | @VAT [Optional]
| | | @role [Required]
| | | @sender [Optional]
| | | | id 1-1
| | | | | @numberingOrg [Optional]
| | | | | legalName 0-1
| | | | | dept 0-1
| | | | | subDept 0-1
| | | | | person 0-1
| | | | | | @email [Optional]
| | | | | | @phone [Optional]
| | | | | | @fax [Optional]
| | | | | street 0-1
| | | | | city 0-1
| | | | | subCountry 0-1
| | | | | country 0-1
| | | | | postCode 0-1

```

| | note 0-99
| | @numberingOrg [Optional]
| | @codeList [Optional]
| | @noteLabel [Optional]

| **terms 0-1**

| | **payment 0-5**
| | @finDiscount [Optional]
| | @finSurcharge [Optional]
| | - choose -

| | | payTerm 1-1

| | - or -

| | | payTermText 1-1

| | - end choose -

| | | payMode 0-1

| | **insPayment 0-5**

| | @part [Required]

| | - choose -

| | | payTerm 1-1

| | - or -

| | | payTermText 1-1

| | - end choose -

| | | payMode 0-1

| | **trade 0-1**

| | - choose -

| | | incoTermText 1-1

| | - or -

| | | incoTerm 1-1

| | - end choose -

| | | location 0-1

| | | @LRI [Optional]

| | **transInfo 0-5**

| | @transReason [Optional]

| | @progr [Optional]

| | | transMode 1-1

| | | carrier 0-1

| | | deliveryPlace 0-1

| | | grossWeight 0-1

| | | @um [Required]

| | | netWeight 0-1

| | | @um [Required]

| | | transMeans 0-1

| | | transCondition 0-3

| | | transConditionText 0-1

| | | despatchPlace 0-1

| | | despatchDate 0-1

| | | @dateForm [Optional]

| | | delEffectiveDate 0-1

| | | @dateForm [Optional]

| | **allowanceCharge 0-9**

| | @um [Optional]

| | @VAT [Optional]

| | @minQty [Optional]

| | @currency [Optional]

| | @maxQty [Optional]

| | - choose -

| | | AC_category 1-1

| | - or -

| | | AC_categoryText 1-1

| | - end choose -

| | - choose -

```

| | | AC_percent 1-1
| | | - or -
| | | AC_amount 1-1
| | | - end choose -
| | | dtScheme 0-1
| | | @taxType [Required]
| | | taxCategory 0-1
| | | taxRate 0-1
| | | legalRef 0-1
| | | @codeList [Required]
| | | note 0-99
| | | @numberingOrg [Optional]
| | | @codeList [Optional]
| | | @noteLabel [Optional]

```

RDCObody 1-1

```

| | RDCOitem 1-unbounded
| | @productLevel [Optional] [Default= END]
| | lineN 1-1
| | @VAT [Optional]
| | rawProd 1-1
| | @CTest [Optional]
| | rawCode 1-1
| | @numberingOrg [Optional]
| | art 1-1
| | @numberingOrg [Optional]
| | @codeList [Optional]
| | @listName [Optional]
| | @listVersion [Optional]
| | color 0-1
| | @numberingOrg [Optional]
| | @codeList [Optional]
| | @listName [Optional]
| | @listVersion [Optional]
| | added 0-9
| | @numberingOrg [Optional]
| | @addType [Optional]
| | description 0-unbounded
| | @ln [Optional]
| | rawSpecs 0-9
| | - choose -
| | | rawCharText 1-1
| | | - or -
| | | rawChar 1-1
| | | - end choose -
| | | specValue 0-1
| | | @um [Optional]
| | | @source [Optional]
| | | @method [Optional]
| | | @application [Optional]
| | | @CV [Optional]
| | | - choose -
| | | pcTolerance 0-2
| | | @um [Optional]
| | | - or -
| | | tolerance 0-2
| | | @um [Required]
| | | - end choose -
| | | lotN 0-1
| | | @numberingOrg [Optional]
| | | dyeN 0-1

```

| @numberingOrg [Optional]
 | note 0-99
 | @numberingOrg [Optional]
 | @codeList [Optional]
 | @noteLabel [Optional]
 qty 1-2
 @um [Required]
 price 0-1
 @um [Optional]
 @priceQualifier [Optional] [Default= NET]
 @currency [Optional]
 deliveryDate 0-1
 @dateForm [Optional]
thirdParty 0-3
 @VAT [Optional]
 @role [Required]
 @sender [Optional]
 | id 1-1
 | @numberingOrg [Optional]
 | legalName 0-1
 | dept 0-1
 | subDept 0-1
 | person 0-1
 | @email [Optional]
 | @phone [Optional]
 | @fax [Optional]
 | street 0-1
 | city 0-1
 | subCountry 0-1
 | country 0-1
 | postCode 0-1
rawComponent 1-9
 @CQQ [Optional]
 | pcQty 0-1
 | @um [Optional]
rawCode 1-1
 @numberingOrg [Optional]
 | art 1-1
 | @numberingOrg [Optional]
 | @codeList [Optional]
 | @listName [Optional]
 | @listVersion [Optional]
 | color 0-1
 | @numberingOrg [Optional]
 | @codeList [Optional]
 | @listName [Optional]
 | @listVersion [Optional]
 | added 0-9
 | @numberingOrg [Optional]
 | @addType [Optional]
 | description 0-unbounded
 | @ln [Optional]
 lotN 0-1
 @numberingOrg [Optional]
 dyeN 0-1
 @numberingOrg [Optional]
 qty 1-2
 @um [Required]
refDoc 0-1
 @docType [Required]
 | docID 1-2


```

| | | | | @numberingOrg [Optional]
| | | | | docDate 0-1
| | | | | @dateForm [Optional]
| | | | | season 0-1
| | | | | @numberingOrg [Optional]
| | | | | @codeList [Optional]
| | | | | @listName [Optional]
| | | | | @listVersion [Optional]
| | | | | itemID 0-1
| | | | | attachment 0-1
| | | | | @uid [Optional]
| | | | | | fileName 0-1
| | | | | | @numberingOrg [Optional]
| | | | | | binaryObject 0-1
| | | | | | @format [Optional]
| | | | | | @mime [Optional]
| | | | | | @encoding [Optional]
| | | | | | @characterSet [Optional]
| | | | | | externalReference 0-99
| | | | | | | uri 1-1
| | | | | | | @isURL [Optional] [Default= true]
| | | | | | | mimeTypeCode 0-1
| | | | | | | formatCode 0-1
| | | | | | | encodingCode 0-1
| | | | | | | characterSetCode 0-1
| | | | | location 0-1
| | | | | @LRI [Optional]
| | | | | note 0-99
| | | | | @numberingOrg [Optional]
| | | | | @codeList [Optional]
| | | | | @noteLabel [Optional]
| | | | | rawMnfrOperation 1-9
| | | | | - choose -
| | | | | | rawJob 1-1
| | | | | - or -
| | | | | | jobName 1-1
| | | | | - end choose -
| | | | | refDoc 0-1
| | | | | @docType [Required]
| | | | | | docID 1-2
| | | | | | @numberingOrg [Optional]
| | | | | | docDate 0-1
| | | | | | @dateForm [Optional]
| | | | | | season 0-1
| | | | | | @numberingOrg [Optional]
| | | | | | @codeList [Optional]
| | | | | | @listName [Optional]
| | | | | | @listVersion [Optional]
| | | | | | itemID 0-1
| | | | | | attachment 0-1
| | | | | | @uid [Optional]
| | | | | | | fileName 0-1
| | | | | | | @numberingOrg [Optional]
| | | | | | | binaryObject 0-1
| | | | | | | @format [Optional]
| | | | | | | @mime [Optional]
| | | | | | | @encoding [Optional]
| | | | | | | @characterSet [Optional]
| | | | | | | externalReference 0-99
| | | | | | | | uri 1-1
| | | | | | | | @isURL [Optional] [Default= true]

```

```

| | | | | mimeCode 0-1
| | | | | formatCode 0-1
| | | | | encodingCode 0-1
| | | | | characterSetCode 0-1
| | | | | note 0-99
| | | | | @numberingOrg [Optional]
| | | | | @codeList [Optional]
| | | | | @noteLabel [Optional]
| | | | | dtScheme 0-1
| | | | | @taxType [Required]
| | | | | taxCategory 0-1
| | | | | taxRate 0-1
| | | | | legalRef 0-1
| | | | | @codeList [Required]
| | | | | note 0-99
| | | | | @numberingOrg [Optional]
| | | | | @codeList [Optional]
| | | | | @noteLabel [Optional]
| | | | | note 0-99
| | | | | @numberingOrg [Optional]
| | | | | @codeList [Optional]
| | | | | @noteLabel [Optional]

```

2.2 Detailed description of document elements

Following tables show all elements (complex and simple) used in this document. Description includes: 1) element's information: xml tag, name, brief description, data type and syntax constraints; 2) information about use of the element in a particular position in the document: xpath and possible associated notes.

2.2.1 Complex elements (Aggregate Business Information Entities)

Complex elements are those elements whose content is composed of other elements (childs). Complex elements are alphabetically ordered.

allowanceCharge	Allowances and Charges related to an Order or a contract (XPath RAWDyeOrder/terms/allowanceCharge) 0-9
attachment	an attached document. An attachment can refer to an external document or be included with the document being exchanged (XPath RAWDyeOrder/RDCObody/RDCOitem/rawMnfrOperation/refDoc/attachment) 0-1 (XPath RAWDyeOrder/RDCObody/RDCOitem/rawComponent/refDoc/attachment) 0-1 (XPath RAWDyeOrder/RDCOheader/refDoc/attachment) 0-1
buyer	details of the Buyer (party that buys the good or service that is object of the current collaborative process) - base type: Nad, (XPath RAWDyeOrder/RDCOheader/buyer) 1-1
dtScheme	set of data usable to declare the duty or tax applied (XPath RAWDyeOrder/terms/allowanceCharge/dtScheme) 0-1 (XPath RAWDyeOrder/RDCObody/RDCOitem/dtScheme) 0-1
externalReference	details about an external object, such as a document stored at a remote location (XPath RAWDyeOrder/RDCObody/RDCOitem/rawMnfrOperation/refDoc/attachment/externalReference) 0-99 (XPath RAWDyeOrder/RDCOheader/refDoc/attachment/externalReference) 0-99 (XPath RAWDyeOrder/RDCObody/RDCOitem/rawComponent/refDoc/attachment/externalReference) 0-99
insPayment	payment details for payment by installments (XPath RAWDyeOrder/terms/insPayment) 0-5 - note: <i>excluded the case of offers, this set of data is alternative to payment set and must be iterated for each payment installment</i>
payment	payment details for payment all in one (XPath RAWDyeOrder/terms/payment) 0-5 - note: <i>excluded the case of offers, this set of data is alternative to insPayment, it can be iterated to specify alternative terms of payment (e.g.: 60 days or 30 days with 3% discount)</i>
rawCode	full codification of a raw material (XPath RAWDyeOrder/RDCObody/RDCOitem/rawComponent/rawCode) 1-1 (XPath RAWDyeOrder/RDCObody/RDCOitem/rawProd/rawCode) 1-1
rawComponent	identification details of a raw material used in a sub-contracted manufacturing operation (XPath RAWDyeOrder/RDCObody/RDCOitem/rawComponent) 1-9
rawMnfrOperation	details of a manufacturing operation on raw material used for manufacturing a yarn product (XPath RAWDyeOrder/RDCObody/RDCOitem/rawMnfrOperation) 1-9 - note: <i>this block of data can be used to specify either a subcontracted operation or an operation assigned to a shop owned by the issuer of the Manufa</i>

	<i>cturing Order. In this latter case the specifications can be completed with "machine data"</i>
rawProd	manufacturing specifications of the raw product to be obtained from an operation of the sub-contracted production (XPath RAWDyeOrder/RDCObody/RDCOitem/rawProd) 1-1
rawSpecs	technical characteristics of a raw material linked to an operation of the sub-contracted production of yarn or to the purchase of yarn (XPath RAWDyeOrder/RDCObody/RDCOitem/rawProd/rawSpecs) 0-9
RDCObody	body of the document RAW MATERIAL DYEING COMMISSION ORDER (XPath RAWDyeOrder/RDCObody) 1-1
RDCOheader	header of the document RAW MATERIAL DYEING COMMISSION ORDER (XPath RAWDyeOrder/RDCOheader) 1-1
RDCOitem	line of the document RAW MATERIAL DYEING COMMISSION ORDER (XPath RAWDyeOrder/RDCObody/RDCOitem) 1-unbounded
refDoc	identification of a document and of an item thereof, to which the message makes reference (XPath RAWDyeOrder/RDCObody/RDCOitem/rawMnfrOperation/refDoc) 0-1 (XPath RAWDyeOrder/RDCObody/RDCOitem/rawComponent/refDoc) 0-1 (XPath RAWDyeOrder/RDCOheader/refDoc) 0-9
subContractor	details of the Sub-contractor - base type: Nad, (XPath RAWDyeOrder/RDCOheader/subContractor) 1-1
terms	details of the commercial obligations for payment and delivery (XPath RAWDyeOrder/terms) 0-1
thirdParty	details of the Third Party, different from Buyer or Supplier - base type: Nad, (XPath RAWDyeOrder/RDCObody/RDCOitem/thirdParty) 0-3 - note: <i>here the Party to whom the Subcontractor must send the semi-finished product for subsequent operations can be specified</i> (XPath RAWDyeOrder/RDCOheader/thirdParty) 0-5 - note: <i>here the Party to whom the Subcontractor must send the semi-finished products for subsequent operations can be specified</i>
trade	general terms of trade for the specified supply (XPath RAWDyeOrder/terms/trade) 0-1
transInfo	details of transport: mode, carrier and delivery place (XPath RAWDyeOrder/terms/transInfo) 0-5

2.2.2 Simple elements (Basic Business Information Entities)

Simple elements are those elements whose content is characterized by a data type plus a domain of possible values. Simple elements are alphabetically ordered.

AC_amount	amount of an Allowance or Charge - base type: decimal, fraction digits: 2, (XPath RAWDyeOrder/terms/allowanceCharge/AC_amount) 1-1
AC_category	coded specification of an Allowance or Charge - base type: string, cod. table: T41 http://www.ebiz.enea.it/moda-ml/repository/codelist/draft/gc_T41.xml (XPath RAWDyeOrder/terms/allowanceCharge/AC_category) 1-1
AC_categoryText	free text description of an Allowance or Charge - base type: string, max length: 250,

	(XPath RAWDyeOrder/terms/allowanceCharge/AC_categoryText) 1-1
AC_percent	amount of an Allowance or Charge as a percentage - base type: decimal, max inclusive: 100, fraction digits: 2, (XPath RAWDyeOrder/terms/allowanceCharge/AC_percent) 1-1
added	additional code of the product (complementing the formers) - base type: string, max length: 80, (XPath RAWDyeOrder/RDCObody/RDCOitem/rawProd/rawCode/added) 0-9 (XPath RAWDyeOrder/RDCObody/RDCOitem/rawComponent/rawCode/added) 0-9
additionalIdentifier	additional identification code of a Party, for example customs registries or others - base type: string, max length: 15, (XPath RAWDyeOrder/RDCOheader/buyer/additionalIdentifier) 0-9 - note: <i>identifiers for example for exports, such as MID (Manufacturer Identification Code), EORI (E.O.R.I. - Economic Operator Registration and Identification)</i>
@addType	qualifier of the additional coding of a product - base type: string, cod. table: T44 http://www.ebiz.enea.it/moda-ml/repository/codelist/draft/gc_T44.xml (XPath RAWDyeOrder/RDCObody/RDCOitem/rawProd/rawCode/added/@addType) [Optional] - nota: <i>addType allows the clarification of the meaning of the added element content; it is strongly suggested to use it always.</i> (XPath RAWDyeOrder/RDCObody/RDCOitem/rawComponent/rawCode/added/@addType) [Optional] - nota: <i>addType allows the clarification of the meaning of the added element content; it is strongly suggested to use it always.</i>
@application	force or similar condition (e.g. no. of revolutions) applied in a test as specified within the standard - base type: string, max length: 15, (XPath RAWDyeOrder/RDCObody/RDCOitem/rawProd/rawSpecs/specValue/@application) [Optional]
art	article number of the product - base type: string, max length: 80, (XPath RAWDyeOrder/RDCObody/RDCOitem/rawComponent/rawCode/art) 1-1 (XPath RAWDyeOrder/RDCObody/RDCOitem/rawProd/rawCode/art) 1-1
binaryObject	a binary large object containing an attached document - base type: base64Binary, (XPath RAWDyeOrder/RDCOheader/refDoc/attachment/binaryObject) 0-1 (XPath RAWDyeOrder/RDCObody/RDCOitem/rawComponent/refDoc/attachment/binaryObject) 0-1 (XPath RAWDyeOrder/RDCObody/RDCOitem/rawMnfrOperation/refDoc/attachment/binaryObject) 0-1
carrier	identification of the transport carrier - base type: string, max length: 40, (XPath RAWDyeOrder/terms/transInfo/carrier) 0-1
@characterSet	the character set of the binary object if the mime type is text - base type: normalizedString, (XPath RAWDyeOrder/RDCOheader/refDoc/attachment/binaryObject/@characterSet) [Optional] (XPath RAWDyeOrder/RDCObody/RDCOitem/rawComponent/refDoc/attachment/binaryObject/@characterSet) [Optional] (XPath RAWDyeOrder/RDCObody/RDCOitem/rawMnfrOperation/refDoc/attachment/binaryObject/@characterSet) [Optional]
characterSetCode	the character set of an external document - base type: normalizedString, (XPath RAWDyeOrder/RDCObody/RDCOitem/rawComponent/refDoc/attachment/externalReference/characterSetCode) 0-1

	<p>(XPath RAWDyeOrder/RDCOheader/refDoc/attachment/externalReference/characterSetCode) 0-1 (XPath RAWDyeOrder/RDCObody/RDCOitem/rawMnfrOperation/refDoc/attachment/externalReference/characterSetCode) 0-1</p>
city	<p>name of the city (town, village) - base type: string, max length: 40, (XPath RAWDyeOrder/RDCOheader/thirdParty/city) 0-1 (XPath RAWDyeOrder/RDCObody/RDCOitem/thirdParty/city) 0-1 (XPath RAWDyeOrder/RDCOheader/buyer/city) 0-1 (XPath RAWDyeOrder/RDCOheader/subContractor/city) 0-1</p>
@codeList	<p>it specifies the URL where the list of codes used to make an instance of the element can be found - base type: string, max length: 255, (XPath RAWDyeOrder/RDCObody/RDCOitem/rawComponent/rawCode/color/@codeList) [Optional] - nota: <i>this attribute could be used as alternative to the others</i> (XPath RAWDyeOrder/RDCObody/RDCOitem/rawComponent/rawCode/art/@codeList) [Optional] - nota: <i>this attribute should be ALTERNATIVE to the others</i> (XPath RAWDyeOrder/RDCOheader/season/@codeList) [Optional] (XPath RAWDyeOrder/RDCObody/RDCOitem/rawProd/rawCode/color/@codeList) [Optional] - nota: <i>this attribute could be used as alternative to the others</i> (XPath RAWDyeOrder/RDCObody/RDCOitem/rawComponent/refDoc/season/@codeList) [Optional] (XPath RAWDyeOrder/RDCObody/RDCOitem/dtScheme/note/@codeList) [Optional] - nota: <i>must be used to provide (URL) the list of codes used in "noteLabel"</i> (XPath RAWDyeOrder/RDCObody/RDCOitem/note/@codeList) [Optional] - nota: <i>must be used to provide (URL) the list of codes used in "noteLabel"</i> (XPath RAWDyeOrder/RDCObody/RDCOitem/dtScheme/legalRef/@codeList) [Required] (XPath RAWDyeOrder/RDCObody/RDCOitem/rawMnfrOperation/note/@codeList) [Optional] - nota: <i>must be used to provide (URL) the list of codes used in "noteLabel"</i> (XPath RAWDyeOrder/RDCOheader/note/@codeList) [Optional] - nota: <i>must be used to provide (URL) the list of codes used in "noteLabel"</i> (XPath RAWDyeOrder/RDCObody/RDCOitem/rawProd/rawCode/art/@codeList) [Optional] - nota: <i>this attribute should be ALTERNATIVE to the others</i> (XPath RAWDyeOrder/terms/allowanceCharge/dtScheme/note/@codeList) [Optional] - nota: <i>must be used to provide (URL) the list of codes used in "noteLabel"</i> (XPath RAWDyeOrder/RDCObody/RDCOitem/rawComponent/note/@codeList) [Optional] - nota: <i>must be used to provide (URL) the list of codes used in "noteLabel"</i> (XPath RAWDyeOrder/RDCObody/RDCOitem/rawMnfrOperation/refDoc/season/@codeList) [Optional] (XPath RAWDyeOrder/RDCOheader/refDoc/season/@codeList) [Optional] (XPath RAWDyeOrder/terms/allowanceCharge/dtScheme/legalRef/@codeList) [Required] (XPath RAWDyeOrder/RDCObody/RDCOitem/rawProd/note/@codeList) [Optional] - nota: <i>must be used to provide (URL) the list of codes used in "noteLabel"</i></p>
color	<p>colour number of the product, when not included in the model or fabric code - base type: string, max length: 15, (XPath RAWDyeOrder/RDCObody/RDCOitem/rawProd/rawCode/color) 0-1 (XPath RAWDyeOrder/RDCObody/RDCOitem/rawComponent/rawCode/color) 0-1</p>
country	<p>code of the nation - base type: string, cod. table: T10 http://www.ebiz.enea.it/moda-ml/repository/codelist/draft/gc_T10.xml (XPath RAWDyeOrder/RDCOheader/subContractor/country) 0-1 (XPath RAWDyeOrder/RDCObody/RDCOitem/thirdParty/country) 0-1 (XPath RAWDyeOrder/RDCOheader/thirdParty/country) 0-1 (XPath RAWDyeOrder/RDCOheader/buyer/country) 0-1</p>

@CQQ	<p>specifies if the committed quantity can or can not include the loss in weight</p> <p>- base type: string, cod. table: NT37 http://www.ebiz.enea.it/moda-ml/repository/codelist/draft/gc_NT37.xml (XPath RAWDyeOrder/RDCObody/RDCOitem/rawComponent/@CQQ) [Optional]</p>
@CTest	<p>indicates the need to execute a colour test before the operation</p> <p>- base type: string, cod. table: NT38 http://www.ebiz.enea.it/moda-ml/repository/codelist/draft/gc_NT38.xml (XPath RAWDyeOrder/RDCObody/RDCOitem/rawProd/@CTest) [Optional]</p>
@currency	<p>currency in which a specified monetary data is expressed</p> <p>- base type: string, cod. table: T9 http://www.ebiz.enea.it/moda-ml/repository/codelist/draft/gc_T9.xml (XPath RAWDyeOrder/terms/allowanceCharge/@currency) [Optional] (XPath RAWDyeOrder/RDCObody/RDCOitem/price/@currency) [Optional] - nota: <i>Currency referred by the price.</i></p>
@CV	<p>coefficient of variation (CV) of a measurement</p> <p>- base type: decimal, (XPath RAWDyeOrder/RDCObody/RDCOitem/rawProd/rawSpecs/specValue/@CV) [Optional]</p>
@dateForm	<p>format used for the date</p> <p>- base type: string, cod. table: NT29 http://www.ebiz.enea.it/moda-ml/repository/codelist/draft/gc_NT29.xml (XPath RAWDyeOrder/RDCObody/RDCOitem/deliveryDate/@dateForm) [Optional] (XPath RAWDyeOrder/terms/transInfo/despatchDate/@dateForm) [Optional] (XPath RAWDyeOrder/terms/transInfo/delEffectiveDate/@dateForm) [Optional] (XPath RAWDyeOrder/RDCOheader/refDoc/docDate/@dateForm) [Optional] (XPath RAWDyeOrder/RDCObody/RDCOitem/rawMnfrOperation/refDoc/docDate/@dateForm) [Optional] (XPath RAWDyeOrder/RDCOheader/msgDate/@dateForm) [Optional] (XPath RAWDyeOrder/RDCObody/RDCOitem/rawComponent/refDoc/docDate/@dateForm) [Optional]</p>
delEffectiveDate	<p>effective date of delivery of goods (declared in Despatch), according to one of the patterns YYYY-MM-DD, YYYY-MM-DD:HH-MM or YYYY-WW.</p> <p>- base type: string, (XPath RAWDyeOrder/terms/transInfo/delEffectiveDate) 0-1</p>
deliveryDate	<p>date of delivery of goods, requested or promised in the purchase process, according to one of the patterns YYYY-MM-DD, YYYY-MM-DD:HH-MM or YY YY-WW.</p> <p>- base type: string, (XPath RAWDyeOrder/RDCObody/RDCOitem/deliveryDate) 0-1</p>
deliveryPlace	<p>place of delivery of goods, ultimate or related to a given leg</p> <p>- base type: string, max length: 250, (XPath RAWDyeOrder/terms/transInfo/deliveryPlace) 0-1</p>
dept	<p>name or code of a contact department within a Party</p> <p>- base type: string, max length: 40, (XPath RAWDyeOrder/RDCOheader/subContractor/dept) 0-1 (XPath RAWDyeOrder/RDCOheader/thirdParty/dept) 0-1 (XPath RAWDyeOrder/RDCOheader/buyer/dept) 0-1 (XPath RAWDyeOrder/RDCObody/RDCOitem/thirdParty/dept) 0-1</p>
description	<p>free text description. The content of the element must be unique, it might be translated and repeated into more languages (thus no more than one instance for each language).</p> <p>- base type: string, max length: 250, (XPath RAWDyeOrder/RDCObody/RDCOitem/rawProd/rawCode/description) 0-unbounded - note: <i>Raw material description</i> (XPath RAWDyeOrder/RDCObody/RDCOitem/rawComponent/rawCode/description) 0-unbounded - note: <i>Raw material description</i></p>

despatchDate	date of despatch of goods, requested or promised in the purchase process, according to one of the patterns YYYY-MM-DD, YYYY-MM-DD:HH-MM or Y YYYY-WW. - base type: string, (XPath RAWDyeOrder/terms/transInfo/despatchDate) 0-1
despatchPlace	place of despatch of goods, origin or related to a given leg - base type: string, max length: 250, (XPath RAWDyeOrder/terms/transInfo/despatchPlace) 0-1
docDate	date of issue of the referenced document, according to one of the patterns Y YYYY-MM-DD, YYYY-MM-DD:HH-MM or YYYY-WW. - base type: string, (XPath RAWDyeOrder/RDCObody/RDCOitem/rawMnfrOperation/ refDoc/docDate) 0-1 (XPath RAWDyeOrder/RDCOheader/refDoc/docDate) 0-1 (XPath RAWDyeOrder/RDCObody/RDCOitem/rawComponent/refDoc/docDate) 0-1
docID	identification number of the referenced document SINCE 2008-1 ITS USE I N THE HEADER IS DISCOURAGED (REPLACED BY msgID) - base type: string, max length: 80, (XPath RAWDyeOrder/RDCOheader/refDoc/docID) 1-2 (XPath RAWDyeOrder/RDCOheader/docID) 0-1 (XPath RAWDyeOrder/RDCObody/RDCOitem/rawComponent/refDoc/docID) 1-2 (XPath RAWDyeOrder/RDCObody/RDCOitem/rawMnfrOperation/ refDoc/docID) 1-2
@docType	type or class to which the referenced document belongs - base type: string, cod. table: T21 http://www.ebiz.enea.it/moda-ml/repository/codelist/draft/gc_T21.xml (XPath RAWDyeOrder/RDCObody/RDCOitem/rawComponent/refDoc/@docType) [Required] (XPath RAWDyeOrder/RDCObody/RDCOitem/rawMnfrOperation/ refDoc/@docType) [Required] (XPath RAWDyeOrder/RDCOheader/refDoc/@docType) [Required]
dyeN	number of the dying batch of a textile product - base type: string, max length: 15, (XPath RAWDyeOrder/RDCObody/RDCOitem/rawProd/dyeN) 0-1 (XPath RAWDyeOrder/RDCObody/RDCOitem/rawComponent/dyeN) 0-1
@email	electronic mail address of the contact person within a Party - base type: string, max length: 250, (XPath RAWDyeOrder/RDCOheader/buyer/person/@email) [Optional] (XPath RAWDyeOrder/RDCObody/RDCOitem/thirdParty/person/@email) [Optional] (XPath RAWDyeOrder/RDCOheader/thirdParty/person/@email) [Optional] (XPath RAWDyeOrder/RDCOheader/subContractor/person/@email) [Optional]
@encoding	specifies the decoding algorithm of the binary object - base type: normalizedString, (XPath RAWDyeOrder/RDCObody/RDCOitem/rawComponent/ refDoc/attachment/binaryObject/@encoding) [Optional] (XPath RAWDyeOrder/RDCObody/RDCOitem/rawMnfrOperation/ refDoc/attachment/binaryObject/@encoding) [Optional] (XPath RAWDyeOrder/RDCOheader/refDoc/attachment/ binaryObject/@encoding) [Optional]
encodingCode	the encoding/decoding algorithm used with the external object - base type: normalizedString, (XPath RAWDyeOrder/RDCObody/RDCOitem/rawMnfrOperation/ refDoc/attachment/externalReference/encodingCode) 0-1 (XPath RAWDyeOrder/RDCObody/RDCOitem/rawComponent/ refDoc/attachment/externalReference/encodingCode) 0-1 (XPath RAWDyeOrder/RDCOheader/refDoc/attachment/ externalReference/encodingCode) 0-1

@fax	<p>fax number of the contact person within a Party</p> <p>- base type: string, max length: 35, (XPath RAWDyeOrder/RDCOheader/thirdParty/person/@fax) [Optional] (XPath RAWDyeOrder/RDCOheader/buyer/person/@fax) [Optional] (XPath RAWDyeOrder/RDCOheader/subContractor/person/@fax) [Optional] (XPath RAWDyeOrder/RDCObody/RDCOitem/thirdParty/person/@fax) [Optional]</p>
fileName	<p>unique identifier (name) of the file</p> <p>- base type: string, max length: 255, (XPath RAWDyeOrder/RDCObody/RDCOitem/rawComponent/refDoc/attachment/fileName) 0-1 (XPath RAWDyeOrder/RDCObody/RDCOitem/rawMnfrOperation/refDoc/attachment/fileName) 0-1 (XPath RAWDyeOrder/RDCOheader/refDoc/attachment/fileName) 0-1</p>
@finDiscount	<p>financial discount rate applied for payment by the date specified</p> <p>- base type: decimal, min inclusive: 0, max inclusive: 100, fraction digits: 2, (XPath RAWDyeOrder/terms/payment/@finDiscount) [Optional]</p>
@finSurcharge	<p>financial surcharge rate applied for payment after the date specified</p> <p>- base type: decimal, min inclusive: 0, max inclusive: 100, fraction digits: 2, (XPath RAWDyeOrder/terms/payment/@finSurcharge) [Optional]</p>
@format	<p>the format of the binary content</p> <p>- base type: string, (XPath RAWDyeOrder/RDCObody/RDCOitem/rawComponent/refDoc/attachment/binaryObject/@format) [Optional] (XPath RAWDyeOrder/RDCOheader/refDoc/attachment/binaryObject/@format) [Optional] (XPath RAWDyeOrder/RDCObody/RDCOitem/rawMnfrOperation/refDoc/attachment/binaryObject/@format) [Optional]</p>
formatCode	<p>the format of the external object</p> <p>- base type: normalizedString, (XPath RAWDyeOrder/RDCOheader/refDoc/attachment/externalReference/formatCode) 0-1 (XPath RAWDyeOrder/RDCObody/RDCOitem/rawMnfrOperation/refDoc/attachment/externalReference/formatCode) 0-1 (XPath RAWDyeOrder/RDCObody/RDCOitem/rawComponent/refDoc/attachment/externalReference/formatCode) 0-1</p>
grossWeight	<p>the gross weight, declared for transport or customs purpose</p> <p>- base type: decimal, min inclusive: 0, fraction digits: 2, (XPath RAWDyeOrder/terms/transInfo/grossWeight) 0-1</p>
id	<p>primary identification code of a Party; it is recommended the format: nation code (ISO 3166) + VAT identification number (11 crt), with the qualifier "numberingOrg"= MF</p> <p>- base type: string, max length: 15, (XPath RAWDyeOrder/RDCObody/RDCOitem/thirdParty/id) 1-1 (XPath RAWDyeOrder/RDCOheader/subContractor/id) 1-1 (XPath RAWDyeOrder/RDCOheader/thirdParty/id) 1-1 (XPath RAWDyeOrder/RDCOheader/buyer/id) 1-1</p>
@idQualifier	<p>Qualification of the identifier.</p> <p>- base type: string, (XPath RAWDyeOrder/RDCOheader/buyer/additionalIdentifier/@idQualifier) [Optional]</p> <p>- nota: <i>this attribute should be used when the numberingOrg attribute is not enough to declare the type of identifier</i></p>
incoTerm	<p>specification of the terms of trade (INCOTERMS)</p> <p>- base type: string, cod. table: T3 http://www.ebiz.enea.it/moda-ml/repository/codelist/draft/gc_T3.xml (XPath RAWDyeOrder/terms/trade/incoTerm) 1-1</p>

incoTermText	free text specifying the terms of trade (incoterm, location) - base type: string, max length: 250, (XPath RAWDyeOrder/terms/trade/incoTermText) 1-1
@isURL	it indicates if the referred element is an URL (true) or not (false) - base type: boolean, (XPath RAWDyeOrder/RDCObody/RDCOitem/rawMnfrOperation/ refDoc/attachment/externalReference/uri/@isURL) [Optional] [Default= true] - nota: <i>usage of URLs is recommended</i> (XPath RAWDyeOrder/RDCObody/RDCOitem/rawComponent/ refDoc/attachment/externalReference/uri/@isURL) [Optional] [Default= true] - nota: <i>usage of URLs is recommended</i> (XPath RAWDyeOrder/RDCOheader/refDoc/attachment/ externalReference/uri/@isURL) [Optional] [Default= true] - nota: <i>usage of URLs is recommended</i>
itemID	number of the line/item of the referenced document - base type: string, max length: 6, (XPath RAWDyeOrder/RDCObody/RDCOitem/rawMnfrOperation/ refDoc/itemID) 0-1 (XPath RAWDyeOrder/RDCObody/RDCOitem/rawComponent/refDoc/itemID) 0-1 (XPath RAWDyeOrder/RDCOheader/refDoc/itemID) 0-1
jobName	description of the elementary job - base type: string, max length: 40, (XPath RAWDyeOrder/RDCObody/RDCOitem/rawMnfrOperation/jobName) 1-1
legalName	legal name of a Party - base type: string, max length: 250, (XPath RAWDyeOrder/RDCOheader/subContractor/legalName) 0-1 (XPath RAWDyeOrder/RDCOheader/thirdParty/legalName) 0-1 (XPath RAWDyeOrder/RDCOheader/buyer/legalName) 0-1 (XPath RAWDyeOrder/RDCObody/RDCOitem/thirdParty/legalName) 0-1
legalRef	legal reference of the duty or tax or fee category - base type: string, (XPath RAWDyeOrder/RDCObody/RDCOitem/dtScheme/legalRef) 0-1 (XPath RAWDyeOrder/terms/allowanceCharge/dtScheme/legalRef) 0-1
lineN	number of the line item of the present message (xml document); it is set by the role that produces the document. Usually it is a progressive number, but not always. - base type: positiveInteger, min inclusive: 1, max inclusive: 9999, (XPath RAWDyeOrder/RDCObody/RDCOitem/lineN) 1-1
@listName	the name of the list of codes used to make an instance of the element (it might be thought as descriptive element, i.e. 'fabric printing technologies', or not, i.e. "T264") - base type: string, max length: 40, (XPath RAWDyeOrder/RDCObody/RDCOitem/rawComponent/ refDoc/season/@listName) [Optional] (XPath RAWDyeOrder/RDCObody/RDCOitem/rawComponent/ rawCode/color/@listName) [Optional] - nota: <i>this attribute should always be used coupled with "numberingOrg"</i> (XPath RAWDyeOrder/RDCObody/RDCOitem/rawMnfrOperation/ refDoc/season/@listName) [Optional] (XPath RAWDyeOrder/RDCObody/RDCOitem/rawProd/rawCode/ color/@listName) [Optional] - nota: <i>this attribute should always be used coupled with "numberingOrg"</i> (XPath RAWDyeOrder/RDCObody/RDCOitem/rawProd/rawCode/art/@listName) [Optional] - nota: <i>this attribute should always be used coupled with "numberingOrg"</i> (XPath RAWDyeOrder/RDCObody/RDCOitem/rawComponent/ rawCode/art/@listName) [Optional] - nota: <i>this attribute should always be used coupled with "numberingOrg"</i> (XPath RAWDyeOrder/RDCOheader/refDoc/season/@listName) [Optional]

	(XPath RAWDyeOrder/RDCOheader/season/@listName) [Optional]
@listVersion	<p>it specifies the version of the list of codes used to make an instance of the element</p> <ul style="list-style-type: none"> - base type: string, max length: 6, (XPath RAWDyeOrder/RDCOheader/refDoc/season/@listVersion) [Optional] (XPath RAWDyeOrder/RDCOheader/season/@listVersion) [Optional] (XPath RAWDyeOrder/RDCObody/RDCOitem/rawComponent/rawCode/color/@listVersion) [Optional] - nota: <i>this attribute should always be used coupled with “numberingOrg” and “listName”</i> (XPath RAWDyeOrder/RDCObody/RDCOitem/rawComponent/rawCode/art/@listVersion) [Optional] - nota: <i>this attribute should always be used coupled with “numberingOrg” and “listName”</i> (XPath RAWDyeOrder/RDCObody/RDCOitem/rawMnfrOperation/refDoc/season/@listVersion) [Optional] (XPath RAWDyeOrder/RDCObody/RDCOitem/rawComponent/refDoc/season/@listVersion) [Optional] (XPath RAWDyeOrder/RDCObody/RDCOitem/rawProd/rawCode/color/@listVersion) [Optional] - nota: <i>this attribute should always be used coupled with “numberingOrg” and “listName”</i> (XPath RAWDyeOrder/RDCObody/RDCOitem/rawProd/rawCode/art/@listVersion) [Optional] - nota: <i>this attribute should always be used coupled with “numberingOrg” and “listName”</i>
@ln	<p>Language code.</p> <ul style="list-style-type: none"> - base type: string, (XPath RAWDyeOrder/RDCObody/RDCOitem/rawProd/rawCode/description/@ln) [Optional] (XPath RAWDyeOrder/RDCObody/RDCOitem/rawComponent/rawCode/description/@ln) [Optional]
location	<p>specification of a location</p> <ul style="list-style-type: none"> - base type: string, max length: 40, (XPath RAWDyeOrder/RDCObody/RDCOitem/rawComponent/location) 0-1 (XPath RAWDyeOrder/terms/trade/location) 0-1 - note: <i>place to which the INCOTERM applies</i>
@logo	<p>company logo (URL of the image jpeg or gif). It is recommended that the width of the image does not exceed 640 pixel.</p> <ul style="list-style-type: none"> - base type: string, max length: 255, (XPath RAWDyeOrder/RDCOheader/buyer/@logo) [Optional]
lotN	<p>lot number of a product or batch number of the raw material</p> <ul style="list-style-type: none"> - base type: string, max length: 15, (XPath RAWDyeOrder/RDCObody/RDCOitem/rawComponent/lotN) 0-1 (XPath RAWDyeOrder/RDCObody/RDCOitem/rawProd/lotN) 0-1
@LRI	<p>attribute usable to format a string according to a customized User rule (local rule)</p> <ul style="list-style-type: none"> - base type: string, cod. table: NT3 http://www.ebiz.enea.it/moda-ml/repository/codelist/draft/gc_NT3.xml (XPath RAWDyeOrder/RDCObody/RDCOitem/rawComponent/location/@LRI) [Optional] (XPath RAWDyeOrder/terms/trade/location/@LRI) [Optional]
@maxQty	<p>maximum product quantity</p> <ul style="list-style-type: none"> - base type: decimal, min inclusive: 0, fraction digits: 2, (XPath RAWDyeOrder/terms/allowanceCharge/@maxQty) [Optional] - nota: <i>maximum quantity of product for the application of this allowance or charge</i>

@method	standard protocol or method employed in a test to evaluate a characteristic or a parameter - base type: string, max length: 80, (XPath RAWDyeOrder/RDCObody/RDCOitem/rawProd/rawSpecs/specValue/@method) [Optional]
@mime	the mime type of the binary object - base type: normalizedString, (XPath RAWDyeOrder/RDCObody/RDCOitem/rawComponent/refDoc/attachment/binaryObject/@mime) [Optional] (XPath RAWDyeOrder/RDCObody/RDCOitem/rawMnfrOperation/refDoc/attachment/binaryObject/@mime) [Optional] (XPath RAWDyeOrder/RDCOheader/refDoc/attachment/binaryObject/@mime) [Optional]
mimeCode	mime type of the external object - base type: normalizedString, (XPath RAWDyeOrder/RDCObody/RDCOitem/rawComponent/refDoc/attachment/externalReference/mimeCode) 0-1 (XPath RAWDyeOrder/RDCOheader/refDoc/attachment/externalReference/mimeCode) 0-1 (XPath RAWDyeOrder/RDCObody/RDCOitem/rawMnfrOperation/refDoc/attachment/externalReference/mimeCode) 0-1
@minQty	minimum product quantity - base type: decimal, min inclusive: 0, fraction digits: 2, (XPath RAWDyeOrder/terms/allowanceCharge/@minQty) [Optional] - nota: <i>minimum quantity of product for the application of this allowance or charge</i>
msgCurrency	currency used to express the monetary amounts of the message - base type: string, cod. table: T9 http://www.ebiz.enea.it/moda-ml/repository/codelist/draft/gc_T9.xml (XPath RAWDyeOrder/RDCOheader/msgCurrency) 0-1
msgDate	date of issue of the present message (xml document), according to one of the patterns YYYY-MM-DD, YYYY-MM-DD:HH-MM or YYYY-WW. - base type: string, (XPath RAWDyeOrder/RDCOheader/msgDate) 1-1
@msgfunction	function performed by the present message with regards to the transmission - base type: string, cod. table: NT18 http://www.ebiz.enea.it/moda-ml/repository/codelist/draft/gc_NT18.xml (XPath RAWDyeOrder/@msgfunction) [Optional] [Default= OR]
msgID	key identifier of the business document in the information system of the issuing Party. In case of more despatches of the same business document, it is unchanged. - base type: string, max length: 35, (XPath RAWDyeOrder/RDCOheader/msgID) 0-1
msgN	identification number given to the message (xml document) by its issuer. In case of more despatches of the same business document, it changes. - base type: string, max length: 35, (XPath RAWDyeOrder/RDCOheader/msgN) 1-1
netWeight	the net weight declared for transport or customs purpose - base type: decimal, min inclusive: 0, fraction digits: 2, (XPath RAWDyeOrder/terms/transInfo/netWeight) 0-1
note	free text or structured (computer processing) note. For note structuring use the attributes "noteLabel" and "codelist" - base type: string, max length: 350, (XPath RAWDyeOrder/terms/allowanceCharge/dtScheme/note) 0-99 (XPath RAWDyeOrder/RDCOheader/note) 0-99 (XPath RAWDyeOrder/RDCObody/RDCOitem/dtScheme/note) 0-99 (XPath RAWDyeOrder/RDCObody/RDCOitem/rawComponent/note) 0-99

	<p>(XPath RAWDyeOrder/RDCObody/RDCOitem/rawMnfrOperation/note) 0-99 (XPath RAWDyeOrder/RDCObody/RDCOitem/note) 0-99 (XPath RAWDyeOrder/RDCObody/RDCOitem/rawProd/note) 0-99</p>
@noteLabel	<p>subject qualifier of a note - base type: string, max length: 35, (XPath RAWDyeOrder/RDCObody/RDCOitem/rawComponent/note/@noteLabel) [Optional] - nota: <i>must be used to qualify the subject of the note</i> (XPath RAWDyeOrder/RDCObody/RDCOitem/rawProd/note/@noteLabel) [Optional] - nota: <i>must be used to qualify the subject of the note</i> (XPath RAWDyeOrder/RDCObody/RDCOitem/rawMnfrOperation/note/@noteLabel) [Optional] - nota: <i>must be used to qualify the subject of the note</i> (XPath RAWDyeOrder/RDCObody/RDCOitem/dtScheme/note/@noteLabel) [Optional] - nota: <i>must be used to qualify the subject of the note</i> (XPath RAWDyeOrder/terms/allowanceCharge/dtScheme/note/@noteLabel) [Optional] - nota: <i>must be used to qualify the subject of the note</i> (XPath RAWDyeOrder/RDCOheader/note/@noteLabel) [Optional] - nota: <i>must be used to qualify the subject of the note</i> (XPath RAWDyeOrder/RDCObody/RDCOitem/note/@noteLabel) [Optional] - nota: <i>must be used to qualify the subject of the note</i></p>
@numberingOrg	<p>code specifying the organisation who has created or owns the coding or numbering system - base type: string, cod. table: NT6 http://www.ebiz.enea.it/moda-ml/repository/codelist/draft/gc_NT6.xml (XPath RAWDyeOrder/RDCObody/RDCOitem/rawComponent/rawCode/color/@numberingOrg) [Optional] - nota: <i>this attribute should be used either single or coupled with "listName" and "listVersion"</i> (XPath RAWDyeOrder/RDCObody/RDCOitem/rawComponent/dyeN/@numberingOrg) [Optional] (XPath RAWDyeOrder/RDCOheader/thirdParty/id/@numberingOrg) [Optional] (XPath RAWDyeOrder/RDCObody/RDCOitem/rawComponent/refDoc/docID/@numberingOrg) [Optional] - nota: <i>here can be specified whose document numbering is used (e.g.: Client, Supplier, ..)</i> (XPath RAWDyeOrder/RDCObody/RDCOitem/rawComponent/lotN/@numberingOrg) [Optional] (XPath RAWDyeOrder/RDCObody/RDCOitem/rawComponent/rawCode/added/@numberingOrg) [Optional] (XPath RAWDyeOrder/RDCOheader/refDoc/docID/@numberingOrg) [Optional] - nota: <i>here can be specified whose document numbering is used (e.g.: Client, Supplier, ..)</i> (XPath RAWDyeOrder/RDCOheader/note/@numberingOrg) [Optional] (XPath RAWDyeOrder/RDCOheader/refDoc/season/@numberingOrg) [Optional] (XPath RAWDyeOrder/RDCObody/RDCOitem/dtScheme/note/@numberingOrg) [Optional] (XPath RAWDyeOrder/RDCOheader/buyer/id/@numberingOrg) [Optional] (XPath RAWDyeOrder/RDCOheader/buyer/additionalIdentifier/@numberingOrg) [Optional] - nota: <i>here the issuer of the identifier must be specified</i> (XPath RAWDyeOrder/RDCObody/RDCOitem/rawComponent/note/@numberingOrg) [Optional] (XPath RAWDyeOrder/RDCOheader/refDoc/attachment/fileName/@numberingOrg) [Optional] (XPath RAWDyeOrder/RDCObody/RDCOitem/rawMnfrOperation/refDoc/season/@numberingOrg) [Optional] (XPath RAWDyeOrder/RDCOheader/season/@numberingOrg) [Optional] (XPath RAWDyeOrder/RDCObody/RDCOitem/rawMnfrOperation/refDoc/docID/@numberingOrg) [Optional] - nota: <i>here can be specified whose document numbering is used (e.g.: Client, Supplier, ..)</i></p>

	<p>(XPath RAWDyeOrder/RDCObody/RDCOitem/note/@numberingOrg) [Optional] (XPath RAWDyeOrder/RDCObody/RDCOitem/rawComponent/refDoc/season/@numberingOrg) [Optional] (XPath RAWDyeOrder/RDCObody/RDCOitem/rawMnfrOperation/refDoc/attachment/fileName/@numberingOrg) [Optional] (XPath RAWDyeOrder/RDCObody/RDCOitem/rawComponent/refDoc/attachment/fileName/@numberingOrg) [Optional] (XPath RAWDyeOrder/RDCObody/RDCOitem/rawMnfrOperation/note/@numberingOrg) [Optional] (XPath RAWDyeOrder/RDCOheader/docID/@numberingOrg) [Optional] - nota: <i>here can be specified whose document numbering is used (e.g.: Client, Supplier, ..)</i> (XPath RAWDyeOrder/RDCOheader/subContractor/id/@numberingOrg) [Optional] (XPath RAWDyeOrder/terms/allowanceCharge/dtScheme/note/@numberingOrg) [Optional] (XPath RAWDyeOrder/RDCObody/RDCOitem/rawProd/rawCode/added/@numberingOrg) [Optional] (XPath RAWDyeOrder/RDCObody/RDCOitem/rawProd/rawCode/@numberingOrg) [Optional] (XPath RAWDyeOrder/RDCObody/RDCOitem/rawProd/rawCode/color/@numberingOrg) [Optional] - nota: <i>this attribute should be used either single or coupled with "listName" and "listVersion"</i> (XPath RAWDyeOrder/RDCObody/RDCOitem/rawProd/note/@numberingOrg) [Optional] (XPath RAWDyeOrder/RDCObody/RDCOitem/thirdParty/id/@numberingOrg) [Optional] (XPath RAWDyeOrder/RDCObody/RDCOitem/rawProd/lotN/@numberingOrg) [Optional] (XPath RAWDyeOrder/RDCObody/RDCOitem/rawProd/dyeN/@numberingOrg) [Optional] (XPath RAWDyeOrder/RDCObody/RDCOitem/rawProd/rawCode/art/@numberingOrg) [Optional] - nota: <i>this attribute should be used either single or coupled with "listName" and "listVersion"</i> (XPath RAWDyeOrder/RDCObody/RDCOitem/rawComponent/rawCode/@numberingOrg) [Optional] (XPath RAWDyeOrder/RDCObody/RDCOitem/rawComponent/rawCode/art/@numberingOrg) [Optional] - nota: <i>this attribute should be used either single or coupled with "listName" and "listVersion"</i></p>
@part	<p>percent fraction of a total payment - base type: decimal, min inclusive: 1, max inclusive: 99, fraction digits: 2, (XPath RAWDyeOrder/terms/insPayment/@part) [Required] - nota: <i>here the % value of each installment must be indicated</i></p>
payMode	<p>way or means of payment - base type: string, cod. table: T2 http://www.ebiz.enea.it/moda-ml/repository/codelist/draft/gc_T2.xml (XPath RAWDyeOrder/terms/payment/payMode) 0-1 (XPath RAWDyeOrder/terms/insPayment/payMode) 0-1</p>
payTerm	<p>code specifying the terms or time by which the payment must be done - base type: string, cod. table: T1 http://www.ebiz.enea.it/moda-ml/repository/codelist/draft/gc_T1.xml (XPath RAWDyeOrder/terms/insPayment/payTerm) 1-1 (XPath RAWDyeOrder/terms/payment/payTerm) 1-1</p>
payTermText	<p>free text specifying the terms by which the payment must be done (time/mode or means) - base type: string, max length: 250, (XPath RAWDyeOrder/terms/insPayment/payTermText) 1-1 (XPath RAWDyeOrder/terms/payment/payTermText) 1-1</p>

pcQty	percent quantity of a raw material or of a specified component in a fabric or in a yarn - base type: decimal, min inclusive: 0, max inclusive: 100, fraction digits: 2, (XPath RAWDyeOrder/RDCObody/RDCOitem/rawComponent/pcQty) 0-1
pcTolerance	percent deviation tolerated on the value of a measurement (it must have a plus or minus sign) - base type: decimal, min inclusive: 0, max inclusive: 100, total digits: 2, (XPath RAWDyeOrder/RDCObody/RDCOitem/rawProd/rawSpecs/pcTolerance) 0-2
person	name of the contact person within a Party - base type: string, max length: 40, (XPath RAWDyeOrder/RDCOheader/buyer/person) 0-1 (XPath RAWDyeOrder/RDCObody/RDCOitem/thirdParty/person) 0-1 (XPath RAWDyeOrder/RDCOheader/subContractor/person) 0-1 (XPath RAWDyeOrder/RDCOheader/thirdParty/person) 0-1
@phone	phone number of the contact person within a Party - base type: string, max length: 35, (XPath RAWDyeOrder/RDCOheader/buyer/person/@phone) [Optional] (XPath RAWDyeOrder/RDCObody/RDCOitem/thirdParty/person/@phone) [Optional] (XPath RAWDyeOrder/RDCOheader/subContractor/person/@phone) [Optional] (XPath RAWDyeOrder/RDCOheader/thirdParty/person/@phone) [Optional]
postCode	code defining the postal zone - base type: string, max length: 10, (XPath RAWDyeOrder/RDCOheader/thirdParty/postCode) 0-1 (XPath RAWDyeOrder/RDCOheader/buyer/postCode) 0-1 (XPath RAWDyeOrder/RDCObody/RDCOitem/thirdParty/postCode) 0-1 (XPath RAWDyeOrder/RDCOheader/subContractor/postCode) 0-1
price	unit price of the article, object or service specified - base type: decimal, min inclusive: 0, fraction digits: 4, (XPath RAWDyeOrder/RDCObody/RDCOitem/price) 0-1
@priceQualifier	type of price with reference to discount and taxes - base type: string, cod. table: NT20 http://www.ebiz.enea.it/moda-ml/repository/codelist/draft/gc_NT20.xml (XPath RAWDyeOrder/RDCObody/RDCOitem/price/@priceQualifier) [Optional] [Default= NET]
@productLevel	level of the product (end or intermediate) yielded by an operation in a work cycle - base type: string, cod. table: NT22 http://www.ebiz.enea.it/moda-ml/repository/codelist/draft/gc_NT22.xml (XPath RAWDyeOrder/RDCObody/RDCOitem/@productLevel) [Optional] [Default= END] - nota: <i>this qualifier "intermediate" must be used when the product is also a component in an other line of the same Commission Order</i>
@progr	progressive number in the sequence - base type: positiveInteger, min inclusive: 1, (XPath RAWDyeOrder/terms/transInfo/@progr) [Optional] - nota: <i>Indicates the position of the leg in a sequence of transport legs.</i>
qty	net quantity of the article or object correlated, qualified by the function of the document (ordering, delivering, ..) and by the context - base type: decimal, min inclusive: 0, fraction digits: 2, (XPath RAWDyeOrder/RDCObody/RDCOitem/qty) 1-2 <hr/> AAAA-WARNING! - text not AVAILABLE n. 245 - In=en (XPath RAWDyeOrder/RDCObody/RDCOitem/rawComponent/qty) 1-2 <hr/> AAAA-WARNING! - text not AVAILABLE n. 245 - In=en
rawChar	physical or mechanical parameter used to define a characteristics of a raw material

	<p>- base type: string, cod. table: T22 http://www.ebiz.enea.it/moda-ml/repository/codelist/draft/gc_T22.xml (XPath RAWDyeOrder/RDCObody/RDCOitem/rawProd/rawSpecs/rawChar) 1-1</p>
rawCharText	<p>free text describing the physical or mechanical parameter used to define a characteristic of a raw material - base type: string, max length: 250, (XPath RAWDyeOrder/RDCObody/RDCOitem/rawProd/rawSpecs/rawCharText) 1-1</p>
rawJob	<p>operation of a work cycle for raw material - base type: string, cod. table: T200 http://www.ebiz.enea.it/moda-ml/repository/codelist/draft/gc_T200.xml (XPath RAWDyeOrder/RDCObody/RDCOitem/rawMnfrOperation/rawJob) 1-1</p>
@role	<p>Third Party role qualifier - base type: string, cod. table: NT2 http://www.ebiz.enea.it/moda-ml/repository/codelist/draft/gc_NT2.xml (XPath RAWDyeOrder/RDCObody/RDCOitem/thirdParty/@role) [Required] (XPath RAWDyeOrder/RDCOheader/thirdParty/@role) [Required]</p>
season	<p>sale season; defined as: season (1 crt) + year (4 crt) - season: S/S=1 A/W=2 Spring=3 Summer=4 Autumn=5 Winter=6: for more than four seasons use alphabetic sequence: 1st season=A 2nd season=B etc.etc. - base type: string, max length: 15, (XPath RAWDyeOrder/RDCOheader/refDoc/season) 0-1 - note: here indicates the season to which the referenced document belongs (XPath RAWDyeOrder/RDCObody/RDCOitem/rawMnfrOperation/refDoc/season) 0-1 - note: here indicates the season to which the referenced document belongs (XPath RAWDyeOrder/RDCOheader/season) 0-1 (XPath RAWDyeOrder/RDCObody/RDCOitem/rawComponent/refDoc/season) 0-1 - note: here indicates the season to which the referenced document belongs</p>
@sender	<p>qualifier that specifies the Party issuing of the document - base type: boolean, (XPath RAWDyeOrder/RDCOheader/subContractor/@sender) [Optional] - nota: This attribute is mandatory when the STYLESHEET must be used (XPath RAWDyeOrder/RDCOheader/thirdParty/@sender) [Optional] - nota: This attribute is mandatory when the STYLESHEET must be used (XPath RAWDyeOrder/RDCObody/RDCOitem/thirdParty/@sender) [Optional] - nota: This attribute is mandatory when the STYLESHEET must be used (XPath RAWDyeOrder/RDCOheader/buyer/@sender) [Optional] - nota: This attribute is mandatory when the STYLESHEET must be used</p>
@source	<p>party who has provided the data - base type: string, cod. table: NT12 http://www.ebiz.enea.it/moda-ml/repository/codelist/draft/gc_NT12.xml (XPath RAWDyeOrder/RDCObody/RDCOitem/rawProd/rawSpecs/specValue/@source) [Optional]</p>
specValue	<p>value requested for a property or a parameter that is measured - base type: decimal, (XPath RAWDyeOrder/RDCObody/RDCOitem/rawProd/rawSpecs/specValue) 0-1</p>
street	<p>street and building number identifying a location - base type: string, max length: 80, (XPath RAWDyeOrder/RDCOheader/subContractor/street) 0-1 (XPath RAWDyeOrder/RDCObody/RDCOitem/thirdParty/street) 0-1 (XPath RAWDyeOrder/RDCOheader/buyer/street) 0-1 (XPath RAWDyeOrder/RDCOheader/thirdParty/street) 0-1</p>
subCountry	<p>short name or code of the sub-country entity - base type: string, max length: 9, (XPath RAWDyeOrder/RDCOheader/subContractor/subCountry) 0-1 (XPath RAWDyeOrder/RDCOheader/thirdParty/subCountry) 0-1 (XPath RAWDyeOrder/RDCOheader/buyer/subCountry) 0-1 (XPath RAWDyeOrder/RDCObody/RDCOitem/thirdParty/subCountry) 0-1</p>

subDept	name or code of a contact department within a Party - base type: string, max length: 40, (XPath RAWDyeOrder/RDCOheader/subContractor/subDept) 0-1 (XPath RAWDyeOrder/RDCObody/RDCOitem/thirdParty/subDept) 0-1 (XPath RAWDyeOrder/RDCOheader/thirdParty/subDept) 0-1 (XPath RAWDyeOrder/RDCOheader/buyer/subDept) 0-1
taxCategory	duty or tax or fee category - base type: string, cod. table: T62 http://www.ebiz.enea.it/moda-ml/repository/codelist/draft/gc_T62.xml (XPath RAWDyeOrder/terms/allowanceCharge/dtScheme/taxCategory) 0-1 (XPath RAWDyeOrder/RDCObody/RDCOitem/dtScheme/taxCategory) 0-1
taxRate	duty or tax or fee percent rate - base type: string, (XPath RAWDyeOrder/terms/allowanceCharge/dtScheme/taxRate) 0-1 (XPath RAWDyeOrder/RDCObody/RDCOitem/dtScheme/taxRate) 0-1
@taxType	duty or tax or fee type - base type: string, cod. table: T61 http://www.ebiz.enea.it/moda-ml/repository/codelist/draft/gc_T61.xml (XPath RAWDyeOrder/RDCObody/RDCOitem/dtScheme/@taxType) [Required] (XPath RAWDyeOrder/terms/allowanceCharge/dtScheme/@taxType) [Required]
tolerance	deviation tolerated on the value of a measurement (it must have a plus or minus sign) - base type: decimal, (XPath RAWDyeOrder/RDCObody/RDCOitem/rawProd/rawSpecs/tolerance) 0-2
transCondition	special condition of transport or special service requested to the Forwarder - base type: string, cod. table: T38 http://www.ebiz.enea.it/moda-ml/repository/codelist/draft/gc_T38.xml (XPath RAWDyeOrder/terms/transInfo/transCondition) 0-3
transConditionText	free text description of the special condition of transport or special service requested to the Forwarder - base type: string, max length: 250, (XPath RAWDyeOrder/terms/transInfo/transConditionText) 0-1
transMeans	means of transport, in general or referred to a specific leg - base type: string, cod. table: T40 http://www.ebiz.enea.it/moda-ml/repository/codelist/draft/gc_T40.xml (XPath RAWDyeOrder/terms/transInfo/transMeans) 0-1
transMode	way of transport, in general or referred to the specified leg - base type: string, cod. table: T8 http://www.ebiz.enea.it/moda-ml/repository/codelist/draft/gc_T8.xml (XPath RAWDyeOrder/terms/transInfo/transMode) 1-1
@transReason	reason for the transport - base type: string, cod. table: NT11 http://www.ebiz.enea.it/moda-ml/repository/codelist/draft/gc_NT11.xml (XPath RAWDyeOrder/terms/transInfo/@transReason) [Optional]
@uid	unique element identifier within the xml document - base type: string, (XPath RAWDyeOrder/RDCObody/RDCOitem/rawMnfrOperation/refDoc/attachment/@uid) [Optional] (XPath RAWDyeOrder/RDCObody/RDCOitem/rawComponent/refDoc/attachment/@uid) [Optional] (XPath RAWDyeOrder/RDCOheader/refDoc/attachment/@uid) [Optional]
@um	specification of the unit of measure - base type: string, cod. table: NT7 http://www.ebiz.enea.it/moda-ml/repository/codelist/draft/gc_NT7.xml (XPath RAWDyeOrder/RDCObody/RDCOitem/price/@um) [Optional] - nota: <i>Unit of measure of the product to which the price is referred (price per meter)</i>

	<p>(XPath RAWDyeOrder/RDCObody/RDCOitem/qty/@um) [Required] (XPath RAWDyeOrder/RDCObody/RDCOitem/rawProd/rawSpecs/pcTolerance/@um) [Optional] - nota: <i>to be used when it has to be soecified if the declared percentage is by weight, volume, etc...</i> (XPath RAWDyeOrder/RDCObody/RDCOitem/rawComponent/pcQty/@um) [Optional] - nota: <i>to be used when it has to be soecified if the declared percentage is by weight, volume, etc...</i> (XPath RAWDyeOrder/RDCObody/RDCOitem/rawComponent/qty/@um) [Required] (XPath RAWDyeOrder/terms/transInfo/netWeight/@um) [Required] (XPath RAWDyeOrder/RDCObody/RDCOitem/rawProd/rawSpecs/specValue/@um) [Optional] (XPath RAWDyeOrder/terms/transInfo/grossWeight/@um) [Required] (XPath RAWDyeOrder/RDCObody/RDCOitem/rawProd/rawSpecs/tolerance/@um) [Required] (XPath RAWDyeOrder/terms/allowanceCharge/@um) [Optional]</p>
uri	<p>Uniform Resource Identifier (URI) that identifies the external object as an Internet resource - base type: normalizedString, (XPath RAWDyeOrder/RDCOheader/refDoc/attachment/externalReference/uri) 1-1 (XPath RAWDyeOrder/RDCObody/RDCOitem/rawMnfrOperation/refDoc/attachment/externalReference/uri) 1-1 (XPath RAWDyeOrder/RDCObody/RDCOitem/rawComponent/refDoc/attachment/externalReference/uri) 1-1</p>
@useProfile	<p>use profile to which the present document if compliant if it was agreed by the parties. It is suggested a URI with reference to the firms or the URL of the profile. - base type: string, (XPath RAWDyeOrder/@useProfile) [Optional]</p>
@VAT	<p>VAT rate or code (DEPRECATED, use dtScheme element) - base type: string, cod. table: NT16 http://www.ebiz.enea.it/moda-ml/repository/codelist/draft/gc_NT16.xml (XPath RAWDyeOrder/RDCObody/RDCOitem/lineN/@VAT) [Optional] - nota: <i>Deprecated, prefer dtScheme when available.</i> (XPath RAWDyeOrder/RDCObody/RDCOitem/thirdParty/@VAT) [Optional] (XPath RAWDyeOrder/terms/allowanceCharge/@VAT) [Optional] (XPath RAWDyeOrder/RDCOheader/thirdParty/@VAT) [Optional]</p>
@version	<p>Dictionary version from which the instance has been created - base type: string, cod. table: NT100 http://www.ebiz.enea.it/moda-ml/repository/codelist/draft/gc_NT100.xml (XPath RAWDyeOrder/@version) [Optional] [Default= draft]</p>

2.3 Suggested best practices

RAWDyeOrder/RDCObody/RDCOitem/qty (net quantity of the article or object correlated, qualified by the function of the document (ordering, delivering, ..) and by the context)

this element can have two instances only if the units of measure are different

RAWDyeOrder/RDCObody/RDCOitem/rawComponent/qty (net quantity of the article or object correlated, qualified by the function of the document (ordering, delivering, ..) and by the context)

this element can have two instances only if the units of measure are different

2.4 Enumeration tables

List of enumeration tables used in the XML document. You can find the corresponding codes at:
<http://www.ebiz-tcf.eu/moda-ml/imple/moda-ml-draft.asp?lingua=en&pag=6>

NT100 - eBIZ TCFUpstream version
NT11 - transport causal
NT12 - data source
NT16 - VAT rate or code
NT18 - message function
NT2 - third party qualifier
NT20 - price qualifier
NT22 - product type of an operation
NT29 - format of a date
NT3 - data format
NT37 - committed quantity qualifier
NT38 - colour test
NT6 - coding system owner/issuer
NT7 - unit of measure
T1 - terms of payment
T10 - ISO3166 - Country
T2 - Modes of payment
T200 - type of job on raw material
T21 - type of document
T22 - raw material characteristics type
T3 - terms of delivery
T38 - transport conditions
T40 - type of transport means
T41 - type of Allowance or Charge
T44 - additional code type
T61 - duty or tax or fee type
T62 - duty or tax or fee category
T8 - Modes of Transport
T9 - ISO4217 - Currency

ACKNOWLEDGEMENT



This action is part of the eBIZ-4.0 project, which has received funding from the European Union's COSME Programme (2014 - 2020).

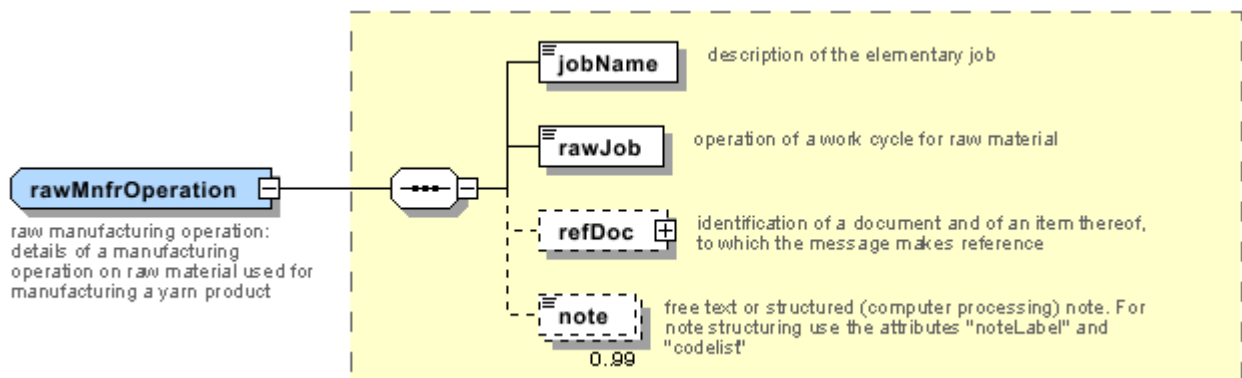
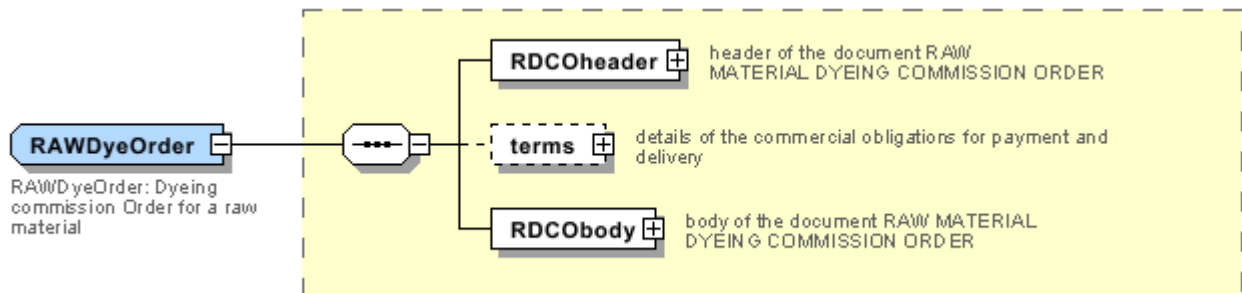
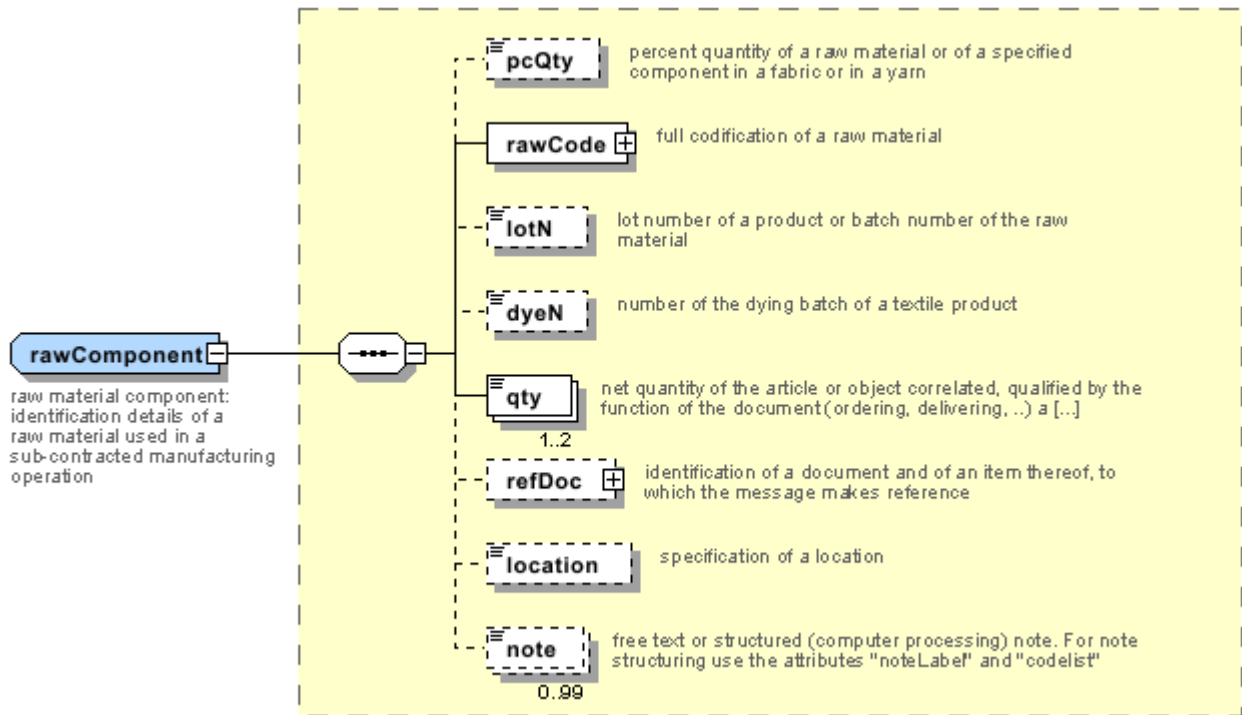
DISCLAIMER

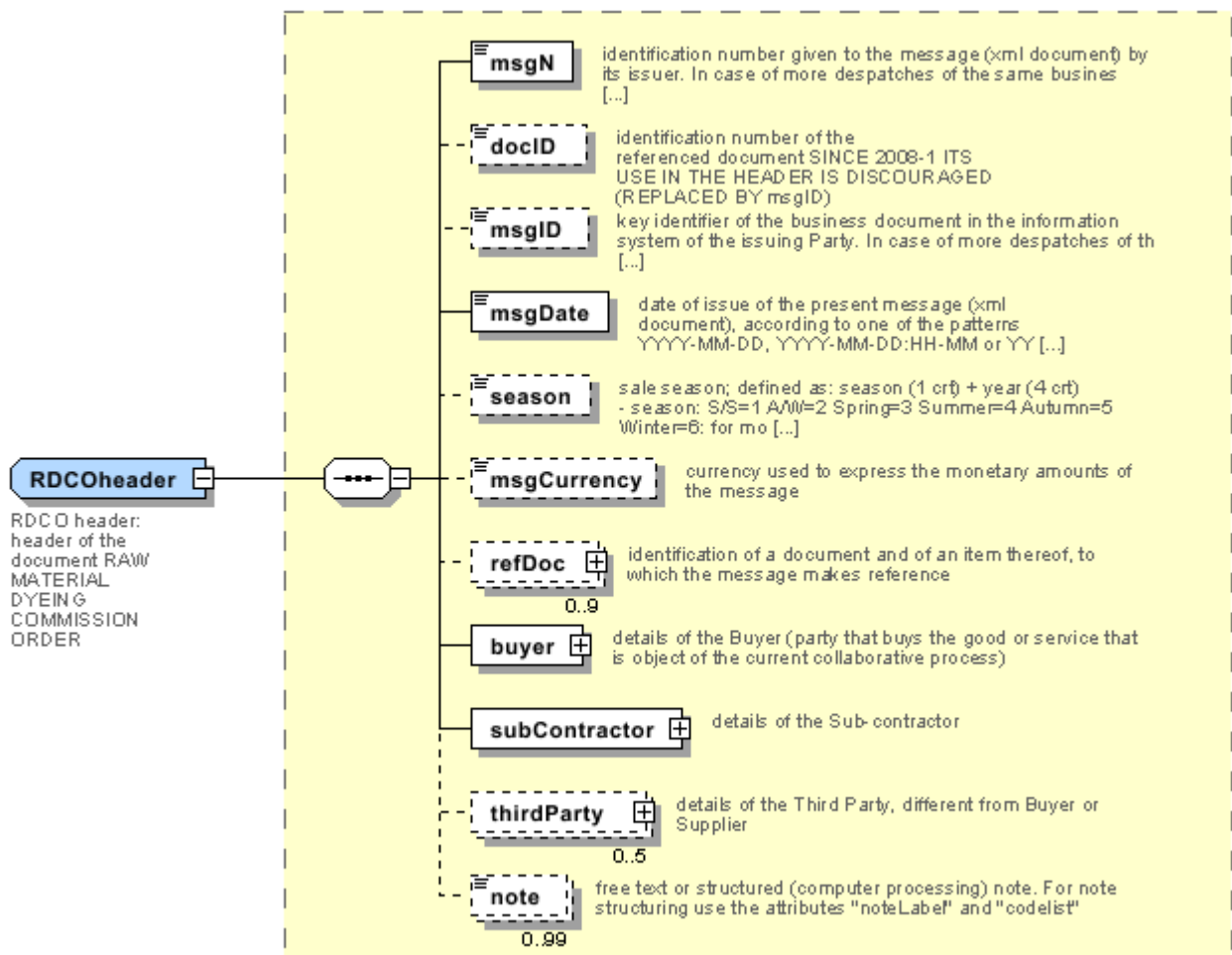
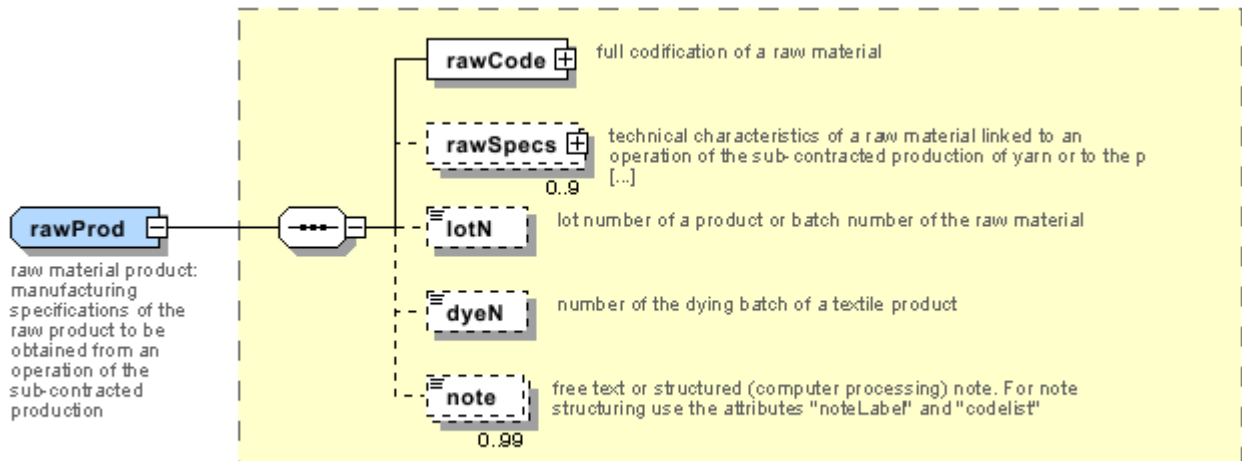
The content of this document represents the views of the authors only and is their sole responsibility; it cannot be considered to reflect the views of the European Commission and/or the Executive Agency for Small and Medium-sized Enterprises (EASME) or any other body of the European Union.

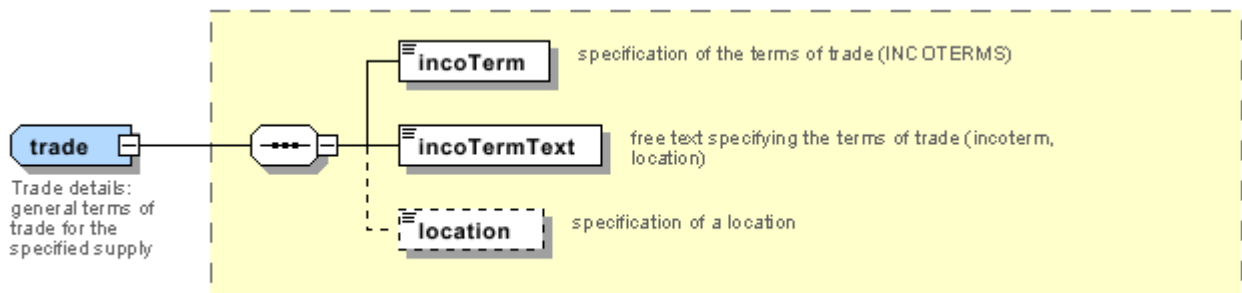
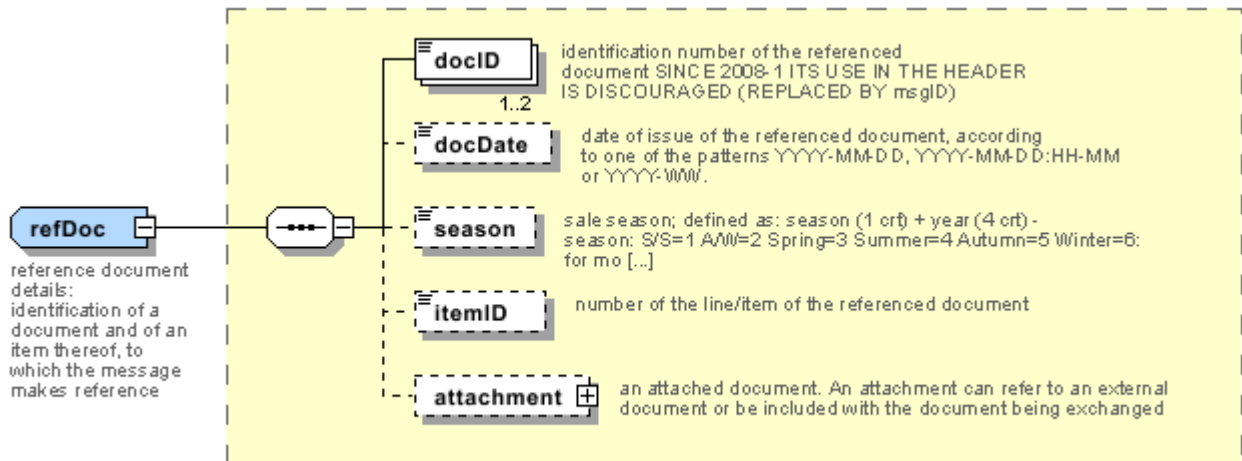
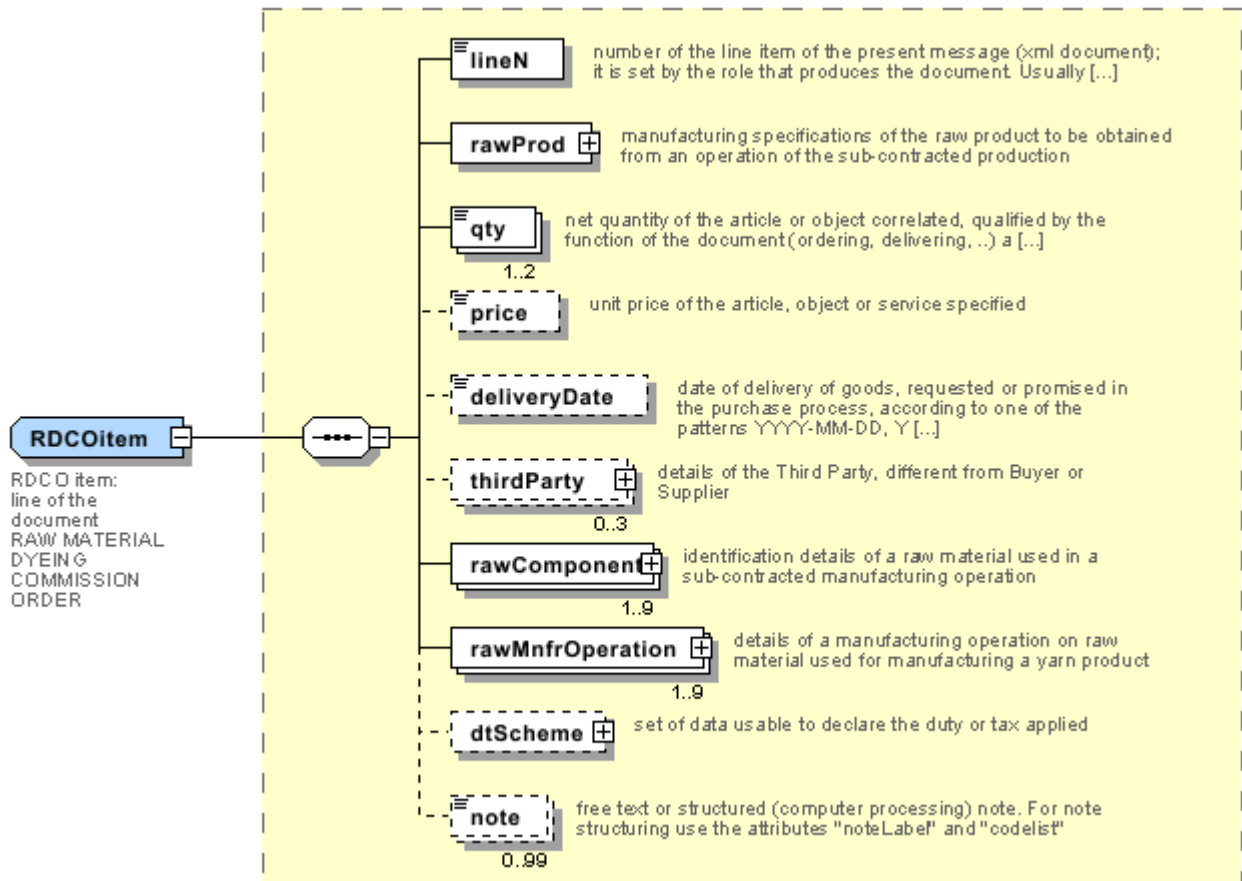
The European Commission and the Agency do not accept any responsibility for use that may be made of the information it contains.

Annex A

Representative images of the principal complex elements' structure.







Annex B

NT100 - eBIZ TCFUpstream version

dictionary version

Agency name: eBIZ

tabella cod.: NT100

File codes list (Generic code): http://www.ebiz.enea.it/moda-ml/repository/codelist/draft/gc_NT100.xml

Code	Description	Adoption note	Date of insertion
2013-1	v2013-1		01/07/2013
2018-1	v2018-1		04/11/2018
draft	draft		08/09/2017

NT11 - transport causal

reason for the transport

Agency name: eBIZ

tabella cod.: NT11

File codes list (Generic code): http://www.ebiz.enea.it/moda-ml/repository/codelist/draft/gc_NT11.xml

Code	Description	Adoption note	Date of insertion
FOC	free of charge		
FRW	return from re-works		
FST	return from storage		
FWW	return from view		
FWK	return from works		
IST	in storage		
NWK	return non-worked		
RJC	return from rejection		
SEL	to sell		
STO	to storage		
VEW	to view		
WRK	to works		

NT12 - data source

party who has provided the data

Agency name: eBIZ

tabella cod.: NT12

File codes list (Generic code): http://www.ebiz.enea.it/moda-ml/repository/codelist/draft/gc_NT12.xml

Code	Description	Adoption note	Date of insertion
AC	internal test		
CO	external test		
CV	test after steaming		

NT16 - VAT rate or code

VAT rate or code (DEPRECATED, use dtScheme element)

tabella cod.: NT16

File codes list (Generic code): http://www.ebiz.enea.it/moda-ml/repository/codelist/draft/gc_NT16.xml

NT18 - message function

function performed by the present message with regards to the transmission

Agency name: eBIZ

tabella cod.: NT18

File codes list (Generic code): http://www.ebiz.enea.it/moda-ml/repository/codelist/draft/gc_NT18.xml

Code	Description	Adoption note	Date of insertion
CA	delete this document		01/07/2013
CP	copy		
OR	original		
RC	re-transmission for data correction		
RT	re-transmission		

NT2 - third party qualifier

Third Party role qualifier

Agency name: eBIZ

tabella cod.: NT2

File codes list (Generic code): http://www.ebiz.enea.it/moda-ml/repository/codelist/draft/gc_NT2.xml

Code	Description	Adoption note	Date of insertion
AG	Sales Agent		
CO	Quality Controller		
DC	Response to		
DF	Invoicee		
DI	Copy to (CC)		28/10/2014
DM	Consignee		
DP	Consignment address (Delivery Party)		
IM	Importer		
OR	Originator		10/09/2014
SP	Forwarder		
TX	Tax Representative		

NT20 - price qualifier

type of price with reference to discount and taxes

Agency name: eBIZ

tabella cod.: NT20

File codes list (Generic code): http://www.ebiz.enea.it/moda-ml/repository/codelist/draft/gc_NT20.xml

Code	Description	Adoption note	Date of insertion
GET	gross excluding taxes		
GIT	gross including taxes		
NET	net excluding taxes		
NIT	net including taxes		

NT22 - product type of an operation

level of the product (end or intermediate) yielded by an operation in a work cycle

Agency name: eBIZ

tabella cod.: NT22

File codes list (Generic code): http://www.ebiz.enea.it/moda-ml/repository/codelist/draft/gc_NT22.xml

Code	Description	Adoption note	Date of insertion
END	end-product		
INT	intermediate		

NT29 - format of a date

format used for the date

Agency name: eBIZ

tabella cod.: NT29

File codes list (Generic code): http://www.ebiz.enea.it/moda-ml/repository/codelist/draft/gc_NT29.xml

Code	Description	Adoption note	Date of insertion
D	YYYY-MM-DD		
M	YYYY-MM-DD:HH-MM		
W	YYYY-WW		

NT3 - data format

format of a string according to a customized User rule (local rule)

Agency name: eBIZ

tabella cod.: NT3

File codes list (Generic code): http://www.ebiz.enea.it/moda-ml/repository/codelist/draft/gc_NT3.xml

Code	Description	Adoption note	Date of insertion
EN4	GS1-GLN		01/07/2013
MD	mutually agreed		

NT37 - committed quantity qualifier

specifies if the committed quantity can or can not include the loss in weight

Agency name: eBIZ

tabella cod.: NT37

File codes list (Generic code): http://www.ebiz.enea.it/moda-ml/repository/codelist/draft/gc_NT37.xml

Code	Description	Adoption note	Date of insertion
NS	quantity can include losses		

SA	quantity can not include losses		
----	---------------------------------	--	--

NT38 - colour test

specification of colour test before the operation

tabella cod.: NT38

File codes list (Generic code): http://www.ebiz.enea.it/moda-ml/repository/codelist/draft/gc_NT38.xml

Code	Description	Adoption note	Date of insertion
1	only colour test		
2	with colour test		

NT6 - coding system owner/issuer

code specifying the organisation who has created or owns the coding or numbering system

Agency name: eBIZ

tabella cod.: NT6

File codes list (Generic code): http://www.ebiz.enea.it/moda-ml/repository/codelist/draft/gc_NT6.xml

Code	Description	Adoption note	Date of insertion
CL	Customer/buyer		
CO	Quality Controller		
EN	GS1 (ex-EAN International)		
ES	e-Stockflow		
FO	Supplier		
GS	GS1		01/07/2013
MF	VAT identifier		
ML	Moda-ML		
SP	Service Provider		

NT7 - unit of measure

specification of the unit of measure, it is a sub set of table Unit of Measure Code - UN/ECE REC 20 delivered by United Nations Economic Commission for Europe (UN/ECE)

Agency name: eBIZ / UN/ECE

tabella cod.: NT7

File codes list (Generic code): http://www.ebiz.enea.it/moda-ml/repository/codelist/draft/gc_NT7.xml

Other link: <http://docs.oasis-open.org/ubl/os-UBL-2.1/cl/gc/default/UnitOfMeasureCode-2.1.gc#>

Code	Description	Adoption note	Date of insertion
CMK	square centimetre		20/12/2017
CMQ	cubic centimetre		20/12/2017
CMT	centimetre		
CNE	centiNewton		
CO2TON	ton of CO2		10/09/2014
COUPLES	couples		
DMQ	cubic decimetre		
E37	pixel		11/04/2018
GRM	gram		
HUR	hour		
INH	inch		
KGM	kilogram		
KMT	kilometer		
KWH	kilowatthours		10/09/2014
LBR	pound		
MIN	minute		
MMK	centimetre		20/12/2017
MMK	square millimetre		20/12/2017
MTK	square metre		20/12/2017
MTQ	cubic metre		
MTR	metre		
NMB	numero		
ONZ	ounce		
P1	percent		
PPM	parts per milion		
PZ	piece		
RPM	rounds per metre		
YRD	yard		

T1 - terms of payment

code specifying the terms or time by which the payment must be done

Agency name: eBIZ

tabella cod.: T1

File codes list (Generic code): http://www.ebiz.enea.it/moda-ml/repository/codelist/draft/gc_T1.xml

Code	Description	Adoption note	Date of insertion
ANTICIP	PAYMENT IN ADVANCE		
BLCOLLECT/120D	BILL OF LADING 120 DD		
BLCOLLECT/30D	BILL OF LADING 30 DD		
BLCOLLECT/60D	BILL OF LADING 60 DD		
BLCOLLECT/90D	BILL OF LADING 90 DD		
CASH	PAYMENT ON DELIVERY		
CASHINV	PAYMENT ON RECEIPT OF INVOICE		
CREDOC/0D	DOCUMENTARY CREDIT FOR PAYM. AT SIGHT		
CREDOC/120	DOCUMENTARY CREDIT FOR PAYM. AT 120 DD		
CREDOC/150	DOCUMENTARY CREDIT FOR PAYM. AT 150 DD		
CREDOC/180	DOCUMENTARY CREDIT FOR PAYM. AT 180 DD		
CREDOC/30D	DOCUMENTARY CREDIT FOR PAYM. AT 30 DD		
CREDOC/45D	DOCUMENTARY CREDIT FOR PAYM. AT 45 DD		
CREDOC/60	DOCUMENTARY CREDIT FOR PAYM. AT 60 DD		
CREDOC/90	DOCUMENTARY CREDIT FOR PAYM. AT 90 DD		
DEL/10	PAYMENT AT 10 DD AFTER DELIVERY		
DOCOLLECT/120D	DOCUMENTARY COLLECTION AT 120 DD		
DOCOLLECT/30D	DOCUMENTARY COLLECTION AT 30 DD		
DOCOLLECT/60D	DOCUMENTARY COLLECTION AT 60 DD		
DOCOLLECT/90D	DOCUMENTARY COLLECTION AT 90 DD		
INV/120D	PAYMENT AT 120 DD AFTER RECEIPT OF INVOICE		
INV/150D	PAYMENT AT 150 DD AFTER RECEIPT OF INVOICE		
INV/180D	PAYMENT AT 180 DD AFTER RECEIPT OF INVOICE		
INV/30D	PAYMENT AT 30 DD AFTER RECEIPT OF INVOICE		
INV/45D	PAYMENT AT 45 DD AFTER RECEIPT OF INVOICE		
INV/60D	PAYMENT AT 60 DD AFTER RECEIPT OF INVOICE		
INV/90D	PAYMENT AT 90 DD AFTER RECEIPT OF INVOICE		
INVULTIMO	PAYMENT AT END MONTH RECEIPT INVOICE		
INVULTIMO/10D	PAYMENT 10 DD AFTER END MONTH RECEIPT INVOICE		
INVULTIMO/120D	PAYMENT 120 DD AFTER END MONTH RECEIPT INVOICE		

INVULTIMO/150D	PAYMENT 150 DD AFTER END MONTH RECEIPT INVOICE		
INVULTIMO/180D	PAYMENT 180 DD AFTER END MONTH RECEIPT INVOICE		
INVULTIMO/240D	PAYMENT 240 DD AFTER END MONTH RECEIPT INVOICE		
INVULTIMO/30D	PAYMENT 30 DD AFTER END MONTH RECEIPT INVOICE		
INVULTIMO/45D	PAYMENT 45 DD AFTER END MONTH RECEIPT INVOICE		
INVULTIMO/60D	PAYMENT 60 DD AFTER END MONTH RECEIPT INVOICE		
INVULTIMO/90D	PAYMENT 90 DD AFTER END MONTH RECEIPT INVOICE		
NOPAY	WITHOUT PAYMENT		
RECREDOC/0D	IRREVOC. DOCUMENTARY CREDIT FOR PAYM. AT SIGHT		
RECREDOC/120D	IRREVOC. DOCUMENTARY CREDIT FOR PAYM. AT 120 DD		
RECREDOC/150D	IRREVOC. DOCUMENTARY CREDIT FOR PAYM. AT 150 DD		
RECREDOC/180D	IRREVOC. DOCUMENTARY CREDIT FOR PAYM. AT 180 DD		
RECREDOC/30D	IRREVOC. DOCUMENTARY CREDIT FOR PAYM. AT 30 DD		
RECREDOC/45D	IRREVOC. DOCUMENTARY CREDIT FOR PAYM. AT 45 DD		
RECREDOC/60D	IRREVOC. DOCUMENTARY CREDIT FOR PAYM. AT 60 DD		
RECREDOC/90D	IRREVOC. DOCUMENTARY CREDIT FOR PAYM. AT 90 DD		
ULTIMO	PAYMENT BY END MONTH OF DELIVERY		
ULTIMO/10	PAYMENT AT 10 DD AFTER END MONTH OF DELIVERY		

T10 - ISO3166 - Country

code of the nation

Agency name: ISO

tabella cod.: T10

File codes list (Generic code): http://www.ebiz.enea.it/moda-ml/repository/codelist/draft/gc_T10.xml

Table not printed: there are 239 elements, more than the maximum specified for printing: 99.

T2 - Modes of payment

way or means of payment

Agency name: eBIZ

tabella cod.: T2

File codes list (Generic code): http://www.ebiz.enea.it/moda-ml/repository/codelist/draft/gc_T2.xml

Code	Description	Adoption note	Date of insertion
------	-------------	---------------	-------------------

BB	bank transfer		
IA	collection through Agent		
IS	collection through Forwarder		
RB	bank receipt		
RD	remittance		
SW	bank SWIFT		
TR	bank draft		

T200 - type of job on raw material

operation of a work cycle for raw material

Agency name: eBIZ

tabella cod.: T200

File codes list (Generic code): http://www.ebiz.enea.it/moda-ml/repository/codelist/draft/gc_T200.xml

Code	Description	Adoption note	Date of insertion
01	dejarrare		
02	to wash		
03	to dry		
04	to mix		
05	to comb		
06	to cut		
07	to tear open		
08	to beat		
09	to carbonise		
10	to dye		
11	felting		
12	to smoothen		
13	vigoreux		
14	angra		
15	basolan		
16	unshrinkable		
17	to blend		

T21 - type of document

type or class to which the referenced document belongs

Agency name: eBIZ

tabella cod.: T21

File codes list (Generic code): http://www.ebiz.enea.it/moda-ml/repository/codelist/draft/gc_T21.xml

Code	Description	Adoption note	Date of insertion
BOR	blanket order		01/02/2018
CAT	Price catalogue - tech sheet		
CEO	Certificate of origin		13/04/2018
CER	Certificate		13/04/2018
COC	colour card		
CRN	Credit note		08/09/2017
CTO	Checking order		01/07/2013
CTR	Contract		
CXF	CxF3 file		01/07/2013
DAD	Darn order		
DDT	ddt		
DEA	Despatch advise		
DER	Despatch request		
DR	Document Request		02/12/2014
FOR	Forecast		02/12/2014
GSO	Garment stock offer		
GSX	Garment stock offer change		
INV	Invoice		
KCC	Knitting-Clothing Commission Order		02/12/2014
KCI	Garment in Work Inventory Report		02/12/2014
M2M	Made to Measure Production Order		02/12/2014
MAS	Master marker		
MCI	Visual merchandising instruction		13/04/2018
OCH	Order change		
OFF	Offer		
ORD	Purchase order		
ORP	Order response		
OSR	order status request		
OSS	Offer status		02/12/2014

OST	Order status		
OUR	our reference		
QR	Quality Report		02/12/2014
RAI	Raw Material in Work Inventory Report		02/12/2014
RDC	Raw dyeing commission order		
RDH	Raw dyeing order change		
RDR	Raw dyeing order response		
REA	Receiving advise		
REQ	Request for Offer		
RET	Return		02/12/2014
RSC	Spinning commission order		
RSH	Spinning order change		
RSR	Spinning order response		
SCL	process sheet		
TFC	Textile dyeing-finishing commission order		
TFX	Textile Dyeing-Finishing Order Change		02/12/2014
TPC	Textile printing commission order		
TPX	Textile Printing Order Change		02/12/2014
TWI	Textile in work inventory		
VMI	visual merchandising instructions		01/02/2018
WAC	Warping commission order		
WEC	Weaving commission order		
YDC	Yarn dyeing commission order		
YDH	Yarn dyeing order change		
YDR	Yarn dyeing order response		
YTC	Twisting commission order		
YWI	Yarn in work inventory		

T22 - raw material characteristics type

physical or mechanical parameter used to define a characteristics of a raw material

Agency name: eBIZ

tabella cod.: T22

File codes list (Generic code): http://www.ebiz.enea.it/moda-ml/repository/codelist/draft/gc_T22.xml

Code	Description	Adoption note	Date of insertion
------	-------------	---------------	-------------------

FIN	fineness		
LNG	length		
RTR	shrinkage		
YLD	yeld		

T3 - terms of delivery

specification of the terms of trade (INCOTERMS)

Agency name: Incoterms

tabella cod.: T3

File codes list (Generic code): http://www.ebiz.enea.it/moda-ml/repository/codelist/draft/gc_T3.xml

Code	Description	Adoption note	Date of insertion
CFR	COST AND FREIGHT (named port of destination)		
CIF	COST, INSURANCE AND FREIGHT (named port of destination)		
CIP	CARRIAGE AND INSURANCE PAID (named place of destination)		
CPA	CARRIAGE PAID (named place of destination)		
DAF	DELIVERED AT FRONTIER (named place)	according to Incoterms® 2010 it is obsolete	08/12/2017
DAP	Delivered at Place of destination (named place of destination)	according to Incoterms® 2010	08/12/2017
DAT	Delivered at Terminal (named place of destination)	according to Incoterms® 2010	08/12/2017
DDP	DELIVERED DUTY PAID (named place of destination)		
DDU	DELIVERED DUTY UNPAID (named place of destination)	according to Incoterms® 2010 it is obsolete, use DAP	08/12/2017
DEQ	DELIVERED EX-QUAY (named port of destination)	according to Incoterms® 2010 it is obsolete	08/12/2017
DES	DELIVERED EX-SHIP (named port of destination)	according to Incoterms® 2010 it is obsolete	08/12/2017
EXW	EX WORKS (named place)		
FAS	FREE ALONGSIDE SHIP (named port of shipment)		
FCA	FREE CARRIER (named place)		

FO B	FREE ON BOARD (named port of shipment)		
---------	--	--	--

T38 - transport conditions

special condition of transport or special service requested to the Forwarder

tabella cod.: T38

File codes list (Generic code): http://www.ebiz.enea.it/moda-ml/repository/codelist/draft/gc_T38.xml

Code	Description	Adoption note	Date of insertion
ACC	arrange customs clearance		
CAL	Carrier loads		
CAU	Carrier unloads		
CMR	CMR carnet		
FFN	freight forwarders national conditions		
FLD	special agreement for full loading		
NCC	do not arrange customs clearance		
PPB	packaging paid by Buyer		
PPS	packaging paid by Supplier		
PRO	proof of delivery		
RFR	return container free		
RPC	return container paid by Customer		
RPS	return container paid by Supplier		
SHL	Shipper loads		
SHU	Consignee unloads		

T40 - type of transport means

means of transport, in general or referred to a specific leg

Agency name: eBIZ

tabella cod.: T40

File codes list (Generic code): http://www.ebiz.enea.it/moda-ml/repository/codelist/draft/gc_T40.xml

Code	Description	Adoption note	Date of insertion
AIR	aircraft		
SHP	ship		

TRU	truck		
VAN	van		

T41 - type of Allowance or Charge

coded specification of an Allowance or Charge (elaborated from UNECE 4465)

Agency name: eBIZ

tabella cod.: T41

File codes list (Generic code): http://www.ebiz.enea.it/moda-ml/repository/codelist/draft/gc_T41.xml

Code	Description	Adoption note	Date of insertion
1	Agreed settlement		19/08/2018
10	Costs for draft		19/08/2018
11	Bank charges	DEPRECATED, use C BK	19/08/2018
12	Agent commission		19/08/2018
14	Wrong delivery		19/08/2018
15	Goods returned to agent		19/08/2018
16	Goods partly returned		19/08/2018
17	Transport damage		19/08/2018
19	Trade discount		19/08/2018
2	Below specification goods		19/08/2018
20	Deduction for late delivery	DEPRECATED, use C WB	19/08/2018
21	Advertising costs		19/08/2018
22	Customs duties		19/08/2018
23	Telephone and postal costs		19/08/2018
24	Repair costs		19/08/2018

25	Attorney fees		19/08/2018
26	Taxes		19/08/2018
3	Damaged goods		19/08/2018
30	Direct payment to seller		19/08/2018
32	Goods not delivered		19/08/2018
33	Late delivery		19/08/2018
35	Goods returned		19/08/2018
36	Invoice not received		19/08/2018
37	Credit note to debtor/not to us		19/08/2018
38	Deducted bonus		19/08/2018
39	Deducted discount		19/08/2018
4	Short delivery		19/08/2018
40	Deducted freight costs		19/08/2018
41	Deduction against other invoices		19/08/2018
42	Credit balance(s)		19/08/2018
45	Debit note to seller		19/08/2018
46	Discount beyond terms		19/08/2018
48	Allowance/charge error		19/08/2018
49	Substitute product		19/08/2018
50	Terms of sale error		19/08/2018
52	Wrong invoice		19/08/2018
53	Duplicate invoice		19/08/2018

54	Weight error		19/08/2018
55	Additional charge not authorized		19/08/2018
56	Incorrect discount		19/08/2018
57	Price change		19/08/2018
58	Variation		19/08/2018
59	Chargeback		19/08/2018
65	Settlement to agent		19/08/2018
66	Cash discount		19/08/2018
7	Payment on account		19/08/2018
70	Wrong monetary amount resulting from incorrect free goods quantity		19/08/2018
72	Temporary special promotion		19/08/2018
73	Difference in tax rate		19/08/2018
74	Quantity discount		19/08/2018
75	Promotion discount		19/08/2018
76	Cancellation deadline passed		19/08/2018
77	Pricing discount		19/08/2018
78	Volume discount		19/08/2018
79	Sundry discount		19/08/2018
8	Returnable container charge included		19/08/2018
9	Invoice error		19/08/2018
AW A	bonus for works ahead of schedule		
CBK	bank charges		
CCR	servizio di corriere		

CIN	insurance		
CLB	labelling		
CPK	packing		
CSP	special packing		
CW B	penalty for works behind schedule		

T44 - additional code type

qualifier of the additional coding of a product

Agency name: eBIZ

tabella cod.: T44

File codes list (Generic code): http://www.ebiz.enea.it/moda-ml/repository/codelist/draft/gc_T44.xml

Code	Description	Adoption note	Date of insertion
CC	colour card		
CL	sales collection		
CO	company identification code		08/09/2017
DY	dye number		
LT	lot number		
MDI	Made in		08/09/2017
MS	manufacturing state		
PKG	packaging		09/09/2014
PL	product line		
RGB	RGB value		
SE	selvedge code		

T61 - duty or tax or fee type

duty or tax or fee type

Agency name: eBIZ

tabella cod.: T61

File codes list (Generic code): http://www.ebiz.enea.it/moda-ml/repository/codelist/draft/gc_T61.xml

Code	Description	Adoption note	Date of insertion
BOL	stamp duty		01/07/2013

CUD	customs duty		01/07/2013
ENV	environmental tax		01/07/2013
FRE	no tax		01/07/2013
OTH	other tax charges		01/07/2013
VAT	value added tax		01/07/2013

T62 - duty or tax or fee category

duty or tax or fee category

Agency name: eBIZ

tabella cod.: T62

File codes list (Generic code): http://www.ebiz.enea.it/moda-ml/repository/codelist/draft/gc_T62.xml

Code	Description	Adoption note	Date of insertion
AA	lower than standard rate		01/07/2013
E	tax not applicable		01/07/2013
H	higher than standard rate		01/07/2013
O	outside scope of tax		01/07/2013
S	standard rate		01/07/2013
Z	zero rate goods		01/07/2013

T8 - Modes of Transport

way of transport, in general or referred to the specified leg

Agency name: eBIZ

tabella cod.: T8

File codes list (Generic code): http://www.ebiz.enea.it/moda-ml/repository/codelist/draft/gc_T8.xml

Code	Description	Adoption note	Date of insertion
1	MARITIME TRANSPORT		
10	Courier		01/07/2013
2	RAIL TRANSPORT		
3	ROAD TRANSPORT		
4	AIR TRANSPORT		
5	MAIL		
6	AIR + SHIP TRANSPORT		

8	INLAND WATER TRANSPORT		
9	MODE UNKNOWN		

T9 - ISO4217 - Currency

currency code

Agency name: ISO

tabella cod.: T9

File codes list (Generic code): http://www.ebiz.enea.it/moda-ml/repository/codelist/draft/gc_T9.xml

Table not printed: there are 205 elements, more than the maximum specified for printing: 99.