



<http://www.ebiz-tcf.eu>

DRAFT

IMPLEMENTATION GUIDE

TRANSACTION "YARN OFFER REQUEST"

Version: draft

Date of release: 17/5/2019

Document code: G073

technical Documentation: <http://www.ebiz.enea.it>

XML Schemas repository: <http://www.ebiz.enea.it/moda-ml/repository/schema/draft/default.asp>

Guides repository: <http://www.ebiz.enea.it/moda-ml/repository/guide/draft/default.asp>

Guide filename: G073-eBIZ-YarnOfferRequest.pdf

0. PREMISE

This document contains a proposal for the updating and extension of eBIZ specifications starting from the eBIZ version released as CEN CWA 16667 in 2013. Under the name of 'Draft version' it is reported the result of an extensive work of analysis and consultation aimed at developing and maintaining eBIZ specifications.

In particular, the content of this proposal is the result of various activities, mainly those carried out within the framework of the **eBIZ 4.0 project** funded by the European Commission, call COS-DESIGN-2015-3-06, topic COS-2015-DESIGN-2.

The technical contents are backwards compatible with the latest official published version.

1. BUSINESS DESCRIPTION

1.1 Scope

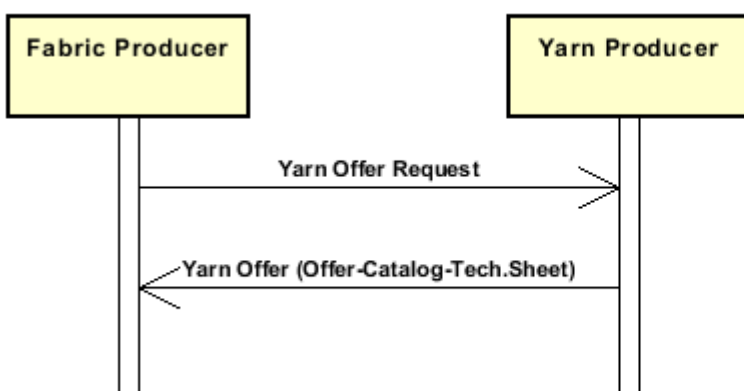
the Fabric or Kintwear Manufacturer sends this enquiry to the Yarn Producer about the kind of yarn he needs, by specifying a selection of manufacturing characteristics and mechanical-physical-chemical properties with the desired values of the ad-hoc parameters.

1.2 Generalities

The Fabric or Knitwear Producer sends this enquiry to the Yarn Producer about the kind of yarn he needs, by specifying a selection of manufacturing characteristics and mechanical-physical-chemical properties with the desired values of the ad-hoc parameters.

1.3. Possible scenario

Selection of yarn



2. IMPLEMENTATION GUIDE

2.1 General structure of XML document

All the business data that can be exchanged through this class of documents are shown in the following "document structure", that provides a simplified vision of the Schema.

In particular:

- the two numbers following each element define its "cardinality" (minimum and maximum number of occurrences); the minimum equal zero indicates that the element is optional, the minimum greater than zero indicates that is mandatory;
- the bold character denotes the complex elements (aggregates of simple elements) that were built for the sake of functionality and re-usability of some complex informations sets. The child elements in each parent element are easily spotted as "indented";
- the symbol "@" denotes an attribute of the preceding element; here "the usage indicator (optional, required, ...)" is shown in square brackets.

Structure

YARNOfferRequest

@msgfunction [Optional]

@version [Optional] [Default= draft]

@useProfile [Optional]

RQheader 1-1

| | msgN 1-1

- choose -

| | msgID 0-1

- or -

| | docID 0-1

| | *@numberingOrg [Optional]*

- end choose -

| | msgDate 1-1

| | *@dateForm [Optional]*

| | season 0-1

| | *@numberingOrg [Optional]*

| | *@codeList [Optional]*

| | *@listName [Optional]*

| | *@listVersion [Optional]*

| | validityStart 0-1

| | *@dateForm [Optional]*

| | validityEnd 1-1

| | *@dateForm [Optional]*

refDoc 0-9

| | *@docType [Required]*

| | docID 1-2

| | *@numberingOrg [Optional]*

| | docDate 0-1

| | *@dateForm [Optional]*

| | season 0-1

| | *@numberingOrg [Optional]*

| | *@codeList [Optional]*

| | *@listName [Optional]*

| | *@listVersion [Optional]*

| | itemID 0-1

attachment 0-1

| | *@uid [Optional]*

| | fileName 0-1

| | *@numberingOrg [Optional]*

| | binaryObject 0-1

| | *@format [Optional]*

- | | | @mime [Optional]
- | | | @encoding [Optional]
- | | | @characterSet [Optional]
- | | | **externalReference 0-99**
- | | | | uri 1-1
- | | | | | @isURL [Optional] [Default= true]
- | | | | mimeTypeCode 0-1
- | | | | formatCode 0-1
- | | | | encodingCode 0-1
- | | | | characterSetCode 0-1

| **buyer 1-1**

- | @logo [Optional]
- | @sender [Optional]
- | | id 1-1
- | | | @numberingOrg [Optional]
- | | additionalIdentifier 0-9
- | | | @numberingOrg [Optional]
- | | | @idQualifier [Optional]
- | | legalName 0-1
- | | dept 0-1
- | | subDept 0-1
- | | person 0-1
- | | | @email [Optional]
- | | | @phone [Optional]
- | | | @fax [Optional]
- | | street 0-1
- | | city 0-1
- | | subCountry 0-1
- | | country 0-1
- | | postCode 0-1

- choose -

| **supplier 0-1**

- | @logo [Optional]
- | @sender [Optional]
- | | id 1-1
- | | | @numberingOrg [Optional]
- | | additionalIdentifier 0-9
- | | | @numberingOrg [Optional]
- | | | @idQualifier [Optional]
- | | legalName 0-1
- | | dept 0-1
- | | subDept 0-1
- | | person 0-1
- | | | @email [Optional]
- | | | @phone [Optional]
- | | | @fax [Optional]
- | | street 0-1
- | | city 0-1
- | | subCountry 0-1
- | | country 0-1
- | | postCode 0-1

- or -

| **subContractor 0-1**

- | @sender [Optional]
- | | id 1-1
- | | | @numberingOrg [Optional]
- | | legalName 0-1
- | | dept 0-1
- | | subDept 0-1
- | | person 0-1
- | | | @email [Optional]

```

| | | @phone [Optional]
| | | @fax [Optional]
| | | street 0-1
| | | city 0-1
| | | subCountry 0-1
| | | country 0-1
| | | postCode 0-1
| | - end choose -
| | thirdParty 0-2
| | @VAT [Optional]
| | @role [Required]
| | @sender [Optional]
| | | id 1-1
| | | @numberingOrg [Optional]
| | | legalName 0-1
| | | dept 0-1
| | | subDept 0-1
| | | person 0-1
| | | @email [Optional]
| | | @phone [Optional]
| | | @fax [Optional]
| | | street 0-1
| | | city 0-1
| | | subCountry 0-1
| | | country 0-1
| | | postCode 0-1
| | note 0-99
| | @numberingOrg [Optional]
| | @codeList [Optional]
| | @noteLabel [Optional]

```

terms 0-1

```

| | payment 0-5
| | @finDiscount [Optional]
| | @finSurcharge [Optional]
| | - choose -
| | | payTerm 1-1
| | | - or -
| | | | payTermText 1-1
| | | - end choose -
| | | | payMode 0-1
| | insPayment 0-5
| | @part [Required]
| | - choose -
| | | payTerm 1-1
| | | - or -
| | | | payTermText 1-1
| | | - end choose -
| | | | payMode 0-1
| | trade 0-1
| | - choose -
| | | incoTermText 1-1
| | | - or -
| | | | incoTerm 1-1
| | | - end choose -
| | | | location 0-1
| | | | @LRI [Optional]
| | transInfo 0-5
| | @transReason [Optional]
| | @progr [Optional]
| | | transMode 1-1

```

- | | | carrier 0-1
- | | | deliveryPlace 0-1
- | | | grossWeight 0-1
- | | | @um [Required]
- | | | netWeight 0-1
- | | | @um [Required]
- | | | transMeans 0-1
- | | | transCondition 0-3
- | | | transConditionText 0-1
- | | | despatchPlace 0-1
- | | | despatchDate 0-1
- | | | @dateForm [Optional]
- | | | delEffectiveDate 0-1
- | | | @dateForm [Optional]
- | | **allowanceCharge 0-9**
- | | | @um [Optional]
- | | | @VAT [Optional]
- | | | @minQty [Optional]
- | | | @currency [Optional]
- | | | @maxQty [Optional]
- | | | - choose -
- | | | | AC_category 1-1
- | | | - or -
- | | | | AC_categoryText 1-1
- | | | - end choose -
- | | | - choose -
- | | | | AC_percent 1-1
- | | | - or -
- | | | | AC_amount 1-1
- | | | - end choose -
- | | | **dtScheme 0-1**
- | | | @taxType [Required]
- | | | | taxCategory 0-1
- | | | | taxRate 0-1
- | | | | legalRef 0-1
- | | | | @codeList [Required]
- | | | | note 0-99
- | | | | @numberingOrg [Optional]
- | | | | @codeList [Optional]
- | | | | @noteLabel [Optional]

| yarnTecSheet 1-99

- | | **yarnIdentity 0-1**
- | | | yarnNameSupplier 1-1
- | | | yarnNameBuyer 0-1
- | | | tradeMark 0-1
- | | | season 0-1
- | | | @numberingOrg [Optional]
- | | | @codeList [Optional]
- | | | @listName [Optional]
- | | | @listVersion [Optional]
- | | | **yarnCompos 0-1**
- | | | | percCompos 1-9
- | | | | @fibre [Required]
- | | | **fibrePD 0-9**
- | | | | @fibre [Required]
- | | | | length 0-1
- | | | | @um [Required]
- | | | | diameter 0-1
- | | | | @um [Optional]
- | | | | country 0-1

| yarnClass 0-1
 | yarnKind 0-1
 | yarnCount 0-1
 | @countSystem [Required]
 | @CV [Optional]
 | **yarnTwist 0-1**
 | | twistDirection 1-1
 | | qty 0-1
 | | @um [Required]
 | moistRegain 0-1
 | **yarnCode 0-2**
 | @numberingOrg [Optional] [Default= CL]
 | | art 1-1
 | | @numberingOrg [Optional]
 | | @codeList [Optional]
 | | @listName [Optional]
 | | @listVersion [Optional]
 | | color 0-1
 | | @numberingOrg [Optional]
 | | @codeList [Optional]
 | | @listName [Optional]
 | | @listVersion [Optional]
 | | added 0-9
 | | @numberingOrg [Optional]
 | | @addType [Optional]
 | | description 0-unbounded
 | | @ln [Optional]
 | customsStat 0-1
 | yarnComWeight 0-1
 | @um [Required]
 | standardPack 0-1
 | @reelType [Optional]
 | yarnReelQty 0-1
 | @um [Required]
 | minLot 0-1
 | @um [Required]
 | minLotExclusive 0-1
 | @um [Required]
 | optLot 0-9
 | @um [Optional]
 | avgDeliveryDD 0-1
 | lotN 0-1
 | @numberingOrg [Optional]
 | dyeN 0-1
 | @numberingOrg [Optional]
 | price 0-2
 | @um [Optional]
 | @priceQualifier [Optional] [Default= NET]
 | @currency [Optional]
 | extendedDescription 0-unbounded
 | @ln [Optional]
 | note 0-99
 | @numberingOrg [Optional]
 | @codeList [Optional]
 | @noteLabel [Optional]
 | **yarnManufacture 0-1**
 | | **yarnPly 0-1**
 | | | plyWork 1-1
 | | | plyN 0-1
 | | **yarnJobSeq 0-1**
 | | | yarnJob 1-19

dyeProcess 0-1
dyeStuff 0-1
yarnColorFastness 0-99
@colorType [Required]
| yarnCFTest 1-1
| specValue 1-1
| @um [Optional]
| @source [Optional]
| @method [Optional]
| @application [Optional]
| @CV [Optional]
colorCard 0-1
| **colorCardItem 1-unbounded**
| | color 1-2
| | @numberingOrg [Optional]
| | @codeList [Optional]
| | @listName [Optional]
| | @listVersion [Optional]
| | **CIELab 0-unbounded**
| | @illuminant [Optional]
| | @standardObserver [Optional]
| | | L 1-1
| | | a 1-1
| | | b 1-1
| | **refDoc 0-1**
| | @docType [Required]
| | | docID 1-2
| | | @numberingOrg [Optional]
| | | docDate 0-1
| | | @dateForm [Optional]
| | | season 0-1
| | | @numberingOrg [Optional]
| | | @codeList [Optional]
| | | @listName [Optional]
| | | @listVersion [Optional]
| | | itemID 0-1
| | | **attachment 0-1**
| | | @uid [Optional]
| | | | fileName 0-1
| | | | @numberingOrg [Optional]
| | | | binaryObject 0-1
| | | | @format [Optional]
| | | | @mime [Optional]
| | | | @encoding [Optional]
| | | | @characterSet [Optional]
| | | | **externalReference 0-99**
| | | | | uri 1-1
| | | | | @isURL [Optional] [Default= true]
| | | | | mimeTypeCode 0-1
| | | | | formatCode 0-1
| | | | | encodingCode 0-1
| | | | | characterSetCode 0-1
| | | description 0-unbounded
| | | @ln [Optional]
| note 0-99
| @numberingOrg [Optional]
| @codeList [Optional]
| @noteLabel [Optional]
yarnQuality 0-1
| **yarnQTest 1-19**
| | yarnQTestType 1-1

				specValue 0-1
				@um [Optional]
				@source [Optional]
				@method [Optional]
				@application [Optional]
				@CV [Optional]
				tolerance 0-1
				@um [Required]
				pcTolerance 0-1
				@um [Optional]
				comply 0-1

2.2 Detailed description of document elements

Following tables show all elements (complex and simple) used in this document. Description includes: 1) element's information: xml tag, name, brief description, data type and syntax constraints; 2) information about use of the element in a particular position in the document: xpath and possible associated notes.

2.2.1 Complex elements (Aggregate Business Information Entities)

Complex elements are those elements whose content is composed of other elements (childs).Complex elements are alphabetically ordered.

allowanceCharge	Allowances and Charges related to an Order or a contract (XPath YARNOfferRequest/terms/allowanceCharge) 0-9
attachment	an attached document. An attachment can refer to an external document or be included with the document being exchanged (XPath YARNOfferRequest/yarnTecSheet/yarnManufacture/colorCard/colorCardItem/refDoc/attachment) 0-1 (XPath YARNOfferRequest/RQheader/refDoc/attachment) 0-1
buyer	details of the Buyer (party that buys the good or service that is object of the current collaborative process) - base type: Nad, (XPath YARNOfferRequest/RQheader/buyer) 1-1
CIELab	color point in the CIELab color space (XPath YARNOfferRequest/yarnTecSheet/yarnManufacture/colorCard/colorCardItem/CIELab) 0-unbounded
colorCard	color card for a textile product (XPath YARNOfferRequest/yarnTecSheet/yarnManufacture/colorCard) 0-1
colorCardItem	item of the color card (XPath YARNOfferRequest/yarnTecSheet/yarnManufacture/colorCard/colorCardItem) 1-unbounded
dtScheme	set of data usable to declare the duty or tax applied (XPath YARNOfferRequest/terms/allowanceCharge/dtScheme) 0-1
externalReference	details about an external object, such as a document stored at a remote location (XPath YARNOfferRequest/RQheader/refDoc/attachment/externalReference) 0-99 (XPath YARNOfferRequest/yarnTecSheet/yarnManufacture/colorCard/colorCardItem/refDoc/attachment/externalReference) 0-99
fibrePD	physical data of a textile fibre (XPath YARNOfferRequest/yarnTecSheet/yarnIdentity/fibrePD) 0-9
insPayment	payment details for payment by installments (XPath YARNOfferRequest/terms/insPayment) 0-5 - note: <i>excluded the case of offers, this set of data is alternative to payment set and must be iterated for each payment installment</i>
payment	payment details for payment all in one (XPath YARNOfferRequest/terms/payment) 0-5 - note: <i>excluded the case of offers, this set of data is alternative to insPayment, it can be iterated to specify alternative terms of payment (e.g.: 60 days or 30 days with 3% discount)</i>
refDoc	identification of a document and of an item thereof, to which the message makes reference (XPath YARNOfferRequest/yarnTecSheet/yarnManufacture/colorCard/colorCardItem/refDoc) 0-1 - note: <i>here the CxF3 file can be referenced</i>

	(XPath YARNOfferRequest/RQheader/refDoc) 0-9
RQheader	header of the document REQUEST FOR OFFER (XPath YARNOfferRequest/RQheader) 1-1
subContractor	details of the Sub-contractor - base type: Nad, (XPath YARNOfferRequest/RQheader/subContractor) 0-1 - note: <i>At least one out of Supplier and Subcontractor must be indicated.</i>
supplier	details of the Supplier (party that supplies the good or service that is object of the current collaborative process) - base type: Nad, (XPath YARNOfferRequest/RQheader/supplier) 0-1 - note: <i>At least one out of Supplier and Subcontractor must be indicated.</i>
terms	details of the commercial obligations for payment and delivery (XPath YARNOfferRequest/terms) 0-1
thirdParty	details of the Third Party, different from Buyer or Supplier - base type: Nad, (XPath YARNOfferRequest/RQheader/thirdParty) 0-2 - note: <i>In the Offer Request case it might give reference to the Originator of the request.</i>
trade	general terms of trade for the specified supply (XPath YARNOfferRequest/terms/trade) 0-1
transInfo	details of transport: mode, carrier and delivery place (XPath YARNOfferRequest/terms/transInfo) 0-5
yarnCode	full codification of a yarn product (XPath YARNOfferRequest/yarnTecSheet/yarnIdentity/yarnCode) 0-2
yarnColorFastness	color fastness data for a yarn (XPath YARNOfferRequest/yarnTecSheet/yarnManufacture/yarnColorFastness) 0-99
yarnCompos	fibrous composition of a yarn product (XPath YARNOfferRequest/yarnTecSheet/yarnIdentity/yarnCompos) 0-1
yarnIdentity	set of data that univocally identify the yarn article and any classification or commercial information (XPath YARNOfferRequest/yarnTecSheet/yarnIdentity) 0-1
yarnJobSeq	operations undergone in the manufacturing of a yarn (XPath YARNOfferRequest/yarnTecSheet/yarnManufacture/yarnJobSeq) 0-1
yarnManufacture	set of data that specify the construction details of the yarn (XPath YARNOfferRequest/yarnTecSheet/yarnManufacture) 0-1
yarnPly	plying characteristics of a yarn (XPath YARNOfferRequest/yarnTecSheet/yarnManufacture/yarnPly) 0-1
yarnQTest	parameter related to the quality of yarn - base type: string, (XPath YARNOfferRequest/yarnTecSheet/yarnQuality/yarnQTest) 1-19
yarnQuality	set of data that specify the quality data of the yarn (XPath YARNOfferRequest/yarnTecSheet/yarnQuality) 0-1
yarnTecSheet	technical sheet of the yarn (XPath YARNOfferRequest/yarnTecSheet) 1-99
yarnTwist	twist characteristics of yarn (XPath YARNOfferRequest/yarnTecSheet/yarnIdentity/yarnTwist) 0-1

2.2.2 Simple elements (Basic Business Information Entities)

Simple elements are those elements whose content is characterized by a data type plus a domain of possible values. Simple elements are alphabetically ordered.

a	"a" dimension of the CIELab color system - base type: decimal, (XPath YARNOfferRequest/yarnTecSheet/yarnManufacture/ colorCard/colorCardItem/CIELab/a) 1-1
AC_amount	amount of an Allowance or Charge - base type: decimal, fraction digits: 2, (XPath YARNOfferRequest/terms/allowanceCharge/AC_amount) 1-1
AC_category	coded specification of an Allowance or Charge - base type: string, cod. table: T41 http://www.ebiz.enea.it/moda-ml/repository/codelist/draft/gc_T41.xml (XPath YARNOfferRequest/terms/allowanceCharge/AC_category) 1-1
AC_categoryText	free text description of an Allowance or Charge - base type: string, max length: 250, (XPath YARNOfferRequest/terms/allowanceCharge/AC_categoryText) 1-1
AC_percent	amount of an Allowance or Charge as a percentage - base type: decimal, max inclusive: 100, fraction digits: 2, (XPath YARNOfferRequest/terms/allowanceCharge/AC_percent) 1-1
added	additional code of the product (complementing the formers) - base type: string, max length: 80, (XPath YARNOfferRequest/yarnTecSheet/yarnIdentity/ yarnCode/added) 0-9 - note: <i>here an additional codification (see table T44) can be specified</i>
additionalIdentifier	additional identification code of a Party, for example customs registries or others - base type: string, max length: 15, (XPath YARNOfferRequest/RQheader/buyer/additionalIdentifier) 0-9 - note: <i>identifiers for example for exports, such as MID (Manufacturer Identification Code), EORI (E.O.R.I. - Economic Operator Registration and Identification)</i> (XPath YARNOfferRequest/RQheader/supplier/additionalIdentifier) 0-9 - note: <i>identifiers for example for exports, such as MID (Manufacturer Identification Code), EORI (E.O.R.I. - Economic Operator Registration and Identification)</i>
@addType	qualifier of the additional coding of a product - base type: string, cod. table: T44 http://www.ebiz.enea.it/moda-ml/repository/codelist/draft/gc_T44.xml (XPath YARNOfferRequest/yarnTecSheet/yarnIdentity/ yarnCode/added/@addType) [Optional] - nota: <i>addType allows the clarification of the meaning of the added element content; it is strongly suggested to use it always.</i>
@application	force or similar condition (e.g. no. of revolutions) applied in a test as specified within the standard - base type: string, max length: 15, (XPath YARNOfferRequest/yarnTecSheet/yarnQuality/ yarnQTest/specValue/@application) [Optional] (XPath YARNOfferRequest/yarnTecSheet/yarnManufacture/ yarnColorFastness/specValue/@application) [Optional]
art	article number of the product - base type: string, max length: 80, (XPath YARNOfferRequest/yarnTecSheet/yarnIdentity/ yarnCode/art) 1-1

avgDeliveryDD	average time (workdays) between order receipt and delivery of an article, specified by the Supplier - base type: duration, (XPath YARNOfferRequest/yarnTecSheet/yarnIdentity/avgDeliveryDD) 0-1
b	"b" dimension of the CIELab color system - base type: decimal, (XPath YARNOfferRequest/yarnTecSheet/yarnManufacture/colorCard/colorCardItem/CIELab/b) 1-1
binaryObject	a binary large object containing an attached document - base type: base64Binary, (XPath YARNOfferRequest/RQheader/refDoc/attachment/binaryObject) 0-1 (XPath YARNOfferRequest/yarnTecSheet/yarnManufacture/colorCard/colorCardItem/refDoc/attachment/binaryObject) 0-1
carrier	identification of the transport carrier - base type: string, max length: 40, (XPath YARNOfferRequest/terms/transInfo/carrier) 0-1
@characterSet	the character set of the binary object if the mime type is text - base type: normalizedString, (XPath YARNOfferRequest/RQheader/refDoc/attachment/binaryObject/@characterSet) [Optional] (XPath YARNOfferRequest/yarnTecSheet/yarnManufacture/colorCard/colorCardItem/refDoc/attachment/binaryObject/@characterSet) [Optional]
characterSetCode	the character set of an external document - base type: normalizedString, (XPath YARNOfferRequest/yarnTecSheet/yarnManufacture/colorCard/colorCardItem/refDoc/attachment/externalReference/characterSetCode) 0-1 (XPath YARNOfferRequest/RQheader/refDoc/attachment/externalReference/characterSetCode) 0-1
city	name of the city (town, village) - base type: string, max length: 40, (XPath YARNOfferRequest/RQheader/buyer/city) 0-1 (XPath YARNOfferRequest/RQheader/thirdParty/city) 0-1 (XPath YARNOfferRequest/RQheader/supplier/city) 0-1 (XPath YARNOfferRequest/RQheader/subContractor/city) 0-1
@codeList	it specifies the URL where the list of codes used to make an instance of the element can be found - base type: string, max length: 255, (XPath YARNOfferRequest/yarnTecSheet/yarnManufacture/note/@codeList) [Optional] - nota: <i>must be used to provide (URL) the list of codes used in "noteLabel"</i> (XPath YARNOfferRequest/yarnTecSheet/yarnIdentity/yarnCode/color/@codeList) [Optional] - nota: <i>this attribute could be used as alternative to the others</i> (XPath YARNOfferRequest/yarnTecSheet/yarnManufacture/colorCard/colorCardItem/color/@codeList) [Optional] - nota: <i>this attribute could be used as alternative to the others</i> (XPath YARNOfferRequest/yarnTecSheet/yarnIdentity/season/@codeList) [Optional] (XPath YARNOfferRequest/terms/allowanceCharge/dtScheme/legalRef/@codeList) [Required] (XPath YARNOfferRequest/RQheader/refDoc/season/@codeList) [Optional] (XPath YARNOfferRequest/yarnTecSheet/yarnIdentity/yarnCode/art/@codeList) [Optional] - nota: <i>this attribute should be ALTERNATIVE to the others</i> (XPath YARNOfferRequest/RQheader/season/@codeList) [Optional] (XPath YARNOfferRequest/yarnTecSheet/yarnManufacture/colorCard/colorCardItem/refDoc/season/@codeList) [Optional] (XPath YARNOfferRequest/yarnTecSheet/yarnIdentity/note/@codeList) [Optional] - nota: <i>must be used to provide (URL) the list of codes used in "noteLabel"</i>

	<p>(XPath YARNOfferRequest/RQheader/note/@codeList) [Optional] - nota: <i>must be used to provide (URL) the list of codes used in "noteLabel"</i> (XPath YARNOfferRequest/terms/allowanceCharge/dtScheme/note/@codeList) [Optional] - nota: <i>must be used to provide (URL) the list of codes used in "noteLabel"</i></p>
color	<p>colour number of the product, when not included in the model or fabric code - base type: string, max length: 15, (XPath YARNOfferRequest/yarnTecSheet/yarnIdentity/yarnCode/color) 0-1 (XPath YARNOfferRequest/yarnTecSheet/yarnManufacture/colorCard/colorCardItem/color) 1-2 - note: <i>multiple color values allowed if they differ for at least one of the numberingOrg and listName attributes</i></p>
@colorType	<p>type of color to which a "color fastness" value refers - base type: string, cod. table: NT26 http://www.ebiz.enea.it/moda-ml/repository/codelist/draft/gc_NT26.xml (XPath YARNOfferRequest/yarnTecSheet/yarnManufacture/yarnColorFastness/@colorType) [Required]</p>
comply	<p>specifies if the experimental value complies with the standard requirement (target value) - base type: boolean, (XPath YARNOfferRequest/yarnTecSheet/yarnQuality/yarnQTest/comply) 0-1</p>
country	<p>code of the nation - base type: string, cod. table: T10 http://www.ebiz.enea.it/moda-ml/repository/codelist/draft/gc_T10.xml (XPath YARNOfferRequest/RQheader/supplier/country) 0-1 (XPath YARNOfferRequest/yarnTecSheet/yarnIdentity/fibrePD/country) 0-1 (XPath YARNOfferRequest/RQheader/subContractor/country) 0-1 (XPath YARNOfferRequest/RQheader/thirdParty/country) 0-1 (XPath YARNOfferRequest/RQheader/buyer/country) 0-1</p>
@countSystem	<p>yarn count system - base type: string, cod. table: T55 http://www.ebiz.enea.it/moda-ml/repository/codelist/draft/gc_T55.xml (XPath YARNOfferRequest/yarnTecSheet/yarnIdentity/yarnCount/@countSystem) [Required]</p>
@currency	<p>currency in which a specified monetary data is expressed - base type: string, cod. table: T9 http://www.ebiz.enea.it/moda-ml/repository/codelist/draft/gc_T9.xml (XPath YARNOfferRequest/yarnTecSheet/yarnIdentity/price/@currency) [Optional] - nota: <i>Currency referred by the price.</i> (XPath YARNOfferRequest/terms/allowanceCharge/@currency) [Optional]</p>
customsStat	<p>statistic code assigned by Customs to a specified product - base type: string, max length: 15, (XPath YARNOfferRequest/yarnTecSheet/yarnIdentity/customsStat) 0-1</p>
@CV	<p>coefficient of variation (CV) of a measurement - base type: decimal, (XPath YARNOfferRequest/yarnTecSheet/yarnManufacture/yarnColorFastness/specValue/@CV) [Optional] (XPath YARNOfferRequest/yarnTecSheet/yarnQuality/yarnQTest/specValue/@CV) [Optional] (XPath YARNOfferRequest/yarnTecSheet/yarnIdentity/yarnCount/@CV) [Optional]</p>
@dateForm	<p>format used for the date - base type: string, cod. table: NT29 http://www.ebiz.enea.it/moda-ml/repository/codelist/draft/gc_NT29.xml (XPath YARNOfferRequest/terms/transInfo/despatchDate/@dateForm) [Optional] (XPath YARNOfferRequest/RQheader/validityEnd/@dateForm) [Optional] (XPath YARNOfferRequest/RQheader/refDoc/docDate/@dateForm) [Optional]</p>

	(XPath YARNOfferRequest/yarnTecSheet/yarnManufacture/colorCard/colorCardItem/refDoc/docDate/@dateForm) [Optional] (XPath YARNOfferRequest/RQheader/msgDate/@dateForm) [Optional] (XPath YARNOfferRequest/terms/transInfo/delEffectiveDate/@dateForm) [Optional] (XPath YARNOfferRequest/RQheader/validityStart/@dateForm) [Optional]
delEffectiveDate	effective date of delivery of goods (declared in Despatch), according to one of the patterns YYYY-MM-DD, YYYY-MM-DD:HH-MM or YYYY-WW. - base type: string, (XPath YARNOfferRequest/terms/transInfo/delEffectiveDate) 0-1
deliveryPlace	place of delivery of goods, ultimate or related to a given leg - base type: string, max length: 250, (XPath YARNOfferRequest/terms/transInfo/deliveryPlace) 0-1
dept	name or code of a contact department within a Party - base type: string, max length: 40, (XPath YARNOfferRequest/RQheader/thirdParty/dept) 0-1 (XPath YARNOfferRequest/RQheader/supplier/dept) 0-1 (XPath YARNOfferRequest/RQheader/subContractor/dept) 0-1 (XPath YARNOfferRequest/RQheader/buyer/dept) 0-1
description	free text description. The content of the element must be unique, it might be translated and repeated into more languages (thus no more than one instance for each language). - base type: string, max length: 250, (XPath YARNOfferRequest/yarnTecSheet/yarnIdentity/yarnCode/description) 0-unbounded - note: <i>Product description</i> (XPath YARNOfferRequest/yarnTecSheet/yarnManufacture/colorCard/colorCardItem/description) 0-unbounded
despatchDate	date of despatch of goods, requested or promised in the purchase process, according to one of the patterns YYYY-MM-DD, YYYY-MM-DD:HH-MM or YYYY-WW. - base type: string, (XPath YARNOfferRequest/terms/transInfo/despatchDate) 0-1
despatchPlace	place of despatch of goods, origin or related to a given leg - base type: string, max length: 250, (XPath YARNOfferRequest/terms/transInfo/despatchPlace) 0-1
diameter	effective diameter of a specified object - base type: decimal, min inclusive: 0, fraction digits: 2, (XPath YARNOfferRequest/yarnTecSheet/yarnIdentity/fibrePD/diameter) 0-1
docDate	date of issue of the referenced document, according to one of the patterns YYYY-MM-DD, YYYY-MM-DD:HH-MM or YYYY-WW. - base type: string, (XPath YARNOfferRequest/RQheader/refDoc/docDate) 0-1 (XPath YARNOfferRequest/yarnTecSheet/yarnManufacture/colorCard/colorCardItem/refDoc/docDate) 0-1
docID	identification number of the referenced document SINCE 2008-1 ITS USE IN THE HEADER IS DISCOURAGED (REPLACED BY msgID) - base type: string, max length: 80, (XPath YARNOfferRequest/RQheader/refDoc/docID) 1-2 (XPath YARNOfferRequest/RQheader/docID) 0-1 (XPath YARNOfferRequest/yarnTecSheet/yarnManufacture/colorCard/colorCardItem/refDoc/docID) 1-2
@docType	type or class to which the referenced document belongs - base type: string, cod. table: T21 http://www.ebiz.enea.it/moda-ml/repository/codelist/draft/gc_T21.xml (XPath YARNOfferRequest/yarnTecSheet/yarnManufacture/colorCard/colorCardItem/refDoc/@docType) [Required] (XPath YARNOfferRequest/RQheader/refDoc/@docType) [Required]

dyeN	number of the dyeing batch of a textile product - base type: string, max length: 15, (XPath YARNOfferRequest/yarnTecSheet/yarnIdentity/dyeN) 0-1 - note: <i>to be used when the document refers to a specific production batch</i>
dyeProcess	dye process applied to the fabric - base type: string, cod. table: T15 http://www.ebiz.enea.it/moda-ml/repository/codelist/draft/gc_T15.xml (XPath YARNOfferRequest/yarnTecSheet/yarnManufacture/dyeProcess) 0-1
dyeStuff	dye stuff used in the fabric dye process - base type: string, cod. table: T16 http://www.ebiz.enea.it/moda-ml/repository/codelist/draft/gc_T16.xml (XPath YARNOfferRequest/yarnTecSheet/yarnManufacture/dyeStuff) 0-1
@email	electronic mail address of the contact person within a Party - base type: string, max length: 250, (XPath YARNOfferRequest/RQheader/buyer/person/@email) [Optional] (XPath YARNOfferRequest/RQheader/subContractor/person/@email) [Optional] (XPath YARNOfferRequest/RQheader/supplier/person/@email) [Optional] (XPath YARNOfferRequest/RQheader/thirdParty/person/@email) [Optional]
@encoding	specifies the decoding algorithm of the binary object - base type: normalizedString, (XPath YARNOfferRequest/RQheader/refDoc/attachment/binaryObject/@encoding) [Optional] (XPath YARNOfferRequest/yarnTecSheet/yarnManufacture/colorCard/colorCardItem/refDoc/attachment/binaryObject/@encoding) [Optional]
encodingCode	the encoding/decoding algorithm used with the external object - base type: normalizedString, (XPath YARNOfferRequest/yarnTecSheet/yarnManufacture/colorCard/colorCardItem/refDoc/attachment/externalReference/encodingCode) 0-1 (XPath YARNOfferRequest/RQheader/refDoc/attachment/externalReference/encodingCode) 0-1
extendedDescription	extended free text description. The content of the element must be unique, it might be translated and repeated into more languages (thus no more than one instance for each language). This element might contain HTML code (must be managed as CDATA) - base type: string, (XPath YARNOfferRequest/yarnTecSheet/yarnIdentity/extendedDescription) 0-unbounded - note: <i>Extended product description</i>
@fax	fax number of the contact person within a Party - base type: string, max length: 35, (XPath YARNOfferRequest/RQheader/thirdParty/person/@fax) [Optional] (XPath YARNOfferRequest/RQheader/supplier/person/@fax) [Optional] (XPath YARNOfferRequest/RQheader/subContractor/person/@fax) [Optional] (XPath YARNOfferRequest/RQheader/buyer/person/@fax) [Optional]
@fibre	type of fibre used in a textile product - base type: string, cod. table: T19 http://www.ebiz.enea.it/moda-ml/repository/codelist/draft/gc_T19.xml (XPath YARNOfferRequest/yarnTecSheet/yarnIdentity/yarnCompos/percCompos/@fibre) [Required] (XPath YARNOfferRequest/yarnTecSheet/yarnIdentity/fibrePD/@fibre) [Required]
fileName	unique identifier (name) of the file - base type: string, max length: 255, (XPath YARNOfferRequest/RQheader/refDoc/attachment/fileName) 0-1 (XPath YARNOfferRequest/yarnTecSheet/yarnManufacture/colorCard/colorCardItem/refDoc/attachment/fileName) 0-1

@finDiscount	financial discount rate applied for payment by the date specified - base type: decimal, min inclusive: 0, max inclusive: 100, fraction digits: 2, (XPath YARNOfferRequest/terms/payment/@finDiscount) [Optional]
@finSurcharge	financial surcharge rate applied for payment after the date specified - base type: decimal, min inclusive: 0, max inclusive: 100, fraction digits: 2, (XPath YARNOfferRequest/terms/payment/@finSurcharge) [Optional]
@format	the format of the binary content - base type: string, (XPath YARNOfferRequest/RQheader/refDoc/attachment/binaryObject/@format) [Optional] (XPath YARNOfferRequest/yarnTecSheet/yarnManufacture/colorCard/colorCardItem/refDoc/attachment/binaryObject/@format) [Optional]
formatCode	the format of the external object - base type: normalizedString, (XPath YARNOfferRequest/yarnTecSheet/yarnManufacture/colorCard/colorCardItem/refDoc/attachment/externalReference/formatCode) 0-1 (XPath YARNOfferRequest/RQheader/refDoc/attachment/externalReference/formatCode) 0-1
grossWeight	the gross weight, declared for transport or customs purpose - base type: decimal, min inclusive: 0, fraction digits: 2, (XPath YARNOfferRequest/terms/transInfo/grossWeight) 0-1
id	primary identification code of a Party; it is recommended the format: nation code (ISO 3166) + VAT identification number (11 crt), with the qualifier "numberingOrg"= MF - base type: string, max length: 15, (XPath YARNOfferRequest/RQheader/buyer/id) 1-1 (XPath YARNOfferRequest/RQheader/subContractor/id) 1-1 (XPath YARNOfferRequest/RQheader/supplier/id) 1-1 (XPath YARNOfferRequest/RQheader/thirdParty/id) 1-1
@idQualifier	Qualification of the identifier. - base type: string, (XPath YARNOfferRequest/RQheader/supplier/additionalIdentifier/@idQualifier) [Optional] - nota: <i>this attribute should be used when the numberingOrg attribute is not enough to declare the type of identifier</i> (XPath YARNOfferRequest/RQheader/buyer/additionalIdentifier/@idQualifier) [Optional] - nota: <i>this attribute should be used when the numberingOrg attribute is not enough to declare the type of identifier</i>
@illuminant	CIE light source - base type: string, cod. table: T59 http://www.ebiz.enea.it/moda-ml/repository/codelist/draft/gc_T59.xml (XPath YARNOfferRequest/yarnTecSheet/yarnManufacture/colorCard/colorCardItem/CIELab/@illuminant) [Optional]
incoTerm	specification of the terms of trade (INCOTERMS) - base type: string, cod. table: T3 http://www.ebiz.enea.it/moda-ml/repository/codelist/draft/gc_T3.xml (XPath YARNOfferRequest/terms/trade/incoTerm) 1-1
incoTermText	free text specifying the terms of trade (incoterm, location) - base type: string, max length: 250, (XPath YARNOfferRequest/terms/trade/incoTermText) 1-1
@isURL	it indicates if the referred element is an URL (true) or not (false) - base type: boolean,

	<p>(XPath YARNOfferRequest/yarnTecSheet/yarnManufacture/colorCard/colorCardItem/refDoc/attachment/externalReference/uri/@isURL) [Optional] [Default= true]</p> <p>- nota: <i>usage of URLs is recommended</i></p> <p>(XPath YARNOfferRequest/RQheader/refDoc/attachment/externalReference/uri/@isURL) [Optional] [Default= true]</p> <p>- nota: <i>usage of URLs is recommended</i></p>
itemID	<p>number of the line/item of the referenced document</p> <p>- base type: string, max length: 6,</p> <p>(XPath YARNOfferRequest/yarnTecSheet/yarnManufacture/colorCard/colorCardItem/refDoc/itemID) 0-1</p> <p>(XPath YARNOfferRequest/RQheader/refDoc/itemID) 0-1</p>
L	<p>"L" value of the CIELab color system</p> <p>- base type: decimal, min inclusive: 0,</p> <p>(XPath YARNOfferRequest/yarnTecSheet/yarnManufacture/colorCard/colorCardItem/CIELab/L) 1-1</p>
legalName	<p>legal name of a Party</p> <p>- base type: string, max length: 250,</p> <p>(XPath YARNOfferRequest/RQheader/thirdParty/legalName) 0-1</p> <p>(XPath YARNOfferRequest/RQheader/subContractor/legalName) 0-1</p> <p>(XPath YARNOfferRequest/RQheader/buyer/legalName) 0-1</p> <p>(XPath YARNOfferRequest/RQheader/supplier/legalName) 0-1</p>
legalRef	<p>legal reference of the duty or tax or fee category</p> <p>- base type: string,</p> <p>(XPath YARNOfferRequest/terms/allowanceCharge/dtScheme/legalRef) 0-1</p>
length	<p>effective length of a specified object</p> <p>- base type: decimal, min inclusive: 0, fraction digits: 2,</p> <p>(XPath YARNOfferRequest/yarnTecSheet/yarnIdentity/fibrePD/length) 0-1</p>
@listName	<p>the name of the list of codes used to make an instance of the element (it might be thought as descriptive element, i.e. 'fabric printing technologies', or not, i.e. "T264")</p> <p>- base type: string, max length: 40,</p> <p>(XPath YARNOfferRequest/yarnTecSheet/yarnIdentity/season/@listName) [Optional]</p> <p>(XPath YARNOfferRequest/yarnTecSheet/yarnManufacture/colorCard/colorCardItem/color/@listName) [Optional]</p> <p>- nota: <i>this attribute should always be used coupled with "numberingOrg"</i></p> <p>(XPath YARNOfferRequest/RQheader/season/@listName) [Optional]</p> <p>(XPath YARNOfferRequest/yarnTecSheet/yarnManufacture/colorCard/colorCardItem/refDoc/season/@listName) [Optional]</p> <p>(XPath YARNOfferRequest/RQheader/refDoc/season/@listName) [Optional]</p> <p>(XPath YARNOfferRequest/yarnTecSheet/yarnIdentity/yarnCode/color/@listName) [Optional]</p> <p>- nota: <i>this attribute should always be used coupled with "numberingOrg"</i></p> <p>(XPath YARNOfferRequest/yarnTecSheet/yarnIdentity/yarnCode/art/@listName) [Optional]</p> <p>- nota: <i>this attribute should always be used coupled with "numberingOrg"</i></p>
@listVersion	<p>it specifies the version of the list of codes used to make an instance of the element</p> <p>- base type: string, max length: 6,</p> <p>(XPath YARNOfferRequest/yarnTecSheet/yarnIdentity/yarnCode/art/@listVersion) [Optional]</p> <p>- nota: <i>this attribute should always be used coupled with "numberingOrg" and "listName"</i></p> <p>(XPath YARNOfferRequest/RQheader/season/@listVersion) [Optional]</p> <p>(XPath YARNOfferRequest/yarnTecSheet/yarnManufacture/colorCard/colorCardItem/color/@listVersion) [Optional]</p> <p>- nota: <i>this attribute should always be used coupled with "numberingOrg" and "listName"</i></p>

	<p>(XPath YARNOfferRequest/yarnTecSheet/yarnIdentity/yarnCode/color/@listVersion) [Optional]</p> <p>- nota: <i>this attribute should always be used coupled with “numberingOrg” and “listName”</i></p> <p>(XPath YARNOfferRequest/yarnTecSheet/yarnIdentity/season/@listVersion) [Optional]</p> <p>(XPath YARNOfferRequest/yarnTecSheet/yarnManufacture/colorCard/colorCardItem/refDoc/season/@listVersion) [Optional]</p> <p>(XPath YARNOfferRequest/RQheader/refDoc/season/@listVersion) [Optional]</p>
@ln	<p>Language code.</p> <p>- base type: string,</p> <p>(XPath YARNOfferRequest/yarnTecSheet/yarnIdentity/yarnCode/description/@ln) [Optional]</p> <p>(XPath YARNOfferRequest/yarnTecSheet/yarnManufacture/colorCard/colorCardItem/description/@ln) [Optional]</p> <p>(XPath YARNOfferRequest/yarnTecSheet/yarnIdentity/extendedDescription/@ln) [Optional]</p>
location	<p>specification of a location</p> <p>- base type: string, max length: 40,</p> <p>(XPath YARNOfferRequest/terms/trade/location) 0-1</p> <p>- note: <i>place to which the INCOTERM applies</i></p>
@logo	<p>company logo (URL of the image jpeg or gif). It is recommended that the width of the image does not exceed 640 pixel.</p> <p>- base type: string, max length: 255,</p> <p>(XPath YARNOfferRequest/RQheader/buyer/@logo) [Optional]</p> <p>(XPath YARNOfferRequest/RQheader/supplier/@logo) [Optional]</p>
lotN	<p>lot number of a product or batch number of the raw material</p> <p>- base type: string, max length: 15,</p> <p>(XPath YARNOfferRequest/yarnTecSheet/yarnIdentity/lotN) 0-1</p> <p>- note: <i>to be used when the document refers to a specific production batch</i></p>
@LRI	<p>attribute usable to format a string according to a customized User rule (local rule)</p> <p>- base type: string, cod. table: NT3</p> <p>http://www.ebiz.enea.it/moda-ml/repository/codelist/draft/gc_NT3.xml</p> <p>(XPath YARNOfferRequest/terms/trade/location/@LRI) [Optional]</p>
@maxQty	<p>maximum product quantity</p> <p>- base type: decimal, min inclusive: 0, fraction digits: 2,</p> <p>(XPath YARNOfferRequest/terms/allowanceCharge/@maxQty) [Optional]</p> <p>- nota: <i>maximum quantity of product for the application of this allowance or charge</i></p>
@method	<p>standard protocol or method employed in a test to evaluate a characteristic or a parameter</p> <p>- base type: string, max length: 80,</p> <p>(XPath YARNOfferRequest/yarnTecSheet/yarnQuality/yarnQTest/specValue/@method) [Optional]</p> <p>(XPath YARNOfferRequest/yarnTecSheet/yarnManufacture/yarnColorFastness/specValue/@method) [Optional]</p>
@mime	<p>the mime type of the binary object</p> <p>- base type: normalizedString,</p> <p>(XPath YARNOfferRequest/RQheader/refDoc/attachment/binaryObject/@mime) [Optional]</p> <p>(XPath YARNOfferRequest/yarnTecSheet/yarnManufacture/colorCard/colorCardItem/refDoc/attachment/binaryObject/@mime) [Optional]</p>
mimeCode	<p>mime type of the external object</p> <p>- base type: normalizedString,</p> <p>(XPath YARNOfferRequest/yarnTecSheet/yarnManufacture/colorCard/colorCardItem/refDoc/attachment/externalReference/mimeCode) 0-1</p>

	(XPath YARNOfferRequest/RQheader/refDoc/attachment/externalReference/mimeType) 0-1
minLot	minimum order quantity of a product requested by the Supplier - base type: decimal, min inclusive: 0, fraction digits: 2, (XPath YARNOfferRequest/yarnTecSheet/yarnIdentity/minLot) 0-1
minLotExclusive	minimum order quantity of a product requested by the Supplier for an exclusive color - base type: decimal, min inclusive: 0, fraction digits: 2, (XPath YARNOfferRequest/yarnTecSheet/yarnIdentity/minLotExclusive) 0-1
@minQty	minimum product quantity - base type: decimal, min inclusive: 0, fraction digits: 2, (XPath YARNOfferRequest/terms/allowanceCharge/@minQty) [Optional] - nota: <i>minimum quantity of product for the application of this allowance or charge</i>
moistRegain	percent moisture regain by the fibres - base type: decimal, (XPath YARNOfferRequest/yarnTecSheet/yarnIdentity/moistRegain) 0-1
msgDate	date of issue of the present message (xml document), according to one of the patterns YYYY-MM-DD, YYYY-MM-DD:HH-MM or YYYY-WW. - base type: string, (XPath YARNOfferRequest/RQheader/msgDate) 1-1
@msgfunction	function performed by the present message with regards to the transmission - base type: string, cod. table: NT18 http://www.ebiz.enea.it/moda-ml/repository/codelist/draft/gc_NT18.xml (XPath YARNOfferRequest/@msgfunction) [Optional]
msgID	key identifier of the business document in the information system of the issuing Party. In case of more despatches of the same business document, it is unchanged. - base type: string, max length: 35, (XPath YARNOfferRequest/RQheader/msgID) 0-1
msgN	identification number given to the message (xml document) by its issuer. In case of more despatches of the same business document, it changes. - base type: string, max length: 35, (XPath YARNOfferRequest/RQheader/msgN) 1-1
netWeight	the net weight declared for transport or customs purpose - base type: decimal, min inclusive: 0, fraction digits: 2, (XPath YARNOfferRequest/terms/transInfo/netWeight) 0-1
note	free text or structured (computer processing) note. For note structuring use the attributes "noteLabel" and "codelist" - base type: string, max length: 350, (XPath YARNOfferRequest/yarnTecSheet/yarnManufacture/note) 0-99 (XPath YARNOfferRequest/RQheader/note) 0-99 (XPath YARNOfferRequest/yarnTecSheet/yarnIdentity/note) 0-99 (XPath YARNOfferRequest/terms/allowanceCharge/dtScheme/note) 0-99
@noteLabel	subject qualifier of a note - base type: string, max length: 35, (XPath YARNOfferRequest/yarnTecSheet/yarnManufacture/note/@noteLabel) [Optional] - nota: <i>must be used to qualify the subject of the note</i> (XPath YARNOfferRequest/RQheader/note/@noteLabel) [Optional] - nota: <i>must be used to qualify the subject of the note</i> (XPath YARNOfferRequest/terms/allowanceCharge/dtScheme/note/@noteLabel) [Optional] - nota: <i>must be used to qualify the subject of the note</i> (XPath YARNOfferRequest/yarnTecSheet/yarnIdentity/note/@noteLabel) [Optional]

	- nota: <i>must be used to qualify the subject of the note</i>
@numberingOrg	<p>code specifying the organisation who has created or owns the coding or numbering system</p> <p>- base type: string, cod. table: NT6 http://www.ebiz.enea.it/moda-ml/repository/codelist/draft/gc_NT6.xml (XPath YARNOfferRequest/yarnTecSheet/yarnManufacture/colorCard/colorCardItem/color/@numberingOrg) [Optional]</p> <p>- nota: <i>this attribute should be used either single or coupled with "listName" and "listVersion"</i> (XPath YARNOfferRequest/RQheader/note/@numberingOrg) [Optional] (XPath YARNOfferRequest/yarnTecSheet/yarnIdentity/yarnCode/added/@numberingOrg) [Optional] (XPath YARNOfferRequest/yarnTecSheet/yarnManufacture/colorCard/colorCardItem/refDoc/attachment/fileName/@numberingOrg) [Optional] (XPath YARNOfferRequest/RQheader/docID/@numberingOrg) [Optional]</p> <p>- nota: <i>here can be specified whose document numbering is used (e.g.: Client, Supplier, ..)</i> (XPath YARNOfferRequest/RQheader/season/@numberingOrg) [Optional] (XPath YARNOfferRequest/yarnTecSheet/yarnIdentity/dyeN/@numberingOrg) [Optional] (XPath YARNOfferRequest/yarnTecSheet/yarnIdentity/lotN/@numberingOrg) [Optional] (XPath YARNOfferRequest/yarnTecSheet/yarnIdentity/note/@numberingOrg) [Optional] (XPath YARNOfferRequest/yarnTecSheet/yarnManufacture/colorCard/colorCardItem/refDoc/season/@numberingOrg) [Optional] (XPath YARNOfferRequest/RQheader/supplier/id/@numberingOrg) [Optional] (XPath YARNOfferRequest/RQheader/thirdParty/id/@numberingOrg) [Optional] (XPath YARNOfferRequest/RQheader/subContractor/id/@numberingOrg) [Optional] (XPath YARNOfferRequest/RQheader/supplier/additionalIdentifier/@numberingOrg) [Optional]</p> <p>- nota: <i>here the issuer of the identifier must be specified</i> (XPath YARNOfferRequest/yarnTecSheet/yarnIdentity/yarnCode/color/@numberingOrg) [Optional]</p> <p>- nota: <i>this attribute should be used either single or coupled with "listName" and "listVersion"</i> (XPath YARNOfferRequest/yarnTecSheet/yarnManufacture/note/@numberingOrg) [Optional] (XPath YARNOfferRequest/RQheader/refDoc/docID/@numberingOrg) [Optional]</p> <p>- nota: <i>here can be specified whose document numbering is used (e.g.: Client, Supplier, ..)</i> (XPath YARNOfferRequest/RQheader/buyer/additionalIdentifier/@numberingOrg) [Optional]</p> <p>- nota: <i>here the issuer of the identifier must be specified</i> (XPath YARNOfferRequest/RQheader/refDoc/season/@numberingOrg) [Optional] (XPath YARNOfferRequest/yarnTecSheet/yarnIdentity/yarnCode/@numberingOrg) [Optional] [Default= CL] (XPath YARNOfferRequest/RQheader/refDoc/attachment/fileName/@numberingOrg) [Optional] (XPath YARNOfferRequest/yarnTecSheet/yarnIdentity/season/@numberingOrg) [Optional] (XPath YARNOfferRequest/terms/allowanceCharge/dtScheme/note/@numberingOrg) [Optional] (XPath YARNOfferRequest/RQheader/buyer/id/@numberingOrg) [Optional] (XPath YARNOfferRequest/yarnTecSheet/yarnManufacture/colorCard/colorCardItem/refDoc/docID/@numberingOrg) [Optional]</p> <p>- nota: <i>here can be specified whose document numbering is used (e.g.: Client, Supplier, ..)</i> (XPath YARNOfferRequest/yarnTecSheet/yarnIdentity/yarnCode/art/@numberingOrg) [Optional]</p> <p>- nota: <i>this attribute should be used either single or coupled with "listName" and "listVersion"</i></p>

optLot	<p>optimized quantity for the manufacturing plant</p> <p>- base type: decimal, min inclusive: 0, (XPath YARNOfferRequest/yarnTecSheet/yarnIdentity/optLot) 0-9</p>
@part	<p>percent fraction of a total payment</p> <p>- base type: decimal, min inclusive: 1, max inclusive: 99, fraction digits: 2, (XPath YARNOfferRequest/terms/insPayment/@part) [Required]</p> <p>- nota: <i>here the % value of each installment must be indicated</i></p>
payMode	<p>way or means of payment</p> <p>- base type: string, cod. table: T2 http://www.ebiz.enea.it/moda-ml/repository/codelist/draft/gc_T2.xml (XPath YARNOfferRequest/terms/insPayment/payMode) 0-1 (XPath YARNOfferRequest/terms/payment/payMode) 0-1</p>
payTerm	<p>code specifying the terms or time by which the payment must be done</p> <p>- base type: string, cod. table: T1 http://www.ebiz.enea.it/moda-ml/repository/codelist/draft/gc_T1.xml (XPath YARNOfferRequest/terms/insPayment/payTerm) 1-1 (XPath YARNOfferRequest/terms/payment/payTerm) 1-1</p>
payTermText	<p>free text specifying the terms by which the payment must be done (time/mode or means)</p> <p>- base type: string, max length: 250, (XPath YARNOfferRequest/terms/payment/payTermText) 1-1 (XPath YARNOfferRequest/terms/insPayment/payTermText) 1-1</p>
pcTolerance	<p>percent deviation tolerated on the value of a measurement (it must have a plus or minus sign)</p> <p>- base type: decimal, min inclusive: 0, max inclusive: 100, total digits: 2, (XPath YARNOfferRequest/yarnTecSheet/yarnQuality/yarnQTest/pcTolerance) 0-1</p>
percCompos	<p>fiber rate in the product composition</p> <p>- base type: decimal, min inclusive: 0, max inclusive: 100, fraction digits: 2, (XPath YARNOfferRequest/yarnTecSheet/yarnIdentity/yarnCompos/percCompos) 1-9</p>
person	<p>name of the contact person within a Party</p> <p>- base type: string, max length: 40, (XPath YARNOfferRequest/RQheader/subContractor/person) 0-1 (XPath YARNOfferRequest/RQheader/thirdParty/person) 0-1 (XPath YARNOfferRequest/RQheader/buyer/person) 0-1 (XPath YARNOfferRequest/RQheader/supplier/person) 0-1</p>
@phone	<p>phone number of the contact person within a Party</p> <p>- base type: string, max length: 35, (XPath YARNOfferRequest/RQheader/subContractor/person/@phone) [Optional] (XPath YARNOfferRequest/RQheader/supplier/person/@phone) [Optional] (XPath YARNOfferRequest/RQheader/buyer/person/@phone) [Optional] (XPath YARNOfferRequest/RQheader/thirdParty/person/@phone) [Optional]</p>
plyN	<p>number of single threads twisted together</p> <p>- base type: positiveInteger, (XPath YARNOfferRequest/yarnTecSheet/yarnManufacture/yarnPly/plyN) 0-1</p>
plyWork	<p>kind of yarn's ply</p> <p>- base type: string, cod. table: T56 http://www.ebiz.enea.it/moda-ml/repository/codelist/draft/gc_T56.xml (XPath YARNOfferRequest/yarnTecSheet/yarnManufacture/yarnPly/plyWork) 1-1</p>
postCode	<p>code defining the postal zone</p> <p>- base type: string, max length: 10, (XPath YARNOfferRequest/RQheader/supplier/postCode) 0-1 (XPath YARNOfferRequest/RQheader/buyer/postCode) 0-1 (XPath YARNOfferRequest/RQheader/thirdParty/postCode) 0-1</p>

	(XPath YARNOfferRequest/RQheader/subContractor/postCode) 0-1
price	unit price of the article, object or service specified - base type: decimal, min inclusive: 0, fraction digits: 4, (XPath YARNOfferRequest/yarnTecSheet/yarnIdentity/price) 0-2
@priceQualifier	type of price with reference to discount and taxes - base type: string, cod. table: NT20 http://www.ebiz.enea.it/moda-ml/repository/codelist/draft/gc_NT20.xml (XPath YARNOfferRequest/yarnTecSheet/yarnIdentity/price/@priceQualifier) [Optional] [Default= NET]
@progr	progressive number in the sequence - base type: positiveInteger, min inclusive: 1, (XPath YARNOfferRequest/terms/transInfo/@progr) [Optional] - nota: <i>Indicates the position of the leg in a sequence of transport legs.</i>
qty	net quantity of the article or object correlated, qualified by the function of the document (ordering, delivering, ..) and by the context - base type: decimal, min inclusive: 0, fraction digits: 2, (XPath YARNOfferRequest/yarnTecSheet/yarnIdentity/yarnTwist/qty) 0-1 - note: <i>here the number of turns per meter is specified</i>
@reelType	type of package used for a yarn product - base type: string, cod. table: T29 http://www.ebiz.enea.it/moda-ml/repository/codelist/draft/gc_T29.xml (XPath YARNOfferRequest/yarnTecSheet/yarnIdentity/standardPack/@reelType) [Optional] - nota: <i>identifies the kind of unit in the package</i>
@role	Third Party role qualifier - base type: string, cod. table: NT2 http://www.ebiz.enea.it/moda-ml/repository/codelist/draft/gc_NT2.xml (XPath YARNOfferRequest/RQheader/thirdParty/@role) [Required]
season	sale season; defined as: season (1 crt) + year (4 crt) - season: S/S=1 A/W=2 Spring=3 Summer=4 Autumn=5 Winter=6: for more than four seasons use alphabetic sequence: 1st season=A 2nd season=B etc.etc. - base type: string, max length: 15, (XPath YARNOfferRequest/RQheader/season) 0-1 (XPath YARNOfferRequest/yarnTecSheet/yarnManufacture/colorCard/colorCardItem/refDoc/season) 0-1 - note: <i>here indicates the season to which the referenced document belongs</i> (XPath YARNOfferRequest/RQheader/refDoc/season) 0-1 - note: <i>here indicates the season to which the referenced document belongs</i> (XPath YARNOfferRequest/yarnTecSheet/yarnIdentity/season) 0-1
@sender	qualifier that specifies the Party issuing of the document - base type: boolean, (XPath YARNOfferRequest/RQheader/buyer/@sender) [Optional] - nota: <i>This attribute is mandatory when the STYLESHEET must be used</i> (XPath YARNOfferRequest/RQheader/supplier/@sender) [Optional] - nota: <i>This attribute is mandatory when the STYLESHEET must be used</i> (XPath YARNOfferRequest/RQheader/thirdParty/@sender) [Optional] - nota: <i>This attribute is mandatory when the STYLESHEET must be used</i> (XPath YARNOfferRequest/RQheader/subContractor/@sender) [Optional] - nota: <i>This attribute is mandatory when the STYLESHEET must be used</i>
@source	party who has provided the data - base type: string, cod. table: NT12 http://www.ebiz.enea.it/moda-ml/repository/codelist/draft/gc_NT12.xml (XPath YARNOfferRequest/yarnTecSheet/yarnQuality/yarnQTest/specValue/@source) [Optional] (XPath YARNOfferRequest/yarnTecSheet/yarnManufacture/yarnColorFastness/specValue/@source) [Optional]

specValue	value requested for a property or a parameter that is measured - base type: decimal, (XPath YARNOfferRequest/yarnTecSheet/yarnManufacture/ yarnColorFastness/specValue) 1-1 - note: <i>when the test forseees two values (change-staining) the 1st value is c hange and the 2nd staining, devided by ";"</i> (XPath YARNOfferRequest/yarnTecSheet/yarnQuality/ yarnQTest/specValue) 0-1
@standardObserver	CIE average chromatic response definition - base type: string, cod. table: T60 http://www.ebiz.enea.it/moda-ml/repository/codelist/draft/gc_T60.xml (XPath YARNOfferRequest/yarnTecSheet/yarnManufacture/ colorCard/colorCardItem/CIELab/@standardObserver) [Optional]
standardPack	number of unit per standard package - base type: positiveInteger, (XPath YARNOfferRequest/yarnTecSheet/yarnIdentity/standardPack) 0-1
street	street and building number identifying a location - base type: string, max length: 80, (XPath YARNOfferRequest/RQheader/buyer/street) 0-1 (XPath YARNOfferRequest/RQheader/subContractor/street) 0-1 (XPath YARNOfferRequest/RQheader/thirdParty/street) 0-1 (XPath YARNOfferRequest/RQheader/supplier/street) 0-1
subCountry	short name or code of the sub-country entity - base type: string, max length: 9, (XPath YARNOfferRequest/RQheader/subContractor/subCountry) 0-1 (XPath YARNOfferRequest/RQheader/thirdParty/subCountry) 0-1 (XPath YARNOfferRequest/RQheader/buyer/subCountry) 0-1 (XPath YARNOfferRequest/RQheader/supplier/subCountry) 0-1
subDept	name or code of a contact department within a Party - base type: string, max length: 40, (XPath YARNOfferRequest/RQheader/subContractor/subDept) 0-1 (XPath YARNOfferRequest/RQheader/buyer/subDept) 0-1 (XPath YARNOfferRequest/RQheader/supplier/subDept) 0-1 (XPath YARNOfferRequest/RQheader/thirdParty/subDept) 0-1
taxCategory	duty or tax or fee category - base type: string, cod. table: T62 http://www.ebiz.enea.it/moda-ml/repository/codelist/draft/gc_T62.xml (XPath YARNOfferRequest/terms/allowanceCharge/dtScheme/taxCategory) 0-1
taxRate	duty or tax or fee percent rate - base type: string, (XPath YARNOfferRequest/terms/allowanceCharge/dtScheme/taxRate) 0-1
@taxType	duty or tax or fee type - base type: string, cod. table: T61 http://www.ebiz.enea.it/moda-ml/repository/codelist/draft/gc_T61.xml (XPath YARNOfferRequest/terms/allowanceCharge/dtScheme/@taxType) [Required]
tolerance	deviation tolerated on the value of a measurement (it must have a plus or mi nus sign) - base type: decimal, (XPath YARNOfferRequest/yarnTecSheet/yarnQuality/ yarnQTest/tolerance) 0-1
tradeMark	name of the official trademark of a specified product (DEPRECATED, use B rand or Product Line). - base type: string, max length: 50, (XPath YARNOfferRequest/yarnTecSheet/yarnIdentity/tradeMark) 0-1

transCondition	special condition of transport or special service requested to the Forwarder - base type: string, cod. table: T38 http://www.ebiz.enea.it/moda-ml/repository/codelist/draft/gc_T38.xml (XPath YARNOfferRequest/terms/transInfo/transCondition) 0-3
transConditionText	free text description of the special condition of transport or special service requested to the Forwarder - base type: string, max length: 250, (XPath YARNOfferRequest/terms/transInfo/transConditionText) 0-1
transMeans	means of transport, in general or referred to a specific leg - base type: string, cod. table: T40 http://www.ebiz.enea.it/moda-ml/repository/codelist/draft/gc_T40.xml (XPath YARNOfferRequest/terms/transInfo/transMeans) 0-1
transMode	way of transport, in general or referred to the specified leg - base type: string, cod. table: T8 http://www.ebiz.enea.it/moda-ml/repository/codelist/draft/gc_T8.xml (XPath YARNOfferRequest/terms/transInfo/transMode) 1-1
@transReason	reason for the transport - base type: string, cod. table: NT11 http://www.ebiz.enea.it/moda-ml/repository/codelist/draft/gc_NT11.xml (XPath YARNOfferRequest/terms/transInfo/@transReason) [Optional]
twistDirection	direction (S or Z) of the yarn twist - base type: string, (XPath YARNOfferRequest/yarnTecSheet/yarnIdentity/yarnTwist/twistDirection) 1-1
@uid	unique element identifier within the xml document - base type: string, (XPath YARNOfferRequest/yarnTecSheet/yarnManufacture/colorCard/colorCardItem/refDoc/attachment/@uid) [Optional] (XPath YARNOfferRequest/RQheader/refDoc/attachment/@uid) [Optional]
@um	specification of the unit of measure - base type: string, cod. table: NT7 http://www.ebiz.enea.it/moda-ml/repository/codelist/draft/gc_NT7.xml (XPath YARNOfferRequest/yarnTecSheet/yarnQuality/yarnQTest/pcTolerance/@um) [Optional] - nota: <i>to be used when it has to be soecified if the declared percentage is by weight, volume, etc...</i> (XPath YARNOfferRequest/yarnTecSheet/yarnIdentity/fibrePD/diameter/@um) [Optional] (XPath YARNOfferRequest/yarnTecSheet/yarnIdentity/fibrePD/length/@um) [Required] (XPath YARNOfferRequest/terms/allowanceCharge/@um) [Optional] (XPath YARNOfferRequest/terms/transInfo/netWeight/@um) [Required] (XPath YARNOfferRequest/yarnTecSheet/yarnQuality/yarnQTest/specValue/@um) [Optional] (XPath YARNOfferRequest/yarnTecSheet/yarnQuality/yarnQTest/tolerance/@um) [Required] (XPath YARNOfferRequest/terms/transInfo/grossWeight/@um) [Required] (XPath YARNOfferRequest/yarnTecSheet/yarnIdentity/yarnTwist/qty/@um) [Required] (XPath YARNOfferRequest/yarnTecSheet/yarnIdentity/optLot/@um) [Optional] (XPath YARNOfferRequest/yarnTecSheet/yarnIdentity/price/@um) [Optional] - nota: <i>Unit of measure of the product to which the price is referred (price per meter)</i> (XPath YARNOfferRequest/yarnTecSheet/yarnIdentity/minLotExclusive/@um) [Required] (XPath YARNOfferRequest/yarnTecSheet/yarnIdentity/yarnReelQty/@um) [Required] (XPath YARNOfferRequest/yarnTecSheet/yarnIdentity/yarnComWeight/@um) [Required] (XPath YARNOfferRequest/yarnTecSheet/yarnIdentity/minLot/@um) [Required]

	(XPath YARNOfferRequest/yarnTecSheet/yarnManufacture/yarnColorFastness/specValue/@um) [Optional]
uri	Uniform Resource Identifier (URI) that identifies the external object as an Internet resource - base type: normalizedString, (XPath YARNOfferRequest/RQheader/refDoc/attachment/externalReference/uri) 1-1 (XPath YARNOfferRequest/yarnTecSheet/yarnManufacture/colorCard/colorCardItem/refDoc/attachment/externalReference/uri) 1-1
@useProfile	use profile to which the present document is compliant if it was agreed by the parties. It is suggested a URI with reference to the firms or the URL of the profile. - base type: string, (XPath YARNOfferRequest/@useProfile) [Optional]
validityEnd	date by which the validity ends, according to one of the patterns YYYY-MM-DD, YYYY-MM-DD:HH-MM or YYYY-WW. - base type: string, (XPath YARNOfferRequest/RQheader/validityEnd) 1-1
validityStart	date by which the validity starts, according to one of the patterns YYYY-MM-DD, YYYY-MM-DD:HH-MM or YYYY-WW. - base type: string, (XPath YARNOfferRequest/RQheader/validityStart) 0-1
@VAT	VAT rate or code (DEPRECATED, use dtScheme element) - base type: string, cod. table: NT16 http://www.ebiz.enea.it/moda-ml/repository/codelist/draft/gc_NT16.xml (XPath YARNOfferRequest/terms/allowanceCharge/@VAT) [Optional] (XPath YARNOfferRequest/RQheader/thirdParty/@VAT) [Optional]
@version	Dictionary version from which the instance has been created - base type: string, cod. table: NT100 http://www.ebiz.enea.it/moda-ml/repository/codelist/draft/gc_NT100.xml (XPath YARNOfferRequest/@version) [Optional] [Default= draft]
yarnCFTest	color fastness test for a yarn - base type: string, cod. table: T57 http://www.ebiz.enea.it/moda-ml/repository/codelist/draft/gc_T57.xml (XPath YARNOfferRequest/yarnTecSheet/yarnManufacture/yarnColorFastness/yarnCFTest) 1-1
yarnClass	yarn classification according to the manufacturing process - base type: string, cod. table: NT31 http://www.ebiz.enea.it/moda-ml/repository/codelist/draft/gc_NT31.xml (XPath YARNOfferRequest/yarnTecSheet/yarnIdentity/yarnClass) 0-1
yarnComWeight	dry weight of fibres plus commercial moisture regain - base type: decimal, min inclusive: 0, (XPath YARNOfferRequest/yarnTecSheet/yarnIdentity/yarnComWeight) 0-1
yarnCount	linear density measure of yarn (count) - base type: string, (XPath YARNOfferRequest/yarnTecSheet/yarnIdentity/yarnCount) 0-1
yarnJob	operation of a work cycle for yarn - base type: string, cod. table: T201 http://www.ebiz.enea.it/moda-ml/repository/codelist/draft/gc_T201.xml (XPath YARNOfferRequest/yarnTecSheet/yarnManufacture/yarnJobSeq/yarnJob) 1-19
yarnKind	general type of yarn - base type: string, cod. table: T54 http://www.ebiz.enea.it/moda-ml/repository/codelist/draft/gc_T54.xml (XPath YARNOfferRequest/yarnTecSheet/yarnIdentity/yarnKind) 0-1

yarnNameBuyer	name given to the yarn by the Buyer - base type: string, max length: 250, (XPath YARNOfferRequest/yarnTecSheet/yarnIdentity/yarnNameBuyer) 0-1
yarnNameSupplier	name given to the yarn by the Supplier - base type: string, max length: 250, (XPath YARNOfferRequest/yarnTecSheet/yarnIdentity/yarnNameSupplier) 1-1
yarnQTestType	Type of test related to a property of a yarn - base type: string, cod. table: T58 http://www.ebiz.enea.it/moda-ml/repository/codelist/draft/gc_T58.xml (XPath YARNOfferRequest/yarnTecSheet/yarnQuality/yarnQTest/yarnQTestType) 1-1
yarnReelQty	quantity of yarn (by weight or length) wound upon a bobbin - base type: decimal, min inclusive: 0, fraction digits: 2, (XPath YARNOfferRequest/yarnTecSheet/yarnIdentity/yarnReelQty) 0-1

2.3 Enumeration tables

List of enumeration tables used in the XML document. You can find the corresponding codes at:
<http://www.ebiz-tcf.eu/moda-ml/imple/moda-ml-draft.asp?lingua=en&pag=6>

NT100 - eBIZ TCFUpstream version

NT11 - transport causal

NT12 - data source

NT16 - VAT rate or code

NT18 - message function

NT2 - third party qualifier

NT20 - price qualifier

NT26 - color type

NT29 - format of a date

NT3 - data format

NT31 - yarn family

NT6 - coding system owner/issuer

NT7 - unit of measure

T1 - terms of payment

T10 - ISO3166 - Country

T15 - dye/print process type

T16 - dyestuff type

T19 - fibre type

T2 - Modes of payment

T201 - type of job on yarn

T21 - type of document

T29 - type of yarn package

T3 - terms of delivery

T38 - transport conditions

T40 - type of transport means

T41 - type of Allowance or Charge

T44 - additional code type

T54 - kind of yarn

T55 - count system

T56 - kind of yarn ply

T57 - color fastness test for yarn

T58 - yarn quality parameters

T59 - CIE illuminant

T60 - CIE standard observer

T61 - duty or tax or fee type

T62 - duty or tax or fee category

T8 - Modes of Transport

T9 - ISO4217 - Currency

ACKNOWLEDGEMENT



This action is part of the eBIZ-4.0 project, which has received funding from the European Union's COSME Programme (2014 - 2020).

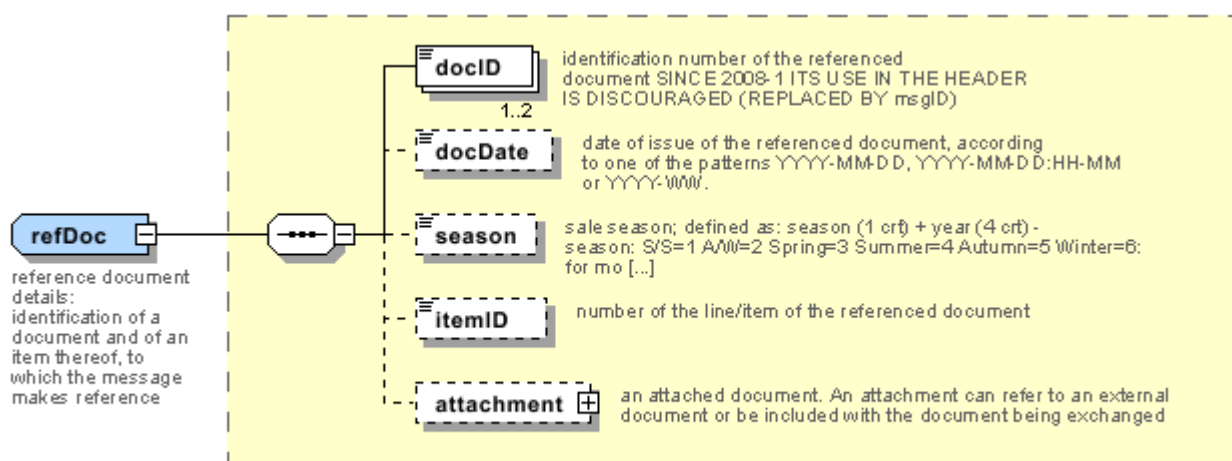
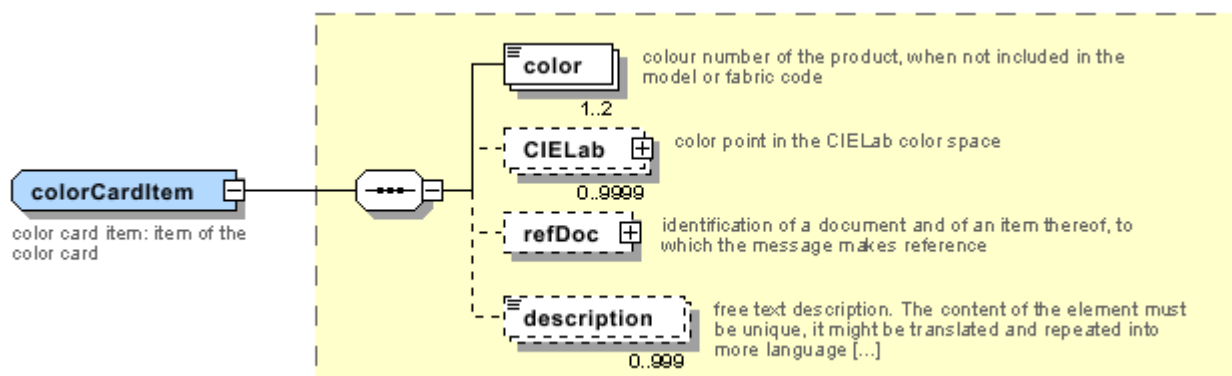
DISCLAIMER

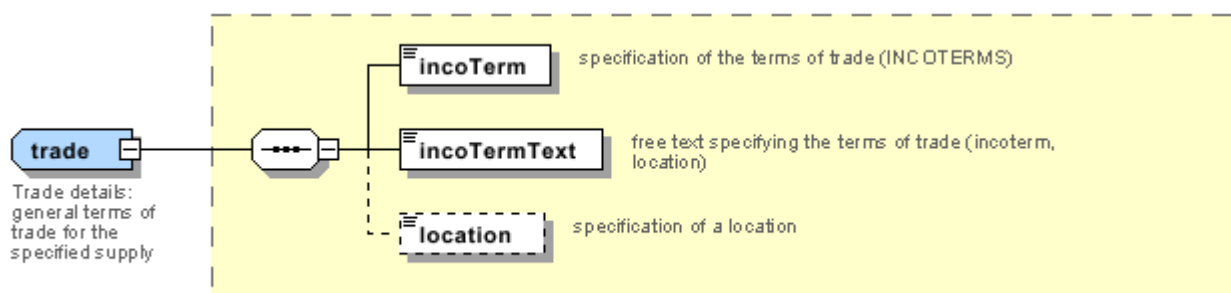
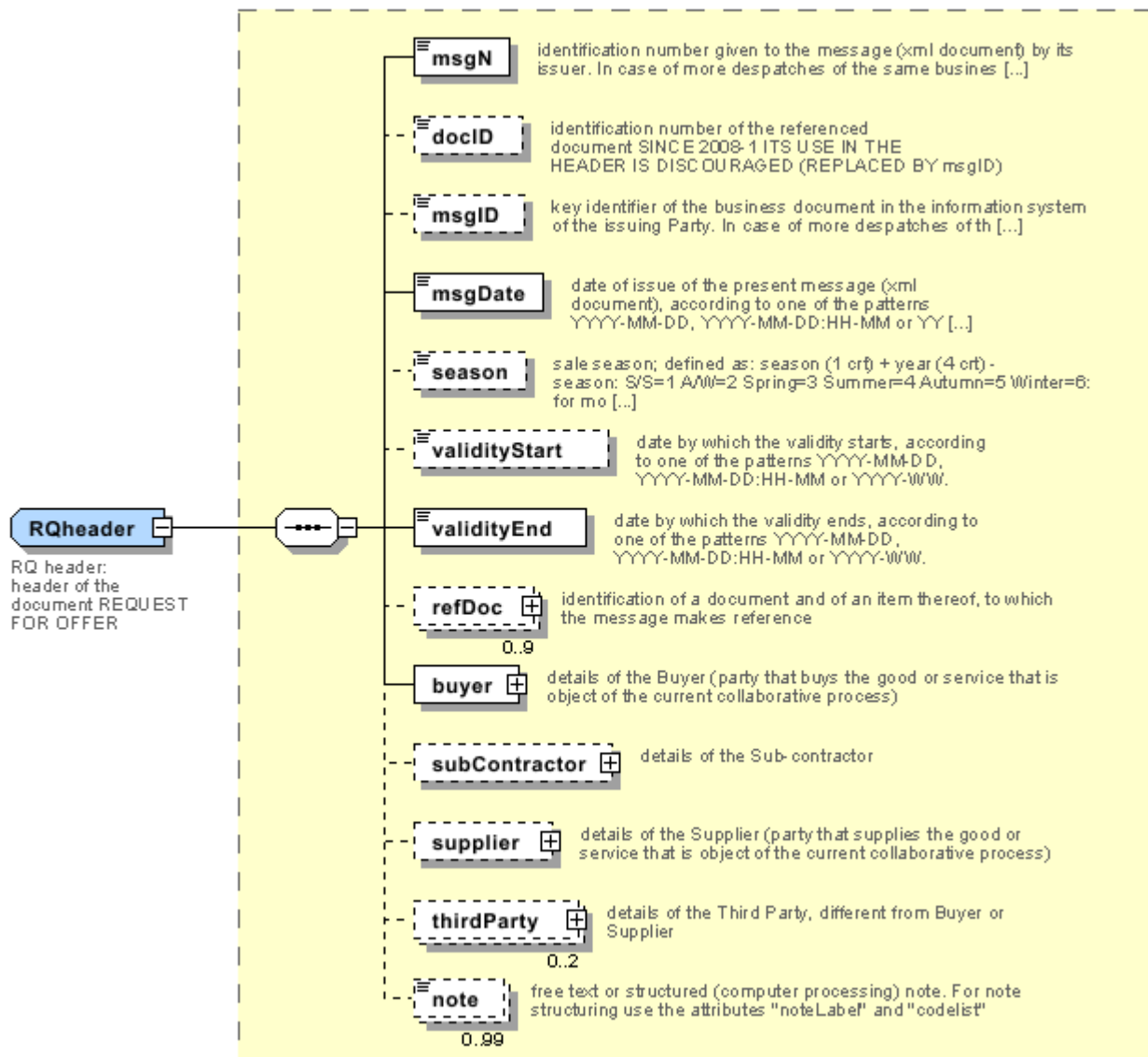
The content of this document represents the views of the authors only and is their sole responsibility; it cannot be considered to reflect the views of the European Commission and/or the Executive Agency for Small and Medium-sized Enterprises (EASME) or any other body of the European Union.

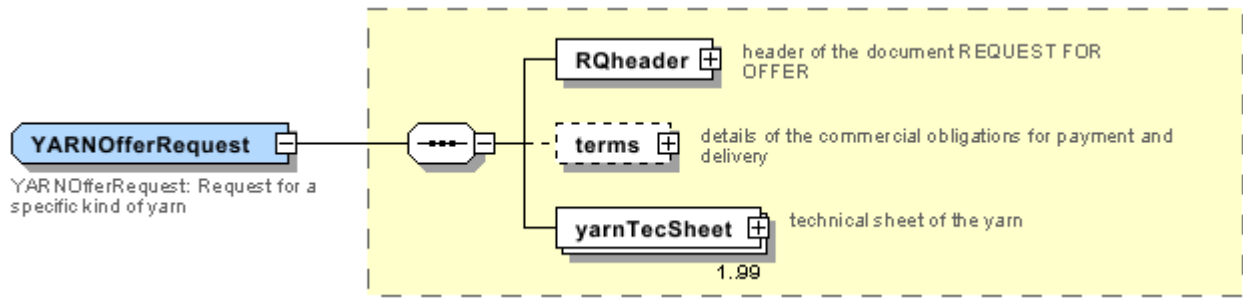
The European Commission and the Agency do not accept any responsibility for use that may be made of the information it contains.

Annex A

Representative images of the principal complex elements' structure.







Annex B

NT100 - eBIZ TCFUpstream version

dictionary version

Agency name: eBIZ

tabella cod.: NT100

File codes list (Generic code): http://www.ebiz.enea.it/moda-ml/repository/codelist/draft/gc_NT100.xml

Code	Description	Adoption note	Date of insertion
2013-1	v2013-1		01/07/2013
2018-1	v2018-1		04/11/2018
draft	draft		08/09/2017

NT11 - transport causal

reason for the transport

Agency name: eBIZ

tabella cod.: NT11

File codes list (Generic code): http://www.ebiz.enea.it/moda-ml/repository/codelist/draft/gc_NT11.xml

Code	Description	Adoption note	Date of insertion
FOC	free of charge		
FRW	return from re-works		
FST	return from storage		
FWW	return from view		
FWK	return from works		
IST	in storage		
NWK	return non-worked		
RJC	return from rejection		
SEL	to sell		
STO	to storage		
VEW	to view		
WRK	to works		

NT12 - data source

party who has provided the data

Agency name: eBIZ

tabella cod.: NT12

File codes list (Generic code): http://www.ebiz.enea.it/moda-ml/repository/codelist/draft/gc_NT12.xml

Code	Description	Adoption note	Date of insertion
AC	internal test		
CO	external test		
CV	test after steaming		

NT16 - VAT rate or code

VAT rate or code (DEPRECATED, use dtScheme element)

tabella cod.: NT16

File codes list (Generic code): http://www.ebiz.enea.it/moda-ml/repository/codelist/draft/gc_NT16.xml

NT18 - message function

function performed by the present message with regards to the transmission

Agency name: eBIZ

tabella cod.: NT18

File codes list (Generic code): http://www.ebiz.enea.it/moda-ml/repository/codelist/draft/gc_NT18.xml

Code	Description	Adoption note	Date of insertion
CA	delete this document		01/07/2013
CP	copy		
OR	original		
RC	re-transmission for data correction		
RT	re-transmission		

NT2 - third party qualifier

Third Party role qualifier

Agency name: eBIZ

tabella cod.: NT2

File codes list (Generic code): http://www.ebiz.enea.it/moda-ml/repository/codelist/draft/gc_NT2.xml

Code	Description	Adoption note	Date of insertion
AG	Sales Agent		
CO	Quality Controller		
DC	Response to		
DF	Invoicee		
DI	Copy to (CC)		28/10/2014
DM	Consignee		
DP	Consignment address (Delivery Party)		
IM	Importer		
OR	Originator		10/09/2014
SP	Forwarder		
TX	Tax Representative		

NT20 - price qualifier

type of price with reference to discount and taxes

Agency name: eBIZ

tabella cod.: NT20

File codes list (Generic code): http://www.ebiz.enea.it/moda-ml/repository/codelist/draft/gc_NT20.xml

Code	Description	Adoption note	Date of insertion
GET	gross excluding taxes		
GIT	gross including taxes		
NET	net excluding taxes		
NIT	net including taxes		

NT26 - color type

type of color to which a "color fastness" value refers

Agency name: eBIZ

tabella cod.: NT26

File codes list (Generic code): http://www.ebiz.enea.it/moda-ml/repository/codelist/draft/gc_NT26.xml

Code	Description	Adoption note	Date of insertion
D	dark		
L	light		
P	pastel		

NT29 - format of a date

format used for the date

Agency name: eBIZ

tabella cod.: NT29

File codes list (Generic code): http://www.ebiz.enea.it/moda-ml/repository/codelist/draft/gc_NT29.xml

Code	Description	Adoption note	Date of insertion
D	YYYY-MM-DD		
M	YYYY-MM-DD:HH-MM		
W	YYYY-WW		

NT3 - data format

format of a string according to a customized User rule (local rule)

Agency name: eBIZ

tabella cod.: NT3

File codes list (Generic code): http://www.ebiz.enea.it/moda-ml/repository/codelist/draft/gc_NT3.xml

Code	Description	Adoption note	Date of insertion
EN4	GS1-GLN		01/07/2013
MD	mutually agreed		

NT31 - yarn family

yarn classification according to the manufacturing process

Agency name: eBIZ

tabella cod.: NT31

File codes list (Generic code): http://www.ebiz.enea.it/moda-ml/repository/codelist/draft/gc_NT31.xml

Code	Description	Adoption note	Date of insertion
------	-------------	---------------	-------------------

CAN	carded		
EXT	extrusion		
FSE	dry-spun		
FUM	wet-spun		
OPE	open end		
PAN	combed		
REG	rigenerated		
SMP	half-combed		

NT6 - coding system owner/issuer

code specifying the organisation who has created or owns the coding or numbering system

Agency name: eBIZ

tabella cod.: NT6

File codes list (Generic code): http://www.ebiz.enea.it/moda-ml/repository/codelist/draft/gc_NT6.xml

Code	Description	Adoption note	Date of insertion
CL	Customer/buyer		
CO	Quality Controller		
EN	GS1 (ex-EAN International)		
ES	e-Stockflow		
FO	Supplier		
GS	GS1		01/07/2013
MF	VAT identifier		
ML	Moda-ML		
SP	Service Provider		

NT7 - unit of measure

specification of the unit of measure, it is a sub set of table Unit of Measure Code - UN/ECE REC 20 delivered by United Nations Economic Commission for Europe (UN/ECE)

Agency name: eBIZ / UN/ECE

tabella cod.: NT7

File codes list (Generic code): http://www.ebiz.enea.it/moda-ml/repository/codelist/draft/gc_NT7.xml

Other link: <http://docs.oasis-open.org/ubl/os-UBL-2.1/cl/gc/default/UnitOfMeasureCode-2.1.gc#>

Code	Description	Adoption note	Date of insertion
------	-------------	---------------	-------------------

CMK	square centimetre		20/12/2017
CMQ	cubic centimetre		20/12/2017
CMT	centimetre		
CNE	centiNewton		
CO2TON	ton of CO2		10/09/2014
COUPLES	couples		
DMQ	cubic decimetre		
E37	pixel		11/04/2018
GRM	gram		
HUR	hour		
INH	inch		
KGM	kilogram		
KMT	kilometer		
KWH	kilowatthours		10/09/2014
LBR	pound		
MIN	minute		
MMK	centimetre		20/12/2017
MMK	square millimetre		20/12/2017
MTK	square metre		20/12/2017
MTQ	cubic metre		
MTR	metre		
NMB	numero		
ONZ	ounce		
P1	percent		
PPM	parts per milion		
PZ	piece		
RPM	rounds per metre		
YRD	yard		

T1 - terms of payment

code specifying the terms or time by which the payment must be done

Agency name: eBIZ

tabella cod.: T1

File codes list (Generic code): http://www.ebiz.enea.it/moda-ml/repository/codelist/draft/gc_T1.xml

Code	Description	Adoption note	Date of insertion
ANTICIP	PAYMENT IN ADVANCE		
BLCOLLECT/120D	BILL OF LADING 120 DD		
BLCOLLECT/30D	BILL OF LADING 30 DD		
BLCOLLECT/60D	BILL OF LADING 60 DD		
BLCOLLECT/90D	BILL OF LADING 90 DD		
CASH	PAYMENT ON DELIVERY		
CASHINV	PAYMENT ON RECEIPT OF INVOICE		
CREDOC/0D	DOCUMENTARY CREDIT FOR PAYM. AT SIGHT		
CREDOC/120	DOCUMENTARY CREDIT FOR PAYM. AT 120 DD		
CREDOC/150	DOCUMENTARY CREDIT FOR PAYM. AT 150 DD		
CREDOC/180	DOCUMENTARY CREDIT FOR PAYM. AT 180 DD		
CREDOC/30D	DOCUMENTARY CREDIT FOR PAYM. AT 30 DD		
CREDOC/45D	DOCUMENTARY CREDIT FOR PAYM. AT 45 DD		
CREDOC/60	DOCUMENTARY CREDIT FOR PAYM. AT 60 DD		
CREDOC/90	DOCUMENTARY CREDIT FOR PAYM. AT 90 DD		
DEL/10	PAYMENT AT 10 DD AFTER DELIVERY		
DOCOLLECT/120D	DOCUMENTARY COLLECTION AT 120 DD		
DOCOLLECT/30D	DOCUMENTARY COLLECTION AT 30 DD		
DOCOLLECT/60D	DOCUMENTARY COLLECTION AT 60 DD		
DOCOLLECT/90D	DOCUMENTARY COLLECTION AT 90 DD		
INV/120D	PAYMENT AT 120 DD AFTER RECEIPT OF INVOICE		
INV/150D	PAYMENT AT 150 DD AFTER RECEIPT OF INVOICE		
INV/180D	PAYMENT AT 180 DD AFTER RECEIPT OF INVOICE		
INV/30D	PAYMENT AT 30 DD AFTER RECEIPT OF INVOICE		
INV/45D	PAYMENT AT 45 DD AFTER RECEIPT OF INVOICE		
INV/60D	PAYMENT AT 60 DD AFTER RECEIPT OF INVOICE		
INV/90D	PAYMENT AT 90 DD AFTER RECEIPT OF INVOICE		
INVULTIMO	PAYMENT AT END MONTH RECEIPT INVOICE		
INVULTIMO/10D	PAYMENT 10 DD AFTER END MONTH RECEIPT INVOICE		
INVULTIMO/120D	PAYMENT 120 DD AFTER END MONTH RECEIPT INVOICE		
INVULTIMO/150D	PAYMENT 150 DD AFTER END MONTH RECEIPT INVOICE		
INVULTIMO/180D	PAYMENT 180 DD AFTER END MONTH RECEIPT INVOICE		
INVULTIMO/240D	PAYMENT 240 DD AFTER END MONTH RECEIPT INVOICE		
INVULTIMO/30D	PAYMENT 30 DD AFTER END MONTH RECEIPT INVOICE		

INVULTIMO/45D	PAYMENT 45 DD AFTER END MONTH RECEIPT INVOICE		
INVULTIMO/60D	PAYMENT 60 DD AFTER END MONTH RECEIPT INVOICE		
INVULTIMO/90D	PAYMENT 90 DD AFTER END MONTH RECEIPT INVOICE		
NOPAY	WITHOUT PAYMENT		
RECREDOC/0D	IRREVOC. DOCUMENTARY CREDIT FOR PAYM. AT SIGHT		
RECREDOC/120D	IRREVOC. DOCUMENTARY CREDIT FOR PAYM. AT 120 DD		
RECREDOC/150D	IRREVOC. DOCUMENTARY CREDIT FOR PAYM. AT 150 DD		
RECREDOC/180D	IRREVOC. DOCUMENTARY CREDIT FOR PAYM. AT 180 DD		
RECREDOC/30D	IRREVOC. DOCUMENTARY CREDIT FOR PAYM. AT 30 DD		
RECREDOC/45D	IRREVOC. DOCUMENTARY CREDIT FOR PAYM. AT 45 DD		
RECREDOC/60D	IRREVOC. DOCUMENTARY CREDIT FOR PAYM. AT 60 DD		
RECREDOC/90D	IRREVOC. DOCUMENTARY CREDIT FOR PAYM. AT 90 DD		
ULTIMO	PAYMENT BY END MONTH OF DELIVERY		
ULTIMO/10	PAYMENT AT 10 DD AFTER END MONTH OF DELIVERY		

T10 - ISO3166 - Country

code of the nation

Agency name: ISO

tabella cod.: T10

File codes list (Generic code): http://www.ebiz.enea.it/moda-ml/repository/codelist/draft/gc_T10.xml

Table not printed: there are 239 elements, more than the maximum specified for printing: 99.

T15 - dye/print process type

dye process applied to the fabric

Agency name: eBIZ

tabella cod.: T15

File codes list (Generic code): http://www.ebiz.enea.it/moda-ml/repository/codelist/draft/gc_T15.xml

Code	Description	Adoption note	Date of insertion
CP	cylinder printing		
DP	discharge printing		
FI	fibre dyed - spun dyed		
PC	piece dyed		

PR	printing		
SP	screen printing		
TP	top dyed		01/07/2013
YR	yarn dyed		

T16 - dyestuff type

dye stuff used in the fabric dye process

Agency name: eBIZ

tabella cod.: T16

File codes list (Generic code): http://www.ebiz.enea.it/moda-ml/repository/codelist/draft/gc_T16.xml

Code	Description	Adoption note	Date of insertion
AC	chrome acid dyestuff		
AN	acid dyestuff		
CA	basic dyestuff		
DI	direct dyestuff		
DS	disperse dyestuff		
NP	naphtol dyestuff		
PI	pigment		01/07/2013
PM	premetallized dyestuff		
RE	reactive dyestuff		
SU	sulfur		01/07/2013

T19 - fibre type

type of fibre used in a textile product

Agency name: eBIZ

tabella cod.: T19

File codes list (Generic code): http://www.ebiz.enea.it/moda-ml/repository/codelist/draft/gc_T19.xml

Code	Description	Adoption note	Date of insertion
AB	abaca		20/08/2018
AC	acetate		
AF	other fibres		
AG	alginic fibre		

AL	alfa		20/08/2018
CA	hemp		
CC	coir (coconut)		20/08/2018
CL	chlorofibre		
CO	cotton		
CU	cuprous		
EA	elastan		
EL	Elastodiene		20/08/2018
FL	fluorofibre		
GI	broom		20/08/2018
GL	textile glass		
HA	hair		20/08/2018
HE	henequen		20/08/2018
HL	mixed linen		
HL	cotton linen union		20/08/2018
JU	jute		
KE	kenaf		20/08/2018
KP	kapoc		20/08/2018
LI	linen		
LY	lyocell		20/08/2018
MA	modacrylic		
MD	modal		
ME	metallized		
MG	maguey		20/08/2018
PA	polyamide		
PB	polyureic		
PC	acrylic		
PE	polyethylene		
PI	paper		20/08/2018
PL	polyester		
PM	polyimide		
PP	polypropylene		
PR	proteic		
PU	polyurethane		
RA	mamie		20/08/2018

SE	silk		
SI	sisal		20/08/2018
SN	sun		20/08/2018
TA	triacetate		
TR	textile residues or unspecified composition		20/08/2018
TV	trivinyll		
VI	viscose		
VY	vinylal		
WA	angora		
WB	beaver		20/08/2018
WC	cashgora		
WG	vicuna		
WK	camel		
WL	llama		
WM	mohair		
WN	lapin		20/08/2018
WO	wool		
WP	alpaca		
WS	cashmere		
WT	Oteer		20/08/2018
WU	guanaco		
WV	virgin wool		
WY	yack		

T2 - Modes of payment

way or means of payment

Agency name: eBIZ

tabella cod.: T2

File codes list (Generic code): http://www.ebiz.enea.it/moda-ml/repository/codelist/draft/gc_T2.xml

Code	Description	Adoption note	Date of insertion
BB	bank transfer		
IA	collection through Agent		
IS	collection through Forwarder		
RB	bank receipt		

RD	remittance		
SW	bank SWIFT		
TR	bank draft		

T201 - type of job on yarn

operation of a work cycle for yarn

Agency name: eBIZ

tabella cod.: T201

File codes list (Generic code): http://www.ebiz.enea.it/moda-ml/repository/codelist/draft/gc_T201.xml

Code	Description	Adoption note	Date of insertion
08	to re-comb		
09	to prepare		
10	to card		
11	to spin		
12	to steam		
13	to wind		
14	doubling		
15	to twist		
16	to unwind		
17	to singe		
18	to raise		
19	to reel		
20	to re-wind		
21	to shrink		
22	to coat		
23	to garnett		
24	to print		
25	to dye		
26	to boil		
27	to scour		
28	to dry		
99	other, see note if any		01/07/2013

T21 - type of document

type or class to which the referenced document belongs

Agency name: eBIZ

tabella cod.: T21

File codes list (Generic code): http://www.ebiz.enea.it/moda-ml/repository/codelist/draft/gc_T21.xml

Code	Description	Adoption note	Date of insertion
BOR	blanket order		01/02/2018
CAT	Price catalogue - tech sheet		
CEO	Certificate of origin		13/04/2018
CER	Certificate		13/04/2018
COC	colour card		
CRN	Credit note		08/09/2017
CTO	Checking order		01/07/2013
CTR	Contract		
CXF	CxF3 file		01/07/2013
DAD	Darn order		
DDT	ddt		
DEA	Despatch advise		
DER	Despatch request		
DR	Document Request		02/12/2014
FOR	Forecast		02/12/2014
GSO	Garment stock offer		
GSX	Garment stock offer change		
INV	Invoice		
KCC	Knitting-Clothing Commission Order		02/12/2014
KCI	Garment in Work Inventory Report		02/12/2014
M2M	Made to Measure Production Order		02/12/2014
MAS	Master marker		
MCI	Visual merchandising instruction		13/04/2018
OCH	Order change		
OFF	Offer		
ORD	Purchase order		
ORP	Order response		
OSR	order status request		

OSS	Offer status		02/12/2014
OST	Order status		
OUR	our reference		
QR	Quality Report		02/12/2014
RAI	Raw Material in Work Inventory Report		02/12/2014
RDC	Raw dyeing commission order		
RDH	Raw dyeing order change		
RDR	Raw dyeing order response		
REA	Receiving advise		
REQ	Request for Offer		
RET	Return		02/12/2014
RSC	Spinning commission order		
RSH	Spinning order change		
RSR	Spinning order response		
SCL	process sheet		
TFC	Textile dyeing-finishing commission order		
TFX	Textile Dyeing-Finishing Order Change		02/12/2014
TPC	Textile printing commission order		
TPX	Textile Printing Order Change		02/12/2014
TWI	Textile in work inventory		
VMI	visual merchandising instructions		01/02/2018
WAC	Warping commission order		
WEC	Weaving commission order		
YDC	Yarn dyeing commission order		
YDH	Yarn dyeing order change		
YDR	Yarn dyeing order response		
YTC	Twisting commission order		
YWI	Yarn in work inventory		

T29 - type of yarn package

type of package (roll-up) used for a yarn product

Agency name: eBIZ

tabella cod.: T29

File codes list (Generic code): http://www.ebiz.enea.it/moda-ml/repository/codelist/draft/gc_T29.xml

Code	Description	Adoption note	Date of insertion
CIL	bobbin		
CON	cone		
HNK	hank, skein		01/07/2013
MUF	muff, cake		01/07/2013
SPL	spool		
TUB	tube		
XCO	supercone		

T3 - terms of delivery

specification of the terms of trade (INCOTERMS)

Agency name: Incoterms

tabella cod.: T3

File codes list (Generic code): http://www.ebiz.enea.it/moda-ml/repository/codelist/draft/gc_T3.xml

Code	Description	Adoption note	Date of insertion
CFR	COST AND FREIGHT (named port of destination)		
CIF	COST, INSURANCE AND FREIGHT (named port of destination)		
CIP	CARRIAGE AND INSURANCE PAID (named place of destination)		
CPA	CARRIAGE PAID (named place of destination)		
DAF	DELIVERED AT FRONTIER (named place)	according to Incoterms® 2010 it is obsolete	08/12/2017
DAP	Delivered at Place of destination (named place of destination)	according to Incoterms® 2010	08/12/2017
DAT	Delivered at Terminal (named place of destination)	according to Incoterms® 2010	08/12/2017
DDP	DELIVERED DUTY PAID (named place of destination)		
DDU	DELIVERED DUTY UNPAID (named place of destination)	according to Incoterms® 2010 it is obsolete, use DAP	08/12/2017
DEQ	DELIVERED EX-QUAY (named port of destination)	according to Incoterms® 2010 it is obsolete	08/12/2017
DES	DELIVERED EX-SHIP (named port of destination)	according to Incoterms® 2010 it is obsolete	08/12/2017

EX W	EX WORKS (named place)		
FA S	FREE ALONGSIDE SHIP (named port of shipment)		
FC A	FREE CARRIER (named place)		
FO B	FREE ON BOARD (named port of shipment)		

T38 - transport conditions

special condition of transport or special service requested to the Forwarder

tabella cod.: T38

File codes list (Generic code): http://www.ebiz.enea.it/moda-ml/repository/codelist/draft/gc_T38.xml

Code	Description	Adoption note	Date of insertion
ACC	arrange customs clearance		
CAL	Carrier loads		
CAU	Carrier unloads		
CMR	CMR carnet		
FFN	freight forwarders national conditions		
FLD	special agreement for full loading		
NCC	do not arrange customs clearance		
PPB	packaging paid by Buyer		
PPS	packaging paid by Supplier		
PRO	proof of delivery		
RFR	return container free		
RPC	return container paid by Customer		
RPS	return container paid by Supplier		
SHL	Shipper loads		
SHU	Consignee unloads		

T40 - type of transport means

means of transport, in general or referred to a specific leg

Agency name: eBIZ

tabella cod.: T40

File codes list (Generic code): http://www.ebiz.enea.it/moda-ml/repository/codelist/draft/gc_T40.xml

Code	Description	Adoption note	Date of insertion
AIR	aircraft		
SHP	ship		
TRU	truck		
VAN	van		

T41 - type of Allowance or Charge

coded specification of an Allowance or Charge (elaborated from UNECE 4465)

Agency name: eBIZ

tabella cod.: T41

File codes list (Generic code): http://www.ebiz.enea.it/moda-ml/repository/codelist/draft/gc_T41.xml

Code	Description	Adoption note	Date of insertion
1	Agreed settlement		19/08/2018
10	Costs for draft		19/08/2018
11	Bank charges	DEPRECATED, use C BK	19/08/2018
12	Agent commission		19/08/2018
14	Wrong delivery		19/08/2018
15	Goods returned to agent		19/08/2018
16	Goods partly returned		19/08/2018
17	Transport damage		19/08/2018
19	Trade discount		19/08/2018
2	Below specification goods		19/08/2018
20	Deduction for late delivery	DEPRECATED, use C WB	19/08/2018
21	Advertising costs		19/08/2018

22	Customs duties		19/08/2018
23	Telephone and postal costs		19/08/2018
24	Repair costs		19/08/2018
25	Attorney fees		19/08/2018
26	Taxes		19/08/2018
3	Damaged goods		19/08/2018
30	Direct payment to seller		19/08/2018
32	Goods not delivered		19/08/2018
33	Late delivery		19/08/2018
35	Goods returned		19/08/2018
36	Invoice not received		19/08/2018
37	Credit note to debtor/not to us		19/08/2018
38	Deducted bonus		19/08/2018
39	Deducted discount		19/08/2018
4	Short delivery		19/08/2018
40	Deducted freight costs		19/08/2018
41	Deduction against other invoices		19/08/2018
42	Credit balance(s)		19/08/2018
45	Debit note to seller		19/08/2018
46	Discount beyond terms		19/08/2018
48	Allowance/charge error		19/08/2018
49	Substitute product		19/08/2018

50	Terms of sale error		19/08/2018
52	Wrong invoice		19/08/2018
53	Duplicate invoice		19/08/2018
54	Weight error		19/08/2018
55	Additional charge not authorized		19/08/2018
56	Incorrect discount		19/08/2018
57	Price change		19/08/2018
58	Variation		19/08/2018
59	Chargeback		19/08/2018
65	Settlement to agent		19/08/2018
66	Cash discount		19/08/2018
7	Payment on account		19/08/2018
70	Wrong monetary amount resulting from incorrect free goods quantity		19/08/2018
72	Temporary special promotion		19/08/2018
73	Difference in tax rate		19/08/2018
74	Quantity discount		19/08/2018
75	Promotion discount		19/08/2018
76	Cancellation deadline passed		19/08/2018
77	Pricing discount		19/08/2018
78	Volume discount		19/08/2018
79	Sundry discount		19/08/2018
8	Returnable container charge included		19/08/2018

9	Invoice error		19/08/2018
AW A	bonus for works ahead of schedule		
CBK	bank charges		
CCR	servizio di corriere		
CIN	insurance		
CLB	labelling		
CPK	packing		
CSP	special packing		
CW B	penalty for works behind schedule		

T44 - additional code type

qualifier of the additional coding of a product

Agency name: eBIZ

tabella cod.: T44

File codes list (Generic code): http://www.ebiz.enea.it/moda-ml/repository/codelist/draft/gc_T44.xml

Code	Description	Adoption note	Date of insertion
CC	colour card		
CL	sales collection		
CO	company identification code		08/09/2017
DY	dye number		
LT	lot number		
MDI	Made in		08/09/2017
MS	manufacturing state		
PKG	packaging		09/09/2014
PL	product line		
RGB	RGB value		
SE	selvedge code		

T54 - kind of yarn

general type of yarn

Agency name: eBIZ

tabella cod.: T54

File codes list (Generic code): http://www.ebiz.enea.it/moda-ml/repository/codelist/draft/gc_T54.xml

Code	Description	Adoption note	Date of insertion
01	Spun yarn (Staple yarn)		
02	Worsted		
03	Woollen		
04	Carded		01/07/2013
05	Combed		01/07/2013
06	Flax-spun		01/07/2013
07	Rotor spun		01/07/2013
08	Air jet spun		01/07/2013
09	Fancy yarn		01/07/2013
10	Filament yarn - Flat		01/07/2013
11	Zero twist		01/07/2013
12	Twisted		01/07/2013
13	Crêpe		01/07/2013
14	Textured yarn		01/07/2013
15	False Twist – FT (also stretch)		01/07/2013
16	False Twist, Fixed – FTF (also bulked)		01/07/2013
17	Air textured		01/07/2013
18	Elastic yarn (also Elastomeric yarn)		01/07/2013
19	Single covered yarn		01/07/2013
20	Double covered yarn		01/07/2013
21	Air covered yarn		01/07/2013
22	Core-spun		01/07/2013

T55 - count system

yarn count system

Agency name: eBIZ

tabella cod.: T55

File codes list (Generic code): http://www.ebiz.enea.it/moda-ml/repository/codelist/draft/gc_T55.xml

Code	Description	Adoption note	Date of insertion
DEN	denier		

DTX	decitex		
NEC	english cotton		
NEJ	english jute/hemp/flax		
NEW	english wool		
NM	metric		
TEX	tex		

T56 - kind of yarn ply

kind of yarn's ply

Agency name: eBIZ

tabella cod.: T56

File codes list (Generic code): http://www.ebiz.enea.it/moda-ml/repository/codelist/draft/gc_T56.xml

Code	Description	Adoption note	Date of insertion
CS	single yarn		
FA	fancy yarn		01/07/2013
RC	ply combination yarn		
RS	ply yarn		

T57 - color fastness test for yarn

color fastness test for a yarn

tabella cod.: T57

File codes list (Generic code): http://www.ebiz.enea.it/moda-ml/repository/codelist/draft/gc_T57.xml

Code	Description	Adoption note	Date of insertion
01	to decatizingal (UNI EN ISO 105-E10:98)		01/07/2013
02	to bleaching: peroxide (UNI EN ISO 105-N02:97)		01/07/2013
03	to bleaching: hypochlorite (UNI EN 20105-N01:97)		01/07/2013
04	to spotting: acid (UNI EN ISO 105-E05:99)		01/07/2013
05	to spotting: alkali (UNI EN ISO 105-E06:99)		01/07/2013
06	to mercerizing (UNI EN ISO 105-X04:99)		01/07/2013
07	to soda boiling (UNI EN ISO 105-X06:99)		01/07/2013
08	to degumming (UNI EN ISO 105-X08:99)		01/07/2013
09	to domestic laundering (UNI EN ISO 105-C06:99)		01/07/2013

10	to carbonizing: sulfuric acid (UNI EN ISO 105-X02:98)		01/07/2013
11	to acid chlorination (UNI 5145:88)		01/07/2013
12	to chlorination: Na dichloroisocyanurate (EN ISO 105-X14:99)		01/07/2013
13	to alkaline milling (UNI EN ISO 105-E12:99)		01/07/2013
14	to acid-felting: mild (UNI EN ISO 105-E14:98)		01/07/2013
15	to dry heat (UNI EN ISO 105-P01:97)		01/07/2013

T58 - yarn quality parameters

parameter related to the quality of yarn

Agency name: eBIZ

tabella cod.: T58

File codes list (Generic code): http://www.ebiz.enea.it/moda-ml/repository/codelist/draft/gc_T58.xml

Code	Description	Adoption note	Date of insertion
01	actual count		01/07/2013
02	elongation % at break (UNI-EN-ISO 2062:97)		01/07/2013
03	breaking force (UNI-EN-ISO 2062:97)		01/07/2013
04	tenacity (specific stress) - cN/tex or RKM (UNI-EN-ISO 2062:97)		01/07/2013
05	unevenness - CV USTER		01/07/2013
06	unevenness - thick spots		01/07/2013
07	unevenness - thin spots		01/07/2013
08	unevenness - neps		01/07/2013
09	hairiness		01/07/2013
10	pilling (UNI-EN-ISO 12945-01:2002)		01/07/2013
11	coefficient of friction		01/07/2013
12	delta E CIELab (UNI 8941:87)		01/07/2013

T59 - CIE illuminant

CIE light source

tabella cod.: T59

File codes list (Generic code): http://www.ebiz.enea.it/moda-ml/repository/codelist/draft/gc_T59.xml

Code	Description	Adoption note	Date of insertion
A	home tungsten CCT 2856K°		01/07/2013

C	daylight CCT 6774K°		01/07/2013
D50	daylight CCT 5003Kà		01/07/2013
D65	solar standard CCT 6504K°		01/07/2013
F11	fluorescent narrow band CCT 4000K° (TL84)		01/07/2013
F2	cold white fluorescent CCT 4230K°		01/07/2013
F7	fluorescent broad band CCT 6500K°		01/07/2013

T60 - CIE standard observer

CIE average chromatic response definition

tabella cod.: T60

File codes list (Generic code): http://www.ebiz.enea.it/moda-ml/repository/codelist/draft/gc_T60.xml

Code	Description	Adoption note	Date of insertion
31	CIE-1931		01/07/2013
64	CIE-1964		01/07/2013

T61 - duty or tax or fee type

duty or tax or fee type

Agency name: eBIZ

tabella cod.: T61

File codes list (Generic code): http://www.ebiz.enea.it/moda-ml/repository/codelist/draft/gc_T61.xml

Code	Description	Adoption note	Date of insertion
BOL	stamp duty		01/07/2013
CUD	customs duty		01/07/2013
ENV	environmental tax		01/07/2013
FRE	no tax		01/07/2013
OTH	other tax charges		01/07/2013
VAT	value added tax		01/07/2013

T62 - duty or tax or fee category

duty or tax or fee category

Agency name: eBIZ

tabella cod.: T62

File codes list (Generic code): http://www.ebiz.enea.it/moda-ml/repository/codelist/draft/gc_T62.xml

Code	Description	Adoption note	Date of insertion
AA	lower than standard rate		01/07/2013
E	tax not applicable		01/07/2013
H	higher than standard rate		01/07/2013
O	outside scope of tax		01/07/2013
S	standard rate		01/07/2013
Z	zero rate goods		01/07/2013

T8 - Modes of Transport

way of transport, in general or referred to the specified leg

Agency name: eBIZ

tabella cod.: T8

File codes list (Generic code): http://www.ebiz.enea.it/moda-ml/repository/codelist/draft/gc_T8.xml

Code	Description	Adoption note	Date of insertion
1	MARITIME TRANSPORT		
10	Courier		01/07/2013
2	RAIL TRANSPORT		
3	ROAD TRANSPORT		
4	AIR TRANSPORT		
5	MAIL		
6	AIR + SHIP TRANSPORT		
8	INLAND WATER TRANSPORT		
9	MODE UNKNOWN		

T9 - ISO4217 - Currency

currency code

Agency name: ISO

tabella cod.: T9

File codes list (Generic code): http://www.ebiz.enea.it/moda-ml/repository/codelist/draft/gc_T9.xml

Table not printed: there are 205 elements, more than the maximum specified for printing: 99.

