



<http://www.ebiz-tcf.eu>

DRAFT

IMPLEMENTATION GUIDE

TRANSACTION "TEXTILE DYEING-FINISHING ORDER CHANGE"

Version: draft

Date of release: 17/5/2019

Document code: G076

technical Documentation: <http://www.ebiz.enea.it>

XML Schemas repository: <http://www.ebiz.enea.it/moda-ml/repository/schema/draft/default.asp>

Guides repository: <http://www.ebiz.enea.it/moda-ml/repository/guide/draft/default.asp>

Guide filename: G076-eBIZ-TextileDyeing-finishingOrderChange.pdf

0. PREMISE

This document contains a proposal for the updating and extension of eBIZ specifications starting from the eBIZ version released as CEN CWA 16667 in 2013. Under the name of 'Draft version' it is reported the result of an extensive work of analysis and consultation aimed at developing and maintaining eBIZ specifications.

In particular, the content of this proposal is the result of various activities, mainly those carried out within the framework of the **eBIZ 4.0 project** funded by the European Commission, call COS-DESIGN-2015-3-06, topic COS-2015-DESIGN-2.

The technical contents are backwards compatible with the latest official published version.

1. BUSINESS DESCRIPTION

1.1 Scope

The present guide has been issued to assist the companies of the Textile-Clothing sector in the implementation of the standard XML document type "TEXTILE DYEING-FINISHING COMMISSION ORDER CHANGE", providing all the instruction required for its use in the context of e-commerce between Dyeing Subcontractors and their Customers shown in the enclosed diagram

All the rules required for the construction and validation of the document are embedded into the specific XML-Schema, which is detailed in section "Implementation guide".

1.2 Generalities

The Commissioner sends to the Subcontractor a Fabric dyeing-finishing Order Change any time he must modify some conditions of his previous Order (eg. to suspend operations already ordered) or amend errors. Basic function of the message is to replace an invalid Order with a valid Order, amending:

- suppliable quantities
- dates and places of delivery
- prices

The Order Change can show a number of lines different from the related Purchase Order, when variations/cancellations have occurred so as to create the splitting of an Order Line.

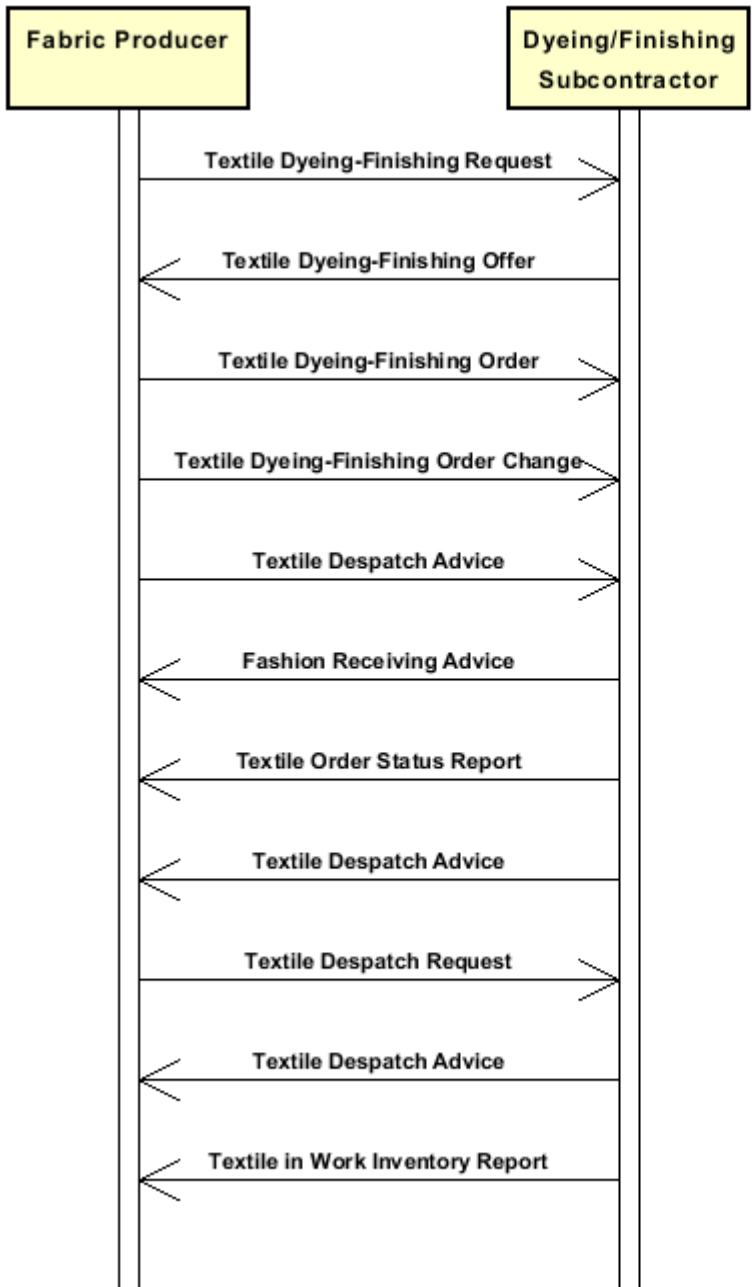
However the sum of the quantities of the lines in the Order Change (confirmed + varied + cancelled) must always not less than the sum of the quantities in the original Order.

When the quantity is change the original line must be splitted and the confimed amount and canceled amount should

explicated through the 'act' flag.

1.3. Possible scenario

Subcontracted fabric dyeing-finishing



2. IMPLEMENTATION GUIDE

2.1 General structure of XML document

All the business data that can be exchanged through this class of documents are shown in the following "document structure", that provides a simplified vision of the Schema.

In particular:

- the two numbers following each element define its "cardinality" (minimum and maximum number of occurrences); the minimum equal zero indicates that the element is optional, the minimum greater than zero indicates that is mandatory;
- the bold character denotes the complex elements (aggregates of simple elements) that were built for the sake of functionality and re-usability of some complex informations sets. The child elements in each parent element are easily spotted as "indented";
- the symbol "@" denotes an attribute of the preceding element; here "the usage indicator (optional, required, ...)" is shown in square brackets.

Structure

TEXDyFinOrdChange

@msgfunction [Optional]

@TFCOtype [Required]

@version [Optional] [Default= draft]

@useProfile [Optional]

| TFCXheader 1-1

| | msgN 1-1

| - choose -

| | docID 0-1

| | *@numberingOrg [Optional]*

| - or -

| | msgID 0-1

| - end choose -

| | msgDate 1-1

| | *@dateForm [Optional]*

| | season 0-1

| | *@numberingOrg [Optional]*

| | *@codeList [Optional]*

| | *@listName [Optional]*

| | *@listVersion [Optional]*

| | msgCurrency 0-1

| refDoc 1-9

| | *@docType [Required]*

| | docID 1-2

| | *@numberingOrg [Optional]*

| | docDate 0-1

| | *@dateForm [Optional]*

| | season 0-1

| | *@numberingOrg [Optional]*

| | *@codeList [Optional]*

| | *@listName [Optional]*

| | *@listVersion [Optional]*

| | itemID 0-1

| attachment 0-1

| | *@uid [Optional]*

| | fileName 0-1

| | *@numberingOrg [Optional]*

| | binaryObject 0-1

| | *@format [Optional]*

| | *@mime [Optional]*

| | *@encoding [Optional]*

```

| | | @characterSet [Optional]
| | | externalReference 0-99
| | | | uri 1-1
| | | | | @isURL [Optional] [Default= true]
| | | | mimeCode 0-1
| | | | formatCode 0-1
| | | | encodingCode 0-1
| | | | characterSetCode 0-1
| buyer 1-1
| | @logo [Optional]
| | @sender [Optional]
| | | id 1-1
| | | | @numberingOrg [Optional]
| | | additionalIdentifier 0-9
| | | | @numberingOrg [Optional]
| | | | @idQualifier [Optional]
| | | legalName 0-1
| | | dept 0-1
| | | subDept 0-1
| | | person 0-1
| | | | @email [Optional]
| | | | @phone [Optional]
| | | | @fax [Optional]
| | | street 0-1
| | | city 0-1
| | | subCountry 0-1
| | | country 0-1
| | | postCode 0-1
| subContractor 1-1
| | @sender [Optional]
| | | id 1-1
| | | | @numberingOrg [Optional]
| | | legalName 0-1
| | | dept 0-1
| | | subDept 0-1
| | | person 0-1
| | | | @email [Optional]
| | | | @phone [Optional]
| | | | @fax [Optional]
| | | street 0-1
| | | city 0-1
| | | subCountry 0-1
| | | country 0-1
| | | postCode 0-1
| thirdParty 0-5
| | @VAT [Optional]
| | @role [Required]
| | @sender [Optional]
| | | id 1-1
| | | | @numberingOrg [Optional]
| | | legalName 0-1
| | | dept 0-1
| | | subDept 0-1
| | | person 0-1
| | | | @email [Optional]
| | | | @phone [Optional]
| | | | @fax [Optional]
| | | street 0-1
| | | city 0-1
| | | subCountry 0-1
| | | country 0-1

```

| | | postCode 0-1
| | note 0-99
| | @numberingOrg [Optional]
| | @codeList [Optional]
| | @noteLabel [Optional]

| **terms 0-1**

| | **payment 0-5**
| | @finDiscount [Optional]
| | @finSurcharge [Optional]

| | - choose -

| | | payTerm 1-1

| | - or -

| | | payTermText 1-1

| | - end choose -

| | | payMode 0-1

| | **insPayment 0-5**

| | @part [Required]

| | - choose -

| | | payTerm 1-1

| | - or -

| | | payTermText 1-1

| | - end choose -

| | | payMode 0-1

| | **trade 0-1**

| | - choose -

| | | incoTermText 1-1

| | - or -

| | | incoTerm 1-1

| | - end choose -

| | | location 0-1

| | | @LRI [Optional]

| | **transInfo 0-5**

| | @transReason [Optional]

| | @progr [Optional]

| | | transMode 1-1

| | | carrier 0-1

| | | deliveryPlace 0-1

| | | grossWeight 0-1

| | | @um [Required]

| | | netWeight 0-1

| | | @um [Required]

| | | transMeans 0-1

| | | transCondition 0-3

| | | transConditionText 0-1

| | | despatchPlace 0-1

| | | despatchDate 0-1

| | | @dateForm [Optional]

| | | delEffectiveDate 0-1

| | | @dateForm [Optional]

| | **allowanceCharge 0-9**

| | @um [Optional]

| | @VAT [Optional]

| | @minQty [Optional]

| | @currency [Optional]

| | @maxQty [Optional]

| | - choose -

| | | AC_category 1-1

| | - or -

| | | AC_categoryText 1-1

- end choose -
- choose -
- | | AC_percent 1-1
- or -
- | | AC_amount 1-1
- end choose -
- | | **dtScheme 0-1**
- | | @taxType [Required]
- | | taxCategory 0-1
- | | taxRate 0-1
- | | legalRef 0-1
- | | @codeList [Required]
- | | note 0-99
- | | @numberingOrg [Optional]
- | | @codeList [Optional]
- | | @noteLabel [Optional]

TFCXbody 1-1

- | **TFCXitem 1-unbounded**
- | | @act [Required]
- | | lineN 1-1
- | | @VAT [Optional]
- | | **refDoc 1-9**
- | | @docType [Required]
- | | docID 1-2
- | | @numberingOrg [Optional]
- | | docDate 0-1
- | | @dateForm [Optional]
- | | season 0-1
- | | @numberingOrg [Optional]
- | | @codeList [Optional]
- | | @listName [Optional]
- | | @listVersion [Optional]
- | | itemID 0-1
- | | **attachment 0-1**
- | | @uid [Optional]
- | | fileName 0-1
- | | @numberingOrg [Optional]
- | | binaryObject 0-1
- | | @format [Optional]
- | | @mime [Optional]
- | | @encoding [Optional]
- | | @characterSet [Optional]
- | | **externalReference 0-99**
- | | uri 1-1
- | | @isURL [Optional] [Default= true]
- | | mimeTypeCode 0-1
- | | formatCode 0-1
- | | encodingCode 0-1
- | | characterSetCode 0-1
- | | **fabricProd 0-1**
- | | @CTest [Optional]
- | | **texCode 1-1**
- | | @numberingOrg [Optional]
- | | art 1-1
- | | @numberingOrg [Optional]
- | | @codeList [Optional]
- | | @listName [Optional]
- | | @listVersion [Optional]
- | | pattern 0-1
- | | @numberingOrg [Optional]

```

| | | | @codeList [Optional]
| | | | @listName [Optional]
| | | | @listVersion [Optional]
| | | | color 0-1
| | | | @numberingOrg [Optional]
| | | | @codeList [Optional]
| | | | @listName [Optional]
| | | | @listVersion [Optional]
| | | | added 0-9
| | | | @numberingOrg [Optional]
| | | | @addType [Optional]
| | | | description 0-unbounded
| | | | @ln [Optional]
| | | | fabricCompos 0-1
| | | | | percCompos 1-9
| | | | | @fibre [Required]
| | | | fabricWidth 0-1
| | | | | @um [Optional] [Default= CMT]
| | | | fabricSpecs 0-99
| | | | - choose -
| | | | | fabricCharText 1-1
| | | | - or -
| | | | | fabricChar 1-1
| | | | - end choose -
| | | | | specValue 0-1
| | | | | @um [Optional]
| | | | | @source [Optional]
| | | | | @method [Optional]
| | | | | @application [Optional]
| | | | | @CV [Optional]
| | | | - choose -
| | | | | tolerance 0-2
| | | | | @um [Required]
| | | | - or -
| | | | | pcTolerance 0-2
| | | | | @um [Optional]
| | | | - end choose -
| | | | - choose -
| | | | | pieceChain 0-99
| | | | | serialN 1-9
| | | | | @numberingOrg [Optional]
| | | | | @idQualifier [Optional]
| | | | | pieceLength 0-1
| | | | | @um [Optional] [Default= MTR]
| | | | | pieceWidth 0-1
| | | | | @um [Optional] [Default= CMT]
| | | | | pieceWeight 0-1
| | | | | @um [Optional] [Default= KGM]
| | | | | lotN 0-1
| | | | | @numberingOrg [Optional]
| | | | | dyeN 0-1
| | | | | @numberingOrg [Optional]
| | | | | packageN 0-1
| | | | | @numberingOrg [Optional]
| | | | | @packageContainerN [Optional]
| | | | | piecePack 0-1
| | | | - choose -
| | | | | piecePackText 1-1
| | | | - or -
| | | | | pieceInnWrap1 1-1
| | | | | pieceInnWrap2 0-1

```



```

| | | | | pieceOutWrap 0-1
- end choose -
| | | | | pieceCut 0-99
| | | | | serialN 1-9
| | | | | @numberingOrg [Optional]
| | | | | @idQualifier [Optional]
| | | | | pieceLength 0-1
| | | | | @um [Optional] [Default= MTR]
| | | | | pieceWeight 0-1
| | | | | @um [Optional] [Default= KGM]
- or -
| | | | | piece 0-99
| | | | | @endUse [Optional]
| | | | | serialN 0-9
| | | | | @numberingOrg [Optional]
| | | | | @idQualifier [Optional]
| | | | | EPC 0-1
| | | | | @numberingOrg [Optional]
| | | | | @TID [Optional]
| | | | | totFault 0-1
| | | | | pieceStatus 0-1
| | | | | pieceLength 0-1
| | | | | @um [Optional] [Default= MTR]
| | | | | pieceWidth 0-1
| | | | | @um [Optional] [Default= CMT]
| | | | | pieceCutWidth 0-1
| | | | | @um [Optional] [Default= CMT]
| | | | | pieceWeight 0-1
| | | | | @um [Optional] [Default= KGM]
| | | | | pieceWeightM 0-1
| | | | | @um [Optional] [Default= GRM]
| | | | | grossWeight 0-1
| | | | | @um [Required]
| | | | | pieceAllow 0-1
| | | | | @um [Required]
| | | | | lotN 0-2
| | | | | @numberingOrg [Optional]
| | | | | dyeN 0-1
| | | | | @numberingOrg [Optional]
| | | | | mixMatch 0-1
| | | | | @numberingOrg [Optional]
| | | | | packageN 0-1
| | | | | @numberingOrg [Optional]
| | | | | @packageContainerN [Optional]
| | | | | piecePack 0-1
- choose -
| | | | | piecePackText 1-1
- or -
| | | | | pieceInnWrap1 1-1
| | | | | pieceInnWrap2 0-1
| | | | | pieceOutWrap 0-1
- end choose -
- end choose -
| | | | | note 0-99
| | | | | @numberingOrg [Optional]
| | | | | @codeList [Optional]
| | | | | @noteLabel [Optional]
| | | | | qty 0-3
| | | | | @um [Required]
| | | | | price 0-1
| | | | | @um [Optional]

```

| | | @priceQualifier [Optional] [Default= NET]
 | | | @currency [Optional]
 | | | deliveryDate 0-1
 | | | @dateForm [Optional]
 | | | **thirdParty 0-3**
 | | | @VAT [Optional]
 | | | @role [Required]
 | | | @sender [Optional]
 | | | | id 1-1
 | | | | | @numberingOrg [Optional]
 | | | | | legalName 0-1
 | | | | | dept 0-1
 | | | | | subDept 0-1
 | | | | | person 0-1
 | | | | | @email [Optional]
 | | | | | @phone [Optional]
 | | | | | @fax [Optional]
 | | | | | street 0-1
 | | | | | city 0-1
 | | | | | subCountry 0-1
 | | | | | country 0-1
 | | | | | postCode 0-1
 | | | **fabricComponent 0-9**
 | | | | **texCode 1-1**
 | | | | | @numberingOrg [Optional]
 | | | | | | art 1-1
 | | | | | | | @numberingOrg [Optional]
 | | | | | | | @codeList [Optional]
 | | | | | | | @listName [Optional]
 | | | | | | | @listVersion [Optional]
 | | | | | | pattern 0-1
 | | | | | | | @numberingOrg [Optional]
 | | | | | | | @codeList [Optional]
 | | | | | | | @listName [Optional]
 | | | | | | | @listVersion [Optional]
 | | | | | | color 0-1
 | | | | | | | @numberingOrg [Optional]
 | | | | | | | @codeList [Optional]
 | | | | | | | @listName [Optional]
 | | | | | | | @listVersion [Optional]
 | | | | | | added 0-9
 | | | | | | | @numberingOrg [Optional]
 | | | | | | | @addType [Optional]
 | | | | | | description 0-unbounded
 | | | | | | @ln [Optional]
 | | | | qty 1-3
 | | | | | @um [Required]
 | | | - choose -
 | | | | serialN 0-unbounded
 | | | | | @numberingOrg [Optional]
 | | | | | @idQualifier [Optional]
 | | | - or -
 | | | | **itemsList 0-unbounded**
 | | | | | qualityLevel 0-1
 | | | | | | @numberingOrg [Optional]
 | | | | | | @codeList [Optional]
 | | | | | | @listName [Optional]
 | | | | | | @listVersion [Optional]
 | | | | | **itemIdentification 1-unbounded**
 | | | | | | serialN 1-9
 | | | | | | @numberingOrg [Optional]

```

| | | | | @idQualifier [Optional]
- end choose -
| | | | | refDoc 0-1
| | | | | @docType [Required]
| | | | | docID 1-2
| | | | | @numberingOrg [Optional]
| | | | | docDate 0-1
| | | | | @dateForm [Optional]
| | | | | season 0-1
| | | | | @numberingOrg [Optional]
| | | | | @codeList [Optional]
| | | | | @listName [Optional]
| | | | | @listVersion [Optional]
| | | | | itemID 0-1
| | | | | attachment 0-1
| | | | | @uid [Optional]
| | | | | fileName 0-1
| | | | | @numberingOrg [Optional]
| | | | | binaryObject 0-1
| | | | | @format [Optional]
| | | | | @mime [Optional]
| | | | | @encoding [Optional]
| | | | | @characterSet [Optional]
| | | | | externalReference 0-99
| | | | | uri 1-1
| | | | | @isURL [Optional] [Default= true]
| | | | | mimeTypeCode 0-1
| | | | | formatCode 0-1
| | | | | encodingCode 0-1
| | | | | characterSetCode 0-1
| | | | | location 0-1
| | | | | @LRI [Optional]
| | | | | note 0-99
| | | | | @numberingOrg [Optional]
| | | | | @codeList [Optional]
| | | | | @noteLabel [Optional]
| | | | | fabMnfrOperation 0-9
- choose -
| | | | | jobName 1-1
- or -
| | | | | texJob 1-1
- end choose -
| | | | | texJobTech 0-9
| | | | | refDoc 0-1
| | | | | @docType [Required]
| | | | | docID 1-2
| | | | | @numberingOrg [Optional]
| | | | | docDate 0-1
| | | | | @dateForm [Optional]
| | | | | season 0-1
| | | | | @numberingOrg [Optional]
| | | | | @codeList [Optional]
| | | | | @listName [Optional]
| | | | | @listVersion [Optional]
| | | | | itemID 0-1
| | | | | attachment 0-1
| | | | | @uid [Optional]
| | | | | fileName 0-1
| | | | | @numberingOrg [Optional]
| | | | | binaryObject 0-1
| | | | | @format [Optional]

```

```

| | | | | @mime [Optional]
| | | | | @encoding [Optional]
| | | | | @characterSet [Optional]
| | | | | externalReference 0-99
| | | | | | uri 1-1
| | | | | | | @isURL [Optional] [Default= true]
| | | | | | mimeCode 0-1
| | | | | | formatCode 0-1
| | | | | | encodingCode 0-1
| | | | | | characterSetCode 0-1
| | | | | texMachine 0-1
| | | | | texMachineSpecs 0-9
| | | | | | texMachineParam 1-1
| | | | | | specValue 0-1
| | | | | | | @um [Optional]
| | | | | | | @source [Optional]
| | | | | | | @method [Optional]
| | | | | | | @application [Optional]
| | | | | | | @CV [Optional]
| | | | | - choose -
| | | | | | pcTolerance 0-2
| | | | | | | @um [Optional]
| | | | | - or -
| | | | | | tolerance 0-2
| | | | | | | @um [Required]
| | | | | - end choose -
| | | | | note 0-99
| | | | | | @numberingOrg [Optional]
| | | | | | @codeList [Optional]
| | | | | | @noteLabel [Optional]
| | | | | dtScheme 0-1
| | | | | | @taxType [Required]
| | | | | | taxCategory 0-1
| | | | | | taxRate 0-1
| | | | | | legalRef 0-1
| | | | | | | @codeList [Required]
| | | | | | note 0-99
| | | | | | | @numberingOrg [Optional]
| | | | | | | @codeList [Optional]
| | | | | | | @noteLabel [Optional]

```

2.2 Detailed description of document elements

Following tables show all elements (complex and simple) used in this document. Description includes: 1) element's information: xml tag, name, brief description, data type and syntax constraints; 2) information about use of the element in a particular position in the document: xpath and possible associated notes.

2.2.1 Complex elements (Aggregate Business Information Entities)

Complex elements are those elements whose content is composed of other elements (childs). Complex elements are alphabetically ordered.

allowanceCharge	Allowances and Charges related to an Order or a contract (XPath <code>TEXDyFinOrdChange/terms/allowanceCharge</code>) 0-9
attachment	an attached document. An attachment can refer to an external document or be included with the document being exchanged (XPath <code>TEXDyFinOrdChange/TFCXbody/TFCXitem/fabMnfrOperation/refDoc/attachment</code>) 0-1 (XPath <code>TEXDyFinOrdChange/TFCXbody/TFCXitem/refDoc/attachment</code>) 0-1 (XPath <code>TEXDyFinOrdChange/TFCXbody/TFCXitem/fabricComponent/refDoc/attachment</code>) 0-1 (XPath <code>TEXDyFinOrdChange/TFCXheader/refDoc/attachment</code>) 0-1
buyer	details of the Buyer (party that buys the good or service that is object of the current collaborative process) - base type: Nad, (XPath <code>TEXDyFinOrdChange/TFCXheader/buyer</code>) 1-1
dtScheme	set of data usable to declare the duty or tax applied (XPath <code>TEXDyFinOrdChange/terms/allowanceCharge/dtScheme</code>) 0-1 (XPath <code>TEXDyFinOrdChange/TFCXbody/TFCXitem/dtScheme</code>) 0-1
externalReference	details about an external object, such as a document stored at a remote location (XPath <code>TEXDyFinOrdChange/TFCXbody/TFCXitem/fabMnfrOperation/refDoc/attachment/externalReference</code>) 0-99 (XPath <code>TEXDyFinOrdChange/TFCXbody/TFCXitem/fabricComponent/refDoc/attachment/externalReference</code>) 0-99 (XPath <code>TEXDyFinOrdChange/TFCXbody/TFCXitem/refDoc/attachment/externalReference</code>) 0-99 (XPath <code>TEXDyFinOrdChange/TFCXheader/refDoc/attachment/externalReference</code>) 0-99
fabMnfrOperation	details of a manufacturing operation used for fabric production (XPath <code>TEXDyFinOrdChange/TFCXbody/TFCXitem/fabMnfrOperation</code>) 0-9
fabricComponent	identification details of a fabric used in a sub-contracted manufacturing operation (XPath <code>TEXDyFinOrdChange/TFCXbody/TFCXitem/fabricComponent</code>) 0-9
fabricCompos	composition of the fabric according to the Directory 97/37/CE (XPath <code>TEXDyFinOrdChange/TFCXbody/TFCXitem/fabricProd/fabricCompos</code>) 0-1
fabricProd	manufacturing specifications of the product to be obtained from an operation of the sub-contracted production of fabric (XPath <code>TEXDyFinOrdChange/TFCXbody/TFCXitem/fabricProd</code>) 0-1
fabricSpecs	technical characteristics of fabric, linked either to an operation of subcontracted production or to the purchase (XPath <code>TEXDyFinOrdChange/TFCXbody/TFCXitem/fabricProd/fabricSpecs</code>) 0-99

insPayment	<p>payment details for payment by installments (XPath TEXDyFinOrdChange/terms/insPayment) 0-5 - note: <i>excluded the case of offers, this set of data is alternative to payment set and must be iterated for each payment installment</i></p>
itemIdentification	<p>serial identification of a product unit (XPath TEXDyFinOrdChange/TFCXbody/TFCXitem/fabricComponent/itemsList/itemIdentification) 1-unbounded - note: <i>identification of the single product unit contained in the list</i></p>
itemsList	<p>list of the single product units (XPath TEXDyFinOrdChange/TFCXbody/TFCXitem/fabricComponent/itemsList) 0-unbounded - note: <i>it may be used to identify the pieces/chains that the Subcontractor must use for the commissioned work with multiple serial Ids for each one</i></p>
payment	<p>payment details for payment all in one (XPath TEXDyFinOrdChange/terms/payment) 0-5 - note: <i>excluded the case of offers, this set of data is alternative to insPayment, it can be iterated to specify alternative terms of payment (e.g.: 60 days or 30 days with 3% discount)</i></p>
piece	<p>Identification data and measurement of the fabric piece. (XPath TEXDyFinOrdChange/TFCXbody/TFCXitem/fabricProd/piece) 0-99</p>
pieceChain	<p>identification data and measurements of a chain of pieces still to be cut (XPath TEXDyFinOrdChange/TFCXbody/TFCXitem/fabricProd/pieceChain) 0-99</p>
pieceCut	<p>identification data and measurements of a fabric piece belonging to a chain still to be cut (XPath TEXDyFinOrdChange/TFCXbody/TFCXitem/fabricProd/pieceChain/pieceCut) 0-99 - note: <i>here the data of the pieces making up the chain should be specified</i></p>
piecePack	<p>type of wrapping or packing of the fabric pieces (XPath TEXDyFinOrdChange/TFCXbody/TFCXitem/fabricProd/piece/piecePack) 0-1 (XPath TEXDyFinOrdChange/TFCXbody/TFCXitem/fabricProd/pieceChain/piecePack) 0-1</p>
refDoc	<p>identification of a document and of an item thereof, to which the message makes reference (XPath TEXDyFinOrdChange/TFCXheader/refDoc) 1-9 (XPath TEXDyFinOrdChange/TFCXbody/TFCXitem/fabricComponent/refDoc) 0-1 - note: <i>here the delivery documents can be specified</i> (XPath TEXDyFinOrdChange/TFCXbody/TFCXitem/fabMnfrOperation/refDoc) 0-1 - note: <i>here a Process Sheet transmitted to the Subcontractor can be referenced</i> (XPath TEXDyFinOrdChange/TFCXbody/TFCXitem/refDoc) 1-9</p>
subContractor	<p>details of the Sub-contractor - base type: Nad, (XPath TEXDyFinOrdChange/TFCXheader/subContractor) 1-1</p>
terms	<p>details of the commercial obligations for payment and delivery (XPath TEXDyFinOrdChange/terms) 0-1</p>
texCode	<p>full codification of the textile product (XPath TEXDyFinOrdChange/TFCXbody/TFCXitem/fabricComponent/texCode) 1-1 (XPath TEXDyFinOrdChange/TFCXbody/TFCXitem/fabricProd/texCode) 1-1</p>

texMachineSpecs	technical specifications of a machine used in an operation of a work cycle for fabric (type and settings) (XPath TEXDyFinOrdChange/TFCXbody/TFCXitem/fabMnfrOperation/texMachineSpecs) 0-9
TFCXbody	body of the document "TEXTILES DYEING-FINISHING COMMISSION ORDER CHANGE" (XPath TEXDyFinOrdChange/TFCXbody) 1-1
TFCXheader	header of the document "TEXTILES DYEING-FINISHING COMMISSION ORDER CHANGE" (XPath TEXDyFinOrdChange/TFCXheader) 1-1
TFCXitem	line item of the document "TEXTILES DYEING-FINISHING COMMISSION ORDER CHANGE" (XPath TEXDyFinOrdChange/TFCXbody/TFCXitem) 1-unbounded
thirdParty	details of the Third Party, different from Buyer or Supplier - base type: Nad, (XPath TEXDyFinOrdChange/TFCXheader/thirdParty) 0-5 (XPath TEXDyFinOrdChange/TFCXbody/TFCXitem/thirdParty) 0-3
trade	general terms of trade for the specified supply (XPath TEXDyFinOrdChange/terms/trade) 0-1
transInfo	details of transport: mode, carrier and delivery place (XPath TEXDyFinOrdChange/terms/transInfo) 0-5

2.2.2 Simple elements (Basic Business Information Entities)

Simple elements are those elements whose content is characterized by a data type plus a domain of possible values. Simple elements are alphabetically ordered.

AC_amount	amount of an Allowance or Charge - base type: decimal, fraction digits: 2, (XPath TEXDyFinOrdChange/terms/allowanceCharge/AC_amount) 1-1
AC_category	coded specification of an Allowance or Charge - base type: string, cod. table: T41 http://www.ebiz.enea.it/moda-ml/repository/codelist/draft/gc_T41.xml (XPath TEXDyFinOrdChange/terms/allowanceCharge/AC_category) 1-1
AC_categoryText	free text description of an Allowance or Charge - base type: string, max length: 250, (XPath TEXDyFinOrdChange/terms/allowanceCharge/AC_categoryText) 1-1
AC_percent	amount of an Allowance or Charge as a percentage - base type: decimal, max inclusive: 100, fraction digits: 2, (XPath TEXDyFinOrdChange/terms/allowanceCharge/AC_percent) 1-1
@act	status that the current line assigns to the line addressed in the reference document; if it is already canceled it maintains the status. - base type: string, cod. table: NT5 http://www.ebiz.enea.it/moda-ml/repository/codelist/draft/gc_NT5.xml (XPath TEXDyFinOrdChange/TFCXbody/TFCXitem/@act) [Required]
added	additional code of the product (complementing the formers) - base type: string, max length: 80, (XPath TEXDyFinOrdChange/TFCXbody/TFCXitem/fabricComponent/texCode/added) 0-9 - note: <i>here an additional codification (see table T44) can be specified</i>

	<p>(XPath <code>TEXDyFinOrdChange/TFCXbody/TFCXitem/fabricProd/texCode/added</code>) 0-9</p> <p>- note: <i>here an additional codification (see table T44) can be specified</i></p>
additionalIdentifier	<p>additional identification code of a Party, for example customs registries or others</p> <p>- base type: string, max length: 15, (XPath <code>TEXDyFinOrdChange/TFCXheader/buyer/additionalIdentifier</code>) 0-9</p> <p>- note: <i>identifiers for example for exports, such as MID (Manufacturer Identification Code), EORI (E.O.R.I. - Economic Operator Registration and Identification)</i></p>
@addType	<p>qualifier of the additional coding of a product</p> <p>- base type: string, cod. table: T44 http://www.ebiz.enea.it/moda-ml/repository/codelist/draft/gc_T44.xml</p> <p>(XPath <code>TEXDyFinOrdChange/TFCXbody/TFCXitem/fabricComponent/texCode/added/@addType</code>) [Optional]</p> <p>- nota: <i>addType allows the clarification of the meaning of the added element content; it is strongly suggested to use it always.</i> (XPath <code>TEXDyFinOrdChange/TFCXbody/TFCXitem/fabricProd/texCode/added/@addType</code>) [Optional]</p> <p>- nota: <i>addType allows the clarification of the meaning of the added element content; it is strongly suggested to use it always.</i></p>
@application	<p>force or similar condition (e.g. no. of revolutions) applied in a test as specified within the standard</p> <p>- base type: string, max length: 15, (XPath <code>TEXDyFinOrdChange/TFCXbody/TFCXitem/fabricProd/fabricSpecs/specValue/@application</code>) [Optional]</p> <p>(XPath <code>TEXDyFinOrdChange/TFCXbody/TFCXitem/fabMnfrOperation/texMachineSpecs/specValue/@application</code>) [Optional]</p>
art	<p>article number of the product</p> <p>- base type: string, max length: 80, (XPath <code>TEXDyFinOrdChange/TFCXbody/TFCXitem/fabricComponent/texCode/art</code>) 1-1</p> <p>- note: <i>can be used either for the base-article (excluding pattern/colour) or for the SKU</i> (XPath <code>TEXDyFinOrdChange/TFCXbody/TFCXitem/fabricProd/texCode/art</code>) 1-1</p> <p>- note: <i>can be used either for the base-article (excluding pattern/colour) or for the SKU</i></p>
binaryObject	<p>a binary large object containing an attached document</p> <p>- base type: base64Binary, (XPath <code>TEXDyFinOrdChange/TFCXheader/refDoc/attachment/binaryObject</code>) 0-1</p> <p>(XPath <code>TEXDyFinOrdChange/TFCXbody/TFCXitem/fabricComponent/refDoc/attachment/binaryObject</code>) 0-1</p> <p>(XPath <code>TEXDyFinOrdChange/TFCXbody/TFCXitem/refDoc/attachment/binaryObject</code>) 0-1</p> <p>(XPath <code>TEXDyFinOrdChange/TFCXbody/TFCXitem/fabMnfrOperation/refDoc/attachment/binaryObject</code>) 0-1</p>
carrier	<p>identification of the transport carrier</p> <p>- base type: string, max length: 40, (XPath <code>TEXDyFinOrdChange/terms/transInfo/carrier</code>) 0-1</p>
@characterSet	<p>the character set of the binary object if the mime type is text</p> <p>- base type: normalizedString,</p>

	<p>(XPath TEXDyFinOrdChange/TFCXbody/TFCXitem/fabricComponent/refDoc/attachment/binaryObject/@characterSet) [Optional] (XPath TEXDyFinOrdChange/TFCXbody/TFCXitem/refDoc/attachment/binaryObject/@characterSet) [Optional] (XPath TEXDyFinOrdChange/TFCXheader/refDoc/attachment/binaryObject/@characterSet) [Optional] (XPath TEXDyFinOrdChange/TFCXbody/TFCXitem/fabMnfrOperation/refDoc/attachment/binaryObject/@characterSet) [Optional]</p>
characterSetCode	<p>the character set of an external document - base type: normalizedString, (XPath TEXDyFinOrdChange/TFCXbody/TFCXitem/refDoc/attachment/externalReference/characterSetCode) 0-1 (XPath TEXDyFinOrdChange/TFCXbody/TFCXitem/fabMnfrOperation/refDoc/attachment/externalReference/characterSetCode) 0-1 (XPath TEXDyFinOrdChange/TFCXheader/refDoc/attachment/externalReference/characterSetCode) 0-1 (XPath TEXDyFinOrdChange/TFCXbody/TFCXitem/fabricComponent/refDoc/attachment/externalReference/characterSetCode) 0-1</p>
city	<p>name of the city (town, village) - base type: string, max length: 40, (XPath TEXDyFinOrdChange/TFCXheader/buyer/city) 0-1 (XPath TEXDyFinOrdChange/TFCXbody/TFCXitem/thirdParty/city) 0-1 (XPath TEXDyFinOrdChange/TFCXheader/thirdParty/city) 0-1 (XPath TEXDyFinOrdChange/TFCXheader/subContractor/city) 0-1</p>
@codeList	<p>it specifies the URL where the list of codes used to make an instance of the element can be found - base type: string, max length: 255, (XPath TEXDyFinOrdChange/TFCXbody/TFCXitem/fabricComponent/texCode/art/@codeList) [Optional] - nota: <i>this attribute should be ALTERNATIVE to the others</i> (XPath TEXDyFinOrdChange/TFCXbody/TFCXitem/fabricProd/note/@codeList) [Optional] - nota: <i>must be used to provide (URL) the list of codes used in "noteLabel"</i> (XPath TEXDyFinOrdChange/TFCXheader/note/@codeList) [Optional] - nota: <i>must be used to provide (URL) the list of codes used in "noteLabel"</i> (XPath TEXDyFinOrdChange/TFCXbody/TFCXitem/fabricComponent/itemsList/qualityLevel/@codeList) [Optional] (XPath TEXDyFinOrdChange/TFCXbody/TFCXitem/refDoc/season/@codeList) [Optional] (XPath TEXDyFinOrdChange/TFCXbody/TFCXitem/fabMnfrOperation/refDoc/season/@codeList) [Optional] (XPath TEXDyFinOrdChange/TFCXbody/TFCXitem/fabricComponent/note/@codeList) [Optional] - nota: <i>must be used to provide (URL) the list of codes used in "noteLabel"</i> (XPath TEXDyFinOrdChange/TFCXbody/TFCXitem/dtScheme/note/@codeList) [Optional] - nota: <i>must be used to provide (URL) the list of codes used in "noteLabel"</i> (XPath TEXDyFinOrdChange/terms/allowanceCharge/dtScheme/legalRef/@codeList) [Required] (XPath TEXDyFinOrdChange/TFCXbody/TFCXitem/fabricComponent/refDoc/season/@codeList) [Optional] (XPath TEXDyFinOrdChange/terms/allowanceCharge/dtScheme/note/@codeList) [Optional] - nota: <i>must be used to provide (URL) the list of codes used in "noteLabel"</i></p>

	<p>(XPath TEXDyFinOrdChange/TFCXbody/TFCXitem/fabricComponent/texCode/color/@codeList) [Optional]</p> <p>- nota: <i>this attribute could be used as alternative to the others</i> (XPath TEXDyFinOrdChange/TFCXheader/refDoc/season/@codeList) [Optional] (XPath TEXDyFinOrdChange/TFCXbody/TFCXitem/dtScheme/legalRef/@codeList) [Required] (XPath TEXDyFinOrdChange/TFCXbody/TFCXitem/fabricProd/texCode/pattern/@codeList) [Optional]</p> <p>- nota: <i>this attribute should be ALTERNATIVE to the others</i> (XPath TEXDyFinOrdChange/TFCXheader/season/@codeList) [Optional] (XPath TEXDyFinOrdChange/TFCXbody/TFCXitem/fabricComponent/texCode/pattern/@codeList) [Optional]</p> <p>- nota: <i>this attribute should be ALTERNATIVE to the others</i> (XPath TEXDyFinOrdChange/TFCXbody/TFCXitem/fabricProd/texCode/color/@codeList) [Optional]</p> <p>- nota: <i>this attribute could be used as alternative to the others</i> (XPath TEXDyFinOrdChange/TFCXbody/TFCXitem/fabricProd/texCode/art/@codeList) [Optional]</p> <p>- nota: <i>this attribute should be ALTERNATIVE to the others</i> (XPath TEXDyFinOrdChange/TFCXbody/TFCXitem/fabMnfrOperation/note/@codeList) [Optional]</p> <p>- nota: <i>must be used to provide (URL) the list of codes used in "noteLabel"</i></p>
color	<p>colour number of the product, when not included in the model or fabric code</p> <p>- base type: string, max length: 15, (XPath TEXDyFinOrdChange/TFCXbody/TFCXitem/fabricComponent/texCode/color) 0-1 (XPath TEXDyFinOrdChange/TFCXbody/TFCXitem/fabricProd/texCode/color) 0-1</p>
country	<p>code of the nation</p> <p>- base type: string, cod. table: T10 http://www.ebiz.enea.it/moda-ml/repository/codelist/draft/gc_T10.xml (XPath TEXDyFinOrdChange/TFCXheader/buyer/country) 0-1 (XPath TEXDyFinOrdChange/TFCXheader/subContractor/country) 0-1 (XPath TEXDyFinOrdChange/TFCXheader/thirdParty/country) 0-1 (XPath TEXDyFinOrdChange/TFCXbody/TFCXitem/thirdParty/country) 0-1</p>
@CTest	<p>indicates the need to execute a colour test before the operation</p> <p>- base type: string, cod. table: NT38 http://www.ebiz.enea.it/moda-ml/repository/codelist/draft/gc_NT38.xml (XPath TEXDyFinOrdChange/TFCXbody/TFCXitem/fabricProd/@CTest) [Optional]</p>
@currency	<p>currency in which a specified monetary data is expressed</p> <p>- base type: string, cod. table: T9 http://www.ebiz.enea.it/moda-ml/repository/codelist/draft/gc_T9.xml (XPath TEXDyFinOrdChange/TFCXbody/TFCXitem/price/@currency) [Optional]</p> <p>- nota: <i>Currency referred by the price.</i> (XPath TEXDyFinOrdChange/terms/allowanceCharge/@currency) [Optional]</p>
@CV	<p>coefficient of variation (CV) of a measurement</p> <p>- base type: decimal, (XPath TEXDyFinOrdChange/TFCXbody/TFCXitem/fabMnfrOperation/texMachineSpecs/specValue/@CV) [Optional] (XPath TEXDyFinOrdChange/TFCXbody/TFCXitem/fabricProd/fabricSpecs/specValue/@CV) [Optional]</p>
@dateForm	<p>format used for the date</p> <p>- base type: string, cod. table: NT29 http://www.ebiz.enea.it/moda-ml/repository/codelist/draft/gc_NT29.xml (XPath TEXDyFinOrdChange/TFCXbody/TFCXitem/fabricComponent/refDoc/docDate/@dateForm) [Optional]</p>

	<p>(XPath TEXDyFinOrdChange/TFCXbody/TFCXitem/fabMnfrOperation/refDoc/docDate/@dateForm) [Optional] (XPath TEXDyFinOrdChange/terms/transInfo/despatchDate/@dateForm) [Optional] (XPath TEXDyFinOrdChange/terms/transInfo/delEffectiveDate/@dateForm) [Optional] (XPath TEXDyFinOrdChange/TFCXheader/refDoc/docDate/@dateForm) [Optional] (XPath TEXDyFinOrdChange/TFCXheader/msgDate/@dateForm) [Optional] (XPath TEXDyFinOrdChange/TFCXbody/TFCXitem/deliveryDate/@dateForm) [Optional] (XPath TEXDyFinOrdChange/TFCXbody/TFCXitem/refDoc/docDate/@dateForm) [Optional]</p>
delEffectiveDate	<p>effective date of delivery of goods (declared in Despatch), according to one of the patterns YYYY-MM-DD, YYYY-MM-DD:HH-MM or YYYY-WW. - base type: string, (XPath TEXDyFinOrdChange/terms/transInfo/delEffectiveDate) 0-1</p>
deliveryDate	<p>date of delivery of goods, requested or promised in the purchase process, according to one of the patterns YYYY-MM-DD, YYYY-MM-DD:HH-MM or YYYY-WW. - base type: string, (XPath TEXDyFinOrdChange/TFCXbody/TFCXitem/deliveryDate) 0-1</p>
deliveryPlace	<p>place of delivery of goods, ultimate or related to a given leg - base type: string, max length: 250, (XPath TEXDyFinOrdChange/terms/transInfo/deliveryPlace) 0-1</p>
dept	<p>name or code of a contact department within a Party - base type: string, max length: 40, (XPath TEXDyFinOrdChange/TFCXbody/TFCXitem/thirdParty/dept) 0-1 (XPath TEXDyFinOrdChange/TFCXheader/subContractor/dept) 0-1 (XPath TEXDyFinOrdChange/TFCXheader/buyer/dept) 0-1 (XPath TEXDyFinOrdChange/TFCXheader/thirdParty/dept) 0-1</p>
description	<p>free text description. The content of the element must be unique, it might be translated and repeated into more languages (thus no more than one instance for each language). - base type: string, max length: 250, (XPath TEXDyFinOrdChange/TFCXbody/TFCXitem/fabricComponent/texCode/description) 0-unbounded - note: <i>Product description</i> (XPath TEXDyFinOrdChange/TFCXbody/TFCXitem/fabricProd/texCode/description) 0-unbounded - note: <i>Product description</i></p>
despatchDate	<p>date of despatch of goods, requested or promised in the purchase process, according to one of the patterns YYYY-MM-DD, YYYY-MM-DD:HH-MM or YYYY-WW. - base type: string, (XPath TEXDyFinOrdChange/terms/transInfo/despatchDate) 0-1</p>
despatchPlace	<p>place of despatch of goods, origin or related to a given leg - base type: string, max length: 250, (XPath TEXDyFinOrdChange/terms/transInfo/despatchPlace) 0-1</p>
docDate	<p>date of issue of the referenced document, according to one of the patterns YYYY-MM-DD, YYYY-MM-DD:HH-MM or YYYY-WW. - base type: string, (XPath TEXDyFinOrdChange/TFCXbody/TFCXitem/fabMnfrOperation/refDoc/docDate) 0-1 (XPath TEXDyFinOrdChange/TFCXbody/TFCXitem/fabricComponent/refDoc/docDate) 0-1 (XPath TEXDyFinOrdChange/TFCXheader/refDoc/docDate) 0-1</p>

	(XPath TEXDyFinOrdChange/TFCXbody/TFCXitem/refDoc/docDate) 0-1
docID	<p>identification number of the referenced document SINCE 2008-1 ITS USE I N THE HEADER IS DISCOURAGED (REPLACED BY msgID)</p> <p>- base type: string, max length: 80,</p> <p>(XPath TEXDyFinOrdChange/TFCXbody/TFCXitem/fabricComponent/refDoc/docID) 1-2 (XPath TEXDyFinOrdChange/TFCXbody/TFCXitem/refDoc/docID) 1-2 (XPath TEXDyFinOrdChange/TFCXbody/TFCXitem/fabMnfrOperation/refDoc/docID) 1-2 (XPath TEXDyFinOrdChange/TFCXheader/docID) 0-1 (XPath TEXDyFinOrdChange/TFCXheader/refDoc/docID) 1-2</p>
@docType	<p>type or class to which the referenced document belongs</p> <p>- base type: string, cod. table: T21 http://www.ebiz.enea.it/moda-ml/repository/codelist/draft/gc_T21.xml</p> <p>(XPath TEXDyFinOrdChange/TFCXbody/TFCXitem/fabMnfrOperation/refDoc/@doc Type) [Required] (XPath TEXDyFinOrdChange/TFCXbody/TFCXitem/refDoc/@docType) [Required] (XPath TEXDyFinOrdChange/TFCXbody/TFCXitem/fabricComponent/refDoc/@doc Type) [Required] (XPath TEXDyFinOrdChange/TFCXheader/refDoc/@docType) [Required]</p>
dyeN	<p>number of the dyeing batch of a textile product</p> <p>- base type: string, max length: 15,</p> <p>(XPath TEXDyFinOrdChange/TFCXbody/TFCXitem/fabricProd/ piece/dyeN) 0-1 (XPath TEXDyFinOrdChange/TFCXbody/TFCXitem/fabricProd/ pieceChain/dyeN) 0-1</p>
@email	<p>electronic mail address of the contact person within a Party</p> <p>- base type: string, max length: 250,</p> <p>(XPath TEXDyFinOrdChange/TFCXbody/TFCXitem/thirdParty/ person/@email) [Optional] (XPath TEXDyFinOrdChange/TFCXheader/subContractor/person/@email) [Optional] (XPath TEXDyFinOrdChange/TFCXheader/buyer/person/@email) [Optional] (XPath TEXDyFinOrdChange/TFCXheader/thirdParty/person/@email) [Optional]</p>
@encoding	<p>specifies the decoding algorithm of the binary object</p> <p>- base type: normalizedString,</p> <p>(XPath TEXDyFinOrdChange/TFCXbody/TFCXitem/fabMnfrOperation/refDoc/attach ment/binaryObject/@encoding) [Optional] (XPath TEXDyFinOrdChange/TFCXheader/refDoc/attachment/ binaryObject/@encoding) [Optional] (XPath TEXDyFinOrdChange/TFCXbody/TFCXitem/refDoc/ attachment/binaryObject/@encoding) [Optional] (XPath TEXDyFinOrdChange/TFCXbody/TFCXitem/fabricComponent/refDoc/attach ment/binaryObject/@encoding) [Optional]</p>
encodingCode	<p>the encoding/decoding algorithm used with the external object</p> <p>- base type: normalizedString,</p> <p>(XPath TEXDyFinOrdChange/TFCXbody/TFCXitem/fabMnfrOperation/refDoc/attach ment/externalReference/encodingCode) 0-1 (XPath TEXDyFinOrdChange/TFCXbody/TFCXitem/refDoc/ attachment/externalReference/encodingCode) 0-1 (XPath TEXDyFinOrdChange/TFCXheader/refDoc/attachment/ externalReference/encodingCode) 0-1 (XPath TEXDyFinOrdChange/TFCXbody/TFCXitem/fabricComponent/refDoc/attach ment/externalReference/encodingCode) 0-1</p>

@endUse	<p>specifies the final use of the fabric</p> <ul style="list-style-type: none"> - base type: string, cod. table: NT4 http://www.ebiz.enea.it/moda-ml/repository/codelist/draft/gc_NT4.xml (XPath TEXDyFinOrdChange/TFCXbody/TFCXitem/fabricProd/piece/@endUse) [Optional]
EPC	<p>serial identifier used for tracing a physical item with RFID technology</p> <ul style="list-style-type: none"> - base type: string, (XPath TEXDyFinOrdChange/TFCXbody/TFCXitem/fabricProd/piece/EPC) 0-1 - note: <i>the use of this element is DEPRECATED, use the appropriate elements (serialN)</i>
fabricChar	<p>code of the physical or mechanical parameter used to define a "technical characteristic of the fabric" (see Fabric technical sheet)</p> <ul style="list-style-type: none"> - base type: string, cod. table: T13 http://www.ebiz.enea.it/moda-ml/repository/codelist/draft/gc_T13.xml (XPath TEXDyFinOrdChange/TFCXbody/TFCXitem/fabricProd/fabricSpecs/fabricChar) 1-1
fabricCharText	<p>free text describing the physical or mechanical parameter used to define a "technical characteristic of the fabric"</p> <ul style="list-style-type: none"> - base type: string, max length: 80, (XPath TEXDyFinOrdChange/TFCXbody/TFCXitem/fabricProd/fabricSpecs/fabricCharText) 1-1
fabricWidth	<p>width of the fabric as technical specification</p> <ul style="list-style-type: none"> - base type: decimal, min inclusive: 0, fraction digits: 2, (XPath TEXDyFinOrdChange/TFCXbody/TFCXitem/fabricProd/fabricWidth) 0-1
@fax	<p>fax number of the contact person within a Party</p> <ul style="list-style-type: none"> - base type: string, max length: 35, (XPath TEXDyFinOrdChange/TFCXheader/subContractor/person/@fax) [Optional] (XPath TEXDyFinOrdChange/TFCXbody/TFCXitem/thirdParty/person/@fax) [Optional] (XPath TEXDyFinOrdChange/TFCXheader/buyer/person/@fax) [Optional] (XPath TEXDyFinOrdChange/TFCXheader/thirdParty/person/@fax) [Optional]
@fibre	<p>type of fibre used in a textile product</p> <ul style="list-style-type: none"> - base type: string, cod. table: T19 http://www.ebiz.enea.it/moda-ml/repository/codelist/draft/gc_T19.xml (XPath TEXDyFinOrdChange/TFCXbody/TFCXitem/fabricProd/fabricCompos/percCompos/@fibre) [Required]
fileName	<p>unique identifier (name) of the file</p> <ul style="list-style-type: none"> - base type: string, max length: 255, (XPath TEXDyFinOrdChange/TFCXbody/TFCXitem/fabMnfrOperation/refDoc/attachment/fileName) 0-1 (XPath TEXDyFinOrdChange/TFCXbody/TFCXitem/refDoc/attachment/fileName) 0-1 (XPath TEXDyFinOrdChange/TFCXheader/refDoc/attachment/fileName) 0-1 (XPath TEXDyFinOrdChange/TFCXbody/TFCXitem/fabricComponent/refDoc/attachment/fileName) 0-1
@finDiscount	<p>financial discount rate applied for payment by the date specified</p> <ul style="list-style-type: none"> - base type: decimal, min inclusive: 0, max inclusive: 100, fraction digits: 2, (XPath TEXDyFinOrdChange/terms/payment/@finDiscount) [Optional]
@finSurcharge	<p>financial surcharge rate applied for payment after the date specified</p> <ul style="list-style-type: none"> - base type: decimal, min inclusive: 0, max inclusive: 100, fraction digits: 2, (XPath TEXDyFinOrdChange/terms/payment/@finSurcharge) [Optional]
@format	<p>the format of the binary content</p> <ul style="list-style-type: none"> - base type: string,

	<p>(XPath TEXDyFinOrdChange/TFCXbody/TFCXitem/refDoc/attachment/binaryObject/@format) [Optional]</p> <p>(XPath TEXDyFinOrdChange/TFCXbody/TFCXitem/fabMnfrOperation/refDoc/attachment/binaryObject/@format) [Optional]</p> <p>(XPath TEXDyFinOrdChange/TFCXbody/TFCXitem/fabricComponent/refDoc/attachment/binaryObject/@format) [Optional]</p> <p>(XPath TEXDyFinOrdChange/TFCXheader/refDoc/attachment/binaryObject/@format) [Optional]</p>
formatCode	<p>the format of the external object</p> <p>- base type: normalizedString,</p> <p>(XPath TEXDyFinOrdChange/TFCXbody/TFCXitem/refDoc/attachment/externalReference/formatCode) 0-1</p> <p>(XPath TEXDyFinOrdChange/TFCXheader/refDoc/attachment/externalReference/formatCode) 0-1</p> <p>(XPath TEXDyFinOrdChange/TFCXbody/TFCXitem/fabricComponent/refDoc/attachment/externalReference/formatCode) 0-1</p> <p>(XPath TEXDyFinOrdChange/TFCXbody/TFCXitem/fabMnfrOperation/refDoc/attachment/externalReference/formatCode) 0-1</p>
grossWeight	<p>the gross weight, declared for transport or customs purpose</p> <p>- base type: decimal, min inclusive: 0, fraction digits: 2,</p> <p>(XPath TEXDyFinOrdChange/terms/transInfo/grossWeight) 0-1</p> <p>(XPath TEXDyFinOrdChange/TFCXbody/TFCXitem/fabricProd/piece/grossWeight) 0-1</p> <p>- note: <i>gross Weight is related to the weight of the piece after packing.</i></p>
id	<p>primary identification code of a Party; it is recommended the format: nation code (ISO 3166) + VAT identification number (11 crt), with the qualifier "numberingOrg"= MF</p> <p>- base type: string, max length: 15,</p> <p>(XPath TEXDyFinOrdChange/TFCXheader/subContractor/id) 1-1</p> <p>(XPath TEXDyFinOrdChange/TFCXbody/TFCXitem/thirdParty/id) 1-1</p> <p>(XPath TEXDyFinOrdChange/TFCXheader/thirdParty/id) 1-1</p> <p>(XPath TEXDyFinOrdChange/TFCXheader/buyer/id) 1-1</p>
@idQualifier	<p>Qualification of the identifier.</p> <p>- base type: string,</p> <p>(XPath TEXDyFinOrdChange/TFCXbody/TFCXitem/fabricProd/pieceChain/serialN/@idQualifier) [Optional]</p> <p>- nota: <i>this attribute should be used when the numberingOrg attribute is not enough to declare the type of serial identifier</i></p> <p>(XPath TEXDyFinOrdChange/TFCXbody/TFCXitem/fabricProd/pieceChain/pieceCut/serialN/@idQualifier) [Optional]</p> <p>- nota: <i>this attribute should be used when the numberingOrg attribute is not enough to declare the type of serial identifier</i></p> <p>(XPath TEXDyFinOrdChange/TFCXbody/TFCXitem/fabricComponent/serialN/@idQualifier) [Optional]</p> <p>- nota: <i>this attribute should be used when the numberingOrg attribute is not enough to declare the type of serial identifier</i></p> <p>(XPath TEXDyFinOrdChange/TFCXbody/TFCXitem/fabricProd/piece/serialN/@idQualifier) [Optional]</p> <p>- nota: <i>this attribute should be used when the numberingOrg attribute is not enough to declare the type of serial identifier</i></p> <p>(XPath TEXDyFinOrdChange/TFCXbody/TFCXitem/fabricComponent/itemsList/itemIdentification/serialN/@idQualifier) [Optional]</p> <p>- nota: <i>this attribute should be used when the numberingOrg attribute is not enough to declare the type of serial identifier</i></p>

	<p>(XPath TEXDyFinOrdChange/TFCXheader/buyer/additionalIdentifier/@idQualifier) [Optional]</p> <p>- nota: <i>this attribute should be used when the numberingOrg attribute is not enough to declare the type of identifier</i></p>
incoTerm	<p>specification of the terms of trade (INCOTERMS)</p> <p>- base type: string, cod. table: T3</p> <p>http://www.ebiz.enea.it/moda-ml/repository/codelist/draft/gc_T3.xml</p> <p>(XPath TEXDyFinOrdChange/terms/trade/incoTerm) 1-1</p>
incoTermText	<p>free text specifying the terms of trade (incoterm, location)</p> <p>- base type: string, max length: 250,</p> <p>(XPath TEXDyFinOrdChange/terms/trade/incoTermText) 1-1</p>
@isURL	<p>it indicates if the referred element is an URL (true) or not (false)</p> <p>- base type: boolean,</p> <p>(XPath TEXDyFinOrdChange/TFCXbody/TFCXitem/fabricComponent/refDoc/attachment/externalReference/uri/@isURL) [Optional] [Default= true]</p> <p>- nota: <i>usage of URLs is recommended</i></p> <p>(XPath TEXDyFinOrdChange/TFCXheader/refDoc/attachment/externalReference/uri/@isURL) [Optional] [Default= true]</p> <p>- nota: <i>usage of URLs is recommended</i></p> <p>(XPath TEXDyFinOrdChange/TFCXbody/TFCXitem/fabMnfrOperation/refDoc/attachment/externalReference/uri/@isURL) [Optional] [Default= true]</p> <p>- nota: <i>usage of URLs is recommended</i></p> <p>(XPath TEXDyFinOrdChange/TFCXbody/TFCXitem/refDoc/attachment/externalReference/uri/@isURL) [Optional] [Default= true]</p> <p>- nota: <i>usage of URLs is recommended</i></p>
itemID	<p>number of the line/item of the referenced document</p> <p>- base type: string, max length: 6,</p> <p>(XPath TEXDyFinOrdChange/TFCXheader/refDoc/itemID) 0-1</p> <p>(XPath TEXDyFinOrdChange/TFCXbody/TFCXitem/refDoc/itemID) 0-1</p> <p>(XPath TEXDyFinOrdChange/TFCXbody/TFCXitem/fabricComponent/refDoc/itemID)) 0-1</p> <p>(XPath TEXDyFinOrdChange/TFCXbody/TFCXitem/fabMnfrOperation/refDoc/itemID)) 0-1</p>
jobName	<p>description of the elementary job</p> <p>- base type: string, max length: 40,</p> <p>(XPath TEXDyFinOrdChange/TFCXbody/TFCXitem/fabMnfrOperation/jobName) 1-1</p>
legalName	<p>legal name of a Party</p> <p>- base type: string, max length: 250,</p> <p>(XPath TEXDyFinOrdChange/TFCXheader/buyer/legalName) 0-1</p> <p>(XPath TEXDyFinOrdChange/TFCXheader/subContractor/legalName) 0-1</p> <p>(XPath TEXDyFinOrdChange/TFCXheader/thirdParty/legalName) 0-1</p> <p>(XPath TEXDyFinOrdChange/TFCXbody/TFCXitem/thirdParty/legalName) 0-1</p>
legalRef	<p>legal reference of the duty or tax or fee category</p> <p>- base type: string,</p> <p>(XPath TEXDyFinOrdChange/terms/allowanceCharge/dtScheme/legalRef) 0-1</p> <p>(XPath TEXDyFinOrdChange/TFCXbody/TFCXitem/dtScheme/legalRef) 0-1</p>
lineN	<p>number of the line item of the present message (xml document); it is set by the role that produces the document. Usually it is a progressive number, but not always.</p> <p>- base type: positiveInteger, min inclusive: 1, max inclusive: 9999,</p> <p>(XPath TEXDyFinOrdChange/TFCXbody/TFCXitem/lineN) 1-1</p>

<p>@listName</p>	<p>the name of the list of codes used to make an instance of the element (it might be thought as descriptive element, i.e. 'fabric printing technologies', or not, i.e. "T264")</p> <ul style="list-style-type: none"> - base type: string, max length: 40, (XPath TEXDyFinOrdChange/TFCXheader/season/@listName) [Optional] (XPath TEXDyFinOrdChange/TFCXbody/TFCXitem/fabricComponent/texCode/color/@listName) [Optional] - nota: <i>this attribute should always be used coupled with "numberingOrg"</i> (XPath TEXDyFinOrdChange/TFCXbody/TFCXitem/fabricComponent/texCode/pattern/@listName) [Optional] - nota: <i>this attribute should always be used coupled with "numberingOrg"</i> (XPath TEXDyFinOrdChange/TFCXbody/TFCXitem/refDoc/season/@listName) [Optional] (XPath TEXDyFinOrdChange/TFCXbody/TFCXitem/fabMnfrOperation/refDoc/season/@listName) [Optional] - nota: <i>this attribute should always be used coupled with "numberingOrg"</i> (XPath TEXDyFinOrdChange/TFCXbody/TFCXitem/fabricComponent/texCode/art/@listName) [Optional] - nota: <i>this attribute should always be used coupled with "numberingOrg"</i> (XPath TEXDyFinOrdChange/TFCXbody/TFCXitem/fabricComponent/refDoc/season/@listName) [Optional] (XPath TEXDyFinOrdChange/TFCXbody/TFCXitem/fabricProd/texCode/art/@listName) [Optional] - nota: <i>this attribute should always be used coupled with "numberingOrg"</i> (XPath TEXDyFinOrdChange/TFCXbody/TFCXitem/fabricProd/texCode/color/@listName) [Optional] - nota: <i>this attribute should always be used coupled with "numberingOrg"</i> (XPath TEXDyFinOrdChange/TFCXbody/TFCXitem/fabricComponent/itemsList/qualityLevel/@listName) [Optional] (XPath TEXDyFinOrdChange/TFCXbody/TFCXitem/fabricProd/texCode/pattern/@listName) [Optional] - nota: <i>this attribute should always be used coupled with "numberingOrg"</i> (XPath TEXDyFinOrdChange/TFCXheader/refDoc/season/@listName) [Optional]
<p>@listVersion</p>	<p>it specifies the version of the list of codes used to make an instance of the element</p> <ul style="list-style-type: none"> - base type: string, max length: 6, (XPath TEXDyFinOrdChange/TFCXbody/TFCXitem/fabricProd/texCode/art/@listVersion) [Optional] - nota: <i>this attribute should always be used coupled with "numberingOrg" and "listName"</i> (XPath TEXDyFinOrdChange/TFCXbody/TFCXitem/fabMnfrOperation/refDoc/season/@listVersion) [Optional] (XPath TEXDyFinOrdChange/TFCXbody/TFCXitem/fabricComponent/texCode/pattern/@listVersion) [Optional] - nota: <i>this attribute should always be used coupled with "numberingOrg" and "listName"</i> (XPath TEXDyFinOrdChange/TFCXheader/season/@listVersion) [Optional] (XPath TEXDyFinOrdChange/TFCXheader/refDoc/season/@listVersion) [Optional] (XPath TEXDyFinOrdChange/TFCXbody/TFCXitem/fabricComponent/texCode/art/@listVersion) [Optional] - nota: <i>this attribute should always be used coupled with "numberingOrg" and "listName"</i> (XPath TEXDyFinOrdChange/TFCXbody/TFCXitem/fabricComponent/refDoc/season/@listVersion) [Optional] (XPath TEXDyFinOrdChange/TFCXbody/TFCXitem/fabricProd/texCode/color/@listVersion) [Optional]

	<p>- nota: <i>this attribute should always be used coupled with “numberingOrg” and “listName”</i> (XPath TEXDyFinOrdChange/TFCXbody/TFCXitem/fabricComponent/texCode/color/@listVersion) [Optional]</p> <p>- nota: <i>this attribute should always be used coupled with “numberingOrg” and “listName”</i> (XPath TEXDyFinOrdChange/TFCXbody/TFCXitem/fabricComponent/itemsList/qualityLevel/@listVersion) [Optional] (XPath TEXDyFinOrdChange/TFCXbody/TFCXitem/fabricProd/texCode/pattern/@listVersion) [Optional]</p> <p>- nota: <i>this attribute should always be used coupled with “numberingOrg” and “listName”</i> (XPath TEXDyFinOrdChange/TFCXbody/TFCXitem/refDoc/season/@listVersion) [Optional]</p>
@ln	<p>Language code. - base type: string, (XPath TEXDyFinOrdChange/TFCXbody/TFCXitem/fabricProd/texCode/description/@ln) [Optional] (XPath TEXDyFinOrdChange/TFCXbody/TFCXitem/fabricComponent/texCode/description/@ln) [Optional]</p>
location	<p>specification of a location - base type: string, max length: 40, (XPath TEXDyFinOrdChange/TFCXbody/TFCXitem/fabricComponent/location) 0-1 - note: <i>it may be used to specify the location where lie the pieces that the Subcontractor must use for the commissioned work operation</i> (XPath TEXDyFinOrdChange/terms/trade/location) 0-1 - note: <i>place to which the INCOTERM applies</i></p>
@logo	<p>company logo (URL of the image jpeg or gif). It is recommended that the width of the image does not exceed 640 pixel. - base type: string, max length: 255, (XPath TEXDyFinOrdChange/TFCXheader/buyer/@logo) [Optional]</p>
lotN	<p>lot number of a product or batch number of the raw material - base type: string, max length: 15, (XPath TEXDyFinOrdChange/TFCXbody/TFCXitem/fabricProd/pieceChain/lotN) 0-1 (XPath TEXDyFinOrdChange/TFCXbody/TFCXitem/fabricProd/piece/lotN) 0-2 - note: <i>The lotN instances must differ by value of the numberingOrg attribute</i></p>
@LRI	<p>attribute usable to format a string according to a customized User rule (local rule) - base type: string, cod. table: NT3 http://www.ebiz.enea.it/moda-ml/repository/codelist/draft/gc_NT3.xml (XPath TEXDyFinOrdChange/terms/trade/location/@LRI) [Optional] (XPath TEXDyFinOrdChange/TFCXbody/TFCXitem/fabricComponent/location/@LRI) [Optional]</p>
@maxQty	<p>maximum product quantity - base type: decimal, min inclusive: 0, fraction digits: 2, (XPath TEXDyFinOrdChange/terms/allowanceCharge/@maxQty) [Optional] - nota: <i>maximum quantity of product for the application of this allowance or charge</i></p>
@method	<p>standard protocol or method employed in a test to evaluate a characteristic or a parameter - base type: string, max length: 80,</p>

	<p>(XPath <code>TEXDyFinOrdChange/TFCXbody/TFCXitem/fabricProd/fabricSpecs/specValue/@method</code>) [Optional]</p> <p>(XPath <code>TEXDyFinOrdChange/TFCXbody/TFCXitem/fabMnfrOperation/texMachineSpecs/specValue/@method</code>) [Optional]</p>
@mime	<p>the mime type of the binary object</p> <p>- base type: normalizedString,</p> <p>(XPath <code>TEXDyFinOrdChange/TFCXheader/refDoc/attachment/binaryObject/@mime</code>) [Optional]</p> <p>(XPath <code>TEXDyFinOrdChange/TFCXbody/TFCXitem/fabricComponent/refDoc/attachment/binaryObject/@mime</code>) [Optional]</p> <p>(XPath <code>TEXDyFinOrdChange/TFCXbody/TFCXitem/fabMnfrOperation/refDoc/attachment/binaryObject/@mime</code>) [Optional]</p> <p>(XPath <code>TEXDyFinOrdChange/TFCXbody/TFCXitem/refDoc/attachment/binaryObject/@mime</code>) [Optional]</p>
mimeCode	<p>mime type of the external object</p> <p>- base type: normalizedString,</p> <p>(XPath <code>TEXDyFinOrdChange/TFCXbody/TFCXitem/fabricComponent/refDoc/attachment/externalReference/mimeCode</code>) 0-1</p> <p>(XPath <code>TEXDyFinOrdChange/TFCXheader/refDoc/attachment/externalReference/mimeCode</code>) 0-1</p> <p>(XPath <code>TEXDyFinOrdChange/TFCXbody/TFCXitem/fabMnfrOperation/refDoc/attachment/externalReference/mimeCode</code>) 0-1</p> <p>(XPath <code>TEXDyFinOrdChange/TFCXbody/TFCXitem/refDoc/attachment/externalReference/mimeCode</code>) 0-1</p>
@minQty	<p>minimum product quantity</p> <p>- base type: decimal, min inclusive: 0, fraction digits: 2,</p> <p>(XPath <code>TEXDyFinOrdChange/terms/allowanceCharge/@minQty</code>) [Optional]</p> <p>- nota: <i>minimum quantity of product for the application of this allowance or charge</i></p>
mixMatch	<p>colour hue used for the match of garments</p> <p>- base type: string, max length: 15,</p> <p>(XPath <code>TEXDyFinOrdChange/TFCXbody/TFCXitem/fabricProd/piece/mixMatch</code>) 0-1</p>
msgCurrency	<p>currency used to express the monetary amounts of the message</p> <p>- base type: string, cod. table: T9</p> <p>http://www.ebiz.enea.it/moda-ml/repository/codelist/draft/gc_T9.xml</p> <p>(XPath <code>TEXDyFinOrdChange/TFCXheader/msgCurrency</code>) 0-1</p>
msgDate	<p>date of issue of the present message (xml document), according to one of the patterns YYYY-MM-DD, YYYY-MM-DD:HH-MM or YYYY-WW.</p> <p>- base type: string,</p> <p>(XPath <code>TEXDyFinOrdChange/TFCXheader/msgDate</code>) 1-1</p>
@msgfunction	<p>function performed by the present message with regards to the transmission</p> <p>- base type: string, cod. table: NT18</p> <p>http://www.ebiz.enea.it/moda-ml/repository/codelist/draft/gc_NT18.xml</p> <p>(XPath <code>TEXDyFinOrdChange/@msgfunction</code>) [Optional]</p>
msgID	<p>key identifier of the business document in the information system of the issuing Party. In case of more despatches of the same business document, it is unchanged.</p> <p>- base type: string, max length: 35,</p> <p>(XPath <code>TEXDyFinOrdChange/TFCXheader/msgID</code>) 0-1</p>
msgN	<p>identification number given to the message (xml document) by its issuer. In case of more despatches of the same business document, it changes.</p> <p>- base type: string, max length: 35,</p>

	(XPath TEXDyFinOrdChange/TFCXheader/msgN) 1-1
netWeight	the net weight declared for transport or customs purpose - base type: decimal, min inclusive: 0, fraction digits: 2, (XPath TEXDyFinOrdChange/terms/transInfo/netWeight) 0-1
note	free text or structured (computer processing) note. For note structuring use the attributes "noteLabel" and "codelist" - base type: string, max length: 350, (XPath TEXDyFinOrdChange/TFCXbody/TFCXitem/fabricProd/note) 0-99 (XPath TEXDyFinOrdChange/TFCXbody/TFCXitem/fabMnfrOperation/note) 0-99 (XPath TEXDyFinOrdChange/TFCXheader/note) 0-99 (XPath TEXDyFinOrdChange/terms/allowanceCharge/dtScheme/note) 0-99 (XPath TEXDyFinOrdChange/TFCXbody/TFCXitem/dtScheme/note) 0-99 (XPath TEXDyFinOrdChange/TFCXbody/TFCXitem/fabricComponent/note) 0-99
@noteLabel	subject qualifier of a note - base type: string, max length: 35, (XPath TEXDyFinOrdChange/TFCXbody/TFCXitem/fabMnfrOperation/note/@noteLabel) [Optional] - nota: <i>must be used to qualify the subject of the note</i> (XPath TEXDyFinOrdChange/TFCXbody/TFCXitem/fabricComponent/note/@noteLabel) [Optional] - nota: <i>must be used to qualify the subject of the note</i> (XPath TEXDyFinOrdChange/TFCXheader/note/@noteLabel) [Optional] - nota: <i>must be used to qualify the subject of the note</i> (XPath TEXDyFinOrdChange/terms/allowanceCharge/dtScheme/note/@noteLabel) [Optional] - nota: <i>must be used to qualify the subject of the note</i> (XPath TEXDyFinOrdChange/TFCXbody/TFCXitem/fabricProd/note/@noteLabel) [Optional] - nota: <i>must be used to qualify the subject of the note</i> (XPath TEXDyFinOrdChange/TFCXbody/TFCXitem/dtScheme/note/@noteLabel) [Optional] - nota: <i>must be used to qualify the subject of the note</i>
@numberingOrg	code specifying the organisation who has created or owns the coding or numbering system - base type: string, cod. table: NT6 http://www.ebiz.enea.it/moda-ml/repository/codelist/draft/gc_NT6.xml (XPath TEXDyFinOrdChange/TFCXbody/TFCXitem/fabMnfrOperation/refDoc/season/@numberingOrg) [Optional] (XPath TEXDyFinOrdChange/TFCXheader/refDoc/season/@numberingOrg) [Optional] (XPath TEXDyFinOrdChange/TFCXbody/TFCXitem/dtScheme/note/@numberingOrg) [Optional] (XPath TEXDyFinOrdChange/TFCXbody/TFCXitem/fabricComponent/texCode/@numberingOrg) [Optional] (XPath TEXDyFinOrdChange/TFCXbody/TFCXitem/fabricProd/piece/lotN/@numberingOrg) [Optional] (XPath TEXDyFinOrdChange/TFCXbody/TFCXitem/fabricProd/note/@numberingOrg) [Optional] (XPath TEXDyFinOrdChange/TFCXbody/TFCXitem/fabricComponent/texCode/color/@numberingOrg) [Optional] - nota: <i>this attribute should be used either single or coupled with "listName" and "listVersion"</i> (XPath TEXDyFinOrdChange/TFCXheader/docID/@numberingOrg) [Optional] - nota: <i>here can be specified whose document numbering is used (e.g.: Client, Supplier, ..)</i> (XPath TEXDyFinOrdChange/TFCXheader/season/@numberingOrg) [Optional]

(XPath
 TEXTDyFinOrdChange/TFCXbody/TFCXitem/fabricComponent/texCode/pattern/@numberingOrg) [Optional]
 - nota: *this attribute should be used either single or coupled with "listName" and "listVersion"*

(XPath TEXTDyFinOrdChange/TFCXbody/TFCXitem/thirdParty/id/@numberingOrg) [Optional]
 (XPath TEXTDyFinOrdChange/TFCXbody/TFCXitem/fabricProd/piece/packageN/@numberingOrg) [Optional]
 (XPath TEXTDyFinOrdChange/TFCXbody/TFCXitem/fabricProd/piece/mixMatch/@numberingOrg) [Optional]
 (XPath TEXTDyFinOrdChange/TFCXbody/TFCXitem/fabricProd/piece/dyeN/@numberingOrg) [Optional]

(XPath
 TEXTDyFinOrdChange/TFCXbody/TFCXitem/fabricComponent/texCode/art/@numberingOrg) [Optional]
 - nota: *this attribute should be used either single or coupled with "listName" and "listVersion"*

(XPath
 TEXTDyFinOrdChange/TFCXbody/TFCXitem/fabMnfrOperation/refDoc/docID/@numberingOrg) [Optional]
 - nota: *here can be specified whose document numbering is used (e.g.: Client, Supplier, ..)*

(XPath TEXTDyFinOrdChange/TFCXheader/refDoc/docID/@numberingOrg) [Optional]
 - nota: *here can be specified whose document numbering is used (e.g.: Client, Supplier, ..)*

(XPath
 TEXTDyFinOrdChange/TFCXbody/TFCXitem/fabricComponent/texCode/added/@numberingOrg) [Optional]

(XPath
 TEXTDyFinOrdChange/TFCXheader/buyer/additionalIdentifier/@numberingOrg) [Optional]
 - nota: *here the issuer of the identifier must be specified*

(XPath TEXTDyFinOrdChange/TFCXheader/buyer/id/@numberingOrg) [Optional]

(XPath
 TEXTDyFinOrdChange/TFCXbody/TFCXitem/fabMnfrOperation/refDoc/attachment/fileName/@numberingOrg) [Optional]
 (XPath TEXTDyFinOrdChange/TFCXbody/TFCXitem/refDoc/season/@numberingOrg) [Optional]
 (XPath TEXTDyFinOrdChange/TFCXbody/TFCXitem/refDoc/docID/@numberingOrg) [Optional]
 - nota: *here can be specified whose document numbering is used (e.g.: Client, Supplier, ..)*

(XPath TEXTDyFinOrdChange/TFCXbody/TFCXitem/fabricProd/pieceChain/lotN/@numberingOrg) [Optional]
 (XPath TEXTDyFinOrdChange/TFCXbody/TFCXitem/fabricProd/pieceChain/dyeN/@numberingOrg) [Optional]

(XPath
 TEXTDyFinOrdChange/TFCXbody/TFCXitem/fabricComponent/refDoc/attachment/fileName/@numberingOrg) [Optional]
 (XPath TEXTDyFinOrdChange/TFCXbody/TFCXitem/fabricProd/pieceChain/serialN/@numberingOrg) [Optional]
 - nota: *here the issuer of the serial number must be specified (when different from the Supplier)*

(XPath TEXTDyFinOrdChange/TFCXheader/note/@numberingOrg) [Optional]
 (XPath TEXTDyFinOrdChange/TFCXheader/subContractor/id/@numberingOrg) [Optional]

(XPath TEXTDyFinOrdChange/TFCXbody/TFCXitem/fabricProd/texCode/color/@numberingOrg) [Optional]
 - nota: *this attribute should be used either single or coupled with "listName" and "listVersion"*

(XPath TEXTDyFinOrdChange/TFCXbody/TFCXitem/fabricProd/texCode/pattern/@numberingOrg) [Optional]
 - nota: *this attribute should be used either single or coupled with "listName" and "listVersion"*

	<p>(XPath TEXDyFinOrdChange/TFCXbody/TFCXitem/fabricProd/texCode/@numberingOrg) [Optional]</p> <p>(XPath TEXDyFinOrdChange/TFCXbody/TFCXitem/fabricProd/texCode/art/@numberingOrg) [Optional]</p> <p>- nota: <i>this attribute should be used either single or coupled with "listName" and "listVersion"</i></p> <p>(XPath TEXDyFinOrdChange/TFCXbody/TFCXitem/fabricComponent/note/@numberingOrg) [Optional]</p> <p>(XPath TEXDyFinOrdChange/TFCXbody/TFCXitem/fabMnfrOperation/note/@numberingOrg) [Optional]</p> <p>(XPath TEXDyFinOrdChange/TFCXbody/TFCXitem/refDoc/attachment/fileName/@numberingOrg) [Optional]</p> <p>(XPath TEXDyFinOrdChange/TFCXheader/thirdParty/id/@numberingOrg) [Optional]</p> <p>(XPath TEXDyFinOrdChange/TFCXbody/TFCXitem/fabricProd/texCode/added/@numberingOrg) [Optional]</p> <p>(XPath TEXDyFinOrdChange/TFCXbody/TFCXitem/fabricProd/pieceChain/packageN/@numberingOrg) [Optional]</p> <p>(XPath TEXDyFinOrdChange/TFCXbody/TFCXitem/fabricComponent/refDoc/docID/@numberingOrg) [Optional]</p> <p>- nota: <i>here can be specified whose document numbering is used (e.g.: Client, Supplier, ..)</i></p> <p>(XPath TEXDyFinOrdChange/TFCXbody/TFCXitem/fabricComponent/itemsList/itemIdentification/serialN/@numberingOrg) [Optional]</p> <p>- nota: <i>here the issuer of the serial number must be specified (when different from the Supplier)</i></p> <p>(XPath TEXDyFinOrdChange/TFCXheader/refDoc/attachment/fileName/@numberingOrg) [Optional]</p> <p>(XPath TEXDyFinOrdChange/TFCXbody/TFCXitem/fabricProd/piece/serialN/@numberingOrg) [Optional]</p> <p>- nota: <i>here the issuer of the serial number must be specified (when different from the Supplier)</i></p> <p>(XPath TEXDyFinOrdChange/TFCXbody/TFCXitem/fabricProd/piece/EPC/@numberingOrg) [Optional]</p> <p>(XPath TEXDyFinOrdChange/TFCXbody/TFCXitem/fabricComponent/itemsList/qualityLevel/@numberingOrg) [Optional]</p> <p>(XPath TEXDyFinOrdChange/TFCXbody/TFCXitem/fabricComponent/serialN/@numberingOrg) [Optional]</p> <p>- nota: <i>here the issuer of the serial number must be specified (when different from the Supplier)</i></p> <p>(XPath TEXDyFinOrdChange/terms/allowanceCharge/dtScheme/note/@numberingOrg) [Optional]</p> <p>(XPath TEXDyFinOrdChange/TFCXbody/TFCXitem/fabricProd/pieceChain/pieceCut/serialN/@numberingOrg) [Optional]</p> <p>- nota: <i>here the issuer of the serial number must be specified (when different from the Supplier)</i></p> <p>(XPath TEXDyFinOrdChange/TFCXbody/TFCXitem/fabricComponent/refDoc/season/@numberingOrg) [Optional]</p>
@packageContainerN	<p>reference usable to indicate the outer package containing this package</p> <p>- base type: string, max length: 40,</p> <p>(XPath TEXDyFinOrdChange/TFCXbody/TFCXitem/fabricProd/piece/packageN/@packageContainerN) [Optional]</p> <p>(XPath TEXDyFinOrdChange/TFCXbody/TFCXitem/fabricProd/pieceChain/packageN/@packageContainerN) [Optional]</p>
packageN	<p>serial number used to identify a transport package</p> <p>- base type: string, max length: 40,</p> <p>(XPath TEXDyFinOrdChange/TFCXbody/TFCXitem/fabricProd/piece/packageN) 0-1</p>

	- note: <i>here the transport package containing the piece can be identified</i> (XPath TEXDyFinOrdChange/TFCXbody/TFCXitem/fabricProd/ pieceChain/packageN) 0-1
@part	percent fraction of a total payment - base type: decimal, min inclusive: 1, max inclusive: 99, fraction digits: 2, (XPath TEXDyFinOrdChange/terms/insPayment/@part) [Required] - nota: <i>here the % value of each installment must be indicated</i>
pattern	pattern/design number of the product, when not included in the article code - base type: string, max length: 15, (XPath TEXDyFinOrdChange/TFCXbody/TFCXitem/fabricProd/ texCode/pattern) 0-1 (XPath TEXDyFinOrdChange/TFCXbody/TFCXitem/fabricComponent/texCode/patte rn) 0-1
payMode	way or means of payment - base type: string, cod. table: T2 http://www.ebiz.enea.it/moda-ml/repository/codelist/draft/gc_T2.xml (XPath TEXDyFinOrdChange/terms/insPayment/payMode) 0-1 (XPath TEXDyFinOrdChange/terms/payment/payMode) 0-1
payTerm	code specifying the terms or time by which the payment must be done - base type: string, cod. table: T1 http://www.ebiz.enea.it/moda-ml/repository/codelist/draft/gc_T1.xml (XPath TEXDyFinOrdChange/terms/payment/payTerm) 1-1 (XPath TEXDyFinOrdChange/terms/insPayment/payTerm) 1-1
payTermText	free text specifying the terms by which the payment must be done (time/mo de or means) - base type: string, max length: 250, (XPath TEXDyFinOrdChange/terms/insPayment/payTermText) 1-1 (XPath TEXDyFinOrdChange/terms/payment/payTermText) 1-1
pcTolerance	percent deviation tolerated on the value of a measurement (it must have a pl us or minus sign) - base type: decimal, min inclusive: 0, max inclusive: 100, total digits: 2, (XPath TEXDyFinOrdChange/TFCXbody/TFCXitem/fabMnfrOperation/texMachineS pecs/pcTolerance) 0-2 (XPath TEXDyFinOrdChange/TFCXbody/TFCXitem/fabricProd/ fabricSpecs/pcTolerance) 0-2
percCompos	fiber rate in the product composition - base type: decimal, min inclusive: 0, max inclusive: 100, fraction digits: 2, (XPath TEXDyFinOrdChange/TFCXbody/TFCXitem/fabricProd/ fabricCompos/percCompos) 1-9
person	name of the contact person within a Party - base type: string, max length: 40, (XPath TEXDyFinOrdChange/TFCXheader/thirdParty/person) 0-1 (XPath TEXDyFinOrdChange/TFCXheader/buyer/person) 0-1 (XPath TEXDyFinOrdChange/TFCXheader/subContractor/person) 0-1 (XPath TEXDyFinOrdChange/TFCXbody/TFCXitem/thirdParty/person) 0-1
@phone	phone number of the contact person within a Party - base type: string, max length: 35, (XPath TEXDyFinOrdChange/TFCXheader/thirdParty/person/@phone) [Optional] (XPath TEXDyFinOrdChange/TFCXheader/buyer/person/@phone) [Optional] (XPath TEXDyFinOrdChange/TFCXbody/TFCXitem/thirdParty/ person/@phone) [Optional] (XPath TEXDyFinOrdChange/TFCXheader/subContractor/person/@phone) [Optiona l]
pieceAllow	allowance required or accorded for the piece - base type: decimal, fraction digits: 2,

	(XPath TEXDyFinOrdChange/TFCXbody/TFCXitem/fabricProd/piece/pieceAllow) 0-1
pieceCutWidth	effective usable width of the fabric piece (for garment manufacturing) - base type: decimal, min inclusive: 0, fraction digits: 2, (XPath TEXDyFinOrdChange/TFCXbody/TFCXitem/fabricProd/piece/pieceCutWidth) 0-1
pieceInnWrap1	code specifying the type of inner wrapping/packing used for the fabric piece - base type: string, cod. table: T4 http://www.ebiz.enea.it/moda-ml/repository/codelist/draft/gc_T4.xml (XPath TEXDyFinOrdChange/TFCXbody/TFCXitem/fabricProd/piece/piecePack/pieceInnWrap1) 1-1 (XPath TEXDyFinOrdChange/TFCXbody/TFCXitem/fabricProd/pieceChain/piecePack/pieceInnWrap1) 1-1
pieceInnWrap2	code sub-specifying the type of inner wrapping/packing used for the fabric piece - base type: string, cod. table: T5 http://www.ebiz.enea.it/moda-ml/repository/codelist/draft/gc_T5.xml (XPath TEXDyFinOrdChange/TFCXbody/TFCXitem/fabricProd/piece/piecePack/pieceInnWrap2) 0-1 (XPath TEXDyFinOrdChange/TFCXbody/TFCXitem/fabricProd/pieceChain/piecePack/pieceInnWrap2) 0-1
pieceLength	length of the piece - base type: decimal, min inclusive: 0, fraction digits: 2, (XPath TEXDyFinOrdChange/TFCXbody/TFCXitem/fabricProd/pieceChain/pieceCut/pieceLength) 0-1 (XPath TEXDyFinOrdChange/TFCXbody/TFCXitem/fabricProd/piece/pieceLength) 0-1 (XPath TEXDyFinOrdChange/TFCXbody/TFCXitem/fabricProd/pieceChain/pieceLength) 0-1
pieceOutWrap	code specifying the type of outer wrapping or packing used for the fabric piece - base type: string, cod. table: T6 http://www.ebiz.enea.it/moda-ml/repository/codelist/draft/gc_T6.xml (XPath TEXDyFinOrdChange/TFCXbody/TFCXitem/fabricProd/pieceChain/piecePack/pieceOutWrap) 0-1 (XPath TEXDyFinOrdChange/TFCXbody/TFCXitem/fabricProd/piece/piecePack/pieceOutWrap) 0-1
piecePackText	free text specifying the type of wrapping or packing used for the fabric piece - base type: string, max length: 250, (XPath TEXDyFinOrdChange/TFCXbody/TFCXitem/fabricProd/pieceChain/piecePack/piecePackText) 1-1 (XPath TEXDyFinOrdChange/TFCXbody/TFCXitem/fabricProd/piece/piecePack/piecePackText) 1-1
pieceStatus	code used to describe the status of a fabric piece after the control - base type: string, cod. table: T52 http://www.ebiz.enea.it/moda-ml/repository/codelist/draft/gc_T52.xml (XPath TEXDyFinOrdChange/TFCXbody/TFCXitem/fabricProd/piece/pieceStatus) 0-1
pieceWeight	effective total weight of the fabric piece - base type: decimal, min inclusive: 0, fraction digits: 2, (XPath TEXDyFinOrdChange/TFCXbody/TFCXitem/fabricProd/piece/pieceWeight) 0-1 - note: <i>It is the net weight of the piece.</i> (XPath TEXDyFinOrdChange/TFCXbody/TFCXitem/fabricProd/pieceChain/pieceWeight) 0-1 (XPath TEXDyFinOrdChange/TFCXbody/TFCXitem/fabricProd/pieceChain/pieceCut/pieceWeight) 0-1
pieceWeightM	effective weight per metre of the fabric piece - base type: decimal, min inclusive: 0, fraction digits: 2,

	(XPath TEXDyFinOrdChange/TFCXbody/TFCXitem/fabricProd/piece/pieceWeightM) 0-1
pieceWidth	effective width of the fabric piece - base type: decimal, min inclusive: 0, fraction digits: 2, (XPath TEXDyFinOrdChange/TFCXbody/TFCXitem/fabricProd/piece/pieceWidth) 0-1 (XPath TEXDyFinOrdChange/TFCXbody/TFCXitem/fabricProd/pieceChain/pieceWidth) 0-1
postCode	code defining the postal zone - base type: string, max length: 10, (XPath TEXDyFinOrdChange/TFCXheader/buyer/postCode) 0-1 (XPath TEXDyFinOrdChange/TFCXheader/thirdParty/postCode) 0-1 (XPath TEXDyFinOrdChange/TFCXheader/subContractor/postCode) 0-1 (XPath TEXDyFinOrdChange/TFCXbody/TFCXitem/thirdParty/postCode) 0-1
price	unit price of the article, object or service specified - base type: decimal, min inclusive: 0, fraction digits: 4, (XPath TEXDyFinOrdChange/TFCXbody/TFCXitem/price) 0-1
@priceQualifier	type of price with reference to discount and taxes - base type: string, cod. table: NT20 http://www.ebiz.enea.it/moda-ml/repository/codelist/draft/gc_NT20.xml (XPath TEXDyFinOrdChange/TFCXbody/TFCXitem/price/@priceQualifier) [Optional] [Default= NET]
@progr	progressive number in the sequence - base type: positiveInteger, min inclusive: 1, (XPath TEXDyFinOrdChange/terms/transInfo/@progr) [Optional] - nota: <i>Indicates the position of the leg in a sequence of transport legs.</i>
qty	net quantity of the article or object correlated, qualified by the function of the document (ordering, delivering, ..) and by the context - base type: decimal, min inclusive: 0, fraction digits: 2, (XPath TEXDyFinOrdChange/TFCXbody/TFCXitem/fabricComponent/qty) 1-3 - note: <i>quantity to be consumed in the transformation. This element can have more instances only if the units of measure are different</i> (XPath TEXDyFinOrdChange/TFCXbody/TFCXitem/qty) 0-3
qualityLevel	the product quality level (first choice, second choice,...). - base type: string, (XPath TEXDyFinOrdChange/TFCXbody/TFCXitem/fabricComponent/itemsList/qualityLevel) 0-1
@role	Third Party role qualifier - base type: string, cod. table: NT2 http://www.ebiz.enea.it/moda-ml/repository/codelist/draft/gc_NT2.xml (XPath TEXDyFinOrdChange/TFCXheader/thirdParty/@role) [Required] (XPath TEXDyFinOrdChange/TFCXbody/TFCXitem/thirdParty/@role) [Required]
season	sale season; defined as: season (1 crt) + year (4 crt) - season: S/S=1 A/W=2 Spring=3 Summer=4 Autumn=5 Winter=6: for more than four seasons use alphabetic sequence: 1st season=A 2nd season=B etc.etc. - base type: string, max length: 15, (XPath TEXDyFinOrdChange/TFCXbody/TFCXitem/fabricComponent/refDoc/season) 0-1 - note: <i>here indicates the season to which the referenced document belongs</i> (XPath TEXDyFinOrdChange/TFCXbody/TFCXitem/fabMnfrOperation/refDoc/season) 0-1 - note: <i>here indicates the season to which the referenced document belongs</i> (XPath TEXDyFinOrdChange/TFCXheader/season) 0-1 (XPath TEXDyFinOrdChange/TFCXheader/refDoc/season) 0-1

	<p>- note: <i>here indicates the season to which the referenced document belongs</i> (XPath TEXDyFinOrdChange/TFCXbody/TFCXitem/refDoc/season) 0-1</p> <p>- note: <i>here indicates the season to which the referenced document belongs</i></p>
@sender	<p>qualifier that specifies the Party issuing of the document</p> <p>- base type: boolean, (XPath TEXDyFinOrdChange/TFCXbody/TFCXitem/thirdParty/@sender) [Optional]</p> <p>- nota: <i>This attribute is mandatory when the STYLESHEET must be used</i> (XPath TEXDyFinOrdChange/TFCXheader/subContractor/@sender) [Optional]</p> <p>- nota: <i>This attribute is mandatory when the STYLESHEET must be used</i> (XPath TEXDyFinOrdChange/TFCXheader/buyer/@sender) [Optional]</p> <p>- nota: <i>This attribute is mandatory when the STYLESHEET must be used</i> (XPath TEXDyFinOrdChange/TFCXheader/thirdParty/@sender) [Optional]</p> <p>- nota: <i>This attribute is mandatory when the STYLESHEET must be used</i></p>
serialN	<p>serial number used for the identification of a physical unit</p> <p>- base type: string, max length: 250, (XPath TEXDyFinOrdChange/TFCXbody/TFCXitem/fabricProd/piece/serialN) 0-9</p> <hr/> <p>AAAA-WARNING! - text not AVAILABLE n. 245 - In=en</p> <p>- note: <i>multiple values of serialN are allowed for different representations of the serial identifier of the same piece. Instances of serialN must differ at least for one value of numberingOrg and idQualifier.</i></p> <p>(XPath TEXDyFinOrdChange/TFCXbody/TFCXitem/fabricComponent/serialN) 0-unbounded</p> <p>- note: <i>it may be used to identify the pieces/chains that the Subcontractor must use for the commissioned work</i></p> <p>(XPath TEXDyFinOrdChange/TFCXbody/TFCXitem/fabricProd/pieceChain/serialN) 1-9</p> <p>- note: <i>multiple values of serialN are allowed in order to provide different representations of the serial identifier of the same piece chain. Different instances of serialN must differ at least for one value of idQualifier or numberingOrg</i></p> <p>(XPath TEXDyFinOrdChange/TFCXbody/TFCXitem/fabricProd/pieceChain/pieceCut/serialN) 1-9</p> <p>- note: <i>multiple values of serialN are allowed in order to provide different representations of the serial identifier of the same piece. Different instances of serialN must differ at least for one value of idQualifier or numberingOrg</i></p> <p>(XPath TEXDyFinOrdChange/TFCXbody/TFCXitem/fabricComponent/itemsList/itemIdentification/serialN) 1-9</p> <hr/> <p>AAAA-WARNING! - text not AVAILABLE n. 245 - In=en</p> <p>- note: <i>multiple values of serialN are allowed for different representations of the serial identifier of the same product unit. Instances of serialN must differ at least for one value of numberingOrg and idQualifier.</i></p>
@source	<p>party who has provided the data</p> <p>- base type: string, cod. table: NT12 http://www.ebiz.enea.it/moda-ml/repository/codelist/draft/gc_NT12.xml</p> <p>(XPath TEXDyFinOrdChange/TFCXbody/TFCXitem/fabricProd/fabricSpecs/specValue/@source) [Optional]</p> <p>(XPath TEXDyFinOrdChange/TFCXbody/TFCXitem/fabMnfrOperation/texMachineSpecs/specValue/@source) [Optional]</p>
specValue	<p>value requested for a property or a parameter that is measured</p> <p>- base type: decimal, (XPath TEXDyFinOrdChange/TFCXbody/TFCXitem/fabricProd/fabricSpecs/specValue) 0-1</p> <p>(XPath TEXDyFinOrdChange/TFCXbody/TFCXitem/fabMnfrOperation/texMachineSpecs/specValue) 0-1</p>
street	<p>street and building number identifying a location</p> <p>- base type: string, max length: 80, (XPath TEXDyFinOrdChange/TFCXbody/TFCXitem/thirdParty/street) 0-1 (XPath TEXDyFinOrdChange/TFCXheader/subContractor/street) 0-1 (XPath TEXDyFinOrdChange/TFCXheader/thirdParty/street) 0-1 (XPath TEXDyFinOrdChange/TFCXheader/buyer/street) 0-1</p>

subCountry	short name or code of the sub-country entity - base type: string, max length: 9, (XPath TEXDyFinOrdChange/TFCXheader/subContractor/subCountry) 0-1 (XPath TEXDyFinOrdChange/TFCXheader/thirdParty/subCountry) 0-1 (XPath TEXDyFinOrdChange/TFCXheader/buyer/subCountry) 0-1 (XPath TEXDyFinOrdChange/TFCXbody/TFCXitem/thirdParty/subCountry) 0-1
subDept	name or code of a contact department within a Party - base type: string, max length: 40, (XPath TEXDyFinOrdChange/TFCXheader/buyer/subDept) 0-1 (XPath TEXDyFinOrdChange/TFCXheader/subContractor/subDept) 0-1 (XPath TEXDyFinOrdChange/TFCXheader/thirdParty/subDept) 0-1 (XPath TEXDyFinOrdChange/TFCXbody/TFCXitem/thirdParty/subDept) 0-1
taxCategory	duty or tax or fee category - base type: string, cod. table: T62 http://www.ebiz.enea.it/moda-ml/repository/codelist/draft/gc_T62.xml (XPath TEXDyFinOrdChange/terms/allowanceCharge/dtScheme/taxCategory) 0-1 (XPath TEXDyFinOrdChange/TFCXbody/TFCXitem/dtScheme/taxCategory) 0-1
taxRate	duty or tax or fee percent rate - base type: string, (XPath TEXDyFinOrdChange/terms/allowanceCharge/dtScheme/taxRate) 0-1 (XPath TEXDyFinOrdChange/TFCXbody/TFCXitem/dtScheme/taxRate) 0-1
@taxType	duty or tax or fee type - base type: string, cod. table: T61 http://www.ebiz.enea.it/moda-ml/repository/codelist/draft/gc_T61.xml (XPath TEXDyFinOrdChange/TFCXbody/TFCXitem/dtScheme/@taxType) [Required] (XPath TEXDyFinOrdChange/terms/allowanceCharge/dtScheme/@taxType) [Required]
texJob	operation of a work cycle for fabric - base type: string, cod. table: T202 http://www.ebiz.enea.it/moda-ml/repository/codelist/draft/gc_T202.xml (XPath TEXDyFinOrdChange/TFCXbody/TFCXitem/fabMnfrOperation/texJob) 1-1
texJobTech	operation technology for fabric - base type: string, cod. table: T262 http://www.ebiz.enea.it/moda-ml/repository/codelist/draft/gc_T262.xml (XPath TEXDyFinOrdChange/TFCXbody/TFCXitem/fabMnfrOperation/texJobTech) 0-9
texMachine	machine used in an operation of a work cycle for fabric - base type: string, cod. table: T272 http://www.ebiz.enea.it/moda-ml/repository/codelist/draft/gc_T272.xml (XPath TEXDyFinOrdChange/TFCXbody/TFCXitem/fabMnfrOperation/texMachine) 0-1
texMachineParam	setting parameter of a machine used in an operation of a work cycle for fabric - base type: string, cod. table: T282 http://www.ebiz.enea.it/moda-ml/repository/codelist/draft/gc_T282.xml (XPath TEXDyFinOrdChange/TFCXbody/TFCXitem/fabMnfrOperation/texMachineSpecs/texMachineParam) 1-1
@TFCOtype	type of "Textile Dyeing-Finishing commission order". This element is mandatory to declare reworking of pieces. - base type: string, cod. table: NT24 http://www.ebiz.enea.it/moda-ml/repository/codelist/draft/gc_NT24.xml (XPath TEXDyFinOrdChange/@TFCOtype) [Required]

@TID	serial number wired into the RFID chip - base type: string, (XPath TEXDyFinOrdChange/TFCXbody/TFCXitem/fabricProd/piece/EPC/@TID) [Optional]
tolerance	deviation tolerated on the value of a measurement (it must have a plus or minus sign) - base type: decimal, (XPath TEXDyFinOrdChange/TFCXbody/TFCXitem/fabMnfrOperation/texMachineSpecs/tolerance) 0-2 (XPath TEXDyFinOrdChange/TFCXbody/TFCXitem/fabricProd/fabricSpecs/tolerance) 0-2
totFault	total number of faults: the 1st/2nd digit count the "Large faults", the 3rd/4th the "Medium faults" and the 5th/6th the "Small faults" - base type: positiveInteger, (XPath TEXDyFinOrdChange/TFCXbody/TFCXitem/fabricProd/piece/totFault) 0-1
transCondition	special condition of transport or special service requested to the Forwarder - base type: string, cod. table: T38 http://www.ebiz.enea.it/moda-ml/repository/codelist/draft/gc_T38.xml (XPath TEXDyFinOrdChange/terms/transInfo/transCondition) 0-3
transConditionText	free text description of the special condition of transport or special service requested to the Forwarder - base type: string, max length: 250, (XPath TEXDyFinOrdChange/terms/transInfo/transConditionText) 0-1
transMeans	means of transport, in general or referred to a specific leg - base type: string, cod. table: T40 http://www.ebiz.enea.it/moda-ml/repository/codelist/draft/gc_T40.xml (XPath TEXDyFinOrdChange/terms/transInfo/transMeans) 0-1
transMode	way of transport, in general or referred to the specified leg - base type: string, cod. table: T8 http://www.ebiz.enea.it/moda-ml/repository/codelist/draft/gc_T8.xml (XPath TEXDyFinOrdChange/terms/transInfo/transMode) 1-1
@transReason	reason for the transport - base type: string, cod. table: NT11 http://www.ebiz.enea.it/moda-ml/repository/codelist/draft/gc_NT11.xml (XPath TEXDyFinOrdChange/terms/transInfo/@transReason) [Optional]
@uid	unique element identifier within the xml document - base type: string, (XPath TEXDyFinOrdChange/TFCXbody/TFCXitem/fabricComponent/refDoc/attachment/@uid) [Optional] (XPath TEXDyFinOrdChange/TFCXbody/TFCXitem/refDoc/attachment/@uid) [Optional] (XPath TEXDyFinOrdChange/TFCXbody/TFCXitem/fabMnfrOperation/refDoc/attachment/@uid) [Optional] (XPath TEXDyFinOrdChange/TFCXheader/refDoc/attachment/@uid) [Optional]
@um	specification of the unit of measure - base type: string, cod. table: NT7 http://www.ebiz.enea.it/moda-ml/repository/codelist/draft/gc_NT7.xml (XPath TEXDyFinOrdChange/TFCXbody/TFCXitem/fabricProd/piece/pieceWeightM/@um) [Optional] [Default= GRM] (XPath TEXDyFinOrdChange/TFCXbody/TFCXitem/price/@um) [Optional] - nota: <i>Unit of measure of the product to which the price is referred (price per meter)</i> (XPath TEXDyFinOrdChange/TFCXbody/TFCXitem/fabMnfrOperation/texMachineSpecs/tolerance/@um) [Required]

	<p>(XPath TEXDyFinOrdChange/TFCXbody/TFCXitem/qty/@um) [Required] (XPath TEXDyFinOrdChange/TFCXbody/TFCXitem/fabMnfrOperation/texMachineSpecs/pcTolerance/@um) [Optional] - nota: <i>to be used when it has to be soecified if the declared percentage is by weight, volume, etc...</i> (XPath TEXDyFinOrdChange/TFCXbody/TFCXitem/fabMnfrOperation/texMachineSpecs/specValue/@um) [Optional] (XPath TEXDyFinOrdChange/TFCXbody/TFCXitem/fabricProd/piece/grossWeight/@um) [Required] (XPath TEXDyFinOrdChange/TFCXbody/TFCXitem/fabricProd/piece/pieceAllow/@um) [Required] (XPath TEXDyFinOrdChange/terms/allowanceCharge/@um) [Optional] (XPath TEXDyFinOrdChange/TFCXbody/TFCXitem/fabricProd/fabricSpecs/tolerance/@um) [Required] (XPath TEXDyFinOrdChange/terms/transInfo/netWeight/@um) [Required] (XPath TEXDyFinOrdChange/TFCXbody/TFCXitem/fabricProd/pieceChain/pieceWeight/@um) [Optional] [Default= KGM] (XPath TEXDyFinOrdChange/TFCXbody/TFCXitem/fabricProd/fabricSpecs/pcTolerance/@um) [Optional] - nota: <i>to be used when it has to be soecified if the declared percentage is by weight, volume, etc...</i> (XPath TEXDyFinOrdChange/TFCXbody/TFCXitem/fabricProd/pieceChain/pieceLength/@um) [Optional] [Default= MTR] (XPath TEXDyFinOrdChange/TFCXbody/TFCXitem/fabricProd/fabricSpecs/specValue/@um) [Optional] (XPath TEXDyFinOrdChange/TFCXbody/TFCXitem/fabricProd/pieceChain/pieceWidth/@um) [Optional] [Default= CMT] (XPath TEXDyFinOrdChange/TFCXbody/TFCXitem/fabricProd/fabricWidth/@um) [Optional] [Default= CMT] (XPath TEXDyFinOrdChange/terms/transInfo/grossWeight/@um) [Required] (XPath TEXDyFinOrdChange/TFCXbody/TFCXitem/fabricProd/piece/pieceWidth/@um) [Optional] [Default= CMT] (XPath TEXDyFinOrdChange/TFCXbody/TFCXitem/fabricProd/piece/pieceWeight/@um) [Optional] [Default= KGM] (XPath TEXDyFinOrdChange/TFCXbody/TFCXitem/fabricProd/piece/pieceCutWidth/@um) [Optional] [Default= CMT] (XPath TEXDyFinOrdChange/TFCXbody/TFCXitem/fabricComponent/qty/@um) [Required] (XPath TEXDyFinOrdChange/TFCXbody/TFCXitem/fabricProd/pieceChain/pieceCut/pieceLength/@um) [Optional] [Default= MTR] (XPath TEXDyFinOrdChange/TFCXbody/TFCXitem/fabricProd/pieceChain/pieceCut/pieceWeight/@um) [Optional] [Default= KGM] (XPath TEXDyFinOrdChange/TFCXbody/TFCXitem/fabricProd/piece/pieceLength/@um) [Optional] [Default= MTR]</p>
uri	<p>Uniform Resource Identifier (URI) that identifies the external object as an Internet resource - base type: normalizedString, (XPath TEXDyFinOrdChange/TFCXbody/TFCXitem/fabMnfrOperation/refDoc/attachment/externalReference/uri) 1-1 (XPath TEXDyFinOrdChange/TFCXbody/TFCXitem/fabricComponent/refDoc/attachment/externalReference/uri) 1-1 (XPath TEXDyFinOrdChange/TFCXbody/TFCXitem/refDoc/attachment/externalReference/uri) 1-1 (XPath TEXDyFinOrdChange/TFCXheader/refDoc/attachment/externalReference/uri) 1-1</p>
@useProfile	<p>use profile to which the present document if compliant if it was agreed by the parties. It is suggested a URI with reference to the firms or the URL of the profile. - base type: string, (XPath TEXDyFinOrdChange/@useProfile) [Optional]</p>

@VAT	<p>VAT rate or code (DEPRECATED, use dtScheme element)</p> <ul style="list-style-type: none"> - base type: string, cod. table: NT16 http://www.ebiz.enea.it/moda-ml/repository/codelist/draft/gc_NT16.xml (XPath TEXDyFinOrdChange/terms/allowanceCharge/@VAT) [Optional] (XPath TEXDyFinOrdChange/TFCXheader/thirdParty/@VAT) [Optional] (XPath TEXDyFinOrdChange/TFCXbody/TFCXitem/lineN/@VAT) [Optional] <p>- nota: <i>Deprecated, prefer dtScheme when available.</i></p> (XPath TEXDyFinOrdChange/TFCXbody/TFCXitem/thirdParty/@VAT) [Optional]
@version	<p>Dictionary version from which the instance has been created</p> <ul style="list-style-type: none"> - base type: string, cod. table: NT100 http://www.ebiz.enea.it/moda-ml/repository/codelist/draft/gc_NT100.xml (XPath TEXDyFinOrdChange/@version) [Optional] [Default= draft]

2.3 Suggested best practices

**TEXDyFinOrdChange/TFCXbody/TFCXitem/fabricProd/
piece/serialN (serial number used for the identification of a physical unit)**

This element might contain also codes for RFID devices.

TEXDyFinOrdChange/TFCXbody/TFCXitem/fabricComponent/itemsList/itemIdentification/serialN (serial number used for the identification of a physical unit)

in the case of garment with RFID for anti-counterfeiting, RFID EPCGlobal for logistics and NFC for the customer experience there should be three serial elements with pairs of attributes numberingOrg/idQualifier: "CL"/"RFID", "GS1"/"RFID", "CL"/"NFC".

2.4 Enumeration tables

List of enumeration tables used in the XML document. You can find the corresponding codes at:
<http://www.ebiz-tcf.eu/moda-ml/imple/moda-ml-draft.asp?lingua=en&pag=6>

NT100 - eBIZ TCFUpstream version
NT11 - transport causal
NT12 - data source
NT16 - VAT rate or code
NT18 - message function
NT2 - third party qualifier
NT20 - price qualifier
NT24 - Textile Dyeing-Finishing Order type
NT29 - format of a date
NT3 - data format
NT38 - colour test
NT4 - end use
NT5 - action code
NT6 - coding system owner/issuer
NT7 - unit of measure
T1 - terms of payment
T10 - ISO3166 - Country
T13 - CFM properties of fabric
T19 - fibre type
T2 - Modes of payment
T202 - type of job on fabric
T21 - type of document
T262 - type of job technology for fabric
T272 - machine type for fabric operation
T282 - parameter type for fabric operation
T3 - terms of delivery
T38 - transport conditions
T4 - fabric piece inner packing (wrapping) 1
T40 - type of transport means
T41 - type of Allowance or Charge
T44 - additional code type
T5 - fabric piece inner packing (wrapping) 2
T52 - fabric piece status
T6 - fabric piece outer packing
T61 - duty or tax or fee type
T62 - duty or tax or fee category
T8 - Modes of Transport
T9 - ISO4217 - Currency

ACKNOWLEDGEMENT



This action is part of the eBIZ-4.0 project, which has received funding from the European Union's COSME Programme (2014 - 2020).

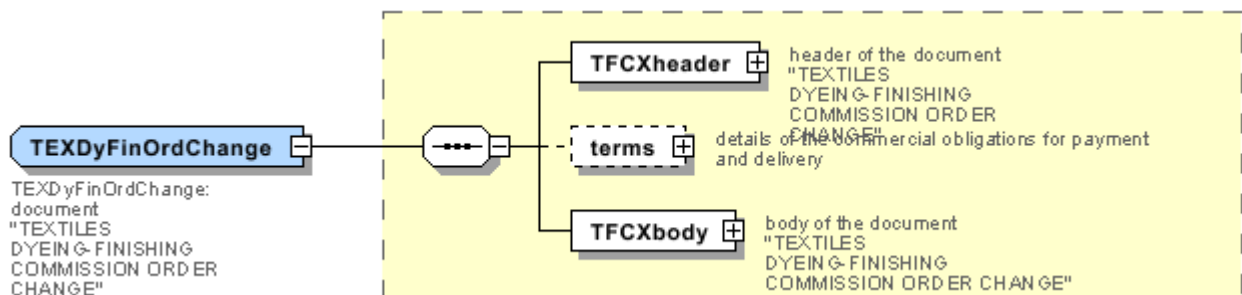
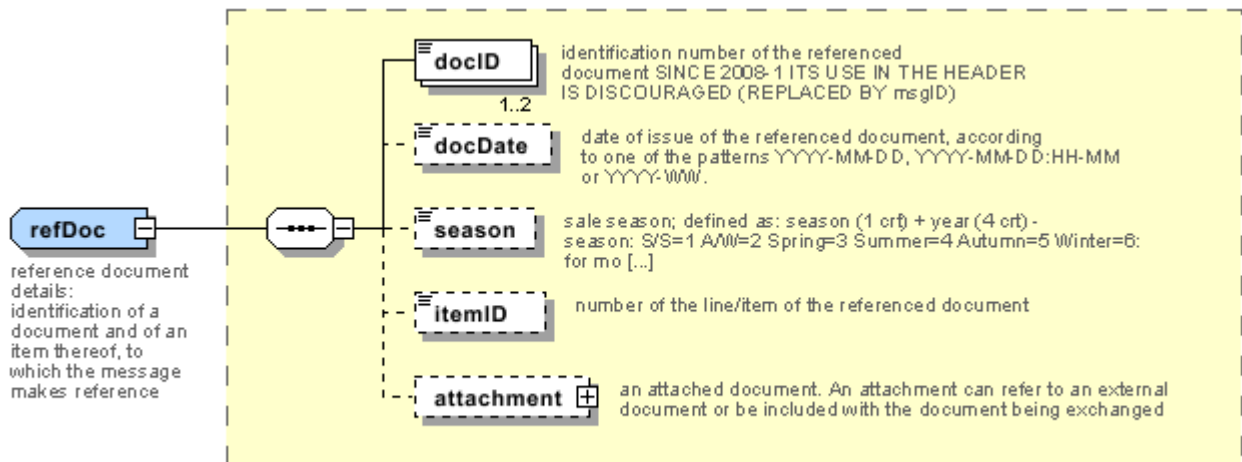
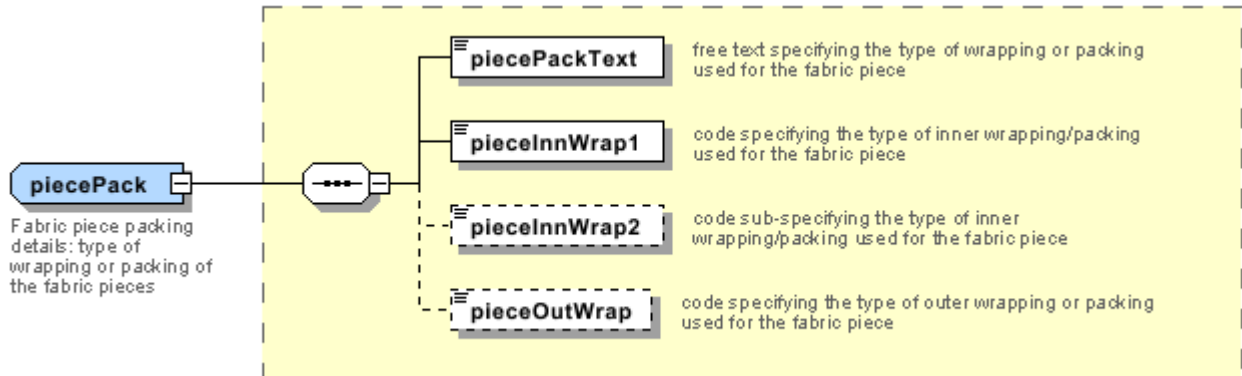
DISCLAIMER

The content of this document represents the views of the authors only and is their sole responsibility; it cannot be considered to reflect the views of the European Commission and/or the Executive Agency for Small and Medium-sized Enterprises (EASME) or any other body of the European Union.

The European Commission and the Agency do not accept any responsibility for use that may be made of the information it contains.

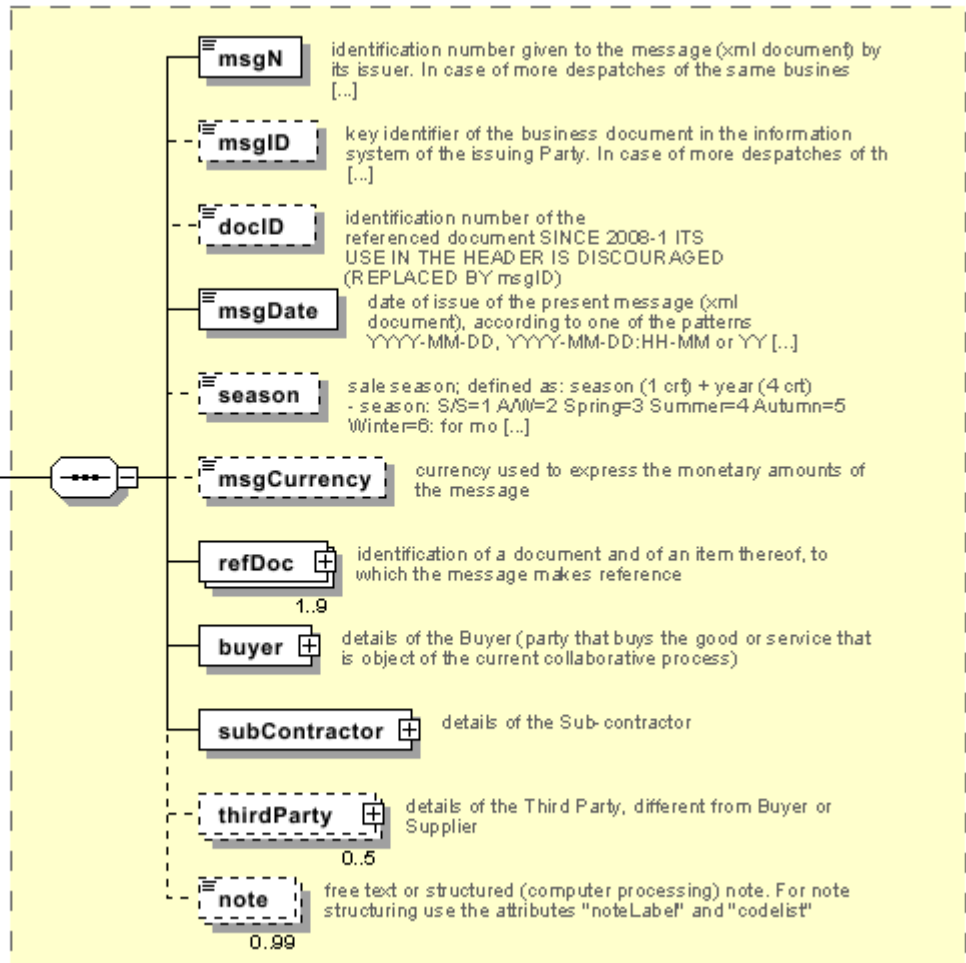
Annex A

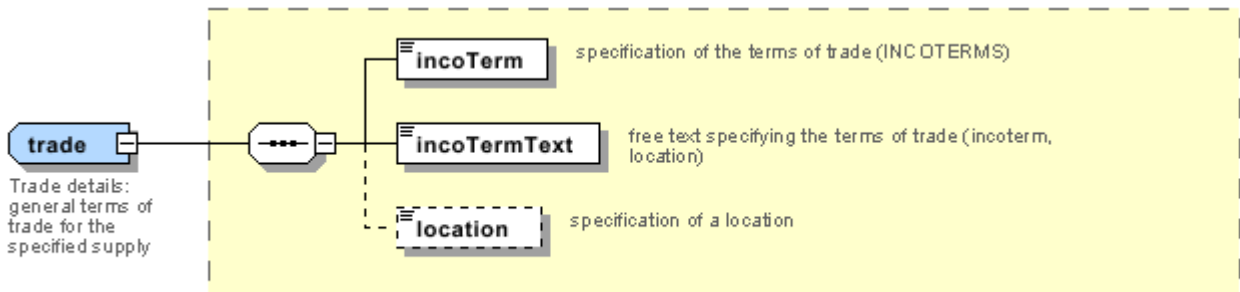
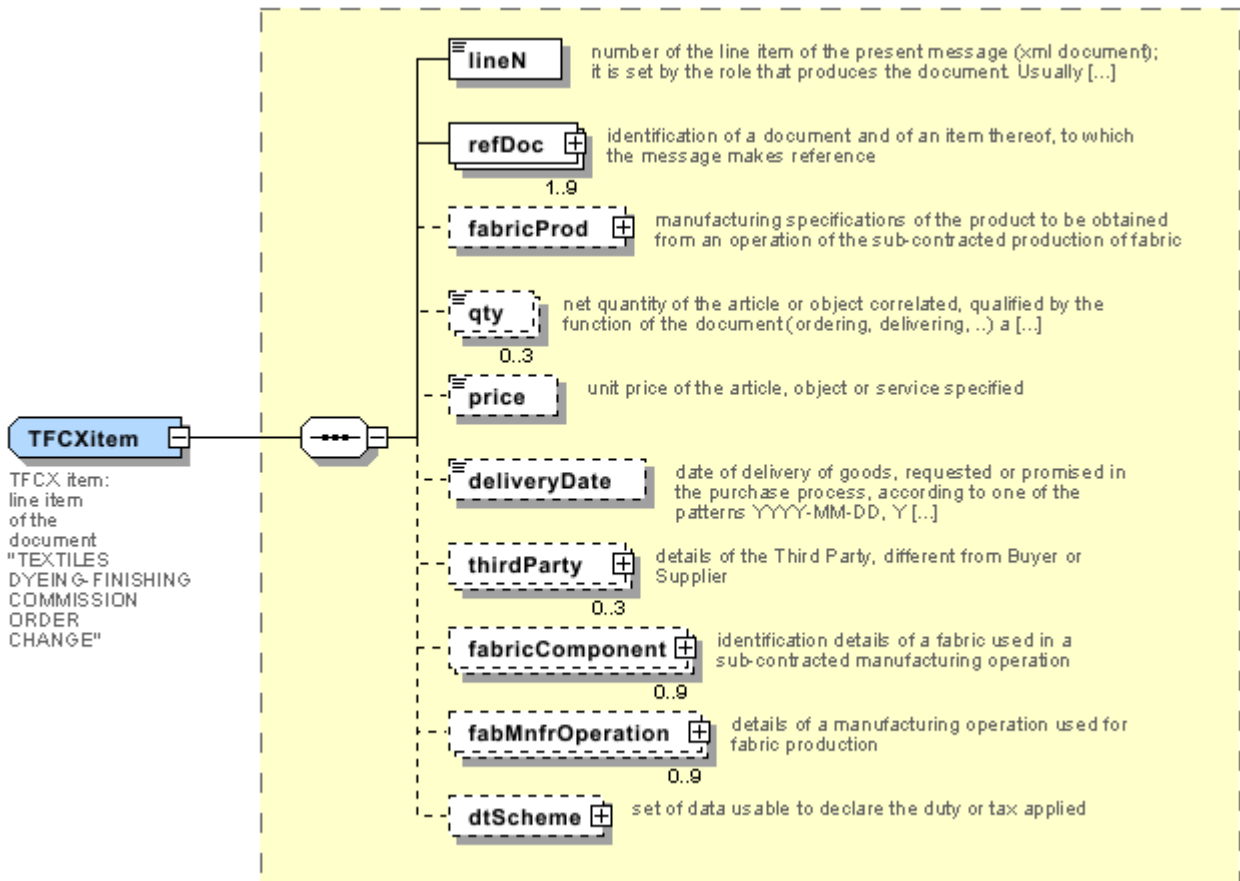
Representative images of the principal complex elements' structure.



TFCXheader

TFCX header:
header of the
document
"TEXTILES
DYEING-FINISHING
COMMISSION
ORDER CHANGE"





Annex B

NT100 - eBIZ TCFUpstream version

dictionary version

Agency name: eBIZ

tabella cod.: NT100

File codes list (Generic code): http://www.ebiz.enea.it/moda-ml/repository/codelist/draft/gc_NT100.xml

Code	Description	Adoption note	Date of insertion
2013-1	v2013-1		01/07/2013
2018-1	v2018-1		04/11/2018
draft	draft		08/09/2017

NT11 - transport causal

reason for the transport

Agency name: eBIZ

tabella cod.: NT11

File codes list (Generic code): http://www.ebiz.enea.it/moda-ml/repository/codelist/draft/gc_NT11.xml

Code	Description	Adoption note	Date of insertion
FOC	free of charge		
FRW	return from re-works		
FST	return from storage		
FWW	return from view		
FWK	return from works		
IST	in storage		
NWK	return non-worked		
RJC	return from rejection		
SEL	to sell		
STO	to storage		
VEW	to view		
WRK	to works		

NT12 - data source

party who has provided the data

Agency name: eBIZ

tabella cod.: NT12

File codes list (Generic code): http://www.ebiz.enea.it/moda-ml/repository/codelist/draft/gc_NT12.xml

Code	Description	Adoption note	Date of insertion
AC	internal test		
CO	external test		
CV	test after steaming		

NT16 - VAT rate or code

VAT rate or code (DEPRECATED, use dtScheme element)

tabella cod.: NT16

File codes list (Generic code): http://www.ebiz.enea.it/moda-ml/repository/codelist/draft/gc_NT16.xml

NT18 - message function

function performed by the present message with regards to the transmission

Agency name: eBIZ

tabella cod.: NT18

File codes list (Generic code): http://www.ebiz.enea.it/moda-ml/repository/codelist/draft/gc_NT18.xml

Code	Description	Adoption note	Date of insertion
CA	delete this document		01/07/2013
CP	copy		
OR	original		
RC	re-transmission for data correction		
RT	re-transmission		

NT2 - third party qualifier

Third Party role qualifier

Agency name: eBIZ

tabella cod.: NT2

File codes list (Generic code): http://www.ebiz.enea.it/moda-ml/repository/codelist/draft/gc_NT2.xml

Code	Description	Adoption note	Date of insertion
AG	Sales Agent		
CO	Quality Controller		
DC	Response to		
DF	Invoicee		
DI	Copy to (CC)		28/10/2014
DM	Consignee		
DP	Consignment address (Delivery Party)		
IM	Importer		
OR	Originator		10/09/2014
SP	Forwarder		
TX	Tax Representative		

NT20 - price qualifier

type of price with reference to discount and taxes

Agency name: eBIZ

tabella cod.: NT20

File codes list (Generic code): http://www.ebiz.enea.it/moda-ml/repository/codelist/draft/gc_NT20.xml

Code	Description	Adoption note	Date of insertion
GET	gross excluding taxes		
GIT	gross including taxes		
NET	net excluding taxes		
NIT	net including taxes		

NT24 - Textile Dyeing-Finishing Order type

type of "Textile Dyeing-Finishing commission order" or its Change.

Agency name: eBIZ

tabella cod.: NT24

File codes list (Generic code): http://www.ebiz.enea.it/moda-ml/repository/codelist/draft/gc_NT24.xml

Code	Description	Adoption note	Date of insertion
DYE	dyeing		
DYERC	dyeing reworking paid by customer		01/07/2013
DYERS	dyeing reworking paid by supplier		01/07/2013
FIN	finishing		
FINRC	finishing reworking paid by customer		01/07/2013
FINRS	finishing reworking paid by supplier		01/07/2013

NT29 - format of a date

format used for the date

Agency name: eBIZ

tabella cod.: NT29

File codes list (Generic code): http://www.ebiz.enea.it/moda-ml/repository/codelist/draft/gc_NT29.xml

Code	Description	Adoption note	Date of insertion
D	YYYY-MM-DD		
M	YYYY-MM-DD:HH-MM		
W	YYYY-WW		

NT3 - data format

format of a string according to a customized User rule (local rule)

Agency name: eBIZ

tabella cod.: NT3

File codes list (Generic code): http://www.ebiz.enea.it/moda-ml/repository/codelist/draft/gc_NT3.xml

Code	Description	Adoption note	Date of insertion
EN4	GS1-GLN		01/07/2013
MD	mutually agreed		

NT38 - colour test

specification of colour test before the operation

tabella cod.: NT38

File codes list (Generic code): http://www.ebiz.enea.it/moda-ml/repository/codelist/draft/gc_NT38.xml

Code	Description	Adoption note	Date of insertion
1	only colour test		
2	with colour test		

NT4 - end use

specifies the final use of the product

Agency name: eBIZ

tabella cod.: NT4

File codes list (Generic code): http://www.ebiz.enea.it/moda-ml/repository/codelist/draft/gc_NT4.xml

Code	Description	Adoption note	Date of insertion
PC	test piece		
PR	production		
SA	Sample		10/09/2014
SC	samples card		
TI	patch		
TP	(test cut)		

NT5 - action code

action performed by the present line upon the referenced document line

Agency name: eBIZ

tabella cod.: NT5

File codes list (Generic code): http://www.ebiz.enea.it/moda-ml/repository/codelist/draft/gc_NT5.xml

Code	Description	Adoption note	Date of insertion
A	CANCELLED		
C	CONFIRMED		
N	NEW ORDER LINE (created by an order change)		
R	PROVISIONAL CONFIRMATION		
S	DEFINITIVE CONFIRMATION		
SA	suspension accepted		

SN	suspension not accepted		
SR	suspension request		
V	AMENDED		

NT6 - coding system owner/issuer

code specifying the organisation who has created or owns the coding or numbering system

Agency name: eBIZ

tabella cod.: NT6

File codes list (Generic code): http://www.ebiz.enea.it/moda-ml/repository/codelist/draft/gc_NT6.xml

Code	Description	Adoption note	Date of insertion
CL	Customer/buyer		
CO	Quality Controller		
EN	GS1 (ex-EAN International)		
ES	e-Stockflow		
FO	Supplier		
GS	GS1		01/07/2013
MF	VAT identifier		
ML	Moda-ML		
SP	Service Provider		

NT7 - unit of measure

specification of the unit of measure, it is a sub set of table Unit of Measure Code - UN/ECE REC 20 delivered by United Nations Economic Commission for Europe (UN/ECE)

Agency name: eBIZ / UN/ECE

tabella cod.: NT7

File codes list (Generic code): http://www.ebiz.enea.it/moda-ml/repository/codelist/draft/gc_NT7.xml

Other link: <http://docs.oasis-open.org/ubl/os-UBL-2.1/cl/gc/default/UnitOfMeasureCode-2.1.gc#>

Code	Description	Adoption note	Date of insertion
CMK	square centimetre		20/12/2017
CMQ	cubic centimetre		20/12/2017
CMT	centimetre		
CNE	centiNewton		
CO2TON	ton of CO2		10/09/2014

COUPLES	couples		
DMQ	cubic decimetre		
E37	pixel		11/04/2018
GRM	gram		
HUR	hour		
INH	inch		
KGM	kilogram		
KMT	kilometer		
KWH	kilowatthours		10/09/2014
LBR	pound		
MIN	minute		
MMK	centimetre		20/12/2017
MMK	square millimetre		20/12/2017
MTK	square metre		20/12/2017
MTQ	cubic metre		
MTR	metre		
NMB	numero		
ONZ	ounce		
P1	percent		
PPM	parts per milion		
PZ	piece		
RPM	rounds per metre		
YRD	yard		

T1 - terms of payment

code specifying the terms or time by which the payment must be done

Agency name: eBIZ

tabella cod.: T1

File codes list (Generic code): http://www.ebiz.enea.it/moda-ml/repository/codelist/draft/gc_T1.xml

Code	Description	Adoption note	Date of insertion
ANTICIP	PAYMENT IN ADVANCE		
BLCOLLECT/120D	BILL OF LADING 120 DD		
BLCOLLECT/30D	BILL OF LADING 30 DD		
BLCOLLECT/60D	BILL OF LADING 60 DD		

BLCOLLECT/90D	BILL OF LADING 90 DD		
CASH	PAYMENT ON DELIVERY		
CASHINV	PAYMENT ON RECEIPT OF INVOICE		
CREDOC/0D	DOCUMENTARY CREDIT FOR PAYM. AT SIGHT		
CREDOC/120	DOCUMENTARY CREDIT FOR PAYM. AT 120 DD		
CREDOC/150	DOCUMENTARY CREDIT FOR PAYM. AT 150 DD		
CREDOC/180	DOCUMENTARY CREDIT FOR PAYM. AT 180 DD		
CREDOC/30D	DOCUMENTARY CREDIT FOR PAYM. AT 30 DD		
CREDOC/45D	DOCUMENTARY CREDIT FOR PAYM. AT 45 DD		
CREDOC/60	DOCUMENTARY CREDIT FOR PAYM. AT 60 DD		
CREDOC/90	DOCUMENTARY CREDIT FOR PAYM. AT 90 DD		
DEL/10	PAYMENT AT 10 DD AFTER DELIVERY		
DOCOLLECT/120D	DOCUMENTARY COLLECTION AT 120 DD		
DOCOLLECT/30D	DOCUMENTARY COLLECTION AT 30 DD		
DOCOLLECT/60D	DOCUMENTARY COLLECTION AT 60 DD		
DOCOLLECT/90D	DOCUMENTARY COLLECTION AT 90 DD		
INV/120D	PAYMENT AT 120 DD AFTER RECEIPT OF INVOICE		
INV/150D	PAYMENT AT 150 DD AFTER RECEIPT OF INVOICE		
INV/180D	PAYMENT AT 180 DD AFTER RECEIPT OF INVOICE		
INV/30D	PAYMENT AT 30 DD AFTER RECEIPT OF INVOICE		
INV/45D	PAYMENT AT 45 DD AFTER RECEIPT OF INVOICE		
INV/60D	PAYMENT AT 60 DD AFTER RECEIPT OF INVOICE		
INV/90D	PAYMENT AT 90 DD AFTER RECEIPT OF INVOICE		
INVULTIMO	PAYMENT AT END MONTH RECEIPT INVOICE		
INVULTIMO/10D	PAYMENT 10 DD AFTER END MONTH RECEIPT INVOICE		
INVULTIMO/120D	PAYMENT 120 DD AFTER END MONTH RECEIPT INVOICE		
INVULTIMO/150D	PAYMENT 150 DD AFTER END MONTH RECEIPT INVOICE		
INVULTIMO/180D	PAYMENT 180 DD AFTER END MONTH RECEIPT INVOICE		
INVULTIMO/240D	PAYMENT 240 DD AFTER END MONTH RECEIPT INVOICE		
INVULTIMO/30D	PAYMENT 30 DD AFTER END MONTH RECEIPT INVOICE		
INVULTIMO/45D	PAYMENT 45 DD AFTER END MONTH RECEIPT INVOICE		
INVULTIMO/60D	PAYMENT 60 DD AFTER END MONTH RECEIPT INVOICE		
INVULTIMO/90D	PAYMENT 90 DD AFTER END MONTH RECEIPT INVOICE		
NOPAY	WITHOUT PAYMENT		
RECREDOC/0D	IRREVOC. DOCUMENTARY CREDIT FOR PAYM. AT SIGHT		

RECREDOC/120D	IRREVOC. DOCUMENTARY CREDIT FOR PAYM. AT 120 DD		
RECREDOC/150D	IRREVOC. DOCUMENTARY CREDIT FOR PAYM. AT 150 DD		
RECREDOC/180D	IRREVOC. DOCUMENTARY CREDIT FOR PAYM. AT 180 DD		
RECREDOC/30D	IRREVOC. DOCUMENTARY CREDIT FOR PAYM. AT 30 DD		
RECREDOC/45D	IRREVOC. DOCUMENTARY CREDIT FOR PAYM. AT 45 DD		
RECREDOC/60D	IRREVOC. DOCUMENTARY CREDIT FOR PAYM. AT 60 DD		
RECREDOC/90D	IRREVOC. DOCUMENTARY CREDIT FOR PAYM. AT 90 DD		
ULTIMO	PAYMENT BY END MONTH OF DELIVERY		
ULTIMO/10	PAYMENT AT 10 DD AFTER END MONTH OF DELIVERY		

T10 - ISO3166 - Country

code of the nation

Agency name: ISO

tabella cod.: T10

File codes list (Generic code): http://www.ebiz.enea.it/moda-ml/repository/codelist/draft/gc_T10.xml

Table not printed: there are 239 elements, more than the maximum specified for printing: 99.

T13 - CFM properties of fabric

code of the physical or mechanical parameter used to define a "technical characteristic of the fabric" (see Fabric technical sheet)

tabella cod.: T13

File codes list (Generic code): http://www.ebiz.enea.it/moda-ml/repository/codelist/draft/gc_T13.xml

Code	Description	Adoption note	Date of insertion
CMA	resistance to pilling (UNI.E.1512434)		
CMB	seam slippage - warp (NFG7117)		
CMC	seam slippage - weft (NFG7117)		
CMD	breaking strength - warp (ISO 1394-1)		
CME	breaking strength - weft (ISO 1394-1)		
CMF	resistance to abrasion (EN 12947)		
CMH	tear strength (ISO 9290)		
CMI	crease recovery (ISO 9867)		
CMJ	elongation - warp (BS 4294/68)		
CMK	elongation - weft (BS 4294/68)		

CML	tear resistance - warp		
CMM	tear resistance - weft		
CMN	resistance to bending		
CMP	spray test		
SLA	colour fastness to light (ISO 105-B02)		
SLB	colour fastness to washing (ISO 105-C06)		
SLC	colour fastness to dry cleaning (ISO 105-D01)		
SLD	colour fastness to spotting water (ISO 105-E07)		
SLG	colour fastness to alkaline perspiration (ISO 105-E04)		
SLH	colour fastness to acid perspiration (ISO 105-E04)		
SLI	colour fastness to dry rubbing (ISO 105-X12)		
SLJ	colour fastness to wet rubbing (ISO 105-X12)		
SLK	colour fastness to dry ironing (ISO 105-X11)		
SLM	colour fastness to wet ironing (ISO 105-X11)		
SLW	colour fastness to water (ISO 105-E01)		
SLX	colour fastness to Xenolight		
SLZ	colour fastness to rubbing org. Solv. (ISO 105-D02)		
STA	dimensional stability to steaming press - length (DIN 53894-2)		
STB	dimensional stability to steaming press - width (DIN 53894-2)		
STC	dimensional stability to washing - length (ISO 5077+6330)		
STD	dimensional stability to washing - width (ISO 5077+6330)		
STE	dimensional stability to dry cleaning - length (ISO 3175)		
STF	dimensional stability to dry cleaning - width (ISO 3175)		

T19 - fibre type

type of fibre used in a textile product

Agency name: eBIZ

tabella cod.: T19

File codes list (Generic code): http://www.ebiz.enea.it/moda-ml/repository/codelist/draft/gc_T19.xml

Code	Description	Adoption note	Date of insertion
AB	abaca		20/08/2018
AC	acetate		
AF	other fibres		
AG	alginic fibre		

AL	alfa		20/08/2018
CA	hemp		
CC	coir (coconut)		20/08/2018
CL	chlorofibre		
CO	cotton		
CU	cuprous		
EA	elastan		
EL	Elastodiene		20/08/2018
FL	fluorofibre		
GI	broom		20/08/2018
GL	textile glass		
HA	hair		20/08/2018
HE	henequen		20/08/2018
HL	mixed linen		
HL	cotton linen union		20/08/2018
JU	jute		
KE	kenaf		20/08/2018
KP	kapoc		20/08/2018
LI	linen		
LY	lyocell		20/08/2018
MA	modacrylic		
MD	modal		
ME	metallized		
MG	maguey		20/08/2018
PA	polyamide		
PB	polyureic		
PC	acrylic		
PE	polyethylene		
PI	paper		20/08/2018
PL	polyester		
PM	polyimide		
PP	polypropylene		
PR	proteic		
PU	polyurethane		
RA	mamie		20/08/2018

SE	silk		
SI	sisal		20/08/2018
SN	sun		20/08/2018
TA	triacetate		
TR	textile residues or unspecified composition		20/08/2018
TV	trivinyll		
VI	viscose		
VY	vinylal		
WA	angora		
WB	beaver		20/08/2018
WC	cashgora		
WG	vicuna		
WK	camel		
WL	llama		
WM	mohair		
WN	lapin		20/08/2018
WO	wool		
WP	alpaca		
WS	cashmere		
WT	Oteer		20/08/2018
WU	guanaco		
WV	virgin wool		
WY	yack		

T2 - Modes of payment

way or means of payment

Agency name: eBIZ

tabella cod.: T2

File codes list (Generic code): http://www.ebiz.enea.it/moda-ml/repository/codelist/draft/gc_T2.xml

Code	Description	Adoption note	Date of insertion
BB	bank transfer		
IA	collection through Agent		
IS	collection through Forwarder		
RB	bank receipt		

RD	remittance		
SW	bank SWIFT		
TR	bank draft		

T202 - type of job on fabric

operation of a work cycle for fabric

Agency name: eBIZ

tabella cod.: T202

File codes list (Generic code): http://www.ebiz.enea.it/moda-ml/repository/codelist/draft/gc_T202.xml

Code	Description	Adoption note	Date of insertion
50	to warp		
51	to weave		
52	to dye		
53	to print		
54	to finish		
56	stain resistant		
57	decolorizing		
58	flame resistant		
59	waterproofing		
60	protolan		
61	lavatex		
62	chlorination		
63	bleaching		
64	caustic soda treatment		
65	thermo-setting		
66	lucido superjet		
67	natural stretch		
68	softisuper		
69	stragar		
70	anti-crease		
71	anti-pilling		
72	anti-slipping		
73	anti-static		
80	printing preparation		01/07/2013

81	check		01/07/2013
99	other, see note if any		01/07/2013

T21 - type of document

type or class to which the referenced document belongs

Agency name: eBIZ

tabella cod.: T21

File codes list (Generic code): http://www.ebiz.enea.it/moda-ml/repository/codelist/draft/gc_T21.xml

Code	Description	Adoption note	Date of insertion
BOR	blanket order		01/02/2018
CAT	Price catalogue - tech sheet		
CEO	Certificate of origin		13/04/2018
CER	Certificate		13/04/2018
COC	colour card		
CRN	Credit note		08/09/2017
CTO	Checking order		01/07/2013
CTR	Contract		
CXF	CxF3 file		01/07/2013
DAD	Darn order		
DDT	ddt		
DEA	Despatch advise		
DER	Despatch request		
DR	Document Request		02/12/2014
FOR	Forecast		02/12/2014
GSO	Garment stock offer		
GSX	Garment stock offer change		
INV	Invoice		
KCC	Knitting-Clothing Commission Order		02/12/2014
KCI	Garment in Work Inventory Report		02/12/2014
M2M	Made to Measure Production Order		02/12/2014
MAS	Master marker		
MCI	Visual merchandising instruction		13/04/2018
OCH	Order change		
OFF	Offer		

ORD	Purchase order		
ORP	Order response		
OSR	order status request		
OSS	Offer status		02/12/2014
OST	Order status		
OUR	our reference		
QR	Quality Report		02/12/2014
RAI	Raw Material in Work Inventory Report		02/12/2014
RDC	Raw dyeing commission order		
RDH	Raw dyeing order change		
RDR	Raw dyeing order response		
REA	Receiving advise		
REQ	Request for Offer		
RET	Return		02/12/2014
RSC	Spinning commission order		
RSH	Spinning order change		
RSR	Spinning order response		
SCL	process sheet		
TFC	Textile dyeing-finishing commission order		
TFX	Textile Dyeing-Finishing Order Change		02/12/2014
TPC	Textile printing commission order		
TPX	Textile Printing Order Change		02/12/2014
TWI	Textile in work inventory		
VMI	visual merchandising instructions		01/02/2018
WAC	Warping commission order		
WEC	Weaving commission order		
YDC	Yarn dyeing commission order		
YDH	Yarn dyeing order change		
YDR	Yarn dyeing order response		
YTC	Twisting commission order		
YWI	Yarn in work inventory		

T262 - type of job technology for fabric

operation technology for fabric

Agency name: eBIZ

tabella cod.: T262

File codes list (Generic code): http://www.ebiz.enea.it/moda-ml/repository/codelist/draft/gc_T262.xml

Code	Description	Adoption note	Date of insertion
50	fractional warping		
51	sectional warping		
52	samples warping		
53	air-jet loom		
54	projectile loom		
55	negative rapier loom		
56	positive rapier loom		
57	verdol		
58	electronic jacquard		
59	trough dyeing		
60	jet dyeing		
61	pad dyeing		
62	overflow dyeing		
63	jiggers dyeing		
64	beam dyeing		
68	wet finishing		
69	dry finishing		
70	direct		
71	discharge printing		
72	reserve printing		
73	thermo printing		
74	devorè		
80	cylinder printing		01/07/2013
81	inkjet printing		01/07/2013
99	other, see note if any		01/07/2013

T272 - machine type for fabric operation

machine used in an operation of a work cycle for fabric

Agency name: eBIZ

tabella cod.: T272

File codes list (Generic code): http://www.ebiz.enea.it/moda-ml/repository/codelist/draft/gc_T272.xml

Code	Description	Adoption note	Date of insertion
01	DORNIER		
02	SULZER		
03	TSUD DAKOMA		
04	VAMATEX		
05	SOMET		
06	N. VAMATEX		
07	BONAS		
08	GROSSE		
09	STAUBLI		
99	other, see note if any		01/07/2013

T282 - parameter type for fabric operation

setting parameter of a machine used in an operation of a work cycle for fabric

Agency name: eBIZ

tabella cod.: T282

File codes list (Generic code): http://www.ebiz.enea.it/moda-ml/repository/codelist/draft/gc_T282.xml

Code	Description	Adoption note	Date of insertion
01	reed width		
02	number of blades		
03	number of warp beams		
04	laid-in selvedge		
05	written selvedge		
99	other, see note if any		01/07/2013

T3 - terms of delivery

specification of the terms of trade (INCOTERMS)

Agency name: Incoterms

tabella cod.: T3

File codes list (Generic code): http://www.ebiz.enea.it/moda-ml/repository/codelist/draft/gc_T3.xml

Code	Description	Adoption note	Date of insertion
CFR	COST AND FREIGHT (named port of destination)		
CIF	COST, INSURANCE AND FREIGHT (named port of destination)		
CIP	CARRIAGE AND INSURANCE PAID (named place of destination)		
CP T	CARRIAGE PAID (named place of destination)		
DAF	DELIVERED AT FRONTIER (named place)	according to Incoterms® 2010 it is obsolete	08/12/2017
DAP	Delivered at Place of destination (named place of destination)	according to Incoterms® 2010	08/12/2017
DAT	Delivered at Terminal (named place of destination)	according to Incoterms® 2010	08/12/2017
DDP	DELIVERED DUTY PAID (named place of destination)		
DDU	DELIVERED DUTY UNPAID (named place of destination)	according to Incoterms® 2010 it is obsolete, use DAP	08/12/2017
DEQ	DELIVERED EX-QUAY (named port of destination)	according to Incoterms® 2010 it is obsolete	08/12/2017
DES	DELIVERED EX-SHIP (named port of destination)	according to Incoterms® 2010 it is obsolete	08/12/2017
EXW	EX WORKS (named place)		
FAS	FREE ALONGSIDE SHIP (named port of shipment)		
FC A	FREE CARRIER (named place)		
FOB	FREE ON BOARD (named port of shipment)		

T38 - transport conditions

special condition of transport or special service requested to the Forwarder

tabella cod.: T38

File codes list (Generic code): http://www.ebiz.enea.it/moda-ml/repository/codelist/draft/gc_T38.xml

Code	Description	Adoption note	Date of insertion
------	-------------	---------------	-------------------

ACC	arrange customs clearance		
CAL	Carrier loads		
CAU	Carrier unloads		
CMR	CMR carnet		
FFN	freight forwarders national conditions		
FLD	special agreement for full loading		
NCC	do not arrange customs clearance		
PPB	packaging paid by Buyer		
PPS	packaging paid by Supplier		
PRO	proof of delivery		
RFR	return container free		
RPC	return container paid by Customer		
RPS	return container paid by Supplier		
SHL	Shipper loads		
SHU	Consignee unloads		

T4 - fabric piece inner packing (wrapping) 1

code specifying the type of inner wrapping/packing used for the fabric piece

Agency name: eBIZ

tabella cod.: T4

File codes list (Generic code): http://www.ebiz.enea.it/moda-ml/repository/codelist/draft/gc_T4.xml

Code	Description	Adoption note	Date of insertion
A	Folded, whole width		
B	Folded, doubled		
C	Folded, tube products		
D	Spoiled, whole width		
E	Spoiled, doubled, pli: left		
F	Spoiled, doubled, pli: right		
G	Rolled, whole width, single item		
H	Rolled, whole width, several items		
I	Rolled, doubled		
J	Rolled, tube products		

T40 - type of transport means

means of transport, in general or referred to a specific leg

Agency name: eBIZ

tabella cod.: T40

File codes list (Generic code): http://www.ebiz.enea.it/moda-ml/repository/codelist/draft/gc_T40.xml

Code	Description	Adoption note	Date of insertion
AIR	aircraft		
SHP	ship		
TRU	truck		
VAN	van		

T41 - type of Allowance or Charge

coded specification of an Allowance or Charge (elaborated from UNECE 4465)

Agency name: eBIZ

tabella cod.: T41

File codes list (Generic code): http://www.ebiz.enea.it/moda-ml/repository/codelist/draft/gc_T41.xml

Code	Description	Adoption note	Date of insertion
1	Agreed settlement		19/08/2018
10	Costs for draft		19/08/2018
11	Bank charges	DEPRECATED, use C BK	19/08/2018
12	Agent commission		19/08/2018
14	Wrong delivery		19/08/2018
15	Goods returned to agent		19/08/2018
16	Goods partly returned		19/08/2018
17	Transport damage		19/08/2018
19	Trade discount		19/08/2018

2	Below specification goods		19/08/2018
20	Deduction for late delivery	DEPRECATED, use C WB	19/08/2018
21	Advertising costs		19/08/2018
22	Customs duties		19/08/2018
23	Telephone and postal costs		19/08/2018
24	Repair costs		19/08/2018
25	Attorney fees		19/08/2018
26	Taxes		19/08/2018
3	Damaged goods		19/08/2018
30	Direct payment to seller		19/08/2018
32	Goods not delivered		19/08/2018
33	Late delivery		19/08/2018
35	Goods returned		19/08/2018
36	Invoice not received		19/08/2018
37	Credit note to debtor/not to us		19/08/2018
38	Deducted bonus		19/08/2018
39	Deducted discount		19/08/2018
4	Short delivery		19/08/2018
40	Deducted freight costs		19/08/2018
41	Deduction against other invoices		19/08/2018
42	Credit balance(s)		19/08/2018
45	Debit note to seller		19/08/2018

46	Discount beyond terms		19/08/2018
48	Allowance/charge error		19/08/2018
49	Substitute product		19/08/2018
50	Terms of sale error		19/08/2018
52	Wrong invoice		19/08/2018
53	Duplicate invoice		19/08/2018
54	Weight error		19/08/2018
55	Additional charge not authorized		19/08/2018
56	Incorrect discount		19/08/2018
57	Price change		19/08/2018
58	Variation		19/08/2018
59	Chargeback		19/08/2018
65	Settlement to agent		19/08/2018
66	Cash discount		19/08/2018
7	Payment on account		19/08/2018
70	Wrong monetary amount resulting from incorrect free goods quantity		19/08/2018
72	Temporary special promotion		19/08/2018
73	Difference in tax rate		19/08/2018
74	Quantity discount		19/08/2018
75	Promotion discount		19/08/2018
76	Cancellation deadline passed		19/08/2018
77	Pricing discount		19/08/2018

78	Volume discount		19/08/2018
79	Sundry discount		19/08/2018
8	Returnable container charge included		19/08/2018
9	Invoice error		19/08/2018
AW A	bonus for works ahead of schedule		
CBK	bank charges		
CCR	servizio di corriere		
CIN	insurance		
CLB	labelling		
CPK	packing		
CSP	special packing		
CW B	penalty for works behind schedule		

T44 - additional code type

qualifier of the additional coding of a product

Agency name: eBIZ

tabella cod.: T44

File codes list (Generic code): http://www.ebiz.enea.it/moda-ml/repository/codelist/draft/gc_T44.xml

Code	Description	Adoption note	Date of insertion
CC	colour card		
CL	sales collection		
CO	company identification code		08/09/2017
DY	dye number		
LT	lot number		
MDI	Made in		08/09/2017
MS	manufacturing state		
PKG	packaging		09/09/2014
PL	product line		
RGB	RGB value		
SE	selvedge code		

T5 - fabric piece inner packing (wrapping) 2

code specifying the sub-type of inner wrapping/packing used for the fabric piece

Agency name: eBIZ

tabella cod.: T5

File codes list (Generic code): http://www.ebiz.enea.it/moda-ml/repository/codelist/draft/gc_T5.xml

Code	Description	Adoption note	Date of insertion
A	Open		
B	Folded once, not looped		
C	Folded twice, not looped		
H	Folded once, looped		
I	Folded twice, looped		
J	Without inner object, right side inside		
K	On carton or spooling plank, right side inside		
L	On spool (for pressure sensitive products), right side inside		
M	Without inner object, left side inside		
N	On carton or spooling plank, left side inside		
O	On spool (for pressure sensitive products), left side inside		
P	Without inner object, right side inside (deprecated code)		
Q	On carton, right side inside		
R	On wooden stick, right side inside		
S	Without inner object, left side inside (deprecated code)		
T	On carton, left side inside		
U	On wooden stick, left side inside		

T52 - fabric piece status

code used to describe the status of a fabric piece with reference to the control

Agency name: eBIZ

tabella cod.: T52

File codes list (Generic code): http://www.ebiz.enea.it/moda-ml/repository/codelist/draft/gc_T52.xml

Code	Description	Adoption note	Date of insertion
0	first registration		

C	registration from return		
F	stopped		
H	handling		
R	returned		
S	held		
T	deliverable		

T6 - fabric piece outer packing

code specifying the type of outer wrapping or packing used for the fabric piece

Agency name: eBIZ

tabella cod.: T6

File codes list (Generic code): http://www.ebiz.enea.it/moda-ml/repository/codelist/draft/gc_T6.xml

Code	Description	Adoption note	Date of insertion
0	Not wrapped		
1	Totally wrapped		
2	Wrapped, one side open		
3	Wrapped, both sides open		
4	Wrapped, one side open, with show corner		
5	Wrapped in cartons		
6	Double wrapped		

T61 - duty or tax or fee type

duty or tax or fee type

Agency name: eBIZ

tabella cod.: T61

File codes list (Generic code): http://www.ebiz.enea.it/moda-ml/repository/codelist/draft/gc_T61.xml

Code	Description	Adoption note	Date of insertion
BOL	stamp duty		01/07/2013
CUD	customs duty		01/07/2013
ENV	environmental tax		01/07/2013
FRE	no tax		01/07/2013
OTH	other tax charges		01/07/2013

VAT	value added tax		01/07/2013
-----	-----------------	--	------------

T62 - duty or tax or fee category

duty or tax or fee category

Agency name: eBIZ

tabella cod.: T62

File codes list (Generic code): http://www.ebiz.enea.it/moda-ml/repository/codelist/draft/gc_T62.xml

Code	Description	Adoption note	Date of insertion
AA	lower than standard rate		01/07/2013
E	tax not applicable		01/07/2013
H	higher than standard rate		01/07/2013
O	outside scope of tax		01/07/2013
S	standard rate		01/07/2013
Z	zero rate goods		01/07/2013

T8 - Modes of Transport

way of transport, in general or referred to the specified leg

Agency name: eBIZ

tabella cod.: T8

File codes list (Generic code): http://www.ebiz.enea.it/moda-ml/repository/codelist/draft/gc_T8.xml

Code	Description	Adoption note	Date of insertion
1	MARITIME TRANSPORT		
10	Courier		01/07/2013
2	RAIL TRANSPORT		
3	ROAD TRANSPORT		
4	AIR TRANSPORT		
5	MAIL		
6	AIR + SHIP TRANSPORT		
8	INLAND WATER TRANSPORT		
9	MODE UNKNOWN		

T9 - ISO4217 - Currency

currency code

Agency name: ISO

tabella cod.: T9

File codes list (Generic code): http://www.ebiz.enea.it/moda-ml/repository/codelist/draft/gc_T9.xml

Table not printed: there are 205 elements, more than the maximum specified for printing: 99.