



<http://www.ebiz-tcf.eu>

IMPLEMENTATION GUIDE

includes COMPARISON BETWEEN CURRENT and LAST
PREVIOUSLY RELEASED VERSION

TRANSACTION "TEXTILE ORDER STATUS REPORT"

Version: v2018-1

Date of release: 18/7/2019

Document code: G003rv

technical Documentation: <http://www.ebiz.enea.it>

XML Schemas repository: <http://www.ebiz.enea.it/moda-ml/repository/schema/v2018-1/default.asp>

Guides repository: <http://www.ebiz.enea.it/moda-ml/repository/guide/v2018-1/default.asp>

Guide filename: G003rv-eBIZ-TextileOrderStatusReport.pdf

1. BUSINESS DESCRIPTION

1.1 Scope

The present guide has been issued to assist the companies of the Textile-Clothing sector in the implementation of the standard XML document type "Textile ORDER STATUS REPORT", providing all the instruction required for its use in any context of e-commerce between Apparel Producers and Fabric Producers.

All the rules required for the construction and validation of the document are embedded into the specific XML-Schema, which is detailed in section "Implementation guide".

1.2 Generalities

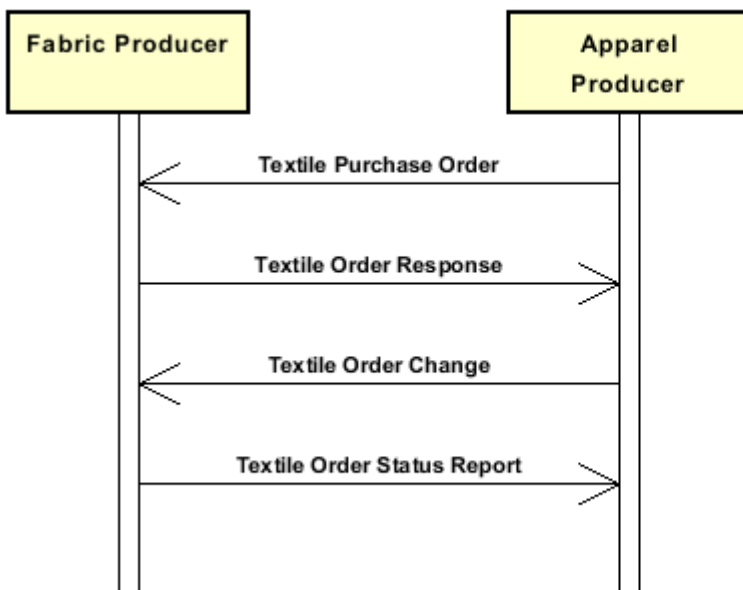
The message is issued by the Fabric Producer to report to his Client the status of his Orders and the updated delivery dates, with the possibility of splitting an order line into several consignements.

The message may concern all the articles ordered (TSType = H "historic"), all the articles ordered and not yet delivered (type = C "complete") or just the articles in the "ready for shipment" status (type = S "for shipping"). Otherwise only articles that have changed their status (TSType=I).

The status report can be given for each article or for each Order line.

1.3. Possible scenario

Purchase of fabrics



1.4. Best practices

Thanks to TSType attribute, Textile Order Status can be used in two modes: 1) normal, status of all the goods in object (TSType=H, C, S) 2) incremental, only goods that changed their status (TSType=I)

2. IMPLEMENTATION GUIDE

2.1 General structure of XML document

All the business data that can be exchanged through this class of documents are shown in the following "document structure", that provides a simplified vision of the Schema.

In particular:

- the two numbers following each element define its "cardinality" (minimum and maximum number of occurrences); the minimum equal zero indicates that the element is optional, the minimum greater than zero indicates that is mandatory;
- the bold character denotes the complex elements (aggregates of simple elements) that were built for the sake of functionality and re-usability of some complex informations sets. The child elements in each parent element are easily spotted as "indented";
- the symbol "@" denotes an attribute of the preceding element; here "the usage indicator (optional, required, ...)" is shown in square brackets.

Legenda

- N: new element
- U: updated properties
- P: changes in children
- p: is a changed child
- A: changes in attributes
- a: is a new or changed attribute
- *: is a subtype

Structure

TEXOrdStatus

```
@TStype [Required]
@msgfunction [Optional] [Default= OR]
@version [Optional] [Default= 2018-1]
@useProfile [Optional]
| TShedder 1-1 (P)
| | msgN 1-1
| | - choose -
| | msgID 0-1
| | - or -
| | docID 0-1
| | @numberingOrg [Optional]
| | - end choose -
| | msgDate 1-1
| | @dateForm [Optional]
| | refDoc 0-9 (P)
| | @docType [Required]
| | | docID 1-2 (p)
| | | @numberingOrg [Optional]
| | | docDate 0-1
| | | @dateForm [Optional]
| | | season 0-1 (A)
| | | @numberingOrg [Optional] (a)
| | | @codeList [Optional] (a)
| | | @listName [Optional] (a)
| | | @listVersion [Optional] (a)
| | | itemID 0-1 (U)
| | | attachment 0-1 (N)
| | | @uid [Optional]
| | | | fileName 0-1 (N)
```

```

| | | @numberingOrg [Optional] (a)
| | | binaryObject 0-1 (N)
| | | @format [Optional] (N)
| | | @mime [Optional] (N)
| | | @encoding [Optional] (N)
| | | @characterSet [Optional] (N)
| | | externalReference 0-99 (N)
| | | | uri 1-1 (N)
| | | | @isURL [Optional] [Default= true] (Na)
| | | | mimeTypeCode 0-1 (N)
| | | | formatCode 0-1 (N)
| | | | encodingCode 0-1 (N)
| | | | characterSetCode 0-1 (N)
| buyer 1-1 (AP)
| @logo [Optional]
| @sender [Optional] (a*)
| | id 1-1 (p)
| | | @numberingOrg [Optional]
| | additionalIdentifier 0-9 (N)
| | | @numberingOrg [Optional] (a)
| | | @idQualifier [Optional] (Na)
| | legalName 0-1 (U)
| | dept 0-1
| | subDept 0-1 (N)
| | person 0-1
| | | @email [Optional]
| | | @phone [Optional]
| | | @fax [Optional]
| | street 0-1
| | city 0-1
| | subCountry 0-1
| | country 0-1
| | postCode 0-1
| supplier 1-1 (AP)
| @logo [Optional]
| @sender [Optional] (a*)
| | id 1-1
| | | @numberingOrg [Optional]
| | additionalIdentifier 0-9 (N)
| | | @numberingOrg [Optional] (a)
| | | @idQualifier [Optional] (Na)
| | legalName 0-1 (U)
| | dept 0-1
| | subDept 0-1 (N)
| | person 0-1
| | | @email [Optional]
| | | @phone [Optional]
| | | @fax [Optional]
| | street 0-1
| | city 0-1
| | subCountry 0-1
| | country 0-1
| | postCode 0-1
| thirdParty 0-5 (AP)
| @VAT [Optional]
| @role [Required]
| @sender [Optional] (a*)
| | id 1-1
| | | @numberingOrg [Optional]
| | legalName 0-1 (U)
| | dept 0-1

```

- | subDept 0-1 (N)
- | person 0-1
- | | @email [Optional]
- | | @phone [Optional]
- | | @fax [Optional]
- | street 0-1
- | city 0-1
- | subCountry 0-1
- | country 0-1
- | postCode 0-1
- qualityLevel 0-1 (N)
- | @numberingOrg [Optional] (a)
- | @codeList [Optional] (a)
- | @listName [Optional] (a)
- | @listVersion [Optional] (a)
- statusReason 0-1 (N)
- note 0-99
- | @numberingOrg [Optional]
- | @codeList [Optional]
- | @noteLabel [Optional]

TSbody 1-1

TSitem 1-unbounded

- | lineN 1-1
- | | @VAT [Optional]
- | **refDoc 0-9** (P)
- | | @docType [Required]
- | | docID 1-2 (p)
- | | | @numberingOrg [Optional]
- | | docDate 0-1
- | | | @dateForm [Optional]
- | | season 0-1 (A)
- | | | @numberingOrg [Optional] (a)
- | | | @codeList [Optional] (a)
- | | | @listName [Optional] (a)
- | | | @listVersion [Optional] (a)
- | | itemID 0-1 (U)
- | | **attachment 0-1** (N)
- | | | @uid [Optional]
- | | | fileName 0-1 (N)
- | | | | @numberingOrg [Optional]
- | | | binaryObject 0-1 (N)
- | | | | @format [Optional] (N)
- | | | | @mime [Optional] (N)
- | | | | @encoding [Optional] (N)
- | | | | @characterSet [Optional] (N)
- | | | **externalReference 0-99** (N)
- | | | | uri 1-1 (N)
- | | | | | @isURL [Optional] [Default= true] (Na)
- | | | | mimeTypeCode 0-1 (N)
- | | | | formatCode 0-1 (N)
- | | | | encodingCode 0-1 (N)
- | | | | characterSetCode 0-1 (N)
- | | **texCode 1-2** (P)
- | | | @numberingOrg [Optional]
- | | | art 1-1 (U)
- | | | | @numberingOrg [Optional]
- | | | | @codeList [Optional]
- | | | | @listName [Optional]
- | | | | @listVersion [Optional]
- | | pattern 0-1

```

| | | | @numberingOrg [Optional]
| | | | @codeList [Optional]
| | | | @listName [Optional]
| | | | @listVersion [Optional]
| | | | color 0-1
| | | | @numberingOrg [Optional]
| | | | @codeList [Optional]
| | | | @listName [Optional]
| | | | @listVersion [Optional]
| | | | added 0-9
| | | | @numberingOrg [Optional]
| | | | @addType [Optional]
| | | | description 0-unbounded (pAU)
| | | | @ln [Optional] (N)
| | | | progress 1-99 (P)
| | | | | qty 1-2 (p)
| | | | | @um [Required]
| | | | | deliveryDate 0-1
| | | | | @dateForm [Optional]
| | | | | delGrantedDate 0-1
| | | | | @dateForm [Optional]
| | | | - choose -
| | | | | mfrStatus 0-1
| | | | - or -
| | | | | mfrStatusText 0-1 (U)
| | | | - end choose -
| | | | | itemsList 0-1 (N)
| | | | | | qualityLevel 0-1 (N)
| | | | | | @numberingOrg [Optional]
| | | | | | @codeList [Optional]
| | | | | | @listName [Optional]
| | | | | | @listVersion [Optional]
| | | | | | itemIdentification 1-unbounded (N)
| | | | | | | serialN 1-9 (AU)
| | | | | | | @numberingOrg [Optional]
| | | | | | | @idQualifier [Optional] (N)
| | | | | qualityLevel 0-1 (N)
| | | | | @numberingOrg [Optional] (a)
| | | | | @codeList [Optional] (a)
| | | | | @listName [Optional] (a)
| | | | | @listVersion [Optional] (a)
| | | | | statusReason 0-1 (N)
| | | | note 0-99
| | | | @numberingOrg [Optional]
| | | | @codeList [Optional]
| | | | @noteLabel [Optional]

```

2.2 Detailed description of document elements

Following tables show all elements (complex and simple) used in this document. Description includes: 1) element's information: xml tag, name, brief description, data type and syntax constraints; 2) information about use of the element in a particular position in the document: xpath and possible associated notes.

2.2.1 Complex elements (Aggregate Business Information Entities)

Complex elements are those elements whose content is composed of other elements (childs).Complex elements are alphabetically ordered.

attachment	an attached document. An attachment can refer to an external document or be included with the document being exchanged (XPath TEXOrdStatus/TSbody/TSitem/refDoc/attachment) 0-1 (N) (XPath TEXOrdStatus/TSheader/refDoc/attachment) 0-1 (N)
buyer	details of the Buyer (party that buys the good or service that is object of the current collaborative process) - base type: Nad, (XPath TEXOrdStatus/TSheader/buyer) 1-1 (AP)
externalReference	details about an external object, such as a document stored at a remote location (XPath TEXOrdStatus/TSbody/TSitem/refDoc/attachment/externalReference) 0-99 (N) (XPath TEXOrdStatus/TSheader/refDoc/attachment/externalReference) 0-99 (N)
itemIdentification	serial identification of a product unit (XPath TEXOrdStatus/TSbody/TSitem/progress/itemsList/itemIdentification) 1-unbounded (N) - note: <i>identification of the single product unit contained in the list</i>
itemsList	list of the single product units (XPath TEXOrdStatus/TSbody/TSitem/progress/itemsList) 0-1 (N)
progress	description of the progress of a production lot in a manufacturing process (XPath TEXOrdStatus/TSbody/TSitem/progress) 1-99 (P)
refDoc	identification of a document and of an item thereof, to which the message makes reference (XPath TEXOrdStatus/TSheader/refDoc) 0-9 (P) (XPath TEXOrdStatus/TSbody/TSitem/refDoc) 0-9 (P) - note: <i>here can be identified the order and order line whose status is reported</i>
supplier	details of the Supplier (party that supplies the good or service that is object of the current collaborative process) - base type: Nad, (XPath TEXOrdStatus/TSheader/supplier) 1-1 (AP)
texCode	full codification of the textile product (XPath TEXOrdStatus/TSbody/TSitem/texCode) 1-2 (P)
thirdParty	details of the Third Party, different from Sender and Receiver of the document - base type: Nad, (XPath TEXOrdStatus/TSheader/thirdParty) 0-5 (AP)
TSbody	body of the document TEXTILES ORDER STATUS REPORT (XPath TEXOrdStatus/TSbody) 1-1
TSheader	header of the ORDER STATUS REPORT (used by documents related to Raw material, Yarn, Fabric)

	(XPath TEXOrdStatus/TSheader) 1-1 (P) - note: <i>the attribute "logo" should be used only in conjunction with Supplier</i>
TSitem	line item of the message TEXTILES ORDER STATUS REPORT (XPath TEXOrdStatus/TSbody/TSitem) 1-unbounded

2.2.2 Simple elements (Basic Business Information Entities)

Simple elements are those elements whose content is characterized by a data type plus a domain of possible values. Simple elements are alphabetically ordered.

added	additional code of the product (complementing the formers) - base type: string, max length: 80, (XPath TEXOrdStatus/TSbody/TSitem/texCode/added) 0-9 - note: <i>here an additional codification (see table T44) can be specified</i>
additionalIdentifier	additional identification code of a Party, for example customs registries or others - base type: string, max length: 15, (XPath TEXOrdStatus/TSheader/supplier/additionalIdentifier) 0-9 (N) - note: <i>identifiers for example for exports, such as MID (Manufacturer Identification Code), EORI (E.O.R.I. - Economic Operator Registration and Identification)</i> (XPath TEXOrdStatus/TSheader/buyer/additionalIdentifier) 0-9 (N) - note: <i>identifiers for example for exports, such as MID (Manufacturer Identification Code), EORI (E.O.R.I. - Economic Operator Registration and Identification)</i>
@addType	qualifier of the additional coding of a product - base type: string, cod. table: T44 http://www.ebiz.enea.it/moda-ml/repository/codelist/v2018-1/gc_T44.xml (XPath TEXOrdStatus/TSbody/TSitem/texCode/added/@addType) [Optional] - note: <i>addType allows the clarification of the meaning of the added element content; it is strongly suggested to use it always.</i>
art	article number of the product - base type: string, max length: 80, (XPath TEXOrdStatus/TSbody/TSitem/texCode/art) 1-1 (U) - note: <i>can be used either for the base-article (excluding pattern/colour) or for the SKU</i>
binaryObject	a binary large object containing an attached document, Coding 'base64Binary' is recommended. - base type: base64Binary, (XPath TEXOrdStatus/TSheader/refDoc/attachment/binaryObject) 0-1 (N) (XPath TEXOrdStatus/TSbody/TSitem/refDoc/attachment/binaryObject) 0-1 (N)
@characterSet	the character set of the binary object (examples UTF-8, UTF-16, Windows-1252, ISO-8859-7,..) - base type: normalizedString, (XPath TEXOrdStatus/TSheader/refDoc/attachment/binaryObject/@characterSet) [Optional] (N) (XPath TEXOrdStatus/TSbody/TSitem/refDoc/attachment/binaryObject/@characterSet) [Optional] (N)
characterSetCode	the character set of an external document (examples UTF-8, UTF-16, Windows-1252, ISO-8859-7,..) - base type: normalizedString, (XPath TEXOrdStatus/TSbody/TSitem/refDoc/attachment/externalReference/characterSetCode) 0-1 (N) (XPath TEXOrdStatus/TSheader/refDoc/attachment/externalReference/characterSetCode) 0-1 (N)

city	<p>name of the city (town, village)</p> <p>- base type: string, max length: 40, (XPath TEXOrdStatus/TSheader/buyer/city) 0-1 (XPath TEXOrdStatus/TSheader/supplier/city) 0-1 (XPath TEXOrdStatus/TSheader/thirdParty/city) 0-1</p>
@codeList	<p>it specifies the URL where the list of codes used to make an instance of the element can be found</p> <p>- base type: string, max length: 255, (XPath TEXOrdStatus/TSbody/TSitem/texCode/art/@codeList) [Optional]</p> <p>- nota: <i>at least one out of this attribute and "numberingOrg" should be set</i> (XPath TEXOrdStatus/TSheader/refDoc/season/@codeList) [Optional] (a)</p> <p>- nota: <i>this attribute should be used either single or coupled with "listName" and "listVersion"</i> (XPath TEXOrdStatus/TSbody/TSitem/progress/qualityLevel/@codeList) [Optional] (a)</p> <p>- nota: <i>at least one out of this attribute and "numberingOrg" should be set</i> (XPath TEXOrdStatus/TSbody/TSitem/progress/itemsList/qualityLevel/@codeList) [Optional]</p> <p>- nota: <i>at least one out of this attribute and "numberingOrg" should be set</i> (XPath TEXOrdStatus/TSbody/TSitem/texCode/color/@codeList) [Optional]</p> <p>- nota: <i>this attribute should be used either single or coupled with "listName" and "listVersion"</i> (XPath TEXOrdStatus/TSbody/TSitem/texCode/pattern/@codeList) [Optional]</p> <p>- nota: <i>at least one out of this attribute and "numberingOrg" should be set</i> (XPath TEXOrdStatus/TSheader/note/@codeList) [Optional]</p> <p>- nota: <i>must be used to provide (URL) the list of codes used in "noteLabel"</i> (XPath TEXOrdStatus/TSheader/qualityLevel/@codeList) [Optional] (a)</p> <p>- nota: <i>at least one out of this attribute and "numberingOrg" should be set</i> (XPath TEXOrdStatus/TSbody/TSitem/note/@codeList) [Optional]</p> <p>- nota: <i>must be used to provide (URL) the list of codes used in "noteLabel"</i> (XPath TEXOrdStatus/TSbody/TSitem/refDoc/season/@codeList) [Optional] (a)</p> <p>- nota: <i>this attribute should be used either single or coupled with "listName" and "listVersion"</i></p>
color	<p>colour number of the product, when not included in the model or fabric code</p> <p>- base type: string, max length: 15, (XPath TEXOrdStatus/TSbody/TSitem/texCode/color) 0-1</p>
country	<p>code of the nation</p> <p>- base type: string, cod. table: T10 http://www.ebiz.enea.it/moda-ml/repository/codelist/v2018-1/gc_T10.xml (XPath TEXOrdStatus/TSheader/thirdParty/country) 0-1 (XPath TEXOrdStatus/TSheader/supplier/country) 0-1 (XPath TEXOrdStatus/TSheader/buyer/country) 0-1</p>
@dateForm	<p>format used for the date</p> <p>- base type: string, cod. table: NT29 http://www.ebiz.enea.it/moda-ml/repository/codelist/v2018-1/gc_NT29.xml (XPath TEXOrdStatus/TSheader/msgDate/@dateForm) [Optional] (XPath TEXOrdStatus/TSbody/TSitem/progress/deliveryDate/@dateForm) [Optional] (XPath TEXOrdStatus/TSheader/refDoc/docDate/@dateForm) [Optional] (XPath TEXOrdStatus/TSbody/TSitem/progress/delGrantedDate/@dateForm) [Optional] (XPath TEXOrdStatus/TSbody/TSitem/refDoc/docDate/@dateForm) [Optional]</p>
delGrantedDate	<p>effective granted date of delivery of goods; in case of doubt delivery must be understood as the event when the ownership of goods is transferred, according to one of the patterns YYYY-MM-DD, YYYY-MM-DD:HH-MM or YYYY-WW.</p> <p>- base type: string, (XPath TEXOrdStatus/TSbody/TSitem/progress/delGrantedDate) 0-1</p>
deliveryDate	<p>date of delivery of goods, requested or promised in the purchase process, according to one of the patterns YYYY-MM-DD, YYYY-MM-DD:HH-MM or YY</p>

	YY-WW. - base type: string, (XPath TEXOrdStatus/TSbody/TSitem/progress/deliveryDate) 0-1
dept	name or code of a contact department within a Party - base type: string, max length: 40, (XPath TEXOrdStatus/TSheader/thirdParty/dept) 0-1 (XPath TEXOrdStatus/TSheader/supplier/dept) 0-1 (XPath TEXOrdStatus/TSheader/buyer/dept) 0-1
description	free text description. The content of the element must be unique, it might be translated and repeated into more languages (thus no more than one instance for each language). - base type: string, max length: 250, (XPath TEXOrdStatus/TSbody/TSitem/texCode/description) 0-unbounded (pAU) - note: <i>Product description</i>
docDate	date of issue of the referenced document, according to one of the patterns YYYY-MM-DD, YYYY-MM-DD:HH-MM or YYYY-WW. - base type: string, (XPath TEXOrdStatus/TSheader/refDoc/docDate) 0-1 (XPath TEXOrdStatus/TSbody/TSitem/refDoc/docDate) 0-1
docID	identification number of the referenced document SINCE 2008-1 ITS USE IN THE HEADER IS DISCOURAGED (REPLACED BY msgID) - base type: string, max length: 80, (XPath TEXOrdStatus/TSbody/TSitem/refDoc/docID) 1-2 (p) <hr/> AAAA-WARNING! - text not AVAILABLE n. 245 - In=en (XPath TEXOrdStatus/TSheader/docID) 0-1 (XPath TEXOrdStatus/TSheader/refDoc/docID) 1-2 (p) <hr/> AAAA-WARNING! - text not AVAILABLE n. 245 - In=en
@docType	type or class to which the referenced document belongs - base type: string, cod. table: T21 http://www.ebiz.enea.it/moda-ml/repository/codelist/v2018-1/gc_T21.xml (XPath TEXOrdStatus/TSheader/refDoc/@docType) [Required] (XPath TEXOrdStatus/TSbody/TSitem/refDoc/@docType) [Required]
@email	electronic mail address of the contact person within a Party - base type: string, max length: 250, (XPath TEXOrdStatus/TSheader/buyer/person/@email) [Optional] (XPath TEXOrdStatus/TSheader/thirdParty/person/@email) [Optional] (XPath TEXOrdStatus/TSheader/supplier/person/@email) [Optional]
@encoding	specifies the decoding algorithm of the binary object - base type: normalizedString, (XPath TEXOrdStatus/TSbody/TSitem/refDoc/attachment/binaryObject/@encoding) [Optional] (N) (XPath TEXOrdStatus/TSheader/refDoc/attachment/binaryObject/@encoding) [Optional] (N)
encodingCode	the encoding/decoding algorithm used with the external object (example is 'base64Binary') - base type: normalizedString, (XPath TEXOrdStatus/TSbody/TSitem/refDoc/attachment/externalReference/encodingCode) 0-1 (N) (XPath TEXOrdStatus/TSheader/refDoc/attachment/externalReference/encodingCode) 0-1 (N)
@fax	fax number of the contact person within a Party - base type: string, max length: 35, (XPath TEXOrdStatus/TSheader/supplier/person/@fax) [Optional] (XPath TEXOrdStatus/TSheader/buyer/person/@fax) [Optional] (XPath TEXOrdStatus/TSheader/thirdParty/person/@fax) [Optional]

fileName	unique identifier (name) of the file - base type: string, max length: 255, (XPath TEXOrdStatus/TShheader/refDoc/attachment/fileName) 0-1 (N) (XPath TEXOrdStatus/TSbody/TSitem/refDoc/attachment/fileName) 0-1 (N)
@format	the format of the binary content (examples xml, pdf, doc,...) - base type: string, (XPath TEXOrdStatus/TShheader/refDoc/attachment/binaryObject/@format) [Optional] (N) (XPath TEXOrdStatus/TSbody/TSitem/refDoc/attachment/binaryObject/@format) [Optional] (N)
formatCode	the format of the external object (examples xml, pdf, doc,...) - base type: normalizedString, (XPath TEXOrdStatus/TSbody/TSitem/refDoc/attachment/externalReference/formatCode) 0-1 (N) (XPath TEXOrdStatus/TShheader/refDoc/attachment/externalReference/formatCode) 0-1 (N)
id	primary identification code of a Party; it is recommended the format: nation code (ISO 3166) + VAT identification number (11 crt), with the qualifier "numberingOrg"= MF - base type: string, max length: 15, (XPath TEXOrdStatus/TShheader/supplier/id) 1-1 (XPath TEXOrdStatus/TShheader/buyer/id) 1-1 (p) (XPath TEXOrdStatus/TShheader/thirdParty/id) 1-1
@idQualifier	Qualification of the identifier. - base type: string, (XPath TEXOrdStatus/TShheader/buyer/additionalIdentifier/@idQualifier) [Optional] (Na) - nota: <i>this attribute should be used when the numberingOrg attribute is not enough to declare the type of identifier</i> (XPath TEXOrdStatus/TShheader/supplier/additionalIdentifier/@idQualifier) [Optional] (Na) - nota: <i>this attribute should be used when the numberingOrg attribute is not enough to declare the type of identifier</i> (XPath TEXOrdStatus/TSbody/TSitem/progress/itemsList/itemIdentification/serialN/@idQualifier) [Optional] (N) - nota: <i>this attribute should be used when the numberingOrg attribute is not enough to declare the type of serial identifier</i>
@isURL	it indicates if the referred element is an URL (true) or not (false) - base type: boolean, (XPath TEXOrdStatus/TShheader/refDoc/attachment/externalReference/uri/@isURL) [Optional] [Default= true] (Na) - nota: <i>usage of URLs is recommended</i> (XPath TEXOrdStatus/TSbody/TSitem/refDoc/attachment/externalReference/uri/@isURL) [Optional] [Default= true] (Na) - nota: <i>usage of URLs is recommended</i>
itemID	number of the line/item of the referenced document - base type: string, max length: 40, (XPath TEXOrdStatus/TShheader/refDoc/itemID) 0-1 (U) (XPath TEXOrdStatus/TSbody/TSitem/refDoc/itemID) 0-1 (U)
legalName	legal name of a Party - base type: string, max length: 250, (XPath TEXOrdStatus/TShheader/buyer/legalName) 0-1 (U) (XPath TEXOrdStatus/TShheader/thirdParty/legalName) 0-1 (U) (XPath TEXOrdStatus/TShheader/supplier/legalName) 0-1 (U)
lineN	number of the line item of the present message (xml document); it is set by the role that produces the document. Usually it is a progressive number, but

	<p>not always.</p> <ul style="list-style-type: none"> - base type: positiveInteger, min inclusive: 1, max inclusive: 9999, (XPath TEXOrdStatus/TSbody/TSitem/lineN) 1-1
@listName	<p>the name of the list of codes used to make an instance of the element (it might be thought as descriptive element, i.e. 'fabric printing technologies', or not, i.e. "T264")</p> <ul style="list-style-type: none"> - base type: string, max length: 40, (XPath TEXOrdStatus/TSbody/TSitem/texCode/color/@listName) [Optional] - nota: <i>this attribute should always be used coupled with "numberingOrg"</i> (XPath TEXOrdStatus/TSheader/refDoc/season/@listName) [Optional] (a) - nota: <i>this attribute should always be used coupled with "numberingOrg"</i> (XPath TEXOrdStatus/TSheader/qualityLevel/@listName) [Optional] (a) - nota: <i>this attribute should always be used coupled with "numberingOrg"</i> (XPath TEXOrdStatus/TSbody/TSitem/texCode/art/@listName) [Optional] - nota: <i>this attribute should always be used coupled with "numberingOrg"</i> (XPath TEXOrdStatus/TSbody/TSitem/progress/qualityLevel/@listName) [Optional] (a) - nota: <i>this attribute should always be used coupled with "numberingOrg"</i> (XPath TEXOrdStatus/TSbody/TSitem/refDoc/season/@listName) [Optional] (a) - nota: <i>this attribute should always be used coupled with "numberingOrg"</i> (XPath TEXOrdStatus/TSbody/TSitem/texCode/pattern/@listName) [Optional] - nota: <i>this attribute should always be used coupled with "numberingOrg"</i> (XPath TEXOrdStatus/TSbody/TSitem/progress/itemsList/qualityLevel/@listName) [Optional] - nota: <i>this attribute should always be used coupled with "numberingOrg"</i>
@listVersion	<p>it specifies the version of the list of codes used to make an instance of the element</p> <ul style="list-style-type: none"> - base type: string, max length: 6, (XPath TEXOrdStatus/TSheader/refDoc/season/@listVersion) [Optional] (a) - nota: <i>this attribute should always be used coupled with "numberingOrg" and "listName"</i> (XPath TEXOrdStatus/TSbody/TSitem/texCode/pattern/@listVersion) [Optional] - nota: <i>this attribute should always be used coupled with "numberingOrg" and "listName"</i> (XPath TEXOrdStatus/TSbody/TSitem/texCode/color/@listVersion) [Optional] - nota: <i>this attribute should always be used coupled with "numberingOrg" and "listName"</i> (XPath TEXOrdStatus/TSbody/TSitem/progress/qualityLevel/@listVersion) [Optional] (a) - nota: <i>this attribute should always be used coupled with "numberingOrg" and "listName"</i> (XPath TEXOrdStatus/TSbody/TSitem/texCode/art/@listVersion) [Optional] - nota: <i>this attribute should always be used coupled with "numberingOrg" and "listName"</i> (XPath TEXOrdStatus/TSheader/qualityLevel/@listVersion) [Optional] (a) - nota: <i>this attribute should always be used coupled with "numberingOrg" and "listName"</i> (XPath TEXOrdStatus/TSbody/TSitem/refDoc/season/@listVersion) [Optional] (a) - nota: <i>this attribute should always be used coupled with "numberingOrg" and "listName"</i> (XPath TEXOrdStatus/TSbody/TSitem/progress/itemsList/qualityLevel/@listVersion) [Optional] - nota: <i>this attribute should always be used coupled with "numberingOrg" and "listName"</i>
@ln	<p>Language code.</p> <ul style="list-style-type: none"> - base type: string, cod. table: NT60 http://www.ebiz.enea.it/moda-ml/repository/codelist/v2018-1/gc_NT60.xml (XPath TEXOrdStatus/TSbody/TSitem/texCode/description/@ln) [Optional] (N)
@logo	<p>company logo (URL of the image jpeg or gif). It is recommended that the width of the image does not exceed 640 pixel.</p> <ul style="list-style-type: none"> - base type: string, max length: 255,

	(XPath TEXOrdStatus/TShheader/buyer/@logo) [Optional] (XPath TEXOrdStatus/TShheader/supplier/@logo) [Optional]
mfrStatus	code of the manufacturing stage used to describe the progress in the production cycle - base type: string, cod. table: T7 http://www.ebiz.enea.it/moda-ml/repository/codelist/v2018-1/gc_T7.xml (XPath TEXOrdStatus/TSbody/TSitem/progress/mfrStatus) 0-1
mfrStatusText	free text description of the manufacturing stage used to specify the progress in the production cycle - base type: string, max length: 250, (XPath TEXOrdStatus/TSbody/TSitem/progress/mfrStatusText) 0-1 (U)
@mime	the mime type of the binary object - base type: normalizedString, (XPath TEXOrdStatus/TShheader/refDoc/attachment/binaryObject/@mime) [Optional] (N) (XPath TEXOrdStatus/TSbody/TSitem/refDoc/attachment/binaryObject/@mime) [Optional] (N)
mimeCode	mime type of the external object - base type: normalizedString, (XPath TEXOrdStatus/TShheader/refDoc/attachment/externalReference/mimeCode) 0-1 (N) <hr/> AAAA-WARNING! - text not AVAILABLE n. 245 - In=en (XPath TEXOrdStatus/TSbody/TSitem/refDoc/attachment/externalReference/mimeCode) 0-1 (N) <hr/> AAAA-WARNING! - text not AVAILABLE n. 245 - In=en
msgDate	date of issue of the present message (xml document), according to one of the patterns YYYY-MM-DD, YYYY-MM-DD:HH-MM or YYYY-WW. - base type: string, (XPath TEXOrdStatus/TShheader/msgDate) 1-1
@msgfunction	function performed by the present message with regards to the transmission - base type: string, cod. table: NT18 http://www.ebiz.enea.it/moda-ml/repository/codelist/v2018-1/gc_NT18.xml (XPath TEXOrdStatus/@msgfunction) [Optional] [Default= OR]
msgID	key identifier of the business document in the information system of the issuing Party. In case of more despatches of the same business document, it is unchanged. - base type: string, max length: 35, (XPath TEXOrdStatus/TShheader/msgID) 0-1
msgN	identification number given to the message (xml document) by its issuer. In case of more despatches of the same business document, it changes. - base type: string, max length: 35, (XPath TEXOrdStatus/TShheader/msgN) 1-1
note	free text or structured (computer processing) note. For note structuring use the attributes "noteLabel" and "codelist" - base type: string, max length: 350, (XPath TEXOrdStatus/TShheader/note) 0-99 (XPath TEXOrdStatus/TSbody/TSitem/note) 0-99
@noteLabel	subject qualifier of a note - base type: string, max length: 35, (XPath TEXOrdStatus/TShheader/note/@noteLabel) [Optional] - nota: <i>must be used to qualify the subject of the note</i> (XPath TEXOrdStatus/TSbody/TSitem/note/@noteLabel) [Optional] - nota: <i>must be used to qualify the subject of the note</i>
@numberingOrg	code specifying the organisation who has created or owns the coding or numbering system

- base type: string, cod. table: NT6
http://www.ebiz.enea.it/moda-ml/repository/codelist/v2018-1/gc_NT6.xml
(XPath TEXOrdStatus/TSbody/TSitem/progress/qualityLevel/@numberingOrg) [Optional] (a)
- nota: *this attribute should be used either single or coupled with "listName" and "listVersion"*
(XPath TEXOrdStatus/TSbody/TSitem/texCode/pattern/@numberingOrg) [Optional]
- nota: *this attribute should be used either single or coupled with "listName" and "listVersion"*
(XPath
TEXOrdStatus/TSheader/supplier/additionalIdentifier/@numberingOrg) [Optional] (a)
- nota: *here the issuer of the identifier must be specified*
(XPath TEXOrdStatus/TSbody/TSitem/texCode/@numberingOrg) [Optional]
(XPath TEXOrdStatus/TSheader/refDoc/docID/@numberingOrg) [Optional]
- nota: *here can be specified whose document numbering is used (e.g.: Client, Supplier, ..)*
(XPath TEXOrdStatus/TSbody/TSitem/texCode/art/@numberingOrg) [Optional]
- nota: *this attribute should be used either single or coupled with "listName" and "listVersion"*
(XPath TEXOrdStatus/TSheader/supplier/id/@numberingOrg) [Optional]
(XPath TEXOrdStatus/TSheader/buyer/additionalIdentifier/@numberingOrg) [Optional] (a)
- nota: *here the issuer of the identifier must be specified*
(XPath TEXOrdStatus/TSheader/docID/@numberingOrg) [Optional]
- nota: *here can be specified whose document numbering is used (e.g.: Client, Supplier, ..)*
(XPath TEXOrdStatus/TSbody/TSitem/texCode/added/@numberingOrg) [Optional]
- nota: *this attribute should be used either single or coupled with "listName" and "listVersion"*
(XPath TEXOrdStatus/TSbody/TSitem/texCode/color/@numberingOrg) [Optional]
- nota: *this attribute should be used either single or coupled with "listName" and "listVersion"*
(XPath TEXOrdStatus/TSheader/buyer/id/@numberingOrg) [Optional]
(XPath TEXOrdStatus/TSbody/TSitem/note/@numberingOrg) [Optional]
- nota: *must be used to specify the organization that created the list of codes used in "noteLabel"*
(XPath TEXOrdStatus/TSheader/qualityLevel/@numberingOrg) [Optional] (a)
- nota: *this attribute should be used either single or coupled with "listName" and "listVersion"*
(XPath TEXOrdStatus/TSbody/TSitem/refDoc/attachment/fileName/@numberingOrg) [Optional]
(XPath TEXOrdStatus/TSbody/TSitem/progress/itemsList/qualityLevel/@numberingOrg) [Optional]
- nota: *this attribute should be used either single or coupled with "listName" and "listVersion"*
(XPath TEXOrdStatus/TSheader/refDoc/season/@numberingOrg) [Optional] (a)
- nota: *this attribute should be used either single or coupled with "listName" and "listVersion"*
(XPath TEXOrdStatus/TSbody/TSitem/refDoc/docID/@numberingOrg) [Optional]
- nota: *here can be specified whose document numbering is used (e.g.: Client, Supplier, ..)*
(XPath TEXOrdStatus/TSbody/TSitem/refDoc/season/@numberingOrg) [Optional] (a)
- nota: *this attribute should be used either single or coupled with "listName" and "listVersion"*
(XPath TEXOrdStatus/TSheader/note/@numberingOrg) [Optional]
- nota: *must be used to specify the organization that created the list of codes used in "noteLabel"*
(XPath TEXOrdStatus/TSheader/refDoc/attachment/fileName/@numberingOrg) [Optional] (a)
(XPath TEXOrdStatus/TSheader/thirdParty/id/@numberingOrg) [Optional]
(XPath TEXOrdStatus/TSbody/TSitem/progress/itemsList/itemIdentification/serialN/@numberingOrg) [Optional]

	- nota: <i>here the issuer of the serial number must be specified (when different from the Supplier)</i>
pattern	pattern/design number of the product, when not included in the article code - base type: string, max length: 15, (XPath TEXOrdStatus/TSbody/TSitem/texCode/pattern) 0-1
person	name of the contact person within a Party - base type: string, max length: 40, (XPath TEXOrdStatus/TSheader/thirdParty/person) 0-1 (XPath TEXOrdStatus/TSheader/supplier/person) 0-1 (XPath TEXOrdStatus/TSheader/buyer/person) 0-1
@phone	phone number of the contact person within a Party - base type: string, max length: 35, (XPath TEXOrdStatus/TSheader/buyer/person/@phone) [Optional] (XPath TEXOrdStatus/TSheader/supplier/person/@phone) [Optional] (XPath TEXOrdStatus/TSheader/thirdParty/person/@phone) [Optional]
postCode	code defining the postal zone - base type: string, max length: 10, (XPath TEXOrdStatus/TSheader/buyer/postCode) 0-1 (XPath TEXOrdStatus/TSheader/thirdParty/postCode) 0-1 (XPath TEXOrdStatus/TSheader/supplier/postCode) 0-1
qty	net quantity of the article or object correlated, qualified by the function of the document (ordering, delivering, ..) and by the context - base type: decimal, min inclusive: 0, fraction digits: 2, (XPath TEXOrdStatus/TSbody/TSitem/progress/qty) 1-2 (p) <hr/> AAAA-WARNING! - text not AVAILABLE n. 245 - In=en
qualityLevel	the product quality level (first choice, second choice,...). - base type: string, (XPath TEXOrdStatus/TSbody/TSitem/progress/itemsList/qualityLevel) 0-1 (N) (XPath TEXOrdStatus/TSheader/qualityLevel) 0-1 (N) (XPath TEXOrdStatus/TSbody/TSitem/progress/qualityLevel) 0-1 (N)
@role	Third Party role qualifier - base type: string, cod. table: NT2 http://www.ebiz.enea.it/moda-ml/repository/codelist/v2018-1/gc_NT2.xml (XPath TEXOrdStatus/TSheader/thirdParty/@role) [Required]
season	sale season; defined as: season (1 crt) + year (4 crt) - season: S/S=1 A/W=2 Spring=3 Summer=4 Autumn=5 Winter=6: for more than four seasons use alphabetic sequence: 1st season=A 2nd season=B etc.etc. - base type: string, max length: 15, (XPath TEXOrdStatus/TSheader/refDoc/season) 0-1 (A) - note: <i>here indicates the season to which the referenced document belongs</i> (XPath TEXOrdStatus/TSbody/TSitem/refDoc/season) 0-1 (A) - note: <i>here indicates the season to which the referenced document belongs</i>
@sender	qualifier that specifies the Party issuing of the document - base type: boolean, (XPath TEXOrdStatus/TSheader/buyer/@sender) [Optional] (a*) - nota: <i>This attribute is mandatory when the STYLESHEET must be used</i> (XPath TEXOrdStatus/TSheader/supplier/@sender) [Optional] (a*) - nota: <i>This attribute is mandatory when the STYLESHEET must be used</i> (XPath TEXOrdStatus/TSheader/thirdParty/@sender) [Optional] (a*) - nota: <i>This attribute is mandatory when the STYLESHEET must be used</i>
serialN	serial number used for the identification of a physical unit - base type: string, max length: 250, (XPath TEXOrdStatus/TSbody/TSitem/progress/itemsList/itemIdentification/serialN) 1-9 (AU) <hr/> AAAA-WARNING! - text not AVAILABLE n. 245 - In=en

	- note: <i>multiple values of serialN are allowed for different representations of the serial identifier of the same product unit. Instances of serialN must differ at least for one value of numberingOrg and idQualifier.</i>
statusReason	the reason for the indicated status. - base type: string, (XPath TEXOrdStatus/THeader/statusReason) 0-1 (N) (XPath TEXOrdStatus/TSbody/TSitem/progress/statusReason) 0-1 (N)
street	street and building number identifying a location - base type: string, max length: 80, (XPath TEXOrdStatus/THeader/thirdParty/street) 0-1 (XPath TEXOrdStatus/THeader/buyer/street) 0-1 (XPath TEXOrdStatus/THeader/supplier/street) 0-1
subCountry	short name or code of the sub-country entity - base type: string, max length: 9, (XPath TEXOrdStatus/THeader/buyer/subCountry) 0-1 (XPath TEXOrdStatus/THeader/thirdParty/subCountry) 0-1 (XPath TEXOrdStatus/THeader/supplier/subCountry) 0-1
subDept	name or code of a contact department within a Party - base type: string, max length: 40, (XPath TEXOrdStatus/THeader/supplier/subDept) 0-1 (N) (XPath TEXOrdStatus/THeader/thirdParty/subDept) 0-1 (N) (XPath TEXOrdStatus/THeader/buyer/subDept) 0-1 (N)
@TStype	type of Order status report - base type: string, cod. table: NT8 http://www.ebiz.enea.it/moda-ml/repository/codelist/v2018-1/gc_NT8.xml (XPath TEXOrdStatus/@TStype) [Required]
@uid	unique element identifier within the xml document - base type: string, (XPath TEXOrdStatus/TSbody/TSitem/refDoc/attachment/@uid) [Optional] (XPath TEXOrdStatus/THeader/refDoc/attachment/@uid) [Optional]
@um	specification of the unit of measure - base type: string, cod. table: NT7 http://www.ebiz.enea.it/moda-ml/repository/codelist/v2018-1/gc_NT7.xml (XPath TEXOrdStatus/TSbody/TSitem/progress/qty/@um) [Required]
uri	Uniform Resource Identifier (URI) that identifies the external object as an Internet resource - base type: normalizedString, (XPath TEXOrdStatus/TSbody/TSitem/refDoc/attachment/externalReference/uri) 1-1 (N) (XPath TEXOrdStatus/THeader/refDoc/attachment/externalReference/uri) 1-1 (N)
@useProfile	use profile to which the present document is compliant if it was agreed by the parties. It is suggested a URI with reference to the firms or the URL of the profile. - base type: string, (XPath TEXOrdStatus/@useProfile) [Optional]
@VAT	VAT rate or code (DEPRECATED, use dtScheme element) - base type: string, cod. table: NT16 http://www.ebiz.enea.it/moda-ml/repository/codelist/v2018-1/gc_NT16.xml (XPath TEXOrdStatus/THeader/thirdParty/@VAT) [Optional] (XPath TEXOrdStatus/TSbody/TSitem/lineN/@VAT) [Optional] - note: <i>Deprecated, prefer dtScheme when available.</i>
@version	Dictionary version from which the instance has been created - base type: string, cod. table: NT100 http://www.ebiz.enea.it/moda-ml/repository/codelist/v2018-1/gc_NT100.xml (XPath TEXOrdStatus/@version) [Optional] [Default= 2018-1]

2.3 Suggested best practices

TEXOrdStatus/TSbody/TSitem/refDoc/docID (identification number of the referenced document SINCE 2008-1 ITS USE IN THE HEADER IS DISCOURAGED (REPLACED BY msgID))

numberingOrg indicates the role that produced the document identifier (it is allowed to declare two different ones -e.g. customer and supplier - with two docID with different numberingOrg

TEXOrdStatus/TSheader/refDoc/docID (identification number of the referenced document SINCE 2008-1 ITS USE IN THE HEADER IS DISCOURAGED (REPLACED BY msgID))

numberingOrg indicates the role that produced the document identifier (it is allowed to declare two different ones -e.g. customer and supplier - with two docID with different numberingOrg

TEXOrdStatus/TSheader/refDoc/attachment/

externalReference/mimeType (mime type of the external object)

Use coding from IANA <http://www.iana.org/assignments/media-types/media-types.xml>

TEXOrdStatus/TSbody/TSitem/refDoc/attachment/

externalReference/mimeType (mime type of the external object)

Use coding from IANA <http://www.iana.org/assignments/media-types/media-types.xml>

TEXOrdStatus/TSbody/TSitem/progress/qty (net quantity of the article or object correlated, qualified by the function of the document (ordering, delivering, ..) and by the context)

this element can have two instances only if the units of measure are different

TEXOrdStatus/TSbody/TSitem/progress/itemsList/

itemIdentification/serialN (serial number used for the identification of a physical unit)

in the case of garment with RFID for anti-counterfeiting, RFID EPCGlobal for logistics and NFC for the customer experience there should be three serial elements with pairs of attributes numberingOrg/idQualifier: "CL"/"RFID", "GS1"/"RFID", "CL"/"NFC".

2.4 Enumeration tables

List of enumeration tables used in the XML document. You can find the corresponding codes at:
<http://www.ebiz-tcf.eu/moda-ml/imple/moda-ml-2018-1.asp?lingua=en&pag=6>

Legenda

- N: new table
- U: updated properties

NT100 - eBIZ TCFUpstream version

NT16 - VAT rate or code

NT18 - message function

NT2 - third party qualifier

NT29 - format of a date

NT6 - coding system owner/issuer

NT60 - language, codes from ISO 639-1 (subset) (N)

NT7 - unit of measure (U)

NT8 - Order status type

T10 - ISO3166 - Country

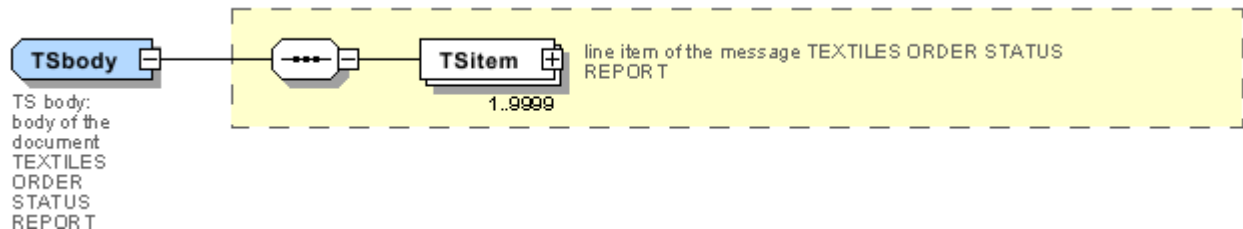
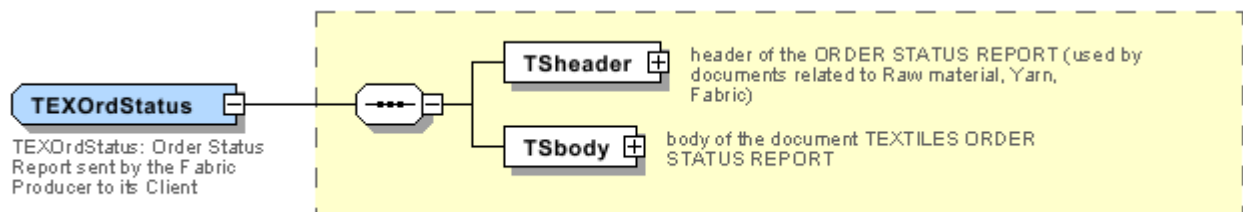
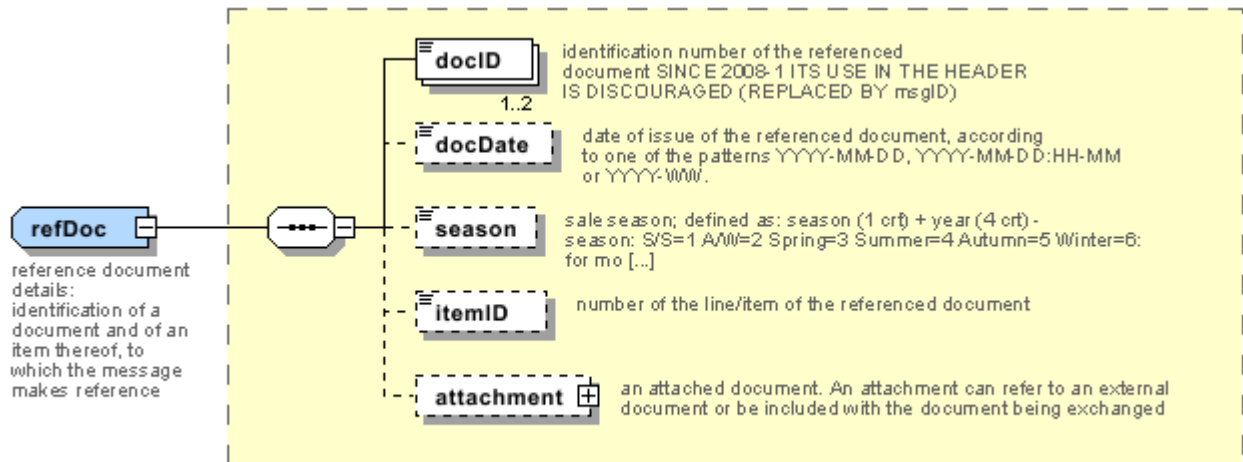
T21 - type of document

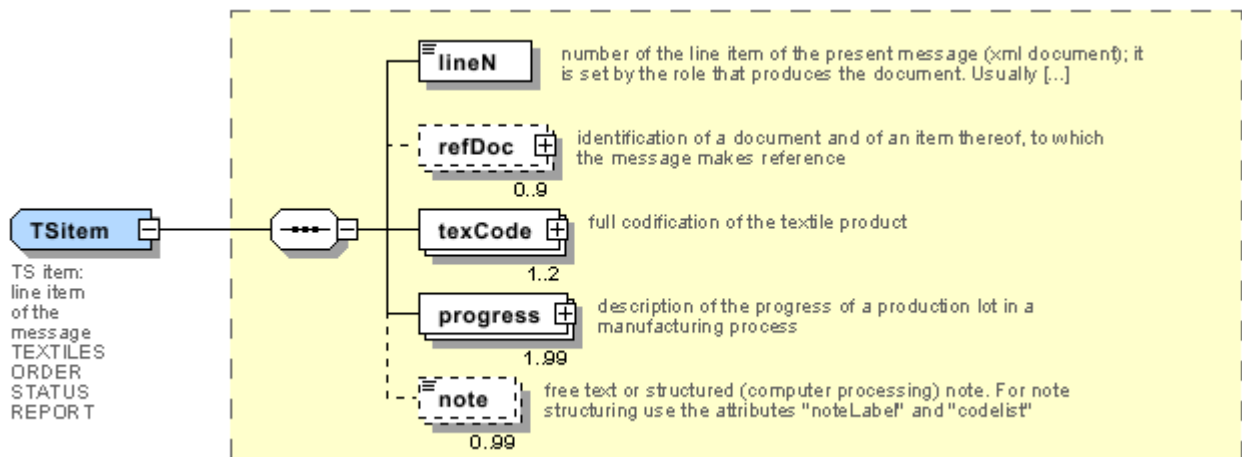
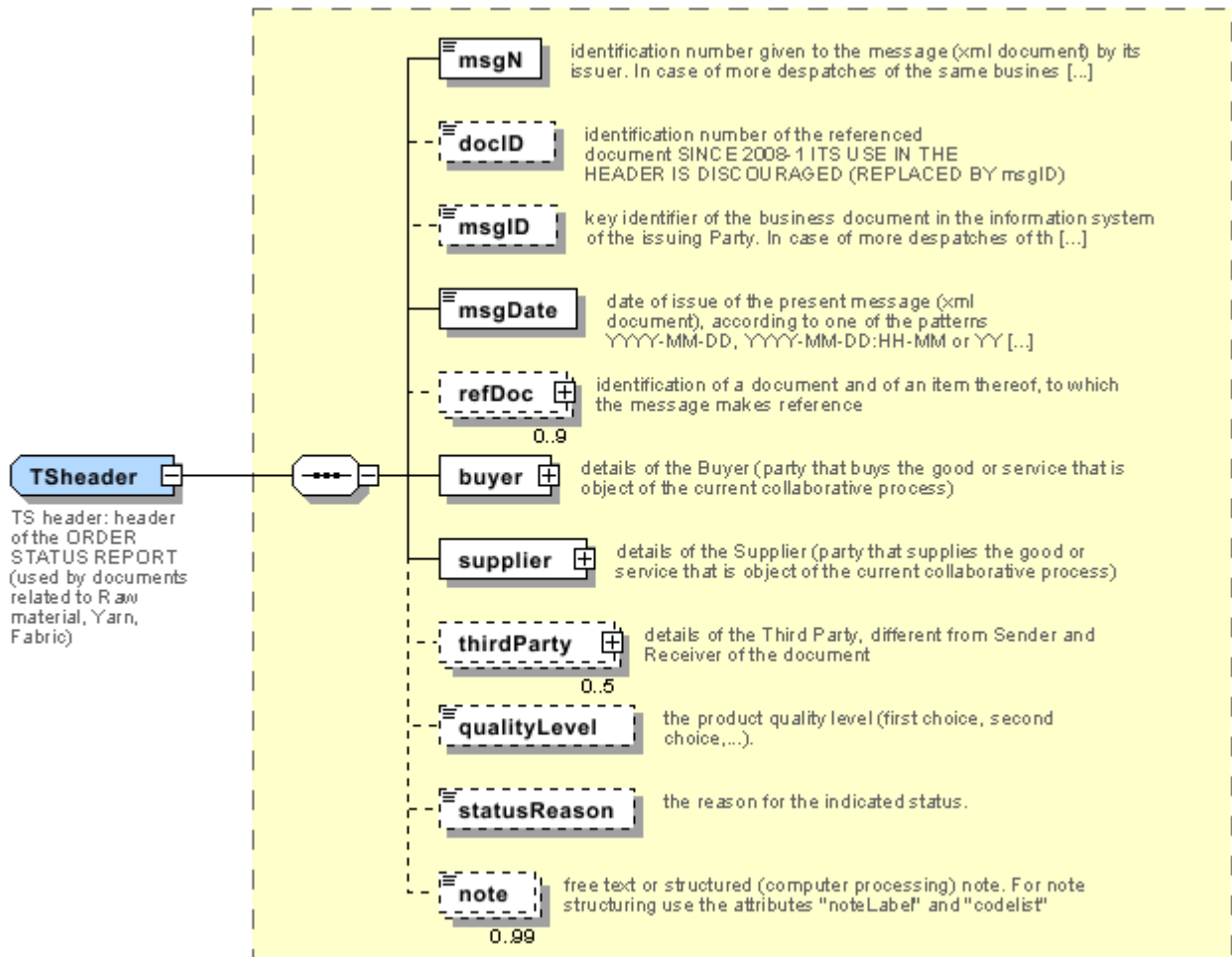
T44 - additional code type

T7 - manufacturing status

Annex A

Representative images of the principal complex elements' structure.





Annex B

NT100 - eBIZ TCFUpstream version

dictionary version

Agency name: eBIZ

tabella cod.: NT100

File codes list (Generic code): http://www.ebiz.enea.it/moda-ml/repository/codelist/v2018-1/gc_NT100.xml

Code	Description	Adoption note	Version status	Date of insertion
2013-1	v2013-1			01/07/2013
2018-1	v2018-1		(N)	04/11/2018
draft	draft		(N)	08/09/2017

NT16 - VAT rate or code

VAT rate or code (DEPRECATED, use dtScheme element)

tabella cod.: NT16

File codes list (Generic code): http://www.ebiz.enea.it/moda-ml/repository/codelist/v2018-1/gc_NT16.xml

NT18 - message function

function performed by the present message with regards to the transmission

Agency name: eBIZ

tabella cod.: NT18

File codes list (Generic code): http://www.ebiz.enea.it/moda-ml/repository/codelist/v2018-1/gc_NT18.xml

Code	Description	Adoption note	Version status	Date of insertion
CA	delete this document			01/07/2013
CP	copy			
OR	original			
RC	re-transmission for data correction			
RT	re-transmission			

NT2 - third party qualifier

Third Party role qualifier

Agency name: eBIZ

tabella cod.: NT2

File codes list (Generic code): http://www.ebiz.enea.it/moda-ml/repository/codelist/v2018-1/gc_NT2.xml

Code	Description	Adoption note	Version status	Date of insertion
AG	Sales Agent			
AU	Auditor		(N)	08/04/2019
CE	Certification authority		(N)	08/04/2019
CO	Quality Controller			
DC	Response to			
DF	Invoicee			
DI	Copy to (CC)			28/10/2014
DM	Consignee			
DP	Consignment address (Delivery Party)			
IM	Importer			
OR	Originator			10/09/2014
SC	Sub contractor		(N)	10/04/2019
SM	Service/ePlatform manager		(N)	08/04/2019
SP	Forwarder			
TX	Tax Representative			

NT29 - format of a date

format used for the date

Agency name: eBIZ

tabella cod.: NT29

File codes list (Generic code): http://www.ebiz.enea.it/moda-ml/repository/codelist/v2018-1/gc_NT29.xml

Code	Description	Adoption note	Version status	Date of insertion
D	YYYY-MM-DD			
M	YYYY-MM-DD:HH-MM			
W	YYYY-WW			

NT6 - coding system owner/issuer

code specifying the organisation who has created or owns the coding or numbering system

Agency name: eBIZ

tabella cod.: NT6

File codes list (Generic code): http://www.ebiz.enea.it/moda-ml/repository/codelist/v2018-1/gc_NT6.xml

Code	Description	Adoption note	Version status	Date of insertion
CL	Customer/buyer			
CO	Quality Controller			
EB	eBIZ	replaces 'ML'	(N)	18/03/2019
EN	GS1 (ex-EAN International)			
ES	e-Stockflow			
FO	Supplier			
GS	GS1			01/07/2013
MF	VAT identifier		(U)	
ML	Moda-ML	DEPRECATED	(U)	
SP	Service Provider			

NT60 - language, codes from ISO 639-1 (subset) (N)

Agency name: eBIZ / ISO

tabella cod.: NT60

File codes list (Generic code): http://www.ebiz.enea.it/moda-ml/repository/codelist/v2018-1/gc_NT60.xml

Code	Description	Adoption note	Version status	Date of insertion
af	Afrikaans		(N)	31/01/2019
ar	Arabic		(N)	31/01/2019
be	Belarusian		(N)	31/01/2019
bg	Bulgarian		(N)	31/01/2019
bn	Bengali		(N)	31/01/2019
bo	Tibetan		(N)	31/01/2019
bs	Bosnian		(N)	31/01/2019
ca	Catalan, Valencian		(N)	31/01/2019
cs	Czech		(N)	31/01/2019
da	Danish		(N)	31/01/2019
de	German		(N)	31/01/2019
el	Greek, Modern (1453-)		(N)	31/01/2019
en	English		(N)	31/01/2019

eo	Esperanto		(N)	31/01/2019
es	Spanish, Castilian		(N)	31/01/2019
et	Estonian		(N)	31/01/2019
eu	Basque		(N)	31/01/2019
F	Female		(N)	15/04/2019
fa	Persian		(N)	31/01/2019
fi	Finnish		(N)	31/01/2019
fr	French		(N)	31/01/2019
ga	Irish		(N)	31/01/2019
gd	Gaelic, Scottish Gaelic		(N)	31/01/2019
gn	Guarani		(N)	31/01/2019
he	Hebrew		(N)	31/01/2019
hr	Croatian		(N)	31/01/2019
ht	Haitian, Haitian Creole		(N)	31/01/2019
hu	Hungarian		(N)	31/01/2019
hy	Armenian		(N)	31/01/2019
ia	Interlingua (International Auxiliary Language Association)		(N)	31/01/2019
id	Indonesian		(N)	31/01/2019
is	Icelandic		(N)	31/01/2019
it	Italian		(N)	31/01/2019
ja	Japanese		(N)	31/01/2019
jv	Javanese		(N)	31/01/2019
ka	Georgian		(N)	31/01/2019
km	Central Khmer		(N)	31/01/2019
ko	Korean		(N)	31/01/2019
ku	Kurdish		(N)	31/01/2019
lb	Luxembourgish, Letzeburgesch		(N)	31/01/2019
lo	Lao		(N)	31/01/2019
lt	Lithuanian		(N)	31/01/2019
lv	Latvian		(N)	31/01/2019
mg	Malagasy		(N)	31/01/2019
mk	Macedonian		(N)	31/01/2019
mn	Mongolian		(N)	31/01/2019
mt	Maltese		(N)	31/01/2019
nl	Dutch, Flemish		(N)	31/01/2019

no	Norwegian		(N)	31/01/2019
pl	Polish		(N)	31/01/2019
pt	Portuguese		(N)	31/01/2019
ro	Romanian, Moldavian, Moldovan		(N)	31/01/2019
ru	Russian		(N)	31/01/2019
se	Northern Sami		(N)	31/01/2019
sk	Slovak		(N)	31/01/2019
sl	Slovenian		(N)	31/01/2019
sm	Samoan		(N)	31/01/2019
so	Somali		(N)	31/01/2019
sq	Albanian		(N)	31/01/2019
sr	Serbian		(N)	31/01/2019
sv	Swedish		(N)	31/01/2019
sw	Swahili		(N)	31/01/2019
ta	Tamil		(N)	31/01/2019
th	Thai		(N)	31/01/2019
tr	Turkish		(N)	31/01/2019
uk	Ukrainian		(N)	31/01/2019
ur	Urdu		(N)	31/01/2019
uz	Uzbek		(N)	31/01/2019
vi	Vietnamese		(N)	31/01/2019
zh	Chinese		(N)	31/01/2019

NT7 - unit of measure (U)

specification of the unit of measure, it is a sub set of table Unit of Measure Code - UN/ECE REC 20 delivered by United Nations Economic Commission for Europe (UN/ECE)

Agency name: eBIZ / UN/ECE

tabella cod.: NT7

File codes list (Generic code): http://www.ebiz.enea.it/moda-ml/repository/codelist/v2018-1/gc_NT7.xml

Other link: <http://docs.oasis-open.org/ubl/os-UBL-2.1/cl/gc/default/UnitOfMeasureCode-2.1.gc#>

Code	Description	Adoption note	Version status	Date of insertion
CMK	square centimetre		(N)	20/12/2017
CMQ	cubic centimetre		(N)	20/12/2017
CMT	centimetre			

CNE	centiNewton			
CO2TON	ton of CO2		(N)	10/09/2014
COUPLES	couples			
DMQ	cubic decimetre			
E37	pixel		(N)	11/04/2018
GRM	gram			
HUR	hour			
INH	inch			
KGM	kilogram			
KMT	kilometer			
KWH	kilowatthours		(N)	10/09/2014
LBR	pound			
MIN	minute			
MMK	square millimetre		(N)	20/12/2017
MTK	square metre		(N)	20/12/2017
MTQ	cubic metre			
MTR	metre			
NMB	numero			
ONZ	ounce			
P1	percent			
PPM	parts per milion			
PZ	piece		(U)	
RPM	rounds per metre			
YRD	yard			

NT8 - Order status type

type of Order status report

Agency name: eBIZ

tabella cod.: NT8

File codes list (Generic code): http://www.ebiz.enea.it/moda-ml/repository/codelist/v2018-1/gc_NT8.xml

Code	Description	Adoption note	Version status	Date of insertion
C	complete			
H	historic (whole season)			
I	incremental (only status changes)			01/07/2013

S	despatchables only			
---	--------------------	--	--	--

T10 - ISO3166 - Country

code of the nation

Agency name: ISO

tabella cod.: T10

File codes list (Generic code): http://www.ebiz.enea.it/moda-ml/repository/codelist/v2018-1/gc_T10.xml

Table not printed: there are 239 elements, more than the maximum specified for printing: 99.

T21 - type of document

type or class to which the referenced document belongs

Agency name: eBIZ

tabella cod.: T21

File codes list (Generic code): http://www.ebiz.enea.it/moda-ml/repository/codelist/v2018-1/gc_T21.xml

Code	Description	Adoption note	Version status	Date of insertion
BOR	blanket order		(N)	01/02/2018
CAT	Price catalogue - tech sheet			
CEO	Certificate of origin		(N)	13/04/2018
CER	Certificate		(N)	13/04/2018
COC	colour card			
CRN	Credit note			08/09/2017
CTO	Checking order			01/07/2013
CTR	Contract		(U)	
CXF	CxF3 file			01/07/2013
DAD	Darn order			
DDT	ddt			
DEA	Despatch advise			
DER	Despatch request			
DR	Document Request			02/12/2014
FOR	Forecast			02/12/2014
GSO	Garment stock offer			
GSX	Garment stock offer change			

INV	Invoice			
KCC	Knitting-Clothing Commission Order			02/12/2014
KCI	Garment in Work Inventory Report			02/12/2014
M2M	Made to Measure Production Order			02/12/2014
MAS	Master marker			
MCI	Visual merchandising instruction		(N)	13/04/2018
OCH	Order change			
OFF	Offer			
ORD	Purchase order			
ORP	Order response			
OSR	order status request			
OSS	Offer status			02/12/2014
OST	Order status			
OUR	our reference			
QR	Quality Report			02/12/2014
RAI	Raw Material in Work Inventory Report			02/12/2014
RDC	Raw dyeing commission order			
RDH	Raw dyeing order change			
RDR	Raw dyeing order response			
REA	Receiving advise			
REQ	Request for Offer			
RET	Return			02/12/2014
RSC	Spinning commission order			
RSH	Spinning order change			
RSR	Spinning order response			
SCL	process sheet			
TFC	Textile dyeing-finishing commission order			
TFX	Textile Dyeing-Finishing Order Change			02/12/2014
TPC	Textile printing commission order			
TPX	Textile Printing Order Change			02/12/2014
TWI	Textile in work inventory			
VMI	visual merchandising instructions		(N)	01/02/2018
WAC	Warping commission order			
WEC	Weaving commission order			
YDC	Yarn dyeing commission order			

YDH	Yarn dyeing order change			
YDR	Yarn dyeing order response			
YTC	Twisting commission order			
YWI	Yarn in work inventory			

T44 - additional code type

qualifier of the additional coding of a product

Agency name: eBIZ

tabella cod.: T44

File codes list (Generic code): http://www.ebiz.enea.it/moda-ml/repository/codelist/v2018-1/gc_T44.xml

Code	Description	Adoption note	Version status	Date of insertion
CC	colour card			
CL	sales collection			
CO	company identification code		(N)	08/09/2017
DY	dye number			
LT	lot number			
MDI	Made in			08/09/2017
MS	manufacturing state			
PKG	packaging			09/09/2014
PL	product line			
RGB	RGB value			
SE	selvedge code			

T7 - manufacturing status

code of the manufacturing stage used to describe the progress in the production cycle

Agency name: eBIZ

tabella cod.: T7

File codes list (Generic code): http://www.ebiz.enea.it/moda-ml/repository/codelist/v2018-1/gc_T7.xml

Code	Description	Adoption note	Version status	Date of insertion
000	to be launched			
001	launched			01/07/2013
010	knitted			

020	packed			
090	preparing			01/07/2013
095	prepared			01/07/2013
100	warping			
199	warped			
200	weaving			
299	woven			
300	dyeing			
399	dyed			
400	finishing			
499	finished			
500	printing			
599	printed			
600	darning			
640	preparing for printing			01/07/2013
650	prepared for printing			01/07/2013
660	checking			01/07/2013
670	checked			01/07/2013
700	spinning			
799	spun			
800	twisting			
899	twisted			
900	despatch-ready			
950	despatched			
999	other, see note if any			01/07/2013

Annex C

New or changed elements towards previous version

Changes or added elements (changes in description excluded; changes in aggregation notes and best practice included): 81

Test Type	Tag	Status	Item type	Changes related to
Attribute	additionalIdentifier	NEW	Additional Party Identifier	Has NEW attribute: numbering organisation code
Attribute	additionalIdentifier	NEW	Additional Party Identifier	Has NEW attribute: id Qualifier
Element(l)	additionalIdentifier	NEW	Additional Party Identifier	
Element(E)	article	UPDATED	article identifier	Property: Length_Max Old value: 25 New value: 80
Attribute	article	UPDATED	article identifier	Its attribute: code list reference Property: Aggregation Note_English Old value: <i>this attribute should be ALTERNATIVE to the others</i> New value: <i>at least one out of this attribute and "numberingOrg" should be set</i>
Element(l)	attachment	NEW	attachment	
Child	attachment	NEW	attachment	Has NEW child of: file name
Child	attachment	NEW	attachment	Has NEW child of: external reference
Child	attachment	NEW	attachment	Has NEW child of: binary object
Attribute	binary Object	NEW	binary object	Has NEW attribute: encoding
Attribute	binary Object	NEW	binary object	Has NEW attribute: mime
Attribute	binary Object	NEW	binary object	Has NEW attribute: format
Attribute	binary Object	NEW	binary object	Has NEW attribute: character set
Element(l)	binary Object	NEW	binary object	
Child	buyer	NEW	Buyer (*)	Has NEW child of: Party identifier

Child	buyer	NEW	Buyer (*)	Has NEW child of: Additional Party Identifier
Attribute	buyer	NEW	Buyer (*)	Has NEW attribute: sender Party qualifier
Element(l)	characterSetCode	NEW	character set code	
Element(l)	characterSet	NEW	character set	
Attribute	description	NEW	description	Has NEW attribute: In
Element(E)	description	UPDATED	description	Property: Length_Max Old value: 70 New value: 250
Element(E)	email	UPDATED	e-mail	Property: Length_Max Old value: 80 New value: 250
Element(l)	encodingCode	NEW	encoding code	
Element(l)	encoding	NEW	encoding	
Child	externalReference	NEW	external reference	Has NEW child of: uri
Child	externalReference	NEW	external reference	Has NEW child of: format code
Child	externalReference	NEW	external reference	Has NEW child of: character set code
Child	externalReference	NEW	external reference	Has NEW child of: mime code
Child	externalReference	NEW	external reference	Has NEW child of: encoding code
Element(l)	externalReference	NEW	external reference	
Attribute	fileName	NEW	file name	Has NEW attribute: numbering organisation code
Element(l)	fileName	NEW	file name	
Element(l)	formatCode	NEW	format code	
Element(l)	format	NEW	format	

Attrib	note	UPDATE	general note	Its attribute: numbering organisation code Property: Aggregation Note_English Old value: New value: <i>must be used to specify the organization that created the list of codes used in "noteLabel"</i>
Elem(l)	idQualifier	NEW	id Qualifier	
Elem(l)	isURL	NEW	is URL	
Child	itemIdentification	NEW	item identification	Has NEW child of: serial number
Elem(l)	itemIdentification	NEW	item identification	
Child	itemsList	NEW	items list	Has NEW child of: quality level
Child	itemsList	NEW	items list	Has NEW child of: item identification
Elem(l)	itemsList	NEW	items list	
Elem(E)	legalName	UPDATE	Legal name	Property: Length_Max Old value: 80 New value: 250
Elem(E)	itemID	UPDATE	line item number	Property: Length_Max Old value: 6 New value: 40
Attrib	lineN	UPDATE	line number	Its attribute: VAT rate Property: Aggregation Note_English Old value: New value: <i>Deprecated, prefer dtScheme when available.</i>
Elem(l)	ln	NEW	ln	
Child	progress	NEW	Manufacturer progress details	Has NEW child of: items list
Child	progress	NEW	Manufacturer progress details	Has NEW child of: status reason
Child	progress	NEW	Manufacturer progress details	Has NEW child of: quality level
Child	progress	UPDATE	Manufacturer progress details	relationship with child: product quantity Property: BestPractice_English

				Old value: New value: <i>this element can have two instances only if the units of measure are different</i>
Element(E)	mfrStatusText	UPDATED	manufacture stage text	Property: Length_Max Old value: 40 New value: 250
Element(I)	mimeCode	NEW	mime code	
Element(I)	mime	NEW	mime	
Attribute	qualityLevel	NEW	quality level	Has NEW attribute: numbering organisation code
Attribute	qualityLevel	NEW	quality level	Has NEW attribute: code list reference
Attribute	qualityLevel	NEW	quality level	Has NEW attribute: code list version
Attribute	qualityLevel	NEW	quality level	Has NEW attribute: code list name
Element(I)	qualityLevel	NEW	quality level	
Child	refDoc	NEW	reference document details	Has NEW child of: attachment
Child	refDoc	UPDATED	reference document details	relationship with child: document identifier Property: BestPractice_English Old value: New value: <i>numberingOrg indicates the role that produced the document identifier (it is allowed to declare two different ones -e.g. customer and supplier - with two docID with different numberingOrg)</i>
Attribute	season	NEW	season identifier	Has NEW attribute: code list reference
Attribute	season	NEW	season identifier	Has NEW attribute: numbering organisation code
Attribute	season	NEW	season identifier	Has NEW attribute: code list name
Attribute	season	NEW	season identifier	Has NEW attribute: code list version
Attribute	serialIN	NEW	serial number	Has NEW attribute: id Qualifier
Element(E)	serialIN	UPDATED	serial number	Property: Length_Max Old value: 15 New value: 250
Element(I)	statusReason	NEW	status reason	
Element(I)	subDepartment	NEW	department identifier	

Child	supplier	NEW	Supplier (*)	Has NEW child of: Party identifier
Child	supplier	NEW	Supplier (*)	Has NEW child of: Additional Party Identifier
Attribute	supplier	NEW	Supplier (*)	Has NEW attribute: sender Party qualifier
Child	texCode	UPDATE	Textiles product code	relationship with child: description Property: Aggregation Note_English Old value: New value: <i>Product description</i>
Child	texCode	UPDATE	Textiles product code	relationship with child: description Property: Cardmax Old value: 1 New value: 999
Child	thirdParty	NEW	Third Party (*)	Has NEW child of: Party identifier
Attribute	thirdParty	NEW	Third Party (*)	Has NEW attribute: sender Party qualifier
Child	TSheader	NEW	TS header	Has NEW child of: status reason
Child	TSheader	NEW	TS header	Has NEW child of: Third Party
Child	TSheader	NEW	TS header	Has NEW child of: quality level
Child	TSheader	UPDATE	TS header	relationship with child: general note Property: Cardmax Old value: 19 New value: 99
Attribute	uri	NEW	uri	Has NEW attribute: is URL
Element(l)	uri	NEW	uri	

Annex D

New or changed tables and codes towards previous version

Changes or added items (changes in CodeListAgencyName excluded; changes in adoption notes and code description included): 97

Test Type	Status	Table code	Table description	Code	Change description
Table	UPD ATED	NT 100	eBIZ TCFUpstream version		Description_English Old value: <i>eBIZ Moda-ML version</i> New value: <i>eBIZ TCFUpstream version</i>
Code	NEW	NT 100		2018-1 (v2018-1)	
Code	NEW	NT 100		draft (draft)	
Table	UPD ATED	NT 16	VAT rate or code		Generalities Old value: <i>VAT rate or code (deprecated , use dtScheme element)</i> New value: <i>VAT rate or code (DEPRECATED, use dtScheme element)</i>
Code	NEW	NT 2		AU (Auditor)	
Code	NEW	NT 2		CE (Certification authority)	
Code	NEW	NT 2		SC (Sub contractor)	
Code	NEW	NT 2		SM (Service/ePlatform manager)	
Code	NEW	NT 6		EB (eBIZ)	
Code	UPD ATED	NT 6		ML (DEPRECATED)	adoption_note Old value: New value: <i>DEPRECATED</i>
Table	NEW	NT 60	language, codes from ISO 639-1 (subset)		
Code	NEW	NT 60		F (Female)	
Code	NEW	NT 60		af (Afrikaans)	
Code	NEW	NT 60		ar (Arabic)	
Code	NEW	NT 60		be (Belarusian)	

Co de	NEW	NT 60		<i>bg</i> (Bulgarian)	
Co de	NEW	NT 60		<i>bn</i> (Bengali)	
Co de	NEW	NT 60		<i>bo</i> (Tibetan)	
Co de	NEW	NT 60		<i>bs</i> (Bosnian)	
Co de	NEW	NT 60		<i>ca</i> (Catalan, Valencian)	
Co de	NEW	NT 60		<i>cs</i> (Czech)	
Co de	NEW	NT 60		<i>da</i> (Danish)	
Co de	NEW	NT 60		<i>de</i> (German)	
Co de	NEW	NT 60		<i>el</i> (Greek, Modern (1453-))	
Co de	NEW	NT 60		<i>en</i> (English)	
Co de	NEW	NT 60		<i>eo</i> (Esperanto)	
Co de	NEW	NT 60		<i>es</i> (Spanish, Castilian)	
Co de	NEW	NT 60		<i>et</i> (Estonian)	
Co de	NEW	NT 60		<i>eu</i> (Basque)	
Co de	NEW	NT 60		<i>fa</i> (Persian)	
Co de	NEW	NT 60		<i>fi</i> (Finnish)	
Co de	NEW	NT 60		<i>fr</i> (French)	
Co de	NEW	NT 60		<i>ga</i> (Irish)	
Co de	NEW	NT 60		<i>gd</i> (Gaelic, Scottish Gaelic)	
Co de	NEW	NT 60		<i>gn</i> (Guarani)	
Co de	NEW	NT 60		<i>he</i> (Hebrew)	
Co de	NEW	NT 60		<i>hr</i> (Croatian)	

Co de	NEW	NT 60		<i>ht</i> (Haitian, Haitian Creole)	
Co de	NEW	NT 60		<i>hu</i> (Hungarian)	
Co de	NEW	NT 60		<i>hy</i> (Armenian)	
Co de	NEW	NT 60		<i>ia</i> (Interlingua (International Auxiliary Language Assoc iation))	
Co de	NEW	NT 60		<i>id</i> (Indonesian)	
Co de	NEW	NT 60		<i>is</i> (Icelandic)	
Co de	NEW	NT 60		<i>it</i> (Italian)	
Co de	NEW	NT 60		<i>ja</i> (Japanese)	
Co de	NEW	NT 60		<i>ju</i> (Javanese)	
Co de	NEW	NT 60		<i>ka</i> (Georgian)	
Co de	NEW	NT 60		<i>km</i> (Central Khmer)	
Co de	NEW	NT 60		<i>ko</i> (Korean)	
Co de	NEW	NT 60		<i>ku</i> (Kurdish)	
Co de	NEW	NT 60		<i>lb</i> (Luxembourgish, Letzebu rgesch)	
Co de	NEW	NT 60		<i>lo</i> (Lao)	
Co de	NEW	NT 60		<i>lt</i> (Lithuanian)	
Co de	NEW	NT 60		<i>lv</i> (Latvian)	
Co de	NEW	NT 60		<i>mg</i> (Malagasy)	
Co de	NEW	NT 60		<i>mk</i> (Macedonian)	
Co de	NEW	NT 60		<i>mn</i> (Mongolian)	
Co de	NEW	NT 60		<i>mt</i> (Maltese)	

Co de	NEW	NT 60		<i>nl</i> (Dutch, Flemish)	
Co de	NEW	NT 60		<i>no</i> (Norwegian)	
Co de	NEW	NT 60		<i>pl</i> (Polish)	
Co de	NEW	NT 60		<i>pt</i> (Portuguese)	
Co de	NEW	NT 60		<i>ro</i> (Romanian, Moldavian, M oldovan)	
Co de	NEW	NT 60		<i>ru</i> (Russian)	
Co de	NEW	NT 60		<i>se</i> (Northern Sami)	
Co de	NEW	NT 60		<i>sk</i> (Slovak)	
Co de	NEW	NT 60		<i>sl</i> (Slovenian)	
Co de	NEW	NT 60		<i>sm</i> (Samoan)	
Co de	NEW	NT 60		<i>so</i> (Somali)	
Co de	NEW	NT 60		<i>sq</i> (Albanian)	
Co de	NEW	NT 60		<i>sr</i> (Serbian)	
Co de	NEW	NT 60		<i>sv</i> (Swedish)	
Co de	NEW	NT 60		<i>sw</i> (Swahili)	
Co de	NEW	NT 60		<i>ta</i> (Tamil)	
Co de	NEW	NT 60		<i>th</i> (Thai)	
Co de	NEW	NT 60		<i>tr</i> (Turkish)	
Co de	NEW	NT 60		<i>uk</i> (Ukrainian)	
Co de	NEW	NT 60		<i>ur</i> (Urdu)	
Co de	NEW	NT 60		<i>uz</i> (Uzbek)	
Co de	NEW	NT 60		<i>vi</i> (Vietnamese)	

Code	NEW	NT60		zh (Chinese)	
Code	NEW	NT7		CMK (square centimetre)	
Code	NEW	NT7		CMQ (cubic centimetre)	
Code	NEW	NT7		E37 (pixel)	
Code	NEW	NT7		KWH (kilowatthours)	
Code	NEW	NT7		MMK (square millimetre)	
Code	NEW	NT7		MTK (square metre)	
Code	NEW	NT7		CO2TON (ton of CO2)	
Table	UPDATED	NT7	unit of measure		OtherExternalReferenceURL Old value: New value: #http://docs.oasis-open.org/ubl/os-UBL-2.1/cl/gc/default/UnitOfMeasureCode-2.1.gc#
Table	UPDATED	NT7	unit of measure		Description_English Old value: <i>unity of measure</i> New value: <i>unit of measure</i>
Code	NEW	T21		BOR (blanket order)	
Code	NEW	T21		CEO (Certificate of origin)	
Code	NEW	T21		CER (Certificate)	
Code	UPDATED	T21		CTR (Contract)	Text_English Old value: <i>contract</i> New value: <i>Contract</i>
Code	NEW	T21		MCI (Visual merchandising instruction)	
Code	NEW	T21		VMI (visual merchandising instructions)	
Code	NEW	T44		CO (company identification code)	