



<http://www.ebiz-tcf.eu>

## IMPLEMENTATION GUIDE

includes COMPARISON BETWEEN CURRENT and LAST  
PREVIOUSLY RELEASED VERSION

TRANSACTION "TEXTILE QUALITY REPORT"

Version: v2018-1

Date of release: 18/7/2019

Document code: G007rv

technical Documentation: <http://www.ebiz.enea.it>

XML Schemas repository: <http://www.ebiz.enea.it/moda-ml/repository/schema/v2018-1/default.asp>

Guides repository: <http://www.ebiz.enea.it/moda-ml/repository/guide/v2018-1/default.asp>

Guide filename: G007rv-eBIZ-TextileQualityReport.pdf

# 1. BUSINESS DESCRIPTION

## 1.1 Scope

The present guide has been issued to assist the companies of the Textile-Clothing sector in the implementation of the standard XML document type "Textile QUALITY REPORT", providing all the instructions required for its use in any context of e-commerce between Apparel Producers and Fabric Producers.

All the rules required for the construction and validation of the document are embedded into the specific XML-Schema, which is detailed in section "Implementation guide".

## 1.2 Generalities

The message is issued either by the Fabric Producer and/or by the Fabric Quality Controller as "quality certificate" of the fabric piece, mainly to anticipate the details on the existence, position and classification of faults in order to accelerate and improve the following apparel manufacturing.

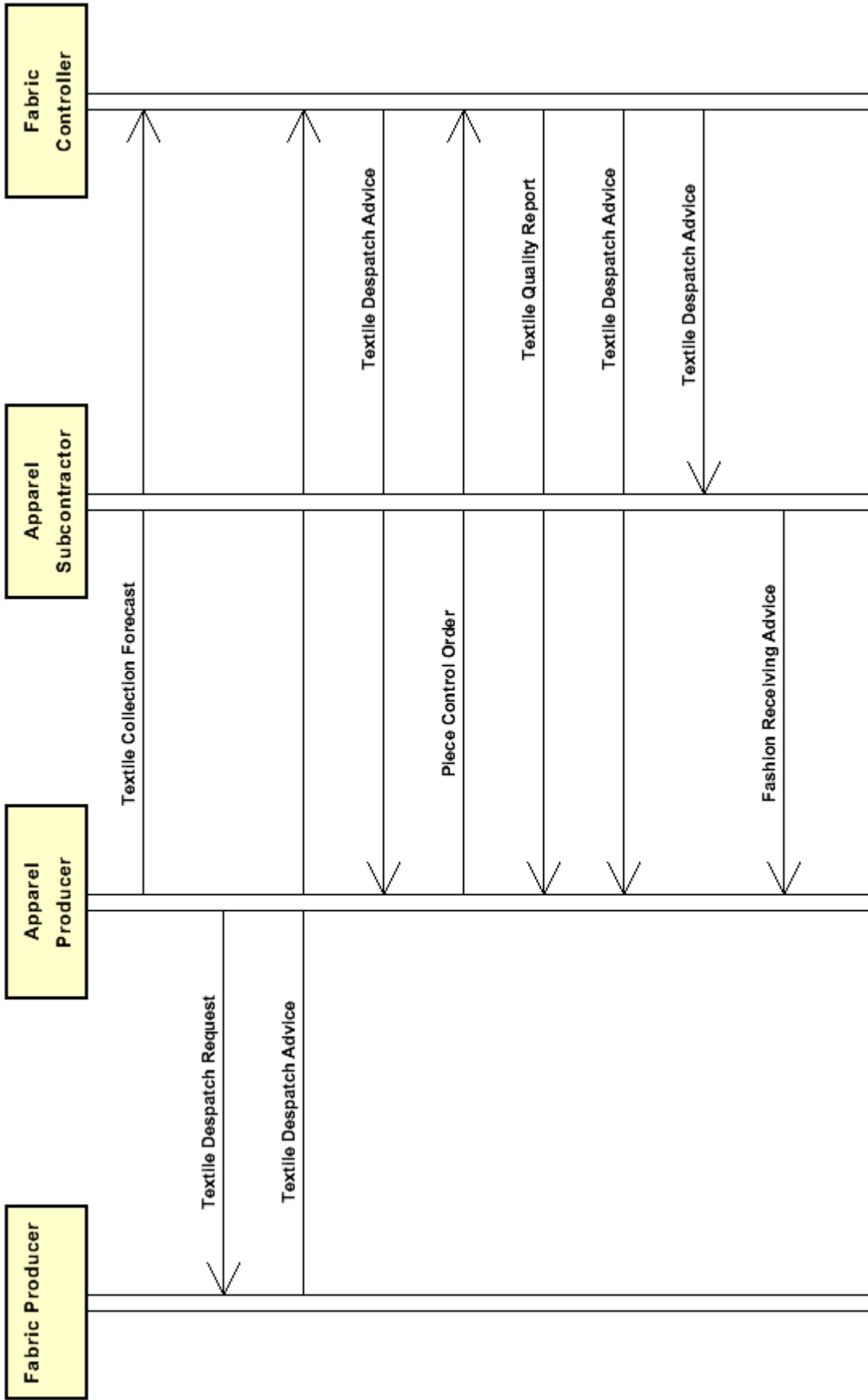
Each document refers either to one piece of fabric, identified by its id. number (TQ type ="S"ingle) or to several pieces belonging to the same shipment (TQ type="M"ultiple) and likewise identified.

The following classes of data can be reported in the document:

- physical dimensions and overall allowance
- fabric faults and their positions
- test value of conformance to specifications and taylorability
- the reporting of the inspection.

## 1.3. Possible scenario

Fabric delivery with quality reporting by controller





## 2. IMPLEMENTATION GUIDE

### 2.1 General structure of XML document

All the business data that can be exchanged through this class of documents are shown in the following "document structure", that provides a simplified vision of the Schema.

In particular:

- the two numbers following each element define its "cardinality" (minimum and maximum number of occurrences); the minimum equal zero indicates that the element is optional, the minimum greater than zero indicates that is mandatory;
- the bold character denotes the complex elements (aggregates of simple elements) that were built for the sake of functionality and re-usability of some complex informations sets. The child elements in each parent element are easily spotted as "indented";
- the symbol "@" denotes an attribute of the preceding element; here "the usage indicator (optional, required, ...)" is shown in square brackets.

#### Legenda

- N: new element
- U: updated properties
- P: changes in children
- p: is a changed child
- A: changes in attributes
- a: is a new or changed attribute
- \*: is a subtype

### Structure

#### TEXQualityRpt

@TQtype [Optional]

@msgfunction [Optional] [Default= OR]

@version [Optional] [Default= 2018-1]

@useProfile [Optional]

```
| TQheader 1-1 (P)
| | msgN 1-1
| | - choose -
| | msgID 0-1
| | - or -
| | docID 0-1
| | @numberingOrg [Optional]
| | - end choose -
| | msgDate 1-1
| | @dateForm [Optional]
| | refDoc 0-9 (pP)
| | @docType [Required]
| | | docID 1-2 (p)
| | | @numberingOrg [Optional]
| | | docDate 0-1
| | | @dateForm [Optional]
| | | season 0-1 (A)
| | | @numberingOrg [Optional] (a)
| | | @codeList [Optional] (a)
| | | @listName [Optional] (a)
| | | @listVersion [Optional] (a)
| | | itemID 0-1 (U)
| | | attachment 0-1 (N)
| | | @uid [Optional]
| | | | fileName 0-1 (N)
```

```

| | | @numberingOrg [Optional] (a)
| | | binaryObject 0-1 (N)
| | | @format [Optional] (N)
| | | @mime [Optional] (N)
| | | @encoding [Optional] (N)
| | | @characterSet [Optional] (N)
| | | externalReference 0-99 (N)
| | | | uri 1-1 (N)
| | | | @isURL [Optional] [Default= true] (Na)
| | | | mimeTypeCode 0-1 (N)
| | | | formatCode 0-1 (N)
| | | | encodingCode 0-1 (N)
| | | | characterSetCode 0-1 (N)
| buyer 1-1 (AP)
| @logo [Optional]
| @sender [Optional] (a*)
| | id 1-1 (p)
| | | @numberingOrg [Optional]
| | additionalIdentifier 0-9 (N)
| | | @numberingOrg [Optional] (a)
| | | @idQualifier [Optional] (Na)
| | legalName 0-1 (U)
| | dept 0-1
| | subDept 0-1 (N)
| | person 0-1
| | | @email [Optional]
| | | @phone [Optional]
| | | @fax [Optional]
| | street 0-1
| | city 0-1
| | subCountry 0-1
| | country 0-1
| | postCode 0-1
| supplier 1-1 (AP)
| @logo [Optional]
| @sender [Optional] (a*)
| | id 1-1
| | | @numberingOrg [Optional]
| | additionalIdentifier 0-9 (N)
| | | @numberingOrg [Optional] (a)
| | | @idQualifier [Optional] (Na)
| | legalName 0-1 (U)
| | dept 0-1
| | subDept 0-1 (N)
| | person 0-1
| | | @email [Optional]
| | | @phone [Optional]
| | | @fax [Optional]
| | street 0-1
| | city 0-1
| | subCountry 0-1
| | country 0-1
| | postCode 0-1
| thirdParty 0-5 (AP)
| @VAT [Optional]
| @role [Required]
| @sender [Optional] (a*)
| | id 1-1
| | | @numberingOrg [Optional]
| | legalName 0-1 (U)
| | dept 0-1

```

- | subDept 0-1 (N)
- | person 0-1
- | | @email [Optional]
- | | @phone [Optional]
- | | @fax [Optional]
- | street 0-1
- | city 0-1
- | subCountry 0-1
- | country 0-1
- | postCode 0-1
- | note 0-99
- | | @numberingOrg [Optional]
- | | @codeList [Optional]
- | | @noteLabel [Optional]

### TQbody 1-1

- | **TQitem 1-unbounded** (P)
- | serialN 1-9 (AU)
- | | @numberingOrg [Optional]
- | | @idQualifier [Optional] (N)
- | | **texCode 0-2** (P)
- | | | @numberingOrg [Optional]
- | | | art 1-1 (U)
- | | | | @numberingOrg [Optional]
- | | | | @codeList [Optional]
- | | | | @listName [Optional]
- | | | | @listVersion [Optional]
- | | pattern 0-1
- | | | @numberingOrg [Optional]
- | | | @codeList [Optional]
- | | | @listName [Optional]
- | | | @listVersion [Optional]
- | | color 0-1
- | | | @numberingOrg [Optional]
- | | | @codeList [Optional]
- | | | @listName [Optional]
- | | | @listVersion [Optional]
- | | added 0-9
- | | | @numberingOrg [Optional]
- | | | @addType [Optional]
- | | description 0-unbounded (pAU)
- | | | @ln [Optional] (N)
- | | **refDoc 0-9** (P)
- | | | @docType [Required]
- | | | docID 1-2 (p)
- | | | | @numberingOrg [Optional]
- | | | docDate 0-1
- | | | | @dateForm [Optional]
- | | | season 0-1 (A)
- | | | | @numberingOrg [Optional] (a)
- | | | | @codeList [Optional] (a)
- | | | | @listName [Optional] (a)
- | | | | @listVersion [Optional] (a)
- | | itemID 0-1 (U)
- | | | **attachment 0-1** (N)
- | | | | @uid [Optional]
- | | | | | fileName 0-1 (N)
- | | | | | @numberingOrg [Optional]
- | | | | | binaryObject 0-1 (N)
- | | | | | @format [Optional] (N)
- | | | | | @mime [Optional] (N)

```

| | | | | @encoding [Optional] (N)
| | | | | @characterSet [Optional] (N)
| | | | | externalReference 0-99 (N)
| | | | | | uri 1-1 (N)
| | | | | | @isURL [Optional] [Default= true] (Na)
| | | | | | mimeTypeCode 0-1 (N)
| | | | | | formatCode 0-1 (N)
| | | | | | encodingCode 0-1 (N)
| | | | | | characterSetCode 0-1 (N)
| | | | | testDate 0-1
| | | | | @dateForm [Optional]
| | | | | lotN 0-1
| | | | | @numberingOrg [Optional]
| | | | | dyeN 0-1
| | | | | @numberingOrg [Optional]
| | | | | mixMatch 0-1
| | | | | @numberingOrg [Optional]
| | | | | pieceMeasures 1-3 (P)
| | | | | @source [Required]
| | | | | | pieceLength 0-1
| | | | | | | @um [Optional] [Default= MTR]
| | | | | | pieceWeight 0-1
| | | | | | | @um [Optional] [Default= KGM]
| | | | | | grossWeight 0-1
| | | | | | | @um [Required]
| | | | | | pieceCutWidth 0-1
| | | | | | | @um [Optional] [Default= CMT]
| | | | | | pieceWeightM 0-1
| | | | | | | @um [Optional] [Default= GRM]
| | | | | | pieceWidth 0-1
| | | | | | | @um [Optional] [Default= CMT]
| | | | | | pieceAllow 0-1
| | | | | | | @um [Required]
| | | | | pieceAllowMea 0-2
| | | | | @source [Required]
| | | | | | pieceAllowM 0-1
| | | | | | | @um [Required]
| | | | | | pieceAllowF 0-1
| | | | | | | @um [Required]
| | | | | | pieceAllow 1-1
| | | | | | | @um [Required]
| | | | | pieceMap 1-2
| | | | | @source [Required]
| | | | | | totFault 1-1
| | | | | | | pieceFault 0-99 (P)
| | | | | | | @faultRank [Required]
| | | | | | | @faultShape [Optional]
| | | | | | - choose -
| | | | | | | fabricFaultText 1-1 (U)
| | | | | | - or -
| | | | | | | fabricFault 1-1
| | | | | | - end choose -
| | | | | | warpStart 1-1
| | | | | | | @um [Optional] [Default= MTR]
| | | | | | warpEnd 0-1
| | | | | | | @um [Optional] [Default= MTR]
| | | | | | weftStart 0-1
| | | | | | | @um [Optional] [Default= CMT]
| | | | | | weftEnd 0-1
| | | | | | | @um [Optional] [Default= CMT]
| | | | | | pieceAllow 0-1

```



```

| | | | @um [Required]
| | | | note 0-99
| | | | @numberingOrg [Optional]
| | | | @codeList [Optional]
| | | | @noteLabel [Optional]
| | | pieceTestRpt 0-2
| | | @source [Required]
| | | | fabricTest 1-99 (P)
| | | | - choose -
| | | | | fabricChar 1-1
| | | | | - or -
| | | | | fabricCharText 1-1 (U)
| | | | | - end choose -
| | | | | experimValue 0-9
| | | | | @um [Optional]
| | | | | @method [Optional]
| | | | | @application [Optional]
| | | | | @idCO [Optional]
| | | | | comply 0-1
| | | | | note 0-99
| | | | | @numberingOrg [Optional]
| | | | | @codeList [Optional]
| | | | | @noteLabel [Optional]
| | | | fabricTaylorability 0-99 (P)
| | | | | taylorabilityChar 1-1
| | | | | experimValue 0-9
| | | | | @um [Optional]
| | | | | @method [Optional]
| | | | | @application [Optional]
| | | | | @idCO [Optional]
| | | | | comply 0-1
| | | | | note 0-99
| | | | | @numberingOrg [Optional]
| | | | | @codeList [Optional]
| | | | | @noteLabel [Optional]
| | | pieceControlRpt 1-1
| | | pieceControl 0-1 (A)
| | | @numberingOrg [Optional]
| | | @codeList [Optional]
| | | @listName [Optional]
| | | @listVersion [Optional]
| | | pieceStatus 0-1
| | | registrationDate 0-1
| | | @dateForm [Optional]
| | | preexaminationDate 0-1
| | | @dateForm [Optional]
| | | inspectionDate 0-1
| | | @dateForm [Optional]
| | | rollUpDate 0-1
| | | @dateForm [Optional]

```

## 2.2 Detailed description of document elements

Following tables show all elements (complex and simple) used in this document. Description includes: 1) element's information: xml tag, name, brief description, data type and syntax constraints; 2) information about use of the element in a particular position in the document: xpath and possible associated notes.

### 2.2.1 Complex elements (Aggregate Business Information Entities)

Complex elements are those elements whose content is composed of other elements (childs).Complex elements are alphabetically ordered.

<b>attachment</b>	an attached document. An attachment can refer to an external document or be included with the document being exchanged (XPath TEXQualityRpt/TQheader/refDoc/attachment) 0-1 (N) (XPath TEXQualityRpt/TQbody/TQitem/refDoc/attachment) 0-1 (N)
<b>buyer</b>	details of the Buyer (party that buys the good or service that is object of the current collaborative process) - base type: Nad, (XPath TEXQualityRpt/TQheader/buyer) 1-1 (AP)
<b>externalReference</b>	details about an external object, such as a document stored at a remote location (XPath TEXQualityRpt/TQbody/TQitem/refDoc/attachment/externalReference) 0-99 (N) (XPath TEXQualityRpt/TQheader/refDoc/attachment/externalReference) 0-99 (N)
<b>fabricTaylorability</b>	taylorability data. Include the type and the value of the taylorability parameter (XPath TEXQualityRpt/TQbody/TQitem/pieceTestRpt/fabricTaylorability) 0-99 (P)
<b>fabricTest</b>	details of the test performed on a fabric. Include the parameter evaluated, the experimental value (one or more) and the declaration of conformity (XPath TEXQualityRpt/TQbody/TQitem/pieceTestRpt/fabricTest) 1-99 (P)
<b>pieceAllowMea</b>	allowance measure for a fabric piece (XPath TEXQualityRpt/TQbody/TQitem/pieceAllowMea) 0-2
<b>pieceControlRpt</b>	report of the control operations executed on a fabric piece (XPath TEXQualityRpt/TQbody/TQitem/pieceControlRpt) 1-1
<b>pieceFault</b>	classification, position and allowance of the piece faults. The reference point (0,0) for the position is the lower left corner of the piece (selvedge excluded) (XPath TEXQualityRpt/TQbody/TQitem/pieceMap/pieceFault) 0-99 (P)
<b>pieceMap</b>	mapping of the piece faults: type, rank and location (XPath TEXQualityRpt/TQbody/TQitem/pieceMap) 1-2 - note: <i>this data group can be iterated to compare the values provided by the Supplier with the values obtained by the external Quality Controller</i>
<b>pieceMeasures</b>	basic measurements of the piece; include width, length, weight and allowance. (XPath TEXQualityRpt/TQbody/TQitem/pieceMeasures) 1-3 (P) - note: <i>this data group can be iterated to compare the values provided by the Supplier with the values obtained by the external Quality Controller</i>
<b>pieceTestRpt</b>	details of the quality test performed on the piece. Includes two sections: test upon the technical characteristics of fabric in general and the taylorability test (XPath TEXQualityRpt/TQbody/TQitem/pieceTestRpt) 0-2 - note: <i>this data group can be iterated to compare the values provided by the Supplier with the values obtained by the external Quality Controller</i>

<b>refDoc</b>	<p>identification of a document and of an item thereof, to which the message makes reference</p> <p>(XPath <code>TEXQualityRpt/TQheader/refDoc</code>) 0-9 (pP)</p> <p>(XPath <code>TEXQualityRpt/TQbody/TQitem/refDoc</code>) 0-9 (P)</p> <p>- note: <i>here the number of the Despatch Advise of the piece can be specified</i></p>
<b>supplier</b>	<p>details of the Supplier (party that supplies the good or service that is object of the current collaborative process)</p> <p>- base type: Nad,</p> <p>(XPath <code>TEXQualityRpt/TQheader/supplier</code>) 1-1 (AP)</p>
<b>texCode</b>	<p>full codification of the textile product</p> <p>(XPath <code>TEXQualityRpt/TQbody/TQitem/texCode</code>) 0-2 (P)</p>
<b>thirdParty</b>	<p>details of the Third Party, different from Sender and Receiver of the document</p> <p>- base type: Nad,</p> <p>(XPath <code>TEXQualityRpt/TQheader/thirdParty</code>) 0-5 (AP)</p> <p>- note: <i>in this case the only permitted third Party is the Controller (role="CO")</i></p>
<b>TQbody</b>	<p>body of the document TEXTILES QUALITY REPORT. It contains one TQitem element for each textile quality report.</p> <p>(XPath <code>TEXQualityRpt/TQbody</code>) 1-1</p> <p>- note: <i>In multiple reports (TQtype="M") this section must contain more than one TQitem.</i></p>
<b>TQheader</b>	<p>header of the TEXTILES QUALITY REPORT.</p> <p>(XPath <code>TEXQualityRpt/TQheader</code>) 1-1 (P)</p> <p>- note: <i>In the document issued by the Controller (sent to Client and Supplier) the Controller must identify as "third party". The attribute "logo" should be used only in conjunction with Supplier or Quality Controller.</i></p>
<b>TQitem</b>	<p>line item of the document TEXTILES QUALITY REPORT. It includes 5 sections: identification data-measurements-faults map- test results-inspection report</p> <p>(XPath <code>TEXQualityRpt/TQbody/TQitem</code>) 1-unbounded (P)</p>

## 2.2.2 Simple elements (Basic Business Information Entities)

Simple elements are those elements whose content is characterized by a data type plus a domain of possible values. Simple elements are alphabetically ordered.

<b>added</b>	<p>additional code of the product (complementing the formers)</p> <p>- base type: string, max length: 80,</p> <p>(XPath <code>TEXQualityRpt/TQbody/TQitem/texCode/added</code>) 0-9</p> <p>- note: <i>here an additional codification (see table T44) can be specified</i></p>
<b>additionalIdentifier</b>	<p>additional identification code of a Party, for example customs registries or others</p> <p>- base type: string, max length: 15,</p> <p>(XPath <code>TEXQualityRpt/TQheader/supplier/additionalIdentifier</code>) 0-9 (N)</p> <p>- note: <i>identifiers for example for exports, such as MID (Manufacturer Identification Code), EORI (E.O.R.I. - Economic Operator Registration and Identification)</i></p> <p>(XPath <code>TEXQualityRpt/TQheader/buyer/additionalIdentifier</code>) 0-9 (N)</p> <p>- note: <i>identifiers for example for exports, such as MID (Manufacturer Identification Code), EORI (E.O.R.I. - Economic Operator Registration and Identification)</i></p>

@addType	<p>qualifier of the additional coding of a product</p> <ul style="list-style-type: none"> <li>- base type: string, cod. table: T44</li> <li><a href="http://www.ebiz.enea.it/moda-ml/repository/codelist/v2018-1/gc_T44.xml">http://www.ebiz.enea.it/moda-ml/repository/codelist/v2018-1/gc_T44.xml</a></li> <li>(XPath <code>TEXQualityRpt/TQbody/TQitem/texCode/added/@addType</code>) [Optional]</li> <li>- nota: <i>addType</i> allows the clarification of the meaning of the added element content; it is strongly suggested to use it always.</li> </ul>
@application	<p>force or similar condition (e.g. no. of revolutions) applied in a test as specified within the standard</p> <ul style="list-style-type: none"> <li>- base type: string, max length: 15,</li> <li>(XPath <code>TEXQualityRpt/TQbody/TQitem/pieceTestRpt/fabricTaylorability/experimValue/@application</code>) [Optional]</li> <li>(XPath <code>TEXQualityRpt/TQbody/TQitem/pieceTestRpt/fabricTest/experimValue/@application</code>) [Optional]</li> </ul>
art	<p>article number of the product</p> <ul style="list-style-type: none"> <li>- base type: string, max length: 80,</li> <li>(XPath <code>TEXQualityRpt/TQbody/TQitem/texCode/art</code>) 1-1 (U)</li> <li>- note: <i>can be used either for the base-article (excluding pattern/colour) or for the SKU</i></li> </ul>
binaryObject	<p>a binary large object containing an attached document, Coding 'base64Binary' is recommended.</p> <ul style="list-style-type: none"> <li>- base type: base64Binary,</li> <li>(XPath <code>TEXQualityRpt/TQbody/TQitem/refDoc/attachment/binaryObject</code>) 0-1 (N)</li> <li>(XPath <code>TEXQualityRpt/TQheader/refDoc/attachment/binaryObject</code>) 0-1 (N)</li> </ul>
@characterSet	<p>the character set of the binary object (examples UTF-8, UTF-16, Windows-1252, ISO-8859-7,..)</p> <ul style="list-style-type: none"> <li>- base type: normalizedString,</li> <li>(XPath <code>TEXQualityRpt/TQheader/refDoc/attachment/binaryObject/@characterSet</code>) [Optional] (N)</li> <li>(XPath <code>TEXQualityRpt/TQbody/TQitem/refDoc/attachment/binaryObject/@characterSet</code>) [Optional] (N)</li> </ul>
characterSetCode	<p>the character set of an external document (examples UTF-8, UTF-16, Windows-1252, ISO-8859-7,..)</p> <ul style="list-style-type: none"> <li>- base type: normalizedString,</li> <li>(XPath <code>TEXQualityRpt/TQbody/TQitem/refDoc/attachment/externalReference/characterSetCode</code>) 0-1 (N)</li> <li>(XPath <code>TEXQualityRpt/TQheader/refDoc/attachment/externalReference/characterSetCode</code>) 0-1 (N)</li> </ul>
city	<p>name of the city (town, village)</p> <ul style="list-style-type: none"> <li>- base type: string, max length: 40,</li> <li>(XPath <code>TEXQualityRpt/TQheader/buyer/city</code>) 0-1</li> <li>(XPath <code>TEXQualityRpt/TQheader/thirdParty/city</code>) 0-1</li> <li>(XPath <code>TEXQualityRpt/TQheader/supplier/city</code>) 0-1</li> </ul>
@codeList	<p>it specifies the URL where the list of codes used to make an instance of the element can be found</p> <ul style="list-style-type: none"> <li>- base type: string, max length: 255,</li> <li>(XPath <code>TEXQualityRpt/TQbody/TQitem/texCode/art/@codeList</code>) [Optional]</li> <li>- nota: <i>at least one out of this attribute and "numberingOrg" should be set</i></li> <li>(XPath <code>TEXQualityRpt/TQbody/TQitem/pieceTestRpt/fabricTest/note/@codeList</code>) [Optional]</li> <li>- nota: <i>must be used to provide (URL) the list of codes used in "noteLabel"</i></li> <li>(XPath <code>TEXQualityRpt/TQbody/TQitem/pieceControlRpt/pieceControl/@codeList</code>) [Optional]</li> <li>- nota: <i>at least one out of this attribute and "numberingOrg" should be set</i></li> <li>(XPath <code>TEXQualityRpt/TQbody/TQitem/pieceTestRpt/fabricTaylorability/note/@codeList</code>) [Optional]</li> <li>- nota: <i>must be used to provide (URL) the list of codes used in "noteLabel"</i></li> <li>(XPath <code>TEXQualityRpt/TQbody/TQitem/refDoc/season/@codeList</code>) [Optional] (a)</li> <li>- nota: <i>this attribute should be used either single or coupled with "listName" and "listVersion"</i></li> </ul>

	<p>(XPath <code>TEXQualityRpt/TQbody/TQitem/pieceMap/pieceFault/note/@codeList</code>) [Optional]</p> <p>- nota: <i>must be used to provide (URL) the list of codes used in "noteLabel"</i></p> <p>(XPath <code>TEXQualityRpt/TQbody/TQitem/texCode/color/@codeList</code>) [Optional]</p> <p>- nota: <i>this attribute should be used either single or coupled with "listName" and "listVersion"</i></p> <p>(XPath <code>TEXQualityRpt/TQbody/TQitem/texCode/pattern/@codeList</code>) [Optional]</p> <p>- nota: <i>at least one out of this attribute and "numberingOrg" should be set</i></p> <p>(XPath <code>TEXQualityRpt/TQheader/note/@codeList</code>) [Optional]</p> <p>- nota: <i>must be used to provide (URL) the list of codes used in "noteLabel"</i></p> <p>(XPath <code>TEXQualityRpt/TQheader/refDoc/season/@codeList</code>) [Optional] (a)</p> <p>- nota: <i>this attribute should be used either single or coupled with "listName" and "listVersion"</i></p>
color	<p>colour number of the product, when not included in the model or fabric code</p> <p>- base type: string, max length: 15,</p> <p>(XPath <code>TEXQualityRpt/TQbody/TQitem/texCode/color</code>) 0-1</p>
comply	<p>specifies if the experimental value complies with the standard requirement (target value)</p> <p>- base type: boolean,</p> <p>(XPath <code>TEXQualityRpt/TQbody/TQitem/pieceTestRpt/fabricTest/comply</code>) 0-1</p> <p>(XPath <code>TEXQualityRpt/TQbody/TQitem/pieceTestRpt/fabricTaylorability/comply</code>) 0-1</p>
country	<p>code of the nation</p> <p>- base type: string, cod. table: T10</p> <p><a href="http://www.ebiz.enea.it/moda-ml/repository/codelist/v2018-1/gc_T10.xml">http://www.ebiz.enea.it/moda-ml/repository/codelist/v2018-1/gc_T10.xml</a></p> <p>(XPath <code>TEXQualityRpt/TQheader/supplier/country</code>) 0-1</p> <p>(XPath <code>TEXQualityRpt/TQheader/thirdParty/country</code>) 0-1</p> <p>(XPath <code>TEXQualityRpt/TQheader/buyer/country</code>) 0-1</p>
@dateForm	<p>format used for the date</p> <p>- base type: string, cod. table: NT29</p> <p><a href="http://www.ebiz.enea.it/moda-ml/repository/codelist/v2018-1/gc_NT29.xml">http://www.ebiz.enea.it/moda-ml/repository/codelist/v2018-1/gc_NT29.xml</a></p> <p>(XPath <code>TEXQualityRpt/TQbody/TQitem/pieceControlRpt/inspectionDate/@dateForm</code>) [Optional]</p> <p>(XPath <code>TEXQualityRpt/TQbody/TQitem/pieceControlRpt/preexaminationDate/@dateForm</code>) [Optional]</p> <p>(XPath <code>TEXQualityRpt/TQheader/refDoc/docDate/@dateForm</code>) [Optional]</p> <p>(XPath <code>TEXQualityRpt/TQheader/msgDate/@dateForm</code>) [Optional]</p> <p>(XPath <code>TEXQualityRpt/TQbody/TQitem/testDate/@dateForm</code>) [Optional]</p> <p>(XPath <code>TEXQualityRpt/TQbody/TQitem/pieceControlRpt/registrationDate/@dateForm</code>) [Optional]</p> <p>(XPath <code>TEXQualityRpt/TQbody/TQitem/refDoc/docDate/@dateForm</code>) [Optional]</p> <p>(XPath <code>TEXQualityRpt/TQbody/TQitem/pieceControlRpt/rollUpDate/@dateForm</code>) [Optional]</p>
dept	<p>name or code of a contact department within a Party</p> <p>- base type: string, max length: 40,</p> <p>(XPath <code>TEXQualityRpt/TQheader/buyer/dept</code>) 0-1</p> <p>(XPath <code>TEXQualityRpt/TQheader/supplier/dept</code>) 0-1</p> <p>(XPath <code>TEXQualityRpt/TQheader/thirdParty/dept</code>) 0-1</p>
description	<p>free text description. The content of the element must be unique, it might be translated and repeated into more languages (thus no more than one instance for each language).</p> <p>- base type: string, max length: 250,</p> <p>(XPath <code>TEXQualityRpt/TQbody/TQitem/texCode/description</code>) 0-unbounded (pAU)</p> <p>- note: <i>Product description</i></p>
docDate	<p>date of issue of the referenced document, according to one of the patterns YYYY-MM-DD, YYYY-MM-DD:HH-MM or YYYY-WW.</p> <p>- base type: string,</p> <p>(XPath <code>TEXQualityRpt/TQheader/refDoc/docDate</code>) 0-1</p> <p>(XPath <code>TEXQualityRpt/TQbody/TQitem/refDoc/docDate</code>) 0-1</p>

docID	<p>identification number of the referenced document SINCE 2008-1 ITS USE IN THE HEADER IS DISCOURAGED (REPLACED BY msgID)</p> <p>- base type: string, max length: 80,  (XPath TEXQualityRpt/TQheader/docID) 0-1  (XPath TEXQualityRpt/TQheader/refDoc/docID) 1-2 (p)</p> <hr/> <p><b>AAAA-WARNING! - text not AVAILABLE n. 245 - In=en</b>  <b>(XPath TEXQualityRpt/TQbody/TQitem/refDoc/docID) 1-2 (p)</b></p> <hr/> <p><b>AAAA-WARNING! - text not AVAILABLE n. 245 - In=en</b></p>
@docType	<p>type or class to which the referenced document belongs</p> <p>- base type: string, cod. table: T21  <a href="http://www.ebiz.enea.it/moda-ml/repository/codelist/v2018-1/gc_T21.xml">http://www.ebiz.enea.it/moda-ml/repository/codelist/v2018-1/gc_T21.xml</a>  (XPath TEXQualityRpt/TQbody/TQitem/refDoc/@docType) [Required]  (XPath TEXQualityRpt/TQheader/refDoc/@docType) [Required]</p>
dyeN	<p>number of the dyeing batch of a textile product</p> <p>- base type: string, max length: 15,  (XPath TEXQualityRpt/TQbody/TQitem/dyeN) 0-1</p>
@email	<p>electronic mail address of the contact person within a Party</p> <p>- base type: string, max length: 250,  (XPath TEXQualityRpt/TQheader/thirdParty/person/@email) [Optional]  (XPath TEXQualityRpt/TQheader/supplier/person/@email) [Optional]  (XPath TEXQualityRpt/TQheader/buyer/person/@email) [Optional]</p>
@encoding	<p>specifies the decoding algorithm of the binary object</p> <p>- base type: normalizedString,  (XPath TEXQualityRpt/TQbody/TQitem/refDoc/attachment/binaryObject/@encoding) [Optional] (N)  (XPath TEXQualityRpt/TQheader/refDoc/attachment/binaryObject/@encoding) [Optional] (N)</p>
encodingCode	<p>the encoding/decoding algorithm used with the external object (example is 'base64Binary')</p> <p>- base type: normalizedString,  (XPath TEXQualityRpt/TQheader/refDoc/attachment/externalReference/encodingCode) 0-1 (N)  (XPath TEXQualityRpt/TQbody/TQitem/refDoc/attachment/externalReference/encodingCode) 0-1 (N)</p>
experimValue	<p>experimental value of the measurement</p> <p>- base type: decimal,  (XPath TEXQualityRpt/TQbody/TQitem/pieceTestRpt/fabricTaylorability/experimValue) 0-9</p> <p>- note: <i>in the case of FAST test the attributes "meth" and "applic" should not be used</i>  (XPath TEXQualityRpt/TQbody/TQitem/pieceTestRpt/fabricTest/experimValue) 0-9</p> <p>- note: <i>this data can be iterated to provide repeated instances of the same test</i></p>
fabricChar	<p>code of the physical or mechanical parameter used to define a "technical characteristic of the fabric" (see Fabric technical sheet)</p> <p>- base type: string, cod. table: T13  <a href="http://www.ebiz.enea.it/moda-ml/repository/codelist/v2018-1/gc_T13.xml">http://www.ebiz.enea.it/moda-ml/repository/codelist/v2018-1/gc_T13.xml</a>  (XPath TEXQualityRpt/TQbody/TQitem/pieceTestRpt/fabricTest/fabricChar) 1-1</p> <p>- note: <i>here the MODA-ML codelist must be used.</i></p>
fabricCharText	<p>free text describing the physical or mechanical parameter used to define a "technical characteristic of the fabric"</p> <p>- base type: string, max length: 80,  (XPath TEXQualityRpt/TQbody/TQitem/pieceTestRpt/fabricTest/fabricCharText) 1-1 (U)</p> <p>- note: <i>here the text or the proprietary code mutually agreed must be used</i></p>

fabricFault	code specifying the type or class of fabric fault - base type: string, cod. table: T12 <a href="http://www.ebiz.enea.it/moda-ml/repository/codelist/v2018-1/gc_T12.xml">http://www.ebiz.enea.it/moda-ml/repository/codelist/v2018-1/gc_T12.xml</a> (XPath TEXQualityRpt/TQbody/TQitem/pieceMap/pieceFault/fabricFault) 1-1 - note: <i>here the MODA-ML codelist must be used.</i>
fabricFaultText	free text describing the type or class of the fabric fault - base type: string, max length: 250, (XPath TEXQualityRpt/TQbody/TQitem/pieceMap/pieceFault/fabricFaultText) 1-1 (U) - note: <i>here the text or proprietary code mutually agreed must be used</i>
@faultRank	ranking class of the fabric fault - base type: string, cod. table: NT13 <a href="http://www.ebiz.enea.it/moda-ml/repository/codelist/v2018-1/gc_NT13.xml">http://www.ebiz.enea.it/moda-ml/repository/codelist/v2018-1/gc_NT13.xml</a> (XPath TEXQualityRpt/TQbody/TQitem/pieceMap/pieceFault/@faultRank) [Required]
@faultShape	shape classification of the fabric fault - base type: string, cod. table: NT14 <a href="http://www.ebiz.enea.it/moda-ml/repository/codelist/v2018-1/gc_NT14.xml">http://www.ebiz.enea.it/moda-ml/repository/codelist/v2018-1/gc_NT14.xml</a> (XPath TEXQualityRpt/TQbody/TQitem/pieceMap/pieceFault/@faultShape) [Optional]
@fax	fax number of the contact person within a Party - base type: string, max length: 35, (XPath TEXQualityRpt/TQheader/thirdParty/person/@fax) [Optional] (XPath TEXQualityRpt/TQheader/supplier/person/@fax) [Optional] (XPath TEXQualityRpt/TQheader/buyer/person/@fax) [Optional]
fileName	unique identifier (name) of the file - base type: string, max length: 255, (XPath TEXQualityRpt/TQbody/TQitem/refDoc/attachment/fileName) 0-1 (N) (XPath TEXQualityRpt/TQheader/refDoc/attachment/fileName) 0-1 (N)
@format	the format of the binary content (examples xml, pdf, doc,...) - base type: string, (XPath TEXQualityRpt/TQheader/refDoc/attachment/binaryObject/@format) [Optional] (N) (XPath TEXQualityRpt/TQbody/TQitem/refDoc/attachment/binaryObject/@format) [Optional] (N)
formatCode	the format of the external object (examples xml, pdf, doc,...) - base type: normalizedString, (XPath TEXQualityRpt/TQbody/TQitem/refDoc/attachment/externalReference/formatCode) 0-1 (N) (XPath TEXQualityRpt/TQheader/refDoc/attachment/externalReference/formatCode) 0-1 (N)
grossWeight	the gross weight, declared for transport or customs purpose - base type: decimal, min inclusive: 0, fraction digits: 2, (XPath TEXQualityRpt/TQbody/TQitem/pieceMeasures/grossWeight) 0-1 - note: <i>gross weight is related to the weight of the piece after packing</i>
id	primary identification code of a Party; it is recommended the format: nation code (ISO 3166) + VAT identification number (11 crt), with the qualifier "numberingOrg"= MF - base type: string, max length: 15, (XPath TEXQualityRpt/TQheader/supplier/id) 1-1 (XPath TEXQualityRpt/TQheader/thirdParty/id) 1-1 (XPath TEXQualityRpt/TQheader/buyer/id) 1-1 (p)
@idCO	primary identification code of the Party executing the test; it is recommended the format: nation code (ISO 3166) + VAT identification number (11 crt). - base type: string, max length: 15, (XPath TEXQualityRpt/TQbody/TQitem/pieceTestRpt/fabricTest/experimValue/@idCO) [Optional]

	(XPath TEXQualityRpt/TQbody/TQitem/pieceTestRpt/fabricTaylorability/experimValue/@idCO) [Optional]
@idQualifier	<p>Qualification of the identifier.</p> <p>- base type: string, (XPath TEXQualityRpt/TQheader/buyer/additionalIdentifier/@idQualifier) [Optional] (Na)</p> <p>- nota: <i>this attribute should be used when the numberingOrg attribute is not enough to declare the type of identifier</i> (XPath TEXQualityRpt/TQbody/TQitem/serialN/@idQualifier) [Optional] (N)</p> <p>- nota: <i>this attribute should be used when the numberingOrg attribute is not enough to declare the type of serial identifier</i> (XPath TEXQualityRpt/TQheader/supplier/additionalIdentifier/@idQualifier) [Optional] (Na)</p> <p>- nota: <i>this attribute should be used when the numberingOrg attribute is not enough to declare the type of identifier</i></p>
inspectionDate	<p>date of inspection (normally of a fabric piece), according to one of the patterns YYYY-MM-DD, YYYY-MM-DD:HH-MM or YYYY-WW.</p> <p>- base type: string, (XPath TEXQualityRpt/TQbody/TQitem/pieceControlRpt/inspectionDate) 0-1</p>
@isURL	<p>it indicates if the referred element is an URL (true) or not (false)</p> <p>- base type: boolean, (XPath TEXQualityRpt/TQbody/TQitem/refDoc/attachment/externalReference/uri/@isURL) [Optional] [Default= true] (Na)</p> <p>- nota: <i>usage of URLs is recommended</i> (XPath TEXQualityRpt/TQheader/refDoc/attachment/externalReference/uri/@isURL) [Optional] [Default= true] (Na)</p> <p>- nota: <i>usage of URLs is recommended</i></p>
itemID	<p>number of the line/item of the referenced document</p> <p>- base type: string, max length: 40, (XPath TEXQualityRpt/TQheader/refDoc/itemID) 0-1 (U) (XPath TEXQualityRpt/TQbody/TQitem/refDoc/itemID) 0-1 (U)</p>
legalName	<p>legal name of a Party</p> <p>- base type: string, max length: 250, (XPath TEXQualityRpt/TQheader/buyer/legalName) 0-1 (U) (XPath TEXQualityRpt/TQheader/thirdParty/legalName) 0-1 (U) (XPath TEXQualityRpt/TQheader/supplier/legalName) 0-1 (U)</p>
@listName	<p>the name of the list of codes used to make an instance of the element (it might be thought as descriptive element, i.e. 'fabric printing technologies', or not, i.e. "T264")</p> <p>- base type: string, max length: 40, (XPath TEXQualityRpt/TQbody/TQitem/texCode/pattern/@listName) [Optional]</p> <p>- nota: <i>this attribute should always be used coupled with "numberingOrg"</i> (XPath TEXQualityRpt/TQheader/refDoc/season/@listName) [Optional] (a)</p> <p>- nota: <i>this attribute should always be used coupled with "numberingOrg"</i> (XPath TEXQualityRpt/TQbody/TQitem/refDoc/season/@listName) [Optional] (a)</p> <p>- nota: <i>this attribute should always be used coupled with "numberingOrg"</i> (XPath TEXQualityRpt/TQbody/TQitem/texCode/color/@listName) [Optional]</p> <p>- nota: <i>this attribute should always be used coupled with "numberingOrg"</i> (XPath TEXQualityRpt/TQbody/TQitem/pieceControlRpt/pieceControl/@listName) [Optional]</p> <p>- nota: <i>this attribute should always be used coupled with "numberingOrg"</i> (XPath TEXQualityRpt/TQbody/TQitem/texCode/art/@listName) [Optional]</p> <p>- nota: <i>this attribute should always be used coupled with "numberingOrg"</i></p>
@listVersion	<p>it specifies the version of the list of codes used to make an instance of the element</p> <p>- base type: string, max length: 6, (XPath TEXQualityRpt/TQbody/TQitem/refDoc/season/@listVersion) [Optional] (a)</p>



	<p>- nota: <i>this attribute should always be used coupled with “numberingOrg” and “listName”</i>  (XPath TEXQualityRpt/TQbody/TQitem/pieceControlRpt/pieceControl/@listVersion) [Optional]</p> <p>- nota: <i>this attribute should always be used coupled with “numberingOrg” and “listName”</i>  (XPath TEXQualityRpt/TQbody/TQitem/texCode/color/@listVersion) [Optional]</p> <p>- nota: <i>this attribute should always be used coupled with “numberingOrg” and “listName”</i>  (XPath TEXQualityRpt/TQbody/TQitem/texCode/pattern/@listVersion) [Optional]</p> <p>- nota: <i>this attribute should always be used coupled with “numberingOrg” and “listName”</i>  (XPath TEXQualityRpt/TQbody/TQitem/texCode/art/@listVersion) [Optional]</p> <p>- nota: <i>this attribute should always be used coupled with “numberingOrg” and “listName”</i>  (XPath TEXQualityRpt/TQheader/refDoc/season/@listVersion) [Optional] (a)</p> <p>- nota: <i>this attribute should always be used coupled with “numberingOrg” and “listName”</i></p>
@ln	<p>Language code.</p> <p>- base type: string, cod. table: NT60  <a href="http://www.ebiz.enea.it/moda-ml/repository/codelist/v2018-1/gc_NT60.xml">http://www.ebiz.enea.it/moda-ml/repository/codelist/v2018-1/gc_NT60.xml</a>  (XPath TEXQualityRpt/TQbody/TQitem/texCode/description/@ln) [Optional] (N)</p>
@logo	<p>company logo (URL of the image jpeg or gif). It is recommended that the width of the image does not exceed 640 pixel.</p> <p>- base type: string, max length: 255,  (XPath TEXQualityRpt/TQheader/buyer/@logo) [Optional]  (XPath TEXQualityRpt/TQheader/supplier/@logo) [Optional]</p>
lotN	<p>lot number of a product or batch number of the raw material</p> <p>- base type: string, max length: 15,  (XPath TEXQualityRpt/TQbody/TQitem/lotN) 0-1</p>
@method	<p>standard protocol or method employed in a test to evaluate a characteristic or a parameter</p> <p>- base type: string, max length: 80,  (XPath TEXQualityRpt/TQbody/TQitem/pieceTestRpt/fabricTaylorability/experimValue/@method) [Optional]</p> <p>- nota: <i>we recommend the specification of the method of measure only when different from the one of the MODA-ML coding system</i>  (XPath TEXQualityRpt/TQbody/TQitem/pieceTestRpt/fabricTest/experimValue/@method) [Optional]</p> <p>- nota: <i>we recommend the specification of the method of measure only when different from the one of the MODA-ML coding system</i></p>
@mime	<p>the mime type of the binary object</p> <p>- base type: normalizedString,  (XPath TEXQualityRpt/TQheader/refDoc/attachment/binaryObject/@mime) [Optional] (N)  (XPath TEXQualityRpt/TQbody/TQitem/refDoc/attachment/binaryObject/@mime) [Optional] (N)</p>
mimeCode	<p>mime type of the external object</p> <p>- base type: normalizedString,  (XPath TEXQualityRpt/TQbody/TQitem/refDoc/attachment/externalReference/mimeCode) 0-1 (N)</p> <hr/> <p>AAAA-WARNING! - text not AVAILABLE n. 245 - ln=en  (XPath TEXQualityRpt/TQheader/refDoc/attachment/externalReference/mimeCode) 0-1 (N)</p> <hr/> <p>AAAA-WARNING! - text not AVAILABLE n. 245 - ln=en</p>
mixMatch	<p>colour hue used for the match of garments</p> <p>- base type: string, max length: 15,  (XPath TEXQualityRpt/TQbody/TQitem/mixMatch) 0-1</p>

msgDate	<p>date of issue of the present message (xml document), according to one of the patterns YYYY-MM-DD, YYYY-MM-DD:HH-MM or YYYY-WW.</p> <p>- base type: string, (XPath TEXQualityRpt/TQheader/msgDate) 1-1</p>
@msgfunction	<p>function performed by the present message with regards to the transmission</p> <p>- base type: string, cod. table: NT18 <a href="http://www.ebiz.enea.it/moda-ml/repository/codelist/v2018-1/gc_NT18.xml">http://www.ebiz.enea.it/moda-ml/repository/codelist/v2018-1/gc_NT18.xml</a> (XPath TEXQualityRpt/@msgfunction) [Optional] [Default= OR]</p>
msgID	<p>key identifier of the business document in the information system of the issuing Party. In case of more despatches of the same business document, it is unchanged.</p> <p>- base type: string, max length: 35, (XPath TEXQualityRpt/TQheader/msgID) 0-1</p>
msgN	<p>identification number given to the message (xml document) by its issuer. In case of more despatches of the same business document, it changes.</p> <p>- base type: string, max length: 35, (XPath TEXQualityRpt/TQheader/msgN) 1-1</p>
note	<p>free text or structured (computer processing) note. For note structuring use the attributes "noteLabel" and "codelist"</p> <p>- base type: string, max length: 350, (XPath TEXQualityRpt/TQbody/TQitem/pieceTestRpt/fabricTaylorability/note) 0-99 (XPath TEXQualityRpt/TQbody/TQitem/pieceMap/pieceFault/note) 0-99 (XPath TEXQualityRpt/TQbody/TQitem/pieceTestRpt/fabricTest/note) 0-99 (XPath TEXQualityRpt/TQheader/note) 0-99</p>
@noteLabel	<p>subject qualifier of a note</p> <p>- base type: string, max length: 35, (XPath TEXQualityRpt/TQbody/TQitem/pieceTestRpt/fabricTaylorability/note/@noteLabel) [Optional]</p> <p>- nota: <i>must be used to qualify the subject of the note</i> (XPath TEXQualityRpt/TQbody/TQitem/pieceMap/pieceFault/note/@noteLabel) [Optional]</p> <p>- nota: <i>must be used to qualify the subject of the note</i> (XPath TEXQualityRpt/TQheader/note/@noteLabel) [Optional]</p> <p>- nota: <i>must be used to qualify the subject of the note</i> (XPath TEXQualityRpt/TQbody/TQitem/pieceTestRpt/fabricTest/note/@noteLabel) [Optional]</p> <p>- nota: <i>must be used to qualify the subject of the note</i></p>
@numberingOrg	<p>code specifying the organisation who has created or owns the coding or numbering system</p> <p>- base type: string, cod. table: NT6 <a href="http://www.ebiz.enea.it/moda-ml/repository/codelist/v2018-1/gc_NT6.xml">http://www.ebiz.enea.it/moda-ml/repository/codelist/v2018-1/gc_NT6.xml</a> (XPath TEXQualityRpt/TQbody/TQitem/pieceMap/pieceFault/note/@numberingOrg) [Optional]</p> <p>- nota: <i>must be used to specify the organization that created the list of codes used in "noteLabel"</i> (XPath TEXQualityRpt/TQheader/refDoc/season/@numberingOrg) [Optional] (a)</p> <p>- nota: <i>this attribute should be used either single or coupled with "listName" and "listVersion"</i> (XPath TEXQualityRpt/TQheader/refDoc/docID/@numberingOrg) [Optional]</p> <p>- nota: <i>here can be specified whose document numbering is used (e.g.: Client, Supplier, ..)</i> (XPath TEXQualityRpt/TQbody/TQitem/serialN/@numberingOrg) [Optional]</p> <p>- nota: <i>here the issuer of the serial number must be specified (when different from the Supplier)</i> (XPath TEXQualityRpt/TQbody/TQitem/mixMatch/@numberingOrg) [Optional] (XPath TEXQualityRpt/TQheader/docID/@numberingOrg) [Optional]</p> <p>- nota: <i>here can be specified whose document numbering is used (e.g.: Client, Supplier, ..)</i></p>

	<p>(XPath TEXQualityRpt/TQheader/note/@numberingOrg) [Optional]  - nota: <i>must be used to specify the organization that created the list of codes used in "noteLabel"</i></p> <p>(XPath TEXQualityRpt/TQbody/TQitem/refDoc/season/@numberingOrg) [Optional] (a)  - nota: <i>this attribute should be used either single or coupled with "listName" and "listVersion"</i></p> <p>(XPath TEXQualityRpt/TQheader/buyer/additionalIdentifier/@numberingOrg) [Optional] (a)  - nota: <i>here the issuer of the identifier must be specified</i></p> <p>(XPath TEXQualityRpt/TQbody/TQitem/texCode/added/@numberingOrg) [Optional]  - nota: <i>this attribute should be used either single or coupled with "listName" and "listVersion"</i></p> <p>(XPath TEXQualityRpt/TQbody/TQitem/refDoc/docID/@numberingOrg) [Optional]  - nota: <i>here can be specified whose document numbering is used (e.g.: Client, Supplier, ..)</i></p> <p>(XPath TEXQualityRpt/TQbody/TQitem/pieceTestRpt/fabricTaylorability/note/@numberingOrg) [Optional]  - nota: <i>must be used to specify the organization that created the list of codes used in "noteLabel"</i></p> <p>(XPath TEXQualityRpt/TQbody/TQitem/pieceTestRpt/fabricTest/note/@numberingOrg) [Optional]  - nota: <i>must be used to specify the organization that created the list of codes used in "noteLabel"</i></p> <p>(XPath TEXQualityRpt/TQbody/TQitem/texCode/@numberingOrg) [Optional]  (XPath TEXQualityRpt/TQheader/buyer/id/@numberingOrg) [Optional]  (XPath TEXQualityRpt/TQheader/supplier/id/@numberingOrg) [Optional]  (XPath TEXQualityRpt/TQheader/supplier/additionalIdentifier/@numberingOrg) [Optional] (a)  - nota: <i>here the issuer of the identifier must be specified</i></p> <p>(XPath TEXQualityRpt/TQheader/thirdParty/id/@numberingOrg) [Optional]  (XPath TEXQualityRpt/TQbody/TQitem/texCode/art/@numberingOrg) [Optional]  - nota: <i>this attribute should be used either single or coupled with "listName" and "listVersion"</i></p> <p>(XPath TEXQualityRpt/TQheader/refDoc/attachment/fileName/@numberingOrg) [Optional] (a)  (XPath TEXQualityRpt/TQbody/TQitem/pieceControlRpt/pieceControl/@numberingOrg) [Optional]  (XPath TEXQualityRpt/TQbody/TQitem/dyeN/@numberingOrg) [Optional]  (XPath TEXQualityRpt/TQbody/TQitem/texCode/color/@numberingOrg) [Optional]  - nota: <i>this attribute should be used either single or coupled with "listName" and "listVersion"</i></p> <p>(XPath TEXQualityRpt/TQbody/TQitem/refDoc/attachment/fileName/@numberingOrg) [Optional]  (XPath TEXQualityRpt/TQbody/TQitem/texCode/pattern/@numberingOrg) [Optional]  - nota: <i>this attribute should be used either single or coupled with "listName" and "listVersion"</i></p> <p>(XPath TEXQualityRpt/TQbody/TQitem/lotN/@numberingOrg) [Optional]</p>
pattern	<p>pattern/design number of the product, when not included in the article code  - base type: string, max length: 15,  (XPath TEXQualityRpt/TQbody/TQitem/texCode/pattern) 0-1</p>
person	<p>name of the contact person within a Party  - base type: string, max length: 40,  (XPath TEXQualityRpt/TQheader/buyer/person) 0-1  (XPath TEXQualityRpt/TQheader/supplier/person) 0-1  (XPath TEXQualityRpt/TQheader/thirdParty/person) 0-1</p>
@phone	<p>phone number of the contact person within a Party  - base type: string, max length: 35,  (XPath TEXQualityRpt/TQheader/thirdParty/person/@phone) [Optional]  (XPath TEXQualityRpt/TQheader/buyer/person/@phone) [Optional]  (XPath TEXQualityRpt/TQheader/supplier/person/@phone) [Optional]</p>

pieceAllow	<p>allowance required or accorded for the piece</p> <ul style="list-style-type: none"> <li>- base type: decimal, fraction digits: 2, (XPath TEXQualityRpt/TQbody/TQitem/pieceAllowMea/pieceAllow) 1-1 (XPath TEXQualityRpt/TQbody/TQitem/pieceMap/pieceFault/pieceAllow) 0-1</li> <li>- note: <i>this is the allowance estimated for the fault by the same "source" responsible for the other measurements</i> (XPath TEXQualityRpt/TQbody/TQitem/pieceMeasures/pieceAllow) 0-1</li> </ul>
pieceAllowF	<p>allowance required/accorded for fabric faults</p> <ul style="list-style-type: none"> <li>- base type: decimal, fraction digits: 2, (XPath TEXQualityRpt/TQbody/TQitem/pieceAllowMea/pieceAllowF) 0-1</li> </ul>
pieceAllowM	<p>allowance required/accorded for missing measures</p> <ul style="list-style-type: none"> <li>- base type: decimal, fraction digits: 2, (XPath TEXQualityRpt/TQbody/TQitem/pieceAllowMea/pieceAllowM) 0-1</li> </ul>
pieceControl	<p>code assigned to a fabric piece to specify the type of control required/performed</p> <ul style="list-style-type: none"> <li>- base type: string, max length: 7, (XPath TEXQualityRpt/TQbody/TQitem/pieceControlRpt/pieceControl) 0-1 (A)</li> </ul>
pieceCutWidth	<p>effective usable width of the fabric piece (for garment manufacturing)</p> <ul style="list-style-type: none"> <li>- base type: decimal, min inclusive: 0, fraction digits: 2, (XPath TEXQualityRpt/TQbody/TQitem/pieceMeasures/pieceCutWidth) 0-1</li> </ul>
pieceLength	<p>length of the piece</p> <ul style="list-style-type: none"> <li>- base type: decimal, min inclusive: 0, fraction digits: 2, (XPath TEXQualityRpt/TQbody/TQitem/pieceMeasures/pieceLength) 0-1</li> <li>- note: <i>effective length of the piece (allowance included)</i></li> </ul>
pieceStatus	<p>code used to describe the status of a fabric piece after the control</p> <ul style="list-style-type: none"> <li>- base type: string, cod. table: T52 <a href="http://www.ebiz.enea.it/moda-ml/repository/codelist/v2018-1/gc_T52.xml">http://www.ebiz.enea.it/moda-ml/repository/codelist/v2018-1/gc_T52.xml</a> (XPath TEXQualityRpt/TQbody/TQitem/pieceControlRpt/pieceStatus) 0-1</li> </ul>
pieceWeight	<p>effective total weight of the fabric piece</p> <ul style="list-style-type: none"> <li>- base type: decimal, min inclusive: 0, fraction digits: 2, (XPath TEXQualityRpt/TQbody/TQitem/pieceMeasures/pieceWeight) 0-1</li> <li>- note: <i>effective net weight of the piece</i></li> </ul>
pieceWeightM	<p>effective weight per metre of the fabric piece</p> <ul style="list-style-type: none"> <li>- base type: decimal, min inclusive: 0, fraction digits: 2, (XPath TEXQualityRpt/TQbody/TQitem/pieceMeasures/pieceWeightM) 0-1</li> </ul>
pieceWidth	<p>effective width of the fabric piece</p> <ul style="list-style-type: none"> <li>- base type: decimal, min inclusive: 0, fraction digits: 2, (XPath TEXQualityRpt/TQbody/TQitem/pieceMeasures/pieceWidth) 0-1</li> <li>- note: <i>effective width of the piece (selvedge included)</i></li> </ul>
postCode	<p>code defining the postal zone</p> <ul style="list-style-type: none"> <li>- base type: string, max length: 10, (XPath TEXQualityRpt/TQheader/thirdParty/postCode) 0-1 (XPath TEXQualityRpt/TQheader/supplier/postCode) 0-1 (XPath TEXQualityRpt/TQheader/buyer/postCode) 0-1</li> </ul>
preexaminationDate	<p>date of preexamination (normally of a fabric piece), according to one of the patterns YYYY-MM-DD, YYYY-MM-DD:HH-MM or YYYY-WW.</p> <ul style="list-style-type: none"> <li>- base type: string, (XPath TEXQualityRpt/TQbody/TQitem/pieceControlRpt/preexaminationDate) 0-1</li> </ul>
registrationDate	<p>date of registration (normally of a fabric piece), according to one of the patterns YYYY-MM-DD, YYYY-MM-DD:HH-MM or YYYY-WW.</p> <ul style="list-style-type: none"> <li>- base type: string, (XPath TEXQualityRpt/TQbody/TQitem/pieceControlRpt/registrationDate) 0-1</li> </ul>

@role	Third Party role qualifier - base type: string, cod. table: NT2 <a href="http://www.ebiz.enea.it/moda-ml/repository/codelist/v2018-1/gc_NT2.xml">http://www.ebiz.enea.it/moda-ml/repository/codelist/v2018-1/gc_NT2.xml</a> (XPath TEXQualityRpt/TQheader/thirdParty/@role) [Required]
rollUpDate	date of rolling up (normally of a fabric piece), according to one of the patterns YYYY-MM-DD, YYYY-MM-DD:HH-MM or YYYY-WW. - base type: string, (XPath TEXQualityRpt/TQbody/TQitem/pieceControlRpt/rollUpDate) 0-1
season	sale season; defined as: season (1 crt) + year (4 crt) - season: S/S=1 A/W=2 Spring=3 Summer=4 Autumn=5 Winter=6: for more than four seasons use alphabetic sequence: 1st season=A 2nd season=B etc.etc. - base type: string, max length: 15, (XPath TEXQualityRpt/TQbody/TQitem/refDoc/season) 0-1 (A) - note: here indicates the season to which the referenced document belongs (XPath TEXQualityRpt/TQheader/refDoc/season) 0-1 (A) - note: here indicates the season to which the referenced document belongs
@sender	qualifier that specifies the Party issuing of the document - base type: boolean, (XPath TEXQualityRpt/TQheader/buyer/@sender) [Optional] (a*) - nota: This attribute is mandatory when the STYLESHEET must be used (XPath TEXQualityRpt/TQheader/supplier/@sender) [Optional] (a*) - nota: This attribute is mandatory when the STYLESHEET must be used (XPath TEXQualityRpt/TQheader/thirdParty/@sender) [Optional] (a*) - nota: This attribute is mandatory when the STYLESHEET must be used
serialN	serial number used for the identification of a physical unit - base type: string, max length: 250, (XPath TEXQualityRpt/TQbody/TQitem/serialN) 1-9 (AU) - note: multiple values of serialN are allowed to provide different representations of the serial identifier of the same tested piece. Several instances of serialN must differ at least by a value of idQualifier or numberingOrg
@source	party who has provided the data - base type: string, cod. table: NT12 <a href="http://www.ebiz.enea.it/moda-ml/repository/codelist/v2018-1/gc_NT12.xml">http://www.ebiz.enea.it/moda-ml/repository/codelist/v2018-1/gc_NT12.xml</a> (XPath TEXQualityRpt/TQbody/TQitem/pieceMeasures/@source) [Required] (XPath TEXQualityRpt/TQbody/TQitem/pieceTestRpt/@source) [Required] (XPath TEXQualityRpt/TQbody/TQitem/pieceAllowMea/@source) [Required] (XPath TEXQualityRpt/TQbody/TQitem/pieceMap/@source) [Required]
street	street and building number identifying a location - base type: string, max length: 80, (XPath TEXQualityRpt/TQheader/supplier/street) 0-1 (XPath TEXQualityRpt/TQheader/thirdParty/street) 0-1 (XPath TEXQualityRpt/TQheader/buyer/street) 0-1
subCountry	short name or code of the sub-country entity - base type: string, max length: 9, (XPath TEXQualityRpt/TQheader/thirdParty/subCountry) 0-1 (XPath TEXQualityRpt/TQheader/supplier/subCountry) 0-1 (XPath TEXQualityRpt/TQheader/buyer/subCountry) 0-1
subDept	name or code of a contact department within a Party - base type: string, max length: 40, (XPath TEXQualityRpt/TQheader/thirdParty/subDept) 0-1 (N) (XPath TEXQualityRpt/TQheader/buyer/subDept) 0-1 (N) (XPath TEXQualityRpt/TQheader/supplier/subDept) 0-1 (N)
taylorabilityChar	taylorability parameter for fabric - base type: string, cod. table: T14 <a href="http://www.ebiz.enea.it/moda-ml/repository/codelist/v2018-1/gc_T14.xml">http://www.ebiz.enea.it/moda-ml/repository/codelist/v2018-1/gc_T14.xml</a> (XPath TEXQualityRpt/TQbody/TQitem/pieceTestRpt/fabricTaylorability/taylorabilityChar) 1-1 - note: here the MODA-ML codelist must be used

testDate	<p>date on which the quality test of goods has been made, according to one of the patterns YYYY-MM-DD, YYYY-MM-DD:HH-MM or YYYY-WW.</p> <p>- base type: string, (XPath TEXQualityRpt/TQbody/TQitem/testDate) 0-1</p>
totFault	<p>total number of faults: the 1st/2nd digit count the "Large faults", the 3rd/4th the "Medium faults" and the 5th/6th the "Small faults"</p> <p>- base type: positiveInteger, (XPath TEXQualityRpt/TQbody/TQitem/pieceMap/totFault) 1-1</p>
@TQtype	<p>type of Textiles quality report</p> <p>- base type: string, cod. table: NT15 <a href="http://www.ebiz.enea.it/moda-ml/repository/codelist/v2018-1/gc_NT15.xml">http://www.ebiz.enea.it/moda-ml/repository/codelist/v2018-1/gc_NT15.xml</a> (XPath TEXQualityRpt/@TQtype) [Optional]</p> <p>- nota: <i>this attribute may be used to specify if the report refers to one or to several pieces</i></p>
@uid	<p>unique element identifier within the xml document</p> <p>- base type: string, (XPath TEXQualityRpt/TQbody/TQitem/refDoc/attachment/@uid) [Optional] (XPath TEXQualityRpt/TQheader/refDoc/attachment/@uid) [Optional]</p>
@um	<p>specification of the unit of measure</p> <p>- base type: string, cod. table: NT7 <a href="http://www.ebiz.enea.it/moda-ml/repository/codelist/v2018-1/gc_NT7.xml">http://www.ebiz.enea.it/moda-ml/repository/codelist/v2018-1/gc_NT7.xml</a></p> <p>(XPath TEXQualityRpt/TQbody/TQitem/pieceTestRpt/fabricTaylorability/experimValue/@um) [Optional] (XPath TEXQualityRpt/TQbody/TQitem/pieceMeasures/pieceAllow/@um) [Required] (XPath TEXQualityRpt/TQbody/TQitem/pieceMeasures/pieceWidth/@um) [Optional] [Default= CMT] (XPath TEXQualityRpt/TQbody/TQitem/pieceAllowMea/pieceAllowM/@um) [Required] (XPath TEXQualityRpt/TQbody/TQitem/pieceAllowMea/pieceAllow/@um) [Required] (XPath TEXQualityRpt/TQbody/TQitem/pieceAllowMea/pieceAllowF/@um) [Required] (XPath TEXQualityRpt/TQbody/TQitem/pieceMeasures/pieceWeight/@um) [Optional] [Default= KGM] (XPath TEXQualityRpt/TQbody/TQitem/pieceMeasures/pieceLength/@um) [Optional] [Default= MTR] (XPath TEXQualityRpt/TQbody/TQitem/pieceMeasures/grossWeight/@um) [Required] (XPath TEXQualityRpt/TQbody/TQitem/pieceMeasures/pieceWeightM/@um) [Optional] [Default= GRM] (XPath TEXQualityRpt/TQbody/TQitem/pieceMeasures/pieceCutWidth/@um) [Optional] [Default= CMT] (XPath TEXQualityRpt/TQbody/TQitem/pieceMap/pieceFault/warpStart/@um) [Optional] [Default= MTR] (XPath TEXQualityRpt/TQbody/TQitem/pieceMap/pieceFault/weftEnd/@um) [Optional] [Default= CMT] (XPath TEXQualityRpt/TQbody/TQitem/pieceMap/pieceFault/weftStart/@um) [Optional] [Default= CMT] (XPath TEXQualityRpt/TQbody/TQitem/pieceTestRpt/fabricTest/experimValue/@um) [Optional] (XPath TEXQualityRpt/TQbody/TQitem/pieceMap/pieceFault/pieceAllow/@um) [Required] (XPath TEXQualityRpt/TQbody/TQitem/pieceMap/pieceFault/warpEnd/@um) [Optional] [Default= MTR]</p>
uri	<p>Uniform Resource Identifier (URI) that identifies the external object as an Internet resource</p> <p>- base type: normalizedString, (XPath TEXQualityRpt/TQheader/refDoc/attachment/externalReference/uri) 1-1 (N) (XPath TEXQualityRpt/TQbody/TQitem/refDoc/attachment/externalReference/uri) 1-1 (N)</p>

@useProfile	use profile to which the present document is compliant if it was agreed by the parties. It is suggested a URI with reference to the firm or the URL of the profile. - base type: string, (XPath TEXQualityRpt/@useProfile) [Optional]
@VAT	VAT rate or code (DEPRECATED, use dtScheme element) - base type: string, cod. table: NT16 <a href="http://www.ebiz.enea.it/moda-ml/repository/codelist/v2018-1/gc_NT16.xml">http://www.ebiz.enea.it/moda-ml/repository/codelist/v2018-1/gc_NT16.xml</a> (XPath TEXQualityRpt/TQheader/thirdParty/@VAT) [Optional]
@version	Dictionary version from which the instance has been created - base type: string, cod. table: NT100 <a href="http://www.ebiz.enea.it/moda-ml/repository/codelist/v2018-1/gc_NT100.xml">http://www.ebiz.enea.it/moda-ml/repository/codelist/v2018-1/gc_NT100.xml</a> (XPath TEXQualityRpt/@version) [Optional] [Default= 2018-1]
warpEnd	end point of the fabric fault in the warp direction - base type: decimal, min inclusive: 0, fraction digits: 2, (XPath TEXQualityRpt/TQbody/TQitem/pieceMap/pieceFault/warpEnd) 0-1
warpStart	start point of the fabric fault in the warp direction - base type: decimal, min inclusive: 0, fraction digits: 2, (XPath TEXQualityRpt/TQbody/TQitem/pieceMap/pieceFault/warpStart) 1-1
weftEnd	end point of the fabric fault in the weft direction - base type: decimal, min inclusive: 0, fraction digits: 2, (XPath TEXQualityRpt/TQbody/TQitem/pieceMap/pieceFault/weftEnd) 0-1
weftStart	start point of the fabric fault in the weft direction - base type: decimal, min inclusive: 0, fraction digits: 2, (XPath TEXQualityRpt/TQbody/TQitem/pieceMap/pieceFault/weftStart) 0-1

## 2.3 Suggested best practices

**TEXQualityRpt/TQheader/refDoc/docID (identification number of the referenced document SINCE 2008-1 ITS USE IN THE HEADER IS DISCOURAGED (REPLACED BY msgID))**

numberingOrg indicates the role that produced the document identifier (it is allowed to declare two different ones -e.g. customer and supplier - with two docID with different numberingOrg

**TEXQualityRpt/TQbody/TQitem/refDoc/docID (identification number of the referenced document SINCE 2008-1 ITS USE IN THE HEADER IS DISCOURAGED (REPLACED BY msgID))**

numberingOrg indicates the role that produced the document identifier (it is allowed to declare two different ones -e.g. customer and supplier - with two docID with different numberingOrg

**TEXQualityRpt/TQbody/TQitem/refDoc/attachment/  
externalReference/mimeCode (mime type of the external object)**

Use coding from IANA <http://www.iana.org/assignments/media-types/media-types.xml>

**TEXQualityRpt/TQheader/refDoc/attachment/  
externalReference/mimeCode (mime type of the external object)**

Use coding from IANA <http://www.iana.org/assignments/media-types/media-types.xml>



## 2.4 Enumeration tables

List of enumeration tables used in the XML document. You can find the corresponding codes at:  
<http://www.ebiz-tcf.eu/moda-ml/imple/moda-ml-2018-1.asp?lingua=en&pag=6>

### Legenda

- N: new table
- U: updated properties

NT100 - eBIZ TCFUpstream version

NT12 - data source

NT13 - fabric fault category

NT14 - fabric fault shape

NT15 - Textiles Quality Report type

NT16 - VAT rate or code

NT18 - message function

NT2 - third party qualifier

NT29 - format of a date

NT6 - coding system owner/issuer

NT60 - language, codes from ISO 639-1 (subset) (N)

NT7 - unit of measure (U)

T10 - ISO3166 - Country

T12 - fabric faults

T13 - CFM properties of fabric

T14 - FAST tests

T21 - type of document

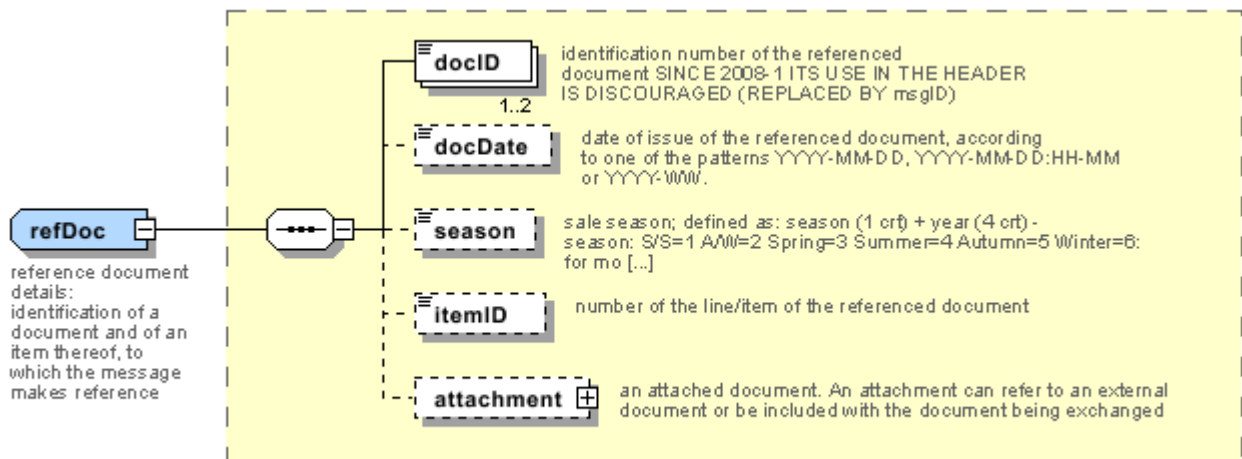
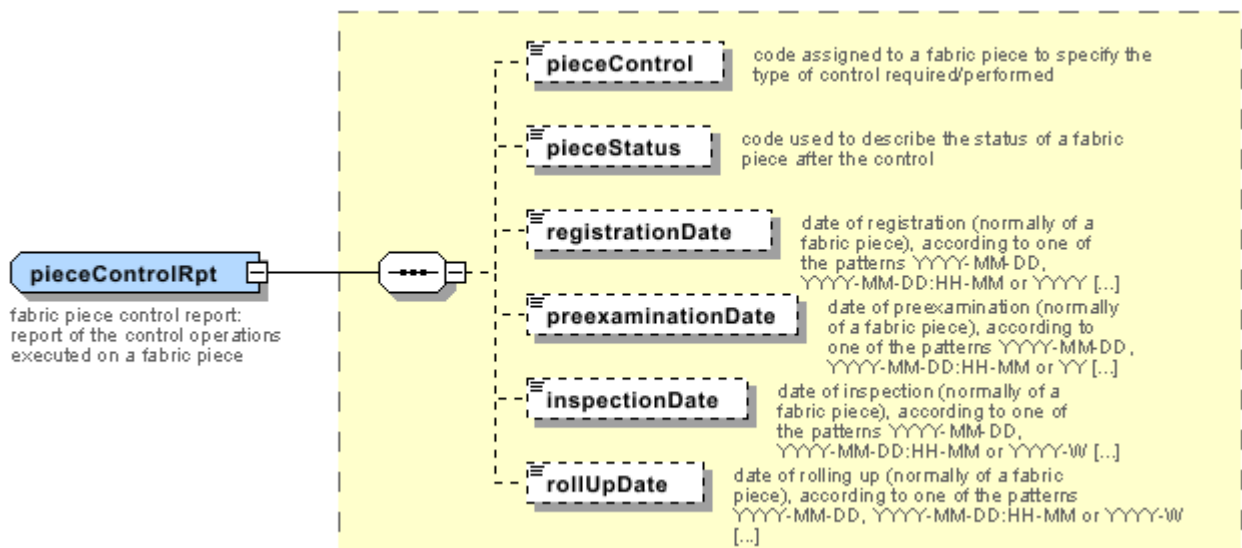
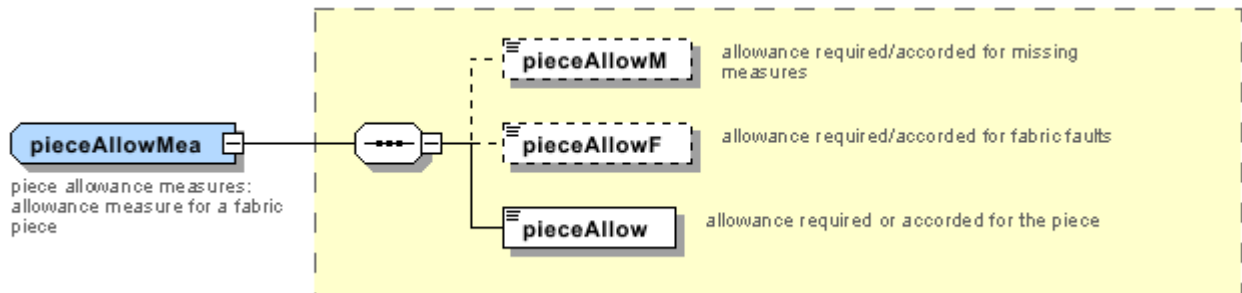
T44 - additional code type

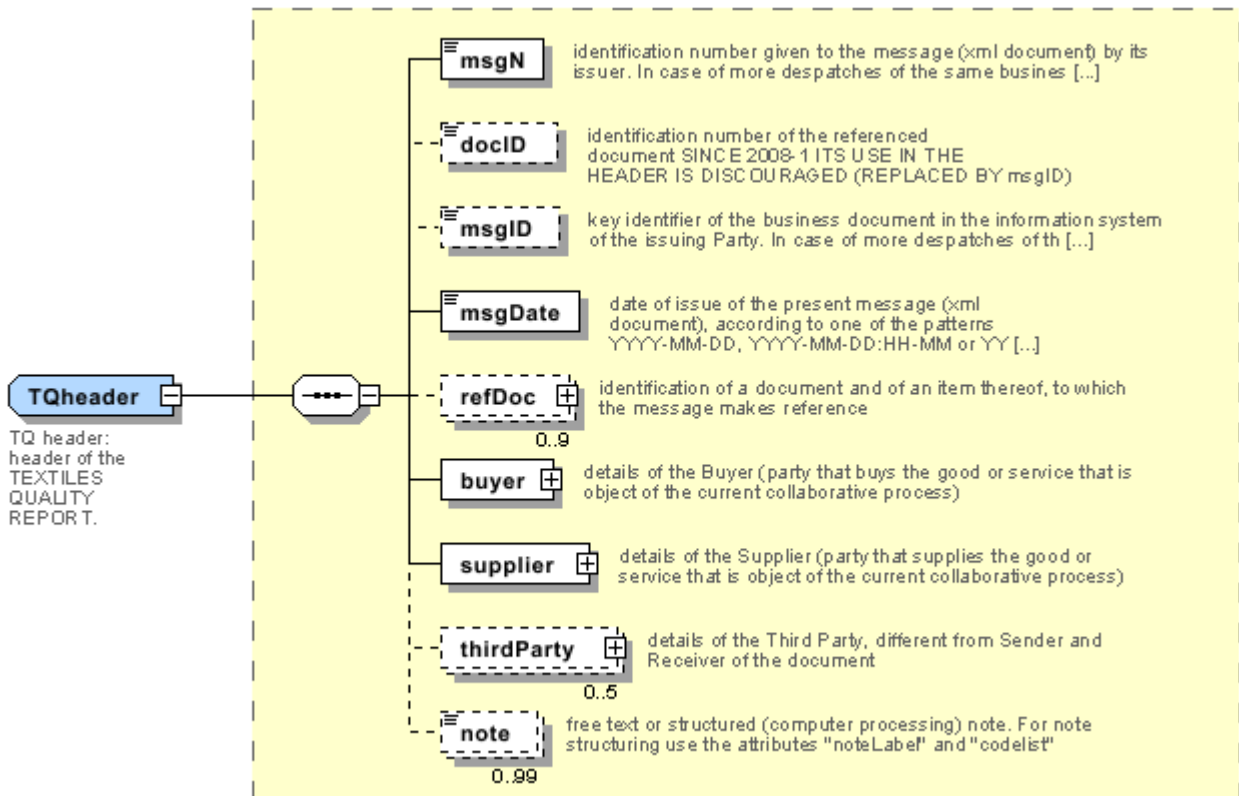
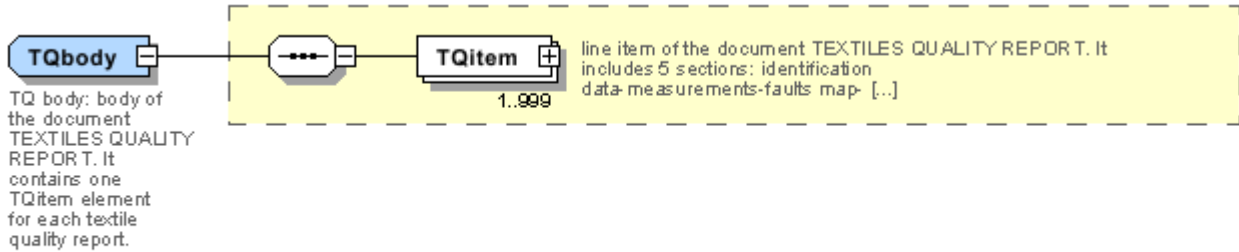
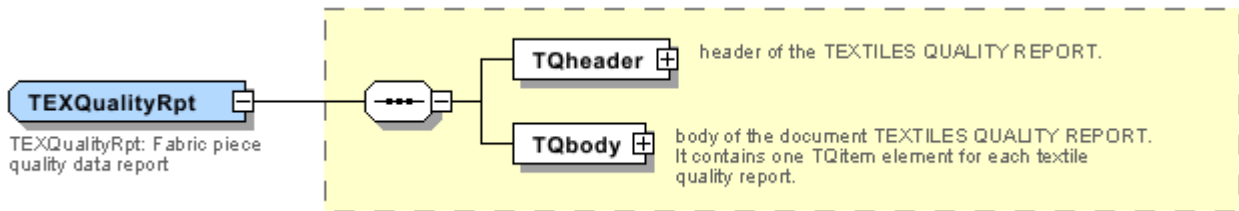
T52 - fabric piece status



# Annex A

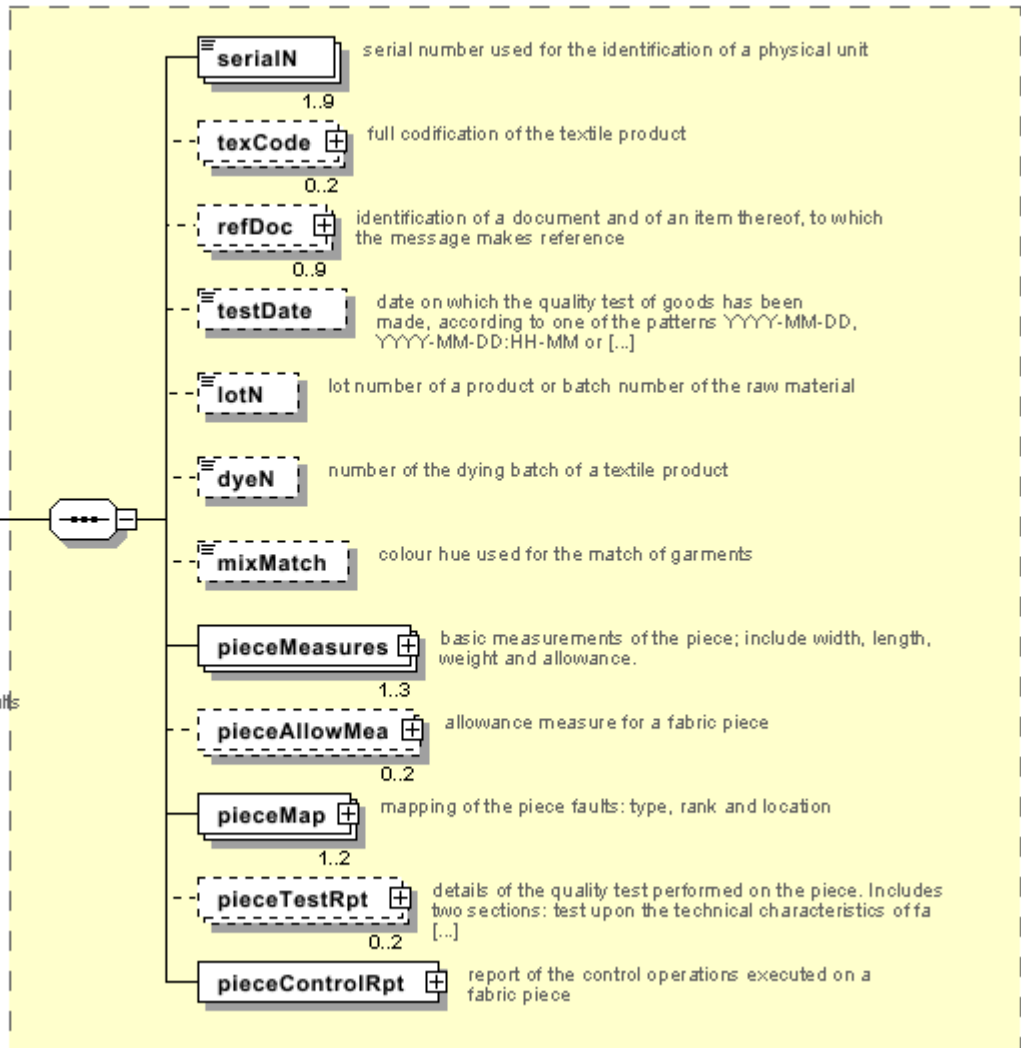
Representative images of the principal complex elements' structure.





**TQitem**

TQ item: line item of the document TEXTILES QUALITY REPORT. It includes 5 sections: identification data- measurements-faults map- test results- inspection report





## Annex B

### NT100 - eBIZ TCFUpstream version

dictionary version

Agency name: eBIZ

tabella cod.: NT100

File codes list (Generic code): [http://www.ebiz.enea.it/moda-ml/repository/codelist/v2018-1/gc\\_NT100.xml](http://www.ebiz.enea.it/moda-ml/repository/codelist/v2018-1/gc_NT100.xml)

Code	Description	Adoption note	Version status	Date of insertion
2013-1	v2013-1			01/07/2013
2018-1	v2018-1		(N)	04/11/2018
draft	draft		(N)	08/09/2017

### NT12 - data source

party who has provided the data

Agency name: eBIZ

tabella cod.: NT12

File codes list (Generic code): [http://www.ebiz.enea.it/moda-ml/repository/codelist/v2018-1/gc\\_NT12.xml](http://www.ebiz.enea.it/moda-ml/repository/codelist/v2018-1/gc_NT12.xml)

Code	Description	Adoption note	Version status	Date of insertion
AC	internal test			
CO	external test			
CV	test after steaming			

### NT13 - fabric fault category

ranking class of the fabric fault

Agency name: eBIZ

tabella cod.: NT13

File codes list (Generic code): [http://www.ebiz.enea.it/moda-ml/repository/codelist/v2018-1/gc\\_NT13.xml](http://www.ebiz.enea.it/moda-ml/repository/codelist/v2018-1/gc_NT13.xml)

Code	Description	Adoption note	Version status	Date of insertion
CL1	class 1			
CL2	class 2			
CL3	class 3			

CL4	class 4			
CL5	class 5			
CL6	class 6			
G	large			
L	small			
M	medium			

#### NT14 - fabric fault shape

shape classification of the fabric fault

Agency name: eBIZ

tabella cod.: NT14

File codes list (Generic code): [http://www.ebiz.enea.it/moda-ml/repository/codelist/v2018-1/gc\\_NT14.xml](http://www.ebiz.enea.it/moda-ml/repository/codelist/v2018-1/gc_NT14.xml)

Code	Description	Adoption note	Version status	Date of insertion
C	continuous			
P	point			
S	stretch			

#### NT15 - Textiles Quality Report type

type of Textiles quality report

Agency name: eBIZ

tabella cod.: NT15

File codes list (Generic code): [http://www.ebiz.enea.it/moda-ml/repository/codelist/v2018-1/gc\\_NT15.xml](http://www.ebiz.enea.it/moda-ml/repository/codelist/v2018-1/gc_NT15.xml)

Code	Description	Adoption note	Version status	Date of insertion
M	multiple			
S	single			

#### NT16 - VAT rate or code

VAT rate or code ( DEPRECATED, use dtScheme element )

tabella cod.: NT16

File codes list (Generic code): [http://www.ebiz.enea.it/moda-ml/repository/codelist/v2018-1/gc\\_NT16.xml](http://www.ebiz.enea.it/moda-ml/repository/codelist/v2018-1/gc_NT16.xml)



## NT18 - message function

function performed by the present message with regards to the transmission

Agency name: eBIZ

tabella cod.: NT18

File codes list (Generic code): [http://www.ebiz.enea.it/moda-ml/repository/codelist/v2018-1/gc\\_NT18.xml](http://www.ebiz.enea.it/moda-ml/repository/codelist/v2018-1/gc_NT18.xml)

Code	Description	Adoption note	Version status	Date of insertion
CA	delete this document			01/07/2013
CP	copy			
OR	original			
RC	re-transmission for data correction			
RT	re-transmission			

## NT2 - third party qualifier

Third Party role qualifier

Agency name: eBIZ

tabella cod.: NT2

File codes list (Generic code): [http://www.ebiz.enea.it/moda-ml/repository/codelist/v2018-1/gc\\_NT2.xml](http://www.ebiz.enea.it/moda-ml/repository/codelist/v2018-1/gc_NT2.xml)

Code	Description	Adoption note	Version status	Date of insertion
AG	Sales Agent			
AU	Auditor		(N)	08/04/2019
CE	Certification authority		(N)	08/04/2019
CO	Quality Controller			
DC	Response to			
DF	Invoicee			
DI	Copy to (CC)			28/10/2014
DM	Consignee			
DP	Consignment address (Delivery Party)			
IM	Importer			
OR	Originator			10/09/2014
SC	Sub contractor		(N)	10/04/2019
SM	Service/ePlatform manager		(N)	08/04/2019
SP	Forwarder			

TX	Tax Representative			
----	--------------------	--	--	--

### NT29 - format of a date

format used for the date

Agency name: eBIZ

tabella cod.: NT29

File codes list (Generic code): [http://www.ebiz.enea.it/moda-ml/repository/codelist/v2018-1/gc\\_NT29.xml](http://www.ebiz.enea.it/moda-ml/repository/codelist/v2018-1/gc_NT29.xml)

Code	Description	Adoption note	Version status	Date of insertion
D	YYYY-MM-DD			
M	YYYY-MM-DD:HH-MM			
W	YYYY-WW			

### NT6 - coding system owner/issuer

code specifying the organisation who has created or owns the coding or numbering system

Agency name: eBIZ

tabella cod.: NT6

File codes list (Generic code): [http://www.ebiz.enea.it/moda-ml/repository/codelist/v2018-1/gc\\_NT6.xml](http://www.ebiz.enea.it/moda-ml/repository/codelist/v2018-1/gc_NT6.xml)

Code	Description	Adoption note	Version status	Date of insertion
CL	Customer/buyer			
CO	Quality Controller			
EB	eBIZ	replaces 'ML'	(N)	18/03/2019
EN	GS1 ( ex-EAN International )			
ES	e-Stockflow			
FO	Supplier			
GS	GS1			01/07/2013
MF	VAT identifier		(U)	
ML	Moda-ML	DEPRECATED	(U)	
SP	Service Provider			

### NT60 - language, codes from ISO 639-1 (subset) (N)

Agency name: eBIZ / ISO

tabella cod.: NT60

File codes list (Generic code): [http://www.ebiz.enea.it/moda-ml/repository/codelist/v2018-1/gc\\_NT60.xml](http://www.ebiz.enea.it/moda-ml/repository/codelist/v2018-1/gc_NT60.xml)

Code	Description	Adoption note	Version status	Date of insertion
af	Afrikaans		(N)	31/01/2019
ar	Arabic		(N)	31/01/2019
be	Belarusian		(N)	31/01/2019
bg	Bulgarian		(N)	31/01/2019
bn	Bengali		(N)	31/01/2019
bo	Tibetan		(N)	31/01/2019
bs	Bosnian		(N)	31/01/2019
ca	Catalan, Valencian		(N)	31/01/2019
cs	Czech		(N)	31/01/2019
da	Danish		(N)	31/01/2019
de	German		(N)	31/01/2019
el	Greek, Modern (1453-)		(N)	31/01/2019
en	English		(N)	31/01/2019
eo	Esperanto		(N)	31/01/2019
es	Spanish, Castilian		(N)	31/01/2019
et	Estonian		(N)	31/01/2019
eu	Basque		(N)	31/01/2019
F	Female		(N)	15/04/2019
fa	Persian		(N)	31/01/2019
fi	Finnish		(N)	31/01/2019
fr	French		(N)	31/01/2019
ga	Irish		(N)	31/01/2019
gd	Gaelic, Scottish Gaelic		(N)	31/01/2019
gn	Guarani		(N)	31/01/2019
he	Hebrew		(N)	31/01/2019
hr	Croatian		(N)	31/01/2019
ht	Haitian, Haitian Creole		(N)	31/01/2019
hu	Hungarian		(N)	31/01/2019
hy	Armenian		(N)	31/01/2019
ia	Interlingua (International Auxiliary Language Association)		(N)	31/01/2019
id	Indonesian		(N)	31/01/2019
is	Icelandic		(N)	31/01/2019

it	Italian		(N)	31/01/2019
ja	Japanese		(N)	31/01/2019
jv	Javanese		(N)	31/01/2019
ka	Georgian		(N)	31/01/2019
km	Central Khmer		(N)	31/01/2019
ko	Korean		(N)	31/01/2019
ku	Kurdish		(N)	31/01/2019
lb	Luxembourgish, Letzeburgesch		(N)	31/01/2019
lo	Lao		(N)	31/01/2019
lt	Lithuanian		(N)	31/01/2019
lv	Latvian		(N)	31/01/2019
mg	Malagasy		(N)	31/01/2019
mk	Macedonian		(N)	31/01/2019
mn	Mongolian		(N)	31/01/2019
mt	Maltese		(N)	31/01/2019
nl	Dutch, Flemish		(N)	31/01/2019
no	Norwegian		(N)	31/01/2019
pl	Polish		(N)	31/01/2019
pt	Portuguese		(N)	31/01/2019
ro	Romanian, Moldavian, Moldovan		(N)	31/01/2019
ru	Russian		(N)	31/01/2019
se	Northern Sami		(N)	31/01/2019
sk	Slovak		(N)	31/01/2019
sl	Slovenian		(N)	31/01/2019
sm	Samoan		(N)	31/01/2019
so	Somali		(N)	31/01/2019
sq	Albanian		(N)	31/01/2019
sr	Serbian		(N)	31/01/2019
sv	Swedish		(N)	31/01/2019
sw	Swahili		(N)	31/01/2019
ta	Tamil		(N)	31/01/2019
th	Thai		(N)	31/01/2019
tr	Turkish		(N)	31/01/2019
uk	Ukrainian		(N)	31/01/2019
ur	Urdu		(N)	31/01/2019

uz	Uzbek		(N)	31/01/2019
vi	Vietnamese		(N)	31/01/2019
zh	Chinese		(N)	31/01/2019

### NT7 - unit of measure (U)

specification of the unit of measure, it is a sub set of table Unit of Measure Code - UN/ECE REC 20 delivered by United Nations Economic Commission for Europe (UN/ECE)

Agency name: eBIZ / UN/ECE

tabella cod.: NT7

File codes list (Generic code): [http://www.ebiz.enea.it/moda-ml/repository/codelist/v2018-1/gc\\_NT7.xml](http://www.ebiz.enea.it/moda-ml/repository/codelist/v2018-1/gc_NT7.xml)

Other link: <http://docs.oasis-open.org/ubl/os-UBL-2.1/cl/gc/default/UnitOfMeasureCode-2.1.gc#>

Code	Description	Adoption note	Version status	Date of insertion
CMK	square centimetre		(N)	20/12/2017
CMQ	cubic centimetre		(N)	20/12/2017
CMT	centimetre			
CNE	centiNewton			
CO2TON	ton of CO2		(N)	10/09/2014
COUPLES	couples			
DMQ	cubic decimetre			
E37	pixel		(N)	11/04/2018
GRM	gram			
HUR	hour			
INH	inch			
KGM	kilogram			
KMT	kilometer			
KWH	kilowatthours		(N)	10/09/2014
LBR	pound			
MIN	minute			
MMK	square millimetre		(N)	20/12/2017
MTK	square metre		(N)	20/12/2017
MTQ	cubic metre			
MTR	metre			
NMB	numero			
ONZ	ounce			

P1	percent			
PPM	parts per million			
PZ	piece		(U)	
RPM	rounds per metre			
YRD	yard			

### T10 - ISO3166 - Country

code of the nation

Agency name: ISO

tabella cod.: T10

File codes list (Generic code): [http://www.ebiz.enea.it/moda-ml/repository/codelist/v2018-1/gc\\_T10.xml](http://www.ebiz.enea.it/moda-ml/repository/codelist/v2018-1/gc_T10.xml)

Table not printed: there are 239 elements, more than the maximum specified for printing: 99.

### T12 - fabric faults

code specifying the type or class of fabric fault

Agency name: eBIZ

tabella cod.: T12

File codes list (Generic code): [http://www.ebiz.enea.it/moda-ml/repository/codelist/v2018-1/gc\\_T12.xml](http://www.ebiz.enea.it/moda-ml/repository/codelist/v2018-1/gc_T12.xml)

Code	Description	Adoption note	Version status	Date of insertion
AA				
AA1	warpway thick end			
AA2	weftway thick pick			
AA3	thin end/pick			
AA4	warpway thin end			
AA5	weftway thin pick			
AA6	tight end/pick			
AA7	warpway tight end			
AB	weftway tight pick			
AB1	slack end/pick			
AB2	warpway slack end			
AB3	weftway slack pick			
AB4	missing end/pick			

AB5	warpway missing end			
AB6	weftway missing pick			
AC	knots/slubs			
AE	stripes/bars			
AE1	stripes/bars in the warp			
AE2	stripes/bars in the weft			
AG	bowing			
AG1	bowing in the warp			
AG2	bowing in the weft			
AI	skew			
AJ	difference in tension: body-selvedge			
AK				
AL				
AM	tears,cuts,holes			
AN	abrasions			
AO	faulty mending			
AP	creases			
AQ	disagreeable odour			
AR1	foreign matter (fibres)			
AR3	stains			
AS	variation in shade: weftway			
AT	variation in shade: warpway			
AU	difference in shade (vs. sample)			
AV	difference in look (vs. sample)			
AW	difference in handle (vs. sample)			
AX	asymmetry of design			
AY	irregularity of checks			
AZ				
AZA				

### T13 - CFM properties of fabric

code of the physical or mechanical parameter used to define a "technical characteristic of the fabric" (see Fabric technical sheet)

tabella cod.: T13

File codes list (Generic code): [http://www.ebiz.enea.it/moda-ml/repository/codelist/v2018-1/gc\\_T13.xml](http://www.ebiz.enea.it/moda-ml/repository/codelist/v2018-1/gc_T13.xml)

<b>Code</b>	<b>Description</b>	<b>Adoption note</b>	<b>Version status</b>	<b>Date of insertion</b>
CMA	resistance to pilling (UNI.E.1512434)			
CMB	seam slippage - warp ( NFG7117)			
CMC	seam slippage - weft ( NFG7117)			
CMD	breaking strength - warp (ISO 1394-1)			
CME	breaking strength - weft (ISO 1394-1)			
CMF	resistance to abrasion (EN 12947)			
CMH	tear strength (ISO 9290)			
CMI	crease recovery (ISO 9867)			
CMJ	elongation - warp (BS 4294/68)			
CMK	elongation - weft (BS 4294/68)			
CML	tear resistance - warp			
CMM	tear resistance - weft			
CMN	resistance to bending			
CMP	spray test			
SLA	colour fastness to light (ISO 105-B02)			
SLB	colour fastness to washing (ISO 105-C06)			
SLC	colour fastness to dry cleaning (ISO 105-D01)			
SLD	colour fastness to spotting water (ISO 105-E07)			
SLG	colour fastness to alkaline perspiration (ISO 105-E04)			
SLH	colour fastness to acid perspiration (ISO 105-E04)			
SLI	colour fastness to dry rubbing (ISO 105-X12)			
SLJ	colour fastness to wet rubbing (ISO 105-X12)			
SLK	colour fastness to dry ironing (ISO 105-X11)			
SLM	colour fastness to wet ironing (ISO 105-X11)			
SLW	colour fastness to water (ISO 105-E01)			
SLX	colour fastness to Xeno-light			
SLZ	colour fastness to rubbing org. Solv. (ISO 105-D02)			
STA	dimensional stability to steaming press - length (DIN 53894-2)			
STB	dimensional stability to steaming press - width (DIN 53894-2)			
STC	dimensional stability to washing - length (ISO 5077+6330)			
STD	dimensional stability to washing - width (ISO 5077+6330)			
STE	dimensional stability to dry cleaning - length (ISO 3175)			
STF	dimensional stability to dry cleaning - width (ISO 3175)			



## T14 - FAST tests

taylorability parameter for fabric

tabella cod.: T14

File codes list (Generic code): [http://www.ebiz.enea.it/moda-ml/repository/codelist/v2018-1/gc\\_T14.xml](http://www.ebiz.enea.it/moda-ml/repository/codelist/v2018-1/gc_T14.xml)

Code	Description	Adoption note	Version status	Date of insertion
A1	press test angle - warpway			
A2	press test angle - weftway			
B1	bending rigidity - warpway			
B2	bending rigidity - weftway			
E1001	extensibility - warpway			
E1002	extensibility - weftway			
F1	formability - warpway			
F2	formability - weftway			
G	shear rigidity			
HE1	hygral expansion - warpway			
HE2	hygral expansion - weftway			
RS1	relaxation shrinkage - warpway			
RS2	relaxation shrinkage - weftway			
ST	surface thickness			
STR	surface thickness released			
T2	thickness			

## T21 - type of document

type or class to which the referenced document belongs

Agency name: eBIZ

tabella cod.: T21

File codes list (Generic code): [http://www.ebiz.enea.it/moda-ml/repository/codelist/v2018-1/gc\\_T21.xml](http://www.ebiz.enea.it/moda-ml/repository/codelist/v2018-1/gc_T21.xml)

Code	Description	Adoption note	Version status	Date of insertion
BOR	blanket order		(N)	01/02/2018
CAT	Price catalogue - tech sheet			
CEO	Certificate of origin		(N)	13/04/2018
CER	Certificate		(N)	13/04/2018

COC	colour card			
CRN	Credit note			08/09/2017
CTO	Checking order			01/07/2013
CTR	Contract		(U)	
CXF	CxF3 file			01/07/2013
DAD	Darn order			
DDT	ddt			
DEA	Despatch advise			
DER	Despatch request			
DR	Document Request			02/12/2014
FOR	Forecast			02/12/2014
GSO	Garment stock offer			
GSX	Garment stock offer change			
INV	Invoice			
KCC	Knitting-Clothing Commission Order			02/12/2014
KCI	Garment in Work Inventory Report			02/12/2014
M2M	Made to Measure Production Order			02/12/2014
MAS	Master marker			
MCI	Visual merchandising instruction		(N)	13/04/2018
OCH	Order change			
OFF	Offer			
ORD	Purchase order			
ORP	Order response			
OSR	order status request			
OSS	Offer status			02/12/2014
OST	Order status			
OUR	our reference			
QR	Quality Report			02/12/2014
RAI	Raw Material in Work Inventory Report			02/12/2014
RDC	Raw dyeing commission order			
RDH	Raw dyeing order change			
RDR	Raw dyeing order response			
REA	Receiving advise			
REQ	Request for Offer			
RET	Return			02/12/2014

RSC	Spinning commission order			
RSH	Spinning order change			
RSR	Spinning order response			
SCL	process sheet			
TFC	Textile dyeing-finishing commission order			
TFX	Textile Dyeing-Finishing Order Change			02/12/2014
TPC	Textile printing commission order			
TPX	Textile Printing Order Change			02/12/2014
TWI	Textile in work inventory			
VMI	visual merchandising instructions		(N)	01/02/2018
WAC	Warping commission order			
WEC	Weaving commission order			
YDC	Yarn dyeing commission order			
YDH	Yarn dyeing order change			
YDR	Yarn dyeing order response			
YTC	Twisting commission order			
YWI	Yarn in work inventory			

#### T44 - additional code type

qualifier of the additional coding of a product

Agency name: eBIZ

tabella cod.: T44

File codes list (Generic code): [http://www.ebiz.enea.it/moda-ml/repository/codelist/v2018-1/gc\\_T44.xml](http://www.ebiz.enea.it/moda-ml/repository/codelist/v2018-1/gc_T44.xml)

Code	Description	Adoption note	Version status	Date of insertion
CC	colour card			
CL	sales collection			
CO	company identification code		(N)	08/09/2017
DY	dye number			
LT	lot number			
MDI	Made in			08/09/2017
MS	manufacturing state			
PKG	packaging			09/09/2014
PL	product line			
RGB	RGB value			

SE	selvedge code			
----	---------------	--	--	--

### T52 - fabric piece status

code used to describe the status of a fabric piece with reference to the control

Agency name: eBIZ

tabella cod.: T52

File codes list (Generic code): [http://www.ebiz.enea.it/moda-ml/repository/codelist/v2018-1/gc\\_T52.xml](http://www.ebiz.enea.it/moda-ml/repository/codelist/v2018-1/gc_T52.xml)

Code	Description	Adoption note	Version status	Date of insertion
0	first registration			
C	registration from return			
F	stopped			
H	handling			
R	returned			
S	held			
T	deliverable			

## Annex C

### New or changed elements towards previous version

Changes or added elements (changes in description excluded; changes in aggregation notes and best practice included): 78

Test Type	Tag	Status	Item type	Changes related to
Attribute	additionalIdentifier	NEW	Additional Party Identifier	Has NEW attribute: numbering organisation code
Attribute	additionalIdentifier	NEW	Additional Party Identifier	Has NEW attribute: id Qualifier
Element()	additionalIdentifier	NEW	Additional Party Identifier	
Element(E)	art	UPD ATED	article identifier	Property: Length_Max Old value: 25 New value: 80
Attribute	art	UPD ATED	article identifier	Its attribute: code list reference  Property: Aggregation Note_English Old value: <i>this attribute should be ALTERNATIVE to the others</i> New value: <i>at least one out of this attribute and "numberingOrg" should be set</i>
Element()	attachment	NEW	attachment	
Child	attachment	NEW	attachment	Has NEW child of: file name
Child	attachment	NEW	attachment	Has NEW child of: external reference
Child	attachment	NEW	attachment	Has NEW child of: binary object
Attribute	binary Object	NEW	binary object	Has NEW attribute: encoding
Attribute	binary Object	NEW	binary object	Has NEW attribute: mime
Attribute	binary Object	NEW	binary object	Has NEW attribute: format
Attribute	binary Object	NEW	binary object	Has NEW attribute: character set
Element()	binary Object	NEW	binary object	

Child	buyer	NEW	Buyer (*)	Has NEW child of: Party identifier
Child	buyer	NEW	Buyer (*)	Has NEW child of: Additional Party Identifier
Attrib	buyer	NEW	Buyer (*)	Has NEW attribute: sender Party qualifier
Element()	characterSet Code	NEW	character set code	
Element()	characterSet	NEW	character set	
Attrib	description	NEW	description	Has NEW attribute: In
Element(E)	description	UPDATED	description	Property: Length_Max Old value: 70 New value: 250
Element(E)	email	UPDATED	e-mail	Property: Length_Max Old value: 80 New value: 250
Element()	encodingCode	NEW	encoding code	
Element()	encoding	NEW	encoding	
Child	externalReference	NEW	external reference	Has NEW child of: uri
Child	externalReference	NEW	external reference	Has NEW child of: format code
Child	externalReference	NEW	external reference	Has NEW child of: character set code
Child	externalReference	NEW	external reference	Has NEW child of: mime code
Child	externalReference	NEW	external reference	Has NEW child of: encoding code
Element()	externalReference	NEW	external reference	
Element(E)	fabricCharacterText	UPDATED	fabric characteristic text	Property: Length_Max Old value: 40 New value: 80

Element(E)	fabricFaultText	UPDATE	fabric fault text	Property: Length_Max Old value: 40 New value: 250
Attribute	pieceControl	NEW	fabric piece control code	Has NEW attribute: code list reference
Attribute	pieceControl	NEW	fabric piece control code	Has NEW attribute: code list name
Attribute	pieceControl	NEW	fabric piece control code	Has NEW attribute: code list version
Child	pieceFault	UPDATE	Fabric piece fault details	relationship with child: general note  Property: Cardmax Old value: 19 New value: 99
Child	pieceMeasurements	NEW	Fabric piece measures	Has NEW child of: gross weight measures
Child	pieceMeasurements	UPDATE	Fabric piece measures	relationship with child: piece weight measure  Property: Aggregation Note_English Old value: <i>effective weight of the piece</i> New value: <i>effective net weight of the piece</i>
Child	fabricTaylability	UPDATE	Fabric taylability details	relationship with child: general note  Property: Cardmax Old value: 19 New value: 99
Child	fabricTest	UPDATE	Fabric test details	relationship with child: general note  Property: Cardmax Old value: 19 New value: 99
Child	fabricTest	UPDATE	Fabric test details	relationship with child: experimental measure  Property: Aggregation Note_English Old value: <i>this data can be iterated to provide repeated instances of the same test</i> New value: <i>this data can be iterated to provide repeated instances of the same test</i>
Attribute	fileName	NEW	file name	Has NEW attribute: numbering organisation code
Element(I)	fileName	NEW	file name	

Element()	format Code	NEW	format code	
Element()	format	NEW	format	
Attribute	note	UPDATED	general note	<p>Its attribute: numbering organisation code</p> <p>Property: Aggregation Note_English</p> <p>Old value:</p> <p>New value: <i>must be used to specify the organization that created the list of codes used in "noteLabel"</i></p>
Element()	idQualifier	NEW	id Qualifier	
Element()	isURL	NEW	is URL	
Element(E)	legalName	UPDATED	Legal name	<p>Property: Length_Max</p> <p>Old value: 80</p> <p>New value: 250</p>
Element(E)	itemID	UPDATED	line item number	<p>Property: Length_Max</p> <p>Old value: 6</p> <p>New value: 40</p>
Element()	In	NEW	In	
Element()	mimeCode	NEW	mime code	
Element()	mime	NEW	mime	
Child	refDoc	NEW	reference document details	Has NEW child of: attachment
Child	refDoc	UPDATED	reference document details	<p>relationship with child: document identifier</p> <p>Property: BestPractice_English</p> <p>Old value:</p> <p>New value: <i>numberingOrg indicates the role that produced the document identifier (it is allowed to declare two different ones -e.g. customer and supplier - with two docID with different numberingOrg</i></p>
Attribute	season	NEW	season identifier	Has NEW attribute: code list reference
Attribute	season	NEW	season identifier	Has NEW attribute: numbering organisation code
Attribute	season	NEW	season identifier	Has NEW attribute: code list name



Attr ib	season	NE W	season id entifier	Has NEW attribute: code list version
Attr ib	serialN	NE W	serial nu mber	Has NEW attribute: id Qualifier
Ele m( E)	serialN	UPD ATE D	serial nu mber	Property: Length_Max Old value: 15 New value: 250
Ele m(l )	subDe pt	NE W	departme nt identifi er	
Chil d	supplie r	NE W	Supplier ( *)	Has NEW child of: Party identifier
Chil d	supplie r	NE W	Supplier ( *)	Has NEW child of: Additional Party Identifier
Attr ib	supplie r	NE W	Supplier ( *)	Has NEW attribute: sender Party qualifier
Ele m( E)	metho d	UPD ATE D	test meth od identifi er	Property: Length_Max Old value: 25 New value: 80
Chil d	TEXQ ualityR pt	UPD ATE D	TEXQuali tyRpt (*)	relationship with child: TQ header  Property: Aggregation Note_English Old value: <i>In the document issued by the Controller (sent to Client and Su pplier) the Controller must identify as "third party". the attribute "logo" sho uld be used only in conjunction with Supplier or Quality Controller.</i> New value: <i>In the document issued by the Controller (sent to Client and S upplier) the Controller must identify as "third party". The attribute "logo" sh ould be used only in conjunction with Supplier or Quality Controller.</i>
Chil d	texCod e	UPD ATE D	Textiles p roduct co de	relationship with child: description  Property: Aggregation Note_English Old value: New value: <i>Product description</i>
Chil d	texCod e	UPD ATE D	Textiles p roduct co de	relationship with child: description  Property: Cardmax Old value: 1 New value: 999
Chil d	thirdPa rty	NE W	Third Part y (*)	Has NEW child of: Party identifier
Attr ib	thirdPa rty	NE W	Third Part y (*)	Has NEW attribute: sender Party qualifier
Chil d	TQhea der	NE W	TQ heade r	Has NEW child of: reference document details
Chil d	TQhea der	UPD ATE D	TQ heade r	relationship with child: general note  Property: Cardmax

				Old value: 19 New value: 99
Child	TQitem	UPDATED	TQ item	relationship with child: serial number  Property: Cardmax Old value: 3 New value: 9
Child	TQitem	UPDATED	TQ item	relationship with child: serial number  Property: Aggregation Note_English Old value: <i>here the serial number of the piece must be reported</i> New value: <i>multiple values of serialN are allowed to provide different representations of the serial identifier of the same tested piece. Several instances of serialN must differ at least by a value of idQualifier or numberingOr g</i>
Child	TQitem	UPDATED	TQ item	relationship with child: reference document details  Property: Cardmax Old value: 1 New value: 9
Attrib	uri	NEW	uri	Has NEW attribute: is URL
Elem(l)	uri	NEW	uri	

## Annex D

### New or changed tables and codes towards previous version

Changes or added items (changes in CodeListAgencyName excluded; changes in adoption notes and code description included): 97

Test Type	Status	Table code	Table description	Code	Change description
Table	UPD ATED	NT 100	eBIZ TCFUpstream version		Description_English Old value: <i>eBIZ Moda-ML version</i> New value: <i>eBIZ TCFUpstream version</i>
Code	NEW	NT 100		2018-1 (v2018-1)	
Code	NEW	NT 100		draft (draft)	
Table	UPD ATED	NT 16	VAT rate or code		Generalities Old value: <i>VAT rate or code ( deprecated , use dtScheme element )</i> New value: <i>VAT rate or code ( DEPRECATED, use dtScheme element )</i>
Code	NEW	NT 2		AU (Auditor)	
Code	NEW	NT 2		CE (Certification authority)	
Code	NEW	NT 2		SC (Sub contractor)	
Code	NEW	NT 2		SM (Service/ePlatform manager)	
Code	NEW	NT 6		EB (eBIZ)	
Code	UPD ATED	NT 6		ML (DEPRECATED)	adoption_note Old value: New value: <i>DEPRECATED</i>
Table	NEW	NT 60	language, codes from ISO 639-1 (subset)		
Code	NEW	NT 60		F (Female)	
Code	NEW	NT 60		af (Afrikaans)	
Code	NEW	NT 60		ar (Arabic)	
Code	NEW	NT 60		be (Belarusian)	

Co de	NEW	NT 60		<i>bg</i> (Bulgarian)	
Co de	NEW	NT 60		<i>bn</i> (Bengali)	
Co de	NEW	NT 60		<i>bo</i> (Tibetan)	
Co de	NEW	NT 60		<i>bs</i> (Bosnian)	
Co de	NEW	NT 60		<i>ca</i> (Catalan, Valencian)	
Co de	NEW	NT 60		<i>cs</i> (Czech)	
Co de	NEW	NT 60		<i>da</i> (Danish)	
Co de	NEW	NT 60		<i>de</i> (German)	
Co de	NEW	NT 60		<i>el</i> (Greek, Modern (1453-))	
Co de	NEW	NT 60		<i>en</i> (English)	
Co de	NEW	NT 60		<i>eo</i> (Esperanto)	
Co de	NEW	NT 60		<i>es</i> (Spanish, Castilian)	
Co de	NEW	NT 60		<i>et</i> (Estonian)	
Co de	NEW	NT 60		<i>eu</i> (Basque)	
Co de	NEW	NT 60		<i>fa</i> (Persian)	
Co de	NEW	NT 60		<i>fi</i> (Finnish)	
Co de	NEW	NT 60		<i>fr</i> (French)	
Co de	NEW	NT 60		<i>ga</i> (Irish)	
Co de	NEW	NT 60		<i>gd</i> (Gaelic, Scottish Gaelic)	
Co de	NEW	NT 60		<i>gn</i> (Guarani)	
Co de	NEW	NT 60		<i>he</i> (Hebrew)	
Co de	NEW	NT 60		<i>hr</i> (Croatian)	

Co de	NEW	NT 60		<i>ht</i> (Haitian, Haitian Creole)	
Co de	NEW	NT 60		<i>hu</i> (Hungarian)	
Co de	NEW	NT 60		<i>hy</i> (Armenian)	
Co de	NEW	NT 60		<i>ia</i> (Interlingua (International Auxiliary Language Assoc iation))	
Co de	NEW	NT 60		<i>id</i> (Indonesian)	
Co de	NEW	NT 60		<i>is</i> (Icelandic)	
Co de	NEW	NT 60		<i>it</i> (Italian)	
Co de	NEW	NT 60		<i>ja</i> (Japanese)	
Co de	NEW	NT 60		<i>ju</i> (Javanese)	
Co de	NEW	NT 60		<i>ka</i> (Georgian)	
Co de	NEW	NT 60		<i>km</i> (Central Khmer)	
Co de	NEW	NT 60		<i>ko</i> (Korean)	
Co de	NEW	NT 60		<i>ku</i> (Kurdish)	
Co de	NEW	NT 60		<i>lb</i> (Luxembourgish, Letzebu rgesch)	
Co de	NEW	NT 60		<i>lo</i> (Lao)	
Co de	NEW	NT 60		<i>lt</i> (Lithuanian)	
Co de	NEW	NT 60		<i>lv</i> (Latvian)	
Co de	NEW	NT 60		<i>mg</i> (Malagasy)	
Co de	NEW	NT 60		<i>mk</i> (Macedonian)	
Co de	NEW	NT 60		<i>mn</i> (Mongolian)	
Co de	NEW	NT 60		<i>mt</i> (Maltese)	

Co de	NEW	NT 60		<i>nl</i> (Dutch, Flemish)	
Co de	NEW	NT 60		<i>no</i> (Norwegian)	
Co de	NEW	NT 60		<i>pl</i> (Polish)	
Co de	NEW	NT 60		<i>pt</i> (Portuguese)	
Co de	NEW	NT 60		<i>ro</i> (Romanian, Moldavian, M oldovan)	
Co de	NEW	NT 60		<i>ru</i> (Russian)	
Co de	NEW	NT 60		<i>se</i> (Northern Sami)	
Co de	NEW	NT 60		<i>sk</i> (Slovak)	
Co de	NEW	NT 60		<i>sl</i> (Slovenian)	
Co de	NEW	NT 60		<i>sm</i> (Samoan)	
Co de	NEW	NT 60		<i>so</i> (Somali)	
Co de	NEW	NT 60		<i>sq</i> (Albanian)	
Co de	NEW	NT 60		<i>sr</i> (Serbian)	
Co de	NEW	NT 60		<i>sv</i> (Swedish)	
Co de	NEW	NT 60		<i>sw</i> (Swahili)	
Co de	NEW	NT 60		<i>ta</i> (Tamil)	
Co de	NEW	NT 60		<i>th</i> (Thai)	
Co de	NEW	NT 60		<i>tr</i> (Turkish)	
Co de	NEW	NT 60		<i>uk</i> (Ukrainian)	
Co de	NEW	NT 60		<i>ur</i> (Urdu)	
Co de	NEW	NT 60		<i>uz</i> (Uzbek)	
Co de	NEW	NT 60		<i>vi</i> (Vietnamese)	

Code	NEW	NT60		zh (Chinese)	
Code	NEW	NT7		CMK (square centimetre)	
Code	NEW	NT7		CMQ (cubic centimetre)	
Code	NEW	NT7		E37 (pixel)	
Code	NEW	NT7		KWH (kilowatthours)	
Code	NEW	NT7		MMK (square millimetre)	
Code	NEW	NT7		MTK (square metre)	
Code	NEW	NT7		CO2TON (ton of CO2)	
Table	UPDATED	NT7	unit of measure		OtherExternalReferenceURL Old value: New value: <a href="http://docs.oasis-open.org/ubl/os-UBL-2.1/cl/gc/default/UnitOfMeasureCode-2.1.gc#">#http://docs.oasis-open.org/ubl/os-UBL-2.1/cl/gc/default/UnitOfMeasureCode-2.1.gc#</a>
Table	UPDATED	NT7	unit of measure		Description_English Old value: <i>unity of measure</i> New value: <i>unit of measure</i>
Code	NEW	T21		BOR (blanket order)	
Code	NEW	T21		CEO (Certificate of origin)	
Code	NEW	T21		CER (Certificate)	
Code	UPDATED	T21		CTR (Contract)	Text_English Old value: <i>contract</i> New value: <i>Contract</i>
Code	NEW	T21		MCI (Visual merchandising instruction)	
Code	NEW	T21		VMI (visual merchandising instructions)	
Code	NEW	T44		CO (company identification code)	