



<http://www.ebiz-tcf.eu>

## IMPLEMENTATION GUIDE

includes COMPARISON BETWEEN CURRENT and LAST  
PREVIOUSLY RELEASED VERSION

TRANSACTION "TEXTILE DARNING RETURN"

Version: v2018-1

Date of release: 18/7/2019

Document code: G013rv

technical Documentation: <http://www.ebiz.enea.it>

XML Schemas repository: <http://www.ebiz.enea.it/moda-ml/repository/schema/v2018-1/default.asp>

Guides repository: <http://www.ebiz.enea.it/moda-ml/repository/guide/v2018-1/default.asp>

Guide filename: G013rv-eBIZ-TextileDarningReturn.pdf

# 1. BUSINESS DESCRIPTION

## 1.1 Scope

The present guide has been issued to assist the companies of the Textile-Clothing sector in the implementation of the standard XML document type "Textile DARN RETURN", providing all the instruction required for its use in any context of e-commerce between Fabric Producers and Darn Subcontractors. All the rules required for the construction and validation of the document are embedded into the specific XML-Schema, which is detailed in section "Implementation guide".

## 1.2 Generalities

The document "Textile Darn Return" is used by the Darn Subcontractor to specify the darning operations performed on each fabric piece and possibly the worktimes invoiced.

The document can refer to one or more pieces and can be used either in conjunction with the "Textile Despatch Advise" (1 DA : 1 Return) or independently.

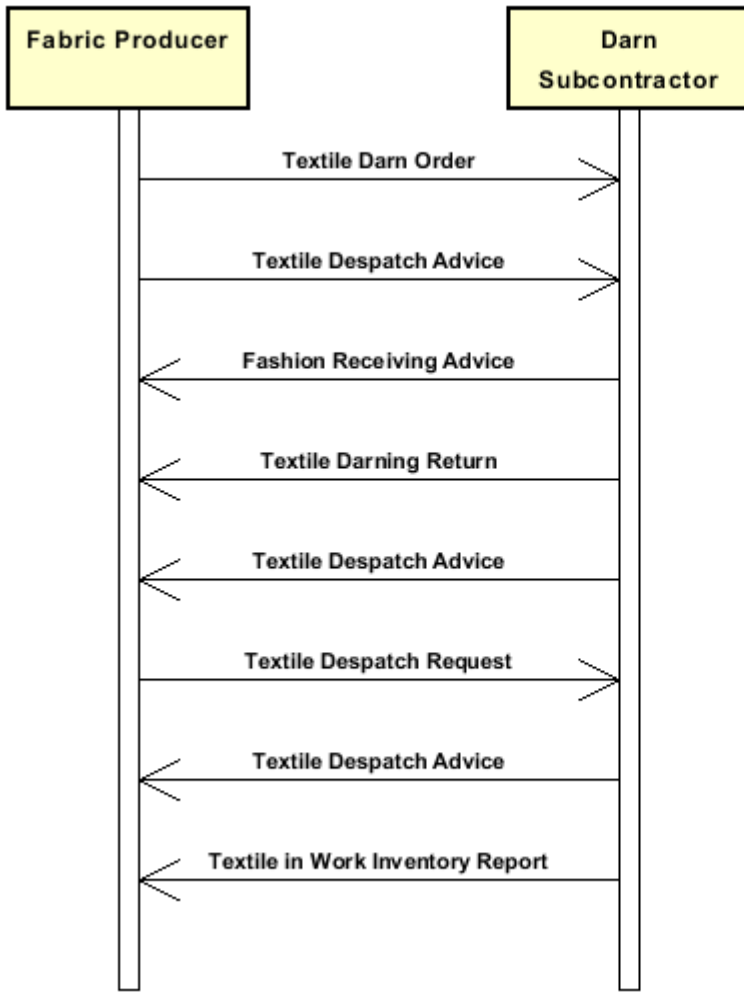
In the first instance the reference to the Despatch Advise must be given in the Header; in the second each piece can have at item level its reference to the transport document with which was returned to the Client.

EACH ITEM CONTAINS A JOB REPORTING FOR ONE OR MORE PIECES OF THE SAME TEXTILE ARTICLE.

The Job cost reporting can be calculated from a metre rate or from an hourly rate times a given operation time or from a combination of both.

## 1.3. Possible scenario

Subcontracted fabric darning



## 2. IMPLEMENTATION GUIDE

### 2.1 General structure of XML document

All the business data that can be exchanged through this class of documents are shown in the following "document structure", that provides a simplified vision of the Schema.

In particular:

- the two numbers following each element define its "cardinality" (minimum and maximum number of occurrences); the minimum equal zero indicates that the element is optional, the minimum greater than zero indicates that is mandatory;
- the bold character denotes the complex elements (aggregates of simple elements) that were built for the sake of functionality and re-usability of some complex informations sets. The child elements in each parent element are easily spotted as "indented";
- the symbol "@" denotes an attribute of the preceding element; here "the usage indicator (optional, required, ...)" is shown in square brackets.

#### Legenda

- N: new element
- U: updated properties
- P: changes in children
- p: is a changed child
- A: changes in attributes
- a: is a new or changed attribute
- \*: is a subtype

### Structure

#### TEXDarnReturn

```
@msgfunction [Optional] [Default= OR]
@version [Optional] [Default= 2018-1]
@useProfile [Optional]
| DRheader 1-1 (P)
| | msgN 1-1
| | - choose -
| | msgID 0-1
| | - or -
| | docID 0-1
| | @numberingOrg [Optional]
| | - end choose -
| | msgDate 1-1
| | @dateForm [Optional]
| | refDoc 0-9 (P)
| | @docType [Required]
| | | docID 1-2 (p)
| | | @numberingOrg [Optional]
| | | docDate 0-1
| | | @dateForm [Optional]
| | | season 0-1 (A)
| | | @numberingOrg [Optional] (a)
| | | @codeList [Optional] (a)
| | | @listName [Optional] (a)
| | | @listVersion [Optional] (a)
| | | itemID 0-1 (U)
| | | attachment 0-1 (N)
| | | | @uid [Optional]
| | | | | fileName 0-1 (N)
| | | | | @numberingOrg [Optional] (a)
```

```

| | | binaryObject 0-1 (N)
| | | @format [Optional] (N)
| | | @mime [Optional] (N)
| | | @encoding [Optional] (N)
| | | @characterSet [Optional] (N)
| | | externalReference 0-99 (N)
| | | | uri 1-1 (N)
| | | | @isURL [Optional] [Default= true] (Na)
| | | | mimeTypeCode 0-1 (N)
| | | | formatCode 0-1 (N)
| | | | encodingCode 0-1 (N)
| | | | characterSetCode 0-1 (N)
| buyer 1-1 (AP)
| @logo [Optional]
| @sender [Optional] (a*)
| | id 1-1 (p)
| | | @numberingOrg [Optional]
| | additionalIdentifier 0-9 (N)
| | | @numberingOrg [Optional] (a)
| | | @idQualifier [Optional] (Na)
| | legalName 0-1 (U)
| | dept 0-1
| | subDept 0-1 (N)
| | person 0-1
| | | @email [Optional]
| | | @phone [Optional]
| | | @fax [Optional]
| | street 0-1
| | city 0-1
| | subCountry 0-1
| | country 0-1
| | postCode 0-1
| subContractor 1-1 (AP)
| @sender [Optional] (a*)
| | id 1-1
| | | @numberingOrg [Optional]
| | legalName 0-1 (U)
| | dept 0-1
| | subDept 0-1 (N)
| | person 0-1
| | | @email [Optional]
| | | @phone [Optional]
| | | @fax [Optional]
| | street 0-1
| | city 0-1
| | subCountry 0-1
| | country 0-1
| | postCode 0-1
| thirdParty 0-5 (AP)
| @VAT [Optional]
| @role [Required]
| @sender [Optional] (a*)
| | id 1-1
| | | @numberingOrg [Optional]
| | legalName 0-1 (U)
| | dept 0-1
| | subDept 0-1 (N)
| | person 0-1
| | | @email [Optional]
| | | @phone [Optional]
| | | @fax [Optional]

```

- | street 0-1
- | city 0-1
- | subCountry 0-1
- | country 0-1
- | postCode 0-1
- | qualityLevel 0-1 (N)
- | @numberingOrg [Optional] (a)
- | @codeList [Optional] (a)
- | @listName [Optional] (a)
- | @listVersion [Optional] (a)
- | note 0-99
- | @numberingOrg [Optional]
- | @codeList [Optional]
- | @noteLabel [Optional]

### DRbody 1-1

- | **DRitem 1-unbounded** (P)
- | @transReason [Optional]
- | lineN 1-1
- | @VAT [Optional]
- | **texCode 0-2** (P)
- | @numberingOrg [Optional]
- | art 1-1 (U)
- | @numberingOrg [Optional]
- | @codeList [Optional]
- | @listName [Optional]
- | @listVersion [Optional]
- | pattern 0-1
- | @numberingOrg [Optional]
- | @codeList [Optional]
- | @listName [Optional]
- | @listVersion [Optional]
- | color 0-1
- | @numberingOrg [Optional]
- | @codeList [Optional]
- | @listName [Optional]
- | @listVersion [Optional]
- | added 0-9
- | @numberingOrg [Optional]
- | @addType [Optional]
- | description 0-unbounded (pAU)
- | @ln [Optional] (N)
- | qty 1-2
- | @um [Required]
- choose -
- | **pieceChain 1-1** (P)
- | serialN 1-9 (AU)
- | @numberingOrg [Optional]
- | @idQualifier [Optional] (N)
- | pieceLength 0-1
- | @um [Optional] [Default= MTR]
- | pieceWidth 0-1
- | @um [Optional] [Default= CMT]
- | pieceWeight 0-1
- | @um [Optional] [Default= KGM]
- | lotN 0-1
- | @numberingOrg [Optional]
- | dyeN 0-1
- | @numberingOrg [Optional]
- | packageN 0-1 (U)
- | @numberingOrg [Optional]

```

| | | | @packageContainerN [Optional]
| | | | piecePack 0-1
- choose -
| | | | | piecePackText 1-1 (U)
- or -
| | | | | pieceInnWrap1 1-1
| | | | | pieceInnWrap2 0-1
| | | | | pieceOutWrap 0-1
- end choose -
| | | | | pieceCut 0-99 (P)
| | | | | serialN 1-9 (AU)
| | | | | @numberingOrg [Optional]
| | | | | @idQualifier [Optional] (N)
| | | | | pieceLength 0-1
| | | | | @um [Optional] [Default= MTR]
| | | | | pieceWeight 0-1
| | | | | @um [Optional] [Default= KGM]

```

- or -

```

| | | | piece 1-1 (P)
| | | | @endUse [Optional]
| | | | | serialN 0-9 (AU)
| | | | | @numberingOrg [Optional]
| | | | | @idQualifier [Optional] (N)
| | | | | EPC 0-1
| | | | | @numberingOrg [Optional]
| | | | | @TID [Optional]
| | | | | totFault 0-1
| | | | | pieceStatus 0-1
| | | | | pieceLength 0-1
| | | | | @um [Optional] [Default= MTR]
| | | | | pieceWidth 0-1
| | | | | @um [Optional] [Default= CMT]
| | | | | pieceCutWidth 0-1
| | | | | @um [Optional] [Default= CMT]
| | | | | pieceWeight 0-1
| | | | | @um [Optional] [Default= KGM]
| | | | | pieceWeightM 0-1
| | | | | @um [Optional] [Default= GRM]
| | | | | grossWeight 0-1 (p)
| | | | | @um [Required]
| | | | | pieceAllow 0-1
| | | | | @um [Required]
| | | | | lotN 0-2 (p)
| | | | | @numberingOrg [Optional]
| | | | | dyeN 0-1
| | | | | @numberingOrg [Optional]
| | | | | mixMatch 0-1
| | | | | @numberingOrg [Optional]
| | | | | packageN 0-1 (U)
| | | | | @numberingOrg [Optional]
| | | | | @packageContainerN [Optional]
| | | | | piecePack 0-1
- choose -
| | | | | | piecePackText 1-1 (U)
- or -
| | | | | | pieceInnWrap1 1-1
| | | | | | pieceInnWrap2 0-1
| | | | | | pieceOutWrap 0-1
- end choose -

```

- end choose -

```

| | | | pieceMap 0-1

```

```

| | | @source [Required]
| | | | totFault 1-1
| | | | pieceFault 0-99 (P)
| | | | | @faultRank [Required]
| | | | | @faultShape [Optional]
| | | | - choose -
| | | | | fabricFaultText 1-1 (U)
| | | | - or -
| | | | | fabricFault 1-1
| | | | - end choose -
| | | | | warpStart 1-1
| | | | | | @um [Optional] [Default= MTR]
| | | | | warpEnd 0-1
| | | | | | @um [Optional] [Default= MTR]
| | | | | weftStart 0-1
| | | | | | @um [Optional] [Default= CMT]
| | | | | weftEnd 0-1
| | | | | | @um [Optional] [Default= CMT]
| | | | | pieceAllow 0-1
| | | | | | @um [Required]
| | | | | note 0-99
| | | | | | @numberingOrg [Optional]
| | | | | | @codeList [Optional]
| | | | | | @noteLabel [Optional]
| | | refDoc 0-9 (P)
| | | | @docType [Required]
| | | | | docID 1-2 (p)
| | | | | | @numberingOrg [Optional]
| | | | | docDate 0-1
| | | | | | @dateForm [Optional]
| | | | | season 0-1 (A)
| | | | | | @numberingOrg [Optional] (a)
| | | | | | @codeList [Optional] (a)
| | | | | | @listName [Optional] (a)
| | | | | | @listVersion [Optional] (a)
| | | | | itemID 0-1 (U)
| | | | | attachment 0-1 (N)
| | | | | | @uid [Optional]
| | | | | | | fileName 0-1 (N)
| | | | | | | | @numberingOrg [Optional]
| | | | | | | binaryObject 0-1 (N)
| | | | | | | | @format [Optional] (N)
| | | | | | | | @mime [Optional] (N)
| | | | | | | | @encoding [Optional] (N)
| | | | | | | | @characterSet [Optional] (N)
| | | | | | | externalReference 0-99 (N)
| | | | | | | | uri 1-1 (N)
| | | | | | | | | @isURL [Optional] [Default= true] (Na)
| | | | | | | | | mimeTypeCode 0-1 (N)
| | | | | | | | | formatCode 0-1 (N)
| | | | | | | | | encodingCode 0-1 (N)
| | | | | | | | | characterSetCode 0-1 (N)
| | | darnJobReport 0-9
| | | | job 1-1
| | | | | jobTime 0-1
| | | | | jobTimeBasis 0-1
| | | | | | @um [Required]
| | | | | darnJobPrice 0-2
| | | | | | jobPrice 0-1 (A)
| | | | | | | @currency [Optional] (a)
| | | | | | priceBasis 0-1

```



| | | | | @um [Required]  
| | | | | note 0-99  
| | | | | @numberingOrg [Optional]  
| | | | | @codeList [Optional]  
| | | | | @noteLabel [Optional]

| **MOtotals 0-1**

| | totQty 2-2  
| | @um [Required]

## 2.2 Detailed description of document elements

Following tables show all elements (complex and simple) used in this document. Description includes: 1) element's information: xml tag, name, brief description, data type and syntax constraints; 2) information about use of the element in a particular position in the document: xpath and possible associated notes.

### 2.2.1 Complex elements (Aggregate Business Information Entities)

Complex elements are those elements whose content is composed of other elements (childs).Complex elements are alphabetically ordered.

<b>attachment</b>	an attached document. An attachment can refer to an external document or be included with the document being exchanged (XPath <code>TEXDarnReturn/DRbody/DRitem/refDoc/attachment</code> ) 0-1 (N) (XPath <code>TEXDarnReturn/DRheader/refDoc/attachment</code> ) 0-1 (N)
<b>buyer</b>	details of the Buyer (party that buys the good or service that is object of the current collaborative process) - base type: Nad, (XPath <code>TEXDarnReturn/DRheader/buyer</code> ) 1-1 (AP)
<b>darnJobPrice</b>	pricing of a darn work (XPath <code>TEXDarnReturn/DRbody/DRitem/darnJobReport/darnJobPrice</code> ) 0-2
<b>darnJobReport</b>	job report for the execution of a darn work (XPath <code>TEXDarnReturn/DRbody/DRitem/darnJobReport</code> ) 0-9 - note: <i>here is the job report for the fabric pieces identified by its serial number (serialIN)</i>
<b>DRbody</b>	body of the document TEXTILES DARN RETURN (XPath <code>TEXDarnReturn/DRbody</code> ) 1-1
<b>DRheader</b>	header of the TEXTILES DARN RETURN (XPath <code>TEXDarnReturn/DRheader</code> ) 1-1 (P)
<b>DRitem</b>	line item of the document TEXTILES DARN RETURN (XPath <code>TEXDarnReturn/DRbody/DRitem</code> ) 1-unbounded (P)
<b>externalReference</b>	details about an external object, such as a document stored at a remote location (XPath <code>TEXDarnReturn/DRheader/refDoc/attachment/externalReference</code> ) 0-99 (N) (XPath <code>TEXDarnReturn/DRbody/DRitem/refDoc/attachment/externalReference</code> ) 0-99 (N)
<b>MOtotals</b>	monetary and quantity totals of the Order (XPath <code>TEXDarnReturn/MOtots</code> ) 0-1
<b>piece</b>	Identification data and measurement of the fabric piece. (XPath <code>TEXDarnReturn/DRbody/DRitem/piece</code> ) 1-1 (P)
<b>pieceChain</b>	identification data and measurements of a chain of pieces still to be cut (XPath <code>TEXDarnReturn/DRbody/DRitem/pieceChain</code> ) 1-1 (P)
<b>pieceCut</b>	identification data and measurements of a fabric piece belonging to a chain still to be cut (XPath <code>TEXDarnReturn/DRbody/DRitem/pieceChain/pieceCut</code> ) 0-99 (P) - note: <i>here the data of the pieces making up the chain should be specified</i>
<b>pieceFault</b>	classification, position and allowance of the piece faults. The reference point (0,0) for the position is the lower left corner of the piece (selvedge excluded) (XPath <code>TEXDarnReturn/DRbody/DRitem/pieceMap/pieceFault</code> ) 0-99 (P)
<b>pieceMap</b>	mapping of the piece faults: type, rank and location (XPath <code>TEXDarnReturn/DRbody/DRitem/pieceMap</code> ) 0-1

<b>piecePack</b>	type of wrapping or packing of the fabric pieces (XPath TEXDarnReturn/DRbody/DRitem/piece/piecePack) 0-1 (XPath TEXDarnReturn/DRbody/DRitem/pieceChain/piecePack) 0-1
<b>refDoc</b>	identification of a document and of an item thereof, to which the message makes reference (XPath TEXDarnReturn/DRheader/refDoc) 0-9 (P) (XPath TEXDarnReturn/DRbody/DRitem/refDoc) 0-9 (P) - note: <i>here the transport document can be identified</i>
<b>subContractor</b>	details of the Sub-contractor - base type: Nad, (XPath TEXDarnReturn/DRheader/subContractor) 1-1 (AP)
<b>texCode</b>	full codification of the textile product (XPath TEXDarnReturn/DRbody/DRitem/texCode) 0-2 (P)
<b>thirdParty</b>	details of the Third Party, different from Sender and Receiver of the document - base type: Nad, (XPath TEXDarnReturn/DRheader/thirdParty) 0-5 (AP) - note: <i>it can be used to specify the Party to whom the subcontractor has sent the goods (role="DM")</i>

## 2.2.2 Simple elements (Basic Business Information Entities)

Simple elements are those elements whose content is characterized by a data type plus a domain of possible values. Simple elements are alphabetically ordered.

<b>added</b>	additional code of the product (complementing the formers) - base type: string, max length: 80, (XPath TEXDarnReturn/DRbody/DRitem/texCode/added) 0-9 - note: <i>here an additional codification (see table T44) can be specified</i>
<b>additionalIdentifier</b>	additional identification code of a Party, for example customs registries or others - base type: string, max length: 15, (XPath TEXDarnReturn/DRheader/buyer/additionalIdentifier) 0-9 (N) - note: <i>identifiers for example for exports, such as MID (Manufacturer Identification Code), EORI (E.O.R.I. - Economic Operator Registration and Identification)</i>
<b>@addType</b>	qualifier of the additional coding of a product - base type: string, cod. table: T44 <a href="http://www.ebiz.enea.it/moda-ml/repository/codelist/v2018-1/gc_T44.xml">http://www.ebiz.enea.it/moda-ml/repository/codelist/v2018-1/gc_T44.xml</a> (XPath TEXDarnReturn/DRbody/DRitem/texCode/added/@addType) [Optional] - note: <i>addType allows the clarification of the meaning of the added element content; it is strongly suggested to use it always.</i>
<b>art</b>	article number of the product - base type: string, max length: 80, (XPath TEXDarnReturn/DRbody/DRitem/texCode/art) 1-1 (U) - note: <i>can be used either for the base-article (excluding pattern/colour) or for the SKU</i>
<b>binaryObject</b>	a binary large object containing an attached document, Coding 'base64Binary' is recommended. - base type: base64Binary, (XPath TEXDarnReturn/DRbody/DRitem/refDoc/attachment/binaryObject) 0-1 (N) (XPath TEXDarnReturn/DRheader/refDoc/attachment/binaryObject) 0-1 (N)

@characterSet	<p>the character set of the binary object (examples UTF-8, UTF-16, Windows-1252, ISO-8859-7,..)</p> <p>- base type: normalizedString,  (XPath TEXDarnReturn/DRheader/refDoc/attachment/binaryObject/@characterSet) [Optional] (N)  (XPath TEXDarnReturn/DRbody/DRitem/refDoc/attachment/binaryObject/@characterSet) [Optional] (N)</p>
characterSetCode	<p>the character set of an external document (examples UTF-8, UTF-16, Windows-1252, ISO-8859-7,..)</p> <p>- base type: normalizedString,  (XPath TEXDarnReturn/DRheader/refDoc/attachment/externalReference/characterSetCode) 0-1 (N)  (XPath TEXDarnReturn/DRbody/DRitem/refDoc/attachment/externalReference/characterSetCode) 0-1 (N)</p>
city	<p>name of the city (town, village)</p> <p>- base type: string, max length: 40,  (XPath TEXDarnReturn/DRheader/subContractor/city) 0-1  (XPath TEXDarnReturn/DRheader/buyer/city) 0-1  (XPath TEXDarnReturn/DRheader/thirdParty/city) 0-1</p>
@codeList	<p>it specifies the URL where the list of codes used to make an instance of the element can be found</p> <p>- base type: string, max length: 255,  (XPath TEXDarnReturn/DRheader/refDoc/season/@codeList) [Optional] (a)  - nota: <i>this attribute should be used either single or coupled with "listName" and "listVersion"</i>  (XPath TEXDarnReturn/DRheader/qualityLevel/@codeList) [Optional] (a)  - nota: <i>at least one out of this attribute and "numberingOrg" should be set</i>  (XPath TEXDarnReturn/DRbody/DRitem/texCode/art/@codeList) [Optional]  - nota: <i>at least one out of this attribute and "numberingOrg" should be set</i>  (XPath TEXDarnReturn/DRbody/DRitem/refDoc/season/@codeList) [Optional] (a)  - nota: <i>this attribute should be used either single or coupled with "listName" and "listVersion"</i>  (XPath TEXDarnReturn/DRbody/DRitem/texCode/color/@codeList) [Optional]  - nota: <i>this attribute should be used either single or coupled with "listName" and "listVersion"</i>  (XPath TEXDarnReturn/DRbody/DRitem/texCode/pattern/@codeList) [Optional]  - nota: <i>at least one out of this attribute and "numberingOrg" should be set</i>  (XPath TEXDarnReturn/DRbody/DRitem/pieceMap/pieceFault/note/@codeList) [Optional]  - nota: <i>must be used to provide (URL) the list of codes used in "noteLabel"</i>  (XPath TEXDarnReturn/DRbody/DRitem/note/@codeList) [Optional]  - nota: <i>must be used to provide (URL) the list of codes used in "noteLabel"</i>  (XPath TEXDarnReturn/DRheader/note/@codeList) [Optional]  - nota: <i>must be used to provide (URL) the list of codes used in "noteLabel"</i></p>
color	<p>colour number of the product, when not included in the model or fabric code</p> <p>- base type: string, max length: 15,  (XPath TEXDarnReturn/DRbody/DRitem/texCode/color) 0-1</p>
country	<p>code of the nation</p> <p>- base type: string, cod. table: T10  <a href="http://www.ebiz.enea.it/moda-ml/repository/codelist/v2018-1/gc_T10.xml">http://www.ebiz.enea.it/moda-ml/repository/codelist/v2018-1/gc_T10.xml</a>  (XPath TEXDarnReturn/DRheader/buyer/country) 0-1  (XPath TEXDarnReturn/DRheader/subContractor/country) 0-1  (XPath TEXDarnReturn/DRheader/thirdParty/country) 0-1</p>
@currency	<p>currency in which a specified monetary data is expressed</p> <p>- base type: string, cod. table: T9  <a href="http://www.ebiz.enea.it/moda-ml/repository/codelist/v2018-1/gc_T9.xml">http://www.ebiz.enea.it/moda-ml/repository/codelist/v2018-1/gc_T9.xml</a>  (XPath TEXDarnReturn/DRbody/DRitem/darnJobReport/darnJobPrice/jobPrice/@currency) [Optional] (a)  - nota: <i>Currency referred by the price.</i></p>

@dateForm	<p>format used for the date</p> <p>- base type: string, cod. table: NT29  <a href="http://www.ebiz.enea.it/moda-ml/repository/codelist/v2018-1/gc_NT29.xml">http://www.ebiz.enea.it/moda-ml/repository/codelist/v2018-1/gc_NT29.xml</a>  (XPath TEXDarnReturn/DRheader/refDoc/docDate/@dateForm) [Optional]  (XPath TEXDarnReturn/DRheader/msgDate/@dateForm) [Optional]  (XPath TEXDarnReturn/DRbody/DRitem/refDoc/docDate/@dateForm) [Optional]</p>
dept	<p>name or code of a contact department within a Party</p> <p>- base type: string, max length: 40,  (XPath TEXDarnReturn/DRheader/buyer/dept) 0-1  (XPath TEXDarnReturn/DRheader/subContractor/dept) 0-1  (XPath TEXDarnReturn/DRheader/thirdParty/dept) 0-1</p>
description	<p>free text description. The content of the element must be unique, it might be translated and repeated into more languages (thus no more than one instance for each language).</p> <p>- base type: string, max length: 250,  (XPath TEXDarnReturn/DRbody/DRitem/texCode/description) 0-unbounded (pAU)  - note: <i>Product description</i></p>
docDate	<p>date of issue of the referenced document, according to one of the patterns YYYY-MM-DD, YYYY-MM-DD:HH-MM or YYYY-WW.</p> <p>- base type: string,  (XPath TEXDarnReturn/DRbody/DRitem/refDoc/docDate) 0-1  (XPath TEXDarnReturn/DRheader/refDoc/docDate) 0-1</p>
docID	<p>identification number of the referenced document SINCE 2008-1 ITS USE IN THE HEADER IS DISCOURAGED (REPLACED BY msgID)</p> <p>- base type: string, max length: 80,  (XPath TEXDarnReturn/DRbody/DRitem/refDoc/docID) 1-2 (p)</p> <hr/> <p>AAAA-WARNING! - text not AVAILABLE n. 245 - In=en  (XPath TEXDarnReturn/DRheader/docID) 0-1  (XPath TEXDarnReturn/DRheader/refDoc/docID) 1-2 (p)</p> <hr/> <p>AAAA-WARNING! - text not AVAILABLE n. 245 - In=en</p>
@docType	<p>type or class to which the referenced document belongs</p> <p>- base type: string, cod. table: T21  <a href="http://www.ebiz.enea.it/moda-ml/repository/codelist/v2018-1/gc_T21.xml">http://www.ebiz.enea.it/moda-ml/repository/codelist/v2018-1/gc_T21.xml</a>  (XPath TEXDarnReturn/DRheader/refDoc/@docType) [Required]  (XPath TEXDarnReturn/DRbody/DRitem/refDoc/@docType) [Required]</p>
dyeN	<p>number of the dyeing batch of a textile product</p> <p>- base type: string, max length: 15,  (XPath TEXDarnReturn/DRbody/DRitem/piece/dyeN) 0-1  (XPath TEXDarnReturn/DRbody/DRitem/pieceChain/dyeN) 0-1</p>
@email	<p>electronic mail address of the contact person within a Party</p> <p>- base type: string, max length: 250,  (XPath TEXDarnReturn/DRheader/subContractor/person/@email) [Optional]  (XPath TEXDarnReturn/DRheader/buyer/person/@email) [Optional]  (XPath TEXDarnReturn/DRheader/thirdParty/person/@email) [Optional]</p>
@encoding	<p>specifies the decoding algorithm of the binary object</p> <p>- base type: normalizedString,  (XPath TEXDarnReturn/DRbody/DRitem/refDoc/attachment/binaryObject/@encoding) [Optional] (N)  (XPath TEXDarnReturn/DRheader/refDoc/attachment/binaryObject/@encoding) [Optional] (N)</p>
encodingCode	<p>the encoding/decoding algorithm used with the external object (example is 'base64Binary')</p> <p>- base type: normalizedString,  (XPath TEXDarnReturn/DRheader/refDoc/attachment/externalReference/encodingCode) 0-1 (N)  (XPath TEXDarnReturn/DRbody/DRitem/refDoc/attachment/externalReference/encodingCode) 0-1 (N)</p>

@endUse	specifies the final use of the fabric - base type: string, cod. table: NT4 <a href="http://www.ebiz.enea.it/moda-ml/repository/codelist/v2018-1/gc_NT4.xml">http://www.ebiz.enea.it/moda-ml/repository/codelist/v2018-1/gc_NT4.xml</a> (XPath TEXDarnReturn/DRbody/DRitem/piece/@endUse) [Optional]
EPC	serial identifier used for tracing a physical item with RFID technology - base type: string, (XPath TEXDarnReturn/DRbody/DRitem/piece/EPC) 0-1 - note: <i>the use of this element is DEPRECATED, use the appropriate elements (serialN)</i>
fabricFault	code specifying the type or class of fabric fault - base type: string, cod. table: T12 <a href="http://www.ebiz.enea.it/moda-ml/repository/codelist/v2018-1/gc_T12.xml">http://www.ebiz.enea.it/moda-ml/repository/codelist/v2018-1/gc_T12.xml</a> (XPath TEXDarnReturn/DRbody/DRitem/pieceMap/pieceFault/fabricFault) 1-1 - note: <i>here the MODA-ML codelist must be used.</i>
fabricFaultText	free text describing the type or class of the fabric fault - base type: string, max length: 250, (XPath TEXDarnReturn/DRbody/DRitem/pieceMap/pieceFault/fabricFaultText) 1-1 (U) - note: <i>here the text or proprietary code mutually agreed must be used</i>
@faultRank	ranking class of the fabric fault - base type: string, cod. table: NT13 <a href="http://www.ebiz.enea.it/moda-ml/repository/codelist/v2018-1/gc_NT13.xml">http://www.ebiz.enea.it/moda-ml/repository/codelist/v2018-1/gc_NT13.xml</a> (XPath TEXDarnReturn/DRbody/DRitem/pieceMap/pieceFault/@faultRank) [Required]
@faultShape	shape classification of the fabric fault - base type: string, cod. table: NT14 <a href="http://www.ebiz.enea.it/moda-ml/repository/codelist/v2018-1/gc_NT14.xml">http://www.ebiz.enea.it/moda-ml/repository/codelist/v2018-1/gc_NT14.xml</a> (XPath TEXDarnReturn/DRbody/DRitem/pieceMap/pieceFault/@faultShape) [Optional]
@fax	fax number of the contact person within a Party - base type: string, max length: 35, (XPath TEXDarnReturn/DRheader/thirdParty/person/@fax) [Optional] (XPath TEXDarnReturn/DRheader/subContractor/person/@fax) [Optional] (XPath TEXDarnReturn/DRheader/buyer/person/@fax) [Optional]
fileName	unique identifier (name) of the file - base type: string, max length: 255, (XPath TEXDarnReturn/DRheader/refDoc/attachment/fileName) 0-1 (N) (XPath TEXDarnReturn/DRbody/DRitem/refDoc/attachment/fileName) 0-1 (N)
@format	the format of the binary content (examples xml, pdf, doc,...) - base type: string, (XPath TEXDarnReturn/DRheader/refDoc/attachment/binaryObject/@format) [Optional] (N) (XPath TEXDarnReturn/DRbody/DRitem/refDoc/attachment/binaryObject/@format) [Optional] (N)
formatCode	the format of the external object (examples xml, pdf, doc,...) - base type: normalizedString, (XPath TEXDarnReturn/DRheader/refDoc/attachment/externalReference/formatCode) 0-1 (N) (XPath TEXDarnReturn/DRbody/DRitem/refDoc/attachment/externalReference/formatCode) 0-1 (N)
grossWeight	the gross weight, declared for transport or customs purpose - base type: decimal, min inclusive: 0, fraction digits: 2, (XPath TEXDarnReturn/DRbody/DRitem/piece/grossWeight) 0-1 (p) - note: <i>gross Weight is related to the weight of the piece after packing.</i>
id	primary identification code of a Party; it is recommended the format: nation code (ISO 3166) + VAT identification number (11 crt), with the qualifier "num

	beringOrg"= MF - base type: string, max length: 15, (XPath TEXDarnReturn/DRheader/thirdParty/id) 1-1 (XPath TEXDarnReturn/DRheader/buyer/id) 1-1 (p) (XPath TEXDarnReturn/DRheader/subContractor/id) 1-1
@idQualifier	Qualification of the identifier. - base type: string, (XPath TEXDarnReturn/DRbody/DRitem/piece/serialN/@idQualifier) [Optional] (N) - nota: <i>this attribute should be used when the numberingOrg attribute is not enough to declare the type of serial identifier</i> (XPath TEXDarnReturn/DRbody/DRitem/pieceChain/pieceCut/serialN/@idQualifier) [Optional] (N) - nota: <i>this attribute should be used when the numberingOrg attribute is not enough to declare the type of serial identifier</i> (XPath TEXDarnReturn/DRheader/buyer/additionalIdentifier/@idQualifier) [Optional] (Na) - nota: <i>this attribute should be used when the numberingOrg attribute is not enough to declare the type of identifier</i> (XPath TEXDarnReturn/DRbody/DRitem/pieceChain/serialN/@idQualifier) [Optional] (N) - nota: <i>this attribute should be used when the numberingOrg attribute is not enough to declare the type of serial identifier</i>
@isURL	it indicates if the referred element is an URL (true) or not (false) - base type: boolean, (XPath TEXDarnReturn/DRbody/DRitem/refDoc/attachment/externalReference/uri/@isURL) [Optional] [Default= true] (Na) - nota: <i>usage of URLs is recommended</i> (XPath TEXDarnReturn/DRheader/refDoc/attachment/externalReference/uri/@isURL) [Optional] [Default= true] (Na) - nota: <i>usage of URLs is recommended</i>
itemID	number of the line/item of the referenced document - base type: string, max length: 40, (XPath TEXDarnReturn/DRbody/DRitem/refDoc/itemID) 0-1 (U) (XPath TEXDarnReturn/DRheader/refDoc/itemID) 0-1 (U)
job	element of a work cycle - base type: string, cod. table: T20 <a href="http://www.ebiz.enea.it/moda-ml/repository/codelist/v2018-1/gc_T20.xml">http://www.ebiz.enea.it/moda-ml/repository/codelist/v2018-1/gc_T20.xml</a> (XPath TEXDarnReturn/DRbody/DRitem/darnJobReport/job) 1-1
jobPrice	price of a hired job operation - base type: decimal, min inclusive: 0, fraction digits: 4, (XPath TEXDarnReturn/DRbody/DRitem/darnJobReport/darnJobPrice/jobPrice) 0-1 (A)
jobTime	worktime of the elementary operation of a work cycle in hours and minutes (nnnHnnM) - base type: duration, (XPath TEXDarnReturn/DRbody/DRitem/darnJobReport/jobTime) 0-1
jobTimeBasis	reference basis for the time of an operation (e.g.: 1 metre, 50 metres, 30 kilos, etc...) - base type: positiveInteger, min inclusive: 1, (XPath TEXDarnReturn/DRbody/DRitem/darnJobReport/jobTimeBasis) 0-1 - note: <i>this element must not be used when the time (jobTime) is a forfeit</i>
legalName	legal name of a Party - base type: string, max length: 250, (XPath TEXDarnReturn/DRheader/buyer/legalName) 0-1 (U) (XPath TEXDarnReturn/DRheader/thirdParty/legalName) 0-1 (U) (XPath TEXDarnReturn/DRheader/subContractor/legalName) 0-1 (U)



lineN	<p>number of the line item of the present message (xml document); it is set by the role that produces the document. Usually it is a progressive number, but not always.</p> <p>- base type: positiveInteger, min inclusive: 1, max inclusive: 9999, (XPath TEXDarnReturn/DRbody/DRitem/lineN) 1-1</p>
@listName	<p>the name of the list of codes used to make an instance of the element (it might be thought as descriptive element, i.e. 'fabric printing technologies', or not, i.e. "T264")</p> <p>- base type: string, max length: 40, (XPath TEXDarnReturn/DRheader/qualityLevel/@listName) [Optional] (a)</p> <p>- nota: <i>this attribute should always be used coupled with "numberingOrg"</i> (XPath TEXDarnReturn/DRbody/DRitem/texCode/pattern/@listName) [Optional]</p> <p>- nota: <i>this attribute should always be used coupled with "numberingOrg"</i> (XPath TEXDarnReturn/DRbody/DRitem/texCode/color/@listName) [Optional]</p> <p>- nota: <i>this attribute should always be used coupled with "numberingOrg"</i> (XPath TEXDarnReturn/DRbody/DRitem/texCode/art/@listName) [Optional]</p> <p>- nota: <i>this attribute should always be used coupled with "numberingOrg"</i> (XPath TEXDarnReturn/DRbody/DRitem/refDoc/season/@listName) [Optional] (a)</p> <p>- nota: <i>this attribute should always be used coupled with "numberingOrg"</i> (XPath TEXDarnReturn/DRheader/refDoc/season/@listName) [Optional] (a)</p> <p>- nota: <i>this attribute should always be used coupled with "numberingOrg"</i></p>
@listVersion	<p>it specifies the version of the list of codes used to make an instance of the element</p> <p>- base type: string, max length: 6, (XPath TEXDarnReturn/DRheader/qualityLevel/@listVersion) [Optional] (a)</p> <p>- nota: <i>this attribute should always be used coupled with "numberingOrg" and "listName"</i> (XPath TEXDarnReturn/DRheader/refDoc/season/@listVersion) [Optional] (a)</p> <p>- nota: <i>this attribute should always be used coupled with "numberingOrg" and "listName"</i> (XPath TEXDarnReturn/DRbody/DRitem/texCode/art/@listVersion) [Optional]</p> <p>- nota: <i>this attribute should always be used coupled with "numberingOrg" and "listName"</i> (XPath TEXDarnReturn/DRbody/DRitem/texCode/pattern/@listVersion) [Optional]</p> <p>- nota: <i>this attribute should always be used coupled with "numberingOrg" and "listName"</i> (XPath TEXDarnReturn/DRbody/DRitem/refDoc/season/@listVersion) [Optional] (a)</p> <p>- nota: <i>this attribute should always be used coupled with "numberingOrg" and "listName"</i> (XPath TEXDarnReturn/DRbody/DRitem/texCode/color/@listVersion) [Optional]</p> <p>- nota: <i>this attribute should always be used coupled with "numberingOrg" and "listName"</i></p>
@ln	<p>Language code.</p> <p>- base type: string, cod. table: NT60 <a href="http://www.ebiz.enea.it/moda-ml/repository/codelist/v2018-1/gc_NT60.xml">http://www.ebiz.enea.it/moda-ml/repository/codelist/v2018-1/gc_NT60.xml</a> (XPath TEXDarnReturn/DRbody/DRitem/texCode/description/@ln) [Optional] (N)</p>
@logo	<p>company logo (URL of the image jpeg or gif). It is recommended that the width of the image does not exceed 640 pixel.</p> <p>- base type: string, max length: 255, (XPath TEXDarnReturn/DRheader/buyer/@logo) [Optional]</p>
lotN	<p>lot number of a product or batch number of the raw material</p> <p>- base type: string, max length: 15, (XPath TEXDarnReturn/DRbody/DRitem/piece/lotN) 0-2 (p)</p> <p>- note: <i>The lotN instances must differ by value of the numberingOrg attribute</i> (XPath TEXDarnReturn/DRbody/DRitem/pieceChain/lotN) 0-1</p>
@mime	<p>the mime type of the binary object</p> <p>- base type: normalizedString, (XPath TEXDarnReturn/DRbody/DRitem/refDoc/attachment/binaryObject/@mime) [Optional] (N)</p>



	(XPath TEXDarnReturn/DRheader/refDoc/attachment/binaryObject/@mime) [Optional] (N)
mimeCode	<p>mime type of the external object - base type: normalizedString, (XPath TEXDarnReturn/DRheader/refDoc/attachment/externalReference/mimeCode) 0-1 (N)</p> <hr/> <p>AAAA-WARNING! - text not AVAILABLE n. 245 - In=en (XPath TEXDarnReturn/DRbody/DRitem/refDoc/attachment/externalReference/mimeCode) 0-1 (N)</p> <hr/> <p>AAAA-WARNING! - text not AVAILABLE n. 245 - In=en</p>
mixMatch	<p>colour hue used for the match of garments - base type: string, max length: 15, (XPath TEXDarnReturn/DRbody/DRitem/piece/mixMatch) 0-1</p>
msgDate	<p>date of issue of the present message (xml document), according to one of the patterns YYYY-MM-DD, YYYY-MM-DD:HH-MM or YYYY-WW. - base type: string, (XPath TEXDarnReturn/DRheader/msgDate) 1-1</p>
@msgfunction	<p>function performed by the present message with regards to the transmission - base type: string, cod. table: NT18 <a href="http://www.ebiz.enea.it/moda-ml/repository/codelist/v2018-1/gc_NT18.xml">http://www.ebiz.enea.it/moda-ml/repository/codelist/v2018-1/gc_NT18.xml</a> (XPath TEXDarnReturn/@msgfunction) [Optional] [Default= OR]</p>
msgID	<p>key identifier of the business document in the information system of the issuing Party. In case of more despatches of the same business document, it is unchanged. - base type: string, max length: 35, (XPath TEXDarnReturn/DRheader/msgID) 0-1</p>
msgN	<p>identification number given to the message (xml document) by its issuer. In case of more despatches of the same business document, it changes. - base type: string, max length: 35, (XPath TEXDarnReturn/DRheader/msgN) 1-1</p>
note	<p>free text or structured (computer processing) note. For note structuring use the attributes "noteLabel" and "codelist" - base type: string, max length: 350, (XPath TEXDarnReturn/DRbody/DRitem/pieceMap/pieceFault/note) 0-99 (XPath TEXDarnReturn/DRbody/DRitem/note) 0-99 (XPath TEXDarnReturn/DRheader/note) 0-99</p>
@noteLabel	<p>subject qualifier of a note - base type: string, max length: 35, (XPath TEXDarnReturn/DRheader/note/@noteLabel) [Optional] - nota: <i>must be used to qualify the subject of the note</i> (XPath TEXDarnReturn/DRbody/DRitem/pieceMap/pieceFault/note/@noteLabel) [Optional] - nota: <i>must be used to qualify the subject of the note</i> (XPath TEXDarnReturn/DRbody/DRitem/note/@noteLabel) [Optional] - nota: <i>must be used to qualify the subject of the note</i></p>
@numberingOrg	<p>code specifying the organisation who has created or owns the coding or numbering system - base type: string, cod. table: NT6 <a href="http://www.ebiz.enea.it/moda-ml/repository/codelist/v2018-1/gc_NT6.xml">http://www.ebiz.enea.it/moda-ml/repository/codelist/v2018-1/gc_NT6.xml</a> (XPath TEXDarnReturn/DRbody/DRitem/refDoc/season/@numberingOrg) [Optional] (a) - nota: <i>this attribute should be used either single or coupled with "listName" and "listVersion"</i> (XPath TEXDarnReturn/DRbody/DRitem/piece/serialN/@numberingOrg) [Optional] - nota: <i>here the issuer of the serial number must be specified (when different from the Supplier)</i></p>

(XPath TEXDarnReturn/DRbody/DRitem/pieceChain/pieceCut/serialN/@numberingOrg) [Optional]

- nota: here the issuer of the serial number must be specified (when different from the Supplier)

(XPath TEXDarnReturn/DRbody/DRitem/refDoc/attachment/fileName/@numberingOrg) [Optional]

(XPath TEXDarnReturn/DRbody/DRitem/note/@numberingOrg) [Optional]

- nota: must be used to specify the organization that created the list of codes used in "noteLabel"

(XPath TEXDarnReturn/DRbody/DRitem/refDoc/docID/@numberingOrg) [Optional]

- nota: here can be specified whose document numbering is used (e.g.: Client, Supplier, ..)

(XPath TEXDarnReturn/DRbody/DRitem/piece/dyeN/@numberingOrg) [Optional]

(XPath TEXDarnReturn/DRbody/DRitem/piece/lotN/@numberingOrg) [Optional]

(XPath TEXDarnReturn/DRbody/DRitem/piece/EPC/@numberingOrg) [Optional]

(XPath TEXDarnReturn/DRbody/DRitem/piece/packageN/@numberingOrg) [Optional]

(XPath TEXDarnReturn/DRbody/DRitem/pieceMap/pieceFault/note/@numberingOrg) [Optional]

- nota: must be used to specify the organization that created the list of codes used in "noteLabel"

(XPath TEXDarnReturn/DRbody/DRitem/piece/mixMatch/@numberingOrg) [Optional]

(XPath TEXDarnReturn/DRbody/DRitem/texCode/pattern/@numberingOrg) [Optional]

- nota: this attribute should be used either single or coupled with "listName" and "listVersion"

(XPath TEXDarnReturn/DRbody/DRitem/texCode/color/@numberingOrg) [Optional]

- nota: this attribute should be used either single or coupled with "listName" and "listVersion"

(XPath TEXDarnReturn/DRheader/refDoc/season/@numberingOrg) [Optional] (a)

- nota: this attribute should be used either single or coupled with "listName" and "listVersion"

(XPath TEXDarnReturn/DRheader/qualityLevel/@numberingOrg) [Optional] (a)

- nota: this attribute should be used either single or coupled with "listName" and "listVersion"

(XPath TEXDarnReturn/DRheader/docID/@numberingOrg) [Optional]

- nota: here can be specified whose document numbering is used (e.g.: Client, Supplier, ..)

(XPath TEXDarnReturn/DRheader/refDoc/docID/@numberingOrg) [Optional]

- nota: here can be specified whose document numbering is used (e.g.: Client, Supplier, ..)

(XPath TEXDarnReturn/DRbody/DRitem/texCode/art/@numberingOrg) [Optional]

- nota: this attribute should be used either single or coupled with "listName" and "listVersion"

(XPath TEXDarnReturn/DRbody/DRitem/pieceChain/serialN/@numberingOrg) [Optional]

- nota: here the issuer of the serial number must be specified (when different from the Supplier)

(XPath TEXDarnReturn/DRheader/buyer/id/@numberingOrg) [Optional]

(XPath TEXDarnReturn/DRbody/DRitem/texCode/added/@numberingOrg) [Optional]

- nota: this attribute should be used either single or coupled with "listName" and "listVersion"

(XPath TEXDarnReturn/DRheader/buyer/additionalIdentifier/@numberingOrg) [Optional] (a)

- nota: here the issuer of the identifier must be specified

(XPath TEXDarnReturn/DRheader/note/@numberingOrg) [Optional]

- nota: must be used to specify the organization that created the list of codes used in "noteLabel"

(XPath TEXDarnReturn/DRheader/refDoc/attachment/fileName/@numberingOrg) [Optional] (a)

(XPath TEXDarnReturn/DRheader/subContractor/id/@numberingOrg) [Optional]

(XPath TEXDarnReturn/DRbody/DRitem/pieceChain/lotN/@numberingOrg) [Optional]

	(XPath TEXDarnReturn/DRbody/DRitem/pieceChain/packageN/@numberingOrg) [Optional] (XPath TEXDarnReturn/DRheader/thirdParty/id/@numberingOrg) [Optional] (XPath TEXDarnReturn/DRbody/DRitem/texCode/@numberingOrg) [Optional] (XPath TEXDarnReturn/DRbody/DRitem/pieceChain/dyeN/@numberingOrg) [Optional]
@packageContainerN	reference usable to indicate the outer package containing this package - base type: string, max length: 40, (XPath TEXDarnReturn/DRbody/DRitem/piece/packageN/@packageContainerN) [Optional] (XPath TEXDarnReturn/DRbody/DRitem/pieceChain/packageN/@packageContainerN) [Optional]
packageN	serial number used to identify a transport package - base type: string, max length: 40, (XPath TEXDarnReturn/DRbody/DRitem/piece/packageN) 0-1 (U) - note: <i>here the transport package containing the piece can be identified</i> (XPath TEXDarnReturn/DRbody/DRitem/pieceChain/packageN) 0-1 (U)
pattern	pattern/design number of the product, when not included in the article code - base type: string, max length: 15, (XPath TEXDarnReturn/DRbody/DRitem/texCode/pattern) 0-1
person	name of the contact person within a Party - base type: string, max length: 40, (XPath TEXDarnReturn/DRheader/subContractor/person) 0-1 (XPath TEXDarnReturn/DRheader/buyer/person) 0-1 (XPath TEXDarnReturn/DRheader/thirdParty/person) 0-1
@phone	phone number of the contact person within a Party - base type: string, max length: 35, (XPath TEXDarnReturn/DRheader/subContractor/person/@phone) [Optional] (XPath TEXDarnReturn/DRheader/buyer/person/@phone) [Optional] (XPath TEXDarnReturn/DRheader/thirdParty/person/@phone) [Optional]
pieceAllow	allowance required or accorded for the piece - base type: decimal, fraction digits: 2, (XPath TEXDarnReturn/DRbody/DRitem/pieceMap/pieceFault/pieceAllow) 0-1 - note: <i>this is the allowance estimated for the fault by the same "source" responsible for the other measurements</i> (XPath TEXDarnReturn/DRbody/DRitem/piece/pieceAllow) 0-1
pieceCutWidth	effective usable width of the fabric piece (for garment manufacturing) - base type: decimal, min inclusive: 0, fraction digits: 2, (XPath TEXDarnReturn/DRbody/DRitem/piece/pieceCutWidth) 0-1
pieceInnWrap1	code specifying the type of inner wrapping/packing used for the fabric piece - base type: string, cod. table: T4 <a href="http://www.ebiz.enea.it/moda-ml/repository/codelist/v2018-1/gc_T4.xml">http://www.ebiz.enea.it/moda-ml/repository/codelist/v2018-1/gc_T4.xml</a> (XPath TEXDarnReturn/DRbody/DRitem/pieceChain/piecePack/pieceInnWrap1) 1-1 (XPath TEXDarnReturn/DRbody/DRitem/piece/piecePack/pieceInnWrap1) 1-1
pieceInnWrap2	code sub-specifying the type of inner wrapping/packing used for the fabric piece - base type: string, cod. table: T5 <a href="http://www.ebiz.enea.it/moda-ml/repository/codelist/v2018-1/gc_T5.xml">http://www.ebiz.enea.it/moda-ml/repository/codelist/v2018-1/gc_T5.xml</a> (XPath TEXDarnReturn/DRbody/DRitem/piece/piecePack/pieceInnWrap2) 0-1 (XPath TEXDarnReturn/DRbody/DRitem/pieceChain/piecePack/pieceInnWrap2) 0-1
pieceLength	length of the piece - base type: decimal, min inclusive: 0, fraction digits: 2, (XPath TEXDarnReturn/DRbody/DRitem/pieceChain/pieceCut/pieceLength) 0-1 (XPath TEXDarnReturn/DRbody/DRitem/piece/pieceLength) 0-1 (XPath TEXDarnReturn/DRbody/DRitem/pieceChain/pieceLength) 0-1
pieceOutWrap	code specifying the type of outer wrapping or packing used for the fabric piece

	<p>- base type: string, cod. table: T6  <a href="http://www.ebiz.enea.it/moda-ml/repository/codelist/v2018-1/gc_T6.xml">http://www.ebiz.enea.it/moda-ml/repository/codelist/v2018-1/gc_T6.xml</a>  (XPath TEXDarnReturn/DRbody/DRitem/pieceChain/piecePack/pieceOutWrap) 0-1  (XPath TEXDarnReturn/DRbody/DRitem/piece/piecePack/pieceOutWrap) 0-1</p>
piecePackText	<p>free text specifying the type of wrapping or packing used for the fabric piece  - base type: string, max length: 250,  (XPath TEXDarnReturn/DRbody/DRitem/piece/piecePack/piecePackText) 1-1 (U)  (XPath TEXDarnReturn/DRbody/DRitem/pieceChain/piecePack/piecePackText) 1-1 (U)</p>
pieceStatus	<p>code used to describe the status of a fabric piece after the control  - base type: string, cod. table: T52  <a href="http://www.ebiz.enea.it/moda-ml/repository/codelist/v2018-1/gc_T52.xml">http://www.ebiz.enea.it/moda-ml/repository/codelist/v2018-1/gc_T52.xml</a>  (XPath TEXDarnReturn/DRbody/DRitem/piece/pieceStatus) 0-1</p>
pieceWeight	<p>effective total weight of the fabric piece  - base type: decimal, min inclusive: 0, fraction digits: 2,  (XPath TEXDarnReturn/DRbody/DRitem/pieceChain/pieceCut/pieceWeight) 0-1  (XPath TEXDarnReturn/DRbody/DRitem/piece/pieceWeight) 0-1  - note: <i>It is the net weight of the piece.</i>  (XPath TEXDarnReturn/DRbody/DRitem/pieceChain/pieceWeight) 0-1</p>
pieceWeightM	<p>effective weight per metre of the fabric piece  - base type: decimal, min inclusive: 0, fraction digits: 2,  (XPath TEXDarnReturn/DRbody/DRitem/piece/pieceWeightM) 0-1</p>
pieceWidth	<p>effective width of the fabric piece  - base type: decimal, min inclusive: 0, fraction digits: 2,  (XPath TEXDarnReturn/DRbody/DRitem/piece/pieceWidth) 0-1  (XPath TEXDarnReturn/DRbody/DRitem/pieceChain/pieceWidth) 0-1</p>
postCode	<p>code defining the postal zone  - base type: string, max length: 10,  (XPath TEXDarnReturn/DRheader/thirdParty/postCode) 0-1  (XPath TEXDarnReturn/DRheader/buyer/postCode) 0-1  (XPath TEXDarnReturn/DRheader/subContractor/postCode) 0-1</p>
priceBasis	<p>reference basis for the price (e.g.: 1 metre, 1 hour, 1 minute, etc...)  - base type: positiveInteger, min inclusive: 1,  (XPath TEXDarnReturn/DRbody/DRitem/darnJobReport/darnJobPrice/priceBasis) 0-1  - note: <i>this element must not be used when the price (jobPrice) is a forfeit</i></p>
qty	<p>net quantity of the article or object correlated, qualified by the function of the document (ordering, delivering, ..) and by the context  - base type: decimal, min inclusive: 0, fraction digits: 2,  (XPath TEXDarnReturn/DRbody/DRitem/qty) 1-2</p> <hr/> <p>AAAA-WARNING! - text not AVAILABLE n. 245 - In=en</p>
qualityLevel	<p>the product quality level (first choice, second choice,...).  - base type: string,  (XPath TEXDarnReturn/DRheader/qualityLevel) 0-1 (N)</p>
@role	<p>Third Party role qualifier  - base type: string, cod. table: NT2  <a href="http://www.ebiz.enea.it/moda-ml/repository/codelist/v2018-1/gc_NT2.xml">http://www.ebiz.enea.it/moda-ml/repository/codelist/v2018-1/gc_NT2.xml</a>  (XPath TEXDarnReturn/DRheader/thirdParty/@role) [Required]</p>
season	<p>sale season; defined as: season (1 crt) + year (4 crt) - season: S/S=1 A/W=2 Spring=3 Summer=4 Autumn=5 Winter=6: for more than four seasons use alphabetic sequence: 1st season=A 2nd season=B etc.etc.  - base type: string, max length: 15,  (XPath TEXDarnReturn/DRbody/DRitem/refDoc/season) 0-1 (A)  - note: <i>here indicates the season to which the referenced document belongs</i>  (XPath TEXDarnReturn/DRheader/refDoc/season) 0-1 (A)  - note: <i>here indicates the season to which the referenced document belongs</i></p>

@sender	<p>qualifier that specifies the Party issuing of the document</p> <ul style="list-style-type: none"> <li>- base type: boolean,</li> <li>(XPath TEXDarnReturn/DRheader/buyer/@sender) [Optional] (a*)</li> <li>- nota: <i>This attribute is mandatory when the STYLESHEET must be used</i></li> <li>(XPath TEXDarnReturn/DRheader/thirdParty/@sender) [Optional] (a*)</li> <li>- nota: <i>This attribute is mandatory when the STYLESHEET must be used</i></li> <li>(XPath TEXDarnReturn/DRheader/subContractor/@sender) [Optional] (a*)</li> <li>- nota: <i>This attribute is mandatory when the STYLESHEET must be used</i></li> </ul>
serialN	<p>serial number used for the identification of a physical unit</p> <ul style="list-style-type: none"> <li>- base type: string, max length: 250,</li> <li>(XPath TEXDarnReturn/DRbody/DRitem/pieceChain/pieceCut/serialN) 1-9 (AU)</li> <li>- note: <i>multiple values of serialN are allowed in order to provide different representations of the serial identifier of the same piece. Different instances of serialN must differ at least for one value of idQualifier or numberingOrg</i></li> <li>(XPath TEXDarnReturn/DRbody/DRitem/piece/serialN) 0-9 (AU)</li> </ul> <hr/> <p><b>AAAA-WARNING! - text not AVAILABLE n. 245 - In=en</b></p> <ul style="list-style-type: none"> <li>- note: <i>multiple values of serialN are allowed for different representations of the serial identifier of the same piece. Instances of serialN must differ at least for one value of numberingOrg and idQualifier.</i></li> <li>(XPath TEXDarnReturn/DRbody/DRitem/pieceChain/serialN) 1-9 (AU)</li> <li>- note: <i>multiple values of serialN are allowed in order to provide different representations of the serial identifier of the same piece chain. Different instances of serialN must differ at least for one value of idQualifier or numberingOrg</i></li> </ul>
@source	<p>party who has provided the data</p> <ul style="list-style-type: none"> <li>- base type: string, cod. table: NT12</li> <li><a href="http://www.ebiz.enea.it/moda-ml/repository/codelist/v2018-1/gc_NT12.xml">http://www.ebiz.enea.it/moda-ml/repository/codelist/v2018-1/gc_NT12.xml</a></li> <li>(XPath TEXDarnReturn/DRbody/DRitem/pieceMap/@source) [Required]</li> </ul>
street	<p>street and building number identifying a location</p> <ul style="list-style-type: none"> <li>- base type: string, max length: 80,</li> <li>(XPath TEXDarnReturn/DRheader/thirdParty/street) 0-1</li> <li>(XPath TEXDarnReturn/DRheader/subContractor/street) 0-1</li> <li>(XPath TEXDarnReturn/DRheader/buyer/street) 0-1</li> </ul>
subCountry	<p>short name or code of the sub-country entity</p> <ul style="list-style-type: none"> <li>- base type: string, max length: 9,</li> <li>(XPath TEXDarnReturn/DRheader/subContractor/subCountry) 0-1</li> <li>(XPath TEXDarnReturn/DRheader/thirdParty/subCountry) 0-1</li> <li>(XPath TEXDarnReturn/DRheader/buyer/subCountry) 0-1</li> </ul>
subDept	<p>name or code of a contact department within a Party</p> <ul style="list-style-type: none"> <li>- base type: string, max length: 40,</li> <li>(XPath TEXDarnReturn/DRheader/thirdParty/subDept) 0-1 (N)</li> <li>(XPath TEXDarnReturn/DRheader/subContractor/subDept) 0-1 (N)</li> <li>(XPath TEXDarnReturn/DRheader/buyer/subDept) 0-1 (N)</li> </ul>
@TID	<p>serial number wired into the RFID chip</p> <ul style="list-style-type: none"> <li>- base type: string,</li> <li>(XPath TEXDarnReturn/DRbody/DRitem/piece/EPC/@TID) [Optional]</li> </ul>
totFault	<p>total number of faults: the 1st/2nd digit count the "Large faults", the 3rd/4th the "Medium faults" and the 5th/6th the "Small faults"</p> <ul style="list-style-type: none"> <li>- base type: positiveInteger,</li> <li>(XPath TEXDarnReturn/DRbody/DRitem/pieceMap/totFault) 1-1</li> <li>(XPath TEXDarnReturn/DRbody/DRitem/piece/totFault) 0-1</li> </ul>
totQty	<p>total quantity of the articles related to the whole document</p> <ul style="list-style-type: none"> <li>- base type: decimal, min inclusive: 0, fraction digits: 2,</li> <li>(XPath TEXDarnReturn/MOtotals/totQty) 2-2</li> <li>- note: <i>used to specify the number of pieces (um="PZ") and the quantity of metres (um="MTR") relative to the document</i></li> </ul>
@transReason	<p>reason for the transport</p> <ul style="list-style-type: none"> <li>- base type: string, cod. table: NT11</li> <li><a href="http://www.ebiz.enea.it/moda-ml/repository/codelist/v2018-1/gc_NT11.xml">http://www.ebiz.enea.it/moda-ml/repository/codelist/v2018-1/gc_NT11.xml</a></li> <li>(XPath TEXDarnReturn/DRbody/DRitem/@transReason) [Optional]</li> </ul>

@uid	<p>unique element identifier within the xml document</p> <ul style="list-style-type: none"> <li>- base type: string,</li> </ul> <p>(XPath TEXDarnReturn/DRheader/refDoc/attachment/@uid) [Optional]  (XPath TEXDarnReturn/DRbody/DRitem/refDoc/attachment/@uid) [Optional]</p>
@um	<p>specification of the unit of measure</p> <ul style="list-style-type: none"> <li>- base type: string, cod. table: NT7</li> </ul> <p><a href="http://www.ebiz.enea.it/moda-ml/repository/codelist/v2018-1/gc_NT7.xml">http://www.ebiz.enea.it/moda-ml/repository/codelist/v2018-1/gc_NT7.xml</a></p> <p>(XPath TEXDarnReturn/DRbody/DRitem/darnJobReport/darnJobPrice/priceBasis/@um) [Required]  (XPath TEXDarnReturn/DRbody/DRitem/darnJobReport/jobTimeBasis/@um) [Required]  (XPath TEXDarnReturn/MOtotals/totQty/@um) [Required]  (XPath TEXDarnReturn/DRbody/DRitem/piece/pieceWeight/@um) [Optional] [Default= KGM]  (XPath TEXDarnReturn/DRbody/DRitem/qty/@um) [Required]  (XPath TEXDarnReturn/DRbody/DRitem/piece/pieceCutWidth/@um) [Optional] [Default= CMT]  (XPath TEXDarnReturn/DRbody/DRitem/pieceMap/pieceFault/warpStart/@um) [Optional] [Default= MTR]  (XPath TEXDarnReturn/DRbody/DRitem/pieceChain/pieceLength/@um) [Optional] [Default= MTR]  (XPath TEXDarnReturn/DRbody/DRitem/piece/pieceAllow/@um) [Required]  (XPath TEXDarnReturn/DRbody/DRitem/piece/grossWeight/@um) [Required]  (XPath TEXDarnReturn/DRbody/DRitem/piece/pieceWeightM/@um) [Optional] [Default= GRM]  (XPath TEXDarnReturn/DRbody/DRitem/pieceChain/pieceWidth/@um) [Optional] [Default= CMT]  (XPath TEXDarnReturn/DRbody/DRitem/pieceMap/pieceFault/pieceAllow/@um) [Required]  (XPath TEXDarnReturn/DRbody/DRitem/pieceMap/pieceFault/weftEnd/@um) [Optional] [Default= CMT]  (XPath TEXDarnReturn/DRbody/DRitem/pieceChain/pieceCut/pieceLength/@um) [Optional] [Default= MTR]  (XPath TEXDarnReturn/DRbody/DRitem/pieceChain/pieceCut/pieceWeight/@um) [Optional] [Default= KGM]  (XPath TEXDarnReturn/DRbody/DRitem/pieceChain/pieceWeight/@um) [Optional] [Default= KGM]  (XPath TEXDarnReturn/DRbody/DRitem/piece/pieceWidth/@um) [Optional] [Default= CMT]  (XPath TEXDarnReturn/DRbody/DRitem/pieceMap/pieceFault/warpEnd/@um) [Optional] [Default= MTR]  (XPath TEXDarnReturn/DRbody/DRitem/piece/pieceLength/@um) [Optional] [Default= MTR]  (XPath TEXDarnReturn/DRbody/DRitem/pieceMap/pieceFault/weftStart/@um) [Optional] [Default= CMT]</p>
uri	<p>Uniform Resource Identifier (URI) that identifies the external object as an Internet resource</p> <ul style="list-style-type: none"> <li>- base type: normalizedString,</li> </ul> <p>(XPath TEXDarnReturn/DRbody/DRitem/refDoc/attachment/externalReference/uri) 1-1 (N)  (XPath TEXDarnReturn/DRheader/refDoc/attachment/externalReference/uri) 1-1 (N)</p>
@useProfile	<p>use profile to which the present document is compliant if it was agreed by the parties. It is suggested a URI with reference to the firms or the URL of the profile.</p> <ul style="list-style-type: none"> <li>- base type: string,</li> </ul> <p>(XPath TEXDarnReturn/@useProfile) [Optional]</p>
@VAT	<p>VAT rate or code (DEPRECATED, use dtScheme element)</p> <ul style="list-style-type: none"> <li>- base type: string, cod. table: NT16</li> </ul> <p><a href="http://www.ebiz.enea.it/moda-ml/repository/codelist/v2018-1/gc_NT16.xml">http://www.ebiz.enea.it/moda-ml/repository/codelist/v2018-1/gc_NT16.xml</a></p> <p>(XPath TEXDarnReturn/DRbody/DRitem/lineN/@VAT) [Optional]</p> <p>- nota: <i>Deprecated, prefer dtScheme when available.</i></p> <p>(XPath TEXDarnReturn/DRheader/thirdParty/@VAT) [Optional]</p>



@version	Dictionary version from which the instance has been created - base type: string, cod. table: NT100 <a href="http://www.ebiz.enea.it/moda-ml/repository/codelist/v2018-1/gc_NT100.xml">http://www.ebiz.enea.it/moda-ml/repository/codelist/v2018-1/gc_NT100.xml</a> (XPath TEXDarnReturn/@version) [Optional] [Default= 2018-1]
warpEnd	end point of the fabric fault in the warp direction - base type: decimal, min inclusive: 0, fraction digits: 2, (XPath TEXDarnReturn/DRbody/DRitem/pieceMap/pieceFault/warpEnd) 0-1
warpStart	start point of the fabric fault in the warp direction - base type: decimal, min inclusive: 0, fraction digits: 2, (XPath TEXDarnReturn/DRbody/DRitem/pieceMap/pieceFault/warpStart) 1-1
weftEnd	end point of the fabric fault in the weft direction - base type: decimal, min inclusive: 0, fraction digits: 2, (XPath TEXDarnReturn/DRbody/DRitem/pieceMap/pieceFault/weftEnd) 0-1
weftStart	start point of the fabric fault in the weft direction - base type: decimal, min inclusive: 0, fraction digits: 2, (XPath TEXDarnReturn/DRbody/DRitem/pieceMap/pieceFault/weftStart) 0-1

## 2.3 Suggested best practices

**TEXDarnReturn/DRbody/DRitem/refDoc/docID (identification number of the referenced document SINCE 2008-1 ITS USE IN THE HEADER IS DISCOURAGED (REPLACED BY msgID))**

numberingOrg indicates the role that produced the document identifier (it is allowed to declare two different ones -e.g. customer and supplier - with two docID with different numberingOrg

**TEXDarnReturn/DRheader/refDoc/docID (identification number of the referenced document SINCE 2008-1 ITS USE IN THE HEADER IS DISCOURAGED (REPLACED BY msgID))**

numberingOrg indicates the role that produced the document identifier (it is allowed to declare two different ones -e.g. customer and supplier - with two docID with different numberingOrg

**TEXDarnReturn/DRheader/refDoc/attachment/**

**externalReference/mimeType (mime type of the external object)**

Use coding from IANA <http://www.iana.org/assignments/media-types/media-types.xml>

**TEXDarnReturn/DRbody/DRitem/refDoc/attachment/**

**externalReference/mimeType (mime type of the external object)**

Use coding from IANA <http://www.iana.org/assignments/media-types/media-types.xml>

**TEXDarnReturn/DRbody/DRitem/qty (net quantity of the article or object correlated, qualified by the function of the document (ordering, delivering, ..) and by the context)**

this element can have two instances only if the units of measure are different

**TEXDarnReturn/DRbody/DRitem/piece/serialN (serial number used for the identification of a physical unit)**

This element might contain also codes for RFID devices.



## 2.4 Enumeration tables

List of enumeration tables used in the XML document. You can find the corresponding codes at:  
<http://www.ebiz-tcf.eu/moda-ml/imple/moda-ml-2018-1.asp?lingua=en&pag=6>

### Legenda

- N: new table
- U: updated properties

NT100 - eBIZ TCFUpstream version

NT11 - transport causal

NT12 - data source

NT13 - fabric fault category

NT14 - fabric fault shape

NT16 - VAT rate or code

NT18 - message function

NT2 - third party qualifier

NT29 - format of a date

NT4 - end use

NT6 - coding system owner/issuer

NT60 - language, codes from ISO 639-1 (subset) (N)

NT7 - unit of measure (U)

T10 - ISO3166 - Country

T12 - fabric faults

T20 - type of darning operation

T21 - type of document

T4 - fabric piece inner packing (wrapping) 1

T44 - additional code type

T5 - fabric piece inner packing (wrapping) 2

T52 - fabric piece status

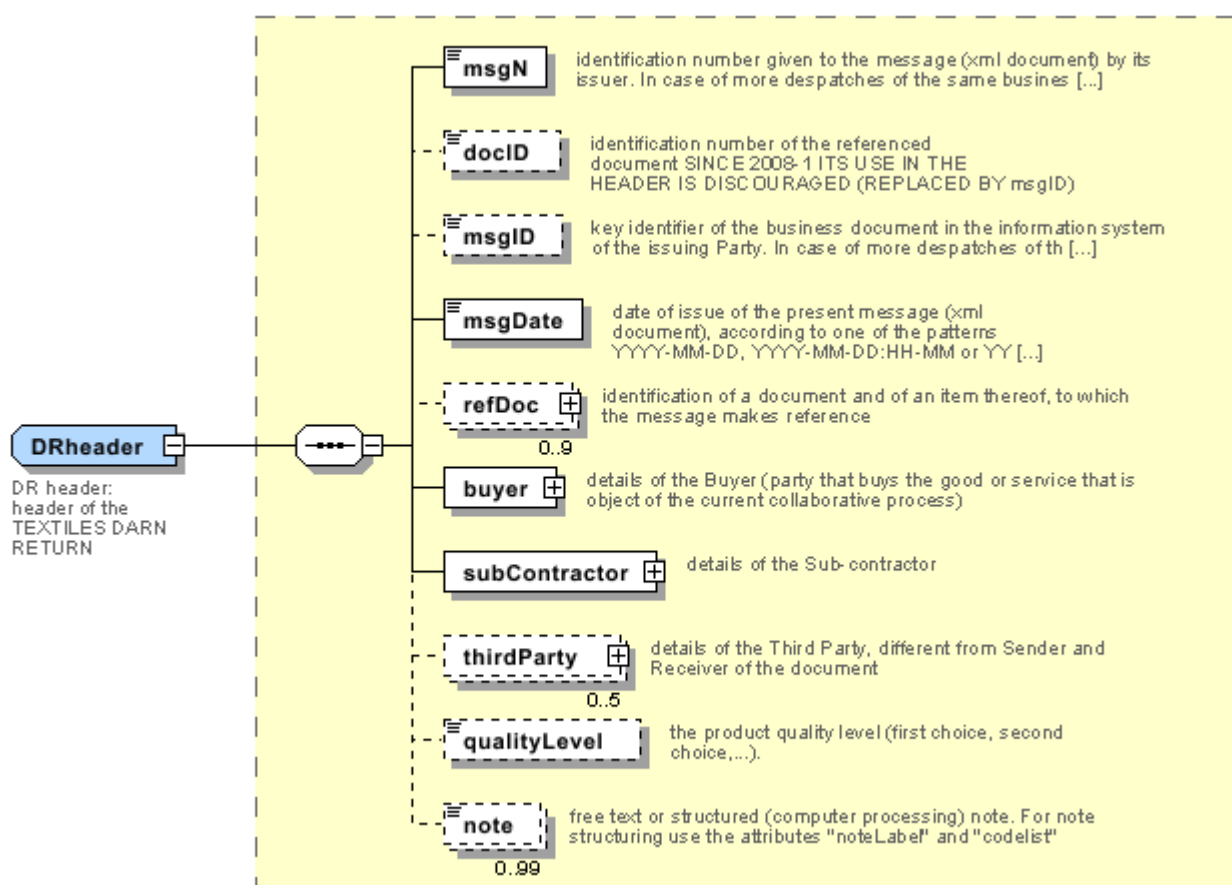
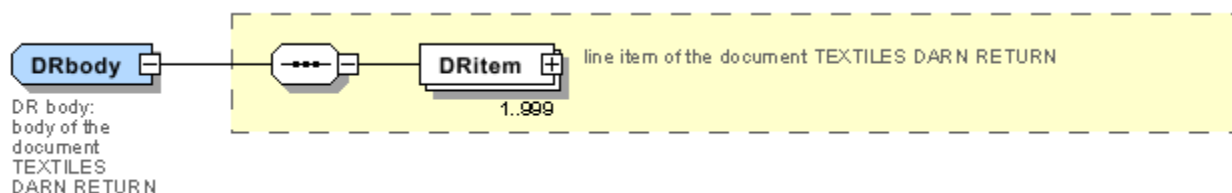
T6 - fabric piece outer packing

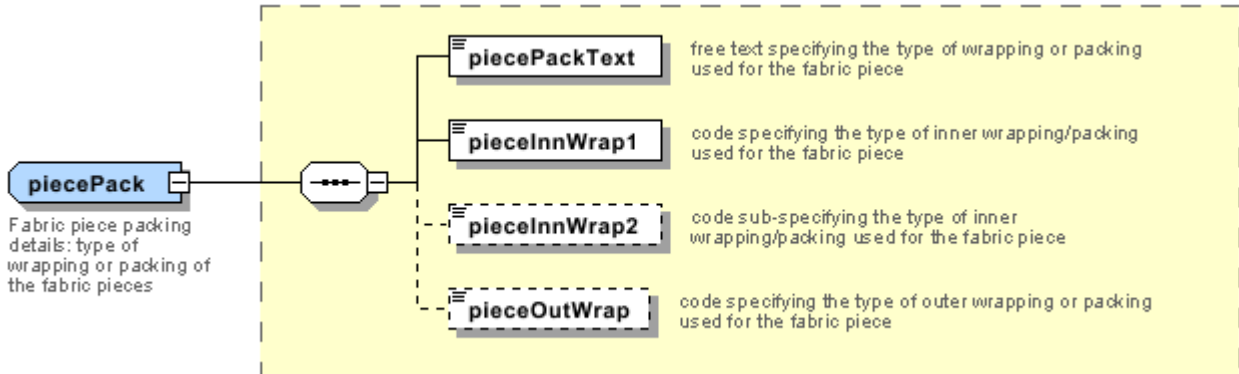
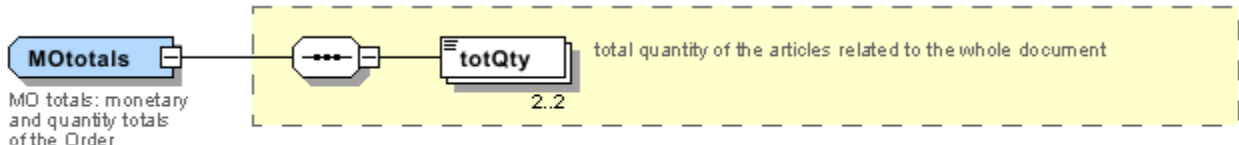
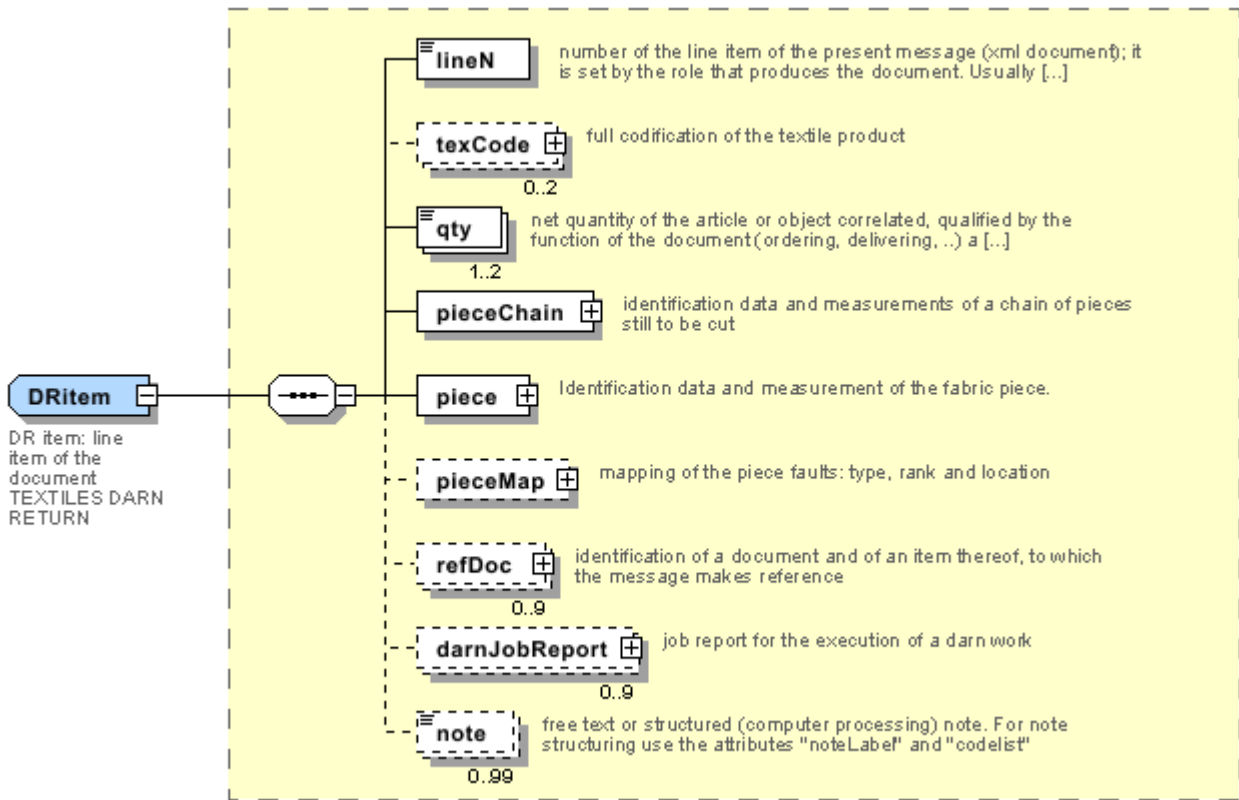
T9 - ISO4217 - Currency

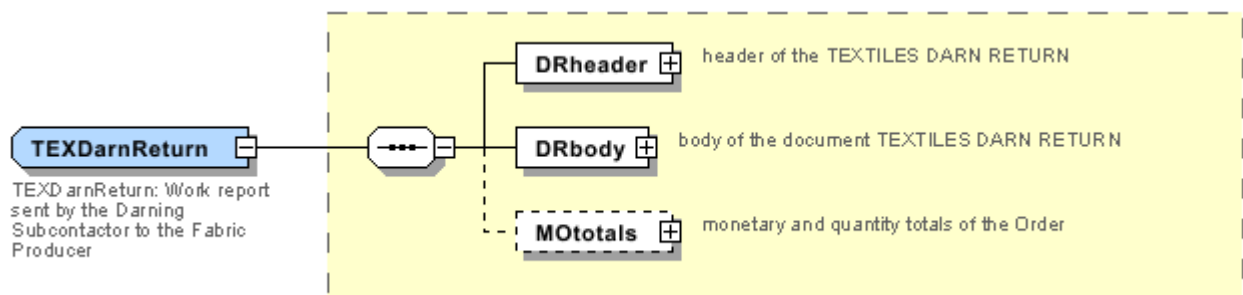
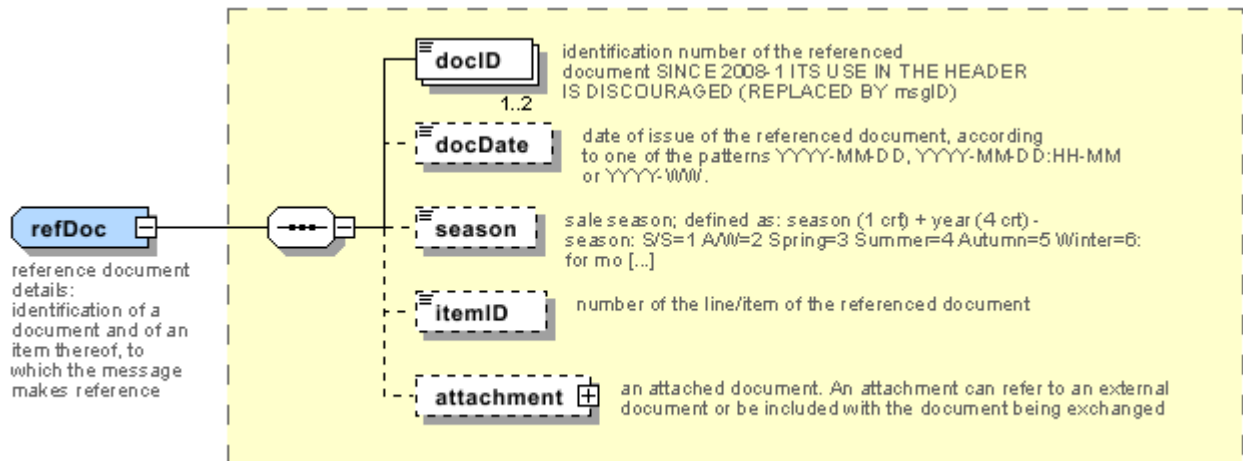


## Annex A

Representative images of the principal complex elements' structure.









## Annex B

### NT100 - eBIZ TCFUpstream version

dictionary version

Agency name: eBIZ

tabella cod.: NT100

File codes list (Generic code): [http://www.ebiz.enea.it/moda-ml/repository/codelist/v2018-1/gc\\_NT100.xml](http://www.ebiz.enea.it/moda-ml/repository/codelist/v2018-1/gc_NT100.xml)

Code	Description	Adoption note	Version status	Date of insertion
2013-1	v2013-1			01/07/2013
2018-1	v2018-1		(N)	04/11/2018
draft	draft		(N)	08/09/2017

### NT11 - transport causal

reason for the transport

Agency name: eBIZ

tabella cod.: NT11

File codes list (Generic code): [http://www.ebiz.enea.it/moda-ml/repository/codelist/v2018-1/gc\\_NT11.xml](http://www.ebiz.enea.it/moda-ml/repository/codelist/v2018-1/gc_NT11.xml)

Code	Description	Adoption note	Version status	Date of insertion
FOC	free of charge			
FRW	return from re-works			
FST	return from storage			
FWW	return from view			
FWK	return from works			
IST	in storage			
NWK	return non-worked			
RJC	return from rejection			
SEL	to sell			
STO	to storage			
VEW	to view			
WRK	to works			

### NT12 - data source

party who has provided the data

Agency name: eBIZ

tabella cod.: NT12

File codes list (Generic code): [http://www.ebiz.enea.it/moda-ml/repository/codelist/v2018-1/gc\\_NT12.xml](http://www.ebiz.enea.it/moda-ml/repository/codelist/v2018-1/gc_NT12.xml)

Code	Description	Adoption note	Version status	Date of insertion
AC	internal test			
CO	external test			
CV	test after steaming			

### NT13 - fabric fault category

ranking class of the fabric fault

Agency name: eBIZ

tabella cod.: NT13

File codes list (Generic code): [http://www.ebiz.enea.it/moda-ml/repository/codelist/v2018-1/gc\\_NT13.xml](http://www.ebiz.enea.it/moda-ml/repository/codelist/v2018-1/gc_NT13.xml)

Code	Description	Adoption note	Version status	Date of insertion
CL1	class 1			
CL2	class 2			
CL3	class 3			
CL4	class 4			
CL5	class 5			
CL6	class 6			
G	large			
L	small			
M	medium			

### NT14 - fabric fault shape

shape classification of the fabric fault

Agency name: eBIZ

tabella cod.: NT14

File codes list (Generic code): [http://www.ebiz.enea.it/moda-ml/repository/codelist/v2018-1/gc\\_NT14.xml](http://www.ebiz.enea.it/moda-ml/repository/codelist/v2018-1/gc_NT14.xml)



Code	Description	Adoption note	Version status	Date of insertion
C	continuous			
P	point			
S	stretch			

### NT16 - VAT rate or code

VAT rate or code ( DEPRECATED, use dtScheme element )

tabella cod.: NT16

File codes list (Generic code): [http://www.ebiz.enea.it/moda-ml/repository/codelist/v2018-1/gc\\_NT16.xml](http://www.ebiz.enea.it/moda-ml/repository/codelist/v2018-1/gc_NT16.xml)

### NT18 - message function

function performed by the present message with regards to the transmission

Agency name: eBIZ

tabella cod.: NT18

File codes list (Generic code): [http://www.ebiz.enea.it/moda-ml/repository/codelist/v2018-1/gc\\_NT18.xml](http://www.ebiz.enea.it/moda-ml/repository/codelist/v2018-1/gc_NT18.xml)

Code	Description	Adoption note	Version status	Date of insertion
CA	delete this document			01/07/2013
CP	copy			
OR	original			
RC	re-transmission for data correction			
RT	re-transmission			

### NT2 - third party qualifier

Third Party role qualifier

Agency name: eBIZ

tabella cod.: NT2

File codes list (Generic code): [http://www.ebiz.enea.it/moda-ml/repository/codelist/v2018-1/gc\\_NT2.xml](http://www.ebiz.enea.it/moda-ml/repository/codelist/v2018-1/gc_NT2.xml)

Code	Description	Adoption note	Version status	Date of insertion
AG	Sales Agent			
AU	Auditor		(N)	08/04/2019
CE	Certification authority		(N)	08/04/2019

CO	Quality Controller			
DC	Response to			
DF	Invoicee			
DI	Copy to (CC)			28/10/2014
DM	Consignee			
DP	Consignment address (Delivery Party)			
IM	Importer			
OR	Originator			10/09/2014
SC	Sub contractor		(N)	10/04/2019
SM	Service/ePlatform manager		(N)	08/04/2019
SP	Forwarder			
TX	Tax Representative			

#### NT29 - format of a date

format used for the date

Agency name: eBIZ

tabella cod.: NT29

File codes list (Generic code): [http://www.ebiz.enea.it/moda-ml/repository/codelist/v2018-1/gc\\_NT29.xml](http://www.ebiz.enea.it/moda-ml/repository/codelist/v2018-1/gc_NT29.xml)

Code	Description	Adoption note	Version status	Date of insertion
D	YYYY-MM-DD			
M	YYYY-MM-DD:HH-MM			
W	YYYY-WW			

#### NT4 - end use

specifies the final use of the product

Agency name: eBIZ

tabella cod.: NT4

File codes list (Generic code): [http://www.ebiz.enea.it/moda-ml/repository/codelist/v2018-1/gc\\_NT4.xml](http://www.ebiz.enea.it/moda-ml/repository/codelist/v2018-1/gc_NT4.xml)

Code	Description	Adoption note	Version status	Date of insertion
PC	test piece			
PR	production			
SA	Sample		(N)	10/09/2014

SC	samples card			
TI	patch			
TP	(test cut)			

### NT6 - coding system owner/issuer

code specifying the organisation who has created or owns the coding or numbering system

Agency name: eBIZ

tabella cod.: NT6

File codes list (Generic code): [http://www.ebiz.enea.it/moda-ml/repository/codelist/v2018-1/gc\\_NT6.xml](http://www.ebiz.enea.it/moda-ml/repository/codelist/v2018-1/gc_NT6.xml)

Code	Description	Adoption note	Version status	Date of insertion
CL	Customer/buyer			
CO	Quality Controller			
EB	eBIZ	replaces 'ML'	(N)	18/03/2019
EN	GS1 ( ex-EAN International )			
ES	e-Stockflow			
FO	Supplier			
GS	GS1			01/07/2013
MF	VAT identifier		(U)	
ML	Moda-ML	DEPRECATED	(U)	
SP	Service Provider			

### NT60 - language, codes from ISO 639-1 (subset) (N)

Agency name: eBIZ / ISO

tabella cod.: NT60

File codes list (Generic code): [http://www.ebiz.enea.it/moda-ml/repository/codelist/v2018-1/gc\\_NT60.xml](http://www.ebiz.enea.it/moda-ml/repository/codelist/v2018-1/gc_NT60.xml)

Code	Description	Adoption note	Version status	Date of insertion
af	Afrikaans		(N)	31/01/2019
ar	Arabic		(N)	31/01/2019
be	Belarusian		(N)	31/01/2019
bg	Bulgarian		(N)	31/01/2019
bn	Bengali		(N)	31/01/2019
bo	Tibetan		(N)	31/01/2019

bs	Bosnian		(N)	31/01/2019
ca	Catalan, Valencian		(N)	31/01/2019
cs	Czech		(N)	31/01/2019
da	Danish		(N)	31/01/2019
de	German		(N)	31/01/2019
el	Greek, Modern (1453-)		(N)	31/01/2019
en	English		(N)	31/01/2019
eo	Esperanto		(N)	31/01/2019
es	Spanish, Castilian		(N)	31/01/2019
et	Estonian		(N)	31/01/2019
eu	Basque		(N)	31/01/2019
F	Female		(N)	15/04/2019
fa	Persian		(N)	31/01/2019
fi	Finnish		(N)	31/01/2019
fr	French		(N)	31/01/2019
ga	Irish		(N)	31/01/2019
gd	Gaelic, Scottish Gaelic		(N)	31/01/2019
gn	Guarani		(N)	31/01/2019
he	Hebrew		(N)	31/01/2019
hr	Croatian		(N)	31/01/2019
ht	Haitian, Haitian Creole		(N)	31/01/2019
hu	Hungarian		(N)	31/01/2019
hy	Armenian		(N)	31/01/2019
ia	Interlingua (International Auxiliary Language Association)		(N)	31/01/2019
id	Indonesian		(N)	31/01/2019
is	Icelandic		(N)	31/01/2019
it	Italian		(N)	31/01/2019
ja	Japanese		(N)	31/01/2019
jv	Javanese		(N)	31/01/2019
ka	Georgian		(N)	31/01/2019
km	Central Khmer		(N)	31/01/2019
ko	Korean		(N)	31/01/2019
ku	Kurdish		(N)	31/01/2019
lb	Luxembourgish, Letzeburgesch		(N)	31/01/2019
lo	Lao		(N)	31/01/2019

lt	Lithuanian		(N)	31/01/2019
lv	Latvian		(N)	31/01/2019
mg	Malagasy		(N)	31/01/2019
mk	Macedonian		(N)	31/01/2019
mn	Mongolian		(N)	31/01/2019
mt	Maltese		(N)	31/01/2019
nl	Dutch, Flemish		(N)	31/01/2019
no	Norwegian		(N)	31/01/2019
pl	Polish		(N)	31/01/2019
pt	Portuguese		(N)	31/01/2019
ro	Romanian, Moldavian, Moldovan		(N)	31/01/2019
ru	Russian		(N)	31/01/2019
se	Northern Sami		(N)	31/01/2019
sk	Slovak		(N)	31/01/2019
sl	Slovenian		(N)	31/01/2019
sm	Samoan		(N)	31/01/2019
so	Somali		(N)	31/01/2019
sq	Albanian		(N)	31/01/2019
sr	Serbian		(N)	31/01/2019
sv	Swedish		(N)	31/01/2019
sw	Swahili		(N)	31/01/2019
ta	Tamil		(N)	31/01/2019
th	Thai		(N)	31/01/2019
tr	Turkish		(N)	31/01/2019
uk	Ukrainian		(N)	31/01/2019
ur	Urdu		(N)	31/01/2019
uz	Uzbek		(N)	31/01/2019
vi	Vietnamese		(N)	31/01/2019
zh	Chinese		(N)	31/01/2019

#### NT7 - unit of measure (U)

specification of the unit of measure, it is a sub set of table Unit of Measure Code - UN/ECE REC 20 delivered by United Nations Economic Commission for Europe (UN/ECE)

Agency name: eBIZ / UN/ECE

tabella cod.: NT7

File codes list (Generic code): [http://www.ebiz.enea.it/moda-ml/repository/codelist/v2018-1/gc\\_NT7.xml](http://www.ebiz.enea.it/moda-ml/repository/codelist/v2018-1/gc_NT7.xml)

Other link: <http://docs.oasis-open.org/ubl/os-UBL-2.1/cl/gc/default/UnitOfMeasureCode-2.1.gc#>

Code	Description	Adoption note	Version status	Date of insertion
CMK	square centimetre		(N)	20/12/2017
CMQ	cubic centimetre		(N)	20/12/2017
CMT	centimetre			
CNE	centiNewton			
CO2TON	ton of CO2		(N)	10/09/2014
COUPLES	couples			
DMQ	cubic decimetre			
E37	pixel		(N)	11/04/2018
GRM	gram			
HUR	hour			
INH	inch			
KGM	kilogram			
KMT	kilometer			
KWH	kilowatthours		(N)	10/09/2014
LBR	pound			
MIN	minute			
MMK	square millimetre		(N)	20/12/2017
MTK	square metre		(N)	20/12/2017
MTQ	cubic metre			
MTR	metre			
NMB	numero			
ONZ	ounce			
P1	percent			
PPM	parts per million			
PZ	piece		(U)	
RPM	rounds per metre			
YRD	yard			

## T10 - ISO3166 - Country

code of the nation

Agency name: ISO

tabella cod.: T10

File codes list (Generic code): [http://www.ebiz.enea.it/moda-ml/repository/codelist/v2018-1/gc\\_T10.xml](http://www.ebiz.enea.it/moda-ml/repository/codelist/v2018-1/gc_T10.xml)

Table not printed: there are 239 elements, more than the maximum specified for printing: 99.

## T12 - fabric faults

code specifying the type or class of fabric fault

Agency name: eBIZ

tabella cod.: T12

File codes list (Generic code): [http://www.ebiz.enea.it/moda-ml/repository/codelist/v2018-1/gc\\_T12.xml](http://www.ebiz.enea.it/moda-ml/repository/codelist/v2018-1/gc_T12.xml)

Code	Description	Adoption note	Version status	Date of insertion
AA				
AA1	warpway thick end			
AA2	weftway thick pick			
AA3	thin end/pick			
AA4	warpway thin end			
AA5	weftway thin pick			
AA6	tight end/pick			
AA7	warpway tight end			
AB	weftway tight pick			
AB1	slack end/pick			
AB2	warpway slack end			
AB3	weftway slack pick			
AB4	missing end/pick			
AB5	warpway missing end			
AB6	weftway missing pick			
AC	knots/slubs			
AE	stripes/bars			
AE1	stripes/bars in the warp			
AE2	stripes/bars in the weft			
AG	bowing			
AG1	bowing in the warp			
AG2	bowing in the weft			

AI	skew			
AJ	difference in tension: body-selvedge			
AK				
AL				
AM	tears,cuts,holes			
AN	abrasions			
AO	faulty mending			
AP	creases			
AQ	disagreeable odour			
AR1	foreign matter (fibres)			
AR3	stains			
AS	variation in shade: weftway			
AT	variation in shade: warpway			
AU	difference in shade (vs. sample)			
AV	difference in look (vs. sample)			
AW	difference in handle (vs. sample)			
AX	asymmetry of design			
AY	irregularity of checks			
AZ				
AZA				

### T20 - type of darning operation

element of a work cycle

Agency name: eBIZ

tabella cod.: T20

File codes list (Generic code): [http://www.ebiz.enea.it/moda-ml/repository/codelist/v2018-1/gc\\_T20.xml](http://www.ebiz.enea.it/moda-ml/repository/codelist/v2018-1/gc_T20.xml)

Code	Description	Adoption note	Version status	Date of insertion
301	clamp			
302	fine darn			
303	gross darn			

### T21 - type of document

type or class to which the referenced document belongs



Agency name: eBIZ

tabella cod.: T21

File codes list (Generic code): [http://www.ebiz.enea.it/moda-ml/repository/codelist/v2018-1/gc\\_T21.xml](http://www.ebiz.enea.it/moda-ml/repository/codelist/v2018-1/gc_T21.xml)

Code	Description	Adoption note	Version status	Date of insertion
BOR	blanket order		(N)	01/02/2018
CAT	Price catalogue - tech sheet			
CEO	Certificate of origin		(N)	13/04/2018
CER	Certificate		(N)	13/04/2018
COC	colour card			
CRN	Credit note			08/09/2017
CTO	Checking order			01/07/2013
CTR	Contract		(U)	
CXF	CxF3 file			01/07/2013
DAD	Darn order			
DDT	ddt			
DEA	Despatch advise			
DER	Despatch request			
DR	Document Request			02/12/2014
FOR	Forecast			02/12/2014
GSO	Garment stock offer			
GSX	Garment stock offer change			
INV	Invoice			
KCC	Knitting-Clothing Commission Order			02/12/2014
KCI	Garment in Work Inventory Report			02/12/2014
M2M	Made to Measure Production Order			02/12/2014
MAS	Master marker			
MCI	Visual merchandising instruction		(N)	13/04/2018
OCH	Order change			
OFF	Offer			
ORD	Purchase order			
ORP	Order response			
OSR	order status request			
OSS	Offer status			02/12/2014
OST	Order status			

OUR	our reference			
QR	Quality Report			02/12/2014
RAI	Raw Material in Work Inventory Report			02/12/2014
RDC	Raw dyeing commission order			
RDH	Raw dyeing order change			
RDR	Raw dyeing order response			
REA	Receiving advise			
REQ	Request for Offer			
RET	Return			02/12/2014
RSC	Spinning commission order			
RSH	Spinning order change			
RSR	Spinning order response			
SCL	process sheet			
TFC	Textile dyeing-finishing commission order			
TFX	Textile Dyeing-Finishing Order Change			02/12/2014
TPC	Textile printing commission order			
TPX	Textile Printing Order Change			02/12/2014
TWI	Textile in work inventory			
VMI	visual merchandising instructions		(N)	01/02/2018
WAC	Warping commission order			
WEC	Weaving commission order			
YDC	Yarn dyeing commission order			
YDH	Yarn dyeing order change			
YDR	Yarn dyeing order response			
YTC	Twisting commission order			
YWI	Yarn in work inventory			

#### T4 - fabric piece inner packing (wrapping) 1

code specifying the type of inner wrapping/packing used for the fabric piece

Agency name: eBIZ

tabella cod.: T4

File codes list (Generic code): [http://www.ebiz.enea.it/moda-ml/repository/codelist/v2018-1/gc\\_T4.xml](http://www.ebiz.enea.it/moda-ml/repository/codelist/v2018-1/gc_T4.xml)

Code	Description	Adoption note	Version status	Date of insertion
A	Folded, whole width			

B	Folded, doubled			
C	Folded, tube products			
D	Spoiled, whole width			
E	Spoiled, doubled, pli: left			
F	Spoiled, doubled, pli: right			
G	Rolled, whole width, single item			
H	Rolled, whole width, several items			
I	Rolled, doubled			
J	Rolled, tube products			

#### T44 - additional code type

qualifier of the additional coding of a product

Agency name: eBIZ

tabella cod.: T44

File codes list (Generic code): [http://www.ebiz.enea.it/moda-ml/repository/codelist/v2018-1/gc\\_T44.xml](http://www.ebiz.enea.it/moda-ml/repository/codelist/v2018-1/gc_T44.xml)

Code	Description	Adoption note	Version status	Date of insertion
CC	colour card			
CL	sales collection			
CO	company identification code		(N)	08/09/2017
DY	dye number			
LT	lot number			
MDI	Made in			08/09/2017
MS	manufacturing state			
PKG	packaging			09/09/2014
PL	product line			
RGB	RGB value			
SE	selvedge code			

#### T5 - fabric piece inner packing (wrapping) 2

code specifying the sub-type of inner wrapping/packing used for the fabric piece

Agency name: eBIZ

tabella cod.: T5

File codes list (Generic code): [http://www.ebiz.enea.it/moda-ml/repository/codelist/v2018-1/gc\\_T5.xml](http://www.ebiz.enea.it/moda-ml/repository/codelist/v2018-1/gc_T5.xml)

Code	Description	Adoption note	Version status	Date of insertion
A	Open			
B	Folded once, not looped			
C	Folded twice, not looped			
H	Folded once, looped			
I	Folded twice, looped			
J	Without inner object, right side inside			
K	On carton or spooling plank, right side inside			
L	On spool (for pressure sensitive products), right side inside			
M	Without inner object, left side inside			
N	On carton or spooling plank, left side inside			
O	On spool (for pressure sensitive products), left side inside			
P	Without inner object, right side inside (deprecated code)			
Q	On carton, right side inside			
R	On wooden stick, right side inside			
S	Without inner object, left side inside (deprecated code)			
T	On carton, left side inside			
U	On wooden stick, left side inside			

### T52 - fabric piece status

code used to describe the status of a fabric piece with reference to the control

Agency name: eBIZ

tabella cod.: T52

File codes list (Generic code): [http://www.ebiz.enea.it/moda-ml/repository/codelist/v2018-1/gc\\_T52.xml](http://www.ebiz.enea.it/moda-ml/repository/codelist/v2018-1/gc_T52.xml)

Code	Description	Adoption note	Version status	Date of insertion
0	first registration			
C	registration from return			
F	stopped			
H	handling			
R	returned			
S	held			

T	deliverable			
---	-------------	--	--	--

### T6 - fabric piece outer packing

code specifying the type of outer wrapping or packing used for the fabric piece

Agency name: eBIZ

tabella cod.: T6

File codes list (Generic code): [http://www.ebiz.enea.it/moda-ml/repository/codelist/v2018-1/gc\\_T6.xml](http://www.ebiz.enea.it/moda-ml/repository/codelist/v2018-1/gc_T6.xml)

Code	Description	Adoption note	Version status	Date of insertion
0	Not wrapped			
1	Totally wrapped			
2	Wrapped, one side open			
3	Wrapped, both sides open			
4	Wrapped, one side open, with show corner			
5	Wrapped in cartons			
6	Double wrapped			

### T9 - ISO4217 - Currency

currency code

Agency name: ISO

tabella cod.: T9

File codes list (Generic code): [http://www.ebiz.enea.it/moda-ml/repository/codelist/v2018-1/gc\\_T9.xml](http://www.ebiz.enea.it/moda-ml/repository/codelist/v2018-1/gc_T9.xml)

Table not printed: there are 205 elements, more than the maximum specified for printing: 99.

## Annex C

### New or changed elements towards previous version

Changes or added elements (changes in description excluded; changes in aggregation notes and best practice included): 92

Test Type	Tag	Status	Item type	Changes related to
Attribute	additionalIdentifier	NEW	Additional Party Identifier	Has NEW attribute: numbering organisation code
Attribute	additionalIdentifier	NEW	Additional Party Identifier	Has NEW attribute: id Qualifier
Element()	additionalIdentifier	NEW	Additional Party Identifier	
Element(E)	art	UPDATE	article identifier	Property: Length_Max Old value: 25 New value: 80
Attribute	art	UPDATE	article identifier	Its attribute: code list reference  Property: Aggregation Note_English Old value: <i>this attribute should be ALTERNATIVE to the others</i> New value: <i>at least one out of this attribute and "numberingOrg" should be set</i>
Element()	attachment	NEW	attachment	
Child	attachment	NEW	attachment	Has NEW child of: file name
Child	attachment	NEW	attachment	Has NEW child of: external reference
Child	attachment	NEW	attachment	Has NEW child of: binary object
Attribute	binary Object	NEW	binary object	Has NEW attribute: encoding
Attribute	binary Object	NEW	binary object	Has NEW attribute: mime
Attribute	binary Object	NEW	binary object	Has NEW attribute: format
Attribute	binary Object	NEW	binary object	Has NEW attribute: character set

Element()	binary Object	NEW	binary object	
Child	buyer	NEW	Buyer (*)	Has NEW child of: Party identifier
Child	buyer	NEW	Buyer (*)	Has NEW child of: Additional Party Identifier
Attribute	buyer	NEW	Buyer (*)	Has NEW attribute: sender Party qualifier
Child	pieceCut	UPDATE	Chained piece data	relationship with child: serial number  Property: Cardmax Old value: 1 New value: 9
Child	pieceCut	UPDATE	Chained piece data	relationship with child: serial number  Property: Aggregation Note_English Old value: New value: <i>multiple values of serialN are allowed in order to provide different representations of the serial identifier of the same piece. Different instances of serialN must differ at least for one value of idQualifier or numberingOrg</i>
Element()	characterSetCode	NEW	character set code	
Element()	characterSet	NEW	character set	
Element(E)	packageContainerN	UPDATE	container reference	Property: Length_Max Old value: 25 New value: 40
Attribute	description	NEW	description	Has NEW attribute: In
Element(E)	description	UPDATE	description	Property: Length_Max Old value: 70 New value: 250
Child	DRheader	NEW	DR header	Has NEW child of: quality level
Child	DRheader	UPDATE	DR header	relationship with child: general note  Property: Cardmax Old value: 19 New value: 99
Child	DRheader	UPDATE	DR header	relationship with child: Third Party  Property: Cardmax Old value: 1 New value: 5

Child	DRitem	UPDATED	DR item	relationship with child: general note  Property: Cardmax Old value: 19 New value: 99
Child	DRitem	UPDATED	DR item	relationship with child: Textiles product code  Property: Cardmax Old value: 1 New value: 2
Child	DRitem	UPDATED	DR item	relationship with child: reference document details  Property: Cardmax Old value: 1 New value: 9
Child	DRitem	UPDATED	DR item	relationship with child: product quantity  Property: Cardmax Old value: 1 New value: 2
Child	DRitem	UPDATED	DR item	relationship with child: product quantity  Property: BestPractice_English Old value: New value: <i>this element can have two instances only if the units of measure are different</i>
Element(E)	email	UPDATED	e-mail	Property: Length_Max Old value: 80 New value: 250
Element(l)	encodingCode	NEW	encoding code	
Element(l)	encoding	NEW	encoding	
Child	externalReference	NEW	external reference	Has NEW child of: uri
Child	externalReference	NEW	external reference	Has NEW child of: format code
Child	externalReference	NEW	external reference	Has NEW child of: character set code
Child	externalReference	NEW	external reference	Has NEW child of: mime code



Child	externalReference	NEW	external reference	Has NEW child of: encoding code
Element()	externalReference	NEW	external reference	
Element(E)	fabricFaultText	UPDATED	fabric fault text	Property: Length_Max Old value: 40 New value: 250
Child	piece	NEW	Fabric piece data	Has NEW child of: gross weight measure
Child	piece	UPDATED	Fabric piece data	relationship with child: serial number  Property: Cardmax Old value: 3 New value: 9
Child	piece	UPDATED	Fabric piece data	relationship with child: serial number  Property: Cardmin Old value: 1 New value: 0
Child	piece	UPDATED	Fabric piece data	relationship with child: serial number  Property: BestPractice_English Old value: New value: <i>This element might contain also codes for RFID devices.</i>
Child	piece	UPDATED	Fabric piece data	relationship with child: manufacture lot identifier  Property: Cardmax Old value: 1 New value: 2
Child	piece	UPDATED	Fabric piece data	relationship with child: manufacture lot identifier  Property: Aggregation Note_English Old value: New value: <i>The lotN instances must differ by value of the numberingOrg attribute</i>
Child	piece	UPDATED	Fabric piece data	relationship with child: piece weight measure  Property: Aggregation Note_English Old value: New value: <i>It is the net weight of the piece.</i>
Child	piece	UPDATED	Fabric piece data	relationship with child: electronic product code  Property: Aggregation Note_English Old value:

				New value: <i>the use of this element is DEPRECATED, use the appropriate elements (serialN)</i>
Child	piece	UPDATED	Fabric piece data	relationship with child: serial number  Property: Aggregation Note_English Old value: <i>More than one serialN is accepted only if the numbering organizations are different (and the piece is the same)</i> New value: <i>multiple values of serialN are allowed for different representations of the serial identifier of the same piece. Instances of serialN must differ at least for one value of numberingOrg and idQualifier.</i>
Child	pieceFault	UPDATED	Fabric piece fault details	relationship with child: general note  Property: Cardmax Old value: 19 New value: 99
Element(E)	piecePackText	UPDATED	fabric piece packing text	Property: Length_Max Old value: 40 New value: 250
Attribute	fileName	NEW	file name	Has NEW attribute: numbering organisation code
Element(l)	fileName	NEW	file name	
Element(l)	formatCode	NEW	format code	
Element(l)	format	NEW	format	
Attribute	note	UPDATED	general note	Its attribute: numbering organisation code  Property: Aggregation Note_English Old value: New value: <i>must be used to specify the organization that created the list of codes used in "noteLabel"</i>
Element(l)	idQualifier	NEW	id Qualifier	
Element(l)	isURL	NEW	is URL	
Attribute	jobPrice	NEW	job price	Has NEW attribute: data currency
Element(E)	legalName	UPDATED	Legal name	Property: Length_Max Old value: 80 New value: 250
Element(E)	itemID	UPDATED	line item number	Property: Length_Max Old value: 6 New value: 40

Attr ib	lineN	UPD ATE D	line numb er	Its attribute: VAT rate  Property: Aggregation Note_English Old value: New value: <i>Deprecated, prefer dtScheme when available.</i>
Ele m(l )	In	NE W	In	
Ele m(l )	mimeC ode	NE W	mime cod e	
Ele m(l )	mime	NE W	mime	
Ele m( E)	packag eN	UPD ATE D	package number	Property: Length_Max Old value: 25 New value: 40
Chi ld	pieceC hain	UPD ATE D	piece cha in	relationship with child: serial number  Property: Aggregation Note_English Old value: New value: <i>multiple values of serialN are allowed in order to provide differ ent representations of the serial identifier of the same piece chain. Differ ent instances of serialN must differ at least for one value of idQualifier or nu mberingOrg</i>
Chi ld	pieceC hain	UPD ATE D	piece cha in	relationship with child: serial number  Property: Cardmax Old value: 1 New value: 9
Attr ib	quality Level	NE W	quality le vel	Has NEW attribute: numbering organisation code
Attr ib	quality Level	NE W	quality le vel	Has NEW attribute: code list reference
Attr ib	quality Level	NE W	quality le vel	Has NEW attribute: code list version
Attr ib	quality Level	NE W	quality le vel	Has NEW attribute: code list name
Ele m(l )	quality Level	NE W	quality le vel	
Chi ld	refDoc	NE W	reference documen t details	Has NEW child of: attachment
Chi ld	refDoc	UPD ATE D	reference documen t details	relationship with child: document identifier  Property: BestPractice_English Old value:

				New value: <i>numberingOrg</i> indicates the role that produced the document identifier (it is allowed to declare two different ones -e.g. customer and supplier - with two docID with different numberingOrg
Attr ib	season	NE W	season id entifier	Has NEW attribute: code list reference
Attr ib	season	NE W	season id entifier	Has NEW attribute: numbering organisation code
Attr ib	season	NE W	season id entifier	Has NEW attribute: code list name
Attr ib	season	NE W	season id entifier	Has NEW attribute: code list version
Attr ib	serialN	NE W	serial nu mber	Has NEW attribute: id Qualifier
Ele m( E)	serialN	UPD ATE D	serial nu mber	Property: Length_Max Old value: 15 New value: 250
Chi ld	subCo ntracto r	NE W	Sub-contr actor (*)	Has NEW child of: Party identifier
Attr ib	subCo ntracto r	NE W	Sub-contr actor (*)	Has NEW attribute: sender Party qualifier
Ele m(l )	subDe pt	NE W	departme nt identifi er	
Chi ld	texCod e	UPD ATE D	Textiles p roduct co de	relationship with child: description  Property: Aggregation Note_English Old value: New value: <i>Product description</i>
Chi ld	texCod e	UPD ATE D	Textiles p roduct co de	relationship with child: description  Property: Cardmax Old value: 1 New value: 999
Chi ld	thirdPa rty	NE W	Third Par ty (*)	Has NEW child of: Party identifier
Attr ib	thirdPa rty	NE W	Third Par ty (*)	Has NEW attribute: sender Party qualifier
Attr ib	uri	NE W	uri	Has NEW attribute: is URL
Ele m(l )	uri	NE W	uri	

## Annex D

### New or changed tables and codes towards previous version

Changes or added items (changes in CodeListAgencyName excluded; changes in adoption notes and code description included): 99

Test Type	Status	Table code	Table description	Code	Change description
Table	UPD ATED	NT 100	eBIZ TCFUpstream version		Description_English Old value: <i>eBIZ Moda-ML version</i> New value: <i>eBIZ TCFUpstream version</i>
Code	NEW	NT 100		2018-1 (v2018-1)	
Code	NEW	NT 100		draft (draft)	
Table	UPD ATED	NT 16	VAT rate or code		Generalities Old value: <i>VAT rate or code ( deprecated , use dtScheme element )</i> New value: <i>VAT rate or code ( DEPRECATED, use dtScheme element )</i>
Code	NEW	NT 2		AU (Auditor)	
Code	NEW	NT 2		CE (Certification authority)	
Code	NEW	NT 2		SC (Sub contractor)	
Code	NEW	NT 2		SM (Service/ePlatform manager)	
Code	NEW	NT 4		SA (Sample)	
Table	UPD ATED	NT 4	end use		Generalities Old value: <i>specifies the final use of the fabric</i> New value: <i>specifies the final use of the product</i>
Code	NEW	NT 6		EB (eBIZ)	
Code	UPD ATED	NT 6		ML (DEPRECATED)	adoption_note Old value: New value: <i>DEPRECATED</i>
Table	NEW	NT 60	language, codes from ISO 639-1 (subset)		

Co de	NEW	NT 60		<i>F</i> (Female)	
Co de	NEW	NT 60		<i>af</i> (Afrikaans)	
Co de	NEW	NT 60		<i>ar</i> (Arabic)	
Co de	NEW	NT 60		<i>be</i> (Belarusian)	
Co de	NEW	NT 60		<i>bg</i> (Bulgarian)	
Co de	NEW	NT 60		<i>bn</i> (Bengali)	
Co de	NEW	NT 60		<i>bo</i> (Tibetan)	
Co de	NEW	NT 60		<i>bs</i> (Bosnian)	
Co de	NEW	NT 60		<i>ca</i> (Catalan, Valencian)	
Co de	NEW	NT 60		<i>cs</i> (Czech)	
Co de	NEW	NT 60		<i>da</i> (Danish)	
Co de	NEW	NT 60		<i>de</i> (German)	
Co de	NEW	NT 60		<i>el</i> (Greek, Modern (1453-))	
Co de	NEW	NT 60		<i>en</i> (English)	
Co de	NEW	NT 60		<i>eo</i> (Esperanto)	
Co de	NEW	NT 60		<i>es</i> (Spanish, Castilian)	
Co de	NEW	NT 60		<i>et</i> (Estonian)	
Co de	NEW	NT 60		<i>eu</i> (Basque)	
Co de	NEW	NT 60		<i>fa</i> (Persian)	
Co de	NEW	NT 60		<i>fi</i> (Finnish)	
Co de	NEW	NT 60		<i>fr</i> (French)	
Co de	NEW	NT 60		<i>ga</i> (Irish)	

Co de	NEW	NT 60		<i>gd</i> (Gaelic, Scottish Gaelic)	
Co de	NEW	NT 60		<i>gn</i> (Guarani)	
Co de	NEW	NT 60		<i>he</i> (Hebrew)	
Co de	NEW	NT 60		<i>hr</i> (Croatian)	
Co de	NEW	NT 60		<i>ht</i> (Haitian, Haitian Creole)	
Co de	NEW	NT 60		<i>hu</i> (Hungarian)	
Co de	NEW	NT 60		<i>hy</i> (Armenian)	
Co de	NEW	NT 60		<i>ia</i> (Interlingua (International Auxiliary Language Assoc iation))	
Co de	NEW	NT 60		<i>id</i> (Indonesian)	
Co de	NEW	NT 60		<i>is</i> (Icelandic)	
Co de	NEW	NT 60		<i>it</i> (Italian)	
Co de	NEW	NT 60		<i>ja</i> (Japanese)	
Co de	NEW	NT 60		<i>ju</i> (Javanese)	
Co de	NEW	NT 60		<i>ka</i> (Georgian)	
Co de	NEW	NT 60		<i>km</i> (Central Khmer)	
Co de	NEW	NT 60		<i>ko</i> (Korean)	
Co de	NEW	NT 60		<i>ku</i> (Kurdish)	
Co de	NEW	NT 60		<i>lb</i> (Luxembourgish, Letzebu rgesch)	
Co de	NEW	NT 60		<i>lo</i> (Lao)	
Co de	NEW	NT 60		<i>lt</i> (Lithuanian)	
Co de	NEW	NT 60		<i>lv</i> (Latvian)	

Co de	NEW	NT 60		<i>mg</i> (Malagasy)	
Co de	NEW	NT 60		<i>mk</i> (Macedonian)	
Co de	NEW	NT 60		<i>mn</i> (Mongolian)	
Co de	NEW	NT 60		<i>mt</i> (Maltese)	
Co de	NEW	NT 60		<i>nl</i> (Dutch, Flemish)	
Co de	NEW	NT 60		<i>no</i> (Norwegian)	
Co de	NEW	NT 60		<i>pl</i> (Polish)	
Co de	NEW	NT 60		<i>pt</i> (Portuguese)	
Co de	NEW	NT 60		<i>ro</i> (Romanian, Moldavian, M oldovan)	
Co de	NEW	NT 60		<i>ru</i> (Russian)	
Co de	NEW	NT 60		<i>se</i> (Northern Sami)	
Co de	NEW	NT 60		<i>sk</i> (Slovak)	
Co de	NEW	NT 60		<i>sl</i> (Slovenian)	
Co de	NEW	NT 60		<i>sm</i> (Samoan)	
Co de	NEW	NT 60		<i>so</i> (Somali)	
Co de	NEW	NT 60		<i>sq</i> (Albanian)	
Co de	NEW	NT 60		<i>sr</i> (Serbian)	
Co de	NEW	NT 60		<i>sv</i> (Swedish)	
Co de	NEW	NT 60		<i>sw</i> (Swahili)	
Co de	NEW	NT 60		<i>ta</i> (Tamil)	
Co de	NEW	NT 60		<i>th</i> (Thai)	
Co de	NEW	NT 60		<i>tr</i> (Turkish)	



Code	NEW	NT 60		<i>uk</i> (Ukrainian)	
Code	NEW	NT 60		<i>ur</i> (Urdu)	
Code	NEW	NT 60		<i>uz</i> (Uzbek)	
Code	NEW	NT 60		<i>vi</i> (Vietnamese)	
Code	NEW	NT 60		<i>zh</i> (Chinese)	
Code	NEW	NT 7		<i>CMK</i> (square centimetre)	
Code	NEW	NT 7		<i>CMQ</i> (cubic centimetre)	
Code	NEW	NT 7		<i>E37</i> (pixel)	
Code	NEW	NT 7		<i>KWH</i> (kilowatthours)	
Code	NEW	NT 7		<i>MMK</i> (square millimetre)	
Code	NEW	NT 7		<i>MTK</i> (square metre)	
Code	NEW	NT 7		<i>CO2TON</i> (ton of CO2)	
Table	UPDATE	NT 7	unit of measure		OtherExternalReferenceURL Old value: New value: <a href="http://docs.oasis-open.org/ubl/os-UBL-2.1/cl/gc/default/UnitOfMeasureCode-2.1.gc#">#http://docs.oasis-open.org/ubl/os-UBL-2.1/cl/gc/default/UnitOfMeasureCode-2.1.gc#</a>
Table	UPDATE	NT 7	unit of measure		Description_English Old value: <i>unity of measure</i> New value: <i>unit of measure</i>
Code	NEW	T2 1		<i>BOR</i> (blanket order)	
Code	NEW	T2 1		<i>CEO</i> (Certificate of origin)	
Code	NEW	T2 1		<i>CER</i> (Certificate)	
Code	UPDATE	T2 1		<i>CTR</i> (Contract)	Text_English Old value: <i>contract</i> New value: <i>Contract</i>
Code	NEW	T2 1		<i>MCI</i> (Visual merchandising instruction)	
Code	NEW	T2 1		<i>VMI</i> (visual merchandising instructions)	

Code	NEW	T4 4		CO (company identification code)	
------	-----	---------	--	-------------------------------------	--