



<http://www.ebiz-tcf.eu>

IMPLEMENTATION GUIDE

includes COMPARISON BETWEEN CURRENT and LAST
PREVIOUSLY RELEASED VERSION

TRANSACTION "FASHION RECEIVING ADVICE"

Version: v2018-1

Date of release: 18/7/2019

Document code: G025rv

technical Documentation: <http://www.ebiz.enea.it>

XML Schemas repository: <http://www.ebiz.enea.it/moda-ml/repository/schema/v2018-1/default.asp>

Guides repository: <http://www.ebiz.enea.it/moda-ml/repository/guide/v2018-1/default.asp>

Guide filename: G025rv-eBIZ-FashionReceivingAdvice.pdf

1. BUSINESS DESCRIPTION

1.1 Scope

The present guide has been issued to assist the companies of the Textile-Clothing sector in the implementation of the standard XML document type "RECEIVING ADVISE", providing all the instruction required for its use in the context of e-commerce in the Textile industry, as shown in the enclosed diagrams.

All the rules required for the construction and validation of the document are embedded into the specific XML-Schema, which is detailed in section "Implementation guide".

1.2 Generalities

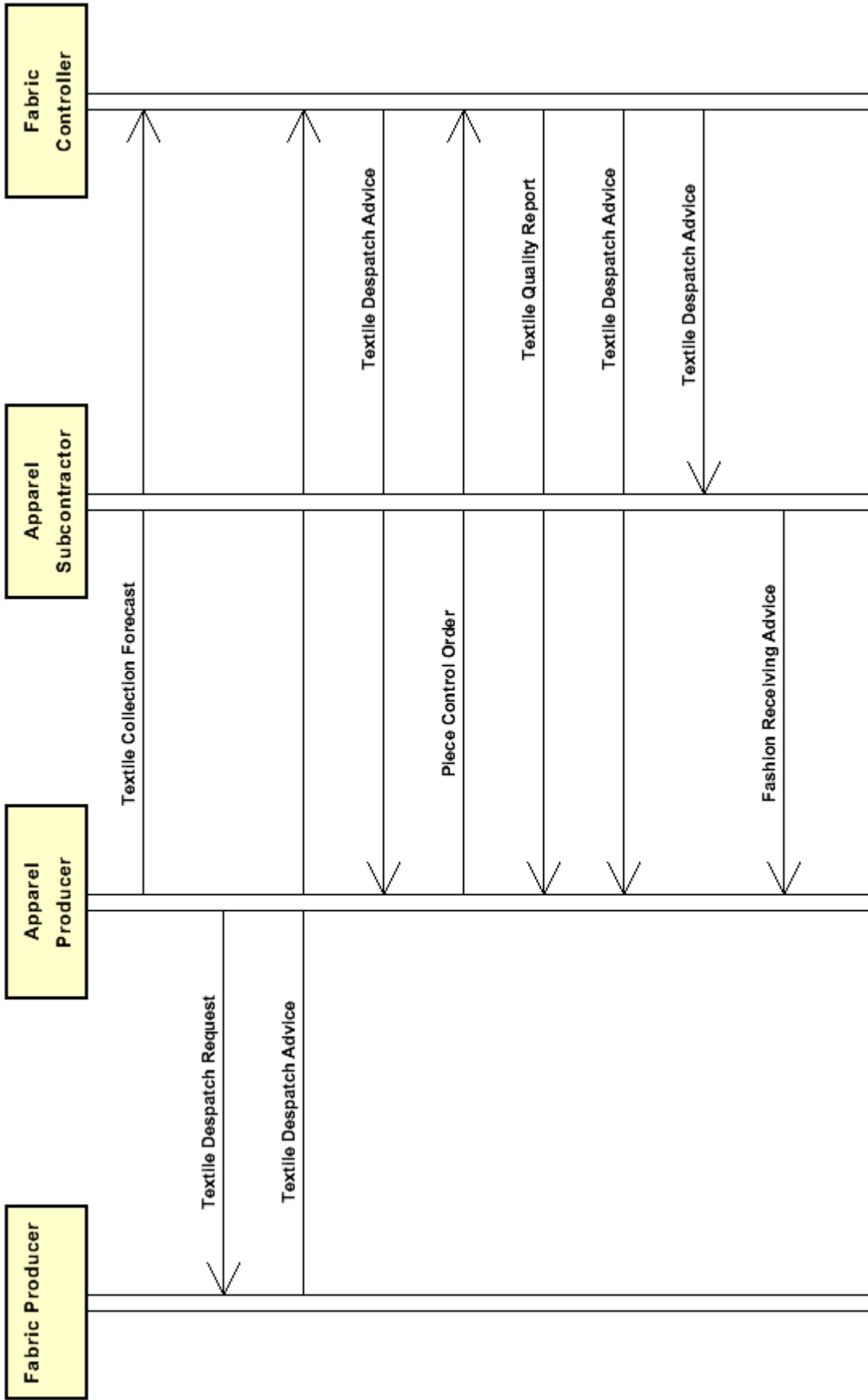
The Receiving Advise can be used by the Receiver of goods (purchased or received for commissioned works) either to confirm the regular receipt of goods or to notify discrepancies between what was declared by the Sender and what was received and accepted.

The present document must always be used in coupling with the Despatch Advise document.

It is recommended to issue one Receiving Advise against one Despatch Advise

1.3. Possible scenario

Fabric delivery with quality reporting by controller



2. IMPLEMENTATION GUIDE

2.1 General structure of XML document

All the business data that can be exchanged through this class of documents are shown in the following "document structure", that provides a simplified vision of the Schema.

In particular:

- the two numbers following each element define its "cardinality" (minimum and maximum number of occurrences); the minimum equal zero indicates that the element is optional, the minimum greater than zero indicates that is mandatory;
- the bold character denotes the complex elements (aggregates of simple elements) that were built for the sake of functionality and re-usability of some complex informations sets. The child elements in each parent element are easily spotted as "indented";
- the symbol "@" denotes an attribute of the preceding element; here "the usage indicator (optional, required, ...)" is shown in square brackets.

Legenda

- N: new element
- U: updated properties
- P: changes in children
- p: is a changed child
- A: changes in attributes
- a: is a new or changed attribute
- *: is a subtype

Structure

TEXRecAdvise

```
@msgfunction [Optional] [Default= OR]
@version [Optional] [Default= 2018-1]
@useProfile [Optional]
| TRHeader 1-1 (P)
| | msgN 1-1
| | - choose -
| | msgID 0-1
| | - or -
| | docID 0-1
| | @numberingOrg [Optional]
| | - end choose -
| | msgDate 1-1
| | @dateForm [Optional]
| | refDoc 0-9 (P)
| | @docType [Required]
| | | docID 1-2 (p)
| | | @numberingOrg [Optional]
| | | docDate 0-1
| | | @dateForm [Optional]
| | | season 0-1 (A)
| | | @numberingOrg [Optional] (a)
| | | @codeList [Optional] (a)
| | | @listName [Optional] (a)
| | | @listVersion [Optional] (a)
| | | itemID 0-1 (U)
| | | attachment 0-1 (N)
| | | | @uid [Optional]
| | | | | fileName 0-1 (N)
| | | | | @numberingOrg [Optional] (a)
```

- | binaryObject 0-1 (N)
- | @format [Optional] (N)
- | @mime [Optional] (N)
- | @encoding [Optional] (N)
- | @characterSet [Optional] (N)
- | **externalReference 0-99 (N)**
- | | uri 1-1 (N)
- | | | @isURL [Optional] [Default= true] (Na)
- | | mimeTypeCode 0-1 (N)
- | | formatCode 0-1 (N)
- | | encodingCode 0-1 (N)
- | | characterSetCode 0-1 (N)

buyer 1-1 (AP)

- | @logo [Optional]
- | @sender [Optional] (a*)
- | | id 1-1 (p)
- | | | @numberingOrg [Optional]
- | | additionalIdentifier 0-9 (N)
- | | | @numberingOrg [Optional] (a)
- | | | @idQualifier [Optional] (Na)
- | | legalName 0-1 (U)
- | | dept 0-1
- | | subDept 0-1 (N)
- | | person 0-1
- | | | @email [Optional]
- | | | @phone [Optional]
- | | | @fax [Optional]
- | | street 0-1
- | | city 0-1
- | | subCountry 0-1
- | | country 0-1
- | | postCode 0-1

- choose -

subContractor 0-1 (AP)

- | @sender [Optional] (a*)
- | | id 1-1
- | | | @numberingOrg [Optional]
- | | legalName 0-1 (U)
- | | dept 0-1
- | | subDept 0-1 (N)
- | | person 0-1
- | | | @email [Optional]
- | | | @phone [Optional]
- | | | @fax [Optional]
- | | street 0-1
- | | city 0-1
- | | subCountry 0-1
- | | country 0-1
- | | postCode 0-1

- or -

supplier 0-1 (AP)

- | @logo [Optional]
- | @sender [Optional] (a*)
- | | id 1-1
- | | | @numberingOrg [Optional]
- | | additionalIdentifier 0-9 (N)
- | | | @numberingOrg [Optional] (a)
- | | | @idQualifier [Optional] (Na)
- | | legalName 0-1 (U)
- | | dept 0-1
- | | subDept 0-1 (N)

```

| | | person 0-1
| | |   @email [Optional]
| | |   @phone [Optional]
| | |   @fax [Optional]
| | | street 0-1
| | | city 0-1
| | | subCountry 0-1
| | | country 0-1
| | | postCode 0-1
| | - end choose -
| | thirdParty 0-5 (AP)
| |   @VAT [Optional]
| |   @role [Required]
| |   @sender [Optional] (a*)
| |     id 1-1
| |     @numberingOrg [Optional]
| |     legalName 0-1 (U)
| |     dept 0-1
| |     subDept 0-1 (N)
| |     person 0-1
| |     @email [Optional]
| |     @phone [Optional]
| |     @fax [Optional]
| |     street 0-1
| |     city 0-1
| |     subCountry 0-1
| |     country 0-1
| |     postCode 0-1
| | note 0-99
| |   @numberingOrg [Optional]
| |   @codeList [Optional]
| |   @noteLabel [Optional]

```

TRABody 1-1

```

| | TRAItem 1-unbounded (P)
| |   lineN 1-1
| |   @VAT [Optional]
| |   lineID 0-1 (N)
| |   refDoc 1-9 (P)
| |   @docType [Required]
| |     docID 1-2 (p)
| |     @numberingOrg [Optional]
| |     docDate 0-1
| |     @dateForm [Optional]
| |     season 0-1 (A)
| |     @numberingOrg [Optional] (a)
| |     @codeList [Optional] (a)
| |     @listName [Optional] (a)
| |     @listVersion [Optional] (a)
| |     itemID 0-1 (U)
| |     attachment 0-1 (N)
| |     @uid [Optional]
| |       fileName 0-1 (N)
| |       @numberingOrg [Optional]
| |       binaryObject 0-1 (N)
| |       @format [Optional] (N)
| |       @mime [Optional] (N)
| |       @encoding [Optional] (N)
| |       @characterSet [Optional] (N)
| |     externalReference 0-99 (N)
| |       uri 1-1 (N)

```

					@isURL [Optional] [Default= true] (Na)
					mimeCode 0-1 (N)
					formatCode 0-1 (N)
					encodingCode 0-1 (N)
					characterSetCode 0-1 (N)
				qty 1-2	
				@um [Required]	
				acceptQty 1-1	
				@um [Required]	
				qtyVariance 0-9	
				@um [Optional]	
				@varReason [Optional]	
				note 0-99	
				@numberingOrg [Optional]	
				@codeList [Optional]	
				@noteLabel [Optional]	

2.2 Detailed description of document elements

Following tables show all elements (complex and simple) used in this document. Description includes: 1) element's information: xml tag, name, brief description, data type and syntax constraints; 2) information about use of the element in a particular position in the document: xpath and possible associated notes.

2.2.1 Complex elements (Aggregate Business Information Entities)

Complex elements are those elements whose content is composed of other elements (childs).Complex elements are alphabetically ordered.

attachment	an attached document. An attachment can refer to an external document or be included with the document being exchanged (XPath TEXRecAdvise/TRABody/TRAIitem/refDoc/attachment) 0-1 (N) (XPath TEXRecAdvise/TRAheader/refDoc/attachment) 0-1 (N)
buyer	details of the Buyer (party that buys the good or service that is object of the current collaborative process) - base type: Nad, (XPath TEXRecAdvise/TRAheader/buyer) 1-1 (AP)
externalReference	details about an external object, such as a document stored at a remote location (XPath TEXRecAdvise/TRAheader/refDoc/attachment/externalReference) 0-99 (N) (XPath TEXRecAdvise/TRABody/TRAIitem/refDoc/attachment/externalReference) 0-99 (N)
refDoc	identification of a document and of an item thereof, to which the message makes reference (XPath TEXRecAdvise/TRAheader/refDoc) 0-9 (P) (XPath TEXRecAdvise/TRABody/TRAIitem/refDoc) 1-9 (P)
subContractor	details of the Sub-contractor - base type: Nad, (XPath TEXRecAdvise/TRAheader/subContractor) 0-1 (AP) - note: <i>At least one out of Supplier and Subcontractor must be indicated.</i>
supplier	details of the Supplier (party that supplies the good or service that is object of the current collaborative process) - base type: Nad, (XPath TEXRecAdvise/TRAheader/supplier) 0-1 (AP) - note: <i>At least one out of Supplier and Subcontractor must be indicated.</i>
thirdParty	details of the Third Party, different from Sender and Receiver of the document - base type: Nad, (XPath TEXRecAdvise/TRAheader/thirdParty) 0-5 (AP)
TRABody	body of the document "Receiving Advise" (XPath TEXRecAdvise/TRABody) 1-1
TRAheader	header of the document "Receiving Advise" (XPath TEXRecAdvise/TRAheader) 1-1 (P)
TRAitem	line item of the document "Receiving Advise" (XPath TEXRecAdvise/TRABody/TRAIitem) 1-unbounded (P)

2.2.2 Simple elements (Basic Business Information Entities)

Simple elements are those elements whose content is characterized by a data type plus a domain of possible values. Simple elements are alphabetically ordered.

acceptQty	net quantity of a product received and accepted by the Receiving Party - base type: decimal, min inclusive: 0, fraction digits: 2, (XPath TEXRecAdvise/TRABody/TRAItem/acceptQty) 1-1
additionalIdentifier	additional identification code of a Party, for example customs registries or others - base type: string, max length: 15, (XPath TEXRecAdvise/TRAheader/supplier/additionalIdentifier) 0-9 (N) - note: <i>identifiers for example for exports, such as MID (Manufacturer Identification Code), EORI (E.O.R.I. - Economic Operator Registration and Identification)</i> (XPath TEXRecAdvise/TRAheader/buyer/additionalIdentifier) 0-9 (N) - note: <i>identifiers for example for exports, such as MID (Manufacturer Identification Code), EORI (E.O.R.I. - Economic Operator Registration and Identification)</i>
binaryObject	a binary large object containing an attached document, Coding 'base64Binary' is recommended. - base type: base64Binary, (XPath TEXRecAdvise/TRABody/TRAItem/refDoc/attachment/binaryObject) 0-1 (N) (XPath TEXRecAdvise/TRAheader/refDoc/attachment/binaryObject) 0-1 (N)
@characterSet	the character set of the binary object (examples UTF-8, UTF-16, Windows-1252, ISO-8859-7,..) - base type: normalizedString, (XPath TEXRecAdvise/TRAheader/refDoc/attachment/binaryObject/@characterSet) [Optional] (N) (XPath TEXRecAdvise/TRABody/TRAItem/refDoc/attachment/binaryObject/@characterSet) [Optional] (N)
characterSetCode	the character set of an external document (examples UTF-8, UTF-16, Windows-1252, ISO-8859-7,..) - base type: normalizedString, (XPath TEXRecAdvise/TRAheader/refDoc/attachment/externalReference/characterSetCode) 0-1 (N) (XPath TEXRecAdvise/TRABody/TRAItem/refDoc/attachment/externalReference/characterSetCode) 0-1 (N)
city	name of the city (town, village) - base type: string, max length: 40, (XPath TEXRecAdvise/TRAheader/buyer/city) 0-1 (XPath TEXRecAdvise/TRAheader/subContractor/city) 0-1 (XPath TEXRecAdvise/TRAheader/supplier/city) 0-1 (XPath TEXRecAdvise/TRAheader/thirdParty/city) 0-1
@codeList	it specifies the URL where the list of codes used to make an instance of the element can be found - base type: string, max length: 255, (XPath TEXRecAdvise/TRABody/TRAItem/note/@codeList) [Optional] - nota: <i>must be used to provide (URL) the list of codes used in "noteLabel"</i> (XPath TEXRecAdvise/TRABody/TRAItem/refDoc/season/@codeList) [Optional] (a) - nota: <i>this attribute should be used either single or coupled with "listName" and "listVersion"</i> (XPath TEXRecAdvise/TRAheader/note/@codeList) [Optional] - nota: <i>must be used to provide (URL) the list of codes used in "noteLabel"</i> (XPath TEXRecAdvise/TRAheader/refDoc/season/@codeList) [Optional] (a) - nota: <i>this attribute should be used either single or coupled with "listName" and "listVersion"</i>
country	code of the nation - base type: string, cod. table: T10 http://www.ebiz.enea.it/moda-ml/repository/codelist/v2018-1/gc_T10.xml (XPath TEXRecAdvise/TRAheader/supplier/country) 0-1 (XPath TEXRecAdvise/TRAheader/subContractor/country) 0-1 (XPath TEXRecAdvise/TRAheader/thirdParty/country) 0-1

	(XPath TEXRecAdvise/TRAheader/buyer/country) 0-1
@dateForm	<p>format used for the date</p> <p>- base type: string, cod. table: NT29</p> <p>http://www.ebiz.enea.it/moda-ml/repository/codelist/v2018-1/gc_NT29.xml</p> <p>(XPath TEXRecAdvise/TRAbody/TRAitem/refDoc/docDate/@dateForm) [Optional]</p> <p>(XPath TEXRecAdvise/TRAheader/msgDate/@dateForm) [Optional]</p> <p>(XPath TEXRecAdvise/TRAheader/refDoc/docDate/@dateForm) [Optional]</p>
dept	<p>name or code of a contact department within a Party</p> <p>- base type: string, max length: 40,</p> <p>(XPath TEXRecAdvise/TRAheader/subContractor/dept) 0-1</p> <p>(XPath TEXRecAdvise/TRAheader/buyer/dept) 0-1</p> <p>(XPath TEXRecAdvise/TRAheader/thirdParty/dept) 0-1</p> <p>(XPath TEXRecAdvise/TRAheader/supplier/dept) 0-1</p>
docDate	<p>date of issue of the referenced document, according to one of the patterns Y YYY-MM-DD, YYYY-MM-DD:HH-MM or YYYY-WW.</p> <p>- base type: string,</p> <p>(XPath TEXRecAdvise/TRAbody/TRAitem/refDoc/docDate) 0-1</p> <p>(XPath TEXRecAdvise/TRAheader/refDoc/docDate) 0-1</p>
docID	<p>identification number of the referenced document SINCE 2008-1 ITS USE I N THE HEADER IS DISCOURAGED (REPLACED BY msgID)</p> <p>- base type: string, max length: 80,</p> <p>(XPath TEXRecAdvise/TRAbody/TRAitem/refDoc/docID) 1-2 (p)</p> <hr/> <p>AAAA-WARNING! - text not AVAILABLE n. 245 - In=en</p> <p>(XPath TEXRecAdvise/TRAheader/docID) 0-1</p> <p>(XPath TEXRecAdvise/TRAheader/refDoc/docID) 1-2 (p)</p> <hr/> <p>AAAA-WARNING! - text not AVAILABLE n. 245 - In=en</p>
@docType	<p>type or class to which the referenced document belongs</p> <p>- base type: string, cod. table: T21</p> <p>http://www.ebiz.enea.it/moda-ml/repository/codelist/v2018-1/gc_T21.xml</p> <p>(XPath TEXRecAdvise/TRAheader/refDoc/@docType) [Required]</p> <p>(XPath TEXRecAdvise/TRAbody/TRAitem/refDoc/@docType) [Required]</p>
@email	<p>electronic mail address of the contact person within a Party</p> <p>- base type: string, max length: 250,</p> <p>(XPath TEXRecAdvise/TRAheader/buyer/person/@email) [Optional]</p> <p>(XPath TEXRecAdvise/TRAheader/thirdParty/person/@email) [Optional]</p> <p>(XPath TEXRecAdvise/TRAheader/supplier/person/@email) [Optional]</p> <p>(XPath TEXRecAdvise/TRAheader/subContractor/person/@email) [Optional]</p>
@encoding	<p>specifies the decoding algorithm of the binary object</p> <p>- base type: normalizedString,</p> <p>(XPath TEXRecAdvise/TRAbody/TRAitem/refDoc/attachment/ binaryObject/@encoding) [Optional] (N)</p> <p>(XPath TEXRecAdvise/TRAheader/refDoc/attachment/ binaryObject/@encoding) [Optional] (N)</p>
encodingCode	<p>the encoding/decoding algorithm used with the external object (example is ' base64Binary')</p> <p>- base type: normalizedString,</p> <p>(XPath TEXRecAdvise/TRAheader/refDoc/attachment/ externalReference/encodingCode) 0-1 (N)</p> <p>(XPath TEXRecAdvise/TRAbody/TRAitem/refDoc/attachment/ externalReference/encodingCode) 0-1 (N)</p>
@fax	<p>fax number of the contact person within a Party</p> <p>- base type: string, max length: 35,</p> <p>(XPath TEXRecAdvise/TRAheader/buyer/person/@fax) [Optional]</p> <p>(XPath TEXRecAdvise/TRAheader/supplier/person/@fax) [Optional]</p> <p>(XPath TEXRecAdvise/TRAheader/thirdParty/person/@fax) [Optional]</p> <p>(XPath TEXRecAdvise/TRAheader/subContractor/person/@fax) [Optional]</p>

fileName	unique identifier (name) of the file - base type: string, max length: 255, (XPath TEXRecAdvise/TRABody/TRAItem/refDoc/attachment/fileName) 0-1 (N) (XPath TEXRecAdvise/TRAHeader/refDoc/attachment/fileName) 0-1 (N)
@format	the format of the binary content (examples xml, pdf, doc,...) - base type: string, (XPath TEXRecAdvise/TRAHeader/refDoc/attachment/binaryObject/@format) [Optional] (N) (XPath TEXRecAdvise/TRABody/TRAItem/refDoc/attachment/binaryObject/@format) [Optional] (N)
formatCode	the format of the external object (examples xml, pdf, doc,...) - base type: normalizedString, (XPath TEXRecAdvise/TRABody/TRAItem/refDoc/attachment/externalReference/formatCode) 0-1 (N) (XPath TEXRecAdvise/TRAHeader/refDoc/attachment/externalReference/formatCode) 0-1 (N)
id	primary identification code of a Party; it is recommended the format: nation code (ISO 3166) + VAT identification number (11 crt), with the qualifier "numberingOrg"= MF - base type: string, max length: 15, (XPath TEXRecAdvise/TRAHeader/buyer/id) 1-1 (p) (XPath TEXRecAdvise/TRAHeader/thirdParty/id) 1-1 (XPath TEXRecAdvise/TRAHeader/supplier/id) 1-1 (XPath TEXRecAdvise/TRAHeader/subContractor/id) 1-1
@idQualifier	Qualification of the identifier. - base type: string, (XPath TEXRecAdvise/TRAHeader/supplier/additionalIdentifier/@idQualifier) [Optional] (Na) - nota: <i>this attribute should be used when the numberingOrg attribute is not enough to declare the type of identifier</i> (XPath TEXRecAdvise/TRAHeader/buyer/additionalIdentifier/@idQualifier) [Optional] (Na) - nota: <i>this attribute should be used when the numberingOrg attribute is not enough to declare the type of identifier</i>
@isURL	it indicates if the referred element is an URL (true) or not (false) - base type: boolean, (XPath TEXRecAdvise/TRAHeader/refDoc/attachment/externalReference/uri/@isURL) [Optional] [Default= true] (Na) - nota: <i>usage of URLs is recommended</i> (XPath TEXRecAdvise/TRABody/TRAItem/refDoc/attachment/externalReference/uri/@isURL) [Optional] [Default= true] (Na) - nota: <i>usage of URLs is recommended</i>
itemID	number of the line/item of the referenced document - base type: string, max length: 40, (XPath TEXRecAdvise/TRAHeader/refDoc/itemID) 0-1 (U) (XPath TEXRecAdvise/TRABody/TRAItem/refDoc/itemID) 0-1 (U)
legalName	legal name of a Party - base type: string, max length: 250, (XPath TEXRecAdvise/TRAHeader/supplier/legalName) 0-1 (U) (XPath TEXRecAdvise/TRAHeader/thirdParty/legalName) 0-1 (U) (XPath TEXRecAdvise/TRAHeader/subContractor/legalName) 0-1 (U) (XPath TEXRecAdvise/TRAHeader/buyer/legalName) 0-1 (U)
lineID	unique identifier of the line item of the business document; it is set by the role that produces the document. - base type: string, max length: 30, (XPath TEXRecAdvise/TRABody/TRAItem/lineID) 0-1 (N)

lineN	<p>number of the line item of the present message (xml document); it is set by the role that produces the document. Usually it is a progressive number, but not always.</p> <p>- base type: positiveInteger, min inclusive: 1, max inclusive: 9999, (XPath TEXRecAdvise/TRAbody/TRAitem/lineN) 1-1</p>
@listName	<p>the name of the list of codes used to make an instance of the element (it might be thought as descriptive element, i.e. 'fabric printing technologies', or not, i.e. "T264")</p> <p>- base type: string, max length: 40, (XPath TEXRecAdvise/TRAbody/TRAitem/refDoc/season/@listName) [Optional] (a)</p> <p>- nota: <i>this attribute should always be used coupled with "numberingOrg"</i> (XPath TEXRecAdvise/TRAheader/refDoc/season/@listName) [Optional] (a)</p> <p>- nota: <i>this attribute should always be used coupled with "numberingOrg"</i></p>
@listVersion	<p>it specifies the version of the list of codes used to make an instance of the element</p> <p>- base type: string, max length: 6, (XPath TEXRecAdvise/TRAbody/TRAitem/refDoc/season/@listVersion) [Optional] (a)</p> <p>- nota: <i>this attribute should always be used coupled with "numberingOrg" and "listName"</i> (XPath TEXRecAdvise/TRAheader/refDoc/season/@listVersion) [Optional] (a)</p> <p>- nota: <i>this attribute should always be used coupled with "numberingOrg" and "listName"</i></p>
@logo	<p>company logo (URL of the image jpeg or gif). It is recommended that the width of the image does not exceed 640 pixel.</p> <p>- base type: string, max length: 255, (XPath TEXRecAdvise/TRAheader/supplier/@logo) [Optional] (XPath TEXRecAdvise/TRAheader/buyer/@logo) [Optional]</p>
@mime	<p>the mime type of the binary object</p> <p>- base type: normalizedString, (XPath TEXRecAdvise/TRAbody/TRAitem/refDoc/attachment/binaryObject/@mime) [Optional] (N) (XPath TEXRecAdvise/TRAheader/refDoc/attachment/binaryObject/@mime) [Optional] (N)</p>
mimeCode	<p>mime type of the external object</p> <p>- base type: normalizedString, (XPath TEXRecAdvise/TRAbody/TRAitem/refDoc/attachment/externalReference/mimeCode) 0-1 (N)</p> <hr/> <p>AAAA-WARNING! - text not AVAILABLE n. 245 - In=en (XPath TEXRecAdvise/TRAheader/refDoc/attachment/externalReference/mimeCode) 0-1 (N)</p> <hr/> <p>AAAA-WARNING! - text not AVAILABLE n. 245 - In=en</p>
msgDate	<p>date of issue of the present message (xml document), according to one of the patterns YYYY-MM-DD, YYYY-MM-DD:HH-MM or YYYY-WW.</p> <p>- base type: string, (XPath TEXRecAdvise/TRAheader/msgDate) 1-1</p>
@msgfunction	<p>function performed by the present message with regards to the transmission</p> <p>- base type: string, cod. table: NT18 http://www.ebiz.enea.it/moda-ml/repository/codelist/v2018-1/gc_NT18.xml (XPath TEXRecAdvise/@msgfunction) [Optional] [Default= OR]</p>
msgID	<p>key identifier of the business document in the information system of the issuing Party. In case of more despatches of the same business document, it is unchanged.</p> <p>- base type: string, max length: 35, (XPath TEXRecAdvise/TRAheader/msgID) 0-1</p>

msgN	<p>identification number given to the message (xml document) by its issuer. In case of more despatches of the same business document, it changes.</p> <p>- base type: string, max length: 35, (XPath TEXRecAdvise/TRAheader/msgN) 1-1</p>
note	<p>free text or structured (computer processing) note. For note structuring use the attributes "noteLabel" and "codelist"</p> <p>- base type: string, max length: 350, (XPath TEXRecAdvise/TRAbody/TRAitem/note) 0-99 (XPath TEXRecAdvise/TRAheader/note) 0-99</p>
@noteLabel	<p>subject qualifier of a note</p> <p>- base type: string, max length: 35, (XPath TEXRecAdvise/TRAheader/note/@noteLabel) [Optional]</p> <p>- nota: <i>must be used to qualify the subject of the note</i> (XPath TEXRecAdvise/TRAbody/TRAitem/note/@noteLabel) [Optional]</p> <p>- nota: <i>must be used to qualify the subject of the note</i></p>
@numberingOrg	<p>code specifying the organisation who has created or owns the coding or numbering system</p> <p>- base type: string, cod. table: NT6 http://www.ebiz.enea.it/moda-ml/repository/codelist/v2018-1/gc_NT6.xml (XPath TEXRecAdvise/TRAheader/buyer/id/@numberingOrg) [Optional] (XPath TEXRecAdvise/TRAheader/refDoc/docID/@numberingOrg) [Optional]</p> <p>- nota: <i>here can be specified whose document numbering is used (e.g.: Client, Supplier, ..)</i> (XPath TEXRecAdvise/TRAbody/TRAitem/refDoc/attachment/fileName/@numberingOrg) [Optional] (XPath TEXRecAdvise/TRAheader/note/@numberingOrg) [Optional]</p> <p>- nota: <i>must be used to specify the organization that created the list of codes used in "noteLabel"</i> (XPath TEXRecAdvise/TRAheader/refDoc/season/@numberingOrg) [Optional] (a)</p> <p>- nota: <i>this attribute should be used either single or coupled with "listName" and "listVersion"</i> (XPath TEXRecAdvise/TRAheader/buyer/additionalIdentifier/@numberingOrg) [Optional] (a)</p> <p>- nota: <i>here the issuer of the identifier must be specified</i> (XPath TEXRecAdvise/TRAheader/subContractor/id/@numberingOrg) [Optional] (XPath TEXRecAdvise/TRAheader/supplier/id/@numberingOrg) [Optional] (XPath TEXRecAdvise/TRAheader/docID/@numberingOrg) [Optional]</p> <p>- nota: <i>here can be specified whose document numbering is used (e.g.: Client, Supplier, ..)</i> (XPath TEXRecAdvise/TRAbody/TRAitem/refDoc/season/@numberingOrg) [Optional] (a)</p> <p>- nota: <i>this attribute should be used either single or coupled with "listName" and "listVersion"</i> (XPath TEXRecAdvise/TRAheader/thirdParty/id/@numberingOrg) [Optional] (XPath TEXRecAdvise/TRAbody/TRAitem/refDoc/docID/@numberingOrg) [Optional]</p> <p>- nota: <i>here can be specified whose document numbering is used (e.g.: Client, Supplier, ..)</i> (XPath TEXRecAdvise/TRAheader/supplier/additionalIdentifier/@numberingOrg) [Optional] (a)</p> <p>- nota: <i>here the issuer of the identifier must be specified</i> (XPath TEXRecAdvise/TRAheader/refDoc/attachment/fileName/@numberingOrg) [Optional] (a) (XPath TEXRecAdvise/TRAbody/TRAitem/note/@numberingOrg) [Optional]</p> <p>- nota: <i>must be used to specify the organization that created the list of codes used in "noteLabel"</i></p>
person	<p>name of the contact person within a Party</p> <p>- base type: string, max length: 40, (XPath TEXRecAdvise/TRAheader/subContractor/person) 0-1 (XPath TEXRecAdvise/TRAheader/buyer/person) 0-1 (XPath TEXRecAdvise/TRAheader/thirdParty/person) 0-1</p>

	(XPath TEXRecAdvise/TRAheader/supplier/person) 0-1
@phone	phone number of the contact person within a Party - base type: string, max length: 35, (XPath TEXRecAdvise/TRAheader/buyer/person/@phone) [Optional] (XPath TEXRecAdvise/TRAheader/thirdParty/person/@phone) [Optional] (XPath TEXRecAdvise/TRAheader/subContractor/person/@phone) [Optional] (XPath TEXRecAdvise/TRAheader/supplier/person/@phone) [Optional]
postCode	code defining the postal zone - base type: string, max length: 10, (XPath TEXRecAdvise/TRAheader/subContractor/postCode) 0-1 (XPath TEXRecAdvise/TRAheader/supplier/postCode) 0-1 (XPath TEXRecAdvise/TRAheader/thirdParty/postCode) 0-1 (XPath TEXRecAdvise/TRAheader/buyer/postCode) 0-1
qty	net quantity of the article or object correlated, qualified by the function of the document (ordering, delivering, ..) and by the context - base type: decimal, min inclusive: 0, fraction digits: 2, (XPath TEXRecAdvise/TRAbody/TRAIitem/qty) 1-2 <hr/> AAAA-WARNING! - text not AVAILABLE n. 245 - In=en - note: here is the quantity specified in the above referenced sender's document/line item (refDoc)
qtyVariance	difference between two quantities qualified by the context (e.g.: delivered vs . ordered; received vs. despatched etc..) - base type: decimal, fraction digits: 2, (XPath TEXRecAdvise/TRAbody/TRAIitem/qtyVariance) 0-9 - note: here is the difference between the item quantity declared by the sender Party (Despatch Advise) and that received and accepted by the receiving Party
@role	Third Party role qualifier - base type: string, cod. table: NT2 http://www.ebiz.enea.it/moda-ml/repository/codelist/v2018-1/gc_NT2.xml (XPath TEXRecAdvise/TRAheader/thirdParty/@role) [Required]
season	sale season; defined as: season (1 crt) + year (4 crt) - season: S/S=1 A/W=2 Spring=3 Summer=4 Autumn=5 Winter=6: for more than four seasons use alphabetic sequence: 1st season=A 2nd season=B etc.etc. - base type: string, max length: 15, (XPath TEXRecAdvise/TRAheader/refDoc/season) 0-1 (A) - note: here indicates the season to which the referenced document belongs (XPath TEXRecAdvise/TRAbody/TRAIitem/refDoc/season) 0-1 (A) - note: here indicates the season to which the referenced document belongs
@sender	qualifier that specifies the Party issuing of the document - base type: boolean, (XPath TEXRecAdvise/TRAheader/buyer/@sender) [Optional] (a*) - nota: This attribute is mandatory when the STYLESHEET must be used (XPath TEXRecAdvise/TRAheader/supplier/@sender) [Optional] (a*) - nota: This attribute is mandatory when the STYLESHEET must be used (XPath TEXRecAdvise/TRAheader/thirdParty/@sender) [Optional] (a*) - nota: This attribute is mandatory when the STYLESHEET must be used (XPath TEXRecAdvise/TRAheader/subContractor/@sender) [Optional] (a*) - nota: This attribute is mandatory when the STYLESHEET must be used
street	street and building number identifying a location - base type: string, max length: 80, (XPath TEXRecAdvise/TRAheader/buyer/street) 0-1 (XPath TEXRecAdvise/TRAheader/subContractor/street) 0-1 (XPath TEXRecAdvise/TRAheader/thirdParty/street) 0-1 (XPath TEXRecAdvise/TRAheader/supplier/street) 0-1
subCountry	short name or code of the sub-country entity - base type: string, max length: 9, (XPath TEXRecAdvise/TRAheader/buyer/subCountry) 0-1

	(XPath TEXRecAdvise/TRAheader/supplier/subCountry) 0-1 (XPath TEXRecAdvise/TRAheader/thirdParty/subCountry) 0-1 (XPath TEXRecAdvise/TRAheader/subContractor/subCountry) 0-1
subDept	name or code of a contact department within a Party - base type: string, max length: 40, (XPath TEXRecAdvise/TRAheader/buyer/subDept) 0-1 (N) (XPath TEXRecAdvise/TRAheader/thirdParty/subDept) 0-1 (N) (XPath TEXRecAdvise/TRAheader/subContractor/subDept) 0-1 (N) (XPath TEXRecAdvise/TRAheader/supplier/subDept) 0-1 (N)
@uid	unique element identifier within the xml document - base type: string, (XPath TEXRecAdvise/TRAheader/refDoc/attachment/@uid) [Optional] (XPath TEXRecAdvise/TRAbody/TRAitem/refDoc/attachment/@uid) [Optional]
@um	specification of the unit of measure - base type: string, cod. table: NT7 http://www.ebiz.enea.it/moda-ml/repository/codelist/v2018-1/gc_NT7.xml (XPath TEXRecAdvise/TRAbody/TRAitem/acceptQty/@um) [Required] (XPath TEXRecAdvise/TRAbody/TRAitem/qtyVariance/@um) [Optional] (XPath TEXRecAdvise/TRAbody/TRAitem/qty/@um) [Required]
uri	Uniform Resource Identifier (URI) that identifies the external object as an Internet resource - base type: normalizedString, (XPath TEXRecAdvise/TRAbody/TRAitem/refDoc/attachment/externalReference/uri) 1-1 (N) (XPath TEXRecAdvise/TRAheader/refDoc/attachment/externalReference/uri) 1-1 (N)
@useProfile	use profile to which the present document is compliant if it was agreed by the parties. It is suggested a URI with reference to the firms or the URL of the profile. - base type: string, (XPath TEXRecAdvise/@useProfile) [Optional]
@varReason	reason for the difference between the two quantities specified by the context - base type: string, cod. table: T46 http://www.ebiz.enea.it/moda-ml/repository/codelist/v2018-1/gc_T46.xml (XPath TEXRecAdvise/TRAbody/TRAitem/qtyVariance/@varReason) [Optional]
@VAT	VAT rate or code (DEPRECATED, use dtScheme element) - base type: string, cod. table: NT16 http://www.ebiz.enea.it/moda-ml/repository/codelist/v2018-1/gc_NT16.xml (XPath TEXRecAdvise/TRAbody/TRAitem/lineN/@VAT) [Optional] - nota: <i>Deprecated, prefer dtScheme when available.</i> (XPath TEXRecAdvise/TRAheader/thirdParty/@VAT) [Optional]
@version	Dictionary version from which the instance has been created - base type: string, cod. table: NT100 http://www.ebiz.enea.it/moda-ml/repository/codelist/v2018-1/gc_NT100.xml (XPath TEXRecAdvise/@version) [Optional] [Default= 2018-1]

2.3 Suggested best practices

TEXRecAdvise/TRAbody/TRAitem/refDoc/docID (identification number of the referenced document SINCE 2008-1 ITS USE IN THE HEADER IS DISCOURAGED (REPLACED BY msgID))

numberingOrg indicates the role that produced the document identifier (it is allowed to declare two different ones -e.g. customer and supplier - with two docID with different numberingOrg

TEXRecAdvise/TRAheader/refDoc/docID (identification number of the referenced document SINCE 2008-1 ITS USE IN THE HEADER IS DISCOURAGED (REPLACED BY msgID))

numberingOrg indicates the role that produced the document identifier (it is allowed to declare two different ones -e.g. customer and supplier - with two docID with different numberingOrg

**TEXRecAdvise/TRAbody/TRAitem/refDoc/attachment/
externalReference/mimeCode (mime type of the external object)**

Use coding from IANA <http://www.iana.org/assignments/media-types/media-types.xml>

**TEXRecAdvise/TRAheader/refDoc/attachment/
externalReference/mimeCode (mime type of the external object)**

Use coding from IANA <http://www.iana.org/assignments/media-types/media-types.xml>

TEXRecAdvise/TRAbody/TRAitem/qty (net quantity of the article or object correlated, qualified by the function of the document (ordering, delivering, ..) and by the context)

this element can have two instances only if the units of measure are different

2.4 Enumeration tables

List of enumeration tables used in the XML document. You can find the corresponding codes at:
<http://www.ebiz-tcf.eu/moda-ml/imple/moda-ml-2018-1.asp?lingua=en&pag=6>

Legenda

- N: new table
- U: updated properties

NT100 - eBIZ TCFUpstream version

NT16 - VAT rate or code

NT18 - message function

NT2 - third party qualifier

NT29 - format of a date

NT6 - coding system owner/issuer

NT7 - unit of measure (U)

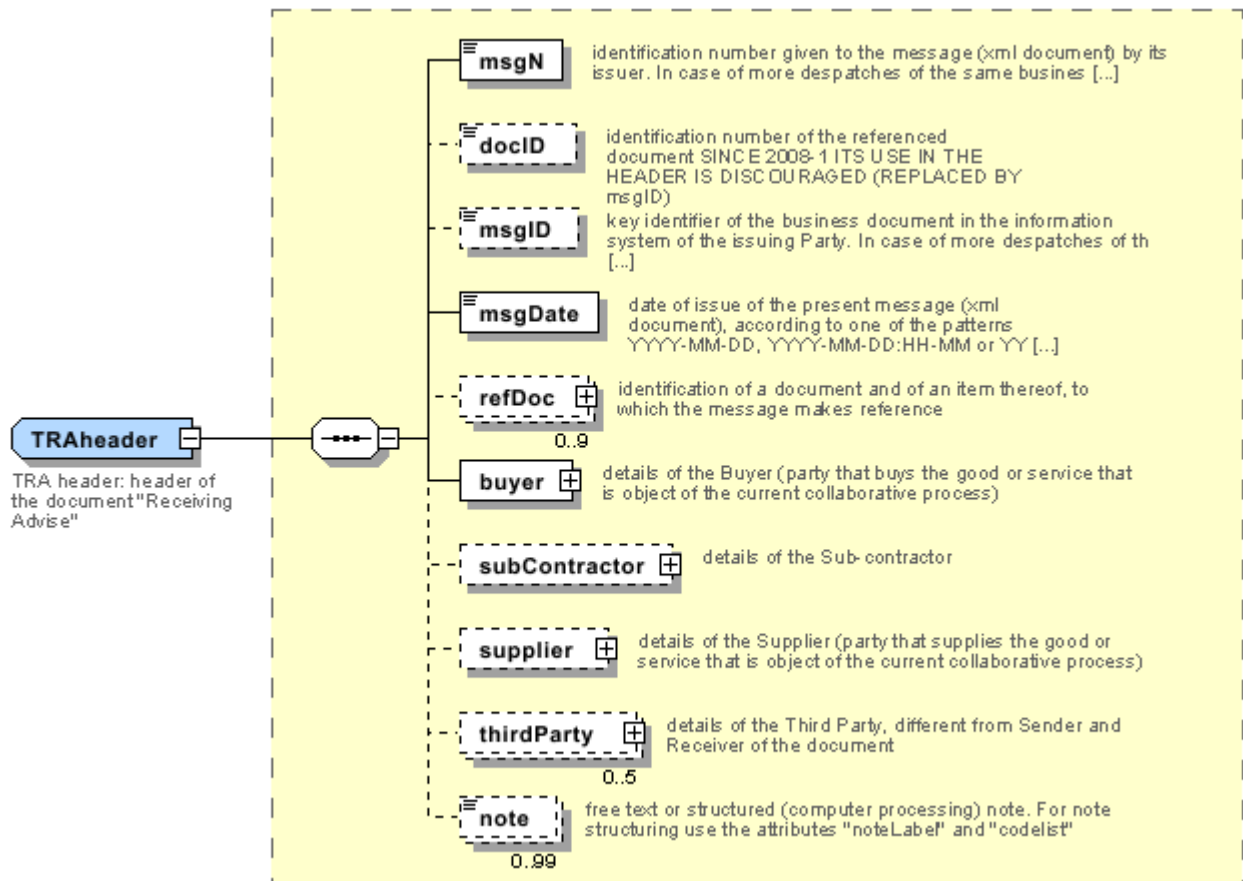
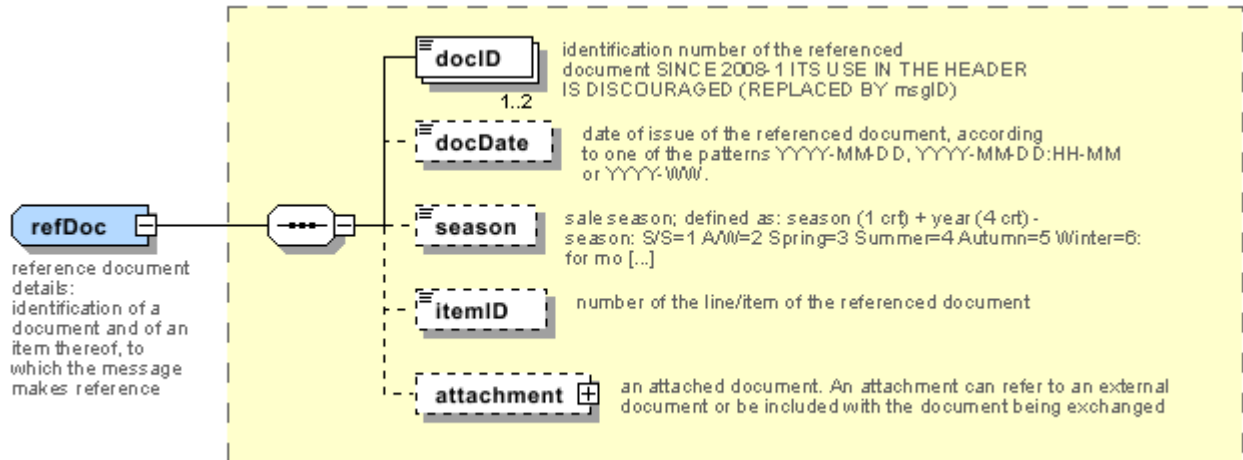
T10 - ISO3166 - Country

T21 - type of document

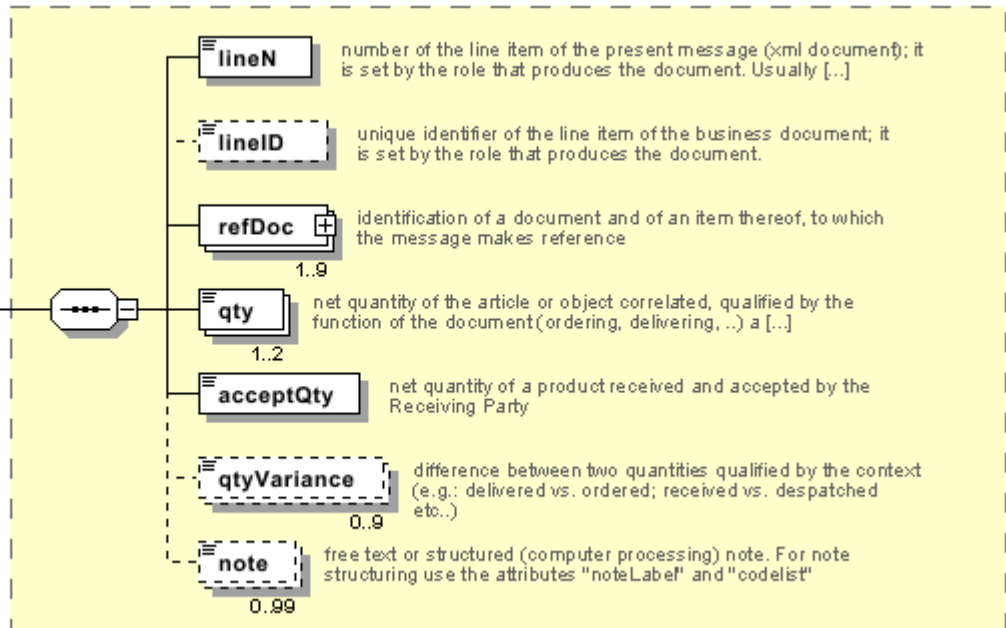
T46 - quantity variance reason

Annex A

Representative images of the principal complex elements' structure.



TRAItem
 TRA item: line item
 of the document
 "Receiving Advise"



Annex B

NT100 - eBIZ TCFUpstream version

dictionary version

Agency name: eBIZ

tabella cod.: NT100

File codes list (Generic code): http://www.ebiz.enea.it/moda-ml/repository/codelist/v2018-1/gc_NT100.xml

Code	Description	Adoption note	Version status	Date of insertion
2013-1	v2013-1			01/07/2013
2018-1	v2018-1		(N)	04/11/2018
draft	draft		(N)	08/09/2017

NT16 - VAT rate or code

VAT rate or code (DEPRECATED, use dtScheme element)

tabella cod.: NT16

File codes list (Generic code): http://www.ebiz.enea.it/moda-ml/repository/codelist/v2018-1/gc_NT16.xml

NT18 - message function

function performed by the present message with regards to the transmission

Agency name: eBIZ

tabella cod.: NT18

File codes list (Generic code): http://www.ebiz.enea.it/moda-ml/repository/codelist/v2018-1/gc_NT18.xml

Code	Description	Adoption note	Version status	Date of insertion
CA	delete this document			01/07/2013
CP	copy			
OR	original			
RC	re-transmission for data correction			
RT	re-transmission			

NT2 - third party qualifier

Third Party role qualifier

Agency name: eBIZ

tabella cod.: NT2

File codes list (Generic code): http://www.ebiz.enea.it/moda-ml/repository/codelist/v2018-1/gc_NT2.xml

Code	Description	Adoption note	Version status	Date of insertion
AG	Sales Agent			
AU	Auditor		(N)	08/04/2019
CE	Certification authority		(N)	08/04/2019
CO	Quality Controller			
DC	Response to			
DF	Invoicee			
DI	Copy to (CC)			28/10/2014
DM	Consignee			
DP	Consignment address (Delivery Party)			
IM	Importer			
OR	Originator			10/09/2014
SC	Sub contractor		(N)	10/04/2019
SM	Service/ePlatform manager		(N)	08/04/2019
SP	Forwarder			
TX	Tax Representative			

NT29 - format of a date

format used for the date

Agency name: eBIZ

tabella cod.: NT29

File codes list (Generic code): http://www.ebiz.enea.it/moda-ml/repository/codelist/v2018-1/gc_NT29.xml

Code	Description	Adoption note	Version status	Date of insertion
D	YYYY-MM-DD			
M	YYYY-MM-DD:HH-MM			
W	YYYY-WW			

NT6 - coding system owner/issuer

code specifying the organisation who has created or owns the coding or numbering system

Agency name: eBIZ

tabella cod.: NT6

File codes list (Generic code): http://www.ebiz.enea.it/moda-ml/repository/codelist/v2018-1/gc_NT6.xml

Code	Description	Adoption note	Version status	Date of insertion
CL	Customer/buyer			
CO	Quality Controller			
EB	eBIZ	replaces 'ML'	(N)	18/03/2019
EN	GS1 (ex-EAN International)			
ES	e-Stockflow			
FO	Supplier			
GS	GS1			01/07/2013
MF	VAT identifier		(U)	
ML	Moda-ML	DEPRECATED	(U)	
SP	Service Provider			

NT7 - unit of measure (U)

specification of the unit of measure, it is a sub set of table Unit of Measure Code - UN/ECE REC 20 delivered by United Nations Economic Commission for Europe (UN/ECE)

Agency name: eBIZ / UN/ECE

tabella cod.: NT7

File codes list (Generic code): http://www.ebiz.enea.it/moda-ml/repository/codelist/v2018-1/gc_NT7.xml

Other link: <http://docs.oasis-open.org/ubl/os-UBL-2.1/cl/gc/default/UnitOfMeasureCode-2.1.gc#>

Code	Description	Adoption note	Version status	Date of insertion
CMK	square centimetre		(N)	20/12/2017
CMQ	cubic centimetre		(N)	20/12/2017
CMT	centimetre			
CNE	centiNewton			
CO2TON	ton of CO2		(N)	10/09/2014
COUPLES	couples			
DMQ	cubic decimetre			
E37	pixel		(N)	11/04/2018
GRM	gram			
HUR	hour			

INH	inch			
KGM	kilogram			
KMT	kilometer			
KWH	kilowatthours		(N)	10/09/2014
LBR	pound			
MIN	minute			
MMK	square millimetre		(N)	20/12/2017
MTK	square metre		(N)	20/12/2017
MTQ	cubic metre			
MTR	metre			
NMB	numero			
ONZ	ounce			
P1	percent			
PPM	parts per milion			
PZ	piece		(U)	
RPM	rounds per metre			
YRD	yard			

T10 - ISO3166 - Country

code of the nation

Agency name: ISO

tabella cod.: T10

File codes list (Generic code): http://www.ebiz.enea.it/moda-ml/repository/codelist/v2018-1/gc_T10.xml

Table not printed: there are 239 elements, more than the maximum specified for printing: 99.

T21 - type of document

type or class to which the referenced document belongs

Agency name: eBIZ

tabella cod.: T21

File codes list (Generic code): http://www.ebiz.enea.it/moda-ml/repository/codelist/v2018-1/gc_T21.xml

Code	Description	Adoption note	Version status	Date of insertion
BOR	blanket order		(N)	01/02/2018

CAT	Price catalogue - tech sheet			
CEO	Certificate of origin		(N)	13/04/2018
CER	Certificate		(N)	13/04/2018
COC	colour card			
CRN	Credit note			08/09/2017
CTO	Checking order			01/07/2013
CTR	Contract		(U)	
CXF	CxF3 file			01/07/2013
DAD	Darn order			
DDT	ddt			
DEA	Despatch advise			
DER	Despatch request			
DR	Document Request			02/12/2014
FOR	Forecast			02/12/2014
GSO	Garment stock offer			
GSX	Garment stock offer change			
INV	Invoice			
KCC	Knitting-Clothing Commission Order			02/12/2014
KCI	Garment in Work Inventory Report			02/12/2014
M2M	Made to Measure Production Order			02/12/2014
MAS	Master marker			
MCI	Visual merchandising instruction		(N)	13/04/2018
OCH	Order change			
OFF	Offer			
ORD	Purchase order			
ORP	Order response			
OSR	order status request			
OSS	Offer status			02/12/2014
OST	Order status			
OUR	our reference			
QR	Quality Report			02/12/2014
RAI	Raw Material in Work Inventory Report			02/12/2014
RDC	Raw dyeing commission order			
RDH	Raw dyeing order change			
RDR	Raw dyeing order response			

REA	Receiving advise			
REQ	Request for Offer			
RET	Return			02/12/2014
RSC	Spinning commission order			
RSH	Spinning order change			
RSR	Spinning order response			
SCL	process sheet			
TFC	Textile dyeing-finishing commission order			
TFX	Textile Dyeing-Finishing Order Change			02/12/2014
TPC	Textile printing commission order			
TPX	Textile Printing Order Change			02/12/2014
TWI	Textile in work inventory			
VMI	visual merchandising instructions		(N)	01/02/2018
WAC	Warping commission order			
WEC	Weaving commission order			
YDC	Yarn dyeing commission order			
YDH	Yarn dyeing order change			
YDR	Yarn dyeing order response			
YTC	Twisting commission order			
YWI	Yarn in work inventory			

T46 - quantity variance reason

reason for the difference between the two quantities specified by the context

Agency name: eBIZ

tabella cod.: T46

File codes list (Generic code): http://www.ebiz.enea.it/moda-ml/repository/codelist/v2018-1/gc_T46.xml

Code	Description	Adoption note	Version status	Date of insertion
DAM	damaged on receipt			
DIF	different article			
NAC	not acceptable for quality or conformance			
NRC	not received			

Annex C

New or changed elements towards previous version

Changes or added elements (changes in description excluded; changes in aggregation notes and best practice included): 63

Test Type	Tag	Status	Item type	Changes related to
Attribute	additionalIdentifier	NEW	Additional Party Identifier	Has NEW attribute: numbering organisation code
Attribute	additionalIdentifier	NEW	Additional Party Identifier	Has NEW attribute: id Qualifier
Element(l)	additionalIdentifier	NEW	Additional Party Identifier	
Element(l)	attachment	NEW	attachment	
Child	attachment	NEW	attachment	Has NEW child of: file name
Child	attachment	NEW	attachment	Has NEW child of: external reference
Child	attachment	NEW	attachment	Has NEW child of: binary object
Attribute	binary Object	NEW	binary object	Has NEW attribute: encoding
Attribute	binary Object	NEW	binary object	Has NEW attribute: mime
Attribute	binary Object	NEW	binary object	Has NEW attribute: format
Attribute	binary Object	NEW	binary object	Has NEW attribute: character set
Element(l)	binary Object	NEW	binary object	
Child	buyer	NEW	Buyer (*)	Has NEW child of: Party identifier
Child	buyer	NEW	Buyer (*)	Has NEW child of: Additional Party Identifier
Attribute	buyer	NEW	Buyer (*)	Has NEW attribute: sender Party qualifier
Element(l)	characterSetCode	NEW	character set code	

Element(l)	characterSet	NEW	character set	
Element(E)	email	UPDATED	e-mail	Property: Length_Max Old value: 80 New value: 250
Element(l)	encodingCode	NEW	encoding code	
Element(l)	encoding	NEW	encoding	
Child	externalReference	NEW	external reference	Has NEW child of: uri
Child	externalReference	NEW	external reference	Has NEW child of: format code
Child	externalReference	NEW	external reference	Has NEW child of: character set code
Child	externalReference	NEW	external reference	Has NEW child of: mime code
Child	externalReference	NEW	external reference	Has NEW child of: encoding code
Element(l)	externalReference	NEW	external reference	
Attribute	fileName	NEW	file name	Has NEW attribute: numbering organisation code
Element(l)	fileName	NEW	file name	
Element(l)	formatCode	NEW	format code	
Element(l)	format	NEW	format	
Attribute	note	UPDATED	general note	Its attribute: numbering organisation code Property: Aggregation Note_English Old value: New value: <i>must be used to specify the organization that created the list of codes used in "noteLabel"</i>
Element(l)	idQualifier	NEW	id Qualifier	
Element(l)	isURL	NEW	is URL	

Element(E)	legalName	UPDATED	Legal name	Property: Length_Max Old value: 80 New value: 250
Element(E)	itemID	UPDATED	line item number	Property: Length_Max Old value: 6 New value: 40
Attribute	lineN	UPDATED	line number	Its attribute: VAT rate Property: Aggregation Note_English Old value: New value: <i>Deprecated, prefer dtScheme when available.</i>
Element(I)	lineID	NEW	line identifier	
Element(I)	mimeCode	NEW	mime code	
Element(I)	mime	NEW	mime	
Child	refDoc	NEW	reference document details	Has NEW child of: attachment
Child	refDoc	UPDATED	reference document details	relationship with child: document identifier Property: BestPractice_English Old value: New value: <i>numberingOrg indicates the role that produced the document identifier (it is allowed to declare two different ones -e.g. customer and supplier - with two docID with different numberingOrg</i>
Attribute	season	NEW	season identifier	Has NEW attribute: code list reference
Attribute	season	NEW	season identifier	Has NEW attribute: numbering organisation code
Attribute	season	NEW	season identifier	Has NEW attribute: code list name
Attribute	season	NEW	season identifier	Has NEW attribute: code list version
Child	subContractor	NEW	Sub-contractor (*)	Has NEW child of: Party identifier
Attribute	subContractor	NEW	Sub-contractor (*)	Has NEW attribute: sender Party qualifier
Element(I)	subDepartment	NEW	department identifier	
Child	supplier	NEW	Supplier (*)	Has NEW child of: Party identifier
Child	supplier	NEW	Supplier (*)	Has NEW child of: Additional Party Identifier
Attribute	supplier	NEW	Supplier (*)	Has NEW attribute: sender Party qualifier

Child	thirdParty	NEW	Third Party (*)	Has NEW child of: Party identifier
Attribute	thirdParty	NEW	Third Party (*)	Has NEW attribute: sender Party qualifier
Child	TRAheader	NEW	TRA header	Has NEW child of: Third Party
Child	TRAheader	UPDATED	TRA header	relationship with child: reference document details Property: Cardmax Old value: 1 New value: 9
Child	TRAheader	UPDATED	TRA header	relationship with child: general note Property: Cardmax Old value: 19 New value: 99
Child	TRAitem	NEW	TRA item	Has NEW child of: line identifier
Child	TRAitem	UPDATED	TRA item	relationship with child: product quantity Property: Cardmax Old value: 1 New value: 2
Child	TRAitem	UPDATED	TRA item	relationship with child: product quantity Property: BestPractice_English Old value: New value: <i>this element can have two instances only if the units of measure are different</i>
Child	TRAitem	UPDATED	TRA item	relationship with child: reference document details Property: Cardmax Old value: 1 New value: 9
Child	TRAitem	UPDATED	TRA item	relationship with child: general note Property: Cardmax Old value: 19 New value: 99
Attribute	uri	NEW	uri	Has NEW attribute: is URL
Element(l)	uri	NEW	uri	

Annex D

New or changed tables and codes towards previous version

Changes or added items (changes in CodeListAgencyName excluded; changes in adoption notes and code description included): 25

Test Type	Status	Table code	Table description	Code	Change description
Table	UPDATED	NT100	eBIZ TCFUpstream version		Description_English Old value: <i>eBIZ Moda-ML version</i> New value: <i>eBIZ TCFUpstream version</i>
Code	NEW	NT100		2018-1 (v2018-1)	
Code	NEW	NT100		draft (draft)	
Table	UPDATED	NT16	VAT rate or code		Generalities Old value: <i>VAT rate or code (deprecated, use dtScheme element)</i> New value: <i>VAT rate or code (DEPRECATED, use dtScheme element)</i>
Code	NEW	NT2		AU (Auditor)	
Code	NEW	NT2		CE (Certification authority)	
Code	NEW	NT2		SC (Sub contractor)	
Code	NEW	NT2		SM (Service/ePlatform manager)	
Code	NEW	NT6		EB (eBIZ)	
Code	UPDATED	NT6		ML (DEPRECATED)	adoption_note Old value: New value: <i>DEPRECATED</i>
Code	NEW	NT7		CMK (square centimetre)	
Code	NEW	NT7		CMQ (cubic centimetre)	
Code	NEW	NT7		E37 (pixel)	
Code	NEW	NT7		KWH (kilowatthours)	
Code	NEW	NT7		MMK (square millimetre)	

Code	NEW	NT7		<i>MTK</i> (square metre)	
Code	NEW	NT7		<i>CO2TON</i> (ton of CO2)	
Table	UPDATED	NT7	unit of measure		OtherExternalReferenceURL Old value: New value: #http://docs.oasis-open.org/ubl/os-UBL-2.1/cl/gc/default/UnitOfMeasureCode-2.1.gc#
Table	UPDATED	NT7	unit of measure		Description_English Old value: <i>unity of measure</i> New value: <i>unit of measure</i>
Code	NEW	T21		<i>BOR</i> (blanket order)	
Code	NEW	T21		<i>CEO</i> (Certificate of origin)	
Code	NEW	T21		<i>CER</i> (Certificate)	
Code	UPDATED	T21		<i>CTR</i> (Contract)	Text_English Old value: <i>contract</i> New value: <i>Contract</i>
Code	NEW	T21		<i>MCI</i> (Visual merchandising instruction)	
Code	NEW	T21		<i>VMI</i> (visual merchandising instructions)	