



<http://www.ebiz-tcf.eu>

## IMPLEMENTATION GUIDE

includes COMPARISON BETWEEN CURRENT and LAST  
PREVIOUSLY RELEASED VERSION

TRANSACTION "GARMENT STOCK OFFER"

Version: v2018-1

Date of release: 18/7/2019

Document code: G029rv

technical Documentation: <http://www.ebiz.enea.it>

XML Schemas repository: <http://www.ebiz.enea.it/moda-ml/repository/schema/v2018-1/default.asp>

Guides repository: <http://www.ebiz.enea.it/moda-ml/repository/guide/v2018-1/default.asp>

Guide filename: G029rv-eBIZ-GarmentStockOffer.pdf

# 1. BUSINESS DESCRIPTION

## 1.1 Scope

The document Garment Stock Offer can be used for the electronic transmission of stock data from the Trade organisation or the Garment company into the e-Stockflow service.

## 1.2 Generalities

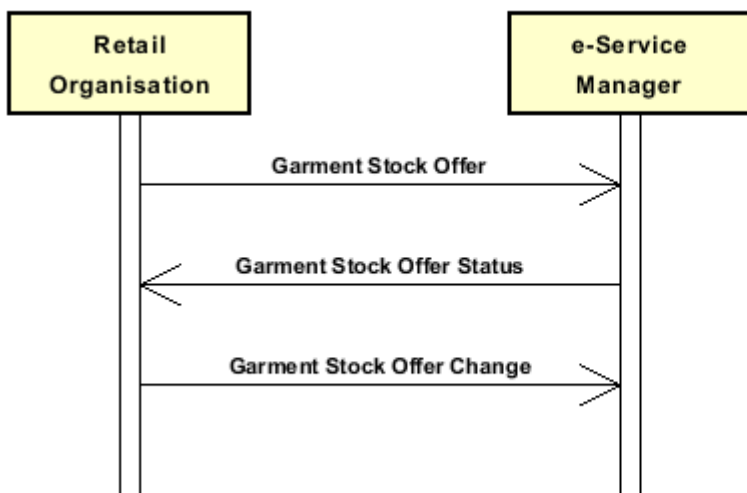
The document is issued by the Trade organisation or the Garment company to create an offer of garment stock through the e-Stockflow service.

Each document line must deal with one stock item in one definite location.

The description of the stock item includes the classification per category and sex and the assortment of color/sizes.

## 1.3. Possible scenario

On-line stocks offer



## 2. IMPLEMENTATION GUIDE

### 2.1 General structure of XML document

All the business data that can be exchanged through this class of documents are shown in the following "document structure", that provides a simplified vision of the Schema.

In particular:

- the two numbers following each element define its "cardinality" (minimum and maximum number of occurrences); the minimum equal zero indicates that the element is optional, the minimum greater than zero indicates that is mandatory;
- the bold character denotes the complex elements (aggregates of simple elements) that were built for the sake of functionality and re-usability of some complex informations sets. The child elements in each parent element are easily spotted as "indented";
- the symbol "@" denotes an attribute of the preceding element; here "the usage indicator (optional, required, ...) is shown in square brackets.

#### Legenda

- N: new element
- U: updated properties
- P: changes in children
- p: is a changed child
- A: changes in attributes
- a: is a new or changed attribute
- \*: is a subtype

### Structure

#### **GARStockOffer**

@msgfunction [Optional] [Default= OR]

@version [Optional] [Default= 2018-1]

@useProfile [Optional]

```
| GSOheader 1-1 (P)
| | msgN 1-1
| | msgID 0-1
| | msgDate 1-1
| | @dateForm [Optional]
| | refDoc 0-9 (P)
| | @docType [Required]
| | | docID 1-2 (p)
| | | @numberingOrg [Optional]
| | | docDate 0-1
| | | @dateForm [Optional]
| | | season 0-1 (A)
| | | @numberingOrg [Optional] (a)
| | | @codeList [Optional] (a)
| | | @listName [Optional] (a)
| | | @listVersion [Optional] (a)
| | | itemID 0-1 (U)
| | | attachment 0-1 (N)
| | | @uid [Optional]
| | | | fileName 0-1 (N)
| | | | @numberingOrg [Optional] (a)
| | | | binaryObject 0-1 (N)
| | | | @format [Optional] (N)
| | | | @mime [Optional] (N)
| | | | @encoding [Optional] (N)
| | | | @characterSet [Optional] (N)
```

```

| | | | externalReference 0-99 (N)
| | | | | uri 1-1 (N)
| | | | | @isURL [Optional] [Default= true] (Na)
| | | | | mimeTypeCode 0-1 (N)
| | | | | formatCode 0-1 (N)
| | | | | encodingCode 0-1 (N)
| | | | | characterSetCode 0-1 (N)
| | supplier 1-1 (AP)
| | @logo [Optional]
| | @sender [Optional] (a*)
| | | id 1-1
| | | | @numberingOrg [Optional]
| | | | additionalIdentifier 0-9 (N)
| | | | | @numberingOrg [Optional] (a)
| | | | | @idQualifier [Optional] (Na)
| | | | | legalName 0-1 (U)
| | | | | dept 0-1
| | | | | subDept 0-1 (N)
| | | | | person 0-1
| | | | | | @email [Optional]
| | | | | | @phone [Optional]
| | | | | | @fax [Optional]
| | | | | street 0-1
| | | | | city 0-1
| | | | | subCountry 0-1
| | | | | country 0-1
| | | | | postCode 0-1
| | buyer 0-1 (AP)
| | @logo [Optional]
| | @sender [Optional] (a*)
| | | id 1-1 (p)
| | | | @numberingOrg [Optional]
| | | | additionalIdentifier 0-9 (N)
| | | | | @numberingOrg [Optional] (a)
| | | | | @idQualifier [Optional] (Na)
| | | | | legalName 0-1 (U)
| | | | | dept 0-1
| | | | | subDept 0-1 (N)
| | | | | person 0-1
| | | | | | @email [Optional]
| | | | | | @phone [Optional]
| | | | | | @fax [Optional]
| | | | | street 0-1
| | | | | city 0-1
| | | | | subCountry 0-1
| | | | | country 0-1
| | | | | postCode 0-1
| | thirdParty 0-5 (AP)
| | @VAT [Optional]
| | @role [Required]
| | @sender [Optional] (a*)
| | | id 1-1
| | | | @numberingOrg [Optional]
| | | | | legalName 0-1 (U)
| | | | | dept 0-1
| | | | | subDept 0-1 (N)
| | | | | person 0-1
| | | | | | @email [Optional]
| | | | | | @phone [Optional]
| | | | | | @fax [Optional]
| | | | | street 0-1

```

- | | | city 0-1
- | | | subCountry 0-1
- | | | country 0-1
- | | | postCode 0-1
- | | note 0-99
- | | @numberingOrg [Optional]
- | | @codeList [Optional]
- | | @noteLabel [Optional]

## GSObody 1-1

### GSOitem 1-unbounded (AP)

@currency [Optional] (a)

| lineN 1-1

| @VAT [Optional]

| lineID 0-1 (N)

### refDoc 0-9 (P)

| @docType [Required]

| | docID 1-2 (p)

| | @numberingOrg [Optional]

| | docDate 0-1

| | @dateForm [Optional]

| | season 0-1 (A)

| | @numberingOrg [Optional] (a)

| | @codeList [Optional] (a)

| | @listName [Optional] (a)

| | @listVersion [Optional] (a)

| | itemID 0-1 (U)

### attachment 0-1 (N)

| | @uid [Optional]

| | | fileName 0-1 (N)

| | | @numberingOrg [Optional]

| | | binaryObject 0-1 (N)

| | | @format [Optional] (N)

| | | @mime [Optional] (N)

| | | @encoding [Optional] (N)

| | | @characterSet [Optional] (N)

### externalReference 0-99 (N)

| | | uri 1-1 (N)

| | | @isURL [Optional] [Default= true] (Na)

| | | mimeTypeCode 0-1 (N)

| | | formatCode 0-1 (N)

| | | encodingCode 0-1 (N)

| | | characterSetCode 0-1 (N)

### garmentCategory 1-1 (P)

| @numberingOrg [Optional]

| | artGroup 0-1 (p)

| | @numberingOrg [Optional]

| | @codeList [Optional]

| | @listName [Optional]

| | @listVersion [Optional]

| | artSubGroup 0-1 (p)

| | @numberingOrg [Optional]

| | @codeList [Optional]

| | @listName [Optional]

| | @listVersion [Optional]

| | artSex 0-1 (p)

| | @numberingOrg [Optional]

| | @codeList [Optional]

| | @listName [Optional]

| | @listVersion [Optional]

| | season 0-1 (A)

| | | @numberingOrg [Optional]  
 | | | @codeList [Optional]  
 | | | @listName [Optional]  
 | | | @listVersion [Optional]  
 | | | **goodsClassification 0-9** (N)  
 | | | | macroClass 0-1 (N)  
 | | | | | @numberingOrg [Optional] (a)  
 | | | | | @codeList [Optional] (a)  
 | | | | | @listName [Optional] (a)  
 | | | | | @listVersion [Optional] (a)  
 | | | | class 0-1 (N)  
 | | | | | @numberingOrg [Optional] (a)  
 | | | | | @codeList [Optional] (a)  
 | | | | | @listName [Optional] (a)  
 | | | | | @listVersion [Optional] (a)  
 | | | | subclass 0-1 (N)  
 | | | | | @numberingOrg [Optional] (a)  
 | | | | | @codeList [Optional] (a)  
 | | | | | @listName [Optional] (a)  
 | | | | | @listVersion [Optional] (a)  
 | | | note 0-99  
 | | | | @numberingOrg [Optional]  
 | | | | @codeList [Optional]  
 | | | | @noteLabel [Optional]  
 | | | tradeMark 0-1  
 | | | commerceText 0-unbounded (pA)  
 | | | | @ln [Optional] (N)  
 | | | **garmentCode 1-1**  
 | | | | @numberingOrg [Optional]  
 | | | - choose -  
 | | | | **garmentCodeB 1-1** (P)  
 | | | | | @numberingOrg [Optional]  
 | | | | | mod 1-1  
 | | | | | | @numberingOrg [Optional]  
 | | | | | | @codeList [Optional]  
 | | | | | | @listName [Optional]  
 | | | | | | @listVersion [Optional]  
 | | | | | fabric 0-1  
 | | | | | | @numberingOrg [Optional]  
 | | | | | | @codeList [Optional]  
 | | | | | | @listName [Optional]  
 | | | | | | @listVersion [Optional]  
 | | | | | color 0-1  
 | | | | | | @numberingOrg [Optional]  
 | | | | | | @codeList [Optional]  
 | | | | | | @listName [Optional]  
 | | | | | | @listVersion [Optional]  
 | | | | | **garmentVariant 0-9** (N)  
 | | | | | | variantType 1-1 (N)  
 | | | | | | | @numberingOrg [Optional] (a)  
 | | | | | | | @codeList [Optional] (a)  
 | | | | | | | @listName [Optional] (a)  
 | | | | | | | @listVersion [Optional] (a)  
 | | | | | | variantCode 1-1 (N)  
 | | | | | | | @numberingOrg [Optional] (a)  
 | | | | | | | @codeList [Optional] (a)  
 | | | | | | | @listName [Optional] (a)  
 | | | | | | | @listVersion [Optional] (a)  
 | | | | | drop 0-1 (A)  
 | | | | | | @numberingOrg [Optional] (a)  
 | | | | | | @codeList [Optional]

```

| | | | @listName [Optional] (a)
| | | | @listVersion [Optional] (a)
| | | | size 0-1 (A)
| | | | @numberingOrg [Optional] (a)
| | | | @codeList [Optional]
| | | | @listName [Optional] (a)
| | | | @listVersion [Optional] (a)
| | | | artGroup 0-1
| | | | @numberingOrg [Optional]
| | | | @codeList [Optional]
| | | | @listName [Optional]
| | | | @listVersion [Optional]
| | | | added 0-9
| | | | @numberingOrg [Optional]
| | | | @addType [Optional]
| | | | description 0-unbounded (AU)
| | | | @ln [Optional] (N)
- or -
| | | | garmentCodeA 1-1 (P)
| | | | | art 1-1 (U)
| | | | | @numberingOrg [Optional]
| | | | | @codeList [Optional]
| | | | | @listName [Optional]
| | | | | @listVersion [Optional]
| | | | | description 0-unbounded (AU)
| | | | | @ln [Optional] (N)
- end choose -
| | | | qty 1-1
| | | | | @um [Required]
| | | | | readyToSendDate 0-1 (N)
| | | | | @dateForm [Optional] (a)
| | | | | price 1-1 (AU)
| | | | | @um [Optional]
| | | | | @priceQualifier [Optional] [Default= NET]
| | | | | @currency [Optional] (a)
| | | | | csRange 1-99 (P)
| | | | | @numberingOrg [Optional]
| | | | | @sizeSystemNat [Optional]
| | | | | @sizeSystemSeg [Optional]
| | | | | @sizeSystemBase [Optional]
| | | | | @sizeSystemID [Optional]
| | | | | | color 0-1
| | | | | | @numberingOrg [Optional]
| | | | | | @codeList [Optional]
| | | | | | @listName [Optional]
| | | | | | @listVersion [Optional]
| | | | | | garmentVariant 0-9 (N)
| | | | | | | variantType 1-1 (N)
| | | | | | | @numberingOrg [Optional] (a)
| | | | | | | @codeList [Optional] (a)
| | | | | | | @listName [Optional] (a)
| | | | | | | @listVersion [Optional] (a)
| | | | | | | variantCode 1-1 (N)
| | | | | | | @numberingOrg [Optional] (a)
| | | | | | | @codeList [Optional] (a)
| | | | | | | @listName [Optional] (a)
| | | | | | | @listVersion [Optional] (a)
| | | | | drop 0-1 (Ap)
| | | | | @numberingOrg [Optional] (a)
| | | | | @codeList [Optional]
| | | | | @listName [Optional] (a)

```

```

| | | | @listVersion [Optional] (a)
| | | | sizeMatrix 1-1
| | | | | sizeRow 1-99 (P)
| | | | | | additionalComponentCode 0-9 (N)
| | | | | | @numberingOrg [Optional] (a)
| | | | | | @codeList [Optional] (a)
| | | | | | @listName [Optional] (a)
| | | | | | @listVersion [Optional] (a)
| | | | | | drop 0-1 (A)
| | | | | | @numberingOrg [Optional] (a)
| | | | | | @codeList [Optional]
| | | | | | @listName [Optional] (a)
| | | | | | @listVersion [Optional] (a)
| | | | | | size 1-1 (A)
| | | | | | @numberingOrg [Optional] (a)
| | | | | | @codeList [Optional]
| | | | | | @listName [Optional] (a)
| | | | | | @listVersion [Optional] (a)
| | | | | | qty 0-1
| | | | | | @um [Required]
| | | | | | itemsList 0-1 (N)
| | | | | | | qualityLevel 0-1 (N)
| | | | | | | @numberingOrg [Optional] (a)
| | | | | | | @codeList [Optional] (a)
| | | | | | | @listName [Optional] (a)
| | | | | | | @listVersion [Optional] (a)
| | | | | | | itemIdentification 1-unbounded (N)
| | | | | | | serialN 1-9 (AU)
| | | | | | | @numberingOrg [Optional]
| | | | | | | @idQualifier [Optional] (N)
| | | | stockAddress 1-1
| | | | | @numberingOrg [Optional]
| | | | | | city 1-1
| | | | | | subCountry 1-1
| | | | | | country 1-1
| | | | dtScheme 0-1 (P)
| | | | | @taxType [Required]
| | | | | | taxCategory 0-1
| | | | | | taxRate 0-1
| | | | | | legalRef 0-1 (A)
| | | | | | @numberingOrg [Optional] (a)
| | | | | | @codeList [Optional] (a)
| | | | | | @listName [Optional] (a)
| | | | | | @listVersion [Optional] (a)
| | | | | | note 0-99
| | | | | | @numberingOrg [Optional]
| | | | | | @codeList [Optional]
| | | | | | @noteLabel [Optional]
| | | | note 0-99
| | | | | @numberingOrg [Optional]
| | | | | @codeList [Optional]
| | | | | @noteLabel [Optional]

```



## 2.2 Detailed description of document elements

Following tables show all elements (complex and simple) used in this document. Description includes: 1) element's information: xml tag, name, brief description, data type and syntax constraints; 2) information about use of the element in a particular position in the document: xpath and possible associated notes.

### 2.2.1 Complex elements (Aggregate Business Information Entities)

Complex elements are those elements whose content is composed of other elements (childs). Complex elements are alphabetically ordered.

<b>attachment</b>	an attached document. An attachment can refer to an external document or be included with the document being exchanged (XPath GARStockOffer/GSObody/GSOitem/refDoc/attachment) 0-1 (N) (XPath GARStockOffer/GSOheader/refDoc/attachment) 0-1 (N)
<b>buyer</b>	details of the Buyer (party that buys the good or service that is object of the current collaborative process) - base type: Nad, (XPath GARStockOffer/GSOheader/buyer) 0-1 (AP)
<b>csRange</b>	range of color-size for a fashion article (XPath GARStockOffer/GSObody/GSOitem/csRange) 1-99 (P)
<b>dtScheme</b>	set of data usable to declare the duty or tax applied (XPath GARStockOffer/GSObody/GSOitem/dtScheme) 0-1 (P) - note: <i>recommended alternative to the attribute @VAT</i>
<b>externalReference</b>	details about an external object, such as a document stored at a remote location (XPath GARStockOffer/GSObody/GSOitem/refDoc/attachment/externalReference) 0-99 (N) (XPath GARStockOffer/GSOheader/refDoc/attachment/externalReference) 0-99 (N)
<b>garmentCategory</b>	classification of a garment article (XPath GARStockOffer/GSObody/GSOitem/garmentCategory) 1-1 (P)
<b>garmentCode</b>	codification of the garment product (XPath GARStockOffer/GSObody/GSOitem/garmentCode) 1-1
<b>garmentCodeA</b>	codification of the garment product- type A (XPath GARStockOffer/GSObody/GSOitem/garmentCode/garmentCodeA) 1-1 (P) - note: <i>here the barcode EAN-13 or EAN-8 should be specified</i>
<b>garmentCodeB</b>	codification of the garment product - type B (XPath GARStockOffer/GSObody/GSOitem/garmentCode/garmentCodeB) 1-1 (P)
<b>garmentVariant</b>	garment product variant (XPath GARStockOffer/GSObody/GSOitem/garmentCode/garmentCodeB/garmentVariant) 0-9 (N) (XPath GARStockOffer/GSObody/GSOitem/csRange/garmentVariant) 0-9 (N) - note: <i>used only if not already specified in the article code</i>
<b>goodsClassification</b>	goods classification of the item. (XPath GARStockOffer/GSObody/GSOitem/garmentCategory/goodsClassification) 0-9 (N)
<b>GSObody</b>	body of the document GARMENT STOCK OFFER (XPath GARStockOffer/GSObody) 1-1
<b>GSOheader</b>	Header of a document for on-line FASHION STOCK management (XPath GARStockOffer/GSOheader) 1-1 (P)
<b>GSOitem</b>	line item of the document GARMENT STOCK OFFER

	(XPath GARStockOffer/GSObody/GSOitem) 1-unbounded (AP)
<b>itemIdentification</b>	serial identification of a product unit (XPath GARStockOffer/GSObody/GSOitem/csRange/sizeMatrix/sizeRow/itemsList/itemIdentification) 1-unbounded (N) - note: <i>identification of the single product unit contained in the list</i>
<b>itemsList</b>	list of the single product units (XPath GARStockOffer/GSObody/GSOitem/csRange/sizeMatrix/sizeRow/itemsList) 0-1 (N) - note: <i>the usage in this position is alternative to its usage within the document line element</i>
<b>refDoc</b>	identification of a document and of an item thereof, to which the message makes reference (XPath GARStockOffer/GSOheader/refDoc) 0-9 (P) (XPath GARStockOffer/GSObody/GSOitem/refDoc) 0-9 (P)
<b>sizeMatrix</b>	size matrix of an apparel product (XPath GARStockOffer/GSObody/GSOitem/csRange/sizeMatrix) 1-1
<b>sizeRow</b>	size matrix row of an apparel product (XPath GARStockOffer/GSObody/GSOitem/csRange/sizeMatrix/sizeRow) 1-99 (P)
<b>stockAddress</b>	physical location of a stock (XPath GARStockOffer/GSObody/GSOitem/stockAddress) 1-1
<b>supplier</b>	details of the Supplier (party that supplies the good or service that is object of the current collaborative process) - base type: Nad, (XPath GARStockOffer/GSOheader/supplier) 1-1 (AP)
<b>thirdParty</b>	details of the Third Party, different from Sender and Receiver of the document - base type: Nad, (XPath GARStockOffer/GSOheader/thirdParty) 0-5 (AP) - note: <i>might be the ePlatform manager</i>

## 2.2.2 Simple elements (Basic Business Information Entities)

Simple elements are those elements whose content is characterized by a data type plus a domain of possible values. Simple elements are alphabetically ordered.

<b>added</b>	additional code of the product (complementing the formers) - base type: string, max length: 80, (XPath GARStockOffer/GSObody/GSOitem/garmentCode/garmentCodeB/added) 0-9
<b>additionalComponentCode</b>	an additional code to identify a fashion product or a part of it (it is a way to codify the item, but it is not one of the codes to identify it). It is not a serial identifier. - base type: string, (XPath GARStockOffer/GSObody/GSOitem/csRange/sizeMatrix/sizeRow/additionalComponentCode) 0-9 (N)
<b>additionalIdentifier</b>	additional identification code of a Party, for example customs registries or others - base type: string, max length: 15, (XPath GARStockOffer/GSOheader/supplier/additionalIdentifier) 0-9 (N) - note: <i>identifiers for example for exports, such as MID (Manufacturer Identification Code), EORI (E.O.R.I. - Economic Operator Registration and Identification)</i> (XPath GARStockOffer/GSOheader/buyer/additionalIdentifier) 0-9 (N)

	- note: <i>identifiers for example for exports, such as MID (Manufacturer Identification Code), EORI (E.O.R.I. - Economic Operator Registration and Identification)</i>
@addType	qualifier of the additional coding of a product - base type: string, cod. table: T44 <a href="http://www.ebiz.enea.it/moda-ml/repository/codelist/v2018-1/gc_T44.xml">http://www.ebiz.enea.it/moda-ml/repository/codelist/v2018-1/gc_T44.xml</a> (XPath GARStockOffer/GSObody/GSOitem/garmentCode/garmentCodeB/added/@addType) [Optional] - nota: <i>addType allows the clarification of the meaning of the added element content; it is strongly suggested to use it always.</i>
art	article number of the product - base type: string, max length: 80, (XPath GARStockOffer/GSObody/GSOitem/garmentCode/garmentCodeA/art) 1-1 (U)
artGroup	code identifying a class of products - base type: string, max length: 40, (XPath GARStockOffer/GSObody/GSOitem/garmentCode/garmentCodeB/artGroup) 0-1 (XPath GARStockOffer/GSObody/GSOitem/garmentCategory/artGroup) 0-1 (p)
artSex	code identifying the sex for which a fashion product is intended - base type: string, max length: 15, (XPath GARStockOffer/GSObody/GSOitem/garmentCategory/artSex) 0-1 (p)
artSubGroup	code identifying a sub-class of products - base type: string, max length: 40, (XPath GARStockOffer/GSObody/GSOitem/garmentCategory/artSubGroup) 0-1 (p)
binaryObject	a binary large object containing an attached document, Coding 'base64Binary' is recommended. - base type: base64Binary, (XPath GARStockOffer/GSOheader/refDoc/attachment/binaryObject) 0-1 (N) (XPath GARStockOffer/GSObody/GSOitem/refDoc/attachment/binaryObject) 0-1 (N)
@characterSet	the character set of the binary object (examples UTF-8, UTF-16, Windows-1252, ISO-8859-7,..) - base type: normalizedString, (XPath GARStockOffer/GSObody/GSOitem/refDoc/attachment/binaryObject/@characterSet) [Optional] (N) (XPath GARStockOffer/GSOheader/refDoc/attachment/binaryObject/@characterSet) [Optional] (N)
characterSetCode	the character set of an external document (examples UTF-8, UTF-16, Windows-1252, ISO-8859-7,..) - base type: normalizedString, (XPath GARStockOffer/GSObody/GSOitem/refDoc/attachment/externalReference/characterSetCode) 0-1 (N) (XPath GARStockOffer/GSOheader/refDoc/attachment/externalReference/characterSetCode) 0-1 (N)
city	name of the city (town, village) - base type: string, max length: 40, (XPath GARStockOffer/GSObody/GSOitem/stockAddress/city) 1-1 (XPath GARStockOffer/GSOheader/supplier/city) 0-1 (XPath GARStockOffer/GSOheader/thirdParty/city) 0-1 (XPath GARStockOffer/GSOheader/buyer/city) 0-1
class	a code indicating the category (macro-class, class or sub-class) of a commodity classification system the article belongs to. - base type: string, (XPath GARStockOffer/GSObody/GSOitem/garmentCategory/goodsClassification/class) 0-1 (N)

<p>@codeList</p>	<p>it specifies the URL where the list of codes used to make an instance of the element can be found</p> <ul style="list-style-type: none"> <li>- base type: string, max length: 255, (XPath GARStockOffer/GSObody/GSOitem/garmentCode/garmentCodeB/mod/@codeList) [Optional]</li> <li>- nota: <i>at least one out of this attribute and "numberingOrg" should be set</i> (XPath GARStockOffer/GSObody/GSOitem/garmentCategory/note/@codeList) [Optional]</li> <li>- nota: <i>must be used to provide (URL) the list of codes used in "noteLabel"</i> (XPath GARStockOffer/GSObody/GSOitem/garmentCategory/goodsClassification/subClass/@codeList) [Optional] (a)</li> <li>- nota: <i>at least one out of this attribute and "numberingOrg" should be set</i> (XPath GARStockOffer/GSObody/GSOitem/garmentCode/garmentCodeB/fabric/@codeList) [Optional]</li> <li>- nota: <i>at least one out of this attribute and "numberingOrg" should be set</i> (XPath GARStockOffer/GSObody/GSOitem/garmentCode/garmentCodeB/garmentVariant/variantCode/@codeList) [Optional] (a)</li> <li>- nota: <i>at least one out of this attribute and "numberingOrg" should be set</i> (XPath GARStockOffer/GSObody/GSOitem/garmentCode/garmentCodeB/garmentVariant/variantType/@codeList) [Optional] (a)</li> <li>- nota: <i>always at least one out of this attribute and "numberingOrg" should be set</i> (XPath GARStockOffer/GSObody/GSOitem/garmentCode/garmentCodeB/color/@codeList) [Optional]</li> <li>- nota: <i>this attribute should be used either single or coupled with "listName" and "listVersion"</i> (XPath GARStockOffer/GSObody/GSOitem/garmentCategory/goodsClassification/class/@codeList) [Optional] (a)</li> <li>- nota: <i>at least one out of this attribute and "numberingOrg" should be set</i> (XPath GARStockOffer/GSObody/GSOitem/garmentCategory/artGroup/@codeList) [Optional]</li> <li>- nota: <i>at least one out of this attribute and "numberingOrg" should be set</i> (XPath GARStockOffer/GSObody/GSOitem/refDoc/season/@codeList) [Optional] (a)</li> <li>- nota: <i>this attribute should be used either single or coupled with "listName" and "listVersion"</i> (XPath GARStockOffer/GSOheader/note/@codeList) [Optional]</li> <li>- nota: <i>must be used to provide (URL) the list of codes used in "noteLabel"</i> (XPath GARStockOffer/GSObody/GSOitem/garmentCategory/artSubGroup/@codeList) [Optional]</li> <li>- nota: <i>at least one out of this attribute and "numberingOrg" should be set</i> (XPath GARStockOffer/GSObody/GSOitem/garmentCategory/goodsClassification/macroClass/@codeList) [Optional] (a)</li> <li>- nota: <i>at least one out of this attribute and "numberingOrg" should be set</i> (XPath GARStockOffer/GSObody/GSOitem/garmentCategory/season/@codeList) [Optional]</li> <li>- nota: <i>this attribute should be used either single or coupled with "listName" and "listVersion"</i> (XPath GARStockOffer/GSObody/GSOitem/garmentCategory/artSex/@codeList) [Optional]</li> <li>- nota: <i>at least one out of this attribute and "numberingOrg" should be set</i> (XPath GARStockOffer/GSObody/GSOitem/garmentCode/garmentCodeB/drop/@codeList) [Optional]</li> <li>(XPath GARStockOffer/GSObody/GSOitem/csRange/sizeMatrix/sizeRow/size/@codeList) [Optional]</li> <li>(XPath GARStockOffer/GSObody/GSOitem/csRange/sizeMatrix/sizeRow/drop/@codeList) [Optional]</li> <li>(XPath GARStockOffer/GSObody/GSOitem/csRange/sizeMatrix/sizeRow/additionalComponentCode/@codeList) [Optional] (a)</li> <li>- nota: <i>at least one out of this attribute and "numberingOrg" should be set</i> (XPath GARStockOffer/GSObody/GSOitem/csRange/sizeMatrix/sizeRow/itemsList/qualityLevel/@codeList) [Optional] (a)</li> <li>- nota: <i>at least one out of this attribute and "numberingOrg" should be set</i> (XPath GARStockOffer/GSObody/GSOitem/note/@codeList) [Optional]</li> <li>- nota: <i>must be used to provide (URL) the list of codes used in "noteLabel"</i> (XPath GARStockOffer/GSObody/GSOitem/dtScheme/note/@codeList) [Optional]</li> </ul>
------------------	--

	<p>- nota: <i>must be used to provide (URL) the list of codes used in "noteLabel"</i>  (XPath GARStockOffer/GSObody/GSOitem/dtScheme/legalRef/@codeList) [Optional] (a)  (XPath GARStockOffer/GSObody/GSOitem/csRange/drop/@codeList) [Optional]  (XPath GARStockOffer/GSObody/GSOitem/garmentCode/garmentCodeB/artGroup/@codeList) [Optional]</p> <p>- nota: <i>at least one out of this attribute and "numberingOrg" should be set</i>  (XPath GARStockOffer/GSOheader/refDoc/season/@codeList) [Optional] (a)</p> <p>- nota: <i>this attribute should be used either single or coupled with "listName" and "listVersion"</i>  (XPath GARStockOffer/GSObody/GSOitem/garmentCode/garmentCodeB/size/@codeList) [Optional]  (XPath GARStockOffer/GSObody/GSOitem/garmentCode/garmentCodeA/art/@codeList) [Optional]</p> <p>- nota: <i>at least one out of this attribute and "numberingOrg" should be set</i>  (XPath GARStockOffer/GSObody/GSOitem/csRange/garmentVariant/variantCode/@codeList) [Optional] (a)</p> <p>- nota: <i>at least one out of this attribute and "numberingOrg" should be set</i>  (XPath GARStockOffer/GSObody/GSOitem/csRange/garmentVariant/variantType/@codeList) [Optional] (a)</p> <p>- nota: <i>always at least one out of this attribute and "numberingOrg" should be set</i>  (XPath GARStockOffer/GSObody/GSOitem/csRange/color/@codeList) [Optional]</p> <p>- nota: <i>this attribute should be used either single or coupled with "listName" and "listVersion"</i></p>
color	<p>colour number of the product, when not included in the model or fabric code</p> <p>- base type: string, max length: 15,  (XPath GARStockOffer/GSObody/GSOitem/garmentCode/garmentCodeB/color) 0-1  (XPath GARStockOffer/GSObody/GSOitem/csRange/color) 0-1</p> <p>- note: <i>used only if not already specified in the article code</i></p>
commerceText	<p>text usable for the full commercial description of a product</p> <p>- base type: string, max length: 400,  (XPath GARStockOffer/GSObody/GSOitem/commerceText) 0-unbounded (pA)</p> <p>- note: <i>Only one instance of this element for each different value of 'ln' attribute (language)</i></p>
country	<p>code of the nation</p> <p>- base type: string, cod. table: T10  <a href="http://www.ebiz.enea.it/moda-ml/repository/codelist/v2018-1/gc_T10.xml">http://www.ebiz.enea.it/moda-ml/repository/codelist/v2018-1/gc_T10.xml</a>  (XPath GARStockOffer/GSOheader/supplier/country) 0-1  (XPath GARStockOffer/GSOheader/thirdParty/country) 0-1  (XPath GARStockOffer/GSOheader/buyer/country) 0-1  (XPath GARStockOffer/GSObody/GSOitem/stockAddress/country) 1-1</p>
@currency	<p>currency in which a specified monetary data is expressed</p> <p>- base type: string, cod. table: T9  <a href="http://www.ebiz.enea.it/moda-ml/repository/codelist/v2018-1/gc_T9.xml">http://www.ebiz.enea.it/moda-ml/repository/codelist/v2018-1/gc_T9.xml</a>  (XPath GARStockOffer/GSObody/GSOitem/price/@currency) [Optional] (a)</p> <p>- nota: <i>Currency referred by the price.</i>  (XPath GARStockOffer/GSObody/GSOitem/@currency) [Optional] (a)</p> <p>- nota: <i>this is the currency of the offer price of the specified stock. DEPREC ATED: when possible refer currency to the whole document (msgCurrency), otherwise use the currency attribute of the price element of the line</i></p>
@dateForm	<p>format used for the date</p> <p>- base type: string, cod. table: NT29  <a href="http://www.ebiz.enea.it/moda-ml/repository/codelist/v2018-1/gc_NT29.xml">http://www.ebiz.enea.it/moda-ml/repository/codelist/v2018-1/gc_NT29.xml</a>  (XPath GARStockOffer/GSObody/GSOitem/readyToSendDate/@dateForm) [Optional] (a)  (XPath GARStockOffer/GSObody/GSOitem/refDoc/docDate/@dateForm) [Optional]  (XPath GARStockOffer/GSOheader/msgDate/@dateForm) [Optional]</p>

	(XPath GARStockOffer/GSOheader/refDoc/docDate/@dateForm) [Optional]
dept	name or code of a contact department within a Party - base type: string, max length: 40, (XPath GARStockOffer/GSOheader/supplier/dept) 0-1 (XPath GARStockOffer/GSOheader/buyer/dept) 0-1 (XPath GARStockOffer/GSOheader/thirdParty/dept) 0-1
description	free text description. The content of the element must be unique, it might be translated and repeated into more languages (thus no more than one instance for each language). - base type: string, max length: 250, (XPath GARStockOffer/GSObody/GSOitem/garmentCode/garmentCodeA/description) 0-unbounded (AU) - note: <i>Product description</i> (XPath GARStockOffer/GSObody/GSOitem/garmentCode/garmentCodeB/description) 0-unbounded (AU) - note: <i>Product description</i>
docDate	date of issue of the referenced document, according to one of the patterns YYYY-MM-DD, YYYY-MM-DD:HH-MM or YYYY-WW. - base type: string, (XPath GARStockOffer/GSObody/GSOitem/refDoc/docDate) 0-1 (XPath GARStockOffer/GSOheader/refDoc/docDate) 0-1
docID	identification number of the referenced document SINCE 2008-1 ITS USE IN THE HEADER IS DISCOURAGED (REPLACED BY msgID) - base type: string, max length: 80, (XPath GARStockOffer/GSOheader/refDoc/docID) 1-2 (p) <hr/> <b>AAAA-WARNING! - text not AVAILABLE n. 245 - In=en</b> (XPath GARStockOffer/GSObody/GSOitem/refDoc/docID) 1-2 (p) <hr/> <b>AAAA-WARNING! - text not AVAILABLE n. 245 - In=en</b>
@docType	type or class to which the referenced document belongs - base type: string, cod. table: T21 <a href="http://www.ebiz.enea.it/moda-ml/repository/codelist/v2018-1/gc_T21.xml">http://www.ebiz.enea.it/moda-ml/repository/codelist/v2018-1/gc_T21.xml</a> (XPath GARStockOffer/GSObody/GSOitem/refDoc/@docType) [Required] (XPath GARStockOffer/GSOheader/refDoc/@docType) [Required]
drop	drop number of the garment - base type: string, max length: 15, (XPath GARStockOffer/GSObody/GSOitem/csRange/sizeMatrix/sizeRow/drop) 0-1 (A) - note: <i>DEPRECATED, anyhow it is used only if not already specified in the article code or csRange</i> (XPath GARStockOffer/GSObody/GSOitem/garmentCode/garmentCodeB/drop) 0-1 (A) - note: <i>Fill this element if the drop is the same for all the sizes of the model. Otherway specify it within the csRange element</i> (XPath GARStockOffer/GSObody/GSOitem/csRange/drop) 0-1 (Ap) - note: <i>used only if not already specified in the article code</i>
@email	electronic mail address of the contact person within a Party - base type: string, max length: 250, (XPath GARStockOffer/GSOheader/buyer/person/@email) [Optional] (XPath GARStockOffer/GSOheader/supplier/person/@email) [Optional] (XPath GARStockOffer/GSOheader/thirdParty/person/@email) [Optional]
@encoding	specifies the decoding algorithm of the binary object - base type: normalizedString, (XPath GARStockOffer/GSOheader/refDoc/attachment/binaryObject/@encoding) [Optional] (N) (XPath GARStockOffer/GSObody/GSOitem/refDoc/attachment/binaryObject/@encoding) [Optional] (N)



encodingCode	<p>the encoding/decoding algorithm used with the external object (example is 'base64Binary')</p> <p>- base type: normalizedString,  (XPath GARStockOffer/GSObody/GSOitem/refDoc/attachment/externalReference/encodingCode) 0-1 (N)  (XPath GARStockOffer/GSOheader/refDoc/attachment/externalReference/encodingCode) 0-1 (N)</p>
fabric	<p>fabric number of the garment</p> <p>- base type: string, max length: 15,  (XPath GARStockOffer/GSObody/GSOitem/garmentCode/garmentCodeB/fabric) 0-1</p>
@fax	<p>fax number of the contact person within a Party</p> <p>- base type: string, max length: 35,  (XPath GARStockOffer/GSOheader/buyer/person/@fax) [Optional]  (XPath GARStockOffer/GSOheader/thirdParty/person/@fax) [Optional]  (XPath GARStockOffer/GSOheader/supplier/person/@fax) [Optional]</p>
fileName	<p>unique identifier (name) of the file</p> <p>- base type: string, max length: 255,  (XPath GARStockOffer/GSOheader/refDoc/attachment/fileName) 0-1 (N)  (XPath GARStockOffer/GSObody/GSOitem/refDoc/attachment/fileName) 0-1 (N)</p>
@format	<p>the format of the binary content (examples xml, pdf, doc,...)</p> <p>- base type: string,  (XPath GARStockOffer/GSObody/GSOitem/refDoc/attachment/binaryObject/@format) [Optional] (N)  (XPath GARStockOffer/GSOheader/refDoc/attachment/binaryObject/@format) [Optional] (N)</p>
formatCode	<p>the format of the external object (examples xml, pdf, doc,...)</p> <p>- base type: normalizedString,  (XPath GARStockOffer/GSObody/GSOitem/refDoc/attachment/externalReference/formatCode) 0-1 (N)  (XPath GARStockOffer/GSOheader/refDoc/attachment/externalReference/formatCode) 0-1 (N)</p>
id	<p>primary identification code of a Party; it is recommended the format: nation code (ISO 3166) + VAT identification number (11 crt), with the qualifier "numberingOrg"= MF</p> <p>- base type: string, max length: 15,  (XPath GARStockOffer/GSOheader/supplier/id) 1-1  (XPath GARStockOffer/GSOheader/buyer/id) 1-1 (p)  (XPath GARStockOffer/GSOheader/thirdParty/id) 1-1</p>
@idQualifier	<p>Qualification of the identifier.</p> <p>- base type: string,  (XPath GARStockOffer/GSOheader/supplier/additionalIdentifier/@idQualifier) [Optional] (Na)  - nota: <i>this attribute should be used when the numberingOrg attribute is not enough to declare the type of identifier</i>  (XPath GARStockOffer/GSOheader/buyer/additionalIdentifier/@idQualifier) [Optional] (Na)  - nota: <i>this attribute should be used when the numberingOrg attribute is not enough to declare the type of identifier</i>  (XPath GARStockOffer/GSObody/GSOitem/csRange/sizeMatrix/sizeRow/itemsList/itemIdentification/serialN/@idQualifier) [Optional] (N)  - nota: <i>this attribute should be used when the numberingOrg attribute is not enough to declare the type of serial identifier</i></p>
@isURL	<p>it indicates if the referred element is an URL (true) or not (false)</p> <p>- base type: boolean,  (XPath GARStockOffer/GSOheader/refDoc/attachment/externalReference/uri/@isURL) [Optional] [Default= true] (Na)</p>

	<p>- nota: <i>usage of URLs is recommended</i>  (XPath GARStockOffer/GSObody/GSOitem/refDoc/attachment/externalReference/uri/@isURL) [Optional] [Default= true] (Na)</p> <p>- nota: <i>usage of URLs is recommended</i></p>
itemID	<p>number of the line/item of the referenced document</p> <p>- base type: string, max length: 40,  (XPath GARStockOffer/GSObody/GSOitem/refDoc/itemID) 0-1 (U)  (XPath GARStockOffer/GSOheader/refDoc/itemID) 0-1 (U)</p>
legalName	<p>legal name of a Party</p> <p>- base type: string, max length: 250,  (XPath GARStockOffer/GSOheader/supplier/legalName) 0-1 (U)  (XPath GARStockOffer/GSOheader/buyer/legalName) 0-1 (U)  (XPath GARStockOffer/GSOheader/thirdParty/legalName) 0-1 (U)</p>
legalRef	<p>legal reference of the duty or tax or fee category</p> <p>- base type: string,  (XPath GARStockOffer/GSObody/GSOitem/dtScheme/legalRef) 0-1 (A)</p>
lineID	<p>unique identifier of the line item of the business document; it is set by the role that produces the document.</p> <p>- base type: string, max length: 30,  (XPath GARStockOffer/GSObody/GSOitem/lineID) 0-1 (N)</p>
lineN	<p>number of the line item of the present message (xml document); it is set by the role that produces the document. Usually it is a progressive number, but not always.</p> <p>- base type: positiveInteger, min inclusive: 1, max inclusive: 9999,  (XPath GARStockOffer/GSObody/GSOitem/lineN) 1-1</p>
@listName	<p>the name of the list of codes used to make an instance of the element (it might be thought as descriptive element, i.e. 'fabric printing technologies', or not, i.e. "T264")</p> <p>- base type: string, max length: 40,  (XPath GARStockOffer/GSObody/GSOitem/garmentCategory/goodsClassification/class/@listName) [Optional] (a)</p> <p>- nota: <i>this attribute should always be used coupled with "numberingOrg"</i>  (XPath GARStockOffer/GSObody/GSOitem/garmentCodeB/garmentVariant/variantType/@listName) [Optional] (a)</p> <p>- nota: <i>this attribute should always be used coupled with "numberingOrg"</i>  (XPath GARStockOffer/GSObody/GSOitem/garmentCodeB/garmentCodeB/color/@listName) [Optional]</p> <p>- nota: <i>this attribute should always be used coupled with "numberingOrg"</i>  (XPath GARStockOffer/GSOheader/refDoc/season/@listName) [Optional] (a)</p> <p>- nota: <i>this attribute should always be used coupled with "numberingOrg"</i>  (XPath GARStockOffer/GSObody/GSOitem/garmentCategory/goodsClassification/macroClass/@listName) [Optional] (a)</p> <p>- nota: <i>this attribute should always be used coupled with "numberingOrg"</i>  (XPath GARStockOffer/GSObody/GSOitem/csRange/garmentVariant/variantCode/@listName) [Optional] (a)</p> <p>- nota: <i>this attribute should always be used coupled with "numberingOrg"</i>  (XPath GARStockOffer/GSObody/GSOitem/csRange/drop/@listName) [Optional] (a)</p> <p>- nota: <i>this attribute should always be used coupled with "numberingOrg"</i>  (XPath GARStockOffer/GSObody/GSOitem/garmentCodeB/garmentVariant/variantCode/@listName) [Optional] (a)</p> <p>- nota: <i>this attribute should always be used coupled with "numberingOrg"</i>  (XPath GARStockOffer/GSObody/GSOitem/csRange/sizeMatrix/sizeRow/drop/@listName) [Optional] (a)</p> <p>- nota: <i>this attribute should always be used coupled with "numberingOrg"</i>  (XPath GARStockOffer/GSObody/GSOitem/garmentCodeB/garmentCodeB/fabric/@listName) [Optional]</p> <p>- nota: <i>this attribute should always be used coupled with "numberingOrg"</i>  (XPath GARStockOffer/GSObody/GSOitem/csRange/sizeMatrix/sizeRow/size/@listName) [Optional] (a)</p>



	<ul style="list-style-type: none"> <li>- nota: <i>this attribute should always be used coupled with “numberingOrg”</i> (XPath GARStockOffer/GSObody/GSOitem/garmentCode/ garmentCodeB/mod/@listName) [Optional]</li> <li>- nota: <i>this attribute should always be used coupled with “numberingOrg”</i> (XPath GARStockOffer/GSObody/GSOitem/csRange/sizeMatrix/ sizeRow/additionalComponentCode/@listName) [Optional] (a)</li> <li>- nota: <i>this attribute should always be used coupled with “numberingOrg”</i> (XPath GARStockOffer/GSObody/GSOitem/garmentCategory/ goodsClassification/subClass/@listName) [Optional] (a)</li> <li>- nota: <i>this attribute should always be used coupled with “numberingOrg”</i> (XPath GARStockOffer/GSObody/GSOitem/refDoc/season/@listName) [Optional] (a)</li> <li>- nota: <i>this attribute should always be used coupled with “numberingOrg”</i> (XPath GARStockOffer/GSObody/GSOitem/csRange/sizeMatrix/ sizeRow/itemsList/qualityLevel/@listName) [Optional] (a)</li> <li>- nota: <i>this attribute should always be used coupled with “numberingOrg”</i> (XPath GARStockOffer/GSObody/GSOitem/garmentCode/ garmentCodeB/drop/@listName) [Optional] (a)</li> <li>- nota: <i>this attribute should always be used coupled with “numberingOrg”</i> (XPath GARStockOffer/GSObody/GSOitem/csRange/color/@listName) [Optional]</li> <li>- nota: <i>this attribute should always be used coupled with “numberingOrg”</i> (XPath GARStockOffer/GSObody/GSOitem/garmentCode/ garmentCodeB/size/@listName) [Optional] (a)</li> <li>- nota: <i>this attribute should always be used coupled with “numberingOrg”</i> (XPath GARStockOffer/GSObody/GSOitem/csRange/garmentVariant/variantType/@ listName) [Optional] (a)</li> <li>- nota: <i>this attribute should always be used coupled with “numberingOrg”</i> (XPath GARStockOffer/GSObody/GSOitem/garmentCategory/ artSex/@listName) [Optional]</li> <li>- nota: <i>this attribute should always be used coupled with “numberingOrg”</i> (XPath GARStockOffer/GSObody/GSOitem/garmentCode/ garmentCodeB/artGroup/@listName) [Optional]</li> <li>- nota: <i>this attribute should always be used coupled with “numberingOrg”</i> (XPath GARStockOffer/GSObody/GSOitem/garmentCategory/ artGroup/@listName) [Optional]</li> <li>- nota: <i>this attribute should always be used coupled with “numberingOrg”</i> (XPath GARStockOffer/GSObody/GSOitem/garmentCategory/ artSubGroup/@listName) [Optional]</li> <li>- nota: <i>this attribute should always be used coupled with “numberingOrg”</i> (XPath GARStockOffer/GSObody/GSOitem/garmentCategory/ season/@listName) [Optional]</li> <li>- nota: <i>this attribute should always be used coupled with “numberingOrg”</i> (XPath GARStockOffer/GSObody/GSOitem/dtScheme/legalRef/@listName) [Optional] (a)</li> <li>- nota: <i>this attribute should always be used coupled with “numberingOrg”</i> (XPath GARStockOffer/GSObody/GSOitem/garmentCode/ garmentCodeA/art/@listName) [Optional]</li> <li>- nota: <i>this attribute should always be used coupled with “numberingOrg”</i></li> </ul>
<p>@listVersion</p>	<p>it specifies the version of the list of codes used to make an instance of the element</p> <ul style="list-style-type: none"> <li>- base type: string, max length: 6, (XPath GARStockOffer/GSObody/GSOitem/garmentCode/ garmentCodeA/art/@listVersion) [Optional]</li> <li>- nota: <i>this attribute should always be used coupled with “numberingOrg” and “listName”</i> (XPath GARStockOffer/GSObody/GSOitem/csRange/sizeMatrix/ sizeRow/drop/@listVersion) [Optional] (a)</li> <li>- nota: <i>this attribute should always be used coupled with “numberingOrg” and “listName”</i> (XPath GARStockOffer/GSObody/GSOitem/garmentCode/ garmentCodeB/fabric/@listVersion) [Optional]</li> <li>- nota: <i>this attribute should always be used coupled with “numberingOrg” and “listName”</i></li> </ul>

	<p>(XPath GARStockOffer/GSObody/GSOitem/refDoc/season/@listVersion) [Optional] (a)</p> <p>- nota: <i>this attribute should always be used coupled with “numberingOrg” and “listName”</i></p> <p>(XPath GARStockOffer/GSObody/GSOitem/garmentCode/garmentCodeB/mod/@listVersion) [Optional]</p> <p>- nota: <i>this attribute should always be used coupled with “numberingOrg” and “listName”</i></p> <p>(XPath GARStockOffer/GSObody/GSOitem/garmentCode/garmentCodeB/artGroup/@listVersion) [Optional]</p> <p>- nota: <i>this attribute should always be used coupled with “numberingOrg” and “listName”</i></p> <p>(XPath GARStockOffer/GSObody/GSOitem/csRange/garmentVariant/variantType/@listVersion) [Optional] (a)</p> <p>- nota: <i>this attribute should always be used coupled with “numberingOrg” and “listName”</i></p> <p>(XPath GARStockOffer/GSObody/GSOitem/garmentCode/garmentCodeB/garmentVariant/variantType/@listVersion) [Optional] (a)</p> <p>- nota: <i>this attribute should always be used coupled with “numberingOrg” and “listName”</i></p> <p>(XPath GARStockOffer/GSObody/GSOitem/garmentCode/garmentCodeB/garmentVariant/variantCode/@listVersion) [Optional] (a)</p> <p>- nota: <i>this attribute should always be used coupled with “numberingOrg” and “listName”</i></p> <p>(XPath GARStockOffer/GSObody/GSOitem/garmentCode/garmentCodeB/drop/@listVersion) [Optional] (a)</p> <p>- nota: <i>this attribute should always be used coupled with “numberingOrg” and “listName”</i></p> <p>(XPath GARStockOffer/GSObody/GSOitem/csRange/garmentVariant/variantCode/@listVersion) [Optional] (a)</p> <p>- nota: <i>this attribute should always be used coupled with “numberingOrg” and “listName”</i></p> <p>(XPath GARStockOffer/GSObody/GSOitem/csRange/color/@listVersion) [Optional]</p> <p>- nota: <i>this attribute should always be used coupled with “numberingOrg” and “listName”</i></p> <p>(XPath GARStockOffer/GSObody/GSOitem/csRange/sizeMatrix/sizeRow/additionalComponentCode/@listVersion) [Optional] (a)</p> <p>- nota: <i>this attribute should always be used coupled with “numberingOrg” and “listName”</i></p> <p>(XPath GARStockOffer/GSObody/GSOitem/garmentCode/garmentCodeB/size/@listVersion) [Optional] (a)</p> <p>- nota: <i>this attribute should always be used coupled with “numberingOrg” and “listName”</i></p> <p>(XPath GARStockOffer/GSObody/GSOitem/csRange/drop/@listVersion) [Optional] (a)</p> <p>- nota: <i>this attribute should always be used coupled with “numberingOrg” and “listName”</i></p> <p>(XPath GARStockOffer/GSObody/GSOitem/garmentCode/garmentCodeB/color/@listVersion) [Optional]</p> <p>- nota: <i>this attribute should always be used coupled with “numberingOrg” and “listName”</i></p> <p>(XPath GARStockOffer/GSObody/GSOitem/garmentCategory/season/@listVersion) [Optional]</p> <p>- nota: <i>this attribute should always be used coupled with “numberingOrg” and “listName”</i></p> <p>(XPath GARStockOffer/GSObody/GSOitem/dtScheme/legalRef/@listVersion) [Optional] (a)</p> <p>- nota: <i>this attribute should always be used coupled with “numberingOrg” and “listName”</i></p> <p>(XPath GARStockOffer/GSObody/GSOitem/garmentCategory/artSex/@listVersion) [Optional]</p>
--	---

	<p>- nota: <i>this attribute should always be used coupled with “numberingOrg” and “listName”</i>  (XPath GARStockOffer/GSObody/GSOitem/garmentCategory/goodsClassification/subClass/@listVersion) [Optional] (a)</p> <p>- nota: <i>this attribute should always be used coupled with “numberingOrg” and “listName”</i>  (XPath GARStockOffer/GSObody/GSOitem/garmentCategory/goodsClassification/class/@listVersion) [Optional] (a)</p> <p>- nota: <i>this attribute should always be used coupled with “numberingOrg” and “listName”</i>  (XPath GARStockOffer/GSObody/GSOitem/garmentCategory/goodsClassification/macroClass/@listVersion) [Optional] (a)</p> <p>- nota: <i>this attribute should always be used coupled with “numberingOrg” and “listName”</i>  (XPath GARStockOffer/GSObody/GSOitem/csRange/sizeMatrix/sizeRow/itemsList/qualityLevel/@listVersion) [Optional] (a)</p> <p>- nota: <i>this attribute should always be used coupled with “numberingOrg” and “listName”</i>  (XPath GARStockOffer/GSObody/GSOitem/garmentCategory/artSubGroup/@listVersion) [Optional]</p> <p>- nota: <i>this attribute should always be used coupled with “numberingOrg” and “listName”</i>  (XPath GARStockOffer/GSObody/GSOitem/csRange/sizeMatrix/sizeRow/size/@listVersion) [Optional] (a)</p> <p>- nota: <i>this attribute should always be used coupled with “numberingOrg” and “listName”</i>  (XPath GARStockOffer/GSOheader/refDoc/season/@listVersion) [Optional] (a)</p> <p>- nota: <i>this attribute should always be used coupled with “numberingOrg” and “listName”</i>  (XPath GARStockOffer/GSObody/GSOitem/garmentCategory/artGroup/@listVersion) [Optional]</p> <p>- nota: <i>this attribute should always be used coupled with “numberingOrg” and “listName”</i></p>
@ln	<p>Language code.  - base type: string, cod. table: NT60  <a href="http://www.ebiz.enea.it/moda-ml/repository/codelist/v2018-1/gc_NT60.xml">http://www.ebiz.enea.it/moda-ml/repository/codelist/v2018-1/gc_NT60.xml</a>  (XPath GARStockOffer/GSObody/GSOitem/garmentCode/garmentCodeA/description/@ln) [Optional] (N)  (XPath GARStockOffer/GSObody/GSOitem/commerceText/@ln) [Optional] (N)  (XPath GARStockOffer/GSObody/GSOitem/garmentCode/garmentCodeB/description/@ln) [Optional] (N)</p>
@logo	<p>company logo (URL of the image jpeg or gif). It is recommended that the width of the image does not exceed 640 pixel.  - base type: string, max length: 255,  (XPath GARStockOffer/GSOheader/buyer/@logo) [Optional]  (XPath GARStockOffer/GSOheader/supplier/@logo) [Optional]</p>
macroClass	<p>a code indicating the category (macro-class, class or sub-class) of a commodity classification system the article belongs to.  - base type: string,  (XPath GARStockOffer/GSObody/GSOitem/garmentCategory/goodsClassification/macroClass) 0-1 (N)</p>
@mime	<p>the mime type of the binary object  - base type: normalizedString,  (XPath GARStockOffer/GSOheader/refDoc/attachment/binaryObject/@mime) [Optional] (N)  (XPath GARStockOffer/GSObody/GSOitem/refDoc/attachment/binaryObject/@mime) [Optional] (N)</p>
mimeCode	<p>mime type of the external object  - base type: normalizedString,  (XPath GARStockOffer/GSObody/GSOitem/refDoc/attachment/externalReference/mimeCode) 0-1 (N)</p>

	<p>AAAA-WARNING! - text not AVAILABLE n. 245 - In=en  (XPath GARStockOffer/GSOheader/refDoc/attachment/  externalReference/mimeCode) 0-1 (N)</p> <hr/> <p>AAAA-WARNING! - text not AVAILABLE n. 245 - In=en</p>
mod	<p>model number of the garment  - base type: string, max length: 15,  (XPath GARStockOffer/GSObody/GSOitem/garmentCode/  garmentCodeB/mod) 1-1</p>
msgDate	<p>date of issue of the present message (xml document), according to one of the patterns YYYY-MM-DD, YYYY-MM-DD:HH-MM or YYYY-WW.  - base type: string,  (XPath GARStockOffer/GSOheader/msgDate) 1-1</p>
@msgfunction	<p>function performed by the present message with regards to the transmission  - base type: string, cod. table: NT18  <a href="http://www.ebiz.enea.it/moda-ml/repository/codelist/v2018-1/gc_NT18.xml">http://www.ebiz.enea.it/moda-ml/repository/codelist/v2018-1/gc_NT18.xml</a>  (XPath GARStockOffer/@msgfunction) [Optional] [Default= OR]</p>
msgID	<p>key identifier of the business document in the information system of the issuing Party. In case of more despatches of the same business document, it is unchanged.  - base type: string, max length: 35,  (XPath GARStockOffer/GSOheader/msgID) 0-1</p>
msgN	<p>identification number given to the message (xml document) by its issuer. In case of more despatches of the same business document, it changes.  - base type: string, max length: 35,  (XPath GARStockOffer/GSOheader/msgN) 1-1</p>
note	<p>free text or structured (computer processing) note. For note structuring use the attributes "noteLabel" and "codelist"  - base type: string, max length: 350,  (XPath GARStockOffer/GSObody/GSOitem/garmentCategory/note) 0-99  (XPath GARStockOffer/GSOheader/note) 0-99  (XPath GARStockOffer/GSObody/GSOitem/note) 0-99  (XPath GARStockOffer/GSObody/GSOitem/dtScheme/note) 0-99</p>
@noteLabel	<p>subject qualifier of a note  - base type: string, max length: 35,  (XPath GARStockOffer/GSObody/GSOitem/garmentCategory/note/@noteLabel) [Optional]  - nota: <i>must be used to qualify the subject of the note</i>  (XPath GARStockOffer/GSObody/GSOitem/dtScheme/note/@noteLabel) [Optional]  - nota: <i>must be used to qualify the subject of the note</i>  (XPath GARStockOffer/GSObody/GSOitem/note/@noteLabel) [Optional]  - nota: <i>must be used to qualify the subject of the note</i>  (XPath GARStockOffer/GSOheader/note/@noteLabel) [Optional]  - nota: <i>must be used to qualify the subject of the note</i></p>
@numberingOrg	<p>code specifying the organisation who has created or owns the coding or numbering system  - base type: string, cod. table: NT6  <a href="http://www.ebiz.enea.it/moda-ml/repository/codelist/v2018-1/gc_NT6.xml">http://www.ebiz.enea.it/moda-ml/repository/codelist/v2018-1/gc_NT6.xml</a>  (XPath GARStockOffer/GSObody/GSOitem/stockAddress/@numberingOrg) [Optional]  - nota: <i>to be use when city and sub-country are specified with a proprietary code</i>  (XPath GARStockOffer/GSObody/GSOitem/csRange/color/@numberingOrg) [Optional]  - nota: <i>this attribute should be used either single or coupled with "listName" and "listVersion"</i>  (XPath GARStockOffer/GSObody/GSOitem/csRange/drop/@numberingOrg) [Optional] (a)</p>

- nota: *this attribute should be used either single or coupled with "listName" and "listVersion"*  
 (XPath GARStockOffer/GSObody/GSOitem/csRange/@numberingOrg) [Optional]  
 (XPath GARStockOffer/GSObody/GSOitem/csRange/sizeMatrix/sizeRow/size/@numberingOrg) [Optional] (a)

- nota: *this attribute should be used either single or coupled with "listName" and "listVersion"*  
 (XPath GARStockOffer/GSOheader/thirdParty/id/@numberingOrg) [Optional]  
 (XPath GARStockOffer/GSOheader/refDoc/docID/@numberingOrg) [Optional]  
 - nota: *here can be specified whose document numbering is used (e.g.: Client, Supplier, ..)*  
 (XPath GARStockOffer/GSOheader/note/@numberingOrg) [Optional]

- nota: *must be used to specify the organization that created the list of codes used in "noteLabel"*  
 (XPath GARStockOffer/GSObody/GSOitem/csRange/sizeMatrix/sizeRow/itemsList/qualityLevel/@numberingOrg) [Optional] (a)

- nota: *this attribute should be used either single or coupled with "listName" and "listVersion"*  
 (XPath GARStockOffer/GSObody/GSOitem/garmentCategory/artGroup/@numberingOrg) [Optional]

- nota: *this attribute should be used either single or coupled with "listName" and "listVersion"*  
 (XPath GARStockOffer/GSObody/GSOitem/csRange/sizeMatrix/sizeRow/additionalComponentCode/@numberingOrg) [Optional] (a)

- nota: *this attribute should be used either single or coupled with "listName" and "listVersion"*  
 (XPath GARStockOffer/GSObody/GSOitem/csRange/sizeMatrix/sizeRow/itemsList/itemIdentification/serialN/@numberingOrg) [Optional]  
 - nota: *here the issuer of the serial number must be specified (when different from the Supplier)*  
 (XPath GARStockOffer/GSObody/GSOitem/dtScheme/legalRef/@numberingOrg) [Optional] (a)

- nota: *this attribute should be used either single or coupled with "listName" and "listVersion"*  
 (XPath GARStockOffer/GSObody/GSOitem/csRange/garmentVariant/variantCode/@numberingOrg) [Optional] (a)

- nota: *this attribute should be used either single or coupled with "listName" and "listVersion"*  
 (XPath GARStockOffer/GSOheader/supplier/id/@numberingOrg) [Optional]  
 (XPath GARStockOffer/GSObody/GSOitem/note/@numberingOrg) [Optional]

- nota: *must be used to specify the organization that created the list of codes used in "noteLabel"*  
 (XPath GARStockOffer/GSObody/GSOitem/csRange/sizeMatrix/sizeRow/drop/@numberingOrg) [Optional] (a)

- nota: *this attribute should be used either single or coupled with "listName" and "listVersion"*  
 (XPath GARStockOffer/GSObody/GSOitem/csRange/garmentVariant/variantType/@numberingOrg) [Optional] (a)

- nota: *this attribute should be used either single or coupled with "listName" and "listVersion"*  
 (XPath GARStockOffer/GSObody/GSOitem/dtScheme/note/@numberingOrg) [Optional]

- nota: *must be used to specify the organization that created the list of codes used in "noteLabel"*  
 (XPath GARStockOffer/GSObody/GSOitem/garmentCode/garmentCodeB/garmentVariant/variantCode/@numberingOrg) [Optional] (a)

- nota: *this attribute should be used either single or coupled with "listName" and "listVersion"*  
 (XPath GARStockOffer/GSObody/GSOitem/refDoc/docID/@numberingOrg) [Optional]

- nota: *here can be specified whose document numbering is used (e.g.: Client, Supplier, ..)*



(XPath GARStockOffer/GSObody/GSOitem/refDoc/season/@numberingOrg) [Optional] (a)  
- nota: *this attribute should be used either single or coupled with "listName" and "listVersion"*

(XPath GARStockOffer/GSOheader/supplier/additionalIdentifier/@numberingOrg) [Optional] (a)  
- nota: *here the issuer of the identifier must be specified*

(XPath GARStockOffer/GSObody/GSOitem/garmentCode/garmentCodeB/garmentVariant/variantType/@numberingOrg) [Optional] (a)  
- nota: *this attribute should be used either single or coupled with "listName" and "listVersion"*

(XPath GARStockOffer/GSObody/GSOitem/garmentCode/garmentCodeB/size/@numberingOrg) [Optional] (a)  
- nota: *this attribute should be used either single or coupled with "listName" and "listVersion"*

(XPath GARStockOffer/GSOheader/buyer/id/@numberingOrg) [Optional]  
(XPath GARStockOffer/GSObody/GSOitem/garmentCategory/artSex/@numberingOrg) [Optional]  
- nota: *this attribute should be used either single or coupled with "listName" and "listVersion"*

(XPath GARStockOffer/GSObody/GSOitem/garmentCode/garmentCodeB/drop/@numberingOrg) [Optional] (a)  
- nota: *this attribute should be used either single or coupled with "listName" and "listVersion"*

(XPath GARStockOffer/GSOheader/buyer/additionalIdentifier/@numberingOrg) [Optional] (a)  
- nota: *here the issuer of the identifier must be specified*

(XPath GARStockOffer/GSObody/GSOitem/garmentCode/garmentCodeB/color/@numberingOrg) [Optional]  
- nota: *this attribute should be used either single or coupled with "listName" and "listVersion"*

(XPath GARStockOffer/GSObody/GSOitem/refDoc/attachment/fileName/@numberingOrg) [Optional]  
(XPath GARStockOffer/GSObody/GSOitem/garmentCode/@numberingOrg) [Optional]  
(XPath GARStockOffer/GSObody/GSOitem/garmentCategory/note/@numberingOrg) [Optional]  
- nota: *must be used to specify the organization that created the list of codes used in "noteLabel"*

(XPath GARStockOffer/GSObody/GSOitem/garmentCategory/goodsClassification/class/@numberingOrg) [Optional] (a)  
- nota: *this attribute should be used either single or coupled with "listName" and "listVersion"*

(XPath GARStockOffer/GSObody/GSOitem/garmentCategory/goodsClassification/subClass/@numberingOrg) [Optional] (a)  
- nota: *this attribute should be used either single or coupled with "listName" and "listVersion"*

(XPath GARStockOffer/GSObody/GSOitem/garmentCategory/goodsClassification/macroClass/@numberingOrg) [Optional] (a)  
- nota: *this attribute should be used either single or coupled with "listName" and "listVersion"*

(XPath GARStockOffer/GSObody/GSOitem/garmentCategory/season/@numberingOrg) [Optional]  
- nota: *this attribute should be used either single or coupled with "listName" and "listVersion"*

(XPath GARStockOffer/GSObody/GSOitem/garmentCode/garmentCodeB/fabric/@numberingOrg) [Optional]  
- nota: *this attribute should be used either single or coupled with "listName" and "listVersion"*

(XPath GARStockOffer/GSObody/GSOitem/garmentCode/garmentCodeB/@numberingOrg) [Optional]  
(XPath GARStockOffer/GSObody/GSOitem/garmentCode/garmentCodeB/mod/@numberingOrg) [Optional]

	<p>(XPath GARStockOffer/GSObody/GSOitem/garmentCode/garmentCodeB/added/@numberingOrg) [Optional]</p> <p>- nota: <i>this attribute should be used either single or coupled with "listName" and "listVersion"</i></p> <p>(XPath GARStockOffer/GSOheader/refDoc/season/@numberingOrg) [Optional] (a)</p> <p>- nota: <i>this attribute should be used either single or coupled with "listName" and "listVersion"</i></p> <p>(XPath GARStockOffer/GSOheader/refDoc/attachment/fileName/@numberingOrg) [Optional] (a)</p> <p>(XPath GARStockOffer/GSObody/GSOitem/garmentCategory/@numberingOrg) [Optional]</p> <p>(XPath GARStockOffer/GSObody/GSOitem/garmentCode/garmentCodeA/art/@numberingOrg) [Optional]</p> <p>- nota: <i>this attribute should be used either single or coupled with "listName" and "listVersion"</i></p> <p>(XPath GARStockOffer/GSObody/GSOitem/garmentCategory/artSubGroup/@numberingOrg) [Optional]</p> <p>- nota: <i>this attribute should be used either single or coupled with "listName" and "listVersion"</i></p> <p>(XPath GARStockOffer/GSObody/GSOitem/garmentCode/garmentCodeB/artGroup/@numberingOrg) [Optional]</p> <p>- nota: <i>this attribute should be used either single or coupled with "listName" and "listVersion"</i></p>
person	<p>name of the contact person within a Party</p> <p>- base type: string, max length: 40,</p> <p>(XPath GARStockOffer/GSOheader/buyer/person) 0-1</p> <p>(XPath GARStockOffer/GSOheader/thirdParty/person) 0-1</p> <p>(XPath GARStockOffer/GSOheader/supplier/person) 0-1</p>
@phone	<p>phone number of the contact person within a Party</p> <p>- base type: string, max length: 35,</p> <p>(XPath GARStockOffer/GSOheader/supplier/person/@phone) [Optional]</p> <p>(XPath GARStockOffer/GSOheader/thirdParty/person/@phone) [Optional]</p> <p>(XPath GARStockOffer/GSOheader/buyer/person/@phone) [Optional]</p>
postCode	<p>code defining the postal zone</p> <p>- base type: string, max length: 10,</p> <p>(XPath GARStockOffer/GSOheader/thirdParty/postCode) 0-1</p> <p>(XPath GARStockOffer/GSOheader/buyer/postCode) 0-1</p> <p>(XPath GARStockOffer/GSOheader/supplier/postCode) 0-1</p>
price	<p>unit price of the article, object or service specified</p> <p>- base type: decimal, min inclusive: 0, fraction digits: 4,</p> <p>(XPath GARStockOffer/GSObody/GSOitem/price) 1-1 (AU)</p>
@priceQualifier	<p>type of price with reference to discount and taxes</p> <p>- base type: string, cod. table: NT20</p> <p><a href="http://www.ebiz.enea.it/moda-ml/repository/codelist/v2018-1/gc_NT20.xml">http://www.ebiz.enea.it/moda-ml/repository/codelist/v2018-1/gc_NT20.xml</a></p> <p>(XPath GARStockOffer/GSObody/GSOitem/price/@priceQualifier) [Optional] [Default= NET]</p>
qty	<p>net quantity of the article or object correlated, qualified by the function of the document (ordering, delivering, ..) and by the context</p> <p>- base type: decimal, min inclusive: 0, fraction digits: 2,</p> <p>(XPath GARStockOffer/GSObody/GSOitem/csRange/sizeMatrix/sizeRow/qty) 0-1</p> <p>(XPath GARStockOffer/GSObody/GSOitem/qty) 1-1</p>
qualityLevel	<p>the product quality level (first choice, second choice,...).</p> <p>- base type: string,</p> <p>(XPath GARStockOffer/GSObody/GSOitem/csRange/sizeMatrix/sizeRow/itemsList/qualityLevel) 0-1 (N)</p>
readyToSendDate	<p>date of goods ready to despatch, according to one of the patterns YYYY-MM-DD, YYYY-MM-DD:HH-MM or YYYY-WW.</p> <p>- base type: string,</p>

	(XPath GARStockOffer/GSObody/GSOitem/readyToSendDate) 0-1 (N)
@role	Third Party role qualifier - base type: string, cod. table: NT2 <a href="http://www.ebiz.enea.it/moda-ml/repository/codelist/v2018-1/gc_NT2.xml">http://www.ebiz.enea.it/moda-ml/repository/codelist/v2018-1/gc_NT2.xml</a> (XPath GARStockOffer/GSOheader/thirdParty/@role) [Required]
season	sale season; defined as: season (1 crt) + year (4 crt) - season: S/S=1 A/W=2 Spring=3 Summer=4 Autumn=5 Winter=6: for more than four seasons use alphabetic sequence: 1st season=A 2nd season=B etc.etc. - base type: string, max length: 15, (XPath GARStockOffer/GSOheader/refDoc/season) 0-1 (A) - note: here indicates the season to which the referenced document belongs (XPath GARStockOffer/GSObody/GSOitem/refDoc/season) 0-1 (A) - note: here indicates the season to which the referenced document belongs (XPath GARStockOffer/GSObody/GSOitem/garmentCategory/season) 0-1 (A)
@sender	qualifier that specifies the Party issuing of the document - base type: boolean, (XPath GARStockOffer/GSOheader/buyer/@sender) [Optional] (a*) - nota: This attribute is mandatory when the STYLESHEET must be used (XPath GARStockOffer/GSOheader/thirdParty/@sender) [Optional] (a*) - nota: This attribute is mandatory when the STYLESHEET must be used (XPath GARStockOffer/GSOheader/supplier/@sender) [Optional] (a*) - nota: This attribute is mandatory when the STYLESHEET must be used
serialN	serial number used for the identification of a physical unit - base type: string, max length: 250, (XPath GARStockOffer/GSObody/GSOitem/csRange/sizeMatrix/sizeRow/itemsList/itemIdentification/serialN) 1-9 (AU)
	<b>AAAA-WARNING! - text not AVAILABLE n. 245 - In=en</b> - note: multiple values of serialN are allowed for different representations of the serial identifier of the same product unit. Instances of serialN must differ at least for one value of numberingOrg and idQualifier.
size	size number of a fashion product (knitwear, clothing, ..) - base type: string, max length: 15, (XPath GARStockOffer/GSObody/GSOitem/csRange/sizeMatrix/sizeRow/size) 1-1 (A) (XPath GARStockOffer/GSObody/GSOitem/garmentCode/garmentCodeB/size) 0-1 (A)
@sizeSystemBase	base of the size system - base type: string, cod. table: T423 <a href="http://www.ebiz.enea.it/moda-ml/repository/codelist/v2018-1/gc_T423.xml">http://www.ebiz.enea.it/moda-ml/repository/codelist/v2018-1/gc_T423.xml</a> (XPath GARStockOffer/GSObody/GSOitem/csRange/@sizeSystemBase) [Optional]
@sizeSystemID	the identifier of the size system. - base type: string, (XPath GARStockOffer/GSObody/GSOitem/csRange/@sizeSystemID) [Optional]
@sizeSystemNat	nation or agency identifying the size system - base type: string, cod. table: T421 <a href="http://www.ebiz.enea.it/moda-ml/repository/codelist/v2018-1/gc_T421.xml">http://www.ebiz.enea.it/moda-ml/repository/codelist/v2018-1/gc_T421.xml</a> (XPath GARStockOffer/GSObody/GSOitem/csRange/@sizeSystemNat) [Optional]
@sizeSystemSeg	market segment identifying the size system - base type: string, cod. table: T422 <a href="http://www.ebiz.enea.it/moda-ml/repository/codelist/v2018-1/gc_T422.xml">http://www.ebiz.enea.it/moda-ml/repository/codelist/v2018-1/gc_T422.xml</a> (XPath GARStockOffer/GSObody/GSOitem/csRange/@sizeSystemSeg) [Optional]
street	street and building number identifying a location - base type: string, max length: 80, (XPath GARStockOffer/GSOheader/thirdParty/street) 0-1 (XPath GARStockOffer/GSOheader/supplier/street) 0-1 (XPath GARStockOffer/GSOheader/buyer/street) 0-1



subClass	a code indicating the category (macro-class, class or sub-class) of a commodity classification system the article belongs to. - base type: string, (XPath GARStockOffer/GSObody/GSOitem/garmentCategory/goodsClassification/subClass) 0-1 (N)
subCountry	short name or code of the sub-country entity - base type: string, max length: 9, (XPath GARStockOffer/GSOheader/thirdParty/subCountry) 0-1 (XPath GARStockOffer/GSOheader/supplier/subCountry) 0-1 (XPath GARStockOffer/GSOheader/buyer/subCountry) 0-1 (XPath GARStockOffer/GSObody/GSOitem/stockAddress/subCountry) 1-1
subDept	name or code of a contact department within a Party - base type: string, max length: 40, (XPath GARStockOffer/GSOheader/supplier/subDept) 0-1 (N) (XPath GARStockOffer/GSOheader/buyer/subDept) 0-1 (N) (XPath GARStockOffer/GSOheader/thirdParty/subDept) 0-1 (N)
taxCategory	duty or tax or fee category - base type: string, cod. table: T62 <a href="http://www.ebiz.enea.it/moda-ml/repository/codelist/v2018-1/gc_T62.xml">http://www.ebiz.enea.it/moda-ml/repository/codelist/v2018-1/gc_T62.xml</a> (XPath GARStockOffer/GSObody/GSOitem/dtScheme/taxCategory) 0-1
taxRate	duty or tax or fee percent rate - base type: string, (XPath GARStockOffer/GSObody/GSOitem/dtScheme/taxRate) 0-1
@taxType	duty or tax or fee type - base type: string, cod. table: T61 <a href="http://www.ebiz.enea.it/moda-ml/repository/codelist/v2018-1/gc_T61.xml">http://www.ebiz.enea.it/moda-ml/repository/codelist/v2018-1/gc_T61.xml</a> (XPath GARStockOffer/GSObody/GSOitem/dtScheme/@taxType) [Required]
tradeMark	name of the official trademark of a specified product (DEPRECATED, use Brand or Product Line). - base type: string, max length: 50, (XPath GARStockOffer/GSObody/GSOitem/tradeMark) 0-1
@uid	unique element identifier within the xml document - base type: string, (XPath GARStockOffer/GSOheader/refDoc/attachment/@uid) [Optional] (XPath GARStockOffer/GSObody/GSOitem/refDoc/attachment/@uid) [Optional]
@um	specification of the unit of measure - base type: string, cod. table: NT7 <a href="http://www.ebiz.enea.it/moda-ml/repository/codelist/v2018-1/gc_NT7.xml">http://www.ebiz.enea.it/moda-ml/repository/codelist/v2018-1/gc_NT7.xml</a> (XPath GARStockOffer/GSObody/GSOitem/qty/@um) [Required] (XPath GARStockOffer/GSObody/GSOitem/csRange/sizeMatrix/sizeRow/qty/@um) [Required] (XPath GARStockOffer/GSObody/GSOitem/price/@um) [Optional] - nota: <i>Unit of measure of the product to which the price is referred (price per meter)</i>
uri	Uniform Resource Identifier (URI) that identifies the external object as an Internet resource - base type: normalizedString, (XPath GARStockOffer/GSOheader/refDoc/attachment/externalReference/uri) 1-1 (N) (XPath GARStockOffer/GSObody/GSOitem/refDoc/attachment/externalReference/uri) 1-1 (N)
@useProfile	use profile to which the present document is compliant if it was agreed by the parties. It is suggested a URI with reference to the firms or the URL of the profile. - base type: string, (XPath GARStockOffer/@useProfile) [Optional]

variantCode	Code of variant used for fashion product. - base type: string, (XPath <a href="#">GARStockOffer/GSObody/GSOitem/csRange/garmentVariant/variantCode</a> ) 1 -1 (N) (XPath <a href="#">GARStockOffer/GSObody/GSOitem/garmentCode/garmentCodeB/garmentVariant/variantCode</a> ) 1-1 (N)
variantType	Type of variant used for fashion product (examples: 'treatment', 'washing type', 'size class',...) - base type: string, (XPath <a href="#">GARStockOffer/GSObody/GSOitem/garmentCode/garmentCodeB/garmentVariant/variantType</a> ) 1-1 (N) (XPath <a href="#">GARStockOffer/GSObody/GSOitem/csRange/garmentVariant/variantType</a> ) 1 -1 (N)
@VAT	VAT rate or code (DEPRECATED, use dtScheme element) - base type: string, cod. table: NT16 <a href="http://www.ebiz.enea.it/moda-ml/repository/codelist/v2018-1/gc_NT16.xml">http://www.ebiz.enea.it/moda-ml/repository/codelist/v2018-1/gc_NT16.xml</a> (XPath <a href="#">GARStockOffer/GSOheader/thirdParty/@VAT</a> ) [Optional] (XPath <a href="#">GARStockOffer/GSObody/GSOitem/lineN/@VAT</a> ) [Optional] - nota: <i>Deprecated, prefer dtScheme when available.</i>
@version	Dictionary version from which the instance has been created - base type: string, cod. table: NT100 <a href="http://www.ebiz.enea.it/moda-ml/repository/codelist/v2018-1/gc_NT100.xml">http://www.ebiz.enea.it/moda-ml/repository/codelist/v2018-1/gc_NT100.xml</a> (XPath <a href="#">GARStockOffer/@version</a> ) [Optional] [Default= 2018-1]

## 2.3 Suggested best practices

**GARStockOffer/GSOheader/refDoc/docID (identification number of the referenced document SINCE 2008-1 ITS USE IN THE HEADER IS DISCOURAGED (REPLACED BY msgID))**

numberingOrg indicates the role that produced the document identifier (it is allowed to declare two different ones -e.g. customer and supplier - with two docID with different numberingOrg

**GARStockOffer/GSObody/GSOitem/refDoc/docID (identification number of the referenced document SINCE 2008-1 ITS USE IN THE HEADER IS DISCOURAGED (REPLACED BY msgID))**

numberingOrg indicates the role that produced the document identifier (it is allowed to declare two different ones -e.g. customer and supplier - with two docID with different numberingOrg

**GARStockOffer/GSObody/GSOitem/refDoc/attachment/  
externalReference/mimeType (mime type of the external object)**

Use coding from IANA <http://www.iana.org/assignments/media-types/media-types.xml>

**GARStockOffer/GSOheader/refDoc/attachment/  
externalReference/mimeType (mime type of the external object)**

Use coding from IANA <http://www.iana.org/assignments/media-types/media-types.xml>

**GARStockOffer/GSObody/GSOitem/csRange/sizeMatrix/  
sizeRow/itemsList/itemIdentification/serialN (serial number used for the identification of a physical unit)**

in the case of garment with RFID for anti-counterfeiting, RFID EPCGlobal for logistics and NFC for the customer experience there should be three serial elements with pairs of attributes numberingOrg/idQualifier: "CL"/"RFID", "GS1"/"RFID", "CL"/"NFC".

## 2.4 Enumeration tables

List of enumeration tables used in the XML document. You can find the corresponding codes at:  
<http://www.ebiz-tcf.eu/moda-ml/imple/moda-ml-2018-1.asp?lingua=en&pag=6>

### Legenda

- N: new table
- U: updated properties

NT100 - eBIZ TCFUpstream version

NT16 - VAT rate or code

NT18 - message function

NT2 - third party qualifier

NT20 - price qualifier

NT29 - format of a date

NT6 - coding system owner/issuer

NT60 - language, codes from ISO 639-1 (subset) (N)

NT7 - unit of measure (U)

T10 - ISO3166 - Country

T21 - type of document

T421 - size system: nationality

T422 - size system: market segment

T423 - size system: base

T44 - additional code type

T61 - duty or tax or fee type

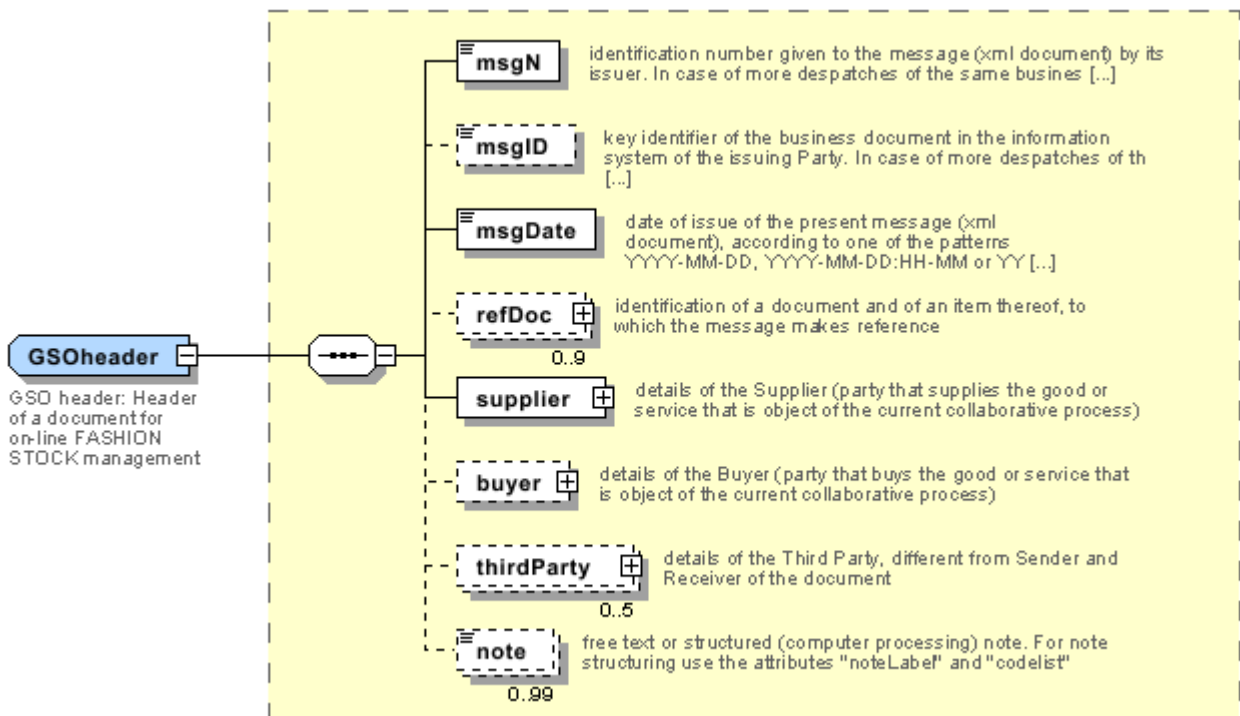
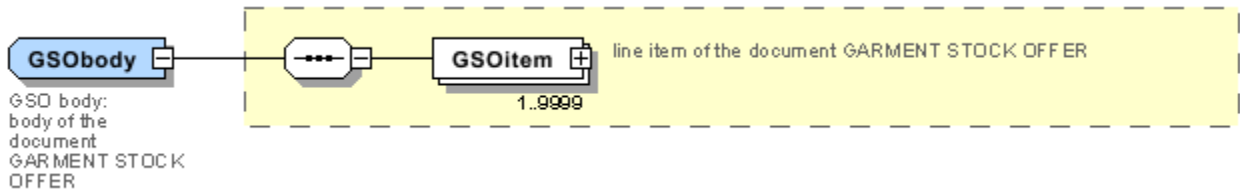
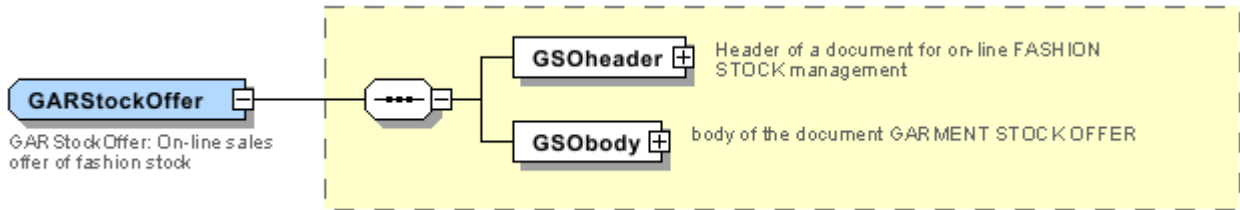
T62 - duty or tax or fee category

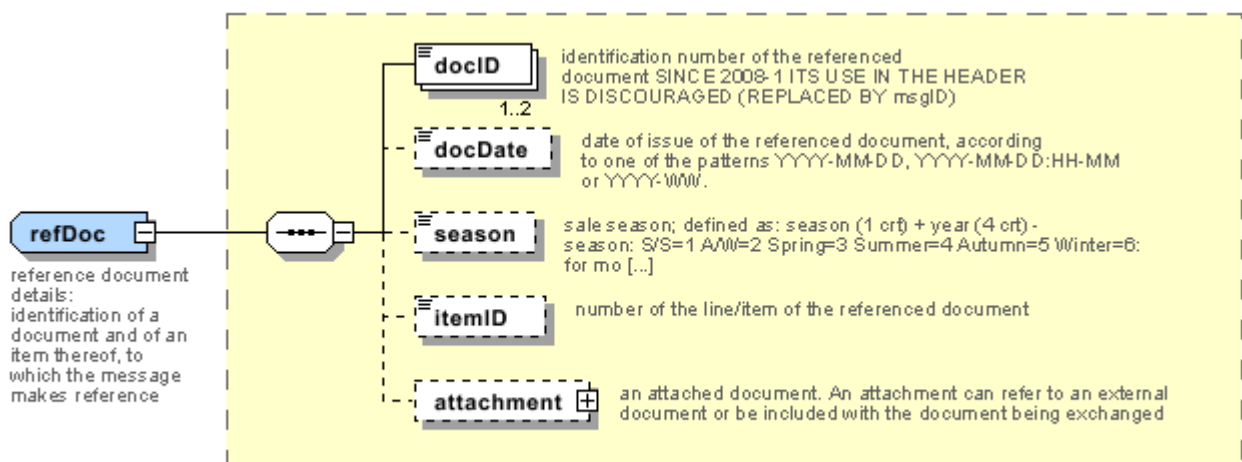
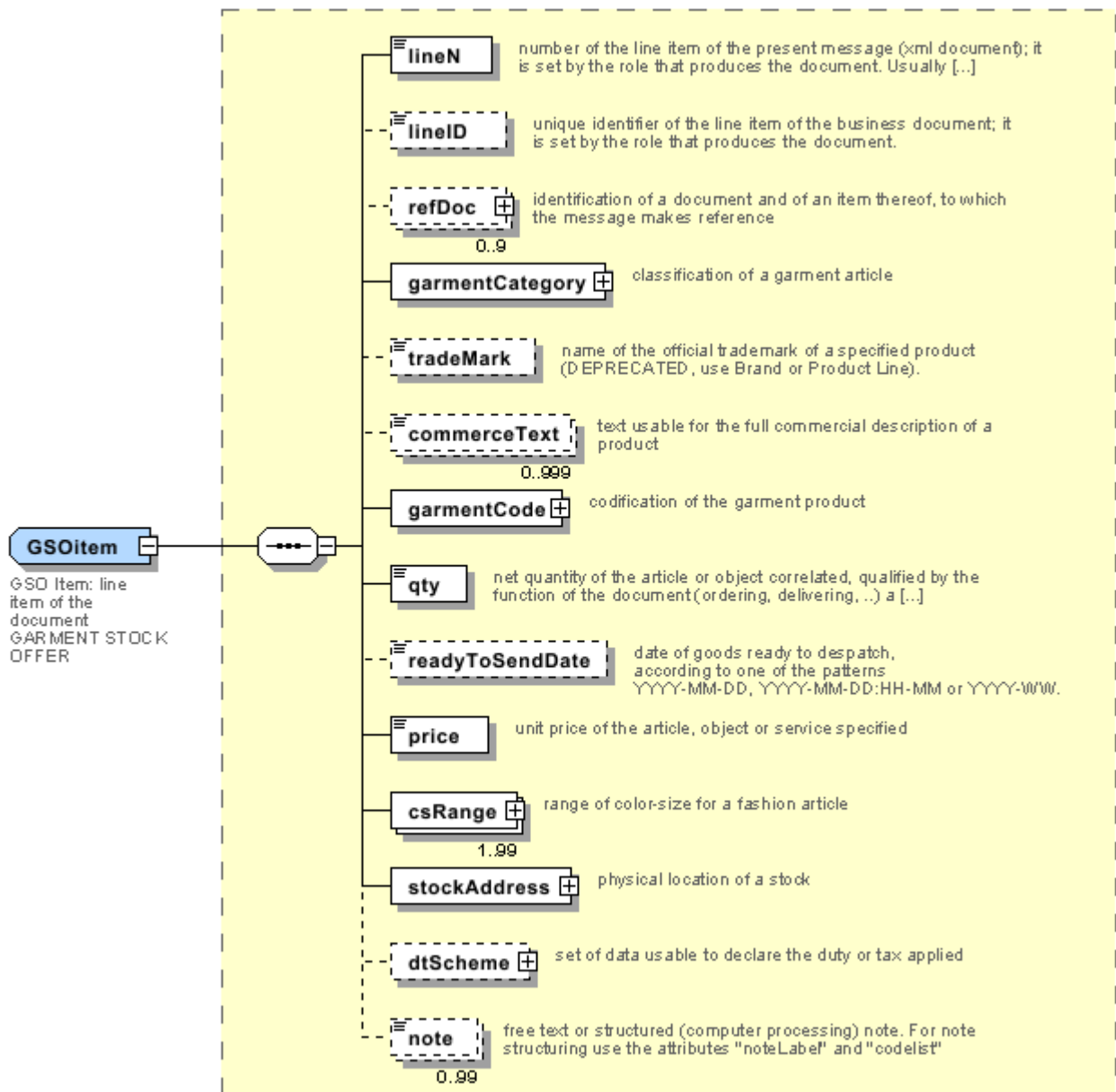
T9 - ISO4217 - Currency



# Annex A

Representative images of the principal complex elements' structure.









## Annex B

### NT100 - eBIZ TCFUpstream version

dictionary version

Agency name: eBIZ

tabella cod.: NT100

File codes list (Generic code): [http://www.ebiz.enea.it/moda-ml/repository/codelist/v2018-1/gc\\_NT100.xml](http://www.ebiz.enea.it/moda-ml/repository/codelist/v2018-1/gc_NT100.xml)

Code	Description	Adoption note	Version status	Date of insertion
2013-1	v2013-1			01/07/2013
2018-1	v2018-1		(N)	04/11/2018
draft	draft		(N)	08/09/2017

### NT16 - VAT rate or code

VAT rate or code ( DEPRECATED, use dtScheme element )

tabella cod.: NT16

File codes list (Generic code): [http://www.ebiz.enea.it/moda-ml/repository/codelist/v2018-1/gc\\_NT16.xml](http://www.ebiz.enea.it/moda-ml/repository/codelist/v2018-1/gc_NT16.xml)

### NT18 - message function

function performed by the present message with regards to the transmission

Agency name: eBIZ

tabella cod.: NT18

File codes list (Generic code): [http://www.ebiz.enea.it/moda-ml/repository/codelist/v2018-1/gc\\_NT18.xml](http://www.ebiz.enea.it/moda-ml/repository/codelist/v2018-1/gc_NT18.xml)

Code	Description	Adoption note	Version status	Date of insertion
CA	delete this document			01/07/2013
CP	copy			
OR	original			
RC	re-transmission for data correction			
RT	re-transmission			

### NT2 - third party qualifier

Third Party role qualifier

Agency name: eBIZ

tabella cod.: NT2

File codes list (Generic code): [http://www.ebiz.enea.it/moda-ml/repository/codelist/v2018-1/gc\\_NT2.xml](http://www.ebiz.enea.it/moda-ml/repository/codelist/v2018-1/gc_NT2.xml)

Code	Description	Adoption note	Version status	Date of insertion
AG	Sales Agent			
AU	Auditor		(N)	08/04/2019
CE	Certification authority		(N)	08/04/2019
CO	Quality Controller			
DC	Response to			
DF	Invoicee			
DI	Copy to (CC)			28/10/2014
DM	Consignee			
DP	Consignment address (Delivery Party)			
IM	Importer			
OR	Originator			10/09/2014
SC	Sub contractor		(N)	10/04/2019
SM	Service/ePlatform manager		(N)	08/04/2019
SP	Forwarder			
TX	Tax Representative			

#### NT20 - price qualifier

type of price with reference to discount and taxes

Agency name: eBIZ

tabella cod.: NT20

File codes list (Generic code): [http://www.ebiz.enea.it/moda-ml/repository/codelist/v2018-1/gc\\_NT20.xml](http://www.ebiz.enea.it/moda-ml/repository/codelist/v2018-1/gc_NT20.xml)

Code	Description	Adoption note	Version status	Date of insertion
GET	gross excluding taxes			
GIT	gross including taxes			
NET	net excluding taxes			
NIT	net including taxes			

#### NT29 - format of a date

format used for the date

Agency name: eBIZ

tabella cod.: NT29

File codes list (Generic code): [http://www.ebiz.enea.it/moda-ml/repository/codelist/v2018-1/gc\\_NT29.xml](http://www.ebiz.enea.it/moda-ml/repository/codelist/v2018-1/gc_NT29.xml)

Code	Description	Adoption note	Version status	Date of insertion
D	YYYY-MM-DD			
M	YYYY-MM-DD:HH-MM			
W	YYYY-WW			

### NT6 - coding system owner/issuer

code specifying the organisation who has created or owns the coding or numbering system

Agency name: eBIZ

tabella cod.: NT6

File codes list (Generic code): [http://www.ebiz.enea.it/moda-ml/repository/codelist/v2018-1/gc\\_NT6.xml](http://www.ebiz.enea.it/moda-ml/repository/codelist/v2018-1/gc_NT6.xml)

Code	Description	Adoption note	Version status	Date of insertion
CL	Customer/buyer			
CO	Quality Controller			
EB	eBIZ	replaces 'ML'	(N)	18/03/2019
EN	GS1 ( ex-EAN International )			
ES	e-Stockflow			
FO	Supplier			
GS	GS1			01/07/2013
MF	VAT identifier		(U)	
ML	Moda-ML	DEPRECATED	(U)	
SP	Service Provider			

### NT60 - language, codes from ISO 639-1 (subset) (N)

Agency name: eBIZ / ISO

tabella cod.: NT60

File codes list (Generic code): [http://www.ebiz.enea.it/moda-ml/repository/codelist/v2018-1/gc\\_NT60.xml](http://www.ebiz.enea.it/moda-ml/repository/codelist/v2018-1/gc_NT60.xml)

Code	Description	Adoption note	Version status	Date of insertion
------	-------------	---------------	----------------	-------------------

af	Afrikaans		(N)	31/01/2019
ar	Arabic		(N)	31/01/2019
be	Belarusian		(N)	31/01/2019
bg	Bulgarian		(N)	31/01/2019
bn	Bengali		(N)	31/01/2019
bo	Tibetan		(N)	31/01/2019
bs	Bosnian		(N)	31/01/2019
ca	Catalan, Valencian		(N)	31/01/2019
cs	Czech		(N)	31/01/2019
da	Danish		(N)	31/01/2019
de	German		(N)	31/01/2019
el	Greek, Modern (1453-)		(N)	31/01/2019
en	English		(N)	31/01/2019
eo	Esperanto		(N)	31/01/2019
es	Spanish, Castilian		(N)	31/01/2019
et	Estonian		(N)	31/01/2019
eu	Basque		(N)	31/01/2019
F	Female		(N)	15/04/2019
fa	Persian		(N)	31/01/2019
fi	Finnish		(N)	31/01/2019
fr	French		(N)	31/01/2019
ga	Irish		(N)	31/01/2019
gd	Gaelic, Scottish Gaelic		(N)	31/01/2019
gn	Guarani		(N)	31/01/2019
he	Hebrew		(N)	31/01/2019
hr	Croatian		(N)	31/01/2019
ht	Haitian, Haitian Creole		(N)	31/01/2019
hu	Hungarian		(N)	31/01/2019
hy	Armenian		(N)	31/01/2019
ia	Interlingua (International Auxiliary Language Association)		(N)	31/01/2019
id	Indonesian		(N)	31/01/2019
is	Icelandic		(N)	31/01/2019
it	Italian		(N)	31/01/2019
ja	Japanese		(N)	31/01/2019
jv	Javanese		(N)	31/01/2019

ka	Georgian		(N)	31/01/2019
km	Central Khmer		(N)	31/01/2019
ko	Korean		(N)	31/01/2019
ku	Kurdish		(N)	31/01/2019
lb	Luxembourgish, Letzeburgesch		(N)	31/01/2019
lo	Lao		(N)	31/01/2019
lt	Lithuanian		(N)	31/01/2019
lv	Latvian		(N)	31/01/2019
mg	Malagasy		(N)	31/01/2019
mk	Macedonian		(N)	31/01/2019
mn	Mongolian		(N)	31/01/2019
mt	Maltese		(N)	31/01/2019
nl	Dutch, Flemish		(N)	31/01/2019
no	Norwegian		(N)	31/01/2019
pl	Polish		(N)	31/01/2019
pt	Portuguese		(N)	31/01/2019
ro	Romanian, Moldavian, Moldovan		(N)	31/01/2019
ru	Russian		(N)	31/01/2019
se	Northern Sami		(N)	31/01/2019
sk	Slovak		(N)	31/01/2019
sl	Slovenian		(N)	31/01/2019
sm	Samoan		(N)	31/01/2019
so	Somali		(N)	31/01/2019
sq	Albanian		(N)	31/01/2019
sr	Serbian		(N)	31/01/2019
sv	Swedish		(N)	31/01/2019
sw	Swahili		(N)	31/01/2019
ta	Tamil		(N)	31/01/2019
th	Thai		(N)	31/01/2019
tr	Turkish		(N)	31/01/2019
uk	Ukrainian		(N)	31/01/2019
ur	Urdu		(N)	31/01/2019
uz	Uzbek		(N)	31/01/2019
vi	Vietnamese		(N)	31/01/2019
zh	Chinese		(N)	31/01/2019

**NT7 - unit of measure (U)**

specification of the unit of measure, it is a sub set of table Unit of Measure Code - UN/ECE REC 20 delivered by United Nations Economic Commission for Europe (UN/ECE)

Agency name: eBIZ / UN/ECE

tabella cod.: NT7

File codes list (Generic code): [http://www.ebiz.enea.it/moda-ml/repository/codelist/v2018-1/gc\\_NT7.xml](http://www.ebiz.enea.it/moda-ml/repository/codelist/v2018-1/gc_NT7.xml)

Other link: <http://docs.oasis-open.org/ubl/os-UBL-2.1/cl/gc/default/UnitOfMeasureCode-2.1.gc#>

Code	Description	Adoption note	Version status	Date of insertion
CMK	square centimetre		(N)	20/12/2017
CMQ	cubic centimetre		(N)	20/12/2017
CMT	centimetre			
CNE	centiNewton			
CO2TON	ton of CO2		(N)	10/09/2014
COUPLES	couples			
DMQ	cubic decimetre			
E37	pixel		(N)	11/04/2018
GRM	gram			
HUR	hour			
INH	inch			
KGM	kilogram			
KMT	kilometer			
KWH	kilowatthours		(N)	10/09/2014
LBR	pound			
MIN	minute			
MMK	square millimetre		(N)	20/12/2017
MTK	square metre		(N)	20/12/2017
MTQ	cubic metre			
MTR	metre			
NMB	numero			
ONZ	ounce			
P1	percent			
PPM	parts per milion			
PZ	piece		(U)	

RPM	rounds per metre			
YRD	yard			

### T10 - ISO3166 - Country

code of the nation

Agency name: ISO

tabella cod.: T10

File codes list (Generic code): [http://www.ebiz.enea.it/moda-ml/repository/codelist/v2018-1/gc\\_T10.xml](http://www.ebiz.enea.it/moda-ml/repository/codelist/v2018-1/gc_T10.xml)

Table not printed: there are 239 elements, more than the maximum specified for printing: 99.

### T21 - type of document

type or class to which the referenced document belongs

Agency name: eBIZ

tabella cod.: T21

File codes list (Generic code): [http://www.ebiz.enea.it/moda-ml/repository/codelist/v2018-1/gc\\_T21.xml](http://www.ebiz.enea.it/moda-ml/repository/codelist/v2018-1/gc_T21.xml)

Code	Description	Adoption note	Version status	Date of insertion
BOR	blanket order		(N)	01/02/2018
CAT	Price catalogue - tech sheet			
CEO	Certificate of origin		(N)	13/04/2018
CER	Certificate		(N)	13/04/2018
COC	colour card			
CRN	Credit note			08/09/2017
CTO	Checking order			01/07/2013
CTR	Contract		(U)	
CXF	CxF3 file			01/07/2013
DAD	Darn order			
DDT	ddt			
DEA	Despatch advise			
DER	Despatch request			
DR	Document Request			02/12/2014
FOR	Forecast			02/12/2014
GSO	Garment stock offer			

GSX	Garment stock offer change			
INV	Invoice			
KCC	Knitting-Clothing Commission Order			02/12/2014
KCI	Garment in Work Inventory Report			02/12/2014
M2M	Made to Measure Production Order			02/12/2014
MAS	Master marker			
MCI	Visual merchandising instruction		(N)	13/04/2018
OCH	Order change			
OFF	Offer			
ORD	Purchase order			
ORP	Order response			
OSR	order status request			
OSS	Offer status			02/12/2014
OST	Order status			
OUR	our reference			
QR	Quality Report			02/12/2014
RAI	Raw Material in Work Inventory Report			02/12/2014
RDC	Raw dyeing commission order			
RDH	Raw dyeing order change			
RDR	Raw dyeing order response			
REA	Receiving advise			
REQ	Request for Offer			
RET	Return			02/12/2014
RSC	Spinning commission order			
RSH	Spinning order change			
RSR	Spinning order response			
SCL	process sheet			
TFC	Textile dyeing-finishing commission order			
TFX	Textile Dyeing-Finishing Order Change			02/12/2014
TPC	Textile printing commission order			
TPX	Textile Printing Order Change			02/12/2014
TWI	Textile in work inventory			
VMI	visual merchandising instructions		(N)	01/02/2018
WAC	Warping commission order			
WEC	Weaving commission order			



YDC	Yarn dyeing commission order			
YDH	Yarn dyeing order change			
YDR	Yarn dyeing order response			
YTC	Twisting commission order			
YWI	Yarn in work inventory			

#### T421 - size system: nationality

nation or agency identifying the size system

Agency name: eBIZ

tabella cod.: T421

File codes list (Generic code): [http://www.ebiz.enea.it/moda-ml/repository/codelist/v2018-1/gc\\_T421.xml](http://www.ebiz.enea.it/moda-ml/repository/codelist/v2018-1/gc_T421.xml)

Code	Description	Adoption note	Version status	Date of insertion
DE	Germany			
ES	Spain			
EU	Europe			
FR	France			
IT	Italy			
UK	United Kingdom			
US	USA			
XX	International			

#### T422 - size system: market segment

market segment identifying the size system

Agency name: eBIZ

tabella cod.: T422

File codes list (Generic code): [http://www.ebiz.enea.it/moda-ml/repository/codelist/v2018-1/gc\\_T422.xml](http://www.ebiz.enea.it/moda-ml/repository/codelist/v2018-1/gc_T422.xml)

Code	Description	Adoption note	Version status	Date of insertion
B	baby			
C	child			
K	kid			
M	man			
U	unisex			

W	woman			
---	-------	--	--	--

### T423 - size system: base

base of the size system

Agency name: eBIZ

tabella cod.: T423

File codes list (Generic code): [http://www.ebiz.enea.it/moda-ml/repository/codelist/v2018-1/gc\\_T423.xml](http://www.ebiz.enea.it/moda-ml/repository/codelist/v2018-1/gc_T423.xml)

Code	Description	Adoption note	Version status	Date of insertion
1	arab numbers			
2	latin numbers			
3	symbols			
4	letters			
H	height			
L	length			
U	unic			
W	weight			

### T44 - additional code type

qualifier of the additional coding of a product

Agency name: eBIZ

tabella cod.: T44

File codes list (Generic code): [http://www.ebiz.enea.it/moda-ml/repository/codelist/v2018-1/gc\\_T44.xml](http://www.ebiz.enea.it/moda-ml/repository/codelist/v2018-1/gc_T44.xml)

Code	Description	Adoption note	Version status	Date of insertion
CC	colour card			
CL	sales collection			
CO	company identification code		(N)	08/09/2017
DY	dye number			
LT	lot number			
MDI	Made in			08/09/2017
MS	manufacturing state			
PKG	packaging			09/09/2014
PL	product line			

RGB	RGB value			
SE	selvedge code			

### T61 - duty or tax or fee type

duty or tax or fee type

Agency name: eBIZ

tabella cod.: T61

File codes list (Generic code): [http://www.ebiz.enea.it/moda-ml/repository/codelist/v2018-1/gc\\_T61.xml](http://www.ebiz.enea.it/moda-ml/repository/codelist/v2018-1/gc_T61.xml)

Code	Description	Adoption note	Version status	Date of insertion
BOL	stamp duty			01/07/2013
CUD	customs duty			01/07/2013
ENV	environmental tax			01/07/2013
FRE	no tax			01/07/2013
OTH	other tax charges			01/07/2013
VAT	value added tax			01/07/2013

### T62 - duty or tax or fee category

duty or tax or fee category

Agency name: eBIZ

tabella cod.: T62

File codes list (Generic code): [http://www.ebiz.enea.it/moda-ml/repository/codelist/v2018-1/gc\\_T62.xml](http://www.ebiz.enea.it/moda-ml/repository/codelist/v2018-1/gc_T62.xml)

Code	Description	Adoption note	Version status	Date of insertion
AA	lower than standard rate			01/07/2013
E	tax not applicable			01/07/2013
H	higher than standard rate			01/07/2013
O	outside scope of tax			01/07/2013
S	standard rate			01/07/2013
Z	zero rate goods			01/07/2013

### T9 - ISO4217 - Currency

currency code

Agency name: ISO

tabella cod.: T9

File codes list (Generic code): [http://www.ebiz.enea.it/moda-ml/repository/codelist/v2018-1/gc\\_T9.xml](http://www.ebiz.enea.it/moda-ml/repository/codelist/v2018-1/gc_T9.xml)

Table not printed: there are 205 elements, more than the maximum specified for printing: 99.

## Annex C

### New or changed elements towards previous version

Changes or added elements (changes in description excluded; changes in aggregation notes and best practice included): 157

Test Type	Tag	Status	Item type	Changes related to
Attrib	additionalIdentifier	NEW	Additional Party Identifier	Has NEW attribute: numbering organisation code
Attrib	additionalIdentifier	NEW	Additional Party Identifier	Has NEW attribute: id Qualifier
Elem()	additionalComponentCode	NEW	component Code	
Elem()	additionalIdentifier	NEW	Additional Party Identifier	
Elem(E)	art	UPDATED	article identifier	Property: Length_Max Old value: 25 New value: 80
Attrib	art	UPDATED	article identifier	Its attribute: code list reference  Property: Aggregation Note_English Old value: <i>this attribute should be ALTERNATIVE to the others</i> New value: <i>at least one out of this attribute and "numberingOrg" should be set</i>
Elem()	attachment	NEW	attachment	
Child	attachment	NEW	attachment	Has NEW child of: file name
Child	attachment	NEW	attachment	Has NEW child of: external reference
Child	attachment	NEW	attachment	Has NEW child of: binary object
Attrib	binaryObject	NEW	binary object	Has NEW attribute: encoding
Attrib	binaryObject	NEW	binary object	Has NEW attribute: mime
Attrib	binaryObject	NEW	binary object	Has NEW attribute: format

Attr ib	binaryObj ect	NE W	binary obj ect	Has NEW attribute: character set
Ele m(l )	binaryObj ect	NE W	binary obj ect	
Chi ld	buyer	NE W	Buyer (*)	Has NEW child of: Party identifier
Chi ld	buyer	NE W	Buyer (*)	Has NEW child of: Additional Party Identifier
Attr ib	buyer	NE W	Buyer (*)	Has NEW attribute: sender Party qualifier
Ele m(l )	character SetCode	NE W	character set code	
Ele m(l )	character Set	NE W	character set	
Attr ib	subClass	NE W	class ide ntifier	Has NEW attribute: code list name
Attr ib	class	NE W	class ide ntifier	Has NEW attribute: code list reference
Attr ib	macroCla ss	NE W	class ide ntifier	Has NEW attribute: code list name
Attr ib	subClass	NE W	class ide ntifier	Has NEW attribute: code list version
Attr ib	class	NE W	class ide ntifier	Has NEW attribute: code list version
Attr ib	subClass	NE W	class ide ntifier	Has NEW attribute: code list reference
Attr ib	macroCla ss	NE W	class ide ntifier	Has NEW attribute: numbering organisation code
Attr ib	class	NE W	class ide ntifier	Has NEW attribute: numbering organisation code
Attr ib	subClass	NE W	class ide ntifier	Has NEW attribute: numbering organisation code
Attr ib	class	NE W	class ide ntifier	Has NEW attribute: code list name
Attr ib	macroCla ss	NE W	class ide ntifier	Has NEW attribute: code list reference
Attr ib	macroCla ss	NE W	class ide ntifier	Has NEW attribute: code list version
Ele m(l )	class	NE W	class ide ntifier	
Chi ld	csRange	NE W	color-size range	Has NEW child of: garment variant

Child	csRange	NEW	color-size range	Has NEW child of: drop identifier
Child	csRange	UPDATED	color-size range	relationship with child: articles colour identifier  Property: Aggregation Note_English Old value: New value: <i>used only if not already specified in the article code</i>
Attribute	commerceText	NEW	commercial text	Has NEW attribute: In
Attribute	additionalComponentCode	NEW	component Code	Has NEW attribute: code list reference
Attribute	additionalComponentCode	NEW	component Code	Has NEW attribute: numbering organisation code
Attribute	additionalComponentCode	NEW	component Code	Has NEW attribute: code list version
Attribute	additionalComponentCode	NEW	component Code	Has NEW attribute: code list name
Attribute	description	NEW	description	Has NEW attribute: In
Element(E)	description	UPDATED	description	Property: Length_Max Old value: 70 New value: 250
Attribute	drop	NEW	drop identifier	Has NEW attribute: numbering organisation code
Attribute	drop	NEW	drop identifier	Has NEW attribute: code list name
Attribute	drop	NEW	drop identifier	Has NEW attribute: code list version
Element(E)	email	UPDATED	e-mail	Property: Length_Max Old value: 80 New value: 250
Element(I)	encodingCode	NEW	encoding code	
Element(I)	encoding	NEW	encoding	
Child	externalReference	NEW	external reference	Has NEW child of: uri
Child	externalReference	NEW	external reference	Has NEW child of: format code
Child	externalReference	NEW	external reference	Has NEW child of: character set code

Child	externalReference	NEW	external reference	Has NEW child of: mime code
Child	externalReference	NEW	external reference	Has NEW child of: encoding code
Element()	externalReference	NEW	external reference	
Attribute	fabric	UPDATED	fabric identifier	Its attribute: code list reference  Property: Aggregation Note_English Old value: <i>this attribute should be ALTERNATIVE to the others</i> New value: <i>at least one out of this attribute and "numberingOrg" should be set</i>
Attribute	fileName	NEW	file name	Has NEW attribute: numbering organisation code
Element()	fileName	NEW	file name	
Element()	formatCode	NEW	format code	
Element()	format	NEW	format	
Child	garmentCategory	NEW	garment classification	Has NEW child of: general note
Child	garmentCategory	NEW	garment classification	Has NEW child of: goods Classification
Child	garmentCategory	UPDATED	garment classification	relationship with child: group identifier  Property: Cardmin Old value: <i>1</i> New value: <i>0</i>
Child	garmentCategory	UPDATED	garment classification	relationship with child: sex identifier  Property: Cardmin Old value: <i>1</i> New value: <i>0</i>
Child	garmentCategory	UPDATED	garment classification	relationship with child: sub-group identifier  Property: Cardmin Old value: <i>1</i> New value: <i>0</i>
Child	garmentCodeA	UPDATED	garment code A	relationship with child: description



				Property: Cardmax Old value: 1 New value: 999
Chi Id	garment CodeA	UPD ATE D	garment code A	relationship with child: description  Property: Aggregation Note_English Old value: New value: <i>Product description</i>
Chi Id	garment CodeB	NE W	garment code B	Has NEW child of: drop identifier
Chi Id	garment CodeB	NE W	garment code B	Has NEW child of: garment variant
Chi Id	garment CodeB	UPD ATE D	garment code B	relationship with child: description  Property: Aggregation Note_English Old value: New value: <i>Product description</i>
Chi Id	garment CodeB	UPD ATE D	garment code B	relationship with child: description  Property: Cardmax Old value: 1 New value: 999
Chi Id	garment Variant	NE W	garment variant	Has NEW child of: variant code
Chi Id	garment Variant	NE W	garment variant	Has NEW child of: variant type
Elem(l)	garment Variant	NE W	garment variant	
Attr ib	note	UPD ATE D	general note	Its attribute: numbering organisation code  Property: Aggregation Note_English Old value: New value: <i>must be used to specify the organization that created the list of codes used in "noteLabel"</i>
Chi Id	goodsClassification	NE W	goods Classification	Has NEW child of: class identifier
Chi Id	goodsClassification	NE W	goods Classification	Has NEW child of: class identifier
Chi Id	goodsClassification	NE W	goods Classification	Has NEW child of: class identifier
Elem(l)	goodsClassification	NE W	goods Classification	

Attr ib	artGroup	UPD ATE D	group ide ntifier	Its attribute: code list reference  Property: Aggregation Note_English Old value: <i>this attribute should be ALTERNATIVE to the others</i> New value: <i>at least one out of this attribute and "numberingOrg" should be set</i>
Chi ld	GSOhea der	NE W	GSO hea der	Has NEW child of: general note
Chi ld	GSOhea der	NE W	GSO hea der	Has NEW child of: Third Party
Chi ld	GSOitem	NE W	GSO lte m	Has NEW child of: tax scheme
Chi ld	GSOitem	NE W	GSO lte m	Has NEW child of: line identifier
Chi ld	GSOitem	NE W	GSO lte m	Has NEW child of: ready to send date
Chi ld	GSOitem	NE W	GSO lte m	Has NEW child of: reference document details
Chi ld	GSOitem	NE W	GSO lte m	Has NEW child of: general note
Attr ib	GSOitem	UPD ATE D	GSO lte m	Its attribute: data currency  Property: Aggregation Note_English Old value: <i>this is the currency of the offer price of the specified stock</i> New value: <i>this is the currency of the offer price of the specified stock.</i> <i>DEPRECATED: when possible refer currency to the whole document ( msgCurrency), otherwise use the currency attribute of the price element of the line</i>
Attr ib	GSOitem	UPD ATE D	GSO lte m	Its attribute: data currency  Property: Use Old value: <i>Required</i> New value: <i>Optional</i>
Chi ld	GSOitem	UPD ATE D	GSO lte m	relationship with child: commercial text  Property: Cardmax Old value: <i>1</i> New value: <i>999</i>
Chi ld	GSOitem	UPD ATE D	GSO lte m	relationship with child: commercial text  Property: Aggregation Note_English Old value: New value: <i>Only one instance of this element for each different value of In attribute (language)</i>
Ele m(l )	idQualifie r	NE W	id Quali fier	

Elem(l)	isURL	NEW	is URL	
Child	itemIdentification	NEW	item identification	Has NEW child of: serial number
Elem(l)	itemIdentification	NEW	item identification	
Child	itemsList	NEW	items list	Has NEW child of: quality level
Child	itemsList	NEW	items list	Has NEW child of: item identification
Elem(l)	itemsList	NEW	items list	
Elem(E)	legalName	UPDATED	Legal name	Property: Length_Max Old value: 80 New value: 250
Elem(E)	itemID	UPDATED	line item number	Property: Length_Max Old value: 6 New value: 40
Attrib	lineN	UPDATED	line number	Its attribute: VAT rate  Property: Aggregation Note_English Old value: New value: <i>Deprecated, prefer dtScheme when available.</i>
Elem(l)	lineID	NEW	line identifier	
Elem(l)	ln	NEW	ln	
Elem(l)	macroClass	NEW	class identifier	
Elem(l)	mimeCode	NEW	mime code	
Elem(l)	mime	NEW	mime	
Attrib	mod	UPDATED	model identifier	Its attribute: code list reference  Property: Aggregation Note_English Old value: <i>this attribute should be ALTERNATIVE to the others</i> New value: <i>at least one out of this attribute and "numberingOrg" should be set</i>

Attr ib	mod	UPD ATE D	model ide ntifier	Its attribute: numbering organisation code  Property: Aggregation Note_English Old value: <i>this attribute should be ALTERNATIVE to the others</i> New value:
Attr ib	qualityLe vel	NE W	quality le vel	Has NEW attribute: numbering organisation code
Attr ib	qualityLe vel	NE W	quality le vel	Has NEW attribute: code list reference
Attr ib	qualityLe vel	NE W	quality le vel	Has NEW attribute: code list version
Attr ib	qualityLe vel	NE W	quality le vel	Has NEW attribute: code list name
Ele m(l )	qualityLe vel	NE W	quality le vel	
Attr ib	readyTo SendDat e	NE W	ready to send dat e	Has NEW attribute: date format
Ele m(l )	readyTo SendDat e	NE W	ready to send dat e	
Chi ld	refDoc	NE W	reference documen t details	Has NEW child of: attachment
Chi ld	refDoc	UPD ATE D	reference documen t details	relationship with child: document identifier  Property: BestPractice_English Old value: New value: <i>numberingOrg indicates the role that produced the documen t identifier (it is allowed to declare two different ones -e.g. customer and supplier - with two docID with different numberingOrg</i>
Attr ib	season	NE W	season id entifier	Has NEW attribute: code list reference
Attr ib	season	NE W	season id entifier	Has NEW attribute: numbering organisation code
Attr ib	season	NE W	season id entifier	Has NEW attribute: code list name
Attr ib	season	NE W	season id entifier	Has NEW attribute: code list version
Attr ib	serialN	NE W	serial nu mber	Has NEW attribute: id Qualifier
Ele m( E)	serialN	UPD ATE D	serial nu mber	Property: Length_Max Old value: 15 New value: 250
Attr ib	artSex	UPD ATE D	sex identi fier	Its attribute: code list reference

				Property: Aggregation Note_English Old value: <i>this attribute should be ALTERNATIVE to the others</i> New value: <i>at least one out of this attribute and "numberingOrg" should be set</i>
Attr ib	size	NE W	size ident ifier	Has NEW attribute: numbering organisation code
Attr ib	size	NE W	size ident ifier	Has NEW attribute: code list name
Attr ib	size	NE W	size ident ifier	Has NEW attribute: code list version
Chi ld	sizeRow	NE W	size row	Has NEW child of: items list
Chi ld	sizeRow	NE W	size row	Has NEW child of: component Code
Chi ld	sizeRow	UPD ATE D	size row	relationship with child: drop identifier  Property: Aggregation Note_English Old value: New value: <i>DEPRECATED, anyhow it is used only if not already specifi ed in the article code or csRange</i>
Ele m(l )	subClass	NE W	class ide ntifier	
Ele m(l )	subDept	NE W	departme nt identifi er	
Attr ib	artSubGr oup	UPD ATE D	sub-grou p identifie r	Its attribute: code list reference  Property: Aggregation Note_English Old value: <i>this attribute should be ALTERNATIVE to the others</i> New value: <i>at least one out of this attribute and "numberingOrg" should be set</i>
Chi ld	supplier	NE W	Supplier (* )	Has NEW child of: Party identifier
Chi ld	supplier	NE W	Supplier (* )	Has NEW child of: Additional Party Identifier
Attr ib	supplier	NE W	Supplier (* )	Has NEW attribute: sender Party qualifier
Attr ib	legalRef	NE W	tax legal r eference	Has NEW attribute: code list name
Attr ib	legalRef	NE W	tax legal r eference	Has NEW attribute: numbering organisation code
Attr ib	legalRef	NE W	tax legal r eference	Has NEW attribute: code list version
Attr ib	legalRef	UPD ATE D	tax legal r eference	Its attribute: code list reference  Property: Use

				Old value: <i>Required</i> New value: <i>Optional</i>
Child	dtScheme	UPDATED	tax scheme	relationship with child: general note  Property: Cardmax Old value: 19 New value: 99
Child	thirdParty	NEW	Third Party (*)	Has NEW child of: Party identifier
Attribute	thirdParty	NEW	Third Party (*)	Has NEW attribute: sender Party qualifier
Attribute	price	NEW	unit price amount	Has NEW attribute: data currency
Element(E)	price	UPDATED	unit price amount	Property: Digits_Dec Old value: 2 New value: 4
Attribute	uri	NEW	uri	Has NEW attribute: is URL
Element(I)	uri	NEW	uri	
Attribute	variantCode	NEW	variant code	Has NEW attribute: code list version
Attribute	variantCode	NEW	variant code	Has NEW attribute: code list name
Attribute	variantCode	NEW	variant code	Has NEW attribute: numbering organisation code
Attribute	variantCode	NEW	variant code	Has NEW attribute: code list reference
Attribute	variantType	NEW	variant type	Has NEW attribute: code list reference
Attribute	variantType	NEW	variant type	Has NEW attribute: code list version
Attribute	variantType	NEW	variant type	Has NEW attribute: code list name
Attribute	variantType	NEW	variant type	Has NEW attribute: numbering organisation code
Element(I)	variantCode	NEW	variant code	
Element(I)	variantType	NEW	variant type	

## Annex D

### New or changed tables and codes towards previous version

Changes or added items (changes in CodeListAgencyName excluded; changes in adoption notes and code description included): 97

Test Type	Status	Table code	Table description	Code	Change description
Table	UPD ATED	NT 100	eBIZ TCFUpstream version		Description_English Old value: <i>eBIZ Moda-ML version</i> New value: <i>eBIZ TCFUpstream version</i>
Code	NEW	NT 100		2018-1 (v2018-1)	
Code	NEW	NT 100		draft (draft)	
Table	UPD ATED	NT 16	VAT rate or code		Generalities Old value: <i>VAT rate or code ( deprecated , use dtScheme element )</i> New value: <i>VAT rate or code ( DEPRECATED, use dtScheme element )</i>
Code	NEW	NT 2		AU (Auditor)	
Code	NEW	NT 2		CE (Certification authority)	
Code	NEW	NT 2		SC (Sub contractor)	
Code	NEW	NT 2		SM (Service/ePlatform manager)	
Code	NEW	NT 6		EB (eBIZ)	
Code	UPD ATED	NT 6		ML (DEPRECATED)	adoption_note Old value: New value: <i>DEPRECATED</i>
Table	NEW	NT 60	language, codes from ISO 639-1 (subset)		
Code	NEW	NT 60		F (Female)	
Code	NEW	NT 60		af (Afrikaans)	
Code	NEW	NT 60		ar (Arabic)	
Code	NEW	NT 60		be (Belarusian)	

Co de	NEW	NT 60		<i>bg</i> (Bulgarian)	
Co de	NEW	NT 60		<i>bn</i> (Bengali)	
Co de	NEW	NT 60		<i>bo</i> (Tibetan)	
Co de	NEW	NT 60		<i>bs</i> (Bosnian)	
Co de	NEW	NT 60		<i>ca</i> (Catalan, Valencian)	
Co de	NEW	NT 60		<i>cs</i> (Czech)	
Co de	NEW	NT 60		<i>da</i> (Danish)	
Co de	NEW	NT 60		<i>de</i> (German)	
Co de	NEW	NT 60		<i>el</i> (Greek, Modern (1453-))	
Co de	NEW	NT 60		<i>en</i> (English)	
Co de	NEW	NT 60		<i>eo</i> (Esperanto)	
Co de	NEW	NT 60		<i>es</i> (Spanish, Castilian)	
Co de	NEW	NT 60		<i>et</i> (Estonian)	
Co de	NEW	NT 60		<i>eu</i> (Basque)	
Co de	NEW	NT 60		<i>fa</i> (Persian)	
Co de	NEW	NT 60		<i>fi</i> (Finnish)	
Co de	NEW	NT 60		<i>fr</i> (French)	
Co de	NEW	NT 60		<i>ga</i> (Irish)	
Co de	NEW	NT 60		<i>gd</i> (Gaelic, Scottish Gaelic)	
Co de	NEW	NT 60		<i>gn</i> (Guarani)	
Co de	NEW	NT 60		<i>he</i> (Hebrew)	
Co de	NEW	NT 60		<i>hr</i> (Croatian)	



Co de	NEW	NT 60		<i>ht</i> (Haitian, Haitian Creole)	
Co de	NEW	NT 60		<i>hu</i> (Hungarian)	
Co de	NEW	NT 60		<i>hy</i> (Armenian)	
Co de	NEW	NT 60		<i>ia</i> (Interlingua (International Auxiliary Language Assoc iation))	
Co de	NEW	NT 60		<i>id</i> (Indonesian)	
Co de	NEW	NT 60		<i>is</i> (Icelandic)	
Co de	NEW	NT 60		<i>it</i> (Italian)	
Co de	NEW	NT 60		<i>ja</i> (Japanese)	
Co de	NEW	NT 60		<i>ju</i> (Javanese)	
Co de	NEW	NT 60		<i>ka</i> (Georgian)	
Co de	NEW	NT 60		<i>km</i> (Central Khmer)	
Co de	NEW	NT 60		<i>ko</i> (Korean)	
Co de	NEW	NT 60		<i>ku</i> (Kurdish)	
Co de	NEW	NT 60		<i>lb</i> (Luxembourgish, Letzebu rgesch)	
Co de	NEW	NT 60		<i>lo</i> (Lao)	
Co de	NEW	NT 60		<i>lt</i> (Lithuanian)	
Co de	NEW	NT 60		<i>lv</i> (Latvian)	
Co de	NEW	NT 60		<i>mg</i> (Malagasy)	
Co de	NEW	NT 60		<i>mk</i> (Macedonian)	
Co de	NEW	NT 60		<i>mn</i> (Mongolian)	
Co de	NEW	NT 60		<i>mt</i> (Maltese)	

Co de	NEW	NT 60		<i>nl</i> (Dutch, Flemish)	
Co de	NEW	NT 60		<i>no</i> (Norwegian)	
Co de	NEW	NT 60		<i>pl</i> (Polish)	
Co de	NEW	NT 60		<i>pt</i> (Portuguese)	
Co de	NEW	NT 60		<i>ro</i> (Romanian, Moldavian, M oldovan)	
Co de	NEW	NT 60		<i>ru</i> (Russian)	
Co de	NEW	NT 60		<i>se</i> (Northern Sami)	
Co de	NEW	NT 60		<i>sk</i> (Slovak)	
Co de	NEW	NT 60		<i>sl</i> (Slovenian)	
Co de	NEW	NT 60		<i>sm</i> (Samoan)	
Co de	NEW	NT 60		<i>so</i> (Somali)	
Co de	NEW	NT 60		<i>sq</i> (Albanian)	
Co de	NEW	NT 60		<i>sr</i> (Serbian)	
Co de	NEW	NT 60		<i>sv</i> (Swedish)	
Co de	NEW	NT 60		<i>sw</i> (Swahili)	
Co de	NEW	NT 60		<i>ta</i> (Tamil)	
Co de	NEW	NT 60		<i>th</i> (Thai)	
Co de	NEW	NT 60		<i>tr</i> (Turkish)	
Co de	NEW	NT 60		<i>uk</i> (Ukrainian)	
Co de	NEW	NT 60		<i>ur</i> (Urdu)	
Co de	NEW	NT 60		<i>uz</i> (Uzbek)	
Co de	NEW	NT 60		<i>vi</i> (Vietnamese)	

Code	NEW	NT60		zh (Chinese)	
Code	NEW	NT7		CMK (square centimetre)	
Code	NEW	NT7		CMQ (cubic centimetre)	
Code	NEW	NT7		E37 (pixel)	
Code	NEW	NT7		KWH (kilowatthours)	
Code	NEW	NT7		MMK (square millimetre)	
Code	NEW	NT7		MTK (square metre)	
Code	NEW	NT7		CO2TON (ton of CO2)	
Table	UPDATED	NT7	unit of measure		OtherExternalReferenceURL Old value: New value: # <a href="http://docs.oasis-open.org/ubl/os-UBL-2.1/cl/gc/default/UnitOfMeasureCode-2.1.gc#">http://docs.oasis-open.org/ubl/os-UBL-2.1/cl/gc/default/UnitOfMeasureCode-2.1.gc#</a>
Table	UPDATED	NT7	unit of measure		Description_English Old value: <i>unity of measure</i> New value: <i>unit of measure</i>
Code	NEW	T21		BOR (blanket order)	
Code	NEW	T21		CEO (Certificate of origin)	
Code	NEW	T21		CER (Certificate)	
Code	UPDATED	T21		CTR (Contract)	Text_English Old value: <i>contract</i> New value: <i>Contract</i>
Code	NEW	T21		MCI (Visual merchandising instruction)	
Code	NEW	T21		VMI (visual merchandising instructions)	
Code	NEW	T44		CO (company identification code)	