



<http://www.ebiz-tcf.eu>

## IMPLEMENTATION GUIDE

includes COMPARISON BETWEEN CURRENT and LAST  
PREVIOUSLY RELEASED VERSION

TRANSACTION "GENERAL PURPOSE REQUEST"

Version: v2018-1

Date of release: 18/7/2019

Document code: G039rv

technical Documentation: <http://www.ebiz.enea.it>

XML Schemas repository: <http://www.ebiz.enea.it/moda-ml/repository/schema/v2018-1/default.asp>

Guides repository: <http://www.ebiz.enea.it/moda-ml/repository/guide/v2018-1/default.asp>

Guide filename: G039rv-eBIZ-GeneralPurposeRequest.pdf

# 1. BUSINESS DESCRIPTION

## 1.1 Scope

This document is used to solicit the sending of a document when this is produced only on request (e.g.: the Order Status)

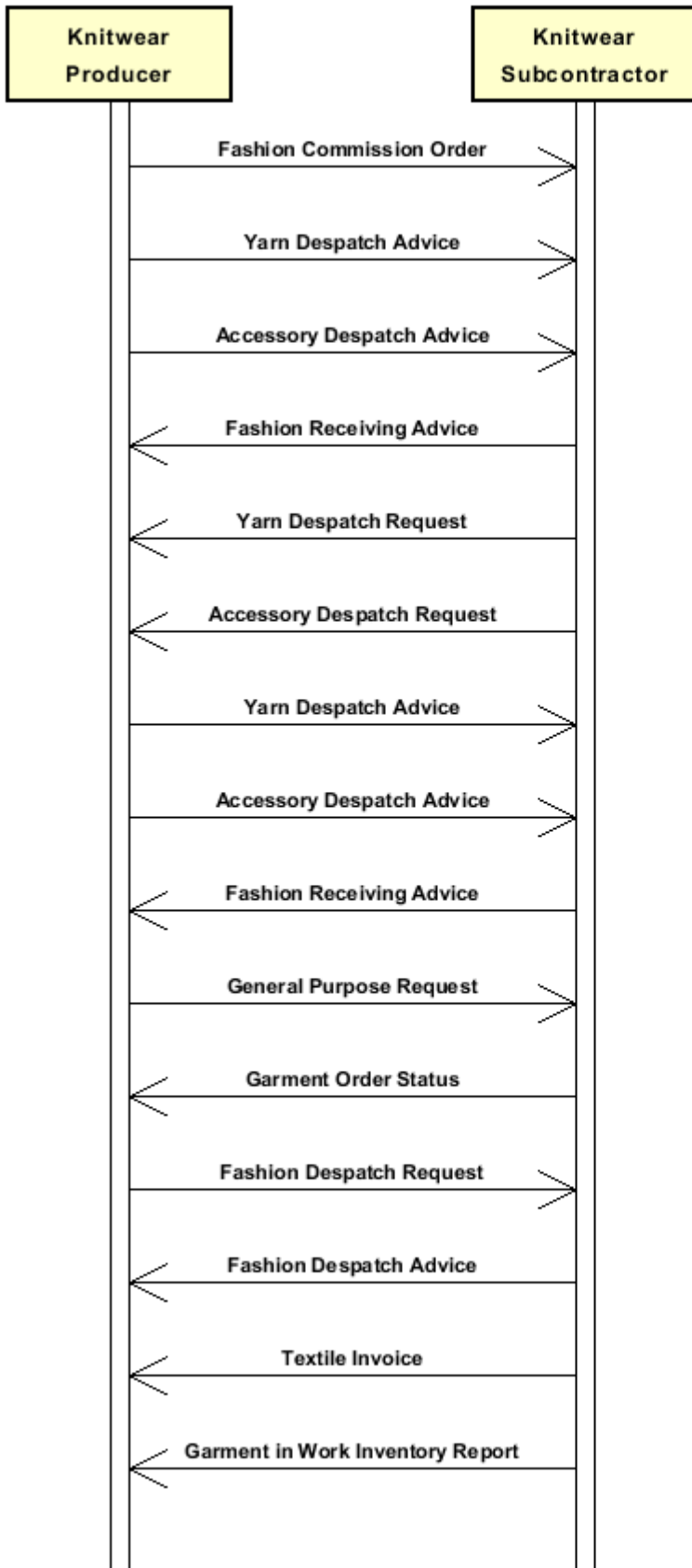
## 1.2 Generalities

The message is issued to request a particular (paper or electronic) business document.

With this document it is possible to indicate the type of the requested document , and one or more blocks of filtering criteria (the Party, identified by legal name or id, to which it refers, and/or one or more items to be referred to, eg season, article or fabric or component code, . . .)

## 1.3. Possible scenario

Knitting and assembling



#### 1.4. Best practices

The document could be used to request the order progress status for a season and a group of articles whose code is indicated; in another case it could be sent to a warehouse manager to request the inventory related to one or more particular brands whose legal name is indicated; another example is the use for requesting the PartyIn document concerning information on one or more parties, indicating their legal names or unique codes.

## 2. IMPLEMENTATION GUIDE

### 2.1 General structure of XML document

All the business data that can be exchanged through this class of documents are shown in the following "document structure", that provides a simplified vision of the Schema.

In particular:

- the two numbers following each element define its "cardinality" (minimum and maximum number of occurrences); the minimum equal zero indicates that the element is optional, the minimum greater than zero indicates that is mandatory;
- the bold character denotes the complex elements (aggregates of simple elements) that were built for the sake of functionality and re-usability of some complex informations sets. The child elements in each parent element are easily spotted as "indented";
- the symbol "@" denotes an attribute of the preceding element; here "the usage indicator (optional, required, ...)" is shown in square brackets.

#### Legenda

- N: new element
- U: updated properties
- P: changes in children
- p: is a changed child
- A: changes in attributes
- a: is a new or changed attribute
- \*: is a subtype

### Structure

#### **GPDocRequest** (P)

@version [Optional] [Default= 2018-1]

@useProfile [Optional]

| msgN 1-1

| msgDate 1-1

| @dateForm [Optional]

#### | **refDoc 0-9** (P)

| @docType [Required]

| | docID 1-2 (p)

| | @numberingOrg [Optional]

| | docDate 0-1

| | @dateForm [Optional]

| | season 0-1 (A)

| | @numberingOrg [Optional] (a)

| | @codeList [Optional] (a)

| | @listName [Optional] (a)

| | @listVersion [Optional] (a)

| | itemID 0-1 (U)

#### | **attachment 0-1** (N)

| | @uid [Optional]

| | | fileName 0-1 (N)

| | | @numberingOrg [Optional] (a)

| | | binaryObject 0-1 (N)

| | | @format [Optional] (Na)

| | | @mime [Optional] (Na)

| | | @encoding [Optional] (Na)

| | | @characterSet [Optional] (Na)

#### | **externalReference 0-99** (N)

| | | | uri 1-1 (N)  
| | | | @isURL [Optional] [Default= true] (N)  
| | | | mimeTypeCode 0-1 (N)  
| | | | formatCode 0-1 (N)  
| | | | encodingCode 0-1 (N)  
| | | | characterSetCode 0-1 (N)

| **buyer 1-1** (AP)  
| @logo [Optional]  
| @sender [Optional] (a\*)  
| | id 1-1 (p)  
| | @numberingOrg [Optional]  
| | additionalIdentifier 0-9 (N)  
| | @numberingOrg [Optional] (a)  
| | @idQualifier [Optional] (Na)  
| | legalName 0-1 (U)  
| | dept 0-1  
| | subDept 0-1 (N)  
| | person 0-1  
| | @email [Optional]  
| | @phone [Optional]  
| | @fax [Optional]  
| | street 0-1  
| | city 0-1  
| | subCountry 0-1  
| | country 0-1  
| | postCode 0-1

| **supplier 1-1** (AP)  
| @logo [Optional]  
| @sender [Optional] (a\*)  
| | id 1-1  
| | @numberingOrg [Optional]  
| | additionalIdentifier 0-9 (N)  
| | @numberingOrg [Optional] (a)  
| | @idQualifier [Optional] (Na)  
| | legalName 0-1 (U)  
| | dept 0-1  
| | subDept 0-1 (N)  
| | person 0-1  
| | @email [Optional]  
| | @phone [Optional]  
| | @fax [Optional]  
| | street 0-1  
| | city 0-1  
| | subCountry 0-1  
| | country 0-1  
| | postCode 0-1

| requestDocType 1-1

| **itemRestrict 0-99** (P)  
| | id 0-1  
| | @numberingOrg [Optional]  
| | legalName 0-1 (U)  
| | season 0-1 (A)  
| | @numberingOrg [Optional] (a)  
| | @codeList [Optional] (a)  
| | @listName [Optional] (a)  
| | @listVersion [Optional] (a)

- choose -

```

| | garmentCode 0-2
| | @numberingOrg [Optional]
| | - choose -
| | | garmentCodeB 1-1 (P)
| | | @numberingOrg [Optional]
| | |   mod 1-1
| | |   | @numberingOrg [Optional]
| | |   | @codeList [Optional]
| | |   | @listName [Optional]
| | |   | @listVersion [Optional]
| | |   fabric 0-1
| | |   | @numberingOrg [Optional]
| | |   | @codeList [Optional]
| | |   | @listName [Optional]
| | |   | @listVersion [Optional]
| | |   color 0-1
| | |   | @numberingOrg [Optional]
| | |   | @codeList [Optional]
| | |   | @listName [Optional]
| | |   | @listVersion [Optional]
| | | | garmentVariant 0-9 (N)
| | | |   variantType 1-1 (N)
| | | |   | @numberingOrg [Optional] (a)
| | | |   | @codeList [Optional] (a)
| | | |   | @listName [Optional] (a)
| | | |   | @listVersion [Optional] (a)
| | | |   variantCode 1-1 (N)
| | | |   | @numberingOrg [Optional] (a)
| | | |   | @codeList [Optional] (a)
| | | |   | @listName [Optional] (a)
| | | |   | @listVersion [Optional] (a)
| | | | drop 0-1 (A)
| | | | | @numberingOrg [Optional]
| | | | | @codeList [Optional]
| | | | | @listName [Optional]
| | | | | @listVersion [Optional]
| | | | size 0-1 (A)
| | | | | @numberingOrg [Optional]
| | | | | @codeList [Optional]
| | | | | @listName [Optional]
| | | | | @listVersion [Optional]
| | | | artGroup 0-1
| | | | | @numberingOrg [Optional]
| | | | | @codeList [Optional]
| | | | | @listName [Optional]
| | | | | @listVersion [Optional]
| | | | added 0-9
| | | | | @numberingOrg [Optional]
| | | | | @addType [Optional]
| | | | description 0-unbounded (AU)
| | | | | @ln [Optional] (N)
| | | - or -
| | | | garmentCodeA 1-1 (P)
| | | | | art 1-1 (U)
| | | | | | @numberingOrg [Optional]
| | | | | | @codeList [Optional]
| | | | | | @listName [Optional]
| | | | | | @listVersion [Optional]
| | | | | description 0-unbounded (AU)
| | | | | | @ln [Optional] (N)
| | | - end choose -

```

- or -

**texCode 0-2 (P)**  
| @numberingOrg [Optional]  
| | art 1-1 (U)  
| | | @numberingOrg [Optional]  
| | | @codeList [Optional]  
| | | @listName [Optional]  
| | | @listVersion [Optional]  
| | pattern 0-1  
| | | @numberingOrg [Optional]  
| | | @codeList [Optional]  
| | | @listName [Optional]  
| | | @listVersion [Optional]  
| | color 0-1  
| | | @numberingOrg [Optional]  
| | | @codeList [Optional]  
| | | @listName [Optional]  
| | | @listVersion [Optional]  
| | added 0-9  
| | | @numberingOrg [Optional]  
| | | @addType [Optional]  
| | description 0-unbounded (pAU)  
| | | @ln [Optional] (N)

- or -

**yarnCode 0-2 (P)**  
| @numberingOrg [Optional] [Default= CL]  
| | art 1-1 (U)  
| | | @numberingOrg [Optional]  
| | | @codeList [Optional]  
| | | @listName [Optional]  
| | | @listVersion [Optional]  
| | color 0-1  
| | | @numberingOrg [Optional]  
| | | @codeList [Optional]  
| | | @listName [Optional]  
| | | @listVersion [Optional]  
| | added 0-9  
| | | @numberingOrg [Optional]  
| | | @addType [Optional]  
| | description 0-unbounded (AU)  
| | | @ln [Optional] (N)

- or -

**garmentPartCode 0-2 (P)**  
| @numberingOrg [Optional]  
| | gPart 1-1  
| | mod 1-1  
| | | @numberingOrg [Optional]  
| | | @codeList [Optional]  
| | | @listName [Optional]  
| | | @listVersion [Optional]  
| | fabric 0-1  
| | | @numberingOrg [Optional]  
| | | @codeList [Optional]  
| | | @listName [Optional]  
| | | @listVersion [Optional]  
| | color 0-1  
| | | @numberingOrg [Optional]  
| | | @codeList [Optional]  
| | | @listName [Optional]  
| | | @listVersion [Optional]  
| | added 0-19



```

| | | @numberingOrg [Optional]
| | | @addType [Optional]
| | | size 0-1 (A)
| | | @numberingOrg [Optional] (a)
| | | @codeList [Optional]
| | | @listName [Optional] (a)
| | | @listVersion [Optional] (a)
| | | description 0-unbounded (AU)
| | | @ln [Optional] (N)

```

- or -

```

| | acsCode 0-2 (U)
| | | @numberingOrg [Optional]
| | | | art 1-1 (U)
| | | | @numberingOrg [Optional]
| | | | @codeList [Optional]
| | | | @listName [Optional]
| | | | @listVersion [Optional]
| | | | pattern 0-1
| | | | | @numberingOrg [Optional]
| | | | | @codeList [Optional]
| | | | | @listName [Optional]
| | | | | @listVersion [Optional]
| | | | color 0-1
| | | | | @numberingOrg [Optional]
| | | | | @codeList [Optional]
| | | | | @listName [Optional]
| | | | | @listVersion [Optional]
| | | | added 0-9
| | | | | @numberingOrg [Optional]
| | | | | @addType [Optional]
| | | | description 0-unbounded (AU)
| | | | @ln [Optional] (N)

```

- end choose -

```

| | note 0-99
| | | @numberingOrg [Optional]
| | | @codeList [Optional]
| | | @noteLabel [Optional]

```

**timeRestrict 0-1**

```

| | validityStart 0-1
| | | @dateForm [Optional]
| | validityEnd 0-1
| | | @dateForm [Optional]

```

```

| | note 0-99
| | | @numberingOrg [Optional]
| | | @codeList [Optional]
| | | @noteLabel [Optional]

```

## 2.2 Detailed description of document elements

Following tables show all elements (complex and simple) used in this document. Description includes: 1) element's information: xml tag, name, brief description, data type and syntax constraints; 2) information about use of the element in a particular position in the document: xpath and possible associated notes.

### 2.2.1 Complex elements (Aggregate Business Information Entities)

Complex elements are those elements whose content is composed of other elements (childs).Complex elements are alphabetically ordered.

|                          |   |
|--------------------------|---|
| <b>acsCode</b>           | full codification identifying an accessory product usually coupled with garment or other fashion product<br>(XPath GPDocRequest/itemRestrict/acsCode) 0-2 (U)   |
| <b>attachment</b>        | an attached document. An attachment can refer to an external document or be included with the document being exchanged<br>(XPath GPDocRequest/refDoc/attachment) 0-1 (N)  |
| <b>buyer</b>             | details of the Buyer (party that buys the good or service that is object of the current collaborative process)<br>- base type: Nad,<br>(XPath GPDocRequest/buyer) 1-1 (AP)  |
| <b>externalReference</b> | details about an external object, such as a document stored at a remote location<br>(XPath GPDocRequest/refDoc/attachment/externalReference) 0-99 (N)   |
| <b>garmentCode</b>       | codification of the garment product<br>(XPath GPDocRequest/itemRestrict/garmentCode) 0-2  |
| <b>garmentCodeA</b>      | codification of the garment product- type A<br>(XPath GPDocRequest/itemRestrict/garmentCode/garmentCodeA) 1-1 (P)<br>- note: <i>here the barcode EAN-13 or EAN-8 should be specified</i>  |
| <b>garmentCodeB</b>      | codification of the garment product - type B<br>(XPath GPDocRequest/itemRestrict/garmentCode/garmentCodeB) 1-1 (P)  |
| <b>garmentPartCode</b>   | codification of the component or part of a fashion article<br>(XPath GPDocRequest/itemRestrict/garmentPartCode) 0-2 (P)   |
| <b>garmentVariant</b>    | garment product variant<br>(XPath GPDocRequest/itemRestrict/garmentCode/garmentCodeB/garmentVariant) 0-9 (N)  |
| <b>itemRestrict</b>      | Item restriction to be applied on the document requested, expressed as an article code or a Party code<br>(XPath GPDocRequest/itemRestrict) 0-99 (P)<br>- note: <i>in case of use of this item restriction at least one of the child elements must be present</i> |
| <b>refDoc</b>            | identification of a document and of an item thereof, to which the message makes reference<br>(XPath GPDocRequest/refDoc) 0-9 (P)  |
| <b>supplier</b>          | details of the Supplier (party that supplies the good or service that is object of the current collaborative process)<br>- base type: Nad,<br>(XPath GPDocRequest/supplier) 1-1 (AP)  |
| <b>texCode</b>           | full codification of the textile product<br>(XPath GPDocRequest/itemRestrict/texCode) 0-2 (P)   |

|                     |  |
|---------------------|--|
| <b>timeRestrict</b> | time restriction to be applied on the document requested, expressed as a period of validity/application of the document requested<br>(XPath GPDocRequest/timeRestrict) 0-1 |
| <b>yarnCode</b>     | full codification of a yarn product<br>(XPath GPDocRequest/itemRestrict/yarnCode) 0-2 (P)  |

## 2.2.2 Simple elements (Basic Business Information Entities)

Simple elements are those elements whose content is characterized by a data type plus a domain of possible values. Simple elements are alphabetically ordered.

|                             |   |
|-----------------------------|---|
| <b>added</b>                | additional code of the product (complementing the formers)<br>- base type: string, max length: 80,<br>(XPath GPDocRequest/itemRestrict/garmentPartCode/added) 0-19<br>(XPath GPDocRequest/itemRestrict/garmentCode/garmentCodeB/added) 0-9<br>(XPath GPDocRequest/itemRestrict/texCode/added) 0-9<br>- note: here an additional codification (see table T44) can be specified<br>(XPath GPDocRequest/itemRestrict/acsCode/added) 0-9<br>- note: here an additional codification (see table T44) can be specified<br>(XPath GPDocRequest/itemRestrict/yarnCode/added) 0-9<br>- note: here an additional codification (see table T44) can be specified  |
| <b>additionalIdentifier</b> | additional identification code of a Party, for example customs registries or others<br>- base type: string, max length: 15,<br>(XPath GPDocRequest/supplier/additionalIdentifier) 0-9 (N)<br>- note: identifiers for example for exports, such as MID (Manufacturer Identification Code), EORI (E.O.R.I. - Economic Operator Registration and Identification)<br>(XPath GPDocRequest/buyer/additionalIdentifier) 0-9 (N)<br>- note: identifiers for example for exports, such as MID (Manufacturer Identification Code), EORI (E.O.R.I. - Economic Operator Registration and Identification)  |
| <b>@addType</b>             | qualifier of the additional coding of a product<br>- base type: string, cod. table: T44<br><a href="http://www.ebiz.enea.it/moda-ml/repository/codelist/v2018-1/gc_T44.xml">http://www.ebiz.enea.it/moda-ml/repository/codelist/v2018-1/gc_T44.xml</a><br>(XPath GPDocRequest/itemRestrict/texCode/added/@addType) [Optional]<br>- nota: addType allows the clarification of the meaning of the added element content; it is strongly suggested to use it always.<br>(XPath GPDocRequest/itemRestrict/garmentCode/garmentCodeB/added/@addType) [Optional]<br>- nota: addType allows the clarification of the meaning of the added element content; it is strongly suggested to use it always.<br>(XPath GPDocRequest/itemRestrict/acsCode/added/@addType) [Optional]<br>- nota: addType allows the clarification of the meaning of the added element content; it is strongly suggested to use it always.<br>(XPath GPDocRequest/itemRestrict/yarnCode/added/@addType) [Optional]<br>- nota: addType allows the clarification of the meaning of the added element content; it is strongly suggested to use it always.<br>(XPath GPDocRequest/itemRestrict/garmentPartCode/added/@addType) [Optional]<br>- nota: addType allows the clarification of the meaning of the added element content; it is strongly suggested to use it always. |
| <b>art</b>                  | article number of the product<br>- base type: string, max length: 80,<br>(XPath GPDocRequest/itemRestrict/acsCode/art) 1-1 (U)<br>(XPath GPDocRequest/itemRestrict/texCode/art) 1-1 (U)<br>- note: can be used either for the base-article (excluding pattern/colour) or for the SKU<br>(XPath GPDocRequest/itemRestrict/yarnCode/art) 1-1 (U)  |

|                  |   |
|------------------|---|
|                  | (XPath GPDocRequest/itemRestrict/garmentCode/garmentCodeA/art) 1-1 (U)  |
| artGroup         | code identifying a class of products<br>- base type: string, max length: 40,<br>(XPath GPDocRequest/itemRestrict/garmentCode/garmentCodeB/artGroup) 0-1   |
| binaryObject     | a binary large object containing an attached document, Coding 'base64Binary' is recommended.<br>- base type: base64Binary,<br>(XPath GPDocRequest/refDoc/attachment/binaryObject) 0-1 (N)   |
| @characterSet    | the character set of the binary object (examples UTF-8, UTF-16, Windows-1252, ISO-8859-7,..)<br>- base type: normalizedString,<br>(XPath GPDocRequest/refDoc/attachment/binaryObject/@characterSet) [Optional] (Na)   |
| characterSetCode | the character set of an external document (examples UTF-8, UTF-16, Windows-1252, ISO-8859-7,..)<br>- base type: normalizedString,<br>(XPath GPDocRequest/refDoc/attachment/externalReference/characterSetCode) 0-1 (N)  |
| city             | name of the city (town, village)<br>- base type: string, max length: 40,<br>(XPath GPDocRequest/supplier/city) 0-1<br>(XPath GPDocRequest/buyer/city) 0-1   |
| @codeList        | it specifies the URL where the list of codes used to make an instance of the element can be found<br>- base type: string, max length: 255,<br>(XPath GPDocRequest/itemRestrict/garmentPartCode/mod/@codeList) [Optional]<br>- nota: <i>at least one out of this attribute and "numberingOrg" should be set</i><br>(XPath GPDocRequest/itemRestrict/garmentCode/garmentCodeA/art/@codeList) [Optional]<br>- nota: <i>at least one out of this attribute and "numberingOrg" should be set</i><br>(XPath GPDocRequest/itemRestrict/acsCode/color/@codeList) [Optional]<br>- nota: <i>this attribute should be used either single or coupled with "listName" and "listVersion"</i><br>(XPath GPDocRequest/itemRestrict/garmentCode/garmentCodeB/fabric/@codeList) [Optional]<br>- nota: <i>at least one out of this attribute and "numberingOrg" should be set</i><br>(XPath GPDocRequest/itemRestrict/garmentCode/garmentCodeB/garmentVariant/variantCode/@codeList) [Optional] (a)<br>- nota: <i>at least one out of this attribute and "numberingOrg" should be set</i><br>(XPath GPDocRequest/itemRestrict/garmentCode/garmentCodeB/artGroup/@codeList) [Optional]<br>- nota: <i>at least one out of this attribute and "numberingOrg" should be set</i><br>(XPath GPDocRequest/itemRestrict/texCode/art/@codeList) [Optional]<br>- nota: <i>at least one out of this attribute and "numberingOrg" should be set</i><br>(XPath GPDocRequest/itemRestrict/garmentPartCode/fabric/@codeList) [Optional]<br>- nota: <i>at least one out of this attribute and "numberingOrg" should be set</i><br>(XPath GPDocRequest/itemRestrict/season/@codeList) [Optional] (a)<br>- nota: <i>this attribute should be used either single or coupled with "listName" and "listVersion"</i><br>(XPath GPDocRequest/itemRestrict/yarnCode/color/@codeList) [Optional]<br>- nota: <i>this attribute should be used either single or coupled with "listName" and "listVersion"</i><br>(XPath GPDocRequest/itemRestrict/note/@codeList) [Optional]<br>- nota: <i>must be used to provide (URL) the list of codes used in "noteLabel"</i><br>(XPath GPDocRequest/itemRestrict/yarnCode/art/@codeList) [Optional]<br>- nota: <i>at least one out of this attribute and "numberingOrg" should be set</i><br>(XPath GPDocRequest/refDoc/season/@codeList) [Optional] (a)<br>- nota: <i>this attribute should be used either single or coupled with "listName" and "listVersion"</i> |

|             |  |
|-------------|--|
|             | <p>(XPath GPDocRequest/itemRestrict/garmentCode/garmentCodeB/size/@codeList) [Optional]</p> <p>(XPath GPDocRequest/itemRestrict/garmentCode/garmentCodeB/garmentVariant/variantType/@codeList) [Optional] (a)</p> <p>- nota: <i>always at least one out of this attribute and "numberingOrg" should be set</i></p> <p>(XPath GPDocRequest/itemRestrict/texCode/color/@codeList) [Optional]</p> <p>- nota: <i>this attribute should be used either single or coupled with "listName" and "listVersion"</i></p> <p>(XPath GPDocRequest/note/@codeList) [Optional]</p> <p>- nota: <i>must be used to provide (URL) the list of codes used in "noteLabel"</i></p> <p>(XPath GPDocRequest/itemRestrict/garmentCode/garmentCodeB/drop/@codeList) [Optional]</p> <p>(XPath GPDocRequest/itemRestrict/acsCode/art/@codeList) [Optional]</p> <p>- nota: <i>at least one out of this attribute and "numberingOrg" should be set</i></p> <p>(XPath GPDocRequest/itemRestrict/texCode/pattern/@codeList) [Optional]</p> <p>- nota: <i>at least one out of this attribute and "numberingOrg" should be set</i></p> <p>(XPath GPDocRequest/itemRestrict/garmentPartCode/size/@codeList) [Optional]</p> <p>(XPath GPDocRequest/itemRestrict/garmentCode/garmentCodeB/mod/@codeList) [Optional]</p> <p>- nota: <i>at least one out of this attribute and "numberingOrg" should be set</i></p> <p>(XPath GPDocRequest/itemRestrict/garmentCode/garmentCodeB/color/@codeList) [Optional]</p> <p>- nota: <i>this attribute should be used either single or coupled with "listName" and "listVersion"</i></p> <p>(XPath GPDocRequest/itemRestrict/garmentPartCode/color/@codeList) [Optional]</p> <p>- nota: <i>this attribute should be used either single or coupled with "listName" and "listVersion"</i></p> <p>(XPath GPDocRequest/itemRestrict/acsCode/pattern/@codeList) [Optional]</p> <p>- nota: <i>at least one out of this attribute and "numberingOrg" should be set</i></p> |
| color       | <p>colour number of the product, when not included in the model or fabric code</p> <p>- base type: string, max length: 15,</p> <p>(XPath GPDocRequest/itemRestrict/texCode/color) 0-1</p> <p>(XPath GPDocRequest/itemRestrict/garmentPartCode/color) 0-1</p> <p>- note: <i>when a garment component, it should be the code assigned to the garment article</i></p> <p>(XPath GPDocRequest/itemRestrict/yarnCode/color) 0-1</p> <p>(XPath GPDocRequest/itemRestrict/acsCode/color) 0-1</p> <p>(XPath GPDocRequest/itemRestrict/garmentCode/garmentCodeB/color) 0-1</p>  |
| country     | <p>code of the nation</p> <p>- base type: string, cod. table: T10</p> <p><a href="http://www.ebiz.enea.it/moda-ml/repository/codelist/v2018-1/gc_T10.xml">http://www.ebiz.enea.it/moda-ml/repository/codelist/v2018-1/gc_T10.xml</a></p> <p>(XPath GPDocRequest/supplier/country) 0-1</p> <p>(XPath GPDocRequest/buyer/country) 0-1</p>  |
| @dateForm   | <p>format used for the date</p> <p>- base type: string, cod. table: NT29</p> <p><a href="http://www.ebiz.enea.it/moda-ml/repository/codelist/v2018-1/gc_NT29.xml">http://www.ebiz.enea.it/moda-ml/repository/codelist/v2018-1/gc_NT29.xml</a></p> <p>(XPath GPDocRequest/refDoc/docDate/@dateForm) [Optional]</p> <p>(XPath GPDocRequest/msgDate/@dateForm) [Optional]</p> <p>(XPath GPDocRequest/timeRestrict/validityStart/@dateForm) [Optional]</p> <p>(XPath GPDocRequest/timeRestrict/validityEnd/@dateForm) [Optional]</p>   |
| dept        | <p>name or code of a contact department within a Party</p> <p>- base type: string, max length: 40,</p> <p>(XPath GPDocRequest/buyer/dept) 0-1</p> <p>(XPath GPDocRequest/supplier/dept) 0-1</p>  |
| description | <p>free text description. The content of the element must be unique, it might be translated and repeated into more languages (thus no more than one instance for each language).</p> <p>- base type: string, max length: 250,</p> <p>(XPath GPDocRequest/itemRestrict/yarnCode/description) 0-unbounded (AU)</p> <p>- note: <i>Product description</i></p>   |

|              |   |
|--------------|---|
|              | <p>(XPath GPDocRequest/itemRestrict/texCode/description) 0-unbounded (pAU)<br/> - note: <i>Product description</i></p> <p>(XPath GPDocRequest/itemRestrict/garmentPartCode/description) 0-unbounded (AU)<br/> - note: <i>Product part description</i></p> <p>(XPath GPDocRequest/itemRestrict/garmentCode/garmentCodeA/description) 0-unbounded (AU)<br/> - note: <i>Product description</i></p> <p>(XPath GPDocRequest/itemRestrict/acsCode/description) 0-unbounded (AU)<br/> - note: <i>Product description</i></p> <p>(XPath GPDocRequest/itemRestrict/garmentCode/garmentCodeB/description) 0-unbounded (AU)<br/> - note: <i>Product description</i></p> |
| docDate      | <p>date of issue of the referenced document, according to one of the patterns YYYY-MM-DD, YYYY-MM-DD:HH-MM or YYYY-WW.<br/> - base type: string,<br/> (XPath GPDocRequest/refDoc/docDate) 0-1</p>   |
| docID        | <p>identification number of the referenced document SINCE 2008-1 ITS USE IN THE HEADER IS DISCOURAGED (REPLACED BY msgID)<br/> - base type: string, max length: 80,<br/> (XPath GPDocRequest/refDoc/docID) 1-2 (p)</p> <hr/> <p>AAAA-WARNING! - text not AVAILABLE n. 245 - In=en</p>   |
| @docType     | <p>type or class to which the referenced document belongs<br/> - base type: string, cod. table: T21<br/> <a href="http://www.ebiz.enea.it/moda-ml/repository/codelist/v2018-1/gc_T21.xml">http://www.ebiz.enea.it/moda-ml/repository/codelist/v2018-1/gc_T21.xml</a><br/> (XPath GPDocRequest/refDoc/@docType) [Required]</p>   |
| drop         | <p>drop number of the garment<br/> - base type: string, max length: 15,<br/> (XPath GPDocRequest/itemRestrict/garmentCode/garmentCodeB/drop) 0-1 (A)<br/> - note: <i>Fill this element if the drop is the same for all the sizes of the model. Otherway specify it within the csRange element</i></p>   |
| @email       | <p>electronic mail address of the contact person within a Party<br/> - base type: string, max length: 250,<br/> (XPath GPDocRequest/supplier/person/@email) [Optional]<br/> (XPath GPDocRequest/buyer/person/@email) [Optional]</p>   |
| @encoding    | <p>specifies the decoding algorithm of the binary object<br/> - base type: normalizedString,<br/> (XPath GPDocRequest/refDoc/attachment/binaryObject/@encoding) [Optional] (Na)</p>   |
| encodingCode | <p>the encoding/decoding algorithm used with the external object (example is 'base64Binary')<br/> - base type: normalizedString,<br/> (XPath GPDocRequest/refDoc/attachment/externalReference/encodingCode) 0-1 (N)</p>   |
| fabric       | <p>fabric number of the garment<br/> - base type: string, max length: 15,<br/> (XPath GPDocRequest/itemRestrict/garmentCode/garmentCodeB/fabric) 0-1<br/> (XPath GPDocRequest/itemRestrict/garmentPartCode/fabric) 0-1<br/> - note: <i>when a garment component, it should be the code assigned to the garment article</i></p>  |
| @fax         | <p>fax number of the contact person within a Party<br/> - base type: string, max length: 35,<br/> (XPath GPDocRequest/supplier/person/@fax) [Optional]<br/> (XPath GPDocRequest/buyer/person/@fax) [Optional]</p>   |
| fileName     | <p>unique identifier (name) of the file<br/> - base type: string, max length: 255,<br/> (XPath GPDocRequest/refDoc/attachment/fileName) 0-1 (N)</p>   |

|              |  |
|--------------|--|
| @format      | <p>the format of the binary content (examples xml, pdf, doc,...)</p> <p>- base type: string,<br/>(XPath GPDocRequest/refDoc/attachment/binaryObject/@format) [Optional] (Na)</p>   |
| formatCode   | <p>the format of the external object (examples xml, pdf, doc,...)</p> <p>- base type: normalizedString,<br/>(XPath GPDocRequest/refDoc/attachment/externalReference/formatCode) 0-1 (N)</p>  |
| gPart        | <p>code specifying the type of component or part of a fashion product (sleeve, neck, ...)</p> <p>- base type: string, cod. table: T48<br/><a href="http://www.ebiz.enea.it/moda-ml/repository/codelist/v2018-1/gc_T48.xml">http://www.ebiz.enea.it/moda-ml/repository/codelist/v2018-1/gc_T48.xml</a><br/>(XPath GPDocRequest/itemRestrict/garmentPartCode/gPart) 1-1</p>  |
| id           | <p>primary identification code of a Party; it is recommended the format: nation code (ISO 3166) + VAT identification number (11 crt), with the qualifier "numberingOrg"= MF</p> <p>- base type: string, max length: 15,<br/>(XPath GPDocRequest/buyer/id) 1-1 (p)<br/>(XPath GPDocRequest/itemRestrict/id) 0-1<br/>(XPath GPDocRequest/supplier/id) 1-1</p>  |
| @idQualifier | <p>Qualification of the identifier.</p> <p>- base type: string,<br/>(XPath GPDocRequest/buyer/additionalIdentifier/@idQualifier) [Optional] (Na)<br/>- nota: <i>this attribute should be used when the numberingOrg attribute is not enough to declare the type of identifier</i><br/>(XPath GPDocRequest/supplier/additionalIdentifier/@idQualifier) [Optional] (Na)<br/>- nota: <i>this attribute should be used when the numberingOrg attribute is not enough to declare the type of identifier</i></p>   |
| @isURL       | <p>it indicates if the referred element is an URL (true) or not (false)</p> <p>- base type: boolean,<br/>(XPath GPDocRequest/refDoc/attachment/externalReference/uri/@isURL) [Optional] [Default= true] (N)<br/>- nota: <i>usage of URLs is recommended</i></p>  |
| itemID       | <p>number of the line/item of the referenced document</p> <p>- base type: string, max length: 40,<br/>(XPath GPDocRequest/refDoc/itemID) 0-1 (U)</p>   |
| legalName    | <p>legal name of a Party</p> <p>- base type: string, max length: 250,<br/>(XPath GPDocRequest/buyer/legalName) 0-1 (U)<br/>(XPath GPDocRequest/supplier/legalName) 0-1 (U)<br/>(XPath GPDocRequest/itemRestrict/legalName) 0-1 (U)</p>   |
| @listName    | <p>the name of the list of codes used to make an instance of the element (it might be thought as descriptive element, i.e. 'fabric printing technologies', or not, i.e. "T264")</p> <p>- base type: string, max length: 40,<br/>(XPath GPDocRequest/itemRestrict/acsCode/color/@listName) [Optional]<br/>- nota: <i>this attribute should always be used coupled with "numberingOrg"</i><br/>(XPath GPDocRequest/itemRestrict/garmentPartCode/size/@listName) [Optional] (a)<br/>)<br/>- nota: <i>this attribute should always be used coupled with "numberingOrg"</i><br/>(XPath GPDocRequest/itemRestrict/acsCode/pattern/@listName) [Optional]<br/>- nota: <i>this attribute should always be used coupled with "numberingOrg"</i><br/>(XPath GPDocRequest/itemRestrict/acsCode/art/@listName) [Optional]<br/>- nota: <i>this attribute should always be used coupled with "numberingOrg"</i><br/>(XPath GPDocRequest/itemRestrict/garmentCode/garmentCodeB/artGroup/@listName) [Optional]<br/>- nota: <i>this attribute should always be used coupled with "numberingOrg"</i><br/>(XPath GPDocRequest/itemRestrict/texCode/color/@listName) [Optional]<br/>- nota: <i>this attribute should always be used coupled with "numberingOrg"</i><br/>(XPath GPDocRequest/itemRestrict/yarnCode/art/@listName) [Optional]</p> |

|              |  |
|--------------|--|
|              | <ul style="list-style-type: none"> <li>- nota: <i>this attribute should always be used coupled with “numberingOrg”</i><br/>(XPath GPDocRequest/itemRestrict/texCode/art/@listName) [Optional]</li> <li>- nota: <i>this attribute should always be used coupled with “numberingOrg”</i><br/>(XPath GPDocRequest/itemRestrict/texCode/pattern/@listName) [Optional]</li> <li>- nota: <i>this attribute should always be used coupled with “numberingOrg”</i><br/>(XPath GPDocRequest/itemRestrict/yarnCode/color/@listName) [Optional]</li> <li>- nota: <i>this attribute should always be used coupled with “numberingOrg”</i><br/>(XPath GPDocRequest/itemRestrict/garmentPartCode/fabric/@listName) [Optional]</li> <li>- nota: <i>this attribute should always be used coupled with “numberingOrg”</i><br/>(XPath GPDocRequest/itemRestrict/garmentPartCode/color/@listName) [Optional]</li> <li>- nota: <i>this attribute should always be used coupled with “numberingOrg”</i><br/>(XPath GPDocRequest/itemRestrict/garmentPartCode/mod/@listName) [Optional]</li> <li>- nota: <i>this attribute should always be used coupled with “numberingOrg”</i><br/>(XPath GPDocRequest/itemRestrict/garmentCode/garmentCodeA/<br/>art/@listName) [Optional]</li> <li>- nota: <i>this attribute should always be used coupled with “numberingOrg”</i><br/>(XPath GPDocRequest/itemRestrict/garmentCode/garmentCodeB/<br/>size/@listName) [Optional]</li> <li>- nota: <i>this attribute should always be used coupled with “numberingOrg”</i><br/>(XPath GPDocRequest/itemRestrict/season/@listName) [Optional] (a)</li> <li>- nota: <i>this attribute should always be used coupled with “numberingOrg”</i><br/>(XPath GPDocRequest/itemRestrict/garmentCode/garmentCodeB/<br/>garmentVariant/variantCode/@listName) [Optional] (a)</li> <li>- nota: <i>this attribute should always be used coupled with “numberingOrg”</i><br/>(XPath GPDocRequest/refDoc/season/@listName) [Optional] (a)</li> <li>- nota: <i>this attribute should always be used coupled with “numberingOrg”</i><br/>(XPath GPDocRequest/itemRestrict/garmentCode/garmentCodeB/<br/>mod/@listName) [Optional]</li> <li>- nota: <i>this attribute should always be used coupled with “numberingOrg”</i><br/>(XPath GPDocRequest/itemRestrict/garmentCode/garmentCodeB/<br/>color/@listName) [Optional]</li> <li>- nota: <i>this attribute should always be used coupled with “numberingOrg”</i><br/>(XPath GPDocRequest/itemRestrict/garmentCode/garmentCodeB/<br/>fabric/@listName) [Optional]</li> <li>- nota: <i>this attribute should always be used coupled with “numberingOrg”</i><br/>(XPath GPDocRequest/itemRestrict/garmentCode/garmentCodeB/<br/>garmentVariant/variantType/@listName) [Optional] (a)</li> <li>- nota: <i>this attribute should always be used coupled with “numberingOrg”</i><br/>(XPath GPDocRequest/itemRestrict/garmentCode/garmentCodeB/<br/>drop/@listName) [Optional]</li> <li>- nota: <i>this attribute should always be used coupled with “numberingOrg”</i></li> </ul> |
| @listVersion | <p>it specifies the version of the list of codes used to make an instance of the element</p> <ul style="list-style-type: none"> <li>- base type: string, max length: 6,<br/>(XPath GPDocRequest/itemRestrict/garmentCode/garmentCodeB/<br/>mod/@listVersion) [Optional]</li> <li>- nota: <i>this attribute should always be used coupled with “numberingOrg” and “listName”</i><br/>(XPath GPDocRequest/itemRestrict/acsCode/pattern/@listVersion) [Optional]</li> <li>- nota: <i>this attribute should always be used coupled with “numberingOrg” and “listName”</i><br/>(XPath GPDocRequest/itemRestrict/texCode/color/@listVersion) [Optional]</li> <li>- nota: <i>this attribute should always be used coupled with “numberingOrg” and “listName”</i><br/>(XPath GPDocRequest/itemRestrict/garmentPartCode/size/@listVersion) [Optional] (a)</li> <li>- nota: <i>this attribute should always be used coupled with “numberingOrg” and “listName”</i><br/>(XPath GPDocRequest/itemRestrict/texCode/art/@listVersion) [Optional]</li> <li>- nota: <i>this attribute should always be used coupled with “numberingOrg” and “listName”</i><br/>(XPath GPDocRequest/itemRestrict/acsCode/art/@listVersion) [Optional]</li> </ul>  |



- nota: *this attribute should always be used coupled with “numberingOrg” and “listName”*  
 (XPath GPDocRequest/itemRestrict/texCode/pattern/@listVersion) [Optional]

- nota: *this attribute should always be used coupled with “numberingOrg” and “listName”*  
 (XPath GPDocRequest/itemRestrict/garmentCode/garmentCodeB/fabric/@listVersion) [Optional]

- nota: *this attribute should always be used coupled with “numberingOrg” and “listName”*  
 (XPath GPDocRequest/itemRestrict/yarnCode/color/@listVersion) [Optional]

- nota: *this attribute should always be used coupled with “numberingOrg” and “listName”*  
 (XPath GPDocRequest/itemRestrict/garmentPartCode/color/@listVersion) [Optional]

- nota: *this attribute should always be used coupled with “numberingOrg” and “listName”*  
 (XPath GPDocRequest/itemRestrict/garmentPartCode/fabric/@listVersion) [Optional]

- nota: *this attribute should always be used coupled with “numberingOrg” and “listName”*  
 (XPath GPDocRequest/itemRestrict/garmentPartCode/mod/@listVersion) [Optional]

- nota: *this attribute should always be used coupled with “numberingOrg” and “listName”*  
 (XPath GPDocRequest/itemRestrict/season/@listVersion) [Optional] (a)

- nota: *this attribute should always be used coupled with “numberingOrg” and “listName”*  
 (XPath GPDocRequest/refDoc/season/@listVersion) [Optional] (a)

- nota: *this attribute should always be used coupled with “numberingOrg” and “listName”*  
 (XPath GPDocRequest/itemRestrict/yarnCode/art/@listVersion) [Optional]

- nota: *this attribute should always be used coupled with “numberingOrg” and “listName”*  
 (XPath GPDocRequest/itemRestrict/acsCode/color/@listVersion) [Optional]

- nota: *this attribute should always be used coupled with “numberingOrg” and “listName”*  
 (XPath GPDocRequest/itemRestrict/garmentCode/garmentCodeB/garmentVariant/variantType/@listVersion) [Optional] (a)

- nota: *this attribute should always be used coupled with “numberingOrg” and “listName”*  
 (XPath GPDocRequest/itemRestrict/garmentCode/garmentCodeB/artGroup/@listVersion) [Optional]

- nota: *this attribute should always be used coupled with “numberingOrg” and “listName”*  
 (XPath GPDocRequest/itemRestrict/garmentCode/garmentCodeB/garmentVariant/variantCode/@listVersion) [Optional] (a)

- nota: *this attribute should always be used coupled with “numberingOrg” and “listName”*  
 (XPath GPDocRequest/itemRestrict/garmentCode/garmentCodeB/drop/@listVersion) [Optional]

- nota: *this attribute should always be used coupled with “numberingOrg” and “listName”*  
 (XPath GPDocRequest/itemRestrict/garmentCode/garmentCodeA/art/@listVersion) [Optional]

- nota: *this attribute should always be used coupled with “numberingOrg” and “listName”*  
 (XPath GPDocRequest/itemRestrict/garmentCode/garmentCodeB/size/@listVersion) [Optional]

- nota: *this attribute should always be used coupled with “numberingOrg” and “listName”*  
 (XPath GPDocRequest/itemRestrict/garmentCode/garmentCodeB/color/@listVersion) [Optional]

- nota: *this attribute should always be used coupled with “numberingOrg” and “listName”*

|               |  |
|---------------|--|
| @ln           | <p>Language code.</p> <p>- base type: string, cod. table: NT60<br/> <a href="http://www.ebiz.enea.it/moda-ml/repository/codelist/v2018-1/gc_NT60.xml">http://www.ebiz.enea.it/moda-ml/repository/codelist/v2018-1/gc_NT60.xml</a><br/> (XPath GPDocRequest/itemRestrict/texCode/description/@ln) [Optional] (N)<br/> (XPath GPDocRequest/itemRestrict/yarnCode/description/@ln) [Optional] (N)<br/> (XPath GPDocRequest/itemRestrict/garmentPartCode/description/@ln) [Optional] (N)<br/> (XPath GPDocRequest/itemRestrict/garmentCode/garmentCodeA/description/@ln) [Optional] (N)<br/> (XPath GPDocRequest/itemRestrict/garmentCode/garmentCodeB/description/@ln) [Optional] (N)<br/> (XPath GPDocRequest/itemRestrict/acsCode/description/@ln) [Optional] (N)</p> |
| @logo         | <p>company logo (URL of the image jpeg or gif). It is recommended that the width of the image does not exceed 640 pixel.</p> <p>- base type: string, max length: 255,<br/> (XPath GPDocRequest/supplier/@logo) [Optional]<br/> (XPath GPDocRequest/buyer/@logo) [Optional]</p>   |
| @mime         | <p>the mime type of the binary object</p> <p>- base type: normalizedString,<br/> (XPath GPDocRequest/refDoc/attachment/binaryObject/@mime) [Optional] (Na)</p>   |
| mimeCode      | <p>mime type of the external object</p> <p>- base type: normalizedString,<br/> (XPath GPDocRequest/refDoc/attachment/externalReference/mimeCode) 0-1 (N)</p> <hr/> <p>AAAA-WARNING! - text not AVAILABLE n. 245 - ln=en</p>  |
| mod           | <p>model number of the garment</p> <p>- base type: string, max length: 15,<br/> (XPath GPDocRequest/itemRestrict/garmentPartCode/mod) 1-1<br/> - note: <i>when a garment component, it should be the code assigned to the garment article</i><br/> (XPath GPDocRequest/itemRestrict/garmentCode/garmentCodeB/mod) 1-1</p>  |
| msgDate       | <p>date of issue of the present message (xml document), according to one of the patterns YYYY-MM-DD, YYYY-MM-DD:HH-MM or YYYY-WW.</p> <p>- base type: string,<br/> (XPath GPDocRequest/msgDate) 1-1</p>  |
| msgN          | <p>identification number given to the message (xml document) by its issuer. In case of more despatches of the same business document, it changes.</p> <p>- base type: string, max length: 35,<br/> (XPath GPDocRequest/msgN) 1-1</p>   |
| note          | <p>free text or structured (computer processing) note. For note structuring use the attributes "noteLabel" and "codelist"</p> <p>- base type: string, max length: 350,<br/> (XPath GPDocRequest/note) 0-99<br/> (XPath GPDocRequest/itemRestrict/note) 0-99</p>  |
| @noteLabel    | <p>subject qualifier of a note</p> <p>- base type: string, max length: 35,<br/> (XPath GPDocRequest/itemRestrict/note/@noteLabel) [Optional]<br/> - nota: <i>must be used to qualify the subject of the note</i><br/> (XPath GPDocRequest/note/@noteLabel) [Optional]<br/> - nota: <i>must be used to qualify the subject of the note</i></p>  |
| @numberingOrg | <p>code specifying the organisation who has created or owns the coding or numbering system</p> <p>- base type: string, cod. table: NT6<br/> <a href="http://www.ebiz.enea.it/moda-ml/repository/codelist/v2018-1/gc_NT6.xml">http://www.ebiz.enea.it/moda-ml/repository/codelist/v2018-1/gc_NT6.xml</a><br/> (XPath GPDocRequest/itemRestrict/garmentPartCode/fabric/@numberingOrg) [Optional]<br/> - nota: <i>this attribute should be used either single or coupled with "listName" and "listVersion"</i></p>  |

(XPath GPDocRequest/refDoc/season/@numberingOrg) [Optional] (a)  
- nota: *this attribute should be used either single or coupled with "listName" and "listVersion"*

(XPath GPDocRequest/itemRestrict/garmentCode/garmentCodeB/drop/@numberingOrg) [Optional]  
- nota: *this attribute should be used either single or coupled with "listName" and "listVersion"*

(XPath GPDocRequest/supplier/id/@numberingOrg) [Optional]  
(XPath GPDocRequest/itemRestrict/garmentPartCode/color/@numberingOrg) [Optional]  
- nota: *this attribute should be used either single or coupled with "listName" and "listVersion"*

(XPath GPDocRequest/itemRestrict/acsCode/added/@numberingOrg) [Optional]  
- nota: *this attribute should be used either single or coupled with "listName" and "listVersion"*

(XPath GPDocRequest/itemRestrict/acsCode/@numberingOrg) [Optional]  
(XPath GPDocRequest/buyer/id/@numberingOrg) [Optional]  
(XPath GPDocRequest/buyer/additionalIdentifier/@numberingOrg) [Optional] (a)  
- nota: *here the issuer of the identifier must be specified*

(XPath GPDocRequest/itemRestrict/acsCode/pattern/@numberingOrg) [Optional]  
- nota: *this attribute should be used either single or coupled with "listName" and "listVersion"*

(XPath GPDocRequest/itemRestrict/acsCode/art/@numberingOrg) [Optional]  
- nota: *this attribute should be used either single or coupled with "listName" and "listVersion"*

(XPath GPDocRequest/itemRestrict/garmentCode/garmentCodeB/size/@numberingOrg) [Optional]  
- nota: *this attribute should be used either single or coupled with "listName" and "listVersion"*

(XPath GPDocRequest/itemRestrict/acsCode/color/@numberingOrg) [Optional]  
- nota: *this attribute should be used either single or coupled with "listName" and "listVersion"*

(XPath GPDocRequest/itemRestrict/garmentPartCode/added/@numberingOrg) [Optional]  
- nota: *this attribute should be used either single or coupled with "listName" and "listVersion"*

(XPath GPDocRequest/itemRestrict/garmentCode/garmentCodeB/added/@numberingOrg) [Optional]  
- nota: *this attribute should be used either single or coupled with "listName" and "listVersion"*

(XPath GPDocRequest/itemRestrict/garmentCode/garmentCodeB/artGroup/@numberingOrg) [Optional]  
- nota: *this attribute should be used either single or coupled with "listName" and "listVersion"*

(XPath GPDocRequest/refDoc/attachment/fileName/@numberingOrg) [Optional] (a)  
(XPath GPDocRequest/itemRestrict/garmentPartCode/size/@numberingOrg) [Optional] (a)  
- nota: *this attribute should be used either single or coupled with "listName" and "listVersion"*

(XPath GPDocRequest/itemRestrict/garmentCode/garmentCodeB/@numberingOrg) [Optional]  
(XPath GPDocRequest/itemRestrict/garmentCode/garmentCodeB/mod/@numberingOrg) [Optional]  
(XPath GPDocRequest/itemRestrict/texCode/added/@numberingOrg) [Optional]  
- nota: *this attribute should be used either single or coupled with "listName" and "listVersion"*

(XPath GPDocRequest/itemRestrict/yarnCode/art/@numberingOrg) [Optional]  
- nota: *this attribute should be used either single or coupled with "listName" and "listVersion"*

(XPath GPDocRequest/itemRestrict/garmentCode/@numberingOrg) [Optional]  
(XPath GPDocRequest/itemRestrict/yarnCode/@numberingOrg) [Optional] [Default=CL]  
(XPath GPDocRequest/itemRestrict/texCode/@numberingOrg) [Optional]  
(XPath GPDocRequest/itemRestrict/garmentCode/garmentCodeB/color/@numberingOrg) [Optional]

|         |   |
|---------|---|
|         | <p>- nota: <i>this attribute should be used either single or coupled with "listName" and "listVersion"</i><br/> (XPath GPDocRequest/itemRestrict/texCode/pattern/@numberingOrg) [Optional]</p> <p>- nota: <i>this attribute should be used either single or coupled with "listName" and "listVersion"</i><br/> (XPath GPDocRequest/itemRestrict/garmentCode/garmentCodeB/fabric/@numberingOrg) [Optional]</p> <p>- nota: <i>this attribute should be used either single or coupled with "listName" and "listVersion"</i><br/> (XPath GPDocRequest/itemRestrict/texCode/color/@numberingOrg) [Optional]</p> <p>- nota: <i>this attribute should be used either single or coupled with "listName" and "listVersion"</i><br/> (XPath GPDocRequest/itemRestrict/garmentCode/garmentCodeB/garmentVariant/variantType/@numberingOrg) [Optional] (a)</p> <p>- nota: <i>this attribute should be used either single or coupled with "listName" and "listVersion"</i><br/> (XPath GPDocRequest/note/@numberingOrg) [Optional]</p> <p>- nota: <i>must be used to specify the organization that created the list of codes used in "noteLabel"</i><br/> (XPath GPDocRequest/itemRestrict/garmentPartCode/@numberingOrg) [Optional]<br/> (XPath GPDocRequest/itemRestrict/note/@numberingOrg) [Optional]</p> <p>- nota: <i>must be used to specify the organization that created the list of codes used in "noteLabel"</i><br/> (XPath GPDocRequest/refDoc/docID/@numberingOrg) [Optional]</p> <p>- nota: <i>here can be specified whose document numbering is used (e.g.: Client, Supplier, ..)</i><br/> (XPath GPDocRequest/supplier/additionalIdentifier/@numberingOrg) [Optional] (a)</p> <p>- nota: <i>here the issuer of the identifier must be specified</i><br/> (XPath GPDocRequest/itemRestrict/texCode/art/@numberingOrg) [Optional]</p> <p>- nota: <i>this attribute should be used either single or coupled with "listName" and "listVersion"</i><br/> (XPath GPDocRequest/itemRestrict/garmentPartCode/mod/@numberingOrg) [Optional]</p> <p>(XPath GPDocRequest/itemRestrict/yarnCode/added/@numberingOrg) [Optional]</p> <p>- nota: <i>this attribute should be used either single or coupled with "listName" and "listVersion"</i><br/> (XPath GPDocRequest/itemRestrict/garmentCode/garmentCodeB/garmentVariant/variantCode/@numberingOrg) [Optional] (a)</p> <p>- nota: <i>this attribute should be used either single or coupled with "listName" and "listVersion"</i><br/> (XPath GPDocRequest/itemRestrict/garmentCode/garmentCodeA/art/@numberingOrg) [Optional]</p> <p>- nota: <i>this attribute should be used either single or coupled with "listName" and "listVersion"</i><br/> (XPath GPDocRequest/itemRestrict/season/@numberingOrg) [Optional] (a)</p> <p>- nota: <i>this attribute should be used either single or coupled with "listName" and "listVersion"</i><br/> (XPath GPDocRequest/itemRestrict/id/@numberingOrg) [Optional]<br/> (XPath GPDocRequest/itemRestrict/yarnCode/color/@numberingOrg) [Optional]</p> <p>- nota: <i>this attribute should be used either single or coupled with "listName" and "listVersion"</i></p> |
| pattern | <p>pattern/design number of the product, when not included in the article code</p> <p>- base type: string, max length: 15,<br/> (XPath GPDocRequest/itemRestrict/acsCode/pattern) 0-1<br/> (XPath GPDocRequest/itemRestrict/texCode/pattern) 0-1</p>  |
| person  | <p>name of the contact person within a Party</p> <p>- base type: string, max length: 40,<br/> (XPath GPDocRequest/supplier/person) 0-1<br/> (XPath GPDocRequest/buyer/person) 0-1</p>   |
| @phone  | <p>phone number of the contact person within a Party</p> <p>- base type: string, max length: 35,<br/> (XPath GPDocRequest/buyer/person/@phone) [Optional]</p>   |

|                |   |
|----------------|---|
|                | (XPath GPDocRequest/supplier/person/@phone) [Optional]  |
| postCode       | code defining the postal zone<br>- base type: string, max length: 10,<br>(XPath GPDocRequest/supplier/postCode) 0-1<br>(XPath GPDocRequest/buyer/postCode) 0-1  |
| requestDocType | type of document the issue of which is requested by the present Request message<br>- base type: string, cod. table: T21<br><a href="http://www.ebiz.enea.it/moda-ml/repository/codelist/v2018-1/gc_T21.xml">http://www.ebiz.enea.it/moda-ml/repository/codelist/v2018-1/gc_T21.xml</a><br>(XPath GPDocRequest/requestDocType) 1-1   |
| season         | sale season; defined as: season (1 crt) + year (4 crt) - season: S/S=1 A/W=2 Spring=3 Summer=4 Autumn=5 Winter=6: for more than four seasons use alphabetic sequence: 1st season=A 2nd season=B etc.etc.<br>- base type: string, max length: 15,<br>(XPath GPDocRequest/refDoc/season) 0-1 (A)<br>- note: <i>here indicates the season to which the referenced document belongs</i><br>(XPath GPDocRequest/itemRestrict/season) 0-1 (A) |
| @sender        | qualifier that specifies the Party issuing of the document<br>- base type: boolean,<br>(XPath GPDocRequest/supplier/@sender) [Optional] (a*)<br>- nota: <i>This attribute is mandatory when the STYLESHEET must be used</i><br>(XPath GPDocRequest/buyer/@sender) [Optional] (a*)<br>- nota: <i>This attribute is mandatory when the STYLESHEET must be used</i>  |
| size           | size number of a fashion product (knitwear, clothing, ..)<br>- base type: string, max length: 15,<br>(XPath GPDocRequest/itemRestrict/garmentPartCode/size) 0-1 (A)<br>(XPath GPDocRequest/itemRestrict/garmentCode/garmentCodeB/size) 0-1 (A)  |
| street         | street and building number identifying a location<br>- base type: string, max length: 80,<br>(XPath GPDocRequest/supplier/street) 0-1<br>(XPath GPDocRequest/buyer/street) 0-1  |
| subCountry     | short name or code of the sub-country entity<br>- base type: string, max length: 9,<br>(XPath GPDocRequest/buyer/subCountry) 0-1<br>(XPath GPDocRequest/supplier/subCountry) 0-1  |
| subDept        | name or code of a contact department within a Party<br>- base type: string, max length: 40,<br>(XPath GPDocRequest/buyer/subDept) 0-1 (N)<br>(XPath GPDocRequest/supplier/subDept) 0-1 (N)  |
| @uid           | unique element identifier within the xml document<br>- base type: string,<br>(XPath GPDocRequest/refDoc/attachment/@uid) [Optional]   |
| uri            | Uniform Resource Identifier (URI) that identifies the external object as an Internet resource<br>- base type: normalizedString,<br>(XPath GPDocRequest/refDoc/attachment/externalReference/uri) 1-1 (N)   |
| @useProfile    | use profile to which the present document is compliant if it was agreed by the parties. It is suggested a URI with reference to the firms or the URL of the profile.<br>- base type: string,<br>(XPath GPDocRequest/@useProfile) [Optional]   |
| validityEnd    | date by which the validity ends, according to one of the patterns YYYY-MM-DD, YYYY-MM-DD:HH-MM or YYYY-WW.<br>- base type: string,<br>(XPath GPDocRequest/timeRestrict/validityEnd) 0-1   |

|               |  |
|---------------|--|
| validityStart | date by which the validity starts, according to one of the patterns YYYY-MM-DD, YYYY-MM-DD:HH-MM or YYYY-WW.<br>- base type: string,<br>(XPath GPDocRequest/timeRestrict/validityStart) 0-1  |
| variantCode   | Code of variant used for fashion product.<br>- base type: string,<br>(XPath GPDocRequest/itemRestrict/garmentCode/garmentCodeB/garmentVariant/variantCode) 1-1 (N)   |
| variantType   | Type of variant used for fashion product (examples: 'treatment', 'washing type', 'size class',...)<br>- base type: string,<br>(XPath GPDocRequest/itemRestrict/garmentCode/garmentCodeB/garmentVariant/variantType) 1-1 (N)  |
| @version      | Dictionary version from which the instance has been created<br>- base type: string, cod. table: NT100<br><a href="http://www.ebiz.enea.it/moda-ml/repository/codelist/v2018-1/gc_NT100.xml">http://www.ebiz.enea.it/moda-ml/repository/codelist/v2018-1/gc_NT100.xml</a><br>(XPath GPDocRequest/@version) [Optional] [Default= 2018-1] |

## 2.3 Suggested best practices

**GPDocRequest/refDoc/docID (identification number of the referenced document SINCE 2008-1 ITS USE IN THE HEADER IS DISCOURAGED (REPLACED BY msgID))**

numberingOrg indicates the role that produced the document identifier (it is allowed to declare two different ones -e.g. customer and supplier - with two docID with different numberingOrg

**GPDocRequest/refDoc/attachment/externalReference/mimeCode (mime type of the external object)**

Use coding from IANA <http://www.iana.org/assignments/media-types/media-types.xml>

## 2.4 Enumeration tables

List of enumeration tables used in the XML document. You can find the corresponding codes at:  
<http://www.ebiz-tcf.eu/moda-ml/imple/moda-ml-2018-1.asp?lingua=en&pag=6>

### Legenda

- N: new table
- U: updated properties

NT100 - eBIZ TCFUpstream version

NT29 - format of a date

NT6 - coding system owner/issuer

NT60 - language, codes from ISO 639-1 (subset) (N)

T10 - ISO3166 - Country

T21 - type of document

T44 - additional code type

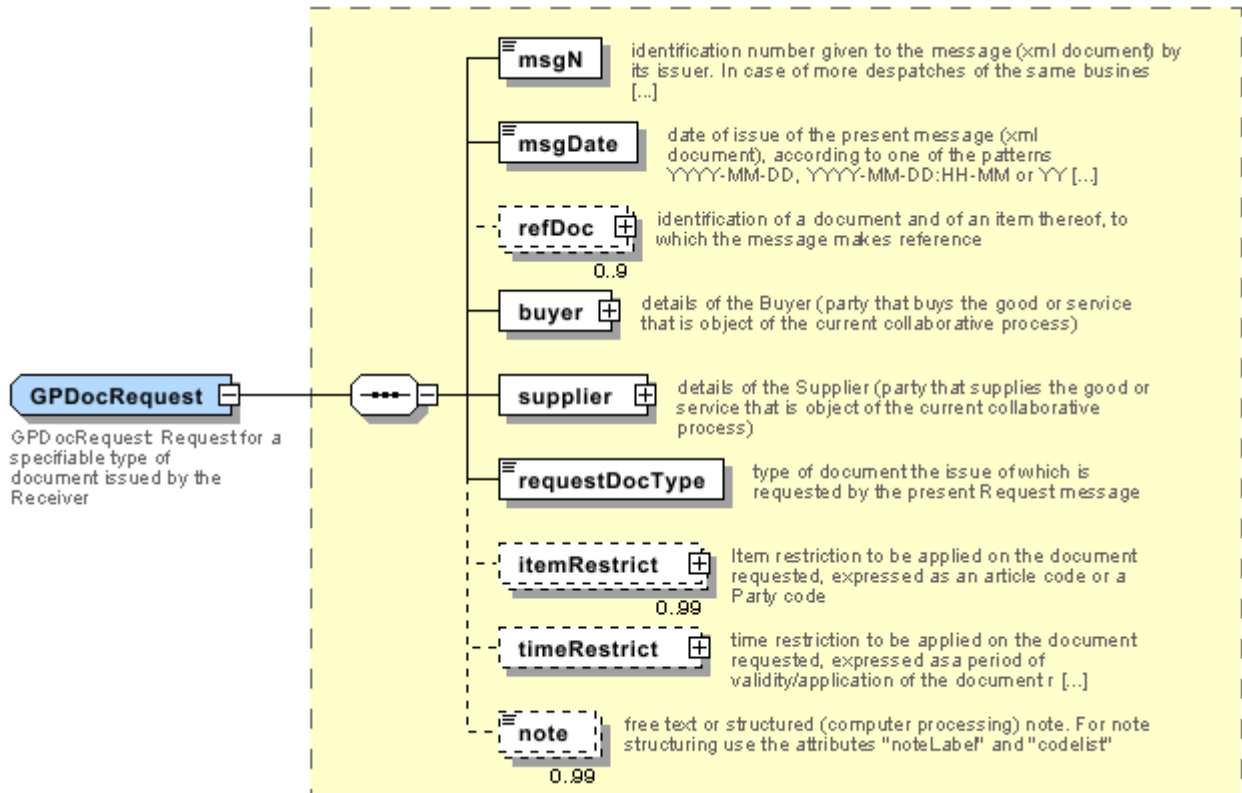
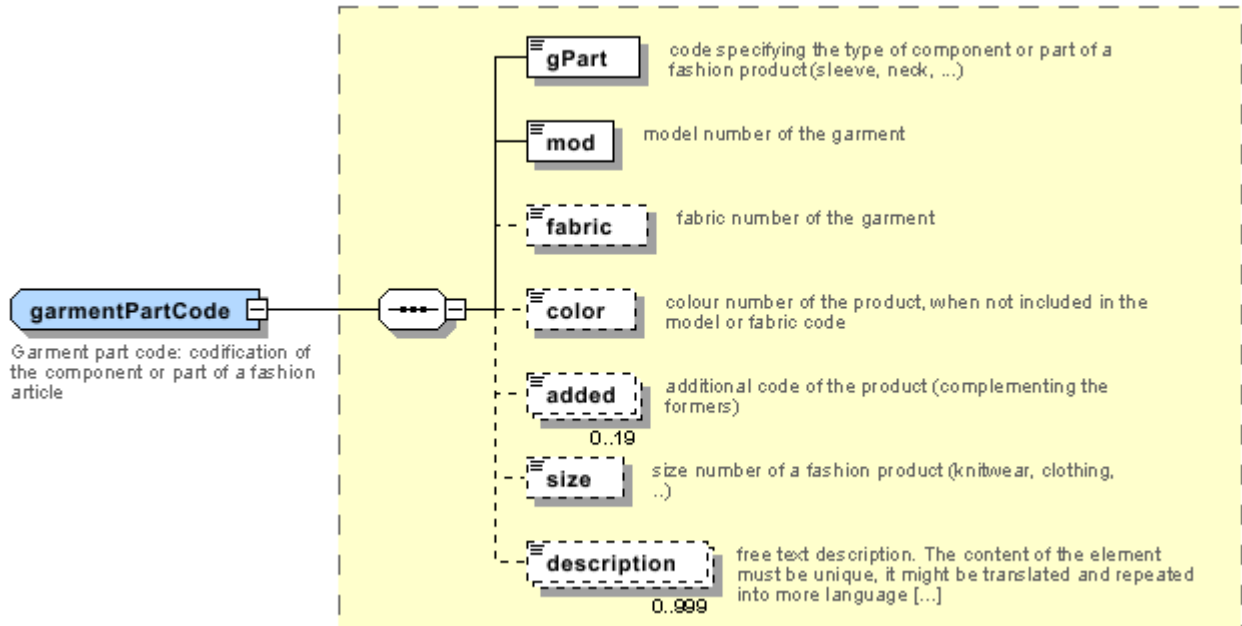
T48 - garment part type





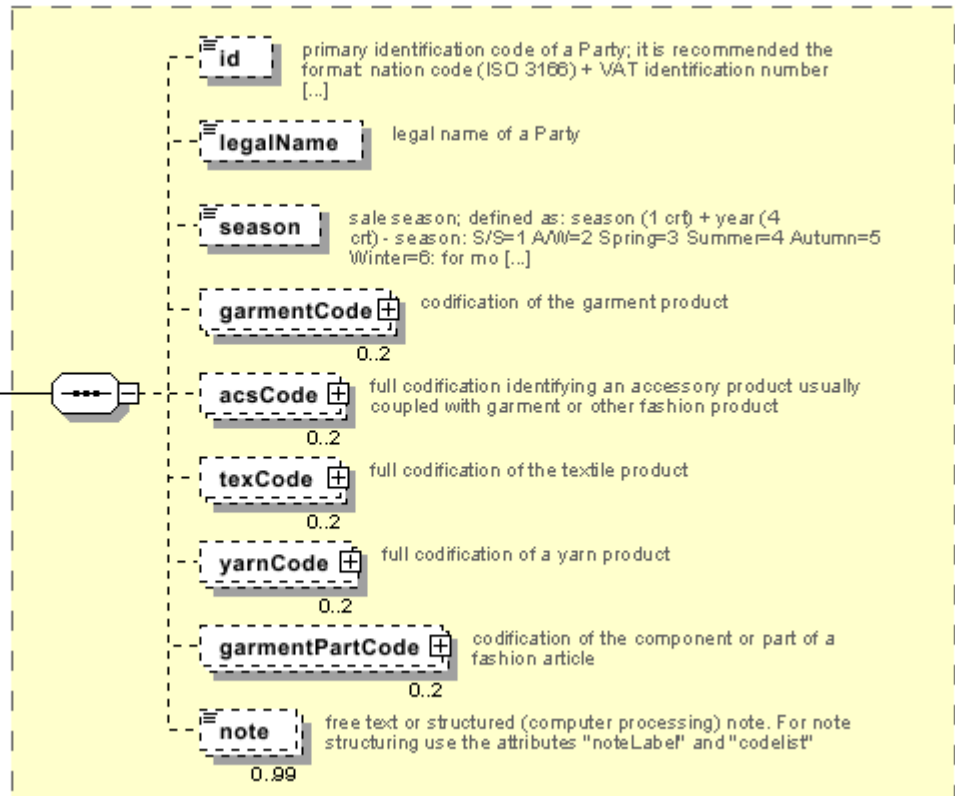
# Annex A

Representative images of the principal complex elements' structure.



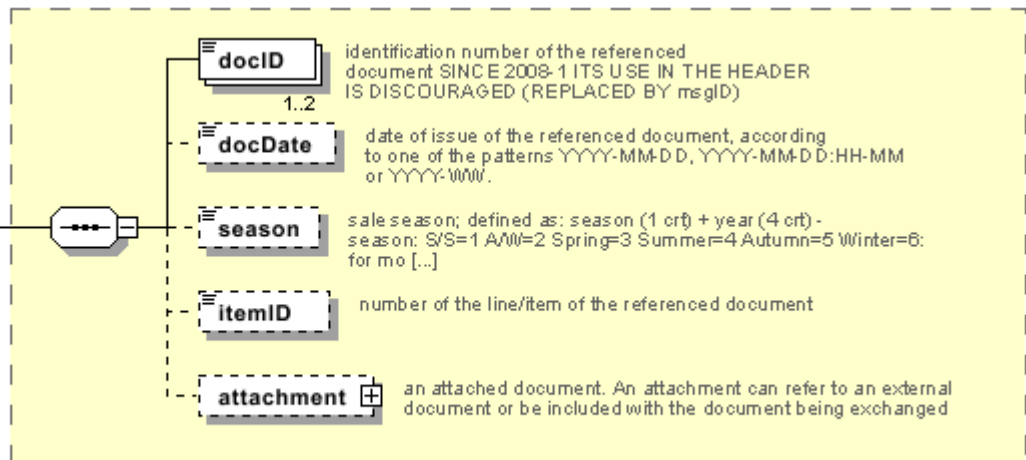
**itemRestrict**

Item restriction: Item restriction to be applied on the document requested, expressed as an article code or a Party code



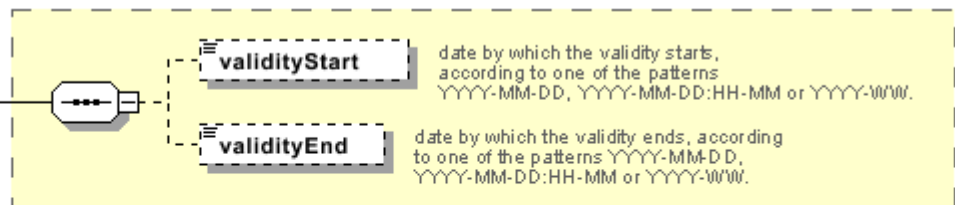
**refDoc**

reference document details: identification of a document and of an item thereof, to which the message makes reference



**timeRestrict**

Time restriction: time restriction to be applied on the document requested, expressed as a period of validity/application of the document requested





## Annex B

### NT100 - eBIZ TCFUpstream version

dictionary version

Agency name: eBIZ

tabella cod.: NT100

File codes list (Generic code): [http://www.ebiz.enea.it/moda-ml/repository/codelist/v2018-1/gc\\_NT100.xml](http://www.ebiz.enea.it/moda-ml/repository/codelist/v2018-1/gc_NT100.xml)

| Code   | Description | Adoption note | Version status | Date of insertion |
|--------|-------------|---------------|----------------|-------------------|
| 2013-1 | v2013-1     |               |                | 01/07/2013        |
| 2018-1 | v2018-1     |               | (N)            | 04/11/2018        |
| draft  | draft       |               | (N)            | 08/09/2017        |

### NT29 - format of a date

format used for the date

Agency name: eBIZ

tabella cod.: NT29

File codes list (Generic code): [http://www.ebiz.enea.it/moda-ml/repository/codelist/v2018-1/gc\\_NT29.xml](http://www.ebiz.enea.it/moda-ml/repository/codelist/v2018-1/gc_NT29.xml)

| Code | Description      | Adoption note | Version status | Date of insertion |
|------|------------------|---------------|----------------|-------------------|
| D    | YYYY-MM-DD       |               |                |                   |
| M    | YYYY-MM-DD:HH-MM |               |                |                   |
| W    | YYYY-WW          |               |                |                   |

### NT6 - coding system owner/issuer

code specifying the organisation who has created or owns the coding or numbering system

Agency name: eBIZ

tabella cod.: NT6

File codes list (Generic code): [http://www.ebiz.enea.it/moda-ml/repository/codelist/v2018-1/gc\\_NT6.xml](http://www.ebiz.enea.it/moda-ml/repository/codelist/v2018-1/gc_NT6.xml)

| Code | Description        | Adoption note | Version status | Date of insertion |
|------|--------------------|---------------|----------------|-------------------|
| CL   | Customer/buyer     |               |                |                   |
| CO   | Quality Controller |               |                |                   |
| EB   | eBIZ               | replaces 'ML' | (N)            | 18/03/2019        |

|    |                              |            |     |            |
|----|------------------------------|------------|-----|------------|
| EN | GS1 ( ex-EAN International ) |            |     |            |
| ES | e-Stockflow                  |            |     |            |
| FO | Supplier                     |            |     |            |
| GS | GS1                          |            |     | 01/07/2013 |
| MF | VAT identifier               |            | (U) |            |
| ML | Moda-ML                      | DEPRECATED | (U) |            |
| SP | Service Provider             |            |     |            |

**NT60 - language, codes from ISO 639-1 (subset) (N)**

Agency name: eBIZ / ISO

tabella cod.: NT60

File codes list (Generic code): [http://www.ebiz.enea.it/moda-ml/repository/codelist/v2018-1/gc\\_NT60.xml](http://www.ebiz.enea.it/moda-ml/repository/codelist/v2018-1/gc_NT60.xml)

| Code | Description           | Adoption note | Version status | Date of insertion |
|------|-----------------------|---------------|----------------|-------------------|
| af   | Afrikaans             |               | (N)            | 31/01/2019        |
| ar   | Arabic                |               | (N)            | 31/01/2019        |
| be   | Belarusian            |               | (N)            | 31/01/2019        |
| bg   | Bulgarian             |               | (N)            | 31/01/2019        |
| bn   | Bengali               |               | (N)            | 31/01/2019        |
| bo   | Tibetan               |               | (N)            | 31/01/2019        |
| bs   | Bosnian               |               | (N)            | 31/01/2019        |
| ca   | Catalan, Valencian    |               | (N)            | 31/01/2019        |
| cs   | Czech                 |               | (N)            | 31/01/2019        |
| da   | Danish                |               | (N)            | 31/01/2019        |
| de   | German                |               | (N)            | 31/01/2019        |
| el   | Greek, Modern (1453-) |               | (N)            | 31/01/2019        |
| en   | English               |               | (N)            | 31/01/2019        |
| eo   | Esperanto             |               | (N)            | 31/01/2019        |
| es   | Spanish, Castilian    |               | (N)            | 31/01/2019        |
| et   | Estonian              |               | (N)            | 31/01/2019        |
| eu   | Basque                |               | (N)            | 31/01/2019        |
| F    | Female                |               | (N)            | 15/04/2019        |
| fa   | Persian               |               | (N)            | 31/01/2019        |
| fi   | Finnish               |               | (N)            | 31/01/2019        |
| fr   | French                |               | (N)            | 31/01/2019        |

|    |  |  |     |            |
|----|--|--|-----|------------|
| ga | Irish  |  | (N) | 31/01/2019 |
| gd | Gaelic, Scottish Gaelic                                    |  | (N) | 31/01/2019 |
| gn | Guarani  |  | (N) | 31/01/2019 |
| he | Hebrew   |  | (N) | 31/01/2019 |
| hr | Croatian   |  | (N) | 31/01/2019 |
| ht | Haitian, Haitian Creole                                    |  | (N) | 31/01/2019 |
| hu | Hungarian  |  | (N) | 31/01/2019 |
| hy | Armenian   |  | (N) | 31/01/2019 |
| ia | Interlingua (International Auxiliary Language Association) |  | (N) | 31/01/2019 |
| id | Indonesian   |  | (N) | 31/01/2019 |
| is | Icelandic  |  | (N) | 31/01/2019 |
| it | Italian  |  | (N) | 31/01/2019 |
| ja | Japanese   |  | (N) | 31/01/2019 |
| jv | Javanese   |  | (N) | 31/01/2019 |
| ka | Georgian   |  | (N) | 31/01/2019 |
| km | Central Khmer  |  | (N) | 31/01/2019 |
| ko | Korean   |  | (N) | 31/01/2019 |
| ku | Kurdish  |  | (N) | 31/01/2019 |
| lb | Luxembourgish, Letzeburgesch                               |  | (N) | 31/01/2019 |
| lo | Lao  |  | (N) | 31/01/2019 |
| lt | Lithuanian   |  | (N) | 31/01/2019 |
| lv | Latvian  |  | (N) | 31/01/2019 |
| mg | Malagasy   |  | (N) | 31/01/2019 |
| mk | Macedonian   |  | (N) | 31/01/2019 |
| mn | Mongolian  |  | (N) | 31/01/2019 |
| mt | Maltese  |  | (N) | 31/01/2019 |
| nl | Dutch, Flemish   |  | (N) | 31/01/2019 |
| no | Norwegian  |  | (N) | 31/01/2019 |
| pl | Polish   |  | (N) | 31/01/2019 |
| pt | Portuguese   |  | (N) | 31/01/2019 |
| ro | Romanian, Moldavian, Moldovan                              |  | (N) | 31/01/2019 |
| ru | Russian  |  | (N) | 31/01/2019 |
| se | Northern Sami  |  | (N) | 31/01/2019 |
| sk | Slovak   |  | (N) | 31/01/2019 |
| sl | Slovenian  |  | (N) | 31/01/2019 |

|    |            |  |     |            |
|----|------------|--|-----|------------|
| sm | Samoan     |  | (N) | 31/01/2019 |
| so | Somali     |  | (N) | 31/01/2019 |
| sq | Albanian   |  | (N) | 31/01/2019 |
| sr | Serbian    |  | (N) | 31/01/2019 |
| sv | Swedish    |  | (N) | 31/01/2019 |
| sw | Swahili    |  | (N) | 31/01/2019 |
| ta | Tamil      |  | (N) | 31/01/2019 |
| th | Thai       |  | (N) | 31/01/2019 |
| tr | Turkish    |  | (N) | 31/01/2019 |
| uk | Ukrainian  |  | (N) | 31/01/2019 |
| ur | Urdu       |  | (N) | 31/01/2019 |
| uz | Uzbek      |  | (N) | 31/01/2019 |
| vi | Vietnamese |  | (N) | 31/01/2019 |
| zh | Chinese    |  | (N) | 31/01/2019 |

#### T10 - ISO3166 - Country

code of the nation

Agency name: ISO

tabella cod.: T10

File codes list (Generic code): [http://www.ebiz.enea.it/moda-ml/repository/codelist/v2018-1/gc\\_T10.xml](http://www.ebiz.enea.it/moda-ml/repository/codelist/v2018-1/gc_T10.xml)

Table not printed: there are 239 elements, more than the maximum specified for printing: 99.

#### T21 - type of document

type or class to which the referenced document belongs

Agency name: eBIZ

tabella cod.: T21

File codes list (Generic code): [http://www.ebiz.enea.it/moda-ml/repository/codelist/v2018-1/gc\\_T21.xml](http://www.ebiz.enea.it/moda-ml/repository/codelist/v2018-1/gc_T21.xml)

| Code | Description                  | Adoption note | Version status | Date of insertion |
|------|------------------------------|---------------|----------------|-------------------|
| BOR  | blanket order                |               | (N)            | 01/02/2018        |
| CAT  | Price catalogue - tech sheet |               |                |                   |
| CEO  | Certificate of origin        |               | (N)            | 13/04/2018        |
| CER  | Certificate                  |               | (N)            | 13/04/2018        |



|     |                                       |  |     |            |
|-----|---------------------------------------|--|-----|------------|
| COC | colour card                           |  |     |            |
| CRN | Credit note                           |  |     | 08/09/2017 |
| CTO | Checking order                        |  |     | 01/07/2013 |
| CTR | Contract                              |  | (U) |            |
| CXF | CxF3 file                             |  |     | 01/07/2013 |
| DAD | Darn order                            |  |     |            |
| DDT | ddt                                   |  |     |            |
| DEA | Despatch advise                       |  |     |            |
| DER | Despatch request                      |  |     |            |
| DR  | Document Request                      |  |     | 02/12/2014 |
| FOR | Forecast                              |  |     | 02/12/2014 |
| GSO | Garment stock offer                   |  |     |            |
| GSX | Garment stock offer change            |  |     |            |
| INV | Invoice                               |  |     |            |
| KCC | Knitting-Clothing Commission Order    |  |     | 02/12/2014 |
| KCI | Garment in Work Inventory Report      |  |     | 02/12/2014 |
| M2M | Made to Measure Production Order      |  |     | 02/12/2014 |
| MAS | Master marker                         |  |     |            |
| MCI | Visual merchandising instruction      |  | (N) | 13/04/2018 |
| OCH | Order change                          |  |     |            |
| OFF | Offer                                 |  |     |            |
| ORD | Purchase order                        |  |     |            |
| ORP | Order response                        |  |     |            |
| OSR | order status request                  |  |     |            |
| OSS | Offer status                          |  |     | 02/12/2014 |
| OST | Order status                          |  |     |            |
| OUR | our reference                         |  |     |            |
| QR  | Quality Report                        |  |     | 02/12/2014 |
| RAI | Raw Material in Work Inventory Report |  |     | 02/12/2014 |
| RDC | Raw dyeing commission order           |  |     |            |
| RDH | Raw dyeing order change               |  |     |            |
| RDR | Raw dyeing order response             |  |     |            |
| REA | Receiving advise                      |  |     |            |
| REQ | Request for Offer                     |  |     |            |
| RET | Return                                |  |     | 02/12/2014 |

|     |   |  |     |            |
|-----|---|--|-----|------------|
| RSC | Spinning commission order                 |  |     |            |
| RSH | Spinning order change                     |  |     |            |
| RSR | Spinning order response                   |  |     |            |
| SCL | process sheet                             |  |     |            |
| TFC | Textile dyeing-finishing commission order |  |     |            |
| TFX | Textile Dyeing-Finishing Order Change     |  |     | 02/12/2014 |
| TPC | Textile printing commission order         |  |     |            |
| TPX | Textile Printing Order Change             |  |     | 02/12/2014 |
| TWI | Textile in work inventory                 |  |     |            |
| VMI | visual merchandising instructions         |  | (N) | 01/02/2018 |
| WAC | Warping commission order                  |  |     |            |
| WEC | Weaving commission order                  |  |     |            |
| YDC | Yarn dyeing commission order              |  |     |            |
| YDH | Yarn dyeing order change                  |  |     |            |
| YDR | Yarn dyeing order response                |  |     |            |
| YTC | Twisting commission order                 |  |     |            |
| YWI | Yarn in work inventory                    |  |     |            |

#### T44 - additional code type

qualifier of the additional coding of a product

Agency name: eBIZ

tabella cod.: T44

File codes list (Generic code): [http://www.ebiz.enea.it/moda-ml/repository/codelist/v2018-1/gc\\_T44.xml](http://www.ebiz.enea.it/moda-ml/repository/codelist/v2018-1/gc_T44.xml)

| Code | Description                 | Adoption note | Version status | Date of insertion |
|------|-----------------------------|---------------|----------------|-------------------|
| CC   | colour card                 |               |                |                   |
| CL   | sales collection            |               |                |                   |
| CO   | company identification code |               | (N)            | 08/09/2017        |
| DY   | dye number                  |               |                |                   |
| LT   | lot number                  |               |                |                   |
| MDI  | Made in                     |               |                | 08/09/2017        |
| MS   | manufacturing state         |               |                |                   |
| PKG  | packaging                   |               |                | 09/09/2014        |
| PL   | product line                |               |                |                   |
| RGB  | RGB value                   |               |                |                   |

|    |               |  |  |  |
|----|---------------|--|--|--|
| SE | selvedge code |  |  |  |
|----|---------------|--|--|--|

### T48 - garment part type

code specifying the type of component or part of a garment (sleeve, neck, ...)

Agency name: eBIZ

tabella cod.: T48

File codes list (Generic code): [http://www.ebiz.enea.it/moda-ml/repository/codelist/v2018-1/gc\\_T48.xml](http://www.ebiz.enea.it/moda-ml/repository/codelist/v2018-1/gc_T48.xml)

| Code | Description       | Adoption note | Version status | Date of insertion |
|------|-------------------|---------------|----------------|-------------------|
| BB   | bottom back       |               | (N)            | 01/08/2018        |
| BF   | bottom fore/front |               | (N)            | 01/08/2018        |
| CO   | collar            |               | (N)            | 01/08/2018        |
| CU   | cuff              |               | (N)            | 01/08/2018        |
| DV   | fore              |               | (N)            |                   |
| EM   | embroidery        |               | (N)            | 01/08/2018        |
| OC   | other component   |               | (N)            | 01/08/2018        |
| PO   | pocket            |               | (N)            | 01/08/2018        |
| SC   | back              |               | (N)            |                   |
| SL   | sleeve            |               | (N)            | 01/08/2018        |
| TB   | top back          |               | (N)            | 01/08/2018        |
| TF   | top fore/front    |               | (N)            | 01/08/2018        |

## Annex C

### New or changed elements towards previous version

Changes or added elements (changes in description excluded; changes in aggregation notes and best practice included): 97

| Test Type  | Tag                  | Status | Item type                   | Changes related to  |
|------------|----------------------|--------|-----------------------------|---|
| Child      | acsCode              | UPDATE | Accessory code              | relationship with child: description<br><br>Property: Cardmax<br>Old value: 1<br>New value: 999   |
| Element(E) | acsCode              | UPDATE | Accessory code              | Property: class<br>Old value: <i>garment accessory</i><br>New value: <i>accessory</i>   |
| Child      | acsCode              | UPDATE | Accessory code              | relationship with child: description<br><br>Property: Aggregation Note_English<br>Old value:<br>New value: <i>Product description</i>   |
| Attribute  | additionalIdentifier | NEW    | Additional Party Identifier | Has NEW attribute: numbering organisation code  |
| Attribute  | additionalIdentifier | NEW    | Additional Party Identifier | Has NEW attribute: id Qualifier   |
| Element(I) | additionalIdentifier | NEW    | Additional Party Identifier |   |
| Element(E) | art                  | UPDATE | article identifier          | Property: Length_Max<br>Old value: 25<br>New value: 80  |
| Attribute  | art                  | UPDATE | article identifier          | Its attribute: code list reference<br><br>Property: Aggregation Note_English<br>Old value: <i>this attribute should be ALTERNATIVE to the others</i><br>New value: <i>at least one out of this attribute and "numberingOrg" should be set</i> |
| Element(I) | attachment           | NEW    | attachment                  |   |
| Child      | attachment           | NEW    | attachment                  | Has NEW child of: file name   |
| Child      | attachment           | NEW    | attachment                  | Has NEW child of: external reference  |

|            |                   |        |                    |   |
|------------|-------------------|--------|--------------------|---|
| Child      | attachment        | NEW    | attachment         | Has NEW child of:<br>binary object                      |
| Attribute  | binary Object     | NEW    | binary object      | Has NEW attribute:<br>encoding                          |
| Attribute  | binary Object     | NEW    | binary object      | Has NEW attribute:<br>mime                              |
| Attribute  | binary Object     | NEW    | binary object      | Has NEW attribute:<br>format                            |
| Attribute  | binary Object     | NEW    | binary object      | Has NEW attribute:<br>character set                     |
| Element(l) | binary Object     | NEW    | binary object      |   |
| Child      | buyer             | NEW    | Buyer (*)          | Has NEW child of:<br>Party identifier                   |
| Child      | buyer             | NEW    | Buyer (*)          | Has NEW child of:<br>Additional Party Identifier        |
| Attribute  | buyer             | NEW    | Buyer (*)          | Has NEW attribute:<br>sender Party qualifier            |
| Element(l) | characterSetCode  | NEW    | character set code |   |
| Element(l) | characterSet      | NEW    | character set      |   |
| Attribute  | description       | NEW    | description        | Has NEW attribute:<br>In                                |
| Element(E) | description       | UPDATE | description        | Property: Length_Max<br>Old value: 70<br>New value: 250 |
| Attribute  | drop              | NEW    | drop identifier    | Has NEW attribute:<br>numbering organisation code       |
| Attribute  | drop              | NEW    | drop identifier    | Has NEW attribute:<br>code list name                    |
| Attribute  | drop              | NEW    | drop identifier    | Has NEW attribute:<br>code list version                 |
| Element(E) | email             | UPDATE | e-mail             | Property: Length_Max<br>Old value: 80<br>New value: 250 |
| Element(l) | encodingCode      | NEW    | encoding code      |   |
| Element(l) | encoding          | NEW    | encoding           |   |
| Child      | externalReference | NEW    | external reference | Has NEW child of:<br>uri                                |

|            |                   |         |                    |  |
|------------|-------------------|---------|--------------------|--|
| Child      | externalReference | NEW     | external reference | Has NEW child of:<br>format code   |
| Child      | externalReference | NEW     | external reference | Has NEW child of:<br>character set code  |
| Child      | externalReference | NEW     | external reference | Has NEW child of:<br>mime code   |
| Child      | externalReference | NEW     | external reference | Has NEW child of:<br>encoding code   |
| Element(l) | externalReference | NEW     | external reference |  |
| Attribute  | fabric            | UPDATED | fabric identifier  | Its attribute:<br>code list reference<br><br>Property: Aggregation Note_English<br>Old value: <i>this attribute should be ALTERNATIVE to the others</i><br>New value: <i>at least one out of this attribute and "numberingOrg" should be set</i> |
| Attribute  | fileName          | NEW     | file name          | Has NEW attribute:<br>numbering organisation code  |
| Element(l) | fileName          | NEW     | file name          |  |
| Element(l) | formatCode        | NEW     | format code        |  |
| Element(l) | format            | NEW     | format             |  |
| Child      | garmentCodeA      | UPDATED | garment code A     | relationship with child:<br>description<br><br>Property: Cardmax<br>Old value: 1<br>New value: 999   |
| Child      | garmentCodeA      | UPDATED | garment code A     | relationship with child:<br>description<br><br>Property: Aggregation Note_English<br>Old value:<br>New value: <i>Product description</i>   |
| Child      | garmentCodeB      | NEW     | garment code B     | Has NEW child of:<br>drop identifier   |
| Child      | garmentCodeB      | NEW     | garment code B     | Has NEW child of:<br>garment variant   |
| Child      | garmentCodeB      | UPDATED | garment code B     | relationship with child:<br>description<br><br>Property: Aggregation Note_English  |

|            |                 |        |                   |   |
|------------|-----------------|--------|-------------------|---|
|            |                 |        |                   | Old value:<br>New value: <i>Product description</i>   |
| Child      | garmentCodeB    | UPDATE | garment code B    | relationship with child: description<br><br>Property: Cardmax<br>Old value: 1<br>New value: 999   |
| Child      | garmentPartCode | NEW    | Garment part code | Has NEW child of: articles additional identifier  |
| Child      | garmentPartCode | UPDATE | Garment part code | relationship with child: description<br><br>Property: Cardmax<br>Old value: 1<br>New value: 999   |
| Child      | garmentPartCode | UPDATE | Garment part code | relationship with child: description<br><br>Property: Aggregation Note_English<br>Old value:<br>New value: <i>Product part description</i>  |
| Child      | garmentVariant  | NEW    | garment variant   | Has NEW child of: variant code  |
| Child      | garmentVariant  | NEW    | garment variant   | Has NEW child of: variant type  |
| Element(l) | garmentVariant  | NEW    | garment variant   |   |
| Attribute  | note            | UPDATE | general note      | Its attribute: numbering organisation code<br><br>Property: Aggregation Note_English<br>Old value:<br>New value: <i>must be used to specify the organization that created the list of codes used in "noteLabel"</i>                           |
| Child      | GPDocRequest    | UPDATE | GPDocRequest (*)  | relationship with child: general note<br><br>Property: Cardmax<br>Old value: 19<br>New value: 99  |
| Attribute  | artGroup        | UPDATE | group identifier  | Its attribute: code list reference<br><br>Property: Aggregation Note_English<br>Old value: <i>this attribute should be ALTERNATIVE to the others</i><br>New value: <i>at least one out of this attribute and "numberingOrg" should be set</i> |
| Element(l) | idQualifier     | NEW    | id Qualifier      |   |

|         |              |         |                            |   |
|---------|--------------|---------|----------------------------|---|
| Elem(l) | isURL        | NEW     | is URL                     |   |
| Child   | itemRestrict | NEW     | Item restriction           | Has NEW child of:<br>general note   |
| Child   | itemRestrict | NEW     | Item restriction           | Has NEW child of:<br>Accessory code   |
| Child   | itemRestrict | NEW     | Item restriction           | Has NEW child of:<br>Garment part code  |
| Elem(E) | legalName    | UPDATED | Legal name                 | Property: Length_Max<br>Old value: 80<br>New value: 250   |
| Elem(E) | itemID       | UPDATED | line item number           | Property: Length_Max<br>Old value: 6<br>New value: 40   |
| Elem(l) | ln           | NEW     | ln                         |   |
| Elem(l) | mimeCode     | NEW     | mime code                  |   |
| Elem(l) | mime         | NEW     | mime                       |   |
| Attrib  | mod          | UPDATED | model identifier           | Its attribute:<br>code list reference<br><br>Property: Aggregation Note_English<br>Old value: <i>this attribute should be ALTERNATIVE to the others</i><br>New value: <i>at least one out of this attribute and "numberingOrg" should be set</i>  |
| Attrib  | mod          | UPDATED | model identifier           | Its attribute:<br>numbering organisation code<br><br>Property: Aggregation Note_English<br>Old value: <i>this attribute should be ALTERNATIVE to the others</i><br>New value:   |
| Child   | refDoc       | NEW     | reference document details | Has NEW child of:<br>attachment   |
| Child   | refDoc       | UPDATED | reference document details | relationship with child:<br>document identifier<br><br>Property: BestPractice_English<br>Old value:<br>New value: <i>numberingOrg indicates the role that produced the document identifier (it is allowed to declare two different ones -e.g. customer and supplier - with two docID with different numberingOrg)</i> |
| Attrib  | season       | NEW     | season identifier          | Has NEW attribute:<br>code list reference   |
| Attrib  | season       | NEW     | season identifier          | Has NEW attribute:<br>numbering organisation code   |
| Attrib  | season       | NEW     | season identifier          | Has NEW attribute:<br>code list name  |



|            |               |          |                       |   |
|------------|---------------|----------|-----------------------|---|
| Attrib     | season        | NEW      | season identifier     | Has NEW attribute: code list version  |
| Attrib     | size          | NEW      | size identifier       | Has NEW attribute: numbering organisation code  |
| Attrib     | size          | NEW      | size identifier       | Has NEW attribute: code list name   |
| Attrib     | size          | NEW      | size identifier       | Has NEW attribute: code list version  |
| Element(l) | subDepartment | NEW      | department identifier |   |
| Child      | supplier      | NEW      | Supplier (*)          | Has NEW child of: Party identifier  |
| Child      | supplier      | NEW      | Supplier (*)          | Has NEW child of: Additional Party Identifier   |
| Attrib     | supplier      | NEW      | Supplier (*)          | Has NEW attribute: sender Party qualifier   |
| Child      | texCode       | UPDATE D | Textiles product code | relationship with child: description<br><br>Property: Aggregation Note_English<br>Old value:<br>New value: <i>Product description</i> |
| Child      | texCode       | UPDATE D | Textiles product code | relationship with child: description<br><br>Property: Cardmax<br>Old value: 1<br>New value: 999                                       |
| Attrib     | uri           | NEW      | uri                   | Has NEW attribute: is URL   |
| Element(l) | uri           | NEW      | uri                   |   |
| Attrib     | variant Code  | NEW      | variant code          | Has NEW attribute: code list version  |
| Attrib     | variant Code  | NEW      | variant code          | Has NEW attribute: code list name   |
| Attrib     | variant Code  | NEW      | variant code          | Has NEW attribute: numbering organisation code  |
| Attrib     | variant Code  | NEW      | variant code          | Has NEW attribute: code list reference  |
| Attrib     | variant Type  | NEW      | variant type          | Has NEW attribute: code list reference  |
| Attrib     | variant Type  | NEW      | variant type          | Has NEW attribute: code list version  |
| Attrib     | variant Type  | NEW      | variant type          | Has NEW attribute: code list name   |

|         |              |         |                   |  |
|---------|--------------|---------|-------------------|--|
| Attrib  | variant Type | NEW     | variant type      | Has NEW attribute:<br>numbering organisation code  |
| Elem(l) | variant Code | NEW     | variant code      |  |
| Elem(l) | variant Type | NEW     | variant type      |  |
| Child   | yarnCode     | UPDATED | Yarn product code | relationship with child:<br>description<br><br>Property: Aggregation Note_English<br>Old value:<br>New value: <i>Product description</i> |
| Child   | yarnCode     | UPDATED | Yarn product code | relationship with child:<br>description<br><br>Property: Cardmax<br>Old value: 1<br>New value: 999                                       |

## Annex D

### New or changed tables and codes towards previous version

Changes or added items (changes in CodeListAgencyName excluded; changes in adoption notes and code description included): 95

| Test Type | Status  | Table code | Table description                       | Code                       | Change description   |
|-----------|---------|------------|---|----------------------------|--|
| Table     | UPDATED | NT100      | eBIZ TCFUpstream version                |                            | Description_English<br>Old value: <i>eBIZ Modal ML version</i><br>New value: <i>eBIZ TCFUpstream version</i> |
| Code      | NEW     | NT100      |   | 2018-1<br>(v2018-1)        |  |
| Code      | NEW     | NT100      |   | draft<br>(draft)           |  |
| Code      | NEW     | NT6        |   | EB<br>(eBIZ)               |  |
| Code      | UPDATED | NT6        |   | ML<br>(DEPRECATED)         | adoption_note<br>Old value:<br>New value: <i>DEPRECATED</i>  |
| Table     | NEW     | NT60       | language, codes from ISO 639-1 (subset) |                            |  |
| Code      | NEW     | NT60       |   | F<br>(Female)              |  |
| Code      | NEW     | NT60       |   | af<br>(Afrikaans)          |  |
| Code      | NEW     | NT60       |   | ar<br>(Arabic)             |  |
| Code      | NEW     | NT60       |   | be<br>(Belarusian)         |  |
| Code      | NEW     | NT60       |   | bg<br>(Bulgarian)          |  |
| Code      | NEW     | NT60       |   | bn<br>(Bengali)            |  |
| Code      | NEW     | NT60       |   | bo<br>(Tibetan)            |  |
| Code      | NEW     | NT60       |   | bs<br>(Bosnian)            |  |
| Code      | NEW     | NT60       |   | ca<br>(Catalan, Valencian) |  |
| Code      | NEW     | NT60       |   | cs<br>(Czech)              |  |

|          |     |          |  |  |  |
|----------|-----|----------|--|--|--|
| Co<br>de | NEW | NT6<br>0 |  | <i>da</i><br>(Danish)  |  |
| Co<br>de | NEW | NT6<br>0 |  | <i>de</i><br>(German)  |  |
| Co<br>de | NEW | NT6<br>0 |  | <i>el</i><br>(Greek, Modern (1453-))   |  |
| Co<br>de | NEW | NT6<br>0 |  | <i>en</i><br>(English)   |  |
| Co<br>de | NEW | NT6<br>0 |  | <i>eo</i><br>(Esperanto)   |  |
| Co<br>de | NEW | NT6<br>0 |  | <i>es</i><br>(Spanish, Castilian)  |  |
| Co<br>de | NEW | NT6<br>0 |  | <i>et</i><br>(Estonian)  |  |
| Co<br>de | NEW | NT6<br>0 |  | <i>eu</i><br>(Basque)  |  |
| Co<br>de | NEW | NT6<br>0 |  | <i>fa</i><br>(Persian)   |  |
| Co<br>de | NEW | NT6<br>0 |  | <i>fi</i><br>(Finnish)   |  |
| Co<br>de | NEW | NT6<br>0 |  | <i>fr</i><br>(French)  |  |
| Co<br>de | NEW | NT6<br>0 |  | <i>ga</i><br>(Irish)   |  |
| Co<br>de | NEW | NT6<br>0 |  | <i>gd</i><br>(Gaelic, Scottish Gaelic)                                       |  |
| Co<br>de | NEW | NT6<br>0 |  | <i>gn</i><br>(Guarani)   |  |
| Co<br>de | NEW | NT6<br>0 |  | <i>he</i><br>(Hebrew)  |  |
| Co<br>de | NEW | NT6<br>0 |  | <i>hr</i><br>(Croatian)  |  |
| Co<br>de | NEW | NT6<br>0 |  | <i>ht</i><br>(Haitian, Haitian Creole)                                       |  |
| Co<br>de | NEW | NT6<br>0 |  | <i>hu</i><br>(Hungarian)   |  |
| Co<br>de | NEW | NT6<br>0 |  | <i>hy</i><br>(Armenian)  |  |
| Co<br>de | NEW | NT6<br>0 |  | <i>ia</i><br>(Interlingua (International Auxiliary<br>Language Association)) |  |
| Co<br>de | NEW | NT6<br>0 |  | <i>id</i><br>(Indonesian)  |  |
| Co<br>de | NEW | NT6<br>0 |  | <i>is</i><br>(Icelandic)   |  |

|       |     |      |  |  |  |
|-------|-----|------|--|--|--|
| Co de | NEW | NT60 |  | <i>it</i><br>(Italian)                       |  |
| Co de | NEW | NT60 |  | <i>ja</i><br>(Japanese)                      |  |
| Co de | NEW | NT60 |  | <i>ju</i><br>(Javanese)                      |  |
| Co de | NEW | NT60 |  | <i>ka</i><br>(Georgian)                      |  |
| Co de | NEW | NT60 |  | <i>km</i><br>(Central Khmer)                 |  |
| Co de | NEW | NT60 |  | <i>ko</i><br>(Korean)                        |  |
| Co de | NEW | NT60 |  | <i>ku</i><br>(Kurdish)                       |  |
| Co de | NEW | NT60 |  | <i>lb</i><br>(Luxembourgish, Letzeburgesch)  |  |
| Co de | NEW | NT60 |  | <i>lo</i><br>(Lao)                           |  |
| Co de | NEW | NT60 |  | <i>lt</i><br>(Lithuanian)                    |  |
| Co de | NEW | NT60 |  | <i>lv</i><br>(Latvian)                       |  |
| Co de | NEW | NT60 |  | <i>mg</i><br>(Malagasy)                      |  |
| Co de | NEW | NT60 |  | <i>mk</i><br>(Macedonian)                    |  |
| Co de | NEW | NT60 |  | <i>mn</i><br>(Mongolian)                     |  |
| Co de | NEW | NT60 |  | <i>mt</i><br>(Maltese)                       |  |
| Co de | NEW | NT60 |  | <i>nl</i><br>(Dutch, Flemish)                |  |
| Co de | NEW | NT60 |  | <i>no</i><br>(Norwegian)                     |  |
| Co de | NEW | NT60 |  | <i>pl</i><br>(Polish)                        |  |
| Co de | NEW | NT60 |  | <i>pt</i><br>(Portuguese)                    |  |
| Co de | NEW | NT60 |  | <i>ro</i><br>(Romanian, Moldavian, Moldovan) |  |
| Co de | NEW | NT60 |  | <i>ru</i><br>(Russian)                       |  |
| Co de | NEW | NT60 |  | <i>se</i><br>(Northern Sami)                 |  |

|       |         |      |  |   |  |
|-------|---------|------|--|---|--|
| Co de | NEW     | NT60 |  | <i>sk</i><br>(Slovak)                             |  |
| Co de | NEW     | NT60 |  | <i>sl</i><br>(Slovenian)                          |  |
| Co de | NEW     | NT60 |  | <i>sm</i><br>(Samoan)                             |  |
| Co de | NEW     | NT60 |  | <i>so</i><br>(Somali)                             |  |
| Co de | NEW     | NT60 |  | <i>sq</i><br>(Albanian)                           |  |
| Co de | NEW     | NT60 |  | <i>sr</i><br>(Serbian)                            |  |
| Co de | NEW     | NT60 |  | <i>sv</i><br>(Swedish)                            |  |
| Co de | NEW     | NT60 |  | <i>sw</i><br>(Swahili)                            |  |
| Co de | NEW     | NT60 |  | <i>ta</i><br>(Tamil)                              |  |
| Co de | NEW     | NT60 |  | <i>th</i><br>(Thai)                               |  |
| Co de | NEW     | NT60 |  | <i>tr</i><br>(Turkish)                            |  |
| Co de | NEW     | NT60 |  | <i>uk</i><br>(Ukrainian)                          |  |
| Co de | NEW     | NT60 |  | <i>ur</i><br>(Urdu)                               |  |
| Co de | NEW     | NT60 |  | <i>uz</i><br>(Uzbek)                              |  |
| Co de | NEW     | NT60 |  | <i>vi</i><br>(Vietnamese)                         |  |
| Co de | NEW     | NT60 |  | <i>zh</i><br>(Chinese)                            |  |
| Co de | NEW     | T21  |  | <i>BOR</i><br>(blanket order)                     |  |
| Co de | NEW     | T21  |  | <i>CEO</i><br>(Certificate of origin)             |  |
| Co de | NEW     | T21  |  | <i>CER</i><br>(Certificate)                       |  |
| Co de | UPDATED | T21  |  | <i>CTR</i><br>(Contract)                          | Text_English<br>Old value: <i>contract</i><br>New value: <i>Contract</i> |
| Co de | NEW     | T21  |  | <i>MCI</i><br>(Visual merchandising instruction)  |  |
| Co de | NEW     | T21  |  | <i>VMI</i><br>(visual merchandising instructions) |  |

|          |     |     |  |  |  |
|----------|-----|-----|--|--|--|
| Co<br>de | NEW | T44 |  | <i>CO</i><br>(company identification code) |  |
| Co<br>de | NEW | T48 |  | <i>BB</i><br>(bottom back)                 |  |
| Co<br>de | NEW | T48 |  | <i>BF</i><br>(bottom fore/front)           |  |
| Co<br>de | NEW | T48 |  | <i>CO</i><br>(collar)                      |  |
| Co<br>de | NEW | T48 |  | <i>CU</i><br>(cuff)                        |  |
| Co<br>de | NEW | T48 |  | <i>DV</i><br>(fore)                        |  |
| Co<br>de | NEW | T48 |  | <i>EM</i><br>(embroidery)                  |  |
| Co<br>de | NEW | T48 |  | <i>OC</i><br>(other component)             |  |
| Co<br>de | NEW | T48 |  | <i>PO</i><br>(pocket)                      |  |
| Co<br>de | NEW | T48 |  | <i>SC</i><br>(back)                        |  |
| Co<br>de | NEW | T48 |  | <i>SL</i><br>(sleeve)                      |  |
| Co<br>de | NEW | T48 |  | <i>TB</i><br>(top back)                    |  |
| Co<br>de | NEW | T48 |  | <i>TF</i><br>(top fore/front)              |  |