



<http://www.ebiz-tcf.eu>

IMPLEMENTATION GUIDE

includes COMPARISON BETWEEN CURRENT and LAST
PREVIOUSLY RELEASED VERSION

TRANSACTION "RAW MATERIAL DESPATCH ADVICE"

Version: v2018-1

Date of release: 18/7/2019

Document code: G042rv

technical Documentation: <http://www.ebiz.enea.it>

XML Schemas repository: <http://www.ebiz.enea.it/moda-ml/repository/schema/v2018-1/default.asp>

Guides repository: <http://www.ebiz.enea.it/moda-ml/repository/guide/v2018-1/default.asp>

Guide filename: G042rv-eBIZ-RawMaterialDespatchAdvice.pdf

1. BUSINESS DESCRIPTION

1.1 Scope

The present guide has been issued to assist the companies of the Textile-Clothing sector in the implementation of the standard XML document type "RAW MATERIAL DESPATCH ADVISE", providing all the instruction required for its use in any context of e-commerce between Yarn Producers (or Subcontractors) and their Clients.

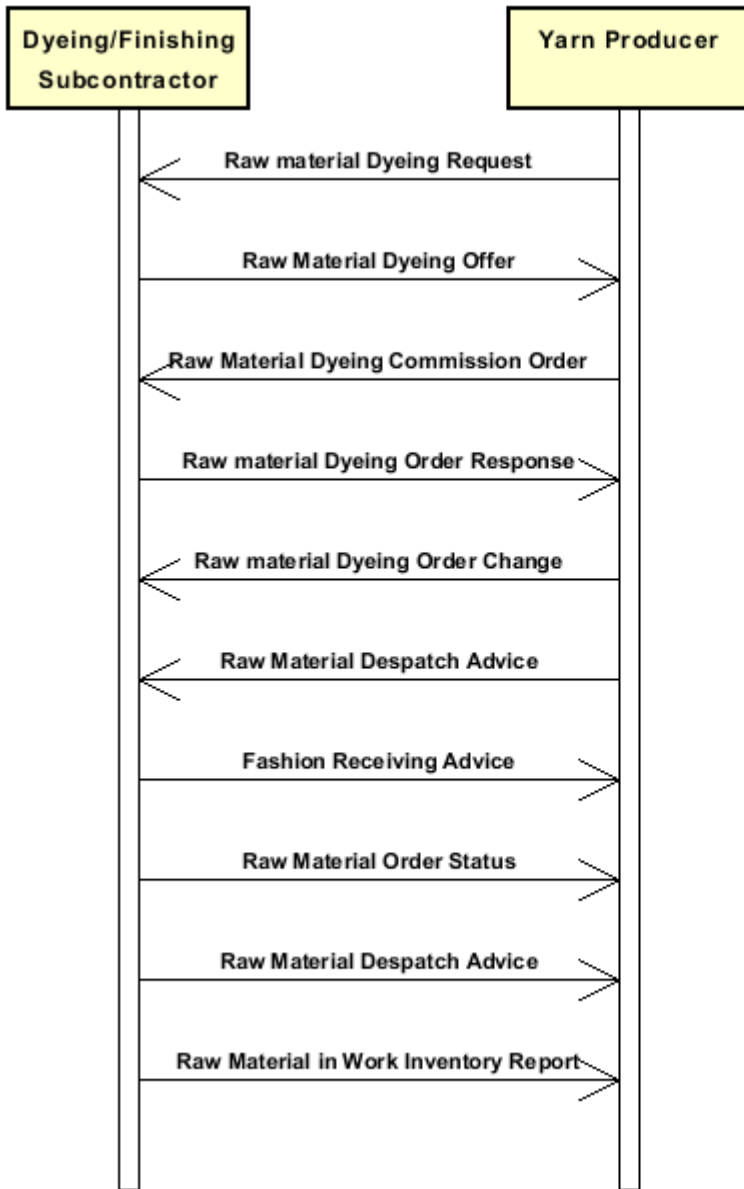
All the rules required for the construction and validation of the document are embedded into the specific XML-Schema, which is detailed in section "Implementation guide".

1.2 Generalities

Document usable by the Commissioner to inform the Subcontractor about the shipment of raw material to be worked

1.3. Possible scenario

Subcontracted dyeing of raw material



2. IMPLEMENTATION GUIDE

2.1 General structure of XML document

All the business data that can be exchanged through this class of documents are shown in the following "document structure", that provides a simplified vision of the Schema.

In particular:

- the two numbers following each element define its "cardinality" (minimum and maximum number of occurrences); the minimum equal zero indicates that the element is optional, the minimum greater than zero indicates that is mandatory;
- the bold character denotes the complex elements (aggregates of simple elements) that were built for the sake of functionality and re-usability of some complex informations sets. The child elements in each parent element are easily spotted as "indented";
- the symbol "@" denotes an attribute of the preceding element; here "the usage indicator (optional, required, ...)" is shown in square brackets.

Legenda

- N: new element
- U: updated properties
- P: changes in children
- p: is a changed child
- A: changes in attributes
- a: is a new or changed attribute
- *: is a subtype

Structure

RAWDesAdvise

@TAtype [Optional] [Default= STD]

@msgfunction [Optional] [Default= OR]

@version [Optional] [Default= 2018-1]

@useProfile [Optional]

```
| TAheader 1-1 (P)
| | msgN 1-1
| | - choose -
| | msgID 0-1
| | - or -
| | docID 0-1
| | @numberingOrg [Optional]
| | - end choose -
| | msgDate 1-1
| | @dateForm [Optional]
| | refDoc 0-9 (P)
| | @docType [Required]
| | | docID 1-2 (p)
| | | @numberingOrg [Optional]
| | | docDate 0-1
| | | @dateForm [Optional]
| | | season 0-1 (A)
| | | @numberingOrg [Optional] (a)
| | | @codeList [Optional] (a)
| | | @listName [Optional] (a)
| | | @listVersion [Optional] (a)
| | | itemID 0-1 (U)
| | | attachment 0-1 (N)
| | | @uid [Optional]
| | | | fileName 0-1 (N)
```

```

| | | @numberingOrg [Optional] (a)
| | | binaryObject 0-1 (N)
| | | @format [Optional] (N)
| | | @mime [Optional] (N)
| | | @encoding [Optional] (N)
| | | @characterSet [Optional] (N)
| | | externalReference 0-99 (N)
| | | | uri 1-1 (N)
| | | | @isURL [Optional] [Default= true] (Na)
| | | | mimeTypeCode 0-1 (N)
| | | | formatCode 0-1 (N)
| | | | encodingCode 0-1 (N)
| | | | characterSetCode 0-1 (N)
| buyer 1-1 (AP)
| @logo [Optional]
| @sender [Optional] (a*)
| | id 1-1 (p)
| | | @numberingOrg [Optional]
| | additionalIdentifier 0-9 (N)
| | | @numberingOrg [Optional] (a)
| | | @idQualifier [Optional] (Na)
| | legalName 0-1 (U)
| | dept 0-1
| | subDept 0-1 (N)
| | person 0-1
| | | @email [Optional]
| | | @phone [Optional]
| | | @fax [Optional]
| | street 0-1
| | city 0-1
| | subCountry 0-1
| | country 0-1
| | postCode 0-1
| supplier 1-1 (AP)
| @logo [Optional]
| @sender [Optional] (a*)
| | id 1-1
| | | @numberingOrg [Optional]
| | additionalIdentifier 0-9 (N)
| | | @numberingOrg [Optional] (a)
| | | @idQualifier [Optional] (Na)
| | legalName 0-1 (U)
| | dept 0-1
| | subDept 0-1 (N)
| | person 0-1
| | | @email [Optional]
| | | @phone [Optional]
| | | @fax [Optional]
| | street 0-1
| | city 0-1
| | subCountry 0-1
| | country 0-1
| | postCode 0-1
| thirdParty 0-5 (AP)
| @VAT [Optional]
| @role [Required]
| @sender [Optional] (a*)
| | id 1-1
| | | @numberingOrg [Optional]
| | legalName 0-1 (U)
| | dept 0-1

```

- | | | subDept 0-1 (N)
- | | | person 0-1
- | | | @email [Optional]
- | | | @phone [Optional]
- | | | @fax [Optional]
- | | | street 0-1
- | | | city 0-1
- | | | subCountry 0-1
- | | | country 0-1
- | | | postCode 0-1
- | | note 0-99
- | | @numberingOrg [Optional]
- | | @codeList [Optional]
- | | @noteLabel [Optional]

trade 0-1

- choose -

- | | incoTermText 1-1 (U)

- or -

- | | incoTerm 1-1

- end choose -

- | | location 0-1
- | | @LRI [Optional]

shipInfo 0-1 (P)

- | | **transInfo 0-9 (AP)**
- | | @transReason [Optional]
- | | @progr [Optional] (N)
- | | | transMode 1-1
- | | | carrier 0-1
- | | | deliveryPlace 0-1 (U)
- | | | grossWeight 0-1
- | | | @um [Required]
- | | | netWeight 0-1
- | | | @um [Required]
- | | | transMeans 0-1
- | | | transCondition 0-3
- | | | transConditionText 0-1 (U)
- | | | despatchPlace 0-1 (N)
- | | | despatchDate 0-1 (N)
- | | | @dateForm [Optional] (a)
- | | | delEffectiveDate 0-1 (p)
- | | | @dateForm [Optional]
- | | delEffectiveDate 0-1
- | | @dateForm [Optional]
- | | **packages 0-99 (P)**
- | | @packageLevel [Optional]
- | | - choose -
- | | | packageText 1-1 (U)
- | | - or -
- | | | package 1-1
- | | - end choose -
- | | | packageModelCode 0-1 (N)
- | | | @numberingOrg [Optional] (a)
- | | | description 0-unbounded (AU)
- | | | @ln [Optional] (N)
- | | | **packageDim 0-1**
- | | | | length 1-1
- | | | | @um [Required]
- | | | | width 0-1
- | | | | @um [Required]

```

| | | | height 0-1
| | | | @um [Required]
| | | | handlingChar 0-1 (N)
- choose -
| | | | yarnPack 0-1
| | | | | yarnReel 1-1
| | | | | | @reelType [Required]
| | | | | | @reelMat [Optional]
| | | | | | | yarnReelD 0-1
| | | | | | | | @um [Required]
| | | | | | | yarnReelH 0-1
| | | | | | | | @um [Required]
| | | | | | | yarnConeAngle 0-1
| | | | | | | yarnReelQty 0-2
| | | | | | | | @um [Required]
| | | | | | | label 0-1
| | | | | | | labelWrit 0-1
| | | | | | yarnInWrap 0-1
| | | | | | | yarnReelWrap 1-1
| | | | | | | label 0-1
| | | | | | | labelWrit 0-1
- choose -
| | | | | yarnOutWrapText 0-1 (U)
- or -
| | | | | yarnOutWrap 0-1
- end choose -
- or -
| | | | | piecePack 0-1
- choose -
| | | | | | piecePackText 1-1 (U)
- or -
| | | | | | | pieceInnWrap1 1-1
| | | | | | | pieceInnWrap2 0-1
| | | | | | | pieceOutWrap 0-1
- end choose -
- or -
| | | | | acsPack 0-1 (U)
- choose -
| | | | | | acsPackCode 1-1 (AU)
| | | | | | | @numberingOrg [Optional] (a)
| | | | | | | @codeList [Optional] (a)
| | | | | | | @listName [Optional] (a)
| | | | | | | @listVersion [Optional] (a)
- or -
| | | | | | acsPackText 1-1 (U)
- end choose -
- or -
| | | | | garPack 0-1 (N)
- choose -
| | | | | | garPackCode 1-1 (N)
| | | | | | | @numberingOrg [Optional] (a)
| | | | | | | @codeList [Optional] (a)
| | | | | | | @listName [Optional] (a)
| | | | | | | @listVersion [Optional] (a)
- or -
| | | | | | garPackText 1-1 (N)
- end choose -
- end choose -
| | | | | sortableIndicator 0-1 (N)
| | | | | stackabilityLevel 0-1 (N)
| | | | | handlingType 0-1 (N)

```

| | | @In [Optional] (N)
 | | | volume 0-1 (p)
 | | | @um [Required]
 | | | netWeight 0-1 (p)
 | | | @um [Required]
 | | | grossWeight 0-1
 | | | @um [Required]
 | | | note 0-99
 | | | @numberingOrg [Optional]
 | | | @codeList [Optional]
 | | | @noteLabel [Optional]
 | itemsPerPackage 0-1 (N)
 | @um [Required] (a)
 | minItemsPerPackage 0-1 (N)
 | @um [Required] (a)
 | fillingCriterion 0-9 (N)
 | @progr [Optional] (Na)
 | packageQty 0-1
 | packageN 0-unbounded (U)
 | @numberingOrg [Optional]
 | @packageContainerN [Optional]
 | **EPCList 0-1**
 | | EPC 1-unbounded
 | | @numberingOrg [Optional]
 | | @TID [Optional]
 | **actualPackageUnit 0-unbounded (N)**
 | @packageLevel [Optional] (a)
 | | **packageIdentification 1-1 (N)**
 | | | packageN 1-1 (U)
 | | | @numberingOrg [Optional]
 | | | @packageContainerN [Optional]
 | | | serialN 0-9 (AU)
 | | | @numberingOrg [Optional]
 | | | @idQualifier [Optional] (N)
 | - choose -
 | | packageText 0-1 (U)
 | - or -
 | | package 0-1 (p)
 | - end choose -
 | | packageModelCode 0-1 (N)
 | | @numberingOrg [Optional]
 | | volume 0-1
 | | @um [Required]
 | | netWeight 0-1
 | | @um [Required]
 | | grossWeight 0-1
 | | @um [Required]
 | | **packageDim 0-1 (p)**
 | | | length 1-1
 | | | @um [Required]
 | | | width 0-1
 | | | @um [Required]
 | | | height 0-1
 | | | @um [Required]
 | | actualItemsPerPackage 0-1 (N)
 | | **packagesList 0-1 (N)**
 | | | **packageIdentification 1-unbounded (N)**
 | | | | packageN 1-1 (U)
 | | | | @numberingOrg [Optional]
 | | | | @packageContainerN [Optional]
 | | | | serialN 0-9 (AU)

- | | | | @numberingOrg [Optional]
- | | | | @idQualifier [Optional] (N)
- | | **itemsList 0-1** (N)
- | | | qualityLevel 0-1 (N)
- | | | | @numberingOrg [Optional] (a)
- | | | | @codeList [Optional] (a)
- | | | | @listName [Optional] (a)
- | | | | @listVersion [Optional] (a)
- | | | **itemIdentification 1-unbounded** (N)
- | | | | serialN 1-9 (AU)
- | | | | | @numberingOrg [Optional]
- | | | | | @idQualifier [Optional] (N)
- | | note 0-99
- | | | @numberingOrg [Optional]
- | | | @codeList [Optional]
- | | | @noteLabel [Optional]

RABody 1-1

- | | **RAitem 1-unbounded** (P)
- | | | @extinction [Optional]
- | | | lineN 1-1
- | | | | @VAT [Optional]
- | | | **refDoc 0-9** (P)
- | | | | @docType [Required]
- | | | | | docID 1-2 (p)
- | | | | | | @numberingOrg [Optional]
- | | | | | docDate 0-1
- | | | | | | @dateForm [Optional]
- | | | | | season 0-1 (A)
- | | | | | | @numberingOrg [Optional] (a)
- | | | | | | @codeList [Optional] (a)
- | | | | | | @listName [Optional] (a)
- | | | | | | @listVersion [Optional] (a)
- | | | | itemID 0-1 (U)
- | | | | **attachment 0-1** (N)
- | | | | | @uid [Optional]
- | | | | | | fileName 0-1 (N)
- | | | | | | | @numberingOrg [Optional]
- | | | | | | binaryObject 0-1 (N)
- | | | | | | | @format [Optional] (N)
- | | | | | | | @mime [Optional] (N)
- | | | | | | | @encoding [Optional] (N)
- | | | | | | | @characterSet [Optional] (N)
- | | | | | | **externalReference 0-99** (N)
- | | | | | | | uri 1-1 (N)
- | | | | | | | | @isURL [Optional] [Default= true] (Na)
- | | | | | | | | mimeTypeCode 0-1 (N)
- | | | | | | | | formatCode 0-1 (N)
- | | | | | | | | encodingCode 0-1 (N)
- | | | | | | | | characterSetCode 0-1 (N)
- | | | **rawCode 1-2** (P)
- | | | | @numberingOrg [Optional]
- | | | | | art 1-1 (U)
- | | | | | | @numberingOrg [Optional]
- | | | | | | @codeList [Optional]
- | | | | | | @listName [Optional]
- | | | | | | @listVersion [Optional]
- | | | | | color 0-1
- | | | | | | @numberingOrg [Optional]
- | | | | | | @codeList [Optional]
- | | | | | | @listName [Optional]

```

| | | | @listVersion [Optional]
| | | | added 0-9
| | | | @numberingOrg [Optional]
| | | | @addType [Optional]
| | | | description 0-unbounded (AU)
| | | | @ln [Optional] (N)
| | | | rawSpecs 0-9
| | | | - choose -
| | | | | rawCharText 1-1 (U)
| | | | - or -
| | | | | rawChar 1-1
| | | | - end choose -
| | | | | specValue 0-1
| | | | | @um [Optional]
| | | | | @source [Optional]
| | | | | @method [Optional]
| | | | | @application [Optional]
| | | | | @CV [Optional]
| | | | - choose -
| | | | | pcTolerance 0-2
| | | | | @um [Optional]
| | | | - or -
| | | | | tolerance 0-2
| | | | | @um [Required]
| | | | - end choose -
| | | | lotN 0-2
| | | | @numberingOrg [Optional]
| | | | dyeN 0-1 (p)
| | | | @numberingOrg [Optional]
| | | | qty 1-2
| | | | @um [Required]
| | | | thirdParty 0-3 (AP)
| | | | @VAT [Optional]
| | | | @role [Required]
| | | | @sender [Optional] (a*)
| | | | | id 1-1
| | | | | @numberingOrg [Optional]
| | | | | legalName 0-1 (U)
| | | | | dept 0-1
| | | | | subDept 0-1 (N)
| | | | | person 0-1
| | | | | @email [Optional]
| | | | | @phone [Optional]
| | | | | @fax [Optional]
| | | | | street 0-1
| | | | | city 0-1
| | | | | subCountry 0-1
| | | | | country 0-1
| | | | | postCode 0-1
| | | | shipInfo 0-1 (P)
| | | | | transInfo 0-9 (AP)
| | | | | @transReason [Optional]
| | | | | @progr [Optional] (N)
| | | | | | transMode 1-1
| | | | | | carrier 0-1
| | | | | | deliveryPlace 0-1 (U)
| | | | | | grossWeight 0-1
| | | | | | @um [Required]
| | | | | | netWeight 0-1
| | | | | | @um [Required]
| | | | | | transMeans 0-1

```

```

| | | | | transCondition 0-3
| | | | | transConditionText 0-1 (U)
| | | | | despatchPlace 0-1 (N)
| | | | | despatchDate 0-1 (N)
| | | | | @dateForm [Optional]
| | | | | delEffectiveDate 0-1 (p)
| | | | | @dateForm [Optional]
delEffectiveDate 0-1
@dateForm [Optional]
| | | | | packages 0-99 (P)
| | | | | @packageLevel [Optional]
- choose -
| | | | | packageText 1-1 (U)
- or -
| | | | | package 1-1
- end choose -
| | | | | packageModelCode 0-1 (N)
| | | | | @numberingOrg [Optional]
| | | | | description 0-unbounded (AU)
| | | | | @ln [Optional] (N)
| | | | | packageDim 0-1
| | | | | length 1-1
| | | | | @um [Required]
| | | | | width 0-1
| | | | | @um [Required]
| | | | | height 0-1
| | | | | @um [Required]
| | | | | handlingChar 0-1 (N)
- choose -
| | | | | yarnPack 0-1
| | | | | yarnReel 1-1
| | | | | @reelType [Required]
| | | | | @reelMat [Optional]
| | | | | yarnReelD 0-1
| | | | | @um [Required]
| | | | | yarnReelH 0-1
| | | | | @um [Required]
| | | | | yarnConeAngle 0-1
| | | | | yarnReelQty 0-2
| | | | | @um [Required]
| | | | | label 0-1
| | | | | labelWrit 0-1
| | | | | yarnInWrap 0-1
| | | | | yarnReelWrap 1-1
| | | | | label 0-1
| | | | | labelWrit 0-1
- choose -
| | | | | yarnOutWrapText 0-1 (U)
- or -
| | | | | yarnOutWrap 0-1
- end choose -
- or -
| | | | | piecePack 0-1
- choose -
| | | | | piecePackText 1-1 (U)
- or -
| | | | | pieceInnWrap1 1-1
| | | | | pieceInnWrap2 0-1
| | | | | pieceOutWrap 0-1
- end choose -
- or -

```

```

| | | | | | | acsPack 0-1 (U)
| | | | | | | - choose -
| | | | | | | | acsPackCode 1-1 (AU)
| | | | | | | | | @numberingOrg [Optional] (a)
| | | | | | | | | @codeList [Optional] (a)
| | | | | | | | | @listName [Optional] (a)
| | | | | | | | | @listVersion [Optional] (a)
| | | | | | | | - or -
| | | | | | | | acsPackText 1-1 (U)
| | | | | | | | - end choose -
| | | | | | | - or -
| | | | | | | | garPack 0-1 (N)
| | | | | | | | - choose -
| | | | | | | | | garPackCode 1-1 (N)
| | | | | | | | | | @numberingOrg [Optional] (a)
| | | | | | | | | | @codeList [Optional] (a)
| | | | | | | | | | @listName [Optional] (a)
| | | | | | | | | | @listVersion [Optional] (a)
| | | | | | | | | - or -
| | | | | | | | | garPackText 1-1 (N)
| | | | | | | | | - end choose -
| | | | | | | | - end choose -
| | | | | | | | | sortableIndicator 0-1 (N)
| | | | | | | | | | stackabilityLevel 0-1 (N)
| | | | | | | | | | handlingType 0-1 (N)
| | | | | | | | | | | @ln [Optional] (Na)
| | | | | | | | | | volume 0-1
| | | | | | | | | | | @um [Required]
| | | | | | | | | | | netWeight 0-1
| | | | | | | | | | | | @um [Required]
| | | | | | | | | | | grossWeight 0-1
| | | | | | | | | | | | @um [Required]
| | | | | | | | | | | note 0-99
| | | | | | | | | | | | @numberingOrg [Optional]
| | | | | | | | | | | | @codeList [Optional]
| | | | | | | | | | | | @noteLabel [Optional]
| | | | | | | | | itemsPerPackage 0-1 (N)
| | | | | | | | | | @um [Required]
| | | | | | | | | minItemsPerPackage 0-1 (N)
| | | | | | | | | | @um [Required]
| | | | | | | | | fillingCriterion 0-9 (N)
| | | | | | | | | | @progr [Optional] (N)
| | | | | | | | | packageQty 0-1
| | | | | | | | | packageN 0-unbounded (U)
| | | | | | | | | | @numberingOrg [Optional]
| | | | | | | | | | @packageContainerN [Optional]
| | | | | | | | | EPCList 0-1
| | | | | | | | | | EPC 1-unbounded
| | | | | | | | | | | @numberingOrg [Optional]
| | | | | | | | | | | @TID [Optional]
| | | | | | | | | actualPackageUnit 0-unbounded (N)
| | | | | | | | | | @packageLevel [Optional] (a)
| | | | | | | | | | packageIdentification 1-1 (N)
| | | | | | | | | | | packageN 1-1 (U)
| | | | | | | | | | | | @numberingOrg [Optional]
| | | | | | | | | | | | @packageContainerN [Optional]
| | | | | | | | | | | serialN 0-9 (AU)
| | | | | | | | | | | | @numberingOrg [Optional]
| | | | | | | | | | | | @idQualifier [Optional] (N)
| | | | | | | | | - choose -
| | | | | | | | | packageText 0-1 (U)

```

```

- or -
| | package 0-1 (p)
- end choose -
| | packageModelCode 0-1 (N)
| | @numberingOrg [Optional] (a)
| | volume 0-1
| | @um [Required]
| | netWeight 0-1
| | @um [Required]
| | grossWeight 0-1
| | @um [Required]
| | packageDim 0-1 (p)
| | | length 1-1
| | | @um [Required]
| | | width 0-1
| | | @um [Required]
| | | height 0-1
| | | @um [Required]
| | actualItemsPerPackage 0-1 (N)
| | packagesList 0-1 (N)
| | | packageIdentification 1-unbounded (N)
| | | | packageN 1-1 (U)
| | | | @numberingOrg [Optional]
| | | | @packageContainerN [Optional]
| | | | serialN 0-9 (AU)
| | | | @numberingOrg [Optional]
| | | | @idQualifier [Optional] (N)
| | | itemsList 0-1 (N)
| | | | qualityLevel 0-1 (N)
| | | | @numberingOrg [Optional] (a)
| | | | @codeList [Optional] (a)
| | | | @listName [Optional] (a)
| | | | @listVersion [Optional] (a)
| | | | itemIdentification 1-unbounded (N)
| | | | | serialN 1-9 (AU)
| | | | | @numberingOrg [Optional]
| | | | | @idQualifier [Optional] (N)
| | note 0-99
| | @numberingOrg [Optional]
| | @codeList [Optional]
| | @noteLabel [Optional]
itemsList 0-1 (N)
| | qualityLevel 0-1 (N)
| | @numberingOrg [Optional] (a)
| | @codeList [Optional] (a)
| | @listName [Optional] (a)
| | @listVersion [Optional] (a)
| | itemIdentification 1-unbounded (N)
| | | serialN 1-9 (AU)
| | | @numberingOrg [Optional]
| | | @idQualifier [Optional] (N)
packageN 0-unbounded (U)
@numberingOrg [Optional]
@packageContainerN [Optional]
note 0-99
@numberingOrg [Optional]
@codeList [Optional]
@noteLabel [Optional]

```

2.2 Detailed description of document elements

Following tables show all elements (complex and simple) used in this document. Description includes: 1) element's information: xml tag, name, brief description, data type and syntax constraints; 2) information about use of the element in a particular position in the document: xpath and possible associated notes.

2.2.1 Complex elements (Aggregate Business Information Entities)

Complex elements are those elements whose content is composed of other elements (childs). Complex elements are alphabetically ordered.

acsPack	type of wrapping or packing of the accessory (XPath RAWDesAdvise/shipInfo/packages/handlingChar/acsPack) 0-1 (U) (XPath RAWDesAdvise/RABody/RAitem/shipInfo/packages/handlingChar/acsPack) 0-1 (U)
actualPackageUnit	description and identification of a single transport package (XPath RAWDesAdvise/RABody/RAitem/shipInfo/actualPackageUnit) 0-unbounded (N) - note: <i>this element might be repeated for listing each single package of the shipment</i> (XPath RAWDesAdvise/shipInfo/actualPackageUnit) 0-unbounded (N) - note: <i>this element might be repeated for listing each single package of the shipment</i>
attachment	an attached document. An attachment can refer to an external document or be included with the document being exchanged (XPath RAWDesAdvise/RABody/RAitem/refDoc/attachment) 0-1 (N) (XPath RAWDesAdvise/TAheader/refDoc/attachment) 0-1 (N)
buyer	details of the Buyer (party that buys the good or service that is object of the current collaborative process) - base type: Nad, (XPath RAWDesAdvise/TAheader/buyer) 1-1 (AP)
EPCList	list of identifiers used for tracing a physical item with RFID technology (XPath RAWDesAdvise/RABody/RAitem/shipInfo/packages/EPCList) 0-1 - note: <i>this element is DEPRECATED, please use the specific elements</i> (XPath RAWDesAdvise/shipInfo/packages/EPCList) 0-1 - note: <i>this element is DEPRECATED, please use the specific elements</i>
externalReference	details about an external object, such as a document stored at a remote location (XPath RAWDesAdvise/TAheader/refDoc/attachment/externalReference) 0-99 (N) (XPath RAWDesAdvise/RABody/RAitem/refDoc/attachment/externalReference) 0-99 (N)
garPack	the packaging mode of the item or a part of it. (XPath RAWDesAdvise/shipInfo/packages/handlingChar/garPack) 0-1 (N) (XPath RAWDesAdvise/RABody/RAitem/shipInfo/packages/handlingChar/garPack) 0-1 (N)
handlingChar	features of an item (item or package) useful for its transport and warehouse management. (XPath RAWDesAdvise/RABody/RAitem/shipInfo/packages/handlingChar) 0-1 (N) - note: <i>in this case the characteristics are related to the package.</i> (XPath RAWDesAdvise/shipInfo/packages/handlingChar) 0-1 (N) - note: <i>in this case the characteristics are related to the package.</i>
itemIdentification	serial identification of a product unit (XPath RAWDesAdvise/RABody/RAitem/shipInfo/actualPackageUnit/itemsList/itemIdentification) 1-unbounded (N)

	<p>- note: <i>identification of the single product unit contained in the list</i> (XPath RAWDesAdvise/shipInfo/actualPackageUnit/itemsList/itemIdentification) 1-unbounded (N)</p> <p>- note: <i>identification of the single product unit contained in the list</i> (XPath RAWDesAdvise/RABody/RAitem/itemsList/itemIdentification) 1-unbounded (N)</p> <p>- note: <i>identification of the single product unit contained in the list</i></p>
itemsList	<p>list of the single product units (XPath RAWDesAdvise/RABody/RAitem/shipInfo/actualPackageUnit/itemsList) 0-1 (N) (XPath RAWDesAdvise/RABody/RAitem/itemsList) 0-1 (N) (XPath RAWDesAdvise/shipInfo/actualPackageUnit/itemsList) 0-1 (N)</p>
packageDim	<p>dimensions of a transport package (XPath RAWDesAdvise/RABody/RAitem/shipInfo/packages/packageDim) 0-1 (XPath RAWDesAdvise/shipInfo/actualPackageUnit/packageDim) 0-1 (p) (XPath RAWDesAdvise/RABody/RAitem/shipInfo/actualPackageUnit/packageDim) 0-1 (p) (XPath RAWDesAdvise/shipInfo/packages/packageDim) 0-1</p>
packageIdentification	<p>serial identification of a package (XPath RAWDesAdvise/shipInfo/actualPackageUnit/packagesList/packageIdentification) 1-unbounded (N)</p> <p>- note: <i>identification of the single package contained in the list</i> (XPath RAWDesAdvise/shipInfo/actualPackageUnit/packageIdentification) 1-1 (N)</p> <p>(XPath RAWDesAdvise/RABody/RAitem/shipInfo/actualPackageUnit/packagesList/packageIdentification) 1-unbounded (N)</p> <p>- note: <i>identification of the single package contained in the list</i> (XPath RAWDesAdvise/RABody/RAitem/shipInfo/actualPackageUnit/packageIdentification) 1-1 (N)</p>
packages	<p>describes the composition of the transport packaging. Each element corresponds to a type of package: type, quantity, hierarchic level, list of identifiers of the single packages (XPath RAWDesAdvise/RABody/RAitem/shipInfo/packages) 0-99 (P)</p> <p>- note: <i>this element must be iterated for each type of package</i> (XPath RAWDesAdvise/shipInfo/packages) 0-99 (P)</p> <p>- note: <i>this element must be iterated for each type of package</i></p>
packagesList	<p>list of single packages (XPath RAWDesAdvise/RABody/RAitem/shipInfo/actualPackageUnit/packagesList) 0-1 (N)</p> <p>- note: <i>list of packages contained within the actual package (thus with lower level). All the packages in the list should preferably have the same level.</i> (XPath RAWDesAdvise/shipInfo/actualPackageUnit/packagesList) 0-1 (N)</p> <p>- note: <i>list of packages contained within the actual package (thus with lower level). All the packages in the list should preferably have the same level.</i></p>
piecePack	<p>type of wrapping or packing of the fabric pieces (XPath RAWDesAdvise/shipInfo/packages/handlingChar/piecePack) 0-1 (XPath RAWDesAdvise/RABody/RAitem/shipInfo/packages/handlingChar/piecePack) 0-1</p>
RABody	<p>body of the document RAW MATERIAL DESPATCH ADVISE (XPath RAWDesAdvise/RABody) 1-1</p>
RAitem	<p>line item of the document RAW MATERIAL DESPATCH ADVISE (XPath RAWDesAdvise/RABody/RAitem) 1-unbounded (P)</p>
rawCode	<p>full codification of a raw material (XPath RAWDesAdvise/RABody/RAitem/rawCode) 1-2 (P)</p>

rawSpecs	technical characteristics of a raw material linked to an operation of the sub-contracted production of yarn or to the purchase of yarn (XPath RAWDesAdvise/RABody/RAitem/rawSpecs) 0-9
refDoc	identification of a document and of an item thereof, to which the message makes reference (XPath RAWDesAdvise/TAheader/refDoc) 0-9 (P) (XPath RAWDesAdvise/RABody/RAitem/refDoc) 0-9 (P)
shipInfo	miscellaneous information on transport and transport packages, referred either to the whole document or to the single item (XPath RAWDesAdvise/RABody/RAitem/shipInfo) 0-1 (P) (XPath RAWDesAdvise/shipInfo) 0-1 (P)
supplier	details of the Supplier (party that supplies the good or service that is object of the current collaborative process) - base type: Nad, (XPath RAWDesAdvise/TAheader/supplier) 1-1 (AP)
TAheader	header of the TEXTILES (YARN) DESPATCH ADVISE (XPath RAWDesAdvise/TAheader) 1-1 (P)
thirdParty	details of the Third Party, different from Sender and Receiver of the document - base type: Nad, (XPath RAWDesAdvise/RABody/RAitem/thirdParty) 0-3 (AP) (XPath RAWDesAdvise/TAheader/thirdParty) 0-5 (AP) - note: <i>here the Consignee when different from the Client must be specified</i>
trade	general terms of trade for the specified supply (XPath RAWDesAdvise/trade) 0-1
transInfo	details of transport: mode, carrier and delivery place (XPath RAWDesAdvise/shipInfo/transInfo) 0-9 (AP) - note: <i>this data group can be iterated for each transport leg. They have to be in ordered sequence from initial place up to the final delivery place.</i> (XPath RAWDesAdvise/RABody/RAitem/shipInfo/transInfo) 0-9 (AP) - note: <i>this data group can be iterated for each transport leg. They have to be in ordered sequence from initial place up to the final delivery place.</i>
yarnInWrap	details specifying the inner wrapping of a yarn product (XPath RAWDesAdvise/shipInfo/packages/handlingChar/yarnPack/yarnInWrap) 0-1 (XPath RAWDesAdvise/RABody/RAitem/shipInfo/packages/handlingChar/yarnPack/yarnInWrap) 0-1
yarnPack	details of type of presentation used for the yarn (XPath RAWDesAdvise/RABody/RAitem/shipInfo/packages/handlingChar/yarnPack) 0-1 (XPath RAWDesAdvise/shipInfo/packages/handlingChar/yarnPack) 0-1
yarnReel	details of the packaging of a yarn product (bobbin and reel,...) (XPath RAWDesAdvise/RABody/RAitem/shipInfo/packages/handlingChar/yarnPack/yarnReel) 1-1 (XPath RAWDesAdvise/shipInfo/packages/handlingChar/yarnPack/yarnReel) 1-1

2.2.2 Simple elements (Basic Business Information Entities)

Simple elements are those elements whose content is characterized by a data type plus a domain of possible values. Simple elements are alphabetically ordered.

acsPackCode	code specifying the type of wrapping or packing used for the accessory - base type: string,
--------------------	--

	(XPath RAWDesAdvise/shipInfo/packages/handlingChar/acsPack/acsPackCode) 1-1 (AU) (XPath RAWDesAdvise/RABody/RAitem/shipInfo/packages/handlingChar/acsPack/acsPackCode) 1-1 (AU)
acsPackText	free text specifying the type of wrapping or packing used for the accessory - base type: string, max length: 250, (XPath RAWDesAdvise/shipInfo/packages/handlingChar/acsPack/acsPackText) 1-1 (U) (XPath RAWDesAdvise/RABody/RAitem/shipInfo/packages/handlingChar/acsPack/acsPackText) 1-1 (U)
actualItemsPerPackage	the quantity of items actually contained in the package - base type: decimal, (XPath RAWDesAdvise/RABody/RAitem/shipInfo/actualPackageUnit/actualItemsPerPackage) 0-1 (N) (XPath RAWDesAdvise/shipInfo/actualPackageUnit/actualItemsPerPackage) 0-1 (N)
added	additional code of the product (complementing the formers) - base type: string, max length: 80, (XPath RAWDesAdvise/RABody/RAitem/rawCode/added) 0-9
additionalIdentifier	additional identification code of a Party, for example customs registries or others - base type: string, max length: 15, (XPath RAWDesAdvise/TAheader/buyer/additionalIdentifier) 0-9 (N) - note: <i>identifiers for example for exports, such as MID (Manufacturer Identification Code), EORI (E.O.R.I. - Economic Operator Registration and Identification)</i> (XPath RAWDesAdvise/TAheader/supplier/additionalIdentifier) 0-9 (N) - note: <i>identifiers for example for exports, such as MID (Manufacturer Identification Code), EORI (E.O.R.I. - Economic Operator Registration and Identification)</i>
@addType	qualifier of the additional coding of a product - base type: string, cod. table: T44 http://www.ebiz.enea.it/moda-ml/repository/codelist/v2018-1/gc_T44.xml (XPath RAWDesAdvise/RABody/RAitem/rawCode/added/@addType) [Optional] - nota: <i>addType allows the clarification of the meaning of the added element content; it is strongly suggested to use it always.</i>
@application	force or similar condition (e.g. no. of revolutions) applied in a test as specified within the standard - base type: string, max length: 15, (XPath RAWDesAdvise/RABody/RAitem/rawSpecs/specValue/@application) [Optional]
art	article number of the product - base type: string, max length: 80, (XPath RAWDesAdvise/RABody/RAitem/rawCode/art) 1-1 (U)
binaryObject	a binary large object containing an attached document, Coding 'base64Binary' is recommended. - base type: base64Binary, (XPath RAWDesAdvise/TAheader/refDoc/attachment/binaryObject) 0-1 (N) (XPath RAWDesAdvise/RABody/RAitem/refDoc/attachment/binaryObject) 0-1 (N)
carrier	identification of the transport carrier - base type: string, max length: 40, (XPath RAWDesAdvise/RABody/RAitem/shipInfo/transInfo/carrier) 0-1 (XPath RAWDesAdvise/shipInfo/transInfo/carrier) 0-1
@characterSet	the character set of the binary object (examples UTF-8, UTF-16, Windows-1252, ISO-8859-7,..) - base type: normalizedString,

	<p>(XPath RAWDesAdvise/TAheader/refDoc/attachment/binaryObject/@characterSet) [Optional] (N)</p> <p>(XPath RAWDesAdvise/RABody/RAitem/refDoc/attachment/binaryObject/@characterSet) [Optional] (N)</p>
characterSetCode	<p>the character set of an external document (examples UTF-8, UTF-16, Windows-1252, ISO-8859-7,...)</p> <p>- base type: normalizedString,</p> <p>(XPath RAWDesAdvise/RABody/RAitem/refDoc/attachment/externalReference/characterSetCode) 0-1 (N)</p> <p>(XPath RAWDesAdvise/TAheader/refDoc/attachment/externalReference/characterSetCode) 0-1 (N)</p>
city	<p>name of the city (town, village)</p> <p>- base type: string, max length: 40,</p> <p>(XPath RAWDesAdvise/TAheader/buyer/city) 0-1</p> <p>(XPath RAWDesAdvise/TAheader/thirdParty/city) 0-1</p> <p>(XPath RAWDesAdvise/RABody/RAitem/thirdParty/city) 0-1</p> <p>(XPath RAWDesAdvise/TAheader/supplier/city) 0-1</p>
@codeList	<p>it specifies the URL where the list of codes used to make an instance of the element can be found</p> <p>- base type: string, max length: 255,</p> <p>(XPath RAWDesAdvise/shipInfo/packages/handlingChar/garPack/garPackCode/@codeList) [Optional] (a)</p> <p>- nota: <i>at least one out of this attribute and "numberingOrg" should be set</i> (XPath RAWDesAdvise/TAheader/note/@codeList) [Optional]</p> <p>- nota: <i>must be used to provide (URL) the list of codes used in "noteLabel"</i> (XPath RAWDesAdvise/RABody/RAitem/shipInfo/packages/handlingChar/note/@codeList) [Optional]</p> <p>- nota: <i>must be used to provide (URL) the list of codes used in "noteLabel"</i> (XPath RAWDesAdvise/RABody/RAitem/shipInfo/packages/handlingChar/acsPack/acsPackCode/@codeList) [Optional] (a)</p> <p>- nota: <i>at least one out of this attribute and "numberingOrg" should be set</i> (XPath RAWDesAdvise/RABody/RAitem/shipInfo/actualPackageUnit/note/@codeList) [Optional]</p> <p>- nota: <i>must be used to provide (URL) the list of codes used in "noteLabel"</i> (XPath RAWDesAdvise/shipInfo/packages/handlingChar/acsPack/acsPackCode/@codeList) [Optional] (a)</p> <p>- nota: <i>at least one out of this attribute and "numberingOrg" should be set</i> (XPath RAWDesAdvise/shipInfo/packages/handlingChar/note/@codeList) [Optional]</p> <p>- nota: <i>must be used to provide (URL) the list of codes used in "noteLabel"</i> (XPath RAWDesAdvise/RABody/RAitem/itemsList/qualityLevel/@codeList) [Optional] (a)</p> <p>- nota: <i>at least one out of this attribute and "numberingOrg" should be set</i> (XPath RAWDesAdvise/shipInfo/actualPackageUnit/note/@codeList) [Optional]</p> <p>- nota: <i>must be used to provide (URL) the list of codes used in "noteLabel"</i> (XPath RAWDesAdvise/shipInfo/actualPackageUnit/itemsList/qualityLevel/@codeList) [Optional] (a)</p> <p>- nota: <i>at least one out of this attribute and "numberingOrg" should be set</i> (XPath RAWDesAdvise/TAheader/refDoc/season/@codeList) [Optional] (a)</p> <p>- nota: <i>this attribute should be used either single or coupled with "listName" and "listVersion"</i> (XPath RAWDesAdvise/RABody/RAitem/refDoc/season/@codeList) [Optional] (a)</p> <p>- nota: <i>this attribute should be used either single or coupled with "listName" and "listVersion"</i> (XPath RAWDesAdvise/RABody/RAitem/shipInfo/actualPackageUnit/itemsList/qualityLevel/@codeList) [Optional] (a)</p> <p>- nota: <i>at least one out of this attribute and "numberingOrg" should be set</i> (XPath RAWDesAdvise/RABody/RAitem/note/@codeList) [Optional]</p> <p>- nota: <i>must be used to provide (URL) the list of codes used in "noteLabel"</i> (XPath RAWDesAdvise/RABody/RAitem/rawCode/color/@codeList) [Optional]</p> <p>- nota: <i>this attribute should be used either single or coupled with "listName" and "listVersion"</i></p>

	<p>(XPath RAWDesAdvise/RABody/RAitem/shipInfo/packages/handlingChar/garPack/garPackCode/@codeList) [Optional] (a)</p> <p>- nota: <i>at least one out of this attribute and "numberingOrg" should be set</i></p> <p>(XPath RAWDesAdvise/RABody/RAitem/rawCode/art/@codeList) [Optional]</p> <p>- nota: <i>at least one out of this attribute and "numberingOrg" should be set</i></p>
color	<p>colour number of the product, when not included in the model or fabric code</p> <p>- base type: string, max length: 15,</p> <p>(XPath RAWDesAdvise/RABody/RAitem/rawCode/color) 0-1</p>
country	<p>code of the nation</p> <p>- base type: string, cod. table: T10</p> <p>http://www.ebiz.enea.it/moda-ml/repository/codelist/v2018-1/gc_T10.xml</p> <p>(XPath RAWDesAdvise/TAheader/buyer/country) 0-1</p> <p>(XPath RAWDesAdvise/RABody/RAitem/thirdParty/country) 0-1</p> <p>(XPath RAWDesAdvise/TAheader/supplier/country) 0-1</p> <p>(XPath RAWDesAdvise/TAheader/thirdParty/country) 0-1</p>
@CV	<p>coefficient of variation (CV) of a measurement</p> <p>- base type: decimal,</p> <p>(XPath RAWDesAdvise/RABody/RAitem/rawSpecs/specValue/@CV) [Optional]</p>
@dateForm	<p>format used for the date</p> <p>- base type: string, cod. table: NT29</p> <p>http://www.ebiz.enea.it/moda-ml/repository/codelist/v2018-1/gc_NT29.xml</p> <p>(XPath RAWDesAdvise/shipInfo/transInfo/delEffectiveDate/@dateForm) [Optional]</p> <p>(XPath RAWDesAdvise/shipInfo/transInfo/despatchDate/@dateForm) [Optional] (a)</p> <p>(XPath RAWDesAdvise/RABody/RAitem/refDoc/docDate/@dateForm) [Optional]</p> <p>(XPath RAWDesAdvise/shipInfo/delEffectiveDate/@dateForm) [Optional]</p> <p>(XPath RAWDesAdvise/RABody/RAitem/shipInfo/delEffectiveDate/@dateForm) [Optional]</p> <p>(XPath RAWDesAdvise/TAheader/msgDate/@dateForm) [Optional]</p> <p>(XPath RAWDesAdvise/RABody/RAitem/shipInfo/transInfo/despatchDate/@dateForm) [Optional]</p> <p>(XPath RAWDesAdvise/RABody/RAitem/shipInfo/transInfo/delEffectiveDate/@dateForm) [Optional]</p> <p>(XPath RAWDesAdvise/TAheader/refDoc/docDate/@dateForm) [Optional]</p>
delEffectiveDate	<p>effective date of delivery of goods (declared in Despatch), according to one of the patterns YYYY-MM-DD, YYYY-MM-DD:HH-MM or YYYY-WW.</p> <p>- base type: string,</p> <p>(XPath RAWDesAdvise/shipInfo/delEffectiveDate) 0-1</p> <p>(XPath RAWDesAdvise/shipInfo/transInfo/delEffectiveDate) 0-1 (p)</p> <p>(XPath RAWDesAdvise/RABody/RAitem/shipInfo/transInfo/delEffectiveDate) 0-1 (p)</p> <p>(XPath RAWDesAdvise/RABody/RAitem/shipInfo/delEffectiveDate) 0-1</p>
deliveryPlace	<p>place of delivery of goods, ultimate or related to a given leg</p> <p>- base type: string, max length: 250,</p> <p>(XPath RAWDesAdvise/shipInfo/transInfo/deliveryPlace) 0-1 (U)</p> <p>(XPath RAWDesAdvise/RABody/RAitem/shipInfo/transInfo/deliveryPlace) 0-1 (U)</p>
dept	<p>name or code of a contact department within a Party</p> <p>- base type: string, max length: 40,</p> <p>(XPath RAWDesAdvise/TAheader/buyer/dept) 0-1</p> <p>(XPath RAWDesAdvise/RABody/RAitem/thirdParty/dept) 0-1</p> <p>(XPath RAWDesAdvise/TAheader/supplier/dept) 0-1</p> <p>(XPath RAWDesAdvise/TAheader/thirdParty/dept) 0-1</p>
description	<p>free text description. The content of the element must be unique, it might be translated and repeated into more languages (thus no more than one instance for each language).</p> <p>- base type: string, max length: 250,</p> <p>(XPath RAWDesAdvise/RABody/RAitem/shipInfo/packages/description) 0-unbounded (AU)</p> <p>(XPath RAWDesAdvise/RABody/RAitem/rawCode/description) 0-unbounded (AU)</p> <p>- note: <i>Raw material description</i></p>

	(XPath RAWDesAdvise/shipInfo/packages/description) 0-unbounded (AU)
despatchDate	date of despatch of goods, requested or promised in the purchase process, according to one of the patterns YYYY-MM-DD, YYYY-MM-DD:HH-MM or YYY-WW. - base type: string, (XPath RAWDesAdvise/RABody/RAitem/shipInfo/transInfo/despatchDate) 0-1 (N) (XPath RAWDesAdvise/shipInfo/transInfo/despatchDate) 0-1 (N)
despatchPlace	place of despatch of goods, origin or related to a given leg - base type: string, max length: 250, (XPath RAWDesAdvise/RABody/RAitem/shipInfo/transInfo/despatchPlace) 0-1 (N) (XPath RAWDesAdvise/shipInfo/transInfo/despatchPlace) 0-1 (N)
docDate	date of issue of the referenced document, according to one of the patterns YYY-MM-DD, YYYY-MM-DD:HH-MM or YYYY-WW. - base type: string, (XPath RAWDesAdvise/RABody/RAitem/refDoc/docDate) 0-1 (XPath RAWDesAdvise/TAheader/refDoc/docDate) 0-1
docID	identification number of the referenced document SINCE 2008-1 ITS USE I N THE HEADER IS DISCOURAGED (REPLACED BY msgID) - base type: string, max length: 80, (XPath RAWDesAdvise/TAheader/docID) 0-1 (XPath RAWDesAdvise/RABody/RAitem/refDoc/docID) 1-2 (p) <hr/> AAAA-WARNING! - text not AVAILABLE n. 245 - In=en (XPath RAWDesAdvise/TAheader/refDoc/docID) 1-2 (p) <hr/> AAAA-WARNING! - text not AVAILABLE n. 245 - In=en
@docType	type or class to which the referenced document belongs - base type: string, cod. table: T21 http://www.ebiz.enea.it/moda-ml/repository/codelist/v2018-1/gc_T21.xml (XPath RAWDesAdvise/TAheader/refDoc/@docType) [Required] (XPath RAWDesAdvise/RABody/RAitem/refDoc/@docType) [Required]
dyeN	number of the dying batch of a textile product - base type: string, max length: 15, (XPath RAWDesAdvise/RABody/RAitem/dyeN) 0-1 (p)
@email	electronic mail address of the contact person within a Party - base type: string, max length: 250, (XPath RAWDesAdvise/RABody/RAitem/thirdParty/person/@email) [Optional] (XPath RAWDesAdvise/TAheader/buyer/person/@email) [Optional] (XPath RAWDesAdvise/TAheader/thirdParty/person/@email) [Optional] (XPath RAWDesAdvise/TAheader/supplier/person/@email) [Optional]
@encoding	specifies the decoding algorithm of the binary object - base type: normalizedString, (XPath RAWDesAdvise/RABody/RAitem/refDoc/attachment/binaryObject/@encoding) [Optional] (N) (XPath RAWDesAdvise/TAheader/refDoc/attachment/binaryObject/@encoding) [Optional] (N)
encodingCode	the encoding/decoding algorithm used with the external object (example is 'base64Binary') - base type: normalizedString, (XPath RAWDesAdvise/TAheader/refDoc/attachment/externalReference/encodingCode) 0-1 (N) (XPath RAWDesAdvise/RABody/RAitem/refDoc/attachment/externalReference/encodingCode) 0-1 (N)
EPC	serial identifier used for tracing a physical item with RFID technology - base type: string, (XPath RAWDesAdvise/RABody/RAitem/shipInfo/packages/EPClist/EPC) 1-unbounded (XPath RAWDesAdvise/shipInfo/packages/EPClist/EPC) 1-unbounded

@extinction	specified if the referred position (document/line) in refDoc is cleared (exhausted) by this line item. Value: True = exhausted, False = not exhausted - base type: boolean, (XPath RAWDesAdvise/RABody/RAitem/@extinction) [Optional]
@fax	fax number of the contact person within a Party - base type: string, max length: 35, (XPath RAWDesAdvise/RABody/RAitem/thirdParty/person/@fax) [Optional] (XPath RAWDesAdvise/TAheader/supplier/person/@fax) [Optional] (XPath RAWDesAdvise/TAheader/thirdParty/person/@fax) [Optional] (XPath RAWDesAdvise/TAheader/buyer/person/@fax) [Optional]
fileName	unique identifier (name) of the file - base type: string, max length: 255, (XPath RAWDesAdvise/TAheader/refDoc/attachment/fileName) 0-1 (N) (XPath RAWDesAdvise/RABody/RAitem/refDoc/attachment/fileName) 0-1 (N)
fillingCriterion	the assortment criterion to fill the specified kind of package: it states the homogeneity criterion (eg: "model", "color", "size"). - base type: string, cod. table: NT51 http://www.ebiz.enea.it/moda-ml/repository/codelist/v2018-1/gc_NT51.xml (XPath RAWDesAdvise/RABody/RAitem/shipInfo/packages/fillingCriterion) 0-9 (N) (XPath RAWDesAdvise/shipInfo/packages/fillingCriterion) 0-9 (N)
@format	the format of the binary content (examples xml, pdf, doc,...) - base type: string, (XPath RAWDesAdvise/RABody/RAitem/refDoc/attachment/binaryObject/@format) [Optional] (N) (XPath RAWDesAdvise/TAheader/refDoc/attachment/binaryObject/@format) [Optional] (N)
formatCode	the format of the external object (examples xml, pdf, doc,...) - base type: normalizedString, (XPath RAWDesAdvise/RABody/RAitem/refDoc/attachment/externalReference/formatCode) 0-1 (N) (XPath RAWDesAdvise/TAheader/refDoc/attachment/externalReference/formatCode) 0-1 (N)
garPackCode	a code specifying the type of packaging used for the item. - base type: string, (XPath RAWDesAdvise/RABody/RAitem/shipInfo/packages/handlingChar/garPack/garPackCode) 1-1 (N) (XPath RAWDesAdvise/shipInfo/packages/handlingChar/garPack/garPackCode) 1-1 (N)
garPackText	a free text specifying the type of packaging used for the item. - base type: string, (XPath RAWDesAdvise/RABody/RAitem/shipInfo/packages/handlingChar/garPack/garPackText) 1-1 (N) (XPath RAWDesAdvise/shipInfo/packages/handlingChar/garPack/garPackText) 1-1 (N)
grossWeight	the gross weight, declared for transport or customs purpose - base type: decimal, min inclusive: 0, fraction digits: 2, (XPath RAWDesAdvise/shipInfo/packages/handlingChar/grossWeight) 0-1 (XPath RAWDesAdvise/RABody/RAitem/shipInfo/actualPackageUnit/grossWeight) 0-1 (XPath RAWDesAdvise/RABody/RAitem/shipInfo/transInfo/grossWeight) 0-1 (XPath RAWDesAdvise/shipInfo/transInfo/grossWeight) 0-1 (XPath RAWDesAdvise/shipInfo/actualPackageUnit/grossWeight) 0-1 (XPath RAWDesAdvise/RABody/RAitem/shipInfo/packages/handlingChar/grossWeight) 0-1
handlingType	information to handle the item (eg "breakable"). - base type: string, (XPath RAWDesAdvise/shipInfo/packages/handlingChar/handlingType) 0-1 (N)

	(XPath RAWDesAdvise/RABody/RAitem/shipInfo/packages/handlingChar/handlingType) 0-1 (N)
height	<p>effective height of a specified object</p> <p>- base type: decimal, min inclusive: 0, fraction digits: 2,</p> <p>(XPath RAWDesAdvise/RABody/RAitem/shipInfo/actualPackageUnit/packageDim/height) 0-1</p> <p>(XPath RAWDesAdvise/shipInfo/packages/packageDim/height) 0-1</p> <p>(XPath RAWDesAdvise/RABody/RAitem/shipInfo/packages/packageDim/height) 0-1</p> <p>(XPath RAWDesAdvise/shipInfo/actualPackageUnit/packageDim/height) 0-1</p>
id	<p>primary identification code of a Party; it is recommended the format: nation code (ISO 3166) + VAT identification number (11 crt), with the qualifier "numberingOrg"= MF</p> <p>- base type: string, max length: 15,</p> <p>(XPath RAWDesAdvise/TAheader/thirdParty/id) 1-1</p> <p>(XPath RAWDesAdvise/RABody/RAitem/thirdParty/id) 1-1</p> <p>(XPath RAWDesAdvise/TAheader/buyer/id) 1-1 (p)</p> <p>(XPath RAWDesAdvise/TAheader/supplier/id) 1-1</p>
@idQualifier	<p>Qualification of the identifier.</p> <p>- base type: string,</p> <p>(XPath RAWDesAdvise/shipInfo/actualPackageUnit/itemsList/itemIdentification/serialN/@idQualifier) [Optional] (N)</p> <p>- nota: <i>this attribute should be used when the numberingOrg attribute is not enough to declare the type of serial identifier</i></p> <p>(XPath RAWDesAdvise/RABody/RAitem/shipInfo/actualPackageUnit/packagesList/packageIdentification/serialN/@idQualifier) [Optional] (N)</p> <p>- nota: <i>this attribute should be used when the numberingOrg attribute is not enough to declare the type of serial identifier</i></p> <p>(XPath RAWDesAdvise/TAheader/buyer/additionalIdentifier/@idQualifier) [Optional] (Na)</p> <p>- nota: <i>this attribute should be used when the numberingOrg attribute is not enough to declare the type of identifier</i></p> <p>(XPath RAWDesAdvise/TAheader/supplier/additionalIdentifier/@idQualifier) [Optional] (Na)</p> <p>- nota: <i>this attribute should be used when the numberingOrg attribute is not enough to declare the type of identifier</i></p> <p>(XPath RAWDesAdvise/shipInfo/actualPackageUnit/packagesList/packageIdentification/serialN/@idQualifier) [Optional] (N)</p> <p>- nota: <i>this attribute should be used when the numberingOrg attribute is not enough to declare the type of serial identifier</i></p> <p>(XPath RAWDesAdvise/RABody/RAitem/itemsList/itemIdentification/serialN/@idQualifier) [Optional] (N)</p> <p>- nota: <i>this attribute should be used when the numberingOrg attribute is not enough to declare the type of serial identifier</i></p> <p>(XPath RAWDesAdvise/shipInfo/actualPackageUnit/packageIdentification/serialN/@idQualifier) [Optional] (N)</p> <p>- nota: <i>this attribute should be used when the numberingOrg attribute is not enough to declare the type of serial identifier</i></p> <p>(XPath RAWDesAdvise/RABody/RAitem/shipInfo/actualPackageUnit/itemsList/itemIdentification/serialN/@idQualifier) [Optional] (N)</p> <p>- nota: <i>this attribute should be used when the numberingOrg attribute is not enough to declare the type of serial identifier</i></p> <p>(XPath RAWDesAdvise/RABody/RAitem/shipInfo/actualPackageUnit/packageIdentification/serialN/@idQualifier) [Optional] (N)</p> <p>- nota: <i>this attribute should be used when the numberingOrg attribute is not enough to declare the type of serial identifier</i></p>

incoTerm	<p>specification of the terms of trade (INCOTERMS)</p> <p>- base type: string, cod. table: T3</p> <p>http://www.ebiz.enea.it/moda-ml/repository/codelist/v2018-1/gc_T3.xml</p> <p>(XPath RAWDesAdvise/trade/incoTerm) 1-1</p>
incoTermText	<p>free text specifying the terms of trade (incoterm, location)</p> <p>- base type: string, max length: 250,</p> <p>(XPath RAWDesAdvise/trade/incoTermText) 1-1 (U)</p>
@isURL	<p>it indicates if the referred element is an URL (true) or not (false)</p> <p>- base type: boolean,</p> <p>(XPath RAWDesAdvise/RABody/RAitem/refDoc/attachment/externalReference/uri/@isURL) [Optional] [Default= true] (Na)</p> <p>- nota: <i>usage of URLs is recommended</i></p> <p>(XPath RAWDesAdvise/TAheader/refDoc/attachment/externalReference/uri/@isURL) [Optional] [Default= true] (Na)</p> <p>- nota: <i>usage of URLs is recommended</i></p>
itemID	<p>number of the line/item of the referenced document</p> <p>- base type: string, max length: 40,</p> <p>(XPath RAWDesAdvise/RABody/RAitem/refDoc/itemID) 0-1 (U)</p> <p>(XPath RAWDesAdvise/TAheader/refDoc/itemID) 0-1 (U)</p>
itemsPerPackage	<p>the quantity of items that can be contained in a package.</p> <p>- base type: decimal,</p> <p>(XPath RAWDesAdvise/shipInfo/packages/itemsPerPackage) 0-1 (N)</p> <p>(XPath RAWDesAdvise/RABody/RAitem/shipInfo/packages/itemsPerPackage) 0-1 (N)</p>
label	<p>indicates if the physical object specified has to be labelled</p> <p>- base type: boolean,</p> <p>(XPath RAWDesAdvise/RABody/RAitem/shipInfo/packages/handlingChar/yarnPack/yarnReel/label) 0-1</p> <p>(XPath RAWDesAdvise/shipInfo/packages/handlingChar/yarnPack/yarnReel/label) 0-1</p> <p>(XPath RAWDesAdvise/RABody/RAitem/shipInfo/packages/handlingChar/yarnPack/yarnInWrap/label) 0-1</p> <p>(XPath RAWDesAdvise/shipInfo/packages/handlingChar/yarnPack/yarnInWrap/label) 0-1</p>
labelWrit	<p>text that must be written on the lable of a specified physical object when its customization is required</p> <p>- base type: string, max length: 350,</p> <p>(XPath RAWDesAdvise/shipInfo/packages/handlingChar/yarnPack/yarnReel/labelWrit) 0-1</p> <p>(XPath RAWDesAdvise/RABody/RAitem/shipInfo/packages/handlingChar/yarnPack/yarnInWrap/labelWrit) 0-1</p> <p>(XPath RAWDesAdvise/RABody/RAitem/shipInfo/packages/handlingChar/yarnPack/yarnReel/labelWrit) 0-1</p> <p>(XPath RAWDesAdvise/shipInfo/packages/handlingChar/yarnPack/yarnInWrap/labelWrit) 0-1</p>
legalName	<p>legal name of a Party</p> <p>- base type: string, max length: 250,</p> <p>(XPath RAWDesAdvise/TAheader/buyer/legalName) 0-1 (U)</p> <p>(XPath RAWDesAdvise/RABody/RAitem/thirdParty/legalName) 0-1 (U)</p> <p>(XPath RAWDesAdvise/TAheader/supplier/legalName) 0-1 (U)</p> <p>(XPath RAWDesAdvise/TAheader/thirdParty/legalName) 0-1 (U)</p>
length	<p>effective length of a specified object</p> <p>- base type: decimal, min inclusive: 0, fraction digits: 2,</p> <p>(XPath RAWDesAdvise/RABody/RAitem/shipInfo/packages/packageDim/length) 1-1</p> <p>- note: <i>here the maximum dimension must also be specified</i></p> <p>(XPath RAWDesAdvise/shipInfo/packages/packageDim/length) 1-1</p> <p>- note: <i>here the maximum dimension must also be specified</i></p> <p>(XPath RAWDesAdvise/shipInfo/actualPackageUnit/packageDim/length) 1-1</p>

	<p>- note: <i>here the maximum dimension must also be specified</i> (XPath RAWDesAdvise/RABody/RAitem/shipInfo/actualPackageUnit/packageDim/length) 1-1</p> <p>- note: <i>here the maximum dimension must also be specified</i></p>
lineN	<p>number of the line item of the present message (xml document); it is set by the role that produces the document. Usually it is a progressive number, but not always.</p> <p>- base type: positiveInteger, min inclusive: 1, max inclusive: 9999, (XPath RAWDesAdvise/RABody/RAitem/lineN) 1-1</p>
@listName	<p>the name of the list of codes used to make an instance of the element (it might be thought as descriptive element, i.e. 'fabric printing technologies', or not, i.e. "T264")</p> <p>- base type: string, max length: 40, (XPath RAWDesAdvise/RABody/RAitem/rawCode/art/@listName) [Optional]</p> <p>- nota: <i>this attribute should always be used coupled with "numberingOrg"</i> (XPath RAWDesAdvise/RABody/RAitem/shipInfo/actualPackageUnit/itemsList/qualityLevel/@listName) [Optional] (a)</p> <p>- nota: <i>this attribute should always be used coupled with "numberingOrg"</i> (XPath RAWDesAdvise/shipInfo/packages/handlingChar/garPack/garPackCode/@listName) [Optional] (a)</p> <p>- nota: <i>this attribute should always be used coupled with "numberingOrg"</i> (XPath RAWDesAdvise/RABody/RAitem/itemsList/qualityLevel/@listName) [Optional] (a)</p> <p>- nota: <i>this attribute should always be used coupled with "numberingOrg"</i> (XPath RAWDesAdvise/TAheader/refDoc/season/@listName) [Optional] (a)</p> <p>- nota: <i>this attribute should always be used coupled with "numberingOrg"</i> (XPath RAWDesAdvise/shipInfo/packages/handlingChar/acsPack/acsPackCode/@listName) [Optional] (a)</p> <p>- nota: <i>this attribute should always be used coupled with "numberingOrg"</i> (XPath RAWDesAdvise/RABody/RAitem/shipInfo/packages/handlingChar/acsPack/acsPackCode/@listName) [Optional] (a)</p> <p>- nota: <i>this attribute should always be used coupled with "numberingOrg"</i> (XPath RAWDesAdvise/RABody/RAitem/rawCode/color/@listName) [Optional]</p> <p>- nota: <i>this attribute should always be used coupled with "numberingOrg"</i> (XPath RAWDesAdvise/RABody/RAitem/shipInfo/packages/handlingChar/garPack/garPackCode/@listName) [Optional] (a)</p> <p>- nota: <i>this attribute should always be used coupled with "numberingOrg"</i> (XPath RAWDesAdvise/RABody/RAitem/refDoc/season/@listName) [Optional] (a)</p> <p>- nota: <i>this attribute should always be used coupled with "numberingOrg"</i> (XPath RAWDesAdvise/shipInfo/actualPackageUnit/itemsList/qualityLevel/@listName) [Optional] (a)</p> <p>- nota: <i>this attribute should always be used coupled with "numberingOrg"</i></p>
@listVersion	<p>it specifies the version of the list of codes used to make an instance of the element</p> <p>- base type: string, max length: 6, (XPath RAWDesAdvise/shipInfo/actualPackageUnit/itemsList/qualityLevel/@listVersion) [Optional] (a)</p> <p>- nota: <i>this attribute should always be used coupled with "numberingOrg" and "listName"</i> (XPath RAWDesAdvise/shipInfo/packages/handlingChar/acsPack/acsPackCode/@listVersion) [Optional] (a)</p> <p>- nota: <i>this attribute should always be used coupled with "numberingOrg" and "listName"</i> (XPath RAWDesAdvise/RABody/RAitem/shipInfo/actualPackageUnit/itemsList/qualityLevel/@listVersion) [Optional] (a)</p> <p>- nota: <i>this attribute should always be used coupled with "numberingOrg" and "listName"</i> (XPath RAWDesAdvise/RABody/RAitem/shipInfo/packages/handlingChar/garPack/garPackCode/@listVersion) [Optional] (a)</p>

	<p>- nota: <i>this attribute should always be used coupled with “numberingOrg” and “listName”</i> (XPath RAWDesAdvise/RABody/RAitem/shipInfo/packages/handlingChar/acsPack/acsPackCode/@listVersion) [Optional] (a)</p> <p>- nota: <i>this attribute should always be used coupled with “numberingOrg” and “listName”</i> (XPath RAWDesAdvise/TAheader/refDoc/season/@listVersion) [Optional] (a)</p> <p>- nota: <i>this attribute should always be used coupled with “numberingOrg” and “listName”</i> (XPath RAWDesAdvise/RABody/RAitem/rawCode/art/@listVersion) [Optional]</p> <p>- nota: <i>this attribute should always be used coupled with “numberingOrg” and “listName”</i> (XPath RAWDesAdvise/RABody/RAitem/refDoc/season/@listVersion) [Optional] (a)</p> <p>- nota: <i>this attribute should always be used coupled with “numberingOrg” and “listName”</i> (XPath RAWDesAdvise/RABody/RAitem/itemsList/qualityLevel/@listVersion) [Optional] (a)</p> <p>- nota: <i>this attribute should always be used coupled with “numberingOrg” and “listName”</i> (XPath RAWDesAdvise/RABody/RAitem/rawCode/color/@listVersion) [Optional]</p> <p>- nota: <i>this attribute should always be used coupled with “numberingOrg” and “listName”</i> (XPath RAWDesAdvise/shipInfo/packages/handlingChar/garPack/garPackCode/@listVersion) [Optional] (a)</p> <p>- nota: <i>this attribute should always be used coupled with “numberingOrg” and “listName”</i></p>
@ln	<p>Language code. - base type: string, cod. table: NT60 http://www.ebiz.enea.it/moda-ml/repository/codelist/v2018-1/gc_NT60.xml (XPath RAWDesAdvise/shipInfo/packages/description/@ln) [Optional] (N) (XPath RAWDesAdvise/RABody/RAitem/shipInfo/packages/handlingChar/handlingType/@ln) [Optional] (Na) (XPath RAWDesAdvise/RABody/RAitem/shipInfo/packages/description/@ln) [Optional] (N) (XPath RAWDesAdvise/RABody/RAitem/rawCode/description/@ln) [Optional] (N) (XPath RAWDesAdvise/shipInfo/packages/handlingChar/handlingType/@ln) [Optional] (N)</p>
location	<p>specification of a location - base type: string, max length: 40, (XPath RAWDesAdvise/trade/location) 0-1 - note: <i>place to which the INCOTERM applies</i></p>
@logo	<p>company logo (URL of the image jpeg or gif). It is recommended that the width of the image does not exceed 640 pixel. - base type: string, max length: 255, (XPath RAWDesAdvise/TAheader/supplier/@logo) [Optional] (XPath RAWDesAdvise/TAheader/buyer/@logo) [Optional]</p>
lotN	<p>lot number of a product or batch number of the raw material - base type: string, max length: 15, (XPath RAWDesAdvise/RABody/RAitem/lotN) 0-2 - note: <i>The lotN instances must differ by value of the numberingOrg attribute</i></p>
@LRI	<p>attribute usable to format a string according to a customized User rule (local rule) - base type: string, cod. table: NT3 http://www.ebiz.enea.it/moda-ml/repository/codelist/v2018-1/gc_NT3.xml (XPath RAWDesAdvise/trade/location/@LRI) [Optional]</p>
@method	<p>standard protocol or method employed in a test to evaluate a characteristic or a parameter - base type: string, max length: 80, (XPath RAWDesAdvise/RABody/RAitem/rawSpecs/specValue/@method) [Optional]</p>

@mime	<p>the mime type of the binary object</p> <ul style="list-style-type: none"> - base type: normalizedString, <p>(XPath RAWDesAdvise/RABody/RAitem/refDoc/attachment/binaryObject/@mime) [Optional] (N)</p> <p>(XPath RAWDesAdvise/TAheader/refDoc/attachment/binaryObject/@mime) [Optional] (N)</p>
mimeCode	<p>mime type of the external object</p> <ul style="list-style-type: none"> - base type: normalizedString, <p>(XPath RAWDesAdvise/RABody/RAitem/refDoc/attachment/externalReference/mimeCode) 0-1 (N)</p> <hr/> <p>AAAA-WARNING! - text not AVAILABLE n. 245 - In=en</p> <p>(XPath RAWDesAdvise/TAheader/refDoc/attachment/externalReference/mimeCode) 0-1 (N)</p> <hr/> <p>AAAA-WARNING! - text not AVAILABLE n. 245 - In=en</p>
minItemsPerPackage	<p>the minimum quantity of items for the specified kind of package.</p> <ul style="list-style-type: none"> - base type: decimal, min inclusive: 0, <p>(XPath RAWDesAdvise/shipInfo/packages/minItemsPerPackage) 0-1 (N)</p> <p>(XPath RAWDesAdvise/RABody/RAitem/shipInfo/packages/minItemsPerPackage) 0-1 (N)</p>
msgDate	<p>date of issue of the present message (xml document), according to one of the patterns YYYY-MM-DD, YYYY-MM-DD:HH-MM or YYYY-WW.</p> <ul style="list-style-type: none"> - base type: string, <p>(XPath RAWDesAdvise/TAheader/msgDate) 1-1</p>
@msgfunction	<p>function performed by the present message with regards to the transmission</p> <ul style="list-style-type: none"> - base type: string, cod. table: NT18 <p>http://www.ebiz.enea.it/moda-ml/repository/codelist/v2018-1/gc_NT18.xml</p> <p>(XPath RAWDesAdvise/@msgfunction) [Optional] [Default= OR]</p>
msgID	<p>key identifier of the business document in the information system of the issuing Party. In case of more despatches of the same business document, it is unchanged.</p> <ul style="list-style-type: none"> - base type: string, max length: 35, <p>(XPath RAWDesAdvise/TAheader/msgID) 0-1</p>
msgN	<p>identification number given to the message (xml document) by its issuer. In case of more despatches of the same business document, it changes.</p> <ul style="list-style-type: none"> - base type: string, max length: 35, <p>(XPath RAWDesAdvise/TAheader/msgN) 1-1</p>
netWeight	<p>the net weight declared for transport or customs purpose</p> <ul style="list-style-type: none"> - base type: decimal, min inclusive: 0, fraction digits: 2, <p>(XPath RAWDesAdvise/RABody/RAitem/shipInfo/transInfo/netWeight) 0-1</p> <p>(XPath RAWDesAdvise/RABody/RAitem/shipInfo/packages/handlingChar/netWeight) 0-1</p> <p>(XPath RAWDesAdvise/shipInfo/transInfo/netWeight) 0-1</p> <p>(XPath RAWDesAdvise/RABody/RAitem/shipInfo/actualPackageUnit/netWeight) 0-1</p> <p>(XPath RAWDesAdvise/shipInfo/actualPackageUnit/netWeight) 0-1</p> <p>(XPath RAWDesAdvise/shipInfo/packages/handlingChar/netWeight) 0-1 (p)</p>
note	<p>free text or structured (computer processing) note. For note structuring use the attributes "noteLabel" and "codelist"</p> <ul style="list-style-type: none"> - base type: string, max length: 350, <p>(XPath RAWDesAdvise/RABody/RAitem/shipInfo/packages/handlingChar/note) 0-99</p> <p>(XPath RAWDesAdvise/shipInfo/packages/handlingChar/note) 0-99</p> <p>(XPath RAWDesAdvise/RABody/RAitem/shipInfo/actualPackageUnit/note) 0-99</p> <p>(XPath RAWDesAdvise/TAheader/note) 0-99</p> <p>(XPath RAWDesAdvise/RABody/RAitem/note) 0-99</p> <p>(XPath RAWDesAdvise/shipInfo/actualPackageUnit/note) 0-99</p>

<p>@noteLabel</p>	<p>subject qualifier of a note</p> <ul style="list-style-type: none"> - base type: string, max length: 35, (XPath RAWDesAdvise/RABody/RAitem/note/@noteLabel) [Optional] - nota: <i>must be used to qualify the subject of the note</i> (XPath RAWDesAdvise/RABody/RAitem/shipInfo/actualPackageUnit/note/@noteLabel) [Optional] - nota: <i>must be used to qualify the subject of the note</i> (XPath RAWDesAdvise/RABody/RAitem/shipInfo/packages/handlingChar/note/@noteLabel) [Optional] - nota: <i>must be used to qualify the subject of the note</i> (XPath RAWDesAdvise/shipInfo/actualPackageUnit/note/@noteLabel) [Optional] - nota: <i>must be used to qualify the subject of the note</i> (XPath RAWDesAdvise/TAheader/note/@noteLabel) [Optional] - nota: <i>must be used to qualify the subject of the note</i> (XPath RAWDesAdvise/shipInfo/packages/handlingChar/note/@noteLabel) [Optional] - nota: <i>must be used to qualify the subject of the note</i>
<p>@numberingOrg</p>	<p>code specifying the organisation who has created or owns the coding or numbering system</p> <ul style="list-style-type: none"> - base type: string, cod. table: NT6 http://www.ebiz.enea.it/moda-ml/repository/codelist/v2018-1/gc_NT6.xml (XPath RAWDesAdvise/RABody/RAitem/shipInfo/actualPackageUnit/packagesList/packageIdentification/serialN/@numberingOrg) [Optional] - nota: <i>here the issuer of the serial number must be specified (when different from the Supplier)</i> (XPath RAWDesAdvise/RABody/RAitem/shipInfo/packages/packageModelCode/@numberingOrg) [Optional] (XPath RAWDesAdvise/RABody/RAitem/thirdParty/id/@numberingOrg) [Optional] (XPath RAWDesAdvise/shipInfo/packages/handlingChar/note/@numberingOrg) [Optional] - nota: <i>must be used to specify the organization that created the list of codes used in "noteLabel"</i> (XPath RAWDesAdvise/shipInfo/packages/handlingChar/garPack/garPackCode/@numberingOrg) [Optional] (a) - nota: <i>this attribute should be used either single or coupled with "listName" and "listVersion"</i> (XPath RAWDesAdvise/RABody/RAitem/shipInfo/actualPackageUnit/itemsList/qualityLevel/@numberingOrg) [Optional] (a) - nota: <i>this attribute should be used either single or coupled with "listName" and "listVersion"</i> (XPath RAWDesAdvise/shipInfo/packages/handlingChar/acsPack/acsPackCode/@numberingOrg) [Optional] (a) - nota: <i>this attribute should be used either single or coupled with "listName" and "listVersion"</i> (XPath RAWDesAdvise/shipInfo/packages/packageN/@numberingOrg) [Optional] (XPath RAWDesAdvise/TAheader/buyer/id/@numberingOrg) [Optional] (XPath RAWDesAdvise/TAheader/buyer/additionalIdentifier/@numberingOrg) [Optional] (a) - nota: <i>here the issuer of the identifier must be specified</i> (XPath RAWDesAdvise/RABody/RAitem/shipInfo/actualPackageUnit/note/@numberingOrg) [Optional] - nota: <i>must be used to specify the organization that created the list of codes used in "noteLabel"</i> (XPath RAWDesAdvise/shipInfo/actualPackageUnit/packageIdentification/packageN/@numberingOrg) [Optional] (XPath RAWDesAdvise/RABody/RAitem/dyeN/@numberingOrg) [Optional] (XPath RAWDesAdvise/RABody/RAitem/shipInfo/actualPackageUnit/itemsList/itemIdentification/serialN/@numberingOrg) [Optional]

- nota: *here the issuer of the serial number must be specified (when different from the Supplier)*
 (XPath RAWDesAdvise/RABody/RAitem/lotN/@numberingOrg) [Optional]
 (XPath RAWDesAdvise/shipInfo/packages/EPClist/EPC/@numberingOrg) [Optional]
 (XPath RAWDesAdvise/TAheader/note/@numberingOrg) [Optional]

- nota: *must be used to specify the organization that created the list of codes used in "noteLabel"*
 (XPath
 RAWDesAdvise/RABody/RAitem/shipInfo/actualPackageUnit/packageIdentification/packageN/@numberingOrg) [Optional]
 (XPath RAWDesAdvise/RABody/RAitem/shipInfo/packages/
 handlingChar/garPack/garPackCode/@numberingOrg) [Optional] (a)

- nota: *this attribute should be used either single or coupled with "listName" and "listVersion"*
 (XPath
 RAWDesAdvise/RABody/RAitem/shipInfo/actualPackageUnit/packageIdentification/serialN/@numberingOrg) [Optional]

- nota: *here the issuer of the serial number must be specified (when different from the Supplier)*
 (XPath RAWDesAdvise/TAheader/thirdParty/id/@numberingOrg) [Optional]
 (XPath RAWDesAdvise/RABody/RAitem/shipInfo/packages/
 EPClist/EPC/@numberingOrg) [Optional]
 (XPath RAWDesAdvise/RABody/RAitem/shipInfo/packages/
 handlingChar/note/@numberingOrg) [Optional]

- nota: *must be used to specify the organization that created the list of codes used in "noteLabel"*
 (XPath RAWDesAdvise/RABody/RAitem/shipInfo/packages/
 packageN/@numberingOrg) [Optional]
 (XPath RAWDesAdvise/RABody/RAitem/shipInfo/packages/
 handlingChar/acsPack/acsPackCode/@numberingOrg) [Optional] (a)

- nota: *this attribute should be used either single or coupled with "listName" and "listVersion"*
 (XPath
 RAWDesAdvise/TAheader/supplier/additionalIdentifier/@numberingOrg) [Optional] (a)

- nota: *here the issuer of the identifier must be specified*
 (XPath RAWDesAdvise/RABody/RAitem/note/@numberingOrg) [Optional]

- nota: *must be used to specify the organization that created the list of codes used in "noteLabel"*
 (XPath
 RAWDesAdvise/RABody/RAitem/shipInfo/actualPackageUnit/packagesList/packageIdentification/packageN/@numberingOrg) [Optional]
 (XPath RAWDesAdvise/TAheader/supplier/id/@numberingOrg) [Optional]
 (XPath
 RAWDesAdvise/RABody/RAitem/shipInfo/actualPackageUnit/packageModelCode/@numberingOrg) [Optional] (a)
 (XPath RAWDesAdvise/shipInfo/packages/packageModelCode/@numberingOrg) [Optional] (a)
 (XPath RAWDesAdvise/RABody/RAitem/packageN/@numberingOrg) [Optional]
 (XPath RAWDesAdvise/TAheader/docID/@numberingOrg) [Optional]

- nota: *here can be specified whose document numbering is used (e.g.: Client, Supplier, ..)*
 (XPath RAWDesAdvise/shipInfo/actualPackageUnit/
 packageModelCode/@numberingOrg) [Optional]
 (XPath RAWDesAdvise/shipInfo/actualPackageUnit/
 itemsList/itemIdentification/serialN/@numberingOrg) [Optional]

- nota: *here the issuer of the serial number must be specified (when different from the Supplier)*
 (XPath RAWDesAdvise/shipInfo/actualPackageUnit/
 itemsList/qualityLevel/@numberingOrg) [Optional] (a)

- nota: *this attribute should be used either single or coupled with "listName" and "listVersion"*
 (XPath RAWDesAdvise/RABody/RAitem/rawCode/added/@numberingOrg) [Optional]

	<p>- nota: <i>this attribute should be used either single or coupled with "listName" and "listVersion"</i> (XPath RAWDesAdvise/shipInfo/actualPackageUnit/note/@numberingOrg) [Optional]</p> <p>- nota: <i>must be used to specify the organization that created the list of codes used in "noteLabel"</i> (XPath RAWDesAdvise/RABody/RAitem/rawCode/@numberingOrg) [Optional] (XPath RAWDesAdvise/RABody/RAitem/itemsList/qualityLevel/@numberingOrg) [Optional] (a)</p> <p>- nota: <i>this attribute should be used either single or coupled with "listName" and "listVersion"</i> (XPath RAWDesAdvise/shipInfo/actualPackageUnit/packagesList/packageIdentification/packageN/@numberingOrg) [Optional] (XPath RAWDesAdvise/TAheader/refDoc/docID/@numberingOrg) [Optional]</p> <p>- nota: <i>here can be specified whose document numbering is used (e.g.: Client, Supplier, ..)</i> (XPath RAWDesAdvise/RABody/RAitem/rawCode/color/@numberingOrg) [Optional]</p> <p>- nota: <i>this attribute should be used either single or coupled with "listName" and "listVersion"</i> (XPath RAWDesAdvise/TAheader/refDoc/attachment/fileName/@numberingOrg) [Optional] (a) (XPath RAWDesAdvise/shipInfo/actualPackageUnit/packagesList/packageIdentification/serialN/@numberingOrg) [Optional]</p> <p>- nota: <i>here the issuer of the serial number must be specified (when different from the Supplier)</i> (XPath RAWDesAdvise/RABody/RAitem/refDoc/season/@numberingOrg) [Optional] (a)</p> <p>- nota: <i>this attribute should be used either single or coupled with "listName" and "listVersion"</i> (XPath RAWDesAdvise/TAheader/refDoc/season/@numberingOrg) [Optional] (a)</p> <p>- nota: <i>this attribute should be used either single or coupled with "listName" and "listVersion"</i> (XPath RAWDesAdvise/shipInfo/actualPackageUnit/packageIdentification/serialN/@numberingOrg) [Optional]</p> <p>- nota: <i>here the issuer of the serial number must be specified (when different from the Supplier)</i> (XPath RAWDesAdvise/RABody/RAitem/refDoc/docID/@numberingOrg) [Optional]</p> <p>- nota: <i>here can be specified whose document numbering is used (e.g.: Client, Supplier, ..)</i> (XPath RAWDesAdvise/RABody/RAitem/rawCode/art/@numberingOrg) [Optional]</p> <p>- nota: <i>this attribute should be used either single or coupled with "listName" and "listVersion"</i> (XPath RAWDesAdvise/RABody/RAitem/itemsList/itemIdentification/serialN/@numberingOrg) [Optional]</p> <p>- nota: <i>here the issuer of the serial number must be specified (when different from the Supplier)</i> (XPath RAWDesAdvise/RABody/RAitem/refDoc/attachment/fileName/@numberingOrg) [Optional]</p>
package	<p>code specifying the type of transport package - base type: string, cod. table: T11 http://www.ebiz.enea.it/moda-ml/repository/codelist/v2018-1/gc_T11.xml (XPath RAWDesAdvise/shipInfo/actualPackageUnit/package) 0-1 (p) (XPath RAWDesAdvise/RABody/RAitem/shipInfo/packages/package) 1-1 (XPath RAWDesAdvise/RABody/RAitem/shipInfo/actualPackageUnit/package) 0-1 (p) (XPath RAWDesAdvise/shipInfo/packages/package) 1-1</p>
@packageContainerN	<p>reference usable to indicate the outer package containing this package - base type: string, max length: 40, (XPath RAWDesAdvise/RABody/RAitem/shipInfo/actualPackageUnit/packageIdentification/packageN/@packageContainerN) [Optional]</p>

	<p>(XPath RAWDesAdvise/RABody/RAitem/packageN/@packageContainerN) [Optional]</p> <p>(XPath RAWDesAdvise/RABody/RAitem/shipInfo/packages/packageN/@packageContainerN) [Optional]</p> <p>(XPath RAWDesAdvise/RABody/RAitem/shipInfo/actualPackageUnit/packagesList/packageIdentification/packageN/@packageContainerN) [Optional]</p> <p>(XPath RAWDesAdvise/shipInfo/actualPackageUnit/packageIdentification/packageN/@packageContainerN) [Optional]</p> <p>(XPath RAWDesAdvise/shipInfo/actualPackageUnit/packagesList/packageIdentification/packageN/@packageContainerN) [Optional]</p> <p>(XPath RAWDesAdvise/shipInfo/packages/packageN/@packageContainerN) [Optional]</p>
@packageLevel	<p>level used to indicate the hierarchical structure of the packages (from outer to inner levels)</p> <p>- base type: positiveInteger, min inclusive: 1, max inclusive: 9,</p> <p>(XPath RAWDesAdvise/shipInfo/actualPackageUnit/@packageLevel) [Optional] (a)</p> <p>(XPath RAWDesAdvise/shipInfo/packages/@packageLevel) [Optional]</p> <p>- nota: <i>number fixing the level of the package in the transport structure (from inner to outer). Must either be used for all package types or not be used</i></p> <p>(XPath RAWDesAdvise/RABody/RAitem/shipInfo/actualPackageUnit/@packageLevel) [Optional] (a)</p> <p>(XPath RAWDesAdvise/RABody/RAitem/shipInfo/packages/@packageLevel) [Optional]</p> <p>- nota: <i>number fixing the level of the package in the transport structure (from inner to outer). Must either be used for all package types or not be used</i></p>
packageModelCode	<p>a code (eg a barcode) identifying the type of packaging</p> <p>- base type: string,</p> <p>(XPath RAWDesAdvise/RABody/RAitem/shipInfo/packages/packageModelCode) 0-1 (N)</p> <p>(XPath RAWDesAdvise/RABody/RAitem/shipInfo/actualPackageUnit/packageModelCode) 0-1 (N)</p> <p>(XPath RAWDesAdvise/shipInfo/packages/packageModelCode) 0-1 (N)</p> <p>(XPath RAWDesAdvise/shipInfo/actualPackageUnit/packageModelCode) 0-1 (N)</p>
packageN	<p>serial number used to identify a transport package</p> <p>- base type: string, max length: 40,</p> <p>(XPath RAWDesAdvise/RABody/RAitem/shipInfo/actualPackageUnit/packageIdentification/packageN) 1-1 (U)</p> <p>(XPath RAWDesAdvise/RABody/RAitem/shipInfo/packages/packageN) 0-unbounded (U)</p> <p>- note: <i>here the serial no.s of the packages can be identified</i></p> <p>(XPath RAWDesAdvise/RABody/RAitem/shipInfo/actualPackageUnit/packagesList/packageIdentification/packageN) 1-1 (U)</p> <p>(XPath RAWDesAdvise/RABody/RAitem/packageN) 0-unbounded (U)</p> <p>(XPath RAWDesAdvise/shipInfo/actualPackageUnit/packagesList/packageIdentification/packageN) 1-1 (U)</p> <p>(XPath RAWDesAdvise/shipInfo/packages/packageN) 0-unbounded (U)</p> <p>- note: <i>here the serial no.s of the packages can be identified</i></p> <p>(XPath RAWDesAdvise/shipInfo/actualPackageUnit/packageIdentification/packageN) 1-1 (U)</p>
packageQty	<p>quantity of the specified transport packages</p> <p>- base type: positiveInteger,</p> <p>(XPath RAWDesAdvise/RABody/RAitem/shipInfo/packages/packageQty) 0-1</p> <p>- note: <i>total for the type of package</i></p> <p>(XPath RAWDesAdvise/shipInfo/packages/packageQty) 0-1</p> <p>- note: <i>total for the type of package</i></p>

packageText	denomination of the type of transport package (text) - base type: string, max length: 80, (XPath RAWDesAdvise/RABody/RAitem/shipInfo/packages/packageText) 1-1 (U) (XPath RAWDesAdvise/shipInfo/actualPackageUnit/packageText) 0-1 (U) (XPath RAWDesAdvise/shipInfo/packages/packageText) 1-1 (U) (XPath RAWDesAdvise/RABody/RAitem/shipInfo/actualPackageUnit/packageText) 0-1 (U)
pcTolerance	percent deviation tolerated on the value of a measurement (it must have a plus or minus sign) - base type: decimal, min inclusive: 0, max inclusive: 100, total digits: 2, (XPath RAWDesAdvise/RABody/RAitem/rawSpecs/pcTolerance) 0-2
person	name of the contact person within a Party - base type: string, max length: 40, (XPath RAWDesAdvise/RABody/RAitem/thirdParty/person) 0-1 (XPath RAWDesAdvise/TAheader/thirdParty/person) 0-1 (XPath RAWDesAdvise/TAheader/buyer/person) 0-1 (XPath RAWDesAdvise/TAheader/supplier/person) 0-1
@phone	phone number of the contact person within a Party - base type: string, max length: 35, (XPath RAWDesAdvise/RABody/RAitem/thirdParty/person/@phone) [Optional] (XPath RAWDesAdvise/TAheader/supplier/person/@phone) [Optional] (XPath RAWDesAdvise/TAheader/thirdParty/person/@phone) [Optional] (XPath RAWDesAdvise/TAheader/buyer/person/@phone) [Optional]
pieceInnWrap1	code specifying the type of inner wrapping/packing used for the fabric piece - base type: string, cod. table: T4 http://www.ebiz.enea.it/moda-ml/repository/codelist/v2018-1/gc_T4.xml (XPath RAWDesAdvise/RABody/RAitem/shipInfo/packages/handlingChar/piecePack/pieceInnWrap1) 1-1 (XPath RAWDesAdvise/shipInfo/packages/handlingChar/piecePack/pieceInnWrap1) 1-1
pieceInnWrap2	code sub-specifying the type of inner wrapping/packing used for the fabric piece - base type: string, cod. table: T5 http://www.ebiz.enea.it/moda-ml/repository/codelist/v2018-1/gc_T5.xml (XPath RAWDesAdvise/shipInfo/packages/handlingChar/piecePack/pieceInnWrap2) 0-1 (XPath RAWDesAdvise/RABody/RAitem/shipInfo/packages/handlingChar/piecePack/pieceInnWrap2) 0-1
pieceOutWrap	code specifying the type of outer wrapping or packing used for the fabric piece - base type: string, cod. table: T6 http://www.ebiz.enea.it/moda-ml/repository/codelist/v2018-1/gc_T6.xml (XPath RAWDesAdvise/shipInfo/packages/handlingChar/piecePack/pieceOutWrap) 0-1 (XPath RAWDesAdvise/RABody/RAitem/shipInfo/packages/handlingChar/piecePack/pieceOutWrap) 0-1
piecePackText	free text specifying the type of wrapping or packing used for the fabric piece - base type: string, max length: 250, (XPath RAWDesAdvise/RABody/RAitem/shipInfo/packages/handlingChar/piecePack/piecePackText) 1-1 (U) (XPath RAWDesAdvise/shipInfo/packages/handlingChar/piecePack/piecePackText) 1-1 (U)
postCode	code defining the postal zone - base type: string, max length: 10, (XPath RAWDesAdvise/TAheader/supplier/postCode) 0-1 (XPath RAWDesAdvise/RABody/RAitem/thirdParty/postCode) 0-1 (XPath RAWDesAdvise/TAheader/thirdParty/postCode) 0-1 (XPath RAWDesAdvise/TAheader/buyer/postCode) 0-1

@progr	<p>progressive number in the sequence</p> <ul style="list-style-type: none"> - base type: positiveInteger, min inclusive: 1, (XPath RAWDesAdvise/RABody/RAitem/shipInfo/transInfo/@progr) [Optional] (N) - nota: <i>Indicates the position of the leg in a sequence of transport legs. If it is declared it must be in all the transInfo elements.</i> (XPath RAWDesAdvise/shipInfo/packages/fillingCriterion/@progr) [Optional] (Na) (XPath RAWDesAdvise/RABody/RAitem/shipInfo/packages/fillingCriterion/@progr) [Optional] (N) (XPath RAWDesAdvise/shipInfo/transInfo/@progr) [Optional] (N) - nota: <i>Indicates the position of the leg in a sequence of transport legs. If it is declared it must be in all the transInfo elements.</i>
qty	<p>net quantity of the article or object correlated, qualified by the function of the document (ordering, delivering, ..) and by the context</p> <ul style="list-style-type: none"> - base type: decimal, min inclusive: 0, fraction digits: 2, (XPath RAWDesAdvise/RABody/RAitem/qty) 1-2 <hr/> <p>AAAA-WARNING! - text not AVAILABLE n. 245 - ln=en</p>
qualityLevel	<p>the product quality level (first choice, second choice,...).</p> <ul style="list-style-type: none"> - base type: string, (XPath RAWDesAdvise/RABody/RAitem/shipInfo/actualPackageUnit/itemsList/qualityLevel) 0-1 (N) (XPath RAWDesAdvise/RABody/RAitem/itemsList/qualityLevel) 0-1 (N) (XPath RAWDesAdvise/shipInfo/actualPackageUnit/itemsList/qualityLevel) 0-1 (N)
rawChar	<p>physical or mechanical parameter used to define a characteristics of a raw material</p> <ul style="list-style-type: none"> - base type: string, cod. table: T22 http://www.ebiz.enea.it/moda-ml/repository/codelist/v2018-1/gc_T22.xml (XPath RAWDesAdvise/RABody/RAitem/rawSpecs/rawChar) 1-1
rawCharText	<p>free text describing the physical or mechanical parameter used to define a characteristics of a raw material</p> <ul style="list-style-type: none"> - base type: string, max length: 250, (XPath RAWDesAdvise/RABody/RAitem/rawSpecs/rawCharText) 1-1 (U)
@reelMat	<p>type of material of which a package for yarn is made</p> <ul style="list-style-type: none"> - base type: string, cod. table: T30 http://www.ebiz.enea.it/moda-ml/repository/codelist/v2018-1/gc_T30.xml (XPath RAWDesAdvise/shipInfo/packages/handlingChar/yarnPack/yarnReel/@reelMat) [Optional] (XPath RAWDesAdvise/RABody/RAitem/shipInfo/packages/handlingChar/yarnPack/yarnReel/@reelMat) [Optional]
@reelType	<p>type of package used for a yarn product</p> <ul style="list-style-type: none"> - base type: string, cod. table: T29 http://www.ebiz.enea.it/moda-ml/repository/codelist/v2018-1/gc_T29.xml (XPath RAWDesAdvise/RABody/RAitem/shipInfo/packages/handlingChar/yarnPack/yarnReel/@reelType) [Required] (XPath RAWDesAdvise/shipInfo/packages/handlingChar/yarnPack/yarnReel/@reelType) [Required]
@role	<p>Third Party role qualifier</p> <ul style="list-style-type: none"> - base type: string, cod. table: NT2 http://www.ebiz.enea.it/moda-ml/repository/codelist/v2018-1/gc_NT2.xml (XPath RAWDesAdvise/TAheader/thirdParty/@role) [Required] (XPath RAWDesAdvise/RABody/RAitem/thirdParty/@role) [Required]
season	<p>sale season; defined as: season (1 crt) + year (4 crt) - season: S/S=1 A/W=2 Spring=3 Summer=4 Autumn=5 Winter=6: for more than four seasons use alphabetic sequence: 1st season=A 2nd season=B etc.etc.</p> <ul style="list-style-type: none"> - base type: string, max length: 15, (XPath RAWDesAdvise/RABody/RAitem/refDoc/season) 0-1 (A) - note: <i>here indicates the season to which the referenced document belongs</i> (XPath RAWDesAdvise/TAheader/refDoc/season) 0-1 (A)

	- note: <i>here indicates the season to which the referenced document belongs</i>
@sender	<p>qualifier that specifies the Party issuing of the document</p> <p>- base type: boolean, (XPath RAWDesAdvise/TAheader/thirdParty/@sender) [Optional] (a*)</p> <p>- nota: <i>This attribute is mandatory when the STYLESHEET must be used</i> (XPath RAWDesAdvise/TAheader/buyer/@sender) [Optional] (a*)</p> <p>- nota: <i>This attribute is mandatory when the STYLESHEET must be used</i> (XPath RAWDesAdvise/RABody/RAitem/thirdParty/@sender) [Optional] (a*)</p> <p>- nota: <i>This attribute is mandatory when the STYLESHEET must be used</i> (XPath RAWDesAdvise/TAheader/supplier/@sender) [Optional] (a*)</p> <p>- nota: <i>This attribute is mandatory when the STYLESHEET must be used</i></p>
serialN	<p>serial number used for the identification of a physical unit</p> <p>- base type: string, max length: 250, (XPath RAWDesAdvise/RABody/RAitem/shipInfo/actualPackageUnit/itemsList/itemIdentification/serialN) 1-9 (AU)</p> <hr/> <p>AAAA-WARNING! - text not AVAILABLE n. 245 - In=en</p> <p>- note: <i>multiple values of serialN are allowed for different representations of the serial identifier of the same product unit. Instances of serialN must differ at least for one value of numberingOrg and idQualifier.</i></p> <p>(XPath RAWDesAdvise/shipInfo/actualPackageUnit/packageIdentification/serialN) 0-9 (AU)</p> <p>- note: <i>multiple values of serialN are allowed in order to provide different representations of the serial identifier of the same package unit. Different instances of serialN must differ at least for one value of idQualifier or numberingOrg</i></p> <p>(XPath RAWDesAdvise/RABody/RAitem/shipInfo/actualPackageUnit/packageIdentification/serialN) 0-9 (AU)</p> <p>- note: <i>multiple values of serialN are allowed in order to provide different representations of the serial identifier of the same package unit. Different instances of serialN must differ at least for one value of idQualifier or numberingOrg</i></p> <p>(XPath RAWDesAdvise/shipInfo/actualPackageUnit/itemsList/itemIdentification/serialN) 1-9 (AU)</p> <hr/> <p>AAAA-WARNING! - text not AVAILABLE n. 245 - In=en</p> <p>- note: <i>multiple values of serialN are allowed for different representations of the serial identifier of the same product unit. Instances of serialN must differ at least for one value of numberingOrg and idQualifier.</i></p> <p>(XPath RAWDesAdvise/RABody/RAitem/shipInfo/actualPackageUnit/packagesList/packageIdentification/serialN) 0-9 (AU)</p> <p>- note: <i>multiple values of serialN are allowed in order to provide different representations of the serial identifier of the same package unit. Different instances of serialN must differ at least for one value of idQualifier or numberingOrg</i></p> <p>(XPath RAWDesAdvise/RABody/RAitem/itemsList/itemIdentification/serialN) 1-9 (AU)</p> <hr/> <p>AAAA-WARNING! - text not AVAILABLE n. 245 - In=en</p> <p>- note: <i>multiple values of serialN are allowed for different representations of the serial identifier of the same product unit. Instances of serialN must differ at least for one value of numberingOrg and idQualifier.</i></p> <p>(XPath RAWDesAdvise/shipInfo/actualPackageUnit/packagesList/packageIdentification/serialN) 0-9 (AU)</p> <p>- note: <i>multiple values of serialN are allowed in order to provide different representations of the serial identifier of the same package unit. Different instances of serialN must differ at least for one value of idQualifier or numberingOrg</i></p>
sortableIndicator	<p>It states if the item can be automatically sorted.</p> <p>- base type: boolean, (XPath RAWDesAdvise/RABody/RAitem/shipInfo/packages/handlingChar/sortableIndicator) 0-1 (N) (XPath RAWDesAdvise/shipInfo/packages/handlingChar/sortableIndicator) 0-1 (N)</p>
@source	<p>party who has provided the data</p> <p>- base type: string, cod. table: NT12 http://www.ebiz.enea.it/moda-ml/repository/codelist/v2018-1/gc_NT12.xml (XPath RAWDesAdvise/RABody/RAitem/rawSpecs/specValue/@source) [Optional]</p>

specValue	value requested for a property or a parameter that is measured - base type: decimal, (XPath RAWDesAdvise/RABody/RAitem/rawSpecs/specValue) 0-1
stackabilityLevel	This value indicates the level at which the item can be stacked. - base type: integer, (XPath RAWDesAdvise/shipInfo/packages/handlingChar/stackabilityLevel) 0-1 (N) (XPath RAWDesAdvise/RABody/RAitem/shipInfo/packages/handlingChar/stackabilityLevel) 0-1 (N)
street	street and building number identifying a location - base type: string, max length: 80, (XPath RAWDesAdvise/TAheader/buyer/street) 0-1 (XPath RAWDesAdvise/TAheader/supplier/street) 0-1 (XPath RAWDesAdvise/RABody/RAitem/thirdParty/street) 0-1 (XPath RAWDesAdvise/TAheader/thirdParty/street) 0-1
subCountry	short name or code of the sub-country entity - base type: string, max length: 9, (XPath RAWDesAdvise/TAheader/supplier/subCountry) 0-1 (XPath RAWDesAdvise/RABody/RAitem/thirdParty/subCountry) 0-1 (XPath RAWDesAdvise/TAheader/thirdParty/subCountry) 0-1 (XPath RAWDesAdvise/TAheader/buyer/subCountry) 0-1
subDept	name or code of a contact department within a Party - base type: string, max length: 40, (XPath RAWDesAdvise/TAheader/supplier/subDept) 0-1 (N) (XPath RAWDesAdvise/TAheader/buyer/subDept) 0-1 (N) (XPath RAWDesAdvise/RABody/RAitem/thirdParty/subDept) 0-1 (N) (XPath RAWDesAdvise/TAheader/thirdParty/subDept) 0-1 (N)
@TAtype	type of Despatch advise - base type: string, cod. table: NT10 http://www.ebiz.enea.it/moda-ml/repository/codelist/v2018-1/gc_NT10.xml (XPath RAWDesAdvise/@TAtype) [Optional] [Default= STD]
@TID	serial number wired into the RFID chip - base type: string, (XPath RAWDesAdvise/RABody/RAitem/shipInfo/packages/EPClist/EPC/@TID) [Optional] (XPath RAWDesAdvise/shipInfo/packages/EPClist/EPC/@TID) [Optional]
tolerance	deviation tolerated on the value of a measurement (it must have a plus or minus sign) - base type: decimal, (XPath RAWDesAdvise/RABody/RAitem/rawSpecs/tolerance) 0-2
transCondition	special condition of transport or special service requested to the Forwarder - base type: string, cod. table: T38 http://www.ebiz.enea.it/moda-ml/repository/codelist/v2018-1/gc_T38.xml (XPath RAWDesAdvise/RABody/RAitem/shipInfo/transInfo/transCondition) 0-3 (XPath RAWDesAdvise/shipInfo/transInfo/transCondition) 0-3
transConditionText	free text description of the special condition of transport or special service requested to the Forwarder - base type: string, max length: 250, (XPath RAWDesAdvise/RABody/RAitem/shipInfo/transInfo/transConditionText) 0-1 (U) (XPath RAWDesAdvise/shipInfo/transInfo/transConditionText) 0-1 (U)
transMeans	means of transport, in general or referred to a specific leg - base type: string, cod. table: T40 http://www.ebiz.enea.it/moda-ml/repository/codelist/v2018-1/gc_T40.xml (XPath RAWDesAdvise/RABody/RAitem/shipInfo/transInfo/transMeans) 0-1 (XPath RAWDesAdvise/shipInfo/transInfo/transMeans) 0-1

transMode	<p>way of transport, in general or referred to the specified leg</p> <p>- base type: string, cod. table: T8</p> <p>http://www.ebiz.enea.it/moda-ml/repository/codelist/v2018-1/gc_T8.xml</p> <p>(XPath RAWDesAdvise/RABody/RAitem/shipInfo/transInfo/transMode) 1-1</p> <p>(XPath RAWDesAdvise/shipInfo/transInfo/transMode) 1-1</p>
@transReason	<p>reason for the transport</p> <p>- base type: string, cod. table: NT11</p> <p>http://www.ebiz.enea.it/moda-ml/repository/codelist/v2018-1/gc_NT11.xml</p> <p>(XPath RAWDesAdvise/RABody/RAitem/shipInfo/transInfo/@transReason) [Optional]</p> <p>(XPath RAWDesAdvise/shipInfo/transInfo/@transReason) [Optional]</p>
@uid	<p>unique element identifier within the xml document</p> <p>- base type: string,</p> <p>(XPath RAWDesAdvise/RABody/RAitem/refDoc/attachment/@uid) [Optional]</p> <p>(XPath RAWDesAdvise/TAheader/refDoc/attachment/@uid) [Optional]</p>
@um	<p>specification of the unit of measure</p> <p>- base type: string, cod. table: NT7</p> <p>http://www.ebiz.enea.it/moda-ml/repository/codelist/v2018-1/gc_NT7.xml</p> <p>(XPath RAWDesAdvise/RABody/RAitem/shipInfo/actualPackageUnit/packageDim/length/@um) [Required]</p> <p>(XPath RAWDesAdvise/RABody/RAitem/shipInfo/actualPackageUnit/packageDim/width/@um) [Required]</p> <p>(XPath RAWDesAdvise/RABody/RAitem/shipInfo/actualPackageUnit/packageDim/height/@um) [Required]</p> <p>(XPath RAWDesAdvise/RABody/RAitem/shipInfo/actualPackageUnit/volume/@um) [Required]</p> <p>(XPath RAWDesAdvise/RABody/RAitem/shipInfo/actualPackageUnit/netWeight/@um) [Required]</p> <p>(XPath RAWDesAdvise/RABody/RAitem/shipInfo/actualPackageUnit/grossWeight/@um) [Required]</p> <p>(XPath RAWDesAdvise/shipInfo/packages/handlingChar/volume/@um) [Required]</p> <p>(XPath RAWDesAdvise/RABody/RAitem/shipInfo/transInfo/grossWeight/@um) [Required]</p> <p>(XPath RAWDesAdvise/shipInfo/packages/handlingChar/netWeight/@um) [Required]</p> <p>(XPath RAWDesAdvise/shipInfo/packages/itemsPerPackage/@um) [Required] (a)</p> <p>(XPath RAWDesAdvise/shipInfo/packages/handlingChar/grossWeight/@um) [Required]</p> <p>(XPath RAWDesAdvise/RABody/RAitem/shipInfo/transInfo/netWeight/@um) [Required]</p> <p>(XPath RAWDesAdvise/RABody/RAitem/shipInfo/packages/packageDim/height/@um) [Required]</p> <p>(XPath RAWDesAdvise/shipInfo/packages/handlingChar/yarnPack/yarnReel/yarnReelH/@um) [Required]</p> <p>(XPath RAWDesAdvise/RABody/RAitem/shipInfo/packages/packageDim/width/@um) [Required]</p> <p>(XPath RAWDesAdvise/shipInfo/packages/handlingChar/yarnPack/yarnReel/yarnReelQty/@um) [Required]</p> <p>(XPath RAWDesAdvise/RABody/RAitem/shipInfo/packages/packageDim/length/@um) [Required]</p> <p>(XPath RAWDesAdvise/shipInfo/actualPackageUnit/grossWeight/@um) [Required]</p> <p>(XPath RAWDesAdvise/shipInfo/actualPackageUnit/netWeight/@um) [Required]</p> <p>(XPath RAWDesAdvise/shipInfo/actualPackageUnit/packageDim/length/@um) [Required]</p> <p>(XPath RAWDesAdvise/shipInfo/actualPackageUnit/packageDim/height/@um) [Required]</p> <p>(XPath RAWDesAdvise/shipInfo/actualPackageUnit/packageDim/width/@um) [Required]</p>

	<p>(XPath RAWDesAdvise/shipInfo/actualPackageUnit/volume/@um) [Required] (XPath RAWDesAdvise/RABody/RAitem/qty/@um) [Required] (XPath RAWDesAdvise/shipInfo/packages/minItemsPerPackage/@um) [Required] (a) (XPath RAWDesAdvise/RABody/RAitem/rawSpecs/tolerance/@um) [Required] (XPath RAWDesAdvise/RABody/RAitem/rawSpecs/specValue/@um) [Optional] (XPath RAWDesAdvise/RABody/RAitem/rawSpecs/pcTolerance/@um) [Optional] - nota: <i>to be used when it has to be soecified if the declared percentage is b y weight, volume, etc...</i> (XPath RAWDesAdvise/shipInfo/packages/handlingChar/yarnPack/yarnReel/yarnReelD/@um) [Required] (XPath RAWDesAdvise/shipInfo/packages/packageDim/width/@um) [Required] (XPath RAWDesAdvise/RABody/RAitem/shipInfo/packages/handlingChar/grossWeight/@um) [Required] (XPath RAWDesAdvise/RABody/RAitem/shipInfo/packages/handlingChar/yarnPack/yarnReel/yarnReelQty/@um) [Required] (XPath RAWDesAdvise/shipInfo/packages/packageDim/height/@um) [Required] (XPath RAWDesAdvise/RABody/RAitem/shipInfo/packages/handlingChar/netWeight/@um) [Required] (XPath RAWDesAdvise/shipInfo/transInfo/netWeight/@um) [Required] (XPath RAWDesAdvise/shipInfo/transInfo/grossWeight/@um) [Required] (XPath RAWDesAdvise/RABody/RAitem/shipInfo/packages/handlingChar/volume/@um) [Required] (XPath RAWDesAdvise/shipInfo/packages/packageDim/length/@um) [Required] (XPath RAWDesAdvise/RABody/RAitem/shipInfo/packages/itemsPerPackage/@um) [Required] (XPath RAWDesAdvise/RABody/RAitem/shipInfo/packages/minItemsPerPackage/@um) [Required] (XPath RAWDesAdvise/RABody/RAitem/shipInfo/packages/handlingChar/yarnPack/yarnReel/yarnReelH/@um) [Required] (XPath RAWDesAdvise/RABody/RAitem/shipInfo/packages/handlingChar/yarnPack/yarnReel/yarnReelD/@um) [Required]</p>
uri	<p>Uniform Resource Identifier (URI) that identifies the external object as an Internet resource - base type: normalizedString, (XPath RAWDesAdvise/TAheader/refDoc/attachment/externalReference/uri) 1-1 (N) (XPath RAWDesAdvise/RABody/RAitem/refDoc/attachment/externalReference/uri) 1-1 (N)</p>
@useProfile	<p>use profile to which the present document is compliant if it was agreed by the parties. It is suggested a URI with reference to the firm or the URL of the profile. - base type: string, (XPath RAWDesAdvise/@useProfile) [Optional]</p>
@VAT	<p>VAT rate or code (DEPRECATED, use dtScheme element) - base type: string, cod. table: NT16 http://www.ebiz.enea.it/moda-ml/repository/codelist/v2018-1/gc_NT16.xml (XPath RAWDesAdvise/RABody/RAitem/thirdParty/@VAT) [Optional] (XPath RAWDesAdvise/TAheader/thirdParty/@VAT) [Optional] (XPath RAWDesAdvise/RABody/RAitem/lineN/@VAT) [Optional] - nota: <i>Deprecated, prefer dtScheme when available.</i></p>
@version	<p>Dictionary version from which the instance has been created - base type: string, cod. table: NT100 http://www.ebiz.enea.it/moda-ml/repository/codelist/v2018-1/gc_NT100.xml (XPath RAWDesAdvise/@version) [Optional] [Default= 2018-1]</p>
volume	<p>effective volume of a specified object - base type: decimal, min inclusive: 0, fraction digits: 2, (XPath RAWDesAdvise/shipInfo/actualPackageUnit/volume) 0-1 (XPath RAWDesAdvise/RABody/RAitem/shipInfo/packages/handlingChar/volume) 0-1 (XPath RAWDesAdvise/shipInfo/packages/handlingChar/volume) 0-1 (p)</p>

	(XPath RAWDesAdvise/RABody/RAitem/shipInfo/actualPackageUnit/volume) 0-1
width	effective width of a specified object - base type: decimal, min inclusive: 0, fraction digits: 2, (XPath RAWDesAdvise/shipInfo/actualPackageUnit/packageDim/width) 0-1 (XPath RAWDesAdvise/RABody/RAitem/shipInfo/actualPackageUnit/packageDim/wi dth) 0-1 (XPath RAWDesAdvise/RABody/RAitem/shipInfo/packages/ packageDim/width) 0-1 (XPath RAWDesAdvise/shipInfo/packages/packageDim/width) 0-1
yarnConeAngle	tapering angle of the cone on which a yarn is reeled - base type: positiveInteger, (XPath RAWDesAdvise/shipInfo/packages/handlingChar/ yarnPack/yarnReel/yarnConeAngle) 0-1 (XPath RAWDesAdvise/RABody/RAitem/shipInfo/packages/ handlingChar/yarnPack/yarnReel/yarnConeAngle) 0-1
yarnOutWrap	code specifying the type of outer wrapping or packing of a yarn - base type: string, cod. table: T33 http://www.ebiz.enea.it/moda-ml/repository/codelist/v2018-1/gc_T33.xml (XPath RAWDesAdvise/RABody/RAitem/shipInfo/packages/ handlingChar/yarnPack/yarnOutWrap) 0-1 (XPath RAWDesAdvise/shipInfo/packages/handlingChar/ yarnPack/yarnOutWrap) 0-1
yarnOutWrapText	free text specifying the type of outer wrapping or packing of a yarn - base type: string, max length: 250, (XPath RAWDesAdvise/RABody/RAitem/shipInfo/packages/ handlingChar/yarnPack/yarnOutWrapText) 0-1 (U) (XPath RAWDesAdvise/shipInfo/packages/handlingChar/ yarnPack/yarnOutWrapText) 0-1 (U)
yarnReelD	diameter of the bobbin used for a yarn product - base type: decimal, min inclusive: 0, fraction digits: 2, (XPath RAWDesAdvise/RABody/RAitem/shipInfo/packages/ handlingChar/yarnPack/yarnReel/yarnReelD) 0-1 (XPath RAWDesAdvise/shipInfo/packages/handlingChar/ yarnPack/yarnReel/yarnReelD) 0-1
yarnReelH	height of the bobbin used a yarn product - base type: decimal, min inclusive: 0, fraction digits: 2, (XPath RAWDesAdvise/shipInfo/packages/handlingChar/ yarnPack/yarnReel/yarnReelH) 0-1 (XPath RAWDesAdvise/RABody/RAitem/shipInfo/packages/ handlingChar/yarnPack/yarnReel/yarnReelH) 0-1
yarnReelQty	quantity of yarn (by weight or length) wound upon a bobbin - base type: decimal, min inclusive: 0, fraction digits: 2, (XPath RAWDesAdvise/shipInfo/packages/handlingChar/ yarnPack/yarnReel/yarnReelQty) 0-2 (XPath RAWDesAdvise/RABody/RAitem/shipInfo/packages/ handlingChar/yarnPack/yarnReel/yarnReelQty) 0-2
yarnReelWrap	type of wrapping in which a package of yarn is wrapped - base type: string, cod. table: T32 http://www.ebiz.enea.it/moda-ml/repository/codelist/v2018-1/gc_T32.xml (XPath RAWDesAdvise/shipInfo/packages/handlingChar/ yarnPack/yarnInWrap/yarnReelWrap) 1-1 (XPath RAWDesAdvise/RABody/RAitem/shipInfo/packages/ handlingChar/yarnPack/yarnInWrap/yarnReelWrap) 1-1

2.3 Suggested best practices

RAWDesAdvise/RABody/RAitem/refDoc/docID (identification number of the referenced document SINCE 2008-1 ITS USE IN THE HEADER IS DISCOURAGED (REPLACED BY msgID))

numberingOrg indicates the role that produced the document identifier (it is allowed to declare two different ones -e.g. customer and supplier - with two docID with different numberingOrg

RAWDesAdvise/TAheader/refDoc/docID (identification number of the referenced document SINCE 2008-1 ITS USE IN THE HEADER IS DISCOURAGED (REPLACED BY msgID))

numberingOrg indicates the role that produced the document identifier (it is allowed to declare two different ones -e.g. customer and supplier - with two docID with different numberingOrg

RAWDesAdvise/RABody/RAitem/refDoc/attachment/ externalReference/mimeCode (mime type of the external object)

Use coding from IANA <http://www.iana.org/assignments/media-types/media-types.xml>

RAWDesAdvise/TAheader/refDoc/attachment/ externalReference/mimeCode (mime type of the external object)

Use coding from IANA <http://www.iana.org/assignments/media-types/media-types.xml>

RAWDesAdvise/RABody/RAitem/qty (net quantity of the article or object correlated, qualified by the function of the document (ordering, delivering, ..) and by the context)

this element can have two instances only if the units of measure are different

RAWDesAdvise/RABody/RAitem/shipInfo/actualPackageUnit/itemsList/itemIdentification/serialN (serial number used for the identification of a physical unit)

in the case of garment with RFID for anti-counterfeiting, RFID EPCGlobal for logistics and NFC for the customer experience there should be three serial elements with pairs of attributes numberingOrg/idQualifier: "CL"/"RFID", "GS1"/"RFID", "CL"/"NFC".

RAWDesAdvise/shipInfo/actualPackageUnit/ itemsList/itemIdentification/serialN (serial number used for the identification of a physical unit)

in the case of garment with RFID for anti-counterfeiting, RFID EPCGlobal for logistics and NFC for the customer experience there should be three serial elements with pairs of attributes numberingOrg/idQualifier: "CL"/"RFID", "GS1"/"RFID", "CL"/"NFC".

RAWDesAdvise/RABody/RAitem/itemsList/itemIdentification/serialN (serial number used for the identification of a physical unit)

in the case of garment with RFID for anti-counterfeiting, RFID EPCGlobal for logistics and NFC for the customer experience there should be three serial elements with pairs of attributes numberingOrg/idQualifier: "CL"/"RFID", "GS1"/"RFID", "CL"/"NFC".

2.4 Enumeration tables

List of enumeration tables used in the XML document. You can find the corresponding codes at:
<http://www.ebiz-tcf.eu/moda-ml/imple/moda-ml-2018-1.asp?lingua=en&pag=6>

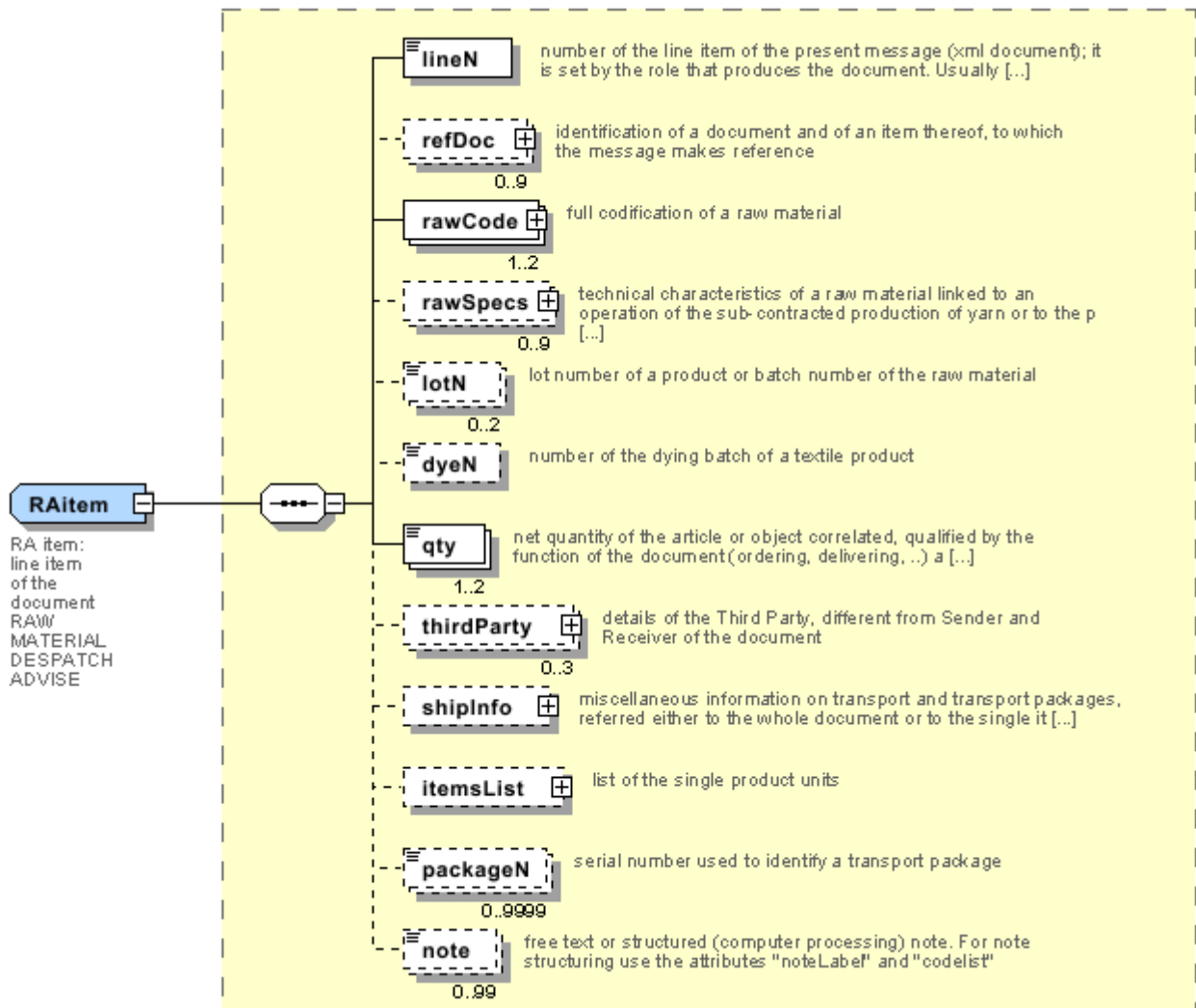
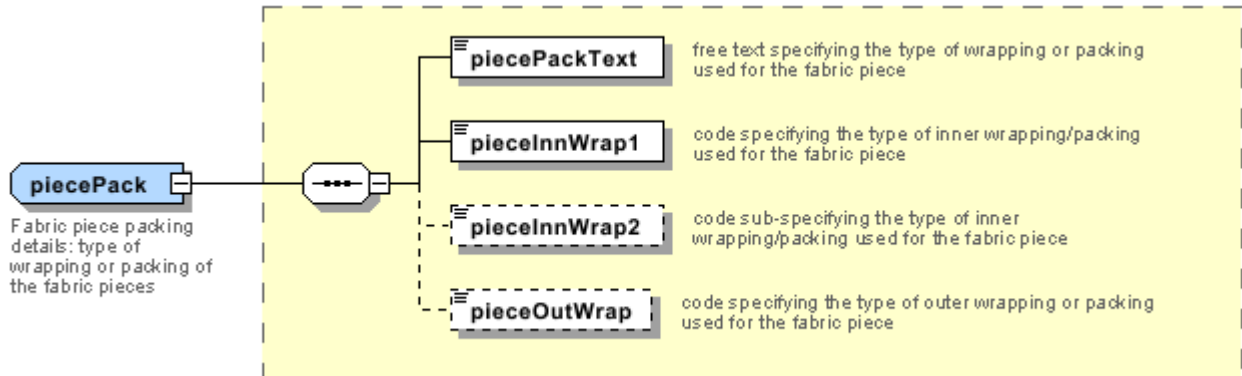
Legenda

- N: new table
- U: updated properties

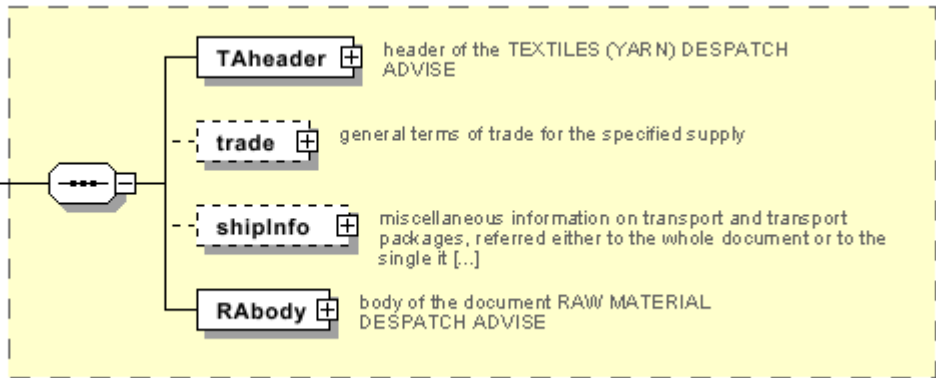
NT10 - Despatch Advise type
NT100 - eBIZ TCFUpstream version
NT11 - transport causal
NT12 - data source
NT16 - VAT rate or code
NT18 - message function
NT2 - third party qualifier
NT29 - format of a date
NT3 - data format
NT51 - Filling Criterion for Package homogeneity (N)
NT6 - coding system owner/issuer
NT60 - language, codes from ISO 639-1 (subset) (N)
NT7 - unit of measure (U)
T10 - ISO3166 - Country
T11 - transport package type (U)
T21 - type of document
T22 - raw material characteristics type
T29 - type of yarn package
T3 - terms of delivery
T30 - support of yarn package - material
T32 - yarn reel wrapping type
T33 - yarn outer packing
T38 - transport conditions
T4 - fabric piece inner packing (wrapping) 1
T40 - type of transport means
T44 - additional code type
T5 - fabric piece inner packing (wrapping) 2
T6 - fabric piece outer packing
T8 - Modes of Transport

Annex A

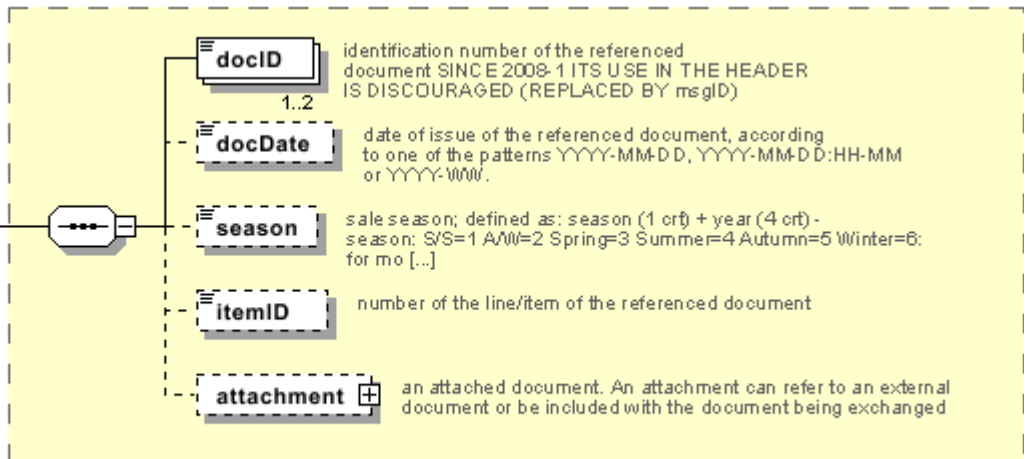
Representative images of the principal complex elements' structure.



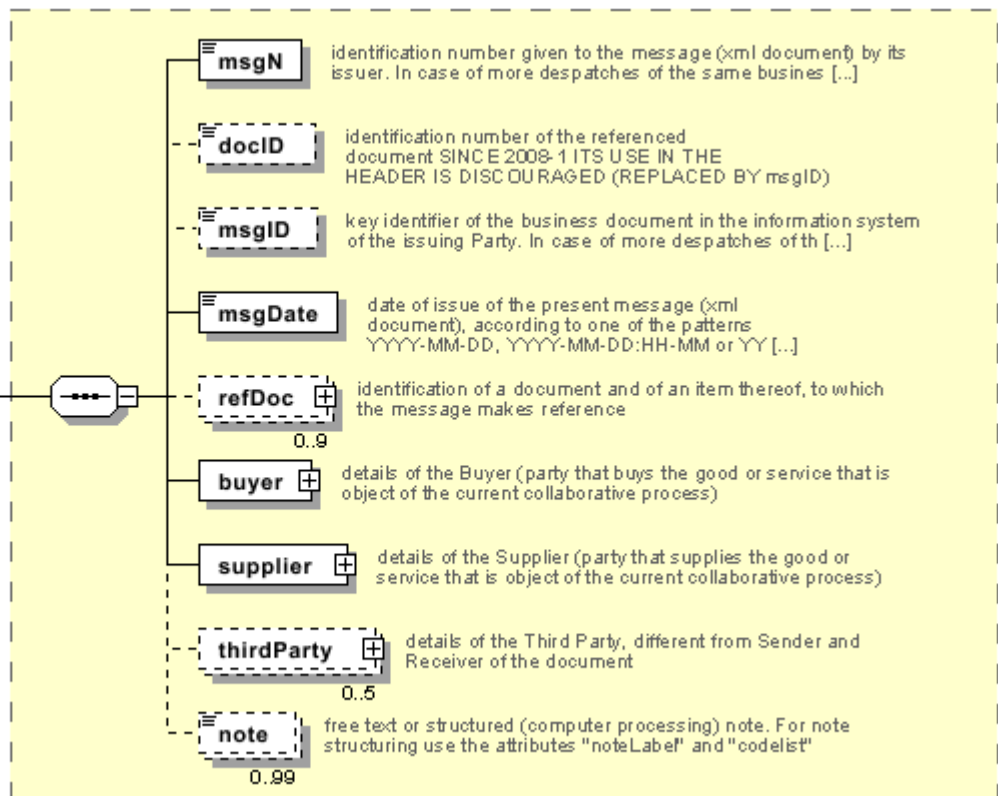
RAWDesAdvise
 RAWDesAdvise: Despatch
 advise of the raw material

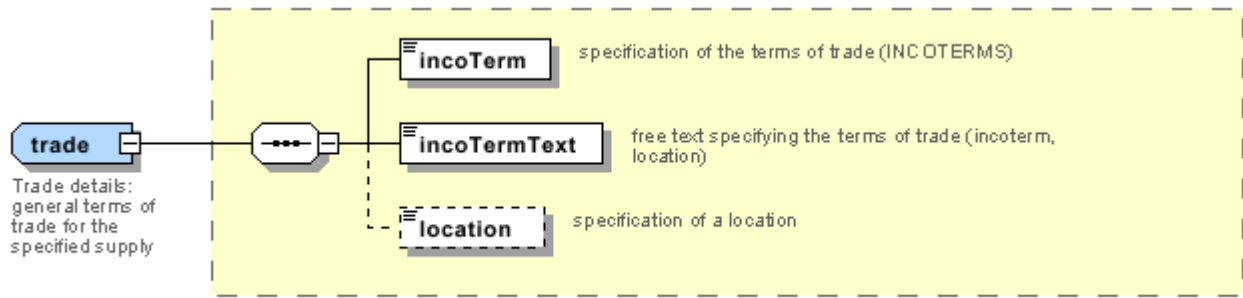


refDoc
 reference document
 details:
 identification of a
 document and of an
 item thereof, to
 which the message
 makes reference



TAheader
 TA header:
 header of
 the TEXTILES
 (YARN)
 DESPATCH
 ADVISE





Annex B

NT10 - Despatch Advise type

type of Despatch advise

Agency name: eBIZ

tabella cod.: NT10

File codes list (Generic code): http://www.ebiz.enea.it/moda-ml/repository/codelist/v2018-1/gc_NT10.xml

Code	Description	Adoption note	Version status	Date of insertion
BRG	re-worked no-charge			01/07/2013
CLP	for work			05/12/2013
DDT	return from work			01/07/2013
DDV	for demonstration			01/07/2013
PKL	packing list		(N)	05/02/2018
PRE	pre-advise			
RCD	storage return			01/07/2013
RDV	return from demonstration			05/12/2013
RNL	not worked return			01/07/2013
RRG	return from re-worked no-charge			05/12/2013
RSB	return from sale			05/12/2013
SBT	for sale			01/07/2013
SCD	for storage			05/12/2013
STD	standard			

NT100 - eBIZ TCFUpstream version

dictionary version

Agency name: eBIZ

tabella cod.: NT100

File codes list (Generic code): http://www.ebiz.enea.it/moda-ml/repository/codelist/v2018-1/gc_NT100.xml

Code	Description	Adoption note	Version status	Date of insertion
2013-1	v2013-1			01/07/2013
2018-1	v2018-1		(N)	04/11/2018
draft	draft		(N)	08/09/2017

NT11 - transport causal

reason for the transport

Agency name: eBIZ

tabella cod.: NT11

File codes list (Generic code): http://www.ebiz.enea.it/moda-ml/repository/codelist/v2018-1/gc_NT11.xml

Code	Description	Adoption note	Version status	Date of insertion
FOC	free of charge			
FRW	return from re-works			
FST	return from storage			
FVW	return from view			
FWK	return from works			
IST	in storage			
NWK	return non-worked			
RJC	return from rejection			
SEL	to sell			
STO	to storage			
VEW	to view			
WRK	to works			

NT12 - data source

party who has provided the data

Agency name: eBIZ

tabella cod.: NT12

File codes list (Generic code): http://www.ebiz.enea.it/moda-ml/repository/codelist/v2018-1/gc_NT12.xml

Code	Description	Adoption note	Version status	Date of insertion
AC	internal test			
CO	external test			
CV	test after steaming			

NT16 - VAT rate or code

VAT rate or code (DEPRECATED, use dtScheme element)

tabella cod.: NT16

File codes list (Generic code): http://www.ebiz.enea.it/moda-ml/repository/codelist/v2018-1/gc_NT16.xml

NT18 - message function

function performed by the present message with regards to the transmission

Agency name: eBIZ

tabella cod.: NT18

File codes list (Generic code): http://www.ebiz.enea.it/moda-ml/repository/codelist/v2018-1/gc_NT18.xml

Code	Description	Adoption note	Version status	Date of insertion
CA	delete this document			01/07/2013
CP	copy			
OR	original			
RC	re-transmission for data correction			
RT	re-transmission			

NT2 - third party qualifier

Third Party role qualifier

Agency name: eBIZ

tabella cod.: NT2

File codes list (Generic code): http://www.ebiz.enea.it/moda-ml/repository/codelist/v2018-1/gc_NT2.xml

Code	Description	Adoption note	Version status	Date of insertion
AG	Sales Agent			
AU	Auditor		(N)	08/04/2019
CE	Certification authority		(N)	08/04/2019
CO	Quality Controller			
DC	Response to			
DF	Invoicee			
DI	Copy to (CC)			28/10/2014
DM	Consignee			
DP	Consignment address (Delivery Party)			
IM	Importer			
OR	Originator			10/09/2014

SC	Sub contractor		(N)	10/04/2019
SM	Service/ePlatform manager		(N)	08/04/2019
SP	Forwarder			
TX	Tax Representative			

NT29 - format of a date

format used for the date

Agency name: eBIZ

tabella cod.: NT29

File codes list (Generic code): http://www.ebiz.enea.it/moda-ml/repository/codelist/v2018-1/gc_NT29.xml

Code	Description	Adoption note	Version status	Date of insertion
D	YYYY-MM-DD			
M	YYYY-MM-DD:HH-MM			
W	YYYY-WW			

NT3 - data format

format of a string according to a customized User rule (local rule)

Agency name: eBIZ

tabella cod.: NT3

File codes list (Generic code): http://www.ebiz.enea.it/moda-ml/repository/codelist/v2018-1/gc_NT3.xml

Code	Description	Adoption note	Version status	Date of insertion
EN4	GS1-GLN			01/07/2013
MD	mutually agreed			

NT51 - Filling Criterion for Package homogeneity (N)

Filling Criterion for Package homogeneity

Agency name: eBIZ

tabella cod.: NT51

File codes list (Generic code): http://www.ebiz.enea.it/moda-ml/repository/codelist/v2018-1/gc_NT51.xml

Code	Description	Adoption note	Version status	Date of insertion
------	-------------	---------------	----------------	-------------------

COL	Colour		(N)	08/09/2017
MOD	Model		(N)	08/09/2017
SIZ	Size		(N)	08/09/2017

NT6 - coding system owner/issuer

code specifying the organisation who has created or owns the coding or numbering system

Agency name: eBIZ

tabella cod.: NT6

File codes list (Generic code): http://www.ebiz.enea.it/moda-ml/repository/codelist/v2018-1/gc_NT6.xml

Code	Description	Adoption note	Version status	Date of insertion
CL	Customer/buyer			
CO	Quality Controller			
EB	eBIZ	replaces 'ML'	(N)	18/03/2019
EN	GS1 (ex-EAN International)			
ES	e-Stockflow			
FO	Supplier			
GS	GS1			01/07/2013
MF	VAT identifier		(U)	
ML	Moda-ML	DEPRECATED	(U)	
SP	Service Provider			

NT60 - language, codes from ISO 639-1 (subset) (N)

Agency name: eBIZ / ISO

tabella cod.: NT60

File codes list (Generic code): http://www.ebiz.enea.it/moda-ml/repository/codelist/v2018-1/gc_NT60.xml

Code	Description	Adoption note	Version status	Date of insertion
af	Afrikaans		(N)	31/01/2019
ar	Arabic		(N)	31/01/2019
be	Belarusian		(N)	31/01/2019
bg	Bulgarian		(N)	31/01/2019
bn	Bengali		(N)	31/01/2019
bo	Tibetan		(N)	31/01/2019

bs	Bosnian		(N)	31/01/2019
ca	Catalan, Valencian		(N)	31/01/2019
cs	Czech		(N)	31/01/2019
da	Danish		(N)	31/01/2019
de	German		(N)	31/01/2019
el	Greek, Modern (1453-)		(N)	31/01/2019
en	English		(N)	31/01/2019
eo	Esperanto		(N)	31/01/2019
es	Spanish, Castilian		(N)	31/01/2019
et	Estonian		(N)	31/01/2019
eu	Basque		(N)	31/01/2019
F	Female		(N)	15/04/2019
fa	Persian		(N)	31/01/2019
fi	Finnish		(N)	31/01/2019
fr	French		(N)	31/01/2019
ga	Irish		(N)	31/01/2019
gd	Gaelic, Scottish Gaelic		(N)	31/01/2019
gn	Guarani		(N)	31/01/2019
he	Hebrew		(N)	31/01/2019
hr	Croatian		(N)	31/01/2019
ht	Haitian, Haitian Creole		(N)	31/01/2019
hu	Hungarian		(N)	31/01/2019
hy	Armenian		(N)	31/01/2019
ia	Interlingua (International Auxiliary Language Association)		(N)	31/01/2019
id	Indonesian		(N)	31/01/2019
is	Icelandic		(N)	31/01/2019
it	Italian		(N)	31/01/2019
ja	Japanese		(N)	31/01/2019
jv	Javanese		(N)	31/01/2019
ka	Georgian		(N)	31/01/2019
km	Central Khmer		(N)	31/01/2019
ko	Korean		(N)	31/01/2019
ku	Kurdish		(N)	31/01/2019
lb	Luxembourgish, Letzeburgesch		(N)	31/01/2019
lo	Lao		(N)	31/01/2019

lt	Lithuanian		(N)	31/01/2019
lv	Latvian		(N)	31/01/2019
mg	Malagasy		(N)	31/01/2019
mk	Macedonian		(N)	31/01/2019
mn	Mongolian		(N)	31/01/2019
mt	Maltese		(N)	31/01/2019
nl	Dutch, Flemish		(N)	31/01/2019
no	Norwegian		(N)	31/01/2019
pl	Polish		(N)	31/01/2019
pt	Portuguese		(N)	31/01/2019
ro	Romanian, Moldavian, Moldovan		(N)	31/01/2019
ru	Russian		(N)	31/01/2019
se	Northern Sami		(N)	31/01/2019
sk	Slovak		(N)	31/01/2019
sl	Slovenian		(N)	31/01/2019
sm	Samoan		(N)	31/01/2019
so	Somali		(N)	31/01/2019
sq	Albanian		(N)	31/01/2019
sr	Serbian		(N)	31/01/2019
sv	Swedish		(N)	31/01/2019
sw	Swahili		(N)	31/01/2019
ta	Tamil		(N)	31/01/2019
th	Thai		(N)	31/01/2019
tr	Turkish		(N)	31/01/2019
uk	Ukrainian		(N)	31/01/2019
ur	Urdu		(N)	31/01/2019
uz	Uzbek		(N)	31/01/2019
vi	Vietnamese		(N)	31/01/2019
zh	Chinese		(N)	31/01/2019

NT7 - unit of measure (U)

specification of the unit of measure, it is a sub set of table Unit of Measure Code - UN/ECE REC 20 delivered by United Nations Economic Commission for Europe (UN/ECE)

Agency name: eBIZ / UN/ECE

tabella cod.: NT7

File codes list (Generic code): http://www.ebiz.enea.it/moda-ml/repository/codelist/v2018-1/gc_NT7.xml

Other link: <http://docs.oasis-open.org/ubl/os-UBL-2.1/cl/gc/default/UnitOfMeasureCode-2.1.gc#>

Code	Description	Adoption note	Version status	Date of insertion
CMK	square centimetre		(N)	20/12/2017
CMQ	cubic centimetre		(N)	20/12/2017
CMT	centimetre			
CNE	centiNewton			
CO2TON	ton of CO2		(N)	10/09/2014
COUPLES	couples			
DMQ	cubic decimetre			
E37	pixel		(N)	11/04/2018
GRM	gram			
HUR	hour			
INH	inch			
KGM	kilogram			
KMT	kilometer			
KWH	kilowatthours		(N)	10/09/2014
LBR	pound			
MIN	minute			
MMK	square millimetre		(N)	20/12/2017
MTK	square metre		(N)	20/12/2017
MTQ	cubic metre			
MTR	metre			
NMB	numero			
ONZ	ounce			
P1	percent			
PPM	parts per million			
PZ	piece		(U)	
RPM	rounds per metre			
YRD	yard			

T10 - ISO3166 - Country

code of the nation

Agency name: ISO

tabella cod.: T10

File codes list (Generic code): http://www.ebiz.enea.it/moda-ml/repository/codelist/v2018-1/gc_T10.xml

Table not printed: there are 239 elements, more than the maximum specified for printing: 99.

T11 - transport package type (U)

code specifying the type of package used for transport and delivery (subset of UN/ECE 8053 and UBL TransportEquipmentTypeCode-2.1)

Agency name: eBIZ

tabella cod.: T11

File codes list (Generic code): http://www.ebiz.enea.it/moda-ml/repository/codelist/v2018-1/gc_T11.xml

Other link: <http://docs.oasis-open.org/ubl/os-UBL-2.1/cl/gc/default/TransportEquipmentTypeCode-2.1.gc#>

Code	Description	Adoption note	Version status	Date of insertion
4A	box, steel		(U)	
4C	box, wood		(U)	
4G	Box, fibreboard		(N)	01/08/2018
4H	Box, plastic		(N)	01/08/2018
5H	Bag, woven plastic		(N)	01/08/2018
5L	Bag, textile		(N)	01/08/2018
5M	Bag, paper		(U)	
AJ	Cone		(N)	01/08/2018
BL	Bale, compressed		(N)	01/08/2018
BN	Bale, non-compressed		(N)	01/08/2018
BX	Box		(U)	
CI	Canister		(N)	01/08/2018
CL	Coil		(N)	01/08/2018
CN	Container, not otherwise specified as transport equipment		(N)	01/08/2018
CS	Case		(N)	01/08/2018
CT	Carton		(N)	01/08/2018
EC	Bag, plastic		(N)	01/08/2018
ED	Case, with pallet base		(N)	01/08/2018
EE	Case, with pallet base, wooden		(N)	01/08/2018
EF	Case, with pallet base, cardboard		(N)	01/08/2018
EG	Case, with pallet base, plastic		(N)	01/08/2018

EH	Case, with pallet base, metal		(N)	01/08/2018
FX	Bag, flexible container		(N)	01/08/2018
HN	Hanger		(N)	01/08/2018
NE	unpacked		(U)	
NF	Unpacked or unpackageged, single unit		(N)	01/08/2018
NG	Unpacked or unpackageged, multiple units		(N)	01/08/2018
OA	Pallet, CHEP 40 cm x 60 cm		(N)	01/08/2018
OB	Pallet, CHEP 80 cm x 120 cm		(N)	01/08/2018
OC	Pallet, CHEP 100 cm x 120 cm		(N)	01/08/2018
OD	Pallet, AS 4068-1993		(N)	01/08/2018
OE	Pallet, ISO T11		(N)	01/08/2018
PE	europallet (80x120)			
PX	pallet		(U)	
QS	box, plastic, solid		(U)	
RJ	Rack, clothing hanger		(N)	01/08/2018
RL	Reel		(N)	01/08/2018
SO	Spool		(N)	01/08/2018
TU	tube		(U)	
XD	bag, plastics film		(U)	
XK	bag,paper, multi-wall, water resistant		(U)	
ZZ	Mutually defined		(N)	01/08/2018

T21 - type of document

type or class to which the referenced document belongs

Agency name: eBIZ

tabella cod.: T21

File codes list (Generic code): http://www.ebiz.enea.it/moda-ml/repository/codelist/v2018-1/gc_T21.xml

Code	Description	Adoption note	Version status	Date of insertion
BOR	blanket order		(N)	01/02/2018
CAT	Price catalogue - tech sheet			
CEO	Certificate of origin		(N)	13/04/2018
CER	Certificate		(N)	13/04/2018
COC	colour card			
CRN	Credit note			08/09/2017

CTO	Checking order			01/07/2013
CTR	Contract		(U)	
CXF	CxF3 file			01/07/2013
DAD	Darn order			
DDT	ddt			
DEA	Despatch advise			
DER	Despatch request			
DR	Document Request			02/12/2014
FOR	Forecast			02/12/2014
GSO	Garment stock offer			
GSX	Garment stock offer change			
INV	Invoice			
KCC	Knitting-Clothing Commission Order			02/12/2014
KCI	Garment in Work Inventory Report			02/12/2014
M2M	Made to Measure Production Order			02/12/2014
MAS	Master marker			
MCI	Visual merchandising instruction		(N)	13/04/2018
OCH	Order change			
OFF	Offer			
ORD	Purchase order			
ORP	Order response			
OSR	order status request			
OSS	Offer status			02/12/2014
OST	Order status			
OUR	our reference			
QR	Quality Report			02/12/2014
RAI	Raw Material in Work Inventory Report			02/12/2014
RDC	Raw dyeing commission order			
RDH	Raw dyeing order change			
RDR	Raw dyeing order response			
REA	Receiving advise			
REQ	Request for Offer			
RET	Return			02/12/2014
RSC	Spinning commission order			
RSH	Spinning order change			

RSR	Spinning order response			
SCL	process sheet			
TFC	Textile dyeing-finishing commission order			
TFX	Textile Dyeing-Finishing Order Change			02/12/2014
TPC	Textile printing commission order			
TPX	Textile Printing Order Change			02/12/2014
TWI	Textile in work inventory			
VMI	visual merchandising instructions		(N)	01/02/2018
WAC	Warping commission order			
WEC	Weaving commission order			
YDC	Yarn dyeing commission order			
YDH	Yarn dyeing order change			
YDR	Yarn dyeing order response			
YTC	Twisting commission order			
YWI	Yarn in work inventory			

T22 - raw material characteristics type

physical or mechanical parameter used to define a characteristics of a raw material

Agency name: eBIZ

tabella cod.: T22

File codes list (Generic code): http://www.ebiz.enea.it/moda-ml/repository/codelist/v2018-1/gc_T22.xml

Code	Description	Adoption note	Version status	Date of insertion
FIN	fineness			
LNG	length			
RTR	shrinkage			
YLD	yeld			

T29 - type of yarn package

type of package (roll-up) used for a yarn product

Agency name: eBIZ

tabella cod.: T29

File codes list (Generic code): http://www.ebiz.enea.it/moda-ml/repository/codelist/v2018-1/gc_T29.xml

Code	Description	Adoption note	Version status	Date of insertion
CIL	bobbin			
CON	cone			
HNK	hank, skein			01/07/2013
MUF	muff, cake			01/07/2013
SPL	spool			
TUB	tube			
XCO	supercone			

T3 - terms of delivery

specification of the terms of trade (INCOTERMS)

Agency name: Incoterms

tabella cod.: T3

File codes list (Generic code): http://www.ebiz.enea.it/moda-ml/repository/codelist/v2018-1/gc_T3.xml

Code	Description	Adoption note	Version status	Date of insertion
CFR	COST AND FREIGHT (named port of destination)			
CIF	COST, INSURANCE AND FREIGHT (named port of destination)			
CIP	CARRIAGE AND INSURANCE PAID (named place of destination)			
CPA	CARRIAGE PAID (named place of destination)			
DAF	DELIVERED AT FRONTIER (named place)	according to Incoterms® 2010 it is obsolete		08/12/2017
DAP	Delivered at Place of destination (named place of destination)	according to Incoterms® 2010		08/12/2017
DAT	Delivered at Terminal (named place of destination)	according to Incoterms® 2010		08/12/2017
DDP	DELIVERED DUTY PAID (named place of destination)			
DDU	DELIVERED DUTY UNPAID (named place of destination)	according to Incoterms® 2010 it is obsolete, use DAP		08/12/2017
DEQ	DELIVERED EX-QUAY (named port of destination)	according to Incoterms® 2010 it is obsolete		08/12/2017
DES	DELIVERED EX-SHIP (named port of destination)	according to Incoterms® 2010 it is obsolete		08/12/2017

EX W	EX WORKS (named place)			
FA S	FREE ALONGSIDE SHIP (named port of shipment)			
FC A	FREE CARRIER (named place)			
FO B	FREE ON BOARD (named port of shipment)			

T30 - support of yarn package - material

type of material of which a package for yarn is made

Agency name: eBIZ

tabella cod.: T30

File codes list (Generic code): http://www.ebiz.enea.it/moda-ml/repository/codelist/v2018-1/gc_T30.xml

Code	Description	Adoption note	Version status	Date of insertion
CA	cartoon			
DY	for soft package dyeing			
MT	metallic			01/07/2013
PL	plastic			

T32 - yarn reel wrapping type

type of wrapping in which a package of yarn is wrapped

Agency name: eBIZ

tabella cod.: T32

File codes list (Generic code): http://www.ebiz.enea.it/moda-ml/repository/codelist/v2018-1/gc_T32.xml

Code	Description	Adoption note	Version status	Date of insertion
XA	without bag			
XB	paper bag			01/07/2013
XD	plastic film bag			

T33 - yarn outer packing

code specifying the type of outer wrapping or packing of a yarn

Agency name: eBIZ

tabella cod.: T33

File codes list (Generic code): http://www.ebiz.enea.it/moda-ml/repository/codelist/v2018-1/gc_T33.xml

Code	Description	Adoption note	Version status	Date of insertion
00				
CB	cartoon box			
CC	cartoon box 18 reels			
CD	cartoon box 36 reels			
XD	plastic film			

T38 - transport conditions

special condition of transport or special service requested to the Forwarder

tabella cod.: T38

File codes list (Generic code): http://www.ebiz.enea.it/moda-ml/repository/codelist/v2018-1/gc_T38.xml

Code	Description	Adoption note	Version status	Date of insertion
ACC	arrange customs clearance			
CAL	Carrier loads			
CAU	Carrier unloads			
CMR	CMR carnet			
FFN	freight forwarders national conditions			
FLD	special agreement for full loading			
NCC	do not arrange customs clearance			
PPB	packaging paid by Buyer			
PPS	packaging paid by Supplier			
PRO	proof of delivery			
RFR	return container free			
RPC	return container paid by Customer			
RPS	return container paid by Supplier			
SHL	Shipper loads			
SHU	Consignee unloads			

T4 - fabric piece inner packing (wrapping) 1

code specifying the type of inner wrapping/packing used for the fabric piece

Agency name: eBIZ

tabella cod.: T4

File codes list (Generic code): http://www.ebiz.enea.it/moda-ml/repository/codelist/v2018-1/gc_T4.xml

Code	Description	Adoption note	Version status	Date of insertion
A	Folded, whole width			
B	Folded, doubled			
C	Folded, tube products			
D	Spoiled, whole width			
E	Spoiled, doubled, pli: left			
F	Spoiled, doubled, pli: right			
G	Rolled, whole width, single item			
H	Rolled, whole width, several items			
I	Rolled, doubled			
J	Rolled, tube products			

T40 - type of transport means

means of transport, in general or referred to a specific leg

Agency name: eBIZ

tabella cod.: T40

File codes list (Generic code): http://www.ebiz.enea.it/moda-ml/repository/codelist/v2018-1/gc_T40.xml

Code	Description	Adoption note	Version status	Date of insertion
AIR	aircraft			
SHP	ship			
TRU	truck			
VAN	van			

T44 - additional code type

qualifier of the additional coding of a product

Agency name: eBIZ

tabella cod.: T44

File codes list (Generic code): http://www.ebiz.enea.it/moda-ml/repository/codelist/v2018-1/gc_T44.xml

Code	Description	Adoption note	Version status	Date of insertion
CC	colour card			
CL	sales collection			
CO	company identification code		(N)	08/09/2017
DY	dye number			
LT	lot number			
MDI	Made in			08/09/2017
MS	manufacturing state			
PKG	packaging			09/09/2014
PL	product line			
RGB	RGB value			
SE	selvedge code			

T5 - fabric piece inner packing (wrapping) 2

code specifying the sub-type of inner wrapping/packing used for the fabric piece

Agency name: eBIZ

tabella cod.: T5

File codes list (Generic code): http://www.ebiz.enea.it/moda-ml/repository/codelist/v2018-1/gc_T5.xml

Code	Description	Adoption note	Version status	Date of insertion
A	Open			
B	Folded once, not looped			
C	Folded twice, not looped			
H	Folded once, looped			
I	Folded twice, looped			
J	Without inner object, right side inside			
K	On carton or spooling plank, right side inside			
L	On spool (for pressure sensitive products), right side inside			
M	Without inner object, left side inside			
N	On carton or spooling plank, left side inside			
O	On spool (for pressure sensitive products), left side inside			
P	Without inner object, right side inside (deprecated code)			

Q	On carton, right side inside			
R	On wooden stick, right side inside			
S	Without inner object, left side inside (deprecated code)			
T	On carton, left side inside			
U	On wooden stick, left side inside			

T6 - fabric piece outer packing

code specifying the type of outer wrapping or packing used for the fabric piece

Agency name: eBIZ

tabella cod.: T6

File codes list (Generic code): http://www.ebiz.enea.it/moda-ml/repository/codelist/v2018-1/gc_T6.xml

Code	Description	Adoption note	Version status	Date of insertion
0	Not wrapped			
1	Totally wrapped			
2	Wrapped, one side open			
3	Wrapped, both sides open			
4	Wrapped, one side open, with show corner			
5	Wrapped in cartons			
6	Double wrapped			

T8 - Modes of Transport

way of transport, in general or referred to the specified leg

Agency name: eBIZ

tabella cod.: T8

File codes list (Generic code): http://www.ebiz.enea.it/moda-ml/repository/codelist/v2018-1/gc_T8.xml

Code	Description	Adoption note	Version status	Date of insertion
1	MARITIME TRANSPORT			
10	Courier			01/07/2013
2	RAIL TRANSPORT			
3	ROAD TRANSPORT			
4	AIR TRANSPORT			
5	MAIL			

6	AIR + SHIP TRANSPORT			
8	INLAND WATER TRANSPORT			
9	MODE UNKNOWN			

Annex C

New or changed elements towards previous version

Changes or added elements (changes in description excluded; changes in aggregation notes and best practice included): 170

Test Type	Tag	Status	Item type	Changes related to
Attribute	acsPackCode	NEW	Accessory packing code	Has NEW attribute: numbering organisation code
Attribute	acsPackCode	NEW	Accessory packing code	Has NEW attribute: code list reference
Attribute	acsPackCode	NEW	Accessory packing code	Has NEW attribute: code list name
Attribute	acsPackCode	NEW	Accessory packing code	Has NEW attribute: code list version
Element (E)	acsPackCode	UPDATED	Accessory packing code	Property: class Old value: <i>garment accessory</i> New value: <i>accessory</i>
Element (E)	acsPack	UPDATED	Accessory packing details	Property: class Old value: <i>garment accessory</i> New value: <i>accessory</i>
Element (E)	acsPackText	UPDATED	Accessory packing text	Property: Length_Max Old value: 40 New value: 250
Element (E)	acsPackText	UPDATED	Accessory packing text	Property: class Old value: <i>garment accessory</i> New value: <i>accessory</i>
Child	actualPackageUnit	NEW	actual package unit	Has NEW child of: transport package text
Child	actualPackageUnit	NEW	actual package unit	Has NEW child of: transport package dimensions
Child	actualPackageUnit	NEW	actual package unit	Has NEW child of: actual items per package
Attribute	actualPackageUnit	NEW	actual package unit	Has NEW attribute: package level identifier
Child	actualPackageUnit	NEW	actual package unit	Has NEW child of: volume measure

Child	actualPackageUnit	NEW	actual package unit	Has NEW child of: items list
Child	actualPackageUnit	NEW	actual package unit	Has NEW child of: packages list
Child	actualPackageUnit	NEW	actual package unit	Has NEW child of: package identification
Child	actualPackageUnit	NEW	actual package unit	Has NEW child of: package model code
Child	actualPackageUnit	NEW	actual package unit	Has NEW child of: general note
Child	actualPackageUnit	NEW	actual package unit	Has NEW child of: transport package code
Child	actualPackageUnit	NEW	actual package unit	Has NEW child of: net weight measure
Child	actualPackageUnit	NEW	actual package unit	Has NEW child of: gross weight measure
Element(l)	actualItemsPerPackage	NEW	actual items per package	
Element(l)	actualPackageUnit	NEW	actual package unit	
Attribute	additionalIdentifier	NEW	Additional Party Identifier	Has NEW attribute: numbering organisation code
Attribute	additionalIdentifier	NEW	Additional Party Identifier	Has NEW attribute: id Qualifier
Element(l)	additionalIdentifier	NEW	Additional Party Identifier	
Element(E)	art	UPDATE	article identifier	Property: Length_Max Old value: 25 New value: 80
Attribute	art	UPDATE	article identifier	Its attribute: code list reference Property: Aggregation Note_English Old value: <i>this attribute should be ALTERNATIVE to the others</i> New value: <i>at least one out of this attribute and "numberingOrg" should be set</i>

Element(l)	attachment	NEW	attachment	
Child	attachment	NEW	attachment	Has NEW child of: file name
Child	attachment	NEW	attachment	Has NEW child of: external reference
Child	attachment	NEW	attachment	Has NEW child of: binary object
Attribute	binaryObject	NEW	binary object	Has NEW attribute: encoding
Attribute	binaryObject	NEW	binary object	Has NEW attribute: mime
Attribute	binaryObject	NEW	binary object	Has NEW attribute: format
Attribute	binaryObject	NEW	binary object	Has NEW attribute: character set
Element(l)	binaryObject	NEW	binary object	
Child	buyer	NEW	Buyer (*)	Has NEW child of: Party identifier
Child	buyer	NEW	Buyer (*)	Has NEW child of: Additional Party Identifier
Attribute	buyer	NEW	Buyer (*)	Has NEW attribute: sender Party qualifier
Element(l)	characterSetCode	NEW	character set code	
Element(l)	characterSet	NEW	character set	
Element(E)	packageContainerN	UPDATED	container reference	Property: Length_Max Old value: 25 New value: 40
Element(E)	deliveryPlace	UPDATED	delivery place	Property: Length_Max Old value: 40 New value: 250
Attribute	description	NEW	description	Has NEW attribute: In
Element(E)	description	UPDATED	description	Property: Length_Max Old value: 70 New value: 250
Attribute	despatchDate	NEW	despatch date	Has NEW attribute: date format
Element(l)	despatchDate	NEW	despatch date	
Element(l)	despatchPlace	NEW	despatch place	

Element(E)	email	UPDATE	e-mail	Property: Length_Max Old value: 80 New value: 250
Element(I)	encoding Code	NEW	encoding code	
Element(I)	encoding	NEW	encoding	
Child	external Reference	NEW	external reference	Has NEW child of: uri
Child	external Reference	NEW	external reference	Has NEW child of: format code
Child	external Reference	NEW	external reference	Has NEW child of: character set code
Child	external Reference	NEW	external reference	Has NEW child of: mime code
Child	external Reference	NEW	external reference	Has NEW child of: encoding code
Element(I)	external Reference	NEW	external reference	
Element(E)	piecePackingText	UPDATE	fabric piece packing text	Property: Length_Max Old value: 40 New value: 250
Attribute	fileName	NEW	file name	Has NEW attribute: numbering organisation code
Element(I)	fileName	NEW	file name	
Attribute	fillingCriterion	NEW	filling criterion	Has NEW attribute: progressive number
Element(I)	fillingCriterion	NEW	filling criterion	
Element(I)	formatCode	NEW	format code	
Element(I)	format	NEW	format	
Attribute	garPackCode	NEW	garment packing code	Has NEW attribute: code list name
Attribute	garPackCode	NEW	garment packing code	Has NEW attribute: numbering organisation code
Attribute	garPackCode	NEW	garment packing code	Has NEW attribute: code list version

Attrib	garPack Code	NEW	garment packing code	Has NEW attribute: code list reference
Child	garPack	NEW	garment packing	Has NEW child of: garment packing text
Child	garPack	NEW	garment packing	Has NEW child of: garment packing code
Elem(l)	garPack Code	NEW	garment packing code	
Elem(l)	garPack	NEW	garment packing	
Elem(l)	garPack Text	NEW	garment packing text	
Attrib	note	UPDATED	general note	Its attribute: numbering organisation code Property: Aggregation Note_English Old value: New value: <i>must be used to specify the organization that created the list of codes used in "noteLabel"</i>
Child	handling Char	NEW	handling Characteristics	Has NEW child of: general note
Child	handling Char	NEW	handling Characteristics	Has NEW child of: garment packing
Child	handling Char	NEW	handling Characteristics	Has NEW child of: yarn presentation details
Child	handling Char	NEW	handling Characteristics	Has NEW child of: stackability Level
Child	handling Char	NEW	handling Characteristics	Has NEW child of: gross weight measure
Child	handling Char	NEW	handling Characteristics	Has NEW child of: net weight measure
Child	handling Char	NEW	handling Characteristics	Has NEW child of: volume measure
Child	handling Char	NEW	handling Characteristics	Has NEW child of: handling type
Child	handling Char	NEW	handling Characteristics	Has NEW child of: Accessory packing details
Child	handling Char	NEW	handling Characteristics	Has NEW child of: sortable Indicator
Child	handling Char	NEW	handling Characteristics	Has NEW child of: Fabric piece packing details
Attrib	handling Type	NEW	handling type	Has NEW attribute: In
Elem(l)	handling Char	NEW	handling Characteristics	
Elem(l)	handling Type	NEW	handling type	

Element(l)	idQualifier	NEW	id Qualifier	
Element(l)	isURL	NEW	is URL	
Child	itemIdentification	NEW	item identification	Has NEW child of: serial number
Element(l)	itemIdentification	NEW	item identification	
Child	itemsList	NEW	items list	Has NEW child of: quality level
Child	itemsList	NEW	items list	Has NEW child of: item identification
Attribute	itemsPerPackage	NEW	items per package	Has NEW attribute: unit of measure code
Element(l)	itemsList	NEW	items list	
Element(l)	itemsPerPackage	NEW	items per package	
Element(E)	legalName	UPDATE	Legal name	Property: Length_Max Old value: 80 New value: 250
Element(E)	itemID	UPDATE	line item number	Property: Length_Max Old value: 6 New value: 40
Attribute	lineN	UPDATE	line number	Its attribute: VAT rate Property: Aggregation Note_English Old value: New value: <i>Deprecated, prefer dtScheme when available.</i>
Element(l)	In	NEW	In	
Element(l)	mimeCode	NEW	mime code	
Element(l)	mime	NEW	mime	
Attribute	minItemsPerPackage	NEW	minimum items per package	Has NEW attribute: unit of measure code
Element(l)	minItemsPerPackage	NEW	minimum items per package	
Child	packageIdentification	NEW	package identification	Has NEW child of: package number
Child	packageIdentification	NEW	package identification	Has NEW child of: serial number

Attrib	package ModelCode	NEW	package model code	Has NEW attribute: numbering organisation code
Elem(E)	package N	UPDATE	package number	Property: Length_Max Old value: 25 New value: 40
Elem(I)	package identification	NEW	package identification	
Elem(I)	package ModelCode	NEW	package model code	
Child	packagesList	NEW	packages list	Has NEW child of: package identification
Elem(I)	packagesList	NEW	packages list	
Elem(I)	progr	NEW	progressive number	
Attrib	qualityLevel	NEW	quality level	Has NEW attribute: numbering organisation code
Attrib	qualityLevel	NEW	quality level	Has NEW attribute: code list reference
Attrib	qualityLevel	NEW	quality level	Has NEW attribute: code list version
Attrib	qualityLevel	NEW	quality level	Has NEW attribute: code list name
Elem(I)	qualityLevel	NEW	quality level	
Child	RAitem	NEW	RA item	Has NEW child of: dye bath identifier
Child	RAitem	NEW	RA item	Has NEW child of: items list
Child	RAitem	NEW	RA item	Has NEW child of: package number
Child	RAitem	NEW	RA item	Has NEW child of: shipping information
Child	RAitem	NEW	RA item	Has NEW child of: Third Party
Child	RAitem	NEW	RA item	Has NEW child of: manufacture lot identifier
Child	RAitem	UPDATE	RA item	relationship with child: reference document details Property: Cardmax Old value: 1 New value: 9

Child	RAitem	UPD ATED	RA item	relationship with child: product quantity Property: BestPractice_English Old value: New value: <i>this element can have two instances only if the units of measure are different</i>
Child	RAitem	UPD ATED	RA item	relationship with child: general note Property: Cardmax Old value: 19 New value: 99
Element(E)	rawChar Text	UPD ATED	raw material characteristics text	Property: Length_Max Old value: 40 New value: 250
Child	rawCode	UPD ATED	raw material code	relationship with child: description Property: Cardmax Old value: 1 New value: 999
Child	rawCode	UPD ATED	raw material code	relationship with child: description Property: Aggregation Note_English Old value: New value: <i>Raw material description</i>
Child	refDoc	NEW	reference document details	Has NEW child of: attachment
Child	refDoc	UPD ATED	reference document details	relationship with child: document identifier Property: BestPractice_English Old value: New value: <i>numberingOrg indicates the role that produced the document identifier (it is allowed to declare two different ones -e.g. customer and supplier - with two docID with different numberingOrg</i>
Attribute	season	NEW	season identifier	Has NEW attribute: code list reference
Attribute	season	NEW	season identifier	Has NEW attribute: numbering organisation code
Attribute	season	NEW	season identifier	Has NEW attribute: code list name
Attribute	season	NEW	season identifier	Has NEW attribute: code list version
Attribute	serialIN	NEW	serial number	Has NEW attribute: id Qualifier
Element(E)	serialIN	UPD ATED	serial number	Property: Length_Max Old value: 15 New value: 250

Child	shiplInfo	NEW	shipping information	Has NEW child of: actual package unit
Child	shiplInfo	UPDATED	shipping information	relationship with child: Transport packages details Property: Aggregation Note_English Old value: <i>this data group must be iterated for each type of package</i> New value: <i>this element must be iterated for each type of package</i>
Child	shiplInfo	UPDATED	shipping information	relationship with child: Transport information Property: Cardmax Old value: 5 New value: 9
Element(I)	sortableIndicator	NEW	sortable Indicator	
Element(I)	stackabilityLevel	NEW	stackability Level	
Element(I)	subDept	NEW	department identifier	
Child	supplier	NEW	Supplier (*)	Has NEW child of: Party identifier
Child	supplier	NEW	Supplier (*)	Has NEW child of: Additional Party Identifier
Attribute	supplier	NEW	Supplier (*)	Has NEW attribute: sender Party qualifier
Child	TAheader	UPDATED	TA header	relationship with child: general note Property: Cardmax Old value: 19 New value: 99
Element(E)	incoTermText	UPDATED	terms of trade text	Property: Length_Max Old value: 70 New value: 250
Element(E)	method	UPDATED	test method identifier	Property: Length_Max Old value: 25 New value: 80
Child	thirdParty	NEW	Third Party (*)	Has NEW child of: Party identifier
Attribute	thirdParty	NEW	Third Party (*)	Has NEW attribute: sender Party qualifier
Element(E)	transConditionText	UPDATED	transport condition - text	Property: Length_Max Old value: 100 New value: 250
Child	transInfo	NEW	Transport information	Has NEW child of: despatch place
Child	transInfo	NEW	Transport information	Has NEW child of: despatch date

Child	transInfo	NEW	Transport information	Has NEW child of: effective delivery date
Attribute	transInfo	NEW	Transport information	Has NEW attribute: progressive number
Element(E)	packageText	UPDATED	transport package text	Property: Length_Max Old value: 40 New value: 80
Child	packages	NEW	Transport packages details	Has NEW child of: items per package
Child	packages	NEW	Transport packages details	Has NEW child of: minimum items per package
Child	packages	NEW	Transport packages details	Has NEW child of: description
Child	packages	NEW	Transport packages details	Has NEW child of: handling Characteristics
Child	packages	NEW	Transport packages details	Has NEW child of: package model code
Child	packages	NEW	Transport packages details	Has NEW child of: filling criterion
Child	packages	UPDATED	Transport packages details	relationship with child: epc list Property: Aggregation Note_English Old value: <i>here the RFID tags of the packages can be identified</i> New value: <i>this element is DEPRECATED, please use the specific elements</i>
Attribute	uri	NEW	uri	Has NEW attribute: is URL
Element(I)	uri	NEW	uri	
Element(E)	yarnOutWrapText	UPDATED	yarn outer packaging text	Property: Length_Max Old value: 40 New value: 250

Annex D

New or changed tables and codes towards previous version

Changes or added items (changes in CodeListAgencyName excluded; changes in adoption notes and code description included): 137

Test Type	Status	Table code	Table description	Code	Change description
Code	NEW	NT10		<i>PKL</i> (packing list)	
Table	UPDATE	NT100	eBIZ TCFUpstream version		Description_English Old value: <i>eBIZ Moda-ML version</i> New value: <i>eBIZ TCFUpstream version</i>
Code	NEW	NT100		<i>2018-1</i> (v2018-1)	
Code	NEW	NT100		<i>draft</i> (draft)	
Table	UPDATE	NT16	VAT rate or code		Generalities Old value: <i>VAT rate or code (deprecated, use dtScheme element)</i> New value: <i>VAT rate or code (DEPRECATED, use dtScheme element)</i>
Code	NEW	NT2		<i>AU</i> (Auditor)	
Code	NEW	NT2		<i>CE</i> (Certification authority)	
Code	NEW	NT2		<i>SC</i> (Sub contractor)	
Code	NEW	NT2		<i>SM</i> (Service/ePlatform manager)	
Table	NEW	NT51	Filling Criterion for Package homogeneity		
Code	NEW	NT51		<i>COL</i> (Colour)	
Code	NEW	NT51		<i>MOD</i> (Model)	
Code	NEW	NT51		<i>SIZ</i> (Size)	
Code	NEW	NT6		<i>EB</i> (eBIZ)	

Code	UPDATE	NT6		<i>ML</i> (DEPRECATED)	adoption_note Old value: New value: <i>DEPRECATED</i>
Table	NEW	NT60	language, codes from ISO 639-1 (subset)		
Code	NEW	NT60		<i>F</i> (Female)	
Code	NEW	NT60		<i>af</i> (Afrikaans)	
Code	NEW	NT60		<i>ar</i> (Arabic)	
Code	NEW	NT60		<i>be</i> (Belarusian)	
Code	NEW	NT60		<i>bg</i> (Bulgarian)	
Code	NEW	NT60		<i>bn</i> (Bengali)	
Code	NEW	NT60		<i>bo</i> (Tibetan)	
Code	NEW	NT60		<i>bs</i> (Bosnian)	
Code	NEW	NT60		<i>ca</i> (Catalan, Valencian)	
Code	NEW	NT60		<i>cs</i> (Czech)	
Code	NEW	NT60		<i>da</i> (Danish)	
Code	NEW	NT60		<i>de</i> (German)	
Code	NEW	NT60		<i>el</i> (Greek, Modern (1453-))	
Code	NEW	NT60		<i>en</i> (English)	
Code	NEW	NT60		<i>eo</i> (Esperanto)	
Code	NEW	NT60		<i>es</i> (Spanish, Castilian)	
Code	NEW	NT60		<i>et</i> (Estonian)	
Code	NEW	NT60		<i>eu</i> (Basque)	
Code	NEW	NT60		<i>fa</i> (Persian)	

Co de	NE W	NT 60		<i>fi</i> (Finnish)	
Co de	NE W	NT 60		<i>fr</i> (French)	
Co de	NE W	NT 60		<i>ga</i> (Irish)	
Co de	NE W	NT 60		<i>gd</i> (Gaelic, Scottish Gaelic)	
Co de	NE W	NT 60		<i>gn</i> (Guarani)	
Co de	NE W	NT 60		<i>he</i> (Hebrew)	
Co de	NE W	NT 60		<i>hr</i> (Croatian)	
Co de	NE W	NT 60		<i>ht</i> (Haitian, Haitian Creole)	
Co de	NE W	NT 60		<i>hu</i> (Hungarian)	
Co de	NE W	NT 60		<i>hy</i> (Armenian)	
Co de	NE W	NT 60		<i>ia</i> (Interlingua (International Auxiliary Language Association))	
Co de	NE W	NT 60		<i>id</i> (Indonesian)	
Co de	NE W	NT 60		<i>is</i> (Icelandic)	
Co de	NE W	NT 60		<i>it</i> (Italian)	
Co de	NE W	NT 60		<i>ja</i> (Japanese)	
Co de	NE W	NT 60		<i>ju</i> (Javanese)	
Co de	NE W	NT 60		<i>ka</i> (Georgian)	
Co de	NE W	NT 60		<i>km</i> (Central Khmer)	
Co de	NE W	NT 60		<i>ko</i> (Korean)	
Co de	NE W	NT 60		<i>ku</i> (Kurdish)	
Co de	NE W	NT 60		<i>lb</i> (Luxembourgish, Letzeburgesch)	

Co de	NE W	NT 60		<i>lo</i> (Lao)	
Co de	NE W	NT 60		<i>lt</i> (Lithuanian)	
Co de	NE W	NT 60		<i>lv</i> (Latvian)	
Co de	NE W	NT 60		<i>mg</i> (Malagasy)	
Co de	NE W	NT 60		<i>mk</i> (Macedonian)	
Co de	NE W	NT 60		<i>mn</i> (Mongolian)	
Co de	NE W	NT 60		<i>mt</i> (Maltese)	
Co de	NE W	NT 60		<i>nl</i> (Dutch, Flemish)	
Co de	NE W	NT 60		<i>no</i> (Norwegian)	
Co de	NE W	NT 60		<i>pl</i> (Polish)	
Co de	NE W	NT 60		<i>pt</i> (Portuguese)	
Co de	NE W	NT 60		<i>ro</i> (Romanian, Moldavian, Moldovan)	
Co de	NE W	NT 60		<i>ru</i> (Russian)	
Co de	NE W	NT 60		<i>se</i> (Northern Sami)	
Co de	NE W	NT 60		<i>sk</i> (Slovak)	
Co de	NE W	NT 60		<i>sl</i> (Slovenian)	
Co de	NE W	NT 60		<i>sm</i> (Samoan)	
Co de	NE W	NT 60		<i>so</i> (Somali)	
Co de	NE W	NT 60		<i>sq</i> (Albanian)	
Co de	NE W	NT 60		<i>sr</i> (Serbian)	
Co de	NE W	NT 60		<i>sv</i> (Swedish)	
Co de	NE W	NT 60		<i>sw</i> (Swahili)	

Code	NE W	NT 60		<i>ta</i> (Tamil)	
Code	NE W	NT 60		<i>th</i> (Thai)	
Code	NE W	NT 60		<i>tr</i> (Turkish)	
Code	NE W	NT 60		<i>uk</i> (Ukrainian)	
Code	NE W	NT 60		<i>ur</i> (Urdu)	
Code	NE W	NT 60		<i>uz</i> (Uzbek)	
Code	NE W	NT 60		<i>vi</i> (Vietnamese)	
Code	NE W	NT 60		<i>zh</i> (Chinese)	
Code	NE W	NT 7		<i>CMK</i> (square centimetre)	
Code	NE W	NT 7		<i>CMQ</i> (cubic centimetre)	
Code	NE W	NT 7		<i>E37</i> (pixel)	
Code	NE W	NT 7		<i>KWH</i> (kilowatthours)	
Code	NE W	NT 7		<i>MMK</i> (square millimetre)	
Code	NE W	NT 7		<i>MTK</i> (square metre)	
Code	NE W	NT 7		<i>CO2TON</i> (ton of CO2)	
Table	UPD ATE D	NT 7	unit of measure		OtherExternalReferenceURL Old value: New value: #http://docs.oasis-open.org/ubl/os-UBL-2.1/cl/gc/default/UnitOfMeasureCode-2.1.gc#
Table	UPD ATE D	NT 7	unit of measure		Description_English Old value: <i>unity of measure</i> New value: <i>unit of measure</i>
Code	NE W	T1 1		<i>4G</i> (Box, fibreboard)	
Code	NE W	T1 1		<i>4H</i> (Box, plastic)	
Code	NE W	T1 1		<i>5H</i> (Bag, woven plastic)	
Code	NE W	T1 1		<i>5L</i> (Bag, textile)	

Co de	UPD ATE D	T1 1		<i>5M</i> (Bag, paper)	Text_English Old value: <i>bag, paper</i> New value: <i>Bag, paper</i>
Co de	NE W	T1 1		<i>AJ</i> (Cone)	
Co de	NE W	T1 1		<i>BL</i> (Bale, compressed)	
Co de	NE W	T1 1		<i>BN</i> (Bale, non-compress ed)	
Co de	UPD ATE D	T1 1		<i>BX</i> (Box)	Text_English Old value: <i>box</i> New value: <i>Box</i>
Co de	NE W	T1 1		<i>CI</i> (Canister)	
Co de	NE W	T1 1		<i>CL</i> (Coil)	
Co de	NE W	T1 1		<i>CN</i> (Container, not other wise specified as tran sport equipment)	
Co de	NE W	T1 1		<i>CS</i> (Case)	
Co de	NE W	T1 1		<i>CT</i> (Carton)	
Co de	NE W	T1 1		<i>EC</i> (Bag, plastic)	
Co de	NE W	T1 1		<i>ED</i> (Case, with pallet bas e)	
Co de	NE W	T1 1		<i>EE</i> (Case, with pallet bas e, wooden)	
Co de	NE W	T1 1		<i>EF</i> (Case, with pallet bas e, cardboard)	
Co de	NE W	T1 1		<i>EG</i> (Case, with pallet bas e, plastic)	
Co de	NE W	T1 1		<i>EH</i> (Case, with pallet bas e, metal)	
Co de	NE W	T1 1		<i>FX</i> (Bag, flexible contain er)	
Co de	NE W	T1 1		<i>HN</i> (Hanger)	

Code	NE W	T1 1		NF (Unpacked or unpackaged, single unit)	
Code	NE W	T1 1		NG (Unpacked or unpackaged, multiple units)	
Code	NE W	T1 1		OA (Pallet, CHEP 40 cm x 60 cm)	
Code	NE W	T1 1		OB (Pallet, CHEP 80 cm x 120 cm)	
Code	NE W	T1 1		OC (Pallet, CHEP 100 cm x 120 cm)	
Code	NE W	T1 1		OD (Pallet, AS 4068-1993)	
Code	NE W	T1 1		OE (Pallet, ISO T11)	
Code	NE W	T1 1		RJ (Rack, clothing hanger)	
Code	NE W	T1 1		RL (Reel)	
Code	NE W	T1 1		SO (Spool)	
Code	NE W	T1 1		ZZ (Mutually defined)	
Table	UPD ATE D	T1 1	transport package type		OtherExternalReferenceURL Old value: New value: #http://docs.oasis-open.org/ubl/os-UBL-2.1/cl/gc/default/TransportEquipmentTypeCode-2.1.gc#
Table	UPD ATE D	T1 1	transport package type		Generalities Old value: <i>code specifying the type of package used for transport and delivery</i> New value: <i>code specifying the type of package used for transport and delivery (subset of UN/ECE 8053 and UBL TransportEquipmentTypeCode-2.1)</i>
Code	NE W	T2 1		BOR (blanket order)	
Code	NE W	T2 1		CEO (Certificate of origin)	
Code	NE W	T2 1		CER (Certificate)	
Code	UPD ATE D	T2 1		CTR (Contract)	Text_English Old value: <i>contract</i> New value: <i>Contract</i>

Co de	NE W	T2 1		<i>MCI</i> (Visual merchandising instruction)	
Co de	NE W	T2 1		<i>VMI</i> (visual merchandising instructions)	
Co de	NE W	T4 4		CO (company identification code)	