



<http://www.ebiz-tcf.eu>

IMPLEMENTATION GUIDE

includes COMPARISON BETWEEN CURRENT and LAST
PREVIOUSLY RELEASED VERSION

TRANSACTION "GARMENT IN WORK INVENTORY REPORT"

Version: v2018-1

Date of release: 18/7/2019

Document code: G044rv

technical Documentation: <http://www.ebiz.enea.it>

XML Schemas repository: <http://www.ebiz.enea.it/moda-ml/repository/schema/v2018-1/default.asp>

Guides repository: <http://www.ebiz.enea.it/moda-ml/repository/guide/v2018-1/default.asp>

Guide filename: G044rv-eBIZ-GarmentInWorkInventoryReport.pdf

1. BUSINESS DESCRIPTION

1.1 Scope

The present guide has been issued to assist the companies of the Textile-Clothing sector in the implementation of the standard XML document type "GARMENT IN WORK INVENTORY REPORT", providing all the instruction required for its use in the context of e-commerce in the Textile industry, as shown in the enclosed diagrams.

All the rules required for the construction and validation of the document are embedded into the specific XML-Schema, which is detailed in section "Implementation guide".

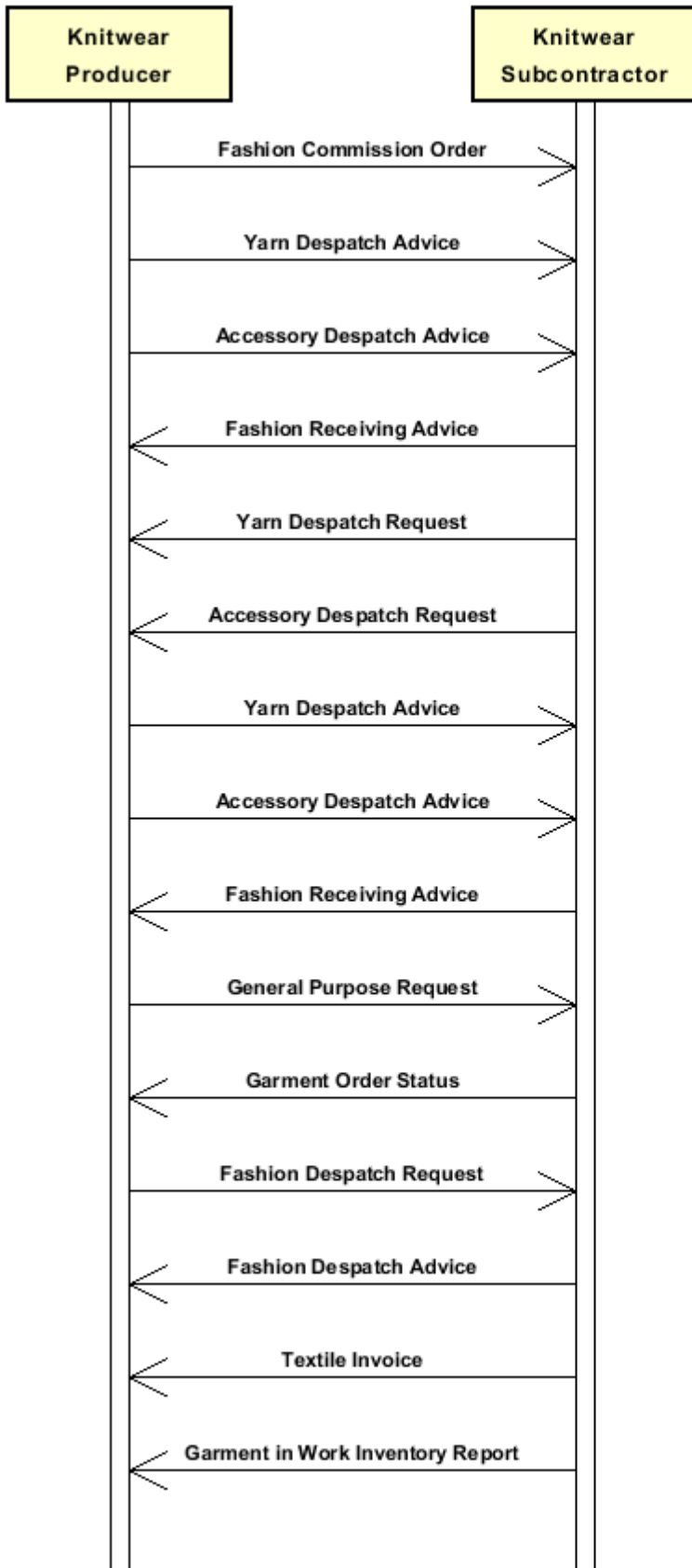
1.2 Generalities

The present document can be used by a Knitwear or Clothing Subcontractor to inform his Client (Commission issuer), periodically or on demand, about the quantity of pre-works or in-work Textile items (Client's property) stocked at the Subcontractor's premises.

This inventory may refer to all the goods of one Commission issuer or just to those related to one Commission order; item quantities may be subdivided by type of stock and physical location.

1.3. Possible scenario

Knitting and assembling



2. IMPLEMENTATION GUIDE

2.1 General structure of XML document

All the business data that can be exchanged through this class of documents are shown in the following "document structure", that provides a simplified vision of the Schema.

In particular:

- the two numbers following each element define its "cardinality" (minimum and maximum number of occurrences); the minimum equal zero indicates that the element is optional, the minimum greater than zero indicates that is mandatory;
- the bold character denotes the complex elements (aggregates of simple elements) that were built for the sake of functionality and re-usability of some complex informations sets. The child elements in each parent element are easily spotted as "indented";
- the symbol "@" denotes an attribute of the preceding element; here "the usage indicator (optional, required, ...)" is shown in square brackets.

Legenda

- N: new element
- U: updated properties
- P: changes in children
- p: is a changed child
- A: changes in attributes
- a: is a new or changed attribute
- *: is a subtype

Structure

GARWorkInv

@msgfunction [Optional] [Default= OR]

@version [Optional] [Default= 2018-1]

@useProfile [Optional]

```
| GWHeader 1-1 (P)
| | msgN 1-1
| | - choose -
| | msgID 0-1
| | - or -
| | docID 0-1
| | @numberingOrg [Optional]
| | - end choose -
| | msgDate 1-1
| | @dateForm [Optional]
| | inventoryDate 1-1
| | @dateForm [Optional]
| | refDoc 0-9 (P)
| | @docType [Required]
| | | docID 1-2 (p)
| | | @numberingOrg [Optional]
| | | docDate 0-1
| | | @dateForm [Optional]
| | | season 0-1 (A)
| | | @numberingOrg [Optional] (a)
| | | @codeList [Optional] (a)
| | | @listName [Optional] (a)
| | | @listVersion [Optional] (a)
| | | itemID 0-1 (U)
| | | attachment 0-1 (N)
| | | @uid [Optional]
```

```

| | | | fileName 0-1 (N)
| | | | @numberingOrg [Optional] (a)
| | | | binaryObject 0-1 (N)
| | | | @format [Optional] (Na)
| | | | @mime [Optional] (Na)
| | | | @encoding [Optional] (Na)
| | | | @characterSet [Optional] (Na)
| | | | externalReference 0-99 (N)
| | | | | uri 1-1 (N)
| | | | | @isURL [Optional] [Default= true] (Na)
| | | | | mimeTypeCode 0-1 (N)
| | | | | formatCode 0-1 (N)
| | | | | encodingCode 0-1 (N)
| | | | | characterSetCode 0-1 (N)
| buyer 1-1 (AP)
| @logo [Optional]
| @sender [Optional] (a*)
| | id 1-1 (p)
| | | @numberingOrg [Optional]
| | additionalIdentifier 0-9 (N)
| | | @numberingOrg [Optional] (a)
| | | @idQualifier [Optional] (Na)
| | legalName 0-1 (U)
| | dept 0-1
| | subDept 0-1 (N)
| | person 0-1
| | | @email [Optional]
| | | @phone [Optional]
| | | @fax [Optional]
| | street 0-1
| | city 0-1
| | subCountry 0-1
| | country 0-1
| | postCode 0-1
| subContractor 1-1 (AP)
| @sender [Optional] (a*)
| | id 1-1
| | | @numberingOrg [Optional]
| | legalName 0-1 (U)
| | dept 0-1
| | subDept 0-1 (N)
| | person 0-1
| | | @email [Optional]
| | | @phone [Optional]
| | | @fax [Optional]
| | street 0-1
| | city 0-1
| | subCountry 0-1
| | country 0-1
| | postCode 0-1
| thirdParty 0-5 (AP)
| @VAT [Optional]
| @role [Required]
| @sender [Optional] (a*)
| | id 1-1
| | | @numberingOrg [Optional]
| | legalName 0-1 (U)
| | dept 0-1
| | subDept 0-1 (N)
| | person 0-1
| | | @email [Optional]

```

- | | | @phone [Optional]
- | | | @fax [Optional]
- | | | street 0-1
- | | | city 0-1
- | | | subCountry 0-1
- | | | country 0-1
- | | | postCode 0-1
- | | note 0-99
- | | | @numberingOrg [Optional]
- | | | @codeList [Optional]
- | | | @noteLabel [Optional]

GWtbody 1-1

GWitem 1-unbounded (P)

- | | lineN 1-1
- | | | @VAT [Optional]
- | | lineID 0-1 (N)
- | | **refDoc 0-9 (P)**
- | | | @docType [Required]
- | | | | docID 1-2 (p)
- | | | | | @numberingOrg [Optional]
- | | | | docDate 0-1
- | | | | | @dateForm [Optional]
- | | | | season 0-1 (A)
- | | | | | @numberingOrg [Optional] (a)
- | | | | | @codeList [Optional] (a)
- | | | | | @listName [Optional] (a)
- | | | | | @listVersion [Optional] (a)
- | | | itemID 0-1 (U)
- | | | **attachment 0-1 (N)**
- | | | | @uid [Optional]
- | | | | | fileName 0-1 (N)
- | | | | | | @numberingOrg [Optional]
- | | | | | binaryObject 0-1 (N)
- | | | | | | @format [Optional] (N)
- | | | | | | @mime [Optional] (N)
- | | | | | | @encoding [Optional] (N)
- | | | | | | @characterSet [Optional] (N)
- | | | | **externalReference 0-99 (N)**
- | | | | | uri 1-1 (N)
- | | | | | | @isURL [Optional] [Default= true] (Na)
- | | | | | | mimeTypeCode 0-1 (N)
- | | | | | | formatCode 0-1 (N)
- | | | | | | encodingCode 0-1 (N)
- | | | | | | characterSetCode 0-1 (N)

- choose -

- | | **garmentPartCode 1-1 (P)**
- | | | @numberingOrg [Optional]
- | | | gPart 1-1
- | | | mod 1-1
- | | | | @numberingOrg [Optional]
- | | | | | @codeList [Optional]
- | | | | | @listName [Optional]
- | | | | | @listVersion [Optional]
- | | | fabric 0-1
- | | | | @numberingOrg [Optional]
- | | | | | @codeList [Optional]
- | | | | | @listName [Optional]
- | | | | | @listVersion [Optional]
- | | | color 0-1
- | | | | @numberingOrg [Optional]

```

| | | @codeList [Optional]
| | | @listName [Optional]
| | | @listVersion [Optional]
| | | added 0-19
| | | @numberingOrg [Optional]
| | | @addType [Optional]
| | | size 0-1 (A)
| | | @numberingOrg [Optional] (a)
| | | @codeList [Optional]
| | | @listName [Optional] (a)
| | | @listVersion [Optional] (a)
| | | description 0-unbounded (AU)
| | | @ln [Optional] (N)

```

- or -

```

| | | garmentCode 1-1
| | | @numberingOrg [Optional]

```

- choose -

```

| | | garmentCodeB 1-1 (P)
| | | @numberingOrg [Optional]
| | | | mod 1-1
| | | | @numberingOrg [Optional]
| | | | @codeList [Optional]
| | | | @listName [Optional]
| | | | @listVersion [Optional]
| | | | fabric 0-1
| | | | @numberingOrg [Optional]
| | | | @codeList [Optional]
| | | | @listName [Optional]
| | | | @listVersion [Optional]
| | | | color 0-1
| | | | @numberingOrg [Optional]
| | | | @codeList [Optional]
| | | | @listName [Optional]
| | | | @listVersion [Optional]
| | | | garmentVariant 0-9 (N)
| | | | | variantType 1-1 (N)
| | | | | @numberingOrg [Optional] (a)
| | | | | @codeList [Optional] (a)
| | | | | @listName [Optional] (a)
| | | | | @listVersion [Optional] (a)
| | | | | variantCode 1-1 (N)
| | | | | @numberingOrg [Optional] (a)
| | | | | @codeList [Optional] (a)
| | | | | @listName [Optional] (a)
| | | | | @listVersion [Optional] (a)
| | | | drop 0-1 (A)
| | | | @numberingOrg [Optional] (a)
| | | | @codeList [Optional]
| | | | @listName [Optional] (a)
| | | | @listVersion [Optional] (a)
| | | | size 0-1 (A)
| | | | @numberingOrg [Optional] (a)
| | | | @codeList [Optional]
| | | | @listName [Optional] (a)
| | | | @listVersion [Optional] (a)
| | | | artGroup 0-1
| | | | @numberingOrg [Optional]
| | | | @codeList [Optional]
| | | | @listName [Optional]
| | | | @listVersion [Optional]
| | | | added 0-9

```

```

| | | | | @numberingOrg [Optional]
| | | | | @addType [Optional]
| | | | | description 0-unbounded (AU)
| | | | | @ln [Optional] (N)
- or -
| | | | | garmentCodeA 1-1 (P)
| | | | | | art 1-1 (U)
| | | | | | @numberingOrg [Optional]
| | | | | | @codeList [Optional]
| | | | | | @listName [Optional]
| | | | | | @listVersion [Optional]
| | | | | | description 0-unbounded (AU)
| | | | | | @ln [Optional] (N)
- end choose -
- end choose -
| | | | | inventory 1-9 (P)
| | | | | | @invType [Required]
| | | | | | | qty 1-2
| | | | | | | @um [Required]
| | | | | | | location 0-1
| | | | | | | @LRI [Optional]
- choose -
| | | | | | serialN 0-unbounded (AU)
| | | | | | | @numberingOrg [Optional]
| | | | | | | @idQualifier [Optional] (N)
- or -
| | | | | | itemsList 0-1 (N)
| | | | | | | qualityLevel 0-1 (N)
| | | | | | | @numberingOrg [Optional]
| | | | | | | @codeList [Optional]
| | | | | | | @listName [Optional]
| | | | | | | @listVersion [Optional]
| | | | | | | itemIdentification 1-unbounded (N)
| | | | | | | | serialN 1-9 (AU)
| | | | | | | | @numberingOrg [Optional]
| | | | | | | | @idQualifier [Optional] (N)
- end choose -
| | | | | | actualPackageUnit 0-unbounded (N)
| | | | | | | @packageLevel [Optional] (a)
| | | | | | | | packageIdentification 1-1 (N)
| | | | | | | | | packageN 1-1 (U)
| | | | | | | | | @numberingOrg [Optional]
| | | | | | | | | @packageContainerN [Optional]
| | | | | | | | | serialN 0-9 (AU)
| | | | | | | | | @numberingOrg [Optional]
| | | | | | | | | @idQualifier [Optional] (N)
- choose -
| | | | | | | packageText 0-1 (U)
- or -
| | | | | | | package 0-1 (p)
- end choose -
| | | | | | | packageModelCode 0-1 (N)
| | | | | | | | @numberingOrg [Optional] (a)
| | | | | | | | volume 0-1
| | | | | | | | @um [Required]
| | | | | | | | netWeight 0-1
| | | | | | | | @um [Required]
| | | | | | | | grossWeight 0-1
| | | | | | | | @um [Required]
| | | | | | | | packageDim 0-1 (p)
| | | | | | | | | length 1-1

```



```

| | | | @um [Required]
| | | | width 0-1
| | | | @um [Required]
| | | | height 0-1
| | | | @um [Required]
| | | actualItemsPerPackage 0-1 (N)
| | | packagesList 0-1 (N)
| | | | packageIdentification 1-unbounded (N)
| | | | | packageN 1-1 (U)
| | | | | @numberingOrg [Optional]
| | | | | @packageContainerN [Optional]
| | | | | serialN 0-9 (AU)
| | | | | @numberingOrg [Optional]
| | | | | @idQualifier [Optional] (N)
| | | | itemsList 0-1 (N)
| | | | | qualityLevel 0-1 (N)
| | | | | @numberingOrg [Optional] (a)
| | | | | @codeList [Optional] (a)
| | | | | @listName [Optional] (a)
| | | | | @listVersion [Optional] (a)
| | | | | itemIdentification 1-unbounded (N)
| | | | | | serialN 1-9 (AU)
| | | | | | @numberingOrg [Optional]
| | | | | | @idQualifier [Optional] (N)
| | | | note 0-99
| | | | | @numberingOrg [Optional]
| | | | | @codeList [Optional]
| | | | | @noteLabel [Optional]
| | | EPCList 0-1
| | | | EPC 1-unbounded
| | | | | @numberingOrg [Optional]
| | | | | @TID [Optional]
| | | note 0-99
| | | | @numberingOrg [Optional]
| | | | @codeList [Optional]
| | | | @noteLabel [Optional]

```

2.2 Detailed description of document elements

Following tables show all elements (complex and simple) used in this document. Description includes: 1) element's information: xml tag, name, brief description, data type and syntax constraints; 2) information about use of the element in a particular position in the document: xpath and possible associated notes.

2.2.1 Complex elements (Aggregate Business Information Entities)

Complex elements are those elements whose content is composed of other elements (childs). Complex elements are alphabetically ordered.

actualPackageUnit	description and identification of a single transport package (XPath GARWorkInv/GWlbody/GWlitem/inventory/actualPackageUnit) 0-unbounded (N)
attachment	an attached document. An attachment can refer to an external document or be included with the document being exchanged (XPath GARWorkInv/GWlbody/GWlitem/refDoc/attachment) 0-1 (N) (XPath GARWorkInv/GWlheader/refDoc/attachment) 0-1 (N)
buyer	details of the Buyer (party that buys the good or service that is object of the current collaborative process) - base type: Nad, (XPath GARWorkInv/GWlheader/buyer) 1-1 (AP)
EPClist	list of identifiers used for tracing a physical item with RFID technology (XPath GARWorkInv/GWlbody/GWlitem/inventory/EPClist) 0-1 - note: <i>DEPRECATED, use serialN or itemsList</i>
externalReference	details about an external object, such as a document stored at a remote location (XPath GARWorkInv/GWlheader/refDoc/attachment/externalReference) 0-99 (N) (XPath GARWorkInv/GWlbody/GWlitem/refDoc/attachment/externalReference) 0-99 (N)
garmentCode	codification of the garment product (XPath GARWorkInv/GWlbody/GWlitem/garmentCode) 1-1
garmentCodeA	codification of the garment product- type A (XPath GARWorkInv/GWlbody/GWlitem/garmentCode/garmentCodeA) 1-1 (P) - note: <i>here the barcode EAN-13 or EAN-8 should be specified</i>
garmentCodeB	codification of the garment product - type B (XPath GARWorkInv/GWlbody/GWlitem/garmentCode/garmentCodeB) 1-1 (P)
garmentPartCode	codification of the component or part of a fashion article (XPath GARWorkInv/GWlbody/GWlitem/garmentPartCode) 1-1 (P)
garmentVariant	garment product variant (XPath GARWorkInv/GWlbody/GWlitem/garmentCode/garmentCodeB/garmentVariant) 0-9 (N)
GWlbody	body of the document GARMENT IN WORK INVENTORY REPORT (XPath GARWorkInv/GWlbody) 1-1
GWlheader	header of the document GARMENT IN WORK INVENTORY REPORT (XPath GARWorkInv/GWlheader) 1-1 (P)
GWlitem	line item of the document GARMENT IN WORK INVENTORY REPORT (XPath GARWorkInv/GWlbody/GWlitem) 1-unbounded (P)
inventory	details of a stock of goods with reference to the manufacturing process: item quantity per class of stock

	(XPath GARWorkInv/GWlbody/GWlitem/inventory) 1-9 (P)
itemIdentification	<p>serial identification of a product unit (XPath GARWorkInv/GWlbody/GWlitem/inventory/actualPackageUnit/itemsList/itemIdentification) 1-unbounded (N) - note: <i>identification of the single product unit contained in the list</i> (XPath GARWorkInv/GWlbody/GWlitem/inventory/itemsList/itemIdentification) 1-unbounded (N) - note: <i>identification of the single product unit contained in the list</i></p>
itemsList	<p>list of the single product units (XPath GARWorkInv/GWlbody/GWlitem/inventory/actualPackageUnit/itemsList) 0-1 (N) (XPath GARWorkInv/GWlbody/GWlitem/inventory/itemsList) 0-1 (N) - note: <i>Use this element when reporting serial numbers referring to different coding methods for the same article</i></p>
packageDim	<p>dimensions of a transport package (XPath GARWorkInv/GWlbody/GWlitem/inventory/actualPackageUnit/packageDim) 0-1 (p)</p>
packageIdentification	<p>serial identification of a package (XPath GARWorkInv/GWlbody/GWlitem/inventory/actualPackageUnit/packagesList/packageIdentification) 1-unbounded (N) - note: <i>identification of the single package contained in the list</i> (XPath GARWorkInv/GWlbody/GWlitem/inventory/actualPackageUnit/packageIdentification) 1-1 (N)</p>
packagesList	<p>list of single packages (XPath GARWorkInv/GWlbody/GWlitem/inventory/actualPackageUnit/packagesList) 0-1 (N) - note: <i>list of packages contained within the actual package (thus with lower level). All the packages in the list should preferably have the same level.</i></p>
refDoc	<p>identification of a document and of an item thereof, to which the message makes reference (XPath GARWorkInv/GWlbody/GWlitem/refDoc) 0-9 (P) (XPath GARWorkInv/GWlheader/refDoc) 0-9 (P)</p>
subContractor	<p>details of the Sub-contractor - base type: Nad, (XPath GARWorkInv/GWlheader/subContractor) 1-1 (AP)</p>
thirdParty	<p>details of the Third Party, different from Sender and Receiver of the document - base type: Nad, (XPath GARWorkInv/GWlheader/thirdParty) 0-5 (AP)</p>

2.2.2 Simple elements (Basic Business Information Entities)

Simple elements are those elements whose content is characterized by a data type plus a domain of possible values. Simple elements are alphabetically ordered.

actualItemsPerPackage	<p>the quantity of items actually contained in the package - base type: decimal, (XPath GARWorkInv/GWlbody/GWlitem/inventory/actualPackageUnit/actualItemsPerPackage) 0-1 (N)</p>
------------------------------	---

added	<p>additional code of the product (complementing the formers)</p> <p>- base type: string, max length: 80, (XPath GARWorkInv/GWlbody/GWlitem/garmentCode/garmentCodeB/added) 0-9 (XPath GARWorkInv/GWlbody/GWlitem/garmentPartCode/added) 0-19</p>
additionalIdentifier	<p>additional identification code of a Party, for example customs registries or others</p> <p>- base type: string, max length: 15, (XPath GARWorkInv/GWlheader/buyer/additionalIdentifier) 0-9 (N)</p> <p>- note: <i>identifiers for example for exports, such as MID (Manufacturer Identification Code), EORI (E.O.R.I. - Economic Operator Registration and Identification)</i></p>
@addType	<p>qualifier of the additional coding of a product</p> <p>- base type: string, cod. table: T44 http://www.ebiz.enea.it/moda-ml/repository/codelist/v2018-1/gc_T44.xml (XPath GARWorkInv/GWlbody/GWlitem/garmentPartCode/added/@addType) [Optional]</p> <p>- nota: <i>addType allows the clarification of the meaning of the added element content; it is strongly suggested to use it always.</i> (XPath GARWorkInv/GWlbody/GWlitem/garmentCode/garmentCodeB/added/@addType) [Optional]</p> <p>- nota: <i>addType allows the clarification of the meaning of the added element content; it is strongly suggested to use it always.</i></p>
art	<p>article number of the product</p> <p>- base type: string, max length: 80, (XPath GARWorkInv/GWlbody/GWlitem/garmentCode/garmentCodeA/art) 1-1 (U)</p>
artGroup	<p>code identifying a class of products</p> <p>- base type: string, max length: 40, (XPath GARWorkInv/GWlbody/GWlitem/garmentCode/garmentCodeB/artGroup) 0-1</p>
binaryObject	<p>a binary large object containing an attached document, Coding 'base64Binary' is recommended.</p> <p>- base type: base64Binary, (XPath GARWorkInv/GWlheader/refDoc/attachment/binaryObject) 0-1 (N) (XPath GARWorkInv/GWlbody/GWlitem/refDoc/attachment/binaryObject) 0-1 (N)</p>
@characterSet	<p>the character set of the binary object (examples UTF-8, UTF-16, Windows-1252, ISO-8859-7,...)</p> <p>- base type: normalizedString, (XPath GARWorkInv/GWlheader/refDoc/attachment/binaryObject/@characterSet) [Optional] (Na) (XPath GARWorkInv/GWlbody/GWlitem/refDoc/attachment/binaryObject/@characterSet) [Optional] (N)</p>
characterSetCode	<p>the character set of an external document (examples UTF-8, UTF-16, Windows-1252, ISO-8859-7,...)</p> <p>- base type: normalizedString, (XPath GARWorkInv/GWlbody/GWlitem/refDoc/attachment/externalReference/characterSetCode) 0-1 (N) (XPath GARWorkInv/GWlheader/refDoc/attachment/externalReference/characterSetCode) 0-1 (N)</p>
city	<p>name of the city (town, village)</p> <p>- base type: string, max length: 40, (XPath GARWorkInv/GWlheader/subContractor/city) 0-1 (XPath GARWorkInv/GWlheader/buyer/city) 0-1 (XPath GARWorkInv/GWlheader/thirdParty/city) 0-1</p>

<p>@codeList</p>	<p>it specifies the URL where the list of codes used to make an instance of the element can be found</p> <ul style="list-style-type: none"> - base type: string, max length: 255, (XPath <code>GARWorkInv/GWlbody/GWlitem/inventory/actualPackageUnit/note/@codeList</code>) [Optional] - nota: <i>must be used to provide (URL) the list of codes used in "noteLabel"</i> (XPath <code>GARWorkInv/GWlheader/note/@codeList</code>) [Optional] - nota: <i>must be used to provide (URL) the list of codes used in "noteLabel"</i> (XPath <code>GARWorkInv/GWlbody/GWlitem/refDoc/season/@codeList</code>) [Optional] (a) - nota: <i>this attribute should be used either single or coupled with "listName" and "listVersion"</i> (XPath <code>GARWorkInv/GWlbody/GWlitem/note/@codeList</code>) [Optional] - nota: <i>must be used to provide (URL) the list of codes used in "noteLabel"</i> (XPath <code>GARWorkInv/GWlbody/GWlitem/garmentCode/garmentCodeB/garmentVariant/variantType/@codeList</code>) [Optional] (a) - nota: <i>always at least one out of this attribute and "numberingOrg" should be set</i> (XPath <code>GARWorkInv/GWlbody/GWlitem/garmentCode/garmentCodeB/color/@codeList</code>) [Optional] - nota: <i>this attribute should be used either single or coupled with "listName" and "listVersion"</i> (XPath <code>GARWorkInv/GWlbody/GWlitem/garmentCode/garmentCodeB/fabric/@codeList</code>) [Optional] - nota: <i>at least one out of this attribute and "numberingOrg" should be set</i> (XPath <code>GARWorkInv/GWlbody/GWlitem/garmentCode/garmentCodeB/garmentVariant/variantCode/@codeList</code>) [Optional] (a) - nota: <i>at least one out of this attribute and "numberingOrg" should be set</i> (XPath <code>GARWorkInv/GWlbody/GWlitem/garmentCode/garmentCodeB/artGroup/@codeList</code>) [Optional] - nota: <i>at least one out of this attribute and "numberingOrg" should be set</i> (XPath <code>GARWorkInv/GWlbody/GWlitem/garmentCode/garmentCodeB/size/@codeList</code>) [Optional] - nota: <i>at least one out of this attribute and "numberingOrg" should be set</i> (XPath <code>GARWorkInv/GWlbody/GWlitem/garmentCode/garmentCodeB/drop/@codeList</code>) [Optional] - nota: <i>at least one out of this attribute and "numberingOrg" should be set</i> (XPath <code>GARWorkInv/GWlbody/GWlitem/garmentCode/garmentCodeB/mod/@codeList</code>) [Optional] - nota: <i>at least one out of this attribute and "numberingOrg" should be set</i> (XPath <code>GARWorkInv/GWlbody/GWlitem/garmentPartCode/fabric/@codeList</code>) [Optional] - nota: <i>at least one out of this attribute and "numberingOrg" should be set</i> (XPath <code>GARWorkInv/GWlbody/GWlitem/garmentPartCode/mod/@codeList</code>) [Optional] - nota: <i>at least one out of this attribute and "numberingOrg" should be set</i> (XPath <code>GARWorkInv/GWlbody/GWlitem/inventory/itemsList/qualityLevel/@codeList</code>) [Optional] - nota: <i>at least one out of this attribute and "numberingOrg" should be set</i> (XPath <code>GARWorkInv/GWlbody/GWlitem/garmentPartCode/color/@codeList</code>) [Optional] - nota: <i>this attribute should be used either single or coupled with "listName" and "listVersion"</i> (XPath <code>GARWorkInv/GWlbody/GWlitem/garmentCode/garmentCodeA/art/@codeList</code>) [Optional] - nota: <i>at least one out of this attribute and "numberingOrg" should be set</i>
------------------	---

	<p>(XPath GARWorkInv/GWlbody/GWlitem/inventory/actualPackageUnit/itemsList/qualityLevel/@codeList) [Optional] (a) - nota: <i>at least one out of this attribute and "numberingOrg" should be set</i> (XPath GARWorkInv/GWlbody/GWlitem/garmentPartCode/size/@codeList) [Optional] (XPath GARWorkInv/GWlheader/refDoc/season/@codeList) [Optional] (a) - nota: <i>this attribute should be used either single or coupled with "listName" and "listVersion"</i></p>
color	<p>colour number of the product, when not included in the model or fabric code - base type: string, max length: 15, (XPath GARWorkInv/GWlbody/GWlitem/garmentPartCode/color) 0-1 - note: <i>when a garment component, it should be the code assigned to the garment article</i> (XPath GARWorkInv/GWlbody/GWlitem/garmentCode/garmentCodeB/color) 0-1</p>
country	<p>code of the nation - base type: string, cod. table: T10 http://www.ebiz.enea.it/moda-ml/repository/codelist/v2018-1/gc_T10.xml (XPath GARWorkInv/GWlheader/buyer/country) 0-1 (XPath GARWorkInv/GWlheader/subContractor/country) 0-1 (XPath GARWorkInv/GWlheader/thirdParty/country) 0-1</p>
@dateForm	<p>format used for the date - base type: string, cod. table: NT29 http://www.ebiz.enea.it/moda-ml/repository/codelist/v2018-1/gc_NT29.xml (XPath GARWorkInv/GWlheader/refDoc/docDate/@dateForm) [Optional] (XPath GARWorkInv/GWlheader/inventoryDate/@dateForm) [Optional] (XPath GARWorkInv/GWlheader/msgDate/@dateForm) [Optional] (XPath GARWorkInv/GWlbody/GWlitem/refDoc/docDate/@dateForm) [Optional]</p>
dept	<p>name or code of a contact department within a Party - base type: string, max length: 40, (XPath GARWorkInv/GWlheader/thirdParty/dept) 0-1 (XPath GARWorkInv/GWlheader/subContractor/dept) 0-1 (XPath GARWorkInv/GWlheader/buyer/dept) 0-1</p>
description	<p>free text description. The content of the element must be unique, it might be translated and repeated into more languages (thus no more than one instance for each language). - base type: string, max length: 250, (XPath GARWorkInv/GWlbody/GWlitem/garmentPartCode/description) 0-unbounded (AU) - note: <i>Product part description</i> (XPath GARWorkInv/GWlbody/GWlitem/garmentCode/garmentCodeA/description) 0-unbounded (AU) - note: <i>Product description</i> (XPath GARWorkInv/GWlbody/GWlitem/garmentCode/garmentCodeB/description) 0-unbounded (AU) - note: <i>Product description</i></p>
docDate	<p>date of issue of the referenced document, according to one of the patterns YYYY-MM-DD, YYYY-MM-DD:HH-MM or YYYY-WW. - base type: string, (XPath GARWorkInv/GWlbody/GWlitem/refDoc/docDate) 0-1 (XPath GARWorkInv/GWlheader/refDoc/docDate) 0-1</p>
docID	<p>identification number of the referenced document SINCE 2008-1 ITS USE IN THE HEADER IS DISCOURAGED (REPLACED BY msgID) - base type: string, max length: 80, (XPath GARWorkInv/GWlheader/refDoc/docID) 1-2 (p)</p> <hr/> <p>AAAA-WARNING! - text not AVAILABLE n. 245 - In=en</p>

	<p>(XPath GARWorkInv/GWIheader/docID) 0-1 (XPath GARWorkInv/GWIbody/GWIitem/refDoc/docID) 1-2 (p)</p> <hr/> <p>AAAA-WARNING! - text not AVAILABLE n. 245 - In=en</p>
@docType	<p>type or class to which the referenced document belongs - base type: string, cod. table: T21 http://www.ebiz.enea.it/moda-ml/repository/codelist/v2018-1/gc_T21.xml (XPath GARWorkInv/GWIbody/GWIitem/refDoc/@docType) [Required] (XPath GARWorkInv/GWIheader/refDoc/@docType) [Required]</p>
drop	<p>drop number of the garment - base type: string, max length: 15, (XPath GARWorkInv/GWIbody/GWIitem/garmentCode/garmentCodeB/drop) 0-1 (A) - note: <i>Fill this element if the drop is the same for all the sizes of the model. Otherway specify it within the csRange element</i></p>
@email	<p>electronic mail address of the contact person within a Party - base type: string, max length: 250, (XPath GARWorkInv/GWIheader/subContractor/person/@email) [Optional] (XPath GARWorkInv/GWIheader/thirdParty/person/@email) [Optional] (XPath GARWorkInv/GWIheader/buyer/person/@email) [Optional]</p>
@encoding	<p>specifies the decoding algorithm of the binary object - base type: normalizedString, (XPath GARWorkInv/GWIheader/refDoc/attachment/binaryObject/@encoding) [Optional] (Na) (XPath GARWorkInv/GWIbody/GWIitem/refDoc/attachment/ binaryObject/@encoding) [Optional] (N)</p>
encodingCode	<p>the encoding/decoding algorithm used with the external object (example is 'base64Binary') - base type: normalizedString, (XPath GARWorkInv/GWIheader/refDoc/attachment/externalReference/encodingCode) 0-1 (N) (XPath GARWorkInv/GWIbody/GWIitem/refDoc/attachment/ externalReference/encodingCode) 0-1 (N)</p>
EPC	<p>serial identifier used for tracing a physical item with RFID technology - base type: string, (XPath GARWorkInv/GWIbody/GWIitem/inventory/EPClist/EPC) 1-unbounded</p>
fabric	<p>fabric number of the garment - base type: string, max length: 15, (XPath GARWorkInv/GWIbody/GWIitem/garmentCode/garmentCodeB/fabric) 0-1 (XPath GARWorkInv/GWIbody/GWIitem/garmentPartCode/fabric) 0-1 - note: <i>when a garment component, it should be the code assigned to the garment article</i></p>
@fax	<p>fax number of the contact person within a Party - base type: string, max length: 35, (XPath GARWorkInv/GWIheader/buyer/person/@fax) [Optional] (XPath GARWorkInv/GWIheader/thirdParty/person/@fax) [Optional] (XPath GARWorkInv/GWIheader/subContractor/person/@fax) [Optional]</p>
fileName	<p>unique identifier (name) of the file - base type: string, max length: 255, (XPath GARWorkInv/GWIbody/GWIitem/refDoc/attachment/fileName) 0-1 (N) (XPath GARWorkInv/GWIheader/refDoc/attachment/fileName) 0-1 (N)</p>
@format	<p>the format of the binary content (examples xml, pdf, doc,...) - base type: string,</p>

	<p>(XPath GARWorkInv/GWlheader/refDoc/attachment/binaryObject/@format) [Optional] (Na) (XPath GARWorkInv/GWlbody/GWlitem/refDoc/attachment/binaryObject/@format) [Optional] (N)</p>
formatCode	<p>the format of the external object (examples xml, pdf, doc,...) - base type: normalizedString, (XPath GARWorkInv/GWlheader/refDoc/attachment/externalReference/formatCode) 0-1 (N) (XPath GARWorkInv/GWlbody/GWlitem/refDoc/attachment/externalReference/formatCode) 0-1 (N)</p>
gPart	<p>code specifying the type of component or part of a fashion product (sleeve, neck, ...) - base type: string, cod. table: T48 http://www.ebiz.enea.it/moda-ml/repository/codelist/v2018-1/gc_T48.xml (XPath GARWorkInv/GWlbody/GWlitem/garmentPartCode/gPart) 1-1</p>
grossWeight	<p>the gross weight, declared for transport or customs purpose - base type: decimal, min inclusive: 0, fraction digits: 2, (XPath GARWorkInv/GWlbody/GWlitem/inventory/actualPackageUnit/grossWeight) 0-1</p>
height	<p>effective height of a specified object - base type: decimal, min inclusive: 0, fraction digits: 2, (XPath GARWorkInv/GWlbody/GWlitem/inventory/actualPackageUnit/packageDim/height) 0-1</p>
id	<p>primary identification code of a Party; it is recommended the format: nation code (ISO 3166) + VAT identification number (11 crt), with the qualifier "numberingOrg"= MF - base type: string, max length: 15, (XPath GARWorkInv/GWlheader/buyer/id) 1-1 (p) (XPath GARWorkInv/GWlheader/subContractor/id) 1-1 (XPath GARWorkInv/GWlheader/thirdParty/id) 1-1</p>
@idQualifier	<p>Qualification of the identifier. - base type: string, (XPath GARWorkInv/GWlbody/GWlitem/inventory/actualPackageUnit/itemsList/itemIdentification/serialN/@idQualifier) [Optional] (N) - nota: <i>this attribute should be used when the numberingOrg attribute is not enough to declare the type of serial identifier</i> (XPath GARWorkInv/GWlbody/GWlitem/inventory/actualPackageUnit/packagesList/packageIdentification/serialN/@idQualifier) [Optional] (N) - nota: <i>this attribute should be used when the numberingOrg attribute is not enough to declare the type of serial identifier</i> (XPath GARWorkInv/GWlbody/GWlitem/inventory/itemsList/itemIdentification/serialN/@idQualifier) [Optional] (N) - nota: <i>this attribute should be used when the numberingOrg attribute is not enough to declare the type of serial identifier</i> (XPath GARWorkInv/GWlbody/GWlitem/inventory/actualPackageUnit/packageIdentification/serialN/@idQualifier) [Optional] (N) - nota: <i>this attribute should be used when the numberingOrg attribute is not enough to declare the type of serial identifier</i> (XPath GARWorkInv/GWlbody/GWlitem/inventory/serialN/@idQualifier) [Optional] (N) - nota: <i>this attribute should be used when the numberingOrg attribute is not enough to declare the type of serial identifier</i></p>

	<p>(XPath GARWorkInv/GWlheader/buyer/additionalIdentifier/@idQualifier) [Optional] (Na)</p> <p>- nota: <i>this attribute should be used when the numberingOrg attribute is not enough to declare the type of identifier</i></p>
inventoryDate	<p>date in which the inventory was done, according to one of the patterns YYYY-MM-DD, YYYY-MM-DD:HH-MM or YYYY-WW.</p> <p>- base type: string,</p> <p>(XPath GARWorkInv/GWlheader/inventoryDate) 1-1</p>
@invType	<p>code classifying a stock of goods with reference to the manufacturing process</p> <p>- base type: string, cod. table: T47</p> <p>http://www.ebiz.enea.it/moda-ml/repository/codelist/v2018-1/gc_T47.xml</p> <p>(XPath GARWorkInv/GWlbody/GWlitem/inventory/@invType) [Required]</p>
@isURL	<p>it indicates if the referred element is an URL (true) or not (false)</p> <p>- base type: boolean,</p> <p>(XPath GARWorkInv/GWlbody/GWlitem/refDoc/attachment/externalReference/uri/@isURL) [Optional] [Default= true] (Na)</p> <p>- nota: <i>usage of URLs is recommended</i></p> <p>(XPath GARWorkInv/GWlheader/refDoc/attachment/externalReference/uri/@isURL) [Optional] [Default= true] (Na)</p> <p>- nota: <i>usage of URLs is recommended</i></p>
itemID	<p>number of the line/item of the referenced document</p> <p>- base type: string, max length: 40,</p> <p>(XPath GARWorkInv/GWlheader/refDoc/itemID) 0-1 (U)</p> <p>(XPath GARWorkInv/GWlbody/GWlitem/refDoc/itemID) 0-1 (U)</p>
legalName	<p>legal name of a Party</p> <p>- base type: string, max length: 250,</p> <p>(XPath GARWorkInv/GWlheader/thirdParty/legalName) 0-1 (U)</p> <p>(XPath GARWorkInv/GWlheader/buyer/legalName) 0-1 (U)</p> <p>(XPath GARWorkInv/GWlheader/subContractor/legalName) 0-1 (U)</p>
length	<p>effective length of a specified object</p> <p>- base type: decimal, min inclusive: 0, fraction digits: 2,</p> <p>(XPath GARWorkInv/GWlbody/GWlitem/inventory/actualPackageUnit/packageDim/length) 1-1</p> <p>- note: <i>here the maximum dimension must also be specified</i></p>
lineID	<p>unique identifier of the line item of the business document; it is set by the role that produces the document.</p> <p>- base type: string, max length: 30,</p> <p>(XPath GARWorkInv/GWlbody/GWlitem/lineID) 0-1 (N)</p>
lineN	<p>number of the line item of the present message (xml document); it is set by the role that produces the document. Usually it is a progressive number, but not always.</p> <p>- base type: positiveInteger, min inclusive: 1, max inclusive: 9999,</p> <p>(XPath GARWorkInv/GWlbody/GWlitem/lineN) 1-1</p>
@listName	<p>the name of the list of codes used to make an instance of the element (it might be thought as descriptive element, i.e. 'fabric printing technologies', or not, i.e. "T264")</p> <p>- base type: string, max length: 40,</p> <p>(XPath GARWorkInv/GWlbody/GWlitem/garmentCode/garmentCodeB/garmentVariant/variantType/@listName) [Optional] (a)</p> <p>- nota: <i>this attribute should always be used coupled with "numberingOrg"</i></p> <p>(XPath GARWorkInv/GWlbody/GWlitem/garmentPartCode/color/@listName) [Optional]</p> <p>- nota: <i>this attribute should always be used coupled with "numberingOrg"</i></p>

	<p>(XPath GARWorkInv/GWlbody/GWlitem/garmentCode/garmentCodeB/garmentVariant/variantCode/@listName) [Optional] (a) - nota: <i>this attribute should always be used coupled with “numberingOrg”</i> (XPath GARWorkInv/GWlbody/GWlitem/garmentPartCode/fabric/@listName) [Optional] - nota: <i>this attribute should always be used coupled with “numberingOrg”</i> (XPath GARWorkInv/GWlbody/GWlitem/garmentCode/garmentCodeB/color/@listName) [Optional] - nota: <i>this attribute should always be used coupled with “numberingOrg”</i> (XPath GARWorkInv/GWlbody/GWlitem/garmentCode/garmentCodeB/fabric/@listName) [Optional] - nota: <i>this attribute should always be used coupled with “numberingOrg”</i> (XPath GARWorkInv/GWlbody/GWlitem/garmentCode/garmentCodeB/mod/@listName) [Optional] - nota: <i>this attribute should always be used coupled with “numberingOrg”</i> (XPath GARWorkInv/GWlbody/GWlitem/inventory/actualPackageUnit/itemsList/qualityLevel/@listName) [Optional] (a) - nota: <i>this attribute should always be used coupled with “numberingOrg”</i> (XPath GARWorkInv/GWlbody/GWlitem/garmentPartCode/size/@listName) [Optional] (a) - nota: <i>this attribute should always be used coupled with “numberingOrg”</i> (XPath GARWorkInv/GWlbody/GWlitem/garmentPartCode/mod/@listName) [Optional] - nota: <i>this attribute should always be used coupled with “numberingOrg”</i> (XPath GARWorkInv/GWlbody/GWlitem/garmentCode/garmentCodeB/artGroup/@listName) [Optional] - nota: <i>this attribute should always be used coupled with “numberingOrg”</i> (XPath GARWorkInv/GWlbody/GWlitem/refDoc/season/@listName) [Optional] (a) - nota: <i>this attribute should always be used coupled with “numberingOrg”</i> (XPath GARWorkInv/GWlheader/refDoc/season/@listName) [Optional] (a) - nota: <i>this attribute should always be used coupled with “numberingOrg”</i> (XPath GARWorkInv/GWlbody/GWlitem/inventory/itemsList/qualityLevel/@listName) [Optional] - nota: <i>this attribute should always be used coupled with “numberingOrg”</i> (XPath GARWorkInv/GWlbody/GWlitem/garmentCode/garmentCodeA/art/@listName) [Optional] - nota: <i>this attribute should always be used coupled with “numberingOrg”</i> (XPath GARWorkInv/GWlbody/GWlitem/garmentCode/garmentCodeB/size/@listName) [Optional] (a) - nota: <i>this attribute should always be used coupled with “numberingOrg”</i> (XPath GARWorkInv/GWlbody/GWlitem/garmentCode/garmentCodeB/drop/@listName) [Optional] (a) - nota: <i>this attribute should always be used coupled with “numberingOrg”</i></p>
@listVersion	<p>it specifies the version of the list of codes used to make an instance of the element - base type: string, max length: 6, (XPath GARWorkInv/GWlbody/GWlitem/garmentCode/garmentCodeB/mod/@listVersion) [Optional] - nota: <i>this attribute should always be used coupled with “numberingOrg” and “listName”</i> (XPath GARWorkInv/GWlbody/GWlitem/garmentCode/garmentCodeB/artGroup/@listVersion) [Optional] - nota: <i>this attribute should always be used coupled with “numberingOrg” and “listName”</i></p>

	<p>(XPath GARWorkInv/GWlbody/GWlitem/inventory/actualPackageUnit/itemsList/qualityLevel/@listVersion) [Optional] (a) - nota: <i>this attribute should always be used coupled with “numberingOrg” and “listName”</i></p> <p>(XPath GARWorkInv/GWlbody/GWlitem/garmentCode/garmentCodeB/size/@listVersion) [Optional] (a) - nota: <i>this attribute should always be used coupled with “numberingOrg” and “listName”</i></p> <p>(XPath GARWorkInv/GWlheader/refDoc/season/@listVersion) [Optional] (a) - nota: <i>this attribute should always be used coupled with “numberingOrg” and “listName”</i></p> <p>(XPath GARWorkInv/GWlbody/GWlitem/garmentCode/garmentCodeB/garmentVariant/variantType/@listVersion) [Optional] (a) - nota: <i>this attribute should always be used coupled with “numberingOrg” and “listName”</i></p> <p>(XPath GARWorkInv/GWlbody/GWlitem/inventory/itemsList/qualityLevel/@listVersion) [Optional] - nota: <i>this attribute should always be used coupled with “numberingOrg” and “listName”</i></p> <p>(XPath GARWorkInv/GWlbody/GWlitem/garmentCode/garmentCodeB/garmentVariant/variantCode/@listVersion) [Optional] (a) - nota: <i>this attribute should always be used coupled with “numberingOrg” and “listName”</i></p> <p>(XPath GARWorkInv/GWlbody/GWlitem/garmentCode/garmentCodeB/color/@listVersion) [Optional] - nota: <i>this attribute should always be used coupled with “numberingOrg” and “listName”</i></p> <p>(XPath GARWorkInv/GWlbody/GWlitem/garmentCode/garmentCodeB/fabric/@listVersion) [Optional] - nota: <i>this attribute should always be used coupled with “numberingOrg” and “listName”</i></p> <p>(XPath GARWorkInv/GWlbody/GWlitem/garmentCode/garmentCodeA/art/@listVersion) [Optional] - nota: <i>this attribute should always be used coupled with “numberingOrg” and “listName”</i></p> <p>(XPath GARWorkInv/GWlbody/GWlitem/garmentCode/garmentCodeB/drop/@listVersion) [Optional] (a) - nota: <i>this attribute should always be used coupled with “numberingOrg” and “listName”</i></p> <p>(XPath GARWorkInv/GWlbody/GWlitem/garmentPartCode/color/@listVersion) [Optional] - nota: <i>this attribute should always be used coupled with “numberingOrg” and “listName”</i></p> <p>(XPath GARWorkInv/GWlbody/GWlitem/garmentPartCode/size/@listVersion) [Optional] (a) - nota: <i>this attribute should always be used coupled with “numberingOrg” and “listName”</i></p> <p>(XPath GARWorkInv/GWlbody/GWlitem/garmentPartCode/fabric/@listVersion) [Optional] - nota: <i>this attribute should always be used coupled with “numberingOrg” and “listName”</i></p> <p>(XPath GARWorkInv/GWlbody/GWlitem/garmentPartCode/mod/@listVersion) [Optional] - nota: <i>this attribute should always be used coupled with “numberingOrg” and “listName”</i></p> <p>(XPath GARWorkInv/GWlbody/GWlitem/refDoc/season/@listVersion) [Optional] (a)</p>
--	---

	- nota: <i>this attribute should always be used coupled with “numberingOrg” and “listName”</i>
@ln	Language code. - base type: string, cod. table: NT60 http://www.ebiz.enea.it/moda-ml/repository/codelist/v2018-1/gc_NT60.xml (XPath GARWorkInv/GWlbody/GWlitem/garmentPartCode/description/@ln) [Optional] (N) (XPath GARWorkInv/GWlbody/GWlitem/garmentCode/garmentCodeA/description/@ln) [Optional] (N) (XPath GARWorkInv/GWlbody/GWlitem/garmentCode/garmentCodeB/description/@ln) [Optional] (N)
location	specification of a location - base type: string, max length: 40, (XPath GARWorkInv/GWlbody/GWlitem/inventory/location) 0-1
@logo	company logo (URL of the image jpeg or gif). It is recommended that the width of the image does not exceed 640 pixel. - base type: string, max length: 255, (XPath GARWorkInv/GWlheader/buyer/@logo) [Optional]
@LRI	attribute usable to format a string according to a customized User rule (local rule) - base type: string, cod. table: NT3 http://www.ebiz.enea.it/moda-ml/repository/codelist/v2018-1/gc_NT3.xml (XPath GARWorkInv/GWlbody/GWlitem/inventory/location/@LRI) [Optional]
@mime	the mime type of the binary object - base type: normalizedString, (XPath GARWorkInv/GWlbody/GWlitem/refDoc/attachment/binaryObject/@mime) [Optional] (N) (XPath GARWorkInv/GWlheader/refDoc/attachment/binaryObject/@mime) [Optional] (Na)
mimeCode	mime type of the external object - base type: normalizedString, (XPath GARWorkInv/GWlheader/refDoc/attachment/externalReference/mimeCode) 0-1 (N) <hr/> AAAA-WARNING! - text not AVAILABLE n. 245 - In=en (XPath GARWorkInv/GWlbody/GWlitem/refDoc/attachment/externalReference/mimeCode) 0-1 (N) <hr/> AAAA-WARNING! - text not AVAILABLE n. 245 - In=en
mod	model number of the garment - base type: string, max length: 15, (XPath GARWorkInv/GWlbody/GWlitem/garmentCode/garmentCodeB/mod) 1-1 (XPath GARWorkInv/GWlbody/GWlitem/garmentPartCode/mod) 1-1 - note: <i>when a garment component, it should be the code assigned to the garment article</i>
msgDate	date of issue of the present message (xml document), according to one of the patterns YYYY-MM-DD, YYYY-MM-DD:HH-MM or YYYY-WW. - base type: string, (XPath GARWorkInv/GWlheader/msgDate) 1-1
@msgfunction	function performed by the present message with regards to the transmission - base type: string, cod. table: NT18 http://www.ebiz.enea.it/moda-ml/repository/codelist/v2018-1/gc_NT18.xml (XPath GARWorkInv/@msgfunction) [Optional] [Default= OR]

msgID	<p>key identifier of the business document in the information system of the issuing Party. In case of more despatches of the same business document, it is unchanged.</p> <p>- base type: string, max length: 35, (XPath GARWorkInv/GWlheader/msgID) 0-1</p>
msgN	<p>identification number given to the message (xml document) by its issuer. In case of more despatches of the same business document, it changes.</p> <p>- base type: string, max length: 35, (XPath GARWorkInv/GWlheader/msgN) 1-1</p>
netWeight	<p>the net weight declared for transport or customs purpose</p> <p>- base type: decimal, min inclusive: 0, fraction digits: 2, (XPath GARWorkInv/GWlbody/GWlitem/inventory/actualPackageUnit/netWeight) 0-1</p>
note	<p>free text or structured (computer processing) note. For note structuring use the attributes "noteLabel" and "codelist"</p> <p>- base type: string, max length: 350, (XPath GARWorkInv/GWlbody/GWlitem/inventory/actualPackageUnit/note) 0-99 (XPath GARWorkInv/GWlheader/note) 0-99 (XPath GARWorkInv/GWlbody/GWlitem/note) 0-99</p>
@noteLabel	<p>subject qualifier of a note</p> <p>- base type: string, max length: 35, (XPath GARWorkInv/GWlheader/note/@noteLabel) [Optional]</p> <p>- nota: <i>must be used to qualify the subject of the note</i> (XPath GARWorkInv/GWlbody/GWlitem/note/@noteLabel) [Optional]</p> <p>- nota: <i>must be used to qualify the subject of the note</i> (XPath GARWorkInv/GWlbody/GWlitem/inventory/actualPackageUnit/note/@noteLabel) [Optional]</p> <p>- nota: <i>must be used to qualify the subject of the note</i></p>
@numberingOrg	<p>code specifying the organisation who has created or owns the coding or numbering system</p> <p>- base type: string, cod. table: NT6 http://www.ebiz.enea.it/moda-ml/repository/codelist/v2018-1/gc_NT6.xml (XPath GARWorkInv/GWlheader/refDoc/season/@numberingOrg) [Optional] (a)</p> <p>- nota: <i>this attribute should be used either single or coupled with "listName" and "listVersion"</i> (XPath GARWorkInv/GWlbody/GWlitem/garmentCode/garmentCodeA/art/@numberingOrg) [Optional]</p> <p>- nota: <i>this attribute should be used either single or coupled with "listName" and "listVersion"</i> (XPath GARWorkInv/GWlbody/GWlitem/refDoc/attachment/fileName/@numberingOrg) [Optional]</p> <p>(XPath GARWorkInv/GWlheader/subContractor/id/@numberingOrg) [Optional]</p> <p>(XPath GARWorkInv/GWlbody/GWlitem/inventory/actualPackageUnit/itemsList/itemIdentification/serialN/@numberingOrg) [Optional]</p> <p>- nota: <i>here the issuer of the serial number must be specified (when different from the Supplier)</i> (XPath GARWorkInv/GWlheader/note/@numberingOrg) [Optional]</p> <p>- nota: <i>must be used to specify the organization that created the list of codes used in "noteLabel"</i> (XPath GARWorkInv/GWlbody/GWlitem/inventory/actualPackageUnit/packageModeICode/@numberingOrg) [Optional] (a)</p> <p>(XPath GARWorkInv/GWlbody/GWlitem/inventory/actualPackageUnit/packageIdentification/serialN/@numberingOrg) [Optional]</p>

- nota: *here the issuer of the serial number must be specified (when different from the Supplier)*
(XPath
GARWorkInv/GWlbody/GWlitem/inventory/actualPackageUnit/itemsList/qualityLevel/@numberingOrg) [Optional] (a)

- nota: *this attribute should be used either single or coupled with "listName" and "listVersion"*
(XPath GARWorkInv/GWlheader/docID/@numberingOrg) [Optional]

- nota: *here can be specified whose document numbering is used (e.g.: Client, Supplier, ..)*
(XPath
GARWorkInv/GWlbody/GWlitem/inventory/actualPackageUnit/packagesList/packageIdentification/packageN/@numberingOrg) [Optional]

(XPath
GARWorkInv/GWlbody/GWlitem/inventory/actualPackageUnit/packagesList/packageIdentification/serialN/@numberingOrg) [Optional]

- nota: *here the issuer of the serial number must be specified (when different from the Supplier)*
(XPath GARWorkInv/GWlheader/refDoc/docID/@numberingOrg) [Optional]

- nota: *here can be specified whose document numbering is used (e.g.: Client, Supplier, ..)*
(XPath GARWorkInv/GWlbody/GWlitem/inventory/itemsList/qualityLevel/@numberingOrg) [Optional]

- nota: *this attribute should be used either single or coupled with "listName" and "listVersion"*
(XPath GARWorkInv/GWlbody/GWlitem/inventory/serialN/@numberingOrg) [Optional]

- nota: *here the issuer of the serial number must be specified (when different from the Supplier)*
(XPath GARWorkInv/GWlbody/GWlitem/refDoc/season/@numberingOrg) [Optional] (a)

- nota: *this attribute should be used either single or coupled with "listName" and "listVersion"*
(XPath
GARWorkInv/GWlbody/GWlitem/inventory/actualPackageUnit/packageIdentification/packageN/@numberingOrg) [Optional]

(XPath GARWorkInv/GWlbody/GWlitem/refDoc/docID/@numberingOrg) [Optional]

- nota: *here can be specified whose document numbering is used (e.g.: Client, Supplier, ..)*
(XPath GARWorkInv/GWlbody/GWlitem/inventory/itemsList/itemIdentification/serialN/@numberingOrg) [Optional]

- nota: *here the issuer of the serial number must be specified (when different from the Supplier)*
(XPath GARWorkInv/GWlheader/thirdParty/id/@numberingOrg) [Optional]

(XPath GARWorkInv/GWlbody/GWlitem/note/@numberingOrg) [Optional]

- nota: *must be used to specify the organization that created the list of codes used in "noteLabel"*
(XPath
GARWorkInv/GWlbody/GWlitem/garmentCode/garmentCodeB/garmentVariant/variantType/@numberingOrg) [Optional] (a)

- nota: *this attribute should be used either single or coupled with "listName" and "listVersion"*
(XPath GARWorkInv/GWlbody/GWlitem/garmentPartCode/color/@numberingOrg) [Optional]

- nota: *this attribute should be used either single or coupled with "listName" and "listVersion"*
(XPath GARWorkInv/GWlbody/GWlitem/garmentPartCode/fabric/@numberingOrg) [Optional]

- nota: *this attribute should be used either single or coupled with "listName" and "listVersion"*
(XPath
GARWorkInv/GWlbody/GWlitem/garmentCode/garmentCodeB/drop/@numberingOrg) [Optional] (a)

- nota: *this attribute should be used either single or coupled with "listName" and "listVersion"*
(XPath
GARWorkInv/GWlbody/GWlitem/garmentCode/garmentCodeB/garmentVariant/variantCode/@numberingOrg) [Optional] (a)

- nota: *this attribute should be used either single or coupled with "listName" and "listVersion"*
(XPath GARWorkInv/GWlheader/buyer/additionalIdentifier/@numberingOrg) [Optional] (a)

- nota: *here the issuer of the identifier must be specified*
(XPath
GARWorkInv/GWlbody/GWlitem/garmentCode/garmentCodeB/mod/@numberingOrg) [Optional]
(XPath GARWorkInv/GWlbody/GWlitem/garmentPartCode/size/@numberingOrg) [Optional] (a)

- nota: *this attribute should be used either single or coupled with "listName" and "listVersion"*
(XPath GARWorkInv/GWlbody/GWlitem/garmentCode/@numberingOrg) [Optional]
(XPath
GARWorkInv/GWlbody/GWlitem/garmentCode/garmentCodeB/@numberingOrg) [Optional]
(XPath
GARWorkInv/GWlbody/GWlitem/garmentCode/garmentCodeB/color/@numberingOrg) [Optional]

- nota: *this attribute should be used either single or coupled with "listName" and "listVersion"*
(XPath GARWorkInv/GWlheader/buyer/id/@numberingOrg) [Optional]
(XPath
GARWorkInv/GWlbody/GWlitem/garmentCode/garmentCodeB/fabric/@numberingOrg) [Optional]

- nota: *this attribute should be used either single or coupled with "listName" and "listVersion"*
(XPath GARWorkInv/GWlbody/GWlitem/garmentPartCode/added/@numberingOrg) [Optional]

- nota: *this attribute should be used either single or coupled with "listName" and "listVersion"*
(XPath
GARWorkInv/GWlbody/GWlitem/garmentCode/garmentCodeB/size/@numberingOrg) [Optional] (a)

- nota: *this attribute should be used either single or coupled with "listName" and "listVersion"*
(XPath
GARWorkInv/GWlbody/GWlitem/inventory/actualPackageUnit/note/@numberingOrg) [Optional]

- nota: *must be used to specify the organization that created the lists used in "noteLabel"*
(XPath GARWorkInv/GWlbody/GWlitem/garmentPartCode/@numberingOrg) [Optional]
(XPath GARWorkInv/GWlbody/GWlitem/inventory/EPClist/EPC/@numberingOrg) [Optional]
(XPath
GARWorkInv/GWlbody/GWlitem/garmentCode/garmentCodeB/artGroup/@numberingOrg) [Optional]

- nota: *this attribute should be used either single or coupled with "listName" and "listVersion"*
(XPath GARWorkInv/GWlheader/refDoc/attachment/fileName/@numberingOrg) [Optional] (a)
(XPath GARWorkInv/GWlbody/GWlitem/garmentPartCode/mod/@numberingOrg) [Optional]
(XPath
GARWorkInv/GWlbody/GWlitem/garmentCode/garmentCodeB/added/@numberingOrg) [Optional]

- nota: *this attribute should be used either single or coupled with "listName" and "listVersion"*

package	code specifying the type of transport package - base type: string, cod. table: T11 http://www.ebiz.enea.it/moda-ml/repository/codelist/v2018-1/gc_T11.xml (XPath GARWorkInv/GWlbody/GWlitem/inventory/actualPackageUnit/package) 0-1 (p)
@packageContainerN	reference usable to indicate the outer package containing this package - base type: string, max length: 40, (XPath GARWorkInv/GWlbody/GWlitem/inventory/actualPackageUnit/packagesList/packageIdentification/packageN/@packageContainerN) [Optional] (XPath GARWorkInv/GWlbody/GWlitem/inventory/actualPackageUnit/packageIdentification/packageN/@packageContainerN) [Optional]
@packageLevel	level used to indicate the hierarchical structure of the packages (from outer to inner levels) - base type: positiveInteger, min inclusive: 1, max inclusive: 9, (XPath GARWorkInv/GWlbody/GWlitem/inventory/actualPackageUnit/@packageLevel) [Optional] (a)
packageModelCode	a code (eg a barcode) identifying the type of packaging - base type: string, (XPath GARWorkInv/GWlbody/GWlitem/inventory/actualPackageUnit/packageModelCode) 0-1 (N)
packageN	serial number used to identify a transport package - base type: string, max length: 40, (XPath GARWorkInv/GWlbody/GWlitem/inventory/actualPackageUnit/packageIdentification/packageN) 1-1 (U) (XPath GARWorkInv/GWlbody/GWlitem/inventory/actualPackageUnit/packagesList/packageIdentification/packageN) 1-1 (U)
packageText	denomination of the type of transport package (text) - base type: string, max length: 80, (XPath GARWorkInv/GWlbody/GWlitem/inventory/actualPackageUnit/packageText) 0-1 (U)
person	name of the contact person within a Party - base type: string, max length: 40, (XPath GARWorkInv/GWlheader/thirdParty/person) 0-1 (XPath GARWorkInv/GWlheader/buyer/person) 0-1 (XPath GARWorkInv/GWlheader/subContractor/person) 0-1
@phone	phone number of the contact person within a Party - base type: string, max length: 35, (XPath GARWorkInv/GWlheader/thirdParty/person/@phone) [Optional] (XPath GARWorkInv/GWlheader/subContractor/person/@phone) [Optional] (XPath GARWorkInv/GWlheader/buyer/person/@phone) [Optional]
postCode	code defining the postal zone - base type: string, max length: 10, (XPath GARWorkInv/GWlheader/buyer/postCode) 0-1 (XPath GARWorkInv/GWlheader/thirdParty/postCode) 0-1 (XPath GARWorkInv/GWlheader/subContractor/postCode) 0-1
qty	net quantity of the article or object correlated, qualified by the function of the document (ordering, delivering, ..) and by the context - base type: decimal, min inclusive: 0, fraction digits: 2, (XPath GARWorkInv/GWlbody/GWlitem/inventory/qty) 1-2

AAAA-WARNING! - text not AVAILABLE n. 245 - In=en

qualityLevel	<p>the product quality level (first choice, second choice,...).</p> <p>- base type: string, (XPath GARWorkInv/GWlbody/GWlitem/inventory/actualPackageUnit/itemsList/qualityLevel) 0-1 (N) (XPath GARWorkInv/GWlbody/GWlitem/inventory/itemsList/qualityLevel) 0-1 (N)</p>
@role	<p>Third Party role qualifier</p> <p>- base type: string, cod. table: NT2 http://www.ebiz.enea.it/moda-ml/repository/codelist/v2018-1/gc_NT2.xml (XPath GARWorkInv/GWlheader/thirdParty/@role) [Required]</p>
season	<p>sale season; defined as: season (1 crt) + year (4 crt) - season: S/S=1 A/W=2 Spring=3 Summer=4 Autumn=5 Winter=6: for more than four seasons use alphabetic sequence: 1st season=A 2nd season=B etc.etc.</p> <p>- base type: string, max length: 15, (XPath GARWorkInv/GWlheader/refDoc/season) 0-1 (A)</p> <p>- note: <i>here indicates the season to which the referenced document belongs</i> (XPath GARWorkInv/GWlbody/GWlitem/refDoc/season) 0-1 (A)</p> <p>- note: <i>here indicates the season to which the referenced document belongs</i></p>
@sender	<p>qualifier that specifies the Party issuing of the document</p> <p>- base type: boolean, (XPath GARWorkInv/GWlheader/thirdParty/@sender) [Optional] (a*)</p> <p>- nota: <i>This attribute is mandatory when the STYLESHEET must be used</i> (XPath GARWorkInv/GWlheader/subContractor/@sender) [Optional] (a*)</p> <p>- nota: <i>This attribute is mandatory when the STYLESHEET must be used</i> (XPath GARWorkInv/GWlheader/buyer/@sender) [Optional] (a*)</p> <p>- nota: <i>This attribute is mandatory when the STYLESHEET must be used</i></p>
serialN	<p>serial number used for the identification of a physical unit</p> <p>- base type: string, max length: 250, (XPath GARWorkInv/GWlbody/GWlitem/inventory/actualPackageUnit/itemsList/itemIdentification/serialN) 1-9 (AU)</p> <hr/> <p>AAAA-WARNING! - text not AVAILABLE n. 245 - In=en</p> <p>- note: <i>multiple values of serialN are allowed for different representations of the serial identifier of the same product unit. Instances of serialN must differ at least for one value of numberingOrg and idQualifier.</i></p> <p>(XPath GARWorkInv/GWlbody/GWlitem/inventory/serialN) 0-unbounded (AU)</p> <p>- note: <i>Use this element if the coding method is only one and is the same for each article</i> (XPath GARWorkInv/GWlbody/GWlitem/inventory/itemsList/itemIdentification/serialN) 1-9 (AU)</p> <hr/> <p>AAAA-WARNING! - text not AVAILABLE n. 245 - In=en</p> <p>- note: <i>multiple values of serialN are allowed for different representations of the serial identifier of the same product unit. Instances of serialN must differ at least for one value of numberingOrg and idQualifier.</i></p> <p>(XPath GARWorkInv/GWlbody/GWlitem/inventory/actualPackageUnit/packageIdentification/serialN) 0-9 (AU)</p> <p>- note: <i>multiple values of serialN are allowed in order to provide different representations of the serial identifier of the same package unit. Different instances of serialN must differ at least for one value of idQualifier or numberingOrg</i></p> <p>(XPath GARWorkInv/GWlbody/GWlitem/inventory/actualPackageUnit/packagesList/packageIdentification/serialN) 0-9 (AU)</p> <p>- note: <i>multiple values of serialN are allowed in order to provide different representations of the serial identifier of the same package unit. Different instances of serialN must differ at least for one value of idQualifier or numberingOrg</i></p>
size	<p>size number of a fashion product (knitwear, clothing, ..)</p> <p>- base type: string, max length: 15, (XPath GARWorkInv/GWlbody/GWlitem/garmentPartCode/size) 0-1 (A) (XPath GARWorkInv/GWlbody/GWlitem/garmentCode/garmentCodeB/size) 0-1 (A)</p>
street	<p>street and building number identifying a location</p> <p>- base type: string, max length: 80, (XPath GARWorkInv/GWlheader/buyer/street) 0-1</p>

	(XPath GARWorkInv/GWlheader/thirdParty/street) 0-1 (XPath GARWorkInv/GWlheader/subContractor/street) 0-1
subCountry	short name or code of the sub-country entity - base type: string, max length: 9, (XPath GARWorkInv/GWlheader/buyer/subCountry) 0-1 (XPath GARWorkInv/GWlheader/thirdParty/subCountry) 0-1 (XPath GARWorkInv/GWlheader/subContractor/subCountry) 0-1
subDept	name or code of a contact department within a Party - base type: string, max length: 40, (XPath GARWorkInv/GWlheader/subContractor/subDept) 0-1 (N) (XPath GARWorkInv/GWlheader/thirdParty/subDept) 0-1 (N) (XPath GARWorkInv/GWlheader/buyer/subDept) 0-1 (N)
@TID	serial number wired into the RFID chip - base type: string, (XPath GARWorkInv/GWlbody/GWlitem/inventory/EPClist/EPC/@TID) [Optional]
@uid	unique element identifier within the xml document - base type: string, (XPath GARWorkInv/GWlheader/refDoc/attachment/@uid) [Optional] (XPath GARWorkInv/GWlbody/GWlitem/refDoc/attachment/@uid) [Optional]
@um	specification of the unit of measure - base type: string, cod. table: NT7 http://www.ebiz.enea.it/moda-ml/repository/codelist/v2018-1/gc_NT7.xml (XPath GARWorkInv/GWlbody/GWlitem/inventory/qty/@um) [Required] (XPath GARWorkInv/GWlbody/GWlitem/inventory/actualPackageUnit/packageDim/height/@um) [Required] (XPath GARWorkInv/GWlbody/GWlitem/inventory/actualPackageUnit/grossWeight/@um) [Required] (XPath GARWorkInv/GWlbody/GWlitem/inventory/actualPackageUnit/packageDim/width/@um) [Required] (XPath GARWorkInv/GWlbody/GWlitem/inventory/actualPackageUnit/packageDim/length/@um) [Required] (XPath GARWorkInv/GWlbody/GWlitem/inventory/actualPackageUnit/volume/@um) [Required] (XPath GARWorkInv/GWlbody/GWlitem/inventory/actualPackageUnit/netWeight/@um) [Required]
uri	Uniform Resource Identifier (URI) that identifies the external object as an Internet resource - base type: normalizedString, (XPath GARWorkInv/GWlheader/refDoc/attachment/externalReference/uri) 1-1 (N) (XPath GARWorkInv/GWlbody/GWlitem/refDoc/attachment/externalReference/uri) 1-1 (N)
@useProfile	use profile to which the present document is compliant if it was agreed by the parties. It is suggested a URI with reference to the firm or the URL of the profile. - base type: string, (XPath GARWorkInv/@useProfile) [Optional]
variantCode	Code of variant used for fashion product. - base type: string, (XPath GARWorkInv/GWlbody/GWlitem/garmentCode/garmentCodeB/garmentVariant/variantCode) 1-1 (N)

variantType	Type of variant used for fashion product (examples: 'treatment', 'washing type', 'size class',...) - base type: string, (XPath GARWorkInv/GWlbody/GWlitem/garmentCode/garmentCodeB/garmentVariant/variantType) 1-1 (N)
@VAT	VAT rate or code (DEPRECATED, use dtScheme element) - base type: string, cod. table: NT16 http://www.ebiz.enea.it/moda-ml/repository/codelist/v2018-1/gc_NT16.xml (XPath GARWorkInv/GWlheader/thirdParty/@VAT) [Optional] (XPath GARWorkInv/GWlbody/GWlitem/lineN/@VAT) [Optional] - nota: <i>Deprecated, prefer dtScheme when available.</i>
@version	Dictionary version from which the instance has been created - base type: string, cod. table: NT100 http://www.ebiz.enea.it/moda-ml/repository/codelist/v2018-1/gc_NT100.xml (XPath GARWorkInv/@version) [Optional] [Default= 2018-1]
volume	effective volume of a specified object - base type: decimal, min inclusive: 0, fraction digits: 2, (XPath GARWorkInv/GWlbody/GWlitem/inventory/actualPackageUnit/volume) 0-1
width	effective width of a specified object - base type: decimal, min inclusive: 0, fraction digits: 2, (XPath GARWorkInv/GWlbody/GWlitem/inventory/actualPackageUnit/packageDim/width) 0-1

2.3 Suggested best practices

GARWorkInv/GWIheader/refDoc/docID (identification number of the referenced document SINCE 2008-1 ITS USE IN THE HEADER IS DISCOURAGED (REPLACED BY msgID))

numberingOrg indicates the role that produced the document identifier (it is allowed to declare two different ones -e.g. customer and supplier - with two docID with different numberingOrg

GARWorkInv/GWIbody/GWlitem/refDoc/docID (identification number of the referenced document SINCE 2008-1 ITS USE IN THE HEADER IS DISCOURAGED (REPLACED BY msgID))

numberingOrg indicates the role that produced the document identifier (it is allowed to declare two different ones -e.g. customer and supplier - with two docID with different numberingOrg

GARWorkInv/GWIheader/refDoc/attachment/externalReference/mimeCode (mime type of the external object)

Use coding from IANA <http://www.iana.org/assignments/media-types/media-types.xml>

**GARWorkInv/GWIbody/GWlitem/refDoc/attachment/
externalReference/mimeCode (mime type of the external object)**

Use coding from IANA <http://www.iana.org/assignments/media-types/media-types.xml>

GARWorkInv/GWIbody/GWlitem/inventory/qty (net quantity of the article or object correlated, qualified by the function of the document (ordering, delivering, ..) and by the context)

this element can have two instances only if the units of measure are different

GARWorkInv/GWIbody/GWlitem/inventory/actualPackageUnit/itemsList/itemIdentification/serialN (serial number used for the identification of a physical unit)

in the case of garment with RFID for anti-counterfeiting, RFID EPCGlobal for logistics and NFC for the customer experience there should be three serial elements with pairs of attributes numberingOrg/idQualifier: "CL"/"RFID", "GS1"/"RFID", "CL"/"NFC".

**GARWorkInv/GWIbody/GWlitem/inventory/itemsList/
itemIdentification/serialN (serial number used for the identification of a physical unit)**

in the case of garment with RFID for anti-counterfeiting, RFID EPCGlobal for logistics and NFC for the customer experience there should be three serial elements with pairs of attributes numberingOrg/idQualifier: "CL"/"RFID", "GS1"/"RFID", "CL"/"NFC".

2.4 Enumeration tables

List of enumeration tables used in the XML document. You can find the corresponding codes at:
<http://www.ebiz-tcf.eu/moda-ml/imple/moda-ml-2018-1.asp?lingua=en&pag=6>

Legenda

- N: new table
- U: updated properties

NT100 - eBIZ TCFUpstream version

NT16 - VAT rate or code

NT18 - message function

NT2 - third party qualifier

NT29 - format of a date

NT3 - data format

NT6 - coding system owner/issuer

NT60 - language, codes from ISO 639-1 (subset) (N)

NT7 - unit of measure (U)

T10 - ISO3166 - Country

T11 - transport package type (U)

T21 - type of document

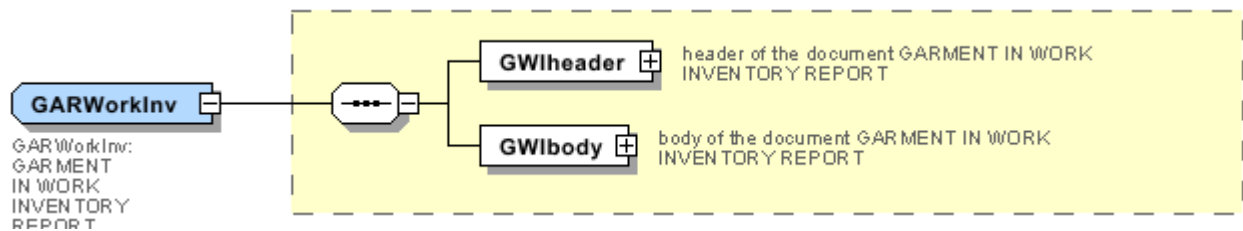
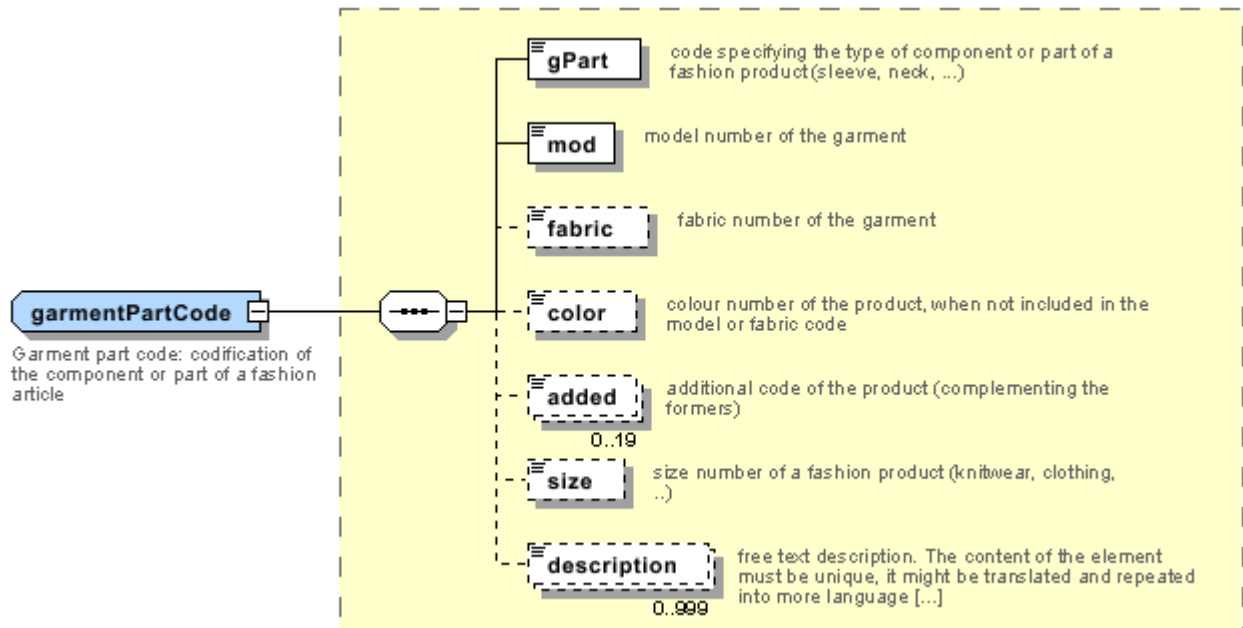
T44 - additional code type

T47 - stock type

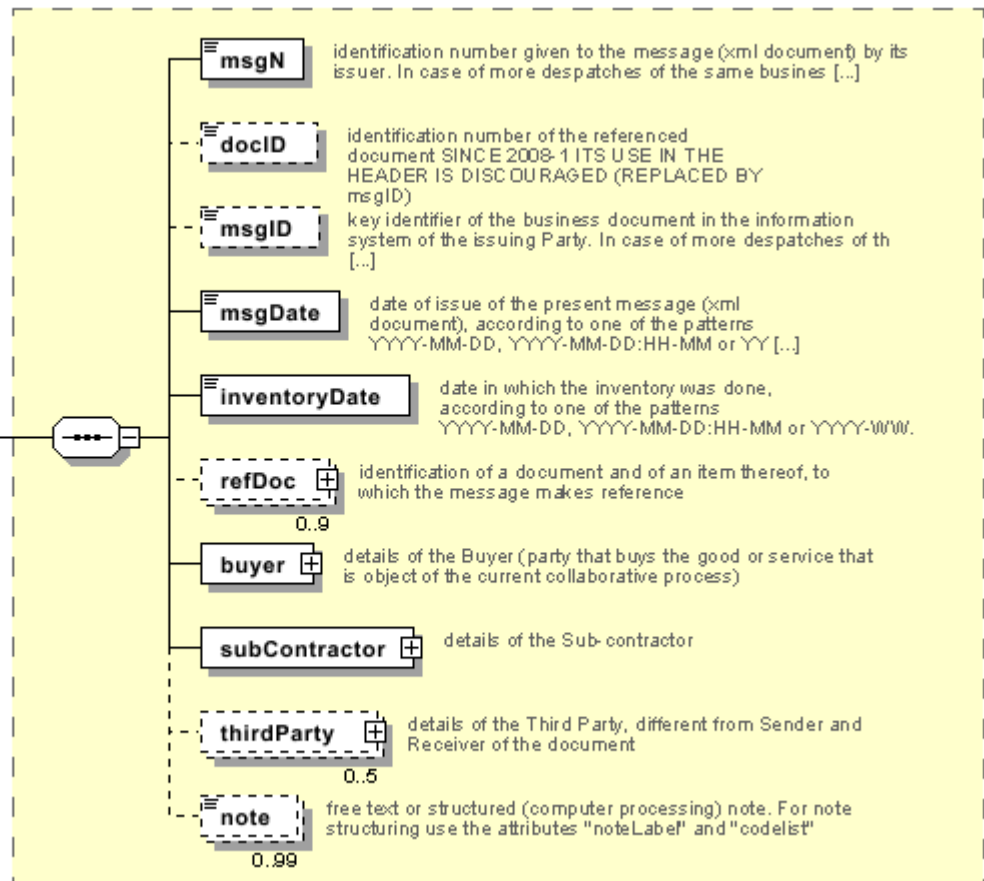
T48 - garment part type

Annex A

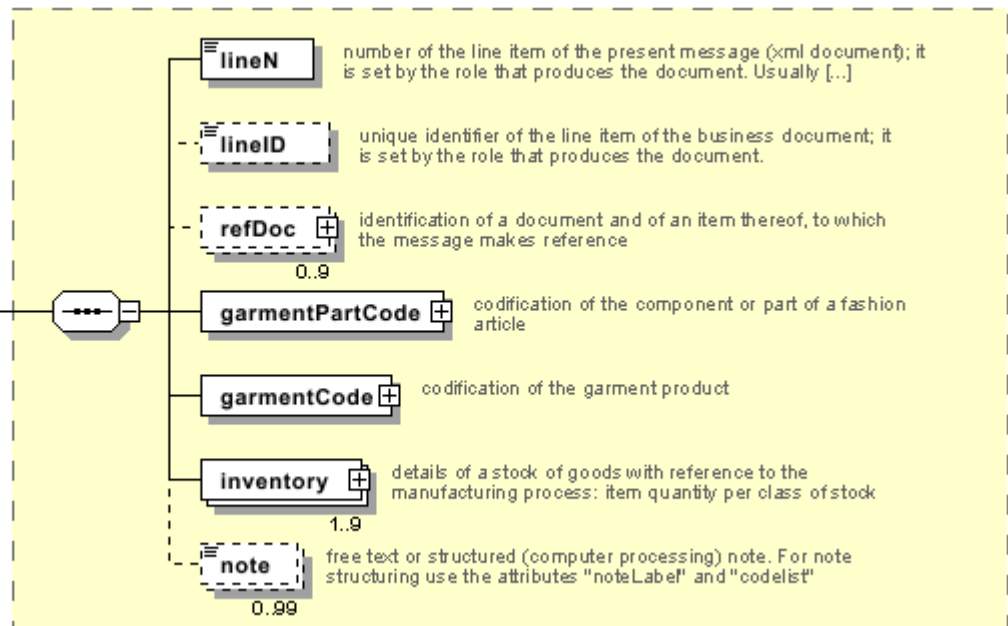
Representative images of the principal complex elements' structure.

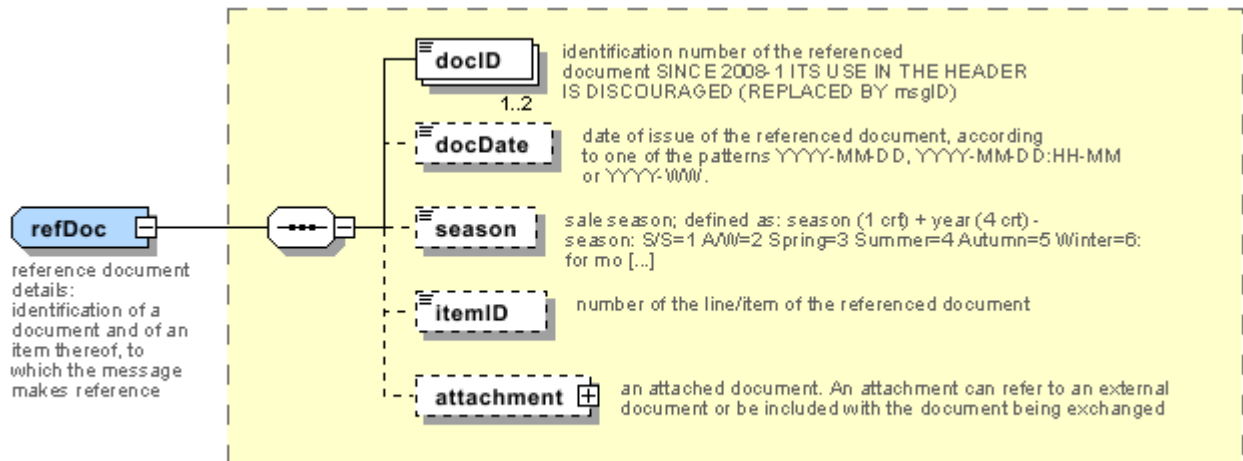


GWlheader
 GWl header:
 header of the
 document
 GARMENT IN
 WORK INVENTORY
 REPORT



GWlitem
 GWl item:
 line item of
 the document
 GARMENT IN
 WORK
 INVENTORY
 REPORT





Annex B

NT100 - eBIZ TCFUpstream version

dictionary version

Agency name: eBIZ

tabella cod.: NT100

File codes list (Generic code): http://www.ebiz.enea.it/moda-ml/repository/codelist/v2018-1/gc_NT100.xml

Code	Description	Adoption note	Version status	Date of insertion
2013-1	v2013-1			01/07/2013
2018-1	v2018-1		(N)	04/11/2018
draft	draft		(N)	08/09/2017

NT16 - VAT rate or code

VAT rate or code (DEPRECATED, use dtScheme element)

tabella cod.: NT16

File codes list (Generic code): http://www.ebiz.enea.it/moda-ml/repository/codelist/v2018-1/gc_NT16.xml

NT18 - message function

function performed by the present message with regards to the transmission

Agency name: eBIZ

tabella cod.: NT18

File codes list (Generic code): http://www.ebiz.enea.it/moda-ml/repository/codelist/v2018-1/gc_NT18.xml

Code	Description	Adoption note	Version status	Date of insertion
CA	delete this document			01/07/2013
CP	copy			
OR	original			
RC	re-transmission for data correction			
RT	re-transmission			

NT2 - third party qualifier

Third Party role qualifier

Agency name: eBIZ

tabella cod.: NT2

File codes list (Generic code): http://www.ebiz.enea.it/moda-ml/repository/codelist/v2018-1/gc_NT2.xml

Code	Description	Adoption note	Version status	Date of insertion
AG	Sales Agent			
AU	Auditor		(N)	08/04/2019
CE	Certification authority		(N)	08/04/2019
CO	Quality Controller			
DC	Response to			
DF	Invoicee			
DI	Copy to (CC)			28/10/2014
DM	Consignee			
DP	Consignment address (Delivery Party)			
IM	Importer			
OR	Originator			10/09/2014
SC	Sub contractor		(N)	10/04/2019
SM	Service/ePlatform manager		(N)	08/04/2019
SP	Forwarder			
TX	Tax Representative			

NT29 - format of a date

format used for the date

Agency name: eBIZ

tabella cod.: NT29

File codes list (Generic code): http://www.ebiz.enea.it/moda-ml/repository/codelist/v2018-1/gc_NT29.xml

Code	Description	Adoption note	Version status	Date of insertion
D	YYYY-MM-DD			
M	YYYY-MM-DD:HH-MM			
W	YYYY-WW			

NT3 - data format

format of a string according to a customized User rule (local rule)

Agency name: eBIZ

tabella cod.: NT3

File codes list (Generic code): http://www.ebiz.enea.it/moda-ml/repository/codelist/v2018-1/gc_NT3.xml

Code	Description	Adoption note	Version status	Date of insertion
EN4	GS1-GLN			01/07/2013
MD	mutually agreed			

NT6 - coding system owner/issuer

code specifying the organisation who has created or owns the coding or numbering system

Agency name: eBIZ

tabella cod.: NT6

File codes list (Generic code): http://www.ebiz.enea.it/moda-ml/repository/codelist/v2018-1/gc_NT6.xml

Code	Description	Adoption note	Version status	Date of insertion
CL	Customer/buyer			
CO	Quality Controller			
EB	eBIZ	replaces 'ML'	(N)	18/03/2019
EN	GS1 (ex-EAN International)			
ES	e-Stockflow			
FO	Supplier			
GS	GS1			01/07/2013
MF	VAT identifier		(U)	
ML	Moda-ML	DEPRECATED	(U)	
SP	Service Provider			

NT60 - language, codes from ISO 639-1 (subset) (N)

Agency name: eBIZ / ISO

tabella cod.: NT60

File codes list (Generic code): http://www.ebiz.enea.it/moda-ml/repository/codelist/v2018-1/gc_NT60.xml

Code	Description	Adoption note	Version status	Date of insertion
af	Afrikaans		(N)	31/01/2019
ar	Arabic		(N)	31/01/2019

be	Belarusian		(N)	31/01/2019
bg	Bulgarian		(N)	31/01/2019
bn	Bengali		(N)	31/01/2019
bo	Tibetan		(N)	31/01/2019
bs	Bosnian		(N)	31/01/2019
ca	Catalan, Valencian		(N)	31/01/2019
cs	Czech		(N)	31/01/2019
da	Danish		(N)	31/01/2019
de	German		(N)	31/01/2019
el	Greek, Modern (1453-)		(N)	31/01/2019
en	English		(N)	31/01/2019
eo	Esperanto		(N)	31/01/2019
es	Spanish, Castilian		(N)	31/01/2019
et	Estonian		(N)	31/01/2019
eu	Basque		(N)	31/01/2019
F	Female		(N)	15/04/2019
fa	Persian		(N)	31/01/2019
fi	Finnish		(N)	31/01/2019
fr	French		(N)	31/01/2019
ga	Irish		(N)	31/01/2019
gd	Gaelic, Scottish Gaelic		(N)	31/01/2019
gn	Guarani		(N)	31/01/2019
he	Hebrew		(N)	31/01/2019
hr	Croatian		(N)	31/01/2019
ht	Haitian, Haitian Creole		(N)	31/01/2019
hu	Hungarian		(N)	31/01/2019
hy	Armenian		(N)	31/01/2019
ia	Interlingua (International Auxiliary Language Association)		(N)	31/01/2019
id	Indonesian		(N)	31/01/2019
is	Icelandic		(N)	31/01/2019
it	Italian		(N)	31/01/2019
ja	Japanese		(N)	31/01/2019
jv	Javanese		(N)	31/01/2019
ka	Georgian		(N)	31/01/2019
km	Central Khmer		(N)	31/01/2019

ko	Korean		(N)	31/01/2019
ku	Kurdish		(N)	31/01/2019
lb	Luxembourgish, Letzeburgesch		(N)	31/01/2019
lo	Lao		(N)	31/01/2019
lt	Lithuanian		(N)	31/01/2019
lv	Latvian		(N)	31/01/2019
mg	Malagasy		(N)	31/01/2019
mk	Macedonian		(N)	31/01/2019
mn	Mongolian		(N)	31/01/2019
mt	Maltese		(N)	31/01/2019
nl	Dutch, Flemish		(N)	31/01/2019
no	Norwegian		(N)	31/01/2019
pl	Polish		(N)	31/01/2019
pt	Portuguese		(N)	31/01/2019
ro	Romanian, Moldavian, Moldovan		(N)	31/01/2019
ru	Russian		(N)	31/01/2019
se	Northern Sami		(N)	31/01/2019
sk	Slovak		(N)	31/01/2019
sl	Slovenian		(N)	31/01/2019
sm	Samoan		(N)	31/01/2019
so	Somali		(N)	31/01/2019
sq	Albanian		(N)	31/01/2019
sr	Serbian		(N)	31/01/2019
sv	Swedish		(N)	31/01/2019
sw	Swahili		(N)	31/01/2019
ta	Tamil		(N)	31/01/2019
th	Thai		(N)	31/01/2019
tr	Turkish		(N)	31/01/2019
uk	Ukrainian		(N)	31/01/2019
ur	Urdu		(N)	31/01/2019
uz	Uzbek		(N)	31/01/2019
vi	Vietnamese		(N)	31/01/2019
zh	Chinese		(N)	31/01/2019

NT7 - unit of measure (U)

specification of the unit of measure, it is a sub set of table Unit of Measure Code - UN/ECE REC 20 delivered by United Nations Economic Commission for Europe (UN/ECE)

Agency name: eBIZ / UN/ECE

tabella cod.: NT7

File codes list (Generic code): http://www.ebiz.enea.it/moda-ml/repository/codelist/v2018-1/gc_NT7.xml

Other link: <http://docs.oasis-open.org/ubl/os-UBL-2.1/cl/gc/default/UnitOfMeasureCode-2.1.gc#>

Code	Description	Adoption note	Version status	Date of insertion
CMK	square centimetre		(N)	20/12/2017
CMQ	cubic centimetre		(N)	20/12/2017
CMT	centimetre			
CNE	centiNewton			
CO2TON	ton of CO2		(N)	10/09/2014
COUPLES	couples			
DMQ	cubic decimetre			
E37	pixel		(N)	11/04/2018
GRM	gram			
HUR	hour			
INH	inch			
KGM	kilogram			
KMT	kilometer			
KWH	kilowatthours		(N)	10/09/2014
LBR	pound			
MIN	minute			
MMK	square millimetre		(N)	20/12/2017
MTK	square metre		(N)	20/12/2017
MTQ	cubic metre			
MTR	metre			
NMB	numero			
ONZ	ounce			
P1	percent			
PPM	parts per milion			
PZ	piece		(U)	
RPM	rounds per metre			
YRD	yard			

T10 - ISO3166 - Country

code of the nation

Agency name: ISO

tabella cod.: T10

File codes list (Generic code): http://www.ebiz.enea.it/moda-ml/repository/codelist/v2018-1/gc_T10.xml

Table not printed: there are 239 elements, more than the maximum specified for printing: 99.

T11 - transport package type (U)

code specifying the type of package used for transport and delivery (subset of UN/ECE 8053 and UBL TransportEquipmentTypeCode-2.1)

Agency name: eBIZ

tabella cod.: T11

File codes list (Generic code): http://www.ebiz.enea.it/moda-ml/repository/codelist/v2018-1/gc_T11.xml

Other link: <http://docs.oasis-open.org/ubl/os-UBL-2.1/cl/gc/default/TransportEquipmentTypeCode-2.1.gc#>

Code	Description	Adoption note	Version status	Date of insertion
4A	box, steel		(U)	
4C	box, wood		(U)	
4G	Box, fibreboard		(N)	01/08/2018
4H	Box, plastic		(N)	01/08/2018
5H	Bag, woven plastic		(N)	01/08/2018
5L	Bag, textile		(N)	01/08/2018
5M	Bag, paper		(U)	
AJ	Cone		(N)	01/08/2018
BL	Bale, compressed		(N)	01/08/2018
BN	Bale, non-compressed		(N)	01/08/2018
BX	Box		(U)	
CI	Canister		(N)	01/08/2018
CL	Coil		(N)	01/08/2018
CN	Container, not otherwise specified as transport equipment		(N)	01/08/2018
CS	Case		(N)	01/08/2018
CT	Carton		(N)	01/08/2018
EC	Bag, plastic		(N)	01/08/2018
ED	Case, with pallet base		(N)	01/08/2018

EE	Case, with pallet base, wooden		(N)	01/08/2018
EF	Case, with pallet base, cardboard		(N)	01/08/2018
EG	Case, with pallet base, plastic		(N)	01/08/2018
EH	Case, with pallet base, metal		(N)	01/08/2018
FX	Bag, flexible container		(N)	01/08/2018
HN	Hanger		(N)	01/08/2018
NE	unpacked		(U)	
NF	Unpacked or unpackageged, single unit		(N)	01/08/2018
NG	Unpacked or unpackageged, multiple units		(N)	01/08/2018
OA	Pallet, CHEP 40 cm x 60 cm		(N)	01/08/2018
OB	Pallet, CHEP 80 cm x 120 cm		(N)	01/08/2018
OC	Pallet, CHEP 100 cm x 120 cm		(N)	01/08/2018
OD	Pallet, AS 4068-1993		(N)	01/08/2018
OE	Pallet, ISO T11		(N)	01/08/2018
PE	europallet (80x120)			
PX	pallet		(U)	
QS	box, plastic, solid		(U)	
RJ	Rack, clothing hanger		(N)	01/08/2018
RL	Reel		(N)	01/08/2018
SO	Spool		(N)	01/08/2018
TU	tube		(U)	
XD	bag, plastics film		(U)	
XK	bag,paper, multi-wall, water resistant		(U)	
ZZ	Mutually defined		(N)	01/08/2018

T21 - type of document

type or class to which the referenced document belongs

Agency name: eBIZ

tabella cod.: T21

File codes list (Generic code): http://www.ebiz.enea.it/moda-ml/repository/codelist/v2018-1/gc_T21.xml

Code	Description	Adoption note	Version status	Date of insertion
BOR	blanket order		(N)	01/02/2018
CAT	Price catalogue - tech sheet			
CEO	Certificate of origin		(N)	13/04/2018

CER	Certificate		(N)	13/04/2018
COC	colour card			
CRN	Credit note			08/09/2017
CTO	Checking order			01/07/2013
CTR	Contract		(U)	
CXF	CxF3 file			01/07/2013
DAD	Darn order			
DDT	ddt			
DEA	Despatch advise			
DER	Despatch request			
DR	Document Request			02/12/2014
FOR	Forecast			02/12/2014
GSO	Garment stock offer			
GSX	Garment stock offer change			
INV	Invoice			
KCC	Knitting-Clothing Commission Order			02/12/2014
KCI	Garment in Work Inventory Report			02/12/2014
M2M	Made to Measure Production Order			02/12/2014
MAS	Master marker			
MCI	Visual merchandising instruction		(N)	13/04/2018
OCH	Order change			
OFF	Offer			
ORD	Purchase order			
ORP	Order response			
OSR	order status request			
OSS	Offer status			02/12/2014
OST	Order status			
OUR	our reference			
QR	Quality Report			02/12/2014
RAI	Raw Material in Work Inventory Report			02/12/2014
RDC	Raw dyeing commission order			
RDH	Raw dyeing order change			
RDR	Raw dyeing order response			
REA	Receiving advise			
REQ	Request for Offer			

RET	Return			02/12/2014
RSC	Spinning commission order			
RSH	Spinning order change			
RSR	Spinning order response			
SCL	process sheet			
TFC	Textile dyeing-finishing commission order			
TFX	Textile Dyeing-Finishing Order Change			02/12/2014
TPC	Textile printing commission order			
TPX	Textile Printing Order Change			02/12/2014
TWI	Textile in work inventory			
VMI	visual merchandising instructions		(N)	01/02/2018
WAC	Warping commission order			
WEC	Weaving commission order			
YDC	Yarn dyeing commission order			
YDH	Yarn dyeing order change			
YDR	Yarn dyeing order response			
YTC	Twisting commission order			
YWI	Yarn in work inventory			

T44 - additional code type

qualifier of the additional coding of a product

Agency name: eBIZ

tabella cod.: T44

File codes list (Generic code): http://www.ebiz.enea.it/moda-ml/repository/codelist/v2018-1/gc_T44.xml

Code	Description	Adoption note	Version status	Date of insertion
CC	colour card			
CL	sales collection			
CO	company identification code		(N)	08/09/2017
DY	dye number			
LT	lot number			
MDI	Made in			08/09/2017
MS	manufacturing state			
PKG	packaging			09/09/2014
PL	product line			

RGB	RGB value			
SE	selvedge code			

T47 - stock type

code classifying a stock of goods with reference to the manufacturing status

Agency name: eBIZ

tabella cod.: T47

File codes list (Generic code): http://www.ebiz.enea.it/moda-ml/repository/codelist/v2018-1/gc_T47.xml

Code	Description	Adoption note	Version status	Date of insertion
ALL	overall stock			
DMG	damaged stock			
FIW	finished (post-works) stock			
PRW	pre-works stock			
WIP	work in progress stock			

T48 - garment part type

code specifying the type of component or part of a garment (sleeve, neck, ...)

Agency name: eBIZ

tabella cod.: T48

File codes list (Generic code): http://www.ebiz.enea.it/moda-ml/repository/codelist/v2018-1/gc_T48.xml

Code	Description	Adoption note	Version status	Date of insertion
BB	bottom back		(N)	01/08/2018
BF	bottom fore/front		(N)	01/08/2018
CO	collar		(N)	01/08/2018
CU	cuff		(N)	01/08/2018
DV	fore		(N)	
EM	embroidery		(N)	01/08/2018
OC	other component		(N)	01/08/2018
PO	pocket		(N)	01/08/2018
SC	back		(N)	
SL	sleeve		(N)	01/08/2018
TB	top back		(N)	01/08/2018

TF	top fore/front		(N)	01/08/2018
----	----------------	--	-----	------------

Annex C

New or changed elements towards previous version

Changes or added elements (changes in description excluded; changes in aggregation notes and best practice included): 138

Test Type	Tag	Status	Item type	Changes related to
Child	actualPackageUnit	NEW	actual package unit	Has NEW child of: transport package text
Child	actualPackageUnit	NEW	actual package unit	Has NEW child of: transport package dimensions
Child	actualPackageUnit	NEW	actual package unit	Has NEW child of: actual items per package
Attribute	actualPackageUnit	NEW	actual package unit	Has NEW attribute: package level identifier
Child	actualPackageUnit	NEW	actual package unit	Has NEW child of: volume measure
Child	actualPackageUnit	NEW	actual package unit	Has NEW child of: items list
Child	actualPackageUnit	NEW	actual package unit	Has NEW child of: packages list
Child	actualPackageUnit	NEW	actual package unit	Has NEW child of: package identification
Child	actualPackageUnit	NEW	actual package unit	Has NEW child of: package model code
Child	actualPackageUnit	NEW	actual package unit	Has NEW child of: general note
Child	actualPackageUnit	NEW	actual package unit	Has NEW child of: transport package code
Child	actualPackageUnit	NEW	actual package unit	Has NEW child of: net weight measure
Child	actualPackageUnit	NEW	actual package unit	Has NEW child of: gross weight measure

Element(l)	actualItemsPerPackage	NEW	actual items per package	
Element(l)	actualPackageUnit	NEW	actual package unit	
Attribute	additionalIdentifier	NEW	Additional Party Identifier	Has NEW attribute: numbering organisation code
Attribute	additionalIdentifier	NEW	Additional Party Identifier	Has NEW attribute: id Qualifier
Element(l)	additionalIdentifier	NEW	Additional Party Identifier	
Element(E)	art	UPD ATED	article identifier	Property: Length_Max Old value: 25 New value: 80
Attribute	art	UPD ATED	article identifier	Its attribute: code list reference Property: Aggregation Note_English Old value: <i>this attribute should be ALTERNATIVE to the others</i> New value: <i>at least one out of this attribute and "numberingOrg" should be set</i>
Element(l)	attachment	NEW	attachment	
Child	attachment	NEW	attachment	Has NEW child of: file name
Child	attachment	NEW	attachment	Has NEW child of: external reference
Child	attachment	NEW	attachment	Has NEW child of: binary object
Attribute	binaryObject	NEW	binary object	Has NEW attribute: encoding
Attribute	binaryObject	NEW	binary object	Has NEW attribute: mime
Attribute	binaryObject	NEW	binary object	Has NEW attribute: format
Attribute	binaryObject	NEW	binary object	Has NEW attribute: character set
Element(l)	binaryObject	NEW	binary object	
Child	buyer	NEW	Buyer (*)	Has NEW child of: Party identifier
Child	buyer	NEW	Buyer (*)	Has NEW child of: Additional Party Identifier

Attrib	buyer	NEW	Buyer (*)	Has NEW attribute: sender Party qualifier
Elem(I)	characterSetCode	NEW	character set code	
Elem(I)	characterSet	NEW	character set	
Elem(E)	packageContainerN	UPD ATED	container reference	Property: Length_Max Old value: 25 New value: 40
Attrib	description	NEW	description	Has NEW attribute: ln
Elem(E)	description	UPD ATED	description	Property: Length_Max Old value: 70 New value: 250
Attrib	drop	NEW	drop identifier	Has NEW attribute: numbering organisation code
Attrib	drop	NEW	drop identifier	Has NEW attribute: code list name
Attrib	drop	NEW	drop identifier	Has NEW attribute: code list version
Elem(E)	email	UPD ATED	e-mail	Property: Length_Max Old value: 80 New value: 250
Elem(I)	encodingCode	NEW	encoding code	
Elem(I)	encoding	NEW	encoding	
Child	externalReference	NEW	external reference	Has NEW child of: uri
Child	externalReference	NEW	external reference	Has NEW child of: format code
Child	externalReference	NEW	external reference	Has NEW child of: character set code
Child	externalReference	NEW	external reference	Has NEW child of: mime code
Child	externalReference	NEW	external reference	Has NEW child of: encoding code
Elem(I)	externalReference	NEW	external reference	
Attrib	fabric	UPD ATED	fabric identifier	Its attribute: code list reference Property: Aggregation Note_English Old value: <i>this attribute should be ALTERNATIVE to the others</i> New value: <i>at least one out of this attribute and "numberingOrg" should be set</i>

Attrib	fileName	NEW	file name	Has NEW attribute: numbering organisation code
Elem(l)	fileName	NEW	file name	
Elem(l)	formatCode	NEW	format code	
Elem(l)	format	NEW	format	
Child	garmentCodeA	UPDATED	garment code A	relationship with child: description Property: Cardmax Old value: 1 New value: 999
Child	garmentCodeA	UPDATED	garment code A	relationship with child: description Property: Aggregation Note_English Old value: New value: <i>Product description</i>
Child	garmentCodeB	NEW	garment code B	Has NEW child of: drop identifier
Child	garmentCodeB	NEW	garment code B	Has NEW child of: garment variant
Child	garmentCodeB	UPDATED	garment code B	relationship with child: description Property: Aggregation Note_English Old value: New value: <i>Product description</i>
Child	garmentCodeB	UPDATED	garment code B	relationship with child: description Property: Cardmax Old value: 1 New value: 999
Child	garmentPartCode	NEW	Garment part code	Has NEW child of: articles additional identifier
Child	garmentPartCode	UPDATED	Garment part code	relationship with child: description Property: Cardmax Old value: 1 New value: 999
Child	garmentPartCode	UPDATED	Garment part code	relationship with child: description Property: Aggregation Note_English Old value: New value: <i>Product part description</i>
Child	garmentVariant	NEW	garment variant	Has NEW child of: variant code

Child	garment Variant	NEW	garment variant	Has NEW child of: variant type
Element(l)	garment Variant	NEW	garment variant	
Attribute	note	UPDATED	general note	Its attribute: numbering organisation code Property: Aggregation Note_English Old value: New value: <i>must be used to specify the organization that created the list of codes used in "noteLabel"</i>
Attribute	artGroup	UPDATED	group identifier	Its attribute: code list reference Property: Aggregation Note_English Old value: <i>this attribute should be ALTERNATIVE to the others</i> New value: <i>at least one out of this attribute and "numberingOrg" should be set</i>
Child	GWHeader	NEW	GWHeader	Has NEW child of: Third Party
Child	GWHeader	UPDATED	GWHeader	relationship with child: general note Property: Cardmax Old value: 19 New value: 99
Child	GWItem	NEW	GWItem	Has NEW child of: line identifier
Child	GWItem	UPDATED	GWItem	relationship with child: reference document details Property: Cardmax Old value: 1 New value: 9
Child	GWItem	UPDATED	GWItem	relationship with child: general note Property: Cardmax Old value: 19 New value: 99
Element(l)	idQualifier	NEW	id Qualifier	
Child	inventory	NEW	inventory	Has NEW child of: items list
Child	inventory	NEW	inventory	Has NEW child of: actual package unit
Child	inventory	UPDATED	inventory	relationship with child: product quantity Property: BestPractice_English Old value:

				New value: <i>this element can have two instances only if the units of measure are different</i>
Child	inventory	UPDATED	inventory	relationship with child: serial number Property: Gruppo Old value: 0 New value: -1
Child	inventory	UPDATED	inventory	relationship with child: serial number Property: Grp_pos Old value: 0 New value: 1
Child	inventory	UPDATED	inventory	relationship with child: serial number Property: Aggregation Note_English Old value: <i>When different numbering organisations are used all the serial numbers of every one should be reported.</i> New value: <i>Use this element if the coding method is only one and is the same for each article</i>
Child	inventory	UPDATED	inventory	relationship with child: epc list Property: Aggregation Note_English Old value: New value: <i>DEPRECATED, use serialN or itemsList</i>
Element(l)	isURL	NEW	is URL	
Child	itemIdentification	NEW	item identification	Has NEW child of: serial number
Element(l)	itemIdentification	NEW	item identification	
Child	itemsList	NEW	items list	Has NEW child of: quality level
Child	itemsList	NEW	items list	Has NEW child of: item identification
Element(l)	itemsList	NEW	items list	
Element(E)	legalName	UPDATED	Legal name	Property: Length_Max Old value: 80 New value: 250
Element(E)	itemID	UPDATED	line item number	Property: Length_Max Old value: 6 New value: 40
Attribute	lineN	UPDATED	line number	Its attribute: VAT rate Property: Aggregation Note_English Old value: New value: <i>Deprecated, prefer dtScheme when available.</i>

Elem(l)	lineID	NEW	line identifier	
Elem(l)	ln	NEW	ln	
Elem(l)	mimeCode	NEW	mime code	
Elem(l)	mime	NEW	mime	
Attrib	mod	UPD ATED	model identifier	Its attribute: code list reference Property: Aggregation Note_English Old value: <i>this attribute should be ALTERNATIVE to the others</i> New value: <i>at least one out of this attribute and "numberingOrg" should be set</i>
Attrib	mod	UPD ATED	model identifier	Its attribute: numbering organisation code Property: Aggregation Note_English Old value: <i>this attribute should be ALTERNATIVE to the others</i> New value:
Child	package identification	NEW	package identification	Has NEW child of: package number
Child	package identification	NEW	package identification	Has NEW child of: serial number
Attrib	package ModelCode	NEW	package model code	Has NEW attribute: numbering organisation code
Elem(E)	package N	UPD ATED	package number	Property: Length_Max Old value: 25 New value: 40
Elem(l)	package identification	NEW	package identification	
Elem(l)	package ModelCode	NEW	package model code	
Child	packages List	NEW	packages list	Has NEW child of: package identification
Elem(l)	packages List	NEW	packages list	
Attrib	qualityLevel	NEW	quality level	Has NEW attribute: numbering organisation code
Attrib	qualityLevel	NEW	quality level	Has NEW attribute: code list reference
Attrib	qualityLevel	NEW	quality level	Has NEW attribute: code list version

Attrib	qualityLevel	NEW	quality level	Has NEW attribute: code list name
Elem(I)	qualityLevel	NEW	quality level	
Child	refDoc	NEW	reference document details	Has NEW child of: attachment
Child	refDoc	UPD ATED	reference document details	relationship with child: document identifier Property: BestPractice_English Old value: New value: <i>numberingOrg</i> indicates the role that produced the document identifier (it is allowed to declare two different ones -e.g. customer and supplier - with two docID with different numberingOrg
Attrib	season	NEW	season identifier	Has NEW attribute: code list reference
Attrib	season	NEW	season identifier	Has NEW attribute: numbering organisation code
Attrib	season	NEW	season identifier	Has NEW attribute: code list name
Attrib	season	NEW	season identifier	Has NEW attribute: code list version
Attrib	serialIN	NEW	serial number	Has NEW attribute: id Qualifier
Elem(E)	serialIN	UPD ATED	serial number	Property: Length_Max Old value: 15 New value: 250
Attrib	size	NEW	size identifier	Has NEW attribute: numbering organisation code
Attrib	size	NEW	size identifier	Has NEW attribute: code list name
Attrib	size	NEW	size identifier	Has NEW attribute: code list version
Child	subContractor	NEW	Sub-contractor (*)	Has NEW child of: Party identifier
Attrib	subContractor	NEW	Sub-contractor (*)	Has NEW attribute: sender Party qualifier
Elem(I)	subDept	NEW	department identifier	
Child	thirdParty	NEW	Third Party (*)	Has NEW child of: Party identifier
Attrib	thirdParty	NEW	Third Party (*)	Has NEW attribute: sender Party qualifier
Elem(E)	packageText	UPD ATED	transport package text	Property: Length_Max Old value: 40 New value: 80

Attrib	uri	NEW	uri	Has NEW attribute: is URL
Elem(l)	uri	NEW	uri	
Attrib	variantCode	NEW	variant code	Has NEW attribute: code list version
Attrib	variantCode	NEW	variant code	Has NEW attribute: code list name
Attrib	variantCode	NEW	variant code	Has NEW attribute: numbering organisation code
Attrib	variantCode	NEW	variant code	Has NEW attribute: code list reference
Attrib	variantType	NEW	variant type	Has NEW attribute: code list reference
Attrib	variantType	NEW	variant type	Has NEW attribute: code list version
Attrib	variantType	NEW	variant type	Has NEW attribute: code list name
Attrib	variantType	NEW	variant type	Has NEW attribute: numbering organisation code
Elem(l)	variantCode	NEW	variant code	
Elem(l)	variantType	NEW	variant type	

Annex D

New or changed tables and codes towards previous version

Changes or added items (changes in CodeListAgencyName excluded; changes in adoption notes and code description included): 144

Test Type	Status	Table code	Table description	Code	Change description
Table	UPDATED	NT100	eBIZ TCFUpstream version		Description_English Old value: <i>eBIZ Moda-ML version</i> New value: <i>eBIZ TCFUpstream version</i>
Code	NEW	NT100		2018-1 (v2018-1)	
Code	NEW	NT100		<i>draft</i> (draft)	
Table	UPDATED	NT16	VAT rate or code		Generalities Old value: <i>VAT rate or code (deprecated, use dtScheme element)</i> New value: <i>VAT rate or code (DEPRECATED, use dtScheme element)</i>
Code	NEW	NT2		<i>AU</i> (Auditor)	
Code	NEW	NT2		<i>CE</i> (Certification authority)	
Code	NEW	NT2		<i>SC</i> (Sub contractor)	
Code	NEW	NT2		<i>SM</i> (Service/ePlatform manager)	
Code	NEW	NT6		<i>EB</i> (eBIZ)	
Code	UPDATED	NT6		<i>ML</i> (DEPRECATED)	adoption_note Old value: New value: <i>DEPRECATED</i>
Table	NEW	NT60	language, codes from ISO 639-1 (subset)		
Code	NEW	NT60		<i>F</i> (Female)	
Code	NEW	NT60		<i>af</i> (Afrikaans)	

Co de	NE W	NT 60		<i>ar</i> (Arabic)	
Co de	NE W	NT 60		<i>be</i> (Belarusian)	
Co de	NE W	NT 60		<i>bg</i> (Bulgarian)	
Co de	NE W	NT 60		<i>bn</i> (Bengali)	
Co de	NE W	NT 60		<i>bo</i> (Tibetan)	
Co de	NE W	NT 60		<i>bs</i> (Bosnian)	
Co de	NE W	NT 60		<i>ca</i> (Catalan, Valencian)	
Co de	NE W	NT 60		<i>cs</i> (Czech)	
Co de	NE W	NT 60		<i>da</i> (Danish)	
Co de	NE W	NT 60		<i>de</i> (German)	
Co de	NE W	NT 60		<i>el</i> (Greek, Modern (145 3-))	
Co de	NE W	NT 60		<i>en</i> (English)	
Co de	NE W	NT 60		<i>eo</i> (Esperanto)	
Co de	NE W	NT 60		<i>es</i> (Spanish, Castilian)	
Co de	NE W	NT 60		<i>et</i> (Estonian)	
Co de	NE W	NT 60		<i>eu</i> (Basque)	
Co de	NE W	NT 60		<i>fa</i> (Persian)	
Co de	NE W	NT 60		<i>fi</i> (Finnish)	
Co de	NE W	NT 60		<i>fr</i> (French)	
Co de	NE W	NT 60		<i>ga</i> (Irish)	
Co de	NE W	NT 60		<i>gd</i> (Gaelic, Scottish Gae lic)	
Co de	NE W	NT 60		<i>gn</i> (Guarani)	

Co de	NE W	NT 60		<i>he</i> (Hebrew)	
Co de	NE W	NT 60		<i>hr</i> (Croatian)	
Co de	NE W	NT 60		<i>ht</i> (Haitian, Haitian Creole)	
Co de	NE W	NT 60		<i>hu</i> (Hungarian)	
Co de	NE W	NT 60		<i>hy</i> (Armenian)	
Co de	NE W	NT 60		<i>ia</i> (Interlingua (International Auxiliary Language Association))	
Co de	NE W	NT 60		<i>id</i> (Indonesian)	
Co de	NE W	NT 60		<i>is</i> (Icelandic)	
Co de	NE W	NT 60		<i>it</i> (Italian)	
Co de	NE W	NT 60		<i>ja</i> (Japanese)	
Co de	NE W	NT 60		<i>ju</i> (Javanese)	
Co de	NE W	NT 60		<i>ka</i> (Georgian)	
Co de	NE W	NT 60		<i>km</i> (Central Khmer)	
Co de	NE W	NT 60		<i>ko</i> (Korean)	
Co de	NE W	NT 60		<i>ku</i> (Kurdish)	
Co de	NE W	NT 60		<i>lb</i> (Luxembourgish, Letzeburgesch)	
Co de	NE W	NT 60		<i>lo</i> (Lao)	
Co de	NE W	NT 60		<i>lt</i> (Lithuanian)	
Co de	NE W	NT 60		<i>lv</i> (Latvian)	
Co de	NE W	NT 60		<i>mg</i> (Malagasy)	
Co de	NE W	NT 60		<i>mk</i> (Macedonian)	

Co de	NE W	NT 60		<i>mn</i> (Mongolian)	
Co de	NE W	NT 60		<i>mt</i> (Maltese)	
Co de	NE W	NT 60		<i>nl</i> (Dutch, Flemish)	
Co de	NE W	NT 60		<i>no</i> (Norwegian)	
Co de	NE W	NT 60		<i>pl</i> (Polish)	
Co de	NE W	NT 60		<i>pt</i> (Portuguese)	
Co de	NE W	NT 60		<i>ro</i> (Romanian, Moldavia n, Moldovan)	
Co de	NE W	NT 60		<i>ru</i> (Russian)	
Co de	NE W	NT 60		<i>se</i> (Northern Sami)	
Co de	NE W	NT 60		<i>sk</i> (Slovak)	
Co de	NE W	NT 60		<i>sl</i> (Slovenian)	
Co de	NE W	NT 60		<i>sm</i> (Samoan)	
Co de	NE W	NT 60		<i>so</i> (Somali)	
Co de	NE W	NT 60		<i>sq</i> (Albanian)	
Co de	NE W	NT 60		<i>sr</i> (Serbian)	
Co de	NE W	NT 60		<i>sv</i> (Swedish)	
Co de	NE W	NT 60		<i>sw</i> (Swahili)	
Co de	NE W	NT 60		<i>ta</i> (Tamil)	
Co de	NE W	NT 60		<i>th</i> (Thai)	
Co de	NE W	NT 60		<i>tr</i> (Turkish)	
Co de	NE W	NT 60		<i>uk</i> (Ukrainian)	
Co de	NE W	NT 60		<i>ur</i> (Urdu)	

Code	NE W	NT 60		<i>uz</i> (Uzbek)	
Code	NE W	NT 60		<i>vi</i> (Vietnamese)	
Code	NE W	NT 60		<i>zh</i> (Chinese)	
Code	NE W	NT 7		<i>CMK</i> (square centimetre)	
Code	NE W	NT 7		<i>CMQ</i> (cubic centimetre)	
Code	NE W	NT 7		<i>E37</i> (pixel)	
Code	NE W	NT 7		<i>KWH</i> (kilowatthours)	
Code	NE W	NT 7		<i>MMK</i> (square millimetre)	
Code	NE W	NT 7		<i>MTK</i> (square metre)	
Code	NE W	NT 7		<i>CO2TON</i> (ton of CO2)	
Table	UPD ATE D	NT 7	unit of measure		OtherExternalReferenceURL Old value: New value: #http://docs.oasis-open.org/ubl/os-UBL-2.1/cl/gc/default/UnitOfMeasureCode-2.1.gc#
Table	UPD ATE D	NT 7	unit of measure		Description_English Old value: <i>unity of measure</i> New value: <i>unit of measure</i>
Code	NE W	T1 1		<i>4G</i> (Box, fibreboard)	
Code	NE W	T1 1		<i>4H</i> (Box, plastic)	
Code	NE W	T1 1		<i>5H</i> (Bag, woven plastic)	
Code	NE W	T1 1		<i>5L</i> (Bag, textile)	
Code	UPD ATE D	T1 1		<i>5M</i> (Bag, paper)	Text_English Old value: <i>bag, paper</i> New value: <i>Bag, paper</i>
Code	NE W	T1 1		<i>AJ</i> (Cone)	
Code	NE W	T1 1		<i>BL</i> (Bale, compressed)	
Code	NE W	T1 1		<i>BN</i> (Bale, non-compressed)	

Code	UPDATE	T11		<i>BX</i> (Box)	Text_English Old value: <i>box</i> New value: <i>Box</i>
Code	NEW	T11		<i>CI</i> (Canister)	
Code	NEW	T11		<i>CL</i> (Coil)	
Code	NEW	T11		<i>CN</i> (Container, not otherwise specified as transport equipment)	
Code	NEW	T11		<i>CS</i> (Case)	
Code	NEW	T11		<i>CT</i> (Carton)	
Code	NEW	T11		<i>EC</i> (Bag, plastic)	
Code	NEW	T11		<i>ED</i> (Case, with pallet base)	
Code	NEW	T11		<i>EE</i> (Case, with pallet base, wooden)	
Code	NEW	T11		<i>EF</i> (Case, with pallet base, cardboard)	
Code	NEW	T11		<i>EG</i> (Case, with pallet base, plastic)	
Code	NEW	T11		<i>EH</i> (Case, with pallet base, metal)	
Code	NEW	T11		<i>FX</i> (Bag, flexible container)	
Code	NEW	T11		<i>HN</i> (Hanger)	
Code	NEW	T11		<i>NF</i> (Unpacked or unpackaged, single unit)	
Code	NEW	T11		<i>NG</i> (Unpacked or unpackaged, multiple units)	
Code	NEW	T11		<i>OA</i> (Pallet, CHEP 40 cm x 60 cm)	
Code	NEW	T11		<i>OB</i> (Pallet, CHEP 80 cm x 120 cm)	

Code	NE W	T1 1		OC (Pallet, CHEP 100 cm x 120 cm)	
Code	NE W	T1 1		OD (Pallet, AS 4068-1993)	
Code	NE W	T1 1		OE (Pallet, ISO T11)	
Code	NE W	T1 1		RJ (Rack, clothing hanger)	
Code	NE W	T1 1		RL (Reel)	
Code	NE W	T1 1		SO (Spool)	
Code	NE W	T1 1		ZZ (Mutually defined)	
Table	UPD ATE D	T1 1	transport package type		OtherExternalReferenceURL Old value: New value: #http://docs.oasis-open.org/ubl/os-UBL-2.1/cl/gc/default/TransportEquipmentTypeCode-2.1.gc#
Table	UPD ATE D	T1 1	transport package type		Generalities Old value: <i>code specifying the type of package used for transport and delivery</i> New value: <i>code specifying the type of package used for transport and delivery (subset of UN/ECE 8053 and UBL TransportEquipmentTypeCode-2.1)</i>
Code	NE W	T2 1		BOR (blanket order)	
Code	NE W	T2 1		CEO (Certificate of origin)	
Code	NE W	T2 1		CER (Certificate)	
Code	UPD ATE D	T2 1		CTR (Contract)	Text_English Old value: <i>contract</i> New value: <i>Contract</i>
Code	NE W	T2 1		MCI (Visual merchandising instruction)	
Code	NE W	T2 1		VMI (visual merchandising instructions)	
Code	NE W	T4 4		CO (company identification code)	
Code	NE W	T4 8		BB (bottom back)	

Co de	NE W	T4 8		<i>BF</i> (bottom fore/front)	
Co de	NE W	T4 8		<i>CO</i> (collar)	
Co de	NE W	T4 8		<i>CU</i> (cuff)	
Co de	NE W	T4 8		<i>DV</i> (fore)	
Co de	NE W	T4 8		<i>EM</i> (embroidery)	
Co de	NE W	T4 8		<i>OC</i> (other component)	
Co de	NE W	T4 8		<i>PO</i> (pocket)	
Co de	NE W	T4 8		<i>SC</i> (back)	
Co de	NE W	T4 8		<i>SL</i> (sleeve)	
Co de	NE W	T4 8		<i>TB</i> (top back)	
Co de	NE W	T4 8		<i>TF</i> (top fore/front)	