



<http://www.ebiz-tcf.eu>

## IMPLEMENTATION GUIDE

includes COMPARISON BETWEEN CURRENT and LAST  
PREVIOUSLY RELEASED VERSION  
TRANSACTION "RAW MATERIAL DYEING COMMISSION  
ORDER"

Version: v2018-1

Date of release: 18/7/2019

Document code: G046rv

technical Documentation: <http://www.ebiz.enea.it>

XML Schemas repository: <http://www.ebiz.enea.it/moda-ml/repository/schema/v2018-1/default.asp>

Guides repository: <http://www.ebiz.enea.it/moda-ml/repository/guide/v2018-1/default.asp>

Guide filename: G046rv-eBIZ-RawMaterialDyeingCommissionOrder.pdf

# 1. BUSINESS DESCRIPTION

## 1.1 Scope

The present guide has been issued to assist the companies of the Textile-Clothing sector in the implementation of the standard XML document type "RAW MATERIAL DYEING COMMISSION ORDER", providing all the instruction required for its use in the context of e-commerce between Dyeing Subcontractors and their Customers shown in the enclosed diagram

All the rules required for the construction and validation of the document are embedded into the specific XML-Schema, which is detailed in section "Implementation guide".

## 1.2 Generalities

The Raw material Dyeing commission order is used by a Yarn Producer to commit to a Subcontractor the dyeing of a raw material required to transform the material into yarn usable for fabric production. This work order can include one or several operations of the dyeing cycle.

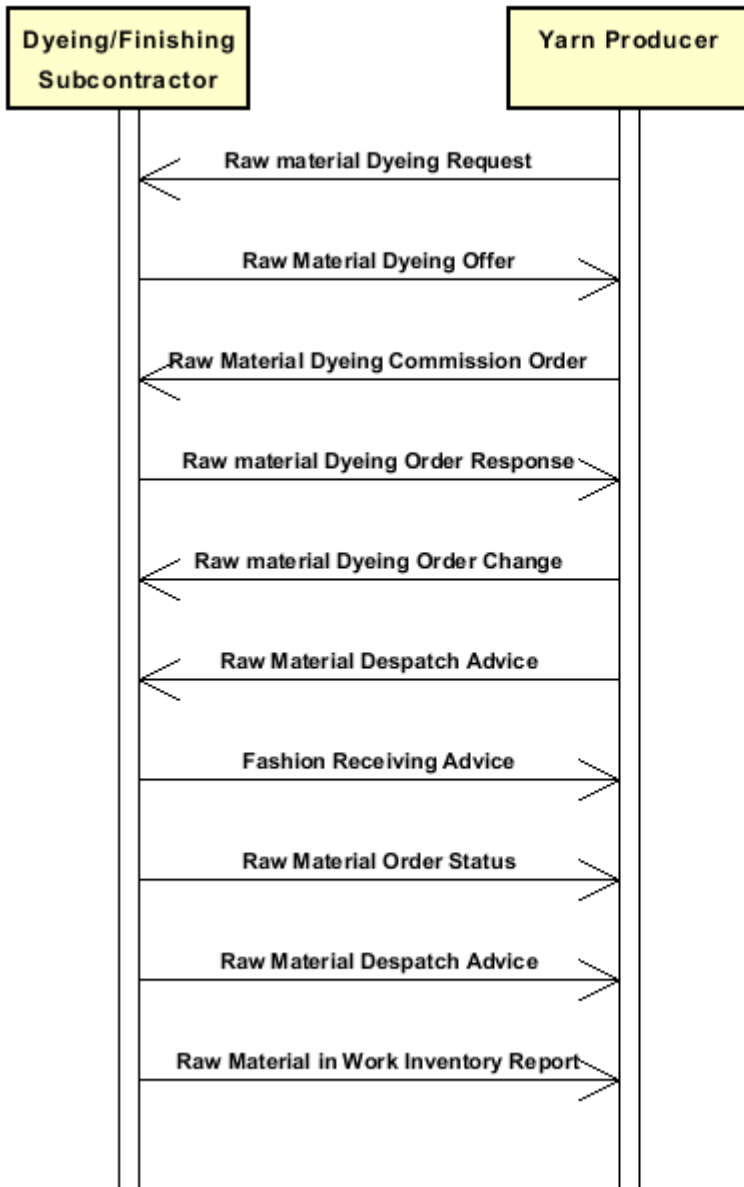
When the Issuer of the Commission requires different manufacturing operations in sequence to different Subcontractors, he can use this document not only as work order but also as a despatch order to send the semi-finished product to a successive Subcontractor

As a general rule, the Raw material dyeing commission order specifies only the characteristics of the end product of each operation and specifies the components used to manufacture that product

It must be noted that this end product can be, in turn, a component for a successive manufacturing operation

## 1.3. Possible scenario

Subcontracted dyeing of raw material



## 2. IMPLEMENTATION GUIDE

### 2.1 General structure of XML document

All the business data that can be exchanged through this class of documents are shown in the following "document structure", that provides a simplified vision of the Schema.

In particular:

- the two numbers following each element define its "cardinality" (minimum and maximum number of occurrences); the minimum equal zero indicates that the element is optional, the minimum greater than zero indicates that is mandatory;
- the bold character denotes the complex elements (aggregates of simple elements) that were built for the sake of functionality and re-usability of some complex informations sets. The child elements in each parent element are easily spotted as "indented";
- the symbol "@" denotes an attribute of the preceding element; here "the usage indicator (optional, required, ...)" is shown in square brackets.

#### Legenda

- N: new element
- U: updated properties
- P: changes in children
- p: is a changed child
- A: changes in attributes
- a: is a new or changed attribute
- \*: is a subtype

### Structure

#### RAWDyeOrder

@msgfunction [Optional] [Default= OR]

@version [Optional] [Default= 2018-1]

@useProfile [Optional]

```
| RDCOheader 1-1 (P)
| | msgN 1-1
| | - choose -
| | msgID 0-1
| | - or -
| | docID 0-1
| | @numberingOrg [Optional]
| | - end choose -
| | msgDate 1-1
| | @dateForm [Optional]
| | season 0-1 (A)
| | @numberingOrg [Optional] (a)
| | @codeList [Optional] (a)
| | @listName [Optional] (a)
| | @listVersion [Optional] (a)
| | msgCurrency 0-1
| | refDoc 0-9 (P)
| | @docType [Required]
| | | docID 1-2 (p)
| | | @numberingOrg [Optional]
| | | docDate 0-1
| | | @dateForm [Optional]
| | | season 0-1 (A)
| | | @numberingOrg [Optional] (a)
| | | @codeList [Optional] (a)
| | | @listName [Optional] (a)
```

- | @listVersion [Optional] (a)
- | itemID 0-1 (U)
- | **attachment 0-1 (N)**
- | @uid [Optional]
  - | fileName 0-1 (N)
  - | @numberingOrg [Optional] (a)
  - | binaryObject 0-1 (N)
  - | @format [Optional] (N)
  - | @mime [Optional] (N)
  - | @encoding [Optional] (N)
  - | @characterSet [Optional] (N)
- | **externalReference 0-99 (N)**
  - | uri 1-1 (N)
  - | @isURL [Optional] [Default= true] (Na)
  - | mimeTypeCode 0-1 (N)
  - | formatCode 0-1 (N)
  - | encodingCode 0-1 (N)
  - | characterSetCode 0-1 (N)

| **buyer 1-1 (AP)**

- | @logo [Optional]
- | @sender [Optional] (a\*)
  - | id 1-1 (p)
  - | @numberingOrg [Optional]
  - | additionalIdentifier 0-9 (N)
  - | @numberingOrg [Optional] (a)
  - | @idQualifier [Optional] (Na)
  - | legalName 0-1 (U)
  - | dept 0-1
  - | subDept 0-1 (N)
  - | person 0-1
  - | @email [Optional]
  - | @phone [Optional]
  - | @fax [Optional]
  - | street 0-1
  - | city 0-1
  - | subCountry 0-1
  - | country 0-1
  - | postCode 0-1

| **subContractor 1-1 (AP)**

- | @sender [Optional] (a\*)
  - | id 1-1
  - | @numberingOrg [Optional]
  - | legalName 0-1 (U)
  - | dept 0-1
  - | subDept 0-1 (N)
  - | person 0-1
  - | @email [Optional]
  - | @phone [Optional]
  - | @fax [Optional]
  - | street 0-1
  - | city 0-1
  - | subCountry 0-1
  - | country 0-1
  - | postCode 0-1

| **thirdParty 0-5 (AP)**

- | @VAT [Optional]
- | @role [Required]
- | @sender [Optional] (a\*)
  - | id 1-1
  - | @numberingOrg [Optional]
  - | legalName 0-1 (U)

- | | dept 0-1
- | | subDept 0-1 (N)
- | | person 0-1
- | | @email [Optional]
- | | @phone [Optional]
- | | @fax [Optional]
- | | street 0-1
- | | city 0-1
- | | subCountry 0-1
- | | country 0-1
- | | postCode 0-1
- | | note 0-99
- | | @numberingOrg [Optional]
- | | @codeList [Optional]
- | | @noteLabel [Optional]

| **terms 0-1 (P)**

- | | **payment 0-5**
- | | @finDiscount [Optional]
- | | @finSurcharge [Optional]
- | | - choose -
- | | | payTerm 1-1
- | | | - or -
- | | | payTermText 1-1 (U)
- | | | - end choose -
- | | | payMode 0-1

- | | **insPayment 0-5**
- | | @part [Required]
- | | - choose -
- | | | payTerm 1-1
- | | | - or -
- | | | payTermText 1-1 (U)
- | | | - end choose -
- | | | payMode 0-1

- | | **trade 0-1**
- | | - choose -
- | | | incoTermText 1-1 (U)
- | | | - or -
- | | | incoTerm 1-1
- | | | - end choose -
- | | | location 0-1
- | | | @LRI [Optional]

- | | **transInfo 0-5 (pAP)**
- | | @transReason [Optional]
- | | @progr [Optional] (N)
- | | transMode 1-1
- | | carrier 0-1
- | | deliveryPlace 0-1 (U)
- | | grossWeight 0-1
- | | @um [Required]
- | | netWeight 0-1
- | | @um [Required]
- | | transMeans 0-1
- | | transCondition 0-3
- | | transConditionText 0-1 (U)
- | | despatchPlace 0-1 (N)
- | | despatchDate 0-1 (N)
- | | @dateForm [Optional] (a)
- | | delEffectiveDate 0-1 (p)
- | | @dateForm [Optional]

- | | **allowanceCharge 0-9 (A)**

```

| | @um [Optional] (a)
| | @VAT [Optional]
| | @minQty [Optional] (a)
| | @currency [Optional] (a)
| | @maxQty [Optional] (N)
| | @isCharge [Optional] (N)
| | - choose -
| | | AC_category 1-1
| | - or -
| | | AC_categoryText 1-1 (U)
| | - end choose -
| | - choose -
| | | AC_percent 1-1
| | - or -
| | | AC_amount 1-1 (A)
| | | @currency [Optional] (a)
| | - end choose -
| | | dtScheme 0-1 (P)
| | | @taxType [Required]
| | | taxCategory 0-1
| | | taxRate 0-1
| | | legalRef 0-1 (A)
| | | @numberingOrg [Optional]
| | | @codeList [Optional]
| | | @listName [Optional]
| | | @listVersion [Optional]
| | | note 0-99
| | | @numberingOrg [Optional]
| | | @codeList [Optional]
| | | @noteLabel [Optional]

```

#### RDCObody 1-1

```

| | RDCOitem 1-unbounded (P)
| | @productLevel [Optional] [Default= END]
| | lineN 1-1
| | @VAT [Optional]
| | rawProd 1-1 (P)
| | @CTest [Optional]
| | | rawCode 1-1 (P)
| | | @numberingOrg [Optional]
| | | | art 1-1 (U)
| | | | @numberingOrg [Optional]
| | | | @codeList [Optional]
| | | | @listName [Optional]
| | | | @listVersion [Optional]
| | | | color 0-1
| | | | @numberingOrg [Optional]
| | | | @codeList [Optional]
| | | | @listName [Optional]
| | | | @listVersion [Optional]
| | | | added 0-9
| | | | @numberingOrg [Optional]
| | | | @addType [Optional]
| | | | description 0-unbounded (AU)
| | | | @ln [Optional] (N)
| | | rawSpecs 0-9
| | | - choose -
| | | | rawCharText 1-1 (U)
| | | - or -
| | | | rawChar 1-1
| | | - end choose -

```

```

| | | | specValue 0-1
| | | | @um [Optional]
| | | | @source [Optional]
| | | | @method [Optional]
| | | | @application [Optional]
| | | | @CV [Optional]
- choose -
| | | | pcTolerance 0-2
| | | | @um [Optional]
- or -
| | | | tolerance 0-2
| | | | @um [Required]
- end choose -
| | | | lotN 0-1
| | | | @numberingOrg [Optional]
| | | | dyeN 0-1
| | | | @numberingOrg [Optional]
| | | | note 0-99
| | | | @numberingOrg [Optional]
| | | | @codeList [Optional]
| | | | @noteLabel [Optional]
qty 1-2
@um [Required]
price 0-1 (AU)
@um [Optional]
@priceQualifier [Optional] [Default= NET]
@currency [Optional] (a)
deliveryDate 0-1
@dateForm [Optional]
thirdParty 0-3 (AP)
@VAT [Optional]
@role [Required]
@sender [Optional] (a*)
| id 1-1
| @numberingOrg [Optional]
| legalName 0-1 (U)
| dept 0-1
| subDept 0-1 (N)
| person 0-1
| @email [Optional]
| @phone [Optional]
| @fax [Optional]
| street 0-1
| city 0-1
| subCountry 0-1
| country 0-1
| postCode 0-1
rawComponent 1-9 (P)
@CQQ [Optional]
| pcQty 0-1
| @um [Optional]
| rawCode 1-1 (P)
| @numberingOrg [Optional]
| | art 1-1 (U)
| | @numberingOrg [Optional]
| | @codeList [Optional]
| | @listName [Optional]
| | @listVersion [Optional]
| | color 0-1
| | @numberingOrg [Optional]
| | @codeList [Optional]

```



```

| | | | @listName [Optional]
| | | | @listVersion [Optional]
| | | | added 0-9
| | | | @numberingOrg [Optional]
| | | | @addType [Optional]
| | | | description 0-unbounded (AU)
| | | | @ln [Optional] (N)
lotN 0-1
| | | | @numberingOrg [Optional]
dyeN 0-1
| | | | @numberingOrg [Optional]
qty 1-2
| | | | @um [Required]
refDoc 0-9 (P)
| | | | @docType [Required]
| | | | | docID 1-2 (p)
| | | | | @numberingOrg [Optional]
| | | | | docDate 0-1
| | | | | @dateForm [Optional]
| | | | | season 0-1 (A)
| | | | | @numberingOrg [Optional] (a)
| | | | | @codeList [Optional] (a)
| | | | | @listName [Optional] (a)
| | | | | @listVersion [Optional] (a)
| | | | | itemID 0-1 (U)
| | | | attachment 0-1 (N)
| | | | | @uid [Optional]
| | | | | | fileName 0-1 (N)
| | | | | | @numberingOrg [Optional] (a)
| | | | | | binaryObject 0-1 (N)
| | | | | | @format [Optional] (Na)
| | | | | | @mime [Optional] (Na)
| | | | | | @encoding [Optional] (Na)
| | | | | | @characterSet [Optional] (Na)
| | | | | | externalReference 0-99 (N)
| | | | | | | uri 1-1 (N)
| | | | | | | @isURL [Optional] [Default= true] (Na)
| | | | | | | mimeTypeCode 0-1 (N)
| | | | | | | formatCode 0-1 (N)
| | | | | | | encodingCode 0-1 (N)
| | | | | | | characterSetCode 0-1 (N)
location 0-1
| | | | @LRI [Optional]
note 0-99
| | | | @numberingOrg [Optional]
| | | | @codeList [Optional]
| | | | @noteLabel [Optional]
rawMnfrOperation 1-9 (P)
- choose -
| | | | rawJob 1-1
- or -
| | | | jobName 1-1
- end choose -
| | | | refDoc 0-9 (P)
| | | | | @docType [Required]
| | | | | docID 1-2
| | | | | @numberingOrg [Optional]
| | | | | docDate 0-1
| | | | | @dateForm [Optional]
| | | | | season 0-1 (A)
| | | | | @numberingOrg [Optional] (a)

```

```

| | | | @codeList [Optional] (a)
| | | | @listName [Optional] (a)
| | | | @listVersion [Optional] (a)
| | | | itemID 0-1 (U)
| | | | attachment 0-1 (N)
| | | | @uid [Optional]
| | | | | fileName 0-1 (N)
| | | | | @numberingOrg [Optional] (a)
| | | | | binaryObject 0-1 (N)
| | | | | @format [Optional] (Na)
| | | | | @mime [Optional] (Na)
| | | | | @encoding [Optional] (Na)
| | | | | @characterSet [Optional] (Na)
| | | | | externalReference 0-99 (N)
| | | | | | uri 1-1 (N)
| | | | | | @isURL [Optional] [Default= true] (Na)
| | | | | | mimeTypeCode 0-1 (N)
| | | | | | formatCode 0-1 (N)
| | | | | | encodingCode 0-1 (N)
| | | | | | characterSetCode 0-1 (N)
| | | | note 0-99
| | | | @numberingOrg [Optional]
| | | | @codeList [Optional]
| | | | @noteLabel [Optional]
| | | | dtScheme 0-1 (P)
| | | | @taxType [Required]
| | | | | taxCategory 0-1
| | | | | taxRate 0-1
| | | | | legalRef 0-1 (A)
| | | | | @numberingOrg [Optional] (a)
| | | | | @codeList [Optional] (a)
| | | | | @listName [Optional] (a)
| | | | | @listVersion [Optional] (a)
| | | | | note 0-99
| | | | | @numberingOrg [Optional]
| | | | | @codeList [Optional]
| | | | | @noteLabel [Optional]
| | | | note 0-99
| | | | @numberingOrg [Optional]
| | | | @codeList [Optional]
| | | | @noteLabel [Optional]

```

## 2.2 Detailed description of document elements

Following tables show all elements (complex and simple) used in this document. Description includes: 1) element's information: xml tag, name, brief description, data type and syntax constraints; 2) information about use of the element in a particular position in the document: xpath and possible associated notes.

### 2.2.1 Complex elements (Aggregate Business Information Entities)

Complex elements are those elements whose content is composed of other elements (childs). Complex elements are alphabetically ordered.

|                          |   |
|--------------------------|---|
| <b>allowanceCharge</b>   | Allowances and Charges related to an Order or a contract<br>(XPath RAWDyeOrder/terms/allowanceCharge) 0-9 (A)   |
| <b>attachment</b>        | an attached document. An attachment can refer to an external document or be included with the document being exchanged<br>(XPath RAWDyeOrder/RDCObody/RDCOitem/rawComponent/refDoc/attachment) 0-1 (N)<br>(XPath RAWDyeOrder/RDCOheader/refDoc/attachment) 0-1 (N)<br>(XPath RAWDyeOrder/RDCObody/RDCOitem/rawMnfrOperation/refDoc/attachment) 0-1 (N)                    |
| <b>buyer</b>             | details of the Buyer (party that buys the good or service that is object of the current collaborative process)<br>- base type: Nad,<br>(XPath RAWDyeOrder/RDCOheader/buyer) 1-1 (AP)  |
| <b>dtScheme</b>          | set of data usable to declare the duty or tax applied<br>(XPath RAWDyeOrder/RDCObody/RDCOitem/dtScheme) 0-1 (P)<br>(XPath RAWDyeOrder/terms/allowanceCharge/dtScheme) 0-1 (P)   |
| <b>externalReference</b> | details about an external object, such as a document stored at a remote location<br>(XPath RAWDyeOrder/RDCObody/RDCOitem/rawComponent/refDoc/attachment/externalReference) 0-99 (N)<br>(XPath RAWDyeOrder/RDCOheader/refDoc/attachment/externalReference) 0-99 (N)<br>(XPath RAWDyeOrder/RDCObody/RDCOitem/rawMnfrOperation/refDoc/attachment/externalReference) 0-99 (N) |
| <b>insPayment</b>        | payment details for payment by installments<br>(XPath RAWDyeOrder/terms/insPayment) 0-5<br>- note: <i>excluded the case of offers, this set of data is alternative to payment set and must be iterated for each payment installment</i>   |
| <b>payment</b>           | payment details for payment all in one<br>(XPath RAWDyeOrder/terms/payment) 0-5<br>- note: <i>excluded the case of offers, this set of data is alternative to insPayment, it can be iterated to specify alternative terms of payment (e.g.: 60 days or 30 days with 3% discount)</i>  |
| <b>rawCode</b>           | full codification of a raw material<br>(XPath RAWDyeOrder/RDCObody/RDCOitem/rawComponent/rawCode) 1-1 (P)<br>(XPath RAWDyeOrder/RDCObody/RDCOitem/rawProd/rawCode) 1-1 (P)  |
| <b>rawComponent</b>      | identification details of a raw material used in a sub-contracted manufacturing operation<br>(XPath RAWDyeOrder/RDCObody/RDCOitem/rawComponent) 1-9 (P)   |
| <b>rawMnfrOperation</b>  | details of a manufacturing operation on raw material used for manufacturing a yarn product<br>(XPath RAWDyeOrder/RDCObody/RDCOitem/rawMnfrOperation) 1-9 (P)  |

|                      |   |
|----------------------|---|
|                      | - note: <i>this block of data can be used to specify either a subcontracted operation or an operation assigned to a shop owned by the issuer of the Manufacturing Order. In this latter case the specifications can be completed with "machine data"</i>  |
| <b>rawProd</b>       | manufacturing specifications of the raw product to be obtained from an operation of the sub-contracted production<br>(XPath RAWDyeOrder/RDCObody/RDCOitem/rawProd) 1-1 (P)  |
| <b>rawSpecs</b>      | technical characteristics of a raw material linked to an operation of the sub-contracted production of yarn or to the purchase of yarn<br>(XPath RAWDyeOrder/RDCObody/RDCOitem/rawProd/rawSpecs) 0-9  |
| <b>RDCObody</b>      | body of the document RAW MATERIAL DYEING COMMISSION ORDER<br>(XPath RAWDyeOrder/RDCObody) 1-1   |
| <b>RDCOheader</b>    | header of the document RAW MATERIAL DYEING COMMISSION ORDER<br>(XPath RAWDyeOrder/RDCOheader) 1-1 (P)   |
| <b>RDCOitem</b>      | line of the document RAW MATERIAL DYEING COMMISSION ORDER<br>(XPath RAWDyeOrder/RDCObody/RDCOitem) 1-unbounded (P)  |
| <b>refDoc</b>        | identification of a document and of an item thereof, to which the message makes reference<br>(XPath RAWDyeOrder/RDCObody/RDCOitem/rawComponent/refDoc) 0-9 (P)<br>(XPath RAWDyeOrder/RDCObody/RDCOitem/rawMnfrOperation/refDoc) 0-9 (P)<br>(XPath RAWDyeOrder/RDCOheader/refDoc) 0-9 (P)  |
| <b>subContractor</b> | details of the Sub-contractor<br>- base type: Nad,<br>(XPath RAWDyeOrder/RDCOheader/subContractor) 1-1 (AP)   |
| <b>terms</b>         | details of the commercial obligations for payment and delivery<br>(XPath RAWDyeOrder/terms) 0-1 (P)   |
| <b>thirdParty</b>    | details of the Third Party, different from Sender and Receiver of the document<br>- base type: Nad,<br>(XPath RAWDyeOrder/RDCOheader/thirdParty) 0-5 (AP)<br>- note: <i>here the Party to whom the Subcontractor must send the semi-finished products for subsequent operations can be specified</i><br>(XPath RAWDyeOrder/RDCObody/RDCOitem/thirdParty) 0-3 (AP)<br>- note: <i>here the Party to whom the Subcontractor must send the semi-finished product for subsequent operations can be specified</i> |
| <b>trade</b>         | general terms of trade for the specified supply<br>(XPath RAWDyeOrder/terms/trade) 0-1  |
| <b>transInfo</b>     | details of transport: mode, carrier and delivery place<br>(XPath RAWDyeOrder/terms/transInfo) 0-5 (pAP)   |

## 2.2.2 Simple elements (Basic Business Information Entities)

Simple elements are those elements whose content is characterized by a data type plus a domain of possible values. Simple elements are alphabetically ordered.

|                    |   |
|--------------------|---|
| <b>AC_amount</b>   | amount of an Allowance or Charge<br>- base type: decimal, fraction digits: 2,<br>(XPath RAWDyeOrder/terms/allowanceCharge/AC_amount) 1-1 (A)  |
| <b>AC_category</b> | coded specification of an Allowance or Charge<br>- base type: string, cod. table: T41<br><a href="http://www.ebiz.enea.it/moda-ml/repository/codelist/v2018-1/gc_T41.xml">http://www.ebiz.enea.it/moda-ml/repository/codelist/v2018-1/gc_T41.xml</a><br>(XPath RAWDyeOrder/terms/allowanceCharge/AC_category) 1-1 |

|                      |   |
|----------------------|---|
| AC_categoryText      | free text description of an Allowance or Charge<br>- base type: string, max length: 250,<br>(XPath RAWDyeOrder/terms/allowanceCharge/AC_categoryText) 1-1 (U)   |
| AC_percent           | amount of an Allowance or Charge as a percentage (always non negative value)<br>- base type: decimal, max inclusive: 100, fraction digits: 2,<br>(XPath RAWDyeOrder/terms/allowanceCharge/AC_percent) 1-1   |
| added                | additional code of the product (complementing the formers)<br>- base type: string, max length: 80,<br>(XPath RAWDyeOrder/RDCObody/RDCOitem/rawComponent/rawCode/added) 0-9<br>(XPath RAWDyeOrder/RDCObody/RDCOitem/rawProd/rawCode/added) 0-9   |
| additionalIdentifier | additional identification code of a Party, for example customs registries or others<br>- base type: string, max length: 15,<br>(XPath RAWDyeOrder/RDCOheader/buyer/additionalIdentifier) 0-9 (N)<br>- note: <i>identifiers for example for exports, such as MID (Manufacturer Identification Code), EORI (E.O.R.I. - Economic Operator Registration and Identification)</i>   |
| @addType             | qualifier of the additional coding of a product<br>- base type: string, cod. table: T44<br><a href="http://www.ebiz.enea.it/moda-ml/repository/codelist/v2018-1/gc_T44.xml">http://www.ebiz.enea.it/moda-ml/repository/codelist/v2018-1/gc_T44.xml</a><br>(XPath RAWDyeOrder/RDCObody/RDCOitem/rawComponent/rawCode/added/@addType) [Optional]<br>- nota: <i>addType allows the clarification of the meaning of the added element content; it is strongly suggested to use it always.</i><br>(XPath RAWDyeOrder/RDCObody/RDCOitem/rawProd/rawCode/added/@addType) [Optional]<br>- nota: <i>addType allows the clarification of the meaning of the added element content; it is strongly suggested to use it always.</i> |
| @application         | force or similar condition (e.g. no. of revolutions) applied in a test as specified within the standard<br>- base type: string, max length: 15,<br>(XPath RAWDyeOrder/RDCObody/RDCOitem/rawProd/rawSpecs/specValue/@application) [Optional]   |
| art                  | article number of the product<br>- base type: string, max length: 80,<br>(XPath RAWDyeOrder/RDCObody/RDCOitem/rawProd/rawCode/art) 1-1 (U)<br>(XPath RAWDyeOrder/RDCObody/RDCOitem/rawComponent/rawCode/art) 1-1 (U)  |
| binaryObject         | a binary large object containing an attached document, Coding 'base64Binary' is recommended.<br>- base type: base64Binary,<br>(XPath RAWDyeOrder/RDCObody/RDCOitem/rawComponent/refDoc/attachment/binaryObject) 0-1 (N)<br>(XPath RAWDyeOrder/RDCOheader/refDoc/attachment/binaryObject) 0-1 (N)<br>(XPath RAWDyeOrder/RDCObody/RDCOitem/rawMnfrOperation/refDoc/attachment/binaryObject) 0-1 (N)   |
| carrier              | identification of the transport carrier<br>- base type: string, max length: 40,<br>(XPath RAWDyeOrder/terms/transInfo/carrier) 0-1  |
| @characterSet        | the character set of the binary object (examples UTF-8, UTF-16, Windows-1252, ISO-8859-7,...)<br>- base type: normalizedString,<br>(XPath RAWDyeOrder/RDCObody/RDCOitem/rawMnfrOperation/refDoc/attachment/binaryObject/@characterSet) [Optional] (Na)<br>(XPath RAWDyeOrder/RDCObody/RDCOitem/rawComponent/refDoc/attachment/binaryObject/@characterSet) [Optional] (Na)   |

|                  |   |
|------------------|---|
|                  | (XPath RAWDyeOrder/RDCOheader/refDoc/attachment/binaryObject/@characterSet) [Optional] (N)  |
| characterSetCode | <p>the character set of an external document (examples UTF-8, UTF-16, Windows-1252, ISO-8859-7,..)</p> <p>- base type: normalizedString,</p> <p>(XPath RAWDyeOrder/RDCObody/RDCOitem/rawMnfrOperation/refDoc/attachment/externalReference/characterSetCode) 0-1 (N)</p> <p>(XPath RAWDyeOrder/RDCOheader/refDoc/attachment/externalReference/characterSetCode) 0-1 (N)</p> <p>(XPath RAWDyeOrder/RDCObody/RDCOitem/rawComponent/refDoc/attachment/externalReference/characterSetCode) 0-1 (N)</p>   |
| city             | <p>name of the city (town, village)</p> <p>- base type: string, max length: 40,</p> <p>(XPath RAWDyeOrder/RDCOheader/subContractor/city) 0-1</p> <p>(XPath RAWDyeOrder/RDCOheader/buyer/city) 0-1</p> <p>(XPath RAWDyeOrder/RDCObody/RDCOitem/thirdParty/city) 0-1</p> <p>(XPath RAWDyeOrder/RDCOheader/thirdParty/city) 0-1</p>  |
| @codeList        | <p>it specifies the URL where the list of codes used to make an instance of the element can be found</p> <p>- base type: string, max length: 255,</p> <p>(XPath RAWDyeOrder/RDCObody/RDCOitem/rawMnfrOperation/note/@codeList) [Optional]</p> <p>- nota: <i>must be used to provide (URL) the list of codes used in "noteLabel"</i></p> <p>(XPath RAWDyeOrder/RDCOheader/note/@codeList) [Optional]</p> <p>- nota: <i>must be used to provide (URL) the list of codes used in "noteLabel"</i></p> <p>(XPath RAWDyeOrder/RDCObody/RDCOitem/note/@codeList) [Optional]</p> <p>- nota: <i>must be used to provide (URL) the list of codes used in "noteLabel"</i></p> <p>(XPath RAWDyeOrder/RDCObody/RDCOitem/dtScheme/legalRef/@codeList) [Optional] (a)</p> <p>(XPath RAWDyeOrder/RDCObody/RDCOitem/dtScheme/note/@codeList) [Optional]</p> <p>- nota: <i>must be used to provide (URL) the list of codes used in "noteLabel"</i></p> <p>(XPath RAWDyeOrder/RDCObody/RDCOitem/rawProd/rawCode/color/@codeList) [Optional]</p> <p>- nota: <i>this attribute should be used either single or coupled with "listName" and "listVersion"</i></p> <p>(XPath RAWDyeOrder/terms/allowanceCharge/dtScheme/note/@codeList) [Optional]</p> <p>- nota: <i>must be used to provide (URL) the list of codes used in "noteLabel"</i></p> <p>(XPath RAWDyeOrder/terms/allowanceCharge/dtScheme/legalRef/@codeList) [Optional]</p> <p>(XPath RAWDyeOrder/RDCObody/RDCOitem/rawComponent/rawCode/art/@codeList) [Optional]</p> <p>- nota: <i>at least one out of this attribute and "numberingOrg" should be set</i></p> <p>(XPath RAWDyeOrder/RDCObody/RDCOitem/rawComponent/rawCode/color/@codeList) [Optional]</p> <p>- nota: <i>this attribute should be used either single or coupled with "listName" and "listVersion"</i></p> <p>(XPath RAWDyeOrder/RDCObody/RDCOitem/rawComponent/refDoc/season/@codeList) [Optional] (a)</p> <p>- nota: <i>this attribute should be used either single or coupled with "listName" and "listVersion"</i></p> <p>(XPath RAWDyeOrder/RDCObody/RDCOitem/rawMnfrOperation/refDoc/season/@codeList) [Optional] (a)</p> <p>- nota: <i>this attribute should be used either single or coupled with "listName" and "listVersion"</i></p> <p>(XPath RAWDyeOrder/RDCObody/RDCOitem/rawProd/rawCode/art/@codeList) [Optional]</p> <p>- nota: <i>at least one out of this attribute and "numberingOrg" should be set</i></p> <p>(XPath RAWDyeOrder/RDCObody/RDCOitem/rawProd/note/@codeList) [Optional]</p> <p>- nota: <i>must be used to provide (URL) the list of codes used in "noteLabel"</i></p> <p>(XPath RAWDyeOrder/RDCObody/RDCOitem/rawComponent/note/@codeList) [Optional]</p> <p>- nota: <i>must be used to provide (URL) the list of codes used in "noteLabel"</i></p> |

|                  |   |
|------------------|---|
|                  | <p>(XPath RAWDyeOrder/RDCOheader/refDoc/season/@codeList) [Optional] (a)<br/> - nota: <i>this attribute should be used either single or coupled with "listName" and "listVersion"</i></p> <p>(XPath RAWDyeOrder/RDCOheader/season/@codeList) [Optional] (a)<br/> - nota: <i>this attribute should be used either single or coupled with "listName" and "listVersion"</i></p>  |
| color            | <p>colour number of the product, when not included in the model or fabric code<br/> - base type: string, max length: 15,<br/> (XPath RAWDyeOrder/RDCObody/RDCOitem/rawComponent/rawCode/color) 0-1<br/> (XPath RAWDyeOrder/RDCObody/RDCOitem/rawProd/rawCode/color) 0-1</p>   |
| country          | <p>code of the nation<br/> - base type: string, cod. table: T10<br/> <a href="http://www.ebiz.enea.it/moda-ml/repository/codelist/v2018-1/gc_T10.xml">http://www.ebiz.enea.it/moda-ml/repository/codelist/v2018-1/gc_T10.xml</a><br/> (XPath RAWDyeOrder/RDCObody/RDCOitem/thirdParty/country) 0-1<br/> (XPath RAWDyeOrder/RDCOheader/subContractor/country) 0-1<br/> (XPath RAWDyeOrder/RDCOheader/buyer/country) 0-1<br/> (XPath RAWDyeOrder/RDCOheader/thirdParty/country) 0-1</p>   |
| @CQQ             | <p>specifies if the committed quantity can or can not include the loss in weight<br/> - base type: string, cod. table: NT37<br/> <a href="http://www.ebiz.enea.it/moda-ml/repository/codelist/v2018-1/gc_NT37.xml">http://www.ebiz.enea.it/moda-ml/repository/codelist/v2018-1/gc_NT37.xml</a><br/> (XPath RAWDyeOrder/RDCObody/RDCOitem/rawComponent/@CQQ) [Optional]</p>  |
| @CTest           | <p>indicates the need to execute a colour test before the operation<br/> - base type: string, cod. table: NT38<br/> <a href="http://www.ebiz.enea.it/moda-ml/repository/codelist/v2018-1/gc_NT38.xml">http://www.ebiz.enea.it/moda-ml/repository/codelist/v2018-1/gc_NT38.xml</a><br/> (XPath RAWDyeOrder/RDCObody/RDCOitem/rawProd/@CTest) [Optional]</p>  |
| @currency        | <p>currency in which a specified monetary data is expressed<br/> - base type: string, cod. table: T9<br/> <a href="http://www.ebiz.enea.it/moda-ml/repository/codelist/v2018-1/gc_T9.xml">http://www.ebiz.enea.it/moda-ml/repository/codelist/v2018-1/gc_T9.xml</a><br/> (XPath RAWDyeOrder/terms/allowanceCharge/AC_amount/@currency) [Optional] (a)<br/> (XPath RAWDyeOrder/RDCObody/RDCOitem/price/@currency) [Optional] (a)<br/> - nota: <i>Currency referred by the price.</i><br/> (XPath RAWDyeOrder/terms/allowanceCharge/@currency) [Optional] (a)</p>   |
| @CV              | <p>coefficient of variation (CV) of a measurement<br/> - base type: decimal,<br/> (XPath RAWDyeOrder/RDCObody/RDCOitem/rawProd/rawSpecs/specValue/@CV) [Optional]</p>   |
| @dateForm        | <p>format used for the date<br/> - base type: string, cod. table: NT29<br/> <a href="http://www.ebiz.enea.it/moda-ml/repository/codelist/v2018-1/gc_NT29.xml">http://www.ebiz.enea.it/moda-ml/repository/codelist/v2018-1/gc_NT29.xml</a><br/> (XPath RAWDyeOrder/RDCObody/RDCOitem/rawMnfrOperation/refDoc/docDate/@dateForm) [Optional]<br/> (XPath RAWDyeOrder/RDCOheader/refDoc/docDate/@dateForm) [Optional]<br/> (XPath RAWDyeOrder/terms/transInfo/delEffectiveDate/@dateForm) [Optional]<br/> (XPath RAWDyeOrder/RDCObody/RDCOitem/rawComponent/refDoc/docDate/@dateForm) [Optional]<br/> (XPath RAWDyeOrder/RDCObody/RDCOitem/deliveryDate/@dateForm) [Optional]<br/> (XPath RAWDyeOrder/RDCOheader/msgDate/@dateForm) [Optional]<br/> (XPath RAWDyeOrder/terms/transInfo/despatchDate/@dateForm) [Optional] (a)</p> |
| delEffectiveDate | <p>effective date of delivery of goods (declared in Despatch), according to one of the patterns YYYY-MM-DD, YYYY-MM-DD:HH-MM or YYYY-WW.<br/> - base type: string,<br/> (XPath RAWDyeOrder/terms/transInfo/delEffectiveDate) 0-1 (p)</p>  |
| deliveryDate     | <p>date of delivery of goods, requested or promised in the purchase process, according to one of the patterns YYYY-MM-DD, YYYY-MM-DD:HH-MM or YY YY-WW.<br/> - base type: string,<br/> (XPath RAWDyeOrder/RDCObody/RDCOitem/deliveryDate) 0-1</p>   |

|               |   |
|---------------|---|
| deliveryPlace | place of delivery of goods, ultimate or related to a given leg<br>- base type: string, max length: 250,<br>(XPath RAWDyeOrder/terms/transInfo/deliveryPlace) 0-1 (U)  |
| dept          | name or code of a contact department within a Party<br>- base type: string, max length: 40,<br>(XPath RAWDyeOrder/RDCOheader/subContractor/dept) 0-1<br>(XPath RAWDyeOrder/RDCObody/RDCOitem/thirdParty/dept) 0-1<br>(XPath RAWDyeOrder/RDCOheader/thirdParty/dept) 0-1<br>(XPath RAWDyeOrder/RDCOheader/buyer/dept) 0-1  |
| description   | free text description. The content of the element must be unique, it might be translated and repeated into more languages (thus no more than one instance for each language).<br>- base type: string, max length: 250,<br>(XPath RAWDyeOrder/RDCObody/RDCOitem/rawComponent/rawCode/description) 0-unbounded (AU)<br>- note: <i>Raw material description</i><br>(XPath RAWDyeOrder/RDCObody/RDCOitem/rawProd/rawCode/description) 0-unbounded (AU)<br>- note: <i>Raw material description</i>   |
| despatchDate  | date of despatch of goods, requested or promised in the purchase process, according to one of the patterns YYYY-MM-DD, YYYY-MM-DD:HH-MM or YYYY-WW.<br>- base type: string,<br>(XPath RAWDyeOrder/terms/transInfo/despatchDate) 0-1 (N)   |
| despatchPlace | place of despatch of goods, origin or related to a given leg<br>- base type: string, max length: 250,<br>(XPath RAWDyeOrder/terms/transInfo/despatchPlace) 0-1 (N)  |
| docDate       | date of issue of the referenced document, according to one of the patterns YYYY-MM-DD, YYYY-MM-DD:HH-MM or YYYY-WW.<br>- base type: string,<br>(XPath RAWDyeOrder/RDCOheader/refDoc/docDate) 0-1<br>(XPath RAWDyeOrder/RDCObody/RDCOitem/rawComponent/refDoc/docDate) 0-1<br>(XPath RAWDyeOrder/RDCObody/RDCOitem/rawMnfrOperation/refDoc/docDate) 0-1  |
| docID         | identification number of the referenced document SINCE 2008-1 ITS USE IN THE HEADER IS DISCOURAGED (REPLACED BY msgID)<br>- base type: string, max length: 80,<br>(XPath RAWDyeOrder/RDCOheader/refDoc/docID) 1-2 (p)<br><hr/> <b>AAAA-WARNING! - text not AVAILABLE n. 245 - In=en</b><br>(XPath RAWDyeOrder/RDCOheader/docID) 0-1<br>(XPath RAWDyeOrder/RDCObody/RDCOitem/rawComponent/refDoc/docID) 1-2 (p)<br><hr/> <b>AAAA-WARNING! - text not AVAILABLE n. 245 - In=en</b><br>(XPath RAWDyeOrder/RDCObody/RDCOitem/rawMnfrOperation/refDoc/docID) 1-2<br><hr/> <b>AAAA-WARNING! - text not AVAILABLE n. 245 - In=en</b> |
| @docType      | type or class to which the referenced document belongs<br>- base type: string, cod. table: T21<br><a href="http://www.ebiz.enea.it/moda-ml/repository/codelist/v2018-1/gc_T21.xml">http://www.ebiz.enea.it/moda-ml/repository/codelist/v2018-1/gc_T21.xml</a><br>(XPath RAWDyeOrder/RDCObody/RDCOitem/rawComponent/refDoc/@docType) [Required]<br>(XPath RAWDyeOrder/RDCOheader/refDoc/@docType) [Required]<br>(XPath RAWDyeOrder/RDCObody/RDCOitem/rawMnfrOperation/refDoc/@docType) [Required]  |
| dyeN          | number of the dyeing batch of a textile product<br>- base type: string, max length: 15,<br>(XPath RAWDyeOrder/RDCObody/RDCOitem/rawComponent/dyeN) 0-1  |



|               |   |
|---------------|---|
|               | (XPath RAWDyeOrder/RDCObody/RDCOitem/rawProd/dyeN) 0-1  |
| @email        | <p>electronic mail address of the contact person within a Party</p> <p>- base type: string, max length: 250,</p> <p>(XPath RAWDyeOrder/RDCOheader/subContractor/person/@email) [Optional]</p> <p>(XPath RAWDyeOrder/RDCOheader/buyer/person/@email) [Optional]</p> <p>(XPath RAWDyeOrder/RDCOheader/thirdParty/person/@email) [Optional]</p> <p>(XPath RAWDyeOrder/RDCObody/RDCOitem/thirdParty/person/@email) [Optional]</p>   |
| @encoding     | <p>specifies the decoding algorithm of the binary object</p> <p>- base type: normalizedString,</p> <p>(XPath RAWDyeOrder/RDCObody/RDCOitem/rawMnfrOperation/refDoc/attachment/binaryObject/@encoding) [Optional] (Na)</p> <p>(XPath RAWDyeOrder/RDCObody/RDCOitem/rawComponent/refDoc/attachment/binaryObject/@encoding) [Optional] (Na)</p> <p>(XPath RAWDyeOrder/RDCOheader/refDoc/attachment/binaryObject/@encoding) [Optional] (N)</p>                                      |
| encodingCode  | <p>the encoding/decoding algorithm used with the external object (example is 'base64Binary')</p> <p>- base type: normalizedString,</p> <p>(XPath RAWDyeOrder/RDCObody/RDCOitem/rawComponent/refDoc/attachment/externalReference/encodingCode) 0-1 (N)</p> <p>(XPath RAWDyeOrder/RDCObody/RDCOitem/rawMnfrOperation/refDoc/attachment/externalReference/encodingCode) 0-1 (N)</p> <p>(XPath RAWDyeOrder/RDCOheader/refDoc/attachment/externalReference/encodingCode) 0-1 (N)</p> |
| @fax          | <p>fax number of the contact person within a Party</p> <p>- base type: string, max length: 35,</p> <p>(XPath RAWDyeOrder/RDCOheader/subContractor/person/@fax) [Optional]</p> <p>(XPath RAWDyeOrder/RDCObody/RDCOitem/thirdParty/person/@fax) [Optional]</p> <p>(XPath RAWDyeOrder/RDCOheader/thirdParty/person/@fax) [Optional]</p> <p>(XPath RAWDyeOrder/RDCOheader/buyer/person/@fax) [Optional]</p>   |
| fileName      | <p>unique identifier (name) of the file</p> <p>- base type: string, max length: 255,</p> <p>(XPath RAWDyeOrder/RDCObody/RDCOitem/rawComponent/refDoc/attachment/fileName) 0-1 (N)</p> <p>(XPath RAWDyeOrder/RDCObody/RDCOitem/rawMnfrOperation/refDoc/attachment/fileName) 0-1 (N)</p> <p>(XPath RAWDyeOrder/RDCOheader/refDoc/attachment/fileName) 0-1 (N)</p>   |
| @finDiscount  | <p>financial discount rate applied for payment by the date specified</p> <p>- base type: decimal, min inclusive: 0, max inclusive: 100, fraction digits: 2,</p> <p>(XPath RAWDyeOrder/terms/payment/@finDiscount) [Optional]</p>  |
| @finSurcharge | <p>financial surcharge rate applied for payment after the date specified</p> <p>- base type: decimal, min inclusive: 0, max inclusive: 100, fraction digits: 2,</p> <p>(XPath RAWDyeOrder/terms/payment/@finSurcharge) [Optional]</p>   |
| @format       | <p>the format of the binary content (examples xml, pdf, doc,...)</p> <p>- base type: string,</p> <p>(XPath RAWDyeOrder/RDCObody/RDCOitem/rawComponent/refDoc/attachment/binaryObject/@format) [Optional] (Na)</p> <p>(XPath RAWDyeOrder/RDCObody/RDCOitem/rawMnfrOperation/refDoc/attachment/binaryObject/@format) [Optional] (Na)</p> <p>(XPath RAWDyeOrder/RDCOheader/refDoc/attachment/binaryObject/@format) [Optional] (N)</p>  |
| formatCode    | <p>the format of the external object (examples xml, pdf, doc,...)</p> <p>- base type: normalizedString,</p> <p>(XPath RAWDyeOrder/RDCOheader/refDoc/attachment/externalReference/formatCode) 0-1 (N)</p> <p>(XPath RAWDyeOrder/RDCObody/RDCOitem/rawMnfrOperation/refDoc/attachment/externalReference/formatCode) 0-1 (N)</p> <p>(XPath RAWDyeOrder/RDCObody/RDCOitem/rawComponent/refDoc/attachment/externalReference/formatCode) 0-1 (N)</p>                                  |

|              |   |
|--------------|---|
| grossWeight  | the gross weight, declared for transport or customs purpose<br>- base type: decimal, min inclusive: 0, fraction digits: 2,<br>(XPath RAWDyeOrder/terms/transInfo/grossWeight) 0-1   |
| id           | primary identification code of a Party; it is recommended the format: nation code (ISO 3166) + VAT identification number (11 crt), with the qualifier "numberingOrg"= MF<br>- base type: string, max length: 15,<br>(XPath RAWDyeOrder/RDCOheader/buyer/id) 1-1 (p)<br>(XPath RAWDyeOrder/RDCOheader/thirdParty/id) 1-1<br>(XPath RAWDyeOrder/RDCObody/RDCOitem/thirdParty/id) 1-1<br>(XPath RAWDyeOrder/RDCOheader/subContractor/id) 1-1   |
| @idQualifier | Qualification of the identifier.<br>- base type: string,<br>(XPath RAWDyeOrder/RDCOheader/buyer/additionalIdentifier/@idQualifier) [Optional] (Na)<br>- nota: <i>this attribute should be used when the numberingOrg attribute is not enough to declare the type of identifier</i>  |
| incoTerm     | specification of the terms of trade (INCOTERMS)<br>- base type: string, cod. table: T3<br><a href="http://www.ebiz.enea.it/moda-ml/repository/codelist/v2018-1/gc_T3.xml">http://www.ebiz.enea.it/moda-ml/repository/codelist/v2018-1/gc_T3.xml</a><br>(XPath RAWDyeOrder/terms/trade/incoTerm) 1-1   |
| incoTermText | free text specifying the terms of trade (incoterm, location)<br>- base type: string, max length: 250,<br>(XPath RAWDyeOrder/terms/trade/incoTermText) 1-1 (U)   |
| @isCharge    | Indicates if the element to which it refers is a charge (true = charge, false = allowance)<br>- base type: boolean, min length: 0,<br>(XPath RAWDyeOrder/terms/allowanceCharge/@isCharge) [Optional] (N)  |
| @isURL       | it indicates if the referred element is an URL (true) or not (false)<br>- base type: boolean,<br>(XPath RAWDyeOrder/RDCOheader/refDoc/attachment/externalReference/uri/@isURL) [Optional] [Default= true] (Na)<br>- nota: <i>usage of URLs is recommended</i><br>(XPath RAWDyeOrder/RDCObody/RDCOitem/rawComponent/refDoc/attachment/externalReference/uri/@isURL) [Optional] [Default= true] (Na)<br>- nota: <i>usage of URLs is recommended</i><br>(XPath RAWDyeOrder/RDCObody/RDCOitem/rawMnfrOperation/refDoc/attachment/externalReference/uri/@isURL) [Optional] [Default= true] (Na)<br>- nota: <i>usage of URLs is recommended</i> |
| itemID       | number of the line/item of the referenced document<br>- base type: string, max length: 40,<br>(XPath RAWDyeOrder/RDCObody/RDCOitem/rawComponent/refDoc/itemID) 0-1 (U)<br>(XPath RAWDyeOrder/RDCOheader/refDoc/itemID) 0-1 (U)<br>(XPath RAWDyeOrder/RDCObody/RDCOitem/rawMnfrOperation/refDoc/itemID) 0-1 (U)  |
| jobName      | description of the elementary job<br>- base type: string, max length: 40,<br>(XPath RAWDyeOrder/RDCObody/RDCOitem/rawMnfrOperation/jobName) 1-1   |
| legalName    | legal name of a Party<br>- base type: string, max length: 250,<br>(XPath RAWDyeOrder/RDCOheader/subContractor/legalName) 0-1 (U)<br>(XPath RAWDyeOrder/RDCObody/RDCOitem/thirdParty/legalName) 0-1 (U)<br>(XPath RAWDyeOrder/RDCOheader/thirdParty/legalName) 0-1 (U)<br>(XPath RAWDyeOrder/RDCOheader/buyer/legalName) 0-1 (U)   |

|              |   |
|--------------|---|
| legalRef     | <p>legal reference of the duty or tax or fee category</p> <ul style="list-style-type: none"> <li>- base type: string,</li> <li>(XPath RAWDyeOrder/RDCObody/RDCOitem/dtScheme/legalRef) 0-1 (A)</li> <li>(XPath RAWDyeOrder/terms/allowanceCharge/dtScheme/legalRef) 0-1 (A)</li> </ul>  |
| lineN        | <p>number of the line item of the present message (xml document); it is set by the role that produces the document. Usually it is a progressive number, but not always.</p> <ul style="list-style-type: none"> <li>- base type: positiveInteger, min inclusive: 1, max inclusive: 9999,</li> <li>(XPath RAWDyeOrder/RDCObody/RDCOitem/lineN) 1-1</li> </ul>   |
| @listName    | <p>the name of the list of codes used to make an instance of the element (it might be thought as descriptive element, i.e. 'fabric printing technologies', or not, i.e. "T264")</p> <ul style="list-style-type: none"> <li>- base type: string, max length: 40,</li> <li>(XPath RAWDyeOrder/RDCObody/RDCOitem/rawProd/rawCode/color/@listName) [Optional]</li> <li>- nota: <i>this attribute should always be used coupled with "numberingOrg"</i></li> <li>(XPath RAWDyeOrder/RDCObody/RDCOitem/rawProd/rawCode/art/@listName) [Optional]</li> <li>- nota: <i>this attribute should always be used coupled with "numberingOrg"</i></li> <li>(XPath RAWDyeOrder/RDCObody/RDCOitem/rawComponent/rawCode/color/@listName) [Optional]</li> <li>- nota: <i>this attribute should always be used coupled with "numberingOrg"</i></li> <li>(XPath RAWDyeOrder/RDCObody/RDCOitem/rawMnfrOperation/refDoc/season/@listName) [Optional] (a)</li> <li>- nota: <i>this attribute should always be used coupled with "numberingOrg"</i></li> <li>(XPath RAWDyeOrder/RDCOheader/refDoc/season/@listName) [Optional] (a)</li> <li>- nota: <i>this attribute should always be used coupled with "numberingOrg"</i></li> <li>(XPath RAWDyeOrder/RDCObody/RDCOitem/rawComponent/refDoc/season/@listName) [Optional] (a)</li> <li>- nota: <i>this attribute should always be used coupled with "numberingOrg"</i></li> <li>(XPath RAWDyeOrder/RDCObody/RDCOitem/dtScheme/legalRef/@listName) [Optional] (a)</li> <li>- nota: <i>this attribute should always be used coupled with "numberingOrg"</i></li> <li>(XPath RAWDyeOrder/RDCOheader/season/@listName) [Optional] (a)</li> <li>- nota: <i>this attribute should always be used coupled with "numberingOrg"</i></li> <li>(XPath RAWDyeOrder/RDCObody/RDCOitem/rawComponent/rawCode/art/@listName) [Optional]</li> <li>- nota: <i>this attribute should always be used coupled with "numberingOrg"</i></li> <li>(XPath RAWDyeOrder/terms/allowanceCharge/dtScheme/legalRef/@listName) [Optional]</li> <li>- nota: <i>this attribute should always be used coupled with "numberingOrg"</i></li> </ul> |
| @listVersion | <p>it specifies the version of the list of codes used to make an instance of the element</p> <ul style="list-style-type: none"> <li>- base type: string, max length: 6,</li> <li>(XPath RAWDyeOrder/RDCObody/RDCOitem/rawProd/rawCode/color/@listVersion) [Optional]</li> <li>- nota: <i>this attribute should always be used coupled with "numberingOrg" and "listName"</i></li> <li>(XPath RAWDyeOrder/RDCOheader/season/@listVersion) [Optional] (a)</li> <li>- nota: <i>this attribute should always be used coupled with "numberingOrg" and "listName"</i></li> <li>(XPath RAWDyeOrder/RDCObody/RDCOitem/rawComponent/refDoc/season/@listVersion) [Optional] (a)</li> <li>- nota: <i>this attribute should always be used coupled with "numberingOrg" and "listName"</i></li> <li>(XPath RAWDyeOrder/terms/allowanceCharge/dtScheme/legalRef/@listVersion) [Optional]</li> <li>- nota: <i>this attribute should always be used coupled with "numberingOrg" and "listName"</i></li> <li>(XPath RAWDyeOrder/RDCObody/RDCOitem/dtScheme/legalRef/@listVersion) [Optional] (a)</li> </ul>  |

|          |  |
|----------|--|
|          | <p>- nota: <i>this attribute should always be used coupled with “numberingOrg” and “listName”</i><br/> (XPath RAWDyeOrder/RDCObody/RDCOitem/rawMnfrOperation/refDoc/season/@listVersion) [Optional] (a)</p> <p>- nota: <i>this attribute should always be used coupled with “numberingOrg” and “listName”</i><br/> (XPath RAWDyeOrder/RDCObody/RDCOitem/rawComponent/rawCode/art/@listVersion) [Optional]</p> <p>- nota: <i>this attribute should always be used coupled with “numberingOrg” and “listName”</i><br/> (XPath RAWDyeOrder/RDCObody/RDCOitem/rawProd/rawCode/art/@listVersion) [Optional]</p> <p>- nota: <i>this attribute should always be used coupled with “numberingOrg” and “listName”</i><br/> (XPath RAWDyeOrder/RDCOheader/refDoc/season/@listVersion) [Optional] (a)</p> <p>- nota: <i>this attribute should always be used coupled with “numberingOrg” and “listName”</i><br/> (XPath RAWDyeOrder/RDCObody/RDCOitem/rawComponent/rawCode/color/@listVersion) [Optional]</p> <p>- nota: <i>this attribute should always be used coupled with “numberingOrg” and “listName”</i></p> |
| @ln      | <p>Language code.<br/> - base type: string, cod. table: NT60<br/> <a href="http://www.ebiz.enea.it/moda-ml/repository/codelist/v2018-1/gc_NT60.xml">http://www.ebiz.enea.it/moda-ml/repository/codelist/v2018-1/gc_NT60.xml</a><br/> (XPath RAWDyeOrder/RDCObody/RDCOitem/rawProd/rawCode/description/@ln) [Optional] (N)<br/> (XPath RAWDyeOrder/RDCObody/RDCOitem/rawComponent/rawCode/description/@ln) [Optional] (N)</p>   |
| location | <p>specification of a location<br/> - base type: string, max length: 40,<br/> (XPath RAWDyeOrder/terms/trade/location) 0-1<br/> - note: <i>place to which the INCOTERM applies</i><br/> (XPath RAWDyeOrder/RDCObody/RDCOitem/rawComponent/location) 0-1</p>  |
| @logo    | <p>company logo (URL of the image jpeg or gif). It is recommended that the width of the image does not exceed 640 pixel.<br/> - base type: string, max length: 255,<br/> (XPath RAWDyeOrder/RDCOheader/buyer/@logo) [Optional]</p>   |
| lotN     | <p>lot number of a product or batch number of the raw material<br/> - base type: string, max length: 15,<br/> (XPath RAWDyeOrder/RDCObody/RDCOitem/rawProd/lotN) 0-1<br/> (XPath RAWDyeOrder/RDCObody/RDCOitem/rawComponent/lotN) 0-1</p>  |
| @LRI     | <p>attribute usable to format a string according to a customized User rule (local rule)<br/> - base type: string, cod. table: NT3<br/> <a href="http://www.ebiz.enea.it/moda-ml/repository/codelist/v2018-1/gc_NT3.xml">http://www.ebiz.enea.it/moda-ml/repository/codelist/v2018-1/gc_NT3.xml</a><br/> (XPath RAWDyeOrder/RDCObody/RDCOitem/rawComponent/location/@LRI) [Optional]<br/> (XPath RAWDyeOrder/terms/trade/location/@LRI) [Optional]</p>  |
| @maxQty  | <p>maximum product quantity<br/> - base type: decimal, min inclusive: 0, fraction digits: 2,<br/> (XPath RAWDyeOrder/terms/allowanceCharge/@maxQty) [Optional] (N)<br/> - nota: <i>maximum quantity of product for the application of this allowance or charge</i></p>   |
| @method  | <p>standard protocol or method employed in a test to evaluate a characteristic or a parameter<br/> - base type: string, max length: 80,<br/> (XPath RAWDyeOrder/RDCObody/RDCOitem/rawProd/rawSpecs/specValue/@method) [Optional]</p>   |

|              |  |
|--------------|--|
| @mime        | <p>the mime type of the binary object</p> <ul style="list-style-type: none"> <li>- base type: normalizedString,</li> </ul> <p>(XPath RAWDyeOrder/RDCObody/RDCOitem/rawMnfrOperation/refDoc/attachment/binaryObject/@mime) [Optional] (Na)</p> <p>(XPath RAWDyeOrder/RDCOheader/refDoc/attachment/binaryObject/@mime) [Optional] (N)</p> <p>(XPath RAWDyeOrder/RDCObody/RDCOitem/rawComponent/refDoc/attachment/binaryObject/@mime) [Optional] (Na)</p>   |
| mimeCode     | <p>mime type of the external object</p> <ul style="list-style-type: none"> <li>- base type: normalizedString,</li> </ul> <p>(XPath RAWDyeOrder/RDCObody/RDCOitem/rawComponent/refDoc/attachment/externalReference/mimeCode) 0-1 (N)</p> <hr/> <p>AAAA-WARNING! - text not AVAILABLE n. 245 - In=en</p> <p>(XPath RAWDyeOrder/RDCOheader/refDoc/attachment/externalReference/mimeCode) 0-1 (N)</p> <hr/> <p>AAAA-WARNING! - text not AVAILABLE n. 245 - In=en</p> <p>(XPath RAWDyeOrder/RDCObody/RDCOitem/rawMnfrOperation/refDoc/attachment/externalReference/mimeCode) 0-1 (N)</p> <hr/> <p>AAAA-WARNING! - text not AVAILABLE n. 245 - In=en</p> |
| @minQty      | <p>minimum product quantity</p> <ul style="list-style-type: none"> <li>- base type: decimal, min inclusive: 0, fraction digits: 2,</li> </ul> <p>(XPath RAWDyeOrder/terms/allowanceCharge/@minQty) [Optional] (a)</p> <p>- nota: <i>minimum quantity of product for the application of this allowance or charge</i></p>  |
| msgCurrency  | <p>currency used to express the monetary amounts of the message</p> <ul style="list-style-type: none"> <li>- base type: string, cod. table: T9</li> </ul> <p><a href="http://www.ebiz.enea.it/moda-ml/repository/codelist/v2018-1/gc_T9.xml">http://www.ebiz.enea.it/moda-ml/repository/codelist/v2018-1/gc_T9.xml</a></p> <p>(XPath RAWDyeOrder/RDCOheader/msgCurrency) 0-1</p>   |
| msgDate      | <p>date of issue of the present message (xml document), according to one of the patterns YYYY-MM-DD, YYYY-MM-DD:HH-MM or YYYY-WW.</p> <ul style="list-style-type: none"> <li>- base type: string,</li> </ul> <p>(XPath RAWDyeOrder/RDCOheader/msgDate) 1-1</p>   |
| @msgfunction | <p>function performed by the present message with regards to the transmission</p> <ul style="list-style-type: none"> <li>- base type: string, cod. table: NT18</li> </ul> <p><a href="http://www.ebiz.enea.it/moda-ml/repository/codelist/v2018-1/gc_NT18.xml">http://www.ebiz.enea.it/moda-ml/repository/codelist/v2018-1/gc_NT18.xml</a></p> <p>(XPath RAWDyeOrder/@msgfunction) [Optional] [Default= OR]</p>  |
| msgID        | <p>key identifier of the business document in the information system of the issuing Party. In case of more despatches of the same business document, it is unchanged.</p> <ul style="list-style-type: none"> <li>- base type: string, max length: 35,</li> </ul> <p>(XPath RAWDyeOrder/RDCOheader/msgID) 0-1</p>   |
| msgN         | <p>identification number given to the message (xml document) by its issuer. In case of more despatches of the same business document, it changes.</p> <ul style="list-style-type: none"> <li>- base type: string, max length: 35,</li> </ul> <p>(XPath RAWDyeOrder/RDCOheader/msgN) 1-1</p>  |
| netWeight    | <p>the net weight declared for transport or customs purpose</p> <ul style="list-style-type: none"> <li>- base type: decimal, min inclusive: 0, fraction digits: 2,</li> </ul> <p>(XPath RAWDyeOrder/terms/transInfo/netWeight) 0-1</p>   |
| note         | <p>free text or structured (computer processing) note. For note structuring use the attributes "noteLabel" and "codelist"</p> <ul style="list-style-type: none"> <li>- base type: string, max length: 350,</li> </ul> <p>(XPath RAWDyeOrder/RDCObody/RDCOitem/rawComponent/note) 0-99</p> <p>(XPath RAWDyeOrder/RDCObody/RDCOitem/dtScheme/note) 0-99</p> <p>(XPath RAWDyeOrder/RDCOheader/note) 0-99</p> <p>(XPath RAWDyeOrder/RDCObody/RDCOitem/note) 0-99</p> <p>(XPath RAWDyeOrder/RDCObody/RDCOitem/rawMnfrOperation/note) 0-99</p>   |

|               |   |
|---------------|---|
|               | <p>(XPath RAWDyeOrder/RDCObody/RDCOitem/rawProd/note) 0-99<br/> (XPath RAWDyeOrder/terms/allowanceCharge/dtScheme/note) 0-99</p>  |
| @noteLabel    | <p>subject qualifier of a note<br/> - base type: string, max length: 35,<br/> (XPath RAWDyeOrder/RDCObody/RDCOitem/note/@noteLabel) [Optional]<br/> - nota: <i>must be used to qualify the subject of the note</i><br/> (XPath RAWDyeOrder/terms/allowanceCharge/dtScheme/note/@noteLabel) [Optional]<br/> - nota: <i>must be used to qualify the subject of the note</i><br/> (XPath RAWDyeOrder/RDCObody/RDCOitem/dtScheme/note/@noteLabel) [Optional]<br/> - nota: <i>must be used to qualify the subject of the note</i><br/> (XPath RAWDyeOrder/RDCObody/RDCOitem/rawMnfrOperation/note/@noteLabel) [Optional]<br/> - nota: <i>must be used to qualify the subject of the note</i><br/> (XPath RAWDyeOrder/RDCObody/RDCOitem/rawComponent/note/@noteLabel) [Optional]<br/> - nota: <i>must be used to qualify the subject of the note</i><br/> (XPath RAWDyeOrder/RDCObody/RDCOitem/rawProd/note/@noteLabel) [Optional]<br/> - nota: <i>must be used to qualify the subject of the note</i><br/> (XPath RAWDyeOrder/RDCOheader/note/@noteLabel) [Optional]<br/> - nota: <i>must be used to qualify the subject of the note</i></p>   |
| @numberingOrg | <p>code specifying the organisation who has created or owns the coding or numbering system<br/> - base type: string, cod. table: NT6<br/> <a href="http://www.ebiz.enea.it/moda-ml/repository/codelist/v2018-1/gc_NT6.xml">http://www.ebiz.enea.it/moda-ml/repository/codelist/v2018-1/gc_NT6.xml</a><br/> (XPath RAWDyeOrder/RDCObody/RDCOitem/rawMnfrOperation/refDoc/docID/@numberingOrg) [Optional]<br/> - nota: <i>here can be specified whose document numbering is used (e.g.: Client, Supplier, ..)</i><br/> (XPath RAWDyeOrder/RDCObody/RDCOitem/rawComponent/rawCode/@numberingOrg) [Optional]<br/> (XPath RAWDyeOrder/RDCObody/RDCOitem/rawComponent/rawCode/color/@numberingOrg) [Optional]<br/> - nota: <i>this attribute should be used either single or coupled with "listName" and "listVersion"</i><br/> (XPath RAWDyeOrder/RDCObody/RDCOitem/rawComponent/refDoc/season/@numberingOrg) [Optional] (a)<br/> - nota: <i>this attribute should be used either single or coupled with "listName" and "listVersion"</i><br/> (XPath RAWDyeOrder/RDCObody/RDCOitem/rawComponent/rawCode/art/@numberingOrg) [Optional]<br/> - nota: <i>this attribute should be used either single or coupled with "listName" and "listVersion"</i><br/> (XPath RAWDyeOrder/RDCObody/RDCOitem/rawComponent/dyeN/@numberingOrg) [Optional]<br/> (XPath RAWDyeOrder/RDCObody/RDCOitem/note/@numberingOrg) [Optional]<br/> - nota: <i>must be used to specify the organization that created the list of codes used in "noteLabel"</i><br/> (XPath RAWDyeOrder/RDCObody/RDCOitem/rawComponent/refDoc/docID/@numberingOrg) [Optional]<br/> - nota: <i>here can be specified whose document numbering is used (e.g.: Client, Supplier, ..)</i><br/> (XPath RAWDyeOrder/RDCObody/RDCOitem/rawComponent/note/@numberingOrg) [Optional]<br/> - nota: <i>must be used to specify the organization that created the list of codes used in "noteLabel"</i><br/> (XPath RAWDyeOrder/RDCObody/RDCOitem/rawComponent/lotN/@numberingOrg) [Optional]<br/> (XPath RAWDyeOrder/RDCOheader/refDoc/season/@numberingOrg) [Optional] (a)<br/> - nota: <i>this attribute should be used either single or coupled with "listName" and "listVersion"</i></p> |

(XPath RAWDyeOrder/RDCObody/RDCOitem/rawComponent/rawCode/added/@numberingOrg) [Optional]

- nota: *this attribute should be used either single or coupled with "listName" and "listVersion"*

(XPath RAWDyeOrder/RDCOheader/subContractor/id/@numberingOrg) [Optional]

(XPath RAWDyeOrder/RDCOheader/note/@numberingOrg) [Optional]

- nota: *must be used to specify the organization that created the list of codes used in "noteLabel"*

(XPath RAWDyeOrder/RDCObody/RDCOitem/rawProd/rawCode/@numberingOrg) [Optional]

(XPath RAWDyeOrder/RDCObody/RDCOitem/rawProd/rawCode/art/@numberingOrg) [Optional]

- nota: *this attribute should be used either single or coupled with "listName" and "listVersion"*

(XPath RAWDyeOrder/RDCOheader/docID/@numberingOrg) [Optional]

- nota: *here can be specified whose document numbering is used (e.g.: Client, Supplier, ..)*

(XPath RAWDyeOrder/RDCObody/RDCOitem/dtScheme/note/@numberingOrg) [Optional]

- nota: *must be used to specify the organization that created the list of codes used in "noteLabel"*

(XPath RAWDyeOrder/RDCOheader/buyer/id/@numberingOrg) [Optional]

(XPath RAWDyeOrder/RDCObody/RDCOitem/thirdParty/id/@numberingOrg) [Optional]

(XPath RAWDyeOrder/RDCOheader/refDoc/docID/@numberingOrg) [Optional]

- nota: *here can be specified whose document numbering is used (e.g.: Client, Supplier, ..)*

(XPath RAWDyeOrder/RDCObody/RDCOitem/rawProd/rawCode/added/@numberingOrg) [Optional]

- nota: *this attribute should be used either single or coupled with "listName" and "listVersion"*

(XPath RAWDyeOrder/RDCObody/RDCOitem/dtScheme/legalRef/@numberingOrg) [Optional] (a)

- nota: *this attribute should be used either single or coupled with "listName" and "listVersion"*

(XPath RAWDyeOrder/RDCObody/RDCOitem/rawMnfrOperation/note/@numberingOrg) [Optional]

- nota: *must be used to specify the organization that created the list of codes used in "noteLabel"*

(XPath RAWDyeOrder/RDCObody/RDCOitem/rawProd/lotN/@numberingOrg) [Optional]

(XPath RAWDyeOrder/RDCObody/RDCOitem/rawProd/rawCode/color/@numberingOrg) [Optional]

- nota: *this attribute should be used either single or coupled with "listName" and "listVersion"*

(XPath RAWDyeOrder/RDCObody/RDCOitem/rawProd/note/@numberingOrg) [Optional]

- nota: *must be used to specify the organization that created the list of codes used in "noteLabel"*

(XPath RAWDyeOrder/RDCObody/RDCOitem/rawProd/dyeN/@numberingOrg) [Optional]

(XPath RAWDyeOrder/RDCOheader/season/@numberingOrg) [Optional] (a)

- nota: *this attribute should be used either single or coupled with "listName" and "listVersion"*

(XPath RAWDyeOrder/terms/allowanceCharge/dtScheme/note/@numberingOrg) [Optional]

- nota: *must be used to specify the organization that created the list of codes used in "noteLabel"*

(XPath RAWDyeOrder/RDCOheader/refDoc/attachment/fileName/@numberingOrg) [Optional] (a)

(XPath RAWDyeOrder/RDCOheader/thirdParty/id/@numberingOrg) [Optional]

(XPath RAWDyeOrder/terms/allowanceCharge/dtScheme/legalRef/@numberingOrg) [Optional]

- nota: *this attribute should be used either single or coupled with "listName" and "listVersion"*

|             |   |
|-------------|---|
|             | <p>(XPath RAWDyeOrder/RDCObody/RDCOitem/rawMnfrOperation/refDoc/attachment/fileName/@numberingOrg) [Optional] (a)</p> <p>(XPath RAWDyeOrder/RDCOheader/buyer/additionalIdentifier/@numberingOrg) [Optional] (a)</p> <p>- nota: <i>here the issuer of the identifier must be specified</i></p> <p>(XPath RAWDyeOrder/RDCObody/RDCOitem/rawMnfrOperation/refDoc/season/@numberingOrg) [Optional] (a)</p> <p>- nota: <i>this attribute should be used either single or coupled with "listName" and "listVersion"</i></p> <p>(XPath RAWDyeOrder/RDCObody/RDCOitem/rawComponent/refDoc/attachment/fileName/@numberingOrg) [Optional] (a)</p> |
| @part       | <p>percent fraction of a total payment</p> <p>- base type: decimal, min inclusive: 1, max inclusive: 99, fraction digits: 2, (XPath RAWDyeOrder/terms/insPayment/@part) [Required]</p> <p>- nota: <i>here the % value of each installment must be indicated</i></p>   |
| payMode     | <p>way or means of payment</p> <p>- base type: string, cod. table: T2</p> <p><a href="http://www.ebiz.enea.it/moda-ml/repository/codelist/v2018-1/gc_T2.xml">http://www.ebiz.enea.it/moda-ml/repository/codelist/v2018-1/gc_T2.xml</a></p> <p>(XPath RAWDyeOrder/terms/insPayment/payMode) 0-1</p> <p>(XPath RAWDyeOrder/terms/payment/payMode) 0-1</p>   |
| payTerm     | <p>code specifying the terms or time by which the payment must be done</p> <p>- base type: string, cod. table: T1</p> <p><a href="http://www.ebiz.enea.it/moda-ml/repository/codelist/v2018-1/gc_T1.xml">http://www.ebiz.enea.it/moda-ml/repository/codelist/v2018-1/gc_T1.xml</a></p> <p>(XPath RAWDyeOrder/terms/insPayment/payTerm) 1-1</p> <p>(XPath RAWDyeOrder/terms/payment/payTerm) 1-1</p>   |
| payTermText | <p>free text specifying the terms by which the payment must be done (time/mode or means)</p> <p>- base type: string, max length: 250,</p> <p>(XPath RAWDyeOrder/terms/payment/payTermText) 1-1 (U)</p> <p>(XPath RAWDyeOrder/terms/insPayment/payTermText) 1-1 (U)</p>  |
| pcQty       | <p>percent quantity of a raw material or of a specified component in a fabric or in a yarn</p> <p>- base type: decimal, min inclusive: 0, max inclusive: 100, fraction digits: 2, (XPath RAWDyeOrder/RDCObody/RDCOitem/rawComponent/pcQty) 0-1</p>  |
| pcTolerance | <p>percent deviation tolerated on the value of a measurement (it must have a plus or minus sign)</p> <p>- base type: decimal, min inclusive: 0, max inclusive: 100, total digits: 2, (XPath RAWDyeOrder/RDCObody/RDCOitem/rawProd/rawSpecs/pcTolerance) 0-2</p>   |
| person      | <p>name of the contact person within a Party</p> <p>- base type: string, max length: 40,</p> <p>(XPath RAWDyeOrder/RDCOheader/thirdParty/person) 0-1</p> <p>(XPath RAWDyeOrder/RDCObody/RDCOitem/thirdParty/person) 0-1</p> <p>(XPath RAWDyeOrder/RDCOheader/subContractor/person) 0-1</p> <p>(XPath RAWDyeOrder/RDCOheader/buyer/person) 0-1</p>   |
| @phone      | <p>phone number of the contact person within a Party</p> <p>- base type: string, max length: 35,</p> <p>(XPath RAWDyeOrder/RDCObody/RDCOitem/thirdParty/person/@phone) [Optional]</p> <p>(XPath RAWDyeOrder/RDCOheader/subContractor/person/@phone) [Optional]</p> <p>(XPath RAWDyeOrder/RDCOheader/buyer/person/@phone) [Optional]</p> <p>(XPath RAWDyeOrder/RDCOheader/thirdParty/person/@phone) [Optional]</p>   |
| postCode    | <p>code defining the postal zone</p> <p>- base type: string, max length: 10,</p> <p>(XPath RAWDyeOrder/RDCOheader/subContractor/postCode) 0-1</p> <p>(XPath RAWDyeOrder/RDCOheader/buyer/postCode) 0-1</p> <p>(XPath RAWDyeOrder/RDCObody/RDCOitem/thirdParty/postCode) 0-1</p> <p>(XPath RAWDyeOrder/RDCOheader/thirdParty/postCode) 0-1</p>   |



|                 |   |
|-----------------|---|
| price           | unit price of the article, object or service specified<br>- base type: decimal, min inclusive: 0, fraction digits: 4,<br>(XPath RAWDyeOrder/RDCObody/RDCOitem/price) 0-1 (AU)   |
| @priceQualifier | type of price with reference to discount and taxes<br>- base type: string, cod. table: NT20<br><a href="http://www.ebiz.enea.it/moda-ml/repository/codelist/v2018-1/gc_NT20.xml">http://www.ebiz.enea.it/moda-ml/repository/codelist/v2018-1/gc_NT20.xml</a><br>(XPath RAWDyeOrder/RDCObody/RDCOitem/price/@priceQualifier) [Optional] [Default= NET]   |
| @productLevel   | level of the product (end or intermediate) yielded by an operation in a work cycle<br>- base type: string, cod. table: NT22<br><a href="http://www.ebiz.enea.it/moda-ml/repository/codelist/v2018-1/gc_NT22.xml">http://www.ebiz.enea.it/moda-ml/repository/codelist/v2018-1/gc_NT22.xml</a><br>(XPath RAWDyeOrder/RDCObody/RDCOitem/@productLevel) [Optional] [Default= END]<br>- nota: <i>this qualifier "intermediate" must be used when the product is also a component in an other line of the same Commission Order</i>   |
| @progr          | progressive number in the sequence<br>- base type: positiveInteger, min inclusive: 1,<br>(XPath RAWDyeOrder/terms/transInfo/@progr) [Optional] (N)<br>- nota: <i>Indicates the position of the leg in a sequence of transport legs. If it is declared it must be in all the transInfo elements.</i>   |
| qty             | net quantity of the article or object correlated, qualified by the function of the document (ordering, delivering, ..) and by the context<br>- base type: decimal, min inclusive: 0, fraction digits: 2,<br>(XPath RAWDyeOrder/RDCObody/RDCOitem/rawComponent/qty) 1-2<br><hr/> <b>AAAA-WARNING! - text not AVAILABLE n. 245 - In=en</b><br>(XPath RAWDyeOrder/RDCObody/RDCOitem/qty) 1-2<br><hr/> <b>AAAA-WARNING! - text not AVAILABLE n. 245 - In=en</b>   |
| rawChar         | physical or mechanical parameter used to define a characteristics of a raw material<br>- base type: string, cod. table: T22<br><a href="http://www.ebiz.enea.it/moda-ml/repository/codelist/v2018-1/gc_T22.xml">http://www.ebiz.enea.it/moda-ml/repository/codelist/v2018-1/gc_T22.xml</a><br>(XPath RAWDyeOrder/RDCObody/RDCOitem/rawProd/rawSpecs/rawChar) 1-1  |
| rawCharText     | free text describing the physical or mechanical parameter used to define a characteristics of a raw material<br>- base type: string, max length: 250,<br>(XPath RAWDyeOrder/RDCObody/RDCOitem/rawProd/rawSpecs/rawCharText) 1-1 (U)   |
| rawJob          | operation of a work cycle for raw material<br>- base type: string, cod. table: T200<br><a href="http://www.ebiz.enea.it/moda-ml/repository/codelist/v2018-1/gc_T200.xml">http://www.ebiz.enea.it/moda-ml/repository/codelist/v2018-1/gc_T200.xml</a><br>(XPath RAWDyeOrder/RDCObody/RDCOitem/rawMnfrOperation/rawJob) 1-1   |
| @role           | Third Party role qualifier<br>- base type: string, cod. table: NT2<br><a href="http://www.ebiz.enea.it/moda-ml/repository/codelist/v2018-1/gc_NT2.xml">http://www.ebiz.enea.it/moda-ml/repository/codelist/v2018-1/gc_NT2.xml</a><br>(XPath RAWDyeOrder/RDCObody/RDCOitem/thirdParty/@role) [Required]<br>(XPath RAWDyeOrder/RDCOheader/thirdParty/@role) [Required]  |
| season          | sale season; defined as: season (1 crt) + year (4 crt) - season: S/S=1 A/W=2 Spring=3 Summer=4 Autumn=5 Winter=6: for more than four seasons use alphabetic sequence: 1st season=A 2nd season=B etc.etc.<br>- base type: string, max length: 15,<br>(XPath RAWDyeOrder/RDCOheader/season) 0-1 (A)<br>(XPath RAWDyeOrder/RDCObody/RDCOitem/rawComponent/refDoc/season) 0-1 (A)<br>- note: <i>here indicates the season to which the referenced document belongs</i><br>(XPath RAWDyeOrder/RDCOheader/refDoc/season) 0-1 (A)<br>- note: <i>here indicates the season to which the referenced document belongs</i> |

|             |   |
|-------------|---|
|             | <p>(XPath RAWDyeOrder/RDCObody/RDCOitem/rawMnfrOperation/refDoc/season) 0-1 (A)</p> <p>- note: <i>here indicates the season to which the referenced document belongs</i></p>  |
| @sender     | <p>qualifier that specifies the Party issuing of the document</p> <p>- base type: boolean,</p> <p>(XPath RAWDyeOrder/RDCObody/RDCOitem/thirdParty/@sender) [Optional] (a*)</p> <p>- nota: <i>This attribute is mandatory when the STYLESHEET must be used</i></p> <p>(XPath RAWDyeOrder/RDCOheader/thirdParty/@sender) [Optional] (a*)</p> <p>- nota: <i>This attribute is mandatory when the STYLESHEET must be used</i></p> <p>(XPath RAWDyeOrder/RDCOheader/buyer/@sender) [Optional] (a*)</p> <p>- nota: <i>This attribute is mandatory when the STYLESHEET must be used</i></p> <p>(XPath RAWDyeOrder/RDCOheader/subContractor/@sender) [Optional] (a*)</p> <p>- nota: <i>This attribute is mandatory when the STYLESHEET must be used</i></p> |
| @source     | <p>party who has provided the data</p> <p>- base type: string, cod. table: NT12</p> <p><a href="http://www.ebiz.enea.it/moda-ml/repository/codelist/v2018-1/gc_NT12.xml">http://www.ebiz.enea.it/moda-ml/repository/codelist/v2018-1/gc_NT12.xml</a></p> <p>(XPath RAWDyeOrder/RDCObody/RDCOitem/rawProd/rawSpecs/specValue/@source) [Optional]</p>   |
| specValue   | <p>value requested for a property or a parameter that is measured</p> <p>- base type: decimal,</p> <p>(XPath RAWDyeOrder/RDCObody/RDCOitem/rawProd/rawSpecs/specValue) 0-1</p>  |
| street      | <p>street and building number identifying a location</p> <p>- base type: string, max length: 80,</p> <p>(XPath RAWDyeOrder/RDCOheader/buyer/street) 0-1</p> <p>(XPath RAWDyeOrder/RDCOheader/subContractor/street) 0-1</p> <p>(XPath RAWDyeOrder/RDCObody/RDCOitem/thirdParty/street) 0-1</p> <p>(XPath RAWDyeOrder/RDCOheader/thirdParty/street) 0-1</p>   |
| subCountry  | <p>short name or code of the sub-country entity</p> <p>- base type: string, max length: 9,</p> <p>(XPath RAWDyeOrder/RDCOheader/subContractor/subCountry) 0-1</p> <p>(XPath RAWDyeOrder/RDCObody/RDCOitem/thirdParty/subCountry) 0-1</p> <p>(XPath RAWDyeOrder/RDCOheader/thirdParty/subCountry) 0-1</p> <p>(XPath RAWDyeOrder/RDCOheader/buyer/subCountry) 0-1</p>   |
| subDept     | <p>name or code of a contact department within a Party</p> <p>- base type: string, max length: 40,</p> <p>(XPath RAWDyeOrder/RDCObody/RDCOitem/thirdParty/subDept) 0-1 (N)</p> <p>(XPath RAWDyeOrder/RDCOheader/subContractor/subDept) 0-1 (N)</p> <p>(XPath RAWDyeOrder/RDCOheader/buyer/subDept) 0-1 (N)</p> <p>(XPath RAWDyeOrder/RDCOheader/thirdParty/subDept) 0-1 (N)</p>   |
| taxCategory | <p>duty or tax or fee category</p> <p>- base type: string, cod. table: T62</p> <p><a href="http://www.ebiz.enea.it/moda-ml/repository/codelist/v2018-1/gc_T62.xml">http://www.ebiz.enea.it/moda-ml/repository/codelist/v2018-1/gc_T62.xml</a></p> <p>(XPath RAWDyeOrder/RDCObody/RDCOitem/dtScheme/taxCategory) 0-1</p> <p>(XPath RAWDyeOrder/terms/allowanceCharge/dtScheme/taxCategory) 0-1</p>   |
| taxRate     | <p>duty or tax or fee percent rate</p> <p>- base type: string,</p> <p>(XPath RAWDyeOrder/terms/allowanceCharge/dtScheme/taxRate) 0-1</p> <p>(XPath RAWDyeOrder/RDCObody/RDCOitem/dtScheme/taxRate) 0-1</p>  |
| @taxType    | <p>duty or tax or fee type</p> <p>- base type: string, cod. table: T61</p> <p><a href="http://www.ebiz.enea.it/moda-ml/repository/codelist/v2018-1/gc_T61.xml">http://www.ebiz.enea.it/moda-ml/repository/codelist/v2018-1/gc_T61.xml</a></p> <p>(XPath RAWDyeOrder/RDCObody/RDCOitem/dtScheme/@taxType) [Required]</p> <p>(XPath RAWDyeOrder/terms/allowanceCharge/dtScheme/@taxType) [Required]</p>   |
| tolerance   | <p>deviation tolerated on the value of a measurement (it must have a plus or minus sign)</p> <p>- base type: decimal,</p> <p>(XPath RAWDyeOrder/RDCObody/RDCOitem/rawProd/rawSpecs/tolerance) 0-2</p>   |

|                    |  |
|--------------------|--|
| transCondition     | <p>special condition of transport or special service requested to the Forwarder</p> <p>- base type: string, cod. table: T38<br/> <a href="http://www.ebiz.enea.it/moda-ml/repository/codelist/v2018-1/gc_T38.xml">http://www.ebiz.enea.it/moda-ml/repository/codelist/v2018-1/gc_T38.xml</a><br/> (XPath RAWDyeOrder/terms/transInfo/transCondition) 0-3</p>   |
| transConditionText | <p>free text description of the special condition of transport or special service requested to the Forwarder</p> <p>- base type: string, max length: 250,<br/> (XPath RAWDyeOrder/terms/transInfo/transConditionText) 0-1 (U)</p>  |
| transMeans         | <p>means of transport, in general or referred to a specific leg</p> <p>- base type: string, cod. table: T40<br/> <a href="http://www.ebiz.enea.it/moda-ml/repository/codelist/v2018-1/gc_T40.xml">http://www.ebiz.enea.it/moda-ml/repository/codelist/v2018-1/gc_T40.xml</a><br/> (XPath RAWDyeOrder/terms/transInfo/transMeans) 0-1</p>   |
| transMode          | <p>way of transport, in general or referred to the specified leg</p> <p>- base type: string, cod. table: T8<br/> <a href="http://www.ebiz.enea.it/moda-ml/repository/codelist/v2018-1/gc_T8.xml">http://www.ebiz.enea.it/moda-ml/repository/codelist/v2018-1/gc_T8.xml</a><br/> (XPath RAWDyeOrder/terms/transInfo/transMode) 1-1</p>  |
| @transReason       | <p>reason for the transport</p> <p>- base type: string, cod. table: NT11<br/> <a href="http://www.ebiz.enea.it/moda-ml/repository/codelist/v2018-1/gc_NT11.xml">http://www.ebiz.enea.it/moda-ml/repository/codelist/v2018-1/gc_NT11.xml</a><br/> (XPath RAWDyeOrder/terms/transInfo/@transReason) [Optional]</p>   |
| @uid               | <p>unique element identifier within the xml document</p> <p>- base type: string,<br/> (XPath RAWDyeOrder/RDCObody/RDCOitem/rawComponent/refDoc/attachment/@uid) [Optional]<br/> (XPath RAWDyeOrder/RDCObody/RDCOitem/rawMnfrOperation/refDoc/attachment/@uid) [Optional]<br/> (XPath RAWDyeOrder/RDCOheader/refDoc/attachment/@uid) [Optional]</p>   |
| @um                | <p>specification of the unit of measure</p> <p>- base type: string, cod. table: NT7<br/> <a href="http://www.ebiz.enea.it/moda-ml/repository/codelist/v2018-1/gc_NT7.xml">http://www.ebiz.enea.it/moda-ml/repository/codelist/v2018-1/gc_NT7.xml</a><br/> (XPath RAWDyeOrder/RDCObody/RDCOitem/rawProd/rawSpecs/specValue/@um) [Optional]<br/> (XPath RAWDyeOrder/RDCObody/RDCOitem/rawProd/rawSpecs/pcTolerance/@um) [Optional]</p> <p>- nota: <i>to be used when it has to be soecified if the declared percentage is b y weight, volume, etc...</i><br/> (XPath RAWDyeOrder/RDCObody/RDCOitem/rawProd/rawSpecs/tolerance/@um) [Required]<br/> (XPath RAWDyeOrder/terms/transInfo/grossWeight/@um) [Required]<br/> (XPath RAWDyeOrder/terms/transInfo/netWeight/@um) [Required]<br/> (XPath RAWDyeOrder/terms/allowanceCharge/@um) [Optional] (a)<br/> (XPath RAWDyeOrder/RDCObody/RDCOitem/qty/@um) [Required]<br/> (XPath RAWDyeOrder/RDCObody/RDCOitem/rawComponent/pcQty/@um) [Optional]</p> <p>- nota: <i>to be used when it has to be soecified if the declared percentage is b y weight, volume, etc...</i><br/> (XPath RAWDyeOrder/RDCObody/RDCOitem/rawComponent/qty/@um) [Required]<br/> (XPath RAWDyeOrder/RDCObody/RDCOitem/price/@um) [Optional]</p> <p>- nota: <i>Unit of measure of the product to which the price is referred (price pe r meter)</i></p> |
| uri                | <p>Uniform Resource Identifier (URI) that identifies the external object as an Internet resource</p> <p>- base type: normalizedString,<br/> (XPath RAWDyeOrder/RDCObody/RDCOitem/rawMnfrOperation/refDoc/attachment/externalReference/uri) 1-1 (N)<br/> (XPath RAWDyeOrder/RDCObody/RDCOitem/rawComponent/refDoc/attachment/externalReference/uri) 1-1 (N)<br/> (XPath RAWDyeOrder/RDCOheader/refDoc/attachment/externalReference/uri) 1-1 (N)</p>   |

|                    |   |
|--------------------|---|
| <i>@useProfile</i> | <p>use profile to which the present document is compliant if it was agreed by the parties. It is suggested a URI with reference to the firm or the URL of the profile.</p> <p>- base type: string,<br/> (XPath RAWDyeOrder/@useProfile) [Optional]</p>  |
| <i>@VAT</i>        | <p>VAT rate or code (DEPRECATED, use dtScheme element)</p> <p>- base type: string, cod. table: NT16<br/> <a href="http://www.ebiz.enea.it/moda-ml/repository/codelist/v2018-1/gc_NT16.xml">http://www.ebiz.enea.it/moda-ml/repository/codelist/v2018-1/gc_NT16.xml</a><br/> (XPath RAWDyeOrder/RDCOheader/thirdParty/@VAT) [Optional]<br/> (XPath RAWDyeOrder/RDCObody/RDCOitem/lineN/@VAT) [Optional]</p> <p>- nota: <i>Deprecated, prefer dtScheme when available.</i><br/> (XPath RAWDyeOrder/RDCObody/RDCOitem/thirdParty/@VAT) [Optional]<br/> (XPath RAWDyeOrder/terms/allowanceCharge/@VAT) [Optional]</p> |
| <i>@version</i>    | <p>Dictionary version from which the instance has been created</p> <p>- base type: string, cod. table: NT100<br/> <a href="http://www.ebiz.enea.it/moda-ml/repository/codelist/v2018-1/gc_NT100.xml">http://www.ebiz.enea.it/moda-ml/repository/codelist/v2018-1/gc_NT100.xml</a><br/> (XPath RAWDyeOrder/@version) [Optional] [Default= 2018-1]</p>  |

## 2.3 Suggested best practices

**RAWDyeOrder/RDCOheader/refDoc/docID (identification number of the referenced document SINCE 2008-1 ITS USE IN THE HEADER IS DISCOURAGED (REPLACED BY msgID))**

numberingOrg indicates the role that produced the document identifier (it is allowed to declare two different ones -e.g. customer and supplier - with two docID with different numberingOrg

**RAWDyeOrder/RDCObody/RDCOitem/rawComponent/refDoc/docID (identification number of the referenced document SINCE 2008-1 ITS USE IN THE HEADER IS DISCOURAGED (REPLACED BY msgID))**

numberingOrg indicates the role that produced the document identifier (it is allowed to declare two different ones -e.g. customer and supplier - with two docID with different numberingOrg

**RAWDyeOrder/RDCObody/RDCOitem/rawMnfrOperation/**

**refDoc/docID (identification number of the referenced document SINCE 2008-1 ITS USE IN THE HEADER IS DISCOURAGED (REPLACED BY msgID))**

numberingOrg indicates the role that produced the document identifier (it is allowed to declare two different ones -e.g. customer and supplier - with two docID with different numberingOrg

**RAWDyeOrder/RDCObody/RDCOitem/rawComponent/**

**refDoc/attachment/externalReference/mimeType (mime type of the external object)**

Use coding from IANA <http://www.iana.org/assignments/media-types/media-types.xml>

**RAWDyeOrder/RDCOheader/refDoc/attachment/**

**externalReference/mimeType (mime type of the external object)**

Use coding from IANA <http://www.iana.org/assignments/media-types/media-types.xml>

**RAWDyeOrder/RDCObody/RDCOitem/rawMnfrOperation/**

**refDoc/attachment/externalReference/mimeType (mime type of the external object)**

Use coding from IANA <http://www.iana.org/assignments/media-types/media-types.xml>

**RAWDyeOrder/RDCObody/RDCOitem/rawComponent/qty (net quantity of the article or object correlated, qualified by the function of the document (ordering, delivering, ..) and by the context)**

this element can have two instances only if the units of measure are different

**RAWDyeOrder/RDCObody/RDCOitem/qty (net quantity of the article or object correlated, qualified by the function of the document (ordering, delivering, ..) and by the context)**

this element can have two instances only if the units of measure are different

## 2.4 Enumeration tables

List of enumeration tables used in the XML document. You can find the corresponding codes at:  
<http://www.ebiz-tcf.eu/moda-ml/imple/moda-ml-2018-1.asp?lingua=en&pag=6>

### Legenda

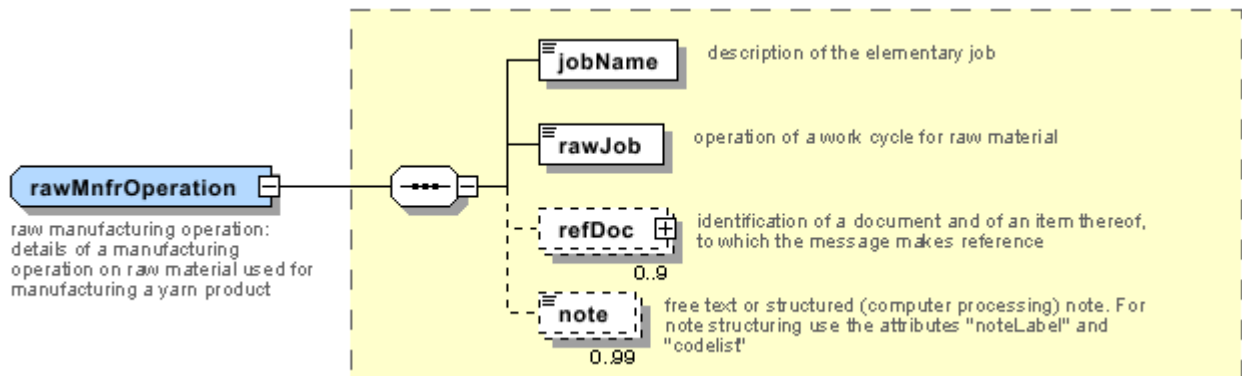
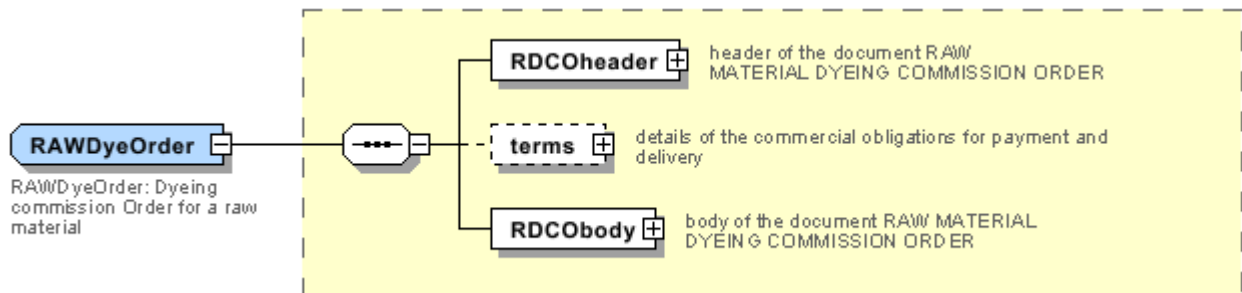
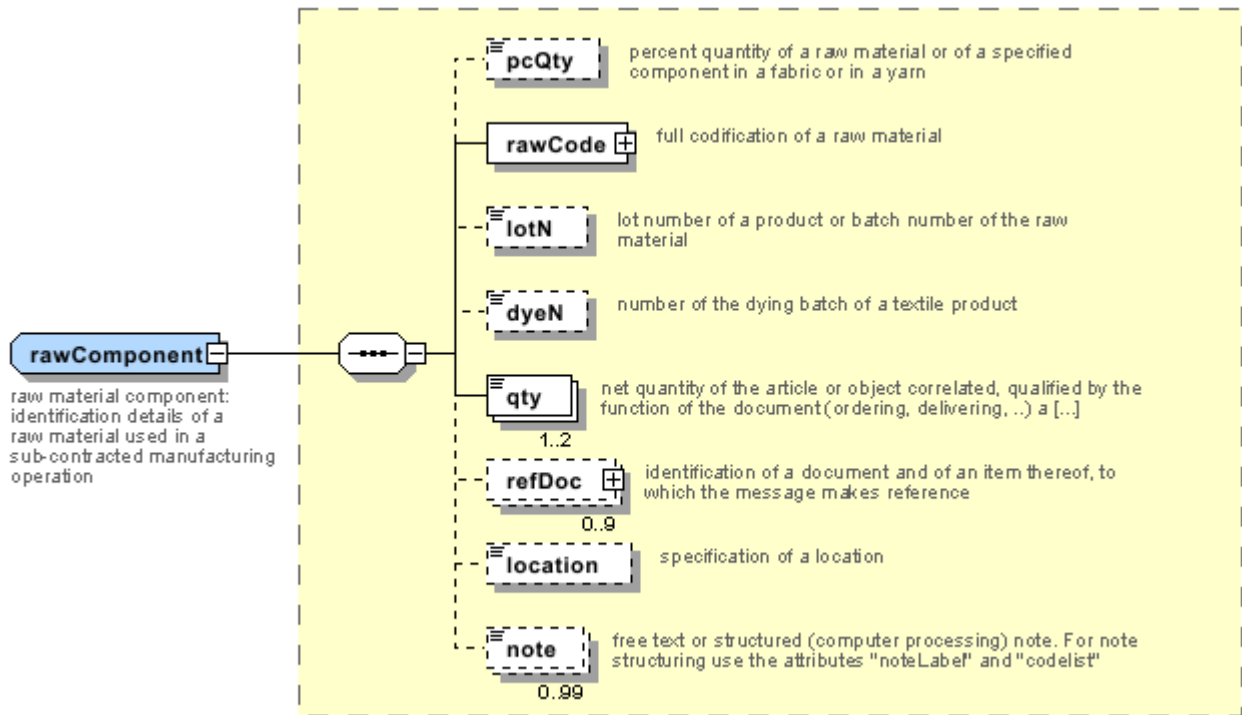
- N: new table
- U: updated properties

NT100 - eBIZ TCFUpstream version  
NT11 - transport causal  
NT12 - data source  
NT16 - VAT rate or code  
NT18 - message function  
NT2 - third party qualifier  
NT20 - price qualifier  
NT22 - product type of an operation  
NT29 - format of a date  
NT3 - data format  
NT37 - committed quantity qualifier  
NT38 - colour test  
NT6 - coding system owner/issuer  
NT60 - language, codes from ISO 639-1 (subset) (N)  
NT7 - unit of measure (U)  
T1 - terms of payment  
T10 - ISO3166 - Country  
T2 - Modes of payment  
T200 - type of job on raw material  
T21 - type of document  
T22 - raw material characteristics type  
T3 - terms of delivery  
T38 - transport conditions  
T40 - type of transport means  
T41 - type of Allowance or Charge  
T44 - additional code type  
T61 - duty or tax or fee type  
T62 - duty or tax or fee category  
T8 - Modes of Transport  
T9 - ISO4217 - Currency

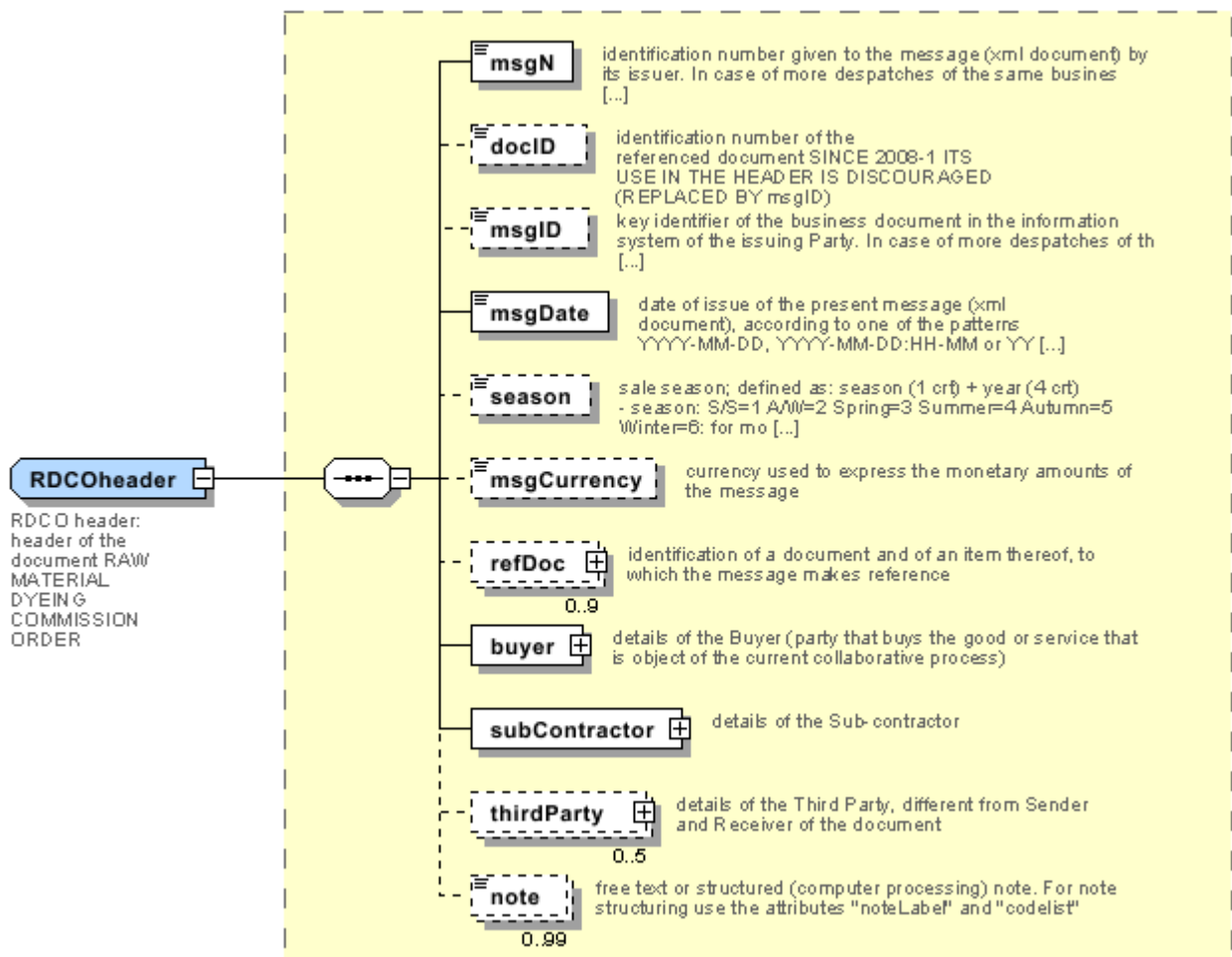
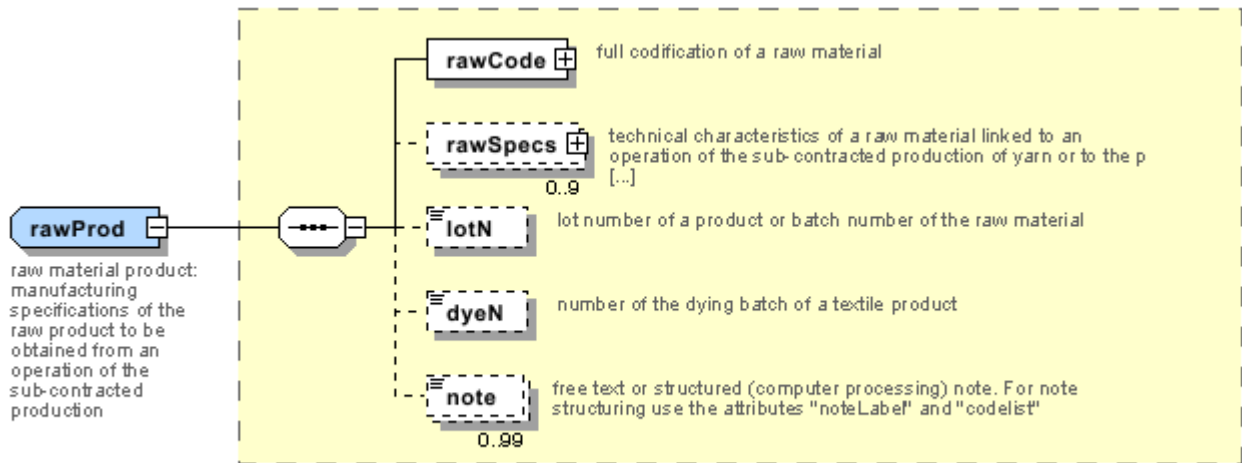


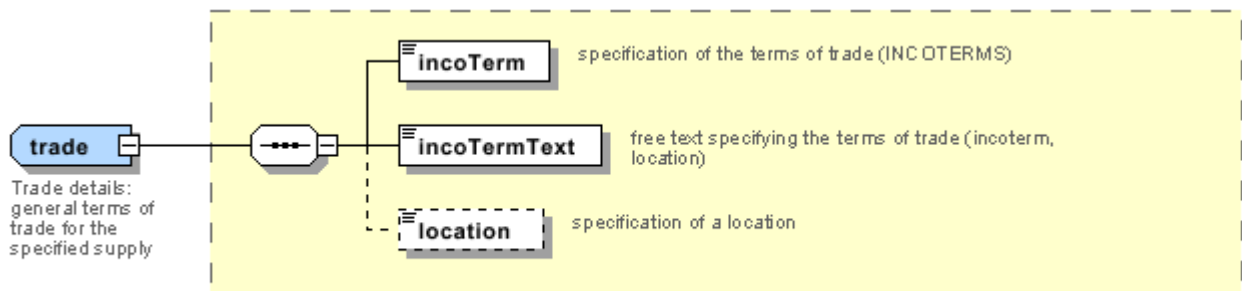
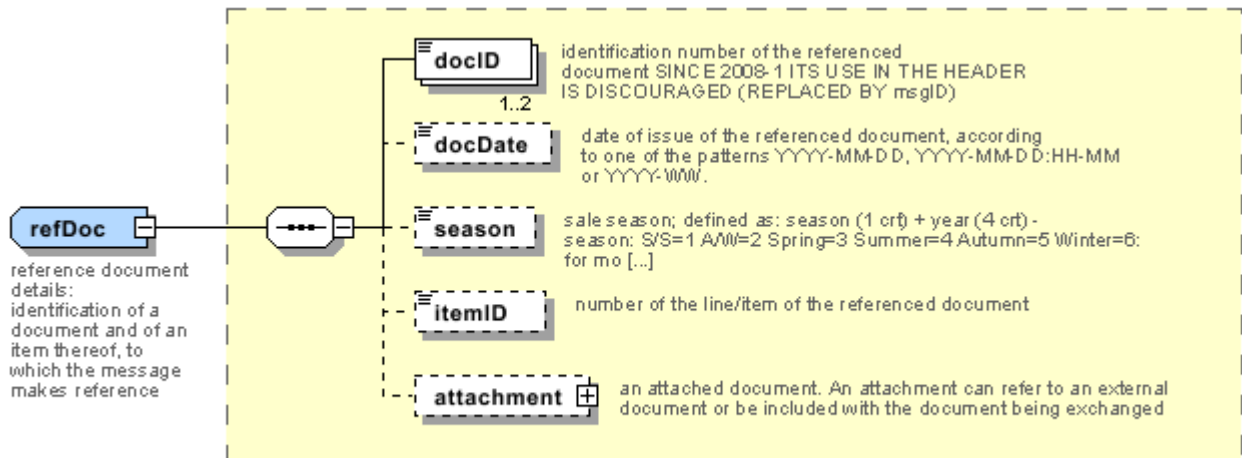
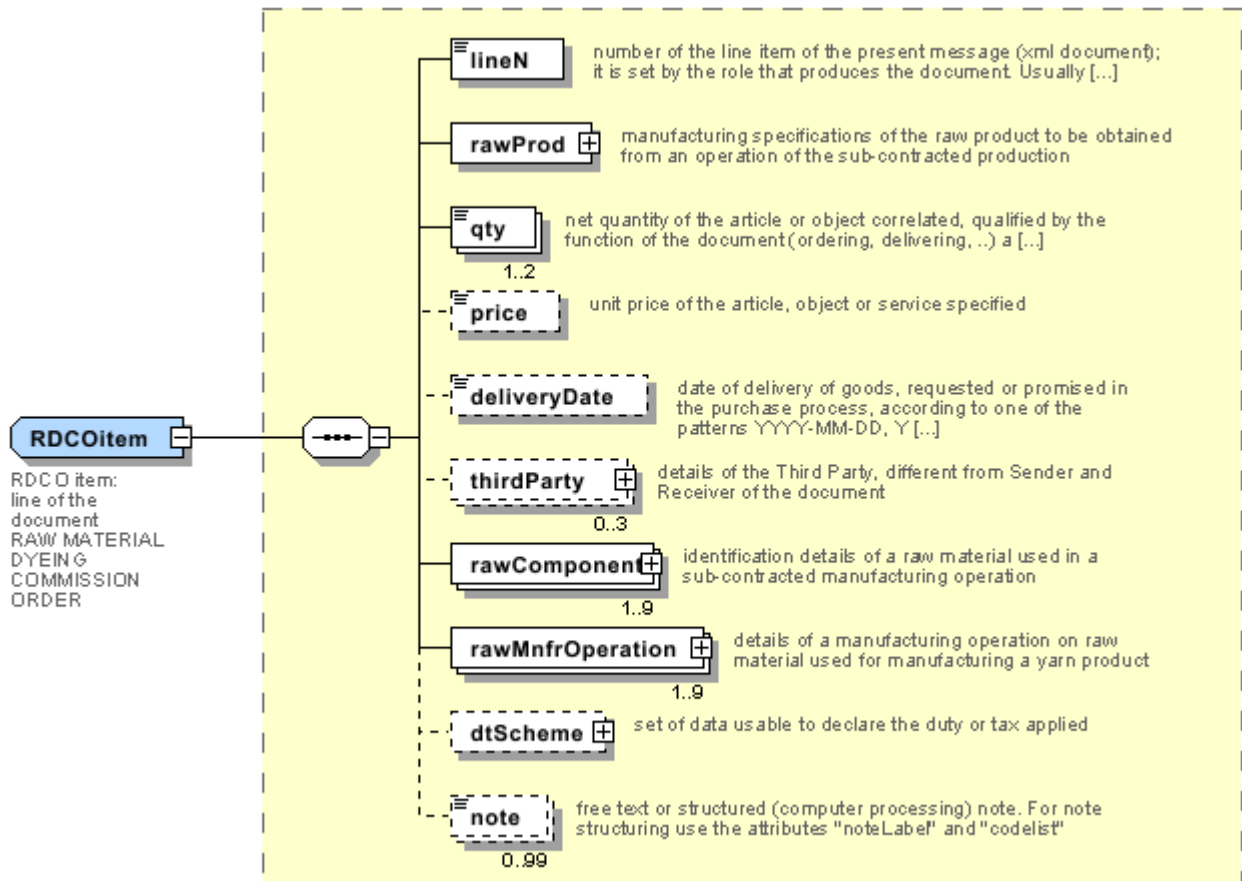
# Annex A

Representative images of the principal complex elements' structure.











## Annex B

### NT100 - eBIZ TCFUpstream version

dictionary version

Agency name: eBIZ

tabella cod.: NT100

File codes list (Generic code): [http://www.ebiz.enea.it/moda-ml/repository/codelist/v2018-1/gc\\_NT100.xml](http://www.ebiz.enea.it/moda-ml/repository/codelist/v2018-1/gc_NT100.xml)

| Code   | Description | Adoption note | Version status | Date of insertion |
|--------|-------------|---------------|----------------|-------------------|
| 2013-1 | v2013-1     |               |                | 01/07/2013        |
| 2018-1 | v2018-1     |               | (N)            | 04/11/2018        |
| draft  | draft       |               | (N)            | 08/09/2017        |

### NT11 - transport causal

reason for the transport

Agency name: eBIZ

tabella cod.: NT11

File codes list (Generic code): [http://www.ebiz.enea.it/moda-ml/repository/codelist/v2018-1/gc\\_NT11.xml](http://www.ebiz.enea.it/moda-ml/repository/codelist/v2018-1/gc_NT11.xml)

| Code | Description           | Adoption note | Version status | Date of insertion |
|------|-----------------------|---------------|----------------|-------------------|
| FOC  | free of charge        |               |                |                   |
| FRW  | return from re-works  |               |                |                   |
| FST  | return from storage   |               |                |                   |
| FWW  | return from view      |               |                |                   |
| FWK  | return from works     |               |                |                   |
| IST  | in storage            |               |                |                   |
| NWK  | return non-worked     |               |                |                   |
| RJC  | return from rejection |               |                |                   |
| SEL  | to sell               |               |                |                   |
| STO  | to storage            |               |                |                   |
| VEW  | to view               |               |                |                   |
| WRK  | to works              |               |                |                   |

### NT12 - data source

party who has provided the data

Agency name: eBIZ

tabella cod.: NT12

File codes list (Generic code): [http://www.ebiz.enea.it/moda-ml/repository/codelist/v2018-1/gc\\_NT12.xml](http://www.ebiz.enea.it/moda-ml/repository/codelist/v2018-1/gc_NT12.xml)

| Code | Description         | Adoption note | Version status | Date of insertion |
|------|---------------------|---------------|----------------|-------------------|
| AC   | internal test       |               |                |                   |
| CO   | external test       |               |                |                   |
| CV   | test after steaming |               |                |                   |

### NT16 - VAT rate or code

VAT rate or code ( DEPRECATED, use dtScheme element )

tabella cod.: NT16

File codes list (Generic code): [http://www.ebiz.enea.it/moda-ml/repository/codelist/v2018-1/gc\\_NT16.xml](http://www.ebiz.enea.it/moda-ml/repository/codelist/v2018-1/gc_NT16.xml)

### NT18 - message function

function performed by the present message with regards to the transmission

Agency name: eBIZ

tabella cod.: NT18

File codes list (Generic code): [http://www.ebiz.enea.it/moda-ml/repository/codelist/v2018-1/gc\\_NT18.xml](http://www.ebiz.enea.it/moda-ml/repository/codelist/v2018-1/gc_NT18.xml)

| Code | Description                         | Adoption note | Version status | Date of insertion |
|------|-------------------------------------|---------------|----------------|-------------------|
| CA   | delete this document                |               |                | 01/07/2013        |
| CP   | copy                                |               |                |                   |
| OR   | original                            |               |                |                   |
| RC   | re-transmission for data correction |               |                |                   |
| RT   | re-transmission                     |               |                |                   |

### NT2 - third party qualifier

Third Party role qualifier

Agency name: eBIZ

tabella cod.: NT2

File codes list (Generic code): [http://www.ebiz.enea.it/moda-ml/repository/codelist/v2018-1/gc\\_NT2.xml](http://www.ebiz.enea.it/moda-ml/repository/codelist/v2018-1/gc_NT2.xml)

| Code | Description                          | Adoption note | Version status | Date of insertion |
|------|--------------------------------------|---------------|----------------|-------------------|
| AG   | Sales Agent                          |               |                |                   |
| AU   | Auditor                              |               | (N)            | 08/04/2019        |
| CE   | Certification authority              |               | (N)            | 08/04/2019        |
| CO   | Quality Controller                   |               |                |                   |
| DC   | Response to                          |               |                |                   |
| DF   | Invoicee                             |               |                |                   |
| DI   | Copy to (CC)                         |               |                | 28/10/2014        |
| DM   | Consignee                            |               |                |                   |
| DP   | Consignment address (Delivery Party) |               |                |                   |
| IM   | Importer                             |               |                |                   |
| OR   | Originator                           |               |                | 10/09/2014        |
| SC   | Sub contractor                       |               | (N)            | 10/04/2019        |
| SM   | Service/ePlatform manager            |               | (N)            | 08/04/2019        |
| SP   | Forwarder                            |               |                |                   |
| TX   | Tax Representative                   |               |                |                   |

### NT20 - price qualifier

type of price with reference to discount and taxes

Agency name: eBIZ

tabella cod.: NT20

File codes list (Generic code): [http://www.ebiz.enea.it/moda-ml/repository/codelist/v2018-1/gc\\_NT20.xml](http://www.ebiz.enea.it/moda-ml/repository/codelist/v2018-1/gc_NT20.xml)

| Code | Description           | Adoption note | Version status | Date of insertion |
|------|-----------------------|---------------|----------------|-------------------|
| GET  | gross excluding taxes |               |                |                   |
| GIT  | gross including taxes |               |                |                   |
| NET  | net excluding taxes   |               |                |                   |
| NIT  | net including taxes   |               |                |                   |

### NT22 - product type of an operation

level of the product (end or intermediate) yielded by an operation in a work cycle

Agency name: eBIZ

tabella cod.: NT22

File codes list (Generic code): [http://www.ebiz.enea.it/moda-ml/repository/codelist/v2018-1/gc\\_NT22.xml](http://www.ebiz.enea.it/moda-ml/repository/codelist/v2018-1/gc_NT22.xml)

| Code | Description  | Adoption note | Version status | Date of insertion |
|------|--------------|---------------|----------------|-------------------|
| END  | end-product  |               |                |                   |
| INT  | intermediate |               |                |                   |

### NT29 - format of a date

format used for the date

Agency name: eBIZ

tabella cod.: NT29

File codes list (Generic code): [http://www.ebiz.enea.it/moda-ml/repository/codelist/v2018-1/gc\\_NT29.xml](http://www.ebiz.enea.it/moda-ml/repository/codelist/v2018-1/gc_NT29.xml)

| Code | Description      | Adoption note | Version status | Date of insertion |
|------|------------------|---------------|----------------|-------------------|
| D    | YYYY-MM-DD       |               |                |                   |
| M    | YYYY-MM-DD:HH-MM |               |                |                   |
| W    | YYYY-WW          |               |                |                   |

### NT3 - data format

format of a string according to a customized User rule (local rule)

Agency name: eBIZ

tabella cod.: NT3

File codes list (Generic code): [http://www.ebiz.enea.it/moda-ml/repository/codelist/v2018-1/gc\\_NT3.xml](http://www.ebiz.enea.it/moda-ml/repository/codelist/v2018-1/gc_NT3.xml)

| Code | Description     | Adoption note | Version status | Date of insertion |
|------|-----------------|---------------|----------------|-------------------|
| EN4  | GS1-GLN         |               |                | 01/07/2013        |
| MD   | mutually agreed |               |                |                   |

### NT37 - committed quantity qualifier

specifies if the committed quantity can or can not include the loss in weight

Agency name: eBIZ

tabella cod.: NT37

File codes list (Generic code): [http://www.ebiz.enea.it/moda-ml/repository/codelist/v2018-1/gc\\_NT37.xml](http://www.ebiz.enea.it/moda-ml/repository/codelist/v2018-1/gc_NT37.xml)

| Code | Description                     | Adoption note | Version status | Date of insertion |
|------|---------------------------------|---------------|----------------|-------------------|
| NS   | quantity can include losses     |               |                |                   |
| SA   | quantity can not include losses |               |                |                   |

### NT38 - colour test

specification of colour test before the operation

tabella cod.: NT38

File codes list (Generic code): [http://www.ebiz.enea.it/moda-ml/repository/codelist/v2018-1/gc\\_NT38.xml](http://www.ebiz.enea.it/moda-ml/repository/codelist/v2018-1/gc_NT38.xml)

| Code | Description      | Adoption note | Version status | Date of insertion |
|------|------------------|---------------|----------------|-------------------|
| 1    | only colour test |               |                |                   |
| 2    | with colour test |               |                |                   |

### NT6 - coding system owner/issuer

code specifying the organisation who has created or owns the coding or numbering system

Agency name: eBIZ

tabella cod.: NT6

File codes list (Generic code): [http://www.ebiz.enea.it/moda-ml/repository/codelist/v2018-1/gc\\_NT6.xml](http://www.ebiz.enea.it/moda-ml/repository/codelist/v2018-1/gc_NT6.xml)

| Code | Description                  | Adoption note | Version status | Date of insertion |
|------|------------------------------|---------------|----------------|-------------------|
| CL   | Customer/buyer               |               |                |                   |
| CO   | Quality Controller           |               |                |                   |
| EB   | eBIZ                         | replaces 'ML' | (N)            | 18/03/2019        |
| EN   | GS1 ( ex-EAN International ) |               |                |                   |
| ES   | e-Stockflow                  |               |                |                   |
| FO   | Supplier                     |               |                |                   |
| GS   | GS1                          |               |                | 01/07/2013        |
| MF   | VAT identifier               |               | (U)            |                   |
| ML   | Moda-ML                      | DEPRECATED    | (U)            |                   |
| SP   | Service Provider             |               |                |                   |



**NT60 - language, codes from ISO 639-1 (subset) (N)**

Agency name: eBIZ / ISO

tabella cod.: NT60

File codes list (Generic code): [http://www.ebiz.enea.it/moda-ml/repository/codelist/v2018-1/gc\\_NT60.xml](http://www.ebiz.enea.it/moda-ml/repository/codelist/v2018-1/gc_NT60.xml)

| <b>Code</b> | <b>Description</b>      | <b>Adoption note</b> | <b>Version status</b> | <b>Date of insertion</b> |
|-------------|-------------------------|----------------------|-----------------------|--------------------------|
| af          | Afrikaans               |                      | (N)                   | 31/01/2019               |
| ar          | Arabic                  |                      | (N)                   | 31/01/2019               |
| be          | Belarusian              |                      | (N)                   | 31/01/2019               |
| bg          | Bulgarian               |                      | (N)                   | 31/01/2019               |
| bn          | Bengali                 |                      | (N)                   | 31/01/2019               |
| bo          | Tibetan                 |                      | (N)                   | 31/01/2019               |
| bs          | Bosnian                 |                      | (N)                   | 31/01/2019               |
| ca          | Catalan, Valencian      |                      | (N)                   | 31/01/2019               |
| cs          | Czech                   |                      | (N)                   | 31/01/2019               |
| da          | Danish                  |                      | (N)                   | 31/01/2019               |
| de          | German                  |                      | (N)                   | 31/01/2019               |
| el          | Greek, Modern (1453-)   |                      | (N)                   | 31/01/2019               |
| en          | English                 |                      | (N)                   | 31/01/2019               |
| eo          | Esperanto               |                      | (N)                   | 31/01/2019               |
| es          | Spanish, Castilian      |                      | (N)                   | 31/01/2019               |
| et          | Estonian                |                      | (N)                   | 31/01/2019               |
| eu          | Basque                  |                      | (N)                   | 31/01/2019               |
| F           | Female                  |                      | (N)                   | 15/04/2019               |
| fa          | Persian                 |                      | (N)                   | 31/01/2019               |
| fi          | Finnish                 |                      | (N)                   | 31/01/2019               |
| fr          | French                  |                      | (N)                   | 31/01/2019               |
| ga          | Irish                   |                      | (N)                   | 31/01/2019               |
| gd          | Gaelic, Scottish Gaelic |                      | (N)                   | 31/01/2019               |
| gn          | Guarani                 |                      | (N)                   | 31/01/2019               |
| he          | Hebrew                  |                      | (N)                   | 31/01/2019               |
| hr          | Croatian                |                      | (N)                   | 31/01/2019               |
| ht          | Haitian, Haitian Creole |                      | (N)                   | 31/01/2019               |
| hu          | Hungarian               |                      | (N)                   | 31/01/2019               |
| hy          | Armenian                |                      | (N)                   | 31/01/2019               |

|    |  |  |     |            |
|----|--|--|-----|------------|
| ia | Interlingua (International Auxiliary Language Association) |  | (N) | 31/01/2019 |
| id | Indonesian   |  | (N) | 31/01/2019 |
| is | Icelandic  |  | (N) | 31/01/2019 |
| it | Italian  |  | (N) | 31/01/2019 |
| ja | Japanese   |  | (N) | 31/01/2019 |
| jv | Javanese   |  | (N) | 31/01/2019 |
| ka | Georgian   |  | (N) | 31/01/2019 |
| km | Central Khmer  |  | (N) | 31/01/2019 |
| ko | Korean   |  | (N) | 31/01/2019 |
| ku | Kurdish  |  | (N) | 31/01/2019 |
| lb | Luxembourgish, Letzeburgesch                               |  | (N) | 31/01/2019 |
| lo | Lao  |  | (N) | 31/01/2019 |
| lt | Lithuanian   |  | (N) | 31/01/2019 |
| lv | Latvian  |  | (N) | 31/01/2019 |
| mg | Malagasy   |  | (N) | 31/01/2019 |
| mk | Macedonian   |  | (N) | 31/01/2019 |
| mn | Mongolian  |  | (N) | 31/01/2019 |
| mt | Maltese  |  | (N) | 31/01/2019 |
| nl | Dutch, Flemish   |  | (N) | 31/01/2019 |
| no | Norwegian  |  | (N) | 31/01/2019 |
| pl | Polish   |  | (N) | 31/01/2019 |
| pt | Portuguese   |  | (N) | 31/01/2019 |
| ro | Romanian, Moldavian, Moldovan                              |  | (N) | 31/01/2019 |
| ru | Russian  |  | (N) | 31/01/2019 |
| se | Northern Sami  |  | (N) | 31/01/2019 |
| sk | Slovak   |  | (N) | 31/01/2019 |
| sl | Slovenian  |  | (N) | 31/01/2019 |
| sm | Samoan   |  | (N) | 31/01/2019 |
| so | Somali   |  | (N) | 31/01/2019 |
| sq | Albanian   |  | (N) | 31/01/2019 |
| sr | Serbian  |  | (N) | 31/01/2019 |
| sv | Swedish  |  | (N) | 31/01/2019 |
| sw | Swahili  |  | (N) | 31/01/2019 |
| ta | Tamil  |  | (N) | 31/01/2019 |
| th | Thai   |  | (N) | 31/01/2019 |

|    |            |  |     |            |
|----|------------|--|-----|------------|
| tr | Turkish    |  | (N) | 31/01/2019 |
| uk | Ukrainian  |  | (N) | 31/01/2019 |
| ur | Urdu       |  | (N) | 31/01/2019 |
| uz | Uzbek      |  | (N) | 31/01/2019 |
| vi | Vietnamese |  | (N) | 31/01/2019 |
| zh | Chinese    |  | (N) | 31/01/2019 |

#### NT7 - unit of measure (U)

specification of the unit of measure, it is a sub set of table Unit of Measure Code - UN/ECE REC 20 delivered by United Nations Economic Commission for Europe (UN/ECE)

Agency name: eBIZ / UN/ECE

tabella cod.: NT7

File codes list (Generic code): [http://www.ebiz.enea.it/moda-ml/repository/codelist/v2018-1/gc\\_NT7.xml](http://www.ebiz.enea.it/moda-ml/repository/codelist/v2018-1/gc_NT7.xml)

Other link: <http://docs.oasis-open.org/ubl/os-UBL-2.1/cl/gc/default/UnitOfMeasureCode-2.1.gc#>

| Code    | Description       | Adoption note | Version status | Date of insertion |
|---------|-------------------|---------------|----------------|-------------------|
| CMK     | square centimetre |               | (N)            | 20/12/2017        |
| CMQ     | cubic centimetre  |               | (N)            | 20/12/2017        |
| CMT     | centimetre        |               |                |                   |
| CNE     | centiNewton       |               |                |                   |
| CO2TON  | ton of CO2        |               | (N)            | 10/09/2014        |
| COUPLES | couples           |               |                |                   |
| DMQ     | cubic decimetre   |               |                |                   |
| E37     | pixel             |               | (N)            | 11/04/2018        |
| GRM     | gram              |               |                |                   |
| HUR     | hour              |               |                |                   |
| INH     | inch              |               |                |                   |
| KGM     | kilogram          |               |                |                   |
| KMT     | kilometer         |               |                |                   |
| KWH     | kilowatthours     |               | (N)            | 10/09/2014        |
| LBR     | pound             |               |                |                   |
| MIN     | minute            |               |                |                   |
| MMK     | square millimetre |               | (N)            | 20/12/2017        |
| MTK     | square metre      |               | (N)            | 20/12/2017        |
| MTQ     | cubic metre       |               |                |                   |

|     |                  |  |     |  |
|-----|------------------|--|-----|--|
| MTR | metre            |  |     |  |
| NMB | numero           |  |     |  |
| ONZ | ounce            |  |     |  |
| P1  | percent          |  |     |  |
| PPM | parts per milion |  |     |  |
| PZ  | piece            |  | (U) |  |
| RPM | rounds per metre |  |     |  |
| YRD | yard             |  |     |  |

### T1 - terms of payment

code specifying the terms or time by which the payment must be done

Agency name: eBIZ

tabella cod.: T1

File codes list (Generic code): [http://www.ebiz.enea.it/moda-ml/repository/codelist/v2018-1/gc\\_T1.xml](http://www.ebiz.enea.it/moda-ml/repository/codelist/v2018-1/gc_T1.xml)

| Code           | Description                            | Adoption note | Version status | Date of insertion |
|----------------|--|---------------|----------------|-------------------|
| ANTICIP        | PAYMENT IN ADVANCE                     |               |                |                   |
| BLCOLLECT/120D | BILL OF LADING 120 DD                  |               |                |                   |
| BLCOLLECT/30D  | BILL OF LADING 30 DD                   |               |                |                   |
| BLCOLLECT/60D  | BILL OF LADING 60 DD                   |               |                |                   |
| BLCOLLECT/90D  | BILL OF LADING 90 DD                   |               |                |                   |
| CASH           | PAYMENT ON DELIVERY                    |               |                |                   |
| CASHINV        | PAYMENT ON RECEIPT OF INVOICE          |               |                |                   |
| CREDOC/0D      | DOCUMENTARY CREDIT FOR PAYM. AT SIGHT  |               |                |                   |
| CREDOC/120     | DOCUMENTARY CREDIT FOR PAYM. AT 120 DD |               |                |                   |
| CREDOC/150     | DOCUMENTARY CREDIT FOR PAYM. AT 150 DD |               |                |                   |
| CREDOC/180     | DOCUMENTARY CREDIT FOR PAYM. AT 180 DD |               |                |                   |
| CREDOC/30D     | DOCUMENTARY CREDIT FOR PAYM. AT 30 DD  |               |                |                   |
| CREDOC/45D     | DOCUMENTARY CREDIT FOR PAYM. AT 45 DD  |               |                |                   |
| CREDOC/60      | DOCUMENTARY CREDIT FOR PAYM. AT 60 DD  |               |                |                   |
| CREDOC/90      | DOCUMENTARY CREDIT FOR PAYM. AT 90 DD  |               |                |                   |
| DEL/10         | PAYMENT AT 10 DD AFTER DELIVERY        |               |                |                   |
| DOCOLLECT/120D | DOCUMENTARY COLLECTION AT 120 DD       |               |                |                   |

|                |   |  |  |  |
|----------------|---|--|--|--|
| DOCOLLECT/30D  | DOCUMENTARY COLLECTION AT 30 DD                 |  |  |  |
| DOCOLLECT/60D  | DOCUMENTARY COLLECTION AT 60 DD                 |  |  |  |
| DOCOLLECT/90D  | DOCUMENTARY COLLECTION AT 90 DD                 |  |  |  |
| INV/120D       | PAYMENT AT 120 DD AFTER RECEIPT OF INVOICE      |  |  |  |
| INV/150D       | PAYMENT AT 150 DD AFTER RECEIPT OF INVOICE      |  |  |  |
| INV/180D       | PAYMENT AT 180 DD AFTER RECEIPT OF INVOICE      |  |  |  |
| INV/30D        | PAYMENT AT 30 DD AFTER RECEIPT OF INVOICE       |  |  |  |
| INV/45D        | PAYMENT AT 45 DD AFTER RECEIPT OF INVOICE       |  |  |  |
| INV/60D        | PAYMENT AT 60 DD AFTER RECEIPT OF INVOICE       |  |  |  |
| INV/90D        | PAYMENT AT 90 DD AFTER RECEIPT OF INVOICE       |  |  |  |
| INVULTIMO      | PAYMENT AT END MONTH RECEIPT INVOICE            |  |  |  |
| INVULTIMO/10D  | PAYMENT 10 DD AFTER END MONTH RECEIPT INVOICE   |  |  |  |
| INVULTIMO/120D | PAYMENT 120 DD AFTER END MONTH RECEIPT INVOICE  |  |  |  |
| INVULTIMO/150D | PAYMENT 150 DD AFTER END MONTH RECEIPT INVOICE  |  |  |  |
| INVULTIMO/180D | PAYMENT 180 DD AFTER END MONTH RECEIPT INVOICE  |  |  |  |
| INVULTIMO/240D | PAYMENT 240 DD AFTER END MONTH RECEIPT INVOICE  |  |  |  |
| INVULTIMO/30D  | PAYMENT 30 DD AFTER END MONTH RECEIPT INVOICE   |  |  |  |
| INVULTIMO/45D  | PAYMENT 45 DD AFTER END MONTH RECEIPT INVOICE   |  |  |  |
| INVULTIMO/60D  | PAYMENT 60 DD AFTER END MONTH RECEIPT INVOICE   |  |  |  |
| INVULTIMO/90D  | PAYMENT 90 DD AFTER END MONTH RECEIPT INVOICE   |  |  |  |
| NOPAY          | WITHOUT PAYMENT                                 |  |  |  |
| RECREDOC/0D    | IRREVOC. DOCUMENTARY CREDIT FOR PAYM. AT SIGHT  |  |  |  |
| RECREDOC/120D  | IRREVOC. DOCUMENTARY CREDIT FOR PAYM. AT 120 DD |  |  |  |
| RECREDOC/150D  | IRREVOC. DOCUMENTARY CREDIT FOR PAYM. AT 150 DD |  |  |  |
| RECREDOC/180D  | IRREVOC. DOCUMENTARY CREDIT FOR PAYM. AT 180 DD |  |  |  |

|              |  |  |  |  |
|--------------|--|--|--|--|
| RECREDOC/30D | IRREVOC. DOCUMENTARY CREDIT FOR PAYM. AT 30 DD |  |  |  |
| RECREDOC/45D | IRREVOC. DOCUMENTARY CREDIT FOR PAYM. AT 45 DD |  |  |  |
| RECREDOC/60D | IRREVOC. DOCUMENTARY CREDIT FOR PAYM. AT 60 DD |  |  |  |
| RECREDOC/90D | IRREVOC. DOCUMENTARY CREDIT FOR PAYM. AT 90 DD |  |  |  |
| ULTIMO       | PAYMENT BY END MONTH OF DELIVERY               |  |  |  |
| ULTIMO/10    | PAYMENT AT 10 DD AFTER END MONTH OF DELIVERY   |  |  |  |

### T10 - ISO3166 - Country

code of the nation

Agency name: ISO

tabella cod.: T10

File codes list (Generic code): [http://www.ebiz.enea.it/moda-ml/repository/codelist/v2018-1/gc\\_T10.xml](http://www.ebiz.enea.it/moda-ml/repository/codelist/v2018-1/gc_T10.xml)

Table not printed: there are 239 elements, more than the maximum specified for printing: 99.

### T2 - Modes of payment

way or means of payment

Agency name: eBIZ

tabella cod.: T2

File codes list (Generic code): [http://www.ebiz.enea.it/moda-ml/repository/codelist/v2018-1/gc\\_T2.xml](http://www.ebiz.enea.it/moda-ml/repository/codelist/v2018-1/gc_T2.xml)

| Code | Description                  | Adoption note | Version status | Date of insertion |
|------|------------------------------|---------------|----------------|-------------------|
| BB   | bank transfer                |               |                |                   |
| IA   | collection through Agent     |               |                |                   |
| IS   | collection through Forwarder |               |                |                   |
| RB   | bank receipt                 |               |                |                   |
| RD   | remittance                   |               |                |                   |
| SW   | bank SWIFT                   |               |                |                   |
| TR   | bank draft                   |               |                |                   |

### T200 - type of job on raw material

operation of a work cycle for raw material

Agency name: eBIZ

tabella cod.: T200

File codes list (Generic code): [http://www.ebiz.enea.it/moda-ml/repository/codelist/v2018-1/gc\\_T200.xml](http://www.ebiz.enea.it/moda-ml/repository/codelist/v2018-1/gc_T200.xml)

| Code | Description  | Adoption note | Version status | Date of insertion |
|------|--------------|---------------|----------------|-------------------|
| 01   | dejarrare    |               |                |                   |
| 02   | to wash      |               |                |                   |
| 03   | to dry       |               |                |                   |
| 04   | to mix       |               |                |                   |
| 05   | to comb      |               |                |                   |
| 06   | to cut       |               |                |                   |
| 07   | to tear open |               |                |                   |
| 08   | to beat      |               |                |                   |
| 09   | to carbonise |               |                |                   |
| 10   | to dye       |               |                |                   |
| 11   | felting      |               |                |                   |
| 12   | to smoothen  |               |                |                   |
| 13   | vigoreux     |               |                |                   |
| 14   | angra        |               |                |                   |
| 15   | basolan      |               |                |                   |
| 16   | unshrinkable |               |                |                   |
| 17   | to blend     |               |                |                   |

## T21 - type of document

type or class to which the referenced document belongs

Agency name: eBIZ

tabella cod.: T21

File codes list (Generic code): [http://www.ebiz.enea.it/moda-ml/repository/codelist/v2018-1/gc\\_T21.xml](http://www.ebiz.enea.it/moda-ml/repository/codelist/v2018-1/gc_T21.xml)

| Code | Description                  | Adoption note | Version status | Date of insertion |
|------|------------------------------|---------------|----------------|-------------------|
| BOR  | blanket order                |               | (N)            | 01/02/2018        |
| CAT  | Price catalogue - tech sheet |               |                |                   |
| CEO  | Certificate of origin        |               | (N)            | 13/04/2018        |

|     |                                       |  |     |            |
|-----|---------------------------------------|--|-----|------------|
| CER | Certificate                           |  | (N) | 13/04/2018 |
| COC | colour card                           |  |     |            |
| CRN | Credit note                           |  |     | 08/09/2017 |
| CTO | Checking order                        |  |     | 01/07/2013 |
| CTR | Contract                              |  | (U) |            |
| CXF | CxF3 file                             |  |     | 01/07/2013 |
| DAD | Darn order                            |  |     |            |
| DDT | ddt                                   |  |     |            |
| DEA | Despatch advise                       |  |     |            |
| DER | Despatch request                      |  |     |            |
| DR  | Document Request                      |  |     | 02/12/2014 |
| FOR | Forecast                              |  |     | 02/12/2014 |
| GSO | Garment stock offer                   |  |     |            |
| GSX | Garment stock offer change            |  |     |            |
| INV | Invoice                               |  |     |            |
| KCC | Knitting-Clothing Commission Order    |  |     | 02/12/2014 |
| KCI | Garment in Work Inventory Report      |  |     | 02/12/2014 |
| M2M | Made to Measure Production Order      |  |     | 02/12/2014 |
| MAS | Master marker                         |  |     |            |
| MCI | Visual merchandising instruction      |  | (N) | 13/04/2018 |
| OCH | Order change                          |  |     |            |
| OFF | Offer                                 |  |     |            |
| ORD | Purchase order                        |  |     |            |
| ORP | Order response                        |  |     |            |
| OSR | order status request                  |  |     |            |
| OSS | Offer status                          |  |     | 02/12/2014 |
| OST | Order status                          |  |     |            |
| OUR | our reference                         |  |     |            |
| QR  | Quality Report                        |  |     | 02/12/2014 |
| RAI | Raw Material in Work Inventory Report |  |     | 02/12/2014 |
| RDC | Raw dyeing commission order           |  |     |            |
| RDH | Raw dyeing order change               |  |     |            |
| RDR | Raw dyeing order response             |  |     |            |
| REA | Receiving advise                      |  |     |            |
| REQ | Request for Offer                     |  |     |            |



|     |   |  |     |            |
|-----|---|--|-----|------------|
| RET | Return                                    |  |     | 02/12/2014 |
| RSC | Spinning commission order                 |  |     |            |
| RSH | Spinning order change                     |  |     |            |
| RSR | Spinning order response                   |  |     |            |
| SCL | process sheet                             |  |     |            |
| TFC | Textile dyeing-finishing commission order |  |     |            |
| TFX | Textile Dyeing-Finishing Order Change     |  |     | 02/12/2014 |
| TPC | Textile printing commission order         |  |     |            |
| TPX | Textile Printing Order Change             |  |     | 02/12/2014 |
| TWI | Textile in work inventory                 |  |     |            |
| VMI | visual merchandising instructions         |  | (N) | 01/02/2018 |
| WAC | Warping commission order                  |  |     |            |
| WEC | Weaving commission order                  |  |     |            |
| YDC | Yarn dyeing commission order              |  |     |            |
| YDH | Yarn dyeing order change                  |  |     |            |
| YDR | Yarn dyeing order response                |  |     |            |
| YTC | Twisting commission order                 |  |     |            |
| YWI | Yarn in work inventory                    |  |     |            |

### T22 - raw material characteristics type

physical or mechanical parameter used to define a characteristics of a raw material

Agency name: eBIZ

tabella cod.: T22

File codes list (Generic code): [http://www.ebiz.enea.it/moda-ml/repository/codelist/v2018-1/gc\\_T22.xml](http://www.ebiz.enea.it/moda-ml/repository/codelist/v2018-1/gc_T22.xml)

| Code | Description | Adoption note | Version status | Date of insertion |
|------|-------------|---------------|----------------|-------------------|
| FIN  | fineness    |               |                |                   |
| LNG  | length      |               |                |                   |
| RTR  | shrinkage   |               |                |                   |
| YLD  | yeld        |               |                |                   |

### T3 - terms of delivery

specification of the terms of trade (INCOTERMS)

Agency name: Incoterms

tabella cod.: T3

File codes list (Generic code): [http://www.ebiz.enea.it/moda-ml/repository/codelist/v2018-1/gc\\_T3.xml](http://www.ebiz.enea.it/moda-ml/repository/codelist/v2018-1/gc_T3.xml)

| <b>Cod e</b> | <b>Description</b>   | <b>Adoption note</b>                                 | <b>Versi on statu s</b> | <b>Date of insertio n</b> |
|--------------|--|--|-------------------------|---------------------------|
| CF R         | COST AND FREIGHT (named port of destination)                   |  |                         |                           |
| CIF          | COST, INSURANCE AND FREIGHT (named port of destination)        |  |                         |                           |
| CIP          | CARRIAGE AND INSURANCE PAID (named place of destination)       |  |                         |                           |
| CP T         | CARRIAGE PAID (named place of destination)                     |  |                         |                           |
| DA F         | DELIVERED AT FRONTIER (named place)                            | according to Incoterms® 2010 it is obsolete          |                         | 08/12/2017                |
| DA P         | Delivered at Place of destination (named place of destination) | according to Incoterms® 2010                         |                         | 08/12/2017                |
| DA T         | Delivered at Terminal (named place of destination)             | according to Incoterms® 2010                         |                         | 08/12/2017                |
| DD P         | DELIVERED DUTY PAID (named place of destination)               |  |                         |                           |
| DD U         | DELIVERED DUTY UNPAID (named place of destination)             | according to Incoterms® 2010 it is obsolete, use DAP |                         | 08/12/2017                |
| DE Q         | DELIVERED EX-QUAY (named port of destination)                  | according to Incoterms® 2010 it is obsolete          |                         | 08/12/2017                |
| DE S         | DELIVERED EX-SHIP (named port of destination)                  | according to Incoterms® 2010 it is obsolete          |                         | 08/12/2017                |
| EX W         | EX WORKS (named place)   |  |                         |                           |
| FA S         | FREE ALONGSIDE SHIP (named port of shipment)                   |  |                         |                           |
| FC A         | FREE CARRIER (named place)                                     |  |                         |                           |
| FO B         | FREE ON BOARD (named port of shipment)                         |  |                         |                           |

### T38 - transport conditions

special condition of transport or special service requested to the Forwarder

tabella cod.: T38

File codes list (Generic code): [http://www.ebiz.enea.it/moda-ml/repository/codelist/v2018-1/gc\\_T38.xml](http://www.ebiz.enea.it/moda-ml/repository/codelist/v2018-1/gc_T38.xml)

| Code | Description                            | Adoption note | Version status | Date of insertion |
|------|--|---------------|----------------|-------------------|
| ACC  | arrange customs clearance              |               |                |                   |
| CAL  | Carrier loads                          |               |                |                   |
| CAU  | Carrier unloads                        |               |                |                   |
| CMR  | CMR carnet                             |               |                |                   |
| FFN  | freight forwarders national conditions |               |                |                   |
| FLD  | special agreement for full loading     |               |                |                   |
| NCC  | do not arrange customs clearance       |               |                |                   |
| PPB  | packaging paid by Buyer                |               |                |                   |
| PPS  | packaging paid by Supplier             |               |                |                   |
| PRO  | proof of delivery                      |               |                |                   |
| RFR  | return container free                  |               |                |                   |
| RPC  | return container paid by Customer      |               |                |                   |
| RPS  | return container paid by Supplier      |               |                |                   |
| SHL  | Shipper loads                          |               |                |                   |
| SHU  | Consignee unloads                      |               |                |                   |

#### T40 - type of transport means

means of transport, in general or referred to a specific leg

Agency name: eBIZ

tabella cod.: T40

File codes list (Generic code): [http://www.ebiz.enea.it/moda-ml/repository/codelist/v2018-1/gc\\_T40.xml](http://www.ebiz.enea.it/moda-ml/repository/codelist/v2018-1/gc_T40.xml)

| Code | Description | Adoption note | Version status | Date of insertion |
|------|-------------|---------------|----------------|-------------------|
| AIR  | aircraft    |               |                |                   |
| SHP  | ship        |               |                |                   |
| TRU  | truck       |               |                |                   |
| VAN  | van         |               |                |                   |

#### T41 - type of Allowance or Charge

coded specification of an Allowance or Charge (elaborated from UNECE 4465)

Agency name: eBIZ

tabella cod.: T41

File codes list (Generic code): [http://www.ebiz.enea.it/moda-ml/repository/codelist/v2018-1/gc\\_T41.xml](http://www.ebiz.enea.it/moda-ml/repository/codelist/v2018-1/gc_T41.xml)

| Code | Description                 | Adoption note       | Version status | Date of insertion |
|------|-----------------------------|---------------------|----------------|-------------------|
| 1    | Agreed settlement           |                     | (N)            | 19/08/2018        |
| 10   | Costs for draft             |                     | (N)            | 19/08/2018        |
| 11   | Bank charges                | DEPRECATED, use CBK | (N)            | 19/08/2018        |
| 12   | Agent commission            |                     | (N)            | 19/08/2018        |
| 14   | Wrong delivery              |                     | (N)            | 19/08/2018        |
| 15   | Goods returned to agent     |                     | (N)            | 19/08/2018        |
| 16   | Goods partly returned       |                     | (N)            | 19/08/2018        |
| 17   | Transport damage            |                     | (N)            | 19/08/2018        |
| 19   | Trade discount              |                     | (N)            | 19/08/2018        |
| 2    | Below specification goods   |                     | (N)            | 19/08/2018        |
| 20   | Deduction for late delivery | DEPRECATED, use CWB | (N)            | 19/08/2018        |
| 21   | Advertising costs           |                     | (N)            | 19/08/2018        |
| 22   | Customs duties              |                     | (N)            | 19/08/2018        |
| 23   | Telephone and postal costs  |                     | (N)            | 19/08/2018        |
| 24   | Repair costs                |                     | (N)            | 19/08/2018        |
| 25   | Attorney fees               |                     | (N)            | 19/08/2018        |
| 26   | Taxes                       |                     | (N)            | 19/08/2018        |
| 3    | Damaged goods               |                     | (N)            | 19/08/2018        |
| 30   | Direct payment to seller    |                     | (N)            | 19/08/2018        |

|    |                                  |  |     |            |
|----|----------------------------------|--|-----|------------|
| 32 | Goods not delivered              |  | (N) | 19/08/2018 |
| 33 | Late delivery                    |  | (N) | 19/08/2018 |
| 35 | Goods returned                   |  | (N) | 19/08/2018 |
| 36 | Invoice not received             |  | (N) | 19/08/2018 |
| 37 | Credit note to debtor/not to us  |  | (N) | 19/08/2018 |
| 38 | Deducted bonus                   |  | (N) | 19/08/2018 |
| 39 | Deducted discount                |  | (N) | 19/08/2018 |
| 4  | Short delivery                   |  | (N) | 19/08/2018 |
| 40 | Deducted freight costs           |  | (N) | 19/08/2018 |
| 41 | Deduction against other invoices |  | (N) | 19/08/2018 |
| 42 | Credit balance(s)                |  | (N) | 19/08/2018 |
| 45 | Debit note to seller             |  | (N) | 19/08/2018 |
| 46 | Discount beyond terms            |  | (N) | 19/08/2018 |
| 48 | Allowance/charge error           |  | (N) | 19/08/2018 |
| 49 | Substitute product               |  | (N) | 19/08/2018 |
| 50 | Terms of sale error              |  | (N) | 19/08/2018 |
| 52 | Wrong invoice                    |  | (N) | 19/08/2018 |
| 53 | Duplicate invoice                |  | (N) | 19/08/2018 |
| 54 | Weight error                     |  | (N) | 19/08/2018 |
| 55 | Additional charge not authorized |  | (N) | 19/08/2018 |
| 56 | Incorrect discount               |  | (N) | 19/08/2018 |
| 57 | Price change                     |  | (N) | 19/08/2018 |

|     |  |  |     |            |
|-----|--|--|-----|------------|
| 58  | Variation  |  | (N) | 19/08/2018 |
| 59  | Chargeback   |  | (N) | 19/08/2018 |
| 65  | Settlement to agent  |  | (N) | 19/08/2018 |
| 66  | Cash discount  |  | (N) | 19/08/2018 |
| 7   | Payment on account   |  | (N) | 19/08/2018 |
| 70  | Wrong monetary amount resulting from incorrect free goods quantity |  | (N) | 19/08/2018 |
| 72  | Temporary special promotion  |  | (N) | 19/08/2018 |
| 73  | Difference in tax rate   |  | (N) | 19/08/2018 |
| 74  | Quantity discount  |  | (N) | 19/08/2018 |
| 75  | Promotion discount   |  | (N) | 19/08/2018 |
| 76  | Cancellation deadline passed                                       |  | (N) | 19/08/2018 |
| 77  | Pricing discount   |  | (N) | 19/08/2018 |
| 78  | Volume discount  |  | (N) | 19/08/2018 |
| 79  | Sundry discount  |  | (N) | 19/08/2018 |
| 8   | Returnable container charge included                               |  | (N) | 19/08/2018 |
| 9   | Invoice error  |  | (N) | 19/08/2018 |
| AWA | bonus for works ahead of schedule                                  |  |     |            |
| CBK | bank charges   |  |     |            |
| CCR | servizio di corriere   |  |     |            |
| CIN | insurance  |  |     |            |
| CLB | labelling  |  |     |            |
| CPK | packing  |  |     |            |
| CSP | special packing  |  |     |            |
| CWB | penalty for works behind schedule                                  |  |     |            |

#### T44 - additional code type

qualifier of the additional coding of a product

Agency name: eBIZ

tabella cod.: T44

File codes list (Generic code): [http://www.ebiz.enea.it/moda-ml/repository/codelist/v2018-1/gc\\_T44.xml](http://www.ebiz.enea.it/moda-ml/repository/codelist/v2018-1/gc_T44.xml)

| Code | Description                 | Adoption note | Version status | Date of insertion |
|------|-----------------------------|---------------|----------------|-------------------|
| CC   | colour card                 |               |                |                   |
| CL   | sales collection            |               |                |                   |
| CO   | company identification code |               | (N)            | 08/09/2017        |
| DY   | dye number                  |               |                |                   |
| LT   | lot number                  |               |                |                   |
| MDI  | Made in                     |               |                | 08/09/2017        |
| MS   | manufacturing state         |               |                |                   |
| PKG  | packaging                   |               |                | 09/09/2014        |
| PL   | product line                |               |                |                   |
| RGB  | RGB value                   |               |                |                   |
| SE   | selvedge code               |               |                |                   |

#### T61 - duty or tax or fee type

duty or tax or fee type

Agency name: eBIZ

tabella cod.: T61

File codes list (Generic code): [http://www.ebiz.enea.it/moda-ml/repository/codelist/v2018-1/gc\\_T61.xml](http://www.ebiz.enea.it/moda-ml/repository/codelist/v2018-1/gc_T61.xml)

| Code | Description       | Adoption note | Version status | Date of insertion |
|------|-------------------|---------------|----------------|-------------------|
| BOL  | stamp duty        |               |                | 01/07/2013        |
| CUD  | customs duty      |               |                | 01/07/2013        |
| ENV  | environmental tax |               |                | 01/07/2013        |
| FRE  | no tax            |               |                | 01/07/2013        |
| OTH  | other tax charges |               |                | 01/07/2013        |
| VAT  | value added tax   |               |                | 01/07/2013        |

## T62 - duty or tax or fee category

duty or tax or fee category

Agency name: eBIZ

tabella cod.: T62

File codes list (Generic code): [http://www.ebiz.enea.it/moda-ml/repository/codelist/v2018-1/gc\\_T62.xml](http://www.ebiz.enea.it/moda-ml/repository/codelist/v2018-1/gc_T62.xml)

| Code | Description               | Adoption note | Version status | Date of insertion |
|------|---------------------------|---------------|----------------|-------------------|
| AA   | lower than standard rate  |               |                | 01/07/2013        |
| E    | tax not applicable        |               |                | 01/07/2013        |
| H    | higher than standard rate |               |                | 01/07/2013        |
| O    | outside scope of tax      |               |                | 01/07/2013        |
| S    | standard rate             |               |                | 01/07/2013        |
| Z    | zero rate goods           |               |                | 01/07/2013        |

## T8 - Modes of Transport

way of transport, in general or referred to the specified leg

Agency name: eBIZ

tabella cod.: T8

File codes list (Generic code): [http://www.ebiz.enea.it/moda-ml/repository/codelist/v2018-1/gc\\_T8.xml](http://www.ebiz.enea.it/moda-ml/repository/codelist/v2018-1/gc_T8.xml)

| Code | Description            | Adoption note | Version status | Date of insertion |
|------|------------------------|---------------|----------------|-------------------|
| 1    | MARITIME TRANSPORT     |               |                |                   |
| 10   | Courier                |               |                | 01/07/2013        |
| 2    | RAIL TRANSPORT         |               |                |                   |
| 3    | ROAD TRANSPORT         |               |                |                   |
| 4    | AIR TRANSPORT          |               |                |                   |
| 5    | MAIL                   |               |                |                   |
| 6    | AIR + SHIP TRANSPORT   |               |                |                   |
| 8    | INLAND WATER TRANSPORT |               |                |                   |
| 9    | MODE UNKNOWN           |               |                |                   |

## T9 - ISO4217 - Currency

currency code



Agency name: ISO

tabella cod.: T9

File codes list (Generic code): [http://www.ebiz.enea.it/moda-ml/repository/codelist/v2018-1/gc\\_T9.xml](http://www.ebiz.enea.it/moda-ml/repository/codelist/v2018-1/gc_T9.xml)

Table not printed: there are 205 elements, more than the maximum specified for printing: 99.

## Annex C

### New or changed elements towards previous version

Changes or added elements (changes in description excluded; changes in aggregation notes and best practice included): 100

| Test Type  | Tag                  | Status  | Item type                   | Changes related to  |
|------------|----------------------|---------|-----------------------------|---|
| Attribute  | AC_amount            | NEW     | AC amount                   | Has NEW attribute: data currency  |
| Element(E) | AC_categoryText      | UPDATED | AC category text            | Property: Length_Max<br>Old value: 70<br>New value: 250   |
| Attribute  | additionalIdentifier | NEW     | Additional Party Identifier | Has NEW attribute: numbering organisation code  |
| Attribute  | additionalIdentifier | NEW     | Additional Party Identifier | Has NEW attribute: id Qualifier   |
| Element(I) | additionalIdentifier | NEW     | Additional Party Identifier |   |
| Attribute  | allowanceCharge      | NEW     | Allowance and Charge        | Has NEW attribute: is Charge  |
| Attribute  | allowanceCharge      | NEW     | Allowance and Charge        | Has NEW attribute: maximum quantity   |
| Attribute  | allowanceCharge      | NEW     | Allowance and Charge        | Has NEW attribute: minimum quantity   |
| Attribute  | allowanceCharge      | NEW     | Allowance and Charge        | Has NEW attribute: data currency  |
| Attribute  | allowanceCharge      | NEW     | Allowance and Charge        | Has NEW attribute: unit of measure code   |
| Element(E) | art                  | UPDATED | article identifier          | Property: Length_Max<br>Old value: 25<br>New value: 80  |
| Attribute  | art                  | UPDATED | article identifier          | Its attribute: code list reference<br><br>Property: Aggregation Note_English<br>Old value: <i>this attribute should be ALTERNATIVE to the others</i><br>New value: <i>at least one out of this attribute and "numberingOrg" should be set</i> |

|            |                  |         |                    |   |
|------------|------------------|---------|--------------------|---|
| Element(l) | attachment       | NEW     | attachment         |   |
| Child      | attachment       | NEW     | attachment         | Has NEW child of: file name                             |
| Child      | attachment       | NEW     | attachment         | Has NEW child of: external reference                    |
| Child      | attachment       | NEW     | attachment         | Has NEW child of: binary object                         |
| Attribute  | binary Object    | NEW     | binary object      | Has NEW attribute: encoding                             |
| Attribute  | binary Object    | NEW     | binary object      | Has NEW attribute: mime                                 |
| Attribute  | binary Object    | NEW     | binary object      | Has NEW attribute: format                               |
| Attribute  | binary Object    | NEW     | binary object      | Has NEW attribute: character set                        |
| Element(l) | binary Object    | NEW     | binary object      |   |
| Child      | buyer            | NEW     | Buyer (*)          | Has NEW child of: Party identifier                      |
| Child      | buyer            | NEW     | Buyer (*)          | Has NEW child of: Additional Party Identifier           |
| Attribute  | buyer            | NEW     | Buyer (*)          | Has NEW attribute: sender Party qualifier               |
| Element(l) | characterSetCode | NEW     | character set code |   |
| Element(l) | characterSet     | NEW     | character set      |   |
| Element(E) | delivery Place   | UPDATED | delivery place     | Property: Length_Max<br>Old value: 40<br>New value: 250 |
| Attribute  | description      | NEW     | description        | Has NEW attribute: In                                   |
| Element(E) | description      | UPDATED | description        | Property: Length_Max<br>Old value: 70<br>New value: 250 |
| Attribute  | despatchDate     | NEW     | despatch date      | Has NEW attribute: date format                          |
| Element(l) | despatchDate     | NEW     | despatch date      |   |
| Element(l) | despatchPlace    | NEW     | despatch place     |   |
| Element(E) | email            | UPDATED | e-mail             | Property: Length_Max<br>Old value: 80<br>New value: 250 |

|            |                   |         |                    |   |
|------------|-------------------|---------|--------------------|---|
| Element(l) | encodingCode      | NEW     | encoding code      |   |
| Element(l) | encoding          | NEW     | encoding           |   |
| Child      | externalReference | NEW     | external reference | Has NEW child of: uri   |
| Child      | externalReference | NEW     | external reference | Has NEW child of: format code   |
| Child      | externalReference | NEW     | external reference | Has NEW child of: character set code  |
| Child      | externalReference | NEW     | external reference | Has NEW child of: mime code   |
| Child      | externalReference | NEW     | external reference | Has NEW child of: encoding code   |
| Element(l) | externalReference | NEW     | external reference |   |
| Attribute  | fileName          | NEW     | file name          | Has NEW attribute: numbering organisation code  |
| Element(l) | fileName          | NEW     | file name          |   |
| Element(l) | formatCode        | NEW     | format code        |   |
| Element(l) | format            | NEW     | format             |   |
| Attribute  | note              | UPDATED | general note       | Its attribute: numbering organisation code<br><br>Property: Aggregation Note_English<br>Old value:<br>New value: <i>must be used to specify the organization that created the list of codes used in "noteLabel"</i> |
| Element(l) | idQualifier       | NEW     | id Qualifier       |   |
| Element(l) | isCharge          | NEW     | is Charge          |   |
| Element(l) | isURL             | NEW     | is URL             |   |
| Element(E) | legalName         | UPDATED | Legal name         | Property: Length_Max<br>Old value: 80<br>New value: 250   |

|            |                  |         |                                   |   |
|------------|------------------|---------|-----------------------------------|---|
| Element(E) | itemID           | UPDATED | line item number                  | Property: Length_Max<br>Old value: 6<br>New value: 40   |
| Attribute  | lineN            | UPDATED | line number                       | Its attribute:<br>VAT rate<br><br>Property: Aggregation Note_English<br>Old value:<br>New value: <i>Deprecated, prefer dtScheme when available.</i> |
| Element(l) | In               | NEW     | In                                |   |
| Element(l) | maxQty           | NEW     | maximum quantity                  |   |
| Element(l) | mimeCode         | NEW     | mime code                         |   |
| Element(l) | mime             | NEW     | mime                              |   |
| Element(l) | progr            | NEW     | progressive number                |   |
| Child      | rawMnrOperation  | UPDATED | raw manufacturing operation       | relationship with child:<br>reference document details<br><br>Property: Cardmax<br>Old value: 1<br>New value: 9                                     |
| Child      | rawMnrOperation  | UPDATED | raw manufacturing operation       | relationship with child:<br>general note<br><br>Property: Cardmax<br>Old value: 19<br>New value: 99   |
| Element(E) | rawCharacterText | UPDATED | raw material characteristics text | Property: Length_Max<br>Old value: 40<br>New value: 250   |
| Child      | rawCode          | UPDATED | raw material code                 | relationship with child:<br>description<br><br>Property: Cardmax<br>Old value: 1<br>New value: 999  |
| Child      | rawCode          | UPDATED | raw material code                 | relationship with child:<br>description<br><br>Property: Aggregation Note_English<br>Old value:<br>New value: <i>Raw material description</i>       |
| Child      | rawComponent     | UPDATED | raw material component            | relationship with child:<br>reference document details<br><br>Property: Cardmax<br>Old value: 1<br>New value: 9                                     |

|       |              |         |                            |  |
|-------|--------------|---------|----------------------------|--|
| Child | rawComponent | UPDATED | raw material component     | relationship with child:<br>product quantity<br><br>Property: BestPractice_English<br>Old value:<br>New value: <i>this element can have two instances only if the units of measure are different</i> |
| Child | rawComponent | UPDATED | raw material component     | relationship with child:<br>general note<br><br>Property: Cardmax<br>Old value: 19<br>New value: 99  |
| Child | rawProd      | UPDATED | raw material product       | relationship with child:<br>general note<br><br>Property: Cardmax<br>Old value: 19<br>New value: 99  |
| Child | RDCO header  | UPDATED | RDCO header                | relationship with child:<br>Third Party<br><br>Property: Cardmax<br>Old value: 1<br>New value: 5   |
| Child | RDCO header  | UPDATED | RDCO header                | relationship with child:<br>general note<br><br>Property: Cardmax<br>Old value: 19<br>New value: 99  |
| Child | RDCO item    | UPDATED | RDCO item                  | relationship with child:<br>Third Party<br><br>Property: Cardmax<br>Old value: 1<br>New value: 3   |
| Child | RDCO item    | UPDATED | RDCO item                  | relationship with child:<br>product quantity<br><br>Property: BestPractice_English<br>Old value:<br>New value: <i>this element can have two instances only if the units of measure are different</i> |
| Child | RDCO item    | UPDATED | RDCO item                  | relationship with child:<br>general note<br><br>Property: Cardmax<br>Old value: 19<br>New value: 99  |
| Child | refDoc       | NEW     | reference document details | Has NEW child of:<br>attachment  |

|            |               |             |                            |   |
|------------|---------------|-------------|----------------------------|---|
| Child      | refDoc        | UPD<br>ATED | reference document details | relationship with child:<br>document identifier<br><br>Property: BestPractice_English<br>Old value:<br>New value: <i>numberingOrg</i> indicates the role that produced the document identifier (it is allowed to declare two different ones -e.g. customer and supplier - with two docID with different numberingOrg) |
| Attribute  | season        | NEW         | season identifier          | Has NEW attribute:<br>code list reference   |
| Attribute  | season        | NEW         | season identifier          | Has NEW attribute:<br>numbering organisation code   |
| Attribute  | season        | NEW         | season identifier          | Has NEW attribute:<br>code list name  |
| Attribute  | season        | NEW         | season identifier          | Has NEW attribute:<br>code list version   |
| Child      | subContractor | NEW         | Sub-contractor (*)         | Has NEW child of:<br>Party identifier   |
| Attribute  | subContractor | NEW         | Sub-contractor (*)         | Has NEW attribute:<br>sender Party qualifier  |
| Element(l) | subDepartment | NEW         | department identifier      |   |
| Attribute  | legalRef      | NEW         | tax legal reference        | Has NEW attribute:<br>code list name  |
| Attribute  | legalRef      | NEW         | tax legal reference        | Has NEW attribute:<br>numbering organisation code   |
| Attribute  | legalRef      | NEW         | tax legal reference        | Has NEW attribute:<br>code list version   |
| Attribute  | legalRef      | UPD<br>ATED | tax legal reference        | Its attribute:<br>code list reference<br><br>Property: Use<br>Old value: <i>Required</i><br>New value: <i>Optional</i>  |
| Child      | dtScheme      | UPD<br>ATED | tax scheme                 | relationship with child:<br>general note<br><br>Property: Cardmax<br>Old value: 19<br>New value: 99   |
| Element(E) | payTermText   | UPD<br>ATED | terms of payment text      | Property: Length_Max<br>Old value: 40<br>New value: 250   |
| Element(E) | incotermsText | UPD<br>ATED | terms of trade text        | Property: Length_Max<br>Old value: 70<br>New value: 250   |
| Element(E) | method        | UPD<br>ATED | test method identifier     | Property: Length_Max<br>Old value: 25<br>New value: 80  |

|            |                    |        |                            |  |
|------------|--------------------|--------|----------------------------|--|
| Child      | thirdParty         | NEW    | Third Party (*)            | Has NEW child of:<br>Party identifier  |
| Attribute  | thirdParty         | NEW    | Third Party (*)            | Has NEW attribute:<br>sender Party qualifier   |
| Child      | terms              | UPDATE | Trade conditions           | relationship with child:<br>Transport information<br><br>Property: Cardmax<br>Old value: 1<br>New value: 5 |
| Element(E) | transConditionText | UPDATE | transport condition - text | Property: Length_Max<br>Old value: 100<br>New value: 250   |
| Child      | transInfo          | NEW    | Transport information      | Has NEW child of:<br>despatch place  |
| Child      | transInfo          | NEW    | Transport information      | Has NEW child of:<br>despatch date   |
| Child      | transInfo          | NEW    | Transport information      | Has NEW child of:<br>effective delivery date   |
| Attribute  | transInfo          | NEW    | Transport information      | Has NEW attribute:<br>progressive number   |
| Attribute  | price              | NEW    | unit price amount          | Has NEW attribute:<br>data currency  |
| Element(E) | price              | UPDATE | unit price amount          | Property: Digits_Dec<br>Old value: 2<br>New value: 4   |
| Attribute  | uri                | NEW    | uri                        | Has NEW attribute:<br>is URL   |
| Element(I) | uri                | NEW    | uri                        |  |



## Annex D

### New or changed tables and codes towards previous version

Changes or added items (changes in CodeListAgencyName excluded; changes in adoption notes and code description included): 155

| Test Type | Status  | Table code | Table description                       | Code                              | Change description   |
|-----------|---------|------------|---|-----------------------------------|--|
| Table     | UPDATED | NT100      | eBIZ TCFUpstream version                |                                   | Description_English<br>Old value: <i>eBIZ Moda-ML version</i><br>New value: <i>eBIZ TCFUpstream version</i>  |
| Code      | NEW     | NT100      |   | 2018-1<br>(v2018-1)               |  |
| Code      | NEW     | NT100      |   | draft<br>(draft)                  |  |
| Table     | UPDATED | NT16       | VAT rate or code                        |                                   | Generalities<br>Old value: <i>VAT rate or code ( deprecated, use dtScheme element )</i><br>New value: <i>VAT rate or code ( DEPRECATED, use dtScheme element )</i> |
| Code      | NEW     | NT2        |   | AU<br>(Auditor)                   |  |
| Code      | NEW     | NT2        |   | CE<br>(Certification authority)   |  |
| Code      | NEW     | NT2        |   | SC<br>(Sub contractor)            |  |
| Code      | NEW     | NT2        |   | SM<br>(Service/ePlatform manager) |  |
| Code      | NEW     | NT6        |   | EB<br>(eBIZ)                      |  |
| Code      | UPDATED | NT6        |   | ML<br>(DEPRECATED)                | adoption_note<br>Old value:<br>New value: <i>DEPRECATED</i>  |
| Table     | NEW     | NT60       | language, codes from ISO 639-1 (subset) |                                   |  |
| Code      | NEW     | NT60       |   | F<br>(Female)                     |  |
| Code      | NEW     | NT60       |   | af<br>(Afrikaans)                 |  |
| Code      | NEW     | NT60       |   | ar<br>(Arabic)                    |  |

|          |     |          |  |  |  |
|----------|-----|----------|--|--|--|
| Co<br>de | NEW | NT<br>60 |  | <i>be</i><br>(Belarusian)              |  |
| Co<br>de | NEW | NT<br>60 |  | <i>bg</i><br>(Bulgarian)               |  |
| Co<br>de | NEW | NT<br>60 |  | <i>bn</i><br>(Bengali)                 |  |
| Co<br>de | NEW | NT<br>60 |  | <i>bo</i><br>(Tibetan)                 |  |
| Co<br>de | NEW | NT<br>60 |  | <i>bs</i><br>(Bosnian)                 |  |
| Co<br>de | NEW | NT<br>60 |  | <i>ca</i><br>(Catalan, Valencian)      |  |
| Co<br>de | NEW | NT<br>60 |  | <i>cs</i><br>(Czech)                   |  |
| Co<br>de | NEW | NT<br>60 |  | <i>da</i><br>(Danish)                  |  |
| Co<br>de | NEW | NT<br>60 |  | <i>de</i><br>(German)                  |  |
| Co<br>de | NEW | NT<br>60 |  | <i>el</i><br>(Greek, Modern (1453-))   |  |
| Co<br>de | NEW | NT<br>60 |  | <i>en</i><br>(English)                 |  |
| Co<br>de | NEW | NT<br>60 |  | <i>eo</i><br>(Esperanto)               |  |
| Co<br>de | NEW | NT<br>60 |  | <i>es</i><br>(Spanish, Castilian)      |  |
| Co<br>de | NEW | NT<br>60 |  | <i>et</i><br>(Estonian)                |  |
| Co<br>de | NEW | NT<br>60 |  | <i>eu</i><br>(Basque)                  |  |
| Co<br>de | NEW | NT<br>60 |  | <i>fa</i><br>(Persian)                 |  |
| Co<br>de | NEW | NT<br>60 |  | <i>fi</i><br>(Finnish)                 |  |
| Co<br>de | NEW | NT<br>60 |  | <i>fr</i><br>(French)                  |  |
| Co<br>de | NEW | NT<br>60 |  | <i>ga</i><br>(Irish)                   |  |
| Co<br>de | NEW | NT<br>60 |  | <i>gd</i><br>(Gaelic, Scottish Gaelic) |  |
| Co<br>de | NEW | NT<br>60 |  | <i>gn</i><br>(Guarani)                 |  |
| Co<br>de | NEW | NT<br>60 |  | <i>he</i><br>(Hebrew)                  |  |

|          |     |          |  |   |  |
|----------|-----|----------|--|---|--|
| Co<br>de | NEW | NT<br>60 |  | <i>hr</i><br>(Croatian)   |  |
| Co<br>de | NEW | NT<br>60 |  | <i>ht</i><br>(Haitian, Haitian Creole)  |  |
| Co<br>de | NEW | NT<br>60 |  | <i>hu</i><br>(Hungarian)  |  |
| Co<br>de | NEW | NT<br>60 |  | <i>hy</i><br>(Armenian)   |  |
| Co<br>de | NEW | NT<br>60 |  | <i>ia</i><br>(Interlingua (International Au<br>xiliary Language Association<br>)) |  |
| Co<br>de | NEW | NT<br>60 |  | <i>id</i><br>(Indonesian)   |  |
| Co<br>de | NEW | NT<br>60 |  | <i>is</i><br>(Icelandic)  |  |
| Co<br>de | NEW | NT<br>60 |  | <i>it</i><br>(Italian)  |  |
| Co<br>de | NEW | NT<br>60 |  | <i>ja</i><br>(Japanese)   |  |
| Co<br>de | NEW | NT<br>60 |  | <i>jv</i><br>(Javanese)   |  |
| Co<br>de | NEW | NT<br>60 |  | <i>ka</i><br>(Georgian)   |  |
| Co<br>de | NEW | NT<br>60 |  | <i>km</i><br>(Central Khmer)  |  |
| Co<br>de | NEW | NT<br>60 |  | <i>ko</i><br>(Korean)   |  |
| Co<br>de | NEW | NT<br>60 |  | <i>ku</i><br>(Kurdish)  |  |
| Co<br>de | NEW | NT<br>60 |  | <i>lb</i><br>(Luxembourgish, Letzeburge<br>sch)                                   |  |
| Co<br>de | NEW | NT<br>60 |  | <i>lo</i><br>(Lao)  |  |
| Co<br>de | NEW | NT<br>60 |  | <i>lt</i><br>(Lithuanian)   |  |
| Co<br>de | NEW | NT<br>60 |  | <i>lv</i><br>(Latvian)  |  |
| Co<br>de | NEW | NT<br>60 |  | <i>mg</i><br>(Malagasy)   |  |
| Co<br>de | NEW | NT<br>60 |  | <i>mk</i><br>(Macedonian)   |  |
| Co<br>de | NEW | NT<br>60 |  | <i>mn</i><br>(Mongolian)  |  |

|          |     |          |  |  |  |
|----------|-----|----------|--|--|--|
| Co<br>de | NEW | NT<br>60 |  | <i>mt</i><br>(Maltese)                           |  |
| Co<br>de | NEW | NT<br>60 |  | <i>nl</i><br>(Dutch, Flemish)                    |  |
| Co<br>de | NEW | NT<br>60 |  | <i>no</i><br>(Norwegian)                         |  |
| Co<br>de | NEW | NT<br>60 |  | <i>pl</i><br>(Polish)                            |  |
| Co<br>de | NEW | NT<br>60 |  | <i>pt</i><br>(Portuguese)                        |  |
| Co<br>de | NEW | NT<br>60 |  | <i>ro</i><br>(Romanian, Moldavian, Mold<br>ovan) |  |
| Co<br>de | NEW | NT<br>60 |  | <i>ru</i><br>(Russian)                           |  |
| Co<br>de | NEW | NT<br>60 |  | <i>se</i><br>(Northern Sami)                     |  |
| Co<br>de | NEW | NT<br>60 |  | <i>sk</i><br>(Slovak)                            |  |
| Co<br>de | NEW | NT<br>60 |  | <i>sl</i><br>(Slovenian)                         |  |
| Co<br>de | NEW | NT<br>60 |  | <i>sm</i><br>(Samoan)                            |  |
| Co<br>de | NEW | NT<br>60 |  | <i>so</i><br>(Somali)                            |  |
| Co<br>de | NEW | NT<br>60 |  | <i>sq</i><br>(Albanian)                          |  |
| Co<br>de | NEW | NT<br>60 |  | <i>sr</i><br>(Serbian)                           |  |
| Co<br>de | NEW | NT<br>60 |  | <i>sv</i><br>(Swedish)                           |  |
| Co<br>de | NEW | NT<br>60 |  | <i>sw</i><br>(Swahili)                           |  |
| Co<br>de | NEW | NT<br>60 |  | <i>ta</i><br>(Tamil)                             |  |
| Co<br>de | NEW | NT<br>60 |  | <i>th</i><br>(Thai)                              |  |
| Co<br>de | NEW | NT<br>60 |  | <i>tr</i><br>(Turkish)                           |  |
| Co<br>de | NEW | NT<br>60 |  | <i>uk</i><br>(Ukrainian)                         |  |
| Co<br>de | NEW | NT<br>60 |  | <i>ur</i><br>(Urdu)                              |  |
| Co<br>de | NEW | NT<br>60 |  | <i>uz</i><br>(Uzbek)                             |  |

|       |        |          |                 |   |   |
|-------|--------|----------|-----------------|---|---|
| Code  | NEW    | NT<br>60 |                 | <i>vi</i><br>(Vietnamese)                         |   |
| Code  | NEW    | NT<br>60 |                 | <i>zh</i><br>(Chinese)                            |   |
| Code  | NEW    | NT<br>7  |                 | <i>CMK</i><br>(square centimetre)                 |   |
| Code  | NEW    | NT<br>7  |                 | <i>CMQ</i><br>(cubic centimetre)                  |   |
| Code  | NEW    | NT<br>7  |                 | <i>E37</i><br>(pixel)                             |   |
| Code  | NEW    | NT<br>7  |                 | <i>KWH</i><br>(kilowatthours)                     |   |
| Code  | NEW    | NT<br>7  |                 | <i>MMK</i><br>(square millimetre)                 |   |
| Code  | NEW    | NT<br>7  |                 | <i>MTK</i><br>(square metre)                      |   |
| Code  | NEW    | NT<br>7  |                 | <i>CO2TON</i><br>(ton of CO2)                     |   |
| Table | UPDATE | NT<br>7  | unit of measure |   | OtherExternalReferenceURL<br>Old value:<br>New value: <a href="http://docs.oasis-open.org/ubl/os-UBL-2.1/cl/gc/default/UnitOfMeasureCode-2.1.gc#">http://docs.oasis-open.org/ubl/os-UBL-2.1/cl/gc/default/UnitOfMeasureCode-2.1.gc#</a> |
| Table | UPDATE | NT<br>7  | unit of measure |   | Description_English<br>Old value: <i>unity of measure</i><br>New value: <i>unit of measure</i>  |
| Code  | NEW    | T2<br>1  |                 | <i>BOR</i><br>(blanket order)                     |   |
| Code  | NEW    | T2<br>1  |                 | <i>CEO</i><br>(Certificate of origin)             |   |
| Code  | NEW    | T2<br>1  |                 | <i>CER</i><br>(Certificate)                       |   |
| Code  | UPDATE | T2<br>1  |                 | <i>CTR</i><br>(Contract)                          | Text_English<br>Old value: <i>contract</i><br>New value: <i>Contract</i>  |
| Code  | NEW    | T2<br>1  |                 | <i>MCI</i><br>(Visual merchandising instruction)  |   |
| Code  | NEW    | T2<br>1  |                 | <i>VMI</i><br>(visual merchandising instructions) |   |
| Code  | NEW    | T4<br>1  |                 | 1<br>(Agreed settlement)                          |   |
| Code  | NEW    | T4<br>1  |                 | 2<br>(Below specification goods)                  |   |
| Code  | NEW    | T4<br>1  |                 | 3<br>(Damaged goods)                              |   |

|       |     |         |  |   |  |
|-------|-----|---------|--|---|--|
| Co de | NEW | T4<br>1 |  | 4<br>(Short delivery)                       |  |
| Co de | NEW | T4<br>1 |  | 7<br>(Payment on account)                   |  |
| Co de | NEW | T4<br>1 |  | 8<br>(Returnable container charge included) |  |
| Co de | NEW | T4<br>1 |  | 9<br>(Invoice error)                        |  |
| Co de | NEW | T4<br>1 |  | 10<br>(Costs for draft)                     |  |
| Co de | NEW | T4<br>1 |  | 11<br>(Bank charges)                        |  |
| Co de | NEW | T4<br>1 |  | 12<br>(Agent commission)                    |  |
| Co de | NEW | T4<br>1 |  | 14<br>(Wrong delivery)                      |  |
| Co de | NEW | T4<br>1 |  | 15<br>(Goods returned to agent)             |  |
| Co de | NEW | T4<br>1 |  | 16<br>(Goods partly returned)               |  |
| Co de | NEW | T4<br>1 |  | 17<br>(Transport damage)                    |  |
| Co de | NEW | T4<br>1 |  | 19<br>(Trade discount)                      |  |
| Co de | NEW | T4<br>1 |  | 20<br>(Deduction for late delivery)         |  |
| Co de | NEW | T4<br>1 |  | 21<br>(Advertising costs)                   |  |
| Co de | NEW | T4<br>1 |  | 22<br>(Customs duties)                      |  |
| Co de | NEW | T4<br>1 |  | 23<br>(Telephone and postal costs)          |  |
| Co de | NEW | T4<br>1 |  | 24<br>(Repair costs)                        |  |
| Co de | NEW | T4<br>1 |  | 25<br>(Attorney fees)                       |  |
| Co de | NEW | T4<br>1 |  | 26<br>(Taxes)                               |  |
| Co de | NEW | T4<br>1 |  | 30<br>(Direct payment to seller)            |  |
| Co de | NEW | T4<br>1 |  | 32<br>(Goods not delivered)                 |  |
| Co de | NEW | T4<br>1 |  | 33<br>(Late delivery)                       |  |

|          |     |         |  |  |  |
|----------|-----|---------|--|--|--|
| Co<br>de | NEW | T4<br>1 |  | 35<br>(Goods returned)                       |  |
| Co<br>de | NEW | T4<br>1 |  | 36<br>(Invoice not received)                 |  |
| Co<br>de | NEW | T4<br>1 |  | 37<br>(Credit note to debtor/not to<br>us)   |  |
| Co<br>de | NEW | T4<br>1 |  | 38<br>(Deducted bonus)                       |  |
| Co<br>de | NEW | T4<br>1 |  | 39<br>(Deducted discount)                    |  |
| Co<br>de | NEW | T4<br>1 |  | 40<br>(Deducted freight costs)               |  |
| Co<br>de | NEW | T4<br>1 |  | 41<br>(Deduction against other inv<br>oices) |  |
| Co<br>de | NEW | T4<br>1 |  | 42<br>(Credit balance(s))                    |  |
| Co<br>de | NEW | T4<br>1 |  | 45<br>(Debit note to seller)                 |  |
| Co<br>de | NEW | T4<br>1 |  | 46<br>(Discount beyond terms)                |  |
| Co<br>de | NEW | T4<br>1 |  | 48<br>(Allowance/charge error)               |  |
| Co<br>de | NEW | T4<br>1 |  | 49<br>(Substitute product)                   |  |
| Co<br>de | NEW | T4<br>1 |  | 50<br>(Terms of sale error)                  |  |
| Co<br>de | NEW | T4<br>1 |  | 52<br>(Wrong invoice)                        |  |
| Co<br>de | NEW | T4<br>1 |  | 53<br>(Duplicate invoice)                    |  |
| Co<br>de | NEW | T4<br>1 |  | 54<br>(Weight error)                         |  |
| Co<br>de | NEW | T4<br>1 |  | 55<br>(Additional charge not author<br>ized) |  |
| Co<br>de | NEW | T4<br>1 |  | 56<br>(Incorrect discount)                   |  |
| Co<br>de | NEW | T4<br>1 |  | 57<br>(Price change)                         |  |
| Co<br>de | NEW | T4<br>1 |  | 58<br>(Variation)                            |  |
| Co<br>de | NEW | T4<br>1 |  | 59<br>(Chargeback)                           |  |

|       |        |         |                             |  |   |
|-------|--------|---------|-----------------------------|--|---|
| Code  | NEW    | T4<br>1 |                             | 65<br>(Settlement to agent)  |   |
| Code  | NEW    | T4<br>1 |                             | 66<br>(Cash discount)  |   |
| Code  | NEW    | T4<br>1 |                             | 70<br>(Wrong monetary amount resulting from incorrect free goods quantity) |   |
| Code  | NEW    | T4<br>1 |                             | 72<br>(Temporary special promotion)  |   |
| Code  | NEW    | T4<br>1 |                             | 73<br>(Difference in tax rate)   |   |
| Code  | NEW    | T4<br>1 |                             | 74<br>(Quantity discount)  |   |
| Code  | NEW    | T4<br>1 |                             | 75<br>(Promotion discount)   |   |
| Code  | NEW    | T4<br>1 |                             | 76<br>(Cancellation deadline passed)                                       |   |
| Code  | NEW    | T4<br>1 |                             | 77<br>(Pricing discount)   |   |
| Code  | NEW    | T4<br>1 |                             | 78<br>(Volume discount)  |   |
| Code  | NEW    | T4<br>1 |                             | 79<br>(Sundry discount)  |   |
| Table | UPDATE | T4<br>1 | type of Allowance or Charge |  | Generalities<br>Old value: <i>coded specification of an Allowance or Charge</i><br>New value: <i>coded specification of an Allowance or Charge (elaborated from UNECE 4465)</i> |
| Code  | NEW    | T4<br>4 |                             | CO<br>(company identification code)  |   |