



<http://www.ebiz-tcf.eu>

IMPLEMENTATION GUIDE

includes COMPARISON BETWEEN CURRENT and LAST
PREVIOUSLY RELEASED VERSION
TRANSACTION "WEAVING OFFER"

Version: v2018-1

Date of release: 18/7/2019

Document code: G060rv

technical Documentation: <http://www.ebiz.enea.it>

XML Schemas repository: <http://www.ebiz.enea.it/moda-ml/repository/schema/v2018-1/default.asp>

Guides repository: <http://www.ebiz.enea.it/moda-ml/repository/guide/v2018-1/default.asp>

Guide filename: G060rv-eBIZ-WeavingOffer.pdf

1. BUSINESS DESCRIPTION

1.1 Scope

The present guide has been issued to assist the companies of the Textile-Clothing sector in the implementation of the standard XML document type "WEAVING OFFER", providing all the instruction required for its use in the context of e-commerce between Subcontractors and their Customers shown in the enclosed diagram

All the rules required for the construction and validation of the document are embedded into the specific XML-Schema, which is detailed in section "Implementation guide".

1.2 Generalities

The Offer is used by a Subcontractor to respond to the Request of a Fabric Producer for the weaving of a yarn.

The Offer is structured in four levels:

Macro-type of Work offered = document root (7 types of Request)

Product Family = document qualifier (type of product with reference to the manufacturing process; e.g.: combed yarn, jacquard weaved fabric, ..)

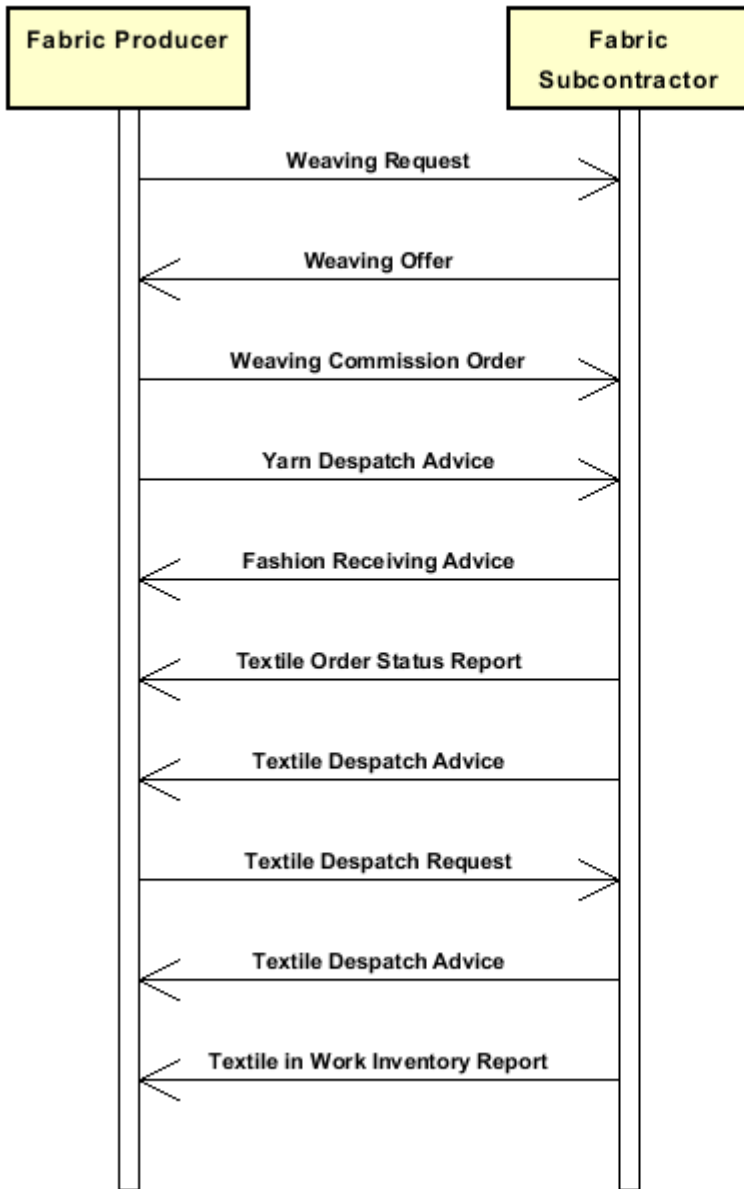
Product Specifications = "xxxSpecs" (technical characteristics and properties of the product)

Operations offered = "XXXMnfrOperation" (details of the works requested)

Quantities, unit measures and prices must be referred to the third level (Line Item)

1.3. Possible scenario

Subcontracted weaving



2. IMPLEMENTATION GUIDE

2.1 General structure of XML document

All the business data that can be exchanged through this class of documents are shown in the following "document structure", that provides a simplified vision of the Schema.

In particular:

- the two numbers following each element define its "cardinality" (minimum and maximum number of occurrences); the minimum equal zero indicates that the element is optional, the minimum greater than zero indicates that is mandatory;
- the bold character denotes the complex elements (aggregates of simple elements) that were built for the sake of functionality and re-usability of some complex informations sets. The child elements in each parent element are easily spotted as "indented";
- the symbol "@" denotes an attribute of the preceding element; here "the usage indicator (optional, required, ...)" is shown in square brackets.

Legenda

- N: new element
- U: updated properties
- P: changes in children
- p: is a changed child
- A: changes in attributes
- a: is a new or changed attribute
- *: is a subtype

Structure

TEXWeaveOffer

```
@msgfunction [Optional] [Default= OR]
@fabProcQualifier [Required]
@version [Optional] [Default= 2018-1]
@useProfile [Optional]
| OFheader 1-1 (P)
| | msgN 1-1
| | - choose -
| | msgID 0-1
| | - or -
| | docID 0-1
| | @numberingOrg [Optional]
| | - end choose -
| | msgDate 1-1
| | @dateForm [Optional]
| | season 0-1 (A)
| | @numberingOrg [Optional] (a)
| | @codeList [Optional] (a)
| | @listName [Optional] (a)
| | @listVersion [Optional] (a)
| | validityStart 0-1
| | @dateForm [Optional]
| | validityEnd 1-1
| | @dateForm [Optional]
| | refDoc 0-9 (P)
| | @docType [Required]
| | | docID 1-2 (p)
| | | @numberingOrg [Optional]
| | | docDate 0-1
| | | @dateForm [Optional]
```

- season 0-1 (A)
- @numberingOrg [Optional] (a)
- @codeList [Optional] (a)
- @listName [Optional] (a)
- @listVersion [Optional] (a)
- itemID 0-1 (U)
- attachment 0-1 (N)**
- @uid [Optional]
- | fileName 0-1 (N)
- | @numberingOrg [Optional] (a)
- | binaryObject 0-1 (N)
- | @format [Optional] (N)
- | @mime [Optional] (N)
- | @encoding [Optional] (N)
- | @characterSet [Optional] (N)
- externalReference 0-99 (N)**
- | uri 1-1 (N)
- | @isURL [Optional] [Default= true] (Na)
- | mimeTypeCode 0-1 (N)
- | formatCode 0-1 (N)
- | encodingCode 0-1 (N)
- | characterSetCode 0-1 (N)

buyer 1-1 (AP)

- @logo [Optional]
- @sender [Optional] (a*)
- | id 1-1 (p)
- | @numberingOrg [Optional]
- | additionalIdentifier 0-9 (N)
- | @numberingOrg [Optional] (a)
- | @idQualifier [Optional] (Na)
- | legalName 0-1 (U)
- | dept 0-1
- | subDept 0-1 (N)
- | person 0-1
- | @email [Optional]
- | @phone [Optional]
- | @fax [Optional]
- | street 0-1
- | city 0-1
- | subCountry 0-1
- | country 0-1
- | postCode 0-1

- choose -

supplier 0-1 (AP)

- @logo [Optional]
- @sender [Optional] (a*)
- | id 1-1
- | @numberingOrg [Optional]
- | additionalIdentifier 0-9 (N)
- | @numberingOrg [Optional] (a)
- | @idQualifier [Optional] (Na)
- | legalName 0-1 (U)
- | dept 0-1
- | subDept 0-1 (N)
- | person 0-1
- | @email [Optional]
- | @phone [Optional]
- | @fax [Optional]
- | street 0-1
- | city 0-1
- | subCountry 0-1

```

| | | country 0-1
| | | postCode 0-1
- or -
| | subContractor 0-1 (AP)
| | @sender [Optional] (a*)
| | | id 1-1
| | | @numberingOrg [Optional]
| | | legalName 0-1 (U)
| | | dept 0-1
| | | subDept 0-1 (N)
| | | person 0-1
| | | @email [Optional]
| | | @phone [Optional]
| | | @fax [Optional]
| | | street 0-1
| | | city 0-1
| | | subCountry 0-1
| | | country 0-1
| | | postCode 0-1
- end choose -
| | thirdParty 0-5 (AP)
| | @VAT [Optional]
| | @role [Required]
| | @sender [Optional] (a*)
| | | id 1-1
| | | @numberingOrg [Optional]
| | | legalName 0-1 (U)
| | | dept 0-1
| | | subDept 0-1 (N)
| | | person 0-1
| | | @email [Optional]
| | | @phone [Optional]
| | | @fax [Optional]
| | | street 0-1
| | | city 0-1
| | | subCountry 0-1
| | | country 0-1
| | | postCode 0-1
| | note 0-99
| | @numberingOrg [Optional]
| | @codeList [Optional]
| | @noteLabel [Optional]
| | terms 0-1 (P)
| | | payment 0-5
| | | @finDiscount [Optional]
| | | @finSurcharge [Optional]
| | | - choose -
| | | | payTerm 1-1
| | | | - or -
| | | | payTermText 1-1 (U)
| | | | - end choose -
| | | | payMode 0-1
| | | insPayment 0-5
| | | @part [Required]
| | | - choose -
| | | | payTerm 1-1
| | | | - or -
| | | | payTermText 1-1 (U)
| | | | - end choose -
| | | | payMode 0-1

```

trade 0-1
 - choose -
 | incoTermText 1-1 (U)
 - or -
 | incoTerm 1-1
 - end choose -
 | location 0-1
 | @LRI [Optional]

transInfo 0-5 (pAP)
 @transReason [Optional]
 @progr [Optional] (N)
 | transMode 1-1
 | carrier 0-1
 | deliveryPlace 0-1 (U)
 | grossWeight 0-1
 | @um [Required]
 | netWeight 0-1
 | @um [Required]
 | transMeans 0-1
 | transCondition 0-3
 | transConditionText 0-1 (U)
 | despatchPlace 0-1 (N)
 | despatchDate 0-1 (N)
 | @dateForm [Optional] (a)
 | delEffectiveDate 0-1 (p)
 | @dateForm [Optional]

allowanceCharge 0-9 (A)
 @um [Optional] (a)
 @VAT [Optional]
 @minQty [Optional] (a)
 @currency [Optional] (a)
 @maxQty [Optional] (N)
 @isCharge [Optional] (N)
 - choose -
 | AC_category 1-1
 - or -
 | AC_categoryText 1-1 (U)
 - end choose -
 - choose -
 | AC_percent 1-1
 - or -
 | AC_amount 1-1 (A)
 | @currency [Optional] (a)
 - end choose -

dtScheme 0-1 (P)
 @taxType [Required]
 | taxCategory 0-1
 | taxRate 0-1
 | legalRef 0-1 (A)
 | @numberingOrg [Optional]
 | @codeList [Optional]
 | @listName [Optional]
 | @listVersion [Optional]
 | note 0-99
 | @numberingOrg [Optional]
 | @codeList [Optional]
 | @noteLabel [Optional]

TWOFbody 1-1
 | TWOFitem 1-unbounded (P)
 | @act [Required]

lineN 1-1
 @VAT [Optional]
refDoc 0-9 (P)
 @docType [Required]
 | docID 1-2 (p)
 | | @numberingOrg [Optional]
 | docDate 0-1
 | | @dateForm [Optional]
 | season 0-1 (A)
 | | @numberingOrg [Optional] (a)
 | | @codeList [Optional] (a)
 | | @listName [Optional] (a)
 | | @listVersion [Optional] (a)
 | itemID 0-1 (U)
attachment 0-1 (N)
 | @uid [Optional]
 | | fileName 0-1 (N)
 | | | @numberingOrg [Optional]
 | | binaryObject 0-1 (N)
 | | | @format [Optional] (N)
 | | | @mime [Optional] (N)
 | | | @encoding [Optional] (N)
 | | | @characterSet [Optional] (N)
 | | **externalReference 0-99** (N)
 | | | uri 1-1 (N)
 | | | | @isURL [Optional] [Default= true] (Na)
 | | | mimeCode 0-1 (N)
 | | | formatCode 0-1 (N)
 | | | encodingCode 0-1 (N)
 | | | characterSetCode 0-1 (N)
fabricCompos 0-1
 | percCompos 1-9
 | | @fibre [Required]
construction 0-1
 | fabricWeightM 1-1
 | | @um [Optional] [Default= GRM]
 | fabricWeightM2 0-1
 | | @um [Optional] [Default= GRM]
 | fabricWidth 0-1
 | | @um [Optional] [Default= CMT]
 | fabricCutWidth 0-1
 | | @um [Optional] [Default= CMT]
 | pieceLength 0-1
 | | @um [Optional] [Default= MTR]
 | weave 0-1
 | warpCount 0-9
 | | @method [Optional] [Default= ISO-2060]
 | | @fibre [Optional]
 | weftCount 0-9
 | | @method [Optional] [Default= ISO-2060]
 | | @fibre [Optional]
 | warpEndsN 0-1
 | weftEndsN 0-1
 | bowingWarp 0-1
 | | @method [Optional]
 | bowingWeft 0-1
 | | @method [Optional]
 | checksFlaw 0-1
 | | @method [Optional]
 | weftDev 0-1
 | | @method [Optional]


```

| | | resin 0-1
| | | fabricSpecs 0-9
| | | - choose -
| | | | fabricCharText 1-1 (U)
| | | - or -
| | | | fabricChar 1-1
| | | - end choose -
| | | | specValue 0-1
| | | | @um [Optional]
| | | | @source [Optional]
| | | | @method [Optional]
| | | | @application [Optional]
| | | | @CV [Optional]
| | | - choose -
| | | | tolerance 0-2
| | | | @um [Required]
| | | - or -
| | | | pcTolerance 0-2
| | | | @um [Optional]
| | | - end choose -
| | | qty 1-2
| | | @um [Required]
| | | price 1-1 (AU)
| | | @um [Optional]
| | | @priceQualifier [Optional] [Default= NET]
| | | @currency [Optional] (a)
| | | deliveryDate 1-1
| | | @dateForm [Optional]
| | | notBeforeDate 0-1
| | | @dateForm [Optional]
| | | thirdParty 0-3 (AP)
| | | @VAT [Optional]
| | | @role [Required]
| | | @sender [Optional] (a*)
| | | | id 1-1
| | | | @numberingOrg [Optional]
| | | | legalName 0-1 (U)
| | | | dept 0-1
| | | | subDept 0-1 (N)
| | | | person 0-1
| | | | @email [Optional]
| | | | @phone [Optional]
| | | | @fax [Optional]
| | | | street 0-1
| | | | city 0-1
| | | | subCountry 0-1
| | | | country 0-1
| | | | postCode 0-1
| | | fabMnfrOperation 1-9 (P)
| | | - choose -
| | | | jobName 1-1
| | | - or -
| | | | texJob 1-1
| | | - end choose -
| | | | texJobTech 0-9
| | | | refDoc 0-9 (P)
| | | | @docType [Required]
| | | | | docID 1-2
| | | | | @numberingOrg [Optional]
| | | | | docDate 0-1
| | | | | @dateForm [Optional]

```

```

| season 0-1 (A)
| @numberingOrg [Optional] (a)
| @codeList [Optional] (a)
| @listName [Optional] (a)
| @listVersion [Optional] (a)
| itemID 0-1 (U)
| attachment 0-1 (N)
| @uid [Optional]
| | fileName 0-1 (N)
| | @numberingOrg [Optional] (a)
| | binaryObject 0-1 (N)
| | @format [Optional] (Na)
| | @mime [Optional] (Na)
| | @encoding [Optional] (Na)
| | @characterSet [Optional] (Na)
| | externalReference 0-99 (N)
| | | uri 1-1 (N)
| | | @isURL [Optional] [Default= true] (Na)
| | | mimeTypeCode 0-1 (N)
| | | formatCode 0-1 (N)
| | | encodingCode 0-1 (N)
| | | characterSetCode 0-1 (N)
| texMachine 0-1
| texMachineSpecs 0-9
| | texMachineParam 1-1
| | specValue 0-1
| | @um [Optional]
| | @source [Optional]
| | @method [Optional]
| | @application [Optional]
| | @CV [Optional]
- choose -
| | pcTolerance 0-2
| | @um [Optional]
- or -
| | tolerance 0-2
| | @um [Required]
- end choose -
| note 0-99
| @numberingOrg [Optional]
| @codeList [Optional]
| @noteLabel [Optional]
| dtScheme 0-1 (P)
| @taxType [Required]
| taxCategory 0-1
| taxRate 0-1
| legalRef 0-1 (A)
| @numberingOrg [Optional] (a)
| @codeList [Optional] (a)
| @listName [Optional] (a)
| @listVersion [Optional] (a)
| note 0-99
| @numberingOrg [Optional]
| @codeList [Optional]
| @noteLabel [Optional]
| note 0-99
| @numberingOrg [Optional]
| @codeList [Optional]
| @noteLabel [Optional]

```

2.2 Detailed description of document elements

Following tables show all elements (complex and simple) used in this document. Description includes: 1) element's information: xml tag, name, brief description, data type and syntax constraints; 2) information about use of the element in a particular position in the document: xpath and possible associated notes.

2.2.1 Complex elements (Aggregate Business Information Entities)

Complex elements are those elements whose content is composed of other elements (childs). Complex elements are alphabetically ordered.

allowanceCharge	Allowances and Charges related to an Order or a contract (XPath TEXWeaveOffer/terms/allowanceCharge) 0-9 (A)
attachment	an attached document. An attachment can refer to an external document or be included with the document being exchanged (XPath TEXWeaveOffer/TWOFbody/TWOFitem/fabMnfrOperation/refDoc/attachment) 0-1 (N) (XPath TEXWeaveOffer/OFheader/refDoc/attachment) 0-1 (N) (XPath TEXWeaveOffer/TWOFbody/TWOFitem/refDoc/attachment) 0-1 (N)
buyer	details of the Buyer (party that buys the good or service that is object of the current collaborative process) - base type: Nad, (XPath TEXWeaveOffer/OFheader/buyer) 1-1 (AP)
construction	construction data and features included in the technical sheet of the fabric article (XPath TEXWeaveOffer/TWOFbody/TWOFitem/construction) 0-1
dtScheme	set of data usable to declare the duty or tax applied (XPath TEXWeaveOffer/terms/allowanceCharge/dtScheme) 0-1 (P) (XPath TEXWeaveOffer/TWOFbody/TWOFitem/dtScheme) 0-1 (P) - note: <i>recommended alternative to the attribute @VAT</i>
externalReference	details about an external object, such as a document stored at a remote location (XPath TEXWeaveOffer/TWOFbody/TWOFitem/refDoc/attachment/externalReference) 0-99 (N) (XPath TEXWeaveOffer/TWOFbody/TWOFitem/fabMnfrOperation/refDoc/attachment/externalReference) 0-99 (N) (XPath TEXWeaveOffer/OFheader/refDoc/attachment/externalReference) 0-99 (N)
fabMnfrOperation	details of a manufacturing operation used for fabric production (XPath TEXWeaveOffer/TWOFbody/TWOFitem/fabMnfrOperation) 1-9 (P)
fabricCompos	composition of the fabric according to the Directory 97/37/CE (XPath TEXWeaveOffer/TWOFbody/TWOFitem/fabricCompos) 0-1
fabricSpecs	technical characteristics of fabric, linked either to an operation of subcontracted production or to the purchase (XPath TEXWeaveOffer/TWOFbody/TWOFitem/fabricSpecs) 0-9
insPayment	payment details for payment by installments (XPath TEXWeaveOffer/terms/insPayment) 0-5 - note: <i>excluded the case of offers, this set of data is alternative to payment set and must be iterated for each payment installment</i>
OFheader	header of the document OFFER (XPath TEXWeaveOffer/OFheader) 1-1 (P)
payment	payment details for payment all in one (XPath TEXWeaveOffer/terms/payment) 0-5

	- note: <i>excluded the case of offers, this set of data is alternative to insPayment, it can be iterated to specify alternative terms of payment (e.g.: 60 days or 30 days with 3% discount)</i>
refDoc	<p>identification of a document and of an item thereof, to which the message makes reference</p> <p>(XPath <code>TEXWeaveOffer/OFheader/refDoc</code>) 0-9 (P)</p> <p>- note: <i>At least one occurrence should contain a reference to the corresponding Request for Offer (docType=REQ)</i></p> <p>(XPath <code>TEXWeaveOffer/TWOFbody/TWOFitem/refDoc</code>) 0-9 (P)</p> <p>- note: <i>At least one occurrence should contain a reference to the line of the corresponding Request for Offer (docType=REQ)</i></p> <p>(XPath <code>TEXWeaveOffer/TWOFbody/TWOFitem/fabMnfrOperation/refDoc</code>) 0-9 (P)</p> <p>- note: <i>here a Process Sheet transmitted to the Subcontractor can be referenced</i></p>
subContractor	<p>details of the Sub-contractor</p> <p>- base type: Nad,</p> <p>(XPath <code>TEXWeaveOffer/OFheader/subContractor</code>) 0-1 (AP)</p> <p>- note: <i>At least one out of Supplier and Subcontractor must be indicated.</i></p>
supplier	<p>details of the Supplier (party that supplies the good or service that is object of the current collaborative process)</p> <p>- base type: Nad,</p> <p>(XPath <code>TEXWeaveOffer/OFheader/supplier</code>) 0-1 (AP)</p> <p>- note: <i>At least one out of Supplier and Subcontractor must be indicated.</i></p>
terms	<p>details of the commercial obligations for payment and delivery</p> <p>(XPath <code>TEXWeaveOffer/terms</code>) 0-1 (P)</p>
texMachineSpecs	<p>technical specifications of a machine used in an operation of a work cycle for fabric (type and settings)</p> <p>(XPath <code>TEXWeaveOffer/TWOFbody/TWOFitem/fabMnfrOperation/texMachineSpecs</code>) 0-9</p>
thirdParty	<p>details of the Third Party, different from Sender and Receiver of the document</p> <p>- base type: Nad,</p> <p>(XPath <code>TEXWeaveOffer/TWOFbody/TWOFitem/thirdParty</code>) 0-3 (AP)</p> <p>(XPath <code>TEXWeaveOffer/OFheader/thirdParty</code>) 0-5 (AP)</p> <p>- note: <i>In the Offer case it might give reference to the Originator of the request.</i></p>
trade	<p>general terms of trade for the specified supply</p> <p>(XPath <code>TEXWeaveOffer/terms/trade</code>) 0-1</p>
transInfo	<p>details of transport: mode, carrier and delivery place</p> <p>(XPath <code>TEXWeaveOffer/terms/transInfo</code>) 0-5 (pAP)</p>
TWOFbody	<p>body of the document OFFER OF WEAVING</p> <p>(XPath <code>TEXWeaveOffer/TWOFbody</code>) 1-1</p>
TWOFitem	<p>line of the document OFFER OF WEAVING</p> <p>(XPath <code>TEXWeaveOffer/TWOFbody/TWOFitem</code>) 1-unbounded (P)</p>

2.2.2 Simple elements (Basic Business Information Entities)

Simple elements are those elements whose content is characterized by a data type plus a domain of possible values. Simple elements are alphabetically ordered.

AC_amount	<p>amount of an Allowance or Charge</p> <p>- base type: decimal, fraction digits: 2,</p> <p>(XPath <code>TEXWeaveOffer/terms/allowanceCharge/AC_amount</code>) 1-1 (A)</p>
------------------	--

AC_category	<p>coded specification of an Allowance or Charge</p> <p>- base type: string, cod. table: T41 http://www.ebiz.enea.it/moda-ml/repository/codelist/v2018-1/gc_T41.xml (XPath <code>TEXWeaveOffer/terms/allowanceCharge/AC_category</code>) 1-1</p>
AC_categoryText	<p>free text description of an Allowance or Charge</p> <p>- base type: string, max length: 250, (XPath <code>TEXWeaveOffer/terms/allowanceCharge/AC_categoryText</code>) 1-1 (U)</p>
AC_percent	<p>amount of an Allowance or Charge as a percentage (always non negative value)</p> <p>- base type: decimal, max inclusive: 100, fraction digits: 2, (XPath <code>TEXWeaveOffer/terms/allowanceCharge/AC_percent</code>) 1-1</p>
@act	<p>status that the current line assigns to the line addressed in the reference document; if it is already canceled it maintains the status.</p> <p>- base type: string, cod. table: NT5 http://www.ebiz.enea.it/moda-ml/repository/codelist/v2018-1/gc_NT5.xml (XPath <code>TEXWeaveOffer/TWOFbody/TWOFitem/@act</code>) [Required]</p>
additionalIdentifier	<p>additional identification code of a Party, for example customs registries or others</p> <p>- base type: string, max length: 15, (XPath <code>TEXWeaveOffer/OFheader/supplier/additionalIdentifier</code>) 0-9 (N) - note: <i>identifiers for example for exports, such as MID (Manufacturer Identification Code), EORI (E.O.R.I. - Economic Operator Registration and Identification)</i> (XPath <code>TEXWeaveOffer/OFheader/buyer/additionalIdentifier</code>) 0-9 (N) - note: <i>identifiers for example for exports, such as MID (Manufacturer Identification Code), EORI (E.O.R.I. - Economic Operator Registration and Identification)</i></p>
@application	<p>force or similar condition (e.g. no. of revolutions) applied in a test as specified within the standard</p> <p>- base type: string, max length: 15, (XPath <code>TEXWeaveOffer/TWOFbody/TWOFitem/fabMnfrOperation/texMachineSpecs/specValue/@application</code>) [Optional] (XPath <code>TEXWeaveOffer/TWOFbody/TWOFitem/fabricSpecs/specValue/@application</code>) [Optional]</p>
binaryObject	<p>a binary large object containing an attached document, Coding 'base64Binary' is recommended.</p> <p>- base type: base64Binary, (XPath <code>TEXWeaveOffer/TWOFbody/TWOFitem/refDoc/attachment/binaryObject</code>) 0-1 (N) (XPath <code>TEXWeaveOffer/TWOFbody/TWOFitem/fabMnfrOperation/refDoc/attachment/binaryObject</code>) 0-1 (N) (XPath <code>TEXWeaveOffer/OFheader/refDoc/attachment/binaryObject</code>) 0-1 (N)</p>
bowingWarp	<p>warp bowing</p> <p>- base type: decimal, min inclusive: 0, (XPath <code>TEXWeaveOffer/TWOFbody/TWOFitem/construction/bowingWarp</code>) 0-1</p>
bowingWeft	<p>weft bowing</p> <p>- base type: decimal, min inclusive: 0, (XPath <code>TEXWeaveOffer/TWOFbody/TWOFitem/construction/bowingWeft</code>) 0-1</p>
carrier	<p>identification of the transport carrier</p> <p>- base type: string, max length: 40, (XPath <code>TEXWeaveOffer/terms/transInfo/carrier</code>) 0-1</p>
@characterSet	<p>the character set of the binary object (examples UTF-8, UTF-16, Windows-1252, ISO-8859-7,..)</p> <p>- base type: normalizedString, (XPath <code>TEXWeaveOffer/TWOFbody/TWOFitem/refDoc/attachment/binaryObject/@characterSet</code>) [Optional] (N)</p>

	<p>(XPath <code>TEXWeaveOffer/OFheader/refDoc/attachment/binaryObject/@characterSet</code>) [Optional] (N)</p> <p>(XPath <code>TEXWeaveOffer/TWOFbody/TWOFitem/fabMnfrOperation/refDoc/attachment/binaryObject/@characterSet</code>) [Optional] (Na)</p>
characterSetCode	<p>the character set of an external document (examples UTF-8, UTF-16, Windows-1252, ISO-8859-7,...)</p> <p>- base type: normalizedString,</p> <p>(XPath <code>TEXWeaveOffer/TWOFbody/TWOFitem/fabMnfrOperation/refDoc/attachment/externalReference/characterSetCode</code>) 0-1 (N)</p> <p>(XPath <code>TEXWeaveOffer/TWOFbody/TWOFitem/refDoc/attachment/externalReference/characterSetCode</code>) 0-1 (N)</p> <p>(XPath <code>TEXWeaveOffer/OFheader/refDoc/attachment/externalReference/characterSetCode</code>) 0-1 (N)</p>
checksFlaw	<p>flaw in checks</p> <p>- base type: decimal, min inclusive: 0,</p> <p>(XPath <code>TEXWeaveOffer/TWOFbody/TWOFitem/construction/checksFlaw</code>) 0-1</p>
city	<p>name of the city (town, village)</p> <p>- base type: string, max length: 40,</p> <p>(XPath <code>TEXWeaveOffer/OFheader/subContractor/city</code>) 0-1</p> <p>(XPath <code>TEXWeaveOffer/OFheader/thirdParty/city</code>) 0-1</p> <p>(XPath <code>TEXWeaveOffer/TWOFbody/TWOFitem/thirdParty/city</code>) 0-1</p> <p>(XPath <code>TEXWeaveOffer/OFheader/buyer/city</code>) 0-1</p> <p>(XPath <code>TEXWeaveOffer/OFheader/supplier/city</code>) 0-1</p>
@codeList	<p>it specifies the URL where the list of codes used to make an instance of the element can be found</p> <p>- base type: string, max length: 255,</p> <p>(XPath <code>TEXWeaveOffer/terms/allowanceCharge/dtScheme/note/@codeList</code>) [Optional]</p> <p>- nota: <i>must be used to provide (URL) the list of codes used in "noteLabel"</i></p> <p>(XPath <code>TEXWeaveOffer/terms/allowanceCharge/dtScheme/legalRef/@codeList</code>) [Optional]</p> <p>(XPath <code>TEXWeaveOffer/TWOFbody/TWOFitem/dtScheme/legalRef/@codeList</code>) [Optional] (a)</p> <p>(XPath <code>TEXWeaveOffer/TWOFbody/TWOFitem/fabMnfrOperation/note/@codeList</code>) [Optional]</p> <p>- nota: <i>must be used to provide (URL) the list of codes used in "noteLabel"</i></p> <p>(XPath <code>TEXWeaveOffer/TWOFbody/TWOFitem/refDoc/season/@codeList</code>) [Optional] (a)</p> <p>- nota: <i>this attribute should be used either single or coupled with "listName" and "listVersion"</i></p> <p>(XPath <code>TEXWeaveOffer/TWOFbody/TWOFitem/fabMnfrOperation/refDoc/season/@codeList</code>) [Optional] (a)</p> <p>- nota: <i>this attribute should be used either single or coupled with "listName" and "listVersion"</i></p> <p>(XPath <code>TEXWeaveOffer/OFheader/note/@codeList</code>) [Optional]</p> <p>- nota: <i>must be used to provide (URL) the list of codes used in "noteLabel"</i></p> <p>(XPath <code>TEXWeaveOffer/TWOFbody/TWOFitem/note/@codeList</code>) [Optional]</p> <p>- nota: <i>must be used to provide (URL) the list of codes used in "noteLabel"</i></p> <p>(XPath <code>TEXWeaveOffer/TWOFbody/TWOFitem/dtScheme/note/@codeList</code>) [Optional]</p> <p>- nota: <i>must be used to provide (URL) the list of codes used in "noteLabel"</i></p> <p>(XPath <code>TEXWeaveOffer/OFheader/refDoc/season/@codeList</code>) [Optional] (a)</p> <p>- nota: <i>this attribute should be used either single or coupled with "listName" and "listVersion"</i></p> <p>(XPath <code>TEXWeaveOffer/OFheader/season/@codeList</code>) [Optional] (a)</p> <p>- nota: <i>this attribute should be used either single or coupled with "listName" and "listVersion"</i></p>
country	<p>code of the nation</p> <p>- base type: string, cod. table: T10</p> <p>http://www.ebiz.enea.it/moda-ml/repository/codelist/v2018-1/gc_T10.xml</p> <p>(XPath <code>TEXWeaveOffer/OFheader/supplier/country</code>) 0-1</p>

	<p>(XPath TEXWeaveOffer/TWOFbody/TWOFitem/thirdParty/country) 0-1 (XPath TEXWeaveOffer/OFheader/thirdParty/country) 0-1 (XPath TEXWeaveOffer/OFheader/subContractor/country) 0-1 (XPath TEXWeaveOffer/OFheader/buyer/country) 0-1</p>
@currency	<p>currency in which a specified monetary data is expressed - base type: string, cod. table: T9 http://www.ebiz.enea.it/moda-ml/repository/codelist/v2018-1/gc_T9.xml (XPath TEXWeaveOffer/terms/allowanceCharge/AC_amount/@currency) [Optional] (a) (XPath TEXWeaveOffer/TWOFbody/TWOFitem/price/@currency) [Optional] (a) - nota: <i>Currency referred by the price.</i> (XPath TEXWeaveOffer/terms/allowanceCharge/@currency) [Optional] (a)</p>
@CV	<p>coefficient of variation (CV) of a measurement - base type: decimal, (XPath TEXWeaveOffer/TWOFbody/TWOFitem/fabricSpecs/specValue/@CV) [Optional] (XPath TEXWeaveOffer/TWOFbody/TWOFitem/fabMnfrOperation/texMachineSpecs/specValue/@CV) [Optional]</p>
@dateForm	<p>format used for the date - base type: string, cod. table: NT29 http://www.ebiz.enea.it/moda-ml/repository/codelist/v2018-1/gc_NT29.xml (XPath TEXWeaveOffer/terms/transInfo/despatchDate/@dateForm) [Optional] (a) (XPath TEXWeaveOffer/terms/transInfo/delEffectiveDate/@dateForm) [Optional] (XPath TEXWeaveOffer/TWOFbody/TWOFitem/refDoc/docDate/@dateForm) [Optional] (XPath TEXWeaveOffer/OFheader/refDoc/docDate/@dateForm) [Optional] (XPath TEXWeaveOffer/TWOFbody/TWOFitem/notBeforeDate/@dateForm) [Optional] (XPath TEXWeaveOffer/TWOFbody/TWOFitem/deliveryDate/@dateForm) [Optional] (XPath TEXWeaveOffer/OFheader/validityStart/@dateForm) [Optional] (XPath TEXWeaveOffer/OFheader/validityEnd/@dateForm) [Optional] (XPath TEXWeaveOffer/OFheader/msgDate/@dateForm) [Optional] (XPath TEXWeaveOffer/TWOFbody/TWOFitem/fabMnfrOperation/refDoc/docDate/@dateForm) [Optional]</p>
delEffectiveDate	<p>effective date of delivery of goods (declared in Despatch), according to one of the patterns YYYY-MM-DD, YYYY-MM-DD:HH-MM or YYYY-WW. - base type: string, (XPath TEXWeaveOffer/terms/transInfo/delEffectiveDate) 0-1 (p)</p>
deliveryDate	<p>date of delivery of goods, requested or promised in the purchase process, according to one of the patterns YYYY-MM-DD, YYYY-MM-DD:HH-MM or YY-YY-WW. - base type: string, (XPath TEXWeaveOffer/TWOFbody/TWOFitem/deliveryDate) 1-1</p>
deliveryPlace	<p>place of delivery of goods, ultimate or related to a given leg - base type: string, max length: 250, (XPath TEXWeaveOffer/terms/transInfo/deliveryPlace) 0-1 (U)</p>
dept	<p>name or code of a contact department within a Party - base type: string, max length: 40, (XPath TEXWeaveOffer/OFheader/subContractor/dept) 0-1 (XPath TEXWeaveOffer/OFheader/buyer/dept) 0-1 (XPath TEXWeaveOffer/TWOFbody/TWOFitem/thirdParty/dept) 0-1 (XPath TEXWeaveOffer/OFheader/thirdParty/dept) 0-1 (XPath TEXWeaveOffer/OFheader/supplier/dept) 0-1</p>
despatchDate	<p>date of despatch of goods, requested or promised in the purchase process, according to one of the patterns YYYY-MM-DD, YYYY-MM-DD:HH-MM or YY-YY-WW. - base type: string, (XPath TEXWeaveOffer/terms/transInfo/despatchDate) 0-1 (N)</p>

despatchPlace	place of despatch of goods, origin or related to a given leg - base type: string, max length: 250, (XPath TEXWeaveOffer/terms/transInfo/despatchPlace) 0-1 (N)
docDate	date of issue of the referenced document, according to one of the patterns Y YYY-MM-DD, YYYY-MM-DD:HH-MM or YYYY-WW. - base type: string, (XPath TEXWeaveOffer/OFheader/refDoc/docDate) 0-1 (XPath TEXWeaveOffer/TWOFbody/TWOFitem/refDoc/docDate) 0-1 (XPath TEXWeaveOffer/TWOFbody/TWOFitem/fabMnfrOperation/ refDoc/docDate) 0-1
docID	identification number of the referenced document SINCE 2008-1 ITS USE I N THE HEADER IS DISCOURAGED (REPLACED BY msgID) - base type: string, max length: 80, (XPath TEXWeaveOffer/TWOFbody/TWOFitem/fabMnfrOperation/ refDoc/docID) 1-2 <hr/> AAAA-WARNING! - text not AVAILABLE n. 245 - In=en (XPath TEXWeaveOffer/TWOFbody/TWOFitem/refDoc/docID) 1-2 (p) <hr/> AAAA-WARNING! - text not AVAILABLE n. 245 - In=en (XPath TEXWeaveOffer/OFheader/docID) 0-1 (XPath TEXWeaveOffer/OFheader/refDoc/docID) 1-2 (p) <hr/> AAAA-WARNING! - text not AVAILABLE n. 245 - In=en
@docType	type or class to which the referenced document belongs - base type: string, cod. table: T21 http://www.ebiz.enea.it/moda-ml/repository/codelist/v2018-1/gc_T21.xml (XPath TEXWeaveOffer/OFheader/refDoc/@docType) [Required] (XPath TEXWeaveOffer/TWOFbody/TWOFitem/refDoc/@docType) [Required] (XPath TEXWeaveOffer/TWOFbody/TWOFitem/fabMnfrOperation/ refDoc/@docType) [Required]
@email	electronic mail address of the contact person within a Party - base type: string, max length: 250, (XPath TEXWeaveOffer/OFheader/supplier/person/@email) [Optional] (XPath TEXWeaveOffer/OFheader/thirdParty/person/@email) [Optional] (XPath TEXWeaveOffer/OFheader/subContractor/person/@email) [Optional] (XPath TEXWeaveOffer/OFheader/buyer/person/@email) [Optional] (XPath TEXWeaveOffer/TWOFbody/TWOFitem/thirdParty/person/@email) [Optional]
@encoding	specifies the decoding algorithm of the binary object - base type: normalizedString, (XPath TEXWeaveOffer/TWOFbody/TWOFitem/refDoc/attachment/ binaryObject/@encoding) [Optional] (N) (XPath TEXWeaveOffer/TWOFbody/TWOFitem/fabMnfrOperation/ refDoc/attachment/binaryObject/@encoding) [Optional] (Na) (XPath TEXWeaveOffer/OFheader/refDoc/attachment/ binaryObject/@encoding) [Optional] (N)
encodingCode	the encoding/decoding algorithm used with the external object (example is ' base64Binary') - base type: normalizedString, (XPath TEXWeaveOffer/TWOFbody/TWOFitem/fabMnfrOperation/ refDoc/attachment/externalReference/encodingCode) 0-1 (N) (XPath TEXWeaveOffer/TWOFbody/TWOFitem/refDoc/attachment/ externalReference/encodingCode) 0-1 (N) (XPath TEXWeaveOffer/OFheader/refDoc/attachment/ externalReference/encodingCode) 0-1 (N)
@fabProcQualifier	type of fabric with reference to the manufacturing process - base type: string, cod. table: NT32 http://www.ebiz.enea.it/moda-ml/repository/codelist/v2018-1/gc_NT32.xml (XPath TEXWeaveOffer/@fabProcQualifier) [Required]

fabricChar	code of the physical or mechanical parameter used to define a "technical characteristic of the fabric" (see Fabric technical sheet) - base type: string, cod. table: T13 http://www.ebiz.enea.it/moda-ml/repository/codelist/v2018-1/gc_T13.xml (XPath TEXWeaveOffer/TWOFbody/TWOFitem/fabricSpecs/fabricChar) 1-1
fabricCharText	free text describing the physical or mechanical parameter used to define a "technical characteristic of the fabric" - base type: string, max length: 80, (XPath TEXWeaveOffer/TWOFbody/TWOFitem/fabricSpecs/fabricCharText) 1-1 (U)
fabricCutWidth	usable width of the fabric (for garments manufacturing) as technical specification - base type: decimal, min inclusive: 0, fraction digits: 2, (XPath TEXWeaveOffer/TWOFbody/TWOFitem/construction/fabricCutWidth) 0-1
fabricWeightM	weight per metre of the fabric as technical specification - base type: decimal, min inclusive: 0, fraction digits: 2, (XPath TEXWeaveOffer/TWOFbody/TWOFitem/construction/fabricWeightM) 1-1
fabricWeightM2	weight per square metre of the fabric as technical specification - base type: decimal, min inclusive: 0, fraction digits: 2, (XPath TEXWeaveOffer/TWOFbody/TWOFitem/construction/fabricWeightM2) 0-1
fabricWidth	width of the fabric as technical specification - base type: decimal, min inclusive: 0, fraction digits: 2, (XPath TEXWeaveOffer/TWOFbody/TWOFitem/construction/fabricWidth) 0-1
@fax	fax number of the contact person within a Party - base type: string, max length: 35, (XPath TEXWeaveOffer/OFheader/subContractor/person/@fax) [Optional] (XPath TEXWeaveOffer/OFheader/buyer/person/@fax) [Optional] (XPath TEXWeaveOffer/OFheader/thirdParty/person/@fax) [Optional] (XPath TEXWeaveOffer/TWOFbody/TWOFitem/thirdParty/person/@fax) [Optional] (XPath TEXWeaveOffer/OFheader/supplier/person/@fax) [Optional]
@fibre	type of fibre used in a textile product - base type: string, cod. table: T19 http://www.ebiz.enea.it/moda-ml/repository/codelist/v2018-1/gc_T19.xml (XPath TEXWeaveOffer/TWOFbody/TWOFitem/fabricCompos/percCompos/@fibre) [Required] (XPath TEXWeaveOffer/TWOFbody/TWOFitem/construction/warpCount/@fibre) [Optional] (XPath TEXWeaveOffer/TWOFbody/TWOFitem/construction/weftCount/@fibre) [Optional]
fileName	unique identifier (name) of the file - base type: string, max length: 255, (XPath TEXWeaveOffer/OFheader/refDoc/attachment/fileName) 0-1 (N) (XPath TEXWeaveOffer/TWOFbody/TWOFitem/refDoc/attachment/fileName) 0-1 (N) (XPath TEXWeaveOffer/TWOFbody/TWOFitem/fabMnfrOperation/refDoc/attachment/fileName) 0-1 (N)
@finDiscount	financial discount rate applied for payment by the date specified - base type: decimal, min inclusive: 0, max inclusive: 100, fraction digits: 2, (XPath TEXWeaveOffer/terms/payment/@finDiscount) [Optional]
@finSurcharge	financial surcharge rate applied for payment after the date specified - base type: decimal, min inclusive: 0, max inclusive: 100, fraction digits: 2, (XPath TEXWeaveOffer/terms/payment/@finSurcharge) [Optional]
@format	the format of the binary content (examples xml, pdf, doc,...) - base type: string, (XPath TEXWeaveOffer/TWOFbody/TWOFitem/fabMnfrOperation/refDoc/attachment/binaryObject/@format) [Optional] (Na)

	<p>(XPath TEXWeaveOffer/OFheader/refDoc/attachment/binaryObject/@format) [Optional] (N)</p> <p>(XPath TEXWeaveOffer/TWOFbody/TWOFitem/refDoc/attachment/binaryObject/@format) [Optional] (N)</p>
formatCode	<p>the format of the external object (examples xml, pdf, doc,...)</p> <p>- base type: normalizedString,</p> <p>(XPath TEXWeaveOffer/OFheader/refDoc/attachment/externalReference/formatCode) 0-1 (N)</p> <p>(XPath TEXWeaveOffer/TWOFbody/TWOFitem/refDoc/attachment/externalReference/formatCode) 0-1 (N)</p> <p>(XPath TEXWeaveOffer/TWOFbody/TWOFitem/fabMnfrOperation/refDoc/attachment/externalReference/formatCode) 0-1 (N)</p>
grossWeight	<p>the gross weight, declared for transport or customs purpose</p> <p>- base type: decimal, min inclusive: 0, fraction digits: 2,</p> <p>(XPath TEXWeaveOffer/terms/transInfo/grossWeight) 0-1</p>
id	<p>primary identification code of a Party; it is recommended the format: nation code (ISO 3166) + VAT identification number (11 crt), with the qualifier "numberingOrg"= MF</p> <p>- base type: string, max length: 15,</p> <p>(XPath TEXWeaveOffer/OFheader/subContractor/id) 1-1</p> <p>(XPath TEXWeaveOffer/OFheader/thirdParty/id) 1-1</p> <p>(XPath TEXWeaveOffer/TWOFbody/TWOFitem/thirdParty/id) 1-1</p> <p>(XPath TEXWeaveOffer/OFheader/buyer/id) 1-1 (p)</p> <p>(XPath TEXWeaveOffer/OFheader/supplier/id) 1-1</p>
@idQualifier	<p>Qualification of the identifier.</p> <p>- base type: string,</p> <p>(XPath TEXWeaveOffer/OFheader/supplier/additionalIdentifier/@idQualifier) [Optional] (Na)</p> <p>- nota: <i>this attribute should be used when the numberingOrg attribute is not enough to declare the type of identifier</i></p> <p>(XPath TEXWeaveOffer/OFheader/buyer/additionalIdentifier/@idQualifier) [Optional] (Na)</p> <p>- nota: <i>this attribute should be used when the numberingOrg attribute is not enough to declare the type of identifier</i></p>
incoTerm	<p>specification of the terms of trade (INCOTERMS)</p> <p>- base type: string, cod. table: T3</p> <p>http://www.ebiz.enea.it/moda-ml/repository/codelist/v2018-1/gc_T3.xml</p> <p>(XPath TEXWeaveOffer/terms/trade/incoTerm) 1-1</p>
incoTermText	<p>free text specifying the terms of trade (incoterm, location)</p> <p>- base type: string, max length: 250,</p> <p>(XPath TEXWeaveOffer/terms/trade/incoTermText) 1-1 (U)</p>
@isCharge	<p>Indicates if the element to which it refers is a charge (true = charge, false = allowance)</p> <p>- base type: boolean, min length: 0,</p> <p>(XPath TEXWeaveOffer/terms/allowanceCharge/@isCharge) [Optional] (N)</p>
@isURL	<p>it indicates if the referred element is an URL (true) or not (false)</p> <p>- base type: boolean,</p> <p>(XPath TEXWeaveOffer/OFheader/refDoc/attachment/externalReference/uri/@isURL) [Optional] [Default= true] (Na)</p> <p>- nota: <i>usage of URLs is recommended</i></p> <p>(XPath TEXWeaveOffer/TWOFbody/TWOFitem/fabMnfrOperation/refDoc/attachment/externalReference/uri/@isURL) [Optional] [Default= true] (Na)</p> <p>- nota: <i>usage of URLs is recommended</i></p> <p>(XPath TEXWeaveOffer/TWOFbody/TWOFitem/refDoc/attachment/externalReference/uri/@isURL) [Optional] [Default= true] (Na)</p> <p>- nota: <i>usage of URLs is recommended</i></p>

itemID	<p>number of the line/item of the referenced document</p> <p>- base type: string, max length: 40, (XPath TEXWeaveOffer/TWOFbody/TWOFitem/fabMnfrOperation/refDoc/itemID) 0-1 (U) (XPath TEXWeaveOffer/TWOFbody/TWOFitem/refDoc/itemID) 0-1 (U) (XPath TEXWeaveOffer/OFheader/refDoc/itemID) 0-1 (U)</p>
jobName	<p>description of the elementary job</p> <p>- base type: string, max length: 40, (XPath TEXWeaveOffer/TWOFbody/TWOFitem/fabMnfrOperation/jobName) 1-1</p>
legalName	<p>legal name of a Party</p> <p>- base type: string, max length: 250, (XPath TEXWeaveOffer/OFheader/supplier/legalName) 0-1 (U) (XPath TEXWeaveOffer/OFheader/buyer/legalName) 0-1 (U) (XPath TEXWeaveOffer/OFheader/subContractor/legalName) 0-1 (U) (XPath TEXWeaveOffer/OFheader/thirdParty/legalName) 0-1 (U) (XPath TEXWeaveOffer/TWOFbody/TWOFitem/thirdParty/legalName) 0-1 (U)</p>
legalRef	<p>legal reference of the duty or tax or fee category</p> <p>- base type: string, (XPath TEXWeaveOffer/terms/allowanceCharge/dtScheme/legalRef) 0-1 (A) (XPath TEXWeaveOffer/TWOFbody/TWOFitem/dtScheme/legalRef) 0-1 (A)</p>
lineN	<p>number of the line item of the present message (xml document); it is set by the role that produces the document. Usually it is a progressive number, but not always.</p> <p>- base type: positiveInteger, min inclusive: 1, max inclusive: 9999, (XPath TEXWeaveOffer/TWOFbody/TWOFitem/lineN) 1-1</p>
@listName	<p>the name of the list of codes used to make an instance of the element (it might be thought as descriptive element, i.e. 'fabric printing technologies', or not, i.e. "T264")</p> <p>- base type: string, max length: 40, (XPath TEXWeaveOffer/TWOFbody/TWOFitem/refDoc/season/@listName) [Optional] (a)</p> <p>- nota: <i>this attribute should always be used coupled with "numberingOrg"</i> (XPath TEXWeaveOffer/OFheader/season/@listName) [Optional] (a)</p> <p>- nota: <i>this attribute should always be used coupled with "numberingOrg"</i> (XPath TEXWeaveOffer/terms/allowanceCharge/dtScheme/legalRef/@listName) [Optional]</p> <p>- nota: <i>this attribute should always be used coupled with "numberingOrg"</i> (XPath TEXWeaveOffer/OFheader/refDoc/season/@listName) [Optional] (a)</p> <p>- nota: <i>this attribute should always be used coupled with "numberingOrg"</i> (XPath TEXWeaveOffer/TWOFbody/TWOFitem/fabMnfrOperation/refDoc/season/@listName) [Optional] (a)</p> <p>- nota: <i>this attribute should always be used coupled with "numberingOrg"</i> (XPath TEXWeaveOffer/TWOFbody/TWOFitem/dtScheme/legalRef/@listName) [Optional] (a)</p> <p>- nota: <i>this attribute should always be used coupled with "numberingOrg"</i></p>
@listVersion	<p>it specifies the version of the list of codes used to make an instance of the element</p> <p>- base type: string, max length: 6, (XPath TEXWeaveOffer/OFheader/refDoc/season/@listVersion) [Optional] (a)</p> <p>- nota: <i>this attribute should always be used coupled with "numberingOrg" and "listName"</i> (XPath TEXWeaveOffer/terms/allowanceCharge/dtScheme/legalRef/@listVersion) [Optional]</p> <p>- nota: <i>this attribute should always be used coupled with "numberingOrg" and "listName"</i> (XPath TEXWeaveOffer/TWOFbody/TWOFitem/fabMnfrOperation/refDoc/season/@listVersion) [Optional] (a)</p> <p>- nota: <i>this attribute should always be used coupled with "numberingOrg" and "listName"</i></p>

	<p>(XPath <code>TEXWeaveOffer/TWOFbody/TWOFitem/dtScheme/legalRef/@listVersion</code>) [Optional] (a)</p> <p>- nota: <i>this attribute should always be used coupled with “numberingOrg” and “listName”</i></p> <p>(XPath <code>TEXWeaveOffer/OFheader/season/@listVersion</code>) [Optional] (a)</p> <p>- nota: <i>this attribute should always be used coupled with “numberingOrg” and “listName”</i></p> <p>(XPath <code>TEXWeaveOffer/TWOFbody/TWOFitem/refDoc/season/@listVersion</code>) [Optional] (a)</p> <p>- nota: <i>this attribute should always be used coupled with “numberingOrg” and “listName”</i></p>
location	<p>specification of a location</p> <p>- base type: string, max length: 40,</p> <p>(XPath <code>TEXWeaveOffer/terms/trade/location</code>) 0-1</p> <p>- note: <i>place to which the INCOTERM applies</i></p>
@logo	<p>company logo (URL of the image jpeg or gif). It is recommended that the width of the image does not exceed 640 pixel.</p> <p>- base type: string, max length: 255,</p> <p>(XPath <code>TEXWeaveOffer/OFheader/supplier/@logo</code>) [Optional]</p> <p>(XPath <code>TEXWeaveOffer/OFheader/buyer/@logo</code>) [Optional]</p>
@LRI	<p>attribute usable to format a string according to a customized User rule (local rule)</p> <p>- base type: string, cod. table: NT3</p> <p>http://www.ebiz.enea.it/moda-ml/repository/codelist/v2018-1/gc_NT3.xml</p> <p>(XPath <code>TEXWeaveOffer/terms/trade/location/@LRI</code>) [Optional]</p>
@maxQty	<p>maximum product quantity</p> <p>- base type: decimal, min inclusive: 0, fraction digits: 2,</p> <p>(XPath <code>TEXWeaveOffer/terms/allowanceCharge/@maxQty</code>) [Optional] (N)</p> <p>- nota: <i>maximum quantity of product for the application of this allowance or charge</i></p>
@method	<p>standard protocol or method employed in a test to evaluate a characteristic or a parameter</p> <p>- base type: string, max length: 80,</p> <p>(XPath <code>TEXWeaveOffer/TWOFbody/TWOFitem/construction/bowingWeft/@method</code>) [Optional]</p> <p>(XPath <code>TEXWeaveOffer/TWOFbody/TWOFitem/construction/weftDev/@method</code>) [Optional]</p> <p>(XPath <code>TEXWeaveOffer/TWOFbody/TWOFitem/construction/weftCount/@method</code>) [Optional] [Default= ISO-2060]</p> <p>(XPath <code>TEXWeaveOffer/TWOFbody/TWOFitem/construction/warpCount/@method</code>) [Optional] [Default= ISO-2060]</p> <p>(XPath <code>TEXWeaveOffer/TWOFbody/TWOFitem/construction/bowingWarp/@method</code>) [Optional]</p> <p>(XPath <code>TEXWeaveOffer/TWOFbody/TWOFitem/fabricSpecs/specValue/@method</code>) [Optional]</p> <p>(XPath <code>TEXWeaveOffer/TWOFbody/TWOFitem/construction/checksFlaw/@method</code>) [Optional]</p> <p>(XPath <code>TEXWeaveOffer/TWOFbody/TWOFitem/fabMnfrOperation/texMachineSpecs/specValue/@method</code>) [Optional]</p>
@mime	<p>the mime type of the binary object</p> <p>- base type: normalizedString,</p> <p>(XPath <code>TEXWeaveOffer/OFheader/refDoc/attachment/binaryObject/@mime</code>) [Optional] (N)</p> <p>(XPath <code>TEXWeaveOffer/TWOFbody/TWOFitem/refDoc/attachment/binaryObject/@mime</code>) [Optional] (N)</p> <p>(XPath <code>TEXWeaveOffer/TWOFbody/TWOFitem/fabMnfrOperation/refDoc/attachment/binaryObject/@mime</code>) [Optional] (Na)</p>
mimeCode	<p>mime type of the external object</p> <p>- base type: normalizedString,</p>

	<p>(XPath TEXWeaveOffer/TWOFbody/TWOFitem/refDoc/attachment/externalReference/mimeType) 0-1 (N)</p> <hr/> <p>AAAA-WARNING! - text not AVAILABLE n. 245 - In=en (XPath TEXWeaveOffer/OFheader/refDoc/attachment/externalReference/mimeType) 0-1 (N)</p> <hr/> <p>AAAA-WARNING! - text not AVAILABLE n. 245 - In=en (XPath TEXWeaveOffer/TWOFbody/TWOFitem/fabMnfrOperation/refDoc/attachment/externalReference/mimeType) 0-1 (N)</p> <hr/> <p>AAAA-WARNING! - text not AVAILABLE n. 245 - In=en</p>
@minQty	<p>minimum product quantity</p> <ul style="list-style-type: none"> - base type: decimal, min inclusive: 0, fraction digits: 2, <p>(XPath TEXWeaveOffer/terms/allowanceCharge/@minQty) [Optional] (a)</p> <ul style="list-style-type: none"> - nota: <i>minimum quantity of product for the application of this allowance or charge</i>
msgDate	<p>date of issue of the present message (xml document), according to one of the patterns YYYY-MM-DD, YYYY-MM-DD:HH-MM or YYYY-WW.</p> <ul style="list-style-type: none"> - base type: string, <p>(XPath TEXWeaveOffer/OFheader/msgDate) 1-1</p>
@msgfunction	<p>function performed by the present message with regards to the transmission</p> <ul style="list-style-type: none"> - base type: string, cod. table: NT18 <p>http://www.ebiz.enea.it/moda-ml/repository/codelist/v2018-1/gc_NT18.xml</p> <p>(XPath TEXWeaveOffer/@msgfunction) [Optional] [Default= OR]</p>
msgID	<p>key identifier of the business document in the information system of the issuing Party. In case of more despatches of the same business document, it is unchanged.</p> <ul style="list-style-type: none"> - base type: string, max length: 35, <p>(XPath TEXWeaveOffer/OFheader/msgID) 0-1</p>
msgN	<p>identification number given to the message (xml document) by its issuer. In case of more despatches of the same business document, it changes.</p> <ul style="list-style-type: none"> - base type: string, max length: 35, <p>(XPath TEXWeaveOffer/OFheader/msgN) 1-1</p>
netWeight	<p>the net weight declared for transport or customs purpose</p> <ul style="list-style-type: none"> - base type: decimal, min inclusive: 0, fraction digits: 2, <p>(XPath TEXWeaveOffer/terms/transInfo/netWeight) 0-1</p>
notBeforeDate	<p>earliest date possible to begin an activity, according to one of the patterns YYYY-MM-DD, YYYY-MM-DD:HH-MM or YYYY-WW.</p> <ul style="list-style-type: none"> - base type: string, <p>(XPath TEXWeaveOffer/TWOFbody/TWOFitem/notBeforeDate) 0-1</p>
note	<p>free text or structured (computer processing) note. For note structuring use the attributes "noteLabel" and "codelist"</p> <ul style="list-style-type: none"> - base type: string, max length: 350, <p>(XPath TEXWeaveOffer/OFheader/note) 0-99 (XPath TEXWeaveOffer/TWOFbody/TWOFitem/fabMnfrOperation/note) 0-99 (XPath TEXWeaveOffer/TWOFbody/TWOFitem/dtScheme/note) 0-99 (XPath TEXWeaveOffer/terms/allowanceCharge/dtScheme/note) 0-99 (XPath TEXWeaveOffer/TWOFbody/TWOFitem/note) 0-99</p>
@noteLabel	<p>subject qualifier of a note</p> <ul style="list-style-type: none"> - base type: string, max length: 35, <p>(XPath TEXWeaveOffer/OFheader/note/@noteLabel) [Optional]</p> <ul style="list-style-type: none"> - nota: <i>must be used to qualify the subject of the note</i> <p>(XPath TEXWeaveOffer/TWOFbody/TWOFitem/note/@noteLabel) [Optional]</p> <ul style="list-style-type: none"> - nota: <i>must be used to qualify the subject of the note</i> <p>(XPath TEXWeaveOffer/TWOFbody/TWOFitem/fabMnfrOperation/note/@noteLabel) [Optional]</p> <ul style="list-style-type: none"> - nota: <i>must be used to qualify the subject of the note</i>

	<p>(XPath <code>TEXWeaveOffer/TWOFbody/TWOFitem/dtScheme/note/@noteLabel</code>) [Optional]</p> <p>- nota: <i>must be used to qualify the subject of the note</i></p> <p>(XPath <code>TEXWeaveOffer/terms/allowanceCharge/dtScheme/note/@noteLabel</code>) [Optional]</p> <p>- nota: <i>must be used to qualify the subject of the note</i></p>
<p>@numberingOrg</p>	<p>code specifying the organisation who has created or owns the coding or numbering system</p> <p>- base type: string, cod. table: NT6</p> <p>http://www.ebiz.enea.it/moda-ml/repository/codelist/v2018-1/gc_NT6.xml</p> <p>(XPath <code>TEXWeaveOffer/OFheader/docID/@numberingOrg</code>) [Optional]</p> <p>- nota: <i>here can be specified whose document numbering is used (e.g.: Client, Supplier, ..)</i></p> <p>(XPath <code>TEXWeaveOffer/OFheader/refDoc/docID/@numberingOrg</code>) [Optional]</p> <p>- nota: <i>here can be specified whose document numbering is used (e.g.: Client, Supplier, ..)</i></p> <p>(XPath <code>TEXWeaveOffer/TWOFbody/TWOFitem/dtScheme/note/@numberingOrg</code>) [Optional]</p> <p>- nota: <i>must be used to specify the organization that created the list of codes used in "noteLabel"</i></p> <p>(XPath <code>TEXWeaveOffer/TWOFbody/TWOFitem/dtScheme/legalRef/@numberingOrg</code>) [Optional] (a)</p> <p>- nota: <i>this attribute should be used either single or coupled with "listName" and "listVersion"</i></p> <p>(XPath <code>TEXWeaveOffer/TWOFbody/TWOFitem/thirdParty/id/@numberingOrg</code>) [Optional]</p> <p>(XPath <code>TEXWeaveOffer/OFheader/supplier/additionalIdentifier/@numberingOrg</code>) [Optional] (a)</p> <p>- nota: <i>here the issuer of the identifier must be specified</i></p> <p>(XPath <code>TEXWeaveOffer/OFheader/subContractor/id/@numberingOrg</code>) [Optional]</p> <p>(XPath <code>TEXWeaveOffer/TWOFbody/TWOFitem/fabMnfrOperation/refDoc/docID/@numberingOrg</code>) [Optional]</p> <p>- nota: <i>here can be specified whose document numbering is used (e.g.: Client, Supplier, ..)</i></p> <p>(XPath <code>TEXWeaveOffer/TWOFbody/TWOFitem/fabMnfrOperation/refDoc/season/@numberingOrg</code>) [Optional] (a)</p> <p>- nota: <i>this attribute should be used either single or coupled with "listName" and "listVersion"</i></p> <p>(XPath <code>TEXWeaveOffer/terms/allowanceCharge/dtScheme/legalRef/@numberingOrg</code>) [Optional]</p> <p>- nota: <i>this attribute should be used either single or coupled with "listName" and "listVersion"</i></p> <p>(XPath <code>TEXWeaveOffer/TWOFbody/TWOFitem/note/@numberingOrg</code>) [Optional]</p> <p>- nota: <i>must be used to specify the organization that created the list of codes used in "noteLabel"</i></p> <p>(XPath <code>TEXWeaveOffer/TWOFbody/TWOFitem/fabMnfrOperation/note/@numberingOrg</code>) [Optional]</p> <p>- nota: <i>must be used to specify the organization that created the list of codes used in "noteLabel"</i></p> <p>(XPath <code>TEXWeaveOffer/OFheader/note/@numberingOrg</code>) [Optional]</p> <p>- nota: <i>must be used to specify the organization that created the list of codes used in "noteLabel"</i></p> <p>(XPath <code>TEXWeaveOffer/TWOFbody/TWOFitem/fabMnfrOperation/refDoc/attachment/fileName/@numberingOrg</code>) [Optional] (a)</p> <p>(XPath <code>TEXWeaveOffer/OFheader/thirdParty/id/@numberingOrg</code>) [Optional]</p> <p>(XPath <code>TEXWeaveOffer/OFheader/season/@numberingOrg</code>) [Optional] (a)</p> <p>- nota: <i>this attribute should be used either single or coupled with "listName" and "listVersion"</i></p> <p>(XPath <code>TEXWeaveOffer/OFheader/buyer/id/@numberingOrg</code>) [Optional]</p> <p>(XPath <code>TEXWeaveOffer/OFheader/buyer/additionalIdentifier/@numberingOrg</code>) [Optional] (a)</p> <p>- nota: <i>here the issuer of the identifier must be specified</i></p>

	<p>(XPath <code>TEXWeaveOffer/terms/allowanceCharge/dtScheme/note/@numberingOrg</code>) [Optional]</p> <p>- nota: <i>must be used to specify the organization that created the list of codes used in "noteLabel"</i></p> <p>(XPath <code>TEXWeaveOffer/TWOFbody/TWOFitem/refDoc/season/@numberingOrg</code>) [Optional] (a)</p> <p>- nota: <i>this attribute should be used either single or coupled with "listName" and "listVersion"</i></p> <p>(XPath <code>TEXWeaveOffer/OFheader/supplier/id/@numberingOrg</code>) [Optional]</p> <p>(XPath <code>TEXWeaveOffer/TWOFbody/TWOFitem/refDoc/attachment/fileName/@numberingOrg</code>) [Optional]</p> <p>(XPath <code>TEXWeaveOffer/OFheader/refDoc/season/@numberingOrg</code>) [Optional] (a)</p> <p>- nota: <i>this attribute should be used either single or coupled with "listName" and "listVersion"</i></p> <p>(XPath <code>TEXWeaveOffer/TWOFbody/TWOFitem/refDoc/docID/@numberingOrg</code>) [Optional]</p> <p>- nota: <i>here can be specified whose document numbering is used (e.g.: Client, Supplier, ..)</i></p> <p>(XPath <code>TEXWeaveOffer/OFheader/refDoc/attachment/fileName/@numberingOrg</code>) [Optional] (a)</p>
@part	<p>percent fraction of a total payment</p> <p>- base type: decimal, min inclusive: 1, max inclusive: 99, fraction digits: 2,</p> <p>(XPath <code>TEXWeaveOffer/terms/insPayment/@part</code>) [Required]</p> <p>- nota: <i>here the % value of each installment must be indicated</i></p>
payMode	<p>way or means of payment</p> <p>- base type: string, cod. table: T2</p> <p>http://www.ebiz.enea.it/moda-ml/repository/codelist/v2018-1/gc_T2.xml</p> <p>(XPath <code>TEXWeaveOffer/terms/payment/payMode</code>) 0-1</p> <p>(XPath <code>TEXWeaveOffer/terms/insPayment/payMode</code>) 0-1</p>
payTerm	<p>code specifying the terms or time by which the payment must be done</p> <p>- base type: string, cod. table: T1</p> <p>http://www.ebiz.enea.it/moda-ml/repository/codelist/v2018-1/gc_T1.xml</p> <p>(XPath <code>TEXWeaveOffer/terms/insPayment/payTerm</code>) 1-1</p> <p>(XPath <code>TEXWeaveOffer/terms/payment/payTerm</code>) 1-1</p>
payTermText	<p>free text specifying the terms by which the payment must be done (time/mode or means)</p> <p>- base type: string, max length: 250,</p> <p>(XPath <code>TEXWeaveOffer/terms/payment/payTermText</code>) 1-1 (U)</p> <p>(XPath <code>TEXWeaveOffer/terms/insPayment/payTermText</code>) 1-1 (U)</p>
pcTolerance	<p>percent deviation tolerated on the value of a measurement (it must have a plus or minus sign)</p> <p>- base type: decimal, min inclusive: 0, max inclusive: 100, total digits: 2,</p> <p>(XPath <code>TEXWeaveOffer/TWOFbody/TWOFitem/fabMnfrOperation/texMachineSpecs/pcTolerance</code>) 0-2</p> <p>(XPath <code>TEXWeaveOffer/TWOFbody/TWOFitem/fabricSpecs/pcTolerance</code>) 0-2</p>
percCompos	<p>fiber rate in the product composition</p> <p>- base type: decimal, min inclusive: 0, max inclusive: 100, fraction digits: 2,</p> <p>(XPath <code>TEXWeaveOffer/TWOFbody/TWOFitem/fabricCompos/percCompos</code>) 1-9</p>
person	<p>name of the contact person within a Party</p> <p>- base type: string, max length: 40,</p> <p>(XPath <code>TEXWeaveOffer/OFheader/buyer/person</code>) 0-1</p> <p>(XPath <code>TEXWeaveOffer/TWOFbody/TWOFitem/thirdParty/person</code>) 0-1</p> <p>(XPath <code>TEXWeaveOffer/OFheader/subContractor/person</code>) 0-1</p> <p>(XPath <code>TEXWeaveOffer/OFheader/thirdParty/person</code>) 0-1</p> <p>(XPath <code>TEXWeaveOffer/OFheader/supplier/person</code>) 0-1</p>
@phone	<p>phone number of the contact person within a Party</p> <p>- base type: string, max length: 35,</p> <p>(XPath <code>TEXWeaveOffer/OFheader/thirdParty/person/@phone</code>) [Optional]</p>

	<p>(XPath TEXWeaveOffer/TWOFbody/TWOFitem/thirdParty/person/@phone) [Optional]</p> <p>(XPath TEXWeaveOffer/OFheader/buyer/person/@phone) [Optional]</p> <p>(XPath TEXWeaveOffer/OFheader/subContractor/person/@phone) [Optional]</p> <p>(XPath TEXWeaveOffer/OFheader/supplier/person/@phone) [Optional]</p>
pieceLength	<p>length of the piece</p> <p>- base type: decimal, min inclusive: 0, fraction digits: 2,</p> <p>(XPath TEXWeaveOffer/TWOFbody/TWOFitem/construction/pieceLength) 0-1</p>
postCode	<p>code defining the postal zone</p> <p>- base type: string, max length: 10,</p> <p>(XPath TEXWeaveOffer/TWOFbody/TWOFitem/thirdParty/postCode) 0-1</p> <p>(XPath TEXWeaveOffer/OFheader/subContractor/postCode) 0-1</p> <p>(XPath TEXWeaveOffer/OFheader/supplier/postCode) 0-1</p> <p>(XPath TEXWeaveOffer/OFheader/thirdParty/postCode) 0-1</p> <p>(XPath TEXWeaveOffer/OFheader/buyer/postCode) 0-1</p>
price	<p>unit price of the article, object or service specified</p> <p>- base type: decimal, min inclusive: 0, fraction digits: 4,</p> <p>(XPath TEXWeaveOffer/TWOFbody/TWOFitem/price) 1-1 (AU)</p>
@priceQualifier	<p>type of price with reference to discount and taxes</p> <p>- base type: string, cod. table: NT20</p> <p>http://www.ebiz.enea.it/moda-ml/repository/codelist/v2018-1/gc_NT20.xml</p> <p>(XPath TEXWeaveOffer/TWOFbody/TWOFitem/price/@priceQualifier) [Optional] [Default= NET]</p>
@progr	<p>progressive number in the sequence</p> <p>- base type: positiveInteger, min inclusive: 1,</p> <p>(XPath TEXWeaveOffer/terms/transInfo/@progr) [Optional] (N)</p> <p>- nota: <i>Indicates the position of the leg in a sequence of transport legs. If it is declared it must be in all the transInfo elements.</i></p>
qty	<p>net quantity of the article or object correlated, qualified by the function of the document (ordering, delivering, ..) and by the context</p> <p>- base type: decimal, min inclusive: 0, fraction digits: 2,</p> <p>(XPath TEXWeaveOffer/TWOFbody/TWOFitem/qty) 1-2</p> <hr/> <p>AAAA-WARNING! - text not AVAILABLE n. 245 - In=en</p>
resin	<p>resin (coating) percentage in finished weight</p> <p>- base type: decimal, min inclusive: 0,</p> <p>(XPath TEXWeaveOffer/TWOFbody/TWOFitem/construction/resin) 0-1</p>
@role	<p>Third Party role qualifier</p> <p>- base type: string, cod. table: NT2</p> <p>http://www.ebiz.enea.it/moda-ml/repository/codelist/v2018-1/gc_NT2.xml</p> <p>(XPath TEXWeaveOffer/TWOFbody/TWOFitem/thirdParty/@role) [Required]</p> <p>(XPath TEXWeaveOffer/OFheader/thirdParty/@role) [Required]</p>
season	<p>sale season; defined as: season (1 crt) + year (4 crt) - season: S/S=1 A/W=2 Spring=3 Summer=4 Autumn=5 Winter=6: for more than four seasons use alphabetic sequence: 1st season=A 2nd season=B etc.etc.</p> <p>- base type: string, max length: 15,</p> <p>(XPath TEXWeaveOffer/OFheader/refDoc/season) 0-1 (A)</p> <p>- note: <i>here indicates the season to which the referenced document belongs</i></p> <p>(XPath TEXWeaveOffer/OFheader/season) 0-1 (A)</p> <p>(XPath TEXWeaveOffer/TWOFbody/TWOFitem/refDoc/season) 0-1 (A)</p> <p>- note: <i>here indicates the season to which the referenced document belongs</i></p> <p>(XPath TEXWeaveOffer/TWOFbody/TWOFitem/fabMnfrOperation/refDoc/season) 0-1 (A)</p> <p>- note: <i>here indicates the season to which the referenced document belongs</i></p>
@sender	<p>qualifier that specifies the Party issuing of the document</p> <p>- base type: boolean,</p> <p>(XPath TEXWeaveOffer/TWOFbody/TWOFitem/thirdParty/@sender) [Optional] (a*)</p>

	<p>- nota: <i>This attribute is mandatory when the STYLESHEET must be used</i> (XPath <code>TEXWeaveOffer/OFheader/thirdParty/@sender</code>) [Optional] (a*)</p> <p>- nota: <i>This attribute is mandatory when the STYLESHEET must be used</i> (XPath <code>TEXWeaveOffer/OFheader/buyer/@sender</code>) [Optional] (a*)</p> <p>- nota: <i>This attribute is mandatory when the STYLESHEET must be used</i> (XPath <code>TEXWeaveOffer/OFheader/supplier/@sender</code>) [Optional] (a*)</p> <p>- nota: <i>This attribute is mandatory when the STYLESHEET must be used</i> (XPath <code>TEXWeaveOffer/OFheader/subContractor/@sender</code>) [Optional] (a*)</p> <p>- nota: <i>This attribute is mandatory when the STYLESHEET must be used</i></p>
@source	<p>party who has provided the data</p> <p>- base type: string, cod. table: NT12 http://www.ebiz.enea.it/moda-ml/repository/codelist/v2018-1/gc_NT12.xml (XPath <code>TEXWeaveOffer/TWOFbody/TWOFitem/fabricSpecs/specValue/@source</code>) [Optional] (XPath <code>TEXWeaveOffer/TWOFbody/TWOFitem/fabMnfrOperation/texMachineSpecs/specValue/@source</code>) [Optional]</p>
specValue	<p>value requested for a property or a parameter that is measured</p> <p>- base type: decimal, (XPath <code>TEXWeaveOffer/TWOFbody/TWOFitem/fabMnfrOperation/texMachineSpecs/specValue</code>) 0-1 (XPath <code>TEXWeaveOffer/TWOFbody/TWOFitem/fabricSpecs/specValue</code>) 0-1</p>
street	<p>street and building number identifying a location</p> <p>- base type: string, max length: 80, (XPath <code>TEXWeaveOffer/OFheader/thirdParty/street</code>) 0-1 (XPath <code>TEXWeaveOffer/OFheader/subContractor/street</code>) 0-1 (XPath <code>TEXWeaveOffer/OFheader/supplier/street</code>) 0-1 (XPath <code>TEXWeaveOffer/OFheader/buyer/street</code>) 0-1 (XPath <code>TEXWeaveOffer/TWOFbody/TWOFitem/thirdParty/street</code>) 0-1</p>
subCountry	<p>short name or code of the sub-country entity</p> <p>- base type: string, max length: 9, (XPath <code>TEXWeaveOffer/OFheader/thirdParty/subCountry</code>) 0-1 (XPath <code>TEXWeaveOffer/TWOFbody/TWOFitem/thirdParty/subCountry</code>) 0-1 (XPath <code>TEXWeaveOffer/OFheader/buyer/subCountry</code>) 0-1 (XPath <code>TEXWeaveOffer/OFheader/subContractor/subCountry</code>) 0-1 (XPath <code>TEXWeaveOffer/OFheader/supplier/subCountry</code>) 0-1</p>
subDept	<p>name or code of a contact department within a Party</p> <p>- base type: string, max length: 40, (XPath <code>TEXWeaveOffer/OFheader/thirdParty/subDept</code>) 0-1 (N) (XPath <code>TEXWeaveOffer/OFheader/supplier/subDept</code>) 0-1 (N) (XPath <code>TEXWeaveOffer/TWOFbody/TWOFitem/thirdParty/subDept</code>) 0-1 (N) (XPath <code>TEXWeaveOffer/OFheader/subContractor/subDept</code>) 0-1 (N) (XPath <code>TEXWeaveOffer/OFheader/buyer/subDept</code>) 0-1 (N)</p>
taxCategory	<p>duty or tax or fee category</p> <p>- base type: string, cod. table: T62 http://www.ebiz.enea.it/moda-ml/repository/codelist/v2018-1/gc_T62.xml (XPath <code>TEXWeaveOffer/terms/allowanceCharge/dtScheme/taxCategory</code>) 0-1 (XPath <code>TEXWeaveOffer/TWOFbody/TWOFitem/dtScheme/taxCategory</code>) 0-1</p>
taxRate	<p>duty or tax or fee percent rate</p> <p>- base type: string, (XPath <code>TEXWeaveOffer/terms/allowanceCharge/dtScheme/taxRate</code>) 0-1 (XPath <code>TEXWeaveOffer/TWOFbody/TWOFitem/dtScheme/taxRate</code>) 0-1</p>
@taxType	<p>duty or tax or fee type</p> <p>- base type: string, cod. table: T61 http://www.ebiz.enea.it/moda-ml/repository/codelist/v2018-1/gc_T61.xml (XPath <code>TEXWeaveOffer/terms/allowanceCharge/dtScheme/@taxType</code>) [Required] (XPath <code>TEXWeaveOffer/TWOFbody/TWOFitem/dtScheme/@taxType</code>) [Required]</p>
texJob	<p>operation of a work cycle for fabric</p> <p>- base type: string, cod. table: T202 http://www.ebiz.enea.it/moda-ml/repository/codelist/v2018-1/gc_T202.xml</p>

	(XPath TEXWeaveOffer/TWOFbody/TWOFitem/fabMnfrOperation/texJob) 1-1
texJobTech	operation technology for fabric - base type: string, cod. table: T262 http://www.ebiz.enea.it/moda-ml/repository/codelist/v2018-1/gc_T262.xml (XPath TEXWeaveOffer/TWOFbody/TWOFitem/fabMnfrOperation/texJobTech) 0-9
texMachine	machine used in an operation of a work cycle for fabric - base type: string, cod. table: T272 http://www.ebiz.enea.it/moda-ml/repository/codelist/v2018-1/gc_T272.xml (XPath TEXWeaveOffer/TWOFbody/TWOFitem/fabMnfrOperation/texMachine) 0-1
texMachineParam	setting parameter of a machine used in an operation of a work cycle for fabric - base type: string, cod. table: T282 http://www.ebiz.enea.it/moda-ml/repository/codelist/v2018-1/gc_T282.xml (XPath TEXWeaveOffer/TWOFbody/TWOFitem/fabMnfrOperation/texMachineSpecs/texMachineParam) 1-1
tolerance	deviation tolerated on the value of a measurement (it must have a plus or minus sign) - base type: decimal, (XPath TEXWeaveOffer/TWOFbody/TWOFitem/fabricSpecs/tolerance) 0-2 (XPath TEXWeaveOffer/TWOFbody/TWOFitem/fabMnfrOperation/texMachineSpecs/tolerance) 0-2
transCondition	special condition of transport or special service requested to the Forwarder - base type: string, cod. table: T38 http://www.ebiz.enea.it/moda-ml/repository/codelist/v2018-1/gc_T38.xml (XPath TEXWeaveOffer/terms/transInfo/transCondition) 0-3
transConditionText	free text description of the special condition of transport or special service requested to the Forwarder - base type: string, max length: 250, (XPath TEXWeaveOffer/terms/transInfo/transConditionText) 0-1 (U)
transMeans	means of transport, in general or referred to a specific leg - base type: string, cod. table: T40 http://www.ebiz.enea.it/moda-ml/repository/codelist/v2018-1/gc_T40.xml (XPath TEXWeaveOffer/terms/transInfo/transMeans) 0-1
transMode	way of transport, in general or referred to the specified leg - base type: string, cod. table: T8 http://www.ebiz.enea.it/moda-ml/repository/codelist/v2018-1/gc_T8.xml (XPath TEXWeaveOffer/terms/transInfo/transMode) 1-1
@transReason	reason for the transport - base type: string, cod. table: NT11 http://www.ebiz.enea.it/moda-ml/repository/codelist/v2018-1/gc_NT11.xml (XPath TEXWeaveOffer/terms/transInfo/@transReason) [Optional]
@uid	unique element identifier within the xml document - base type: string, (XPath TEXWeaveOffer/OFheader/refDoc/attachment/@uid) [Optional] (XPath TEXWeaveOffer/TWOFbody/TWOFitem/refDoc/attachment/@uid) [Optional] (XPath TEXWeaveOffer/TWOFbody/TWOFitem/fabMnfrOperation/refDoc/attachment/@uid) [Optional]
@um	specification of the unit of measure - base type: string, cod. table: NT7 http://www.ebiz.enea.it/moda-ml/repository/codelist/v2018-1/gc_NT7.xml (XPath TEXWeaveOffer/TWOFbody/TWOFitem/fabMnfrOperation/texMachineSpecs/pcTolerance/@um) [Optional] - nota: <i>to be used when it has to be soecified if the declared percentage is by weight, volume, etc...</i> (XPath TEXWeaveOffer/TWOFbody/TWOFitem/construction/fabricWeightM2/@um) [Optional] [Default= GRM]

	<p>(XPath <code>TEXWeaveOffer/TWOFbody/TWOFitem/construction/fabricWeightM/@um</code>) [Optional] [Default= GRM] (XPath <code>TEXWeaveOffer/terms/transInfo/netWeight/@um</code>) [Required] (XPath <code>TEXWeaveOffer/terms/transInfo/grossWeight/@um</code>) [Required] (XPath <code>TEXWeaveOffer/TWOFbody/TWOFitem/fabMnfrOperation/texMachineSpecs/tolerance/@um</code>) [Required] (XPath <code>TEXWeaveOffer/terms/allowanceCharge/@um</code>) [Optional] (a) (XPath <code>TEXWeaveOffer/TWOFbody/TWOFitem/fabricSpecs/pcTolerance/@um</code>) [Optional] - nota: <i>to be used when it has to be soecified if the declared percentage is b y weight, volume, etc...</i> (XPath <code>TEXWeaveOffer/TWOFbody/TWOFitem/fabricSpecs/tolerance/@um</code>) [Required] (XPath <code>TEXWeaveOffer/TWOFbody/TWOFitem/price/@um</code>) [Optional] - nota: <i>Unit of measure of the product to which the price is referred (price pe r meter)</i> (XPath <code>TEXWeaveOffer/TWOFbody/TWOFitem/qty/@um</code>) [Required] (XPath <code>TEXWeaveOffer/TWOFbody/TWOFitem/fabricSpecs/specValue/@um</code>) [Optional] (XPath <code>TEXWeaveOffer/TWOFbody/TWOFitem/construction/fabricCutWidth/@um</code>) [Optional] [Default= CMT] (XPath <code>TEXWeaveOffer/TWOFbody/TWOFitem/construction/fabricWidth/@um</code>) [Optional] [Default= CMT] (XPath <code>TEXWeaveOffer/TWOFbody/TWOFitem/fabMnfrOperation/texMachineSpecs/specValue/@um</code>) [Optional] (XPath <code>TEXWeaveOffer/TWOFbody/TWOFitem/construction/pieceLength/@um</code>) [Optional] [Default= MTR]</p>
uri	<p>Uniform Resource Identifier (URI) that identifies the external object as an Internet resource - base type: <code>normalizedString</code>, (XPath <code>TEXWeaveOffer/OFheader/refDoc/attachment/externalReference/uri</code>) 1-1 (N) (XPath <code>TEXWeaveOffer/TWOFbody/TWOFitem/refDoc/attachment/externalReference/uri</code>) 1-1 (N) (XPath <code>TEXWeaveOffer/TWOFbody/TWOFitem/fabMnfrOperation/refDoc/attachment/externalReference/uri</code>) 1-1 (N)</p>
@useProfile	<p>use profile to which the present document if compliant if it was agreed by th e parties. It is suggested a URI with reference to the firms or the URL of the profile. - base type: <code>string</code>, (XPath <code>TEXWeaveOffer/@useProfile</code>) [Optional]</p>
validityEnd	<p>date by which the validity ends, according to one of the patterns YYYY-MM-DD, YYYY-MM-DD:HH-MM or YYYY-WW. - base type: <code>string</code>, (XPath <code>TEXWeaveOffer/OFheader/validityEnd</code>) 1-1</p>
validityStart	<p>date by which the validity starts, according to one of the patterns YYYY-MM-DD, YYYY-MM-DD:HH-MM or YYYY-WW. - base type: <code>string</code>, (XPath <code>TEXWeaveOffer/OFheader/validityStart</code>) 0-1</p>
@VAT	<p>VAT rate or code (DEPRECATED, use dtScheme element) - base type: <code>string</code>, cod. table: NT16 http://www.ebiz.enea.it/moda-ml/repository/codelist/v2018-1/gc_NT16.xml (XPath <code>TEXWeaveOffer/TWOFbody/TWOFitem/lineN/@VAT</code>) [Optional] - nota: <i>Deprecated, prefer dtScheme when available.</i> (XPath <code>TEXWeaveOffer/terms/allowanceCharge/@VAT</code>) [Optional] (XPath <code>TEXWeaveOffer/OFheader/thirdParty/@VAT</code>) [Optional] (XPath <code>TEXWeaveOffer/TWOFbody/TWOFitem/thirdParty/@VAT</code>) [Optional]</p>
@version	<p>Dictionary version from which the instance has been created - base type: <code>string</code>, cod. table: NT100 http://www.ebiz.enea.it/moda-ml/repository/codelist/v2018-1/gc_NT100.xml (XPath <code>TEXWeaveOffer/@version</code>) [Optional] [Default= 2018-1]</p>

warpCount	measure of thinness of the warp thread - base type: string, max length: 10, (XPath TEXWeaveOffer/TWOFbody/TWOFitem/construction/warpCount) 0-9
warpEndsN	number of warp threads in 1 centimetre - base type: decimal, min inclusive: 0, fraction digits: 1, (XPath TEXWeaveOffer/TWOFbody/TWOFitem/construction/warpEndsN) 0-1
weave	type of weaving used in the manufacturing of fabric - base type: string, cod. table: T17 http://www.ebiz.enea.it/moda-ml/repository/codelist/v2018-1/gc_T17.xml (XPath TEXWeaveOffer/TWOFbody/TWOFitem/construction/weave) 0-1
weftCount	measure of thinness of the weft thread - base type: string, max length: 10, (XPath TEXWeaveOffer/TWOFbody/TWOFitem/construction/weftCount) 0-9
weftDev	deviation from right angle in weft - base type: decimal, min inclusive: 0, (XPath TEXWeaveOffer/TWOFbody/TWOFitem/construction/weftDev) 0-1
weftEndsN	number of weft threads in 1 centimetre - base type: decimal, min inclusive: 0, fraction digits: 1, (XPath TEXWeaveOffer/TWOFbody/TWOFitem/construction/weftEndsN) 0-1

2.3 Suggested best practices

TEXWeaveOffer/TWOFbody/TWOFitem/fabMnfrOperation/

refDoc/docID (identification number of the referenced document SINCE 2008-1 ITS USE IN THE HEADER IS DISCOURAGED (REPLACED BY msgID))

numberingOrg indicates the role that produced the document identifier (it is allowed to declare two different ones -e.g. customer and supplier - with two docID with different numberingOrg

TEXWeaveOffer/TWOFbody/TWOFitem/refDoc/docID (identification number of the referenced document SINCE 2008-1 ITS USE IN THE HEADER IS DISCOURAGED (REPLACED BY msgID))

numberingOrg indicates the role that produced the document identifier (it is allowed to declare two different ones -e.g. customer and supplier - with two docID with different numberingOrg

TEXWeaveOffer/OFheader/refDoc/docID (identification number of the referenced document SINCE 2008-1 ITS USE IN THE HEADER IS DISCOURAGED (REPLACED BY msgID))

numberingOrg indicates the role that produced the document identifier (it is allowed to declare two different ones -e.g. customer and supplier - with two docID with different numberingOrg

TEXWeaveOffer/TWOFbody/TWOFitem/refDoc/attachment/

externalReference/mimeCode (mime type of the external object)

Use coding from IANA <http://www.iana.org/assignments/media-types/media-types.xml>

TEXWeaveOffer/OFheader/refDoc/attachment/

externalReference/mimeCode (mime type of the external object)

Use coding from IANA <http://www.iana.org/assignments/media-types/media-types.xml>

TEXWeaveOffer/TWOFbody/TWOFitem/fabMnfrOperation/

refDoc/attachment/externalReference/mimeCode (mime type of the external object)

Use coding from IANA <http://www.iana.org/assignments/media-types/media-types.xml>

TEXWeaveOffer/TWOFbody/TWOFitem/qty (net quantity of the article or object correlated, qualified by the function of the document (ordering, delivering, ..) and by the context)

this element can have two instances only if the units of measure are different

2.4 Enumeration tables

List of enumeration tables used in the XML document. You can find the corresponding codes at:
<http://www.ebiz-tcf.eu/moda-ml/imple/moda-ml-2018-1.asp?lingua=en&pag=6>

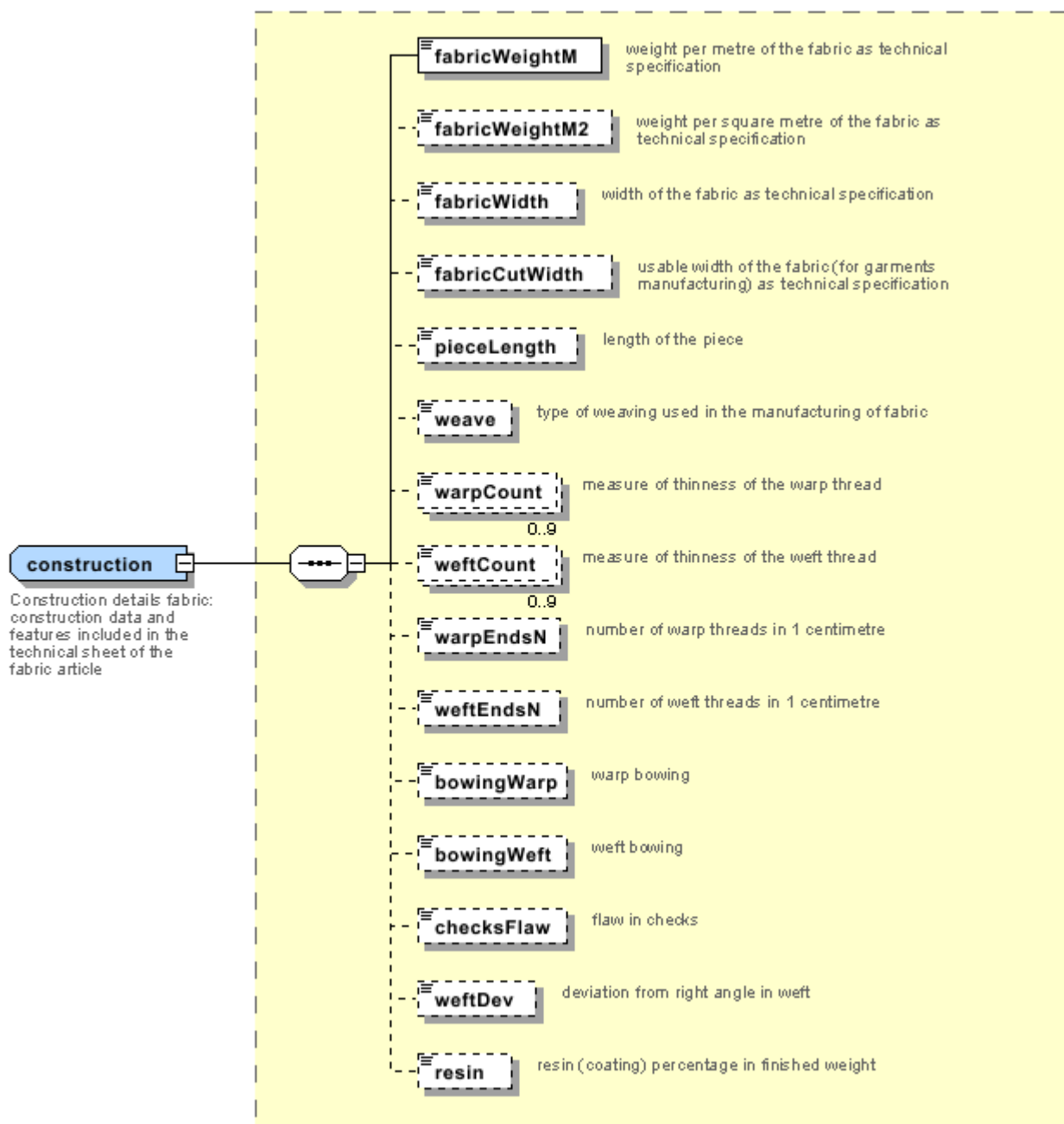
Legenda

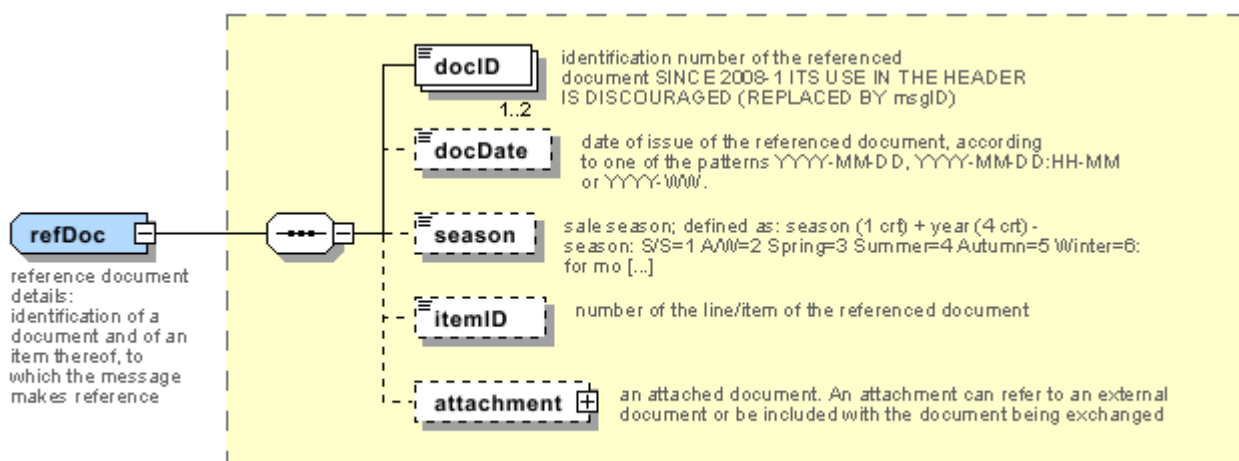
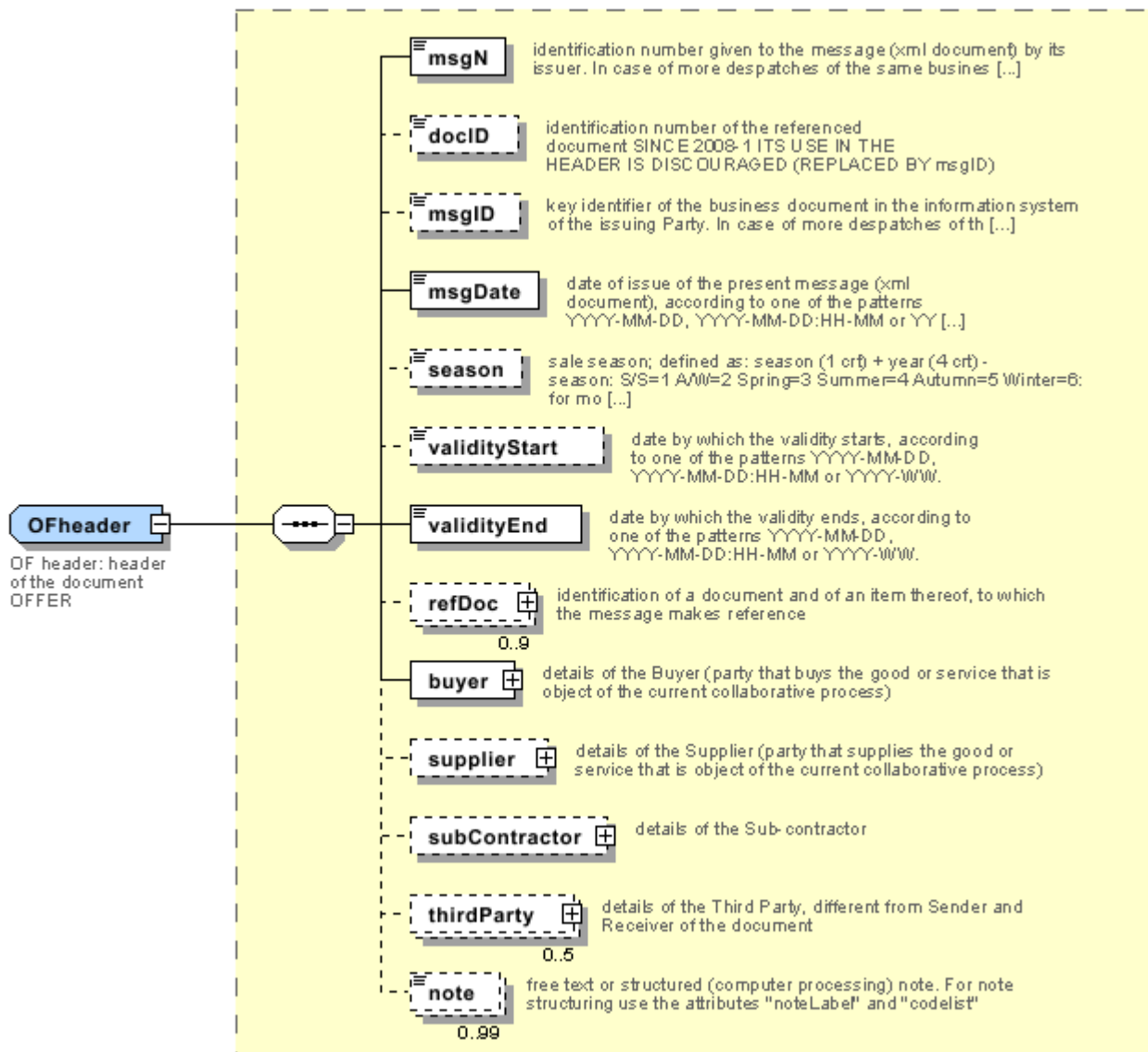
- N: new table
- U: updated properties

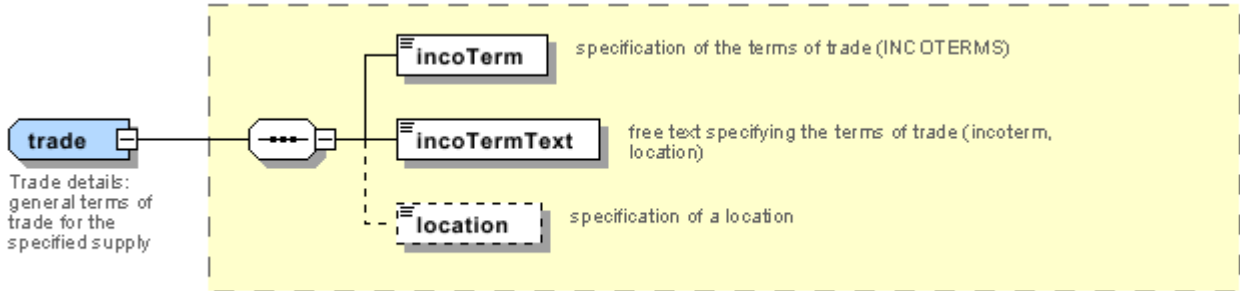
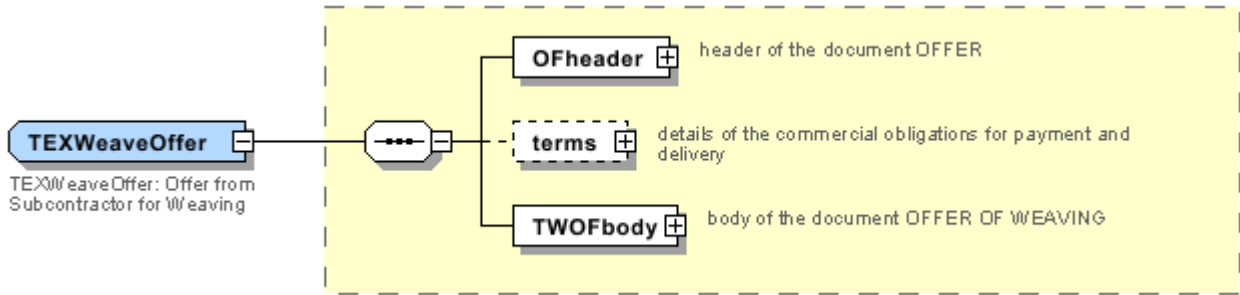
NT100 - eBIZ TCFUpstream version
NT11 - transport causal
NT12 - data source
NT16 - VAT rate or code
NT18 - message function
NT2 - third party qualifier
NT20 - price qualifier
NT29 - format of a date
NT3 - data format
NT32 - fabric family
NT5 - action code
NT6 - coding system owner/issuer
NT7 - unit of measure (U)
T1 - terms of payment
T10 - ISO3166 - Country
T13 - CFM properties of fabric
T17 - weave type
T19 - fibre type
T2 - Modes of payment
T202 - type of job on fabric
T21 - type of document
T262 - type of job technology for fabric
T272 - machine type for fabric operation
T282 - parameter type for fabric operation
T3 - terms of delivery
T38 - transport conditions
T40 - type of transport means
T41 - type of Allowance or Charge
T61 - duty or tax or fee type
T62 - duty or tax or fee category
T8 - Modes of Transport
T9 - ISO4217 - Currency

Annex A

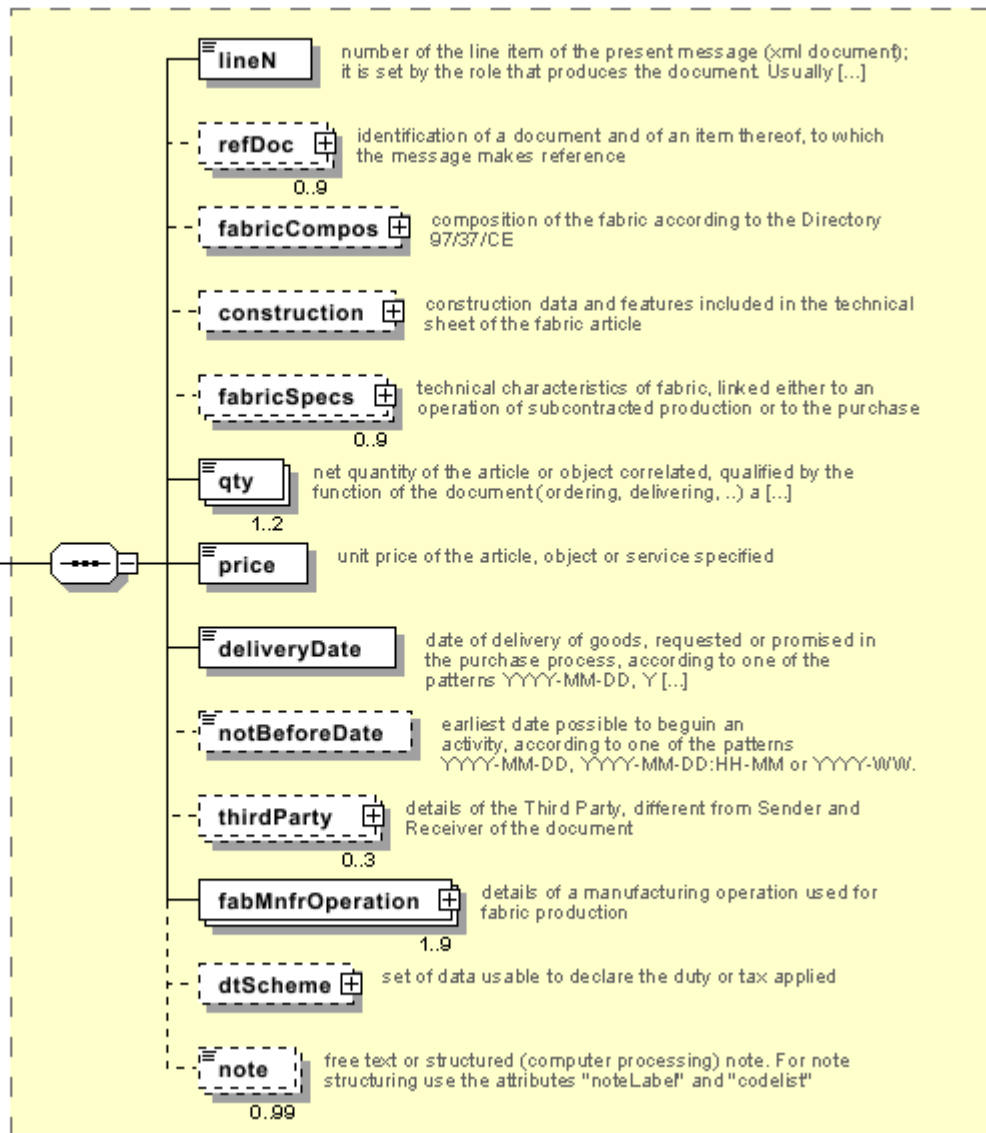
Representative images of the principal complex elements' structure.







TWOFItem
 TWOF item: line of the document
 OFFER OF WEAVING



Annex B

NT100 - eBIZ TCFUpstream version

dictionary version

Agency name: eBIZ

tabella cod.: NT100

File codes list (Generic code): http://www.ebiz.enea.it/moda-ml/repository/codelist/v2018-1/gc_NT100.xml

Code	Description	Adoption note	Version status	Date of insertion
2013-1	v2013-1			01/07/2013
2018-1	v2018-1		(N)	04/11/2018
draft	draft		(N)	08/09/2017

NT11 - transport causal

reason for the transport

Agency name: eBIZ

tabella cod.: NT11

File codes list (Generic code): http://www.ebiz.enea.it/moda-ml/repository/codelist/v2018-1/gc_NT11.xml

Code	Description	Adoption note	Version status	Date of insertion
FOC	free of charge			
FRW	return from re-works			
FST	return from storage			
FWW	return from view			
FWK	return from works			
IST	in storage			
NWK	return non-worked			
RJC	return from rejection			
SEL	to sell			
STO	to storage			
VEW	to view			
WRK	to works			

NT12 - data source

party who has provided the data

Agency name: eBIZ

tabella cod.: NT12

File codes list (Generic code): http://www.ebiz.enea.it/moda-ml/repository/codelist/v2018-1/gc_NT12.xml

Code	Description	Adoption note	Version status	Date of insertion
AC	internal test			
CO	external test			
CV	test after steaming			

NT16 - VAT rate or code

VAT rate or code (DEPRECATED, use dtScheme element)

tabella cod.: NT16

File codes list (Generic code): http://www.ebiz.enea.it/moda-ml/repository/codelist/v2018-1/gc_NT16.xml

NT18 - message function

function performed by the present message with regards to the transmission

Agency name: eBIZ

tabella cod.: NT18

File codes list (Generic code): http://www.ebiz.enea.it/moda-ml/repository/codelist/v2018-1/gc_NT18.xml

Code	Description	Adoption note	Version status	Date of insertion
CA	delete this document			01/07/2013
CP	copy			
OR	original			
RC	re-transmission for data correction			
RT	re-transmission			

NT2 - third party qualifier

Third Party role qualifier

Agency name: eBIZ

tabella cod.: NT2

File codes list (Generic code): http://www.ebiz.enea.it/moda-ml/repository/codelist/v2018-1/gc_NT2.xml

Code	Description	Adoption note	Version status	Date of insertion
AG	Sales Agent			
AU	Auditor		(N)	08/04/2019
CE	Certification authority		(N)	08/04/2019
CO	Quality Controller			
DC	Response to			
DF	Invoicee			
DI	Copy to (CC)			28/10/2014
DM	Consignee			
DP	Consignment address (Delivery Party)			
IM	Importer			
OR	Originator			10/09/2014
SC	Sub contractor		(N)	10/04/2019
SM	Service/ePlatform manager		(N)	08/04/2019
SP	Forwarder			
TX	Tax Representative			

NT20 - price qualifier

type of price with reference to discount and taxes

Agency name: eBIZ

tabella cod.: NT20

File codes list (Generic code): http://www.ebiz.enea.it/moda-ml/repository/codelist/v2018-1/gc_NT20.xml

Code	Description	Adoption note	Version status	Date of insertion
GET	gross excluding taxes			
GIT	gross including taxes			
NET	net excluding taxes			
NIT	net including taxes			

NT29 - format of a date

format used for the date

Agency name: eBIZ

tabella cod.: NT29

File codes list (Generic code): http://www.ebiz.enea.it/moda-ml/repository/codelist/v2018-1/gc_NT29.xml

Code	Description	Adoption note	Version status	Date of insertion
D	YYYY-MM-DD			
M	YYYY-MM-DD:HH-MM			
W	YYYY-WW			

NT3 - data format

format of a string according to a customized User rule (local rule)

Agency name: eBIZ

tabella cod.: NT3

File codes list (Generic code): http://www.ebiz.enea.it/moda-ml/repository/codelist/v2018-1/gc_NT3.xml

Code	Description	Adoption note	Version status	Date of insertion
EN4	GS1-GLN			01/07/2013
MD	mutually agreed			

NT32 - fabric family

type of fabric with reference to the manufacturing process

Agency name: eBIZ

tabella cod.: NT32

File codes list (Generic code): http://www.ebiz.enea.it/moda-ml/repository/codelist/v2018-1/gc_NT32.xml

Code	Description	Adoption note	Version status	Date of insertion
CIR	circular knitted			
JAC	jacquard			
RAT	dobby			

NT5 - action code

action performed by the present line upon the referenced document line

Agency name: eBIZ

tabella cod.: NT5

File codes list (Generic code): http://www.ebiz.enea.it/moda-ml/repository/codelist/v2018-1/gc_NT5.xml

Code	Description	Adoption note	Version status	Date of insertion
A	CANCELLED			
C	CONFIRMED			
N	NEW ORDER LINE (created by an order change)			
R	PROVISIONAL CONFIRMATION			
S	DEFINITIVE CONFIRMATION			
SA	suspension accepted			
SN	suspension not accepted			
SR	suspension request			
V	AMENDED			

NT6 - coding system owner/issuer

code specifying the organisation who has created or owns the coding or numbering system

Agency name: eBIZ

tabella cod.: NT6

File codes list (Generic code): http://www.ebiz.enea.it/moda-ml/repository/codelist/v2018-1/gc_NT6.xml

Code	Description	Adoption note	Version status	Date of insertion
CL	Customer/buyer			
CO	Quality Controller			
EB	eBIZ	replaces 'ML'	(N)	18/03/2019
EN	GS1 (ex-EAN International)			
ES	e-Stockflow			
FO	Supplier			
GS	GS1			01/07/2013
MF	VAT identifier		(U)	
ML	Moda-ML	DEPRECATED	(U)	
SP	Service Provider			

NT7 - unit of measure (U)

specification of the unit of measure, it is a sub set of table Unit of Measure Code - UN/ECE REC 20 delivered by United Nations Economic Commission for Europe (UN/ECE)

Agency name: eBIZ / UN/ECE

tabella cod.: NT7

File codes list (Generic code): http://www.ebiz.enea.it/moda-ml/repository/codelist/v2018-1/gc_NT7.xml

Other link: <http://docs.oasis-open.org/ubl/os-UBL-2.1/cl/gc/default/UnitOfMeasureCode-2.1.gc#>

Code	Description	Adoption note	Version status	Date of insertion
CMK	square centimetre		(N)	20/12/2017
CMQ	cubic centimetre		(N)	20/12/2017
CMT	centimetre			
CNE	centiNewton			
CO2TON	ton of CO2		(N)	10/09/2014
COUPLES	couples			
DMQ	cubic decimetre			
E37	pixel		(N)	11/04/2018
GRM	gram			
HUR	hour			
INH	inch			
KGM	kilogram			
KMT	kilometer			
KWH	kilowatthours		(N)	10/09/2014
LBR	pound			
MIN	minute			
MMK	square millimetre		(N)	20/12/2017
MTK	square metre		(N)	20/12/2017
MTQ	cubic metre			
MTR	metre			
NMB	numero			
ONZ	ounce			
P1	percent			
PPM	parts per milion			
PZ	piece		(U)	
RPM	rounds per metre			
YRD	yard			

T1 - terms of payment

code specifying the terms or time by which the payment must be done

Agency name: eBIZ

tabella cod.: T1

File codes list (Generic code): http://www.ebiz.enea.it/moda-ml/repository/codelist/v2018-1/gc_T1.xml

Code	Description	Adoption note	Version status	Date of insertion
ANTICIP	PAYMENT IN ADVANCE			
BLCOLLECT/120D	BILL OF LADING 120 DD			
BLCOLLECT/30D	BILL OF LADING 30 DD			
BLCOLLECT/60D	BILL OF LADING 60 DD			
BLCOLLECT/90D	BILL OF LADING 90 DD			
CASH	PAYMENT ON DELIVERY			
CASHINV	PAYMENT ON RECEIPT OF INVOICE			
CREDOC/0D	DOCUMENTARY CREDIT FOR PAYM. AT SIGHT			
CREDOC/120	DOCUMENTARY CREDIT FOR PAYM. AT 120 DD			
CREDOC/150	DOCUMENTARY CREDIT FOR PAYM. AT 150 DD			
CREDOC/180	DOCUMENTARY CREDIT FOR PAYM. AT 180 DD			
CREDOC/30D	DOCUMENTARY CREDIT FOR PAYM. AT 30 DD			
CREDOC/45D	DOCUMENTARY CREDIT FOR PAYM. AT 45 DD			
CREDOC/60	DOCUMENTARY CREDIT FOR PAYM. AT 60 DD			
CREDOC/90	DOCUMENTARY CREDIT FOR PAYM. AT 90 DD			
DEL/10	PAYMENT AT 10 DD AFTER DELIVERY			
DOCOLLECT/120D	DOCUMENTARY COLLECTION AT 120 DD			
DOCOLLECT/30D	DOCUMENTARY COLLECTION AT 30 DD			
DOCOLLECT/60D	DOCUMENTARY COLLECTION AT 60 DD			
DOCOLLECT/90D	DOCUMENTARY COLLECTION AT 90 DD			
INV/120D	PAYMENT AT 120 DD AFTER RECEIPT OF INVOICE			
INV/150D	PAYMENT AT 150 DD AFTER RECEIPT OF INVOICE			
INV/180D	PAYMENT AT 180 DD AFTER RECEIPT OF INVOICE			
INV/30D	PAYMENT AT 30 DD AFTER RECEIPT OF INVOICE			

INV/45D	PAYMENT AT 45 DD AFTER RECEIPT OF INVOICE			
INV/60D	PAYMENT AT 60 DD AFTER RECEIPT OF INVOICE			
INV/90D	PAYMENT AT 90 DD AFTER RECEIPT OF INVOICE			
INVULTIMO	PAYMENT AT END MONTH RECEIPT INVOICE			
INVULTIMO/10D	PAYMENT 10 DD AFTER END MONTH RECEIPT INVOICE			
INVULTIMO/120D	PAYMENT 120 DD AFTER END MONTH RECEIPT INVOICE			
INVULTIMO/150D	PAYMENT 150 DD AFTER END MONTH RECEIPT INVOICE			
INVULTIMO/180D	PAYMENT 180 DD AFTER END MONTH RECEIPT INVOICE			
INVULTIMO/240D	PAYMENT 240 DD AFTER END MONTH RECEIPT INVOICE			
INVULTIMO/30D	PAYMENT 30 DD AFTER END MONTH RECEIPT INVOICE			
INVULTIMO/45D	PAYMENT 45 DD AFTER END MONTH RECEIPT INVOICE			
INVULTIMO/60D	PAYMENT 60 DD AFTER END MONTH RECEIPT INVOICE			
INVULTIMO/90D	PAYMENT 90 DD AFTER END MONTH RECEIPT INVOICE			
NOPAY	WITHOUT PAYMENT			
RECREDOC/0D	IRREVOC. DOCUMENTARY CREDIT FOR PAYM. AT SIGHT			
RECREDOC/120D	IRREVOC. DOCUMENTARY CREDIT FOR PAYM. AT 120 DD			
RECREDOC/150D	IRREVOC. DOCUMENTARY CREDIT FOR PAYM. AT 150 DD			
RECREDOC/180D	IRREVOC. DOCUMENTARY CREDIT FOR PAYM. AT 180 DD			
RECREDOC/30D	IRREVOC. DOCUMENTARY CREDIT FOR PAYM. AT 30 DD			
RECREDOC/45D	IRREVOC. DOCUMENTARY CREDIT FOR PAYM. AT 45 DD			
RECREDOC/60D	IRREVOC. DOCUMENTARY CREDIT FOR PAYM. AT 60 DD			
RECREDOC/90D	IRREVOC. DOCUMENTARY CREDIT FOR PAYM. AT 90 DD			
ULTIMO	PAYMENT BY END MONTH OF DELIVERY			
ULTIMO/10	PAYMENT AT 10 DD AFTER END MONTH OF DELIVERY			

T10 - ISO3166 - Country

code of the nation

Agency name: ISO

tabella cod.: T10

File codes list (Generic code): http://www.ebiz.enea.it/moda-ml/repository/codelist/v2018-1/gc_T10.xml

Table not printed: there are 239 elements, more than the maximum specified for printing: 99.

T13 - CFM properties of fabric

code of the physical or mechanical parameter used to define a "technical characteristic of the fabric" (see Fabric technical sheet)

tabella cod.: T13

File codes list (Generic code): http://www.ebiz.enea.it/moda-ml/repository/codelist/v2018-1/gc_T13.xml

Code	Description	Adoption note	Version status	Date of insertion
CMA	resistance to pilling (UNI.E.1512434)			
CMB	seam slippage - warp (NFG7117)			
CMC	seam slippage - weft (NFG7117)			
CMD	breaking strength - warp (ISO 1394-1)			
CME	breaking strength - weft (ISO 1394-1)			
CMF	resistance to abrasion (EN 12947)			
CMH	tear strength (ISO 9290)			
CMI	crease recovery (ISO 9867)			
CMJ	elongation - warp (BS 4294/68)			
CMK	elongation - weft (BS 4294/68)			
CML	tear resistance - warp			
CMM	tear resistance - weft			
CMN	resistance to bending			
CMP	spray test			
SLA	colour fastness to light (ISO 105-B02)			
SLB	colour fastness to washing (ISO 105-C06)			
SLC	colour fastness to dry cleaning (ISO 105-D01)			
SLD	colour fastness to spotting water (ISO 105-E07)			
SLG	colour fastness to alkaline perspiration (ISO 105-E04)			
SLH	colour fastness to acid perspiration (ISO 105-E04)			

SLI	colour fastness to dry rubbing (ISO 105-X12)			
SLJ	colour fastness to wet rubbing (ISO 105-X12)			
SLK	colour fastness to dry ironing (ISO 105-X11)			
SLM	colour fastness to wet ironing (ISO 105-X11)			
SLW	colour fastness to water (ISO 105-E01)			
SLX	colour fastness to Xeno-light			
SLZ	colour fastness to rubbing org. Solv. (ISO 105-D02)			
STA	dimensional stability to steaming press - length (DIN 53894-2)			
STB	dimensional stability to steaming press - width (DIN 53894-2)			
STC	dimensional stability to washing - length (ISO 5077+6330)			
STD	dimensional stability to washing - width (ISO 5077+6330)			
STE	dimensional stability to dry cleaning - length (ISO 3175)			
STF	dimensional stability to dry cleaning - width (ISO 3175)			

T17 - weave type

type of weaving used in the manufacturing of fabric

Agency name: eBIZ

tabella cod.: T17

File codes list (Generic code): http://www.ebiz.enea.it/moda-ml/repository/codelist/v2018-1/gc_T17.xml

Code	Description	Adoption note	Version status	Date of insertion
BA	2/2 twill weave			
BE	birdseye weave			
CO	corduroy weave			
DE	derived weave			
DO	double weave			
GA	gauze			
GR	granite weave			
HO	honeycomb weave			
HS	hopsack weave			
MA	mat weave			
PL	plain weave			
SA	satin weave			
TO	towel weave			
TR	tricot weave			

TW	twill weave			
V	V-weave			
W	W-weave			

T19 - fibre type

type of fibre used in a textile product

Agency name: eBIZ

tabella cod.: T19

File codes list (Generic code): http://www.ebiz.enea.it/moda-ml/repository/codelist/v2018-1/gc_T19.xml

Code	Description	Adoption note	Version status	Date of insertion
AB	abaca			20/08/2018
AC	acetate			
AF	other fibres			
AG	alginic fibre			
AL	alfa			20/08/2018
CA	hemp			
CC	coir (coconut)			20/08/2018
CL	chlorofibre			
CO	cotton			
CU	cuprous			
EA	elastan			
EL	Elastodiene			20/08/2018
FL	fluorofibre			
GI	broom			20/08/2018
GL	textile glass			
HA	hair			20/08/2018
HE	henequen			20/08/2018
HL	mixed linen			
HL	cotton linen union			20/08/2018
JU	jute			
KE	kenaf			20/08/2018
KP	kapoc			20/08/2018
LI	linen			
LY	lyocell			20/08/2018

MA	modacrylic			
MD	modal			
ME	metallized			
MG	maguey			20/08/2018
PA	polyamide			
PB	polyureic			
PC	acrylic			
PE	polyethylene			
PI	paper			20/08/2018
PL	polyester			
PM	polyimide			
PP	polypropylene			
PR	proteic			
PU	polyurethane			
RA	mamie			20/08/2018
SE	silk			
SI	sisal			20/08/2018
SN	sun			20/08/2018
TA	triacetate			
TR	textile residues or unspecified composition			20/08/2018
TV	trivinyll			
VI	viscose			
VY	vinylal			
WA	angora			
WB	beaver			20/08/2018
WC	cashgora			
WG	vicuna			
WK	camel			
WL	llama			
WM	mohair			
WN	lapin			20/08/2018
WO	wool			
WP	alpaca			
WS	cashmere			
WT	Oteer			20/08/2018

WU	guanaco			
WV	virgin wool			
WY	yack			

T2 - Modes of payment

way or means of payment

Agency name: eBIZ

tabella cod.: T2

File codes list (Generic code): http://www.ebiz.enea.it/moda-ml/repository/codelist/v2018-1/gc_T2.xml

Code	Description	Adoption note	Version status	Date of insertion
BB	bank transfer			
IA	collection through Agent			
IS	collection through Forwarder			
RB	bank receipt			
RD	remittance			
SW	bank SWIFT			
TR	bank draft			

T202 - type of job on fabric

operation of a work cycle for fabric

Agency name: eBIZ

tabella cod.: T202

File codes list (Generic code): http://www.ebiz.enea.it/moda-ml/repository/codelist/v2018-1/gc_T202.xml

Code	Description	Adoption note	Version status	Date of insertion
50	to warp			
51	to weave			
52	to dye			
53	to print			
54	to finish			
56	stain resistant			
57	decolorizing			
58	flame resistant			

59	waterproofing			
60	protolan			
61	lavatex			
62	chlorination			
63	bleaching			
64	caustic soda treatment			
65	thermo-setting			
66	lucido superjet			
67	natural stretch			
68	softisuper			
69	stragar			
70	anti-crease			
71	anti-pilling			
72	anti-slipping			
73	anti-static			
80	printing preparation			01/07/2013
81	check			01/07/2013
99	other, see note if any			01/07/2013

T21 - type of document

type or class to which the referenced document belongs

Agency name: eBIZ

tabella cod.: T21

File codes list (Generic code): http://www.ebiz.enea.it/moda-ml/repository/codelist/v2018-1/gc_T21.xml

Code	Description	Adoption note	Version status	Date of insertion
BOR	blanket order		(N)	01/02/2018
CAT	Price catalogue - tech sheet			
CEO	Certificate of origin		(N)	13/04/2018
CER	Certificate		(N)	13/04/2018
COC	colour card			
CRN	Credit note			08/09/2017
CTO	Checking order			01/07/2013
CTR	Contract		(U)	
CXF	CxF3 file			01/07/2013

DAD	Darn order			
DDT	ddt			
DEA	Despatch advise			
DER	Despatch request			
DR	Document Request			02/12/2014
FOR	Forecast			02/12/2014
GSO	Garment stock offer			
GSX	Garment stock offer change			
INV	Invoice			
KCC	Knitting-Clothing Commission Order			02/12/2014
KCI	Garment in Work Inventory Report			02/12/2014
M2M	Made to Measure Production Order			02/12/2014
MAS	Master marker			
MCI	Visual merchandising instruction		(N)	13/04/2018
OCH	Order change			
OFF	Offer			
ORD	Purchase order			
ORP	Order response			
OSR	order status request			
OSS	Offer status			02/12/2014
OST	Order status			
OUR	our reference			
QR	Quality Report			02/12/2014
RAI	Raw Material in Work Inventory Report			02/12/2014
RDC	Raw dyeing commission order			
RDH	Raw dyeing order change			
RDR	Raw dyeing order response			
REA	Receiving advise			
REQ	Request for Offer			
RET	Return			02/12/2014
RSC	Spinning commission order			
RSH	Spinning order change			
RSR	Spinning order response			
SCL	process sheet			
TFC	Textile dyeing-finishing commission order			

TFX	Textile Dyeing-Finishing Order Change			02/12/2014
TPC	Textile printing commission order			
TPX	Textile Printing Order Change			02/12/2014
TWI	Textile in work inventory			
VMI	visual merchandising instructions		(N)	01/02/2018
WAC	Warping commission order			
WEC	Weaving commission order			
YDC	Yarn dyeing commission order			
YDH	Yarn dyeing order change			
YDR	Yarn dyeing order response			
YTC	Twisting commission order			
YWI	Yarn in work inventory			

T262 - type of job technology for fabric

operation technology for fabric

Agency name: eBIZ

tabella cod.: T262

File codes list (Generic code): http://www.ebiz.enea.it/moda-ml/repository/codelist/v2018-1/gc_T262.xml

Code	Description	Adoption note	Version status	Date of insertion
50	fractional warping			
51	sectional warping			
52	samples warping			
53	air-jet loom			
54	projectile loom			
55	negative rapier loom			
56	positive rapier loom			
57	verdol			
58	electronic jacquard			
59	trough dyeing			
60	jet dyeing			
61	pad dyeing			
62	overflow dyeing			
63	jiggers dyeing			
64	beam dyeing			

68	wet finishing			
69	dry finishing			
70	direct			
71	discharge printing			
72	reserve printing			
73	thermo printing			
74	devorè			
80	cylinder printing			01/07/2013
81	inkjet printing			01/07/2013
99	other, see note if any			01/07/2013

T272 - machine type for fabric operation

machine used in an operation of a work cycle for fabric

Agency name: eBIZ

tabella cod.: T272

File codes list (Generic code): http://www.ebiz.enea.it/moda-ml/repository/codelist/v2018-1/gc_T272.xml

Code	Description	Adoption note	Version status	Date of insertion
01	DORNIER			
02	SULZER			
03	TSUD DAKOMA			
04	VAMATEX			
05	SOMET			
06	N. VAMATEX			
07	BONAS			
08	GROSSE			
09	STAUBLI			
99	other, see note if any			01/07/2013

T282 - parameter type for fabric operation

setting parameter of a machine used in an operation of a work cycle for fabric

Agency name: eBIZ

tabella cod.: T282

File codes list (Generic code): http://www.ebiz.enea.it/moda-ml/repository/codelist/v2018-1/gc_T282.xml

Code	Description	Adoption note	Version status	Date of insertion
01	reed width			
02	number of blades			
03	number of warp beams			
04	laid-in selvedge			
05	written selvedge			
99	other, see note if any			01/07/2013

T3 - terms of delivery

specification of the terms of trade (INCOTERMS)

Agency name: Incoterms

tabella cod.: T3

File codes list (Generic code): http://www.ebiz.enea.it/moda-ml/repository/codelist/v2018-1/gc_T3.xml

Code	Description	Adoption note	Version status	Date of insertion
CFR	COST AND FREIGHT (named port of destination)			
CIF	COST, INSURANCE AND FREIGHT (named port of destination)			
CIP	CARRIAGE AND INSURANCE PAID (named place of destination)			
CPA	CARRIAGE PAID (named place of destination)			
DAF	DELIVERED AT FRONTIER (named place)	according to Incoterms® 2010 it is obsolete		08/12/2017
DAP	Delivered at Place of destination (named place of destination)	according to Incoterms® 2010		08/12/2017
DAT	Delivered at Terminal (named place of destination)	according to Incoterms® 2010		08/12/2017
DDP	DELIVERED DUTY PAID (named place of destination)			
DDU	DELIVERED DUTY UNPAID (named place of destination)	according to Incoterms® 2010 it is obsolete, use DAP		08/12/2017
DEQ	DELIVERED EX-QUAY (named port of destination)	according to Incoterms® 2010 it is obsolete		08/12/2017

DE S	DELIVERED EX-SHIP (named port of destination)	according to Incoterms® 2010 it is obsolete		08/12/2017
EX W	EX WORKS (named place)			
FA S	FREE ALONGSIDE SHIP (named port of shipment)			
FC A	FREE CARRIER (named place)			
FO B	FREE ON BOARD (named port of shipment)			

T38 - transport conditions

special condition of transport or special service requested to the Forwarder

tabella cod.: T38

File codes list (Generic code): http://www.ebiz.enea.it/moda-ml/repository/codelist/v2018-1/gc_T38.xml

Code	Description	Adoption note	Version status	Date of insertion
ACC	arrange customs clearance			
CAL	Carrier loads			
CAU	Carrier unloads			
CMR	CMR carnet			
FFN	freight forwarders national conditions			
FLD	special agreement for full loading			
NCC	do not arrange customs clearance			
PPB	packaging paid by Buyer			
PPS	packaging paid by Supplier			
PRO	proof of delivery			
RFR	return container free			
RPC	return container paid by Customer			
RPS	return container paid by Supplier			
SHL	Shipper loads			
SHU	Consignee unloads			

T40 - type of transport means

means of transport, in general or referred to a specific leg

Agency name: eBIZ

tabella cod.: T40

File codes list (Generic code): http://www.ebiz.enea.it/moda-ml/repository/codelist/v2018-1/gc_T40.xml

Code	Description	Adoption note	Version status	Date of insertion
AIR	aircraft			
SHP	ship			
TRU	truck			
VAN	van			

T41 - type of Allowance or Charge

coded specification of an Allowance or Charge (elaborated from UNECE 4465)

Agency name: eBIZ

tabella cod.: T41

File codes list (Generic code): http://www.ebiz.enea.it/moda-ml/repository/codelist/v2018-1/gc_T41.xml

Code	Description	Adoption note	Version status	Date of insertion
1	Agreed settlement		(N)	19/08/2018
10	Costs for draft		(N)	19/08/2018
11	Bank charges	DEPRECATED, use CBK	(N)	19/08/2018
12	Agent commission		(N)	19/08/2018
14	Wrong delivery		(N)	19/08/2018
15	Goods returned to agent		(N)	19/08/2018
16	Goods partly returned		(N)	19/08/2018
17	Transport damage		(N)	19/08/2018
19	Trade discount		(N)	19/08/2018
2	Below specification goods		(N)	19/08/2018
20	Deduction for late delivery	DEPRECATED, use CWB	(N)	19/08/2018

21	Advertising costs		(N)	19/08/2018
22	Customs duties		(N)	19/08/2018
23	Telephone and postal costs		(N)	19/08/2018
24	Repair costs		(N)	19/08/2018
25	Attorney fees		(N)	19/08/2018
26	Taxes		(N)	19/08/2018
3	Damaged goods		(N)	19/08/2018
30	Direct payment to seller		(N)	19/08/2018
32	Goods not delivered		(N)	19/08/2018
33	Late delivery		(N)	19/08/2018
35	Goods returned		(N)	19/08/2018
36	Invoice not received		(N)	19/08/2018
37	Credit note to debtor/not to us		(N)	19/08/2018
38	Deducted bonus		(N)	19/08/2018
39	Deducted discount		(N)	19/08/2018
4	Short delivery		(N)	19/08/2018
40	Deducted freight costs		(N)	19/08/2018
41	Deduction against other invoices		(N)	19/08/2018
42	Credit balance(s)		(N)	19/08/2018
45	Debit note to seller		(N)	19/08/2018
46	Discount beyond terms		(N)	19/08/2018
48	Allowance/charge error		(N)	19/08/2018

49	Substitute product		(N)	19/08/2018
50	Terms of sale error		(N)	19/08/2018
52	Wrong invoice		(N)	19/08/2018
53	Duplicate invoice		(N)	19/08/2018
54	Weight error		(N)	19/08/2018
55	Additional charge not authorized		(N)	19/08/2018
56	Incorrect discount		(N)	19/08/2018
57	Price change		(N)	19/08/2018
58	Variation		(N)	19/08/2018
59	Chargeback		(N)	19/08/2018
65	Settlement to agent		(N)	19/08/2018
66	Cash discount		(N)	19/08/2018
7	Payment on account		(N)	19/08/2018
70	Wrong monetary amount resulting from incorrect free goods quantity		(N)	19/08/2018
72	Temporary special promotion		(N)	19/08/2018
73	Difference in tax rate		(N)	19/08/2018
74	Quantity discount		(N)	19/08/2018
75	Promotion discount		(N)	19/08/2018
76	Cancellation deadline passed		(N)	19/08/2018
77	Pricing discount		(N)	19/08/2018
78	Volume discount		(N)	19/08/2018
79	Sundry discount		(N)	19/08/2018

8	Returnable container charge included		(N)	19/08/2018
9	Invoice error		(N)	19/08/2018
AW A	bonus for works ahead of schedule			
CBK	bank charges			
CC R	servizio di corriere			
CIN	insurance			
CLB	labelling			
CPK	packing			
CSP	special packing			
CW B	penalty for works behind schedule			

T61 - duty or tax or fee type

duty or tax or fee type

Agency name: eBIZ

tabella cod.: T61

File codes list (Generic code): http://www.ebiz.enea.it/moda-ml/repository/codelist/v2018-1/gc_T61.xml

Code	Description	Adoption note	Version status	Date of insertion
BOL	stamp duty			01/07/2013
CUD	customs duty			01/07/2013
ENV	environmental tax			01/07/2013
FRE	no tax			01/07/2013
OTH	other tax charges			01/07/2013
VAT	value added tax			01/07/2013

T62 - duty or tax or fee category

duty or tax or fee category

Agency name: eBIZ

tabella cod.: T62

File codes list (Generic code): http://www.ebiz.enea.it/moda-ml/repository/codelist/v2018-1/gc_T62.xml

Code	Description	Adoption note	Version status	Date of insertion
AA	lower than standard rate			01/07/2013
E	tax not applicable			01/07/2013
H	higher than standard rate			01/07/2013
O	outside scope of tax			01/07/2013
S	standard rate			01/07/2013
Z	zero rate goods			01/07/2013

T8 - Modes of Transport

way of transport, in general or referred to the specified leg

Agency name: eBIZ

tabella cod.: T8

File codes list (Generic code): http://www.ebiz.enea.it/moda-ml/repository/codelist/v2018-1/gc_T8.xml

Code	Description	Adoption note	Version status	Date of insertion
1	MARITIME TRANSPORT			
10	Courier			01/07/2013
2	RAIL TRANSPORT			
3	ROAD TRANSPORT			
4	AIR TRANSPORT			
5	MAIL			
6	AIR + SHIP TRANSPORT			
8	INLAND WATER TRANSPORT			
9	MODE UNKNOWN			

T9 - ISO4217 - Currency

currency code

Agency name: ISO

tabella cod.: T9

File codes list (Generic code): http://www.ebiz.enea.it/moda-ml/repository/codelist/v2018-1/gc_T9.xml

Table not printed: there are 205 elements, more than the maximum specified for printing: 99.

Annex C

New or changed elements towards previous version

Changes or added elements (changes in description excluded; changes in aggregation notes and best practice included): 98

Test Type	Tag	Status	Item type	Changes related to
Attribute	AC_amount	NEW	AC amount	Has NEW attribute: data currency
Element(Extension)	AC_categoryText	UPDATED	AC category text	Property: Length_Max Old value: 70 New value: 250
Attribute	additionalIdentifier	NEW	Additional Party Identifier	Has NEW attribute: numbering organisation code
Attribute	additionalIdentifier	NEW	Additional Party Identifier	Has NEW attribute: id Qualifier
Element(Instance)	additionalIdentifier	NEW	Additional Party Identifier	
Attribute	allowanceCharge	NEW	Allowance and Charge	Has NEW attribute: is Charge
Attribute	allowanceCharge	NEW	Allowance and Charge	Has NEW attribute: maximum quantity
Attribute	allowanceCharge	NEW	Allowance and Charge	Has NEW attribute: minimum quantity
Attribute	allowanceCharge	NEW	Allowance and Charge	Has NEW attribute: data currency
Attribute	allowanceCharge	NEW	Allowance and Charge	Has NEW attribute: unit of measure code
Element(Instance)	attachment	NEW	attachment	
Child	attachment	NEW	attachment	Has NEW child of: file name
Child	attachment	NEW	attachment	Has NEW child of: external reference
Child	attachment	NEW	attachment	Has NEW child of: binary object
Attribute	binaryObject	NEW	binary object	Has NEW attribute: encoding

Attrib	binaryObject	NEW	binary object	Has NEW attribute: mime
Attrib	binaryObject	NEW	binary object	Has NEW attribute: format
Attrib	binaryObject	NEW	binary object	Has NEW attribute: character set
Element(l)	binaryObject	NEW	binary object	
Child	buyer	NEW	Buyer (*)	Has NEW child of: Party identifier
Child	buyer	NEW	Buyer (*)	Has NEW child of: Additional Party Identifier
Attrib	buyer	NEW	Buyer (*)	Has NEW attribute: sender Party qualifier
Element(l)	characterSetCode	NEW	character set code	
Element(l)	characterSet	NEW	character set	
Element(E)	deliveryPlace	UPDATED	delivery place	Property: Length_Max Old value: 40 New value: 250
Attrib	despatchDate	NEW	despatch date	Has NEW attribute: date format
Element(l)	despatchDate	NEW	despatch date	
Element(l)	despatchPlace	NEW	despatch place	
Element(E)	email	UPDATED	e-mail	Property: Length_Max Old value: 80 New value: 250
Element(l)	encodingCode	NEW	encoding code	
Element(l)	encoding	NEW	encoding	
Child	externalReference	NEW	external reference	Has NEW child of: uri
Child	externalReference	NEW	external reference	Has NEW child of: format code
Child	externalReference	NEW	external reference	Has NEW child of: character set code
Child	externalReference	NEW	external reference	Has NEW child of: mime code

Child	external Reference	NEW	external reference	Has NEW child of: encoding code
Element(l)	external Reference	NEW	external reference	
Element(E)	fabricCharacterText	UPDATE	fabric characteristic text	Property: Length_Max Old value: 40 New value: 80
Child	fabMnfrOperation	UPDATE	fabric manufacturing operation	relationship with child: reference document details Property: Cardmax Old value: 1 New value: 9
Child	fabMnfrOperation	UPDATE	fabric manufacturing operation	relationship with child: general note Property: Cardmax Old value: 19 New value: 99
Attribute	fileName	NEW	file name	Has NEW attribute: numbering organisation code
Element(l)	fileName	NEW	file name	
Element(l)	formatCode	NEW	format code	
Element(l)	format	NEW	format	
Attribute	note	UPDATE	general note	Its attribute: numbering organisation code Property: Aggregation Note_English Old value: New value: <i>must be used to specify the organization that created the list of codes used in "noteLabel"</i>
Element(l)	idQualifier	NEW	id Qualifier	
Element(l)	isCharge	NEW	is Charge	
Element(l)	isURL	NEW	is URL	
Element(E)	legalName	UPDATE	Legal name	Property: Length_Max Old value: 80 New value: 250
Element(E)	itemID	UPDATE	line item number	Property: Length_Max Old value: 6 New value: 40

Attrib	lineN	UPD ATE D	line number	Its attribute: VAT rate Property: Aggregation Note_English Old value: New value: <i>Deprecated, prefer dtScheme when available.</i>
Elem(l)	maxQty	NE W	maximum quantity	
Elem(l)	mimeCode	NE W	mime code	
Elem(l)	mime	NE W	mime	
Child	OFheader	NE W	OF header	Has NEW child of: Third Party
Child	OFheader	UPD ATE D	OF header	relationship with child: general note Property: Cardmax Old value: 19 New value: 99
Child	OFheader	UPD ATE D	OF header	relationship with child: reference document details Property: Cardmin Old value: 1 New value: 0
Child	OFheader	UPD ATE D	OF header	relationship with child: reference document details Property: Aggregation Note_English Old value: <i>reference to the Request for Offer</i> New value: <i>At least one occurrence should contain a reference to the corresponding Request for Offer (docType=REQ)</i>
Elem(l)	progr	NE W	progressive number	
Child	refDoc	NE W	reference document details	Has NEW child of: attachment
Child	refDoc	UPD ATE D	reference document details	relationship with child: document identifier Property: BestPractice_English Old value: New value: <i>numberingOrg indicates the role that produced the document identifier (it is allowed to declare two different ones -e.g. customer and supplier - with two docID with different numberingOrg)</i>
Attrib	season	NE W	season identifier	Has NEW attribute: code list reference
Attrib	season	NE W	season identifier	Has NEW attribute: numbering organisation code
Attrib	season	NE W	season identifier	Has NEW attribute: code list name

Attrib	season	NEW	season identifier	Has NEW attribute: code list version
Child	subContractor	NEW	Sub-contractor (*)	Has NEW child of: Party identifier
Attrib	subContractor	NEW	Sub-contractor (*)	Has NEW attribute: sender Party qualifier
Elem(l)	subDept	NEW	department identifier	
Child	supplier	NEW	Supplier (*)	Has NEW child of: Party identifier
Child	supplier	NEW	Supplier (*)	Has NEW child of: Additional Party Identifier
Attrib	supplier	NEW	Supplier (*)	Has NEW attribute: sender Party qualifier
Attrib	legalRef	NEW	tax legal reference	Has NEW attribute: code list name
Attrib	legalRef	NEW	tax legal reference	Has NEW attribute: numbering organisation code
Attrib	legalRef	NEW	tax legal reference	Has NEW attribute: code list version
Attrib	legalRef	UPDATED	tax legal reference	Its attribute: code list reference Property: Use Old value: <i>Required</i> New value: <i>Optional</i>
Child	dtScheme	UPDATED	tax scheme	relationship with child: general note Property: Cardmax Old value: 19 New value: 99
Elem(E)	payTermText	UPDATED	terms of payment text	Property: Length_Max Old value: 40 New value: 250
Elem(E)	incotermsText	UPDATED	terms of trade text	Property: Length_Max Old value: 70 New value: 250
Elem(E)	method	UPDATED	test method identifier	Property: Length_Max Old value: 25 New value: 80
Child	thirdParty	NEW	Third Party (*)	Has NEW child of: Party identifier
Attrib	thirdParty	NEW	Third Party (*)	Has NEW attribute: sender Party qualifier
Child	terms	UPDATED	Trade conditions	relationship with child: Transport information Property: Cardmax

				Old value: 1 New value: 5
Element(E)	transportConditionText	UPDATED	transport condition - text	Property: Length_Max Old value: 100 New value: 250
Child	transportInfo	NEW	Transport information	Has NEW child of: despatch place
Child	transportInfo	NEW	Transport information	Has NEW child of: despatch date
Child	transportInfo	NEW	Transport information	Has NEW child of: effective delivery date
Attribute	transportInfo	NEW	Transport information	Has NEW attribute: progressive number
Child	TWOFItem	NEW	TWOF item	Has NEW child of: tax scheme
Child	TWOFItem	UPDATED	TWOF item	relationship with child: reference document details Property: Cardmax Old value: 1 New value: 9
Child	TWOFItem	UPDATED	TWOF item	relationship with child: reference document details Property: Cardmin Old value: 1 New value: 0
Child	TWOFItem	UPDATED	TWOF item	relationship with child: product quantity Property: BestPractice_English Old value: New value: <i>this element can have two instances only if the units of measure are different</i>
Child	TWOFItem	UPDATED	TWOF item	relationship with child: Third Party Property: Cardmax Old value: 1 New value: 3
Child	TWOFItem	UPDATED	TWOF item	relationship with child: reference document details Property: Aggregation Note_English Old value: <i>reference to the line of the corresponding Request for Offer</i> New value: <i>At least one occurrence should contain a reference to the line of the corresponding Request for Offer (docType=REQ)</i>
Child	TWOFItem	UPDATED	TWOF item	relationship with child: general note Property: Cardmax

				Old value: 19 New value: 99
Attrib	price	NEW	unit price amount	Has NEW attribute: data currency
Element(E)	price	UPDATED	unit price amount	Property: Digits_Dec Old value: 2 New value: 4
Attrib	uri	NEW	uri	Has NEW attribute: is URL
Element(I)	uri	NEW	uri	

Annex D

New or changed tables and codes towards previous version

Changes or added items (changes in CodeListAgencyName excluded; changes in adoption notes and code description included): 83

Test Type	Status	Table code	Table description	Code	Change description
Table	UPDATE	NT 100	eBIZ TCFUpstream version		Description_English Old value: <i>eBIZ Moda-ML version</i> New value: <i>eBIZ TCFUpstream version</i>
Code	NEW	NT 100		2018-1 (v2018-1)	
Code	NEW	NT 100		draft (draft)	
Table	UPDATE	NT 16	VAT rate or code		Generalities Old value: <i>VAT rate or code (deprecated, use dtScheme element)</i> New value: <i>VAT rate or code (DEPRECA TED, use dtScheme element)</i>
Code	NEW	NT 2		AU (Auditor)	
Code	NEW	NT 2		CE (Certification authority)	
Code	NEW	NT 2		SC (Sub contractor)	
Code	NEW	NT 2		SM (Service/ePlatform manager)	
Code	NEW	NT 6		EB (eBIZ)	
Code	UPDATE	NT 6		ML (DEPRECATED)	adoption_note Old value: New value: <i>DEPRECATED</i>
Code	NEW	NT 7		CMK (square centimetre)	
Code	NEW	NT 7		CMQ (cubic centimetre)	
Code	NEW	NT 7		E37 (pixel)	
Code	NEW	NT 7		KWH (kilowatthours)	
Code	NEW	NT 7		MMK (square millimetre)	

Code	NEW	NT7		<i>MTK</i> (square metre)	
Code	NEW	NT7		<i>CO2TON</i> (ton of CO2)	
Table	UPDATED	NT7	unit of measure		OtherExternalReferenceURL Old value: New value: #http://docs.oasis-open.org/ubl/os-UBL-2.1/cl/gc/default/UnitOfMeasureCode-2.1.gc#
Table	UPDATED	NT7	unit of measure		Description_English Old value: <i>unity of measure</i> New value: <i>unit of measure</i>
Code	NEW	T21		<i>BOR</i> (blanket order)	
Code	NEW	T21		<i>CEO</i> (Certificate of origin)	
Code	NEW	T21		<i>CER</i> (Certificate)	
Code	UPDATED	T21		<i>CTR</i> (Contract)	Text_English Old value: <i>contract</i> New value: <i>Contract</i>
Code	NEW	T21		<i>MCI</i> (Visual merchandising instruction)	
Code	NEW	T21		<i>VMI</i> (visual merchandising instructions)	
Code	NEW	T41		1 (Agreed settlement)	
Code	NEW	T41		2 (Below specification goods)	
Code	NEW	T41		3 (Damaged goods)	
Code	NEW	T41		4 (Short delivery)	
Code	NEW	T41		7 (Payment on account)	
Code	NEW	T41		8 (Returnable container charge included)	
Code	NEW	T41		9 (Invoice error)	
Code	NEW	T41		10 (Costs for draft)	
Code	NEW	T41		11 (Bank charges)	

Co de	NEW	T4 1		12 (Agent commission)	
Co de	NEW	T4 1		14 (Wrong delivery)	
Co de	NEW	T4 1		15 (Goods returned to agent)	
Co de	NEW	T4 1		16 (Goods partly returned)	
Co de	NEW	T4 1		17 (Transport damage)	
Co de	NEW	T4 1		19 (Trade discount)	
Co de	NEW	T4 1		20 (Deduction for late delivery)	
Co de	NEW	T4 1		21 (Advertising costs)	
Co de	NEW	T4 1		22 (Customs duties)	
Co de	NEW	T4 1		23 (Telephone and postal costs)	
Co de	NEW	T4 1		24 (Repair costs)	
Co de	NEW	T4 1		25 (Attorney fees)	
Co de	NEW	T4 1		26 (Taxes)	
Co de	NEW	T4 1		30 (Direct payment to seller)	
Co de	NEW	T4 1		32 (Goods not delivered)	
Co de	NEW	T4 1		33 (Late delivery)	
Co de	NEW	T4 1		35 (Goods returned)	
Co de	NEW	T4 1		36 (Invoice not received)	
Co de	NEW	T4 1		37 (Credit note to debtor/not to us)	
Co de	NEW	T4 1		38 (Deducted bonus)	
Co de	NEW	T4 1		39 (Deducted discount)	
Co de	NEW	T4 1		40 (Deducted freight costs)	

Co de	NEW	T4 1		41 (Deduction against other invoices)	
Co de	NEW	T4 1		42 (Credit balance(s))	
Co de	NEW	T4 1		45 (Debit note to seller)	
Co de	NEW	T4 1		46 (Discount beyond terms)	
Co de	NEW	T4 1		48 (Allowance/charge error)	
Co de	NEW	T4 1		49 (Substitute product)	
Co de	NEW	T4 1		50 (Terms of sale error)	
Co de	NEW	T4 1		52 (Wrong invoice)	
Co de	NEW	T4 1		53 (Duplicate invoice)	
Co de	NEW	T4 1		54 (Weight error)	
Co de	NEW	T4 1		55 (Additional charge not authorized)	
Co de	NEW	T4 1		56 (Incorrect discount)	
Co de	NEW	T4 1		57 (Price change)	
Co de	NEW	T4 1		58 (Variation)	
Co de	NEW	T4 1		59 (Chargeback)	
Co de	NEW	T4 1		65 (Settlement to agent)	
Co de	NEW	T4 1		66 (Cash discount)	
Co de	NEW	T4 1		70 (Wrong monetary amount resulting from incorrect free goods quantity)	
Co de	NEW	T4 1		72 (Temporary special promotion)	
Co de	NEW	T4 1		73 (Difference in tax rate)	
Co de	NEW	T4 1		74 (Quantity discount)	

Code	NEW	T4 1		75 (Promotion discount)	
Code	NEW	T4 1		76 (Cancellation deadline passed)	
Code	NEW	T4 1		77 (Pricing discount)	
Code	NEW	T4 1		78 (Volume discount)	
Code	NEW	T4 1		79 (Sundry discount)	
Table	UPD ATE D	T4 1	type of Allowance or Charge		Generalities Old value: <i>coded specification of an Allowance or Charge</i> New value: <i>coded specification of an Allowance or Charge (elaborated from UNECE 4465)</i>