



<http://www.ebiz-tcf.eu>

## IMPLEMENTATION GUIDE

includes COMPARISON BETWEEN CURRENT and LAST  
PREVIOUSLY RELEASED VERSION

TRANSACTION "GARMENT STOCK OFFER STATUS"

Version: v2018-1

Date of release: 18/7/2019

Document code: G063rv

technical Documentation: <http://www.ebiz.enea.it>

XML Schemas repository: <http://www.ebiz.enea.it/moda-ml/repository/schema/v2018-1/default.asp>

Guides repository: <http://www.ebiz.enea.it/moda-ml/repository/guide/v2018-1/default.asp>

Guide filename: G063rv-eBIZ-GarmentStockOfferStatus.pdf

# 1. BUSINESS DESCRIPTION

## 1.1 Scope

The document Garment Stock Offer Status can be used as Response to the Offer, notifying the Client of the loading and of the status of the Offer (. dealing, sold, withdrawn, ..etc..).

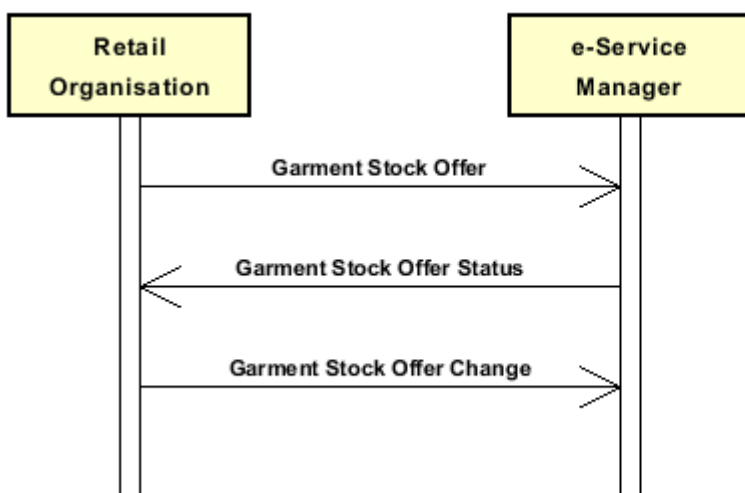
## 1.2 Generalities

The document is issued by the e-Stockflow Service Provider to respond to an Offer of garment stock or to notify the status of the Offer.

Each document line must refer to one line of a former "Stock Offer", of which is notified either the loading or the following development of the dealing

## 1.3. Possible scenario

On-line stocks offer



## 2. IMPLEMENTATION GUIDE

### 2.1 General structure of XML document

All the business data that can be exchanged through this class of documents are shown in the following "document structure", that provides a simplified vision of the Schema.

In particular:

- the two numbers following each element define its "cardinality" (minimum and maximum number of occurrences); the minimum equal zero indicates that the element is optional, the minimum greater than zero indicates that is mandatory;
- the bold character denotes the complex elements (aggregates of simple elements) that were built for the sake of functionality and re-usability of some complex informations sets. The child elements in each parent element are easily spotted as "indented";
- the symbol "@" denotes an attribute of the preceding element; here "the usage indicator (optional, required, ...) is shown in square brackets.

#### Legenda

- N: new element
- U: updated properties
- P: changes in children
- p: is a changed child
- A: changes in attributes
- a: is a new or changed attribute
- \*: is a subtype

### Structure

#### GARStockStat

@msgfunction [Optional] [Default= OR]

@version [Optional] [Default= 2018-1]

@useProfile [Optional]

```
| GSOheader 1-1 (P)
| | msgN 1-1
| | msgID 0-1
| | msgDate 1-1
| | @dateForm [Optional]
| | refDoc 0-9 (P)
| | @docType [Required]
| | | docID 1-2 (p)
| | | @numberingOrg [Optional]
| | | docDate 0-1
| | | @dateForm [Optional]
| | | season 0-1 (A)
| | | @numberingOrg [Optional] (a)
| | | @codeList [Optional] (a)
| | | @listName [Optional] (a)
| | | @listVersion [Optional] (a)
| | | itemID 0-1 (U)
| | | attachment 0-1 (N)
| | | @uid [Optional]
| | | | fileName 0-1 (N)
| | | | @numberingOrg [Optional] (a)
| | | | binaryObject 0-1 (N)
| | | | @format [Optional] (N)
| | | | @mime [Optional] (N)
| | | | @encoding [Optional] (N)
| | | | @characterSet [Optional] (N)
```

```

| | | | externalReference 0-99 (N)
| | | | | uri 1-1 (N)
| | | | | @isURL [Optional] [Default= true] (Na)
| | | | | mimeTypeCode 0-1 (N)
| | | | | formatCode 0-1 (N)
| | | | | encodingCode 0-1 (N)
| | | | | characterSetCode 0-1 (N)
| | supplier 1-1 (AP)
| | | @logo [Optional]
| | | @sender [Optional] (a*)
| | | | id 1-1
| | | | | @numberingOrg [Optional]
| | | | | additionalIdentifier 0-9 (N)
| | | | | @numberingOrg [Optional] (a)
| | | | | @idQualifier [Optional] (Na)
| | | | | legalName 0-1 (U)
| | | | | dept 0-1
| | | | | subDept 0-1 (N)
| | | | | person 0-1
| | | | | | @email [Optional]
| | | | | | @phone [Optional]
| | | | | | @fax [Optional]
| | | | | street 0-1
| | | | | city 0-1
| | | | | subCountry 0-1
| | | | | country 0-1
| | | | | postCode 0-1
| | buyer 0-1 (AP)
| | | @logo [Optional]
| | | @sender [Optional] (a*)
| | | | id 1-1 (p)
| | | | | @numberingOrg [Optional]
| | | | | additionalIdentifier 0-9 (N)
| | | | | @numberingOrg [Optional] (a)
| | | | | @idQualifier [Optional] (Na)
| | | | | legalName 0-1 (U)
| | | | | dept 0-1
| | | | | subDept 0-1 (N)
| | | | | person 0-1
| | | | | | @email [Optional]
| | | | | | @phone [Optional]
| | | | | | @fax [Optional]
| | | | | street 0-1
| | | | | city 0-1
| | | | | subCountry 0-1
| | | | | country 0-1
| | | | | postCode 0-1
| | thirdParty 0-5 (AP)
| | | @VAT [Optional]
| | | @role [Required]
| | | @sender [Optional] (a*)
| | | | id 1-1
| | | | | @numberingOrg [Optional]
| | | | | legalName 0-1 (U)
| | | | | dept 0-1
| | | | | subDept 0-1 (N)
| | | | | person 0-1
| | | | | | @email [Optional]
| | | | | | @phone [Optional]
| | | | | | @fax [Optional]
| | | | | street 0-1

```

- | | | city 0-1
- | | | subCountry 0-1
- | | | country 0-1
- | | | postCode 0-1
- | | note 0-99
- | | @numberingOrg [Optional]
- | | @codeList [Optional]
- | | @noteLabel [Optional]

**GSSbody 1-1**

**GSSitem 1-unbounded (P)**

@offerStat [Required]

@offerStatReason [Optional]

| lineN 1-1

| @VAT [Optional]

| lineID 0-1 (N)

| eStockN 1-1

| @numberingOrg [Optional]

**refDoc 0-9 (P)**

| @docType [Required]

| | docID 1-2 (p)

| | @numberingOrg [Optional]

| | docDate 0-1

| | @dateForm [Optional]

| | season 0-1 (A)

| | @numberingOrg [Optional] (a)

| | @codeList [Optional] (a)

| | @listName [Optional] (a)

| | @listVersion [Optional] (a)

| | itemID 0-1 (U)

**attachment 0-1 (N)**

| | @uid [Optional]

| | | fileName 0-1 (N)

| | | @numberingOrg [Optional]

| | | binaryObject 0-1 (N)

| | | @format [Optional] (N)

| | | @mime [Optional] (N)

| | | @encoding [Optional] (N)

| | | @characterSet [Optional] (N)

**externalReference 0-99 (N)**

| | | uri 1-1 (N)

| | | @isURL [Optional] [Default= true] (Na)

| | | mimeTypeCode 0-1 (N)

| | | formatCode 0-1 (N)

| | | encodingCode 0-1 (N)

| | | characterSetCode 0-1 (N)

**garmentCategory 0-1 (P)**

| @numberingOrg [Optional]

| | artGroup 0-1 (p)

| | @numberingOrg [Optional]

| | @codeList [Optional]

| | @listName [Optional]

| | @listVersion [Optional]

| | artSubGroup 0-1 (p)

| | @numberingOrg [Optional]

| | @codeList [Optional]

| | @listName [Optional]

| | @listVersion [Optional]

| | artSex 0-1 (p)

| | @numberingOrg [Optional]

| | @codeList [Optional]

@listName [Optional]  
 @listVersion [Optional]  
 season 0-1 (A)  
 @numberingOrg [Optional]  
 @codeList [Optional]  
 @listName [Optional]  
 @listVersion [Optional]  
**goodsClassification 0-9 (N)**  
 | macroClass 0-1 (N)  
 | | @numberingOrg [Optional] (a)  
 | | @codeList [Optional] (a)  
 | | @listName [Optional] (a)  
 | | @listVersion [Optional] (a)  
 | class 0-1 (N)  
 | | @numberingOrg [Optional] (a)  
 | | @codeList [Optional] (a)  
 | | @listName [Optional] (a)  
 | | @listVersion [Optional] (a)  
 | subClass 0-1 (N)  
 | | @numberingOrg [Optional] (a)  
 | | @codeList [Optional] (a)  
 | | @listName [Optional] (a)  
 | | @listVersion [Optional] (a)  
 note 0-99  
 | @numberingOrg [Optional]  
 | @codeList [Optional]  
 | @noteLabel [Optional]  
 tradeMark 0-1  
 commerceText 0-unbounded (A)  
 @ln [Optional] (N)  
**garmentCode 0-1**  
 @numberingOrg [Optional]  
 - choose -  
**garmentCodeB 1-1 (P)**  
 @numberingOrg [Optional]  
 | mod 1-1  
 | | @numberingOrg [Optional]  
 | | @codeList [Optional]  
 | | @listName [Optional]  
 | | @listVersion [Optional]  
 | fabric 0-1  
 | | @numberingOrg [Optional]  
 | | @codeList [Optional]  
 | | @listName [Optional]  
 | | @listVersion [Optional]  
 | color 0-1  
 | | @numberingOrg [Optional]  
 | | @codeList [Optional]  
 | | @listName [Optional]  
 | | @listVersion [Optional]  
**garmentVariant 0-9 (N)**  
 | variantType 1-1 (N)  
 | | @numberingOrg [Optional] (a)  
 | | @codeList [Optional] (a)  
 | | @listName [Optional] (a)  
 | | @listVersion [Optional] (a)  
 | variantCode 1-1 (N)  
 | | @numberingOrg [Optional] (a)  
 | | @codeList [Optional] (a)  
 | | @listName [Optional] (a)  
 | | @listVersion [Optional] (a)

```

| | | | drop 0-1 (A)
| | | | @numberingOrg [Optional] (a)
| | | | @codeList [Optional]
| | | | @listName [Optional] (a)
| | | | @listVersion [Optional] (a)
| | | | size 0-1 (A)
| | | | @numberingOrg [Optional] (a)
| | | | @codeList [Optional]
| | | | @listName [Optional] (a)
| | | | @listVersion [Optional] (a)
| | | | artGroup 0-1
| | | | @numberingOrg [Optional]
| | | | @codeList [Optional]
| | | | @listName [Optional]
| | | | @listVersion [Optional]
| | | | added 0-9
| | | | @numberingOrg [Optional]
| | | | @addType [Optional]
| | | | description 0-unbounded (AU)
| | | | @ln [Optional] (N)

```

- or -

```

| | | | garmentCodeA 1-1 (P)
| | | | art 1-1 (U)
| | | | @numberingOrg [Optional]
| | | | @codeList [Optional]
| | | | @listName [Optional]
| | | | @listVersion [Optional]
| | | | description 0-unbounded (AU)
| | | | @ln [Optional] (N)

```

- end choose -

```

| | | | qty 0-1
| | | | @um [Required]
| | | | readyToSendDate 0-1 (N)
| | | | @dateForm [Optional] (a)
| | | | price 0-1 (AU)
| | | | @um [Optional]
| | | | @priceQualifier [Optional] [Default= NET]
| | | | @currency [Optional] (a)
| | | | csRange 0-99 (P)
| | | | @numberingOrg [Optional]
| | | | @sizeSystemNat [Optional]
| | | | @sizeSystemSeg [Optional]
| | | | @sizeSystemBase [Optional]
| | | | @sizeSystemID [Optional]
| | | | color 0-1
| | | | @numberingOrg [Optional]
| | | | @codeList [Optional]
| | | | @listName [Optional]
| | | | @listVersion [Optional]
| | | | garmentVariant 0-9 (N)
| | | | variantType 1-1 (N)
| | | | @numberingOrg [Optional] (a)
| | | | @codeList [Optional] (a)
| | | | @listName [Optional] (a)
| | | | @listVersion [Optional] (a)
| | | | variantCode 1-1 (N)
| | | | @numberingOrg [Optional] (a)
| | | | @codeList [Optional] (a)
| | | | @listName [Optional] (a)
| | | | @listVersion [Optional] (a)
| | | | drop 0-1 (Ap)

```

```

| | | | @numberingOrg [Optional] (a)
| | | | @codeList [Optional]
| | | | @listName [Optional] (a)
| | | | @listVersion [Optional] (a)
| | | | sizeMatrix 1-1
| | | | | sizeRow 1-99 (P)
| | | | | | additionalComponentCode 0-9 (N)
| | | | | | @numberingOrg [Optional] (a)
| | | | | | @codeList [Optional] (a)
| | | | | | @listName [Optional] (a)
| | | | | | @listVersion [Optional] (a)
| | | | | | drop 0-1 (A)
| | | | | | @numberingOrg [Optional] (a)
| | | | | | @codeList [Optional]
| | | | | | @listName [Optional] (a)
| | | | | | @listVersion [Optional] (a)
| | | | | | size 1-1 (A)
| | | | | | @numberingOrg [Optional] (a)
| | | | | | @codeList [Optional]
| | | | | | @listName [Optional] (a)
| | | | | | @listVersion [Optional] (a)
| | | | | | qty 0-1
| | | | | | @um [Required]
| | | | | | itemsList 0-1 (N)
| | | | | | | qualityLevel 0-1 (N)
| | | | | | | @numberingOrg [Optional] (a)
| | | | | | | @codeList [Optional] (a)
| | | | | | | @listName [Optional] (a)
| | | | | | | @listVersion [Optional] (a)
| | | | | | | itemIdentification 1-unbounded (N)
| | | | | | | | serialN 1-9 (AU)
| | | | | | | | @numberingOrg [Optional]
| | | | | | | | @idQualifier [Optional] (N)
| | | | stockAddress 0-1
| | | | | @numberingOrg [Optional]
| | | | | | city 1-1
| | | | | | subCountry 1-1
| | | | | | country 1-1
| | | | note 0-99
| | | | | @numberingOrg [Optional]
| | | | | @codeList [Optional]
| | | | | @noteLabel [Optional]

```



## 2.2 Detailed description of document elements

Following tables show all elements (complex and simple) used in this document. Description includes: 1) element's information: xml tag, name, brief description, data type and syntax constraints; 2) information about use of the element in a particular position in the document: xpath and possible associated notes.

### 2.2.1 Complex elements (Aggregate Business Information Entities)

Complex elements are those elements whose content is composed of other elements (childs).Complex elements are alphabetically ordered.

<b>attachment</b>	an attached document. An attachment can refer to an external document or be included with the document being exchanged (XPath GARStockStat/GSSbody/GSSitem/refDoc/attachment) 0-1 (N) (XPath GARStockStat/GSOheader/refDoc/attachment) 0-1 (N)
<b>buyer</b>	details of the Buyer (party that buys the good or service that is object of the current collaborative process) - base type: Nad, (XPath GARStockStat/GSOheader/buyer) 0-1 (AP)
<b>csRange</b>	range of color-size for a fashion article (XPath GARStockStat/GSSbody/GSSitem/csRange) 0-99 (P)
<b>externalReference</b>	details about an external object, such as a document stored at a remote location (XPath GARStockStat/GSSbody/GSSitem/refDoc/attachment/externalReference) 0-99 (N) (XPath GARStockStat/GSOheader/refDoc/attachment/externalReference) 0-99 (N)
<b>garmentCategory</b>	classification of a garment article (XPath GARStockStat/GSSbody/GSSitem/garmentCategory) 0-1 (P)
<b>garmentCode</b>	codification of the garment product (XPath GARStockStat/GSSbody/GSSitem/garmentCode) 0-1
<b>garmentCodeA</b>	codification of the garment product- type A (XPath GARStockStat/GSSbody/GSSitem/garmentCode/garmentCodeA) 1-1 (P) - note: <i>here the barcode EAN-13 or EAN-8 should be specified</i>
<b>garmentCodeB</b>	codification of the garment product - type B (XPath GARStockStat/GSSbody/GSSitem/garmentCode/garmentCodeB) 1-1 (P)
<b>garmentVariant</b>	garment product variant (XPath GARStockStat/GSSbody/GSSitem/csRange/garmentVariant) 0-9 (N) - note: <i>used only if not already specified in the article code</i> (XPath GARStockStat/GSSbody/GSSitem/garmentCode/garmentCodeB/garmentVariant) 0-9 (N)
<b>goodsClassification</b>	goods classification of the item. (XPath GARStockStat/GSSbody/GSSitem/garmentCategory/goodsClassification) 0-9 (N)
<b>GSOheader</b>	Header of a document for on-line FASHION STOCK management (XPath GARStockStat/GSOheader) 1-1 (P)
<b>GSSbody</b>	body of the document GARMENT STOCK OFFER STATUS (XPath GARStockStat/GSSbody) 1-1
<b>GSSitem</b>	line item of the document GARMENT STOCK OFFER STATUS (XPath GARStockStat/GSSbody/GSSitem) 1-unbounded (P)
<b>itemIdentification</b>	serial identification of a product unit

	(XPath GARStockStat/GSSbody/GSSitem/csRange/sizeMatrix/sizeRow/itemsList/itemIdentification) 1-unbounded (N) - note: <i>identification of the single product unit contained in the list</i>
<b>itemsList</b>	list of the single product units (XPath GARStockStat/GSSbody/GSSitem/csRange/sizeMatrix/sizeRow/itemsList) 0-1 (N) - note: <i>the usage in this position is alternative to its usage within the document line element</i>
<b>refDoc</b>	identification of a document and of an item thereof, to which the message makes reference (XPath GARStockStat/GSSbody/GSSitem/refDoc) 0-9 (P) (XPath GARStockStat/GSOheader/refDoc) 0-9 (P)
<b>sizeMatrix</b>	size matrix of an apparel product (XPath GARStockStat/GSSbody/GSSitem/csRange/sizeMatrix) 1-1
<b>sizeRow</b>	size matrix row of an apparel product (XPath GARStockStat/GSSbody/GSSitem/csRange/sizeMatrix/sizeRow) 1-99 (P)
<b>stockAddress</b>	physical location of a stock (XPath GARStockStat/GSSbody/GSSitem/stockAddress) 0-1
<b>supplier</b>	details of the Supplier (party that supplies the good or service that is object of the current collaborative process) - base type: Nad, (XPath GARStockStat/GSOheader/supplier) 1-1 (AP)
<b>thirdParty</b>	details of the Third Party, different from Sender and Receiver of the document - base type: Nad, (XPath GARStockStat/GSOheader/thirdParty) 0-5 (AP) - note: <i>might be the ePlatform manager</i>

## 2.2.2 Simple elements (Basic Business Information Entities)

Simple elements are those elements whose content is characterized by a data type plus a domain of possible values. Simple elements are alphabetically ordered.

<b>added</b>	additional code of the product (complementing the formers) - base type: string, max length: 80, (XPath GARStockStat/GSSbody/GSSitem/garmentCode/garmentCodeB/added) 0-9
<b>additionalComponentCode</b>	an additional code to identify a fashion product or a part of it (it is a way to codify the item, but it is not one of the codes to identify it). It is not a serial identifier. - base type: string, (XPath GARStockStat/GSSbody/GSSitem/csRange/sizeMatrix/sizeRow/additionalComponentCode) 0-9 (N)
<b>additionalIdentifier</b>	additional identification code of a Party, for example customs registries or others - base type: string, max length: 15, (XPath GARStockStat/GSOheader/buyer/additionalIdentifier) 0-9 (N) - note: <i>identifiers for example for exports, such as MID (Manufacturer Identification Code), EORI (E.O.R.I. - Economic Operator Registration and Identification)</i> (XPath GARStockStat/GSOheader/supplier/additionalIdentifier) 0-9 (N) - note: <i>identifiers for example for exports, such as MID (Manufacturer Identification Code), EORI (E.O.R.I. - Economic Operator Registration and Identification)</i>

@addType	<p>qualifier of the additional coding of a product</p> <ul style="list-style-type: none"> <li>- base type: string, cod. table: T44</li> <li><a href="http://www.ebiz.enea.it/moda-ml/repository/codelist/v2018-1/gc_T44.xml">http://www.ebiz.enea.it/moda-ml/repository/codelist/v2018-1/gc_T44.xml</a></li> <li>(XPath GARStockStat/GSSbody/GSSitem/garmentCode/garmentCodeB/added/@addType) [Optional]</li> </ul> <p>- nota: <i>addType</i> allows the clarification of the meaning of the added element content; it is strongly suggested to use it always.</p>
art	<p>article number of the product</p> <ul style="list-style-type: none"> <li>- base type: string, max length: 80,</li> <li>(XPath GARStockStat/GSSbody/GSSitem/garmentCode/garmentCodeA/art) 1-1 (U)</li> </ul>
artGroup	<p>code identifying a class of products</p> <ul style="list-style-type: none"> <li>- base type: string, max length: 40,</li> <li>(XPath GARStockStat/GSSbody/GSSitem/garmentCategory/artGroup) 0-1 (p)</li> <li>(XPath GARStockStat/GSSbody/GSSitem/garmentCode/garmentCodeB/artGroup) 0-1</li> </ul>
artSex	<p>code identifying the sex for which a fashion product is intended</p> <ul style="list-style-type: none"> <li>- base type: string, max length: 15,</li> <li>(XPath GARStockStat/GSSbody/GSSitem/garmentCategory/artSex) 0-1 (p)</li> </ul>
artSubGroup	<p>code identifying a sub-class of products</p> <ul style="list-style-type: none"> <li>- base type: string, max length: 40,</li> <li>(XPath GARStockStat/GSSbody/GSSitem/garmentCategory/artSubGroup) 0-1 (p)</li> </ul>
binaryObject	<p>a binary large object containing an attached document, Coding 'base64Binary' is recommended.</p> <ul style="list-style-type: none"> <li>- base type: base64Binary,</li> <li>(XPath GARStockStat/GSOheader/refDoc/attachment/binaryObject) 0-1 (N)</li> <li>(XPath GARStockStat/GSSbody/GSSitem/refDoc/attachment/binaryObject) 0-1 (N)</li> </ul>
@characterSet	<p>the character set of the binary object (examples UTF-8, UTF-16, Windows-1252, ISO-8859-7,..)</p> <ul style="list-style-type: none"> <li>- base type: normalizedString,</li> <li>(XPath GARStockStat/GSSbody/GSSitem/refDoc/attachment/binaryObject/@characterSet) [Optional] (N)</li> <li>(XPath GARStockStat/GSOheader/refDoc/attachment/binaryObject/@characterSet) [Optional] (N)</li> </ul>
characterSetCode	<p>the character set of an external document (examples UTF-8, UTF-16, Windows-1252, ISO-8859-7,..)</p> <ul style="list-style-type: none"> <li>- base type: normalizedString,</li> <li>(XPath GARStockStat/GSOheader/refDoc/attachment/externalReference/characterSetCode) 0-1 (N)</li> <li>(XPath GARStockStat/GSSbody/GSSitem/refDoc/attachment/externalReference/characterSetCode) 0-1 (N)</li> </ul>
city	<p>name of the city (town, village)</p> <ul style="list-style-type: none"> <li>- base type: string, max length: 40,</li> <li>(XPath GARStockStat/GSSbody/GSSitem/stockAddress/city) 1-1</li> <li>(XPath GARStockStat/GSOheader/supplier/city) 0-1</li> <li>(XPath GARStockStat/GSOheader/thirdParty/city) 0-1</li> <li>(XPath GARStockStat/GSOheader/buyer/city) 0-1</li> </ul>
class	<p>a code indicating the category (macro-class, class or sub-class) of a commodity classification system the article belongs to.</p> <ul style="list-style-type: none"> <li>- base type: string,</li> <li>(XPath GARStockStat/GSSbody/GSSitem/garmentCategory/goodsClassification/class) 0-1 (N)</li> </ul>
@codeList	<p>it specifies the URL where the list of codes used to make an instance of the element can be found</p> <ul style="list-style-type: none"> <li>- base type: string, max length: 255,</li> <li>(XPath GARStockStat/GSSbody/GSSitem/garmentCode/garmentCodeB/size/@codeList) [Optional]</li> </ul>

(XPath GARStockStat/GSSbody/GSSitem/garmentCode/garmentCodeB/garmentVariant/variantCode/@codeList) [Optional] (a)

- nota: *at least one out of this attribute and "numberingOrg" should be set*

(XPath GARStockStat/GSOheader/note/@codeList) [Optional]

- nota: *must be used to provide (URL) the list of codes used in "noteLabel"*

(XPath GARStockStat/GSSbody/GSSitem/garmentCode/garmentCodeB/drop/@codeList) [Optional]

(XPath GARStockStat/GSSbody/GSSitem/csRange/sizeMatrix/sizeRow/itemsList/qualityLevel/@codeList) [Optional] (a)

- nota: *at least one out of this attribute and "numberingOrg" should be set*

(XPath GARStockStat/GSOheader/refDoc/season/@codeList) [Optional] (a)

- nota: *this attribute should be used either single or coupled with "listName" and "listVersion"*

(XPath GARStockStat/GSSbody/GSSitem/csRange/sizeMatrix/sizeRow/size/@codeList) [Optional]

(XPath GARStockStat/GSSbody/GSSitem/garmentCategory/season/@codeList) [Optional]

- nota: *this attribute should be used either single or coupled with "listName" and "listVersion"*

(XPath GARStockStat/GSSbody/GSSitem/garmentCode/garmentCodeB/artGroup/@codeList) [Optional]

- nota: *at least one out of this attribute and "numberingOrg" should be set*

(XPath GARStockStat/GSSbody/GSSitem/garmentCode/garmentCodeA/art/@codeList) [Optional]

- nota: *at least one out of this attribute and "numberingOrg" should be set*

(XPath GARStockStat/GSSbody/GSSitem/note/@codeList) [Optional]

- nota: *must be used to provide (URL) the list of codes used in "noteLabel"*

(XPath GARStockStat/GSSbody/GSSitem/garmentCategory/note/@codeList) [Optional]

- nota: *must be used to provide (URL) the list of codes used in "noteLabel"*

(XPath GARStockStat/GSSbody/GSSitem/garmentCategory/artGroup/@codeList) [Optional]

- nota: *at least one out of this attribute and "numberingOrg" should be set*

(XPath GARStockStat/GSSbody/GSSitem/garmentCode/garmentCodeB/mod/@codeList) [Optional]

- nota: *at least one out of this attribute and "numberingOrg" should be set*

(XPath GARStockStat/GSSbody/GSSitem/garmentCategory/goodsClassification/class/@codeList) [Optional] (a)

- nota: *at least one out of this attribute and "numberingOrg" should be set*

(XPath GARStockStat/GSSbody/GSSitem/garmentCategory/artSubGroup/@codeList) [Optional]

- nota: *at least one out of this attribute and "numberingOrg" should be set*

(XPath GARStockStat/GSSbody/GSSitem/garmentCategory/goodsClassification/subClass/@codeList) [Optional] (a)

- nota: *at least one out of this attribute and "numberingOrg" should be set*

(XPath GARStockStat/GSSbody/GSSitem/refDoc/season/@codeList) [Optional] (a)

- nota: *this attribute should be used either single or coupled with "listName" and "listVersion"*

(XPath GARStockStat/GSSbody/GSSitem/garmentCode/garmentCodeB/color/@codeList) [Optional]

- nota: *this attribute should be used either single or coupled with "listName" and "listVersion"*

(XPath GARStockStat/GSSbody/GSSitem/garmentCode/garmentCodeB/garmentVariant/variantType/@codeList) [Optional] (a)

- nota: *always at least one out of this attribute and "numberingOrg" should be set*

(XPath GARStockStat/GSSbody/GSSitem/garmentCategory/artSex/@codeList) [Optional]

- nota: *at least one out of this attribute and "numberingOrg" should be set*

(XPath GARStockStat/GSSbody/GSSitem/garmentCategory/goodsClassification/macroClass/@codeList) [Optional] (a)

- nota: *at least one out of this attribute and "numberingOrg" should be set*

(XPath GARStockStat/GSSbody/GSSitem/garmentCode/garmentCodeB/fabric/@codeList) [Optional]

- nota: *at least one out of this attribute and "numberingOrg" should be set*

	<p>(XPath  GARStockStat/GSSbody/GSSitem/csRange/garmentVariant/variantCode/@codeList) [Optional] (a)  - nota: <i>at least one out of this attribute and "numberingOrg" should be set</i>  (XPath GARStockStat/GSSbody/GSSitem/csRange/drop/@codeList) [Optional]  (XPath  GARStockStat/GSSbody/GSSitem/csRange/garmentVariant/variantType/@codeList) [Optional] (a)  - nota: <i>always at least one out of this attribute and "numberingOrg" should be set</i>  (XPath GARStockStat/GSSbody/GSSitem/csRange/sizeMatrix/sizeRow/drop/@codeList) [Optional]  (XPath GARStockStat/GSSbody/GSSitem/csRange/color/@codeList) [Optional]  - nota: <i>this attribute should be used either single or coupled with "listName" and "listVersion"</i>  (XPath GARStockStat/GSSbody/GSSitem/csRange/sizeMatrix/sizeRow/additionalComponentCode/@codeList) [Optional] (a)  - nota: <i>at least one out of this attribute and "numberingOrg" should be set</i></p>
color	<p>colour number of the product, when not included in the model or fabric code  - base type: string, max length: 15,  (XPath GARStockStat/GSSbody/GSSitem/garmentCode/garmentCodeB/color) 0-1  (XPath GARStockStat/GSSbody/GSSitem/csRange/color) 0-1  - note: <i>used only if not already specified in the article code</i></p>
commerceText	<p>text usable for the full commercial description of a product  - base type: string, max length: 400,  (XPath GARStockStat/GSSbody/GSSitem/commerceText) 0-unbounded (A)  - note: <i>Only one instance of this element for each different value of 'ln' attribute (language)</i></p>
country	<p>code of the nation  - base type: string, cod. table: T10  <a href="http://www.ebiz.enea.it/moda-ml/repository/codelist/v2018-1/gc_T10.xml">http://www.ebiz.enea.it/moda-ml/repository/codelist/v2018-1/gc_T10.xml</a>  (XPath GARStockStat/GSOheader/thirdParty/country) 0-1  (XPath GARStockStat/GSOheader/buyer/country) 0-1  (XPath GARStockStat/GSOheader/supplier/country) 0-1  (XPath GARStockStat/GSSbody/GSSitem/stockAddress/country) 1-1</p>
@currency	<p>currency in which a specified monetary data is expressed  - base type: string, cod. table: T9  <a href="http://www.ebiz.enea.it/moda-ml/repository/codelist/v2018-1/gc_T9.xml">http://www.ebiz.enea.it/moda-ml/repository/codelist/v2018-1/gc_T9.xml</a>  (XPath GARStockStat/GSSbody/GSSitem/price/@currency) [Optional] (a)  - nota: <i>Currency referred by the price.</i></p>
@dateForm	<p>format used for the date  - base type: string, cod. table: NT29  <a href="http://www.ebiz.enea.it/moda-ml/repository/codelist/v2018-1/gc_NT29.xml">http://www.ebiz.enea.it/moda-ml/repository/codelist/v2018-1/gc_NT29.xml</a>  (XPath GARStockStat/GSSbody/GSSitem/readyToSendDate/@dateForm) [Optional] (a)  (XPath GARStockStat/GSSbody/GSSitem/refDoc/docDate/@dateForm) [Optional]  (XPath GARStockStat/GSOheader/msgDate/@dateForm) [Optional]  (XPath GARStockStat/GSOheader/refDoc/docDate/@dateForm) [Optional]</p>
dept	<p>name or code of a contact department within a Party  - base type: string, max length: 40,  (XPath GARStockStat/GSOheader/buyer/dept) 0-1  (XPath GARStockStat/GSOheader/supplier/dept) 0-1  (XPath GARStockStat/GSOheader/thirdParty/dept) 0-1</p>
description	<p>free text description. The content of the element must be unique, it might be translated and repeated into more languages (thus no more than one instance for each language).  - base type: string, max length: 250,  (XPath GARStockStat/GSSbody/GSSitem/garmentCode/garmentCodeB/description) 0-unbounded (AU)</p>

	<p>- note: <i>Product description</i> (XPath GARStockStat/GSSbody/GSSitem/garmentCode/garmentCodeA/description) 0-unbounded (AU)</p> <p>- note: <i>Product description</i></p>
docDate	<p>date of issue of the referenced document, according to one of the patterns Y YYY-MM-DD, YYYY-MM-DD:HH-MM or YYYY-WW.</p> <p>- base type: string, (XPath GARStockStat/GSSbody/GSSitem/refDoc/docDate) 0-1 (XPath GARStockStat/GSOheader/refDoc/docDate) 0-1</p>
docID	<p>identification number of the referenced document SINCE 2008-1 ITS USE I N THE HEADER IS DISCOURAGED (REPLACED BY msgID)</p> <p>- base type: string, max length: 80, (XPath GARStockStat/GSOheader/refDoc/docID) 1-2 (p)</p> <hr/> <p>AAAA-WARNING! - text not AVAILABLE n. 245 - In=en (XPath GARStockStat/GSSbody/GSSitem/refDoc/docID) 1-2 (p)</p> <hr/> <p>AAAA-WARNING! - text not AVAILABLE n. 245 - In=en</p>
@docType	<p>type or class to which the referenced document belongs</p> <p>- base type: string, cod. table: T21 <a href="http://www.ebiz.enea.it/moda-ml/repository/codelist/v2018-1/gc_T21.xml">http://www.ebiz.enea.it/moda-ml/repository/codelist/v2018-1/gc_T21.xml</a> (XPath GARStockStat/GSOheader/refDoc/@docType) [Required] (XPath GARStockStat/GSSbody/GSSitem/refDoc/@docType) [Required]</p>
drop	<p>drop number of the garment</p> <p>- base type: string, max length: 15, (XPath GARStockStat/GSSbody/GSSitem/garmentCode/garmentCodeB/drop) 0-1 (A)</p> <p>- note: <i>Fill this element if the drop is the same for all the sizes of the model. Otherway specify it within the csRange element</i> (XPath GARStockStat/GSSbody/GSSitem/csRange/drop) 0-1 (Ap)</p> <p>- note: <i>used only if not already specified in the article code</i> (XPath GARStockStat/GSSbody/GSSitem/csRange/sizeMatrix/sizeRow/drop) 0-1 (A)</p> <p>- note: <i>DEPRECATED, anyhow it is used only if not already specified in the article code or csRange</i></p>
@email	<p>electronic mail address of the contact person within a Party</p> <p>- base type: string, max length: 250, (XPath GARStockStat/GSOheader/supplier/person/@email) [Optional] (XPath GARStockStat/GSOheader/buyer/person/@email) [Optional] (XPath GARStockStat/GSOheader/thirdParty/person/@email) [Optional]</p>
@encoding	<p>specifies the decoding algorithm of the binary object</p> <p>- base type: normalizedString, (XPath GARStockStat/GSOheader/refDoc/attachment/binaryObject/@encoding) [Optional] (N) (XPath GARStockStat/GSSbody/GSSitem/refDoc/attachment/binaryObject/@encoding) [Optional] (N)</p>
encodingCode	<p>the encoding/decoding algorithm used with the external object (example is 'base64Binary')</p> <p>- base type: normalizedString, (XPath GARStockStat/GSOheader/refDoc/attachment/externalReference/encodingCode) 0-1 (N) (XPath GARStockStat/GSSbody/GSSitem/refDoc/attachment/externalReference/encodingCode) 0-1 (N)</p>
eStockN	<p>offer identifier assigned by the e-stock service provider</p> <p>- base type: string, max length: 15, (XPath GARStockStat/GSSbody/GSSitem/eStockN) 1-1</p>
fabric	<p>fabric number of the garment</p> <p>- base type: string, max length: 15,</p>

	(XPath GARStockStat/GSSbody/GSSitem/garmentCode/garmentCodeB/fabric) 0-1
@fax	fax number of the contact person within a Party - base type: string, max length: 35, (XPath GARStockStat/GSOheader/supplier/person/@fax) [Optional] (XPath GARStockStat/GSOheader/thirdParty/person/@fax) [Optional] (XPath GARStockStat/GSOheader/buyer/person/@fax) [Optional]
fileName	unique identifier (name) of the file - base type: string, max length: 255, (XPath GARStockStat/GSOheader/refDoc/attachment/fileName) 0-1 (N) (XPath GARStockStat/GSSbody/GSSitem/refDoc/attachment/fileName) 0-1 (N)
@format	the format of the binary content (examples xml, pdf, doc,...) - base type: string, (XPath GARStockStat/GSOheader/refDoc/attachment/binaryObject/@format) [Optional] (N) (XPath GARStockStat/GSSbody/GSSitem/refDoc/attachment/binaryObject/@format) [Optional] (N)
formatCode	the format of the external object (examples xml, pdf, doc,...) - base type: normalizedString, (XPath GARStockStat/GSSbody/GSSitem/refDoc/attachment/externalReference/formatCode) 0-1 (N) (XPath GARStockStat/GSOheader/refDoc/attachment/externalReference/formatCode) 0-1 (N)
id	primary identification code of a Party; it is recommended the format: nation code (ISO 3166) + VAT identification number (11 crt), with the qualifier "numberingOrg"= MF - base type: string, max length: 15, (XPath GARStockStat/GSOheader/buyer/id) 1-1 (p) (XPath GARStockStat/GSOheader/thirdParty/id) 1-1 (XPath GARStockStat/GSOheader/supplier/id) 1-1
@idQualifier	Qualification of the identifier. - base type: string, (XPath GARStockStat/GSOheader/buyer/additionalIdentifier/@idQualifier) [Optional] (Na) - nota: <i>this attribute should be used when the numberingOrg attribute is not enough to declare the type of identifier</i> (XPath GARStockStat/GSOheader/supplier/additionalIdentifier/@idQualifier) [Optional] (Na) - nota: <i>this attribute should be used when the numberingOrg attribute is not enough to declare the type of identifier</i> (XPath GARStockStat/GSSbody/GSSitem/csRange/sizeMatrix/sizeRow/itemsList/itemIdentification/serialN/@idQualifier) [Optional] (N) - nota: <i>this attribute should be used when the numberingOrg attribute is not enough to declare the type of serial identifier</i>
@isURL	it indicates if the referred element is an URL (true) or not (false) - base type: boolean, (XPath GARStockStat/GSSbody/GSSitem/refDoc/attachment/externalReference/uri/@isURL) [Optional] [Default= true] (Na) - nota: <i>usage of URLs is recommended</i> (XPath GARStockStat/GSOheader/refDoc/attachment/externalReference/uri/@isURL) [Optional] [Default= true] (Na) - nota: <i>usage of URLs is recommended</i>
itemID	number of the line/item of the referenced document - base type: string, max length: 40, (XPath GARStockStat/GSSbody/GSSitem/refDoc/itemID) 0-1 (U) (XPath GARStockStat/GSOheader/refDoc/itemID) 0-1 (U)

legalName	<p>legal name of a Party</p> <ul style="list-style-type: none"> <li>- base type: string, max length: 250,</li> <li>(XPath GARStockStat/GSOheader/thirdParty/legalName) 0-1 (U)</li> <li>(XPath GARStockStat/GSOheader/supplier/legalName) 0-1 (U)</li> <li>(XPath GARStockStat/GSOheader/buyer/legalName) 0-1 (U)</li> </ul>
lineID	<p>unique identifier of the line item of the business document; it is set by the role that produces the document.</p> <ul style="list-style-type: none"> <li>- base type: string, max length: 30,</li> <li>(XPath GARStockStat/GSSbody/GSSitem/lineID) 0-1 (N)</li> </ul>
lineN	<p>number of the line item of the present message (xml document); it is set by the role that produces the document. Usually it is a progressive number, but not always.</p> <ul style="list-style-type: none"> <li>- base type: positiveInteger, min inclusive: 1, max inclusive: 9999,</li> <li>(XPath GARStockStat/GSSbody/GSSitem/lineN) 1-1</li> </ul>
@listName	<p>the name of the list of codes used to make an instance of the element (it might be thought as descriptive element, i.e. 'fabric printing technologies', or not, i.e. "T264")</p> <ul style="list-style-type: none"> <li>- base type: string, max length: 40,</li> <li>(XPath GARStockStat/GSSbody/GSSitem/garmentCode/garmentCodeB/drop/@listName) [Optional] (a)</li> <li>- nota: <i>this attribute should always be used coupled with "numberingOrg"</i></li> <li>(XPath GARStockStat/GSSbody/GSSitem/garmentCode/garmentCodeB/garmentVariant/variantCode/@listName) [Optional] (a)</li> <li>- nota: <i>this attribute should always be used coupled with "numberingOrg"</i></li> <li>(XPath GARStockStat/GSSbody/GSSitem/garmentCategory/goodsClassification/macroClass/@listName) [Optional] (a)</li> <li>- nota: <i>this attribute should always be used coupled with "numberingOrg"</i></li> <li>(XPath GARStockStat/GSSbody/GSSitem/garmentCode/garmentCodeB/size/@listName) [Optional] (a)</li> <li>- nota: <i>this attribute should always be used coupled with "numberingOrg"</i></li> <li>(XPath GARStockStat/GSSbody/GSSitem/csRange/color/@listName) [Optional]</li> <li>- nota: <i>this attribute should always be used coupled with "numberingOrg"</i></li> <li>(XPath GARStockStat/GSSbody/GSSitem/garmentCategory/season/@listName) [Optional]</li> <li>- nota: <i>this attribute should always be used coupled with "numberingOrg"</i></li> <li>(XPath GARStockStat/GSSbody/GSSitem/csRange/sizeMatrix/sizeRow/additionalComponentCode/@listName) [Optional] (a)</li> <li>- nota: <i>this attribute should always be used coupled with "numberingOrg"</i></li> <li>(XPath GARStockStat/GSSbody/GSSitem/garmentCategory/goodsClassification/class/@listName) [Optional] (a)</li> <li>- nota: <i>this attribute should always be used coupled with "numberingOrg"</i></li> <li>(XPath GARStockStat/GSSbody/GSSitem/csRange/drop/@listName) [Optional] (a)</li> <li>- nota: <i>this attribute should always be used coupled with "numberingOrg"</i></li> <li>(XPath GARStockStat/GSSbody/GSSitem/garmentCode/garmentCodeB/artGroup/@listName) [Optional]</li> <li>- nota: <i>this attribute should always be used coupled with "numberingOrg"</i></li> <li>(XPath GARStockStat/GSSbody/GSSitem/garmentCode/garmentCodeB/mod/@listName) [Optional]</li> <li>- nota: <i>this attribute should always be used coupled with "numberingOrg"</i></li> <li>(XPath GARStockStat/GSSbody/GSSitem/csRange/sizeMatrix/sizeRow/itemsList/qualityLevel/@listName) [Optional] (a)</li> <li>- nota: <i>this attribute should always be used coupled with "numberingOrg"</i></li> <li>(XPath GARStockStat/GSSbody/GSSitem/garmentCode/garmentCodeB/fabric/@listName) [Optional]</li> <li>- nota: <i>this attribute should always be used coupled with "numberingOrg"</i></li> <li>(XPath GARStockStat/GSSbody/GSSitem/csRange/garmentVariant/variantType/@listName) [Optional] (a)</li> <li>- nota: <i>this attribute should always be used coupled with "numberingOrg"</i></li> <li>(XPath GARStockStat/GSSbody/GSSitem/garmentCode/garmentCodeB/color/@listName) [Optional]</li> <li>- nota: <i>this attribute should always be used coupled with "numberingOrg"</i></li> </ul>



	<p>(XPath GARStockStat/GSSbody/GSSitem/csRange/sizeMatrix/sizeRow/drop/@listName) [Optional] (a)</p> <p>- nota: <i>this attribute should always be used coupled with “numberingOrg”</i></p> <p>(XPath GARStockStat/GSSbody/GSSitem/garmentCode/garmentCodeA/art/@listName) [Optional]</p> <p>- nota: <i>this attribute should always be used coupled with “numberingOrg”</i></p> <p>(XPath GARStockStat/GSSbody/GSSitem/garmentCategory/goodsClassification/subClass/@listName) [Optional] (a)</p> <p>- nota: <i>this attribute should always be used coupled with “numberingOrg”</i></p> <p>(XPath GARStockStat/GSSbody/GSSitem/csRange/garmentVariant/variantCode/@listName) [Optional] (a)</p> <p>- nota: <i>this attribute should always be used coupled with “numberingOrg”</i></p> <p>(XPath GARStockStat/GSSbody/GSSitem/csRange/sizeMatrix/sizeRow/size/@listName) [Optional] (a)</p> <p>- nota: <i>this attribute should always be used coupled with “numberingOrg”</i></p> <p>(XPath GARStockStat/GSSbody/GSSitem/garmentCode/garmentCodeB/garmentVariant/variantType/@listName) [Optional] (a)</p> <p>- nota: <i>this attribute should always be used coupled with “numberingOrg”</i></p> <p>(XPath GARStockStat/GSSbody/GSSitem/garmentCategory/artSex/@listName) [Optional]</p> <p>- nota: <i>this attribute should always be used coupled with “numberingOrg”</i></p> <p>(XPath GARStockStat/GSSbody/GSSitem/refDoc/season/@listName) [Optional] (a)</p> <p>- nota: <i>this attribute should always be used coupled with “numberingOrg”</i></p> <p>(XPath GARStockStat/GSSbody/GSSitem/garmentCategory/artSubGroup/@listName) [Optional]</p> <p>- nota: <i>this attribute should always be used coupled with “numberingOrg”</i></p> <p>(XPath GARStockStat/GSOheader/refDoc/season/@listName) [Optional] (a)</p> <p>- nota: <i>this attribute should always be used coupled with “numberingOrg”</i></p> <p>(XPath GARStockStat/GSSbody/GSSitem/garmentCategory/artGroup/@listName) [Optional]</p> <p>- nota: <i>this attribute should always be used coupled with “numberingOrg”</i></p>
<p>@listVersion</p>	<p>it specifie the version of the list of codes used to make an instance of the element</p> <p>- base type: string, max length: 6,</p> <p>(XPath GARStockStat/GSSbody/GSSitem/garmentCode/garmentCodeB/garmentVariant/variantCode/@listVersion) [Optional] (a)</p> <p>- nota: <i>this attribute should always be used coupled with “numberingOrg” and “listName”</i></p> <p>(XPath GARStockStat/GSSbody/GSSitem/csRange/garmentVariant/variantType/@listVersion) [Optional] (a)</p> <p>- nota: <i>this attribute should always be used coupled with “numberingOrg” and “listName”</i></p> <p>(XPath GARStockStat/GSSbody/GSSitem/garmentCode/garmentCodeB/drop/@listVersion) [Optional] (a)</p> <p>- nota: <i>this attribute should always be used coupled with “numberingOrg” and “listName”</i></p> <p>(XPath GARStockStat/GSSbody/GSSitem/garmentCode/garmentCodeB/mod/@listVersion) [Optional]</p> <p>- nota: <i>this attribute should always be used coupled with “numberingOrg” and “listName”</i></p> <p>(XPath GARStockStat/GSSbody/GSSitem/garmentCode/garmentCodeB/fabric/@listVersion) [Optional]</p> <p>- nota: <i>this attribute should always be used coupled with “numberingOrg” and “listName”</i></p> <p>(XPath GARStockStat/GSSbody/GSSitem/garmentCode/garmentCodeB/color/@listVersion) [Optional]</p> <p>- nota: <i>this attribute should always be used coupled with “numberingOrg” and “listName”</i></p> <p>(XPath GARStockStat/GSSbody/GSSitem/refDoc/season/@listVersion) [Optional] (a)</p> <p>- nota: <i>this attribute should always be used coupled with “numberingOrg” and “listName”</i></p>

(XPath GARStockStat/GSSbody/GSSitem/garmentCode/garmentCodeB/garmentVariant/variantType/@listVersion) [Optional] (a)  
- nota: *this attribute should always be used coupled with “numberingOrg” and “listName”*

(XPath GARStockStat/GSSbody/GSSitem/csRange/sizeMatrix/sizeRow/itemsList/qualityLevel/@listVersion) [Optional] (a)  
- nota: *this attribute should always be used coupled with “numberingOrg” and “listName”*

(XPath GARStockStat/GSSbody/GSSitem/csRange/sizeMatrix/sizeRow/additionalComponentCode/@listVersion) [Optional] (a)  
- nota: *this attribute should always be used coupled with “numberingOrg” and “listName”*

(XPath GARStockStat/GSSbody/GSSitem/garmentCode/garmentCodeA/art/@listVersion) [Optional]  
- nota: *this attribute should always be used coupled with “numberingOrg” and “listName”*

(XPath GARStockStat/GSSbody/GSSitem/csRange/color/@listVersion) [Optional]  
- nota: *this attribute should always be used coupled with “numberingOrg” and “listName”*

(XPath GARStockStat/GSSbody/GSSitem/csRange/garmentVariant/variantCode/@listVersion) [Optional] (a)  
- nota: *this attribute should always be used coupled with “numberingOrg” and “listName”*

(XPath GARStockStat/GSSbody/GSSitem/csRange/drop/@listVersion) [Optional] (a)  
- nota: *this attribute should always be used coupled with “numberingOrg” and “listName”*

(XPath GARStockStat/GSSbody/GSSitem/garmentCode/garmentCodeB/artGroup/@listVersion) [Optional]  
- nota: *this attribute should always be used coupled with “numberingOrg” and “listName”*

(XPath GARStockStat/GSSbody/GSSitem/garmentCode/garmentCodeB/size/@listVersion) [Optional] (a)  
- nota: *this attribute should always be used coupled with “numberingOrg” and “listName”*

(XPath GARStockStat/GSSbody/GSSitem/csRange/sizeMatrix/sizeRow/size/@listVersion) [Optional] (a)  
- nota: *this attribute should always be used coupled with “numberingOrg” and “listName”*

(XPath GARStockStat/GSSbody/GSSitem/csRange/sizeMatrix/sizeRow/drop/@listVersion) [Optional] (a)  
- nota: *this attribute should always be used coupled with “numberingOrg” and “listName”*

(XPath GARStockStat/GSOheader/refDoc/season/@listVersion) [Optional] (a)  
- nota: *this attribute should always be used coupled with “numberingOrg” and “listName”*

(XPath GARStockStat/GSSbody/GSSitem/garmentCategory/artGroup/@listVersion) [Optional]  
- nota: *this attribute should always be used coupled with “numberingOrg” and “listName”*

(XPath GARStockStat/GSSbody/GSSitem/garmentCategory/artSex/@listVersion) [Optional]  
- nota: *this attribute should always be used coupled with “numberingOrg” and “listName”*

(XPath GARStockStat/GSSbody/GSSitem/garmentCategory/season/@listVersion) [Optional]  
- nota: *this attribute should always be used coupled with “numberingOrg” and “listName”*

(XPath GARStockStat/GSSbody/GSSitem/garmentCategory/goodsClassification/subClass/@listVersion) [Optional] (a)  
- nota: *this attribute should always be used coupled with “numberingOrg” and “listName”*

(XPath GARStockStat/GSSbody/GSSitem/garmentCategory/goodsClassification/macroClass/@listVersion) [Optional] (a)

	<p>- nota: <i>this attribute should always be used coupled with “numberingOrg” and “listName”</i>  (XPath GARStockStat/GSSbody/GSSitem/garmentCategory/goodsClassification/class/@listVersion) [Optional] (a)</p> <p>- nota: <i>this attribute should always be used coupled with “numberingOrg” and “listName”</i>  (XPath GARStockStat/GSSbody/GSSitem/garmentCategory/artSubGroup/@listVersion) [Optional]</p> <p>- nota: <i>this attribute should always be used coupled with “numberingOrg” and “listName”</i></p>
@ln	<p>Language code.  - base type: string, cod. table: NT60  <a href="http://www.ebiz.enea.it/moda-ml/repository/codelist/v2018-1/gc_NT60.xml">http://www.ebiz.enea.it/moda-ml/repository/codelist/v2018-1/gc_NT60.xml</a>  (XPath GARStockStat/GSSbody/GSSitem/commerceText/@ln) [Optional] (N)  (XPath GARStockStat/GSSbody/GSSitem/garmentCode/garmentCodeB/description/@ln) [Optional] (N)  (XPath GARStockStat/GSSbody/GSSitem/garmentCode/garmentCodeA/description/@ln) [Optional] (N)</p>
@logo	<p>company logo (URL of the image jpeg or gif). It is recommended that the width of the image does not exceed 640 pixel.  - base type: string, max length: 255,  (XPath GARStockStat/GSOheader/buyer/@logo) [Optional]  (XPath GARStockStat/GSOheader/supplier/@logo) [Optional]</p>
macroClass	<p>a code indicating the category (macro-class, class or sub-class) of a commodity classification system the article belongs to.  - base type: string,  (XPath GARStockStat/GSSbody/GSSitem/garmentCategory/goodsClassification/macroClass) 0-1 (N)</p>
@mime	<p>the mime type of the binary object  - base type: normalizedString,  (XPath GARStockStat/GSSbody/GSSitem/refDoc/attachment/binaryObject/@mime) [Optional] (N)  (XPath GARStockStat/GSOheader/refDoc/attachment/binaryObject/@mime) [Optional] (N)</p>
mimeCode	<p>mime type of the external object  - base type: normalizedString,  (XPath GARStockStat/GSOheader/refDoc/attachment/externalReference/mimeCode) 0-1 (N)</p> <hr/> <p><b>AAAA-WARNING! - text not AVAILABLE n. 245 - ln=en</b>  (XPath GARStockStat/GSSbody/GSSitem/refDoc/attachment/externalReference/mimeCode) 0-1 (N)</p> <hr/> <p><b>AAAA-WARNING! - text not AVAILABLE n. 245 - ln=en</b></p>
mod	<p>model number of the garment  - base type: string, max length: 15,  (XPath GARStockStat/GSSbody/GSSitem/garmentCode/garmentCodeB/mod) 1-1</p>
msgDate	<p>date of issue of the present message (xml document), according to one of the patterns YYYY-MM-DD, YYYY-MM-DD:HH-MM or YYYY-WW.  - base type: string,  (XPath GARStockStat/GSOheader/msgDate) 1-1</p>
@msgfunction	<p>function performed by the present message with regards to the transmission  - base type: string, cod. table: NT18  <a href="http://www.ebiz.enea.it/moda-ml/repository/codelist/v2018-1/gc_NT18.xml">http://www.ebiz.enea.it/moda-ml/repository/codelist/v2018-1/gc_NT18.xml</a>  (XPath GARStockStat/@msgfunction) [Optional] [Default= OR]</p>
msgID	<p>key identifier of the business document in the information system of the issuing Party. In case of more despatches of the same business document, it is</p>

	<p>unchanged.</p> <ul style="list-style-type: none"> <li>- base type: string, max length: 35, (XPath GARStockStat/GSOheader/msgID) 0-1</li> </ul>
msgN	<p>identification number given to the message (xml document) by its issuer. In case of more despatches of the same business document, it changes.</p> <ul style="list-style-type: none"> <li>- base type: string, max length: 35, (XPath GARStockStat/GSOheader/msgN) 1-1</li> </ul>
note	<p>free text or structured (computer processing) note. For note structuring use the attributes "noteLabel" and "codelist"</p> <ul style="list-style-type: none"> <li>- base type: string, max length: 350, (XPath GARStockStat/GSSbody/GSSitem/note) 0-99</li> <li>- note: <i>here the offer status reason can be described</i> (XPath GARStockStat/GSOheader/note) 0-99</li> <li>(XPath GARStockStat/GSSbody/GSSitem/garmentCategory/note) 0-99</li> </ul>
@noteLabel	<p>subject qualifier of a note</p> <ul style="list-style-type: none"> <li>- base type: string, max length: 35, (XPath GARStockStat/GSSbody/GSSitem/note/@noteLabel) [Optional]</li> <li>- nota: <i>must be used to qualify the subject of the note</i> (XPath GARStockStat/GSOheader/note/@noteLabel) [Optional]</li> <li>- nota: <i>must be used to qualify the subject of the note</i> (XPath GARStockStat/GSSbody/GSSitem/garmentCategory/note/@noteLabel) [Optional]</li> <li>- nota: <i>must be used to qualify the subject of the note</i></li> </ul>
@numberingOrg	<p>code specifying the organisation who has created or owns the coding or numbering system</p> <ul style="list-style-type: none"> <li>- base type: string, cod. table: NT6 <a href="http://www.ebiz.enea.it/moda-ml/repository/codelist/v2018-1/gc_NT6.xml">http://www.ebiz.enea.it/moda-ml/repository/codelist/v2018-1/gc_NT6.xml</a> (XPath GARStockStat/GSSbody/GSSitem/csRange/sizeMatrix/sizeRow/size/@numberingOrg) [Optional] (a)</li> <li>- nota: <i>this attribute should be used either single or coupled with "listName" and "listVersion"</i> (XPath GARStockStat/GSSbody/GSSitem/csRange/color/@numberingOrg) [Optional]</li> <li>- nota: <i>this attribute should be used either single or coupled with "listName" and "listVersion"</i> (XPath GARStockStat/GSSbody/GSSitem/garmentCategory/season/@numberingOrg) [Optional]</li> <li>- nota: <i>this attribute should be used either single or coupled with "listName" and "listVersion"</i> (XPath GARStockStat/GSSbody/GSSitem/garmentCategory/artSex/@numberingOrg) [Optional]</li> <li>- nota: <i>this attribute should be used either single or coupled with "listName" and "listVersion"</i> (XPath GARStockStat/GSOheader/thirdParty/id/@numberingOrg) [Optional]</li> <li>(XPath GARStockStat/GSSbody/GSSitem/garmentCode/garmentCodeB/added/@numberingOrg) [Optional]</li> <li>- nota: <i>this attribute should be used either single or coupled with "listName" and "listVersion"</i> (XPath GARStockStat/GSSbody/GSSitem/garmentCategory/goodsClassification/class/@numberingOrg) [Optional] (a)</li> <li>- nota: <i>this attribute should be used either single or coupled with "listName" and "listVersion"</i> (XPath GARStockStat/GSOheader/buyer/additionalIdentifier/@numberingOrg) [Optional] (a)</li> <li>- nota: <i>here the issuer of the identifier must be specified</i> (XPath GARStockStat/GSOheader/supplier/additionalIdentifier/@numberingOrg) [Optional] (a)</li> <li>- nota: <i>here the issuer of the identifier must be specified</i> (XPath GARStockStat/GSSbody/GSSitem/csRange/drop/@numberingOrg) [Optional] (a)</li> </ul>

- nota: *this attribute should be used either single or coupled with "listName" and "listVersion"*  
 (XPath GARStockStat/GSSbody/GSSitem/csRange/@numberingOrg) [Optional]  
 (XPath GARStockStat/GSOheader/supplier/id/@numberingOrg) [Optional]  
 (XPath GARStockStat/GSSbody/GSSitem/csRange/sizeMatrix/sizeRow/additionalComponentCode/@numberingOrg) [Optional] (a)

- nota: *this attribute should be used either single or coupled with "listName" and "listVersion"*  
 (XPath GARStockStat/GSOheader/refDoc/attachment/fileName/@numberingOrg) [Optional] (a)  
 (XPath GARStockStat/GSSbody/GSSitem/garmentCode/garmentCodeA/art/@numberingOrg) [Optional]

- nota: *this attribute should be used either single or coupled with "listName" and "listVersion"*  
 (XPath GARStockStat/GSSbody/GSSitem/garmentCategory/goodsClassification/macroClass/@numberingOrg) [Optional] (a)

- nota: *this attribute should be used either single or coupled with "listName" and "listVersion"*  
 (XPath GARStockStat/GSOheader/buyer/id/@numberingOrg) [Optional]  
 (XPath GARStockStat/GSSbody/GSSitem/csRange/sizeMatrix/sizeRow/drop/@numberingOrg) [Optional] (a)

- nota: *this attribute should be used either single or coupled with "listName" and "listVersion"*  
 (XPath GARStockStat/GSSbody/GSSitem/garmentCategory/note/@numberingOrg) [Optional]

- nota: *must be used to specify the organization that created the list of codes used in "noteLabel"*  
 (XPath GARStockStat/GSSbody/GSSitem/note/@numberingOrg) [Optional]

- nota: *must be used to specify the organization that created the list of codes used in "noteLabel"*  
 (XPath GARStockStat/GSSbody/GSSitem/stockAddress/@numberingOrg) [Optional]

- nota: *to be use when city and sub-country are specified with a proprietary code*  
 (XPath GARStockStat/GSSbody/GSSitem/garmentCode/garmentCodeB/color/@numberingOrg) [Optional]

- nota: *this attribute should be used either single or coupled with "listName" and "listVersion"*  
 (XPath GARStockStat/GSSbody/GSSitem/garmentCode/garmentCodeB/garmentVariant/variantType/@numberingOrg) [Optional] (a)

- nota: *this attribute should be used either single or coupled with "listName" and "listVersion"*  
 (XPath GARStockStat/GSSbody/GSSitem/refDoc/docID/@numberingOrg) [Optional]

- nota: *here can be specified whose document numbering is used (e.g.: Client, Supplier, ..)*  
 (XPath GARStockStat/GSSbody/GSSitem/refDoc/season/@numberingOrg) [Optional] (a)

- nota: *this attribute should be used either single or coupled with "listName" and "listVersion"*  
 (XPath GARStockStat/GSSbody/GSSitem/garmentCode/garmentCodeB/@numberingOrg) [Optional]

(XPath GARStockStat/GSSbody/GSSitem/garmentCode/@numberingOrg) [Optional]

(XPath GARStockStat/GSSbody/GSSitem/garmentCategory/@numberingOrg) [Optional]

(XPath GARStockStat/GSSbody/GSSitem/garmentCode/garmentCodeB/mod/@numberingOrg) [Optional]

(XPath GARStockStat/GSSbody/GSSitem/garmentCode/garmentCodeB/fabric/@numberingOrg) [Optional]

- nota: *this attribute should be used either single or coupled with "listName" and "listVersion"*  
 (XPath GARStockStat/GSSbody/GSSitem/refDoc/attachment/fileName/@numberingOrg) [Optional]  
 (XPath GARStockStat/GSSbody/GSSitem/garmentCategory/artGroup/@numberingOrg) [Optional]

	<p>- nota: <i>this attribute should be used either single or coupled with "listName" and "listVersion"</i>  (XPath GARStockStat/GSSbody/GSSitem/eStockN/@numberingOrg) [Optional]  (XPath GARStockStat/GSSbody/GSSitem/csRange/sizeMatrix/sizeRow/itemsList/qualityLevel/@numberingOrg) [Optional] (a)</p> <p>- nota: <i>this attribute should be used either single or coupled with "listName" and "listVersion"</i>  (XPath GARStockStat/GSOheader/refDoc/docID/@numberingOrg) [Optional]</p> <p>- nota: <i>here can be specified whose document numbering is used (e.g.: Client, Supplier, ..)</i>  (XPath GARStockStat/GSSbody/GSSitem/garmentCode/garmentCodeB/size/@numberingOrg) [Optional] (a)</p> <p>- nota: <i>this attribute should be used either single or coupled with "listName" and "listVersion"</i>  (XPath GARStockStat/GSOheader/refDoc/season/@numberingOrg) [Optional] (a)</p> <p>- nota: <i>this attribute should be used either single or coupled with "listName" and "listVersion"</i>  (XPath GARStockStat/GSSbody/GSSitem/csRange/garmentVariant/variantCode/@numberingOrg) [Optional] (a)</p> <p>- nota: <i>this attribute should be used either single or coupled with "listName" and "listVersion"</i>  (XPath GARStockStat/GSSbody/GSSitem/csRange/garmentVariant/variantType/@numberingOrg) [Optional] (a)</p> <p>- nota: <i>this attribute should be used either single or coupled with "listName" and "listVersion"</i>  (XPath GARStockStat/GSSbody/GSSitem/garmentCode/garmentCodeB/artGroup/@numberingOrg) [Optional]</p> <p>- nota: <i>this attribute should be used either single or coupled with "listName" and "listVersion"</i>  (XPath GARStockStat/GSSbody/GSSitem/garmentCategory/artSubGroup/@numberingOrg) [Optional]</p> <p>- nota: <i>this attribute should be used either single or coupled with "listName" and "listVersion"</i>  (XPath GARStockStat/GSSbody/GSSitem/garmentCode/garmentCodeB/garmentVariant/variantCode/@numberingOrg) [Optional] (a)</p> <p>- nota: <i>this attribute should be used either single or coupled with "listName" and "listVersion"</i>  (XPath GARStockStat/GSSbody/GSSitem/csRange/sizeMatrix/sizeRow/itemsList/itemIdentification/serialN/@numberingOrg) [Optional]</p> <p>- nota: <i>here the issuer of the serial number must be specified (when different from the Supplier)</i>  (XPath GARStockStat/GSOheader/note/@numberingOrg) [Optional]</p> <p>- nota: <i>must be used to specify the organization that created the list of codes used in "noteLabel"</i>  (XPath GARStockStat/GSSbody/GSSitem/garmentCategory/goodsClassification/subClass/@numberingOrg) [Optional] (a)</p> <p>- nota: <i>this attribute should be used either single or coupled with "listName" and "listVersion"</i>  (XPath GARStockStat/GSSbody/GSSitem/garmentCode/garmentCodeB/drop/@numberingOrg) [Optional] (a)</p> <p>- nota: <i>this attribute should be used either single or coupled with "listName" and "listVersion"</i></p>
@offerStat	<p>status of the offer in the e-stock  - base type: string, cod. table: NT35  <a href="http://www.ebiz.enea.it/moda-ml/repository/codelist/v2018-1/gc_NT35.xml">http://www.ebiz.enea.it/moda-ml/repository/codelist/v2018-1/gc_NT35.xml</a>  (XPath GARStockStat/GSSbody/GSSitem/@offerStat) [Required]</p>
@offerStatReason	<p>status reason of the offer in the e-stock  - base type: string, cod. table: NT36  <a href="http://www.ebiz.enea.it/moda-ml/repository/codelist/v2018-1/gc_NT36.xml">http://www.ebiz.enea.it/moda-ml/repository/codelist/v2018-1/gc_NT36.xml</a>  (XPath GARStockStat/GSSbody/GSSitem/@offerStatReason) [Optional]</p>

person	name of the contact person within a Party - base type: string, max length: 40, (XPath GARStockStat/GSOheader/thirdParty/person) 0-1 (XPath GARStockStat/GSOheader/buyer/person) 0-1 (XPath GARStockStat/GSOheader/supplier/person) 0-1
@phone	phone number of the contact person within a Party - base type: string, max length: 35, (XPath GARStockStat/GSOheader/thirdParty/person/@phone) [Optional] (XPath GARStockStat/GSOheader/supplier/person/@phone) [Optional] (XPath GARStockStat/GSOheader/buyer/person/@phone) [Optional]
postCode	code defining the postal zone - base type: string, max length: 10, (XPath GARStockStat/GSOheader/buyer/postCode) 0-1 (XPath GARStockStat/GSOheader/supplier/postCode) 0-1 (XPath GARStockStat/GSOheader/thirdParty/postCode) 0-1
price	unit price of the article, object or service specified - base type: decimal, min inclusive: 0, fraction digits: 4, (XPath GARStockStat/GSSbody/GSSitem/price) 0-1 (AU)
@priceQualifier	type of price with reference to discount and taxes - base type: string, cod. table: NT20 <a href="http://www.ebiz.enea.it/moda-ml/repository/codelist/v2018-1/gc_NT20.xml">http://www.ebiz.enea.it/moda-ml/repository/codelist/v2018-1/gc_NT20.xml</a> (XPath GARStockStat/GSSbody/GSSitem/price/@priceQualifier) [Optional] [Default=NET]
qty	net quantity of the article or object correlated, qualified by the function of the document (ordering, delivering, ..) and by the context - base type: decimal, min inclusive: 0, fraction digits: 2, (XPath GARStockStat/GSSbody/GSSitem/qty) 0-1 (XPath GARStockStat/GSSbody/GSSitem/csRange/sizeMatrix/sizeRow/qty) 0-1
qualityLevel	the product quality level (first choice, second choice,...). - base type: string, (XPath GARStockStat/GSSbody/GSSitem/csRange/sizeMatrix/sizeRow/itemsList/qualityLevel) 0-1 (N)
readyToSendDate	date of goods ready to despatch, according to one of the patterns YYYY-M M-DD, YYYY-MM-DD:HH-MM or YYYY-WW. - base type: string, (XPath GARStockStat/GSSbody/GSSitem/readyToSendDate) 0-1 (N)
@role	Third Party role qualifier - base type: string, cod. table: NT2 <a href="http://www.ebiz.enea.it/moda-ml/repository/codelist/v2018-1/gc_NT2.xml">http://www.ebiz.enea.it/moda-ml/repository/codelist/v2018-1/gc_NT2.xml</a> (XPath GARStockStat/GSOheader/thirdParty/@role) [Required]
season	sale season; defined as: season (1 crt) + year (4 crt) - season: S/S=1 A/W=2 Spring=3 Summer=4 Autumn=5 Winter=6: for more than four seasons use alphabetic sequence: 1st season=A 2nd season=B etc.etc. - base type: string, max length: 15, (XPath GARStockStat/GSSbody/GSSitem/garmentCategory/season) 0-1 (A) (XPath GARStockStat/GSSbody/GSSitem/refDoc/season) 0-1 (A) - note: here indicates the season to which the referenced document belongs (XPath GARStockStat/GSOheader/refDoc/season) 0-1 (A) - note: here indicates the season to which the referenced document belongs
@sender	qualifier that specifies the Party issuing of the document - base type: boolean, (XPath GARStockStat/GSOheader/buyer/@sender) [Optional] (a*) - nota: This attribute is mandatory when the STYLESHEET must be used (XPath GARStockStat/GSOheader/thirdParty/@sender) [Optional] (a*) - nota: This attribute is mandatory when the STYLESHEET must be used (XPath GARStockStat/GSOheader/supplier/@sender) [Optional] (a*)

	- nota: <i>This attribute is mandatory when the STYLESHEET must be used</i>
serialN	<p>serial number used for the identification of a physical unit</p> <p>- base type: string, max length: 250,  (XPath GARStockStat/GSSbody/GSSitem/csRange/sizeMatrix/sizeRow/itemsList/itemIdentification/serialN) 1-9 (AU)</p> <hr/> <p><b>AAAA-WARNING! - text not AVAILABLE n. 245 - In=en</b>  - note: <i>multiple values of serialN are allowed for different representations of the serial identifier of the same product unit. Instances of serialN must differ at least for one value of numberingOrg and idQualifier.</i></p>
size	<p>size number of a fashion product (knitwear, clothing, ..)</p> <p>- base type: string, max length: 15,  (XPath GARStockStat/GSSbody/GSSitem/garmentCode/garmentCodeB/size) 0-1 (A)  (XPath GARStockStat/GSSbody/GSSitem/csRange/sizeMatrix/sizeRow/size) 1-1 (A)</p>
@sizeSystemBase	<p>base of the size system</p> <p>- base type: string, cod. table: T423  <a href="http://www.ebiz.enea.it/moda-ml/repository/codelist/v2018-1/gc_T423.xml">http://www.ebiz.enea.it/moda-ml/repository/codelist/v2018-1/gc_T423.xml</a>  (XPath GARStockStat/GSSbody/GSSitem/csRange/@sizeSystemBase) [Optional]</p>
@sizeSystemID	<p>the identifier of the size system.</p> <p>- base type: string,  (XPath GARStockStat/GSSbody/GSSitem/csRange/@sizeSystemID) [Optional]</p>
@sizeSystemNat	<p>nation or agency identifying the size system</p> <p>- base type: string, cod. table: T421  <a href="http://www.ebiz.enea.it/moda-ml/repository/codelist/v2018-1/gc_T421.xml">http://www.ebiz.enea.it/moda-ml/repository/codelist/v2018-1/gc_T421.xml</a>  (XPath GARStockStat/GSSbody/GSSitem/csRange/@sizeSystemNat) [Optional]</p>
@sizeSystemSeg	<p>market segment identifying the size system</p> <p>- base type: string, cod. table: T422  <a href="http://www.ebiz.enea.it/moda-ml/repository/codelist/v2018-1/gc_T422.xml">http://www.ebiz.enea.it/moda-ml/repository/codelist/v2018-1/gc_T422.xml</a>  (XPath GARStockStat/GSSbody/GSSitem/csRange/@sizeSystemSeg) [Optional]</p>
street	<p>street and building number identifying a location</p> <p>- base type: string, max length: 80,  (XPath GARStockStat/GSOheader/buyer/street) 0-1  (XPath GARStockStat/GSOheader/supplier/street) 0-1  (XPath GARStockStat/GSOheader/thirdParty/street) 0-1</p>
subClass	<p>a code indicating the category (macro-class, class or sub-class) of a commodity classification system the article belongs to.</p> <p>- base type: string,  (XPath GARStockStat/GSSbody/GSSitem/garmentCategory/goodsClassification/subClass) 0-1 (N)</p>
subCountry	<p>short name or code of the sub-country entity</p> <p>- base type: string, max length: 9,  (XPath GARStockStat/GSSbody/GSSitem/stockAddress/subCountry) 1-1  (XPath GARStockStat/GSOheader/buyer/subCountry) 0-1  (XPath GARStockStat/GSOheader/supplier/subCountry) 0-1  (XPath GARStockStat/GSOheader/thirdParty/subCountry) 0-1</p>
subDept	<p>name or code of a contact department within a Party</p> <p>- base type: string, max length: 40,  (XPath GARStockStat/GSOheader/buyer/subDept) 0-1 (N)  (XPath GARStockStat/GSOheader/thirdParty/subDept) 0-1 (N)  (XPath GARStockStat/GSOheader/supplier/subDept) 0-1 (N)</p>
tradeMark	<p>name of the official trademark of a specified product (DEPRECATED, use Brand or Product Line).</p> <p>- base type: string, max length: 50,  (XPath GARStockStat/GSSbody/GSSitem/tradeMark) 0-1</p>



@uid	unique element identifier within the xml document - base type: string, (XPath GARStockStat/GSOheader/refDoc/attachment/@uid) [Optional] (XPath GARStockStat/GSSbody/GSSitem/refDoc/attachment/@uid) [Optional]
@um	specification of the unit of measure - base type: string, cod. table: NT7 <a href="http://www.ebiz.enea.it/moda-ml/repository/codelist/v2018-1/gc_NT7.xml">http://www.ebiz.enea.it/moda-ml/repository/codelist/v2018-1/gc_NT7.xml</a> (XPath GARStockStat/GSSbody/GSSitem/csRange/sizeMatrix/sizeRow/qty/@um) [Required] (XPath GARStockStat/GSSbody/GSSitem/qty/@um) [Required] (XPath GARStockStat/GSSbody/GSSitem/price/@um) [Optional] - nota: <i>Unit of measure of the product to which the price is referred (price per meter)</i>
uri	Uniform Resource Identifier (URI) that identifies the external object as an Internet resource - base type: normalizedString, (XPath GARStockStat/GSOheader/refDoc/attachment/externalReference/uri) 1-1 (N) (XPath GARStockStat/GSSbody/GSSitem/refDoc/attachment/externalReference/uri) 1-1 (N)
@useProfile	use profile to which the present document is compliant if it was agreed by the parties. It is suggested a URI with reference to the firms or the URL of the profile. - base type: string, (XPath GARStockStat/@useProfile) [Optional]
variantCode	Code of variant used for fashion product. - base type: string, (XPath GARStockStat/GSSbody/GSSitem/garmentCode/garmentCodeB/garmentVariant/variantCode) 1-1 (N) (XPath GARStockStat/GSSbody/GSSitem/csRange/garmentVariant/variantCode) 1-1 (N)
variantType	Type of variant used for fashion product (examples: 'treatment', 'washing type', 'size class',...) - base type: string, (XPath GARStockStat/GSSbody/GSSitem/csRange/garmentVariant/variantType) 1-1 (N) (XPath GARStockStat/GSSbody/GSSitem/garmentCode/garmentCodeB/garmentVariant/variantType) 1-1 (N)
@VAT	VAT rate or code (DEPRECATED, use dtScheme element) - base type: string, cod. table: NT16 <a href="http://www.ebiz.enea.it/moda-ml/repository/codelist/v2018-1/gc_NT16.xml">http://www.ebiz.enea.it/moda-ml/repository/codelist/v2018-1/gc_NT16.xml</a> (XPath GARStockStat/GSOheader/thirdParty/@VAT) [Optional] (XPath GARStockStat/GSSbody/GSSitem/lineN/@VAT) [Optional] - nota: <i>Deprecated, prefer dtScheme when available.</i>
@version	Dictionary version from which the instance has been created - base type: string, cod. table: NT100 <a href="http://www.ebiz.enea.it/moda-ml/repository/codelist/v2018-1/gc_NT100.xml">http://www.ebiz.enea.it/moda-ml/repository/codelist/v2018-1/gc_NT100.xml</a> (XPath GARStockStat/@version) [Optional] [Default= 2018-1]

## 2.3 Suggested best practices

**GARStockStat/GSOheader/refDoc/docID (identification number of the referenced document SINCE 2008-1 ITS USE IN THE HEADER IS DISCOURAGED (REPLACED BY msgID))**

numberingOrg indicates the role that produced the document identifier (it is allowed to declare two different ones -e.g. customer and supplier - with two docID with different numberingOrg

**GARStockStat/GSSbody/GSSitem/refDoc/docID (identification number of the referenced document SINCE 2008-1 ITS USE IN THE HEADER IS DISCOURAGED (REPLACED BY msgID))**

numberingOrg indicates the role that produced the document identifier (it is allowed to declare two different ones -e.g. customer and supplier - with two docID with different numberingOrg

**GARStockStat/GSOheader/refDoc/attachment/**

**externalReference/mimeType (mime type of the external object)**

Use coding from IANA <http://www.iana.org/assignments/media-types/media-types.xml>

**GARStockStat/GSSbody/GSSitem/refDoc/attachment/**

**externalReference/mimeType (mime type of the external object)**

Use coding from IANA <http://www.iana.org/assignments/media-types/media-types.xml>

**GARStockStat/GSSbody/GSSitem/csRange/sizeMatrix/**

**sizeRow/itemsList/itemIdentification/serialN (serial number used for the identification of a physical unit)**

in the case of garment with RFID for anti-counterfeiting, RFID EPCGlobal for logistics and NFC for the customer experience there should be three serial elements with pairs of attributes numberingOrg/idQualifier: "CL"/"RFID", "GS1"/"RFID", "CL"/"NFC".

## 2.4 Enumeration tables

List of enumeration tables used in the XML document. You can find the corresponding codes at:  
<http://www.ebiz-tcf.eu/moda-ml/imple/moda-ml-2018-1.asp?lingua=en&pag=6>

### Legenda

- N: new table
- U: updated properties

NT100 - eBIZ TCFUpstream version

NT16 - VAT rate or code

NT18 - message function

NT2 - third party qualifier

NT20 - price qualifier

NT29 - format of a date

NT35 - stock offer status

NT36 - stock offer status reason

NT6 - coding system owner/issuer

NT60 - language, codes from ISO 639-1 (subset) (N)

NT7 - unit of measure (U)

T10 - ISO3166 - Country

T21 - type of document

T421 - size system: nationality

T422 - size system: market segment

T423 - size system: base

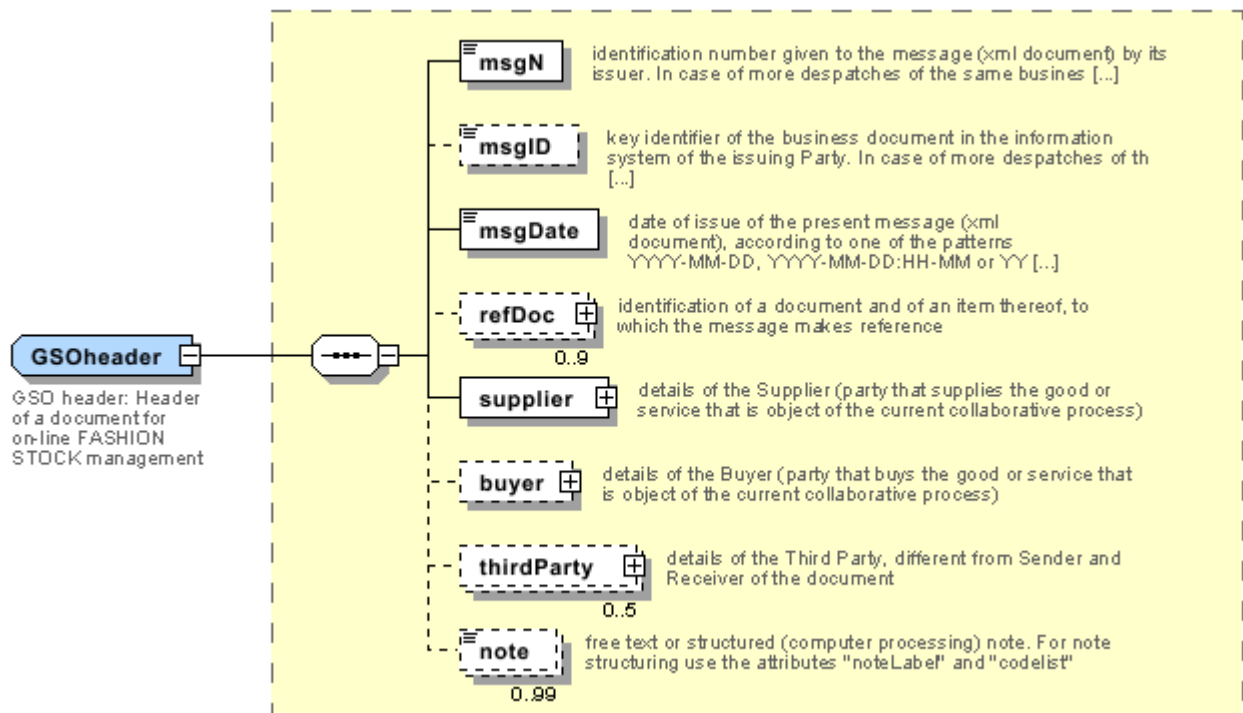
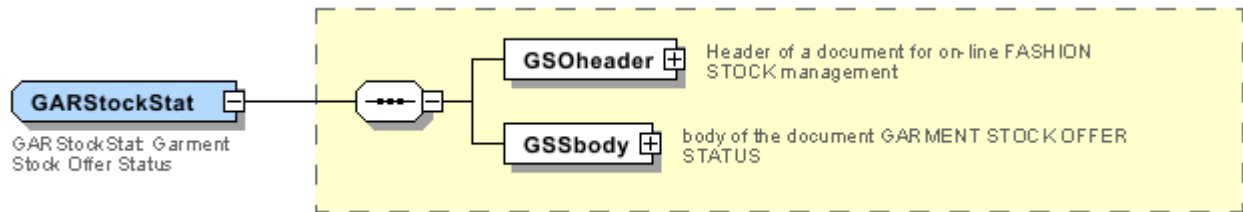
T44 - additional code type

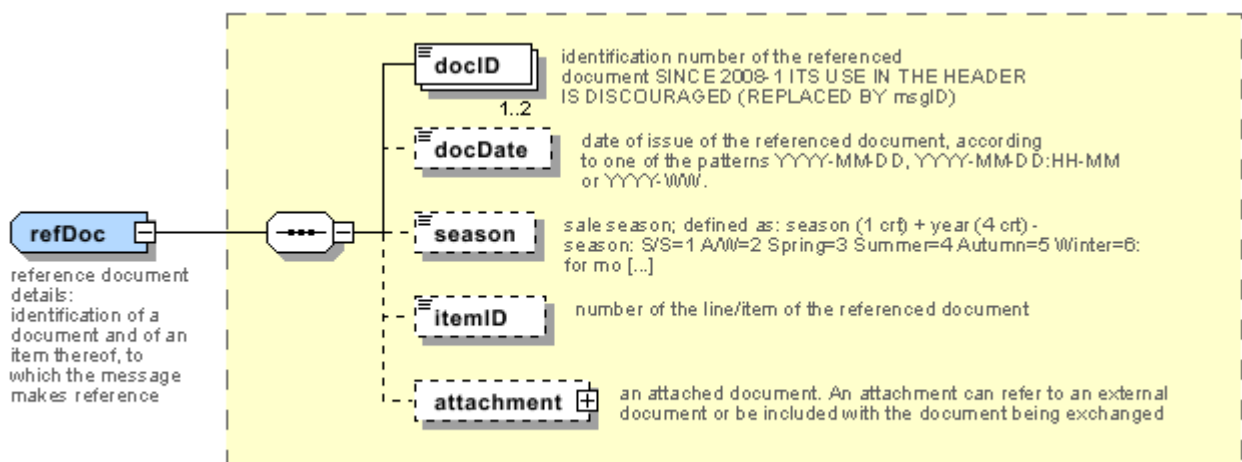
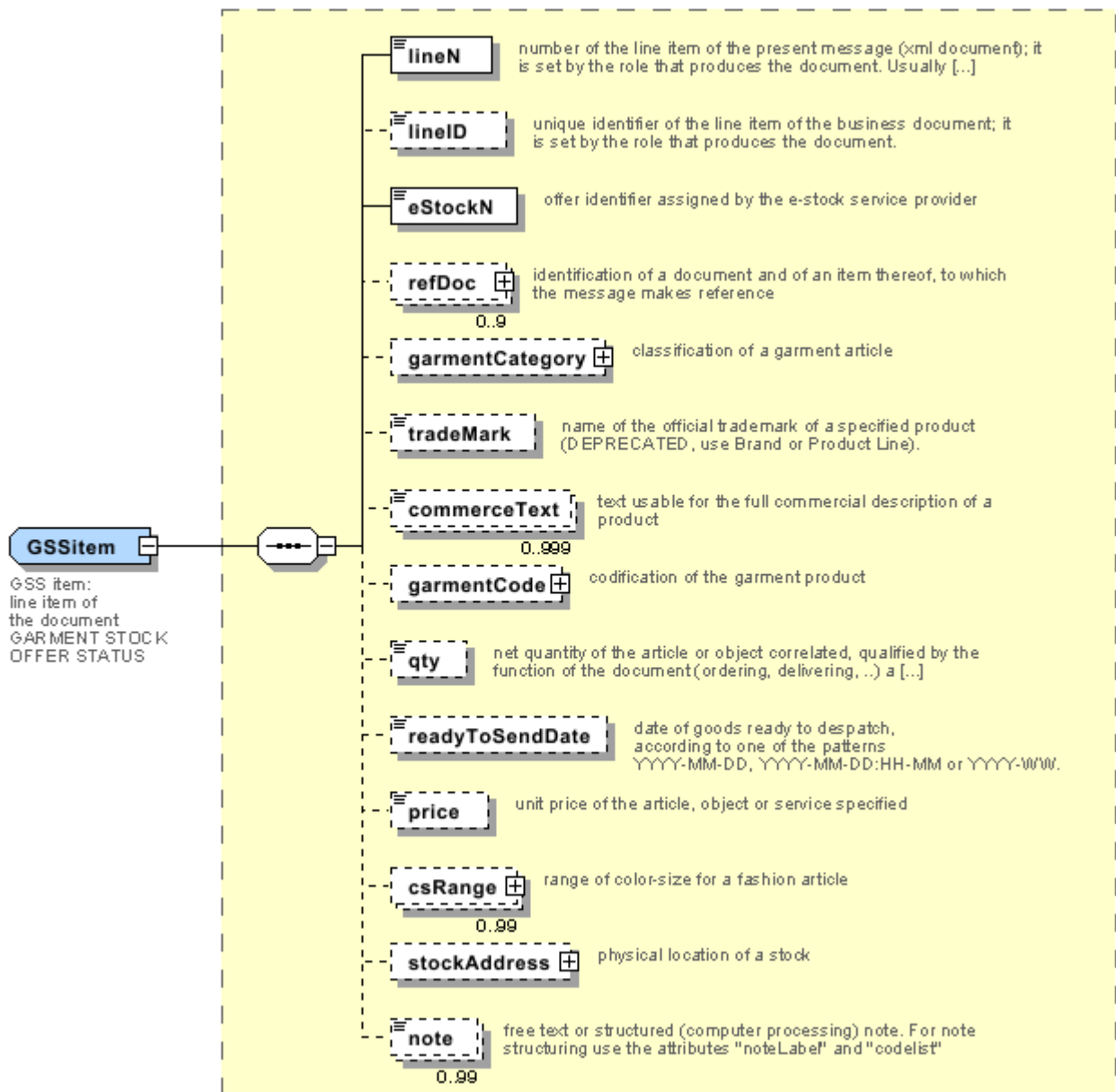
T9 - ISO4217 - Currency



# Annex A

Representative images of the principal complex elements' structure.







## Annex B

### NT100 - eBIZ TCFUpstream version

dictionary version

Agency name: eBIZ

tabella cod.: NT100

File codes list (Generic code): [http://www.ebiz.enea.it/moda-ml/repository/codelist/v2018-1/gc\\_NT100.xml](http://www.ebiz.enea.it/moda-ml/repository/codelist/v2018-1/gc_NT100.xml)

Code	Description	Adoption note	Version status	Date of insertion
2013-1	v2013-1			01/07/2013
2018-1	v2018-1		(N)	04/11/2018
draft	draft		(N)	08/09/2017

### NT16 - VAT rate or code

VAT rate or code ( DEPRECATED, use dtScheme element )

tabella cod.: NT16

File codes list (Generic code): [http://www.ebiz.enea.it/moda-ml/repository/codelist/v2018-1/gc\\_NT16.xml](http://www.ebiz.enea.it/moda-ml/repository/codelist/v2018-1/gc_NT16.xml)

### NT18 - message function

function performed by the present message with regards to the transmission

Agency name: eBIZ

tabella cod.: NT18

File codes list (Generic code): [http://www.ebiz.enea.it/moda-ml/repository/codelist/v2018-1/gc\\_NT18.xml](http://www.ebiz.enea.it/moda-ml/repository/codelist/v2018-1/gc_NT18.xml)

Code	Description	Adoption note	Version status	Date of insertion
CA	delete this document			01/07/2013
CP	copy			
OR	original			
RC	re-transmission for data correction			
RT	re-transmission			

### NT2 - third party qualifier

Third Party role qualifier



Agency name: eBIZ

tabella cod.: NT2

File codes list (Generic code): [http://www.ebiz.enea.it/moda-ml/repository/codelist/v2018-1/gc\\_NT2.xml](http://www.ebiz.enea.it/moda-ml/repository/codelist/v2018-1/gc_NT2.xml)

Code	Description	Adoption note	Version status	Date of insertion
AG	Sales Agent			
AU	Auditor		(N)	08/04/2019
CE	Certification authority		(N)	08/04/2019
CO	Quality Controller			
DC	Response to			
DF	Invoicee			
DI	Copy to (CC)			28/10/2014
DM	Consignee			
DP	Consignment address (Delivery Party)			
IM	Importer			
OR	Originator			10/09/2014
SC	Sub contractor		(N)	10/04/2019
SM	Service/ePlatform manager		(N)	08/04/2019
SP	Forwarder			
TX	Tax Representative			

#### NT20 - price qualifier

type of price with reference to discount and taxes

Agency name: eBIZ

tabella cod.: NT20

File codes list (Generic code): [http://www.ebiz.enea.it/moda-ml/repository/codelist/v2018-1/gc\\_NT20.xml](http://www.ebiz.enea.it/moda-ml/repository/codelist/v2018-1/gc_NT20.xml)

Code	Description	Adoption note	Version status	Date of insertion
GET	gross excluding taxes			
GIT	gross including taxes			
NET	net excluding taxes			
NIT	net including taxes			

#### NT29 - format of a date

format used for the date

Agency name: eBIZ

tabella cod.: NT29

File codes list (Generic code): [http://www.ebiz.enea.it/moda-ml/repository/codelist/v2018-1/gc\\_NT29.xml](http://www.ebiz.enea.it/moda-ml/repository/codelist/v2018-1/gc_NT29.xml)

Code	Description	Adoption note	Version status	Date of insertion
D	YYYY-MM-DD			
M	YYYY-MM-DD:HH-MM			
W	YYYY-WW			

### NT35 - stock offer status

status of the offer in the e-stock

Agency name: eBIZ

tabella cod.: NT35

File codes list (Generic code): [http://www.ebiz.enea.it/moda-ml/repository/codelist/v2018-1/gc\\_NT35.xml](http://www.ebiz.enea.it/moda-ml/repository/codelist/v2018-1/gc_NT35.xml)

Code	Description	Adoption note	Version status	Date of insertion
IN	loaded			
NO	not loaded			
PR	on sale			
RT	withdrawn from sale			
SC	expired			
TC	dealing terminated			
TR	dealing			
VE	sold			
WA	loaded with warning			

### NT36 - stock offer status reason

status reason of the offer in the e-stock

Agency name: eBIZ

tabella cod.: NT36

File codes list (Generic code): [http://www.ebiz.enea.it/moda-ml/repository/codelist/v2018-1/gc\\_NT36.xml](http://www.ebiz.enea.it/moda-ml/repository/codelist/v2018-1/gc_NT36.xml)

Code	Description	Adoption note	Version status	Date of insertion
UC	unsufficient credit			
UL	unrecognised location			
US	unrecognised size system			
UU	user not permitted			

### NT6 - coding system owner/issuer

code specifying the organisation who has created or owns the coding or numbering system

Agency name: eBIZ

tabella cod.: NT6

File codes list (Generic code): [http://www.ebiz.enea.it/moda-ml/repository/codelist/v2018-1/gc\\_NT6.xml](http://www.ebiz.enea.it/moda-ml/repository/codelist/v2018-1/gc_NT6.xml)

Code	Description	Adoption note	Version status	Date of insertion
CL	Customer/buyer			
CO	Quality Controller			
EB	eBIZ	replaces 'ML'	(N)	18/03/2019
EN	GS1 ( ex-EAN International )			
ES	e-Stockflow			
FO	Supplier			
GS	GS1			01/07/2013
MF	VAT identifier		(U)	
ML	Moda-ML	DEPRECATED	(U)	
SP	Service Provider			

### NT60 - language, codes from ISO 639-1 (subset) (N)

Agency name: eBIZ / ISO

tabella cod.: NT60

File codes list (Generic code): [http://www.ebiz.enea.it/moda-ml/repository/codelist/v2018-1/gc\\_NT60.xml](http://www.ebiz.enea.it/moda-ml/repository/codelist/v2018-1/gc_NT60.xml)

Code	Description	Adoption note	Version status	Date of insertion
af	Afrikaans		(N)	31/01/2019
ar	Arabic		(N)	31/01/2019
be	Belarusian		(N)	31/01/2019
bg	Bulgarian		(N)	31/01/2019

bn	Bengali		(N)	31/01/2019
bo	Tibetan		(N)	31/01/2019
bs	Bosnian		(N)	31/01/2019
ca	Catalan, Valencian		(N)	31/01/2019
cs	Czech		(N)	31/01/2019
da	Danish		(N)	31/01/2019
de	German		(N)	31/01/2019
el	Greek, Modern (1453-)		(N)	31/01/2019
en	English		(N)	31/01/2019
eo	Esperanto		(N)	31/01/2019
es	Spanish, Castilian		(N)	31/01/2019
et	Estonian		(N)	31/01/2019
eu	Basque		(N)	31/01/2019
F	Female		(N)	15/04/2019
fa	Persian		(N)	31/01/2019
fi	Finnish		(N)	31/01/2019
fr	French		(N)	31/01/2019
ga	Irish		(N)	31/01/2019
gd	Gaelic, Scottish Gaelic		(N)	31/01/2019
gn	Guarani		(N)	31/01/2019
he	Hebrew		(N)	31/01/2019
hr	Croatian		(N)	31/01/2019
ht	Haitian, Haitian Creole		(N)	31/01/2019
hu	Hungarian		(N)	31/01/2019
hy	Armenian		(N)	31/01/2019
ia	Interlingua (International Auxiliary Language Association)		(N)	31/01/2019
id	Indonesian		(N)	31/01/2019
is	Icelandic		(N)	31/01/2019
it	Italian		(N)	31/01/2019
ja	Japanese		(N)	31/01/2019
jv	Javanese		(N)	31/01/2019
ka	Georgian		(N)	31/01/2019
km	Central Khmer		(N)	31/01/2019
ko	Korean		(N)	31/01/2019
ku	Kurdish		(N)	31/01/2019

lb	Luxembourgish, Letzeburgesch		(N)	31/01/2019
lo	Lao		(N)	31/01/2019
lt	Lithuanian		(N)	31/01/2019
lv	Latvian		(N)	31/01/2019
mg	Malagasy		(N)	31/01/2019
mk	Macedonian		(N)	31/01/2019
mn	Mongolian		(N)	31/01/2019
mt	Maltese		(N)	31/01/2019
nl	Dutch, Flemish		(N)	31/01/2019
no	Norwegian		(N)	31/01/2019
pl	Polish		(N)	31/01/2019
pt	Portuguese		(N)	31/01/2019
ro	Romanian, Moldavian, Moldovan		(N)	31/01/2019
ru	Russian		(N)	31/01/2019
se	Northern Sami		(N)	31/01/2019
sk	Slovak		(N)	31/01/2019
sl	Slovenian		(N)	31/01/2019
sm	Samoan		(N)	31/01/2019
so	Somali		(N)	31/01/2019
sq	Albanian		(N)	31/01/2019
sr	Serbian		(N)	31/01/2019
sv	Swedish		(N)	31/01/2019
sw	Swahili		(N)	31/01/2019
ta	Tamil		(N)	31/01/2019
th	Thai		(N)	31/01/2019
tr	Turkish		(N)	31/01/2019
uk	Ukrainian		(N)	31/01/2019
ur	Urdu		(N)	31/01/2019
uz	Uzbek		(N)	31/01/2019
vi	Vietnamese		(N)	31/01/2019
zh	Chinese		(N)	31/01/2019

**NT7 - unit of measure** (U)

specification of the unit of measure, it is a sub set of table Unit of Measure Code - UN/ECE REC 20 delivered by United Nations Economic Commission for Europe (UN/ECE)

Agency name: eBIZ / UN/ECE

tabella cod.: NT7

File codes list (Generic code): [http://www.ebiz.enea.it/moda-ml/repository/codelist/v2018-1/gc\\_NT7.xml](http://www.ebiz.enea.it/moda-ml/repository/codelist/v2018-1/gc_NT7.xml)

Other link: <http://docs.oasis-open.org/ubl/os-UBL-2.1/cl/gc/default/UnitOfMeasureCode-2.1.gc#>

Code	Description	Adoption note	Version status	Date of insertion
CMK	square centimetre		(N)	20/12/2017
CMQ	cubic centimetre		(N)	20/12/2017
CMT	centimetre			
CNE	centiNewton			
CO2TON	ton of CO2		(N)	10/09/2014
COUPLES	couples			
DMQ	cubic decimetre			
E37	pixel		(N)	11/04/2018
GRM	gram			
HUR	hour			
INH	inch			
KGM	kilogram			
KMT	kilometer			
KWH	kilowatthours		(N)	10/09/2014
LBR	pound			
MIN	minute			
MMK	square millimetre		(N)	20/12/2017
MTK	square metre		(N)	20/12/2017
MTQ	cubic metre			
MTR	metre			
NMB	numero			
ONZ	ounce			
P1	percent			
PPM	parts per milion			
PZ	piece		(U)	
RPM	rounds per metre			
YRD	yard			

**T10 - ISO3166 - Country**

code of the nation

Agency name: ISO

tabella cod.: T10

File codes list (Generic code): [http://www.ebiz.enea.it/moda-ml/repository/codelist/v2018-1/gc\\_T10.xml](http://www.ebiz.enea.it/moda-ml/repository/codelist/v2018-1/gc_T10.xml)

Table not printed: there are 239 elements, more than the maximum specified for printing: 99.

## T21 - type of document

type or class to which the referenced document belongs

Agency name: eBIZ

tabella cod.: T21

File codes list (Generic code): [http://www.ebiz.enea.it/moda-ml/repository/codelist/v2018-1/gc\\_T21.xml](http://www.ebiz.enea.it/moda-ml/repository/codelist/v2018-1/gc_T21.xml)

Code	Description	Adoption note	Version status	Date of insertion
BOR	blanket order		(N)	01/02/2018
CAT	Price catalogue - tech sheet			
CEO	Certificate of origin		(N)	13/04/2018
CER	Certificate		(N)	13/04/2018
COC	colour card			
CRN	Credit note			08/09/2017
CTO	Checking order			01/07/2013
CTR	Contract		(U)	
CXF	CxF3 file			01/07/2013
DAD	Darn order			
DDT	ddt			
DEA	Despatch advise			
DER	Despatch request			
DR	Document Request			02/12/2014
FOR	Forecast			02/12/2014
GSO	Garment stock offer			
GSX	Garment stock offer change			
INV	Invoice			
KCC	Knitting-Clothing Commission Order			02/12/2014
KCI	Garment in Work Inventory Report			02/12/2014
M2M	Made to Measure Production Order			02/12/2014

MAS	Master marker			
MCI	Visual merchandising instruction		(N)	13/04/2018
OCH	Order change			
OFF	Offer			
ORD	Purchase order			
ORP	Order response			
OSR	order status request			
OSS	Offer status			02/12/2014
OST	Order status			
OUR	our reference			
QR	Quality Report			02/12/2014
RAI	Raw Material in Work Inventory Report			02/12/2014
RDC	Raw dyeing commission order			
RDH	Raw dyeing order change			
RDR	Raw dyeing order response			
REA	Receiving advise			
REQ	Request for Offer			
RET	Return			02/12/2014
RSC	Spinning commission order			
RSH	Spinning order change			
RSR	Spinning order response			
SCL	process sheet			
TFC	Textile dyeing-finishing commission order			
TFX	Textile Dyeing-Finishing Order Change			02/12/2014
TPC	Textile printing commission order			
TPX	Textile Printing Order Change			02/12/2014
TWI	Textile in work inventory			
VMI	visual merchandising instructions		(N)	01/02/2018
WAC	Warping commission order			
WEC	Weaving commission order			
YDC	Yarn dyeing commission order			
YDH	Yarn dyeing order change			
YDR	Yarn dyeing order response			
YTC	Twisting commission order			
YWI	Yarn in work inventory			



**T421 - size system: nationality**

nation or agency identifying the size system

Agency name: eBIZ

tabella cod.: T421

File codes list (Generic code): [http://www.ebiz.enea.it/moda-ml/repository/codelist/v2018-1/gc\\_T421.xml](http://www.ebiz.enea.it/moda-ml/repository/codelist/v2018-1/gc_T421.xml)

Code	Description	Adoption note	Version status	Date of insertion
DE	Germany			
ES	Spain			
EU	Europe			
FR	France			
IT	Italy			
UK	United Kingdom			
US	USA			
XX	International			

**T422 - size system: market segment**

market segment identifying the size system

Agency name: eBIZ

tabella cod.: T422

File codes list (Generic code): [http://www.ebiz.enea.it/moda-ml/repository/codelist/v2018-1/gc\\_T422.xml](http://www.ebiz.enea.it/moda-ml/repository/codelist/v2018-1/gc_T422.xml)

Code	Description	Adoption note	Version status	Date of insertion
B	baby			
C	child			
K	kid			
M	man			
U	unisex			
W	woman			

**T423 - size system: base**

base of the size system

Agency name: eBIZ

tabella cod.: T423

File codes list (Generic code): [http://www.ebiz.enea.it/moda-ml/repository/codelist/v2018-1/gc\\_T423.xml](http://www.ebiz.enea.it/moda-ml/repository/codelist/v2018-1/gc_T423.xml)

Code	Description	Adoption note	Version status	Date of insertion
1	arab numbers			
2	latin numbers			
3	symbols			
4	letters			
H	height			
L	length			
U	unic			
W	weight			

#### T44 - additional code type

qualifier of the additional coding of a product

Agency name: eBIZ

tabella cod.: T44

File codes list (Generic code): [http://www.ebiz.enea.it/moda-ml/repository/codelist/v2018-1/gc\\_T44.xml](http://www.ebiz.enea.it/moda-ml/repository/codelist/v2018-1/gc_T44.xml)

Code	Description	Adoption note	Version status	Date of insertion
CC	colour card			
CL	sales collection			
CO	company identification code		(N)	08/09/2017
DY	dye number			
LT	lot number			
MDI	Made in			08/09/2017
MS	manufacturing state			
PKG	packaging			09/09/2014
PL	product line			
RGB	RGB value			
SE	selvedge code			

#### T9 - ISO4217 - Currency

currency code

Agency name: ISO

tabella cod.: T9

File codes list (Generic code): [http://www.ebiz.enea.it/moda-ml/repository/codelist/v2018-1/gc\\_T9.xml](http://www.ebiz.enea.it/moda-ml/repository/codelist/v2018-1/gc_T9.xml)

Table not printed: there are 205 elements, more than the maximum specified for printing: 99.

## Annex C

### New or changed elements towards previous version

Changes or added elements (changes in description excluded; changes in aggregation notes and best practice included): 149

Test Type	Tag	Status	Item type	Changes related to
Attribute	additionalIdentifier	NEW	Additional Party Identifier	Has NEW attribute: numbering organisation code
Attribute	additionalIdentifier	NEW	Additional Party Identifier	Has NEW attribute: id Qualifier
Element(l)	additionalComponentCode	NEW	component Code	
Element(l)	additionalIdentifier	NEW	Additional Party Identifier	
Element(E)	art	UPDATE	article identifier	Property: Length_Max Old value: 25 New value: 80
Attribute	art	UPDATE	article identifier	Its attribute: code list reference  Property: Aggregation Note_English Old value: <i>this attribute should be ALTERNATIVE to the others</i> New value: <i>at least one out of this attribute and "numberingOrg" should be set</i>
Element(l)	attachment	NEW	attachment	
Child	attachment	NEW	attachment	Has NEW child of: file name
Child	attachment	NEW	attachment	Has NEW child of: external reference
Child	attachment	NEW	attachment	Has NEW child of: binary object
Attribute	binaryObject	NEW	binary object	Has NEW attribute: encoding
Attribute	binaryObject	NEW	binary object	Has NEW attribute: mime
Attribute	binaryObject	NEW	binary object	Has NEW attribute: format
Attribute	binaryObject	NEW	binary object	Has NEW attribute: character set

Element(l)	binaryObject	NEW	binary object	
Child	buyer	NEW	Buyer (*)	Has NEW child of: Party identifier
Child	buyer	NEW	Buyer (*)	Has NEW child of: Additional Party Identifier
Attribute	buyer	NEW	Buyer (*)	Has NEW attribute: sender Party qualifier
Element(l)	characterSetCode	NEW	character set code	
Element(l)	characterSet	NEW	character set	
Attribute	subClass	NEW	class identifier	Has NEW attribute: code list name
Attribute	class	NEW	class identifier	Has NEW attribute: code list reference
Attribute	macroClass	NEW	class identifier	Has NEW attribute: code list name
Attribute	subClass	NEW	class identifier	Has NEW attribute: code list version
Attribute	class	NEW	class identifier	Has NEW attribute: code list version
Attribute	subClass	NEW	class identifier	Has NEW attribute: code list reference
Attribute	macroClass	NEW	class identifier	Has NEW attribute: numbering organisation code
Attribute	class	NEW	class identifier	Has NEW attribute: numbering organisation code
Attribute	subClass	NEW	class identifier	Has NEW attribute: numbering organisation code
Attribute	class	NEW	class identifier	Has NEW attribute: code list name
Attribute	macroClass	NEW	class identifier	Has NEW attribute: code list reference
Attribute	macroClass	NEW	class identifier	Has NEW attribute: code list version
Element(l)	class	NEW	class identifier	
Child	csRange	NEW	color-size range	Has NEW child of: garment variant
Child	csRange	NEW	color-size range	Has NEW child of: drop identifier
Child	csRange	UPDATED	color-size range	relationship with child: articles colour identifier  Property: Aggregation Note_English

				Old value: New value: <i>used only if not already specified in the article code</i>
Attrib	commerce Text	NEW	commercial text	Has NEW attribute: In
Attrib	additional Component Code	NEW	component Code	Has NEW attribute: code list reference
Attrib	additional Component Code	NEW	component Code	Has NEW attribute: numbering organisation code
Attrib	additional Component Code	NEW	component Code	Has NEW attribute: code list version
Attrib	additional Component Code	NEW	component Code	Has NEW attribute: code list name
Attrib	description	NEW	description	Has NEW attribute: In
Element(E)	description	UPDATED	description	Property: Length_Max Old value: 70 New value: 250
Attrib	drop	NEW	drop identifier	Has NEW attribute: numbering organisation code
Attrib	drop	NEW	drop identifier	Has NEW attribute: code list name
Attrib	drop	NEW	drop identifier	Has NEW attribute: code list version
Element(E)	email	UPDATED	e-mail	Property: Length_Max Old value: 80 New value: 250
Element(I)	encoding Code	NEW	encoding code	
Element(I)	encoding	NEW	encoding	
Child	externalReference	NEW	external reference	Has NEW child of: uri
Child	externalReference	NEW	external reference	Has NEW child of: format code
Child	externalReference	NEW	external reference	Has NEW child of: character set code
Child	externalReference	NEW	external reference	Has NEW child of: mime code
Child	externalReference	NEW	external reference	Has NEW child of: encoding code
Element(I)	externalReference	NEW	external reference	

Attrib	fabric	UPDATE	fabric identifier	<p>Its attribute: code list reference</p> <p>Property: Aggregation Note_English Old value: <i>this attribute should be ALTERNATIVE to the others</i> New value: <i>at least one out of this attribute and "numberingOrg" should be set</i></p>
Attrib	fileName	NEW	file name	Has NEW attribute: numbering organisation code
Elem(l)	fileName	NEW	file name	
Elem(l)	formatCode	NEW	format code	
Elem(l)	format	NEW	format	
Child	garmentCategory	NEW	garment classification	Has NEW child of: general note
Child	garmentCategory	NEW	garment classification	Has NEW child of: goods Classification
Child	garmentCategory	UPDATE	garment classification	<p>relationship with child: group identifier</p> <p>Property: Cardmin Old value: 1 New value: 0</p>
Child	garmentCategory	UPDATE	garment classification	<p>relationship with child: sex identifier</p> <p>Property: Cardmin Old value: 1 New value: 0</p>
Child	garmentCategory	UPDATE	garment classification	<p>relationship with child: sub-group identifier</p> <p>Property: Cardmin Old value: 1 New value: 0</p>
Child	garmentCodeA	UPDATE	garment code A	<p>relationship with child: description</p> <p>Property: Cardmax Old value: 1 New value: 999</p>
Child	garmentCodeA	UPDATE	garment code A	<p>relationship with child: description</p> <p>Property: Aggregation Note_English Old value: New value: <i>Product description</i></p>

Child	garmentCodeB	NEW	garment code B	Has NEW child of: drop identifier
Child	garmentCodeB	NEW	garment code B	Has NEW child of: garment variant
Child	garmentCodeB	UPDATED	garment code B	relationship with child: description  Property: Aggregation Note_English Old value: New value: <i>Product description</i>
Child	garmentCodeB	UPDATED	garment code B	relationship with child: description  Property: Cardmax Old value: 1 New value: 999
Child	garmentVariant	NEW	garment variant	Has NEW child of: variant code
Child	garmentVariant	NEW	garment variant	Has NEW child of: variant type
Element(l)	garmentVariant	NEW	garment variant	
Attribute	note	UPDATED	general note	Its attribute: numbering organisation code  Property: Aggregation Note_English Old value: New value: <i>must be used to specify the organization that created the list of codes used in "noteLabel"</i>
Child	goodsClassification	NEW	goods Classification	Has NEW child of: class identifier
Child	goodsClassification	NEW	goods Classification	Has NEW child of: class identifier
Child	goodsClassification	NEW	goods Classification	Has NEW child of: class identifier
Element(l)	goodsClassification	NEW	goods Classification	
Attribute	artGroup	UPDATED	group identifier	Its attribute: code list reference  Property: Aggregation Note_English Old value: <i>this attribute should be ALTERNATIVE to the others</i> New value: <i>at least one out of this attribute and "numberingOrg" should be set</i>
Child	GSOheader	NEW	GSO header	Has NEW child of: general note
Child	GSOheader	NEW	GSO header	Has NEW child of: Third Party
Child	GSSitem	NEW	GSS item	Has NEW child of: line identifier



Child	GSSitem	NEW	GSS item	Has NEW child of: ready to send date
Child	GSSitem	UPDATED	GSS item	relationship with child: commercial text  Property: Aggregation Note_English Old value: New value: <i>Only one instance of this element for each different value of In attribute (language)</i>
Child	GSSitem	UPDATED	GSS item	relationship with child: commercial text  Property: Cardmax Old value: 1 New value: 999
Child	GSSitem	UPDATED	GSS item	relationship with child: reference document details  Property: Cardmax Old value: 1 New value: 9
Child	GSSitem	UPDATED	GSS item	relationship with child: general note  Property: Cardmax Old value: 19 New value: 99
Element(l)	idQualifier	NEW	id Qualifier	
Element(l)	isURL	NEW	is URL	
Child	itemIdentification	NEW	item identification	Has NEW child of: serial number
Element(l)	itemIdentification	NEW	item identification	
Child	itemsList	NEW	items list	Has NEW child of: quality level
Child	itemsList	NEW	items list	Has NEW child of: item identification
Element(l)	itemsList	NEW	items list	
Element(E)	legalName	UPDATED	Legal name	Property: Length_Max Old value: 80 New value: 250
Element(E)	itemID	UPDATED	line item number	Property: Length_Max Old value: 6 New value: 40
Attribute	lineN	UPDATED	line number	Its attribute: VAT rate  Property: Aggregation Note_English

				Old value: New value: <i>Deprecated, prefer dtScheme when available.</i>
Element(l)	lineID	NEW	line identifier	
Element(l)	In	NEW	In	
Element(l)	macroClass	NEW	class identifier	
Element(l)	mimeCode	NEW	mime code	
Element(l)	mime	NEW	mime	
Attribute	mod	UPDATED	model identifier	Its attribute: code list reference  Property: Aggregation Note_English Old value: <i>this attribute should be ALTERNATIVE to the others</i> New value: <i>at least one out of this attribute and "numberingOrg" should be set</i>
Attribute	mod	UPDATED	model identifier	Its attribute: numbering organisation code  Property: Aggregation Note_English Old value: <i>this attribute should be ALTERNATIVE to the others</i> New value:
Attribute	qualityLevel	NEW	quality level	Has NEW attribute: numbering organisation code
Attribute	qualityLevel	NEW	quality level	Has NEW attribute: code list reference
Attribute	qualityLevel	NEW	quality level	Has NEW attribute: code list version
Attribute	qualityLevel	NEW	quality level	Has NEW attribute: code list name
Element(l)	qualityLevel	NEW	quality level	
Attribute	readyToS endDate	NEW	ready to s end date	Has NEW attribute: date format
Element(l)	readyToS endDate	NEW	ready to s end date	
Child	refDoc	NEW	reference document details	Has NEW child of: attachment
Child	refDoc	UPDATED	reference document details	relationship with child: document identifier  Property: BestPractice_English Old value: New value: <i>numberingOrg indicates the role that produced the document identifier (it is allowed to declare two different ones -e.g. customer and supplier - with two docID with different numberingOrg</i>

Attrib	season	NEW	season identifier	Has NEW attribute: code list reference
Attrib	season	NEW	season identifier	Has NEW attribute: numbering organisation code
Attrib	season	NEW	season identifier	Has NEW attribute: code list name
Attrib	season	NEW	season identifier	Has NEW attribute: code list version
Attrib	serialN	NEW	serial number	Has NEW attribute: id Qualifier
Element(E)	serialN	UPDATED	serial number	Property: Length_Max Old value: 15 New value: 250
Attrib	artSex	UPDATED	sex identifier	Its attribute: code list reference  Property: Aggregation Note_English Old value: <i>this attribute should be ALTERNATIVE to the others</i> New value: <i>at least one out of this attribute and "numberingOrg" should be set</i>
Attrib	size	NEW	size identifier	Has NEW attribute: numbering organisation code
Attrib	size	NEW	size identifier	Has NEW attribute: code list name
Attrib	size	NEW	size identifier	Has NEW attribute: code list version
Child	sizeRow	NEW	size row	Has NEW child of: items list
Child	sizeRow	NEW	size row	Has NEW child of: component Code
Child	sizeRow	UPDATED	size row	relationship with child: drop identifier  Property: Aggregation Note_English Old value: New value: <i>DEPRECATED, anyhow it is used only if not already specified in the article code or csRange</i>
Element(I)	subClass	NEW	class identifier	
Element(I)	subDept	NEW	department identifier	
Attrib	artSubGroup	UPDATED	sub-group identifier	Its attribute: code list reference  Property: Aggregation Note_English Old value: <i>this attribute should be ALTERNATIVE to the others</i> New value: <i>at least one out of this attribute and "numberingOrg" should be set</i>

Child	supplier	NEW	Supplier (*)	Has NEW child of: Party identifier
Child	supplier	NEW	Supplier (*)	Has NEW child of: Additional Party Identifier
Attribute	supplier	NEW	Supplier (*)	Has NEW attribute: sender Party qualifier
Child	thirdParty	NEW	Third Party (*)	Has NEW child of: Party identifier
Attribute	thirdParty	NEW	Third Party (*)	Has NEW attribute: sender Party qualifier
Attribute	price	NEW	unit price amount	Has NEW attribute: data currency
Element( E)	price	UPDATED	unit price amount	Property: Digits_Dec Old value: 2 New value: 4
Attribute	uri	NEW	uri	Has NEW attribute: is URL
Element(l)	uri	NEW	uri	
Attribute	variantCode	NEW	variant code	Has NEW attribute: code list version
Attribute	variantCode	NEW	variant code	Has NEW attribute: code list name
Attribute	variantCode	NEW	variant code	Has NEW attribute: numbering organisation code
Attribute	variantCode	NEW	variant code	Has NEW attribute: code list reference
Attribute	variantType	NEW	variant type	Has NEW attribute: code list reference
Attribute	variantType	NEW	variant type	Has NEW attribute: code list version
Attribute	variantType	NEW	variant type	Has NEW attribute: code list name
Attribute	variantType	NEW	variant type	Has NEW attribute: numbering organisation code
Element(l)	variantCode	NEW	variant code	
Element(l)	variantType	NEW	variant type	

## Annex D

### New or changed tables and codes towards previous version

Changes or added items (changes in CodeListAgencyName excluded; changes in adoption notes and code description included): 97

Test Type	Status	Table code	Table description	Code	Change description
Table	UPD ATED	NT 100	eBIZ TCFUpstream version		Description_English Old value: <i>eBIZ Moda-ML version</i> New value: <i>eBIZ TCFUpstream version</i>
Code	NEW	NT 100		2018-1 (v2018-1)	
Code	NEW	NT 100		draft (draft)	
Table	UPD ATED	NT 16	VAT rate or code		Generalities Old value: <i>VAT rate or code ( deprecated , use dtScheme element )</i> New value: <i>VAT rate or code ( DEPRECATED, use dtScheme element )</i>
Code	NEW	NT 2		AU (Auditor)	
Code	NEW	NT 2		CE (Certification authority)	
Code	NEW	NT 2		SC (Sub contractor)	
Code	NEW	NT 2		SM (Service/ePlatform manager)	
Code	NEW	NT 6		EB (eBIZ)	
Code	UPD ATED	NT 6		ML (DEPRECATED)	adoption_note Old value: New value: <i>DEPRECATED</i>
Table	NEW	NT 60	language, codes from ISO 639-1 (subset)		
Code	NEW	NT 60		F (Female)	
Code	NEW	NT 60		af (Afrikaans)	
Code	NEW	NT 60		ar (Arabic)	
Code	NEW	NT 60		be (Belarusian)	

Co de	NEW	NT 60		<i>bg</i> (Bulgarian)	
Co de	NEW	NT 60		<i>bn</i> (Bengali)	
Co de	NEW	NT 60		<i>bo</i> (Tibetan)	
Co de	NEW	NT 60		<i>bs</i> (Bosnian)	
Co de	NEW	NT 60		<i>ca</i> (Catalan, Valencian)	
Co de	NEW	NT 60		<i>cs</i> (Czech)	
Co de	NEW	NT 60		<i>da</i> (Danish)	
Co de	NEW	NT 60		<i>de</i> (German)	
Co de	NEW	NT 60		<i>el</i> (Greek, Modern (1453-))	
Co de	NEW	NT 60		<i>en</i> (English)	
Co de	NEW	NT 60		<i>eo</i> (Esperanto)	
Co de	NEW	NT 60		<i>es</i> (Spanish, Castilian)	
Co de	NEW	NT 60		<i>et</i> (Estonian)	
Co de	NEW	NT 60		<i>eu</i> (Basque)	
Co de	NEW	NT 60		<i>fa</i> (Persian)	
Co de	NEW	NT 60		<i>fi</i> (Finnish)	
Co de	NEW	NT 60		<i>fr</i> (French)	
Co de	NEW	NT 60		<i>ga</i> (Irish)	
Co de	NEW	NT 60		<i>gd</i> (Gaelic, Scottish Gaelic)	
Co de	NEW	NT 60		<i>gn</i> (Guarani)	
Co de	NEW	NT 60		<i>he</i> (Hebrew)	
Co de	NEW	NT 60		<i>hr</i> (Croatian)	

Co de	NEW	NT 60		<i>ht</i> (Haitian, Haitian Creole)	
Co de	NEW	NT 60		<i>hu</i> (Hungarian)	
Co de	NEW	NT 60		<i>hy</i> (Armenian)	
Co de	NEW	NT 60		<i>ia</i> (Interlingua (International Auxiliary Language Assoc iation))	
Co de	NEW	NT 60		<i>id</i> (Indonesian)	
Co de	NEW	NT 60		<i>is</i> (Icelandic)	
Co de	NEW	NT 60		<i>it</i> (Italian)	
Co de	NEW	NT 60		<i>ja</i> (Japanese)	
Co de	NEW	NT 60		<i>ju</i> (Javanese)	
Co de	NEW	NT 60		<i>ka</i> (Georgian)	
Co de	NEW	NT 60		<i>km</i> (Central Khmer)	
Co de	NEW	NT 60		<i>ko</i> (Korean)	
Co de	NEW	NT 60		<i>ku</i> (Kurdish)	
Co de	NEW	NT 60		<i>lb</i> (Luxembourgish, Letzebu rgesch)	
Co de	NEW	NT 60		<i>lo</i> (Lao)	
Co de	NEW	NT 60		<i>lt</i> (Lithuanian)	
Co de	NEW	NT 60		<i>lv</i> (Latvian)	
Co de	NEW	NT 60		<i>mg</i> (Malagasy)	
Co de	NEW	NT 60		<i>mk</i> (Macedonian)	
Co de	NEW	NT 60		<i>mn</i> (Mongolian)	
Co de	NEW	NT 60		<i>mt</i> (Maltese)	

Co de	NEW	NT 60		<i>nl</i> (Dutch, Flemish)	
Co de	NEW	NT 60		<i>no</i> (Norwegian)	
Co de	NEW	NT 60		<i>pl</i> (Polish)	
Co de	NEW	NT 60		<i>pt</i> (Portuguese)	
Co de	NEW	NT 60		<i>ro</i> (Romanian, Moldavian, M oldovan)	
Co de	NEW	NT 60		<i>ru</i> (Russian)	
Co de	NEW	NT 60		<i>se</i> (Northern Sami)	
Co de	NEW	NT 60		<i>sk</i> (Slovak)	
Co de	NEW	NT 60		<i>sl</i> (Slovenian)	
Co de	NEW	NT 60		<i>sm</i> (Samoan)	
Co de	NEW	NT 60		<i>so</i> (Somali)	
Co de	NEW	NT 60		<i>sq</i> (Albanian)	
Co de	NEW	NT 60		<i>sr</i> (Serbian)	
Co de	NEW	NT 60		<i>sv</i> (Swedish)	
Co de	NEW	NT 60		<i>sw</i> (Swahili)	
Co de	NEW	NT 60		<i>ta</i> (Tamil)	
Co de	NEW	NT 60		<i>th</i> (Thai)	
Co de	NEW	NT 60		<i>tr</i> (Turkish)	
Co de	NEW	NT 60		<i>uk</i> (Ukrainian)	
Co de	NEW	NT 60		<i>ur</i> (Urdu)	
Co de	NEW	NT 60		<i>uz</i> (Uzbek)	
Co de	NEW	NT 60		<i>vi</i> (Vietnamese)	



Code	NEW	NT60		zh (Chinese)	
Code	NEW	NT7		CMK (square centimetre)	
Code	NEW	NT7		CMQ (cubic centimetre)	
Code	NEW	NT7		E37 (pixel)	
Code	NEW	NT7		KWH (kilowatthours)	
Code	NEW	NT7		MMK (square millimetre)	
Code	NEW	NT7		MTK (square metre)	
Code	NEW	NT7		CO2TON (ton of CO2)	
Table	UPDATED	NT7	unit of measure		OtherExternalReferenceURL Old value: New value: <a href="http://docs.oasis-open.org/ubl/os-UBL-2.1/cl/gc/default/UnitOfMeasureCode-2.1.gc#">#http://docs.oasis-open.org/ubl/os-UBL-2.1/cl/gc/default/UnitOfMeasureCode-2.1.gc#</a>
Table	UPDATED	NT7	unit of measure		Description_English Old value: <i>unity of measure</i> New value: <i>unit of measure</i>
Code	NEW	T21		BOR (blanket order)	
Code	NEW	T21		CEO (Certificate of origin)	
Code	NEW	T21		CER (Certificate)	
Code	UPDATED	T21		CTR (Contract)	Text_English Old value: <i>contract</i> New value: <i>Contract</i>
Code	NEW	T21		MCI (Visual merchandising instruction)	
Code	NEW	T21		VMI (visual merchandising instructions)	
Code	NEW	T44		CO (company identification code)	