



<http://www.ebiz-tcf.eu>

IMPLEMENTATION GUIDE

includes COMPARISON BETWEEN CURRENT and LAST
PREVIOUSLY RELEASED VERSION

TRANSACTION "YARN OFFER REQUEST"

Version: v2018-1

Date of release: 18/7/2019

Document code: G073rv

technical Documentation: <http://www.ebiz.enea.it>

XML Schemas repository: <http://www.ebiz.enea.it/moda-ml/repository/schema/v2018-1/default.asp>

Guides repository: <http://www.ebiz.enea.it/moda-ml/repository/guide/v2018-1/default.asp>

Guide filename: G073rv-eBIZ-YarnOfferRequest.pdf

1. BUSINESS DESCRIPTION

1.1 Scope

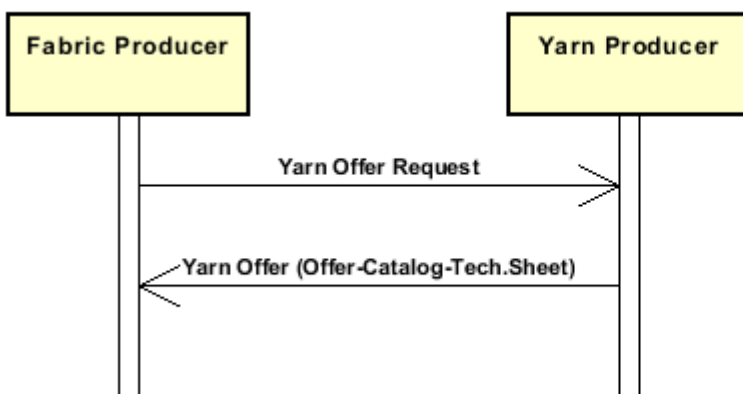
the Fabric or Kintwear Manufacturer sends this enquiry to the Yarn Producer about the kind of yarn he needs, by specifying a selection of manufacturing characteristics and mechanical-physical-chemical properties with the desired values of the ad-hoc parameters.

1.2 Generalities

The Fabric or Knitwear Producer sends this enquiry to the Yarn Producer about the kind of yarn he needs, by specifying a selection of manufacturing characteristics and mechanical-physical-chemical properties with the desired values of the ad-hoc parameters.

1.3. Possible scenario

Selection of yarns



2. IMPLEMENTATION GUIDE

2.1 General structure of XML document

All the business data that can be exchanged through this class of documents are shown in the following "document structure", that provides a simplified vision of the Schema.

In particular:

- the two numbers following each element define its "cardinality" (minimum and maximum number of occurrences); the minimum equal zero indicates that the element is optional, the minimum greater than zero indicates that is mandatory;
- the bold character denotes the complex elements (aggregates of simple elements) that were built for the sake of functionality and re-usability of some complex informations sets. The child elements in each parent element are easily spotted as "indented";
- the symbol "@" denotes an attribute of the preceding element; here "the usage indicator (optional, required, ...)" is shown in square brackets.

Legenda

- N: new element
- U: updated properties
- P: changes in children
- p: is a changed child
- A: changes in attributes
- a: is a new or changed attribute
- *: is a subtype

Structure

```
YARNOfferRequest (P)
@msgfunction [Optional]
@version [Optional] [Default= 2018-1]
@useProfile [Optional]
| RQheader 1-1 (P)
| | msgN 1-1
| | - choose -
| | msgID 0-1
| | - or -
| | docID 0-1
| | @numberingOrg [Optional]
| | - end choose -
| | msgDate 1-1
| | @dateForm [Optional]
| | season 0-1 (A)
| | @numberingOrg [Optional] (a)
| | @codeList [Optional] (a)
| | @listName [Optional] (a)
| | @listVersion [Optional] (a)
| | validityStart 0-1
| | @dateForm [Optional]
| | validityEnd 1-1
| | @dateForm [Optional]
| | refDoc 0-9 (P)
| | @docType [Required]
| | | docID 1-2 (p)
| | | @numberingOrg [Optional]
| | | docDate 0-1
| | | @dateForm [Optional]
| | | season 0-1 (A)
```

- | | | @numberingOrg [Optional] (a)
- | | | @codeList [Optional] (a)
- | | | @listName [Optional] (a)
- | | | @listVersion [Optional] (a)
- | | | itemID 0-1 (U)
- | | | **attachment 0-1 (N)**
- | | | | @uid [Optional]
- | | | | | fileName 0-1 (N)
- | | | | | @numberingOrg [Optional]
- | | | | | binaryObject 0-1 (N)
- | | | | | @format [Optional] (N)
- | | | | | @mime [Optional] (N)
- | | | | | @encoding [Optional] (N)
- | | | | | @characterSet [Optional] (N)
- | | | | **externalReference 0-99 (N)**
- | | | | | uri 1-1 (N)
- | | | | | | @isURL [Optional] [Default= true] (Na)
- | | | | | | mimeTypeCode 0-1 (N)
- | | | | | | formatCode 0-1 (N)
- | | | | | | encodingCode 0-1 (N)
- | | | | | | characterSetCode 0-1 (N)

| **buyer 1-1 (AP)**

- | | @logo [Optional]
- | | @sender [Optional] (a*)
- | | | id 1-1 (p)
- | | | | @numberingOrg [Optional]
- | | | | additionalIdentifier 0-9 (N)
- | | | | | @numberingOrg [Optional] (a)
- | | | | | @idQualifier [Optional] (Na)
- | | | | legalName 0-1 (U)
- | | | | dept 0-1
- | | | | | subDept 0-1 (N)
- | | | | | person 0-1
- | | | | | | @email [Optional]
- | | | | | | @phone [Optional]
- | | | | | | @fax [Optional]
- | | | | | street 0-1
- | | | | | city 0-1
- | | | | | subCountry 0-1
- | | | | | country 0-1
- | | | | | postCode 0-1

- choose -

| **supplier 0-1 (AP)**

- | | @logo [Optional]
- | | @sender [Optional] (a*)
- | | | id 1-1
- | | | | @numberingOrg [Optional]
- | | | | additionalIdentifier 0-9 (N)
- | | | | | @numberingOrg [Optional] (a)
- | | | | | @idQualifier [Optional] (Na)
- | | | | legalName 0-1 (U)
- | | | | dept 0-1
- | | | | | subDept 0-1 (N)
- | | | | | person 0-1
- | | | | | | @email [Optional]
- | | | | | | @phone [Optional]
- | | | | | | @fax [Optional]
- | | | | | street 0-1
- | | | | | city 0-1
- | | | | | subCountry 0-1
- | | | | | country 0-1

```

| | | postCode 0-1
- or -
| | subContractor 0-1 (AP)
| | @sender [Optional] (a*)
| | | id 1-1
| | | @numberingOrg [Optional]
| | | legalName 0-1 (U)
| | | dept 0-1
| | | subDept 0-1 (N)
| | | person 0-1
| | | @email [Optional]
| | | @phone [Optional]
| | | @fax [Optional]
| | | street 0-1
| | | city 0-1
| | | subCountry 0-1
| | | country 0-1
| | | postCode 0-1

```

- end choose -

```

| | thirdParty 0-5 (AP)
| | @VAT [Optional]
| | @role [Required]
| | @sender [Optional] (a*)
| | | id 1-1
| | | @numberingOrg [Optional]
| | | legalName 0-1 (U)
| | | dept 0-1
| | | subDept 0-1 (N)
| | | person 0-1
| | | @email [Optional]
| | | @phone [Optional]
| | | @fax [Optional]
| | | street 0-1
| | | city 0-1
| | | subCountry 0-1
| | | country 0-1
| | | postCode 0-1
| | note 0-99
| | @numberingOrg [Optional]
| | @codeList [Optional]
| | @noteLabel [Optional]

```

| **terms 0-1** (P)

```

| | payment 0-5
| | @finDiscount [Optional]
| | @finSurcharge [Optional]
| | - choose -
| | | payTerm 1-1
| | | - or -
| | | | payTermText 1-1 (U)
| | | - end choose -
| | | | payMode 0-1
| | insPayment 0-5
| | @part [Required]
| | - choose -
| | | payTerm 1-1
| | | - or -
| | | | payTermText 1-1 (U)
| | | - end choose -
| | | | payMode 0-1
| | trade 0-1

```

```

- choose -
| | | incoTermText 1-1 (U)
- or -
| | | incoTerm 1-1
- end choose -
| | | location 0-1
| | | @LRI [Optional]
| | transInfo 0-5 (pAP)
| | | @transReason [Optional]
| | | @progr [Optional] (N)
| | | | transMode 1-1
| | | | carrier 0-1
| | | | deliveryPlace 0-1 (U)
| | | | grossWeight 0-1
| | | | | @um [Required]
| | | | netWeight 0-1
| | | | | @um [Required]
| | | | transMeans 0-1
| | | | transCondition 0-3
| | | | transConditionText 0-1 (U)
| | | | despatchPlace 0-1 (N)
| | | | despatchDate 0-1 (N)
| | | | | @dateForm [Optional] (a)
| | | | delEffectiveDate 0-1 (p)
| | | | | @dateForm [Optional]
| | | allowanceCharge 0-9 (A)
| | | | @um [Optional] (a)
| | | | @VAT [Optional]
| | | | @minQty [Optional] (a)
| | | | @currency [Optional] (a)
| | | | @maxQty [Optional] (N)
| | | | @isCharge [Optional] (N)
- choose -
| | | | AC_category 1-1
- or -
| | | | AC_categoryText 1-1 (U)
- end choose -
- choose -
| | | | AC_percent 1-1
- or -
| | | | AC_amount 1-1 (A)
| | | | | @currency [Optional] (a)
- end choose -
| | | | dtScheme 0-1 (P)
| | | | | @taxType [Required]
| | | | | taxCategory 0-1
| | | | | taxRate 0-1
| | | | | legalRef 0-1 (A)
| | | | | | @numberingOrg [Optional]
| | | | | | @codeList [Optional]
| | | | | | @listName [Optional]
| | | | | | @listVersion [Optional]
| | | | | note 0-99
| | | | | | @numberingOrg [Optional]
| | | | | | @codeList [Optional]
| | | | | | @noteLabel [Optional]
| | yarnTecSheet 1-unbounded (Pp)
| | | refDoc 0-9 (P)
| | | | @docType [Required]
| | | | docID 1-2 (p)

```

- | @numberingOrg [Optional]
- | docDate 0-1
- | @dateForm [Optional]
- | season 0-1 (A)
- | @numberingOrg [Optional] (a)
- | @codeList [Optional] (a)
- | @listName [Optional] (a)
- | @listVersion [Optional] (a)
- | itemID 0-1 (U)
- | **attachment 0-1 (N)**
- | @uid [Optional]
 - | fileName 0-1 (N)
 - | @numberingOrg [Optional]
 - | binaryObject 0-1 (N)
 - | @format [Optional] (N)
 - | @mime [Optional] (N)
 - | @encoding [Optional] (N)
 - | @characterSet [Optional] (N)
 - | **externalReference 0-99 (N)**
 - | uri 1-1 (N)
 - | @isURL [Optional] [Default= true] (Na)
 - | mimeTypeCode 0-1 (N)
 - | formatCode 0-1 (N)
 - | encodingCode 0-1 (N)
 - | characterSetCode 0-1 (N)

yarnIdentity 0-1 (P)

- | yarnNameSupplier 1-1 (U)
- | yarnNameBuyer 0-1 (U)
- | tradeMark 0-1
- | season 0-1 (A)
- | @numberingOrg [Optional] (a)
- | @codeList [Optional] (a)
- | @listName [Optional] (a)
- | @listVersion [Optional] (a)

yarnCompos 0-1

- | percCompos 1-9
- | @fibre [Required]

fibrePD 0-9

- | @fibre [Required]
 - | length 0-1
 - | @um [Required]
 - | diameter 0-1
 - | @um [Optional]
 - | country 0-1

yarnClass 0-1

yarnKind 0-1

yarnCount 0-1

@countSystem [Required]

@CV [Optional]

yarnTwist 0-1

- | twistDirection 1-1
- | qty 0-1
- | @um [Required]

moistRegain 0-1

yarnCode 0-2 (P)

@numberingOrg [Optional] [Default= CL]

- | art 1-1 (U)
- | @numberingOrg [Optional]
- | @codeList [Optional]
- | @listName [Optional]
- | @listVersion [Optional]

- | color 0-1
 - | @numberingOrg [Optional]
 - | @codeList [Optional]
 - | @listName [Optional]
 - | @listVersion [Optional]
- | added 0-9
 - | @numberingOrg [Optional]
 - | @addType [Optional]
- | description 0-unbounded (AU)
 - | @ln [Optional] (N)
- customsStat 0-1
- yarnComWeight 0-1
 - | @um [Required]
- standardPack 0-1
 - | @reelType [Optional]
- yarnReelQty 0-1
 - | @um [Required]
- minLot 0-1
 - | @um [Required]
- minLotExclusive 0-1
 - | @um [Required]
- optLot 0-9
 - | @um [Optional]
- avgDeliveryDD 0-1
- lotN 0-1
 - | @numberingOrg [Optional]
- dyeN 0-1
 - | @numberingOrg [Optional]
- price 0-2 (AU)
 - | @um [Optional]
 - | @priceQualifier [Optional] [Default= NET]
 - | @currency [Optional] (a)
- extendedDescription 0-unbounded (N)
 - | @ln [Optional] (N)
- note 0-99
 - | @numberingOrg [Optional]
 - | @codeList [Optional]
 - | @noteLabel [Optional]
- yarnManufacture 0-1 (P)**
 - yarnPly 0-1**
 - | plyWork 1-1
 - | plyN 0-1
 - yarnJobSeq 0-1**
 - | yarnJob 1-19
 - dyeProcess 0-1
 - dyeStuff 0-1
 - yarnColorFastness 0-99**
 - | @colorType [Required]
 - | yarnCFTest 1-1
 - | specValue 1-1
 - | @um [Optional]
 - | @source [Optional]
 - | @method [Optional]
 - | @application [Optional]
 - | @CV [Optional]
 - colorCard 0-1**
 - colorCardItem 1-unbounded (P)**
 - | color 1-2
 - | @numberingOrg [Optional]
 - | @codeList [Optional]
 - | @listName [Optional]


```

| | | | @listVersion [Optional]
| | | | CIELab 0-unbounded
| | | | @illuminant [Optional]
| | | | @standardObserver [Optional]
| | | | | L 1-1
| | | | | a 1-1
| | | | | b 1-1
| | | | refDoc 0-1 (P)
| | | | @docType [Required]
| | | | | docID 1-2 (p)
| | | | | @numberingOrg [Optional]
| | | | | docDate 0-1
| | | | | @dateForm [Optional]
| | | | | season 0-1 (A)
| | | | | @numberingOrg [Optional] (a)
| | | | | @codeList [Optional] (a)
| | | | | @listName [Optional] (a)
| | | | | @listVersion [Optional] (a)
| | | | | itemID 0-1 (U)
| | | | | attachment 0-1 (N)
| | | | | @uid [Optional]
| | | | | | fileName 0-1 (N)
| | | | | | @numberingOrg [Optional] (a)
| | | | | | binaryObject 0-1 (N)
| | | | | | @format [Optional] (Na)
| | | | | | @mime [Optional] (Na)
| | | | | | @encoding [Optional] (Na)
| | | | | | @characterSet [Optional] (Na)
| | | | | | externalReference 0-99 (N)
| | | | | | | uri 1-1 (N)
| | | | | | | @isURL [Optional] [Default= true] (Na)
| | | | | | | mimeTypeCode 0-1 (N)
| | | | | | | formatCode 0-1 (N)
| | | | | | | encodingCode 0-1 (N)
| | | | | | | characterSetCode 0-1 (N)
| | | | | description 0-unbounded (AU)
| | | | | @ln [Optional] (N)
| | | | note 0-99
| | | | | @numberingOrg [Optional]
| | | | | @codeList [Optional]
| | | | | @noteLabel [Optional]
| | | | yarnQuality 0-1 (P)
| | | | | yarnQTest 1-99 (Pp)
| | | | | | yarnQTestType 1-1 (N)
| | | | | | specValue 0-1
| | | | | | | @um [Optional]
| | | | | | | @source [Optional]
| | | | | | | @method [Optional]
| | | | | | | @application [Optional]
| | | | | | | @CV [Optional]
| | | | | | tolerance 0-1
| | | | | | | @um [Required]
| | | | | | pcTolerance 0-1
| | | | | | | @um [Optional]
| | | | | | comply 0-1
| | | | | note 0-99
| | | | | | @numberingOrg [Optional]
| | | | | | @codeList [Optional]
| | | | | | @noteLabel [Optional]

```

2.2 Detailed description of document elements

Following tables show all elements (complex and simple) used in this document. Description includes: 1) element's information: xml tag, name, brief description, data type and syntax constraints; 2) information about use of the element in a particular position in the document: xpath and possible associated notes.

2.2.1 Complex elements (Aggregate Business Information Entities)

Complex elements are those elements whose content is composed of other elements (childs). Complex elements are alphabetically ordered.

| | |
|--------------------------|--|
| allowanceCharge | Allowances and Charges related to an Order or a contract (XPath YARNOfferRequest/terms/allowanceCharge) 0-9 (A) |
| attachment | an attached document. An attachment can refer to an external document or be included with the document being exchanged (XPath YARNOfferRequest/yarnTecSheet/refDoc/attachment) 0-1 (N) (XPath YARNOfferRequest/yarnTecSheet/yarnManufacture/colorCard/colorCardItem/refDoc/attachment) 0-1 (N) (XPath YARNOfferRequest/RQheader/refDoc/attachment) 0-1 (N) |
| buyer | details of the Buyer (party that buys the good or service that is object of the current collaborative process) - base type: Nad, (XPath YARNOfferRequest/RQheader/buyer) 1-1 (AP) |
| CIELab | color point in the CIELab color space (XPath YARNOfferRequest/yarnTecSheet/yarnManufacture/colorCard/colorCardItem/CIELab) 0-unbounded |
| colorCard | color card for a textile product (XPath YARNOfferRequest/yarnTecSheet/yarnManufacture/colorCard) 0-1 |
| colorCardItem | item of the color card (XPath YARNOfferRequest/yarnTecSheet/yarnManufacture/colorCard/colorCardItem) 1-unbounded (P) |
| dtScheme | set of data usable to declare the duty or tax applied (XPath YARNOfferRequest/terms/allowanceCharge/dtScheme) 0-1 (P) |
| externalReference | details about an external object, such as a document stored at a remote location (XPath YARNOfferRequest/yarnTecSheet/refDoc/attachment/externalReference) 0-99 (N) (XPath YARNOfferRequest/RQheader/refDoc/attachment/externalReference) 0-99 (N) (XPath YARNOfferRequest/yarnTecSheet/yarnManufacture/colorCard/colorCardItem/refDoc/attachment/externalReference) 0-99 (N) |
| fibrePD | physical data of a textile fibre (XPath YARNOfferRequest/yarnTecSheet/yarnIdentity/fibrePD) 0-9 |
| insPayment | payment details for payment by installments (XPath YARNOfferRequest/terms/insPayment) 0-5 - note: <i>excluded the case of offers, this set of data is alternative to payment set and must be iterated for each payment installment</i> |
| payment | payment details for payment all in one (XPath YARNOfferRequest/terms/payment) 0-5 - note: <i>excluded the case of offers, this set of data is alternative to insPayment, it can be iterated to specify alternative terms of payment (e.g.: 60 days or 30 days with 3% discount)</i> |

| | |
|--------------------------|---|
| refDoc | <p>identification of a document and of an item thereof, to which the message makes reference</p> <p>(XPath YARNOfferRequest/yarnTecSheet/refDoc) 0-9 (P)</p> <p>(XPath YARNOfferRequest/yarnTecSheet/yarnManufacture/colorCard/colorCardItem/refDoc) 0-1 (P)</p> <p>- note: <i>here the CxF3 file can be referenced</i></p> <p>(XPath YARNOfferRequest/RQheader/refDoc) 0-9 (P)</p> |
| RQheader | <p>header of the document REQUEST FOR OFFER</p> <p>(XPath YARNOfferRequest/RQheader) 1-1 (P)</p> |
| subContractor | <p>details of the Sub-contractor</p> <p>- base type: Nad,</p> <p>(XPath YARNOfferRequest/RQheader/subContractor) 0-1 (AP)</p> <p>- note: <i>At least one out of Supplier and Subcontractor must be indicated.</i></p> |
| supplier | <p>details of the Supplier (party that supplies the good or service that is object of the current collaborative process)</p> <p>- base type: Nad,</p> <p>(XPath YARNOfferRequest/RQheader/supplier) 0-1 (AP)</p> <p>- note: <i>At least one out of Supplier and Subcontractor must be indicated.</i></p> |
| terms | <p>details of the commercial obligations for payment and delivery</p> <p>(XPath YARNOfferRequest/terms) 0-1 (P)</p> |
| thirdParty | <p>details of the Third Party, different from Sender and Receiver of the document</p> <p>- base type: Nad,</p> <p>(XPath YARNOfferRequest/RQheader/thirdParty) 0-5 (AP)</p> <p>- note: <i>In the Offer Request case it might give reference to the Originator of the request.</i></p> |
| trade | <p>general terms of trade for the specified supply</p> <p>(XPath YARNOfferRequest/terms/trade) 0-1</p> |
| transInfo | <p>details of transport: mode, carrier and delivery place</p> <p>(XPath YARNOfferRequest/terms/transInfo) 0-5 (pAP)</p> |
| yarnCode | <p>full codification of a yarn product</p> <p>(XPath YARNOfferRequest/yarnTecSheet/yarnIdentity/yarnCode) 0-2 (P)</p> |
| yarnColorFastness | <p>color fastness data for a yarn</p> <p>(XPath YARNOfferRequest/yarnTecSheet/yarnManufacture/yarnColorFastness) 0-99</p> |
| yarnCompos | <p>fibrous composition of a yarn product</p> <p>(XPath YARNOfferRequest/yarnTecSheet/yarnIdentity/yarnCompos) 0-1</p> |
| yarnIdentity | <p>set of data that univocally identify the yarn article and any classification or commercial information</p> <p>(XPath YARNOfferRequest/yarnTecSheet/yarnIdentity) 0-1 (P)</p> |
| yarnJobSeq | <p>operations undergone in the manufacturing of a yarn</p> <p>(XPath YARNOfferRequest/yarnTecSheet/yarnManufacture/yarnJobSeq) 0-1</p> |
| yarnManufacture | <p>set of data that specify the construction details of the yarn</p> <p>(XPath YARNOfferRequest/yarnTecSheet/yarnManufacture) 0-1 (P)</p> |
| yarnPly | <p>plying characteristics of a yarn</p> <p>(XPath YARNOfferRequest/yarnTecSheet/yarnManufacture/yarnPly) 0-1</p> |
| yarnQTest | <p>parameter related to the quality of yarn</p> <p>- base type: string,</p> <p>(XPath YARNOfferRequest/yarnTecSheet/yarnQuality/yarnQTest) 1-99 (Pp)</p> |
| yarnQuality | <p>set of data that specify the quality data of the yarn</p> <p>(XPath YARNOfferRequest/yarnTecSheet/yarnQuality) 0-1 (P)</p> |

| | |
|---------------------|---|
| yarnTecSheet | technical sheet of the yarn (XPath YARNOfferRequest/yarnTecSheet) 1-unbounded (Pp) |
| yarnTwist | twist characteristics of yarn (XPath YARNOfferRequest/yarnTecSheet/yarnIdentity/yarnTwist) 0-1 |

2.2.2 Simple elements (Basic Business Information Entities)

Simple elements are those elements whose content is characterized by a data type plus a domain of possible values. Simple elements are alphabetically ordered.

| | |
|----------------------|--|
| a | "a" dimension of the CIELab color system - base type: decimal, (XPath YARNOfferRequest/yarnTecSheet/yarnManufacture/ colorCard/colorCardItem/CIELab/a) 1-1 |
| AC_amount | amount of an Allowance or Charge - base type: decimal, fraction digits: 2, (XPath YARNOfferRequest/terms/allowanceCharge/AC_amount) 1-1 (A) |
| AC_category | coded specification of an Allowance or Charge - base type: string, cod. table: T41 http://www.ebiz.enea.it/moda-ml/repository/codelist/v2018-1/gc_T41.xml (XPath YARNOfferRequest/terms/allowanceCharge/AC_category) 1-1 |
| AC_categoryText | free text description of an Allowance or Charge - base type: string, max length: 250, (XPath YARNOfferRequest/terms/allowanceCharge/AC_categoryText) 1-1 (U) |
| AC_percent | amount of an Allowance or Charge as a percentage (always non negative value) - base type: decimal, max inclusive: 100, fraction digits: 2, (XPath YARNOfferRequest/terms/allowanceCharge/AC_percent) 1-1 |
| added | additional code of the product (complementing the formers) - base type: string, max length: 80, (XPath YARNOfferRequest/yarnTecSheet/yarnIdentity/ yarnCode/added) 0-9 - note: <i>here an additional codification (see table T44) can be specified</i> |
| additionalIdentifier | additional identification code of a Party, for example customs registries or others - base type: string, max length: 15, (XPath YARNOfferRequest/RQheader/buyer/additionalIdentifier) 0-9 (N) - note: <i>identifiers for example for exports, such as MID (Manufacturer Identification Code), EORI (E.O.R.I. - Economic Operator Registration and Identification)</i> (XPath YARNOfferRequest/RQheader/supplier/additionalIdentifier) 0-9 (N) - note: <i>identifiers for example for exports, such as MID (Manufacturer Identification Code), EORI (E.O.R.I. - Economic Operator Registration and Identification)</i> |
| @addType | qualifier of the additional coding of a product - base type: string, cod. table: T44 http://www.ebiz.enea.it/moda-ml/repository/codelist/v2018-1/gc_T44.xml (XPath YARNOfferRequest/yarnTecSheet/yarnIdentity/ yarnCode/added/@addType) [Optional] - nota: <i>addType allows the clarification of the meaning of the added element content; it is strongly suggested to use it always.</i> |
| @application | force or similar condition (e.g. no. of revolutions) applied in a test as specified within the standard - base type: string, max length: 15, |

| | |
|------------------|---|
| | (XPath YARNOfferRequest/yarnTecSheet/yarnQuality/yarnQTest/specValue/@application) [Optional] (XPath YARNOfferRequest/yarnTecSheet/yarnManufacture/yarnColorFastness/specValue/@application) [Optional] |
| art | article number of the product - base type: string, max length: 80, (XPath YARNOfferRequest/yarnTecSheet/yarnIdentity/yarnCode/art) 1-1 (U) |
| avgDeliveryDD | average time (workdays) between order receipt and delivery of an article, specified by the Supplier - base type: duration, (XPath YARNOfferRequest/yarnTecSheet/yarnIdentity/avgDeliveryDD) 0-1 |
| b | "b" dimension of the CIELab color system - base type: decimal, (XPath YARNOfferRequest/yarnTecSheet/yarnManufacture/colorCard/colorCardItem/CIELab/b) 1-1 |
| binaryObject | a binary large object containing an attached document, Coding 'base64Binary' is recommended. - base type: base64Binary, (XPath YARNOfferRequest/yarnTecSheet/yarnManufacture/colorCard/colorCardItem/refDoc/attachment/binaryObject) 0-1 (N) (XPath YARNOfferRequest/yarnTecSheet/refDoc/attachment/binaryObject) 0-1 (N) (XPath YARNOfferRequest/RQheader/refDoc/attachment/binaryObject) 0-1 (N) |
| carrier | identification of the transport carrier - base type: string, max length: 40, (XPath YARNOfferRequest/terms/transInfo/carrier) 0-1 |
| @characterSet | the character set of the binary object (examples UTF-8, UTF-16, Windows-1252, ISO-8859-7,..) - base type: normalizedString, (XPath YARNOfferRequest/yarnTecSheet/yarnManufacture/colorCard/colorCardItem/refDoc/attachment/binaryObject/@characterSet) [Optional] (Na) (XPath YARNOfferRequest/yarnTecSheet/refDoc/attachment/binaryObject/@characterSet) [Optional] (N) (XPath YARNOfferRequest/RQheader/refDoc/attachment/binaryObject/@characterSet) [Optional] (N) |
| characterSetCode | the character set of an external document (examples UTF-8, UTF-16, Windows-1252, ISO-8859-7,..) - base type: normalizedString, (XPath YARNOfferRequest/RQheader/refDoc/attachment/externalReference/characterSetCode) 0-1 (N) (XPath YARNOfferRequest/yarnTecSheet/yarnManufacture/colorCard/colorCardItem/refDoc/attachment/externalReference/characterSetCode) 0-1 (N) (XPath YARNOfferRequest/yarnTecSheet/refDoc/attachment/externalReference/characterSetCode) 0-1 (N) |
| city | name of the city (town, village) - base type: string, max length: 40, (XPath YARNOfferRequest/RQheader/thirdParty/city) 0-1 (XPath YARNOfferRequest/RQheader/supplier/city) 0-1 (XPath YARNOfferRequest/RQheader/subContractor/city) 0-1 (XPath YARNOfferRequest/RQheader/buyer/city) 0-1 |
| @codeList | it specifies the URL where the list of codes used to make an instance of the element can be found - base type: string, max length: 255, (XPath YARNOfferRequest/RQheader/season/@codeList) [Optional] (a) - nota: <i>this attribute should be used either single or coupled with "listName" and "listVersion"</i> |

| | |
|------------|--|
| | <p>(XPath YARNOfferRequest/yarnTecSheet/yarnIdentity/note/@codeList) [Optional] - nota: <i>must be used to provide (URL) the list of codes used in "noteLabel"</i></p> <p>(XPath YARNOfferRequest/terms/allowanceCharge/dtScheme/note/@codeList) [Optional] - nota: <i>must be used to provide (URL) the list of codes used in "noteLabel"</i></p> <p>(XPath YARNOfferRequest/yarnTecSheet/yarnManufacture/colorCard/colorCardItem/color/@codeList) [Optional] - nota: <i>this attribute should be used either single or coupled with "listName" and "listVersion"</i></p> <p>(XPath YARNOfferRequest/terms/allowanceCharge/dtScheme/legalRef/@codeList) [Optional] (XPath YARNOfferRequest/yarnTecSheet/refDoc/season/@codeList) [Optional] (a) - nota: <i>this attribute should be used either single or coupled with "listName" and "listVersion"</i></p> <p>(XPath YARNOfferRequest/yarnTecSheet/yarnIdentity/season/@codeList) [Optional] (a) - nota: <i>this attribute should be used either single or coupled with "listName" and "listVersion"</i></p> <p>(XPath YARNOfferRequest/RQheader/note/@codeList) [Optional] - nota: <i>must be used to provide (URL) the list of codes used in "noteLabel"</i></p> <p>(XPath YARNOfferRequest/RQheader/refDoc/season/@codeList) [Optional] (a) - nota: <i>this attribute should be used either single or coupled with "listName" and "listVersion"</i></p> <p>(XPath YARNOfferRequest/yarnTecSheet/yarnIdentity/yarnCode/color/@codeList) [Optional] - nota: <i>this attribute should be used either single or coupled with "listName" and "listVersion"</i></p> <p>(XPath YARNOfferRequest/yarnTecSheet/yarnIdentity/yarnCode/art/@codeList) [Optional] - nota: <i>at least one out of this attribute and "numberingOrg" should be set</i></p> <p>(XPath YARNOfferRequest/yarnTecSheet/yarnManufacture/note/@codeList) [Optional] - nota: <i>must be used to provide (URL) the list of codes used in "noteLabel"</i></p> <p>(XPath YARNOfferRequest/yarnTecSheet/yarnManufacture/colorCard/colorCardItem/refDoc/season/@codeList) [Optional] (a) - nota: <i>this attribute should be used either single or coupled with "listName" and "listVersion"</i></p> <p>(XPath YARNOfferRequest/yarnTecSheet/yarnQuality/note/@codeList) [Optional] - nota: <i>must be used to provide (URL) the list of codes used in "noteLabel"</i></p> |
| color | <p>colour number of the product, when not included in the model or fabric code - base type: string, max length: 15, (XPath YARNOfferRequest/yarnTecSheet/yarnIdentity/yarnCode/color) 0-1 (XPath YARNOfferRequest/yarnTecSheet/yarnManufacture/colorCard/colorCardItem/color) 1-2 - note: <i>multiple color values allowed if they differ for at least one of the numberingOrg and listName attributes</i></p> |
| @colorType | <p>type of color to which a "color fastness" value refers - base type: string, cod. table: NT26 http://www.ebiz.enea.it/moda-ml/repository/codelist/v2018-1/gc_NT26.xml (XPath YARNOfferRequest/yarnTecSheet/yarnManufacture/yarnColorFastness/@colorType) [Required]</p> |
| comply | <p>specifies if the experimental value complies with the standard requirement (target value) - base type: boolean, (XPath YARNOfferRequest/yarnTecSheet/yarnQuality/yarnQTest/comply) 0-1</p> |
| country | <p>code of the nation - base type: string, cod. table: T10 http://www.ebiz.enea.it/moda-ml/repository/codelist/v2018-1/gc_T10.xml (XPath YARNOfferRequest/yarnTecSheet/yarnIdentity/fibrePD/country) 0-1 (XPath YARNOfferRequest/RQheader/thirdParty/country) 0-1</p> |

| | |
|------------------|---|
| | (XPath YARNOfferRequest/RQheader/subContractor/country) 0-1 (XPath YARNOfferRequest/RQheader/buyer/country) 0-1 (XPath YARNOfferRequest/RQheader/supplier/country) 0-1 |
| @countSystem | yarn count system - base type: string, cod. table: T55 http://www.ebiz.enea.it/moda-ml/repository/codelist/v2018-1/gc_T55.xml (XPath YARNOfferRequest/yarnTecSheet/yarnIdentity/yarnCount/@countSystem) [Required] |
| @currency | currency in which a specified monetary data is expressed - base type: string, cod. table: T9 http://www.ebiz.enea.it/moda-ml/repository/codelist/v2018-1/gc_T9.xml (XPath YARNOfferRequest/yarnTecSheet/yarnIdentity/price/@currency) [Optional] (a) - nota: <i>Currency referred by the price.</i> (XPath YARNOfferRequest/terms/allowanceCharge/AC_amount/@currency) [Optional] (a) (XPath YARNOfferRequest/terms/allowanceCharge/@currency) [Optional] (a) |
| customsStat | statistic code assigned by Customs to a specified product - base type: string, max length: 15, (XPath YARNOfferRequest/yarnTecSheet/yarnIdentity/customsStat) 0-1 |
| @CV | coefficient of variation (CV) of a measurement - base type: decimal, (XPath YARNOfferRequest/yarnTecSheet/yarnQuality/yarnQTest/specValue/@CV) [Optional] (XPath YARNOfferRequest/yarnTecSheet/yarnIdentity/yarnCount/@CV) [Optional] (XPath YARNOfferRequest/yarnTecSheet/yarnManufacture/yarnColorFastness/specValue/@CV) [Optional] |
| @dateForm | format used for the date - base type: string, cod. table: NT29 http://www.ebiz.enea.it/moda-ml/repository/codelist/v2018-1/gc_NT29.xml (XPath YARNOfferRequest/RQheader/validityEnd/@dateForm) [Optional] (XPath YARNOfferRequest/terms/transInfo/delEffectiveDate/@dateForm) [Optional] (XPath YARNOfferRequest/yarnTecSheet/refDoc/docDate/@dateForm) [Optional] (XPath YARNOfferRequest/RQheader/msgDate/@dateForm) [Optional] (XPath YARNOfferRequest/yarnTecSheet/yarnManufacture/colorCard/colorCardItem/refDoc/docDate/@dateForm) [Optional] (XPath YARNOfferRequest/RQheader/validityStart/@dateForm) [Optional] (XPath YARNOfferRequest/terms/transInfo/despatchDate/@dateForm) [Optional] (a) (XPath YARNOfferRequest/RQheader/refDoc/docDate/@dateForm) [Optional] |
| delEffectiveDate | effective date of delivery of goods (declared in Despatch), according to one of the patterns YYYY-MM-DD, YYYY-MM-DD:HH-MM or YYYY-WW. - base type: string, (XPath YARNOfferRequest/terms/transInfo/delEffectiveDate) 0-1 (p) |
| deliveryPlace | place of delivery of goods, ultimate or related to a given leg - base type: string, max length: 250, (XPath YARNOfferRequest/terms/transInfo/deliveryPlace) 0-1 (U) |
| dept | name or code of a contact department within a Party - base type: string, max length: 40, (XPath YARNOfferRequest/RQheader/supplier/dept) 0-1 (XPath YARNOfferRequest/RQheader/thirdParty/dept) 0-1 (XPath YARNOfferRequest/RQheader/subContractor/dept) 0-1 (XPath YARNOfferRequest/RQheader/buyer/dept) 0-1 |
| description | free text description. The content of the element must be unique, it might be translated and repeated into more languages (thus no more than one instance for each language). - base type: string, max length: 250, (XPath YARNOfferRequest/yarnTecSheet/yarnIdentity/yarnCode/description) 0-unbounded (AU) |

| | |
|---------------|--|
| | - note: <i>Product description</i> (XPath YARNOfferRequest/yarnTecSheet/yarnManufacture/colorCard/colorCardItem/description) 0-unbounded (AU) |
| despatchDate | date of despatch of goods, requested or promised in the purchase process, according to one of the patterns YYYY-MM-DD, YYYY-MM-DD:HH-MM or YYY-WW. - base type: string, (XPath YARNOfferRequest/terms/transInfo/despatchDate) 0-1 (N) |
| despatchPlace | place of despatch of goods, origin or related to a given leg - base type: string, max length: 250, (XPath YARNOfferRequest/terms/transInfo/despatchPlace) 0-1 (N) |
| diameter | effective diameter of a specified object - base type: decimal, min inclusive: 0, fraction digits: 2, (XPath YARNOfferRequest/yarnTecSheet/yarnIdentity/fibrePD/diameter) 0-1 |
| docDate | date of issue of the referenced document, according to one of the patterns YYY-MM-DD, YYYY-MM-DD:HH-MM or YYYY-WW. - base type: string, (XPath YARNOfferRequest/yarnTecSheet/refDoc/docDate) 0-1 (XPath YARNOfferRequest/RQheader/refDoc/docDate) 0-1 (XPath YARNOfferRequest/yarnTecSheet/yarnManufacture/colorCard/colorCardItem/refDoc/docDate) 0-1 |
| docID | identification number of the referenced document SINCE 2008-1 ITS USE I N THE HEADER IS DISCOURAGED (REPLACED BY msgID) - base type: string, max length: 80, (XPath YARNOfferRequest/RQheader/docID) 0-1 (XPath YARNOfferRequest/RQheader/refDoc/docID) 1-2 (p) <hr/> AAAA-WARNING! - text not AVAILABLE n. 245 - In=en (XPath YARNOfferRequest/yarnTecSheet/yarnManufacture/colorCard/colorCardItem/refDoc/docID) 1-2 (p) <hr/> AAAA-WARNING! - text not AVAILABLE n. 245 - In=en (XPath YARNOfferRequest/yarnTecSheet/refDoc/docID) 1-2 (p) <hr/> AAAA-WARNING! - text not AVAILABLE n. 245 - In=en |
| @docType | type or class to which the referenced document belongs - base type: string, cod. table: T21 http://www.ebiz.enea.it/moda-ml/repository/codelist/v2018-1/gc_T21.xml (XPath YARNOfferRequest/yarnTecSheet/refDoc/@docType) [Required] (XPath YARNOfferRequest/yarnTecSheet/yarnManufacture/colorCard/colorCardItem/refDoc/@docType) [Required] (XPath YARNOfferRequest/RQheader/refDoc/@docType) [Required] |
| dyeN | number of the dying batch of a textile product - base type: string, max length: 15, (XPath YARNOfferRequest/yarnTecSheet/yarnIdentity/dyeN) 0-1 - note: <i>to be used when the document refers to a specific production batch</i> |
| dyeProcess | dye process applied to the fabric - base type: string, cod. table: T15 http://www.ebiz.enea.it/moda-ml/repository/codelist/v2018-1/gc_T15.xml (XPath YARNOfferRequest/yarnTecSheet/yarnManufacture/dyeProcess) 0-1 |
| dyeStuff | dye stuff used in the fabric dye process - base type: string, cod. table: T16 http://www.ebiz.enea.it/moda-ml/repository/codelist/v2018-1/gc_T16.xml (XPath YARNOfferRequest/yarnTecSheet/yarnManufacture/dyeStuff) 0-1 |
| @email | electronic mail address of the contact person within a Party - base type: string, max length: 250, (XPath YARNOfferRequest/RQheader/supplier/person/@email) [Optional] (XPath YARNOfferRequest/RQheader/subContractor/person/@email) [Optional] (XPath YARNOfferRequest/RQheader/thirdParty/person/@email) [Optional] |

| | |
|---------------------|---|
| | (XPath YARNOfferRequest/RQheader/buyer/person/@email) [Optional] |
| @encoding | specifies the decoding algorithm of the binary object - base type: normalizedString, (XPath YARNOfferRequest/RQheader/refDoc/attachment/binaryObject/@encoding) [Optional] (N) (XPath YARNOfferRequest/yarnTecSheet/refDoc/attachment/binaryObject/@encoding) [Optional] (N) (XPath YARNOfferRequest/yarnTecSheet/yarnManufacture/colorCard/colorCardItem/refDoc/attachment/binaryObject/@encoding) [Optional] (Na) |
| encodingCode | the encoding/decoding algorithm used with the external object (example is 'base64Binary') - base type: normalizedString, (XPath YARNOfferRequest/yarnTecSheet/refDoc/attachment/externalReference/encodingCode) 0-1 (N) (XPath YARNOfferRequest/RQheader/refDoc/attachment/externalReference/encodingCode) 0-1 (N) (XPath YARNOfferRequest/yarnTecSheet/yarnManufacture/colorCard/colorCardItem/refDoc/attachment/externalReference/encodingCode) 0-1 (N) |
| extendedDescription | extended free text description. The content of the element must be unique, it might be translated and repeated into more languages (thus no more than one instance for each language). This element might contain HTML code (must be managed as CDATA) - base type: string, (XPath YARNOfferRequest/yarnTecSheet/yarnIdentity/extendedDescription) 0-unbounded (N) - note: <i>Extended product description</i> |
| @fax | fax number of the contact person within a Party - base type: string, max length: 35, (XPath YARNOfferRequest/RQheader/thirdParty/person/@fax) [Optional] (XPath YARNOfferRequest/RQheader/buyer/person/@fax) [Optional] (XPath YARNOfferRequest/RQheader/supplier/person/@fax) [Optional] (XPath YARNOfferRequest/RQheader/subContractor/person/@fax) [Optional] |
| @fibre | type of fibre used in a textile product - base type: string, cod. table: T19 http://www.ebiz.enea.it/moda-ml/repository/codelist/v2018-1/gc_T19.xml (XPath YARNOfferRequest/yarnTecSheet/yarnIdentity/yarnCompos/percCompos/@fibre) [Required] (XPath YARNOfferRequest/yarnTecSheet/yarnIdentity/fibrePD/@fibre) [Required] |
| fileName | unique identifier (name) of the file - base type: string, max length: 255, (XPath YARNOfferRequest/yarnTecSheet/yarnManufacture/colorCard/colorCardItem/refDoc/attachment/fileName) 0-1 (N) (XPath YARNOfferRequest/RQheader/refDoc/attachment/fileName) 0-1 (N) (XPath YARNOfferRequest/yarnTecSheet/refDoc/attachment/fileName) 0-1 (N) |
| @finDiscount | financial discount rate applied for payment by the date specified - base type: decimal, min inclusive: 0, max inclusive: 100, fraction digits: 2, (XPath YARNOfferRequest/terms/payment/@finDiscount) [Optional] |
| @finSurcharge | financial surcharge rate applied for payment after the date specified - base type: decimal, min inclusive: 0, max inclusive: 100, fraction digits: 2, (XPath YARNOfferRequest/terms/payment/@finSurcharge) [Optional] |
| @format | the format of the binary content (examples xml, pdf, doc,...) - base type: string, (XPath YARNOfferRequest/RQheader/refDoc/attachment/binaryObject/@format) [Optional] (N) |

| | |
|--------------|---|
| | (XPath YARNOfferRequest/yarnTecSheet/yarnManufacture/colorCard/colorCardItem/refDoc/attachment/binaryObject/@format) [Optional] (Na) (XPath YARNOfferRequest/yarnTecSheet/refDoc/attachment/binaryObject/@format) [Optional] (N) |
| formatCode | the format of the external object (examples xml, pdf, doc,...) - base type: normalizedString, (XPath YARNOfferRequest/yarnTecSheet/yarnManufacture/colorCard/colorCardItem/refDoc/attachment/externalReference/formatCode) 0-1 (N) (XPath YARNOfferRequest/yarnTecSheet/refDoc/attachment/externalReference/formatCode) 0-1 (N) (XPath YARNOfferRequest/RQheader/refDoc/attachment/externalReference/formatCode) 0-1 (N) |
| grossWeight | the gross weight, declared for transport or customs purpose - base type: decimal, min inclusive: 0, fraction digits: 2, (XPath YARNOfferRequest/terms/transInfo/grossWeight) 0-1 |
| id | primary identification code of a Party; it is recommended the format: nation code (ISO 3166) + VAT identification number (11 crt), with the qualifier "numberingOrg"= MF - base type: string, max length: 15, (XPath YARNOfferRequest/RQheader/subContractor/id) 1-1 (XPath YARNOfferRequest/RQheader/supplier/id) 1-1 (XPath YARNOfferRequest/RQheader/buyer/id) 1-1 (p) (XPath YARNOfferRequest/RQheader/thirdParty/id) 1-1 |
| @idQualifier | Qualification of the identifier. - base type: string, (XPath YARNOfferRequest/RQheader/supplier/additionalIdentifier/@idQualifier) [Optional] (Na) - nota: <i>this attribute should be used when the numberingOrg attribute is not enough to declare the type of identifier</i> (XPath YARNOfferRequest/RQheader/buyer/additionalIdentifier/@idQualifier) [Optional] (Na) - nota: <i>this attribute should be used when the numberingOrg attribute is not enough to declare the type of identifier</i> |
| @illuminant | CIE light source - base type: string, cod. table: T59 http://www.ebiz.enea.it/moda-ml/repository/codelist/v2018-1/gc_T59.xml (XPath YARNOfferRequest/yarnTecSheet/yarnManufacture/colorCard/colorCardItem/CIELab/@illuminant) [Optional] |
| incoTerm | specification of the terms of trade (INCOTERMS) - base type: string, cod. table: T3 http://www.ebiz.enea.it/moda-ml/repository/codelist/v2018-1/gc_T3.xml (XPath YARNOfferRequest/terms/trade/incoTerm) 1-1 |
| incoTermText | free text specifying the terms of trade (incoterm, location) - base type: string, max length: 250, (XPath YARNOfferRequest/terms/trade/incoTermText) 1-1 (U) |
| @isCharge | Indicates if the element to which it refers is a charge (true = charge, false = allowance) - base type: boolean, min length: 0, (XPath YARNOfferRequest/terms/allowanceCharge/@isCharge) [Optional] (N) |
| @isURL | it indicates if the referred element is an URL (true) or not (false) - base type: boolean, (XPath YARNOfferRequest/yarnTecSheet/refDoc/attachment/externalReference/uri/@isURL) [Optional] [Default= true] (Na) - nota: <i>usage of URLs is recommended</i> |

| | |
|-----------|--|
| | <p>(XPath YARNOfferRequest/RQheader/refDoc/attachment/externalReference/uri/@isURL) [Optional] [Default= true] (Na)</p> <p>- nota: <i>usage of URLs is recommended</i></p> <p>(XPath YARNOfferRequest/yarnTecSheet/yarnManufacture/colorCard/colorCardItem/refDoc/attachment/externalReference/uri/@isURL) [Optional] [Default= true] (Na)</p> <p>- nota: <i>usage of URLs is recommended</i></p> |
| itemID | <p>number of the line/item of the referenced document</p> <p>- base type: string, max length: 40,</p> <p>(XPath YARNOfferRequest/RQheader/refDoc/itemID) 0-1 (U)</p> <p>(XPath YARNOfferRequest/yarnTecSheet/refDoc/itemID) 0-1 (U)</p> <p>(XPath YARNOfferRequest/yarnTecSheet/yarnManufacture/colorCard/colorCardItem/refDoc/itemID) 0-1 (U)</p> |
| L | <p>"L" value of the CIELab color system</p> <p>- base type: decimal, min inclusive: 0,</p> <p>(XPath YARNOfferRequest/yarnTecSheet/yarnManufacture/colorCard/colorCardItem/CIELab/L) 1-1</p> |
| legalName | <p>legal name of a Party</p> <p>- base type: string, max length: 250,</p> <p>(XPath YARNOfferRequest/RQheader/thirdParty/legalName) 0-1 (U)</p> <p>(XPath YARNOfferRequest/RQheader/subContractor/legalName) 0-1 (U)</p> <p>(XPath YARNOfferRequest/RQheader/buyer/legalName) 0-1 (U)</p> <p>(XPath YARNOfferRequest/RQheader/supplier/legalName) 0-1 (U)</p> |
| legalRef | <p>legal reference of the duty or tax or fee category</p> <p>- base type: string,</p> <p>(XPath YARNOfferRequest/terms/allowanceCharge/dtScheme/legalRef) 0-1 (A)</p> |
| length | <p>effective length of a specified object</p> <p>- base type: decimal, min inclusive: 0, fraction digits: 2,</p> <p>(XPath YARNOfferRequest/yarnTecSheet/yarnIdentity/fibrePD/length) 0-1</p> |
| @listName | <p>the name of the list of codes used to make an instance of the element (it might be thought as descriptive element, i.e. 'fabric printing technologies', or not, i.e. "T264")</p> <p>- base type: string, max length: 40,</p> <p>(XPath YARNOfferRequest/yarnTecSheet/yarnIdentity/season/@listName) [Optional] (a)</p> <p>- nota: <i>this attribute should always be used coupled with "numberingOrg"</i></p> <p>(XPath YARNOfferRequest/yarnTecSheet/yarnIdentity/yarnCode/art/@listName) [Optional]</p> <p>- nota: <i>this attribute should always be used coupled with "numberingOrg"</i></p> <p>(XPath YARNOfferRequest/yarnTecSheet/yarnManufacture/colorCard/colorCardItem/color/@listName) [Optional]</p> <p>- nota: <i>this attribute should always be used coupled with "numberingOrg"</i></p> <p>(XPath YARNOfferRequest/RQheader/refDoc/season/@listName) [Optional] (a)</p> <p>- nota: <i>this attribute should always be used coupled with "numberingOrg"</i></p> <p>(XPath YARNOfferRequest/yarnTecSheet/yarnIdentity/yarnCode/color/@listName) [Optional]</p> <p>- nota: <i>this attribute should always be used coupled with "numberingOrg"</i></p> <p>(XPath YARNOfferRequest/yarnTecSheet/refDoc/season/@listName) [Optional] (a)</p> <p>- nota: <i>this attribute should always be used coupled with "numberingOrg"</i></p> <p>(XPath YARNOfferRequest/RQheader/season/@listName) [Optional] (a)</p> <p>- nota: <i>this attribute should always be used coupled with "numberingOrg"</i></p> <p>(XPath YARNOfferRequest/terms/allowanceCharge/dtScheme/legalRef/@listName) [Optional]</p> <p>- nota: <i>this attribute should always be used coupled with "numberingOrg"</i></p> <p>(XPath YARNOfferRequest/yarnTecSheet/yarnManufacture/colorCard/colorCardItem/refDoc/season/@listName) [Optional] (a)</p> <p>- nota: <i>this attribute should always be used coupled with "numberingOrg"</i></p> |

| | |
|---------------------|--|
| <p>@listVersion</p> | <p>it specifies the version of the list of codes used to make an instance of the element</p> <ul style="list-style-type: none"> - base type: string, max length: 6, (XPath YARNOfferRequest/yarnTecSheet/yarnIdentity/yarnCode/art/@listVersion) [Optional] - nota: <i>this attribute should always be used coupled with “numberingOrg” and “listName”</i> (XPath YARNOfferRequest/RQheader/refDoc/season/@listVersion) [Optional] (a) - nota: <i>this attribute should always be used coupled with “numberingOrg” and “listName”</i> (XPath YARNOfferRequest/yarnTecSheet/refDoc/season/@listVersion) [Optional] (a) - nota: <i>this attribute should always be used coupled with “numberingOrg” and “listName”</i> (XPath YARNOfferRequest/yarnTecSheet/yarnManufacture/colorCard/colorCardItem/refDoc/season/@listVersion) [Optional] (a) - nota: <i>this attribute should always be used coupled with “numberingOrg” and “listName”</i> (XPath YARNOfferRequest/RQheader/season/@listVersion) [Optional] (a) - nota: <i>this attribute should always be used coupled with “numberingOrg” and “listName”</i> (XPath YARNOfferRequest/terms/allowanceCharge/dtScheme/legalRef/@listVersion) [Optional] - nota: <i>this attribute should always be used coupled with “numberingOrg” and “listName”</i> (XPath YARNOfferRequest/yarnTecSheet/yarnIdentity/yarnCode/color/@listVersion) [Optional] - nota: <i>this attribute should always be used coupled with “numberingOrg” and “listName”</i> (XPath YARNOfferRequest/yarnTecSheet/yarnIdentity/season/@listVersion) [Optional] (a) - nota: <i>this attribute should always be used coupled with “numberingOrg” and “listName”</i> (XPath YARNOfferRequest/yarnTecSheet/yarnManufacture/colorCard/colorCardItem/color/@listVersion) [Optional] - nota: <i>this attribute should always be used coupled with “numberingOrg” and “listName”</i> |
| <p>@ln</p> | <p>Language code.</p> <ul style="list-style-type: none"> - base type: string, cod. table: NT60 http://www.ebiz.enea.it/moda-ml/repository/codelist/v2018-1/gc_NT60.xml (XPath YARNOfferRequest/yarnTecSheet/yarnIdentity/extendedDescription/@ln) [Optional] (N) (XPath YARNOfferRequest/yarnTecSheet/yarnIdentity/yarnCode/description/@ln) [Optional] (N) (XPath YARNOfferRequest/yarnTecSheet/yarnManufacture/colorCard/colorCardItem/description/@ln) [Optional] (N) |
| <p>location</p> | <p>specification of a location</p> <ul style="list-style-type: none"> - base type: string, max length: 40, (XPath YARNOfferRequest/terms/trade/location) 0-1 - note: <i>place to which the INCOTERM applies</i> |
| <p>@logo</p> | <p>company logo (URL of the image jpeg or gif). It is recommended that the width of the image does not exceed 640 pixel.</p> <ul style="list-style-type: none"> - base type: string, max length: 255, (XPath YARNOfferRequest/RQheader/buyer/@logo) [Optional] (XPath YARNOfferRequest/RQheader/supplier/@logo) [Optional] |
| <p>lotN</p> | <p>lot number of a product or batch number of the raw material</p> <ul style="list-style-type: none"> - base type: string, max length: 15, (XPath YARNOfferRequest/yarnTecSheet/yarnIdentity/lotN) 0-1 - note: <i>to be used when the document refers to a specific production batch</i> |

| | |
|-----------------|--|
| @LRI | attribute usable to format a string according to a customized User rule (local rule) - base type: string, cod. table: NT3 http://www.ebiz.enea.it/moda-ml/repository/codelist/v2018-1/gc_NT3.xml (XPath YARNOfferRequest/terms/trade/location/@LRI) [Optional] |
| @maxQty | maximum product quantity - base type: decimal, min inclusive: 0, fraction digits: 2, (XPath YARNOfferRequest/terms/allowanceCharge/@maxQty) [Optional] (N) - nota: <i>maximum quantity of product for the application of this allowance or charge</i> |
| @method | standard protocol or method employed in a test to evaluate a characteristic or a parameter - base type: string, max length: 80, (XPath YARNOfferRequest/yarnTecSheet/yarnQuality/yarnQTest/specValue/@method) [Optional] (XPath YARNOfferRequest/yarnTecSheet/yarnManufacture/yarnColorFastness/specValue/@method) [Optional] |
| @mime | the mime type of the binary object - base type: normalizedString, (XPath YARNOfferRequest/RQheader/refDoc/attachment/binaryObject/@mime) [Optional] (N) (XPath YARNOfferRequest/yarnTecSheet/refDoc/attachment/binaryObject/@mime) [Optional] (N) (XPath YARNOfferRequest/yarnTecSheet/yarnManufacture/colorCard/colorCardItem/refDoc/attachment/binaryObject/@mime) [Optional] (Na) |
| mimeCode | mime type of the external object - base type: normalizedString, (XPath YARNOfferRequest/yarnTecSheet/yarnManufacture/colorCard/colorCardItem/refDoc/attachment/externalReference/mimeCode) 0-1 (N) <hr/> AAAA-WARNING! - text not AVAILABLE n. 245 - In=en (XPath YARNOfferRequest/yarnTecSheet/refDoc/attachment/externalReference/mimeCode) 0-1 (N) <hr/> AAAA-WARNING! - text not AVAILABLE n. 245 - In=en (XPath YARNOfferRequest/RQheader/refDoc/attachment/externalReference/mimeCode) 0-1 (N) <hr/> AAAA-WARNING! - text not AVAILABLE n. 245 - In=en |
| minLot | minimum order quantity of a product requested by the Supplier - base type: decimal, min inclusive: 0, fraction digits: 2, (XPath YARNOfferRequest/yarnTecSheet/yarnIdentity/minLot) 0-1 |
| minLotExclusive | minimum order quantity of a product requested by the Supplier for an exclusive color - base type: decimal, min inclusive: 0, fraction digits: 2, (XPath YARNOfferRequest/yarnTecSheet/yarnIdentity/minLotExclusive) 0-1 |
| @minQty | minimum product quantity - base type: decimal, min inclusive: 0, fraction digits: 2, (XPath YARNOfferRequest/terms/allowanceCharge/@minQty) [Optional] (a) - nota: <i>minimum quantity of product for the application of this allowance or charge</i> |
| moistRegain | percent moisture regain by the fibres - base type: decimal, (XPath YARNOfferRequest/yarnTecSheet/yarnIdentity/moistRegain) 0-1 |
| msgDate | date of issue of the present message (xml document), according to one of the patterns YYYY-MM-DD, YYYY-MM-DD:HH-MM or YYYY-WW. - base type: string, |

| | |
|---------------|---|
| | (XPath YARNOfferRequest/RQheader/msgDate) 1-1 |
| @msgfunction | function performed by the present message with regards to the transmission - base type: string, cod. table: NT18 http://www.ebiz.enea.it/moda-ml/repository/codelist/v2018-1/gc_NT18.xml (XPath YARNOfferRequest/@msgfunction) [Optional] |
| msgID | key identifier of the business document in the information system of the issuing Party. In case of more despatches of the same business document, it is unchanged. - base type: string, max length: 35, (XPath YARNOfferRequest/RQheader/msgID) 0-1 |
| msgN | identification number given to the message (xml document) by its issuer. In case of more despatches of the same business document, it changes. - base type: string, max length: 35, (XPath YARNOfferRequest/RQheader/msgN) 1-1 |
| netWeight | the net weight declared for transport or customs purpose - base type: decimal, min inclusive: 0, fraction digits: 2, (XPath YARNOfferRequest/terms/transInfo/netWeight) 0-1 |
| note | free text or structured (computer processing) note. For note structuring use the attributes "noteLabel" and "codelist" - base type: string, max length: 350, (XPath YARNOfferRequest/terms/allowanceCharge/dtScheme/note) 0-99 (XPath YARNOfferRequest/yarnTecSheet/yarnManufacture/note) 0-99 (XPath YARNOfferRequest/yarnTecSheet/yarnIdentity/note) 0-99 (XPath YARNOfferRequest/yarnTecSheet/yarnQuality/note) 0-99 (XPath YARNOfferRequest/RQheader/note) 0-99 |
| @noteLabel | subject qualifier of a note - base type: string, max length: 35, (XPath YARNOfferRequest/yarnTecSheet/yarnManufacture/note/@noteLabel) [Optional] - nota: <i>must be used to qualify the subject of the note</i> (XPath YARNOfferRequest/yarnTecSheet/yarnQuality/note/@noteLabel) [Optional] - nota: <i>must be used to qualify the subject of the note</i> (XPath YARNOfferRequest/yarnTecSheet/yarnIdentity/note/@noteLabel) [Optional] - nota: <i>must be used to qualify the subject of the note</i> (XPath YARNOfferRequest/terms/allowanceCharge/dtScheme/note/@noteLabel) [Optional] - nota: <i>must be used to qualify the subject of the note</i> (XPath YARNOfferRequest/RQheader/note/@noteLabel) [Optional] - nota: <i>must be used to qualify the subject of the note</i> |
| @numberingOrg | code specifying the organisation who has created or owns the coding or numbering system - base type: string, cod. table: NT6 http://www.ebiz.enea.it/moda-ml/repository/codelist/v2018-1/gc_NT6.xml (XPath YARNOfferRequest/yarnTecSheet/yarnManufacture/colorCard/colorCardItem/refDoc/attachment/fileName/@numberingOrg) [Optional] (a) (XPath YARNOfferRequest/yarnTecSheet/yarnIdentity/yarnCode/color/@numberingOrg) [Optional] - nota: <i>this attribute should be used either single or coupled with "listName" and "listVersion"</i> (XPath YARNOfferRequest/RQheader/docID/@numberingOrg) [Optional] - nota: <i>here can be specified whose document numbering is used (e.g.: Client, Supplier, ..)</i> (XPath YARNOfferRequest/yarnTecSheet/yarnManufacture/colorCard/colorCardItem/color/@numberingOrg) [Optional] - nota: <i>this attribute should be used either single or coupled with "listName" and "listVersion"</i> (XPath YARNOfferRequest/yarnTecSheet/yarnManufacture/colorCard/colorCardItem/refDoc/season/@numberingOrg) [Optional] (a) |

- nota: *this attribute should be used either single or coupled with "listName" and "listVersion"*
(XPath YARNOfferRequest/RQheader/supplier/id/@numberingOrg) [Optional]
(XPath YARNOfferRequest/yarnTecSheet/yarnManufacture/colorCard/colorCardItem/refDoc/docID/@numberingOrg) [Optional]

- nota: *here can be specified whose document numbering is used (e.g.: Client, Supplier, ..)*
(XPath YARNOfferRequest/RQheader/supplier/additionalIdentifier/@numberingOrg) [Optional] (a)

- nota: *here the issuer of the identifier must be specified*
(XPath YARNOfferRequest/yarnTecSheet/yarnIdentity/lotN/@numberingOrg) [Optional]
(XPath YARNOfferRequest/yarnTecSheet/yarnIdentity/yarnCode/added/@numberingOrg) [Optional]

- nota: *this attribute should be used either single or coupled with "listName" and "listVersion"*
(XPath YARNOfferRequest/yarnTecSheet/yarnIdentity/dyeN/@numberingOrg) [Optional]
(XPath YARNOfferRequest/yarnTecSheet/yarnIdentity/note/@numberingOrg) [Optional]

- nota: *must be used to specify the organization that created the list of codes used in "noteLabel"*
(XPath YARNOfferRequest/yarnTecSheet/yarnManufacture/note/@numberingOrg) [Optional]

- nota: *must be used to specify the organization that created the list of codes used in "noteLabel"*
(XPath YARNOfferRequest/RQheader/subContractor/id/@numberingOrg) [Optional]
(XPath YARNOfferRequest/RQheader/refDoc/attachment/fileName/@numberingOrg) [Optional]
(XPath YARNOfferRequest/RQheader/season/@numberingOrg) [Optional] (a)

- nota: *this attribute should be used either single or coupled with "listName" and "listVersion"*
(XPath YARNOfferRequest/yarnTecSheet/refDoc/attachment/fileName/@numberingOrg) [Optional]
(XPath YARNOfferRequest/RQheader/refDoc/season/@numberingOrg) [Optional] (a)

- nota: *this attribute should be used either single or coupled with "listName" and "listVersion"*
(XPath YARNOfferRequest/yarnTecSheet/refDoc/season/@numberingOrg) [Optional] (a)

- nota: *this attribute should be used either single or coupled with "listName" and "listVersion"*
(XPath YARNOfferRequest/yarnTecSheet/yarnIdentity/season/@numberingOrg) [Optional] (a)

- nota: *this attribute should be used either single or coupled with "listName" and "listVersion"*
(XPath YARNOfferRequest/RQheader/note/@numberingOrg) [Optional]

- nota: *must be used to specify the organization that created the list of codes used in "noteLabel"*
(XPath YARNOfferRequest/RQheader/buyer/additionalIdentifier/@numberingOrg) [Optional] (a)

- nota: *here the issuer of the identifier must be specified*
(XPath YARNOfferRequest/RQheader/refDoc/docID/@numberingOrg) [Optional]

- nota: *here can be specified whose document numbering is used (e.g.: Client, Supplier, ..)*
(XPath YARNOfferRequest/yarnTecSheet/yarnQuality/note/@numberingOrg) [Optional]

- nota: *must be used to specify the organization that created the list of codes used in "noteLabel"*
(XPath YARNOfferRequest/RQheader/buyer/id/@numberingOrg) [Optional]
(XPath YARNOfferRequest/yarnTecSheet/refDoc/docID/@numberingOrg) [Optional]

- nota: *here can be specified whose document numbering is used (e.g.: Client, Supplier, ..)*

| | |
|-------------|---|
| | <p>(XPath YARNOfferRequest/terms/allowanceCharge/dtScheme/note/@numberingOrg) [Optional]</p> <p>- nota: <i>must be used to specify the organization that created the list of codes used in "noteLabel"</i></p> <p>(XPath YARNOfferRequest/terms/allowanceCharge/dtScheme/legalRef/@numberingOrg) [Optional]</p> <p>- nota: <i>this attribute should be used either single or coupled with "listName" and "listVersion"</i></p> <p>(XPath YARNOfferRequest/yarnTecSheet/yarnIdentity/yarnCode/art/@numberingOrg) [Optional]</p> <p>- nota: <i>this attribute should be used either single or coupled with "listName" and "listVersion"</i></p> <p>(XPath YARNOfferRequest/yarnTecSheet/yarnIdentity/yarnCode/@numberingOrg) [Optional] [Default= CL]</p> <p>(XPath YARNOfferRequest/RQheader/thirdParty/id/@numberingOrg) [Optional]</p> |
| optLot | <p>optimized quantity for the manufacturing plant</p> <p>- base type: decimal, min inclusive: 0,</p> <p>(XPath YARNOfferRequest/yarnTecSheet/yarnIdentity/optLot) 0-9</p> |
| @part | <p>percent fraction of a total payment</p> <p>- base type: decimal, min inclusive: 1, max inclusive: 99, fraction digits: 2,</p> <p>(XPath YARNOfferRequest/terms/insPayment/@part) [Required]</p> <p>- nota: <i>here the % value of each installment must be indicated</i></p> |
| payMode | <p>way or means of payment</p> <p>- base type: string, cod. table: T2</p> <p>http://www.ebiz.enea.it/moda-ml/repository/codelist/v2018-1/gc_T2.xml</p> <p>(XPath YARNOfferRequest/terms/payment/payMode) 0-1</p> <p>(XPath YARNOfferRequest/terms/insPayment/payMode) 0-1</p> |
| payTerm | <p>code specifying the terms or time by which the payment must be done</p> <p>- base type: string, cod. table: T1</p> <p>http://www.ebiz.enea.it/moda-ml/repository/codelist/v2018-1/gc_T1.xml</p> <p>(XPath YARNOfferRequest/terms/payment/payTerm) 1-1</p> <p>(XPath YARNOfferRequest/terms/insPayment/payTerm) 1-1</p> |
| payTermText | <p>free text specifying the terms by which the payment must be done (time/mode or means)</p> <p>- base type: string, max length: 250,</p> <p>(XPath YARNOfferRequest/terms/insPayment/payTermText) 1-1 (U)</p> <p>(XPath YARNOfferRequest/terms/payment/payTermText) 1-1 (U)</p> |
| pcTolerance | <p>percent deviation tolerated on the value of a measurement (it must have a plus or minus sign)</p> <p>- base type: decimal, min inclusive: 0, max inclusive: 100, total digits: 2,</p> <p>(XPath YARNOfferRequest/yarnTecSheet/yarnQuality/yarnQTest/pcTolerance) 0-1</p> |
| percCompos | <p>fiber rate in the product composition</p> <p>- base type: decimal, min inclusive: 0, max inclusive: 100, fraction digits: 2,</p> <p>(XPath YARNOfferRequest/yarnTecSheet/yarnIdentity/yarnCompos/percCompos) 1-9</p> |
| person | <p>name of the contact person within a Party</p> <p>- base type: string, max length: 40,</p> <p>(XPath YARNOfferRequest/RQheader/subContractor/person) 0-1</p> <p>(XPath YARNOfferRequest/RQheader/thirdParty/person) 0-1</p> <p>(XPath YARNOfferRequest/RQheader/supplier/person) 0-1</p> <p>(XPath YARNOfferRequest/RQheader/buyer/person) 0-1</p> |
| @phone | <p>phone number of the contact person within a Party</p> <p>- base type: string, max length: 35,</p> <p>(XPath YARNOfferRequest/RQheader/subContractor/person/@phone) [Optional]</p> <p>(XPath YARNOfferRequest/RQheader/supplier/person/@phone) [Optional]</p> <p>(XPath YARNOfferRequest/RQheader/buyer/person/@phone) [Optional]</p> <p>(XPath YARNOfferRequest/RQheader/thirdParty/person/@phone) [Optional]</p> |

| | |
|-----------------|---|
| plyN | number of single threads twisted together - base type: positiveInteger, (XPath YARNOfferRequest/yarnTecSheet/yarnManufacture/ yarnPly/plyN) 0-1 |
| plyWork | kind of yarn's ply - base type: string, cod. table: T56 http://www.ebiz.enea.it/moda-ml/repository/codelist/v2018-1/gc_T56.xml (XPath YARNOfferRequest/yarnTecSheet/yarnManufacture/ yarnPly/plyWork) 1-1 |
| postCode | code defining the postal zone - base type: string, max length: 10, (XPath YARNOfferRequest/RQheader/supplier/postCode) 0-1 (XPath YARNOfferRequest/RQheader/buyer/postCode) 0-1 (XPath YARNOfferRequest/RQheader/subContractor/postCode) 0-1 (XPath YARNOfferRequest/RQheader/thirdParty/postCode) 0-1 |
| price | unit price of the article, object or service specified - base type: decimal, min inclusive: 0, fraction digits: 4, (XPath YARNOfferRequest/yarnTecSheet/yarnIdentity/price) 0-2 (AU) |
| @priceQualifier | type of price with reference to discount and taxes - base type: string, cod. table: NT20 http://www.ebiz.enea.it/moda-ml/repository/codelist/v2018-1/gc_NT20.xml (XPath YARNOfferRequest/yarnTecSheet/yarnIdentity/price/@priceQualifier) [Optional] [Default= NET] |
| @progr | progressive number in the sequence - base type: positiveInteger, min inclusive: 1, (XPath YARNOfferRequest/terms/transInfo/@progr) [Optional] (N) - nota: <i>Indicates the position of the leg in a sequence of transport legs. If it is declared it must be in all the transInfo elements.</i> |
| qty | net quantity of the article or object correlated, qualified by the function of the document (ordering, delivering, ..) and by the context - base type: decimal, min inclusive: 0, fraction digits: 2, (XPath YARNOfferRequest/yarnTecSheet/yarnIdentity/ yarnTwist/qty) 0-1 - note: <i>here the number of turns per meter is specified</i> |
| @reelType | type of package used for a yarn product - base type: string, cod. table: T29 http://www.ebiz.enea.it/moda-ml/repository/codelist/v2018-1/gc_T29.xml (XPath YARNOfferRequest/yarnTecSheet/yarnIdentity/ standardPack/@reelType) [Optional] - nota: <i>identifies the kind of unit in the package</i> |
| @role | Third Party role qualifier - base type: string, cod. table: NT2 http://www.ebiz.enea.it/moda-ml/repository/codelist/v2018-1/gc_NT2.xml (XPath YARNOfferRequest/RQheader/thirdParty/@role) [Required] |
| season | sale season; defined as: season (1 crt) + year (4 crt) - season: S/S=1 A/W=2 Spring=3 Summer=4 Autumn=5 Winter=6: for more than four seasons use alphabetic sequence: 1st season=A 2nd season=B etc.etc. - base type: string, max length: 15, (XPath YARNOfferRequest/yarnTecSheet/refDoc/season) 0-1 (A) - note: <i>here indicates the season to which the referenced document belongs</i> (XPath YARNOfferRequest/yarnTecSheet/yarnManufacture/ colorCard/colorCardItem/refDoc/season) 0-1 (A) - note: <i>here indicates the season to which the referenced document belongs</i> (XPath YARNOfferRequest/RQheader/season) 0-1 (A) (XPath YARNOfferRequest/RQheader/refDoc/season) 0-1 (A) - note: <i>here indicates the season to which the referenced document belongs</i> (XPath YARNOfferRequest/yarnTecSheet/yarnIdentity/season) 0-1 (A) |

| | |
|-------------------|---|
| @sender | <p>qualifier that specifies the Party issuing of the document</p> <ul style="list-style-type: none"> - base type: boolean, (XPath YARNOfferRequest/RQheader/buyer/@sender) [Optional] (a*) - nota: <i>This attribute is mandatory when the STYLESHEET must be used</i> (XPath YARNOfferRequest/RQheader/thirdParty/@sender) [Optional] (a*) - nota: <i>This attribute is mandatory when the STYLESHEET must be used</i> (XPath YARNOfferRequest/RQheader/supplier/@sender) [Optional] (a*) - nota: <i>This attribute is mandatory when the STYLESHEET must be used</i> (XPath YARNOfferRequest/RQheader/subContractor/@sender) [Optional] (a*) - nota: <i>This attribute is mandatory when the STYLESHEET must be used</i> |
| @source | <p>party who has provided the data</p> <ul style="list-style-type: none"> - base type: string, cod. table: NT12 http://www.ebiz.enea.it/moda-ml/repository/codelist/v2018-1/gc_NT12.xml (XPath YARNOfferRequest/yarnTecSheet/yarnQuality/yarnQTest/specValue/@source) [Optional] (XPath YARNOfferRequest/yarnTecSheet/yarnManufacture/yarnColorFastness/specValue/@source) [Optional] |
| specValue | <p>value requested for a property or a parameter that is measured</p> <ul style="list-style-type: none"> - base type: decimal, (XPath YARNOfferRequest/yarnTecSheet/yarnQuality/yarnQTest/specValue) 0-1 (XPath YARNOfferRequest/yarnTecSheet/yarnManufacture/yarnColorFastness/specValue) 1-1 - note: <i>when the test forseees two values (change-staining) the 1st value is change and the 2nd staining, divided by ";"</i> |
| @standardObserver | <p>CIE average chromatic response definition</p> <ul style="list-style-type: none"> - base type: string, cod. table: T60 http://www.ebiz.enea.it/moda-ml/repository/codelist/v2018-1/gc_T60.xml (XPath YARNOfferRequest/yarnTecSheet/yarnManufacture/colorCard/colorCardItem/CIELab/@standardObserver) [Optional] |
| standardPack | <p>number of unit per standard package</p> <ul style="list-style-type: none"> - base type: positiveInteger, (XPath YARNOfferRequest/yarnTecSheet/yarnIdentity/standardPack) 0-1 |
| street | <p>street and building number identifying a location</p> <ul style="list-style-type: none"> - base type: string, max length: 80, (XPath YARNOfferRequest/RQheader/thirdParty/street) 0-1 (XPath YARNOfferRequest/RQheader/buyer/street) 0-1 (XPath YARNOfferRequest/RQheader/supplier/street) 0-1 (XPath YARNOfferRequest/RQheader/subContractor/street) 0-1 |
| subCountry | <p>short name or code of the sub-country entity</p> <ul style="list-style-type: none"> - base type: string, max length: 9, (XPath YARNOfferRequest/RQheader/subContractor/subCountry) 0-1 (XPath YARNOfferRequest/RQheader/buyer/subCountry) 0-1 (XPath YARNOfferRequest/RQheader/supplier/subCountry) 0-1 (XPath YARNOfferRequest/RQheader/thirdParty/subCountry) 0-1 |
| subDept | <p>name or code of a contact department within a Party</p> <ul style="list-style-type: none"> - base type: string, max length: 40, (XPath YARNOfferRequest/RQheader/buyer/subDept) 0-1 (N) (XPath YARNOfferRequest/RQheader/thirdParty/subDept) 0-1 (N) (XPath YARNOfferRequest/RQheader/supplier/subDept) 0-1 (N) (XPath YARNOfferRequest/RQheader/subContractor/subDept) 0-1 (N) |
| taxCategory | <p>duty or tax or fee category</p> <ul style="list-style-type: none"> - base type: string, cod. table: T62 http://www.ebiz.enea.it/moda-ml/repository/codelist/v2018-1/gc_T62.xml (XPath YARNOfferRequest/terms/allowanceCharge/dtScheme/taxCategory) 0-1 |
| taxRate | <p>duty or tax or fee percent rate</p> <ul style="list-style-type: none"> - base type: string, (XPath YARNOfferRequest/terms/allowanceCharge/dtScheme/taxRate) 0-1 |

| | |
|--------------------|--|
| @taxType | duty or tax or fee type - base type: string, cod. table: T61 http://www.ebiz.enea.it/moda-ml/repository/codelist/v2018-1/gc_T61.xml (XPath YARNOfferRequest/terms/allowanceCharge/dtScheme/@taxType) [Required] |
| tolerance | deviation tolerated on the value of a measurement (it must have a plus or minus sign) - base type: decimal, (XPath YARNOfferRequest/yarnTecSheet/yarnQuality/yarnQTest/tolerance) 0-1 |
| tradeMark | name of the official trademark of a specified product (DEPRECATED, use Brand or Product Line). - base type: string, max length: 50, (XPath YARNOfferRequest/yarnTecSheet/yarnIdentity/tradeMark) 0-1 |
| transCondition | special condition of transport or special service requested to the Forwarder - base type: string, cod. table: T38 http://www.ebiz.enea.it/moda-ml/repository/codelist/v2018-1/gc_T38.xml (XPath YARNOfferRequest/terms/transInfo/transCondition) 0-3 |
| transConditionText | free text description of the special condition of transport or special service requested to the Forwarder - base type: string, max length: 250, (XPath YARNOfferRequest/terms/transInfo/transConditionText) 0-1 (U) |
| transMeans | means of transport, in general or referred to a specific leg - base type: string, cod. table: T40 http://www.ebiz.enea.it/moda-ml/repository/codelist/v2018-1/gc_T40.xml (XPath YARNOfferRequest/terms/transInfo/transMeans) 0-1 |
| transMode | way of transport, in general or referred to the specified leg - base type: string, cod. table: T8 http://www.ebiz.enea.it/moda-ml/repository/codelist/v2018-1/gc_T8.xml (XPath YARNOfferRequest/terms/transInfo/transMode) 1-1 |
| @transReason | reason for the transport - base type: string, cod. table: NT11 http://www.ebiz.enea.it/moda-ml/repository/codelist/v2018-1/gc_NT11.xml (XPath YARNOfferRequest/terms/transInfo/@transReason) [Optional] |
| twistDirection | direction (S or Z) of the yarn twist - base type: string, (XPath YARNOfferRequest/yarnTecSheet/yarnIdentity/yarnTwist/twistDirection) 1-1 |
| @uid | unique element identifier within the xml document - base type: string, (XPath YARNOfferRequest/yarnTecSheet/refDoc/attachment/@uid) [Optional] (XPath YARNOfferRequest/RQheader/refDoc/attachment/@uid) [Optional] (XPath YARNOfferRequest/yarnTecSheet/yarnManufacture/colorCard/colorCardItem/refDoc/attachment/@uid) [Optional] |
| @um | specification of the unit of measure - base type: string, cod. table: NT7 http://www.ebiz.enea.it/moda-ml/repository/codelist/v2018-1/gc_NT7.xml (XPath YARNOfferRequest/yarnTecSheet/yarnQuality/yarnQTest/tolerance/@um) [Required] (XPath YARNOfferRequest/yarnTecSheet/yarnQuality/yarnQTest/pcTolerance/@um) [Optional] - nota: <i>to be used when it has to be soecified if the declared percentage is by weight, volume, etc...</i> (XPath YARNOfferRequest/yarnTecSheet/yarnQuality/yarnQTest/specValue/@um) [Optional] (XPath YARNOfferRequest/terms/allowanceCharge/@um) [Optional] (a) (XPath YARNOfferRequest/yarnTecSheet/yarnIdentity/yarnReelQty/@um) [Required] |

| | |
|---------------|---|
| | <p>(XPath YARNOfferRequest/yarnTecSheet/yarnIdentity/minLot/@um) [Required] (XPath YARNOfferRequest/yarnTecSheet/yarnIdentity/yarnComWeight/@um) [Required] (XPath YARNOfferRequest/yarnTecSheet/yarnIdentity/fibrePD/diameter/@um) [Optional] (XPath YARNOfferRequest/yarnTecSheet/yarnIdentity/fibrePD/length/@um) [Required] (XPath YARNOfferRequest/yarnTecSheet/yarnIdentity/yarnTwist/qty/@um) [Required] (XPath YARNOfferRequest/yarnTecSheet/yarnIdentity/minLotExclusive/@um) [Required] (XPath YARNOfferRequest/terms/transInfo/netWeight/@um) [Required] (XPath YARNOfferRequest/yarnTecSheet/yarnManufacture/yarnColorFastness/specValue/@um) [Optional] (XPath YARNOfferRequest/terms/transInfo/grossWeight/@um) [Required] (XPath YARNOfferRequest/yarnTecSheet/yarnIdentity/optLot/@um) [Optional] (XPath YARNOfferRequest/yarnTecSheet/yarnIdentity/price/@um) [Optional] - nota: <i>Unit of measure of the product to which the price is referred (price per meter)</i></p> |
| uri | <p>Uniform Resource Identifier (URI) that identifies the external object as an Internet resource - base type: normalizedString, (XPath YARNOfferRequest/yarnTecSheet/refDoc/attachment/externalReference/uri) 1-1 (N) (XPath YARNOfferRequest/yarnManufacture/colorCard/colorCardItem/refDoc/attachment/externalReference/uri) 1-1 (N) (XPath YARNOfferRequest/RQheader/refDoc/attachment/externalReference/uri) 1-1 (N)</p> |
| @useProfile | <p>use profile to which the present document is compliant if it was agreed by the parties. It is suggested a URI with reference to the firms or the URL of the profile. - base type: string, (XPath YARNOfferRequest/@useProfile) [Optional]</p> |
| validityEnd | <p>date by which the validity ends, according to one of the patterns YYYY-MM-DD, YYYY-MM-DD:HH-MM or YYYY-WW. - base type: string, (XPath YARNOfferRequest/RQheader/validityEnd) 1-1</p> |
| validityStart | <p>date by which the validity starts, according to one of the patterns YYYY-MM-DD, YYYY-MM-DD:HH-MM or YYYY-WW. - base type: string, (XPath YARNOfferRequest/RQheader/validityStart) 0-1</p> |
| @VAT | <p>VAT rate or code (DEPRECATED, use dtScheme element) - base type: string, cod. table: NT16 http://www.ebiz.enea.it/moda-ml/repository/codelist/v2018-1/gc_NT16.xml (XPath YARNOfferRequest/terms/allowanceCharge/@VAT) [Optional] (XPath YARNOfferRequest/RQheader/thirdParty/@VAT) [Optional]</p> |
| @version | <p>Dictionary version from which the instance has been created - base type: string, cod. table: NT100 http://www.ebiz.enea.it/moda-ml/repository/codelist/v2018-1/gc_NT100.xml (XPath YARNOfferRequest/@version) [Optional] [Default= 2018-1]</p> |
| yarnCFTest | <p>color fastness test for a yarn - base type: string, cod. table: T57 http://www.ebiz.enea.it/moda-ml/repository/codelist/v2018-1/gc_T57.xml (XPath YARNOfferRequest/yarnManufacture/yarnColorFastness/yarnCFTest) 1-1</p> |
| yarnClass | <p>yarn classification according to the manufacturing process - base type: string, cod. table: NT31 http://www.ebiz.enea.it/moda-ml/repository/codelist/v2018-1/gc_NT31.xml (XPath YARNOfferRequest/yarnTecSheet/yarnIdentity/yarnClass) 0-1</p> |

| | |
|------------------|--|
| yarnComWeight | dry weight of fibres plus commercial moisture regain - base type: decimal, min inclusive: 0, (XPath YARNOfferRequest/yarnTecSheet/yarnIdentity/yarnComWeight) 0-1 |
| yarnCount | linear density measure of yarn (count) - base type: string, (XPath YARNOfferRequest/yarnTecSheet/yarnIdentity/yarnCount) 0-1 |
| yarnJob | operation of a work cycle for yarn - base type: string, cod. table: T201 http://www.ebiz.enea.it/moda-ml/repository/codelist/v2018-1/gc_T201.xml (XPath YARNOfferRequest/yarnTecSheet/yarnManufacture/ yarnJobSeq/yarnJob) 1-19 |
| yarnKind | general type of yarn - base type: string, cod. table: T54 http://www.ebiz.enea.it/moda-ml/repository/codelist/v2018-1/gc_T54.xml (XPath YARNOfferRequest/yarnTecSheet/yarnIdentity/yarnKind) 0-1 |
| yarnNameBuyer | name given to the yarn by the Buyer - base type: string, max length: 250, (XPath YARNOfferRequest/yarnTecSheet/yarnIdentity/yarnNameBuyer) 0-1 (U) |
| yarnNameSupplier | name given to the yarn by the Supplier - base type: string, max length: 250, (XPath YARNOfferRequest/yarnTecSheet/yarnIdentity/yarnNameSupplier) 1-1 (U) |
| yarnQTestType | Type of test related to a property of a yarn - base type: string, cod. table: T58 http://www.ebiz.enea.it/moda-ml/repository/codelist/v2018-1/gc_T58.xml (XPath YARNOfferRequest/yarnTecSheet/yarnQuality/ yarnQTest/yarnQTestType) 1-1 (N) |
| yarnReelQty | quantity of yarn (by weight or length) wound upon a bobbin - base type: decimal, min inclusive: 0, fraction digits: 2, (XPath YARNOfferRequest/yarnTecSheet/yarnIdentity/yarnReelQty) 0-1 |

2.3 Suggested best practices

YARNOfferRequest/RQheader/refDoc/docID (identification number of the referenced document SINCE 2008-1 ITS USE IN THE HEADER IS DISCOURAGED (REPLACED BY msgID))

numberingOrg indicates the role that produced the document identifier (it is allowed to declare two different ones -e.g. customer and supplier - with two docID with different numberingOrg

YARNOfferRequest/yarnTecSheet/yarnManufacture/

colorCard/colorCardItem/refDoc/docID (identification number of the referenced document SINCE 2008-1 ITS USE IN THE HEADER IS DISCOURAGED (REPLACED BY msgID))

numberingOrg indicates the role that produced the document identifier (it is allowed to declare two different ones -e.g. customer and supplier - with two docID with different numberingOrg

YARNOfferRequest/yarnTecSheet/refDoc/docID (identification number of the referenced document SINCE 2008-1 ITS USE IN THE HEADER IS DISCOURAGED (REPLACED BY msgID))

numberingOrg indicates the role that produced the document identifier (it is allowed to declare two different ones -e.g. customer and supplier - with two docID with different numberingOrg

YARNOfferRequest/yarnTecSheet/yarnManufacture/

colorCard/colorCardItem/refDoc/attachment/externalReference/mimeCode (mime type of the external object)

Use coding from IANA <http://www.iana.org/assignments/media-types/media-types.xml>

YARNOfferRequest/yarnTecSheet/refDoc/attachment/

externalReference/mimeCode (mime type of the external object)

Use coding from IANA <http://www.iana.org/assignments/media-types/media-types.xml>

YARNOfferRequest/RQheader/refDoc/attachment/

externalReference/mimeCode (mime type of the external object)

Use coding from IANA <http://www.iana.org/assignments/media-types/media-types.xml>

2.4 Enumeration tables

List of enumeration tables used in the XML document. You can find the corresponding codes at:
<http://www.ebiz-tcf.eu/moda-ml/imple/moda-ml-2018-1.asp?lingua=en&pag=6>

Legenda

- N: new table
- U: updated properties

NT100 - eBIZ TCFUpstream version

NT11 - transport causal

NT12 - data source

NT16 - VAT rate or code

NT18 - message function

NT2 - third party qualifier

NT20 - price qualifier

NT26 - color type

NT29 - format of a date

NT3 - data format

NT31 - yarn family

NT6 - coding system owner/issuer

NT60 - language, codes from ISO 639-1 (subset) (N)

NT7 - unit of measure (U)

T1 - terms of payment

T10 - ISO3166 - Country

T15 - dye/print process type

T16 - dyestuff type

T19 - fibre type

T2 - Modes of payment

T201 - type of job on yarn

T21 - type of document

T29 - type of yarn package

T3 - terms of delivery

T38 - transport conditions

T40 - type of transport means

T41 - type of Allowance or Charge

T44 - additional code type

T54 - kind of yarn

T55 - count system

T56 - kind of yarn ply

T57 - color fastness test for yarn

T58 - yarn quality parameters

T59 - CIE illuminant

T60 - CIE standard observer

T61 - duty or tax or fee type

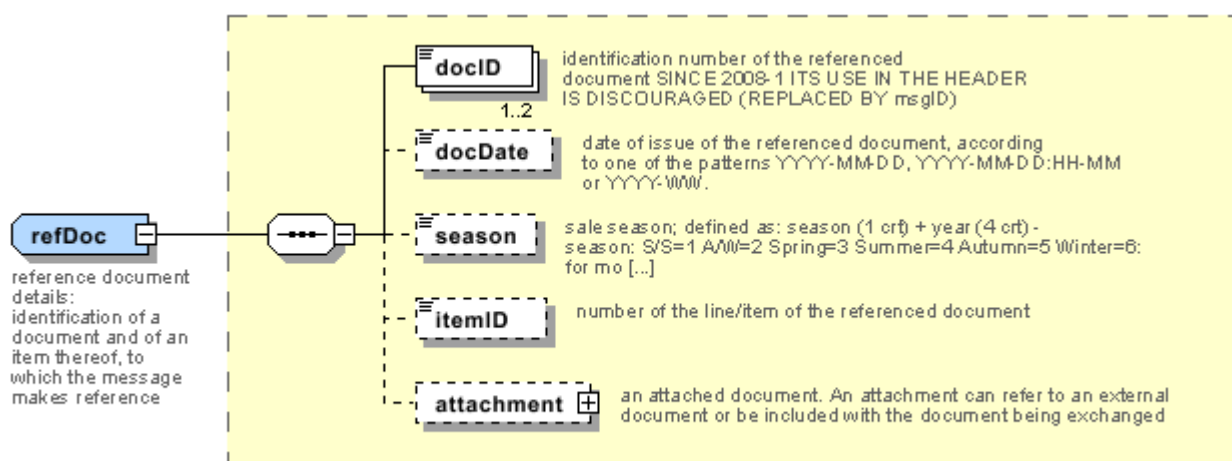
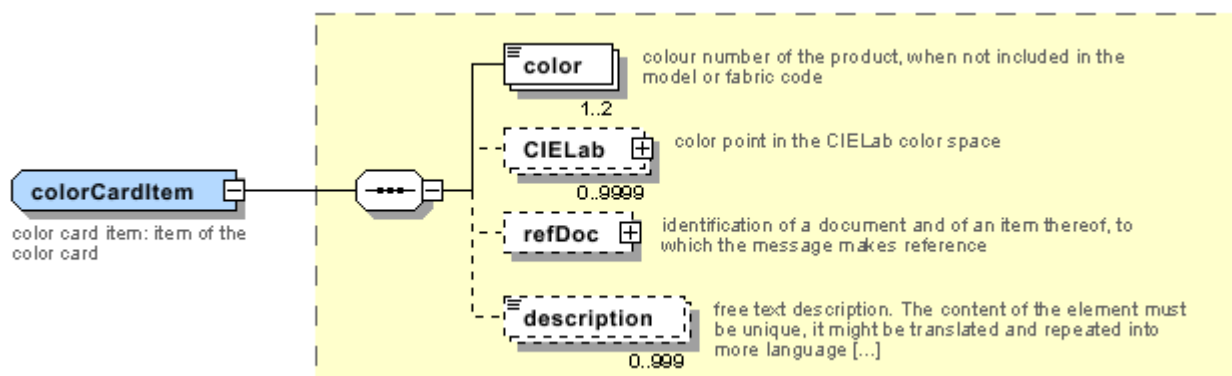
T62 - duty or tax or fee category

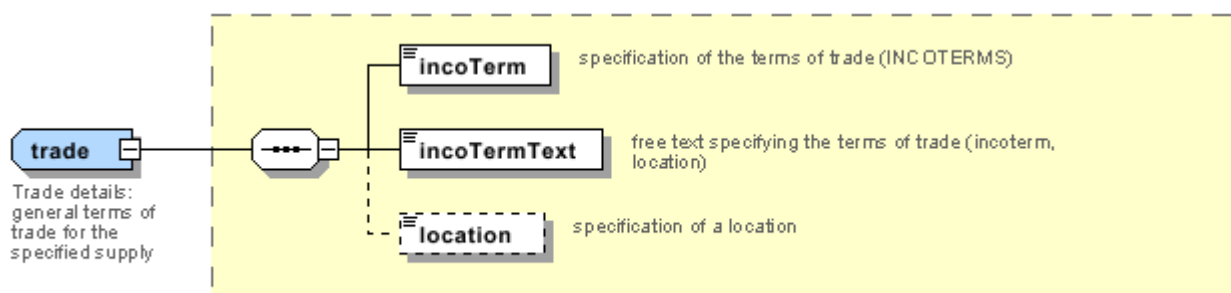
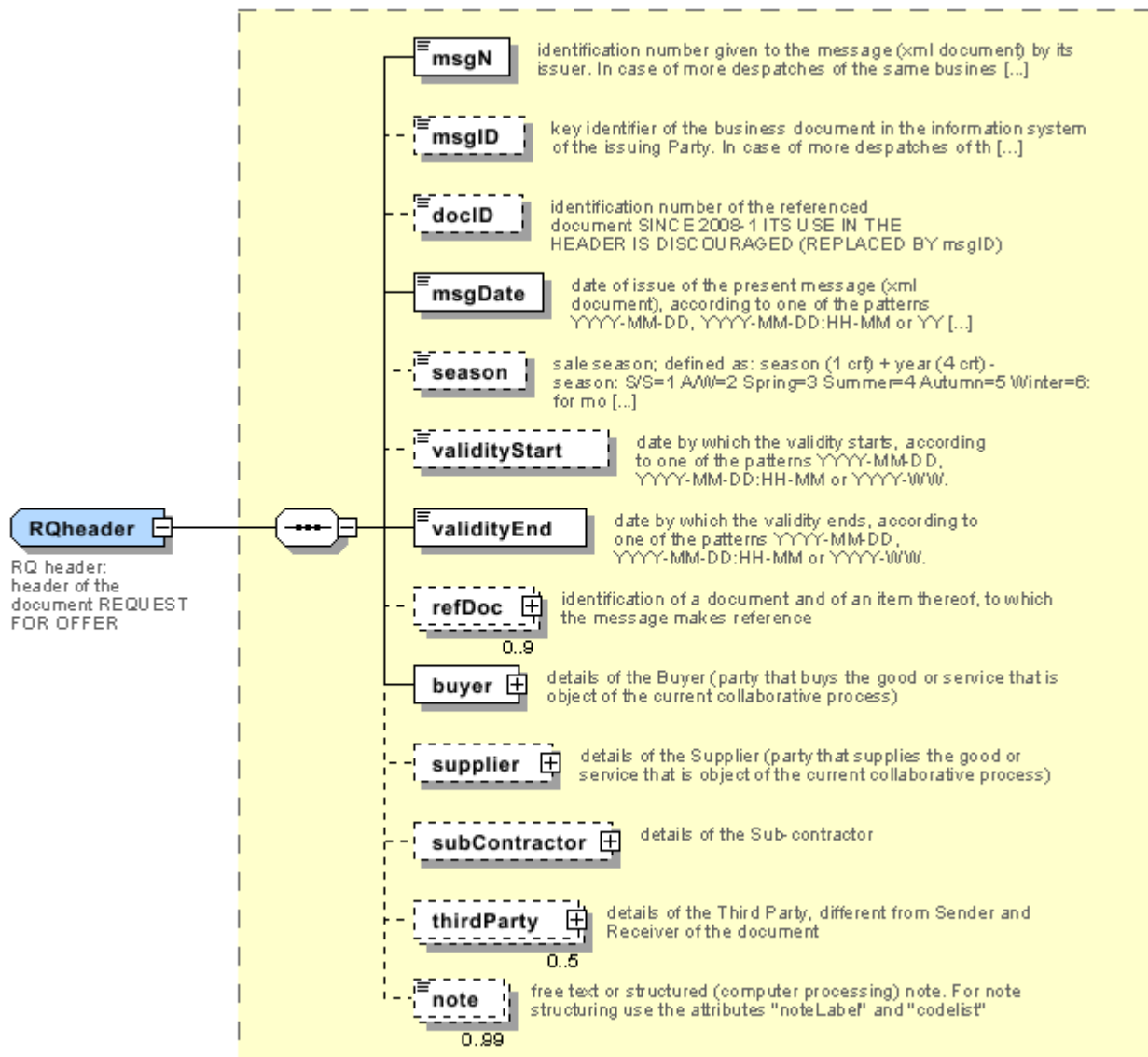
T8 - Modes of Transport

T9 - ISO4217 - Currency

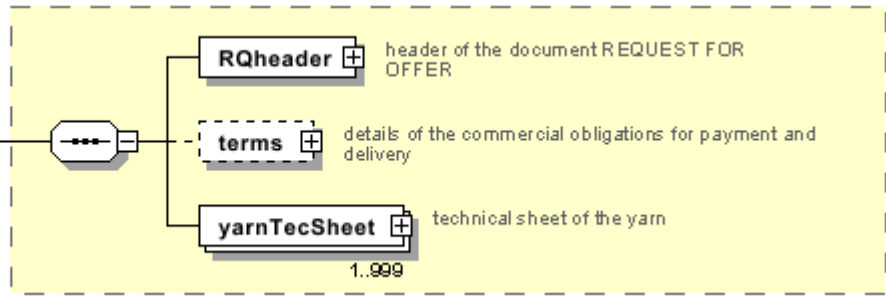
Annex A

Representative images of the principal complex elements' structure.





YARNOfferRequest
YARNOfferRequest: Request for a specific kind of yarn



Annex B

NT100 - eBIZ TCFUpstream version

dictionary version

Agency name: eBIZ

tabella cod.: NT100

File codes list (Generic code): http://www.ebiz.enea.it/moda-ml/repository/codelist/v2018-1/gc_NT100.xml

| Code | Description | Adoption note | Version status | Date of insertion |
|--------|-------------|---------------|----------------|-------------------|
| 2013-1 | v2013-1 | | | 01/07/2013 |
| 2018-1 | v2018-1 | | (N) | 04/11/2018 |
| draft | draft | | (N) | 08/09/2017 |

NT11 - transport causal

reason for the transport

Agency name: eBIZ

tabella cod.: NT11

File codes list (Generic code): http://www.ebiz.enea.it/moda-ml/repository/codelist/v2018-1/gc_NT11.xml

| Code | Description | Adoption note | Version status | Date of insertion |
|------|-----------------------|---------------|----------------|-------------------|
| FOC | free of charge | | | |
| FRW | return from re-works | | | |
| FST | return from storage | | | |
| FWW | return from view | | | |
| FWK | return from works | | | |
| IST | in storage | | | |
| NWK | return non-worked | | | |
| RJC | return from rejection | | | |
| SEL | to sell | | | |
| STO | to storage | | | |
| VEW | to view | | | |
| WRK | to works | | | |

NT12 - data source

party who has provided the data

Agency name: eBIZ

tabella cod.: NT12

File codes list (Generic code): http://www.ebiz.enea.it/moda-ml/repository/codelist/v2018-1/gc_NT12.xml

| Code | Description | Adoption note | Version status | Date of insertion |
|------|---------------------|---------------|----------------|-------------------|
| AC | internal test | | | |
| CO | external test | | | |
| CV | test after steaming | | | |

NT16 - VAT rate or code

VAT rate or code (DEPRECATED, use dtScheme element)

tabella cod.: NT16

File codes list (Generic code): http://www.ebiz.enea.it/moda-ml/repository/codelist/v2018-1/gc_NT16.xml

NT18 - message function

function performed by the present message with regards to the transmission

Agency name: eBIZ

tabella cod.: NT18

File codes list (Generic code): http://www.ebiz.enea.it/moda-ml/repository/codelist/v2018-1/gc_NT18.xml

| Code | Description | Adoption note | Version status | Date of insertion |
|------|-------------------------------------|---------------|----------------|-------------------|
| CA | delete this document | | | 01/07/2013 |
| CP | copy | | | |
| OR | original | | | |
| RC | re-transmission for data correction | | | |
| RT | re-transmission | | | |

NT2 - third party qualifier

Third Party role qualifier

Agency name: eBIZ

tabella cod.: NT2

File codes list (Generic code): http://www.ebiz.enea.it/moda-ml/repository/codelist/v2018-1/gc_NT2.xml

| Code | Description | Adoption note | Version status | Date of insertion |
|------|--------------------------------------|---------------|----------------|-------------------|
| AG | Sales Agent | | | |
| AU | Auditor | | (N) | 08/04/2019 |
| CE | Certification authority | | (N) | 08/04/2019 |
| CO | Quality Controller | | | |
| DC | Response to | | | |
| DF | Invoicee | | | |
| DI | Copy to (CC) | | | 28/10/2014 |
| DM | Consignee | | | |
| DP | Consignment address (Delivery Party) | | | |
| IM | Importer | | | |
| OR | Originator | | | 10/09/2014 |
| SC | Sub contractor | | (N) | 10/04/2019 |
| SM | Service/ePlatform manager | | (N) | 08/04/2019 |
| SP | Forwarder | | | |
| TX | Tax Representative | | | |

NT20 - price qualifier

type of price with reference to discount and taxes

Agency name: eBIZ

tabella cod.: NT20

File codes list (Generic code): http://www.ebiz.enea.it/moda-ml/repository/codelist/v2018-1/gc_NT20.xml

| Code | Description | Adoption note | Version status | Date of insertion |
|------|-----------------------|---------------|----------------|-------------------|
| GET | gross excluding taxes | | | |
| GIT | gross including taxes | | | |
| NET | net excluding taxes | | | |
| NIT | net including taxes | | | |

NT26 - color type

type of color to which a "color fastness" value refers

Agency name: eBIZ

tabella cod.: NT26

File codes list (Generic code): http://www.ebiz.enea.it/moda-ml/repository/codelist/v2018-1/gc_NT26.xml

| Code | Description | Adoption note | Version status | Date of insertion |
|------|-------------|---------------|----------------|-------------------|
| D | dark | | | |
| L | light | | | |
| P | pastel | | | |

NT29 - format of a date

format used for the date

Agency name: eBIZ

tabella cod.: NT29

File codes list (Generic code): http://www.ebiz.enea.it/moda-ml/repository/codelist/v2018-1/gc_NT29.xml

| Code | Description | Adoption note | Version status | Date of insertion |
|------|------------------|---------------|----------------|-------------------|
| D | YYYY-MM-DD | | | |
| M | YYYY-MM-DD:HH-MM | | | |
| W | YYYY-WW | | | |

NT3 - data format

format of a string according to a customized User rule (local rule)

Agency name: eBIZ

tabella cod.: NT3

File codes list (Generic code): http://www.ebiz.enea.it/moda-ml/repository/codelist/v2018-1/gc_NT3.xml

| Code | Description | Adoption note | Version status | Date of insertion |
|------|-----------------|---------------|----------------|-------------------|
| EN4 | GS1-GLN | | | 01/07/2013 |
| MD | mutually agreed | | | |

NT31 - yarn family

yarn classification according to the manufacturing process

Agency name: eBIZ

tabella cod.: NT31

File codes list (Generic code): http://www.ebiz.enea.it/moda-ml/repository/codelist/v2018-1/gc_NT31.xml

| Code | Description | Adoption note | Version status | Date of insertion |
|------|-------------|---------------|----------------|-------------------|
| CAN | carded | | | |
| EXT | extrusion | | | |
| FSE | dry-spun | | | |
| FUM | wet-spun | | | |
| OPE | open end | | | |
| PAN | combed | | | |
| REG | rigenerated | | | |
| SMP | half-combed | | | |

NT6 - coding system owner/issuer

code specifying the organisation who has created or owns the coding or numbering system

Agency name: eBIZ

tabella cod.: NT6

File codes list (Generic code): http://www.ebiz.enea.it/moda-ml/repository/codelist/v2018-1/gc_NT6.xml

| Code | Description | Adoption note | Version status | Date of insertion |
|------|------------------------------|---------------|----------------|-------------------|
| CL | Customer/buyer | | | |
| CO | Quality Controller | | | |
| EB | eBIZ | replaces 'ML' | (N) | 18/03/2019 |
| EN | GS1 (ex-EAN International) | | | |
| ES | e-Stockflow | | | |
| FO | Supplier | | | |
| GS | GS1 | | | 01/07/2013 |
| MF | VAT identifier | | (U) | |
| ML | Moda-ML | DEPRECATED | (U) | |
| SP | Service Provider | | | |

NT60 - language, codes from ISO 639-1 (subset) (N)

Agency name: eBIZ / ISO

tabella cod.: NT60

File codes list (Generic code): http://www.ebiz.enea.it/moda-ml/repository/codelist/v2018-1/gc_NT60.xml

| Code | Description | Adoption note | Version status | Date of insertion |
|------|--|---------------|----------------|-------------------|
| af | Afrikaans | | (N) | 31/01/2019 |
| ar | Arabic | | (N) | 31/01/2019 |
| be | Belarusian | | (N) | 31/01/2019 |
| bg | Bulgarian | | (N) | 31/01/2019 |
| bn | Bengali | | (N) | 31/01/2019 |
| bo | Tibetan | | (N) | 31/01/2019 |
| bs | Bosnian | | (N) | 31/01/2019 |
| ca | Catalan, Valencian | | (N) | 31/01/2019 |
| cs | Czech | | (N) | 31/01/2019 |
| da | Danish | | (N) | 31/01/2019 |
| de | German | | (N) | 31/01/2019 |
| el | Greek, Modern (1453-) | | (N) | 31/01/2019 |
| en | English | | (N) | 31/01/2019 |
| eo | Esperanto | | (N) | 31/01/2019 |
| es | Spanish, Castilian | | (N) | 31/01/2019 |
| et | Estonian | | (N) | 31/01/2019 |
| eu | Basque | | (N) | 31/01/2019 |
| F | Female | | (N) | 15/04/2019 |
| fa | Persian | | (N) | 31/01/2019 |
| fi | Finnish | | (N) | 31/01/2019 |
| fr | French | | (N) | 31/01/2019 |
| ga | Irish | | (N) | 31/01/2019 |
| gd | Gaelic, Scottish Gaelic | | (N) | 31/01/2019 |
| gn | Guarani | | (N) | 31/01/2019 |
| he | Hebrew | | (N) | 31/01/2019 |
| hr | Croatian | | (N) | 31/01/2019 |
| ht | Haitian, Haitian Creole | | (N) | 31/01/2019 |
| hu | Hungarian | | (N) | 31/01/2019 |
| hy | Armenian | | (N) | 31/01/2019 |
| ia | Interlingua (International Auxiliary Language Association) | | (N) | 31/01/2019 |
| id | Indonesian | | (N) | 31/01/2019 |
| is | Icelandic | | (N) | 31/01/2019 |

| | | | | |
|----|-------------------------------|--|-----|------------|
| it | Italian | | (N) | 31/01/2019 |
| ja | Japanese | | (N) | 31/01/2019 |
| jv | Javanese | | (N) | 31/01/2019 |
| ka | Georgian | | (N) | 31/01/2019 |
| km | Central Khmer | | (N) | 31/01/2019 |
| ko | Korean | | (N) | 31/01/2019 |
| ku | Kurdish | | (N) | 31/01/2019 |
| lb | Luxembourgish, Letzeburgesch | | (N) | 31/01/2019 |
| lo | Lao | | (N) | 31/01/2019 |
| lt | Lithuanian | | (N) | 31/01/2019 |
| lv | Latvian | | (N) | 31/01/2019 |
| mg | Malagasy | | (N) | 31/01/2019 |
| mk | Macedonian | | (N) | 31/01/2019 |
| mn | Mongolian | | (N) | 31/01/2019 |
| mt | Maltese | | (N) | 31/01/2019 |
| nl | Dutch, Flemish | | (N) | 31/01/2019 |
| no | Norwegian | | (N) | 31/01/2019 |
| pl | Polish | | (N) | 31/01/2019 |
| pt | Portuguese | | (N) | 31/01/2019 |
| ro | Romanian, Moldavian, Moldovan | | (N) | 31/01/2019 |
| ru | Russian | | (N) | 31/01/2019 |
| se | Northern Sami | | (N) | 31/01/2019 |
| sk | Slovak | | (N) | 31/01/2019 |
| sl | Slovenian | | (N) | 31/01/2019 |
| sm | Samoan | | (N) | 31/01/2019 |
| so | Somali | | (N) | 31/01/2019 |
| sq | Albanian | | (N) | 31/01/2019 |
| sr | Serbian | | (N) | 31/01/2019 |
| sv | Swedish | | (N) | 31/01/2019 |
| sw | Swahili | | (N) | 31/01/2019 |
| ta | Tamil | | (N) | 31/01/2019 |
| th | Thai | | (N) | 31/01/2019 |
| tr | Turkish | | (N) | 31/01/2019 |
| uk | Ukrainian | | (N) | 31/01/2019 |
| ur | Urdu | | (N) | 31/01/2019 |

| | | | | |
|----|------------|--|-----|------------|
| uz | Uzbek | | (N) | 31/01/2019 |
| vi | Vietnamese | | (N) | 31/01/2019 |
| zh | Chinese | | (N) | 31/01/2019 |

NT7 - unit of measure (U)

specification of the unit of measure, it is a sub set of table Unit of Measure Code - UN/ECE REC 20 delivered by United Nations Economic Commission for Europe (UN/ECE)

Agency name: eBIZ / UN/ECE

tabella cod.: NT7

File codes list (Generic code): http://www.ebiz.enea.it/moda-ml/repository/codelist/v2018-1/gc_NT7.xml

Other link: <http://docs.oasis-open.org/ubl/os-UBL-2.1/cl/gc/default/UnitOfMeasureCode-2.1.gc#>

| Code | Description | Adoption note | Version status | Date of insertion |
|---------|-------------------|---------------|----------------|-------------------|
| CMK | square centimetre | | (N) | 20/12/2017 |
| CMQ | cubic centimetre | | (N) | 20/12/2017 |
| CMT | centimetre | | | |
| CNE | centiNewton | | | |
| CO2TON | ton of CO2 | | (N) | 10/09/2014 |
| COUPLES | couples | | | |
| DMQ | cubic decimetre | | | |
| E37 | pixel | | (N) | 11/04/2018 |
| GRM | gram | | | |
| HUR | hour | | | |
| INH | inch | | | |
| KGM | kilogram | | | |
| KMT | kilometer | | | |
| KWH | kilowatthours | | (N) | 10/09/2014 |
| LBR | pound | | | |
| MIN | minute | | | |
| MMK | square millimetre | | (N) | 20/12/2017 |
| MTK | square metre | | (N) | 20/12/2017 |
| MTQ | cubic metre | | | |
| MTR | metre | | | |
| NMB | numero | | | |
| ONZ | ounce | | | |

| | | | | |
|-----|-------------------|--|-----|--|
| P1 | percent | | | |
| PPM | parts per million | | | |
| PZ | piece | | (U) | |
| RPM | rounds per metre | | | |
| YRD | yard | | | |

T1 - terms of payment

code specifying the terms or time by which the payment must be done

Agency name: eBIZ

tabella cod.: T1

File codes list (Generic code): http://www.ebiz.enea.it/moda-ml/repository/codelist/v2018-1/gc_T1.xml

| Code | Description | Adoption note | Version status | Date of insertion |
|----------------|--|---------------|----------------|-------------------|
| ANTICIP | PAYMENT IN ADVANCE | | | |
| BLCOLLECT/120D | BILL OF LADING 120 DD | | | |
| BLCOLLECT/30D | BILL OF LADING 30 DD | | | |
| BLCOLLECT/60D | BILL OF LADING 60 DD | | | |
| BLCOLLECT/90D | BILL OF LADING 90 DD | | | |
| CASH | PAYMENT ON DELIVERY | | | |
| CASHINV | PAYMENT ON RECEIPT OF INVOICE | | | |
| CREDOC/0D | DOCUMENTARY CREDIT FOR PAYM. AT SIGHT | | | |
| CREDOC/120 | DOCUMENTARY CREDIT FOR PAYM. AT 120 DD | | | |
| CREDOC/150 | DOCUMENTARY CREDIT FOR PAYM. AT 150 DD | | | |
| CREDOC/180 | DOCUMENTARY CREDIT FOR PAYM. AT 180 DD | | | |
| CREDOC/30D | DOCUMENTARY CREDIT FOR PAYM. AT 30 DD | | | |
| CREDOC/45D | DOCUMENTARY CREDIT FOR PAYM. AT 45 DD | | | |
| CREDOC/60 | DOCUMENTARY CREDIT FOR PAYM. AT 60 DD | | | |
| CREDOC/90 | DOCUMENTARY CREDIT FOR PAYM. AT 90 DD | | | |
| DEL/10 | PAYMENT AT 10 DD AFTER DELIVERY | | | |
| DOCOLLECT/120D | DOCUMENTARY COLLECTION AT 120 DD | | | |
| DOCOLLECT/30D | DOCUMENTARY COLLECTION AT 30 DD | | | |
| DOCOLLECT/60D | DOCUMENTARY COLLECTION AT 60 DD | | | |

| | | | | |
|----------------|---|--|--|--|
| DOCOLLECT/90D | DOCUMENTARY COLLECTION AT 90 DD | | | |
| INV/120D | PAYMENT AT 120 DD AFTER RECEIPT OF INVOICE | | | |
| INV/150D | PAYMENT AT 150 DD AFTER RECEIPT OF INVOICE | | | |
| INV/180D | PAYMENT AT 180 DD AFTER RECEIPT OF INVOICE | | | |
| INV/30D | PAYMENT AT 30 DD AFTER RECEIPT OF INVOICE | | | |
| INV/45D | PAYMENT AT 45 DD AFTER RECEIPT OF INVOICE | | | |
| INV/60D | PAYMENT AT 60 DD AFTER RECEIPT OF INVOICE | | | |
| INV/90D | PAYMENT AT 90 DD AFTER RECEIPT OF INVOICE | | | |
| INVULTIMO | PAYMENT AT END MONTH RECEIPT INVOICE | | | |
| INVULTIMO/10D | PAYMENT 10 DD AFTER END MONTH RECEIPT INVOICE | | | |
| INVULTIMO/120D | PAYMENT 120 DD AFTER END MONTH RECEIPT INVOICE | | | |
| INVULTIMO/150D | PAYMENT 150 DD AFTER END MONTH RECEIPT INVOICE | | | |
| INVULTIMO/180D | PAYMENT 180 DD AFTER END MONTH RECEIPT INVOICE | | | |
| INVULTIMO/240D | PAYMENT 240 DD AFTER END MONTH RECEIPT INVOICE | | | |
| INVULTIMO/30D | PAYMENT 30 DD AFTER END MONTH RECEIPT INVOICE | | | |
| INVULTIMO/45D | PAYMENT 45 DD AFTER END MONTH RECEIPT INVOICE | | | |
| INVULTIMO/60D | PAYMENT 60 DD AFTER END MONTH RECEIPT INVOICE | | | |
| INVULTIMO/90D | PAYMENT 90 DD AFTER END MONTH RECEIPT INVOICE | | | |
| NOPAY | WITHOUT PAYMENT | | | |
| RECREDOC/0D | IRREVOC. DOCUMENTARY CREDIT FOR PAYM. AT SIGHT | | | |
| RECREDOC/120D | IRREVOC. DOCUMENTARY CREDIT FOR PAYM. AT 120 DD | | | |
| RECREDOC/150D | IRREVOC. DOCUMENTARY CREDIT FOR PAYM. AT 150 DD | | | |
| RECREDOC/180D | IRREVOC. DOCUMENTARY CREDIT FOR PAYM. AT 180 DD | | | |
| RECREDOC/30D | IRREVOC. DOCUMENTARY CREDIT FOR PAYM. AT 30 DD | | | |
| RECREDOC/45D | IRREVOC. DOCUMENTARY CREDIT FOR PAYM. AT 45 DD | | | |

| | | | | |
|--------------|--|--|--|--|
| RECREDOC/60D | IRREVOC. DOCUMENTARY CREDIT FOR PAYM. AT 60 DD | | | |
| RECREDOC/90D | IRREVOC. DOCUMENTARY CREDIT FOR PAYM. AT 90 DD | | | |
| ULTIMO | PAYMENT BY END MONTH OF DELIVERY | | | |
| ULTIMO/10 | PAYMENT AT 10 DD AFTER END MONTH OF DELIVER Y | | | |

T10 - ISO3166 - Country

code of the nation

Agency name: ISO

tabella cod.: T10

File codes list (Generic code): http://www.ebiz.enea.it/moda-ml/repository/codelist/v2018-1/gc_T10.xml

Table not printed: there are 239 elements, more than the maximum specified for printing: 99.

T15 - dye/print process type

dye process applied to the fabric

Agency name: eBIZ

tabella cod.: T15

File codes list (Generic code): http://www.ebiz.enea.it/moda-ml/repository/codelist/v2018-1/gc_T15.xml

| Code | Description | Adoption note | Version status | Date of insertion |
|------|------------------------|---------------|----------------|-------------------|
| CP | cylinder printing | | | |
| DP | discharge printing | | | |
| FI | fibre dyed - spun dyed | | | |
| PC | piece dyed | | | |
| PR | printing | | | |
| SP | screen printing | | | |
| TP | top dyed | | | 01/07/2013 |
| YR | yarn dyed | | | |

T16 - dyestuff type

dye stuff used in the fabric dye process

Agency name: eBIZ

tabella cod.: T16

File codes list (Generic code): http://www.ebiz.enea.it/moda-ml/repository/codelist/v2018-1/gc_T16.xml

| Code | Description | Adoption note | Version status | Date of insertion |
|------|------------------------|---------------|----------------|-------------------|
| AC | chrome acid dyestuff | | | |
| AN | acid dyestuff | | | |
| CA | basic dyestuff | | | |
| DI | direct dyestuff | | | |
| DS | disperse dyestuff | | | |
| NP | naphthol dyestuff | | | |
| PI | pigment | | | 01/07/2013 |
| PM | premetallized dyestuff | | | |
| RE | reactive dyestuff | | | |
| SU | sulfur | | | 01/07/2013 |

T19 - fibre type

type of fibre used in a textile product

Agency name: eBIZ

tabella cod.: T19

File codes list (Generic code): http://www.ebiz.enea.it/moda-ml/repository/codelist/v2018-1/gc_T19.xml

| Code | Description | Adoption note | Version status | Date of insertion |
|------|----------------|---------------|----------------|-------------------|
| AB | abaca | | | 20/08/2018 |
| AC | acetate | | | |
| AF | other fibres | | | |
| AG | alginic fibre | | | |
| AL | alfa | | | 20/08/2018 |
| CA | hemp | | | |
| CC | coir (coconut) | | | 20/08/2018 |
| CL | chlorofibre | | | |
| CO | cotton | | | |
| CU | cuprous | | | |
| EA | elastan | | | |
| EL | Elastodiene | | | 20/08/2018 |

| | | | | |
|----|---|--|--|------------|
| FL | fluorofibre | | | |
| GI | broom | | | 20/08/2018 |
| GL | textile glass | | | |
| HA | hair | | | 20/08/2018 |
| HE | henequen | | | 20/08/2018 |
| HL | mixed linen | | | |
| HL | cotton linen union | | | 20/08/2018 |
| JU | jute | | | |
| KE | kenaf | | | 20/08/2018 |
| KP | kapoc | | | 20/08/2018 |
| LI | linen | | | |
| LY | lyocell | | | 20/08/2018 |
| MA | modacrylic | | | |
| MD | modal | | | |
| ME | metallized | | | |
| MG | maguey | | | 20/08/2018 |
| PA | polyamide | | | |
| PB | polyureic | | | |
| PC | acrylic | | | |
| PE | polyethylene | | | |
| PI | paper | | | 20/08/2018 |
| PL | polyester | | | |
| PM | polyimide | | | |
| PP | polypropylene | | | |
| PR | proteic | | | |
| PU | polyurethane | | | |
| RA | mamie | | | 20/08/2018 |
| SE | silk | | | |
| SI | sisal | | | 20/08/2018 |
| SN | sun | | | 20/08/2018 |
| TA | triacetate | | | |
| TR | textile residues or unspecified composition | | | 20/08/2018 |
| TV | trivinyll | | | |
| VI | viscose | | | |
| VY | vinylal | | | |

| | | | | |
|----|-------------|--|--|------------|
| WA | angora | | | |
| WB | beaver | | | 20/08/2018 |
| WC | cashgora | | | |
| WG | vicuna | | | |
| WK | camel | | | |
| WL | llama | | | |
| WM | mohair | | | |
| WN | lapin | | | 20/08/2018 |
| WO | wool | | | |
| WP | alpaca | | | |
| WS | cashmere | | | |
| WT | Oteer | | | 20/08/2018 |
| WU | guanaco | | | |
| WV | virgin wool | | | |
| WY | yack | | | |

T2 - Modes of payment

way or means of payment

Agency name: eBIZ

tabella cod.: T2

File codes list (Generic code): http://www.ebiz.enea.it/moda-ml/repository/codelist/v2018-1/gc_T2.xml

| Code | Description | Adoption note | Version status | Date of insertion |
|------|------------------------------|---------------|----------------|-------------------|
| BB | bank transfer | | | |
| IA | collection through Agent | | | |
| IS | collection through Forwarder | | | |
| RB | bank receipt | | | |
| RD | remittance | | | |
| SW | bank SWIFT | | | |
| TR | bank draft | | | |

T201 - type of job on yarn

operation of a work cycle for yarn

Agency name: eBIZ

tabella cod.: T201

File codes list (Generic code): http://www.ebiz.enea.it/moda-ml/repository/codelist/v2018-1/gc_T201.xml

| Code | Description | Adoption note | Version status | Date of insertion |
|------|------------------------|---------------|----------------|-------------------|
| 08 | to re-comb | | | |
| 09 | to prepare | | | |
| 10 | to card | | | |
| 11 | to spin | | | |
| 12 | to steam | | | |
| 13 | to wind | | | |
| 14 | doubling | | | |
| 15 | to twist | | | |
| 16 | to unwind | | | |
| 17 | to singe | | | |
| 18 | to raise | | | |
| 19 | to reel | | | |
| 20 | to re-wind | | | |
| 21 | to shrink | | | |
| 22 | to coat | | | |
| 23 | to garnett | | | |
| 24 | to print | | | |
| 25 | to dye | | | |
| 26 | to boil | | | |
| 27 | to scour | | | |
| 28 | to dry | | | |
| 99 | other, see note if any | | | 01/07/2013 |

T21 - type of document

type or class to which the referenced document belongs

Agency name: eBIZ

tabella cod.: T21

File codes list (Generic code): http://www.ebiz.enea.it/moda-ml/repository/codelist/v2018-1/gc_T21.xml

| Code | Description | Adoption note | Version status | Date of insertion |
|------|-------------|---------------|----------------|-------------------|
|------|-------------|---------------|----------------|-------------------|

| | | | | |
|-----|---------------------------------------|--|-----|------------|
| BOR | blanket order | | (N) | 01/02/2018 |
| CAT | Price catalogue - tech sheet | | | |
| CEO | Certificate of origin | | (N) | 13/04/2018 |
| CER | Certificate | | (N) | 13/04/2018 |
| COC | colour card | | | |
| CRN | Credit note | | | 08/09/2017 |
| CTO | Checking order | | | 01/07/2013 |
| CTR | Contract | | (U) | |
| CXF | CxF3 file | | | 01/07/2013 |
| DAD | Darn order | | | |
| DDT | ddt | | | |
| DEA | Despatch advise | | | |
| DER | Despatch request | | | |
| DR | Document Request | | | 02/12/2014 |
| FOR | Forecast | | | 02/12/2014 |
| GSO | Garment stock offer | | | |
| GSX | Garment stock offer change | | | |
| INV | Invoice | | | |
| KCC | Knitting-Clothing Commission Order | | | 02/12/2014 |
| KCI | Garment in Work Inventory Report | | | 02/12/2014 |
| M2M | Made to Measure Production Order | | | 02/12/2014 |
| MAS | Master marker | | | |
| MCI | Visual merchandising instruction | | (N) | 13/04/2018 |
| OCH | Order change | | | |
| OFF | Offer | | | |
| ORD | Purchase order | | | |
| ORP | Order response | | | |
| OSR | order status request | | | |
| OSS | Offer status | | | 02/12/2014 |
| OST | Order status | | | |
| OUR | our reference | | | |
| QR | Quality Report | | | 02/12/2014 |
| RAI | Raw Material in Work Inventory Report | | | 02/12/2014 |
| RDC | Raw dyeing commission order | | | |
| RDH | Raw dyeing order change | | | |

| | | | | |
|-----|---|--|-----|------------|
| RDR | Raw dyeing order response | | | |
| REA | Receiving advise | | | |
| REQ | Request for Offer | | | |
| RET | Return | | | 02/12/2014 |
| RSC | Spinning commission order | | | |
| RSH | Spinning order change | | | |
| RSR | Spinning order response | | | |
| SCL | process sheet | | | |
| TFC | Textile dyeing-finishing commission order | | | |
| TFX | Textile Dyeing-Finishing Order Change | | | 02/12/2014 |
| TPC | Textile printing commission order | | | |
| TPX | Textile Printing Order Change | | | 02/12/2014 |
| TWI | Textile in work inventory | | | |
| VMI | visual merchandising instructions | | (N) | 01/02/2018 |
| WAC | Warping commission order | | | |
| WEC | Weaving commission order | | | |
| YDC | Yarn dyeing commission order | | | |
| YDH | Yarn dyeing order change | | | |
| YDR | Yarn dyeing order response | | | |
| YTC | Twisting commission order | | | |
| YWI | Yarn in work inventory | | | |

T29 - type of yarn package

type of package (roll-up) used for a yarn product

Agency name: eBIZ

tabella cod.: T29

File codes list (Generic code): http://www.ebiz.enea.it/moda-ml/repository/codelist/v2018-1/gc_T29.xml

| Code | Description | Adoption note | Version status | Date of insertion |
|------|-------------|---------------|----------------|-------------------|
| CIL | bobbin | | | |
| CON | cone | | | |
| HNK | hank, skein | | | 01/07/2013 |
| MUF | muff, cake | | | 01/07/2013 |
| SPL | spool | | | |
| TUB | tube | | | |

| | | | | |
|-----|-----------|--|--|--|
| XCO | supercone | | | |
|-----|-----------|--|--|--|

T3 - terms of delivery

specification of the terms of trade (INCOTERMS)

Agency name: Incoterms

tabella cod.: T3

File codes list (Generic code): http://www.ebiz.enea.it/moda-ml/repository/codelist/v2018-1/gc_T3.xml

| Cod e | Description | Adoption note | Versi on statu s | Date of insertio n |
|-------|--|--|------------------|--------------------|
| CF R | COST AND FREIGHT (named port of destination) | | | |
| CIF | COST, INSURANCE AND FREIGHT (named port of destination) | | | |
| CIP | CARRIAGE AND INSURANCE PAID (named place of destination) | | | |
| CP T | CARRIAGE PAID (named place of destination) | | | |
| DA F | DELIVERED AT FRONTIER (named place) | according to Incoterms® 2010 it is obsolete | | 08/12/2017 |
| DA P | Delivered at Place of destination (named place of destination) | according to Incoterms® 2010 | | 08/12/2017 |
| DA T | Delivered at Terminal (named place of destination) | according to Incoterms® 2010 | | 08/12/2017 |
| DD P | DELIVERED DUTY PAID (named place of destination) | | | |
| DD U | DELIVERED DUTY UNPAID (named place of destination) | according to Incoterms® 2010 it is obsolete, use DAP | | 08/12/2017 |
| DE Q | DELIVERED EX-QUAY (named port of destination) | according to Incoterms® 2010 it is obsolete | | 08/12/2017 |
| DE S | DELIVERED EX-SHIP (named port of destination) | according to Incoterms® 2010 it is obsolete | | 08/12/2017 |
| EX W | EX WORKS (named place) | | | |
| FA S | FREE ALONGSIDE SHIP (named port of shipment) | | | |
| FC A | FREE CARRIER (named place) | | | |
| FO B | FREE ON BOARD (named port of shipment) | | | |

T38 - transport conditions

special condition of transport or special service requested to the Forwarder

tabella cod.: T38

File codes list (Generic code): http://www.ebiz.enea.it/moda-ml/repository/codelist/v2018-1/gc_T38.xml

| Code | Description | Adoption note | Version status | Date of insertion |
|------|--|---------------|----------------|-------------------|
| ACC | arrange customs clearance | | | |
| CAL | Carrier loads | | | |
| CAU | Carrier unloads | | | |
| CMR | CMR carnet | | | |
| FFN | freight forwarders national conditions | | | |
| FLD | special agreement for full loading | | | |
| NCC | do not arrange customs clearance | | | |
| PPB | packaging paid by Buyer | | | |
| PPS | packaging paid by Supplier | | | |
| PRO | proof of delivery | | | |
| RFR | return container free | | | |
| RPC | return container paid by Customer | | | |
| RPS | return container paid by Supplier | | | |
| SHL | Shipper loads | | | |
| SHU | Consignee unloads | | | |

T40 - type of transport means

means of transport, in general or referred to a specific leg

Agency name: eBIZ

tabella cod.: T40

File codes list (Generic code): http://www.ebiz.enea.it/moda-ml/repository/codelist/v2018-1/gc_T40.xml

| Code | Description | Adoption note | Version status | Date of insertion |
|------|-------------|---------------|----------------|-------------------|
| AIR | aircraft | | | |
| SHP | ship | | | |
| TRU | truck | | | |
| VAN | van | | | |

T41 - type of Allowance or Charge

coded specification of an Allowance or Charge (elaborated from UNECE 4465)

Agency name: eBIZ

tabella cod.: T41

File codes list (Generic code): http://www.ebiz.enea.it/moda-ml/repository/codelist/v2018-1/gc_T41.xml

| Code | Description | Adoption note | Version status | Date of insertion |
|------|-----------------------------|---------------------|----------------|-------------------|
| 1 | Agreed settlement | | (N) | 19/08/2018 |
| 10 | Costs for draft | | (N) | 19/08/2018 |
| 11 | Bank charges | DEPRECATED, use CBK | (N) | 19/08/2018 |
| 12 | Agent commission | | (N) | 19/08/2018 |
| 14 | Wrong delivery | | (N) | 19/08/2018 |
| 15 | Goods returned to agent | | (N) | 19/08/2018 |
| 16 | Goods partly returned | | (N) | 19/08/2018 |
| 17 | Transport damage | | (N) | 19/08/2018 |
| 19 | Trade discount | | (N) | 19/08/2018 |
| 2 | Below specification goods | | (N) | 19/08/2018 |
| 20 | Deduction for late delivery | DEPRECATED, use CWB | (N) | 19/08/2018 |
| 21 | Advertising costs | | (N) | 19/08/2018 |
| 22 | Customs duties | | (N) | 19/08/2018 |
| 23 | Telephone and postal costs | | (N) | 19/08/2018 |
| 24 | Repair costs | | (N) | 19/08/2018 |
| 25 | Attorney fees | | (N) | 19/08/2018 |

| | | | | |
|----|----------------------------------|--|-----|------------|
| 26 | Taxes | | (N) | 19/08/2018 |
| 3 | Damaged goods | | (N) | 19/08/2018 |
| 30 | Direct payment to seller | | (N) | 19/08/2018 |
| 32 | Goods not delivered | | (N) | 19/08/2018 |
| 33 | Late delivery | | (N) | 19/08/2018 |
| 35 | Goods returned | | (N) | 19/08/2018 |
| 36 | Invoice not received | | (N) | 19/08/2018 |
| 37 | Credit note to debtor/not to us | | (N) | 19/08/2018 |
| 38 | Deducted bonus | | (N) | 19/08/2018 |
| 39 | Deducted discount | | (N) | 19/08/2018 |
| 4 | Short delivery | | (N) | 19/08/2018 |
| 40 | Deducted freight costs | | (N) | 19/08/2018 |
| 41 | Deduction against other invoices | | (N) | 19/08/2018 |
| 42 | Credit balance(s) | | (N) | 19/08/2018 |
| 45 | Debit note to seller | | (N) | 19/08/2018 |
| 46 | Discount beyond terms | | (N) | 19/08/2018 |
| 48 | Allowance/charge error | | (N) | 19/08/2018 |
| 49 | Substitute product | | (N) | 19/08/2018 |
| 50 | Terms of sale error | | (N) | 19/08/2018 |
| 52 | Wrong invoice | | (N) | 19/08/2018 |
| 53 | Duplicate invoice | | (N) | 19/08/2018 |
| 54 | Weight error | | (N) | 19/08/2018 |

| | | | | |
|-----|--|--|-----|------------|
| 55 | Additional charge not authorized | | (N) | 19/08/2018 |
| 56 | Incorrect discount | | (N) | 19/08/2018 |
| 57 | Price change | | (N) | 19/08/2018 |
| 58 | Variation | | (N) | 19/08/2018 |
| 59 | Chargeback | | (N) | 19/08/2018 |
| 65 | Settlement to agent | | (N) | 19/08/2018 |
| 66 | Cash discount | | (N) | 19/08/2018 |
| 7 | Payment on account | | (N) | 19/08/2018 |
| 70 | Wrong monetary amount resulting from incorrect free goods quantity | | (N) | 19/08/2018 |
| 72 | Temporary special promotion | | (N) | 19/08/2018 |
| 73 | Difference in tax rate | | (N) | 19/08/2018 |
| 74 | Quantity discount | | (N) | 19/08/2018 |
| 75 | Promotion discount | | (N) | 19/08/2018 |
| 76 | Cancellation deadline passed | | (N) | 19/08/2018 |
| 77 | Pricing discount | | (N) | 19/08/2018 |
| 78 | Volume discount | | (N) | 19/08/2018 |
| 79 | Sundry discount | | (N) | 19/08/2018 |
| 8 | Returnable container charge included | | (N) | 19/08/2018 |
| 9 | Invoice error | | (N) | 19/08/2018 |
| AWA | bonus for works ahead of schedule | | | |
| CBK | bank charges | | | |
| CCR | servizio di corriere | | | |
| CIN | insurance | | | |

| | | | | |
|---------|-----------------------------------|--|--|--|
| CLB | labelling | | | |
| CPK | packing | | | |
| CSP | special packing | | | |
| CW B | penalty for works behind schedule | | | |

T44 - additional code type

qualifier of the additional coding of a product

Agency name: eBIZ

tabella cod.: T44

File codes list (Generic code): http://www.ebiz.enea.it/moda-ml/repository/codelist/v2018-1/gc_T44.xml

| Code | Description | Adoption note | Version status | Date of insertion |
|------|-----------------------------|---------------|----------------|-------------------|
| CC | colour card | | | |
| CL | sales collection | | | |
| CO | company identification code | | (N) | 08/09/2017 |
| DY | dye number | | | |
| LT | lot number | | | |
| MDI | Made in | | | 08/09/2017 |
| MS | manufacturing state | | | |
| PKG | packaging | | | 09/09/2014 |
| PL | product line | | | |
| RGB | RGB value | | | |
| SE | selvedge code | | | |

T54 - kind of yarn

general type of yarn

Agency name: eBIZ

tabella cod.: T54

File codes list (Generic code): http://www.ebiz.enea.it/moda-ml/repository/codelist/v2018-1/gc_T54.xml

| Code | Description | Adoption note | Version status | Date of insertion |
|------|-------------------------|---------------|----------------|-------------------|
| 01 | Spun yarn (Staple yarn) | | | |
| 02 | Worsted | | | |

| | | | | |
|----|--|--|--|------------|
| 03 | Woollen | | | |
| 04 | Carded | | | 01/07/2013 |
| 05 | Combed | | | 01/07/2013 |
| 06 | Flax-spun | | | 01/07/2013 |
| 07 | Rotor spun | | | 01/07/2013 |
| 08 | Air jet spun | | | 01/07/2013 |
| 09 | Fancy yarn | | | 01/07/2013 |
| 10 | Filament yarn - Flat | | | 01/07/2013 |
| 11 | Zero twist | | | 01/07/2013 |
| 12 | Twisted | | | 01/07/2013 |
| 13 | Crêpe | | | 01/07/2013 |
| 14 | Textured yarn | | | 01/07/2013 |
| 15 | False Twist – FT (also stretch) | | | 01/07/2013 |
| 16 | False Twist, Fixed – FTF (also bulked) | | | 01/07/2013 |
| 17 | Air textured | | | 01/07/2013 |
| 18 | Elastic yarn (also Elastomeric yarn) | | | 01/07/2013 |
| 19 | Single covered yarn | | | 01/07/2013 |
| 20 | Double covered yarn | | | 01/07/2013 |
| 21 | Air covered yarn | | | 01/07/2013 |
| 22 | Core-spun | | | 01/07/2013 |

T55 - count system

yarn count system

Agency name: eBIZ

tabella cod.: T55

File codes list (Generic code): http://www.ebiz.enea.it/moda-ml/repository/codelist/v2018-1/gc_T55.xml

| Code | Description | Adoption note | Version status | Date of insertion |
|------|------------------------|---------------|----------------|-------------------|
| DEN | denier | | | |
| DTX | decitex | | | |
| NEC | english cotton | | | |
| NEJ | english jute/hemp/flax | | | |
| NEW | english wool | | | |
| NM | metric | | | |
| TEX | tex | | | |

T56 - kind of yarn ply

kind of yarn's ply

Agency name: eBIZ

tabella cod.: T56

File codes list (Generic code): http://www.ebiz.enea.it/moda-ml/repository/codelist/v2018-1/gc_T56.xml

| Code | Description | Adoption note | Version status | Date of insertion |
|------|----------------------|---------------|----------------|-------------------|
| CS | single yarn | | | |
| FA | fancy yarn | | | 01/07/2013 |
| RC | ply combination yarn | | | |
| RS | ply yarn | | | |

T57 - color fastness test for yarn

color fastness test for a yarn

tabella cod.: T57

File codes list (Generic code): http://www.ebiz.enea.it/moda-ml/repository/codelist/v2018-1/gc_T57.xml

| Code | Description | Adoption note | Version status | Date of insertion |
|------|--|---------------|----------------|-------------------|
| 01 | to decatizingal (UNI EN ISO 105-E10:98) | | | 01/07/2013 |
| 02 | to bleaching: peroxide (UNI EN ISO 105-N02:97) | | | 01/07/2013 |
| 03 | to bleaching: hypochlorite (UNI EN 20105-N01:97) | | | 01/07/2013 |
| 04 | to spotting: acid (UNI EN ISO 105-E05:99) | | | 01/07/2013 |
| 05 | to spotting: alkali (UNI EN ISO 105-E06:99) | | | 01/07/2013 |
| 06 | to mercerizing (UNI EN ISO 105-X04:99) | | | 01/07/2013 |
| 07 | to soda boiling (UNI EN ISO 105-X06:99) | | | 01/07/2013 |
| 08 | to degumming (UNI EN ISO 105-X08:99) | | | 01/07/2013 |
| 09 | to domestic laundering (UNI EN ISO 105-C06:99) | | | 01/07/2013 |
| 10 | to carbonizing: sulfuric acid (UNI EN ISO 105-X02:98) | | | 01/07/2013 |
| 11 | to acid chlorination (UNI 5145:88) | | | 01/07/2013 |
| 12 | to chlorination: Na dichloroisocyanurate (EN ISO 105-X14:99) | | | 01/07/2013 |
| 13 | to alkaline milling (UNI EN ISO 105-E12:99) | | | 01/07/2013 |
| 14 | to acid-felting: mild (UNI EN ISO 105-E14:98) | | | 01/07/2013 |
| 15 | to dry heat (UNI EN ISO 105-P01:97) | | | 01/07/2013 |

T58 - yarn quality parameters

parameter related to the quality of yarn

Agency name: eBIZ

tabella cod.: T58

File codes list (Generic code): http://www.ebiz.enea.it/moda-ml/repository/codelist/v2018-1/gc_T58.xml

| Code | Description | Adoption note | Version status | Date of insertion |
|------|---|---------------|----------------|-------------------|
| 01 | actual count | | | 01/07/2013 |
| 02 | elongation % at break (UNI-EN-ISO 2062:97) | | | 01/07/2013 |
| 03 | breaking force (UNI-EN-ISO 2062:97) | | | 01/07/2013 |
| 04 | tenacity (specific stress) - cN/tex or RKM (UNI-EN-ISO 2062:97) | | | 01/07/2013 |
| 05 | unevenness - CV USTER | | | 01/07/2013 |
| 06 | unevenness - thick spots | | | 01/07/2013 |
| 07 | unevenness - thin spots | | | 01/07/2013 |
| 08 | unevenness - neps | | | 01/07/2013 |
| 09 | hairiness | | | 01/07/2013 |
| 10 | pilling (UNI-EN-ISO 12945-01:2002) | | | 01/07/2013 |
| 11 | coefficient of friction | | | 01/07/2013 |
| 12 | delta E CIELab (UNI 8941:87) | | | 01/07/2013 |

T59 - CIE illuminant

CIE light source

tabella cod.: T59

File codes list (Generic code): http://www.ebiz.enea.it/moda-ml/repository/codelist/v2018-1/gc_T59.xml

| Code | Description | Adoption note | Version status | Date of insertion |
|------|---|---------------|----------------|-------------------|
| A | home tungsten CCT 2856K° | | | 01/07/2013 |
| C | daylight CCT 6774K° | | | 01/07/2013 |
| D50 | daylight CCT 5003Kà | | | 01/07/2013 |
| D65 | solar standard CCT 6504K° | | | 01/07/2013 |
| F11 | fluorescent narrow band CCT 4000K° (TL84) | | | 01/07/2013 |
| F2 | cold white fluorescent CCT 4230K° | | | 01/07/2013 |
| F7 | fluorescent broad band CCT 6500K° | | | 01/07/2013 |

T60 - CIE standard observer

CIE average chromatic response definition

tabella cod.: T60

File codes list (Generic code): http://www.ebiz.enea.it/moda-ml/repository/codelist/v2018-1/gc_T60.xml

| Code | Description | Adoption note | Version status | Date of insertion |
|------|-------------|---------------|----------------|-------------------|
| 31 | CIE-1931 | | | 01/07/2013 |
| 64 | CIE-1964 | | | 01/07/2013 |

T61 - duty or tax or fee type

duty or tax or fee type

Agency name: eBIZ

tabella cod.: T61

File codes list (Generic code): http://www.ebiz.enea.it/moda-ml/repository/codelist/v2018-1/gc_T61.xml

| Code | Description | Adoption note | Version status | Date of insertion |
|------|-------------------|---------------|----------------|-------------------|
| BOL | stamp duty | | | 01/07/2013 |
| CUD | customs duty | | | 01/07/2013 |
| ENV | environmental tax | | | 01/07/2013 |
| FRE | no tax | | | 01/07/2013 |
| OTH | other tax charges | | | 01/07/2013 |
| VAT | value added tax | | | 01/07/2013 |

T62 - duty or tax or fee category

duty or tax or fee category

Agency name: eBIZ

tabella cod.: T62

File codes list (Generic code): http://www.ebiz.enea.it/moda-ml/repository/codelist/v2018-1/gc_T62.xml

| Code | Description | Adoption note | Version status | Date of insertion |
|------|--------------------------|---------------|----------------|-------------------|
| AA | lower than standard rate | | | 01/07/2013 |
| E | tax not applicable | | | 01/07/2013 |

| | | | | |
|---|---------------------------|--|--|------------|
| H | higher than standard rate | | | 01/07/2013 |
| O | outside scope of tax | | | 01/07/2013 |
| S | standard rate | | | 01/07/2013 |
| Z | zero rate goods | | | 01/07/2013 |

T8 - Modes of Transport

way of transport, in general or referred to the specified leg

Agency name: eBIZ

tabella cod.: T8

File codes list (Generic code): http://www.ebiz.enea.it/moda-ml/repository/codelist/v2018-1/gc_T8.xml

| Code | Description | Adoption note | Version status | Date of insertion |
|------|------------------------|---------------|----------------|-------------------|
| 1 | MARITIME TRANSPORT | | | |
| 10 | Courier | | | 01/07/2013 |
| 2 | RAIL TRANSPORT | | | |
| 3 | ROAD TRANSPORT | | | |
| 4 | AIR TRANSPORT | | | |
| 5 | MAIL | | | |
| 6 | AIR + SHIP TRANSPORT | | | |
| 8 | INLAND WATER TRANSPORT | | | |
| 9 | MODE UNKNOWN | | | |

T9 - ISO4217 - Currency

currency code

Agency name: ISO

tabella cod.: T9

File codes list (Generic code): http://www.ebiz.enea.it/moda-ml/repository/codelist/v2018-1/gc_T9.xml

Table not printed: there are 205 elements, more than the maximum specified for printing: 99.

Annex C

New or changed elements towards previous version

Changes or added elements (changes in description excluded; changes in aggregation notes and best practice included): 108

| Test Type | Tag | Status | Item type | Changes related to |
|------------|----------------------|---------|-----------------------------|---|
| Attribute | AC_amount | NEW | AC amount | Has NEW attribute: data currency |
| Element(E) | AC_categoryText | UPDATED | AC category text | Property: Length_Max Old value: 70 New value: 250 |
| Attribute | additionalIdentifier | NEW | Additional Party Identifier | Has NEW attribute: numbering organisation code |
| Attribute | additionalIdentifier | NEW | Additional Party Identifier | Has NEW attribute: id Qualifier |
| Element(I) | additionalIdentifier | NEW | Additional Party Identifier | |
| Attribute | allowanceCharge | NEW | Allowance and Charge | Has NEW attribute: is Charge |
| Attribute | allowanceCharge | NEW | Allowance and Charge | Has NEW attribute: maximum quantity |
| Attribute | allowanceCharge | NEW | Allowance and Charge | Has NEW attribute: minimum quantity |
| Attribute | allowanceCharge | NEW | Allowance and Charge | Has NEW attribute: data currency |
| Attribute | allowanceCharge | NEW | Allowance and Charge | Has NEW attribute: unit of measure code |
| Element(E) | art | UPDATED | article identifier | Property: Length_Max Old value: 25 New value: 80 |
| Attribute | art | UPDATED | article identifier | Its attribute: code list reference Property: Aggregation Note_English Old value: <i>this attribute should be ALTERNATIVE to the others</i> New value: <i>at least one out of this attribute and "numberingOrg" should be set</i> |

| | | | | |
|-----------------|------------------|--------|--------------------|---|
| Element(l) | attachment | NEW | attachment | |
| Child | attachment | NEW | attachment | Has NEW child of: file name |
| Child | attachment | NEW | attachment | Has NEW child of: external reference |
| Child | attachment | NEW | attachment | Has NEW child of: binary object |
| Attribute | binaryObject | NEW | binary object | Has NEW attribute: encoding |
| Attribute | binaryObject | NEW | binary object | Has NEW attribute: mime |
| Attribute | binaryObject | NEW | binary object | Has NEW attribute: format |
| Attribute | binaryObject | NEW | binary object | Has NEW attribute: character set |
| Element(l) | binaryObject | NEW | binary object | |
| Element(Update) | yarnNameBuyer | UPDATE | Buyer yarn name | Property: Length_Max Old value: 70 New value: 250 |
| Child | buyer | NEW | Buyer (*) | Has NEW child of: Party identifier |
| Child | buyer | NEW | Buyer (*) | Has NEW child of: Additional Party Identifier |
| Attribute | buyer | NEW | Buyer (*) | Has NEW attribute: sender Party qualifier |
| Element(l) | characterSetCode | NEW | character set code | |
| Element(l) | characterSet | NEW | character set | |
| Child | colorCardItem | UPDATE | color card item | relationship with child: description Property: Cardmax Old value: 1 New value: 999 |
| Child | colorCardItem | UPDATE | color card item | relationship with child: articles colour identifier Property: Aggregation Note_English Old value: New value: <i>multiple color values allowed if they differ for at least one of the numberingOrg and listName attributes</i> |
| Child | colorCardItem | UPDATE | color card item | relationship with child: articles colour identifier Property: Cardmax |

| | | | | |
|------------|---------------------|---------|----------------------|---|
| | | | | Old value: 1 New value: 2 |
| Element(E) | delivery Place | UPDATED | delivery place | Property: Length_Max Old value: 40 New value: 250 |
| Attribute | description | NEW | description | Has NEW attribute: In |
| Element(E) | description | UPDATED | description | Property: Length_Max Old value: 70 New value: 250 |
| Attribute | despatchDate | NEW | despatch date | Has NEW attribute: date format |
| Element(I) | despatchDate | NEW | despatch date | |
| Element(I) | despatchPlace | NEW | despatch place | |
| Element(E) | email | UPDATED | e-mail | Property: Length_Max Old value: 80 New value: 250 |
| Element(I) | encodingCode | NEW | encoding code | |
| Element(I) | encoding | NEW | encoding | |
| Attribute | extendedDescription | NEW | extended description | Has NEW attribute: In |
| Element(I) | extendedDescription | NEW | extended description | |
| Child | externalReference | NEW | external reference | Has NEW child of: uri |
| Child | externalReference | NEW | external reference | Has NEW child of: format code |
| Child | externalReference | NEW | external reference | Has NEW child of: character set code |
| Child | externalReference | NEW | external reference | Has NEW child of: mime code |
| Child | externalReference | NEW | external reference | Has NEW child of: encoding code |
| Element(I) | externalReference | NEW | external reference | |

| | | | | |
|---------|-------------|---------|----------------------------|--|
| Attrib | fileName | NEW | file name | Has NEW attribute: numbering organisation code |
| Elem(l) | fileName | NEW | file name | |
| Elem(l) | formatCode | NEW | format code | |
| Elem(l) | format | NEW | format | |
| Attrib | note | UPDATED | general note | Its attribute: numbering organisation code Property: Aggregation Note_English Old value: New value: <i>must be used to specify the organization that created the list of codes used in "noteLabel"</i> |
| Elem(l) | idQualifier | NEW | id Qualifier | |
| Elem(l) | isCharge | NEW | is Charge | |
| Elem(l) | isURL | NEW | is URL | |
| Elem(E) | legalName | UPDATED | Legal name | Property: Length_Max Old value: 80 New value: 250 |
| Elem(E) | itemID | UPDATED | line item number | Property: Length_Max Old value: 6 New value: 40 |
| Elem(l) | In | NEW | In | |
| Elem(l) | maxQty | NEW | maximum quantity | |
| Elem(l) | mimeCode | NEW | mime code | |
| Elem(l) | mime | NEW | mime | |
| Elem(l) | progr | NEW | progressive number | |
| Child | refDoc | NEW | reference document details | Has NEW child of: attachment |
| Child | refDoc | UPDATED | reference document details | relationship with child: document identifier Property: BestPractice_English Old value: New value: <i>numberingOrg indicates the role that produced the document identifier (it is allowed to declare two different ones -e.g. customer and supplier - with two docID with different numberingOrg</i> |

| | | | | |
|------------|------------------|--------|-----------------------|--|
| Child | RQheader | NEW | RQ header | Has NEW child of: Third Party |
| Child | RQheader | UPDATE | RQ header | relationship with child: general note Property: Cardmax Old value: 19 New value: 99 |
| Attribute | season | NEW | season identifier | Has NEW attribute: code list reference |
| Attribute | season | NEW | season identifier | Has NEW attribute: numbering organisation code |
| Attribute | season | NEW | season identifier | Has NEW attribute: code list name |
| Attribute | season | NEW | season identifier | Has NEW attribute: code list version |
| Child | subContractor | NEW | Sub-contractor (*) | Has NEW child of: Party identifier |
| Attribute | subContractor | NEW | Sub-contractor (*) | Has NEW attribute: sender Party qualifier |
| Element(l) | subDept | NEW | department identifier | |
| Element(E) | yarnNameSupplier | UPDATE | Supplier yarn name | Property: Length_Max Old value: 70 New value: 250 |
| Child | supplier | NEW | Supplier (*) | Has NEW child of: Party identifier |
| Child | supplier | NEW | Supplier (*) | Has NEW child of: Additional Party Identifier |
| Attribute | supplier | NEW | Supplier (*) | Has NEW attribute: sender Party qualifier |
| Attribute | legalRef | NEW | tax legal reference | Has NEW attribute: code list name |
| Attribute | legalRef | NEW | tax legal reference | Has NEW attribute: numbering organisation code |
| Attribute | legalRef | NEW | tax legal reference | Has NEW attribute: code list version |
| Attribute | legalRef | UPDATE | tax legal reference | Its attribute: code list reference Property: Use Old value: <i>Required</i> New value: <i>Optional</i> |
| Child | dtScheme | UPDATE | tax scheme | relationship with child: general note Property: Cardmax Old value: 19 New value: 99 |

| | | | | |
|------------|------------------------|--------|----------------------------|--|
| Element(E) | payTermText | UPDATE | terms of payment text | Property: Length_Max Old value: 40 New value: 250 |
| Element(E) | incoTermText | UPDATE | terms of trade text | Property: Length_Max Old value: 70 New value: 250 |
| Element(E) | method | UPDATE | test method identifier | Property: Length_Max Old value: 25 New value: 80 |
| Child | thirdParty | NEW | Third Party (*) | Has NEW child of: Party identifier |
| Attribute | thirdParty | NEW | Third Party (*) | Has NEW attribute: sender Party qualifier |
| Child | terms | UPDATE | Trade conditions | relationship with child: Transport information Property: Cardmax Old value: 1 New value: 5 |
| Element(E) | transportConditionText | UPDATE | transport condition - text | Property: Length_Max Old value: 100 New value: 250 |
| Child | transportInfo | NEW | Transport information | Has NEW child of: despatch place |
| Child | transportInfo | NEW | Transport information | Has NEW child of: despatch date |
| Child | transportInfo | NEW | Transport information | Has NEW child of: effective delivery date |
| Attribute | transportInfo | NEW | Transport information | Has NEW attribute: progressive number |
| Attribute | price | NEW | unit price amount | Has NEW attribute: data currency |
| Element(E) | price | UPDATE | unit price amount | Property: Digits_Dec Old value: 2 New value: 4 |
| Attribute | uri | NEW | uri | Has NEW attribute: is URL |
| Element(I) | uri | NEW | uri | |
| Child | yarnIdentity | NEW | Yarn identity data | Has NEW child of: extended description |
| Child | yarnIdentity | NEW | Yarn identity data | Has NEW child of: general note |
| Child | yarnManufacture | NEW | yarn manufacturing data | Has NEW child of: general note |

| | | | | |
|-----------|---------------------|---------|------------------------|---|
| Child | yarnCode | UPDATED | Yarn product code | relationship with child: description Property: Aggregation Note_English Old value: New value: <i>Product description</i> |
| Child | yarnCode | UPDATED | Yarn product code | relationship with child: description Property: Cardmax Old value: 1 New value: 999 |
| Child | yarnQuality | NEW | yarn quality data | Has NEW child of: general note |
| Child | yarnQuality | UPDATED | yarn quality data | relationship with child: yarn quality test Property: Cardmax Old value: 19 New value: 99 |
| Child | yarnQualityTest | UPDATED | yarn quality test | relationship with child: yarn quality test type Property: Cardmin Old value: 0 New value: 1 |
| Child | yarnTechnicalSheet | NEW | yarn technical sheet | Has NEW child of: reference document details |
| Child | YARNOfferRequest | UPDATED | YARNOfferRequest (*) | relationship with child: yarn technical sheet Property: Cardmax Old value: 99 New value: 999 |
| Element() | yarnQualityTestType | NEW | yarn quality test type | |

Annex D

New or changed tables and codes towards previous version

Changes or added items (changes in CodeListAgencyName excluded; changes in adoption notes and code description included): 155

| Test Type | Status | Table code | Table description | Code | Change description |
|-----------|---------|------------|---|-----------------------------------|--|
| Table | UPDATED | NT100 | eBIZ TCFUpstream version | | Description_English Old value: <i>eBIZ Moda-ML version</i> New value: <i>eBIZ TCFUpstream version</i> |
| Code | NEW | NT100 | | 2018-1 (v2018-1) | |
| Code | NEW | NT100 | | draft (draft) | |
| Table | UPDATED | NT16 | VAT rate or code | | Generalities Old value: <i>VAT rate or code (deprecated, use dtScheme element)</i> New value: <i>VAT rate or code (DEPRECATED, use dtScheme element)</i> |
| Code | NEW | NT2 | | AU (Auditor) | |
| Code | NEW | NT2 | | CE (Certification authority) | |
| Code | NEW | NT2 | | SC (Sub contractor) | |
| Code | NEW | NT2 | | SM (Service/ePlatform manager) | |
| Code | NEW | NT6 | | EB (eBIZ) | |
| Code | UPDATED | NT6 | | ML (DEPRECATED) | adoption_note Old value: New value: <i>DEPRECATED</i> |
| Table | NEW | NT60 | language, codes from ISO 639-1 (subset) | | |
| Code | NEW | NT60 | | F (Female) | |
| Code | NEW | NT60 | | af (Afrikaans) | |
| Code | NEW | NT60 | | ar (Arabic) | |

| | | | | | |
|----------|-----|----------|--|--|--|
| Co de | NEW | NT 60 | | <i>be</i> (Belarusian) | |
| Co de | NEW | NT 60 | | <i>bg</i> (Bulgarian) | |
| Co de | NEW | NT 60 | | <i>bn</i> (Bengali) | |
| Co de | NEW | NT 60 | | <i>bo</i> (Tibetan) | |
| Co de | NEW | NT 60 | | <i>bs</i> (Bosnian) | |
| Co de | NEW | NT 60 | | <i>ca</i> (Catalan, Valencian) | |
| Co de | NEW | NT 60 | | <i>cs</i> (Czech) | |
| Co de | NEW | NT 60 | | <i>da</i> (Danish) | |
| Co de | NEW | NT 60 | | <i>de</i> (German) | |
| Co de | NEW | NT 60 | | <i>el</i> (Greek, Modern (1453-)) | |
| Co de | NEW | NT 60 | | <i>en</i> (English) | |
| Co de | NEW | NT 60 | | <i>eo</i> (Esperanto) | |
| Co de | NEW | NT 60 | | <i>es</i> (Spanish, Castilian) | |
| Co de | NEW | NT 60 | | <i>et</i> (Estonian) | |
| Co de | NEW | NT 60 | | <i>eu</i> (Basque) | |
| Co de | NEW | NT 60 | | <i>fa</i> (Persian) | |
| Co de | NEW | NT 60 | | <i>fi</i> (Finnish) | |
| Co de | NEW | NT 60 | | <i>fr</i> (French) | |
| Co de | NEW | NT 60 | | <i>ga</i> (Irish) | |
| Co de | NEW | NT 60 | | <i>gd</i> (Gaelic, Scottish Gaelic) | |
| Co de | NEW | NT 60 | | <i>gn</i> (Guarani) | |
| Co de | NEW | NT 60 | | <i>he</i> (Hebrew) | |

| | | | | | |
|----------|-----|----------|--|---|--|
| Co de | NEW | NT 60 | | <i>hr</i> (Croatian) | |
| Co de | NEW | NT 60 | | <i>ht</i> (Haitian, Haitian Creole) | |
| Co de | NEW | NT 60 | | <i>hu</i> (Hungarian) | |
| Co de | NEW | NT 60 | | <i>hy</i> (Armenian) | |
| Co de | NEW | NT 60 | | <i>ia</i> (Interlingua (International Au xiliary Language Association)) | |
| Co de | NEW | NT 60 | | <i>id</i> (Indonesian) | |
| Co de | NEW | NT 60 | | <i>is</i> (Icelandic) | |
| Co de | NEW | NT 60 | | <i>it</i> (Italian) | |
| Co de | NEW | NT 60 | | <i>ja</i> (Japanese) | |
| Co de | NEW | NT 60 | | <i>ju</i> (Javanese) | |
| Co de | NEW | NT 60 | | <i>ka</i> (Georgian) | |
| Co de | NEW | NT 60 | | <i>km</i> (Central Khmer) | |
| Co de | NEW | NT 60 | | <i>ko</i> (Korean) | |
| Co de | NEW | NT 60 | | <i>ku</i> (Kurdish) | |
| Co de | NEW | NT 60 | | <i>lb</i> (Luxembourgish, Letzeburge sch) | |
| Co de | NEW | NT 60 | | <i>lo</i> (Lao) | |
| Co de | NEW | NT 60 | | <i>lt</i> (Lithuanian) | |
| Co de | NEW | NT 60 | | <i>lv</i> (Latvian) | |
| Co de | NEW | NT 60 | | <i>mg</i> (Malagasy) | |
| Co de | NEW | NT 60 | | <i>mk</i> (Macedonian) | |
| Co de | NEW | NT 60 | | <i>mn</i> (Mongolian) | |

| | | | | | |
|----------|-----|----------|--|--|--|
| Co de | NEW | NT 60 | | <i>mt</i> (Maltese) | |
| Co de | NEW | NT 60 | | <i>nl</i> (Dutch, Flemish) | |
| Co de | NEW | NT 60 | | <i>no</i> (Norwegian) | |
| Co de | NEW | NT 60 | | <i>pl</i> (Polish) | |
| Co de | NEW | NT 60 | | <i>pt</i> (Portuguese) | |
| Co de | NEW | NT 60 | | <i>ro</i> (Romanian, Moldavian, Moldovan) | |
| Co de | NEW | NT 60 | | <i>ru</i> (Russian) | |
| Co de | NEW | NT 60 | | <i>se</i> (Northern Sami) | |
| Co de | NEW | NT 60 | | <i>sk</i> (Slovak) | |
| Co de | NEW | NT 60 | | <i>sl</i> (Slovenian) | |
| Co de | NEW | NT 60 | | <i>sm</i> (Samoan) | |
| Co de | NEW | NT 60 | | <i>so</i> (Somali) | |
| Co de | NEW | NT 60 | | <i>sq</i> (Albanian) | |
| Co de | NEW | NT 60 | | <i>sr</i> (Serbian) | |
| Co de | NEW | NT 60 | | <i>sv</i> (Swedish) | |
| Co de | NEW | NT 60 | | <i>sw</i> (Swahili) | |
| Co de | NEW | NT 60 | | <i>ta</i> (Tamil) | |
| Co de | NEW | NT 60 | | <i>th</i> (Thai) | |
| Co de | NEW | NT 60 | | <i>tr</i> (Turkish) | |
| Co de | NEW | NT 60 | | <i>uk</i> (Ukrainian) | |
| Co de | NEW | NT 60 | | <i>ur</i> (Urdu) | |
| Co de | NEW | NT 60 | | <i>uz</i> (Uzbek) | |

| | | | | | |
|-------|--------|----------|-----------------|---|--|
| Code | NEW | NT 60 | | <i>vi</i> (Vietnamese) | |
| Code | NEW | NT 60 | | <i>zh</i> (Chinese) | |
| Code | NEW | NT 7 | | <i>CMK</i> (square centimetre) | |
| Code | NEW | NT 7 | | <i>CMQ</i> (cubic centimetre) | |
| Code | NEW | NT 7 | | <i>E37</i> (pixel) | |
| Code | NEW | NT 7 | | <i>KWH</i> (kilowatthours) | |
| Code | NEW | NT 7 | | <i>MMK</i> (square millimetre) | |
| Code | NEW | NT 7 | | <i>MTK</i> (square metre) | |
| Code | NEW | NT 7 | | <i>CO2TON</i> (ton of CO2) | |
| Table | UPDATE | NT 7 | unit of measure | | OtherExternalReferenceURL Old value: New value: #http://docs.oasis-open.org/ubl/os-UBL-2.1/cl/gc/default/UnitOfMeasureCode-2.1.gc# |
| Table | UPDATE | NT 7 | unit of measure | | Description_English Old value: <i>unity of measure</i> New value: <i>unit of measure</i> |
| Code | NEW | T2 1 | | <i>BOR</i> (blanket order) | |
| Code | NEW | T2 1 | | <i>CEO</i> (Certificate of origin) | |
| Code | NEW | T2 1 | | <i>CER</i> (Certificate) | |
| Code | UPDATE | T2 1 | | <i>CTR</i> (Contract) | Text_English Old value: <i>contract</i> New value: <i>Contract</i> |
| Code | NEW | T2 1 | | <i>MCI</i> (Visual merchandising instruction) | |
| Code | NEW | T2 1 | | <i>VMI</i> (visual merchandising instructions) | |
| Code | NEW | T4 1 | | 1 (Agreed settlement) | |
| Code | NEW | T4 1 | | 2 (Below specification goods) | |
| Code | NEW | T4 1 | | 3 (Damaged goods) | |

| | | | | | |
|----------|-----|---------|--|--|--|
| Co de | NEW | T4 1 | | 4 (Short delivery) | |
| Co de | NEW | T4 1 | | 7 (Payment on account) | |
| Co de | NEW | T4 1 | | 8 (Returnable container charge included) | |
| Co de | NEW | T4 1 | | 9 (Invoice error) | |
| Co de | NEW | T4 1 | | 10 (Costs for draft) | |
| Co de | NEW | T4 1 | | 11 (Bank charges) | |
| Co de | NEW | T4 1 | | 12 (Agent commission) | |
| Co de | NEW | T4 1 | | 14 (Wrong delivery) | |
| Co de | NEW | T4 1 | | 15 (Goods returned to agent) | |
| Co de | NEW | T4 1 | | 16 (Goods partly returned) | |
| Co de | NEW | T4 1 | | 17 (Transport damage) | |
| Co de | NEW | T4 1 | | 19 (Trade discount) | |
| Co de | NEW | T4 1 | | 20 (Deduction for late delivery) | |
| Co de | NEW | T4 1 | | 21 (Advertising costs) | |
| Co de | NEW | T4 1 | | 22 (Customs duties) | |
| Co de | NEW | T4 1 | | 23 (Telephone and postal costs) | |
| Co de | NEW | T4 1 | | 24 (Repair costs) | |
| Co de | NEW | T4 1 | | 25 (Attorney fees) | |
| Co de | NEW | T4 1 | | 26 (Taxes) | |
| Co de | NEW | T4 1 | | 30 (Direct payment to seller) | |
| Co de | NEW | T4 1 | | 32 (Goods not delivered) | |
| Co de | NEW | T4 1 | | 33 (Late delivery) | |

| | | | | | |
|----------|-----|---------|--|--|--|
| Co de | NEW | T4 1 | | 35 (Goods returned) | |
| Co de | NEW | T4 1 | | 36 (Invoice not received) | |
| Co de | NEW | T4 1 | | 37 (Credit note to debtor/not to us) | |
| Co de | NEW | T4 1 | | 38 (Deducted bonus) | |
| Co de | NEW | T4 1 | | 39 (Deducted discount) | |
| Co de | NEW | T4 1 | | 40 (Deducted freight costs) | |
| Co de | NEW | T4 1 | | 41 (Deduction against other invoices) | |
| Co de | NEW | T4 1 | | 42 (Credit balance(s)) | |
| Co de | NEW | T4 1 | | 45 (Debit note to seller) | |
| Co de | NEW | T4 1 | | 46 (Discount beyond terms) | |
| Co de | NEW | T4 1 | | 48 (Allowance/charge error) | |
| Co de | NEW | T4 1 | | 49 (Substitute product) | |
| Co de | NEW | T4 1 | | 50 (Terms of sale error) | |
| Co de | NEW | T4 1 | | 52 (Wrong invoice) | |
| Co de | NEW | T4 1 | | 53 (Duplicate invoice) | |
| Co de | NEW | T4 1 | | 54 (Weight error) | |
| Co de | NEW | T4 1 | | 55 (Additional charge not authorized) | |
| Co de | NEW | T4 1 | | 56 (Incorrect discount) | |
| Co de | NEW | T4 1 | | 57 (Price change) | |
| Co de | NEW | T4 1 | | 58 (Variation) | |
| Co de | NEW | T4 1 | | 59 (Chargeback) | |

| | | | | | |
|-------|--------|---------|-----------------------------|--|---|
| Code | NEW | T4 1 | | 65 (Settlement to agent) | |
| Code | NEW | T4 1 | | 66 (Cash discount) | |
| Code | NEW | T4 1 | | 70 (Wrong monetary amount resulting from incorrect free goods quantity) | |
| Code | NEW | T4 1 | | 72 (Temporary special promotion) | |
| Code | NEW | T4 1 | | 73 (Difference in tax rate) | |
| Code | NEW | T4 1 | | 74 (Quantity discount) | |
| Code | NEW | T4 1 | | 75 (Promotion discount) | |
| Code | NEW | T4 1 | | 76 (Cancellation deadline passed) | |
| Code | NEW | T4 1 | | 77 (Pricing discount) | |
| Code | NEW | T4 1 | | 78 (Volume discount) | |
| Code | NEW | T4 1 | | 79 (Sundry discount) | |
| Table | UPDATE | T4 1 | type of Allowance or Charge | | Generalities Old value: <i>coded specification of an Allowance or Charge</i> New value: <i>coded specification of an Allowance or Charge (elaborated from UNECE 4465)</i> |
| Code | NEW | T4 4 | | CO (company identification code) | |