



<http://www.ebiz-tcf.eu>

## IMPLEMENTATION GUIDE

includes COMPARISON BETWEEN CURRENT and LAST  
PREVIOUSLY RELEASED VERSION

TRANSACTION "YARN OFFER (OFFER-CATALOG-  
TECH.SHEET)"

Version: v2018-1

Date of release: 18/7/2019

Document code: G074rv

technical Documentation: <http://www.ebiz.enea.it>

XML Schemas repository: <http://www.ebiz.enea.it/moda-ml/repository/schema/v2018-1/default.asp>

Guides repository: <http://www.ebiz.enea.it/moda-ml/repository/guide/v2018-1/default.asp>

Guide filename: G074rv-eBIZ-YarnOffer(offer-catalog-tech.sheet).pdf

# 1. BUSINESS DESCRIPTION

## 1.1 Scope

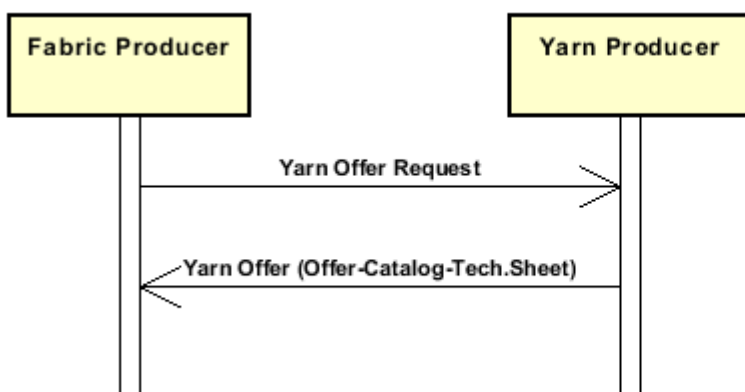
the Yarn Producer sends this document reporting all the data that identify the yarn articles matching the Request and certify their manufacturing characteristics and its mechanical-physical-chemical properties. In many cases the values declared for these parameters may be the average of several test measurements with a coefficient of variation (CV).

## 1.2 Generalities

the Yarn Producer sends this document reporting all the data that identify the yarn articles matching the Request and certify their manufacturing characteristics and its mechanical-physical-chemical properties. In many cases the values declared for these parameters may be the average of several test measurements with a coefficient of variation (CV).

## 1.3. Possible scenario

Selection of yarns



## 2. IMPLEMENTATION GUIDE

### 2.1 General structure of XML document

All the business data that can be exchanged through this class of documents are shown in the following "document structure", that provides a simplified vision of the Schema.

In particular:

- the two numbers following each element define its "cardinality" (minimum and maximum number of occurrences); the minimum equal zero indicates that the element is optional, the minimum greater than zero indicates that is mandatory;
- the bold character denotes the complex elements (aggregates of simple elements) that were built for the sake of functionality and re-usability of some complex informations sets. The child elements in each parent element are easily spotted as "indented";
- the symbol "@" denotes an attribute of the preceding element; here "the usage indicator (optional, required, ...)" is shown in square brackets.

#### Legenda

- N: new element
- U: updated properties
- P: changes in children
- p: is a changed child
- A: changes in attributes
- a: is a new or changed attribute
- \*: is a subtype

### Structure

```
YARNOffer (P)
@msgfunction [Optional]
@version [Optional] [Default= 2018-1]
@useProfile [Optional]
| OFheader 1-1 (P)
| | msgN 1-1
| | - choose -
| | msgID 0-1
| | - or -
| | docID 0-1
| | @numberingOrg [Optional]
| | - end choose -
| | msgDate 1-1
| | @dateForm [Optional]
| | season 0-1 (A)
| | @numberingOrg [Optional] (a)
| | @codeList [Optional] (a)
| | @listName [Optional] (a)
| | @listVersion [Optional] (a)
| | validityStart 0-1
| | @dateForm [Optional]
| | validityEnd 1-1
| | @dateForm [Optional]
| | refDoc 0-9 (P)
| | @docType [Required]
| | | docID 1-2 (p)
| | | @numberingOrg [Optional]
| | | docDate 0-1
| | | @dateForm [Optional]
| | | season 0-1 (A)
```

- | | | @numberingOrg [Optional] (a)
- | | | @codeList [Optional] (a)
- | | | @listName [Optional] (a)
- | | | @listVersion [Optional] (a)
- | | itemID 0-1 (U)
- | | **attachment 0-1 (N)**
- | | | @uid [Optional]
- | | | | fileName 0-1 (N)
- | | | | @numberingOrg [Optional] (a)
- | | | | binaryObject 0-1 (N)
- | | | | @format [Optional] (Na)
- | | | | @mime [Optional] (Na)
- | | | | @encoding [Optional] (Na)
- | | | | @characterSet [Optional] (Na)
- | | | **externalReference 0-99 (N)**
- | | | | uri 1-1 (N)
- | | | | | @isURL [Optional] [Default= true] (Na)
- | | | | | mimeTypeCode 0-1 (N)
- | | | | | formatCode 0-1 (N)
- | | | | | encodingCode 0-1 (N)
- | | | | | characterSetCode 0-1 (N)

**buyer 1-1 (AP)**

- | | @logo [Optional]
- | | @sender [Optional] (a\*)
- | | | id 1-1 (p)
- | | | | @numberingOrg [Optional]
- | | | additionalIdentifier 0-9 (N)
- | | | | @numberingOrg [Optional] (a)
- | | | | @idQualifier [Optional] (Na)
- | | | legalName 0-1 (U)
- | | | dept 0-1
- | | | subDept 0-1 (N)
- | | | person 0-1
- | | | | @email [Optional]
- | | | | @phone [Optional]
- | | | | @fax [Optional]
- | | | street 0-1
- | | | city 0-1
- | | | subCountry 0-1
- | | | country 0-1
- | | | postCode 0-1

- choose -

**supplier 0-1 (AP)**

- | | @logo [Optional]
- | | @sender [Optional] (a\*)
- | | | id 1-1
- | | | | @numberingOrg [Optional]
- | | | additionalIdentifier 0-9 (N)
- | | | | @numberingOrg [Optional] (a)
- | | | | @idQualifier [Optional] (Na)
- | | | legalName 0-1 (U)
- | | | dept 0-1
- | | | subDept 0-1 (N)
- | | | person 0-1
- | | | | @email [Optional]
- | | | | @phone [Optional]
- | | | | @fax [Optional]
- | | | street 0-1
- | | | city 0-1
- | | | subCountry 0-1
- | | | country 0-1

```

| | | postCode 0-1
- or -
| | subContractor 0-1 (AP)
| | @sender [Optional] (a*)
| | | id 1-1
| | | @numberingOrg [Optional]
| | | legalName 0-1 (U)
| | | dept 0-1
| | | subDept 0-1 (N)
| | | person 0-1
| | | @email [Optional]
| | | @phone [Optional]
| | | @fax [Optional]
| | | street 0-1
| | | city 0-1
| | | subCountry 0-1
| | | country 0-1
| | | postCode 0-1

```

- end choose -

```

| | thirdParty 0-5 (AP)
| | @VAT [Optional]
| | @role [Required]
| | @sender [Optional] (a*)
| | | id 1-1
| | | @numberingOrg [Optional]
| | | legalName 0-1 (U)
| | | dept 0-1
| | | subDept 0-1 (N)
| | | person 0-1
| | | @email [Optional]
| | | @phone [Optional]
| | | @fax [Optional]
| | | street 0-1
| | | city 0-1
| | | subCountry 0-1
| | | country 0-1
| | | postCode 0-1
| | note 0-99
| | @numberingOrg [Optional]
| | @codeList [Optional]
| | @noteLabel [Optional]

```

| **terms 0-1** (P)

```

| | payment 0-5
| | @finDiscount [Optional]
| | @finSurcharge [Optional]
| | - choose -
| | | payTerm 1-1
| | | - or -
| | | payTermText 1-1 (U)
| | | - end choose -
| | | payMode 0-1
| | insPayment 0-5
| | @part [Required]
| | - choose -
| | | payTerm 1-1
| | | - or -
| | | payTermText 1-1 (U)
| | | - end choose -
| | | payMode 0-1
| | trade 0-1

```

- choose -  
| | | incoTermText 1-1 (U)  
- or -  
| | | incoTerm 1-1  
- end choose -  
| | | location 0-1  
| | | @LRI [Optional]  
| | **transInfo 0-5** (pAP)  
| | | @transReason [Optional]  
| | | @progr [Optional] (N)  
| | | | transMode 1-1  
| | | | carrier 0-1  
| | | | deliveryPlace 0-1 (U)  
| | | | grossWeight 0-1  
| | | | | @um [Required]  
| | | | netWeight 0-1  
| | | | | @um [Required]  
| | | | transMeans 0-1  
| | | | transCondition 0-3  
| | | | transConditionText 0-1 (U)  
| | | | despatchPlace 0-1 (N)  
| | | | despatchDate 0-1 (N)  
| | | | | @dateForm [Optional] (a)  
| | | | delEffectiveDate 0-1 (p)  
| | | | | @dateForm [Optional]  
| | **allowanceCharge 0-9** (A)  
| | | @um [Optional] (a)  
| | | @VAT [Optional]  
| | | @minQty [Optional] (a)  
| | | @currency [Optional] (a)  
| | | @maxQty [Optional] (N)  
| | | @isCharge [Optional] (N)  
- choose -  
| | | AC\_category 1-1  
- or -  
| | | AC\_categoryText 1-1 (U)  
- end choose -  
- choose -  
| | | AC\_percent 1-1  
- or -  
| | | AC\_amount 1-1 (A)  
| | | | @currency [Optional] (a)  
- end choose -  
| | | **dtScheme 0-1** (P)  
| | | | @taxType [Required]  
| | | | | taxCategory 0-1  
| | | | | taxRate 0-1  
| | | | | legalRef 0-1 (A)  
| | | | | | @numberingOrg [Optional] (a)  
| | | | | | @codeList [Optional] (a)  
| | | | | | @listName [Optional] (a)  
| | | | | | @listVersion [Optional] (a)  
| | | | | note 0-99  
| | | | | | @numberingOrg [Optional]  
| | | | | | @codeList [Optional]  
| | | | | | @noteLabel [Optional]  
| | **yarnTecSheet 1-unbounded** (P)  
| | | **refDoc 0-9** (P)  
| | | | @docType [Required]  
| | | | docID 1-2 (p)

| @numberingOrg [Optional]  
 | docDate 0-1  
 | @dateForm [Optional]  
 | season 0-1 (A)  
 | @numberingOrg [Optional] (a)  
 | @codeList [Optional] (a)  
 | @listName [Optional] (a)  
 | @listVersion [Optional] (a)  
 | itemID 0-1 (U)  
**attachment 0-1 (N)**  
 | @uid [Optional]  
 | | fileName 0-1 (N)  
 | | @numberingOrg [Optional] (a)  
 | | binaryObject 0-1 (N)  
 | | @format [Optional] (N)  
 | | @mime [Optional] (N)  
 | | @encoding [Optional] (N)  
 | | @characterSet [Optional] (N)  
**externalReference 0-99 (N)**  
 | | uri 1-1 (N)  
 | | @isURL [Optional] [Default= true] (Na)  
 | | mimeTypeCode 0-1 (N)  
 | | formatCode 0-1 (N)  
 | | encodingCode 0-1 (N)  
 | | characterSetCode 0-1 (N)

**yarnIdentity 0-1 (P)**

| yarnNameSupplier 1-1 (U)  
 | yarnNameBuyer 0-1 (U)  
 | tradeMark 0-1  
 | season 0-1 (A)  
 | @numberingOrg [Optional] (a)  
 | @codeList [Optional] (a)  
 | @listName [Optional] (a)  
 | @listVersion [Optional] (a)

**yarnCompos 0-1**

| percCompos 1-9  
 | @fibre [Required]

**fibrePD 0-9**

| @fibre [Required]  
 | | length 0-1  
 | | @um [Required]  
 | | diameter 0-1  
 | | @um [Optional]  
 | | country 0-1

yarnClass 0-1

yarnKind 0-1

yarnCount 0-1

@countSystem [Required]

@CV [Optional]

**yarnTwist 0-1**

| twistDirection 1-1  
 | qty 0-1  
 | @um [Required]

moistRegain 0-1

**yarnCode 0-2 (P)**

| @numberingOrg [Optional] [Default= CL]  
 | | art 1-1 (U)  
 | | @numberingOrg [Optional]  
 | | @codeList [Optional]  
 | | @listName [Optional]  
 | | @listVersion [Optional]

- | color 0-1
  - | @numberingOrg [Optional]
  - | @codeList [Optional]
  - | @listName [Optional]
  - | @listVersion [Optional]
- | added 0-9
  - | @numberingOrg [Optional]
  - | @addType [Optional]
- | description 0-unbounded (AU)
  - | @ln [Optional] (N)
- customsStat 0-1
- yarnComWeight 0-1
  - | @um [Required]
- standardPack 0-1
  - | @reelType [Optional]
- yarnReelQty 0-1
  - | @um [Required]
- minLot 0-1
  - | @um [Required]
- minLotExclusive 0-1
  - | @um [Required]
- optLot 0-9
  - | @um [Optional]
- avgDeliveryDD 0-1
- lotN 0-1
  - | @numberingOrg [Optional]
- dyeN 0-1
  - | @numberingOrg [Optional]
- price 0-2 (AU)
  - | @um [Optional]
  - | @priceQualifier [Optional] [Default= NET]
  - | @currency [Optional] (a)
- extendedDescription 0-unbounded (N)
  - | @ln [Optional] (Na)
- note 0-99
  - | @numberingOrg [Optional]
  - | @codeList [Optional]
  - | @noteLabel [Optional]
- yarnManufacture 0-1 (P)**
  - yarnPly 0-1**
    - | plyWork 1-1
    - | plyN 0-1
  - yarnJobSeq 0-1**
    - | yarnJob 1-19
  - dyeProcess 0-1
  - dyeStuff 0-1
  - yarnColorFastness 0-99**
    - | @colorType [Required]
    - | yarnCFTest 1-1
    - | specValue 1-1
      - | @um [Optional]
      - | @source [Optional]
      - | @method [Optional]
      - | @application [Optional]
      - | @CV [Optional]
  - colorCard 0-1**
    - colorCardItem 1-unbounded (P)**
      - | color 1-2
        - | @numberingOrg [Optional]
        - | @codeList [Optional]
        - | @listName [Optional]



```

| | | | @listVersion [Optional]
| | | | CIELab 0-unbounded
| | | | @illuminant [Optional]
| | | | @standardObserver [Optional]
| | | | | L 1-1
| | | | | a 1-1
| | | | | b 1-1
| | | | refDoc 0-1 (P)
| | | | @docType [Required]
| | | | | docID 1-2 (p)
| | | | | @numberingOrg [Optional]
| | | | | docDate 0-1
| | | | | @dateForm [Optional]
| | | | | season 0-1 (A)
| | | | | @numberingOrg [Optional] (a)
| | | | | @codeList [Optional] (a)
| | | | | @listName [Optional] (a)
| | | | | @listVersion [Optional] (a)
| | | | | itemID 0-1 (U)
| | | | | attachment 0-1 (N)
| | | | | @uid [Optional]
| | | | | | fileName 0-1 (N)
| | | | | | @numberingOrg [Optional] (a)
| | | | | | binaryObject 0-1 (N)
| | | | | | @format [Optional] (Na)
| | | | | | @mime [Optional] (Na)
| | | | | | @encoding [Optional] (Na)
| | | | | | @characterSet [Optional] (Na)
| | | | | | externalReference 0-99 (N)
| | | | | | | uri 1-1 (N)
| | | | | | | @isURL [Optional] [Default= true] (Na)
| | | | | | | mimeTypeCode 0-1 (N)
| | | | | | | formatCode 0-1 (N)
| | | | | | | encodingCode 0-1 (N)
| | | | | | | characterSetCode 0-1 (N)
| | | | | description 0-unbounded (AU)
| | | | | @ln [Optional] (N)
| | | | note 0-99
| | | | | @numberingOrg [Optional]
| | | | | @codeList [Optional]
| | | | | @noteLabel [Optional]
| | | | yarnQuality 0-1 (P)
| | | | | yarnQTest 1-99 (Pp)
| | | | | | yarnQTestType 1-1 (N)
| | | | | | specValue 0-1
| | | | | | | @um [Optional]
| | | | | | | @source [Optional]
| | | | | | | @method [Optional]
| | | | | | | @application [Optional]
| | | | | | | @CV [Optional]
| | | | | | tolerance 0-1
| | | | | | | @um [Required]
| | | | | | pcTolerance 0-1
| | | | | | | @um [Optional]
| | | | | | comply 0-1
| | | | | note 0-99
| | | | | | @numberingOrg [Optional]
| | | | | | @codeList [Optional]
| | | | | | @noteLabel [Optional]

```

## 2.2 Detailed description of document elements

Following tables show all elements (complex and simple) used in this document. Description includes: 1) element's information: xml tag, name, brief description, data type and syntax constraints; 2) information about use of the element in a particular position in the document: xpath and possible associated notes.

### 2.2.1 Complex elements (Aggregate Business Information Entities)

Complex elements are those elements whose content is composed of other elements (childs).Complex elements are alphabetically ordered.

<b>allowanceCharge</b>	Allowances and Charges related to an Order or a contract (XPath YARNOffer/terms/allowanceCharge) 0-9 (A)
<b>attachment</b>	an attached document. An attachment can refer to an external document or be included with the document being exchanged (XPath YARNOffer/yarnTecSheet/refDoc/attachment) 0-1 (N) (XPath YARNOffer/yarnTecSheet/yarnManufacture/colorCard/colorCardItem/refDoc/attachment) 0-1 (N) (XPath YARNOffer/OFheader/refDoc/attachment) 0-1 (N)
<b>buyer</b>	details of the Buyer (party that buys the good or service that is object of the current collaborative process) - base type: Nad, (XPath YARNOffer/OFheader/buyer) 1-1 (AP)
<b>CIELab</b>	color point in the CIELab color space (XPath YARNOffer/yarnTecSheet/yarnManufacture/colorCard/colorCardItem/CIELab) 0-unbounded
<b>colorCard</b>	color card for a textile product (XPath YARNOffer/yarnTecSheet/yarnManufacture/colorCard) 0-1
<b>colorCardItem</b>	item of the color card (XPath YARNOffer/yarnTecSheet/yarnManufacture/colorCard/colorCardItem) 1-unbounded (P)
<b>dtScheme</b>	set of data usable to declare the duty or tax applied (XPath YARNOffer/terms/allowanceCharge/dtScheme) 0-1 (P)
<b>externalReference</b>	details about an external object, such as a document stored at a remote location (XPath YARNOffer/yarnTecSheet/refDoc/attachment/externalReference) 0-99 (N) (XPath YARNOffer/OFheader/refDoc/attachment/externalReference) 0-99 (N) (XPath YARNOffer/yarnTecSheet/yarnManufacture/colorCard/colorCardItem/refDoc/attachment/externalReference) 0-99 (N)
<b>fibrePD</b>	physical data of a textile fibre (XPath YARNOffer/yarnTecSheet/yarnIdentity/fibrePD) 0-9
<b>insPayment</b>	payment details for payment by installments (XPath YARNOffer/terms/insPayment) 0-5 - note: <i>excluded the case of offers, this set of data is alternative to payment set and must be iterated for each payment installment</i>
<b>OFheader</b>	header of the document OFFER (XPath YARNOffer/OFheader) 1-1 (P)
<b>payment</b>	payment details for payment all in one (XPath YARNOffer/terms/payment) 0-5 - note: <i>excluded the case of offers, this set of data is alternative to insPayment, it can be iterated to specify alternative terms of payment (e.g.: 60 days or 30 days with 3% discount)</i>

<b>refDoc</b>	<p>identification of a document and of an item thereof, to which the message makes reference  (XPath YARNOffer/OFheader/refDoc) 0-9 (P)  - note: <i>At least one occurrence should contain a reference to the corresponding Request for Offer ( docType=REQ)</i>  (XPath YARNOffer/yarnTecSheet/refDoc) 0-9 (P)  (XPath YARNOffer/yarnTecSheet/yarnManufacture/colorCard/colorCardItem/refDoc) 0-1 (P)  - note: <i>here the CxF3 file can be referenced</i></p>
<b>subContractor</b>	<p>details of the Sub-contractor  - base type: Nad,  (XPath YARNOffer/OFheader/subContractor) 0-1 (AP)  - note: <i>At least one out of Supplier and Subcontractor must be indicated.</i></p>
<b>supplier</b>	<p>details of the Supplier (party that supplies the good or service that is object of the current collaborative process)  - base type: Nad,  (XPath YARNOffer/OFheader/supplier) 0-1 (AP)  - note: <i>At least one out of Supplier and Subcontractor must be indicated.</i></p>
<b>terms</b>	<p>details of the commercial obligations for payment and delivery  (XPath YARNOffer/terms) 0-1 (P)</p>
<b>thirdParty</b>	<p>details of the Third Party, different from Sender and Receiver of the document  - base type: Nad,  (XPath YARNOffer/OFheader/thirdParty) 0-5 (AP)  - note: <i>In the Offer case it might give reference to the Originator of the request.</i></p>
<b>trade</b>	<p>general terms of trade for the specified supply  (XPath YARNOffer/terms/trade) 0-1</p>
<b>transInfo</b>	<p>details of transport: mode, carrier and delivery place  (XPath YARNOffer/terms/transInfo) 0-5 (pAP)</p>
<b>yarnCode</b>	<p>full codification of a yarn product  (XPath YARNOffer/yarnTecSheet/yarnIdentity/yarnCode) 0-2 (P)</p>
<b>yarnColorFastness</b>	<p>color fastness data for a yarn  (XPath YARNOffer/yarnTecSheet/yarnManufacture/yarnColorFastness) 0-99</p>
<b>yarnCompos</b>	<p>fibrous composition of a yarn product  (XPath YARNOffer/yarnTecSheet/yarnIdentity/yarnCompos) 0-1</p>
<b>yarnIdentity</b>	<p>set of data that univocally identify the yarn article and any classification or commercial information  (XPath YARNOffer/yarnTecSheet/yarnIdentity) 0-1 (P)</p>
<b>yarnJobSeq</b>	<p>operations undergone in the manufacturing of a yarn  (XPath YARNOffer/yarnTecSheet/yarnManufacture/yarnJobSeq) 0-1</p>
<b>yarnManufacture</b>	<p>set of data that specify the construction details of the yarn  (XPath YARNOffer/yarnTecSheet/yarnManufacture) 0-1 (P)</p>
<b>yarnPly</b>	<p>plying characteristics of a yarn  (XPath YARNOffer/yarnTecSheet/yarnManufacture/yarnPly) 0-1</p>
<b>yarnQTest</b>	<p>parameter related to the quality of yarn  - base type: string,  (XPath YARNOffer/yarnTecSheet/yarnQuality/yarnQTest) 1-99 (Pp)</p>
<b>yarnQuality</b>	<p>set of data that specify the quality data of the yarn  (XPath YARNOffer/yarnTecSheet/yarnQuality) 0-1 (P)</p>
<b>yarnTecSheet</b>	<p>technical sheet of the yarn  (XPath YARNOffer/yarnTecSheet) 1-unbounded (P)</p>

<b>yarnTwist</b>	twist characteristics of yarn (XPath YARNOffer/yarnTecSheet/yarnIdentity/yarnTwist) 0-1
------------------	--

## 2.2.2 Simple elements (Basic Business Information Entities)

Simple elements are those elements whose content is characterized by a data type plus a domain of possible values. Simple elements are alphabetically ordered.

a	"a" dimension of the CIELab color system - base type: decimal, (XPath YARNOffer/yarnTecSheet/yarnManufacture/colorCard/colorCardItem/CIELab/a) 1-1
AC_amount	amount of an Allowance or Charge - base type: decimal, fraction digits: 2, (XPath YARNOffer/terms/allowanceCharge/AC_amount) 1-1 (A)
AC_category	coded specification of an Allowance or Charge - base type: string, cod. table: T41 <a href="http://www.ebiz.enea.it/moda-ml/repository/codelist/v2018-1/gc_T41.xml">http://www.ebiz.enea.it/moda-ml/repository/codelist/v2018-1/gc_T41.xml</a> (XPath YARNOffer/terms/allowanceCharge/AC_category) 1-1
AC_categoryText	free text description of an Allowance or Charge - base type: string, max length: 250, (XPath YARNOffer/terms/allowanceCharge/AC_categoryText) 1-1 (U)
AC_percent	amount of an Allowance or Charge as a percentage (always non negative value) - base type: decimal, max inclusive: 100, fraction digits: 2, (XPath YARNOffer/terms/allowanceCharge/AC_percent) 1-1
added	additional code of the product (complementing the formers) - base type: string, max length: 80, (XPath YARNOffer/yarnTecSheet/yarnIdentity/yarnCode/added) 0-9 - note: <i>here an additional codification (see table T44) can be specified</i>
additionalIdentifier	additional identification code of a Party, for example customs registries or others - base type: string, max length: 15, (XPath YARNOffer/OFheader/buyer/additionalIdentifier) 0-9 (N) - note: <i>identifiers for example for exports, such as MID (Manufacturer Identification Code), EORI (E.O.R.I. - Economic Operator Registration and Identification)</i> (XPath YARNOffer/OFheader/supplier/additionalIdentifier) 0-9 (N) - note: <i>identifiers for example for exports, such as MID (Manufacturer Identification Code), EORI (E.O.R.I. - Economic Operator Registration and Identification)</i>
@addType	qualifier of the additional coding of a product - base type: string, cod. table: T44 <a href="http://www.ebiz.enea.it/moda-ml/repository/codelist/v2018-1/gc_T44.xml">http://www.ebiz.enea.it/moda-ml/repository/codelist/v2018-1/gc_T44.xml</a> (XPath YARNOffer/yarnTecSheet/yarnIdentity/yarnCode/added/@addType) [Optional] - nota: <i>addType allows the clarification of the meaning of the added element content; it is strongly suggested to use it always.</i>
@application	force or similar condition (e.g. no. of revolutions) applied in a test as specified within the standard - base type: string, max length: 15, (XPath YARNOffer/yarnTecSheet/yarnQuality/yarnQTest/specValue/@application) [Optional]

	(XPath YARNOffer/yarnTecSheet/yarnManufacture/yarnColorFastness/specValue/ @application) [Optional]
art	article number of the product - base type: string, max length: 80, (XPath YARNOffer/yarnTecSheet/yarnIdentity/yarnCode/art) 1-1 (U)
avgDeliveryDD	average time (workdays) between order receipt and delivery of an article, specified by the Supplier - base type: duration, (XPath YARNOffer/yarnTecSheet/yarnIdentity/avgDeliveryDD) 0-1
b	"b" dimension of the CIELab color system - base type: decimal, (XPath YARNOffer/yarnTecSheet/yarnManufacture/colorCard/ colorCardItem/CIELab/b) 1-1
binaryObject	a binary large object containing an attached document, Coding 'base64Binary' is recommended. - base type: base64Binary, (XPath YARNOffer/yarnTecSheet/yarnManufacture/colorCard/ colorCardItem/refDoc/attachment/binaryObject) 0-1 (N) (XPath YARNOffer/yarnTecSheet/refDoc/attachment/binaryObject) 0-1 (N) (XPath YARNOffer/OFheader/refDoc/attachment/binaryObject) 0-1 (N)
carrier	identification of the transport carrier - base type: string, max length: 40, (XPath YARNOffer/terms/transInfo/carrier) 0-1
@characterSet	the character set of the binary object (examples UTF-8, UTF-16, Windows-1252, ISO-8859-7,..) - base type: normalizedString, (XPath YARNOffer/yarnTecSheet/yarnManufacture/colorCard/ colorCardItem/refDoc/attachment/binaryObject/@characterSet) [Optional] (Na) (XPath YARNOffer/yarnTecSheet/refDoc/attachment/ binaryObject/@characterSet) [Optional] (N) (XPath YARNOffer/OFheader/refDoc/attachment/binaryObject/@characterSet) [Optional] (Na)
characterSetCode	the character set of an external document (examples UTF-8, UTF-16, Windows-1252, ISO-8859-7,..) - base type: normalizedString, (XPath YARNOffer/OFheader/refDoc/attachment/externalReference/characterSetCode) 0-1 (N) (XPath YARNOffer/yarnTecSheet/yarnManufacture/colorCard/ colorCardItem/refDoc/attachment/externalReference/characterSetCode) 0-1 (N) (XPath YARNOffer/yarnTecSheet/refDoc/attachment/ externalReference/characterSetCode) 0-1 (N)
city	name of the city (town, village) - base type: string, max length: 40, (XPath YARNOffer/OFheader/thirdParty/city) 0-1 (XPath YARNOffer/OFheader/supplier/city) 0-1 (XPath YARNOffer/OFheader/subContractor/city) 0-1 (XPath YARNOffer/OFheader/buyer/city) 0-1
@codeList	it specifies the URL where the list of codes used to make an instance of the element can be found - base type: string, max length: 255, (XPath YARNOffer/OFheader/season/@codeList) [Optional] (a) - nota: <i>this attribute should be used either single or coupled with "listName" and "listVersion"</i> (XPath YARNOffer/yarnTecSheet/yarnIdentity/note/@codeList) [Optional]

	<p>- nota: <i>must be used to provide (URL) the list of codes used in "noteLabel"</i> (XPath YARNOffer/terms/allowanceCharge/dtScheme/note/@codeList) [Optional]</p> <p>- nota: <i>must be used to provide (URL) the list of codes used in "noteLabel"</i> (XPath YARNOffer/yarnTecSheet/yarnManufacture/colorCard/colorCardItem/color/@codeList) [Optional]</p> <p>- nota: <i>this attribute should be used either single or coupled with "listName" and "listVersion"</i> (XPath YARNOffer/terms/allowanceCharge/dtScheme/legalRef/@codeList) [Optional] (a)</p> <p>(XPath YARNOffer/yarnTecSheet/refDoc/season/@codeList) [Optional] (a)</p> <p>- nota: <i>this attribute should be used either single or coupled with "listName" and "listVersion"</i> (XPath YARNOffer/yarnTecSheet/yarnIdentity/season/@codeList) [Optional] (a)</p> <p>- nota: <i>this attribute should be used either single or coupled with "listName" and "listVersion"</i> (XPath YARNOffer/OFheader/note/@codeList) [Optional]</p> <p>- nota: <i>must be used to provide (URL) the list of codes used in "noteLabel"</i> (XPath YARNOffer/OFheader/refDoc/season/@codeList) [Optional] (a)</p> <p>- nota: <i>this attribute should be used either single or coupled with "listName" and "listVersion"</i> (XPath YARNOffer/yarnTecSheet/yarnIdentity/yarnCode/color/@codeList) [Optional]</p> <p>- nota: <i>this attribute should be used either single or coupled with "listName" and "listVersion"</i> (XPath YARNOffer/yarnTecSheet/yarnIdentity/yarnCode/art/@codeList) [Optional]</p> <p>- nota: <i>at least one out of this attribute and "numberingOrg" should be set</i> (XPath YARNOffer/yarnTecSheet/yarnManufacture/note/@codeList) [Optional]</p> <p>- nota: <i>must be used to provide (URL) the list of codes used in "noteLabel"</i> (XPath YARNOffer/yarnTecSheet/yarnManufacture/colorCard/colorCardItem/refDoc/season/@codeList) [Optional] (a)</p> <p>- nota: <i>this attribute should be used either single or coupled with "listName" and "listVersion"</i> (XPath YARNOffer/yarnTecSheet/yarnQuality/note/@codeList) [Optional]</p> <p>- nota: <i>must be used to provide (URL) the list of codes used in "noteLabel"</i></p>
color	<p>colour number of the product, when not included in the model or fabric code</p> <p>- base type: string, max length: 15, (XPath YARNOffer/yarnTecSheet/yarnIdentity/yarnCode/color) 0-1 (XPath YARNOffer/yarnTecSheet/yarnManufacture/colorCard/colorCardItem/color) 1-2</p> <p>- note: <i>multiple color values allowed if they differ for at least one of the numberingOrg and listName attributes</i></p>
@colorType	<p>type of color to which a "color fastness" value refers</p> <p>- base type: string, cod. table: NT26 <a href="http://www.ebiz.enea.it/moda-ml/repository/codelist/v2018-1/gc_NT26.xml">http://www.ebiz.enea.it/moda-ml/repository/codelist/v2018-1/gc_NT26.xml</a> (XPath YARNOffer/yarnTecSheet/yarnManufacture/yarnColorFastness/@colorType) [Required]</p>
comply	<p>specifies if the experimental value complies with the standard requirement (target value)</p> <p>- base type: boolean, (XPath YARNOffer/yarnTecSheet/yarnQuality/yarnQTest/comply) 0-1</p>
country	<p>code of the nation</p> <p>- base type: string, cod. table: T10 <a href="http://www.ebiz.enea.it/moda-ml/repository/codelist/v2018-1/gc_T10.xml">http://www.ebiz.enea.it/moda-ml/repository/codelist/v2018-1/gc_T10.xml</a> (XPath YARNOffer/yarnTecSheet/yarnIdentity/fibrePD/country) 0-1 (XPath YARNOffer/OFheader/thirdParty/country) 0-1 (XPath YARNOffer/OFheader/subContractor/country) 0-1 (XPath YARNOffer/OFheader/buyer/country) 0-1 (XPath YARNOffer/OFheader/supplier/country) 0-1</p>
@countSystem	<p>yarn count system</p> <p>- base type: string, cod. table: T55 <a href="http://www.ebiz.enea.it/moda-ml/repository/codelist/v2018-1/gc_T55.xml">http://www.ebiz.enea.it/moda-ml/repository/codelist/v2018-1/gc_T55.xml</a></p>

	(XPath YARNOffer/yarnTecSheet/yarnIdentity/yarnCount/@countSystem) [Required]
@currency	<p>currency in which a specified monetary data is expressed</p> <p>- base type: string, cod. table: T9  <a href="http://www.ebiz.enea.it/moda-ml/repository/codelist/v2018-1/gc_T9.xml">http://www.ebiz.enea.it/moda-ml/repository/codelist/v2018-1/gc_T9.xml</a>  (XPath YARNOffer/yarnTecSheet/yarnIdentity/price/@currency) [Optional] (a)</p> <p>- nota: <i>Currency referred by the price.</i>  (XPath YARNOffer/terms/allowanceCharge/AC_amount/@currency) [Optional] (a)  (XPath YARNOffer/terms/allowanceCharge/@currency) [Optional] (a)</p>
customsStat	<p>statistic code assigned by Customs to a specified product</p> <p>- base type: string, max length: 15,  (XPath YARNOffer/yarnTecSheet/yarnIdentity/customsStat) 0-1</p>
@CV	<p>coefficient of variation (CV) of a measurement</p> <p>- base type: decimal,  (XPath YARNOffer/yarnTecSheet/yarnQuality/yarnQTest/specValue/@CV) [Optional]  (XPath YARNOffer/yarnTecSheet/yarnIdentity/yarnCount/@CV) [Optional]  (XPath YARNOffer/yarnTecSheet/yarnManufacture/yarnColorFastness/specValue/@CV) [Optional]</p>
@dateForm	<p>format used for the date</p> <p>- base type: string, cod. table: NT29  <a href="http://www.ebiz.enea.it/moda-ml/repository/codelist/v2018-1/gc_NT29.xml">http://www.ebiz.enea.it/moda-ml/repository/codelist/v2018-1/gc_NT29.xml</a>  (XPath YARNOffer/OFheader/validityEnd/@dateForm) [Optional]  (XPath YARNOffer/terms/transInfo/delEffectiveDate/@dateForm) [Optional]  (XPath YARNOffer/yarnTecSheet/refDoc/docDate/@dateForm) [Optional]  (XPath YARNOffer/OFheader/msgDate/@dateForm) [Optional]  (XPath YARNOffer/yarnTecSheet/yarnManufacture/colorCard/colorCardItem/refDoc/docDate/@dateForm) [Optional]  (XPath YARNOffer/OFheader/validityStart/@dateForm) [Optional]  (XPath YARNOffer/terms/transInfo/despatchDate/@dateForm) [Optional] (a)  (XPath YARNOffer/OFheader/refDoc/docDate/@dateForm) [Optional]</p>
delEffectiveDate	<p>effective date of delivery of goods (declared in Despatch), according to one of the patterns YYYY-MM-DD, YYYY-MM-DD:HH-MM or YYYY-WW.</p> <p>- base type: string,  (XPath YARNOffer/terms/transInfo/delEffectiveDate) 0-1 (p)</p>
deliveryPlace	<p>place of delivery of goods, ultimate or related to a given leg</p> <p>- base type: string, max length: 250,  (XPath YARNOffer/terms/transInfo/deliveryPlace) 0-1 (U)</p>
dept	<p>name or code of a contact department within a Party</p> <p>- base type: string, max length: 40,  (XPath YARNOffer/OFheader/supplier/dept) 0-1  (XPath YARNOffer/OFheader/thirdParty/dept) 0-1  (XPath YARNOffer/OFheader/subContractor/dept) 0-1  (XPath YARNOffer/OFheader/buyer/dept) 0-1</p>
description	<p>free text description. The content of the element must be unique, it might be translated and repeated into more languages (thus no more than one instance for each language).</p> <p>- base type: string, max length: 250,  (XPath YARNOffer/yarnTecSheet/yarnIdentity/yarnCode/description) 0-unbounded (AU)</p> <p>- note: <i>Product description</i>  (XPath YARNOffer/yarnTecSheet/yarnManufacture/colorCard/colorCardItem/description) 0-unbounded (AU)</p>
despatchDate	<p>date of despatch of goods, requested or promised in the purchase process, according to one of the patterns YYYY-MM-DD, YYYY-MM-DD:HH-MM or YYYY-WW.</p> <p>- base type: string,  (XPath YARNOffer/terms/transInfo/despatchDate) 0-1 (N)</p>

despatchPlace	place of despatch of goods, origin or related to a given leg - base type: string, max length: 250, (XPath YARNOffer/terms/transInfo/despatchPlace) 0-1 (N)
diameter	effective diameter of a specified object - base type: decimal, min inclusive: 0, fraction digits: 2, (XPath YARNOffer/yarnTecSheet/yarnIdentity/fibrePD/diameter) 0-1
docDate	date of issue of the referenced document, according to one of the patterns Y YYY-MM-DD, YYYY-MM-DD:HH-MM or YYYY-WW. - base type: string, (XPath YARNOffer/yarnTecSheet/refDoc/docDate) 0-1 (XPath YARNOffer/OFheader/refDoc/docDate) 0-1 (XPath YARNOffer/yarnTecSheet/yarnManufacture/colorCard/ colorCardItem/refDoc/docDate) 0-1
docID	identification number of the referenced document SINCE 2008-1 ITS USE I N THE HEADER IS DISCOURAGED (REPLACED BY msgID) - base type: string, max length: 80, (XPath YARNOffer/OFheader/docID) 0-1 (XPath YARNOffer/OFheader/refDoc/docID) 1-2 (p) <hr/> <b>AAAA-WARNING! - text not AVAILABLE n. 245 - In=en</b> (XPath YARNOffer/yarnTecSheet/yarnManufacture/colorCard/ colorCardItem/refDoc/docID) 1-2 (p) <hr/> <b>AAAA-WARNING! - text not AVAILABLE n. 245 - In=en</b> (XPath YARNOffer/yarnTecSheet/refDoc/docID) 1-2 (p) <hr/> <b>AAAA-WARNING! - text not AVAILABLE n. 245 - In=en</b>
@docType	type or class to which the referenced document belongs - base type: string, cod. table: T21 <a href="http://www.ebiz.enea.it/moda-ml/repository/codelist/v2018-1/gc_T21.xml">http://www.ebiz.enea.it/moda-ml/repository/codelist/v2018-1/gc_T21.xml</a> (XPath YARNOffer/yarnTecSheet/refDoc/@docType) [Required] (XPath YARNOffer/yarnTecSheet/yarnManufacture/colorCard/ colorCardItem/refDoc/@docType) [Required] (XPath YARNOffer/OFheader/refDoc/@docType) [Required]
dyeN	number of the dyeing batch of a textile product - base type: string, max length: 15, (XPath YARNOffer/yarnTecSheet/yarnIdentity/dyeN) 0-1 - note: <i>to be used when the document refers to a specific production batch</i>
dyeProcess	dye process applied to the fabric - base type: string, cod. table: T15 <a href="http://www.ebiz.enea.it/moda-ml/repository/codelist/v2018-1/gc_T15.xml">http://www.ebiz.enea.it/moda-ml/repository/codelist/v2018-1/gc_T15.xml</a> (XPath YARNOffer/yarnTecSheet/yarnManufacture/dyeProcess) 0-1
dyeStuff	dye stuff used in the fabric dye process - base type: string, cod. table: T16 <a href="http://www.ebiz.enea.it/moda-ml/repository/codelist/v2018-1/gc_T16.xml">http://www.ebiz.enea.it/moda-ml/repository/codelist/v2018-1/gc_T16.xml</a> (XPath YARNOffer/yarnTecSheet/yarnManufacture/dyeStuff) 0-1
@email	electronic mail address of the contact person within a Party - base type: string, max length: 250, (XPath YARNOffer/OFheader/supplier/person/@email) [Optional] (XPath YARNOffer/OFheader/subContractor/person/@email) [Optional] (XPath YARNOffer/OFheader/thirdParty/person/@email) [Optional] (XPath YARNOffer/OFheader/buyer/person/@email) [Optional]
@encoding	specifies the decoding algorithm of the binary object - base type: normalizedString, (XPath YARNOffer/OFheader/refDoc/attachment/binaryObject/@encoding) [Optional] ] (Na) (XPath YARNOffer/yarnTecSheet/refDoc/attachment/ binaryObject/@encoding) [Optional] (N) (XPath YARNOffer/yarnTecSheet/yarnManufacture/colorCard/ colorCardItem/refDoc/attachment/binaryObject/@encoding) [Optional] (Na)



encodingCode	<p>the encoding/decoding algorithm used with the external object (example is 'base64Binary')</p> <p>- base type: normalizedString,</p> <p>(XPath YARNOffer/yarnTecSheet/refDoc/attachment/externalReference/encodingCode) 0-1 (N)</p> <p>(XPath YARNOffer/OFheader/refDoc/attachment/externalReference/encodingCode) 0-1 (N)</p> <p>(XPath YARNOffer/yarnTecSheet/yarnManufacture/colorCard/colorCardItem/refDoc/attachment/externalReference/encodingCode) 0-1 (N)</p>
extendedDescription	<p>extended free text description. The content of the element must be unique, it might be translated and repeated into more languages (thus no more than one instance for each language). This element might contain HTML code (must be managed as CDATA)</p> <p>- base type: string,</p> <p>(XPath YARNOffer/yarnTecSheet/yarnIdentity/extendedDescription) 0-unbounded (N)</p> <p>- note: <i>Extended product description</i></p>
@fax	<p>fax number of the contact person within a Party</p> <p>- base type: string, max length: 35,</p> <p>(XPath YARNOffer/OFheader/thirdParty/person/@fax) [Optional]</p> <p>(XPath YARNOffer/OFheader/buyer/person/@fax) [Optional]</p> <p>(XPath YARNOffer/OFheader/supplier/person/@fax) [Optional]</p> <p>(XPath YARNOffer/OFheader/subContractor/person/@fax) [Optional]</p>
@fibre	<p>type of fibre used in a textile product</p> <p>- base type: string, cod. table: T19</p> <p><a href="http://www.ebiz.enea.it/moda-ml/repository/codelist/v2018-1/gc_T19.xml">http://www.ebiz.enea.it/moda-ml/repository/codelist/v2018-1/gc_T19.xml</a></p> <p>(XPath YARNOffer/yarnTecSheet/yarnIdentity/yarnCompos/percCompos/@fibre) [Required]</p> <p>(XPath YARNOffer/yarnTecSheet/yarnIdentity/fibrePD/@fibre) [Required]</p>
fileName	<p>unique identifier (name) of the file</p> <p>- base type: string, max length: 255,</p> <p>(XPath YARNOffer/yarnTecSheet/yarnManufacture/colorCard/colorCardItem/refDoc/attachment/fileName) 0-1 (N)</p> <p>(XPath YARNOffer/OFheader/refDoc/attachment/fileName) 0-1 (N)</p> <p>(XPath YARNOffer/yarnTecSheet/refDoc/attachment/fileName) 0-1 (N)</p>
@finDiscount	<p>financial discount rate applied for payment by the date specified</p> <p>- base type: decimal, min inclusive: 0, max inclusive: 100, fraction digits: 2,</p> <p>(XPath YARNOffer/terms/payment/@finDiscount) [Optional]</p>
@finSurcharge	<p>financial surcharge rate applied for payment after the date specified</p> <p>- base type: decimal, min inclusive: 0, max inclusive: 100, fraction digits: 2,</p> <p>(XPath YARNOffer/terms/payment/@finSurcharge) [Optional]</p>
@format	<p>the format of the binary content (examples xml, pdf, doc,...)</p> <p>- base type: string,</p> <p>(XPath YARNOffer/OFheader/refDoc/attachment/binaryObject/@format) [Optional] (Na)</p> <p>(XPath YARNOffer/yarnTecSheet/yarnManufacture/colorCard/colorCardItem/refDoc/attachment/binaryObject/@format) [Optional] (Na)</p> <p>(XPath YARNOffer/yarnTecSheet/refDoc/attachment/binaryObject/@format) [Optional] (N)</p>
formatCode	<p>the format of the external object (examples xml, pdf, doc,...)</p> <p>- base type: normalizedString,</p> <p>(XPath YARNOffer/yarnTecSheet/yarnManufacture/colorCard/colorCardItem/refDoc/attachment/externalReference/formatCode) 0-1 (N)</p> <p>(XPath YARNOffer/yarnTecSheet/refDoc/attachment/externalReference/formatCode) 0-1 (N)</p> <p>(XPath YARNOffer/OFheader/refDoc/attachment/externalReference/formatCode) 0-1 (N)</p>

grossWeight	the gross weight, declared for transport or customs purpose - base type: decimal, min inclusive: 0, fraction digits: 2, (XPath YARNOffer/terms/transInfo/grossWeight) 0-1
id	primary identification code of a Party; it is recommended the format: nation code (ISO 3166) + VAT identification number (11 crt), with the qualifier "numberingOrg"= MF - base type: string, max length: 15, (XPath YARNOffer/OFheader/subContractor/id) 1-1 (XPath YARNOffer/OFheader/supplier/id) 1-1 (XPath YARNOffer/OFheader/buyer/id) 1-1 (p) (XPath YARNOffer/OFheader/thirdParty/id) 1-1
@idQualifier	Qualification of the identifier. - base type: string, (XPath YARNOffer/OFheader/supplier/additionalIdentifier/@idQualifier) [Optional] (Na) - nota: <i>this attribute should be used when the numberingOrg attribute is not enough to declare the type of identifier</i> (XPath YARNOffer/OFheader/buyer/additionalIdentifier/@idQualifier) [Optional] (Na) - nota: <i>this attribute should be used when the numberingOrg attribute is not enough to declare the type of identifier</i>
@illuminant	CIE light source - base type: string, cod. table: T59 <a href="http://www.ebiz.enea.it/moda-ml/repository/codelist/v2018-1/gc_T59.xml">http://www.ebiz.enea.it/moda-ml/repository/codelist/v2018-1/gc_T59.xml</a> (XPath YARNOffer/yarnTecSheet/yarnManufacture/colorCard/colorCardItem/CIELab/@illuminant) [Optional]
incoTerm	specification of the terms of trade (INCOTERMS) - base type: string, cod. table: T3 <a href="http://www.ebiz.enea.it/moda-ml/repository/codelist/v2018-1/gc_T3.xml">http://www.ebiz.enea.it/moda-ml/repository/codelist/v2018-1/gc_T3.xml</a> (XPath YARNOffer/terms/trade/incoTerm) 1-1
incoTermText	free text specifying the terms of trade (incoterm, location) - base type: string, max length: 250, (XPath YARNOffer/terms/trade/incoTermText) 1-1 (U)
@isCharge	Indicates if the element to which it refers is a charge (true = charge, false = allowance) - base type: boolean, min length: 0, (XPath YARNOffer/terms/allowanceCharge/@isCharge) [Optional] (N)
@isURL	it indicates if the referred element is an URL (true) or not (false) - base type: boolean, (XPath YARNOffer/yarnTecSheet/refDoc/attachment/externalReference/uri/@isURL) [Optional] [Default= true] (Na) - nota: <i>usage of URLs is recommended</i> (XPath YARNOffer/OFheader/refDoc/attachment/externalReference/uri/@isURL) [Optional] [Default= true] (Na) - nota: <i>usage of URLs is recommended</i> (XPath YARNOffer/yarnTecSheet/yarnManufacture/colorCard/colorCardItem/refDoc/attachment/externalReference/uri/@isURL) [Optional] [Default= true] (Na) - nota: <i>usage of URLs is recommended</i>
itemID	number of the line/item of the referenced document - base type: string, max length: 40, (XPath YARNOffer/OFheader/refDoc/itemID) 0-1 (U) (XPath YARNOffer/yarnTecSheet/refDoc/itemID) 0-1 (U) (XPath YARNOffer/yarnTecSheet/yarnManufacture/colorCard/colorCardItem/refDoc/itemID) 0-1 (U)
L	"L" value of the CIELab color system - base type: decimal, min inclusive: 0,

	(XPath YARNOffer/yarnTecSheet/yarnManufacture/colorCard/colorCardItem/CIELab/L) 1-1
legalName	<p>legal name of a Party</p> <p>- base type: string, max length: 250,</p> <p>(XPath YARNOffer/OFheader/thirdParty/legalName) 0-1 (U)</p> <p>(XPath YARNOffer/OFheader/subContractor/legalName) 0-1 (U)</p> <p>(XPath YARNOffer/OFheader/buyer/legalName) 0-1 (U)</p> <p>(XPath YARNOffer/OFheader/supplier/legalName) 0-1 (U)</p>
legalRef	<p>legal reference of the duty or tax or fee category</p> <p>- base type: string,</p> <p>(XPath YARNOffer/terms/allowanceCharge/dtScheme/legalRef) 0-1 (A)</p>
length	<p>effective length of a specified object</p> <p>- base type: decimal, min inclusive: 0, fraction digits: 2,</p> <p>(XPath YARNOffer/yarnTecSheet/yarnIdentity/fibrePD/length) 0-1</p>
@listName	<p>the name of the list of codes used to make an instance of the element (it might be thought as descriptive element, i.e. 'fabric printing technologies', or not, i.e. "T264")</p> <p>- base type: string, max length: 40,</p> <p>(XPath YARNOffer/yarnTecSheet/yarnIdentity/season/@listName) [Optional] (a)</p> <p>- nota: <i>this attribute should always be used coupled with "numberingOrg"</i></p> <p>(XPath YARNOffer/yarnTecSheet/yarnIdentity/yarnCode/art/@listName) [Optional]</p> <p>- nota: <i>this attribute should always be used coupled with "numberingOrg"</i></p> <p>(XPath YARNOffer/yarnTecSheet/yarnManufacture/colorCard/colorCardItem/color/@listName) [Optional]</p> <p>- nota: <i>this attribute should always be used coupled with "numberingOrg"</i></p> <p>(XPath YARNOffer/OFheader/refDoc/season/@listName) [Optional] (a)</p> <p>- nota: <i>this attribute should always be used coupled with "numberingOrg"</i></p> <p>(XPath YARNOffer/yarnTecSheet/yarnIdentity/yarnCode/color/@listName) [Optional]</p> <p>- nota: <i>this attribute should always be used coupled with "numberingOrg"</i></p> <p>(XPath YARNOffer/yarnTecSheet/refDoc/season/@listName) [Optional] (a)</p> <p>- nota: <i>this attribute should always be used coupled with "numberingOrg"</i></p> <p>(XPath YARNOffer/OFheader/season/@listName) [Optional] (a)</p> <p>- nota: <i>this attribute should always be used coupled with "numberingOrg"</i></p> <p>(XPath YARNOffer/terms/allowanceCharge/dtScheme/legalRef/@listName) [Optional] (a)</p> <p>- nota: <i>this attribute should always be used coupled with "numberingOrg"</i></p> <p>(XPath YARNOffer/yarnTecSheet/yarnManufacture/colorCard/colorCardItem/refDoc/season/@listName) [Optional] (a)</p> <p>- nota: <i>this attribute should always be used coupled with "numberingOrg"</i></p>
@listVersion	<p>it specifies the version of the list of codes used to make an instance of the element</p> <p>- base type: string, max length: 6,</p> <p>(XPath YARNOffer/yarnTecSheet/yarnIdentity/yarnCode/art/@listVersion) [Optional]</p> <p>- nota: <i>this attribute should always be used coupled with "numberingOrg" and "listName"</i></p> <p>(XPath YARNOffer/OFheader/refDoc/season/@listVersion) [Optional] (a)</p> <p>- nota: <i>this attribute should always be used coupled with "numberingOrg" and "listName"</i></p> <p>(XPath YARNOffer/yarnTecSheet/refDoc/season/@listVersion) [Optional] (a)</p> <p>- nota: <i>this attribute should always be used coupled with "numberingOrg" and "listName"</i></p> <p>(XPath YARNOffer/yarnTecSheet/yarnManufacture/colorCard/colorCardItem/refDoc/season/@listVersion) [Optional] (a)</p> <p>- nota: <i>this attribute should always be used coupled with "numberingOrg" and "listName"</i></p> <p>(XPath YARNOffer/OFheader/season/@listVersion) [Optional] (a)</p> <p>- nota: <i>this attribute should always be used coupled with "numberingOrg" and "listName"</i></p> <p>(XPath YARNOffer/terms/allowanceCharge/dtScheme/legalRef/@listVersion) [Optional] (a)</p>

	<p>- nota: <i>this attribute should always be used coupled with “numberingOrg” and “listName”</i>  (XPath YARNOffer/yarnTecSheet/yarnIdentity/yarnCode/color/@listVersion) [Optional]</p> <p>- nota: <i>this attribute should always be used coupled with “numberingOrg” and “listName”</i>  (XPath YARNOffer/yarnTecSheet/yarnIdentity/season/@listVersion) [Optional] (a)</p> <p>- nota: <i>this attribute should always be used coupled with “numberingOrg” and “listName”</i>  (XPath YARNOffer/yarnTecSheet/yarnManufacture/colorCard/colorCardItem/color/@listVersion) [Optional]</p> <p>- nota: <i>this attribute should always be used coupled with “numberingOrg” and “listName”</i></p>
@ln	<p>Language code.  - base type: string, cod. table: NT60  <a href="http://www.ebiz.enea.it/moda-ml/repository/codelist/v2018-1/gc_NT60.xml">http://www.ebiz.enea.it/moda-ml/repository/codelist/v2018-1/gc_NT60.xml</a>  (XPath YARNOffer/yarnTecSheet/yarnIdentity/extendedDescription/@ln) [Optional] (Na)</p> <p>(XPath YARNOffer/yarnTecSheet/yarnIdentity/yarnCode/description/@ln) [Optional] (N)</p> <p>(XPath YARNOffer/yarnTecSheet/yarnManufacture/colorCard/colorCardItem/description/@ln) [Optional] (N)</p>
location	<p>specification of a location  - base type: string, max length: 40,  (XPath YARNOffer/terms/trade/location) 0-1  - note: <i>place to which the INCOTERM applies</i></p>
@logo	<p>company logo (URL of the image jpeg or gif). It is recommended that the width of the image does not exceed 640 pixel.  - base type: string, max length: 255,  (XPath YARNOffer/OFheader/buyer/@logo) [Optional]  (XPath YARNOffer/OFheader/supplier/@logo) [Optional]</p>
lotN	<p>lot number of a product or batch number of the raw material  - base type: string, max length: 15,  (XPath YARNOffer/yarnTecSheet/yarnIdentity/lotN) 0-1  - note: <i>to be used when the document refers to a specific production batch</i></p>
@LRI	<p>attribute usable to format a string according to a customized User rule (local rule)  - base type: string, cod. table: NT3  <a href="http://www.ebiz.enea.it/moda-ml/repository/codelist/v2018-1/gc_NT3.xml">http://www.ebiz.enea.it/moda-ml/repository/codelist/v2018-1/gc_NT3.xml</a>  (XPath YARNOffer/terms/trade/location/@LRI) [Optional]</p>
@maxQty	<p>maximum product quantity  - base type: decimal, min inclusive: 0, fraction digits: 2,  (XPath YARNOffer/terms/allowanceCharge/@maxQty) [Optional] (N)  - nota: <i>maximum quantity of product for the application of this allowance or charge</i></p>
@method	<p>standard protocol or method employed in a test to evaluate a characteristic or a parameter  - base type: string, max length: 80,  (XPath YARNOffer/yarnTecSheet/yarnQuality/yarnQTest/specValue/@method) [Optional]  (XPath YARNOffer/yarnManufacture/yarnColorFastness/specValue/@method) [Optional]</p>
@mime	<p>the mime type of the binary object  - base type: normalizedString,  (XPath YARNOffer/OFheader/refDoc/attachment/binaryObject/@mime) [Optional] (Na)</p>

	(XPath YARNOffer/yarnTecSheet/refDoc/attachment/binaryObject/@mime) [Optional] (N) (XPath YARNOffer/yarnTecSheet/yarnManufacture/colorCard/colorCardItem/refDoc/attachment/binaryObject/@mime) [Optional] (Na)
mimeCode	mime type of the external object - base type: normalizedString, (XPath YARNOffer/yarnTecSheet/yarnManufacture/colorCard/colorCardItem/refDoc/attachment/externalReference/mimeCode) 0-1 (N) <hr/> AAAA-WARNING! - text not AVAILABLE n. 245 - In=en (XPath YARNOffer/yarnTecSheet/refDoc/attachment/externalReference/mimeCode) 0-1 (N) <hr/> AAAA-WARNING! - text not AVAILABLE n. 245 - In=en (XPath YARNOffer/OFheader/refDoc/attachment/externalReference/mimeCode) 0-1 (N) <hr/> AAAA-WARNING! - text not AVAILABLE n. 245 - In=en
minLot	minimum order quantity of a product requested by the Supplier - base type: decimal, min inclusive: 0, fraction digits: 2, (XPath YARNOffer/yarnTecSheet/yarnIdentity/minLot) 0-1
minLotExclusive	minimum order quantity of a product requested by the Supplier for an exclusive color - base type: decimal, min inclusive: 0, fraction digits: 2, (XPath YARNOffer/yarnTecSheet/yarnIdentity/minLotExclusive) 0-1
@minQty	minimum product quantity - base type: decimal, min inclusive: 0, fraction digits: 2, (XPath YARNOffer/terms/allowanceCharge/@minQty) [Optional] (a) - nota: <i>minimum quantity of product for the application of this allowance or charge</i>
moistRegain	percent moisture regain by the fibres - base type: decimal, (XPath YARNOffer/yarnTecSheet/yarnIdentity/moistRegain) 0-1
msgDate	date of issue of the present message (xml document), according to one of the patterns YYYY-MM-DD, YYYY-MM-DD:HH-MM or YYYY-WW. - base type: string, (XPath YARNOffer/OFheader/msgDate) 1-1
@msgfunction	function performed by the present message with regards to the transmission - base type: string, cod. table: NT18 <a href="http://www.ebiz.enea.it/moda-ml/repository/codelist/v2018-1/gc_NT18.xml">http://www.ebiz.enea.it/moda-ml/repository/codelist/v2018-1/gc_NT18.xml</a> (XPath YARNOffer/@msgfunction) [Optional]
msgID	key identifier of the business document in the information system of the issuing Party. In case of more despatches of the same business document, it is unchanged. - base type: string, max length: 35, (XPath YARNOffer/OFheader/msgID) 0-1
msgN	identification number given to the message (xml document) by its issuer. In case of more despatches of the same business document, it changes. - base type: string, max length: 35, (XPath YARNOffer/OFheader/msgN) 1-1
netWeight	the net weight declared for transport or customs purpose - base type: decimal, min inclusive: 0, fraction digits: 2, (XPath YARNOffer/terms/transInfo/netWeight) 0-1
note	free text or structured (computer processing) note. For note structuring use the attributes "noteLabel" and "codelist" - base type: string, max length: 350,

	<p>(XPath YARNOffer/terms/allowanceCharge/dtScheme/note) 0-99  (XPath YARNOffer/yarnTecSheet/yarnManufacture/note) 0-99  (XPath YARNOffer/yarnTecSheet/yarnIdentity/note) 0-99  (XPath YARNOffer/yarnTecSheet/yarnQuality/note) 0-99  (XPath YARNOffer/OFheader/note) 0-99</p>
@noteLabel	<p>subject qualifier of a note  - base type: string, max length: 35,  (XPath YARNOffer/yarnTecSheet/yarnManufacture/note/@noteLabel) [Optional]  - nota: <i>must be used to qualify the subject of the note</i>  (XPath YARNOffer/yarnTecSheet/yarnQuality/note/@noteLabel) [Optional]  - nota: <i>must be used to qualify the subject of the note</i>  (XPath YARNOffer/yarnTecSheet/yarnIdentity/note/@noteLabel) [Optional]  - nota: <i>must be used to qualify the subject of the note</i>  (XPath YARNOffer/terms/allowanceCharge/dtScheme/note/@noteLabel) [Optional]  - nota: <i>must be used to qualify the subject of the note</i>  (XPath YARNOffer/OFheader/note/@noteLabel) [Optional]  - nota: <i>must be used to qualify the subject of the note</i></p>
@numberingOrg	<p>code specifying the organisation who has created or owns the coding or numbering system  - base type: string, cod. table: NT6  <a href="http://www.ebiz.enea.it/moda-ml/repository/codelist/v2018-1/gc_NT6.xml">http://www.ebiz.enea.it/moda-ml/repository/codelist/v2018-1/gc_NT6.xml</a>  (XPath YARNOffer/yarnTecSheet/yarnManufacture/colorCard/colorCardItem/refDoc/attachment/fileName/@numberingOrg) [Optional] (a)  (XPath YARNOffer/yarnTecSheet/yarnIdentity/yarnCode/color/@numberingOrg) [Optional]  - nota: <i>this attribute should be used either single or coupled with "listName" and "listVersion"</i>  (XPath YARNOffer/OFheader/docID/@numberingOrg) [Optional]  - nota: <i>here can be specified whose document numbering is used (e.g.: Client, Supplier, ..)</i>  (XPath YARNOffer/yarnTecSheet/yarnManufacture/colorCard/colorCardItem/color/@numberingOrg) [Optional]  - nota: <i>this attribute should be used either single or coupled with "listName" and "listVersion"</i>  (XPath YARNOffer/yarnTecSheet/yarnManufacture/colorCard/colorCardItem/refDoc/season/@numberingOrg) [Optional] (a)  - nota: <i>this attribute should be used either single or coupled with "listName" and "listVersion"</i>  (XPath YARNOffer/OFheader/supplier/id/@numberingOrg) [Optional]  (XPath YARNOffer/yarnTecSheet/yarnManufacture/colorCard/colorCardItem/refDoc/docID/@numberingOrg) [Optional]  - nota: <i>here can be specified whose document numbering is used (e.g.: Client, Supplier, ..)</i>  (XPath YARNOffer/OFheader/supplier/additionalIdentifier/@numberingOrg) [Optional] (a)  - nota: <i>here the issuer of the identifier must be specified</i>  (XPath YARNOffer/yarnTecSheet/yarnIdentity/lotN/@numberingOrg) [Optional]  (XPath YARNOffer/yarnTecSheet/yarnIdentity/yarnCode/added/@numberingOrg) [Optional]  - nota: <i>this attribute should be used either single or coupled with "listName" and "listVersion"</i>  (XPath YARNOffer/yarnTecSheet/yarnIdentity/dyeN/@numberingOrg) [Optional]  (XPath YARNOffer/yarnTecSheet/yarnIdentity/note/@numberingOrg) [Optional]  - nota: <i>must be used to specify the organization that created the list of codes used in "noteLabel"</i>  (XPath YARNOffer/yarnTecSheet/yarnManufacture/note/@numberingOrg) [Optional]  - nota: <i>must be used to specify the organization that created the list of codes used in "noteLabel"</i>  (XPath YARNOffer/OFheader/subContractor/id/@numberingOrg) [Optional]  (XPath YARNOffer/OFheader/refDoc/attachment/fileName/@numberingOrg) [Optional] (a)  (XPath YARNOffer/OFheader/season/@numberingOrg) [Optional] (a)</p>

	<p>- nota: <i>this attribute should be used either single or coupled with "listName" and "listVersion"</i>  (XPath YARNOffer/yarnTecSheet/refDoc/attachment/fileName/@numberingOrg) [Optional] (a)  (XPath YARNOffer/OFheader/refDoc/season/@numberingOrg) [Optional] (a)</p> <p>- nota: <i>this attribute should be used either single or coupled with "listName" and "listVersion"</i>  (XPath YARNOffer/yarnTecSheet/refDoc/season/@numberingOrg) [Optional] (a)</p> <p>- nota: <i>this attribute should be used either single or coupled with "listName" and "listVersion"</i>  (XPath YARNOffer/yarnTecSheet/yarnIdentity/season/@numberingOrg) [Optional] (a)</p> <p>- nota: <i>this attribute should be used either single or coupled with "listName" and "listVersion"</i>  (XPath YARNOffer/OFheader/note/@numberingOrg) [Optional]</p> <p>- nota: <i>must be used to specify the organization that created the list of codes used in "noteLabel"</i>  (XPath YARNOffer/OFheader/buyer/additionalIdentifier/@numberingOrg) [Optional] (a)</p> <p>- nota: <i>here the issuer of the identifier must be specified</i>  (XPath YARNOffer/OFheader/refDoc/docID/@numberingOrg) [Optional]</p> <p>- nota: <i>here can be specified whose document numbering is used (e.g.: Client, Supplier, ..)</i>  (XPath YARNOffer/yarnTecSheet/yarnQuality/note/@numberingOrg) [Optional]</p> <p>- nota: <i>must be used to specify the organization that created the list of codes used in "noteLabel"</i>  (XPath YARNOffer/OFheader/buyer/id/@numberingOrg) [Optional]  (XPath YARNOffer/yarnTecSheet/refDoc/docID/@numberingOrg) [Optional]</p> <p>- nota: <i>here can be specified whose document numbering is used (e.g.: Client, Supplier, ..)</i>  (XPath YARNOffer/terms/allowanceCharge/dtScheme/note/@numberingOrg) [Optional]</p> <p>- nota: <i>must be used to specify the organization that created the list of codes used in "noteLabel"</i>  (XPath YARNOffer/terms/allowanceCharge/dtScheme/legalRef/@numberingOrg) [Optional] (a)</p> <p>- nota: <i>this attribute should be used either single or coupled with "listName" and "listVersion"</i>  (XPath YARNOffer/yarnTecSheet/yarnIdentity/yarnCode/art/@numberingOrg) [Optional]</p> <p>- nota: <i>this attribute should be used either single or coupled with "listName" and "listVersion"</i>  (XPath YARNOffer/yarnTecSheet/yarnIdentity/yarnCode/@numberingOrg) [Optional] [Default= CL]  (XPath YARNOffer/OFheader/thirdParty/id/@numberingOrg) [Optional]</p>
optLot	<p>optimized quantity for the manufacturing plant  - base type: decimal, min inclusive: 0,  (XPath YARNOffer/yarnTecSheet/yarnIdentity/optLot) 0-9</p>
@part	<p>percent fraction of a total payment  - base type: decimal, min inclusive: 1, max inclusive: 99, fraction digits: 2,  (XPath YARNOffer/terms/insPayment/@part) [Required]  - nota: <i>here the % value of each installment must be indicated</i></p>
payMode	<p>way or means of payment  - base type: string, cod. table: T2  <a href="http://www.ebiz.enea.it/moda-ml/repository/codelist/v2018-1/gc_T2.xml">http://www.ebiz.enea.it/moda-ml/repository/codelist/v2018-1/gc_T2.xml</a>  (XPath YARNOffer/terms/payment/payMode) 0-1  (XPath YARNOffer/terms/insPayment/payMode) 0-1</p>
payTerm	<p>code specifying the terms or time by which the payment must be done  - base type: string, cod. table: T1  <a href="http://www.ebiz.enea.it/moda-ml/repository/codelist/v2018-1/gc_T1.xml">http://www.ebiz.enea.it/moda-ml/repository/codelist/v2018-1/gc_T1.xml</a>  (XPath YARNOffer/terms/payment/payTerm) 1-1</p>

	(XPath YARNOffer/terms/insPayment/payTerm) 1-1
payTermText	free text specifying the terms by which the payment must be done (time/mode or means) - base type: string, max length: 250, (XPath YARNOffer/terms/insPayment/payTermText) 1-1 (U) (XPath YARNOffer/terms/payment/payTermText) 1-1 (U)
pcTolerance	percent deviation tolerated on the value of a measurement (it must have a plus or minus sign) - base type: decimal, min inclusive: 0, max inclusive: 100, total digits: 2, (XPath YARNOffer/yarnTecSheet/yarnQuality/yarnQTest/pcTolerance) 0-1
percCompos	fiber rate in the product composition - base type: decimal, min inclusive: 0, max inclusive: 100, fraction digits: 2, (XPath YARNOffer/yarnTecSheet/yarnIdentity/yarnCompos/percCompos) 1-9
person	name of the contact person within a Party - base type: string, max length: 40, (XPath YARNOffer/OFheader/subContractor/person) 0-1 (XPath YARNOffer/OFheader/thirdParty/person) 0-1 (XPath YARNOffer/OFheader/supplier/person) 0-1 (XPath YARNOffer/OFheader/buyer/person) 0-1
@phone	phone number of the contact person within a Party - base type: string, max length: 35, (XPath YARNOffer/OFheader/subContractor/person/@phone) [Optional] (XPath YARNOffer/OFheader/supplier/person/@phone) [Optional] (XPath YARNOffer/OFheader/buyer/person/@phone) [Optional] (XPath YARNOffer/OFheader/thirdParty/person/@phone) [Optional]
plyN	number of single threads twisted together - base type: positiveInteger, (XPath YARNOffer/yarnTecSheet/yarnManufacture/yarnPly/plyN) 0-1
plyWork	kind of yarn's ply - base type: string, cod. table: T56 <a href="http://www.ebiz.enea.it/moda-ml/repository/codelist/v2018-1/gc_T56.xml">http://www.ebiz.enea.it/moda-ml/repository/codelist/v2018-1/gc_T56.xml</a> (XPath YARNOffer/yarnTecSheet/yarnManufacture/yarnPly/plyWork) 1-1
postCode	code defining the postal zone - base type: string, max length: 10, (XPath YARNOffer/OFheader/supplier/postCode) 0-1 (XPath YARNOffer/OFheader/buyer/postCode) 0-1 (XPath YARNOffer/OFheader/subContractor/postCode) 0-1 (XPath YARNOffer/OFheader/thirdParty/postCode) 0-1
price	unit price of the article, object or service specified - base type: decimal, min inclusive: 0, fraction digits: 4, (XPath YARNOffer/yarnTecSheet/yarnIdentity/price) 0-2 (AU)
@priceQualifier	type of price with reference to discount and taxes - base type: string, cod. table: NT20 <a href="http://www.ebiz.enea.it/moda-ml/repository/codelist/v2018-1/gc_NT20.xml">http://www.ebiz.enea.it/moda-ml/repository/codelist/v2018-1/gc_NT20.xml</a> (XPath YARNOffer/yarnTecSheet/yarnIdentity/price/@priceQualifier) [Optional] [Default= NET]
@progr	progressive number in the sequence - base type: positiveInteger, min inclusive: 1, (XPath YARNOffer/terms/transInfo/@progr) [Optional] (N) - nota: <i>Indicates the position of the leg in a sequence of transport legs. If it is declared it must be in all the transInfo elements.</i>
qty	net quantity of the article or object correlated, qualified by the function of the document (ordering, delivering, ..) and by the context - base type: decimal, min inclusive: 0, fraction digits: 2, (XPath YARNOffer/yarnTecSheet/yarnIdentity/yarnTwist/qty) 0-1



	- note: <i>here the number of turns per meter is specified</i>
@reelType	<p>type of package used for a yarn product</p> <p>- base type: string, cod. table: T29  <a href="http://www.ebiz.enea.it/moda-ml/repository/codelist/v2018-1/gc_T29.xml">http://www.ebiz.enea.it/moda-ml/repository/codelist/v2018-1/gc_T29.xml</a>  (XPath YARNOffer/yarnTecSheet/yarnIdentity/standardPack/@reelType) [Optional]</p> <p>- nota: <i>identifies the kind of unit in the package</i></p>
@role	<p>Third Party role qualifier</p> <p>- base type: string, cod. table: NT2  <a href="http://www.ebiz.enea.it/moda-ml/repository/codelist/v2018-1/gc_NT2.xml">http://www.ebiz.enea.it/moda-ml/repository/codelist/v2018-1/gc_NT2.xml</a>  (XPath YARNOffer/OFheader/thirdParty/@role) [Required]</p>
season	<p>sale season; defined as: season (1 crt) + year (4 crt) - season: S/S=1 A/W=2 Spring=3 Summer=4 Autumn=5 Winter=6: for more than four seasons use alphabetic sequence: 1st season=A 2nd season=B etc.etc.</p> <p>- base type: string, max length: 15,  (XPath YARNOffer/yarnTecSheet/refDoc/season) 0-1 (A)</p> <p>- note: <i>here indicates the season to which the referenced document belongs</i>  (XPath YARNOffer/yarnTecSheet/yarnManufacture/colorCard/colorCardItem/refDoc/season) 0-1 (A)</p> <p>- note: <i>here indicates the season to which the referenced document belongs</i>  (XPath YARNOffer/OFheader/season) 0-1 (A)  (XPath YARNOffer/OFheader/refDoc/season) 0-1 (A)</p> <p>- note: <i>here indicates the season to which the referenced document belongs</i>  (XPath YARNOffer/yarnTecSheet/yarnIdentity/season) 0-1 (A)</p>
@sender	<p>qualifier that specifies the Party issuing of the document</p> <p>- base type: boolean,  (XPath YARNOffer/OFheader/buyer/@sender) [Optional] (a*)</p> <p>- nota: <i>This attribute is mandatory when the STYLESHEET must be used</i>  (XPath YARNOffer/OFheader/thirdParty/@sender) [Optional] (a*)</p> <p>- nota: <i>This attribute is mandatory when the STYLESHEET must be used</i>  (XPath YARNOffer/OFheader/supplier/@sender) [Optional] (a*)</p> <p>- nota: <i>This attribute is mandatory when the STYLESHEET must be used</i>  (XPath YARNOffer/OFheader/subContractor/@sender) [Optional] (a*)</p> <p>- nota: <i>This attribute is mandatory when the STYLESHEET must be used</i></p>
@source	<p>party who has provided the data</p> <p>- base type: string, cod. table: NT12  <a href="http://www.ebiz.enea.it/moda-ml/repository/codelist/v2018-1/gc_NT12.xml">http://www.ebiz.enea.it/moda-ml/repository/codelist/v2018-1/gc_NT12.xml</a>  (XPath YARNOffer/yarnTecSheet/yarnQuality/yarnQTest/specValue/@source) [Optional]</p> <p>(XPath YARNOffer/yarnTecSheet/yarnManufacture/yarnColorFastness/specValue/@source) [Optional]</p>
specValue	<p>value requested for a property or a parameter that is measured</p> <p>- base type: decimal,  (XPath YARNOffer/yarnTecSheet/yarnQuality/yarnQTest/specValue) 0-1  (XPath YARNOffer/yarnTecSheet/yarnManufacture/yarnColorFastness/specValue) 1-1</p> <p>- note: <i>when the test forsee two values (change-staining) the 1st value is change and the 2nd staining, divided by ";"</i></p>
@standardObserver	<p>CIE average chromatic response definition</p> <p>- base type: string, cod. table: T60  <a href="http://www.ebiz.enea.it/moda-ml/repository/codelist/v2018-1/gc_T60.xml">http://www.ebiz.enea.it/moda-ml/repository/codelist/v2018-1/gc_T60.xml</a>  (XPath YARNOffer/yarnTecSheet/yarnManufacture/colorCard/colorCardItem/CIELab/@standardObserver) [Optional]</p>
standardPack	<p>number of unit per standard package</p> <p>- base type: positiveInteger,  (XPath YARNOffer/yarnTecSheet/yarnIdentity/standardPack) 0-1</p>

street	street and building number identifying a location - base type: string, max length: 80, <a href="#">(XPath YARNOffer/OFheader/thirdParty/street) 0-1</a> <a href="#">(XPath YARNOffer/OFheader/buyer/street) 0-1</a> <a href="#">(XPath YARNOffer/OFheader/supplier/street) 0-1</a> <a href="#">(XPath YARNOffer/OFheader/subContractor/street) 0-1</a>
subCountry	short name or code of the sub-country entity - base type: string, max length: 9, <a href="#">(XPath YARNOffer/OFheader/subContractor/subCountry) 0-1</a> <a href="#">(XPath YARNOffer/OFheader/buyer/subCountry) 0-1</a> <a href="#">(XPath YARNOffer/OFheader/supplier/subCountry) 0-1</a> <a href="#">(XPath YARNOffer/OFheader/thirdParty/subCountry) 0-1</a>
subDept	name or code of a contact department within a Party - base type: string, max length: 40, <a href="#">(XPath YARNOffer/OFheader/buyer/subDept) 0-1 (N)</a> <a href="#">(XPath YARNOffer/OFheader/thirdParty/subDept) 0-1 (N)</a> <a href="#">(XPath YARNOffer/OFheader/supplier/subDept) 0-1 (N)</a> <a href="#">(XPath YARNOffer/OFheader/subContractor/subDept) 0-1 (N)</a>
taxCategory	duty or tax or fee category - base type: string, cod. table: T62 <a href="http://www.ebiz.enea.it/moda-ml/repository/codelist/v2018-1/gc_T62.xml">http://www.ebiz.enea.it/moda-ml/repository/codelist/v2018-1/gc_T62.xml</a> <a href="#">(XPath YARNOffer/terms/allowanceCharge/dtScheme/taxCategory) 0-1</a>
taxRate	duty or tax or fee percent rate - base type: string, <a href="#">(XPath YARNOffer/terms/allowanceCharge/dtScheme/taxRate) 0-1</a>
@taxType	duty or tax or fee type - base type: string, cod. table: T61 <a href="http://www.ebiz.enea.it/moda-ml/repository/codelist/v2018-1/gc_T61.xml">http://www.ebiz.enea.it/moda-ml/repository/codelist/v2018-1/gc_T61.xml</a> <a href="#">(XPath YARNOffer/terms/allowanceCharge/dtScheme/@taxType) [Required]</a>
tolerance	deviation tolerated on the value of a measurement (it must have a plus or minus sign) - base type: decimal, <a href="#">(XPath YARNOffer/yarnTecSheet/yarnQuality/yarnQTest/tolerance) 0-1</a>
tradeMark	name of the official trademark of a specified product (DEPRECATED, use Brand or Product Line). - base type: string, max length: 50, <a href="#">(XPath YARNOffer/yarnTecSheet/yarnIdentity/tradeMark) 0-1</a>
transCondition	special condition of transport or special service requested to the Forwarder - base type: string, cod. table: T38 <a href="http://www.ebiz.enea.it/moda-ml/repository/codelist/v2018-1/gc_T38.xml">http://www.ebiz.enea.it/moda-ml/repository/codelist/v2018-1/gc_T38.xml</a> <a href="#">(XPath YARNOffer/terms/transInfo/transCondition) 0-3</a>
transConditionText	free text description of the special condition of transport or special service requested to the Forwarder - base type: string, max length: 250, <a href="#">(XPath YARNOffer/terms/transInfo/transConditionText) 0-1 (U)</a>
transMeans	means of transport, in general or referred to a specific leg - base type: string, cod. table: T40 <a href="http://www.ebiz.enea.it/moda-ml/repository/codelist/v2018-1/gc_T40.xml">http://www.ebiz.enea.it/moda-ml/repository/codelist/v2018-1/gc_T40.xml</a> <a href="#">(XPath YARNOffer/terms/transInfo/transMeans) 0-1</a>
transMode	way of transport, in general or referred to the specified leg - base type: string, cod. table: T8 <a href="http://www.ebiz.enea.it/moda-ml/repository/codelist/v2018-1/gc_T8.xml">http://www.ebiz.enea.it/moda-ml/repository/codelist/v2018-1/gc_T8.xml</a> <a href="#">(XPath YARNOffer/terms/transInfo/transMode) 1-1</a>
@transReason	reason for the transport - base type: string, cod. table: NT11 <a href="http://www.ebiz.enea.it/moda-ml/repository/codelist/v2018-1/gc_NT11.xml">http://www.ebiz.enea.it/moda-ml/repository/codelist/v2018-1/gc_NT11.xml</a>

	(XPath YARNOffer/terms/transInfo/@transReason) [Optional]
twistDirection	direction (S or Z) of the yarn twist - base type: string, (XPath YARNOffer/yarnTecSheet/yarnIdentity/yarnTwist/twistDirection) 1-1
@uid	unique element identifier within the xml document - base type: string, (XPath YARNOffer/yarnTecSheet/refDoc/attachment/@uid) [Optional] (XPath YARNOffer/OFheader/refDoc/attachment/@uid) [Optional] (XPath YARNOffer/yarnTecSheet/yarnManufacture/colorCard/colorCardItem/refDoc/attachment/@uid) [Optional]
@um	specification of the unit of measure - base type: string, cod. table: NT7 <a href="http://www.ebiz.enea.it/moda-ml/repository/codelist/v2018-1/gc_NT7.xml">http://www.ebiz.enea.it/moda-ml/repository/codelist/v2018-1/gc_NT7.xml</a> (XPath YARNOffer/yarnTecSheet/yarnQuality/yarnQTest/tolerance/@um) [Required] (XPath YARNOffer/yarnTecSheet/yarnQuality/yarnQTest/pcTolerance/@um) [Optional] - nota: <i>to be used when it has to be soecified if the declared percentage is b y weight, volume, etc...</i> (XPath YARNOffer/yarnTecSheet/yarnQuality/yarnQTest/specValue/@um) [Optional] (XPath YARNOffer/terms/allowanceCharge/@um) [Optional] (a) (XPath YARNOffer/yarnTecSheet/yarnIdentity/yarnReelQty/@um) [Required] (XPath YARNOffer/yarnTecSheet/yarnIdentity/minLot/@um) [Required] (XPath YARNOffer/yarnTecSheet/yarnIdentity/yarnComWeight/@um) [Required] (XPath YARNOffer/yarnTecSheet/yarnIdentity/fibrePD/diameter/@um) [Optional] (XPath YARNOffer/yarnTecSheet/yarnIdentity/fibrePD/length/@um) [Required] (XPath YARNOffer/yarnTecSheet/yarnIdentity/yarnTwist/qty/@um) [Required] (XPath YARNOffer/yarnTecSheet/yarnIdentity/minLotExclusive/@um) [Required] (XPath YARNOffer/terms/transInfo/netWeight/@um) [Required] (XPath YARNOffer/yarnTecSheet/yarnManufacture/yarnColorFastness/specValue/@um) [Optional] (XPath YARNOffer/terms/transInfo/grossWeight/@um) [Required] (XPath YARNOffer/yarnTecSheet/yarnIdentity/optLot/@um) [Optional] (XPath YARNOffer/yarnTecSheet/yarnIdentity/price/@um) [Optional] - nota: <i>Unit of measure of the product to which the price is referred (price pe r meter)</i>
uri	Uniform Resource Identifier (URI) that identifies the external object as an Internet resource - base type: normalizedString, (XPath YARNOffer/yarnTecSheet/refDoc/attachment/externalReference/uri) 1-1 (N) (XPath YARNOffer/yarnTecSheet/yarnManufacture/colorCard/colorCardItem/refDoc/attachment/externalReference/uri) 1-1 (N) (XPath YARNOffer/OFheader/refDoc/attachment/externalReference/uri) 1-1 (N)
@useProfile	use profile to which the present document if compliant if it was agreed by th e parties. It is suggested a URI with reference to the firms or the URL of the profile. - base type: string, (XPath YARNOffer/@useProfile) [Optional]
validityEnd	date by which the validity ends, according to one of the patterns YYYY-MM-DD, YYYY-MM-DD:HH-MM or YYYY-WW. - base type: string, (XPath YARNOffer/OFheader/validityEnd) 1-1

validityStart	date by which the validity starts, according to one of the patterns YYYY-MM-DD, YYYY-MM-DD:HH-MM or YYYY-WW. - base type: string, (XPath YARNOffer/OFheader/validityStart) 0-1
@VAT	VAT rate or code (DEPRECATED, use dtScheme element) - base type: string, cod. table: NT16 <a href="http://www.ebiz.enea.it/moda-ml/repository/codelist/v2018-1/gc_NT16.xml">http://www.ebiz.enea.it/moda-ml/repository/codelist/v2018-1/gc_NT16.xml</a> (XPath YARNOffer/terms/allowanceCharge/@VAT) [Optional] (XPath YARNOffer/OFheader/thirdParty/@VAT) [Optional]
@version	Dictionary version from which the instance has been created - base type: string, cod. table: NT100 <a href="http://www.ebiz.enea.it/moda-ml/repository/codelist/v2018-1/gc_NT100.xml">http://www.ebiz.enea.it/moda-ml/repository/codelist/v2018-1/gc_NT100.xml</a> (XPath YARNOffer/@version) [Optional] [Default= 2018-1]
yarnCFTest	color fastness test for a yarn - base type: string, cod. table: T57 <a href="http://www.ebiz.enea.it/moda-ml/repository/codelist/v2018-1/gc_T57.xml">http://www.ebiz.enea.it/moda-ml/repository/codelist/v2018-1/gc_T57.xml</a> (XPath YARNOffer/yarnTecSheet/yarnManufacture/yarnColorFastness/yarnCFTest) 1-1
yarnClass	yarn classification according to the manufacturing process - base type: string, cod. table: NT31 <a href="http://www.ebiz.enea.it/moda-ml/repository/codelist/v2018-1/gc_NT31.xml">http://www.ebiz.enea.it/moda-ml/repository/codelist/v2018-1/gc_NT31.xml</a> (XPath YARNOffer/yarnTecSheet/yarnIdentity/yarnClass) 0-1
yarnComWeight	dry weight of fibres plus commercial moisture regain - base type: decimal, min inclusive: 0, (XPath YARNOffer/yarnTecSheet/yarnIdentity/yarnComWeight) 0-1
yarnCount	linear density measure of yarn (count) - base type: string, (XPath YARNOffer/yarnTecSheet/yarnIdentity/yarnCount) 0-1
yarnJob	operation of a work cycle for yarn - base type: string, cod. table: T201 <a href="http://www.ebiz.enea.it/moda-ml/repository/codelist/v2018-1/gc_T201.xml">http://www.ebiz.enea.it/moda-ml/repository/codelist/v2018-1/gc_T201.xml</a> (XPath YARNOffer/yarnTecSheet/yarnManufacture/yarnJobSeq/yarnJob) 1-19
yarnKind	general type of yarn - base type: string, cod. table: T54 <a href="http://www.ebiz.enea.it/moda-ml/repository/codelist/v2018-1/gc_T54.xml">http://www.ebiz.enea.it/moda-ml/repository/codelist/v2018-1/gc_T54.xml</a> (XPath YARNOffer/yarnTecSheet/yarnIdentity/yarnKind) 0-1
yarnNameBuyer	name given to the yarn by the Buyer - base type: string, max length: 250, (XPath YARNOffer/yarnTecSheet/yarnIdentity/yarnNameBuyer) 0-1 (U)
yarnNameSupplier	name given to the yarn by the Supplier - base type: string, max length: 250, (XPath YARNOffer/yarnTecSheet/yarnIdentity/yarnNameSupplier) 1-1 (U)
yarnQTestType	Type of test related to a property of a yarn - base type: string, cod. table: T58 <a href="http://www.ebiz.enea.it/moda-ml/repository/codelist/v2018-1/gc_T58.xml">http://www.ebiz.enea.it/moda-ml/repository/codelist/v2018-1/gc_T58.xml</a> (XPath YARNOffer/yarnTecSheet/yarnQuality/yarnQTest/yarnQTestType) 1-1 (N)
yarnReelQty	quantity of yarn (by weight or length) wound upon a bobbin - base type: decimal, min inclusive: 0, fraction digits: 2, (XPath YARNOffer/yarnTecSheet/yarnIdentity/yarnReelQty) 0-1

## 2.3 Suggested best practices

**YARNOffer/OFheader/refDoc/docID (identification number of the referenced document SINCE 2008-1 ITS USE IN THE HEADER IS DISCOURAGED (REPLACED BY msgID))**

numberingOrg indicates the role that produced the document identifier (it is allowed to declare two different ones -e.g. customer and supplier - with two docID with different numberingOrg

**YARNOffer/yarnTecSheet/yarnManufacture/colorCard/**

**colorCardItem/refDoc/docID (identification number of the referenced document SINCE 2008-1 ITS USE IN THE HEADER IS DISCOURAGED (REPLACED BY msgID))**

numberingOrg indicates the role that produced the document identifier (it is allowed to declare two different ones -e.g. customer and supplier - with two docID with different numberingOrg

**YARNOffer/yarnTecSheet/refDoc/docID (identification number of the referenced document SINCE 2008-1 ITS USE IN THE HEADER IS DISCOURAGED (REPLACED BY msgID))**

numberingOrg indicates the role that produced the document identifier (it is allowed to declare two different ones -e.g. customer and supplier - with two docID with different numberingOrg

**YARNOffer/yarnTecSheet/yarnManufacture/colorCard/**

**colorCardItem/refDoc/attachment/externalReference/mimeCode (mime type of the external object)**

Use coding from IANA <http://www.iana.org/assignments/media-types/media-types.xml>

**YARNOffer/yarnTecSheet/refDoc/attachment/**

**externalReference/mimeCode (mime type of the external object)**

Use coding from IANA <http://www.iana.org/assignments/media-types/media-types.xml>

**YARNOffer/OFheader/refDoc/attachment/externalReference/mimeCode (mime type of the external object)**

Use coding from IANA <http://www.iana.org/assignments/media-types/media-types.xml>

## 2.4 Enumeration tables

List of enumeration tables used in the XML document. You can find the corresponding codes at:  
<http://www.ebiz-tcf.eu/moda-ml/imple/moda-ml-2018-1.asp?lingua=en&pag=6>

### Legenda

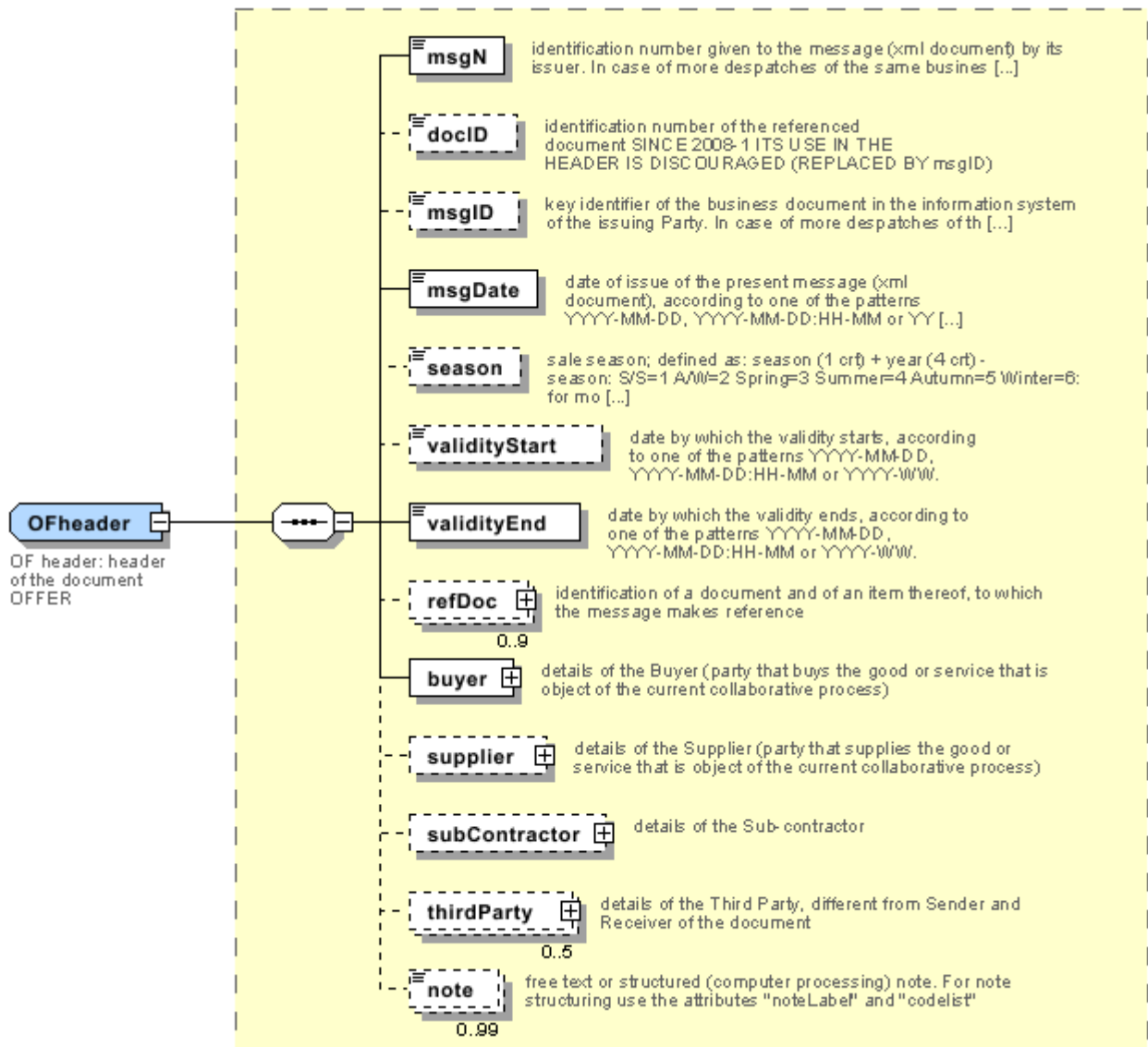
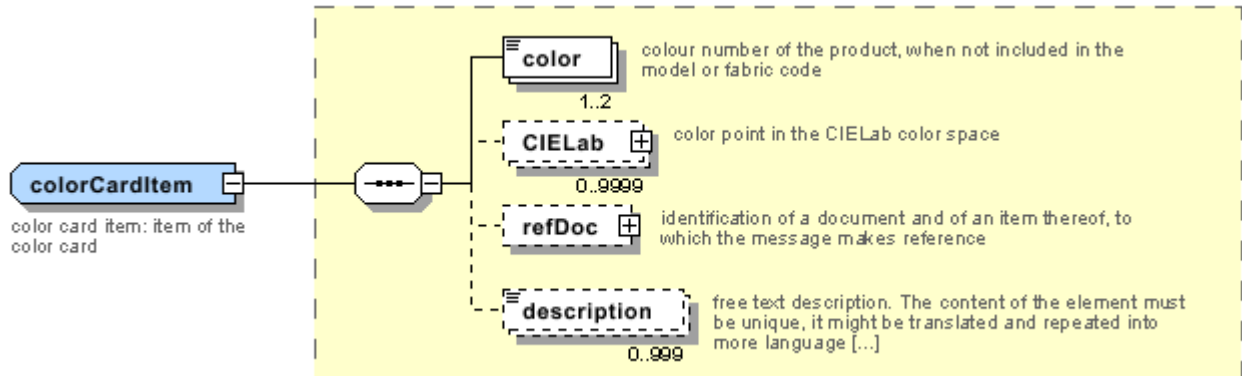
- N: new table
- U: updated properties

NT100 - eBIZ TCFUpstream version  
NT11 - transport causal  
NT12 - data source  
NT16 - VAT rate or code  
NT18 - message function  
NT2 - third party qualifier  
NT20 - price qualifier  
NT26 - color type  
NT29 - format of a date  
NT3 - data format  
NT31 - yarn family  
NT6 - coding system owner/issuer  
NT60 - language, codes from ISO 639-1 (subset) (N)  
NT7 - unit of measure (U)  
T1 - terms of payment  
T10 - ISO3166 - Country  
T15 - dye/print process type  
T16 - dyestuff type  
T19 - fibre type  
T2 - Modes of payment  
T201 - type of job on yarn  
T21 - type of document  
T29 - type of yarn package  
T3 - terms of delivery  
T38 - transport conditions  
T40 - type of transport means  
T41 - type of Allowance or Charge  
T44 - additional code type  
T54 - kind of yarn  
T55 - count system  
T56 - kind of yarn ply  
T57 - color fastness test for yarn  
T58 - yarn quality parameters  
T59 - CIE illuminant  
T60 - CIE standard observer  
T61 - duty or tax or fee type  
T62 - duty or tax or fee category  
T8 - Modes of Transport  
T9 - ISO4217 - Currency

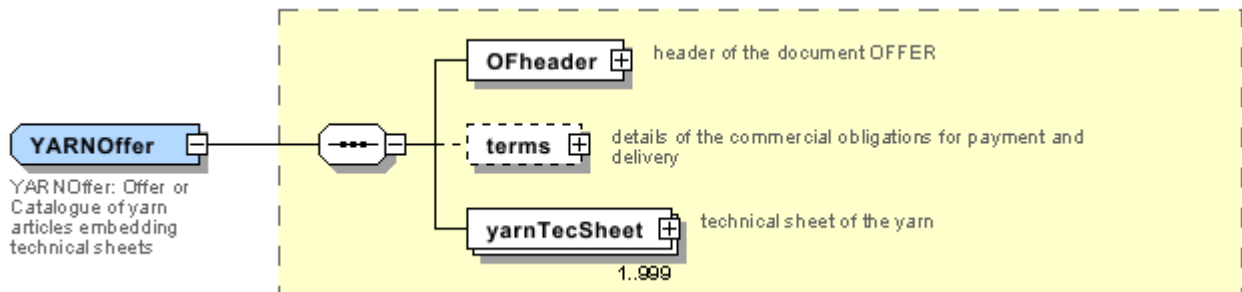
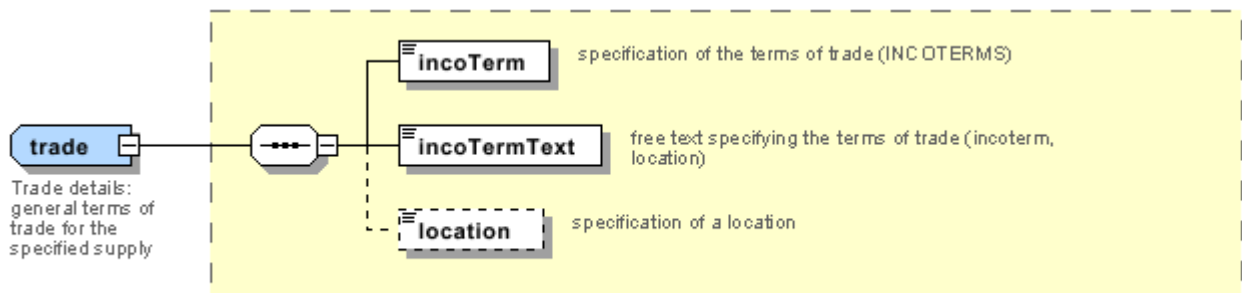
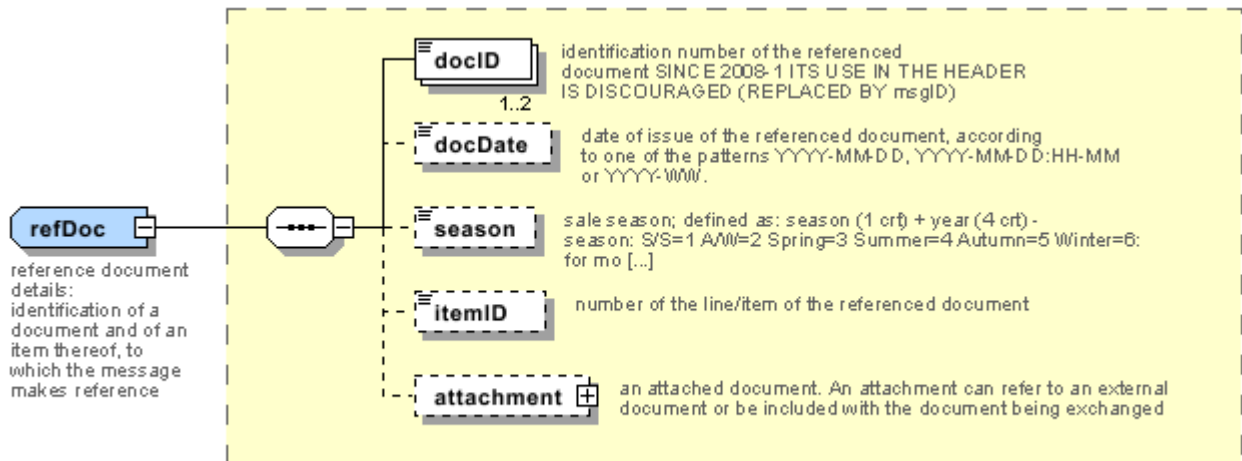


# Annex A

Representative images of the principal complex elements' structure.









## Annex B

### NT100 - eBIZ TCFUpstream version

dictionary version

Agency name: eBIZ

tabella cod.: NT100

File codes list (Generic code): [http://www.ebiz.enea.it/moda-ml/repository/codelist/v2018-1/gc\\_NT100.xml](http://www.ebiz.enea.it/moda-ml/repository/codelist/v2018-1/gc_NT100.xml)

Code	Description	Adoption note	Version status	Date of insertion
2013-1	v2013-1			01/07/2013
2018-1	v2018-1		(N)	04/11/2018
draft	draft		(N)	08/09/2017

### NT11 - transport causal

reason for the transport

Agency name: eBIZ

tabella cod.: NT11

File codes list (Generic code): [http://www.ebiz.enea.it/moda-ml/repository/codelist/v2018-1/gc\\_NT11.xml](http://www.ebiz.enea.it/moda-ml/repository/codelist/v2018-1/gc_NT11.xml)

Code	Description	Adoption note	Version status	Date of insertion
FOC	free of charge			
FRW	return from re-works			
FST	return from storage			
FWW	return from view			
FWK	return from works			
IST	in storage			
NWK	return non-worked			
RJC	return from rejection			
SEL	to sell			
STO	to storage			
VEW	to view			
WRK	to works			

### NT12 - data source

party who has provided the data

Agency name: eBIZ

tabella cod.: NT12

File codes list (Generic code): [http://www.ebiz.enea.it/moda-ml/repository/codelist/v2018-1/gc\\_NT12.xml](http://www.ebiz.enea.it/moda-ml/repository/codelist/v2018-1/gc_NT12.xml)

Code	Description	Adoption note	Version status	Date of insertion
AC	internal test			
CO	external test			
CV	test after steaming			

### NT16 - VAT rate or code

VAT rate or code ( DEPRECATED, use dtScheme element )

tabella cod.: NT16

File codes list (Generic code): [http://www.ebiz.enea.it/moda-ml/repository/codelist/v2018-1/gc\\_NT16.xml](http://www.ebiz.enea.it/moda-ml/repository/codelist/v2018-1/gc_NT16.xml)

### NT18 - message function

function performed by the present message with regards to the transmission

Agency name: eBIZ

tabella cod.: NT18

File codes list (Generic code): [http://www.ebiz.enea.it/moda-ml/repository/codelist/v2018-1/gc\\_NT18.xml](http://www.ebiz.enea.it/moda-ml/repository/codelist/v2018-1/gc_NT18.xml)

Code	Description	Adoption note	Version status	Date of insertion
CA	delete this document			01/07/2013
CP	copy			
OR	original			
RC	re-transmission for data correction			
RT	re-transmission			

### NT2 - third party qualifier

Third Party role qualifier

Agency name: eBIZ

tabella cod.: NT2

File codes list (Generic code): [http://www.ebiz.enea.it/moda-ml/repository/codelist/v2018-1/gc\\_NT2.xml](http://www.ebiz.enea.it/moda-ml/repository/codelist/v2018-1/gc_NT2.xml)

Code	Description	Adoption note	Version status	Date of insertion
AG	Sales Agent			
AU	Auditor		(N)	08/04/2019
CE	Certification authority		(N)	08/04/2019
CO	Quality Controller			
DC	Response to			
DF	Invoicee			
DI	Copy to (CC)			28/10/2014
DM	Consignee			
DP	Consignment address (Delivery Party)			
IM	Importer			
OR	Originator			10/09/2014
SC	Sub contractor		(N)	10/04/2019
SM	Service/ePlatform manager		(N)	08/04/2019
SP	Forwarder			
TX	Tax Representative			

### NT20 - price qualifier

type of price with reference to discount and taxes

Agency name: eBIZ

tabella cod.: NT20

File codes list (Generic code): [http://www.ebiz.enea.it/moda-ml/repository/codelist/v2018-1/gc\\_NT20.xml](http://www.ebiz.enea.it/moda-ml/repository/codelist/v2018-1/gc_NT20.xml)

Code	Description	Adoption note	Version status	Date of insertion
GET	gross excluding taxes			
GIT	gross including taxes			
NET	net excluding taxes			
NIT	net including taxes			

### NT26 - color type

type of color to which a "color fastness" value refers

Agency name: eBIZ

tabella cod.: NT26

File codes list (Generic code): [http://www.ebiz.enea.it/moda-ml/repository/codelist/v2018-1/gc\\_NT26.xml](http://www.ebiz.enea.it/moda-ml/repository/codelist/v2018-1/gc_NT26.xml)

Code	Description	Adoption note	Version status	Date of insertion
D	dark			
L	light			
P	pastel			

### NT29 - format of a date

format used for the date

Agency name: eBIZ

tabella cod.: NT29

File codes list (Generic code): [http://www.ebiz.enea.it/moda-ml/repository/codelist/v2018-1/gc\\_NT29.xml](http://www.ebiz.enea.it/moda-ml/repository/codelist/v2018-1/gc_NT29.xml)

Code	Description	Adoption note	Version status	Date of insertion
D	YYYY-MM-DD			
M	YYYY-MM-DD:HH-MM			
W	YYYY-WW			

### NT3 - data format

format of a string according to a customized User rule (local rule)

Agency name: eBIZ

tabella cod.: NT3

File codes list (Generic code): [http://www.ebiz.enea.it/moda-ml/repository/codelist/v2018-1/gc\\_NT3.xml](http://www.ebiz.enea.it/moda-ml/repository/codelist/v2018-1/gc_NT3.xml)

Code	Description	Adoption note	Version status	Date of insertion
EN4	GS1-GLN			01/07/2013
MD	mutually agreed			

### NT31 - yarn family

yarn classification according to the manufacturing process

Agency name: eBIZ

tabella cod.: NT31

File codes list (Generic code): [http://www.ebiz.enea.it/moda-ml/repository/codelist/v2018-1/gc\\_NT31.xml](http://www.ebiz.enea.it/moda-ml/repository/codelist/v2018-1/gc_NT31.xml)

Code	Description	Adoption note	Version status	Date of insertion
CAN	carded			
EXT	extrusion			
FSE	dry-spun			
FUM	wet-spun			
OPE	open end			
PAN	combed			
REG	rigenerated			
SMP	half-combed			

#### NT6 - coding system owner/issuer

code specifying the organisation who has created or owns the coding or numbering system

Agency name: eBIZ

tabella cod.: NT6

File codes list (Generic code): [http://www.ebiz.enea.it/moda-ml/repository/codelist/v2018-1/gc\\_NT6.xml](http://www.ebiz.enea.it/moda-ml/repository/codelist/v2018-1/gc_NT6.xml)

Code	Description	Adoption note	Version status	Date of insertion
CL	Customer/buyer			
CO	Quality Controller			
EB	eBIZ	replaces 'ML'	(N)	18/03/2019
EN	GS1 ( ex-EAN International )			
ES	e-Stockflow			
FO	Supplier			
GS	GS1			01/07/2013
MF	VAT identifier		(U)	
ML	Moda-ML	DEPRECATED	(U)	
SP	Service Provider			

#### NT60 - language, codes from ISO 639-1 (subset) (N)

Agency name: eBIZ / ISO

tabella cod.: NT60

File codes list (Generic code): [http://www.ebiz.enea.it/moda-ml/repository/codelist/v2018-1/gc\\_NT60.xml](http://www.ebiz.enea.it/moda-ml/repository/codelist/v2018-1/gc_NT60.xml)

Code	Description	Adoption note	Version status	Date of insertion
af	Afrikaans		(N)	31/01/2019
ar	Arabic		(N)	31/01/2019
be	Belarusian		(N)	31/01/2019
bg	Bulgarian		(N)	31/01/2019
bn	Bengali		(N)	31/01/2019
bo	Tibetan		(N)	31/01/2019
bs	Bosnian		(N)	31/01/2019
ca	Catalan, Valencian		(N)	31/01/2019
cs	Czech		(N)	31/01/2019
da	Danish		(N)	31/01/2019
de	German		(N)	31/01/2019
el	Greek, Modern (1453-)		(N)	31/01/2019
en	English		(N)	31/01/2019
eo	Esperanto		(N)	31/01/2019
es	Spanish, Castilian		(N)	31/01/2019
et	Estonian		(N)	31/01/2019
eu	Basque		(N)	31/01/2019
F	Female		(N)	15/04/2019
fa	Persian		(N)	31/01/2019
fi	Finnish		(N)	31/01/2019
fr	French		(N)	31/01/2019
ga	Irish		(N)	31/01/2019
gd	Gaelic, Scottish Gaelic		(N)	31/01/2019
gn	Guarani		(N)	31/01/2019
he	Hebrew		(N)	31/01/2019
hr	Croatian		(N)	31/01/2019
ht	Haitian, Haitian Creole		(N)	31/01/2019
hu	Hungarian		(N)	31/01/2019
hy	Armenian		(N)	31/01/2019
ia	Interlingua (International Auxiliary Language Association)		(N)	31/01/2019
id	Indonesian		(N)	31/01/2019
is	Icelandic		(N)	31/01/2019



it	Italian		(N)	31/01/2019
ja	Japanese		(N)	31/01/2019
jv	Javanese		(N)	31/01/2019
ka	Georgian		(N)	31/01/2019
km	Central Khmer		(N)	31/01/2019
ko	Korean		(N)	31/01/2019
ku	Kurdish		(N)	31/01/2019
lb	Luxembourgish, Letzeburgesch		(N)	31/01/2019
lo	Lao		(N)	31/01/2019
lt	Lithuanian		(N)	31/01/2019
lv	Latvian		(N)	31/01/2019
mg	Malagasy		(N)	31/01/2019
mk	Macedonian		(N)	31/01/2019
mn	Mongolian		(N)	31/01/2019
mt	Maltese		(N)	31/01/2019
nl	Dutch, Flemish		(N)	31/01/2019
no	Norwegian		(N)	31/01/2019
pl	Polish		(N)	31/01/2019
pt	Portuguese		(N)	31/01/2019
ro	Romanian, Moldavian, Moldovan		(N)	31/01/2019
ru	Russian		(N)	31/01/2019
se	Northern Sami		(N)	31/01/2019
sk	Slovak		(N)	31/01/2019
sl	Slovenian		(N)	31/01/2019
sm	Samoan		(N)	31/01/2019
so	Somali		(N)	31/01/2019
sq	Albanian		(N)	31/01/2019
sr	Serbian		(N)	31/01/2019
sv	Swedish		(N)	31/01/2019
sw	Swahili		(N)	31/01/2019
ta	Tamil		(N)	31/01/2019
th	Thai		(N)	31/01/2019
tr	Turkish		(N)	31/01/2019
uk	Ukrainian		(N)	31/01/2019
ur	Urdu		(N)	31/01/2019

uz	Uzbek		(N)	31/01/2019
vi	Vietnamese		(N)	31/01/2019
zh	Chinese		(N)	31/01/2019

### NT7 - unit of measure (U)

specification of the unit of measure, it is a sub set of table Unit of Measure Code - UN/ECE REC 20 delivered by United Nations Economic Commission for Europe (UN/ECE)

Agency name: eBIZ / UN/ECE

tabella cod.: NT7

File codes list (Generic code): [http://www.ebiz.enea.it/moda-ml/repository/codelist/v2018-1/gc\\_NT7.xml](http://www.ebiz.enea.it/moda-ml/repository/codelist/v2018-1/gc_NT7.xml)

Other link: <http://docs.oasis-open.org/ubl/os-UBL-2.1/cl/gc/default/UnitOfMeasureCode-2.1.gc#>

Code	Description	Adoption note	Version status	Date of insertion
CMK	square centimetre		(N)	20/12/2017
CMQ	cubic centimetre		(N)	20/12/2017
CMT	centimetre			
CNE	centiNewton			
CO2TON	ton of CO2		(N)	10/09/2014
COUPLES	couples			
DMQ	cubic decimetre			
E37	pixel		(N)	11/04/2018
GRM	gram			
HUR	hour			
INH	inch			
KGM	kilogram			
KMT	kilometer			
KWH	kilowatthours		(N)	10/09/2014
LBR	pound			
MIN	minute			
MMK	square millimetre		(N)	20/12/2017
MTK	square metre		(N)	20/12/2017
MTQ	cubic metre			
MTR	metre			
NMB	numero			
ONZ	ounce			

P1	percent			
PPM	parts per million			
PZ	piece		(U)	
RPM	rounds per metre			
YRD	yard			

## T1 - terms of payment

code specifying the terms or time by which the payment must be done

Agency name: eBIZ

tabella cod.: T1

File codes list (Generic code): [http://www.ebiz.enea.it/moda-ml/repository/codelist/v2018-1/gc\\_T1.xml](http://www.ebiz.enea.it/moda-ml/repository/codelist/v2018-1/gc_T1.xml)

Code	Description	Adoption note	Version status	Date of insertion
ANTICIP	PAYMENT IN ADVANCE			
BLCOLLECT/120D	BILL OF LADING 120 DD			
BLCOLLECT/30D	BILL OF LADING 30 DD			
BLCOLLECT/60D	BILL OF LADING 60 DD			
BLCOLLECT/90D	BILL OF LADING 90 DD			
CASH	PAYMENT ON DELIVERY			
CASHINV	PAYMENT ON RECEIPT OF INVOICE			
CREDOC/0D	DOCUMENTARY CREDIT FOR PAYM. AT SIGHT			
CREDOC/120	DOCUMENTARY CREDIT FOR PAYM. AT 120 DD			
CREDOC/150	DOCUMENTARY CREDIT FOR PAYM. AT 150 DD			
CREDOC/180	DOCUMENTARY CREDIT FOR PAYM. AT 180 DD			
CREDOC/30D	DOCUMENTARY CREDIT FOR PAYM. AT 30 DD			
CREDOC/45D	DOCUMENTARY CREDIT FOR PAYM. AT 45 DD			
CREDOC/60	DOCUMENTARY CREDIT FOR PAYM. AT 60 DD			
CREDOC/90	DOCUMENTARY CREDIT FOR PAYM. AT 90 DD			
DEL/10	PAYMENT AT 10 DD AFTER DELIVERY			
DOCOLLECT/120D	DOCUMENTARY COLLECTION AT 120 DD			
DOCOLLECT/30D	DOCUMENTARY COLLECTION AT 30 DD			
DOCOLLECT/60D	DOCUMENTARY COLLECTION AT 60 DD			

DOCOLLECT/90D	DOCUMENTARY COLLECTION AT 90 DD			
INV/120D	PAYMENT AT 120 DD AFTER RECEIPT OF INVOICE			
INV/150D	PAYMENT AT 150 DD AFTER RECEIPT OF INVOICE			
INV/180D	PAYMENT AT 180 DD AFTER RECEIPT OF INVOICE			
INV/30D	PAYMENT AT 30 DD AFTER RECEIPT OF INVOICE			
INV/45D	PAYMENT AT 45 DD AFTER RECEIPT OF INVOICE			
INV/60D	PAYMENT AT 60 DD AFTER RECEIPT OF INVOICE			
INV/90D	PAYMENT AT 90 DD AFTER RECEIPT OF INVOICE			
INVULTIMO	PAYMENT AT END MONTH RECEIPT INVOICE			
INVULTIMO/10D	PAYMENT 10 DD AFTER END MONTH RECEIPT INVOICE			
INVULTIMO/120D	PAYMENT 120 DD AFTER END MONTH RECEIPT INVOICE			
INVULTIMO/150D	PAYMENT 150 DD AFTER END MONTH RECEIPT INVOICE			
INVULTIMO/180D	PAYMENT 180 DD AFTER END MONTH RECEIPT INVOICE			
INVULTIMO/240D	PAYMENT 240 DD AFTER END MONTH RECEIPT INVOICE			
INVULTIMO/30D	PAYMENT 30 DD AFTER END MONTH RECEIPT INVOICE			
INVULTIMO/45D	PAYMENT 45 DD AFTER END MONTH RECEIPT INVOICE			
INVULTIMO/60D	PAYMENT 60 DD AFTER END MONTH RECEIPT INVOICE			
INVULTIMO/90D	PAYMENT 90 DD AFTER END MONTH RECEIPT INVOICE			
NOPAY	WITHOUT PAYMENT			
RECREDOC/0D	IRREVOC. DOCUMENTARY CREDIT FOR PAYM. AT SIGHT			
RECREDOC/120D	IRREVOC. DOCUMENTARY CREDIT FOR PAYM. AT 120 DD			
RECREDOC/150D	IRREVOC. DOCUMENTARY CREDIT FOR PAYM. AT 150 DD			
RECREDOC/180D	IRREVOC. DOCUMENTARY CREDIT FOR PAYM. AT 180 DD			
RECREDOC/30D	IRREVOC. DOCUMENTARY CREDIT FOR PAYM. AT 30 DD			
RECREDOC/45D	IRREVOC. DOCUMENTARY CREDIT FOR PAYM. AT 45 DD			

RECREDOC/60D	IRREVOC. DOCUMENTARY CREDIT FOR PAYM. AT 60 DD			
RECREDOC/90D	IRREVOC. DOCUMENTARY CREDIT FOR PAYM. AT 90 DD			
ULTIMO	PAYMENT BY END MONTH OF DELIVERY			
ULTIMO/10	PAYMENT AT 10 DD AFTER END MONTH OF DELIVER Y			

### T10 - ISO3166 - Country

code of the nation

Agency name: ISO

tabella cod.: T10

File codes list (Generic code): [http://www.ebiz.enea.it/moda-ml/repository/codelist/v2018-1/gc\\_T10.xml](http://www.ebiz.enea.it/moda-ml/repository/codelist/v2018-1/gc_T10.xml)

Table not printed: there are 239 elements, more than the maximum specified for printing: 99.

### T15 - dye/print process type

dye process applied to the fabric

Agency name: eBIZ

tabella cod.: T15

File codes list (Generic code): [http://www.ebiz.enea.it/moda-ml/repository/codelist/v2018-1/gc\\_T15.xml](http://www.ebiz.enea.it/moda-ml/repository/codelist/v2018-1/gc_T15.xml)

Code	Description	Adoption note	Version status	Date of insertion
CP	cylinder printing			
DP	discharge printing			
FI	fibre dyed - spun dyed			
PC	piece dyed			
PR	printing			
SP	screen printing			
TP	top dyed			01/07/2013
YR	yarn dyed			

### T16 - dyestuff type

dye stuff used in the fabric dye process

Agency name: eBIZ

tabella cod.: T16

File codes list (Generic code): [http://www.ebiz.enea.it/moda-ml/repository/codelist/v2018-1/gc\\_T16.xml](http://www.ebiz.enea.it/moda-ml/repository/codelist/v2018-1/gc_T16.xml)

Code	Description	Adoption note	Version status	Date of insertion
AC	chrome acid dyestuff			
AN	acid dyestuff			
CA	basic dyestuff			
DI	direct dyestuff			
DS	disperse dyestuff			
NP	naphtol dyestuff			
PI	pigment			01/07/2013
PM	premetallized dyestuff			
RE	reactive dyestuff			
SU	sulfur			01/07/2013

### T19 - fibre type

type of fibre used in a textile product

Agency name: eBIZ

tabella cod.: T19

File codes list (Generic code): [http://www.ebiz.enea.it/moda-ml/repository/codelist/v2018-1/gc\\_T19.xml](http://www.ebiz.enea.it/moda-ml/repository/codelist/v2018-1/gc_T19.xml)

Code	Description	Adoption note	Version status	Date of insertion
AB	abaca			20/08/2018
AC	acetate			
AF	other fibres			
AG	alginic fibre			
AL	alfa			20/08/2018
CA	hemp			
CC	coir (coconut)			20/08/2018
CL	chlorofibre			
CO	cotton			
CU	cuprous			
EA	elastan			
EL	Elastodiene			20/08/2018

FL	fluorofibre			
GI	broom			20/08/2018
GL	textile glass			
HA	hair			20/08/2018
HE	henequen			20/08/2018
HL	mixed linen			
HL	cotton linen union			20/08/2018
JU	jute			
KE	kenaf			20/08/2018
KP	kapoc			20/08/2018
LI	linen			
LY	lyocell			20/08/2018
MA	modacrylic			
MD	modal			
ME	metallized			
MG	maguey			20/08/2018
PA	polyamide			
PB	polyureic			
PC	acrylic			
PE	polyethylene			
PI	paper			20/08/2018
PL	polyester			
PM	polyimide			
PP	polypropylene			
PR	proteic			
PU	polyurethane			
RA	mamie			20/08/2018
SE	silk			
SI	sisal			20/08/2018
SN	sun			20/08/2018
TA	triacetate			
TR	textile residues or unspecified composition			20/08/2018
TV	trivinyll			
VI	viscose			
VY	vinylal			

WA	angora			
WB	beaver			20/08/2018
WC	cashgora			
WG	vicuna			
WK	camel			
WL	llama			
WM	mohair			
WN	lapin			20/08/2018
WO	wool			
WP	alpaca			
WS	cashmere			
WT	Oteer			20/08/2018
WU	guanaco			
WV	virgin wool			
WY	yack			

## T2 - Modes of payment

way or means of payment

Agency name: eBIZ

tabella cod.: T2

File codes list (Generic code): [http://www.ebiz.enea.it/moda-ml/repository/codelist/v2018-1/gc\\_T2.xml](http://www.ebiz.enea.it/moda-ml/repository/codelist/v2018-1/gc_T2.xml)

Code	Description	Adoption note	Version status	Date of insertion
BB	bank transfer			
IA	collection through Agent			
IS	collection through Forwarder			
RB	bank receipt			
RD	remittance			
SW	bank SWIFT			
TR	bank draft			

## T201 - type of job on yarn

operation of a work cycle for yarn



Agency name: eBIZ

tabella cod.: T201

File codes list (Generic code): [http://www.ebiz.enea.it/moda-ml/repository/codelist/v2018-1/gc\\_T201.xml](http://www.ebiz.enea.it/moda-ml/repository/codelist/v2018-1/gc_T201.xml)

Code	Description	Adoption note	Version status	Date of insertion
08	to re-comb			
09	to prepare			
10	to card			
11	to spin			
12	to steam			
13	to wind			
14	doubling			
15	to twist			
16	to unwind			
17	to singe			
18	to raise			
19	to reel			
20	to re-wind			
21	to shrink			
22	to coat			
23	to garnett			
24	to print			
25	to dye			
26	to boil			
27	to scour			
28	to dry			
99	other, see note if any			01/07/2013

### T21 - type of document

type or class to which the referenced document belongs

Agency name: eBIZ

tabella cod.: T21

File codes list (Generic code): [http://www.ebiz.enea.it/moda-ml/repository/codelist/v2018-1/gc\\_T21.xml](http://www.ebiz.enea.it/moda-ml/repository/codelist/v2018-1/gc_T21.xml)

Code	Description	Adoption note	Version status	Date of insertion
------	-------------	---------------	----------------	-------------------

BOR	blanket order		(N)	01/02/2018
CAT	Price catalogue - tech sheet			
CEO	Certificate of origin		(N)	13/04/2018
CER	Certificate		(N)	13/04/2018
COC	colour card			
CRN	Credit note			08/09/2017
CTO	Checking order			01/07/2013
CTR	Contract		(U)	
CXF	CxF3 file			01/07/2013
DAD	Darn order			
DDT	ddt			
DEA	Despatch advise			
DER	Despatch request			
DR	Document Request			02/12/2014
FOR	Forecast			02/12/2014
GSO	Garment stock offer			
GSX	Garment stock offer change			
INV	Invoice			
KCC	Knitting-Clothing Commission Order			02/12/2014
KCI	Garment in Work Inventory Report			02/12/2014
M2M	Made to Measure Production Order			02/12/2014
MAS	Master marker			
MCI	Visual merchandising instruction		(N)	13/04/2018
OCH	Order change			
OFF	Offer			
ORD	Purchase order			
ORP	Order response			
OSR	order status request			
OSS	Offer status			02/12/2014
OST	Order status			
OUR	our reference			
QR	Quality Report			02/12/2014
RAI	Raw Material in Work Inventory Report			02/12/2014
RDC	Raw dyeing commission order			
RDH	Raw dyeing order change			

RDR	Raw dyeing order response			
REA	Receiving advise			
REQ	Request for Offer			
RET	Return			02/12/2014
RSC	Spinning commission order			
RSH	Spinning order change			
RSR	Spinning order response			
SCL	process sheet			
TFC	Textile dyeing-finishing commission order			
TFX	Textile Dyeing-Finishing Order Change			02/12/2014
TPC	Textile printing commission order			
TPX	Textile Printing Order Change			02/12/2014
TWI	Textile in work inventory			
VMI	visual merchandising instructions		(N)	01/02/2018
WAC	Warping commission order			
WEC	Weaving commission order			
YDC	Yarn dyeing commission order			
YDH	Yarn dyeing order change			
YDR	Yarn dyeing order response			
YTC	Twisting commission order			
YWI	Yarn in work inventory			

### T29 - type of yarn package

type of package (roll-up) used for a yarn product

Agency name: eBIZ

tabella cod.: T29

File codes list (Generic code): [http://www.ebiz.enea.it/moda-ml/repository/codelist/v2018-1/gc\\_T29.xml](http://www.ebiz.enea.it/moda-ml/repository/codelist/v2018-1/gc_T29.xml)

Code	Description	Adoption note	Version status	Date of insertion
CIL	bobbin			
CON	cone			
HNK	hank, skein			01/07/2013
MUF	muff, cake			01/07/2013
SPL	spool			
TUB	tube			

XCO	supercone			
-----	-----------	--	--	--

### T3 - terms of delivery

specification of the terms of trade (INCOTERMS)

Agency name: Incoterms

tabella cod.: T3

File codes list (Generic code): [http://www.ebiz.enea.it/moda-ml/repository/codelist/v2018-1/gc\\_T3.xml](http://www.ebiz.enea.it/moda-ml/repository/codelist/v2018-1/gc_T3.xml)

Cod e	Description	Adoption note	Versi on statu s	Date of insertio n
CF R	COST AND FREIGHT (named port of destination)			
CIF	COST, INSURANCE AND FREIGHT (named port of destination)			
CIP	CARRIAGE AND INSURANCE PAID (named place of destination)			
CP T	CARRIAGE PAID (named place of destination)			
DA F	DELIVERED AT FRONTIER (named place)	according to Incoterms® 2010 it is obsolete		08/12/2017
DA P	Delivered at Place of destination (named place of destination)	according to Incoterms® 2010		08/12/2017
DA T	Delivered at Terminal (named place of destination)	according to Incoterms® 2010		08/12/2017
DD P	DELIVERED DUTY PAID (named place of destination)			
DD U	DELIVERED DUTY UNPAID (named place of destination)	according to Incoterms® 2010 it is obsolete, use DAP		08/12/2017
DE Q	DELIVERED EX-QUAY (named port of destination)	according to Incoterms® 2010 it is obsolete		08/12/2017
DE S	DELIVERED EX-SHIP (named port of destination)	according to Incoterms® 2010 it is obsolete		08/12/2017
EX W	EX WORKS (named place)			
FA S	FREE ALONGSIDE SHIP (named port of shipment)			
FC A	FREE CARRIER (named place)			
FO B	FREE ON BOARD (named port of shipment)			

### T38 - transport conditions

special condition of transport or special service requested to the Forwarder

tabella cod.: T38

File codes list (Generic code): [http://www.ebiz.enea.it/moda-ml/repository/codelist/v2018-1/gc\\_T38.xml](http://www.ebiz.enea.it/moda-ml/repository/codelist/v2018-1/gc_T38.xml)

Code	Description	Adoption note	Version status	Date of insertion
ACC	arrange customs clearance			
CAL	Carrier loads			
CAU	Carrier unloads			
CMR	CMR carnet			
FFN	freight forwarders national conditions			
FLD	special agreement for full loading			
NCC	do not arrange customs clearance			
PPB	packaging paid by Buyer			
PPS	packaging paid by Supplier			
PRO	proof of delivery			
RFR	return container free			
RPC	return container paid by Customer			
RPS	return container paid by Supplier			
SHL	Shipper loads			
SHU	Consignee unloads			

### T40 - type of transport means

means of transport, in general or referred to a specific leg

Agency name: eBIZ

tabella cod.: T40

File codes list (Generic code): [http://www.ebiz.enea.it/moda-ml/repository/codelist/v2018-1/gc\\_T40.xml](http://www.ebiz.enea.it/moda-ml/repository/codelist/v2018-1/gc_T40.xml)

Code	Description	Adoption note	Version status	Date of insertion
AIR	aircraft			
SHP	ship			
TRU	truck			
VAN	van			

## T41 - type of Allowance or Charge

coded specification of an Allowance or Charge (elaborated from UNECE 4465)

Agency name: eBIZ

tabella cod.: T41

File codes list (Generic code): [http://www.ebiz.enea.it/moda-ml/repository/codelist/v2018-1/gc\\_T41.xml](http://www.ebiz.enea.it/moda-ml/repository/codelist/v2018-1/gc_T41.xml)

Code	Description	Adoption note	Version status	Date of insertion
1	Agreed settlement		(N)	19/08/2018
10	Costs for draft		(N)	19/08/2018
11	Bank charges	DEPRECATED, use CBK	(N)	19/08/2018
12	Agent commission		(N)	19/08/2018
14	Wrong delivery		(N)	19/08/2018
15	Goods returned to agent		(N)	19/08/2018
16	Goods partly returned		(N)	19/08/2018
17	Transport damage		(N)	19/08/2018
19	Trade discount		(N)	19/08/2018
2	Below specification goods		(N)	19/08/2018
20	Deduction for late delivery	DEPRECATED, use CWB	(N)	19/08/2018
21	Advertising costs		(N)	19/08/2018
22	Customs duties		(N)	19/08/2018
23	Telephone and postal costs		(N)	19/08/2018
24	Repair costs		(N)	19/08/2018
25	Attorney fees		(N)	19/08/2018

26	Taxes		(N)	19/08/2018
3	Damaged goods		(N)	19/08/2018
30	Direct payment to seller		(N)	19/08/2018
32	Goods not delivered		(N)	19/08/2018
33	Late delivery		(N)	19/08/2018
35	Goods returned		(N)	19/08/2018
36	Invoice not received		(N)	19/08/2018
37	Credit note to debtor/not to us		(N)	19/08/2018
38	Deducted bonus		(N)	19/08/2018
39	Deducted discount		(N)	19/08/2018
4	Short delivery		(N)	19/08/2018
40	Deducted freight costs		(N)	19/08/2018
41	Deduction against other invoices		(N)	19/08/2018
42	Credit balance(s)		(N)	19/08/2018
45	Debit note to seller		(N)	19/08/2018
46	Discount beyond terms		(N)	19/08/2018
48	Allowance/charge error		(N)	19/08/2018
49	Substitute product		(N)	19/08/2018
50	Terms of sale error		(N)	19/08/2018
52	Wrong invoice		(N)	19/08/2018
53	Duplicate invoice		(N)	19/08/2018
54	Weight error		(N)	19/08/2018

55	Additional charge not authorized		(N)	19/08/2018
56	Incorrect discount		(N)	19/08/2018
57	Price change		(N)	19/08/2018
58	Variation		(N)	19/08/2018
59	Chargeback		(N)	19/08/2018
65	Settlement to agent		(N)	19/08/2018
66	Cash discount		(N)	19/08/2018
7	Payment on account		(N)	19/08/2018
70	Wrong monetary amount resulting from incorrect free goods quantity		(N)	19/08/2018
72	Temporary special promotion		(N)	19/08/2018
73	Difference in tax rate		(N)	19/08/2018
74	Quantity discount		(N)	19/08/2018
75	Promotion discount		(N)	19/08/2018
76	Cancellation deadline passed		(N)	19/08/2018
77	Pricing discount		(N)	19/08/2018
78	Volume discount		(N)	19/08/2018
79	Sundry discount		(N)	19/08/2018
8	Returnable container charge included		(N)	19/08/2018
9	Invoice error		(N)	19/08/2018
AWA	bonus for works ahead of schedule			
CBK	bank charges			
CCR	servizio di corriere			
CIN	insurance			



CLB	labelling			
CPK	packing			
CSP	special packing			
CW B	penalty for works behind schedule			

#### T44 - additional code type

qualifier of the additional coding of a product

Agency name: eBIZ

tabella cod.: T44

File codes list (Generic code): [http://www.ebiz.enea.it/moda-ml/repository/codelist/v2018-1/gc\\_T44.xml](http://www.ebiz.enea.it/moda-ml/repository/codelist/v2018-1/gc_T44.xml)

Code	Description	Adoption note	Version status	Date of insertion
CC	colour card			
CL	sales collection			
CO	company identification code		(N)	08/09/2017
DY	dye number			
LT	lot number			
MDI	Made in			08/09/2017
MS	manufacturing state			
PKG	packaging			09/09/2014
PL	product line			
RGB	RGB value			
SE	selvedge code			

#### T54 - kind of yarn

general type of yarn

Agency name: eBIZ

tabella cod.: T54

File codes list (Generic code): [http://www.ebiz.enea.it/moda-ml/repository/codelist/v2018-1/gc\\_T54.xml](http://www.ebiz.enea.it/moda-ml/repository/codelist/v2018-1/gc_T54.xml)

Code	Description	Adoption note	Version status	Date of insertion
01	Spun yarn (Staple yarn)			
02	Worsted			

03	Woollen			
04	Carded			01/07/2013
05	Combed			01/07/2013
06	Flax-spun			01/07/2013
07	Rotor spun			01/07/2013
08	Air jet spun			01/07/2013
09	Fancy yarn			01/07/2013
10	Filament yarn - Flat			01/07/2013
11	Zero twist			01/07/2013
12	Twisted			01/07/2013
13	Crêpe			01/07/2013
14	Textured yarn			01/07/2013
15	False Twist – FT (also stretch)			01/07/2013
16	False Twist, Fixed – FTF (also bulked)			01/07/2013
17	Air textured			01/07/2013
18	Elastic yarn (also Elastomeric yarn)			01/07/2013
19	Single covered yarn			01/07/2013
20	Double covered yarn			01/07/2013
21	Air covered yarn			01/07/2013
22	Core-spun			01/07/2013

### T55 - count system

yarn count system

Agency name: eBIZ

tabella cod.: T55

File codes list (Generic code): [http://www.ebiz.enea.it/moda-ml/repository/codelist/v2018-1/gc\\_T55.xml](http://www.ebiz.enea.it/moda-ml/repository/codelist/v2018-1/gc_T55.xml)

Code	Description	Adoption note	Version status	Date of insertion
DEN	denier			
DTX	decitex			
NEC	english cotton			
NEJ	english jute/hemp/flax			
NEW	english wool			
NM	metric			
TEX	tex			

## T56 - kind of yarn ply

kind of yarn's ply

Agency name: eBIZ

tabella cod.: T56

File codes list (Generic code): [http://www.ebiz.enea.it/moda-ml/repository/codelist/v2018-1/gc\\_T56.xml](http://www.ebiz.enea.it/moda-ml/repository/codelist/v2018-1/gc_T56.xml)

Code	Description	Adoption note	Version status	Date of insertion
CS	single yarn			
FA	fancy yarn			01/07/2013
RC	ply combination yarn			
RS	ply yarn			

## T57 - color fastness test for yarn

color fastness test for a yarn

tabella cod.: T57

File codes list (Generic code): [http://www.ebiz.enea.it/moda-ml/repository/codelist/v2018-1/gc\\_T57.xml](http://www.ebiz.enea.it/moda-ml/repository/codelist/v2018-1/gc_T57.xml)

Code	Description	Adoption note	Version status	Date of insertion
01	to decatizingal (UNI EN ISO 105-E10:98)			01/07/2013
02	to bleaching: peroxide (UNI EN ISO 105-N02:97)			01/07/2013
03	to bleaching: hypochlorite (UNI EN 20105-N01:97)			01/07/2013
04	to spotting: acid (UNI EN ISO 105-E05:99)			01/07/2013
05	to spotting: alkali (UNI EN ISO 105-E06:99)			01/07/2013
06	to mercerizing (UNI EN ISO 105-X04:99)			01/07/2013
07	to soda boiling (UNI EN ISO 105-X06:99)			01/07/2013
08	to degumming (UNI EN ISO 105-X08:99)			01/07/2013
09	to domestic laundering (UNI EN ISO 105-C06:99)			01/07/2013
10	to carbonizing: sulfuric acid (UNI EN ISO 105-X02:98)			01/07/2013
11	to acid chlorination (UNI 5145:88)			01/07/2013
12	to chlorination: Na dichloroisocyanurate (EN ISO 105-X14:99)			01/07/2013
13	to alkaline milling (UNI EN ISO 105-E12:99)			01/07/2013
14	to acid-felting: mild (UNI EN ISO 105-E14:98)			01/07/2013
15	to dry heat (UNI EN ISO 105-P01:97)			01/07/2013

## T58 - yarn quality parameters

parameter related to the quality of yarn

Agency name: eBIZ

tabella cod.: T58

File codes list (Generic code): [http://www.ebiz.enea.it/moda-ml/repository/codelist/v2018-1/gc\\_T58.xml](http://www.ebiz.enea.it/moda-ml/repository/codelist/v2018-1/gc_T58.xml)

Code	Description	Adoption note	Version status	Date of insertion
01	actual count			01/07/2013
02	elongation % at break (UNI-EN-ISO 2062:97)			01/07/2013
03	breaking force (UNI-EN-ISO 2062:97)			01/07/2013
04	tenacity (specific stress) - cN/tex or RKM (UNI-EN-ISO 2062:97)			01/07/2013
05	unevenness - CV USTER			01/07/2013
06	unevenness - thick spots			01/07/2013
07	unevenness - thin spots			01/07/2013
08	unevenness - neps			01/07/2013
09	hairiness			01/07/2013
10	pilling (UNI-EN-ISO 12945-01:2002)			01/07/2013
11	coefficient of friction			01/07/2013
12	delta E CIELab (UNI 8941:87)			01/07/2013

## T59 - CIE illuminant

CIE light source

tabella cod.: T59

File codes list (Generic code): [http://www.ebiz.enea.it/moda-ml/repository/codelist/v2018-1/gc\\_T59.xml](http://www.ebiz.enea.it/moda-ml/repository/codelist/v2018-1/gc_T59.xml)

Code	Description	Adoption note	Version status	Date of insertion
A	home tungsten CCT 2856K°			01/07/2013
C	daylight CCT 6774K°			01/07/2013
D50	daylight CCT 5003Kà			01/07/2013
D65	solar standard CCT 6504K°			01/07/2013
F11	fluorescent narrow band CCT 4000K° (TL84)			01/07/2013
F2	cold white fluorescent CCT 4230K°			01/07/2013
F7	fluorescent broad band CCT 6500K°			01/07/2013

## T60 - CIE standard observer

CIE average chromatic response definition

tabella cod.: T60

File codes list (Generic code): [http://www.ebiz.enea.it/moda-ml/repository/codelist/v2018-1/gc\\_T60.xml](http://www.ebiz.enea.it/moda-ml/repository/codelist/v2018-1/gc_T60.xml)

Code	Description	Adoption note	Version status	Date of insertion
31	CIE-1931			01/07/2013
64	CIE-1964			01/07/2013

## T61 - duty or tax or fee type

duty or tax or fee type

Agency name: eBIZ

tabella cod.: T61

File codes list (Generic code): [http://www.ebiz.enea.it/moda-ml/repository/codelist/v2018-1/gc\\_T61.xml](http://www.ebiz.enea.it/moda-ml/repository/codelist/v2018-1/gc_T61.xml)

Code	Description	Adoption note	Version status	Date of insertion
BOL	stamp duty			01/07/2013
CUD	customs duty			01/07/2013
ENV	environmental tax			01/07/2013
FRE	no tax			01/07/2013
OTH	other tax charges			01/07/2013
VAT	value added tax			01/07/2013

## T62 - duty or tax or fee category

duty or tax or fee category

Agency name: eBIZ

tabella cod.: T62

File codes list (Generic code): [http://www.ebiz.enea.it/moda-ml/repository/codelist/v2018-1/gc\\_T62.xml](http://www.ebiz.enea.it/moda-ml/repository/codelist/v2018-1/gc_T62.xml)

Code	Description	Adoption note	Version status	Date of insertion
AA	lower than standard rate			01/07/2013
E	tax not applicable			01/07/2013

H	higher than standard rate			01/07/2013
O	outside scope of tax			01/07/2013
S	standard rate			01/07/2013
Z	zero rate goods			01/07/2013

### T8 - Modes of Transport

way of transport, in general or referred to the specified leg

Agency name: eBIZ

tabella cod.: T8

File codes list (Generic code): [http://www.ebiz.enea.it/moda-ml/repository/codelist/v2018-1/gc\\_T8.xml](http://www.ebiz.enea.it/moda-ml/repository/codelist/v2018-1/gc_T8.xml)

Code	Description	Adoption note	Version status	Date of insertion
1	MARITIME TRANSPORT			
10	Courier			01/07/2013
2	RAIL TRANSPORT			
3	ROAD TRANSPORT			
4	AIR TRANSPORT			
5	MAIL			
6	AIR + SHIP TRANSPORT			
8	INLAND WATER TRANSPORT			
9	MODE UNKNOWN			

### T9 - ISO4217 - Currency

currency code

Agency name: ISO

tabella cod.: T9

File codes list (Generic code): [http://www.ebiz.enea.it/moda-ml/repository/codelist/v2018-1/gc\\_T9.xml](http://www.ebiz.enea.it/moda-ml/repository/codelist/v2018-1/gc_T9.xml)

Table not printed: there are 205 elements, more than the maximum specified for printing: 99.

## Annex C

### New or changed elements towards previous version

Changes or added elements (changes in description excluded; changes in aggregation notes and best practice included): 110

Test Type	Tag	Status	Item type	Changes related to
Attribute	AC_amount	NEW	AC amount	Has NEW attribute: data currency
Element(E)	AC_categoryText	UPDATED	AC category text	Property: Length_Max Old value: 70 New value: 250
Attribute	additionalIdentifier	NEW	Additional Party Identifier	Has NEW attribute: numbering organisation code
Attribute	additionalIdentifier	NEW	Additional Party Identifier	Has NEW attribute: id Qualifier
Element(I)	additionalIdentifier	NEW	Additional Party Identifier	
Attribute	allowanceCharge	NEW	Allowance and Charge	Has NEW attribute: is Charge
Attribute	allowanceCharge	NEW	Allowance and Charge	Has NEW attribute: maximum quantity
Attribute	allowanceCharge	NEW	Allowance and Charge	Has NEW attribute: minimum quantity
Attribute	allowanceCharge	NEW	Allowance and Charge	Has NEW attribute: data currency
Attribute	allowanceCharge	NEW	Allowance and Charge	Has NEW attribute: unit of measure code
Element(E)	art	UPDATED	article identifier	Property: Length_Max Old value: 25 New value: 80
Attribute	art	UPDATED	article identifier	Its attribute: code list reference  Property: Aggregation Note_English Old value: <i>this attribute should be ALTERNATIVE to the others</i> New value: <i>at least one out of this attribute and "numberingOrg" should be set</i>

Element(l)	attachment	NEW	attachment	
Child	attachment	NEW	attachment	Has NEW child of: file name
Child	attachment	NEW	attachment	Has NEW child of: external reference
Child	attachment	NEW	attachment	Has NEW child of: binary object
Attribute	binaryObject	NEW	binary object	Has NEW attribute: encoding
Attribute	binaryObject	NEW	binary object	Has NEW attribute: mime
Attribute	binaryObject	NEW	binary object	Has NEW attribute: format
Attribute	binaryObject	NEW	binary object	Has NEW attribute: character set
Element(l)	binaryObject	NEW	binary object	
Element(UE)	yarnNameBuyer	UPDATE	Buyer yarn name	Property: Length_Max Old value: 70 New value: 250
Child	buyer	NEW	Buyer (*)	Has NEW child of: Party identifier
Child	buyer	NEW	Buyer (*)	Has NEW child of: Additional Party Identifier
Attribute	buyer	NEW	Buyer (*)	Has NEW attribute: sender Party qualifier
Element(l)	characterSetCode	NEW	character set code	
Element(l)	characterSet	NEW	character set	
Child	colorCardItem	UPDATE	color card item	relationship with child: description  Property: Cardmax Old value: 1 New value: 999
Child	colorCardItem	UPDATE	color card item	relationship with child: articles colour identifier  Property: Aggregation Note_English Old value: New value: <i>multiple color values allowed if they differ for at least one of the numberingOrg and listName attributes</i>
Child	colorCardItem	UPDATE	color card item	relationship with child: articles colour identifier  Property: Cardmax



				Old value: 1 New value: 2
Element(E)	delivery Place	UPDATED	delivery place	Property: Length_Max Old value: 40 New value: 250
Attribute	description	NEW	description	Has NEW attribute: In
Element(E)	description	UPDATED	description	Property: Length_Max Old value: 70 New value: 250
Attribute	despatchDate	NEW	despatch date	Has NEW attribute: date format
Element(I)	despatchDate	NEW	despatch date	
Element(I)	despatchPlace	NEW	despatch place	
Element(E)	email	UPDATED	e-mail	Property: Length_Max Old value: 80 New value: 250
Element(I)	encodingCode	NEW	encoding code	
Element(I)	encoding	NEW	encoding	
Attribute	extendedDescription	NEW	extended description	Has NEW attribute: In
Element(I)	extendedDescription	NEW	extended description	
Child	externalReference	NEW	external reference	Has NEW child of: uri
Child	externalReference	NEW	external reference	Has NEW child of: format code
Child	externalReference	NEW	external reference	Has NEW child of: character set code
Child	externalReference	NEW	external reference	Has NEW child of: mime code
Child	externalReference	NEW	external reference	Has NEW child of: encoding code
Element(I)	externalReference	NEW	external reference	

Attrib	fileName	NEW	file name	Has NEW attribute: numbering organisation code
Elem(l)	fileName	NEW	file name	
Elem(l)	formatCode	NEW	format code	
Elem(l)	format	NEW	format	
Attrib	note	UPDATED	general note	Its attribute: numbering organisation code  Property: Aggregation Note_English Old value: New value: <i>must be used to specify the organization that created the list of codes used in "noteLabel"</i>
Elem(l)	idQualifier	NEW	id Qualifier	
Elem(l)	isCharge	NEW	is Charge	
Elem(l)	isURL	NEW	is URL	
Elem(E)	legalName	UPDATED	Legal name	Property: Length_Max Old value: 80 New value: 250
Elem(E)	itemID	UPDATED	line item number	Property: Length_Max Old value: 6 New value: 40
Elem(l)	In	NEW	In	
Elem(l)	maxQty	NEW	maximum quantity	
Elem(l)	mimeCode	NEW	mime code	
Elem(l)	mime	NEW	mime	
Child	OFheader	NEW	OF header	Has NEW child of: Third Party
Child	OFheader	UPDATED	OF header	relationship with child: general note  Property: Cardmax Old value: 19 New value: 99
Child	OFheader	UPDATED	OF header	relationship with child: reference document details  Property: Cardmin Old value: 1 New value: 0

Child	OFheader	UPDATE	OF header	relationship with child: reference document details  Property: Aggregation Note_English Old value: <i>reference to the Request for Offer</i> New value: <i>At least one occurrence should contain a reference to the corresponding Request for Offer ( docType=REQ)</i>
Element(l)	program	NEW	progressive number	
Child	refDoc	NEW	reference document details	Has NEW child of: attachment
Child	refDoc	UPDATE	reference document details	relationship with child: document identifier  Property: BestPractice_English Old value: New value: <i>numberingOrg indicates the role that produced the document identifier (it is allowed to declare two different ones -e.g. customer and supplier - with two docID with different numberingOrg)</i>
Attribute	season	NEW	season identifier	Has NEW attribute: code list reference
Attribute	season	NEW	season identifier	Has NEW attribute: numbering organisation code
Attribute	season	NEW	season identifier	Has NEW attribute: code list name
Attribute	season	NEW	season identifier	Has NEW attribute: code list version
Child	subContractor	NEW	Sub-contractor (*)	Has NEW child of: Party identifier
Attribute	subContractor	NEW	Sub-contractor (*)	Has NEW attribute: sender Party qualifier
Element(l)	subDept	NEW	department identifier	
Element(e)	yarnNameSupplier	UPDATE	Supplier yarn name	Property: Length_Max Old value: 70 New value: 250
Child	supplier	NEW	Supplier (*)	Has NEW child of: Party identifier
Child	supplier	NEW	Supplier (*)	Has NEW child of: Additional Party Identifier
Attribute	supplier	NEW	Supplier (*)	Has NEW attribute: sender Party qualifier
Attribute	legalRef	NEW	tax legal reference	Has NEW attribute: code list name
Attribute	legalRef	NEW	tax legal reference	Has NEW attribute: numbering organisation code
Attribute	legalRef	NEW	tax legal reference	Has NEW attribute: code list version

Attrib	legalRef	UPDATE	tax legal reference	Its attribute: code list reference  Property: Use Old value: <i>Required</i> New value: <i>Optional</i>
Child	dtScheme	UPDATE	tax scheme	relationship with child: general note  Property: Cardmax Old value: 19 New value: 99
Element(E)	payTermText	UPDATE	terms of payment text	Property: Length_Max Old value: 40 New value: 250
Element(E)	incotermsText	UPDATE	terms of trade text	Property: Length_Max Old value: 70 New value: 250
Element(E)	method	UPDATE	test method identifier	Property: Length_Max Old value: 25 New value: 80
Child	thirdParty	NEW	Third Party (*)	Has NEW child of: Party identifier
Attrib	thirdParty	NEW	Third Party (*)	Has NEW attribute: sender Party qualifier
Child	terms	UPDATE	Trade conditions	relationship with child: Transport information  Property: Cardmax Old value: 1 New value: 5
Element(E)	transportConditionText	UPDATE	transport condition - text	Property: Length_Max Old value: 100 New value: 250
Child	transportInfo	NEW	Transport information	Has NEW child of: despatch place
Child	transportInfo	NEW	Transport information	Has NEW child of: despatch date
Child	transportInfo	NEW	Transport information	Has NEW child of: effective delivery date
Attrib	transportInfo	NEW	Transport information	Has NEW attribute: progressive number
Attrib	price	NEW	unit price amount	Has NEW attribute: data currency
Element(E)	price	UPDATE	unit price amount	Property: Digits_Dec Old value: 2 New value: 4
Attrib	uri	NEW	uri	Has NEW attribute: is URL

Elem(l)	uri	NEW	uri	
Child	yarnIdentity	NEW	Yarn identity data	Has NEW child of: extended description
Child	yarnIdentity	NEW	Yarn identity data	Has NEW child of: general note
Child	yarnManufacture	NEW	yarn manufacturing data	Has NEW child of: general note
Child	yarnCode	UPDATED	Yarn product code	relationship with child: description  Property: Aggregation Note_English Old value: New value: <i>Product description</i>
Child	yarnCode	UPDATED	Yarn product code	relationship with child: description  Property: Cardmax Old value: 1 New value: 999
Child	yarnQuality	NEW	yarn quality data	Has NEW child of: general note
Child	yarnQuality	UPDATED	yarn quality data	relationship with child: yarn quality test  Property: Cardmax Old value: 19 New value: 99
Child	yarnQTest	UPDATED	yarn quality test	relationship with child: yarn quality test type  Property: Cardmin Old value: 0 New value: 1
Child	yarnTechSheet	NEW	yarn technical sheet	Has NEW child of: reference document details
Child	YARNOffer	UPDATED	YARNOffer (*)	relationship with child: yarn technical sheet  Property: Cardmax Old value: 99 New value: 999
Elem(l)	yarnQTestType	NEW	yarn quality test type	

## Annex D

### New or changed tables and codes towards previous version

Changes or added items (changes in CodeListAgencyName excluded; changes in adoption notes and code description included): 155

Test Type	Status	Table code	Table description	Code	Change description
Table	UPDATED	NT100	eBIZ TCFUpstream version		Description_English Old value: <i>eBIZ Moda-ML version</i> New value: <i>eBIZ TCFUpstream version</i>
Code	NEW	NT100		2018-1 (v2018-1)	
Code	NEW	NT100		draft (draft)	
Table	UPDATED	NT16	VAT rate or code		Generalities Old value: <i>VAT rate or code ( deprecated, use dtScheme element )</i> New value: <i>VAT rate or code ( DEPRECATED, use dtScheme element )</i>
Code	NEW	NT2		AU (Auditor)	
Code	NEW	NT2		CE (Certification authority)	
Code	NEW	NT2		SC (Sub contractor)	
Code	NEW	NT2		SM (Service/ePlatform manager)	
Code	NEW	NT6		EB (eBIZ)	
Code	UPDATED	NT6		ML (DEPRECATED)	adoption_note Old value: New value: <i>DEPRECATED</i>
Table	NEW	NT60	language, codes from ISO 639-1 (subset)		
Code	NEW	NT60		F (Female)	
Code	NEW	NT60		af (Afrikaans)	
Code	NEW	NT60		ar (Arabic)	

Co de	NEW	NT 60		<i>be</i> (Belarusian)	
Co de	NEW	NT 60		<i>bg</i> (Bulgarian)	
Co de	NEW	NT 60		<i>bn</i> (Bengali)	
Co de	NEW	NT 60		<i>bo</i> (Tibetan)	
Co de	NEW	NT 60		<i>bs</i> (Bosnian)	
Co de	NEW	NT 60		<i>ca</i> (Catalan, Valencian)	
Co de	NEW	NT 60		<i>cs</i> (Czech)	
Co de	NEW	NT 60		<i>da</i> (Danish)	
Co de	NEW	NT 60		<i>de</i> (German)	
Co de	NEW	NT 60		<i>el</i> (Greek, Modern (1453-))	
Co de	NEW	NT 60		<i>en</i> (English)	
Co de	NEW	NT 60		<i>eo</i> (Esperanto)	
Co de	NEW	NT 60		<i>es</i> (Spanish, Castilian)	
Co de	NEW	NT 60		<i>et</i> (Estonian)	
Co de	NEW	NT 60		<i>eu</i> (Basque)	
Co de	NEW	NT 60		<i>fa</i> (Persian)	
Co de	NEW	NT 60		<i>fi</i> (Finnish)	
Co de	NEW	NT 60		<i>fr</i> (French)	
Co de	NEW	NT 60		<i>ga</i> (Irish)	
Co de	NEW	NT 60		<i>gd</i> (Gaelic, Scottish Gaelic)	
Co de	NEW	NT 60		<i>gn</i> (Guarani)	
Co de	NEW	NT 60		<i>he</i> (Hebrew)	

Co de	NEW	NT 60		<i>hr</i> (Croatian)	
Co de	NEW	NT 60		<i>ht</i> (Haitian, Haitian Creole)	
Co de	NEW	NT 60		<i>hu</i> (Hungarian)	
Co de	NEW	NT 60		<i>hy</i> (Armenian)	
Co de	NEW	NT 60		<i>ia</i> (Interlingua (International Au xiliary Language Association ))	
Co de	NEW	NT 60		<i>id</i> (Indonesian)	
Co de	NEW	NT 60		<i>is</i> (Icelandic)	
Co de	NEW	NT 60		<i>it</i> (Italian)	
Co de	NEW	NT 60		<i>ja</i> (Japanese)	
Co de	NEW	NT 60		<i>jv</i> (Javanese)	
Co de	NEW	NT 60		<i>ka</i> (Georgian)	
Co de	NEW	NT 60		<i>km</i> (Central Khmer)	
Co de	NEW	NT 60		<i>ko</i> (Korean)	
Co de	NEW	NT 60		<i>ku</i> (Kurdish)	
Co de	NEW	NT 60		<i>lb</i> (Luxembourgish, Letzeburge sch)	
Co de	NEW	NT 60		<i>lo</i> (Lao)	
Co de	NEW	NT 60		<i>lt</i> (Lithuanian)	
Co de	NEW	NT 60		<i>lv</i> (Latvian)	
Co de	NEW	NT 60		<i>mg</i> (Malagasy)	
Co de	NEW	NT 60		<i>mk</i> (Macedonian)	
Co de	NEW	NT 60		<i>mn</i> (Mongolian)	



Co de	NEW	NT 60		<i>mt</i> (Maltese)	
Co de	NEW	NT 60		<i>nl</i> (Dutch, Flemish)	
Co de	NEW	NT 60		<i>no</i> (Norwegian)	
Co de	NEW	NT 60		<i>pl</i> (Polish)	
Co de	NEW	NT 60		<i>pt</i> (Portuguese)	
Co de	NEW	NT 60		<i>ro</i> (Romanian, Moldavian, Mold ovan)	
Co de	NEW	NT 60		<i>ru</i> (Russian)	
Co de	NEW	NT 60		<i>se</i> (Northern Sami)	
Co de	NEW	NT 60		<i>sk</i> (Slovak)	
Co de	NEW	NT 60		<i>sl</i> (Slovenian)	
Co de	NEW	NT 60		<i>sm</i> (Samoan)	
Co de	NEW	NT 60		<i>so</i> (Somali)	
Co de	NEW	NT 60		<i>sq</i> (Albanian)	
Co de	NEW	NT 60		<i>sr</i> (Serbian)	
Co de	NEW	NT 60		<i>sv</i> (Swedish)	
Co de	NEW	NT 60		<i>sw</i> (Swahili)	
Co de	NEW	NT 60		<i>ta</i> (Tamil)	
Co de	NEW	NT 60		<i>th</i> (Thai)	
Co de	NEW	NT 60		<i>tr</i> (Turkish)	
Co de	NEW	NT 60		<i>uk</i> (Ukrainian)	
Co de	NEW	NT 60		<i>ur</i> (Urdu)	
Co de	NEW	NT 60		<i>uz</i> (Uzbek)	

Code	NEW	NT 60		<i>vi</i> (Vietnamese)	
Code	NEW	NT 60		<i>zh</i> (Chinese)	
Code	NEW	NT 7		<i>CMK</i> (square centimetre)	
Code	NEW	NT 7		<i>CMQ</i> (cubic centimetre)	
Code	NEW	NT 7		<i>E37</i> (pixel)	
Code	NEW	NT 7		<i>KWH</i> (kilowatthours)	
Code	NEW	NT 7		<i>MMK</i> (square millimetre)	
Code	NEW	NT 7		<i>MTK</i> (square metre)	
Code	NEW	NT 7		<i>CO2TON</i> (ton of CO2)	
Table	UPDATE	NT 7	unit of measure		OtherExternalReferenceURL Old value: New value: <a href="http://docs.oasis-open.org/ubl/os-UBL-2.1/cl/gc/default/UnitOfMeasureCode-2.1.gc#">#http://docs.oasis-open.org/ubl/os-UBL-2.1/cl/gc/default/UnitOfMeasureCode-2.1.gc#</a>
Table	UPDATE	NT 7	unit of measure		Description_English Old value: <i>unity of measure</i> New value: <i>unit of measure</i>
Code	NEW	T2 1		<i>BOR</i> (blanket order)	
Code	NEW	T2 1		<i>CEO</i> (Certificate of origin)	
Code	NEW	T2 1		<i>CER</i> (Certificate)	
Code	UPDATE	T2 1		<i>CTR</i> (Contract)	Text_English Old value: <i>contract</i> New value: <i>Contract</i>
Code	NEW	T2 1		<i>MCI</i> (Visual merchandising instruction)	
Code	NEW	T2 1		<i>VMI</i> (visual merchandising instructions)	
Code	NEW	T4 1		1 (Agreed settlement)	
Code	NEW	T4 1		2 (Below specification goods)	
Code	NEW	T4 1		3 (Damaged goods)	

Co de	NEW	T4 1		4 (Short delivery)	
Co de	NEW	T4 1		7 (Payment on account)	
Co de	NEW	T4 1		8 (Returnable container charge included)	
Co de	NEW	T4 1		9 (Invoice error)	
Co de	NEW	T4 1		10 (Costs for draft)	
Co de	NEW	T4 1		11 (Bank charges)	
Co de	NEW	T4 1		12 (Agent commission)	
Co de	NEW	T4 1		14 (Wrong delivery)	
Co de	NEW	T4 1		15 (Goods returned to agent)	
Co de	NEW	T4 1		16 (Goods partly returned)	
Co de	NEW	T4 1		17 (Transport damage)	
Co de	NEW	T4 1		19 (Trade discount)	
Co de	NEW	T4 1		20 (Deduction for late delivery)	
Co de	NEW	T4 1		21 (Advertising costs)	
Co de	NEW	T4 1		22 (Customs duties)	
Co de	NEW	T4 1		23 (Telephone and postal costs)	
Co de	NEW	T4 1		24 (Repair costs)	
Co de	NEW	T4 1		25 (Attorney fees)	
Co de	NEW	T4 1		26 (Taxes)	
Co de	NEW	T4 1		30 (Direct payment to seller)	
Co de	NEW	T4 1		32 (Goods not delivered)	
Co de	NEW	T4 1		33 (Late delivery)	

Co de	NEW	T4 1		35 (Goods returned)	
Co de	NEW	T4 1		36 (Invoice not received)	
Co de	NEW	T4 1		37 (Credit note to debtor/not to us)	
Co de	NEW	T4 1		38 (Deducted bonus)	
Co de	NEW	T4 1		39 (Deducted discount)	
Co de	NEW	T4 1		40 (Deducted freight costs)	
Co de	NEW	T4 1		41 (Deduction against other inv oices)	
Co de	NEW	T4 1		42 (Credit balance(s))	
Co de	NEW	T4 1		45 (Debit note to seller)	
Co de	NEW	T4 1		46 (Discount beyond terms)	
Co de	NEW	T4 1		48 (Allowance/charge error)	
Co de	NEW	T4 1		49 (Substitute product)	
Co de	NEW	T4 1		50 (Terms of sale error)	
Co de	NEW	T4 1		52 (Wrong invoice)	
Co de	NEW	T4 1		53 (Duplicate invoice)	
Co de	NEW	T4 1		54 (Weight error)	
Co de	NEW	T4 1		55 (Additional charge not author ized)	
Co de	NEW	T4 1		56 (Incorrect discount)	
Co de	NEW	T4 1		57 (Price change)	
Co de	NEW	T4 1		58 (Variation)	
Co de	NEW	T4 1		59 (Chargeback)	

Code	NEW	T4 1		65 (Settlement to agent)	
Code	NEW	T4 1		66 (Cash discount)	
Code	NEW	T4 1		70 (Wrong monetary amount resulting from incorrect free goods quantity)	
Code	NEW	T4 1		72 (Temporary special promotion)	
Code	NEW	T4 1		73 (Difference in tax rate)	
Code	NEW	T4 1		74 (Quantity discount)	
Code	NEW	T4 1		75 (Promotion discount)	
Code	NEW	T4 1		76 (Cancellation deadline passed)	
Code	NEW	T4 1		77 (Pricing discount)	
Code	NEW	T4 1		78 (Volume discount)	
Code	NEW	T4 1		79 (Sundry discount)	
Table	UPDATE	T4 1	type of Allowance or Charge		Generalities Old value: <i>coded specification of an Allowance or Charge</i> New value: <i>coded specification of an Allowance or Charge (elaborated from UNECE 4465)</i>
Code	NEW	T4 4		CO (company identification code)	