



<http://www.ebiz-tcf.eu>

IMPLEMENTATION GUIDE

includes COMPARISON BETWEEN CURRENT and LAST
PREVIOUSLY RELEASED VERSION
TRANSACTION "PARTY INFORMATION"

Version: v2018-1

Date of release: 18/7/2019

Document code: G079rv

technical Documentation: <http://www.ebiz.enea.it>

XML Schemas repository: <http://www.ebiz.enea.it/moda-ml/repository/schema/v2018-1/default.asp>

Guides repository: <http://www.ebiz.enea.it/moda-ml/repository/guide/v2018-1/default.asp>

Guide filename: G079rv-eBIZ-PartyInformation.pdf

1. BUSINESS DESCRIPTION

1.1 Scope

This guide is intended to illustrate to FASHION companies the standard XML form of the document type "Party Information", providing instructions for its use in any context of electronic commerce between different subjects of the production and sales chain.

All the rules necessary for the construction and validation of the document are expressed through a specific XML schema, which is presented in detail in the paragraph "Implementation Guide".

1.2 Generalities

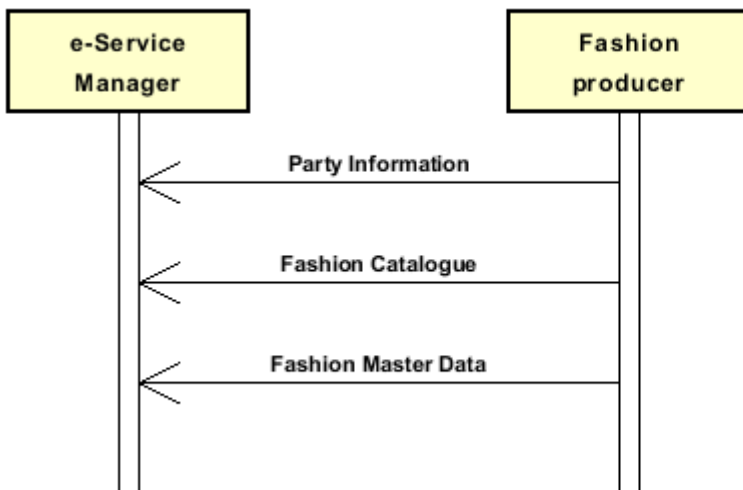
The message is issued to communicate information about people or organisations (for example, lists of customers enabled to operate on an eCommerce site).

The sender forwards this document when he has to feed a registry of persons or organizations.

Main function of the message is transferring information about people or companies: personal or business data (name, address, contacts, billing information, categories of belonging to subjects useful for commercial purposes).

1.3. Possible scenario

Initial transmission of information to eService



2. IMPLEMENTATION GUIDE

2.1 General structure of XML document

All the business data that can be exchanged through this class of documents are shown in the following "document structure", that provides a simplified vision of the Schema.

In particular:

- the two numbers following each element define its "cardinality" (minimum and maximum number of occurrences); the minimum equal zero indicates that the element is optional, the minimum greater than zero indicates that is mandatory;
- the bold character denotes the complex elements (aggregates of simple elements) that were built for the sake of functionality and re-usability of some complex informations sets. The child elements in each parent element are easily spotted as "indented";
- the symbol "@" denotes an attribute of the preceding element; here "the usage indicator (optional, required, ...)" is shown in square brackets.

Legenda

- N: new element
- U: updated properties
- P: changes in children
- p: is a changed child
- A: changes in attributes
- a: is a new or changed attribute
- *: is a subtype

Structure

PARTIn (N*)

@msgfunction [Optional] [Default= OR] (a*)

@version [Optional] [Default= 2018-1]

@useProfile [Optional]

	PIheader 1-1 (N*)	
	msgN 1-1 (p)	
	msgID 0-1 (p)	
	msgDate 1-1 (p)	
	@dateForm [Optional]	
	validityEnd 0-1	
	@dateForm [Optional]	
	refDoc 0-9 (P)	
	@docType [Required]	
	docID 1-2 (p)	
	@numberingOrg [Optional]	
	docDate 0-1	
	@dateForm [Optional]	
	season 0-1 (A)	
	@numberingOrg [Optional] (a)	
	@codeList [Optional] (a)	
	@listName [Optional] (a)	
	@listVersion [Optional] (a)	
	itemID 0-1 (U)	
	attachment 0-1 (N)	
	@uid [Optional]	
	fileName 0-1 (N)	
	@numberingOrg [Optional] (a)	
	binaryObject 0-1 (N)	
	@format [Optional] (Na)	
	@mime [Optional] (Na)	

```

| | | @encoding [Optional] (Na)
| | | @characterSet [Optional] (Na)
| | | externalReference 0-99 (N)
| | | | uri 1-1 (N)
| | | | | @isURL [Optional] [Default= true] (Na)
| | | | | mimeTypeCode 0-1 (N)
| | | | | formatCode 0-1 (N)
| | | | | encodingCode 0-1 (N)
| | | | | characterSetCode 0-1 (N)
| senderParty 1-1 (N*)
| | @sender [Optional] (a*)
| | | id 1-1
| | | | @numberingOrg [Optional]
| | | | legalName 0-1 (U)
| | | | dept 0-1
| | | | | subDept 0-1 (N)
| | | | | person 0-1
| | | | | | @email [Optional]
| | | | | | @phone [Optional]
| | | | | | @fax [Optional]
| | | | | street 0-1
| | | | | city 0-1
| | | | | subCountry 0-1
| | | | | country 0-1
| | | | | postCode 0-1
| receiverParty 1-1 (N*)
| | @sender [Optional] (a*)
| | | id 1-1
| | | | @numberingOrg [Optional]
| | | | legalName 0-1 (U)
| | | | dept 0-1
| | | | | subDept 0-1 (N)
| | | | | person 0-1
| | | | | | @email [Optional]
| | | | | | @phone [Optional]
| | | | | | @fax [Optional]
| | | | | street 0-1
| | | | | city 0-1
| | | | | subCountry 0-1
| | | | | country 0-1
| | | | | postCode 0-1
| thirdParty 0-5 (AP)
| | @VAT [Optional]
| | @role [Required]
| | @sender [Optional] (a*)
| | | id 1-1
| | | | @numberingOrg [Optional]
| | | | legalName 0-1 (U)
| | | | dept 0-1
| | | | | subDept 0-1 (N)
| | | | | person 0-1
| | | | | | @email [Optional]
| | | | | | @phone [Optional]
| | | | | | @fax [Optional]
| | | | | street 0-1
| | | | | city 0-1
| | | | | subCountry 0-1
| | | | | country 0-1
| | | | | postCode 0-1
| | note 0-99
| | @numberingOrg [Optional]

```

```

| | @codeList [Optional]
| | @noteLabel [Optional]
|
| Plbody 1-1 (N*)
| | Plitem 1-unbounded (N)
| | @logo [Optional] (a)
| | @legalEntity [Required] (Na)
| | | partyQualifiedID 0-unbounded (N)
| | | @numberingOrg [Optional] (a)
| | | @idQualifier [Optional] (Na)
| | - choose -
| | | individual 1-1 (N)
| | | | firstName 0-1 (N)
| | | | lastName 1-1 (N)
| | | | birthDate 0-1 (N)
| | | | @dateForm [Optional] (a)
| | | | gender 0-1 (N)
| | - or -
| | | legalName 1-1 (U)
| | - end choose -
| | | partyCategory 0-unbounded (N)
| | | @partyCategoryType [Required] (Na)
| | | brand 0-unbounded (N)
| | | @numberingOrg [Optional] (a)
| | | @codeList [Optional] (a)
| | | @listName [Optional] (a)
| | | @listVersion [Optional] (a)
| | | partyDescription 0-unbounded (N)
| | | @In [Optional] (Na)
| | | language 0-unbounded (N)
| | | partyReference 0-unbounded (N)
| | | @refQualifier [Optional] (Na)
| | | | brand 0-unbounded (N)
| | | | @numberingOrg [Optional] (a)
| | | | @codeList [Optional] (a)
| | | | @listName [Optional] (a)
| | | | @listVersion [Optional] (a)
| | | | legalName 0-1 (U)
| | | | person 0-1 (p)
| | | | @email [Optional]
| | | | @phone [Optional]
| | | | @fax [Optional]
| | | | dept 0-1
| | | | street 0-1 (p)
| | | | city 0-1 (p)
| | | | subCountry 0-1 (p)
| | | | country 0-1 (p)
| | | | postCode 0-1 (p)
| | | | note 0-unbounded
| | | | @numberingOrg [Optional]
| | | | @codeList [Optional]
| | | | @noteLabel [Optional]
| | | invoicee 0-1 (N)
| | | | partyQualifiedID 0-1 (N)
| | | | @numberingOrg [Optional] (a)
| | | | @idQualifier [Optional] (Na)
| | | | additionalIdentifier 0-9 (N)
| | | | @numberingOrg [Optional] (a)
| | | | @idQualifier [Optional] (Na)
| | - choose -
| | | legalName 1-1 (U)

```

```

- or -
| | | | firstName 1-1 (N)
| | | | lastName 1-1 (N)
- end choose -
| | | | street 0-1
| | | | city 0-1
| | | | subCountry 0-1
| | | | country 0-1
| | | | postCode 0-1
| | | | note 0-unbounded
| | | | @numberingOrg [Optional]
| | | | @codeList [Optional]
| | | | @noteLabel [Optional]
| | | payTermText 0-unbounded (U)
| | | payment 0-5 (p)
| | | @finDiscount [Optional]
| | | @finSurcharge [Optional]
- choose -
| | | | payTerm 1-1
- or -
| | | | payTermText 1-1 (U)
- end choose -
| | | | payMode 0-1
| | | finInfo 0-9 (Pp)
| | | | accountName 0-1 (N)
| | | | bank 0-1 (N*)
| | | | | legalName 0-1 (U)
| | | | | dept 0-1
| | | | | subDept 0-1 (N)
| | | | | person 0-1
| | | | | @email [Optional]
| | | | | @phone [Optional]
| | | | | @fax [Optional]
| | | | | street 0-1
| | | | | city 0-1
| | | | | subCountry 0-1
| | | | | country 0-1
| | | | | postCode 0-1
- choose -
| | | | iban 1-1
- or -
| | | | bankIT 1-1
| | | | | legalName 0-1 (U)
| | | | | cin 0-1
| | | | | abi 1-1
| | | | | cab 1-1
| | | | | accountN 1-1
- end choose -
| | | | swift 0-1
| | | | note 0-99
| | | | @numberingOrg [Optional]
| | | | @codeList [Optional]
| | | | @noteLabel [Optional]
| | | note 0-99
| | | @numberingOrg [Optional]
| | | @codeList [Optional]
| | | @noteLabel [Optional]

```

2.2 Detailed description of document elements

Following tables show all elements (complex and simple) used in this document. Description includes: 1) element's information: xml tag, name, brief description, data type and syntax constraints; 2) information about use of the element in a particular position in the document: xpath and possible associated notes.

2.2.1 Complex elements (Aggregate Business Information Entities)

Complex elements are those elements whose content is composed of other elements (childs).Complex elements are alphabetically ordered.

attachment	an attached document. An attachment can refer to an external document or be included with the document being exchanged (XPath PARTIn/PIheader/refDoc/attachment) 0-1 (N)
bank	details of the financial institution - base type: Nad, (XPath PARTIn/PIbody/Plitem/finInfo/bank) 0-1 (N*)
bankIT	Italian bank operations code (DEPRECATED, use IBAN) (XPath PARTIn/PIbody/Plitem/finInfo/bankIT) 1-1
externalReference	details about an external object, such as a document stored at a remote location (XPath PARTIn/PIheader/refDoc/attachment/externalReference) 0-99 (N)
finInfo	bank details relevant for the payment: bank coordinates, SWIFT code, account (XPath PARTIn/PIbody/Plitem/finInfo) 0-9 (Pp)
individual	Data of an individual. (XPath PARTIn/PIbody/Plitem/individual) 1-1 (N)
invoicee	Whole data of the invoicee. (XPath PARTIn/PIbody/Plitem/invoicee) 0-1 (N)
partyReference	Reference. (XPath PARTIn/PIbody/Plitem/partyReference) 0-unbounded (N)
payment	payment details for payment all in one (XPath PARTIn/PIbody/Plitem/payment) 0-5 (p) - note: <i>payment is used here to indicate the usual payment terms and conditions of the party (whether they are active or passive)</i>
PIbody	Body of the "Party Information" document. (XPath PARTIn/PIbody) 1-1 (N*)
PIheader	Header of the "Party Information" document. (XPath PARTIn/PIheader) 1-1 (N*)
Plitem	Party details. (XPath PARTIn/PIbody/Plitem) 1-unbounded (N)
receiverParty	Details of the party receiving the document. - base type: Nad, (XPath PARTIn/PIheader/receiverParty) 1-1 (N*)
refDoc	identification of a document and of an item thereof, to which the message makes reference (XPath PARTIn/PIheader/refDoc) 0-9 (P)
senderParty	Details of the party sending the document. - base type: Nad, (XPath PARTIn/PIheader/senderParty) 1-1 (N*)

thirdParty	details of the Third Party, different from Sender and Receiver of the document - base type: Nad, (XPath PARTIn/PIheader/thirdParty) 0-5 (AP)
-------------------	----------------------------------------------------------------------------------------------------------------------------------------------------

2.2.2 Simple elements (Basic Business Information Entities)

Simple elements are those elements whose content is characterized by a data type plus a domain of possible values. Simple elements are alphabetically ordered.

abi	ABI code - base type: string, length: 5, (XPath PARTIn/PIbody/PIitem/finInfo/bankIT/abi) 1-1
accountN	account number - base type: string, max length: 15, (XPath PARTIn/PIbody/PIitem/finInfo/bankIT/accountN) 1-1
accountName	account name - base type: string, max length: 250, (XPath PARTIn/PIbody/PIitem/finInfo/accountName) 0-1 (N)
additionalIdentifier	additional identification code of a Party, for example customs registries or others - base type: string, max length: 15, (XPath PARTIn/PIbody/PIitem/invoicee/additionalIdentifier) 0-9 (N) - note: <i>identifiers for example for exports, such as MID (Manufacturer Identification Code), EORI (E.O.R.I. - Economic Operator Registration and Identification)</i>
binaryObject	a binary large object containing an attached document, Coding 'base64Binary' is recommended. - base type: base64Binary, (XPath PARTIn/PIheader/refDoc/attachment/binaryObject) 0-1 (N)
birthDate	Birth date (in case of individuals). - base type: string, (XPath PARTIn/PIbody/PIitem/individual/birthDate) 0-1 (N)
brand	A brand name. - base type: string, (XPath PARTIn/PIbody/PIitem/brand) 0-unbounded (N) (XPath PARTIn/PIbody/PIitem/partyReference/brand) 0-unbounded (N)
cab	CAB code - base type: string, length: 5, (XPath PARTIn/PIbody/PIitem/finInfo/bankIT/cab) 1-1
@characterSet	the character set of the binary object (examples UTF-8, UTF-16, Windows-1252, ISO-8859-7,..) - base type: normalizedString, (XPath PARTIn/PIheader/refDoc/attachment/binaryObject/@characterSet) [Optional] (Na)
characterSetCode	the character set of an external document (examples UTF-8, UTF-16, Windows-1252, ISO-8859-7,..) - base type: normalizedString, (XPath PARTIn/PIheader/refDoc/attachment/externalReference/characterSetCode) 0-1 (N)
cin	CIN code - base type: string, length: 5,

	(XPath PARTIn/PIbody/PIitem/finInfo/bankIT/cin) 0-1
city	<p>name of the city (town, village)</p> <p>- base type: string, max length: 40,</p> <p>(XPath PARTIn/PIheader/thirdParty/city) 0-1</p> <p>(XPath PARTIn/PIbody/PIitem/invoicee/city) 0-1</p> <p>(XPath PARTIn/PIheader/receiverParty/city) 0-1</p> <p>(XPath PARTIn/PIheader/senderParty/city) 0-1</p> <p>(XPath PARTIn/PIbody/PIitem/finInfo/bank/city) 0-1</p> <p>(XPath PARTIn/PIbody/PIitem/partyReference/city) 0-1 (p)</p>
@codeList	<p>it specifies the URL where the list of codes used to make an instance of the element can be found</p> <p>- base type: string, max length: 255,</p> <p>(XPath PARTIn/PIbody/PIitem/brand/@codeList) [Optional] (a)</p> <p>- nota: <i>at least one out of this attribute and "numberingOrg" should be set</i></p> <p>(XPath PARTIn/PIbody/PIitem/partyReference/note/@codeList) [Optional]</p> <p>- nota: <i>must be used to provide (URL) the list of codes used in "noteLabel"</i></p> <p>(XPath PARTIn/PIbody/PIitem/partyReference/brand/@codeList) [Optional] (a)</p> <p>- nota: <i>at least one out of this attribute and "numberingOrg" should be set</i></p> <p>(XPath PARTIn/PIbody/PIitem/invoicee/note/@codeList) [Optional]</p> <p>- nota: <i>must be used to provide (URL) the list of codes used in "noteLabel"</i></p> <p>(XPath PARTIn/PIheader/note/@codeList) [Optional]</p> <p>- nota: <i>must be used to provide (URL) the list of codes used in "noteLabel"</i></p> <p>(XPath PARTIn/PIbody/PIitem/note/@codeList) [Optional]</p> <p>- nota: <i>must be used to provide (URL) the list of codes used in "noteLabel"</i></p> <p>(XPath PARTIn/PIbody/PIitem/finInfo/note/@codeList) [Optional]</p> <p>- nota: <i>must be used to provide (URL) the list of codes used in "noteLabel"</i></p> <p>(XPath PARTIn/PIheader/refDoc/season/@codeList) [Optional] (a)</p> <p>- nota: <i>this attribute should be used either single or coupled with "listName" and "listVersion"</i></p>
country	<p>code of the nation</p> <p>- base type: string, cod. table: T10</p> <p>http://www.ebiz.enea.it/moda-ml/repository/codelist/v2018-1/gc_T10.xml</p> <p>(XPath PARTIn/PIheader/senderParty/country) 0-1</p> <p>(XPath PARTIn/PIheader/receiverParty/country) 0-1</p> <p>(XPath PARTIn/PIbody/PIitem/finInfo/bank/country) 0-1</p> <p>(XPath PARTIn/PIheader/thirdParty/country) 0-1</p> <p>(XPath PARTIn/PIbody/PIitem/partyReference/country) 0-1 (p)</p> <p>(XPath PARTIn/PIbody/PIitem/invoicee/country) 0-1</p>
@dateForm	<p>format used for the date</p> <p>- base type: string, cod. table: NT29</p> <p>http://www.ebiz.enea.it/moda-ml/repository/codelist/v2018-1/gc_NT29.xml</p> <p>(XPath PARTIn/PIheader/validityEnd/@dateForm) [Optional]</p> <p>(XPath PARTIn/PIbody/PIitem/individual/birthDate/@dateForm) [Optional] (a)</p> <p>(XPath PARTIn/PIheader/msgDate/@dateForm) [Optional]</p> <p>(XPath PARTIn/PIheader/refDoc/docDate/@dateForm) [Optional]</p>
dept	<p>name or code of a contact department within a Party</p> <p>- base type: string, max length: 40,</p> <p>(XPath PARTIn/PIbody/PIitem/finInfo/bank/dept) 0-1</p> <p>(XPath PARTIn/PIheader/receiverParty/dept) 0-1</p> <p>(XPath PARTIn/PIheader/senderParty/dept) 0-1</p> <p>(XPath PARTIn/PIbody/PIitem/partyReference/dept) 0-1</p> <p>(XPath PARTIn/PIheader/thirdParty/dept) 0-1</p>
docDate	<p>date of issue of the referenced document, according to one of the patterns Y YYY-MM-DD, YYYY-MM-DD:HH-MM or YYYY-WW.</p> <p>- base type: string,</p> <p>(XPath PARTIn/PIheader/refDoc/docDate) 0-1</p>
docID	<p>identification number of the referenced document SINCE 2008-1 ITS USE I N THE HEADER IS DISCOURAGED (REPLACED BY msgID)</p> <p>- base type: string, max length: 80,</p> <p>(XPath PARTIn/PIheader/refDoc/docID) 1-2 (p)</p>

	AAAA-WARNING! - text not AVAILABLE n. 245 - In=en
@docType	type or class to which the referenced document belongs - base type: string, cod. table: T21 http://www.ebiz.enea.it/moda-ml/repository/codelist/v2018-1/gc_T21.xml (XPath PARTIn/PIheader/refDoc/@docType) [Required]
@email	electronic mail address of the contact person within a Party - base type: string, max length: 250, (XPath PARTIn/PIheader/thirdParty/person/@email) [Optional] (XPath PARTIn/PIbody/PIitem/finInfo/bank/person/@email) [Optional] (XPath PARTIn/PIheader/senderParty/person/@email) [Optional] (XPath PARTIn/PIbody/PIitem/partyReference/person/@email) [Optional] (XPath PARTIn/PIheader/receiverParty/person/@email) [Optional]
@encoding	specifies the decoding algorithm of the binary object - base type: normalizedString, (XPath PARTIn/PIheader/refDoc/attachment/binaryObject/@encoding) [Optional] (Na)
encodingCode	the encoding/decoding algorithm used with the external object (example is 'base64Binary') - base type: normalizedString, (XPath PARTIn/PIheader/refDoc/attachment/externalReference/encodingCode) 0-1 (N)
@fax	fax number of the contact person within a Party - base type: string, max length: 35, (XPath PARTIn/PIbody/PIitem/finInfo/bank/person/@fax) [Optional] (XPath PARTIn/PIheader/thirdParty/person/@fax) [Optional] (XPath PARTIn/PIheader/receiverParty/person/@fax) [Optional] (XPath PARTIn/PIbody/PIitem/partyReference/person/@fax) [Optional] (XPath PARTIn/PIheader/senderParty/person/@fax) [Optional]
fileName	unique identifier (name) of the file - base type: string, max length: 255, (XPath PARTIn/PIheader/refDoc/attachment/fileName) 0-1 (N)
@finDiscount	financial discount rate applied for payment by the date specified - base type: decimal, min inclusive: 0, max inclusive: 100, fraction digits: 2, (XPath PARTIn/PIbody/PIitem/payment/@finDiscount) [Optional]
@finSurcharge	financial surcharge rate applied for payment after the date specified - base type: decimal, min inclusive: 0, max inclusive: 100, fraction digits: 2, (XPath PARTIn/PIbody/PIitem/payment/@finSurcharge) [Optional]
firstName	Person first name. - base type: string, (XPath PARTIn/PIbody/PIitem/invoicee/firstName) 1-1 (N) (XPath PARTIn/PIbody/PIitem/individual/firstName) 0-1 (N)
@format	the format of the binary content (examples xml, pdf, doc,...) - base type: string, (XPath PARTIn/PIheader/refDoc/attachment/binaryObject/@format) [Optional] (Na)
formatCode	the format of the external object (examples xml, pdf, doc,...) - base type: normalizedString, (XPath PARTIn/PIheader/refDoc/attachment/externalReference/formatCode) 0-1 (N)
gender	The state of being male or female (in case of individual). - base type: string, length: 1, cod. table: NT73 http://www.ebiz.enea.it/moda-ml/repository/codelist/v2018-1/gc_NT73.xml (XPath PARTIn/PIbody/PIitem/individual/gender) 0-1 (N)

iban	international bank and account identifier, used for fund transfer - base type: string, max length: 35, (XPath PARTIn/PIbody/PIitem/finInfo/iban) 1-1
id	primary identification code of a Party; it is recommended the format: nation code (ISO 3166) + VAT identification number (11 crt), with the qualifier "numberingOrg"= MF - base type: string, max length: 15, (XPath PARTIn/PIheader/thirdParty/id) 1-1 (XPath PARTIn/PIheader/receiverParty/id) 1-1 (XPath PARTIn/PIheader/senderParty/id) 1-1
@idQualifier	Qualification of the identifier. - base type: string, (XPath PARTIn/PIbody/PIitem/invoicee/partyQualifiedID/@idQualifier) [Optional] (Na) (XPath PARTIn/PIbody/PIitem/invoicee/additionalIdentifier/@idQualifier) [Optional] (Na) - nota: <i>this attribute should be used when the numberingOrg attribute is not enough to declare the type of identifier</i> (XPath PARTIn/PIbody/PIitem/partyQualifiedID/@idQualifier) [Optional] (Na)
@isURL	it indicates if the referred element is an URL (true) or not (false) - base type: boolean, (XPath PARTIn/PIheader/refDoc/attachment/externalReference/uri/@isURL) [Optional] [Default= true] (Na) - nota: <i>usage of URLs is recommended</i>
itemID	number of the line/item of the referenced document - base type: string, max length: 40, (XPath PARTIn/PIheader/refDoc/itemID) 0-1 (U)
language	Language. - base type: string, cod. table: NT60 http://www.ebiz.enea.it/moda-ml/repository/codelist/v2018-1/gc_NT60.xml (XPath PARTIn/PIbody/PIitem/language) 0-unbounded (N)
lastName	Person last name. - base type: string, (XPath PARTIn/PIbody/PIitem/individual/lastName) 1-1 (N) (XPath PARTIn/PIbody/PIitem/invoicee/lastName) 1-1 (N)
@legalEntity	It indicates whether the party is a legal entity or individual ("True" = legal entity, "False" = individual). - base type: boolean, (XPath PARTIn/PIbody/PIitem/@legalEntity) [Required] (Na)
legalName	legal name of a Party - base type: string, max length: 250, (XPath PARTIn/PIbody/PIitem/partyReference/legalName) 0-1 (U) (XPath PARTIn/PIbody/PIitem/finInfo/bank/legalName) 0-1 (U) (XPath PARTIn/PIbody/PIitem/legalName) 1-1 (U) (XPath PARTIn/PIheader/thirdParty/legalName) 0-1 (U) (XPath PARTIn/PIbody/PIitem/finInfo/bankIT/legalName) 0-1 (U) (XPath PARTIn/PIheader/senderParty/legalName) 0-1 (U) (XPath PARTIn/PIheader/receiverParty/legalName) 0-1 (U) (XPath PARTIn/PIbody/PIitem/invoicee/legalName) 1-1 (U)
@listName	the name of the list of codes used to make an instance of the element (it might be thought as descriptive element, i.e. 'fabric printing technologies', or not, i.e. "T264") - base type: string, max length: 40, (XPath PARTIn/PIheader/refDoc/season/@listName) [Optional] (a) - nota: <i>this attribute should always be used coupled with "numberingOrg"</i> (XPath PARTIn/PIbody/PIitem/partyReference/brand/@listName) [Optional] (a)

	<p>- nota: <i>this attribute should always be used coupled with "numberingOrg"</i> (XPath PARTIn/PIbody/PIitem/brand/@listName) [Optional] (a)</p> <p>- nota: <i>this attribute should always be used coupled with "numberingOrg"</i></p>
@listVersion	<p>it specifies the version of the list of codes used to make an instance of the element</p> <p>- base type: string, max length: 6, (XPath PARTIn/PIbody/PIitem/brand/@listVersion) [Optional] (a)</p> <p>- nota: <i>this attribute should always be used coupled with "numberingOrg" and "listName"</i> (XPath PARTIn/PIbody/PIitem/partyReference/brand/@listVersion) [Optional] (a)</p> <p>- nota: <i>this attribute should always be used coupled with "numberingOrg" and "listName"</i> (XPath PARTIn/PIheader/refDoc/season/@listVersion) [Optional] (a)</p> <p>- nota: <i>this attribute should always be used coupled with "numberingOrg" and "listName"</i></p>
@ln	<p>Language code.</p> <p>- base type: string, cod. table: NT60 http://www.ebiz.enea.it/moda-ml/repository/codelist/v2018-1/gc_NT60.xml (XPath PARTIn/PIbody/PIitem/partyDescription/@ln) [Optional] (Na)</p>
@logo	<p>company logo (URL of the image jpeg or gif). It is recommended that the width of the image does not exceed 640 pixel.</p> <p>- base type: string, max length: 255, (XPath PARTIn/PIbody/PIitem/@logo) [Optional] (a)</p>
@mime	<p>the mime type of the binary object</p> <p>- base type: normalizedString, (XPath PARTIn/PIheader/refDoc/attachment/binaryObject/@mime) [Optional] (Na)</p>
mimeCode	<p>mime type of the external object</p> <p>- base type: normalizedString, (XPath PARTIn/PIheader/refDoc/attachment/externalReference/mimeCode) 0-1 (N)</p> <hr/> <p>AAAA-WARNING! - text not AVAILABLE n. 245 - ln=en</p>
msgDate	<p>date of issue of the present message (xml document), according to one of the patterns YYYY-MM-DD, YYYY-MM-DD:HH-MM or YYYY-WW.</p> <p>- base type: string, (XPath PARTIn/PIheader/msgDate) 1-1 (p)</p>
@msgfunction	<p>function performed by the present message with regards to the transmission</p> <p>- base type: string, cod. table: NT18 http://www.ebiz.enea.it/moda-ml/repository/codelist/v2018-1/gc_NT18.xml (XPath PARTIn/@msgfunction) [Optional] [Default= OR] (a*)</p>
msgID	<p>key identifier of the business document in the information system of the issuing Party. In case of more despatches of the same business document, it is unchanged.</p> <p>- base type: string, max length: 35, (XPath PARTIn/PIheader/msgID) 0-1 (p)</p>
msgN	<p>identification number given to the message (xml document) by its issuer. In case of more despatches of the same business document, it changes.</p> <p>- base type: string, max length: 35, (XPath PARTIn/PIheader/msgN) 1-1 (p)</p>
note	<p>free text or structured (computer processing) note. For note structuring use the attributes "noteLabel" and "codelist"</p> <p>- base type: string, max length: 350, (XPath PARTIn/PIheader/note) 0-99 (XPath PARTIn/PIbody/PIitem/partyReference/note) 0-unbounded (XPath PARTIn/PIbody/PIitem/note) 0-99 (XPath PARTIn/PIbody/PIitem/invoicee/note) 0-unbounded (XPath PARTIn/PIbody/PIitem/finInfo/note) 0-99</p>

@noteLabel	<p>subject qualifier of a note</p> <ul style="list-style-type: none"> - base type: string, max length: 35, (XPath PARTIn/PIheader/note/@noteLabel) [Optional] - nota: <i>must be used to qualify the subject of the note</i> (XPath PARTIn/PIbody/PIitem/note/@noteLabel) [Optional] - nota: <i>must be used to qualify the subject of the note</i> (XPath PARTIn/PIbody/PIitem/finInfo/note/@noteLabel) [Optional] - nota: <i>must be used to qualify the subject of the note</i> (XPath PARTIn/PIbody/PIitem/invoicee/note/@noteLabel) [Optional] - nota: <i>must be used to qualify the subject of the note</i> (XPath PARTIn/PIbody/PIitem/partyReference/note/@noteLabel) [Optional] - nota: <i>must be used to qualify the subject of the note</i>
@numberingOrg	<p>code specifying the organisation who has created or owns the coding or numbering system</p> <ul style="list-style-type: none"> - base type: string, cod. table: NT6 http://www.ebiz.enea.it/moda-ml/repository/codelist/v2018-1/gc_NT6.xml (XPath PARTIn/PIbody/PIitem/invoicee/partyQualifiedID/@numberingOrg) [Optional] (a) (XPath PARTIn/PIbody/PIitem/invoicee/note/@numberingOrg) [Optional] - nota: <i>must be used to specify the organization that created the list of codes used in "noteLabel"</i> (XPath PARTIn/PIbody/PIitem/finInfo/note/@numberingOrg) [Optional] - nota: <i>must be used to specify the organization that created the list of codes used in "noteLabel"</i> (XPath PARTIn/PIbody/PIitem/partyReference/note/@numberingOrg) [Optional] - nota: <i>must be used to specify the organization that created the list of codes used in "noteLabel"</i> (XPath PARTIn/PIbody/PIitem/invoicee/additionalIdentifier/@numberingOrg) [Optional] (a) - nota: <i>here the issuer of the identifier must be specified</i> (XPath PARTIn/PIbody/PIitem/note/@numberingOrg) [Optional] - nota: <i>must be used to specify the organization that created the list of codes used in "noteLabel"</i> (XPath PARTIn/PIheader/thirdParty/id/@numberingOrg) [Optional] (XPath PARTIn/PIbody/PIitem/partyReference/brand/@numberingOrg) [Optional] (a) - nota: <i>this attribute should be used either single or coupled with "listName" and "listVersion"</i> (XPath PARTIn/PIheader/note/@numberingOrg) [Optional] - nota: <i>must be used to specify the organization that created the list of codes used in "noteLabel"</i> (XPath PARTIn/PIbody/PIitem/partyQualifiedID/@numberingOrg) [Optional] (a) (XPath PARTIn/PIbody/PIitem/brand/@numberingOrg) [Optional] (a) - nota: <i>this attribute should be used either single or coupled with "listName" and "listVersion"</i> (XPath PARTIn/PIheader/refDoc/attachment/fileName/@numberingOrg) [Optional] (a) (XPath PARTIn/PIheader/refDoc/season/@numberingOrg) [Optional] (a) - nota: <i>this attribute should be used either single or coupled with "listName" and "listVersion"</i> (XPath PARTIn/PIheader/refDoc/docID/@numberingOrg) [Optional] - nota: <i>here can be specified whose document numbering is used (e.g.: Client, Supplier, ..)</i> (XPath PARTIn/PIheader/senderParty/id/@numberingOrg) [Optional] (XPath PARTIn/PIheader/receiverParty/id/@numberingOrg) [Optional]
partyCategory	<p>Code qualifying the Party respect with reference to a category (for example: cluster, market, ...).</p> <ul style="list-style-type: none"> - base type: string, (XPath PARTIn/PIbody/PIitem/partyCategory) 0-unbounded (N)
@partyCategoryType	<p>Category type for party classification.</p> <ul style="list-style-type: none"> - base type: string, (XPath PARTIn/PIbody/PIitem/partyCategory/@partyCategoryType) [Required] (Na)

partyDescription	Free text description of a party. - base type: string, (XPath PARTIn/PIbody/PIitem/partyDescription) 0-unbounded (N)
partyQualifiedID	Identification code of a Party. - base type: string, (XPath PARTIn/PIbody/PIitem/partyQualifiedID) 0-unbounded (N) (XPath PARTIn/PIbody/PIitem/invoicee/partyQualifiedID) 0-1 (N)
payMode	way or means of payment - base type: string, cod. table: T2 http://www.ebiz.enea.it/moda-ml/repository/codelist/v2018-1/gc_T2.xml (XPath PARTIn/PIbody/PIitem/payment/payMode) 0-1
payTerm	code specifying the terms or time by which the payment must be done - base type: string, cod. table: T1 http://www.ebiz.enea.it/moda-ml/repository/codelist/v2018-1/gc_T1.xml (XPath PARTIn/PIbody/PIitem/payment/payTerm) 1-1
payTermText	free text specifying the terms by which the payment must be done (time/mode or means) - base type: string, max length: 250, (XPath PARTIn/PIbody/PIitem/payment/payTermText) 1-1 (U) (XPath PARTIn/PIbody/PIitem/payTermText) 0-unbounded (U) - note: <i>DEPRECATED</i> , use 'payment' element.
person	name of the contact person within a Party - base type: string, max length: 40, (XPath PARTIn/PIheader/receiverParty/person) 0-1 (XPath PARTIn/PIheader/senderParty/person) 0-1 (XPath PARTIn/PIbody/PIitem/partyReference/person) 0-1 (p) (XPath PARTIn/PIbody/PIitem/finInfo/bank/person) 0-1 (XPath PARTIn/PIheader/thirdParty/person) 0-1
@phone	phone number of the contact person within a Party - base type: string, max length: 35, (XPath PARTIn/PIheader/senderParty/person/@phone) [Optional] (XPath PARTIn/PIheader/thirdParty/person/@phone) [Optional] (XPath PARTIn/PIheader/receiverParty/person/@phone) [Optional] (XPath PARTIn/PIbody/PIitem/partyReference/person/@phone) [Optional] (XPath PARTIn/PIbody/PIitem/finInfo/bank/person/@phone) [Optional]
postCode	code defining the postal zone - base type: string, max length: 10, (XPath PARTIn/PIheader/thirdParty/postCode) 0-1 (XPath PARTIn/PIbody/PIitem/partyReference/postCode) 0-1 (p) (XPath PARTIn/PIheader/senderParty/postCode) 0-1 (XPath PARTIn/PIbody/PIitem/finInfo/bank/postCode) 0-1 (XPath PARTIn/PIheader/receiverParty/postCode) 0-1 (XPath PARTIn/PIbody/PIitem/invoicee/postCode) 0-1
@refQualifier	Reference qualifier (for ex. main contact, operating headquarters, invoicing, shipping, purchasing department, storage, ...). - base type: string, (XPath PARTIn/PIbody/PIitem/partyReference/@refQualifier) [Optional] (Na)
@role	Third Party role qualifier - base type: string, cod. table: NT2 http://www.ebiz.enea.it/moda-ml/repository/codelist/v2018-1/gc_NT2.xml (XPath PARTIn/PIheader/thirdParty/@role) [Required]
season	sale season; defined as: season (1 crt) + year (4 crt) - season: S/S=1 A/W=2 Spring=3 Summer=4 Autumn=5 Winter=6: for more than four seasons use alphabetic sequence: 1st season=A 2nd season=B etc.etc. - base type: string, max length: 15, (XPath PARTIn/PIheader/refDoc/season) 0-1 (A) - note: <i>here indicates the season to which the referenced document belongs</i>

@sender	<p>qualifier that specifies the Party issuing of the document</p> <ul style="list-style-type: none"> - base type: boolean, (XPath PARTIn/PIheader/thirdParty/@sender) [Optional] (a*) - nota: <i>This attribute is mandatory when the STYLESHEET must be used</i> (XPath PARTIn/PIheader/senderParty/@sender) [Optional] (a*) - nota: <i>This attribute is mandatory when the STYLESHEET must be used.</i> (XPath PARTIn/PIheader/receiverParty/@sender) [Optional] (a*) - nota: <i>This attribute is mandatory when the STYLESHEET must be used.</i>
street	<p>street and building number identifying a location</p> <ul style="list-style-type: none"> - base type: string, max length: 80, (XPath PARTIn/PIbody/PIitem/partyReference/street) 0-1 (p) (XPath PARTIn/PIheader/senderParty/street) 0-1 (XPath PARTIn/PIbody/PIitem/finInfo/bank/street) 0-1 (XPath PARTIn/PIheader/thirdParty/street) 0-1 (XPath PARTIn/PIheader/receiverParty/street) 0-1 (XPath PARTIn/PIbody/PIitem/invoicee/street) 0-1
subCountry	<p>short name or code of the sub-country entity</p> <ul style="list-style-type: none"> - base type: string, max length: 9, (XPath PARTIn/PIheader/thirdParty/subCountry) 0-1 (XPath PARTIn/PIbody/PIitem/invoicee/subCountry) 0-1 (XPath PARTIn/PIbody/PIitem/partyReference/subCountry) 0-1 (p) (XPath PARTIn/PIheader/senderParty/subCountry) 0-1 (XPath PARTIn/PIbody/PIitem/finInfo/bank/subCountry) 0-1 (XPath PARTIn/PIheader/receiverParty/subCountry) 0-1
subDept	<p>name or code of a contact department within a Party</p> <ul style="list-style-type: none"> - base type: string, max length: 40, (XPath PARTIn/PIheader/thirdParty/subDept) 0-1 (N) (XPath PARTIn/PIheader/receiverParty/subDept) 0-1 (N) (XPath PARTIn/PIbody/PIitem/finInfo/bank/subDept) 0-1 (N) (XPath PARTIn/PIheader/senderParty/subDept) 0-1 (N)
swift	<p>swift code relevant to the financial transaction</p> <ul style="list-style-type: none"> - base type: string, max length: 15, (XPath PARTIn/PIbody/PIitem/finInfo/swift) 0-1
@uid	<p>unique element identifier within the xml document</p> <ul style="list-style-type: none"> - base type: string, (XPath PARTIn/PIheader/refDoc/attachment/@uid) [Optional]
uri	<p>Uniform Resource Identifier (URI) that identifies the external object as an Internet resource</p> <ul style="list-style-type: none"> - base type: normalizedString, (XPath PARTIn/PIheader/refDoc/attachment/externalReference/uri) 1-1 (N)
@useProfile	<p>use profile to which the present document is compliant if it was agreed by the parties. It is suggested a URI with reference to the firms or the URL of the profile.</p> <ul style="list-style-type: none"> - base type: string, (XPath PARTIn/@useProfile) [Optional]
validityEnd	<p>date by which the validity ends, according to one of the patterns YYYY-MM-DD, YYYY-MM-DD:HH-MM or YYYY-WW.</p> <ul style="list-style-type: none"> - base type: string, (XPath PARTIn/PIheader/validityEnd) 0-1
@VAT	<p>VAT rate or code (DEPRECATED, use dtScheme element)</p> <ul style="list-style-type: none"> - base type: string, cod. table: NT16 http://www.ebiz.enea.it/moda-ml/repository/codelist/v2018-1/gc_NT16.xml (XPath PARTIn/PIheader/thirdParty/@VAT) [Optional]
@version	<p>Dictionary version from which the instance has been created</p> <ul style="list-style-type: none"> - base type: string, cod. table: NT100 http://www.ebiz.enea.it/moda-ml/repository/codelist/v2018-1/gc_NT100.xml

	(XPath PARTIn/@version) [Optional] [Default= 2018-1]
--	------------------------------------------------------

2.3 Suggested best practices

PARTIn/PIheader/refDoc/docID (identification number of the referenced document SINCE 2008-1 ITS USE IN THE HEADER IS DISCOURAGED (REPLACED BY msgID))

numberingOrg indicates the role that produced the document identifier (it is allowed to declare two different ones -e.g. customer and supplier - with two docID with different numberingOrg

PARTIn/PIheader/refDoc/attachment/externalReference/mimeCode (mime type of the external object)

Use coding from IANA <http://www.iana.org/assignments/media-types/media-types.xml>

2.4 Enumeration tables

List of enumeration tables used in the XML document. You can find the corresponding codes at:
<http://www.ebiz-tcf.eu/moda-ml/imple/moda-ml-2018-1.asp?lingua=en&pag=6>

Legenda

- N: new table
- U: updated properties

NT100 - eBIZ TCFUpstream version

NT16 - VAT rate or code

NT18 - message function

NT2 - third party qualifier

NT29 - format of a date

NT6 - coding system owner/issuer

NT60 - language, codes from ISO 639-1 (subset) (N)

NT73 - Gender (N)

T1 - terms of payment

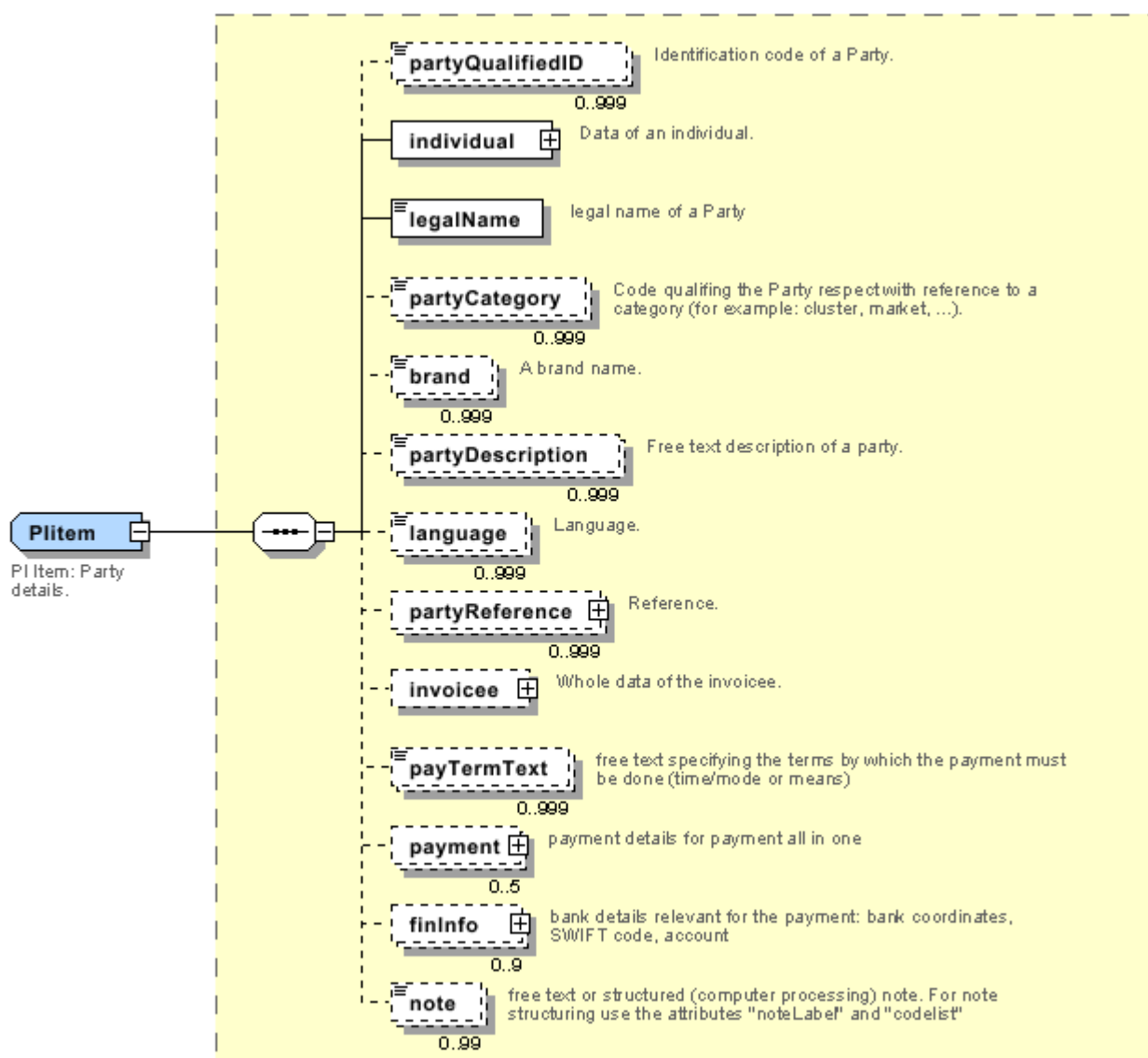
T10 - ISO3166 - Country

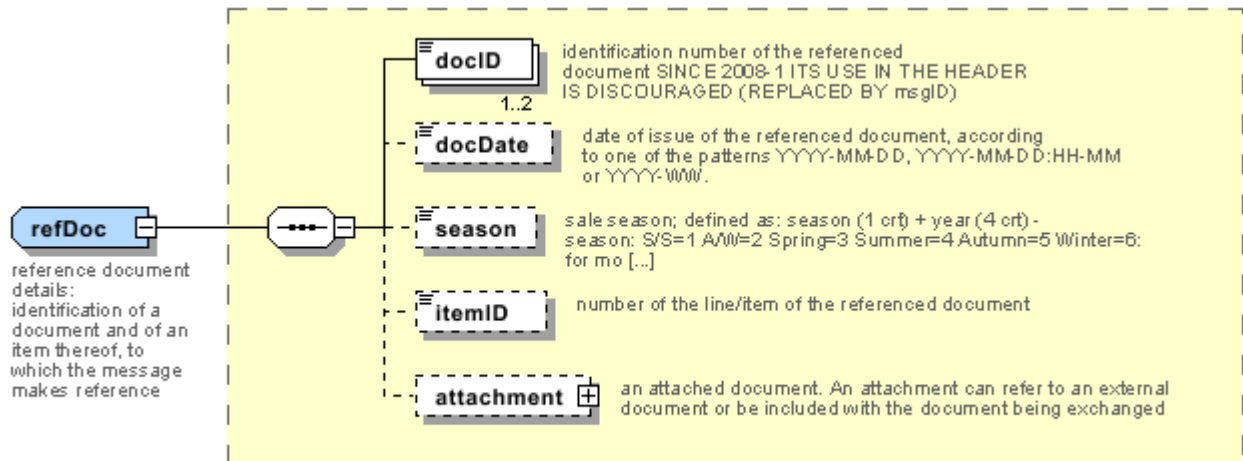
T2 - Modes of payment

T21 - type of document

Annex A

Representative images of the principal complex elements' structure.





Annex B

NT100 - eBIZ TCFUpstream version

dictionary version

Agency name: eBIZ

tabella cod.: NT100

File codes list (Generic code): http://www.ebiz.enea.it/moda-ml/repository/codelist/v2018-1/gc_NT100.xml

Code	Description	Adoption note	Version status	Date of insertion
2013-1	v2013-1			01/07/2013
2018-1	v2018-1		(N)	04/11/2018
draft	draft		(N)	08/09/2017

NT16 - VAT rate or code

VAT rate or code (DEPRECATED, use dtScheme element)

tabella cod.: NT16

File codes list (Generic code): http://www.ebiz.enea.it/moda-ml/repository/codelist/v2018-1/gc_NT16.xml

NT18 - message function

function performed by the present message with regards to the transmission

Agency name: eBIZ

tabella cod.: NT18

File codes list (Generic code): http://www.ebiz.enea.it/moda-ml/repository/codelist/v2018-1/gc_NT18.xml

Code	Description	Adoption note	Version status	Date of insertion
CA	delete this document			01/07/2013
CP	copy			
OR	original			
RC	re-transmission for data correction			
RT	re-transmission			

NT2 - third party qualifier

Third Party role qualifier

Agency name: eBIZ

tabella cod.: NT2

File codes list (Generic code): http://www.ebiz.enea.it/moda-ml/repository/codelist/v2018-1/gc_NT2.xml

Code	Description	Adoption note	Version status	Date of insertion
AG	Sales Agent			
AU	Auditor		(N)	08/04/2019
CE	Certification authority		(N)	08/04/2019
CO	Quality Controller			
DC	Response to			
DF	Invoicee			
DI	Copy to (CC)			28/10/2014
DM	Consignee			
DP	Consignment address (Delivery Party)			
IM	Importer			
OR	Originator			10/09/2014
SC	Sub contractor		(N)	10/04/2019
SM	Service/ePlatform manager		(N)	08/04/2019
SP	Forwarder			
TX	Tax Representative			

NT29 - format of a date

format used for the date

Agency name: eBIZ

tabella cod.: NT29

File codes list (Generic code): http://www.ebiz.enea.it/moda-ml/repository/codelist/v2018-1/gc_NT29.xml

Code	Description	Adoption note	Version status	Date of insertion
D	YYYY-MM-DD			
M	YYYY-MM-DD:HH-MM			
W	YYYY-WW			

NT6 - coding system owner/issuer

code specifying the organisation who has created or owns the coding or numbering system

Agency name: eBIZ

tabella cod.: NT6

File codes list (Generic code): http://www.ebiz.enea.it/moda-ml/repository/codelist/v2018-1/gc_NT6.xml

Code	Description	Adoption note	Version status	Date of insertion
CL	Customer/buyer			
CO	Quality Controller			
EB	eBIZ	replaces 'ML'	(N)	18/03/2019
EN	GS1 (ex-EAN International)			
ES	e-Stockflow			
FO	Supplier			
GS	GS1			01/07/2013
MF	VAT identifier		(U)	
ML	Moda-ML	DEPRECATED	(U)	
SP	Service Provider			

NT60 - language, codes from ISO 639-1 (subset) (N)

Agency name: eBIZ / ISO

tabella cod.: NT60

File codes list (Generic code): http://www.ebiz.enea.it/moda-ml/repository/codelist/v2018-1/gc_NT60.xml

Code	Description	Adoption note	Version status	Date of insertion
af	Afrikaans		(N)	31/01/2019
ar	Arabic		(N)	31/01/2019
be	Belarusian		(N)	31/01/2019
bg	Bulgarian		(N)	31/01/2019
bn	Bengali		(N)	31/01/2019
bo	Tibetan		(N)	31/01/2019
bs	Bosnian		(N)	31/01/2019
ca	Catalan, Valencian		(N)	31/01/2019
cs	Czech		(N)	31/01/2019
da	Danish		(N)	31/01/2019
de	German		(N)	31/01/2019
el	Greek, Modern (1453-)		(N)	31/01/2019
en	English		(N)	31/01/2019

eo	Esperanto		(N)	31/01/2019
es	Spanish, Castilian		(N)	31/01/2019
et	Estonian		(N)	31/01/2019
eu	Basque		(N)	31/01/2019
F	Female		(N)	15/04/2019
fa	Persian		(N)	31/01/2019
fi	Finnish		(N)	31/01/2019
fr	French		(N)	31/01/2019
ga	Irish		(N)	31/01/2019
gd	Gaelic, Scottish Gaelic		(N)	31/01/2019
gn	Guarani		(N)	31/01/2019
he	Hebrew		(N)	31/01/2019
hr	Croatian		(N)	31/01/2019
ht	Haitian, Haitian Creole		(N)	31/01/2019
hu	Hungarian		(N)	31/01/2019
hy	Armenian		(N)	31/01/2019
ia	Interlingua (International Auxiliary Language Association)		(N)	31/01/2019
id	Indonesian		(N)	31/01/2019
is	Icelandic		(N)	31/01/2019
it	Italian		(N)	31/01/2019
ja	Japanese		(N)	31/01/2019
jv	Javanese		(N)	31/01/2019
ka	Georgian		(N)	31/01/2019
km	Central Khmer		(N)	31/01/2019
ko	Korean		(N)	31/01/2019
ku	Kurdish		(N)	31/01/2019
lb	Luxembourgish, Letzeburgesch		(N)	31/01/2019
lo	Lao		(N)	31/01/2019
lt	Lithuanian		(N)	31/01/2019
lv	Latvian		(N)	31/01/2019
mg	Malagasy		(N)	31/01/2019
mk	Macedonian		(N)	31/01/2019
mn	Mongolian		(N)	31/01/2019
mt	Maltese		(N)	31/01/2019
nl	Dutch, Flemish		(N)	31/01/2019

no	Norwegian		(N)	31/01/2019
pl	Polish		(N)	31/01/2019
pt	Portuguese		(N)	31/01/2019
ro	Romanian, Moldavian, Moldovan		(N)	31/01/2019
ru	Russian		(N)	31/01/2019
se	Northern Sami		(N)	31/01/2019
sk	Slovak		(N)	31/01/2019
sl	Slovenian		(N)	31/01/2019
sm	Samoan		(N)	31/01/2019
so	Somali		(N)	31/01/2019
sq	Albanian		(N)	31/01/2019
sr	Serbian		(N)	31/01/2019
sv	Swedish		(N)	31/01/2019
sw	Swahili		(N)	31/01/2019
ta	Tamil		(N)	31/01/2019
th	Thai		(N)	31/01/2019
tr	Turkish		(N)	31/01/2019
uk	Ukrainian		(N)	31/01/2019
ur	Urdu		(N)	31/01/2019
uz	Uzbek		(N)	31/01/2019
vi	Vietnamese		(N)	31/01/2019
zh	Chinese		(N)	31/01/2019

NT73 - Gender (N)

Agency name: eBIZ

tabella cod.: NT73

File codes list (Generic code): http://www.ebiz.enea.it/moda-ml/repository/codelist/v2018-1/gc_NT73.xml

Code	Description	Adoption note	Version status	Date of insertion
F	Female		(N)	15/04/2019
M	Male		(N)	15/04/2019

T1 - terms of payment

code specifying the terms or time by which the payment must be done

Agency name: eBIZ

tabella cod.: T1

File codes list (Generic code): http://www.ebiz.enea.it/moda-ml/repository/codelist/v2018-1/gc_T1.xml

Code	Description	Adoption note	Version status	Date of insertion
ANTICIP	PAYMENT IN ADVANCE			
BLCOLLECT/120D	BILL OF LADING 120 DD			
BLCOLLECT/30D	BILL OF LADING 30 DD			
BLCOLLECT/60D	BILL OF LADING 60 DD			
BLCOLLECT/90D	BILL OF LADING 90 DD			
CASH	PAYMENT ON DELIVERY			
CASHINV	PAYMENT ON RECEIPT OF INVOICE			
CREDOC/0D	DOCUMENTARY CREDIT FOR PAYM. AT SIGHT			
CREDOC/120	DOCUMENTARY CREDIT FOR PAYM. AT 120 DD			
CREDOC/150	DOCUMENTARY CREDIT FOR PAYM. AT 150 DD			
CREDOC/180	DOCUMENTARY CREDIT FOR PAYM. AT 180 DD			
CREDOC/30D	DOCUMENTARY CREDIT FOR PAYM. AT 30 DD			
CREDOC/45D	DOCUMENTARY CREDIT FOR PAYM. AT 45 DD			
CREDOC/60	DOCUMENTARY CREDIT FOR PAYM. AT 60 DD			
CREDOC/90	DOCUMENTARY CREDIT FOR PAYM. AT 90 DD			
DEL/10	PAYMENT AT 10 DD AFTER DELIVERY			
DOCOLLECT/120D	DOCUMENTARY COLLECTION AT 120 DD			
DOCOLLECT/30D	DOCUMENTARY COLLECTION AT 30 DD			
DOCOLLECT/60D	DOCUMENTARY COLLECTION AT 60 DD			
DOCOLLECT/90D	DOCUMENTARY COLLECTION AT 90 DD			
INV/120D	PAYMENT AT 120 DD AFTER RECEIPT OF INVOICE			
INV/150D	PAYMENT AT 150 DD AFTER RECEIPT OF INVOICE			
INV/180D	PAYMENT AT 180 DD AFTER RECEIPT OF INVOICE			
INV/30D	PAYMENT AT 30 DD AFTER RECEIPT OF INVOICE			
INV/45D	PAYMENT AT 45 DD AFTER RECEIPT OF INVOICE			
INV/60D	PAYMENT AT 60 DD AFTER RECEIPT OF INVOICE			
INV/90D	PAYMENT AT 90 DD AFTER RECEIPT OF INVOICE			

INVULTIMO	PAYMENT AT END MONTH RECEIPT INVOICE			
INVULTIMO/10D	PAYMENT 10 DD AFTER END MONTH RECEIPT INVOICE			
INVULTIMO/120D	PAYMENT 120 DD AFTER END MONTH RECEIPT INVOICE			
INVULTIMO/150D	PAYMENT 150 DD AFTER END MONTH RECEIPT INVOICE			
INVULTIMO/180D	PAYMENT 180 DD AFTER END MONTH RECEIPT INVOICE			
INVULTIMO/240D	PAYMENT 240 DD AFTER END MONTH RECEIPT INVOICE			
INVULTIMO/30D	PAYMENT 30 DD AFTER END MONTH RECEIPT INVOICE			
INVULTIMO/45D	PAYMENT 45 DD AFTER END MONTH RECEIPT INVOICE			
INVULTIMO/60D	PAYMENT 60 DD AFTER END MONTH RECEIPT INVOICE			
INVULTIMO/90D	PAYMENT 90 DD AFTER END MONTH RECEIPT INVOICE			
NOPAY	WITHOUT PAYMENT			
RECREDOC/0D	IRREVOC. DOCUMENTARY CREDIT FOR PAYM. AT SIGHT			
RECREDOC/120D	IRREVOC. DOCUMENTARY CREDIT FOR PAYM. AT 120 DD			
RECREDOC/150D	IRREVOC. DOCUMENTARY CREDIT FOR PAYM. AT 150 DD			
RECREDOC/180D	IRREVOC. DOCUMENTARY CREDIT FOR PAYM. AT 180 DD			
RECREDOC/30D	IRREVOC. DOCUMENTARY CREDIT FOR PAYM. AT 30 DD			
RECREDOC/45D	IRREVOC. DOCUMENTARY CREDIT FOR PAYM. AT 45 DD			
RECREDOC/60D	IRREVOC. DOCUMENTARY CREDIT FOR PAYM. AT 60 DD			
RECREDOC/90D	IRREVOC. DOCUMENTARY CREDIT FOR PAYM. AT 90 DD			
ULTIMO	PAYMENT BY END MONTH OF DELIVERY			
ULTIMO/10	PAYMENT AT 10 DD AFTER END MONTH OF DELIVERY			

T10 - ISO3166 - Country

code of the nation

Agency name: ISO

tabella cod.: T10

File codes list (Generic code): http://www.ebiz.enea.it/moda-ml/repository/codelist/v2018-1/gc_T10.xml

Table not printed: there are 239 elements, more than the maximum specified for printing: 99.

T2 - Modes of payment

way or means of payment

Agency name: eBIZ

tabella cod.: T2

File codes list (Generic code): http://www.ebiz.enea.it/moda-ml/repository/codelist/v2018-1/gc_T2.xml

Code	Description	Adoption note	Version status	Date of insertion
BB	bank transfer			
IA	collection through Agent			
IS	collection through Forwarder			
RB	bank receipt			
RD	remittance			
SW	bank SWIFT			
TR	bank draft			

T21 - type of document

type or class to which the referenced document belongs

Agency name: eBIZ

tabella cod.: T21

File codes list (Generic code): http://www.ebiz.enea.it/moda-ml/repository/codelist/v2018-1/gc_T21.xml

Code	Description	Adoption note	Version status	Date of insertion
BOR	blanket order		(N)	01/02/2018
CAT	Price catalogue - tech sheet			
CEO	Certificate of origin		(N)	13/04/2018
CER	Certificate		(N)	13/04/2018
COC	colour card			
CRN	Credit note			08/09/2017

CTO	Checking order			01/07/2013
CTR	Contract		(U)	
CXF	CxF3 file			01/07/2013
DAD	Darn order			
DDT	ddt			
DEA	Despatch advise			
DER	Despatch request			
DR	Document Request			02/12/2014
FOR	Forecast			02/12/2014
GSO	Garment stock offer			
GSX	Garment stock offer change			
INV	Invoice			
KCC	Knitting-Clothing Commission Order			02/12/2014
KCI	Garment in Work Inventory Report			02/12/2014
M2M	Made to Measure Production Order			02/12/2014
MAS	Master marker			
MCI	Visual merchandising instruction		(N)	13/04/2018
OCH	Order change			
OFF	Offer			
ORD	Purchase order			
ORP	Order response			
OSR	order status request			
OSS	Offer status			02/12/2014
OST	Order status			
OUR	our reference			
QR	Quality Report			02/12/2014
RAI	Raw Material in Work Inventory Report			02/12/2014
RDC	Raw dyeing commission order			
RDH	Raw dyeing order change			
RDR	Raw dyeing order response			
REA	Receiving advise			
REQ	Request for Offer			
RET	Return			02/12/2014
RSC	Spinning commission order			
RSH	Spinning order change			

RSR	Spinning order response			
SCL	process sheet			
TFC	Textile dyeing-finishing commission order			
TFX	Textile Dyeing-Finishing Order Change			02/12/2014
TPC	Textile printing commission order			
TPX	Textile Printing Order Change			02/12/2014
TWI	Textile in work inventory			
VMI	visual merchandising instructions		(N)	01/02/2018
WAC	Warping commission order			
WEC	Weaving commission order			
YDC	Yarn dyeing commission order			
YDH	Yarn dyeing order change			
YDR	Yarn dyeing order response			
YTC	Twisting commission order			
YWI	Yarn in work inventory			

Annex C

New or changed elements towards previous version

Changes or added elements (changes in description excluded; changes in aggregation notes and best practice included): 140

Test Type	Tag	Status	Item type	Changes related to
Element(l)	account Name	NEW	Account name	
Attribute	additionalIdentifier	NEW	Additional Party Identifier	Has NEW attribute: numbering organisation code
Attribute	additionalIdentifier	NEW	Additional Party Identifier	Has NEW attribute: id Qualifier
Element(l)	additionalIdentifier	NEW	Additional Party Identifier	
Element(l)	attachment	NEW	attachment	
Child	attachment	NEW	attachment	Has NEW child of: file name
Child	attachment	NEW	attachment	Has NEW child of: external reference
Child	attachment	NEW	attachment	Has NEW child of: binary object
Child	finInfo	NEW	Bank details	Has NEW child of: general note
Child	finInfo	NEW	Bank details	Has NEW child of: Account name
Child	finInfo	NEW	Bank details	Has NEW child of: Bank
Element(l)	bank	NEW	Bank (*)	
Attribute	binaryObject	NEW	binary object	Has NEW attribute: encoding
Attribute	binaryObject	NEW	binary object	Has NEW attribute: mime
Attribute	binaryObject	NEW	binary object	Has NEW attribute: format
Attribute	binaryObject	NEW	binary object	Has NEW attribute: character set
Element(l)	binaryObject	NEW	binary object	

Attrib	birthdate	NEW	birth date	Has NEW attribute: date format
Elem(l)	birthdate	NEW	birth date	
Attrib	brand	NEW	Brand	Has NEW attribute: code list version
Elem(l)	brand	NEW	Brand	
Attrib	brand	NEW	Brand	Has NEW attribute: numbering organisation code
Attrib	brand	NEW	Brand	Has NEW attribute: code list reference
Attrib	brand	NEW	Brand	Has NEW attribute: code list name
Elem(l)	characterSetCode	NEW	character set code	
Elem(l)	characterSet	NEW	character set	
Elem(E)	email	UPDATED	e-mail	Property: Length_Max Old value: 80 New value: 250
Elem(l)	encodingCode	NEW	encoding code	
Elem(l)	encoding	NEW	encoding	
Child	externalReference	NEW	external reference	Has NEW child of: uri
Child	externalReference	NEW	external reference	Has NEW child of: format code
Child	externalReference	NEW	external reference	Has NEW child of: character set code
Child	externalReference	NEW	external reference	Has NEW child of: mime code
Child	externalReference	NEW	external reference	Has NEW child of: encoding code
Elem(l)	externalReference	NEW	external reference	
Attrib	fileName	NEW	file name	Has NEW attribute: numbering organisation code

Element(l)	fileName	NEW	file name	
Element(l)	firstName	NEW	First Name	
Element(l)	formatCode	NEW	format code	
Element(l)	format	NEW	format	
Element(l)	gender	NEW	gender	
Attribute	note	UPDATE	general note	<p>Its attribute: numbering organisation code</p> <p>Property: Aggregation Note_English Old value: New value: <i>must be used to specify the organization that created the list of codes used in "noteLabel"</i></p>
Element(l)	idQualifier	NEW	id Qualifier	
Child	individual	NEW	Individual	Has NEW child of: First Name
Child	individual	NEW	Individual	Has NEW child of: Last Name
Child	individual	NEW	Individual	Has NEW child of: birth date
Child	individual	NEW	Individual	Has NEW child of: gender
Element(l)	individual	NEW	Individual	
Child	invoicee	NEW	Invoicee	Has NEW child of: Party Qualified ID
Child	invoicee	NEW	Invoicee	Has NEW child of: general note
Child	invoicee	NEW	Invoicee	Has NEW child of: Legal name
Child	invoicee	NEW	Invoicee	Has NEW child of: street and building identifier
Element(l)	invoicee	NEW	Invoicee	
Child	invoicee	NEW	Invoicee	Has NEW child of: city name
Child	invoicee	NEW	Invoicee	Has NEW child of: sub-country identifier
Child	invoicee	NEW	Invoicee	Has NEW child of: country code
Child	invoicee	NEW	Invoicee	Has NEW child of: postal zone identifier

Child	invoice	NEW	Invoicee	Has NEW child of: First Name
Child	invoice	NEW	Invoicee	Has NEW child of: Last Name
Child	invoice	NEW	Invoicee	Has NEW child of: Additional Party Identifier
Element(l)	isURL	NEW	is URL	
Element(l)	language	NEW	language	
Element(l)	lastName	NEW	Last Name	
Element(E)	legalName	UPDATE	Legal name	Property: Length_Max Old value: 80 New value: 250
Element(l)	legalEntity	NEW	legal entity	
Element(E)	itemID	UPDATE	line item number	Property: Length_Max Old value: 6 New value: 40
Element(l)	In	NEW	In	
Element(l)	mimeCode	NEW	mime code	
Element(l)	mime	NEW	mime	
Child	PARTIn	NEW	PARTIN (*)	Has NEW child of: PIBody
Attribute	PARTIn	NEW	PARTIN (*)	Has NEW attribute: message function
Element(l)	PARTIn	NEW	PARTIN (*)	
Child	PARTIn	NEW	PARTIN (*)	Has NEW child of: PI header
Attribute	partyCategory	NEW	Party Category	Has NEW attribute: Party Category Type
Attribute	partyDescription	NEW	party description	Has NEW attribute: In
Attribute	partyQualifiedID	NEW	Party Qualified ID	Has NEW attribute: numbering organisation code
Attribute	partyQualifiedID	NEW	Party Qualified ID	Has NEW attribute: id Qualifier
Child	partyReference	NEW	Party Reference	Has NEW child of: Legal name

Child	partyReference	NEW	Party Reference	Has NEW child of: Brand
Child	partyReference	NEW	Party Reference	Has NEW child of: country code
Child	partyReference	NEW	Party Reference	Has NEW child of: sub-country identifier
Child	partyReference	NEW	Party Reference	Has NEW child of: city name
Child	partyReference	NEW	Party Reference	Has NEW child of: postal zone identifier
Attribute	partyReference	NEW	Party Reference	Has NEW attribute: Reference Qualifier
Child	partyReference	NEW	Party Reference	Has NEW child of: contact person name
Child	partyReference	NEW	Party Reference	Has NEW child of: department identifier
Child	partyReference	NEW	Party Reference	Has NEW child of: general note
Child	partyReference	NEW	Party Reference	Has NEW child of: street and building identifier
Element()	partyCategory	NEW	Party Category	
Element()	partyCategoryType	NEW	Party Category Type	
Element()	partyDescription	NEW	party description	
Element()	partyQualifiedID	NEW	Party Qualified ID	
Element()	partyReference	NEW	Party Reference	
Child	PIheader	NEW	PI header	Has NEW child of: validity end date
Child	PIheader	NEW	PI header	Has NEW child of: reference document details
Child	PIheader	NEW	PI header	Has NEW child of: message IT identifier
Child	PIheader	NEW	PI header	Has NEW child of: general note
Child	PIheader	NEW	PI header	Has NEW child of: message date
Child	PIheader	NEW	PI header	Has NEW child of: Sender Party

Child	PIheader	NEW	PI header	Has NEW child of: message identifier
Child	PIheader	NEW	PI header	Has NEW child of: Receiver Party
Child	PIheader	NEW	PI header	Has NEW child of: Third Party
Child	PIitem	NEW	PI Item	Has NEW child of: Payment details
Child	PIitem	NEW	PI Item	Has NEW child of: Individual
Child	PIitem	NEW	PI Item	Has NEW child of: language
Child	PIitem	NEW	PI Item	Has NEW child of: party description
Child	PIitem	NEW	PI Item	Has NEW child of: Party Category
Child	PIitem	NEW	PI Item	Has NEW child of: Party Qualified ID
Child	PIitem	NEW	PI Item	Has NEW child of: Bank details
Attribute	PIitem	NEW	PI Item	Has NEW attribute: party logo
Child	PIitem	NEW	PI Item	Has NEW child of: Legal name
Child	PIitem	NEW	PI Item	Has NEW child of: general note
Child	PIitem	NEW	PI Item	Has NEW child of: terms of payment text
Child	PIitem	NEW	PI Item	Has NEW child of: Party Reference
Child	PIitem	NEW	PI Item	Has NEW child of: Invoicee
Child	PIitem	NEW	PI Item	Has NEW child of: Brand
Attribute	PIitem	NEW	PI Item	Has NEW attribute: legal entity
Child	PIbody	NEW	PIBody	Has NEW child of: PI Item
Element(l)	PIbody	NEW	PIBody	
Element(l)	PIheader	NEW	PI header	
Element(l)	PIitem	NEW	PI Item	

Child	receiver Party	NEW	Receiver Party (*)	Has NEW child of: Party identifier
Attribute	receiver Party	NEW	Receiver Party (*)	Has NEW attribute: sender Party qualifier
Element(l)	receiver Party	NEW	Receiver Party (*)	
Child	refDoc	NEW	reference document details	Has NEW child of: attachment
Child	refDoc	UPDATED	reference document details	relationship with child: document identifier Property: BestPractice_English Old value: New value: <i>numberingOrg indicates the role that produced the document identifier (it is allowed to declare two different ones -e.g. customer and supplier - with two docID with different numberingOrg)</i>
Element(l)	refQualifier	NEW	Reference Qualifier	
Attribute	season	NEW	season identifier	Has NEW attribute: code list reference
Attribute	season	NEW	season identifier	Has NEW attribute: numbering organisation code
Attribute	season	NEW	season identifier	Has NEW attribute: code list name
Attribute	season	NEW	season identifier	Has NEW attribute: code list version
Attribute	sender Party	NEW	Sender Party (*)	Has NEW attribute: sender Party qualifier
Child	sender Party	NEW	Sender Party (*)	Has NEW child of: Party identifier
Element(l)	sender Party	NEW	Sender Party (*)	
Element(l)	subDepartment	NEW	department identifier	
Element(ET)	payTermText	UPDATED	terms of payment text	Property: Length_Max Old value: 40 New value: 250
Child	thirdParty	NEW	Third Party (*)	Has NEW child of: Party identifier
Attribute	thirdParty	NEW	Third Party (*)	Has NEW attribute: sender Party qualifier
Attribute	uri	NEW	uri	Has NEW attribute: is URL
Element(l)	uri	NEW	uri	

Annex D

New or changed tables and codes towards previous version

Changes or added items (changes in CodeListAgencyName excluded; changes in adoption notes and code description included): 90

Test Type	Status	Table code	Table description	Code	Change description
Table	UPD ATED	NT 100	eBIZ TCFUpstream version		Description_English Old value: <i>eBIZ Moda-ML version</i> New value: <i>eBIZ TCFUpstream version</i>
Code	NEW	NT 100		<i>2018-1</i> (v2018-1)	
Code	NEW	NT 100		<i>draft</i> (draft)	
Table	UPD ATED	NT 16	VAT rate or code		Generalities Old value: <i>VAT rate or code (deprecated, use dtScheme element)</i> New value: <i>VAT rate or code (DE PRECATED, use dtScheme element)</i>
Code	NEW	NT 2		<i>AU</i> (Auditor)	
Code	NEW	NT 2		<i>CE</i> (Certification authority)	
Code	NEW	NT 2		<i>SC</i> (Sub contractor)	
Code	NEW	NT 2		<i>SM</i> (Service/ePlatform manager)	
Code	NEW	NT 6		<i>EB</i> (eBIZ)	
Code	UPD ATED	NT 6		<i>ML</i> (DEPRECATED)	adoption_note Old value: New value: <i>DEPRECATED</i>
Table	NEW	NT 60	language, codes from ISO 639-1 (subset)		
Code	NEW	NT 60		<i>F</i> (Female)	
Code	NEW	NT 60		<i>af</i> (Afrikaans)	
Code	NEW	NT 60		<i>ar</i> (Arabic)	
Code	NEW	NT 60		<i>be</i> (Belarusian)	

Co de	NEW	NT 60		<i>bg</i> (Bulgarian)	
Co de	NEW	NT 60		<i>bn</i> (Bengali)	
Co de	NEW	NT 60		<i>bo</i> (Tibetan)	
Co de	NEW	NT 60		<i>bs</i> (Bosnian)	
Co de	NEW	NT 60		<i>ca</i> (Catalan, Valencian)	
Co de	NEW	NT 60		<i>cs</i> (Czech)	
Co de	NEW	NT 60		<i>da</i> (Danish)	
Co de	NEW	NT 60		<i>de</i> (German)	
Co de	NEW	NT 60		<i>el</i> (Greek, Modern (1453-))	
Co de	NEW	NT 60		<i>en</i> (English)	
Co de	NEW	NT 60		<i>eo</i> (Esperanto)	
Co de	NEW	NT 60		<i>es</i> (Spanish, Castilian)	
Co de	NEW	NT 60		<i>et</i> (Estonian)	
Co de	NEW	NT 60		<i>eu</i> (Basque)	
Co de	NEW	NT 60		<i>fa</i> (Persian)	
Co de	NEW	NT 60		<i>fi</i> (Finnish)	
Co de	NEW	NT 60		<i>fr</i> (French)	
Co de	NEW	NT 60		<i>ga</i> (Irish)	
Co de	NEW	NT 60		<i>gd</i> (Gaelic, Scottish Gaelic)	
Co de	NEW	NT 60		<i>gn</i> (Guarani)	
Co de	NEW	NT 60		<i>he</i> (Hebrew)	
Co de	NEW	NT 60		<i>hr</i> (Croatian)	

Co de	NEW	NT 60		<i>ht</i> (Haitian, Haitian Creole)	
Co de	NEW	NT 60		<i>hu</i> (Hungarian)	
Co de	NEW	NT 60		<i>hy</i> (Armenian)	
Co de	NEW	NT 60		<i>ia</i> (Interlingua (International Au xiliary Language Association))	
Co de	NEW	NT 60		<i>id</i> (Indonesian)	
Co de	NEW	NT 60		<i>is</i> (Icelandic)	
Co de	NEW	NT 60		<i>it</i> (Italian)	
Co de	NEW	NT 60		<i>ja</i> (Japanese)	
Co de	NEW	NT 60		<i>ju</i> (Javanese)	
Co de	NEW	NT 60		<i>ka</i> (Georgian)	
Co de	NEW	NT 60		<i>km</i> (Central Khmer)	
Co de	NEW	NT 60		<i>ko</i> (Korean)	
Co de	NEW	NT 60		<i>ku</i> (Kurdish)	
Co de	NEW	NT 60		<i>lb</i> (Luxembourgish, Letzeburge sch)	
Co de	NEW	NT 60		<i>lo</i> (Lao)	
Co de	NEW	NT 60		<i>lt</i> (Lithuanian)	
Co de	NEW	NT 60		<i>lv</i> (Latvian)	
Co de	NEW	NT 60		<i>mg</i> (Malagasy)	
Co de	NEW	NT 60		<i>mk</i> (Macedonian)	
Co de	NEW	NT 60		<i>mn</i> (Mongolian)	
Co de	NEW	NT 60		<i>mt</i> (Maltese)	

Co de	NEW	NT 60		<i>nl</i> (Dutch, Flemish)	
Co de	NEW	NT 60		<i>no</i> (Norwegian)	
Co de	NEW	NT 60		<i>pl</i> (Polish)	
Co de	NEW	NT 60		<i>pt</i> (Portuguese)	
Co de	NEW	NT 60		<i>ro</i> (Romanian, Moldavian, Mold ovan)	
Co de	NEW	NT 60		<i>ru</i> (Russian)	
Co de	NEW	NT 60		<i>se</i> (Northern Sami)	
Co de	NEW	NT 60		<i>sk</i> (Slovak)	
Co de	NEW	NT 60		<i>sl</i> (Slovenian)	
Co de	NEW	NT 60		<i>sm</i> (Samoan)	
Co de	NEW	NT 60		<i>so</i> (Somali)	
Co de	NEW	NT 60		<i>sq</i> (Albanian)	
Co de	NEW	NT 60		<i>sr</i> (Serbian)	
Co de	NEW	NT 60		<i>sv</i> (Swedish)	
Co de	NEW	NT 60		<i>sw</i> (Swahili)	
Co de	NEW	NT 60		<i>ta</i> (Tamil)	
Co de	NEW	NT 60		<i>th</i> (Thai)	
Co de	NEW	NT 60		<i>tr</i> (Turkish)	
Co de	NEW	NT 60		<i>uk</i> (Ukrainian)	
Co de	NEW	NT 60		<i>ur</i> (Urdu)	
Co de	NEW	NT 60		<i>uz</i> (Uzbek)	
Co de	NEW	NT 60		<i>vi</i> (Vietnamese)	

Code	NEW	NT60		<i>zh</i> (Chinese)	
Table	NEW	NT73	Gender		
Code	NEW	NT73		<i>F</i> (Female)	
Code	NEW	NT73		<i>M</i> (Male)	
Code	NEW	T21		<i>BOR</i> (blanket order)	
Code	NEW	T21		<i>CEO</i> (Certificate of origin)	
Code	NEW	T21		<i>CER</i> (Certificate)	
Code	UPD ATED	T21		<i>CTR</i> (Contract)	Text_English Old value: <i>contract</i> New value: <i>Contract</i>
Code	NEW	T21		<i>MCI</i> (Visual merchandising instruction)	
Code	NEW	T21		<i>VMI</i> (visual merchandising instructions)	