



TRICK



<https://www.trick-project.eu/>

DRAFT

## IMPLEMENTATION GUIDE TRANSACTION "PARTY INFORMATION"

Version: draft

Date of release: 26/6/2023

Document code: G079

technical Documentation: <http://www.ebiz.enea.it>

XML Schemas repository: <http://www.ebiz.enea.it/moda-ml/repository/schema/draft/default.asp>

Guides repository: <http://www.ebiz.enea.it/moda-ml/repository/guide/draft/default.asp>

Guide filename: G079-TRICK-PartyInformation.pdf

## 0. PREMISE

This document contains a proposal for the updating and extension of eBIZ specifications starting from the eBIZ version 2018. Under the name of 'Draft version' it is reported the result of an extensive work of analysis and consultation aimed at developing and maintaining eBIZ specifications.

In particular, the content of this proposal is the result of various activities, mainly those carried out within the framework of the **TRICK project** funded by the European Commission: grant agreement 958352, call H2020-LOW-CARBON-CIRCULAR-INDUSTRIES-2020 / H2020-LCCI-2020-EASME-twostage.

The technical contents are backwards compatible with the latest official published version, with the exclusion of the totally new concepts added explicitly for the version that are thought as incremental evolution of the knowledge base.

## 1. BUSINESS DESCRIPTION

### 1.1 Scope

This guide is intended to illustrate to FASHION companies the standard XML form of the document type "Party Information", providing instructions for its use in any context of electronic commerce between different subjects of the production and sales chain.

All the rules necessary for the construction and validation of the document are expressed through a specific XML schema, which is presented in detail in the paragraph "Implementation Guide".

### 1.2 Generalities

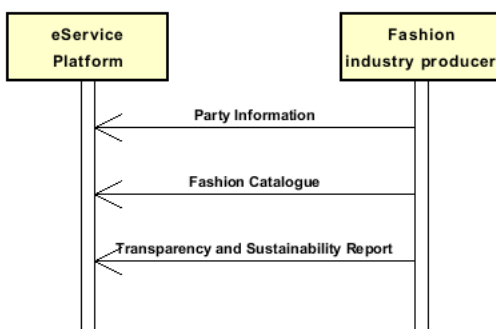
The message is issued to communicate information about people or organisations (for example, lists of customers enabled to operate on an eCommerce site).

The sender forwards this document when he has to feed a registry of persons or organizations.

Main function of the message is transferring information about people or companies: personal or business data (name, address, contacts, billing information, categories of belonging to subjects useful for commercial purposes).

### 1.3. Possible scenario

P1.A1 Products, processes and facilities static data collection





## 2. IMPLEMENTATION GUIDE

### 2.1 General structure of XML document

All the business data that can be exchanged through this class of documents are shown in the following "document structure", that provides a simplified vision of the Schema.

In particular:

- the two numbers following each element define its "cardinality" (minimum and maximum number of occurrences); the minimum equal zero indicates that the element is optional, the minimum greater than zero indicates that is mandatory;
- the bold character denotes the complex elements (aggregates of simple elements) that were built for the sake of functionality and re-usability of some complex informations sets. The child elements in each parent element are easily spotted as "indented";
- the symbol "@" denotes an attribute of the preceding element; here "the usage indicator (optional, required, ...)" is shown in square brackets.

### Structure

#### **PARTIn**

*@msgfunction [Optional] [Default= OR]*

*@version [Optional] [Default= draft]*

*@useProfile [Optional]*

```
| PIheader 1-1
| | msgN 1-1
| | msgID 0-1
| | msgDate 1-1
| |   @dateForm [Optional]
| | validityEnd 0-1
| |   @dateForm [Optional]
| | refDoc 0-9
| |   @docType [Required]
| |   docID 1-2
| |     @numberingOrg [Optional]
| |   docDate 0-1
| |     @dateForm [Optional]
| |   season 0-1
| |     @numberingOrg [Optional]
| |     @codeList [Optional]
| |     @listName [Optional]
| |     @listVersion [Optional]
| |   itemID 0-1
| |   attachment 0-1
| |     @uid [Optional]
| |     fileName 0-1
| |       @numberingOrg [Optional]
| |     binaryObject 0-1
| |       @format [Optional]
| |       @mime [Optional]
| |       @encoding [Optional]
| |       @characterSet [Optional]
| |     externalReference 0-99
| |       uri 1-1
| |         @isURL [Optional] [Default= true]
| |       mimeTypeCode 0-1
| |       formatCode 0-1
| |       encodingCode 0-1
| |       characterSetCode 0-1
| |       hashFootprint 0-1
| |         @schemeID [Optional]
| |         @hashMethod [Required]
| |     blockChainReference 0-9
| |       uri 1-1
| |         @isURL [Optional] [Default= true]
| |       transactionReceipt 1-9
| | senderParty 1-1
| |   @role [Optional]
| |   @sender [Optional]
```

```

| id 1-1
|   @numberingOrg [Optional]
| legalName 0-1
| dept 0-1
| subDept 0-1
| person 0-1
|   @email [Optional]
|   @phone [Optional]
|   @fax [Optional]
| street 0-1
| city 0-1
| subCountry 0-1
| country 0-1
| postCode 0-1
| geoCoordinates 0-1
|   @um [Optional] [Default= DEGD]
|   @geoRefSystem [Optional]
|     | xGeoCoord 1-1
|     | yGeoCoord 1-1
|     | zGeoCoord 0-1
| receiverParty 1-1
| @role [Optional]
| @sender [Optional]
|   id 1-1
|   @numberingOrg [Optional]
|   legalName 0-1
|   dept 0-1
|   subDept 0-1
|   person 0-1
|   @email [Optional]
|   @phone [Optional]
|   @fax [Optional]
|   street 0-1
|   city 0-1
|   subCountry 0-1
|   country 0-1
|   postCode 0-1
|   geoCoordinates 0-1
|     @um [Optional] [Default= DEGD]
|     @geoRefSystem [Optional]
|       | xGeoCoord 1-1
|       | yGeoCoord 1-1
|       | zGeoCoord 0-1
| thirdParty 0-5
| @VAT [Optional]
| @role [Required]
| @sender [Optional]
|   id 1-1
|   @numberingOrg [Optional]
|   legalName 0-1
|   dept 0-1
|   subDept 0-1
|   person 0-1
|   @email [Optional]
|   @phone [Optional]
|   @fax [Optional]
|   street 0-1
|   city 0-1
|   subCountry 0-1
|   country 0-1
|   postCode 0-1
|   geoCoordinates 0-1
|     @um [Optional] [Default= DEGD]
|     @geoRefSystem [Optional]
|       | xGeoCoord 1-1
|       | yGeoCoord 1-1
|       | zGeoCoord 0-1
| note 0-99

```

| | @numberingOrg [Optional]  
| | @codeList [Optional]  
| | @noteLabel [Optional]

| **Plbody 1-1**

| | **Plitem 1-unbounded**

| | @logo [Optional]  
| | @legalEntity [Required]  
| | partyQualifiedID 0-unbounded  
| | @numberingOrg [Optional]  
| | @idQualifier [Optional]

- choose -

| | **individual 1-1**

| | firstName 0-1  
| | lastName 1-1  
| | birthDate 0-1  
| | @dateForm [Optional]  
| | gender 0-1

- or -

| | legalName 1-1

- end choose -

| | partyCategory 0-unbounded  
| | @partyCategoryType [Required]  
| | brand 0-unbounded  
| | @numberingOrg [Optional]  
| | @codeList [Optional]  
| | @listName [Optional]  
| | @listVersion [Optional]  
| | partyDescription 0-unbounded  
| | @ln [Optional]  
| | language 0-unbounded

| | **partyReference 0-unbounded**

| | @refQualifier [Optional]  
| | brand 0-unbounded  
| | @numberingOrg [Optional]  
| | @codeList [Optional]  
| | @listName [Optional]  
| | @listVersion [Optional]  
| | legalName 0-1  
| | person 0-1  
| | @email [Optional]  
| | @phone [Optional]  
| | @fax [Optional]  
| | dept 0-1  
| | street 0-1  
| | city 0-1  
| | subCountry 0-1  
| | country 0-1  
| | postCode 0-1  
| | note 0-unbounded  
| | @numberingOrg [Optional]  
| | @codeList [Optional]  
| | @noteLabel [Optional]

| | **invoicee 0-1**

| | partyQualifiedID 0-1  
| | @numberingOrg [Optional]  
| | @idQualifier [Optional]  
| | additionalIdentifier 0-9  
| | @numberingOrg [Optional]  
| | @idQualifier [Optional]

- choose -

| | legalName 1-1

- or -

| | firstName 1-1  
| | lastName 1-1

- end choose -

| | street 0-1  
| | city 0-1

```

| | | | subCountry 0-1
| | | | country 0-1
| | | | postCode 0-1
| | | | note 0-unbounded
| | | | @numberingOrg [Optional]
| | | | @codeList [Optional]
| | | | @noteLabel [Optional]
| | | payTermText 0-unbounded
| | | payment 0-5
| | | | @finDiscount [Optional]
| | | | @finSurcharge [Optional]
| | | - choose -
| | | | payTerm 1-1
| | | - or -
| | | | payTermText 1-1
| | | - end choose -
| | | | payMode 0-1
| | | finInfo 0-9
| | | | accountName 0-1
| | | | bank 0-1
| | | | | legalName 0-1
| | | | | dept 0-1
| | | | | subDept 0-1
| | | | | person 0-1
| | | | | @email [Optional]
| | | | | @phone [Optional]
| | | | | @fax [Optional]
| | | | | street 0-1
| | | | | city 0-1
| | | | | subCountry 0-1
| | | | | country 0-1
| | | | | postCode 0-1
| | | | | geoCoordinates 0-1
| | | | | @um [Optional] [Default= DEGD]
| | | | | @geoRefSystem [Optional]
| | | | | | xGeoCoord 1-1
| | | | | | yGeoCoord 1-1
| | | | | | zGeoCoord 0-1
| | | - choose -
| | | | iban 1-1
| | | - or -
| | | | bankIT 1-1
| | | | | legalName 0-1
| | | | | cin 0-1
| | | | | abi 1-1
| | | | | cab 1-1
| | | | | accountN 1-1
| | | - end choose -
| | | | swift 0-1
| | | | note 0-99
| | | | | @numberingOrg [Optional]
| | | | | @codeList [Optional]
| | | | | @noteLabel [Optional]
| | | note 0-99
| | | | @numberingOrg [Optional]
| | | | @codeList [Optional]
| | | | @noteLabel [Optional]

```

## 2.2 Detailed description of document elements

Following tables show all elements (complex and simple) used in this document. Description includes: 1) element's information: xml tag, name, brief description, data type and syntax constraints; 2) information about use of the element in a particular position in the document: xpath and possible associated notes.

### 2.2.1 Complex elements (Aggregate Business Information Entities)

Complex elements are those elements whose content is composed of other elements (childs). Complex elements are alphabetically ordered.

<b>attachment</b>	an attached document. An attachment can refer to an external document or be included with the document being exchanged (XPath PARTIn/Plheader/refDoc/attachment) 0-1
<b>bank</b>	details of the financial institution - base type: Nad, (XPath PARTIn/Plbody/Plitem/finInfo/bank) 0-1
<b>bankIT</b>	Italian bank operations code (DEPRECATED, use IBAN) (XPath PARTIn/Plbody/Plitem/finInfo/bankIT) 1-1
<b>blockChainReference</b>	blockchain reference - base type: string, max length: 80, (XPath PARTIn/Plheader/refDoc/attachment/blockChainReference) 0-9
<b>externalReference</b>	details about an external object, such as a document stored at a remote location (XPath PARTIn/Plheader/refDoc/attachment/externalReference) 0-99
<b>finInfo</b>	bank details relevant for the payment: bank coordinates, SWIFT code, account (XPath PARTIn/Plbody/Plitem/finInfo) 0-9
<b>geoCoordinates</b>	geographical coordinates (XPath PARTIn/Plheader/senderParty/geoCoordinates) 0-1 (XPath PARTIn/Plbody/Plitem/finInfo/bank/geoCoordinates) 0-1 (XPath PARTIn/Plheader/thirdParty/geoCoordinates) 0-1 (XPath PARTIn/Plheader/receiverParty/geoCoordinates) 0-1
<b>individual</b>	Data of an individual. (XPath PARTIn/Plbody/Plitem/individual) 1-1
<b>invoicee</b>	Whole data of the invoicee. (XPath PARTIn/Plbody/Plitem/invoicee) 0-1
<b>partyReference</b>	References to the organisation or to a department (XPath PARTIn/Plbody/Plitem/partyReference) 0-unbounded
<b>payment</b>	payment details for payment all in one (XPath PARTIn/Plbody/Plitem/payment) 0-5 - note: <i>payment is used here to indicate the usual payment terms and conditions of the party (whether they are active or passive)</i>
<b>Plbody</b>	Body of the "Party Information" document. (XPath PARTIn/Plbody) 1-1
<b>Plheader</b>	Header of the "Party Information" document. (XPath PARTIn/Plheader) 1-1
<b>Plitem</b>	Party details. (XPath PARTIn/Plbody/Plitem) 1-unbounded
<b>receiverParty</b>	Details of the party receiving the document. - base type: Nad, (XPath PARTIn/Plheader/receiverParty) 1-1
<b>refDoc</b>	identification of a document and of an item thereof, to which the message makes reference (XPath PARTIn/Plheader/refDoc) 0-9
<b>senderParty</b>	Details of the party sending the document.



	- base type: Nad, (XPath PARTIn/PIheader/senderParty) 1-1
<b>thirdParty</b>	identification and details of the Third Party, different from Sender and Receiver of the document - base type: Nad, (XPath PARTIn/PIheader/thirdParty) 0-5

## 2.2.2 Simple elements (Basic Business Information Entities)

Simple elements are those elements whose content is characterized by a data type plus a domain of possible values. Simple elements are alphabetically ordered.

<b>abi</b>	ABI code - base type: string, length: 5, (XPath PARTIn/PIbody/PIitem/finInfo/bankIT/abi) 1-1
<b>accountN</b>	account number - base type: string, max length: 15, (XPath PARTIn/PIbody/PIitem/finInfo/bankIT/accountN) 1-1
<b>accountName</b>	account name - base type: string, max length: 250, (XPath PARTIn/PIbody/PIitem/finInfo/accountName) 0-1
<b>additionalIdentifier</b>	additional identification code of a Party, for example customs registries or others - base type: string, max length: 15, (XPath PARTIn/PIbody/PIitem/invoicee/additionalIdentifier) 0-9 - note: <i>identifiers for example for exports, such as MID (Manufacturer Identification Code), REX (identificatier in Registered Exporter system)</i>
<b>binaryObject</b>	a binary large object containing an attached document, Coding 'base64Binary' is recommended. - base type: base64Binary, (XPath PARTIn/PIheader/refDoc/attachment/binaryObject) 0-1
<b>birthDate</b>	Birth date (in case of individuals). - base type: string, (XPath PARTIn/PIbody/PIitem/individual/birthDate) 0-1
<b>brand</b>	A brand name. - base type: string, (XPath PARTIn/PIbody/PIitem/partyReference/brand) 0-unbounded (XPath PARTIn/PIbody/PIitem/brand) 0-unbounded
<b>cab</b>	CAB code - base type: string, length: 5, (XPath PARTIn/PIbody/PIitem/finInfo/bankIT/cab) 1-1
<b>@characterSet</b>	the character set of the binary object (examples UTF-8, UTF-16, Windows-1252, ISO-8859-7,..) - base type: normalizedString, (XPath PARTIn/PIheader/refDoc/attachment/binaryObject/@characterSet) [Optional]
<b>characterSetCode</b>	the character set of an external document (examples UTF-8, UTF-16, Windows-1252, ISO-8859-7,..) - base type: normalizedString, (XPath PARTIn/PIheader/refDoc/attachment/externalReference/characterSetCode) 0-1
<b>cin</b>	CIN code - base type: string, length: 5, (XPath PARTIn/PIbody/PIitem/finInfo/bankIT/cin) 0-1
<b>city</b>	name of the city (town, village) - base type: string, max length: 40, (XPath PARTIn/PIheader/senderParty/city) 0-1 (XPath PARTIn/PIbody/PIitem/invoicee/city) 0-1

	<p>(XPath PARTIn/Plheader/receiverParty/city) 0-1  (XPath PARTIn/Plheader/thirdParty/city) 0-1  (XPath PARTIn/Plbody/Plitem/partyReference/city) 0-1  (XPath PARTIn/Plbody/Plitem/finInfo/bank/city) 0-1</p>
@codeList	<p>it specifies the URL where the list of codes used to make an instance of the element can be found</p> <ul style="list-style-type: none"> <li>- base type: string, max length: 255,  (XPath PARTIn/Plbody/Plitem/invoicee/note/@codeList) [Optional]</li> <li>- nota: <i>must be used to provide (URL) the list of codes used in "noteLabel"</i>  (XPath PARTIn/Plbody/Plitem/note/@codeList) [Optional]</li> <li>- nota: <i>must be used to provide (URL) the list of codes used in "noteLabel"</i>  (XPath PARTIn/Plbody/Plitem/partyReference/brand/@codeList) [Optional]</li> <li>- nota: <i>at least one out of this attribute and "numberingOrg" should be set</i>  (XPath PARTIn/Plbody/Plitem/finInfo/note/@codeList) [Optional]</li> <li>- nota: <i>must be used to provide (URL) the list of codes used in "noteLabel"</i>  (XPath PARTIn/Plbody/Plitem/brand/@codeList) [Optional]</li> <li>- nota: <i>at least one out of this attribute and "numberingOrg" should be set</i>  (XPath PARTIn/Plheader/note/@codeList) [Optional]</li> <li>- nota: <i>must be used to provide (URL) the list of codes used in "noteLabel"</i>  (XPath PARTIn/Plheader/refDoc/season/@codeList) [Optional]</li> <li>- nota: <i>this attribute should be used either single or coupled with "listName" and "listVersion"</i>  (XPath PARTIn/Plbody/Plitem/partyReference/note/@codeList) [Optional]</li> <li>- nota: <i>must be used to provide (URL) the list of codes used in "noteLabel"</i></li> </ul>
country	<p>code of the nation</p> <ul style="list-style-type: none"> <li>- base type: string, cod. table: T10  <a href="http://www.ebiz.enea.it/moda-ml/repository/codelist/draft/gc_T10.xml">http://www.ebiz.enea.it/moda-ml/repository/codelist/draft/gc_T10.xml</a></li> <li>(XPath PARTIn/Plheader/senderParty/country) 0-1</li> <li>(XPath PARTIn/Plbody/Plitem/partyReference/country) 0-1</li> <li>(XPath PARTIn/Plheader/thirdParty/country) 0-1</li> <li>(XPath PARTIn/Plbody/Plitem/invoicee/country) 0-1</li> <li>(XPath PARTIn/Plheader/receiverParty/country) 0-1</li> <li>(XPath PARTIn/Plbody/Plitem/finInfo/bank/country) 0-1</li> </ul>
@dateForm	<p>format used for the date</p> <ul style="list-style-type: none"> <li>- base type: string, cod. table: NT29  <a href="http://www.ebiz.enea.it/moda-ml/repository/codelist/draft/gc_NT29.xml">http://www.ebiz.enea.it/moda-ml/repository/codelist/draft/gc_NT29.xml</a></li> <li>(XPath PARTIn/Plheader/validityEnd/@dateForm) [Optional]</li> <li>(XPath PARTIn/Plheader/refDoc/docDate/@dateForm) [Optional]</li> <li>(XPath PARTIn/Plbody/Plitem/individual/birthDate/@dateForm) [Optional]</li> <li>(XPath PARTIn/Plheader/msgDate/@dateForm) [Optional]</li> </ul>
dept	<p>name or code of a department</p> <ul style="list-style-type: none"> <li>- base type: string, max length: 40,  (XPath PARTIn/Plheader/senderParty/dept) 0-1  (XPath PARTIn/Plbody/Plitem/partyReference/dept) 0-1  (XPath PARTIn/Plbody/Plitem/finInfo/bank/dept) 0-1  (XPath PARTIn/Plheader/thirdParty/dept) 0-1  (XPath PARTIn/Plheader/receiverParty/dept) 0-1</li> </ul>
docDate	<p>date of issue of the referenced document, according to one of the patterns YYYY-MM-DD, YYYY-MM-DD:HH-MM or YYYY-WW.</p> <ul style="list-style-type: none"> <li>- base type: string,  (XPath PARTIn/Plheader/refDoc/docDate) 0-1</li> </ul>
docID	<p>identification number of the referenced document</p> <ul style="list-style-type: none"> <li>- base type: string, max length: 80,  (XPath PARTIn/Plheader/refDoc/docID) 1-2 Best Practice</li> </ul>
@docType	<p>type or class to which the referenced document belongs</p> <ul style="list-style-type: none"> <li>- base type: string, cod. table: T21  <a href="http://www.ebiz.enea.it/moda-ml/repository/codelist/draft/gc_T21.xml">http://www.ebiz.enea.it/moda-ml/repository/codelist/draft/gc_T21.xml</a></li> <li>(XPath PARTIn/Plheader/refDoc/@docType) [Required]</li> </ul>
@email	<p>electronic mail address of the contact person within a Party</p> <ul style="list-style-type: none"> <li>- base type: string, max length: 250,  (XPath PARTIn/Plheader/receiverParty/person/@email) [Optional]  (XPath PARTIn/Plheader/thirdParty/person/@email) [Optional]  (XPath PARTIn/Plbody/Plitem/partyReference/person/@email) [Optional]  (XPath PARTIn/Plbody/Plitem/finInfo/bank/person/@email) [Optional]  (XPath PARTIn/Plheader/senderParty/person/@email) [Optional]</li> </ul>

@encoding	specifies the decoding algorithm of the binary object - base type: normalizedString, (XPath PARTIn/PIheader/refDoc/attachment/binaryObject/@encoding) [Optional]
encodingCode	the encoding/decoding algorithm used with the external object (example is 'base64Binary') - base type: normalizedString, (XPath PARTIn/PIheader/refDoc/attachment/externalReference/encodingCode) 0-1
@fax	fax number of the contact person within a Party - base type: string, max length: 35, (XPath PARTIn/PIheader/receiverParty/person/@fax) [Optional] (XPath PARTIn/PIbody/PIitem/partyReference/person/@fax) [Optional] (XPath PARTIn/PIbody/PIitem/finInfo/bank/person/@fax) [Optional] (XPath PARTIn/PIheader/senderParty/person/@fax) [Optional] (XPath PARTIn/PIheader/thirdParty/person/@fax) [Optional]
fileName	unique identifier (name) of the file - base type: string, max length: 255, (XPath PARTIn/PIheader/refDoc/attachment/fileName) 0-1
@finDiscount	financial discount rate applied for payment by the date specified - base type: decimal, min inclusive: 0, max inclusive: 100, fraction digits: 2, (XPath PARTIn/PIbody/PIitem/payment/@finDiscount) [Optional]
@finSurcharge	financial surcharge rate applied for payment after the date specified - base type: decimal, min inclusive: 0, max inclusive: 100, fraction digits: 2, (XPath PARTIn/PIbody/PIitem/payment/@finSurcharge) [Optional]
firstName	Person first name. - base type: string, (XPath PARTIn/PIbody/PIitem/individual/firstName) 0-1 (XPath PARTIn/PIbody/PIitem/invoicee/firstName) 1-1
@format	the format of the binary content (examples xml, pdf, doc,...) - base type: string, (XPath PARTIn/PIheader/refDoc/attachment/binaryObject/@format) [Optional]
formatCode	the format of the external object (examples xml, pdf, doc,...) - base type: normalizedString, (XPath PARTIn/PIheader/refDoc/attachment/externalReference/formatCode) 0-1
gender	The state of being male or female (in case of individual). - base type: string, length: 1, cod. table: NT73 <a href="http://www.ebiz.enea.it/moda-ml/repository/codelist/draft/gc_NT73.xml">http://www.ebiz.enea.it/moda-ml/repository/codelist/draft/gc_NT73.xml</a> (XPath PARTIn/PIbody/PIitem/individual/gender) 0-1
@geoRefSystem	georeference system adopted for the coordinate (in example wgs84 with decimal degree or degree with minute and seconds) - base type: string, (XPath PARTIn/PIheader/receiverParty/geoCoordinates/@geoRefSystem) [Optional] (XPath PARTIn/PIheader/thirdParty/geoCoordinates/@geoRefSystem) [Optional] (XPath PARTIn/PIbody/PIitem/finInfo/bank/geoCoordinates/@geoRefSystem) [Optional] (XPath PARTIn/PIheader/senderParty/geoCoordinates/@geoRefSystem) [Optional]
hashFootprint	footprint obtained by applying an hashing algorithm - base type: string, max length: 80, (XPath PARTIn/PIheader/refDoc/attachment/hashFootprint) 0-1
@hashMethod	type of used hashing algorithm - base type: string, max length: 80, cod. table: NT333 <a href="http://www.ebiz.enea.it/moda-ml/repository/codelist/draft/gc_NT333.xml">http://www.ebiz.enea.it/moda-ml/repository/codelist/draft/gc_NT333.xml</a> (XPath PARTIn/PIheader/refDoc/attachment/hashFootprint/@hashMethod) [Required]
iban	international bank and account identifier, used for fund transfer - base type: string, max length: 35, (XPath PARTIn/PIbody/PIitem/finInfo/iban) 1-1
id	primary identification code of a Party; it is recommended to use an EORI number (with @numberingOrg= "EO") or the format: nation code (ISO 3166) + national tax code (i.e. VAT identification number ) with @numberingOrg= "MF"

	<p>- base type: string, max length: 15,  (XPath PARTIn/PIheader/receiverParty/id) 1-1  (XPath PARTIn/PIheader/thirdParty/id) 1-1  (XPath PARTIn/PIheader/senderParty/id) 1-1</p>
@idQualifier	<p>Qualification of the identifier.  - base type: string,  (XPath PARTIn/PIbody/Plitem/invoicee/partyQualifiedID/@idQualifier) [Optional]  (XPath PARTIn/PIbody/Plitem/invoicee/additionalIdentifier/@idQualifier) [Optional]  - nota: <i>this attribute should be used when the numberingOrg attribute is not enough to declare the type of identifier</i>  (XPath PARTIn/PIbody/Plitem/partyQualifiedID/@idQualifier) [Optional]</p>
@isURL	<p>it indicates if the referred element is an URL (true) or not (false)  - base type: boolean,  (XPath PARTIn/PIheader/refDoc/attachment/externalReference/uri/@isURL) [Optional]  ] [Default= true]  - nota: <i>usage of URLs is recommended</i>  (XPath PARTIn/PIheader/refDoc/attachment/blockChainReference/uri/@isURL) [Optional]  ] [Default= true]  - nota: <i>usage of URLs is recommended</i></p>
itemID	<p>number of the line/item of the referenced document  - base type: string, max length: 40,  (XPath PARTIn/PIheader/refDoc/itemID) 0-1</p>
language	<p>Language.  - base type: string, cod. table: NT60  <a href="http://www.ebiz.enea.it/moda-ml/repository/codelist/draft/gc_NT60.xml">http://www.ebiz.enea.it/moda-ml/repository/codelist/draft/gc_NT60.xml</a>  (XPath PARTIn/PIbody/Plitem/language) 0-unbounded</p>
lastName	<p>Person last name.  - base type: string,  (XPath PARTIn/PIbody/Plitem/individual/lastName) 1-1  (XPath PARTIn/PIbody/Plitem/invoicee/lastName) 1-1</p>
@legalEntity	<p>It indicates whether the party is a legal entity or individual ("True" = legal entity, "False" = individual).  - base type: boolean,  (XPath PARTIn/PIbody/Plitem/@legalEntity) [Required]</p>
legalName	<p>legal name  - base type: string, max length: 250,  (XPath PARTIn/PIbody/Plitem/legalName) 1-1  (XPath PARTIn/PIbody/Plitem/partyReference/legalName) 0-1  (XPath PARTIn/PIheader/senderParty/legalName) 0-1  (XPath PARTIn/PIbody/Plitem/finInfo/bank/legalName) 0-1  (XPath PARTIn/PIheader/thirdParty/legalName) 0-1  (XPath PARTIn/PIbody/Plitem/invoicee/legalName) 1-1  (XPath PARTIn/PIbody/Plitem/finInfo/bankIT/legalName) 0-1  (XPath PARTIn/PIheader/receiverParty/legalName) 0-1</p>
@listName	<p>the name of the list of codes used to make an instance of the element (it might be thought as descriptive element, i.e. 'fabric printing technologies', or not, i.e. "T264")  - base type: string, max length: 40,  (XPath PARTIn/PIbody/Plitem/partyReference/brand/@listName) [Optional]  - nota: <i>this attribute should always be used coupled with "numberingOrg"</i>  (XPath PARTIn/PIheader/refDoc/season/@listName) [Optional]  - nota: <i>this attribute should always be used coupled with "numberingOrg"</i>  (XPath PARTIn/PIbody/Plitem/brand/@listName) [Optional]  - nota: <i>this attribute should always be used coupled with "numberingOrg"</i></p>
@listVersion	<p>it specifies the version of the list of codes used to make an instance of the element  - base type: string, max length: 6,  (XPath PARTIn/PIbody/Plitem/partyReference/brand/@listVersion) [Optional]  - nota: <i>this attribute should always be used coupled with "numberingOrg" and "listName"</i>  (XPath PARTIn/PIbody/Plitem/brand/@listVersion) [Optional]  - nota: <i>this attribute should always be used coupled with "numberingOrg" and "listName"</i>  (XPath PARTIn/PIheader/refDoc/season/@listVersion) [Optional]</p>

	- nota: <i>this attribute should always be used coupled with "numberingOrg" and "listName"</i>
@ln	Language code. - base type: string, cod. table: NT60 <a href="http://www.ebiz.enea.it/moda-ml/repository/codelist/draft/gc_NT60.xml">http://www.ebiz.enea.it/moda-ml/repository/codelist/draft/gc_NT60.xml</a> (XPath PARTIn/Plbody/Plitem/partyDescription/@ln) [Optional]
@logo	company logo (URL of the image jpeg or gif). It is recommended that the width of the image does not exceed 640 pixel. - base type: string, max length: 255, (XPath PARTIn/Plbody/Plitem/@logo) [Optional]
@mime	the mime type of the binary object - base type: normalizedString, (XPath PARTIn/Plheader/refDoc/attachment/binaryObject/@mime) [Optional]
mimeCode	mime type of the external object - base type: normalizedString, (XPath PARTIn/Plheader/refDoc/attachment/externalReference/mimeCode) 0-1 Best Practice
msgDate	date of issue of the present message (xml document), according to one of the patterns YYYY-MM-DD, YYYY-MM-DD:HH-MM or YYYY-WW. - base type: string, (XPath PARTIn/Plheader/msgDate) 1-1
@msgfunction	function performed by the present message with regards to the transmission - base type: string, cod. table: NT18 <a href="http://www.ebiz.enea.it/moda-ml/repository/codelist/draft/gc_NT18.xml">http://www.ebiz.enea.it/moda-ml/repository/codelist/draft/gc_NT18.xml</a> (XPath PARTIn/@msgfunction) [Optional] [Default= OR]
msgID	key identifier of the business document in the information system of the issuing Party. In case of more despatches of the same business document, it is unchanged. - base type: string, max length: 35, (XPath PARTIn/Plheader/msgID) 0-1
msgN	identification number given to the message (xml document) by its issuer. In case of more despatches of the same business document, it changes. - base type: string, max length: 35, (XPath PARTIn/Plheader/msgN) 1-1
note	free text or structured (computer processing) note. For note structuring use the attributes "noteLabel" and "codelist" - base type: string, max length: 350, (XPath PARTIn/Plbody/Plitem/invoicee/note) 0-unbounded (XPath PARTIn/Plbody/Plitem/finInfo/note) 0-99 (XPath PARTIn/Plbody/Plitem/partyReference/note) 0-unbounded (XPath PARTIn/Plheader/note) 0-99 (XPath PARTIn/Plbody/Plitem/note) 0-99
@noteLabel	subject qualifier of a note - base type: string, max length: 35, (XPath PARTIn/Plbody/Plitem/invoicee/note/@noteLabel) [Optional] - nota: <i>must be used to qualify the subject of the note</i> (XPath PARTIn/Plbody/Plitem/finInfo/note/@noteLabel) [Optional] - nota: <i>must be used to qualify the subject of the note</i> (XPath PARTIn/Plbody/Plitem/partyReference/note/@noteLabel) [Optional] - nota: <i>must be used to qualify the subject of the note</i> (XPath PARTIn/Plbody/Plitem/note/@noteLabel) [Optional] - nota: <i>must be used to qualify the subject of the note</i> (XPath PARTIn/Plheader/note/@noteLabel) [Optional] - nota: <i>must be used to qualify the subject of the note</i>
@numberingOrg	code specifying the organisation who has created or owns the coding or numbering system - base type: string, cod. table: NT6 <a href="http://www.ebiz.enea.it/moda-ml/repository/codelist/draft/gc_NT6.xml">http://www.ebiz.enea.it/moda-ml/repository/codelist/draft/gc_NT6.xml</a> (XPath PARTIn/Plbody/Plitem/partyReference/note/@numberingOrg) [Optional] - nota: <i>must be used to specify the organization that created the list of codes used in "noteLabel"</i> (XPath PARTIn/Plbody/Plitem/finInfo/note/@numberingOrg) [Optional]

	<p>- nota: must be used to specify the organization that created the list of codes used in "noteLabel" (XPath PARTIn/PIheader/thirdParty/id/@numberingOrg) [Optional] (XPath PARTIn/PIbody/Plitem/note/@numberingOrg) [Optional]</p> <p>- nota: must be used to specify the organization that created the list of codes used in "noteLabel" (XPath PARTIn/PIbody/Plitem/invoicee/additionalIdentifier/@numberingOrg) [Optional]</p> <p>- nota: here the issuer of the identifier must be specified (XPath PARTIn/PIheader/receiverParty/id/@numberingOrg) [Optional] (XPath PARTIn/PIheader/senderParty/id/@numberingOrg) [Optional] (XPath PARTIn/PIbody/Plitem/invoicee/partyQualifiedID/@numberingOrg) [Optional] (XPath PARTIn/PIbody/Plitem/invoicee/note/@numberingOrg) [Optional]</p> <p>- nota: must be used to specify the organization that created the list of codes used in "noteLabel" (XPath PARTIn/PIbody/Plitem/partyReference/brand/@numberingOrg) [Optional]</p> <p>- nota: this attribute should be used either single or coupled with "listName" and "listVersion" (XPath PARTIn/PIheader/refDoc/docID/@numberingOrg) [Optional]</p> <p>- nota: here can be specified whose document numbering is used (e.g.: Client, Supplier, ..) (XPath PARTIn/PIheader/refDoc/season/@numberingOrg) [Optional]</p> <p>- nota: this attribute should be used either single or coupled with "listName" and "listVersion" (XPath PARTIn/PIbody/Plitem/brand/@numberingOrg) [Optional]</p> <p>- nota: this attribute should be used either single or coupled with "listName" and "listVersion" (XPath PARTIn/PIbody/Plitem/partyQualifiedID/@numberingOrg) [Optional] (XPath PARTIn/PIheader/note/@numberingOrg) [Optional]</p> <p>- nota: must be used to specify the organization that created the list of codes used in "noteLabel" (XPath PARTIn/PIheader/refDoc/attachment/fileName/@numberingOrg) [Optional]</p>
partyCategory	<p>Code qualifying the Party respect with reference to a category (for example: cluster, market, ...).</p> <p>- base type: string, (XPath PARTIn/PIbody/Plitem/partyCategory) 0-unbounded</p>
@partyCategoryType	<p>Category type for party classification.</p> <p>- base type: string, (XPath PARTIn/PIbody/Plitem/partyCategory/@partyCategoryType) [Required]</p>
partyDescription	<p>Free text description of a party.</p> <p>- base type: string, (XPath PARTIn/PIbody/Plitem/partyDescription) 0-unbounded</p>
partyQualifiedID	<p>Identification code of a Party.</p> <p>- base type: string, (XPath PARTIn/PIbody/Plitem/invoicee/partyQualifiedID) 0-1 (XPath PARTIn/PIbody/Plitem/partyQualifiedID) 0-unbounded</p>
payMode	<p>way or means of payment</p> <p>- base type: string, cod. table: T2 <a href="http://www.ebiz.enea.it/moda-ml/repository/codelist/draft/gc_T2.xml">http://www.ebiz.enea.it/moda-ml/repository/codelist/draft/gc_T2.xml</a> (XPath PARTIn/PIbody/Plitem/payment/payMode) 0-1</p>
payTerm	<p>code specifying the terms or time by which the payment must be done</p> <p>- base type: string, cod. table: T1 <a href="http://www.ebiz.enea.it/moda-ml/repository/codelist/draft/gc_T1.xml">http://www.ebiz.enea.it/moda-ml/repository/codelist/draft/gc_T1.xml</a> (XPath PARTIn/PIbody/Plitem/payment/payTerm) 1-1</p>
payTermText	<p>free text specifying the terms by which the payment must be done (time/mode or means)</p> <p>- base type: string, max length: 250, (XPath PARTIn/PIbody/Plitem/payTermText) 0-unbounded</p> <p>- note: DEPRECATED, use 'payment' element. (XPath PARTIn/PIbody/Plitem/payment/payTermText) 1-1</p>
person	<p>name of a person (e.g. contact person within an organization)</p> <p>- base type: string, max length: 40, (XPath PARTIn/PIheader/thirdParty/person) 0-1 (XPath PARTIn/PIheader/senderParty/person) 0-1 (XPath PARTIn/PIbody/Plitem/finInfo/bank/person) 0-1 (XPath PARTIn/PIheader/receiverParty/person) 0-1</p>

	(XPath PARTIn/Plbody/Plitem/partyReference/person) 0-1
@phone	phone number of the contact person within a Party - base type: string, max length: 35, (XPath PARTIn/Plheader/senderParty/person/@phone) [Optional] (XPath PARTIn/Plheader/receiverParty/person/@phone) [Optional] (XPath PARTIn/Plheader/thirdParty/person/@phone) [Optional] (XPath PARTIn/Plbody/Plitem/partyReference/person/@phone) [Optional] (XPath PARTIn/Plbody/Plitem/finInfo/bank/person/@phone) [Optional]
postCode	code defining the postal zone - base type: string, max length: 10, (XPath PARTIn/Plbody/Plitem/invoicee/postCode) 0-1 (XPath PARTIn/Plbody/Plitem/finInfo/bank/postCode) 0-1 (XPath PARTIn/Plheader/receiverParty/postCode) 0-1 (XPath PARTIn/Plheader/senderParty/postCode) 0-1 (XPath PARTIn/Plheader/thirdParty/postCode) 0-1 (XPath PARTIn/Plbody/Plitem/partyReference/postCode) 0-1
@refQualifier	Reference qualifier (for ex. main contact, operating headquarters, invoicing, shipping, purchasing department, storage, ...). - base type: string, (XPath PARTIn/Plbody/Plitem/partyReference/@refQualifier) [Optional]
@role	Third Party role qualifier - base type: string, cod. table: NT2 <a href="http://www.ebiz.enea.it/moda-ml/repository/codelist/draft/gc_NT2.xml">http://www.ebiz.enea.it/moda-ml/repository/codelist/draft/gc_NT2.xml</a> (XPath PARTIn/Plheader/thirdParty/@role) [Required] (XPath PARTIn/Plheader/receiverParty/@role) [Optional] - nota: <i>The use of this attribute is mandatory when the element to which it is associated has TRCHeader as its parent.</i> (XPath PARTIn/Plheader/senderParty/@role) [Optional] - nota: <i>The use of this attribute is mandatory when the element to which it is associated has TRCHeader as its parent.</i>
@schemeID	identifier of an identification scheme - base type: string, (XPath PARTIn/Plheader/refDoc/attachment/hashFootprint/@schemeID) [Optional] - nota: <i>specify for which system this hash footprint might be used as identifier (for example HDFS system..)</i>
season	sale season; defined as: season (1 crt) + year (4 crt) - season: S/S=1 AW=2 Spring=3 Summer=4 Autumn=5 Winter=6: for more than four seasons use alphabetic sequence: 1st season=A 2nd season=B etc.etc. - base type: string, max length: 15, (XPath PARTIn/Plheader/refDoc/season) 0-1 - note: <i>here indicates the season to which the referenced document belongs</i>
@sender	qualifier that specifies the Party issuing of the document - base type: boolean, (XPath PARTIn/Plheader/receiverParty/@sender) [Optional] - nota: <i>This attribute is mandatory when the STYLESHEET must be used.</i> (XPath PARTIn/Plheader/thirdParty/@sender) [Optional] - nota: <i>This attribute is mandatory when the STYLESHEET must be used</i> (XPath PARTIn/Plheader/senderParty/@sender) [Optional] - nota: <i>This attribute is mandatory when the STYLESHEET must be used.</i>
street	street and building number identifying a location - base type: string, max length: 80, (XPath PARTIn/Plheader/senderParty/street) 0-1 (XPath PARTIn/Plbody/Plitem/finInfo/bank/street) 0-1 (XPath PARTIn/Plbody/Plitem/invoicee/street) 0-1 (XPath PARTIn/Plheader/thirdParty/street) 0-1 (XPath PARTIn/Plheader/receiverParty/street) 0-1 (XPath PARTIn/Plbody/Plitem/partyReference/street) 0-1
subCountry	short name or code of the sub-country entity - base type: string, max length: 9, (XPath PARTIn/Plbody/Plitem/finInfo/bank/subCountry) 0-1 (XPath PARTIn/Plheader/senderParty/subCountry) 0-1 (XPath PARTIn/Plheader/receiverParty/subCountry) 0-1 (XPath PARTIn/Plheader/thirdParty/subCountry) 0-1 (XPath PARTIn/Plbody/Plitem/invoicee/subCountry) 0-1

	(XPath PARTIn/PIbody/PIitem/partyReference/subCountry) 0-1
subDept	name or code of a department - base type: string, max length: 40, (XPath PARTIn/PIheader/thirdParty/subDept) 0-1 (XPath PARTIn/PIheader/senderParty/subDept) 0-1 (XPath PARTIn/PIbody/PIitem/finInfo/bank/subDept) 0-1 (XPath PARTIn/PIheader/receiverParty/subDept) 0-1
swift	swift code relevant to the financial transaction - base type: string, max length: 15, (XPath PARTIn/PIbody/PIitem/finInfo/swift) 0-1
transactionReceipt	transaction receipt on blockchain - base type: string, max length: 80, (XPath PARTIn/PIheader/refDoc/attachment/blockChainReference/transactionReceipt) 1-9
@uid	unique element identifier within the xml document - base type: string, (XPath PARTIn/PIheader/refDoc/attachment/@uid) [Optional]
@um	specification of the unit of measure - base type: string, cod. table: NT7 <a href="http://www.ebiz.enea.it/moda-ml/repository/codelist/draft/gc_NT7.xml">http://www.ebiz.enea.it/moda-ml/repository/codelist/draft/gc_NT7.xml</a> (XPath PARTIn/PIheader/receiverParty/geoCoordinates/@um) [Optional] [Default= DEGD] - nota: when not specified assume decimal DEGREES (XPath PARTIn/PIbody/PIitem/finInfo/bank/geoCoordinates/@um) [Optional] [Default= DEGD] - nota: when not specified assume decimal DEGREES (XPath PARTIn/PIheader/senderParty/geoCoordinates/@um) [Optional] [Default= DEGD] - nota: when not specified assume decimal DEGREES (XPath PARTIn/PIheader/thirdParty/geoCoordinates/@um) [Optional] [Default= DEGD] - nota: when not specified assume decimal DEGREES
uri	Uniform Resource Identifier (URI) that identifies the external object as an Internet resource - base type: normalizedString, (XPath PARTIn/PIheader/refDoc/attachment/externalReference/uri) 1-1 (XPath PARTIn/PIheader/refDoc/attachment/blockChainReference/uri) 1-1 - note: reference to the used blockchain ( example: url <a href="https://etherscan.io/">https://etherscan.io/</a> of ethereum)
@useProfile	use profile to which the present document is compliant if it was agreed by the parties. It is suggested a URI with reference to the firms or the URL of the profile. - base type: string, (XPath PARTIn/@useProfile) [Optional]
validityEnd	date by which the validity ends, according to one of the patterns YYYY-MM-DD, YYYY-MM-DD:HH-MM or YYYY-WW. - base type: string, (XPath PARTIn/PIheader/validityEnd) 0-1
@VAT	VAT rate or code (DEPRECATED, use dtScheme element) - base type: string, cod. table: NT16 <a href="http://www.ebiz.enea.it/moda-ml/repository/codelist/draft/gc_NT16.xml">http://www.ebiz.enea.it/moda-ml/repository/codelist/draft/gc_NT16.xml</a> (XPath PARTIn/PIheader/thirdParty/@VAT) [Optional]
@version	Dictionary version from which the instance has been created - base type: string, cod. table: NT100 <a href="http://www.ebiz.enea.it/moda-ml/repository/codelist/draft/gc_NT100.xml">http://www.ebiz.enea.it/moda-ml/repository/codelist/draft/gc_NT100.xml</a> (XPath PARTIn/@version) [Optional] [Default= draft]
xGeoCoord	geographical coordinate x , corresponding to latitude - base type: decimal, (XPath PARTIn/PIheader/thirdParty/geoCoordinates/xGeoCoord) 1-1 (XPath PARTIn/PIheader/receiverParty/geoCoordinates/xGeoCoord) 1-1 (XPath PARTIn/PIheader/senderParty/geoCoordinates/xGeoCoord) 1-1 (XPath PARTIn/PIbody/PIitem/finInfo/bank/geoCoordinates/xGeoCoord) 1-1
yGeoCoord	geographical coordinate y , corresponding to longitude



	<ul style="list-style-type: none"> <li>- base type: decimal,</li> <li>(XPath PARTIn/Plheader/thirdParty/geoCoordinates/yGeoCoord) 1-1</li> <li>(XPath PARTIn/Plheader/receiverParty/geoCoordinates/yGeoCoord) 1-1</li> <li>(XPath PARTIn/Plheader/senderParty/geoCoordinates/yGeoCoord) 1-1</li> <li>(XPath PARTIn/Plbody/Plitem/finInfo/bank/geoCoordinates/yGeoCoord) 1-1</li> </ul>
zGeoCoord	<ul style="list-style-type: none"> <li>geographical coordinate z , corresponding to altitude</li> <li>- base type: decimal,</li> <li>(XPath PARTIn/Plheader/senderParty/geoCoordinates/zGeoCoord) 0-1</li> <li>- note: <i>altitude might be omitted</i></li> <li>(XPath PARTIn/Plbody/Plitem/finInfo/bank/geoCoordinates/zGeoCoord) 0-1</li> <li>- note: <i>altitude might be omitted</i></li> <li>(XPath PARTIn/Plheader/receiverParty/geoCoordinates/zGeoCoord) 0-1</li> <li>- note: <i>altitude might be omitted</i></li> <li>(XPath PARTIn/Plheader/thirdParty/geoCoordinates/zGeoCoord) 0-1</li> <li>- note: <i>altitude might be omitted</i></li> </ul>

## 2.3 Suggested best practices

**PARTIn/PIheader/refDoc/docID (identification number of the referenced document)**

numberingOrg indicates the role that produced the document identifier (it is allowed to declare two different ones -e.g. customer and supplier - with two docID with different numberingOrg

**PARTIn/PIheader/refDoc/attachment/externalReference/mimeCode (mime type of the external object)**

Use coding from IANA <http://www.iana.org/assignments/media-types/media-types.xml>

## 2.4 Enumeration tables

List of enumeration tables used in the XML document. You can find all the tables with the corresponding codes at:  
<http://www.ebiz.enea.it/eBIZ/imple/eBIZTCU-draft.asp?lingua=en&pag=6>

NT100 - eBIZ TCFUpstream version  
NT16 - VAT rate or code  
NT18 - message function  
NT2 - third party qualifier  
NT29 - format of a date  
NT333 - type of hashing algorithm  
NT6 - coding system owner/issuer  
NT60 - language, codes from ISO 639-1 (subset)  
NT7 - unit of measure  
NT73 - Gender  
T1 - terms of payment  
T10 - ISO3166 - Country  
T2 - Modes of payment  
T21 - type of document

(the most relevant tables are detailed in the following Annexes too)

## ACKNOWLEDGEMENT



This action is part of the TRICK project, which has received funding from Horizon 2020 research and innovation programme under grant agreement No. 958352 of the European Union.

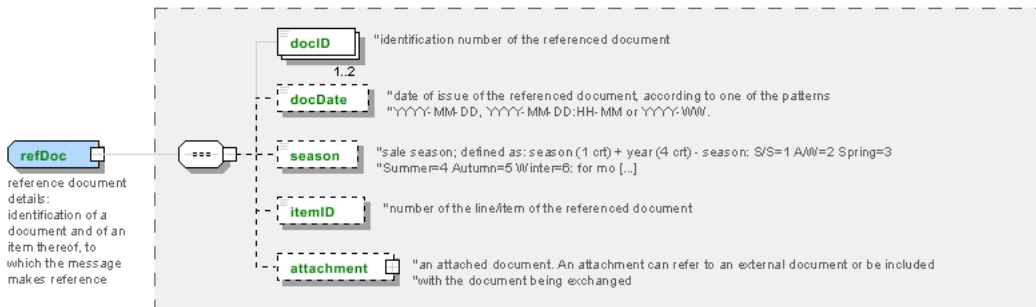
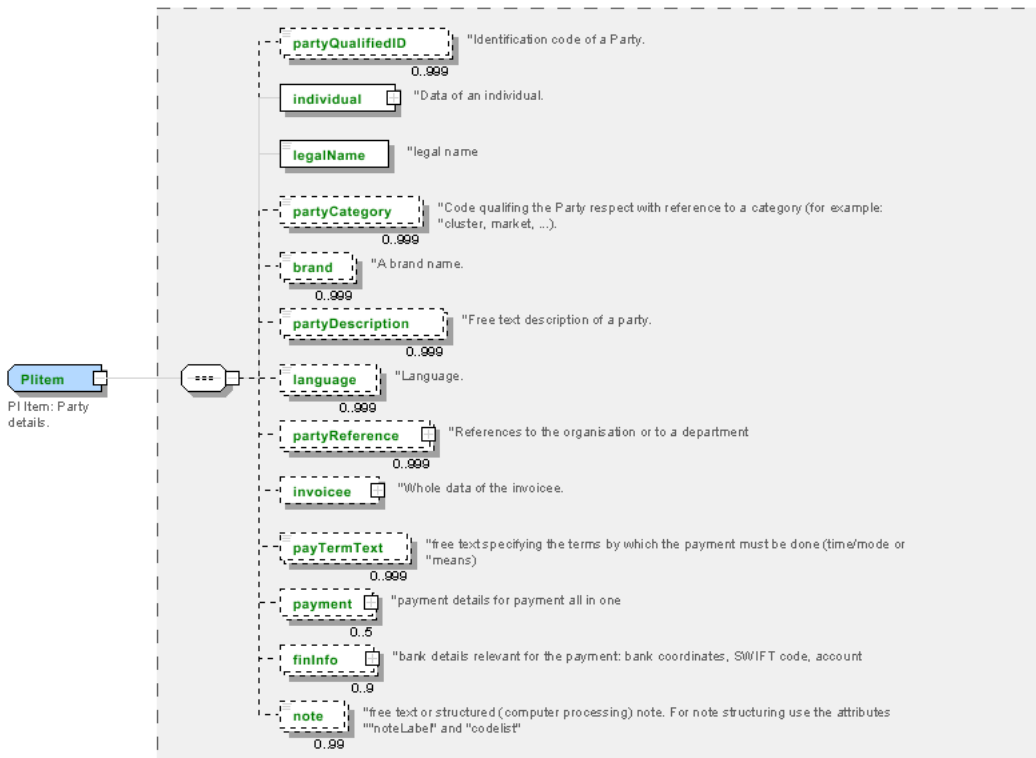
## DISCLAIMER

The content of this document represents the views of the authors only and is their sole responsibility; it cannot be considered to reflect the views of the European Commission or any other body of the European Union.

The European Commission does not accept any responsibility for use that may be made of the information it contains.

# Annex A

Representative images of the principal complex elements' structure.





## Annex B

### NT100 - eBIZ TCFUpstream version

dictionary version

Agency name: eBIZ

Decoding table: NT100

File codes list (Generic code): [http://www.ebiz.enea.it/moda-ml/repository/codelist/draft/gc\\_NT100.xml](http://www.ebiz.enea.it/moda-ml/repository/codelist/draft/gc_NT100.xml)

Code	Description	Adoption note	Date of insertion
2013-1	v2013-1		01/07/2013
2018-1	v2018-1		04/11/2018
draft	draft		08/09/2017

### NT16 - VAT rate or code

VAT rate or code ( DEPRECATED, use dtScheme element )

Decoding table: NT16

File codes list (Generic code): [http://www.ebiz.enea.it/moda-ml/repository/codelist/draft/gc\\_NT16.xml](http://www.ebiz.enea.it/moda-ml/repository/codelist/draft/gc_NT16.xml)

### NT18 - message function

function performed by the present message with regards to the transmission

Agency name: eBIZ

Decoding table: NT18

File codes list (Generic code): [http://www.ebiz.enea.it/moda-ml/repository/codelist/draft/gc\\_NT18.xml](http://www.ebiz.enea.it/moda-ml/repository/codelist/draft/gc_NT18.xml)

Code	Description	Adoption note	Date of insertion
CA	delete this document		01/07/2013
CP	copy		
OR	original		
RC	re-transmission for data correction		
RT	re-transmission		

### NT2 - third party qualifier

Third Party role qualifier

Agency name: eBIZ

Decoding table: NT2

File codes list (Generic code): [http://www.ebiz.enea.it/moda-ml/repository/codelist/draft/gc\\_NT2.xml](http://www.ebiz.enea.it/moda-ml/repository/codelist/draft/gc_NT2.xml)

Code	Description	Adoption note	Date of insertion
AG	Sales Agent		
AU	Auditor		08/04/2019
BU	Buyer		13/06/2022
CE	Certification authority		08/04/2019
CM	Commissioner		13/06/2022
CO	Quality Controller		
CU	Customs authority		13/06/2022
DC	Response to		
DF	Invoicee		
DI	Copy to (CC)		28/10/2014
DM	Consignee		
DP	Consignment address (Delivery Party)		
EX	Expert		13/06/2022
IM	Importer		
OR	Originator		10/09/2014
SC	Sub contractor		10/04/2019
SM	Service/ePlatform manager		08/04/2019
SP	Forwarder		
SU	Supplier		13/06/2022
TL	Test or analysis laboratory		13/06/2022
TX	Tax Representative		

#### NT29 - format of a date

format used for the date

Agency name: eBIZ

Decoding table: NT29

File codes list (Generic code): [http://www.ebiz.enea.it/moda-ml/repository/codelist/draft/gc\\_NT29.xml](http://www.ebiz.enea.it/moda-ml/repository/codelist/draft/gc_NT29.xml)

Code	Description	Adoption note	Date of insertion
D	YYYY-MM-DD		
M	YYYY-MM-DD:HH-MM (date and time)		
S	AAAA-MM-GG:HH-MM-SS (date and time with seconds)		13/06/2022
W	YYYY-WW		



### NT333 - type of hashing algorithm

type of hashing algorithm

Decoding table: NT333

File codes list (Generic code): [http://www.ebiz.enea.it/moda-ml/repository/codelist/draft/gc\\_NT333.xml](http://www.ebiz.enea.it/moda-ml/repository/codelist/draft/gc_NT333.xml)

Code	Description	Adoption note	Date of insertion
ADLER32	ADLER32		26/05/2023
HMAC	HMAC		26/05/2023
MD2	MD2		26/05/2023
MD4	MD4		26/05/2023
MD5	MD5		26/05/2023
MDC-2	MDC-2		26/05/2023
PANAMA	PANAMA		26/05/2023
RIPEMD-160	RIPEMD-160		26/05/2023
SHA-1	SHA-1		26/05/2023
SHA-2 256	SHA-2 256		26/05/2023
SHA-2 384	SHA-2 384		26/05/2023
SHA-2 512	SHA-2 512		26/05/2023
TIGER	TIGER		26/05/2023

### NT6 - coding system owner/issuer

code specifying the organisation who has created or owns the registers of the present coding or numbering system

Agency name: eBIZ

Decoding table: NT6

File codes list (Generic code): [http://www.ebiz.enea.it/moda-ml/repository/codelist/draft/gc\\_NT6.xml](http://www.ebiz.enea.it/moda-ml/repository/codelist/draft/gc_NT6.xml)

Code	Description	Adoption note	Date of insertion
CBR	National customs brokers registry		12/06/2023
CL	Customer/buyer		
CO	Quality Controller		
DU	D-U-N-S registry (Data Universal Numbering System)		04/05/2023
EB	eBIZ	replaces 'ML'	18/03/2019
EN	GS1 ( ex-EAN International )		
EO	Registro EORI (Economic Operators Registration and Identification number)		04/03/2023
ES	e-Stockflow	DEPRECATED	
FO	Supplier		

GS	GS1		01/07/2013
MF	national taxation authority (i.e. VAT codes registry)		
ML	Moda-ML	DEPRECATED	
PL	Application Platform		13/06/2022
REX	Registered Exporter system (REX)		19/05/2023
SP	Service Provider		
SU	Enterprise Identification Number UID	Only switzerland	04/03/2023

#### NT60 - language, codes from ISO 639-1 (subset)

Agency name: eBIZ / ISO

Decoding table: NT60

File codes list (Generic code): [http://www.ebiz.enea.it/moda-ml/repository/codelist/draft/gc\\_NT60.xml](http://www.ebiz.enea.it/moda-ml/repository/codelist/draft/gc_NT60.xml)

Code	Description	Adoption note	Date of insertion
af	Afrikaans		31/01/2019
ar	Arabic		31/01/2019
be	Belarusian		31/01/2019
bg	Bulgarian		31/01/2019
bn	Bengali		31/01/2019
bo	Tibetan		31/01/2019
bs	Bosnian		31/01/2019
ca	Catalan, Valencian		31/01/2019
cs	Czech		31/01/2019
da	Danish		31/01/2019
de	German		31/01/2019
el	Greek, Modern (1453-)		31/01/2019
en	English		31/01/2019
eo	Esperanto		31/01/2019
es	Spanish, Castilian		31/01/2019
et	Estonian		31/01/2019
eu	Basque		31/01/2019
F	Female		15/04/2019
fa	Persian		31/01/2019
fi	Finnish		31/01/2019
fr	French		31/01/2019
ga	Irish		31/01/2019
gd	Gaelic, Scottish Gaelic		31/01/2019

gn	Guarani		31/01/2019
he	Hebrew		31/01/2019
hr	Croatian		31/01/2019
ht	Haitian, Haitian Creole		31/01/2019
hu	Hungarian		31/01/2019
hy	Armenian		31/01/2019
ia	Interlingua (International Auxiliary Language Association)		31/01/2019
id	Indonesian		31/01/2019
is	Icelandic		31/01/2019
it	Italian		31/01/2019
ja	Japanese		31/01/2019
jv	Javanese		31/01/2019
ka	Georgian		31/01/2019
km	Central Khmer		31/01/2019
ko	Korean		31/01/2019
ku	Kurdish		31/01/2019
lb	Luxembourgish, Letzeburgesch		31/01/2019
lo	Lao		31/01/2019
lt	Lithuanian		31/01/2019
lv	Latvian		31/01/2019
mg	Malagasy		31/01/2019
mk	Macedonian		31/01/2019
mn	Mongolian		31/01/2019
mt	Maltese		31/01/2019
nl	Dutch, Flemish		31/01/2019
no	Norwegian		31/01/2019
pl	Polish		31/01/2019
pt	Portuguese		31/01/2019
ro	Romanian, Moldavian, Moldovan		31/01/2019
ru	Russian		31/01/2019
se	Northern Sami		31/01/2019
sk	Slovak		31/01/2019
sl	Slovenian		31/01/2019
sm	Samoan		31/01/2019
so	Somali		31/01/2019
sq	Albanian		31/01/2019
sr	Serbian		31/01/2019
sv	Swedish		31/01/2019

sw	Swahili		31/01/2019
ta	Tamil		31/01/2019
th	Thai		31/01/2019
tr	Turkish		31/01/2019
uk	Ukrainian		31/01/2019
ur	Urdu		31/01/2019
uz	Uzbek		31/01/2019
vi	Vietnamese		31/01/2019
zh	Chinese		31/01/2019

### NT7 - unit of measure

specification of the unit of measure, it is a sub set of table Unit of Measure Code - UN/ECE REC 20 delivered by United Nations Economic Commission for Europe (UN/ECE)

Agency name: eBIZ / UN/ECE

Decoding table: NT7

File codes list (Generic code): [http://www.ebiz.enea.it/moda-ml/repository/codelist/draft/gc\\_NT7.xml](http://www.ebiz.enea.it/moda-ml/repository/codelist/draft/gc_NT7.xml)

Other link: <http://docs.oasis-open.org/ubl/os-UBL-2.1/cl/gc/default/UnitOfMeasureCode-2.1.gc#>

Code	Description	Adoption note	Date of insertion
CMK	square centimetre		20/12/2017
CMQ	cubic centimetre		20/12/2017
CMT	centimetre		
CNE	centiNewton		
CO2TON	ton of CO2		10/09/2014
COUPLES	couples		
DAY	day		22/08/2022
DEGD	decimal degrees		04/07/2022
DEGMS	degrees with minutes and seconds		01/07/2022
DMQ	cubic decimetre		
E37	pixel		11/04/2018
GRM	gram		
HUR	hour		
INH	inch		
KGM	kilogram		
KMT	kilometer		
KWH	kilowatthours		10/09/2014
LBR	pound		
MCG	microgram		23/08/2022

MG	milligram		23/08/2022
MIN	minute		
MMK	square millimetre		20/12/2017
MONTH	month		22/08/2022
MSEC	millisecond (time)		22/08/2022
MTK	square metre		20/12/2017
MTQ	cubic metre		
MTR	metre		
NMB	numero		
ONZ	ounce		
P1	percent		
PPM	parts per milion		
PZ	piece		
RPM	rounds per metre		
SEC	second (time)		22/08/2022
YEAR	year		22/08/2022
YRD	yard		

#### NT73 - Gender

Agency name: eBIZ

Decoding table: NT73

File codes list (Generic code): [http://www.ebiz.enea.it/moda-ml/repository/codelist/draft/gc\\_NT73.xml](http://www.ebiz.enea.it/moda-ml/repository/codelist/draft/gc_NT73.xml)

Code	Description	Adoption note	Date of insertion
F	Female		15/04/2019
M	Male		15/04/2019

#### T1 - terms of payment

code specifying the terms or time by which the payment must be done

Agency name: eBIZ

Decoding table: T1

File codes list (Generic code): [http://www.ebiz.enea.it/moda-ml/repository/codelist/draft/gc\\_T1.xml](http://www.ebiz.enea.it/moda-ml/repository/codelist/draft/gc_T1.xml)

Code	Description	Adoption note	Date of insertion
ANTICIP	PAYMENT IN ADVANCE		
BLCOLLECT/120D	BILL OF LADING 120 DD		

BLCOLLECT/30D	BILL OF LADING 30 DD		
BLCOLLECT/60D	BILL OF LADING 60 DD		
BLCOLLECT/90D	BILL OF LADING 90 DD		
CASH	PAYMENT ON DELIVERY		
CASHINV	PAYMENT ON RECEIPT OF INVOICE		
CREDOC/0D	DOCUMENTARY CREDIT FOR PAYM. AT SIGHT		
CREDOC/120	DOCUMENTARY CREDIT FOR PAYM. AT 120 DD		
CREDOC/150	DOCUMENTARY CREDIT FOR PAYM. AT 150 DD		
CREDOC/180	DOCUMENTARY CREDIT FOR PAYM. AT 180 DD		
CREDOC/30D	DOCUMENTARY CREDIT FOR PAYM. AT 30 DD		
CREDOC/45D	DOCUMENTARY CREDIT FOR PAYM. AT 45 DD		
CREDOC/60	DOCUMENTARY CREDIT FOR PAYM. AT 60 DD		
CREDOC/90	DOCUMENTARY CREDIT FOR PAYM. AT 90 DD		
DEL/10	PAYMENT AT 10 DD AFTER DELIVERY		
DOCOLLECT/120D	DOCUMENTARY COLLECTION AT 120 DD		
DOCOLLECT/30D	DOCUMENTARY COLLECTION AT 30 DD		
DOCOLLECT/60D	DOCUMENTARY COLLECTION AT 60 DD		
DOCOLLECT/90D	DOCUMENTARY COLLECTION AT 90 DD		
INV/120D	PAYMENT AT 120 DD AFTER RECEIPT OF INVOICE		
INV/150D	PAYMENT AT 150 DD AFTER RECEIPT OF INVOICE		
INV/180D	PAYMENT AT 180 DD AFTER RECEIPT OF INVOICE		
INV/30D	PAYMENT AT 30 DD AFTER RECEIPT OF INVOICE		
INV/45D	PAYMENT AT 45 DD AFTER RECEIPT OF INVOICE		
INV/60D	PAYMENT AT 60 DD AFTER RECEIPT OF INVOICE		
INV/90D	PAYMENT AT 90 DD AFTER RECEIPT OF INVOICE		
INVULTIMO	PAYMENT AT END MONTH RECEIPT INVOICE		
INVULTIMO/10D	PAYMENT 10 DD AFTER END MONTH RECEIPT INVOICE		
INVULTIMO/120D	PAYMENT 120 DD AFTER END MONTH RECEIPT INVOICE		
INVULTIMO/150D	PAYMENT 150 DD AFTER END MONTH RECEIPT INVOICE		
INVULTIMO/180D	PAYMENT 180 DD AFTER END MONTH RECEIPT INVOICE		
INVULTIMO/240D	PAYMENT 240 DD AFTER END MONTH RECEIPT INVOICE		
INVULTIMO/30D	PAYMENT 30 DD AFTER END MONTH RECEIPT INVOICE		
INVULTIMO/45D	PAYMENT 45 DD AFTER END MONTH RECEIPT INVOICE		
INVULTIMO/60D	PAYMENT 60 DD AFTER END MONTH RECEIPT INVOICE		
INVULTIMO/90D	PAYMENT 90 DD AFTER END MONTH RECEIPT INVOICE		
NOPAY	WITHOUT PAYMENT		
RECREDOC/0D	IRREVOC. DOCUMENTARY CREDIT FOR PAYM. AT SIGHT		
RECREDOC/120D	IRREVOC. DOCUMENTARY CREDIT FOR PAYM. AT 120 DD		

RECREDOC/150D	IRREVOC. DOCUMENTARY CREDIT FOR PAYM. AT 150 DD		
RECREDOC/180D	IRREVOC. DOCUMENTARY CREDIT FOR PAYM. AT 180 DD		
RECREDOC/30D	IRREVOC. DOCUMENTARY CREDIT FOR PAYM. AT 30 DD		
RECREDOC/45D	IRREVOC. DOCUMENTARY CREDIT FOR PAYM. AT 45 DD		
RECREDOC/60D	IRREVOC. DOCUMENTARY CREDIT FOR PAYM. AT 60 DD		
RECREDOC/90D	IRREVOC. DOCUMENTARY CREDIT FOR PAYM. AT 90 DD		
ULTIMO	PAYMENT BY END MONTH OF DELIVERY		
ULTIMO/10	PAYMENT AT 10 DD AFTER END MONTH OF DELIVERY		

### T10 - ISO3166 - Country

code of the nation

Agency name: ISO

Decoding table: T10

File codes list (Generic code): [http://www.ebiz.enea.it/moda-ml/repository/codelist/draft/gc\\_T10.xml](http://www.ebiz.enea.it/moda-ml/repository/codelist/draft/gc_T10.xml)

Table not printed: there are 240 elements, more than the maximum specified for printing: 99.

### T2 - Modes of payment

way or means of payment

Agency name: eBIZ

Decoding table: T2

File codes list (Generic code): [http://www.ebiz.enea.it/moda-ml/repository/codelist/draft/gc\\_T2.xml](http://www.ebiz.enea.it/moda-ml/repository/codelist/draft/gc_T2.xml)

Code	Description	Adoption note	Date of insertion
BB	bank transfer		
IA	collection through Agent		
IS	collection through Forwarder		
RB	bank receipt		
RD	remittance		
SW	bank SWIFT		
TR	bank draft		

### T21 - type of document

type or class to which the referenced document belongs

Agency name: eBIZ

Decoding table: T21

Code	Description	Adoption note	Date of insertion
BIL	Bill of lading		07/03/2023
BOR	Blanket order		01/02/2018
CAT	Price catalogue - tech sheet		
CEO	Certificate of origin		13/04/2018
CER	Certificate		13/04/2018
CMR	CMR consignment note		07/03/2023
COC	Colour card		
CRN	Credit note		08/09/2017
CTO	Checking order		01/07/2013
CTR	Contract		
CXF	CxF3 file		01/07/2013
DAD	Darn order		
DDT	Delivery note (transport document)		
DEA	Despatch advise		
DER	Despatch request		
DR	Document Request		02/12/2014
EAD	Export Accompanying Document	adopted by European customs	12/05/2023
ECMR	electronic CMR consignment note		07/03/2023
ECUS	EXPORT Custom Declaration		07/03/2023
FOR	Forecast		02/12/2014
GSO	Garment stock offer		
GSX	Garment stock offer change		
ICUS	IMPORT Custom Declaration		07/03/2023
INV	Invoice		
KCC	Knitting-Clothing Commission Order		02/12/2014
KCI	Garment in Work Inventory Report		02/12/2014
LCA	LCA study		28/08/2022
LCAD	LCA study dataset		28/08/2022
M2M	Made to Measure Production Order		02/12/2014
MAS	Master marker		
MCI	Visual merchandising instruction		13/04/2018
OCH	Order change		
OFF	Offer		
ORD	Purchase order		
ORP	Order response		



OSR	order status request		
OSS	Offer status		02/12/2014
OST	Order status		
OUR	our reference		
PCO	Preferential certificate of origin		07/03/2023
PEF	PEF study		28/08/2022
PEFD	PEF study dataset		28/08/2022
PEFP	PEF environmental profile		07/03/2023
QR	Quality Report		02/12/2014
RAI	Raw Material in Work Inventory Report		02/12/2014
RDC	Raw dyeing commission order		
RDH	Raw dyeing order change		
RDR	Raw dyeing order response		
REA	Receiving advise		
REQ	Request for Offer		
RET	Return		02/12/2014
RSC	Spinning commission order		
RSH	Spinning order change		
RSR	Spinning order response		
SAD	Single Administrative Document	adopted by European customs	12/05/2023
SCL	Process sheet		
SDE	Self-declaration		07/03/2023
SDS	SDS - Safety data sheet		07/03/2023
SLCA	S-LCA Study		07/03/2023
SLCAD	S-LCA Study documentation		07/03/2023
TFC	Textile dyeing-finishing commission order		
TFX	Textile Dyeing-Finishing Order Change		02/12/2014
TPC	Textile printing commission order		
TPX	Textile Printing Order Change		02/12/2014
TWI	Textile in work inventory		
VMI	visual merchandising instructions		01/02/2018
WAC	Warping commission order		
WAYB	Waybill		07/03/2023
WEC	Weaving commission order		
YDC	Yarn dyeing commission order		
YDH	Yarn dyeing order change		
YDR	Yarn dyeing order response		
YTC	Twisting commission order		

YWI	Yarn in work inventory		
-----	------------------------	--	--