



<https://www.trick-project.eu/>

DRAFT

IMPLEMENTATION GUIDE
TRANSACTION "DOCUMENT AVAILABILITY ADVISE"

Version: draft

Date of release: 26/6/2023

Document code: TRC005

technical Documentation: <http://www.ebiz.enea.it>

XML Schemas repository: <http://www.ebiz.enea.it/moda-ml/repository/schema/draft/default.asp>

Guides repository: <http://www.ebiz.enea.it/moda-ml/repository/guide/draft/default.asp>

Guide filename: TRC005-TRICK-DocumentAvailabilityAdvise.pdf

0. PREMISE

This document contains a proposal for the updating and extension of eBIZ specifications starting from the eBIZ version 2018. Under the name of 'Draft version' it is reported the result of an extensive work of analysis and consultation aimed at developing and maintaining eBIZ specifications.

In particular, the content of this proposal is the result of various activities, mainly those carried out within the framework of the **TRICK project** funded by the European Commission: grant agreement 958352, call H2020-LOW-CARBON-CIRCULAR-INDUSTRIES-2020 / H2020-LCCI-2020-EASME-twostage.

The technical contents are backwards compatible with the latest official published version, with the exclusion of the totally new concepts added explicitly for the version that are thought as incremental evolution of the knowledge base.

1. BUSINESS DESCRIPTION

1.1 Scope

This guide aims to illustrate to fashion companies the standard XML format of the document type "NEW DOCUMENT ADVISE", providing instructions for its use in the context of a TRACEABILITY SYSTEM involving Fashion Manufacturers, their customers, third parties and in case customs authorities, eBusiness and eCommerce platforms. All the rules necessary for the construction and validation of the document are expressed through a specific XML schema, which is presented in detail in the paragraph "Implementation Guide".

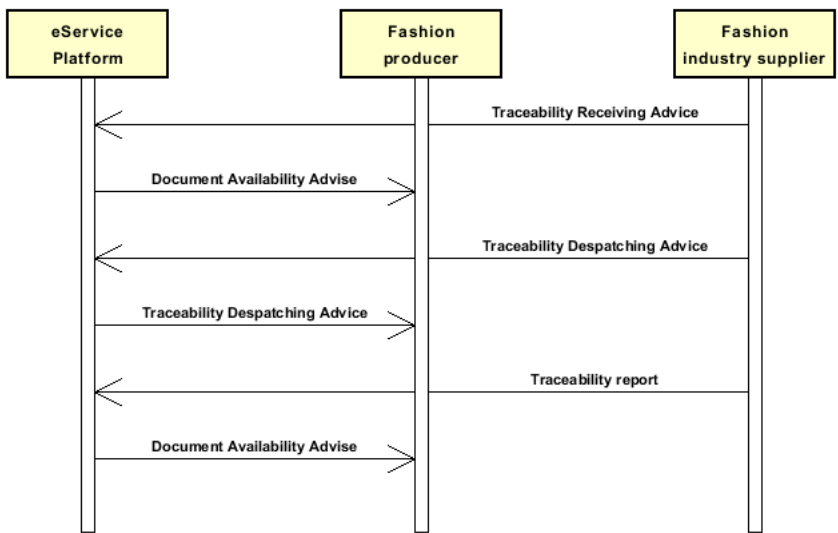
1.2 Generalities

This document is intended to inform a party, be it a company or a service platform, that one or more (new) documents are available and to provide some metadata, including information on where they can be found. For each reported document, among the metadata, there is a flag that indicates whether the availability of the document requires taking some specific action, indications on any document to which it refers and finally an indication of traceable objects to which it refers.

The document could be included in the message as a binary object, choice not recommended for practical reasons, or it could be indicated with a file name or with an external reference through a URI.

1.3. Possible scenario

P1.A2 Incoming material



2. IMPLEMENTATION GUIDE

2.1 General structure of XML document

All the business data that can be exchanged through this class of documents are shown in the following "document structure", that provides a simplified vision of the Schema.

In particular:

- the two numbers following each element define its "cardinality" (minimum and maximum number of occurrences); the minimum equal zero indicates that the element is optional, the minimum greater than zero indicates that is mandatory;
- the bold character denotes the complex elements (aggregates of simple elements) that were built for the sake of functionality and re-usability of some complex informations sets. The child elements in each parent element are easily spotted as "indented";
- the symbol "@" denotes an attribute of the preceding element; here "the usage indicator (optional, required, ...)" is shown in square brackets.

Structure

GPDdocAvailability

@msgfunction [Optional]

@version [Optional] [Default= draft]

@useProfile [Optional]

| **GPDheader 1-1**

| msgN 1-1

| msgDate 1-1

| @dateForm [Optional]

| **refDoc 0-9**

| @docType [Required]

| docID 1-2

| @numberingOrg [Optional]

| docDate 0-1

| @dateForm [Optional]

| season 0-1

| @numberingOrg [Optional]

| @codeList [Optional]

| @listName [Optional]

| @listVersion [Optional]

| itemID 0-1

| **attachment 0-1**

| @uid [Optional]

| fileName 0-1

| @numberingOrg [Optional]

| binaryObject 0-1

| @format [Optional]

| @mime [Optional]

| @encoding [Optional]

| @characterSet [Optional]

| **externalReference 0-99**

| uri 1-1

| @isURL [Optional] [Default= true]

| mimeTypeCode 0-1

| formatCode 0-1

| encodingCode 0-1

| characterSetCode 0-1

| hashFootprint 0-1

| @schemeID [Optional]

| @hashMethod [Required]

| **blockChainReference 0-9**

| uri 1-1

| @isURL [Optional] [Default= true]

| transactionReceipt 1-9

| **senderParty 1-1**

| @role [Optional]

| @sender [Optional]

| id 1-1

| @numberingOrg [Optional]

| legalName 0-1

- dept 0-1
- subDept 0-1
- person 0-1
 - @email [Optional]
 - @phone [Optional]
 - @fax [Optional]
- street 0-1
- city 0-1
- subCountry 0-1
- country 0-1
- postCode 0-1
- geoCoordinates 0-1**
 - @um [Optional] [Default= DEGD]
 - @geoRefSystem [Optional]
 - xGeoCoord 1-1
 - yGeoCoord 1-1
 - zGeoCoord 0-1

GPDAbody 1-1

GDPItem 1-unbounded

- docID 1-1
 - @numberingOrg [Optional]
- docDate 1-1
 - @dateForm [Optional]
- title 0-unbounded
 - @ln [Optional]
- description 0-unbounded
 - @ln [Optional]
- validityStart 0-1
 - @dateForm [Optional]
- validityEnd 0-1
 - @dateForm [Optional]
- issuerParty 0-1**
 - id 0-1
 - @numberingOrg [Optional]
 - legalName 0-1
 - dept 0-1
 - subDept 0-1
 - person 0-1
 - @email [Optional]
 - @phone [Optional]
 - @fax [Optional]
 - street 0-1
 - city 0-1
 - subCountry 0-1
 - country 0-1
 - postCode 0-1
 - geoCoordinates 0-1**
 - @um [Optional] [Default= DEGD]
 - @geoRefSystem [Optional]
 - xGeoCoord 1-1
 - yGeoCoord 1-1
 - zGeoCoord 0-1
 - issuerAccreditationInfo 0-1
- availabilityDateTime 0-1
 - @dateForm [Required]
- refDoc 0-9**
 - @docType [Required]
 - docID 1-2
 - @numberingOrg [Optional]
 - docDate 0-1
 - @dateForm [Optional]
 - season 0-1
 - @numberingOrg [Optional]
 - @codeList [Optional]
 - @listName [Optional]
 - @listVersion [Optional]
 - itemID 0-1

```

| | | | attachment 0-1
| | | | @uid [Optional]
| | | | | fileName 0-1
| | | | | @numberingOrg [Optional]
| | | | | binaryObject 0-1
| | | | | @format [Optional]
| | | | | @mime [Optional]
| | | | | @encoding [Optional]
| | | | | @characterSet [Optional]
| | | | | externalReference 0-99
| | | | | | uri 1-1
| | | | | | @isURL [Optional] [Default= true]
| | | | | | mimeTypeCode 0-1
| | | | | | formatCode 0-1
| | | | | | encodingCode 0-1
| | | | | | characterSetCode 0-1
| | | | | hashFootprint 0-1
| | | | | @schemeID [Optional]
| | | | | @hashMethod [Required]
| | | | | blockChainReference 0-9
| | | | | | uri 1-1
| | | | | | @isURL [Optional] [Default= true]
| | | | | | transactionReceipt 1-9
| | | | tracedObject 0-unbounded
| | | | @objectInstanceTypeCode [Required]
| | | | | objectInstanceIdentification 1-1
| | | | | @objectInstanceTypeCode [Required]
| | | | | | objectID 1-9
| | | | | | @schemeID [Required]
| | | | | productIDandQty 1-99
| | | | | | uniqueProductID 1-1
| | | | | | @schemeID [Required]
| | | | | | qty 0-2
| | | | | | @um [Required]
| | | | | objectTypeCode 1-1
| | | | actionRequired 0-1
| | | | signatureInformation 0-1
| | | | | signatureTypeCode 1-1
| | | | | signatoryParty 0-unbounded
| | | | | | id 0-1
| | | | | | @numberingOrg [Optional]
| | | | | | legalName 0-1
| | | | | | dept 0-1
| | | | | | subDept 0-1
| | | | | | person 0-1
| | | | | | @email [Optional]
| | | | | | @phone [Optional]
| | | | | | @fax [Optional]
| | | | | | street 0-1
| | | | | | city 0-1
| | | | | | subCountry 0-1
| | | | | | country 0-1
| | | | | | postCode 0-1
| | | | | | geoCoordinates 0-1
| | | | | | @um [Optional] [Default= DEGD]
| | | | | | @geoRefSystem [Optional]
| | | | | | | xGeoCoord 1-1
| | | | | | | yGeoCoord 1-1
| | | | | | | zGeoCoord 0-1
| | | | attachment 0-1
| | | | @uid [Optional]
| | | | | fileName 0-1
| | | | | @numberingOrg [Optional]
| | | | | binaryObject 0-1
| | | | | @format [Optional]
| | | | | @mime [Optional]
| | | | | @encoding [Optional]
| | | | | @characterSet [Optional]

```

```

| | | | externalReference 0-99
| | | | | uri 1-1
| | | | | @isURL [Optional] [Default= true]
| | | | | mimeTypeCode 0-1
| | | | | formatCode 0-1
| | | | | encodingCode 0-1
| | | | | characterSetCode 0-1
| | | | | hashFootprint 0-1
| | | | | @schemeID [Optional]
| | | | | @hashMethod [Required]
| | | | | blockChainReference 0-9
| | | | | | uri 1-1
| | | | | | @isURL [Optional] [Default= true]
| | | | | | transactionReceipt 1-9
| | | | note 0-99
| | | | | @numberingOrg [Optional]
| | | | | @codeList [Optional]
| | | | | @noteLabel [Optional]

```

2.2 Detailed description of document elements

Following tables show all elements (complex and simple) used in this document. Description includes: 1) element's information: xml tag, name, brief description, data type and syntax constraints; 2) information about use of the element in a particular position in the document: xpath and possible associated notes.

2.2.1 Complex elements (Aggregate Business Information Entities)

Complex elements are those elements whose content is composed of other elements (childs). Complex elements are alphabetically ordered.

| | |
|-------------------------------------|--|
| attachment | <p>an attached document. An attachment can refer to an external document or be included with the document being exchanged</p> <p>(XPath GPDocAvailability/GPDheader/refDoc/attachment) 0-1 (XPath GPDocAvailability/GPDAbody/GDPAitem/refDoc/attachment) 0-1 (XPath GPDocAvailability/GPDAbody/GDPAitem/attachment) 0-1</p> <p>- note: indicates where to find the document or contains it as a binary object (the second option is not recommended for practical reasons)</p> |
| blockChainReference | <p>blockchain reference</p> <p>- base type: string, max length: 80,</p> <p>(XPath GPDocAvailability/GPDAbody/GDPAitem/attachment/blockChainReference) 0-9 (XPath GPDocAvailability/GPDheader/refDoc/attachment/blockChainReference) 0-9 (XPath GPDocAvailability/GPDAbody/GDPAitem/refDoc/attachment/blockChainReference) 0-9</p> |
| externalReference | <p>details about an external object, such as a document stored at a remote location</p> <p>(XPath GPDocAvailability/GPDAbody/GDPAitem/attachment/externalReference) 0-99 (XPath GPDocAvailability/GPDheader/refDoc/attachment/externalReference) 0-99 (XPath GPDocAvailability/GPDAbody/GDPAitem/refDoc/attachment/externalReference) 0-99</p> |
| GDPAitem | <p>line item of the document named "DOCUMENT AVAILABILITY ADVISE", it signals the availability of a document on which it also gives some information</p> <p>- base type: ,</p> <p>(XPath GPDocAvailability/GPDAbody/GDPAitem) 1-unbounded</p> |
| geoCoordinates | <p>geographical coordinates</p> <p>(XPath GPDocAvailability/GPDheader/senderParty/geoCoordinates) 0-1 (XPath GPDocAvailability/GPDAbody/GDPAitem/signatureInformation/signatoryParty/geoCoordinates) 0-1 (XPath GPDocAvailability/GPDAbody/GDPAitem/issuerParty/geoCoordinates) 0-1</p> |
| GPDAbody | <p>body of the document "DOCUMENT AVAILABILITY ADVISE"</p> <p>(XPath GPDocAvailability/GPDAbody) 1-1</p> |
| GPDheader | <p>header of the "DOCUMENT AVAILABILITY ADVISE"</p> <p>(XPath GPDocAvailability/GPDheader) 1-1</p> |
| issuerParty | <p>Details of the party that issued the document.</p> <p>- base type: Nad,</p> <p>(XPath GPDocAvailability/GPDAbody/GDPAitem/issuerParty) 0-1</p> |
| objectInstanceIdentification | <p>Identification of an object instance, it could contain more than one identifier of the same object as long as they refer to different identification schemes</p> <p>(XPath GPDocAvailability/GPDAbody/GDPAitem/tracedObject/objectInstanceIdentification) 1-1</p> <p>- note: unique identifier of the traced object.</p> |
| productIDandQty | <p>product identifier and its quantity</p> <p>(XPath GPDocAvailability/GPDAbody/GDPAitem/tracedObject/productIDandQty) 1-99</p> <p>- note: inside an event it should indicate the effectively USED (input) or RESULTING (output) quantity of the lot as a consequence of the event. Max cardinality is 1 when @objectInstanceTypeCode='IST'</p> |
| refDoc | <p>identification of a document and of an item thereof, to which the message makes reference</p> <p>(XPath GPDocAvailability/GPDheader/refDoc) 0-9 (XPath GPDocAvailability/GPDAbody/GDPAitem/refDoc) 0-9</p> |

| | |
|-----------------------------|--|
| | - note: <i>any other document to which this document is related</i> |
| senderParty | Details of the party sending the document. - base type: Nad, (XPath GPDdocAvailability/GPDheader/senderParty) 1-1 - note: <i>indicates who sent this availability advice</i> |
| signatoryParty | Details of the party that signed the document. - base type: Nad, (XPath GPDdocAvailability/GPDAbody/GDPAitem/signatureInformation/signatoryParty) 0-unbounded |
| signatureInformation | information about the document signature (XPath GPDdocAvailability/GPDAbody/GDPAitem/signatureInformation) 0-1 |
| tracedObject | traced product instance or lot. Usually it refers to just one productID (i.e. one SKU); nevertheless if the lot is made of clothing, it can refer to more than one SKUs which differ in size. - base type: , (XPath GPDdocAvailability/GPDAbody/GDPAitem/tracedObject) 0-unbounded - note: <i>traced objects to which the document refers</i> |

2.2.2 Simple elements (Basic Business Information Entities)

Simple elements are those elements whose content is characterized by a data type plus a domain of possible values. Simple elements are alphabetically ordered.

| | |
|-----------------------------|--|
| actionRequired | indicates that some action is required by the element it is associated with - base type: boolean, (XPath GPDdocAvailability/GPDAbody/GDPAitem/actionRequired) 0-1 - note: <i>indicates that the document whose availability is indicated requires some action to be taken</i> |
| availabilityDateTime | The value of the date, or date and time, starting from when the element to which it is associated was made available; according to one of the patterns YYYY-MM-DD, YYYY-MM-DD:HH-MM or YYYY-WW. - base type: string, (XPath GPDdocAvailability/GPDAbody/GDPAitem/availabilityDateTime) 0-1 |
| binaryObject | a binary large object containing an attached document, Coding 'base64Binary' is recommended. - base type: base64Binary, (XPath GPDdocAvailability/GPDAbody/GDPAitem/refDoc/attachment/binaryObject) 0-1 (XPath GPDdocAvailability/GPDAbody/GDPAitem/attachment/binaryObject) 0-1 (XPath GPDdocAvailability/GPDheader/refDoc/attachment/binaryObject) 0-1 |
| @characterSet | the character set of the binary object (examples UTF-8, UTF-16, Windows-1252, ISO-8859-7,...) - base type: normalizedString, (XPath GPDdocAvailability/GPDAbody/GDPAitem/refDoc/attachment/binaryObject/@characterSet) [Optional] (XPath GPDdocAvailability/GPDAbody/GDPAitem/attachment/binaryObject/@characterSet) [Optional] (XPath GPDdocAvailability/GPDheader/refDoc/attachment/binaryObject/@characterSet) [Optional] |
| characterSetCode | the character set of an external document (examples UTF-8, UTF-16, Windows-1252, ISO-8859-7,...) - base type: normalizedString, (XPath GPDdocAvailability/GPDheader/refDoc/attachment/externalReference/characterSetCode) 0-1 (XPath GPDdocAvailability/GPDAbody/GDPAitem/refDoc/attachment/externalReference/characterSetCode) 0-1 (XPath GPDdocAvailability/GPDAbody/GDPAitem/attachment/externalReference/characterSetCode) 0-1 |
| city | name of the city (town, village) |

| | |
|-------------|--|
| | <p>- base type: string, max length: 40, (XPath GPDdocAvailability/GPDAbody/GDPAitem/issuerParty/city) 0-1 (XPath GPDdocAvailability/GPDheader/senderParty/city) 0-1 (XPath GPDdocAvailability/GPDAbody/GDPAitem/signatureInformation/signatoryParty/city) 0-1</p> |
| @codeList | <p>it specifies the URL where the list of codes used to make an instance of the element can be found</p> <p>- base type: string, max length: 255, (XPath GPDdocAvailability/GPDheader/refDoc/season/@codeList) [Optional] - nota: <i>this attribute should be used either single or coupled with "listVersion"</i> (XPath GPDdocAvailability/GPDAbody/GDPAitem/note/@codeList) [Optional] - nota: <i>must be used to provide (URL) the list of codes used in "noteLabel"</i> (XPath GPDdocAvailability/GPDAbody/GDPAitem/refDoc/season/@codeList) [Optional] - nota: <i>this attribute should be used either single or coupled with "listVersion"</i></p> |
| country | <p>code of the nation</p> <p>- base type: string, cod. table: T10 http://www.ebiz.enea.it/moda-ml/repository/codelist/draft/gc_T10.xml (XPath GPDdocAvailability/GPDheader/senderParty/country) 0-1 (XPath GPDdocAvailability/GPDAbody/GDPAitem/issuerParty/country) 0-1 (XPath GPDdocAvailability/GPDAbody/GDPAitem/signatureInformation/signatoryParty/country) 0-1</p> |
| @dateForm | <p>format used for the date</p> <p>- base type: string, cod. table: NT29 http://www.ebiz.enea.it/moda-ml/repository/codelist/draft/gc_NT29.xml (XPath GPDdocAvailability/GPDAbody/GDPAitem/validityStart/@dateForm) [Optional] (XPath GPDdocAvailability/GPDAbody/GDPAitem/availabilityDateTime/@dateForm) [Required] (XPath GPDdocAvailability/GPDAbody/GDPAitem/docDate/@dateForm) [Optional] (XPath GPDdocAvailability/GPDheader/msgDate/@dateForm) [Optional] (XPath GPDdocAvailability/GPDAbody/GDPAitem/refDoc/docDate/@dateForm) [Optional] (XPath GPDdocAvailability/GPDheader/refDoc/docDate/@dateForm) [Optional] (XPath GPDdocAvailability/GPDAbody/GDPAitem/validityEnd/@dateForm) [Optional]</p> |
| dept | <p>name or code of a department</p> <p>- base type: string, max length: 40, (XPath GPDdocAvailability/GPDAbody/GDPAitem/issuerParty/dept) 0-1 (XPath GPDdocAvailability/GPDheader/senderParty/dept) 0-1 (XPath GPDdocAvailability/GPDAbody/GDPAitem/signatureInformation/signatoryParty/dept) 0-1</p> |
| description | <p>free text description. The content of the element must be unique, it might be translated and repeated into more languages (thus no more than one instance for each language).</p> <p>- base type: string, max length: 250, (XPath GPDdocAvailability/GPDAbody/GDPAitem/description) 0-unbounded - note: <i>Only one instance of this element for each different value of 'In' attribute (language)</i></p> |
| docDate | <p>date of issue of the referenced document, according to one of the patterns YYYY-MM-DD, YYYY-MM-DD:HH-MM or YYYY-WW.</p> <p>- base type: string, (XPath GPDdocAvailability/GPDAbody/GDPAitem/docDate) 1-1 (XPath GPDdocAvailability/GPDheader/refDoc/docDate) 0-1 (XPath GPDdocAvailability/GPDAbody/GDPAitem/refDoc/docDate) 0-1</p> |
| docID | <p>identification number of the referenced document</p> <p>- base type: string, max length: 80, (XPath GPDdocAvailability/GPDAbody/GDPAitem/refDoc/docID) 1-2 Best Practice (XPath GPDdocAvailability/GPDAbody/GDPAitem/docID) 1-1 (XPath GPDdocAvailability/GPDheader/refDoc/docID) 1-2 Best Practice</p> |
| @docType | <p>type or class to which the referenced document belongs</p> <p>- base type: string, cod. table: T21 http://www.ebiz.enea.it/moda-ml/repository/codelist/draft/gc_T21.xml</p> |

| | |
|---------------|---|
| | (XPath GPDdocAvailability/GPDheader/refDoc/@docType) [Required] (XPath GPDdocAvailability/GPDAbody/GDPAitem/refDoc/@docType) [Required] |
| @email | electronic mail address of the contact person within a Party - base type: string, max length: 250, (XPath GPDdocAvailability/GPDAbody/GDPAitem/issuerParty/person/@email) [Optional] (XPath GPDdocAvailability/GPDAbody/GDPAitem/signatureInformation/signatoryParty/person/@email) [Optional] (XPath GPDdocAvailability/GPDheader/senderParty/person/@email) [Optional] |
| @encoding | specifies the decoding algorithm of the binary object - base type: normalizedString, (XPath GPDdocAvailability/GPDheader/refDoc/attachment/binaryObject/@encoding) [Optional] (XPath GPDdocAvailability/GPDAbody/GDPAitem/attachment/binaryObject/@encoding) [Optional] (XPath GPDdocAvailability/GPDAbody/GDPAitem/refDoc/attachment/binaryObject/@encoding) [Optional] |
| encodingCode | the encoding/decoding algorithm used with the external object (example is 'base64Binary') - base type: normalizedString, (XPath GPDdocAvailability/GPDAbody/GDPAitem/attachment/externalReference/encodingCode) 0-1 (XPath GPDdocAvailability/GPDAbody/GDPAitem/refDoc/attachment/externalReference/encodingCode) 0-1 (XPath GPDdocAvailability/GPDheader/refDoc/attachment/externalReference/encodingCode) 0-1 |
| @fax | fax number of the contact person within a Party - base type: string, max length: 35, (XPath GPDdocAvailability/GPDAbody/GDPAitem/signatureInformation/signatoryParty/person/@fax) [Optional] (XPath GPDdocAvailability/GPDAbody/GDPAitem/issuerParty/person/@fax) [Optional] (XPath GPDdocAvailability/GPDheader/senderParty/person/@fax) [Optional] |
| fileName | unique identifier (name) of the file - base type: string, max length: 255, (XPath GPDdocAvailability/GPDheader/refDoc/attachment/fileName) 0-1 (XPath GPDdocAvailability/GPDAbody/GDPAitem/attachment/fileName) 0-1 (XPath GPDdocAvailability/GPDAbody/GDPAitem/refDoc/attachment/fileName) 0-1 |
| @format | the format of the binary content (examples xml, pdf, doc,...) - base type: string, (XPath GPDdocAvailability/GPDAbody/GDPAitem/attachment/binaryObject/@format) [Optional] (XPath GPDdocAvailability/GPDAbody/GDPAitem/refDoc/attachment/binaryObject/@format) [Optional] (XPath GPDdocAvailability/GPDheader/refDoc/attachment/binaryObject/@format) [Optional] |
| formatCode | the format of the external object (examples xml, pdf, doc,...) - base type: normalizedString, (XPath GPDdocAvailability/GPDAbody/GDPAitem/attachment/externalReference/formatCode) 0-1 (XPath GPDdocAvailability/GPDheader/refDoc/attachment/externalReference/formatCode) 0-1 (XPath GPDdocAvailability/GPDAbody/GDPAitem/refDoc/attachment/externalReference/formatCode) 0-1 |
| @geoRefSystem | georeference system adopted for the coordinate (in example wgs84 with decimal degree or degree with minute and seconds) - base type: string, (XPath GPDdocAvailability/GPDAbody/GDPAitem/issuerParty/geoCoordinates/@geoRefSystem) [Optional] (XPath GPDdocAvailability/GPDheader/senderParty/geoCoordinates/@geoRefSystem) [Optional] |

| | |
|-------------------------|---|
| | (XPath GPDdocAvailability/GPDAbody/GDPAitem/signatureInformation/signatoryParty/ geoCoordinates/@geoRefSystem) [Optional] |
| hashFootprint | footprint obtained by applying an hashing algorithym - base type: string, max length: 80, (XPath GPDdocAvailability/GPDAbody/GDPAitem/refDoc/ attachment/hashFootprint) 0-1 (XPath GPDdocAvailability/GPDAbody/GDPAitem/attachment/hashFootprint) 0-1 (XPath GPDdocAvailability/GPDheader/refDoc/attachment/hashFootprint) 0-1 |
| @hashMethod | type of used hashing algorithym - base type: string, max length: 80, cod. table: NT333 http://www.ebiz.enea.it/moda-ml/repository/codelist/draft/gc_NT333.xml (XPath GPDdocAvailability/GPDAbody/GDPAitem/refDoc/ attachment/hashFootprint/@hashMethod) [Required] (XPath GPDdocAvailability/GPDAbody/GDPAitem/attachment/ hashFootprint/@hashMethod) [Required] (XPath GPDdocAvailability/GPDheader/refDoc/attachment/ hashFootprint/@hashMethod) [Required] |
| id | primary identification code of a Party; it is recommended to use an EORI number (with @numberingOrg= "EO") or the format: nation code (ISO 3166) + national tax code (i.e. VAT identification number) with @numberingOrg= "MF" - base type: string, max length: 15, (XPath GPDdocAvailability/GPDheader/senderParty/id) 1-1 (XPath GPDdocAvailability/GPDAbody/GDPAitem/issuerParty/id) 0-1 (XPath GPDdocAvailability/GPDAbody/GDPAitem/signatureInformation/signatoryParty/i d) 0-1 |
| issuerAccreditationInfo | accrediting information of the issuer of the document - base type: string, (XPath GPDdocAvailability/GPDAbody/GDPAitem/issuerParty/issuerAccreditationInfo) 0-1 |
| @isURL | it indicates if the referred element is an URL (true) or not (false) - base type: boolean, (XPath GPDdocAvailability/GPDAbody/GDPAitem/attachment/ blockChainReference/uri/@isURL) [Optional] [Default= true] - nota: <i>usage of URLs is recommended</i> (XPath GPDdocAvailability/GPDheader/refDoc/attachment/ externalReference/uri/@isURL) [Optional] [Default= true] - nota: <i>usage of URLs is recommended</i> (XPath GPDdocAvailability/GPDAbody/GDPAitem/refDoc/ attachment/externalReference/uri/@isURL) [Optional] [Default= true] - nota: <i>usage of URLs is recommended</i> (XPath GPDdocAvailability/GPDheader/refDoc/attachment/ blockChainReference/uri/@isURL) [Optional] [Default= true] - nota: <i>usage of URLs is recommended</i> (XPath GPDdocAvailability/GPDAbody/GDPAitem/refDoc/ attachment/blockChainReference/uri/@isURL) [Optional] [Default= true] - nota: <i>usage of URLs is recommended</i> (XPath GPDdocAvailability/GPDAbody/GDPAitem/attachment/ externalReference/uri/@isURL) [Optional] [Default= true] - nota: <i>usage of URLs is recommended</i> |
| itemID | number of the line/item of the referenced document - base type: string, max length: 40, (XPath GPDdocAvailability/GPDAbody/GDPAitem/refDoc/itemID) 0-1 (XPath GPDdocAvailability/GPDheader/refDoc/itemID) 0-1 |
| legalName | legal name - base type: string, max length: 250, (XPath GPDdocAvailability/GPDAbody/GDPAitem/issuerParty/legalName) 0-1 (XPath GPDdocAvailability/GPDheader/senderParty/legalName) 0-1 (XPath GPDdocAvailability/GPDAbody/GDPAitem/signatureInformation/signatoryParty/l egalName) 0-1 |
| @listName | the name of the list of codes used to make an instance of the element (it might be thou ght as descriptive element, i.e. 'fabric printing technologies', or not, i.e. "T264") - base type: string, max length: 40, |

| | |
|---------------|---|
| | <p>(XPath GPDdocAvailability/GPDheader/refDoc/season/@listName) [Optional] - nota: <i>this attribute should always be used coupled with "numberingOrg"</i> (XPath GPDdocAvailability/GPDAbody/GDPAitem/refDoc/season/@listName) [Optional] - nota: <i>this attribute should always be used coupled with "numberingOrg"</i></p> |
| @listVersion | <p>it specifies the version of the list of codes used to make an instance of the element - base type: string, max length: 6, (XPath GPDdocAvailability/GPDAbody/GDPAitem/refDoc/season/@listVersion) [Optional] - nota: <i>this attribute should always be used coupled with "numberingOrg" and "listName"</i> (XPath GPDdocAvailability/GPDheader/refDoc/season/@listVersion) [Optional] - nota: <i>this attribute should always be used coupled with "numberingOrg" and "listName"</i></p> |
| @ln | <p>Language code. - base type: string, cod. table: NT60 http://www.ebiz.enea.it/moda-ml/repository/codelist/draft/gc_NT60.xml (XPath GPDdocAvailability/GPDAbody/GDPAitem/title/@ln) [Optional] (XPath GPDdocAvailability/GPDAbody/GDPAitem/description/@ln) [Optional]</p> |
| @mime | <p>the mime type of the binary object - base type: normalizedString, (XPath GPDdocAvailability/GPDAbody/GDPAitem/attachment/binaryObject/@mime) [Optional] (XPath GPDdocAvailability/GPDAbody/GDPAitem/refDoc/attachment/binaryObject/@mime) [Optional] (XPath GPDdocAvailability/GPDheader/refDoc/attachment/binaryObject/@mime) [Optional]</p> |
| mimeCode | <p>mime type of the external object - base type: normalizedString, (XPath GPDdocAvailability/GPDAbody/GDPAitem/attachment/externalReference/mimeCode) 0-1 Best Practice (XPath GPDdocAvailability/GPDheader/refDoc/attachment/externalReference/mimeCode) 0-1 Best Practice (XPath GPDdocAvailability/GPDAbody/GDPAitem/refDoc/attachment/externalReference/mimeCode) 0-1 Best Practice</p> |
| msgDate | <p>date of issue of the present message (xml document), according to one of the patterns YYYY-MM-DD, YYYY-MM-DD:HH-MM or YYYY-WW. - base type: string, (XPath GPDdocAvailability/GPDheader/msgDate) 1-1</p> |
| @msgfunction | <p>function performed by the present message with regards to the transmission - base type: string, cod. table: NT18 http://www.ebiz.enea.it/moda-ml/repository/codelist/draft/gc_NT18.xml (XPath GPDdocAvailability/@msgfunction) [Optional]</p> |
| msgN | <p>identification number given to the message (xml document) by its issuer. In case of more despatches of the same business document, it changes. - base type: string, max length: 35, (XPath GPDdocAvailability/GPDheader/msgN) 1-1</p> |
| note | <p>free text or structured (computer processing) note. For note structuring use the attributes "noteLabel" and "codelist" - base type: string, max length: 350, (XPath GPDdocAvailability/GPDAbody/GDPAitem/note) 0-99</p> |
| @noteLabel | <p>subject qualifier of a note - base type: string, max length: 35, (XPath GPDdocAvailability/GPDAbody/GDPAitem/note/@noteLabel) [Optional] - nota: <i>must be used to qualify the subject of the note</i></p> |
| @numberingOrg | <p>code specifying the organisation who has created or owns the coding or numbering system - base type: string, cod. table: NT6 http://www.ebiz.enea.it/moda-ml/repository/codelist/draft/gc_NT6.xml (XPath GPDdocAvailability/GPDAbody/GDPAitem/issuerParty/id/@numberingOrg) [Optional] (XPath GPDdocAvailability/GPDheader/senderParty/id/@numberingOrg) [Optional] (XPath GPDdocAvailability/GPDAbody/GDPAitem/signatureInformation/signatoryParty/id/@numberingOrg) [Optional] (XPath GPDdocAvailability/GPDAbody/GDPAitem/note/@numberingOrg) [Optional]</p> |

| | |
|-------------------------|---|
| | <p>- nota: <i>must be used to specify the organization that created the list of codes used in "noteLabel"</i> (XPath GPDdocAvailability/GPDheader/refDoc/docID/@numberingOrg) [Optional]</p> <p>- nota: <i>here can be specified whose document numbering is used (e.g.: Client, Suppliers, ...)</i> (XPath GPDdocAvailability/GPDAbody/GDPAitem/docID/@numberingOrg) [Optional]</p> <p>- nota: <i>here can be specified whose document numbering is used (e.g.: Client, Suppliers, ...)</i> (XPath GPDdocAvailability/GPDAbody/GDPAitem/refDoc/docID/@numberingOrg) [Optional]</p> <p>- nota: <i>here can be specified whose document numbering is used (e.g.: Client, Suppliers, ...)</i> (XPath GPDdocAvailability/GPDAbody/GDPAitem/refDoc/attachment/fileName/@numberingOrg) [Optional]</p> <p>(XPath GPDdocAvailability/GPDheader/refDoc/season/@numberingOrg) [Optional]</p> <p>- nota: <i>this attribute should be used either single or coupled with "listName" and "listVersion"</i> (XPath GPDdocAvailability/GPDAbody/GDPAitem/refDoc/season/@numberingOrg) [Optional]</p> <p>- nota: <i>this attribute should be used either single or coupled with "listName" and "listVersion"</i> (XPath GPDdocAvailability/GPDAbody/GDPAitem/attachment/fileName/@numberingOrg) [Optional]</p> <p>(XPath GPDdocAvailability/GPDheader/refDoc/attachment/fileName/@numberingOrg) [Optional]</p> |
| objectID | <p>Object identifier</p> <p>- base type: string, (XPath GPDdocAvailability/GPDAbody/GDPAitem/tracedObject/objectInstanceIdentification/objectID) 1-9</p> <p>- note: <i>multiple values of objectID are allowed for different representations of the same object that must differ for the value of schemeID. In traceability transactions there must be at least the UNIQUE code assigned by the platform (e.g. TRN)</i></p> |
| @objectInstanceTypeCode | <p>code that identifies the type of object instance</p> <p>- base type: string, cod. table: NT202 http://www.ebiz.enea.it/moda-ml/repository/codelist/draft/gc_NT202.xml (XPath GPDdocAvailability/GPDAbody/GDPAitem/tracedObject/@objectInstanceTypeCode) [Required]</p> <p>(XPath GPDdocAvailability/GPDAbody/GDPAitem/tracedObject/objectInstanceIdentification/@objectInstanceTypeCode) [Required]</p> |
| objectTypeCode | <p>code that identifies the type of object</p> <p>- base type: string, cod. table: T302 http://www.ebiz.enea.it/moda-ml/repository/codelist/draft/gc_T302.xml (XPath GPDdocAvailability/GPDAbody/GDPAitem/tracedObject/objectTypeCode) 1-1</p> |
| person | <p>name of a person (e.g. contact person within an organization)</p> <p>- base type: string, max length: 40, (XPath GPDdocAvailability/GPDAbody/GDPAitem/issuerParty/person) 0-1 (XPath GPDdocAvailability/GPDAbody/GDPAitem/signatureInformation/signatoryParty/person) 0-1 (XPath GPDdocAvailability/GPDheader/senderParty/person) 0-1</p> |
| @phone | <p>phone number of the contact person within a Party</p> <p>- base type: string, max length: 35, (XPath GPDdocAvailability/GPDAbody/GDPAitem/signatureInformation/signatoryParty/person/@phone) [Optional] (XPath GPDdocAvailability/GPDAbody/GDPAitem/issuerParty/person/@phone) [Optional] (XPath GPDdocAvailability/GPDheader/senderParty/person/@phone) [Optional]</p> |
| postCode | <p>code defining the postal zone</p> <p>- base type: string, max length: 10, (XPath GPDdocAvailability/GPDheader/senderParty/postCode) 0-1 (XPath GPDdocAvailability/GPDAbody/GDPAitem/issuerParty/postCode) 0-1 (XPath GPDdocAvailability/GPDAbody/GDPAitem/signatureInformation/signatoryParty/postCode) 0-1</p> |
| qty | <p>net quantity of the article or object correlated, qualified by the function of the document (ordering, delivering, ..) and by the context</p> |

| | |
|-------------------|--|
| | <p>- base type: decimal, min inclusive: 0, fraction digits: 2, (XPath GPDdocAvailability/GPDAbody/GDPAitem/tracedObject/productIDandQty/qty) 0-2</p> <p>- note: quantity of the product, identified by uniqueProductID. This element can have two instances only if the units of measure are different.</p> |
| @role | <p>Third Party role qualifier</p> <p>- base type: string, cod. table: NT2 http://www.ebiz.enea.it/moda-ml/repository/codelist/draft/gc_NT2.xml (XPath GPDdocAvailability/GPDheader/senderParty/@role) [Optional]</p> <p>- nota: The use of this attribute is mandatory when the element to which it is associated has TRCHeader as its parent.</p> |
| @schemeID | <p>identifier of an identification scheme</p> <p>- base type: string, (XPath GPDdocAvailability/GPDAbody/GDPAitem/tracedObject/productIDandQty/uniqueProductID/@schemeID) [Required] (XPath GPDdocAvailability/GPDAbody/GDPAitem/refDoc/attachment/hashFootprint/@schemeID) [Optional]</p> <p>- nota: specify for which system this hash footprint might be used as identifier (for example HDFS system..) (XPath GPDdocAvailability/GPDAbody/GDPAitem/attachment/hashFootprint/@schemeID) [Optional]</p> <p>- nota: specify for which system this hash footprint might be used as identifier (for example HDFS system..) (XPath GPDdocAvailability/GPDheader/refDoc/attachment/hashFootprint/@schemeID) [Optional]</p> <p>- nota: specify for which system this hash footprint might be used as identifier (for example HDFS system..) (XPath GPDdocAvailability/GPDAbody/GDPAitem/tracedObject/objectInstanceIdentification/objectID/@schemeID) [Required]</p> |
| season | <p>sale season; defined as: season (1 crt) + year (4 crt) - season: S/S=1 AW=2 Spring=3 Summer=4 Autumn=5 Winter=6: for more than four seasons use alphabetic sequence: 1st season=A 2nd season=B etc.etc.</p> <p>- base type: string, max length: 15, (XPath GPDdocAvailability/GPDAbody/GDPAitem/refDoc/season) 0-1</p> <p>- note: here indicates the season to which the referenced document belongs (XPath GPDdocAvailability/GPDheader/refDoc/season) 0-1</p> <p>- note: here indicates the season to which the referenced document belongs</p> |
| @sender | <p>qualifier that specifies the Party issuing of the document</p> <p>- base type: boolean, (XPath GPDdocAvailability/GPDheader/senderParty/@sender) [Optional]</p> <p>- nota: This attribute is mandatory when the STYLESHEET must be used.</p> |
| signatureTypeCode | <p>indicator of existing and type of signature</p> <p>- base type: string, (XPath GPDdocAvailability/GPDAbody/GDPAitem/signatureInformation/signatureTypeCode) 1-1</p> |
| street | <p>street and building number identifying a location</p> <p>- base type: string, max length: 80, (XPath GPDdocAvailability/GPDAbody/GDPAitem/signatureInformation/signatoryParty/street) 0-1 (XPath GPDdocAvailability/GPDAbody/GDPAitem/issuerParty/street) 0-1 (XPath GPDdocAvailability/GPDheader/senderParty/street) 0-1</p> |
| subCountry | <p>short name or code of the sub-country entity</p> <p>- base type: string, max length: 9, (XPath GPDdocAvailability/GPDheader/senderParty/subCountry) 0-1 (XPath GPDdocAvailability/GPDAbody/GDPAitem/signatureInformation/signatoryParty/subCountry) 0-1 (XPath GPDdocAvailability/GPDAbody/GDPAitem/issuerParty/subCountry) 0-1</p> |
| subDept | <p>name or code of a department</p> <p>- base type: string, max length: 40, (XPath GPDdocAvailability/GPDheader/senderParty/subDept) 0-1 (XPath GPDdocAvailability/GPDAbody/GDPAitem/issuerParty/subDept) 0-1</p> |

| | |
|--------------------|--|
| | (XPath GPDdocAvailability/GPDAbody/GDPAitem/signatureInformation/signatoryParty/ subDept) 0-1 |
| title | document title - base type: string, (XPath GPDdocAvailability/GPDAbody/GDPAitem/title) 0-unbounded - note: <i>Only one instance of this element for each different value of 'In' attribute (language)</i> |
| transactionReceipt | transaction receipt on blockchain - base type: string, max length: 80, (XPath GPDdocAvailability/GPDAbody/GDPAitem/attachment/ blockChainReference/transactionReceipt) 1-9 (XPath GPDdocAvailability/GPDheader/refDoc/attachment/ blockChainReference/transactionReceipt) 1-9 (XPath GPDdocAvailability/GPDAbody/GDPAitem/refDoc/ attachment/blockChainReference/transactionReceipt) 1-9 |
| @uid | unique element identifier within the xml document - base type: string, (XPath GPDdocAvailability/GPDheader/refDoc/attachment/@uid) [Optional] (XPath GPDdocAvailability/GPDAbody/GDPAitem/attachment/@uid) [Optional] (XPath GPDdocAvailability/GPDAbody/GDPAitem/refDoc/ attachment/@uid) [Optional] |
| @um | specification of the unit of measure - base type: string, cod. table: NT7 http://www.ebiz.enea.it/moda-ml/repository/codelist/draft/gc_NT7.xml (XPath GPDdocAvailability/GPDAbody/GDPAitem/signatureInformation/signatoryParty/ geoCoordinates/@um) [Optional] [Default= DEGD] - nota: <i>when not specified assume decimal DEGREES</i> (XPath GPDdocAvailability/GPDheader/senderParty/ geoCoordinates/@um) [Optional] [Default= DEGD] - nota: <i>when not specified assume decimal DEGREES</i> (XPath GPDdocAvailability/GPDAbody/GDPAitem/issuerParty/ geoCoordinates/@um) [Optional] [Default= DEGD] - nota: <i>when not specified assume decimal DEGREES</i> (XPath GPDdocAvailability/GPDAbody/GDPAitem/tracedObject/ productIDandQty/qty/@um) [Required] |
| uniqueProductID | Unique product identifier. It identifies the product completely, differentiating any variants, sizes, colors, etc. It should be unique throughout the whole value chain. (It can be the GTIN) - base type: string, max length: 80, (XPath GPDdocAvailability/GPDAbody/GDPAitem/tracedObject/ productIDandQty/uniqueProductID) 1-1 |
| uri | Uniform Resource Identifier (URI) that identifies the external object as an Internet resource - base type: normalizedString, (XPath GPDdocAvailability/GPDheader/refDoc/attachment/ externalReference/uri) 1-1 (XPath GPDdocAvailability/GPDAbody/GDPAitem/refDoc/ attachment/blockChainReference/uri) 1-1 - note: <i>reference to the used blockchain (example: url https://etherscan.io/ of ethereum)</i> (XPath GPDdocAvailability/GPDheader/refDoc/attachment/ blockChainReference/uri) 1-1 - note: <i>reference to the used blockchain (example: url https://etherscan.io/ of ethereum)</i> (XPath GPDdocAvailability/GPDAbody/GDPAitem/attachment/ blockChainReference/uri) 1-1 - note: <i>reference to the used blockchain (example: url https://etherscan.io/ of ethereum)</i> (XPath GPDdocAvailability/GPDAbody/GDPAitem/refDoc/ attachment/externalReference/uri) 1-1 (XPath GPDdocAvailability/GPDAbody/GDPAitem/attachment/ externalReference/uri) 1-1 |
| @useProfile | use profile to which the present document is compliant if it was agreed by the parties. It |

| | |
|---------------|--|
| | <p>is suggested a URI with reference to the firms or the URL of the profile.</p> <ul style="list-style-type: none"> - base type: string, <p>(XPath GPDdocAvailability/@useProfile) [Optional]</p> |
| validityEnd | <p>date by which the validity ends, according to one of the patterns YYYY-MM-DD, YYYY-MM-DD:HH-MM or YYYY-WW.</p> <ul style="list-style-type: none"> - base type: string, <p>(XPath GPDdocAvailability/GPDAbody/GDPAitem/validityEnd) 0-1</p> |
| validityStart | <p>date by which the validity starts, according to one of the patterns YYYY-MM-DD, YYYY-MM-DD:HH-MM or YYYY-WW.</p> <ul style="list-style-type: none"> - base type: string, <p>(XPath GPDdocAvailability/GPDAbody/GDPAitem/validityStart) 0-1</p> |
| @version | <p>Dictionary version from which the instance has been created</p> <ul style="list-style-type: none"> - base type: string, cod. table: NT100 <p>http://www.ebiz.enea.it/moda-ml/repository/codelist/draft/gc_NT100.xml</p> <p>(XPath GPDdocAvailability/@version) [Optional] [Default= draft]</p> |
| xGeoCoord | <p>geographical coordinate x , corresponding to latitude</p> <ul style="list-style-type: none"> - base type: decimal, <p>(XPath GPDdocAvailability/GPDAbody/GDPAitem/issuerParty/geoCoordinates/xGeoCoord) 1-1</p> <p>(XPath GPDdocAvailability/GPDAbody/GDPAitem/signatureInformation/signatoryParty/geoCoordinates/xGeoCoord) 1-1</p> <p>(XPath GPDdocAvailability/GPDheader/senderParty/geoCoordinates/xGeoCoord) 1-1</p> |
| yGeoCoord | <p>geographical coordinate y , corresponding to longitude</p> <ul style="list-style-type: none"> - base type: decimal, <p>(XPath GPDdocAvailability/GPDheader/senderParty/geoCoordinates/yGeoCoord) 1-1</p> <p>(XPath GPDdocAvailability/GPDAbody/GDPAitem/issuerParty/geoCoordinates/yGeoCoord) 1-1</p> <p>(XPath GPDdocAvailability/GPDAbody/GDPAitem/signatureInformation/signatoryParty/geoCoordinates/yGeoCoord) 1-1</p> |
| zGeoCoord | <p>geographical coordinate z , corresponding to altitude</p> <ul style="list-style-type: none"> - base type: decimal, <p>(XPath GPDdocAvailability/GPDheader/senderParty/geoCoordinates/zGeoCoord) 0-1</p> <ul style="list-style-type: none"> - note: <i>altitude might be omitted</i> <p>(XPath GPDdocAvailability/GPDAbody/GDPAitem/signatureInformation/signatoryParty/geoCoordinates/zGeoCoord) 0-1</p> <ul style="list-style-type: none"> - note: <i>altitude might be omitted</i> <p>(XPath GPDdocAvailability/GPDAbody/GDPAitem/issuerParty/geoCoordinates/zGeoCoord) 0-1</p> <ul style="list-style-type: none"> - note: <i>altitude might be omitted</i> |

2.3 Suggested best practices

GPDocAvailability/GPDABody/GDPAitem/refDoc/docID (identification number of the referenced document)

numberingOrg indicates the role that produced the document identifier (it is allowed to declare two different ones -e.g. customer and supplier - with two docID with different numberingOrg

GPDocAvailability/GPDheader/refDoc/docID (identification number of the referenced document)

numberingOrg indicates the role that produced the document identifier (it is allowed to declare two different ones -e.g. customer and supplier - with two docID with different numberingOrg

**GPDocAvailability/GPDABody/GDPAitem/attachment/
externalReference/mimeCode (mime type of the external object)**

Use coding from IANA <http://www.iana.org/assignments/media-types/media-types.xml>

**GPDocAvailability/GPDheader/refDoc/attachment/
externalReference/mimeCode (mime type of the external object)**

Use coding from IANA <http://www.iana.org/assignments/media-types/media-types.xml>

**GPDocAvailability/GPDABody/GDPAitem/refDoc/
attachment/externalReference/mimeCode (mime type of the external object)**

Use coding from IANA <http://www.iana.org/assignments/media-types/media-types.xml>

2.4 Enumeration tables

List of enumeration tables used in the XML document. You can find all the tables with the corresponding codes at:
<http://www.ebiz.enea.it/eBIZ/imple/eBIZTCU-draft.asp?lingua=en&pag=6>

NT100 - eBIZ TCFUpstream version
NT18 - message function
NT2 - third party qualifier
NT202 - Type of the object Instance
NT29 - format of a date
NT333 - type of hashing algorithm
NT6 - coding system owner/issuer
NT60 - language, codes from ISO 639-1 (subset)
NT7 - unit of measure
T10 - ISO3166 - Country
T21 - type of document
T302 - type of object

(the most relevant tables are detailed in the following Annexes too)

3. Documentation for the applicative context 'TRICK'

3.1 related to the current document and to Activity '*P1.A2 Incoming material*'

An alert is sent to the producer to advise him about a new document on TRICK related to raw material availability at the supplier facility.
In this way he can connect to the platform and get the contents of this file.

ACKNOWLEDGEMENT



This action is part of the TRICK project, which has received funding from Horizon 2020 research and innovation programme under grant agreement No. 958352 of the European Union.

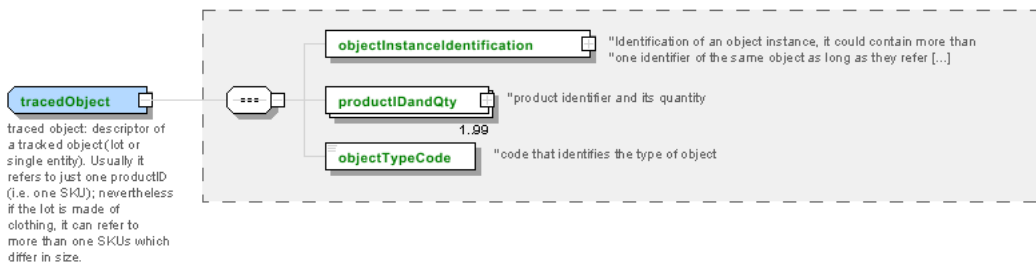
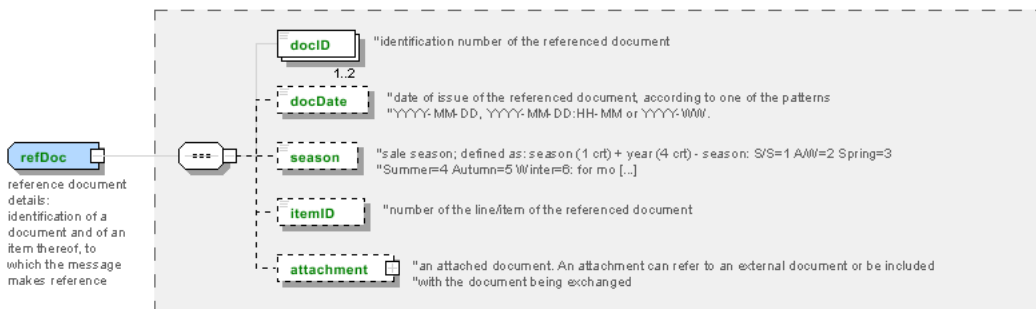
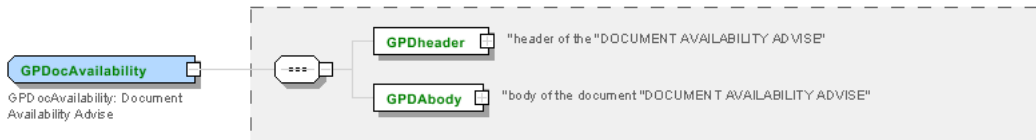
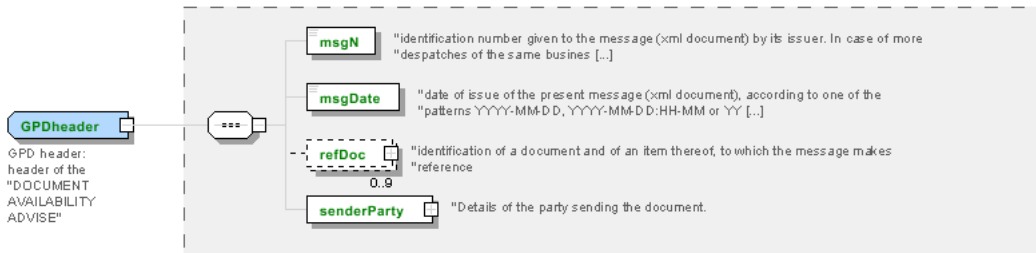
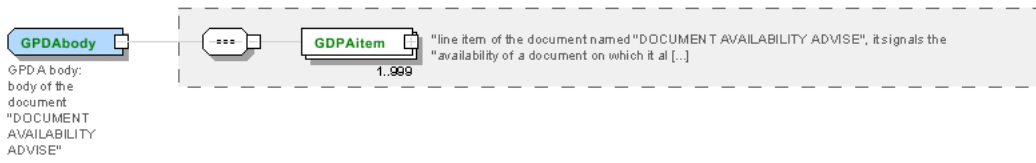
DISCLAIMER

The content of this document represents the views of the authors only and is their sole responsibility; it cannot be considered to reflect the views of the European Commission or any other body of the European Union.

The European Commission does not accept any responsibility for use that may be made of the information it contains.

Annex A

Representative images of the principal complex elements' structure.



Annex B

NT100 - eBIZ TCFUpstream version

dictionary version

Agency name: eBIZ

Decoding table: NT100

File codes list (Generic code): http://www.ebiz.enea.it/moda-ml/repository/codelist/draft/gc_NT100.xml

| Code | Description | Adoption note | Date of insertion |
|--------|-------------|---------------|-------------------|
| 2013-1 | v2013-1 | | 01/07/2013 |
| 2018-1 | v2018-1 | | 04/11/2018 |
| draft | draft | | 08/09/2017 |

NT18 - message function

function performed by the present message with regards to the transmission

Agency name: eBIZ

Decoding table: NT18

File codes list (Generic code): http://www.ebiz.enea.it/moda-ml/repository/codelist/draft/gc_NT18.xml

| Code | Description | Adoption note | Date of insertion |
|------|-------------------------------------|---------------|-------------------|
| CA | delete this document | | 01/07/2013 |
| CP | copy | | |
| OR | original | | |
| RC | re-transmission for data correction | | |
| RT | re-transmission | | |

NT2 - third party qualifier

Third Party role qualifier

Agency name: eBIZ

Decoding table: NT2

File codes list (Generic code): http://www.ebiz.enea.it/moda-ml/repository/codelist/draft/gc_NT2.xml

| Code | Description | Adoption note | Date of insertion |
|------|-------------|---------------|-------------------|
| AG | Sales Agent | | |
| AU | Auditor | | 08/04/2019 |
| BU | Buyer | | 13/06/2022 |

| | | | |
|----|--------------------------------------|--|------------|
| CE | Certification authority | | 08/04/2019 |
| CM | Commissioner | | 13/06/2022 |
| CO | Quality Controller | | |
| CU | Customs authority | | 13/06/2022 |
| DC | Response to | | |
| DF | Invoicee | | |
| DI | Copy to (CC) | | 28/10/2014 |
| DM | Consignee | | |
| DP | Consignment address (Delivery Party) | | |
| EX | Expert | | 13/06/2022 |
| IM | Importer | | |
| OR | Originator | | 10/09/2014 |
| SC | Sub contractor | | 10/04/2019 |
| SM | Service/ePlatform manager | | 08/04/2019 |
| SP | Forwarder | | |
| SU | Supplier | | 13/06/2022 |
| TL | Test or analysis laboratory | | 13/06/2022 |
| TX | Tax Representative | | |

NT202 - Type of the object Instance

indicates the type of the object Instance

Agency name: eBIZ for TRICK

Decoding table: NT202

File codes list (Generic code): http://www.ebiz.enea.it/moda-ml/repository/codelist/draft/gc_NT202.xml

| Code | Description | Adoption note | Date of insertion |
|------|--------------------------------------|---------------|-------------------|
| IST | an individual instance of the object | | 13/06/2022 |
| LOT | lot or batch of objects | | 13/06/2022 |

NT29 - format of a date

format used for the date

Agency name: eBIZ

Decoding table: NT29

File codes list (Generic code): http://www.ebiz.enea.it/moda-ml/repository/codelist/draft/gc_NT29.xml

| Code | Description | Adoption note | Date of insertion |
|------|-------------|---------------|-------------------|
|------|-------------|---------------|-------------------|

| | | | |
|---|--|--|------------|
| D | YYYY-MM-DD | | |
| M | YYYY-MM-DD:HH-MM (date and time) | | |
| S | AAAA-MM-GG:HH-MM-SS (date and time with seconds) | | 13/06/2022 |
| W | YYYY-WW | | |

NT333 - type of hashing algorithm

type of hashing algorithm

Decoding table: NT333

File codes list (Generic code): http://www.ebiz.enea.it/moda-ml/repository/codelist/draft/gc_NT333.xml

| Code | Description | Adoption note | Date of insertion |
|------------|-------------|---------------|-------------------|
| ADLER32 | ADLER32 | | 26/05/2023 |
| HMAC | HMAC | | 26/05/2023 |
| MD2 | MD2 | | 26/05/2023 |
| MD4 | MD4 | | 26/05/2023 |
| MD5 | MD5 | | 26/05/2023 |
| MDC-2 | MDC-2 | | 26/05/2023 |
| PANAMA | PANAMA | | 26/05/2023 |
| RIPEMD-160 | RIPEMD-160 | | 26/05/2023 |
| SHA-1 | SHA-1 | | 26/05/2023 |
| SHA-2 256 | SHA-2 256 | | 26/05/2023 |
| SHA-2 384 | SHA-2 384 | | 26/05/2023 |
| SHA-2 512 | SHA-2 512 | | 26/05/2023 |
| TIGER | TIGER | | 26/05/2023 |

NT6 - coding system owner/issuer

code specifying the organisation who has created or owns the registers of the present coding or numbering system

Agency name: eBIZ

Decoding table: NT6

File codes list (Generic code): http://www.ebiz.enea.it/moda-ml/repository/codelist/draft/gc_NT6.xml

| Code | Description | Adoption note | Date of insertion |
|------|--|---------------|-------------------|
| CBR | National customs brokers registry | | 12/06/2023 |
| CL | Customer/buyer | | |
| CO | Quality Controller | | |
| DU | D-U-N-S registry (Data Universal Numbering System) | | 04/05/2023 |

| | | | |
|-----|---|------------------|------------|
| EB | eBIZ | replaces 'ML' | 18/03/2019 |
| EN | GS1 (ex-EAN International) | | |
| EO | Registro EORI (Economic Operators Registration and Identification number) | | 04/03/2023 |
| ES | e-Stockflow | DEPRECATED | |
| FO | Supplier | | |
| GS | GS1 | | 01/07/2013 |
| MF | national taxation authority (i.e. VAT codes registry) | | |
| ML | Moda-ML | DEPRECATED | |
| PL | Application Platform | | 13/06/2022 |
| REX | Registered Exporter system (REX) | | 19/05/2023 |
| SP | Service Provider | | |
| SU | Enterprise Identification Number UID | Only switzerland | 04/03/2023 |

NT60 - language, codes from ISO 639-1 (subset)

Agency name: eBIZ / ISO

Decoding table: NT60

File codes list (Generic code): http://www.ebiz.enea.it/moda-ml/repository/codelist/draft/gc_NT60.xml

| Code | Description | Adoption note | Date of insertion |
|------|-----------------------|---------------|-------------------|
| af | Afrikaans | | 31/01/2019 |
| ar | Arabic | | 31/01/2019 |
| be | Belarusian | | 31/01/2019 |
| bg | Bulgarian | | 31/01/2019 |
| bn | Bengali | | 31/01/2019 |
| bo | Tibetan | | 31/01/2019 |
| bs | Bosnian | | 31/01/2019 |
| ca | Catalan, Valencian | | 31/01/2019 |
| cs | Czech | | 31/01/2019 |
| da | Danish | | 31/01/2019 |
| de | German | | 31/01/2019 |
| el | Greek, Modern (1453-) | | 31/01/2019 |
| en | English | | 31/01/2019 |
| eo | Esperanto | | 31/01/2019 |
| es | Spanish, Castilian | | 31/01/2019 |
| et | Estonian | | 31/01/2019 |
| eu | Basque | | 31/01/2019 |
| F | Female | | 15/04/2019 |

| | | | |
|----|--|--|------------|
| fa | Persian | | 31/01/2019 |
| fi | Finnish | | 31/01/2019 |
| fr | French | | 31/01/2019 |
| ga | Irish | | 31/01/2019 |
| gd | Gaelic, Scottish Gaelic | | 31/01/2019 |
| gn | Guarani | | 31/01/2019 |
| he | Hebrew | | 31/01/2019 |
| hr | Croatian | | 31/01/2019 |
| ht | Haitian, Haitian Creole | | 31/01/2019 |
| hu | Hungarian | | 31/01/2019 |
| hy | Armenian | | 31/01/2019 |
| ia | Interlingua (International Auxiliary Language Association) | | 31/01/2019 |
| id | Indonesian | | 31/01/2019 |
| is | Icelandic | | 31/01/2019 |
| it | Italian | | 31/01/2019 |
| ja | Japanese | | 31/01/2019 |
| jv | Javanese | | 31/01/2019 |
| ka | Georgian | | 31/01/2019 |
| km | Central Khmer | | 31/01/2019 |
| ko | Korean | | 31/01/2019 |
| ku | Kurdish | | 31/01/2019 |
| lb | Luxembourgish, Letzeburgesch | | 31/01/2019 |
| lo | Lao | | 31/01/2019 |
| lt | Lithuanian | | 31/01/2019 |
| lv | Latvian | | 31/01/2019 |
| mg | Malagasy | | 31/01/2019 |
| mk | Macedonian | | 31/01/2019 |
| mn | Mongolian | | 31/01/2019 |
| mt | Maltese | | 31/01/2019 |
| nl | Dutch, Flemish | | 31/01/2019 |
| no | Norwegian | | 31/01/2019 |
| pl | Polish | | 31/01/2019 |
| pt | Portuguese | | 31/01/2019 |
| ro | Romanian, Moldavian, Moldovan | | 31/01/2019 |
| ru | Russian | | 31/01/2019 |
| se | Northern Sami | | 31/01/2019 |
| sk | Slovak | | 31/01/2019 |
| sl | Slovenian | | 31/01/2019 |

| | | | |
|----|------------|--|------------|
| sm | Samoan | | 31/01/2019 |
| so | Somali | | 31/01/2019 |
| sq | Albanian | | 31/01/2019 |
| sr | Serbian | | 31/01/2019 |
| sv | Swedish | | 31/01/2019 |
| sw | Swahili | | 31/01/2019 |
| ta | Tamil | | 31/01/2019 |
| th | Thai | | 31/01/2019 |
| tr | Turkish | | 31/01/2019 |
| uk | Ukrainian | | 31/01/2019 |
| ur | Urdu | | 31/01/2019 |
| uz | Uzbek | | 31/01/2019 |
| vi | Vietnamese | | 31/01/2019 |
| zh | Chinese | | 31/01/2019 |

NT7 - unit of measure

specification of the unit of measure, it is a sub set of table Unit of Measure Code - UN/ECE REC 20 delivered by United Nations Economic Commission for Europe (UN/ECE)

Agency name: eBIZ / UN/ECE

Decoding table: NT7

File codes list (Generic code): http://www.ebiz.enea.it/moda-ml/repository/codelist/draft/gc_NT7.xml

Other link: <http://docs.oasis-open.org/ubl/os-UBL-2.1/cl/gc/default/UnitOfMeasureCode-2.1.gc#>

| Code | Description | Adoption note | Date of insertion |
|---------|----------------------------------|---------------|-------------------|
| CMK | square centimetre | | 20/12/2017 |
| CMQ | cubic centimetre | | 20/12/2017 |
| CMT | centimetre | | |
| CNE | centiNewton | | |
| CO2TON | ton of CO2 | | 10/09/2014 |
| COUPLES | couples | | |
| DAY | day | | 22/08/2022 |
| DEGD | decimal degrees | | 04/07/2022 |
| DEGMS | degrees with minutes and seconds | | 01/07/2022 |
| DMQ | cubic decimetre | | |
| E37 | pixel | | 11/04/2018 |
| GRM | gram | | |
| HUR | hour | | |
| INH | inch | | |

| | | | |
|-------|--------------------|--|------------|
| KGM | kilogram | | |
| KMT | kilometer | | |
| KWH | kilowatthours | | 10/09/2014 |
| LBR | pound | | |
| MCG | microgram | | 23/08/2022 |
| MG | milligram | | 23/08/2022 |
| MIN | minute | | |
| MMK | square millimetre | | 20/12/2017 |
| MONTH | month | | 22/08/2022 |
| MSEC | millisecond (time) | | 22/08/2022 |
| MTK | square metre | | 20/12/2017 |
| MTQ | cubic metre | | |
| MTR | metre | | |
| NMB | numero | | |
| ONZ | ounce | | |
| P1 | percent | | |
| PPM | parts per milion | | |
| PZ | piece | | |
| RPM | rounds per metre | | |
| SEC | second (time) | | 22/08/2022 |
| YEAR | year | | 22/08/2022 |
| YRD | yard | | |

T10 - ISO3166 - Country

code of the nation

Agency name: ISO

Decoding table: T10

File codes list (Generic code): http://www.ebiz.enea.it/moda-ml/repository/codelist/draft/gc_T10.xml

Table not printed: there are 240 elements, more than the maximum specified for printing: 99.

T21 - type of document

type or class to which the referenced document belongs

Agency name: eBIZ

Decoding table: T21

File codes list (Generic code): http://www.ebiz.enea.it/moda-ml/repository/codelist/draft/gc_T21.xml

| Code | Description | Adoption note | Date of insertion |
|-------------|------------------------------------|-----------------------------|--------------------------|
| BIL | Bill of lading | | 07/03/2023 |
| BOR | Blanket order | | 01/02/2018 |
| CAT | Price catalogue - tech sheet | | |
| CEO | Certificate of origin | | 13/04/2018 |
| CER | Certificate | | 13/04/2018 |
| CMR | CMR consignment note | | 07/03/2023 |
| COC | Colour card | | |
| CRN | Credit note | | 08/09/2017 |
| CTO | Checking order | | 01/07/2013 |
| CTR | Contract | | |
| CXF | CxF3 file | | 01/07/2013 |
| DAD | Darn order | | |
| DDT | Delivery note (transport document) | | |
| DEA | Despatch advise | | |
| DER | Despatch request | | |
| DR | Document Request | | 02/12/2014 |
| EAD | Export Accompanying Document | adopted by European customs | 12/05/2023 |
| ECMR | electronic CMR consignment note | | 07/03/2023 |
| ECUS | EXPORT Custom Declaration | | 07/03/2023 |
| FOR | Forecast | | 02/12/2014 |
| GSO | Garment stock offer | | |
| GSX | Garment stock offer change | | |
| ICUS | IMPORT Custom Declaration | | 07/03/2023 |
| INV | Invoice | | |
| KCC | Knitting-Clothing Commission Order | | 02/12/2014 |
| KCI | Garment in Work Inventory Report | | 02/12/2014 |
| LCA | LCA study | | 28/08/2022 |
| LCAD | LCA study dataset | | 28/08/2022 |
| M2M | Made to Measure Production Order | | 02/12/2014 |
| MAS | Master marker | | |
| MCI | Visual merchandising instruction | | 13/04/2018 |
| OCH | Order change | | |
| OFF | Offer | | |
| ORD | Purchase order | | |
| ORP | Order response | | |
| OSR | order status request | | |

| | | | |
|-------|---|-----------------------------|------------|
| OSS | Offer status | | 02/12/2014 |
| OST | Order status | | |
| OUR | our reference | | |
| PCO | Preferential certificate of origin | | 07/03/2023 |
| PEF | PEF study | | 28/08/2022 |
| PEFD | PEF study dataset | | 28/08/2022 |
| PEFP | PEF environmental profile | | 07/03/2023 |
| QR | Quality Report | | 02/12/2014 |
| RAI | Raw Material in Work Inventory Report | | 02/12/2014 |
| RDC | Raw dyeing commission order | | |
| RDH | Raw dyeing order change | | |
| RDR | Raw dyeing order response | | |
| REA | Receiving advise | | |
| REQ | Request for Offer | | |
| RET | Return | | 02/12/2014 |
| RSC | Spinning commission order | | |
| RSH | Spinning order change | | |
| RSR | Spinning order response | | |
| SAD | Single Administrative Document | adopted by European customs | 12/05/2023 |
| SCL | Process sheet | | |
| SDE | Self-declaration | | 07/03/2023 |
| SDS | SDS - Safety data sheet | | 07/03/2023 |
| SLCA | S-LCA Study | | 07/03/2023 |
| SLCAD | S-LCA Study documentation | | 07/03/2023 |
| TFC | Textile dyeing-finishing commission order | | |
| TFX | Textile Dyeing-Finishing Order Change | | 02/12/2014 |
| TPC | Textile printing commission order | | |
| TPX | Textile Printing Order Change | | 02/12/2014 |
| TWI | Textile in work inventory | | |
| VMI | visual merchandising instructions | | 01/02/2018 |
| WAC | Warping commission order | | |
| WAYB | Waybill | | 07/03/2023 |
| WEC | Weaving commission order | | |
| YDC | Yarn dyeing commission order | | |
| YDH | Yarn dyeing order change | | |
| YDR | Yarn dyeing order response | | |
| YTC | Twisting commission order | | |
| YWI | Yarn in work inventory | | |

T302 - type of object

indicates the type of object. Indicates the nature of a traceable object (for example a truck load).

Agency name: eBIZ for TRICK

Decoding table: T302

File codes list (Generic code): http://www.ebiz.enea.it/moda-ml/repository/codelist/draft/gc_T302.xml

| Code | Description | Adoption note | Date of insertion |
|------|---------------------------------------|---|-------------------|
| ACCE | accessory | | 13/06/2022 |
| CFBR | fiber (combed) | | 01/09/2022 |
| FABR | fabric (finished) (non knitted) | after any finishing or dyeing or darning | 01/09/2022 |
| FIL | filament | | 01/09/2022 |
| GARM | garment (finished) | garment ready fo use (sales, rent or anything else) | 13/06/2022 |
| GRCO | garment component | | 13/06/2022 |
| KNFA | knitted fabric (finished) | | 01/09/2022 |
| LFIB | lose fibers | | 01/09/2022 |
| PFBR | fiber (processed) | | 01/07/2022 |
| POLY | polymer | | 04/09/2022 |
| PPFB | fiber (preprocessed) | might include washed fiber or dyed | 01/09/2022 |
| RAFA | fabric (non knitted) (raw) | | 01/09/2022 |
| RAFI | fiber (raw) | before any kind of treatment or preprocessing | 01/09/2022 |
| RAGA | garment (unfinished) | | 01/09/2022 |
| RAKF | knitted fabric (unfinished) | | 01/09/2022 |
| RAYA | yarn (unfinished) | | 13/06/2022 |
| TOPS | tops | | 23/03/2023 |
| TRIM | trimming | | 01/09/2022 |
| WACC | waste accessories | | 01/09/2022 |
| WFFP | waste fabric from fabric production | | 01/09/2022 |
| WFGP | waste fabric from garment production | | 01/09/2022 |
| WFYP | waste fibre from yarn production | | 01/09/2022 |
| WGGP | waste garment from garment production | | 01/09/2022 |
| WPAC | waste accessories (Post-Consumer) | | 01/09/2022 |
| WPFB | waste fabric (Post-Consumer) | | 01/09/2022 |
| WPGR | waste garment (Post-Consumer) | | 01/09/2022 |
| WPTR | waste trimming (Post-Consumer) | | 01/09/2022 |
| WTRM | waste trimming | | 01/09/2022 |
| WYFP | waste yarn from fabric production | | 01/09/2022 |

| | | | |
|------|---------------------------------|--|------------|
| WYYP | waste yarn from yarn production | | 01/09/2022 |
| YARN | yarn (finished) | | 13/06/2022 |