



<http://www.ebiz-tcf.eu>

DRAFT

IMPLEMENTATION GUIDE
TRANSACTION "TEXTILE QUALITY REPORT"

Version: draft

Date of release: 26/6/2023

Document code: G007

technical Documentation: <http://www.ebiz.enea.it>

XML Schemas repository: <http://www.ebiz.enea.it/moda-ml/repository/schema/draft/default.asp>

Guides repository: <http://www.ebiz.enea.it/moda-ml/repository/guide/draft/default.asp>

Guide filename: G007-eBIZ-TextileQualityReport.pdf

0. PREMISE

This document contains a proposal for the updating and extension of eBIZ specifications starting from the eBIZ version 2018. Under the name of 'Draft version' it is reported the result of an extensive work of analysis and consultation aimed at developing and maintaining eBIZ specifications.

In particular, the content of this proposal is the result of various activities, mainly those carried out within the framework of the **TRICK project** funded by the European Commission: grant agreement 958352, call H2020-LOW-CARBON-CIRCULAR-INDUSTRIES-2020 / H2020-LCCI-2020-EASME-twostage.

The technical contents are backwards compatible with the latest official published version, with the exclusion of the totally new concepts added explicitly for the version that are thought as incremental evolution of the knowledge base.

1. BUSINESS DESCRIPTION

1.1 Scope

The present guide has been issued to assist the companies of the Textile-Clothing sector in the implementation of the standard XML document type "Textile QUALITY REPORT", providing all the instructions required for its use in any context of e-commerce between Apparel Producers and Fabric Producers.

All the rules required for the construction and validation of the document are embedded into the specific XML-Schema, which is detailed in section "Implementation guide".

1.2 Generalities

The message is issued either by the Fabric Producer and/or by the Fabric Quality Controller as "quality certificate" of the fabric piece, mainly to anticipate the details on the existence, position and classification of faults in order to accelerate and improve the following apparel manufacturing.

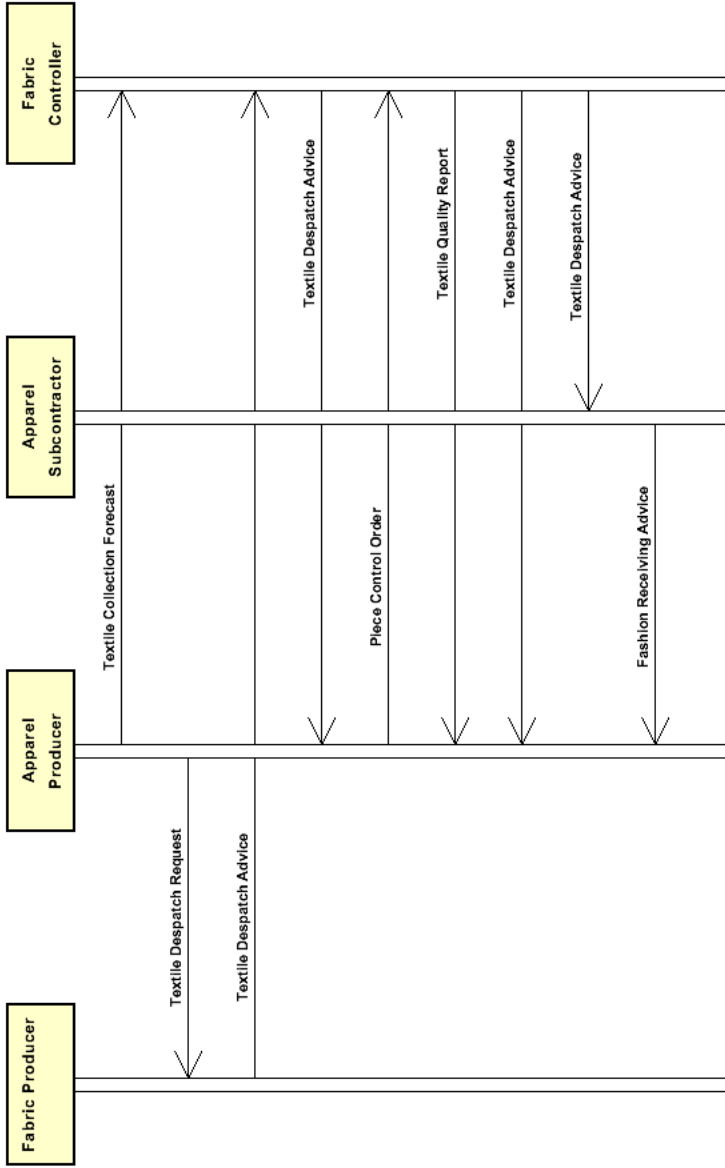
Each document refers either to one piece of fabric, identified by its id. number (TQ type ="S"ingle) or to several pieces belonging to the same shipment (TQ type="M"ultiple) and likewise identified.

The following classes of data can be reported in the document:

- physical dimensions and overall allowance
- fabric faults and their positions
- test value of conformance to specifications and tailorability
- the reporting of the inspection.

1.3. Possible scenario

Fabric delivery with quality reporting by controller



2. IMPLEMENTATION GUIDE

2.1 General structure of XML document

All the business data that can be exchanged through this class of documents are shown in the following "document structure", that provides a simplified vision of the Schema.

In particular:

- the two numbers following each element define its "cardinality" (minimum and maximum number of occurrences); the minimum equal zero indicates that the element is optional, the minimum greater than zero indicates that is mandatory;
- the bold character denotes the complex elements (aggregates of simple elements) that were built for the sake of functionality and re-usability of some complex informations sets. The child elements in each parent element are easily spotted as "indented";
- the symbol "@" denotes an attribute of the preceding element; here "the usage indicator (optional, required, ...) is shown in square brackets.

Structure

TEXQualityRpt

```
@TQtype [Optional]
@msgfunction [Optional] [Default= OR]
@version [Optional] [Default= draft]
@useProfile [Optional]
| TQheader 1-1
| | msgN 1-1
| | - choose -
| | | msgID 0-1
| | | - or -
| | | docID 0-1
| | | @numberingOrg [Optional]
| | | - end choose -
| | | msgDate 1-1
| | | @dateForm [Optional]
| | | refDoc 0-9
| | | @docType [Required]
| | | | docID 1-2
| | | | @numberingOrg [Optional]
| | | | docDate 0-1
| | | | @dateForm [Optional]
| | | | season 0-1
| | | | @numberingOrg [Optional]
| | | | @codeList [Optional]
| | | | @listName [Optional]
| | | | @listVersion [Optional]
| | | | itemID 0-1
| | | | attachment 0-1
| | | | @uid [Optional]
| | | | | fileName 0-1
| | | | | @numberingOrg [Optional]
| | | | | binaryObject 0-1
| | | | | @format [Optional]
| | | | | @mime [Optional]
| | | | | @encoding [Optional]
| | | | | @characterSet [Optional]
| | | | | externalReference 0-99
| | | | | | uri 1-1
| | | | | | @isURL [Optional] [Default= true]
| | | | | | mimeTypeCode 0-1
| | | | | | formatCode 0-1
| | | | | | encodingCode 0-1
| | | | | | characterSetCode 0-1
| | | | | hashFootprint 0-1
| | | | | @schemeID [Optional]
| | | | | @hashMethod [Required]
| | | | | blockChainReference 0-9
| | | | | | uri 1-1
| | | | | | @isURL [Optional] [Default= true]
```

| | | transactionReceipt 1-9

| **buyer 1-1**

| @logo [Optional]

| @sender [Optional]

| id 1-1

| @numberingOrg [Optional]

| additionalIdentifier 0-9

| @numberingOrg [Optional]

| @idQualifier [Optional]

| legalName 0-1

| dept 0-1

| subDept 0-1

| person 0-1

| @email [Optional]

| @phone [Optional]

| @fax [Optional]

| street 0-1

| city 0-1

| subCountry 0-1

| country 0-1

| postCode 0-1

| **geoCoordinates 0-1**

| @um [Optional] [Default= DEGD]

| @geoRefSystem [Optional]

| | xGeoCoord 1-1

| | yGeoCoord 1-1

| | zGeoCoord 0-1

| **supplier 1-1**

| @logo [Optional]

| @sender [Optional]

| id 1-1

| @numberingOrg [Optional]

| additionalIdentifier 0-9

| @numberingOrg [Optional]

| @idQualifier [Optional]

| legalName 0-1

| dept 0-1

| subDept 0-1

| person 0-1

| @email [Optional]

| @phone [Optional]

| @fax [Optional]

| street 0-1

| city 0-1

| subCountry 0-1

| country 0-1

| postCode 0-1

| **geoCoordinates 0-1**

| @um [Optional] [Default= DEGD]

| @geoRefSystem [Optional]

| | xGeoCoord 1-1

| | yGeoCoord 1-1

| | zGeoCoord 0-1

| **thirdParty 0-5**

| @VAT [Optional]

| @role [Required]

| @sender [Optional]

| id 1-1

| @numberingOrg [Optional]

| legalName 0-1

| dept 0-1

| subDept 0-1

| person 0-1

| @email [Optional]

| @phone [Optional]

| @fax [Optional]

| street 0-1

| city 0-1

- | subCountry 0-1
- | country 0-1
- | postCode 0-1
- | **geoCoordinates 0-1**
- | | @um [Optional] [Default= DEGD]
- | | @geoRefSystem [Optional]
- | | | xGeoCoord 1-1
- | | | yGeoCoord 1-1
- | | | zGeoCoord 0-1
- | note 0-99
- | | @numberingOrg [Optional]
- | | @codeList [Optional]
- | | @noteLabel [Optional]

TQbody 1-1

- | **TQitem 1-unbounded**
- | | serialN 1-9
- | | | @numberingOrg [Optional]
- | | | @idQualifier [Optional]
- | | **texCode 0-2**
- | | | @numberingOrg [Optional]
- | | | | art 1-1
- | | | | | @numberingOrg [Optional]
- | | | | | @codeList [Optional]
- | | | | | @listName [Optional]
- | | | | | @listVersion [Optional]
- | | | | pattern 0-1
- | | | | | @numberingOrg [Optional]
- | | | | | @codeList [Optional]
- | | | | | @listName [Optional]
- | | | | | @listVersion [Optional]
- | | | | color 0-1
- | | | | | @numberingOrg [Optional]
- | | | | | @codeList [Optional]
- | | | | | @listName [Optional]
- | | | | | @listVersion [Optional]
- | | | | added 0-9
- | | | | | @numberingOrg [Optional]
- | | | | | @addType [Optional]
- | | | | description 0-unbounded
- | | | | | @ln [Optional]
- | | **refDoc 0-9**
- | | | @docType [Required]
- | | | | docID 1-2
- | | | | | @numberingOrg [Optional]
- | | | | | docDate 0-1
- | | | | | @dateForm [Optional]
- | | | | | season 0-1
- | | | | | @numberingOrg [Optional]
- | | | | | @codeList [Optional]
- | | | | | @listName [Optional]
- | | | | | @listVersion [Optional]
- | | | | itemID 0-1
- | | | **attachment 0-1**
- | | | | @uid [Optional]
- | | | | | fileName 0-1
- | | | | | | @numberingOrg [Optional]
- | | | | | | binaryObject 0-1
- | | | | | | | @format [Optional]
- | | | | | | | @mime [Optional]
- | | | | | | | @encoding [Optional]
- | | | | | | | @characterSet [Optional]
- | | | | **externalReference 0-99**
- | | | | | uri 1-1
- | | | | | | @isURL [Optional] [Default= true]
- | | | | | | mimeTypeCode 0-1
- | | | | | | formatCode 0-1
- | | | | | | encodingCode 0-1

```

| | | | characterSetCode 0-1
| | | | hashFootprint 0-1
| | | | @schemeID [Optional]
| | | | @hashMethod [Required]
| | | | blockChainReference 0-9
| | | | | uri 1-1
| | | | | @isURL [Optional] [Default= true]
| | | | | transactionReceipt 1-9
| testDate 0-1
| | @dateForm [Optional]
| lotN 0-1
| | @numberingOrg [Optional]
| dyeN 0-1
| | @numberingOrg [Optional]
| mixMatch 0-1
| | @numberingOrg [Optional]
| pieceMeasures 1-3
| | @source [Required]
| | | pieceLength 0-1
| | | | @um [Optional] [Default= MTR]
| | | | pieceWeight 0-1
| | | | | @um [Optional] [Default= KGM]
| | | | grossWeight 0-1
| | | | | @um [Required]
| | | | pieceCutWidth 0-1
| | | | | @um [Optional] [Default= CMT]
| | | | pieceWeightM 0-1
| | | | | @um [Optional] [Default= GRM]
| | | | pieceWidth 0-1
| | | | | @um [Optional] [Default= CMT]
| | | | pieceAllow 0-1
| | | | | @um [Required]
| pieceAllowMea 0-2
| | @source [Required]
| | | pieceAllowM 0-1
| | | | @um [Required]
| | | | pieceAllowF 0-1
| | | | | @um [Required]
| | | | pieceAllow 1-1
| | | | | @um [Required]
| pieceMap 1-2
| | @source [Required]
| | | totFault 1-1
| | | | pieceFault 0-99
| | | | | @faultRank [Required]
| | | | | @faultShape [Optional]
| | | | - choose -
| | | | | fabricFaultText 1-1
| | | | - or -
| | | | | fabricFault 1-1
| | | | - end choose -
| | | | warpStart 1-1
| | | | | @um [Optional] [Default= MTR]
| | | | warpEnd 0-1
| | | | | @um [Optional] [Default= MTR]
| | | | weftStart 0-1
| | | | | @um [Optional] [Default= CMT]
| | | | weftEnd 0-1
| | | | | @um [Optional] [Default= CMT]
| | | | pieceAllow 0-1
| | | | | @um [Required]
| | | | note 0-99
| | | | | @numberingOrg [Optional]
| | | | | @codeList [Optional]
| | | | | @noteLabel [Optional]
| pieceTestRpt 0-2
| | @source [Required]
| | | fabricTest 1-99

```

```

- choose -
| | | | fabricChar 1-1
- or -
| | | | fabricCharText 1-1
- end choose -
| | | |
| | | | experimValue 0-9
| | | | @um [Optional]
| | | | @method [Optional]
| | | | @application [Optional]
| | | | @idCO [Optional]
| | | | comply 0-1
| | | | note 0-99
| | | | @numberingOrg [Optional]
| | | | @codeList [Optional]
| | | | @noteLabel [Optional]
| | | | fabricTaylorability 0-99
| | | | taylorabilityChar 1-1
| | | | experimValue 0-9
| | | | @um [Optional]
| | | | @method [Optional]
| | | | @application [Optional]
| | | | @idCO [Optional]
| | | | comply 0-1
| | | | note 0-99
| | | | @numberingOrg [Optional]
| | | | @codeList [Optional]
| | | | @noteLabel [Optional]
| | | | pieceControlRpt 1-1
| | | | pieceControl 0-1
| | | | @numberingOrg [Optional]
| | | | @codeList [Optional]
| | | | @listName [Optional]
| | | | @listVersion [Optional]
| | | | pieceStatus 0-1
| | | | registrationDate 0-1
| | | | @dateForm [Optional]
| | | | preexaminationDate 0-1
| | | | @dateForm [Optional]
| | | | inspectionDate 0-1
| | | | @dateForm [Optional]
| | | | rollUpDate 0-1
| | | | @dateForm [Optional]

```


2.2 Detailed description of document elements

Following tables show all elements (complex and simple) used in this document. Description includes: 1) element's information: xml tag, name, brief description, data type and syntax constraints; 2) information about use of the element in a particular position in the document: xpath and possible associated notes.

2.2.1 Complex elements (Aggregate Business Information Entities)

Complex elements are those elements whose content is composed of other elements (childs). Complex elements are alphabetically ordered.

attachment	an attached document. An attachment can refer to an external document or be included with the document being exchanged (XPath TEXQualityRpt/TQbody/TQitem/refDoc/attachment) 0-1 (XPath TEXQualityRpt/TQheader/refDoc/attachment) 0-1
blockChainReference	blockchain reference - base type: string, max length: 80, (XPath TEXQualityRpt/TQbody/TQitem/refDoc/attachment/blockChainReference) 0-9 (XPath TEXQualityRpt/TQheader/refDoc/attachment/blockChainReference) 0-9
buyer	details of the Buyer (party that buys the good or service that is object of the current collaborative process) - base type: Nad, (XPath TEXQualityRpt/TQheader/buyer) 1-1
externalReference	details about an external object, such as a document stored at a remote location (XPath TEXQualityRpt/TQheader/refDoc/attachment/externalReference) 0-99 (XPath TEXQualityRpt/TQbody/TQitem/refDoc/attachment/externalReference) 0-99
fabricTaylorability	taylorability data. Include the type and the value of the taylorability parameter (XPath TEXQualityRpt/TQbody/TQitem/pieceTestRpt/fabricTaylorability) 0-99
fabricTest	details of the test performed on a fabric. Include the parameter evaluated, the experimental value (one or more) and the declaration of conformity (XPath TEXQualityRpt/TQbody/TQitem/pieceTestRpt/fabricTest) 1-99
geoCoordinates	geographical coordinates (XPath TEXQualityRpt/TQheader/thirdParty/geoCoordinates) 0-1 (XPath TEXQualityRpt/TQheader/supplier/geoCoordinates) 0-1 (XPath TEXQualityRpt/TQheader/buyer/geoCoordinates) 0-1
pieceAllowMea	allowance measure for a fabric piece (XPath TEXQualityRpt/TQbody/TQitem/pieceAllowMea) 0-2
pieceControlRpt	report of the control operations executed on a fabric piece (XPath TEXQualityRpt/TQbody/TQitem/pieceControlRpt) 1-1
pieceFault	classification, position and allowance of the piece faults. The reference point (0,0) for the position is the lower left corner of the piece (selvedge excluded) (XPath TEXQualityRpt/TQbody/TQitem/pieceMap/pieceFault) 0-99
pieceMap	mapping of the piece faults: type, rank and location (XPath TEXQualityRpt/TQbody/TQitem/pieceMap) 1-2 - note: <i>this data group can be iterated to compare the values provided by the Supplier with the values obtained by the external Quality Controller</i>
pieceMeasures	basic measurements of the piece; include width, length, weight and allowance. (XPath TEXQualityRpt/TQbody/TQitem/pieceMeasures) 1-3 - note: <i>this data group can be iterated to compare the values provided by the Supplier with the values obtained by the external Quality Controller</i>
pieceTestRpt	details of the quality test performed on the piece. Includes two sections: test upon the technical characteristics of fabric in general and the taylorability test (XPath TEXQualityRpt/TQbody/TQitem/pieceTestRpt) 0-2 - note: <i>this data group can be iterated to compare the values provided by the Supplier with the values obtained by the external Quality Controller</i>
refDoc	identification of a document and of an item thereof, to which the message makes reference

	(XPath TEXQualityRpt/TQheader/refDoc) 0-9 (XPath TEXQualityRpt/TQbody/TQitem/refDoc) 0-9 - note: here the number of the Despatch Advise of the piece can be specified
supplier	details of the Supplier (party that supplies the good or service that is object of the current collaborative process) - base type: Nad, (XPath TEXQualityRpt/TQheader/supplier) 1-1
texCode	full codification of the textile product (XPath TEXQualityRpt/TQbody/TQitem/texCode) 0-2
thirdParty	identification and details of the Third Party, different from Sender and Receiver of the document - base type: Nad, (XPath TEXQualityRpt/TQheader/thirdParty) 0-5 - note: in this case the only permitted third Party is the Controller (role="CO")
TQbody	body of the document TEXTILES QUALITY REPORT. It contains one TQitem element for each textile quality report. (XPath TEXQualityRpt/TQbody) 1-1 - note: In multiple reports (TQtype="M") this section must contain more than one TQitem.
TQheader	header of the TEXTILES QUALITY REPORT. (XPath TEXQualityRpt/TQheader) 1-1 - note: In the document issued by the Controller (sent to Client and Supplier) the Controller must identify as "third party". The attribute "logo" should be used only in conjunction with Supplier or Quality Controller.
TQitem	line item of the document TEXTILES QUALITY REPORT. It includes 5 sections: identification data-measurements-faults map- test results-inspection report (XPath TEXQualityRpt/TQbody/TQitem) 1-unbounded

2.2.2 Simple elements (Basic Business Information Entities)

Simple elements are those elements whose content is characterized by a data type plus a domain of possible values. Simple elements are alphabetically ordered.

added	additional code of the product (complementing the formers) - base type: string, max length: 80, (XPath TEXQualityRpt/TQbody/TQitem/texCode/added) 0-9 - note: here an additional codification (see table T44) can be specified
additionalIdentifier	additional identification code of a Party, for example customs registries or others - base type: string, max length: 15, (XPath TEXQualityRpt/TQheader/buyer/additionalIdentifier) 0-9 - note: identifiers for example for exports, such as MID (Manufacturer Identification Code), REX (identificatier in Registered Exporter system) (XPath TEXQualityRpt/TQheader/supplier/additionalIdentifier) 0-9 - note: identifiers for example for exports, such as MID (Manufacturer Identification Code), REX (identifier in EU Registered Exporter system)
@addType	qualifier of the additional coding of a product - base type: string, cod. table: T44 http://www.ebiz.enea.it/moda-ml/repository/codelist/draft/gc_T44.xml (XPath TEXQualityRpt/TQbody/TQitem/texCode/added/@addType) [Optional] - nota: addType allows the clarification of the meaning of the added element content; it is strongly suggested to use it always.
@application	force or similar condition (e.g. no. of revolutions) applied in a test as specified within the standard - base type: string, max length: 15, (XPath TEXQualityRpt/TQbody/TQitem/pieceTestRpt/fabricTaylorability/experimValue/@application) [Optional] (XPath TEXQualityRpt/TQbody/TQitem/pieceTestRpt/fabricTest/experimValue/@application) [Optional]
art	article number of the product

	<p>- base type: string, max length: 80, (XPath TEXQualityRpt/TQbody/TQitem/texCode/art) 1-1</p> <p>- note: <i>can be used either for the base-article (excluding pattern/colour) or for the SKU</i></p>
binaryObject	<p>a binary large object containing an attached document, Coding 'base64Binary' is recommended.</p> <p>- base type: base64Binary, (XPath TEXQualityRpt/TQheader/refDoc/attachment/binaryObject) 0-1 (XPath TEXQualityRpt/TQbody/TQitem/refDoc/attachment/binaryObject) 0-1</p>
@characterSet	<p>the character set of the binary object (examples UTF-8, UTF-16, Windows-1252, ISO-8859-7,..)</p> <p>- base type: normalizedString, (XPath TEXQualityRpt/TQbody/TQitem/refDoc/attachment/binaryObject/@characterSet) [Optional] (XPath TEXQualityRpt/TQheader/refDoc/attachment/binaryObject/@characterSet) [Optional]</p>
characterSetCode	<p>the character set of an external document (examples UTF-8, UTF-16, Windows-1252, ISO-8859-7,..)</p> <p>- base type: normalizedString, (XPath TEXQualityRpt/TQbody/TQitem/refDoc/attachment/externalReference/characterSetCode) 0-1 (XPath TEXQualityRpt/TQheader/refDoc/attachment/externalReference/characterSetCode) 0-1</p>
city	<p>name of the city (town, village)</p> <p>- base type: string, max length: 40, (XPath TEXQualityRpt/TQheader/thirdParty/city) 0-1 (XPath TEXQualityRpt/TQheader/supplier/city) 0-1 (XPath TEXQualityRpt/TQheader/buyer/city) 0-1</p>
@codeList	<p>it specifies the URL where the list of codes used to make an instance of the element can be found</p> <p>- base type: string, max length: 255, (XPath TEXQualityRpt/TQbody/TQitem/pieceMap/pieceFault/note/@codeList) [Optional]</p> <p>- nota: <i>must be used to provide (URL) the list of codes used in "noteLabel"</i> (XPath TEXQualityRpt/TQbody/TQitem/refDoc/season/@codeList) [Optional]</p> <p>- nota: <i>this attribute should be used either single or coupled with "listName" and "listVersion"</i> (XPath TEXQualityRpt/TQbody/TQitem/pieceTestRpt/fabricTaylorability/note/@codeList) [Optional]</p> <p>- nota: <i>must be used to provide (URL) the list of codes used in "noteLabel"</i> (XPath TEXQualityRpt/TQbody/TQitem/texCode/pattern/@codeList) [Optional]</p> <p>- nota: <i>at least one out of this attribute and "numberingOrg" should be set</i> (XPath TEXQualityRpt/TQheader/note/@codeList) [Optional]</p> <p>- nota: <i>must be used to provide (URL) the list of codes used in "noteLabel"</i> (XPath TEXQualityRpt/TQheader/refDoc/season/@codeList) [Optional]</p> <p>- nota: <i>this attribute should be used either single or coupled with "listName" and "listVersion"</i> (XPath TEXQualityRpt/TQbody/TQitem/texCode/art/@codeList) [Optional]</p> <p>- nota: <i>at least one out of this attribute and "numberingOrg" should be set</i> (XPath TEXQualityRpt/TQbody/TQitem/pieceTestRpt/fabricTest/note/@codeList) [Optional]</p> <p>- nota: <i>must be used to provide (URL) the list of codes used in "noteLabel"</i> (XPath TEXQualityRpt/TQbody/TQitem/pieceControlRpt/pieceControl/@codeList) [Optional]</p> <p>- nota: <i>at least one out of this attribute and "numberingOrg" should be set</i> (XPath TEXQualityRpt/TQbody/TQitem/texCode/color/@codeList) [Optional]</p> <p>- nota: <i>this attribute should be used either single or coupled with "listName" and "listVersion"</i></p>
color	<p>colour number of the product, when not included in the model or fabric code</p> <p>- base type: string, max length: 15, (XPath TEXQualityRpt/TQbody/TQitem/texCode/color) 0-1</p>
comply	<p>specifies if the experimental value complies with the standard requirement (target value)</p> <p>- base type: boolean, (XPath TEXQualityRpt/TQbody/TQitem/pieceTestRpt/fabricTaylorability/comply) 0-1</p>

	(XPath TEXQualityRpt/TQbody/TQitem/pieceTestRpt/fabricTest/comply) 0-1
country	code of the nation - base type: string, cod. table: T10 http://www.ebiz.enea.it/moda-ml/repository/codelist/draft/gc_T10.xml (XPath TEXQualityRpt/TQheader/thirdParty/country) 0-1 (XPath TEXQualityRpt/TQheader/buyer/country) 0-1 (XPath TEXQualityRpt/TQheader/supplier/country) 0-1
@dateForm	format used for the date - base type: string, cod. table: NT29 http://www.ebiz.enea.it/moda-ml/repository/codelist/draft/gc_NT29.xml (XPath TEXQualityRpt/TQbody/TQitem/testDate/@dateForm) [Optional] (XPath TEXQualityRpt/TQheader/refDoc/docDate/@dateForm) [Optional] (XPath TEXQualityRpt/TQbody/TQitem/refDoc/docDate/@dateForm) [Optional] (XPath TEXQualityRpt/TQbody/TQitem/pieceControlRpt/rollUpDate/@dateForm) [Optional] (XPath TEXQualityRpt/TQheader/msgDate/@dateForm) [Optional] (XPath TEXQualityRpt/TQbody/TQitem/pieceControlRpt/registrationDate/@dateForm) [Optional] (XPath TEXQualityRpt/TQbody/TQitem/pieceControlRpt/preexaminationDate/@dateForm) [Optional] (XPath TEXQualityRpt/TQbody/TQitem/pieceControlRpt/inspectionDate/@dateForm) [Optional]
dept	name or code of a department - base type: string, max length: 40, (XPath TEXQualityRpt/TQheader/thirdParty/dept) 0-1 (XPath TEXQualityRpt/TQheader/supplier/dept) 0-1 (XPath TEXQualityRpt/TQheader/buyer/dept) 0-1
description	free text description. The content of the element must be unique, it might be translated and repeated into more languages (thus no more than one instance for each language). - base type: string, max length: 250, (XPath TEXQualityRpt/TQbody/TQitem/texCode/description) 0-unbounded - note: <i>Product description</i>
docDate	date of issue of the referenced document, according to one of the patterns YYYY-MM-DD, YYYY-MM-DD:HH-MM or YYYY-WW. - base type: string, (XPath TEXQualityRpt/TQbody/TQitem/refDoc/docDate) 0-1 (XPath TEXQualityRpt/TQheader/refDoc/docDate) 0-1
docID	identification number of the referenced document - base type: string, max length: 80, (XPath TEXQualityRpt/TQbody/TQitem/refDoc/docID) 1-2 Best Practice (XPath TEXQualityRpt/TQheader/docID) 0-1 - note: <i>Its use in HEADER elements is discouraged (use msgID)</i> (XPath TEXQualityRpt/TQheader/refDoc/docID) 1-2 Best Practice
@docType	type or class to which the referenced document belongs - base type: string, cod. table: T21 http://www.ebiz.enea.it/moda-ml/repository/codelist/draft/gc_T21.xml (XPath TEXQualityRpt/TQbody/TQitem/refDoc/@docType) [Required] (XPath TEXQualityRpt/TQheader/refDoc/@docType) [Required]
dyeN	number of the dying batch of a textile product - base type: string, max length: 15, (XPath TEXQualityRpt/TQbody/TQitem/dyeN) 0-1
@email	electronic mail address of the contact person within a Party - base type: string, max length: 250, (XPath TEXQualityRpt/TQheader/buyer/person/@email) [Optional] (XPath TEXQualityRpt/TQheader/supplier/person/@email) [Optional] (XPath TEXQualityRpt/TQheader/thirdParty/person/@email) [Optional]
@encoding	specifies the decoding algorithm of the binary object - base type: normalizedString, (XPath TEXQualityRpt/TQbody/TQitem/refDoc/attachment/binaryObject/@encoding) [Optional] (XPath TEXQualityRpt/TQheader/refDoc/attachment/binaryObject/@encoding) [Optional]

encodingCode	<p>the encoding/decoding algorithm used with the external object (example is 'base64Binary')</p> <p>- base type: normalizedString, (XPath TEXQualityRpt/TQbody/TQitem/refDoc/attachment/externalReference/encodingCode) 0-1 (XPath TEXQualityRpt/TQheader/refDoc/attachment/externalReference/encodingCode) 0-1</p>
experimValue	<p>experimental value of the measurement</p> <p>- base type: decimal, (XPath TEXQualityRpt/TQbody/TQitem/pieceTestRpt/fabricTaylorability/experimValue) 0-9</p> <p>- note: <i>in the case of FAST test the attributes "meth" and "applic" should not be used</i> (XPath TEXQualityRpt/TQbody/TQitem/pieceTestRpt/fabricTest/experimValue) 0-9</p> <p>- note: <i>this data can be iterated to provide repeated instances of the same test</i></p>
fabricChar	<p>code of the physical or mechanical parameter used to define a "technical characteristic of the fabric" (see Fabric technical sheet)</p> <p>- base type: string, cod. table: T13 http://www.ebiz.enea.it/moda-ml/repository/codelist/draft/gc_T13.xml (XPath TEXQualityRpt/TQbody/TQitem/pieceTestRpt/fabricTest/fabricChar) 1-1</p> <p>- note: <i>here the MODA-ML codelist must be used.</i></p>
fabricCharText	<p>free text describing the physical or mechanical parameter used to define a "technical characteristic of the fabric"</p> <p>- base type: string, max length: 80, (XPath TEXQualityRpt/TQbody/TQitem/pieceTestRpt/fabricTest/fabricCharText) 1-1</p> <p>- note: <i>here the text or the proprietary code mutually agreed must be used</i></p>
fabricFault	<p>code specifying the type or class of fabric fault</p> <p>- base type: string, cod. table: T12 http://www.ebiz.enea.it/moda-ml/repository/codelist/draft/gc_T12.xml (XPath TEXQualityRpt/TQbody/TQitem/pieceMap/pieceFault/fabricFault) 1-1</p> <p>- note: <i>here the MODA-ML codelist must be used.</i></p>
fabricFaultText	<p>free text describing the type or class of the fabric fault</p> <p>- base type: string, max length: 250, (XPath TEXQualityRpt/TQbody/TQitem/pieceMap/pieceFault/fabricFaultText) 1-1</p> <p>- note: <i>here the text or proprietary code mutually agreed must be used</i></p>
@faultRank	<p>ranking class of the fabric fault</p> <p>- base type: string, cod. table: NT13 http://www.ebiz.enea.it/moda-ml/repository/codelist/draft/gc_NT13.xml (XPath TEXQualityRpt/TQbody/TQitem/pieceMap/pieceFault/@faultRank) [Required]</p>
@faultShape	<p>shape classification of the fabric fault</p> <p>- base type: string, cod. table: NT14 http://www.ebiz.enea.it/moda-ml/repository/codelist/draft/gc_NT14.xml (XPath TEXQualityRpt/TQbody/TQitem/pieceMap/pieceFault/@faultShape) [Optional]</p>
@fax	<p>fax number of the contact person within a Party</p> <p>- base type: string, max length: 35, (XPath TEXQualityRpt/TQheader/supplier/person/@fax) [Optional] (XPath TEXQualityRpt/TQheader/thirdParty/person/@fax) [Optional] (XPath TEXQualityRpt/TQheader/buyer/person/@fax) [Optional]</p>
fileName	<p>unique identifier (name) of the file</p> <p>- base type: string, max length: 255, (XPath TEXQualityRpt/TQbody/TQitem/refDoc/attachment/fileName) 0-1 (XPath TEXQualityRpt/TQheader/refDoc/attachment/fileName) 0-1</p>
@format	<p>the format of the binary content (examples xml, pdf, doc,...)</p> <p>- base type: string, (XPath TEXQualityRpt/TQheader/refDoc/attachment/binaryObject/@format) [Optional] (XPath TEXQualityRpt/TQbody/TQitem/refDoc/attachment/binaryObject/@format) [Optional]</p>
formatCode	<p>the format of the external object (examples xml, pdf, doc,...)</p> <p>- base type: normalizedString,</p>

	(XPath TEXQualityRpt/TQbody/TQitem/refDoc/attachment/externalReference/formatCode) 0-1 (XPath TEXQualityRpt/TQheader/refDoc/attachment/externalReference/formatCode) 0-1
@geoRefSystem	georeference system adopted for the coordinate (in example wgs84 with decimal degree 0 degree with minute and seconds) - base type: string, (XPath TEXQualityRpt/TQheader/thirdParty/geoCoordinates/@geoRefSystem) [Optional] (XPath TEXQualityRpt/TQheader/supplier/geoCoordinates/@geoRefSystem) [Optional] (XPath TEXQualityRpt/TQheader/buyer/geoCoordinates/@geoRefSystem) [Optional]
grossWeight	the gross weight, declared for transport or customs purpose - base type: decimal, min inclusive: 0, fraction digits: 2, (XPath TEXQualityRpt/TQbody/TQitem/pieceMeasures/grossWeight) 0-1 - note: <i>gross weight is related to the weight of the piece after packing</i>
hashFootprint	footprint obtained by applying an hashing algorithm - base type: string, max length: 80, (XPath TEXQualityRpt/TQbody/TQitem/refDoc/attachment/hashFootprint) 0-1 (XPath TEXQualityRpt/TQheader/refDoc/attachment/hashFootprint) 0-1
@hashMethod	type of used hashing algorithm - base type: string, max length: 80, cod. table: NT333 http://www.ebiz.enea.it/moda-ml/repository/codelist/draft/gc_NT333.xml (XPath TEXQualityRpt/TQheader/refDoc/attachment/hashFootprint/@hashMethod) [Required] (XPath TEXQualityRpt/TQbody/TQitem/refDoc/attachment/hashFootprint/@hashMethod) [Required]
id	primary identification code of a Party; it is recommended to use an EORI number (with @numberingOrg= "EO") or the format: nation code (ISO 3166) + national tax code (i.e. VAT identification number) with @numberingOrg= "MF" - base type: string, max length: 15, (XPath TEXQualityRpt/TQheader/thirdParty/id) 1-1 (XPath TEXQualityRpt/TQheader/supplier/id) 1-1 (XPath TEXQualityRpt/TQheader/buyer/id) 1-1
@idCO	primary identification code of the Party executing the test; it is recommended the format: nation code (ISO 3166) + VAT identification number (11 crt). - base type: string, max length: 15, (XPath TEXQualityRpt/TQbody/TQitem/pieceTestRpt/fabricTest/experimValue/@idCO) [Optional] (XPath TEXQualityRpt/TQbody/TQitem/pieceTestRpt/fabricTaylorability/experimValue/@idCO) [Optional]
@idQualifier	Qualification of the identifier. - base type: string, (XPath TEXQualityRpt/TQheader/buyer/additionalIdentifier/@idQualifier) [Optional] - nota: <i>this attribute should be used when the numberingOrg attribute is not enough to declare the type of identifier</i> (XPath TEXQualityRpt/TQbody/TQitem/serialN/@idQualifier) [Optional] - nota: <i>this attribute should be used when the numberingOrg attribute is not enough to declare the type of serial identifier</i> (XPath TEXQualityRpt/TQheader/supplier/additionalIdentifier/@idQualifier) [Optional] - nota: <i>this attribute should be used when the numberingOrg attribute is not enough to declare the type of identifier</i>
inspectionDate	date of inspection (normally of a fabric piece), according to one of the patterns YYYY-MM-DD, YYYY-MM-DD:HH-MM or YYYY-WW. - base type: string, (XPath TEXQualityRpt/TQbody/TQitem/pieceControlRpt/inspectionDate) 0-1
@isURL	it indicates if the referred element is an URL (true) or not (false) - base type: boolean, (XPath TEXQualityRpt/TQbody/TQitem/refDoc/attachment/externalReference/uri/@isURL) [Optional] [Default= true] - nota: <i>usage of URLs is recommended</i> (XPath TEXQualityRpt/TQbody/TQitem/refDoc/attachment/blockChainReference/uri/@isURL) [Optional] [Default= true] - nota: <i>usage of URLs is recommended</i>

	<p>(XPath TEXQualityRpt/TQheader/refDoc/attachment/blockChainReference/uri/@isURL) [Optional] [Default= true]</p> <p>- nota: <i>usage of URLs is recommended</i></p> <p>(XPath TEXQualityRpt/TQheader/refDoc/attachment/externalReference/uri/@isURL) [Optional] [Default= true]</p> <p>- nota: <i>usage of URLs is recommended</i></p>
itemID	<p>number of the line/item of the referenced document</p> <p>- base type: string, max length: 40,</p> <p>(XPath TEXQualityRpt/TQheader/refDoc/itemID) 0-1</p> <p>(XPath TEXQualityRpt/TQbody/TQitem/refDoc/itemID) 0-1</p>
legalName	<p>legal name</p> <p>- base type: string, max length: 250,</p> <p>(XPath TEXQualityRpt/TQheader/thirdParty/legalName) 0-1</p> <p>(XPath TEXQualityRpt/TQheader/supplier/legalName) 0-1</p> <p>(XPath TEXQualityRpt/TQheader/buyer/legalName) 0-1</p>
@listName	<p>the name of the list of codes used to make an instance of the element (it might be thought as descriptive element, i.e. 'fabric printing technologies', or not, i.e. "T264")</p> <p>- base type: string, max length: 40,</p> <p>(XPath TEXQualityRpt/TQbody/TQitem/refDoc/season/@listName) [Optional]</p> <p>- nota: <i>this attribute should always be used coupled with "numberingOrg"</i></p> <p>(XPath TEXQualityRpt/TQbody/TQitem/texCode/color/@listName) [Optional]</p> <p>- nota: <i>this attribute should always be used coupled with "numberingOrg"</i></p> <p>(XPath TEXQualityRpt/TQbody/TQitem/texCode/pattern/@listName) [Optional]</p> <p>- nota: <i>this attribute should always be used coupled with "numberingOrg"</i></p> <p>(XPath TEXQualityRpt/TQbody/TQitem/texCode/art/@listName) [Optional]</p> <p>- nota: <i>this attribute should always be used coupled with "numberingOrg"</i></p> <p>(XPath TEXQualityRpt/TQbody/TQitem/pieceControlRpt/pieceControl/@listName) [Optional]</p> <p>- nota: <i>this attribute should always be used coupled with "numberingOrg"</i></p> <p>(XPath TEXQualityRpt/TQheader/refDoc/season/@listName) [Optional]</p> <p>- nota: <i>this attribute should always be used coupled with "numberingOrg"</i></p>
@listVersion	<p>it specifies the version of the list of codes used to make an instance of the element</p> <p>- base type: string, max length: 6,</p> <p>(XPath TEXQualityRpt/TQbody/TQitem/texCode/color/@listVersion) [Optional]</p> <p>- nota: <i>this attribute should always be used coupled with "numberingOrg" and "listName"</i></p> <p>(XPath TEXQualityRpt/TQbody/TQitem/texCode/pattern/@listVersion) [Optional]</p> <p>- nota: <i>this attribute should always be used coupled with "numberingOrg" and "listName"</i></p> <p>(XPath TEXQualityRpt/TQbody/TQitem/pieceControlRpt/pieceControl/@listVersion) [Optional]</p> <p>- nota: <i>this attribute should always be used coupled with "numberingOrg" and "listName"</i></p> <p>(XPath TEXQualityRpt/TQheader/refDoc/season/@listVersion) [Optional]</p> <p>- nota: <i>this attribute should always be used coupled with "numberingOrg" and "listName"</i></p> <p>(XPath TEXQualityRpt/TQbody/TQitem/refDoc/season/@listVersion) [Optional]</p> <p>- nota: <i>this attribute should always be used coupled with "numberingOrg" and "listName"</i></p> <p>(XPath TEXQualityRpt/TQbody/TQitem/texCode/art/@listVersion) [Optional]</p> <p>- nota: <i>this attribute should always be used coupled with "numberingOrg" and "listName"</i></p>
@ln	<p>Language code.</p> <p>- base type: string, cod. table: NT60</p> <p>http://www.ebiz.enea.it/moda-ml/repository/codelist/draft/gc_NT60.xml</p> <p>(XPath TEXQualityRpt/TQbody/TQitem/texCode/description/@ln) [Optional]</p>
@logo	<p>company logo (URL of the image jpeg or gif). It is recommended that the width of the image does not exceed 640 pixel.</p> <p>- base type: string, max length: 255,</p> <p>(XPath TEXQualityRpt/TQheader/buyer/@logo) [Optional]</p> <p>(XPath TEXQualityRpt/TQheader/supplier/@logo) [Optional]</p>
lotN	<p>lot number of a product or batch number of the raw material</p> <p>- base type: string, max length: 15,</p> <p>(XPath TEXQualityRpt/TQbody/TQitem/lotN) 0-1</p>

@method	<p>standard protocol or method employed in a test to evaluate a characteristic or a parameter</p> <p>- base type: string, max length: 80, (XPath TEXQualityRpt/TQbody/TQitem/pieceTestRpt/fabricTaylorability/experimValue/@method) [Optional]</p> <p>- nota: we recommend the specification of the method of measure only when different from the one of the MODA-ML coding system (XPath TEXQualityRpt/TQbody/TQitem/pieceTestRpt/fabricTest/experimValue/@method) [Optional]</p> <p>- nota: we recommend the specification of the method of measure only when different from the one of the MODA-ML coding system</p>
@mime	<p>the mime type of the binary object</p> <p>- base type: normalizedString, (XPath TEXQualityRpt/TQheader/refDoc/attachment/binaryObject/@mime) [Optional] (XPath TEXQualityRpt/TQbody/TQitem/refDoc/attachment/binaryObject/@mime) [Optional]</p>
mimeCode	<p>mime type of the external object</p> <p>- base type: normalizedString, (XPath TEXQualityRpt/TQbody/TQitem/refDoc/attachment/externalReference/mimeCode) 0-1 Best Practice (XPath TEXQualityRpt/TQheader/refDoc/attachment/externalReference/mimeCode) 0-1 Best Practice</p>
mixMatch	<p>colour hue used for the match of garments</p> <p>- base type: string, max length: 15, (XPath TEXQualityRpt/TQbody/TQitem/mixMatch) 0-1</p>
msgDate	<p>date of issue of the present message (xml document), according to one of the patterns YYYY-MM-DD, YYYY-MM-DD:HH-MM or YYYY-WW.</p> <p>- base type: string, (XPath TEXQualityRpt/TQheader/msgDate) 1-1</p>
@msgfunction	<p>function performed by the present message with regards to the transmission</p> <p>- base type: string, cod. table: NT18 http://www.ebiz.enea.it/moda-ml/repository/codelist/draft/gc_NT18.xml (XPath TEXQualityRpt/@msgfunction) [Optional] [Default= OR]</p>
msgID	<p>key identifier of the business document in the information system of the issuing Party. In case of more despatches of the same business document, it is unchanged.</p> <p>- base type: string, max length: 35, (XPath TEXQualityRpt/TQheader/msgID) 0-1</p>
msgN	<p>identification number given to the message (xml document) by its issuer. In case of more despatches of the same business document, it changes.</p> <p>- base type: string, max length: 35, (XPath TEXQualityRpt/TQheader/msgN) 1-1</p>
note	<p>free text or structured (computer processing) note. For note structuring use the attributes "noteLabel" and "codelist"</p> <p>- base type: string, max length: 350, (XPath TEXQualityRpt/TQbody/TQitem/pieceTestRpt/fabricTest/note) 0-99 (XPath TEXQualityRpt/TQbody/TQitem/pieceMap/pieceFault/note) 0-99 (XPath TEXQualityRpt/TQbody/TQitem/pieceTestRpt/fabricTaylorability/note) 0-99 (XPath TEXQualityRpt/TQheader/note) 0-99</p>
@noteLabel	<p>subject qualifier of a note</p> <p>- base type: string, max length: 35, (XPath TEXQualityRpt/TQbody/TQitem/pieceTestRpt/fabricTaylorability/note/@noteLabel) [Optional]</p> <p>- nota: must be used to qualify the subject of the note (XPath TEXQualityRpt/TQbody/TQitem/pieceTestRpt/fabricTest/note/@noteLabel) [Optional]</p> <p>- nota: must be used to qualify the subject of the note (XPath TEXQualityRpt/TQheader/note/@noteLabel) [Optional]</p> <p>- nota: must be used to qualify the subject of the note (XPath TEXQualityRpt/TQbody/TQitem/pieceMap/pieceFault/note/@noteLabel) [Optional]</p>

	- nota: <i>must be used to qualify the subject of the note</i>
@numberingOrg	<p>code specifying the organisation who has created or owns the coding or numbering system</p> <p>- base type: string, cod. table: NT6 http://www.ebiz.enea.it/moda-ml/repository/codelist/draft/gc_NT6.xml (XPath TEXQualityRpt/TQheader/refDoc/attachment/fileName/@numberingOrg) [Optional] (XPath TEXQualityRpt/TQbody/TQitem/pieceTestRpt/fabricTest/note/@numberingOrg) [Optional]</p> <p>- nota: <i>must be used to specify the organization that created the list of codes used in "noteLabel"</i> (XPath TEXQualityRpt/TQbody/TQitem/mixMatch/@numberingOrg) [Optional] (XPath TEXQualityRpt/TQbody/TQitem/pieceMap/pieceFault/note/@numberingOrg) [Optional]</p> <p>- nota: <i>must be used to specify the organization that created the list of codes used in "noteLabel"</i> (XPath TEXQualityRpt/TQbody/TQitem/dyeN/@numberingOrg) [Optional] (XPath TEXQualityRpt/TQbody/TQitem/lotN/@numberingOrg) [Optional] (XPath TEXQualityRpt/TQheader/supplier/id/@numberingOrg) [Optional] (XPath TEXQualityRpt/TQheader/supplier/additionalIdentifier/@numberingOrg) [Optional]</p> <p>- nota: <i>here the issuer of the identifier must be specified</i> (XPath TEXQualityRpt/TQheader/buyer/id/@numberingOrg) [Optional] (XPath TEXQualityRpt/TQheader/buyer/additionalIdentifier/@numberingOrg) [Optional]</p> <p>- nota: <i>here the issuer of the identifier must be specified</i> (XPath TEXQualityRpt/TQbody/TQitem/refDoc/docID/@numberingOrg) [Optional]</p> <p>- nota: <i>here can be specified whose document numbering is used (e.g.: Client, Suppliers, ..)</i> (XPath TEXQualityRpt/TQbody/TQitem/pieceControlRpt/pieceControl/@numberingOrg) [Optional] (XPath TEXQualityRpt/TQheader/thirdParty/id/@numberingOrg) [Optional] (XPath TEXQualityRpt/TQbody/TQitem/refDoc/season/@numberingOrg) [Optional]</p> <p>- nota: <i>this attribute should be used either single or coupled with "listName" and "listVersion"</i> (XPath TEXQualityRpt/TQheader/docID/@numberingOrg) [Optional]</p> <p>- nota: <i>here can be specified whose document numbering is used (e.g.: Client, Suppliers, ..)</i> (XPath TEXQualityRpt/TQheader/note/@numberingOrg) [Optional]</p> <p>- nota: <i>must be used to specify the organization that created the list of codes used in "noteLabel"</i> (XPath TEXQualityRpt/TQbody/TQitem/texCode/pattern/@numberingOrg) [Optional]</p> <p>- nota: <i>this attribute should be used either single or coupled with "listName" and "listVersion"</i> (XPath TEXQualityRpt/TQbody/TQitem/texCode/added/@numberingOrg) [Optional]</p> <p>- nota: <i>this attribute should be used either single or coupled with "listName" and "listVersion"</i> (XPath TEXQualityRpt/TQbody/TQitem/texCode/color/@numberingOrg) [Optional]</p> <p>- nota: <i>this attribute should be used either single or coupled with "listName" and "listVersion"</i> (XPath TEXQualityRpt/TQheader/refDoc/season/@numberingOrg) [Optional]</p> <p>- nota: <i>this attribute should be used either single or coupled with "listName" and "listVersion"</i> (XPath TEXQualityRpt/TQbody/TQitem/pieceTestRpt/fabricTaylorability/note/@numberingOrg) [Optional]</p> <p>- nota: <i>must be used to specify the organization that created the list of codes used in "noteLabel"</i> (XPath TEXQualityRpt/TQbody/TQitem/texCode/art/@numberingOrg) [Optional]</p> <p>- nota: <i>this attribute should be used either single or coupled with "listName" and "listVersion"</i> (XPath TEXQualityRpt/TQbody/TQitem/texCode/@numberingOrg) [Optional] (XPath TEXQualityRpt/TQbody/TQitem/refDoc/attachment/fileName/@numberingOrg) [Optional] (XPath TEXQualityRpt/TQbody/TQitem/serialN/@numberingOrg) [Optional]</p> <p>- nota: <i>here the issuer of the serial number must be specified (when different from the Supplier)</i> (XPath TEXQualityRpt/TQheader/refDoc/docID/@numberingOrg) [Optional]</p> <p>- nota: <i>here can be specified whose document numbering is used (e.g.: Client, Suppliers, ..)</i></p>
pattern	pattern/design number of the product, when not included in the article code

	- base type: string, max length: 15, (XPath TEXQualityRpt/TQbody/TQitem/texCode/pattern) 0-1
person	name of a person (e.g. contact person within an organization) - base type: string, max length: 40, (XPath TEXQualityRpt/TQheader/thirdParty/person) 0-1 (XPath TEXQualityRpt/TQheader/buyer/person) 0-1 (XPath TEXQualityRpt/TQheader/supplier/person) 0-1
@phone	phone number of the contact person within a Party - base type: string, max length: 35, (XPath TEXQualityRpt/TQheader/supplier/person/@phone) [Optional] (XPath TEXQualityRpt/TQheader/buyer/person/@phone) [Optional] (XPath TEXQualityRpt/TQheader/thirdParty/person/@phone) [Optional]
pieceAllow	allowance required or accorded for the piece - base type: decimal, fraction digits: 2, (XPath TEXQualityRpt/TQbody/TQitem/pieceMap/pieceFault/pieceAllow) 0-1 - note: <i>this is the allowance estimated for the fault by the same "source" responsible for the other measurements</i> (XPath TEXQualityRpt/TQbody/TQitem/pieceAllowMea/pieceAllow) 1-1 (XPath TEXQualityRpt/TQbody/TQitem/pieceMeasures/pieceAllow) 0-1
pieceAllowF	allowance required/accorded for fabric faults - base type: decimal, fraction digits: 2, (XPath TEXQualityRpt/TQbody/TQitem/pieceAllowMea/pieceAllowF) 0-1
pieceAllowM	allowance required/accorded for missing measures - base type: decimal, fraction digits: 2, (XPath TEXQualityRpt/TQbody/TQitem/pieceAllowMea/pieceAllowM) 0-1
pieceControl	code assigned to a fabric piece to specify the type of control required/performed - base type: string, max length: 7, (XPath TEXQualityRpt/TQbody/TQitem/pieceControlRpt/pieceControl) 0-1
pieceCutWidth	effective usable width of the fabric piece (for garment manufacturing) - base type: decimal, min inclusive: 0, fraction digits: 2, (XPath TEXQualityRpt/TQbody/TQitem/pieceMeasures/pieceCutWidth) 0-1
pieceLength	length of the piece - base type: decimal, min inclusive: 0, fraction digits: 2, (XPath TEXQualityRpt/TQbody/TQitem/pieceMeasures/pieceLength) 0-1 - note: <i>effective length of the piece (allowance included)</i>
pieceStatus	code used to describe the status of a fabric piece after the control - base type: string, cod. table: T52 http://www.ebiz.enea.it/moda-ml/repository/codelist/draft/gc_T52.xml (XPath TEXQualityRpt/TQbody/TQitem/pieceControlRpt/pieceStatus) 0-1
pieceWeight	effective total weight of the fabric piece - base type: decimal, min inclusive: 0, fraction digits: 2, (XPath TEXQualityRpt/TQbody/TQitem/pieceMeasures/pieceWeight) 0-1 - note: <i>effective net weight of the piece</i>
pieceWeightM	effective weight per metre of the fabric piece - base type: decimal, min inclusive: 0, fraction digits: 2, (XPath TEXQualityRpt/TQbody/TQitem/pieceMeasures/pieceWeightM) 0-1
pieceWidth	effective width of the fabric piece - base type: decimal, min inclusive: 0, fraction digits: 2, (XPath TEXQualityRpt/TQbody/TQitem/pieceMeasures/pieceWidth) 0-1 - note: <i>effective width of the piece (selvedge included)</i>
postCode	code defining the postal zone - base type: string, max length: 10, (XPath TEXQualityRpt/TQheader/buyer/postCode) 0-1 (XPath TEXQualityRpt/TQheader/thirdParty/postCode) 0-1 (XPath TEXQualityRpt/TQheader/supplier/postCode) 0-1
preexaminationDate	date of preexamination (normally of a fabric piece), according to one of the patterns Y YYY-MM-DD, YYYY-MM-DD:HH-MM or YYYY-WW. - base type: string, (XPath TEXQualityRpt/TQbody/TQitem/pieceControlRpt/preexaminationDate) 0-1

registrationDate	date of registration (normally of a fabric piece), according to one of the patterns YYYY-MM-DD, YYYY-MM-DD:HH-MM or YYYY-WW. - base type: string, (XPath TEXQualityRpt/TQbody/TQitem/pieceControlRpt/registrationDate) 0-1
@role	Third Party role qualifier - base type: string, cod. table: NT2 http://www.ebiz.enea.it/moda-ml/repository/codelist/draft/gc_NT2.xml (XPath TEXQualityRpt/TQheader/thirdParty/@role) [Required]
rollUpDate	date of rolling up (normally of a fabric piece), according to one of the patterns YYYY-MM-DD, YYYY-MM-DD:HH-MM or YYYY-WW. - base type: string, (XPath TEXQualityRpt/TQbody/TQitem/pieceControlRpt/rollUpDate) 0-1
@schemeID	identifier of an identification scheme - base type: string, (XPath TEXQualityRpt/TQbody/TQitem/refDoc/attachment/hashFootprint/@schemeID) [Optional] - nota: specify for which system this hash footprint might be used as identifier (for example HDFS system..) (XPath TEXQualityRpt/TQheader/refDoc/attachment/hashFootprint/@schemeID) [Optional] - nota: specify for which system this hash footprint might be used as identifier (for example HDFS system..)
season	sale season; defined as: season (1 crt) + year (4 crt) - season: S/S=1 A/W=2 Spring=3 Summer=4 Autumn=5 Winter=6: for more than four seasons use alphabetic sequence: 1st season=A 2nd season=B etc.etc. - base type: string, max length: 15, (XPath TEXQualityRpt/TQbody/TQitem/refDoc/season) 0-1 - note: here indicates the season to which the referenced document belongs (XPath TEXQualityRpt/TQheader/refDoc/season) 0-1 - note: here indicates the season to which the referenced document belongs
@sender	qualifier that specifies the Party issuing of the document - base type: boolean, (XPath TEXQualityRpt/TQheader/thirdParty/@sender) [Optional] - nota: This attribute is mandatory when the STYLESHEET must be used (XPath TEXQualityRpt/TQheader/supplier/@sender) [Optional] - nota: This attribute is mandatory when the STYLESHEET must be used (XPath TEXQualityRpt/TQheader/buyer/@sender) [Optional] - nota: This attribute is mandatory when the STYLESHEET must be used
serialN	serial number used for the identification of a physical unit - base type: string, max length: 250, (XPath TEXQualityRpt/TQbody/TQitem/serialN) 1-9 - note: multiple values of serialN are allowed to provide different representations of the serial identifier of the same tested piece. Several instances of serialN must differ at least by a value of idQualifier or numberingOrg
@source	party who has provided the data - base type: string, cod. table: NT12 http://www.ebiz.enea.it/moda-ml/repository/codelist/draft/gc_NT12.xml (XPath TEXQualityRpt/TQbody/TQitem/pieceTestRpt/@source) [Required] (XPath TEXQualityRpt/TQbody/TQitem/pieceAllowMea/@source) [Required] (XPath TEXQualityRpt/TQbody/TQitem/pieceMeasures/@source) [Required] (XPath TEXQualityRpt/TQbody/TQitem/pieceMap/@source) [Required]
street	street and building number identifying a location - base type: string, max length: 80, (XPath TEXQualityRpt/TQheader/supplier/street) 0-1 (XPath TEXQualityRpt/TQheader/thirdParty/street) 0-1 (XPath TEXQualityRpt/TQheader/buyer/street) 0-1
subCountry	short name or code of the sub-country entity - base type: string, max length: 9, (XPath TEXQualityRpt/TQheader/thirdParty/subCountry) 0-1 (XPath TEXQualityRpt/TQheader/supplier/subCountry) 0-1 (XPath TEXQualityRpt/TQheader/buyer/subCountry) 0-1
subDept	name or code of a department - base type: string, max length: 40,

	(XPath TEXQualityRpt/TQheader/buyer/subDept) 0-1 (XPath TEXQualityRpt/TQheader/thirdParty/subDept) 0-1 (XPath TEXQualityRpt/TQheader/supplier/subDept) 0-1
taylorabilityChar	taylorability parameter for fabric - base type: string, cod. table: T14 http://www.ebiz.enea.it/moda-ml/repository/codelist/draft/gc_T14.xml (XPath TEXQualityRpt/TQbody/TQitem/pieceTestRpt/fabricTaylorability/taylorabilityChar) 1-1 - note: here the MODA-ML codelist must be used
testDate	date on which the quality test of goods has been made, according to one of the patterns YYYY-MM-DD, YYYY-MM-DD:HH-MM or YYYY-WW. - base type: string, (XPath TEXQualityRpt/TQbody/TQitem/testDate) 0-1
totFault	total number of faults: the 1st/2nd digit count the "Large faults", the 3rd/4th the "Medium faults" and the 5th/6th the "Small faults" - base type: positiveInteger, (XPath TEXQualityRpt/TQbody/TQitem/pieceMap/totFault) 1-1
@TQtype	type of Textiles quality report - base type: string, cod. table: NT15 http://www.ebiz.enea.it/moda-ml/repository/codelist/draft/gc_NT15.xml (XPath TEXQualityRpt/@TQtype) [Optional] - nota: this attribute may be used to specify if the report refers to one or to several pieces
transactionReceipt	transaction receipt on blockchain - base type: string, max length: 80, (XPath TEXQualityRpt/TQheader/refDoc/attachment/blockChainReference/transactionReceipt) 1-9 (XPath TEXQualityRpt/TQbody/TQitem/refDoc/attachment/blockChainReference/transactionReceipt) 1-9
@uid	unique element identifier within the xml document - base type: string, (XPath TEXQualityRpt/TQheader/refDoc/attachment/@uid) [Optional] (XPath TEXQualityRpt/TQbody/TQitem/refDoc/attachment/@uid) [Optional]
@um	specification of the unit of measure - base type: string, cod. table: NT7 http://www.ebiz.enea.it/moda-ml/repository/codelist/draft/gc_NT7.xml (XPath TEXQualityRpt/TQbody/TQitem/pieceMeasures/pieceWidth/@um) [Optional] [Default= CMT] (XPath TEXQualityRpt/TQbody/TQitem/pieceMeasures/grossWeight/@um) [Required] (XPath TEXQualityRpt/TQbody/TQitem/pieceMeasures/pieceLength/@um) [Optional] [Default= MTR] (XPath TEXQualityRpt/TQbody/TQitem/pieceMap/pieceFault/warpStart/@um) [Optional] [Default= MTR] (XPath TEXQualityRpt/TQbody/TQitem/pieceMeasures/pieceCutWidth/@um) [Optional] [Default= CMT] (XPath TEXQualityRpt/TQbody/TQitem/pieceTestRpt/fabricTaylorability/experimValue/@um) [Optional] (XPath TEXQualityRpt/TQbody/TQitem/pieceAllowMea/pieceAllow/@um) [Required] (XPath TEXQualityRpt/TQbody/TQitem/pieceAllowMea/pieceAllowM/@um) [Required] (XPath TEXQualityRpt/TQheader/thirdParty/geoCoordinates/@um) [Optional] [Default= DEGD] - nota: when not specified assume decimal DEGREES (XPath TEXQualityRpt/TQbody/TQitem/pieceMeasures/pieceAllow/@um) [Required] (XPath TEXQualityRpt/TQbody/TQitem/pieceMeasures/pieceWeight/@um) [Optional] [Default= KGM] (XPath TEXQualityRpt/TQbody/TQitem/pieceAllowMea/pieceAllowF/@um) [Required] (XPath TEXQualityRpt/TQheader/buyer/geoCoordinates/@um) [Optional] [Default= DEGD] - nota: when not specified assume decimal DEGREES (XPath TEXQualityRpt/TQbody/TQitem/pieceMeasures/pieceWeightM/@um) [Optional] [Default= GRM] (XPath TEXQualityRpt/TQbody/TQitem/pieceMap/pieceFault/weftEnd/@um) [Optional] [Default= CMT]

	<p>(XPath TEXQualityRpt/TQbody/TQitem/pieceMap/pieceFault/pieceAllow/@um) [Required]</p> <p>(XPath TEXQualityRpt/TQbody/TQitem/pieceTestRpt/fabricTest/experimValue/@um) [Optional]</p> <p>(XPath TEXQualityRpt/TQheader/supplier/geoCoordinates/@um) [Optional] [Default= DEGD]</p> <p>- nota: <i>when not specified assume decimal DEGREEs</i></p> <p>(XPath TEXQualityRpt/TQbody/TQitem/pieceMap/pieceFault/weftStart/@um) [Optional] [Default= CMT]</p> <p>(XPath TEXQualityRpt/TQbody/TQitem/pieceMap/pieceFault/warpEnd/@um) [Optional] [Default= MTR]</p>
uri	<p>Uniform Resource Identifier (URI) that identifies the external object as an Internet resource</p> <p>- base type: normalizedString,</p> <p>(XPath TEXQualityRpt/TQheader/refDoc/attachment/externalReference/uri) 1-1</p> <p>(XPath TEXQualityRpt/TQheader/refDoc/attachment/blockChainReference/uri) 1-1</p> <p>- note: <i>reference to the used blockchain (example: url https://etherscan.io/ of ethereum)</i></p> <p>(XPath TEXQualityRpt/TQbody/TQitem/refDoc/attachment/externalReference/uri) 1-1</p> <p>(XPath TEXQualityRpt/TQbody/TQitem/refDoc/attachment/blockChainReference/uri) 1-1</p> <p>- note: <i>reference to the used blockchain (example: url https://etherscan.io/ of ethereum)</i></p>
@useProfile	<p>use profile to which the present document is compliant if it was agreed by the parties. It is suggested a URI with reference to the firms or the URL of the profile.</p> <p>- base type: string,</p> <p>(XPath TEXQualityRpt/@useProfile) [Optional]</p>
@VAT	<p>VAT rate or code (DEPRECATED, use dtScheme element)</p> <p>- base type: string, cod. table: NT16</p> <p>http://www.ebiz.enea.it/moda-ml/repository/codelist/draft/gc_NT16.xml</p> <p>(XPath TEXQualityRpt/TQheader/thirdParty/@VAT) [Optional]</p>
@version	<p>Dictionary version from which the instance has been created</p> <p>- base type: string, cod. table: NT100</p> <p>http://www.ebiz.enea.it/moda-ml/repository/codelist/draft/gc_NT100.xml</p> <p>(XPath TEXQualityRpt/@version) [Optional] [Default= draft]</p>
warpEnd	<p>end point of the fabric fault in the warp direction</p> <p>- base type: decimal, min inclusive: 0, fraction digits: 2,</p> <p>(XPath TEXQualityRpt/TQbody/TQitem/pieceMap/pieceFault/warpEnd) 0-1</p>
warpStart	<p>start point of the fabric fault in the warp direction</p> <p>- base type: decimal, min inclusive: 0, fraction digits: 2,</p> <p>(XPath TEXQualityRpt/TQbody/TQitem/pieceMap/pieceFault/warpStart) 1-1</p>
weftEnd	<p>end point of the fabric fault in the weft direction</p> <p>- base type: decimal, min inclusive: 0, fraction digits: 2,</p> <p>(XPath TEXQualityRpt/TQbody/TQitem/pieceMap/pieceFault/weftEnd) 0-1</p>
weftStart	<p>start point of the fabric fault in the weft direction</p> <p>- base type: decimal, min inclusive: 0, fraction digits: 2,</p> <p>(XPath TEXQualityRpt/TQbody/TQitem/pieceMap/pieceFault/weftStart) 0-1</p>
xGeoCoord	<p>geographical coordinate x , corresponding to latitude</p> <p>- base type: decimal,</p> <p>(XPath TEXQualityRpt/TQheader/supplier/geoCoordinates/xGeoCoord) 1-1</p> <p>(XPath TEXQualityRpt/TQheader/buyer/geoCoordinates/xGeoCoord) 1-1</p> <p>(XPath TEXQualityRpt/TQheader/thirdParty/geoCoordinates/xGeoCoord) 1-1</p>
yGeoCoord	<p>geographical coordinate y , corresponding to longitude</p> <p>- base type: decimal,</p> <p>(XPath TEXQualityRpt/TQheader/buyer/geoCoordinates/yGeoCoord) 1-1</p> <p>(XPath TEXQualityRpt/TQheader/supplier/geoCoordinates/yGeoCoord) 1-1</p> <p>(XPath TEXQualityRpt/TQheader/thirdParty/geoCoordinates/yGeoCoord) 1-1</p>
zGeoCoord	<p>geographical coordinate z , corresponding to altitude</p> <p>- base type: decimal,</p> <p>(XPath TEXQualityRpt/TQheader/buyer/geoCoordinates/zGeoCoord) 0-1</p>

	<ul style="list-style-type: none">- note: <i>altitude might be omitted</i> (XPath TEXQualityRpt/TQheader/supplier/geoCoordinates/zGeoCoord) 0-1- note: <i>altitude might be omitted</i> (XPath TEXQualityRpt/TQheader/thirdParty/geoCoordinates/zGeoCoord) 0-1- note: <i>altitude might be omitted</i>
--	--

2.3 Suggested best practices

TEXQualityRpt/TQbody/TQitem/refDoc/docID (identification number of the referenced document)

numberingOrg indicates the role that produced the document identifier (it is allowed to declare two different ones -e.g. customer and supplier - with two docID with different numberingOrg)

TEXQualityRpt/TQheader/refDoc/docID (identification number of the referenced document)

numberingOrg indicates the role that produced the document identifier (it is allowed to declare two different ones -e.g. customer and supplier - with two docID with different numberingOrg)

**TEXQualityRpt/TQbody/TQitem/refDoc/attachment/
externalReference/mimeCode (mime type of the external object)**

Use coding from IANA <http://www.iana.org/assignments/media-types/media-types.xml>

**TEXQualityRpt/TQheader/refDoc/attachment/
externalReference/mimeCode (mime type of the external object)**

Use coding from IANA <http://www.iana.org/assignments/media-types/media-types.xml>

2.4 Enumeration tables

List of enumeration tables used in the XML document. You can find all the tables with the corresponding codes at:
<http://www.ebiz.enea.it/eBIZ/imple/eBIZTCU-draft.asp?lingua=en&pag=6>

NT100 - eBIZ TCFUpstream version
NT12 - data source
NT13 - fabric fault category
NT14 - fabric fault shape
NT15 - Textiles Quality Report type
NT16 - VAT rate or code
NT18 - message function
NT2 - third party qualifier
NT29 - format of a date
NT333 - type of hashing algorithm
NT6 - coding system owner/issuer
NT60 - language, codes from ISO 639-1 (subset)
NT7 - unit of measure
T10 - ISO3166 - Country
T12 - fabric faults
T13 - CFM properties of fabric
T14 - FAST tests
T21 - type of document
T44 - additional code type
T52 - fabric piece status

(the most relevant tables are detailed in the following Annexes too)

ACKNOWLEDGEMENT



This action is part of the TRICK project, which has received funding from Horizon 2020 research and innovation programme under grant agreement No. 958352 of the European Union.

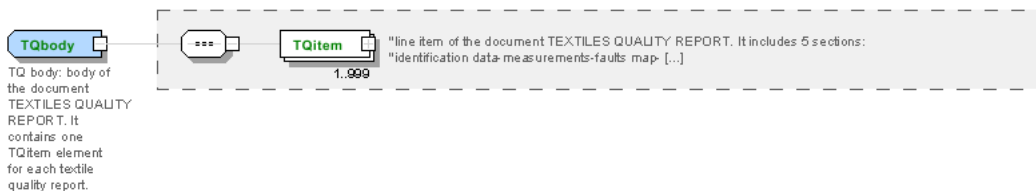
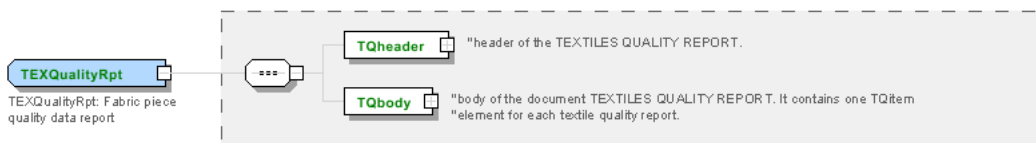
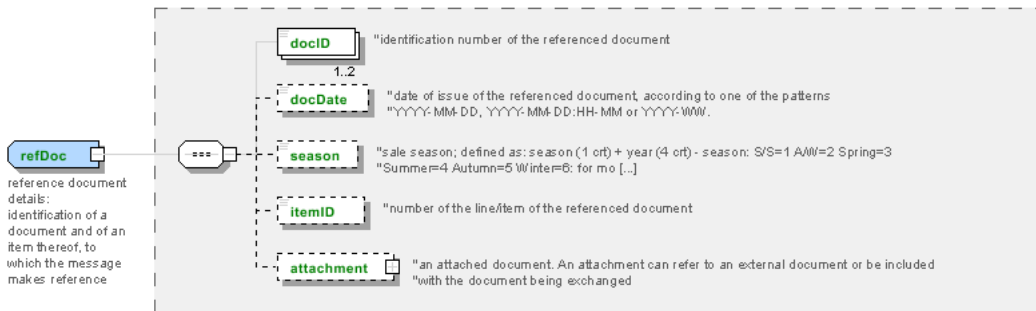
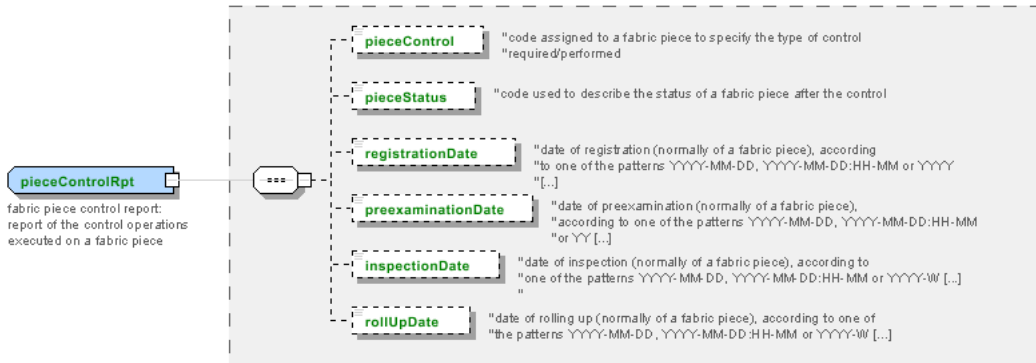
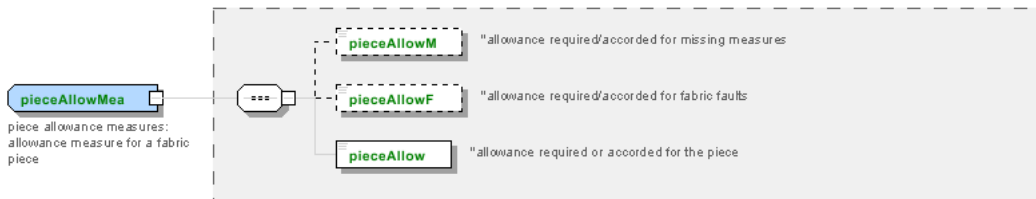
DISCLAIMER

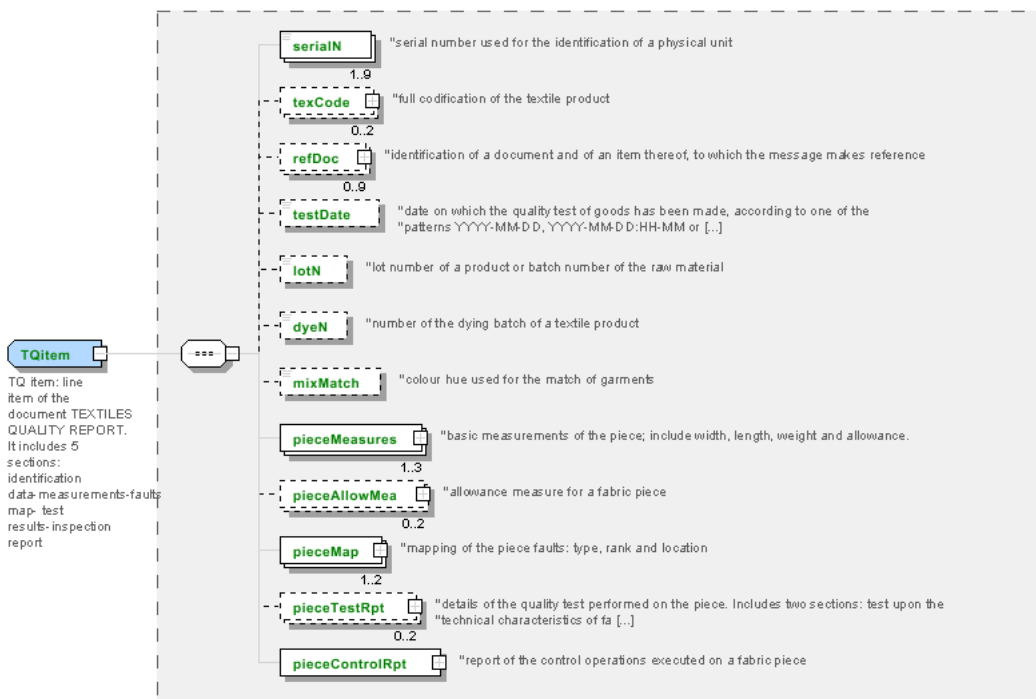
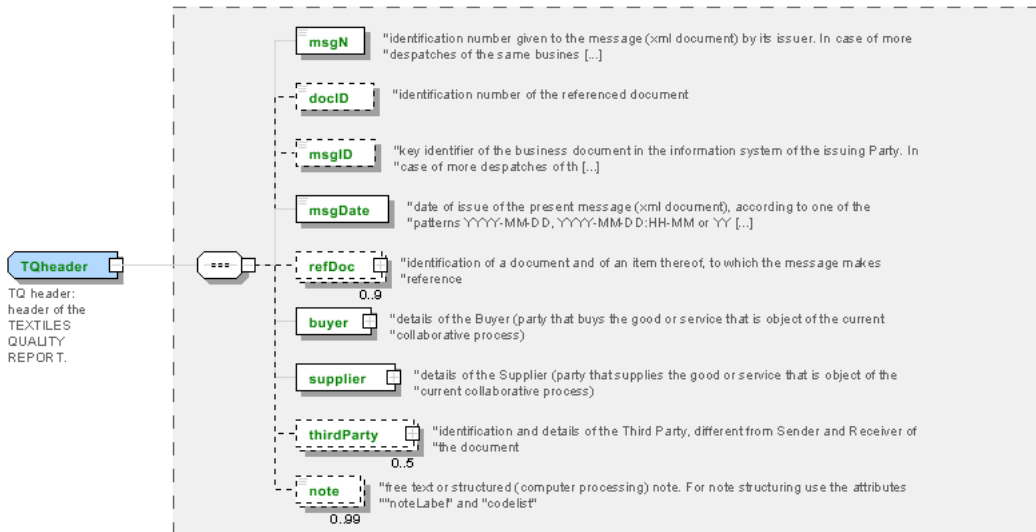
The content of this document represents the views of the authors only and is their sole responsibility; it cannot be considered to reflect the views of the European Commission or any other body of the European Union.

The European Commission does not accept any responsibility for use that may be made of the information it contains.

Annex A

Representative images of the principal complex elements' structure.





Annex B

NT100 - eBIZ TCFUpstream version

dictionary version

Agency name: eBIZ

Decoding table: NT100

File codes list (Generic code): http://www.ebiz.enea.it/moda-ml/repository/codelist/draft/gc_NT100.xml

Code	Description	Adoption note	Date of insertion
2013-1	v2013-1		01/07/2013
2018-1	v2018-1		04/11/2018
draft	draft		08/09/2017

NT12 - data source

party who has provided the data

Agency name: eBIZ

Decoding table: NT12

File codes list (Generic code): http://www.ebiz.enea.it/moda-ml/repository/codelist/draft/gc_NT12.xml

Code	Description	Adoption note	Date of insertion
AC	internal test		
CO	external test		
CV	test after steaming		

NT13 - fabric fault category

ranking class of the fabric fault

Agency name: eBIZ

Decoding table: NT13

File codes list (Generic code): http://www.ebiz.enea.it/moda-ml/repository/codelist/draft/gc_NT13.xml

Code	Description	Adoption note	Date of insertion
CL1	class 1		
CL2	class 2		
CL3	class 3		
CL4	class 4		
CL5	class 5		

CL6	class 6		
G	large		
L	small		
M	medium		

NT14 - fabric fault shape

shape classification of the fabric fault

Agency name: eBIZ

Decoding table: NT14

File codes list (Generic code): http://www.ebiz.enea.it/moda-ml/repository/codelist/draft/gc_NT14.xml

Code	Description	Adoption note	Date of insertion
C	continuous		
P	point		
S	stretch		

NT15 - Textiles Quality Report type

type of Textiles quality report

Agency name: eBIZ

Decoding table: NT15

File codes list (Generic code): http://www.ebiz.enea.it/moda-ml/repository/codelist/draft/gc_NT15.xml

Code	Description	Adoption note	Date of insertion
M	multiple		
S	single		

NT16 - VAT rate or code

VAT rate or code (DEPRECATED, use dtScheme element)

Decoding table: NT16

File codes list (Generic code): http://www.ebiz.enea.it/moda-ml/repository/codelist/draft/gc_NT16.xml

NT18 - message function

function performed by the present message with regards to the transmission

Agency name: eBIZ

Decoding table: NT18

File codes list (Generic code): http://www.ebiz.enea.it/moda-ml/repository/codelist/draft/gc_NT18.xml

Code	Description	Adoption note	Date of insertion
CA	delete this document		01/07/2013
CP	copy		
OR	original		
RC	re-transmission for data correction		
RT	re-transmission		

NT2 - third party qualifier

Third Party role qualifier

Agency name: eBIZ

Decoding table: NT2

File codes list (Generic code): http://www.ebiz.enea.it/moda-ml/repository/codelist/draft/gc_NT2.xml

Code	Description	Adoption note	Date of insertion
AG	Sales Agent		
AU	Auditor		08/04/2019
BU	Buyer		13/06/2022
CE	Certification authority		08/04/2019
CM	Commissioner		13/06/2022
CO	Quality Controller		
CU	Customs authority		13/06/2022
DC	Response to		
DF	Invoicee		
DI	Copy to (CC)		28/10/2014
DM	Consignee		
DP	Consignment address (Delivery Party)		
EX	Expert		13/06/2022
IM	Importer		
OR	Originator		10/09/2014
SC	Sub contractor		10/04/2019
SM	Service/ePlatform manager		08/04/2019
SP	Forwarder		
SU	Supplier		13/06/2022
TL	Test or analysis laboratory		13/06/2022
TX	Tax Representative		

NT29 - format of a date

format used for the date

Agency name: eBIZ

Decoding table: NT29

File codes list (Generic code): http://www.ebiz.enea.it/moda-ml/repository/codelist/draft/gc_NT29.xml

Code	Description	Adoption note	Date of insertion
D	YYYY-MM-DD		
M	YYYY-MM-DD:HH-MM (date and time)		
S	AAAA-MM-GG:HH-MM-SS (date and time with seconds)		13/06/2022
W	YYYY-WW		

NT333 - type of hashing algorithm

type of hashing algorithm

Decoding table: NT333

File codes list (Generic code): http://www.ebiz.enea.it/moda-ml/repository/codelist/draft/gc_NT333.xml

Code	Description	Adoption note	Date of insertion
ADLER32	ADLER32		26/05/2023
HMAC	HMAC		26/05/2023
MD2	MD2		26/05/2023
MD4	MD4		26/05/2023
MD5	MD5		26/05/2023
MDC-2	MDC-2		26/05/2023
PANAMA	PANAMA		26/05/2023
RIPEMD-160	RIPEMD-160		26/05/2023
SHA-1	SHA-1		26/05/2023
SHA-2 256	SHA-2 256		26/05/2023
SHA-2 384	SHA-2 384		26/05/2023
SHA-2 512	SHA-2 512		26/05/2023
TIGER	TIGER		26/05/2023

NT6 - coding system owner/issuer

code specifying the organisation who has created or owns the registers of the present coding or numbering system

Agency name: eBIZ

Decoding table: NT6

File codes list (Generic code): http://www.ebiz.enea.it/moda-ml/repository/codelist/draft/gc_NT6.xml

Code	Description	Adoption note	Date of insertion
CBR	National customs brokers registry		12/06/2023
CL	Customer/buyer		
CO	Quality Controller		
DU	D-U-N-S registry (Data Universal Numbering System)		04/05/2023
EB	eBIZ	replaces 'ML'	18/03/2019
EN	GS1 (ex-EAN International)		
EO	Registro EORI (Economic Operators Registration and Identification number)		04/03/2023
ES	e-Stockflow	DEPRECATED	
FO	Supplier		
GS	GS1		01/07/2013
MF	national taxation authority (i.e. VAT codes registry)		
ML	Moda-ML	DEPRECATED	
PL	Application Platform		13/06/2022
REX	Registered Exporter system (REX)		19/05/2023
SP	Service Provider		
SU	Enterprise Identification Number UID	Only switzerland	04/03/2023

NT60 - language, codes from ISO 639-1 (subset)

Agency name: eBIZ / ISO

Decoding table: NT60

File codes list (Generic code): http://www.ebiz.enea.it/moda-ml/repository/codelist/draft/gc_NT60.xml

Code	Description	Adoption note	Date of insertion
af	Afrikaans		31/01/2019
ar	Arabic		31/01/2019
be	Belarusian		31/01/2019
bg	Bulgarian		31/01/2019
bn	Bengali		31/01/2019
bo	Tibetan		31/01/2019
bs	Bosnian		31/01/2019
ca	Catalan, Valencian		31/01/2019
cs	Czech		31/01/2019
da	Danish		31/01/2019

de	German		31/01/2019
el	Greek, Modern (1453-)		31/01/2019
en	English		31/01/2019
eo	Esperanto		31/01/2019
es	Spanish, Castilian		31/01/2019
et	Estonian		31/01/2019
eu	Basque		31/01/2019
F	Female		15/04/2019
fa	Persian		31/01/2019
fi	Finnish		31/01/2019
fr	French		31/01/2019
ga	Irish		31/01/2019
gd	Gaelic, Scottish Gaelic		31/01/2019
gn	Guarani		31/01/2019
he	Hebrew		31/01/2019
hr	Croatian		31/01/2019
ht	Haitian, Haitian Creole		31/01/2019
hu	Hungarian		31/01/2019
hy	Armenian		31/01/2019
ia	Interlingua (International Auxiliary Language Association)		31/01/2019
id	Indonesian		31/01/2019
is	Icelandic		31/01/2019
it	Italian		31/01/2019
ja	Japanese		31/01/2019
jv	Javanese		31/01/2019
ka	Georgian		31/01/2019
km	Central Khmer		31/01/2019
ko	Korean		31/01/2019
ku	Kurdish		31/01/2019
lb	Luxembourgish, Letzeburgesch		31/01/2019
lo	Lao		31/01/2019
lt	Lithuanian		31/01/2019
lv	Latvian		31/01/2019
mg	Malagasy		31/01/2019
mk	Macedonian		31/01/2019
mn	Mongolian		31/01/2019
mt	Maltese		31/01/2019
nl	Dutch, Flemish		31/01/2019

no	Norwegian		31/01/2019
pl	Polish		31/01/2019
pt	Portuguese		31/01/2019
ro	Romanian, Moldavian, Moldovan		31/01/2019
ru	Russian		31/01/2019
se	Northern Sami		31/01/2019
sk	Slovak		31/01/2019
sl	Slovenian		31/01/2019
sm	Samoan		31/01/2019
so	Somali		31/01/2019
sq	Albanian		31/01/2019
sr	Serbian		31/01/2019
sv	Swedish		31/01/2019
sw	Swahili		31/01/2019
ta	Tamil		31/01/2019
th	Thai		31/01/2019
tr	Turkish		31/01/2019
uk	Ukrainian		31/01/2019
ur	Urdu		31/01/2019
uz	Uzbek		31/01/2019
vi	Vietnamese		31/01/2019
zh	Chinese		31/01/2019

NT7 - unit of measure

specification of the unit of measure, it is a sub set of table Unit of Measure Code - UN/ECE REC 20 delivered by United Nations Economic Commission for Europe (UN/ECE)

Agency name: eBIZ / UN/ECE

Decoding table: NT7

File codes list (Generic code): http://www.ebiz.enea.it/moda-ml/repository/codelist/draft/gc_NT7.xml

Other link: <http://docs.oasis-open.org/ubl/os-UBL-2.1/cl/gc/default/UnitOfMeasureCode-2.1.gc#>

Code	Description	Adoption note	Date of insertion
CMK	square centimetre		20/12/2017
CMQ	cubic centimetre		20/12/2017
CMT	centimetre		
CNE	centiNewton		
CO2TON	ton of CO2		10/09/2014
COUPLES	couples		

DAY	day		22/08/2022
DEGD	decimal degrees		04/07/2022
DEGMS	degrees with minutes and seconds		01/07/2022
DMQ	cubic decimetre		
E37	pixel		11/04/2018
GRM	gram		
HUR	hour		
INH	inch		
KGM	kilogram		
KMT	kilometer		
KWH	kilowatthours		10/09/2014
LBR	pound		
MCG	microgram		23/08/2022
MG	milligram		23/08/2022
MIN	minute		
MMK	square millimetre		20/12/2017
MONTH	month		22/08/2022
MSEC	millisecond (time)		22/08/2022
MTK	square metre		20/12/2017
MTQ	cubic metre		
MTR	metre		
NMB	numero		
ONZ	ounce		
P1	percent		
PPM	parts per milion		
PZ	piece		
RPM	rounds per metre		
SEC	second (time)		22/08/2022
YEAR	year		22/08/2022
YRD	yard		

T10 - ISO3166 - Country

code of the nation

Agency name: ISO

Decoding table: T10

File codes list (Generic code): http://www.ebiz.enea.it/moda-ml/repository/codelist/draft/gc_T10.xml

Table not printed: there are 240 elements, more than the maximum specified for printing: 99.

T12 - fabric faults

code specifying the type or class of fabric fault

Agency name: eBIZ

Decoding table: T12

File codes list (Generic code): http://www.ebiz.enea.it/moda-ml/repository/codelist/draft/gc_T12.xml

Code	Description	Adoption note	Date of insertion
AA	defective weft		
AA1	warpway thick end		
AA2	weftway thick pick		
AA3	thin end/pick		
AA4	warpway thin end		
AA5	weftway thin pick		
AA6	tight end/pick		
AA7	warpway tight end		
AB	weftway tight pick		
AB1	slack end/pick		
AB2	warpway slack end		
AB3	weftway slack pick		
AB4	missing end/pick		
AB5	warpway missing end		
AB6	weftway missing pick		
AC	knots/slubs		
AE	stripes/bars		
AE1	stripes/bars in the warp		
AE2	stripes/bars in the weft		
AG	bowing		
AG1	bowing in the warp		
AG2	bowing in the weft		
AI	skew		
AJ	difference in tension: body-selvedge		
AK	stepped or shuttered appearance		
AL	stick effect		
AM	tears,cuts,holes		
AN	abrasions		

AO	faulty mending		
AP	creases		
AQ	disagreeable odour		
AR1	foreign matter (fibres)		
AR3	stains		
AS	variation in shade: weftway		
AT	variation in shade: warpway		
AU	difference in shade (vs. sample)		
AV	difference in look (vs. sample)		
AW	difference in handle (vs. sample)		
AX	asymmetry of design		
AY	irregularity of checks		
AZ	footprint left by K.D. process		
AZA	out of print register		

T13 - CFM properties of fabric

code of the physical or mechanical parameter used to define a "technical characteristic of the fabric" (see Fabric technical sheet)

Decoding table: T13

File codes list (Generic code): http://www.ebiz.enea.it/moda-ml/repository/codelist/draft/gc_T13.xml

Code	Description	Adoption note	Date of insertion
CMA	resistance to pilling (UNI.E.1512434)		
CMB	seam slippage - warp (NFG7117)		
CMC	seam slippage - weft (NFG7117)		
CMD	breaking strength - warp (ISO 1394-1)		
CME	breaking strength - weft (ISO 1394-1)		
CMF	resistance to abrasion (EN 12947)		
CMH	tear strength (ISO 9290)		
CMI	crease recovery (ISO 9867)		
CMJ	elongation - warp (BS 4294/68)		
CMK	elongation - weft (BS 4294/68)		
CML	tear resistance - warp		
CMM	tear resistance - weft		
CMN	resistance to bending		
CMP	spray test		
SLA	colour fastness to light (ISO 105-B02)		

SLB	colour fastness to washing (ISO 105-C06)		
SLC	colour fastness to dry cleaning (ISO 105-D01)		
SLD	colour fastness to spotting water (ISO 105-E07)		
SLG	colour fastness to alkaline perspiration (ISO 105-E04)		
SLH	colour fastness to acid perspiration (ISO 105-E04)		
SLI	colour fastness to dry rubbing (ISO 105-X12)		
SLJ	colour fastness to wet rubbing (ISO 105-X12)		
SLK	colour fastness to dry ironing (ISO 105-X11)		
SLM	colour fastness to wet ironing (ISO 105-X11)		
SLW	colour fastness to water (ISO 105-E01)		
SLX	colour fastness to Xeno-light		
SLZ	colour fastness to rubbing org. Solv. (ISO 105-D02)		
STA	dimensional stability to steaming press - length (DIN 53894-2)		
STB	dimensional stability to steaming press - width (DIN 53894-2)		
STC	dimensional stability to washing - length (ISO 5077+6330)		
STD	dimensional stability to washing - width (ISO 5077+6330)		
STE	dimensional stability to dry cleaning - length (ISO 3175)		
STF	dimensional stability to dry cleaning - width (ISO 3175)		

T14 - FAST tests

taylorability parameter for fabric

Decoding table: T14

File codes list (Generic code): http://www.ebiz.enea.it/moda-ml/repository/codelist/draft/gc_T14.xml

Code	Description	Adoption note	Date of insertion
A1	press test angle - warpway		
A2	press test angle - weftway		
B1	bending rigidity - warpway		
B2	bending rigidity - weftway		
E1001	extensibility - warpway		
E1002	extensibility - weftway		
F1	formability - warpway		
F2	formability - weftway		
G	shear rigidity		
HE1	hygral expansion - warpway		
HE2	hygral expansion - weftway		
RS1	relaxation shrinkage - warpway		

RS2	relaxation shrinkage - weftway		
ST	surface thickness		
STR	surface thickness released		
T2	thickness		

T21 - type of document

type or class to which the referenced document belongs

Agency name: eBIZ

Decoding table: T21

File codes list (Generic code): http://www.ebiz.enea.it/moda-ml/repository/codelist/draft/gc_T21.xml

Code	Description	Adoption note	Date of insertion
BIL	Bill of lading		07/03/2023
BOR	Blanket order		01/02/2018
CAT	Price catalogue - tech sheet		
CEO	Certificate of origin		13/04/2018
CER	Certificate		13/04/2018
CMR	CMR consignment note		07/03/2023
COC	Colour card		
CRN	Credit note		08/09/2017
CTO	Checking order		01/07/2013
CTR	Contract		
CXF	CxF3 file		01/07/2013
DAD	Darn order		
DDT	Delivery note (transport document)		
DEA	Despatch advise		
DER	Despatch request		
DR	Document Request		02/12/2014
EAD	Export Accompanying Document	adopted by European customs	12/05/2023
ECMR	electronic CMR consignment note		07/03/2023
ECUS	EXPORT Custom Declaration		07/03/2023
FOR	Forecast		02/12/2014
GSO	Garment stock offer		
GSX	Garment stock offer change		
ICUS	IMPORT Custom Declaration		07/03/2023
INV	Invoice		
KCC	Knitting-Clothing Commission Order		02/12/2014

KCI	Garment in Work Inventory Report		02/12/2014
LCA	LCA study		28/08/2022
LCAD	LCA study dataset		28/08/2022
M2M	Made to Measure Production Order		02/12/2014
MAS	Master marker		
MCI	Visual merchandising instruction		13/04/2018
OCH	Order change		
OFF	Offer		
ORD	Purchase order		
ORP	Order response		
OSR	order status request		
OSS	Offer status		02/12/2014
OST	Order status		
OUR	our reference		
PCO	Preferential certificate of origin		07/03/2023
PEF	PEF study		28/08/2022
PEFD	PEF study dataset		28/08/2022
PEFP	PEF environmental profile		07/03/2023
QR	Quality Report		02/12/2014
RAI	Raw Material in Work Inventory Report		02/12/2014
RDC	Raw dyeing commission order		
RDH	Raw dyeing order change		
RDR	Raw dyeing order response		
REA	Receiving advise		
REQ	Request for Offer		
RET	Return		02/12/2014
RSC	Spinning commission order		
RSH	Spinning order change		
RSR	Spinning order response		
SAD	Single Administrative Document	adopted by European customs	12/05/2023
SCL	Process sheet		
SDE	Self-declaration		07/03/2023
SDS	SDS - Safety data sheet		07/03/2023
SLCA	S-LCA Study		07/03/2023
SLCAD	S-LCA Study documentation		07/03/2023
TFC	Textile dyeing-finishing commission order		
TFX	Textile Dyeing-Finishing Order Change		02/12/2014
TPC	Textile printing commission order		

TPX	Textile Printing Order Change		02/12/2014
TWI	Textile in work inventory		
VMI	visual merchandising instructions		01/02/2018
WAC	Warping commission order		
WAYB	Waybill		07/03/2023
WEC	Weaving commission order		
YDC	Yarn dyeing commission order		
YDH	Yarn dyeing order change		
YDR	Yarn dyeing order response		
YTC	Twisting commission order		
YWI	Yarn in work inventory		

T44 - additional code type

qualifier of the additional coding of a product

Agency name: eBIZ

Decoding table: T44

File codes list (Generic code): http://www.ebiz.enea.it/moda-ml/repository/codelist/draft/gc_T44.xml

Code	Description	Adoption note	Date of insertion
CC	colour card		
CL	sales collection		
CO	company identification code		08/09/2017
DY	dye number		
LT	lot number		
MDI	Made in		08/09/2017
MS	manufacturing state		
PKG	packaging		09/09/2014
PL	product line		
RGB	RGB value		
SE	selvedge code		

T52 - fabric piece status

code used to describe the status of a fabric piece with reference to the control

Agency name: eBIZ

Decoding table: T52

File codes list (Generic code): http://www.ebiz.enea.it/moda-ml/repository/codelist/draft/gc_T52.xml

Code	Description	Adoption note	Date of insertion
0	first registration		
C	registration from return		
F	stopped		
H	handling		
R	returned		
S	held		
T	deliverable		