



<http://www.ebiz-tcf.eu>

DRAFT

IMPLEMENTATION GUIDE  
TRANSACTION "TEXTILE COLLECTION FORECAST"

Version: draft

Date of release: 26/6/2023

Document code: G010

technical Documentation: <http://www.ebiz.enea.it>

XML Schemas repository: <http://www.ebiz.enea.it/moda-ml/repository/schema/draft/default.asp>

Guides repository: <http://www.ebiz.enea.it/moda-ml/repository/guide/draft/default.asp>

Guide filename: G010-eBIZ-TextileCollectionForecast.pdf

## 0. PREMISE

This document contains a proposal for the updating and extension of eBIZ specifications starting from the eBIZ version 2018. Under the name of 'Draft version' it is reported the result of an extensive work of analysis and consultation aimed at developing and maintaining eBIZ specifications.

In particular, the content of this proposal is the result of various activities, mainly those carried out within the framework of the **TRICK project** funded by the European Commission: grant agreement 958352, call H2020-LOW-CARBON-CIRCULAR-INDUSTRIES-2020 / H2020-LCCI-2020-EASME-twostage.

The technical contents are backwards compatible with the latest official published version, with the exclusion of the totally new concepts added explicitly for the version that are thought as incremental evolution of the knowledge base.

## 1. BUSINESS DESCRIPTION

### 1.1 Scope

The present guide has been issued to assist the companies of the Textile-Clothing sector in the implementation of the standard XML document type "Textile COLLECTION FORECAST", providing all the instruction required for its use in any context of e-commerce between Apparel Producers and Fabric Producers.

All the rules required for the construction and validation of the document are embedded into the specific XML-Schema, which is detailed in section "Implementation guide".

### 1.2 Generalities

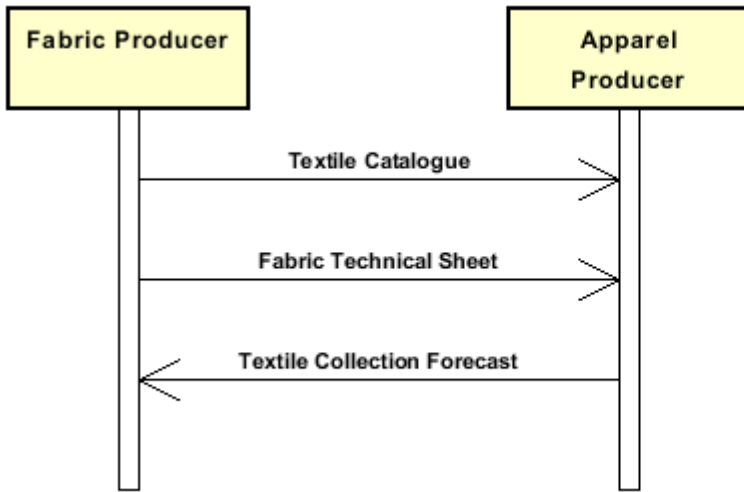
The document "Textile Collection Forecast" is used to notify to the Fabric Producer the articles of his Offer that are considered for future acquisition or use in the Season Collection. The same document can also be used by the Client to request the Fabric Technical Sheet and/or notify his article code to the Producer.

Each article notified must be identified at SKU level by the Supplier's code. An estimated quantity can be supplied only for information.

In some business scenarios this message may be used to notify the Textile Controller about the fabric articles he will inspect in the season

### 1.3. Possible scenario

Selection of fabrics



## 2. IMPLEMENTATION GUIDE

### 2.1 General structure of XML document

All the business data that can be exchanged through this class of documents are shown in the following "document structure", that provides a simplified vision of the Schema.

In particular:

- the two numbers following each element define its "cardinality" (minimum and maximum number of occurrences); the minimum equal zero indicates that the element is optional, the minimum greater than zero indicates that is mandatory;
- the bold character denotes the complex elements (aggregates of simple elements) that were built for the sake of functionality and re-usability of some complex informations sets. The child elements in each parent element are easily spotted as "indented";
- the symbol "@" denotes an attribute of the preceding element; here "the usage indicator (optional, required, ...) is shown in square brackets.

### Structure

#### TEXCollection

```
@TNtype [Required]
@msgfunction [Optional] [Default= OR]
@version [Optional] [Default= draft]
@useProfile [Optional]
| TNheader 1-1
| | msgN 1-1
| | - choose -
| | | msgID 0-1
| | | - or -
| | | docID 0-1
| | | @numberingOrg [Optional]
| | | - end choose -
| | msgDate 1-1
| | | @dateForm [Optional]
| | msgCurrency 0-1
| | season 0-1
| | | @numberingOrg [Optional]
| | | @codeList [Optional]
| | | @listName [Optional]
| | | @listVersion [Optional]
| | refDoc 0-9
| | | @docType [Required]
| | | | docID 1-2
| | | | | @numberingOrg [Optional]
| | | | | docDate 0-1
| | | | | @dateForm [Optional]
| | | | | season 0-1
| | | | | @numberingOrg [Optional]
| | | | | @codeList [Optional]
| | | | | @listName [Optional]
| | | | | @listVersion [Optional]
| | | | itemID 0-1
| | | attachment 0-1
| | | | @uid [Optional]
| | | | | fileName 0-1
| | | | | | @numberingOrg [Optional]
| | | | | | binaryObject 0-1
| | | | | | @format [Optional]
| | | | | | @mime [Optional]
| | | | | | @encoding [Optional]
| | | | | | @characterSet [Optional]
| | | | externalReference 0-99
| | | | | uri 1-1
| | | | | | @isURL [Optional] [Default= true]
| | | | | | mimeTypeCode 0-1
| | | | | | formatCode 0-1
| | | | | | encodingCode 0-1
| | | | | | characterSetCode 0-1
```

| hashFootprint 0-1  
| @schemeID [Optional]  
| @hashMethod [Required]  
| **blockChainReference 0-9**  
| uri 1-1  
| @isURL [Optional] [Default= true]  
| transactionReceipt 1-9

**buyer 1-1**

@logo [Optional]  
@sender [Optional]  
| id 1-1  
| @numberingOrg [Optional]  
| additionalIdentifier 0-9  
| @numberingOrg [Optional]  
| @idQualifier [Optional]  
| legalName 0-1  
| dept 0-1  
| subDept 0-1  
| person 0-1  
| @email [Optional]  
| @phone [Optional]  
| @fax [Optional]  
| street 0-1  
| city 0-1  
| subCountry 0-1  
| country 0-1  
| postCode 0-1  
| **geoCoordinates 0-1**  
| @um [Optional] [Default= DEGD]  
| @geoRefSystem [Optional]  
| xGeoCoord 1-1  
| yGeoCoord 1-1  
| zGeoCoord 0-1

**supplier 1-1**

@logo [Optional]  
@sender [Optional]  
| id 1-1  
| @numberingOrg [Optional]  
| additionalIdentifier 0-9  
| @numberingOrg [Optional]  
| @idQualifier [Optional]  
| legalName 0-1  
| dept 0-1  
| subDept 0-1  
| person 0-1  
| @email [Optional]  
| @phone [Optional]  
| @fax [Optional]  
| street 0-1  
| city 0-1  
| subCountry 0-1  
| country 0-1  
| postCode 0-1  
| **geoCoordinates 0-1**  
| @um [Optional] [Default= DEGD]  
| @geoRefSystem [Optional]  
| xGeoCoord 1-1  
| yGeoCoord 1-1  
| zGeoCoord 0-1

**thirdParty 0-5**

@VAT [Optional]  
@role [Required]  
@sender [Optional]  
| id 1-1  
| @numberingOrg [Optional]  
| legalName 0-1  
| dept 0-1  
| subDept 0-1

| person 0-1  
 |    @*email* [Optional]  
 |    @*phone* [Optional]  
 |    @*fax* [Optional]  
 | street 0-1  
 | city 0-1  
 | subCountry 0-1  
 | country 0-1  
 | postCode 0-1  
 | **geoCoordinates 0-1**  
 |    @*um* [Optional] [Default= DEGD]  
 |    @*geoRefSystem* [Optional]  
 |      | xGeoCoord 1-1  
 |      | yGeoCoord 1-1  
 |      | zGeoCoord 0-1  
 | note 0-99  
 |    @*numberingOrg* [Optional]  
 |    @*codeList* [Optional]  
 |    @*noteLabel* [Optional]

### TNbody 1-1

| **TNitem 1-unbounded**  
 |    @*techSheet* [Optional]  
 |    lineN 1-1  
 |      @*VAT* [Optional]  
 |    **texCode 1-2**  
 |      @*numberingOrg* [Optional]  
 |        | art 1-1  
 |        |    @*numberingOrg* [Optional]  
 |        |    @*codeList* [Optional]  
 |        |    @*listName* [Optional]  
 |        |    @*listVersion* [Optional]  
 |        | pattern 0-1  
 |        |    @*numberingOrg* [Optional]  
 |        |    @*codeList* [Optional]  
 |        |    @*listName* [Optional]  
 |        |    @*listVersion* [Optional]  
 |        | color 0-1  
 |        |    @*numberingOrg* [Optional]  
 |        |    @*codeList* [Optional]  
 |        |    @*listName* [Optional]  
 |        |    @*listVersion* [Optional]  
 |        | added 0-9  
 |        |    @*numberingOrg* [Optional]  
 |        |    @*addType* [Optional]  
 |        | description 0-unbounded  
 |        |    @*ln* [Optional]  
 |    qty 0-2  
 |      @*um* [Required]  
 |    amount 0-1  
 |      @*currency* [Optional]  
 |    season 0-1  
 |      @*numberingOrg* [Optional]  
 |      @*codeList* [Optional]  
 |      @*listName* [Optional]  
 |      @*listVersion* [Optional]  
 |    **fabricCompos 0-1**  
 |      | percCompos 1-9  
 |      |    @*fibre* [Required]  
 |      |    @*materialSource* [Optional]  
 |      |    @*recyclingProcessMethod* [Optional]  
 |      |    @*percSourcesRenewable* [Optional]  
 |      |    @*validationMethod* [Optional]  
 |      |    @*recyclingProcessEfficiency* [Optional]  
 |    fabricWeightM 0-1  
 |      @*um* [Optional] [Default= GRM]  
 |    fabricWidth 0-1  
 |      @*um* [Optional] [Default= CMT]



## 2.2 Detailed description of document elements

Following tables show all elements (complex and simple) used in this document. Description includes: 1) element's information: xml tag, name, brief description, data type and syntax constraints; 2) information about use of the element in a particular position in the document: xpath and possible associated notes.

### 2.2.1 Complex elements (Aggregate Business Information Entities)

Complex elements are those elements whose content is composed of other elements (childs). Complex elements are alphabetically ordered.

<b>attachment</b>	an attached document. An attachment can refer to an external document or be included with the document being exchanged (XPath <code>TEXCollection/TNheader/refDoc/attachment</code> ) 0-1
<b>blockChainReference</b>	blockchain reference - base type: string, max length: 80, (XPath <code>TEXCollection/TNheader/refDoc/attachment/blockChainReference</code> ) 0-9
<b>buyer</b>	details of the Buyer (party that buys the good or service that is object of the current collaborative process) - base type: Nad, (XPath <code>TEXCollection/TNheader/buyer</code> ) 1-1
<b>externalReference</b>	details about an external object, such as a document stored at a remote location (XPath <code>TEXCollection/TNheader/refDoc/attachment/externalReference</code> ) 0-99
<b>fabricCompos</b>	percent of composition of the fabric according to the Directive 97/37/CE (XPath <code>TEXCollection/TNbody/TNitem/fabricCompos</code> ) 0-1
<b>geoCoordinates</b>	geographical coordinates (XPath <code>TEXCollection/TNheader/supplier/geoCoordinates</code> ) 0-1 (XPath <code>TEXCollection/TNheader/buyer/geoCoordinates</code> ) 0-1 (XPath <code>TEXCollection/TNheader/thirdParty/geoCoordinates</code> ) 0-1
<b>refDoc</b>	identification of a document and of an item thereof, to which the message makes reference (XPath <code>TEXCollection/TNheader/refDoc</code> ) 0-9 - note: <i>here the referenced price catalogue can be specified</i>
<b>supplier</b>	details of the Supplier (party that supplies the good or service that is object of the current collaborative process) - base type: Nad, (XPath <code>TEXCollection/TNheader/supplier</code> ) 1-1
<b>texCode</b>	full codification of the textile product (XPath <code>TEXCollection/TNbody/TNitem/texCode</code> ) 1-2 - note: <i>the article must be identified with the supplier's code; the buyer's code can be added</i>
<b>thirdParty</b>	identification and details of the Third Party, different from Sender and Receiver of the document - base type: Nad, (XPath <code>TEXCollection/TNheader/thirdParty</code> ) 0-5
<b>TNbody</b>	body of the document TEXTILES COLLECTION FORECAST (XPath <code>TEXCollection/TNbody</code> ) 1-1
<b>TNheader</b>	header of the document TEXTILES COLLECTION FORECAST (XPath <code>TEXCollection/TNheader</code> ) 1-1
<b>TNitem</b>	line item of the document TEXTILES COLLECTION FORECAST (XPath <code>TEXCollection/TNbody/TNitem</code> ) 1-unbounded

### 2.2.2 Simple elements (Basic Business Information Entities)

Simple elements are those elements whose content is characterized by a data type plus a domain of possible values.



Simple elements are alphabetically ordered.

added	<p>additional code of the product (complementing the formers)</p> <ul style="list-style-type: none"> <li>- base type: string, max length: 80, (XPath <a href="#">TEXCollection/TNbody/TNitem/texCode/added</a>) 0-9</li> <li>- note: <i>here an additional codification (see table T44) can be specified</i></li> </ul>
additionalIdentifier	<p>additional identification code of a Party, for example customs registries or others</p> <ul style="list-style-type: none"> <li>- base type: string, max length: 15, (XPath <a href="#">TEXCollection/TNheader/buyer/additionalIdentifier</a>) 0-9</li> <li>- note: <i>identifiers for example for exports, such as MID (Manufacturer Identification Code), REX (identificatier in Registered Exporter system)</i> (XPath <a href="#">TEXCollection/TNheader/supplier/additionalIdentifier</a>) 0-9</li> <li>- note: <i>identifiers for example for exports, such as MID (Manufacturer Identification Code), REX (identifier in EU Registered Exporter system)</i></li> </ul>
@addType	<p>qualifier of the additional coding of a product</p> <ul style="list-style-type: none"> <li>- base type: string, cod. table: T44 <a href="http://www.ebiz.enea.it/moda-ml/repository/codelist/draft/gc_T44.xml">http://www.ebiz.enea.it/moda-ml/repository/codelist/draft/gc_T44.xml</a> (XPath <a href="#">TEXCollection/TNbody/TNitem/texCode/added/@addType</a>) [Optional]</li> <li>- nota: <i>addType allows the clarification of the meaning of the added element content; it is strongly suggested to use it always.</i></li> </ul>
amount	<p>total monetary value of the goods and services considered in the message line (usually net price x quantity)</p> <ul style="list-style-type: none"> <li>- base type: decimal, min inclusive: 0, fraction digits: 2, (XPath <a href="#">TEXCollection/TNbody/TNitem/amount</a>) 0-1 Best Practice</li> <li>- note: <i>indicates a total expense forecast for the article</i></li> </ul>
art	<p>article number of the product</p> <ul style="list-style-type: none"> <li>- base type: string, max length: 80, (XPath <a href="#">TEXCollection/TNbody/TNitem/texCode/art</a>) 1-1</li> <li>- note: <i>can be used either for the base-article (excluding pattern/colour) or for the SKU</i></li> </ul>
binaryObject	<p>a binary large object containing an attached document, Coding 'base64Binary' is recommended.</p> <ul style="list-style-type: none"> <li>- base type: base64Binary, (XPath <a href="#">TEXCollection/TNheader/refDoc/attachment/binaryObject</a>) 0-1</li> </ul>
@characterSet	<p>the character set of the binary object (examples UTF-8, UTF-16, Windows-1252, ISO-8859-7,..)</p> <ul style="list-style-type: none"> <li>- base type: normalizedString, (XPath <a href="#">TEXCollection/TNheader/refDoc/attachment/binaryObject/@characterSet</a>) [Optional]</li> </ul>
characterSetCode	<p>the character set of an external document (examples UTF-8, UTF-16, Windows-1252, ISO-8859-7,..)</p> <ul style="list-style-type: none"> <li>- base type: normalizedString, (XPath <a href="#">TEXCollection/TNheader/refDoc/attachment/externalReference/characterSetCode</a>) 0-1</li> </ul>
city	<p>name of the city (town, village)</p> <ul style="list-style-type: none"> <li>- base type: string, max length: 40, (XPath <a href="#">TEXCollection/TNheader/supplier/city</a>) 0-1 (XPath <a href="#">TEXCollection/TNheader/thirdParty/city</a>) 0-1 (XPath <a href="#">TEXCollection/TNheader/buyer/city</a>) 0-1</li> </ul>
@codeList	<p>it specifies the URL where the list of codes used to make an instance of the element can be found</p> <ul style="list-style-type: none"> <li>- base type: string, max length: 255, (XPath <a href="#">TEXCollection/TNbody/TNitem/season/@codeList</a>) [Optional]</li> <li>- nota: <i>this attribute should be used either single or coupled with "listName" and "listVersion"</i> (XPath <a href="#">TEXCollection/TNbody/TNitem/texCode/art/@codeList</a>) [Optional]</li> <li>- nota: <i>at least one out of this attribute and "numberingOrg" should be set</i> (XPath <a href="#">TEXCollection/TNbody/TNitem/texCode/pattern/@codeList</a>) [Optional]</li> <li>- nota: <i>at least one out of this attribute and "numberingOrg" should be set</i> (XPath <a href="#">TEXCollection/TNheader/note/@codeList</a>) [Optional]</li> <li>- nota: <i>must be used to provide (URL) the list of codes used in "noteLabel"</i> (XPath <a href="#">TEXCollection/TNheader/refDoc/season/@codeList</a>) [Optional]</li> <li>- nota: <i>this attribute should be used either single or coupled with "listName" and "listVersion"</i></li> </ul>

	<p><i>rsion</i>"  (XPath <a href="#">TEXCollection/TNheader/season/@codeList</a>) [Optional]  - nota: <i>this attribute should be used either single or coupled with "listName" and "listVersion"</i>  (XPath <a href="#">TEXCollection/TNbody/TNitem/texCode/color/@codeList</a>) [Optional]  - nota: <i>this attribute should be used either single or coupled with "listName" and "listVersion"</i></p>
color	<p>colour number of the product, when not included in the model or fabric code  - base type: string, max length: 15,  (XPath <a href="#">TEXCollection/TNbody/TNitem/texCode/color</a>) 0-1</p>
country	<p>code of the nation  - base type: string, cod. table: T10  <a href="http://www.ebiz.enea.it/moda-ml/repository/codelist/draft/gc_T10.xml">http://www.ebiz.enea.it/moda-ml/repository/codelist/draft/gc_T10.xml</a>  (XPath <a href="#">TEXCollection/TNheader/thirdParty/country</a>) 0-1  (XPath <a href="#">TEXCollection/TNheader/supplier/country</a>) 0-1  (XPath <a href="#">TEXCollection/TNheader/buyer/country</a>) 0-1</p>
@currency	<p>currency in which a specified monetary data is expressed  - base type: string, cod. table: T9  <a href="http://www.ebiz.enea.it/moda-ml/repository/codelist/draft/gc_T9.xml">http://www.ebiz.enea.it/moda-ml/repository/codelist/draft/gc_T9.xml</a>  (XPath <a href="#">TEXCollection/TNbody/TNitem/amount/@currency</a>) [Optional]</p>
@dateForm	<p>format used for the date  - base type: string, cod. table: NT29  <a href="http://www.ebiz.enea.it/moda-ml/repository/codelist/draft/gc_NT29.xml">http://www.ebiz.enea.it/moda-ml/repository/codelist/draft/gc_NT29.xml</a>  (XPath <a href="#">TEXCollection/TNheader/msgDate/@dateForm</a>) [Optional]  (XPath <a href="#">TEXCollection/TNheader/refDoc/docDate/@dateForm</a>) [Optional]</p>
dept	<p>name or code of a department  - base type: string, max length: 40,  (XPath <a href="#">TEXCollection/TNheader/thirdParty/dept</a>) 0-1  (XPath <a href="#">TEXCollection/TNheader/supplier/dept</a>) 0-1  (XPath <a href="#">TEXCollection/TNheader/buyer/dept</a>) 0-1</p>
description	<p>free text description. The content of the element must be unique, it might be translated and repeated into more languages (thus no more than one instance for each language).  - base type: string, max length: 250,  (XPath <a href="#">TEXCollection/TNbody/TNitem/texCode/description</a>) 0-unbounded  - note: <i>Product description</i></p>
docDate	<p>date of issue of the referenced document, according to one of the patterns YYYY-MM-DD, YYYY-MM-DD:HH-MM or YYYY-WW.  - base type: string,  (XPath <a href="#">TEXCollection/TNheader/refDoc/docDate</a>) 0-1</p>
docID	<p>identification number of the referenced document  - base type: string, max length: 80,  (XPath <a href="#">TEXCollection/TNheader/docID</a>) 0-1  - note: <i>Its use in HEADER elements is discouraged (use msgID)</i>  (XPath <a href="#">TEXCollection/TNheader/refDoc/docID</a>) 1-2 Best Practice</p>
@docType	<p>type or class to which the referenced document belongs  - base type: string, cod. table: T21  <a href="http://www.ebiz.enea.it/moda-ml/repository/codelist/draft/gc_T21.xml">http://www.ebiz.enea.it/moda-ml/repository/codelist/draft/gc_T21.xml</a>  (XPath <a href="#">TEXCollection/TNheader/refDoc/@docType</a>) [Required]</p>
@email	<p>electronic mail address of the contact person within a Party  - base type: string, max length: 250,  (XPath <a href="#">TEXCollection/TNheader/buyer/person/@email</a>) [Optional]  (XPath <a href="#">TEXCollection/TNheader/supplier/person/@email</a>) [Optional]  (XPath <a href="#">TEXCollection/TNheader/thirdParty/person/@email</a>) [Optional]</p>
@encoding	<p>specifies the decoding algorithm of the binary object  - base type: normalizedString,  (XPath <a href="#">TEXCollection/TNheader/refDoc/attachment/binaryObject/@encoding</a>) [Optional]</p>
encodingCode	<p>the encoding/decoding algorithm used with the external object (example is 'base64Binary')  - base type: normalizedString,</p>

	(XPath <code>TEXCollection/TNheader/refDoc/attachment/externalReference/encodingCode</code> ) 0-1
fabricWeightM	weight per metre of the fabric as technical specification - base type: decimal, min inclusive: 0, fraction digits: 2, (XPath <code>TEXCollection/TNbody/TNitem/fabricWeightM</code> ) 0-1
fabricWidth	width of the fabric as technical specification - base type: decimal, min inclusive: 0, fraction digits: 2, (XPath <code>TEXCollection/TNbody/TNitem/fabricWidth</code> ) 0-1
@fax	fax number of the contact person within a Party - base type: string, max length: 35, (XPath <code>TEXCollection/TNheader/supplier/person/@fax</code> ) [Optional] (XPath <code>TEXCollection/TNheader/buyer/person/@fax</code> ) [Optional] (XPath <code>TEXCollection/TNheader/thirdParty/person/@fax</code> ) [Optional]
@fibre	type of fibre used in a textile product - base type: string, cod. table: T19 <a href="http://www.ebiz.enea.it/moda-ml/repository/codelist/draft/gc_T19.xml">http://www.ebiz.enea.it/moda-ml/repository/codelist/draft/gc_T19.xml</a> (XPath <code>TEXCollection/TNbody/TNitem/fabricCompos/percCompos/@fibre</code> ) [Required]
fileName	unique identifier (name) of the file - base type: string, max length: 255, (XPath <code>TEXCollection/TNheader/refDoc/attachment/fileName</code> ) 0-1
@format	the format of the binary content (examples xml, pdf, doc,...) - base type: string, (XPath <code>TEXCollection/TNheader/refDoc/attachment/binaryObject/@format</code> ) [Optional]
formatCode	the format of the external object (examples xml, pdf, doc,...) - base type: normalizedString, (XPath <code>TEXCollection/TNheader/refDoc/attachment/externalReference/formatCode</code> ) 0-1
@geoRefSystem	georeference system adopted for the coordinate (in example wgs84 with decimal degree o degree with minute and seconds) - base type: string, (XPath <code>TEXCollection/TNheader/buyer/geoCoordinates/@geoRefSystem</code> ) [Optional] (XPath <code>TEXCollection/TNheader/thirdParty/geoCoordinates/@geoRefSystem</code> ) [Optional] (XPath <code>TEXCollection/TNheader/supplier/geoCoordinates/@geoRefSystem</code> ) [Optional]
hashFootprint	footprint obtained by applying an hashing algorithm - base type: string, max length: 80, (XPath <code>TEXCollection/TNheader/refDoc/attachment/hashFootprint</code> ) 0-1
@hashMethod	type of used hashing algorithm - base type: string, max length: 80, cod. table: NT333 <a href="http://www.ebiz.enea.it/moda-ml/repository/codelist/draft/gc_NT333.xml">http://www.ebiz.enea.it/moda-ml/repository/codelist/draft/gc_NT333.xml</a> (XPath <code>TEXCollection/TNheader/refDoc/attachment/hashFootprint/@hashMethod</code> ) [Required]
id	primary identification code of a Party; it is recommended to use an EORI number (with @numberingOrg= "EO") or the format: nation code (ISO 3166) + national tax code (i.e. VAT identification number ) with @numberingOrg= "MF" - base type: string, max length: 15, (XPath <code>TEXCollection/TNheader/supplier/id</code> ) 1-1 (XPath <code>TEXCollection/TNheader/thirdParty/id</code> ) 1-1 (XPath <code>TEXCollection/TNheader/buyer/id</code> ) 1-1
@idQualifier	Qualification of the identifier. - base type: string, (XPath <code>TEXCollection/TNheader/supplier/additionalIdentifier/@idQualifier</code> ) [Optional] - nota: this attribute should be used when the numberingOrg attribute is not enough to declare the type of identifier (XPath <code>TEXCollection/TNheader/buyer/additionalIdentifier/@idQualifier</code> ) [Optional] - nota: this attribute should be used when the numberingOrg attribute is not enough to declare the type of identifier
@isURL	it indicates if the referred element is an URL (true) or not (false)

	<p>- base type: boolean, (XPath <code>TEXCollection/TNheader/refDoc/attachment/externalReference/uri/@isURL</code>) [Optional] [Default= true]</p> <p>- nota: <i>usage of URLs is recommended</i> (XPath <code>TEXCollection/TNheader/refDoc/attachment/blockChainReference/uri/@isURL</code>) [Optional] [Default= true]</p> <p>- nota: <i>usage of URLs is recommended</i></p>
itemID	<p>number of the line/item of the referenced document</p> <p>- base type: string, max length: 40, (XPath <code>TEXCollection/TNheader/refDoc/itemID</code>) 0-1</p>
legalName	<p>legal name</p> <p>- base type: string, max length: 250, (XPath <code>TEXCollection/TNheader/buyer/legalName</code>) 0-1 (XPath <code>TEXCollection/TNheader/supplier/legalName</code>) 0-1 (XPath <code>TEXCollection/TNheader/thirdParty/legalName</code>) 0-1</p>
lineN	<p>number of the line item of the present message (xml document); it is set by the role that produces the document. Usually it is a progressive number, but not always.</p> <p>- base type: positiveInteger, min inclusive: 1, max inclusive: 9999, (XPath <code>TEXCollection/TNbody/TNitem/lineN</code>) 1-1</p>
@listName	<p>the name of the list of codes used to make an instance of the element (it might be thought as descriptive element, i.e. 'fabric printing technologies', or not, i.e. "T264")</p> <p>- base type: string, max length: 40, (XPath <code>TEXCollection/TNbody/TNitem/texCode/pattern/@listName</code>) [Optional]</p> <p>- nota: <i>this attribute should always be used coupled with "numberingOrg"</i> (XPath <code>TEXCollection/TNbody/TNitem/texCode/art/@listName</code>) [Optional]</p> <p>- nota: <i>this attribute should always be used coupled with "numberingOrg"</i> (XPath <code>TEXCollection/TNheader/refDoc/season/@listName</code>) [Optional]</p> <p>- nota: <i>this attribute should always be used coupled with "numberingOrg"</i> (XPath <code>TEXCollection/TNbody/TNitem/texCode/color/@listName</code>) [Optional]</p> <p>- nota: <i>this attribute should always be used coupled with "numberingOrg"</i> (XPath <code>TEXCollection/TNbody/TNitem/season/@listName</code>) [Optional]</p> <p>- nota: <i>this attribute should always be used coupled with "numberingOrg"</i> (XPath <code>TEXCollection/TNheader/season/@listName</code>) [Optional]</p> <p>- nota: <i>this attribute should always be used coupled with "numberingOrg"</i></p>
@listVersion	<p>it specifies the version of the list of codes used to make an instance of the element</p> <p>- base type: string, max length: 6, (XPath <code>TEXCollection/TNbody/TNitem/texCode/pattern/@listVersion</code>) [Optional]</p> <p>- nota: <i>this attribute should always be used coupled with "numberingOrg" and "listName"</i> (XPath <code>TEXCollection/TNbody/TNitem/texCode/art/@listVersion</code>) [Optional]</p> <p>- nota: <i>this attribute should always be used coupled with "numberingOrg" and "listName"</i> (XPath <code>TEXCollection/TNheader/season/@listVersion</code>) [Optional]</p> <p>- nota: <i>this attribute should always be used coupled with "numberingOrg" and "listName"</i> (XPath <code>TEXCollection/TNheader/refDoc/season/@listVersion</code>) [Optional]</p> <p>- nota: <i>this attribute should always be used coupled with "numberingOrg" and "listName"</i> (XPath <code>TEXCollection/TNbody/TNitem/season/@listVersion</code>) [Optional]</p> <p>- nota: <i>this attribute should always be used coupled with "numberingOrg" and "listName"</i> (XPath <code>TEXCollection/TNbody/TNitem/texCode/color/@listVersion</code>) [Optional]</p> <p>- nota: <i>this attribute should always be used coupled with "numberingOrg" and "listName"</i></p>
@ln	<p>Language code.</p> <p>- base type: string, cod. table: NT60 <a href="http://www.ebiz.enea.it/moda-ml/repository/codelist/draft/gc_NT60.xml">http://www.ebiz.enea.it/moda-ml/repository/codelist/draft/gc_NT60.xml</a> (XPath <code>TEXCollection/TNbody/TNitem/texCode/description/@ln</code>) [Optional]</p>
@logo	<p>company logo (URL of the image jpeg or gif). It is recommended that the width of the image does not exceed 640 pixel.</p> <p>- base type: string, max length: 255, (XPath <code>TEXCollection/TNheader/supplier/@logo</code>) [Optional] (XPath <code>TEXCollection/TNheader/buyer/@logo</code>) [Optional]</p>
@materialSource	<p>Indicates whether the material is virgin or comes from recycling or reuse processes</p>

	<p>- base type: string, cod. table: T306  <a href="http://www.ebiz.enea.it/moda-ml/repository/codelist/draft/gc_T306.xml">http://www.ebiz.enea.it/moda-ml/repository/codelist/draft/gc_T306.xml</a>  (XPath <code>TEXCollection/TNbody/TNitem/fabricCompos/percCompos/@materialSource</code>) [Optional]</p>
@mime	<p>the mime type of the binary object  - base type: normalizedString,  (XPath <code>TEXCollection/TNheader/refDoc/attachment/binaryObject/@mime</code>) [Optional]</p>
mimeCode	<p>mime type of the external object  - base type: normalizedString,  (XPath <code>TEXCollection/TNheader/refDoc/attachment/externalReference/mimeCode</code>) 0-1 Best Practice</p>
msgCurrency	<p>currency used to express the monetary amounts of the message  - base type: string, cod. table: T9  <a href="http://www.ebiz.enea.it/moda-ml/repository/codelist/draft/gc_T9.xml">http://www.ebiz.enea.it/moda-ml/repository/codelist/draft/gc_T9.xml</a>  (XPath <code>TEXCollection/TNheader/msgCurrency</code>) 0-1</p>
msgDate	<p>date of issue of the present message (xml document), according to one of the patterns YYYY-MM-DD, YYYY-MM-DD:HH-MM or YYYY-WW.  - base type: string,  (XPath <code>TEXCollection/TNheader/msgDate</code>) 1-1</p>
@msgfunction	<p>function performed by the present message with regards to the transmission  - base type: string, cod. table: NT18  <a href="http://www.ebiz.enea.it/moda-ml/repository/codelist/draft/gc_NT18.xml">http://www.ebiz.enea.it/moda-ml/repository/codelist/draft/gc_NT18.xml</a>  (XPath <code>TEXCollection/@msgfunction</code>) [Optional] [Default= OR]</p>
msgID	<p>key identifier of the business document in the information system of the issuing Party. In case of more despatches of the same business document, it is unchanged.  - base type: string, max length: 35,  (XPath <code>TEXCollection/TNheader/msgID</code>) 0-1</p>
msgN	<p>identification number given to the message (xml document) by its issuer. In case of more despatches of the same business document, it changes.  - base type: string, max length: 35,  (XPath <code>TEXCollection/TNheader/msgN</code>) 1-1</p>
note	<p>free text or structured (computer processing) note. For note structuring use the attributes "noteLabel" and "codelist"  - base type: string, max length: 350,  (XPath <code>TEXCollection/TNheader/note</code>) 0-99</p>
@noteLabel	<p>subject qualifier of a note  - base type: string, max length: 35,  (XPath <code>TEXCollection/TNheader/note/@noteLabel</code>) [Optional]  - nota: <i>must be used to qualify the subject of the note</i></p>
@numberingOrg	<p>code specifying the organisation who has created or owns the coding or numbering system  - base type: string, cod. table: NT6  <a href="http://www.ebiz.enea.it/moda-ml/repository/codelist/draft/gc_NT6.xml">http://www.ebiz.enea.it/moda-ml/repository/codelist/draft/gc_NT6.xml</a>  (XPath <code>TEXCollection/TNheader/refDoc/attachment/fileName/@numberingOrg</code>) [Optional]  (XPath <code>TEXCollection/TNheader/note/@numberingOrg</code>) [Optional]  - nota: <i>must be used to specify the organization that created the list of codes used in "noteLabel"</i>  (XPath <code>TEXCollection/TNheader/thirdParty/id/@numberingOrg</code>) [Optional]  (XPath <code>TEXCollection/TNheader/supplier/id/@numberingOrg</code>) [Optional]  (XPath <code>TEXCollection/TNheader/supplier/additionalIdentifier/@numberingOrg</code>) [Optional]  - nota: <i>here the issuer of the identifier must be specified</i>  (XPath <code>TEXCollection/TNheader/buyer/additionalIdentifier/@numberingOrg</code>) [Optional]  - nota: <i>here the issuer of the identifier must be specified</i>  (XPath <code>TEXCollection/TNbody/TNitem/texCode/color/@numberingOrg</code>) [Optional]  - nota: <i>this attribute should be used either single or coupled with "listName" and "listVersion"</i>  (XPath <code>TEXCollection/TNheader/refDoc/season/@numberingOrg</code>) [Optional]  - nota: <i>this attribute should be used either single or coupled with "listName" and "listVersion"</i>  (XPath <code>TEXCollection/TNbody/TNitem/texCode/added/@numberingOrg</code>) [Optional]</p>

	<p>- nota: <i>this attribute should be used either single or coupled with "listName" and "listVersion"</i>  (XPath <code>TEXCollection/TNheader/refDoc/docID/@numberingOrg</code>) [Optional]</p> <p>- nota: <i>here can be specified whose document numbering is used (e.g.: Client, Suppliers, ..)</i>  (XPath <code>TEXCollection/TNbody/TNitem/texCode/art/@numberingOrg</code>) [Optional]</p> <p>- nota: <i>this attribute should be used either single or coupled with "listName" and "listVersion"</i>  (XPath <code>TEXCollection/TNheader/docID/@numberingOrg</code>) [Optional]</p> <p>- nota: <i>here can be specified whose document numbering is used (e.g.: Client, Suppliers, ..)</i>  (XPath <code>TEXCollection/TNbody/TNitem/texCode/@numberingOrg</code>) [Optional]  (XPath <code>TEXCollection/TNbody/TNitem/season/@numberingOrg</code>) [Optional]</p> <p>- nota: <i>this attribute should be used either single or coupled with "listName" and "listVersion"</i>  (XPath <code>TEXCollection/TNheader/buyer/id/@numberingOrg</code>) [Optional]  (XPath <code>TEXCollection/TNheader/season/@numberingOrg</code>) [Optional]</p> <p>- nota: <i>this attribute should be used either single or coupled with "listName" and "listVersion"</i>  (XPath <code>TEXCollection/TNbody/TNitem/texCode/pattern/@numberingOrg</code>) [Optional]</p> <p>- nota: <i>this attribute should be used either single or coupled with "listName" and "listVersion"</i></p>
pattern	<p>pattern/design number of the product, when not included in the article code</p> <p>- base type: string, max length: 15,  (XPath <code>TEXCollection/TNbody/TNitem/texCode/pattern</code>) 0-1</p>
percCompos	<p>fiber percentage in the product composition</p> <p>- base type: decimal, min inclusive: 0, max inclusive: 100, fraction digits: 2,  (XPath <code>TEXCollection/TNbody/TNitem/fabricCompos/percCompos</code>) 1-9</p> <p>- note: <i>fiber % in the product composition</i></p>
@percSourcesRenewable	<p>indicates the percentage of renewable sources</p> <p>- base type: decimal,  (XPath <code>TEXCollection/TNbody/TNitem/fabricCompos/percCompos/@percSourcesRenewable</code>) [Optional]</p> <p>- nota: <i>use only for virgin material</i></p>
person	<p>name of a person (e.g. contact person within an organization)</p> <p>- base type: string, max length: 40,  (XPath <code>TEXCollection/TNheader/thirdParty/person</code>) 0-1  (XPath <code>TEXCollection/TNheader/supplier/person</code>) 0-1  (XPath <code>TEXCollection/TNheader/buyer/person</code>) 0-1</p>
@phone	<p>phone number of the contact person within a Party</p> <p>- base type: string, max length: 35,  (XPath <code>TEXCollection/TNheader/supplier/person/@phone</code>) [Optional]  (XPath <code>TEXCollection/TNheader/thirdParty/person/@phone</code>) [Optional]  (XPath <code>TEXCollection/TNheader/buyer/person/@phone</code>) [Optional]</p>
postCode	<p>code defining the postal zone</p> <p>- base type: string, max length: 10,  (XPath <code>TEXCollection/TNheader/supplier/postCode</code>) 0-1  (XPath <code>TEXCollection/TNheader/buyer/postCode</code>) 0-1  (XPath <code>TEXCollection/TNheader/thirdParty/postCode</code>) 0-1</p>
qty	<p>net quantity of the article or object correlated, qualified by the function of the document (ordering, delivering, ..) and by the context</p> <p>- base type: decimal, min inclusive: 0, fraction digits: 2,  (XPath <code>TEXCollection/TNbody/TNitem/qty</code>) 0-2 <b>Best Practice</b></p> <p>- note: <i>here is always an estimated quantity; only the order will report a reliable value</i></p>
@recyclingProcessEfficiency	<p>recycling process efficiency rate (percentage by weight).</p> <p>- base type: decimal, min inclusive: 0, max inclusive: 100,  (XPath <code>TEXCollection/TNbody/TNitem/fabricCompos/percCompos/@recyclingProcessEfficiency</code>) [Optional]</p> <p>- nota: <i>process efficiency declared by the fibre supplier</i></p>
@recyclingProcessMethod	<p>recycling process method</p> <p>- base type: string, cod. table: T307  <a href="http://www.ebiz.enea.it/moda-ml/repository/codelist/draft/gc_T307.xml">http://www.ebiz.enea.it/moda-ml/repository/codelist/draft/gc_T307.xml</a>  (XPath <code>TEXCollection/TNbody/TNitem/fabricCompos/percCompos/@recyclingProcessMethod</code>) [Optional]</p>

	- nota: use only for non virgin material
@role	Third Party role qualifier - base type: string, cod. table: NT2 <a href="http://www.ebiz.enea.it/moda-ml/repository/codelist/draft/gc_NT2.xml">http://www.ebiz.enea.it/moda-ml/repository/codelist/draft/gc_NT2.xml</a> (XPath <code>TEXCollection/TNheader/thirdParty/@role</code> ) [Required]
@schemeID	identifier of an identification scheme - base type: string, (XPath <code>TEXCollection/TNheader/refDoc/attachment/hashFootprint/@schemeID</code> ) [Optional] - nota: specify for which system this hash footprint might be used as identifier (for example HDFS system..)
season	sale season; defined as: season (1 crt) + year (4 crt) - season: S/S=1 AW=2 Spring=3 Summer=4 Autumn=5 Winter=6: for more than four seasons use alphabetic sequence: 1st season=A 2nd season=B etc.etc. - base type: string, max length: 15, (XPath <code>TEXCollection/TNheader/refDoc/season</code> ) 0-1 - note: here indicates the season to which the referenced document belongs (XPath <code>TEXCollection/TNbody/TNitem/season</code> ) 0-1 (XPath <code>TEXCollection/TNheader/season</code> ) 0-1
@sender	qualifier that specifies the Party issuing of the document - base type: boolean, (XPath <code>TEXCollection/TNheader/supplier/@sender</code> ) [Optional] - nota: This attribute is mandatory when the STYLESHEET must be used (XPath <code>TEXCollection/TNheader/buyer/@sender</code> ) [Optional] - nota: This attribute is mandatory when the STYLESHEET must be used (XPath <code>TEXCollection/TNheader/thirdParty/@sender</code> ) [Optional] - nota: This attribute is mandatory when the STYLESHEET must be used
street	street and building number identifying a location - base type: string, max length: 80, (XPath <code>TEXCollection/TNheader/buyer/street</code> ) 0-1 (XPath <code>TEXCollection/TNheader/supplier/street</code> ) 0-1 (XPath <code>TEXCollection/TNheader/thirdParty/street</code> ) 0-1
subCountry	short name or code of the sub-country entity - base type: string, max length: 9, (XPath <code>TEXCollection/TNheader/buyer/subCountry</code> ) 0-1 (XPath <code>TEXCollection/TNheader/supplier/subCountry</code> ) 0-1 (XPath <code>TEXCollection/TNheader/thirdParty/subCountry</code> ) 0-1
subDept	name or code of a department - base type: string, max length: 40, (XPath <code>TEXCollection/TNheader/buyer/subDept</code> ) 0-1 (XPath <code>TEXCollection/TNheader/supplier/subDept</code> ) 0-1 (XPath <code>TEXCollection/TNheader/thirdParty/subDept</code> ) 0-1
@techSheet	specifies if the " technical characteristics of fabric" document must provided - base type: boolean, (XPath <code>TEXCollection/TNbody/TNitem/@techSheet</code> ) [Optional]
@TNtype	type of Textiles Collection Forecast - base type: string, cod. table: NT17 <a href="http://www.ebiz.enea.it/moda-ml/repository/codelist/draft/gc_NT17.xml">http://www.ebiz.enea.it/moda-ml/repository/codelist/draft/gc_NT17.xml</a> (XPath <code>TEXCollection/@TNtype</code> ) [Required]
transactionReceipt	transaction receipt on blockchain - base type: string, max length: 80, (XPath <code>TEXCollection/TNheader/refDoc/attachment/blockChainReference/transactionReceipt</code> ) 1-9
@uid	unique element identifier within the xml document - base type: string, (XPath <code>TEXCollection/TNheader/refDoc/attachment/@uid</code> ) [Optional]
@um	specification of the unit of measure - base type: string, cod. table: NT7 <a href="http://www.ebiz.enea.it/moda-ml/repository/codelist/draft/gc_NT7.xml">http://www.ebiz.enea.it/moda-ml/repository/codelist/draft/gc_NT7.xml</a> (XPath <code>TEXCollection/TNbody/TNitem/qty/@um</code> ) [Required] (XPath <code>TEXCollection/TNheader/thirdParty/geoCoordinates/@um</code> ) [Optional] [Default= DEGD]

	<p>- nota: <i>when not specified assume decimal DEGREES</i> (XPath <code>TEXCollection/TNheader/supplier/geoCoordinates/@um</code>) [Optional] [Default= DEGD]</p> <p>- nota: <i>when not specified assume decimal DEGREES</i> (XPath <code>TEXCollection/TNheader/buyer/geoCoordinates/@um</code>) [Optional] [Default= DEGD]</p> <p>- nota: <i>when not specified assume decimal DEGREES</i> (XPath <code>TEXCollection/TNbody/TNitem/fabricWeightM/@um</code>) [Optional] [Default= GRM]</p> <p>(XPath <code>TEXCollection/TNbody/TNitem/fabricWidth/@um</code>) [Optional] [Default= CMT]</p>
uri	<p>Uniform Resource Identifier (URI) that identifies the external object as an Internet resource</p> <p>- base type: normalizedString, (XPath <code>TEXCollection/TNheader/refDoc/attachment/externalReference/uri</code>) 1-1 (XPath <code>TEXCollection/TNheader/refDoc/attachment/blockChainReference/uri</code>) 1-1</p> <p>- note: <i>reference to the used blockchain ( example: url <a href="https://etherscan.io/">https://etherscan.io/</a> of ethereum)</i></p>
@useProfile	<p>use profile to which the present document is compliant if it was agreed by the parties. It is suggested a URI with reference to the firms or the URL of the profile.</p> <p>- base type: string, (XPath <code>TEXCollection/@useProfile</code>) [Optional]</p>
@validationMethod	<p>type of method used to validate the quantity to which it refers. For example, it indicates whether it was measured in the field, estimated indirectly, approved by an expert or taken from the literature</p> <p>- base type: string, cod. table: NT329 <a href="http://www.ebiz.enea.it/moda-ml/repository/codelist/draft/gc_NT329.xml">http://www.ebiz.enea.it/moda-ml/repository/codelist/draft/gc_NT329.xml</a> (XPath <code>TEXCollection/TNbody/TNitem/fabricCompos/percCompos/@validationMethod</code>) [Optional]</p>
@VAT	<p>VAT rate or code (DEPRECATED, use dtScheme element)</p> <p>- base type: string, cod. table: NT16 <a href="http://www.ebiz.enea.it/moda-ml/repository/codelist/draft/gc_NT16.xml">http://www.ebiz.enea.it/moda-ml/repository/codelist/draft/gc_NT16.xml</a> (XPath <code>TEXCollection/TNheader/thirdParty/@VAT</code>) [Optional] (XPath <code>TEXCollection/TNbody/TNitem/lineN/@VAT</code>) [Optional]</p> <p>- nota: <i>Deprecated, prefer dtScheme when available.</i></p>
@version	<p>Dictionary version from which the instance has been created</p> <p>- base type: string, cod. table: NT100 <a href="http://www.ebiz.enea.it/moda-ml/repository/codelist/draft/gc_NT100.xml">http://www.ebiz.enea.it/moda-ml/repository/codelist/draft/gc_NT100.xml</a> (XPath <code>TEXCollection/@version</code>) [Optional] [Default= draft]</p>
xGeoCoord	<p>geographical coordinate x , corresponding to latitude</p> <p>- base type: decimal, (XPath <code>TEXCollection/TNheader/buyer/geoCoordinates/xGeoCoord</code>) 1-1 (XPath <code>TEXCollection/TNheader/thirdParty/geoCoordinates/xGeoCoord</code>) 1-1 (XPath <code>TEXCollection/TNheader/supplier/geoCoordinates/xGeoCoord</code>) 1-1</p>
yGeoCoord	<p>geographical coordinate y , corresponding to longitude</p> <p>- base type: decimal, (XPath <code>TEXCollection/TNheader/supplier/geoCoordinates/yGeoCoord</code>) 1-1 (XPath <code>TEXCollection/TNheader/thirdParty/geoCoordinates/yGeoCoord</code>) 1-1 (XPath <code>TEXCollection/TNheader/buyer/geoCoordinates/yGeoCoord</code>) 1-1</p>
zGeoCoord	<p>geographical coordinate z , corresponding to altitude</p> <p>- base type: decimal, (XPath <code>TEXCollection/TNheader/thirdParty/geoCoordinates/zGeoCoord</code>) 0-1</p> <p>- note: <i>altitude might be omitted</i> (XPath <code>TEXCollection/TNheader/buyer/geoCoordinates/zGeoCoord</code>) 0-1</p> <p>- note: <i>altitude might be omitted</i> (XPath <code>TEXCollection/TNheader/supplier/geoCoordinates/zGeoCoord</code>) 0-1</p> <p>- note: <i>altitude might be omitted</i></p>



## 2.3 Suggested best practices

**TEXCollection/TNbody/TNitem/amount (total monetary value of the goods and services considered in the message line (usually net price x quantity))**

it can be used as alternative to the indication of the quantity of product

**TEXCollection/TNheader/refDoc/docID (identification number of the referenced document)**

numberingOrg indicates the role that produced the document identifier (it is allowed to declare two different ones -e.g. customer and supplier - with two docID with different numberingOrg

**TEXCollection/TNheader/refDoc/attachment/  
externalReference/mimeCode (mime type of the external object)**

Use coding from IANA <http://www.iana.org/assignments/media-types/media-types.xml>

**TEXCollection/TNbody/TNitem/qty (net quantity of the article or object correlated, qualified by the function of the document (ordering, delivering, ..) and by the context)**

this element can have two instances only if the units of measure are different

## 2.4 Enumeration tables

List of enumeration tables used in the XML document. You can find all the tables with the corresponding codes at:  
<http://www.ebiz.enea.it/eBIZ/imple/eBIZTCU-draft.asp?lingua=en&pag=6>

NT100 - eBIZ TCFUpstream version  
NT16 - VAT rate or code  
NT17 - textiles collection status  
NT18 - message function  
NT2 - third party qualifier  
NT29 - format of a date  
NT329 - type of validation method of the value  
NT333 - type of hashing algorithm  
NT6 - coding system owner/issuer  
NT60 - language, codes from ISO 639-1 (subset)  
NT7 - unit of measure  
T10 - ISO3166 - Country  
T19 - fibre type  
T21 - type of document  
T306 - material circularity attribute  
T307 - recycling process method  
T44 - additional code type  
T9 - ISO4217 - Currency

(the most relevant tables are detailed in the following Annexes too)

## ACKNOWLEDGEMENT



This action is part of the TRICK project, which has received funding from Horizon 2020 research and innovation programme under grant agreement No. 958352 of the European Union.

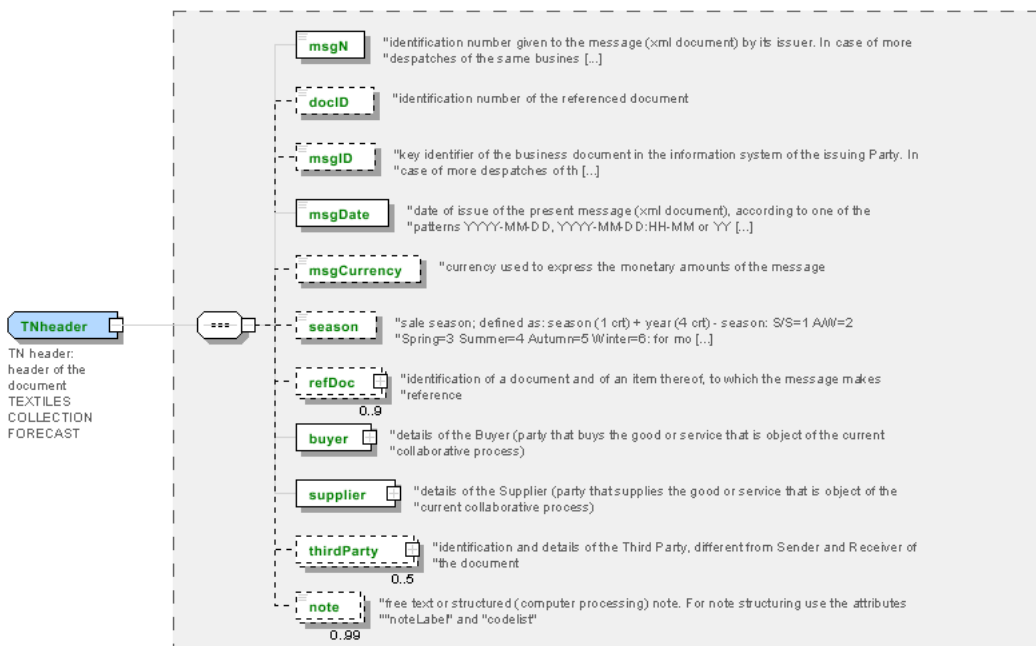
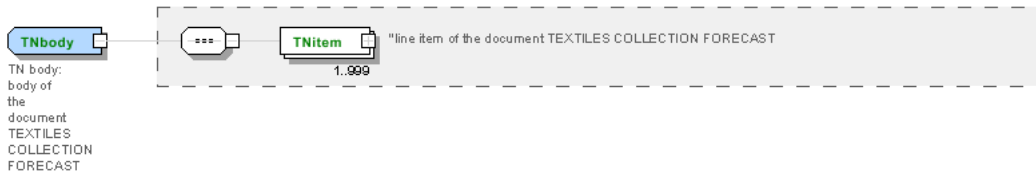
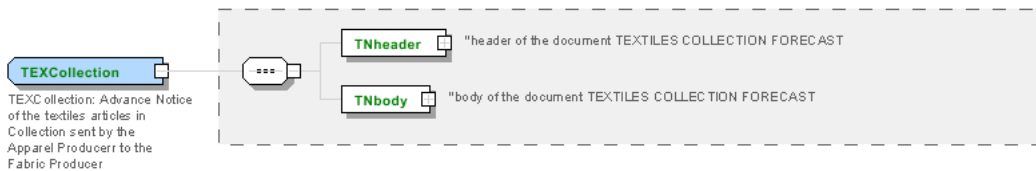
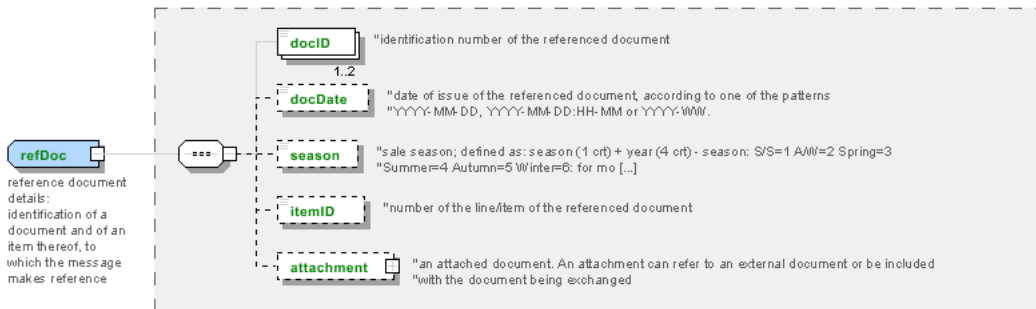
## DISCLAIMER

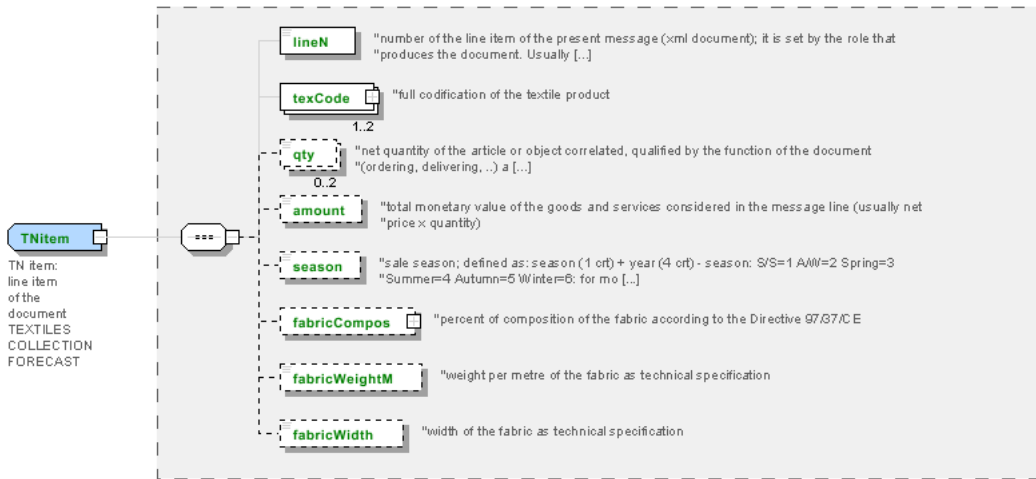
The content of this document represents the views of the authors only and is their sole responsibility; it cannot be considered to reflect the views of the European Commission or any other body of the European Union.

The European Commission does not accept any responsibility for use that may be made of the information it contains.

# Annex A

Representative images of the principal complex elements' structure.







## Annex B

### NT100 - eBIZ TCFUpstream version

dictionary version

Agency name: eBIZ

Decoding table: NT100

File codes list (Generic code): [http://www.ebiz.enea.it/moda-ml/repository/codelist/draft/gc\\_NT100.xml](http://www.ebiz.enea.it/moda-ml/repository/codelist/draft/gc_NT100.xml)

Code	Description	Adoption note	Date of insertion
2013-1	v2013-1		01/07/2013
2018-1	v2018-1		04/11/2018
draft	draft		08/09/2017

### NT16 - VAT rate or code

VAT rate or code ( DEPRECATED, use dtScheme element )

Decoding table: NT16

File codes list (Generic code): [http://www.ebiz.enea.it/moda-ml/repository/codelist/draft/gc\\_NT16.xml](http://www.ebiz.enea.it/moda-ml/repository/codelist/draft/gc_NT16.xml)

### NT17 - textiles collection status

type of Textiles Collection Forecast

Agency name: eBIZ

Decoding table: NT17

File codes list (Generic code): [http://www.ebiz.enea.it/moda-ml/repository/codelist/draft/gc\\_NT17.xml](http://www.ebiz.enea.it/moda-ml/repository/codelist/draft/gc_NT17.xml)

Code	Description	Adoption note	Date of insertion
DEF	definitive		
PRO	provisional		

### NT18 - message function

function performed by the present message with regards to the transmission

Agency name: eBIZ

Decoding table: NT18

File codes list (Generic code): [http://www.ebiz.enea.it/moda-ml/repository/codelist/draft/gc\\_NT18.xml](http://www.ebiz.enea.it/moda-ml/repository/codelist/draft/gc_NT18.xml)

Code	Description	Adoption note	Date of insertion
CA	delete this document		01/07/2013

CP	copy		
OR	original		
RC	re-transmission for data correction		
RT	re-transmission		

### NT2 - third party qualifier

Third Party role qualifier

Agency name: eBIZ

Decoding table: NT2

File codes list (Generic code): [http://www.ebiz.enea.it/moda-ml/repository/codelist/draft/gc\\_NT2.xml](http://www.ebiz.enea.it/moda-ml/repository/codelist/draft/gc_NT2.xml)

Code	Description	Adoption note	Date of insertion
AG	Sales Agent		
AU	Auditor		08/04/2019
BU	Buyer		13/06/2022
CE	Certification authority		08/04/2019
CM	Commissioner		13/06/2022
CO	Quality Controller		
CU	Customs authority		13/06/2022
DC	Response to		
DF	Invoicee		
DI	Copy to (CC)		28/10/2014
DM	Consignee		
DP	Consignment address (Delivery Party)		
EX	Expert		13/06/2022
IM	Importer		
OR	Originator		10/09/2014
SC	Sub contractor		10/04/2019
SM	Service/ePlatform manager		08/04/2019
SP	Forwarder		
SU	Supplier		13/06/2022
TL	Test or analysis laboratory		13/06/2022
TX	Tax Representative		

### NT29 - format of a date

format used for the date



Agency name: eBIZ

Decoding table: NT29

File codes list (Generic code): [http://www.ebiz.enea.it/moda-ml/repository/codelist/draft/gc\\_NT29.xml](http://www.ebiz.enea.it/moda-ml/repository/codelist/draft/gc_NT29.xml)

Code	Description	Adoption note	Date of insertion
D	YYYY-MM-DD		
M	YYYY-MM-DD:HH-MM (date and time)		
S	AAAA-MM-GG:HH-MM-SS (date and time with seconds)		13/06/2022
W	YYYY-WW		

### NT329 - type of validation method of the value

indicates the type of method used to validation and calculate the quantity to which it refers; used to express the data faithfulness

Agency name: eBIZ

Decoding table: NT329

File codes list (Generic code): [http://www.ebiz.enea.it/moda-ml/repository/codelist/draft/gc\\_NT329.xml](http://www.ebiz.enea.it/moda-ml/repository/codelist/draft/gc_NT329.xml)

Code	Description	Adoption note	Date of insertion
CER	third party certification		11/06/2023
EST	estimate		12/05/2023
EXP	confirmed by an expert		19/05/2023
LAB	laboratory test		11/06/2023
LIT	literature	refer to a literature analysis outcome	12/05/2023
MON	monitoring	refer to continuous measurement in field	12/05/2023
REV	confirmed by review		11/06/2023
SAM	sampling	refer to a sample measurement in field	12/05/2023
SUP	supplier declaration		11/06/2023

### NT333 - type of hashing algorithm

type of hashing algorithm

Decoding table: NT333

File codes list (Generic code): [http://www.ebiz.enea.it/moda-ml/repository/codelist/draft/gc\\_NT333.xml](http://www.ebiz.enea.it/moda-ml/repository/codelist/draft/gc_NT333.xml)

Code	Description	Adoption note	Date of insertion
ADLER32	ADLER32		26/05/2023
HMAC	HMAC		26/05/2023
MD2	MD2		26/05/2023

MD4	MD4		26/05/2023
MD5	MD5		26/05/2023
MDC-2	MDC-2		26/05/2023
PANAMA	PANAMA		26/05/2023
RIPEMD-160	RIPEMD-160		26/05/2023
SHA-1	SHA-1		26/05/2023
SHA-2 256	SHA-2 256		26/05/2023
SHA-2 384	SHA-2 384		26/05/2023
SHA-2 512	SHA-2 512		26/05/2023
TIGER	TIGER		26/05/2023

#### NT6 - coding system owner/issuer

code specifying the organisation who has created or owns the registers of the present coding or numbering system

Agency name: eBIZ

Decoding table: NT6

File codes list (Generic code): [http://www.ebiz.enea.it/moda-ml/repository/codelist/draft/gc\\_NT6.xml](http://www.ebiz.enea.it/moda-ml/repository/codelist/draft/gc_NT6.xml)

Code	Description	Adoption note	Date of insertion
CBR	National customs brokers registry		12/06/2023
CL	Customer/buyer		
CO	Quality Controller		
DU	D-U-N-S registry (Data Universal Numbering System)		04/05/2023
EB	eBIZ	replaces 'ML'	18/03/2019
EN	GS1 ( ex-EAN International )		
EO	Registro EORI (Economic Operators Registration and Identification number)		04/03/2023
ES	e-Stockflow	DEPRECATED	
FO	Supplier		
GS	GS1		01/07/2013
MF	national taxation authority (i.e. VAT codes registry)		
ML	Moda-ML	DEPRECATED	
PL	Application Platform		13/06/2022
REX	Registered Exporter system (REX)		19/05/2023
SP	Service Provider		
SU	Enterprise Identification Number UID	Only switzerland	04/03/2023

#### NT60 - language, codes from ISO 639-1 (subset)

Agency name: eBIZ / ISO

Decoding table: NT60

File codes list (Generic code): [http://www.ebiz.enea.it/moda-ml/repository/codelist/draft/gc\\_NT60.xml](http://www.ebiz.enea.it/moda-ml/repository/codelist/draft/gc_NT60.xml)

<b>Code</b>	<b>Description</b>	<b>Adoption note</b>	<b>Date of insertion</b>
af	Afrikaans		31/01/2019
ar	Arabic		31/01/2019
be	Belarusian		31/01/2019
bg	Bulgarian		31/01/2019
bn	Bengali		31/01/2019
bo	Tibetan		31/01/2019
bs	Bosnian		31/01/2019
ca	Catalan, Valencian		31/01/2019
cs	Czech		31/01/2019
da	Danish		31/01/2019
de	German		31/01/2019
el	Greek, Modern (1453-)		31/01/2019
en	English		31/01/2019
eo	Esperanto		31/01/2019
es	Spanish, Castilian		31/01/2019
et	Estonian		31/01/2019
eu	Basque		31/01/2019
F	Female		15/04/2019
fa	Persian		31/01/2019
fi	Finnish		31/01/2019
fr	French		31/01/2019
ga	Irish		31/01/2019
gd	Gaelic, Scottish Gaelic		31/01/2019
gn	Guarani		31/01/2019
he	Hebrew		31/01/2019
hr	Croatian		31/01/2019
ht	Haitian, Haitian Creole		31/01/2019
hu	Hungarian		31/01/2019
hy	Armenian		31/01/2019
ia	Interlingua (International Auxiliary Language Association)		31/01/2019
id	Indonesian		31/01/2019
is	Icelandic		31/01/2019
it	Italian		31/01/2019
ja	Japanese		31/01/2019

jv	Javanese		31/01/2019
ka	Georgian		31/01/2019
km	Central Khmer		31/01/2019
ko	Korean		31/01/2019
ku	Kurdish		31/01/2019
lb	Luxembourgish, Letzeburgesch		31/01/2019
lo	Lao		31/01/2019
lt	Lithuanian		31/01/2019
lv	Latvian		31/01/2019
mg	Malagasy		31/01/2019
mk	Macedonian		31/01/2019
mn	Mongolian		31/01/2019
mt	Maltese		31/01/2019
nl	Dutch, Flemish		31/01/2019
no	Norwegian		31/01/2019
pl	Polish		31/01/2019
pt	Portuguese		31/01/2019
ro	Romanian, Moldavian, Moldovan		31/01/2019
ru	Russian		31/01/2019
se	Northern Sami		31/01/2019
sk	Slovak		31/01/2019
sl	Slovenian		31/01/2019
sm	Samoan		31/01/2019
so	Somali		31/01/2019
sq	Albanian		31/01/2019
sr	Serbian		31/01/2019
sv	Swedish		31/01/2019
sw	Swahili		31/01/2019
ta	Tamil		31/01/2019
th	Thai		31/01/2019
tr	Turkish		31/01/2019
uk	Ukrainian		31/01/2019
ur	Urdu		31/01/2019
uz	Uzbek		31/01/2019
vi	Vietnamese		31/01/2019
zh	Chinese		31/01/2019

specification of the unit of measure, it is a sub set of table Unit of Measure Code - UN/ECE REC 20 delivered by United Nations Economic Commission for Europe (UN/ECE)

Agency name: eBIZ / UN/ECE

Decoding table: NT7

File codes list (Generic code): [http://www.ebiz.enea.it/moda-ml/repository/codelist/draft/gc\\_NT7.xml](http://www.ebiz.enea.it/moda-ml/repository/codelist/draft/gc_NT7.xml)

Other link: <http://docs.oasis-open.org/ubl/os-UBL-2.1/cl/gc/default/UnitOfMeasureCode-2.1.gc#>

Code	Description	Adoption note	Date of insertion
CMK	square centimetre		20/12/2017
CMQ	cubic centimetre		20/12/2017
CMT	centimetre		
CNE	centiNewton		
CO2TON	ton of CO2		10/09/2014
COUPLES	couples		
DAY	day		22/08/2022
DEGD	decimal degrees		04/07/2022
DEGMS	degrees with minutes and seconds		01/07/2022
DMQ	cubic decimetre		
E37	pixel		11/04/2018
GRM	gram		
HUR	hour		
INH	inch		
KGM	kilogram		
KMT	kilometer		
KWH	kilowatthours		10/09/2014
LBR	pound		
MCG	microgram		23/08/2022
MG	milligram		23/08/2022
MIN	minute		
MMK	square millimetre		20/12/2017
MONTH	month		22/08/2022
MSEC	millisecond (time)		22/08/2022
MTK	square metre		20/12/2017
MTQ	cubic metre		
MTR	metre		
NMB	numero		
ONZ	ounce		
P1	percent		

PPM	parts per milion		
PZ	piece		
RPM	rounds per metre		
SEC	second (time)		22/08/2022
YEAR	year		22/08/2022
YRD	yard		

### T10 - ISO3166 - Country

code of the nation

Agency name: ISO

Decoding table: T10

File codes list (Generic code): [http://www.ebiz.enea.it/moda-ml/repository/codelist/draft/gc\\_T10.xml](http://www.ebiz.enea.it/moda-ml/repository/codelist/draft/gc_T10.xml)

Table not printed: there are 240 elements, more than the maximum specified for printing: 99.

### T19 - fibre type

type of fibre used in a textile product

Agency name: eBIZ

Decoding table: T19

File codes list (Generic code): [http://www.ebiz.enea.it/moda-ml/repository/codelist/draft/gc\\_T19.xml](http://www.ebiz.enea.it/moda-ml/repository/codelist/draft/gc_T19.xml)

Code	Description	Adoption note	Date of insertion
AB	abaca		20/08/2018
AC	acetate		
AF	other fibres		
AG	alginic fibre		
AL	alfa		20/08/2018
AR	aramid		25/04/2022
CA	hemp		
CC	coir (coconut)		20/08/2018
CL	chlorofibre		
CO	cotton		
CU	cuprous		
EA	elastan		
EF	elastolefin		25/04/2022
EL	Elastodiene		20/08/2018
EM	elastomultiester		25/04/2022

FL	fluorofibre		
GI	broom		20/08/2018
GL	textile glass		
HA	hair		20/08/2018
HE	henequen		20/08/2018
HL	mixed linen		
JU	jute		
KE	kenaf		20/08/2018
KP	kapoc		20/08/2018
LI	linen		
LY	lyocell		20/08/2018
MA	modacrylic		
MD	modal		
ME	metallized		
MG	maguey		20/08/2018
MM	melamine		25/04/2022
PA	polyamide		
PB	polyureic		
PC	acrylic		
PE	polyethylene		
PI	paper		20/08/2018
PL	polyester		
PM	polyimide		
PO	polilactyd		25/04/2022
PP	polypropylene		
PR	proteic		
PU	polyurethane		
RA	ramie		20/08/2018
SE	silk		
SI	sisal		20/08/2018
SN	sun		20/08/2018
TA	triacetate		
TR	textile residues or unspecified composition		20/08/2018
TV	trivinyll		
VI	viscose		
VY	vinylal		
WA	angora		
WB	beaver		20/08/2018

WC	cashgora		
WG	vicuna		
WK	camel		
WL	llama		
WM	mohair		
WN	lapin		20/08/2018
WO	wool		
WP	alpaca		
WS	cashmere		
WT	Oteer		20/08/2018
WU	guanaco		
WV	virgin wool		
WY	yack		

### T21 - type of document

type or class to which the referenced document belongs

Agency name: eBIZ

Decoding table: T21

File codes list (Generic code): [http://www.ebiz.enea.it/moda-ml/repository/codelist/draft/gc\\_T21.xml](http://www.ebiz.enea.it/moda-ml/repository/codelist/draft/gc_T21.xml)

Code	Description	Adoption note	Date of insertion
BIL	Bill of lading		07/03/2023
BOR	Blanket order		01/02/2018
CAT	Price catalogue - tech sheet		
CEO	Certificate of origin		13/04/2018
CER	Certificate		13/04/2018
CMR	CMR consignment note		07/03/2023
COC	Colour card		
CRN	Credit note		08/09/2017
CTO	Checking order		01/07/2013
CTR	Contract		
CXF	CxF3 file		01/07/2013
DAD	Darn order		
DDT	Delivery note (transport document)		
DEA	Despatch advise		
DER	Despatch request		
DR	Document Request		02/12/2014



EAD	Export Accompanying Document	adopted by European customs	12/05/2023
ECMR	electronic CMR consignment note		07/03/2023
ECUS	EXPORT Custom Declaration		07/03/2023
FOR	Forecast		02/12/2014
GSO	Garment stock offer		
GSX	Garment stock offer change		
ICUS	IMPORT Custom Declaration		07/03/2023
INV	Invoice		
KCC	Knitting-Clothing Commission Order		02/12/2014
KCI	Garment in Work Inventory Report		02/12/2014
LCA	LCA study		28/08/2022
LCAD	LCA study dataset		28/08/2022
M2M	Made to Measure Production Order		02/12/2014
MAS	Master marker		
MCI	Visual merchandising instruction		13/04/2018
OCH	Order change		
OFF	Offer		
ORD	Purchase order		
ORP	Order response		
OSR	order status request		
OSS	Offer status		02/12/2014
OST	Order status		
OUR	our reference		
PCO	Preferential certificate of origin		07/03/2023
PEF	PEF study		28/08/2022
PEFD	PEF study dataset		28/08/2022
PEFP	PEF environmental profile		07/03/2023
QR	Quality Report		02/12/2014
RAI	Raw Material in Work Inventory Report		02/12/2014
RDC	Raw dyeing commission order		
RDH	Raw dyeing order change		
RDR	Raw dyeing order response		
REA	Receiving advise		
REQ	Request for Offer		
RET	Return		02/12/2014
RSC	Spinning commission order		
RSH	Spinning order change		
RSR	Spinning order response		

SAD	Single Administrative Document	adopted by European customs	12/05/2023
SCL	Process sheet		
SDE	Self-declaration		07/03/2023
SDS	SDS - Safety data sheet		07/03/2023
SLCA	S-LCA Study		07/03/2023
SLCAD	S-LCA Study documentation		07/03/2023
TFC	Textile dyeing-finishing commission order		
TFX	Textile Dyeing-Finishing Order Change		02/12/2014
TPC	Textile printing commission order		
TPX	Textile Printing Order Change		02/12/2014
TWI	Textile in work inventory		
VMI	visual merchandising instructions		01/02/2018
WAC	Warping commission order		
WAYB	Waybill		07/03/2023
WEC	Weaving commission order		
YDC	Yarn dyeing commission order		
YDH	Yarn dyeing order change		
YDR	Yarn dyeing order response		
YTC	Twisting commission order		
YWI	Yarn in work inventory		

### T306 - material circularity attribute

Indicates whether the material is virgin or comes from recycling or reuse processes

Agency name: eBIZ for TRICK

Decoding table: T306

File codes list (Generic code): [http://www.ebiz.enea.it/moda-ml/repository/codelist/draft/gc\\_T306.xml](http://www.ebiz.enea.it/moda-ml/repository/codelist/draft/gc_T306.xml)

Code	Description	Adoption note	Date of insertion
REU	Reused material		30/08/2022
SCL	Secondary raw materials	adopt this for any secondary raw material when information about the first or following loop is not available	22/07/2022
SCL1	Secondary raw materials - first loop		22/07/2022
SCLx	Secondary raw materials - loop following the first one		22/07/2022
VRG	Virgin raw material	adopt this for any virgin raw material when biobased information is not available	22/07/2022

VR GB	Virgin raw material - biobased		23/03/2023
VR GN	Virgin raw material - not biobased		23/03/2023

### T307 - recycling process method

Agency name: eBIZ for TRICK

Decoding table: T307

File codes list (Generic code): [http://www.ebiz.enea.it/moda-ml/repository/codelist/draft/gc\\_T307.xml](http://www.ebiz.enea.it/moda-ml/repository/codelist/draft/gc_T307.xml)

Code	Description	Adoption note	Date of insertion
CHMD	chemical recycling (dissolution)		28/07/2022
CHMP	chemical recycling (depolymerization)		28/07/2022
ENZ	enzymatic recycling		01/09/2022
MEC	mechanical recycling		28/07/2022
THE	thermal recycle		31/08/2022
THMC	thermo-mechanical recycling		01/09/2022

### T44 - additional code type

qualifier of the additional coding of a product

Agency name: eBIZ

Decoding table: T44

File codes list (Generic code): [http://www.ebiz.enea.it/moda-ml/repository/codelist/draft/gc\\_T44.xml](http://www.ebiz.enea.it/moda-ml/repository/codelist/draft/gc_T44.xml)

Code	Description	Adoption note	Date of insertion
CC	colour card		
CL	sales collection		
CO	company identification code		08/09/2017
DY	dye number		
LT	lot number		
MDI	Made in		08/09/2017
MS	manufacturing state		
PKG	packaging		09/09/2014
PL	product line		
RGB	RGB value		
SE	selvedge code		

**T9 - ISO4217 - Currency**

currency code

Agency name: ISO

Decoding table: T9

File codes list (Generic code): [http://www.ebiz.enea.it/moda-ml/repository/codelist/draft/gc\\_T9.xml](http://www.ebiz.enea.it/moda-ml/repository/codelist/draft/gc_T9.xml)

Table not printed: there are 205 elements, more than the maximum specified for printing: 99.