



<http://www.ebiz-tcf.eu>

DRAFT

IMPLEMENTATION GUIDE TRANSACTION "TEXTILE DARN ORDER"

Version: draft

Date of release: 26/6/2023

Document code: G012

technical Documentation: <http://www.ebiz.enea.it>

XML Schemas repository: <http://www.ebiz.enea.it/moda-ml/repository/schema/draft/default.asp>

Guides repository: <http://www.ebiz.enea.it/moda-ml/repository/guide/draft/default.asp>

Guide filename: G012-eBIZ-TextileDarnOrder.pdf

0. PREMISE

This document contains a proposal for the updating and extension of eBIZ specifications starting from the eBIZ version 2018. Under the name of 'Draft version' it is reported the result of an extensive work of analysis and consultation aimed at developing and maintaining eBIZ specifications.

In particular, the content of this proposal is the result of various activities, mainly those carried out within the framework of the **TRICK project** funded by the European Commission: grant agreement 958352, call H2020-LOW-CARBON-CIRCULAR-INDUSTRIES-2020 / H2020-LCCI-2020-EASME-twostage.

The technical contents are backwards compatible with the latest official published version, with the exclusion of the totally new concepts added explicitly for the version that are thought as incremental evolution of the knowledge base.

1. BUSINESS DESCRIPTION

1.1 Scope

The present guide has been issued to assist the companies of the Textile-Clothing sector in the implementation of the standard XML document type "Textile DARN ORDER", providing all the instruction required for its use in any context of e-commerce between Fabric Producers and Darn Subcontractors.

All the rules required for the construction and validation of the document are embedded into the specific XML-Schema, which is detailed in section "Implementation guide".

1.2 Generalities

The document "Textile Darn Order" is used by the Fabric Producer to specify the darning operations required on each fabric piece and possibly the standard (or maximum) worktimes allowed with the related prices.

The Order can refer to one or more pieces and can be used either in conjunction with the "Textile Despatch Advise" (1 DA : 1 Order) or independently.

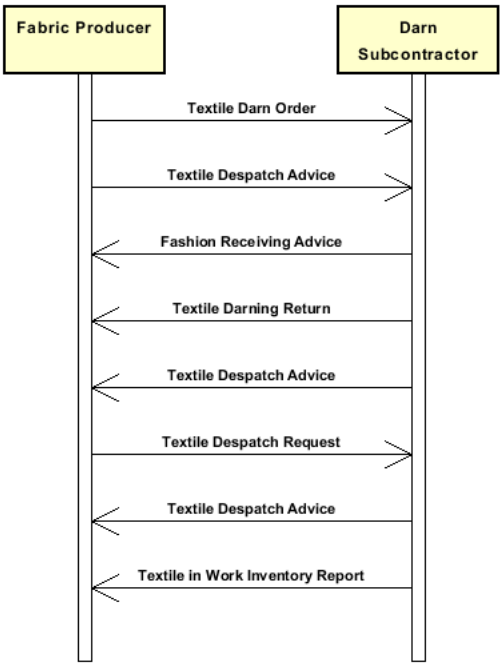
In the first instance the reference to the Despatch Advise must be given in the Header; in the second each piece can have at item level its reference to the transport document with which was sent to the Subcontractor.

EACH ITEM CONTAINS A JOB ORDER FOR ONE OR MORE PIECES OF THE SAME TEXTILE ARTICLE.

The Job cost can be calculated from a metre rate or from an hourly rate times a given operation time or from a combination of both.

1.3. Possible scenario

Subcontracted fabric darning



2. IMPLEMENTATION GUIDE

2.1 General structure of XML document

All the business data that can be exchanged through this class of documents are shown in the following "document structure", that provides a simplified vision of the Schema.

In particular:

- the two numbers following each element define its "cardinality" (minimum and maximum number of occurrences); the minimum equal zero indicates that the element is optional, the minimum greater than zero indicates that is mandatory;
- the bold character denotes the complex elements (aggregates of simple elements) that were built for the sake of functionality and re-usability of some complex informations sets. The child elements in each parent element are easily spotted as "indented";
- the symbol "@" denotes an attribute of the preceding element; here "the usage indicator (optional, required, ...)" is shown in square brackets.

Structure

TEXDarnOrder

@msgfunction [Optional] [Default= OR]

@version [Optional] [Default= draft]

@useProfile [Optional]

| **MOheader 1-1**

| | msgN 1-1

| - choose -

| | msgID 0-1

| - or -

| | docID 0-1

| | *@numberingOrg [Optional]*

| - end choose -

| | msgDate 1-1

| | *@dateForm [Optional]*

| | **refDoc 0-9**

| | *@docType [Required]*

| | | docID 1-2

| | | *@numberingOrg [Optional]*

| | | docDate 0-1

| | | *@dateForm [Optional]*

| | | season 0-1

| | | *@numberingOrg [Optional]*

| | | *@codeList [Optional]*

| | | *@listName [Optional]*

| | | *@listVersion [Optional]*

| | | itemID 0-1

| | | **attachment 0-1**

| | | | *@uid [Optional]*

| | | | | fileName 0-1

| | | | | *@numberingOrg [Optional]*

| | | | | binaryObject 0-1

| | | | | *@format [Optional]*

| | | | | *@mime [Optional]*

| | | | | *@encoding [Optional]*

| | | | | *@characterSet [Optional]*

| | | | **externalReference 0-99**

| | | | | uri 1-1

| | | | | *@isURL [Optional] [Default= true]*

| | | | | mimeTypeCode 0-1

| | | | | formatCode 0-1

| | | | | encodingCode 0-1

| | | | | characterSetCode 0-1

| | | | | hashFootprint 0-1

| | | | | *@schemeID [Optional]*

| | | | | *@hashMethod [Required]*

| | | | **blockChainReference 0-9**

| | | | | uri 1-1

| | | | | *@isURL [Optional] [Default= true]*

| | | | | transactionReceipt 1-9

buyer 1-1

@logo [Optional]
@sender [Optional]
id 1-1
| *@numberingOrg [Optional]*
| additionalIdentifier 0-9
| *@numberingOrg [Optional]*
| *@idQualifier [Optional]*
| legalName 0-1
| dept 0-1
| subDept 0-1
| person 0-1
| *@email [Optional]*
| *@phone [Optional]*
| *@fax [Optional]*
| street 0-1
| city 0-1
| subCountry 0-1
| country 0-1
| postCode 0-1
| **geoCoordinates 0-1**
| *@um [Optional] [Default= DEGD]*
| *@geoRefSystem [Optional]*
| | xGeoCoord 1-1
| | yGeoCoord 1-1
| | zGeoCoord 0-1

subContractor 1-1

@sender [Optional]
id 1-1
| *@numberingOrg [Optional]*
| legalName 0-1
| dept 0-1
| subDept 0-1
| person 0-1
| *@email [Optional]*
| *@phone [Optional]*
| *@fax [Optional]*
| street 0-1
| city 0-1
| subCountry 0-1
| country 0-1
| postCode 0-1
| **geoCoordinates 0-1**
| *@um [Optional] [Default= DEGD]*
| *@geoRefSystem [Optional]*
| | xGeoCoord 1-1
| | yGeoCoord 1-1
| | zGeoCoord 0-1

thirdParty 0-5

@VAT [Optional]
@role [Required]
@sender [Optional]
id 1-1
| *@numberingOrg [Optional]*
| legalName 0-1
| dept 0-1
| subDept 0-1
| person 0-1
| *@email [Optional]*
| *@phone [Optional]*
| *@fax [Optional]*
| street 0-1
| city 0-1
| subCountry 0-1
| country 0-1
| postCode 0-1
| **geoCoordinates 0-1**
| *@um [Optional] [Default= DEGD]*

```

| | | @geoRefSystem [Optional]
| | | | xGeoCoord 1-1
| | | | yGeoCoord 1-1
| | | | zGeoCoord 0-1
| note 0-99
| | @numberingOrg [Optional]
| | @codeList [Optional]
| | @noteLabel [Optional]

```

MObody 1-1

MOitem 1-unbounded

```

| | @transReason [Optional]
| | lineN 1-1
| | | @VAT [Optional]
| | | texCode 0-2
| | | | @numberingOrg [Optional]
| | | | | art 1-1
| | | | | @numberingOrg [Optional]
| | | | | @codeList [Optional]
| | | | | @listName [Optional]
| | | | | @listVersion [Optional]
| | | | pattern 0-1
| | | | | @numberingOrg [Optional]
| | | | | @codeList [Optional]
| | | | | @listName [Optional]
| | | | | @listVersion [Optional]
| | | | color 0-1
| | | | | @numberingOrg [Optional]
| | | | | @codeList [Optional]
| | | | | @listName [Optional]
| | | | | @listVersion [Optional]
| | | | added 0-9
| | | | | @numberingOrg [Optional]
| | | | | @addType [Optional]
| | | | description 0-unbounded
| | | | | @ln [Optional]
| | qty 1-2
| | | @um [Required]

```

- choose -

pieceChain 1-1

```

| | serialN 1-9
| | | @numberingOrg [Optional]
| | | @idQualifier [Optional]
| | pieceLength 0-1
| | | @um [Optional] [Default= MTR]
| | pieceWidth 0-1
| | | @um [Optional] [Default= CMT]
| | pieceWeight 0-1
| | | @um [Optional] [Default= KGM]
| | lotN 0-1
| | | @numberingOrg [Optional]
| | dyeN 0-1
| | | @numberingOrg [Optional]
| | packageN 0-1
| | | @numberingOrg [Optional]
| | | @packageContainerN [Optional]

```

piecePack 0-1

- choose -

```

| | | piecePackText 1-1

```

- or -

```

| | | pieceInnWrap1 1-1
| | | pieceInnWrap2 0-1
| | | pieceOutWrap 0-1

```

- end choose -

pieceCut 0-99

```

| | serialN 1-9
| | | @numberingOrg [Optional]
| | | @idQualifier [Optional]

```

```

| | | | pieceLength 0-1
| | | |   @um [Optional] [Default= MTR]
| | | | pieceWeight 0-1
| | | |   @um [Optional] [Default= KGM]

```

- or -

```

| | | | piece 1-3
| | | |   @endUse [Optional]
| | | |   serialN 0-9
| | | |   @numberingOrg [Optional]
| | | |   @idQualifier [Optional]
| | | |   EPC 0-1
| | | |   @numberingOrg [Optional]
| | | |   @TID [Optional]
| | | |   totFault 0-1
| | | |   pieceStatus 0-1
| | | |   pieceLength 0-1
| | | |   @um [Optional] [Default= MTR]
| | | |   pieceWidth 0-1
| | | |   @um [Optional] [Default= CMT]
| | | |   pieceCutWidth 0-1
| | | |   @um [Optional] [Default= CMT]
| | | |   pieceWeight 0-1
| | | |   @um [Optional] [Default= KGM]
| | | |   pieceWeightM 0-1
| | | |   @um [Optional] [Default= GRM]
| | | |   grossWeight 0-1
| | | |   @um [Required]
| | | |   pieceAllow 0-1
| | | |   @um [Required]
| | | |   lotN 0-2
| | | |   @numberingOrg [Optional]
| | | |   dyeN 0-1
| | | |   @numberingOrg [Optional]
| | | |   mixMatch 0-1
| | | |   @numberingOrg [Optional]
| | | |   packageN 0-1
| | | |   @numberingOrg [Optional]
| | | |   @packageContainerN [Optional]

```

piecePack 0-1

- choose -

```

| | | | piecePackText 1-1

```

- or -

```

| | | | pieceInnWrap1 1-1
| | | | pieceInnWrap2 0-1
| | | | pieceOutWrap 0-1

```

- end choose -

- end choose -

```

| | | | pieceMap 0-1
| | | |   @source [Required]
| | | |   totFault 1-1
| | | |   pieceFault 0-99
| | | |   @faultRank [Required]
| | | |   @faultShape [Optional]
| | | |   - choose -
| | | |   fabricFaultText 1-1
| | | |   - or -
| | | |   fabricFault 1-1
| | | |   - end choose -
| | | |   warpStart 1-1
| | | |   @um [Optional] [Default= MTR]
| | | |   warpEnd 0-1
| | | |   @um [Optional] [Default= MTR]
| | | |   weftStart 0-1
| | | |   @um [Optional] [Default= CMT]
| | | |   weftEnd 0-1
| | | |   @um [Optional] [Default= CMT]
| | | |   pieceAllow 0-1
| | | |   @um [Required]

```

```

| | | | | note 0-99
| | | | | @numberingOrg [Optional]
| | | | | @codeList [Optional]
| | | | | @noteLabel [Optional]
| | | | | darnJobTicket 0-9
| | | | | job 1-1
| | | | | jobTime 0-1
| | | | | jobTimeBasis 0-1
| | | | | @um [Required]
| | | | | darnJobPrice 0-2
| | | | | jobPrice 0-1
| | | | | @currency [Optional]
| | | | | priceBasis 0-1
| | | | | @um [Required]
| | | | | deliveryDate 0-1
| | | | | @dateForm [Optional]
| | | | | dtScheme 0-1
| | | | | @taxType [Required]
| | | | | taxCategory 0-1
| | | | | taxRate 0-1
| | | | | legalRef 0-1
| | | | | @numberingOrg [Optional]
| | | | | @codeList [Optional]
| | | | | @listName [Optional]
| | | | | @listVersion [Optional]
| | | | | note 0-99
| | | | | @numberingOrg [Optional]
| | | | | @codeList [Optional]
| | | | | @noteLabel [Optional]
| | | | | note 0-99
| | | | | @numberingOrg [Optional]
| | | | | @codeList [Optional]
| | | | | @noteLabel [Optional]

```

```

| MOtotals 0-1
| | totQty 2-2
| | @um [Required]

```


2.2 Detailed description of document elements

Following tables show all elements (complex and simple) used in this document. Description includes: 1) element's information: xml tag, name, brief description, data type and syntax constraints; 2) information about use of the element in a particular position in the document: xpath and possible associated notes.

2.2.1 Complex elements (Aggregate Business Information Entities)

Complex elements are those elements whose content is composed of other elements (childs). Complex elements are alphabetically ordered.

attachment	an attached document. An attachment can refer to an external document or be included with the document being exchanged (XPath <code>TEXDarnOrder/MOheader/refDoc/attachment</code>) 0-1
blockChainReference	blockchain reference - base type: string, max length: 80, (XPath <code>TEXDarnOrder/MOheader/refDoc/attachment/blockChainReference</code>) 0-9
buyer	details of the Buyer (party that buys the good or service that is object of the current collaborative process) - base type: Nad, (XPath <code>TEXDarnOrder/MOheader/buyer</code>) 1-1
darnJobPrice	pricing of a darn work (XPath <code>TEXDarnOrder/MObody/MOitem/darnJobTicket/darnJobPrice</code>) 0-2
darnJobTicket	job ticket for the execution of a darn work (XPath <code>TEXDarnOrder/MObody/MOitem/darnJobTicket</code>) 0-9 - note: <i>here is the job order for the fabric pieces identified by its serial number (serialN)</i>
dtScheme	set of data usable to declare the duty or tax applied (XPath <code>TEXDarnOrder/MObody/MOitem/dtScheme</code>) 0-1
externalReference	details about an external object, such as a document stored at a remote location (XPath <code>TEXDarnOrder/MOheader/refDoc/attachment/externalReference</code>) 0-99
geoCoordinates	geographical coordinates (XPath <code>TEXDarnOrder/MOheader/buyer/geoCoordinates</code>) 0-1 (XPath <code>TEXDarnOrder/MOheader/thirdParty/geoCoordinates</code>) 0-1 (XPath <code>TEXDarnOrder/MOheader/subContractor/geoCoordinates</code>) 0-1
MObody	body of the document TEXTILES DARN ORDER (XPath <code>TEXDarnOrder/MObody</code>) 1-1
MOheader	header of the document TEXTILES DARN ORDER (XPath <code>TEXDarnOrder/MOheader</code>) 1-1
MOitem	line item of the document TEXTILES DARN ORDER (XPath <code>TEXDarnOrder/MObody/MOitem</code>) 1-unbounded
MOtotals	monetary and quantity totals of the Order (XPath <code>TEXDarnOrder/MOtotals</code>) 0-1
piece	Identification data and measurement of the fabric piece. (XPath <code>TEXDarnOrder/MObody/MOitem/piece</code>) 1-3
pieceChain	identification data and measurements of a chain of pieces still to be cut (XPath <code>TEXDarnOrder/MObody/MOitem/pieceChain</code>) 1-1
pieceCut	identification data and measurements of a fabric piece belonging to a chain still to be cut (XPath <code>TEXDarnOrder/MObody/MOitem/pieceChain/pieceCut</code>) 0-99 - note: <i>here the data of the pieces making up the chain should be specified</i>
pieceFault	classification, position and allowance of the piece faults. The reference point (0,0) for the position is the lower left corner of the piece (selvedge excluded) (XPath <code>TEXDarnOrder/MObody/MOitem/pieceMap/pieceFault</code>) 0-99
pieceMap	mapping of the piece faults: type, rank and location

	(XPath TEXDarnOrder/MObody/MOitem/pieceMap) 0-1
piecePack	type of wrapping or packing of the fabric pieces (XPath TEXDarnOrder/MObody/MOitem/piece/piecePack) 0-1 (XPath TEXDarnOrder/MObody/MOitem/pieceChain/piecePack) 0-1
refDoc	identification of a document and of an item thereof, to which the message makes reference (XPath TEXDarnOrder/MOheader/refDoc) 0-9
subContractor	details of the Sub-contractor - base type: Nad, (XPath TEXDarnOrder/MOheader/subContractor) 1-1
texCode	full codification of the textile product (XPath TEXDarnOrder/MObody/MOitem/texCode) 0-2
thirdParty	identification and details of the Third Party, different from Sender and Receiver of the document - base type: Nad, (XPath TEXDarnOrder/MOheader/thirdParty) 0-5 - note: <i>it can be used to specify the Party to whom the subcontractor must send the goods (role="DM")</i>

2.2.2 Simple elements (Basic Business Information Entities)

Simple elements are those elements whose content is characterized by a data type plus a domain of possible values. Simple elements are alphabetically ordered.

added	additional code of the product (complementing the formers) - base type: string, max length: 80, (XPath TEXDarnOrder/MObody/MOitem/texCode/added) 0-9 - note: <i>here an additional codification (see table T44) can be specified</i>
additionalIdentifier	additional identification code of a Party, for example customs registries or others - base type: string, max length: 15, (XPath TEXDarnOrder/MOheader/buyer/additionalIdentifier) 0-9 - note: <i>identifiers for example for exports, such as MID (Manufacturer Identification Code), REX (identificatier in Registered Exporter system)</i>
@addType	qualifier of the additional coding of a product - base type: string, cod. table: T44 http://www.ebiz.enea.it/moda-ml/repository/codelist/draft/gc_T44.xml (XPath TEXDarnOrder/MObody/MOitem/texCode/added/@addType) [Optional] - nota: <i>addType allows the clarification of the meaning of the added element content; it is strongly suggested to use it always.</i>
art	article number of the product - base type: string, max length: 80, (XPath TEXDarnOrder/MObody/MOitem/texCode/art) 1-1 - note: <i>can be used either for the base-article (excluding pattern/colour) or for the SKU</i>
binaryObject	a binary large object containing an attached document, Coding 'base64Binary' is recommended. - base type: base64Binary, (XPath TEXDarnOrder/MOheader/refDoc/attachment/binaryObject) 0-1
@characterSet	the character set of the binary object (examples UTF-8, UTF-16, Windows-1252, ISO-8859-7,...) - base type: normalizedString, (XPath TEXDarnOrder/MOheader/refDoc/attachment/binaryObject/@characterSet) [Optional]
characterSetCode	the character set of an external document (examples UTF-8, UTF-16, Windows-1252, ISO-8859-7,...) - base type: normalizedString, (XPath TEXDarnOrder/MOheader/refDoc/attachment/externalReference/characterSetCode) 0-1

city	<p>name of the city (town, village)</p> <p>- base type: string, max length: 40, (XPath TEXTarnOrder/MOheader/buyer/city) 0-1 (XPath TEXTarnOrder/MOheader/subContractor/city) 0-1 (XPath TEXTarnOrder/MOheader/thirdParty/city) 0-1</p>
@codeList	<p>it specifies the URL where the list of codes used to make an instance of the element can be found</p> <p>- base type: string, max length: 255, (XPath TEXTarnOrder/MObody/MOitem/dtScheme/legalRef/@codeList) [Optional] (XPath TEXTarnOrder/MObody/MOitem/pieceMap/pieceFault/note/@codeList) [Optional]</p> <p>- nota: <i>must be used to provide (URL) the list of codes used in "noteLabel"</i> (XPath TEXTarnOrder/MObody/MOitem/note/@codeList) [Optional]</p> <p>- nota: <i>must be used to provide (URL) the list of codes used in "noteLabel"</i> (XPath TEXTarnOrder/MObody/MOitem/dtScheme/note/@codeList) [Optional]</p> <p>- nota: <i>must be used to provide (URL) the list of codes used in "noteLabel"</i> (XPath TEXTarnOrder/MObody/MOitem/texCode/art/@codeList) [Optional]</p> <p>- nota: <i>at least one out of this attribute and "numberingOrg" should be set</i> (XPath TEXTarnOrder/MOheader/note/@codeList) [Optional]</p> <p>- nota: <i>must be used to provide (URL) the list of codes used in "noteLabel"</i> (XPath TEXTarnOrder/MObody/MOitem/texCode/color/@codeList) [Optional]</p> <p>- nota: <i>this attribute should be used either single or coupled with "listName" and "listVersion"</i> (XPath TEXTarnOrder/MObody/MOitem/texCode/pattern/@codeList) [Optional]</p> <p>- nota: <i>at least one out of this attribute and "numberingOrg" should be set</i> (XPath TEXTarnOrder/MOheader/refDoc/season/@codeList) [Optional]</p> <p>- nota: <i>this attribute should be used either single or coupled with "listName" and "listVersion"</i></p>
color	<p>colour number of the product, when not included in the model or fabric code</p> <p>- base type: string, max length: 15, (XPath TEXTarnOrder/MObody/MOitem/texCode/color) 0-1</p>
country	<p>code of the nation</p> <p>- base type: string, cod. table: T10 http://www.ebiz.enea.it/moda-ml/repository/codelist/draft/gc_T10.xml (XPath TEXTarnOrder/MOheader/buyer/country) 0-1 (XPath TEXTarnOrder/MOheader/subContractor/country) 0-1 (XPath TEXTarnOrder/MOheader/thirdParty/country) 0-1</p>
@currency	<p>currency in which a specified monetary data is expressed</p> <p>- base type: string, cod. table: T9 http://www.ebiz.enea.it/moda-ml/repository/codelist/draft/gc_T9.xml (XPath TEXTarnOrder/MObody/MOitem/darnJobTicket/darnJobPrice/jobPrice/@currency) [Optional]</p> <p>- nota: <i>Currency referred by the price.</i></p>
@dateForm	<p>format used for the date</p> <p>- base type: string, cod. table: NT29 http://www.ebiz.enea.it/moda-ml/repository/codelist/draft/gc_NT29.xml (XPath TEXTarnOrder/MObody/MOitem/deliveryDate/@dateForm) [Optional] (XPath TEXTarnOrder/MOheader/refDoc/docDate/@dateForm) [Optional] (XPath TEXTarnOrder/MOheader/msgDate/@dateForm) [Optional]</p>
deliveryDate	<p>date of delivery of goods, requested or promised in the purchase process, according to one of the patterns YYYY-MM-DD, YYYY-MM-DD:HH-MM or YYYY-WW.</p> <p>- base type: string, (XPath TEXTarnOrder/MObody/MOitem/deliveryDate) 0-1</p>
dept	<p>name or code of a department</p> <p>- base type: string, max length: 40, (XPath TEXTarnOrder/MOheader/subContractor/dept) 0-1 (XPath TEXTarnOrder/MOheader/thirdParty/dept) 0-1 (XPath TEXTarnOrder/MOheader/buyer/dept) 0-1</p>
description	<p>free text description. The content of the element must be unique, it might be translated and repeated into more languages (thus no more than one instance for each language).</p> <p>- base type: string, max length: 250, (XPath TEXTarnOrder/MObody/MOitem/texCode/description) 0-unbounded</p> <p>- note: <i>Product description</i></p>

docDate	date of issue of the referenced document, according to one of the patterns YYYY-MM-DD, YYYY-MM-DD:HH-MM or YYYY-WW. - base type: string, (XPath TEXTarnOrder/MOheader/refDoc/docDate) 0-1
docID	identification number of the referenced document - base type: string, max length: 80, (XPath TEXTarnOrder/MOheader/refDoc/docID) 1-2 Best Practice (XPath TEXTarnOrder/MOheader/docID) 0-1 - note: <i>Its use in HEADER elements is discouraged (use msgID)</i>
@docType	type or class to which the referenced document belongs - base type: string, cod. table: T21 http://www.ebiz.enea.it/moda-ml/repository/codelist/draft/gc_T21.xml (XPath TEXTarnOrder/MOheader/refDoc/@docType) [Required]
dyeN	number of the dying batch of a textile product - base type: string, max length: 15, (XPath TEXTarnOrder/MObody/MOitem/piece/dyeN) 0-1 (XPath TEXTarnOrder/MObody/MOitem/pieceChain/dyeN) 0-1
@email	electronic mail address of the contact person within a Party - base type: string, max length: 250, (XPath TEXTarnOrder/MOheader/subContractor/person/@email) [Optional] (XPath TEXTarnOrder/MOheader/thirdParty/person/@email) [Optional] (XPath TEXTarnOrder/MOheader/buyer/person/@email) [Optional]
@encoding	specifies the decoding algorithm of the binary object - base type: normalizedString, (XPath TEXTarnOrder/MOheader/refDoc/attachment/binaryObject/@encoding) [Optional]
encodingCode	the encoding/decoding algorithm used with the external object (example is 'base64Binary') - base type: normalizedString, (XPath TEXTarnOrder/MOheader/refDoc/attachment/externalReference/encodingCode) 0-1
@endUse	specifies the final use of the fabric - base type: string, cod. table: NT4 http://www.ebiz.enea.it/moda-ml/repository/codelist/draft/gc_NT4.xml (XPath TEXTarnOrder/MObody/MOitem/piece/@endUse) [Optional]
EPC	serial identifier used for tracing a physical item with RFID technology - base type: string, (XPath TEXTarnOrder/MObody/MOitem/piece/EPC) 0-1 - note: <i>the use of this element is DEPRECATED, use the appropriate elements (serial N)</i>
fabricFault	code specifying the type or class of fabric fault - base type: string, cod. table: T12 http://www.ebiz.enea.it/moda-ml/repository/codelist/draft/gc_T12.xml (XPath TEXTarnOrder/MObody/MOitem/pieceMap/pieceFault/fabricFault) 1-1 - note: <i>here the MODA-ML codelist must be used.</i>
fabricFaultText	free text describing the type or class of the fabric fault - base type: string, max length: 250, (XPath TEXTarnOrder/MObody/MOitem/pieceMap/pieceFault/fabricFaultText) 1-1 - note: <i>here the text or proprietary code mutually agreed must be used</i>
@faultRank	ranking class of the fabric fault - base type: string, cod. table: NT13 http://www.ebiz.enea.it/moda-ml/repository/codelist/draft/gc_NT13.xml (XPath TEXTarnOrder/MObody/MOitem/pieceMap/pieceFault/@faultRank) [Required]
@faultShape	shape classification of the fabric fault - base type: string, cod. table: NT14 http://www.ebiz.enea.it/moda-ml/repository/codelist/draft/gc_NT14.xml (XPath TEXTarnOrder/MObody/MOitem/pieceMap/pieceFault/@faultShape) [Optional]
@fax	fax number of the contact person within a Party - base type: string, max length: 35, (XPath TEXTarnOrder/MOheader/thirdParty/person/@fax) [Optional] (XPath TEXTarnOrder/MOheader/buyer/person/@fax) [Optional]

	(XPath TEXDarnOrder/MOheader/subContractor/person/@fax) [Optional]
fileName	unique identifier (name) of the file - base type: string, max length: 255, (XPath TEXDarnOrder/MOheader/refDoc/attachment/fileName) 0-1
@format	the format of the binary content (examples xml, pdf, doc,...) - base type: string, (XPath TEXDarnOrder/MOheader/refDoc/attachment/binaryObject/@format) [Optional]
formatCode	the format of the external object (examples xml, pdf, doc,...) - base type: normalizedString, (XPath TEXDarnOrder/MOheader/refDoc/attachment/externalReference/formatCode) 0-1
@geoRefSystem	georeference system adopted for the coordinate (in example wgs84 with decimal degree o degree with minute and seconds) - base type: string, (XPath TEXDarnOrder/MOheader/buyer/geoCoordinates/@geoRefSystem) [Optional] (XPath TEXDarnOrder/MOheader/subContractor/geoCoordinates/@geoRefSystem) [Optional] (XPath TEXDarnOrder/MOheader/thirdParty/geoCoordinates/@geoRefSystem) [Optional]
grossWeight	the gross weight, declared for transport or customs purpose - base type: decimal, min inclusive: 0, fraction digits: 2, (XPath TEXDarnOrder/MObody/MOitem/piece/grossWeight) 0-1 - note: <i>gross Weight is related to the weight of the piece after packing.</i>
hashFootprint	footprint obtained by applying an hashing algrorhythm - base type: string, max length: 80, (XPath TEXDarnOrder/MOheader/refDoc/attachment/hashFootprint) 0-1
@hashMethod	type of used hashing algrorhythm - base type: string, max length: 80, cod. table: NT333 http://www.ebiz.enea.it/moda-ml/repository/codelist/draft/gc_NT333.xml (XPath TEXDarnOrder/MOheader/refDoc/attachment/hashFootprint/@hashMethod) [Required]
id	primary identification code of a Party; it is recommended to use an EORI number (with @numberingOrg= "EO") or the format: nation code (ISO 3166) + national tax code (i.e. VAT identification number) with @numberingOrg= "MF" - base type: string, max length: 15, (XPath TEXDarnOrder/MOheader/thirdParty/id) 1-1 (XPath TEXDarnOrder/MOheader/subContractor/id) 1-1 (XPath TEXDarnOrder/MOheader/buyer/id) 1-1
@idQualifier	Qualification of the identifier. - base type: string, (XPath TEXDarnOrder/MObody/MOitem/piece/serialN/@idQualifier) [Optional] - nota: <i>this attribute should be used when the numberingOrg attribute is not enough to declare the type of serial identifier</i> (XPath TEXDarnOrder/MObody/MOitem/pieceChain/pieceCut/serialN/@idQualifier) [Optional] - nota: <i>this attribute should be used when the numberingOrg attribute is not enough to declare the type of serial identifier</i> (XPath TEXDarnOrder/MOheader/buyer/additionalIdentifier/@idQualifier) [Optional] - nota: <i>this attribute should be used when the numberingOrg attribute is not enough to declare the type of identifier</i> (XPath TEXDarnOrder/MObody/MOitem/pieceChain/serialN/@idQualifier) [Optional] - nota: <i>this attribute should be used when the numberingOrg attribute is not enough to declare the type of serial identifier</i>
@isURL	it indicates if the referred element is an URL (true) or not (false) - base type: boolean, (XPath TEXDarnOrder/MOheader/refDoc/attachment/blockChainReference/uri/@isURL) [Optional] [Default= true] - nota: <i>usage of URLs is recommended</i> (XPath TEXDarnOrder/MOheader/refDoc/attachment/externalReference/uri/@isURL) [Optional] [Default= true] - nota: <i>usage of URLs is recommended</i>
itemID	number of the line/item of the referenced document

	- base type: string, max length: 40, (XPath TEXDarnOrder/MOheader/refDoc/itemID) 0-1
job	element of a work cycle - base type: string, cod. table: T20 http://www.ebiz.enea.it/moda-ml/repository/codelist/draft/gc_T20.xml (XPath TEXDarnOrder/MObody/MOitem/darnJobTicket/job) 1-1
jobPrice	price of a hired job operation - base type: decimal, min inclusive: 0, fraction digits: 4, (XPath TEXDarnOrder/MObody/MOitem/darnJobTicket/darnJobPrice/jobPrice) 0-1
jobTime	worktime of the elementary operation of a work cycle in hours and minutes (nnnHnnM) - base type: duration, (XPath TEXDarnOrder/MObody/MOitem/darnJobTicket/jobTime) 0-1
jobTimeBasis	reference basis for the time of an operation (e.g.: 1 metre, 50 metres, 30 kilos, etc...) - base type: positiveInteger, min inclusive: 1, (XPath TEXDarnOrder/MObody/MOitem/darnJobTicket/jobTimeBasis) 0-1 - note: <i>this element must not be used when the time (jobTime) is a forfeit</i>
legalName	legal name - base type: string, max length: 250, (XPath TEXDarnOrder/MOheader/buyer/legalName) 0-1 (XPath TEXDarnOrder/MOheader/subContractor/legalName) 0-1 (XPath TEXDarnOrder/MOheader/thirdParty/legalName) 0-1
legalRef	legal reference of the duty or tax or fee category - base type: string, (XPath TEXDarnOrder/MObody/MOitem/dtScheme/legalRef) 0-1
lineN	number of the line item of the present message (xml document); it is set by the role that produces the document. Usually it is a progressive number, but not always. - base type: positiveInteger, min inclusive: 1, max inclusive: 9999, (XPath TEXDarnOrder/MObody/MOitem/lineN) 1-1
@listName	the name of the list of codes used to make an instance of the element (it might be thought as descriptive element, i.e. 'fabric printing technologies', or not, i.e. "T264") - base type: string, max length: 40, (XPath TEXDarnOrder/MObody/MOitem/dtScheme/legalRef/@listName) [Optional] - nota: <i>this attribute should always be used coupled with "numberingOrg"</i> (XPath TEXDarnOrder/MObody/MOitem/texCode/pattern/@listName) [Optional] - nota: <i>this attribute should always be used coupled with "numberingOrg"</i> (XPath TEXDarnOrder/MOheader/refDoc/season/@listName) [Optional] - nota: <i>this attribute should always be used coupled with "numberingOrg"</i> (XPath TEXDarnOrder/MObody/MOitem/texCode/color/@listName) [Optional] - nota: <i>this attribute should always be used coupled with "numberingOrg"</i> (XPath TEXDarnOrder/MObody/MOitem/texCode/art/@listName) [Optional] - nota: <i>this attribute should always be used coupled with "numberingOrg"</i>
@listVersion	it specifies the version of the list of codes used to make an instance of the element - base type: string, max length: 6, (XPath TEXDarnOrder/MObody/MOitem/texCode/art/@listVersion) [Optional] - nota: <i>this attribute should always be used coupled with "numberingOrg" and "listName"</i> (XPath TEXDarnOrder/MObody/MOitem/texCode/color/@listVersion) [Optional] - nota: <i>this attribute should always be used coupled with "numberingOrg" and "listName"</i> (XPath TEXDarnOrder/MOheader/refDoc/season/@listVersion) [Optional] - nota: <i>this attribute should always be used coupled with "numberingOrg" and "listName"</i> (XPath TEXDarnOrder/MObody/MOitem/texCode/pattern/@listVersion) [Optional] - nota: <i>this attribute should always be used coupled with "numberingOrg" and "listName"</i> (XPath TEXDarnOrder/MObody/MOitem/dtScheme/legalRef/@listVersion) [Optional] - nota: <i>this attribute should always be used coupled with "numberingOrg" and "listName"</i>
@ln	Language code. - base type: string, cod. table: NT60 http://www.ebiz.enea.it/moda-ml/repository/codelist/draft/gc_NT60.xml (XPath TEXDarnOrder/MObody/MOitem/texCode/description/@ln) [Optional]

@logo	company logo (URL of the image jpeg or gif). It is recommended that the width of the image does not exceed 640 pixel. - base type: string, max length: 255, (XPath TEXDarnOrder/MOheader/buyer/@logo) [Optional]
lotN	lot number of a product or batch number of the raw material - base type: string, max length: 15, (XPath TEXDarnOrder/MObody/MOitem/piece/lotN) 0-2 - note: <i>The lotN instances must differ by value of the numberingOrg attribute</i> (XPath TEXDarnOrder/MObody/MOitem/pieceChain/lotN) 0-1
@mime	the mime type of the binary object - base type: normalizedString, (XPath TEXDarnOrder/MOheader/refDoc/attachment/binaryObject/@mime) [Optional]
mimeCode	mime type of the external object - base type: normalizedString, (XPath TEXDarnOrder/MOheader/refDoc/attachment/externalReference/mimeCode) 0-1 Best Practice
mixMatch	colour hue used for the match of garments - base type: string, max length: 15, (XPath TEXDarnOrder/MObody/MOitem/piece/mixMatch) 0-1
msgDate	date of issue of the present message (xml document), according to one of the patterns YYYY-MM-DD, YYYY-MM-DD:HH-MM or YYYY-WW. - base type: string, (XPath TEXDarnOrder/MOheader/msgDate) 1-1
@msgfunction	function performed by the present message with regards to the transmission - base type: string, cod. table: NT18 http://www.ebiz.enea.it/moda-ml/repository/codelist/draft/gc_NT18.xml (XPath TEXDarnOrder/@msgfunction) [Optional] [Default= OR]
msgID	key identifier of the business document in the information system of the issuing Party. In case of more despatches of the same business document, it is unchanged. - base type: string, max length: 35, (XPath TEXDarnOrder/MOheader/msgID) 0-1
msgN	identification number given to the message (xml document) by its issuer. In case of more despatches of the same business document, it changes. - base type: string, max length: 35, (XPath TEXDarnOrder/MOheader/msgN) 1-1
note	free text or structured (computer processing) note. For note structuring use the attributes "noteLabel" and "codelist" - base type: string, max length: 350, (XPath TEXDarnOrder/MOheader/note) 0-99 (XPath TEXDarnOrder/MObody/MOitem/note) 0-99 (XPath TEXDarnOrder/MObody/MOitem/dtScheme/note) 0-99 (XPath TEXDarnOrder/MObody/MOitem/pieceMap/pieceFault/note) 0-99
@noteLabel	subject qualifier of a note - base type: string, max length: 35, (XPath TEXDarnOrder/MObody/MOitem/dtScheme/note/@noteLabel) [Optional] - nota: <i>must be used to qualify the subject of the note</i> (XPath TEXDarnOrder/MOheader/note/@noteLabel) [Optional] - nota: <i>must be used to qualify the subject of the note</i> (XPath TEXDarnOrder/MObody/MOitem/note/@noteLabel) [Optional] - nota: <i>must be used to qualify the subject of the note</i> (XPath TEXDarnOrder/MObody/MOitem/pieceMap/pieceFault/note/@noteLabel) [Optional] - nota: <i>must be used to qualify the subject of the note</i>
@numberingOrg	code specifying the organisation who has created or owns the coding or numbering system - base type: string, cod. table: NT6 http://www.ebiz.enea.it/moda-ml/repository/codelist/draft/gc_NT6.xml (XPath TEXDarnOrder/MObody/MOitem/piece/dyeN/@numberingOrg) [Optional] (XPath TEXDarnOrder/MObody/MOitem/piece/EPC/@numberingOrg) [Optional] (XPath TEXDarnOrder/MObody/MOitem/pieceChain/lotN/@numberingOrg) [Optional] (XPath TEXDarnOrder/MObody/MOitem/piece/mixMatch/@numberingOrg) [Optional]

	<p>(XPath TEXDarnOrder/MObody/MOitem/pieceChain/pieceCut/serialN/@numberingOrg) [Optional]</p> <p>- nota: here the issuer of the serial number must be specified (when different from the Supplier)</p> <p>(XPath TEXDarnOrder/MObody/MOitem/pieceChain/packageN/@numberingOrg) [Optional]</p> <p>(XPath TEXDarnOrder/MObody/MOitem/pieceChain/dyeN/@numberingOrg) [Optional]</p> <p>(XPath TEXDarnOrder/MObody/MOitem/pieceChain/serialN/@numberingOrg) [Optional]</p> <p>- nota: here the issuer of the serial number must be specified (when different from the Supplier)</p> <p>(XPath TEXDarnOrder/MOheader/buyer/id/@numberingOrg) [Optional]</p> <p>(XPath TEXDarnOrder/MObody/MOitem/piece/packageN/@numberingOrg) [Optional]</p> <p>(XPath TEXDarnOrder/MOheader/buyer/additionalIdentifier/@numberingOrg) [Optional]</p> <p>- nota: here the issuer of the identifier must be specified</p> <p>(XPath TEXDarnOrder/MOheader/subContractor/id/@numberingOrg) [Optional]</p> <p>(XPath TEXDarnOrder/MObody/MOitem/texCode/@numberingOrg) [Optional]</p> <p>(XPath TEXDarnOrder/MObody/MOitem/pieceMap/pieceFault/note/@numberingOrg) [Optional]</p> <p>- nota: must be used to specify the organization that created the list of codes used in "noteLabel"</p> <p>(XPath TEXDarnOrder/MObody/MOitem/texCode/art/@numberingOrg) [Optional]</p> <p>- nota: this attribute should be used either single or coupled with "listName" and "listVersion"</p> <p>(XPath TEXDarnOrder/MOheader/docID/@numberingOrg) [Optional]</p> <p>- nota: here can be specified whose document numbering is used (e.g.: Client, Supplier, ..)</p> <p>(XPath TEXDarnOrder/MOheader/refDoc/attachment/fileName/@numberingOrg) [Optional]</p> <p>(XPath TEXDarnOrder/MObody/MOitem/piece/serialN/@numberingOrg) [Optional]</p> <p>- nota: here the issuer of the serial number must be specified (when different from the Supplier)</p> <p>(XPath TEXDarnOrder/MObody/MOitem/dtScheme/legalRef/@numberingOrg) [Optional]</p> <p>- nota: this attribute should be used either single or coupled with "listName" and "listVersion"</p> <p>(XPath TEXDarnOrder/MObody/MOitem/piece/lotN/@numberingOrg) [Optional]</p> <p>(XPath TEXDarnOrder/MOheader/note/@numberingOrg) [Optional]</p> <p>- nota: must be used to specify the organization that created the list of codes used in "noteLabel"</p> <p>(XPath TEXDarnOrder/MObody/MOitem/texCode/color/@numberingOrg) [Optional]</p> <p>- nota: this attribute should be used either single or coupled with "listName" and "listVersion"</p> <p>(XPath TEXDarnOrder/MOheader/refDoc/docID/@numberingOrg) [Optional]</p> <p>- nota: here can be specified whose document numbering is used (e.g.: Client, Supplier, ..)</p> <p>(XPath TEXDarnOrder/MObody/MOitem/dtScheme/note/@numberingOrg) [Optional]</p> <p>- nota: must be used to specify the organization that created the list of codes used in "noteLabel"</p> <p>(XPath TEXDarnOrder/MOheader/refDoc/season/@numberingOrg) [Optional]</p> <p>- nota: this attribute should be used either single or coupled with "listName" and "listVersion"</p> <p>(XPath TEXDarnOrder/MObody/MOitem/texCode/added/@numberingOrg) [Optional]</p> <p>- nota: this attribute should be used either single or coupled with "listName" and "listVersion"</p> <p>(XPath TEXDarnOrder/MObody/MOitem/note/@numberingOrg) [Optional]</p> <p>- nota: must be used to specify the organization that created the list of codes used in "noteLabel"</p> <p>(XPath TEXDarnOrder/MObody/MOitem/texCode/pattern/@numberingOrg) [Optional]</p> <p>- nota: this attribute should be used either single or coupled with "listName" and "listVersion"</p> <p>(XPath TEXDarnOrder/MOheader/thirdParty/id/@numberingOrg) [Optional]</p>
@packageContainerN	<p>reference usable to indicate the outer package containing this package</p> <p>- base type: string, max length: 40,</p> <p>(XPath TEXDarnOrder/MObody/MOitem/piece/packageN/@packageContainerN) [Optional]</p> <p>(XPath TEXDarnOrder/MObody/MOitem/pieceChain/packageN/@packageContainerN) [Optional]</p>
packageN	<p>serial number used to identify a transport package</p> <p>- base type: string, max length: 40,</p> <p>(XPath TEXDarnOrder/MObody/MOitem/piece/packageN) 0-1</p> <p>- note: here the transport package containing the piece can be identified</p> <p>(XPath TEXDarnOrder/MObody/MOitem/pieceChain/packageN) 0-1</p>
pattern	<p>pattern/design number of the product, when not included in the article code</p> <p>- base type: string, max length: 15,</p>

	(XPath TEXDarnOrder/MObody/MOitem/texCode/pattern) 0-1
person	name of a person (e.g. contact person within an organization) - base type: string, max length: 40, (XPath TEXDarnOrder/MOheader/subContractor/person) 0-1 (XPath TEXDarnOrder/MOheader/buyer/person) 0-1 (XPath TEXDarnOrder/MOheader/thirdParty/person) 0-1
@phone	phone number of the contact person within a Party - base type: string, max length: 35, (XPath TEXDarnOrder/MOheader/subContractor/person/@phone) [Optional] (XPath TEXDarnOrder/MOheader/buyer/person/@phone) [Optional] (XPath TEXDarnOrder/MOheader/thirdParty/person/@phone) [Optional]
pieceAllow	allowance required or accorded for the piece - base type: decimal, fraction digits: 2, (XPath TEXDarnOrder/MObody/MOitem/pieceMap/pieceFault/pieceAllow) 0-1 - note: <i>this is the allowance estimated for the fault by the same "source" responsible for the other measurements</i> (XPath TEXDarnOrder/MObody/MOitem/piece/pieceAllow) 0-1
pieceCutWidth	effective usable width of the fabric piece (for garment manufacturing) - base type: decimal, min inclusive: 0, fraction digits: 2, (XPath TEXDarnOrder/MObody/MOitem/piece/pieceCutWidth) 0-1
pieceInnWrap1	code specifying the type of inner wrapping/packing used for the fabric piece - base type: string, cod. table: T4 http://www.ebiz.enea.it/moda-ml/repository/codelist/draft/gc_T4.xml (XPath TEXDarnOrder/MObody/MOitem/piece/piecePack/pieceInnWrap1) 1-1 (XPath TEXDarnOrder/MObody/MOitem/pieceChain/piecePack/pieceInnWrap1) 1-1
pieceInnWrap2	code sub-specifying the type of inner wrapping/packing used for the fabric piece - base type: string, cod. table: T5 http://www.ebiz.enea.it/moda-ml/repository/codelist/draft/gc_T5.xml (XPath TEXDarnOrder/MObody/MOitem/pieceChain/piecePack/pieceInnWrap2) 0-1 (XPath TEXDarnOrder/MObody/MOitem/piece/piecePack/pieceInnWrap2) 0-1
pieceLength	length of the piece - base type: decimal, min inclusive: 0, fraction digits: 2, (XPath TEXDarnOrder/MObody/MOitem/piece/pieceLength) 0-1 (XPath TEXDarnOrder/MObody/MOitem/pieceChain/pieceCut/pieceLength) 0-1 (XPath TEXDarnOrder/MObody/MOitem/pieceChain/pieceLength) 0-1
pieceOutWrap	code specifying the type of outer wrapping or packing used for the fabric piece - base type: string, cod. table: T6 http://www.ebiz.enea.it/moda-ml/repository/codelist/draft/gc_T6.xml (XPath TEXDarnOrder/MObody/MOitem/pieceChain/piecePack/pieceOutWrap) 0-1 (XPath TEXDarnOrder/MObody/MOitem/piece/piecePack/pieceOutWrap) 0-1
piecePackText	free text specifying the type of wrapping or packing used for the fabric piece - base type: string, max length: 250, (XPath TEXDarnOrder/MObody/MOitem/pieceChain/piecePack/piecePackText) 1-1 (XPath TEXDarnOrder/MObody/MOitem/piece/piecePack/piecePackText) 1-1
pieceStatus	code used to describe the status of a fabric piece after the control - base type: string, cod. table: T52 http://www.ebiz.enea.it/moda-ml/repository/codelist/draft/gc_T52.xml (XPath TEXDarnOrder/MObody/MOitem/piece/pieceStatus) 0-1
pieceWeight	effective total weight of the fabric piece - base type: decimal, min inclusive: 0, fraction digits: 2, (XPath TEXDarnOrder/MObody/MOitem/piece/pieceWeight) 0-1 - note: <i>It is the net weight of the piece.</i> (XPath TEXDarnOrder/MObody/MOitem/pieceChain/pieceWeight) 0-1 (XPath TEXDarnOrder/MObody/MOitem/pieceChain/pieceCut/pieceWeight) 0-1
pieceWeightM	effective weight per metre of the fabric piece - base type: decimal, min inclusive: 0, fraction digits: 2, (XPath TEXDarnOrder/MObody/MOitem/piece/pieceWeightM) 0-1
pieceWidth	effective width of the fabric piece - base type: decimal, min inclusive: 0, fraction digits: 2, (XPath TEXDarnOrder/MObody/MOitem/pieceChain/pieceWidth) 0-1 (XPath TEXDarnOrder/MObody/MOitem/piece/pieceWidth) 0-1

postCode	code defining the postal zone - base type: string, max length: 10, (XPath TEXDarnOrder/MOheader/thirdParty/postCode) 0-1 (XPath TEXDarnOrder/MOheader/subContractor/postCode) 0-1 (XPath TEXDarnOrder/MOheader/buyer/postCode) 0-1
priceBasis	reference basis for the price (e.g.: 1 metre, 1 hour, 1 minute, etc...) - base type: positiveInteger, min inclusive: 1, (XPath TEXDarnOrder/MObody/MOitem/darnJobTicket/ darnJobPrice/priceBasis) 0-1 - note: <i>this element must not be used when the price (jobPrice) is a forfait</i>
qty	net quantity of the article or object correlated, qualified by the function of the document (ordering, delivering, ..) and by the context - base type: decimal, min inclusive: 0, fraction digits: 2, (XPath TEXDarnOrder/MObody/MOitem/qty) 1-2 Best Practice - note: <i>here is the total quantity to be darned</i>
@role	Third Party role qualifier - base type: string, cod. table: NT2 http://www.ebiz.enea.it/moda-ml/repository/codelist/draft/gc_NT2.xml (XPath TEXDarnOrder/MOheader/thirdParty/@role) [Required]
@schemeID	identifier of an identification scheme - base type: string, (XPath TEXDarnOrder/MOheader/refDoc/attachment/ hashFootprint/@schemeID) [Optional] - nota: <i>specify for which system this hash footprint might be used as identifier (for example HDFS system..)</i>
season	sale season; defined as: season (1 crt) + year (4 crt) - season: S/S=1 A/W=2 Spring=3 Summer=4 Autumn=5 Winter=6: for more than four seasons use alphabetic sequence: 1st season=A 2nd season=B etc.etc. - base type: string, max length: 15, (XPath TEXDarnOrder/MOheader/refDoc/season) 0-1 - note: <i>here indicates the season to which the referenced document belongs</i>
@sender	qualifier that specifies the Party issuing of the document - base type: boolean, (XPath TEXDarnOrder/MOheader/subContractor/@sender) [Optional] - nota: <i>This attribute is mandatory when the STYLESHEET must be used</i> (XPath TEXDarnOrder/MOheader/thirdParty/@sender) [Optional] - nota: <i>This attribute is mandatory when the STYLESHEET must be used</i> (XPath TEXDarnOrder/MOheader/buyer/@sender) [Optional] - nota: <i>This attribute is mandatory when the STYLESHEET must be used</i>
serialN	serial number used for the identification of a physical unit - base type: string, max length: 250, (XPath TEXDarnOrder/MObody/MOitem/pieceChain/pieceCut/serialN) 1-9 - note: <i>multiple values of serialN are allowed in order to provide different representations of the serial identifier of the same piece. Different instances of serialN must differ at least for one value of idQualifier or numberingOrg</i> (XPath TEXDarnOrder/MObody/MOitem/piece/serialN) 0-9 Best Practice - note: <i>multiple values of serialN are allowed for different representations of the serial identifier of the same piece. Instances of serialN must differ at least for one value of numberingOrg and idQualifier.</i> (XPath TEXDarnOrder/MObody/MOitem/pieceChain/serialN) 1-9 - note: <i>multiple values of serialN are allowed in order to provide different representations of the serial identifier of the same piece chain. Different instances of serialN must differ at least for one value of idQualifier or numberingOrg</i>
@source	party who has provided the data - base type: string, cod. table: NT12 http://www.ebiz.enea.it/moda-ml/repository/codelist/draft/gc_NT12.xml (XPath TEXDarnOrder/MObody/MOitem/pieceMap/@source) [Required]
street	street and building number identifying a location - base type: string, max length: 80, (XPath TEXDarnOrder/MOheader/subContractor/street) 0-1 (XPath TEXDarnOrder/MOheader/buyer/street) 0-1 (XPath TEXDarnOrder/MOheader/thirdParty/street) 0-1
subCountry	short name or code of the sub-country entity - base type: string, max length: 9, (XPath TEXDarnOrder/MOheader/buyer/subCountry) 0-1

	(XPath TEXDarnOrder/MOheader/subContractor/subCountry) 0-1 (XPath TEXDarnOrder/MOheader/thirdParty/subCountry) 0-1
subDept	name or code of a department - base type: string, max length: 40, (XPath TEXDarnOrder/MOheader/thirdParty/subDept) 0-1 (XPath TEXDarnOrder/MOheader/buyer/subDept) 0-1 (XPath TEXDarnOrder/MOheader/subContractor/subDept) 0-1
taxCategory	duty or tax or fee category - base type: string, cod. table: T62 http://www.ebiz.enea.it/moda-ml/repository/codelist/draft/gc_T62.xml (XPath TEXDarnOrder/MObody/MOitem/dtScheme/taxCategory) 0-1
taxRate	duty or tax or fee percent rate - base type: string, (XPath TEXDarnOrder/MObody/MOitem/dtScheme/taxRate) 0-1
@taxType	duty or tax or fee type - base type: string, cod. table: T61 http://www.ebiz.enea.it/moda-ml/repository/codelist/draft/gc_T61.xml (XPath TEXDarnOrder/MObody/MOitem/dtScheme/@taxType) [Required]
@TID	serial number wired into the RFID chip - base type: string, (XPath TEXDarnOrder/MObody/MOitem/piece/EPC/@TID) [Optional]
totFault	total number of faults: the 1st/2nd digit count the "Large faults", the 3rd/4th the "Medium faults" and the 5th/6th the "Small faults" - base type: positiveInteger, (XPath TEXDarnOrder/MObody/MOitem/piece/totFault) 0-1 (XPath TEXDarnOrder/MObody/MOitem/pieceMap/totFault) 1-1
totQty	total quantity of the articles related to the whole document - base type: decimal, min inclusive: 0, fraction digits: 2, (XPath TEXDarnOrder/MOtotals/totQty) 2-2 - note: used to specify the number of pieces (um="PZ") and the quantity of metres (um="MTR") relative to the document
transactionReceipt	transaction receipt on blockchain - base type: string, max length: 80, (XPath TEXDarnOrder/MOheader/refDoc/attachment/blockChainReference/transactionReceipt) 1-9
@transReason	reason for the transport - base type: string, cod. table: NT11 http://www.ebiz.enea.it/moda-ml/repository/codelist/draft/gc_NT11.xml (XPath TEXDarnOrder/MObody/MOitem/@transReason) [Optional]
@uid	unique element identifier within the xml document - base type: string, (XPath TEXDarnOrder/MOheader/refDoc/attachment/@uid) [Optional]
@um	specification of the unit of measure - base type: string, cod. table: NT7 http://www.ebiz.enea.it/moda-ml/repository/codelist/draft/gc_NT7.xml (XPath TEXDarnOrder/MObody/MOitem/pieceMap/pieceFault/pieceAllow/@um) [Required] (XPath TEXDarnOrder/MObody/MOitem/darnJobTicket/jobTimeBasis/@um) [Required] (XPath TEXDarnOrder/MOtotals/totQty/@um) [Required] (XPath TEXDarnOrder/MObody/MOitem/darnJobTicket/darnJobPrice/priceBasis/@um) [Required] (XPath TEXDarnOrder/MObody/MOitem/pieceMap/pieceFault/weftEnd/@um) [Optional] [Default= CMT] (XPath TEXDarnOrder/MObody/MOitem/pieceChain/pieceCut/pieceLength/@um) [Optional] [Default= MTR] (XPath TEXDarnOrder/MObody/MOitem/pieceChain/pieceWeight/@um) [Optional] [Default= KGM] (XPath TEXDarnOrder/MObody/MOitem/pieceChain/pieceCut/pieceWeight/@um) [Optional] [Default= KGM] (XPath TEXDarnOrder/MObody/MOitem/piece/pieceWidth/@um) [Optional] [Default= CMT] (XPath TEXDarnOrder/MObody/MOitem/piece/pieceLength/@um) [Optional] [Default= MTR] (XPath TEXDarnOrder/MObody/MOitem/pieceChain/pieceWidth/@um) [Optional] [Default= CMT]

	<p>(XPath TEXTarnOrder/MOheader/subContractor/geoCoordinates/@um) [Optional] [Default= DEGD]</p> <p>- nota: <i>when not specified assume decimal DEGREES</i></p> <p>(XPath TEXTarnOrder/MOheader/buyer/geoCoordinates/@um) [Optional] [Default= DEGD]</p> <p>- nota: <i>when not specified assume decimal DEGREES</i></p> <p>(XPath TEXTarnOrder/MOheader/thirdParty/geoCoordinates/@um) [Optional] [Default= DEGD]</p> <p>- nota: <i>when not specified assume decimal DEGREES</i></p> <p>(XPath TEXTarnOrder/MObody/MOitem/pieceChain/pieceLength/@um) [Optional] [Default= MTR]</p> <p>(XPath TEXTarnOrder/MObody/MOitem/qty/@um) [Required]</p> <p>(XPath TEXTarnOrder/MObody/MOitem/piece/pieceCutWidth/@um) [Optional] [Default= CMT]</p> <p>(XPath TEXTarnOrder/MObody/MOitem/pieceMap/pieceFault/warpStart/@um) [Optional] [Default= MTR]</p> <p>(XPath TEXTarnOrder/MObody/MOitem/pieceMap/pieceFault/weftStart/@um) [Optional] [Default= CMT]</p> <p>(XPath TEXTarnOrder/MObody/MOitem/pieceMap/pieceFault/warpEnd/@um) [Optional] [Default= MTR]</p> <p>(XPath TEXTarnOrder/MObody/MOitem/piece/pieceAllow/@um) [Required]</p> <p>(XPath TEXTarnOrder/MObody/MOitem/piece/pieceWeightM/@um) [Optional] [Default= GRM]</p> <p>(XPath TEXTarnOrder/MObody/MOitem/piece/pieceWeight/@um) [Optional] [Default= KGM]</p> <p>(XPath TEXTarnOrder/MObody/MOitem/piece/grossWeight/@um) [Required]</p>
uri	<p>Uniform Resource Identifier (URI) that identifies the external object as an Internet resource</p> <p>- base type: normalizedString,</p> <p>(XPath TEXTarnOrder/MOheader/refDoc/attachment/externalReference/uri) 1-1</p> <p>(XPath TEXTarnOrder/MOheader/refDoc/attachment/blockChainReference/uri) 1-1</p> <p>- note: <i>reference to the used blockchain (example: url https://etherscan.io/ of ethereum)</i></p>
@useProfile	<p>use profile to which the present document is compliant if it was agreed by the parties. It is suggested a URI with reference to the firms or the URL of the profile.</p> <p>- base type: string,</p> <p>(XPath TEXTarnOrder/@useProfile) [Optional]</p>
@VAT	<p>VAT rate or code (DEPRECATED, use dtScheme element)</p> <p>- base type: string, cod. table: NT16</p> <p>http://www.ebiz.enea.it/moda-ml/repository/codelist/draft/gc_NT16.xml</p> <p>(XPath TEXTarnOrder/MOheader/thirdParty/@VAT) [Optional]</p> <p>(XPath TEXTarnOrder/MObody/MOitem/lineN/@VAT) [Optional]</p> <p>- nota: <i>Deprecated, prefer dtScheme when available.</i></p>
@version	<p>Dictionary version from which the instance has been created</p> <p>- base type: string, cod. table: NT100</p> <p>http://www.ebiz.enea.it/moda-ml/repository/codelist/draft/gc_NT100.xml</p> <p>(XPath TEXTarnOrder/@version) [Optional] [Default= draft]</p>
warpEnd	<p>end point of the fabric fault in the warp direction</p> <p>- base type: decimal, min inclusive: 0, fraction digits: 2,</p> <p>(XPath TEXTarnOrder/MObody/MOitem/pieceMap/pieceFault/warpEnd) 0-1</p>
warpStart	<p>start point of the fabric fault in the warp direction</p> <p>- base type: decimal, min inclusive: 0, fraction digits: 2,</p> <p>(XPath TEXTarnOrder/MObody/MOitem/pieceMap/pieceFault/warpStart) 1-1</p>
weftEnd	<p>end point of the fabric fault in the weft direction</p> <p>- base type: decimal, min inclusive: 0, fraction digits: 2,</p> <p>(XPath TEXTarnOrder/MObody/MOitem/pieceMap/pieceFault/weftEnd) 0-1</p>
weftStart	<p>start point of the fabric fault in the weft direction</p> <p>- base type: decimal, min inclusive: 0, fraction digits: 2,</p> <p>(XPath TEXTarnOrder/MObody/MOitem/pieceMap/pieceFault/weftStart) 0-1</p>
xGeoCoord	<p>geographical coordinate x , corresponding to latitude</p> <p>- base type: decimal,</p> <p>(XPath TEXTarnOrder/MOheader/buyer/geoCoordinates/xGeoCoord) 1-1</p> <p>(XPath TEXTarnOrder/MOheader/subContractor/geoCoordinates/xGeoCoord) 1-1</p> <p>(XPath TEXTarnOrder/MOheader/thirdParty/geoCoordinates/xGeoCoord) 1-1</p>
yGeoCoord	<p>geographical coordinate y , corresponding to longitude</p> <p>- base type: decimal,</p>

	(XPath TEXDarnOrder/MOheader/buyer/geoCoordinates/yGeoCoord) 1-1 (XPath TEXDarnOrder/MOheader/thirdParty/geoCoordinates/yGeoCoord) 1-1 (XPath TEXDarnOrder/MOheader/subContractor/geoCoordinates/yGeoCoord) 1-1
zGeoCoord	geographical coordinate z , corresponding to altitude - base type: decimal, (XPath TEXDarnOrder/MOheader/subContractor/geoCoordinates/zGeoCoord) 0-1 - note: <i>altitude might be omitted</i> (XPath TEXDarnOrder/MOheader/thirdParty/geoCoordinates/zGeoCoord) 0-1 - note: <i>altitude might be omitted</i> (XPath TEXDarnOrder/MOheader/buyer/geoCoordinates/zGeoCoord) 0-1 - note: <i>altitude might be omitted</i>

2.3 Suggested best practices

TEXDarnOrder/MOheader/refDoc/docID (identification number of the referenced document)

numberingOrg indicates the role that produced the document identifier (it is allowed to declare two different ones -e.g. customer and supplier - with two docID with different numberingOrg)

TEXDarnOrder/MOheader/refDoc/attachment/

externalReference/mimeCode (mime type of the external object)

Use coding from IANA <http://www.iana.org/assignments/media-types/media-types.xml>

TEXDarnOrder/MObody/MOitem/qty (net quantity of the article or object correlated, qualified by the function of the document (ordering, delivering, ..) and by the context)

this element can have two instances only if the units of measure are different

TEXDarnOrder/MObody/MOitem/piece/serialN (serial number used for the identification of a physical unit)

This element might contain also codes for RFID devices.

2.4 Enumeration tables

List of enumeration tables used in the XML document. You can find all the tables with the corresponding codes at:
<http://www.ebiz.enea.it/eBIZ/imple/eBIZTCU-draft.asp?lingua=en&pag=6>

NT100 - eBIZ TCFUpstream version
NT11 - transport causal
NT12 - data source
NT13 - fabric fault category
NT14 - fabric fault shape
NT16 - VAT rate or code
NT18 - message function
NT2 - third party qualifier
NT29 - format of a date
NT333 - type of hashing algorithm
NT4 - end use
NT6 - coding system owner/issuer
NT60 - language, codes from ISO 639-1 (subset)
NT7 - unit of measure
T10 - ISO3166 - Country
T12 - fabric faults
T20 - type of darning operation
T21 - type of document
T4 - fabric piece inner packing (wrapping) 1
T44 - additional code type
T5 - fabric piece inner packing (wrapping) 2
T52 - fabric piece status
T6 - fabric piece outer packing
T61 - duty or tax or fee type
T62 - duty or tax or fee category
T9 - ISO4217 - Currency

(the most relevant tables are detailed in the following Annexes too)

ACKNOWLEDGEMENT



This action is part of the TRICK project, which has received funding from Horizon 2020 research and innovation programme under grant agreement No. 958352 of the European Union.

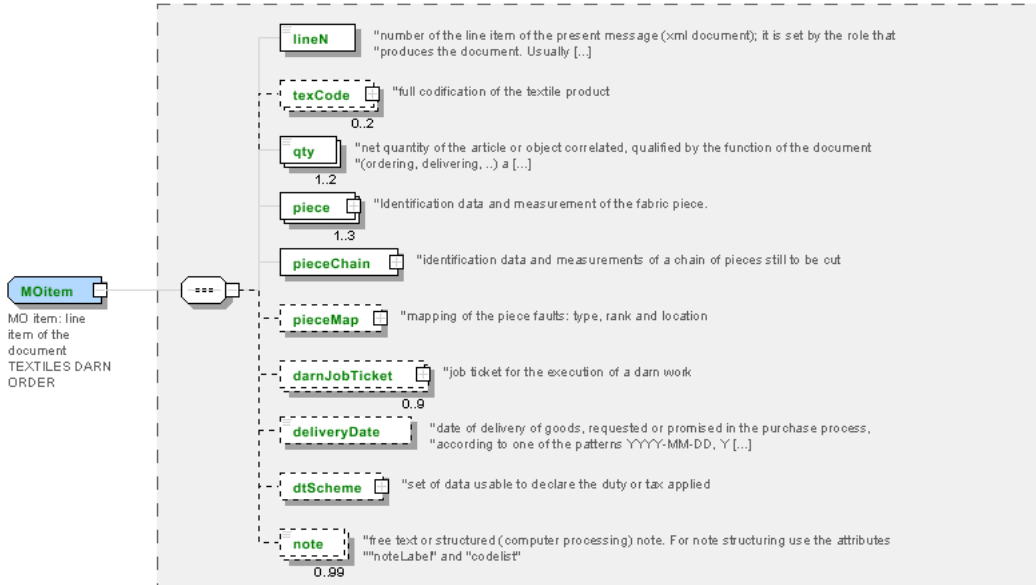
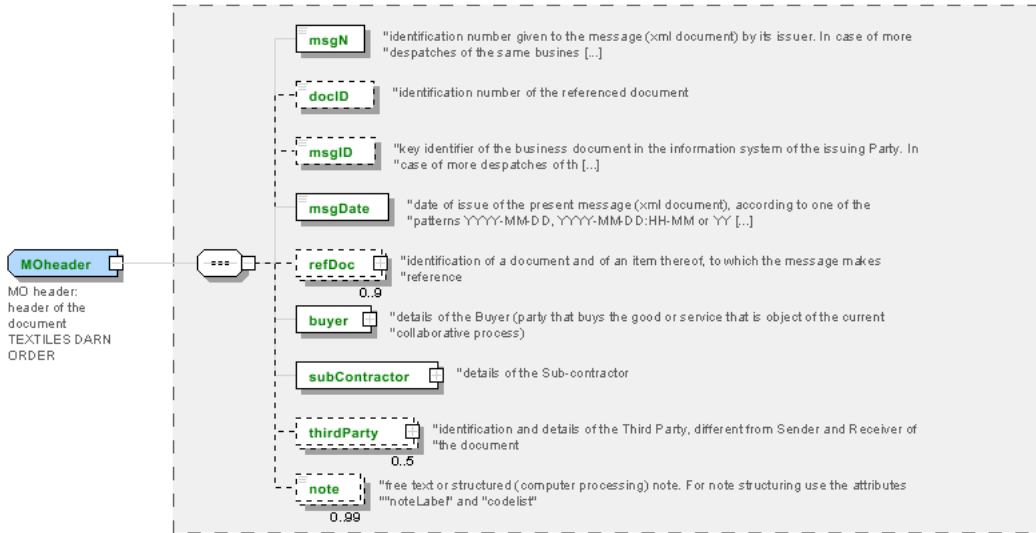
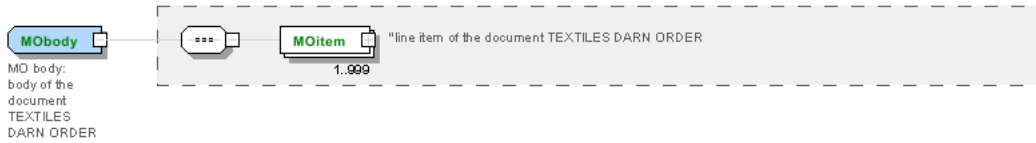
DISCLAIMER

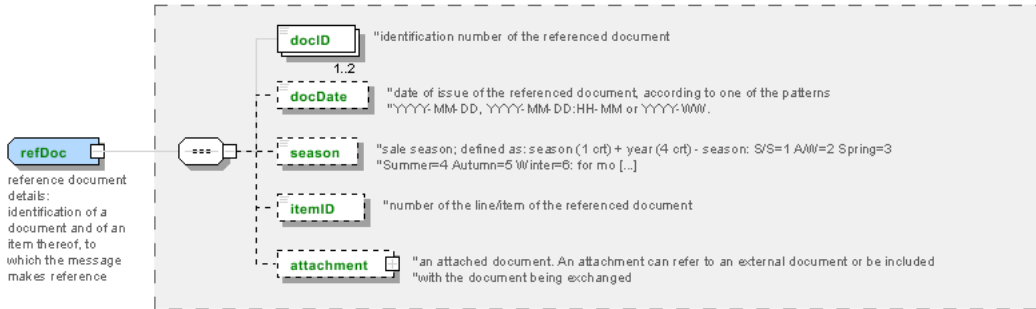
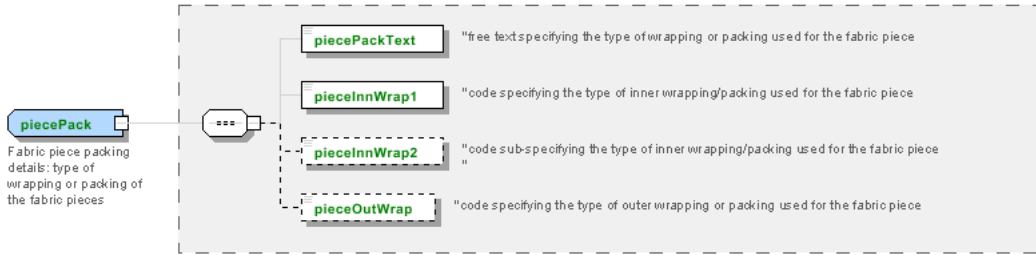
The content of this document represents the views of the authors only and is their sole responsibility; it cannot be considered to reflect the views of the European Commission or any other body of the European Union.

The European Commission does not accept any responsibility for use that may be made of the information it contains.

Annex A

Representative images of the principal complex elements' structure.





Annex B

NT100 - eBIZ TCFUpstream version

dictionary version

Agency name: eBIZ

Decoding table: NT100

File codes list (Generic code): http://www.ebiz.enea.it/moda-ml/repository/codelist/draft/gc_NT100.xml

Code	Description	Adoption note	Date of insertion
2013-1	v2013-1		01/07/2013
2018-1	v2018-1		04/11/2018
draft	draft		08/09/2017

NT11 - transport causal

reason for the transport

Agency name: eBIZ

Decoding table: NT11

File codes list (Generic code): http://www.ebiz.enea.it/moda-ml/repository/codelist/draft/gc_NT11.xml

Code	Description	Adoption note	Date of insertion
FOC	free of charge		
FRW	return from re-works		
FST	return from storage		
FVW	return from view		
FWK	return from works		
IST	in storage		
NWK	return non-worked		
RJC	return from rejection		
SEL	to sell		
STO	to storage		
VEW	to view		
WRK	to works		

NT12 - data source

party who has provided the data

Agency name: eBIZ

Decoding table: NT12

File codes list (Generic code): http://www.ebiz.enea.it/moda-ml/repository/codelist/draft/gc_NT12.xml

Code	Description	Adoption note	Date of insertion
AC	internal test		
CO	external test		
CV	test after steaming		

NT13 - fabric fault category

ranking class of the fabric fault

Agency name: eBIZ

Decoding table: NT13

File codes list (Generic code): http://www.ebiz.enea.it/moda-ml/repository/codelist/draft/gc_NT13.xml

Code	Description	Adoption note	Date of insertion
CL1	class 1		
CL2	class 2		
CL3	class 3		
CL4	class 4		
CL5	class 5		
CL6	class 6		
G	large		
L	small		
M	medium		

NT14 - fabric fault shape

shape classification of the fabric fault

Agency name: eBIZ

Decoding table: NT14

File codes list (Generic code): http://www.ebiz.enea.it/moda-ml/repository/codelist/draft/gc_NT14.xml

Code	Description	Adoption note	Date of insertion
C	continuous		
P	point		
S	stretch		

NT16 - VAT rate or code

VAT rate or code (DEPRECATED, use dtScheme element)

Decoding table: NT16

File codes list (Generic code): http://www.ebiz.enea.it/moda-ml/repository/codelist/draft/gc_NT16.xml

NT18 - message function

function performed by the present message with regards to the transmission

Agency name: eBIZ

Decoding table: NT18

File codes list (Generic code): http://www.ebiz.enea.it/moda-ml/repository/codelist/draft/gc_NT18.xml

Code	Description	Adoption note	Date of insertion
CA	delete this document		01/07/2013
CP	copy		
OR	original		
RC	re-transmission for data correction		
RT	re-transmission		

NT2 - third party qualifier

Third Party role qualifier

Agency name: eBIZ

Decoding table: NT2

File codes list (Generic code): http://www.ebiz.enea.it/moda-ml/repository/codelist/draft/gc_NT2.xml

Code	Description	Adoption note	Date of insertion
AG	Sales Agent		
AU	Auditor		08/04/2019
BU	Buyer		13/06/2022
CE	Certification authority		08/04/2019
CM	Commissioner		13/06/2022
CO	Quality Controller		
CU	Customs authority		13/06/2022
DC	Response to		
DF	Invoicee		
DI	Copy to (CC)		28/10/2014
DM	Consignee		

DP	Consignment address (Delivery Party)		
EX	Expert		13/06/2022
IM	Importer		
OR	Originator		10/09/2014
SC	Sub contractor		10/04/2019
SM	Service/ePlatform manager		08/04/2019
SP	Forwarder		
SU	Supplier		13/06/2022
TL	Test or analysis laboratory		13/06/2022
TX	Tax Representative		

NT29 - format of a date

format used for the date

Agency name: eBIZ

Decoding table: NT29

File codes list (Generic code): http://www.ebiz.enea.it/moda-ml/repository/codelist/draft/gc_NT29.xml

Code	Description	Adoption note	Date of insertion
D	YYYY-MM-DD		
M	YYYY-MM-DD:HH-MM (date and time)		
S	AAAA-MM-GG:HH-MM-SS (date and time with seconds)		13/06/2022
W	YYYY-WW		

NT333 - type of hashing algorithm

type of hashing algorithm

Decoding table: NT333

File codes list (Generic code): http://www.ebiz.enea.it/moda-ml/repository/codelist/draft/gc_NT333.xml

Code	Description	Adoption note	Date of insertion
ADLER32	ADLER32		26/05/2023
HMAC	HMAC		26/05/2023
MD2	MD2		26/05/2023
MD4	MD4		26/05/2023
MD5	MD5		26/05/2023
MDC-2	MDC-2		26/05/2023
PANAMA	PANAMA		26/05/2023

RIPEMD-160	RIPEMD-160		26/05/2023
SHA-1	SHA-1		26/05/2023
SHA-2 256	SHA-2 256		26/05/2023
SHA-2 384	SHA-2 384		26/05/2023
SHA-2 512	SHA-2 512		26/05/2023
TIGER	TIGER		26/05/2023

NT4 - end use

specifies the final use of the product

Agency name: eBIZ

Decoding table: NT4

File codes list (Generic code): http://www.ebiz.enea.it/moda-ml/repository/codelist/draft/gc_NT4.xml

Code	Description	Adoption note	Date of insertion
PC	test piece		
PR	production		
SA	Sample		10/09/2014
SC	samples card		
TI	patch		
TP	(test cut)		

NT6 - coding system owner/issuer

code specifying the organisation who has created or owns the registers of the present coding or numbering system

Agency name: eBIZ

Decoding table: NT6

File codes list (Generic code): http://www.ebiz.enea.it/moda-ml/repository/codelist/draft/gc_NT6.xml

Code	Description	Adoption note	Date of insertion
CBR	National customs brokers registry		12/06/2023
CL	Customer/buyer		
CO	Quality Controller		
DU	D-U-N-S registry (Data Universal Numbering System)		04/05/2023
EB	eBIZ	replaces 'ML'	18/03/2019
EN	GS1 (ex-EAN International)		
EO	Registro EORI (Economic Operators Registration and Identification number)		04/03/2023
ES	e-Stockflow	DEPRECATED	

FO	Supplier		
GS	GS1		01/07/2013
MF	national taxation authority (i.e. VAT codes registry)		
ML	Moda-ML	DEPRECATED	
PL	Application Platform		13/06/2022
REX	Registered Exporter system (REX)		19/05/2023
SP	Service Provider		
SU	Enterprise Identification Number UID	Only switzerland	04/03/2023

NT60 - language, codes from ISO 639-1 (subset)

Agency name: eBIZ / ISO

Decoding table: NT60

File codes list (Generic code): http://www.ebiz.enea.it/moda-ml/repository/codelist/draft/gc_NT60.xml

Code	Description	Adoption note	Date of insertion
af	Afrikaans		31/01/2019
ar	Arabic		31/01/2019
be	Belarusian		31/01/2019
bg	Bulgarian		31/01/2019
bn	Bengali		31/01/2019
bo	Tibetan		31/01/2019
bs	Bosnian		31/01/2019
ca	Catalan, Valencian		31/01/2019
cs	Czech		31/01/2019
da	Danish		31/01/2019
de	German		31/01/2019
el	Greek, Modern (1453-)		31/01/2019
en	English		31/01/2019
eo	Esperanto		31/01/2019
es	Spanish, Castilian		31/01/2019
et	Estonian		31/01/2019
eu	Basque		31/01/2019
F	Female		15/04/2019
fa	Persian		31/01/2019
fi	Finnish		31/01/2019
fr	French		31/01/2019
ga	Irish		31/01/2019

gd	Gaelic, Scottish Gaelic		31/01/2019
gn	Guarani		31/01/2019
he	Hebrew		31/01/2019
hr	Croatian		31/01/2019
ht	Haitian, Haitian Creole		31/01/2019
hu	Hungarian		31/01/2019
hy	Armenian		31/01/2019
ia	Interlingua (International Auxiliary Language Association)		31/01/2019
id	Indonesian		31/01/2019
is	Icelandic		31/01/2019
it	Italian		31/01/2019
ja	Japanese		31/01/2019
jv	Javanese		31/01/2019
ka	Georgian		31/01/2019
km	Central Khmer		31/01/2019
ko	Korean		31/01/2019
ku	Kurdish		31/01/2019
lb	Luxembourgish, Letzeburgesch		31/01/2019
lo	Lao		31/01/2019
lt	Lithuanian		31/01/2019
lv	Latvian		31/01/2019
mg	Malagasy		31/01/2019
mk	Macedonian		31/01/2019
mn	Mongolian		31/01/2019
mt	Maltese		31/01/2019
nl	Dutch, Flemish		31/01/2019
no	Norwegian		31/01/2019
pl	Polish		31/01/2019
pt	Portuguese		31/01/2019
ro	Romanian, Moldavian, Moldovan		31/01/2019
ru	Russian		31/01/2019
se	Northern Sami		31/01/2019
sk	Slovak		31/01/2019
sl	Slovenian		31/01/2019
sm	Samoan		31/01/2019
so	Somali		31/01/2019
sq	Albanian		31/01/2019
sr	Serbian		31/01/2019

sv	Swedish		31/01/2019
sw	Swahili		31/01/2019
ta	Tamil		31/01/2019
th	Thai		31/01/2019
tr	Turkish		31/01/2019
uk	Ukrainian		31/01/2019
ur	Urdu		31/01/2019
uz	Uzbek		31/01/2019
vi	Vietnamese		31/01/2019
zh	Chinese		31/01/2019

NT7 - unit of measure

specification of the unit of measure, it is a sub set of table Unit of Measure Code - UN/ECE REC 20 delivered by United Nations Economic Commission for Europe (UN/ECE)

Agency name: eBIZ / UN/ECE

Decoding table: NT7

File codes list (Generic code): http://www.ebiz.enea.it/moda-ml/repository/codelist/draft/gc_NT7.xml

Other link: <http://docs.oasis-open.org/ubl/os-UBL-2.1/cl/gc/default/UnitOfMeasureCode-2.1.gc#>

Code	Description	Adoption note	Date of insertion
CMK	square centimetre		20/12/2017
CMQ	cubic centimetre		20/12/2017
CMT	centimetre		
CNE	centiNewton		
CO2TON	ton of CO2		10/09/2014
COUPLES	couples		
DAY	day		22/08/2022
DEGD	decimal degrees		04/07/2022
DEGMS	degrees with minutes and seconds		01/07/2022
DMQ	cubic decimetre		
E37	pixel		11/04/2018
GRM	gram		
HUR	hour		
INH	inch		
KGM	kilogram		
KMT	kilometer		
KWH	kilowatthours		10/09/2014
LBR	pound		

MCG	microgram		23/08/2022
MG	milligram		23/08/2022
MIN	minute		
MMK	square millimetre		20/12/2017
MONTH	month		22/08/2022
MSEC	millisecond (time)		22/08/2022
MTK	square metre		20/12/2017
MTQ	cubic metre		
MTR	metre		
NMB	numero		
ONZ	ounce		
P1	percent		
PPM	parts per milion		
PZ	piece		
RPM	rounds per metre		
SEC	second (time)		22/08/2022
YEAR	year		22/08/2022
YRD	yard		

T10 - ISO3166 - Country

code of the nation

Agency name: ISO

Decoding table: T10

File codes list (Generic code): http://www.ebiz.enea.it/moda-ml/repository/codelist/draft/gc_T10.xml

Table not printed: there are 240 elements, more than the maximum specified for printing: 99.

T12 - fabric faults

code specifying the type or class of fabric fault

Agency name: eBIZ

Decoding table: T12

File codes list (Generic code): http://www.ebiz.enea.it/moda-ml/repository/codelist/draft/gc_T12.xml

Code	Description	Adoption note	Date of insertion
AA	defective weft		
AA1	warpway thick end		
AA2	weftway thick pick		

AA3	thin end/pick		
AA4	warpway thin end		
AA5	weftway thin pick		
AA6	tight end/pick		
AA7	warpway tight end		
AB	weftway tight pick		
AB1	slack end/pick		
AB2	warpway slack end		
AB3	weftway slack pick		
AB4	missing end/pick		
AB5	warpway missing end		
AB6	weftway missing pick		
AC	knots/slubs		
AE	stripes/bars		
AE1	stripes/bars in the warp		
AE2	stripes/bars in the weft		
AG	bowing		
AG1	bowing in the warp		
AG2	bowing in the weft		
AI	skew		
AJ	difference in tension: body-selvedge		
AK	stepped or shuttered appearance		
AL	stick effect		
AM	tears,cuts,holes		
AN	abrasions		
AO	faulty mending		
AP	creases		
AQ	disagreeable odour		
AR1	foreign matter (fibres)		
AR3	stains		
AS	variation in shade: weftway		
AT	variation in shade: warpway		
AU	difference in shade (vs. sample)		
AV	difference in look (vs. sample)		
AW	difference in handle (vs. sample)		
AX	asymmetry of design		
AY	irregularity of checks		
AZ	footprint left by K.D. process		

AZA	out of print register		
-----	-----------------------	--	--

T20 - type of darning operation

element of a work cycle

Agency name: eBIZ

Decoding table: T20

File codes list (Generic code): http://www.ebiz.enea.it/moda-ml/repository/codelist/draft/gc_T20.xml

Code	Description	Adoption note	Date of insertion
301	clamp		
302	fine darn		
303	gross darn		

T21 - type of document

type or class to which the referenced document belongs

Agency name: eBIZ

Decoding table: T21

File codes list (Generic code): http://www.ebiz.enea.it/moda-ml/repository/codelist/draft/gc_T21.xml

Code	Description	Adoption note	Date of insertion
BIL	Bill of lading		07/03/2023
BOR	Blanket order		01/02/2018
CAT	Price catalogue - tech sheet		
CEO	Certificate of origin		13/04/2018
CER	Certificate		13/04/2018
CMR	CMR consignment note		07/03/2023
COC	Colour card		
CRN	Credit note		08/09/2017
CTO	Checking order		01/07/2013
CTR	Contract		
CXF	CxF3 file		01/07/2013
DAD	Darn order		
DDT	Delivery note (transport document)		
DEA	Despatch advise		
DER	Despatch request		
DR	Document Request		02/12/2014

EAD	Export Accompanying Document	adopted by European customs	12/05/2023
ECMR	electronic CMR consignment note		07/03/2023
ECUS	EXPORT Custom Declaration		07/03/2023
FOR	Forecast		02/12/2014
GSO	Garment stock offer		
GSX	Garment stock offer change		
ICUS	IMPORT Custom Declaration		07/03/2023
INV	Invoice		
KCC	Knitting-Clothing Commission Order		02/12/2014
KCI	Garment in Work Inventory Report		02/12/2014
LCA	LCA study		28/08/2022
LCAD	LCA study dataset		28/08/2022
M2M	Made to Measure Production Order		02/12/2014
MAS	Master marker		
MCI	Visual merchandising instruction		13/04/2018
OCH	Order change		
OFF	Offer		
ORD	Purchase order		
ORP	Order response		
OSR	order status request		
OSS	Offer status		02/12/2014
OST	Order status		
OUR	our reference		
PCO	Preferential certificate of origin		07/03/2023
PEF	PEF study		28/08/2022
PEFD	PEF study dataset		28/08/2022
PEFP	PEF environmental profile		07/03/2023
QR	Quality Report		02/12/2014
RAI	Raw Material in Work Inventory Report		02/12/2014
RDC	Raw dyeing commission order		
RDH	Raw dyeing order change		
RDR	Raw dyeing order response		
REA	Receiving advise		
REQ	Request for Offer		
RET	Return		02/12/2014
RSC	Spinning commission order		
RSH	Spinning order change		
RSR	Spinning order response		

SAD	Single Administrative Document	adopted by European customs	12/05/2023
SCL	Process sheet		
SDE	Self-declaration		07/03/2023
SDS	SDS - Safety data sheet		07/03/2023
SLCA	S-LCA Study		07/03/2023
SLCAD	S-LCA Study documentation		07/03/2023
TFC	Textile dyeing-finishing commission order		
TFX	Textile Dyeing-Finishing Order Change		02/12/2014
TPC	Textile printing commission order		
TPX	Textile Printing Order Change		02/12/2014
TWI	Textile in work inventory		
VMI	visual merchandising instructions		01/02/2018
WAC	Warping commission order		
WAYB	Waybill		07/03/2023
WEC	Weaving commission order		
YDC	Yarn dyeing commission order		
YDH	Yarn dyeing order change		
YDR	Yarn dyeing order response		
YTC	Twisting commission order		
YWI	Yarn in work inventory		

T4 - fabric piece inner packing (wrapping) 1

code specifying the type of inner wrapping/packing used for the fabric piece

Agency name: eBIZ

Decoding table: T4

File codes list (Generic code): http://www.ebiz.enea.it/moda-ml/repository/codelist/draft/gc_T4.xml

Code	Description	Adoption note	Date of insertion
A	Folded, whole width		
B	Folded, doubled		
C	Folded, tube products		
D	Spoiled, whole width		
E	Spoiled, doubled, pli: left		
F	Spoiled, doubled, pli: right		
G	Rolled, whole width, single item		
H	Rolled, whole width, several items		
I	Rolled, doubled		

J	Rolled, tube products		
---	-----------------------	--	--

T44 - additional code type

qualifier of the additional coding of a product

Agency name: eBIZ

Decoding table: T44

File codes list (Generic code): http://www.ebiz.enea.it/moda-ml/repository/codelist/draft/gc_T44.xml

Code	Description	Adoption note	Date of insertion
CC	colour card		
CL	sales collection		
CO	company identification code		08/09/2017
DY	dye number		
LT	lot number		
MDI	Made in		08/09/2017
MS	manufacturing state		
PKG	packaging		09/09/2014
PL	product line		
RGB	RGB value		
SE	selvedge code		

T5 - fabric piece inner packing (wrapping) 2

code specifying the sub-type of inner wrapping/packing used for the fabric piece

Agency name: eBIZ

Decoding table: T5

File codes list (Generic code): http://www.ebiz.enea.it/moda-ml/repository/codelist/draft/gc_T5.xml

Code	Description	Adoption note	Date of insertion
A	Open		
B	Folded once, not looped		
C	Folded twice, not looped		
H	Folded once, looped		
I	Folded twice, looped		
J	Without inner object, right side inside		
K	On carton or spooling plank, right side inside		
L	On spool (for pressure sensitive products), right side inside		

M	Without inner object, left side inside		
N	On carton or spooling plank, left side inside		
O	On spool (for pressure sensitive products), left side inside		
P	Without inner object, right side inside (deprecated code)		
Q	On carton, right side inside		
R	On wooden stick, right side inside		
S	Without inner object, left side inside (deprecated code)		
T	On carton, left side inside		
U	On wooden stick, left side inside		

T52 - fabric piece status

code used to describe the status of a fabric piece with reference to the control

Agency name: eBIZ

Decoding table: T52

File codes list (Generic code): http://www.ebiz.enea.it/moda-ml/repository/codelist/draft/gc_T52.xml

Code	Description	Adoption note	Date of insertion
0	first registration		
C	registration from return		
F	stopped		
H	handling		
R	returned		
S	held		
T	deliverable		

T6 - fabric piece outer packing

code specifying the type of outer wrapping or packing used for the fabric piece

Agency name: eBIZ

Decoding table: T6

File codes list (Generic code): http://www.ebiz.enea.it/moda-ml/repository/codelist/draft/gc_T6.xml

Code	Description	Adoption note	Date of insertion
0	Not wrapped		
1	Totally wrapped		
2	Wrapped, one side open		
3	Wrapped, both sides open		

4	Wrapped, one side open, with show corner		
5	Wrapped in cartons		
6	Double wrapped		

T61 - duty or tax or fee type

duty or tax or fee type

Agency name: eBIZ

Decoding table: T61

File codes list (Generic code): http://www.ebiz.enea.it/moda-ml/repository/codelist/draft/gc_T61.xml

Code	Description	Adoption note	Date of insertion
BOL	stamp duty		01/07/2013
CUD	customs duty		01/07/2013
ENV	environmental tax		01/07/2013
FRE	no tax		01/07/2013
OTH	other tax charges		01/07/2013
VAT	value added tax		01/07/2013

T62 - duty or tax or fee category

duty or tax or fee category

Agency name: eBIZ

Decoding table: T62

File codes list (Generic code): http://www.ebiz.enea.it/moda-ml/repository/codelist/draft/gc_T62.xml

Code	Description	Adoption note	Date of insertion
AA	lower than standard rate		01/07/2013
E	tax not applicable		01/07/2013
H	higher than standard rate		01/07/2013
O	outside scope of tax		01/07/2013
S	standard rate		01/07/2013
Z	zero rate goods		01/07/2013

T9 - ISO4217 - Currency

currency code

Agency name: ISO

Decoding table: T9

File codes list (Generic code): http://www.ebiz.enea.it/moda-ml/repository/codelist/draft/gc_T9.xml

Table not printed: there are 205 elements, more than the maximum specified for printing: 99.