



<http://www.ebiz-tcf.eu>

DRAFT

IMPLEMENTATION GUIDE
TRANSACTION "GARMENT STOCK OFFER CHANGE"

Version: draft

Date of release: 26/6/2023

Document code: G030

technical Documentation: <http://www.ebiz.enea.it>

XML Schemas repository: <http://www.ebiz.enea.it/moda-ml/repository/schema/draft/default.asp>

Guides repository: <http://www.ebiz.enea.it/moda-ml/repository/guide/draft/default.asp>

Guide filename: G030-eBIZ-GarmentStockOfferChange.pdf

0. PREMISE

This document contains a proposal for the updating and extension of eBIZ specifications starting from the eBIZ version 2018. Under the name of 'Draft version' it is reported the result of an extensive work of analysis and consultation aimed at developing and maintaining eBIZ specifications.

In particular, the content of this proposal is the result of various activities, mainly those carried out within the framework of the **TRICK project** funded by the European Commission: grant agreement 958352, call H2020-LOW-CARBON-CIRCULAR-INDUSTRIES-2020 / H2020-LCCI-2020-EASME-twostage.

The technical contents are backwards compatible with the latest official published version, with the exclusion of the totally new concepts added explicitly for the version that are thought as incremental evolution of the knowledge base.

1. BUSINESS DESCRIPTION

1.1 Scope

The document Garment Stock OfferChange can be used for the electronic transmission from the Trade organisation or the Garment company of modifications of the stock data already into the e-Stockflow service.

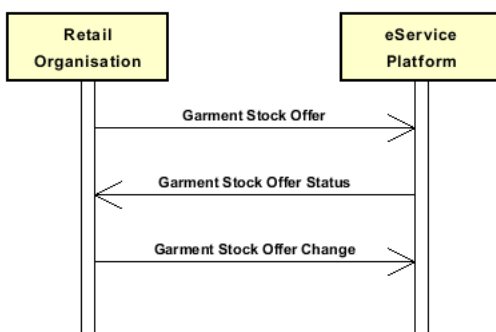
1.2 Generalities

The document is issued by the Trade organisation or the Garment company to modify an offer of garment stock through the e-Stockflow service.

Each document line must refer to one line of a former "Stock Offer", that can be cancelled (attribute "act" = A) or modified (attribute "act" = V); in the latter case the definition and classification of the article, the new assortment color/size as well as the new quantity and/or price should be specified

1.3. Possible scenario

On-line stocks offer



2. IMPLEMENTATION GUIDE

2.1 General structure of XML document

All the business data that can be exchanged through this class of documents are shown in the following "document structure", that provides a simplified vision of the Schema.

In particular:

- the two numbers following each element define its "cardinality" (minimum and maximum number of occurrences); the minimum equal zero indicates that the element is optional, the minimum greater than zero indicates that is mandatory;
- the bold character denotes the complex elements (aggregates of simple elements) that were built for the sake of functionality and re-usability of some complex informations sets. The child elements in each parent element are easily spotted as "indented";
- the symbol "@" denotes an attribute of the preceding element; here "the usage indicator (optional, required, ...)" is shown in square brackets.

Structure

GARStockChange

@msgfunction [Optional] [Default= OR]

@version [Optional] [Default= draft]

@useProfile [Optional]

```
| GSOheader 1-1
| | msgN 1-1
| | msgID 0-1
| | msgDate 1-1
| |   @dateForm [Optional]
| | refDoc 0-9
| |   @docType [Required]
| |   | docID 1-2
| |   |   @numberingOrg [Optional]
| |   | docDate 0-1
| |   |   @dateForm [Optional]
| |   | season 0-1
| |   |   @numberingOrg [Optional]
| |   |   @codeList [Optional]
| |   |   @listName [Optional]
| |   |   @listVersion [Optional]
| |   | itemID 0-1
| |   | attachment 0-1
| |   |   @uid [Optional]
| |   |   | fileName 0-1
| |   |   |   @numberingOrg [Optional]
| |   |   | binaryObject 0-1
| |   |   |   @format [Optional]
| |   |   |   @mime [Optional]
| |   |   |   @encoding [Optional]
| |   |   |   @characterSet [Optional]
| |   |   | externalReference 0-99
| |   |   |   | uri 1-1
| |   |   |   |   @isURL [Optional] [Default= true]
| |   |   |   |   mimeCode 0-1
| |   |   |   |   formatCode 0-1
| |   |   |   |   encodingCode 0-1
| |   |   |   |   characterSetCode 0-1
| |   |   |   | hashFootprint 0-1
| |   |   |   |   @schemeID [Optional]
| |   |   |   |   @hashMethod [Required]
| |   |   |   | blockChainReference 0-9
| |   |   |   |   | uri 1-1
| |   |   |   |   |   @isURL [Optional] [Default= true]
| |   |   |   |   |   transactionReceipt 1-9
| |   | supplier 1-1
| |   |   @logo [Optional]
| |   |   @sender [Optional]
| |   |   | id 1-1
| |   |   |   @numberingOrg [Optional]
```

| additionalIdentifier 0-9
 | @numberingOrg [Optional]
 | @idQualifier [Optional]
 | legalName 0-1
 | dept 0-1
 | subDept 0-1
 | person 0-1
 | @email [Optional]
 | @phone [Optional]
 | @fax [Optional]
 | street 0-1
 | city 0-1
 | subCountry 0-1
 | country 0-1
 | postCode 0-1
 | **geoCoordinates 0-1**
 | @um [Optional] [Default= DEGD]
 | @geoRefSystem [Optional]
 | xGeoCoord 1-1
 | yGeoCoord 1-1
 | zGeoCoord 0-1
buyer 0-1
 @logo [Optional]
 @sender [Optional]
 | id 1-1
 | @numberingOrg [Optional]
 | additionalIdentifier 0-9
 | @numberingOrg [Optional]
 | @idQualifier [Optional]
 | legalName 0-1
 | dept 0-1
 | subDept 0-1
 | person 0-1
 | @email [Optional]
 | @phone [Optional]
 | @fax [Optional]
 | street 0-1
 | city 0-1
 | subCountry 0-1
 | country 0-1
 | postCode 0-1
 | **geoCoordinates 0-1**
 | @um [Optional] [Default= DEGD]
 | @geoRefSystem [Optional]
 | xGeoCoord 1-1
 | yGeoCoord 1-1
 | zGeoCoord 0-1
thirdParty 0-5
 @VAT [Optional]
 @role [Required]
 @sender [Optional]
 | id 1-1
 | @numberingOrg [Optional]
 | legalName 0-1
 | dept 0-1
 | subDept 0-1
 | person 0-1
 | @email [Optional]
 | @phone [Optional]
 | @fax [Optional]
 | street 0-1
 | city 0-1
 | subCountry 0-1
 | country 0-1
 | postCode 0-1
 | **geoCoordinates 0-1**
 | @um [Optional] [Default= DEGD]
 | @geoRefSystem [Optional]

- | | | xGeoCoord 1-1
- | | | yGeoCoord 1-1
- | | | zGeoCoord 0-1
- | note 0-99
- | | @numberingOrg [Optional]
- | | @codeList [Optional]
- | | @noteLabel [Optional]

GSXbody 1-1

GSXitem 1-unbounded

| @act [Required]

| | lineN 1-1

| | | @VAT [Optional]

| | lineID 0-1

| | **refDoc 1-9**

| | | @docType [Required]

| | | | docID 1-2

| | | | | @numberingOrg [Optional]

| | | | docDate 0-1

| | | | @dateForm [Optional]

| | | | season 0-1

| | | | | @numberingOrg [Optional]

| | | | | @codeList [Optional]

| | | | | @listName [Optional]

| | | | | @listVersion [Optional]

| | | itemID 0-1

| | | **attachment 0-1**

| | | | @uid [Optional]

| | | | | fileName 0-1

| | | | | | @numberingOrg [Optional]

| | | | | binaryObject 0-1

| | | | | | @format [Optional]

| | | | | | @mime [Optional]

| | | | | | @encoding [Optional]

| | | | | | @characterSet [Optional]

| | | | **externalReference 0-99**

| | | | | uri 1-1

| | | | | | @isURL [Optional] [Default= true]

| | | | | mimeCode 0-1

| | | | | formatCode 0-1

| | | | | encodingCode 0-1

| | | | | characterSetCode 0-1

| | | | hashFootprint 0-1

| | | | | @schemeID [Optional]

| | | | | @hashMethod [Required]

| | | | **blockChainReference 0-9**

| | | | | uri 1-1

| | | | | | @isURL [Optional] [Default= true]

| | | | | transactionReceipt 1-9

| | **garmentCategory 0-1**

| | | @numberingOrg [Optional]

| | | | artGroup 0-1

| | | | | @numberingOrg [Optional]

| | | | | @codeList [Optional]

| | | | | @listName [Optional]

| | | | | @listVersion [Optional]

| | | | artSubGroup 0-1

| | | | | @numberingOrg [Optional]

| | | | | @codeList [Optional]

| | | | | @listName [Optional]

| | | | | @listVersion [Optional]

| | | | artSex 0-1

| | | | | @numberingOrg [Optional]

| | | | | @codeList [Optional]

| | | | | @listName [Optional]

| | | | | @listVersion [Optional]

| | | | season 0-1

| | | | | @numberingOrg [Optional]

```

| | | | @codeList [Optional]
| | | | @listName [Optional]
| | | | @listVersion [Optional]
| | | | goodsClassification 0-9
| | | | | macroClass 0-1
| | | | | | @numberingOrg [Optional]
| | | | | | @codeList [Optional]
| | | | | | @listName [Optional]
| | | | | | @listVersion [Optional]
| | | | | class 0-1
| | | | | | @numberingOrg [Optional]
| | | | | | @codeList [Optional]
| | | | | | @listName [Optional]
| | | | | | @listVersion [Optional]
| | | | | subclass 0-1
| | | | | | @numberingOrg [Optional]
| | | | | | @codeList [Optional]
| | | | | | @listName [Optional]
| | | | | | @listVersion [Optional]
| | | | | note 0-99
| | | | | | @numberingOrg [Optional]
| | | | | | @codeList [Optional]
| | | | | | @noteLabel [Optional]
| | | | tradeMark 0-1
| | | | commerceText 0-unbounded
| | | | | @ln [Optional]
| | | | garmentCode 0-1
| | | | | @numberingOrg [Optional]
| | | | - choose -
| | | | garmentCodeB 1-1
| | | | | @numberingOrg [Optional]
| | | | | | mod 1-1
| | | | | | | @numberingOrg [Optional]
| | | | | | | @codeList [Optional]
| | | | | | | @listName [Optional]
| | | | | | | @listVersion [Optional]
| | | | | | fabric 0-1
| | | | | | | @numberingOrg [Optional]
| | | | | | | @codeList [Optional]
| | | | | | | @listName [Optional]
| | | | | | | @listVersion [Optional]
| | | | | | color 0-1
| | | | | | | @numberingOrg [Optional]
| | | | | | | @codeList [Optional]
| | | | | | | @listName [Optional]
| | | | | | | @listVersion [Optional]
| | | | | garmentVariant 0-9
| | | | | | variantType 1-1
| | | | | | | @numberingOrg [Optional]
| | | | | | | @codeList [Optional]
| | | | | | | @listName [Optional]
| | | | | | | @listVersion [Optional]
| | | | | | variantCode 1-1
| | | | | | | @numberingOrg [Optional]
| | | | | | | @codeList [Optional]
| | | | | | | @listName [Optional]
| | | | | | | @listVersion [Optional]
| | | | | drop 0-1
| | | | | | @numberingOrg [Optional]
| | | | | | @codeList [Optional]
| | | | | | @listName [Optional]
| | | | | | @listVersion [Optional]
| | | | | size 0-1
| | | | | | @numberingOrg [Optional]
| | | | | | @codeList [Optional]
| | | | | | @listName [Optional]
| | | | | | @listVersion [Optional]
| | | | | artGroup 0-1

```

```

| | | | @numberingOrg [Optional]
| | | | @codeList [Optional]
| | | | @listName [Optional]
| | | | @listVersion [Optional]
| | | | added 0-9
| | | | @numberingOrg [Optional]
| | | | @addType [Optional]
| | | | description 0-unbounded
| | | | @ln [Optional]
| | | - or -
| | | | garmentCodeA 1-1
| | | | art 1-1
| | | | @numberingOrg [Optional]
| | | | @codeList [Optional]
| | | | @listName [Optional]
| | | | @listVersion [Optional]
| | | | description 0-unbounded
| | | | @ln [Optional]
| | | - end choose -
| | | qty 0-1
| | | @um [Required]
| | | readyToSendDate 0-1
| | | @dateForm [Optional]
| | | price 0-1
| | | @um [Optional]
| | | @priceQualifier [Optional] [Default= NET]
| | | @currency [Optional]
| | | csRange 0-99
| | | @numberingOrg [Optional]
| | | @sizeSystemNat [Optional]
| | | @sizeSystemSeg [Optional]
| | | @sizeSystemBase [Optional]
| | | @sizeSystemID [Optional]
| | | color 0-1
| | | @numberingOrg [Optional]
| | | @codeList [Optional]
| | | @listName [Optional]
| | | @listVersion [Optional]
| | | garmentVariant 0-9
| | | variantType 1-1
| | | @numberingOrg [Optional]
| | | @codeList [Optional]
| | | @listName [Optional]
| | | @listVersion [Optional]
| | | variantCode 1-1
| | | @numberingOrg [Optional]
| | | @codeList [Optional]
| | | @listName [Optional]
| | | @listVersion [Optional]
| | | drop 0-1
| | | @numberingOrg [Optional]
| | | @codeList [Optional]
| | | @listName [Optional]
| | | @listVersion [Optional]
| | | sizeMatrix 1-1
| | | sizeRow 1-99
| | | additionalComponentCode 0-9
| | | @numberingOrg [Optional]
| | | @codeList [Optional]
| | | @listName [Optional]
| | | @listVersion [Optional]
| | | drop 0-1
| | | @numberingOrg [Optional]
| | | @codeList [Optional]
| | | @listName [Optional]
| | | @listVersion [Optional]
| | | size 1-1
| | | @numberingOrg [Optional]

```

```

| | | | | @codeList [Optional]
| | | | | @listName [Optional]
| | | | | @listVersion [Optional]
| | | | | qty 0-1
| | | | | @um [Required]
| | | | | itemsList 0-1
| | | | | | qualityLevel 0-1
| | | | | | @numberingOrg [Optional]
| | | | | | @codeList [Optional]
| | | | | | @listName [Optional]
| | | | | | @listVersion [Optional]
| | | | | | itemIdentification 1-unbounded
| | | | | | | serialN 1-9
| | | | | | | @numberingOrg [Optional]
| | | | | | | @idQualifier [Optional]
| | | | | stockAddress 0-1
| | | | | | @numberingOrg [Optional]
| | | | | | | city 1-1
| | | | | | | subCountry 1-1
| | | | | | | country 1-1
| | | | | | dtScheme 0-1
| | | | | | | @taxType [Required]
| | | | | | | taxCategory 0-1
| | | | | | | taxRate 0-1
| | | | | | | legalRef 0-1
| | | | | | | @numberingOrg [Optional]
| | | | | | | @codeList [Optional]
| | | | | | | @listName [Optional]
| | | | | | | @listVersion [Optional]
| | | | | | | note 0-99
| | | | | | | @numberingOrg [Optional]
| | | | | | | @codeList [Optional]
| | | | | | | @noteLabel [Optional]
| | | | | note 0-99
| | | | | | @numberingOrg [Optional]
| | | | | | @codeList [Optional]
| | | | | | @noteLabel [Optional]

```


2.2 Detailed description of document elements

Following tables show all elements (complex and simple) used in this document. Description includes: 1) element's information: xml tag, name, brief description, data type and syntax constraints; 2) information about use of the element in a particular position in the document: xpath and possible associated notes.

2.2.1 Complex elements (Aggregate Business Information Entities)

Complex elements are those elements whose content is composed of other elements (childs). Complex elements are alphabetically ordered.

| | |
|----------------------------|---|
| attachment | an attached document. An attachment can refer to an external document or be included with the document being exchanged (XPath GARStockChange/GSOheader/refDoc/attachment) 0-1 (XPath GARStockChange/GSXbody/GSXitem/refDoc/attachment) 0-1 |
| blockChainReference | blockchain reference - base type: string, max length: 80, (XPath GARStockChange/GSOheader/refDoc/attachment/blockChainReference) 0-9 (XPath GARStockChange/GSXbody/GSXitem/refDoc/attachment/blockChainReference) 0-9 |
| buyer | details of the Buyer (party that buys the good or service that is object of the current collaborative process) - base type: Nad, (XPath GARStockChange/GSOheader/buyer) 0-1 |
| csRange | range of color-size for a fashion article (XPath GARStockChange/GSXbody/GSXitem/csRange) 0-99 |
| dtScheme | set of data usable to declare the duty or tax applied (XPath GARStockChange/GSXbody/GSXitem/dtScheme) 0-1 - note: <i>recommended alternative to the attribute @VAT</i> |
| externalReference | details about an external object, such as a document stored at a remote location (XPath GARStockChange/GSXbody/GSXitem/refDoc/attachment/externalReference) 0-99 (XPath GARStockChange/GSOheader/refDoc/attachment/externalReference) 0-99 |
| garmentCategory | classification of a garment article (XPath GARStockChange/GSXbody/GSXitem/garmentCategory) 0-1 |
| garmentCode | codification of the garment product (XPath GARStockChange/GSXbody/GSXitem/garmentCode) 0-1 |
| garmentCodeA | codification of the garment product- type A (XPath GARStockChange/GSXbody/GSXitem/garmentCode/garmentCodeA) 1-1 - note: <i>here the barcode EAN-13 or EAN-8 should be specified</i> |
| garmentCodeB | codification of the garment product - type B (XPath GARStockChange/GSXbody/GSXitem/garmentCode/garmentCodeB) 1-1 |
| garmentVariant | garment product variant (XPath GARStockChange/GSXbody/GSXitem/garmentCode/garmentCodeB/garmentVariant) 0-9 (XPath GARStockChange/GSXbody/GSXitem/csRange/garmentVariant) 0-9 - note: <i>used only if not already specified in the article code</i> |
| geoCoordinates | geographical coordinates (XPath GARStockChange/GSOheader/thirdParty/geoCoordinates) 0-1 (XPath GARStockChange/GSOheader/supplier/geoCoordinates) 0-1 (XPath GARStockChange/GSOheader/buyer/geoCoordinates) 0-1 |
| goodsClassification | goods classification of the item. (XPath GARStockChange/GSXbody/GSXitem/garmentCategory/goodsClassification) 0-9 |
| GSOheader | Header of a document for on-line FASHION STOCK management (XPath GARStockChange/GSOheader) 1-1 |
| GSXbody | body of the document GARMENT STOCK OFFER CHANGE (XPath GARStockChange/GSXbody) 1-1 |

| | |
|---------------------------|--|
| GSXitem | line item of the document GARMENT STOCK OFFER CHANGE (XPath GARStockChange/GSXbody/GSXitem) 1-unbounded |
| itemIdentification | serial identification of a product unit (XPath GARStockChange/GSXbody/GSXitem/csRange/sizeMatrix/sizeRow/itemsList/itemIdentification) 1-unbounded - note: <i>identification of the single product unit contained in the list</i> |
| itemsList | list of the single product units (XPath GARStockChange/GSXbody/GSXitem/csRange/sizeMatrix/sizeRow/itemsList) 0-1 - note: <i>the usage in this position is alternative to its usage within the document line element</i> |
| refDoc | identification of a document and of an item thereof, to which the message makes reference (XPath GARStockChange/GSOheader/refDoc) 0-9 (XPath GARStockChange/GSXbody/GSXitem/refDoc) 1-9 - note: <i>must be used to link the document line to the line of the Stock Offer that is being modified</i> |
| sizeMatrix | size matrix of an apparel product (XPath GARStockChange/GSXbody/GSXitem/csRange/sizeMatrix) 1-1 |
| sizeRow | size matrix row of an apparel product (XPath GARStockChange/GSXbody/GSXitem/csRange/sizeMatrix/sizeRow) 1-99 |
| stockAddress | physical location of a stock (XPath GARStockChange/GSXbody/GSXitem/stockAddress) 0-1 |
| supplier | details of the Supplier (party that supplies the good or service that is object of the current collaborative process) - base type: Nad, (XPath GARStockChange/GSOheader/supplier) 1-1 |
| thirdParty | identification and details of the Third Party, different from Sender and Receiver of the document - base type: Nad, (XPath GARStockChange/GSOheader/thirdParty) 0-5 - note: <i>might be the ePlatform manager</i> |

2.2.2 Simple elements (Basic Business Information Entities)

Simple elements are those elements whose content is characterized by a data type plus a domain of possible values. Simple elements are alphabetically ordered.

| | |
|--------------------------------|--|
| @act | status that the current line assigns to the line addressed in the reference document; if it is already canceled it maintains the status. - base type: string, cod. table: NT5 http://www.ebiz.enea.it/moda-ml/repository/codelist/draft/gc_NT5.xml (XPath GARStockChange/GSXbody/GSXitem/@act) [Required] |
| added | additional code of the product (complementing the formers) - base type: string, max length: 80, (XPath GARStockChange/GSXbody/GSXitem/garmentCode/garmentCodeB/added) 0-9 |
| additionalComponentCode | an additional code to identify a fashion product or a part of it (it is a way to codify the item, but it is not one of the codes to identify it). It is not a serial identifier. - base type: string, (XPath GARStockChange/GSXbody/GSXitem/csRange/sizeMatrix/sizeRow/additionalComponentCode) 0-9 |
| additionalIdentifier | additional identification code of a Party, for example customs registries or others - base type: string, max length: 15, (XPath GARStockChange/GSOheader/buyer/additionalIdentifier) 0-9 - note: <i>identifiers for example for exports, such as MID (Manufacturer Identification Code), REX (identificatier in Registered Exporter system)</i> (XPath GARStockChange/GSOheader/supplier/additionalIdentifier) 0-9 |

| | |
|------------------|---|
| | - note: identifiers for example for exports, such as MID (Manufacturer Identification Code), REX (identifier in EU Registered Exporter system) |
| @addType | qualifier of the additional coding of a product - base type: string, cod. table: T44 http://www.ebiz.enea.it/moda-ml/repository/codelist/draft/gc_T44.xml (XPath GARStockChange/GSXbody/GSXitem/garmentCode/garmentCodeB/added/@addType) [Optional] - nota: addType allows the clarification of the meaning of the added element content; it is strongly suggested to use it always. |
| art | article number of the product - base type: string, max length: 80, (XPath GARStockChange/GSXbody/GSXitem/garmentCode/garmentCodeA/art) 1-1 |
| artGroup | code identifying a class of products - base type: string, max length: 40, (XPath GARStockChange/GSXbody/GSXitem/garmentCode/garmentCodeB/artGroup) 0-1 (XPath GARStockChange/GSXbody/GSXitem/garmentCategory/artGroup) 0-1 |
| artSex | code identifying the sex for which a fashion product is intended - base type: string, max length: 15, (XPath GARStockChange/GSXbody/GSXitem/garmentCategory/artSex) 0-1 |
| artSubGroup | code identifying a sub-class of products - base type: string, max length: 40, (XPath GARStockChange/GSXbody/GSXitem/garmentCategory/artSubGroup) 0-1 |
| binaryObject | a binary large object containing an attached document, Coding 'base64Binary' is recommended. - base type: base64Binary, (XPath GARStockChange/GSOheader/refDoc/attachment/binaryObject) 0-1 (XPath GARStockChange/GSXbody/GSXitem/refDoc/attachment/binaryObject) 0-1 |
| @characterSet | the character set of the binary object (examples UTF-8, UTF-16, Windows-1252, ISO-8859-7,..) - base type: normalizedString, (XPath GARStockChange/GSXbody/GSXitem/refDoc/attachment/binaryObject/@characterSet) [Optional] (XPath GARStockChange/GSOheader/refDoc/attachment/binaryObject/@characterSet) [Optional] |
| characterSetCode | the character set of an external document (examples UTF-8, UTF-16, Windows-1252, ISO-8859-7,..) - base type: normalizedString, (XPath GARStockChange/GSOheader/refDoc/attachment/externalReference/characterSetCode) 0-1 (XPath GARStockChange/GSXbody/GSXitem/refDoc/attachment/externalReference/characterSetCode) 0-1 |
| city | name of the city (town, village) - base type: string, max length: 40, (XPath GARStockChange/GSOheader/buyer/city) 0-1 (XPath GARStockChange/GSOheader/supplier/city) 0-1 (XPath GARStockChange/GSOheader/thirdParty/city) 0-1 (XPath GARStockChange/GSXbody/GSXitem/stockAddress/city) 1-1 |
| class | a code indicating the category (macro-class, class or sub-class) of a commodity classification system the article belongs to. - base type: string, (XPath GARStockChange/GSXbody/GSXitem/garmentCategory/goodsClassification/class) 0-1 |
| @codeList | it specifies the URL where the list of codes used to make an instance of the element can be found - base type: string, max length: 255, (XPath GARStockChange/GSXbody/GSXitem/garmentCategory/season/@codeList) [Optional] - nota: this attribute should be used either single or coupled with "listName" and "listVersion" |

| | |
|--|--|
| | <p>(XPath GARStockChange/GSXbody/GSXitem/garmentCategory/note/@codeList) [Optional]</p> <p>- nota: <i>must be used to provide (URL) the list of codes used in "noteLabel"</i></p> <p>(XPath GARStockChange/GSXbody/GSXitem/csRange/sizeMatrix/sizeRow/drop/@codeList) [Optional]</p> <p>(XPath GARStockChange/GSXbody/GSXitem/garmentCode/garmentCodeB/garmentVariant/variantType/@codeList) [Optional]</p> <p>- nota: <i>always at least one out of this attribute and "numberingOrg" should be set</i></p> <p>(XPath GARStockChange/GSXbody/GSXitem/csRange/sizeMatrix/sizeRow/itemsList/qualityLevel/@codeList) [Optional]</p> <p>- nota: <i>at least one out of this attribute and "numberingOrg" should be set</i></p> <p>(XPath GARStockChange/GSXbody/GSXitem/csRange/color/@codeList) [Optional]</p> <p>- nota: <i>this attribute should be used either single or coupled with "listName" and "listVersion"</i></p> <p>(XPath GARStockChange/GSXbody/GSXitem/garmentCode/garmentCodeB/mod/@codeList) [Optional]</p> <p>- nota: <i>at least one out of this attribute and "numberingOrg" should be set</i></p> <p>(XPath GARStockChange/GSXbody/GSXitem/garmentCode/garmentCodeA/art/@codeList) [Optional]</p> <p>- nota: <i>at least one out of this attribute and "numberingOrg" should be set</i></p> <p>(XPath GARStockChange/GSXbody/GSXitem/garmentCategory/artSex/@codeList) [Optional]</p> <p>- nota: <i>at least one out of this attribute and "numberingOrg" should be set</i></p> <p>(XPath GARStockChange/GSXbody/GSXitem/garmentCode/garmentCodeB/artGroup/@codeList) [Optional]</p> <p>- nota: <i>at least one out of this attribute and "numberingOrg" should be set</i></p> <p>(XPath GARStockChange/GSXheader/refDoc/season/@codeList) [Optional]</p> <p>- nota: <i>this attribute should be used either single or coupled with "listName" and "listVersion"</i></p> <p>(XPath GARStockChange/GSXbody/GSXitem/csRange/sizeMatrix/sizeRow/size/@codeList) [Optional]</p> <p>(XPath GARStockChange/GSXbody/GSXitem/dtScheme/legalRef/@codeList) [Optional]</p> <p>(XPath GARStockChange/GSXbody/GSXitem/garmentCategory/artSubGroup/@codeList) [Optional]</p> <p>- nota: <i>at least one out of this attribute and "numberingOrg" should be set</i></p> <p>(XPath GARStockChange/GSXbody/GSXitem/garmentCode/garmentCodeB/size/@codeList) [Optional]</p> <p>(XPath GARStockChange/GSXheader/note/@codeList) [Optional]</p> <p>- nota: <i>must be used to provide (URL) the list of codes used in "noteLabel"</i></p> <p>(XPath GARStockChange/GSXbody/GSXitem/garmentCode/garmentCodeB/drop/@codeList) [Optional]</p> <p>(XPath GARStockChange/GSXbody/GSXitem/garmentCategory/artGroup/@codeList) [Optional]</p> <p>- nota: <i>at least one out of this attribute and "numberingOrg" should be set</i></p> <p>(XPath GARStockChange/GSXbody/GSXitem/csRange/garmentVariant/variantCode/@codeList) [Optional]</p> <p>- nota: <i>at least one out of this attribute and "numberingOrg" should be set</i></p> <p>(XPath GARStockChange/GSXbody/GSXitem/garmentCategory/goodsClassification/macroClass/@codeList) [Optional]</p> <p>- nota: <i>at least one out of this attribute and "numberingOrg" should be set</i></p> <p>(XPath GARStockChange/GSXbody/GSXitem/csRange/sizeMatrix/sizeRow/additionalComponentCode/@codeList) [Optional]</p> <p>- nota: <i>at least one out of this attribute and "numberingOrg" should be set</i></p> <p>(XPath GARStockChange/GSXbody/GSXitem/garmentCode/garmentCodeB/color/@codeList) [Optional]</p> <p>- nota: <i>this attribute should be used either single or coupled with "listName" and "listVersion"</i></p> <p>(XPath GARStockChange/GSXbody/GSXitem/csRange/drop/@codeList) [Optional]</p> <p>(XPath GARStockChange/GSXbody/GSXitem/garmentCategory/goodsClassification/subClass/@codeList) [Optional]</p> <p>- nota: <i>at least one out of this attribute and "numberingOrg" should be set</i></p> <p>(XPath GARStockChange/GSXbody/GSXitem/refDoc/season/@codeList) [Optional]</p> <p>- nota: <i>this attribute should be used either single or coupled with "listName" and "listVersion"</i></p> <p>(XPath GARStockChange/GSXbody/GSXitem/garmentCode/garmentCodeB/garmentVariant/variantCode/@codeList) [Optional]</p> <p>- nota: <i>at least one out of this attribute and "numberingOrg" should be set</i></p> <p>(XPath GARStockChange/GSXbody/GSXitem/dtScheme/note/@codeList) [Optional]</p> <p>- nota: <i>must be used to provide (URL) the list of codes used in "noteLabel"</i></p> <p>(XPath GARStockChange/GSXbody/GSXitem/note/@codeList) [Optional]</p> |
|--|--|

| | |
|--------------|---|
| | <p>- nota: <i>must be used to provide (URL) the list of codes used in "noteLabel"</i> (XPath GARStockChange/GSXbody/GSXitem/csRange/garmentVariant/variantType/@codeList) [Optional]</p> <p>- nota: <i>always at least one out of this attribute and "numberingOrg" should be set</i> (XPath GARStockChange/GSXbody/GSXitem/garmentCategory/goodsClassification/class/@codeList) [Optional]</p> <p>- nota: <i>at least one out of this attribute and "numberingOrg" should be set</i> (XPath GARStockChange/GSXbody/GSXitem/garmentCode/garmentCodeB/fabric/@codeList) [Optional]</p> <p>- nota: <i>at least one out of this attribute and "numberingOrg" should be set</i></p> |
| color | <p>colour number of the product, when not included in the model or fabric code</p> <p>- base type: string, max length: 15, (XPath GARStockChange/GSXbody/GSXitem/garmentCode/garmentCodeB/color) 0-1 (XPath GARStockChange/GSXbody/GSXitem/csRange/color) 0-1</p> <p>- note: <i>used only if not already specified in the article code</i></p> |
| commerceText | <p>text usable for the full commercial description of a product</p> <p>- base type: string, max length: 400, (XPath GARStockChange/GSXbody/GSXitem/commerceText) 0-unbounded</p> <p>- note: <i>Only one instance of this element for each different value of 'ln' attribute (language)</i></p> |
| country | <p>code of the nation</p> <p>- base type: string, cod. table: T10 http://www.ebiz.enea.it/moda-ml/repository/codelist/draft/gc_T10.xml (XPath GARStockChange/GSXbody/GSXitem/stockAddress/country) 1-1 (XPath GARStockChange/GSOheader/thirdParty/country) 0-1 (XPath GARStockChange/GSOheader/supplier/country) 0-1 (XPath GARStockChange/GSOheader/buyer/country) 0-1</p> |
| @currency | <p>currency in which a specified monetary data is expressed</p> <p>- base type: string, cod. table: T9 http://www.ebiz.enea.it/moda-ml/repository/codelist/draft/gc_T9.xml (XPath GARStockChange/GSXbody/GSXitem/price/@currency) [Optional]</p> <p>- nota: <i>Currency referred by the price.</i></p> |
| @dateForm | <p>format used for the date</p> <p>- base type: string, cod. table: NT29 http://www.ebiz.enea.it/moda-ml/repository/codelist/draft/gc_NT29.xml (XPath GARStockChange/GSOheader/refDoc/docDate/@dateForm) [Optional] (XPath GARStockChange/GSOheader/msgDate/@dateForm) [Optional] (XPath GARStockChange/GSXbody/GSXitem/readyToSendDate/@dateForm) [Optional] (XPath GARStockChange/GSXbody/GSXitem/refDoc/docDate/@dateForm) [Optional]</p> |
| dept | <p>name or code of a department</p> <p>- base type: string, max length: 40, (XPath GARStockChange/GSOheader/buyer/dept) 0-1 (XPath GARStockChange/GSOheader/thirdParty/dept) 0-1 (XPath GARStockChange/GSOheader/supplier/dept) 0-1</p> |
| description | <p>free text description. The content of the element must be unique, it might be translated and repeated into more languages (thus no more than one instance for each language).</p> <p>- base type: string, max length: 250, (XPath GARStockChange/GSXbody/GSXitem/garmentCode/garmentCodeB/description) 0-unbounded</p> <p>- note: <i>Product description</i> (XPath GARStockChange/GSXbody/GSXitem/garmentCode/garmentCodeA/description) 0-unbounded</p> <p>- note: <i>Product description</i></p> |
| docDate | <p>date of issue of the referenced document, according to one of the patterns YYYY-MM-DD, YYYY-MM-DD:HH-MM or YYYY-WW.</p> <p>- base type: string, (XPath GARStockChange/GSOheader/refDoc/docDate) 0-1 (XPath GARStockChange/GSXbody/GSXitem/refDoc/docDate) 0-1</p> |
| docID | <p>identification number of the referenced document</p> <p>- base type: string, max length: 80, (XPath GARStockChange/GSXbody/GSXitem/refDoc/docID) 1-2 Best Practice</p> |

| | |
|---------------|--|
| | (XPath GARStockChange/GSOheader/refDoc/docID) 1-2 Best Practice |
| @docType | <p>type or class to which the referenced document belongs</p> <ul style="list-style-type: none"> - base type: string, cod. table: T21 <p>http://www.ebiz.enea.it/moda-ml/repository/codelist/draft/gc_T21.xml</p> <p>(XPath GARStockChange/GSOheader/refDoc/@docType) [Required] (XPath GARStockChange/GSXbody/GSXitem/refDoc/@docType) [Required]</p> |
| drop | <p>drop number of the garment</p> <ul style="list-style-type: none"> - base type: string, max length: 15, <p>(XPath GARStockChange/GSXbody/GSXitem/garmentCode/garmentCodeB/drop) 0-1</p> <p>- note: <i>Fill this element if the drop is the same for all the sizes of the model. Otherway specify it within the csRange element</i></p> <p>(XPath GARStockChange/GSXbody/GSXitem/csRange/drop) 0-1</p> <p>- note: <i>used only if not already specified in the article code</i></p> <p>(XPath GARStockChange/GSXbody/GSXitem/csRange/sizeMatrix/sizeRow/drop) 0-1</p> <p>- note: <i>DEPRECATED, anyhow it is used only if not already specified in the article code or csRange</i></p> |
| @email | <p>electronic mail address of the contact person within a Party</p> <ul style="list-style-type: none"> - base type: string, max length: 250, <p>(XPath GARStockChange/GSOheader/buyer/person/@email) [Optional] (XPath GARStockChange/GSOheader/supplier/person/@email) [Optional] (XPath GARStockChange/GSOheader/thirdParty/person/@email) [Optional]</p> |
| @encoding | <p>specifies the decoding algorithm of the binary object</p> <ul style="list-style-type: none"> - base type: normalizedString, <p>(XPath GARStockChange/GSOheader/refDoc/attachment/binaryObject/@encoding) [Optional] (XPath GARStockChange/GSXbody/GSXitem/refDoc/attachment/binaryObject/@encoding) [Optional]</p> |
| encodingCode | <p>the encoding/decoding algorithm used with the external object (example is 'base64Binary')</p> <ul style="list-style-type: none"> - base type: normalizedString, <p>(XPath GARStockChange/GSXbody/GSXitem/refDoc/attachment/externalReference/encodingCode) 0-1 (XPath GARStockChange/GSOheader/refDoc/attachment/externalReference/encodingCode) 0-1</p> |
| fabric | <p>fabric number of the garment</p> <ul style="list-style-type: none"> - base type: string, max length: 15, <p>(XPath GARStockChange/GSXbody/GSXitem/garmentCode/garmentCodeB/fabric) 0-1</p> |
| @fax | <p>fax number of the contact person within a Party</p> <ul style="list-style-type: none"> - base type: string, max length: 35, <p>(XPath GARStockChange/GSOheader/buyer/person/@fax) [Optional] (XPath GARStockChange/GSOheader/supplier/person/@fax) [Optional] (XPath GARStockChange/GSOheader/thirdParty/person/@fax) [Optional]</p> |
| fileName | <p>unique identifier (name) of the file</p> <ul style="list-style-type: none"> - base type: string, max length: 255, <p>(XPath GARStockChange/GSOheader/refDoc/attachment/fileName) 0-1 (XPath GARStockChange/GSXbody/GSXitem/refDoc/attachment/fileName) 0-1</p> |
| @format | <p>the format of the binary content (examples xml, pdf, doc,...)</p> <ul style="list-style-type: none"> - base type: string, <p>(XPath GARStockChange/GSXbody/GSXitem/refDoc/attachment/binaryObject/@format) [Optional] (XPath GARStockChange/GSOheader/refDoc/attachment/binaryObject/@format) [Optional]</p> |
| formatCode | <p>the format of the external object (examples xml, pdf, doc,...)</p> <ul style="list-style-type: none"> - base type: normalizedString, <p>(XPath GARStockChange/GSXbody/GSXitem/refDoc/attachment/externalReference/formatCode) 0-1 (XPath GARStockChange/GSOheader/refDoc/attachment/externalReference/formatCode) 0-1</p> |
| @geoRefSystem | <p>georeference system adopted for the coordinate (in example wgs84 with decimal degr</p> |

| | |
|---------------|---|
| | <p>ee o degree with minute and seconds)</p> <p>- base type: string, (XPath GARStockChange/GSOheader/supplier/geoCoordinates/@geoRefSystem) [Optional] (XPath GARStockChange/GSOheader/buyer/geoCoordinates/@geoRefSystem) [Optional] (XPath GARStockChange/GSOheader/thirdParty/geoCoordinates/@geoRefSystem) [Optional]</p> |
| hashFootprint | <p>footprint obtained by applying an hashing algorithym</p> <p>- base type: string, max length: 80, (XPath GARStockChange/GSOheader/refDoc/attachment/hashFootprint) 0-1 (XPath GARStockChange/GSXbody/GSXitem/refDoc/attachment/hashFootprint) 0-1</p> |
| @hashMethod | <p>type of used hashing algorithym</p> <p>- base type: string, max length: 80, cod. table: NT333 http://www.ebiz.enea.it/moda-ml/repository/codelist/draft/gc_NT333.xml (XPath GARStockChange/GSXbody/GSXitem/refDoc/attachment/hashFootprint/@hashMethod) [Required] (XPath GARStockChange/GSOheader/refDoc/attachment/hashFootprint/@hashMethod) [Required]</p> |
| id | <p>primary identification code of a Party; it is recommended to use an EORI number (with @numberingOrg= "EO") or the format: nation code (ISO 3166) + national tax code (i.e. VAT identification number) with @numberingOrg= "MF"</p> <p>- base type: string, max length: 15, (XPath GARStockChange/GSOheader/supplier/id) 1-1 (XPath GARStockChange/GSOheader/buyer/id) 1-1 (XPath GARStockChange/GSOheader/thirdParty/id) 1-1</p> |
| @idQualifier | <p>Qualification of the identifier.</p> <p>- base type: string, (XPath GARStockChange/GSOheader/supplier/additionalIdentifier/@idQualifier) [Optional]</p> <p>- nota: <i>this attribute should be used when the numberingOrg attribute is not enough to declare the type of identifier</i> (XPath GARStockChange/GSOheader/buyer/additionalIdentifier/@idQualifier) [Optional]</p> <p>- nota: <i>this attribute should be used when the numberingOrg attribute is not enough to declare the type of identifier</i> (XPath GARStockChange/GSXbody/GSXitem/csRange/sizeMatrix/sizeRow/itemsList/itemIdentification/serialN/@idQualifier) [Optional]</p> <p>- nota: <i>this attribute should be used when the numberingOrg attribute is not enough to declare the type of serial identifier</i></p> |
| @isURL | <p>it indicates if the referred element is an URL (true) or not (false)</p> <p>- base type: boolean, (XPath GARStockChange/GSXbody/GSXitem/refDoc/attachment/blockChainReference/uri/@isURL) [Optional] [Default= true]</p> <p>- nota: <i>usage of URLs is recommended</i> (XPath GARStockChange/GSXbody/GSXitem/refDoc/attachment/externalReference/uri/@isURL) [Optional] [Default= true]</p> <p>- nota: <i>usage of URLs is recommended</i> (XPath GARStockChange/GSOheader/refDoc/attachment/blockChainReference/uri/@isURL) [Optional] [Default= true]</p> <p>- nota: <i>usage of URLs is recommended</i> (XPath GARStockChange/GSOheader/refDoc/attachment/externalReference/uri/@isURL) [Optional] [Default= true]</p> <p>- nota: <i>usage of URLs is recommended</i></p> |
| itemID | <p>number of the line/item of the referenced document</p> <p>- base type: string, max length: 40, (XPath GARStockChange/GSOheader/refDoc/itemID) 0-1 (XPath GARStockChange/GSXbody/GSXitem/refDoc/itemID) 0-1</p> |
| legalName | <p>legal name</p> <p>- base type: string, max length: 250, (XPath GARStockChange/GSOheader/supplier/legalName) 0-1 (XPath GARStockChange/GSOheader/buyer/legalName) 0-1 (XPath GARStockChange/GSOheader/thirdParty/legalName) 0-1</p> |
| legalRef | <p>legal reference of the duty or tax or fee category</p> <p>- base type: string,</p> |

| | |
|-----------|--|
| | (XPath GARStockChange/GSXbody/GSXitem/dtScheme/legalRef) 0-1 |
| lineID | <p>unique identifier of the line item of the business document; it is set by the role that produces the document.</p> <p>- base type: string, max length: 30, (XPath GARStockChange/GSXbody/GSXitem/lineID) 0-1</p> |
| lineN | <p>number of the line item of the present message (xml document); it is set by the role that produces the document. Usually it is a progressive number, but not always.</p> <p>- base type: positiveInteger, min inclusive: 1, max inclusive: 9999, (XPath GARStockChange/GSXbody/GSXitem/lineN) 1-1</p> |
| @listName | <p>the name of the list of codes used to make an instance of the element (it might be thought as descriptive element, i.e. 'fabric printing technologies', or not, i.e. "T264")</p> <p>- base type: string, max length: 40, (XPath GARStockChange/GSXbody/GSXitem/garmentCategory/goodsClassification/subClass/@listName) [Optional]</p> <p>- nota: <i>this attribute should always be used coupled with "numberingOrg"</i> (XPath GARStockChange/GSXbody/GSXitem/garmentCategory/goodsClassification/class/@listName) [Optional]</p> <p>- nota: <i>this attribute should always be used coupled with "numberingOrg"</i> (XPath GARStockChange/GSXbody/GSXitem/csRange/sizeMatrix/sizeRow/size/@listName) [Optional]</p> <p>- nota: <i>this attribute should always be used coupled with "numberingOrg"</i> (XPath GARStockChange/GSXbody/GSXitem/garmentCategory/goodsClassification/macroClass/@listName) [Optional]</p> <p>- nota: <i>this attribute should always be used coupled with "numberingOrg"</i> (XPath GARStockChange/GSXbody/GSXitem/garmentCategory/season/@listName) [Optional]</p> <p>- nota: <i>this attribute should always be used coupled with "numberingOrg"</i> (XPath GARStockChange/GSXbody/GSXitem/garmentCode/garmentCodeB/mod/@listName) [Optional]</p> <p>- nota: <i>this attribute should always be used coupled with "numberingOrg"</i> (XPath GARStockChange/GSXbody/GSXitem/garmentCategory/artSubGroup/@listName) [Optional]</p> <p>- nota: <i>this attribute should always be used coupled with "numberingOrg"</i> (XPath GARStockChange/GSXbody/GSXitem/garmentCategory/artGroup/@listName) [Optional]</p> <p>- nota: <i>this attribute should always be used coupled with "numberingOrg"</i> (XPath GARStockChange/GSXbody/GSXitem/garmentCategory/artSex/@listName) [Optional]</p> <p>- nota: <i>this attribute should always be used coupled with "numberingOrg"</i> (XPath GARStockChange/GSXbody/GSXitem/garmentCode/garmentCodeB/fabric/@listName) [Optional]</p> <p>- nota: <i>this attribute should always be used coupled with "numberingOrg"</i> (XPath GARStockChange/GSXheader/refDoc/season/@listName) [Optional]</p> <p>- nota: <i>this attribute should always be used coupled with "numberingOrg"</i> (XPath GARStockChange/GSXbody/GSXitem/csRange/sizeMatrix/sizeRow/drop/@listName) [Optional]</p> <p>- nota: <i>this attribute should always be used coupled with "numberingOrg"</i> (XPath GARStockChange/GSXbody/GSXitem/dtScheme/legalRef/@listName) [Optional]</p> <p>- nota: <i>this attribute should always be used coupled with "numberingOrg"</i> (XPath GARStockChange/GSXbody/GSXitem/garmentCode/garmentCodeA/art/@listName) [Optional]</p> <p>- nota: <i>this attribute should always be used coupled with "numberingOrg"</i> (XPath GARStockChange/GSXbody/GSXitem/garmentCode/garmentCodeB/size/@listName) [Optional]</p> <p>- nota: <i>this attribute should always be used coupled with "numberingOrg"</i> (XPath GARStockChange/GSXbody/GSXitem/garmentCode/garmentCodeB/artGroup/@listName) [Optional]</p> <p>- nota: <i>this attribute should always be used coupled with "numberingOrg"</i> (XPath GARStockChange/GSXbody/GSXitem/csRange/drop/@listName) [Optional]</p> <p>- nota: <i>this attribute should always be used coupled with "numberingOrg"</i> (XPath GARStockChange/GSXbody/GSXitem/csRange/sizeMatrix/sizeRow/additionalComponentCode/@listName) [Optional]</p> <p>- nota: <i>this attribute should always be used coupled with "numberingOrg"</i> (XPath GARStockChange/GSXbody/GSXitem/csRange/garmentVariant/variantCode/@listName) [Optional]</p> <p>- nota: <i>this attribute should always be used coupled with "numberingOrg"</i> (XPath GARStockChange/GSXbody/GSXitem/csRange/color/@listName) [Optional]</p> |

| | |
|----------------------------|--|
| | <ul style="list-style-type: none"> - nota: <i>this attribute should always be used coupled with “numberingOrg”</i> (XPath <code>GARStockChange/GSXbody/GSXitem/csRange/garmentVariant/variantType/@listName</code>) [Optional] - nota: <i>this attribute should always be used coupled with “numberingOrg”</i> (XPath <code>GARStockChange/GSXbody/GSXitem/garmentCode/garmentCodeB/drop/@listName</code>) [Optional] - nota: <i>this attribute should always be used coupled with “numberingOrg”</i> (XPath <code>GARStockChange/GSXbody/GSXitem/csRange/sizeMatrix/sizeRow/itemsList/qualityLevel/@listName</code>) [Optional] - nota: <i>this attribute should always be used coupled with “numberingOrg”</i> (XPath <code>GARStockChange/GSXbody/GSXitem/refDoc/season/@listName</code>) [Optional] - nota: <i>this attribute should always be used coupled with “numberingOrg”</i> (XPath <code>GARStockChange/GSXbody/GSXitem/garmentCode/garmentCodeB/garmentVariant/variantType/@listName</code>) [Optional] - nota: <i>this attribute should always be used coupled with “numberingOrg”</i> (XPath <code>GARStockChange/GSXbody/GSXitem/garmentCode/garmentCodeB/color/@listName</code>) [Optional] - nota: <i>this attribute should always be used coupled with “numberingOrg”</i> (XPath <code>GARStockChange/GSXbody/GSXitem/garmentCode/garmentCodeB/garmentVariant/variantCode/@listName</code>) [Optional] - nota: <i>this attribute should always be used coupled with “numberingOrg”</i> |
| <p><i>@listVersion</i></p> | <p>it specifies the version of the list of codes used to make an instance of the element</p> <ul style="list-style-type: none"> - base type: string, max length: 6, (XPath <code>GARStockChange/GSXbody/GSXitem/csRange/garmentVariant/variantType/@listVersion</code>) [Optional] - nota: <i>this attribute should always be used coupled with “numberingOrg” and “listName”</i> (XPath <code>GARStockChange/GSXbody/GSXitem/garmentCategory/goodsClassification/subClass/@listVersion</code>) [Optional] - nota: <i>this attribute should always be used coupled with “numberingOrg” and “listName”</i> (XPath <code>GARStockChange/GSXbody/GSXitem/csRange/drop/@listVersion</code>) [Optional] - nota: <i>this attribute should always be used coupled with “numberingOrg” and “listName”</i> (XPath <code>GARStockChange/GSXbody/GSXitem/csRange/sizeMatrix/sizeRow/additionalComponentCode/@listVersion</code>) [Optional] - nota: <i>this attribute should always be used coupled with “numberingOrg” and “listName”</i> (XPath <code>GARStockChange/GSXbody/GSXitem/garmentCode/garmentCodeB/fabric/@listVersion</code>) [Optional] - nota: <i>this attribute should always be used coupled with “numberingOrg” and “listName”</i> (XPath <code>GARStockChange/GSXbody/GSXitem/garmentCode/garmentCodeB/color/@listVersion</code>) [Optional] - nota: <i>this attribute should always be used coupled with “numberingOrg” and “listName”</i> (XPath <code>GARStockChange/GSXbody/GSXitem/csRange/garmentVariant/variantCode/@listVersion</code>) [Optional] - nota: <i>this attribute should always be used coupled with “numberingOrg” and “listName”</i> (XPath <code>GARStockChange/GSXbody/GSXitem/csRange/color/@listVersion</code>) [Optional] - nota: <i>this attribute should always be used coupled with “numberingOrg” and “listName”</i> (XPath <code>GARStockChange/GSXbody/GSXitem/garmentCode/garmentCodeB/size/@listVersion</code>) [Optional] - nota: <i>this attribute should always be used coupled with “numberingOrg” and “listName”</i> (XPath <code>GARStockChange/GSXbody/GSXitem/garmentCode/garmentCodeB/artGroup/@listVersion</code>) [Optional] - nota: <i>this attribute should always be used coupled with “numberingOrg” and “listName”</i> (XPath <code>GARStockChange/GSXbody/GSXitem/garmentCode/garmentCodeB/drop/@listVersion</code>) [Optional] - nota: <i>this attribute should always be used coupled with “numberingOrg” and “listName”</i> (XPath <code>GARStockChange/GSXbody/GSXitem/garmentCode/</code> |

| | |
|-----|--|
| | <p style="text-align: center;">garmentCodeB/mod/@listVersion) [Optional]</p> <p>- nota: <i>this attribute should always be used coupled with “numberingOrg” and “listName”</i></p> <p>(XPath GARStockChange/GSXbody/GSXitem/garmentCode/ garmentCodeB/garmentVariant/variantCode/@listVersion) [Optional]</p> <p>- nota: <i>this attribute should always be used coupled with “numberingOrg” and “listName”</i></p> <p>(XPath GARStockChange/GSXbody/GSXitem/csRange/sizeMatrix/ sizeRow/drop/@listVersion) [Optional]</p> <p>- nota: <i>this attribute should always be used coupled with “numberingOrg” and “listName”</i></p> <p>(XPath GARStockChange/GSXbody/GSXitem/garmentCode/ garmentCodeB/garmentVariant/variantType/@listVersion) [Optional]</p> <p>- nota: <i>this attribute should always be used coupled with “numberingOrg” and “listName”</i></p> <p>(XPath GARStockChange/GSOheader/refDoc/season/@listVersion) [Optional]</p> <p>- nota: <i>this attribute should always be used coupled with “numberingOrg” and “listName”</i></p> <p>(XPath GARStockChange/GSXbody/GSXitem/garmentCode/ garmentCodeA/art/@listVersion) [Optional]</p> <p>- nota: <i>this attribute should always be used coupled with “numberingOrg” and “listName”</i></p> <p>(XPath GARStockChange/GSXbody/GSXitem/garmentCategory/ goodsClassification/class/@listVersion) [Optional]</p> <p>- nota: <i>this attribute should always be used coupled with “numberingOrg” and “listName”</i></p> <p>(XPath GARStockChange/GSXbody/GSXitem/refDoc/season/@listVersion) [Optional]</p> <p>- nota: <i>this attribute should always be used coupled with “numberingOrg” and “listName”</i></p> <p>(XPath GARStockChange/GSXbody/GSXitem/csRange/sizeMatrix/ sizeRow/itemsList/qualityLevel/@listVersion) [Optional]</p> <p>- nota: <i>this attribute should always be used coupled with “numberingOrg” and “listName”</i></p> <p>(XPath GARStockChange/GSXbody/GSXitem/garmentCategory/ season/@listVersion) [Optional]</p> <p>- nota: <i>this attribute should always be used coupled with “numberingOrg” and “listName”</i></p> <p>(XPath GARStockChange/GSXbody/GSXitem/garmentCategory/ artSex/@listVersion) [Optional]</p> <p>- nota: <i>this attribute should always be used coupled with “numberingOrg” and “listName”</i></p> <p>(XPath GARStockChange/GSXbody/GSXitem/garmentCategory/ artGroup/@listVersion) [Optional]</p> <p>- nota: <i>this attribute should always be used coupled with “numberingOrg” and “listName”</i></p> <p>(XPath GARStockChange/GSXbody/GSXitem/garmentCategory/ artSubGroup/@listVersion) [Optional]</p> <p>- nota: <i>this attribute should always be used coupled with “numberingOrg” and “listName”</i></p> <p>(XPath GARStockChange/GSXbody/GSXitem/csRange/sizeMatrix/ sizeRow/size/@listVersion) [Optional]</p> <p>- nota: <i>this attribute should always be used coupled with “numberingOrg” and “listName”</i></p> <p>(XPath GARStockChange/GSXbody/GSXitem/garmentCategory/ goodsClassification/macroClass/@listVersion) [Optional]</p> <p>- nota: <i>this attribute should always be used coupled with “numberingOrg” and “listName”</i></p> <p>(XPath GARStockChange/GSXbody/GSXitem/dtScheme/legalRef/@listVersion) [Optional]</p> <p>- nota: <i>this attribute should always be used coupled with “numberingOrg” and “listName”</i></p> |
| @In | <p>Language code.</p> <p>- base type: string, cod. table: NT60</p> <p>http://www.ebiz.enea.it/moda-ml/repository/codelist/draft/gc_NT60.xml</p> <p>(XPath GARStockChange/GSXbody/GSXitem/commerceText/@In) [Optional]</p> <p>(XPath GARStockChange/GSXbody/GSXitem/garmentCode/ garmentCodeA/description/@In) [Optional]</p> <p>(XPath GARStockChange/GSXbody/GSXitem/garmentCode/ garmentCodeB/description/@In) [Optional]</p> |

| | |
|---------------|--|
| @logo | company logo (URL of the image jpeg or gif). It is recommended that the width of the image does not exceed 640 pixel. - base type: string, max length: 255, (XPath GARStockChange/GSOheader/buyer/@logo) [Optional] (XPath GARStockChange/GSOheader/supplier/@logo) [Optional] |
| macroClass | a code indicating the category (macro-class, class or sub-class) of a commodity classification system the article belongs to. - base type: string, (XPath GARStockChange/GSXbody/GSXitem/garmentCategory/goodsClassification/macroClass) 0-1 |
| @mime | the mime type of the binary object - base type: normalizedString, (XPath GARStockChange/GSXbody/GSXitem/refDoc/attachment/binaryObject/@mime) [Optional] (XPath GARStockChange/GSOheader/refDoc/attachment/binaryObject/@mime) [Optional] |
| mimeCode | mime type of the external object - base type: normalizedString, (XPath GARStockChange/GSOheader/refDoc/attachment/externalReference/mimeCode) 0-1 Best Practice (XPath GARStockChange/GSXbody/GSXitem/refDoc/attachment/externalReference/mimeCode) 0-1 Best Practice |
| mod | model number of the garment - base type: string, max length: 15, (XPath GARStockChange/GSXbody/GSXitem/garmentCode/garmentCodeB/mod) 1-1 |
| msgDate | date of issue of the present message (xml document), according to one of the patterns YYYY-MM-DD, YYYY-MM-DD:HH-MM or YYYY-WW. - base type: string, (XPath GARStockChange/GSOheader/msgDate) 1-1 |
| @msgfunction | function performed by the present message with regards to the transmission - base type: string, cod. table: NT18 http://www.ebiz.enea.it/moda-ml/repository/codelist/draft/gc_NT18.xml (XPath GARStockChange/@msgfunction) [Optional] [Default= OR] |
| msgID | key identifier of the business document in the information system of the issuing Party. In case of more despatches of the same business document, it is unchanged. - base type: string, max length: 35, (XPath GARStockChange/GSOheader/msgID) 0-1 |
| msgN | identification number given to the message (xml document) by its issuer. In case of more despatches of the same business document, it changes. - base type: string, max length: 35, (XPath GARStockChange/GSOheader/msgN) 1-1 |
| note | free text or structured (computer processing) note. For note structuring use the attributes "noteLabel" and "codelist" - base type: string, max length: 350, (XPath GARStockChange/GSXbody/GSXitem/garmentCategory/note) 0-99 (XPath GARStockChange/GSXbody/GSXitem/dtScheme/note) 0-99 (XPath GARStockChange/GSOheader/note) 0-99 (XPath GARStockChange/GSXbody/GSXitem/note) 0-99 |
| @noteLabel | subject qualifier of a note - base type: string, max length: 35, (XPath GARStockChange/GSXbody/GSXitem/note/@noteLabel) [Optional] - nota: must be used to qualify the subject of the note (XPath GARStockChange/GSXbody/GSXitem/dtScheme/note/@noteLabel) [Optional] - nota: must be used to qualify the subject of the note (XPath GARStockChange/GSOheader/note/@noteLabel) [Optional] - nota: must be used to qualify the subject of the note (XPath GARStockChange/GSXbody/GSXitem/garmentCategory/note/@noteLabel) [Optional] - nota: must be used to qualify the subject of the note |
| @numberingOrg | code specifying the organisation who has created or owns the coding or numbering system |

stem

- base type: string, cod. table: NT6
http://www.ebiz.enea.it/moda-ml/repository/codelist/draft/gc_NT6.xml
(XPath GARStockChange/GSXbody/GSXitem/garmentCode/
garmentCodeA/art/@numberingOrg) [Optional]
- nota: *this attribute should be used either single or coupled with "listName" and "listVersion"*
(XPath GARStockChange/GSXbody/GSXitem/garmentCode/
garmentCodeB/artGroup/@numberingOrg) [Optional]
- nota: *this attribute should be used either single or coupled with "listName" and "listVersion"*
(XPath GARStockChange/GSXbody/GSXitem/csRange/sizeMatrix/
sizeRow/itemsList/itemIdentification/serialN/@numberingOrg) [Optional]
- nota: *here the issuer of the serial number must be specified (when different from the Supplier)*
(XPath GARStockChange/GSOheader/refDoc/docID/@numberingOrg) [Optional]
- nota: *here can be specified whose document numbering is used (e.g.: Client, Supplier, ..)*
(XPath GARStockChange/GSXbody/GSXitem/csRange/drop/@numberingOrg) [Optional]
- nota: *this attribute should be used either single or coupled with "listName" and "listVersion"*
(XPath GARStockChange/GSXbody/GSXitem/stockAddress/@numberingOrg) [Optional]
- nota: *to be use when city and sub-country are specified with a proprietary code*
(XPath GARStockChange/GSXbody/GSXitem/garmentCategory/
note/@numberingOrg) [Optional]
- nota: *must be used to specify the organization that created the list of codes used in "noteLabel"*
(XPath GARStockChange/GSXbody/GSXitem/garmentCode/
garmentCodeB/added/@numberingOrg) [Optional]
- nota: *this attribute should be used either single or coupled with "listName" and "listVersion"*
(XPath GARStockChange/GSOheader/buyer/id/@numberingOrg) [Optional]
- (XPath GARStockChange/GSXbody/GSXitem/garmentCategory/
goodsClassification/subClass/@numberingOrg) [Optional]
- nota: *this attribute should be used either single or coupled with "listName" and "listVersion"*
(XPath GARStockChange/GSXbody/GSXitem/csRange/@numberingOrg) [Optional]
- (XPath GARStockChange/GSXbody/GSXitem/csRange/color/@numberingOrg) [Optional]
- nota: *this attribute should be used either single or coupled with "listName" and "listVersion"*
(XPath GARStockChange/GSXbody/GSXitem/garmentCategory/
goodsClassification/class/@numberingOrg) [Optional]
- nota: *this attribute should be used either single or coupled with "listName" and "listVersion"*
(XPath
GARStockChange/GSOheader/buyer/additionalIdentifier/@numberingOrg) [Optional]
- nota: *here the issuer of the identifier must be specified*
(XPath
GARStockChange/GSXbody/GSXitem/csRange/garmentVariant/variantType/
@numberingOrg) [Optional]
- nota: *this attribute should be used either single or coupled with "listName" and "listVersion"*
(XPath
GARStockChange/GSXbody/GSXitem/csRange/garmentVariant/variantCode/
@numberingOrg) [Optional]
- nota: *this attribute should be used either single or coupled with "listName" and "listVersion"*
(XPath GARStockChange/GSXbody/GSXitem/garmentCategory/
goodsClassification/macroClass/@numberingOrg) [Optional]
- nota: *this attribute should be used either single or coupled with "listName" and "listVersion"*
(XPath GARStockChange/GSOheader/thirdParty/id/@numberingOrg) [Optional]
- (XPath GARStockChange/GSXbody/GSXitem/dtScheme/note/@numberingOrg) [Optional]
- nota: *must be used to specify the organization that created the list of codes used in "noteLabel"*
(XPath GARStockChange/GSXbody/GSXitem/dtScheme/legalRef/@numberingOrg) [Optional]
- nota: *this attribute should be used either single or coupled with "listName" and "listVersion"*
(XPath GARStockChange/GSXbody/GSXitem/csRange/sizeMatrix/

| | |
|--|--|
| | <p style="text-align: center;">sizeRow/drop/@numberingOrg) [Optional]</p> <p>- nota: <i>this attribute should be used either single or coupled with "listName" and "listVersion"</i></p> <p>(XPath GARStockChange/GSXbody/GSXitem/csRange/sizeMatrix/sizeRow/size/@numberingOrg) [Optional]</p> <p>- nota: <i>this attribute should be used either single or coupled with "listName" and "listVersion"</i></p> <p>(XPath GARStockChange/GSXbody/GSXitem/csRange/sizeMatrix/sizeRow/additionalComponentCode/@numberingOrg) [Optional]</p> <p>- nota: <i>this attribute should be used either single or coupled with "listName" and "listVersion"</i></p> <p>(XPath GARStockChange/GSXbody/GSXitem/garmentCode/garmentCodeB/@numberingOrg) [Optional]</p> <p>(XPath GARStockChange/GSXbody/GSXitem/garmentCode/garmentCodeB/garmentVariant/variantType/@numberingOrg) [Optional]</p> <p>- nota: <i>this attribute should be used either single or coupled with "listName" and "listVersion"</i></p> <p>(XPath GARStockChange/GSXbody/GSXitem/csRange/sizeMatrix/sizeRow/itemsList/qualityLevel/@numberingOrg) [Optional]</p> <p>- nota: <i>this attribute should be used either single or coupled with "listName" and "listVersion"</i></p> <p>(XPath GARStockChange/GSXbody/GSXitem/refDoc/attachment/fileName/@numberingOrg) [Optional]</p> <p>(XPath GARStockChange/GSXbody/GSXitem/garmentCategory/artSex/@numberingOrg) [Optional]</p> <p>- nota: <i>this attribute should be used either single or coupled with "listName" and "listVersion"</i></p> <p>(XPath GARStockChange/GSOheader/supplier/id/@numberingOrg) [Optional]</p> <p>(XPath GARStockChange/GSXbody/GSXitem/garmentCategory/artGroup/@numberingOrg) [Optional]</p> <p>- nota: <i>this attribute should be used either single or coupled with "listName" and "listVersion"</i></p> <p>(XPath GARStockChange/GSXbody/GSXitem/garmentCode/garmentCodeB/fabric/@numberingOrg) [Optional]</p> <p>- nota: <i>this attribute should be used either single or coupled with "listName" and "listVersion"</i></p> <p>(XPath GARStockChange/GSXbody/GSXitem/garmentCategory/artSubGroup/@numberingOrg) [Optional]</p> <p>- nota: <i>this attribute should be used either single or coupled with "listName" and "listVersion"</i></p> <p>(XPath GARStockChange/GSXbody/GSXitem/garmentCategory/@numberingOrg) [Optional]</p> <p>(XPath GARStockChange/GSXbody/GSXitem/garmentCode/garmentCodeB/color/@numberingOrg) [Optional]</p> <p>- nota: <i>this attribute should be used either single or coupled with "listName" and "listVersion"</i></p> <p>(XPath GARStockChange/GSXbody/GSXitem/garmentCode/garmentCodeB/mod/@numberingOrg) [Optional]</p> <p>(XPath GARStockChange/GSOheader/refDoc/attachment/fileName/@numberingOrg) [Optional]</p> <p>(XPath GARStockChange/GSOheader/note/@numberingOrg) [Optional]</p> <p>- nota: <i>must be used to specify the organization that created the list of codes used in "noteLabel"</i></p> <p>(XPath GARStockChange/GSXbody/GSXitem/refDoc/docID/@numberingOrg) [Optional]</p> <p>- nota: <i>here can be specified whose document numbering is used (e.g.: Client, Supplier, ..)</i></p> <p>(XPath GARStockChange/GSXbody/GSXitem/garmentCode/garmentCodeB/drop/@numberingOrg) [Optional]</p> <p>- nota: <i>this attribute should be used either single or coupled with "listName" and "listVersion"</i></p> <p>(XPath GARStockChange/GSOheader/supplier/additionalIdentifier/@numberingOrg) [Optional]</p> <p>- nota: <i>here the issuer of the identifier must be specified</i></p> <p>(XPath GARStockChange/GSOheader/refDoc/season/@numberingOrg) [Optional]</p> <p>- nota: <i>this attribute should be used either single or coupled with "listName" and "listVersion"</i></p> <p>(XPath GARStockChange/GSXbody/GSXitem/note/@numberingOrg) [Optional]</p> <p>- nota: <i>must be used to specify the organization that created the list of codes used in "noteLabel"</i></p> <p>(XPath GARStockChange/GSXbody/GSXitem/garmentCode/</p> |
|--|--|

| | |
|-----------------|--|
| | <p>garmentCodeB/size/@numberingOrg) [Optional]</p> <p>- nota: <i>this attribute should be used either single or coupled with "listName" and "listVersion"</i></p> <p>(XPath GARStockChange/GSXbody/GSXitem/garmentCode/ garmentCodeB/garmentVariant/variantCode/@numberingOrg) [Optional]</p> <p>- nota: <i>this attribute should be used either single or coupled with "listName" and "listVersion"</i></p> <p>(XPath GARStockChange/GSXbody/GSXitem/garmentCode/@numberingOrg) [Optional]</p> <p>(XPath GARStockChange/GSXbody/GSXitem/refDoc/season/@numberingOrg) [Optional]</p> <p>- nota: <i>this attribute should be used either single or coupled with "listName" and "listVersion"</i></p> <p>(XPath GARStockChange/GSXbody/GSXitem/garmentCategory/ season/@numberingOrg) [Optional]</p> <p>- nota: <i>this attribute should be used either single or coupled with "listName" and "listVersion"</i></p> |
| person | <p>name of a person (e.g. contact person within an organization)</p> <p>- base type: string, max length: 40,</p> <p>(XPath GARStockChange/GSOheader/supplier/person) 0-1</p> <p>(XPath GARStockChange/GSOheader/buyer/person) 0-1</p> <p>(XPath GARStockChange/GSOheader/thirdParty/person) 0-1</p> |
| @phone | <p>phone number of the contact person within a Party</p> <p>- base type: string, max length: 35,</p> <p>(XPath GARStockChange/GSOheader/thirdParty/person/@phone) [Optional]</p> <p>(XPath GARStockChange/GSOheader/buyer/person/@phone) [Optional]</p> <p>(XPath GARStockChange/GSOheader/supplier/person/@phone) [Optional]</p> |
| postCode | <p>code defining the postal zone</p> <p>- base type: string, max length: 10,</p> <p>(XPath GARStockChange/GSOheader/supplier/postCode) 0-1</p> <p>(XPath GARStockChange/GSOheader/buyer/postCode) 0-1</p> <p>(XPath GARStockChange/GSOheader/thirdParty/postCode) 0-1</p> |
| price | <p>unit price of the article, object or service specified</p> <p>- base type: decimal, min inclusive: 0, fraction digits: 4,</p> <p>(XPath GARStockChange/GSXbody/GSXitem/price) 0-1</p> |
| @priceQualifier | <p>type of price with reference to discount and taxes</p> <p>- base type: string, cod. table: NT20</p> <p>http://www.ebiz.enea.it/moda-ml/repository/codelist/draft/gc_NT20.xml</p> <p>(XPath GARStockChange/GSXbody/GSXitem/price/@priceQualifier) [Optional] [Default= NET]</p> |
| qty | <p>net quantity of the article or object correlated, qualified by the function of the document (ordering, delivering, ..) and by the context</p> <p>- base type: decimal, min inclusive: 0, fraction digits: 2,</p> <p>(XPath GARStockChange/GSXbody/GSXitem/csRange/sizeMatrix/ sizeRow/qty) 0-1</p> <p>(XPath GARStockChange/GSXbody/GSXitem/qty) 0-1</p> |
| qualityLevel | <p>the product quality level (first choice, second choice, ...).</p> <p>- base type: string,</p> <p>(XPath GARStockChange/GSXbody/GSXitem/csRange/sizeMatrix/ sizeRow/itemsList/qualityLevel) 0-1</p> |
| readyToSendDate | <p>date of goods ready to despatch, according to one of the patterns YYYY-MM-DD, YYYY-MM-DD:HH-MM or YYYY-WW.</p> <p>- base type: string,</p> <p>(XPath GARStockChange/GSXbody/GSXitem/readyToSendDate) 0-1</p> |
| @role | <p>Third Party role qualifier</p> <p>- base type: string, cod. table: NT2</p> <p>http://www.ebiz.enea.it/moda-ml/repository/codelist/draft/gc_NT2.xml</p> <p>(XPath GARStockChange/GSOheader/thirdParty/@role) [Required]</p> |
| @schemeID | <p>identifier of an identification scheme</p> <p>- base type: string,</p> <p>(XPath GARStockChange/GSOheader/refDoc/attachment/ hashFootprint/@schemeID) [Optional]</p> <p>- nota: <i>specify for which system this hash footprint might be used as identifier (for example HDFS system..)</i></p> <p>(XPath GARStockChange/GSXbody/GSXitem/refDoc/attachment/ hashFootprint/@schemeID) [Optional]</p> |

| | |
|-----------------|--|
| | - nota: specify for which system this hash footprint might be used as identifier (for example HDFS system..) |
| season | <p>sale season; defined as: season (1 crt) + year (4 crt) - season: S/S=1 A/W=2 Spring=3 Summer=4 Autumn=5 Winter=6: for more than four seasons use alphabetic sequence: 1st season=A 2nd season=B etc.etc.</p> <p>- base type: string, max length: 15, (XPath GARStockChange/GSXbody/GSXitem/garmentCategory/season) 0-1 (XPath GARStockChange/GSXbody/GSXitem/refDoc/season) 0-1</p> <p>- note: here indicates the season to which the referenced document belongs (XPath GARStockChange/GSOheader/refDoc/season) 0-1</p> <p>- note: here indicates the season to which the referenced document belongs</p> |
| @sender | <p>qualifier that specifies the Party issuing of the document</p> <p>- base type: boolean, (XPath GARStockChange/GSOheader/supplier/@sender) [Optional]</p> <p>- nota: This attribute is mandatory when the STYLESHEET must be used (XPath GARStockChange/GSOheader/thirdParty/@sender) [Optional]</p> <p>- nota: This attribute is mandatory when the STYLESHEET must be used (XPath GARStockChange/GSOheader/buyer/@sender) [Optional]</p> <p>- nota: This attribute is mandatory when the STYLESHEET must be used</p> |
| serialN | <p>serial number used for the identification of a physical unit</p> <p>- base type: string, max length: 250, (XPath GARStockChange/GSXbody/GSXitem/csRange/sizeMatrix/ sizeRow/itemsList/itemIdentification/serialN) 1-9 Best Practice</p> <p>- note: multiple values of serialN are allowed for different representations of the serial identifier of the same product unit. Instances of serialN must differ at least for one value of numberingOrg and idQualifier.</p> |
| size | <p>size number of a fashion product (knitwear, clothing, ..)</p> <p>- base type: string, max length: 15, (XPath GARStockChange/GSXbody/GSXitem/csRange/sizeMatrix/ sizeRow/size) 1-1 (XPath GARStockChange/GSXbody/GSXitem/garmentCode/ garmentCodeB/size) 0-1</p> |
| @sizeSystemBase | <p>base of the size system</p> <p>- base type: string, cod. table: T423 http://www.ebiz.enea.it/moda-ml/repository/codelist/draft/gc_T423.xml (XPath GARStockChange/GSXbody/GSXitem/csRange/@sizeSystemBase) [Optional]</p> |
| @sizeSystemID | <p>the identifier of the size system.</p> <p>- base type: string, (XPath GARStockChange/GSXbody/GSXitem/csRange/@sizeSystemID) [Optional]</p> |
| @sizeSystemNat | <p>nation or agency identifying the size system</p> <p>- base type: string, cod. table: T421 http://www.ebiz.enea.it/moda-ml/repository/codelist/draft/gc_T421.xml (XPath GARStockChange/GSXbody/GSXitem/csRange/@sizeSystemNat) [Optional]</p> |
| @sizeSystemSeg | <p>market segment identifying the size system</p> <p>- base type: string, cod. table: T422 http://www.ebiz.enea.it/moda-ml/repository/codelist/draft/gc_T422.xml (XPath GARStockChange/GSXbody/GSXitem/csRange/@sizeSystemSeg) [Optional]</p> |
| street | <p>street and building number identifying a location</p> <p>- base type: string, max length: 80, (XPath GARStockChange/GSOheader/thirdParty/street) 0-1 (XPath GARStockChange/GSOheader/supplier/street) 0-1 (XPath GARStockChange/GSOheader/buyer/street) 0-1</p> |
| subClass | <p>a code indicating the category (macro-class, class or sub-class) of a commodity classification system the article belongs to.</p> <p>- base type: string, (XPath GARStockChange/GSXbody/GSXitem/garmentCategory/ goodsClassification/subClass) 0-1</p> |
| subCountry | <p>short name or code of the sub-country entity</p> <p>- base type: string, max length: 9, (XPath GARStockChange/GSXbody/GSXitem/stockAddress/subCountry) 1-1 (XPath GARStockChange/GSOheader/supplier/subCountry) 0-1 (XPath GARStockChange/GSOheader/thirdParty/subCountry) 0-1 (XPath GARStockChange/GSOheader/buyer/subCountry) 0-1</p> |

| | |
|--------------------|---|
| subDept | <p>name or code of a department</p> <ul style="list-style-type: none"> - base type: string, max length: 40, (XPath GARStockChange/GSOheader/buyer/subDept) 0-1 (XPath GARStockChange/GSOheader/thirdParty/subDept) 0-1 (XPath GARStockChange/GSOheader/supplier/subDept) 0-1 |
| taxCategory | <p>duty or tax or fee category</p> <ul style="list-style-type: none"> - base type: string, cod. table: T62 http://www.ebiz.enea.it/moda-ml/repository/codelist/draft/gc_T62.xml (XPath GARStockChange/GSXbody/GSXitem/dtScheme/taxCategory) 0-1 |
| taxRate | <p>duty or tax or fee percent rate</p> <ul style="list-style-type: none"> - base type: string, (XPath GARStockChange/GSXbody/GSXitem/dtScheme/taxRate) 0-1 |
| @taxType | <p>duty or tax or fee type</p> <ul style="list-style-type: none"> - base type: string, cod. table: T61 http://www.ebiz.enea.it/moda-ml/repository/codelist/draft/gc_T61.xml (XPath GARStockChange/GSXbody/GSXitem/dtScheme/@taxType) [Required] |
| tradeMark | <p>name of the official trademark of a specified product (DEPRECATED, use Brand or Product Line).</p> <ul style="list-style-type: none"> - base type: string, max length: 50, (XPath GARStockChange/GSXbody/GSXitem/tradeMark) 0-1 |
| transactionReceipt | <p>transaction receipt on blockchain</p> <ul style="list-style-type: none"> - base type: string, max length: 80, (XPath GARStockChange/GSOheader/refDoc/attachment/blockChainReference/transactionReceipt) 1-9 (XPath GARStockChange/GSXbody/GSXitem/refDoc/attachment/blockChainReference/transactionReceipt) 1-9 |
| @uid | <p>unique element identifier within the xml document</p> <ul style="list-style-type: none"> - base type: string, (XPath GARStockChange/GSOheader/refDoc/attachment/@uid) [Optional] (XPath GARStockChange/GSXbody/GSXitem/refDoc/attachment/@uid) [Optional] |
| @um | <p>specification of the unit of measure</p> <ul style="list-style-type: none"> - base type: string, cod. table: NT7 http://www.ebiz.enea.it/moda-ml/repository/codelist/draft/gc_NT7.xml (XPath GARStockChange/GSOheader/buyer/geoCoordinates/@um) [Optional] [Default= DEGD] - nota: <i>when not specified assume decimal DEGREES</i> (XPath GARStockChange/GSOheader/thirdParty/geoCoordinates/@um) [Optional] [Default= DEGD] - nota: <i>when not specified assume decimal DEGREES</i> (XPath GARStockChange/GSXbody/GSXitem/csRange/sizeMatrix/sizeRow/qty/@um) [Required] (XPath GARStockChange/GSXbody/GSXitem/price/@um) [Optional] - nota: <i>Unit of measure of the product to which the price is referred (price per meter)</i> (XPath GARStockChange/GSXbody/GSXitem/qty/@um) [Required] (XPath GARStockChange/GSOheader/supplier/geoCoordinates/@um) [Optional] [Default= DEGD] - nota: <i>when not specified assume decimal DEGREES</i> |
| uri | <p>Uniform Resource Identifier (URI) that identifies the external object as an Internet resource</p> <ul style="list-style-type: none"> - base type: normalizedString, (XPath GARStockChange/GSOheader/refDoc/attachment/externalReference/uri) 1-1 (XPath GARStockChange/GSOheader/refDoc/attachment/blockChainReference/uri) 1-1 - note: <i>reference to the used blockchain (example: url https://etherscan.io/ of ethereum)</i> (XPath GARStockChange/GSXbody/GSXitem/refDoc/attachment/externalReference/uri) 1-1 (XPath GARStockChange/GSXbody/GSXitem/refDoc/attachment/blockChainReference/uri) 1-1 - note: <i>reference to the used blockchain (example: url https://etherscan.io/ of ethereum)</i> |
| @useProfile | <p>use profile to which the present document is compliant if it was agreed by the parties. It is suggested a URI with reference to the firms or the URL of the profile.</p> <ul style="list-style-type: none"> - base type: string, |

| | |
|-------------|--|
| | (XPath GARStockChange/@useProfile) [Optional] |
| variantCode | Code of variant used for fashion product. - base type: string, (XPath GARStockChange/GSXbody/GSXitem/garmentCode/ garmentCodeB/garmentVariant/variantCode) 1-1 (XPath GARStockChange/GSXbody/GSXitem/csRange/garmentVariant/variantCode) 1-1 |
| variantType | Type of variant used for fashion product (examples: 'treatment', 'washing type', 'size class',...) - base type: string, (XPath GARStockChange/GSXbody/GSXitem/csRange/garmentVariant/variantType) 1 -1 (XPath GARStockChange/GSXbody/GSXitem/garmentCode/ garmentCodeB/garmentVariant/variantType) 1-1 |
| @VAT | VAT rate or code (DEPRECATED, use dtScheme element) - base type: string, cod. table: NT16 http://www.ebiz.enea.it/moda-ml/repository/codelist/draft/gc_NT16.xml (XPath GARStockChange/GSXbody/GSXitem/lineN/@VAT) [Optional] - nota: <i>Deprecated, prefer dtScheme when available.</i> (XPath GARStockChange/GSOheader/thirdParty/@VAT) [Optional] |
| @version | Dictionary version from which the instance has been created - base type: string, cod. table: NT100 http://www.ebiz.enea.it/moda-ml/repository/codelist/draft/gc_NT100.xml (XPath GARStockChange/@version) [Optional] [Default= draft] |
| xGeoCoord | geographical coordinate x , corresponding to latitude - base type: decimal, (XPath GARStockChange/GSOheader/supplier/geoCoordinates/xGeoCoord) 1-1 (XPath GARStockChange/GSOheader/thirdParty/geoCoordinates/xGeoCoord) 1-1 (XPath GARStockChange/GSOheader/buyer/geoCoordinates/xGeoCoord) 1-1 |
| yGeoCoord | geographical coordinate y , corresponding to longitude - base type: decimal, (XPath GARStockChange/GSOheader/buyer/geoCoordinates/yGeoCoord) 1-1 (XPath GARStockChange/GSOheader/thirdParty/geoCoordinates/yGeoCoord) 1-1 (XPath GARStockChange/GSOheader/supplier/geoCoordinates/yGeoCoord) 1-1 |
| zGeoCoord | geographical coordinate z , corresponding to altitude - base type: decimal, (XPath GARStockChange/GSOheader/thirdParty/geoCoordinates/zGeoCoord) 0-1 - note: <i>altitude might be omitted</i> (XPath GARStockChange/GSOheader/buyer/geoCoordinates/zGeoCoord) 0-1 - note: <i>altitude might be omitted</i> (XPath GARStockChange/GSOheader/supplier/geoCoordinates/zGeoCoord) 0-1 - note: <i>altitude might be omitted</i> |

2.3 Suggested best practices

GARStockChange/GSXbody/GSXitem/refDoc/docID (identification number of the referenced document)

numberingOrg indicates the role that produced the document identifier (it is allowed to declare two different ones -e.g. customer and supplier - with two docID with different numberingOrg

GARStockChange/GSOheader/refDoc/docID (identification number of the referenced document)

numberingOrg indicates the role that produced the document identifier (it is allowed to declare two different ones -e.g. customer and supplier - with two docID with different numberingOrg

**GARStockChange/GSOheader/refDoc/attachment/
externalReference/mimeCode (mime type of the external object)**

Use coding from IANA <http://www.iana.org/assignments/media-types/media-types.xml>

**GARStockChange/GSXbody/GSXitem/refDoc/attachment/
externalReference/mimeCode (mime type of the external object)**

Use coding from IANA <http://www.iana.org/assignments/media-types/media-types.xml>

**GARStockChange/GSXbody/GSXitem/csRange/sizeMatrix/
sizeRow/itemsList/itemIdentification/serialN (serial number used for the identification of a physical unit)**

in the case of garment with RFID for anti-counterfeiting, RFID EPCGlobal for logistics and NFC for the customer experience there should be three serial elements with pairs of attributes numberingOrg/idQualifier: "CL"/"RFID", "GS1"/"RFID", "CL"/"NFC".

2.4 Enumeration tables

List of enumeration tables used in the XML document. You can find all the tables with the corresponding codes at:
<http://www.ebiz.enea.it/eBIZ/imple/eBIZTCU-draft.asp?lingua=en&pag=6>

NT100 - eBIZ TCFUpstream version
NT16 - VAT rate or code
NT18 - message function
NT2 - third party qualifier
NT20 - price qualifier
NT29 - format of a date
NT333 - type of hashing algorithm
NT5 - action code
NT6 - coding system owner/issuer
NT60 - language, codes from ISO 639-1 (subset)
NT7 - unit of measure
T10 - ISO3166 - Country
T21 - type of document
T421 - size system: nationality
T422 - size system: market segment
T423 - size system: base
T44 - additional code type
T61 - duty or tax or fee type
T62 - duty or tax or fee category
T9 - ISO4217 - Currency

(the most relevant tables are detailed in the following Annexes too)

ACKNOWLEDGEMENT



This action is part of the TRICK project, which has received funding from Horizon 2020 research and innovation programme under grant agreement No. 958352 of the European Union.

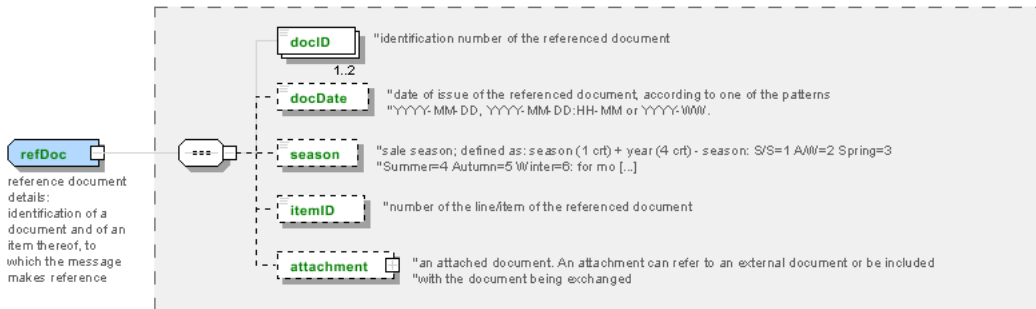
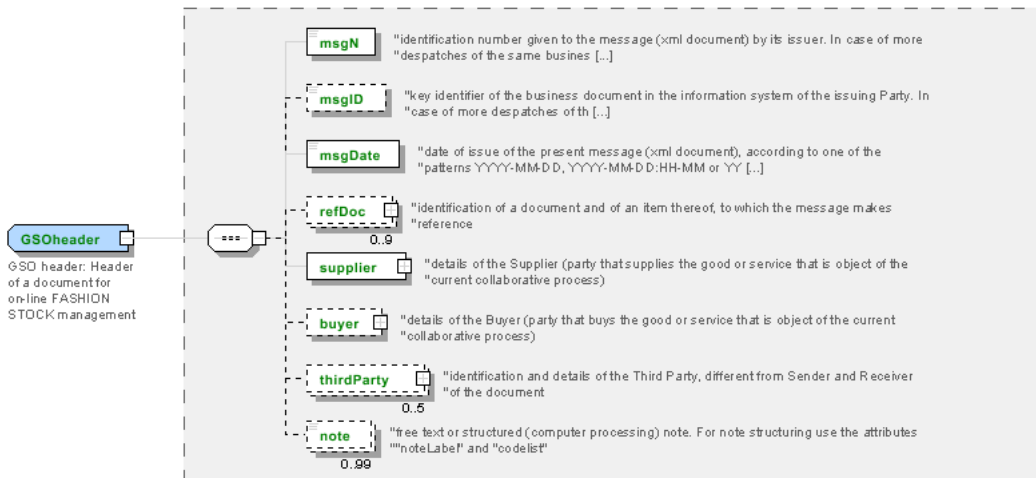
DISCLAIMER

The content of this document represents the views of the authors only and is their sole responsibility; it cannot be considered to reflect the views of the European Commission or any other body of the European Union.

The European Commission does not accept any responsibility for use that may be made of the information it contains.

Annex A

Representative images of the principal complex elements' structure.



Annex B

NT100 - eBIZ TCFUpstream version

dictionary version

Agency name: eBIZ

Decoding table: NT100

File codes list (Generic code): http://www.ebiz.enea.it/moda-ml/repository/codelist/draft/gc_NT100.xml

| Code | Description | Adoption note | Date of insertion |
|--------|-------------|---------------|-------------------|
| 2013-1 | v2013-1 | | 01/07/2013 |
| 2018-1 | v2018-1 | | 04/11/2018 |
| draft | draft | | 08/09/2017 |

NT16 - VAT rate or code

VAT rate or code (DEPRECATED, use dtScheme element)

Decoding table: NT16

File codes list (Generic code): http://www.ebiz.enea.it/moda-ml/repository/codelist/draft/gc_NT16.xml

NT18 - message function

function performed by the present message with regards to the transmission

Agency name: eBIZ

Decoding table: NT18

File codes list (Generic code): http://www.ebiz.enea.it/moda-ml/repository/codelist/draft/gc_NT18.xml

| Code | Description | Adoption note | Date of insertion |
|------|-------------------------------------|---------------|-------------------|
| CA | delete this document | | 01/07/2013 |
| CP | copy | | |
| OR | original | | |
| RC | re-transmission for data correction | | |
| RT | re-transmission | | |

NT2 - third party qualifier

Third Party role qualifier

Agency name: eBIZ

Decoding table: NT2

File codes list (Generic code): http://www.ebiz.enea.it/moda-ml/repository/codelist/draft/gc_NT2.xml

| Code | Description | Adoption note | Date of insertion |
|------|--------------------------------------|---------------|-------------------|
| AG | Sales Agent | | |
| AU | Auditor | | 08/04/2019 |
| BU | Buyer | | 13/06/2022 |
| CE | Certification authority | | 08/04/2019 |
| CM | Commissioner | | 13/06/2022 |
| CO | Quality Controller | | |
| CU | Customs authority | | 13/06/2022 |
| DC | Response to | | |
| DF | Invoicee | | |
| DI | Copy to (CC) | | 28/10/2014 |
| DM | Consignee | | |
| DP | Consignment address (Delivery Party) | | |
| EX | Expert | | 13/06/2022 |
| IM | Importer | | |
| OR | Originator | | 10/09/2014 |
| SC | Sub contractor | | 10/04/2019 |
| SM | Service/ePlatform manager | | 08/04/2019 |
| SP | Forwarder | | |
| SU | Supplier | | 13/06/2022 |
| TL | Test or analysis laboratory | | 13/06/2022 |
| TX | Tax Representative | | |

NT20 - price qualifier

type of price with reference to discount and taxes

Agency name: eBIZ

Decoding table: NT20

File codes list (Generic code): http://www.ebiz.enea.it/moda-ml/repository/codelist/draft/gc_NT20.xml

| Code | Description | Adoption note | Date of insertion |
|------|-----------------------|---------------|-------------------|
| GET | gross excluding taxes | | |
| GIT | gross including taxes | | |
| NET | net excluding taxes | | |
| NIT | net including taxes | | |

NT29 - format of a date

format used for the date

Agency name: eBIZ

Decoding table: NT29

File codes list (Generic code): http://www.ebiz.enea.it/moda-ml/repository/codelist/draft/gc_NT29.xml

| Code | Description | Adoption note | Date of insertion |
|------|--|---------------|-------------------|
| D | YYYY-MM-DD | | |
| M | YYYY-MM-DD:HH-MM (date and time) | | |
| S | AAAA-MM-GG:HH-MM-SS (date and time with seconds) | | 13/06/2022 |
| W | YYYY-WW | | |

NT333 - type of hashing algorithm

type of hashing algorithm

Decoding table: NT333

File codes list (Generic code): http://www.ebiz.enea.it/moda-ml/repository/codelist/draft/gc_NT333.xml

| Code | Description | Adoption note | Date of insertion |
|------------|-------------|---------------|-------------------|
| ADLER32 | ADLER32 | | 26/05/2023 |
| HMAC | HMAC | | 26/05/2023 |
| MD2 | MD2 | | 26/05/2023 |
| MD4 | MD4 | | 26/05/2023 |
| MD5 | MD5 | | 26/05/2023 |
| MDC-2 | MDC-2 | | 26/05/2023 |
| PANAMA | PANAMA | | 26/05/2023 |
| RIPEMD-160 | RIPEMD-160 | | 26/05/2023 |
| SHA-1 | SHA-1 | | 26/05/2023 |
| SHA-2 256 | SHA-2 256 | | 26/05/2023 |
| SHA-2 384 | SHA-2 384 | | 26/05/2023 |
| SHA-2 512 | SHA-2 512 | | 26/05/2023 |
| TIGER | TIGER | | 26/05/2023 |

NT5 - action code

action performed by the present line upon the referenced document line

Agency name: eBIZ

Decoding table: NT5

File codes list (Generic code): http://www.ebiz.enea.it/moda-ml/repository/codelist/draft/gc_NT5.xml

| Code | Description | Adoption note | Date of insertion |
|------|---|---------------|-------------------|
| A | CANCELLED | | |
| C | CONFIRMED | | |
| N | NEW ORDER LINE (created by an order change) | | |
| R | PROVISIONAL CONFIRMATION | | |
| S | DEFINITIVE CONFIRMATION | | |
| SA | suspension accepted | | |
| SN | suspension not accepted | | |
| SR | suspension request | | |
| V | AMENDED | | |

NT6 - coding system owner/issuer

code specifying the organisation who has created or owns the registers of the present coding or numbering system

Agency name: eBIZ

Decoding table: NT6

File codes list (Generic code): http://www.ebiz.enea.it/moda-ml/repository/codelist/draft/gc_NT6.xml

| Code | Description | Adoption note | Date of insertion |
|------|---|------------------|-------------------|
| CBR | National customs brokers registry | | 12/06/2023 |
| CL | Customer/buyer | | |
| CO | Quality Controller | | |
| DU | D-U-N-S registry (Data Universal Numbering System) | | 04/05/2023 |
| EB | eBIZ | replaces 'ML' | 18/03/2019 |
| EN | GS1 (ex-EAN International) | | |
| EO | Registro EORI (Economic Operators Registration and Identification number) | | 04/03/2023 |
| ES | e-Stockflow | DEPRECATED | |
| FO | Supplier | | |
| GS | GS1 | | 01/07/2013 |
| MF | national taxation authority (i.e. VAT codes registry) | | |
| ML | Moda-ML | DEPRECATED | |
| PL | Application Platform | | 13/06/2022 |
| REX | Registered Exporter system (REX) | | 19/05/2023 |
| SP | Service Provider | | |
| SU | Enterprise Identification Number UID | Only switzerland | 04/03/2023 |

NT60 - language, codes from ISO 639-1 (subset)

Agency name: eBIZ / ISO

Decoding table: NT60

File codes list (Generic code): http://www.ebiz.enea.it/moda-ml/repository/codelist/draft/gc_NT60.xml

| Code | Description | Adoption note | Date of insertion |
|-------------|--|----------------------|--------------------------|
| af | Afrikaans | | 31/01/2019 |
| ar | Arabic | | 31/01/2019 |
| be | Belarusian | | 31/01/2019 |
| bg | Bulgarian | | 31/01/2019 |
| bn | Bengali | | 31/01/2019 |
| bo | Tibetan | | 31/01/2019 |
| bs | Bosnian | | 31/01/2019 |
| ca | Catalan, Valencian | | 31/01/2019 |
| cs | Czech | | 31/01/2019 |
| da | Danish | | 31/01/2019 |
| de | German | | 31/01/2019 |
| el | Greek, Modern (1453-) | | 31/01/2019 |
| en | English | | 31/01/2019 |
| eo | Esperanto | | 31/01/2019 |
| es | Spanish, Castilian | | 31/01/2019 |
| et | Estonian | | 31/01/2019 |
| eu | Basque | | 31/01/2019 |
| F | Female | | 15/04/2019 |
| fa | Persian | | 31/01/2019 |
| fi | Finnish | | 31/01/2019 |
| fr | French | | 31/01/2019 |
| ga | Irish | | 31/01/2019 |
| gd | Gaelic, Scottish Gaelic | | 31/01/2019 |
| gn | Guarani | | 31/01/2019 |
| he | Hebrew | | 31/01/2019 |
| hr | Croatian | | 31/01/2019 |
| ht | Haitian, Haitian Creole | | 31/01/2019 |
| hu | Hungarian | | 31/01/2019 |
| hy | Armenian | | 31/01/2019 |
| ia | Interlingua (International Auxiliary Language Association) | | 31/01/2019 |
| id | Indonesian | | 31/01/2019 |

| | | | |
|----|-------------------------------|--|------------|
| is | Icelandic | | 31/01/2019 |
| it | Italian | | 31/01/2019 |
| ja | Japanese | | 31/01/2019 |
| jv | Javanese | | 31/01/2019 |
| ka | Georgian | | 31/01/2019 |
| km | Central Khmer | | 31/01/2019 |
| ko | Korean | | 31/01/2019 |
| ku | Kurdish | | 31/01/2019 |
| lb | Luxembourgish, Letzeburgesch | | 31/01/2019 |
| lo | Lao | | 31/01/2019 |
| lt | Lithuanian | | 31/01/2019 |
| lv | Latvian | | 31/01/2019 |
| mg | Malagasy | | 31/01/2019 |
| mk | Macedonian | | 31/01/2019 |
| mn | Mongolian | | 31/01/2019 |
| mt | Maltese | | 31/01/2019 |
| nl | Dutch, Flemish | | 31/01/2019 |
| no | Norwegian | | 31/01/2019 |
| pl | Polish | | 31/01/2019 |
| pt | Portuguese | | 31/01/2019 |
| ro | Romanian, Moldavian, Moldovan | | 31/01/2019 |
| ru | Russian | | 31/01/2019 |
| se | Northern Sami | | 31/01/2019 |
| sk | Slovak | | 31/01/2019 |
| sl | Slovenian | | 31/01/2019 |
| sm | Samoan | | 31/01/2019 |
| so | Somali | | 31/01/2019 |
| sq | Albanian | | 31/01/2019 |
| sr | Serbian | | 31/01/2019 |
| sv | Swedish | | 31/01/2019 |
| sw | Swahili | | 31/01/2019 |
| ta | Tamil | | 31/01/2019 |
| th | Thai | | 31/01/2019 |
| tr | Turkish | | 31/01/2019 |
| uk | Ukrainian | | 31/01/2019 |
| ur | Urdu | | 31/01/2019 |
| uz | Uzbek | | 31/01/2019 |
| vi | Vietnamese | | 31/01/2019 |

| | | | |
|----|---------|--|------------|
| zh | Chinese | | 31/01/2019 |
|----|---------|--|------------|

NT7 - unit of measure

specification of the unit of measure, it is a sub set of table Unit of Measure Code - UN/ECE REC 20 delivered by United Nations Economic Commission for Europe (UN/ECE)

Agency name: eBIZ / UN/ECE

Decoding table: NT7

File codes list (Generic code): http://www.ebiz.enea.it/moda-ml/repository/codelist/draft/gc_NT7.xml

Other link: <http://docs.oasis-open.org/ubl/os-UBL-2.1/cl/gc/default/UnitOfMeasureCode-2.1.gc#>

| Code | Description | Adoption note | Date of insertion |
|---------|----------------------------------|---------------|-------------------|
| CMK | square centimetre | | 20/12/2017 |
| CMQ | cubic centimetre | | 20/12/2017 |
| CMT | centimetre | | |
| CNE | centiNewton | | |
| CO2TON | ton of CO2 | | 10/09/2014 |
| COUPLES | couples | | |
| DAY | day | | 22/08/2022 |
| DEGD | decimal degrees | | 04/07/2022 |
| DEGMS | degrees with minutes and seconds | | 01/07/2022 |
| DMQ | cubic decimetre | | |
| E37 | pixel | | 11/04/2018 |
| GRM | gram | | |
| HUR | hour | | |
| INH | inch | | |
| KGM | kilogram | | |
| KMT | kilometer | | |
| KWH | kilowatthours | | 10/09/2014 |
| LBR | pound | | |
| MCG | microgram | | 23/08/2022 |
| MG | milligram | | 23/08/2022 |
| MIN | minute | | |
| MMK | square millimetre | | 20/12/2017 |
| MONTH | month | | 22/08/2022 |
| MSEC | millisecond (time) | | 22/08/2022 |
| MTK | square metre | | 20/12/2017 |
| MTQ | cubic metre | | |
| MTR | metre | | |

| | | | |
|------|------------------|--|------------|
| NMB | numero | | |
| ONZ | ounce | | |
| P1 | percent | | |
| PPM | parts per milion | | |
| PZ | piece | | |
| RPM | rounds per metre | | |
| SEC | second (time) | | 22/08/2022 |
| YEAR | year | | 22/08/2022 |
| YRD | yard | | |

T10 - ISO3166 - Country

code of the nation

Agency name: ISO

Decoding table: T10

File codes list (Generic code): http://www.ebiz.enea.it/moda-ml/repository/codelist/draft/gc_T10.xml

Table not printed: there are 240 elements, more than the maximum specified for printing: 99.

T21 - type of document

type or class to which the referenced document belongs

Agency name: eBIZ

Decoding table: T21

File codes list (Generic code): http://www.ebiz.enea.it/moda-ml/repository/codelist/draft/gc_T21.xml

| Code | Description | Adoption note | Date of insertion |
|------|------------------------------|---------------|-------------------|
| BIL | Bill of lading | | 07/03/2023 |
| BOR | Blanket order | | 01/02/2018 |
| CAT | Price catalogue - tech sheet | | |
| CEO | Certificate of origin | | 13/04/2018 |
| CER | Certificate | | 13/04/2018 |
| CMR | CMR consignment note | | 07/03/2023 |
| COC | Colour card | | |
| CRN | Credit note | | 08/09/2017 |
| CTO | Checking order | | 01/07/2013 |
| CTR | Contract | | |
| CXF | CxF3 file | | 01/07/2013 |
| DAD | Darn order | | |

| | | | |
|------|---------------------------------------|-----------------------------|------------|
| DDT | Delivery note (transport document) | | |
| DEA | Despatch advise | | |
| DER | Despatch request | | |
| DR | Document Request | | 02/12/2014 |
| EAD | Export Accompanying Document | adopted by European customs | 12/05/2023 |
| ECMR | electronic CMR consignment note | | 07/03/2023 |
| ECUS | EXPORT Custom Declaration | | 07/03/2023 |
| FOR | Forecast | | 02/12/2014 |
| GSO | Garment stock offer | | |
| GSX | Garment stock offer change | | |
| ICUS | IMPORT Custom Declaration | | 07/03/2023 |
| INV | Invoice | | |
| KCC | Knitting-Clothing Commission Order | | 02/12/2014 |
| KCI | Garment in Work Inventory Report | | 02/12/2014 |
| LCA | LCA study | | 28/08/2022 |
| LCAD | LCA study dataset | | 28/08/2022 |
| M2M | Made to Measure Production Order | | 02/12/2014 |
| MAS | Master marker | | |
| MCI | Visual merchandising instruction | | 13/04/2018 |
| OCH | Order change | | |
| OFF | Offer | | |
| ORD | Purchase order | | |
| ORP | Order response | | |
| OSR | order status request | | |
| OSS | Offer status | | 02/12/2014 |
| OST | Order status | | |
| OUR | our reference | | |
| PCO | Preferential certificate of origin | | 07/03/2023 |
| PEF | PEF study | | 28/08/2022 |
| PEFD | PEF study dataset | | 28/08/2022 |
| PEFP | PEF environmental profile | | 07/03/2023 |
| QR | Quality Report | | 02/12/2014 |
| RAI | Raw Material in Work Inventory Report | | 02/12/2014 |
| RDC | Raw dyeing commission order | | |
| RDH | Raw dyeing order change | | |
| RDR | Raw dyeing order response | | |
| REA | Receiving advise | | |
| REQ | Request for Offer | | |

| | | | |
|-------|---|-----------------------------|------------|
| RET | Return | | 02/12/2014 |
| RSC | Spinning commission order | | |
| RSH | Spinning order change | | |
| RSR | Spinning order response | | |
| SAD | Single Administrative Document | adopted by European customs | 12/05/2023 |
| SCL | Process sheet | | |
| SDE | Self-declaration | | 07/03/2023 |
| SDS | SDS - Safety data sheet | | 07/03/2023 |
| SLCA | S-LCA Study | | 07/03/2023 |
| SLCAD | S-LCA Study documentation | | 07/03/2023 |
| TFC | Textile dyeing-finishing commission order | | |
| TFX | Textile Dyeing-Finishing Order Change | | 02/12/2014 |
| TPC | Textile printing commission order | | |
| TPX | Textile Printing Order Change | | 02/12/2014 |
| TWI | Textile in work inventory | | |
| VMI | visual merchandising instructions | | 01/02/2018 |
| WAC | Warping commission order | | |
| WAYB | Waybill | | 07/03/2023 |
| WEC | Weaving commission order | | |
| YDC | Yarn dyeing commission order | | |
| YDH | Yarn dyeing order change | | |
| YDR | Yarn dyeing order response | | |
| YTC | Twisting commission order | | |
| YWI | Yarn in work inventory | | |

T421 - size system: nationality

nation or agency identifying the size system

Agency name: eBIZ

Decoding table: T421

File codes list (Generic code): http://www.ebiz.enea.it/moda-ml/repository/codelist/draft/gc_T421.xml

| Code | Description | Adoption note | Date of insertion |
|------|-------------|---------------|-------------------|
| DE | Germany | | |
| ES | Spain | | |
| EU | Europe | | |
| FR | France | | |
| IT | Italy | | |

| | | | |
|----|----------------|--|--|
| UK | United Kingdom | | |
| US | USA | | |
| XX | International | | |

T422 - size system: market segment

market segment identifying the size system

Agency name: eBIZ

Decoding table: T422

File codes list (Generic code): http://www.ebiz.enea.it/moda-ml/repository/codelist/draft/gc_T422.xml

| Code | Description | Adoption note | Date of insertion |
|------|-------------|---------------|-------------------|
| B | baby | | |
| C | child | | |
| K | kid | | |
| M | man | | |
| U | unisex | | |
| W | woman | | |

T423 - size system: base

base of the size system

Agency name: eBIZ

Decoding table: T423

File codes list (Generic code): http://www.ebiz.enea.it/moda-ml/repository/codelist/draft/gc_T423.xml

| Code | Description | Adoption note | Date of insertion |
|------|---------------|---------------|-------------------|
| 1 | arab numbers | | |
| 2 | latin numbers | | |
| 3 | symbols | | |
| 4 | letters | | |
| H | height | | |
| L | length | | |
| U | unique | | |
| W | weight | | |

T44 - additional code type

qualifier of the additional coding of a product

Agency name: eBIZ

Decoding table: T44

File codes list (Generic code): http://www.ebiz.enea.it/moda-ml/repository/codelist/draft/gc_T44.xml

| Code | Description | Adoption note | Date of insertion |
|------|-----------------------------|---------------|-------------------|
| CC | colour card | | |
| CL | sales collection | | |
| CO | company identification code | | 08/09/2017 |
| DY | dye number | | |
| LT | lot number | | |
| MDI | Made in | | 08/09/2017 |
| MS | manufacturing state | | |
| PKG | packaging | | 09/09/2014 |
| PL | product line | | |
| RGB | RGB value | | |
| SE | selvedge code | | |

T61 - duty or tax or fee type

duty or tax or fee type

Agency name: eBIZ

Decoding table: T61

File codes list (Generic code): http://www.ebiz.enea.it/moda-ml/repository/codelist/draft/gc_T61.xml

| Code | Description | Adoption note | Date of insertion |
|------|-------------------|---------------|-------------------|
| BOL | stamp duty | | 01/07/2013 |
| CUD | customs duty | | 01/07/2013 |
| ENV | environmental tax | | 01/07/2013 |
| FRE | no tax | | 01/07/2013 |
| OTH | other tax charges | | 01/07/2013 |
| VAT | value added tax | | 01/07/2013 |

T62 - duty or tax or fee category

duty or tax or fee category

Agency name: eBIZ

Decoding table: T62

File codes list (Generic code): http://www.ebiz.enea.it/moda-ml/repository/codelist/draft/gc_T62.xml

| Code | Description | Adoption note | Date of insertion |
|------|---------------------------|---------------|-------------------|
| AA | lower than standard rate | | 01/07/2013 |
| E | tax not applicable | | 01/07/2013 |
| H | higher than standard rate | | 01/07/2013 |
| O | outside scope of tax | | 01/07/2013 |
| S | standard rate | | 01/07/2013 |
| Z | zero rate goods | | 01/07/2013 |

T9 - ISO4217 - Currency

currency code

Agency name: ISO

Decoding table: T9

File codes list (Generic code): http://www.ebiz.enea.it/moda-ml/repository/codelist/draft/gc_T9.xml

Table not printed: there are 205 elements, more than the maximum specified for printing: 99.