



<http://www.ebiz-tcf.eu>

DRAFT

IMPLEMENTATION GUIDE
TRANSACTION "YARN PURCHASE ORDER CHANGE"

Version: draft

Date of release: 26/6/2023

Document code: G032

technical Documentation: <http://www.ebiz.enea.it>

XML Schemas repository: <http://www.ebiz.enea.it/moda-ml/repository/schema/draft/default.asp>

Guides repository: <http://www.ebiz.enea.it/moda-ml/repository/guide/draft/default.asp>

Guide filename: G032-eBIZ-YarnPurchaseOrderChange.pdf

0. PREMISE

This document contains a proposal for the updating and extension of eBIZ specifications starting from the eBIZ version 2018. Under the name of 'Draft version' it is reported the result of an extensive work of analysis and consultation aimed at developing and maintaining eBIZ specifications.

In particular, the content of this proposal is the result of various activities, mainly those carried out within the framework of the **TRICK project** funded by the European Commission: grant agreement 958352, call H2020-LOW-CARBON-CIRCULAR-INDUSTRIES-2020 / H2020-LCCI-2020-EASME-twostage.

The technical contents are backwards compatible with the latest official published version, with the exclusion of the totally new concepts added explicitly for the version that are thought as incremental evolution of the knowledge base.

1. BUSINESS DESCRIPTION

1.1 Scope

The present guide has been issued to assist the companies of the Textile-Clothing sector in the implementation of the standard XML document type "YARN ORDER CHANGE", providing all the instruction required for its use in any context of e-commerce between Fabric and Yarn Producers.

All the rules required for the construction and validation of the document are embedded into the specific XML-Schema, which is detailed in section "Implementation guide".

1.2 Generalities

The Client sends to the Yarn Producer an Order Change any time he must modify some conditions of his previous Order (eg. to cancel items not delivered in time) or amend errors (eg. invalid prices).

Basic function of the message is to replace an invalid Order with a valid Order, amending:

- suppliable quantities
- dates and places of delivery
- prices

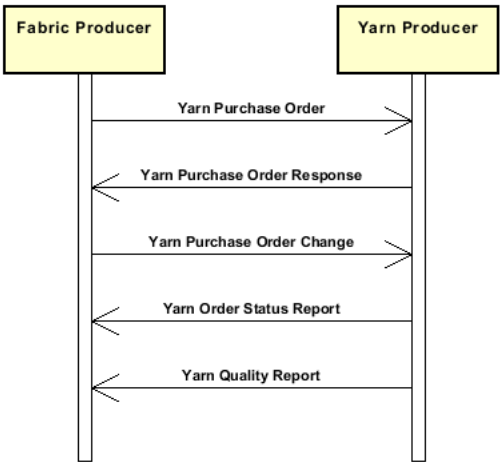
The Order Change can show a number of lines different from the related Purchase Order, when variations/cancellations have occurred so as to create the splitting of an Order Line.

However the sum of the quantities of the lines in the Order Change (confirmed + varied + cancelled) must always not less than the sum of the quantities in the original Order.

When the quantity is change the original line must be splitted and the confimed amount and canceled amount should be explicited through the 'act' flag.

1.3. Possible scenario

Purchase of yarns



2. IMPLEMENTATION GUIDE

2.1 General structure of XML document

All the business data that can be exchanged through this class of documents are shown in the following "document structure", that provides a simplified vision of the Schema.

In particular:

- the two numbers following each element define its "cardinality" (minimum and maximum number of occurrences); the minimum equal zero indicates that the element is optional, the minimum greater than zero indicates that is mandatory;
- the bold character denotes the complex elements (aggregates of simple elements) that were built for the sake of functionality and re-usability of some complex informations sets. The child elements in each parent element are easily spotted as "indented";
- the symbol "@" denotes an attribute of the preceding element; here "the usage indicator (optional, required, ...)" is shown in square brackets.

Structure

YARNOrdChange

```
@Totype [Optional]
@msgfunction [Optional] [Default= OR]
@version [Optional] [Default= draft]
@useProfile [Optional]
| YXheader 1-1
| | msgN 1-1
| | - choose -
| | | msgID 0-1
| | | - or -
| | | docID 0-1
| | | @numberingOrg [Optional]
| | | - end choose -
| | | msgDate 1-1
| | | @dateForm [Optional]
| | | msgCurrency 0-1
| | | otherCurrency 0-9
| | | @currencyUseQualifier [Required]
| | | @exchangeRate [Optional]
| | | refDoc 1-9
| | | @docType [Required]
| | | | docID 1-2
| | | | @numberingOrg [Optional]
| | | | docDate 0-1
| | | | @dateForm [Optional]
| | | | season 0-1
| | | | @numberingOrg [Optional]
| | | | @codeList [Optional]
| | | | @listName [Optional]
| | | | @listVersion [Optional]
| | | | itemID 0-1
| | | | attachment 0-1
| | | | @uid [Optional]
| | | | | fileName 0-1
| | | | | @numberingOrg [Optional]
| | | | | binaryObject 0-1
| | | | | @format [Optional]
| | | | | @mime [Optional]
| | | | | @encoding [Optional]
| | | | | @characterSet [Optional]
| | | | | externalReference 0-99
| | | | | | uri 1-1
| | | | | | @isURL [Optional] [Default= true]
| | | | | | mimeTypeCode 0-1
| | | | | | formatCode 0-1
| | | | | | encodingCode 0-1
| | | | | | characterSetCode 0-1
| | | | | hashFootprint 0-1
| | | | | @schemeID [Optional]
```

| | | @hashMethod [Required]
| | | **blockChainReference 0-9**
| | | uri 1-1
| | | @isURL [Optional] [Default= true]
| | | transactionReceipt 1-9

buyer 1-1

@logo [Optional]
@sender [Optional]
| id 1-1
| @numberingOrg [Optional]
| additionalIdentifier 0-9
| @numberingOrg [Optional]
| @idQualifier [Optional]
| legalName 0-1
| dept 0-1
| subDept 0-1
| person 0-1
| @email [Optional]
| @phone [Optional]
| @fax [Optional]
| street 0-1
| city 0-1
| subCountry 0-1
| country 0-1
| postCode 0-1
| **geoCoordinates 0-1**
| @um [Optional] [Default= DEGD]
| @geoRefSystem [Optional]
| | xGeoCoord 1-1
| | yGeoCoord 1-1
| | zGeoCoord 0-1

supplier 1-1

@logo [Optional]
@sender [Optional]
| id 1-1
| @numberingOrg [Optional]
| additionalIdentifier 0-9
| @numberingOrg [Optional]
| @idQualifier [Optional]
| legalName 0-1
| dept 0-1
| subDept 0-1
| person 0-1
| @email [Optional]
| @phone [Optional]
| @fax [Optional]
| street 0-1
| city 0-1
| subCountry 0-1
| country 0-1
| postCode 0-1
| **geoCoordinates 0-1**
| @um [Optional] [Default= DEGD]
| @geoRefSystem [Optional]
| | xGeoCoord 1-1
| | yGeoCoord 1-1
| | zGeoCoord 0-1

thirdParty 0-5

@VAT [Optional]
@role [Required]
@sender [Optional]
| id 1-1
| @numberingOrg [Optional]
| legalName 0-1
| dept 0-1
| subDept 0-1
| person 0-1
| @email [Optional]

- | | | @phone [Optional]
- | | | @fax [Optional]
- | | | street 0-1
- | | | city 0-1
- | | | subCountry 0-1
- | | | country 0-1
- | | | postCode 0-1
- | | | **geoCoordinates 0-1**
- | | | | @um [Optional] [Default= DEGD]
- | | | | @geoRefSystem [Optional]
- | | | | | xGeoCoord 1-1
- | | | | | yGeoCoord 1-1
- | | | | | zGeoCoord 0-1
- | | | note 0-99
- | | | @numberingOrg [Optional]
- | | | @codeList [Optional]
- | | | @noteLabel [Optional]

| **terms 0-1**

| | **payment 0-5**

- | | | @finDiscount [Optional]
- | | | @finSurcharge [Optional]
- | | | - choose -

- | | | | payTerm 1-1

| | | - or -

- | | | | payTermText 1-1

| | | - end choose -

- | | | | payMode 0-1

| | **insPayment 0-5**

- | | | @part [Required]

| | | - choose -

- | | | | payTerm 1-1

| | | - or -

- | | | | payTermText 1-1

| | | - end choose -

- | | | | payMode 0-1

| | **trade 0-1**

| | | - choose -

- | | | | incoTermText 1-1

| | | - or -

- | | | | incoTerm 1-1

| | | - end choose -

| | | - choose -

| | | **tradeLocation 0-1**

- | | | | location 0-1

- | | | | | @LRI [Optional]

- | | | | | legalName 0-1

- | | | | | dept 0-1

- | | | | | subDept 0-1

- | | | | | person 0-1

- | | | | | | @email [Optional]

- | | | | | | @phone [Optional]

- | | | | | | @fax [Optional]

- | | | | | | street 0-1

- | | | | | | city 0-1

- | | | | | | subCountry 0-1

- | | | | | | country 0-1

- | | | | | | postCode 0-1

- | | | | | | **geoCoordinates 0-1**

- | | | | | | | @um [Optional] [Default= DEGD]

- | | | | | | | @geoRefSystem [Optional]

- | | | | | | | | xGeoCoord 1-1

- | | | | | | | | yGeoCoord 1-1

- | | | | | | | | zGeoCoord 0-1

| | | - or -

- | | | | location 0-1

- | | | | | @LRI [Optional]

| | | - end choose -

```

| | transInfo 0-5
| | @transReason [Optional]
| | @progr [Optional]
| | | transMode 1-1
| | | carrier 0-1
| | - choose -
| | | deliveryLocation 0-1
| | | | location 0-1
| | | | | @LRI [Optional]
| | | | | legalName 0-1
| | | | | dept 0-1
| | | | | subDept 0-1
| | | | | person 0-1
| | | | | | @email [Optional]
| | | | | | @phone [Optional]
| | | | | | @fax [Optional]
| | | | | street 0-1
| | | | | city 0-1
| | | | | subCountry 0-1
| | | | | country 0-1
| | | | | postCode 0-1
| | | | | geoCoordinates 0-1
| | | | | | @um [Optional] [Default= DEGD]
| | | | | | @geoRefSystem [Optional]
| | | | | | | xGeoCoord 1-1
| | | | | | | yGeoCoord 1-1
| | | | | | | zGeoCoord 0-1
| | - or -
| | | deliveryPlace 0-1
| | - end choose -
| | | grossWeight 0-1
| | | | @um [Required]
| | | netWeight 0-1
| | | | @um [Required]
| | | transMeans 0-1
| | | | @propulsionSystemCode [Optional]
| | | transCondition 0-3
| | | | transConditionText 0-1
| | - choose -
| | | despatchPlace 0-1
| | - or -
| | | despatchLocation 0-1
| | | | location 0-1
| | | | | @LRI [Optional]
| | | | | legalName 0-1
| | | | | dept 0-1
| | | | | subDept 0-1
| | | | | person 0-1
| | | | | | @email [Optional]
| | | | | | @phone [Optional]
| | | | | | @fax [Optional]
| | | | | street 0-1
| | | | | city 0-1
| | | | | subCountry 0-1
| | | | | country 0-1
| | | | | postCode 0-1
| | | | | geoCoordinates 0-1
| | | | | | @um [Optional] [Default= DEGD]
| | | | | | @geoRefSystem [Optional]
| | | | | | | xGeoCoord 1-1
| | | | | | | yGeoCoord 1-1
| | | | | | | zGeoCoord 0-1
| | - end choose -
| | | despatchDate 0-1
| | | | @dateForm [Optional]
| | | delEffectiveDate 0-1
| | | | @dateForm [Optional]
| | | routeLength 0-1

```

```

| | | @um [Required]
| | allowanceCharge 0-9
| | @um [Optional]
| | @VAT [Optional]
| | @minQty [Optional]
| | @currency [Optional]
| | @maxQty [Optional]
| | @isCharge [Optional]
| | - choose -
| | | AC_category 1-1
| | - or -
| | | AC_categoryText 1-1
| | - end choose -
| | - choose -
| | | AC_percent 1-1
| | - or -
| | | AC_amount 1-1
| | | @currency [Optional]
| | - end choose -
| | | dtScheme 0-1
| | | @taxType [Required]
| | | taxCategory 0-1
| | | taxRate 0-1
| | | legalRef 0-1
| | | @numberingOrg [Optional]
| | | @codeList [Optional]
| | | @listName [Optional]
| | | @listVersion [Optional]
| | | note 0-99
| | | @numberingOrg [Optional]
| | | @codeList [Optional]
| | | @noteLabel [Optional]

```

```

| yarnComInfo 0-1
| @endUse [Optional] [Default= PR]
| season 0-1
| @numberingOrg [Optional]
| @codeList [Optional]
| @listName [Optional]
| @listVersion [Optional]
| brand 0-1
| @numberingOrg [Optional]
| @codeList [Optional]
| @listName [Optional]
| @listVersion [Optional]
| productLine 0-1
| @numberingOrg [Optional]
| @codeList [Optional]
| @listName [Optional]
| @listVersion [Optional]
| project 0-1
| operationalCode 0-19
| @numberingOrg [Optional]
| @codeList [Optional]
| @listName [Optional]
| @listVersion [Optional]
| @codeQualifier [Optional]
| yarnPay 0-1
| @percCond [Optional]
| deliveryDate 0-1
| @dateForm [Optional]
| specDate 0-1
| @dateForm [Optional]
| yarnPack 0-1
| | yarnReel 1-1
| | @reelType [Required]
| | @reelMat [Optional]
| | | yarnReelD 0-1

```


- | | | | @um [Required]
- | | | | yarnReelH 0-1
- | | | | @um [Required]
- | | | | yarnConeAngle 0-1
- | | | | yarnReelQty 0-2
- | | | | @um [Required]
- | | | | label 0-1
- | | | | labelWrit 0-1
- | | | | **yarnInWrap 0-1**
- | | | | | yarnReelWrap 1-1
- | | | | | label 0-1
- | | | | | labelWrit 0-1
- | | | - choose -
- | | | | yarnOutWrapText 0-1
- | | | - or -
- | | | | yarnOutWrap 0-1
- | | | - end choose -
- | | note 0-99
- | | | @numberingOrg [Optional]
- | | | @codeList [Optional]
- | | | @noteLabel [Optional]

YXbody 1-1

YXitem 1-unbounded

- | | | @act [Required]
- | | | | lineN 1-1
- | | | | @VAT [Optional]
- | | | | **refDoc 1-9**
- | | | | | @docType [Required]
- | | | | | docID 1-2
- | | | | | @numberingOrg [Optional]
- | | | | | docDate 0-1
- | | | | | @dateForm [Optional]
- | | | | | season 0-1
- | | | | | @numberingOrg [Optional]
- | | | | | @codeList [Optional]
- | | | | | @listName [Optional]
- | | | | | @listVersion [Optional]
- | | | | | itemID 0-1
- | | | | | **attachment 0-1**
- | | | | | | @uid [Optional]
- | | | | | | | fileName 0-1
- | | | | | | | @numberingOrg [Optional]
- | | | | | | | binaryObject 0-1
- | | | | | | | @format [Optional]
- | | | | | | | @mime [Optional]
- | | | | | | | @encoding [Optional]
- | | | | | | | @characterSet [Optional]
- | | | | | | | **externalReference 0-99**
- | | | | | | | | uri 1-1
- | | | | | | | | @isURL [Optional] [Default= true]
- | | | | | | | | mimeTypeCode 0-1
- | | | | | | | | formatCode 0-1
- | | | | | | | | encodingCode 0-1
- | | | | | | | | characterSetCode 0-1
- | | | | | | | | hashFootprint 0-1
- | | | | | | | | @schemeID [Optional]
- | | | | | | | | @hashMethod [Required]
- | | | | | | | | **blockChainReference 0-9**
- | | | | | | | | | uri 1-1
- | | | | | | | | | @isURL [Optional] [Default= true]
- | | | | | | | | | transactionReceipt 1-9
- | | | | | | | **yarnCode 0-2**
- | | | | | | | @numberingOrg [Optional] [Default= CL]
- | | | | | | | | art 1-1
- | | | | | | | | @numberingOrg [Optional]
- | | | | | | | | @codeList [Optional]
- | | | | | | | | @listName [Optional]

```

| | | | @listVersion [Optional]
| | | | color 0-1
| | | | @numberingOrg [Optional]
| | | | @codeList [Optional]
| | | | @listName [Optional]
| | | | @listVersion [Optional]
| | | | added 0-9
| | | | @numberingOrg [Optional]
| | | | @addType [Optional]
| | | | description 0-unbounded
| | | | @ln [Optional]
| | | | yarnCompos 0-1
| | | | percCompos 1-9
| | | | @fibre [Required]
| | | | @materialSource [Optional]
| | | | @recyclingProcessMethod [Optional]
| | | | @percSourcesRenewable [Optional]
| | | | @validationMethod [Optional]
| | | | @recyclingProcessEfficiency [Optional]
| | | | yarnSpecs 0-99
| | | | - choose -
| | | | | yarnCharText 1-1
| | | | | - or -
| | | | | | yarnChar 1-1
| | | | | - end choose -
| | | | | | experimValue 0-1
| | | | | | @um [Optional]
| | | | | | @method [Optional]
| | | | | | @application [Optional]
| | | | | | @idCO [Optional]
| | | | | | specValue 0-1
| | | | | | @um [Optional]
| | | | | | @source [Optional]
| | | | | | @method [Optional]
| | | | | | @application [Optional]
| | | | | | @CV [Optional]
| | | | | - choose -
| | | | | | tolerance 0-2
| | | | | | @um [Required]
| | | | | - or -
| | | | | | pcTolerance 0-2
| | | | | | @um [Optional]
| | | | | - end choose -
| | | | | lotN 0-2
| | | | | @numberingOrg [Optional]
| | | | | dyeN 0-2
| | | | | @numberingOrg [Optional]
| | | | - choose -
| | | | | yarnTreat 0-9
| | | | | - or -
| | | | | | yarnTreatText 0-9
| | | | | - end choose -
| | | | | | qty 0-2
| | | | | | @um [Required]
| | | | | | price 0-1
| | | | | | @um [Optional]
| | | | | | @priceQualifier [Optional] [Default= NET]
| | | | | | @currency [Optional]
| | | | | | comDiscount 0-1
| | | | | | thirdParty 0-3
| | | | | | @VAT [Optional]
| | | | | | @role [Required]
| | | | | | @sender [Optional]
| | | | | | | id 1-1
| | | | | | | @numberingOrg [Optional]
| | | | | | | legalName 0-1
| | | | | | | dept 0-1
| | | | | | | subDept 0-1

```

```

| | | | person 0-1
| | | |   @email [Optional]
| | | |   @phone [Optional]
| | | |   @fax [Optional]
| | | | street 0-1
| | | | city 0-1
| | | | subCountry 0-1
| | | | country 0-1
| | | | postCode 0-1
| | | | | geoCoordinates 0-1
| | | | |   @um [Optional] [Default= DEGD]
| | | | |   @geoRefSystem [Optional]
| | | | |     xGeoCoord 1-1
| | | | |     yGeoCoord 1-1
| | | | |     zGeoCoord 0-1
| | | | | yarnComInfo 0-1
| | | | |   @endUse [Optional] [Default= PR]
| | | | |   season 0-1
| | | | |   @numberingOrg [Optional]
| | | | |   @codeList [Optional]
| | | | |   @listName [Optional]
| | | | |   @listVersion [Optional]
| | | | |   brand 0-1
| | | | |   @numberingOrg [Optional]
| | | | |   @codeList [Optional]
| | | | |   @listName [Optional]
| | | | |   @listVersion [Optional]
| | | | |   productLine 0-1
| | | | |   @numberingOrg [Optional]
| | | | |   @codeList [Optional]
| | | | |   @listName [Optional]
| | | | |   @listVersion [Optional]
| | | | |   project 0-1
| | | | |   operationalCode 0-19
| | | | |   @numberingOrg [Optional]
| | | | |   @codeList [Optional]
| | | | |   @listName [Optional]
| | | | |   @listVersion [Optional]
| | | | |   @codeQualifier [Optional]
| | | | |   yarnPay 0-1
| | | | |   @percCond [Optional]
| | | | |   deliveryDate 0-1
| | | | |   @dateForm [Optional]
| | | | |   specDate 0-1
| | | | |   @dateForm [Optional]
| | | | | yarnPack 0-1
| | | | |   | yarnReel 1-1
| | | | |   |   @reelType [Required]
| | | | |   |   @reelMat [Optional]
| | | | |   |     yarnReelD 0-1
| | | | |   |     @um [Required]
| | | | |   |     yarnReelH 0-1
| | | | |   |     @um [Required]
| | | | |   |     yarnConeAngle 0-1
| | | | |   |     yarnReelQty 0-2
| | | | |   |     @um [Required]
| | | | |   |     label 0-1
| | | | |   |     labelWrit 0-1
| | | | |   | yarnInWrap 0-1
| | | | |   |   yarnReelWrap 1-1
| | | | |   |   label 0-1
| | | | |   |   labelWrit 0-1
| | | | | - choose -
| | | | |   | yarnOutWrapText 0-1
| | | | | - or -
| | | | |   | yarnOutWrap 0-1
| | | | | - end choose -
| | | | | note 0-99

```

```

| | | | @numberingOrg [Optional]
| | | | @codeList [Optional]
| | | | @noteLabel [Optional]
| | | | dtScheme 0-1
| | | | @taxType [Required]
| | | | taxCategory 0-1
| | | | taxRate 0-1
| | | | legalRef 0-1
| | | | @numberingOrg [Optional]
| | | | @codeList [Optional]
| | | | @listName [Optional]
| | | | @listVersion [Optional]
| | | | note 0-99
| | | | @numberingOrg [Optional]
| | | | @codeList [Optional]
| | | | @noteLabel [Optional]
| | | | note 0-99
| | | | @numberingOrg [Optional]
| | | | @codeList [Optional]
| | | | @noteLabel [Optional]

```

totals 0-1

```

| | | totQty 0-1
| | | @um [Required]
| | | goodsAmount 1-1
| | | @currency [Optional]

```

2.2 Detailed description of document elements

Following tables show all elements (complex and simple) used in this document. Description includes: 1) element's information: xml tag, name, brief description, data type and syntax constraints; 2) information about use of the element in a particular position in the document: xpath and possible associated notes.

2.2.1 Complex elements (Aggregate Business Information Entities)

Complex elements are those elements whose content is composed of other elements (childs). Complex elements are alphabetically ordered.

allowanceCharge	Allowances and Charges related to an Order or a contract (XPath YARNOrdChange/terms/allowanceCharge) 0-9
attachment	an attached document. An attachment can refer to an external document or be included with the document being exchanged (XPath YARNOrdChange/YXbody/YXitem/refDoc/attachment) 0-1 (XPath YARNOrdChange/YXheader/refDoc/attachment) 0-1
blockChainReference	blockchain reference - base type: string, max length: 80, (XPath YARNOrdChange/YXbody/YXitem/refDoc/attachment/blockChainReference) 0-9 (XPath YARNOrdChange/YXheader/refDoc/attachment/blockChainReference) 0-9
buyer	details of the Buyer (party that buys the good or service that is object of the current collaborative process) - base type: Nad, (XPath YARNOrdChange/YXheader/buyer) 1-1
deliveryLocation	data relating to a place of delivery(indicate at least element location or address, city and country) - base type: Nad, (XPath YARNOrdChange/terms/transInfo/deliveryLocation) 0-1 - note: use to represent addresses in a structured way or with geographical coordinates
despatchLocation	data relating to a place of despatch (indicate at least element location or address, city and country) - base type: Nad, (XPath YARNOrdChange/terms/transInfo/despatchLocation) 0-1 - note: use to represent addresses in a structured way
dtScheme	set of data usable to declare the duty or tax applied (XPath YARNOrdChange/YXbody/YXitem/dtScheme) 0-1 - note: recommended alternative to the attribute @VAT (XPath YARNOrdChange/terms/allowanceCharge/dtScheme) 0-1
externalReference	details about an external object, such as a document stored at a remote location (XPath YARNOrdChange/YXbody/YXitem/refDoc/attachment/externalReference) 0-99 (XPath YARNOrdChange/YXheader/refDoc/attachment/externalReference) 0-99
geoCoordinates	geographical coordinates (XPath YARNOrdChange/YXheader/buyer/geoCoordinates) 0-1 (XPath YARNOrdChange/YXheader/supplier/geoCoordinates) 0-1 (XPath YARNOrdChange/terms/transInfo/deliveryLocation/geoCoordinates) 0-1 (XPath YARNOrdChange/terms/trade/tradeLocation/geoCoordinates) 0-1 (XPath YARNOrdChange/YXheader/thirdParty/geoCoordinates) 0-1 (XPath YARNOrdChange/terms/transInfo/despatchLocation/geoCoordinates) 0-1 (XPath YARNOrdChange/YXbody/YXitem/thirdParty/geoCoordinates) 0-1
insPayment	payment details for payment by installments (XPath YARNOrdChange/terms/insPayment) 0-5 - note: excluded the case of offers, this set of data is alternative to payment set and must be iterated for each payment installment
payment	payment details for payment all in one (XPath YARNOrdChange/terms/payment) 0-5 - note: excluded the case of offers, this set of data is alternative to insPayment, it can be iterated to specify alternative terms of payment (e.g.: 60 days or 30 days with 3% di

	<i>scount)</i>
refDoc	<p>identification of a document and of an item thereof, to which the message makes reference (XPath YARNOrdChange/YXbody/YXitem/refDoc) 1-9 - note: Use to link the line of the present document to the line of the order, use refDoc element; numberingOrg indicates the role that produced the document and such reference, customer or supplier (both might be reported through two instances of refDoc) (XPath YARNOrdChange/YXheader/refDoc) 1-9 - note: At least one occurrence should contain a reference to the order it responds to (for example docType=ORD or OCH or BOR)</p>
supplier	<p>details of the Supplier (party that supplies the good or service that is object of the current collaborative process) - base type: Nad, (XPath YARNOrdChange/YXheader/supplier) 1-1</p>
terms	<p>details of the commercial obligations for payment and delivery (XPath YARNOrdChange/terms) 0-1</p>
thirdParty	<p>identification and details of the Third Party, different from Sender and Receiver of the document - base type: Nad, (XPath YARNOrdChange/YXbody/YXitem/thirdParty) 0-3 (XPath YARNOrdChange/YXheader/thirdParty) 0-5</p>
totals	<p>monetary and quantity totals of the Order (XPath YARNOrdChange/totals) 0-1</p>
trade	<p>general terms of trade for the specified supply (XPath YARNOrdChange/terms/trade) 0-1</p>
tradeLocation	<p>data relating to the place to which the trade conditions refer (indicate at least element location or address, city and country) - base type: Nad, (XPath YARNOrdChange/terms/trade/tradeLocation) 0-1 - note: address of the place to which the INCOTERM applies</p>
transInfo	<p>details of transport: mode, carrier and delivery place (XPath YARNOrdChange/terms/transInfo) 0-5</p>
yarnCode	<p>full codification of a yarn product (XPath YARNOrdChange/YXbody/YXitem/yarnCode) 0-2</p>
yarnComInfo	<p>miscellaneous trade information, that can be specified in a yarn Order, referred either to the whole document or to the single item (XPath YARNOrdChange/yarnComInfo) 0-1 (XPath YARNOrdChange/YXbody/YXitem/yarnComInfo) 0-1</p>
yarnCompos	<p>fibrous composition of a yarn product (XPath YARNOrdChange/YXbody/YXitem/yarnCompos) 0-1</p>
yarnInWrap	<p>details specifying the inner wrapping of a yarn product (XPath YARNOrdChange/yarnComInfo/yarnPack/yarnInWrap) 0-1 (XPath YARNOrdChange/YXbody/YXitem/yarnComInfo/yarnPack/yarnInWrap) 0-1</p>
yarnPack	<p>details of type of presentation used for the yarn (XPath YARNOrdChange/yarnComInfo/yarnPack) 0-1 (XPath YARNOrdChange/YXbody/YXitem/yarnComInfo/yarnPack) 0-1</p>
yarnReel	<p>details of the packaging of a yarn product (bobbin and reel,...) (XPath YARNOrdChange/YXbody/YXitem/yarnComInfo/yarnPack/yarnReel) 1-1 (XPath YARNOrdChange/yarnComInfo/yarnPack/yarnReel) 1-1</p>
yarnSpecs	<p>technical properties of a yarn product linked to an operation of the sub-contracted production of yarn or to the purchase of yarn (XPath YARNOrdChange/YXbody/YXitem/yarnSpecs) 0-99</p>
YXbody	<p>body of the YARN ORDER RESPONSE and YARN ORDER CHANGE (XPath YARNOrdChange/YXbody) 1-1</p>
YXheader	<p>header of the YARN ORDER RESPONSE and YARN ORDER CHANGE (XPath YARNOrdChange/YXheader) 1-1</p>

YXitem	line item of the YARN ORDER RESPONSE and YARN ORDER CHANGE (XPath YARNOrdChange/YXbody/YXitem) 1-unbounded
--------	---

2.2.2 Simple elements (Basic Business Information Entities)

Simple elements are those elements whose content is characterized by a data type plus a domain of possible values. Simple elements are alphabetically ordered.

AC_amount	amount of an Allowance or Charge - base type: decimal, fraction digits: 2, (XPath YARNOrdChange/terms/allowanceCharge/AC_amount) 1-1
AC_category	coded specification of an Allowance or Charge - base type: string, cod. table: T41 http://www.ebiz.enea.it/moda-ml/repository/codelist/draft/gc_T41.xml (XPath YARNOrdChange/terms/allowanceCharge/AC_category) 1-1
AC_categoryText	free text description of an Allowance or Charge - base type: string, max length: 250, (XPath YARNOrdChange/terms/allowanceCharge/AC_categoryText) 1-1
AC_percent	amount of an Allowance or Charge as a percentage (always non negative value) - base type: decimal, max inclusive: 100, fraction digits: 2, (XPath YARNOrdChange/terms/allowanceCharge/AC_percent) 1-1
@act	status that the current line assigns to the line addressed in the reference document; if it is already canceled it maintains the status. - base type: string, cod. table: NT5 http://www.ebiz.enea.it/moda-ml/repository/codelist/draft/gc_NT5.xml (XPath YARNOrdChange/YXbody/YXitem/@act) [Required]
added	additional code of the product (complementing the formers) - base type: string, max length: 80, (XPath YARNOrdChange/YXbody/YXitem/yarnCode/added) 0-9 - note: here an additional codification (see table T44) can be specified
additionalIdentifier	additional identification code of a Party, for example customs registries or others - base type: string, max length: 15, (XPath YARNOrdChange/YXheader/supplier/additionalIdentifier) 0-9 - note: identifiers for example for exports, such as MID (Manufacturer Identification Code), REX (identifier in EU Registered Exporter system) (XPath YARNOrdChange/YXheader/buyer/additionalIdentifier) 0-9 - note: identifiers for example for exports, such as MID (Manufacturer Identification Code), REX (identificatier in Registered Exporter system)
@addType	qualifier of the additional coding of a product - base type: string, cod. table: T44 http://www.ebiz.enea.it/moda-ml/repository/codelist/draft/gc_T44.xml (XPath YARNOrdChange/YXbody/YXitem/yarnCode/added/@addType) [Optional] - nota: addType allows the clarification of the meaning of the added element content; it is strongly suggested to use it always.
@application	force or similar condition (e.g. no. of revolutions) applied in a test as specified within the standard - base type: string, max length: 15, (XPath YARNOrdChange/YXbody/YXitem/yarnSpecs/specValue/@application) [Optional] (XPath YARNOrdChange/YXbody/YXitem/yarnSpecs/experimValue/@application) [Optional]
art	article number of the product - base type: string, max length: 80, (XPath YARNOrdChange/YXbody/YXitem/yarnCode/art) 1-1
binaryObject	a binary large object containing an attached document, Coding 'base64Binary' is recommended. - base type: base64Binary, (XPath YARNOrdChange/YXheader/refDoc/attachment/binaryObject) 0-1 (XPath YARNOrdChange/YXbody/YXitem/refDoc/attachment/binaryObject) 0-1
brand	A brand name.

	<p>- base type: string, (XPath YARNOrdChange/YXbody/YXitem/yarnComInfo/brand) 0-1 (XPath YARNOrdChange/yarnComInfo/brand) 0-1</p>
carrier	<p>identification of the transport carrier - base type: string, max length: 40, (XPath YARNOrdChange/terms/transInfo/carrier) 0-1</p>
@characterSet	<p>the character set of the binary object (examples UTF-8, UTF-16, Windows-1252, ISO-8859-7,...) - base type: normalizedString, (XPath YARNOrdChange/YXheader/refDoc/attachment/ binaryObject/@characterSet) [Optional] (XPath YARNOrdChange/YXbody/YXitem/refDoc/attachment/ binaryObject/@characterSet) [Optional]</p>
characterSetCode	<p>the character set of an external document (examples UTF-8, UTF-16, Windows-1252, ISO-8859-7,...) - base type: normalizedString, (XPath YARNOrdChange/YXheader/refDoc/attachment/ externalReference/characterSetCode) 0-1 (XPath YARNOrdChange/YXbody/YXitem/refDoc/attachment/ externalReference/characterSetCode) 0-1</p>
city	<p>name of the city (town, village) - base type: string, max length: 40, (XPath YARNOrdChange/YXbody/YXitem/thirdParty/city) 0-1 (XPath YARNOrdChange/terms/trade/tradeLocation/city) 0-1 (XPath YARNOrdChange/terms/transInfo/despatchLocation/city) 0-1 (XPath YARNOrdChange/YXheader/thirdParty/city) 0-1 (XPath YARNOrdChange/YXheader/buyer/city) 0-1 (XPath YARNOrdChange/terms/transInfo/deliveryLocation/city) 0-1 (XPath YARNOrdChange/YXheader/supplier/city) 0-1</p>
@codeList	<p>it specifies the URL where the list of codes used to make an instance of the element can be found - base type: string, max length: 255, (XPath YARNOrdChange/YXbody/YXitem/refDoc/season/@codeList) [Optional] - nota: <i>this attribute should be used either single or coupled with "listName" and "listVersion"</i> (XPath YARNOrdChange/yarnComInfo/productLine/@codeList) [Optional] - nota: <i>at least one out of this attribute and "numberingOrg" should be set</i> (XPath YARNOrdChange/YXbody/YXitem/dtScheme/legalRef/@codeList) [Optional] (XPath YARNOrdChange/YXbody/YXitem/yarnComInfo/note/@codeList) [Optional] - nota: <i>must be used to provide (URL) the list of codes used in "noteLabel"</i> (XPath YARNOrdChange/yarnComInfo/brand/@codeList) [Optional] - nota: <i>at least one out of this attribute and "numberingOrg" should be set</i> (XPath YARNOrdChange/YXbody/YXitem/yarnComInfo/ operationalCode/@codeList) [Optional] - nota: <i>at least one out of this attribute and "numberingOrg" should be set</i> (XPath YARNOrdChange/YXheader/note/@codeList) [Optional] - nota: <i>must be used to provide (URL) the list of codes used in "noteLabel"</i> (XPath YARNOrdChange/YXheader/refDoc/season/@codeList) [Optional] - nota: <i>this attribute should be used either single or coupled with "listName" and "listVersion"</i> (XPath YARNOrdChange/yarnComInfo/note/@codeList) [Optional] - nota: <i>must be used to provide (URL) the list of codes used in "noteLabel"</i> (XPath YARNOrdChange/YXbody/YXitem/yarnComInfo/ productLine/@codeList) [Optional] - nota: <i>at least one out of this attribute and "numberingOrg" should be set</i> (XPath YARNOrdChange/YXbody/YXitem/dtScheme/note/@codeList) [Optional] - nota: <i>must be used to provide (URL) the list of codes used in "noteLabel"</i> (XPath YARNOrdChange/YXbody/YXitem/yarnCode/art/@codeList) [Optional] - nota: <i>at least one out of this attribute and "numberingOrg" should be set</i> (XPath YARNOrdChange/YXbody/YXitem/yarnCode/color/@codeList) [Optional] - nota: <i>this attribute should be used either single or coupled with "listName" and "listVersion"</i> (XPath YARNOrdChange/YXbody/YXitem/yarnComInfo/brand/@codeList) [Optional] - nota: <i>at least one out of this attribute and "numberingOrg" should be set</i> (XPath YARNOrdChange/YXbody/YXitem/note/@codeList) [Optional] - nota: <i>must be used to provide (URL) the list of codes used in "noteLabel"</i> (XPath YARNOrdChange/terms/allowanceCharge/dtScheme/note/@codeList) [Optional]</p>

	<p>- nota: <i>must be used to provide (URL) the list of codes used in "noteLabel"</i> (XPath YARNOrdChange/yarnComInfo/season/@codeList) [Optional]</p> <p>- nota: <i>this attribute should be used either single or coupled with "listName" and "listVersion"</i> (XPath YARNOrdChange/terms/allowanceCharge/dtScheme/legalRef/@codeList) [Optional]</p> <p>(XPath YARNOrdChange/yarnComInfo/operationalCode/@codeList) [Optional]</p> <p>- nota: <i>at least one out of this attribute and "numberingOrg" should be set</i> (XPath YARNOrdChange/YXbody/YXitem/yarnComInfo/season/@codeList) [Optional]</p> <p>- nota: <i>this attribute should be used either single or coupled with "listName" and "listVersion"</i></p>
@codeQualifier	<p>operational code qualifier: it states if the code is related to a project, an event, an initiative, a sales channel, a management type (eg CITES),</p> <p>- base type: string, cod. table: NT43 http://www.ebiz.enea.it/moda-ml/repository/codelist/draft/gc_NT43.xml (XPath YARNOrdChange/YXbody/YXitem/yarnComInfo/operationalCode/@codeQualifier) [Optional]</p> <p>(XPath YARNOrdChange/yarnComInfo/operationalCode/@codeQualifier) [Optional]</p>
color	<p>colour number of the product, when not included in the model or fabric code</p> <p>- base type: string, max length: 15, (XPath YARNOrdChange/YXbody/YXitem/yarnCode/color) 0-1</p>
comDiscount	<p>percent discount applied to the related unit price or amount</p> <p>- base type: decimal, min inclusive: 0, max inclusive: 100, fraction digits: 2, (XPath YARNOrdChange/YXbody/YXitem/comDiscount) 0-1</p>
country	<p>code of the nation</p> <p>- base type: string, cod. table: T10 http://www.ebiz.enea.it/moda-ml/repository/codelist/draft/gc_T10.xml (XPath YARNOrdChange/YXheader/thirdParty/country) 0-1 (XPath YARNOrdChange/terms/trade/tradeLocation/country) 0-1 (XPath YARNOrdChange/YXheader/buyer/country) 0-1 (XPath YARNOrdChange/YXbody/YXitem/thirdParty/country) 0-1 (XPath YARNOrdChange/YXheader/supplier/country) 0-1 (XPath YARNOrdChange/terms/transInfo/deliveryLocation/country) 0-1 (XPath YARNOrdChange/terms/transInfo/despatchLocation/country) 0-1</p>
@currency	<p>currency in which a specified monetary data is expressed</p> <p>- base type: string, cod. table: T9 http://www.ebiz.enea.it/moda-ml/repository/codelist/draft/gc_T9.xml (XPath YARNOrdChange/terms/allowanceCharge/@currency) [Optional] (XPath YARNOrdChange/totals/goodsAmount/@currency) [Optional] (XPath YARNOrdChange/YXbody/YXitem/price/@currency) [Optional]</p> <p>- nota: <i>Currency referred by the price.</i> (XPath YARNOrdChange/terms/allowanceCharge/AC_amount/@currency) [Optional]</p>
@currencyUseQualifier	<p>qualification of another currency used in the document</p> <p>- base type: string, cod. table: NT19 http://www.ebiz.enea.it/moda-ml/repository/codelist/draft/gc_NT19.xml (XPath YARNOrdChange/YXheader/otherCurrency/@currencyUseQualifier) [Required]</p>
@CV	<p>coefficient of variation (CV) of a measurement</p> <p>- base type: decimal, (XPath YARNOrdChange/YXbody/YXitem/yarnSpecs/specValue/@CV) [Optional]</p>
@dateForm	<p>format used for the date</p> <p>- base type: string, cod. table: NT29 http://www.ebiz.enea.it/moda-ml/repository/codelist/draft/gc_NT29.xml (XPath YARNOrdChange/YXbody/YXitem/refDoc/docDate/@dateForm) [Optional] (XPath YARNOrdChange/yarnComInfo/specDate/@dateForm) [Optional] (XPath YARNOrdChange/yarnComInfo/deliveryDate/@dateForm) [Optional] (XPath YARNOrdChange/YXbody/YXitem/yarnComInfo/specDate/@dateForm) [Optional] (XPath YARNOrdChange/YXheader/msgDate/@dateForm) [Optional] (XPath YARNOrdChange/YXbody/YXitem/yarnComInfo/deliveryDate/@dateForm) [Optional] (XPath YARNOrdChange/terms/transInfo/despatchDate/@dateForm) [Optional] (XPath YARNOrdChange/YXheader/refDoc/docDate/@dateForm) [Optional] (XPath YARNOrdChange/terms/transInfo/delEffectiveDate/@dateForm) [Optional]</p>
delEffectiveDate	<p>actual delivery date (estimated or occurred in case of receipt docs), it might be different from what agreed between the parties. Format according to one of the patterns indicated by the dateForm attribute: YYYY-MM-DD, YYYY-MM-DD:HH-MM or YYYY-WW.</p>

	- base type: string, (XPath YARNOrdChange/terms/transInfo/delEffectiveDate) 0-1
deliveryDate	date of delivery of goods, requested or promised in the purchase process, according to one of the patterns YYYY-MM-DD, YYYY-MM-DD:HH-MM or YYYY-WW. - base type: string, (XPath YARNOrdChange/yarnComInfo/deliveryDate) 0-1 (XPath YARNOrdChange/YXbody/YXitem/yarnComInfo/deliveryDate) 0-1
deliveryPlace	place of delivery of goods, ultimate or related to a given leg - base type: string, max length: 250, (XPath YARNOrdChange/terms/transInfo/deliveryPlace) 0-1 - note: <i>use to represent addresses with a unique text string</i>
dept	name or code of a department - base type: string, max length: 40, (XPath YARNOrdChange/YXbody/YXitem/thirdParty/dept) 0-1 (XPath YARNOrdChange/YXheader/buyer/dept) 0-1 (XPath YARNOrdChange/YXheader/supplier/dept) 0-1 (XPath YARNOrdChange/terms/trade/tradeLocation/dept) 0-1 (XPath YARNOrdChange/YXheader/thirdParty/dept) 0-1 (XPath YARNOrdChange/terms/transInfo/despatchLocation/dept) 0-1 (XPath YARNOrdChange/terms/transInfo/deliveryLocation/dept) 0-1
description	free text description. The content of the element must be unique, it might be translated and repeated into more languages (thus no more than one instance for each language). - base type: string, max length: 250, (XPath YARNOrdChange/YXbody/YXitem/yarnCode/description) 0-unbounded - note: <i>Product description</i>
despatchDate	date of despatch of goods, requested or promised in the purchase process, according to one of the patterns YYYY-MM-DD, YYYY-MM-DD:HH-MM or YYYY-WW. - base type: string, (XPath YARNOrdChange/terms/transInfo/despatchDate) 0-1
despatchPlace	place of despatch of goods, origin or related to a given leg - base type: string, max length: 250, (XPath YARNOrdChange/terms/transInfo/despatchPlace) 0-1 - note: <i>use to represent addresses with a unique text string</i>
docDate	date of issue of the referenced document, according to one of the patterns YYYY-MM-DD, YYYY-MM-DD:HH-MM or YYYY-WW. - base type: string, (XPath YARNOrdChange/YXheader/refDoc/docDate) 0-1 (XPath YARNOrdChange/YXbody/YXitem/refDoc/docDate) 0-1
docID	identification number of the referenced document - base type: string, max length: 80, (XPath YARNOrdChange/YXheader/refDoc/docID) 1-2 Best Practice (XPath YARNOrdChange/YXheader/docID) 0-1 - note: <i>Its use in HEADER elements is discouraged (use msgID)</i> (XPath YARNOrdChange/YXbody/YXitem/refDoc/docID) 1-2 Best Practice
@docType	type or class to which the referenced document belongs - base type: string, cod. table: T21 http://www.ebiz.enea.it/moda-ml/repository/codelist/draft/gc_T21.xml (XPath YARNOrdChange/YXheader/refDoc/@docType) [Required] (XPath YARNOrdChange/YXbody/YXitem/refDoc/@docType) [Required]
dyeN	number of the dyeing batch of a textile product - base type: string, max length: 15, (XPath YARNOrdChange/YXbody/YXitem/dyeN) 0-2 - note: <i>it can be specified by the Buyer in case of stock service</i>
@email	electronic mail address of the contact person within a Party - base type: string, max length: 250, (XPath YARNOrdChange/YXheader/supplier/person/@email) [Optional] (XPath YARNOrdChange/YXbody/YXitem/thirdParty/person/@email) [Optional] (XPath YARNOrdChange/terms/trade/tradeLocation/person/@email) [Optional] (XPath YARNOrdChange/YXheader/buyer/person/@email) [Optional] (XPath YARNOrdChange/terms/transInfo/despatchLocation/person/@email) [Optional] (XPath YARNOrdChange/YXheader/thirdParty/person/@email) [Optional]

	(XPath YARNOrdChange/terms/transInfo/deliveryLocation/person/@email) [Optional]
@encoding	specifies the decoding algorithm of the binary object - base type: normalizedString, (XPath YARNOrdChange/YXbody/YXitem/refDoc/attachment/binaryObject/@encoding) [Optional] (XPath YARNOrdChange/YXheader/refDoc/attachment/binaryObject/@encoding) [Optional]
encodingCode	the encoding/decoding algorithm used with the external object (example is 'base64Binary') - base type: normalizedString, (XPath YARNOrdChange/YXbody/YXitem/refDoc/attachment/externalReference/encodingCode) 0-1 (XPath YARNOrdChange/YXheader/refDoc/attachment/externalReference/encodingCode) 0-1
@endUse	specifies the final use of the fabric - base type: string, cod. table: NT4 http://www.ebiz.enea.it/moda-ml/repository/codelist/draft/gc_NT4.xml (XPath YARNOrdChange/yarnComInfo/@endUse) [Optional] [Default= PR] - nota: When used for yarns, use only PR: Production or SA: Sample codes. (XPath YARNOrdChange/YXbody/YXitem/yarnComInfo/@endUse) [Optional] [Default= PR] - nota: When used for yarns, use only PR: Production or SA: Sample codes.
@exchangeRate	Currency exchange rate - base type: decimal, min inclusive: 0, (XPath YARNOrdChange/YXheader/otherCurrency/@exchangeRate) [Optional] - nota: Set the exchange rate of this currency to be applied on the message currency (msgCurrecy) to obtain the final value in this currency.
experimValue	experimental value of the measurement - base type: decimal, (XPath YARNOrdChange/YXbody/YXitem/yarnSpecs/experimValue) 0-1
@fax	fax number of the contact person within a Party - base type: string, max length: 35, (XPath YARNOrdChange/YXbody/YXitem/thirdParty/person/@fax) [Optional] (XPath YARNOrdChange/terms/transInfo/deliveryLocation/person/@fax) [Optional] (XPath YARNOrdChange/YXheader/buyer/person/@fax) [Optional] (XPath YARNOrdChange/YXheader/thirdParty/person/@fax) [Optional] (XPath YARNOrdChange/YXheader/supplier/person/@fax) [Optional] (XPath YARNOrdChange/terms/transInfo/despatchLocation/person/@fax) [Optional] (XPath YARNOrdChange/terms/trade/tradeLocation/person/@fax) [Optional]
@fibre	type of fibre used in a textile product - base type: string, cod. table: T19 http://www.ebiz.enea.it/moda-ml/repository/codelist/draft/gc_T19.xml (XPath YARNOrdChange/YXbody/YXitem/yarnCompos/percCompos/@fibre) [Required]
fileName	unique identifier (name) of the file - base type: string, max length: 255, (XPath YARNOrdChange/YXheader/refDoc/attachment/fileName) 0-1 (XPath YARNOrdChange/YXbody/YXitem/refDoc/attachment/fileName) 0-1
@finDiscount	financial discount rate applied for payment by the date specified - base type: decimal, min inclusive: 0, max inclusive: 100, fraction digits: 2, (XPath YARNOrdChange/terms/payment/@finDiscount) [Optional]
@finSurcharge	financial surcharge rate applied for payment after the date specified - base type: decimal, min inclusive: 0, max inclusive: 100, fraction digits: 2, (XPath YARNOrdChange/terms/payment/@finSurcharge) [Optional]
@format	the format of the binary content (examples xml, pdf, doc,...) - base type: string, (XPath YARNOrdChange/YXheader/refDoc/attachment/binaryObject/@format) [Optional] (XPath YARNOrdChange/YXbody/YXitem/refDoc/attachment/binaryObject/@format) [Optional]

formatCode	<p>the format of the external object (examples xml, pdf, doc,...)</p> <p>- base type: normalizedString, (XPath YARNOrdChange/YXheader/refDoc/attachment/ externalReference/formatCode) 0-1 (XPath YARNOrdChange/YXbody/YXitem/refDoc/attachment/ externalReference/formatCode) 0-1</p>
@geoRefSystem	<p>georeference system adopted for the coordinate (in example wgs84 with decimal degree 0 degree with minute and seconds)</p> <p>- base type: string, (XPath YARNOrdChange/YXheader/supplier/geoCoordinates/@geoRefSystem) [Optional] (XPath YARNOrdChange/YXheader/buyer/geoCoordinates/@geoRefSystem) [Optional] (XPath YARNOrdChange/terms/transInfo/deliveryLocation/ geoCoordinates/@geoRefSystem) [Optional] (XPath YARNOrdChange/YXheader/thirdParty/geoCoordinates/@geoRefSystem) [Optional] (XPath YARNOrdChange/terms/trade/tradeLocation/ geoCoordinates/@geoRefSystem) [Optional] (XPath YARNOrdChange/YXbody/YXitem/thirdParty/geoCoordinates/@geoRefSystem) [Optional] (XPath YARNOrdChange/terms/transInfo/despatchLocation/ geoCoordinates/@geoRefSystem) [Optional]</p>
goodsAmount	<p>total monetary value of the goods and services considered in the message</p> <p>- base type: decimal, min inclusive: 0, fraction digits: 2, (XPath YARNOrdChange/totals/goodsAmount) 1-1</p>
grossWeight	<p>the gross weight, declared for transport or customs purpose</p> <p>- base type: decimal, min inclusive: 0, fraction digits: 2, (XPath YARNOrdChange/terms/transInfo/grossWeight) 0-1</p>
hashFootprint	<p>footprint obtained by applying an hashing algorithm</p> <p>- base type: string, max length: 80, (XPath YARNOrdChange/YXheader/refDoc/attachment/hashFootprint) 0-1 (XPath YARNOrdChange/YXbody/YXitem/refDoc/attachment/hashFootprint) 0-1</p>
@hashMethod	<p>type of used hashing algorithm</p> <p>- base type: string, max length: 80, cod. table: NT333 http://www.ebiz.enea.it/moda-ml/repository/codelist/draft/gc_NT333.xml (XPath YARNOrdChange/YXbody/YXitem/refDoc/attachment/ hashFootprint/@hashMethod) [Required] (XPath YARNOrdChange/YXheader/refDoc/attachment/ hashFootprint/@hashMethod) [Required]</p>
id	<p>primary identification code of a Party; it is recommended to use an EORI number (with @numberingOrg= "EO") or the format: nation code (ISO 3166) + national tax code (i.e. VAT identification number) with @numberingOrg= "MF"</p> <p>- base type: string, max length: 15, (XPath YARNOrdChange/YXheader/buyer/id) 1-1 (XPath YARNOrdChange/YXbody/YXitem/thirdParty/id) 1-1 (XPath YARNOrdChange/YXheader/supplier/id) 1-1 (XPath YARNOrdChange/YXheader/thirdParty/id) 1-1</p>
@idCO	<p>primary identification code of the Party executing the test; it is recommended the format: nation code (ISO 3166) + VAT identification number (11 crt).</p> <p>- base type: string, max length: 15, (XPath YARNOrdChange/YXbody/YXitem/yarnSpecs/experimValue/@idCO) [Optional]</p>
@idQualifier	<p>Qualification of the identifier.</p> <p>- base type: string, (XPath YARNOrdChange/YXheader/supplier/additionalIdentifier/@idQualifier) [Optional]</p> <p>- nota: this attribute should be used when the numberingOrg attribute is not enough to declare the type of identifier (XPath YARNOrdChange/YXheader/buyer/additionalIdentifier/@idQualifier) [Optional]</p> <p>- nota: this attribute should be used when the numberingOrg attribute is not enough to declare the type of identifier</p>
incoTerm	<p>specification of the terms of trade (INCOTERMS)</p> <p>- base type: string, cod. table: T3 http://www.ebiz.enea.it/moda-ml/repository/codelist/draft/gc_T3.xml (XPath YARNOrdChange/terms/trade/incoTerm) 1-1</p>

incoTermText	free text specifying the terms of trade (incoterm, location) - base type: string, max length: 250, (XPath YARNOrdChange/terms/trade/incoTermText) 1-1
@isCharge	Indicates if the element to which it refers is a charge (true = charge, false = allowance) - base type: boolean, (XPath YARNOrdChange/terms/allowanceCharge/@isCharge) [Optional]
@isURL	it indicates if the referred element is an URL (true) or not (false) - base type: boolean, (XPath YARNOrdChange/YXbody/YXitem/refDoc/attachment/externalReference/uri/@isURL) [Optional] [Default= true] - nota: <i>usage of URLs is recommended</i> (XPath YARNOrdChange/YXheader/refDoc/attachment/externalReference/uri/@isURL) [Optional] [Default= true] - nota: <i>usage of URLs is recommended</i> (XPath YARNOrdChange/YXheader/refDoc/attachment/blockChainReference/uri/@isURL) [Optional] [Default= true] - nota: <i>usage of URLs is recommended</i> (XPath YARNOrdChange/YXbody/YXitem/refDoc/attachment/blockChainReference/uri/@isURL) [Optional] [Default= true] - nota: <i>usage of URLs is recommended</i>
itemID	number of the line/item of the referenced document - base type: string, max length: 40, (XPath YARNOrdChange/YXbody/YXitem/refDoc/itemID) 0-1 (XPath YARNOrdChange/YXheader/refDoc/itemID) 0-1
label	indicates if the physical object specified has to be labelled - base type: boolean, (XPath YARNOrdChange/yarnComInfo/yarnPack/yarnReel/label) 0-1 (XPath YARNOrdChange/YXbody/YXitem/yarnComInfo/yarnPack/yarnReel/label) 0-1 (XPath YARNOrdChange/yarnComInfo/yarnPack/yarnInWrap/label) 0-1 (XPath YARNOrdChange/YXbody/YXitem/yarnComInfo/yarnPack/yarnInWrap/label) 0-1
labelWrit	text that must be written on the lable of a specified physical object when its customizati on is required - base type: string, max length: 350, (XPath YARNOrdChange/yarnComInfo/yarnPack/yarnInWrap/labelWrit) 0-1 (XPath YARNOrdChange/YXbody/YXitem/yarnComInfo/yarnPack/yarnInWrap/labelWrit) 0-1 (XPath YARNOrdChange/YXbody/YXitem/yarnComInfo/yarnPack/yarnReel/labelWrit) 0-1 (XPath YARNOrdChange/yarnComInfo/yarnPack/yarnReel/labelWrit) 0-1
legalName	legal name - base type: string, max length: 250, (XPath YARNOrdChange/YXheader/thirdParty/legalName) 0-1 (XPath YARNOrdChange/terms/transInfo/deliveryLocation/legalName) 0-1 (XPath YARNOrdChange/YXheader/supplier/legalName) 0-1 (XPath YARNOrdChange/terms/trade/tradeLocation/legalName) 0-1 (XPath YARNOrdChange/YXheader/buyer/legalName) 0-1 (XPath YARNOrdChange/YXbody/YXitem/thirdParty/legalName) 0-1 (XPath YARNOrdChange/terms/transInfo/despatchLocation/legalName) 0-1
legalRef	legal reference of the duty or tax or fee category - base type: string, (XPath YARNOrdChange/YXbody/YXitem/dtScheme/legalRef) 0-1 (XPath YARNOrdChange/terms/allowanceCharge/dtScheme/legalRef) 0-1
lineN	number of the line item of the present message (xml document); it is set by the role tha t produces the document. Usually it is a progressive number, but not always. - base type: positiveInteger, min inclusive: 1, max inclusive: 9999, (XPath YARNOrdChange/YXbody/YXitem/lineN) 1-1
@listName	the name of the list of codes used to make an instance of the element (it might be thou ght as descriptive element, i.e. 'fabric printing technologies', or not, i.e. "T264") - base type: string, max length: 40, (XPath YARNOrdChange/yarnComInfo/season/@listName) [Optional] - nota: <i>this attribute should always be used coupled with "numberingOrg"</i> (XPath YARNOrdChange/YXbody/YXitem/dtScheme/legalRef/@listName) [Optional]

	<ul style="list-style-type: none"> - nota: <i>this attribute should always be used coupled with “numberingOrg”</i> (XPath YARNOrdChange/YXbody/YXitem/yarnComInfo/season/@listName) [Optional] - nota: <i>this attribute should always be used coupled with “numberingOrg”</i> (XPath YARNOrdChange/YXbody/YXitem/yarnComInfo/brand/@listName) [Optional] - nota: <i>this attribute should always be used coupled with “numberingOrg”</i> (XPath YARNOrdChange/YXbody/YXitem/yarnComInfo/productLine/@listName) [Optional] - nota: <i>this attribute should always be used coupled with “numberingOrg”</i> (XPath YARNOrdChange/YXbody/YXitem/yarnCode/art/@listName) [Optional] - nota: <i>this attribute should always be used coupled with “numberingOrg”</i> (XPath YARNOrdChange/YXbody/YXitem/yarnCode/color/@listName) [Optional] - nota: <i>this attribute should always be used coupled with “numberingOrg”</i> (XPath YARNOrdChange/YXbody/YXitem/refDoc/season/@listName) [Optional] - nota: <i>this attribute should always be used coupled with “numberingOrg”</i> (XPath YARNOrdChange/YXbody/YXitem/yarnComInfo/operationalCode/@listName) [Optional] - nota: <i>this attribute should always be used coupled with “numberingOrg”</i> (XPath YARNOrdChange/yarnComInfo/brand/@listName) [Optional] - nota: <i>this attribute should always be used coupled with “numberingOrg”</i> (XPath YARNOrdChange/YXheader/refDoc/season/@listName) [Optional] - nota: <i>this attribute should always be used coupled with “numberingOrg”</i> (XPath YARNOrdChange/yarnComInfo/productLine/@listName) [Optional] - nota: <i>this attribute should always be used coupled with “numberingOrg”</i> (XPath YARNOrdChange/yarnComInfo/operationalCode/@listName) [Optional] - nota: <i>this attribute should always be used coupled with “numberingOrg”</i> (XPath YARNOrdChange/terms/allowanceCharge/dtScheme/legalRef/@listName) [Optional] - nota: <i>this attribute should always be used coupled with “numberingOrg”</i>
<p>@listVersion</p>	<p>it specifies the version of the list of codes used to make an instance of the element</p> <ul style="list-style-type: none"> - base type: string, max length: 6, (XPath YARNOrdChange/terms/allowanceCharge/dtScheme/legalRef/@listVersion) [Optional] - nota: <i>this attribute should always be used coupled with “numberingOrg” and “listName”</i> (XPath YARNOrdChange/YXbody/YXitem/yarnComInfo/brand/@listVersion) [Optional] - nota: <i>this attribute should always be used coupled with “numberingOrg” and “listName”</i> (XPath YARNOrdChange/YXbody/YXitem/yarnComInfo/season/@listVersion) [Optional] - nota: <i>this attribute should always be used coupled with “numberingOrg” and “listName”</i> (XPath YARNOrdChange/YXbody/YXitem/yarnCode/color/@listVersion) [Optional] - nota: <i>this attribute should always be used coupled with “numberingOrg” and “listName”</i> (XPath YARNOrdChange/YXbody/YXitem/dtScheme/legalRef/@listVersion) [Optional] - nota: <i>this attribute should always be used coupled with “numberingOrg” and “listName”</i> (XPath YARNOrdChange/YXbody/YXitem/yarnComInfo/operationalCode/@listVersion) [Optional] - nota: <i>this attribute should always be used coupled with “numberingOrg” and “listName”</i> (XPath YARNOrdChange/YXbody/YXitem/yarnComInfo/productLine/@listVersion) [Optional] - nota: <i>this attribute should always be used coupled with “numberingOrg” and “listName”</i> (XPath YARNOrdChange/yarnComInfo/productLine/@listVersion) [Optional] - nota: <i>this attribute should always be used coupled with “numberingOrg” and “listName”</i> (XPath YARNOrdChange/yarnComInfo/brand/@listVersion) [Optional] - nota: <i>this attribute should always be used coupled with “numberingOrg” and “listName”</i> (XPath YARNOrdChange/yarnComInfo/season/@listVersion) [Optional] - nota: <i>this attribute should always be used coupled with “numberingOrg” and “listName”</i> (XPath YARNOrdChange/YXbody/YXitem/yarnCode/art/@listVersion) [Optional] - nota: <i>this attribute should always be used coupled with “numberingOrg” and “listName”</i> (XPath YARNOrdChange/YXbody/YXitem/refDoc/season/@listVersion) [Optional] - nota: <i>this attribute should always be used coupled with “numberingOrg” and “listName”</i> (XPath YARNOrdChange/yarnComInfo/operationalCode/@listVersion) [Optional]

	<p>- nota: <i>this attribute should always be used coupled with "numberingOrg" and "listName"</i> (XPath YARNOrdChange/YXheader/refDoc/season/@listVersion) [Optional]</p> <p>- nota: <i>this attribute should always be used coupled with "numberingOrg" and "listName"</i></p>
@ln	<p>Language code. - base type: string, cod. table: NT60 http://www.ebiz.enea.it/moda-ml/repository/codelist/draft/gc_NT60.xml (XPath YARNOrdChange/YXbody/YXitem/yarnCode/description/@ln) [Optional]</p>
location	<p>specification of a location. It can be represented by an identification code (preferable) or a short text (not recommended). For example a GLN code that requires to assign the value "GLN" to the attribute @LRI. - base type: string, max length: 128, (XPath YARNOrdChange/terms/trade/location) 0-1 - note: <i>code number of the place to which the INCOTERM applies</i> (XPath YARNOrdChange/terms/trade/tradeLocation/location) 0-1 - note: <i>Use this element to specify a numeric ID of the location, for example a GLN code (in this case @SchemeID='LRI='GLN')</i> (XPath YARNOrdChange/terms/transInfo/despatchLocation/location) 0-1 - note: <i>Use this element to specify a numeric ID of the location, for example a GLN code (in this case @SchemeID='GS1 GLN')</i> (XPath YARNOrdChange/terms/transInfo/deliveryLocation/location) 0-1 - note: <i>Use this element only to indicate an identification code of this place.</i></p>
@logo	<p>company logo (URL of the image jpeg or gif). It is recommended that the width of the image does not exceed 640 pixel. - base type: string, max length: 255, (XPath YARNOrdChange/YXheader/buyer/@logo) [Optional] (XPath YARNOrdChange/YXheader/supplier/@logo) [Optional]</p>
lotN	<p>lot number of a product or batch number of the raw material - base type: string, max length: 15, (XPath YARNOrdChange/YXbody/YXitem/lotN) 0-2 - note: <i>it can be specified by the Buyer in case of stock service it can be specified by the Buyer in case of stock service</i></p>
@LRI	<p>issuer of the identifier (or identification system) of a location. - base type: string, cod. table: NT3 http://www.ebiz.enea.it/moda-ml/repository/codelist/draft/gc_NT3.xml (XPath YARNOrdChange/terms/transInfo/despatchLocation/location/@LRI) [Optional] (XPath YARNOrdChange/terms/trade/tradeLocation/location/@LRI) [Optional] (XPath YARNOrdChange/terms/transInfo/deliveryLocation/location/@LRI) [Optional] (XPath YARNOrdChange/terms/trade/location/@LRI) [Optional]</p>
@materialSource	<p>Indicates whether the material is virgin or comes from recycling or reuse processes - base type: string, cod. table: T306 http://www.ebiz.enea.it/moda-ml/repository/codelist/draft/gc_T306.xml (XPath YARNOrdChange/YXbody/YXitem/yarnCompos/percCompos/@materialSource) [Optional]</p>
@maxQty	<p>maximum product quantity - base type: decimal, min inclusive: 0, fraction digits: 2, (XPath YARNOrdChange/terms/allowanceCharge/@maxQty) [Optional] - nota: <i>maximum quantity of product for the application of this allowance or charge</i></p>
@method	<p>standard protocol or method employed in a test to evaluate a characteristic or a parameter - base type: string, max length: 80, (XPath YARNOrdChange/YXbody/YXitem/yarnSpecs/experimValue/@method) [Optional] - nota: <i>we recommend the specification of the method of measure only when different from the one of the MODA-ML coding system</i> (XPath YARNOrdChange/YXbody/YXitem/yarnSpecs/specValue/@method) [Optional]</p>
@mime	<p>the mime type of the binary object - base type: normalizedString, (XPath YARNOrdChange/YXbody/YXitem/refDoc/attachment/binaryObject/@mime) [Optional] (XPath YARNOrdChange/YXheader/refDoc/attachment/</p>

	binaryObject/@mime) [Optional]
mimeCode	mime type of the external object - base type: normalizedString, (XPath YARNOrdChange/YXbody/YXitem/refDoc/attachment/ externalReference/mimeCode) 0-1 Best Practice (XPath YARNOrdChange/YXheader/refDoc/attachment/ externalReference/mimeCode) 0-1 Best Practice
@minQty	minimum product quantity - base type: decimal, min inclusive: 0, fraction digits: 2, (XPath YARNOrdChange/terms/allowanceCharge/@minQty) [Optional] - nota: <i>minimum quantity of product for the application of this allowance or charge</i>
msgCurrency	currency used to express the monetary amounts of the message - base type: string, cod. table: T9 http://www.ebiz.enea.it/moda-ml/repository/codelist/draft/gc_T9.xml (XPath YARNOrdChange/YXheader/msgCurrency) 0-1
msgDate	date of issue of the present message (xml document), according to one of the patterns YYYY-MM-DD, YYYY-MM-DD:HH-MM or YYYY-WW. - base type: string, (XPath YARNOrdChange/YXheader/msgDate) 1-1
@msgfunction	function performed by the present message with regards to the transmission - base type: string, cod. table: NT18 http://www.ebiz.enea.it/moda-ml/repository/codelist/draft/gc_NT18.xml (XPath YARNOrdChange/@msgfunction) [Optional] [Default= OR]
msgID	key identifier of the business document in the information system of the issuing Party. In n case of more despatches of the same business document, it is unchanged. - base type: string, max length: 35, (XPath YARNOrdChange/YXheader/msgID) 0-1
msgN	identification number given to the message (xml document) by its issuer. In case of mo re despatches of the same business document, it changes. - base type: string, max length: 35, (XPath YARNOrdChange/YXheader/msgN) 1-1
netWeight	the net weight declared for transport or customs purpose - base type: decimal, min inclusive: 0, fraction digits: 2, (XPath YARNOrdChange/terms/transInfo/netWeight) 0-1
note	free text or structured (computer processing) note. For note structuring use the attribut es "noteLabel" and "codelist" - base type: string, max length: 350, (XPath YARNOrdChange/YXbody/YXitem/dtScheme/note) 0-99 (XPath YARNOrdChange/YXbody/YXitem/yarnComInfo/note) 0-99 (XPath YARNOrdChange/yarnComInfo/note) 0-99 (XPath YARNOrdChange/terms/allowanceCharge/dtScheme/note) 0-99 (XPath YARNOrdChange/YXbody/YXitem/note) 0-99 (XPath YARNOrdChange/YXheader/note) 0-99
@noteLabel	subject qualifier of a note - base type: string, max length: 35, (XPath YARNOrdChange/YXbody/YXitem/yarnComInfo/note/@noteLabel) [Optional] - nota: <i>must be used to qualify the subject of the note</i> (XPath YARNOrdChange/yarnComInfo/note/@noteLabel) [Optional] - nota: <i>must be used to qualify the subject of the note</i> (XPath YARNOrdChange/YXbody/YXitem/dtScheme/note/@noteLabel) [Optional] - nota: <i>must be used to qualify the subject of the note</i> (XPath YARNOrdChange/YXbody/YXitem/note/@noteLabel) [Optional] - nota: <i>must be used to qualify the subject of the note</i> (XPath YARNOrdChange/YXheader/note/@noteLabel) [Optional] - nota: <i>must be used to qualify the subject of the note</i> (XPath YARNOrdChange/terms/allowanceCharge/dtScheme/note/@noteLabel) [Optional] - nota: <i>must be used to qualify the subject of the note</i>
@numberingOrg	code specifying the organisation who has created or owns the coding or numbering sy stem - base type: string, cod. table: NT6 http://www.ebiz.enea.it/moda-ml/repository/codelist/draft/gc_NT6.xml (XPath YARNOrdChange/YXheader/supplier/id/@numberingOrg) [Optional]

(XPath YARNOrdChange/YXbody/YXitem/refDoc/attachment/fileName/@numberingOrg) [Optional]

(XPath YARNOrdChange/YXheader/supplier/additionalIdentifier/@numberingOrg) [Optional]

- nota: here the issuer of the identifier must be specified

(XPath YARNOrdChange/YXheader/refDoc/attachment/fileName/@numberingOrg) [Optional]

(XPath YARNOrdChange/YXbody/YXitem/yarnComInfo/note/@numberingOrg) [Optional]

- nota: must be used to specify the organization that created the list of codes used in "noteLabel"

(XPath YARNOrdChange/YXbody/YXitem/refDoc/season/@numberingOrg) [Optional]

- nota: this attribute should be used either single or coupled with "listName" and "listVersion"

(XPath YARNOrdChange/YXbody/YXitem/yarnComInfo/season/@numberingOrg) [Optional]

- nota: this attribute should be used either single or coupled with "listName" and "listVersion"

(XPath YARNOrdChange/YXbody/YXitem/refDoc/docID/@numberingOrg) [Optional]

- nota: here can be specified whose document numbering is used (e.g.: Client, Supplier, ..)

(XPath YARNOrdChange/YXheader/refDoc/docID/@numberingOrg) [Optional]

- nota: here can be specified whose document numbering is used (e.g.: Client, Supplier, ..)

(XPath YARNOrdChange/YXheader/refDoc/season/@numberingOrg) [Optional]

- nota: this attribute should be used either single or coupled with "listName" and "listVersion"

(XPath YARNOrdChange/YXheader/buyer/id/@numberingOrg) [Optional]

(XPath YARNOrdChange/YXbody/YXitem/yarnComInfo/operationalCode/@numberingOrg) [Optional]

- nota: this attribute should be used either single or coupled with "listName" and "listVersion"

(XPath YARNOrdChange/YXbody/YXitem/yarnCode/added/@numberingOrg) [Optional]

- nota: this attribute should be used either single or coupled with "listName" and "listVersion"

(XPath YARNOrdChange/YXbody/YXitem/dtScheme/legalRef/@numberingOrg) [Optional]

- nota: this attribute should be used either single or coupled with "listName" and "listVersion"

(XPath YARNOrdChange/YXbody/YXitem/yarnComInfo/productLine/@numberingOrg) [Optional]

- nota: this attribute should be used either single or coupled with "listName" and "listVersion"

(XPath YARNOrdChange/YXbody/YXitem/yarnComInfo/brand/@numberingOrg) [Optional]

- nota: this attribute should be used either single or coupled with "listName" and "listVersion"

(XPath YARNOrdChange/YXheader/buyer/additionalIdentifier/@numberingOrg) [Optional]

- nota: here the issuer of the identifier must be specified

(XPath YARNOrdChange/YXheader/thirdParty/id/@numberingOrg) [Optional]

(XPath YARNOrdChange/YXbody/YXitem/yarnCode/art/@numberingOrg) [Optional]

- nota: this attribute should be used either single or coupled with "listName" and "listVersion"

(XPath YARNOrdChange/YXheader/note/@numberingOrg) [Optional]

- nota: must be used to specify the organization that created the list of codes used in "noteLabel"

(XPath YARNOrdChange/YXbody/YXitem/thirdParty/id/@numberingOrg) [Optional]

(XPath YARNOrdChange/YXbody/YXitem/yarnCode/@numberingOrg) [Optional] [Default= CL]

(XPath YARNOrdChange/YXheader/docID/@numberingOrg) [Optional]

- nota: here can be specified whose document numbering is used (e.g.: Client, Supplier, ..)

(XPath YARNOrdChange/YXbody/YXitem/lotN/@numberingOrg) [Optional]

(XPath YARNOrdChange/YXbody/YXitem/dyeN/@numberingOrg) [Optional]

(XPath YARNOrdChange/YXbody/YXitem/yarnCode/color/@numberingOrg) [Optional]

- nota: this attribute should be used either single or coupled with "listName" and "listVersion"

(XPath YARNOrdChange/yarnComInfo/productLine/@numberingOrg) [Optional]

- nota: this attribute should be used either single or coupled with "listName" and "listVersion"

(XPath YARNOrdChange/yarnComInfo/note/@numberingOrg) [Optional]

- nota: must be used to specify the organization that created the list of codes used in "noteLabel"

(XPath YARNOrdChange/yarnComInfo/operationalCode/@numberingOrg) [Optional]

- nota: this attribute should be used either single or coupled with "listName" and "listVersion"

	<p>(XPath YARNOrdChange/yarnComInfo/season/@numberingOrg) [Optional] - nota: <i>this attribute should be used either single or coupled with "listName" and "listVersion"</i></p> <p>(XPath YARNOrdChange/terms/allowanceCharge/dtScheme/legalRef/@numberingOrg) [Optional] - nota: <i>this attribute should be used either single or coupled with "listName" and "listVersion"</i></p> <p>(XPath YARNOrdChange/yarnComInfo/brand/@numberingOrg) [Optional] - nota: <i>this attribute should be used either single or coupled with "listName" and "listVersion"</i></p> <p>(XPath YARNOrdChange/terms/allowanceCharge/dtScheme/note/@numberingOrg) [Optional] - nota: <i>must be used to specify the organization that created the list of codes used in "noteLabel"</i></p> <p>(XPath YARNOrdChange/YXbody/YXitem/dtScheme/note/@numberingOrg) [Optional] - nota: <i>must be used to specify the organization that created the list of codes used in "noteLabel"</i></p> <p>(XPath YARNOrdChange/YXbody/YXitem/note/@numberingOrg) [Optional] - nota: <i>must be used to specify the organization that created the list of codes used in "noteLabel"</i></p>
operationalCode	<p>operational code: it is the code of a project, an event, an initiative, a sales channel, a management type (eg CITES), ... the document, or product, is connected with. - base type: string, (XPath YARNOrdChange/yarnComInfo/operationalCode) 0-19 (XPath YARNOrdChange/YXbody/YXitem/yarnComInfo/operationalCode) 0-19</p>
otherCurrency	<p>other currency used in the document - base type: string, cod. table: T9 http://www.ebiz.enea.it/moda-ml/repository/codelist/draft/gc_T9.xml (XPath YARNOrdChange/YXheader/otherCurrency) 0-9</p>
@part	<p>percent fraction - base type: decimal, min inclusive: 1, max inclusive: 100, fraction digits: 2, (XPath YARNOrdChange/terms/insPayment/@part) [Required] - nota: <i>here the % value of each installment must be indicated</i></p>
payMode	<p>way or means of payment - base type: string, cod. table: T2 http://www.ebiz.enea.it/moda-ml/repository/codelist/draft/gc_T2.xml (XPath YARNOrdChange/terms/insPayment/payMode) 0-1 (XPath YARNOrdChange/terms/payment/payMode) 0-1</p>
payTerm	<p>code specifying the terms or time by which the payment must be done - base type: string, cod. table: T1 http://www.ebiz.enea.it/moda-ml/repository/codelist/draft/gc_T1.xml (XPath YARNOrdChange/terms/insPayment/payTerm) 1-1 (XPath YARNOrdChange/terms/payment/payTerm) 1-1</p>
payTermText	<p>free text specifying the terms by which the payment must be done (time/mode or means) - base type: string, max length: 250, (XPath YARNOrdChange/terms/insPayment/payTermText) 1-1 (XPath YARNOrdChange/terms/payment/payTermText) 1-1</p>
pcTolerance	<p>percent deviation tolerated on the value of a measurement (it must have a plus or minus sign) - base type: decimal, min inclusive: 0, max inclusive: 100, total digits: 2, (XPath YARNOrdChange/YXbody/YXitem/yarnSpecs/pcTolerance) 0-2</p>
percCompos	<p>fiber percentage in the product composition - base type: decimal, min inclusive: 0, max inclusive: 100, fraction digits: 2, (XPath YARNOrdChange/YXbody/YXitem/yarnCompos/percCompos) 1-9 - note: <i>fiber % in the product composition</i></p>
@percCond	<p>percentage of conditioning to be applied to the payment of a yarn supply - base type: decimal, min inclusive: 0, max inclusive: 100, fraction digits: 2, (XPath YARNOrdChange/yarnComInfo/yarnPay/@percCond) [Optional] - nota: <i>element to be used only when conditioned payments occur.</i> (XPath YARNOrdChange/YXbody/YXitem/yarnComInfo/yarnPay/@percCond) [Optional] - nota: <i>element to be used only when conditioned payments occur.</i></p>
@percSourcesRenewable	<p>indicates the percentage of renewable sources - base type: decimal,</p>

	(XPath YARNOrdChange/YXbody/YXitem/yarnCompos/percCompos/@percSourcesRenewable) [Optional] - nota: use only for virgin material
person	name of a person (e.g. contact person within an organization) - base type: string, max length: 40, (XPath YARNOrdChange/YXheader/buyer/person) 0-1 (XPath YARNOrdChange/YXheader/thirdParty/person) 0-1 (XPath YARNOrdChange/terms/transInfo/despatchLocation/person) 0-1 (XPath YARNOrdChange/YXbody/YXitem/thirdParty/person) 0-1 (XPath YARNOrdChange/YXheader/supplier/person) 0-1 (XPath YARNOrdChange/terms/transInfo/deliveryLocation/person) 0-1 (XPath YARNOrdChange/terms/trade/tradeLocation/person) 0-1
@phone	phone number of the contact person within a Party - base type: string, max length: 35, (XPath YARNOrdChange/YXheader/supplier/person/@phone) [Optional] (XPath YARNOrdChange/terms/transInfo/despatchLocation/person/@phone) [Optional] (XPath YARNOrdChange/YXbody/YXitem/thirdParty/person/@phone) [Optional] (XPath YARNOrdChange/terms/transInfo/deliveryLocation/person/@phone) [Optional] (XPath YARNOrdChange/YXheader/thirdParty/person/@phone) [Optional] (XPath YARNOrdChange/YXheader/buyer/person/@phone) [Optional] (XPath YARNOrdChange/terms/trade/tradeLocation/person/@phone) [Optional]
postCode	code defining the postal zone - base type: string, max length: 10, (XPath YARNOrdChange/YXheader/buyer/postCode) 0-1 (XPath YARNOrdChange/YXbody/YXitem/thirdParty/postCode) 0-1 (XPath YARNOrdChange/terms/transInfo/despatchLocation/postCode) 0-1 (XPath YARNOrdChange/YXheader/thirdParty/postCode) 0-1 (XPath YARNOrdChange/terms/transInfo/deliveryLocation/postCode) 0-1 (XPath YARNOrdChange/terms/trade/tradeLocation/postCode) 0-1 (XPath YARNOrdChange/YXheader/supplier/postCode) 0-1
price	unit price of the article, object or service specified - base type: decimal, min inclusive: 0, fraction digits: 4, (XPath YARNOrdChange/YXbody/YXitem/price) 0-1
@priceQualifier	type of price with reference to discount and taxes - base type: string, cod. table: NT20 http://www.ebiz.enea.it/moda-ml/repository/codelist/draft/gc_NT20.xml (XPath YARNOrdChange/YXbody/YXitem/price/@priceQualifier) [Optional] [Default= NET]
productLine	the product line name of a fashion product. - base type: string, (XPath YARNOrdChange/YXbody/YXitem/yarnComInfo/productLine) 0-1 (XPath YARNOrdChange/yarnComInfo/productLine) 0-1
@progr	progressive number in the sequence - base type: positiveInteger, min inclusive: 1, (XPath YARNOrdChange/terms/transInfo/@progr) [Optional] - nota: Indicates the position of the leg in a sequence of transport legs. If it is declared it must be in all the transInfo elements.
project	code used to assign the items ordered (fabric pieces, accessories, garments...) to a specific project of the Client - base type: string, max length: 40, (XPath YARNOrdChange/YXbody/YXitem/yarnComInfo/project) 0-1 (XPath YARNOrdChange/yarnComInfo/project) 0-1
@propulsionSystemCode	propulsion system type - base type: string, cod. table: NT324 http://www.ebiz.enea.it/moda-ml/repository/codelist/draft/gc_NT324.xml (XPath YARNOrdChange/terms/transInfo/transMeans/@propulsionSystemCode) [Optional] - nota: indicates the type of propulsion of the means of transport
qty	net quantity of the article or object correlated, qualified by the function of the document (ordering, delivering, ..) and by the context - base type: decimal, min inclusive: 0, fraction digits: 2, (XPath YARNOrdChange/YXbody/YXitem/qty) 0-2 Best Practice
@recyclingProcessEfficiency	recycling process efficiency rate (percentage by weight).

	<p>- base type: decimal, min inclusive: 0, max inclusive: 100, (XPath YARNOrdChange/YXbody/YXitem/yarnCompos/percCompos/@recyclingProcessEfficiency) [Optional]</p> <p>- nota: <i>process efficiency declared by the fibre supplier</i></p>
@recyclingProcessMethod	<p>recycling process method</p> <p>- base type: string, cod. table: T307 http://www.ebiz.enea.it/moda-ml/repository/codelist/draft/gc_T307.xml (XPath YARNOrdChange/YXbody/YXitem/yarnCompos/percCompos/@recyclingProcessMethod) [Optional]</p> <p>- nota: <i>use only for non virgin material</i></p>
@reelMat	<p>type of material of which a package for yarn is made</p> <p>- base type: string, cod. table: T30 http://www.ebiz.enea.it/moda-ml/repository/codelist/draft/gc_T30.xml (XPath YARNOrdChange/YXbody/YXitem/yarnComInfo/yarnPack/yarnReel/@reelMat) [Optional] (XPath YARNOrdChange/yarnComInfo/yarnPack/yarnReel/@reelMat) [Optional]</p>
@reelType	<p>type of package used for a yarn product</p> <p>- base type: string, cod. table: T29 http://www.ebiz.enea.it/moda-ml/repository/codelist/draft/gc_T29.xml (XPath YARNOrdChange/yarnComInfo/yarnPack/yarnReel/@reelType) [Required] (XPath YARNOrdChange/YXbody/YXitem/yarnComInfo/yarnPack/yarnReel/@reelType) [Required]</p>
@role	<p>Third Party role qualifier</p> <p>- base type: string, cod. table: NT2 http://www.ebiz.enea.it/moda-ml/repository/codelist/draft/gc_NT2.xml (XPath YARNOrdChange/YXbody/YXitem/thirdParty/@role) [Required] (XPath YARNOrdChange/YXheader/thirdParty/@role) [Required]</p>
routeLength	<p>length of a route</p> <p>- base type: decimal, min inclusive: 0, fraction digits: 2, (XPath YARNOrdChange/terms/transInfo/routeLength) 0-1</p>
@schemeID	<p>identifier of an identification scheme</p> <p>- base type: string, (XPath YARNOrdChange/YXheader/refDoc/attachment/hashFootprint/@schemeID) [Optional]</p> <p>- nota: <i>specify for which system this hash footprint might be used as identifier (for example HDFS system..)</i> (XPath YARNOrdChange/YXbody/YXitem/refDoc/attachment/hashFootprint/@schemeID) [Optional]</p> <p>- nota: <i>specify for which system this hash footprint might be used as identifier (for example HDFS system..)</i></p>
season	<p>sale season; defined as: season (1 crt) + year (4 crt) - season: S/S=1 A/W=2 Spring=3 Summer=4 Autumn=5 Winter=6: for more than four seasons use alphabetic sequence: 1st season=A 2nd season=B etc.etc.</p> <p>- base type: string, max length: 15, (XPath YARNOrdChange/YXheader/refDoc/season) 0-1</p> <p>- note: <i>here indicates the season to which the referenced document belongs</i> (XPath YARNOrdChange/YXbody/YXitem/refDoc/season) 0-1</p> <p>- note: <i>here indicates the season to which the referenced document belongs</i> (XPath YARNOrdChange/YXbody/YXitem/yarnComInfo/season) 0-1 (XPath YARNOrdChange/yarnComInfo/season) 0-1</p>
@sender	<p>qualifier that specifies the Party issuing of the document</p> <p>- base type: boolean, (XPath YARNOrdChange/YXbody/YXitem/thirdParty/@sender) [Optional]</p> <p>- nota: <i>This attribute is mandatory when the STYLESHEET must be used</i> (XPath YARNOrdChange/YXheader/buyer/@sender) [Optional]</p> <p>- nota: <i>This attribute is mandatory when the STYLESHEET must be used</i> (XPath YARNOrdChange/YXheader/supplier/@sender) [Optional]</p> <p>- nota: <i>This attribute is mandatory when the STYLESHEET must be used</i> (XPath YARNOrdChange/YXheader/thirdParty/@sender) [Optional]</p> <p>- nota: <i>This attribute is mandatory when the STYLESHEET must be used</i></p>
@source	<p>party who has provided the data</p> <p>- base type: string, cod. table: NT12 http://www.ebiz.enea.it/moda-ml/repository/codelist/draft/gc_NT12.xml (XPath YARNOrdChange/YXbody/YXitem/yarnSpecs/specValue/@source) [Optional]</p>

specDate	<p>date by which the referenced blanket order must receive full product specifications (e.g .: colour), according to one of the patterns YYYY-MM-DD, YYYY-MM-DD:HH-MM or YYY-WW.</p> <p>- base type: string, (XPath YARNOrdChange/YXbody/YXitem/yarnComInfo/specDate) 0-1 (XPath YARNOrdChange/yarnComInfo/specDate) 0-1</p>
specValue	<p>value requested for a property or a parameter that is measured</p> <p>- base type: decimal, (XPath YARNOrdChange/YXbody/YXitem/yarnSpecs/specValue) 0-1</p>
street	<p>street and building number identifying a location</p> <p>- base type: string, max length: 80, (XPath YARNOrdChange/YXbody/YXitem/thirdParty/street) 0-1 (XPath YARNOrdChange/terms/transInfo/despatchLocation/street) 0-1 (XPath YARNOrdChange/YXheader/supplier/street) 0-1 (XPath YARNOrdChange/terms/trade/tradeLocation/street) 0-1 (XPath YARNOrdChange/terms/transInfo/deliveryLocation/street) 0-1 (XPath YARNOrdChange/YXheader/thirdParty/street) 0-1 (XPath YARNOrdChange/YXheader/buyer/street) 0-1</p>
subCountry	<p>short name or code of the sub-country entity</p> <p>- base type: string, max length: 9, (XPath YARNOrdChange/YXheader/thirdParty/subCountry) 0-1 (XPath YARNOrdChange/terms/trade/tradeLocation/subCountry) 0-1 (XPath YARNOrdChange/terms/transInfo/deliveryLocation/subCountry) 0-1 (XPath YARNOrdChange/terms/transInfo/despatchLocation/subCountry) 0-1 (XPath YARNOrdChange/YXheader/buyer/subCountry) 0-1 (XPath YARNOrdChange/YXheader/supplier/subCountry) 0-1 (XPath YARNOrdChange/YXbody/YXitem/thirdParty/subCountry) 0-1</p>
subDept	<p>name or code of a department</p> <p>- base type: string, max length: 40, (XPath YARNOrdChange/YXheader/thirdParty/subDept) 0-1 (XPath YARNOrdChange/terms/trade/tradeLocation/subDept) 0-1 (XPath YARNOrdChange/YXheader/supplier/subDept) 0-1 (XPath YARNOrdChange/YXbody/YXitem/thirdParty/subDept) 0-1 (XPath YARNOrdChange/terms/transInfo/despatchLocation/subDept) 0-1 (XPath YARNOrdChange/YXheader/buyer/subDept) 0-1 (XPath YARNOrdChange/terms/transInfo/deliveryLocation/subDept) 0-1</p>
taxCategory	<p>duty or tax or fee category</p> <p>- base type: string, cod. table: T62 http://www.ebiz.enea.it/moda-ml/repository/codelist/draft/gc_T62.xml (XPath YARNOrdChange/terms/allowanceCharge/dtScheme/taxCategory) 0-1 (XPath YARNOrdChange/YXbody/YXitem/dtScheme/taxCategory) 0-1</p>
taxRate	<p>duty or tax or fee percent rate</p> <p>- base type: string, (XPath YARNOrdChange/terms/allowanceCharge/dtScheme/taxRate) 0-1 (XPath YARNOrdChange/YXbody/YXitem/dtScheme/taxRate) 0-1</p>
@taxType	<p>duty or tax or fee type</p> <p>- base type: string, cod. table: T61 http://www.ebiz.enea.it/moda-ml/repository/codelist/draft/gc_T61.xml (XPath YARNOrdChange/YXbody/YXitem/dtScheme/@taxType) [Required] (XPath YARNOrdChange/terms/allowanceCharge/dtScheme/@taxType) [Required]</p>
tolerance	<p>deviation tolerated on the value of a measurement (it must have a plus or minus sign)</p> <p>- base type: decimal, (XPath YARNOrdChange/YXbody/YXitem/yarnSpecs/tolerance) 0-2</p>
totQty	<p>total quantity of the articles related to the whole document</p> <p>- base type: decimal, min inclusive: 0, fraction digits: 2, (XPath YARNOrdChange/totals/totQty) 0-1</p>
@TOtype	<p>type of Order</p> <p>- base type: string, cod. table: NT1 http://www.ebiz.enea.it/moda-ml/repository/codelist/draft/gc_NT1.xml (XPath YARNOrdChange/@TOtype) [Optional]</p>
transactionReceipt	<p>transaction receipt on blockchain</p> <p>- base type: string, max length: 80, (XPath YARNOrdChange/YXheader/refDoc/attachment/</p>

	<p>blockChainReference/transactionReceipt) 1-9 (XPath YARNOrdChange/YXbody/YXitem/refDoc/attachment/ blockChainReference/transactionReceipt) 1-9</p>
transCondition	<p>special condition of transport or special service requested to the Forwarder - base type: string, cod. table: T38 http://www.ebiz.enea.it/moda-ml/repository/codelist/draft/gc_T38.xml (XPath YARNOrdChange/terms/transInfo/transCondition) 0-3</p>
transConditionText	<p>free text description of the special condition of transport or special service requested to the Forwarder - base type: string, max length: 250, (XPath YARNOrdChange/terms/transInfo/transConditionText) 0-1</p>
transMeans	<p>means of transport, in general or referred to a specific leg - base type: string, cod. table: T40 http://www.ebiz.enea.it/moda-ml/repository/codelist/draft/gc_T40.xml (XPath YARNOrdChange/terms/transInfo/transMeans) 0-1</p>
transMode	<p>way of transport, in general or referred to the specified leg - base type: string, cod. table: T8 http://www.ebiz.enea.it/moda-ml/repository/codelist/draft/gc_T8.xml (XPath YARNOrdChange/terms/transInfo/transMode) 1-1</p>
@transReason	<p>reason for the transport - base type: string, cod. table: NT11 http://www.ebiz.enea.it/moda-ml/repository/codelist/draft/gc_NT11.xml (XPath YARNOrdChange/terms/transInfo/@transReason) [Optional]</p>
@uid	<p>unique element identifier within the xml document - base type: string, (XPath YARNOrdChange/YXheader/refDoc/attachment/@uid) [Optional] (XPath YARNOrdChange/YXbody/YXitem/refDoc/attachment/@uid) [Optional]</p>
@um	<p>specification of the unit of measure - base type: string, cod. table: NT7 http://www.ebiz.enea.it/moda-ml/repository/codelist/draft/gc_NT7.xml (XPath YARNOrdChange/YXbody/YXitem/yarnComInfo/ yarnPack/yarnReel/yarnReelQty/@um) [Required] (XPath YARNOrdChange/YXheader/buyer/geoCoordinates/@um) [Optional] [Default= DEGD] - nota: <i>when not specified assume decimal DEGREES</i> (XPath YARNOrdChange/YXbody/YXitem/yarnComInfo/ yarnPack/yarnReel/yarnReelID/@um) [Required] (XPath YARNOrdChange/terms/transInfo/routeLength/@um) [Required] (XPath YARNOrdChange/YXbody/YXitem/yarnComInfo/ yarnPack/yarnReel/yarnReelH/@um) [Required] (XPath YARNOrdChange/terms/allowanceCharge/@um) [Optional] (XPath YARNOrdChange/YXheader/thirdParty/geoCoordinates/@um) [Optional] [Default= DEGD] - nota: <i>when not specified assume decimal DEGREES</i> (XPath YARNOrdChange/terms/transInfo/netWeight/@um) [Required] (XPath YARNOrdChange/totals/totQty/@um) [Required] (XPath YARNOrdChange/YXbody/YXitem/yarnSpecs/specValue/@um) [Optional] (XPath YARNOrdChange/YXbody/YXitem/yarnSpecs/experimValue/@um) [Optional] (XPath YARNOrdChange/yarnComInfo/yarnPack/yarnReel/ yarnReelID/@um) [Required] (XPath YARNOrdChange/terms/trade/tradeLocation/ geoCoordinates/@um) [Optional] [Default= DEGD] - nota: <i>when not specified assume decimal DEGREES</i> (XPath YARNOrdChange/terms/transInfo/deliveryLocation/ geoCoordinates/@um) [Optional] [Default= DEGD] - nota: <i>when not specified assume decimal DEGREES</i> (XPath YARNOrdChange/terms/transInfo/grossWeight/@um) [Required] (XPath YARNOrdChange/yarnComInfo/yarnPack/yarnReel/ yarnReelH/@um) [Required] (XPath YARNOrdChange/yarnComInfo/yarnPack/yarnReel/ yarnReelQty/@um) [Required] (XPath YARNOrdChange/YXbody/YXitem/yarnSpecs/tolerance/@um) [Required] (XPath YARNOrdChange/YXbody/YXitem/price/@um) [Optional] - nota: <i>Unit of measure of the product to which the price is referred (price per meter)</i> (XPath YARNOrdChange/YXheader/supplier/geoCoordinates/@um) [Optional] [Default= DEGD] - nota: <i>when not specified assume decimal DEGREES</i> (XPath YARNOrdChange/terms/transInfo/despatchLocation/</p>

	<p>geoCoordinates/@um) [Optional] [Default= DEGD]</p> <p>- nota: <i>when not specified assume decimal DEGREES</i> (XPath YARNOrdChange/YXbody/YXitem/yarnSpecs/pcTolerance/@um) [Optional]</p> <p>- nota: <i>to be used when it has to be soecified if the declared percentage is by weight, v olume, etc...</i> (XPath YARNOrdChange/YXbody/YXitem/thirdParty/geoCoordinates/@um) [Optional] [Default= DEGD]</p> <p>- nota: <i>when not specified assume decimal DEGREES</i> (XPath YARNOrdChange/YXbody/YXitem/qty/@um) [Required]</p>
uri	<p>Uniform Resource Identifier (URI) that identifies the external object as an Internet resource</p> <p>- base type: normalizedString, (XPath YARNOrdChange/YXbody/YXitem/refDoc/attachment/externalReference/uri) 1-1 (XPath YARNOrdChange/YXheader/refDoc/attachment/blockChainReference/uri) 1-1</p> <p>- note: <i>reference to the used blockchain (example: url https://etherscan.io/ of ethereum)</i> (XPath YARNOrdChange/YXbody/YXitem/refDoc/attachment/blockChainReference/uri) 1-1</p> <p>- note: <i>reference to the used blockchain (example: url https://etherscan.io/ of ethereum)</i> (XPath YARNOrdChange/YXheader/refDoc/attachment/externalReference/uri) 1-1</p>
@useProfile	<p>use profile to which the present document if compliant if it was agreed by the parties. It is suggested a URI with reference to the firms or the URL of the profile.</p> <p>- base type: string, (XPath YARNOrdChange/@useProfile) [Optional]</p>
@validationMethod	<p>type of method used to validare the quantity to which it refers. For example, it indicates whether it was measured in the field, estimated indirectly, approved by an expert or taken from the literature</p> <p>- base type: string, cod. table: NT329 http://www.ebiz.enea.it/moda-ml/repository/codelist/draft/gc_NT329.xml (XPath YARNOrdChange/YXbody/YXitem/yarnCompos/percCompos/@validationMethod) [Optional]</p>
@VAT	<p>VAT rate or code (DEPRECATED, use dtScheme element)</p> <p>- base type: string, cod. table: NT16 http://www.ebiz.enea.it/moda-ml/repository/codelist/draft/gc_NT16.xml (XPath YARNOrdChange/YXbody/YXitem/lineN/@VAT) [Optional]</p> <p>- nota: <i>Deprecated, prefer dtScheme when available.</i> (XPath YARNOrdChange/YXheader/thirdParty/@VAT) [Optional] (XPath YARNOrdChange/YXbody/YXitem/thirdParty/@VAT) [Optional] (XPath YARNOrdChange/terms/allowanceCharge/@VAT) [Optional]</p>
@version	<p>Dictionary version from which the instance has been created</p> <p>- base type: string, cod. table: NT100 http://www.ebiz.enea.it/moda-ml/repository/codelist/draft/gc_NT100.xml (XPath YARNOrdChange/@version) [Optional] [Default= draft]</p>
xGeoCoord	<p>geographical coordinate x , corresponding to latitude</p> <p>- base type: decimal, (XPath YARNOrdChange/terms/trade/tradeLocation/geoCoordinates/xGeoCoord) 1-1 (XPath YARNOrdChange/terms/transInfo/deliveryLocation/geoCoordinates/xGeoCoord) 1-1 (XPath YARNOrdChange/YXheader/buyer/geoCoordinates/xGeoCoord) 1-1 (XPath YARNOrdChange/terms/transInfo/despatchLocation/geoCoordinates/xGeoCoord) 1-1 (XPath YARNOrdChange/YXbody/YXitem/thirdParty/geoCoordinates/xGeoCoord) 1-1 (XPath YARNOrdChange/YXheader/thirdParty/geoCoordinates/xGeoCoord) 1-1 (XPath YARNOrdChange/YXheader/supplier/geoCoordinates/xGeoCoord) 1-1</p>
yarnChar	<p>physical or mechanical parameter used to define a property of a yarn</p> <p>- base type: string, cod. table: T24 http://www.ebiz.enea.it/moda-ml/repository/codelist/draft/gc_T24.xml (XPath YARNOrdChange/YXbody/YXitem/yarnSpecs/yarnChar) 1-1</p>

yarnCharText	free text describing the physical or mechanical parameter used to define a property of a yarn - base type: string, max length: 250, (XPath YARNOrdChange/YXbody/YXitem/yarnSpecs/yarnCharText) 1-1
yarnConeAngle	tapering angle of the cone on which a yarn is reeled - base type: positiveInteger, (XPath YARNOrdChange/yarnComInfo/yarnPack/yarnReel/yarnConeAngle) 0-1 (XPath YARNOrdChange/YXbody/YXitem/yarnComInfo/yarnPack/yarnReel/yarnConeAngle) 0-1
yarnOutWrap	code specifying the type of outer wrapping or packing of a yarn - base type: string, cod. table: T33 http://www.ebiz.enea.it/moda-ml/repository/codelist/draft/gc_T33.xml (XPath YARNOrdChange/YXbody/YXitem/yarnComInfo/yarnPack/yarnOutWrap) 0-1 (XPath YARNOrdChange/yarnComInfo/yarnPack/yarnOutWrap) 0-1
yarnOutWrapText	free text specifying the type of outer wrapping or packing of a yarn - base type: string, max length: 250, (XPath YARNOrdChange/YXbody/YXitem/yarnComInfo/yarnPack/yarnOutWrapText) 0-1 (XPath YARNOrdChange/yarnComInfo/yarnPack/yarnOutWrapText) 0-1
yarnPay	type of payment to be applied to a yarn supply - base type: string, cod. table: T34 http://www.ebiz.enea.it/moda-ml/repository/codelist/draft/gc_T34.xml (XPath YARNOrdChange/yarnComInfo/yarnPay) 0-1 (XPath YARNOrdChange/YXbody/YXitem/yarnComInfo/yarnPay) 0-1
yarnReelID	diameter of the bobbin used for a yarn product - base type: decimal, min inclusive: 0, fraction digits: 2, (XPath YARNOrdChange/YXbody/YXitem/yarnComInfo/yarnPack/yarnReel/yarnReelID) 0-1 (XPath YARNOrdChange/yarnComInfo/yarnPack/yarnReel/yarnReelID) 0-1
yarnReelH	height of the bobbin used a yarn product - base type: decimal, min inclusive: 0, fraction digits: 2, (XPath YARNOrdChange/YXbody/YXitem/yarnComInfo/yarnPack/yarnReel/yarnReelH) 0-1 (XPath YARNOrdChange/yarnComInfo/yarnPack/yarnReel/yarnReelH) 0-1
yarnReelQty	quantity of yarn (by weight or length) wound upon a bobbin - base type: decimal, min inclusive: 0, fraction digits: 2, (XPath YARNOrdChange/YXbody/YXitem/yarnComInfo/yarnPack/yarnReel/yarnReelQty) 0-2 (XPath YARNOrdChange/yarnComInfo/yarnPack/yarnReel/yarnReelQty) 0-2
yarnReelWrap	type of wrapping in which a package of yarn is wrapped - base type: string, cod. table: T32 http://www.ebiz.enea.it/moda-ml/repository/codelist/draft/gc_T32.xml (XPath YARNOrdChange/YXbody/YXitem/yarnComInfo/yarnPack/yarnInWrap/yarnReelWrap) 1-1 (XPath YARNOrdChange/yarnComInfo/yarnPack/yarnInWrap/yarnReelWrap) 1-1
yarnTreat	information on the special treatments and finishing of a yarn product - base type: string, cod. table: T35 http://www.ebiz.enea.it/moda-ml/repository/codelist/draft/gc_T35.xml (XPath YARNOrdChange/YXbody/YXitem/yarnTreat) 0-9
yarnTreatText	free text description of the special treatments of a yarn - base type: string, max length: 250, (XPath YARNOrdChange/YXbody/YXitem/yarnTreatText) 0-9
yGeoCoord	geographical coordinate y , corresponding to longitude - base type: decimal, (XPath YARNOrdChange/terms/transInfo/deliveryLocation/geoCoordinates/yGeoCoord) 1-1 (XPath YARNOrdChange/terms/transInfo/despatchLocation/geoCoordinates/yGeoCoord) 1-1 (XPath YARNOrdChange/YXheader/buyer/geoCoordinates/yGeoCoord) 1-1 (XPath YARNOrdChange/YXbody/YXitem/thirdParty/geoCoordinates/yGeoCoord) 1-1 (XPath YARNOrdChange/terms/trade/tradeLocation/geoCoordinates/yGeoCoord) 1-1 (XPath YARNOrdChange/YXheader/thirdParty/geoCoordinates/yGeoCoord) 1-1

	(XPath YARNOrdChange/YXheader/supplier/geoCoordinates/yGeoCoord) 1-1
zGeoCoord	<p>geographical coordinate z , corresponding to altitude</p> <ul style="list-style-type: none"> - base type: decimal, (XPath YARNOrdChange/YXheader/thirdParty/geoCoordinates/zGeoCoord) 0-1 - note: <i>altitude might be omitted</i> (XPath YARNOrdChange/YXheader/supplier/geoCoordinates/zGeoCoord) 0-1 - note: <i>altitude might be omitted</i> (XPath YARNOrdChange/terms/transInfo/despatchLocation/ geoCoordinates/zGeoCoord) 0-1 - note: <i>altitude might be omitted</i> (XPath YARNOrdChange/terms/transInfo/deliveryLocation/ geoCoordinates/zGeoCoord) 0-1 - note: <i>altitude might be omitted</i> (XPath YARNOrdChange/terms/trade/tradeLocation/ geoCoordinates/zGeoCoord) 0-1 - note: <i>altitude might be omitted</i> (XPath YARNOrdChange/YXheader/buyer/geoCoordinates/zGeoCoord) 0-1 - note: <i>altitude might be omitted</i> (XPath YARNOrdChange/YXbody/YXitem/thirdParty/geoCoordinates/zGeoCoord) 0-1 - note: <i>altitude might be omitted</i>

2.3 Suggested best practices

YARNOrdChange/YXheader/refDoc/docID (identification number of the referenced document)

numberingOrg indicates the role that produced the document identifier (it is allowed to declare two different ones -e.g. customer and supplier - with two docID with different numberingOrg

YARNOrdChange/YXbody/YXitem/refDoc/docID (identification number of the referenced document)

numberingOrg indicates the role that produced the document identifier (it is allowed to declare two different ones -e.g. customer and supplier - with two docID with different numberingOrg

**YARNOrdChange/YXbody/YXitem/refDoc/attachment/
externalReference/mimeCode (mime type of the external object)**

Use coding from IANA <http://www.iana.org/assignments/media-types/media-types.xml>

**YARNOrdChange/YXheader/refDoc/attachment/
externalReference/mimeCode (mime type of the external object)**

Use coding from IANA <http://www.iana.org/assignments/media-types/media-types.xml>

YARNOrdChange/YXbody/YXitem/qty (net quantity of the article or object correlated, qualified by the function of the document (ordering, delivering, ..) and by the context)

this element can have two instances only if the units of measure are different

2.4 Enumeration tables

List of enumeration tables used in the XML document. You can find all the tables with the corresponding codes at:
<http://www.ebiz.enea.it/eBIZ/imple/eBIZTCU-draft.asp?lingua=en&pag=6>

NT1 - Order type
NT100 - eBIZ TCFUpstream version
NT11 - transport causal
NT12 - data source
NT16 - VAT rate or code
NT18 - message function
NT19 - currency use qualifier
NT2 - third party qualifier
NT20 - price qualifier
NT29 - format of a date
NT3 - issuer of the identifier (or identification system) of a location.
NT324 - propulsion system type
NT329 - type of validation method of the value
NT333 - type of hashing algorithm
NT4 - end use
NT43 - operational code qualifier
NT5 - action code
NT6 - coding system owner/issuer
NT60 - language, codes from ISO 639-1 (subset)
NT7 - unit of measure
T1 - terms of payment
T10 - ISO3166 - Country
T19 - fibre type
T2 - Modes of payment
T21 - type of document
T24 - yarn characteristics type
T29 - type of yarn package
T3 - terms of delivery - IncoTerms
T30 - support of yarn package - material
T306 - material circularity attribute
T307 - recycling process method
T32 - yarn reel wrapping type
T33 - yarn outer packing
T34 - yarn payment type
T35 - yarn treatment type
T38 - transport conditions
T40 - type of transport means
T41 - type of Allowance or Charge
T44 - additional code type
T61 - duty or tax or fee type
T62 - duty or tax or fee category
T8 - Modes of Transport
T9 - ISO4217 - Currency

(the most relevant tables are detailed in the following Annexes too)

ACKNOWLEDGEMENT



This action is part of the TRICK project, which has received funding from Horizon 2020 research and innovation programme under grant agreement No. 958352 of the European Union.

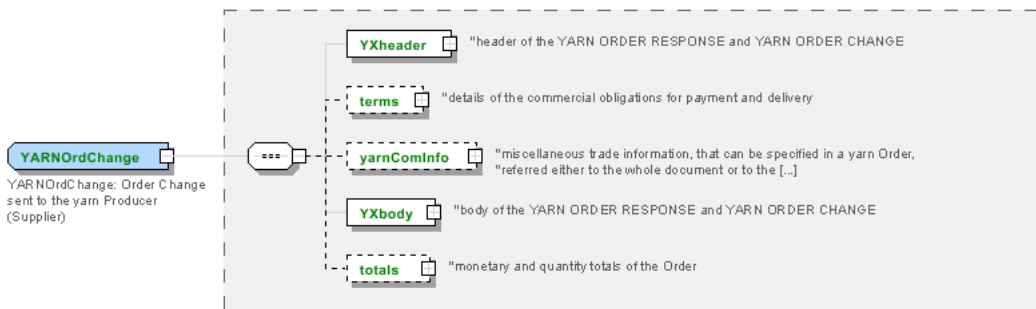
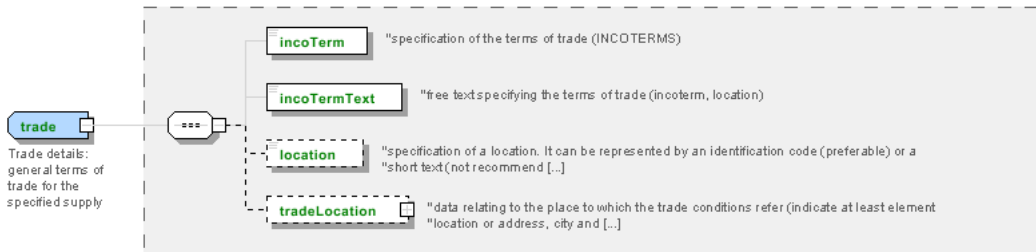
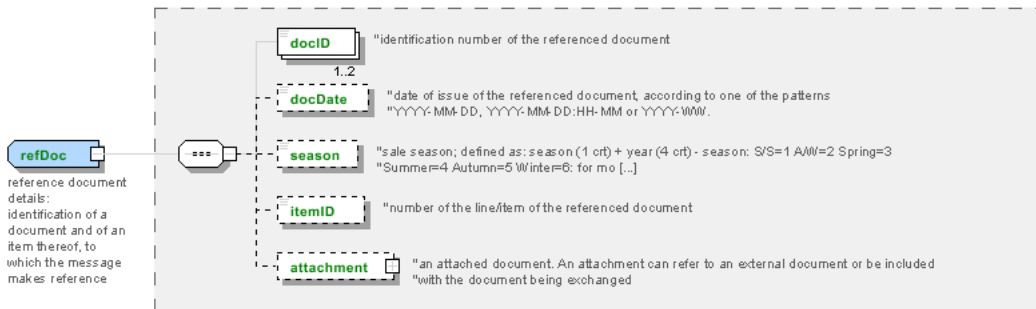
DISCLAIMER

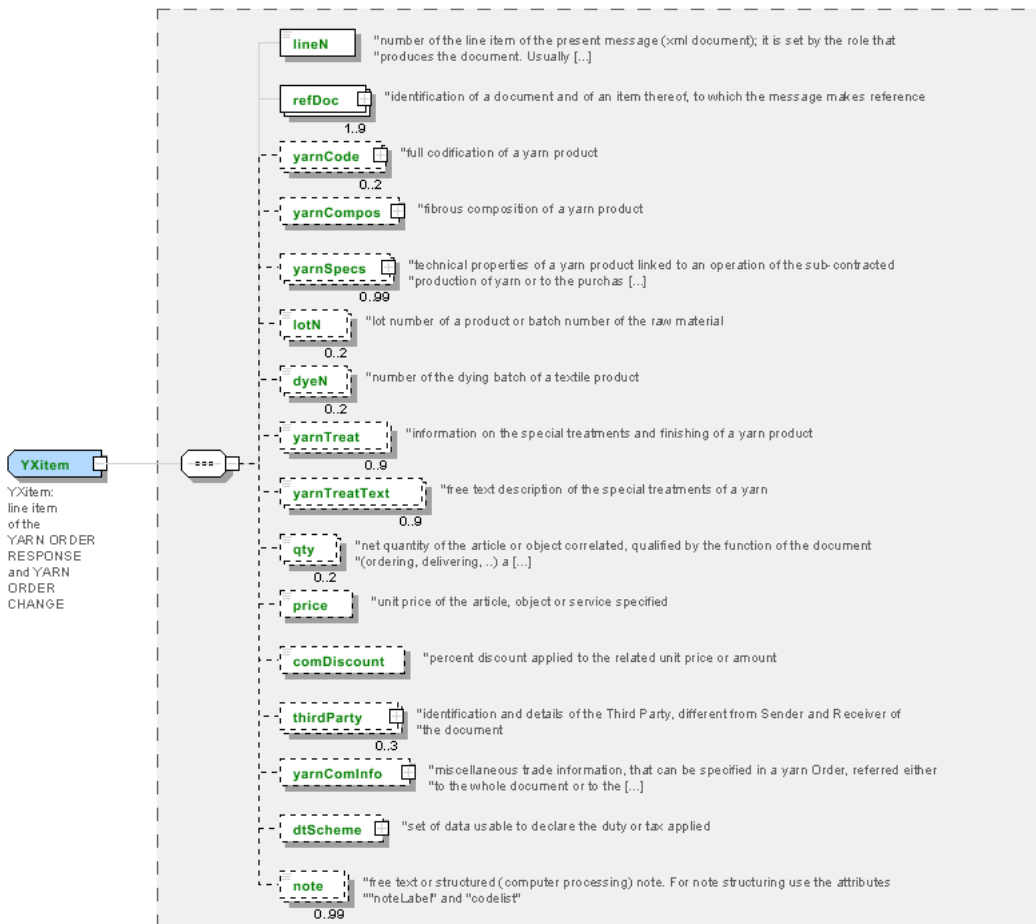
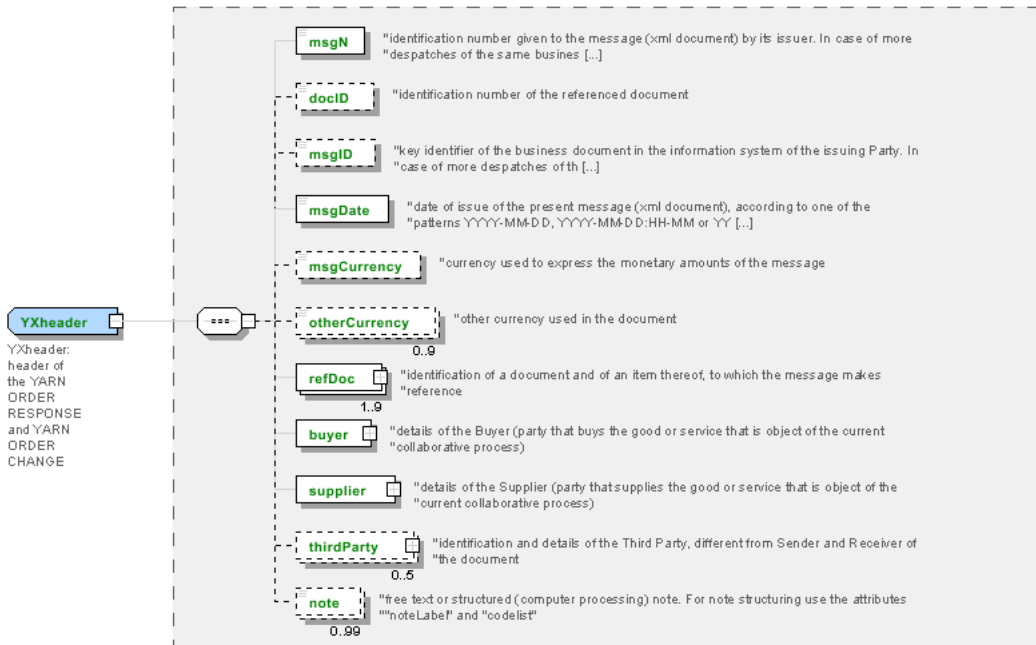
The content of this document represents the views of the authors only and is their sole responsibility; it cannot be considered to reflect the views of the European Commission or any other body of the European Union.

The European Commission does not accept any responsibility for use that may be made of the information it contains.

Annex A

Representative images of the principal complex elements' structure.





Annex B

NT1 - Order type

type of Order

Agency name: eBIZ

Decoding table: NT1

File codes list (Generic code): http://www.ebiz.enea.it/moda-ml/repository/codelist/draft/gc_NT1.xml

Code	Description	Adoption note	Date of insertion
A	blanket	the order is open without a concrete delivery of product; it establishes an amount of goods to be produced in a future	
D	call-off	orders an amount of goods to be delivered (and invoiced and produced if necessary); it is important that it is clear that this amount should be subtracted from the amount of the blanket order referred in the refDoc element	
P	reservation		
STD	standard		

NT100 - eBIZ TCFUpstream version

dictionary version

Agency name: eBIZ

Decoding table: NT100

File codes list (Generic code): http://www.ebiz.enea.it/moda-ml/repository/codelist/draft/gc_NT100.xml

Code	Description	Adoption note	Date of insertion
2013-1	v2013-1		01/07/2013
2018-1	v2018-1		04/11/2018
draft	draft		08/09/2017

NT11 - transport causal

reason for the transport

Agency name: eBIZ

Decoding table: NT11

File codes list (Generic code): http://www.ebiz.enea.it/moda-ml/repository/codelist/draft/gc_NT11.xml

Code	Description	Adoption note	Date of insertion
------	-------------	---------------	-------------------

FOC	free of charge		
FRW	return from re-works		
FST	return from storage		
FVW	return from view		
FWK	return from works		
IST	in storage		
NWK	return non-worked		
RJC	return from rejection		
SEL	to sell		
STO	to storage		
VEW	to view		
WRK	to works		

NT12 - data source

party who has provided the data

Agency name: eBIZ

Decoding table: NT12

File codes list (Generic code): http://www.ebiz.enea.it/moda-ml/repository/codelist/draft/gc_NT12.xml

Code	Description	Adoption note	Date of insertion
AC	internal test		
CO	external test		
CV	test after steaming		

NT16 - VAT rate or code

VAT rate or code (DEPRECATED, use dtScheme element)

Decoding table: NT16

File codes list (Generic code): http://www.ebiz.enea.it/moda-ml/repository/codelist/draft/gc_NT16.xml

NT18 - message function

function performed by the present message with regards to the transmission

Agency name: eBIZ

Decoding table: NT18

File codes list (Generic code): http://www.ebiz.enea.it/moda-ml/repository/codelist/draft/gc_NT18.xml

Code	Description	Adoption	Date of
------	-------------	----------	---------

		note	insertion
CA	delete this document		01/07/2013
CP	copy		
OR	original		
RC	re-transmission for data correction		
RT	re-transmission		

NT19 - currency use qualifier

qualification of another currency used in the document

Agency name: eBIZ

Decoding table: NT19

File codes list (Generic code): http://www.ebiz.enea.it/moda-ml/repository/codelist/draft/gc_NT19.xml

Code	Description	Adoption note	Date of insertion
CAT	pricelist currency		
INV	invoicing currency		
ORD	order currency		
PAY	payment currency		
SAL	sales currency		

NT2 - third party qualifier

Third Party role qualifier

Agency name: eBIZ

Decoding table: NT2

File codes list (Generic code): http://www.ebiz.enea.it/moda-ml/repository/codelist/draft/gc_NT2.xml

Code	Description	Adoption note	Date of insertion
AG	Sales Agent		
AU	Auditor		08/04/2019
BU	Buyer		13/06/2022
CE	Certification authority		08/04/2019
CM	Commissioner		13/06/2022
CO	Quality Controller		
CU	Customs authority		13/06/2022
DC	Response to		
DF	Invoicee		

DI	Copy to (CC)		28/10/2014
DM	Consignee		
DP	Consignment address (Delivery Party)		
EX	Expert		13/06/2022
IM	Importer		
OR	Originator		10/09/2014
SC	Sub contractor		10/04/2019
SM	Service/ePlatform manager		08/04/2019
SP	Forwarder		
SU	Supplier		13/06/2022
TL	Test or analysis laboratory		13/06/2022
TX	Tax Representative		

NT20 - price qualifier

type of price with reference to discount and taxes

Agency name: eBIZ

Decoding table: NT20

File codes list (Generic code): http://www.ebiz.enea.it/moda-ml/repository/codelist/draft/gc_NT20.xml

Code	Description	Adoption note	Date of insertion
GET	gross excluding taxes		
GIT	gross including taxes		
NET	net excluding taxes		
NIT	net including taxes		

NT29 - format of a date

format used for the date

Agency name: eBIZ

Decoding table: NT29

File codes list (Generic code): http://www.ebiz.enea.it/moda-ml/repository/codelist/draft/gc_NT29.xml

Code	Description	Adoption note	Date of insertion
D	YYYY-MM-DD		
M	YYYY-MM-DD:HH-MM (date and time)		
S	AAAA-MM-GG:HH-MM-SS (date and time with seconds)		13/06/2022
W	YYYY-WW		

NT3 - issuer of the identifier (or identification system) of a location.

List of possible issuers of the identifier (or identification system) of a location.

Agency name: eBIZ

Decoding table: NT3

File codes list (Generic code): http://www.ebiz.enea.it/moda-ml/repository/codelist/draft/gc_NT3.xml

Code	Description	Adoption note	Date of insertion
EN4	GS1-GLN	obsolete	01/07/2013
GLN	GS1-GLN	equivalent to EN4	25/04/2023
MD	mutually agreed		
NCA	National custom authority	identifier of a bonded warehouse assigned by the custom authority	19/05/2023
PLA	Platform	internal coding of the involved platform	14/05/2023
TRI	TRICK		14/05/2023

NT324 - propulsion system type

propulsion system type adopted, for example, by a transport mean

Agency name: eBIZ for TRICK

Decoding table: NT324

File codes list (Generic code): http://www.ebiz.enea.it/moda-ml/repository/codelist/draft/gc_NT324.xml

Code	Description	Adoption note	Date of insertion
ALC	Alcohol		05/07/2022
BDIE	Bio diesel		05/07/2022
BEV	Battery Electric Vehicle		05/07/2022
BFUE	Biofuels	biodiesel excluded	02/09/2022
DIE	Diesel		05/07/2022
FCEV	Hydrogen Fuel cell		05/07/2022
GAS	GAS		05/07/2022
GPL	LPG		05/07/2022
HEV	Full hybrid (Hybrid Electric Vehicle)		05/07/2022
HUM	Human force		05/07/2022
HYB	Hybrid		05/07/2022
MHY	Mild hybrid		05/07/2022
NUC	Nuclear		05/07/2022
PET	Petrol		05/07/2022

PHEV	plug-in Hybrid Electric Vehicle		05/07/2022
STEAM	Steam		05/07/2022
WIND	Wind		05/07/2022

NT329 - type of validation method of the value

indicates the type of method used to validation and calculate the quantity to which it refers; used to express the data faithfulness

Agency name: eBIZ

Decoding table: NT329

File codes list (Generic code): http://www.ebiz.enea.it/moda-ml/repository/codelist/draft/gc_NT329.xml

Code	Description	Adoption note	Date of insertion
CER	third party certification		11/06/2023
EST	estimate		12/05/2023
EXP	confirmed by an expert		19/05/2023
LAB	laboratory test		11/06/2023
LIT	literature	refer to a literature analysis outcome	12/05/2023
MON	monitoring	refer to continuous measurement in field	12/05/2023
REV	confirmed by review		11/06/2023
SAM	sampling	refer to a sample measurement in field	12/05/2023
SUP	supplier declaration		11/06/2023

NT333 - type of hashing algorithm

type of hashing algorithm

Decoding table: NT333

File codes list (Generic code): http://www.ebiz.enea.it/moda-ml/repository/codelist/draft/gc_NT333.xml

Code	Description	Adoption note	Date of insertion
ADLER32	ADLER32		26/05/2023
HMAC	HMAC		26/05/2023
MD2	MD2		26/05/2023
MD4	MD4		26/05/2023
MD5	MD5		26/05/2023
MDC-2	MDC-2		26/05/2023
PANAMA	PANAMA		26/05/2023
RIPEMD-160	RIPEMD-160		26/05/2023
SHA-1	SHA-1		26/05/2023

SHA-2 256	SHA-2 256		26/05/2023
SHA-2 384	SHA-2 384		26/05/2023
SHA-2 512	SHA-2 512		26/05/2023
TIGER	TIGER		26/05/2023

NT4 - end use

specifies the final use of the product

Agency name: eBIZ

Decoding table: NT4

File codes list (Generic code): http://www.ebiz.enea.it/moda-ml/repository/codelist/draft/gc_NT4.xml

Code	Description	Adoption note	Date of insertion
PC	test piece		
PR	production		
SA	Sample		10/09/2014
SC	samples card		
TI	patch		
TP	(test cut)		

NT43 - operational code qualifier

Agency name: eBIZ

Decoding table: NT43

File codes list (Generic code): http://www.ebiz.enea.it/moda-ml/repository/codelist/draft/gc_NT43.xml

Code	Description	Adoption note	Date of insertion
1	event		08/09/2017
2	sales channel		08/09/2017
3	goods management type		08/09/2017
4	special initiative		08/09/2017

NT5 - action code

action performed by the present line upon the referenced document line

Agency name: eBIZ

Decoding table: NT5

File codes list (Generic code): http://www.ebiz.enea.it/moda-ml/repository/codelist/draft/gc_NT5.xml

Code	Description	Adoption note	Date of insertion
A	CANCELLED		
C	CONFIRMED		
N	NEW ORDER LINE (created by an order change)		
R	PROVISIONAL CONFIRMATION		
S	DEFINITIVE CONFIRMATION		
SA	suspension accepted		
SN	suspension not accepted		
SR	suspension request		
V	AMENDED		

NT6 - coding system owner/issuer

code specifying the organisation who has created or owns the registers of the present coding or numbering system

Agency name: eBIZ

Decoding table: NT6

File codes list (Generic code): http://www.ebiz.enea.it/moda-ml/repository/codelist/draft/gc_NT6.xml

Code	Description	Adoption note	Date of insertion
CBR	National customs brokers registry		12/06/2023
CL	Customer/buyer		
CO	Quality Controller		
DU	D-U-N-S registry (Data Universal Numbering System)		04/05/2023
EB	eBIZ	replaces 'ML'	18/03/2019
EN	GS1 (ex-EAN International)		
EO	Registro EORI (Economic Operators Registration and Identification number)		04/03/2023
ES	e-Stockflow	DEPRECATED	
FO	Supplier		
GS	GS1		01/07/2013
MF	national taxation authority (i.e. VAT codes registry)		
ML	Moda-ML	DEPRECATED	
PL	Application Platform		13/06/2022
REX	Registered Exporter system (REX)		19/05/2023
SP	Service Provider		
SU	Enterprise Identification Number UID	Only switzerland	04/03/2023

NT60 - language, codes from ISO 639-1 (subset)

Agency name: eBIZ / ISO

Decoding table: NT60

File codes list (Generic code): http://www.ebiz.enea.it/moda-ml/repository/codelist/draft/gc_NT60.xml

Code	Description	Adoption note	Date of insertion
af	Afrikaans		31/01/2019
ar	Arabic		31/01/2019
be	Belarusian		31/01/2019
bg	Bulgarian		31/01/2019
bn	Bengali		31/01/2019
bo	Tibetan		31/01/2019
bs	Bosnian		31/01/2019
ca	Catalan, Valencian		31/01/2019
cs	Czech		31/01/2019
da	Danish		31/01/2019
de	German		31/01/2019
el	Greek, Modern (1453-)		31/01/2019
en	English		31/01/2019
eo	Esperanto		31/01/2019
es	Spanish, Castilian		31/01/2019
et	Estonian		31/01/2019
eu	Basque		31/01/2019
F	Female		15/04/2019
fa	Persian		31/01/2019
fi	Finnish		31/01/2019
fr	French		31/01/2019
ga	Irish		31/01/2019
gd	Gaelic, Scottish Gaelic		31/01/2019
gn	Guarani		31/01/2019
he	Hebrew		31/01/2019
hr	Croatian		31/01/2019
ht	Haitian, Haitian Creole		31/01/2019
hu	Hungarian		31/01/2019
hy	Armenian		31/01/2019
ia	Interlingua (International Auxiliary Language Association)		31/01/2019
id	Indonesian		31/01/2019
is	Icelandic		31/01/2019
it	Italian		31/01/2019

ja	Japanese		31/01/2019
jv	Javanese		31/01/2019
ka	Georgian		31/01/2019
km	Central Khmer		31/01/2019
ko	Korean		31/01/2019
ku	Kurdish		31/01/2019
lb	Luxembourgish, Letzeburgesch		31/01/2019
lo	Lao		31/01/2019
lt	Lithuanian		31/01/2019
lv	Latvian		31/01/2019
mg	Malagasy		31/01/2019
mk	Macedonian		31/01/2019
mn	Mongolian		31/01/2019
mt	Maltese		31/01/2019
nl	Dutch, Flemish		31/01/2019
no	Norwegian		31/01/2019
pl	Polish		31/01/2019
pt	Portuguese		31/01/2019
ro	Romanian, Moldavian, Moldovan		31/01/2019
ru	Russian		31/01/2019
se	Northern Sami		31/01/2019
sk	Slovak		31/01/2019
sl	Slovenian		31/01/2019
sm	Samoan		31/01/2019
so	Somali		31/01/2019
sq	Albanian		31/01/2019
sr	Serbian		31/01/2019
sv	Swedish		31/01/2019
sw	Swahili		31/01/2019
ta	Tamil		31/01/2019
th	Thai		31/01/2019
tr	Turkish		31/01/2019
uk	Ukrainian		31/01/2019
ur	Urdu		31/01/2019
uz	Uzbek		31/01/2019
vi	Vietnamese		31/01/2019
zh	Chinese		31/01/2019

NT7 - unit of measure

specification of the unit of measure, it is a sub set of table Unit of Measure Code - UN/ECE REC 20 delivered by United Nations Economic Commission for Europe (UN/ECE)

Agency name: eBIZ / UN/ECE

Decoding table: NT7

File codes list (Generic code): http://www.ebiz.enea.it/moda-ml/repository/codelist/draft/gc_NT7.xml

Other link: <http://docs.oasis-open.org/ubl/os-UBL-2.1/cl/gc/default/UnitOfMeasureCode-2.1.gc#>

Code	Description	Adoption note	Date of insertion
CMK	square centimetre		20/12/2017
CMQ	cubic centimetre		20/12/2017
CMT	centimetre		
CNE	centiNewton		
CO2TON	ton of CO2		10/09/2014
COUPLES	couples		
DAY	day		22/08/2022
DEGD	decimal degrees		04/07/2022
DEGMS	degrees with minutes and seconds		01/07/2022
DMQ	cubic decimetre		
E37	pixel		11/04/2018
GRM	gram		
HUR	hour		
INH	inch		
KGM	kilogram		
KMT	kilometer		
KWH	kilowatthours		10/09/2014
LBR	pound		
MCG	microgram		23/08/2022
MG	milligram		23/08/2022
MIN	minute		
MMK	square millimetre		20/12/2017
MONTH	month		22/08/2022
MSEC	millisecond (time)		22/08/2022
MTK	square metre		20/12/2017
MTQ	cubic metre		
MTR	metre		
NMB	numero		
ONZ	ounce		

P1	percent		
PPM	parts per milion		
PZ	piece		
RPM	rounds per metre		
SEC	second (time)		22/08/2022
YEAR	year		22/08/2022
YRD	yard		

T1 - terms of payment

code specifying the terms or time by which the payment must be done

Agency name: eBIZ

Decoding table: T1

File codes list (Generic code): http://www.ebiz.enea.it/moda-ml/repository/codelist/draft/gc_T1.xml

Code	Description	Adoption note	Date of insertion
ANTICIP	PAYMENT IN ADVANCE		
BLCOLLECT/120D	BILL OF LADING 120 DD		
BLCOLLECT/30D	BILL OF LADING 30 DD		
BLCOLLECT/60D	BILL OF LADING 60 DD		
BLCOLLECT/90D	BILL OF LADING 90 DD		
CASH	PAYMENT ON DELIVERY		
CASHINV	PAYMENT ON RECEIPT OF INVOICE		
CREDOC/0D	DOCUMENTARY CREDIT FOR PAYM. AT SIGHT		
CREDOC/120	DOCUMENTARY CREDIT FOR PAYM. AT 120 DD		
CREDOC/150	DOCUMENTARY CREDIT FOR PAYM. AT 150 DD		
CREDOC/180	DOCUMENTARY CREDIT FOR PAYM. AT 180 DD		
CREDOC/30D	DOCUMENTARY CREDIT FOR PAYM. AT 30 DD		
CREDOC/45D	DOCUMENTARY CREDIT FOR PAYM. AT 45 DD		
CREDOC/60	DOCUMENTARY CREDIT FOR PAYM. AT 60 DD		
CREDOC/90	DOCUMENTARY CREDIT FOR PAYM. AT 90 DD		
DEL/10	PAYMENT AT 10 DD AFTER DELIVERY		
DOCOLLECT/120D	DOCUMENTARY COLLECTION AT 120 DD		
DOCOLLECT/30D	DOCUMENTARY COLLECTION AT 30 DD		
DOCOLLECT/60D	DOCUMENTARY COLLECTION AT 60 DD		
DOCOLLECT/90D	DOCUMENTARY COLLECTION AT 90 DD		
INV/120D	PAYMENT AT 120 DD AFTER RECEIPT OF INVOICE		
INV/150D	PAYMENT AT 150 DD AFTER RECEIPT OF INVOICE		

INV/180D	PAYMENT AT 180 DD AFTER RECEIPT OF INVOICE		
INV/30D	PAYMENT AT 30 DD AFTER RECEIPT OF INVOICE		
INV/45D	PAYMENT AT 45 DD AFTER RECEIPT OF INVOICE		
INV/60D	PAYMENT AT 60 DD AFTER RECEIPT OF INVOICE		
INV/90D	PAYMENT AT 90 DD AFTER RECEIPT OF INVOICE		
INVULTIMO	PAYMENT AT END MONTH RECEIPT INVOICE		
INVULTIMO/10D	PAYMENT 10 DD AFTER END MONTH RECEIPT INVOICE		
INVULTIMO/120D	PAYMENT 120 DD AFTER END MONTH RECEIPT INVOICE		
INVULTIMO/150D	PAYMENT 150 DD AFTER END MONTH RECEIPT INVOICE		
INVULTIMO/180D	PAYMENT 180 DD AFTER END MONTH RECEIPT INVOICE		
INVULTIMO/240D	PAYMENT 240 DD AFTER END MONTH RECEIPT INVOICE		
INVULTIMO/30D	PAYMENT 30 DD AFTER END MONTH RECEIPT INVOICE		
INVULTIMO/45D	PAYMENT 45 DD AFTER END MONTH RECEIPT INVOICE		
INVULTIMO/60D	PAYMENT 60 DD AFTER END MONTH RECEIPT INVOICE		
INVULTIMO/90D	PAYMENT 90 DD AFTER END MONTH RECEIPT INVOICE		
NOPAY	WITHOUT PAYMENT		
RECREDOC/0D	IRREVOC. DOCUMENTARY CREDIT FOR PAYM. AT SIGHT		
RECREDOC/120D	IRREVOC. DOCUMENTARY CREDIT FOR PAYM. AT 120 DD		
RECREDOC/150D	IRREVOC. DOCUMENTARY CREDIT FOR PAYM. AT 150 DD		
RECREDOC/180D	IRREVOC. DOCUMENTARY CREDIT FOR PAYM. AT 180 DD		
RECREDOC/30D	IRREVOC. DOCUMENTARY CREDIT FOR PAYM. AT 30 DD		
RECREDOC/45D	IRREVOC. DOCUMENTARY CREDIT FOR PAYM. AT 45 DD		
RECREDOC/60D	IRREVOC. DOCUMENTARY CREDIT FOR PAYM. AT 60 DD		
RECREDOC/90D	IRREVOC. DOCUMENTARY CREDIT FOR PAYM. AT 90 DD		
ULTIMO	PAYMENT BY END MONTH OF DELIVERY		
ULTIMO/10	PAYMENT AT 10 DD AFTER END MONTH OF DELIVERY		

T10 - ISO3166 - Country

code of the nation

Agency name: ISO

Decoding table: T10

File codes list (Generic code): http://www.ebiz.enea.it/moda-ml/repository/codelist/draft/gc_T10.xml

Table not printed: there are 240 elements, more than the maximum specified for printing: 99.

T19 - fibre type

type of fibre used in a textile product

Agency name: eBIZ

Decoding table: T19

File codes list (Generic code): http://www.ebiz.enea.it/moda-ml/repository/codelist/draft/gc_T19.xml

Code	Description	Adoption note	Date of insertion
AB	abaca		20/08/2018
AC	acetate		
AF	other fibres		
AG	alginic fibre		
AL	alfa		20/08/2018
AR	aramid		25/04/2022
CA	hemp		
CC	coir (coconut)		20/08/2018
CL	chlorofibre		
CO	cotton		
CU	cuprous		
EA	elastan		
EF	elastolefin		25/04/2022
EL	Elastodiene		20/08/2018
EM	elastomultiester		25/04/2022
FL	fluorofibre		
GI	broom		20/08/2018
GL	textile glass		
HA	hair		20/08/2018
HE	henequen		20/08/2018
HL	mixed linen		
JU	jute		
KE	kenaf		20/08/2018
KP	kapoc		20/08/2018
LI	linen		
LY	lyocell		20/08/2018
MA	modacrylic		
MD	modal		
ME	metallized		
MG	maguey		20/08/2018
MM	melamine		25/04/2022
PA	polyamide		
PB	polyureic		

PC	acrylic		
PE	polyethylene		
PI	paper		20/08/2018
PL	polyester		
PM	polyimide		
PO	polilactyd		25/04/2022
PP	polypropylene		
PR	proteic		
PU	polyurethane		
RA	ramie		20/08/2018
SE	silk		
SI	sisal		20/08/2018
SN	sun		20/08/2018
TA	triacetate		
TR	textile residues or unspecified composition		20/08/2018
TV	trivinyln		
VI	viscose		
VY	vinylal		
WA	angora		
WB	beaver		20/08/2018
WC	cashgora		
WG	vicuna		
WK	camel		
WL	llama		
WM	mohair		
WN	lapin		20/08/2018
WO	wool		
WP	alpaca		
WS	cashmere		
WT	Oteer		20/08/2018
WU	guanaco		
WV	virgin wool		
WY	yack		

T2 - Modes of payment

way or means of payment

Agency name: eBIZ

Decoding table: T2

File codes list (Generic code): http://www.ebiz.enea.it/moda-ml/repository/codelist/draft/gc_T2.xml

Code	Description	Adoption note	Date of insertion
BB	bank transfer		
IA	collection through Agent		
IS	collection through Forwarder		
RB	bank receipt		
RD	remittance		
SW	bank SWIFT		
TR	bank draft		

T21 - type of document

type or class to which the referenced document belongs

Agency name: eBIZ

Decoding table: T21

File codes list (Generic code): http://www.ebiz.enea.it/moda-ml/repository/codelist/draft/gc_T21.xml

Code	Description	Adoption note	Date of insertion
BIL	Bill of lading		07/03/2023
BOR	Blanket order		01/02/2018
CAT	Price catalogue - tech sheet		
CEO	Certificate of origin		13/04/2018
CER	Certificate		13/04/2018
CMR	CMR consignment note		07/03/2023
COC	Colour card		
CRN	Credit note		08/09/2017
CTO	Checking order		01/07/2013
CTR	Contract		
CXF	CxF3 file		01/07/2013
DAD	Darn order		
DDT	Delivery note (transport document)		
DEA	Despatch advise		
DER	Despatch request		
DR	Document Request		02/12/2014
EAD	Export Accompanying Document	adopted by European customs	12/05/2023
ECMR	electronic CMR consignment note		07/03/2023

ECUS	EXPORT Custom Declaration		07/03/2023
FOR	Forecast		02/12/2014
GSO	Garment stock offer		
GSX	Garment stock offer change		
ICUS	IMPORT Custom Declaration		07/03/2023
INV	Invoice		
KCC	Knitting-Clothing Commission Order		02/12/2014
KCI	Garment in Work Inventory Report		02/12/2014
LCA	LCA study		28/08/2022
LCAD	LCA study dataset		28/08/2022
M2M	Made to Measure Production Order		02/12/2014
MAS	Master marker		
MCI	Visual merchandising instruction		13/04/2018
OCH	Order change		
OFF	Offer		
ORD	Purchase order		
ORP	Order response		
OSR	order status request		
OSS	Offer status		02/12/2014
OST	Order status		
OUR	our reference		
PCO	Preferential certificate of origin		07/03/2023
PEF	PEF study		28/08/2022
PEFD	PEF study dataset		28/08/2022
PEFP	PEF environmental profile		07/03/2023
QR	Quality Report		02/12/2014
RAI	Raw Material in Work Inventory Report		02/12/2014
RDC	Raw dyeing commission order		
RDH	Raw dyeing order change		
RDR	Raw dyeing order response		
REA	Receiving advise		
REQ	Request for Offer		
RET	Return		02/12/2014
RSC	Spinning commission order		
RSH	Spinning order change		
RSR	Spinning order response		
SAD	Single Administrative Document	adopted by European customs	12/05/2023
SCL	Process sheet		

SDE	Self-declaration		07/03/2023
SDS	SDS - Safety data sheet		07/03/2023
SLCA	S-LCA Study		07/03/2023
SLCAD	S-LCA Study documentation		07/03/2023
TFC	Textile dyeing-finishing commission order		
TFX	Textile Dyeing-Finishing Order Change		02/12/2014
TPC	Textile printing commission order		
TPX	Textile Printing Order Change		02/12/2014
TWI	Textile in work inventory		
VMI	visual merchandising instructions		01/02/2018
WAC	Warping commission order		
WAYB	Waybill		07/03/2023
WEC	Weaving commission order		
YDC	Yarn dyeing commission order		
YDH	Yarn dyeing order change		
YDR	Yarn dyeing order response		
YTC	Twisting commission order		
YWI	Yarn in work inventory		

T24 - yarn characteristics type

physical or mechanical parameter used to define a property of a yarn

Agency name: eBIZ

Decoding table: T24

File codes list (Generic code): http://www.ebiz.enea.it/moda-ml/repository/codelist/draft/gc_T24.xml

Code	Description	Adoption note	Date of insertion
ALL	elongation		
AMIN	minimum yarn elongation		
CV	Coefficient of Variation of count		
DE	colour tolerance (delta E)		
NFIN	number of cases diameter less than X%		
NGRO	number of cases diameter greater than X%		
NOD	standard nub		
NOS	Splicer nub		
PLH	H hairiness		
PLL	pilling		
RES	tensile strength		

RMIN	minimum tensile strength		
RTR	shrinkage		
SLA	fastness to light (ISO 105-B02)		
SLB	fastness to water washing (ISO 105-C06)		
SLC	fastness to dry washing (ISO 105-D01)		
SLD	fastness to water drop (ISO 105-E07)		
SLW	fastness to water (ISO 105-E01)		
SLX	fastness to Xeno light (ISO 105-E01)		
STW	S-twist		
TIN	english count		
TMT	metric count		
TTX	tex count		
ZTW	Z-twist		

T29 - type of yarn package

type of package (roll-up) used for a yarn product

Agency name: eBIZ

Decoding table: T29

File codes list (Generic code): http://www.ebiz.enea.it/moda-ml/repository/codelist/draft/gc_T29.xml

Code	Description	Adoption note	Date of insertion
CIL	bobbin		
CON	cone		
HNK	hank, skein		01/07/2013
MUF	muff, cake		01/07/2013
SPL	spool		
TUB	tube		
XCO	supercone		

T3 - terms of delivery - Incoterms

specification of the terms of trade (INCOTERMS)

Agency name: Incoterms

Decoding table: T3

File codes list (Generic code): http://www.ebiz.enea.it/moda-ml/repository/codelist/draft/gc_T3.xml

Other link: <https://iccwbo.org/resources-for-business/incoterms-rules/incoterms-2020/#>

Code	Description	Adoption	Date of
------	-------------	----------	---------

		note	insertion
CFR	COST AND FREIGHT (named port of destination)		
CIF	COST, INSURANCE AND FREIGHT (named port of destination)		
CIP	CARRIAGE AND INSURANCE PAID (named place of destination)		
CP	CARRIAGE PAID (named place of destination)		
DAF	DELIVERED AT FRONTIER (named place)	according to Incoterms® 2010, since 2020 it is OBSOLETE.	08/12/2017
DAP	Delivered at Place of destination (named place of destination)	according to Incoterms® 2010	08/12/2017
DAT	Delivered at Terminal (named place of destination)	according to Incoterms® 2010, since 2020 it is OBSOLETE.	08/12/2017
DDP	DELIVERED DUTY PAID (named place of destination)		
DDU	DELIVERED DUTY UNPAID (named place of destination)	according to Incoterms® 2010 it is OBSOLETE, use DAP	08/12/2017
DEQ	DELIVERED EX-QUAY (named port of destination)	according to Incoterms® 2010 it is OBSOLETE	08/12/2017
DES	DELIVERED EX-SHIP (named port of destination)	according to Incoterms® 2010 it is OBSOLETE	08/12/2017
DDP	DELIVERED AT PLACE UNLOADED	according to Incoterms® 2020	25/04/2022
EXW	EX WORKS (named place)		
FAS	FREE ALONGSIDE SHIP (named port of shipment)		
FC	FREE CARRIER (named place)		
FOB	FREE ON BOARD (named port of shipment)		

T30 - support of yarn package - material

type of material of which a package for yarn is made

Agency name: eBIZ

Decoding table: T30

File codes list (Generic code): http://www.ebiz.enea.it/moda-ml/repository/codelist/draft/gc_T30.xml

Code	Description	Adoption note	Date of insertion
CA	cartoon		
DY	for soft package dyeing		
MT	metallic		01/07/2013
PL	plastic		

T306 - material circularity attribute

Indicates whether the material is virgin or comes from recycling or reuse processes

Agency name: eBIZ for TRICK

Decoding table: T306

File codes list (Generic code): http://www.ebiz.enea.it/moda-ml/repository/codelist/draft/gc_T306.xml

Code	Description	Adoption note	Date of insertion
REU	Reused material		30/08/2022
SCL	Secondary raw materials	adopt this for any secondary raw material when information about the first or following loop is not available	22/07/2022
SCL1	Secondary raw materials - first loop		22/07/2022
SCLx	Secondary raw materials - loop following the first one		22/07/2022
VRG	Virgin raw material	adopt this for any virgin raw material when biobased information is not available	22/07/2022
VRGB	Virgin raw material - biobased		23/03/2023
VRGN	Virgin raw material - not biobased		23/03/2023

T307 - recycling process method

Agency name: eBIZ for TRICK

Decoding table: T307

File codes list (Generic code): http://www.ebiz.enea.it/moda-ml/repository/codelist/draft/gc_T307.xml

Code	Description	Adoption note	Date of insertion
CHMD	chemical recycling (dissolution)		28/07/2022
CHMP	chemical recycling (depolymerization)		28/07/2022
ENZ	enzymatic recycling		01/09/2022
MEC	mechanical recycling		28/07/2022
THE	thermal recycle		31/08/2022
THMC	thermo-mechanical recycling		01/09/2022

T32 - yarn reel wrapping type

type of wrapping in which a package of yarn is wrapped

Agency name: eBIZ

Decoding table: T32

File codes list (Generic code): http://www.ebiz.enea.it/moda-ml/repository/codelist/draft/gc_T32.xml

Code	Description	Adoption note	Date of insertion
XA	without bag		
XB	paper bag		01/07/2013
XD	plastic film bag		

T33 - yarn outer packing

code specifying the type of outer wrapping or packing of a yarn

Agency name: eBIZ

Decoding table: T33

File codes list (Generic code): http://www.ebiz.enea.it/moda-ml/repository/codelist/draft/gc_T33.xml

Code	Description	Adoption note	Date of insertion
00			
CB	cartoon box		
CC	cartoon box 18 reels		
CD	cartoon box 36 reels		
XD	plastic film		

T34 - yarn payment type

type of payment to be applied to a yarn supply

Agency name: eBIZ

Decoding table: T34

File codes list (Generic code): http://www.ebiz.enea.it/moda-ml/repository/codelist/draft/gc_T34.xml

Code	Description	Adoption note	Date of insertion
CND	conditioned		
NET	net		
NTT	net-net		

T35 - yarn treatment type

informations on the special treatments and finishing of a yarn product

Agency name: eBIZ

Decoding table: T35

File codes list (Generic code): http://www.ebiz.enea.it/moda-ml/repository/codelist/draft/gc_T35.xml

Code	Description	Adoption note	Date of insertion
00			

T38 - transport conditions

special condition of transport or special service requested to the Forwarder

Decoding table: T38

File codes list (Generic code): http://www.ebiz.enea.it/moda-ml/repository/codelist/draft/gc_T38.xml

Code	Description	Adoption note	Date of insertion
ACC	arrange customs clearance		
CAL	Carrier loads		
CAU	Carrier unloads		
CMR	CMR carnet		
FFN	freight forwarders national conditions		
FLD	special agreement for full loading		
NCC	do not arrange customs clearance		
PPB	packaging paid by Buyer		
PPS	packaging paid by Supplier		
PRO	proof of delivery		
RFR	return container free		
RPC	return container paid by Customer		
RPS	return container paid by Supplier		
SHL	Shipper loads		
SHU	Consignee unloads		

T40 - type of transport means

means of transport, in general or referred to a specific leg

Agency name: eBIZ

Decoding table: T40

File codes list (Generic code): http://www.ebiz.enea.it/moda-ml/repository/codelist/draft/gc_T40.xml

Code	Description	Adoption note	Date of insertion
AIR	aircraft		
SHP	ship		

TRU	truck		
VAN	van		

T41 - type of Allowance or Charge

coded specification of an Allowance or Charge (elaborated from UNECE 4465)

Agency name: eBIZ

Decoding table: T41

File codes list (Generic code): http://www.ebiz.enea.it/moda-ml/repository/codelist/draft/gc_T41.xml

Code	Description	Adoption note	Date of insertion
1	Agreed settlement		19/08/2018
10	Costs for draft		19/08/2018
11	Bank charges	DEPRECATED, use CBK	19/08/2018
12	Agent commission		19/08/2018
14	Wrong delivery		19/08/2018
15	Goods returned to agent		19/08/2018
16	Goods partly returned		19/08/2018
17	Transport damage		19/08/2018
19	Trade discount		19/08/2018
2	Below specification goods		19/08/2018
20	Deduction for late delivery	DEPRECATED, use CWB	19/08/2018
21	Advertising costs		19/08/2018
22	Customs duties		19/08/2018
23	Telephone and postal costs		19/08/2018
24	Repair costs		19/08/2018
25	Attorney fees		19/08/2018
26	Taxes		19/08/2018
3	Damaged goods		19/08/2018
30	Direct payment to seller		19/08/2018
32	Goods not delivered		19/08/2018
33	Late delivery		19/08/2018
35	Goods returned		19/08/2018
36	Invoice not received		19/08/2018
37	Credit note to debtor/not to us		19/08/2018
38	Deducted bonus		19/08/2018
39	Deducted discount		19/08/2018
4	Short delivery		19/08/2018

40	Deducted freight costs		19/08/2018
41	Deduction against other invoices		19/08/2018
42	Credit balance(s)		19/08/2018
45	Debit note to seller		19/08/2018
46	Discount beyond terms		19/08/2018
48	Allowance/charge error		19/08/2018
49	Substitute product		19/08/2018
50	Terms of sale error		19/08/2018
52	Wrong invoice		19/08/2018
53	Duplicate invoice		19/08/2018
54	Weight error		19/08/2018
55	Additional charge not authorized		19/08/2018
56	Incorrect discount		19/08/2018
57	Price change		19/08/2018
58	Variation		19/08/2018
59	Chargeback		19/08/2018
65	Settlement to agent		19/08/2018
66	Cash discount		19/08/2018
7	Payment on account		19/08/2018
70	Wrong monetary amount resulting from incorrect free goods quantity		19/08/2018
72	Temporary special promotion		19/08/2018
73	Difference in tax rate		19/08/2018
74	Quantity discount		19/08/2018
75	Promotion discount		19/08/2018
76	Cancellation deadline passed		19/08/2018
77	Pricing discount		19/08/2018
78	Volume discount		19/08/2018
79	Sundry discount		19/08/2018
8	Returnable container charge included		19/08/2018
9	Invoice error		19/08/2018
AWA	bonus for works ahead of schedule		
CBK	bank charges		
CCR	servizio di corriere		
CIN	insurance		
CLB	labelling		
CPK	packing		
CSP	special packing		
CWB	penalty for works behind schedule		

T44 - additional code type

qualifier of the additional coding of a product

Agency name: eBIZ

Decoding table: T44

File codes list (Generic code): http://www.ebiz.enea.it/moda-ml/repository/codelist/draft/gc_T44.xml

Code	Description	Adoption note	Date of insertion
CC	colour card		
CL	sales collection		
CO	company identification code		08/09/2017
DY	dye number		
LT	lot number		
MDI	Made in		08/09/2017
MS	manufacturing state		
PKG	packaging		09/09/2014
PL	product line		
RGB	RGB value		
SE	selvedge code		

T61 - duty or tax or fee type

duty or tax or fee type

Agency name: eBIZ

Decoding table: T61

File codes list (Generic code): http://www.ebiz.enea.it/moda-ml/repository/codelist/draft/gc_T61.xml

Code	Description	Adoption note	Date of insertion
BOL	stamp duty		01/07/2013
CUD	customs duty		01/07/2013
ENV	environmental tax		01/07/2013
FRE	no tax		01/07/2013
OTH	other tax charges		01/07/2013
VAT	value added tax		01/07/2013

T62 - duty or tax or fee category

duty or tax or fee category

Agency name: eBIZ

Decoding table: T62

File codes list (Generic code): http://www.ebiz.enea.it/moda-ml/repository/codelist/draft/gc_T62.xml

Code	Description	Adoption note	Date of insertion
AA	lower than standard rate		01/07/2013
E	tax not applicable		01/07/2013
H	higher than standard rate		01/07/2013
O	outside scope of tax		01/07/2013
S	standard rate		01/07/2013
Z	zero rate goods		01/07/2013

T8 - Modes of Transport

way of transport, in general or referred to the specified leg. Derived from UNECE Recommendation 28 (see link)

Agency name: eBIZ

Decoding table: T8

File codes list (Generic code): http://www.ebiz.enea.it/moda-ml/repository/codelist/draft/gc_T8.xml

Other link: <https://fig.unece.org/contents/recommendation-28.htm#>

Code	Description	Adoption note	Date of insertion
1	MARITIME TRANSPORT		
10	Courier	DEPRECATED	01/07/2013
2	RAIL TRANSPORT		
3	ROAD TRANSPORT		
4	AIR TRANSPORT		
5	MAIL		
6	MULTIMODAL TRANSPORT	example ship + truck. Not used for custom declarations.	13/06/2023
8	INLAND WATER TRANSPORT		
9	MODE UNKNOWN	Includes Own propulsion	13/06/2023

T9 - ISO4217 - Currency

currency code

Agency name: ISO

Decoding table: T9

File codes list (Generic code): http://www.ebiz.enea.it/moda-ml/repository/codelist/draft/gc_T9.xml

Table not printed: there are 205 elements, more than the maximum specified for printing: 99.

