



<http://www.ebiz-tcf.eu>

DRAFT

IMPLEMENTATION GUIDE
TRANSACTION "RAW MATERIAL DESPATCH ADVICE"

Version: draft

Date of release: 26/6/2023

Document code: G042

technical Documentation: <http://www.ebiz.enea.it>

XML Schemas repository: <http://www.ebiz.enea.it/moda-ml/repository/schema/draft/default.asp>

Guides repository: <http://www.ebiz.enea.it/moda-ml/repository/guide/draft/default.asp>

Guide filename: G042-eBIZ-RawMaterialDespatchAdvice.pdf

0. PREMISE

This document contains a proposal for the updating and extension of eBIZ specifications starting from the eBIZ version 2018. Under the name of 'Draft version' it is reported the result of an extensive work of analysis and consultation aimed at developing and maintaining eBIZ specifications.

In particular, the content of this proposal is the result of various activities, mainly those carried out within the framework of the **TRICK project** funded by the European Commission: grant agreement 958352, call H2020-LOW-CARBON-CIRCULAR-INDUSTRIES-2020 / H2020-LCCI-2020-EASME-twostage.

The technical contents are backwards compatible with the latest official published version, with the exclusion of the totally new concepts added explicitly for the version that are thought as incremental evolution of the knowledge base.

1. BUSINESS DESCRIPTION

1.1 Scope

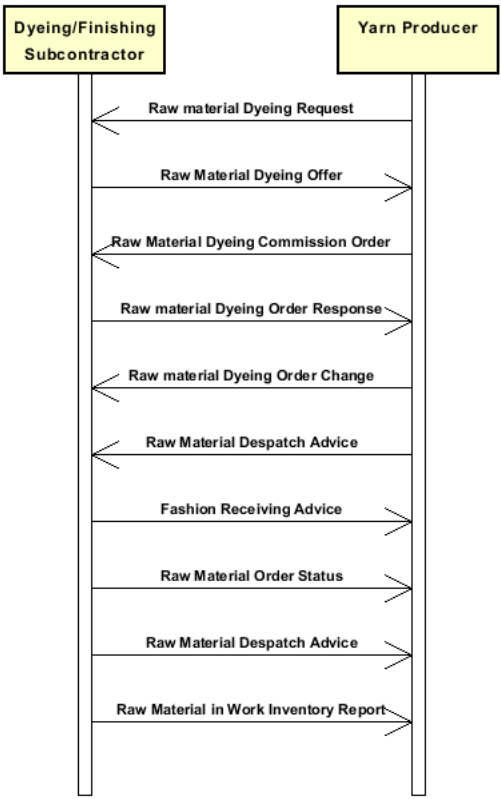
The present guide has been issued to assist the companies of the Textile-Clothing sector in the implementation of the standard XML document type "RAW MATERIAL DESPATCH ADVISE", providing all the instruction required for its use in any context of e-commerce between Yarn Producers (or Subcontractors) and their Clients. All the rules required for the construction and validation of the document are embedded into the specific XML-Schema, which is detailed in section "Implementation guide".

1.2 Generalities

Document usable by the Commissioner to inform the Subcontractor about the shipment of raw material to be worked

1.3. Possible scenario

Subcontracted dyeing of raw material



2. IMPLEMENTATION GUIDE

2.1 General structure of XML document

All the business data that can be exchanged through this class of documents are shown in the following "document structure", that provides a simplified vision of the Schema.

In particular:

- the two numbers following each element define its "cardinality" (minimum and maximum number of occurrences); the minimum equal zero indicates that the element is optional, the minimum greater than zero indicates that is mandatory;
- the bold character denotes the complex elements (aggregates of simple elements) that were built for the sake of functionality and re-usability of some complex informations sets. The child elements in each parent element are easily spotted as "indented";
- the symbol "@" denotes an attribute of the preceding element; here "the usage indicator (optional, required, ...)" is shown in square brackets.

Structure

RAWDesAdvise

```
@TAType [Optional] [Default= STD]
@msgfunction [Optional] [Default= OR]
@version [Optional] [Default= draft]
@useProfile [Optional]
| TAheader 1-1
| | msgN 1-1
| | - choose -
| | | msgID 0-1
| | | - or -
| | | docID 0-1
| | | @numberingOrg [Optional]
| | | - end choose -
| | msgDate 1-1
| | @dateForm [Optional]
| | refDoc 0-9
| | @docType [Required]
| | | docID 1-2
| | | @numberingOrg [Optional]
| | | docDate 0-1
| | | @dateForm [Optional]
| | | season 0-1
| | | @numberingOrg [Optional]
| | | @codeList [Optional]
| | | @listName [Optional]
| | | @listVersion [Optional]
| | | itemID 0-1
| | | attachment 0-1
| | | @uid [Optional]
| | | | fileName 0-1
| | | | @numberingOrg [Optional]
| | | | binaryObject 0-1
| | | | @format [Optional]
| | | | @mime [Optional]
| | | | @encoding [Optional]
| | | | @characterSet [Optional]
| | | | externalReference 0-99
| | | | | uri 1-1
| | | | | @isURL [Optional] [Default= true]
| | | | | mimeTypeCode 0-1
| | | | | formatCode 0-1
| | | | | encodingCode 0-1
| | | | | characterSetCode 0-1
| | | | hashFootprint 0-1
| | | | @schemeID [Optional]
| | | | @hashMethod [Required]
| | | | blockChainReference 0-9
| | | | | uri 1-1
| | | | | @isURL [Optional] [Default= true]
```

| | | transactionReceipt 1-9

| **buyer 1-1**

| @logo [Optional]

| @sender [Optional]

| id 1-1

| @numberingOrg [Optional]

| additionalIdentifier 0-9

| @numberingOrg [Optional]

| @idQualifier [Optional]

| legalName 0-1

| dept 0-1

| subDept 0-1

| person 0-1

| @email [Optional]

| @phone [Optional]

| @fax [Optional]

| street 0-1

| city 0-1

| subCountry 0-1

| country 0-1

| postCode 0-1

| **geoCoordinates 0-1**

| @um [Optional] [Default= DEGD]

| @geoRefSystem [Optional]

| | xGeoCoord 1-1

| | yGeoCoord 1-1

| | zGeoCoord 0-1

| **supplier 1-1**

| @logo [Optional]

| @sender [Optional]

| id 1-1

| @numberingOrg [Optional]

| additionalIdentifier 0-9

| @numberingOrg [Optional]

| @idQualifier [Optional]

| legalName 0-1

| dept 0-1

| subDept 0-1

| person 0-1

| @email [Optional]

| @phone [Optional]

| @fax [Optional]

| street 0-1

| city 0-1

| subCountry 0-1

| country 0-1

| postCode 0-1

| **geoCoordinates 0-1**

| @um [Optional] [Default= DEGD]

| @geoRefSystem [Optional]

| | xGeoCoord 1-1

| | yGeoCoord 1-1

| | zGeoCoord 0-1

| **thirdParty 0-5**

| @VAT [Optional]

| @role [Required]

| @sender [Optional]

| id 1-1

| @numberingOrg [Optional]

| legalName 0-1

| dept 0-1

| subDept 0-1

| person 0-1

| @email [Optional]

| @phone [Optional]

| @fax [Optional]

| street 0-1

| city 0-1

```

| | | subCountry 0-1
| | | country 0-1
| | | postCode 0-1
| | | geoCoordinates 0-1
| | |   @um [Optional] [Default= DEGD]
| | |   @geoRefSystem [Optional]
| | |     | xGeoCoord 1-1
| | |     | yGeoCoord 1-1
| | |     | zGeoCoord 0-1
| | | note 0-99
| | |   @numberingOrg [Optional]
| | |   @codeList [Optional]
| | |   @noteLabel [Optional]

```

| **trade 0-1**

```

- choose -
| | incoTermText 1-1
- or -
| | incoTerm 1-1
- end choose -
- choose -
| | tradeLocation 0-1
| |   location 0-1
| |   @LRI [Optional]
| |   legalName 0-1
| |   dept 0-1
| |   subDept 0-1
| |   person 0-1
| |   @email [Optional]
| |   @phone [Optional]
| |   @fax [Optional]
| |   street 0-1
| |   city 0-1
| |   subCountry 0-1
| |   country 0-1
| |   postCode 0-1
| |   geoCoordinates 0-1
| |     @um [Optional] [Default= DEGD]
| |     @geoRefSystem [Optional]
| |       | xGeoCoord 1-1
| |       | yGeoCoord 1-1
| |       | zGeoCoord 0-1
- or -
| | location 0-1
| | @LRI [Optional]
- end choose -

```

| **shipInfo 0-1**

```

| | transInfo 0-9
| |   @transReason [Optional]
| |   @progr [Optional]
| |   transMode 1-1
| |   carrier 0-1
- choose -
| | deliveryLocation 0-1
| |   location 0-1
| |   @LRI [Optional]
| |   legalName 0-1
| |   dept 0-1
| |   subDept 0-1
| |   person 0-1
| |   @email [Optional]
| |   @phone [Optional]
| |   @fax [Optional]
| |   street 0-1
| |   city 0-1
| |   subCountry 0-1
| |   country 0-1

```

```

| | | | postCode 0-1
| | | | geoCoordinates 0-1
| | | | @um [Optional] [Default= DEGD]
| | | | @geoRefSystem [Optional]
| | | | | xGeoCoord 1-1
| | | | | yGeoCoord 1-1
| | | | | zGeoCoord 0-1
- or -
| | | | deliveryPlace 0-1
- end choose -
| | | | grossWeight 0-1
| | | | @um [Required]
| | | | netWeight 0-1
| | | | @um [Required]
| | | | transMeans 0-1
| | | | @propulsionSystemCode [Optional]
| | | | transCondition 0-3
| | | | transConditionText 0-1
- choose -
| | | | despatchPlace 0-1
- or -
| | | | despatchLocation 0-1
| | | | | location 0-1
| | | | | @LRI [Optional]
| | | | | legalName 0-1
| | | | | dept 0-1
| | | | | subDept 0-1
| | | | | person 0-1
| | | | | @email [Optional]
| | | | | @phone [Optional]
| | | | | @fax [Optional]
| | | | | street 0-1
| | | | | city 0-1
| | | | | subCountry 0-1
| | | | | country 0-1
| | | | | postCode 0-1
| | | | | geoCoordinates 0-1
| | | | | @um [Optional] [Default= DEGD]
| | | | | @geoRefSystem [Optional]
| | | | | | xGeoCoord 1-1
| | | | | | yGeoCoord 1-1
| | | | | | zGeoCoord 0-1
- end choose -
| | | | despatchDate 0-1
| | | | @dateForm [Optional]
| | | | delEffectiveDate 0-1
| | | | @dateForm [Optional]
| | | | routeLength 0-1
| | | | @um [Required]
delEffectiveDate 0-1
@dateForm [Optional]
| | | | packages 0-99
| | | | @packageLevel [Optional]
- choose -
| | | | | packageText 1-1
- or -
| | | | | package 1-1
- end choose -
| | | | | packageModelCode 0-1
| | | | | @numberingOrg [Optional]
| | | | | description 0-unbounded
| | | | | @ln [Optional]
| | | | | packageDim 0-1
| | | | | | length 1-1
| | | | | | @um [Required]
| | | | | | width 0-1
| | | | | | @um [Required]
| | | | | | height 0-1

```

```

| | | | @um [Required]
| | | | handlingChar 0-1
| | | | - choose -
| | | | | yarnPack 0-1
| | | | | | yarnReel 1-1
| | | | | | | @reelType [Required]
| | | | | | | @reelMat [Optional]
| | | | | | | | yarnReelD 0-1
| | | | | | | | | @um [Required]
| | | | | | | | | yarnReelH 0-1
| | | | | | | | | | @um [Required]
| | | | | | | | | | yarnConeAngle 0-1
| | | | | | | | | | | yarnReelQty 0-2
| | | | | | | | | | | | @um [Required]
| | | | | | | | | | | | label 0-1
| | | | | | | | | | | | labelWrit 0-1
| | | | | | | | | | | | yarnInWrap 0-1
| | | | | | | | | | | | | yarnReelWrap 1-1
| | | | | | | | | | | | | | label 0-1
| | | | | | | | | | | | | | labelWrit 0-1
| | | | | | | | | | | | | - choose -
| | | | | | | | | | | | | | yarnOutWrapText 0-1
| | | | | | | | | | | | | | - or -
| | | | | | | | | | | | | | | yarnOutWrap 0-1
| | | | | | | | | | | | | | | - end choose -
| | | | | | | | | | | | | - or -
| | | | | | | | | | | | | | piecePack 0-1
| | | | | | | | | | | | | | - choose -
| | | | | | | | | | | | | | | piecePackText 1-1
| | | | | | | | | | | | | | | - or -
| | | | | | | | | | | | | | | | pieceInnWrap1 1-1
| | | | | | | | | | | | | | | | | pieceInnWrap2 0-1
| | | | | | | | | | | | | | | | | | pieceOutWrap 0-1
| | | | | | | | | | | | | | | | | | - end choose -
| | | | | | | | | | | | | | - or -
| | | | | | | | | | | | | | | acsPack 0-1
| | | | | | | | | | | | | | | - choose -
| | | | | | | | | | | | | | | | acsPackCode 1-1
| | | | | | | | | | | | | | | | | @numberingOrg [Optional]
| | | | | | | | | | | | | | | | | @codeList [Optional]
| | | | | | | | | | | | | | | | | @listName [Optional]
| | | | | | | | | | | | | | | | | @listVersion [Optional]
| | | | | | | | | | | | | | | | | - or -
| | | | | | | | | | | | | | | | | | acsPackText 1-1
| | | | | | | | | | | | | | | | | | - end choose -
| | | | | | | | | | | | | | | | | - or -
| | | | | | | | | | | | | | | | | | garPack 0-1
| | | | | | | | | | | | | | | | | | - choose -
| | | | | | | | | | | | | | | | | | | garPackCode 1-1
| | | | | | | | | | | | | | | | | | | | @numberingOrg [Optional]
| | | | | | | | | | | | | | | | | | | | @codeList [Optional]
| | | | | | | | | | | | | | | | | | | | @listName [Optional]
| | | | | | | | | | | | | | | | | | | | @listVersion [Optional]
| | | | | | | | | | | | | | | | | | | | - or -
| | | | | | | | | | | | | | | | | | | | | garPackText 1-1
| | | | | | | | | | | | | | | | | | | | | - end choose -
| | | | | | | | | | | | | | | | | | | | | - end choose -
| | | | | | | | | | | | | | | | | | | | | | sortableIndicator 0-1
| | | | | | | | | | | | | | | | | | | | | | | stackabilityLevel 0-1
| | | | | | | | | | | | | | | | | | | | | | | | handlingType 0-1
| | | | | | | | | | | | | | | | | | | | | | | | | @ln [Optional]
| | | | | | | | | | | | | | | | | | | | | | | | | | volume 0-1
| | | | | | | | | | | | | | | | | | | | | | | | | | | @um [Required]
| | | | | | | | | | | | | | | | | | | | | | | | | | | netWeight 0-1
| | | | | | | | | | | | | | | | | | | | | | | | | | | | @um [Required]
| | | | | | | | | | | | | | | | | | | | | | | | | | | | grossWeight 0-1
| | | | | | | | | | | | | | | | | | | | | | | | | | | | | @um [Required]
| | | | | | | | | | | | | | | | | | | | | | | | | | | | | | note 0-99

```



```

| | | @numberingOrg [Optional]
| | | @codeList [Optional]
| | | @noteLabel [Optional]
| itemsPerPackage 0-1
| @um [Required]
| minItemsPerPackage 0-1
| @um [Required]
| fillingCriterion 0-9
| @progr [Optional]
| packageQty 0-1
| packageN 0-unbounded
| @numberingOrg [Optional]
| @packageContainerN [Optional]
| EPCList 0-1
| | EPC 1-unbounded
| | @numberingOrg [Optional]
| | @TID [Optional]
| actualPackageUnit 0-unbounded
| @packageLevel [Optional]
| | packageIdentification 1-1
| | | packageN 1-1
| | | @numberingOrg [Optional]
| | | @packageContainerN [Optional]
| | | serialN 0-9
| | | @numberingOrg [Optional]
| | | @idQualifier [Optional]
| - choose -
| | packageText 0-1
| - or -
| | package 0-1
| - end choose -
| | packageModelCode 0-1
| | @numberingOrg [Optional]
| | volume 0-1
| | @um [Required]
| | netWeight 0-1
| | @um [Required]
| | grossWeight 0-1
| | @um [Required]
| | packageDim 0-1
| | | length 1-1
| | | @um [Required]
| | | width 0-1
| | | @um [Required]
| | | height 0-1
| | | @um [Required]
| | actualItemsPerPackage 0-1
| | packagesList 0-1
| | | packageIdentification 1-unbounded
| | | | packageN 1-1
| | | | @numberingOrg [Optional]
| | | | @packageContainerN [Optional]
| | | | serialN 0-9
| | | | @numberingOrg [Optional]
| | | | @idQualifier [Optional]
| | | itemsList 0-1
| | | | qualityLevel 0-1
| | | | @numberingOrg [Optional]
| | | | @codeList [Optional]
| | | | @listName [Optional]
| | | | @listVersion [Optional]
| | | | itemIdentification 1-unbounded
| | | | | serialN 1-9
| | | | | @numberingOrg [Optional]
| | | | | @idQualifier [Optional]
| | note 0-99
| | @numberingOrg [Optional]
| | @codeList [Optional]

```

| | | @noteLabel [Optional]

| **RABody 1-1**

| | **RAitem 1-unbounded**

| | | @extinction [Optional]

| | | | lineN 1-1

| | | | @VAT [Optional]

| | | | **refDoc 0-9**

| | | | | @docType [Required]

| | | | | | docID 1-2

| | | | | | @numberingOrg [Optional]

| | | | | | docDate 0-1

| | | | | | @dateForm [Optional]

| | | | | | season 0-1

| | | | | | @numberingOrg [Optional]

| | | | | | @codeList [Optional]

| | | | | | @listName [Optional]

| | | | | | @listVersion [Optional]

| | | | | | itemID 0-1

| | | | | **attachment 0-1**

| | | | | | @uid [Optional]

| | | | | | | fileName 0-1

| | | | | | | @numberingOrg [Optional]

| | | | | | | binaryObject 0-1

| | | | | | | @format [Optional]

| | | | | | | @mime [Optional]

| | | | | | | @encoding [Optional]

| | | | | | | @characterSet [Optional]

| | | | | | **externalReference 0-99**

| | | | | | | | uri 1-1

| | | | | | | | @isURL [Optional] [Default= true]

| | | | | | | | mimeTypeCode 0-1

| | | | | | | | formatCode 0-1

| | | | | | | | encodingCode 0-1

| | | | | | | | characterSetCode 0-1

| | | | | | | hashFootprint 0-1

| | | | | | | @schemeID [Optional]

| | | | | | | @hashMethod [Required]

| | | | | | **blockChainReference 0-9**

| | | | | | | | uri 1-1

| | | | | | | | @isURL [Optional] [Default= true]

| | | | | | | | transactionReceipt 1-9

| | | **rawCode 1-2**

| | | | @numberingOrg [Optional]

| | | | | art 1-1

| | | | | | @numberingOrg [Optional]

| | | | | | @codeList [Optional]

| | | | | | @listName [Optional]

| | | | | | @listVersion [Optional]

| | | | | | color 0-1

| | | | | | | @numberingOrg [Optional]

| | | | | | | @codeList [Optional]

| | | | | | | @listName [Optional]

| | | | | | | @listVersion [Optional]

| | | | | | | added 0-9

| | | | | | | | @numberingOrg [Optional]

| | | | | | | | @addType [Optional]

| | | | | | | | description 0-unbounded

| | | | | | | | @ln [Optional]

| | | **rawSpecs 0-9**

| | | | - choose -

| | | | | rawCharText 1-1

| | | | | - or -

| | | | | | rawChar 1-1

| | | | | - end choose -

| | | | | | specValue 0-1

| | | | | | | @um [Optional]

| | | | | | | @source [Optional]

```

| | | | @method [Optional]
| | | | @application [Optional]
| | | | @CV [Optional]
| | | - choose -
| | | | pcTolerance 0-2
| | | | @um [Optional]
| | | - or -
| | | | tolerance 0-2
| | | | @um [Required]
| | | - end choose -
| | | lotN 0-2
| | | | @numberingOrg [Optional]
| | | dyeN 0-1
| | | | @numberingOrg [Optional]
| | | qty 1-2
| | | | @um [Required]
| | | thirdParty 0-3
| | | | @VAT [Optional]
| | | | @role [Required]
| | | | @sender [Optional]
| | | | id 1-1
| | | | | @numberingOrg [Optional]
| | | | legalName 0-1
| | | | dept 0-1
| | | | subDept 0-1
| | | | person 0-1
| | | | | @email [Optional]
| | | | | @phone [Optional]
| | | | | @fax [Optional]
| | | | street 0-1
| | | | city 0-1
| | | | subCountry 0-1
| | | | country 0-1
| | | | postCode 0-1
| | | | geoCoordinates 0-1
| | | | | @um [Optional] [Default= DEGD]
| | | | | @geoRefSystem [Optional]
| | | | | xGeoCoord 1-1
| | | | | yGeoCoord 1-1
| | | | | zGeoCoord 0-1
| | | shiplInfo 0-1
| | | | transInfo 0-9
| | | | | @transReason [Optional]
| | | | | @progr [Optional]
| | | | | transMode 1-1
| | | | | carrier 0-1
| | | - choose -
| | | | deliveryLocation 0-1
| | | | | location 0-1
| | | | | | @LRI [Optional]
| | | | | legalName 0-1
| | | | | dept 0-1
| | | | | subDept 0-1
| | | | | person 0-1
| | | | | | @email [Optional]
| | | | | | @phone [Optional]
| | | | | | @fax [Optional]
| | | | | street 0-1
| | | | | city 0-1
| | | | | subCountry 0-1
| | | | | country 0-1
| | | | | postCode 0-1
| | | | | geoCoordinates 0-1
| | | | | | @um [Optional] [Default= DEGD]
| | | | | | @geoRefSystem [Optional]
| | | | | | xGeoCoord 1-1
| | | | | | yGeoCoord 1-1
| | | | | | zGeoCoord 0-1

```

```

- or -
| | | | | deliveryPlace 0-1
- end choose -
| | | | | grossWeight 0-1
| | | | | @um [Required]
| | | | | netWeight 0-1
| | | | | @um [Required]
| | | | | transMeans 0-1
| | | | | @propulsionSystemCode [Optional]
| | | | | transCondition 0-3
| | | | | transConditionText 0-1
- choose -
| | | | | despatchPlace 0-1
- or -
| | | | | despatchLocation 0-1
| | | | | | location 0-1
| | | | | | @LRI [Optional]
| | | | | | legalName 0-1
| | | | | | dept 0-1
| | | | | | subDept 0-1
| | | | | | person 0-1
| | | | | | @email [Optional]
| | | | | | @phone [Optional]
| | | | | | @fax [Optional]
| | | | | | street 0-1
| | | | | | city 0-1
| | | | | | subCountry 0-1
| | | | | | country 0-1
| | | | | | postCode 0-1
| | | | | | geoCoordinates 0-1
| | | | | | @um [Optional] [Default= DEGD]
| | | | | | @geoRefSystem [Optional]
| | | | | | | xGeoCoord 1-1
| | | | | | | yGeoCoord 1-1
| | | | | | | zGeoCoord 0-1
- end choose -
| | | | | despatchDate 0-1
| | | | | @dateForm [Optional]
| | | | | delEffectiveDate 0-1
| | | | | @dateForm [Optional]
| | | | | routeLength 0-1
| | | | | @um [Required]
| | | | | delEffectiveDate 0-1
| | | | | @dateForm [Optional]
| | | | | packages 0-99
| | | | | @packageLevel [Optional]
- choose -
| | | | | packageText 1-1
- or -
| | | | | package 1-1
- end choose -
| | | | | packageModelCode 0-1
| | | | | @numberingOrg [Optional]
| | | | | description 0-unbounded
| | | | | @In [Optional]
| | | | | packageDim 0-1
| | | | | | length 1-1
| | | | | | @um [Required]
| | | | | | width 0-1
| | | | | | @um [Required]
| | | | | | height 0-1
| | | | | | @um [Required]
| | | | | handlingChar 0-1
- choose -
| | | | | yarnPack 0-1
| | | | | | yarnReel 1-1
| | | | | | @reelType [Required]
| | | | | | @reelMat [Optional]

```

									yarnReelID 0-1
									@um [Required]
									yarnReelH 0-1
									@um [Required]
									yarnConeAngle 0-1
									yarnReelQty 0-2
									@um [Required]
									label 0-1
									labelWrit 0-1
									yarnInWrap 0-1
									yarnReelWrap 1-1
									label 0-1
									labelWrit 0-1
									- choose -
									yarnOutWrapText 0-1
									- or -
									yarnOutWrap 0-1
									- end choose -
									- or -
									piecePack 0-1
									- choose -
									piecePackText 1-1
									- or -
									pieceInnWrap1 1-1
									pieceInnWrap2 0-1
									pieceOutWrap 0-1
									- end choose -
									- or -
									acsPack 0-1
									- choose -
									acsPackCode 1-1
									@numberingOrg [Optional]
									@codeList [Optional]
									@listName [Optional]
									@listVersion [Optional]
									- or -
									acsPackText 1-1
									- end choose -
									- or -
									garPack 0-1
									- choose -
									garPackCode 1-1
									@numberingOrg [Optional]
									@codeList [Optional]
									@listName [Optional]
									@listVersion [Optional]
									- or -
									garPackText 1-1
									- end choose -
									- end choose -
									sortableIndicator 0-1
									stackabilityLevel 0-1
									handlingType 0-1
									@ln [Optional]
									volume 0-1
									@um [Required]
									netWeight 0-1
									@um [Required]
									grossWeight 0-1
									@um [Required]
									note 0-99
									@numberingOrg [Optional]
									@codeList [Optional]
									@noteLabel [Optional]
									itemsPerPackage 0-1
									@um [Required]
									minItemsPerPackage 0-1
									@um [Required]

```

| | | | | fillingCriterion 0-9
| | | | | @progr [Optional]
| | | | | packageQty 0-1
| | | | | packageN 0-unbounded
| | | | | @numberingOrg [Optional]
| | | | | @packageContainerN [Optional]
| | | | | EPCList 0-1
| | | | | | EPC 1-unbounded
| | | | | | @numberingOrg [Optional]
| | | | | | @TID [Optional]
| | | | | actualPackageUnit 0-unbounded
| | | | | @packageLevel [Optional]
| | | | | | packageIdentification 1-1
| | | | | | packageN 1-1
| | | | | | @numberingOrg [Optional]
| | | | | | @packageContainerN [Optional]
| | | | | | serialN 0-9
| | | | | | @numberingOrg [Optional]
| | | | | | @idQualifier [Optional]
| | | | | - choose -
| | | | | | packageText 0-1
| | | | | - or -
| | | | | | package 0-1
| | | | | - end choose -
| | | | | packageModelCode 0-1
| | | | | @numberingOrg [Optional]
| | | | | volume 0-1
| | | | | @um [Required]
| | | | | netWeight 0-1
| | | | | @um [Required]
| | | | | grossWeight 0-1
| | | | | @um [Required]
| | | | | packageDim 0-1
| | | | | | length 1-1
| | | | | | @um [Required]
| | | | | | width 0-1
| | | | | | @um [Required]
| | | | | | height 0-1
| | | | | | @um [Required]
| | | | | actualItemsPerPackage 0-1
| | | | | packagesList 0-1
| | | | | | packageIdentification 1-unbounded
| | | | | | packageN 1-1
| | | | | | @numberingOrg [Optional]
| | | | | | @packageContainerN [Optional]
| | | | | | serialN 0-9
| | | | | | @numberingOrg [Optional]
| | | | | | @idQualifier [Optional]
| | | | | | itemsList 0-1
| | | | | | qualityLevel 0-1
| | | | | | @numberingOrg [Optional]
| | | | | | @codeList [Optional]
| | | | | | @listName [Optional]
| | | | | | @listVersion [Optional]
| | | | | | itemIdentification 1-unbounded
| | | | | | serialN 1-9
| | | | | | @numberingOrg [Optional]
| | | | | | @idQualifier [Optional]
| | | | | note 0-99
| | | | | @numberingOrg [Optional]
| | | | | @codeList [Optional]
| | | | | @noteLabel [Optional]
| | | | | itemsList 0-1
| | | | | qualityLevel 0-1
| | | | | @numberingOrg [Optional]
| | | | | @codeList [Optional]
| | | | | @listName [Optional]
| | | | | @listVersion [Optional]

```

			itemIdentification 1-unbounded
			serialN 1-9
			@numberingOrg [Optional]
			@idQualifier [Optional]
			packageN 0-unbounded
			@numberingOrg [Optional]
			@packageContainerN [Optional]
			note 0-99
			@numberingOrg [Optional]
			@codeList [Optional]
			@noteLabel [Optional]

2.2 Detailed description of document elements

Following tables show all elements (complex and simple) used in this document. Description includes: 1) element's information: xml tag, name, brief description, data type and syntax constraints; 2) information about use of the element in a particular position in the document: xpath and possible associated notes.

2.2.1 Complex elements (Aggregate Business Information Entities)

Complex elements are those elements whose content is composed of other elements (childs). Complex elements are alphabetically ordered.

acsPack	type of wrapping or packing of the accessory (XPath RAWDesAdvise/RABody/RAitem/shipInfo/packages/handlingChar/acsPack) 0-1 (XPath RAWDesAdvise/shipInfo/packages/handlingChar/acsPack) 0-1
actualPackageUnit	description and identification of a single transport package (XPath RAWDesAdvise/RABody/RAitem/shipInfo/actualPackageUnit) 0-unbounded - note: <i>this element might be repeated for listing each single package of the shipment</i> (XPath RAWDesAdvise/shipInfo/actualPackageUnit) 0-unbounded - note: <i>this element might be repeated for listing each single package of the shipment</i>
attachment	an attached document. An attachment can refer to an external document or be included with the document being exchanged (XPath RAWDesAdvise/TAheader/refDoc/attachment) 0-1 (XPath RAWDesAdvise/RABody/RAitem/refDoc/attachment) 0-1
blockChainReference	blockchain reference - base type: string, max length: 80, (XPath RAWDesAdvise/TAheader/refDoc/attachment/blockChainReference) 0-9 (XPath RAWDesAdvise/RABody/RAitem/refDoc/attachment/blockChainReference) 0-9
buyer	details of the Buyer (party that buys the good or service that is object of the current collaborative process) - base type: Nad, (XPath RAWDesAdvise/TAheader/buyer) 1-1
deliveryLocation	data relating to a place of delivery(indicate at least element location or address, city and country) - base type: Nad, (XPath RAWDesAdvise/RABody/RAitem/shipInfo/transInfo/deliveryLocation) 0-1 - note: <i>use to represent addresses in a structured way or with geographical coordinates</i> (XPath RAWDesAdvise/shipInfo/transInfo/deliveryLocation) 0-1 - note: <i>use to represent addresses in a structured way or with geographical coordinates</i>
despatchLocation	data relating to a place of despatch (indicate at least element location or address, city and country) - base type: Nad, (XPath RAWDesAdvise/shipInfo/transInfo/despatchLocation) 0-1 - note: <i>use to represent addresses in a structured way</i> (XPath RAWDesAdvise/RABody/RAitem/shipInfo/transInfo/despatchLocation) 0-1 - note: <i>use to represent addresses in a structured way</i>
EPCList	list of identifiers used for tracing a physical item with RFID technology (XPath RAWDesAdvise/shipInfo/packages/EPCList) 0-1 - note: <i>this element is DEPRECATED, please use the specific elements</i> (XPath RAWDesAdvise/RABody/RAitem/shipInfo/packages/EPCList) 0-1 - note: <i>this element is DEPRECATED, please use the specific elements</i>
externalReference	details about an external object, such as a document stored at a remote location (XPath RAWDesAdvise/RABody/RAitem/refDoc/attachment/externalReference) 0-99 (XPath RAWDesAdvise/TAheader/refDoc/attachment/externalReference) 0-99
garPack	the packaging mode of the item or a part of it. (XPath RAWDesAdvise/shipInfo/packages/handlingChar/garPack) 0-1 (XPath RAWDesAdvise/RABody/RAitem/shipInfo/packages/handlingChar/garPack) 0-1

geoCoordinates	<p>geographical coordinates (XPath RAWDesAdvise/TAheader/supplier/geoCoordinates) 0-1 (XPath RAWDesAdvise/TAheader/buyer/geoCoordinates) 0-1 (XPath RAWDesAdvise/RABody/RAitem/thirdParty/geoCoordinates) 0-1 (XPath RAWDesAdvise/TAheader/thirdParty/geoCoordinates) 0-1 (XPath RAWDesAdvise/trade/tradeLocation/geoCoordinates) 0-1 (XPath RAWDesAdvise/RABody/RAitem/shipInfo/transInfo/ despatchLocation/geoCoordinates) 0-1 (XPath RAWDesAdvise/shipInfo/transInfo/despatchLocation/geoCoordinates) 0-1 (XPath RAWDesAdvise/shipInfo/transInfo/deliveryLocation/geoCoordinates) 0-1 (XPath RAWDesAdvise/RABody/RAitem/shipInfo/transInfo/ deliveryLocation/geoCoordinates) 0-1</p>
handlingChar	<p>features of an item (item or package) useful for its transport and warehouse management. (XPath RAWDesAdvise/shipInfo/packages/handlingChar) 0-1 - note: <i>in this case the characteristics are related to the package.</i> (XPath RAWDesAdvise/RABody/RAitem/shipInfo/packages/handlingChar) 0-1 - note: <i>in this case the characteristics are related to the package.</i></p>
itemIdentification	<p>serial identification of a product unit (XPath RAWDesAdvise/shipInfo/actualPackageUnit/itemsList/itemIdentification) 1-unbounded - note: <i>identification of the single product unit contained in the list</i> (XPath RAWDesAdvise/RABody/RAitem/shipInfo/actualPackageUnit/itemsList/itemIdentification) 1-unbounded - note: <i>identification of the single product unit contained in the list</i> (XPath RAWDesAdvise/RABody/RAitem/itemsList/itemIdentification) 1-unbounded - note: <i>identification of the single product unit contained in the list</i></p>
itemsList	<p>list of the single product units (XPath RAWDesAdvise/shipInfo/actualPackageUnit/itemsList) 0-1 (XPath RAWDesAdvise/RABody/RAitem/itemsList) 0-1 (XPath RAWDesAdvise/RABody/RAitem/shipInfo/actualPackageUnit/itemsList) 0-1</p>
packageDim	<p>dimensions of a transport package (XPath RAWDesAdvise/RABody/RAitem/shipInfo/packages/packageDim) 0-1 (XPath RAWDesAdvise/shipInfo/packages/packageDim) 0-1 (XPath RAWDesAdvise/RABody/RAitem/shipInfo/actualPackageUnit/packageDim) 0-1 (XPath RAWDesAdvise/shipInfo/actualPackageUnit/packageDim) 0-1</p>
packageIdentification	<p>serial identification of a package (XPath RAWDesAdvise/RABody/RAitem/shipInfo/actualPackageUnit/packagesList/packageIdentification) 1-unbounded - note: <i>identification of the single package contained in the list</i> (XPath RAWDesAdvise/RABody/RAitem/shipInfo/actualPackageUnit/packageIdentification) 1-1 (XPath RAWDesAdvise/shipInfo/actualPackageUnit/ packagesList/packageIdentification) 1-unbounded - note: <i>identification of the single package contained in the list</i></p>
packages	<p>describes the composition of the transport packaging. Each element corresponds to a type of package: type, quantity, hierarchic level, list of identifiers of the single packages (XPath RAWDesAdvise/RABody/RAitem/shipInfo/packages) 0-99 - note: <i>this element must be iterated for each type of package</i> (XPath RAWDesAdvise/shipInfo/packages) 0-99 - note: <i>this element must be iterated for each type of package</i></p>
packagesList	<p>list of single packages (XPath RAWDesAdvise/RABody/RAitem/shipInfo/actualPackageUnit/packagesList) 0-1 - note: <i>list of packages contained within the actual package (thus with lower level). All the packages in the list should preferably have the same level.</i> (XPath RAWDesAdvise/shipInfo/actualPackageUnit/packagesList) 0-1 - note: <i>list of packages contained within the actual package (thus with lower level). All the packages in the list should preferably have the same level.</i></p>

piecePack	type of wrapping or packing of the fabric pieces (XPath RAWDesAdvise/RABody/RAitem/shiplInfo/packages/handlingChar/piecePack) 0-1 (XPath RAWDesAdvise/shiplInfo/packages/handlingChar/piecePack) 0-1
RABody	body of the document RAW MATERIAL DESPATCH ADVISE (XPath RAWDesAdvise/RABody) 1-1
RAitem	line item of the document RAW MATERIAL DESPATCH ADVISE (XPath RAWDesAdvise/RABody/RAitem) 1-unbounded
rawCode	full codification of a raw material (XPath RAWDesAdvise/RABody/RAitem/rawCode) 1-2
rawSpecs	technical characteristics of a raw material linked to an operation of the sub-contracted production of yarn or to the purchas of yarn (XPath RAWDesAdvise/RABody/RAitem/rawSpecs) 0-9
refDoc	identification of a document and of an item thereof, to which the message makes refer ence (XPath RAWDesAdvise/TAheader/refDoc) 0-9 (XPath RAWDesAdvise/RABody/RAitem/refDoc) 0-9
shiplInfo	miscellaneous information on transport and transport packages, referred either to the whole document or to the single item (XPath RAWDesAdvise/RABody/RAitem/shiplInfo) 0-1 (XPath RAWDesAdvise/shiplInfo) 0-1
supplier	details of the Supplier (party that supplies the good or service that is object of the curre nt collaborative process) - base type: Nad, (XPath RAWDesAdvise/TAheader/supplier) 1-1
TAheader	header of the TEXTILES (YARN) DESPATCH ADVISE (XPath RAWDesAdvise/TAheader) 1-1
thirdParty	identification and details of the Third Party, different from Sender and Receiver of the d ocument - base type: Nad, (XPath RAWDesAdvise/RABody/RAitem/thirdParty) 0-3 (XPath RAWDesAdvise/TAheader/thirdParty) 0-5 - note: <i>here the Consignee when different from the Client must be specified</i>
trade	general terms of trade for the specified supply (XPath RAWDesAdvise/trade) 0-1
tradeLocation	data relating to the place to which the trade conditions refer (indicate at least element l ocation or address, city and country) - base type: Nad, (XPath RAWDesAdvise/trade/tradeLocation) 0-1 - note: <i>address of the place to which the INCOTERM applies</i>
transInfo	details of transport: mode, carrier and delivery place (XPath RAWDesAdvise/shiplInfo/transInfo) 0-9 - note: <i>this data group can be iterated for each transport leg. They have to be in ordere d sequence from initial place up to the final delivery place.</i> (XPath RAWDesAdvise/RABody/RAitem/shiplInfo/transInfo) 0-9 - note: <i>this data group can be iterated for each transport leg. They have to be in ordere d sequence from initial place up to the final delivery place.</i>
yarnInWrap	details specifying the inner wrapping of a yarn product (XPath RAWDesAdvise/shiplInfo/packages/handlingChar/yarnPack/yarnInWrap) 0-1 (XPath RAWDesAdvise/RABody/RAitem/shiplInfo/packages/handlingChar/yarnPack/yarnInWrap) 0-1
yarnPack	details of type of presentation used for the yarn (XPath RAWDesAdvise/RABody/RAitem/shiplInfo/packages/handlingChar/yarnPack) 0-1 (XPath RAWDesAdvise/shiplInfo/packages/handlingChar/yarnPack) 0-1
yarnReel	details of the packaging of a yarn product (bobbin and reel,..) (XPath RAWDesAdvise/RABody/RAitem/shiplInfo/packages/

	<p>handlingChar/yarnPack/yarnReel) 1-1 (XPath RAWDesAdvise/shipInfo/packages/handlingChar/ yarnPack/yarnReel) 1-1</p>
--	---

2.2.2 Simple elements (Basic Business Information Entities)

Simple elements are those elements whose content is characterized by a data type plus a domain of possible values. Simple elements are alphabetically ordered.

acsPackCode	<p>code specifying the type of wrapping or packing used for the accessory - base type: string, (XPath RAWDesAdvise/RABody/RAitem/shipInfo/packages/ handlingChar/acsPack/acsPackCode) 1-1 (XPath RAWDesAdvise/shipInfo/packages/handlingChar/ acsPack/acsPackCode) 1-1</p>
acsPackText	<p>free text specifying the type of wrapping or packing used for the accessory - base type: string, max length: 250, (XPath RAWDesAdvise/RABody/RAitem/shipInfo/packages/ handlingChar/acsPack/acsPackText) 1-1 (XPath RAWDesAdvise/shipInfo/packages/handlingChar/ acsPack/acsPackText) 1-1</p>
actualItemsPerPackage	<p>the quantity of items actually contained in the package - base type: decimal, (XPath RAWDesAdvise/RABody/RAitem/shipInfo/actualPackageUnit/actualItemsPerP ackage) 0-1 (XPath RAWDesAdvise/shipInfo/actualPackageUnit/actualItemsPerPackage) 0-1</p>
added	<p>additional code of the product (complementing the formers) - base type: string, max length: 80, (XPath RAWDesAdvise/RABody/RAitem/rawCode/added) 0-9</p>
additionalIdentifier	<p>additional identification code of a Party, for example customs registries or others - base type: string, max length: 15, (XPath RAWDesAdvise/TAheader/supplier/additionalIdentifier) 0-9 - note: <i>identifiers for example for exports, such as MID (Manufacturer Identification Code), REX (identifier in EU Registered Exporter system)</i> (XPath RAWDesAdvise/TAheader/buyer/additionalIdentifier) 0-9 - note: <i>identifiers for example for exports, such as MID (Manufacturer Identification Code), REX (identificatier in Registered Exporter system)</i></p>
@addType	<p>qualifier of the additional coding of a product - base type: string, cod. table: T44 http://www.ebiz.enea.it/moda-ml/repository/codelist/draft/gc_T44.xml (XPath RAWDesAdvise/RABody/RAitem/rawCode/added/@addType) [Optional] - nota: <i>addType allows the clarification of the meaning of the added element content; it is strongly suggested to use it always.</i></p>
@application	<p>force or similar condition (e.g. no. of revolutions) applied in a test as specified within the standard - base type: string, max length: 15, (XPath RAWDesAdvise/RABody/RAitem/rawSpecs/specValue/@application) [Optional]</p>
art	<p>article number of the product - base type: string, max length: 80, (XPath RAWDesAdvise/RABody/RAitem/rawCode/art) 1-1</p>
binaryObject	<p>a binary large object containing an attached document, Coding 'base64Binary' is recommended. - base type: base64Binary, (XPath RAWDesAdvise/TAheader/refDoc/attachment/binaryObject) 0-1 (XPath RAWDesAdvise/RABody/RAitem/refDoc/attachment/binaryObject) 0-1</p>
carrier	<p>identification of the transport carrier - base type: string, max length: 40, (XPath RAWDesAdvise/RABody/RAitem/shipInfo/transInfo/carrier) 0-1 (XPath RAWDesAdvise/shipInfo/transInfo/carrier) 0-1</p>

<code>@characterSet</code>	<p>the character set of the binary object (examples UTF-8, UTF-16, Windows-1252, ISO-8859-7,..)</p> <ul style="list-style-type: none"> - base type: normalizedString, (XPath RAWDesAdvise/TAheader/refDoc/attachment/binaryObject/@characterSet) [Optional] (XPath RAWDesAdvise/RABody/RAitem/refDoc/attachment/binaryObject/@characterSet) [Optional]
characterSetCode	<p>the character set of an external document (examples UTF-8, UTF-16, Windows-1252, ISO-8859-7,..)</p> <ul style="list-style-type: none"> - base type: normalizedString, (XPath RAWDesAdvise/RABody/RAitem/refDoc/attachment/externalReference/characterSetCode) 0-1 (XPath RAWDesAdvise/TAheader/refDoc/attachment/externalReference/characterSetCode) 0-1
city	<p>name of the city (town, village)</p> <ul style="list-style-type: none"> - base type: string, max length: 40, (XPath RAWDesAdvise/TAheader/buyer/city) 0-1 (XPath RAWDesAdvise/trade/tradeLocation/city) 0-1 (XPath RAWDesAdvise/TAheader/supplier/city) 0-1 (XPath RAWDesAdvise/shipInfo/transInfo/deliveryLocation/city) 0-1 (XPath RAWDesAdvise/TAheader/thirdParty/city) 0-1 (XPath RAWDesAdvise/shipInfo/transInfo/despatchLocation/city) 0-1 (XPath RAWDesAdvise/RABody/RAitem/shipInfo/transInfo/despatchLocation/city) 0-1 (XPath RAWDesAdvise/RABody/RAitem/shipInfo/transInfo/deliveryLocation/city) 0-1 (XPath RAWDesAdvise/RABody/RAitem/thirdParty/city) 0-1
<code>@codeList</code>	<p>it specifies the URL where the list of codes used to make an instance of the element can be found</p> <ul style="list-style-type: none"> - base type: string, max length: 255, (XPath RAWDesAdvise/shipInfo/packages/handlingChar/note/@codeList) [Optional] - nota: <i>must be used to provide (URL) the list of codes used in "noteLabel"</i> (XPath RAWDesAdvise/RABody/RAitem/note/@codeList) [Optional] - nota: <i>must be used to provide (URL) the list of codes used in "noteLabel"</i> (XPath RAWDesAdvise/RABody/RAitem/shipInfo/actualPackageUnit/note/@codeList) [Optional] - nota: <i>must be used to provide (URL) the list of codes used in "noteLabel"</i> (XPath RAWDesAdvise/shipInfo/packages/handlingChar/garPack/garPackCode/@codeList) [Optional] - nota: <i>at least one out of this attribute and "numberingOrg" should be set</i> (XPath RAWDesAdvise/TAheader/refDoc/season/@codeList) [Optional] - nota: <i>this attribute should be used either single or coupled with "listName" and "listVersion"</i> (XPath RAWDesAdvise/TAheader/note/@codeList) [Optional] - nota: <i>must be used to provide (URL) the list of codes used in "noteLabel"</i> (XPath RAWDesAdvise/RABody/RAitem/shipInfo/packages/handlingChar/acsPack/acsPackCode/@codeList) [Optional] - nota: <i>at least one out of this attribute and "numberingOrg" should be set</i> (XPath RAWDesAdvise/RABody/RAitem/shipInfo/packages/handlingChar/garPack/garPackCode/@codeList) [Optional] - nota: <i>at least one out of this attribute and "numberingOrg" should be set</i> (XPath RAWDesAdvise/RABody/RAitem/refDoc/season/@codeList) [Optional] - nota: <i>this attribute should be used either single or coupled with "listName" and "listVersion"</i> (XPath RAWDesAdvise/shipInfo/actualPackageUnit/itemsList/qualityLevel/@codeList) [Optional] - nota: <i>at least one out of this attribute and "numberingOrg" should be set</i> (XPath RAWDesAdvise/shipInfo/actualPackageUnit/note/@codeList) [Optional] - nota: <i>must be used to provide (URL) the list of codes used in "noteLabel"</i> (XPath RAWDesAdvise/RABody/RAitem/rawCode/art/@codeList) [Optional] - nota: <i>at least one out of this attribute and "numberingOrg" should be set</i> (XPath RAWDesAdvise/RABody/RAitem/shipInfo/packages/handlingChar/note/@codeList) [Optional] - nota: <i>must be used to provide (URL) the list of codes used in "noteLabel"</i> (XPath RAWDesAdvise/RABody/RAitem/shipInfo/actualPackageUnit/itemsList/qualityLevel/@codeList) [Optional]

	<p>- nota: <i>at least one out of this attribute and "numberingOrg" should be set</i> (XPath RAWDesAdvise/RABody/RAitem/rawCode/color/@codeList) [Optional]</p> <p>- nota: <i>this attribute should be used either single or coupled with "listName" and "listVersion"</i> (XPath RAWDesAdvise/shipInfo/packages/handlingChar/acsPack/acsPackCode/@codeList) [Optional]</p> <p>- nota: <i>at least one out of this attribute and "numberingOrg" should be set</i> (XPath RAWDesAdvise/RABody/RAitem/itemsList/qualityLevel/@codeList) [Optional]</p> <p>- nota: <i>at least one out of this attribute and "numberingOrg" should be set</i></p>
color	<p>colour number of the product, when not included in the model or fabric code</p> <p>- base type: string, max length: 15, (XPath RAWDesAdvise/RABody/RAitem/rawCode/color) 0-1</p>
country	<p>code of the nation</p> <p>- base type: string, cod. table: T10 http://www.ebiz.enea.it/moda-ml/repository/codelist/draft/gc_T10.xml</p> <p>(XPath RAWDesAdvise/RABody/RAitem/shipInfo/transInfo/deliveryLocation/country) 0-1 (XPath RAWDesAdvise/TAheader/supplier/country) 0-1 (XPath RAWDesAdvise/trade/tradeLocation/country) 0-1 (XPath RAWDesAdvise/TAheader/thirdParty/country) 0-1 (XPath RAWDesAdvise/TAheader/buyer/country) 0-1 (XPath RAWDesAdvise/RABody/RAitem/thirdParty/country) 0-1 (XPath RAWDesAdvise/RABody/RAitem/shipInfo/transInfo/despatchLocation/country) 0-1 (XPath RAWDesAdvise/shipInfo/transInfo/deliveryLocation/country) 0-1 (XPath RAWDesAdvise/shipInfo/transInfo/despatchLocation/country) 0-1</p>
@CV	<p>coefficient of variation (CV) of a measurement</p> <p>- base type: decimal, (XPath RAWDesAdvise/RABody/RAitem/rawSpecs/specValue/@CV) [Optional]</p>
@dateForm	<p>format used for the date</p> <p>- base type: string, cod. table: NT29 http://www.ebiz.enea.it/moda-ml/repository/codelist/draft/gc_NT29.xml</p> <p>(XPath RAWDesAdvise/TAheader/refDoc/docDate/@dateForm) [Optional] (XPath RAWDesAdvise/shipInfo/delEffectiveDate/@dateForm) [Optional] (XPath RAWDesAdvise/TAheader/msgDate/@dateForm) [Optional] (XPath RAWDesAdvise/RABody/RAitem/refDoc/docDate/@dateForm) [Optional] (XPath RAWDesAdvise/shipInfo/transInfo/delEffectiveDate/@dateForm) [Optional] (XPath RAWDesAdvise/shipInfo/transInfo/despatchDate/@dateForm) [Optional] (XPath RAWDesAdvise/RABody/RAitem/shipInfo/transInfo/delEffectiveDate/@dateForm) [Optional] (XPath RAWDesAdvise/RABody/RAitem/shipInfo/transInfo/despatchDate/@dateForm) [Optional]</p>
delEffectiveDate	<p>actual delivery date (estimated or occurred in case of receipt docs), it might be different from what agreed between the parties. Format according to one of the patterns indicated by the dateForm attribute: YYYY-MM-DD, YYYY-MM-DD:HH-MM or YYYY-WW.</p> <p>- base type: string, (XPath RAWDesAdvise/RABody/RAitem/shipInfo/delEffectiveDate) 0-1 (XPath RAWDesAdvise/shipInfo/transInfo/delEffectiveDate) 0-1 (XPath RAWDesAdvise/shipInfo/delEffectiveDate) 0-1 (XPath RAWDesAdvise/RABody/RAitem/shipInfo/transInfo/delEffectiveDate) 0-1</p>
deliveryPlace	<p>place of delivery of goods, ultimate or related to a given leg</p> <p>- base type: string, max length: 250, (XPath RAWDesAdvise/RABody/RAitem/shipInfo/transInfo/deliveryPlace) 0-1</p> <p>- note: <i>use to represent addresses with a unique text string</i> (XPath RAWDesAdvise/shipInfo/transInfo/deliveryPlace) 0-1</p> <p>- note: <i>use to represent addresses with a unique text string</i></p>
dept	<p>name or code of a department</p> <p>- base type: string, max length: 40, (XPath RAWDesAdvise/TAheader/supplier/dept) 0-1 (XPath RAWDesAdvise/shipInfo/transInfo/despatchLocation/dept) 0-1 (XPath RAWDesAdvise/RABody/RAitem/shipInfo/transInfo/deliveryLocation/dept) 0-1 (XPath RAWDesAdvise/shipInfo/transInfo/deliveryLocation/dept) 0-1</p>

	<p>(XPath RAWDesAdvise/RABody/RAitem/thirdParty/dept) 0-1 (XPath RAWDesAdvise/trade/tradeLocation/dept) 0-1 (XPath RAWDesAdvise/RABody/RAitem/shipInfo/transInfo/despatchLocation/dept) 0-1 (XPath RAWDesAdvise/TAheader/thirdParty/dept) 0-1 (XPath RAWDesAdvise/TAheader/buyer/dept) 0-1</p>
description	<p>free text description. The content of the element must be unique, it might be translated and repeated into more languages (thus no more than one instance for each language).</p> <p>- base type: string, max length: 250, (XPath RAWDesAdvise/RABody/RAitem/shipInfo/packages/description) 0-unbounded (XPath RAWDesAdvise/shipInfo/packages/description) 0-unbounded (XPath RAWDesAdvise/RABody/RAitem/rawCode/description) 0-unbounded</p> <p>- note: <i>Raw material description</i></p>
despatchDate	<p>date of despatch of goods, requested or promised in the purchase process, according to one of the patterns YYYY-MM-DD, YYYY-MM-DD:HH-MM or YYYY-WW.</p> <p>- base type: string, (XPath RAWDesAdvise/shipInfo/transInfo/despatchDate) 0-1 (XPath RAWDesAdvise/RABody/RAitem/shipInfo/transInfo/despatchDate) 0-1</p>
despatchPlace	<p>place of despatch of goods, origin or related to a given leg</p> <p>- base type: string, max length: 250, (XPath RAWDesAdvise/shipInfo/transInfo/despatchPlace) 0-1</p> <p>- note: <i>use to represent addresses with a unique text string</i> (XPath RAWDesAdvise/RABody/RAitem/shipInfo/transInfo/despatchPlace) 0-1</p> <p>- note: <i>use to represent addresses with a unique text string</i></p>
docDate	<p>date of issue of the referenced document, according to one of the patterns YYYY-MM-DD, YYYY-MM-DD:HH-MM or YYYY-WW.</p> <p>- base type: string, (XPath RAWDesAdvise/RABody/RAitem/refDoc/docDate) 0-1 (XPath RAWDesAdvise/TAheader/refDoc/docDate) 0-1</p>
docID	<p>identification number of the referenced document</p> <p>- base type: string, max length: 80, (XPath RAWDesAdvise/RABody/RAitem/refDoc/docID) 1-2 Best Practice (XPath RAWDesAdvise/TAheader/docID) 0-1</p> <p>- note: <i>Its use in HEADER elements is discouraged (use msgID)</i> (XPath RAWDesAdvise/TAheader/refDoc/docID) 1-2 Best Practice</p>
@docType	<p>type or class to which the referenced document belongs</p> <p>- base type: string, cod. table: T21 http://www.ebiz.enea.it/moda-ml/repository/codelist/draft/gc_T21.xml (XPath RAWDesAdvise/TAheader/refDoc/@docType) [Required] (XPath RAWDesAdvise/RABody/RAitem/refDoc/@docType) [Required]</p>
dyeN	<p>number of the dying batch of a textile product</p> <p>- base type: string, max length: 15, (XPath RAWDesAdvise/RABody/RAitem/dyeN) 0-1</p>
@email	<p>electronic mail address of the contact person within a Party</p> <p>- base type: string, max length: 250, (XPath RAWDesAdvise/RABody/RAitem/shipInfo/transInfo/deliveryLocation/person/@email) [Optional] (XPath RAWDesAdvise/TAheader/supplier/person/@email) [Optional] (XPath RAWDesAdvise/RABody/RAitem/thirdParty/person/@email) [Optional] (XPath RAWDesAdvise/TAheader/buyer/person/@email) [Optional] (XPath RAWDesAdvise/shipInfo/transInfo/despatchLocation/person/@email) [Optional] (XPath RAWDesAdvise/TAheader/thirdParty/person/@email) [Optional] (XPath RAWDesAdvise/trade/tradeLocation/person/@email) [Optional] (XPath RAWDesAdvise/RABody/RAitem/shipInfo/transInfo/despatchLocation/person/@email) [Optional] (XPath RAWDesAdvise/shipInfo/transInfo/deliveryLocation/person/@email) [Optional]</p>
@encoding	<p>specifies the decoding algorithm of the binary object</p> <p>- base type: normalizedString, (XPath RAWDesAdvise/RABody/RAitem/refDoc/attachment/binaryObject/@encoding) [Optional] (XPath RAWDesAdvise/TAheader/refDoc/attachment/</p>

	binaryObject/@encoding) [Optional]
encodingCode	the encoding/decoding algorithm used with the external object (example is 'base64Binary') - base type: normalizedString, (XPath RAWDesAdvise/TAheader/refDoc/attachment/externalReference/encodingCode) 0-1 (XPath RAWDesAdvise/RABody/RAitem/refDoc/attachment/externalReference/encodingCode) 0-1
EPC	serial identifier used for tracing a physical item with RFID technology - base type: string, (XPath RAWDesAdvise/shipInfo/packages/EPCList/EPC) 1-unbounded (XPath RAWDesAdvise/RABody/RAitem/shipInfo/packages/EPCList/EPC) 1-unbounded
@extinction	specified if the referred position (document/line) in refDoc is cleared (exhausted) by this line item. Value: True = exhausted, False = not exhausted - base type: boolean, (XPath RAWDesAdvise/RABody/RAitem/@extinction) [Optional]
@fax	fax number of the contact person within a Party - base type: string, max length: 35, (XPath RAWDesAdvise/TAheader/thirdParty/person/@fax) [Optional] (XPath RAWDesAdvise/shipInfo/transInfo/deliveryLocation/person/@fax) [Optional] (XPath RAWDesAdvise/shipInfo/transInfo/despatchLocation/person/@fax) [Optional] (XPath RAWDesAdvise/RABody/RAitem/shipInfo/transInfo/despatchLocation/person/@fax) [Optional] (XPath RAWDesAdvise/RABody/RAitem/thirdParty/person/@fax) [Optional] (XPath RAWDesAdvise/RABody/RAitem/shipInfo/transInfo/deliveryLocation/person/@fax) [Optional] (XPath RAWDesAdvise/TAheader/supplier/person/@fax) [Optional] (XPath RAWDesAdvise/TAheader/buyer/person/@fax) [Optional] (XPath RAWDesAdvise/trade/tradeLocation/person/@fax) [Optional]
fileName	unique identifier (name) of the file - base type: string, max length: 255, (XPath RAWDesAdvise/TAheader/refDoc/attachment/fileName) 0-1 (XPath RAWDesAdvise/RABody/RAitem/refDoc/attachment/fileName) 0-1
fillingCriterion	the assortment criterion to fill the specified kind of package: it states the homogeneity criterion (eg: "model", "color", "size"). - base type: string, cod. table: NT51 http://www.ebiz.enea.it/moda-ml/repository/codelist/draft/gc_NT51.xml (XPath RAWDesAdvise/shipInfo/packages/fillingCriterion) 0-9 (XPath RAWDesAdvise/RABody/RAitem/shipInfo/packages/fillingCriterion) 0-9
@format	the format of the binary content (examples xml, pdf, doc,...) - base type: string, (XPath RAWDesAdvise/RABody/RAitem/refDoc/attachment/binaryObject/@format) [Optional] (XPath RAWDesAdvise/TAheader/refDoc/attachment/binaryObject/@format) [Optional]
formatCode	the format of the external object (examples xml, pdf, doc,...) - base type: normalizedString, (XPath RAWDesAdvise/TAheader/refDoc/attachment/externalReference/formatCode) 0-1 (XPath RAWDesAdvise/RABody/RAitem/refDoc/attachment/externalReference/formatCode) 0-1
garPackCode	a code specifying the type of packaging used for the item. - base type: string, (XPath RAWDesAdvise/RABody/RAitem/shipInfo/packages/handlingChar/garPack/garPackCode) 1-1 (XPath RAWDesAdvise/shipInfo/packages/handlingChar/garPack/garPackCode) 1-1
garPackText	a free text specifying the type of packaging used for the item. - base type: string, (XPath RAWDesAdvise/shipInfo/packages/handlingChar/

	<p>garPack/garPackText) 1-1 (XPath RAWDesAdvise/RABody/RAitem/shipInfo/packages/handlingChar/garPack/garPackText) 1-1</p>
@geoRefSystem	<p>georeference system adopted for the coordinate (in example wgs84 with decimal degree o degree with minute and seconds) - base type: string, (XPath RAWDesAdvise/TAheader/supplier/geoCoordinates/@geoRefSystem) [Optional] (XPath RAWDesAdvise/RABody/RAitem/thirdParty/geoCoordinates/@geoRefSystem) [Optional] (XPath RAWDesAdvise/RABody/RAitem/shipInfo/transInfo/despatchLocation/geoCoordinates/@geoRefSystem) [Optional] (XPath RAWDesAdvise/TAheader/buyer/geoCoordinates/@geoRefSystem) [Optional] (XPath RAWDesAdvise/TAheader/thirdParty/geoCoordinates/@geoRefSystem) [Optional] (XPath RAWDesAdvise/shipInfo/transInfo/deliveryLocation/geoCoordinates/@geoRefSystem) [Optional] (XPath RAWDesAdvise/shipInfo/transInfo/despatchLocation/geoCoordinates/@geoRefSystem) [Optional] (XPath RAWDesAdvise/trade/tradeLocation/geoCoordinates/@geoRefSystem) [Optional] (XPath RAWDesAdvise/RABody/RAitem/shipInfo/transInfo/deliveryLocation/geoCoordinates/@geoRefSystem) [Optional]</p>
grossWeight	<p>the gross weight, declared for transport or customs purpose - base type: decimal, min inclusive: 0, fraction digits: 2, (XPath RAWDesAdvise/RABody/RAitem/shipInfo/packages/handlingChar/grossWeight) 0-1 (XPath RAWDesAdvise/shipInfo/transInfo/grossWeight) 0-1 (XPath RAWDesAdvise/shipInfo/actualPackageUnit/grossWeight) 0-1 (XPath RAWDesAdvise/RABody/RAitem/shipInfo/transInfo/grossWeight) 0-1 (XPath RAWDesAdvise/RABody/RAitem/shipInfo/actualPackageUnit/grossWeight) 0-1 (XPath RAWDesAdvise/shipInfo/packages/handlingChar/grossWeight) 0-1</p>
handlingType	<p>information to handle the item (eg "breakable"). - base type: string, (XPath RAWDesAdvise/shipInfo/packages/handlingChar/handlingType) 0-1 (XPath RAWDesAdvise/RABody/RAitem/shipInfo/packages/handlingChar/handlingType) 0-1</p>
hashFootprint	<p>footprint obtained by applying an hashing alorythm - base type: string, max length: 80, (XPath RAWDesAdvise/RABody/RAitem/refDoc/attachment/hashFootprint) 0-1 (XPath RAWDesAdvise/TAheader/refDoc/attachment/hashFootprint) 0-1</p>
@hashMethod	<p>type of used hashing alorythm - base type: string, max length: 80, cod. table: NT333 http://www.ebiz.enea.it/moda-ml/repository/codelist/draft/gc_NT333.xml (XPath RAWDesAdvise/RABody/RAitem/refDoc/attachment/hashFootprint/@hashMethod) [Required] (XPath RAWDesAdvise/TAheader/refDoc/attachment/hashFootprint/@hashMethod) [Required]</p>
height	<p>effective height of a specified object - base type: decimal, min inclusive: 0, fraction digits: 2, (XPath RAWDesAdvise/shipInfo/actualPackageUnit/packageDim/height) 0-1 (XPath RAWDesAdvise/RABody/RAitem/shipInfo/actualPackageUnit/packageDim/height) 0-1 (XPath RAWDesAdvise/shipInfo/packages/packageDim/height) 0-1 (XPath RAWDesAdvise/RABody/RAitem/shipInfo/packages/packageDim/height) 0-1</p>
id	<p>primary identification code of a Party; it is recommended to use an EORI number (with @numberingOrg= "EO") or the format: nation code (ISO 3166) + national tax code (i.e. VAT identification number) with @numberingOrg= "MF" - base type: string, max length: 15, (XPath RAWDesAdvise/TAheader/thirdParty/id) 1-1 (XPath RAWDesAdvise/TAheader/buyer/id) 1-1 (XPath RAWDesAdvise/RABody/RAitem/thirdParty/id) 1-1 (XPath RAWDesAdvise/TAheader/supplier/id) 1-1</p>
@idQualifier	<p>Qualification of the identifier.</p>

	<p>- base type: string, (XPath RAWDesAdvise/RABody/RAitem/itemsList/itemIdentification/serialN/@idQualifier) [Optional]</p> <p>- nota: <i>this attribute should be used when the numberingOrg attribute is not enough to declare the type of serial identifier</i> (XPath RAWDesAdvise/shipInfo/actualPackageUnit/itemsList/itemIdentification/serialN/@idQualifier) [Optional]</p> <p>- nota: <i>this attribute should be used when the numberingOrg attribute is not enough to declare the type of serial identifier</i> (XPath RAWDesAdvise/RABody/RAitem/shipInfo/actualPackageUnit/packageIdentification/serialN/@idQualifier) [Optional]</p> <p>- nota: <i>this attribute should be used when the numberingOrg attribute is not enough to declare the type of serial identifier</i> (XPath RAWDesAdvise/RABody/RAitem/shipInfo/actualPackageUnit/itemsList/itemIdentification/serialN/@idQualifier) [Optional]</p> <p>- nota: <i>this attribute should be used when the numberingOrg attribute is not enough to declare the type of serial identifier</i> (XPath RAWDesAdvise/RABody/RAitem/shipInfo/actualPackageUnit/packagesList/packageIdentification/serialN/@idQualifier) [Optional]</p> <p>- nota: <i>this attribute should be used when the numberingOrg attribute is not enough to declare the type of serial identifier</i> (XPath RAWDesAdvise/shipInfo/actualPackageUnit/packageIdentification/serialN/@idQualifier) [Optional]</p> <p>- nota: <i>this attribute should be used when the numberingOrg attribute is not enough to declare the type of identifier</i> (XPath RAWDesAdvise/TAheader/buyer/additionalIdentifier/@idQualifier) [Optional]</p> <p>- nota: <i>this attribute should be used when the numberingOrg attribute is not enough to declare the type of identifier</i> (XPath RAWDesAdvise/TAheader/supplier/additionalIdentifier/@idQualifier) [Optional]</p> <p>- nota: <i>this attribute should be used when the numberingOrg attribute is not enough to declare the type of identifier</i> (XPath RAWDesAdvise/shipInfo/actualPackageUnit/packagesList/packageIdentification/serialN/@idQualifier) [Optional]</p> <p>- nota: <i>this attribute should be used when the numberingOrg attribute is not enough to declare the type of serial identifier</i></p>
incoTerm	<p>specification of the terms of trade (INCOTERMS)</p> <p>- base type: string, cod. table: T3 http://www.ebiz.enea.it/moda-ml/repository/codelist/draft/gc_T3.xml (XPath RAWDesAdvise/trade/incoTerm) 1-1</p>
incoTermText	<p>free text specifying the terms of trade (incoterm, location)</p> <p>- base type: string, max length: 250, (XPath RAWDesAdvise/trade/incoTermText) 1-1</p>
@isURL	<p>it indicates if the referred element is an URL (true) or not (false)</p> <p>- base type: boolean, (XPath RAWDesAdvise/TAheader/refDoc/attachment/externalReference/uri/@isURL) [Optional] [Default= true]</p> <p>- nota: <i>usage of URLs is recommended</i> (XPath RAWDesAdvise/RABody/RAitem/refDoc/attachment/blockChainReference/uri/@isURL) [Optional] [Default= true]</p> <p>- nota: <i>usage of URLs is recommended</i> (XPath RAWDesAdvise/RABody/RAitem/refDoc/attachment/externalReference/uri/@isURL) [Optional] [Default= true]</p> <p>- nota: <i>usage of URLs is recommended</i> (XPath RAWDesAdvise/TAheader/refDoc/attachment/blockChainReference/uri/@isURL) [Optional] [Default= true]</p> <p>- nota: <i>usage of URLs is recommended</i></p>
itemID	<p>number of the line/item of the referenced document</p> <p>- base type: string, max length: 40, (XPath RAWDesAdvise/TAheader/refDoc/itemID) 0-1 (XPath RAWDesAdvise/RABody/RAitem/refDoc/itemID) 0-1</p>
itemsPerPackage	<p>the quantity of items that can be contained in a package.</p>

	<p>- base type: decimal, (XPath RAWDesAdvise/shipInfo/packages/itemsPerPackage) 0-1 (XPath RAWDesAdvise/RABody/RAitem/shipInfo/packages/itemsPerPackage) 0-1</p>
label	<p>indicates if the physical object specified has to be labelled - base type: boolean, (XPath RAWDesAdvise/RABody/RAitem/shipInfo/packages/handlingChar/yarnPack/yarnReel/label) 0-1 (XPath RAWDesAdvise/shipInfo/packages/handlingChar/yarnPack/yarnReel/label) 0-1 (XPath RAWDesAdvise/RABody/RAitem/shipInfo/packages/handlingChar/yarnPack/yarnInWrap/label) 0-1 (XPath RAWDesAdvise/shipInfo/packages/handlingChar/yarnPack/yarnInWrap/label) 0-1</p>
labelWrit	<p>text that must be written on the lable of a specified physical object when its customizati on is required - base type: string, max length: 350, (XPath RAWDesAdvise/RABody/RAitem/shipInfo/packages/handlingChar/yarnPack/yarnInWrap/labelWrit) 0-1 (XPath RAWDesAdvise/shipInfo/packages/handlingChar/yarnPack/yarnInWrap/labelWrit) 0-1 (XPath RAWDesAdvise/shipInfo/packages/handlingChar/yarnPack/yarnReel/labelWrit) 0-1 (XPath RAWDesAdvise/RABody/RAitem/shipInfo/packages/handlingChar/yarnPack/yarnReel/labelWrit) 0-1</p>
legalName	<p>legal name - base type: string, max length: 250, (XPath RAWDesAdvise/shipInfo/transInfo/deliveryLocation/legalName) 0-1 (XPath RAWDesAdvise/shipInfo/transInfo/despatchLocation/legalName) 0-1 (XPath RAWDesAdvise/TAheader/thirdParty/legalName) 0-1 (XPath RAWDesAdvise/TAheader/supplier/legalName) 0-1 (XPath RAWDesAdvise/TAheader/buyer/legalName) 0-1 (XPath RAWDesAdvise/RABody/RAitem/shipInfo/transInfo/deliveryLocation/legalName) 0-1 (XPath RAWDesAdvise/trade/tradeLocation/legalName) 0-1 (XPath RAWDesAdvise/RABody/RAitem/thirdParty/legalName) 0-1 (XPath RAWDesAdvise/RABody/RAitem/shipInfo/transInfo/despatchLocation/legalName) 0-1</p>
length	<p>effective length of a specified object - base type: decimal, min inclusive: 0, fraction digits: 2, (XPath RAWDesAdvise/RABody/RAitem/shipInfo/packages/packageDim/length) 1-1 - note: <i>here the maximum dimension must also be specified</i> (XPath RAWDesAdvise/shipInfo/packages/packageDim/length) 1-1 - note: <i>here the maximum dimension must also be specified</i> (XPath RAWDesAdvise/RABody/RAitem/shipInfo/actualPackageUnit/packageDim/length) 1-1 - note: <i>here the maximum dimension must also be specified</i> (XPath RAWDesAdvise/shipInfo/actualPackageUnit/packageDim/length) 1-1 - note: <i>here the maximum dimension must also be specified</i></p>
lineN	<p>number of the line item of the present message (xml document); it is set by the role that produces the document. Usually it is a progressive number, but not always. - base type: positiveInteger, min inclusive: 1, max inclusive: 9999, (XPath RAWDesAdvise/RABody/RAitem/lineN) 1-1</p>
@listName	<p>the name of the list of codes used to make an instance of the element (it might be thought as descriptive element, i.e. 'fabric printing technologies', or not, i.e. "T264") - base type: string, max length: 40, (XPath RAWDesAdvise/RABody/RAitem/rawCode/color/@listName) [Optional] - nota: <i>this attribute should always be used coupled with "numberingOrg"</i> (XPath RAWDesAdvise/RABody/RAitem/shipInfo/packages/handlingChar/garPack/garPackCode/@listName) [Optional] - nota: <i>this attribute should always be used coupled with "numberingOrg"</i> (XPath RAWDesAdvise/RABody/RAitem/shipInfo/packages/handlingChar/acsPack/acsPackCode/@listName) [Optional] - nota: <i>this attribute should always be used coupled with "numberingOrg"</i> (XPath</p>

	<p>RAWDesAdvise/RABody/RAitem/shipInfo/actualPackageUnit/itemsList/qualityLevel/@listName) [Optional]</p> <ul style="list-style-type: none"> - nota: <i>this attribute should always be used coupled with “numberingOrg”</i> (XPath RAWDesAdvise/RABody/RAitem/rawCode/art/@listName) [Optional] - nota: <i>this attribute should always be used coupled with “numberingOrg”</i> (XPath RAWDesAdvise/shipInfo/actualPackageUnit/itemsList/qualityLevel/@listName) [Optional] - nota: <i>this attribute should always be used coupled with “numberingOrg”</i> (XPath RAWDesAdvise/TAheader/refDoc/season/@listName) [Optional] - nota: <i>this attribute should always be used coupled with “numberingOrg”</i> (XPath RAWDesAdvise/RABody/RAitem/itemsList/qualityLevel/@listName) [Optional] - nota: <i>this attribute should always be used coupled with “numberingOrg”</i> (XPath RAWDesAdvise/shipInfo/packages/handlingChar/garPack/garPackCode/@listName) [Optional] - nota: <i>this attribute should always be used coupled with “numberingOrg”</i> (XPath RAWDesAdvise/shipInfo/packages/handlingChar/acsPack/acsPackCode/@listName) [Optional] - nota: <i>this attribute should always be used coupled with “numberingOrg”</i> (XPath RAWDesAdvise/RABody/RAitem/refDoc/season/@listName) [Optional] - nota: <i>this attribute should always be used coupled with “numberingOrg”</i>
@listVersion	<p>it specifies the version of the list of codes used to make an instance of the element</p> <ul style="list-style-type: none"> - base type: string, max length: 6, (XPath RAWDesAdvise/RABody/RAitem/refDoc/season/@listVersion) [Optional] - nota: <i>this attribute should always be used coupled with “numberingOrg” and “listName”</i> (XPath RAWDesAdvise/shipInfo/packages/handlingChar/garPack/garPackCode/@listVersion) [Optional] - nota: <i>this attribute should always be used coupled with “numberingOrg” and “listName”</i> (XPath RAWDesAdvise/RABody/RAitem/shipInfo/packages/handlingChar/garPack/garPackCode/@listVersion) [Optional] - nota: <i>this attribute should always be used coupled with “numberingOrg” and “listName”</i> (XPath RAWDesAdvise/RABody/RAitem/itemsList/qualityLevel/@listVersion) [Optional] - nota: <i>this attribute should always be used coupled with “numberingOrg” and “listName”</i> (XPath RAWDesAdvise/RABody/RAitem/rawCode/art/@listVersion) [Optional] - nota: <i>this attribute should always be used coupled with “numberingOrg” and “listName”</i> (XPath RAWDesAdvise/shipInfo/packages/handlingChar/acsPack/acsPackCode/@listVersion) [Optional] - nota: <i>this attribute should always be used coupled with “numberingOrg” and “listName”</i> (XPath RAWDesAdvise/shipInfo/actualPackageUnit/itemsList/qualityLevel/@listVersion) [Optional] - nota: <i>this attribute should always be used coupled with “numberingOrg” and “listName”</i> (XPath RAWDesAdvise/RABody/RAitem/shipInfo/packages/handlingChar/acsPack/acsPackCode/@listVersion) [Optional] - nota: <i>this attribute should always be used coupled with “numberingOrg” and “listName”</i> (XPath RAWDesAdvise/RABody/RAitem/shipInfo/actualPackageUnit/itemsList/qualityLevel/@listVersion) [Optional] - nota: <i>this attribute should always be used coupled with “numberingOrg” and “listName”</i> (XPath RAWDesAdvise/TAheader/refDoc/season/@listVersion) [Optional] - nota: <i>this attribute should always be used coupled with “numberingOrg” and “listName”</i> (XPath RAWDesAdvise/RABody/RAitem/rawCode/color/@listVersion) [Optional] - nota: <i>this attribute should always be used coupled with “numberingOrg” and “listName”</i>
@ln	<p>Language code.</p> <ul style="list-style-type: none"> - base type: string, cod. table: NT60 http://www.ebiz.enea.it/moda-ml/repository/codelist/draft/gc_NT60.xml (XPath RAWDesAdvise/RABody/RAitem/rawCode/description/@ln) [Optional] (XPath RAWDesAdvise/RABody/RAitem/shipInfo/packages/description/@ln) [Optional] (XPath RAWDesAdvise/shipInfo/packages/handlingChar/

	<p>handlingType/@In) [Optional] (XPath RAWDesAdvise/RABody/RAitem/shipInfo/packages/ handlingChar/handlingType/@In) [Optional] (XPath RAWDesAdvise/shipInfo/packages/description/@In) [Optional]</p>
location	<p>specification of a location. It can be represented by an identification code (preferable) or a short text (not recommended). For example a GLN code that requires to assign the value "GLN" to the attribute @LRI. - base type: string, max length: 128, (XPath RAWDesAdvise/shipInfo/transInfo/deliveryLocation/location) 0-1 - note: Use this element only to indicate an identification code of this place. (XPath RAWDesAdvise/trade/tradeLocation/location) 0-1 - note: Use this element to specify a numeric ID of the location, for example a GLN code (in this case @SchemeID='LRI='GLN') (XPath RAWDesAdvise/RABody/RAitem/shipInfo/transInfo/ despatchLocation/location) 0-1 - note: Use this element to specify a numeric ID of the location, for example a GLN code (in this case @SchemeID='GS1 GLN') (XPath RAWDesAdvise/trade/location) 0-1 - note: code number of the place to which the INCOTERM applies (XPath RAWDesAdvise/shipInfo/transInfo/despatchLocation/location) 0-1 - note: Use this element to specify a numeric ID of the location, for example a GLN code (in this case @SchemeID='GS1 GLN') (XPath RAWDesAdvise/RABody/RAitem/shipInfo/transInfo/ deliveryLocation/location) 0-1 - note: Use this element only to indicate an identification code of this place.</p>
@logo	<p>company logo (URL of the image jpeg or gif). It is recommended that the width of the image does not exceed 640 pixel. - base type: string, max length: 255, (XPath RAWDesAdvise/TAheader/supplier/@logo) [Optional] (XPath RAWDesAdvise/TAheader/buyer/@logo) [Optional]</p>
lotN	<p>lot number of a product or batch number of the raw material - base type: string, max length: 15, (XPath RAWDesAdvise/RABody/RAitem/lotN) 0-2 - note: The lotN instances must differ by value of the numberingOrg attribute</p>
@LRI	<p>issuer of the identifier (or identification system) of a location. - base type: string, cod. table: NT3 http://www.ebiz.enea.it/moda-ml/repository/codelist/draft/gc_NT3.xml (XPath RAWDesAdvise/RABody/RAitem/shipInfo/transInfo/ despatchLocation/location/@LRI) [Optional] (XPath RAWDesAdvise/RABody/RAitem/shipInfo/transInfo/ deliveryLocation/location/@LRI) [Optional] (XPath RAWDesAdvise/shipInfo/transInfo/despatchLocation/ location/@LRI) [Optional] (XPath RAWDesAdvise/trade/tradeLocation/location/@LRI) [Optional] (XPath RAWDesAdvise/shipInfo/transInfo/deliveryLocation/ location/@LRI) [Optional] (XPath RAWDesAdvise/trade/location/@LRI) [Optional]</p>
@method	<p>standard protocol or method employed in a test to evaluate a characteristic or a parameter - base type: string, max length: 80, (XPath RAWDesAdvise/RABody/RAitem/rawSpecs/specValue/@method) [Optional]</p>
@mime	<p>the mime type of the binary object - base type: normalizedString, (XPath RAWDesAdvise/RABody/RAitem/refDoc/attachment/ binaryObject/@mime) [Optional] (XPath RAWDesAdvise/TAheader/refDoc/attachment/ binaryObject/@mime) [Optional]</p>
mimeCode	<p>mime type of the external object - base type: normalizedString, (XPath RAWDesAdvise/RABody/RAitem/refDoc/attachment/ externalReference/mimeCode) 0-1 Best Practice (XPath RAWDesAdvise/TAheader/refDoc/attachment/ externalReference/mimeCode) 0-1 Best Practice</p>
minItemsPerPackage	<p>the minimum quantity of items for the specified kind of package.</p>

	<p>- base type: decimal, min inclusive: 0, (XPath RAWDesAdvise/RABody/RAitem/shipInfo/packages/minItemsPerPackage) 0-1 (XPath RAWDesAdvise/shipInfo/packages/minItemsPerPackage) 0-1</p>
msgDate	<p>date of issue of the present message (xml document), according to one of the patterns YYYY-MM-DD, YYYY-MM-DD:HH-MM or YYYY-WW. - base type: string, (XPath RAWDesAdvise/TAheader/msgDate) 1-1</p>
@msgfunction	<p>function performed by the present message with regards to the transmission - base type: string, cod. table: NT18 http://www.ebiz.enea.it/moda-ml/repository/codelist/draft/gc_NT18.xml (XPath RAWDesAdvise/@msgfunction) [Optional] [Default= OR]</p>
msgID	<p>key identifier of the business document in the information system of the issuing Party. In n case of more despatches of the same business document, it is unchanged. - base type: string, max length: 35, (XPath RAWDesAdvise/TAheader/msgID) 0-1</p>
msgN	<p>identification number given to the message (xml document) by its issuer. In case of mo re despatches of the same business document, it changes. - base type: string, max length: 35, (XPath RAWDesAdvise/TAheader/msgN) 1-1</p>
netWeight	<p>the net weight declared for transport or customs purpose - base type: decimal, min inclusive: 0, fraction digits: 2, (XPath RAWDesAdvise/RABody/RAitem/shipInfo/actualPackageUnit/netWeight) 0-1 (XPath RAWDesAdvise/shipInfo/transInfo/netWeight) 0-1 (XPath RAWDesAdvise/RABody/RAitem/shipInfo/packages/ handlingChar/netWeight) 0-1 (XPath RAWDesAdvise/shipInfo/actualPackageUnit/netWeight) 0-1 (XPath RAWDesAdvise/RABody/RAitem/shipInfo/transInfo/netWeight) 0-1 (XPath RAWDesAdvise/shipInfo/packages/handlingChar/netWeight) 0-1</p>
note	<p>free text or structured (computer processing) note. For note structuring use the attribut es "noteLabel" and "codelist" - base type: string, max length: 350, (XPath RAWDesAdvise/shipInfo/actualPackageUnit/note) 0-99 (XPath RAWDesAdvise/RABody/RAitem/shipInfo/actualPackageUnit/note) 0-99 (XPath RAWDesAdvise/shipInfo/packages/handlingChar/note) 0-99 (XPath RAWDesAdvise/RABody/RAitem/shipInfo/packages/ handlingChar/note) 0-99 (XPath RAWDesAdvise/TAheader/note) 0-99 (XPath RAWDesAdvise/RABody/RAitem/note) 0-99</p>
@noteLabel	<p>subject qualifier of a note - base type: string, max length: 35, (XPath RAWDesAdvise/TAheader/note/@noteLabel) [Optional] - nota: <i>must be used to qualify the subject of the note</i> (XPath RAWDesAdvise/RABody/RAitem/shipInfo/actualPackageUnit/note/@noteLabel) [Optional] - nota: <i>must be used to qualify the subject of the note</i> (XPath RAWDesAdvise/shipInfo/actualPackageUnit/note/@noteLabel) [Optional] - nota: <i>must be used to qualify the subject of the note</i> (XPath RAWDesAdvise/shipInfo/packages/handlingChar/note/@noteLabel) [Optional] - nota: <i>must be used to qualify the subject of the note</i> (XPath RAWDesAdvise/RABody/RAitem/shipInfo/packages/ handlingChar/note/@noteLabel) [Optional] - nota: <i>must be used to qualify the subject of the note</i> (XPath RAWDesAdvise/RABody/RAitem/note/@noteLabel) [Optional] - nota: <i>must be used to qualify the subject of the note</i></p>
@numberingOrg	<p>code specifying the organisation who has created or owns the coding or numbering sy stem - base type: string, cod. table: NT6 http://www.ebiz.enea.it/moda-ml/repository/codelist/draft/gc_NT6.xml (XPath RAWDesAdvise/RABody/RAitem/note/@numberingOrg) [Optional] - nota: <i>must be used to specify the organization that created the list of codes used in "</i> <i>noteLabel"</i> (XPath RAWDesAdvise/TAheader/refDoc/attachment/fileName/@numberingOrg) [Optional]</p>

	<p>(XPath RAWDesAdvise/TAheader/refDoc/season/@numberingOrg) [Optional] - nota: <i>this attribute should be used either single or coupled with "listName" and "listVersion"</i> (XPath RAWDesAdvise/RABody/RAitem/shipInfo/actualPackageUnit/note/@numberingOrg) [Optional] - nota: <i>must be used to specify the organization that created the list of codes used in "noteLabel"</i> (XPath RAWDesAdvise/RABody/RAitem/packageN/@numberingOrg) [Optional] (XPath RAWDesAdvise/RABody/RAitem/rawCode/added/@numberingOrg) [Optional] - nota: <i>this attribute should be used either single or coupled with "listName" and "listVersion"</i> (XPath RAWDesAdvise/TAheader/buyer/id/@numberingOrg) [Optional] (XPath RAWDesAdvise/TAheader/buyer/additionalIdentifier/@numberingOrg) [Optional] - nota: <i>here the issuer of the identifier must be specified</i> (XPath RAWDesAdvise/TAheader/docID/@numberingOrg) [Optional] - nota: <i>here can be specified whose document numbering is used (e.g.: Client, Supplier, ..)</i> (XPath RAWDesAdvise/RABody/RAitem/rawCode/art/@numberingOrg) [Optional] - nota: <i>this attribute should be used either single or coupled with "listName" and "listVersion"</i> (XPath RAWDesAdvise/RABody/RAitem/itemsList/itemIdentification/serialN/@numberingOrg) [Optional] - nota: <i>here the issuer of the serial number must be specified (when different from the Supplier)</i> (XPath RAWDesAdvise/RABody/RAitem/refDoc/attachment/fileName/@numberingOrg) [Optional] (XPath RAWDesAdvise/RABody/RAitem/itemsList/qualityLevel/@numberingOrg) [Optional] - nota: <i>this attribute should be used either single or coupled with "listName" and "listVersion"</i> (XPath RAWDesAdvise/TAheader/refDoc/docID/@numberingOrg) [Optional] - nota: <i>here can be specified whose document numbering is used (e.g.: Client, Supplier, ..)</i> (XPath RAWDesAdvise/RABody/RAitem/rawCode/color/@numberingOrg) [Optional] - nota: <i>this attribute should be used either single or coupled with "listName" and "listVersion"</i> (XPath RAWDesAdvise/RABody/RAitem/rawCode/@numberingOrg) [Optional] (XPath RAWDesAdvise/TAheader/note/@numberingOrg) [Optional] - nota: <i>must be used to specify the organization that created the list of codes used in "noteLabel"</i> (XPath RAWDesAdvise/RABody/RAitem/shipInfo/actualPackageUnit/packageIdentification/packageN/@numberingOrg) [Optional] (XPath RAWDesAdvise/RABody/RAitem/shipInfo/packages/EPClist/EPC/@numberingOrg) [Optional] (XPath RAWDesAdvise/RABody/RAitem/shipInfo/packages/packageModelCode/@numberingOrg) [Optional] (XPath RAWDesAdvise/shipInfo/packages/handlingChar/garPack/garPackCode/@numberingOrg) [Optional] - nota: <i>this attribute should be used either single or coupled with "listName" and "listVersion"</i> (XPath RAWDesAdvise/shipInfo/packages/packageModelCode/@numberingOrg) [Optional] (XPath RAWDesAdvise/shipInfo/actualPackageUnit/packagesList/packageIdentification/packageN/@numberingOrg) [Optional] (XPath RAWDesAdvise/RABody/RAitem/shipInfo/actualPackageUnit/packageIdentification/serialN/@numberingOrg) [Optional] - nota: <i>here the issuer of the serial number must be specified (when different from the Supplier)</i> (XPath RAWDesAdvise/shipInfo/packages/handlingChar/acsPack/acsPackCode/@numberingOrg) [Optional] - nota: <i>this attribute should be used either single or coupled with "listName" and "listVersion"</i> (XPath RAWDesAdvise/RABody/RAitem/shipInfo/packages/handlingChar/acsPack/acsPackCode/@numberingOrg) [Optional] - nota: <i>this attribute should be used either single or coupled with "listName" and "listVersion"</i> (XPath RAWDesAdvise/shipInfo/packages/packageN/@numberingOrg) [Optional] (XPath RAWDesAdvise/shipInfo/packages/EPClist/EPC/@numberingOrg) [Optional] (XPath RAWDesAdvise/shipInfo/packages/handlingChar/note/@numberingOrg) [Optional]</p>
--	--

	<p>- nota: must be used to specify the organization that created the list of codes used in "noteLabel" (XPath RAWDesAdvise/RABody/RAitem/shipInfo/packages/handlingChar/garPack/garPackCode/@numberingOrg) [Optional]</p> <p>- nota: this attribute should be used either single or coupled with "listName" and "listVersion" (XPath RAWDesAdvise/shipInfo/actualPackageUnit/packageIdentification/packageN/@numberingOrg) [Optional] (XPath RAWDesAdvise/shipInfo/actualPackageUnit/packageModelCode/@numberingOrg) [Optional] (XPath RAWDesAdvise/RABody/RAitem/shipInfo/packages/packageN/@numberingOrg) [Optional] (XPath RAWDesAdvise/shipInfo/actualPackageUnit/packageIdentification/serialN/@numberingOrg) [Optional]</p> <p>- nota: here the issuer of the serial number must be specified (when different from the Supplier) (XPath RAWDesAdvise/RABody/RAitem/shipInfo/packages/handlingChar/note/@numberingOrg) [Optional]</p> <p>- nota: must be used to specify the organization that created the list of codes used in "noteLabel" (XPath RAWDesAdvise/RABody/RAitem/thirdParty/id/@numberingOrg) [Optional] (XPath RAWDesAdvise/RABody/RAitem/shipInfo/actualPackageUnit/itemsList/qualityLevel/@numberingOrg) [Optional]</p> <p>- nota: this attribute should be used either single or coupled with "listName" and "listVersion" (XPath RAWDesAdvise/TAheader/supplier/additionalIdentifier/@numberingOrg) [Optional]</p> <p>- nota: here the issuer of the identifier must be specified (XPath RAWDesAdvise/shipInfo/actualPackageUnit/note/@numberingOrg) [Optional]</p> <p>- nota: must be used to specify the organization that created the list of codes used in "noteLabel" (XPath RAWDesAdvise/RABody/RAitem/shipInfo/actualPackageUnit/packagesList/packageIdentification/serialN/@numberingOrg) [Optional]</p> <p>- nota: here the issuer of the serial number must be specified (when different from the Supplier) (XPath RAWDesAdvise/TAheader/supplier/id/@numberingOrg) [Optional] (XPath RAWDesAdvise/RABody/RAitem/lotN/@numberingOrg) [Optional] (XPath RAWDesAdvise/RABody/RAitem/refDoc/season/@numberingOrg) [Optional]</p> <p>- nota: this attribute should be used either single or coupled with "listName" and "listVersion" (XPath RAWDesAdvise/RABody/RAitem/refDoc/docID/@numberingOrg) [Optional]</p> <p>- nota: here can be specified whose document numbering is used (e.g.: Client, Supplier, ..) (XPath RAWDesAdvise/RABody/RAitem/shipInfo/actualPackageUnit/itemsList/itemIdentification/serialN/@numberingOrg) [Optional]</p> <p>- nota: here the issuer of the serial number must be specified (when different from the Supplier) (XPath RAWDesAdvise/shipInfo/actualPackageUnit/itemsList/qualityLevel/@numberingOrg) [Optional]</p> <p>- nota: this attribute should be used either single or coupled with "listName" and "listVersion" (XPath RAWDesAdvise/TAheader/thirdParty/id/@numberingOrg) [Optional] (XPath RAWDesAdvise/shipInfo/actualPackageUnit/packagesList/packageIdentification/serialN/@numberingOrg) [Optional]</p> <p>- nota: here the issuer of the serial number must be specified (when different from the Supplier) (XPath RAWDesAdvise/RABody/RAitem/shipInfo/actualPackageUnit/packageModelCode/@numberingOrg) [Optional] (XPath RAWDesAdvise/RABody/RAitem/dyeN/@numberingOrg) [Optional] (XPath RAWDesAdvise/shipInfo/actualPackageUnit/itemsList/itemIdentification/serialN/@numberingOrg) [Optional]</p> <p>- nota: here the issuer of the serial number must be specified (when different from the Supplier) (XPath RAWDesAdvise/RABody/RAitem/shipInfo/actualPackageUnit/packagesList/pac</p>
--	--

	kagelidentification/packageN/@numberingOrg) [Optional]
package	code specifying the type of transport package - base type: string, cod. table: T11 http://www.ebiz.enea.it/moda-ml/repository/codelist/draft/gc_T11.xml (XPath RAWDesAdvise/RABody/RAitem/shipInfo/actualPackageUnit/package) 0-1 (XPath RAWDesAdvise/shipInfo/packages/package) 1-1 (XPath RAWDesAdvise/shipInfo/actualPackageUnit/package) 0-1 (XPath RAWDesAdvise/RABody/RAitem/shipInfo/packages/package) 1-1
@packageContainerN	reference usable to indicate the outer package containing this package - base type: string, max length: 40, (XPath RAWDesAdvise/RABody/RAitem/packageN/@packageContainerN) [Optional] (XPath RAWDesAdvise/RABody/RAitem/shipInfo/actualPackageUnit/packagesList/packagelidentification/packageN/@packageContainerN) [Optional] (XPath RAWDesAdvise/RABody/RAitem/shipInfo/packages/packageN/@packageContainerN) [Optional] (XPath RAWDesAdvise/RABody/RAitem/shipInfo/actualPackageUnit/packagelidentification/packageN/@packageContainerN) [Optional] (XPath RAWDesAdvise/shipInfo/actualPackageUnit/packagelidentification/packageN/@packageContainerN) [Optional] (XPath RAWDesAdvise/shipInfo/actualPackageUnit/packagesList/packagelidentification/packageN/@packageContainerN) [Optional] (XPath RAWDesAdvise/shipInfo/packages/packageN/@packageContainerN) [Optional]
@packageLevel	level used to indicate the hierarchical structure of the packages (from outer to inner levels) - base type: positiveInteger, min inclusive: 1, max inclusive: 9, (XPath RAWDesAdvise/shipInfo/packages/@packageLevel) [Optional] - nota: number fixing the level of the package in the transport structure (from inner to outer). Must either be used for all package types or not be used (XPath RAWDesAdvise/shipInfo/actualPackageUnit/@packageLevel) [Optional] (XPath RAWDesAdvise/RABody/RAitem/shipInfo/packages/@packageLevel) [Optional] - nota: number fixing the level of the package in the transport structure (from inner to outer). Must either be used for all package types or not be used (XPath RAWDesAdvise/RABody/RAitem/shipInfo/actualPackageUnit/@packageLevel) [Optional]
packageModelCode	a code (eg a barcode) identifying the type of packaging - base type: string, (XPath RAWDesAdvise/shipInfo/packages/packageModelCode) 0-1 (XPath RAWDesAdvise/RABody/RAitem/shipInfo/actualPackageUnit/packageModelCode) 0-1 (XPath RAWDesAdvise/shipInfo/actualPackageUnit/packageModelCode) 0-1 (XPath RAWDesAdvise/RABody/RAitem/shipInfo/packages/packageModelCode) 0-1
packageN	serial number used to identify a transport package - base type: string, max length: 40, (XPath RAWDesAdvise/shipInfo/packages/packageN) 0-unbounded - note: here the serial no.s of the packages can be identified (XPath RAWDesAdvise/RABody/RAitem/packageN) 0-unbounded (XPath RAWDesAdvise/RABody/RAitem/shipInfo/actualPackageUnit/packagelidentification/packageN) 1-1 (XPath RAWDesAdvise/shipInfo/actualPackageUnit/packagelidentification/packageN) 1-1 (XPath RAWDesAdvise/RABody/RAitem/shipInfo/actualPackageUnit/packagesList/packagelidentification/packageN) 1-1 (XPath RAWDesAdvise/RABody/RAitem/shipInfo/packages/packageN) 0-unbounded - note: here the serial no.s of the packages can be identified (XPath RAWDesAdvise/shipInfo/actualPackageUnit/packagesList/packagelidentification/packageN) 1-1
packageQty	quantity of the specified transport packages - base type: positiveInteger,

	<p>(XPath RAWDesAdvise/RABody/RAitem/shipInfo/packages/packageQty) 0-1 - note: total for the type of package (XPath RAWDesAdvise/shipInfo/packages/packageQty) 0-1 - note: total for the type of package</p>
packageText	<p>denomination of the type of transport package (text) - base type: string, max length: 80, (XPath RAWDesAdvise/RABody/RAitem/shipInfo/packages/packageText) 1-1 (XPath RAWDesAdvise/shipInfo/actualPackageUnit/packageText) 0-1 (XPath RAWDesAdvise/shipInfo/packages/packageText) 1-1 (XPath RAWDesAdvise/RABody/RAitem/shipInfo/actualPackageUnit/packageText) 0-1</p>
pcTolerance	<p>percent deviation tolerated on the value of a measurement (it must have a plus or minus sign) - base type: decimal, min inclusive: 0, max inclusive: 100, total digits: 2, (XPath RAWDesAdvise/RABody/RAitem/rawSpecs/pcTolerance) 0-2</p>
person	<p>name of a person (e.g. contact person within an organization) - base type: string, max length: 40, (XPath RAWDesAdvise/TAheader/buyer/person) 0-1 (XPath RAWDesAdvise/TAheader/supplier/person) 0-1 (XPath RAWDesAdvise/shipInfo/transInfo/despatchLocation/person) 0-1 (XPath RAWDesAdvise/shipInfo/transInfo/deliveryLocation/person) 0-1 (XPath RAWDesAdvise/trade/tradeLocation/person) 0-1 (XPath RAWDesAdvise/TAheader/thirdParty/person) 0-1 (XPath RAWDesAdvise/RABody/RAitem/shipInfo/transInfo/despatchLocation/person) 0-1 (XPath RAWDesAdvise/RABody/RAitem/shipInfo/transInfo/deliveryLocation/person) 0-1 (XPath RAWDesAdvise/RABody/RAitem/thirdParty/person) 0-1</p>
@phone	<p>phone number of the contact person within a Party - base type: string, max length: 35, (XPath RAWDesAdvise/RABody/RAitem/shipInfo/transInfo/despatchLocation/person/@phone) [Optional] (XPath RAWDesAdvise/RABody/RAitem/shipInfo/transInfo/deliveryLocation/person/@phone) [Optional] (XPath RAWDesAdvise/shipInfo/transInfo/despatchLocation/person/@phone) [Optional] (XPath RAWDesAdvise/TAheader/thirdParty/person/@phone) [Optional] (XPath RAWDesAdvise/trade/tradeLocation/person/@phone) [Optional] (XPath RAWDesAdvise/RABody/RAitem/thirdParty/person/@phone) [Optional] (XPath RAWDesAdvise/TAheader/supplier/person/@phone) [Optional] (XPath RAWDesAdvise/shipInfo/transInfo/deliveryLocation/person/@phone) [Optional] (XPath RAWDesAdvise/TAheader/buyer/person/@phone) [Optional]</p>
pieceInnWrap1	<p>code specifying the type of inner wrapping/packing used for the fabric piece - base type: string, cod. table: T4 http://www.ebiz.enea.it/moda-ml/repository/codelist/draft/gc_T4.xml (XPath RAWDesAdvise/RABody/RAitem/shipInfo/packages/handlingChar/piecePack/pieceInnWrap1) 1-1 (XPath RAWDesAdvise/shipInfo/packages/handlingChar/piecePack/pieceInnWrap1) 1-1</p>
pieceInnWrap2	<p>code sub-specifying the type of inner wrapping/packing used for the fabric piece - base type: string, cod. table: T5 http://www.ebiz.enea.it/moda-ml/repository/codelist/draft/gc_T5.xml (XPath RAWDesAdvise/RABody/RAitem/shipInfo/packages/handlingChar/piecePack/pieceInnWrap2) 0-1 (XPath RAWDesAdvise/shipInfo/packages/handlingChar/piecePack/pieceInnWrap2) 0-1</p>
pieceOutWrap	<p>code specifying the type of outer wrapping or packing used for the fabric piece - base type: string, cod. table: T6 http://www.ebiz.enea.it/moda-ml/repository/codelist/draft/gc_T6.xml (XPath RAWDesAdvise/shipInfo/packages/handlingChar/piecePack/pieceOutWrap) 0-1 (XPath RAWDesAdvise/RABody/RAitem/shipInfo/packages/handlingChar/piecePack/pieceOutWrap) 0-1</p>
piecePackText	<p>free text specifying the type of wrapping or packing used for the fabric piece</p>

	<p>- base type: string, max length: 250, (XPath RAWDesAdvise/shipInfo/packages/handlingChar/piecePack/piecePackText) 1-1 (XPath RAWDesAdvise/RABody/RAitem/shipInfo/packages/handlingChar/piecePack/piecePackText) 1-1</p>
postCode	<p>code defining the postal zone - base type: string, max length: 10, (XPath RAWDesAdvise/THeader/buyer/postCode) 0-1 (XPath RAWDesAdvise/THeader/supplier/postCode) 0-1 (XPath RAWDesAdvise/shipInfo/transInfo/despatchLocation/postCode) 0-1 (XPath RAWDesAdvise/shipInfo/transInfo/deliveryLocation/postCode) 0-1 (XPath RAWDesAdvise/RABody/RAitem/thirdParty/postCode) 0-1 (XPath RAWDesAdvise/RABody/RAitem/shipInfo/transInfo/deliveryLocation/postCode) 0-1 (XPath RAWDesAdvise/trade/tradeLocation/postCode) 0-1 (XPath RAWDesAdvise/THeader/thirdParty/postCode) 0-1 (XPath RAWDesAdvise/RABody/RAitem/shipInfo/transInfo/despatchLocation/postCode) 0-1</p>
@progr	<p>progressive number in the sequence - base type: positiveInteger, min inclusive: 1, (XPath RAWDesAdvise/shipInfo/packages/fillingCriterion/@progr) [Optional] (XPath RAWDesAdvise/RABody/RAitem/shipInfo/packages/fillingCriterion/@progr) [Optional] (XPath RAWDesAdvise/shipInfo/transInfo/@progr) [Optional] - nota: Indicates the position of the leg in a sequence of transport legs. If it is declared it must be in all the transInfo elements. (XPath RAWDesAdvise/RABody/RAitem/shipInfo/transInfo/@progr) [Optional] - nota: Indicates the position of the leg in a sequence of transport legs. If it is declared it must be in all the transInfo elements.</p>
@propulsionSystemCode	<p>propulsion system type - base type: string, cod. table: NT324 http://www.ebiz.enea.it/moda-ml/repository/codelist/draft/gc_NT324.xml (XPath RAWDesAdvise/RABody/RAitem/shipInfo/transInfo/transMeans/@propulsionSystemCode) [Optional] - nota: indicates the type of propulsion of the means of transport (XPath RAWDesAdvise/shipInfo/transInfo/transMeans/@propulsionSystemCode) [Optional] - nota: indicates the type of propulsion of the means of transport</p>
qty	<p>net quantity of the article or object correlated, qualified by the function of the document (ordering, delivering, ..) and by the context - base type: decimal, min inclusive: 0, fraction digits: 2, (XPath RAWDesAdvise/RABody/RAitem/qty) 1-2 Best Practice</p>
qualityLevel	<p>the product quality level (first choice, second choice,...). - base type: string, (XPath RAWDesAdvise/RABody/RAitem/shipInfo/actualPackageUnit/itemsList/qualityLevel) 0-1 (XPath RAWDesAdvise/RABody/RAitem/itemsList/qualityLevel) 0-1 (XPath RAWDesAdvise/shipInfo/actualPackageUnit/itemsList/qualityLevel) 0-1</p>
rawChar	<p>physical or mechanical parameter used to define a characteristics of a raw material - base type: string, cod. table: T22 http://www.ebiz.enea.it/moda-ml/repository/codelist/draft/gc_T22.xml (XPath RAWDesAdvise/RABody/RAitem/rawSpecs/rawChar) 1-1</p>
rawCharText	<p>free text describing the physical or mechanical parameter used to define a characteristics of a raw material - base type: string, max length: 250, (XPath RAWDesAdvise/RABody/RAitem/rawSpecs/rawCharText) 1-1</p>
@reelMat	<p>type of material of which a package for yarn is made - base type: string, cod. table: T30 http://www.ebiz.enea.it/moda-ml/repository/codelist/draft/gc_T30.xml (XPath RAWDesAdvise/shipInfo/packages/handlingChar/yarnPack/yarnReel/@reelMat) [Optional] (XPath RAWDesAdvise/RABody/RAitem/shipInfo/packages/handlingChar/yarnPack/yarnReel/@reelMat) [Optional]</p>
@reelType	<p>type of package used for a yarn product</p>

	<p>- base type: string, cod. table: T29 http://www.ebiz.enea.it/moda-ml/repository/codelist/draft/gc_T29.xml (XPath RAWDesAdvise/shipInfo/packages/handlingChar/yarnPack/yarnReel/@reelType) [Required] (XPath RAWDesAdvise/RABody/RAitem/shipInfo/packages/handlingChar/yarnPack/yarnReel/@reelType) [Required]</p>
@role	<p>Third Party role qualifier - base type: string, cod. table: NT2 http://www.ebiz.enea.it/moda-ml/repository/codelist/draft/gc_NT2.xml (XPath RAWDesAdvise/RABody/RAitem/thirdParty/@role) [Required] (XPath RAWDesAdvise/TAheader/thirdParty/@role) [Required]</p>
routeLength	<p>length of a route - base type: decimal, min inclusive: 0, fraction digits: 2, (XPath RAWDesAdvise/RABody/RAitem/shipInfo/transInfo/routeLength) 0-1 (XPath RAWDesAdvise/shipInfo/transInfo/routeLength) 0-1</p>
@schemeID	<p>identifier of an identification scheme - base type: string, (XPath RAWDesAdvise/TAheader/refDoc/attachment/hashFootprint/@schemeID) [Optional] - nota: specify for which system this hash footprint might be used as identifier (for example HDFS system..) (XPath RAWDesAdvise/RABody/RAitem/refDoc/attachment/hashFootprint/@schemeID) [Optional] - nota: specify for which system this hash footprint might be used as identifier (for example HDFS system..)</p>
season	<p>sale season; defined as: season (1 crt) + year (4 crt) - season: S/S=1 AW=2 Spring=3 Summer=4 Autumn=5 Winter=6: for more than four seasons use alphabetic sequence: 1st season=A 2nd season=B etc.etc. - base type: string, max length: 15, (XPath RAWDesAdvise/TAheader/refDoc/season) 0-1 - note: here indicates the season to which the referenced document belongs (XPath RAWDesAdvise/RABody/RAitem/refDoc/season) 0-1 - note: here indicates the season to which the referenced document belongs</p>
@sender	<p>qualifier that specifies the Party issuing of the document - base type: boolean, (XPath RAWDesAdvise/RABody/RAitem/thirdParty/@sender) [Optional] - nota: This attribute is mandatory when the STYLESHEET must be used (XPath RAWDesAdvise/TAheader/thirdParty/@sender) [Optional] - nota: This attribute is mandatory when the STYLESHEET must be used (XPath RAWDesAdvise/TAheader/buyer/@sender) [Optional] - nota: This attribute is mandatory when the STYLESHEET must be used (XPath RAWDesAdvise/TAheader/supplier/@sender) [Optional] - nota: This attribute is mandatory when the STYLESHEET must be used</p>
serialN	<p>serial number used for the identification of a physical unit - base type: string, max length: 250, (XPath RAWDesAdvise/shipInfo/actualPackageUnit/packagesList/packageIdentification/serialN) 0-9 - note: multiple values of serialN are allowed in order to provide different representations of the serial identifier of the same package unit. Different instances of serialN must differ at least for one value of idQualifier or numberingOrg (XPath RAWDesAdvise/RABody/RAitem/shipInfo/actualPackageUnit/packageIdentification/serialN) 0-9 - note: multiple values of serialN are allowed in order to provide different representations of the serial identifier of the same package unit. Different instances of serialN must differ at least for one value of idQualifier or numberingOrg (XPath RAWDesAdvise/shipInfo/actualPackageUnit/itemsList/itemIdentification/serialN) 1-9 Best Practice - note: multiple values of serialN are allowed for different representations of the serial identifier of the same product unit. Instances of serialN must differ at least for one value of numberingOrg and idQualifier. (XPath RAWDesAdvise/shipInfo/actualPackageUnit/packageIdentification/serialN) 0-9 - note: multiple values of serialN are allowed in order to provide different representations of the serial identifier of the same package unit. Different instances of serialN must differ at least for one value of idQualifier or numberingOrg (XPath</p>

	<p>RAWDesAdvise/RABody/RAitem/shipInfo/actualPackageUnit/packagesList/packageIdentification/serialN) 0-9</p> <p>- note: multiple values of serialN are allowed in order to provide different representations of the serial identifier of the same package unit. Different instances of serialN must differ at least for one value of idQualifier or numberingOrg</p> <p>(XPath RAWDesAdvise/RABody/RAitem/shipInfo/actualPackageUnit/packagesList/packageIdentification/serialN) 0-9 Best Practice</p> <p>- note: multiple values of serialN are allowed for different representations of the serial identifier of the same product unit. Instances of serialN must differ at least for one value of numberingOrg and idQualifier.</p> <p>(XPath RAWDesAdvise/RABody/RAitem/itemsList/itemIdentification/serialN) 1-9 Best Practice</p> <p>- note: multiple values of serialN are allowed for different representations of the serial identifier of the same product unit. Instances of serialN must differ at least for one value of numberingOrg and idQualifier.</p>
sortableIndicator	<p>It states if the item can be automatically sorted.</p> <p>- base type: boolean,</p> <p>(XPath RAWDesAdvise/RABody/RAitem/shipInfo/packages/handlingChar/sortableIndicator) 0-1</p> <p>(XPath RAWDesAdvise/shipInfo/packages/handlingChar/sortableIndicator) 0-1</p>
@source	<p>party who has provided the data</p> <p>- base type: string, cod. table: NT12</p> <p>http://www.ebiz.enea.it/moda-ml/repository/codelist/draft/gc_NT12.xml</p> <p>(XPath RAWDesAdvise/RABody/RAitem/rawSpecs/specValue/@source) [Optional]</p>
specValue	<p>value requested for a property or a parameter that is measured</p> <p>- base type: decimal,</p> <p>(XPath RAWDesAdvise/RABody/RAitem/rawSpecs/specValue) 0-1</p>
stackabilityLevel	<p>This value indicates the level at which the item can be stacked.</p> <p>- base type: integer,</p> <p>(XPath RAWDesAdvise/RABody/RAitem/shipInfo/packages/handlingChar/stackabilityLevel) 0-1</p> <p>(XPath RAWDesAdvise/shipInfo/packages/handlingChar/stackabilityLevel) 0-1</p>
street	<p>street and building number identifying a location</p> <p>- base type: string, max length: 80,</p> <p>(XPath RAWDesAdvise/shipInfo/transInfo/deliveryLocation/street) 0-1</p> <p>(XPath RAWDesAdvise/TAheader/buyer/street) 0-1</p> <p>(XPath RAWDesAdvise/RABody/RAitem/shipInfo/transInfo/despatchLocation/street) 0-1</p> <p>(XPath RAWDesAdvise/shipInfo/transInfo/despatchLocation/street) 0-1</p> <p>(XPath RAWDesAdvise/trade/tradeLocation/street) 0-1</p> <p>(XPath RAWDesAdvise/TAheader/thirdParty/street) 0-1</p> <p>(XPath RAWDesAdvise/RABody/RAitem/shipInfo/transInfo/deliveryLocation/street) 0-1</p> <p>(XPath RAWDesAdvise/TAheader/supplier/street) 0-1</p> <p>(XPath RAWDesAdvise/RABody/RAitem/thirdParty/street) 0-1</p>
subCountry	<p>short name or code of the sub-country entity</p> <p>- base type: string, max length: 9,</p> <p>(XPath RAWDesAdvise/shipInfo/transInfo/despatchLocation/subCountry) 0-1</p> <p>(XPath RAWDesAdvise/TAheader/thirdParty/subCountry) 0-1</p> <p>(XPath RAWDesAdvise/TAheader/supplier/subCountry) 0-1</p> <p>(XPath RAWDesAdvise/TAheader/buyer/subCountry) 0-1</p> <p>(XPath RAWDesAdvise/shipInfo/transInfo/deliveryLocation/subCountry) 0-1</p> <p>(XPath RAWDesAdvise/RABody/RAitem/thirdParty/subCountry) 0-1</p> <p>(XPath RAWDesAdvise/trade/tradeLocation/subCountry) 0-1</p> <p>(XPath RAWDesAdvise/RABody/RAitem/shipInfo/transInfo/deliveryLocation/subCountry) 0-1</p> <p>(XPath RAWDesAdvise/RABody/RAitem/shipInfo/transInfo/despatchLocation/subCountry) 0-1</p>
subDept	<p>name or code of a department</p> <p>- base type: string, max length: 40,</p> <p>(XPath RAWDesAdvise/RABody/RAitem/shipInfo/transInfo/despatchLocation/subDept) 0-1</p> <p>(XPath RAWDesAdvise/RABody/RAitem/thirdParty/subDept) 0-1</p> <p>(XPath RAWDesAdvise/TAheader/buyer/subDept) 0-1</p> <p>(XPath RAWDesAdvise/TAheader/supplier/subDept) 0-1</p> <p>(XPath RAWDesAdvise/trade/tradeLocation/subDept) 0-1</p>

	(XPath RAWDesAdvise/TAheader/thirdParty/subDept) 0-1 (XPath RAWDesAdvise/shipInfo/transInfo/despachLocation/subDept) 0-1 (XPath RAWDesAdvise/shipInfo/transInfo/deliveryLocation/subDept) 0-1 (XPath RAWDesAdvise/RABody/RAitem/shipInfo/transInfo/deliveryLocation/subDept) 0-1
@TAtype	type of Despatch advise - base type: string, cod. table: NT10 http://www.ebiz.enea.it/moda-ml/repository/codelist/draft/gc_NT10.xml (XPath RAWDesAdvise/@TAtype) [Optional] [Default= STD]
@TID	serial number wired into the RFID chip - base type: string, (XPath RAWDesAdvise/RABody/RAitem/shipInfo/packages/EPClist/EPC/@TID) [Optional] (XPath RAWDesAdvise/shipInfo/packages/EPCList/EPC/@TID) [Optional]
tolerance	deviation tolerated on the value of a measurement (it must have a plus or minus sign) - base type: decimal, (XPath RAWDesAdvise/RABody/RAitem/rawSpecs/tolerance) 0-2
transactionReceipt	transaction receipt on blockchain - base type: string, max length: 80, (XPath RAWDesAdvise/RABody/RAitem/refDoc/attachment/blockChainReference/transactionReceipt) 1-9 (XPath RAWDesAdvise/TAheader/refDoc/attachment/blockChainReference/transactionReceipt) 1-9
transCondition	special condition of transport or special service requested to the Forwarder - base type: string, cod. table: T38 http://www.ebiz.enea.it/moda-ml/repository/codelist/draft/gc_T38.xml (XPath RAWDesAdvise/RABody/RAitem/shipInfo/transInfo/transCondition) 0-3 (XPath RAWDesAdvise/shipInfo/transInfo/transCondition) 0-3
transConditionText	free text description of the special condition of transport or special service requested to the Forwarder - base type: string, max length: 250, (XPath RAWDesAdvise/shipInfo/transInfo/transConditionText) 0-1 (XPath RAWDesAdvise/RABody/RAitem/shipInfo/transInfo/transConditionText) 0-1
transMeans	means of transport, in general or referred to a specific leg - base type: string, cod. table: T40 http://www.ebiz.enea.it/moda-ml/repository/codelist/draft/gc_T40.xml (XPath RAWDesAdvise/shipInfo/transInfo/transMeans) 0-1 (XPath RAWDesAdvise/RABody/RAitem/shipInfo/transInfo/transMeans) 0-1
transMode	way of transport, in general or referred to the specified leg - base type: string, cod. table: T8 http://www.ebiz.enea.it/moda-ml/repository/codelist/draft/gc_T8.xml (XPath RAWDesAdvise/RABody/RAitem/shipInfo/transInfo/transMode) 1-1 (XPath RAWDesAdvise/shipInfo/transInfo/transMode) 1-1
@transReason	reason for the transport - base type: string, cod. table: NT11 http://www.ebiz.enea.it/moda-ml/repository/codelist/draft/gc_NT11.xml (XPath RAWDesAdvise/shipInfo/transInfo/@transReason) [Optional] (XPath RAWDesAdvise/RABody/RAitem/shipInfo/transInfo/@transReason) [Optional]
@uid	unique element identifier within the xml document - base type: string, (XPath RAWDesAdvise/RABody/RAitem/refDoc/attachment/@uid) [Optional] (XPath RAWDesAdvise/TAheader/refDoc/attachment/@uid) [Optional]
@um	specification of the unit of measure - base type: string, cod. table: NT7 http://www.ebiz.enea.it/moda-ml/repository/codelist/draft/gc_NT7.xml (XPath RAWDesAdvise/shipInfo/packages/handlingChar/yarnPack/yarnReel/yarnReelQty/@um) [Required] (XPath RAWDesAdvise/RABody/RAitem/shipInfo/transInfo/despachLocation/geoCoordinates/@um) [Optional] [Default= DEGD] - nota: <i>when not specified assume decimal DEGREES</i> (XPath RAWDesAdvise/RABody/RAitem/qty/@um) [Required] (XPath RAWDesAdvise/shipInfo/actualPackageUnit/packageDim/width/@um) [Required]

	<p>(XPath RAWDesAdvise/RABody/RAitem/shipInfo/packages/minItemsPerPackage/@um) [Required]</p> <p>(XPath RAWDesAdvise/RABody/RAitem/shipInfo/packages/itemsPerPackage/@um) [Required]</p> <p>(XPath RAWDesAdvise/trade/tradeLocation/geoCoordinates/@um) [Optional] [Default= DEGD]</p> <p>- nota: <i>when not specified assume decimal DEGREES</i></p> <p>(XPath RAWDesAdvise/TAheader/thirdParty/geoCoordinates/@um) [Optional] [Default= DEGD]</p> <p>- nota: <i>when not specified assume decimal DEGREES</i></p> <p>(XPath RAWDesAdvise/shipInfo/packages/handlingChar/yarnPack/yarnReel/yarnReelH/@um) [Required]</p> <p>(XPath RAWDesAdvise/shipInfo/actualPackageUnit/packageDim/height/@um) [Required]</p> <p>(XPath RAWDesAdvise/RABody/RAitem/shipInfo/actualPackageUnit/volume/@um) [Required]</p> <p>(XPath RAWDesAdvise/TAheader/buyer/geoCoordinates/@um) [Optional] [Default= DEGD]</p> <p>- nota: <i>when not specified assume decimal DEGREES</i></p> <p>(XPath RAWDesAdvise/shipInfo/packages/handlingChar/netWeight/@um) [Required]</p> <p>(XPath RAWDesAdvise/RABody/RAitem/rawSpecs/pcTolerance/@um) [Optional]</p> <p>- nota: <i>to be used when it has to be soecified if the declared percentage is by weight, volume, etc...</i></p> <p>(XPath RAWDesAdvise/shipInfo/packages/handlingChar/grossWeight/@um) [Required]</p> <p>(XPath RAWDesAdvise/shipInfo/packages/handlingChar/volume/@um) [Required]</p> <p>(XPath RAWDesAdvise/RABody/RAitem/shipInfo/transInfo/netWeight/@um) [Required]</p> <p>(XPath RAWDesAdvise/RABody/RAitem/shipInfo/transInfo/grossWeight/@um) [Required]</p> <p>(XPath RAWDesAdvise/RABody/RAitem/rawSpecs/specValue/@um) [Optional]</p> <p>(XPath RAWDesAdvise/RABody/RAitem/shipInfo/actualPackageUnit/grossWeight/@um) [Required]</p> <p>(XPath RAWDesAdvise/RABody/RAitem/shipInfo/actualPackageUnit/packageDim/length/@um) [Required]</p> <p>(XPath RAWDesAdvise/shipInfo/packages/itemsPerPackage/@um) [Required]</p> <p>(XPath RAWDesAdvise/RABody/RAitem/shipInfo/actualPackageUnit/netWeight/@um) [Required]</p> <p>(XPath RAWDesAdvise/RABody/RAitem/rawSpecs/tolerance/@um) [Required]</p> <p>(XPath RAWDesAdvise/TAheader/supplier/geoCoordinates/@um) [Optional] [Default= DEGD]</p> <p>- nota: <i>when not specified assume decimal DEGREES</i></p> <p>(XPath RAWDesAdvise/RABody/RAitem/shipInfo/actualPackageUnit/packageDim/width/@um) [Required]</p> <p>(XPath RAWDesAdvise/RABody/RAitem/shipInfo/actualPackageUnit/packageDim/height/@um) [Required]</p> <p>(XPath RAWDesAdvise/shipInfo/transInfo/routeLength/@um) [Required]</p> <p>(XPath RAWDesAdvise/RABody/RAitem/shipInfo/packages/packageDim/height/@um) [Required]</p> <p>(XPath RAWDesAdvise/shipInfo/transInfo/netWeight/@um) [Required]</p> <p>(XPath RAWDesAdvise/shipInfo/transInfo/grossWeight/@um) [Required]</p> <p>(XPath RAWDesAdvise/shipInfo/actualPackageUnit/grossWeight/@um) [Required]</p> <p>(XPath RAWDesAdvise/RABody/RAitem/shipInfo/packages/packageDim/width/@um) [Required]</p> <p>(XPath RAWDesAdvise/shipInfo/packages/packageDim/length/@um) [Required]</p> <p>(XPath RAWDesAdvise/shipInfo/transInfo/deliveryLocation/geoCoordinates/@um) [Optional] [Default= DEGD]</p> <p>- nota: <i>when not specified assume decimal DEGREES</i></p> <p>(XPath RAWDesAdvise/RABody/RAitem/shipInfo/packages/handlingChar/yarnPack/yarnReel/yarnReelID/@um) [Required]</p> <p>(XPath RAWDesAdvise/RABody/RAitem/shipInfo/packages/handlingChar/yarnPack/yarnReel/yarnReelQty/@um) [Required]</p> <p>(XPath RAWDesAdvise/shipInfo/packages/packageDim/height/@um) [Required]</p> <p>(XPath RAWDesAdvise/RABody/RAitem/shipInfo/packages/handlingChar/yarnPack/yarnReel/yarnReelH/@um) [Required]</p> <p>(XPath RAWDesAdvise/RABody/RAitem/thirdParty/geoCoordinates/@um) [Optional] [Default= DEGD]</p>
--	---

	<p>- nota: <i>when not specified assume decimal DEGREES</i> (XPath RAWDesAdvise/shipInfo/actualPackageUnit/netWeight/@um) [Required] (XPath RAWDesAdvise/shipInfo/actualPackageUnit/volume/@um) [Required] (XPath RAWDesAdvise/shipInfo/packages/packageDim/width/@um) [Required] (XPath RAWDesAdvise/RABody/RAitem/shipInfo/packages/handlingChar/volume/@um) [Required] (XPath RAWDesAdvise/shipInfo/actualPackageUnit/packageDim/length/@um) [Required] (XPath RAWDesAdvise/RABody/RAitem/shipInfo/transInfo/routeLength/@um) [Required] (XPath RAWDesAdvise/RABody/RAitem/shipInfo/packages/packageDim/length/@um) [Required] (XPath RAWDesAdvise/RABody/RAitem/shipInfo/packages/handlingChar/netWeight/@um) [Required] (XPath RAWDesAdvise/shipInfo/packages/handlingChar/yarnPack/yarnReel/yarnReelID/@um) [Required] (XPath RAWDesAdvise/RABody/RAitem/shipInfo/packages/handlingChar/grossWeight/@um) [Required] (XPath RAWDesAdvise/shipInfo/packages/minItemsPerPackage/@um) [Required] (XPath RAWDesAdvise/RABody/RAitem/shipInfo/transInfo/deliveryLocation/geoCoordinates/@um) [Optional] [Default= DEGD]</p> <p>- nota: <i>when not specified assume decimal DEGREES</i> (XPath RAWDesAdvise/shipInfo/transInfo/despatchLocation/geoCoordinates/@um) [Optional] [Default= DEGD]</p> <p>- nota: <i>when not specified assume decimal DEGREES</i></p>
uri	<p>Uniform Resource Identifier (URI) that identifies the external object as an Internet resource</p> <p>- base type: normalizedString, (XPath RAWDesAdvise/RABody/RAitem/refDoc/attachment/blockChainReference/uri) 1-1</p> <p>- note: <i>reference to the used blockchain (example: url https://etherscan.io/ of ethereum)</i> (XPath RAWDesAdvise/TAheader/refDoc/attachment/externalReference/uri) 1-1 (XPath RAWDesAdvise/TAheader/refDoc/attachment/blockChainReference/uri) 1-1</p> <p>- note: <i>reference to the used blockchain (example: url https://etherscan.io/ of ethereum)</i> (XPath RAWDesAdvise/RABody/RAitem/refDoc/attachment/externalReference/uri) 1-1</p>
@useProfile	<p>use profile to which the present document is compliant if it was agreed by the parties. It is suggested a URI with reference to the firms or the URL of the profile.</p> <p>- base type: string, (XPath RAWDesAdvise/@useProfile) [Optional]</p>
@VAT	<p>VAT rate or code (DEPRECATED, use dtScheme element)</p> <p>- base type: string, cod. table: NT16 http://www.ebiz.enea.it/moda-ml/repository/codelist/draft/gc_NT16.xml (XPath RAWDesAdvise/TAheader/thirdParty/@VAT) [Optional] (XPath RAWDesAdvise/RABody/RAitem/thirdParty/@VAT) [Optional] (XPath RAWDesAdvise/RABody/RAitem/lineN/@VAT) [Optional]</p> <p>- nota: <i>Deprecated, prefer dtScheme when available.</i></p>
@version	<p>Dictionary version from which the instance has been created</p> <p>- base type: string, cod. table: NT100 http://www.ebiz.enea.it/moda-ml/repository/codelist/draft/gc_NT100.xml (XPath RAWDesAdvise/@version) [Optional] [Default= draft]</p>
volume	<p>effective volume of a specified object</p> <p>- base type: decimal, min inclusive: 0, fraction digits: 2, (XPath RAWDesAdvise/shipInfo/packages/handlingChar/volume) 0-1 (XPath RAWDesAdvise/shipInfo/actualPackageUnit/volume) 0-1 (XPath RAWDesAdvise/RABody/RAitem/shipInfo/packages/handlingChar/volume) 0-1 (XPath RAWDesAdvise/RABody/RAitem/shipInfo/actualPackageUnit/volume) 0-1</p>
width	<p>effective width of a specified object</p> <p>- base type: decimal, min inclusive: 0, fraction digits: 2, (XPath</p>

	<p>RAWDesAdvise/RABody/RAitem/shipInfo/actualPackageUnit/packageDim/width) 0-1 (XPath RAWDesAdvise/shipInfo/packages/packageDim/width) 0-1 (XPath RAWDesAdvise/RABody/RAitem/shipInfo/packages/packageDim/width) 0-1 (XPath RAWDesAdvise/shipInfo/actualPackageUnit/packageDim/width) 0-1</p>
xGeoCoord	<p>geographical coordinate x , corresponding to latitude - base type: decimal, (XPath RAWDesAdvise/shipInfo/transInfo/despatchLocation/geoCoordinates/xGeoCoord) 1-1 (XPath RAWDesAdvise/RABody/RAitem/shipInfo/transInfo/deliveryLocation/geoCoordinates/xGeoCoord) 1-1 (XPath RAWDesAdvise/TAheader/supplier/geoCoordinates/xGeoCoord) 1-1 (XPath RAWDesAdvise/TAheader/buyer/geoCoordinates/xGeoCoord) 1-1 (XPath RAWDesAdvise/TAheader/thirdParty/geoCoordinates/xGeoCoord) 1-1 (XPath RAWDesAdvise/RABody/RAitem/shipInfo/transInfo/despatchLocation/geoCoordinates/xGeoCoord) 1-1 (XPath RAWDesAdvise/trade/tradeLocation/geoCoordinates/xGeoCoord) 1-1 (XPath RAWDesAdvise/RABody/RAitem/thirdParty/geoCoordinates/xGeoCoord) 1-1 (XPath RAWDesAdvise/shipInfo/transInfo/deliveryLocation/geoCoordinates/xGeoCoord) 1-1</p>
yarnConeAngle	<p>tapering angle of the cone on which a yarn is reeled - base type: positiveInteger, (XPath RAWDesAdvise/RABody/RAitem/shipInfo/packages/handlingChar/yarnPack/yarnReel/yarnConeAngle) 0-1 (XPath RAWDesAdvise/shipInfo/packages/handlingChar/yarnPack/yarnReel/yarnConeAngle) 0-1</p>
yarnOutWrap	<p>code specifying the type of outer wrapping or packing of a yarn - base type: string, cod. table: T33 http://www.ebiz.enea.it/moda-ml/repository/codelist/draft/gc_T33.xml (XPath RAWDesAdvise/shipInfo/packages/handlingChar/yarnPack/yarnOutWrap) 0-1 (XPath RAWDesAdvise/RABody/RAitem/shipInfo/packages/handlingChar/yarnPack/yarnOutWrap) 0-1</p>
yarnOutWrapText	<p>free text specifying the type of outer wrapping or packing of a yarn - base type: string, max length: 250, (XPath RAWDesAdvise/shipInfo/packages/handlingChar/yarnPack/yarnOutWrapText) 0-1 (XPath RAWDesAdvise/RABody/RAitem/shipInfo/packages/handlingChar/yarnPack/yarnOutWrapText) 0-1</p>
yarnReelID	<p>diameter of the bobbin used for a yarn product - base type: decimal, min inclusive: 0, fraction digits: 2, (XPath RAWDesAdvise/shipInfo/packages/handlingChar/yarnPack/yarnReel/yarnReelID) 0-1 (XPath RAWDesAdvise/RABody/RAitem/shipInfo/packages/handlingChar/yarnPack/yarnReel/yarnReelID) 0-1</p>
yarnReelH	<p>height of the bobbin used a yarn product - base type: decimal, min inclusive: 0, fraction digits: 2, (XPath RAWDesAdvise/shipInfo/packages/handlingChar/yarnPack/yarnReel/yarnReelH) 0-1 (XPath RAWDesAdvise/RABody/RAitem/shipInfo/packages/handlingChar/yarnPack/yarnReel/yarnReelH) 0-1</p>
yarnReelQty	<p>quantity of yarn (by weight or length) wound upon a bobbin - base type: decimal, min inclusive: 0, fraction digits: 2, (XPath RAWDesAdvise/RABody/RAitem/shipInfo/packages/handlingChar/yarnPack/yarnReel/yarnReelQty) 0-2 (XPath RAWDesAdvise/shipInfo/packages/handlingChar/yarnPack/yarnReel/yarnReelQty) 0-2</p>
yarnReelWrap	<p>type of wrapping in which a package of yarn is wrapped - base type: string, cod. table: T32 http://www.ebiz.enea.it/moda-ml/repository/codelist/draft/gc_T32.xml (XPath RAWDesAdvise/RABody/RAitem/shipInfo/packages/handlingChar/yarnPack/yarnInWrap/yarnReelWrap) 1-1 (XPath RAWDesAdvise/shipInfo/packages/handlingChar/</p>

	yarnPack/yarnInWrap/yarnReelWrap) 1-1
yGeoCoord	<p>geographical coordinate y , corresponding to longitude</p> <p>- base type: decimal,</p> <p>(XPath RAWDesAdvise/TAheader/thirdParty/geoCoordinates/yGeoCoord) 1-1</p> <p>(XPath RAWDesAdvise/shipInfo/transInfo/despachLocation/geoCoordinates/yGeoCoord) 1-1</p> <p>(XPath RAWDesAdvise/RABody/RAitem/shipInfo/transInfo/despachLocation/geoCoordinates/yGeoCoord) 1-1</p> <p>(XPath RAWDesAdvise/shipInfo/transInfo/deliveryLocation/geoCoordinates/yGeoCoord) 1-1</p> <p>(XPath RAWDesAdvise/RABody/RAitem/shipInfo/transInfo/deliveryLocation/geoCoordinates/yGeoCoord) 1-1</p> <p>(XPath RAWDesAdvise/trade/tradeLocation/geoCoordinates/yGeoCoord) 1-1</p> <p>(XPath RAWDesAdvise/TAheader/buyer/geoCoordinates/yGeoCoord) 1-1</p> <p>(XPath RAWDesAdvise/TAheader/supplier/geoCoordinates/yGeoCoord) 1-1</p> <p>(XPath RAWDesAdvise/RABody/RAitem/thirdParty/geoCoordinates/yGeoCoord) 1-1</p>
zGeoCoord	<p>geographical coordinate z , corresponding to altitude</p> <p>- base type: decimal,</p> <p>(XPath RAWDesAdvise/RABody/RAitem/shipInfo/transInfo/despachLocation/geoCoordinates/zGeoCoord) 0-1</p> <p>- note: <i>altitude might be omitted</i></p> <p>(XPath RAWDesAdvise/trade/tradeLocation/geoCoordinates/zGeoCoord) 0-1</p> <p>- note: <i>altitude might be omitted</i></p> <p>(XPath RAWDesAdvise/TAheader/thirdParty/geoCoordinates/zGeoCoord) 0-1</p> <p>- note: <i>altitude might be omitted</i></p> <p>(XPath RAWDesAdvise/TAheader/supplier/geoCoordinates/zGeoCoord) 0-1</p> <p>- note: <i>altitude might be omitted</i></p> <p>(XPath RAWDesAdvise/TAheader/buyer/geoCoordinates/zGeoCoord) 0-1</p> <p>- note: <i>altitude might be omitted</i></p> <p>(XPath RAWDesAdvise/RABody/RAitem/shipInfo/transInfo/deliveryLocation/geoCoordinates/zGeoCoord) 0-1</p> <p>- note: <i>altitude might be omitted</i></p> <p>(XPath RAWDesAdvise/shipInfo/transInfo/deliveryLocation/geoCoordinates/zGeoCoord) 0-1</p> <p>- note: <i>altitude might be omitted</i></p> <p>(XPath RAWDesAdvise/shipInfo/transInfo/despachLocation/geoCoordinates/zGeoCoord) 0-1</p> <p>- note: <i>altitude might be omitted</i></p> <p>(XPath RAWDesAdvise/RABody/RAitem/thirdParty/geoCoordinates/zGeoCoord) 0-1</p> <p>- note: <i>altitude might be omitted</i></p>

2.3 Suggested best practices

RAWDesAdvise/RABody/RAitem/refDoc/docID (identification number of the referenced document)

numberingOrg indicates the role that produced the document identifier (it is allowed to declare two different ones -e.g. customer and supplier - with two docID with different numberingOrg

RAWDesAdvise/TAheader/refDoc/docID (identification number of the referenced document)

numberingOrg indicates the role that produced the document identifier (it is allowed to declare two different ones -e.g. customer and supplier - with two docID with different numberingOrg

RAWDesAdvise/RABody/RAitem/refDoc/attachment/ externalReference/mimeCode (mime type of the external object)

Use coding from IANA <http://www.iana.org/assignments/media-types/media-types.xml>

RAWDesAdvise/TAheader/refDoc/attachment/ externalReference/mimeCode (mime type of the external object)

Use coding from IANA <http://www.iana.org/assignments/media-types/media-types.xml>

RAWDesAdvise/RABody/RAitem/qty (net quantity of the article or object correlated, qualified by the function of the document (ordering, delivering, ..) and by the context)

this element can have two instances only if the units of measure are different

RAWDesAdvise/shipInfo/actualPackageUnit/ itemsList/itemIdentification/serialN (serial number used for the identification of a physical unit)

in the case of garment with RFID for anti-counterfeiting, RFID EPCGlobal for logistics and NFC for the customer experience there should be three serial elements with pairs of attributes numberingOrg/idQualifier: "CL"/"RFID", "GS1"/"RFID", "CL"/"NFC".

RAWDesAdvise/RABody/RAitem/shipInfo/actualPackageUnit/itemsList/itemIdentification/serialN (serial number used for the identification of a physical unit)

in the case of garment with RFID for anti-counterfeiting, RFID EPCGlobal for logistics and NFC for the customer experience there should be three serial elements with pairs of attributes numberingOrg/idQualifier: "CL"/"RFID", "GS1"/"RFID", "CL"/"NFC".

RAWDesAdvise/RABody/RAitem/itemsList/itemIdentification/serialN (serial number used for the identification of a physical unit)

in the case of garment with RFID for anti-counterfeiting, RFID EPCGlobal for logistics and NFC for the customer experience there should be three serial elements with pairs of attributes numberingOrg/idQualifier: "CL"/"RFID", "GS1"/"RFID", "CL"/"NFC".

2.4 Enumeration tables

List of enumeration tables used in the XML document. You can find all the tables with the corresponding codes at:
<http://www.ebiz.enea.it/eBIZ/imple/eBIZTCU-draft.asp?lingua=en&pag=6>

NT10 - Despatch Advise type
NT100 - eBIZ TCFUpstream version
NT11 - transport causal
NT12 - data source
NT16 - VAT rate or code
NT18 - message function
NT2 - third party qualifier
NT29 - format of a date
NT3 - issuer of the identifier (or identification system) of a location.
NT324 - propulsion system type
NT333 - type of hashing algorithm
NT51 - Filling Criterion for Package homogeneity
NT6 - coding system owner/issuer
NT60 - language, codes from ISO 639-1 (subset)
NT7 - unit of measure
T10 - ISO3166 - Country
T11 - transport package type
T21 - type of document
T22 - raw material characteristics type
T29 - type of yarn package
T3 - terms of delivery - IncoTerms
T30 - support of yarn package - material
T32 - yarn reel wrapping type
T33 - yarn outer packing
T38 - transport conditions
T4 - fabric piece inner packing (wrapping) 1
T40 - type of transport means
T44 - additional code type
T5 - fabric piece inner packing (wrapping) 2
T6 - fabric piece outer packing
T8 - Modes of Transport

(the most relevant tables are detailed in the following Annexes too)

ACKNOWLEDGEMENT



This action is part of the TRICK project, which has received funding from Horizon 2020 research and innovation programme under grant agreement No. 958352 of the European Union.

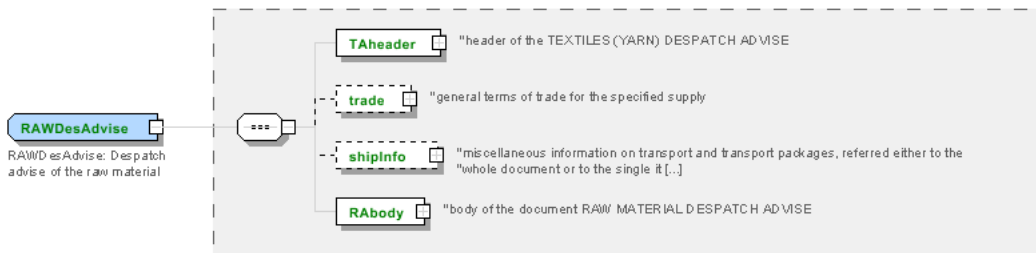
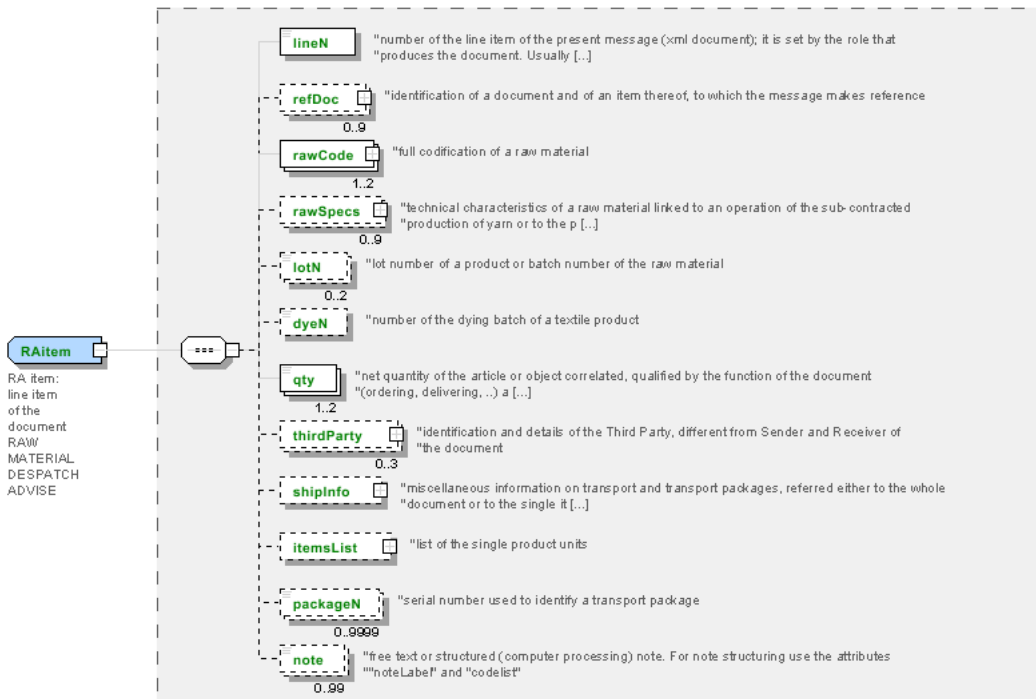
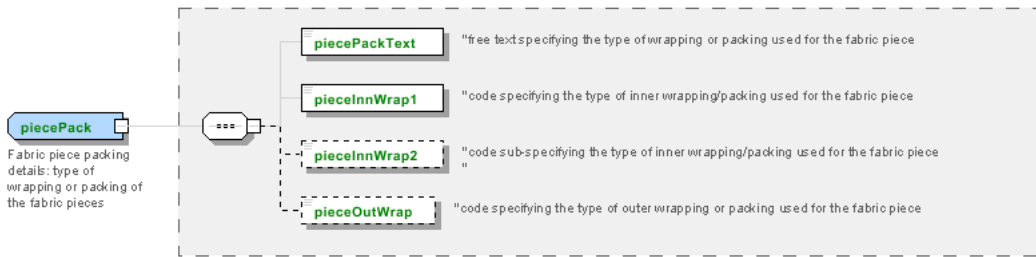
DISCLAIMER

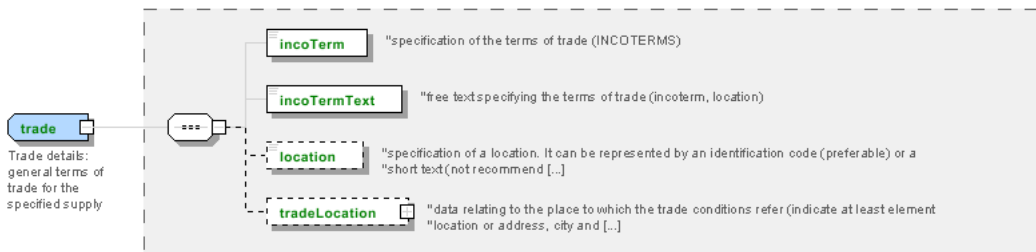
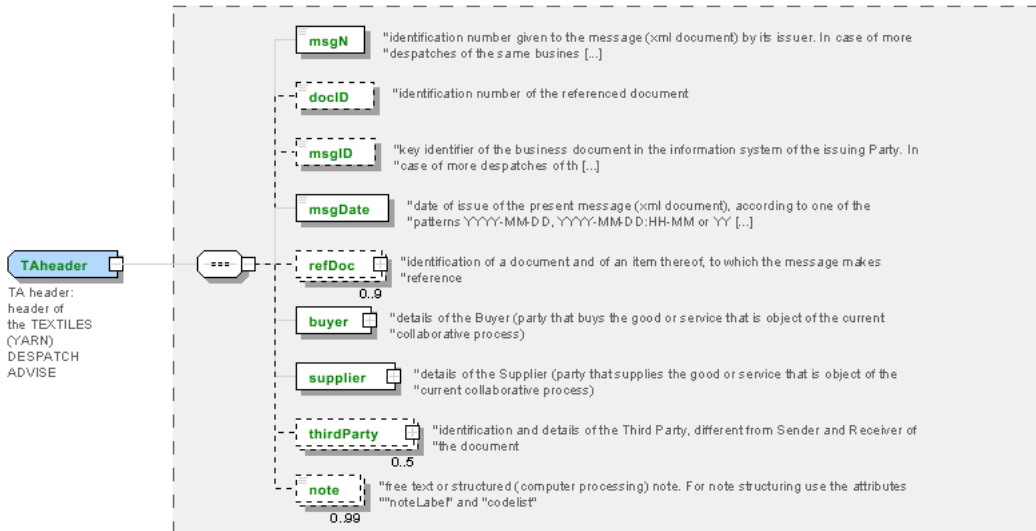
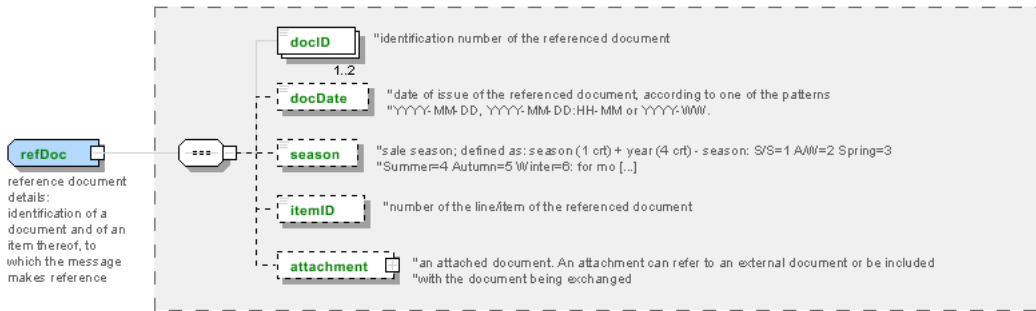
The content of this document represents the views of the authors only and is their sole responsibility; it cannot be considered to reflect the views of the European Commission or any other body of the European Union.

The European Commission does not accept any responsibility for use that may be made of the information it contains.

Annex A

Representative images of the principal complex elements' structure.





Annex B

NT10 - Despatch Advise type

type of Despatch advise

Agency name: eBIZ

Decoding table: NT10

File codes list (Generic code): http://www.ebiz.enea.it/moda-ml/repository/codelist/draft/gc_NT10.xml

Code	Description	Adoption note	Date of insertion
BRG	re-worked no-charge		01/07/2013
CLP	for work		05/12/2013
DDT	return from work		01/07/2013
DDV	for demonstration		01/07/2013
PKL	packing list		05/02/2018
PRE	pre-advise		
RCD	storage return		01/07/2013
RDV	return from demonstration		05/12/2013
RNL	not worked return		01/07/2013
RRG	return from re-worked no-charge		05/12/2013
RSB	return from sale		05/12/2013
SBT	for sale		01/07/2013
SCD	for storage		05/12/2013
STD	standard		

NT100 - eBIZ TCFUpstream version

dictionary version

Agency name: eBIZ

Decoding table: NT100

File codes list (Generic code): http://www.ebiz.enea.it/moda-ml/repository/codelist/draft/gc_NT100.xml

Code	Description	Adoption note	Date of insertion
2013-1	v2013-1		01/07/2013
2018-1	v2018-1		04/11/2018
draft	draft		08/09/2017

NT11 - transport causal

reason for the transport

Agency name: eBIZ

Decoding table: NT11

File codes list (Generic code): http://www.ebiz.enea.it/moda-ml/repository/codelist/draft/gc_NT11.xml

Code	Description	Adoption note	Date of insertion
FOC	free of charge		
FRW	return from re-works		
FST	return from storage		
FVW	return from view		
FWK	return from works		
IST	in storage		
NWK	return non-worked		
RJC	return from rejection		
SEL	to sell		
STO	to storage		
VEW	to view		
WRK	to works		

NT12 - data source

party who has provided the data

Agency name: eBIZ

Decoding table: NT12

File codes list (Generic code): http://www.ebiz.enea.it/moda-ml/repository/codelist/draft/gc_NT12.xml

Code	Description	Adoption note	Date of insertion
AC	internal test		
CO	external test		
CV	test after steaming		

NT16 - VAT rate or code

VAT rate or code (DEPRECATED, use dtScheme element)

Decoding table: NT16

File codes list (Generic code): http://www.ebiz.enea.it/moda-ml/repository/codelist/draft/gc_NT16.xml

NT18 - message function

function performed by the present message with regards to the transmission

Agency name: eBIZ

Decoding table: NT18

File codes list (Generic code): http://www.ebiz.enea.it/moda-ml/repository/codelist/draft/gc_NT18.xml

Code	Description	Adoption note	Date of insertion
CA	delete this document		01/07/2013
CP	copy		
OR	original		
RC	re-transmission for data correction		
RT	re-transmission		

NT2 - third party qualifier

Third Party role qualifier

Agency name: eBIZ

Decoding table: NT2

File codes list (Generic code): http://www.ebiz.enea.it/moda-ml/repository/codelist/draft/gc_NT2.xml

Code	Description	Adoption note	Date of insertion
AG	Sales Agent		
AU	Auditor		08/04/2019
BU	Buyer		13/06/2022
CE	Certification authority		08/04/2019
CM	Commissioner		13/06/2022
CO	Quality Controller		
CU	Customs authority		13/06/2022
DC	Response to		
DF	Invoicee		
DI	Copy to (CC)		28/10/2014
DM	Consignee		
DP	Consignment address (Delivery Party)		
EX	Expert		13/06/2022
IM	Importer		
OR	Originator		10/09/2014
SC	Sub contractor		10/04/2019

SM	Service/ePlatform manager		08/04/2019
SP	Forwarder		
SU	Supplier		13/06/2022
TL	Test or analysis laboratory		13/06/2022
TX	Tax Representative		

NT29 - format of a date

format used for the date

Agency name: eBIZ

Decoding table: NT29

File codes list (Generic code): http://www.ebiz.enea.it/moda-ml/repository/codelist/draft/gc_NT29.xml

Code	Description	Adoption note	Date of insertion
D	YYYY-MM-DD		
M	YYYY-MM-DD:HH-MM (date and time)		
S	AAAA-MM-GG:HH-MM-SS (date and time with seconds)		13/06/2022
W	YYYY-WW		

NT3 - issuer of the identifier (or identification system) of a location.

List of possible issuers of the identifier (or identification system) of a location.

Agency name: eBIZ

Decoding table: NT3

File codes list (Generic code): http://www.ebiz.enea.it/moda-ml/repository/codelist/draft/gc_NT3.xml

Code	Description	Adoption note	Date of insertion
EN4	GS1-GLN	obsolete	01/07/2013
GLN	GS1-GLN	equivalent to EN4	25/04/2023
MD	mutually agreed		
NCA	National custom authority	identifier of a bonded warehouse assigned by the custom authority	19/05/2023
PLA	Platform	internal coding of the involved platform	14/05/2023
TRI	TRICK		14/05/2023

NT324 - propulsion system type

propulsion system type adopted, for example, by a transport mean

Agency name: eBIZ for TRICK

Decoding table: NT324

File codes list (Generic code): http://www.ebiz.enea.it/moda-ml/repository/codelist/draft/gc_NT324.xml

Code	Description	Adoption note	Date of insertion
ALC	Alcohol		05/07/2022
BDIE	Bio diesel		05/07/2022
BEV	Battery Electric Vehicle		05/07/2022
BFUE	Biofuels	biodiesel excluded	02/09/2022
DIE	Diesel		05/07/2022
FCEV	Hydrogen Fuel cell		05/07/2022
GAS	GAS		05/07/2022
GPL	LPG		05/07/2022
HEV	Full hybrid (Hybrid Electric Vehicle)		05/07/2022
HUM	Human force		05/07/2022
HYB	Hybrid		05/07/2022
MHY	Mild hybrid		05/07/2022
NUC	Nuclear		05/07/2022
PET	Petrol		05/07/2022
PHEV	plug-in Hybrid Electric Vehicle		05/07/2022
STEAM	Steam		05/07/2022
WIND	Wind		05/07/2022

NT333 - type of hashing algorithm

type of hashing algorithm

Decoding table: NT333

File codes list (Generic code): http://www.ebiz.enea.it/moda-ml/repository/codelist/draft/gc_NT333.xml

Code	Description	Adoption note	Date of insertion
ADLER32	ADLER32		26/05/2023
HMAC	HMAC		26/05/2023
MD2	MD2		26/05/2023
MD4	MD4		26/05/2023
MD5	MD5		26/05/2023
MDC-2	MDC-2		26/05/2023
PANAMA	PANAMA		26/05/2023
RIPEMD-160	RIPEMD-160		26/05/2023
SHA-1	SHA-1		26/05/2023

SHA-2 256	SHA-2 256		26/05/2023
SHA-2 384	SHA-2 384		26/05/2023
SHA-2 512	SHA-2 512		26/05/2023
TIGER	TIGER		26/05/2023

NT51 - Filling Criterion for Package homogeneity

Filling Criterion for Package homogeneity

Agency name: eBIZ

Decoding table: NT51

File codes list (Generic code): http://www.ebiz.enea.it/moda-ml/repository/codelist/draft/gc_NT51.xml

Code	Description	Adoption note	Date of insertion
COL	Colour		08/09/2017
MOD	Model		08/09/2017
SIZ	Size		08/09/2017

NT6 - coding system owner/issuer

code specifying the organisation who has created or owns the registers of the present coding or numbering system

Agency name: eBIZ

Decoding table: NT6

File codes list (Generic code): http://www.ebiz.enea.it/moda-ml/repository/codelist/draft/gc_NT6.xml

Code	Description	Adoption note	Date of insertion
CBR	National customs brokers registry		12/06/2023
CL	Customer/buyer		
CO	Quality Controller		
DU	D-U-N-S registry (Data Universal Numbering System)		04/05/2023
EB	eBIZ	replaces 'ML'	18/03/2019
EN	GS1 (ex-EAN International)		
EO	Registro EORI (Economic Operators Registration and Identification number)		04/03/2023
ES	e-Stockflow	DEPRECATED	
FO	Supplier		
GS	GS1		01/07/2013
MF	national taxation authority (i.e. VAT codes registry)		
ML	Moda-ML	DEPRECATED	
PL	Application Platform		13/06/2022

REX	Registered Exporter system (REX)		19/05/2023
SP	Service Provider		
SU	Enterprise Identification Number UID	Only switzerland	04/03/2023

NT60 - language, codes from ISO 639-1 (subset)

Agency name: eBIZ / ISO

Decoding table: NT60

File codes list (Generic code): http://www.ebiz.enea.it/moda-ml/repository/codelist/draft/gc_NT60.xml

Code	Description	Adoption note	Date of insertion
af	Afrikaans		31/01/2019
ar	Arabic		31/01/2019
be	Belarusian		31/01/2019
bg	Bulgarian		31/01/2019
bn	Bengali		31/01/2019
bo	Tibetan		31/01/2019
bs	Bosnian		31/01/2019
ca	Catalan, Valencian		31/01/2019
cs	Czech		31/01/2019
da	Danish		31/01/2019
de	German		31/01/2019
el	Greek, Modern (1453-)		31/01/2019
en	English		31/01/2019
eo	Esperanto		31/01/2019
es	Spanish, Castilian		31/01/2019
et	Estonian		31/01/2019
eu	Basque		31/01/2019
F	Female		15/04/2019
fa	Persian		31/01/2019
fi	Finnish		31/01/2019
fr	French		31/01/2019
ga	Irish		31/01/2019
gd	Gaelic, Scottish Gaelic		31/01/2019
gn	Guarani		31/01/2019
he	Hebrew		31/01/2019
hr	Croatian		31/01/2019
ht	Haitian, Haitian Creole		31/01/2019

hu	Hungarian		31/01/2019
hy	Armenian		31/01/2019
ia	Interlingua (International Auxiliary Language Association)		31/01/2019
id	Indonesian		31/01/2019
is	Icelandic		31/01/2019
it	Italian		31/01/2019
ja	Japanese		31/01/2019
jv	Javanese		31/01/2019
ka	Georgian		31/01/2019
km	Central Khmer		31/01/2019
ko	Korean		31/01/2019
ku	Kurdish		31/01/2019
lb	Luxembourgish, Letzeburgesch		31/01/2019
lo	Lao		31/01/2019
lt	Lithuanian		31/01/2019
lv	Latvian		31/01/2019
mg	Malagasy		31/01/2019
mk	Macedonian		31/01/2019
mn	Mongolian		31/01/2019
mt	Maltese		31/01/2019
nl	Dutch, Flemish		31/01/2019
no	Norwegian		31/01/2019
pl	Polish		31/01/2019
pt	Portuguese		31/01/2019
ro	Romanian, Moldavian, Moldovan		31/01/2019
ru	Russian		31/01/2019
se	Northern Sami		31/01/2019
sk	Slovak		31/01/2019
sl	Slovenian		31/01/2019
sm	Samoan		31/01/2019
so	Somali		31/01/2019
sq	Albanian		31/01/2019
sr	Serbian		31/01/2019
sv	Swedish		31/01/2019
sw	Swahili		31/01/2019
ta	Tamil		31/01/2019
th	Thai		31/01/2019
tr	Turkish		31/01/2019

uk	Ukrainian		31/01/2019
ur	Urdu		31/01/2019
uz	Uzbek		31/01/2019
vi	Vietnamese		31/01/2019
zh	Chinese		31/01/2019

NT7 - unit of measure

specification of the unit of measure, it is a sub set of table Unit of Measure Code - UN/ECE REC 20 delivered by United Nations Economic Commission for Europe (UN/ECE)

Agency name: eBIZ / UN/ECE

Decoding table: NT7

File codes list (Generic code): http://www.ebiz.enea.it/moda-ml/repository/codelist/draft/gc_NT7.xml

Other link: <http://docs.oasis-open.org/ubl/os-UBL-2.1/cl/gc/default/UnitOfMeasureCode-2.1.gc#>

Code	Description	Adoption note	Date of insertion
CMK	square centimetre		20/12/2017
CMQ	cubic centimetre		20/12/2017
CMT	centimetre		
CNE	centiNewton		
CO2TON	ton of CO2		10/09/2014
COUPLES	couples		
DAY	day		22/08/2022
DEGD	decimal degrees		04/07/2022
DEGMS	degrees with minutes and seconds		01/07/2022
DMQ	cubic decimetre		
E37	pixel		11/04/2018
GRM	gram		
HUR	hour		
INH	inch		
KGM	kilogram		
KMT	kilometer		
KWH	kilowatthours		10/09/2014
LBR	pound		
MCG	microgram		23/08/2022
MG	milligram		23/08/2022
MIN	minute		
MMK	square millimetre		20/12/2017
MONTH	month		22/08/2022

MSEC	millisecond (time)		22/08/2022
MTK	square metre		20/12/2017
MTQ	cubic metre		
MTR	metre		
NMB	numero		
ONZ	ounce		
P1	percent		
PPM	parts per milion		
PZ	piece		
RPM	rounds per metre		
SEC	second (time)		22/08/2022
YEAR	year		22/08/2022
YRD	yard		

T10 - ISO3166 - Country

code of the nation

Agency name: ISO

Decoding table: T10

File codes list (Generic code): http://www.ebiz.enea.it/moda-ml/repository/codelist/draft/gc_T10.xml

Table not printed: there are 240 elements, more than the maximum specified for printing: 99.

T11 - transport package type

code specifying the type of package used for transport and delivery (subset of UN/ECE 8053 and UBL TransportEquipmentTypeCode-2.1)

Agency name: eBIZ

Decoding table: T11

File codes list (Generic code): http://www.ebiz.enea.it/moda-ml/repository/codelist/draft/gc_T11.xml

Other link: <http://docs.oasis-open.org/ubl/os-UBL-2.1/cl/gc/default/TransportEquipmentTypeCode-2.1.gc#>

Code	Description	Adoption note	Date of insertion
4A	box, steel		
4C	box, wood		
4G	Box, fibreboard		01/08/2018
4H	Box, plastic		01/08/2018
5H	Bag, woven plastic		01/08/2018
5L	Bag, textile		01/08/2018
5M	Bag, paper		

AJ	Cone		01/08/2018
BL	Bale, compressed		01/08/2018
BN	Bale, non-compressed		01/08/2018
BX	Box		
CI	Canister		01/08/2018
CL	Coil		01/08/2018
CN	Container, not otherwise specified as transport equipment		01/08/2018
CS	Case		01/08/2018
CT	Carton		01/08/2018
EC	Bag, plastic		01/08/2018
ED	Case, with pallet base		01/08/2018
EE	Case, with pallet base, wooden		01/08/2018
EF	Case, with pallet base, cardboard		01/08/2018
EG	Case, with pallet base, plastic		01/08/2018
EH	Case, with pallet base, metal		01/08/2018
FX	Bag, flexible container		01/08/2018
HN	Hanger		01/08/2018
NE	unpacked		
NF	Unpacked or unpackaged, single unit		01/08/2018
NG	Unpacked or unpackaged, multiple units		01/08/2018
OA	Pallet, CHEP 40 cm x 60 cm		01/08/2018
OB	Pallet, CHEP 80 cm x 120 cm		01/08/2018
OC	Pallet, CHEP 100 cm x 120 cm		01/08/2018
OD	Pallet, AS 4068-1993		01/08/2018
OE	Pallet, ISO T11		01/08/2018
PE	europallet (80x120)		
PX	pallet		
QS	box, plastic, solid		
RJ	Rack, clothing hanger		01/08/2018
RL	Reel		01/08/2018
SO	Spool		01/08/2018
TU	tube		
XD	bag, plastics film		
XK	bag,paper, multi-wall, water resistant		
ZZ	Mutually defined		01/08/2018

T21 - type of document

type or class to which the referenced document belongs

Agency name: eBIZ

Decoding table: T21

File codes list (Generic code): http://www.ebiz.enea.it/moda-ml/repository/codelist/draft/gc_T21.xml

Code	Description	Adoption note	Date of insertion
BIL	Bill of lading		07/03/2023
BOR	Blanket order		01/02/2018
CAT	Price catalogue - tech sheet		
CEO	Certificate of origin		13/04/2018
CER	Certificate		13/04/2018
CMR	CMR consignment note		07/03/2023
COC	Colour card		
CRN	Credit note		08/09/2017
CTO	Checking order		01/07/2013
CTR	Contract		
CXF	CxF3 file		01/07/2013
DAD	Darn order		
DDT	Delivery note (transport document)		
DEA	Despatch advise		
DER	Despatch request		
DR	Document Request		02/12/2014
EAD	Export Accompanying Document	adopted by European customs	12/05/2023
ECMR	electronic CMR consignment note		07/03/2023
ECUS	EXPORT Custom Declaration		07/03/2023
FOR	Forecast		02/12/2014
GSO	Garment stock offer		
GSX	Garment stock offer change		
ICUS	IMPORT Custom Declaration		07/03/2023
INV	Invoice		
KCC	Knitting-Clothing Commission Order		02/12/2014
KCI	Garment in Work Inventory Report		02/12/2014
LCA	LCA study		28/08/2022
LCAD	LCA study dataset		28/08/2022
M2M	Made to Measure Production Order		02/12/2014
MAS	Master marker		
MCI	Visual merchandising instruction		13/04/2018

OCH	Order change		
OFF	Offer		
ORD	Purchase order		
ORP	Order response		
OSR	order status request		
OSS	Offer status		02/12/2014
OST	Order status		
OUR	our reference		
PCO	Preferential certificate of origin		07/03/2023
PEF	PEF study		28/08/2022
PEFD	PEF study dataset		28/08/2022
PEFP	PEF environmental profile		07/03/2023
QR	Quality Report		02/12/2014
RAI	Raw Material in Work Inventory Report		02/12/2014
RDC	Raw dyeing commission order		
RDH	Raw dyeing order change		
RDR	Raw dyeing order response		
REA	Receiving advise		
REQ	Request for Offer		
RET	Return		02/12/2014
RSC	Spinning commission order		
RSH	Spinning order change		
RSR	Spinning order response		
SAD	Single Administrative Document	adopted by European customs	12/05/2023
SCL	Process sheet		
SDE	Self-declaration		07/03/2023
SDS	SDS - Safety data sheet		07/03/2023
SLCA	S-LCA Study		07/03/2023
SLCAD	S-LCA Study documentation		07/03/2023
TFC	Textile dyeing-finishing commission order		
TFX	Textile Dyeing-Finishing Order Change		02/12/2014
TPC	Textile printing commission order		
TPX	Textile Printing Order Change		02/12/2014
TWI	Textile in work inventory		
VMI	visual merchandising instructions		01/02/2018
WAC	Warping commission order		
WAYB	Waybill		07/03/2023
WEC	Weaving commission order		

YDC	Yarn dyeing commission order		
YDH	Yarn dyeing order change		
YDR	Yarn dyeing order response		
YTC	Twisting commission order		
YWI	Yarn in work inventory		

T22 - raw material characteristics type

physical or mechanical parameter used to define a characteristics of a raw material

Agency name: eBIZ

Decoding table: T22

File codes list (Generic code): http://www.ebiz.enea.it/moda-ml/repository/codelist/draft/gc_T22.xml

Code	Description	Adoption note	Date of insertion
FIN	fineness		
LNG	length		
RTR	shrinkage		
YLD	yield		

T29 - type of yarn package

type of package (roll-up) used for a yarn product

Agency name: eBIZ

Decoding table: T29

File codes list (Generic code): http://www.ebiz.enea.it/moda-ml/repository/codelist/draft/gc_T29.xml

Code	Description	Adoption note	Date of insertion
CIL	bobbin		
CON	cone		
HNK	hank, skein		01/07/2013
MUF	muff, cake		01/07/2013
SPL	spool		
TUB	tube		
XCO	supercone		

T3 - terms of delivery - Incoterms

specification of the terms of trade (INCOTERMS)

Agency name: Incoterms

Decoding table: T3

File codes list (Generic code): http://www.ebiz.enea.it/moda-ml/repository/codelist/draft/gc_T3.xml

Other link: <https://iccwbo.org/resources-for-business/incoterms-rules/incoterms-2020/#>

Code	Description	Adoption note	Date of insertion
CFR	COST AND FREIGHT (named port of destination)		
CIF	COST, INSURANCE AND FREIGHT (named port of destination)		
CIP	CARRIAGE AND INSURANCE PAID (named place of destination)		
CPA	CARRIAGE PAID (named place of destination)		
DAF	DELIVERED AT FRONTIER (named place)	according to Incoterms® 2010, since 2020 it is OBSOLETE.	08/12/2017
DAP	Delivered at Place of destination (named place of destination)	according to Incoterms® 2010	08/12/2017
DAT	Delivered at Terminal (named place of destination)	according to Incoterms® 2010, since 2020 it is OBSOLETE.	08/12/2017
DDP	DELIVERED DUTY PAID (named place of destination)		
DDU	DELIVERED DUTY UNPAID (named place of destination)	according to Incoterms® 2010 it is OBSOLETE , use DAP	08/12/2017
DEQ	DELIVERED EX-QUAY (named port of destination)	according to Incoterms® 2010 it is OBSOLETE	08/12/2017
DES	DELIVERED EX-SHIP (named port of destination)	according to Incoterms® 2010 it is OBSOLETE	08/12/2017
DDP	DELIVERED AT PLACE UNLOADED	according to Incoterms® 2020	25/04/2022
EXW	EX WORKS (named place)		
FAS	FREE ALONGSIDE SHIP (named port of shipment)		
FCA	FREE CARRIER (named place)		
FOB	FREE ON BOARD (named port of shipment)		

T30 - support of yarn package - material

type of material of which a package for yarn is made

Agency name: eBIZ

Decoding table: T30

File codes list (Generic code): http://www.ebiz.enea.it/moda-ml/repository/codelist/draft/gc_T30.xml

Code	Description	Adoption	Date of
------	-------------	----------	---------

		note	insertion
CA	cartoon		
DY	for soft package dyeing		
MT	metallic		01/07/2013
PL	plastic		

T32 - yarn reel wrapping type

type of wrapping in which a package of yarn is wrapped

Agency name: eBIZ

Decoding table: T32

File codes list (Generic code): http://www.ebiz.enea.it/moda-ml/repository/codelist/draft/gc_T32.xml

Code	Description	Adoption note	Date of insertion
XA	without bag		
XB	paper bag		01/07/2013
XD	plastic film bag		

T33 - yarn outer packing

code specifying the type of outer wrapping or packing of a yarn

Agency name: eBIZ

Decoding table: T33

File codes list (Generic code): http://www.ebiz.enea.it/moda-ml/repository/codelist/draft/gc_T33.xml

Code	Description	Adoption note	Date of insertion
00			
CB	cartoon box		
CC	cartoon box 18 reels		
CD	cartoon box 36 reels		
XD	plastic film		

T38 - transport conditions

special condition of transport or special service requested to the Forwarder

Decoding table: T38

File codes list (Generic code): http://www.ebiz.enea.it/moda-ml/repository/codelist/draft/gc_T38.xml

Code	Description	Adoption note	Date of insertion
------	-------------	---------------	-------------------

ACC	arrange customs clearance		
CAL	Carrier loads		
CAU	Carrier unloads		
CMR	CMR carnet		
FFN	freight forwarders national conditions		
FLD	special agreement for full loading		
NCC	do not arrange customs clearance		
PPB	packaging paid by Buyer		
PPS	packaging paid by Supplier		
PRO	proof of delivery		
RFR	return container free		
RPC	return container paid by Customer		
RPS	return container paid by Supplier		
SHL	Shipper loads		
SHU	Consignee unloads		

T4 - fabric piece inner packing (wrapping) 1

code specifying the type of inner wrapping/packing used for the fabric piece

Agency name: eBIZ

Decoding table: T4

File codes list (Generic code): http://www.ebiz.enea.it/moda-ml/repository/codelist/draft/gc_T4.xml

Code	Description	Adoption note	Date of insertion
A	Folded, whole width		
B	Folded, doubled		
C	Folded, tube products		
D	Spoiled, whole width		
E	Spoiled, doubled, pli: left		
F	Spoiled, doubled, pli: right		
G	Rolled, whole width, single item		
H	Rolled, whole width, several items		
I	Rolled, doubled		
J	Rolled, tube products		

T40 - type of transport means

means of transport, in general or referred to a specific leg

Agency name: eBIZ

Decoding table: T40

File codes list (Generic code): http://www.ebiz.enea.it/moda-ml/repository/codelist/draft/gc_T40.xml

Code	Description	Adoption note	Date of insertion
AIR	aircraft		
SHP	ship		
TRU	truck		
VAN	van		

T44 - additional code type

qualifier of the additional coding of a product

Agency name: eBIZ

Decoding table: T44

File codes list (Generic code): http://www.ebiz.enea.it/moda-ml/repository/codelist/draft/gc_T44.xml

Code	Description	Adoption note	Date of insertion
CC	colour card		
CL	sales collection		
CO	company identification code		08/09/2017
DY	dye number		
LT	lot number		
MDI	Made in		08/09/2017
MS	manufacturing state		
PKG	packaging		09/09/2014
PL	product line		
RGB	RGB value		
SE	selvedge code		

T5 - fabric piece inner packing (wrapping) 2

code specifying the sub-type of inner wrapping/packing used for the fabric piece

Agency name: eBIZ

Decoding table: T5

File codes list (Generic code): http://www.ebiz.enea.it/moda-ml/repository/codelist/draft/gc_T5.xml

Code	Description	Adoption note	Date of insertion
------	-------------	---------------	-------------------

A	Open		
B	Folded once, not looped		
C	Folded twice, not looped		
H	Folded once, looped		
I	Folded twice, looped		
J	Without inner object, right side inside		
K	On carton or spooling plank, right side inside		
L	On spool (for pressure sensitive products), right side inside		
M	Without inner object, left side inside		
N	On carton or spooling plank, left side inside		
O	On spool (for pressure sensitive products), left side inside		
P	Without inner object, right side inside (deprecated code)		
Q	On carton, right side inside		
R	On wooden stick, right side inside		
S	Without inner object, left side inside (deprecated code)		
T	On carton, left side inside		
U	On wooden stick, left side inside		

T6 - fabric piece outer packing

code specifying the type of outer wrapping or packing used for the fabric piece

Agency name: eBIZ

Decoding table: T6

File codes list (Generic code): http://www.ebiz.enea.it/moda-ml/repository/codelist/draft/gc_T6.xml

Code	Description	Adoption note	Date of insertion
0	Not wrapped		
1	Totally wrapped		
2	Wrapped, one side open		
3	Wrapped, both sides open		
4	Wrapped, one side open, with show corner		
5	Wrapped in cartons		
6	Double wrapped		

T8 - Modes of Transport

way of transport, in general or referred to the specified leg. Derived from UNECE Recommendation 28 (see link)

Agency name: eBIZ

Decoding table: T8

File codes list (Generic code): http://www.ebiz.enea.it/moda-ml/repository/codelist/draft/gc_T8.xml

Other link: <https://tfig.unece.org/contents/recommendation-28.htm#>

Code	Description	Adoption note	Date of insertion
1	MARITIME TRANSPORT		
10	Courier	DEPRECATED	01/07/2013
2	RAIL TRANSPORT		
3	ROAD TRANSPORT		
4	AIR TRANSPORT		
5	MAIL		
6	MULTIMODAL TRANSPORT	example ship + truck. Not used for custom declarations.	13/06/2023
8	INLAND WATER TRANSPORT		
9	MODE UNKNOWN	Includes Own propulsion	13/06/2023