



<http://www.ebiz-tcf.eu>

DRAFT

IMPLEMENTATION GUIDE TRANSACTION "WEAVING OFFER"

Version: draft

Date of release: 26/6/2023

Document code: G060

technical Documentation: <http://www.ebiz.enea.it>

XML Schemas repository: <http://www.ebiz.enea.it/moda-ml/repository/schema/draft/default.asp>

Guides repository: <http://www.ebiz.enea.it/moda-ml/repository/guide/draft/default.asp>

Guide filename: G060-eBIZ-WeavingOffer.pdf

0. PREMISE

This document contains a proposal for the updating and extension of eBIZ specifications starting from the eBIZ version 2018. Under the name of 'Draft version' it is reported the result of an extensive work of analysis and consultation aimed at developing and maintaining eBIZ specifications.

In particular, the content of this proposal is the result of various activities, mainly those carried out within the framework of the **TRICK project** funded by the European Commission: grant agreement 958352, call H2020-LOW-CARBON-CIRCULAR-INDUSTRIES-2020 / H2020-LCCI-2020-EASME-twostage.

The technical contents are backwards compatible with the latest official published version, with the exclusion of the totally new concepts added explicitly for the version that are thought as incremental evolution of the knowledge base.

1. BUSINESS DESCRIPTION

1.1 Scope

The present guide has been issued to assist the companies of the Textile-Clothing sector in the implementation of the standard XML document type "WEAVING OFFER", providing all the instruction required for its use in the context of e-commerce between Subcontractors and their Customers shown in the enclosed diagram

All the rules required for the construction and validation of the document are embedded into the specific XML-Schema, which is detailed in section "Implementation guide".

1.2 Generalities

The Offer is used by a Subcontractor to respond to the Request of a Fabric Producer for the weaving of a yarn.

The Offer is structured in four levels:

Macro-type of Work offered = document root (7 types of Request)

Product Family = document qualifier (type of product with reference to the manufacturing process; e.g.: combed yarn, jacquard weaved fabric, ..)

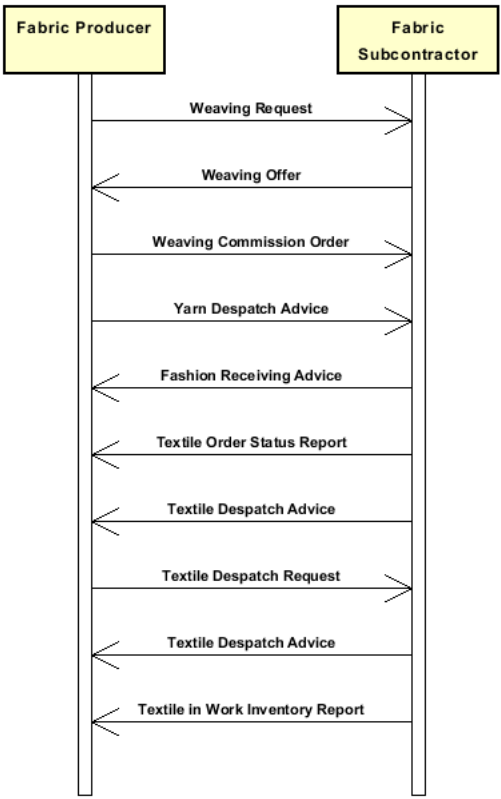
Product Specifications = "xxxSpecs" (technical characteristics and properties of the product)

Operations offered = "XXXMnfrOperation" (details of the works requested)

Quantities, unit measures and prices must be referred to the third level (Line Item)

1.3. Possible scenario

Subcontracted weaving



2. IMPLEMENTATION GUIDE

2.1 General structure of XML document

All the business data that can be exchanged through this class of documents are shown in the following "document structure", that provides a simplified vision of the Schema.

In particular:

- the two numbers following each element define its "cardinality" (minimum and maximum number of occurrences); the minimum equal zero indicates that the element is optional, the minimum greater than zero indicates that is mandatory;
- the bold character denotes the complex elements (aggregates of simple elements) that were built for the sake of functionality and re-usability of some complex informations sets. The child elements in each parent element are easily spotted as "indented";
- the symbol "@" denotes an attribute of the preceding element; here "the usage indicator (optional, required, ...)" is shown in square brackets.

Structure

TEXWeaveOffer

```
@msgfunction [Optional] [Default= OR]
@fabProcQualifier [Required]
@version [Optional] [Default= draft]
@useProfile [Optional]
| OFheader 1-1
| | msgN 1-1
| | - choose -
| | | msgID 0-1
| | | - or -
| | | docID 0-1
| | | @numberingOrg [Optional]
| | | - end choose -
| | | msgDate 1-1
| | | @dateForm [Optional]
| | | season 0-1
| | | @numberingOrg [Optional]
| | | @codeList [Optional]
| | | @listName [Optional]
| | | @listVersion [Optional]
| | | validityStart 0-1
| | | @dateForm [Optional]
| | | validityEnd 1-1
| | | @dateForm [Optional]
| | | refDoc 0-9
| | | @docType [Required]
| | | | docID 1-2
| | | | @numberingOrg [Optional]
| | | | docDate 0-1
| | | | @dateForm [Optional]
| | | | season 0-1
| | | | @numberingOrg [Optional]
| | | | @codeList [Optional]
| | | | @listName [Optional]
| | | | @listVersion [Optional]
| | | | itemID 0-1
| | | | attachment 0-1
| | | | @uid [Optional]
| | | | | fileName 0-1
| | | | | @numberingOrg [Optional]
| | | | | binaryObject 0-1
| | | | | @format [Optional]
| | | | | @mime [Optional]
| | | | | @encoding [Optional]
| | | | | @characterSet [Optional]
| | | | | externalReference 0-99
| | | | | | uri 1-1
| | | | | | @isURL [Optional] [Default= true]
| | | | | | mimeTypeCode 0-1
```

- | | | | formatCode 0-1
- | | | | encodingCode 0-1
- | | | | characterSetCode 0-1
- | | | hashFootprint 0-1
- | | | | @schemeID [Optional]
- | | | | @hashMethod [Required]
- | | | **blockChainReference 0-9**
- | | | | uri 1-1
- | | | | | @isURL [Optional] [Default= true]
- | | | | transactionReceipt 1-9

buyer 1-1

- | | @logo [Optional]
- | | @sender [Optional]
- | | | id 1-1
- | | | | @numberingOrg [Optional]
- | | | additionalIdentifier 0-9
- | | | | @numberingOrg [Optional]
- | | | | @idQualifier [Optional]
- | | | legalName 0-1
- | | | dept 0-1
- | | | subDept 0-1
- | | | person 0-1
- | | | | @email [Optional]
- | | | | @phone [Optional]
- | | | | @fax [Optional]
- | | | street 0-1
- | | | city 0-1
- | | | subCountry 0-1
- | | | country 0-1
- | | | postCode 0-1
- | | | **geoCoordinates 0-1**
- | | | | @um [Optional] [Default= DEGD]
- | | | | @geoRefSystem [Optional]
- | | | | | xGeoCoord 1-1
- | | | | | yGeoCoord 1-1
- | | | | | zGeoCoord 0-1

- choose -

subContractor 0-1

- | | @sender [Optional]
- | | | id 1-1
- | | | | @numberingOrg [Optional]
- | | | legalName 0-1
- | | | dept 0-1
- | | | subDept 0-1
- | | | person 0-1
- | | | | @email [Optional]
- | | | | @phone [Optional]
- | | | | @fax [Optional]
- | | | street 0-1
- | | | city 0-1
- | | | subCountry 0-1
- | | | country 0-1
- | | | postCode 0-1
- | | | **geoCoordinates 0-1**
- | | | | @um [Optional] [Default= DEGD]
- | | | | @geoRefSystem [Optional]
- | | | | | xGeoCoord 1-1
- | | | | | yGeoCoord 1-1
- | | | | | zGeoCoord 0-1

- or -

supplier 0-1

- | | @logo [Optional]
- | | @sender [Optional]
- | | | id 1-1
- | | | | @numberingOrg [Optional]
- | | | additionalIdentifier 0-9
- | | | | @numberingOrg [Optional]
- | | | | @idQualifier [Optional]

```

| | | legalName 0-1
| | | dept 0-1
| | | subDept 0-1
| | | person 0-1
| | | @email [Optional]
| | | @phone [Optional]
| | | @fax [Optional]
| | | street 0-1
| | | city 0-1
| | | subCountry 0-1
| | | country 0-1
| | | postCode 0-1
| | | geoCoordinates 0-1
| | | @um [Optional] [Default= DEGD]
| | | @geoRefSystem [Optional]
| | | | xGeoCoord 1-1
| | | | yGeoCoord 1-1
| | | | zGeoCoord 0-1

```

- end choose -

```

| | thirdParty 0-5
| | @VAT [Optional]
| | @role [Required]
| | @sender [Optional]
| | | id 1-1
| | | @numberingOrg [Optional]
| | | legalName 0-1
| | | dept 0-1
| | | subDept 0-1
| | | person 0-1
| | | @email [Optional]
| | | @phone [Optional]
| | | @fax [Optional]
| | | street 0-1
| | | city 0-1
| | | subCountry 0-1
| | | country 0-1
| | | postCode 0-1
| | | geoCoordinates 0-1
| | | @um [Optional] [Default= DEGD]
| | | @geoRefSystem [Optional]
| | | | xGeoCoord 1-1
| | | | yGeoCoord 1-1
| | | | zGeoCoord 0-1
| | note 0-99
| | @numberingOrg [Optional]
| | @codeList [Optional]
| | @noteLabel [Optional]

```

terms 0-1

```

| | payment 0-5
| | @finDiscount [Optional]
| | @finSurcharge [Optional]
| | - choose -
| | | payTerm 1-1
| | - or -
| | | payTermText 1-1
| | - end choose -
| | | payMode 0-1
| | insPayment 0-5
| | @part [Required]
| | - choose -
| | | payTerm 1-1
| | - or -
| | | payTermText 1-1
| | - end choose -
| | | payMode 0-1
| | trade 0-1
| | - choose -

```

```

| | | incoTermText 1-1
| | - or -
| | | incoTerm 1-1
| | - end choose -
| | - choose -
| | | tradeLocation 0-1
| | | | location 0-1
| | | | | @LRI [Optional]
| | | | | legalName 0-1
| | | | | dept 0-1
| | | | | subDept 0-1
| | | | | person 0-1
| | | | | | @email [Optional]
| | | | | | @phone [Optional]
| | | | | | @fax [Optional]
| | | | | street 0-1
| | | | | city 0-1
| | | | | subCountry 0-1
| | | | | country 0-1
| | | | | postCode 0-1
| | | | | geoCoordinates 0-1
| | | | | | @um [Optional] [Default= DEGD]
| | | | | | @geoRefSystem [Optional]
| | | | | | | xGeoCoord 1-1
| | | | | | | yGeoCoord 1-1
| | | | | | | zGeoCoord 0-1
| | - or -
| | | location 0-1
| | | | @LRI [Optional]
| | - end choose -
| | | transInfo 0-5
| | | | @transReason [Optional]
| | | | | @progr [Optional]
| | | | | transMode 1-1
| | | | | carrier 0-1
| | - choose -
| | | deliveryLocation 0-1
| | | | location 0-1
| | | | | @LRI [Optional]
| | | | | legalName 0-1
| | | | | dept 0-1
| | | | | subDept 0-1
| | | | | person 0-1
| | | | | | @email [Optional]
| | | | | | @phone [Optional]
| | | | | | @fax [Optional]
| | | | | street 0-1
| | | | | city 0-1
| | | | | subCountry 0-1
| | | | | country 0-1
| | | | | postCode 0-1
| | | | | geoCoordinates 0-1
| | | | | | @um [Optional] [Default= DEGD]
| | | | | | @geoRefSystem [Optional]
| | | | | | | xGeoCoord 1-1
| | | | | | | yGeoCoord 1-1
| | | | | | | zGeoCoord 0-1
| | - or -
| | | deliveryPlace 0-1
| | - end choose -
| | | grossWeight 0-1
| | | | @um [Required]
| | | | netWeight 0-1
| | | | | @um [Required]
| | | | transMeans 0-1
| | | | | @propulsionSystemCode [Optional]
| | | | transCondition 0-3
| | | | transConditionText 0-1

```

```

- choose -
| | | despatchPlace 0-1
- or -
| | | despatchLocation 0-1
| | | | location 0-1
| | | | | @LRI [Optional]
| | | | | legalName 0-1
| | | | | dept 0-1
| | | | | subDept 0-1
| | | | | person 0-1
| | | | | @email [Optional]
| | | | | @phone [Optional]
| | | | | @fax [Optional]
| | | | | street 0-1
| | | | | city 0-1
| | | | | subCountry 0-1
| | | | | country 0-1
| | | | | postCode 0-1
| | | | | geoCoordinates 0-1
| | | | | | @um [Optional] [Default= DEGD]
| | | | | | @geoRefSystem [Optional]
| | | | | | | xGeoCoord 1-1
| | | | | | | yGeoCoord 1-1
| | | | | | | zGeoCoord 0-1
- end choose -
| | | despatchDate 0-1
| | | | @dateForm [Optional]
| | | delEffectiveDate 0-1
| | | | @dateForm [Optional]
| | | routeLength 0-1
| | | | @um [Required]
| | | allowanceCharge 0-9
| | | | @um [Optional]
| | | | | @VAT [Optional]
| | | | | @minQty [Optional]
| | | | | @currency [Optional]
| | | | | @maxQty [Optional]
| | | | | @isCharge [Optional]
- choose -
| | | | AC_category 1-1
- or -
| | | | AC_categoryText 1-1
- end choose -
- choose -
| | | | AC_percent 1-1
- or -
| | | | AC_amount 1-1
| | | | | @currency [Optional]
- end choose -
| | | | dtScheme 0-1
| | | | | @taxType [Required]
| | | | | | taxCategory 0-1
| | | | | | taxRate 0-1
| | | | | | legalRef 0-1
| | | | | | @numberingOrg [Optional]
| | | | | | @codeList [Optional]
| | | | | | @listName [Optional]
| | | | | | @listVersion [Optional]
| | | | | | note 0-99
| | | | | | @numberingOrg [Optional]
| | | | | | @codeList [Optional]
| | | | | | @noteLabel [Optional]

| TWOFbody 1-1
| | TWOFitem 1-unbounded
| | | @act [Required]
| | | | lineN 1-1
| | | | | @VAT [Optional]

```


refDoc 0-9

| @docType [Required]

| docID 1-2

| @numberingOrg [Optional]

| docDate 0-1

| @dateForm [Optional]

| season 0-1

| @numberingOrg [Optional]

| @codeList [Optional]

| @listName [Optional]

| @listVersion [Optional]

| itemID 0-1

attachment 0-1

| @uid [Optional]

| fileName 0-1

| @numberingOrg [Optional]

| binaryObject 0-1

| @format [Optional]

| @mime [Optional]

| @encoding [Optional]

| @characterSet [Optional]

externalReference 0-99

| uri 1-1

| @isURL [Optional] [Default= true]

| mimeTypeCode 0-1

| formatCode 0-1

| encodingCode 0-1

| characterSetCode 0-1

| hashFootprint 0-1

| @schemeID [Optional]

| @hashMethod [Required]

blockChainReference 0-9

| uri 1-1

| @isURL [Optional] [Default= true]

| transactionReceipt 1-9

fabricCompos 0-1

| percCompos 1-9

| @fibre [Required]

| @materialSource [Optional]

| @recyclingProcessMethod [Optional]

| @percSourcesRenewable [Optional]

| @validationMethod [Optional]

| @recyclingProcessEfficiency [Optional]

construction 0-1

| fabricWeightM 1-1

| @um [Optional] [Default= GRM]

| fabricWeightM2 0-1

| @um [Optional] [Default= GRM]

| fabricWidth 0-1

| @um [Optional] [Default= CMT]

| fabricCutWidth 0-1

| @um [Optional] [Default= CMT]

| pieceLength 0-1

| @um [Optional] [Default= MTR]

| weave 0-1

| warpCount 0-9

| @method [Optional] [Default= ISO-2060]

| @fibre [Optional]

| weftCount 0-9

| @method [Optional] [Default= ISO-2060]

| @fibre [Optional]

| warpEndsN 0-1

| weftEndsN 0-1

| bowingWarp 0-1

| @method [Optional]

| bowingWeft 0-1

| @method [Optional]

| checksFlaw 0-1

```

| | | | @method [Optional]
| | | | weftDev 0-1
| | | | @method [Optional]
| | | | resin 0-1
| | | fabricSpecs 0-9
| | | - choose -
| | | | fabricCharText 1-1
| | | - or -
| | | | fabricChar 1-1
| | | - end choose -
| | | | specValue 0-1
| | | | @um [Optional]
| | | | @source [Optional]
| | | | @method [Optional]
| | | | @application [Optional]
| | | | @CV [Optional]
| | | - choose -
| | | | tolerance 0-2
| | | | @um [Required]
| | | - or -
| | | | pcTolerance 0-2
| | | | @um [Optional]
| | | - end choose -
| | | | qty 1-2
| | | | @um [Required]
| | | | price 1-1
| | | | @um [Optional]
| | | | @priceQualifier [Optional] [Default= NET]
| | | | @currency [Optional]
| | | | deliveryDate 1-1
| | | | @dateForm [Optional]
| | | | notBeforeDate 0-1
| | | | @dateForm [Optional]
| | | | thirdParty 0-3
| | | | @VAT [Optional]
| | | | @role [Required]
| | | | @sender [Optional]
| | | | | id 1-1
| | | | | @numberingOrg [Optional]
| | | | | legalName 0-1
| | | | | dept 0-1
| | | | | subDept 0-1
| | | | | person 0-1
| | | | | @email [Optional]
| | | | | @phone [Optional]
| | | | | @fax [Optional]
| | | | | street 0-1
| | | | | city 0-1
| | | | | subCountry 0-1
| | | | | country 0-1
| | | | | postCode 0-1
| | | | | geoCoordinates 0-1
| | | | | @um [Optional] [Default= DEGD]
| | | | | @geoRefSystem [Optional]
| | | | | | xGeoCoord 1-1
| | | | | | yGeoCoord 1-1
| | | | | | zGeoCoord 0-1
| | | | fabMnfrOperation 1-9
| | | | - choose -
| | | | | jobName 1-1
| | | | - or -
| | | | | texJob 1-1
| | | | - end choose -
| | | | | texJobTech 0-9
| | | | | refDoc 0-9
| | | | | @docType [Required]
| | | | | | docID 1-2
| | | | | | @numberingOrg [Optional]

```

```

docDate 0-1
  @dateForm [Optional]
season 0-1
  @numberingOrg [Optional]
  @codeList [Optional]
  @listName [Optional]
  @listVersion [Optional]
itemID 0-1
| attachment 0-1
| @uid [Optional]
|   fileName 0-1
|     @numberingOrg [Optional]
|   binaryObject 0-1
|     @format [Optional]
|     @mime [Optional]
|     @encoding [Optional]
|     @characterSet [Optional]
|   externalReference 0-99
|     uri 1-1
|       @isURL [Optional] [Default= true]
|     mimeTypeCode 0-1
|     formatCode 0-1
|     encodingCode 0-1
|     characterSetCode 0-1
|   hashFootprint 0-1
|     @schemeID [Optional]
|     @hashMethod [Required]
|   blockChainReference 0-9
|     uri 1-1
|       @isURL [Optional] [Default= true]
|     transactionReceipt 1-9
texMachine 0-1
| texMachineSpecs 0-9
|   texMachineParam 1-1
|   specValue 0-1
|     @um [Optional]
|     @source [Optional]
|     @method [Optional]
|     @application [Optional]
|     @CV [Optional]
- choose -
|   pcTolerance 0-2
|     @um [Optional]
- or -
|   tolerance 0-2
|     @um [Required]
- end choose -
| note 0-99
|   @numberingOrg [Optional]
|   @codeList [Optional]
|   @noteLabel [Optional]
| dtScheme 0-1
| @taxType [Required]
|   taxCategory 0-1
|   taxRate 0-1
|   legalRef 0-1
|     @numberingOrg [Optional]
|     @codeList [Optional]
|     @listName [Optional]
|     @listVersion [Optional]
|   note 0-99
|     @numberingOrg [Optional]
|     @codeList [Optional]
|     @noteLabel [Optional]
note 0-99
  @numberingOrg [Optional]
  @codeList [Optional]
  @noteLabel [Optional]

```


2.2 Detailed description of document elements

Following tables show all elements (complex and simple) used in this document. Description includes: 1) element's information: xml tag, name, brief description, data type and syntax constraints; 2) information about use of the element in a particular position in the document: xpath and possible associated notes.

2.2.1 Complex elements (Aggregate Business Information Entities)

Complex elements are those elements whose content is composed of other elements (childs). Complex elements are alphabetically ordered.

allowanceCharge	Allowances and Charges related to an Order or a contract (XPath TEXWeaveOffer/terms/allowanceCharge) 0-9
attachment	an attached document. An attachment can refer to an external document or be included with the document being exchanged (XPath TEXWeaveOffer/TWOFbody/TWOFitem/refDoc/attachment) 0-1 (XPath TEXWeaveOffer/TWOFbody/TWOFitem/fabMnfrOperation/refDoc/attachment) 0-1 (XPath TEXWeaveOffer/OFheader/refDoc/attachment) 0-1
blockChainReference	blockchain reference - base type: string, max length: 80, (XPath TEXWeaveOffer/TWOFbody/TWOFitem/refDoc/attachment/blockChainReference) 0-9 (XPath TEXWeaveOffer/OFheader/refDoc/attachment/blockChainReference) 0-9 (XPath TEXWeaveOffer/TWOFbody/TWOFitem/fabMnfrOperation/refDoc/attachment/blockChainReference) 0-9
buyer	details of the Buyer (party that buys the good or service that is object of the current collaborative process) - base type: Nad, (XPath TEXWeaveOffer/OFheader/buyer) 1-1
construction	construction data and features included in the technical sheet of the fabric article (XPath TEXWeaveOffer/TWOFbody/TWOFitem/construction) 0-1
deliveryLocation	data relating to a place of delivery(indicate at least element location or address, city and country) - base type: Nad, (XPath TEXWeaveOffer/terms/transInfo/deliveryLocation) 0-1 - note: <i>use to represent addresses in a structured way or with geographical coordinates</i>
despatchLocation	data relating to a place of despatch (indicate at least element location or address, city and country) - base type: Nad, (XPath TEXWeaveOffer/terms/transInfo/despatchLocation) 0-1 - note: <i>use to represent addresses in a structured way</i>
dtScheme	set of data usable to declare the duty or tax applied (XPath TEXWeaveOffer/TWOFbody/TWOFitem/dtScheme) 0-1 - note: <i>recommended alternative to the attribute @VAT</i> (XPath TEXWeaveOffer/terms/allowanceCharge/dtScheme) 0-1
externalReference	details about an external object, such as a document stored at a remote location (XPath TEXWeaveOffer/OFheader/refDoc/attachment/externalReference) 0-99 (XPath TEXWeaveOffer/TWOFbody/TWOFitem/refDoc/attachment/externalReference) 0-99 (XPath TEXWeaveOffer/TWOFbody/TWOFitem/fabMnfrOperation/refDoc/attachment/externalReference) 0-99
fabMnfrOperation	details of a manufacturing operation used for fabric production (XPath TEXWeaveOffer/TWOFbody/TWOFitem/fabMnfrOperation) 1-9
fabricCompos	percent of composition of the fabric according to the Directive 97/37/CE (XPath TEXWeaveOffer/TWOFbody/TWOFitem/fabricCompos) 0-1
fabricSpecs	technical characteristics of fabric, linked either to an operation of subcontracted production or to the purchase (XPath TEXWeaveOffer/TWOFbody/TWOFitem/fabricSpecs) 0-9

geoCoordinates	geographical coordinates (XPath TEXWeaveOffer/OFheader/buyer/geoCoordinates) 0-1 (XPath TEXWeaveOffer/terms/transInfo/deliveryLocation/geoCoordinates) 0-1 (XPath TEXWeaveOffer/OFheader/subContractor/geoCoordinates) 0-1 (XPath TEXWeaveOffer/OFheader/supplier/geoCoordinates) 0-1 (XPath TEXWeaveOffer/terms/trade/tradeLocation/geoCoordinates) 0-1 (XPath TEXWeaveOffer/OFheader/thirdParty/geoCoordinates) 0-1 (XPath TEXWeaveOffer/TWOFbody/TWOFitem/thirdParty/geoCoordinates) 0-1 (XPath TEXWeaveOffer/terms/transInfo/despatchLocation/geoCoordinates) 0-1
insPayment	payment details for payment by installments (XPath TEXWeaveOffer/terms/insPayment) 0-5 - note: <i>excluded the case of offers, this set of data is alternative to payment set and must be iterated for each payment installment</i>
OFheader	header of the document OFFER (XPath TEXWeaveOffer/OFheader) 1-1
payment	payment details for payment all in one (XPath TEXWeaveOffer/terms/payment) 0-5 - note: <i>excluded the case of offers, this set of data is alternative to insPayment, it can be iterated to specify alternative terms of payment (e.g.: 60 days or 30 days with 3% discount)</i>
refDoc	identification of a document and of an item thereof, to which the message makes reference (XPath TEXWeaveOffer/TWOFbody/TWOFitem/fabMnfrOperation/refDoc) 0-9 - note: <i>here a Process Sheet transmitted to the Subcontractor can be referenced</i> (XPath TEXWeaveOffer/TWOFbody/TWOFitem/refDoc) 0-9 - note: <i>At least one occurrence should contain a reference to the line of the corresponding Request for Offer (docType=REQ)</i> (XPath TEXWeaveOffer/OFheader/refDoc) 0-9 - note: <i>At least one occurrence should contain a reference to the corresponding Request for Offer (docType=REQ)</i>
subContractor	details of the Sub-contractor - base type: Nad, (XPath TEXWeaveOffer/OFheader/subContractor) 0-1 - note: <i>At least one out of Supplier and Subcontractor must be indicated.</i>
supplier	details of the Supplier (party that supplies the good or service that is object of the current collaborative process) - base type: Nad, (XPath TEXWeaveOffer/OFheader/supplier) 0-1 - note: <i>At least one out of Supplier and Subcontractor must be indicated.</i>
terms	details of the commercial obligations for payment and delivery (XPath TEXWeaveOffer/terms) 0-1
texMachineSpecs	technical specifications of a machine used in an operation of a work cycle for fabric (type and settings) (XPath TEXWeaveOffer/TWOFbody/TWOFitem/fabMnfrOperation/texMachineSpecs) 0-9
thirdParty	identification and details of the Third Party, different from Sender and Receiver of the document - base type: Nad, (XPath TEXWeaveOffer/OFheader/thirdParty) 0-5 - note: <i>In the Offer case it might give reference to the Originator of the request.</i> (XPath TEXWeaveOffer/TWOFbody/TWOFitem/thirdParty) 0-3
trade	general terms of trade for the specified supply (XPath TEXWeaveOffer/terms/trade) 0-1
tradeLocation	data relating to the place to which the trade conditions refer (indicate at least element location or address, city and country) - base type: Nad, (XPath TEXWeaveOffer/terms/trade/tradeLocation) 0-1 - note: <i>address of the place to which the INCOTERM applies</i>
transInfo	details of transport: mode, carrier and delivery place (XPath TEXWeaveOffer/terms/transInfo) 0-5
TWOFbody	body of the document OFFER OF WEAVING

	(XPath <code>TEXWeaveOffer/TWOFbody</code>) 1-1
TWOItem	line of the document OFFER OF WEAVING (XPath <code>TEXWeaveOffer/TWOFbody/TWOItem</code>) 1-unbounded

2.2.2 Simple elements (Basic Business Information Entities)

Simple elements are those elements whose content is characterized by a data type plus a domain of possible values. Simple elements are alphabetically ordered.

AC_amount	amount of an Allowance or Charge - base type: decimal, fraction digits: 2, (XPath <code>TEXWeaveOffer/terms/allowanceCharge/AC_amount</code>) 1-1
AC_category	coded specification of an Allowance or Charge - base type: string, cod. table: T41 http://www.ebiz.enea.it/moda-ml/repository/codelist/draft/gc_T41.xml (XPath <code>TEXWeaveOffer/terms/allowanceCharge/AC_category</code>) 1-1
AC_categoryText	free text description of an Allowance or Charge - base type: string, max length: 250, (XPath <code>TEXWeaveOffer/terms/allowanceCharge/AC_categoryText</code>) 1-1
AC_percent	amount of an Allowance or Charge as a percentage (always non negative value) - base type: decimal, max inclusive: 100, fraction digits: 2, (XPath <code>TEXWeaveOffer/terms/allowanceCharge/AC_percent</code>) 1-1
@act	status that the current line assigns to the line addressed in the reference document; if it is already canceled it maintains the status. - base type: string, cod. table: NT5 http://www.ebiz.enea.it/moda-ml/repository/codelist/draft/gc_NT5.xml (XPath <code>TEXWeaveOffer/TWOFbody/TWOItem/@act</code>) [Required]
additionalIdentifier	additional identification code of a Party, for example customs registries or others - base type: string, max length: 15, (XPath <code>TEXWeaveOffer/OFheader/buyer/additionalIdentifier</code>) 0-9 - note: <i>identifiers for example for exports, such as MID (Manufacturer Identification Code), REX (identificatier in Registered Exporter system)</i> (XPath <code>TEXWeaveOffer/OFheader/supplier/additionalIdentifier</code>) 0-9 - note: <i>identifiers for example for exports, such as MID (Manufacturer Identification Code), REX (identifier in EU Registered Exporter system)</i>
@application	force or similar condition (e.g. no. of revolutions) applied in a test as specified within the standard - base type: string, max length: 15, (XPath <code>TEXWeaveOffer/TWOFbody/TWOItem/fabMnfrOperation/texMachineSpecs/specValue/@application</code>) [Optional] (XPath <code>TEXWeaveOffer/TWOFbody/TWOItem/fabricSpecs/specValue/@application</code>) [Optional]
binaryObject	a binary large object containing an attached document, Coding 'base64Binary' is recommended. - base type: base64Binary, (XPath <code>TEXWeaveOffer/OFheader/refDoc/attachment/binaryObject</code>) 0-1 (XPath <code>TEXWeaveOffer/TWOFbody/TWOItem/fabMnfrOperation/refDoc/attachment/binaryObject</code>) 0-1 (XPath <code>TEXWeaveOffer/TWOFbody/TWOItem/refDoc/attachment/binaryObject</code>) 0-1
bowingWarp	warp bowing - base type: decimal, min inclusive: 0, (XPath <code>TEXWeaveOffer/TWOFbody/TWOItem/construction/bowingWarp</code>) 0-1
bowingWeft	weft bowing - base type: decimal, min inclusive: 0, (XPath <code>TEXWeaveOffer/TWOFbody/TWOItem/construction/bowingWeft</code>) 0-1
carrier	identification of the transport carrier - base type: string, max length: 40, (XPath <code>TEXWeaveOffer/terms/transInfo/carrier</code>) 0-1

@characterSet	<p>the character set of the binary object (examples UTF-8, UTF-16, Windows-1252, ISO-8859-7,..)</p> <p>- base type: normalizedString, (XPath TEXWeaveOffer/TWOFbody/TWOFitem/refDoc/attachment/binaryObject/@characterSet) [Optional] (XPath TEXWeaveOffer/OFheader/refDoc/attachment/binaryObject/@characterSet) [Optional] (XPath TEXWeaveOffer/TWOFbody/TWOFitem/fabMnfrOperation/refDoc/attachment/binaryObject/@characterSet) [Optional]</p>
characterSetCode	<p>the character set of an external document (examples UTF-8, UTF-16, Windows-1252, ISO-8859-7,..)</p> <p>- base type: normalizedString, (XPath TEXWeaveOffer/TWOFbody/TWOFitem/fabMnfrOperation/refDoc/attachment/externalReference/characterSetCode) 0-1 (XPath TEXWeaveOffer/OFheader/refDoc/attachment/externalReference/characterSetCode) 0-1 (XPath TEXWeaveOffer/TWOFbody/TWOFitem/refDoc/attachment/externalReference/characterSetCode) 0-1</p>
checksFlaw	<p>flaw in checks</p> <p>- base type: decimal, min inclusive: 0, (XPath TEXWeaveOffer/TWOFbody/TWOFitem/construction/checksFlaw) 0-1</p>
city	<p>name of the city (town, village)</p> <p>- base type: string, max length: 40, (XPath TEXWeaveOffer/terms/trade/tradeLocation/city) 0-1 (XPath TEXWeaveOffer/TWOFbody/TWOFitem/thirdParty/city) 0-1 (XPath TEXWeaveOffer/terms/transInfo/deliveryLocation/city) 0-1 (XPath TEXWeaveOffer/OFheader/supplier/city) 0-1 (XPath TEXWeaveOffer/OFheader/subContractor/city) 0-1 (XPath TEXWeaveOffer/terms/transInfo/despatchLocation/city) 0-1 (XPath TEXWeaveOffer/OFheader/thirdParty/city) 0-1 (XPath TEXWeaveOffer/OFheader/buyer/city) 0-1</p>
@codeList	<p>it specifies the URL where the list of codes used to make an instance of the element can be found</p> <p>- base type: string, max length: 255, (XPath TEXWeaveOffer/OFheader/refDoc/season/@codeList) [Optional] - nota: <i>this attribute should be used either single or coupled with "listName" and "listVersion"</i> (XPath TEXWeaveOffer/TWOFbody/TWOFitem/note/@codeList) [Optional] - nota: <i>must be used to provide (URL) the list of codes used in "noteLabel"</i> (XPath TEXWeaveOffer/OFheader/season/@codeList) [Optional] - nota: <i>this attribute should be used either single or coupled with "listName" and "listVersion"</i> (XPath TEXWeaveOffer/OFheader/note/@codeList) [Optional] - nota: <i>must be used to provide (URL) the list of codes used in "noteLabel"</i> (XPath TEXWeaveOffer/TWOFbody/TWOFitem/dtScheme/legalRef/@codeList) [Optional] (XPath TEXWeaveOffer/terms/allowanceCharge/dtScheme/note/@codeList) [Optional] - nota: <i>must be used to provide (URL) the list of codes used in "noteLabel"</i> (XPath TEXWeaveOffer/TWOFbody/TWOFitem/refDoc/season/@codeList) [Optional] - nota: <i>this attribute should be used either single or coupled with "listName" and "listVersion"</i> (XPath TEXWeaveOffer/TWOFbody/TWOFitem/dtScheme/note/@codeList) [Optional] - nota: <i>must be used to provide (URL) the list of codes used in "noteLabel"</i> (XPath TEXWeaveOffer/TWOFbody/TWOFitem/fabMnfrOperation/refDoc/season/@codeList) [Optional] - nota: <i>this attribute should be used either single or coupled with "listName" and "listVersion"</i> (XPath TEXWeaveOffer/terms/allowanceCharge/dtScheme/legalRef/@codeList) [Optional] (XPath TEXWeaveOffer/TWOFbody/TWOFitem/fabMnfrOperation/note/@codeList) [Optional] - nota: <i>must be used to provide (URL) the list of codes used in "noteLabel"</i></p>
country	<p>code of the nation</p> <p>- base type: string, cod. table: T10 http://www.ebiz.enea.it/moda-ml/repository/codelist/draft/gc_T10.xml (XPath TEXWeaveOffer/OFheader/subContractor/country) 0-1 (XPath TEXWeaveOffer/OFheader/supplier/country) 0-1 (XPath TEXWeaveOffer/OFheader/buyer/country) 0-1</p>

	<p>(XPath TEXWeaveOffer/TWOFbody/TWOFitem/thirdParty/country) 0-1 (XPath TEXWeaveOffer/terms/transInfo/despachLocation/country) 0-1 (XPath TEXWeaveOffer/terms/transInfo/deliveryLocation/country) 0-1 (XPath TEXWeaveOffer/terms/trade/tradeLocation/country) 0-1 (XPath TEXWeaveOffer/OFheader/thirdParty/country) 0-1</p>
@currency	<p>currency in which a specified monetary data is expressed - base type: string, cod. table: T9 http://www.ebiz.enea.it/moda-ml/repository/codelist/draft/gc_T9.xml (XPath TEXWeaveOffer/terms/allowanceCharge/@currency) [Optional] (XPath TEXWeaveOffer/terms/allowanceCharge/AC_amount/@currency) [Optional] (XPath TEXWeaveOffer/TWOFbody/TWOFitem/price/@currency) [Optional] - nota: <i>Currency referred by the price.</i></p>
@CV	<p>coefficient of variation (CV) of a measurement - base type: decimal, (XPath TEXWeaveOffer/TWOFbody/TWOFitem/fabricSpecs/specValue/@CV) [Optional] (XPath TEXWeaveOffer/TWOFbody/TWOFitem/fabMnfrOperation/texMachineSpecs/specValue/@CV) [Optional]</p>
@dateForm	<p>format used for the date - base type: string, cod. table: NT29 http://www.ebiz.enea.it/moda-ml/repository/codelist/draft/gc_NT29.xml (XPath TEXWeaveOffer/OFheader/validityEnd/@dateForm) [Optional] (XPath TEXWeaveOffer/TWOFbody/TWOFitem/deliveryDate/@dateForm) [Optional] (XPath TEXWeaveOffer/TWOFbody/TWOFitem/refDoc/docDate/@dateForm) [Optional] (XPath TEXWeaveOffer/TWOFbody/TWOFitem/notBeforeDate/@dateForm) [Optional] (XPath TEXWeaveOffer/OFheader/refDoc/docDate/@dateForm) [Optional] (XPath TEXWeaveOffer/terms/transInfo/despachDate/@dateForm) [Optional] (XPath TEXWeaveOffer/TWOFbody/TWOFitem/fabMnfrOperation/refDoc/docDate/@dateForm) [Optional] (XPath TEXWeaveOffer/OFheader/validityStart/@dateForm) [Optional] (XPath TEXWeaveOffer/OFheader/msgDate/@dateForm) [Optional] (XPath TEXWeaveOffer/terms/transInfo/delEffectiveDate/@dateForm) [Optional]</p>
delEffectiveDate	<p>actual delivery date (estimated or occurred in case of receipt docs), it might be different from what agreed between the parties. Format according to one of the patterns indicated by the dateForm attribute: YYYY-MM-DD, YYYY-MM-DD:HH-MM or YYYY-WW. - base type: string, (XPath TEXWeaveOffer/terms/transInfo/delEffectiveDate) 0-1</p>
deliveryDate	<p>date of delivery of goods, requested or promised in the purchase process, according to one of the patterns YYYY-MM-DD, YYYY-MM-DD:HH-MM or YYYY-WW. - base type: string, (XPath TEXWeaveOffer/TWOFbody/TWOFitem/deliveryDate) 1-1</p>
deliveryPlace	<p>place of delivery of goods, ultimate or related to a given leg - base type: string, max length: 250, (XPath TEXWeaveOffer/terms/transInfo/deliveryPlace) 0-1 - note: <i>use to represent addresses with a unique text string</i></p>
dept	<p>name or code of a department - base type: string, max length: 40, (XPath TEXWeaveOffer/OFheader/buyer/dept) 0-1 (XPath TEXWeaveOffer/OFheader/subContractor/dept) 0-1 (XPath TEXWeaveOffer/terms/transInfo/despachLocation/dept) 0-1 (XPath TEXWeaveOffer/terms/transInfo/deliveryLocation/dept) 0-1 (XPath TEXWeaveOffer/terms/trade/tradeLocation/dept) 0-1 (XPath TEXWeaveOffer/OFheader/thirdParty/dept) 0-1 (XPath TEXWeaveOffer/TWOFbody/TWOFitem/thirdParty/dept) 0-1 (XPath TEXWeaveOffer/OFheader/supplier/dept) 0-1</p>
despachDate	<p>date of despach of goods, requested or promised in the purchase process, according to one of the patterns YYYY-MM-DD, YYYY-MM-DD:HH-MM or YYYY-WW. - base type: string, (XPath TEXWeaveOffer/terms/transInfo/despachDate) 0-1</p>
despachPlace	<p>place of despach of goods, origin or related to a given leg - base type: string, max length: 250, (XPath TEXWeaveOffer/terms/transInfo/despachPlace) 0-1 - note: <i>use to represent addresses with a unique text string</i></p>
docDate	<p>date of issue of the referenced document, according to one of the patterns YYYY-MM-</p>

	<p>DD, YYYY-MM-DD:HH-MM or YYYY-WW.</p> <p>- base type: string, (XPath <code>TEXWeaveOffer/TWOFbody/TWOFitem/refDoc/docDate</code>) 0-1 (XPath <code>TEXWeaveOffer/OFheader/refDoc/docDate</code>) 0-1 (XPath <code>TEXWeaveOffer/TWOFbody/TWOFitem/fabMnfrOperation/refDoc/docDate</code>) 0-1</p>
docID	<p>identification number of the referenced document</p> <p>- base type: string, max length: 80, (XPath <code>TEXWeaveOffer/TWOFbody/TWOFitem/fabMnfrOperation/refDoc/docID</code>) 1-2 Best Practice (XPath <code>TEXWeaveOffer/OFheader/docID</code>) 0-1 - note: <i>Its use in HEADER elements is discouraged (use msgID)</i> (XPath <code>TEXWeaveOffer/TWOFbody/TWOFitem/refDoc/docID</code>) 1-2 Best Practice (XPath <code>TEXWeaveOffer/OFheader/refDoc/docID</code>) 1-2 Best Practice</p>
@docType	<p>type or class to which the referenced document belongs</p> <p>- base type: string, cod. table: T21 http://www.ebiz.enea.it/moda-ml/repository/codelist/draft/gc_T21.xml (XPath <code>TEXWeaveOffer/TWOFbody/TWOFitem/fabMnfrOperation/refDoc/@docType</code>) [Required] (XPath <code>TEXWeaveOffer/TWOFbody/TWOFitem/refDoc/@docType</code>) [Required] (XPath <code>TEXWeaveOffer/OFheader/refDoc/@docType</code>) [Required]</p>
@email	<p>electronic mail address of the contact person within a Party</p> <p>- base type: string, max length: 250, (XPath <code>TEXWeaveOffer/TWOFbody/TWOFitem/thirdParty/person/@email</code>) [Optional] (XPath <code>TEXWeaveOffer/terms/transInfo/despatchLocation/person/@email</code>) [Optional] (XPath <code>TEXWeaveOffer/OFheader/subContractor/person/@email</code>) [Optional] (XPath <code>TEXWeaveOffer/OFheader/thirdParty/person/@email</code>) [Optional] (XPath <code>TEXWeaveOffer/OFheader/supplier/person/@email</code>) [Optional] (XPath <code>TEXWeaveOffer/terms/transInfo/deliveryLocation/person/@email</code>) [Optional] (XPath <code>TEXWeaveOffer/terms/trade/tradeLocation/person/@email</code>) [Optional] (XPath <code>TEXWeaveOffer/OFheader/buyer/person/@email</code>) [Optional]</p>
@encoding	<p>specifies the decoding algorithm of the binary object</p> <p>- base type: normalizedString, (XPath <code>TEXWeaveOffer/TWOFbody/TWOFitem/refDoc/attachment/binaryObject/@encoding</code>) [Optional] (XPath <code>TEXWeaveOffer/TWOFbody/TWOFitem/fabMnfrOperation/refDoc/attachment/binaryObject/@encoding</code>) [Optional] (XPath <code>TEXWeaveOffer/OFheader/refDoc/attachment/binaryObject/@encoding</code>) [Optional]</p>
encodingCode	<p>the encoding/decoding algorithm used with the external object (example is 'base64Binary')</p> <p>- base type: normalizedString, (XPath <code>TEXWeaveOffer/TWOFbody/TWOFitem/fabMnfrOperation/refDoc/attachment/externalReference/encodingCode</code>) 0-1 (XPath <code>TEXWeaveOffer/OFheader/refDoc/attachment/externalReference/encodingCode</code>) 0-1 (XPath <code>TEXWeaveOffer/TWOFbody/TWOFitem/refDoc/attachment/externalReference/encodingCode</code>) 0-1</p>
@fabProcQualifier	<p>type of fabric with reference to the manufacturing process</p> <p>- base type: string, cod. table: NT32 http://www.ebiz.enea.it/moda-ml/repository/codelist/draft/gc_NT32.xml (XPath <code>TEXWeaveOffer/@fabProcQualifier</code>) [Required]</p>
fabricChar	<p>code of the physical or mechanical parameter used to define a "technical characteristic of the fabric" (see Fabric technical sheet)</p> <p>- base type: string, cod. table: T13 http://www.ebiz.enea.it/moda-ml/repository/codelist/draft/gc_T13.xml (XPath <code>TEXWeaveOffer/TWOFbody/TWOFitem/fabricSpecs/fabricChar</code>) 1-1</p>
fabricCharText	<p>free text describing the physical or mechanical parameter used to define a "technical characteristic of the fabric"</p> <p>- base type: string, max length: 80, (XPath <code>TEXWeaveOffer/TWOFbody/TWOFitem/fabricSpecs/fabricCharText</code>) 1-1</p>
fabricCutWidth	<p>usable width of the fabric (for garments manufacturing) as technical specification</p>

	- base type: decimal, min inclusive: 0, fraction digits: 2, (XPath <code>TEXWeaveOffer/TWOFbody/TWOFitem/construction/fabricCutWidth</code>) 0-1
<code>fabricWeightM</code>	weight per metre of the fabric as technical specification - base type: decimal, min inclusive: 0, fraction digits: 2, (XPath <code>TEXWeaveOffer/TWOFbody/TWOFitem/construction/fabricWeightM</code>) 1-1
<code>fabricWeightM2</code>	weight per square metre of the fabric as technical specification - base type: decimal, min inclusive: 0, fraction digits: 2, (XPath <code>TEXWeaveOffer/TWOFbody/TWOFitem/construction/fabricWeightM2</code>) 0-1
<code>fabricWidth</code>	width of the fabric as technical specification - base type: decimal, min inclusive: 0, fraction digits: 2, (XPath <code>TEXWeaveOffer/TWOFbody/TWOFitem/construction/fabricWidth</code>) 0-1
<code>@fax</code>	fax number of the contact person within a Party - base type: string, max length: 35, (XPath <code>TEXWeaveOffer/terms/trade/tradeLocation/person/@fax</code>) [Optional] (XPath <code>TEXWeaveOffer/OFheader/subContractor/person/@fax</code>) [Optional] (XPath <code>TEXWeaveOffer/OFheader/supplier/person/@fax</code>) [Optional] (XPath <code>TEXWeaveOffer/OFheader/buyer/person/@fax</code>) [Optional] (XPath <code>TEXWeaveOffer/terms/transInfo/despatchLocation/person/@fax</code>) [Optional] (XPath <code>TEXWeaveOffer/OFheader/thirdParty/person/@fax</code>) [Optional] (XPath <code>TEXWeaveOffer/TWOFbody/TWOFitem/thirdParty/person/@fax</code>) [Optional] (XPath <code>TEXWeaveOffer/terms/transInfo/deliveryLocation/person/@fax</code>) [Optional]
<code>@fibre</code>	type of fibre used in a textile product - base type: string, cod. table: T19 http://www.ebiz.enea.it/moda-ml/repository/codelist/draft/gc_T19.xml (XPath <code>TEXWeaveOffer/TWOFbody/TWOFitem/construction/weftCount/@fibre</code>) [Optional] (XPath <code>TEXWeaveOffer/TWOFbody/TWOFitem/construction/warpCount/@fibre</code>) [Optional] (XPath <code>TEXWeaveOffer/TWOFbody/TWOFitem/fabricCompos/percCompos/@fibre</code>) [Required]
<code>fileName</code>	unique identifier (name) of the file - base type: string, max length: 255, (XPath <code>TEXWeaveOffer/OFheader/refDoc/attachment/fileName</code>) 0-1 (XPath <code>TEXWeaveOffer/TWOFbody/TWOFitem/fabMnfrOperation/refDoc/attachment/fileName</code>) 0-1 (XPath <code>TEXWeaveOffer/TWOFbody/TWOFitem/refDoc/attachment/fileName</code>) 0-1
<code>@finDiscount</code>	financial discount rate applied for payment by the date specified - base type: decimal, min inclusive: 0, max inclusive: 100, fraction digits: 2, (XPath <code>TEXWeaveOffer/terms/payment/@finDiscount</code>) [Optional]
<code>@finSurcharge</code>	financial surcharge rate applied for payment after the date specified - base type: decimal, min inclusive: 0, max inclusive: 100, fraction digits: 2, (XPath <code>TEXWeaveOffer/terms/payment/@finSurcharge</code>) [Optional]
<code>@format</code>	the format of the binary content (examples xml, pdf, doc,...) - base type: string, (XPath <code>TEXWeaveOffer/OFheader/refDoc/attachment/binaryObject/@format</code>) [Optional] (XPath <code>TEXWeaveOffer/TWOFbody/TWOFitem/fabMnfrOperation/refDoc/attachment/binaryObject/@format</code>) [Optional] (XPath <code>TEXWeaveOffer/TWOFbody/TWOFitem/refDoc/attachment/binaryObject/@format</code>) [Optional]
<code>formatCode</code>	the format of the external object (examples xml, pdf, doc,...) - base type: normalizedString, (XPath <code>TEXWeaveOffer/OFheader/refDoc/attachment/externalReference/formatCode</code>) 0-1 (XPath <code>TEXWeaveOffer/TWOFbody/TWOFitem/fabMnfrOperation/refDoc/attachment/externalReference/formatCode</code>) 0-1 (XPath <code>TEXWeaveOffer/TWOFbody/TWOFitem/refDoc/attachment/externalReference/formatCode</code>) 0-1
<code>@geoRefSystem</code>	georeference system adopted for the coordinate (in example wgs84 with decimal degree o degree with minute and seconds)

	<p>- base type: string, (XPath TEXWeaveOffer/TWOFbody/TWOFitem/thirdParty/ geoCoordinates/@geoRefSystem) [Optional] (XPath TEXWeaveOffer/OFheader/buyer/geoCoordinates/@geoRefSystem) [Optional] (XPath TEXWeaveOffer/OFheader/thirdParty/geoCoordinates/@geoRefSystem) [Optional] (XPath TEXWeaveOffer/terms/transInfo/deliveryLocation/ geoCoordinates/@geoRefSystem) [Optional] (XPath TEXWeaveOffer/OFheader/subContractor/geoCoordinates/@geoRefSystem) [Optional] (XPath TEXWeaveOffer/terms/trade/tradeLocation/ geoCoordinates/@geoRefSystem) [Optional] (XPath TEXWeaveOffer/OFheader/supplier/geoCoordinates/@geoRefSystem) [Optional] (XPath TEXWeaveOffer/terms/transInfo/despatchLocation/ geoCoordinates/@geoRefSystem) [Optional]</p>
grossWeight	<p>the gross weight, declared for transport or customs purpose - base type: decimal, min inclusive: 0, fraction digits: 2, (XPath TEXWeaveOffer/terms/transInfo/grossWeight) 0-1</p>
hashFootprint	<p>footprint obtained by applying an hashing algorithm - base type: string, max length: 80, (XPath TEXWeaveOffer/OFheader/refDoc/attachment/hashFootprint) 0-1 (XPath TEXWeaveOffer/TWOFbody/TWOFitem/refDoc/attachment/hashFootprint) 0-1 (XPath TEXWeaveOffer/TWOFbody/TWOFitem/fabMnfrOperation/ refDoc/attachment/hashFootprint) 0-1</p>
@hashMethod	<p>type of used hashing algorithm - base type: string, max length: 80, cod. table: NT333 http://www.ebiz.enea.it/moda-ml/repository/codelist/draft/gc_NT333.xml (XPath TEXWeaveOffer/TWOFbody/TWOFitem/refDoc/attachment/ hashFootprint/@hashMethod) [Required] (XPath TEXWeaveOffer/TWOFbody/TWOFitem/fabMnfrOperation/ refDoc/attachment/hashFootprint/@hashMethod) [Required] (XPath TEXWeaveOffer/OFheader/refDoc/attachment/ hashFootprint/@hashMethod) [Required]</p>
id	<p>primary identification code of a Party; it is recommended to use an EORI number (with @numberingOrg= "EO") or the format: nation code (ISO 3166) + national tax code (i.e. VAT identification number) with @numberingOrg= "MF" - base type: string, max length: 15, (XPath TEXWeaveOffer/OFheader/thirdParty/id) 1-1 (XPath TEXWeaveOffer/OFheader/subContractor/id) 1-1 (XPath TEXWeaveOffer/TWOFbody/TWOFitem/thirdParty/id) 1-1 (XPath TEXWeaveOffer/OFheader/supplier/id) 1-1 (XPath TEXWeaveOffer/OFheader/buyer/id) 1-1</p>
@idQualifier	<p>Qualification of the identifier. - base type: string, (XPath TEXWeaveOffer/OFheader/supplier/additionalIdentifier/@idQualifier) [Optional] - nota: <i>this attribute should be used when the numberingOrg attribute is not enough to declare the type of identifier</i> (XPath TEXWeaveOffer/OFheader/buyer/additionalIdentifier/@idQualifier) [Optional] - nota: <i>this attribute should be used when the numberingOrg attribute is not enough to declare the type of identifier</i></p>
incoTerm	<p>specification of the terms of trade (INCOTERMS) - base type: string, cod. table: T3 http://www.ebiz.enea.it/moda-ml/repository/codelist/draft/gc_T3.xml (XPath TEXWeaveOffer/terms/trade/incoTerm) 1-1</p>
incoTermText	<p>free text specifying the terms of trade (incoterm, location) - base type: string, max length: 250, (XPath TEXWeaveOffer/terms/trade/incoTermText) 1-1</p>
@isCharge	<p>Indicates if the element to which it refers is a charge (true = charge, false = allowance) - base type: boolean, (XPath TEXWeaveOffer/terms/allowanceCharge/@isCharge) [Optional]</p>
@isURL	<p>it indicates if the referred element is an URL (true) or not (false) - base type: boolean, (XPath TEXWeaveOffer/OFheader/refDoc/attachment/</p>

	<p>externalReference/uri/@isURL [Optional] [Default= true]</p> <p>- nota: <i>usage of URLs is recommended</i> (XPath TEXWeaveOffer/TWOFbody/TWOFitem/refDoc/attachment/externalReference/uri/@isURL) [Optional] [Default= true]</p> <p>- nota: <i>usage of URLs is recommended</i> (XPath TEXWeaveOffer/TWOFbody/TWOFitem/refDoc/attachment/blockChainReference/uri/@isURL) [Optional] [Default= true]</p> <p>- nota: <i>usage of URLs is recommended</i> (XPath TEXWeaveOffer/OFheader/refDoc/attachment/blockChainReference/uri/@isURL) [Optional] [Default= true]</p> <p>- nota: <i>usage of URLs is recommended</i> (XPath TEXWeaveOffer/TWOFbody/TWOFitem/fabMnfrOperation/refDoc/attachment/externalReference/uri/@isURL) [Optional] [Default= true]</p> <p>- nota: <i>usage of URLs is recommended</i> (XPath TEXWeaveOffer/TWOFbody/TWOFitem/fabMnfrOperation/refDoc/attachment/blockChainReference/uri/@isURL) [Optional] [Default= true]</p> <p>- nota: <i>usage of URLs is recommended</i></p>
itemID	<p>number of the line/item of the referenced document</p> <p>- base type: string, max length: 40, (XPath TEXWeaveOffer/TWOFbody/TWOFitem/refDoc/itemID) 0-1 (XPath TEXWeaveOffer/OFheader/refDoc/itemID) 0-1 (XPath TEXWeaveOffer/TWOFbody/TWOFitem/fabMnfrOperation/refDoc/itemID) 0-1</p>
jobName	<p>description of the elementary job</p> <p>- base type: string, max length: 40, (XPath TEXWeaveOffer/TWOFbody/TWOFitem/fabMnfrOperation/jobName) 1-1</p>
legalName	<p>legal name</p> <p>- base type: string, max length: 250, (XPath TEXWeaveOffer/OFheader/supplier/legalName) 0-1 (XPath TEXWeaveOffer/OFheader/buyer/legalName) 0-1 (XPath TEXWeaveOffer/OFheader/thirdParty/legalName) 0-1 (XPath TEXWeaveOffer/TWOFbody/TWOFitem/thirdParty/legalName) 0-1 (XPath TEXWeaveOffer/terms/transInfo/despatchLocation/legalName) 0-1 (XPath TEXWeaveOffer/terms/transInfo/deliveryLocation/legalName) 0-1 (XPath TEXWeaveOffer/terms/trade/tradeLocation/legalName) 0-1 (XPath TEXWeaveOffer/OFheader/subContractor/legalName) 0-1</p>
legalRef	<p>legal reference of the duty or tax or fee category</p> <p>- base type: string, (XPath TEXWeaveOffer/terms/allowanceCharge/dtScheme/legalRef) 0-1 (XPath TEXWeaveOffer/TWOFbody/TWOFitem/dtScheme/legalRef) 0-1</p>
lineN	<p>number of the line item of the present message (xml document); it is set by the role that produces the document. Usually it is a progressive number, but not always.</p> <p>- base type: positiveInteger, min inclusive: 1, max inclusive: 9999, (XPath TEXWeaveOffer/TWOFbody/TWOFitem/lineN) 1-1</p>
@listName	<p>the name of the list of codes used to make an instance of the element (it might be thought as descriptive element, i.e. 'fabric printing technologies', or not, i.e. "T264")</p> <p>- base type: string, max length: 40, (XPath TEXWeaveOffer/OFheader/season/@listName) [Optional]</p> <p>- nota: <i>this attribute should always be used coupled with "numberingOrg"</i> (XPath TEXWeaveOffer/OFheader/refDoc/season/@listName) [Optional]</p> <p>- nota: <i>this attribute should always be used coupled with "numberingOrg"</i> (XPath TEXWeaveOffer/TWOFbody/TWOFitem/refDoc/season/@listName) [Optional]</p> <p>- nota: <i>this attribute should always be used coupled with "numberingOrg"</i> (XPath TEXWeaveOffer/terms/allowanceCharge/dtScheme/legalRef/@listName) [Optional]</p> <p>- nota: <i>this attribute should always be used coupled with "numberingOrg"</i> (XPath TEXWeaveOffer/TWOFbody/TWOFitem/fabMnfrOperation/refDoc/season/@listName) [Optional]</p> <p>- nota: <i>this attribute should always be used coupled with "numberingOrg"</i> (XPath TEXWeaveOffer/TWOFbody/TWOFitem/dtScheme/legalRef/@listName) [Optional]</p> <p>- nota: <i>this attribute should always be used coupled with "numberingOrg"</i></p>
@listVersion	<p>it specifies the version of the list of codes used to make an instance of the element</p> <p>- base type: string, max length: 6, (XPath TEXWeaveOffer/OFheader/season/@listVersion) [Optional]</p> <p>- nota: <i>this attribute should always be used coupled with "numberingOrg" and "listName"</i></p>

	<p>e” (XPath TEXWeaveOffer/OFheader/refDoc/season/@listVersion) [Optional] - nota: this attribute should always be used coupled with “numberingOrg” and “listName”</p> <p>e” (XPath TEXWeaveOffer/terms/allowanceCharge/dtScheme/legalRef/@listVersion) [Optional] - nota: this attribute should always be used coupled with “numberingOrg” and “listName”</p> <p>e” (XPath TEXWeaveOffer/TWOFbody/TWOFitem/refDoc/season/@listVersion) [Optional] - nota: this attribute should always be used coupled with “numberingOrg” and “listName”</p> <p>e” (XPath TEXWeaveOffer/TWOFbody/TWOFitem/dtScheme/legalRef/@listVersion) [Optional] - nota: this attribute should always be used coupled with “numberingOrg” and “listName”</p> <p>e” (XPath TEXWeaveOffer/TWOFbody/TWOFitem/fabMnfrOperation/refDoc/season/@listVersion) [Optional] - nota: this attribute should always be used coupled with “numberingOrg” and “listName”</p>
location	<p>specification of a location. It can be represented by an identification code (preferable) or a short text (not recommended). For example a GLN code that requires to assign the value "GLN" to the attribute @LRI. - base type: string, max length: 128, (XPath TEXWeaveOffer/terms/transInfo/despatchLocation/location) 0-1 - note: Use this element to specify a numeric ID of the location, for example a GLN code (in this case @SchemeID='GS1 GLN') (XPath TEXWeaveOffer/terms/transInfo/deliveryLocation/location) 0-1 - note: Use this element only to indicate an identification code of this place. (XPath TEXWeaveOffer/terms/trade/location) 0-1 - note: code number of the place to which the INCOTERM applies (XPath TEXWeaveOffer/terms/trade/tradeLocation/location) 0-1 - note: Use this element to specify a numeric ID of the location, for example a GLN code (in this case @SchemeID='LRI='GLN')</p>
@logo	<p>company logo (URL of the image jpeg or gif). It is recommended that the width of the image does not exceed 640 pixel. - base type: string, max length: 255, (XPath TEXWeaveOffer/OFheader/supplier/@logo) [Optional] (XPath TEXWeaveOffer/OFheader/buyer/@logo) [Optional]</p>
@LRI	<p>issuer of the identifier (or identification system) of a location. - base type: string, cod. table: NT3 http://www.ebiz.enea.it/moda-ml/repository/codelist/draft/gc_NT3.xml (XPath TEXWeaveOffer/terms/trade/location/@LRI) [Optional] (XPath TEXWeaveOffer/terms/transInfo/deliveryLocation/location/@LRI) [Optional] (XPath TEXWeaveOffer/terms/transInfo/despatchLocation/location/@LRI) [Optional] (XPath TEXWeaveOffer/terms/trade/tradeLocation/location/@LRI) [Optional]</p>
@materialSource	<p>Indicates whether the material is virgin or comes from recycling or reuse processes - base type: string, cod. table: T306 http://www.ebiz.enea.it/moda-ml/repository/codelist/draft/gc_T306.xml (XPath TEXWeaveOffer/TWOFbody/TWOFitem/fabricCompos/percCompos/@materialSource) [Optional]</p>
@maxQty	<p>maximum product quantity - base type: decimal, min inclusive: 0, fraction digits: 2, (XPath TEXWeaveOffer/terms/allowanceCharge/@maxQty) [Optional] - nota: maximum quantity of product for the application of this allowance or charge</p>
@method	<p>standard protocol or method employed in a test to evaluate a characteristic or a parameter - base type: string, max length: 80, (XPath TEXWeaveOffer/TWOFbody/TWOFitem/construction/warpCount/@method) [Optional] [Default= ISO-2060] (XPath TEXWeaveOffer/TWOFbody/TWOFitem/construction/weftCount/@method) [Optional] [Default= ISO-2060] (XPath TEXWeaveOffer/TWOFbody/TWOFitem/construction/weftDev/@method) [Optional] (XPath TEXWeaveOffer/TWOFbody/TWOFitem/construction/bowingWeft/@method) [Optional]</p>

	<p>(XPath <code>TEXWeaveOffer/TWOFbody/TWOFitem/construction/checksFlaw/@method</code>) [Optional]</p> <p>(XPath <code>TEXWeaveOffer/TWOFbody/TWOFitem/fabricSpecs/specValue/@method</code>) [Optional]</p> <p>(XPath <code>TEXWeaveOffer/TWOFbody/TWOFitem/fabMnfrOperation/texMachineSpecs/specValue/@method</code>) [Optional]</p> <p>(XPath <code>TEXWeaveOffer/TWOFbody/TWOFitem/construction/bowingWarp/@method</code>) [Optional]</p>
@mime	<p>the mime type of the binary object</p> <p>- base type: normalizedString,</p> <p>(XPath <code>TEXWeaveOffer/TWOFbody/TWOFitem/refDoc/attachment/binaryObject/@mime</code>) [Optional]</p> <p>(XPath <code>TEXWeaveOffer/OFheader/refDoc/attachment/binaryObject/@mime</code>) [Optional]</p> <p>(XPath <code>TEXWeaveOffer/TWOFbody/TWOFitem/fabMnfrOperation/refDoc/attachment/binaryObject/@mime</code>) [Optional]</p>
mimeCode	<p>mime type of the external object</p> <p>- base type: normalizedString,</p> <p>(XPath <code>TEXWeaveOffer/OFheader/refDoc/attachment/externalReference/mimeCode</code>) 0-1 Best Practice</p> <p>(XPath <code>TEXWeaveOffer/TWOFbody/TWOFitem/fabMnfrOperation/refDoc/attachment/externalReference/mimeCode</code>) 0-1 Best Practice</p> <p>(XPath <code>TEXWeaveOffer/TWOFbody/TWOFitem/refDoc/attachment/externalReference/mimeCode</code>) 0-1 Best Practice</p>
@minQty	<p>minimum product quantity</p> <p>- base type: decimal, min inclusive: 0, fraction digits: 2,</p> <p>(XPath <code>TEXWeaveOffer/terms/allowanceCharge/@minQty</code>) [Optional]</p> <p>- nota: <i>minimum quantity of product for the application of this allowance or charge</i></p>
msgDate	<p>date of issue of the present message (xml document), according to one of the patterns YYYY-MM-DD, YYYY-MM-DD:HH-MM or YYYY-WW.</p> <p>- base type: string,</p> <p>(XPath <code>TEXWeaveOffer/OFheader/msgDate</code>) 1-1</p>
@msgfunction	<p>function performed by the present message with regards to the transmission</p> <p>- base type: string, cod. table: NT18</p> <p>http://www.ebiz.enea.it/moda-ml/repository/codelist/draft/gc_NT18.xml</p> <p>(XPath <code>TEXWeaveOffer/@msgfunction</code>) [Optional] [Default= OR]</p>
msgID	<p>key identifier of the business document in the information system of the issuing Party. In case of more despatches of the same business document, it is unchanged.</p> <p>- base type: string, max length: 35,</p> <p>(XPath <code>TEXWeaveOffer/OFheader/msgID</code>) 0-1</p>
msgN	<p>identification number given to the message (xml document) by its issuer. In case of more despatches of the same business document, it changes.</p> <p>- base type: string, max length: 35,</p> <p>(XPath <code>TEXWeaveOffer/OFheader/msgN</code>) 1-1</p>
netWeight	<p>the net weight declared for transport or customs purpose</p> <p>- base type: decimal, min inclusive: 0, fraction digits: 2,</p> <p>(XPath <code>TEXWeaveOffer/terms/transInfo/netWeight</code>) 0-1</p>
notBeforeDate	<p>earliest date possible to begin an activity, according to one of the patterns YYYY-MM-DD, YYYY-MM-DD:HH-MM or YYYY-WW.</p> <p>- base type: string,</p> <p>(XPath <code>TEXWeaveOffer/TWOFbody/TWOFitem/notBeforeDate</code>) 0-1</p>
note	<p>free text or structured (computer processing) note. For note structuring use the attributes "noteLabel" and "codelist"</p> <p>- base type: string, max length: 350,</p> <p>(XPath <code>TEXWeaveOffer/OFheader/note</code>) 0-99</p> <p>(XPath <code>TEXWeaveOffer/TWOFbody/TWOFitem/fabMnfrOperation/note</code>) 0-99</p> <p>(XPath <code>TEXWeaveOffer/TWOFbody/TWOFitem/note</code>) 0-99</p> <p>(XPath <code>TEXWeaveOffer/terms/allowanceCharge/dtScheme/note</code>) 0-99</p> <p>(XPath <code>TEXWeaveOffer/TWOFbody/TWOFitem/dtScheme/note</code>) 0-99</p>
@noteLabel	<p>subject qualifier of a note</p> <p>- base type: string, max length: 35,</p> <p>(XPath <code>TEXWeaveOffer/TWOFbody/TWOFitem/note/@noteLabel</code>) [Optional]</p>

	<p>- nota: <i>must be used to qualify the subject of the note</i> (XPath <code>TEXWeaveOffer/TWOFbody/TWOFitem/dtScheme/note/@noteLabel</code>) [Optional]</p> <p>- nota: <i>must be used to qualify the subject of the note</i> (XPath <code>TEXWeaveOffer/terms/allowanceCharge/dtScheme/note/@noteLabel</code>) [Optional]</p> <p>- nota: <i>must be used to qualify the subject of the note</i> (XPath <code>TEXWeaveOffer/OFheader/note/@noteLabel</code>) [Optional]</p> <p>- nota: <i>must be used to qualify the subject of the note</i> (XPath <code>TEXWeaveOffer/TWOFbody/TWOFitem/fabMnfrOperation/note/@noteLabel</code>) [Optional]</p> <p>- nota: <i>must be used to qualify the subject of the note</i></p>
@numberingOrg	<p>code specifying the organisation who has created or owns the coding or numbering system</p> <p>- base type: string, cod. table: NT6 http://www.ebiz.enea.it/moda-ml/repository/codelist/draft/gc_NT6.xml (XPath <code>TEXWeaveOffer/TWOFbody/TWOFitem/fabMnfrOperation/refDoc/docID/@numberingOrg</code>) [Optional]</p> <p>- nota: <i>here can be specified whose document numbering is used (e.g.: Client, Supplier, ..)</i> (XPath <code>TEXWeaveOffer/TWOFbody/TWOFitem/fabMnfrOperation/refDoc/season/@numberingOrg</code>) [Optional]</p> <p>- nota: <i>this attribute should be used either single or coupled with "listName" and "listVersion"</i> (XPath <code>TEXWeaveOffer/OFheader/refDoc/season/@numberingOrg</code>) [Optional]</p> <p>- nota: <i>this attribute should be used either single or coupled with "listName" and "listVersion"</i> (XPath <code>TEXWeaveOffer/TWOFbody/TWOFitem/refDoc/docID/@numberingOrg</code>) [Optional]</p> <p>- nota: <i>here can be specified whose document numbering is used (e.g.: Client, Supplier, ..)</i> (XPath <code>TEXWeaveOffer/OFheader/season/@numberingOrg</code>) [Optional]</p> <p>- nota: <i>this attribute should be used either single or coupled with "listName" and "listVersion"</i> (XPath <code>TEXWeaveOffer/OFheader/docID/@numberingOrg</code>) [Optional]</p> <p>- nota: <i>here can be specified whose document numbering is used (e.g.: Client, Supplier, ..)</i> (XPath <code>TEXWeaveOffer/TWOFbody/TWOFitem/note/@numberingOrg</code>) [Optional]</p> <p>- nota: <i>must be used to specify the organization that created the list of codes used in "noteLabel"</i> (XPath <code>TEXWeaveOffer/TWOFbody/TWOFitem/refDoc/attachment/fileName/@numberingOrg</code>) [Optional] (XPath <code>TEXWeaveOffer/OFheader/refDoc/docID/@numberingOrg</code>) [Optional]</p> <p>- nota: <i>here can be specified whose document numbering is used (e.g.: Client, Supplier, ..)</i> (XPath <code>TEXWeaveOffer/TWOFbody/TWOFitem/refDoc/season/@numberingOrg</code>) [Optional]</p> <p>- nota: <i>this attribute should be used either single or coupled with "listName" and "listVersion"</i> (XPath <code>TEXWeaveOffer/OFheader/note/@numberingOrg</code>) [Optional]</p> <p>- nota: <i>must be used to specify the organization that created the list of codes used in "noteLabel"</i> (XPath <code>TEXWeaveOffer/OFheader/supplier/additionalIdentifier/@numberingOrg</code>) [Optional]</p> <p>- nota: <i>here the issuer of the identifier must be specified</i> (XPath <code>TEXWeaveOffer/OFheader/supplier/id/@numberingOrg</code>) [Optional] (XPath <code>TEXWeaveOffer/terms/allowanceCharge/dtScheme/legalRef/@numberingOrg</code>) [Optional]</p> <p>- nota: <i>this attribute should be used either single or coupled with "listName" and "listVersion"</i> (XPath <code>TEXWeaveOffer/TWOFbody/TWOFitem/fabMnfrOperation/refDoc/attachment/fileName/@numberingOrg</code>) [Optional] (XPath <code>TEXWeaveOffer/TWOFbody/TWOFitem/dtScheme/legalRef/@numberingOrg</code>) [Optional]</p> <p>- nota: <i>this attribute should be used either single or coupled with "listName" and "listVersion"</i> (XPath <code>TEXWeaveOffer/OFheader/subContractor/id/@numberingOrg</code>) [Optional] (XPath <code>TEXWeaveOffer/TWOFbody/TWOFitem/fabMnfrOperation/note/@numberingOrg</code>) [Optional]</p> <p>- nota: <i>must be used to specify the organization that created the list of codes used in "noteLabel"</i> (XPath <code>TEXWeaveOffer/OFheader/buyer/id/@numberingOrg</code>) [Optional] (XPath <code>TEXWeaveOffer/OFheader/buyer/additionalIdentifier/@numberingOrg</code>) [Optional]</p> <p>- nota: <i>here the issuer of the identifier must be specified</i></p>

	<p>(XPath TEXWeaveOffer/OFheader/thirdParty/id/@numberingOrg) [Optional] (XPath TEXWeaveOffer/terms/allowanceCharge/dtScheme/note/@numberingOrg) [Optional] - nota: <i>must be used to specify the organization that created the list of codes used in "noteLabel"</i> (XPath TEXWeaveOffer/TWOFbody/TWOFitem/dtScheme/note/@numberingOrg) [Optional] - nota: <i>must be used to specify the organization that created the list of codes used in "noteLabel"</i> (XPath TEXWeaveOffer/OFheader/refDoc/attachment/fileName/@numberingOrg) [Optional] (XPath TEXWeaveOffer/TWOFbody/TWOFitem/thirdParty/id/@numberingOrg) [Optional]</p>
@part	<p>percent fraction - base type: decimal, min inclusive: 1, max inclusive: 100, fraction digits: 2, (XPath TEXWeaveOffer/terms/insPayment/@part) [Required] - nota: <i>here the % value of each installment must be indicated</i></p>
payMode	<p>way or means of payment - base type: string, cod. table: T2 http://www.ebiz.enea.it/moda-ml/repository/codelist/draft/gc_T2.xml (XPath TEXWeaveOffer/terms/insPayment/payMode) 0-1 (XPath TEXWeaveOffer/terms/payment/payMode) 0-1</p>
payTerm	<p>code specifying the terms or time by which the payment must be done - base type: string, cod. table: T1 http://www.ebiz.enea.it/moda-ml/repository/codelist/draft/gc_T1.xml (XPath TEXWeaveOffer/terms/insPayment/payTerm) 1-1 (XPath TEXWeaveOffer/terms/payment/payTerm) 1-1</p>
payTermText	<p>free text specifying the terms by which the payment must be done (time/mode or means) - base type: string, max length: 250, (XPath TEXWeaveOffer/terms/insPayment/payTermText) 1-1 (XPath TEXWeaveOffer/terms/payment/payTermText) 1-1</p>
pcTolerance	<p>percent deviation tolerated on the value of a measurement (it must have a plus or minus sign) - base type: decimal, min inclusive: 0, max inclusive: 100, total digits: 2, (XPath TEXWeaveOffer/TWOFbody/TWOFitem/fabMnfrOperation/texMachineSpecs/pcTolerance) 0-2 (XPath TEXWeaveOffer/TWOFbody/TWOFitem/fabricSpecs/pcTolerance) 0-2</p>
percCompos	<p>fiber percentage in the product composition - base type: decimal, min inclusive: 0, max inclusive: 100, fraction digits: 2, (XPath TEXWeaveOffer/TWOFbody/TWOFitem/fabricCompos/percCompos) 1-9 - note: <i>fiber % in the product composition</i></p>
@percSourcesRenewable	<p>indicates the percentage of renewable sources - base type: decimal, (XPath TEXWeaveOffer/TWOFbody/TWOFitem/fabricCompos/percCompos/@percSourcesRenewable) [Optional] - nota: <i>use only for virgin material</i></p>
person	<p>name of a person (e.g. contact person within an organization) - base type: string, max length: 40, (XPath TEXWeaveOffer/TWOFbody/TWOFitem/thirdParty/person) 0-1 (XPath TEXWeaveOffer/OFheader/buyer/person) 0-1 (XPath TEXWeaveOffer/OFheader/supplier/person) 0-1 (XPath TEXWeaveOffer/terms/transInfo/deliveryLocation/person) 0-1 (XPath TEXWeaveOffer/terms/trade/tradeLocation/person) 0-1 (XPath TEXWeaveOffer/OFheader/thirdParty/person) 0-1 (XPath TEXWeaveOffer/OFheader/subContractor/person) 0-1 (XPath TEXWeaveOffer/terms/transInfo/despatchLocation/person) 0-1</p>
@phone	<p>phone number of the contact person within a Party - base type: string, max length: 35, (XPath TEXWeaveOffer/TWOFbody/TWOFitem/thirdParty/person/@phone) [Optional] (XPath TEXWeaveOffer/OFheader/thirdParty/person/@phone) [Optional] (XPath TEXWeaveOffer/OFheader/supplier/person/@phone) [Optional] (XPath TEXWeaveOffer/OFheader/subContractor/person/@phone) [Optional] (XPath TEXWeaveOffer/terms/transInfo/deliveryLocation/person/@phone) [Optional] (XPath TEXWeaveOffer/terms/trade/tradeLocation/person/@phone) [Optional] (XPath TEXWeaveOffer/terms/transInfo/despatchLocation/person/@phone) [Optional] (XPath TEXWeaveOffer/OFheader/buyer/person/@phone) [Optional]</p>

pieceLength	length of the piece - base type: decimal, min inclusive: 0, fraction digits: 2, (XPath TEXWeaveOffer/TWOFbody/TWOFitem/construction/pieceLength) 0-1
postCode	code defining the postal zone - base type: string, max length: 10, (XPath TEXWeaveOffer/terms/transInfo/despatchLocation/postCode) 0-1 (XPath TEXWeaveOffer/OFheader/supplier/postCode) 0-1 (XPath TEXWeaveOffer/OFheader/subContractor/postCode) 0-1 (XPath TEXWeaveOffer/terms/trade/tradeLocation/postCode) 0-1 (XPath TEXWeaveOffer/terms/transInfo/deliveryLocation/postCode) 0-1 (XPath TEXWeaveOffer/OFheader/thirdParty/postCode) 0-1 (XPath TEXWeaveOffer/TWOFbody/TWOFitem/thirdParty/postCode) 0-1 (XPath TEXWeaveOffer/OFheader/buyer/postCode) 0-1
price	unit price of the article, object or service specified - base type: decimal, min inclusive: 0, fraction digits: 4, (XPath TEXWeaveOffer/TWOFbody/TWOFitem/price) 1-1
@priceQualifier	type of price with reference to discount and taxes - base type: string, cod. table: NT20 http://www.ebiz.enea.it/moda-ml/repository/codelist/draft/gc_NT20.xml (XPath TEXWeaveOffer/TWOFbody/TWOFitem/price/@priceQualifier) [Optional] [Default= NET]
@progr	progressive number in the sequence - base type: positiveInteger, min inclusive: 1, (XPath TEXWeaveOffer/terms/transInfo/@progr) [Optional] - nota: Indicates the position of the leg in a sequence of transport legs. If it is declared it must be in all the transInfo elements.
@propulsionSystemCode	propulsion system type - base type: string, cod. table: NT324 http://www.ebiz.enea.it/moda-ml/repository/codelist/draft/gc_NT324.xml (XPath TEXWeaveOffer/terms/transInfo/transMeans/@propulsionSystemCode) [Optional] - nota: indicates the type of propulsion of the means of transport
qty	net quantity of the article or object correlated, qualified by the function of the document (ordering, delivering, ..) and by the context - base type: decimal, min inclusive: 0, fraction digits: 2, (XPath TEXWeaveOffer/TWOFbody/TWOFitem/qty) 1-2 Best Practice
@recyclingProcessEfficiency	recycling process efficiency rate (percentage by weight). - base type: decimal, min inclusive: 0, max inclusive: 100, (XPath TEXWeaveOffer/TWOFbody/TWOFitem/fabricCompos/percCompos/@recyclingProcessEfficiency) [Optional] - nota: process efficiency declared by the fibre supplier
@recyclingProcessMethod	recycling process method - base type: string, cod. table: T307 http://www.ebiz.enea.it/moda-ml/repository/codelist/draft/gc_T307.xml (XPath TEXWeaveOffer/TWOFbody/TWOFitem/fabricCompos/percCompos/@recyclingProcessMethod) [Optional] - nota: use only for non virgin material
resin	resin (coating) percentage in finished weight - base type: decimal, min inclusive: 0, (XPath TEXWeaveOffer/TWOFbody/TWOFitem/construction/resin) 0-1
@role	Third Party role qualifier - base type: string, cod. table: NT2 http://www.ebiz.enea.it/moda-ml/repository/codelist/draft/gc_NT2.xml (XPath TEXWeaveOffer/OFheader/thirdParty/@role) [Required] (XPath TEXWeaveOffer/TWOFbody/TWOFitem/thirdParty/@role) [Required]
routeLength	length of a route - base type: decimal, min inclusive: 0, fraction digits: 2, (XPath TEXWeaveOffer/terms/transInfo/routeLength) 0-1
@schemeID	identifier of an identification scheme - base type: string, (XPath TEXWeaveOffer/OFheader/refDoc/attachment/hashFootprint/@schemeID) [Optional] - nota: specify for which system this hash footprint might be used as identifier (for exa

	<p>...mple HDFS system..)</p> <p>(XPath <code>TEXWeaveOffer/TWOFbody/TWOFitem/refDoc/attachment/hashFootprint/@schemeID</code>) [Optional]</p> <p>- nota: specify for which system this hash footprint might be used as identifier (for example HDFS system..)</p> <p>(XPath <code>TEXWeaveOffer/TWOFbody/TWOFitem/fabMnfrOperation/refDoc/attachment/hashFootprint/@schemeID</code>) [Optional]</p> <p>- nota: specify for which system this hash footprint might be used as identifier (for example HDFS system..)</p>
season	<p>sale season; defined as: season (1 crt) + year (4 crt) - season: S/S=1 AW=2 Spring=3 Summer=4 Autumn=5 Winter=6: for more than four seasons use alphabetic sequence: 1st season=A 2nd season=B etc.etc.</p> <p>- base type: string, max length: 15,</p> <p>(XPath <code>TEXWeaveOffer/OFheader/season</code>) 0-1</p> <p>(XPath <code>TEXWeaveOffer/OFheader/refDoc/season</code>) 0-1</p> <p>- note: here indicates the season to which the referenced document belongs</p> <p>(XPath <code>TEXWeaveOffer/TWOFbody/TWOFitem/fabMnfrOperation/refDoc/season</code>) 0-1</p> <p>- note: here indicates the season to which the referenced document belongs</p> <p>(XPath <code>TEXWeaveOffer/TWOFbody/TWOFitem/refDoc/season</code>) 0-1</p> <p>- note: here indicates the season to which the referenced document belongs</p>
@sender	<p>qualifier that specifies the Party issuing of the document</p> <p>- base type: boolean,</p> <p>(XPath <code>TEXWeaveOffer/OFheader/subContractor/@sender</code>) [Optional]</p> <p>- nota: This attribute is mandatory when the STYLESHEET must be used</p> <p>(XPath <code>TEXWeaveOffer/TWOFbody/TWOFitem/thirdParty/@sender</code>) [Optional]</p> <p>- nota: This attribute is mandatory when the STYLESHEET must be used</p> <p>(XPath <code>TEXWeaveOffer/OFheader/buyer/@sender</code>) [Optional]</p> <p>- nota: This attribute is mandatory when the STYLESHEET must be used</p> <p>(XPath <code>TEXWeaveOffer/OFheader/supplier/@sender</code>) [Optional]</p> <p>- nota: This attribute is mandatory when the STYLESHEET must be used</p> <p>(XPath <code>TEXWeaveOffer/OFheader/thirdParty/@sender</code>) [Optional]</p> <p>- nota: This attribute is mandatory when the STYLESHEET must be used</p>
@source	<p>party who has provided the data</p> <p>- base type: string, cod. table: NT12</p> <p>http://www.ebiz.enea.it/moda-ml/repository/codelist/draft/gc_NT12.xml</p> <p>(XPath <code>TEXWeaveOffer/TWOFbody/TWOFitem/fabricSpecs/specValue/@source</code>) [Optional]</p> <p>(XPath <code>TEXWeaveOffer/TWOFbody/TWOFitem/fabMnfrOperation/texMachineSpecs/specValue/@source</code>) [Optional]</p>
specValue	<p>value requested for a property or a parameter that is measured</p> <p>- base type: decimal,</p> <p>(XPath <code>TEXWeaveOffer/TWOFbody/TWOFitem/fabricSpecs/specValue</code>) 0-1</p> <p>(XPath <code>TEXWeaveOffer/TWOFbody/TWOFitem/fabMnfrOperation/texMachineSpecs/specValue</code>) 0-1</p>
street	<p>street and building number identifying a location</p> <p>- base type: string, max length: 80,</p> <p>(XPath <code>TEXWeaveOffer/terms/transInfo/despatchLocation/street</code>) 0-1</p> <p>(XPath <code>TEXWeaveOffer/terms/trade/tradeLocation/street</code>) 0-1</p> <p>(XPath <code>TEXWeaveOffer/terms/transInfo/deliveryLocation/street</code>) 0-1</p> <p>(XPath <code>TEXWeaveOffer/OFheader/thirdParty/street</code>) 0-1</p> <p>(XPath <code>TEXWeaveOffer/OFheader/subContractor/street</code>) 0-1</p> <p>(XPath <code>TEXWeaveOffer/OFheader/supplier/street</code>) 0-1</p> <p>(XPath <code>TEXWeaveOffer/OFheader/buyer/street</code>) 0-1</p> <p>(XPath <code>TEXWeaveOffer/TWOFbody/TWOFitem/thirdParty/street</code>) 0-1</p>
subCountry	<p>short name or code of the sub-country entity</p> <p>- base type: string, max length: 9,</p> <p>(XPath <code>TEXWeaveOffer/TWOFbody/TWOFitem/thirdParty/subCountry</code>) 0-1</p> <p>(XPath <code>TEXWeaveOffer/terms/trade/tradeLocation/subCountry</code>) 0-1</p> <p>(XPath <code>TEXWeaveOffer/OFheader/supplier/subCountry</code>) 0-1</p> <p>(XPath <code>TEXWeaveOffer/terms/transInfo/deliveryLocation/subCountry</code>) 0-1</p> <p>(XPath <code>TEXWeaveOffer/OFheader/thirdParty/subCountry</code>) 0-1</p> <p>(XPath <code>TEXWeaveOffer/OFheader/buyer/subCountry</code>) 0-1</p> <p>(XPath <code>TEXWeaveOffer/OFheader/subContractor/subCountry</code>) 0-1</p> <p>(XPath <code>TEXWeaveOffer/terms/transInfo/despatchLocation/subCountry</code>) 0-1</p>
subDept	<p>name or code of a department</p>

	<p>- base type: string, max length: 40, (XPath TEXWeaveOffer/terms/trade/tradeLocation/subDept) 0-1 (XPath TEXWeaveOffer/terms/transInfo/despatchLocation/subDept) 0-1 (XPath TEXWeaveOffer/terms/transInfo/deliveryLocation/subDept) 0-1 (XPath TEXWeaveOffer/TWOFbody/TWOFitem/thirdParty/subDept) 0-1 (XPath TEXWeaveOffer/OFheader/buyer/subDept) 0-1 (XPath TEXWeaveOffer/OFheader/supplier/subDept) 0-1 (XPath TEXWeaveOffer/OFheader/subContractor/subDept) 0-1 (XPath TEXWeaveOffer/OFheader/thirdParty/subDept) 0-1</p>
taxCategory	<p>duty or tax or fee category - base type: string, cod. table: T62 http://www.ebiz.enea.it/moda-ml/repository/codelist/draft/gc_T62.xml (XPath TEXWeaveOffer/TWOFbody/TWOFitem/dtScheme/taxCategory) 0-1 (XPath TEXWeaveOffer/terms/allowanceCharge/dtScheme/taxCategory) 0-1</p>
taxRate	<p>duty or tax or fee percent rate - base type: string, (XPath TEXWeaveOffer/TWOFbody/TWOFitem/dtScheme/taxRate) 0-1 (XPath TEXWeaveOffer/terms/allowanceCharge/dtScheme/taxRate) 0-1</p>
@taxType	<p>duty or tax or fee type - base type: string, cod. table: T61 http://www.ebiz.enea.it/moda-ml/repository/codelist/draft/gc_T61.xml (XPath TEXWeaveOffer/terms/allowanceCharge/dtScheme/@taxType) [Required] (XPath TEXWeaveOffer/TWOFbody/TWOFitem/dtScheme/@taxType) [Required]</p>
texJob	<p>operation of a work cycle for fabric - base type: string, cod. table: T202 http://www.ebiz.enea.it/moda-ml/repository/codelist/draft/gc_T202.xml (XPath TEXWeaveOffer/TWOFbody/TWOFitem/fabMnfrOperation/texJob) 1-1</p>
texJobTech	<p>operation technology for fabric - base type: string, cod. table: T262 http://www.ebiz.enea.it/moda-ml/repository/codelist/draft/gc_T262.xml (XPath TEXWeaveOffer/TWOFbody/TWOFitem/fabMnfrOperation/texJobTech) 0-9</p>
texMachine	<p>machine used in an operation of a work cycle for fabric - base type: string, cod. table: T272 http://www.ebiz.enea.it/moda-ml/repository/codelist/draft/gc_T272.xml (XPath TEXWeaveOffer/TWOFbody/TWOFitem/fabMnfrOperation/texMachine) 0-1</p>
texMachineParam	<p>setting parameter of a machine used in an operation of a work cycle for fabric - base type: string, cod. table: T282 http://www.ebiz.enea.it/moda-ml/repository/codelist/draft/gc_T282.xml (XPath TEXWeaveOffer/TWOFbody/TWOFitem/fabMnfrOperation/ texMachineSpecs/texMachineParam) 1-1</p>
tolerance	<p>deviation tolerated on the value of a measurement (it must have a plus or minus sign) - base type: decimal, (XPath TEXWeaveOffer/TWOFbody/TWOFitem/fabricSpecs/tolerance) 0-2 (XPath TEXWeaveOffer/TWOFbody/TWOFitem/fabMnfrOperation/ texMachineSpecs/tolerance) 0-2</p>
transactionReceipt	<p>transaction receipt on blockchain - base type: string, max length: 80, (XPath TEXWeaveOffer/OFheader/refDoc/attachment/ blockChainReference/transactionReceipt) 1-9 (XPath TEXWeaveOffer/TWOFbody/TWOFitem/refDoc/attachment/ blockChainReference/transactionReceipt) 1-9 (XPath TEXWeaveOffer/TWOFbody/TWOFitem/fabMnfrOperation/ refDoc/attachment/blockChainReference/transactionReceipt) 1-9</p>
transCondition	<p>special condition of transport or special service requested to the Forwarder - base type: string, cod. table: T38 http://www.ebiz.enea.it/moda-ml/repository/codelist/draft/gc_T38.xml (XPath TEXWeaveOffer/terms/transInfo/transCondition) 0-3</p>
transConditionText	<p>free text description of the special condition of transport or special service requested to the Forwarder - base type: string, max length: 250, (XPath TEXWeaveOffer/terms/transInfo/transConditionText) 0-1</p>
transMeans	<p>means of transport, in general or referred to a specific leg</p>

	<p>- base type: string, cod. table: T40 http://www.ebiz.enea.it/moda-ml/repository/codelist/draft/gc_T40.xml (XPath TEXWeaveOffer/terms/transInfo/transMeans) 0-1</p>
transMode	<p>way of transport, in general or referred to the specified leg - base type: string, cod. table: T8 http://www.ebiz.enea.it/moda-ml/repository/codelist/draft/gc_T8.xml (XPath TEXWeaveOffer/terms/transInfo/transMode) 1-1</p>
@transReason	<p>reason for the transport - base type: string, cod. table: NT11 http://www.ebiz.enea.it/moda-ml/repository/codelist/draft/gc_NT11.xml (XPath TEXWeaveOffer/terms/transInfo/@transReason) [Optional]</p>
@uid	<p>unique element identifier within the xml document - base type: string, (XPath TEXWeaveOffer/OFheader/refDoc/attachment/@uid) [Optional] (XPath TEXWeaveOffer/TWOFbody/TWOFitem/fabMnfrOperation/ refDoc/attachment/@uid) [Optional] (XPath TEXWeaveOffer/TWOFbody/TWOFitem/refDoc/attachment/@uid) [Optional]</p>
@um	<p>specification of the unit of measure - base type: string, cod. table: NT7 http://www.ebiz.enea.it/moda-ml/repository/codelist/draft/gc_NT7.xml (XPath TEXWeaveOffer/TWOFbody/TWOFitem/construction/ fabricCutWidth/@um) [Optional] [Default= CMT] (XPath TEXWeaveOffer/OFheader/subContractor/geoCoordinates/@um) [Optional] [Default= DEGD] - nota: <i>when not specified assume decimal DEGREES</i> (XPath TEXWeaveOffer/OFheader/supplier/geoCoordinates/@um) [Optional] [Default= DEGD] - nota: <i>when not specified assume decimal DEGREES</i> (XPath TEXWeaveOffer/terms/transInfo/deliveryLocation/ geoCoordinates/@um) [Optional] [Default= DEGD] - nota: <i>when not specified assume decimal DEGREES</i> (XPath TEXWeaveOffer/TWOFbody/TWOFitem/construction/ pieceLength/@um) [Optional] [Default= MTR] (XPath TEXWeaveOffer/TWOFbody/TWOFitem/fabMnfrOperation/ texMachineSpecs/pcTolerance/@um) [Optional] - nota: <i>to be used when it has to be soecified if the declared percentage is by weight, v olume, etc...</i> (XPath TEXWeaveOffer/TWOFbody/TWOFitem/construction/ fabricWeightM2/@um) [Optional] [Default= GRM] (XPath TEXWeaveOffer/TWOFbody/TWOFitem/construction/ fabricWeightM/@um) [Optional] [Default= GRM] (XPath TEXWeaveOffer/TWOFbody/TWOFitem/fabMnfrOperation/ texMachineSpecs/specValue/@um) [Optional] (XPath TEXWeaveOffer/TWOFbody/TWOFitem/fabMnfrOperation/ texMachineSpecs/tolerance/@um) [Required] (XPath TEXWeaveOffer/TWOFbody/TWOFitem/construction/ fabricWidth/@um) [Optional] [Default= CMT] (XPath TEXWeaveOffer/terms/transInfo/routeLength/@um) [Required] (XPath TEXWeaveOffer/OFheader/buyer/geoCoordinates/@um) [Optional] [Default= DEGD] - nota: <i>when not specified assume decimal DEGREES</i> (XPath TEXWeaveOffer/terms/allowanceCharge/@um) [Optional] (XPath TEXWeaveOffer/TWOFbody/TWOFitem/thirdParty/ geoCoordinates/@um) [Optional] [Default= DEGD] - nota: <i>when not specified assume decimal DEGREES</i> (XPath TEXWeaveOffer/TWOFbody/TWOFitem/qty/@um) [Required] (XPath TEXWeaveOffer/TWOFbody/TWOFitem/fabricSpecs/ specValue/@um) [Optional] (XPath TEXWeaveOffer/TWOFbody/TWOFitem/fabricSpecs/ pcTolerance/@um) [Optional] - nota: <i>to be used when it has to be soecified if the declared percentage is by weight, v olume, etc...</i> (XPath TEXWeaveOffer/terms/transInfo/despatchLocation/ geoCoordinates/@um) [Optional] [Default= DEGD] - nota: <i>when not specified assume decimal DEGREES</i> (XPath TEXWeaveOffer/OFheader/thirdParty/geoCoordinates/@um) [Optional] [Default= DEGD] - nota: <i>when not specified assume decimal DEGREES</i> (XPath TEXWeaveOffer/TWOFbody/TWOFitem/price/@um) [Optional] - nota: <i>Unit of measure of the product to which the price is referred (price per meter)</i></p>

	<p>(XPath <code>TEXWeaveOffer/terms/trade/tradeLocation/geoCoordinates/@um</code>) [Optional] [Default= DEGD]</p> <p>- nota: <i>when not specified assume decimal DEGREES</i></p> <p>(XPath <code>TEXWeaveOffer/terms/transInfo/grossWeight/@um</code>) [Required]</p> <p>(XPath <code>TEXWeaveOffer/TWOFbody/TWOFitem/fabricSpecs/tolerance/@um</code>) [Required]</p> <p>(XPath <code>TEXWeaveOffer/terms/transInfo/netWeight/@um</code>) [Required]</p>
uri	<p>Uniform Resource Identifier (URI) that identifies the external object as an Internet resource</p> <p>- base type: normalizedString,</p> <p>(XPath <code>TEXWeaveOffer/TWOFbody/TWOFitem/refDoc/attachment/externalReference/uri</code>) 1-1</p> <p>(XPath <code>TEXWeaveOffer/OFheader/refDoc/attachment/blockChainReference/uri</code>) 1-1</p> <p>- note: <i>reference to the used blockchain (example: url https://etherscan.io/ of ethereum)</i></p> <p>(XPath <code>TEXWeaveOffer/OFheader/refDoc/attachment/externalReference/uri</code>) 1-1</p> <p>(XPath <code>TEXWeaveOffer/TWOFbody/TWOFitem/refDoc/attachment/blockChainReference/uri</code>) 1-1</p> <p>- note: <i>reference to the used blockchain (example: url https://etherscan.io/ of ethereum)</i></p> <p>(XPath <code>TEXWeaveOffer/TWOFbody/TWOFitem/fabMnfrOperation/refDoc/attachment/blockChainReference/uri</code>) 1-1</p> <p>- note: <i>reference to the used blockchain (example: url https://etherscan.io/ of ethereum)</i></p> <p>(XPath <code>TEXWeaveOffer/TWOFbody/TWOFitem/fabMnfrOperation/refDoc/attachment/externalReference/uri</code>) 1-1</p>
@useProfile	<p>use profile to which the present document is compliant if it was agreed by the parties. It is suggested a URI with reference to the firms or the URL of the profile.</p> <p>- base type: string,</p> <p>(XPath <code>TEXWeaveOffer/@useProfile</code>) [Optional]</p>
@validationMethod	<p>type of method used to validate the quantity to which it refers. For example, it indicates whether it was measured in the field, estimated indirectly, approved by an expert or taken from the literature</p> <p>- base type: string, cod. table: NT329</p> <p>http://www.ebiz.enea.it/moda-ml/repository/codelist/draft/gc_NT329.xml</p> <p>(XPath <code>TEXWeaveOffer/TWOFbody/TWOFitem/fabricCompos/percCompos/@validationMethod</code>) [Optional]</p>
validityEnd	<p>date by which the validity ends, according to one of the patterns YYYY-MM-DD, YYYY-MM-DD:HH-MM or YYYY-WW.</p> <p>- base type: string,</p> <p>(XPath <code>TEXWeaveOffer/OFheader/validityEnd</code>) 1-1</p>
validityStart	<p>date by which the validity starts, according to one of the patterns YYYY-MM-DD, YYYY-MM-DD:HH-MM or YYYY-WW.</p> <p>- base type: string,</p> <p>(XPath <code>TEXWeaveOffer/OFheader/validityStart</code>) 0-1</p>
@VAT	<p>VAT rate or code (DEPRECATED, use dtScheme element)</p> <p>- base type: string, cod. table: NT16</p> <p>http://www.ebiz.enea.it/moda-ml/repository/codelist/draft/gc_NT16.xml</p> <p>(XPath <code>TEXWeaveOffer/OFheader/thirdParty/@VAT</code>) [Optional]</p> <p>(XPath <code>TEXWeaveOffer/terms/allowanceCharge/@VAT</code>) [Optional]</p> <p>(XPath <code>TEXWeaveOffer/TWOFbody/TWOFitem/lineN/@VAT</code>) [Optional]</p> <p>- nota: <i>Deprecated, prefer dtScheme when available.</i></p> <p>(XPath <code>TEXWeaveOffer/TWOFbody/TWOFitem/thirdParty/@VAT</code>) [Optional]</p>
@version	<p>Dictionary version from which the instance has been created</p> <p>- base type: string, cod. table: NT100</p> <p>http://www.ebiz.enea.it/moda-ml/repository/codelist/draft/gc_NT100.xml</p> <p>(XPath <code>TEXWeaveOffer/@version</code>) [Optional] [Default= draft]</p>
warpCount	<p>measure of thinness of the warp thread</p> <p>- base type: string, max length: 10,</p> <p>(XPath <code>TEXWeaveOffer/TWOFbody/TWOFitem/construction/warpCount</code>) 0-9</p>
warpEndsN	<p>number of warp threads in 1 centimetre</p>

	- base type: decimal, min inclusive: 0, fraction digits: 1, (XPath TEXWeaveOffer/TWOFbody/TWOFitem/construction/warpEndsN) 0-1
weave	type of weaving used in the manufacturing of fabric - base type: string, cod. table: T17 http://www.ebiz.enea.it/moda-ml/repository/codelist/draft/gc_T17.xml (XPath TEXWeaveOffer/TWOFbody/TWOFitem/construction/weave) 0-1
weftCount	measure of thinness of the weft thread - base type: string, max length: 10, (XPath TEXWeaveOffer/TWOFbody/TWOFitem/construction/weftCount) 0-9
weftDev	deviation from right angle in weft - base type: decimal, min inclusive: 0, (XPath TEXWeaveOffer/TWOFbody/TWOFitem/construction/weftDev) 0-1
weftEndsN	number of weft threads in 1 centimetre - base type: decimal, min inclusive: 0, fraction digits: 1, (XPath TEXWeaveOffer/TWOFbody/TWOFitem/construction/weftEndsN) 0-1
xGeoCoord	geographical coordinate x , corresponding to latitude - base type: decimal, (XPath TEXWeaveOffer/TWOFbody/TWOFitem/thirdParty/geoCoordinates/xGeoCoord) 1-1 (XPath TEXWeaveOffer/OFheader/thirdParty/geoCoordinates/xGeoCoord) 1-1 (XPath TEXWeaveOffer/terms/transInfo/deliveryLocation/geoCoordinates/xGeoCoord) 1-1 (XPath TEXWeaveOffer/terms/transInfo/despatchLocation/geoCoordinates/xGeoCoord) 1-1 (XPath TEXWeaveOffer/OFheader/subContractor/geoCoordinates/xGeoCoord) 1-1 (XPath TEXWeaveOffer/OFheader/buyer/geoCoordinates/xGeoCoord) 1-1 (XPath TEXWeaveOffer/terms/trade/tradeLocation/geoCoordinates/xGeoCoord) 1-1 (XPath TEXWeaveOffer/OFheader/supplier/geoCoordinates/xGeoCoord) 1-1
yGeoCoord	geographical coordinate y , corresponding to longitude - base type: decimal, (XPath TEXWeaveOffer/TWOFbody/TWOFitem/thirdParty/geoCoordinates/yGeoCoord) 1-1 (XPath TEXWeaveOffer/OFheader/thirdParty/geoCoordinates/yGeoCoord) 1-1 (XPath TEXWeaveOffer/terms/transInfo/deliveryLocation/geoCoordinates/yGeoCoord) 1-1 (XPath TEXWeaveOffer/terms/trade/tradeLocation/geoCoordinates/yGeoCoord) 1-1 (XPath TEXWeaveOffer/OFheader/subContractor/geoCoordinates/yGeoCoord) 1-1 (XPath TEXWeaveOffer/OFheader/buyer/geoCoordinates/yGeoCoord) 1-1 (XPath TEXWeaveOffer/terms/transInfo/despatchLocation/geoCoordinates/yGeoCoord) 1-1 (XPath TEXWeaveOffer/OFheader/supplier/geoCoordinates/yGeoCoord) 1-1
zGeoCoord	geographical coordinate z , corresponding to altitude - base type: decimal, (XPath TEXWeaveOffer/TWOFbody/TWOFitem/thirdParty/geoCoordinates/zGeoCoord) 0-1 - note: <i>altitude might be omitted</i> (XPath TEXWeaveOffer/OFheader/thirdParty/geoCoordinates/zGeoCoord) 0-1 - note: <i>altitude might be omitted</i> (XPath TEXWeaveOffer/terms/transInfo/deliveryLocation/geoCoordinates/zGeoCoord) 0-1 - note: <i>altitude might be omitted</i> (XPath TEXWeaveOffer/terms/trade/tradeLocation/geoCoordinates/zGeoCoord) 0-1 - note: <i>altitude might be omitted</i> (XPath TEXWeaveOffer/OFheader/subContractor/geoCoordinates/zGeoCoord) 0-1 - note: <i>altitude might be omitted</i> (XPath TEXWeaveOffer/OFheader/buyer/geoCoordinates/zGeoCoord) 0-1 - note: <i>altitude might be omitted</i> (XPath TEXWeaveOffer/OFheader/supplier/geoCoordinates/zGeoCoord) 0-1 - note: <i>altitude might be omitted</i> (XPath TEXWeaveOffer/terms/transInfo/despatchLocation/

	<p><code>geoCoordinates/zGeoCoord</code>) 0-1 - note: <i>altitude might be omitted</i></p>
--	--

2.3 Suggested best practices

**TEXWeaveOffer/TWOFbody/TWOFitem/fabMnfrOperation/
refDoc/docID (identification number of the referenced document)**

numberingOrg indicates the role that produced the document identifier (it is allowed to declare two different ones -e.g. customer and supplier - with two docID with different numberingOrg

TEXWeaveOffer/TWOFbody/TWOFitem/refDoc/docID (identification number of the referenced document)

numberingOrg indicates the role that produced the document identifier (it is allowed to declare two different ones -e.g. customer and supplier - with two docID with different numberingOrg

TEXWeaveOffer/OFheader/refDoc/docID (identification number of the referenced document)

numberingOrg indicates the role that produced the document identifier (it is allowed to declare two different ones -e.g. customer and supplier - with two docID with different numberingOrg

**TEXWeaveOffer/OFheader/refDoc/attachment/
externalReference/mimeCode (mime type of the external object)**

Use coding from IANA <http://www.iana.org/assignments/media-types/media-types.xml>

**TEXWeaveOffer/TWOFbody/TWOFitem/fabMnfrOperation/
refDoc/attachment/externalReference/mimeCode (mime type of the external object)**

Use coding from IANA <http://www.iana.org/assignments/media-types/media-types.xml>

**TEXWeaveOffer/TWOFbody/TWOFitem/refDoc/attachment/
externalReference/mimeCode (mime type of the external object)**

Use coding from IANA <http://www.iana.org/assignments/media-types/media-types.xml>

TEXWeaveOffer/TWOFbody/TWOFitem/qty (net quantity of the article or object correlated, qualified by the function of the document (ordering, delivering, ..) and by the context)

this element can have two instances only if the units of measure are different

2.4 Enumeration tables

List of enumeration tables used in the XML document. You can find all the tables with the corresponding codes at:
<http://www.ebiz.enea.it/eBIZ/imple/eBIZTCU-draft.asp?lingua=en&pag=6>

NT100 - eBIZ TCFUpstream version
NT11 - transport causal
NT12 - data source
NT16 - VAT rate or code
NT18 - message function
NT2 - third party qualifier
NT20 - price qualifier
NT29 - format of a date
NT3 - issuer of the identifier (or identification system) of a location.
NT32 - fabric family
NT324 - propulsion system type
NT329 - type of validation method of the value
NT333 - type of hashing algorithm
NT5 - action code
NT6 - coding system owner/issuer
NT7 - unit of measure
T1 - terms of payment
T10 - ISO3166 - Country
T13 - CFM properties of fabric
T17 - weave type
T19 - fibre type
T2 - Modes of payment
T202 - type of job on fabric
T21 - type of document
T262 - type of job technology for fabric
T272 - machine type for fabric operation
T282 - parameter type for fabric operation
T3 - terms of delivery - IncoTerms
T306 - material circularity attribute
T307 - recycling process method
T38 - transport conditions
T40 - type of transport means
T41 - type of Allowance or Charge
T61 - duty or tax or fee type
T62 - duty or tax or fee category
T8 - Modes of Transport
T9 - ISO4217 - Currency

(the most relevant tables are detailed in the following Annexes too)

ACKNOWLEDGEMENT



This action is part of the TRICK project, which has received funding from Horizon 2020 research and innovation programme under grant agreement No. 958352 of the European Union.

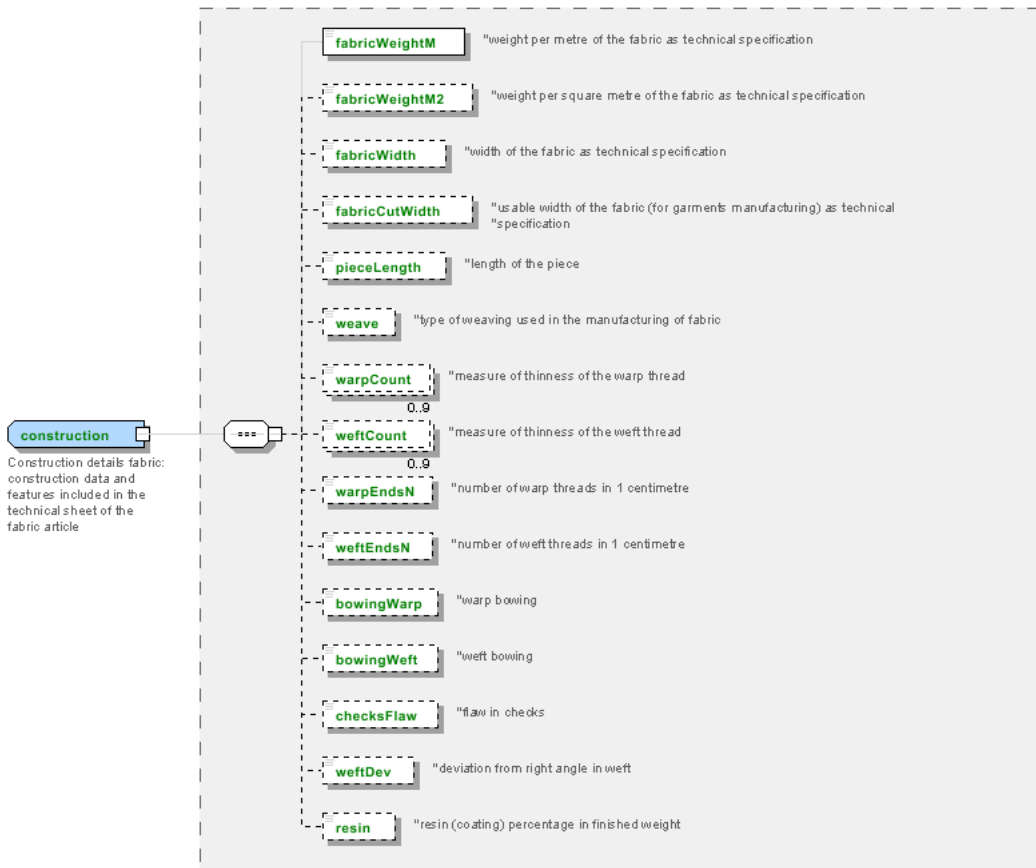
DISCLAIMER

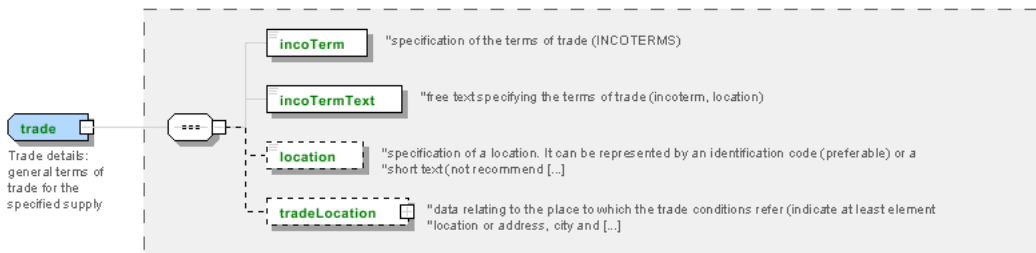
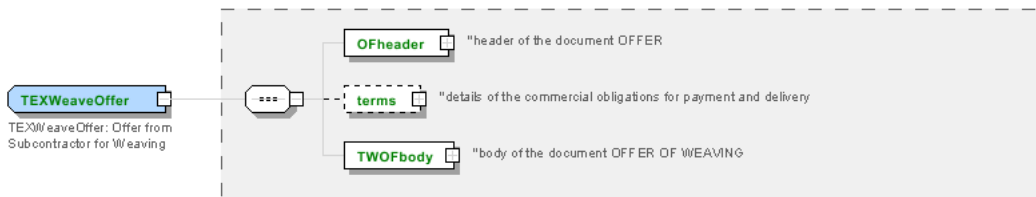
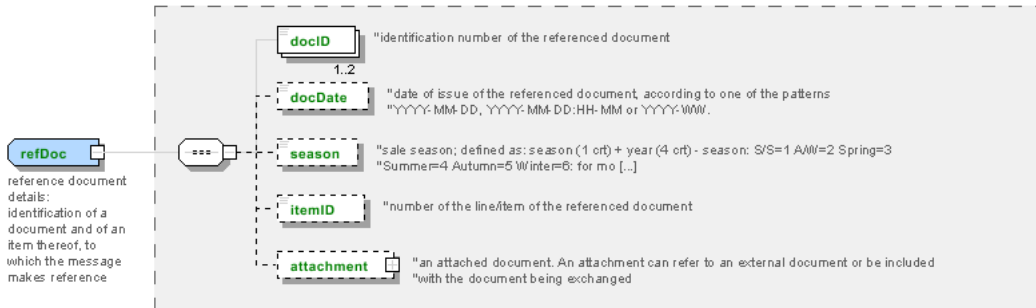
The content of this document represents the views of the authors only and is their sole responsibility; it cannot be considered to reflect the views of the European Commission or any other body of the European Union.

The European Commission does not accept any responsibility for use that may be made of the information it contains.

Annex A

Representative images of the principal complex elements' structure.





Annex B

NT100 - eBIZ TCFUpstream version

dictionary version

Agency name: eBIZ

Decoding table: NT100

File codes list (Generic code): http://www.ebiz.enea.it/moda-ml/repository/codelist/draft/gc_NT100.xml

Code	Description	Adoption note	Date of insertion
2013-1	v2013-1		01/07/2013
2018-1	v2018-1		04/11/2018
draft	draft		08/09/2017

NT11 - transport causal

reason for the transport

Agency name: eBIZ

Decoding table: NT11

File codes list (Generic code): http://www.ebiz.enea.it/moda-ml/repository/codelist/draft/gc_NT11.xml

Code	Description	Adoption note	Date of insertion
FOC	free of charge		
FRW	return from re-works		
FST	return from storage		
FVW	return from view		
FWK	return from works		
IST	in storage		
NWK	return non-worked		
RJC	return from rejection		
SEL	to sell		
STO	to storage		
VEW	to view		
WRK	to works		

NT12 - data source

party who has provided the data

Agency name: eBIZ

Decoding table: NT12

File codes list (Generic code): http://www.ebiz.enea.it/moda-ml/repository/codelist/draft/gc_NT12.xml

Code	Description	Adoption note	Date of insertion
AC	internal test		
CO	external test		
CV	test after steaming		

NT16 - VAT rate or code

VAT rate or code (DEPRECATED, use dtScheme element)

Decoding table: NT16

File codes list (Generic code): http://www.ebiz.enea.it/moda-ml/repository/codelist/draft/gc_NT16.xml

NT18 - message function

function performed by the present message with regards to the transmission

Agency name: eBIZ

Decoding table: NT18

File codes list (Generic code): http://www.ebiz.enea.it/moda-ml/repository/codelist/draft/gc_NT18.xml

Code	Description	Adoption note	Date of insertion
CA	delete this document		01/07/2013
CP	copy		
OR	original		
RC	re-transmission for data correction		
RT	re-transmission		

NT2 - third party qualifier

Third Party role qualifier

Agency name: eBIZ

Decoding table: NT2

File codes list (Generic code): http://www.ebiz.enea.it/moda-ml/repository/codelist/draft/gc_NT2.xml

Code	Description	Adoption note	Date of insertion
AG	Sales Agent		
AU	Auditor		08/04/2019
BU	Buyer		13/06/2022

CE	Certification authority		08/04/2019
CM	Commissioner		13/06/2022
CO	Quality Controller		
CU	Customs authority		13/06/2022
DC	Response to		
DF	Invoicee		
DI	Copy to (CC)		28/10/2014
DM	Consignee		
DP	Consignment address (Delivery Party)		
EX	Expert		13/06/2022
IM	Importer		
OR	Originator		10/09/2014
SC	Sub contractor		10/04/2019
SM	Service/ePlatform manager		08/04/2019
SP	Forwarder		
SU	Supplier		13/06/2022
TL	Test or analysis laboratory		13/06/2022
TX	Tax Representative		

NT20 - price qualifier

type of price with reference to discount and taxes

Agency name: eBIZ

Decoding table: NT20

File codes list (Generic code): http://www.ebiz.enea.it/moda-ml/repository/codelist/draft/gc_NT20.xml

Code	Description	Adoption note	Date of insertion
GET	gross excluding taxes		
GIT	gross including taxes		
NET	net excluding taxes		
NIT	net including taxes		

NT29 - format of a date

format used for the date

Agency name: eBIZ

Decoding table: NT29

File codes list (Generic code): http://www.ebiz.enea.it/moda-ml/repository/codelist/draft/gc_NT29.xml

Code	Description	Adoption note	Date of insertion
D	YYYY-MM-DD		
M	YYYY-MM-DD:HH-MM (date and time)		
S	AAAA-MM-GG:HH-MM-SS (date and time with seconds)		13/06/2022
W	YYYY-WW		

NT3 - issuer of the identifier (or identification system) of a location.

List of possible issuers of the identifier (or identification system) of a location.

Agency name: eBIZ

Decoding table: NT3

File codes list (Generic code): http://www.ebiz.enea.it/moda-ml/repository/codelist/draft/gc_NT3.xml

Code	Description	Adoption note	Date of insertion
EN4	GS1-GLN	obsolete	01/07/2013
GLN	GS1-GLN	equivalent to EN4	25/04/2023
MD	mutually agreed		
NCA	National custom authority	identifier of a bonded warehouse assigned by the custom authority	19/05/2023
PLA	Platform	internal coding of the involved platform	14/05/2023
TRI	TRICK		14/05/2023

NT32 - fabric family

type of fabric with reference to the manufacturing process

Agency name: eBIZ

Decoding table: NT32

File codes list (Generic code): http://www.ebiz.enea.it/moda-ml/repository/codelist/draft/gc_NT32.xml

Code	Description	Adoption note	Date of insertion
CIR	circular knitted		
JAC	jacquard		
RAT	dobby		

NT324 - propulsion system type

propulsion system type adopted, for example, by a transport mean

Agency name: eBIZ for TRICK

Decoding table: NT324

File codes list (Generic code): http://www.ebiz.enea.it/moda-ml/repository/codelist/draft/gc_NT324.xml

Code	Description	Adoption note	Date of insertion
ALC	Alcohol		05/07/2022
BDIE	Bio diesel		05/07/2022
BEV	Battery Electric Vehicle		05/07/2022
BFUE	Biofuels	biodiesel excluded	02/09/2022
DIE	Diesel		05/07/2022
FCEV	Hydrogen Fuel cell		05/07/2022
GAS	GAS		05/07/2022
GPL	LPG		05/07/2022
HEV	Full hybrid (Hybrid Electric Vehicle)		05/07/2022
HUM	Human force		05/07/2022
HYB	Hybrid		05/07/2022
MHY	Mild hybrid		05/07/2022
NUC	Nuclear		05/07/2022
PET	Petrol		05/07/2022
PHEV	plug-in Hybrid Electric Vehicle		05/07/2022
STEAM	Steam		05/07/2022
WIND	Wind		05/07/2022

NT329 - type of validation method of the value

indicates the type of method used to validation and calculate the quantity to which it refers; used to express the data faithfulness

Agency name: eBIZ

Decoding table: NT329

File codes list (Generic code): http://www.ebiz.enea.it/moda-ml/repository/codelist/draft/gc_NT329.xml

Code	Description	Adoption note	Date of insertion
CER	third party certification		11/06/2023
EST	estimate		12/05/2023
EXP	confirmed by an expert		19/05/2023
LAB	laboratory test		11/06/2023
LIT	literature	refer to a literature analysis outcome	12/05/2023
MON	monitoring	refer to continuous measurement in field	12/05/2023
REV	confirmed by review		11/06/2023
SAM	sampling	refer to a sample measurement in field	12/05/2023

SUP	supplier declaration		11/06/2023
-----	----------------------	--	------------

NT333 - type of hashing algorithm

type of hashing algorithm

Decoding table: NT333

File codes list (Generic code): http://www.ebiz.enea.it/moda-ml/repository/codelist/draft/gc_NT333.xml

Code	Description	Adoption note	Date of insertion
ADLER32	ADLER32		26/05/2023
HMAC	HMAC		26/05/2023
MD2	MD2		26/05/2023
MD4	MD4		26/05/2023
MD5	MD5		26/05/2023
MDC-2	MDC-2		26/05/2023
PANAMA	PANAMA		26/05/2023
RIPEMD-160	RIPEMD-160		26/05/2023
SHA-1	SHA-1		26/05/2023
SHA-2 256	SHA-2 256		26/05/2023
SHA-2 384	SHA-2 384		26/05/2023
SHA-2 512	SHA-2 512		26/05/2023
TIGER	TIGER		26/05/2023

NT5 - action code

action performed by the present line upon the referenced document line

Agency name: eBIZ

Decoding table: NT5

File codes list (Generic code): http://www.ebiz.enea.it/moda-ml/repository/codelist/draft/gc_NT5.xml

Code	Description	Adoption note	Date of insertion
A	CANCELLED		
C	CONFIRMED		
N	NEW ORDER LINE (created by an order change)		
R	PROVISIONAL CONFIRMATION		
S	DEFINITIVE CONFIRMATION		
SA	suspension accepted		
SN	suspension not accepted		

SR	suspension request		
V	AMENDED		

NT6 - coding system owner/issuer

code specifying the organisation who has created or owns the registers of the present coding or numbering system

Agency name: eBIZ

Decoding table: NT6

File codes list (Generic code): http://www.ebiz.enea.it/moda-ml/repository/codelist/draft/gc_NT6.xml

Code	Description	Adoption note	Date of insertion
CBR	National customs brokers registry		12/06/2023
CL	Customer/buyer		
CO	Quality Controller		
DU	D-U-N-S registry (Data Universal Numbering System)		04/05/2023
EB	eBIZ	replaces 'ML'	18/03/2019
EN	GS1 (ex-EAN International)		
EO	Registro EORI (Economic Operators Registration and Identification number)		04/03/2023
ES	e-Stockflow	DEPRECATED	
FO	Supplier		
GS	GS1		01/07/2013
MF	national taxation authority (i.e. VAT codes registry)		
ML	Moda-ML	DEPRECATED	
PL	Application Platform		13/06/2022
REX	Registered Exporter system (REX)		19/05/2023
SP	Service Provider		
SU	Enterprise Identification Number UID	Only switzerland	04/03/2023

NT7 - unit of measure

specification of the unit of measure, it is a sub set of table Unit of Measure Code - UN/ECE REC 20 delivered by United Nations Economic Commission for Europe (UN/ECE)

Agency name: eBIZ / UN/ECE

Decoding table: NT7

File codes list (Generic code): http://www.ebiz.enea.it/moda-ml/repository/codelist/draft/gc_NT7.xml

Other link: <http://docs.oasis-open.org/ubl/os-UBL-2.1/cl/gc/default/UnitOfMeasureCode-2.1.gc#>

Code	Description	Adoption note	Date of insertion
CMK	square centimetre		20/12/2017

CMQ	cubic centimetre		20/12/2017
CMT	centimetre		
CNE	centiNewton		
CO2TON	ton of CO2		10/09/2014
COUPLES	couples		
DAY	day		22/08/2022
DEGD	decimal degrees		04/07/2022
DEGMS	degrees with minutes and seconds		01/07/2022
DMQ	cubic decimetre		
E37	pixel		11/04/2018
GRM	gram		
HUR	hour		
INH	inch		
KGM	kilogram		
KMT	kilometer		
KWH	kilowatthours		10/09/2014
LBR	pound		
MCG	microgram		23/08/2022
MG	milligram		23/08/2022
MIN	minute		
MMK	square millimetre		20/12/2017
MONTH	month		22/08/2022
MSEC	millisecond (time)		22/08/2022
MTK	square metre		20/12/2017
MTQ	cubic metre		
MTR	metre		
NMB	numero		
ONZ	ounce		
P1	percent		
PPM	parts per milion		
PZ	piece		
RPM	rounds per metre		
SEC	second (time)		22/08/2022
YEAR	year		22/08/2022
YRD	yard		

T1 - terms of payment

code specifying the terms or time by which the payment must be done

Agency name: eBIZ

Decoding table: T1

File codes list (Generic code): http://www.ebiz.enea.it/moda-ml/repository/codelist/draft/gc_T1.xml

Code	Description	Adoption note	Date of insertion
ANTICIP	PAYMENT IN ADVANCE		
BLCOLLECT/120D	BILL OF LADING 120 DD		
BLCOLLECT/30D	BILL OF LADING 30 DD		
BLCOLLECT/60D	BILL OF LADING 60 DD		
BLCOLLECT/90D	BILL OF LADING 90 DD		
CASH	PAYMENT ON DELIVERY		
CASHINV	PAYMENT ON RECEIPT OF INVOICE		
CREDOC/0D	DOCUMENTARY CREDIT FOR PAYM. AT SIGHT		
CREDOC/120	DOCUMENTARY CREDIT FOR PAYM. AT 120 DD		
CREDOC/150	DOCUMENTARY CREDIT FOR PAYM. AT 150 DD		
CREDOC/180	DOCUMENTARY CREDIT FOR PAYM. AT 180 DD		
CREDOC/30D	DOCUMENTARY CREDIT FOR PAYM. AT 30 DD		
CREDOC/45D	DOCUMENTARY CREDIT FOR PAYM. AT 45 DD		
CREDOC/60	DOCUMENTARY CREDIT FOR PAYM. AT 60 DD		
CREDOC/90	DOCUMENTARY CREDIT FOR PAYM. AT 90 DD		
DEL/10	PAYMENT AT 10 DD AFTER DELIVERY		
DOCOLLECT/120D	DOCUMENTARY COLLECTION AT 120 DD		
DOCOLLECT/30D	DOCUMENTARY COLLECTION AT 30 DD		
DOCOLLECT/60D	DOCUMENTARY COLLECTION AT 60 DD		
DOCOLLECT/90D	DOCUMENTARY COLLECTION AT 90 DD		
INV/120D	PAYMENT AT 120 DD AFTER RECEIPT OF INVOICE		
INV/150D	PAYMENT AT 150 DD AFTER RECEIPT OF INVOICE		
INV/180D	PAYMENT AT 180 DD AFTER RECEIPT OF INVOICE		
INV/30D	PAYMENT AT 30 DD AFTER RECEIPT OF INVOICE		
INV/45D	PAYMENT AT 45 DD AFTER RECEIPT OF INVOICE		
INV/60D	PAYMENT AT 60 DD AFTER RECEIPT OF INVOICE		
INV/90D	PAYMENT AT 90 DD AFTER RECEIPT OF INVOICE		
INVULTIMO	PAYMENT AT END MONTH RECEIPT INVOICE		
INVULTIMO/10D	PAYMENT 10 DD AFTER END MONTH RECEIPT INVOICE		
INVULTIMO/120D	PAYMENT 120 DD AFTER END MONTH RECEIPT INVOICE		
INVULTIMO/150D	PAYMENT 150 DD AFTER END MONTH RECEIPT INVOICE		

INVULTIMO/180D	PAYMENT 180 DD AFTER END MONTH RECEIPT INVOICE		
INVULTIMO/240D	PAYMENT 240 DD AFTER END MONTH RECEIPT INVOICE		
INVULTIMO/30D	PAYMENT 30 DD AFTER END MONTH RECEIPT INVOICE		
INVULTIMO/45D	PAYMENT 45 DD AFTER END MONTH RECEIPT INVOICE		
INVULTIMO/60D	PAYMENT 60 DD AFTER END MONTH RECEIPT INVOICE		
INVULTIMO/90D	PAYMENT 90 DD AFTER END MONTH RECEIPT INVOICE		
NOPAY	WITHOUT PAYMENT		
RECREDOC/0D	IRREVOC. DOCUMENTARY CREDIT FOR PAYM. AT SIGHT		
RECREDOC/120D	IRREVOC. DOCUMENTARY CREDIT FOR PAYM. AT 120 DD		
RECREDOC/150D	IRREVOC. DOCUMENTARY CREDIT FOR PAYM. AT 150 DD		
RECREDOC/180D	IRREVOC. DOCUMENTARY CREDIT FOR PAYM. AT 180 DD		
RECREDOC/30D	IRREVOC. DOCUMENTARY CREDIT FOR PAYM. AT 30 DD		
RECREDOC/45D	IRREVOC. DOCUMENTARY CREDIT FOR PAYM. AT 45 DD		
RECREDOC/60D	IRREVOC. DOCUMENTARY CREDIT FOR PAYM. AT 60 DD		
RECREDOC/90D	IRREVOC. DOCUMENTARY CREDIT FOR PAYM. AT 90 DD		
ULTIMO	PAYMENT BY END MONTH OF DELIVERY		
ULTIMO/10	PAYMENT AT 10 DD AFTER END MONTH OF DELIVERY		

T10 - ISO3166 - Country

code of the nation

Agency name: ISO

Decoding table: T10

File codes list (Generic code): http://www.ebiz.enea.it/moda-ml/repository/codelist/draft/gc_T10.xml

Table not printed: there are 240 elements, more than the maximum specified for printing: 99.

T13 - CFM properties of fabric

code of the physical or mechanical parameter used to define a "technical characteristic of the fabric" (see Fabric technical sheet)

Decoding table: T13

File codes list (Generic code): http://www.ebiz.enea.it/moda-ml/repository/codelist/draft/gc_T13.xml

Code	Description	Adoption note	Date of insertion
CMA	resistance to pilling (UNI.E.1512434)		
CMB	seam slippage - warp (NFG7117)		
CMC	seam slippage - weft (NFG7117)		
CMD	breaking strength - warp (ISO 1394-1)		

CME	breaking strength - weft (ISO 1394-1)		
CMF	resistance to abrasion (EN 12947)		
CMH	tear strength (ISO 9290)		
CMI	crease recovery (ISO 9867)		
CMJ	elongation - warp (BS 4294/68)		
CMK	elongation - weft (BS 4294/68)		
CML	tear resistance - warp		
CMM	tear resistance - weft		
CMN	resistance to bending		
CMP	spray test		
SLA	colour fastness to light (ISO 105-B02)		
SLB	colour fastness to washing (ISO 105-C06)		
SLC	colour fastness to dry cleaning (ISO 105-D01)		
SLD	colour fastness to spotting water (ISO 105-E07)		
SLG	colour fastness to alkaline perspiration (ISO 105-E04)		
SLH	colour fastness to acid perspiration (ISO 105-E04)		
SLI	colour fastness to dry rubbing (ISO 105-X12)		
SLJ	colour fastness to wet rubbing (ISO 105-X12)		
SLK	colour fastness to dry ironing (ISO 105-X11)		
SLM	colour fastness to wet ironing (ISO 105-X11)		
SLW	colour fastness to water (ISO 105-E01)		
SLX	colour fastness to Xeno-light		
SLZ	colour fastness to rubbing org. Solv. (ISO 105-D02)		
STA	dimensional stability to steaming press - length (DIN 53894-2)		
STB	dimensional stability to steaming press - width (DIN 53894-2)		
STC	dimensional stability to washing - length (ISO 5077+6330)		
STD	dimensional stability to washing - width (ISO 5077+6330)		
STE	dimensional stability to dry cleaning - length (ISO 3175)		
STF	dimensional stability to dry cleaning - width (ISO 3175)		

T17 - weave type

type of weaving used in the manufacturing of fabric

Agency name: eBIZ

Decoding table: T17

File codes list (Generic code): http://www.ebiz.enea.it/moda-ml/repository/codelist/draft/gc_T17.xml

Code	Description	Adoption note	Date of insertion
------	-------------	---------------	-------------------

BA	2/2 twill weave		
BE	birdseye weave		
CO	corduroy weave		
DE	derived weave		
DO	double weave		
GA	gauze		
GR	granite weave		
HO	honeycomb weave		
HS	hopsack weave		
MA	mat weave		
PL	plain weave		
SA	satin weave		
TO	towel weave		
TR	tricot weave		
TW	twill weave		
V	V-weave		
W	W-weave		

T19 - fibre type

type of fibre used in a textile product

Agency name: eBIZ

Decoding table: T19

File codes list (Generic code): http://www.ebiz.enea.it/moda-ml/repository/codelist/draft/gc_T19.xml

Code	Description	Adoption note	Date of insertion
AB	abaca		20/08/2018
AC	acetate		
AF	other fibres		
AG	alginic fibre		
AL	alfa		20/08/2018
AR	aramid		25/04/2022
CA	hemp		
CC	coir (coconut)		20/08/2018
CL	chlorofibre		
CO	cotton		
CU	cuprous		
EA	elastan		

EF	elastolefin		25/04/2022
EL	Elastodiene		20/08/2018
EM	elastomultiester		25/04/2022
FL	fluorofibre		
GI	broom		20/08/2018
GL	textile glass		
HA	hair		20/08/2018
HE	henequen		20/08/2018
HL	mixed linen		
JU	jute		
KE	kenaf		20/08/2018
KP	kapoc		20/08/2018
LI	linen		
LY	lyocell		20/08/2018
MA	modacrylic		
MD	modal		
ME	metallized		
MG	maguey		20/08/2018
MM	melamine		25/04/2022
PA	polyamide		
PB	polyureic		
PC	acrylic		
PE	polyethylene		
PI	paper		20/08/2018
PL	polyester		
PM	polyimide		
PO	polilactyd		25/04/2022
PP	polypropylene		
PR	proteic		
PU	polyurethane		
RA	ramie		20/08/2018
SE	silk		
SI	sisal		20/08/2018
SN	sun		20/08/2018
TA	triacetate		
TR	textile residues or unspecified composition		20/08/2018
TV	trivinyln		
VI	viscose		

VY	vinylal		
WA	angora		
WB	beaver		20/08/2018
WC	cashgora		
WG	vicuna		
WK	camel		
WL	llama		
WM	mohair		
WN	lapin		20/08/2018
WO	wool		
WP	alpaca		
WS	cashmere		
WT	Oteer		20/08/2018
WU	guanaco		
WV	virgin wool		
WY	yack		

T2 - Modes of payment

way or means of payment

Agency name: eBIZ

Decoding table: T2

File codes list (Generic code): http://www.ebiz.enea.it/moda-ml/repository/codelist/draft/gc_T2.xml

Code	Description	Adoption note	Date of insertion
BB	bank transfer		
IA	collection through Agent		
IS	collection through Forwarder		
RB	bank receipt		
RD	remittance		
SW	bank SWIFT		
TR	bank draft		

T202 - type of job on fabric

operation of a work cycle for fabric

Agency name: eBIZ

Decoding table: T202

File codes list (Generic code): http://www.ebiz.enea.it/moda-ml/repository/codelist/draft/gc_T202.xml

Code	Description	Adoption note	Date of insertion
50	to warp		
51	to weave		
52	to dye		
53	to print		
54	to finish		
56	stain resistant		
57	decolorizing		
58	flame resistant		
59	waterproofing		
60	protolan		
61	lavatex		
62	chlorination		
63	bleaching		
64	caustic soda treatment		
65	thermo-setting		
66	lucido superjet		
67	natural stretch		
68	softisuper		
69	stragar		
70	anti-crease		
71	anti-pilling		
72	anti-slipping		
73	anti-static		
80	printing preparation		01/07/2013
81	check		01/07/2013
99	other, see note if any		01/07/2013

T21 - type of document

type or class to which the referenced document belongs

Agency name: eBIZ

Decoding table: T21

File codes list (Generic code): http://www.ebiz.enea.it/moda-ml/repository/codelist/draft/gc_T21.xml

Code	Description	Adoption note	Date of insertion
------	-------------	---------------	-------------------

BIL	Bill of lading		07/03/2023
BOR	Blanket order		01/02/2018
CAT	Price catalogue - tech sheet		
CEO	Certificate of origin		13/04/2018
CER	Certificate		13/04/2018
CMR	CMR consignment note		07/03/2023
COC	Colour card		
CRN	Credit note		08/09/2017
CTO	Checking order		01/07/2013
CTR	Contract		
CXF	CxF3 file		01/07/2013
DAD	Darn order		
DDT	Delivery note (transport document)		
DEA	Despatch advise		
DER	Despatch request		
DR	Document Request		02/12/2014
EAD	Export Accompanying Document	adopted by European customs	12/05/2023
ECMR	electronic CMR consignment note		07/03/2023
ECUS	EXPORT Custom Declaration		07/03/2023
FOR	Forecast		02/12/2014
GSO	Garment stock offer		
GSX	Garment stock offer change		
ICUS	IMPORT Custom Declaration		07/03/2023
INV	Invoice		
KCC	Knitting-Clothing Commission Order		02/12/2014
KCI	Garment in Work Inventory Report		02/12/2014
LCA	LCA study		28/08/2022
LCAD	LCA study dataset		28/08/2022
M2M	Made to Measure Production Order		02/12/2014
MAS	Master marker		
MCI	Visual merchandising instruction		13/04/2018
OCH	Order change		
OFF	Offer		
ORD	Purchase order		
ORP	Order response		
OSR	order status request		
OSS	Offer status		02/12/2014
OST	Order status		

OUR	our reference		
PCO	Preferential certificate of origin		07/03/2023
PEF	PEF study		28/08/2022
PEFD	PEF study dataset		28/08/2022
PEFP	PEF environmental profile		07/03/2023
QR	Quality Report		02/12/2014
RAI	Raw Material in Work Inventory Report		02/12/2014
RDC	Raw dyeing commission order		
RDH	Raw dyeing order change		
RDR	Raw dyeing order response		
REA	Receiving advise		
REQ	Request for Offer		
RET	Return		02/12/2014
RSC	Spinning commission order		
RSH	Spinning order change		
RSR	Spinning order response		
SAD	Single Administrative Document	adopted by European customs	12/05/2023
SCL	Process sheet		
SDE	Self-declaration		07/03/2023
SDS	SDS - Safety data sheet		07/03/2023
SLCA	S-LCA Study		07/03/2023
SLCAD	S-LCA Study documentation		07/03/2023
TFC	Textile dyeing-finishing commission order		
TFX	Textile Dyeing-Finishing Order Change		02/12/2014
TPC	Textile printing commission order		
TPX	Textile Printing Order Change		02/12/2014
TWI	Textile in work inventory		
VMI	visual merchandising instructions		01/02/2018
WAC	Warping commission order		
WAYB	Waybill		07/03/2023
WEC	Weaving commission order		
YDC	Yarn dyeing commission order		
YDH	Yarn dyeing order change		
YDR	Yarn dyeing order response		
YTC	Twisting commission order		
YWI	Yarn in work inventory		

T262 - type of job technology for fabric

operation technology for fabric

Agency name: eBIZ

Decoding table: T262

File codes list (Generic code): http://www.ebiz.enea.it/moda-ml/repository/codelist/draft/gc_T262.xml

Code	Description	Adoption note	Date of insertion
50	fractional warping		
51	sectional warping		
52	samples warping		
53	air-jet loom		
54	projectile loom		
55	negative rapier loom		
56	positive rapier loom		
57	verdol		
58	electronic jacquard		
59	trough dyeing		
60	jet dyeing		
61	pad dyeing		
62	overflow dyeing		
63	jiggers dyeing		
64	beam dyeing		
68	wet finishing		
69	dry finishing		
70	direct		
71	discharge printing		
72	reserve printing		
73	thermo printing		
74	devorè		
80	cylinder printing		01/07/2013
81	inkjet printing		01/07/2013
99	other, see note if any		01/07/2013

T272 - machine type for fabric operation

machine used in an operation of a work cycle for fabric

Agency name: eBIZ

Decoding table: T272

File codes list (Generic code): http://www.ebiz.enea.it/moda-ml/repository/codelist/draft/gc_T272.xml

Code	Description	Adoption note	Date of insertion
01	DORNIER		
02	SULZER		
03	TSUD DAKOMA		
04	VAMATEX		
05	SOMET		
06	N. VAMATEX		
07	BONAS		
08	GROSSE		
09	STAUBLI		
99	other, see note if any		01/07/2013

T282 - parameter type for fabric operation

setting parameter of a machine used in an operation of a work cycle for fabric

Agency name: eBIZ

Decoding table: T282

File codes list (Generic code): http://www.ebiz.enea.it/moda-ml/repository/codelist/draft/gc_T282.xml

Code	Description	Adoption note	Date of insertion
01	reed width		
02	number of blades		
03	number of warp beams		
04	laid-in selvedge		
05	written selvedge		
99	other, see note if any		01/07/2013

T3 - terms of delivery - IncoTerms

specification of the terms of trade (INCOTERMS)

Agency name: Incoterms

Decoding table: T3

File codes list (Generic code): http://www.ebiz.enea.it/moda-ml/repository/codelist/draft/gc_T3.xml

Other link: <https://iccwbo.org/resources-for-business/incoterms-rules/incoterms-2020/#>

Code	Description	Adoption note	Date of insertion
CF	COST AND FREIGHT (named port of destination)		

R			
CIF	COST, INSURANCE AND FREIGHT (named port of destination)		
CIP	CARRIAGE AND INSURANCE PAID (named place of destination)		
CP T	CARRIAGE PAID (named place of destination)		
DA F	DELIVERED AT FRONTIER (named place)	according to Incoterms® 2010, since 2020 it is OBSOLETE.	08/12/2017
DA P	Delivered at Place of destination (named place of destination)	according to Incoterms® 2010	08/12/2017
DA T	Delivered at Terminal (named place of destination)	according to Incoterms® 2010, since 2020 it is OBSOLETE.	08/12/2017
DD P	DELIVERED DUTY PAID (named place of destination)		
DD U	DELIVERED DUTY UNPAID (named place of destination)	according to Incoterms® 2010 it is OBSOLETE, use DAP	08/12/2017
DE Q	DELIVERED EX-QUAY (named port of destination)	according to Incoterms® 2010 it is OBSOLETE	08/12/2017
DE S	DELIVERED EX-SHIP (named port of destination)	according to Incoterms® 2010 it is OBSOLETE	08/12/2017
DP U	DELIVERED AT PLACE UNLOADED	according to Incoterms® 2020	25/04/2022
EX W	EX WORKS (named place)		
FAS	FREE ALONGSIDE SHIP (named port of shipment)		
FC A	FREE CARRIER (named place)		
FO B	FREE ON BOARD (named port of shipment)		

T306 - material circularity attribute

Indicates whether the material is virgin or comes from recycling or reuse processes

Agency name: eBIZ for TRICK

Decoding table: T306

File codes list (Generic code): http://www.ebiz.enea.it/moda-ml/repository/codelist/draft/gc_T306.xml

Code	Description	Adoption note	Date of insertion
RE U	Reused material		30/08/2022
SCL	Secondary raw materials	adopt this for any secondary raw material when information about the first or following loop is not available	22/07/2022
SCL 1	Secondary raw materials - first loop		22/07/2022

SCLx	Secondary raw materials - loop following the first one		22/07/2022
VRG	Virgin raw material	adopt this for any virgin raw material when biobased information is not available	22/07/2022
VRGB	Virgin raw material - biobased		23/03/2023
VRGN	Virgin raw material - not biobased		23/03/2023

T307 - recycling process method

Agency name: eBIZ for TRICK

Decoding table: T307

File codes list (Generic code): http://www.ebiz.enea.it/moda-ml/repository/codelist/draft/gc_T307.xml

Code	Description	Adoption note	Date of insertion
CHMD	chemical recycling (dissolution)		28/07/2022
CHMP	chemical recycling (depolymerization)		28/07/2022
ENZ	enzymatic recycling		01/09/2022
MEC	mechanical recycling		28/07/2022
THE	thermal recycle		31/08/2022
THMC	thermo-mechanical recycling		01/09/2022

T38 - transport conditions

special condition of transport or special service requested to the Forwarder

Decoding table: T38

File codes list (Generic code): http://www.ebiz.enea.it/moda-ml/repository/codelist/draft/gc_T38.xml

Code	Description	Adoption note	Date of insertion
ACC	arrange customs clearance		
CAL	Carrier loads		
CAU	Carrier unloads		
CMR	CMR carnet		
FFN	freight forwarders national conditions		
FLD	special agreement for full loading		
NCC	do not arrange customs clearance		
PPB	packaging paid by Buyer		
PPS	packaging paid by Supplier		
PRO	proof of delivery		

RFR	return container free		
RPC	return container paid by Customer		
RPS	return container paid by Supplier		
SHL	Shipper loads		
SHU	Consignee unloads		

T40 - type of transport means

means of transport, in general or referred to a specific leg

Agency name: eBIZ

Decoding table: T40

File codes list (Generic code): http://www.ebiz.enea.it/moda-ml/repository/codelist/draft/gc_T40.xml

Code	Description	Adoption note	Date of insertion
AIR	aircraft		
SHP	ship		
TRU	truck		
VAN	van		

T41 - type of Allowance or Charge

coded specification of an Allowance or Charge (elaborated from UNECE 4465)

Agency name: eBIZ

Decoding table: T41

File codes list (Generic code): http://www.ebiz.enea.it/moda-ml/repository/codelist/draft/gc_T41.xml

Code	Description	Adoption note	Date of insertion
1	Agreed settlement		19/08/2018
10	Costs for draft		19/08/2018
11	Bank charges	DEPRECATED, use CBK	19/08/2018
12	Agent commission		19/08/2018
14	Wrong delivery		19/08/2018
15	Goods returned to agent		19/08/2018
16	Goods partly returned		19/08/2018
17	Transport damage		19/08/2018
19	Trade discount		19/08/2018
2	Below specification goods		19/08/2018
20	Deduction for late delivery	DEPRECATED, use CWB	19/08/2018

21	Advertising costs		19/08/2018
22	Customs duties		19/08/2018
23	Telephone and postal costs		19/08/2018
24	Repair costs		19/08/2018
25	Attorney fees		19/08/2018
26	Taxes		19/08/2018
3	Damaged goods		19/08/2018
30	Direct payment to seller		19/08/2018
32	Goods not delivered		19/08/2018
33	Late delivery		19/08/2018
35	Goods returned		19/08/2018
36	Invoice not received		19/08/2018
37	Credit note to debtor/not to us		19/08/2018
38	Deducted bonus		19/08/2018
39	Deducted discount		19/08/2018
4	Short delivery		19/08/2018
40	Deducted freight costs		19/08/2018
41	Deduction against other invoices		19/08/2018
42	Credit balance(s)		19/08/2018
45	Debit note to seller		19/08/2018
46	Discount beyond terms		19/08/2018
48	Allowance/charge error		19/08/2018
49	Substitute product		19/08/2018
50	Terms of sale error		19/08/2018
52	Wrong invoice		19/08/2018
53	Duplicate invoice		19/08/2018
54	Weight error		19/08/2018
55	Additional charge not authorized		19/08/2018
56	Incorrect discount		19/08/2018
57	Price change		19/08/2018
58	Variation		19/08/2018
59	Chargeback		19/08/2018
65	Settlement to agent		19/08/2018
66	Cash discount		19/08/2018
7	Payment on account		19/08/2018
70	Wrong monetary amount resulting from incorrect free goods quantity		19/08/2018
72	Temporary special promotion		19/08/2018
73	Difference in tax rate		19/08/2018

74	Quantity discount		19/08/2018
75	Promotion discount		19/08/2018
76	Cancellation deadline passed		19/08/2018
77	Pricing discount		19/08/2018
78	Volume discount		19/08/2018
79	Sundry discount		19/08/2018
8	Returnable container charge included		19/08/2018
9	Invoice error		19/08/2018
AWA	bonus for works ahead of schedule		
CBK	bank charges		
CCR	servizio di corriere		
CIN	insurance		
CLB	labelling		
CPK	packing		
CSP	special packing		
CWB	penalty for works behind schedule		

T61 - duty or tax or fee type

duty or tax or fee type

Agency name: eBIZ

Decoding table: T61

File codes list (Generic code): http://www.ebiz.enea.it/moda-ml/repository/codelist/draft/gc_T61.xml

Code	Description	Adoption note	Date of insertion
BOL	stamp duty		01/07/2013
CUD	customs duty		01/07/2013
ENV	environmental tax		01/07/2013
FRE	no tax		01/07/2013
OTH	other tax charges		01/07/2013
VAT	value added tax		01/07/2013

T62 - duty or tax or fee category

duty or tax or fee category

Agency name: eBIZ

Decoding table: T62

File codes list (Generic code): http://www.ebiz.enea.it/moda-ml/repository/codelist/draft/gc_T62.xml

Code	Description	Adoption note	Date of insertion
AA	lower than standard rate		01/07/2013
E	tax not applicable		01/07/2013
H	higher than standard rate		01/07/2013
O	outside scope of tax		01/07/2013
S	standard rate		01/07/2013
Z	zero rate goods		01/07/2013

T8 - Modes of Transport

way of transport, in general or referred to the specified leg. Derived from UNECE Recommendation 28 (see link)

Agency name: eBIZ

Decoding table: T8

File codes list (Generic code): http://www.ebiz.enea.it/moda-ml/repository/codelist/draft/gc_T8.xml

Other link: <https://fig.unece.org/contents/recommendation-28.htm#>

Code	Description	Adoption note	Date of insertion
1	MARITIME TRANSPORT		
10	Courier	DEPRECATED	01/07/2013
2	RAIL TRANSPORT		
3	ROAD TRANSPORT		
4	AIR TRANSPORT		
5	MAIL		
6	MULTIMODAL TRANSPORT	example ship + truck. Not used for custom declarations.	13/06/2023
8	INLAND WATER TRANSPORT		
9	MODE UNKNOWN	Includes Own propulsion	13/06/2023

T9 - ISO4217 - Currency

currency code

Agency name: ISO

Decoding table: T9

File codes list (Generic code): http://www.ebiz.enea.it/moda-ml/repository/codelist/draft/gc_T9.xml

Table not printed: there are 205 elements, more than the maximum specified for printing: 99.