



<http://www.ebiz-tcf.eu>

DRAFT

IMPLEMENTATION GUIDE  
TRANSACTION "GARMENT STOCK OFFER STATUS"

Version: draft

Date of release: 26/6/2023

Document code: G063

technical Documentation: <http://www.ebiz.enea.it>

XML Schemas repository: <http://www.ebiz.enea.it/moda-ml/repository/schema/draft/default.asp>

Guides repository: <http://www.ebiz.enea.it/moda-ml/repository/guide/draft/default.asp>

Guide filename: G063-eBIZ-GarmentStockOfferStatus.pdf

## 0. PREMISE

This document contains a proposal for the updating and extension of eBIZ specifications starting from the eBIZ version 2018. Under the name of 'Draft version' it is reported the result of an extensive work of analysis and consultation aimed at developing and maintaining eBIZ specifications.

In particular, the content of this proposal is the result of various activities, mainly those carried out within the framework of the **TRICK project** funded by the European Commission: grant agreement 958352, call H2020-LOW-CARBON-CIRCULAR-INDUSTRIES-2020 / H2020-LCCI-2020-EASME-twostage.

The technical contents are backwards compatible with the latest official published version, with the exclusion of the totally new concepts added explicitly for the version that are thought as incremental evolution of the knowledge base.

## 1. BUSINESS DESCRIPTION

### 1.1 Scope

The document Garment Stock Offer Status can be used as Response to the Offer, notifying the Client of the loading and of the status of the Offer (. dealing, sold, withdrawn, ..etc..).

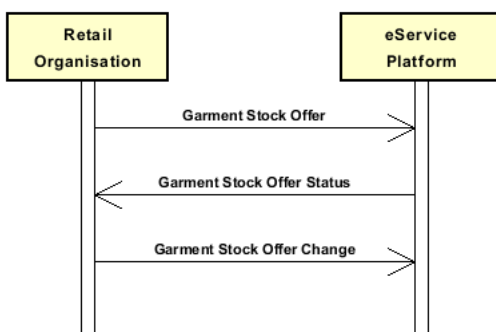
### 1.2 Generalities

The document is issued by the e-Stockflow Service Provider to respond to an Offer of garment stock or to notify the status of the Offer.

Each document line must refer to one line of a former "Stock Offer", of which is notified either the loading or the following development of the dealing

### 1.3. Possible scenario

On-line stocks offer



## 2. IMPLEMENTATION GUIDE

### 2.1 General structure of XML document

All the business data that can be exchanged through this class of documents are shown in the following "document structure", that provides a simplified vision of the Schema.

In particular:

- the two numbers following each element define its "cardinality" (minimum and maximum number of occurrences); the minimum equal zero indicates that the element is optional, the minimum greater than zero indicates that is mandatory;
- the bold character denotes the complex elements (aggregates of simple elements) that were built for the sake of functionality and re-usability of some complex informations sets. The child elements in each parent element are easily spotted as "indented";
- the symbol "@" denotes an attribute of the preceding element; here "the usage indicator (optional, required, ...)" is shown in square brackets.

### Structure

#### **GARStockStat**

@msgfunction [Optional] [Default= OR]

@version [Optional] [Default= draft]

@useProfile [Optional]

```
| GSOheader 1-1
| | msgN 1-1
| | msgID 0-1
| | msgDate 1-1
| |   @dateForm [Optional]
| | refDoc 0-9
| |   @docType [Required]
| |   | docID 1-2
| |   |   @numberingOrg [Optional]
| |   | docDate 0-1
| |   |   @dateForm [Optional]
| |   | season 0-1
| |   |   @numberingOrg [Optional]
| |   |   @codeList [Optional]
| |   |   @listName [Optional]
| |   |   @listVersion [Optional]
| |   | itemID 0-1
| |   | attachment 0-1
| |   |   @uid [Optional]
| |   |   | fileName 0-1
| |   |   |   @numberingOrg [Optional]
| |   |   | binaryObject 0-1
| |   |   |   @format [Optional]
| |   |   |   @mime [Optional]
| |   |   |   @encoding [Optional]
| |   |   |   @characterSet [Optional]
| |   |   | externalReference 0-99
| |   |   |   | uri 1-1
| |   |   |   |   @isURL [Optional] [Default= true]
| |   |   |   |   mimeCode 0-1
| |   |   |   |   formatCode 0-1
| |   |   |   |   encodingCode 0-1
| |   |   |   |   characterSetCode 0-1
| |   |   |   | hashFootprint 0-1
| |   |   |   |   @schemeID [Optional]
| |   |   |   |   @hashMethod [Required]
| |   |   |   | blockChainReference 0-9
| |   |   |   |   | uri 1-1
| |   |   |   |   |   @isURL [Optional] [Default= true]
| |   |   |   |   |   transactionReceipt 1-9
| |   | supplier 1-1
| |   |   @logo [Optional]
| |   |   @sender [Optional]
| |   |   | id 1-1
| |   |   |   @numberingOrg [Optional]
```

| additionalIdentifier 0-9  
 |    @numberingOrg [Optional]  
 |    @idQualifier [Optional]  
 | legalName 0-1  
 | dept 0-1  
 | subDept 0-1  
 | person 0-1  
 |    @email [Optional]  
 |    @phone [Optional]  
 |    @fax [Optional]  
 | street 0-1  
 | city 0-1  
 | subCountry 0-1  
 | country 0-1  
 | postCode 0-1  
 | **geoCoordinates 0-1**  
 |    @um [Optional] [Default= DEGD]  
 |    @geoRefSystem [Optional]  
 |      xGeoCoord 1-1  
 |      yGeoCoord 1-1  
 |      zGeoCoord 0-1  
**buyer 0-1**  
 | @logo [Optional]  
 | @sender [Optional]  
 |    id 1-1  
 |    @numberingOrg [Optional]  
 | additionalIdentifier 0-9  
 |    @numberingOrg [Optional]  
 |    @idQualifier [Optional]  
 | legalName 0-1  
 | dept 0-1  
 | subDept 0-1  
 | person 0-1  
 |    @email [Optional]  
 |    @phone [Optional]  
 |    @fax [Optional]  
 | street 0-1  
 | city 0-1  
 | subCountry 0-1  
 | country 0-1  
 | postCode 0-1  
 | **geoCoordinates 0-1**  
 |    @um [Optional] [Default= DEGD]  
 |    @geoRefSystem [Optional]  
 |      xGeoCoord 1-1  
 |      yGeoCoord 1-1  
 |      zGeoCoord 0-1  
**thirdParty 0-5**  
 | @VAT [Optional]  
 | @role [Required]  
 | @sender [Optional]  
 |    id 1-1  
 |    @numberingOrg [Optional]  
 | legalName 0-1  
 | dept 0-1  
 | subDept 0-1  
 | person 0-1  
 |    @email [Optional]  
 |    @phone [Optional]  
 |    @fax [Optional]  
 | street 0-1  
 | city 0-1  
 | subCountry 0-1  
 | country 0-1  
 | postCode 0-1  
 | **geoCoordinates 0-1**  
 |    @um [Optional] [Default= DEGD]  
 |    @geoRefSystem [Optional]

- | | | xGeoCoord 1-1
- | | | yGeoCoord 1-1
- | | | zGeoCoord 0-1
- | note 0-99
- | | @numberingOrg [Optional]
- | | @codeList [Optional]
- | | @noteLabel [Optional]

**GSSbody 1-1**

**GSSitem 1-unbounded**

- | @offerStat [Required]
- | @offerStatReason [Optional]
- | | lineN 1-1
- | | | @VAT [Optional]
- | | lineID 0-1
- | | eStockN 1-1
- | | | @numberingOrg [Optional]
- | | **refDoc 0-9**
- | | | @docType [Required]
- | | | | docID 1-2
- | | | | | @numberingOrg [Optional]
- | | | | docDate 0-1
- | | | | | @dateForm [Optional]
- | | | | season 0-1
- | | | | | @numberingOrg [Optional]
- | | | | | @codeList [Optional]
- | | | | | @listName [Optional]
- | | | | | @listVersion [Optional]
- | | | itemID 0-1
- | | | **attachment 0-1**
- | | | | @uid [Optional]
- | | | | | fileName 0-1
- | | | | | | @numberingOrg [Optional]
- | | | | | binaryObject 0-1
- | | | | | | @format [Optional]
- | | | | | | @mime [Optional]
- | | | | | | @encoding [Optional]
- | | | | | | @characterSet [Optional]
- | | | | | **externalReference 0-99**
- | | | | | | uri 1-1
- | | | | | | | @isURL [Optional] [Default= true]
- | | | | | | | mimeTypeCode 0-1
- | | | | | | | formatCode 0-1
- | | | | | | | encodingCode 0-1
- | | | | | | | characterSetCode 0-1
- | | | | | | hashFootprint 0-1
- | | | | | | | @schemeID [Optional]
- | | | | | | | @hashMethod [Required]
- | | | | | | **blockChainReference 0-9**
- | | | | | | | uri 1-1
- | | | | | | | | @isURL [Optional] [Default= true]
- | | | | | | | transactionReceipt 1-9
- | | **garmentCategory 0-1**
- | | | @numberingOrg [Optional]
- | | | | artGroup 0-1
- | | | | | @numberingOrg [Optional]
- | | | | | @codeList [Optional]
- | | | | | @listName [Optional]
- | | | | | @listVersion [Optional]
- | | | | artSubGroup 0-1
- | | | | | @numberingOrg [Optional]
- | | | | | @codeList [Optional]
- | | | | | @listName [Optional]
- | | | | | @listVersion [Optional]
- | | | | artSex 0-1
- | | | | | @numberingOrg [Optional]
- | | | | | @codeList [Optional]
- | | | | | @listName [Optional]

| @listVersion [Optional]  
 | season 0-1  
 | @numberingOrg [Optional]  
 | @codeList [Optional]  
 | @listName [Optional]  
 | @listVersion [Optional]  
 | **goodsClassification 0-9**  
 |   macroClass 0-1  
 |    @numberingOrg [Optional]  
 |    @codeList [Optional]  
 |    @listName [Optional]  
 |    @listVersion [Optional]  
 |   class 0-1  
 |    @numberingOrg [Optional]  
 |    @codeList [Optional]  
 |    @listName [Optional]  
 |    @listVersion [Optional]  
 |   subClass 0-1  
 |    @numberingOrg [Optional]  
 |    @codeList [Optional]  
 |    @listName [Optional]  
 |    @listVersion [Optional]  
 |   note 0-99  
 |    @numberingOrg [Optional]  
 |    @codeList [Optional]  
 |    @noteLabel [Optional]  
 | tradeMark 0-1  
 | commerceText 0-unbounded  
 |   @ln [Optional]  
 | **garmentCode 0-1**  
 |   @numberingOrg [Optional]  
 | - choose -  
 |   **garmentCodeB 1-1**  
 |    @numberingOrg [Optional]  
 |    mod 1-1  
 |    @numberingOrg [Optional]  
 |    @codeList [Optional]  
 |    @listName [Optional]  
 |    @listVersion [Optional]  
 |    fabric 0-1  
 |    @numberingOrg [Optional]  
 |    @codeList [Optional]  
 |    @listName [Optional]  
 |    @listVersion [Optional]  
 |    color 0-1  
 |    @numberingOrg [Optional]  
 |    @codeList [Optional]  
 |    @listName [Optional]  
 |    @listVersion [Optional]  
 |    **garmentVariant 0-9**  
 |    variantType 1-1  
 |    @numberingOrg [Optional]  
 |    @codeList [Optional]  
 |    @listName [Optional]  
 |    @listVersion [Optional]  
 |    variantCode 1-1  
 |    @numberingOrg [Optional]  
 |    @codeList [Optional]  
 |    @listName [Optional]  
 |    @listVersion [Optional]  
 |    drop 0-1  
 |    @numberingOrg [Optional]  
 |    @codeList [Optional]  
 |    @listName [Optional]  
 |    @listVersion [Optional]  
 |    size 0-1  
 |    @numberingOrg [Optional]  
 |    @codeList [Optional]

```

| | | | @listName [Optional]
| | | | @listVersion [Optional]
| | | | artGroup 0-1
| | | | @numberingOrg [Optional]
| | | | @codeList [Optional]
| | | | @listName [Optional]
| | | | @listVersion [Optional]
| | | | added 0-9
| | | | @numberingOrg [Optional]
| | | | @addType [Optional]
| | | | description 0-unbounded
| | | | @ln [Optional]
- or -
| | | | garmentCodeA 1-1
| | | | | art 1-1
| | | | | @numberingOrg [Optional]
| | | | | @codeList [Optional]
| | | | | @listName [Optional]
| | | | | @listVersion [Optional]
| | | | | description 0-unbounded
| | | | | @ln [Optional]
- end choose -
| | | | qty 0-1
| | | | | @um [Required]
| | | | readyToSendDate 0-1
| | | | | @dateForm [Optional]
| | | | price 0-1
| | | | | @um [Optional]
| | | | | @priceQualifier [Optional] [Default= NET]
| | | | | @currency [Optional]
| | | | csRange 0-99
| | | | | @numberingOrg [Optional]
| | | | | @sizeSystemNat [Optional]
| | | | | @sizeSystemSeg [Optional]
| | | | | @sizeSystemBase [Optional]
| | | | | @sizeSystemID [Optional]
| | | | | color 0-1
| | | | | | @numberingOrg [Optional]
| | | | | | @codeList [Optional]
| | | | | | @listName [Optional]
| | | | | | @listVersion [Optional]
| | | | | garmentVariant 0-9
| | | | | | variantType 1-1
| | | | | | | @numberingOrg [Optional]
| | | | | | | @codeList [Optional]
| | | | | | | @listName [Optional]
| | | | | | | @listVersion [Optional]
| | | | | | variantCode 1-1
| | | | | | | @numberingOrg [Optional]
| | | | | | | @codeList [Optional]
| | | | | | | @listName [Optional]
| | | | | | | @listVersion [Optional]
| | | | | drop 0-1
| | | | | | @numberingOrg [Optional]
| | | | | | @codeList [Optional]
| | | | | | @listName [Optional]
| | | | | | @listVersion [Optional]
| | | | | sizeMatrix 1-1
| | | | | | sizeRow 1-99
| | | | | | | additionalComponentCode 0-9
| | | | | | | | @numberingOrg [Optional]
| | | | | | | | @codeList [Optional]
| | | | | | | | @listName [Optional]
| | | | | | | | @listVersion [Optional]
| | | | | | | drop 0-1
| | | | | | | | @numberingOrg [Optional]
| | | | | | | | @codeList [Optional]
| | | | | | | | @listName [Optional]

```

```

| | | | | @listVersion [Optional]
| | | | | size 1-1
| | | | | @numberingOrg [Optional]
| | | | | @codeList [Optional]
| | | | | @listName [Optional]
| | | | | @listVersion [Optional]
| | | | | qty 0-1
| | | | | @um [Required]
| | | | | itemsList 0-1
| | | | | | qualityLevel 0-1
| | | | | | @numberingOrg [Optional]
| | | | | | @codeList [Optional]
| | | | | | @listName [Optional]
| | | | | | @listVersion [Optional]
| | | | | | itemIdentification 1-unbounded
| | | | | | | serialN 1-9
| | | | | | | @numberingOrg [Optional]
| | | | | | | @idQualifier [Optional]
| | | | | stockAddress 0-1
| | | | | | @numberingOrg [Optional]
| | | | | | | city 1-1
| | | | | | | subCountry 1-1
| | | | | | | country 1-1
| | | | | note 0-99
| | | | | | @numberingOrg [Optional]
| | | | | | @codeList [Optional]
| | | | | | @noteLabel [Optional]

```



## 2.2 Detailed description of document elements

Following tables show all elements (complex and simple) used in this document. Description includes: 1) element's information: xml tag, name, brief description, data type and syntax constraints; 2) information about use of the element in a particular position in the document: xpath and possible associated notes.

### 2.2.1 Complex elements (Aggregate Business Information Entities)

Complex elements are those elements whose content is composed of other elements (childs).Complex elements are alphabetically ordered.

<b>attachment</b>	an attached document. An attachment can refer to an external document or be included with the document being exchanged (XPath GARStockStat/GSOheader/refDoc/attachment) 0-1 (XPath GARStockStat/GSSbody/GSSitem/refDoc/attachment) 0-1
<b>blockChainReference</b>	blockchain reference - base type: string, max length: 80, (XPath GARStockStat/GSOheader/refDoc/attachment/blockChainReference) 0-9 (XPath GARStockStat/GSSbody/GSSitem/refDoc/attachment/blockChainReference) 0-9
<b>buyer</b>	details of the Buyer (party that buys the good or service that is object of the current collaborative process) - base type: Nad, (XPath GARStockStat/GSOheader/buyer) 0-1
<b>csRange</b>	range of color-size for a fashion article (XPath GARStockStat/GSSbody/GSSitem/csRange) 0-99
<b>externalReference</b>	details about an external object, such as a document stored at a remote location (XPath GARStockStat/GSOheader/refDoc/attachment/externalReference) 0-99 (XPath GARStockStat/GSSbody/GSSitem/refDoc/attachment/externalReference) 0-99
<b>garmentCategory</b>	classification of a garment article (XPath GARStockStat/GSSbody/GSSitem/garmentCategory) 0-1
<b>garmentCode</b>	codification of the garment product (XPath GARStockStat/GSSbody/GSSitem/garmentCode) 0-1
<b>garmentCodeA</b>	codification of the garment product- type A (XPath GARStockStat/GSSbody/GSSitem/garmentCode/garmentCodeA) 1-1 - note: <i>here the barcode EAN-13 or EAN-8 should be specified</i>
<b>garmentCodeB</b>	codification of the garment product - type B (XPath GARStockStat/GSSbody/GSSitem/garmentCode/garmentCodeB) 1-1
<b>garmentVariant</b>	garment product variant (XPath GARStockStat/GSSbody/GSSitem/csRange/garmentVariant) 0-9 - note: <i>used only if not already specified in the article code</i> (XPath GARStockStat/GSSbody/GSSitem/garmentCode/garmentCodeB/garmentVariant) 0-9
<b>geoCoordinates</b>	geographical coordinates (XPath GARStockStat/GSOheader/thirdParty/geoCoordinates) 0-1 (XPath GARStockStat/GSOheader/buyer/geoCoordinates) 0-1 (XPath GARStockStat/GSOheader/supplier/geoCoordinates) 0-1
<b>goodsClassification</b>	goods classification of the item. (XPath GARStockStat/GSSbody/GSSitem/garmentCategory/goodsClassification) 0-9
<b>GSOheader</b>	Header of a document for on-line FASHION STOCK management (XPath GARStockStat/GSOheader) 1-1
<b>GSSbody</b>	body of the document GARMENT STOCK OFFER STATUS (XPath GARStockStat/GSSbody) 1-1
<b>GSSitem</b>	line item of the document GARMENT STOCK OFFER STATUS (XPath GARStockStat/GSSbody/GSSitem) 1-unbounded
<b>itemIdentification</b>	serial identification of a product unit (XPath GARStockStat/GSSbody/GSSitem/csRange/sizeMatrix/

	<p>sizeRow/itemsList/itemIdentification) 1-unbounded  - note: <i>identification of the single product unit contained in the list</i></p>
<b>itemsList</b>	<p>list of the single product units  (XPath GARStockStat/GSSbody/GSSitem/csRange/sizeMatrix/  sizeRow/itemsList) 0-1  - note: <i>the usage in this position is alternative to its usage within the document line element</i></p>
<b>refDoc</b>	<p>identification of a document and of an item thereof, to which the message makes reference  (XPath GARStockStat/GSOheader/refDoc) 0-9  (XPath GARStockStat/GSSbody/GSSitem/refDoc) 0-9</p>
<b>sizeMatrix</b>	<p>size matrix of an apparel product  (XPath GARStockStat/GSSbody/GSSitem/csRange/sizeMatrix) 1-1</p>
<b>sizeRow</b>	<p>size matrix row of an apparel product  (XPath GARStockStat/GSSbody/GSSitem/csRange/sizeMatrix/sizeRow) 1-99</p>
<b>stockAddress</b>	<p>physical location of a stock  (XPath GARStockStat/GSSbody/GSSitem/stockAddress) 0-1</p>
<b>supplier</b>	<p>details of the Supplier (party that supplies the good or service that is object of the current collaborative process)  - base type: Nad,  (XPath GARStockStat/GSOheader/supplier) 1-1</p>
<b>thirdParty</b>	<p>identification and details of the Third Party, different from Sender and Receiver of the document  - base type: Nad,  (XPath GARStockStat/GSOheader/thirdParty) 0-5  - note: <i>might be the ePlatform manager</i></p>

## 2.2.2 Simple elements (Basic Business Information Entities)

Simple elements are those elements whose content is characterized by a data type plus a domain of possible values. Simple elements are alphabetically ordered.

<b>added</b>	<p>additional code of the product (complementing the formers)  - base type: string, max length: 80,  (XPath GARStockStat/GSSbody/GSSitem/garmentCode/  garmentCodeB/added) 0-9</p>
<b>additionalComponentCode</b>	<p>an additional code to identify a fashion product or a part of it (it is a way to codify the item, but it is not one of the codes to identify it). It is not a serial identifier.  - base type: string,  (XPath GARStockStat/GSSbody/GSSitem/csRange/sizeMatrix/  sizeRow/additionalComponentCode) 0-9</p>
<b>additionalIdentifier</b>	<p>additional identification code of a Party, for example customs registries or others  - base type: string, max length: 15,  (XPath GARStockStat/GSOheader/supplier/additionalIdentifier) 0-9  - note: <i>identifiers for example for exports, such as MID (Manufacturer Identification Code), REX (identifier in EU Registered Exporter system)</i>  (XPath GARStockStat/GSOheader/buyer/additionalIdentifier) 0-9  - note: <i>identifiers for example for exports, such as MID (Manufacturer Identification Code), REX (identifier in Registered Exporter system)</i></p>
<b>@addType</b>	<p>qualifier of the additional coding of a product  - base type: string, cod. table: T44  <a href="http://www.ebiz.enea.it/moda-ml/repository/codelist/draft/gc_T44.xml">http://www.ebiz.enea.it/moda-ml/repository/codelist/draft/gc_T44.xml</a>  (XPath GARStockStat/GSSbody/GSSitem/garmentCode/  garmentCodeB/added/@addType) [Optional]  - note: <i>addType allows the clarification of the meaning of the added element content; it is strongly suggested to use it always.</i></p>
<b>art</b>	<p>article number of the product  - base type: string, max length: 80,</p>

	(XPath GARStockStat/GSSbody/GSSitem/garmentCode/garmentCodeA/art) 1-1
artGroup	code identifying a class of products - base type: string, max length: 40, (XPath GARStockStat/GSSbody/GSSitem/garmentCode/garmentCodeB/artGroup) 0-1 (XPath GARStockStat/GSSbody/GSSitem/garmentCategory/artGroup) 0-1
artSex	code identifying the sex for which a fashion product is intended - base type: string, max length: 15, (XPath GARStockStat/GSSbody/GSSitem/garmentCategory/artSex) 0-1
artSubGroup	code identifying a sub-class of products - base type: string, max length: 40, (XPath GARStockStat/GSSbody/GSSitem/garmentCategory/artSubGroup) 0-1
binaryObject	a binary large object containing an attached document, Coding 'base64Binary' is recommended. - base type: base64Binary, (XPath GARStockStat/GSOheader/refDoc/attachment/binaryObject) 0-1 (XPath GARStockStat/GSSbody/GSSitem/refDoc/attachment/binaryObject) 0-1
@characterSet	the character set of the binary object (examples UTF-8, UTF-16, Windows-1252, ISO-8859-7,..) - base type: normalizedString, (XPath GARStockStat/GSSbody/GSSitem/refDoc/attachment/binaryObject/@characterSet) [Optional] (XPath GARStockStat/GSOheader/refDoc/attachment/binaryObject/@characterSet) [Optional]
characterSetCode	the character set of an external document (examples UTF-8, UTF-16, Windows-1252, ISO-8859-7,..) - base type: normalizedString, (XPath GARStockStat/GSSbody/GSSitem/refDoc/attachment/externalReference/characterSetCode) 0-1 (XPath GARStockStat/GSOheader/refDoc/attachment/externalReference/characterSetCode) 0-1
city	name of the city (town, village) - base type: string, max length: 40, (XPath GARStockStat/GSOheader/supplier/city) 0-1 (XPath GARStockStat/GSOheader/thirdParty/city) 0-1 (XPath GARStockStat/GSSbody/GSSitem/stockAddress/city) 1-1 (XPath GARStockStat/GSOheader/buyer/city) 0-1
class	a code indicating the category (macro-class, class or sub-class) of a commodity classification system the article belongs to. - base type: string, (XPath GARStockStat/GSSbody/GSSitem/garmentCategory/goodsClassification/class) 0-1
@codeList	it specifies the URL where the list of codes used to make an instance of the element can be found - base type: string, max length: 255, (XPath GARStockStat/GSOheader/note/@codeList) [Optional] - nota: must be used to provide (URL) the list of codes used in "noteLabel" (XPath GARStockStat/GSSbody/GSSitem/garmentCategory/artGroup/@codeList) [Optional] - nota: at least one out of this attribute and "numberingOrg" should be set (XPath GARStockStat/GSSbody/GSSitem/note/@codeList) [Optional] - nota: must be used to provide (URL) the list of codes used in "noteLabel" (XPath GARStockStat/GSSbody/GSSitem/csRange/sizeMatrix/sizeRow/itemsList/qualityLevel/@codeList) [Optional] - nota: at least one out of this attribute and "numberingOrg" should be set (XPath GARStockStat/GSSbody/GSSitem/refDoc/season/@codeList) [Optional] - nota: this attribute should be used either single or coupled with "listName" and "listVersion" (XPath GARStockStat/GSSbody/GSSitem/csRange/sizeMatrix/sizeRow/drop/@codeList) [Optional] (XPath GARStockStat/GSSbody/GSSitem/garmentCode/garmentCodeB/artGroup/@codeList) [Optional]

	<p>- nota: <i>at least one out of this attribute and "numberingOrg" should be set</i>  (XPath GARStockStat/GSSbody/GSSitem/garmentCode/  garmentCodeB/size/@codeList) [Optional]  (XPath GARStockStat/GSSbody/GSSitem/garmentCode/  garmentCodeB/garmentVariant/variantCode/@codeList) [Optional]</p> <p>- nota: <i>at least one out of this attribute and "numberingOrg" should be set</i>  (XPath GARStockStat/GSSbody/GSSitem/garmentCode/  garmentCodeB/drop/@codeList) [Optional]  (XPath GARStockStat/GSSbody/GSSitem/csRange/sizeMatrix/  sizeRow/additionalComponentCode/@codeList) [Optional]</p> <p>- nota: <i>at least one out of this attribute and "numberingOrg" should be set</i>  (XPath  GARStockStat/GSSbody/GSSitem/csRange/garmentVariant/variantCode/@codeList) [Optional]</p> <p>- nota: <i>at least one out of this attribute and "numberingOrg" should be set</i>  (XPath GARStockStat/GSSbody/GSSitem/csRange/drop/@codeList) [Optional]  (XPath  GARStockStat/GSSbody/GSSitem/csRange/garmentVariant/variantType/@codeList) [Optional]</p> <p>- nota: <i>always at least one out of this attribute and "numberingOrg" should be set</i>  (XPath GARStockStat/GSSbody/GSSitem/garmentCode/  garmentCodeA/art/@codeList) [Optional]</p> <p>- nota: <i>at least one out of this attribute and "numberingOrg" should be set</i>  (XPath GARStockStat/GSSbody/GSSitem/csRange/color/@codeList) [Optional]</p> <p>- nota: <i>this attribute should be used either single or coupled with "listName" and "listVersion"</i>  (XPath GARStockStat/GSSbody/GSSitem/garmentCode/  garmentCodeB/garmentVariant/variantType/@codeList) [Optional]</p> <p>- nota: <i>always at least one out of this attribute and "numberingOrg" should be set</i>  (XPath GARStockStat/GSSbody/GSSitem/garmentCategory/  goodsClassification/macroClass/@codeList) [Optional]</p> <p>- nota: <i>at least one out of this attribute and "numberingOrg" should be set</i>  (XPath GARStockStat/GSSbody/GSSitem/garmentCategory/  goodsClassification/class/@codeList) [Optional]</p> <p>- nota: <i>at least one out of this attribute and "numberingOrg" should be set</i>  (XPath GARStockStat/GSSbody/GSSitem/garmentCategory/  season/@codeList) [Optional]</p> <p>- nota: <i>this attribute should be used either single or coupled with "listName" and "listVersion"</i>  (XPath GARStockStat/GSSbody/GSSitem/garmentCategory/  artSubGroup/@codeList) [Optional]</p> <p>- nota: <i>at least one out of this attribute and "numberingOrg" should be set</i>  (XPath GARStockStat/GSSbody/GSSitem/garmentCategory/  artSex/@codeList) [Optional]</p> <p>- nota: <i>at least one out of this attribute and "numberingOrg" should be set</i>  (XPath GARStockStat/GSSbody/GSSitem/garmentCategory/  goodsClassification/subClass/@codeList) [Optional]</p> <p>- nota: <i>at least one out of this attribute and "numberingOrg" should be set</i>  (XPath GARStockStat/GSSbody/GSSitem/garmentCode/  garmentCodeB/fabric/@codeList) [Optional]</p> <p>- nota: <i>at least one out of this attribute and "numberingOrg" should be set</i>  (XPath GARStockStat/GSSbody/GSSitem/garmentCode/  garmentCodeB/color/@codeList) [Optional]</p> <p>- nota: <i>this attribute should be used either single or coupled with "listName" and "listVersion"</i>  (XPath GARStockStat/GSSbody/GSSitem/garmentCode/  garmentCodeB/mod/@codeList) [Optional]</p> <p>- nota: <i>at least one out of this attribute and "numberingOrg" should be set</i>  (XPath GARStockStat/GSSbody/GSSitem/garmentCategory/note/@codeList) [Optional]</p> <p>- nota: <i>must be used to provide (URL) the list of codes used in "noteLabel"</i>  (XPath GARStockStat/GSSbody/GSSitem/csRange/sizeMatrix/  sizeRow/size/@codeList) [Optional]  (XPath GARStockStat/GSOheader/refDoc/season/@codeList) [Optional]</p> <p>- nota: <i>this attribute should be used either single or coupled with "listName" and "listVersion"</i></p>
color	<p>colour number of the product, when not included in the model or fabric code</p> <p>- base type: string, max length: 15,  (XPath GARStockStat/GSSbody/GSSitem/garmentCode/  garmentCodeB/color) 0-1  (XPath GARStockStat/GSSbody/GSSitem/csRange/color) 0-1</p>

	- note: <i>used only if not already specified in the article code</i>
commerceText	text usable for the full commercial description of a product - base type: string, max length: 400, (XPath GARStockStat/GSSbody/GSSitem/commerceText) 0-unbounded - note: <i>Only one instance of this element for each different value of 'ln' attribute (language)</i>
country	code of the nation - base type: string, cod. table: T10 <a href="http://www.ebiz.enea.it/moda-ml/repository/codelist/draft/gc_T10.xml">http://www.ebiz.enea.it/moda-ml/repository/codelist/draft/gc_T10.xml</a> (XPath GARStockStat/GSSbody/GSSitem/stockAddress/country) 1-1 (XPath GARStockStat/GSOheader/buyer/country) 0-1 (XPath GARStockStat/GSOheader/supplier/country) 0-1 (XPath GARStockStat/GSOheader/thirdParty/country) 0-1
@currency	currency in which a specified monetary data is expressed - base type: string, cod. table: T9 <a href="http://www.ebiz.enea.it/moda-ml/repository/codelist/draft/gc_T9.xml">http://www.ebiz.enea.it/moda-ml/repository/codelist/draft/gc_T9.xml</a> (XPath GARStockStat/GSSbody/GSSitem/price/@currency) [Optional] - nota: <i>Currency referred by the price.</i>
@dateForm	format used for the date - base type: string, cod. table: NT29 <a href="http://www.ebiz.enea.it/moda-ml/repository/codelist/draft/gc_NT29.xml">http://www.ebiz.enea.it/moda-ml/repository/codelist/draft/gc_NT29.xml</a> (XPath GARStockStat/GSSbody/GSSitem/readyToSendDate/@dateForm) [Optional] (XPath GARStockStat/GSOheader/refDoc/docDate/@dateForm) [Optional] (XPath GARStockStat/GSOheader/msgDate/@dateForm) [Optional] (XPath GARStockStat/GSSbody/GSSitem/refDoc/docDate/@dateForm) [Optional]
dept	name or code of a department - base type: string, max length: 40, (XPath GARStockStat/GSOheader/buyer/dept) 0-1 (XPath GARStockStat/GSOheader/supplier/dept) 0-1 (XPath GARStockStat/GSOheader/thirdParty/dept) 0-1
description	free text description. The content of the element must be unique, it might be translated and repeated into more languages (thus no more than one instance for each language). - base type: string, max length: 250, (XPath GARStockStat/GSSbody/GSSitem/garmentCode/garmentCodeA/description) 0-unbounded - note: <i>Product description</i> (XPath GARStockStat/GSSbody/GSSitem/garmentCode/garmentCodeB/description) 0-unbounded - note: <i>Product description</i>
docDate	date of issue of the referenced document, according to one of the patterns YYYY-MM-DD, YYYY-MM-DD:HH-MM or YYYY-WW. - base type: string, (XPath GARStockStat/GSOheader/refDoc/docDate) 0-1 (XPath GARStockStat/GSSbody/GSSitem/refDoc/docDate) 0-1
docID	identification number of the referenced document - base type: string, max length: 80, (XPath GARStockStat/GSSbody/GSSitem/refDoc/docID) 1-2 Best Practice (XPath GARStockStat/GSOheader/refDoc/docID) 1-2 Best Practice
@docType	type or class to which the referenced document belongs - base type: string, cod. table: T21 <a href="http://www.ebiz.enea.it/moda-ml/repository/codelist/draft/gc_T21.xml">http://www.ebiz.enea.it/moda-ml/repository/codelist/draft/gc_T21.xml</a> (XPath GARStockStat/GSOheader/refDoc/@docType) [Required] (XPath GARStockStat/GSSbody/GSSitem/refDoc/@docType) [Required]
drop	drop number of the garment - base type: string, max length: 15, (XPath GARStockStat/GSSbody/GSSitem/garmentCode/garmentCodeB/drop) 0-1 - note: <i>Fill this element if the drop is the same for all the sizes of the model. Otherway specify it within the csRange element</i> (XPath GARStockStat/GSSbody/GSSitem/csRange/drop) 0-1 - note: <i>used only if not already specified in the article code</i> (XPath GARStockStat/GSSbody/GSSitem/csRange/sizeMatrix/

	<p><b>sizeRow/drop) 0-1</b>  - note: <i>DEPRECATED</i>, anyhow it is used only if not already specified in the article code or csRange</p>
@email	<p>electronic mail address of the contact person within a Party  - base type: string, max length: 250,  (XPath GARStockStat/GSOheader/buyer/person/@email) [Optional]  (XPath GARStockStat/GSOheader/thirdParty/person/@email) [Optional]  (XPath GARStockStat/GSOheader/supplier/person/@email) [Optional]</p>
@encoding	<p>specifies the decoding algorithm of the binary object  - base type: normalizedString,  (XPath GARStockStat/GSOheader/refDoc/attachment/binaryObject/@encoding) [Optional]  (XPath GARStockStat/GSSbody/GSSitem/refDoc/attachment/binaryObject/@encoding) [Optional]</p>
encodingCode	<p>the encoding/decoding algorithm used with the external object (example is 'base64Binary')  - base type: normalizedString,  (XPath GARStockStat/GSOheader/refDoc/attachment/externalReference/encodingCode) 0-1  (XPath GARStockStat/GSSbody/GSSitem/refDoc/attachment/externalReference/encodingCode) 0-1</p>
eStockN	<p>offer identifier assigned by the e-stock service provider  - base type: string, max length: 15,  (XPath GARStockStat/GSSbody/GSSitem/eStockN) 1-1</p>
fabric	<p>fabric number of the garment  - base type: string, max length: 15,  (XPath GARStockStat/GSSbody/GSSitem/garmentCode/garmentCodeB/fabric) 0-1</p>
@fax	<p>fax number of the contact person within a Party  - base type: string, max length: 35,  (XPath GARStockStat/GSOheader/buyer/person/@fax) [Optional]  (XPath GARStockStat/GSOheader/supplier/person/@fax) [Optional]  (XPath GARStockStat/GSOheader/thirdParty/person/@fax) [Optional]</p>
fileName	<p>unique identifier (name) of the file  - base type: string, max length: 255,  (XPath GARStockStat/GSSbody/GSSitem/refDoc/attachment/fileName) 0-1  (XPath GARStockStat/GSOheader/refDoc/attachment/fileName) 0-1</p>
@format	<p>the format of the binary content (examples xml, pdf, doc,...)  - base type: string,  (XPath GARStockStat/GSOheader/refDoc/attachment/binaryObject/@format) [Optional]  (XPath GARStockStat/GSSbody/GSSitem/refDoc/attachment/binaryObject/@format) [Optional]</p>
formatCode	<p>the format of the external object (examples xml, pdf, doc,...)  - base type: normalizedString,  (XPath GARStockStat/GSSbody/GSSitem/refDoc/attachment/externalReference/formatCode) 0-1  (XPath GARStockStat/GSOheader/refDoc/attachment/externalReference/formatCode) 0-1</p>
@geoRefSystem	<p>georeference system adopted for the coordinate (in example wgs84 with decimal degree or degree with minute and seconds)  - base type: string,  (XPath GARStockStat/GSOheader/supplier/geoCoordinates/@geoRefSystem) [Optional]  (XPath GARStockStat/GSOheader/buyer/geoCoordinates/@geoRefSystem) [Optional]  (XPath GARStockStat/GSOheader/thirdParty/geoCoordinates/@geoRefSystem) [Optional]</p>
hashFootprint	<p>footprint obtained by applying an hashing algorithm  - base type: string, max length: 80,  (XPath GARStockStat/GSSbody/GSSitem/refDoc/attachment/hashFootprint) 0-1  (XPath GARStockStat/GSOheader/refDoc/attachment/hashFootprint) 0-1</p>
@hashMethod	<p>type of used hashing algorithm  - base type: string, max length: 80, cod. table: NT333</p>

	<p><a href="http://www.ebiz.enea.it/moda-ml/repository/codelist/draft/gc_NT333.xml">http://www.ebiz.enea.it/moda-ml/repository/codelist/draft/gc_NT333.xml</a>  (XPath GARStockStat/GSSbody/GSSitem/refDoc/attachment/hashFootprint/@hashMethod) [Required]  (XPath GARStockStat/GSOheader/refDoc/attachment/hashFootprint/@hashMethod) [Required]</p>
id	<p>primary identification code of a Party; it is recommended to use an EORI number (with @numberingOrg= "EO") or the format: nation code (ISO 3166) + national tax code (i.e. VAT identification number ) with @numberingOrg= "MF"</p> <p>- base type: string, max length: 15,  (XPath GARStockStat/GSOheader/thirdParty/id) 1-1  (XPath GARStockStat/GSOheader/supplier/id) 1-1  (XPath GARStockStat/GSOheader/buyer/id) 1-1</p>
@idQualifier	<p>Qualification of the identifier.</p> <p>- base type: string,  (XPath GARStockStat/GSSbody/GSSitem/csRange/sizeMatrix/sizeRow/itemsList/itemIdentification/serialN/@idQualifier) [Optional]</p> <p>- nota: <i>this attribute should be used when the numberingOrg attribute is not enough to declare the type of serial identifier</i>  (XPath GARStockStat/GSOheader/supplier/additionalIdentifier/@idQualifier) [Optional]</p> <p>- nota: <i>this attribute should be used when the numberingOrg attribute is not enough to declare the type of identifier</i>  (XPath GARStockStat/GSOheader/buyer/additionalIdentifier/@idQualifier) [Optional]</p> <p>- nota: <i>this attribute should be used when the numberingOrg attribute is not enough to declare the type of identifier</i></p>
@isURL	<p>it indicates if the referred element is an URL (true) or not (false)</p> <p>- base type: boolean,  (XPath GARStockStat/GSSbody/GSSitem/refDoc/attachment/externalReference/uri/@isURL) [Optional] [Default= true]</p> <p>- nota: <i>usage of URLs is recommended</i>  (XPath GARStockStat/GSSbody/GSSitem/refDoc/attachment/blockChainReference/uri/@isURL) [Optional] [Default= true]</p> <p>- nota: <i>usage of URLs is recommended</i>  (XPath GARStockStat/GSOheader/refDoc/attachment/blockChainReference/uri/@isURL) [Optional] [Default= true]</p> <p>- nota: <i>usage of URLs is recommended</i>  (XPath GARStockStat/GSOheader/refDoc/attachment/externalReference/uri/@isURL) [Optional] [Default= true]</p> <p>- nota: <i>usage of URLs is recommended</i></p>
itemID	<p>number of the line/item of the referenced document</p> <p>- base type: string, max length: 40,  (XPath GARStockStat/GSSbody/GSSitem/refDoc/itemID) 0-1  (XPath GARStockStat/GSOheader/refDoc/itemID) 0-1</p>
legalName	<p>legal name</p> <p>- base type: string, max length: 250,  (XPath GARStockStat/GSOheader/buyer/legalName) 0-1  (XPath GARStockStat/GSOheader/supplier/legalName) 0-1  (XPath GARStockStat/GSOheader/thirdParty/legalName) 0-1</p>
lineID	<p>unique identifier of the line item of the business document; it is set by the role that produces the document.</p> <p>- base type: string, max length: 30,  (XPath GARStockStat/GSSbody/GSSitem/lineID) 0-1</p>
lineN	<p>number of the line item of the present message (xml document); it is set by the role that produces the document. Usually it is a progressive number, but not always.</p> <p>- base type: positiveInteger, min inclusive: 1, max inclusive: 9999,  (XPath GARStockStat/GSSbody/GSSitem/lineN) 1-1</p>
@listName	<p>the name of the list of codes used to make an instance of the element (it might be thought as descriptive element, i.e. 'fabric printing technologies', or not, i.e. "T264")</p> <p>- base type: string, max length: 40,  (XPath GARStockStat/GSSbody/GSSitem/garmentCode/garmentCodeB/garmentVariant/variantCode/@listName) [Optional]</p> <p>- nota: <i>this attribute should always be used coupled with "numberingOrg"</i>  (XPath GARStockStat/GSSbody/GSSitem/garmentCode/garmentCodeB/mod/@listName) [Optional]</p>

- nota: *this attribute should always be used coupled with “numberingOrg”*  
(XPath GARStockStat/GSSbody/GSSitem/garmentCategory/  
season/@listName) [Optional]

- nota: *this attribute should always be used coupled with “numberingOrg”*  
(XPath GARStockStat/GSSbody/GSSitem/garmentCategory/  
goodsClassification/macroClass/@listName) [Optional]

- nota: *this attribute should always be used coupled with “numberingOrg”*  
(XPath GARStockStat/GSSbody/GSSitem/garmentCategory/  
goodsClassification/subClass/@listName) [Optional]

- nota: *this attribute should always be used coupled with “numberingOrg”*  
(XPath GARStockStat/GSSbody/GSSitem/garmentCategory/  
goodsClassification/class/@listName) [Optional]

- nota: *this attribute should always be used coupled with “numberingOrg”*  
(XPath GARStockStat/GSSbody/GSSitem/garmentCode/  
garmentCodeB/fabric/@listName) [Optional]

- nota: *this attribute should always be used coupled with “numberingOrg”*  
(XPath GARStockStat/GSSbody/GSSitem/garmentCategory/  
artGroup/@listName) [Optional]

- nota: *this attribute should always be used coupled with “numberingOrg”*  
(XPath GARStockStat/GSSbody/GSSitem/garmentCode/  
garmentCodeB/garmentVariant/variantType/@listName) [Optional]

- nota: *this attribute should always be used coupled with “numberingOrg”*  
(XPath GARStockStat/GSSbody/GSSitem/garmentCode/  
garmentCodeB/color/@listName) [Optional]

- nota: *this attribute should always be used coupled with “numberingOrg”*  
(XPath GARStockStat/GSSbody/GSSitem/garmentCategory/  
artSex/@listName) [Optional]

- nota: *this attribute should always be used coupled with “numberingOrg”*  
(XPath GARStockStat/GSSbody/GSSitem/garmentCategory/  
artSubGroup/@listName) [Optional]

- nota: *this attribute should always be used coupled with “numberingOrg”*  
(XPath  
GARStockStat/GSSbody/GSSitem/csRange/garmentVariant/variantType/@list  
Name) [Optional]

- nota: *this attribute should always be used coupled with “numberingOrg”*  
(XPath  
GARStockStat/GSSbody/GSSitem/csRange/garmentVariant/variantCode/@list  
Name) [Optional]

- nota: *this attribute should always be used coupled with “numberingOrg”*  
(XPath GARStockStat/GSOheader/refDoc/season/@listName) [Optional]

- nota: *this attribute should always be used coupled with “numberingOrg”*  
(XPath GARStockStat/GSSbody/GSSitem/garmentCode/  
garmentCodeA/art/@listName) [Optional]

- nota: *this attribute should always be used coupled with “numberingOrg”*  
(XPath GARStockStat/GSSbody/GSSitem/csRange/color/@listName) [Optional]

- nota: *this attribute should always be used coupled with “numberingOrg”*  
(XPath GARStockStat/GSSbody/GSSitem/csRange/sizeMatrix/  
sizeRow/size/@listName) [Optional]

- nota: *this attribute should always be used coupled with “numberingOrg”*  
(XPath GARStockStat/GSSbody/GSSitem/csRange/sizeMatrix/  
sizeRow/itemsList/qualityLevel/@listName) [Optional]

- nota: *this attribute should always be used coupled with “numberingOrg”*  
(XPath GARStockStat/GSSbody/GSSitem/csRange/sizeMatrix/  
sizeRow/drop/@listName) [Optional]

- nota: *this attribute should always be used coupled with “numberingOrg”*  
(XPath GARStockStat/GSSbody/GSSitem/csRange/drop/@listName) [Optional]

- nota: *this attribute should always be used coupled with “numberingOrg”*  
(XPath GARStockStat/GSSbody/GSSitem/csRange/sizeMatrix/  
sizeRow/additionalComponentCode/@listName) [Optional]

- nota: *this attribute should always be used coupled with “numberingOrg”*  
(XPath GARStockStat/GSSbody/GSSitem/garmentCode/  
garmentCodeB/artGroup/@listName) [Optional]

- nota: *this attribute should always be used coupled with “numberingOrg”*  
(XPath GARStockStat/GSSbody/GSSitem/garmentCode/  
garmentCodeB/drop/@listName) [Optional]

- nota: *this attribute should always be used coupled with “numberingOrg”*  
(XPath GARStockStat/GSSbody/GSSitem/garmentCode/  
garmentCodeB/size/@listName) [Optional]

- nota: *this attribute should always be used coupled with “numberingOrg”*  
(XPath GARStockStat/GSSbody/GSSitem/refDoc/season/@listName) [Optional]



	- nota: <i>this attribute should always be used coupled with “numberingOrg”</i>
@listVersion	<p>it specifies the version of the list of codes used to make an instance of the element</p> <p>- base type: string, max length: 6,  (XPath GARStockStat/GSSbody/GSSitem/garmentCode/garmentCodeB/mod/@listVersion) [Optional]</p> <p>- nota: <i>this attribute should always be used coupled with “numberingOrg” and “listName”</i>  (XPath GARStockStat/GSSbody/GSSitem/csRange/sizeMatrix/sizeRow/additionalComponentCode/@listVersion) [Optional]</p> <p>- nota: <i>this attribute should always be used coupled with “numberingOrg” and “listName”</i>  (XPath GARStockStat/GSSbody/GSSitem/garmentCode/garmentCodeB/garmentVariant/variantCode/@listVersion) [Optional]</p> <p>- nota: <i>this attribute should always be used coupled with “numberingOrg” and “listName”</i>  (XPath GARStockStat/GSSbody/GSSitem/garmentCode/garmentCodeB/size/@listVersion) [Optional]</p> <p>- nota: <i>this attribute should always be used coupled with “numberingOrg” and “listName”</i>  (XPath GARStockStat/GSSbody/GSSitem/garmentCategory/season/@listVersion) [Optional]</p> <p>- nota: <i>this attribute should always be used coupled with “numberingOrg” and “listName”</i>  (XPath GARStockStat/GSSbody/GSSitem/csRange/drop/@listVersion) [Optional]</p> <p>- nota: <i>this attribute should always be used coupled with “numberingOrg” and “listName”</i>  (XPath GARStockStat/GSSbody/GSSitem/garmentCategory/goodsClassification/class/@listVersion) [Optional]</p> <p>- nota: <i>this attribute should always be used coupled with “numberingOrg” and “listName”</i>  (XPath GARStockStat/GSSbody/GSSitem/garmentCategory/goodsClassification/subClass/@listVersion) [Optional]</p> <p>- nota: <i>this attribute should always be used coupled with “numberingOrg” and “listName”</i>  (XPath GARStockStat/GSSbody/GSSitem/csRange/sizeMatrix/sizeRow/itemsList/qualityLevel/@listVersion) [Optional]</p> <p>- nota: <i>this attribute should always be used coupled with “numberingOrg” and “listName”</i>  (XPath GARStockStat/GSSbody/GSSitem/csRange/sizeMatrix/sizeRow/size/@listVersion) [Optional]</p> <p>- nota: <i>this attribute should always be used coupled with “numberingOrg” and “listName”</i>  (XPath GARStockStat/GSSbody/GSSitem/garmentCategory/goodsClassification/macroClass/@listVersion) [Optional]</p> <p>- nota: <i>this attribute should always be used coupled with “numberingOrg” and “listName”</i>  (XPath GARStockStat/GSSbody/GSSitem/csRange/sizeMatrix/sizeRow/drop/@listVersion) [Optional]</p> <p>- nota: <i>this attribute should always be used coupled with “numberingOrg” and “listName”</i>  (XPath GARStockStat/GSSbody/GSSitem/garmentCode/garmentCodeB/drop/@listVersion) [Optional]</p> <p>- nota: <i>this attribute should always be used coupled with “numberingOrg” and “listName”</i>  (XPath GARStockStat/GSOheader/refDoc/season/@listVersion) [Optional]</p> <p>- nota: <i>this attribute should always be used coupled with “numberingOrg” and “listName”</i>  (XPath GARStockStat/GSSbody/GSSitem/refDoc/season/@listVersion) [Optional]</p> <p>- nota: <i>this attribute should always be used coupled with “numberingOrg” and “listName”</i>  (XPath GARStockStat/GSSbody/GSSitem/garmentCategory/artSubGroup/@listVersion) [Optional]</p> <p>- nota: <i>this attribute should always be used coupled with “numberingOrg” and “listName”</i>  (XPath GARStockStat/GSSbody/GSSitem/garmentCode/garmentCodeA/art/@listVersion) [Optional]</p> <p>- nota: <i>this attribute should always be used coupled with “numberingOrg” and “listName”</i>  (XPath GARStockStat/GSSbody/GSSitem/garmentCategory/</p>

	<p><b>artGroup/@listVersion) [Optional]</b>  - nota: <i>this attribute should always be used coupled with “numberingOrg” and “listName”</i>  (XPath GARStockStat/GSSbody/GSSitem/garmentCode/garmentCodeB/color/@listVersion) [Optional]</p> <p>- nota: <i>this attribute should always be used coupled with “numberingOrg” and “listName”</i>  (XPath GARStockStat/GSSbody/GSSitem/csRange/color/@listVersion) [Optional]</p> <p>- nota: <i>this attribute should always be used coupled with “numberingOrg” and “listName”</i>  (XPath GARStockStat/GSSbody/GSSitem/garmentCategory/artSex/@listVersion) [Optional]</p> <p>- nota: <i>this attribute should always be used coupled with “numberingOrg” and “listName”</i>  (XPath GARStockStat/GSSbody/GSSitem/csRange/garmentVariant/variantType/@listVersion) [Optional]</p> <p>- nota: <i>this attribute should always be used coupled with “numberingOrg” and “listName”</i>  (XPath GARStockStat/GSSbody/GSSitem/csRange/garmentVariant/variantCode/@listVersion) [Optional]</p> <p>- nota: <i>this attribute should always be used coupled with “numberingOrg” and “listName”</i>  (XPath GARStockStat/GSSbody/GSSitem/garmentCode/garmentCodeB/artGroup/@listVersion) [Optional]</p> <p>- nota: <i>this attribute should always be used coupled with “numberingOrg” and “listName”</i>  (XPath GARStockStat/GSSbody/GSSitem/garmentCode/garmentCodeB/garmentVariant/variantType/@listVersion) [Optional]</p> <p>- nota: <i>this attribute should always be used coupled with “numberingOrg” and “listName”</i>  (XPath GARStockStat/GSSbody/GSSitem/garmentCode/garmentCodeB/fabric/@listVersion) [Optional]</p> <p>- nota: <i>this attribute should always be used coupled with “numberingOrg” and “listName”</i>  </p>
@ln	<p>Language code.  - base type: string, cod. table: NT60  <a href="http://www.ebiz.enea.it/moda-ml/repository/codelist/draft/gc_NT60.xml">http://www.ebiz.enea.it/moda-ml/repository/codelist/draft/gc_NT60.xml</a>  (XPath GARStockStat/GSSbody/GSSitem/garmentCode/garmentCodeB/description/@ln) [Optional]  (XPath GARStockStat/GSSbody/GSSitem/commerceText/@ln) [Optional]  (XPath GARStockStat/GSSbody/GSSitem/garmentCode/garmentCodeA/description/@ln) [Optional]</p>
@logo	<p>company logo (URL of the image jpeg or gif). It is recommended that the width of the image does not exceed 640 pixel.  - base type: string, max length: 255,  (XPath GARStockStat/GSOheader/buyer/@logo) [Optional]  (XPath GARStockStat/GSOheader/supplier/@logo) [Optional]</p>
macroClass	<p>a code indicating the category (macro-class, class or sub-class) of a commodity classification system the article belongs to.  - base type: string,  (XPath GARStockStat/GSSbody/GSSitem/garmentCategory/goodsClassification/macroClass) 0-1</p>
@mime	<p>the mime type of the binary object  - base type: normalizedString,  (XPath GARStockStat/GSSbody/GSSitem/refDoc/attachment/binaryObject/@mime) [Optional]  (XPath GARStockStat/GSOheader/refDoc/attachment/binaryObject/@mime) [Optional]</p>
mimeCode	<p>mime type of the external object  - base type: normalizedString,  (XPath GARStockStat/GSSbody/GSSitem/refDoc/attachment/externalReference/mimeCode) 0-1 Best Practice  (XPath GARStockStat/GSOheader/refDoc/attachment/externalReference/mimeCode) 0-1 Best Practice</p>

mod	<p>model number of the garment</p> <ul style="list-style-type: none"> <li>- base type: string, max length: 15,</li> <li>(XPath GARStockStat/GSSbody/GSSitem/garmentCode/garmentCodeB/mod) 1-1</li> </ul>
msgDate	<p>date of issue of the present message (xml document), according to one of the patterns YYYY-MM-DD, YYYY-MM-DD:HH-MM or YYYY-WW.</p> <ul style="list-style-type: none"> <li>- base type: string,</li> <li>(XPath GARStockStat/GSOheader/msgDate) 1-1</li> </ul>
@msgfunction	<p>function performed by the present message with regards to the transmission</p> <ul style="list-style-type: none"> <li>- base type: string, cod. table: NT18</li> <li><a href="http://www.ebiz.enea.it/moda-ml/repository/codelist/draft/gc_NT18.xml">http://www.ebiz.enea.it/moda-ml/repository/codelist/draft/gc_NT18.xml</a></li> <li>(XPath GARStockStat/@msgfunction) [Optional] [Default= OR]</li> </ul>
msgID	<p>key identifier of the business document in the information system of the issuing Party. In case of more despatches of the same business document, it is unchanged.</p> <ul style="list-style-type: none"> <li>- base type: string, max length: 35,</li> <li>(XPath GARStockStat/GSOheader/msgID) 0-1</li> </ul>
msgN	<p>identification number given to the message (xml document) by its issuer. In case of more despatches of the same business document, it changes.</p> <ul style="list-style-type: none"> <li>- base type: string, max length: 35,</li> <li>(XPath GARStockStat/GSOheader/msgN) 1-1</li> </ul>
note	<p>free text or structured (computer processing) note. For note structuring use the attributes "noteLabel" and "codelist"</p> <ul style="list-style-type: none"> <li>- base type: string, max length: 350,</li> <li>(XPath GARStockStat/GSSbody/GSSitem/garmentCategory/note) 0-99</li> <li>(XPath GARStockStat/GSOheader/note) 0-99</li> <li>(XPath GARStockStat/GSSbody/GSSitem/note) 0-99</li> <li>- note: <i>here the offer status reason can be described</i></li> </ul>
@noteLabel	<p>subject qualifier of a note</p> <ul style="list-style-type: none"> <li>- base type: string, max length: 35,</li> <li>(XPath GARStockStat/GSSbody/GSSitem/note/@noteLabel) [Optional]</li> <li>- nota: <i>must be used to qualify the subject of the note</i></li> <li>(XPath GARStockStat/GSOheader/note/@noteLabel) [Optional]</li> <li>- nota: <i>must be used to qualify the subject of the note</i></li> <li>(XPath GARStockStat/GSSbody/GSSitem/garmentCategory/note/@noteLabel) [Optional]</li> <li>- nota: <i>must be used to qualify the subject of the note</i></li> </ul>
@numberingOrg	<p>code specifying the organisation who has created or owns the coding or numbering system</p> <ul style="list-style-type: none"> <li>- base type: string, cod. table: NT6</li> <li><a href="http://www.ebiz.enea.it/moda-ml/repository/codelist/draft/gc_NT6.xml">http://www.ebiz.enea.it/moda-ml/repository/codelist/draft/gc_NT6.xml</a></li> <li>(XPath GARStockStat/GSSbody/GSSitem/garmentCode/garmentCodeB/drop/@numberingOrg) [Optional]</li> <li>- nota: <i>this attribute should be used either single or coupled with "listName" and "listVersion"</i></li> <li>(XPath GARStockStat/GSOheader/buyer/additionalIdentifier/@numberingOrg) [Optional]</li> <li>- nota: <i>here the issuer of the identifier must be specified</i></li> <li>(XPath GARStockStat/GSSbody/GSSitem/csRange/drop/@numberingOrg) [Optional]</li> <li>- nota: <i>this attribute should be used either single or coupled with "listName" and "listVersion"</i></li> <li>(XPath GARStockStat/GSSbody/GSSitem/csRange/garmentVariant/variantType/@numberingOrg) [Optional]</li> <li>- nota: <i>this attribute should be used either single or coupled with "listName" and "listVersion"</i></li> <li>(XPath GARStockStat/GSSbody/GSSitem/garmentCode/garmentCodeB/size/@numberingOrg) [Optional]</li> <li>- nota: <i>this attribute should be used either single or coupled with "listName" and "listVersion"</i></li> <li>(XPath GARStockStat/GSSbody/GSSitem/csRange/garmentVariant/variantCode/@numberingOrg) [Optional]</li> <li>- nota: <i>this attribute should be used either single or coupled with "listName" and "listVersion"</i></li> <li>(XPath GARStockStat/GSOheader/buyer/id/@numberingOrg) [Optional]</li> <li>(XPath GARStockStat/GSOheader/refDoc/season/@numberingOrg) [Optional]</li> <li>- nota: <i>this attribute should be used either single or coupled with "listName" and "listVersion"</i></li> </ul>

*rsion*  
(XPath GARStockStat/GSOheader/refDoc/attachment/fileName/@numberingOrg) [Optional]  
(XPath GARStockStat/GSSbody/GSSitem/csRange/@numberingOrg) [Optional]  
(XPath GARStockStat/GSSbody/GSSitem/refDoc/docID/@numberingOrg) [Optional]  
- nota: here can be specified whose document numbering is used (e.g.: Client, Supplier, ..)  
(XPath GARStockStat/GSSbody/GSSitem/eStockN/@numberingOrg) [Optional]  
(XPath GARStockStat/GSSbody/GSSitem/garmentCode/garmentCodeA/art/@numberingOrg) [Optional]  
- nota: this attribute should be used either single or coupled with "listName" and "listVersion"  
(XPath GARStockStat/GSSbody/GSSitem/refDoc/season/@numberingOrg) [Optional]  
- nota: this attribute should be used either single or coupled with "listName" and "listVersion"  
(XPath GARStockStat/GSSbody/GSSitem/refDoc/attachment/fileName/@numberingOrg) [Optional]  
(XPath GARStockStat/GSSbody/GSSitem/garmentCode/garmentCodeB/artGroup/@numberingOrg) [Optional]  
- nota: this attribute should be used either single or coupled with "listName" and "listVersion"  
(XPath GARStockStat/GSOheader/note/@numberingOrg) [Optional]  
- nota: must be used to specify the organization that created the list of codes used in "noteLabel"  
(XPath GARStockStat/GSSbody/GSSitem/garmentCode/garmentCodeB/added/@numberingOrg) [Optional]  
- nota: this attribute should be used either single or coupled with "listName" and "listVersion"  
(XPath GARStockStat/GSSbody/GSSitem/csRange/color/@numberingOrg) [Optional]  
- nota: this attribute should be used either single or coupled with "listName" and "listVersion"  
(XPath GARStockStat/GSOheader/refDoc/docID/@numberingOrg) [Optional]  
- nota: here can be specified whose document numbering is used (e.g.: Client, Supplier, ..)  
(XPath  
GARStockStat/GSOheader/supplier/additionalIdentifier/@numberingOrg) [Optional]  
- nota: here the issuer of the identifier must be specified  
(XPath GARStockStat/GSSbody/GSSitem/stockAddress/@numberingOrg) [Optional]  
- nota: to be use when city and sub-country are specified with a proprietary code  
(XPath GARStockStat/GSSbody/GSSitem/garmentCode/garmentCodeB/mod/@numberingOrg) [Optional]  
(XPath GARStockStat/GSSbody/GSSitem/garmentCategory/season/@numberingOrg) [Optional]  
- nota: this attribute should be used either single or coupled with "listName" and "listVersion"  
(XPath GARStockStat/GSSbody/GSSitem/garmentCode/garmentCodeB/fabric/@numberingOrg) [Optional]  
- nota: this attribute should be used either single or coupled with "listName" and "listVersion"  
(XPath GARStockStat/GSSbody/GSSitem/garmentCategory/goodsClassification/macroClass/@numberingOrg) [Optional]  
- nota: this attribute should be used either single or coupled with "listName" and "listVersion"  
(XPath GARStockStat/GSSbody/GSSitem/garmentCode/garmentCodeB/@numberingOrg) [Optional]  
(XPath GARStockStat/GSSbody/GSSitem/note/@numberingOrg) [Optional]  
- nota: must be used to specify the organization that created the list of codes used in "noteLabel"  
(XPath GARStockStat/GSSbody/GSSitem/garmentCategory/note/@numberingOrg) [Optional]  
- nota: must be used to specify the organization that created the list of codes used in "noteLabel"  
(XPath GARStockStat/GSSbody/GSSitem/garmentCategory/goodsClassification/subClass/@numberingOrg) [Optional]  
- nota: this attribute should be used either single or coupled with "listName" and "listVersion"  
(XPath GARStockStat/GSOheader/supplier/id/@numberingOrg) [Optional]  
(XPath GARStockStat/GSSbody/GSSitem/garmentCode/@numberingOrg) [Optional]  
(XPath GARStockStat/GSSbody/GSSitem/garmentCategory/goodsClassification/class/@numberingOrg) [Optional]  
- nota: this attribute should be used either single or coupled with "listName" and "listVersion"  
*rsion*

	<p>(XPath GARStockStat/GSSbody/GSSitem/csRange/sizeMatrix/sizeRow/drop/@numberingOrg) [Optional]</p> <p>- nota: this attribute should be used either single or coupled with "listName" and "listVersion"</p> <p>(XPath GARStockStat/GSSbody/GSSitem/garmentCategory/@numberingOrg) [Optional]</p> <p>(XPath GARStockStat/GSSbody/GSSitem/garmentCategory/artGroup/@numberingOrg) [Optional]</p> <p>- nota: this attribute should be used either single or coupled with "listName" and "listVersion"</p> <p>(XPath GARStockStat/GSSbody/GSSitem/csRange/sizeMatrix/sizeRow/additionalComponentCode/@numberingOrg) [Optional]</p> <p>- nota: this attribute should be used either single or coupled with "listName" and "listVersion"</p> <p>(XPath GARStockStat/GSSbody/GSSitem/garmentCode/garmentCodeB/garmentVariant/variantCode/@numberingOrg) [Optional]</p> <p>- nota: this attribute should be used either single or coupled with "listName" and "listVersion"</p> <p>(XPath GARStockStat/GSOheader/thirdParty/id/@numberingOrg) [Optional]</p> <p>(XPath GARStockStat/GSSbody/GSSitem/garmentCode/garmentCodeB/garmentVariant/variantType/@numberingOrg) [Optional]</p> <p>- nota: this attribute should be used either single or coupled with "listName" and "listVersion"</p> <p>(XPath GARStockStat/GSSbody/GSSitem/garmentCode/garmentCodeB/color/@numberingOrg) [Optional]</p> <p>- nota: this attribute should be used either single or coupled with "listName" and "listVersion"</p> <p>(XPath GARStockStat/GSSbody/GSSitem/garmentCategory/artSex/@numberingOrg) [Optional]</p> <p>- nota: this attribute should be used either single or coupled with "listName" and "listVersion"</p> <p>(XPath GARStockStat/GSSbody/GSSitem/csRange/sizeMatrix/sizeRow/itemsList/itemIdentification/serialN/@numberingOrg) [Optional]</p> <p>- nota: here the issuer of the serial number must be specified (when different from the Supplier)</p> <p>(XPath GARStockStat/GSSbody/GSSitem/csRange/sizeMatrix/sizeRow/size/@numberingOrg) [Optional]</p> <p>- nota: this attribute should be used either single or coupled with "listName" and "listVersion"</p> <p>(XPath GARStockStat/GSSbody/GSSitem/garmentCategory/artSubGroup/@numberingOrg) [Optional]</p> <p>- nota: this attribute should be used either single or coupled with "listName" and "listVersion"</p> <p>(XPath GARStockStat/GSSbody/GSSitem/csRange/sizeMatrix/sizeRow/itemsList/qualityLevel/@numberingOrg) [Optional]</p> <p>- nota: this attribute should be used either single or coupled with "listName" and "listVersion"</p>
@offerStat	<p>status of the offer in the e-stock</p> <p>- base type: string, cod. table: NT35</p> <p><a href="http://www.ebiz.enea.it/moda-ml/repository/codelist/draft/gc_NT35.xml">http://www.ebiz.enea.it/moda-ml/repository/codelist/draft/gc_NT35.xml</a></p> <p>(XPath GARStockStat/GSSbody/GSSitem/@offerStat) [Required]</p>
@offerStatReason	<p>status reason of the offer in the e-stock</p> <p>- base type: string, cod. table: NT36</p> <p><a href="http://www.ebiz.enea.it/moda-ml/repository/codelist/draft/gc_NT36.xml">http://www.ebiz.enea.it/moda-ml/repository/codelist/draft/gc_NT36.xml</a></p> <p>(XPath GARStockStat/GSSbody/GSSitem/@offerStatReason) [Optional]</p>
person	<p>name of a person (e.g. contact person within an organization)</p> <p>- base type: string, max length: 40,</p> <p>(XPath GARStockStat/GSOheader/thirdParty/person) 0-1</p> <p>(XPath GARStockStat/GSOheader/supplier/person) 0-1</p> <p>(XPath GARStockStat/GSOheader/buyer/person) 0-1</p>
@phone	<p>phone number of the contact person within a Party</p> <p>- base type: string, max length: 35,</p> <p>(XPath GARStockStat/GSOheader/buyer/person/@phone) [Optional]</p> <p>(XPath GARStockStat/GSOheader/supplier/person/@phone) [Optional]</p> <p>(XPath GARStockStat/GSOheader/thirdParty/person/@phone) [Optional]</p>
postCode	<p>code defining the postal zone</p> <p>- base type: string, max length: 10,</p> <p>(XPath GARStockStat/GSOheader/thirdParty/postCode) 0-1</p>

	(XPath GARStockStat/GSOheader/supplier/postCode) 0-1 (XPath GARStockStat/GSOheader/buyer/postCode) 0-1
price	unit price of the article, object or service specified - base type: decimal, min inclusive: 0, fraction digits: 4, (XPath GARStockStat/GSSbody/GSSitem/price) 0-1
@priceQualifier	type of price with reference to discount and taxes - base type: string, cod. table: NT20 <a href="http://www.ebiz.enea.it/moda-ml/repository/codelist/draft/gc_NT20.xml">http://www.ebiz.enea.it/moda-ml/repository/codelist/draft/gc_NT20.xml</a> (XPath GARStockStat/GSSbody/GSSitem/price/@priceQualifier) [Optional] [Default= NET]
qty	net quantity of the article or object correlated, qualified by the function of the document (ordering, delivering, ..) and by the context - base type: decimal, min inclusive: 0, fraction digits: 2, (XPath GARStockStat/GSSbody/GSSitem/qty) 0-1 (XPath GARStockStat/GSSbody/GSSitem/csRange/sizeMatrix/sizeRow/qty) 0-1
qualityLevel	the product quality level (first choice, second choice,...). - base type: string, (XPath GARStockStat/GSSbody/GSSitem/csRange/sizeMatrix/sizeRow/itemsList/qualityLevel) 0-1
readyToSendDate	date of goods ready to despatch, according to one of the patterns YYYY-MM-DD, YYYY-MM-DD:HH-MM or YYYY-WW. - base type: string, (XPath GARStockStat/GSSbody/GSSitem/readyToSendDate) 0-1
@role	Third Party role qualifier - base type: string, cod. table: NT2 <a href="http://www.ebiz.enea.it/moda-ml/repository/codelist/draft/gc_NT2.xml">http://www.ebiz.enea.it/moda-ml/repository/codelist/draft/gc_NT2.xml</a> (XPath GARStockStat/GSOheader/thirdParty/@role) [Required]
@schemeID	identifier of an identification scheme - base type: string, (XPath GARStockStat/GSOheader/refDoc/attachment/hashFootprint/@schemeID) [Optional] - nota: specify for which system this hash footprint might be used as identifier (for example HDFS system..) (XPath GARStockStat/GSSbody/GSSitem/refDoc/attachment/hashFootprint/@schemeID) [Optional] - nota: specify for which system this hash footprint might be used as identifier (for example HDFS system..)
season	sale season; defined as: season (1 crt) + year (4 crt) - season: S/S=1 A/W=2 Spring=3 Summer=4 Autumn=5 Winter=6: for more than four seasons use alphabetic sequence: 1st season=A 2nd season=B etc.etc. - base type: string, max length: 15, (XPath GARStockStat/GSOheader/refDoc/season) 0-1 - note: here indicates the season to which the referenced document belongs (XPath GARStockStat/GSSbody/GSSitem/refDoc/season) 0-1 - note: here indicates the season to which the referenced document belongs (XPath GARStockStat/GSSbody/GSSitem/garmentCategory/season) 0-1
@sender	qualifier that specifies the Party issuing of the document - base type: boolean, (XPath GARStockStat/GSOheader/thirdParty/@sender) [Optional] - nota: This attribute is mandatory when the STYLESHEET must be used (XPath GARStockStat/GSOheader/buyer/@sender) [Optional] - nota: This attribute is mandatory when the STYLESHEET must be used (XPath GARStockStat/GSOheader/supplier/@sender) [Optional] - nota: This attribute is mandatory when the STYLESHEET must be used
serialN	serial number used for the identification of a physical unit - base type: string, max length: 250, (XPath GARStockStat/GSSbody/GSSitem/csRange/sizeMatrix/sizeRow/itemsList/itemIdentification/serialN) 1-9 Best Practice - note: multiple values of serialN are allowed for different representations of the serial identifier of the same product unit. Instances of serialN must differ at least for one value of numberingOrg and idQualifier.
size	size number of a fashion product (knitwear, clothing, ..)

	<p>- base type: string, max length: 15,  (XPath GARStockStat/GSSbody/GSSitem/garmentCode/  garmentCodeB/size) 0-1  (XPath GARStockStat/GSSbody/GSSitem/csRange/sizeMatrix/  sizeRow/size) 1-1</p>
@sizeSystemBase	<p>base of the size system  - base type: string, cod. table: T423  <a href="http://www.ebiz.enea.it/moda-ml/repository/codelist/draft/gc_T423.xml">http://www.ebiz.enea.it/moda-ml/repository/codelist/draft/gc_T423.xml</a>  (XPath GARStockStat/GSSbody/GSSitem/csRange/@sizeSystemBase) [Optional]</p>
@sizeSystemID	<p>the identifier of the size system.  - base type: string,  (XPath GARStockStat/GSSbody/GSSitem/csRange/@sizeSystemID) [Optional]</p>
@sizeSystemNat	<p>nation or agency identifying the size system  - base type: string, cod. table: T421  <a href="http://www.ebiz.enea.it/moda-ml/repository/codelist/draft/gc_T421.xml">http://www.ebiz.enea.it/moda-ml/repository/codelist/draft/gc_T421.xml</a>  (XPath GARStockStat/GSSbody/GSSitem/csRange/@sizeSystemNat) [Optional]</p>
@sizeSystemSeg	<p>market segment identifying the size system  - base type: string, cod. table: T422  <a href="http://www.ebiz.enea.it/moda-ml/repository/codelist/draft/gc_T422.xml">http://www.ebiz.enea.it/moda-ml/repository/codelist/draft/gc_T422.xml</a>  (XPath GARStockStat/GSSbody/GSSitem/csRange/@sizeSystemSeg) [Optional]</p>
street	<p>street and building number identifying a location  - base type: string, max length: 80,  (XPath GARStockStat/GSOheader/thirdParty/street) 0-1  (XPath GARStockStat/GSOheader/buyer/street) 0-1  (XPath GARStockStat/GSOheader/supplier/street) 0-1</p>
subClass	<p>a code indicating the category (macro-class, class or sub-class) of a commodity classification system the article belongs to.  - base type: string,  (XPath GARStockStat/GSSbody/GSSitem/garmentCategory/  goodsClassification/subClass) 0-1</p>
subCountry	<p>short name or code of the sub-country entity  - base type: string, max length: 9,  (XPath GARStockStat/GSSbody/GSSitem/stockAddress/subCountry) 1-1  (XPath GARStockStat/GSOheader/buyer/subCountry) 0-1  (XPath GARStockStat/GSOheader/supplier/subCountry) 0-1  (XPath GARStockStat/GSOheader/thirdParty/subCountry) 0-1</p>
subDept	<p>name or code of a department  - base type: string, max length: 40,  (XPath GARStockStat/GSOheader/supplier/subDept) 0-1  (XPath GARStockStat/GSOheader/buyer/subDept) 0-1  (XPath GARStockStat/GSOheader/thirdParty/subDept) 0-1</p>
tradeMark	<p>name of the official trademark of a specified product (DEPRECATED, use Brand or Product Line).  - base type: string, max length: 50,  (XPath GARStockStat/GSSbody/GSSitem/tradeMark) 0-1</p>
transactionReceipt	<p>transaction receipt on blockchain  - base type: string, max length: 80,  (XPath GARStockStat/GSSbody/GSSitem/refDoc/attachment/  blockChainReference/transactionReceipt) 1-9  (XPath GARStockStat/GSOheader/refDoc/attachment/  blockChainReference/transactionReceipt) 1-9</p>
@uid	<p>unique element identifier within the xml document  - base type: string,  (XPath GARStockStat/GSSbody/GSSitem/refDoc/attachment/@uid) [Optional]  (XPath GARStockStat/GSOheader/refDoc/attachment/@uid) [Optional]</p>
@um	<p>specification of the unit of measure  - base type: string, cod. table: NT7  <a href="http://www.ebiz.enea.it/moda-ml/repository/codelist/draft/gc_NT7.xml">http://www.ebiz.enea.it/moda-ml/repository/codelist/draft/gc_NT7.xml</a>  (XPath GARStockStat/GSOheader/buyer/geoCoordinates/@um) [Optional] [Default= DEGD]  - nota: <i>when not specified assume decimal DEGREES</i>  (XPath GARStockStat/GSSbody/GSSitem/price/@um) [Optional]  - nota: <i>Unit of measure of the product to which the price is referred (price per meter)</i></p>

	<p>(XPath GARStockStat/GSSbody/GSSitem/qty/@um) [Required]  (XPath GARStockStat/GSOheader/supplier/geoCoordinates/@um) [Optional] [Default= DEGD]  - nota: <i>when not specified assume decimal DEGREES</i>  (XPath GARStockStat/GSOheader/thirdParty/geoCoordinates/@um) [Optional] [Default= DEGD]  - nota: <i>when not specified assume decimal DEGREES</i>  (XPath GARStockStat/GSSbody/GSSitem/csRange/sizeMatrix/sizeRow/qty/@um) [Required]</p>
uri	<p>Uniform Resource Identifier (URI) that identifies the external object as an Internet resource  - base type: normalizedString,  (XPath GARStockStat/GSOheader/refDoc/attachment/blockChainReference/uri) 1-1  - note: <i>reference to the used blockchain ( example: url https://etherscan.io/ of ethereum)</i>  (XPath GARStockStat/GSSbody/GSSitem/refDoc/attachment/blockChainReference/uri) 1-1  - note: <i>reference to the used blockchain ( example: url https://etherscan.io/ of ethereum)</i>  (XPath GARStockStat/GSOheader/refDoc/attachment/externalReference/uri) 1-1  (XPath GARStockStat/GSSbody/GSSitem/refDoc/attachment/externalReference/uri) 1-1</p>
@useProfile	<p>use profile to which the present document is compliant if it was agreed by the parties. It is suggested a URI with reference to the firms or the URL of the profile.  - base type: string,  (XPath GARStockStat/@useProfile) [Optional]</p>
variantCode	<p>Code of variant used for fashion product.  - base type: string,  (XPath GARStockStat/GSSbody/GSSitem/garmentCode/garmentCodeB/garmentVariant/variantCode) 1-1  (XPath GARStockStat/GSSbody/GSSitem/csRange/garmentVariant/variantCode) 1-1</p>
variantType	<p>Type of variant used for fashion product (examples: 'treatment', 'washing type', 'size class',...)  - base type: string,  (XPath GARStockStat/GSSbody/GSSitem/garmentCode/garmentCodeB/garmentVariant/variantType) 1-1  (XPath GARStockStat/GSSbody/GSSitem/csRange/garmentVariant/variantType) 1-1</p>
@VAT	<p>VAT rate or code (DEPRECATED, use dtScheme element)  - base type: string, cod. table: NT16  <a href="http://www.ebiz.enea.it/moda-ml/repository/codelist/draft/gc_NT16.xml">http://www.ebiz.enea.it/moda-ml/repository/codelist/draft/gc_NT16.xml</a>  (XPath GARStockStat/GSSbody/GSSitem/lineN/@VAT) [Optional]  - nota: <i>Deprecated, prefer dtScheme when available.</i>  (XPath GARStockStat/GSOheader/thirdParty/@VAT) [Optional]</p>
@version	<p>Dictionary version from which the instance has been created  - base type: string, cod. table: NT100  <a href="http://www.ebiz.enea.it/moda-ml/repository/codelist/draft/gc_NT100.xml">http://www.ebiz.enea.it/moda-ml/repository/codelist/draft/gc_NT100.xml</a>  (XPath GARStockStat/@version) [Optional] [Default= draft]</p>
xGeoCoord	<p>geographical coordinate x , corresponding to latitude  - base type: decimal,  (XPath GARStockStat/GSOheader/buyer/geoCoordinates/xGeoCoord) 1-1  (XPath GARStockStat/GSOheader/supplier/geoCoordinates/xGeoCoord) 1-1  (XPath GARStockStat/GSOheader/thirdParty/geoCoordinates/xGeoCoord) 1-1</p>
yGeoCoord	<p>geographical coordinate y , corresponding to longitude  - base type: decimal,  (XPath GARStockStat/GSOheader/supplier/geoCoordinates/yGeoCoord) 1-1  (XPath GARStockStat/GSOheader/buyer/geoCoordinates/yGeoCoord) 1-1  (XPath GARStockStat/GSOheader/thirdParty/geoCoordinates/yGeoCoord) 1-1</p>
zGeoCoord	<p>geographical coordinate z , corresponding to altitude  - base type: decimal,  (XPath GARStockStat/GSOheader/supplier/geoCoordinates/zGeoCoord) 0-1  - note: <i>altitude might be omitted</i>  (XPath GARStockStat/GSOheader/buyer/geoCoordinates/zGeoCoord) 0-1</p>



	<ul style="list-style-type: none"><li>- note: <i>altitude might be omitted</i></li><li>(XPath <code>GARStockStat/GSOheader/thirdParty/geoCoordinates/zGeoCoord</code>) 0-1</li><li>- note: <i>altitude might be omitted</i></li></ul>
--	---

## 2.3 Suggested best practices

**GARStockStat/GSSbody/GSSitem/refDoc/docID (identification number of the referenced document)**

numberingOrg indicates the role that produced the document identifier (it is allowed to declare two different ones -e.g. customer and supplier - with two docID with different numberingOrg

**GARStockStat/GSOheader/refDoc/docID (identification number of the referenced document)**

numberingOrg indicates the role that produced the document identifier (it is allowed to declare two different ones -e.g. customer and supplier - with two docID with different numberingOrg

**GARStockStat/GSSbody/GSSitem/refDoc/attachment/  
externalReference/mimeCode (mime type of the external object)**

Use coding from IANA <http://www.iana.org/assignments/media-types/media-types.xml>

**GARStockStat/GSOheader/refDoc/attachment/  
externalReference/mimeCode (mime type of the external object)**

Use coding from IANA <http://www.iana.org/assignments/media-types/media-types.xml>

**GARStockStat/GSSbody/GSSitem/csRange/sizeMatrix/  
sizeRow/itemsList/itemIdentification/serialN (serial number used for the identification of a physical unit)**

in the case of garment with RFID for anti-counterfeiting, RFID EPCGlobal for logistics and NFC for the customer experience there should be three serial elements with pairs of attributes numberingOrg/idQualifier: "CL"/"RFID", "GS1"/"RFID", "CL"/"NFC".

## 2.4 Enumeration tables

List of enumeration tables used in the XML document. You can find all the tables with the corresponding codes at:  
<http://www.ebiz.enea.it/eBIZ/imple/eBIZTCU-draft.asp?lingua=en&pag=6>

NT100 - eBIZ TCFUpstream version  
NT16 - VAT rate or code  
NT18 - message function  
NT2 - third party qualifier  
NT20 - price qualifier  
NT29 - format of a date  
NT333 - type of hashing algorithm  
NT35 - stock offer status  
NT36 - stock offer status reason  
NT6 - coding system owner/issuer  
NT60 - language, codes from ISO 639-1 (subset)  
NT7 - unit of measure  
T10 - ISO3166 - Country  
T21 - type of document  
T421 - size system: nationality  
T422 - size system: market segment  
T423 - size system: base  
T44 - additional code type  
T9 - ISO4217 - Currency

(the most relevant tables are detailed in the following Annexes too)

## ACKNOWLEDGEMENT



This action is part of the TRICK project, which has received funding from Horizon 2020 research and innovation programme under grant agreement No. 958352 of the European Union.

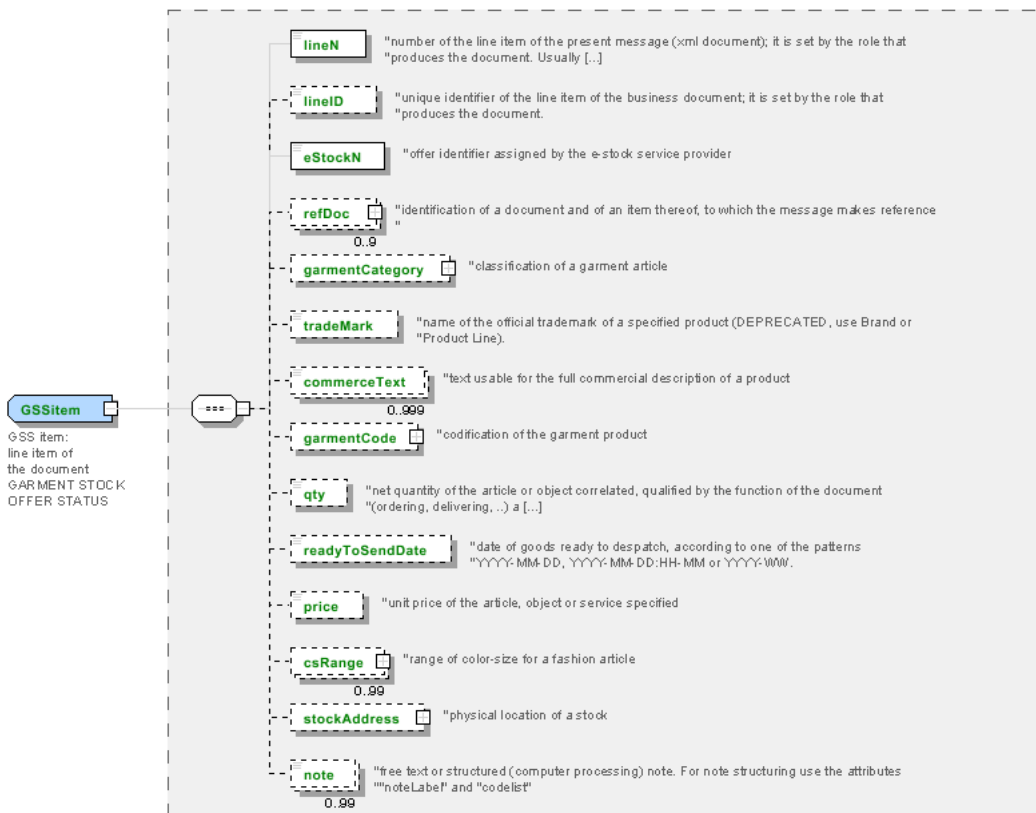
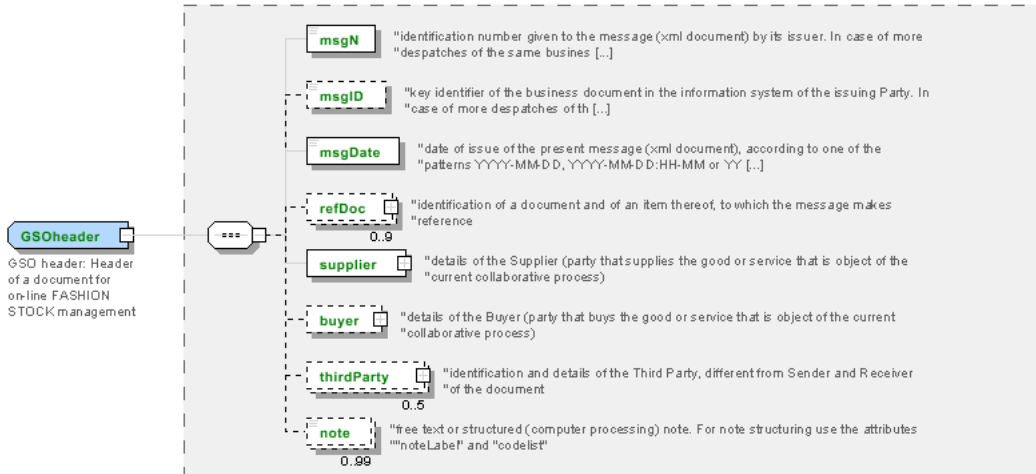
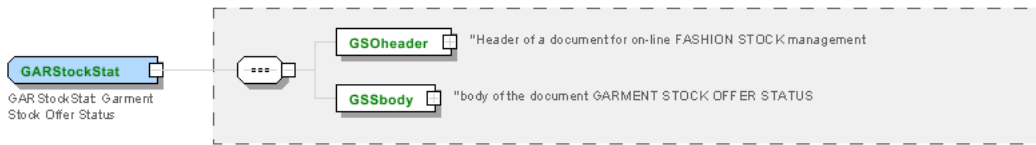
## DISCLAIMER

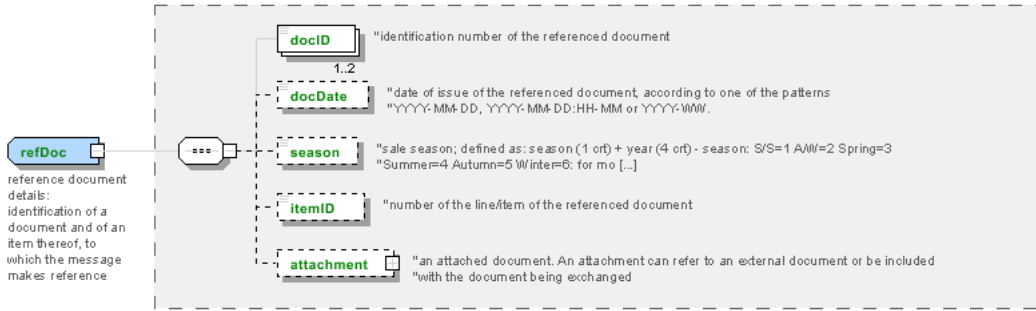
The content of this document represents the views of the authors only and is their sole responsibility; it cannot be considered to reflect the views of the European Commission or any other body of the European Union.

The European Commission does not accept any responsibility for use that may be made of the information it contains.

# Annex A

Representative images of the principal complex elements' structure.







## Annex B

### NT100 - eBIZ TCFUpstream version

dictionary version

Agency name: eBIZ

Decoding table: NT100

File codes list (Generic code): [http://www.ebiz.enea.it/moda-ml/repository/codelist/draft/gc\\_NT100.xml](http://www.ebiz.enea.it/moda-ml/repository/codelist/draft/gc_NT100.xml)

Code	Description	Adoption note	Date of insertion
2013-1	v2013-1		01/07/2013
2018-1	v2018-1		04/11/2018
draft	draft		08/09/2017

### NT16 - VAT rate or code

VAT rate or code ( DEPRECATED, use dtScheme element )

Decoding table: NT16

File codes list (Generic code): [http://www.ebiz.enea.it/moda-ml/repository/codelist/draft/gc\\_NT16.xml](http://www.ebiz.enea.it/moda-ml/repository/codelist/draft/gc_NT16.xml)

### NT18 - message function

function performed by the present message with regards to the transmission

Agency name: eBIZ

Decoding table: NT18

File codes list (Generic code): [http://www.ebiz.enea.it/moda-ml/repository/codelist/draft/gc\\_NT18.xml](http://www.ebiz.enea.it/moda-ml/repository/codelist/draft/gc_NT18.xml)

Code	Description	Adoption note	Date of insertion
CA	delete this document		01/07/2013
CP	copy		
OR	original		
RC	re-transmission for data correction		
RT	re-transmission		

### NT2 - third party qualifier

Third Party role qualifier

Agency name: eBIZ

Decoding table: NT2

File codes list (Generic code): [http://www.ebiz.enea.it/moda-ml/repository/codelist/draft/gc\\_NT2.xml](http://www.ebiz.enea.it/moda-ml/repository/codelist/draft/gc_NT2.xml)



Code	Description	Adoption note	Date of insertion
AG	Sales Agent		
AU	Auditor		08/04/2019
BU	Buyer		13/06/2022
CE	Certification authority		08/04/2019
CM	Commissioner		13/06/2022
CO	Quality Controller		
CU	Customs authority		13/06/2022
DC	Response to		
DF	Invoicee		
DI	Copy to (CC)		28/10/2014
DM	Consignee		
DP	Consignment address (Delivery Party)		
EX	Expert		13/06/2022
IM	Importer		
OR	Originator		10/09/2014
SC	Sub contractor		10/04/2019
SM	Service/ePlatform manager		08/04/2019
SP	Forwarder		
SU	Supplier		13/06/2022
TL	Test or analysis laboratory		13/06/2022
TX	Tax Representative		

#### NT20 - price qualifier

type of price with reference to discount and taxes

Agency name: eBIZ

Decoding table: NT20

File codes list (Generic code): [http://www.ebiz.enea.it/moda-ml/repository/codelist/draft/gc\\_NT20.xml](http://www.ebiz.enea.it/moda-ml/repository/codelist/draft/gc_NT20.xml)

Code	Description	Adoption note	Date of insertion
GET	gross excluding taxes		
GIT	gross including taxes		
NET	net excluding taxes		
NIT	net including taxes		

### NT29 - format of a date

format used for the date

Agency name: eBIZ

Decoding table: NT29

File codes list (Generic code): [http://www.ebiz.enea.it/moda-ml/repository/codelist/draft/gc\\_NT29.xml](http://www.ebiz.enea.it/moda-ml/repository/codelist/draft/gc_NT29.xml)

Code	Description	Adoption note	Date of insertion
D	YYYY-MM-DD		
M	YYYY-MM-DD:HH-MM (date and time)		
S	AAAA-MM-GG:HH-MM-SS (date and time with seconds)		13/06/2022
W	YYYY-WW		

### NT333 - type of hashing algorithm

type of hashing algorithm

Decoding table: NT333

File codes list (Generic code): [http://www.ebiz.enea.it/moda-ml/repository/codelist/draft/gc\\_NT333.xml](http://www.ebiz.enea.it/moda-ml/repository/codelist/draft/gc_NT333.xml)

Code	Description	Adoption note	Date of insertion
ADLER32	ADLER32		26/05/2023
HMAC	HMAC		26/05/2023
MD2	MD2		26/05/2023
MD4	MD4		26/05/2023
MD5	MD5		26/05/2023
MDC-2	MDC-2		26/05/2023
PANAMA	PANAMA		26/05/2023
RIPEMD-160	RIPEMD-160		26/05/2023
SHA-1	SHA-1		26/05/2023
SHA-2 256	SHA-2 256		26/05/2023
SHA-2 384	SHA-2 384		26/05/2023
SHA-2 512	SHA-2 512		26/05/2023
TIGER	TIGER		26/05/2023

### NT35 - stock offer status

status of the offer in the e-stock

Agency name: eBIZ

Decoding table: NT35

File codes list (Generic code): [http://www.ebiz.enea.it/moda-ml/repository/codelist/draft/gc\\_NT35.xml](http://www.ebiz.enea.it/moda-ml/repository/codelist/draft/gc_NT35.xml)

Code	Description	Adoption note	Date of insertion
IN	loaded		
NO	not loaded		
PR	on sale		
RT	withdrawn from sale		
SC	expired		
TC	dealing terminated		
TR	dealing		
VE	sold		
WA	loaded with warning		

### NT36 - stock offer status reason

status reason of the offer in the e-stock

Agency name: eBIZ

Decoding table: NT36

File codes list (Generic code): [http://www.ebiz.enea.it/moda-ml/repository/codelist/draft/gc\\_NT36.xml](http://www.ebiz.enea.it/moda-ml/repository/codelist/draft/gc_NT36.xml)

Code	Description	Adoption note	Date of insertion
UC	unsufficient credit		
UL	unrecognised location		
US	unrecognised size system		
UU	user not permitted		

### NT6 - coding system owner/issuer

code specifying the organisation who has created or owns the registers of the present coding or numbering system

Agency name: eBIZ

Decoding table: NT6

File codes list (Generic code): [http://www.ebiz.enea.it/moda-ml/repository/codelist/draft/gc\\_NT6.xml](http://www.ebiz.enea.it/moda-ml/repository/codelist/draft/gc_NT6.xml)

Code	Description	Adoption note	Date of insertion
CBR	National customs brokers registry		12/06/2023
CL	Customer/buyer		
CO	Quality Controller		
DU	D-U-N-S registry (Data Universal Numbering System)		04/05/2023

EB	eBIZ	replaces 'ML'	18/03/2019
EN	GS1 ( ex-EAN International )		
EO	Registro EORI (Economic Operators Registration and Identification number)		04/03/2023
ES	e-Stockflow	DEPRECATED	
FO	Supplier		
GS	GS1		01/07/2013
MF	national taxation authority (i.e. VAT codes registry)		
ML	Moda-ML	DEPRECATED	
PL	Application Platform		13/06/2022
REX	Registered Exporter system (REX)		19/05/2023
SP	Service Provider		
SU	Enterprise Identification Number UID	Only switzerland	04/03/2023

#### NT60 - language, codes from ISO 639-1 (subset)

Agency name: eBIZ / ISO

Decoding table: NT60

File codes list (Generic code): [http://www.ebiz.enea.it/moda-ml/repository/codelist/draft/gc\\_NT60.xml](http://www.ebiz.enea.it/moda-ml/repository/codelist/draft/gc_NT60.xml)

Code	Description	Adoption note	Date of insertion
af	Afrikaans		31/01/2019
ar	Arabic		31/01/2019
be	Belarusian		31/01/2019
bg	Bulgarian		31/01/2019
bn	Bengali		31/01/2019
bo	Tibetan		31/01/2019
bs	Bosnian		31/01/2019
ca	Catalan, Valencian		31/01/2019
cs	Czech		31/01/2019
da	Danish		31/01/2019
de	German		31/01/2019
el	Greek, Modern (1453-)		31/01/2019
en	English		31/01/2019
eo	Esperanto		31/01/2019
es	Spanish, Castilian		31/01/2019
et	Estonian		31/01/2019
eu	Basque		31/01/2019
F	Female		15/04/2019

fa	Persian		31/01/2019
fi	Finnish		31/01/2019
fr	French		31/01/2019
ga	Irish		31/01/2019
gd	Gaelic, Scottish Gaelic		31/01/2019
gn	Guarani		31/01/2019
he	Hebrew		31/01/2019
hr	Croatian		31/01/2019
ht	Haitian, Haitian Creole		31/01/2019
hu	Hungarian		31/01/2019
hy	Armenian		31/01/2019
ia	Interlingua (International Auxiliary Language Association)		31/01/2019
id	Indonesian		31/01/2019
is	Icelandic		31/01/2019
it	Italian		31/01/2019
ja	Japanese		31/01/2019
jv	Javanese		31/01/2019
ka	Georgian		31/01/2019
km	Central Khmer		31/01/2019
ko	Korean		31/01/2019
ku	Kurdish		31/01/2019
lb	Luxembourgish, Letzeburgesch		31/01/2019
lo	Lao		31/01/2019
lt	Lithuanian		31/01/2019
lv	Latvian		31/01/2019
mg	Malagasy		31/01/2019
mk	Macedonian		31/01/2019
mn	Mongolian		31/01/2019
mt	Maltese		31/01/2019
nl	Dutch, Flemish		31/01/2019
no	Norwegian		31/01/2019
pl	Polish		31/01/2019
pt	Portuguese		31/01/2019
ro	Romanian, Moldavian, Moldovan		31/01/2019
ru	Russian		31/01/2019
se	Northern Sami		31/01/2019
sk	Slovak		31/01/2019
sl	Slovenian		31/01/2019

sm	Samoan		31/01/2019
so	Somali		31/01/2019
sq	Albanian		31/01/2019
sr	Serbian		31/01/2019
sv	Swedish		31/01/2019
sw	Swahili		31/01/2019
ta	Tamil		31/01/2019
th	Thai		31/01/2019
tr	Turkish		31/01/2019
uk	Ukrainian		31/01/2019
ur	Urdu		31/01/2019
uz	Uzbek		31/01/2019
vi	Vietnamese		31/01/2019
zh	Chinese		31/01/2019

#### NT7 - unit of measure

specification of the unit of measure, it is a sub set of table Unit of Measure Code - UN/ECE REC 20 delivered by United Nations Economic Commission for Europe (UN/ECE)

Agency name: eBIZ / UN/ECE

Decoding table: NT7

File codes list (Generic code): [http://www.ebiz.enea.it/moda-ml/repository/codelist/draft/gc\\_NT7.xml](http://www.ebiz.enea.it/moda-ml/repository/codelist/draft/gc_NT7.xml)

Other link: <http://docs.oasis-open.org/ubl/os-UBL-2.1/cl/gc/default/UnitOfMeasureCode-2.1.gc#>

Code	Description	Adoption note	Date of insertion
CMK	square centimetre		20/12/2017
CMQ	cubic centimetre		20/12/2017
CMT	centimetre		
CNE	centiNewton		
CO2TON	ton of CO2		10/09/2014
COUPLES	couples		
DAY	day		22/08/2022
DEGD	decimal degrees		04/07/2022
DEGMS	degrees with minutes and seconds		01/07/2022
DMQ	cubic decimetre		
E37	pixel		11/04/2018
GRM	gram		
HUR	hour		
INH	inch		

KGM	kilogram		
KMT	kilometer		
KWH	kilowatthours		10/09/2014
LBR	pound		
MCG	microgram		23/08/2022
MG	milligram		23/08/2022
MIN	minute		
MMK	square millimetre		20/12/2017
MONTH	month		22/08/2022
MSEC	millisecond (time)		22/08/2022
MTK	square metre		20/12/2017
MTQ	cubic metre		
MTR	metre		
NMB	numero		
ONZ	ounce		
P1	percent		
PPM	parts per milion		
PZ	piece		
RPM	rounds per metre		
SEC	second (time)		22/08/2022
YEAR	year		22/08/2022
YRD	yard		

### T10 - ISO3166 - Country

code of the nation

Agency name: ISO

Decoding table: T10

File codes list (Generic code): [http://www.ebiz.enea.it/moda-ml/repository/codelist/draft/gc\\_T10.xml](http://www.ebiz.enea.it/moda-ml/repository/codelist/draft/gc_T10.xml)

Table not printed: there are 240 elements, more than the maximum specified for printing: 99.

### T21 - type of document

type or class to which the referenced document belongs

Agency name: eBIZ

Decoding table: T21

File codes list (Generic code): [http://www.ebiz.enea.it/moda-ml/repository/codelist/draft/gc\\_T21.xml](http://www.ebiz.enea.it/moda-ml/repository/codelist/draft/gc_T21.xml)

<b>Code</b>	<b>Description</b>	<b>Adoption note</b>	<b>Date of insertion</b>
BIL	Bill of lading		07/03/2023
BOR	Blanket order		01/02/2018
CAT	Price catalogue - tech sheet		
CEO	Certificate of origin		13/04/2018
CER	Certificate		13/04/2018
CMR	CMR consignment note		07/03/2023
COC	Colour card		
CRN	Credit note		08/09/2017
CTO	Checking order		01/07/2013
CTR	Contract		
CXF	CxF3 file		01/07/2013
DAD	Darn order		
DDT	Delivery note (transport document)		
DEA	Despatch advise		
DER	Despatch request		
DR	Document Request		02/12/2014
EAD	Export Accompanying Document	adopted by European customs	12/05/2023
ECMR	electronic CMR consignment note		07/03/2023
ECUS	EXPORT Custom Declaration		07/03/2023
FOR	Forecast		02/12/2014
GSO	Garment stock offer		
GSX	Garment stock offer change		
ICUS	IMPORT Custom Declaration		07/03/2023
INV	Invoice		
KCC	Knitting-Clothing Commission Order		02/12/2014
KCI	Garment in Work Inventory Report		02/12/2014
LCA	LCA study		28/08/2022
LCAD	LCA study dataset		28/08/2022
M2M	Made to Measure Production Order		02/12/2014
MAS	Master marker		
MCI	Visual merchandising instruction		13/04/2018
OCH	Order change		
OFF	Offer		
ORD	Purchase order		
ORP	Order response		
OSR	order status request		



OSS	Offer status		02/12/2014
OST	Order status		
OUR	our reference		
PCO	Preferential certificate of origin		07/03/2023
PEF	PEF study		28/08/2022
PEFD	PEF study dataset		28/08/2022
PEFP	PEF environmental profile		07/03/2023
QR	Quality Report		02/12/2014
RAI	Raw Material in Work Inventory Report		02/12/2014
RDC	Raw dyeing commission order		
RDH	Raw dyeing order change		
RDR	Raw dyeing order response		
REA	Receiving advise		
REQ	Request for Offer		
RET	Return		02/12/2014
RSC	Spinning commission order		
RSH	Spinning order change		
RSR	Spinning order response		
SAD	Single Administrative Document	adopted by European customs	12/05/2023
SCL	Process sheet		
SDE	Self-declaration		07/03/2023
SDS	SDS - Safety data sheet		07/03/2023
SLCA	S-LCA Study		07/03/2023
SLCAD	S-LCA Study documentation		07/03/2023
TFC	Textile dyeing-finishing commission order		
TFX	Textile Dyeing-Finishing Order Change		02/12/2014
TPC	Textile printing commission order		
TPX	Textile Printing Order Change		02/12/2014
TWI	Textile in work inventory		
VMI	visual merchandising instructions		01/02/2018
WAC	Warping commission order		
WAYB	Waybill		07/03/2023
WEC	Weaving commission order		
YDC	Yarn dyeing commission order		
YDH	Yarn dyeing order change		
YDR	Yarn dyeing order response		
YTC	Twisting commission order		
YWI	Yarn in work inventory		

**T421 - size system: nationality**

nation or agency identifying the size system

Agency name: eBIZ

Decoding table: T421

File codes list (Generic code): [http://www.ebiz.enea.it/moda-ml/repository/codelist/draft/gc\\_T421.xml](http://www.ebiz.enea.it/moda-ml/repository/codelist/draft/gc_T421.xml)

Code	Description	Adoption note	Date of insertion
DE	Germany		
ES	Spain		
EU	Europe		
FR	France		
IT	Italy		
UK	United Kingdom		
US	USA		
XX	International		

**T422 - size system: market segment**

market segment identifying the size system

Agency name: eBIZ

Decoding table: T422

File codes list (Generic code): [http://www.ebiz.enea.it/moda-ml/repository/codelist/draft/gc\\_T422.xml](http://www.ebiz.enea.it/moda-ml/repository/codelist/draft/gc_T422.xml)

Code	Description	Adoption note	Date of insertion
B	baby		
C	child		
K	kid		
M	man		
U	unisex		
W	woman		

**T423 - size system: base**

base of the size system

Agency name: eBIZ

Decoding table: T423

File codes list (Generic code): [http://www.ebiz.enea.it/moda-ml/repository/codelist/draft/gc\\_T423.xml](http://www.ebiz.enea.it/moda-ml/repository/codelist/draft/gc_T423.xml)

Code	Description	Adoption note	Date of insertion
1	arab numbers		
2	latin numbers		
3	symbols		
4	letters		
H	height		
L	length		
U	unique		
W	weight		

#### T44 - additional code type

qualifier of the additional coding of a product

Agency name: eBIZ

Decoding table: T44

File codes list (Generic code): [http://www.ebiz.enea.it/moda-ml/repository/codelist/draft/gc\\_T44.xml](http://www.ebiz.enea.it/moda-ml/repository/codelist/draft/gc_T44.xml)

Code	Description	Adoption note	Date of insertion
CC	colour card		
CL	sales collection		
CO	company identification code		08/09/2017
DY	dye number		
LT	lot number		
MDI	Made in		08/09/2017
MS	manufacturing state		
PKG	packaging		09/09/2014
PL	product line		
RGB	RGB value		
SE	selvedge code		

#### T9 - ISO4217 - Currency

currency code

Agency name: ISO

Decoding table: T9

File codes list (Generic code): [http://www.ebiz.enea.it/moda-ml/repository/codelist/draft/gc\\_T9.xml](http://www.ebiz.enea.it/moda-ml/repository/codelist/draft/gc_T9.xml)

Table not printed: there are 205 elements, more than the maximum specified for printing: 99.