



<http://www.ebiz-tcf.eu>

DRAFT

IMPLEMENTATION GUIDE TRANSACTION "YARN OFFER REQUEST"

Version: draft

Date of release: 26/6/2023

Document code: G073

technical Documentation: <http://www.ebiz.enea.it>

XML Schemas repository: <http://www.ebiz.enea.it/moda-ml/repository/schema/draft/default.asp>

Guides repository: <http://www.ebiz.enea.it/moda-ml/repository/guide/draft/default.asp>

Guide filename: G073-eBIZ-YarnOfferRequest.pdf

0. PREMISE

This document contains a proposal for the updating and extension of eBIZ specifications starting from the eBIZ version 2018. Under the name of 'Draft version' it is reported the result of an extensive work of analysis and consultation aimed at developing and maintaining eBIZ specifications.

In particular, the content of this proposal is the result of various activities, mainly those carried out within the framework of the **TRICK project** funded by the European Commission: grant agreement 958352, call H2020-LOW-CARBON-CIRCULAR-INDUSTRIES-2020 / H2020-LCCI-2020-EASME-twostage.

The technical contents are backwards compatible with the latest official published version, with the exclusion of the totally new concepts added explicitly for the version that are thought as incremental evolution of the knowledge base.

1. BUSINESS DESCRIPTION

1.1 Scope

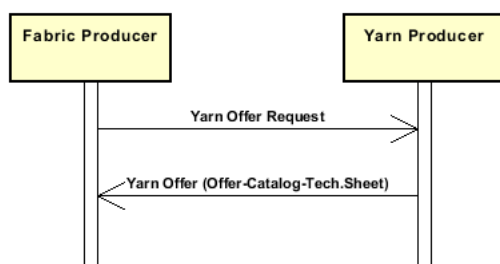
the Fabric or Kintwear Manufacturer sends this enquiry to the Yarn Producer about the kind of yarn he needs, by specifying a selection of manufacturing characteristics and mechanical-physical-chemical properties with the desired values of the ad-hoc parameters.

1.2 Generalities

The Fabric or Knitwear Producer sends this enquiry to the Yarn Producer about the kind of yarn he needs, by specifying a selection of manufacturing characteristics and mechanical-physical-chemical properties with the desired values of the ad-hoc parameters.

1.3. Possible scenario

Selection of yarns



2. IMPLEMENTATION GUIDE

2.1 General structure of XML document

All the business data that can be exchanged through this class of documents are shown in the following "document structure", that provides a simplified vision of the Schema.

In particular:

- the two numbers following each element define its "cardinality" (minimum and maximum number of occurrences); the minimum equal zero indicates that the element is optional, the minimum greater than zero indicates that is mandatory;
- the bold character denotes the complex elements (aggregates of simple elements) that were built for the sake of functionality and re-usability of some complex informations sets. The child elements in each parent element are easily spotted as "indented";
- the symbol "@" denotes an attribute of the preceding element; here "the usage indicator (optional, required, ...)" is shown in square brackets.

Structure

YARNOfferRequest

@msgfunction [Optional]

@version [Optional] [Default= draft]

@useProfile [Optional]

RQheader 1-1

| msgN 1-1

- choose -

| msgID 0-1

- or -

| docID 0-1

| *@numberingOrg [Optional]*

- end choose -

| msgDate 1-1

| *@dateForm [Optional]*

| season 0-1

| *@numberingOrg [Optional]*

| *@codeList [Optional]*

| *@listName [Optional]*

| *@listVersion [Optional]*

| validityStart 0-1

| *@dateForm [Optional]*

| validityEnd 1-1

| *@dateForm [Optional]*

refDoc 0-9

| *@docType [Required]*

| docID 1-2

| *@numberingOrg [Optional]*

| docDate 0-1

| *@dateForm [Optional]*

| season 0-1

| *@numberingOrg [Optional]*

| *@codeList [Optional]*

| *@listName [Optional]*

| *@listVersion [Optional]*

| itemID 0-1

attachment 0-1

| *@uid [Optional]*

| fileName 0-1

| *@numberingOrg [Optional]*

| binaryObject 0-1

| *@format [Optional]*

| *@mime [Optional]*

| *@encoding [Optional]*

| *@characterSet [Optional]*

externalReference 0-99

| uri 1-1

| *@isURL [Optional] [Default= true]*

| mimeTypeCode 0-1

| formatCode 0-1

- | | | encodingCode 0-1
- | | | characterSetCode 0-1
- | | | hashFootprint 0-1
- | | | @schemeID [Optional]
- | | | @hashMethod [Required]
- | | | **blockChainReference 0-9**
- | | | | uri 1-1
- | | | | @isURL [Optional] [Default= true]
- | | | transactionReceipt 1-9

buyer 1-1

- | @logo [Optional]
- | @sender [Optional]
- | | id 1-1
- | | | @numberingOrg [Optional]
- | | additionalIdentifier 0-9
- | | | @numberingOrg [Optional]
- | | | @idQualifier [Optional]
- | | legalName 0-1
- | | dept 0-1
- | | subDept 0-1
- | | person 0-1
- | | | @email [Optional]
- | | | @phone [Optional]
- | | | @fax [Optional]
- | | street 0-1
- | | city 0-1
- | | subCountry 0-1
- | | country 0-1
- | | postCode 0-1
- | | **geoCoordinates 0-1**
- | | | @um [Optional] [Default= DEGD]
- | | | @geoRefSystem [Optional]
- | | | | xGeoCoord 1-1
- | | | | yGeoCoord 1-1
- | | | | zGeoCoord 0-1

- choose -

supplier 0-1

- | @logo [Optional]
- | @sender [Optional]
- | | id 1-1
- | | | @numberingOrg [Optional]
- | | additionalIdentifier 0-9
- | | | @numberingOrg [Optional]
- | | | @idQualifier [Optional]
- | | legalName 0-1
- | | dept 0-1
- | | subDept 0-1
- | | person 0-1
- | | | @email [Optional]
- | | | @phone [Optional]
- | | | @fax [Optional]
- | | street 0-1
- | | city 0-1
- | | subCountry 0-1
- | | country 0-1
- | | postCode 0-1
- | | **geoCoordinates 0-1**
- | | | @um [Optional] [Default= DEGD]
- | | | @geoRefSystem [Optional]
- | | | | xGeoCoord 1-1
- | | | | yGeoCoord 1-1
- | | | | zGeoCoord 0-1

- or -

subContractor 0-1

- | @sender [Optional]
- | | id 1-1
- | | | @numberingOrg [Optional]
- | | legalName 0-1

```

| | | dept 0-1
| | | subDept 0-1
| | | person 0-1
| | |   @email [Optional]
| | |   @phone [Optional]
| | |   @fax [Optional]
| | | street 0-1
| | | city 0-1
| | | subCountry 0-1
| | | country 0-1
| | | postCode 0-1
| | | geoCoordinates 0-1
| | |   @um [Optional] [Default= DEGD]
| | |   @geoRefSystem [Optional]
| | |     | xGeoCoord 1-1
| | |     | yGeoCoord 1-1
| | |     | zGeoCoord 0-1

```

- end choose -

```

| | thirdParty 0-5
| |   @VAT [Optional]
| |   @role [Required]
| |   @sender [Optional]
| |     | id 1-1
| |     |   @numberingOrg [Optional]
| |     | legalName 0-1
| |     | dept 0-1
| |     | subDept 0-1
| |     | person 0-1
| |     |   @email [Optional]
| |     |   @phone [Optional]
| |     |   @fax [Optional]
| |     | street 0-1
| |     | city 0-1
| |     | subCountry 0-1
| |     | country 0-1
| |     | postCode 0-1
| |     | geoCoordinates 0-1
| |     |   @um [Optional] [Default= DEGD]
| |     |   @geoRefSystem [Optional]
| |     |     | xGeoCoord 1-1
| |     |     | yGeoCoord 1-1
| |     |     | zGeoCoord 0-1
| | note 0-99
| |   @numberingOrg [Optional]
| |   @codeList [Optional]
| |   @noteLabel [Optional]

```

| **terms 0-1**

```

| | payment 0-5
| |   @finDiscount [Optional]
| |   @finSurcharge [Optional]
| |   - choose -
| |     | payTerm 1-1
| |     - or -
| |     | payTermText 1-1
| |     - end choose -
| |     | payMode 0-1
| | insPayment 0-5
| |   @part [Required]
| |   - choose -
| |     | payTerm 1-1
| |     - or -
| |     | payTermText 1-1
| |     - end choose -
| |     | payMode 0-1
| | trade 0-1
| |   - choose -
| |     | incoTermText 1-1

```

```

- or -
| | incoTerm 1-1
- end choose -
- choose -
| | tradeLocation 0-1
| | location 0-1
| | @LRI [Optional]
| | legalName 0-1
| | dept 0-1
| | subDept 0-1
| | person 0-1
| | @email [Optional]
| | @phone [Optional]
| | @fax [Optional]
| | street 0-1
| | city 0-1
| | subCountry 0-1
| | country 0-1
| | postCode 0-1
| | geoCoordinates 0-1
| | @um [Optional] [Default= DEGD]
| | @geoRefSystem [Optional]
| | xGeoCoord 1-1
| | yGeoCoord 1-1
| | zGeoCoord 0-1
- or -
| | location 0-1
| | @LRI [Optional]
- end choose -
| | transInfo 0-5
| | @transReason [Optional]
| | @progr [Optional]
| | transMode 1-1
| | carrier 0-1
- choose -
| | deliveryLocation 0-1
| | location 0-1
| | @LRI [Optional]
| | legalName 0-1
| | dept 0-1
| | subDept 0-1
| | person 0-1
| | @email [Optional]
| | @phone [Optional]
| | @fax [Optional]
| | street 0-1
| | city 0-1
| | subCountry 0-1
| | country 0-1
| | postCode 0-1
| | geoCoordinates 0-1
| | @um [Optional] [Default= DEGD]
| | @geoRefSystem [Optional]
| | xGeoCoord 1-1
| | yGeoCoord 1-1
| | zGeoCoord 0-1
- or -
| | deliveryPlace 0-1
- end choose -
| | grossWeight 0-1
| | @um [Required]
| | netWeight 0-1
| | @um [Required]
| | transMeans 0-1
| | @propulsionSystemCode [Optional]
| | transCondition 0-3
| | transConditionText 0-1
- choose -

```

```

| | | despatchPlace 0-1
| | - or -
| | | despatchLocation 0-1
| | | | location 0-1
| | | | | @LRI [Optional]
| | | | | legalName 0-1
| | | | | dept 0-1
| | | | | subDept 0-1
| | | | | person 0-1
| | | | | | @email [Optional]
| | | | | | @phone [Optional]
| | | | | | @fax [Optional]
| | | | | street 0-1
| | | | | city 0-1
| | | | | subCountry 0-1
| | | | | country 0-1
| | | | | postCode 0-1
| | | | | geoCoordinates 0-1
| | | | | | @um [Optional] [Default= DEGD]
| | | | | | @geoRefSystem [Optional]
| | | | | | | xGeoCoord 1-1
| | | | | | | yGeoCoord 1-1
| | | | | | | zGeoCoord 0-1
| | - end choose -
| | | despatchDate 0-1
| | | | @dateForm [Optional]
| | | | delEffectiveDate 0-1
| | | | | @dateForm [Optional]
| | | | routeLength 0-1
| | | | | @um [Required]
| | | allowanceCharge 0-9
| | | | @um [Optional]
| | | | | @VAT [Optional]
| | | | | @minQty [Optional]
| | | | | @currency [Optional]
| | | | | @maxQty [Optional]
| | | | | @isCharge [Optional]
| | | - choose -
| | | | AC_category 1-1
| | | - or -
| | | | AC_categoryText 1-1
| | | - end choose -
| | | - choose -
| | | | AC_percent 1-1
| | | - or -
| | | | AC_amount 1-1
| | | | | @currency [Optional]
| | | - end choose -
| | | | dtScheme 0-1
| | | | | @taxType [Required]
| | | | | | taxCategory 0-1
| | | | | | taxRate 0-1
| | | | | | legalRef 0-1
| | | | | | | @numberingOrg [Optional]
| | | | | | | @codeList [Optional]
| | | | | | | @listName [Optional]
| | | | | | | @listVersion [Optional]
| | | | | | note 0-99
| | | | | | | @numberingOrg [Optional]
| | | | | | | @codeList [Optional]
| | | | | | | @noteLabel [Optional]
| | yarnTecSheet 1-unbounded
| | | refDoc 0-9
| | | | @docType [Required]
| | | | | docID 1-2
| | | | | | @numberingOrg [Optional]
| | | | | docDate 0-1

```

```

| | @dateForm [Optional]
| | season 0-1
| | @numberingOrg [Optional]
| | @codeList [Optional]
| | @listName [Optional]
| | @listVersion [Optional]
| | itemID 0-1
| | attachment 0-1
| | | @uid [Optional]
| | | | fileName 0-1
| | | | | @numberingOrg [Optional]
| | | | binaryObject 0-1
| | | | | @format [Optional]
| | | | | @mime [Optional]
| | | | | @encoding [Optional]
| | | | | @characterSet [Optional]
| | | | externalReference 0-99
| | | | | uri 1-1
| | | | | | @isURL [Optional] [Default= true]
| | | | | | mimeTypeCode 0-1
| | | | | | formatCode 0-1
| | | | | | encodingCode 0-1
| | | | | | characterSetCode 0-1
| | | | | hashFootprint 0-1
| | | | | | @schemeID [Optional]
| | | | | | @hashMethod [Required]
| | | | | blockChainReference 0-9
| | | | | | uri 1-1
| | | | | | | @isURL [Optional] [Default= true]
| | | | | | transactionReceipt 1-9
| | yarnIdentity 0-1
| | | yarnNameSupplier 1-1
| | | yarnNameBuyer 0-1
| | | tradeMark 0-1
| | | season 0-1
| | | | @numberingOrg [Optional]
| | | | @codeList [Optional]
| | | | @listName [Optional]
| | | | @listVersion [Optional]
| | | yarnCompos 0-1
| | | | percCompos 1-9
| | | | | @fibre [Required]
| | | | | | @materialSource [Optional]
| | | | | | @recyclingProcessMethod [Optional]
| | | | | | @percSourcesRenewable [Optional]
| | | | | | @validationMethod [Optional]
| | | | | | @recyclingProcessEfficiency [Optional]
| | | fibrePD 0-9
| | | | @fibre [Required]
| | | | | length 0-1
| | | | | | @um [Required]
| | | | | | diameter 0-1
| | | | | | | @um [Optional]
| | | | | | country 0-1
| | | | yarnClass 0-1
| | | | yarnKind 0-1
| | | | yarnCount 0-1
| | | | | @countSystem [Required]
| | | | | @CV [Optional]
| | | | yarnTwist 0-1
| | | | | twistDirection 1-1
| | | | | | qty 0-1
| | | | | | | @um [Required]
| | | | moistRegain 0-1
| | | | yarnCode 0-2
| | | | | @numberingOrg [Optional] [Default= CL]
| | | | | | art 1-1
| | | | | | | @numberingOrg [Optional]

```


- | @codeList [Optional]
- | @listName [Optional]
- | @listVersion [Optional]
- | color 0-1
- | @numberingOrg [Optional]
- | @codeList [Optional]
- | @listName [Optional]
- | @listVersion [Optional]
- | added 0-9
- | @numberingOrg [Optional]
- | @addType [Optional]
- | description 0-unbounded
- | @ln [Optional]
- customsStat 0-1
- | @schemeID [Optional] [Default= TARIC]
- yarnComWeight 0-1
- | @um [Required]
- standardPack 0-1
- | @reelType [Optional]
- yarnReelQty 0-1
- | @um [Required]
- minLot 0-1
- | @um [Required]
- minLotExclusive 0-1
- | @um [Required]
- optLot 0-9
- | @um [Optional]
- avgDeliveryDD 0-1
- lotN 0-1
- | @numberingOrg [Optional]
- dyeN 0-1
- | @numberingOrg [Optional]
- price 0-2
- | @um [Optional]
- | @priceQualifier [Optional] [Default= NET]
- | @currency [Optional]
- extendedDescription 0-unbounded
- | @ln [Optional]
- note 0-99
- | @numberingOrg [Optional]
- | @codeList [Optional]
- | @noteLabel [Optional]
- yarnManufacture 0-1**
- | **yarnPly 0-1**
- | | plyWork 1-1
- | | plyN 0-1
- | **yarnJobSeq 0-1**
- | | yarnJob 1-19
- dyeProcess 0-1
- dyeStuff 0-1
- yarnColorFastness 0-99**
- | @colorType [Required]
- | | yarnCFTest 1-1
- | | specValue 1-1
- | | @um [Optional]
- | | @source [Optional]
- | | @method [Optional]
- | | @application [Optional]
- | | @CV [Optional]
- colorCard 0-1**
- | **colorCardItem 1-unbounded**
- | | color 1-2
- | | @numberingOrg [Optional]
- | | @codeList [Optional]
- | | @listName [Optional]
- | | @listVersion [Optional]
- | | **CIELab 0-unbounded**
- | | @illuminant [Optional]

```

| | | | | @standardObserver [Optional]
| | | | | | L 1-1
| | | | | | a 1-1
| | | | | | b 1-1
| | | | | | refDoc 0-1
| | | | | | @docType [Required]
| | | | | | docID 1-2
| | | | | | | @numberingOrg [Optional]
| | | | | | docDate 0-1
| | | | | | | @dateForm [Optional]
| | | | | | season 0-1
| | | | | | | @numberingOrg [Optional]
| | | | | | | @codeList [Optional]
| | | | | | | @listName [Optional]
| | | | | | | @listVersion [Optional]
| | | | | | itemID 0-1
| | | | | | | attachment 0-1
| | | | | | | @uid [Optional]
| | | | | | | | fileName 0-1
| | | | | | | | | @numberingOrg [Optional]
| | | | | | | | binaryObject 0-1
| | | | | | | | | @format [Optional]
| | | | | | | | | @mime [Optional]
| | | | | | | | | @encoding [Optional]
| | | | | | | | | @characterSet [Optional]
| | | | | | | | externalReference 0-99
| | | | | | | | | uri 1-1
| | | | | | | | | | @isURL [Optional] [Default= true]
| | | | | | | | | | mimeTypeCode 0-1
| | | | | | | | | | formatCode 0-1
| | | | | | | | | | encodingCode 0-1
| | | | | | | | | | characterSetCode 0-1
| | | | | | | | | hashFootprint 0-1
| | | | | | | | | | @schemeID [Optional]
| | | | | | | | | | @hashMethod [Required]
| | | | | | | | | blockChainReference 0-9
| | | | | | | | | | uri 1-1
| | | | | | | | | | | @isURL [Optional] [Default= true]
| | | | | | | | | | | transactionReceipt 1-9
| | | | | | | | description 0-unbounded
| | | | | | | | | @ln [Optional]
| | | | | | | note 0-99
| | | | | | | | @numberingOrg [Optional]
| | | | | | | | @codeList [Optional]
| | | | | | | | @noteLabel [Optional]
| | | | | | | yarnQuality 0-1
| | | | | | | | yarnQTest 1-99
| | | | | | | | | yarnQTestType 1-1
| | | | | | | | | | specValue 0-1
| | | | | | | | | | | @um [Optional]
| | | | | | | | | | | @source [Optional]
| | | | | | | | | | | @method [Optional]
| | | | | | | | | | | @application [Optional]
| | | | | | | | | | | @CV [Optional]
| | | | | | | | | | tolerance 0-1
| | | | | | | | | | | @um [Required]
| | | | | | | | | | | pcTolerance 0-1
| | | | | | | | | | | | @um [Optional]
| | | | | | | | | | | | comply 0-1
| | | | | | | | note 0-99
| | | | | | | | | @numberingOrg [Optional]
| | | | | | | | | @codeList [Optional]
| | | | | | | | | @noteLabel [Optional]

```

2.2 Detailed description of document elements

Following tables show all elements (complex and simple) used in this document. Description includes: 1) element's information: xml tag, name, brief description, data type and syntax constraints; 2) information about use of the element in a particular position in the document: xpath and possible associated notes.

2.2.1 Complex elements (Aggregate Business Information Entities)

Complex elements are those elements whose content is composed of other elements (childs). Complex elements are alphabetically ordered.

allowanceCharge	Allowances and Charges related to an Order or a contract (XPath YARNOfferRequest/terms/allowanceCharge) 0-9
attachment	an attached document. An attachment can refer to an external document or be included with the document being exchanged (XPath YARNOfferRequest/yarnTecSheet/refDoc/attachment) 0-1 (XPath YARNOfferRequest/RQheader/refDoc/attachment) 0-1 (XPath YARNOfferRequest/yarnTecSheet/yarnManufacture/colorCard/colorCardItem/refDoc/attachment) 0-1
blockChainReference	blockchain reference - base type: string, max length: 80, (XPath YARNOfferRequest/yarnTecSheet/yarnManufacture/colorCard/colorCardItem/refDoc/attachment/blockChainReference) 0-9 (XPath YARNOfferRequest/RQheader/refDoc/attachment/blockChainReference) 0-9 (XPath YARNOfferRequest/yarnTecSheet/refDoc/attachment/blockChainReference) 0-9
buyer	details of the Buyer (party that buys the good or service that is object of the current collaborative process) - base type: Nad, (XPath YARNOfferRequest/RQheader/buyer) 1-1
CIELab	color point in the CIELab color space (XPath YARNOfferRequest/yarnTecSheet/yarnManufacture/colorCard/colorCardItem/CIELab) 0-unbounded
colorCard	color card for a textile product (XPath YARNOfferRequest/yarnTecSheet/yarnManufacture/colorCard) 0-1
colorCardItem	item of the color card (XPath YARNOfferRequest/yarnTecSheet/yarnManufacture/colorCard/colorCardItem) 1-unbounded
deliveryLocation	data relating to a place of delivery (indicate at least element location or address, city and country) - base type: Nad, (XPath YARNOfferRequest/terms/transInfo/deliveryLocation) 0-1 - note: <i>use to represent addresses in a structured way or with geographical coordinates</i>
despatchLocation	data relating to a place of despatch (indicate at least element location or address, city and country) - base type: Nad, (XPath YARNOfferRequest/terms/transInfo/despatchLocation) 0-1 - note: <i>use to represent addresses in a structured way</i>
dtScheme	set of data usable to declare the duty or tax applied (XPath YARNOfferRequest/terms/allowanceCharge/dtScheme) 0-1
externalReference	details about an external object, such as a document stored at a remote location (XPath YARNOfferRequest/yarnTecSheet/refDoc/attachment/externalReference) 0-99 (XPath YARNOfferRequest/RQheader/refDoc/attachment/externalReference) 0-99 (XPath YARNOfferRequest/yarnTecSheet/yarnManufacture/colorCard/colorCardItem/refDoc/attachment/externalReference) 0-99
fibrePD	physical data of a textile fibre (XPath YARNOfferRequest/yarnTecSheet/yarnIdentity/fibrePD) 0-9
geoCoordinates	geographical coordinates

	(XPath YARNOfferRequest/terms/transInfo/deliveryLocation/geoCoordinates) 0-1 (XPath YARNOfferRequest/terms/transInfo/despatchLocation/geoCoordinates) 0-1 (XPath YARNOfferRequest/RQheader/buyer/geoCoordinates) 0-1 (XPath YARNOfferRequest/RQheader/thirdParty/geoCoordinates) 0-1 (XPath YARNOfferRequest/terms/trade/tradeLocation/geoCoordinates) 0-1 (XPath YARNOfferRequest/RQheader/supplier/geoCoordinates) 0-1 (XPath YARNOfferRequest/RQheader/subContractor/geoCoordinates) 0-1
insPayment	payment details for payment by installments (XPath YARNOfferRequest/terms/insPayment) 0-5 - note: <i>excluded the case of offers, this set of data is alternative to payment set and must be iterated for each payment installment</i>
payment	payment details for payment all in one (XPath YARNOfferRequest/terms/payment) 0-5 - note: <i>excluded the case of offers, this set of data is alternative to insPayment, it can be iterated to specify alternative terms of payment (e.g.: 60 days or 30 days with 3% discount)</i>
refDoc	identification of a document and of an item thereof, to which the message makes reference (XPath YARNOfferRequest/yarnTecSheet/refDoc) 0-9 (XPath YARNOfferRequest/yarnTecSheet/yarnManufacture/colorCard/colorCardItem/refDoc) 0-1 - note: <i>here the CxF3 file can be referenced</i> (XPath YARNOfferRequest/RQheader/refDoc) 0-9
RQheader	header of the document REQUEST FOR OFFER (XPath YARNOfferRequest/RQheader) 1-1
subContractor	details of the Sub-contractor - base type: Nad, (XPath YARNOfferRequest/RQheader/subContractor) 0-1 - note: <i>At least one out of Supplier and Subcontractor must be indicated.</i>
supplier	details of the Supplier (party that supplies the good or service that is object of the current collaborative process) - base type: Nad, (XPath YARNOfferRequest/RQheader/supplier) 0-1 - note: <i>At least one out of Supplier and Subcontractor must be indicated.</i>
terms	details of the commercial obligations for payment and delivery (XPath YARNOfferRequest/terms) 0-1
thirdParty	identification and details of the Third Party, different from Sender and Receiver of the document - base type: Nad, (XPath YARNOfferRequest/RQheader/thirdParty) 0-5 - note: <i>In the Offer Request case it might give reference to the Originator of the request.</i>
trade	general terms of trade for the specified supply (XPath YARNOfferRequest/terms/trade) 0-1
tradeLocation	data relating to the place to which the trade conditions refer (indicate at least element location or address, city and country) - base type: Nad, (XPath YARNOfferRequest/terms/trade/tradeLocation) 0-1 - note: <i>address of the place to which the INCOTERM applies</i>
transInfo	details of transport: mode, carrier and delivery place (XPath YARNOfferRequest/terms/transInfo) 0-5
yarnCode	full codification of a yarn product (XPath YARNOfferRequest/yarnTecSheet/yarnIdentity/yarnCode) 0-2
yarnColorFastness	color fastness data for a yarn (XPath YARNOfferRequest/yarnTecSheet/yarnManufacture/yarnColorFastness) 0-99
yarnCompos	fibrous composition of a yarn product (XPath YARNOfferRequest/yarnTecSheet/yarnIdentity/yarnCompos) 0-1
yarnIdentity	set of data that univocally identify the yarn article and any classification or commercial

	information (XPath YARNOfferRequest/yarnTecSheet/yarnIdentity) 0-1
yarnJobSeq	operations undergone in the manufacturing of a yarn (XPath YARNOfferRequest/yarnTecSheet/yarnManufacture/yarnJobSeq) 0-1
yarnManufacture	set of data that specify the construction details of the yarn (XPath YARNOfferRequest/yarnTecSheet/yarnManufacture) 0-1
yarnPly	plying characteristics of a yarn (XPath YARNOfferRequest/yarnTecSheet/yarnManufacture/yarnPly) 0-1
yarnQTest	parameter related to the quality of yarn - base type: string, (XPath YARNOfferRequest/yarnTecSheet/yarnQuality/yarnQTest) 1-99
yarnQuality	set of data that specify the quality data of the yarn (XPath YARNOfferRequest/yarnTecSheet/yarnQuality) 0-1
yarnTecSheet	technical sheet of the yarn (XPath YARNOfferRequest/yarnTecSheet) 1-unbounded
yarnTwist	twist characteristics of yarn (XPath YARNOfferRequest/yarnTecSheet/yarnIdentity/yarnTwist) 0-1

2.2.2 Simple elements (Basic Business Information Entities)

Simple elements are those elements whose content is characterized by a data type plus a domain of possible values. Simple elements are alphabetically ordered.

a	"a" dimension of the CIELab color system - base type: decimal, (XPath YARNOfferRequest/yarnTecSheet/yarnManufacture/colorCard/colorCardItem/CIELab/a) 1-1
AC_amount	amount of an Allowance or Charge - base type: decimal, fraction digits: 2, (XPath YARNOfferRequest/terms/allowanceCharge/AC_amount) 1-1
AC_category	coded specification of an Allowance or Charge - base type: string, cod. table: T41 http://www.ebiz.enea.it/moda-ml/repository/codelist/draft/gc_T41.xml (XPath YARNOfferRequest/terms/allowanceCharge/AC_category) 1-1
AC_categoryText	free text description of an Allowance or Charge - base type: string, max length: 250, (XPath YARNOfferRequest/terms/allowanceCharge/AC_categoryText) 1-1
AC_percent	amount of an Allowance or Charge as a percentage (always non negative value) - base type: decimal, max inclusive: 100, fraction digits: 2, (XPath YARNOfferRequest/terms/allowanceCharge/AC_percent) 1-1
added	additional code of the product (complementing the formers) - base type: string, max length: 80, (XPath YARNOfferRequest/yarnTecSheet/yarnIdentity/yarnCode/added) 0-9 - note: here an additional codification (see table T44) can be specified
additionalIdentifier	additional identification code of a Party, for example customs registries or others - base type: string, max length: 15, (XPath YARNOfferRequest/RQheader/buyer/additionalIdentifier) 0-9 - note: identifiers for example for exports, such as MID (Manufacturer Identification Code), REX (identificatier in Registered Exporter system) (XPath YARNOfferRequest/RQheader/supplier/additionalIdentifier) 0-9 - note: identifiers for example for exports, such as MID (Manufacturer Identification Code), REX (identifier in EU Registered Exporter system)
@addType	qualifier of the additional coding of a product - base type: string, cod. table: T44 http://www.ebiz.enea.it/moda-ml/repository/codelist/draft/gc_T44.xml

	(XPath YARNOfferRequest/yarnTecSheet/yarnIdentity/ yarnCode/added/@addType) [Optional] - nota: <i>addType</i> allows the clarification of the meaning of the added element content; it is strongly suggested to use it always.
@application	force or similar condition (e.g. no. of revolutions) applied in a test as specified within the standard - base type: string, max length: 15, (XPath YARNOfferRequest/yarnTecSheet/yarnQuality/ yarnQTest/specValue/@application) [Optional] (XPath YARNOfferRequest/yarnTecSheet/yarnManufacture/ yarnColorFastness/specValue/@application) [Optional]
art	article number of the product - base type: string, max length: 80, (XPath YARNOfferRequest/yarnTecSheet/yarnIdentity/ yarnCode/art) 1-1
avgDeliveryDD	average time (workdays) between order receipt and delivery of an article, specified by the Supplier - base type: duration, (XPath YARNOfferRequest/yarnTecSheet/yarnIdentity/avgDeliveryDD) 0-1
b	"b" dimension of the CIELab color system - base type: decimal, (XPath YARNOfferRequest/yarnTecSheet/yarnManufacture/ colorCard/colorCardItem/CIELab/b) 1-1
binaryObject	a binary large object containing an attached document, Coding 'base64Binary' is recommended. - base type: base64Binary, (XPath YARNOfferRequest/RQheader/refDoc/attachment/binaryObject) 0-1 (XPath YARNOfferRequest/yarnTecSheet/refDoc/attachment/binaryObject) 0-1 (XPath YARNOfferRequest/yarnTecSheet/yarnManufacture/ colorCard/colorCardItem/refDoc/attachment/binaryObject) 0-1
carrier	identification of the transport carrier - base type: string, max length: 40, (XPath YARNOfferRequest/terms/transInfo/carrier) 0-1
@characterSet	the character set of the binary object (examples UTF-8, UTF-16, Windows-1252, ISO-8859-7,..) - base type: normalizedString, (XPath YARNOfferRequest/RQheader/refDoc/attachment/ binaryObject/@characterSet) [Optional] (XPath YARNOfferRequest/yarnTecSheet/yarnManufacture/ colorCard/colorCardItem/refDoc/attachment/binaryObject/@characterSet) [Optional] (XPath YARNOfferRequest/yarnTecSheet/refDoc/attachment/ binaryObject/@characterSet) [Optional]
characterSetCode	the character set of an external document (examples UTF-8, UTF-16, Windows-1252, ISO-8859-7,..) - base type: normalizedString, (XPath YARNOfferRequest/RQheader/refDoc/attachment/ externalReference/characterSetCode) 0-1 (XPath YARNOfferRequest/yarnTecSheet/refDoc/attachment/ externalReference/characterSetCode) 0-1 (XPath YARNOfferRequest/yarnTecSheet/yarnManufacture/ colorCard/colorCardItem/refDoc/attachment/externalReference/characterSetCode) 0-1
city	name of the city (town, village) - base type: string, max length: 40, (XPath YARNOfferRequest/terms/transInfo/deliveryLocation/city) 0-1 (XPath YARNOfferRequest/terms/trade/tradeLocation/city) 0-1 (XPath YARNOfferRequest/RQheader/supplier/city) 0-1 (XPath YARNOfferRequest/RQheader/thirdParty/city) 0-1 (XPath YARNOfferRequest/terms/transInfo/despatchLocation/city) 0-1 (XPath YARNOfferRequest/RQheader/buyer/city) 0-1 (XPath YARNOfferRequest/RQheader/subContractor/city) 0-1

<p>@codeList</p>	<p>it specifies the URL where the list of codes used to make an instance of the element can be found</p> <ul style="list-style-type: none"> - base type: string, max length: 255, (XPath YARNOfferRequest/yarnTecSheet/yarnManufacture/note/@codeList) [Optional] - nota: <i>must be used to provide (URL) the list of codes used in "noteLabel"</i> (XPath YARNOfferRequest/terms/allowanceCharge/dtScheme/note/@codeList) [Optional] - nota: <i>must be used to provide (URL) the list of codes used in "noteLabel"</i> (XPath YARNOfferRequest/yarnTecSheet/refDoc/season/@codeList) [Optional] - nota: <i>this attribute should be used either single or coupled with "listName" and "listVersion"</i> (XPath YARNOfferRequest/yarnTecSheet/yarnIdentity/note/@codeList) [Optional] - nota: <i>must be used to provide (URL) the list of codes used in "noteLabel"</i> (XPath YARNOfferRequest/yarnTecSheet/yarnQuality/note/@codeList) [Optional] - nota: <i>must be used to provide (URL) the list of codes used in "noteLabel"</i> (XPath YARNOfferRequest/yarnTecSheet/yarnIdentity/yarnCode/art/@codeList) [Optional] - nota: <i>at least one out of this attribute and "numberingOrg" should be set</i> (XPath YARNOfferRequest/yarnTecSheet/yarnIdentity/season/@codeList) [Optional] - nota: <i>this attribute should be used either single or coupled with "listName" and "listVersion"</i> (XPath YARNOfferRequest/RQheader/note/@codeList) [Optional] - nota: <i>must be used to provide (URL) the list of codes used in "noteLabel"</i> (XPath YARNOfferRequest/yarnTecSheet/yarnIdentity/yarnCode/color/@codeList) [Optional] - nota: <i>this attribute should be used either single or coupled with "listName" and "listVersion"</i> (XPath YARNOfferRequest/yarnTecSheet/yarnManufacture/colorCard/colorCardItem/refDoc/season/@codeList) [Optional] - nota: <i>this attribute should be used either single or coupled with "listName" and "listVersion"</i> (XPath YARNOfferRequest/RQheader/refDoc/season/@codeList) [Optional] - nota: <i>this attribute should be used either single or coupled with "listName" and "listVersion"</i> (XPath YARNOfferRequest/yarnTecSheet/yarnManufacture/colorCard/colorCardItem/color/@codeList) [Optional] - nota: <i>this attribute should be used either single or coupled with "listName" and "listVersion"</i> (XPath YARNOfferRequest/RQheader/season/@codeList) [Optional] - nota: <i>this attribute should be used either single or coupled with "listName" and "listVersion"</i> (XPath YARNOfferRequest/terms/allowanceCharge/dtScheme/legalRef/@codeList) [Optional]
<p>color</p>	<p>colour number of the product, when not included in the model or fabric code</p> <ul style="list-style-type: none"> - base type: string, max length: 15, (XPath YARNOfferRequest/yarnTecSheet/yarnIdentity/yarnCode/color) 0-1 (XPath YARNOfferRequest/yarnTecSheet/yarnManufacture/colorCard/colorCardItem/color) 1-2 - note: <i>multiple color values allowed if they differ for at least one of the numberingOrg and listName attributes</i>
<p>@colorType</p>	<p>type of color to which a "color fastness" value refers</p> <ul style="list-style-type: none"> - base type: string, cod. table: NT26 http://www.ebiz.enea.it/moda-ml/repository/codelist/draft/gc_NT26.xml (XPath YARNOfferRequest/yarnTecSheet/yarnManufacture/yarnColorFastness/@colorType) [Required]
<p>comply</p>	<p>specifies if the experimental value complies with the standard requirement (target value)</p> <ul style="list-style-type: none"> - base type: boolean, (XPath YARNOfferRequest/yarnTecSheet/yarnQuality/yarnQTest/comply) 0-1
<p>country</p>	<p>code of the nation</p> <ul style="list-style-type: none"> - base type: string, cod. table: T10 http://www.ebiz.enea.it/moda-ml/repository/codelist/draft/gc_T10.xml (XPath YARNOfferRequest/RQheader/subContractor/country) 0-1 (XPath YARNOfferRequest/terms/transInfo/despatchLocation/country) 0-1 (XPath YARNOfferRequest/yarnTecSheet/yarnIdentity/fibrePD/country) 0-1

	<p>(XPath YARNOfferRequest/terms/transInfo/deliveryLocation/country) 0-1 (XPath YARNOfferRequest/RQheader/thirdParty/country) 0-1 (XPath YARNOfferRequest/terms/trade/tradeLocation/country) 0-1 (XPath YARNOfferRequest/RQheader/buyer/country) 0-1 (XPath YARNOfferRequest/RQheader/supplier/country) 0-1</p>
@countSystem	<p>yarn count system - base type: string, cod. table: T55 http://www.ebiz.enea.it/moda-ml/repository/codelist/draft/gc_T55.xml (XPath YARNOfferRequest/yarnTecSheet/yarnIdentity/yarnCount/@countSystem) [Required]</p>
@currency	<p>currency in which a specified monetary data is expressed - base type: string, cod. table: T9 http://www.ebiz.enea.it/moda-ml/repository/codelist/draft/gc_T9.xml (XPath YARNOfferRequest/terms/allowanceCharge/AC_amount/@currency) [Optional] (XPath YARNOfferRequest/yarnTecSheet/yarnIdentity/price/@currency) [Optional] - nota: <i>Currency referred by the price.</i> (XPath YARNOfferRequest/terms/allowanceCharge/@currency) [Optional]</p>
customsStat	<p>statistic code assigned by Customs to a specified product (TARIC code) - base type: string, max length: 15, (XPath YARNOfferRequest/yarnTecSheet/yarnIdentity/customsStat) 0-1</p>
@CV	<p>coefficient of variation (CV) of a measurement - base type: decimal, (XPath YARNOfferRequest/yarnTecSheet/yarnManufacture/yarnColorFastness/specValue/@CV) [Optional] (XPath YARNOfferRequest/yarnTecSheet/yarnQuality/yarnQTest/specValue/@CV) [Optional] (XPath YARNOfferRequest/yarnTecSheet/yarnIdentity/yarnCount/@CV) [Optional]</p>
@dateForm	<p>format used for the date - base type: string, cod. table: NT29 http://www.ebiz.enea.it/moda-ml/repository/codelist/draft/gc_NT29.xml (XPath YARNOfferRequest/RQheader/msgDate/@dateForm) [Optional] (XPath YARNOfferRequest/yarnTecSheet/yarnManufacture/colorCard/colorCardItem/refDoc/docDate/@dateForm) [Optional] (XPath YARNOfferRequest/RQheader/refDoc/docDate/@dateForm) [Optional] (XPath YARNOfferRequest/yarnTecSheet/refDoc/docDate/@dateForm) [Optional] (XPath YARNOfferRequest/RQheader/validityStart/@dateForm) [Optional] (XPath YARNOfferRequest/RQheader/validityEnd/@dateForm) [Optional] (XPath YARNOfferRequest/terms/transInfo/despatchDate/@dateForm) [Optional] (XPath YARNOfferRequest/terms/transInfo/delEffectiveDate/@dateForm) [Optional]</p>
delEffectiveDate	<p>actual delivery date (estimated or occurred in case of receipt docs), it might be different from what agreed between the parties. Format according to one of the patterns indicated by the dateForm attribute: YYYY-MM-DD, YYYY-MM-DD:HH-MM or YYYY-WW. - base type: string, (XPath YARNOfferRequest/terms/transInfo/delEffectiveDate) 0-1</p>
deliveryPlace	<p>place of delivery of goods, ultimate or related to a given leg - base type: string, max length: 250, (XPath YARNOfferRequest/terms/transInfo/deliveryPlace) 0-1 - note: <i>use to represent addresses with a unique text string</i></p>
dept	<p>name or code of a department - base type: string, max length: 40, (XPath YARNOfferRequest/RQheader/thirdParty/dept) 0-1 (XPath YARNOfferRequest/terms/transInfo/despatchLocation/dept) 0-1 (XPath YARNOfferRequest/terms/transInfo/deliveryLocation/dept) 0-1 (XPath YARNOfferRequest/terms/trade/tradeLocation/dept) 0-1 (XPath YARNOfferRequest/RQheader/supplier/dept) 0-1 (XPath YARNOfferRequest/RQheader/subContractor/dept) 0-1 (XPath YARNOfferRequest/RQheader/buyer/dept) 0-1</p>
description	<p>free text description. The content of the element must be unique, it might be translated and repeated into more languages (thus no more than one instance for each language). - base type: string, max length: 250, (XPath YARNOfferRequest/yarnTecSheet/yarnIdentity/yarnCode/description) 0-unbounded - note: <i>Product description</i></p>

	(XPath YARNOfferRequest/yarnTecSheet/yarnManufacture/colorCard/colorCardItem/description) 0-unbounded
despatchDate	date of despatch of goods, requested or promised in the purchase process, according to one of the patterns YYYY-MM-DD, YYYY-MM-DD:HH-MM or YYYY-WW. - base type: string, (XPath YARNOfferRequest/terms/transInfo/despatchDate) 0-1
despatchPlace	place of despatch of goods, origin or related to a given leg - base type: string, max length: 250, (XPath YARNOfferRequest/terms/transInfo/despatchPlace) 0-1 - note: use to represent addresses with a unique text string
diameter	effective diameter of a specified object - base type: decimal, min inclusive: 0, fraction digits: 2, (XPath YARNOfferRequest/yarnTecSheet/yarnIdentity/fibrePD/diameter) 0-1
docDate	date of issue of the referenced document, according to one of the patterns YYYY-MM-DD, YYYY-MM-DD:HH-MM or YYYY-WW. - base type: string, (XPath YARNOfferRequest/RQheader/refDoc/docDate) 0-1 (XPath YARNOfferRequest/yarnTecSheet/yarnManufacture/colorCard/colorCardItem/refDoc/docDate) 0-1 (XPath YARNOfferRequest/yarnTecSheet/refDoc/docDate) 0-1
docID	identification number of the referenced document - base type: string, max length: 80, (XPath YARNOfferRequest/yarnTecSheet/refDoc/docID) 1-2 Best Practice (XPath YARNOfferRequest/yarnTecSheet/yarnManufacture/colorCard/colorCardItem/refDoc/docID) 1-2 Best Practice (XPath YARNOfferRequest/RQheader/refDoc/docID) 1-2 Best Practice (XPath YARNOfferRequest/RQheader/docID) 0-1 - note: Its use in HEADER elements is discouraged (use msgID)
@docType	type or class to which the referenced document belongs - base type: string, cod. table: T21 http://www.ebiz.enea.it/moda-ml/repository/codelist/draft/gc_T21.xml (XPath YARNOfferRequest/yarnTecSheet/refDoc/@docType) [Required] (XPath YARNOfferRequest/yarnTecSheet/yarnManufacture/colorCard/colorCardItem/refDoc/@docType) [Required] (XPath YARNOfferRequest/RQheader/refDoc/@docType) [Required]
dyeN	number of the dying batch of a textile product - base type: string, max length: 15, (XPath YARNOfferRequest/yarnTecSheet/yarnIdentity/dyeN) 0-1 - note: to be used when the document refers to a specific production batch
dyeProcess	dye process applied to the fabric - base type: string, cod. table: T15 http://www.ebiz.enea.it/moda-ml/repository/codelist/draft/gc_T15.xml (XPath YARNOfferRequest/yarnTecSheet/yarnManufacture/dyeProcess) 0-1
dyeStuff	dye stuff used in the fabric dye process - base type: string, cod. table: T16 http://www.ebiz.enea.it/moda-ml/repository/codelist/draft/gc_T16.xml (XPath YARNOfferRequest/yarnTecSheet/yarnManufacture/dyeStuff) 0-1
@email	electronic mail address of the contact person within a Party - base type: string, max length: 250, (XPath YARNOfferRequest/RQheader/supplier/person/@email) [Optional] (XPath YARNOfferRequest/terms/transInfo/deliveryLocation/person/@email) [Optional] (XPath YARNOfferRequest/RQheader/buyer/person/@email) [Optional] (XPath YARNOfferRequest/terms/trade/tradeLocation/person/@email) [Optional] (XPath YARNOfferRequest/terms/transInfo/despatchLocation/person/@email) [Optional] (XPath YARNOfferRequest/RQheader/subContractor/person/@email) [Optional] (XPath YARNOfferRequest/RQheader/thirdParty/person/@email) [Optional]
@encoding	specifies the decoding algorithm of the binary object - base type: normalizedString, (XPath YARNOfferRequest/RQheader/refDoc/attachment/binaryObject/@encoding) [Optional] (XPath YARNOfferRequest/yarnTecSheet/yarnManufacture/

	<p>colorCard/colorCardItem/refDoc/attachment/binaryObject/@encoding) [Optional]</p> <p>(XPath YARNOfferRequest/yarnTecSheet/refDoc/attachment/binaryObject/@encoding) [Optional]</p>
encodingCode	<p>the encoding/decoding algorithm used with the external object (example is 'base64Binary')</p> <p>- base type: normalizedString,</p> <p>(XPath YARNOfferRequest/yarnTecSheet/refDoc/attachment/externalReference/encodingCode) 0-1</p> <p>(XPath YARNOfferRequest/RQheader/refDoc/attachment/externalReference/encodingCode) 0-1</p> <p>(XPath YARNOfferRequest/yarnTecSheet/yarnManufacture/colorCard/colorCardItem/refDoc/attachment/externalReference/encodingCode) 0-1</p>
extendedDescription	<p>extended free text description. The content of the element must be unique, it might be translated and repeated into more languages (thus no more than one instance for each language). This element might contain HTML code (must be managed as CDATA)</p> <p>- base type: string,</p> <p>(XPath YARNOfferRequest/yarnTecSheet/yarnIdentity/extendedDescription) 0-unbounded</p> <p>- note: <i>Extended product description</i></p>
@fax	<p>fax number of the contact person within a Party</p> <p>- base type: string, max length: 35,</p> <p>(XPath YARNOfferRequest/terms/trade/tradeLocation/person/@fax) [Optional]</p> <p>(XPath YARNOfferRequest/RQheader/thirdParty/person/@fax) [Optional]</p> <p>(XPath YARNOfferRequest/terms/transInfo/deliveryLocation/person/@fax) [Optional]</p> <p>(XPath YARNOfferRequest/RQheader/buyer/person/@fax) [Optional]</p> <p>(XPath YARNOfferRequest/terms/transInfo/despatchLocation/person/@fax) [Optional]</p> <p>(XPath YARNOfferRequest/RQheader/supplier/person/@fax) [Optional]</p> <p>(XPath YARNOfferRequest/RQheader/subContractor/person/@fax) [Optional]</p>
@fibre	<p>type of fibre used in a textile product</p> <p>- base type: string, cod. table: T19</p> <p>http://www.ebiz.enea.it/moda-ml/repository/codelist/draft/gc_T19.xml</p> <p>(XPath YARNOfferRequest/yarnTecSheet/yarnIdentity/yarnCompos/percCompos/@fibre) [Required]</p> <p>(XPath YARNOfferRequest/yarnTecSheet/yarnIdentity/fibrePD/@fibre) [Required]</p>
fileName	<p>unique identifier (name) of the file</p> <p>- base type: string, max length: 255,</p> <p>(XPath YARNOfferRequest/yarnTecSheet/yarnManufacture/colorCard/colorCardItem/refDoc/attachment/fileName) 0-1</p> <p>(XPath YARNOfferRequest/RQheader/refDoc/attachment/fileName) 0-1</p> <p>(XPath YARNOfferRequest/yarnTecSheet/refDoc/attachment/fileName) 0-1</p>
@finDiscount	<p>financial discount rate applied for payment by the date specified</p> <p>- base type: decimal, min inclusive: 0, max inclusive: 100, fraction digits: 2,</p> <p>(XPath YARNOfferRequest/terms/payment/@finDiscount) [Optional]</p>
@finSurcharge	<p>financial surcharge rate applied for payment after the date specified</p> <p>- base type: decimal, min inclusive: 0, max inclusive: 100, fraction digits: 2,</p> <p>(XPath YARNOfferRequest/terms/payment/@finSurcharge) [Optional]</p>
@format	<p>the format of the binary content (examples xml, pdf, doc,...)</p> <p>- base type: string,</p> <p>(XPath YARNOfferRequest/RQheader/refDoc/attachment/binaryObject/@format) [Optional]</p> <p>(XPath YARNOfferRequest/yarnTecSheet/yarnManufacture/colorCard/colorCardItem/refDoc/attachment/binaryObject/@format) [Optional]</p> <p>(XPath YARNOfferRequest/yarnTecSheet/refDoc/attachment/binaryObject/@format) [Optional]</p>
formatCode	<p>the format of the external object (examples xml, pdf, doc,...)</p> <p>- base type: normalizedString,</p> <p>(XPath YARNOfferRequest/yarnTecSheet/yarnManufacture/colorCard/colorCardItem/refDoc/attachment/externalReference/formatCode) 0-1</p> <p>(XPath YARNOfferRequest/yarnTecSheet/refDoc/attachment/</p>

	<p>externalReference/formatCode) 0-1 (XPath YARNOfferRequest/RQheader/refDoc/attachment/externalReference/formatCode) 0-1</p>
@geoRefSystem	<p>georeference system adopted for the coordinate (in example wgs84 with decimal degree o degree with minute and seconds) - base type: string, (XPath YARNOfferRequest/RQheader/subContractor/geoCoordinates/@geoRefSystem) [Optional] (XPath YARNOfferRequest/terms/trade/tradeLocation/geoCoordinates/@geoRefSystem) [Optional] (XPath YARNOfferRequest/RQheader/buyer/geoCoordinates/@geoRefSystem) [Optional] (XPath YARNOfferRequest/terms/transInfo/deliveryLocation/geoCoordinates/@geoRefSystem) [Optional] (XPath YARNOfferRequest/RQheader/thirdParty/geoCoordinates/@geoRefSystem) [Optional] (XPath YARNOfferRequest/terms/transInfo/despatchLocation/geoCoordinates/@geoRefSystem) [Optional] (XPath YARNOfferRequest/RQheader/supplier/geoCoordinates/@geoRefSystem) [Optional]</p>
grossWeight	<p>the gross weight, declared for transport or customs purpose - base type: decimal, min inclusive: 0, fraction digits: 2, (XPath YARNOfferRequest/terms/transInfo/grossWeight) 0-1</p>
hashFootprint	<p>footprint obtained by applying an hashing algorithym - base type: string, max length: 80, (XPath YARNOfferRequest/RQheader/refDoc/attachment/hashFootprint) 0-1 (XPath YARNOfferRequest/yarnTecSheet/yarnManufacture/colorCard/colorCardItem/refDoc/attachment/hashFootprint) 0-1 (XPath YARNOfferRequest/yarnTecSheet/refDoc/attachment/hashFootprint) 0-1</p>
@hashMethod	<p>type of used hashing algorithym - base type: string, max length: 80, cod. table: NT333 http://www.ebiz.enea.it/moda-ml/repository/codelist/draft/gc_NT333.xml (XPath YARNOfferRequest/RQheader/refDoc/attachment/hashFootprint/@hashMethod) [Required] (XPath YARNOfferRequest/yarnTecSheet/refDoc/attachment/hashFootprint/@hashMethod) [Required] (XPath YARNOfferRequest/yarnTecSheet/yarnManufacture/colorCard/colorCardItem/refDoc/attachment/hashFootprint/@hashMethod) [Required]</p>
id	<p>primary identification code of a Party; it is recommended to use an EORI number (with @numberingOrg= "EO") or the format: nation code (ISO 3166) + national tax code (i.e. VAT identification number) with @numberingOrg= "MF" - base type: string, max length: 15, (XPath YARNOfferRequest/RQheader/thirdParty/id) 1-1 (XPath YARNOfferRequest/RQheader/supplier/id) 1-1 (XPath YARNOfferRequest/RQheader/subContractor/id) 1-1 (XPath YARNOfferRequest/RQheader/buyer/id) 1-1</p>
@idQualifier	<p>Qualification of the identifier. - base type: string, (XPath YARNOfferRequest/RQheader/supplier/additionalIdentifier/@idQualifier) [Optional] - nota: this attribute should be used when the numberingOrg attribute is not enough to declare the type of identifier (XPath YARNOfferRequest/RQheader/buyer/additionalIdentifier/@idQualifier) [Optional] - nota: this attribute should be used when the numberingOrg attribute is not enough to declare the type of identifier</p>
@illuminant	<p>CIE light source - base type: string, cod. table: T59 http://www.ebiz.enea.it/moda-ml/repository/codelist/draft/gc_T59.xml (XPath YARNOfferRequest/yarnTecSheet/yarnManufacture/colorCard/colorCardItem/CIELab/@illuminant) [Optional]</p>
incoTerm	<p>specification of the terms of trade (INCOTERMS)</p>

	<p>- base type: string, cod. table: T3 http://www.ebiz.enea.it/moda-ml/repository/codelist/draft/gc_T3.xml (XPath YARNOfferRequest/terms/trade/incoTerm) 1-1</p>
incoTermText	<p>free text specifying the terms of trade (incoterm, location) - base type: string, max length: 250, (XPath YARNOfferRequest/terms/trade/incoTermText) 1-1</p>
@isCharge	<p>Indicates if the element to which it refers is a charge (true = charge, false = allowance) - base type: boolean, (XPath YARNOfferRequest/terms/allowanceCharge/@isCharge) [Optional]</p>
@isURL	<p>it indicates if the referred element is an URL (true) or not (false) - base type: boolean, (XPath YARNOfferRequest/yarnTecSheet/refDoc/attachment/blockChainReference/uri/@isURL) [Optional] [Default= true] - nota: <i>usage of URLs is recommended</i> (XPath YARNOfferRequest/yarnTecSheet/refDoc/attachment/externalReference/uri/@isURL) [Optional] [Default= true] - nota: <i>usage of URLs is recommended</i> (XPath YARNOfferRequest/RQheader/refDoc/attachment/blockChainReference/uri/@isURL) [Optional] [Default= true] - nota: <i>usage of URLs is recommended</i> (XPath YARNOfferRequest/yarnTecSheet/yarnManufacture/colorCard/colorCardItem/refDoc/attachment/blockChainReference/uri/@isURL) [Optional] [Default= true] - nota: <i>usage of URLs is recommended</i> (XPath YARNOfferRequest/RQheader/refDoc/attachment/externalReference/uri/@isURL) [Optional] [Default= true] - nota: <i>usage of URLs is recommended</i> (XPath YARNOfferRequest/yarnTecSheet/yarnManufacture/colorCard/colorCardItem/refDoc/attachment/externalReference/uri/@isURL) [Optional] [Default= true] - nota: <i>usage of URLs is recommended</i></p>
itemID	<p>number of the line/item of the referenced document - base type: string, max length: 40, (XPath YARNOfferRequest/yarnTecSheet/yarnManufacture/colorCard/colorCardItem/refDoc/itemID) 0-1 (XPath YARNOfferRequest/yarnTecSheet/refDoc/itemID) 0-1 (XPath YARNOfferRequest/RQheader/refDoc/itemID) 0-1</p>
L	<p>"L" value of the CIELab color system - base type: decimal, min inclusive: 0, (XPath YARNOfferRequest/yarnTecSheet/yarnManufacture/colorCard/colorCardItem/CIELab/L) 1-1</p>
legalName	<p>legal name - base type: string, max length: 250, (XPath YARNOfferRequest/terms/transInfo/deliveryLocation/legalName) 0-1 (XPath YARNOfferRequest/RQheader/subContractor/legalName) 0-1 (XPath YARNOfferRequest/RQheader/buyer/legalName) 0-1 (XPath YARNOfferRequest/RQheader/thirdParty/legalName) 0-1 (XPath YARNOfferRequest/terms/trade/tradeLocation/legalName) 0-1 (XPath YARNOfferRequest/terms/transInfo/despatchLocation/legalName) 0-1 (XPath YARNOfferRequest/RQheader/supplier/legalName) 0-1</p>
legalRef	<p>legal reference of the duty or tax or fee category - base type: string, (XPath YARNOfferRequest/terms/allowanceCharge/dtScheme/legalRef) 0-1</p>
length	<p>effective length of a specified object - base type: decimal, min inclusive: 0, fraction digits: 2, (XPath YARNOfferRequest/yarnTecSheet/yarnIdentity/fibrePD/length) 0-1</p>
@listName	<p>the name of the list of codes used to make an instance of the element (it might be thought as descriptive element, i.e. 'fabric printing technologies', or not, i.e. "T264") - base type: string, max length: 40, (XPath YARNOfferRequest/yarnTecSheet/yarnIdentity/yarnCode/color/@listName) [Optional] - nota: <i>this attribute should always be used coupled with "numberingOrg"</i> (XPath YARNOfferRequest/yarnTecSheet/yarnIdentity/</p>

	<p>yarnCode/art/@listName) [Optional]</p> <ul style="list-style-type: none"> - nota: <i>this attribute should always be used coupled with “numberingOrg”</i> (XPath YARNOfferRequest/RQheader/season/@listName) [Optional] - nota: <i>this attribute should always be used coupled with “numberingOrg”</i> (XPath YARNOfferRequest/yarnTecSheet/refDoc/season/@listName) [Optional] - nota: <i>this attribute should always be used coupled with “numberingOrg”</i> (XPath YARNOfferRequest/RQheader/refDoc/season/@listName) [Optional] - nota: <i>this attribute should always be used coupled with “numberingOrg”</i> (XPath YARNOfferRequest/yarnTecSheet/yarnManufacture/ colorCard/colorCardItem/refDoc/season/@listName) [Optional] - nota: <i>this attribute should always be used coupled with “numberingOrg”</i> (XPath YARNOfferRequest/terms/allowanceCharge/dtScheme/ legalRef/@listName) [Optional] - nota: <i>this attribute should always be used coupled with “numberingOrg”</i> (XPath YARNOfferRequest/yarnTecSheet/yarnIdentity/season/@listName) [Optional] - nota: <i>this attribute should always be used coupled with “numberingOrg”</i> (XPath YARNOfferRequest/yarnTecSheet/yarnManufacture/ colorCard/colorCardItem/color/@listName) [Optional] - nota: <i>this attribute should always be used coupled with “numberingOrg”</i>
@listVersion	<p>it specifies the version of the list of codes used to make an instance of the element</p> <ul style="list-style-type: none"> - base type: string, max length: 6, (XPath YARNOfferRequest/yarnTecSheet/yarnManufacture/ colorCard/colorCardItem/color/@listVersion) [Optional] - nota: <i>this attribute should always be used coupled with “numberingOrg” and “listName”</i> (XPath YARNOfferRequest/yarnTecSheet/yarnIdentity/ yarnCode/art/@listVersion) [Optional] - nota: <i>this attribute should always be used coupled with “numberingOrg” and “listName”</i> (XPath YARNOfferRequest/yarnTecSheet/yarnIdentity/season/@listVersion) [Optional] - nota: <i>this attribute should always be used coupled with “numberingOrg” and “listName”</i> (XPath YARNOfferRequest/terms/allowanceCharge/dtScheme/ legalRef/@listVersion) [Optional] - nota: <i>this attribute should always be used coupled with “numberingOrg” and “listName”</i> (XPath YARNOfferRequest/RQheader/season/@listVersion) [Optional] - nota: <i>this attribute should always be used coupled with “numberingOrg” and “listName”</i> (XPath YARNOfferRequest/yarnTecSheet/yarnManufacture/ colorCard/colorCardItem/refDoc/season/@listVersion) [Optional] - nota: <i>this attribute should always be used coupled with “numberingOrg” and “listName”</i> (XPath YARNOfferRequest/yarnTecSheet/yarnIdentity/ yarnCode/color/@listVersion) [Optional] - nota: <i>this attribute should always be used coupled with “numberingOrg” and “listName”</i> (XPath YARNOfferRequest/RQheader/refDoc/season/@listVersion) [Optional] - nota: <i>this attribute should always be used coupled with “numberingOrg” and “listName”</i> (XPath YARNOfferRequest/yarnTecSheet/refDoc/season/@listVersion) [Optional] - nota: <i>this attribute should always be used coupled with “numberingOrg” and “listName”</i>
@ln	<p>Language code.</p> <ul style="list-style-type: none"> - base type: string, cod. table: NT60 http://www.ebiz.enea.it/moda-ml/repository/codelist/draft/gc_NT60.xml (XPath YARNOfferRequest/yarnTecSheet/yarnManufacture/ colorCard/colorCardItem/description/@ln) [Optional] (XPath YARNOfferRequest/yarnTecSheet/yarnIdentity/ extendedDescription/@ln) [Optional] (XPath YARNOfferRequest/yarnTecSheet/yarnIdentity/ yarnCode/description/@ln) [Optional]
location	<p>specification of a location. It can be represented by an identification code (preferable) or a short text (not recommended). For example a GLN code that requires to assign the value "GLN" to the attribute @LRI.</p> <ul style="list-style-type: none"> - base type: string, max length: 128, (XPath YARNOfferRequest/terms/transInfo/despatchLocation/location) 0-1 - note: <i>Use this element to specify a numeric ID of the location, for example a GLN code</i>

	<p>e (in this case @SchemeID='GS1 GLN')</p> <p>(XPath YARNOfferRequest/terms/trade/location) 0-1</p> <p>- note: code number of the place to which the INCOTERM applies</p> <p>(XPath YARNOfferRequest/terms/trade/tradeLocation/location) 0-1</p> <p>- note: Use this element to specify a numeric ID of the location, for example a GLN code (in this case @SchemeID='LRI='GLN')</p> <p>(XPath YARNOfferRequest/terms/transInfo/deliveryLocation/location) 0-1</p> <p>- note: Use this element only to indicate an identification code of this place.</p>
@logo	<p>company logo (URL of the image jpeg or gif). It is recommended that the width of the image does not exceed 640 pixel.</p> <p>- base type: string, max length: 255,</p> <p>(XPath YARNOfferRequest/RQheader/buyer/@logo) [Optional]</p> <p>(XPath YARNOfferRequest/RQheader/supplier/@logo) [Optional]</p>
lotN	<p>lot number of a product or batch number of the raw material</p> <p>- base type: string, max length: 15,</p> <p>(XPath YARNOfferRequest/yarnTecSheet/yarnIdentity/lotN) 0-1</p> <p>- note: to be used when the document refers to a specific production batch</p>
@LRI	<p>issuer of the identifier (or identification system) of a location.</p> <p>- base type: string, cod. table: NT3</p> <p>http://www.ebiz.enea.it/moda-ml/repository/codelist/draft/gc_NT3.xml</p> <p>(XPath YARNOfferRequest/terms/transInfo/deliveryLocation/location/@LRI) [Optional]</p> <p>(XPath YARNOfferRequest/terms/trade/location/@LRI) [Optional]</p> <p>(XPath YARNOfferRequest/terms/trade/tradeLocation/location/@LRI) [Optional]</p> <p>(XPath YARNOfferRequest/terms/transInfo/despatchLocation/location/@LRI) [Optional]</p>
@materialSource	<p>Indicates whether the material is virgin or comes from recycling or reuse processes</p> <p>- base type: string, cod. table: T306</p> <p>http://www.ebiz.enea.it/moda-ml/repository/codelist/draft/gc_T306.xml</p> <p>(XPath YARNOfferRequest/yarnTecSheet/yarnIdentity/yarnCompos/percCompos/@materialSource) [Optional]</p>
@maxQty	<p>maximum product quantity</p> <p>- base type: decimal, min inclusive: 0, fraction digits: 2,</p> <p>(XPath YARNOfferRequest/terms/allowanceCharge/@maxQty) [Optional]</p> <p>- nota: maximum quantity of product for the application of this allowance or charge</p>
@method	<p>standard protocol or method employed in a test to evaluate a characteristic or a parameter</p> <p>- base type: string, max length: 80,</p> <p>(XPath YARNOfferRequest/yarnTecSheet/yarnQuality/yarnQTest/specValue/@method) [Optional]</p> <p>(XPath YARNOfferRequest/yarnTecSheet/yarnManufacture/yarnColorFastness/specValue/@method) [Optional]</p>
@mime	<p>the mime type of the binary object</p> <p>- base type: normalizedString,</p> <p>(XPath YARNOfferRequest/yarnTecSheet/refDoc/attachment/binaryObject/@mime) [Optional]</p> <p>(XPath YARNOfferRequest/yarnTecSheet/yarnManufacture/colorCard/colorCardItem/refDoc/attachment/binaryObject/@mime) [Optional]</p> <p>(XPath YARNOfferRequest/RQheader/refDoc/attachment/binaryObject/@mime) [Optional]</p>
mimeCode	<p>mime type of the external object</p> <p>- base type: normalizedString,</p> <p>(XPath YARNOfferRequest/RQheader/refDoc/attachment/externalReference/mimeCode) 0-1 Best Practice</p> <p>(XPath YARNOfferRequest/yarnTecSheet/yarnManufacture/colorCard/colorCardItem/refDoc/attachment/externalReference/mimeCode) 0-1 Best Practice</p> <p>(XPath YARNOfferRequest/yarnTecSheet/refDoc/attachment/externalReference/mimeCode) 0-1 Best Practice</p>
minLot	<p>minimum order quantity of a product requested by the Supplier</p> <p>- base type: decimal, min inclusive: 0, fraction digits: 2,</p> <p>(XPath YARNOfferRequest/yarnTecSheet/yarnIdentity/minLot) 0-1</p>

minLotExclusive	minimum order quantity of a product requested by the Supplier for an exclusive color - base type: decimal, min inclusive: 0, fraction digits: 2, (XPath YARNOfferRequest/yarnTecSheet/yarnIdentity/minLotExclusive) 0-1
@minQty	minimum product quantity - base type: decimal, min inclusive: 0, fraction digits: 2, (XPath YARNOfferRequest/terms/allowanceCharge/@minQty) [Optional] - nota: <i>minimum quantity of product for the application of this allowance or charge</i>
moistRegain	percent moisture regain by the fibres - base type: decimal, (XPath YARNOfferRequest/yarnTecSheet/yarnIdentity/moistRegain) 0-1
msgDate	date of issue of the present message (xml document), according to one of the patterns YYYY-MM-DD, YYYY-MM-DD:HH-MM or YYYY-WW. - base type: string, (XPath YARNOfferRequest/RQheader/msgDate) 1-1
@msgfunction	function performed by the present message with regards to the transmission - base type: string, cod. table: NT18 http://www.ebiz.enea.it/moda-ml/repository/codelist/draft/gc_NT18.xml (XPath YARNOfferRequest/@msgfunction) [Optional]
msgID	key identifier of the business document in the information system of the issuing Party. In case of more despatches of the same business document, it is unchanged. - base type: string, max length: 35, (XPath YARNOfferRequest/RQheader/msgID) 0-1
msgN	identification number given to the message (xml document) by its issuer. In case of more despatches of the same business document, it changes. - base type: string, max length: 35, (XPath YARNOfferRequest/RQheader/msgN) 1-1
netWeight	the net weight declared for transport or customs purpose - base type: decimal, min inclusive: 0, fraction digits: 2, (XPath YARNOfferRequest/terms/transInfo/netWeight) 0-1
note	free text or structured (computer processing) note. For note structuring use the attributes "noteLabel" and "codelist" - base type: string, max length: 350, (XPath YARNOfferRequest/yarnTecSheet/yarnQuality/note) 0-99 (XPath YARNOfferRequest/yarnTecSheet/yarnIdentity/note) 0-99 (XPath YARNOfferRequest/RQheader/note) 0-99 (XPath YARNOfferRequest/yarnTecSheet/yarnManufacture/note) 0-99 (XPath YARNOfferRequest/terms/allowanceCharge/dtScheme/note) 0-99
@noteLabel	subject qualifier of a note - base type: string, max length: 35, (XPath YARNOfferRequest/yarnTecSheet/yarnManufacture/note/@noteLabel) [Optional] - nota: <i>must be used to qualify the subject of the note</i> (XPath YARNOfferRequest/yarnTecSheet/yarnIdentity/note/@noteLabel) [Optional] - nota: <i>must be used to qualify the subject of the note</i> (XPath YARNOfferRequest/RQheader/note/@noteLabel) [Optional] - nota: <i>must be used to qualify the subject of the note</i> (XPath YARNOfferRequest/yarnTecSheet/yarnQuality/note/@noteLabel) [Optional] - nota: <i>must be used to qualify the subject of the note</i> (XPath YARNOfferRequest/terms/allowanceCharge/dtScheme/note/@noteLabel) [Optional] - nota: <i>must be used to qualify the subject of the note</i>
@numberingOrg	code specifying the organisation who has created or owns the coding or numbering system - base type: string, cod. table: NT6 http://www.ebiz.enea.it/moda-ml/repository/codelist/draft/gc_NT6.xml (XPath YARNOfferRequest/yarnTecSheet/yarnManufacture/colorCard/colorCardItem/color/@numberingOrg) [Optional] - nota: <i>this attribute should be used either single or coupled with "listName" and "listVersion"</i> (XPath YARNOfferRequest/yarnTecSheet/yarnManufacture/colorCard/colorCardItem/refDoc/season/@numberingOrg) [Optional] - nota: <i>this attribute should be used either single or coupled with "listName" and "listVersion"</i> (XPath YARNOfferRequest/yarnTecSheet/yarnManufacture/

	<p style="text-align: center;">colorCard/colorCardItem/refDoc/docID/@numberingOrg) [Optional]</p> <p>- nota: here can be specified whose document numbering is used (e.g.: Client, Supplier, ..)</p> <p>(XPath YARNOfferRequest/yarnTecSheet/yarnManufacture/note/@numberingOrg) [Optional]</p> <p>- nota: must be used to specify the organization that created the list of codes used in "noteLabel"</p> <p>(XPath YARNOfferRequest/yarnTecSheet/yarnQuality/note/@numberingOrg) [Optional]</p> <p>- nota: must be used to specify the organization that created the list of codes used in "noteLabel"</p> <p>(XPath YARNOfferRequest/RQheader/docID/@numberingOrg) [Optional]</p> <p>- nota: here can be specified whose document numbering is used (e.g.: Client, Supplier, ..)</p> <p>(XPath YARNOfferRequest/yarnTecSheet/yarnManufacture/colorCard/colorCardItem/refDoc/attachment/fileName/@numberingOrg) [Optional]</p> <p>(XPath YARNOfferRequest/RQheader/season/@numberingOrg) [Optional]</p> <p>- nota: this attribute should be used either single or coupled with "listName" and "listVersion"</p> <p>(XPath YARNOfferRequest/yarnTecSheet/yarnIdentity/season/@numberingOrg) [Optional]</p> <p>- nota: this attribute should be used either single or coupled with "listName" and "listVersion"</p> <p>(XPath YARNOfferRequest/yarnTecSheet/yarnIdentity/yarnCode/added/@numberingOrg) [Optional]</p> <p>- nota: this attribute should be used either single or coupled with "listName" and "listVersion"</p> <p>(XPath YARNOfferRequest/yarnTecSheet/yarnIdentity/yarnCode/color/@numberingOrg) [Optional]</p> <p>- nota: this attribute should be used either single or coupled with "listName" and "listVersion"</p> <p>(XPath YARNOfferRequest/yarnTecSheet/yarnIdentity/yarnCode/@numberingOrg) [Optional] [Default= CL]</p> <p>(XPath YARNOfferRequest/yarnTecSheet/yarnIdentity/yarnCode/art/@numberingOrg) [Optional]</p> <p>- nota: this attribute should be used either single or coupled with "listName" and "listVersion"</p> <p>(XPath YARNOfferRequest/RQheader/refDoc/attachment/fileName/@numberingOrg) [Optional]</p> <p>(XPath YARNOfferRequest/RQheader/refDoc/season/@numberingOrg) [Optional]</p> <p>- nota: this attribute should be used either single or coupled with "listName" and "listVersion"</p> <p>(XPath YARNOfferRequest/RQheader/refDoc/docID/@numberingOrg) [Optional]</p> <p>- nota: here can be specified whose document numbering is used (e.g.: Client, Supplier, ..)</p> <p>(XPath YARNOfferRequest/yarnTecSheet/yarnIdentity/note/@numberingOrg) [Optional]</p> <p>- nota: must be used to specify the organization that created the list of codes used in "noteLabel"</p> <p>(XPath YARNOfferRequest/yarnTecSheet/yarnIdentity/lotN/@numberingOrg) [Optional]</p> <p>(XPath YARNOfferRequest/yarnTecSheet/yarnIdentity/dyeN/@numberingOrg) [Optional]</p> <p>(XPath YARNOfferRequest/RQheader/supplier/id/@numberingOrg) [Optional]</p> <p>(XPath YARNOfferRequest/yarnTecSheet/refDoc/season/@numberingOrg) [Optional]</p> <p>- nota: this attribute should be used either single or coupled with "listName" and "listVersion"</p> <p>(XPath YARNOfferRequest/RQheader/buyer/additionalIdentifier/@numberingOrg) [Optional]</p> <p>- nota: here the issuer of the identifier must be specified</p> <p>(XPath YARNOfferRequest/terms/allowanceCharge/dtScheme/note/@numberingOrg) [Optional]</p> <p>- nota: must be used to specify the organization that created the list of codes used in "noteLabel"</p> <p>(XPath YARNOfferRequest/yarnTecSheet/refDoc/docID/@numberingOrg) [Optional]</p> <p>- nota: here can be specified whose document numbering is used (e.g.: Client, Supplier, ..)</p> <p>(XPath YARNOfferRequest/RQheader/subContractor/id/@numberingOrg) [Optional]</p> <p>(XPath YARNOfferRequest/RQheader/supplier/additionalIdentifier/@numberingOrg) [Optional]</p> <p>- nota: here the issuer of the identifier must be specified</p> <p>(XPath YARNOfferRequest/yarnTecSheet/refDoc/attachment/fileName/@numberingOrg) [Optional]</p> <p>(XPath YARNOfferRequest/RQheader/thirdParty/id/@numberingOrg) [Optional]</p>
--	---

	<p>(XPath YARNOfferRequest/terms/allowanceCharge/dtScheme/legalRef/@numberingOrg) [Optional]</p> <p>- nota: <i>this attribute should be used either single or coupled with "listName" and "listVersion"</i></p> <p>(XPath YARNOfferRequest/RQheader/note/@numberingOrg) [Optional]</p> <p>- nota: <i>must be used to specify the organization that created the list of codes used in "noteLabel"</i></p> <p>(XPath YARNOfferRequest/RQheader/buyer/id/@numberingOrg) [Optional]</p>
optLot	<p>optimized quantity for the manufacturing plant</p> <p>- base type: decimal, min inclusive: 0,</p> <p>(XPath YARNOfferRequest/yarnTecSheet/yarnIdentity/optLot) 0-9</p>
@part	<p>percent fraction</p> <p>- base type: decimal, min inclusive: 1, max inclusive: 100, fraction digits: 2,</p> <p>(XPath YARNOfferRequest/terms/insPayment/@part) [Required]</p> <p>- nota: <i>here the % value of each installment must be indicated</i></p>
payMode	<p>way or means of payment</p> <p>- base type: string, cod. table: T2</p> <p>http://www.ebiz.enea.it/moda-ml/repository/codelist/draft/gc_T2.xml</p> <p>(XPath YARNOfferRequest/terms/payment/payMode) 0-1</p> <p>(XPath YARNOfferRequest/terms/insPayment/payMode) 0-1</p>
payTerm	<p>code specifying the terms or time by which the payment must be done</p> <p>- base type: string, cod. table: T1</p> <p>http://www.ebiz.enea.it/moda-ml/repository/codelist/draft/gc_T1.xml</p> <p>(XPath YARNOfferRequest/terms/payment/payTerm) 1-1</p> <p>(XPath YARNOfferRequest/terms/insPayment/payTerm) 1-1</p>
payTermText	<p>free text specifying the terms by which the payment must be done (time/mode or means)</p> <p>- base type: string, max length: 250,</p> <p>(XPath YARNOfferRequest/terms/insPayment/payTermText) 1-1</p> <p>(XPath YARNOfferRequest/terms/payment/payTermText) 1-1</p>
pcTolerance	<p>percent deviation tolerated on the value of a measurement (it must have a plus or minus sign)</p> <p>- base type: decimal, min inclusive: 0, max inclusive: 100, total digits: 2,</p> <p>(XPath YARNOfferRequest/yarnTecSheet/yarnQuality/yarnQTest/pcTolerance) 0-1</p>
percCompos	<p>fiber percentage in the product composition</p> <p>- base type: decimal, min inclusive: 0, max inclusive: 100, fraction digits: 2,</p> <p>(XPath YARNOfferRequest/yarnTecSheet/yarnIdentity/yarnCompos/percCompos) 1-9</p> <p>- note: <i>fiber % in the product composition</i></p>
@percSourcesRenewable	<p>indicates the percentage of renewable sources</p> <p>- base type: decimal,</p> <p>(XPath YARNOfferRequest/yarnTecSheet/yarnIdentity/yarnCompos/percCompos/@percSourcesRenewable) [Optional]</p> <p>- nota: <i>use only for virgin material</i></p>
person	<p>name of a person (e.g. contact person within an organization)</p> <p>- base type: string, max length: 40,</p> <p>(XPath YARNOfferRequest/terms/transInfo/despatchLocation/person) 0-1</p> <p>(XPath YARNOfferRequest/RQheader/supplier/person) 0-1</p> <p>(XPath YARNOfferRequest/RQheader/subContractor/person) 0-1</p> <p>(XPath YARNOfferRequest/RQheader/buyer/person) 0-1</p> <p>(XPath YARNOfferRequest/terms/transInfo/deliveryLocation/person) 0-1</p> <p>(XPath YARNOfferRequest/terms/trade/tradeLocation/person) 0-1</p> <p>(XPath YARNOfferRequest/RQheader/thirdParty/person) 0-1</p>
@phone	<p>phone number of the contact person within a Party</p> <p>- base type: string, max length: 35,</p> <p>(XPath YARNOfferRequest/RQheader/thirdParty/person/@phone) [Optional]</p> <p>(XPath YARNOfferRequest/RQheader/subContractor/person/@phone) [Optional]</p> <p>(XPath YARNOfferRequest/terms/transInfo/despatchLocation/person/@phone) [Optional]</p> <p>(XPath YARNOfferRequest/RQheader/supplier/person/@phone) [Optional]</p> <p>(XPath YARNOfferRequest/terms/transInfo/deliveryLocation/person/@phone) [Optional]</p>

	(XPath YARNOfferRequest/RQheader/buyer/person/@phone) [Optional] (XPath YARNOfferRequest/terms/trade/tradeLocation/person/@phone) [Optional]
plyN	number of single threads twisted together - base type: positiveInteger, (XPath YARNOfferRequest/yarnTecSheet/yarnManufacture/ yarnPly/plyN) 0-1
plyWork	kind of yarn's ply - base type: string, cod. table: T56 http://www.ebiz.enea.it/moda-ml/repository/codelist/draft/gc_T56.xml (XPath YARNOfferRequest/yarnTecSheet/yarnManufacture/ yarnPly/plyWork) 1-1
postCode	code defining the postal zone - base type: string, max length: 10, (XPath YARNOfferRequest/terms/transInfo/deliveryLocation/postCode) 0-1 (XPath YARNOfferRequest/RQheader/thirdParty/postCode) 0-1 (XPath YARNOfferRequest/RQheader/buyer/postCode) 0-1 (XPath YARNOfferRequest/terms/transInfo/despatchLocation/postCode) 0-1 (XPath YARNOfferRequest/RQheader/supplier/postCode) 0-1 (XPath YARNOfferRequest/RQheader/subContractor/postCode) 0-1 (XPath YARNOfferRequest/terms/trade/tradeLocation/postCode) 0-1
price	unit price of the article, object or service specified - base type: decimal, min inclusive: 0, fraction digits: 4, (XPath YARNOfferRequest/yarnTecSheet/yarnIdentity/price) 0-2
@priceQualifier	type of price with reference to discount and taxes - base type: string, cod. table: NT20 http://www.ebiz.enea.it/moda-ml/repository/codelist/draft/gc_NT20.xml (XPath YARNOfferRequest/yarnTecSheet/yarnIdentity/price/@priceQualifier) [Optional] [Default=NET]
@progr	progressive number in the sequence - base type: positiveInteger, min inclusive: 1, (XPath YARNOfferRequest/terms/transInfo/@progr) [Optional] - nota: <i>Indicates the position of the leg in a sequence of transport legs. If it is declared it must be in all the transInfo elements.</i>
@propulsionSystemCode	propulsion system type - base type: string, cod. table: NT324 http://www.ebiz.enea.it/moda-ml/repository/codelist/draft/gc_NT324.xml (XPath YARNOfferRequest/terms/transInfo/transMeans/@propulsionSystemCode) [Optional] - nota: <i>indicates the type of propulsion of the means of transport</i>
qty	net quantity of the article or object correlated, qualified by the function of the document (ordering, delivering, ..) and by the context - base type: decimal, min inclusive: 0, fraction digits: 2, (XPath YARNOfferRequest/yarnTecSheet/yarnIdentity/ yarnTwist/qty) 0-1 - note: <i>here the number of turns per meter is specified</i>
@recyclingProcessEfficiency	recycling process efficiency rate (percentage by weight). - base type: decimal, min inclusive: 0, max inclusive: 100, (XPath YARNOfferRequest/yarnTecSheet/yarnIdentity/ yarnCompos/percCompos/@recyclingProcessEfficiency) [Optional] - nota: <i>process efficiency declared by the fibre supplier</i>
@recyclingProcessMethod	recycling process method - base type: string, cod. table: T307 http://www.ebiz.enea.it/moda-ml/repository/codelist/draft/gc_T307.xml (XPath YARNOfferRequest/yarnTecSheet/yarnIdentity/ yarnCompos/percCompos/@recyclingProcessMethod) [Optional] - nota: <i>use only for non virgin material</i>
@reelType	type of package used for a yarn product - base type: string, cod. table: T29 http://www.ebiz.enea.it/moda-ml/repository/codelist/draft/gc_T29.xml (XPath YARNOfferRequest/yarnTecSheet/yarnIdentity/ standardPack/@reelType) [Optional] - nota: <i>identifies the kind of unit in the package</i>

@role	Third Party role qualifier - base type: string, cod. table: NT2 http://www.ebiz.enea.it/moda-ml/repository/codelist/draft/gc_NT2.xml (XPath YARNOfferRequest/RQheader/thirdParty/@role) [Required]
routeLength	length of a route - base type: decimal, min inclusive: 0, fraction digits: 2, (XPath YARNOfferRequest/terms/transInfo/routeLength) 0-1
@schemeID	identifier of an identification scheme - base type: string, (XPath YARNOfferRequest/yarnTecSheet/yarnManufacture/colorCard/colorCardItem/refDoc/attachment/hashFootprint/@schemeID) [Optional] - nota: specify for which system this hash footprint might be used as identifier (for example HDFS system..) (XPath YARNOfferRequest/yarnTecSheet/yarnIdentity/customsStat/@schemeID) [Optional] [Default= TARIC] - nota: By default the value is TARIC, other different coding schemes must be indicated (XPath YARNOfferRequest/yarnTecSheet/refDoc/attachment/hashFootprint/@schemeID) [Optional] - nota: specify for which system this hash footprint might be used as identifier (for example HDFS system..) (XPath YARNOfferRequest/RQheader/refDoc/attachment/hashFootprint/@schemeID) [Optional] - nota: specify for which system this hash footprint might be used as identifier (for example HDFS system..)
season	sale season; defined as: season (1 crt) + year (4 crt) - season: S/S=1 AW=2 Spring=3 Summer=4 Autumn=5 Winter=6: for more than four seasons use alphabetic sequence: 1st season=A 2nd season=B etc.etc. - base type: string, max length: 15, (XPath YARNOfferRequest/yarnTecSheet/yarnManufacture/colorCard/colorCardItem/refDoc/season) 0-1 - note: here indicates the season to which the referenced document belongs (XPath YARNOfferRequest/yarnTecSheet/refDoc/season) 0-1 - note: here indicates the season to which the referenced document belongs (XPath YARNOfferRequest/RQheader/refDoc/season) 0-1 - note: here indicates the season to which the referenced document belongs (XPath YARNOfferRequest/yarnTecSheet/yarnIdentity/season) 0-1 (XPath YARNOfferRequest/RQheader/season) 0-1
@sender	qualifier that specifies the Party issuing of the document - base type: boolean, (XPath YARNOfferRequest/RQheader/supplier/@sender) [Optional] - nota: This attribute is mandatory when the STYLESHEET must be used (XPath YARNOfferRequest/RQheader/thirdParty/@sender) [Optional] - nota: This attribute is mandatory when the STYLESHEET must be used (XPath YARNOfferRequest/RQheader/subContractor/@sender) [Optional] - nota: This attribute is mandatory when the STYLESHEET must be used (XPath YARNOfferRequest/RQheader/buyer/@sender) [Optional] - nota: This attribute is mandatory when the STYLESHEET must be used
@source	party who has provided the data - base type: string, cod. table: NT12 http://www.ebiz.enea.it/moda-ml/repository/codelist/draft/gc_NT12.xml (XPath YARNOfferRequest/yarnTecSheet/yarnQuality/yarnQTest/specValue/@source) [Optional] (XPath YARNOfferRequest/yarnTecSheet/yarnManufacture/yarnColorFastness/specValue/@source) [Optional]
specValue	value requested for a property or a parameter that is measured - base type: decimal, (XPath YARNOfferRequest/yarnTecSheet/yarnManufacture/yarnColorFastness/specValue) 1-1 - note: when the test foresees two values (change-staining) the 1st value is change and the 2nd staining, divided by "," (XPath YARNOfferRequest/yarnTecSheet/yarnQuality/yarnQTest/specValue) 0-1
@standardObserver	CIE average chromatic response definition

	<p>- base type: string, cod. table: T60 http://www.ebiz.enea.it/moda-ml/repository/codelist/draft/gc_T60.xml (XPath YARNOfferRequest/yarnTecSheet/yarnManufacture/ colorCard/colorCardItem/CIELab/@standardObserver) [Optional]</p>
standardPack	<p>number of unit per standard package - base type: positiveInteger, (XPath YARNOfferRequest/yarnTecSheet/yarnIdentity/standardPack) 0-1</p>
street	<p>street and building number identifying a location - base type: string, max length: 80, (XPath YARNOfferRequest/terms/transInfo/deliveryLocation/street) 0-1 (XPath YARNOfferRequest/terms/trade/tradeLocation/street) 0-1 (XPath YARNOfferRequest/RQheader/subContractor/street) 0-1 (XPath YARNOfferRequest/RQheader/thirdParty/street) 0-1 (XPath YARNOfferRequest/RQheader/buyer/street) 0-1 (XPath YARNOfferRequest/terms/transInfo/despatchLocation/street) 0-1 (XPath YARNOfferRequest/RQheader/supplier/street) 0-1</p>
subCountry	<p>short name or code of the sub-country entity - base type: string, max length: 9, (XPath YARNOfferRequest/terms/transInfo/despatchLocation/subCountry) 0-1 (XPath YARNOfferRequest/RQheader/buyer/subCountry) 0-1 (XPath YARNOfferRequest/terms/trade/tradeLocation/subCountry) 0-1 (XPath YARNOfferRequest/RQheader/subContractor/subCountry) 0-1 (XPath YARNOfferRequest/terms/transInfo/deliveryLocation/subCountry) 0-1 (XPath YARNOfferRequest/RQheader/thirdParty/subCountry) 0-1 (XPath YARNOfferRequest/RQheader/supplier/subCountry) 0-1</p>
subDept	<p>name or code of a department - base type: string, max length: 40, (XPath YARNOfferRequest/RQheader/supplier/subDept) 0-1 (XPath YARNOfferRequest/RQheader/subContractor/subDept) 0-1 (XPath YARNOfferRequest/RQheader/buyer/subDept) 0-1 (XPath YARNOfferRequest/terms/trade/tradeLocation/subDept) 0-1 (XPath YARNOfferRequest/terms/transInfo/despatchLocation/subDept) 0-1 (XPath YARNOfferRequest/RQheader/thirdParty/subDept) 0-1 (XPath YARNOfferRequest/terms/transInfo/deliveryLocation/subDept) 0-1</p>
taxCategory	<p>duty or tax or fee category - base type: string, cod. table: T62 http://www.ebiz.enea.it/moda-ml/repository/codelist/draft/gc_T62.xml (XPath YARNOfferRequest/terms/allowanceCharge/dtScheme/taxCategory) 0-1</p>
taxRate	<p>duty or tax or fee percent rate - base type: string, (XPath YARNOfferRequest/terms/allowanceCharge/dtScheme/taxRate) 0-1</p>
@taxType	<p>duty or tax or fee type - base type: string, cod. table: T61 http://www.ebiz.enea.it/moda-ml/repository/codelist/draft/gc_T61.xml (XPath YARNOfferRequest/terms/allowanceCharge/dtScheme/@taxType) [Required]</p>
tolerance	<p>deviation tolerated on the value of a measurement (it must have a plus or minus sign) - base type: decimal, (XPath YARNOfferRequest/yarnTecSheet/yarnQuality/ yarnQTest/tolerance) 0-1</p>
tradeMark	<p>name of the official trademark of a specified product (DEPRECATED, use Brand or Product Line). - base type: string, max length: 50, (XPath YARNOfferRequest/yarnTecSheet/yarnIdentity/tradeMark) 0-1</p>
transactionReceipt	<p>transaction receipt on blockchain - base type: string, max length: 80, (XPath YARNOfferRequest/yarnTecSheet/yarnManufacture/ colorCard/colorCardItem/refDoc/attachment/blockChainReference/transaction Receipt) 1-9 (XPath YARNOfferRequest/RQheader/refDoc/attachment/ blockChainReference/transactionReceipt) 1-9 (XPath YARNOfferRequest/yarnTecSheet/refDoc/attachment/ blockChainReference/transactionReceipt) 1-9</p>
transCondition	<p>special condition of transport or special service requested to the Forwarder</p>

	<p>- base type: string, cod. table: T38 http://www.ebiz.enea.it/moda-ml/repository/codelist/draft/gc_T38.xml (XPath YARNOfferRequest/terms/transInfo/transCondition) 0-3</p>
transConditionText	<p>free text description of the special condition of transport or special service requested to the Forwarder - base type: string, max length: 250, (XPath YARNOfferRequest/terms/transInfo/transConditionText) 0-1</p>
transMeans	<p>means of transport, in general or referred to a specific leg - base type: string, cod. table: T40 http://www.ebiz.enea.it/moda-ml/repository/codelist/draft/gc_T40.xml (XPath YARNOfferRequest/terms/transInfo/transMeans) 0-1</p>
transMode	<p>way of transport, in general or referred to the specified leg - base type: string, cod. table: T8 http://www.ebiz.enea.it/moda-ml/repository/codelist/draft/gc_T8.xml (XPath YARNOfferRequest/terms/transInfo/transMode) 1-1</p>
@transReason	<p>reason for the transport - base type: string, cod. table: NT11 http://www.ebiz.enea.it/moda-ml/repository/codelist/draft/gc_NT11.xml (XPath YARNOfferRequest/terms/transInfo/@transReason) [Optional]</p>
twistDirection	<p>direction (S or Z) of the yarn twist - base type: string, (XPath YARNOfferRequest/yarnTecSheet/yarnIdentity/yarnTwist/twistDirection) 1-1</p>
@uid	<p>unique element identifier within the xml document - base type: string, (XPath YARNOfferRequest/yarnTecSheet/yarnManufacture/colorCard/colorCardItem/refDoc/attachment/@uid) [Optional] (XPath YARNOfferRequest/RQheader/refDoc/attachment/@uid) [Optional] (XPath YARNOfferRequest/yarnTecSheet/refDoc/attachment/@uid) [Optional]</p>
@um	<p>specification of the unit of measure - base type: string, cod. table: NT7 http://www.ebiz.enea.it/moda-ml/repository/codelist/draft/gc_NT7.xml (XPath YARNOfferRequest/terms/transInfo/netWeight/@um) [Required] (XPath YARNOfferRequest/RQheader/buyer/geoCoordinates/@um) [Optional] [Default= DEGD] - nota: <i>when not specified assume decimal DEGREES</i> (XPath YARNOfferRequest/yarnTecSheet/yarnIdentity/yarnTwist/qty/@um) [Required] (XPath YARNOfferRequest/terms/transInfo/despatchLocation/geoCoordinates/@um) [Optional] [Default= DEGD] - nota: <i>when not specified assume decimal DEGREES</i> (XPath YARNOfferRequest/terms/transInfo/grossWeight/@um) [Required] (XPath YARNOfferRequest/yarnTecSheet/yarnIdentity/minLot/@um) [Required] (XPath YARNOfferRequest/RQheader/thirdParty/geoCoordinates/@um) [Optional] [Default= DEGD] - nota: <i>when not specified assume decimal DEGREES</i> (XPath YARNOfferRequest/yarnTecSheet/yarnIdentity/yarnComWeight/@um) [Required] (XPath YARNOfferRequest/yarnTecSheet/yarnIdentity/yarnReelQty/@um) [Required] (XPath YARNOfferRequest/yarnTecSheet/yarnQuality/yarnQTest/specValue/@um) [Optional] (XPath YARNOfferRequest/yarnTecSheet/yarnIdentity/fibrePD/length/@um) [Required] (XPath YARNOfferRequest/yarnTecSheet/yarnQuality/yarnQTest/pcTolerance/@um) [Optional] - nota: <i>to be used when it has to be soecified if the declared percentage is by weight, v olume, etc...</i> (XPath YARNOfferRequest/yarnTecSheet/yarnQuality/yarnQTest/tolerance/@um) [Required] (XPath YARNOfferRequest/yarnTecSheet/yarnIdentity/fibrePD/diameter/@um) [Optional] (XPath YARNOfferRequest/terms/allowanceCharge/@um) [Optional] (XPath YARNOfferRequest/terms/transInfo/routeLength/@um) [Required] (XPath YARNOfferRequest/RQheader/supplier/geoCoordinates/@um) [Optional] [Default= DEGD]</p>

	<p>- nota: <i>when not specified assume decimal DEGREES</i> (XPath YARNOfferRequest/RQheader/subContractor/ geoCoordinates/@um) [Optional] [Default= DEGD]</p> <p>- nota: <i>when not specified assume decimal DEGREES</i> (XPath YARNOfferRequest/terms/transInfo/deliveryLocation/ geoCoordinates/@um) [Optional] [Default= DEGD]</p> <p>- nota: <i>when not specified assume decimal DEGREES</i> (XPath YARNOfferRequest/yarnTecSheet/yarnIdentity/optLot/@um) [Optional] (XPath YARNOfferRequest/yarnTecSheet/yarnIdentity/price/@um) [Optional]</p> <p>- nota: <i>Unit of measure of the product to which the price is referred (price per meter)</i> (XPath YARNOfferRequest/yarnTecSheet/yarnManufacture/ yarnColorFastness/specValue/@um) [Optional] (XPath YARNOfferRequest/yarnTecSheet/yarnIdentity/ minLotExclusive/@um) [Required] (XPath YARNOfferRequest/terms/trade/tradeLocation/ geoCoordinates/@um) [Optional] [Default= DEGD]</p> <p>- nota: <i>when not specified assume decimal DEGREES</i></p>
uri	<p>Uniform Resource Identifier (URI) that identifies the external object as an Internet resource</p> <p>- base type: normalizedString, (XPath YARNOfferRequest/RQheader/refDoc/attachment/ externalReference/uri) 1-1 (XPath YARNOfferRequest/yarnTecSheet/refDoc/attachment/ externalReference/uri) 1-1 (XPath YARNOfferRequest/yarnTecSheet/yarnManufacture/ colorCard/colorCardItem/refDoc/attachment/blockChainReference/uri) 1-1</p> <p>- note: <i>reference to the used blockchain (example: url https://etherscan.io/ of ethereum)</i> (XPath YARNOfferRequest/yarnTecSheet/yarnManufacture/ colorCard/colorCardItem/refDoc/attachment/externalReference/uri) 1-1 (XPath YARNOfferRequest/RQheader/refDoc/attachment/ blockChainReference/uri) 1-1</p> <p>- note: <i>reference to the used blockchain (example: url https://etherscan.io/ of ethereum)</i> (XPath YARNOfferRequest/yarnTecSheet/refDoc/attachment/ blockChainReference/uri) 1-1</p> <p>- note: <i>reference to the used blockchain (example: url https://etherscan.io/ of ethereum)</i></p>
@useProfile	<p>use profile to which the present document is compliant if it was agreed by the parties. It is suggested a URI with reference to the firms or the URL of the profile.</p> <p>- base type: string, (XPath YARNOfferRequest/@useProfile) [Optional]</p>
@validationMethod	<p>type of method used to validate the quantity to which it refers. For example, it indicates whether it was measured in the field, estimated indirectly, approved by an expert or taken from the literature</p> <p>- base type: string, cod. table: NT329 http://www.ebiz.enea.it/moda-ml/repository/codelist/draft/gc_NT329.xml (XPath YARNOfferRequest/yarnTecSheet/yarnIdentity/ yarnCompos/percCompos/@validationMethod) [Optional]</p>
validityEnd	<p>date by which the validity ends, according to one of the patterns YYYY-MM-DD, YYYY-MM-DD:HH-MM or YYYY-WW.</p> <p>- base type: string, (XPath YARNOfferRequest/RQheader/validityEnd) 1-1</p>
validityStart	<p>date by which the validity starts, according to one of the patterns YYYY-MM-DD, YYYY-MM-DD:HH-MM or YYYY-WW.</p> <p>- base type: string, (XPath YARNOfferRequest/RQheader/validityStart) 0-1</p>
@VAT	<p>VAT rate or code (DEPRECATED, use dtScheme element)</p> <p>- base type: string, cod. table: NT16 http://www.ebiz.enea.it/moda-ml/repository/codelist/draft/gc_NT16.xml (XPath YARNOfferRequest/RQheader/thirdParty/@VAT) [Optional] (XPath YARNOfferRequest/terms/allowanceCharge/@VAT) [Optional]</p>
@version	<p>Dictionary version from which the instance has been created</p> <p>- base type: string, cod. table: NT100 http://www.ebiz.enea.it/moda-ml/repository/codelist/draft/gc_NT100.xml</p>

	(XPath YARNOfferRequest/@version) [Optional] [Default= draft]
xGeoCoord	geographical coordinate x , corresponding to latitude - base type: decimal, (XPath YARNOfferRequest/terms/trade/tradeLocation/ geoCoordinates/xGeoCoord) 1-1 (XPath YARNOfferRequest/RQheader/subContractor/ geoCoordinates/xGeoCoord) 1-1 (XPath YARNOfferRequest/RQheader/supplier/geoCoordinates/xGeoCoord) 1-1 (XPath YARNOfferRequest/RQheader/buyer/geoCoordinates/xGeoCoord) 1-1 (XPath YARNOfferRequest/terms/transInfo/despatchLocation/ geoCoordinates/xGeoCoord) 1-1 (XPath YARNOfferRequest/RQheader/thirdParty/geoCoordinates/xGeoCoord) 1-1 (XPath YARNOfferRequest/terms/transInfo/deliveryLocation/ geoCoordinates/xGeoCoord) 1-1
yarnCFTest	color fastness test for a yarn - base type: string, cod. table: T57 http://www.ebiz.enea.it/moda-ml/repository/codelist/draft/gc_T57.xml (XPath YARNOfferRequest/yarnTecSheet/yarnManufacture/ yarnColorFastness/yarnCFTest) 1-1
yarnClass	yarn classification according to the manufacturing process - base type: string, cod. table: NT31 http://www.ebiz.enea.it/moda-ml/repository/codelist/draft/gc_NT31.xml (XPath YARNOfferRequest/yarnTecSheet/yarnIdentity/yarnClass) 0-1
yarnComWeight	dry weight of fibres plus commercial moisture regain - base type: decimal, min inclusive: 0, (XPath YARNOfferRequest/yarnTecSheet/yarnIdentity/yarnComWeight) 0-1
yarnCount	linear density measure of yarn (count) - base type: string, (XPath YARNOfferRequest/yarnTecSheet/yarnIdentity/yarnCount) 0-1
yarnJob	operation of a work cycle for yarn - base type: string, cod. table: T201 http://www.ebiz.enea.it/moda-ml/repository/codelist/draft/gc_T201.xml (XPath YARNOfferRequest/yarnTecSheet/yarnManufacture/ yarnJobSeq/yarnJob) 1-19
yarnKind	general type of yarn - base type: string, cod. table: T54 http://www.ebiz.enea.it/moda-ml/repository/codelist/draft/gc_T54.xml (XPath YARNOfferRequest/yarnTecSheet/yarnIdentity/yarnKind) 0-1
yarnNameBuyer	name given to the yarn by the Buyer - base type: string, max length: 250, (XPath YARNOfferRequest/yarnTecSheet/yarnIdentity/yarnNameBuyer) 0-1
yarnNameSupplier	name given to the yarn by the Supplier - base type: string, max length: 250, (XPath YARNOfferRequest/yarnTecSheet/yarnIdentity/yarnNameSupplier) 1-1
yarnQTestType	Type of test related to a property of a yarn - base type: string, cod. table: T58 http://www.ebiz.enea.it/moda-ml/repository/codelist/draft/gc_T58.xml (XPath YARNOfferRequest/yarnTecSheet/yarnQuality/ yarnQTest/yarnQTestType) 1-1
yarnReelQty	quantity of yarn (by weight or length) wound upon a bobbin - base type: decimal, min inclusive: 0, fraction digits: 2, (XPath YARNOfferRequest/yarnTecSheet/yarnIdentity/yarnReelQty) 0-1
yGeoCoord	geographical coordinate y , corresponding to longitude - base type: decimal, (XPath YARNOfferRequest/terms/transInfo/deliveryLocation/ geoCoordinates/yGeoCoord) 1-1 (XPath YARNOfferRequest/terms/trade/tradeLocation/ geoCoordinates/yGeoCoord) 1-1 (XPath YARNOfferRequest/RQheader/supplier/geoCoordinates/yGeoCoord) 1-1 (XPath YARNOfferRequest/RQheader/thirdParty/geoCoordinates/yGeoCoord) 1-1

	<p>(XPath YARNOfferRequest/RQheader/subContractor/ geoCoordinates/yGeoCoord) 1-1 (XPath YARNOfferRequest/terms/transInfo/despatchLocation/ geoCoordinates/yGeoCoord) 1-1 (XPath YARNOfferRequest/RQheader/buyer/geoCoordinates/yGeoCoord) 1-1</p>
zGeoCoord	<p>geographical coordinate z , corresponding to altitude - base type: decimal, (XPath YARNOfferRequest/terms/transInfo/deliveryLocation/ geoCoordinates/zGeoCoord) 0-1 - note: <i>altitude might be omitted</i> (XPath YARNOfferRequest/RQheader/supplier/geoCoordinates/zGeoCoord) 0-1 - note: <i>altitude might be omitted</i> (XPath YARNOfferRequest/terms/transInfo/despatchLocation/ geoCoordinates/zGeoCoord) 0-1 - note: <i>altitude might be omitted</i> (XPath YARNOfferRequest/RQheader/thirdParty/geoCoordinates/zGeoCoord) 0-1 - note: <i>altitude might be omitted</i> (XPath YARNOfferRequest/RQheader/buyer/geoCoordinates/zGeoCoord) 0-1 - note: <i>altitude might be omitted</i> (XPath YARNOfferRequest/terms/trade/tradeLocation/ geoCoordinates/zGeoCoord) 0-1 - note: <i>altitude might be omitted</i> (XPath YARNOfferRequest/RQheader/subContractor/ geoCoordinates/zGeoCoord) 0-1 - note: <i>altitude might be omitted</i></p>

2.3 Suggested best practices

YARNOfferRequest/yarnTecSheet/refDoc/docID (identification number of the referenced document)

numberingOrg indicates the role that produced the document identifier (it is allowed to declare two different ones -e.g. customer and supplier - with two docID with different numberingOrg

YARNOfferRequest/yarnTecSheet/yarnManufacture/

colorCard/colorCardItem/refDoc/docID (identification number of the referenced document)

numberingOrg indicates the role that produced the document identifier (it is allowed to declare two different ones -e.g. customer and supplier - with two docID with different numberingOrg

YARNOfferRequest/RQheader/refDoc/docID (identification number of the referenced document)

numberingOrg indicates the role that produced the document identifier (it is allowed to declare two different ones -e.g. customer and supplier - with two docID with different numberingOrg

YARNOfferRequest/RQheader/refDoc/attachment/

externalReference/mimeCode (mime type of the external object)

Use coding from IANA <http://www.iana.org/assignments/media-types/media-types.xml>

YARNOfferRequest/yarnTecSheet/yarnManufacture/

colorCard/colorCardItem/refDoc/attachment/externalReference/mimeCode (mime type of the external object)

Use coding from IANA <http://www.iana.org/assignments/media-types/media-types.xml>

YARNOfferRequest/yarnTecSheet/refDoc/attachment/

externalReference/mimeCode (mime type of the external object)

Use coding from IANA <http://www.iana.org/assignments/media-types/media-types.xml>

2.4 Enumeration tables

List of enumeration tables used in the XML document. You can find all the tables with the corresponding codes at:
<http://www.ebiz.enea.it/eBIZ/imple/eBIZTCU-draft.asp?lingua=en&pag=6>

NT100 - eBIZ TCFUpstream version
NT11 - transport causal
NT12 - data source
NT16 - VAT rate or code
NT18 - message function
NT2 - third party qualifier
NT20 - price qualifier
NT26 - color type
NT29 - format of a date
NT3 - issuer of the identifier (or identification system) of a location.
NT31 - yarn family
NT324 - propulsion system type
NT329 - type of validation method of the value
NT333 - type of hashing algorithm
NT6 - coding system owner/issuer
NT60 - language, codes from ISO 639-1 (subset)
NT7 - unit of measure
T1 - terms of payment
T10 - ISO3166 - Country
T15 - dye/print process type
T16 - dyestuff type
T19 - fibre type
T2 - Modes of payment
T201 - type of job on yarn
T21 - type of document
T29 - type of yarn package
T3 - terms of delivery - IncoTerms
T306 - material circularity attribute
T307 - recycling process method
T38 - transport conditions
T40 - type of transport means
T41 - type of Allowance or Charge
T44 - additional code type
T54 - kind of yarn
T55 - count system
T56 - kind of yarn ply
T57 - color fastness test for yarn
T58 - yarn quality parameters
T59 - CIE illuminant
T60 - CIE standard observer
T61 - duty or tax or fee type
T62 - duty or tax or fee category
T8 - Modes of Transport
T9 - ISO4217 - Currency

(the most relevant tables are detailed in the following Annexes too)

ACKNOWLEDGEMENT



This action is part of the TRICK project, which has received funding from Horizon 2020 research and innovation programme under grant agreement No. 958352 of the European Union.

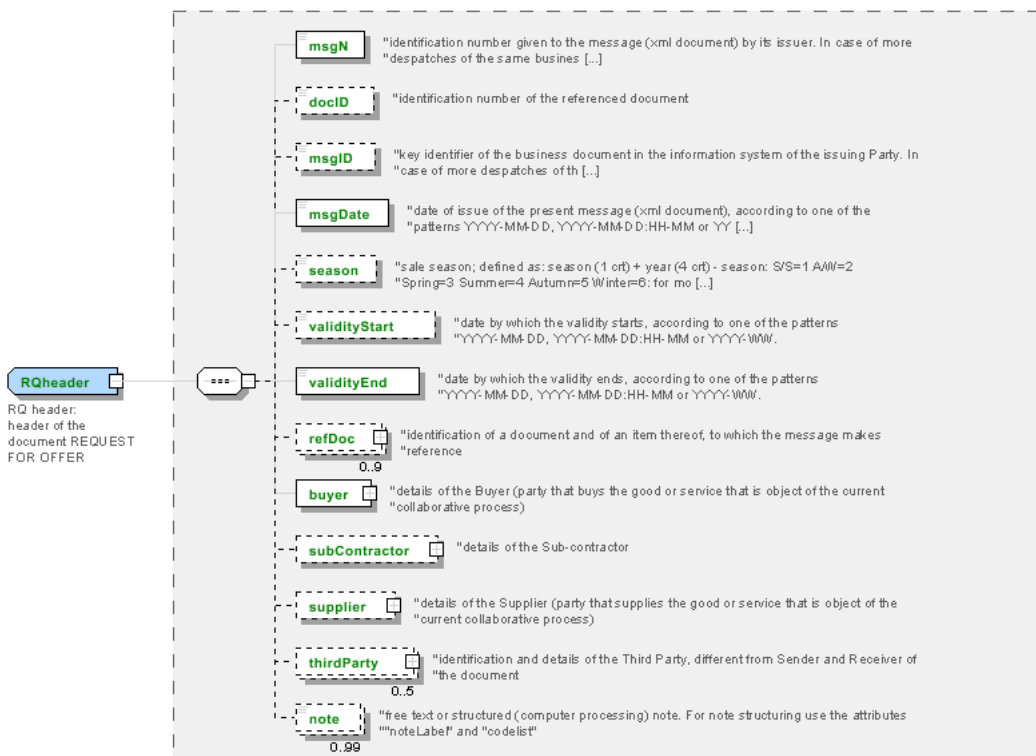
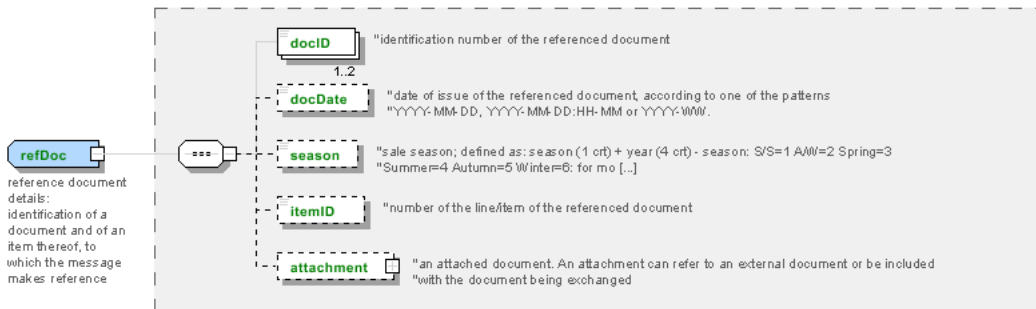
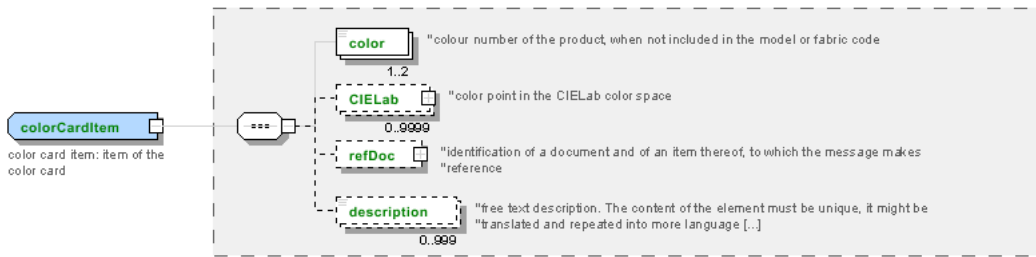
DISCLAIMER

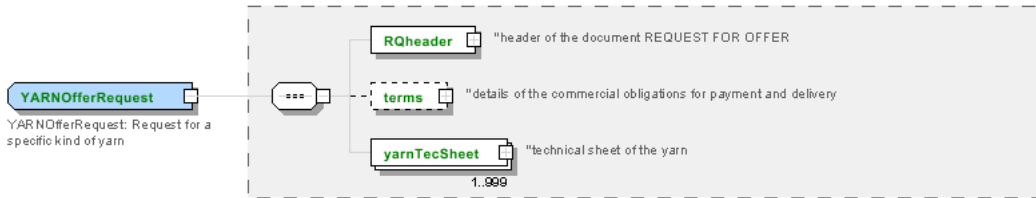
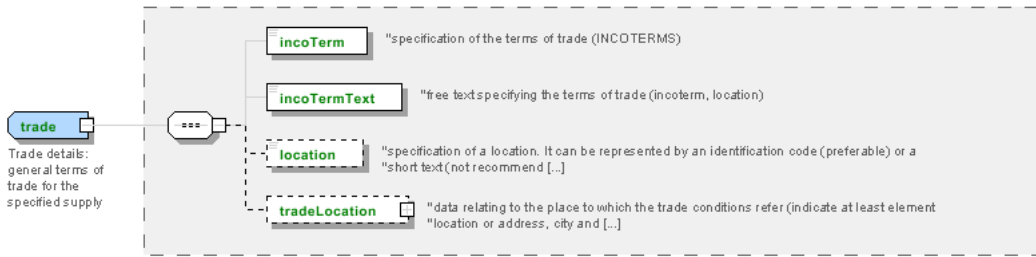
The content of this document represents the views of the authors only and is their sole responsibility; it cannot be considered to reflect the views of the European Commission or any other body of the European Union.

The European Commission does not accept any responsibility for use that may be made of the information it contains.

Annex A

Representative images of the principal complex elements' structure.





Annex B

NT100 - eBIZ TCFUpstream version

dictionary version

Agency name: eBIZ

Decoding table: NT100

File codes list (Generic code): http://www.ebiz.enea.it/moda-ml/repository/codelist/draft/gc_NT100.xml

Code	Description	Adoption note	Date of insertion
2013-1	v2013-1		01/07/2013
2018-1	v2018-1		04/11/2018
draft	draft		08/09/2017

NT11 - transport causal

reason for the transport

Agency name: eBIZ

Decoding table: NT11

File codes list (Generic code): http://www.ebiz.enea.it/moda-ml/repository/codelist/draft/gc_NT11.xml

Code	Description	Adoption note	Date of insertion
FOC	free of charge		
FRW	return from re-works		
FST	return from storage		
FVW	return from view		
FWK	return from works		
IST	in storage		
NWK	return non-worked		
RJC	return from rejection		
SEL	to sell		
STO	to storage		
VEW	to view		
WRK	to works		

NT12 - data source

party who has provided the data

Agency name: eBIZ

Decoding table: NT12

File codes list (Generic code): http://www.ebiz.enea.it/moda-ml/repository/codelist/draft/gc_NT12.xml

Code	Description	Adoption note	Date of insertion
AC	internal test		
CO	external test		
CV	test after steaming		

NT16 - VAT rate or code

VAT rate or code (DEPRECATED, use dtScheme element)

Decoding table: NT16

File codes list (Generic code): http://www.ebiz.enea.it/moda-ml/repository/codelist/draft/gc_NT16.xml

NT18 - message function

function performed by the present message with regards to the transmission

Agency name: eBIZ

Decoding table: NT18

File codes list (Generic code): http://www.ebiz.enea.it/moda-ml/repository/codelist/draft/gc_NT18.xml

Code	Description	Adoption note	Date of insertion
CA	delete this document		01/07/2013
CP	copy		
OR	original		
RC	re-transmission for data correction		
RT	re-transmission		

NT2 - third party qualifier

Third Party role qualifier

Agency name: eBIZ

Decoding table: NT2

File codes list (Generic code): http://www.ebiz.enea.it/moda-ml/repository/codelist/draft/gc_NT2.xml

Code	Description	Adoption note	Date of insertion
AG	Sales Agent		
AU	Auditor		08/04/2019
BU	Buyer		13/06/2022

CE	Certification authority		08/04/2019
CM	Commissioner		13/06/2022
CO	Quality Controller		
CU	Customs authority		13/06/2022
DC	Response to		
DF	Invoicee		
DI	Copy to (CC)		28/10/2014
DM	Consignee		
DP	Consignment address (Delivery Party)		
EX	Expert		13/06/2022
IM	Importer		
OR	Originator		10/09/2014
SC	Sub contractor		10/04/2019
SM	Service/ePlatform manager		08/04/2019
SP	Forwarder		
SU	Supplier		13/06/2022
TL	Test or analysis laboratory		13/06/2022
TX	Tax Representative		

NT20 - price qualifier

type of price with reference to discount and taxes

Agency name: eBIZ

Decoding table: NT20

File codes list (Generic code): http://www.ebiz.enea.it/moda-ml/repository/codelist/draft/gc_NT20.xml

Code	Description	Adoption note	Date of insertion
GET	gross excluding taxes		
GIT	gross including taxes		
NET	net excluding taxes		
NIT	net including taxes		

NT26 - color type

type of color to which a "color fastness" value refers

Agency name: eBIZ

Decoding table: NT26

File codes list (Generic code): http://www.ebiz.enea.it/moda-ml/repository/codelist/draft/gc_NT26.xml

Code	Description	Adoption note	Date of insertion
D	dark		
L	light		
P	pastel		

NT29 - format of a date

format used for the date

Agency name: eBIZ

Decoding table: NT29

File codes list (Generic code): http://www.ebiz.enea.it/moda-ml/repository/codelist/draft/gc_NT29.xml

Code	Description	Adoption note	Date of insertion
D	YYYY-MM-DD		
M	YYYY-MM-DD:HH-MM (date and time)		
S	AAAA-MM-GG:HH-MM-SS (date and time with seconds)		13/06/2022
W	YYYY-WW		

NT3 - issuer of the identifier (or identification system) of a location.

List of possible issuers of the identifier (or identification system) of a location.

Agency name: eBIZ

Decoding table: NT3

File codes list (Generic code): http://www.ebiz.enea.it/moda-ml/repository/codelist/draft/gc_NT3.xml

Code	Description	Adoption note	Date of insertion
EN4	GS1-GLN	obsolete	01/07/2013
GLN	GS1-GLN	equivalent to EN4	25/04/2023
MD	mutually agreed		
NCA	National custom authority	identifier of a bonded warehouse assigned by the custom authority	19/05/2023
PLA	Platform	internal coding of the involved platform	14/05/2023
TRI	TRICK		14/05/2023

NT31 - yarn family

yarn classification according to the manufacturing process

Agency name: eBIZ

Decoding table: NT31

File codes list (Generic code): http://www.ebiz.enea.it/moda-ml/repository/codelist/draft/gc_NT31.xml

Code	Description	Adoption note	Date of insertion
CAN	carded		
EXT	extrusion		
FSE	dry-spun		
FUM	wet-spun		
OPE	open end		
PAN	combed		
REG	regenerated		
SMP	half-combed		

NT324 - propulsion system type

propulsion system type adopted, for example, by a transport mean

Agency name: eBIZ for TRICK

Decoding table: NT324

File codes list (Generic code): http://www.ebiz.enea.it/moda-ml/repository/codelist/draft/gc_NT324.xml

Code	Description	Adoption note	Date of insertion
ALC	Alcohol		05/07/2022
BDIE	Bio diesel		05/07/2022
BEV	Battery Electric Vehicle		05/07/2022
BFUE	Biofuels	biodiesel excluded	02/09/2022
DIE	Diesel		05/07/2022
FCEV	Hydrogen Fuel cell		05/07/2022
GAS	GAS		05/07/2022
GPL	LPG		05/07/2022
HEV	Full hybrid (Hybrid Electric Vehicle)		05/07/2022
HUM	Human force		05/07/2022
HYB	Hybrid		05/07/2022
MHY	Mild hybrid		05/07/2022
NUC	Nuclear		05/07/2022
PET	Petrol		05/07/2022
PHEV	plug-in Hybrid Electric Vehicle		05/07/2022
STEAM	Steam		05/07/2022
WIND	Wind		05/07/2022

NT329 - type of validation method of the value

indicates the type of method used to validation and calculate the quantity to which it refers; used to express the data faithfulness

Agency name: eBIZ

Decoding table: NT329

File codes list (Generic code): http://www.ebiz.enea.it/moda-ml/repository/codelist/draft/gc_NT329.xml

Code	Description	Adoption note	Date of insertion
CER	third party certification		11/06/2023
EST	estimate		12/05/2023
EXP	confirmed by an expert		19/05/2023
LAB	laboratory test		11/06/2023
LIT	literature	refer to a literature analysis outcome	12/05/2023
MON	monitoring	refer to continuous measurement in field	12/05/2023
REV	confirmed by review		11/06/2023
SAM	sampling	refer to a sample measurement in field	12/05/2023
SUP	supplier declaration		11/06/2023

NT333 - type of hashing algorithm

type of hashing algorithm

Decoding table: NT333

File codes list (Generic code): http://www.ebiz.enea.it/moda-ml/repository/codelist/draft/gc_NT333.xml

Code	Description	Adoption note	Date of insertion
ADLER32	ADLER32		26/05/2023
HMAC	HMAC		26/05/2023
MD2	MD2		26/05/2023
MD4	MD4		26/05/2023
MD5	MD5		26/05/2023
MDC-2	MDC-2		26/05/2023
PANAMA	PANAMA		26/05/2023
RIPEND-160	RIPEND-160		26/05/2023
SHA-1	SHA-1		26/05/2023
SHA-2 256	SHA-2 256		26/05/2023
SHA-2 384	SHA-2 384		26/05/2023
SHA-2 512	SHA-2 512		26/05/2023
TIGER	TIGER		26/05/2023

NT6 - coding system owner/issuer

code specifying the organisation who has created or owns the registers of the present coding or numbering system

Agency name: eBIZ

Decoding table: NT6

File codes list (Generic code): http://www.ebiz.enea.it/moda-ml/repository/codelist/draft/gc_NT6.xml

Code	Description	Adoption note	Date of insertion
CBR	National customs brokers registry		12/06/2023
CL	Customer/buyer		
CO	Quality Controller		
DU	D-U-N-S registry (Data Universal Numbering System)		04/05/2023
EB	eBIZ	replaces 'ML'	18/03/2019
EN	GS1 (ex-EAN International)		
EO	Registro EORI (Economic Operators Registration and Identification number)		04/03/2023
ES	e-Stockflow	DEPRECATED	
FO	Supplier		
GS	GS1		01/07/2013
MF	national taxation authority (i.e. VAT codes registry)		
ML	Moda-ML	DEPRECATED	
PL	Application Platform		13/06/2022
REX	Registered Exporter system (REX)		19/05/2023
SP	Service Provider		
SU	Enterprise Identification Number UID	Only switzerland	04/03/2023

NT60 - language, codes from ISO 639-1 (subset)

Agency name: eBIZ / ISO

Decoding table: NT60

File codes list (Generic code): http://www.ebiz.enea.it/moda-ml/repository/codelist/draft/gc_NT60.xml

Code	Description	Adoption note	Date of insertion
af	Afrikaans		31/01/2019
ar	Arabic		31/01/2019
be	Belarusian		31/01/2019
bg	Bulgarian		31/01/2019
bn	Bengali		31/01/2019

bo	Tibetan		31/01/2019
bs	Bosnian		31/01/2019
ca	Catalan, Valencian		31/01/2019
cs	Czech		31/01/2019
da	Danish		31/01/2019
de	German		31/01/2019
el	Greek, Modern (1453-)		31/01/2019
en	English		31/01/2019
eo	Esperanto		31/01/2019
es	Spanish, Castilian		31/01/2019
et	Estonian		31/01/2019
eu	Basque		31/01/2019
F	Female		15/04/2019
fa	Persian		31/01/2019
fi	Finnish		31/01/2019
fr	French		31/01/2019
ga	Irish		31/01/2019
gd	Gaelic, Scottish Gaelic		31/01/2019
gn	Guarani		31/01/2019
he	Hebrew		31/01/2019
hr	Croatian		31/01/2019
ht	Haitian, Haitian Creole		31/01/2019
hu	Hungarian		31/01/2019
hy	Armenian		31/01/2019
ia	Interlingua (International Auxiliary Language Association)		31/01/2019
id	Indonesian		31/01/2019
is	Icelandic		31/01/2019
it	Italian		31/01/2019
ja	Japanese		31/01/2019
jv	Javanese		31/01/2019
ka	Georgian		31/01/2019
km	Central Khmer		31/01/2019
ko	Korean		31/01/2019
ku	Kurdish		31/01/2019
lb	Luxembourgish, Letzeburgesch		31/01/2019
lo	Lao		31/01/2019
lt	Lithuanian		31/01/2019
lv	Latvian		31/01/2019

mg	Malagasy		31/01/2019
mk	Macedonian		31/01/2019
mn	Mongolian		31/01/2019
mt	Maltese		31/01/2019
nl	Dutch, Flemish		31/01/2019
no	Norwegian		31/01/2019
pl	Polish		31/01/2019
pt	Portuguese		31/01/2019
ro	Romanian, Moldavian, Moldovan		31/01/2019
ru	Russian		31/01/2019
se	Northern Sami		31/01/2019
sk	Slovak		31/01/2019
sl	Slovenian		31/01/2019
sm	Samoan		31/01/2019
so	Somali		31/01/2019
sq	Albanian		31/01/2019
sr	Serbian		31/01/2019
sv	Swedish		31/01/2019
sw	Swahili		31/01/2019
ta	Tamil		31/01/2019
th	Thai		31/01/2019
tr	Turkish		31/01/2019
uk	Ukrainian		31/01/2019
ur	Urdu		31/01/2019
uz	Uzbek		31/01/2019
vi	Vietnamese		31/01/2019
zh	Chinese		31/01/2019

NT7 - unit of measure

specification of the unit of measure, it is a sub set of table Unit of Measure Code - UN/ECE REC 20 delivered by United Nations Economic Commission for Europe (UN/ECE)

Agency name: eBIZ / UN/ECE

Decoding table: NT7

File codes list (Generic code): http://www.ebiz.enea.it/moda-ml/repository/codelist/draft/gc_NT7.xml

Other link: <http://docs.oasis-open.org/ubl/os-UBL-2.1/cl/gc/default/UnitOfMeasureCode-2.1.gc#>

Code	Description	Adoption note	Date of insertion
CMK	square centimetre		20/12/2017

CMQ	cubic centimetre		20/12/2017
CMT	centimetre		
CNE	centiNewton		
CO2TON	ton of CO2		10/09/2014
COUPLES	couples		
DAY	day		22/08/2022
DEGD	decimal degrees		04/07/2022
DEGMS	degrees with minutes and seconds		01/07/2022
DMQ	cubic decimetre		
E37	pixel		11/04/2018
GRM	gram		
HUR	hour		
INH	inch		
KGM	kilogram		
KMT	kilometer		
KWH	kilowatthours		10/09/2014
LBR	pound		
MCG	microgram		23/08/2022
MG	milligram		23/08/2022
MIN	minute		
MMK	square millimetre		20/12/2017
MONTH	month		22/08/2022
MSEC	millisecond (time)		22/08/2022
MTK	square metre		20/12/2017
MTQ	cubic metre		
MTR	metre		
NMB	numero		
ONZ	ounce		
P1	percent		
PPM	parts per milion		
PZ	piece		
RPM	rounds per metre		
SEC	second (time)		22/08/2022
YEAR	year		22/08/2022
YRD	yard		

T1 - terms of payment

code specifying the terms or time by which the payment must be done

Agency name: eBIZ

Decoding table: T1

File codes list (Generic code): http://www.ebiz.enea.it/moda-ml/repository/codelist/draft/gc_T1.xml

Code	Description	Adoption note	Date of insertion
ANTICIP	PAYMENT IN ADVANCE		
BLCOLLECT/120D	BILL OF LADING 120 DD		
BLCOLLECT/30D	BILL OF LADING 30 DD		
BLCOLLECT/60D	BILL OF LADING 60 DD		
BLCOLLECT/90D	BILL OF LADING 90 DD		
CASH	PAYMENT ON DELIVERY		
CASHINV	PAYMENT ON RECEIPT OF INVOICE		
CREDOC/0D	DOCUMENTARY CREDIT FOR PAYM. AT SIGHT		
CREDOC/120	DOCUMENTARY CREDIT FOR PAYM. AT 120 DD		
CREDOC/150	DOCUMENTARY CREDIT FOR PAYM. AT 150 DD		
CREDOC/180	DOCUMENTARY CREDIT FOR PAYM. AT 180 DD		
CREDOC/30D	DOCUMENTARY CREDIT FOR PAYM. AT 30 DD		
CREDOC/45D	DOCUMENTARY CREDIT FOR PAYM. AT 45 DD		
CREDOC/60	DOCUMENTARY CREDIT FOR PAYM. AT 60 DD		
CREDOC/90	DOCUMENTARY CREDIT FOR PAYM. AT 90 DD		
DEL/10	PAYMENT AT 10 DD AFTER DELIVERY		
DOCOLLECT/120D	DOCUMENTARY COLLECTION AT 120 DD		
DOCOLLECT/30D	DOCUMENTARY COLLECTION AT 30 DD		
DOCOLLECT/60D	DOCUMENTARY COLLECTION AT 60 DD		
DOCOLLECT/90D	DOCUMENTARY COLLECTION AT 90 DD		
INV/120D	PAYMENT AT 120 DD AFTER RECEIPT OF INVOICE		
INV/150D	PAYMENT AT 150 DD AFTER RECEIPT OF INVOICE		
INV/180D	PAYMENT AT 180 DD AFTER RECEIPT OF INVOICE		
INV/30D	PAYMENT AT 30 DD AFTER RECEIPT OF INVOICE		
INV/45D	PAYMENT AT 45 DD AFTER RECEIPT OF INVOICE		
INV/60D	PAYMENT AT 60 DD AFTER RECEIPT OF INVOICE		
INV/90D	PAYMENT AT 90 DD AFTER RECEIPT OF INVOICE		
INVULTIMO	PAYMENT AT END MONTH RECEIPT INVOICE		
INVULTIMO/10D	PAYMENT 10 DD AFTER END MONTH RECEIPT INVOICE		
INVULTIMO/120D	PAYMENT 120 DD AFTER END MONTH RECEIPT INVOICE		
INVULTIMO/150D	PAYMENT 150 DD AFTER END MONTH RECEIPT INVOICE		

INVULTIMO/180D	PAYMENT 180 DD AFTER END MONTH RECEIPT INVOICE		
INVULTIMO/240D	PAYMENT 240 DD AFTER END MONTH RECEIPT INVOICE		
INVULTIMO/30D	PAYMENT 30 DD AFTER END MONTH RECEIPT INVOICE		
INVULTIMO/45D	PAYMENT 45 DD AFTER END MONTH RECEIPT INVOICE		
INVULTIMO/60D	PAYMENT 60 DD AFTER END MONTH RECEIPT INVOICE		
INVULTIMO/90D	PAYMENT 90 DD AFTER END MONTH RECEIPT INVOICE		
NOPAY	WITHOUT PAYMENT		
RECREDOC/0D	IRREVOC. DOCUMENTARY CREDIT FOR PAYM. AT SIGHT		
RECREDOC/120D	IRREVOC. DOCUMENTARY CREDIT FOR PAYM. AT 120 DD		
RECREDOC/150D	IRREVOC. DOCUMENTARY CREDIT FOR PAYM. AT 150 DD		
RECREDOC/180D	IRREVOC. DOCUMENTARY CREDIT FOR PAYM. AT 180 DD		
RECREDOC/30D	IRREVOC. DOCUMENTARY CREDIT FOR PAYM. AT 30 DD		
RECREDOC/45D	IRREVOC. DOCUMENTARY CREDIT FOR PAYM. AT 45 DD		
RECREDOC/60D	IRREVOC. DOCUMENTARY CREDIT FOR PAYM. AT 60 DD		
RECREDOC/90D	IRREVOC. DOCUMENTARY CREDIT FOR PAYM. AT 90 DD		
ULTIMO	PAYMENT BY END MONTH OF DELIVERY		
ULTIMO/10	PAYMENT AT 10 DD AFTER END MONTH OF DELIVERY		

T10 - ISO3166 - Country

code of the nation

Agency name: ISO

Decoding table: T10

File codes list (Generic code): http://www.ebiz.enea.it/moda-ml/repository/codelist/draft/gc_T10.xml

Table not printed: there are 240 elements, more than the maximum specified for printing: 99.

T15 - dye/print process type

dye process applied to the fabric

Agency name: eBIZ

Decoding table: T15

File codes list (Generic code): http://www.ebiz.enea.it/moda-ml/repository/codelist/draft/gc_T15.xml

Code	Description	Adoption note	Date of insertion
CP	cylinder printing		
DP	discharge printing		
FI	fibre dyed - spun dyed		
PC	piece dyed		

PR	printing		
SP	screen printing		
TP	top dyed		01/07/2013
YR	yarn dyed		

T16 - dyestuff type

dye stuff used in the fabric dye process

Agency name: eBIZ

Decoding table: T16

File codes list (Generic code): http://www.ebiz.enea.it/moda-ml/repository/codelist/draft/gc_T16.xml

Code	Description	Adoption note	Date of insertion
AC	chrome acid dyestuff		
AN	acid dyestuff		
CA	basic dyestuff		
DI	direct dyestuff		
DS	disperse dyestuff		
NP	naphtol dyestuff		
PI	pigment		01/07/2013
PM	premetallized dyestuff		
RE	reactive dyestuff		
SU	sulfur		01/07/2013

T19 - fibre type

type of fibre used in a textile product

Agency name: eBIZ

Decoding table: T19

File codes list (Generic code): http://www.ebiz.enea.it/moda-ml/repository/codelist/draft/gc_T19.xml

Code	Description	Adoption note	Date of insertion
AB	abaca		20/08/2018
AC	acetate		
AF	other fibres		
AG	alginic fibre		
AL	alfa		20/08/2018
AR	aramid		25/04/2022

CA	hemp		
CC	coir (coconut)		20/08/2018
CL	chlorofibre		
CO	cotton		
CU	cuprous		
EA	elastan		
EF	elastolefin		25/04/2022
EL	Elastodiene		20/08/2018
EM	elastomultiester		25/04/2022
FL	fluorofibre		
GI	broom		20/08/2018
GL	textile glass		
HA	hair		20/08/2018
HE	henequen		20/08/2018
HL	mixed linen		
JU	jute		
KE	kenaf		20/08/2018
KP	kapoc		20/08/2018
LI	linen		
LY	lyocell		20/08/2018
MA	modacrylic		
MD	modal		
ME	metallized		
MG	maguey		20/08/2018
MM	melamine		25/04/2022
PA	polyamide		
PB	polyureic		
PC	acrylic		
PE	polyethylene		
PI	paper		20/08/2018
PL	polyester		
PM	polyimide		
PO	polilactyd		25/04/2022
PP	polypropylene		
PR	proteic		
PU	polyurethane		
RA	ramie		20/08/2018
SE	silk		

SI	sisal		20/08/2018
SN	sun		20/08/2018
TA	triacetate		
TR	textile residues or unspecified composition		20/08/2018
TV	trivinyll		
VI	viscose		
VY	vinylal		
WA	angora		
WB	beaver		20/08/2018
WC	cashgora		
WG	vicuna		
WK	camel		
WL	llama		
WM	mohair		
WN	lapin		20/08/2018
WO	wool		
WP	alpaca		
WS	cashmere		
WT	Oteer		20/08/2018
WU	guanaco		
WV	virgin wool		
WY	yack		

T2 - Modes of payment

way or means of payment

Agency name: eBIZ

Decoding table: T2

File codes list (Generic code): http://www.ebiz.enea.it/moda-ml/repository/codelist/draft/gc_T2.xml

Code	Description	Adoption note	Date of insertion
BB	bank transfer		
IA	collection through Agent		
IS	collection through Forwarder		
RB	bank receipt		
RD	remittance		
SW	bank SWIFT		
TR	bank draft		

T201 - type of job on yarn

operation of a work cycle for yarn

Agency name: eBIZ

Decoding table: T201

File codes list (Generic code): http://www.ebiz.enea.it/moda-ml/repository/codelist/draft/gc_T201.xml

Code	Description	Adoption note	Date of insertion
08	to re-comb		
09	to prepare		
10	to card		
11	to spin		
12	to steam		
13	to wind		
14	doubling		
15	to twist		
16	to unwind		
17	to singe		
18	to raise		
19	to reel		
20	to re-wind		
21	to shrink		
22	to coat		
23	to garnett		
24	to print		
25	to dye		
26	to boil		
27	to scour		
28	to dry		
99	other, see note if any		01/07/2013

T21 - type of document

type or class to which the referenced document belongs

Agency name: eBIZ

Decoding table: T21

File codes list (Generic code): http://www.ebiz.enea.it/moda-ml/repository/codelist/draft/gc_T21.xml

Code	Description	Adoption note	Date of insertion
BIL	Bill of lading		07/03/2023
BOR	Blanket order		01/02/2018
CAT	Price catalogue - tech sheet		
CEO	Certificate of origin		13/04/2018
CER	Certificate		13/04/2018
CMR	CMR consignment note		07/03/2023
COC	Colour card		
CRN	Credit note		08/09/2017
CTO	Checking order		01/07/2013
CTR	Contract		
CXF	CxF3 file		01/07/2013
DAD	Darn order		
DDT	Delivery note (transport document)		
DEA	Despatch advise		
DER	Despatch request		
DR	Document Request		02/12/2014
EAD	Export Accompanying Document	adopted by European customs	12/05/2023
ECMR	electronic CMR consignment note		07/03/2023
ECUS	EXPORT Custom Declaration		07/03/2023
FOR	Forecast		02/12/2014
GSO	Garment stock offer		
GSX	Garment stock offer change		
ICUS	IMPORT Custom Declaration		07/03/2023
INV	Invoice		
KCC	Knitting-Clothing Commission Order		02/12/2014
KCI	Garment in Work Inventory Report		02/12/2014
LCA	LCA study		28/08/2022
LCAD	LCA study dataset		28/08/2022
M2M	Made to Measure Production Order		02/12/2014
MAS	Master marker		
MCI	Visual merchandising instruction		13/04/2018
OCH	Order change		
OFF	Offer		
ORD	Purchase order		
ORP	Order response		
OSR	order status request		

OSS	Offer status		02/12/2014
OST	Order status		
OUR	our reference		
PCO	Preferential certificate of origin		07/03/2023
PEF	PEF study		28/08/2022
PEFD	PEF study dataset		28/08/2022
PEFP	PEF environmental profile		07/03/2023
QR	Quality Report		02/12/2014
RAI	Raw Material in Work Inventory Report		02/12/2014
RDC	Raw dyeing commission order		
RDH	Raw dyeing order change		
RDR	Raw dyeing order response		
REA	Receiving advise		
REQ	Request for Offer		
RET	Return		02/12/2014
RSC	Spinning commission order		
RSH	Spinning order change		
RSR	Spinning order response		
SAD	Single Administrative Document	adopted by European customs	12/05/2023
SCL	Process sheet		
SDE	Self-declaration		07/03/2023
SDS	SDS - Safety data sheet		07/03/2023
SLCA	S-LCA Study		07/03/2023
SLCAD	S-LCA Study documentation		07/03/2023
TFC	Textile dyeing-finishing commission order		
TFX	Textile Dyeing-Finishing Order Change		02/12/2014
TPC	Textile printing commission order		
TPX	Textile Printing Order Change		02/12/2014
TWI	Textile in work inventory		
VMI	visual merchandising instructions		01/02/2018
WAC	Warping commission order		
WAYB	Waybill		07/03/2023
WEC	Weaving commission order		
YDC	Yarn dyeing commission order		
YDH	Yarn dyeing order change		
YDR	Yarn dyeing order response		
YTC	Twisting commission order		
YWI	Yarn in work inventory		

T29 - type of yarn package

type of package (roll-up) used for a yarn product

Agency name: eBIZ

Decoding table: T29

File codes list (Generic code): http://www.ebiz.enea.it/moda-ml/repository/codelist/draft/gc_T29.xml

Code	Description	Adoption note	Date of insertion
CIL	bobbin		
CON	cone		
HNK	hank, skein		01/07/2013
MUF	muff, cake		01/07/2013
SPL	spool		
TUB	tube		
XCO	supercone		

T3 - terms of delivery - IncoTerms

specification of the terms of trade (INCOTERMS)

Agency name: Incoterms

Decoding table: T3

File codes list (Generic code): http://www.ebiz.enea.it/moda-ml/repository/codelist/draft/gc_T3.xml

Other link: <https://iccwbo.org/resources-for-business/incoterms-rules/incoterms-2020/#>

Code	Description	Adoption note	Date of insertion
CFR	COST AND FREIGHT (named port of destination)		
CIF	COST, INSURANCE AND FREIGHT (named port of destination)		
CIP	CARRIAGE AND INSURANCE PAID (named place of destination)		
CPA	CARRIAGE PAID (named place of destination)		
DAF	DELIVERED AT FRONTIER (named place)	according to Incoterms® 2010, since 2020 it is OBSOLETE.	08/12/2017
DAP	Delivered at Place of destination (named place of destination)	according to Incoterms® 2010	08/12/2017
DAT	Delivered at Terminal (named place of destination)	according to Incoterms® 2010, since 2020 it is OBSOLETE.	08/12/2017
DDP	DELIVERED DUTY PAID (named place of destination)		

DD U	DELIVERED DUTY UNPAID (named place of destination)	according to Incoterms® 2010 it is OBSOLETE , use DAP	08/12/2017
DE Q	DELIVERED EX-QUAY (named port of destination)	according to Incoterms® 2010 it is OBSOLETE	08/12/2017
DE S	DELIVERED EX-SHIP (named port of destination)	according to Incoterms® 2010 it is OBSOLETE	08/12/2017
DP U	DELIVERED AT PLACE UNLOADED	according to Incoterms® 2020	25/04/2022
EX W	EX WORKS (named place)		
FAS	FREE ALONGSIDE SHIP (named port of shipment)		
FC A	FREE CARRIER (named place)		
FO B	FREE ON BOARD (named port of shipment)		

T306 - material circularity attribute

Indicates whether the material is virgin or comes from recycling or reuse processes

Agency name: eBIZ for TRICK

Decoding table: T306

File codes list (Generic code): http://www.ebiz.enea.it/moda-ml/repository/codelist/draft/gc_T306.xml

Code	Description	Adoption note	Date of insertion
RE U	Reused material		30/08/2022
SCL	Secondary raw materials	adopt this for any secondary raw material when information about the first or following loop is not available	22/07/2022
SCL 1	Secondary raw materials - first loop		22/07/2022
SCL x	Secondary raw materials - loop following the first one		22/07/2022
VR G	Virgin raw material	adopt this for any virgin raw material when biobased information is not available	22/07/2022
VR GB	Virgin raw material - biobased		23/03/2023
VR GN	Virgin raw material - not biobased		23/03/2023

T307 - recycling process method

Agency name: eBIZ for TRICK

Decoding table: T307

File codes list (Generic code): http://www.ebiz.enea.it/moda-ml/repository/codelist/draft/gc_T307.xml

Code	Description	Adoption note	Date of insertion
CHMD	chemical recycling (dissolution)		28/07/2022
CHMP	chemical recycling (depolymerization)		28/07/2022
ENZ	enzymatic recycling		01/09/2022
MEC	mechanical recycling		28/07/2022
THE	thermal recycle		31/08/2022
THMC	thermo-mechanical recycling		01/09/2022

T38 - transport conditions

special condition of transport or special service requested to the Forwarder

Decoding table: T38

File codes list (Generic code): http://www.ebiz.enea.it/moda-ml/repository/codelist/draft/gc_T38.xml

Code	Description	Adoption note	Date of insertion
ACC	arrange customs clearance		
CAL	Carrier loads		
CAU	Carrier unloads		
CMR	CMR carnet		
FFN	freight forwarders national conditions		
FLD	special agreement for full loading		
NCC	do not arrange customs clearance		
PPB	packaging paid by Buyer		
PPS	packaging paid by Supplier		
PRO	proof of delivery		
RFR	return container free		
RPC	return container paid by Customer		
RPS	return container paid by Supplier		
SHL	Shipper loads		
SHU	Consignee unloads		

T40 - type of transport means

means of transport, in general or referred to a specific leg

Agency name: eBIZ

Decoding table: T40

File codes list (Generic code): http://www.ebiz.enea.it/moda-ml/repository/codelist/draft/gc_T40.xml

Code	Description	Adoption	Date of
------	-------------	----------	---------

		note	insertion
AIR	aircraft		
SHP	ship		
TRU	truck		
VAN	van		

T41 - type of Allowance or Charge

coded specification of an Allowance or Charge (elaborated from UNECE 4465)

Agency name: eBIZ

Decoding table: T41

File codes list (Generic code): http://www.ebiz.enea.it/moda-ml/repository/codelist/draft/gc_T41.xml

Code	Description	Adoption note	Date of insertion
1	Agreed settlement		19/08/2018
10	Costs for draft		19/08/2018
11	Bank charges	DEPRECATED, use CBK	19/08/2018
12	Agent commission		19/08/2018
14	Wrong delivery		19/08/2018
15	Goods returned to agent		19/08/2018
16	Goods partly returned		19/08/2018
17	Transport damage		19/08/2018
19	Trade discount		19/08/2018
2	Below specification goods		19/08/2018
20	Deduction for late delivery	DEPRECATED, use CWB	19/08/2018
21	Advertising costs		19/08/2018
22	Customs duties		19/08/2018
23	Telephone and postal costs		19/08/2018
24	Repair costs		19/08/2018
25	Attorney fees		19/08/2018
26	Taxes		19/08/2018
3	Damaged goods		19/08/2018
30	Direct payment to seller		19/08/2018
32	Goods not delivered		19/08/2018
33	Late delivery		19/08/2018
35	Goods returned		19/08/2018
36	Invoice not received		19/08/2018
37	Credit note to debtor/not to us		19/08/2018

38	Deducted bonus		19/08/2018
39	Deducted discount		19/08/2018
4	Short delivery		19/08/2018
40	Deducted freight costs		19/08/2018
41	Deduction against other invoices		19/08/2018
42	Credit balance(s)		19/08/2018
45	Debit note to seller		19/08/2018
46	Discount beyond terms		19/08/2018
48	Allowance/charge error		19/08/2018
49	Substitute product		19/08/2018
50	Terms of sale error		19/08/2018
52	Wrong invoice		19/08/2018
53	Duplicate invoice		19/08/2018
54	Weight error		19/08/2018
55	Additional charge not authorized		19/08/2018
56	Incorrect discount		19/08/2018
57	Price change		19/08/2018
58	Variation		19/08/2018
59	Chargeback		19/08/2018
65	Settlement to agent		19/08/2018
66	Cash discount		19/08/2018
7	Payment on account		19/08/2018
70	Wrong monetary amount resulting from incorrect free goods quantity		19/08/2018
72	Temporary special promotion		19/08/2018
73	Difference in tax rate		19/08/2018
74	Quantity discount		19/08/2018
75	Promotion discount		19/08/2018
76	Cancellation deadline passed		19/08/2018
77	Pricing discount		19/08/2018
78	Volume discount		19/08/2018
79	Sundry discount		19/08/2018
8	Returnable container charge included		19/08/2018
9	Invoice error		19/08/2018
AWA	bonus for works ahead of schedule		
CBK	bank charges		
CCR	servizio di corriere		
CIN	insurance		
CLB	labelling		

CPK	packing		
CSP	special packing		
CWB	penalty for works behind schedule		

T44 - additional code type

qualifier of the additional coding of a product

Agency name: eBIZ

Decoding table: T44

File codes list (Generic code): http://www.ebiz.enea.it/moda-ml/repository/codelist/draft/gc_T44.xml

Code	Description	Adoption note	Date of insertion
CC	colour card		
CL	sales collection		
CO	company identification code		08/09/2017
DY	dye number		
LT	lot number		
MDI	Made in		08/09/2017
MS	manufacturing state		
PKG	packaging		09/09/2014
PL	product line		
RGB	RGB value		
SE	selvedge code		

T54 - kind of yarn

general type of yarn

Agency name: eBIZ

Decoding table: T54

File codes list (Generic code): http://www.ebiz.enea.it/moda-ml/repository/codelist/draft/gc_T54.xml

Code	Description	Adoption note	Date of insertion
01	Spun yarn (Staple yarn)		
02	Worsted		
03	Woollen		
04	Carded		01/07/2013
05	Combed		01/07/2013
06	Flax-spun		01/07/2013

07	Rotor spun		01/07/2013
08	Air jet spun		01/07/2013
09	Fancy yarn		01/07/2013
10	Filament yarn - Flat		01/07/2013
11	Zero twist		01/07/2013
12	Twisted		01/07/2013
13	Crepe		01/07/2013
14	Textured yarn		01/07/2013
15	False Twist, FT (also stretch)		01/07/2013
16	False Twist, Fixed, FTF (also bulked)		01/07/2013
17	Air textured		01/07/2013
18	Elastic yarn (also Elastomeric yarn)		01/07/2013
19	Single covered yarn		01/07/2013
20	Double covered yarn		01/07/2013
21	Air covered yarn		01/07/2013
22	Core-spun		01/07/2013

T55 - count system

yarn count system

Agency name: eBIZ

Decoding table: T55

File codes list (Generic code): http://www.ebiz.enea.it/moda-ml/repository/codelist/draft/gc_T55.xml

Code	Description	Adoption note	Date of insertion
DEN	denier		
DTX	decitex		
NEC	english cotton		
NEJ	english jute/hemp/flax		
NEW	english wool		
NM	metric		
TEX	tex		

T56 - kind of yarn ply

kind of yarn's ply

Agency name: eBIZ

Decoding table: T56

File codes list (Generic code): http://www.ebiz.enea.it/moda-ml/repository/codelist/draft/gc_T56.xml

Code	Description	Adoption note	Date of insertion
CS	single yarn		
FA	fancy yarn		01/07/2013
RC	ply combination yarn		
RS	ply yarn		

T57 - color fastness test for yarn

color fastness test for a yarn

Decoding table: T57

File codes list (Generic code): http://www.ebiz.enea.it/moda-ml/repository/codelist/draft/gc_T57.xml

Code	Description	Adoption note	Date of insertion
01	to decatizing (UNI EN ISO 105-E10:98)		01/07/2013
02	to bleaching: peroxide (UNI EN ISO 105-N02:97)		01/07/2013
03	to bleaching: hypochlorite (UNI EN 20105-N01:97)		01/07/2013
04	to spotting: acid (UNI EN ISO 105-E05:99)		01/07/2013
05	to spotting: alkali (UNI EN ISO 105-E06:99)		01/07/2013
06	to mercerizing (UNI EN ISO 105-X04:99)		01/07/2013
07	to soda boiling (UNI EN ISO 105-X06:99)		01/07/2013
08	to degumming (UNI EN ISO 105-X08:99)		01/07/2013
09	to domestic laundering (UNI EN ISO 105-C06:99)		01/07/2013
10	to carbonizing: sulfuric acid (UNI EN ISO 105-X02:98)		01/07/2013
11	to acid chlorination (UNI 5145:88)		01/07/2013
12	to chlorination: Na dichloroisocyanurate (EN ISO 105-X14:99)		01/07/2013
13	to alkaline milling (UNI EN ISO 105-E12:99)		01/07/2013
14	to acid-felting: mild (UNI EN ISO 105-E14:98)		01/07/2013
15	to dry heat (UNI EN ISO 105-P01:97)		01/07/2013

T58 - yarn quality parameters

parameter related to the quality of yarn

Agency name: eBIZ

Decoding table: T58

File codes list (Generic code): http://www.ebiz.enea.it/moda-ml/repository/codelist/draft/gc_T58.xml

Code	Description	Adoption	Date of
------	-------------	----------	---------

		note	insertion
01	actual count		01/07/2013
02	elongation % at break (UNI-EN-ISO 2062:97)		01/07/2013
03	breaking force (UNI-EN-ISO 2062:97)		01/07/2013
04	tenacity (specific stress) - cN/tex or RKM (UNI-EN-ISO 2062:97)		01/07/2013
05	unevenness - CV USTER		01/07/2013
06	unevenness - thick spots		01/07/2013
07	unevenness - thin spots		01/07/2013
08	unevenness - neps		01/07/2013
09	hairiness		01/07/2013
10	pilling (UNI-EN-ISO 12945-01:2002)		01/07/2013
11	coefficient of friction		01/07/2013
12	delta E CIELab (UNI 8941:87)		01/07/2013

T59 - CIE illuminant

CIE light source

Decoding table: T59

File codes list (Generic code): http://www.ebiz.enea.it/moda-ml/repository/codelist/draft/gc_T59.xml

Code	Description	Adoption note	Date of insertion
A	home tungsten CCT 2856K		01/07/2013
C	daylight CCT 6774K		01/07/2013
D50	daylight CCT 5003K		01/07/2013
D65	solar standard CCT 6504K		01/07/2013
F11	fluorescent narrow band CCT 4000K (TL84)		01/07/2013
F2	cold white fluorescent CCT 4230K		01/07/2013
F7	fluorescent broad band CCT 6500K		01/07/2013

T60 - CIE standard observer

CIE average chromatic response definition

Decoding table: T60

File codes list (Generic code): http://www.ebiz.enea.it/moda-ml/repository/codelist/draft/gc_T60.xml

Code	Description	Adoption note	Date of insertion
31	CIE-1931		01/07/2013
64	CIE-1964		01/07/2013

T61 - duty or tax or fee type

duty or tax or fee type

Agency name: eBIZ

Decoding table: T61

File codes list (Generic code): http://www.ebiz.enea.it/moda-ml/repository/codelist/draft/gc_T61.xml

Code	Description	Adoption note	Date of insertion
BOL	stamp duty		01/07/2013
CUD	customs duty		01/07/2013
ENV	environmental tax		01/07/2013
FRE	no tax		01/07/2013
OTH	other tax charges		01/07/2013
VAT	value added tax		01/07/2013

T62 - duty or tax or fee category

duty or tax or fee category

Agency name: eBIZ

Decoding table: T62

File codes list (Generic code): http://www.ebiz.enea.it/moda-ml/repository/codelist/draft/gc_T62.xml

Code	Description	Adoption note	Date of insertion
AA	lower than standard rate		01/07/2013
E	tax not applicable		01/07/2013
H	higher than standard rate		01/07/2013
O	outside scope of tax		01/07/2013
S	standard rate		01/07/2013
Z	zero rate goods		01/07/2013

T8 - Modes of Transport

way of transport, in general or referred to the specified leg. Derived from UNECE Recommendation 28 (see link)

Agency name: eBIZ

Decoding table: T8

File codes list (Generic code): http://www.ebiz.enea.it/moda-ml/repository/codelist/draft/gc_T8.xml

Other link: <https://fig.unece.org/contents/recommendation-28.htm#>

Code	Description	Adoption note	Date of insertion
------	-------------	---------------	-------------------

1	MARITIME TRANSPORT		
10	Courier	DEPRECATED	01/07/2013
2	RAIL TRANSPORT		
3	ROAD TRANSPORT		
4	AIR TRANSPORT		
5	MAIL		
6	MULTIMODAL TRANSPORT	example ship + truck. Not used for custom declarations.	13/06/2023
8	INLAND WATER TRANSPORT		
9	MODE UNKNOWN	Includes Own propulsion	13/06/2023

T9 - ISO4217 - Currency

currency code

Agency name: ISO

Decoding table: T9

File codes list (Generic code): http://www.ebiz.enea.it/moda-ml/repository/codelist/draft/gc_T9.xml

Table not printed: there are 205 elements, more than the maximum specified for printing: 99.