



<http://www.ebiz-tcf.eu>

DRAFT

Extract from IMPLEMENTATION GUIDE  
TRANSACTION "FASHION CATALOGUE"

Version: draft

Date of release: 9/10/2022

Document code: G080e

technical Documentation: <http://www.ebiz.enea.it>

XML Schemas repository: <http://www.ebiz.enea.it/moda-ml/repository/schema/draft/default.asp>

Guides repository: <http://www.ebiz.enea.it/moda-ml/repository/guide/draft/default.asp>

Guide filename: G080-eBIZ-FashionCatalogue.pdf

# 0. PREMISE

This document contains a proposal for the updating and extension of eBIZ specifications starting from the eBIZ version 2018. Under the name of 'Draft version' it is reported the result of an extensive work of analysis and consultation aimed at developing and maintaining eBIZ specifications.

In particular, the content of this proposal is the result of various activities, mainly those carried out within the framework of the **TRICK project** funded by the European Commission: grant agreement 958352, call H2020-LOW-CARBON-CIRCULAR-INDUSTRIES-2020 / H2020-LCCI-2020-EASME-twostage.

The technical contents are backwards compatible with the latest official published version, with the exclusion of the totally new concepts added explicitly for the version that are thought as incremental evolution of the knowledge base.

## 1. BUSINESS DESCRIPTION

### 1.1 Scope

The present guide has been issued to assist the companies of the Fashion sector in the implementation of the standard XML document type "FASHION CATALOGUE", providing all the instruction required for its use in any context of e-commerce between Fashion Producers and their customers and eBusiness and eCommerce platforms. All the rules required for the construction and validation of the document are embedded into the specific XML-Schema, which is detailed in section "Implementation guide".

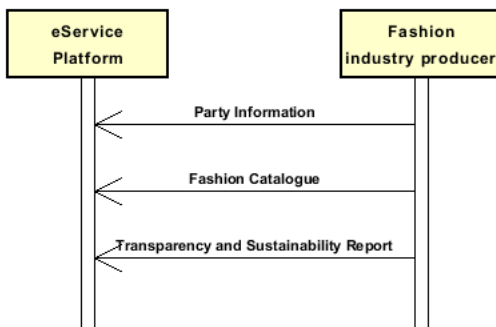
### 1.2 Generalities

This document is usable as a catalog (showcase / offer) as well as to exchange in advance the product data between Suppliers and Customers, in order to allow the synchronization of the corresponding data-base. . Furthermore, a Producer can use it to publish its offer on ePlatforms.

It contains the items that compose the Fashion Manufacturer's offer (codes, descriptions, prices and terms of sale) and may include some technical-descriptive data of the product (trade name, composition, weight and height, . . .) as well as marketing information (images, verbose descriptions, . . .)

### 1.3. Possible scenario

P1.A1 Products, processes and facilities static data collection





## 2. IMPLEMENTATION GUIDE

### 2.1 General structure of XML document

All the business data that can be exchanged through this class of documents are shown in the following "document structure", that provides a simplified vision of the Schema.

In particular:

- the two numbers following each element define its "cardinality" (minimum and maximum number of occurrences); the minimum equal zero indicates that the element is optional, the minimum greater than zero indicates that is mandatory;
- the bold character denotes the complex elements (aggregates of simple elements) that were built for the sake of functionality and re-usability of some complex informations sets. The child elements in each parent element are easily spotted as "indented";
- the symbol "@" denotes an attribute of the preceding element; here "the usage indicator (optional, required, ...)" is shown in square brackets.

### Structure

#### FASCatalog

@version [Optional] [Default= 2018-1]

@useProfile [Optional]

#### FCheader 1-1

msgN 1-1

msgID 0-1

msgDate 1-1

@dateForm [Optional]

msgCurrency 0-1

#### refDoc 0-9

@docType [Required]

docID 1-2

@numberingOrg [Optional]

docDate 0-1

@dateForm [Optional]

season 0-1

@numberingOrg [Optional]

@codeList [Optional]

@listName [Optional]

@listVersion [Optional]

itemID 0-1

#### attachment 0-1

@uid [Optional]

fileName 0-1

@numberingOrg [Optional]

binaryObject 0-1

@format [Optional]

@mime [Optional]

@encoding [Optional]

@characterSet [Optional]

#### externalReference 0-99

uri 1-1

@isURL [Optional] [Default= true]

mimeCode 0-1

formatCode 0-1

encodingCode 0-1

characterSetCode 0-1

#### picture 0-9

pictureCode 0-1

title 0-unbounded

@ln [Optional]

description 0-unbounded

@ln [Optional]

validityStart 0-1

@dateForm [Optional]

validityEnd 0-1

@dateForm [Optional]

alternativeText 0-unbounded

@ln [Optional]

- | rendering 0-1
- | resolution 0-1
- | @resolutionType [Optional] [Default= dpi]
- | width 0-1
- | @um [Required]
- | height 0-1
- | @um [Required]
- | nominalWidth 0-2
- | @um [Optional]
- | nominalHeight 0-2
- | @um [Optional]
- | pictureUse 0-1
- | pictureQualifier 0-1
- | **attachment 0-1**
- | @uid [Optional]
- | | fileName 0-1
- | | @numberingOrg [Optional]
- | | binaryObject 0-1
- | | @format [Optional]
- | | @mime [Optional]
- | | @encoding [Optional]
- | | @characterSet [Optional]
- | | **externalReference 0-99**
- | | | uri 1-1
- | | | @isURL [Optional] [Default= true]
- | | | mimeTypeCode 0-1
- | | | formatCode 0-1
- | | | encodingCode 0-1
- | | | characterSetCode 0-1
- | note 0-99
- | @numberingOrg [Optional]
- | @codeList [Optional]
- | @noteLabel [Optional]
- | season 0-1
- | @numberingOrg [Optional]
- | @codeList [Optional]
- | @listName [Optional]
- | @listVersion [Optional]
- | validityStart 0-1
- | @dateForm [Optional]
- | validityEnd 0-1
- | @dateForm [Optional]
- | **buyer 0-1**
- | @logo [Optional]
- | @sender [Optional]
- | | id 1-1
- | | @numberingOrg [Optional]
- | | additionalIdentifier 0-9
- | | @numberingOrg [Optional]
- | | @idQualifier [Optional]
- | | legalName 0-1
- | | dept 0-1
- | | subDept 0-1
- | | person 0-1
- | | @email [Optional]
- | | @phone [Optional]
- | | @fax [Optional]
- | | street 0-1
- | | city 0-1
- | | subCountry 0-1
- | | country 0-1
- | | postCode 0-1
- | | **geoCoordinates 0-1**
- | | @um [Optional] [Default= DEGD]
- | | @geoReferenceSystem [Optional]
- | | | xGeoCoord 1-1
- | | | yGeoCoord 1-1
- | | | zGeoCoord 0-0

**supplier 1-1**

@logo [Optional]  
@sender [Optional]  
| id 1-1  
| @numberingOrg [Optional]  
| additionalIdentifier 0-9  
| @numberingOrg [Optional]  
| @idQualifier [Optional]  
| legalName 0-1  
| dept 0-1  
| subDept 0-1  
| person 0-1  
| @email [Optional]  
| @phone [Optional]  
| @fax [Optional]  
| street 0-1  
| city 0-1  
| subCountry 0-1  
| country 0-1  
| postCode 0-1  
| **geoCoordinates 0-1**  
| @um [Optional] [Default= DEGD]  
| @geoReferenceSystem [Optional]  
| | xGeoCoord 1-1  
| | yGeoCoord 1-1  
| | zGeoCoord 0-0

**thirdParty 0-5**

@VAT [Optional]  
@role [Required]  
@sender [Optional]  
| id 1-1  
| @numberingOrg [Optional]  
| legalName 0-1  
| dept 0-1  
| subDept 0-1  
| person 0-1  
| @email [Optional]  
| @phone [Optional]  
| @fax [Optional]  
| street 0-1  
| city 0-1  
| subCountry 0-1  
| country 0-1  
| postCode 0-1  
| **geoCoordinates 0-1**  
| @um [Optional] [Default= DEGD]  
| @geoReferenceSystem [Optional]  
| | xGeoCoord 1-1  
| | yGeoCoord 1-1  
| | zGeoCoord 0-0

note 0-99

@numberingOrg [Optional]  
@codeList [Optional]  
@noteLabel [Optional]

**terms 0-1**

**payment 0-5**

@finDiscount [Optional]  
@finSurcharge [Optional]  
- choose -  
| payTerm 1-1  
- or -  
| payTermText 1-1  
- end choose -  
| payMode 0-1

**insPayment 0-5**

@part [Required]  
- choose -

```

| | | payTerm 1-1
| | | - or -
| | | | payTermText 1-1
| | | | - end choose -
| | | | payMode 0-1
| | | trade 0-1
| | | | - choose -
| | | | | incoTermText 1-1
| | | | | - or -
| | | | | | incoTerm 1-1
| | | | | | - end choose -
| | | | | | location 0-1
| | | | | | | @LRI [Optional]
| | | | transInfo 0-5
| | | | | @transReason [Optional]
| | | | | @progr [Optional]
| | | | | | transMode 1-1
| | | | | | carrier 0-1
| | | | | - choose -
| | | | | deliveryLocation 0-1
| | | | | | location 0-1
| | | | | | | @LRI [Optional]
| | | | | | | legalName 0-1
| | | | | | | dept 0-1
| | | | | | | subDept 0-1
| | | | | | | person 0-1
| | | | | | | | @email [Optional]
| | | | | | | | @phone [Optional]
| | | | | | | | @fax [Optional]
| | | | | | | street 0-1
| | | | | | | city 0-1
| | | | | | | subCountry 0-1
| | | | | | | country 0-1
| | | | | | | postCode 0-1
| | | | | | geoCoordinates 0-1
| | | | | | | @um [Optional] [Default= DEGD]
| | | | | | | @geoReferenceSystem [Optional]
| | | | | | | | xGeoCoord 1-1
| | | | | | | | yGeoCoord 1-1
| | | | | | | | zGeoCoord 0-0
| | | | - or -
| | | | | deliveryPlace 0-1
| | | | | - end choose -
| | | | | | grossWeight 0-1
| | | | | | | @um [Required]
| | | | | | | netWeight 0-1
| | | | | | | | @um [Required]
| | | | | | | transMeans 0-1
| | | | | | | | @propulsionSystemCode [Optional]
| | | | | | | transCondition 0-3
| | | | | | | transConditionText 0-1
| | | | | - choose -
| | | | | | despatchPlace 0-1
| | | | | - or -
| | | | | despatchLocation 0-1
| | | | | | legalName 0-1
| | | | | | | dept 0-1
| | | | | | | subDept 0-1
| | | | | | | person 0-1
| | | | | | | | @email [Optional]
| | | | | | | | @phone [Optional]
| | | | | | | | @fax [Optional]
| | | | | | | street 0-1
| | | | | | | city 0-1
| | | | | | | subCountry 0-1
| | | | | | | country 0-1
| | | | | | | postCode 0-1
| | | | | | geoCoordinates 0-1

```

```

| | | | @um [Optional] [Default= DEGD]
| | | | @geoReferenceSystem [Optional]
| | | | xGeoCoord 1-1
| | | | yGeoCoord 1-1
| | | | zGeoCoord 0-0

```

- end choose -

```

| | | | despatchDate 0-1
| | | | @dateForm [Optional]
| | | | delEffectiveDate 0-1
| | | | @dateForm [Optional]
| | | | routeLength 0-1
| | | | @um [Required]

```

**allowanceCharge 0-9**

```

| | | | @um [Optional]
| | | | @VAT [Optional]
| | | | @minQty [Optional]
| | | | @currency [Optional]
| | | | @maxQty [Optional]
| | | | @isCharge [Optional]

```

- choose -

```

| | | | AC_category 1-1

```

- or -

```

| | | | AC_categoryText 1-1

```

- end choose -

- choose -

```

| | | | AC_percent 1-1

```

- or -

```

| | | | AC_amount 1-1
| | | | @currency [Optional]

```

- end choose -

**dtScheme 0-1**

```

| | | | @taxType [Required]
| | | | taxCategory 0-1
| | | | taxRate 0-1
| | | | legalRef 0-1
| | | | @numberingOrg [Optional]
| | | | @codeList [Optional]
| | | | @listName [Optional]
| | | | @listVersion [Optional]
| | | | note 0-99
| | | | @numberingOrg [Optional]
| | | | @codeList [Optional]
| | | | @noteLabel [Optional]

```

**garComInfo 0-1**

```

| | | | @endUse [Optional]
| | | | season 0-1
| | | | @numberingOrg [Optional]
| | | | @codeList [Optional]
| | | | @listName [Optional]
| | | | @listVersion [Optional]
| | | | brand 0-1
| | | | @numberingOrg [Optional]
| | | | @codeList [Optional]
| | | | @listName [Optional]
| | | | @listVersion [Optional]
| | | | productLine 0-1
| | | | @numberingOrg [Optional]
| | | | @codeList [Optional]
| | | | @listName [Optional]
| | | | @listVersion [Optional]
| | | | project 0-1
| | | | operationalCode 0-19
| | | | @numberingOrg [Optional]
| | | | @codeList [Optional]
| | | | @listName [Optional]
| | | | @listVersion [Optional]
| | | | @codeQualifier [Optional]

```



```

| | deliveryDate 0-1
| |   @dateForm [Optional]
| | specDate 0-1
| |   @dateForm [Optional]
- choose -
| | yarnPack 0-1
| |   | yarnReel 1-1
| |   |   @reelType [Required]
| |   |   @reelMat [Optional]
| |   |     | yarnReelD 0-1
| |   |     |   @um [Required]
| |   |     | yarnReelH 0-1
| |   |     |   @um [Required]
| |   |     | yarnConeAngle 0-1
| |   |     | yarnReelQty 0-2
| |   |     |   @um [Required]
| |   |     | label 0-1
| |   |     | labelWrit 0-1
| |   |   | yarnInWrap 0-1
| |   |   |   | yarnReelWrap 1-1
| |   |   |   |   | label 0-1
| |   |   |   |   | labelWrit 0-1
| |   |   - choose -
| |   |   | yarnOutWrapText 0-1
| |   |   - or -
| |   |   | yarnOutWrap 0-1
| |   |   - end choose -
- or -
| | piecePack 0-1
| |   - choose -
| |   | piecePackText 1-1
| |   - or -
| |   | pieceInnWrap1 1-1
| |   | pieceInnWrap2 0-1
| |   | pieceOutWrap 0-1
| |   - end choose -
- or -
| | acsPack 0-1
| |   - choose -
| |   | acsPackCode 1-1
| |   |   @numberingOrg [Optional]
| |   |   @codeList [Optional]
| |   |   @listName [Optional]
| |   |   @listVersion [Optional]
| |   - or -
| |   | acsPackText 1-1
| |   - end choose -
- or -
| | garPack 0-1
| |   - choose -
| |   | garPackCode 1-1
| |   |   @numberingOrg [Optional]
| |   |   @codeList [Optional]
| |   |   @listName [Optional]
| |   |   @listVersion [Optional]
| |   - or -
| |   | garPackText 1-1
| |   - end choose -
- end choose -
| | note 0-99
| |   @numberingOrg [Optional]
| |   @codeList [Optional]
| |   @noteLabel [Optional]
| FCbody 1-1
| | FCgroup 1-unbounded
| |   | artGroup 0-1
| |   | @numberingOrg [Optional]

```

| @codeList [Optional]  
 | @listName [Optional]  
 | @listVersion [Optional]  
 | artGroupName 0-1  
 | description 0-unbounded  
 | @ln [Optional]  
 | extendedDescription 0-unbounded  
 | @ln [Optional]  
 | **refDoc 0-9**  
 | @docType [Required]  
 | | docID 1-2  
 | | @numberingOrg [Optional]  
 | | docDate 0-1  
 | | @dateForm [Optional]  
 | | season 0-1  
 | | @numberingOrg [Optional]  
 | | @codeList [Optional]  
 | | @listName [Optional]  
 | | @listVersion [Optional]  
 | | itemID 0-1  
 | | **attachment 0-1**  
 | | @uid [Optional]  
 | | | fileName 0-1  
 | | | @numberingOrg [Optional]  
 | | | binaryObject 0-1  
 | | | @format [Optional]  
 | | | @mime [Optional]  
 | | | @encoding [Optional]  
 | | | @characterSet [Optional]  
 | | | **externalReference 0-99**  
 | | | | uri 1-1  
 | | | | @isURL [Optional] [Default= true]  
 | | | | mimeTypeCode 0-1  
 | | | | formatCode 0-1  
 | | | | encodingCode 0-1  
 | | | | characterSetCode 0-1  
 | | **picture 0-99**  
 | | | pictureCode 0-1  
 | | | title 0-unbounded  
 | | | @ln [Optional]  
 | | | description 0-unbounded  
 | | | @ln [Optional]  
 | | | validityStart 0-1  
 | | | @dateForm [Optional]  
 | | | validityEnd 0-1  
 | | | @dateForm [Optional]  
 | | | alternativeText 0-unbounded  
 | | | @ln [Optional]  
 | | | rendering 0-1  
 | | | resolution 0-1  
 | | | @resolutionType [Optional] [Default= dpi]  
 | | | width 0-1  
 | | | @um [Required]  
 | | | height 0-1  
 | | | @um [Required]  
 | | | nominalWidth 0-2  
 | | | @um [Optional]  
 | | | nominalHeight 0-2  
 | | | @um [Optional]  
 | | | pictureUse 0-1  
 | | | pictureQualifier 0-1  
 | | | **attachment 0-1**  
 | | | @uid [Optional]  
 | | | | fileName 0-1  
 | | | | @numberingOrg [Optional]  
 | | | | binaryObject 0-1  
 | | | | @format [Optional]  
 | | | | @mime [Optional]

```

| | | | | @encoding [Optional]
| | | | | @characterSet [Optional]
| | | | | externalReference 0-99
| | | | | | uri 1-1
| | | | | | @isURL [Optional] [Default= true]
| | | | | | mimeTypeCode 0-1
| | | | | | formatCode 0-1
| | | | | | encodingCode 0-1
| | | | | | characterSetCode 0-1
| | | | | note 0-99
| | | | | @numberingOrg [Optional]
| | | | | @codeList [Optional]
| | | | | @noteLabel [Optional]
| | | | | allowanceCharge 0-9
| | | | | @um [Optional]
| | | | | @VAT [Optional]
| | | | | @minQty [Optional]
| | | | | @currency [Optional]
| | | | | @maxQty [Optional]
| | | | | @isCharge [Optional]
| | | | | - choose -
| | | | | | AC_category 1-1
| | | | | - or -
| | | | | | AC_categoryText 1-1
| | | | | - end choose -
| | | | | - choose -
| | | | | | AC_percent 1-1
| | | | | - or -
| | | | | | AC_amount 1-1
| | | | | | @currency [Optional]
| | | | | - end choose -
| | | | | | dtScheme 0-1
| | | | | | @taxType [Required]
| | | | | | taxCategory 0-1
| | | | | | taxRate 0-1
| | | | | | legalRef 0-1
| | | | | | @numberingOrg [Optional]
| | | | | | @codeList [Optional]
| | | | | | @listName [Optional]
| | | | | | @listVersion [Optional]
| | | | | | note 0-99
| | | | | | @numberingOrg [Optional]
| | | | | | @codeList [Optional]
| | | | | | @noteLabel [Optional]
| | | | | | garComInfo 0-1
| | | | | | @endUse [Optional]
| | | | | | season 0-1
| | | | | | @numberingOrg [Optional]
| | | | | | @codeList [Optional]
| | | | | | @listName [Optional]
| | | | | | @listVersion [Optional]
| | | | | | brand 0-1
| | | | | | @numberingOrg [Optional]
| | | | | | @codeList [Optional]
| | | | | | @listName [Optional]
| | | | | | @listVersion [Optional]
| | | | | | productLine 0-1
| | | | | | @numberingOrg [Optional]
| | | | | | @codeList [Optional]
| | | | | | @listName [Optional]
| | | | | | @listVersion [Optional]
| | | | | | project 0-1
| | | | | | operationalCode 0-19
| | | | | | @numberingOrg [Optional]
| | | | | | @codeList [Optional]
| | | | | | @listName [Optional]
| | | | | | @listVersion [Optional]
| | | | | | @codeQualifier [Optional]

```

```

| | | | deliveryDate 0-1
| | | |   @dateForm [Optional]
| | | | specDate 0-1
| | | |   @dateForm [Optional]
| | | - choose -
| | | | yarnPack 0-1
| | | |   | yarnReel 1-1
| | | |   |   @reelType [Required]
| | | |   |   @reelMat [Optional]
| | | |   |   | yarnReelID 0-1
| | | |   |   |   @um [Required]
| | | |   |   | yarnReelH 0-1
| | | |   |   |   @um [Required]
| | | |   |   | yarnConeAngle 0-1
| | | |   |   | yarnReelQty 0-2
| | | |   |   |   @um [Required]
| | | |   |   | label 0-1
| | | |   |   | labelWrit 0-1
| | | |   | yarnInWrap 0-1
| | | |   |   | yarnReelWrap 1-1
| | | |   |   | label 0-1
| | | |   |   | labelWrit 0-1
| | | |   - choose -
| | | |   | yarnOutWrapText 0-1
| | | |   - or -
| | | |   | yarnOutWrap 0-1
| | | |   - end choose -
| | | - or -
| | | | piecePack 0-1
| | | |   - choose -
| | | |   | piecePackText 1-1
| | | |   - or -
| | | |   | pieceInnWrap1 1-1
| | | |   | pieceInnWrap2 0-1
| | | |   | pieceOutWrap 0-1
| | | |   - end choose -
| | | - or -
| | | | acsPack 0-1
| | | |   - choose -
| | | |   | acsPackCode 1-1
| | | |   |   @numberingOrg [Optional]
| | | |   |   @codeList [Optional]
| | | |   |   @listName [Optional]
| | | |   |   @listVersion [Optional]
| | | |   - or -
| | | |   | acsPackText 1-1
| | | |   - end choose -
| | | - or -
| | | | garPack 0-1
| | | |   - choose -
| | | |   | garPackCode 1-1
| | | |   |   @numberingOrg [Optional]
| | | |   |   @codeList [Optional]
| | | |   |   @listName [Optional]
| | | |   |   @listVersion [Optional]
| | | |   - or -
| | | |   | garPackText 1-1
| | | |   - end choose -
| | | - end choose -
| | | | note 0-99
| | | |   @numberingOrg [Optional]
| | | |   @codeList [Optional]
| | | |   @noteLabel [Optional]
| | | | FCitem 0-unbounded
| | | |   | lineN 0-1
| | | |   | @VAT [Optional]
| | | |   | lineID 0-1
| | | | refDoc 0-9

```

| @docType [Required]  
 | docID 1-2  
 | | @numberingOrg [Optional]  
 | docDate 0-1  
 | | @dateForm [Optional]  
 | season 0-1  
 | | @numberingOrg [Optional]  
 | | @codeList [Optional]  
 | | @listName [Optional]  
 | | @listVersion [Optional]  
 | itemID 0-1  
 | **attachment 0-1**  
 | | @uid [Optional]  
 | | | fileName 0-1  
 | | | | @numberingOrg [Optional]  
 | | | binaryObject 0-1  
 | | | | @format [Optional]  
 | | | | @mime [Optional]  
 | | | | @encoding [Optional]  
 | | | | @characterSet [Optional]  
 | | | **externalReference 0-99**  
 | | | | uri 1-1  
 | | | | | @isURL [Optional] [Default= true]  
 | | | | | mimeTypeCode 0-1  
 | | | | | formatCode 0-1  
 | | | | | encodingCode 0-1  
 | | | | | characterSetCode 0-1  
 | **picture 0-99**  
 | | pictureCode 0-1  
 | | title 0-unbounded  
 | | | @ln [Optional]  
 | | description 0-unbounded  
 | | | @ln [Optional]  
 | | validityStart 0-1  
 | | | @dateForm [Optional]  
 | | validityEnd 0-1  
 | | | @dateForm [Optional]  
 | | alternativeText 0-unbounded  
 | | | @ln [Optional]  
 | | rendering 0-1  
 | | resolution 0-1  
 | | | @resolutionType [Optional] [Default= dpi]  
 | | width 0-1  
 | | | @um [Required]  
 | | height 0-1  
 | | | @um [Required]  
 | | nominalWidth 0-2  
 | | | @um [Optional]  
 | | nominalHeight 0-2  
 | | | @um [Optional]  
 | | pictureUse 0-1  
 | | pictureQualifier 0-1  
 | | **attachment 0-1**  
 | | | @uid [Optional]  
 | | | | fileName 0-1  
 | | | | | @numberingOrg [Optional]  
 | | | | binaryObject 0-1  
 | | | | | @format [Optional]  
 | | | | | @mime [Optional]  
 | | | | | @encoding [Optional]  
 | | | | | @characterSet [Optional]  
 | | | | **externalReference 0-99**  
 | | | | | uri 1-1  
 | | | | | | @isURL [Optional] [Default= true]  
 | | | | | | mimeTypeCode 0-1  
 | | | | | | formatCode 0-1  
 | | | | | | encodingCode 0-1  
 | | | | | | characterSetCode 0-1

| note 0-99  
 | @numberingOrg [Optional]  
 | @codeList [Optional]  
 | @noteLabel [Optional]

brand 0-1  
 | @numberingOrg [Optional]  
 | @codeList [Optional]  
 | @listName [Optional]  
 | @listVersion [Optional]

productLine 0-1  
 | @numberingOrg [Optional]  
 | @codeList [Optional]  
 | @listName [Optional]  
 | @listVersion [Optional]

prodServName 0-1

operationalCode 0-19  
 | @numberingOrg [Optional]  
 | @codeList [Optional]  
 | @listName [Optional]  
 | @listVersion [Optional]  
 | @codeQualifier [Optional]

**garmentCategory 0-1**  
 | @numberingOrg [Optional]

| artGroup 0-1  
 | | @numberingOrg [Optional]  
 | | @codeList [Optional]  
 | | @listName [Optional]  
 | | @listVersion [Optional]

| artSubGroup 0-1  
 | | @numberingOrg [Optional]  
 | | @codeList [Optional]  
 | | @listName [Optional]  
 | | @listVersion [Optional]

| artSex 0-1  
 | | @numberingOrg [Optional]  
 | | @codeList [Optional]  
 | | @listName [Optional]  
 | | @listVersion [Optional]

| season 0-1  
 | | @numberingOrg [Optional]  
 | | @codeList [Optional]  
 | | @listName [Optional]  
 | | @listVersion [Optional]

**goodsClassification 0-9**

| | macroClass 0-1  
 | | | @numberingOrg [Optional]  
 | | | @codeList [Optional]  
 | | | @listName [Optional]  
 | | | @listVersion [Optional]

| | class 0-1  
 | | | @numberingOrg [Optional]  
 | | | @codeList [Optional]  
 | | | @listName [Optional]  
 | | | @listVersion [Optional]

| | subClass 0-1  
 | | | @numberingOrg [Optional]  
 | | | @codeList [Optional]  
 | | | @listName [Optional]  
 | | | @listVersion [Optional]

| note 0-99  
 | | @numberingOrg [Optional]  
 | | @codeList [Optional]  
 | | @noteLabel [Optional]

**fashionProd 1-1**

| additionalComponentCode 0-9  
 | | @numberingOrg [Optional]  
 | | @codeList [Optional]  
 | | @listName [Optional]

```
| | | | | @listVersion [Optional]
| | | | | - choose -
| | | | | yarnCode 1-2
| | | | | @numberingOrg [Optional] [Default= CL]
| | | | | | art 1-1
| | | | | | | @numberingOrg [Optional]
| | | | | | | @codeList [Optional]
| | | | | | | @listName [Optional]
| | | | | | | @listVersion [Optional]
| | | | | | color 0-1
| | | | | | | @numberingOrg [Optional]
| | | | | | | @codeList [Optional]
| | | | | | | @listName [Optional]
| | | | | | | @listVersion [Optional]
| | | | | | added 0-9
| | | | | | | @numberingOrg [Optional]
| | | | | | | @addType [Optional]
| | | | | | description 0-unbounded
| | | | | | @In [Optional]
| | | | | - or -
| | | | | texCode 1-2
| | | | | @numberingOrg [Optional]
| | | | | | art 1-1
| | | | | | | @numberingOrg [Optional]
| | | | | | | @codeList [Optional]
| | | | | | | @listName [Optional]
| | | | | | | @listVersion [Optional]
| | | | | | pattern 0-1
| | | | | | | @numberingOrg [Optional]
| | | | | | | @codeList [Optional]
| | | | | | | @listName [Optional]
| | | | | | | @listVersion [Optional]
| | | | | | color 0-1
| | | | | | | @numberingOrg [Optional]
| | | | | | | @codeList [Optional]
| | | | | | | @listName [Optional]
| | | | | | | @listVersion [Optional]
| | | | | | added 0-9
| | | | | | | @numberingOrg [Optional]
| | | | | | | @addType [Optional]
| | | | | | description 0-unbounded
| | | | | | @In [Optional]
| | | | | - or -
| | | | | acsCode 1-2
| | | | | @numberingOrg [Optional]
| | | | | | art 1-1
| | | | | | | @numberingOrg [Optional]
| | | | | | | @codeList [Optional]
| | | | | | | @listName [Optional]
| | | | | | | @listVersion [Optional]
| | | | | | pattern 0-1
| | | | | | | @numberingOrg [Optional]
| | | | | | | @codeList [Optional]
| | | | | | | @listName [Optional]
| | | | | | | @listVersion [Optional]
| | | | | | color 0-1
| | | | | | | @numberingOrg [Optional]
| | | | | | | @codeList [Optional]
| | | | | | | @listName [Optional]
| | | | | | | @listVersion [Optional]
| | | | | | added 0-9
| | | | | | | @numberingOrg [Optional]
| | | | | | | @addType [Optional]
| | | | | | description 0-unbounded
| | | | | | @In [Optional]
| | | | | - or -
| | | | | garmentPartCode 1-2
| | | | | @numberingOrg [Optional]
```

```

| | | | | gPart 1-1
| | | | | mod 1-1
| | | | | @numberingOrg [Optional]
| | | | | @codeList [Optional]
| | | | | @listName [Optional]
| | | | | @listVersion [Optional]
| | | | | fabric 0-1
| | | | | @numberingOrg [Optional]
| | | | | @codeList [Optional]
| | | | | @listName [Optional]
| | | | | @listVersion [Optional]
| | | | | color 0-1
| | | | | @numberingOrg [Optional]
| | | | | @codeList [Optional]
| | | | | @listName [Optional]
| | | | | @listVersion [Optional]
| | | | | added 0-19
| | | | | @numberingOrg [Optional]
| | | | | @addType [Optional]
| | | | | size 0-1
| | | | | @numberingOrg [Optional]
| | | | | @codeList [Optional]
| | | | | @listName [Optional]
| | | | | @listVersion [Optional]
| | | | | description 0-unbounded
| | | | | @ln [Optional]

```

- or -

```

| | | | | garmentCode 1-2
| | | | | @numberingOrg [Optional]

```

- choose -

```

| | | | | garmentCodeB 1-1
| | | | | @numberingOrg [Optional]
| | | | | mod 1-1
| | | | | @numberingOrg [Optional]
| | | | | @codeList [Optional]
| | | | | @listName [Optional]
| | | | | @listVersion [Optional]
| | | | | fabric 0-1
| | | | | @numberingOrg [Optional]
| | | | | @codeList [Optional]
| | | | | @listName [Optional]
| | | | | @listVersion [Optional]
| | | | | color 0-1
| | | | | @numberingOrg [Optional]
| | | | | @codeList [Optional]
| | | | | @listName [Optional]
| | | | | @listVersion [Optional]
| | | | | garmentVariant 0-9
| | | | | variantType 1-1
| | | | | @numberingOrg [Optional]
| | | | | @codeList [Optional]
| | | | | @listName [Optional]
| | | | | @listVersion [Optional]
| | | | | variantCode 1-1
| | | | | @numberingOrg [Optional]
| | | | | @codeList [Optional]
| | | | | @listName [Optional]
| | | | | @listVersion [Optional]
| | | | | drop 0-1
| | | | | @numberingOrg [Optional]
| | | | | @codeList [Optional]
| | | | | @listName [Optional]
| | | | | @listVersion [Optional]
| | | | | size 0-1
| | | | | @numberingOrg [Optional]
| | | | | @codeList [Optional]
| | | | | @listName [Optional]
| | | | | @listVersion [Optional]

```





									qualityLevel 0-1
									@numberingOrg [Optional]
									@codeList [Optional]
									@listName [Optional]
									@listVersion [Optional]
									<b>itemIdentification 1-unbounded</b>
									serialN 1-9
									@numberingOrg [Optional]
									@idQualifier [Optional]
									note 0-unbounded
									@numberingOrg [Optional]
									@codeList [Optional]
									@noteLabel [Optional]
									<b>composition 0-1</b>
									<b>garmentCompos 0-1</b>
									percCompos 1-99
									@fibre [Required]
									@materialSource [Optional]
									@recyclingProcessMethod [Optional]
									@percSourcesRenewable [Optional]
									description 0-unbounded
									@ln [Optional]
									unitOfMeasure 0-99
									@numberingOrg [Optional] [Default= EB]
									@codeList [Optional] [Default= <a href="http://www.ebiz.enea.it/moda-ml/repository/codelist/v2013-1/gc_NT7.xml">http://www.ebiz.enea.it/moda-ml/repository/codelist/v2013-1/gc_NT7.xml</a> ]
									@listName [Optional] [Default= NT7]
									@listVersion [Optional]
									@measureQualifier [Optional]
									<b>measureConversion 0-99</b>
									unitOfSourceMeasure 1-1
									@numberingOrg [Optional] [Default= EB]
									@codeList [Optional] [Default= <a href="http://www.ebiz.enea.it/moda-ml/repository/codelist/v2013-1/gc_NT7.xml">http://www.ebiz.enea.it/moda-ml/repository/codelist/v2013-1/gc_NT7.xml</a> ]
									@listName [Optional] [Default= NT7]
									@listVersion [Optional]
									@measureQualifier [Optional]
									unitOfTargetMeasure 1-1
									@numberingOrg [Optional] [Default= EB]
									@codeList [Optional] [Default= <a href="http://www.ebiz.enea.it/moda-ml/repository/codelist/v2013-1/gc_NT7.xml">http://www.ebiz.enea.it/moda-ml/repository/codelist/v2013-1/gc_NT7.xml</a> ]
									@listName [Optional] [Default= NT7]
									@listVersion [Optional]
									@measureQualifier [Optional]
									conversionRate 1-1
									<b>productDim 0-1</b>
									length 1-1
									@um [Required]
									width 0-1
									@um [Required]
									height 0-1
									@um [Required]
									<b>packages 0-1</b>
									@packageLevel [Optional]
									- choose -
									packageText 1-1
									- or -
									package 1-1
									- end choose -
									packageModelCode 0-1
									@numberingOrg [Optional]
									description 0-unbounded
									@ln [Optional]
									<b>packageDim 0-1</b>
									length 1-1
									@um [Required]
									width 0-1
									@um [Required]

```

| | | | | | height 0-1
| | | | | | @um [Required]
| | | | | | handlingChar 0-1
- choose -
| | | | | | yarnPack 0-1
| | | | | | yarnReel 1-1
| | | | | | @reelType [Required]
| | | | | | @reelMat [Optional]
| | | | | | yarnReelID 0-1
| | | | | | @um [Required]
| | | | | | yarnReelH 0-1
| | | | | | @um [Required]
| | | | | | yarnConeAngle 0-1
| | | | | | yarnReelQty 0-2
| | | | | | @um [Required]
| | | | | | label 0-1
| | | | | | labelWrit 0-1
| | | | | | yarnInWrap 0-1
| | | | | | yarnReelWrap 1-1
| | | | | | label 0-1
| | | | | | labelWrit 0-1
- choose -
| | | | | | yarnOutWrapText 0-1
- or -
| | | | | | yarnOutWrap 0-1
- end choose -
- or -
| | | | | | piecePack 0-1
- choose -
| | | | | | piecePackText 1-1
- or -
| | | | | | pieceInnWrap1 1-1
| | | | | | pieceInnWrap2 0-1
| | | | | | pieceOutWrap 0-1
- end choose -
- or -
| | | | | | acsPack 0-1
- choose -
| | | | | | acsPackCode 1-1
| | | | | | @numberingOrg [Optional]
| | | | | | @codeList [Optional]
| | | | | | @listName [Optional]
| | | | | | @listVersion [Optional]
- or -
| | | | | | acsPackText 1-1
- end choose -
- or -
| | | | | | garPack 0-1
- choose -
| | | | | | garPackCode 1-1
| | | | | | @numberingOrg [Optional]
| | | | | | @codeList [Optional]
| | | | | | @listName [Optional]
| | | | | | @listVersion [Optional]
- or -
| | | | | | garPackText 1-1
- end choose -
- end choose -
| | | | | | sortableIndicator 0-1
| | | | | | stackabilityLevel 0-1
| | | | | | handlingType 0-1
| | | | | | @In [Optional]
| | | | | | volume 0-1
| | | | | | @um [Required]
| | | | | | netWeight 0-1
| | | | | | @um [Required]
| | | | | | grossWeight 0-1
| | | | | | @um [Required]

```

					note 0-99
					@numberingOrg [Optional]
					@codeList [Optional]
					@noteLabel [Optional]
					itemsPerPackage 0-1
					@um [Required]
					minItemsPerPackage 0-1
					@um [Required]
					fillingCriterion 0-9
					@progr [Optional]
					packageQty 0-1
					packageN 0-unbounded
					@numberingOrg [Optional]
					@packageContainerN [Optional]
					<b>EPCList 0-1</b>
					EPC 1-unbounded
					@numberingOrg [Optional]
					@TID [Optional]
					extendedDescription 0-unbounded
					@ln [Optional]
					<b>marketPrice 0-unbounded</b>
					catalogPrice 1-1
					@um [Required]
					@minQty [Optional]
					@currency [Optional]
					@garmentMarket [Optional]
					@maxQty [Optional]
					<b>allowanceCharge 0-9</b>
					@um [Optional]
					@VAT [Optional]
					@minQty [Optional]
					@currency [Optional]
					@maxQty [Optional]
					@isCharge [Optional]
					- choose -
					AC_category 1-1
					- or -
					AC_categoryText 1-1
					- end choose -
					- choose -
					AC_percent 1-1
					- or -
					AC_amount 1-1
					@currency [Optional]
					- end choose -
					<b>dtScheme 0-1</b>
					@taxType [Required]
					taxCategory 0-1
					taxRate 0-1
					legalRef 0-1
					@numberingOrg [Optional]
					@codeList [Optional]
					@listName [Optional]
					@listVersion [Optional]
					note 0-99
					@numberingOrg [Optional]
					@codeList [Optional]
					@noteLabel [Optional]
					<b>geographicArea 0-9</b>
					- choose -
					geographicAreaCode 1-1
					- or -
					geographicAreaText 1-1
					- end choose -
					<b>allowanceCharge 0-9</b>
					@um [Optional]
					@VAT [Optional]
					@minQty [Optional]

```

| | | | @currency [Optional]
| | | | @maxQty [Optional]
| | | | @isCharge [Optional]
| | | | - choose -
| | | | | AC_category 1-1
| | | | | - or -
| | | | | AC_categoryText 1-1
| | | | | - end choose -
| | | | | - choose -
| | | | | AC_percent 1-1
| | | | | - or -
| | | | | AC_amount 1-1
| | | | | @currency [Optional]
| | | | | - end choose -
| | | | | dtScheme 0-1
| | | | | @taxType [Required]
| | | | | taxCategory 0-1
| | | | | taxRate 0-1
| | | | | legalRef 0-1
| | | | | @numberingOrg [Optional]
| | | | | @codeList [Optional]
| | | | | @listName [Optional]
| | | | | @listVersion [Optional]
| | | | | note 0-99
| | | | | @numberingOrg [Optional]
| | | | | @codeList [Optional]
| | | | | @noteLabel [Optional]
| | | | | garComInfo 0-1
| | | | | @endUse [Optional]
| | | | | season 0-1
| | | | | @numberingOrg [Optional]
| | | | | @codeList [Optional]
| | | | | @listName [Optional]
| | | | | @listVersion [Optional]
| | | | | brand 0-1
| | | | | @numberingOrg [Optional]
| | | | | @codeList [Optional]
| | | | | @listName [Optional]
| | | | | @listVersion [Optional]
| | | | | productLine 0-1
| | | | | @numberingOrg [Optional]
| | | | | @codeList [Optional]
| | | | | @listName [Optional]
| | | | | @listVersion [Optional]
| | | | | project 0-1
| | | | | operationalCode 0-19
| | | | | @numberingOrg [Optional]
| | | | | @codeList [Optional]
| | | | | @listName [Optional]
| | | | | @listVersion [Optional]
| | | | | @codeQualifier [Optional]
| | | | | deliveryDate 0-1
| | | | | @dateForm [Optional]
| | | | | specDate 0-1
| | | | | @dateForm [Optional]
| | | | | - choose -
| | | | | yarnPack 0-1
| | | | | | yarnReel 1-1
| | | | | | @reelType [Required]
| | | | | | @reelMat [Optional]
| | | | | | yarnReelD 0-1
| | | | | | @um [Required]
| | | | | | yarnReelH 0-1
| | | | | | @um [Required]
| | | | | | yarnConeAngle 0-1
| | | | | | yarnReelQty 0-2
| | | | | | @um [Required]
| | | | | | label 0-1

```

```

| | | | | labelWrit 0-1
| | | | | yarnInWrap 0-1
| | | | | | yarnReelWrap 1-1
| | | | | | label 0-1
| | | | | | labelWrit 0-1
| | | | | - choose -
| | | | | | yarnOutWrapText 0-1
| | | | | - or -
| | | | | | yarnOutWrap 0-1
| | | | | - end choose -
| | | | | - or -
| | | | | piecePack 0-1
| | | | | - choose -
| | | | | | piecePackText 1-1
| | | | | - or -
| | | | | | pieceInnWrap1 1-1
| | | | | | pieceInnWrap2 0-1
| | | | | | pieceOutWrap 0-1
| | | | | - end choose -
| | | | | - or -
| | | | | acsPack 0-1
| | | | | - choose -
| | | | | | acsPackCode 1-1
| | | | | | | @numberingOrg [Optional]
| | | | | | | @codeList [Optional]
| | | | | | | @listName [Optional]
| | | | | | | @listVersion [Optional]
| | | | | - or -
| | | | | | acsPackText 1-1
| | | | | - end choose -
| | | | | - or -
| | | | | garPack 0-1
| | | | | - choose -
| | | | | | garPackCode 1-1
| | | | | | | @numberingOrg [Optional]
| | | | | | | @codeList [Optional]
| | | | | | | @listName [Optional]
| | | | | | | @listVersion [Optional]
| | | | | - or -
| | | | | | garPackText 1-1
| | | | | - end choose -
| | | | | - end choose -
| | | | | | note 0-99
| | | | | | | @numberingOrg [Optional]
| | | | | | | @codeList [Optional]
| | | | | | | @noteLabel [Optional]
| | | | | | dtScheme 0-1
| | | | | | | @taxType [Required]
| | | | | | | taxCategory 0-1
| | | | | | | taxRate 0-1
| | | | | | | legalRef 0-1
| | | | | | | | @numberingOrg [Optional]
| | | | | | | | @codeList [Optional]
| | | | | | | | @listName [Optional]
| | | | | | | | @listVersion [Optional]
| | | | | | | note 0-99
| | | | | | | | @numberingOrg [Optional]
| | | | | | | | @codeList [Optional]
| | | | | | | | @noteLabel [Optional]
| | | | | | note 0-99
| | | | | | | @numberingOrg [Optional]
| | | | | | | @codeList [Optional]
| | | | | | | @noteLabel [Optional]
| | | | | note 0-99
| | | | | | @numberingOrg [Optional]
| | | | | | @codeList [Optional]
| | | | | | @noteLabel [Optional]

```

## 2.2 Detailed description of document elements

Following tables show all elements (complex and simple) used in this document. Description includes: 1) element's information: xml tag, name, brief description, data type and syntax constraints; 2) information about use of the element in a particular position in the document: xpath and possible associated notes.

### 2.2.1 Complex elements (Aggregate Business Information Entities)

Complex elements are those elements whose content is composed of other elements (childs).Complex elements are alphabetically ordered.

<b>acsCode</b>	full codification identifying an accessory product usually coupled with garment or other fashion product
<b>acsPack</b>	type of wrapping or packing of the accessory
<b>allowanceCharge</b>	Allowances and Charges related to an Order or a contract
<b>attachment</b>	an attached document. An attachment can refer to an external document or be included with the document being exchanged
<b>buyer</b>	details of the Buyer (party that buys the good or service that is object of the current collaborative process) - base type: Nad,
<b>composition</b>	Composition of a garment product or of a part of it
<b>csRange</b>	range of color-size for a fashion article
<b>deliveryLocation</b>	data relating to a place of delivery - base type: Nad,
<b>despatchLocation</b>	data relating to a place of despatch - base type: Nad,
<b>dtScheme</b>	set of data usable to declare the duty or tax applied
<b>EPCList</b>	list of identifiers used for tracing a physical item with RFID technology
<b>externalReference</b>	details about an external object, such as a document stored at a remote location
<b>fashionProd</b>	identification of the fashion product or its part (fabric, yarn, accessory, final product or part of it, ...).
<b>FCbody</b>	body of the document FASHION CATALOGUE
<b>FCgroup</b>	Articles grouping of fashion products or their parts for catalogue.
<b>FCheader</b>	header of the document FASHION CATALOGUE
<b>FCitem</b>	Details of a fashion product or component (i.e. fabric, yarn, accessory) for fashion catalogue
<b>garComInfo</b>	miscellaneous commercial information.
<b>garmentCategory</b>	classification of a garment article
<b>garmentCode</b>	codification of the garment product
<b>garmentCodeA</b>	codification of the garment product- type A
<b>garmentCodeB</b>	codification of the garment product - type B
<b>garmentCompos</b>	Quantitative composition of a garment product (of its part)
<b>garmentPartCode</b>	codification of the component or part of a fashion article
<b>garmentVariant</b>	garment product variant
<b>garPack</b>	the packaging mode of the item or a part of it.

<b>geoCoordinates</b>	geographical coordinates
<b>geographicArea</b>	identification of a geographic area - base type: string,
<b>goodsClassification</b>	goods classification of the item.
<b>handlingChar</b>	features of an item (item or package) useful for its transport and warehouse management.
<b>insPayment</b>	payment details for payment by installments
<b>itemIdentification</b>	serial identification of a product unit
<b>itemsList</b>	list of the single product units
<b>marketPrice</b>	price shown for a specific market catalogue
<b>measureConversion</b>	Details to convert two different unit of measure.
<b>packageDim</b>	dimensions of a transport package
<b>packages</b>	describes the composition of the transport packaging. Each element corresponds to a type of package: type, quantity, hierarchic level, list of identifiers of the single packages
<b>payment</b>	payment details for payment all in one
<b>picture</b>	picture; image features and its representation or link to it - base type: ,
<b>piecePack</b>	type of wrapping or packing of the fabric pieces
<b>productDim</b>	Dimensions of an object.
<b>refDoc</b>	identification of a document and of an item thereof, to which the message makes reference
<b>sizeMatrix</b>	size matrix of an apparel product
<b>sizeRow</b>	size matrix row of an apparel product
<b>supplier</b>	details of the Supplier (party that supplies the good or service that is object of the current collaborative process) - base type: Nad,
<b>terms</b>	details of the commercial obligations for payment and delivery
<b>texCode</b>	full codification of the textile product
<b>thirdParty</b>	identification and details of the Third Party, different from Sender and Receiver of the document - base type: Nad,
<b>trade</b>	general terms of trade for the specified supply
<b>transInfo</b>	details of transport: mode, carrier and delivery place
<b>yarnCode</b>	full codification of a yarn product
<b>yarnInWrap</b>	details specifying the inner wrapping of a yarn product
<b>yarnPack</b>	details of type of presentation used for the yarn
<b>yarnReel</b>	details of the packaging of a yarn product (bobbin and reel,...)

### 2.2.2 Simple elements (Basic Business Information Entities)

Simple elements are those elements whose content is characterized by a data type plus a domain of possible values. Simple elements are alphabetically ordered.



AC_amount	amount of an Allowance or Charge - base type: decimal, fraction digits: 2,
AC_category	coded specification of an Allowance or Charge - base type: string, cod. table: T41 <a href="http://www.ebiz.enea.it/moda-ml/repository/codelist/draft/gc_T41.xml">http://www.ebiz.enea.it/moda-ml/repository/codelist/draft/gc_T41.xml</a>
AC_categoryText	free text description of an Allowance or Charge - base type: string, max length: 250,
AC_percent	amount of an Allowance or Charge as a percentage (always non negative value) - base type: decimal, max inclusive: 100, fraction digits: 2,
acsPackCode	code specifying the type of wrapping or packing used for the accessory - base type: string,
acsPackText	free text specifying the type of wrapping or packing used for the accessory - base type: string, max length: 250,
added	additional code of the product (complementing the formers) - base type: string, max length: 80,
additionalComponentCode	an additional code to identify a fashion product or a part of it (it is a way to codify the item, but it is not one of the codes to identify it). It is not a serial identifier. - base type: string,
additionalIdentifier	additional identification code of a Party, for example customs registries or others - base type: string, max length: 15,
@addType	qualifier of the additional coding of a product - base type: string, cod. table: T44 <a href="http://www.ebiz.enea.it/moda-ml/repository/codelist/draft/gc_T44.xml">http://www.ebiz.enea.it/moda-ml/repository/codelist/draft/gc_T44.xml</a>
alternativeText	alternative text of the picture - base type: string, max length: 255,
art	article number of the product - base type: string, max length: 80,
artGroup	code identifying a class of products - base type: string, max length: 40,
artGroupName	description of a class of products - base type: string, max length: 80,
artSex	code identifying the sex for which a fashion product is intended - base type: string, max length: 15,
artSubGroup	code identifying a sub-class of products - base type: string, max length: 40,
binaryObject	a binary large object containing an attached document, Coding 'base64Binary' is recommended. - base type: base64Binary,
brand	A brand name. - base type: string,
carrier	identification of the transport carrier - base type: string, max length: 40,
catalogPrice	price shown in the Supplier's Catalogue - base type: decimal, fraction digits: 2,
@characterSet	the character set of the binary object (examples UTF-8, UTF-16, Windows-1252, ISO-8859-7,..) - base type: normalizedString,
characterSetCode	the character set of an external document (examples UTF-8, UTF-16, Windows-1252, ISO-8859-7,..) - base type: normalizedString,
city	name of the city (town, village)

	- base type: string, max length: 40,
class	a code indicating the category (macro-class, class or sub-class) of a commodity classification system the article belongs to. - base type: string,
@codeList	it specifies the URL where the list of codes used to make an instance of the element can be found - base type: string, max length: 255,
@codeQualifier	operational code qualifier: it states if the code is related to a project, an event, an initiative, a sales channel, a management type (eg CITES), ..... - base type: string, cod. table: NT43 <a href="http://www.ebiz.enea.it/moda-ml/repository/codelist/draft/gc_NT43.xml">http://www.ebiz.enea.it/moda-ml/repository/codelist/draft/gc_NT43.xml</a>
color	colour number of the product, when not included in the model or fabric code - base type: string, max length: 15,
conversionRate	Conversion parameter between two sizes. - base type: decimal,
country	code of the nation - base type: string, cod. table: T10 <a href="http://www.ebiz.enea.it/moda-ml/repository/codelist/draft/gc_T10.xml">http://www.ebiz.enea.it/moda-ml/repository/codelist/draft/gc_T10.xml</a>
@currency	currency in which a specified monetary data is expressed - base type: string, cod. table: T9 <a href="http://www.ebiz.enea.it/moda-ml/repository/codelist/draft/gc_T9.xml">http://www.ebiz.enea.it/moda-ml/repository/codelist/draft/gc_T9.xml</a>
@dateForm	format used for the date - base type: string, cod. table: NT29 <a href="http://www.ebiz.enea.it/moda-ml/repository/codelist/draft/gc_NT29.xml">http://www.ebiz.enea.it/moda-ml/repository/codelist/draft/gc_NT29.xml</a>
delEffectiveDate	estimated date for actual delivery, which may be different from what is foreseen by the agreements between the parties. Formatted according to one of the patterns indicated by the dateForm attribute: YYYY-MM-DD, YYYY-MM-DD:HH-MM or YYYY-WW. - base type: string,
deliveryDate	date of delivery of goods, requested or promised in the purchase process, according to one of the patterns YYYY-MM-DD, YYYY-MM-DD:HH-MM or YYYY-WW. - base type: string,
deliveryPlace	place of delivery of goods, ultimate or related to a given leg - base type: string, max length: 250,
dept	name or code of a department - base type: string, max length: 40,
description	free text description. The content of the element must be unique, it might be translated and repeated into more languages (thus no more than one instance for each language). - base type: string, max length: 250,
despatchDate	date of despatch of goods, requested or promised in the purchase process, according to one of the patterns YYYY-MM-DD, YYYY-MM-DD:HH-MM or YYYY-WW. - base type: string,
despatchPlace	place of despatch of goods, origin or related to a given leg - base type: string, max length: 250,
docDate	date of issue of the referenced document, according to one of the patterns YYYY-MM-DD, YYYY-MM-DD:HH-MM or YYYY-WW. - base type: string,
docID	identification number of the referenced document - base type: string, max length: 80,
@docType	type or class to which the referenced document belongs - base type: string, cod. table: T21 <a href="http://www.ebiz.enea.it/moda-ml/repository/codelist/draft/gc_T21.xml">http://www.ebiz.enea.it/moda-ml/repository/codelist/draft/gc_T21.xml</a>
drop	drop number of the garment - base type: string, max length: 15,

@email	electronic mail address of the contact person within a Party - base type: string, max length: 250,
@encoding	specifies the decoding algorithm of the binary object - base type: normalizedString,
encodingCode	the encoding/decoding algorithm used with the external object (example is 'base64Binary') - base type: normalizedString,
@endUse	specifies the final use of the fabric - base type: string, cod. table: NT4 <a href="http://www.ebiz.enea.it/moda-ml/repository/codelist/draft/gc_NT4.xml">http://www.ebiz.enea.it/moda-ml/repository/codelist/draft/gc_NT4.xml</a>
EPC	serial identifier used for tracing a physical item with RFID technology - base type: string,
extendedDescription	extended free text description. The content of the element must be unique, it might be translated and repeated into more languages (thus no more than one instance for each language). This element might contain HTML code (must be managed as CDATA) - base type: string,
fabric	fabric number of the garment - base type: string, max length: 15,
@fax	fax number of the contact person within a Party - base type: string, max length: 35,
@fibre	type of fibre used in a textile product - base type: string, cod. table: T19 <a href="http://www.ebiz.enea.it/moda-ml/repository/codelist/draft/gc_T19.xml">http://www.ebiz.enea.it/moda-ml/repository/codelist/draft/gc_T19.xml</a>
fileName	unique identifier (name) of the file - base type: string, max length: 255,
fillingCriterion	the assortment criterion to fill the specified kind of package: it states the homogeneity criterion (eg: "model", "color", "size"). - base type: string, cod. table: NT51 <a href="http://www.ebiz.enea.it/moda-ml/repository/codelist/draft/gc_NT51.xml">http://www.ebiz.enea.it/moda-ml/repository/codelist/draft/gc_NT51.xml</a>
@finDiscount	financial discount rate applied for payment by the date specified - base type: decimal, min inclusive: 0, max inclusive: 100, fraction digits: 2,
@finSurcharge	financial surcharge rate applied for payment after the date specified - base type: decimal, min inclusive: 0, max inclusive: 100, fraction digits: 2,
@format	the format of the binary content (examples xml, pdf, doc,...) - base type: string,
formatCode	the format of the external object (examples xml, pdf, doc,...) - base type: normalizedString,
@garmentMarket	market segment for the product - base type: string, min length: 0, max length: 255,
garPackCode	a code specifying the type of packaging used for the item. - base type: string,
garPackText	a free text specifying the type of packaging used for the item. - base type: string,
geographicAreaCode	code identifying a geographic area - base type: string, cod. table: T10 <a href="http://www.ebiz.enea.it/moda-ml/repository/codelist/draft/gc_T10.xml">http://www.ebiz.enea.it/moda-ml/repository/codelist/draft/gc_T10.xml</a>
geographicAreaText	text identifying a geographic area - base type: string,
@geoReferenceSystem	georeference system adopted for the coordinate (in example wgs84 with decimal degree or degree with minute and seconds) - base type: string,
gPart	code specifying the type of component or part of a fashion product (sleeve, neck, ...)

	- base type: string, cod. table: T48 <a href="http://www.ebiz.enea.it/moda-ml/repository/codelist/draft/gc_T48.xml">http://www.ebiz.enea.it/moda-ml/repository/codelist/draft/gc_T48.xml</a>
grossWeight	the gross weight, declared for transport or customs purpose - base type: decimal, min inclusive: 0, fraction digits: 2,
handlingType	information to handle the item (eg "breakable"). - base type: string,
height	effective height of a specified object - base type: decimal, min inclusive: 0, fraction digits: 2,
id	primary identification code of a Party; it is recommended the format: nation code (ISO 3166) + VAT identification number (11 crt), with the qualifier "numberingOrg"= MF - base type: string, max length: 15,
@idQualifier	Qualification of the identifier. - base type: string,
incoTerm	specification of the terms of trade (INCOTERMS) - base type: string, cod. table: T3 <a href="http://www.ebiz.enea.it/moda-ml/repository/codelist/draft/gc_T3.xml">http://www.ebiz.enea.it/moda-ml/repository/codelist/draft/gc_T3.xml</a>
incoTermText	free text specifying the terms of trade (incoterm, location) - base type: string, max length: 250,
@isCharge	Indicates if the element to which it refers is a charge (true = charge, false = allowance) - base type: boolean,
@isURL	it indicates if the referred element is an URL (true) or not (false) - base type: boolean,
itemID	number of the line/item of the referenced document - base type: string, max length: 40,
itemsPerPackage	the quantity of items that can be contained in a package. - base type: decimal,
label	indicates if the physical object specified has to be labelled - base type: boolean,
labelWrit	text that must be written on the lable of a specified physical object when its customizati on is required - base type: string, max length: 350,
legalName	legal name - base type: string, max length: 250,
legalRef	legal reference of the duty or tax or fee category - base type: string,
length	effective length of a specified object - base type: decimal, min inclusive: 0, fraction digits: 2,
lineID	unique identifier of the line item of the business document; it is set by the role that prod uces the document. - base type: string, max length: 30,
lineN	number of the line item of the present message (xml document); it is set by the role tha t produces the document. Usually it is a progressive number, but not always. - base type: positiveInteger, min inclusive: 1, max inclusive: 9999,
@listName	the name of the list of codes used to make an instance of the element (it might be thou ght as descriptive element, i.e. 'fabric printing technologies', or not, i.e. "T264") - base type: string, max length: 40,
@listVersion	it specifie the version of the list of codes used to make an instance of the element - base type: string, max length: 6,
@ln	Language code. - base type: string, cod. table: NT60 <a href="http://www.ebiz.enea.it/moda-ml/repository/codelist/draft/gc_NT60.xml">http://www.ebiz.enea.it/moda-ml/repository/codelist/draft/gc_NT60.xml</a>

location	specification of a location - base type: string, max length: 40,
@logo	company logo (URL of the image jpeg or gif). It is recommended that the width of the image does not exceed 640 pixel. - base type: string, max length: 255,
@LRI	attribute usable to format a string according to a customized User rule (local rule) - base type: string, cod. table: NT3 <a href="http://www.ebiz.enea.it/moda-ml/repository/codelist/draft/gc_NT3.xml">http://www.ebiz.enea.it/moda-ml/repository/codelist/draft/gc_NT3.xml</a>
macroClass	a code indicating the category (macro-class, class or sub-class) of a commodity classification system the article belongs to. - base type: string,
@materialSource	Indicates whether the material is virgin or comes from recycling or reuse processes - base type: string, cod. table: T306 <a href="http://www.ebiz.enea.it/moda-ml/repository/codelist/draft/gc_T306.xml">http://www.ebiz.enea.it/moda-ml/repository/codelist/draft/gc_T306.xml</a>
@maxQty	maximum product quantity - base type: decimal, min inclusive: 0, fraction digits: 2,
@measureQualifier	Unit of measure qualifier. - base type: string,
@mime	the mime type of the binary object - base type: normalizedString,
mimeCode	mime type of the external object - base type: normalizedString,
minItemsPerPackage	the minimum quantity of items for the specified kind of package. - base type: decimal, min inclusive: 0,
@minQty	minimum product quantity - base type: decimal, min inclusive: 0, fraction digits: 2,
mod	model number of the garment - base type: string, max length: 15,
msgCurrency	currency used to express the monetary amounts of the message - base type: string, cod. table: T9 <a href="http://www.ebiz.enea.it/moda-ml/repository/codelist/draft/gc_T9.xml">http://www.ebiz.enea.it/moda-ml/repository/codelist/draft/gc_T9.xml</a>
msgDate	date of issue of the present message (xml document), according to one of the patterns YYYY-MM-DD, YYYY-MM-DD:HH-MM or YYYY-WW. - base type: string,
msgID	key identifier of the business document in the information system of the issuing Party. In case of more despatches of the same business document, it is unchanged. - base type: string, max length: 35,
msgN	identification number given to the message (xml document) by its issuer. In case of more despatches of the same business document, it changes. - base type: string, max length: 35,
netWeight	the net weight declared for transport or customs purpose - base type: decimal, min inclusive: 0, fraction digits: 2,
nominalHeight	nominal height of a specified object - base type: decimal, min inclusive: 0, fraction digits: 2,
nominalWidth	nominal width of a specified object - base type: decimal, min inclusive: 0, fraction digits: 2,
note	free text or structured (computer processing) note. For note structuring use the attributes "noteLabel" and "codelist" - base type: string, max length: 350,
@noteLabel	subject qualifier of a note - base type: string, max length: 35,
@numberingOrg	code specifying the organisation who has created or owns the coding or numbering system

	stem - base type: string, cod. table: NT6 <a href="http://www.ebiz.enea.it/moda-ml/repository/codelist/draft/gc_NT6.xml">http://www.ebiz.enea.it/moda-ml/repository/codelist/draft/gc_NT6.xml</a>
operationalCode	operational code: it is the code of a project, an event, an initiative, a sales channel, a management type (eg CITES), ... the document, or product, is connected with. - base type: string,
package	code specifying the type of transport package - base type: string, cod. table: T11 <a href="http://www.ebiz.enea.it/moda-ml/repository/codelist/draft/gc_T11.xml">http://www.ebiz.enea.it/moda-ml/repository/codelist/draft/gc_T11.xml</a>
@packageContainerN	reference usable to indicate the outer package containing this package - base type: string, max length: 40,
@packageLevel	level used to indicate the hierarchical structure of the packages (from outer to inner levels) - base type: positiveInteger, min inclusive: 1, max inclusive: 9,
packageModelCode	a code (eg a barcode) identifying the type of packaging - base type: string,
packageN	serial number used to identify a transport package - base type: string, max length: 40,
packageQty	quantity of the specified transport packages - base type: positiveInteger,
packageText	denomination of the type of transport package (text) - base type: string, max length: 80,
@part	percent fraction - base type: decimal, min inclusive: 1, max inclusive: 100, fraction digits: 2,
pattern	pattern/design number of the product, when not included in the article code - base type: string, max length: 15,
payMode	way or means of payment - base type: string, cod. table: T2 <a href="http://www.ebiz.enea.it/moda-ml/repository/codelist/draft/gc_T2.xml">http://www.ebiz.enea.it/moda-ml/repository/codelist/draft/gc_T2.xml</a>
payTerm	code specifying the terms or time by which the payment must be done - base type: string, cod. table: T1 <a href="http://www.ebiz.enea.it/moda-ml/repository/codelist/draft/gc_T1.xml">http://www.ebiz.enea.it/moda-ml/repository/codelist/draft/gc_T1.xml</a>
payTermText	free text specifying the terms by which the payment must be done (time/mode or means) - base type: string, max length: 250,
percCompos	fiber rate in the product composition - base type: decimal, min inclusive: 0, max inclusive: 100, fraction digits: 2,
@percSourcesRenewable	indicates the percentage of renewable sources - base type: decimal,
person	name of a person (e.g. contact person within an organization) - base type: string, max length: 40,
@phone	phone number of the contact person within a Party - base type: string, max length: 35,
pictureCode	picture code (it might be shared among more files) - base type: string, max length: 80,
pictureQualifier	qualifies the image from the business point of view (i.e. main image, detail image,...) - base type: string,
pictureUse	picture final use - base type: string, cod. table: NT72 <a href="http://www.ebiz.enea.it/moda-ml/repository/codelist/draft/gc_NT72.xml">http://www.ebiz.enea.it/moda-ml/repository/codelist/draft/gc_NT72.xml</a>
pieceInnWrap1	code specifying the type of inner wrapping/packing used for the fabric piece - base type: string, cod. table: T4

	<a href="http://www.ebiz.enea.it/moda-ml/repository/codelist/draft/gc_T4.xml">http://www.ebiz.enea.it/moda-ml/repository/codelist/draft/gc_T4.xml</a>
pieceInnWrap2	code sub-specifying the type of inner wrapping/packing used for the fabric piece - base type: string, cod. table: T5 <a href="http://www.ebiz.enea.it/moda-ml/repository/codelist/draft/gc_T5.xml">http://www.ebiz.enea.it/moda-ml/repository/codelist/draft/gc_T5.xml</a>
pieceOutWrap	code specifying the type of outer wrapping or packing used for the fabric piece - base type: string, cod. table: T6 <a href="http://www.ebiz.enea.it/moda-ml/repository/codelist/draft/gc_T6.xml">http://www.ebiz.enea.it/moda-ml/repository/codelist/draft/gc_T6.xml</a>
piecePackText	free text specifying the type of wrapping or packing used for the fabric piece - base type: string, max length: 250,
postCode	code defining the postal zone - base type: string, max length: 10,
prodServName	description of the product or service that either complements or substitutes its coding - base type: string, max length: 100,
productLine	the product line name of a fashion product. - base type: string,
@progr	progressive number in the sequence - base type: positiveInteger, min inclusive: 1,
project	code used to assign the items ordered (fabric pieces, accessories, garments...) to a specific project of the Client - base type: string, max length: 40,
@propulsionSystemCode	propulsion system type - base type: string, cod. table: NT324 <a href="http://www.ebiz.enea.it/moda-ml/repository/codelist/draft/gc_NT324.xml">http://www.ebiz.enea.it/moda-ml/repository/codelist/draft/gc_NT324.xml</a>
qty	net quantity of the article or object correlated, qualified by the function of the document (ordering, delivering, ..) and by the context - base type: decimal, min inclusive: 0, fraction digits: 2,
qualityLevel	the product quality level (first choice, second choice,...). - base type: string,
@recyclingProcessMethod	recycling process method - base type: string, cod. table: T307 <a href="http://www.ebiz.enea.it/moda-ml/repository/codelist/draft/gc_T307.xml">http://www.ebiz.enea.it/moda-ml/repository/codelist/draft/gc_T307.xml</a>
@reelMat	type of material of which a package for yarn is made - base type: string, cod. table: T30 <a href="http://www.ebiz.enea.it/moda-ml/repository/codelist/draft/gc_T30.xml">http://www.ebiz.enea.it/moda-ml/repository/codelist/draft/gc_T30.xml</a>
@reelType	type of package used for a yarn product - base type: string, cod. table: T29 <a href="http://www.ebiz.enea.it/moda-ml/repository/codelist/draft/gc_T29.xml">http://www.ebiz.enea.it/moda-ml/repository/codelist/draft/gc_T29.xml</a>
rendering	rendering information about the image - base type: string,
resolution	measure of spatial density of the picture - base type: string, max length: 255,
@resolutionType	it indicates the type of density of the picture - base type: string, cod. table: NT71 <a href="http://www.ebiz.enea.it/moda-ml/repository/codelist/draft/gc_NT71.xml">http://www.ebiz.enea.it/moda-ml/repository/codelist/draft/gc_NT71.xml</a>
@role	Third Party role qualifier - base type: string, cod. table: NT2 <a href="http://www.ebiz.enea.it/moda-ml/repository/codelist/draft/gc_NT2.xml">http://www.ebiz.enea.it/moda-ml/repository/codelist/draft/gc_NT2.xml</a>
routeLength	length of a route - base type: decimal, min inclusive: 0, fraction digits: 2,
season	sale season; defined as: season (1 crt) + year (4 crt) - season: S/S=1 A/W=2 Spring=3 Summer=4 Autumn=5 Winter=6: for more than four seasons use alphabetic sequence: 1st season=A 2nd season=B etc.etc. - base type: string, max length: 15,

@sender	qualifier that specifies the Party issuing of the document - base type: boolean,
serialN	serial number used for the identification of a physical unit - base type: string, max length: 250,
size	size number of a fashion product (knitwear, clothing, ..) - base type: string, max length: 15,
@sizeSystemBase	base of the size system - base type: string, cod. table: T423 <a href="http://www.ebiz.enea.it/moda-ml/repository/codelist/draft/gc_T423.xml">http://www.ebiz.enea.it/moda-ml/repository/codelist/draft/gc_T423.xml</a>
@sizeSystemID	the identifier of the size system. - base type: string,
@sizeSystemNat	nation or agency identifying the size system - base type: string, cod. table: T421 <a href="http://www.ebiz.enea.it/moda-ml/repository/codelist/draft/gc_T421.xml">http://www.ebiz.enea.it/moda-ml/repository/codelist/draft/gc_T421.xml</a>
@sizeSystemSeg	market segment identifying the size system - base type: string, cod. table: T422 <a href="http://www.ebiz.enea.it/moda-ml/repository/codelist/draft/gc_T422.xml">http://www.ebiz.enea.it/moda-ml/repository/codelist/draft/gc_T422.xml</a>
sortableIndicator	It states if the item can be automatically sorted. - base type: boolean,
specDate	date by which the referenced blanket order must receive full product specifications (e.g. : colour), according to one of the patterns YYYY-MM-DD, YYYY-MM-DD:HH-MM or YYY-WW. - base type: string,
stackabilityLevel	This value indicates the level at which the item can be stacked. - base type: integer,
street	street and building number identifying a location - base type: string, max length: 80,
subClass	a code indicating the category (macro-class, class or sub-class) of a commodity classification system the article belongs to. - base type: string,
subCountry	short name or code of the sub-country entity - base type: string, max length: 9,
subDept	name or code of a department - base type: string, max length: 40,
taxCategory	duty or tax or fee category - base type: string, cod. table: T62 <a href="http://www.ebiz.enea.it/moda-ml/repository/codelist/draft/gc_T62.xml">http://www.ebiz.enea.it/moda-ml/repository/codelist/draft/gc_T62.xml</a>
taxRate	duty or tax or fee percent rate - base type: string,
@taxType	duty or tax or fee type - base type: string, cod. table: T61 <a href="http://www.ebiz.enea.it/moda-ml/repository/codelist/draft/gc_T61.xml">http://www.ebiz.enea.it/moda-ml/repository/codelist/draft/gc_T61.xml</a>
@TID	serial number wired into the RFID chip - base type: string,
title	document title - base type: string,
transCondition	special condition of transport or special service requested to the Forwarder - base type: string, cod. table: T38 <a href="http://www.ebiz.enea.it/moda-ml/repository/codelist/draft/gc_T38.xml">http://www.ebiz.enea.it/moda-ml/repository/codelist/draft/gc_T38.xml</a>
transConditionText	free text description of the special condition of transport or special service requested to the Forwarder - base type: string, max length: 250,



transMeans	means of transport, in general or referred to a specific leg - base type: string, cod. table: T40 <a href="http://www.ebiz.enea.it/moda-ml/repository/codelist/draft/gc_T40.xml">http://www.ebiz.enea.it/moda-ml/repository/codelist/draft/gc_T40.xml</a>
transMode	way of transport, in general or referred to the specified leg - base type: string, cod. table: T8 <a href="http://www.ebiz.enea.it/moda-ml/repository/codelist/draft/gc_T8.xml">http://www.ebiz.enea.it/moda-ml/repository/codelist/draft/gc_T8.xml</a>
@transReason	reason for the transport - base type: string, cod. table: NT11 <a href="http://www.ebiz.enea.it/moda-ml/repository/codelist/draft/gc_NT11.xml">http://www.ebiz.enea.it/moda-ml/repository/codelist/draft/gc_NT11.xml</a>
@uid	unique element identifier within the xml document - base type: string,
@um	specification of the unit of measure - base type: string, cod. table: NT7 <a href="http://www.ebiz.enea.it/moda-ml/repository/codelist/draft/gc_NT7.xml">http://www.ebiz.enea.it/moda-ml/repository/codelist/draft/gc_NT7.xml</a>
unitOfMeasure	unit of measure. - base type: string,
unitOfSourceMeasure	unit of measure. - base type: string,
unitOfTargetMeasure	unit of measure. - base type: string,
uri	Uniform Resource Identifier (URI) that identifies the external object as an Internet resource - base type: normalizedString,
@useProfile	use profile to which the present document is compliant if it was agreed by the parties. It is suggested a URI with reference to the firms or the URL of the profile. - base type: string,
validityEnd	date by which the validity ends, according to one of the patterns YYYY-MM-DD, YYYY-MM-DD:HH-MM or YYYY-WW. - base type: string,
validityStart	date by which the validity starts, according to one of the patterns YYYY-MM-DD, YYYY-MM-DD:HH-MM or YYYY-WW. - base type: string,
variantCode	Code of variant used for fashion product. - base type: string,
variantType	Type of variant used for fashion product (examples: 'treatment', 'washing type', 'size class',...) - base type: string,
@VAT	VAT rate or code (DEPRECATED, use dtScheme element) - base type: string, cod. table: NT16 <a href="http://www.ebiz.enea.it/moda-ml/repository/codelist/draft/gc_NT16.xml">http://www.ebiz.enea.it/moda-ml/repository/codelist/draft/gc_NT16.xml</a>
@version	Dictionary version from which the instance has been created - base type: string, cod. table: NT100 <a href="http://www.ebiz.enea.it/moda-ml/repository/codelist/draft/gc_NT100.xml">http://www.ebiz.enea.it/moda-ml/repository/codelist/draft/gc_NT100.xml</a>
volume	effective volume of a specified object - base type: decimal, min inclusive: 0, fraction digits: 2,
width	effective width of a specified object - base type: decimal, min inclusive: 0, fraction digits: 2,
xGeoCoord	geographical coordinate x , corresponding to latitude - base type: decimal,
yarnConeAngle	tapering angle of the cone on which a yarn is reeled - base type: positiveInteger,
yarnOutWrap	code specifying the type of outer wrapping or packing of a yarn - base type: string, cod. table: T33

	<a href="http://www.ebiz.enea.it/moda-ml/repository/codelist/draft/gc_T33.xml">http://www.ebiz.enea.it/moda-ml/repository/codelist/draft/gc_T33.xml</a>
yarnOutWrapText	free text specifying the type of outer wrapping or packing of a yarn - base type: string, max length: 250,
yarnReelD	diameter of the bobbin used for a yarn product - base type: decimal, min inclusive: 0, fraction digits: 2,
yarnReelH	height of the bobbin used a yarn product - base type: decimal, min inclusive: 0, fraction digits: 2,
yarnReelQty	quantity of yarn (by weight or length) wound upon a bobbin - base type: decimal, min inclusive: 0, fraction digits: 2,
yarnReelWrap	type of wrapping in which a package of yarn is wrapped - base type: string, cod. table: T32 <a href="http://www.ebiz.enea.it/moda-ml/repository/codelist/draft/gc_T32.xml">http://www.ebiz.enea.it/moda-ml/repository/codelist/draft/gc_T32.xml</a>
yGeoCoord	geographical coordinate y , corresponding to longitude - base type: decimal,
zGeoCoord	geographical coordinate z , corresponding to altitude - base type: decimal,

## 2.3 Suggested best practices

**FASCatalog/FCheader/refDoc/docID (identification number of the referenced document)**

numberingOrg indicates the role that produced the document identifier (it is allowed to declare two different ones -e.g. customer and supplier - with two docID with different numberingOrg

**FASCatalog/FCbody/FCgroup/FCitem/refDoc/docID (identification number of the referenced document)**

numberingOrg indicates the role that produced the document identifier (it is allowed to declare two different ones -e.g. customer and supplier - with two docID with different numberingOrg

**FASCatalog/FCbody/FCgroup/refDoc/docID (identification number of the referenced document)**

numberingOrg indicates the role that produced the document identifier (it is allowed to declare two different ones -e.g. customer and supplier - with two docID with different numberingOrg

**FASCatalog/FCbody/FCgroup/FCitem/marketPrice/  
geographicArea/geographicAreaText (text identifying a geographic area)**

using a code (geographicAreaCode) is preferable when the area coincides with a state

**FASCatalog/FCheader/refDoc/attachment/externalReference/mimeType (mime type of the external object)**

Use coding from IANA <http://www.iana.org/assignments/media-types/media-types.xml>

**FASCatalog/FCbody/FCgroup/FCitem/picture/  
attachment/externalReference/mimeType (mime type of the external object)**

Use coding from IANA <http://www.iana.org/assignments/media-types/media-types.xml>

**FASCatalog/FCbody/FCgroup/picture/attachment/  
externalReference/mimeType (mime type of the external object)**

Use coding from IANA <http://www.iana.org/assignments/media-types/media-types.xml>

**FASCatalog/FCheader/picture/attachment/externalReference/mimeType (mime type of the external object)**

Use coding from IANA <http://www.iana.org/assignments/media-types/media-types.xml>

**FASCatalog/FCbody/FCgroup/refDoc/attachment/  
externalReference/mimeType (mime type of the external object)**

Use coding from IANA <http://www.iana.org/assignments/media-types/media-types.xml>

**FASCatalog/FCbody/FCgroup/FCitem/refDoc/  
attachment/externalReference/mimeType (mime type of the external object)**

Use coding from IANA <http://www.iana.org/assignments/media-types/media-types.xml>

**FASCatalog/FCbody/FCgroup/FCitem/fashionProd/  
csRange/sizeMatrix/sizeRow/itemsList/itemIdentification/serialN (serial number used for the identification of a physical unit)**

in the case of garment with RFID for anti-counterfeiting, RFID EPCGlobal for logistics and NFC for the customer experience there should be three serial elements with pairs of attributes numberingOrg/idQualifier: "CL"/"RFID", "GS1"/"RFID", "CL"/"NFC".

## 2.4 Enumeration tables

List of enumeration tables used in the XML document. You can find all the tables with the corresponding codes at:  
<http://www.ebiz.enea.it/eBIZ/imple/eBIZTCU-draft.asp?lingua=en&pag=6>

NT100 - eBIZ TCFUpstream version  
NT11 - transport causal  
NT16 - VAT rate or code  
NT2 - third party qualifier  
NT29 - format of a date  
NT3 - data format  
NT324 - propulsion system type  
NT4 - end use  
NT43 - operational code qualifier  
NT51 - Filling Criterion for Package homogeneity  
NT6 - coding system owner/issuer  
NT60 - language, codes from ISO 639-1 (subset)  
NT7 - unit of measure  
NT71 - picture resolution type  
NT72 - picture final use type  
T1 - terms of payment  
T10 - ISO3166 - Country  
T11 - transport package type  
T19 - fibre type  
T2 - Modes of payment  
T21 - type of document  
T29 - type of yarn package  
T3 - terms of delivery - IncoTerms  
T30 - support of yarn package - material  
T306 - material circularity attribute  
T307 - recycling process method  
T32 - yarn reel wrapping type  
T33 - yarn outer packing  
T38 - transport conditions  
T4 - fabric piece inner packing (wrapping) 1  
T40 - type of transport means  
T41 - type of Allowance or Charge  
T421 - size system: nationality  
T422 - size system: market segment  
T423 - size system: base  
T44 - additional code type  
T48 - garment part type  
T5 - fabric piece inner packing (wrapping) 2  
T6 - fabric piece outer packing  
T61 - duty or tax or fee type  
T62 - duty or tax or fee category  
T8 - Modes of Transport  
T9 - ISO4217 - Currency

## ACKNOWLEDGEMENT



This action is part of the TRICK project, which has received funding from Horizon 2020 research and innovation programme under grant agreement No. 958352 of the European Union.

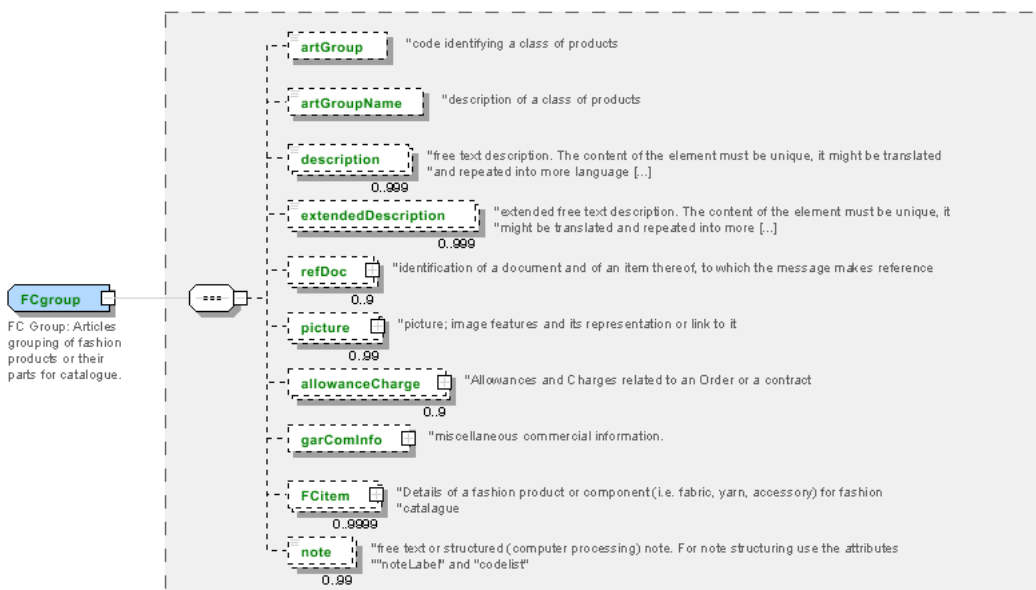
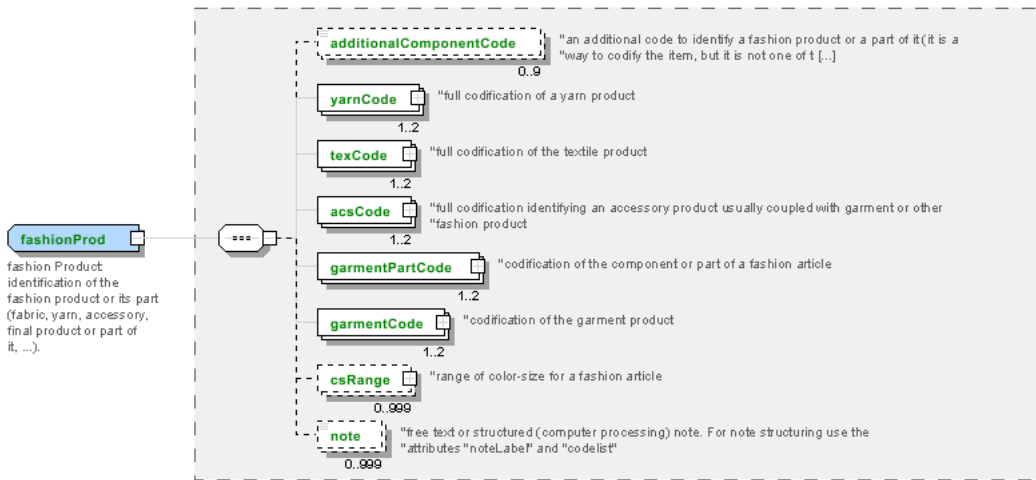
## DISCLAIMER

The content of this document represents the views of the authors only and is their sole responsibility; it cannot be considered to reflect the views of the European Commission or any other body of the European Union.

The European Commission does not accept any responsibility for use that may be made of the information it contains.

# Annex A

Representative images of the principal complex elements' structure.



**FCheader**  
 FC header:  
 header of the  
 document  
 FASHION  
 CATALOGUE

