



<http://www.ebiz-tcf.eu>

DRAFT

IMPLEMENTATION GUIDE
TRANSACTION "DOCUMENT AVAILABILITY ADVISE"

Version: draft

Date of release: 26/6/2023

Document code: TRC005

technical Documentation: <http://www.ebiz.enea.it>

XML Schemas repository: <http://www.ebiz.enea.it/moda-ml/repository/schema/draft/default.asp>

Guides repository: <http://www.ebiz.enea.it/moda-ml/repository/guide/draft/default.asp>

Guide filename: TRC005-eBIZ-DocumentAvailabilityAdvise.pdf

0. PREMISE

This document contains a proposal for the updating and extension of eBIZ specifications starting from the eBIZ version 2018. Under the name of 'Draft version' it is reported the result of an extensive work of analysis and consultation aimed at developing and maintaining eBIZ specifications.

In particular, the content of this proposal is the result of various activities, mainly those carried out within the framework of the **TRICK project** funded by the European Commission: grant agreement 958352, call H2020-LOW-CARBON-CIRCULAR-INDUSTRIES-2020 / H2020-LCCI-2020-EASME-twostage.

The technical contents are backwards compatible with the latest official published version, with the exclusion of the totally new concepts added explicitly for the version that are thought as incremental evolution of the knowledge base.

1. BUSINESS DESCRIPTION

1.1 Scope

This guide aims to illustrate to fashion companies the standard XML format of the document type "NEW DOCUMENT ADVISE", providing instructions for its use in the context of a TRACEABILITY SYSTEM involving Fashion Manufacturers, their customers, third parties and in case customs authorities, eBusiness and eCommerce platforms. All the rules necessary for the construction and validation of the document are expressed through a specific XML schema, which is presented in detail in the paragraph "Implementation Guide".

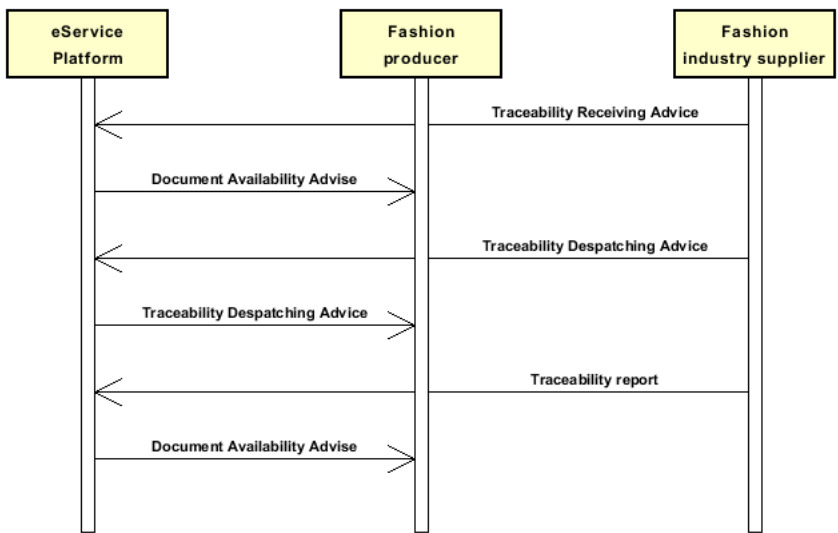
1.2 Generalities

This document is intended to inform a party, be it a company or a service platform, that one or more (new) documents are available and to provide some metadata, including information on where they can be found. For each reported document, among the metadata, there is a flag that indicates whether the availability of the document requires taking some specific action, indications on any document to which it refers and finally an indication of traceable objects to which it refers.

The document could be included in the message as a binary object, choice not recommended for practical reasons, or it could be indicated with a file name or with an external reference through a URI.

1.3. Possible scenario

P1.A2 Incoming material



2. IMPLEMENTATION GUIDE

2.1 General structure of XML document

All the business data that can be exchanged through this class of documents are shown in the following "document structure", that provides a simplified vision of the Schema.

In particular:

- the two numbers following each element define its "cardinality" (minimum and maximum number of occurrences); the minimum equal zero indicates that the element is optional, the minimum greater than zero indicates that is mandatory;
- the bold character denotes the complex elements (aggregates of simple elements) that were built for the sake of functionality and re-usability of some complex informations sets. The child elements in each parent element are easily spotted as "indented";
- the symbol "@" denotes an attribute of the preceding element; here "the usage indicator (optional, required, ...)" is shown in square brackets.

Structure

GPDdocAvailability

@msgfunction [Optional]

@version [Optional] [Default= draft]

@useProfile [Optional]

GPDheader 1-1

msgN 1-1

msgDate 1-1

@dateForm [Optional]

refDoc 0-9

@docType [Required]

docID 1-2

@numberingOrg [Optional]

docDate 0-1

@dateForm [Optional]

season 0-1

@numberingOrg [Optional]

@codeList [Optional]

@listName [Optional]

@listVersion [Optional]

itemID 0-1

attachment 0-1

@uid [Optional]

fileName 0-1

@numberingOrg [Optional]

binaryObject 0-1

@format [Optional]

@mime [Optional]

@encoding [Optional]

@characterSet [Optional]

externalReference 0-99

uri 1-1

@isURL [Optional] [Default= true]

mimeCode 0-1

formatCode 0-1

encodingCode 0-1

characterSetCode 0-1

hashFootprint 0-1

@schemeID [Optional]

@hashMethod [Required]

blockChainReference 0-9

uri 1-1

@isURL [Optional] [Default= true]

transactionReceipt 1-9

senderParty 1-1

@role [Optional]

@sender [Optional]

id 1-1

@numberingOrg [Optional]

legalName 0-1

- dept 0-1
- subDept 0-1
- person 0-1
 - @email [Optional]
 - @phone [Optional]
 - @fax [Optional]
- street 0-1
- city 0-1
- subCountry 0-1
- country 0-1
- postCode 0-1
- geoCoordinates 0-1**
 - @um [Optional] [Default= DEGD]
 - @geoRefSystem [Optional]
 - xGeoCoord 1-1
 - yGeoCoord 1-1
 - zGeoCoord 0-1

GPDAbody 1-1

GDPItem 1-unbounded

- docID 1-1
 - @numberingOrg [Optional]
- docDate 1-1
 - @dateForm [Optional]
- title 0-unbounded
 - @ln [Optional]
- description 0-unbounded
 - @ln [Optional]
- validityStart 0-1
 - @dateForm [Optional]
- validityEnd 0-1
 - @dateForm [Optional]
- issuerParty 0-1**
 - id 0-1
 - @numberingOrg [Optional]
 - legalName 0-1
 - dept 0-1
 - subDept 0-1
 - person 0-1
 - @email [Optional]
 - @phone [Optional]
 - @fax [Optional]
 - street 0-1
 - city 0-1
 - subCountry 0-1
 - country 0-1
 - postCode 0-1
 - geoCoordinates 0-1**
 - @um [Optional] [Default= DEGD]
 - @geoRefSystem [Optional]
 - xGeoCoord 1-1
 - yGeoCoord 1-1
 - zGeoCoord 0-1
 - issuerAccreditationInfo 0-1
- availabilityDateTime 0-1
 - @dateForm [Required]
- refDoc 0-9**
 - @docType [Required]
 - docID 1-2
 - @numberingOrg [Optional]
 - docDate 0-1
 - @dateForm [Optional]
 - season 0-1
 - @numberingOrg [Optional]
 - @codeList [Optional]
 - @listName [Optional]
 - @listVersion [Optional]
 - itemID 0-1

```

| | | | attachment 0-1
| | | | @uid [Optional]
| | | | | fileName 0-1
| | | | | @numberingOrg [Optional]
| | | | | binaryObject 0-1
| | | | | @format [Optional]
| | | | | @mime [Optional]
| | | | | @encoding [Optional]
| | | | | @characterSet [Optional]
| | | | | externalReference 0-99
| | | | | | uri 1-1
| | | | | | @isURL [Optional] [Default= true]
| | | | | | mimeTypeCode 0-1
| | | | | | formatCode 0-1
| | | | | | encodingCode 0-1
| | | | | | characterSetCode 0-1
| | | | | | hashFootprint 0-1
| | | | | | @schemeID [Optional]
| | | | | | @hashMethod [Required]
| | | | | | blockChainReference 0-9
| | | | | | | uri 1-1
| | | | | | | @isURL [Optional] [Default= true]
| | | | | | | transactionReceipt 1-9
| | | | | tracedObject 0-unbounded
| | | | | @objectInstanceTypeCode [Required]
| | | | | | objectInstanceIdentification 1-1
| | | | | | | @objectInstanceTypeCode [Required]
| | | | | | | | objectID 1-9
| | | | | | | | @schemeID [Required]
| | | | | | | productIDandQty 1-99
| | | | | | | | uniqueProductID 1-1
| | | | | | | | @schemeID [Required]
| | | | | | | | qty 0-2
| | | | | | | | @um [Required]
| | | | | | | objectTypeCode 1-1
| | | | | | actionRequired 0-1
| | | | | signatureInformation 0-1
| | | | | | signatureTypeCode 1-1
| | | | | | | signatoryParty 0-unbounded
| | | | | | | | id 0-1
| | | | | | | | @numberingOrg [Optional]
| | | | | | | | legalName 0-1
| | | | | | | | dept 0-1
| | | | | | | | subDept 0-1
| | | | | | | | person 0-1
| | | | | | | | @email [Optional]
| | | | | | | | @phone [Optional]
| | | | | | | | @fax [Optional]
| | | | | | | | street 0-1
| | | | | | | | city 0-1
| | | | | | | | subCountry 0-1
| | | | | | | | country 0-1
| | | | | | | | postCode 0-1
| | | | | | | | geoCoordinates 0-1
| | | | | | | | @um [Optional] [Default= DEGD]
| | | | | | | | @geoRefSystem [Optional]
| | | | | | | | | xGeoCoord 1-1
| | | | | | | | | yGeoCoord 1-1
| | | | | | | | | zGeoCoord 0-1
| | | | | attachment 0-1
| | | | | @uid [Optional]
| | | | | | fileName 0-1
| | | | | | @numberingOrg [Optional]
| | | | | | binaryObject 0-1
| | | | | | @format [Optional]
| | | | | | @mime [Optional]
| | | | | | @encoding [Optional]
| | | | | | @characterSet [Optional]

```

```

| | | | externalReference 0-99
| | | | | uri 1-1
| | | | | @isURL [Optional] [Default= true]
| | | | | mimeTypeCode 0-1
| | | | | formatCode 0-1
| | | | | encodingCode 0-1
| | | | | characterSetCode 0-1
| | | | | hashFootprint 0-1
| | | | | @schemeID [Optional]
| | | | | @hashMethod [Required]
| | | | | blockChainReference 0-9
| | | | | | uri 1-1
| | | | | | @isURL [Optional] [Default= true]
| | | | | | transactionReceipt 1-9
| | | | note 0-99
| | | | | @numberingOrg [Optional]
| | | | | @codeList [Optional]
| | | | | @noteLabel [Optional]

```

2.2 Detailed description of document elements

Following tables show all elements (complex and simple) used in this document. Description includes: 1) element's information: xml tag, name, brief description, data type and syntax constraints; 2) information about use of the element in a particular position in the document: xpath and possible associated notes.

2.2.1 Complex elements (Aggregate Business Information Entities)

Complex elements are those elements whose content is composed of other elements (childs). Complex elements are alphabetically ordered.

attachment	<p>an attached document. An attachment can refer to an external document or be included with the document being exchanged</p> <p>(XPath GPDocAvailability/GPDheader/refDoc/attachment) 0-1 (XPath GPDocAvailability/GPDAbody/GDPAitem/refDoc/attachment) 0-1 (XPath GPDocAvailability/GPDAbody/GDPAitem/attachment) 0-1</p> <p>- note: indicates where to find the document or contains it as a binary object (the second option is not recommended for practical reasons)</p>
blockChainReference	<p>blockchain reference</p> <p>- base type: string, max length: 80,</p> <p>(XPath GPDocAvailability/GPDAbody/GDPAitem/attachment/blockChainReference) 0-9 (XPath GPDocAvailability/GPDheader/refDoc/attachment/blockChainReference) 0-9 (XPath GPDocAvailability/GPDAbody/GDPAitem/refDoc/attachment/blockChainReference) 0-9</p>
externalReference	<p>details about an external object, such as a document stored at a remote location</p> <p>(XPath GPDocAvailability/GPDAbody/GDPAitem/attachment/externalReference) 0-99 (XPath GPDocAvailability/GPDheader/refDoc/attachment/externalReference) 0-99 (XPath GPDocAvailability/GPDAbody/GDPAitem/refDoc/attachment/externalReference) 0-99</p>
GDPAitem	<p>line item of the document named "DOCUMENT AVAILABILITY ADVISE", it signals the availability of a document on which it also gives some information</p> <p>- base type: ,</p> <p>(XPath GPDocAvailability/GPDAbody/GDPAitem) 1-unbounded</p>
geoCoordinates	<p>geographical coordinates</p> <p>(XPath GPDocAvailability/GPDheader/senderParty/geoCoordinates) 0-1 (XPath GPDocAvailability/GPDAbody/GDPAitem/signatureInformation/signatoryParty/geoCoordinates) 0-1 (XPath GPDocAvailability/GPDAbody/GDPAitem/issuerParty/geoCoordinates) 0-1</p>
GPDAbody	<p>body of the document "DOCUMENT AVAILABILITY ADVISE"</p> <p>(XPath GPDocAvailability/GPDAbody) 1-1</p>
GPDheader	<p>header of the "DOCUMENT AVAILABILITY ADVISE"</p> <p>(XPath GPDocAvailability/GPDheader) 1-1</p>
issuerParty	<p>Details of the party that issued the document.</p> <p>- base type: Nad,</p> <p>(XPath GPDocAvailability/GPDAbody/GDPAitem/issuerParty) 0-1</p>
objectInstanceIdentification	<p>Identification of an object instance, it could contain more than one identifier of the same object as long as they refer to different identification schemes</p> <p>(XPath GPDocAvailability/GPDAbody/GDPAitem/tracedObject/objectInstanceIdentification) 1-1</p> <p>- note: unique identifier of the traced object.</p>
productIDandQty	<p>product identifier and its quantity</p> <p>(XPath GPDocAvailability/GPDAbody/GDPAitem/tracedObject/productIDandQty) 1-99</p> <p>- note: inside an event it should indicate the effectively USED (input) or RESULTING (output) quantity of the lot as a consequence of the event. Max cardinality is 1 when @objectInstanceTypeCode='IST'</p>
refDoc	<p>identification of a document and of an item thereof, to which the message makes reference</p> <p>(XPath GPDocAvailability/GPDheader/refDoc) 0-9 (XPath GPDocAvailability/GPDAbody/GDPAitem/refDoc) 0-9</p>

	- note: <i>any other document to which this document is related</i>
senderParty	Details of the party sending the document. - base type: Nad, (XPath GPDdocAvailability/GPDheader/senderParty) 1-1 - note: <i>indicates who sent this availability advice</i>
signatoryParty	Details of the party that signed the document. - base type: Nad, (XPath GPDdocAvailability/GPDAbody/GDPAitem/signatureInformation/signatoryParty) 0-unbounded
signatureInformation	information about the document signature (XPath GPDdocAvailability/GPDAbody/GDPAitem/signatureInformation) 0-1
tracedObject	traced product instance or lot. Usually it refers to just one productID (i.e. one SKU); nevertheless if the lot is made of clothing, it can refer to more than one SKUs which differ in size. - base type: , (XPath GPDdocAvailability/GPDAbody/GDPAitem/tracedObject) 0-unbounded - note: <i>traced objects to which the document refers</i>

2.2.2 Simple elements (Basic Business Information Entities)

Simple elements are those elements whose content is characterized by a data type plus a domain of possible values. Simple elements are alphabetically ordered.

actionRequired	indicates that some action is required by the element it is associated with - base type: boolean, (XPath GPDdocAvailability/GPDAbody/GDPAitem/actionRequired) 0-1 - note: <i>indicates that the document whose availability is indicated requires some action to be taken</i>
availabilityDateTime	The value of the date, or date and time, starting from when the element to which it is associated was made available; according to one of the patterns YYYY-MM-DD, YYYY-MM-DD:HH-MM or YYYY-WW. - base type: string, (XPath GPDdocAvailability/GPDAbody/GDPAitem/availabilityDateTime) 0-1
binaryObject	a binary large object containing an attached document, Coding 'base64Binary' is recommended. - base type: base64Binary, (XPath GPDdocAvailability/GPDAbody/GDPAitem/refDoc/attachment/binaryObject) 0-1 (XPath GPDdocAvailability/GPDAbody/GDPAitem/attachment/binaryObject) 0-1 (XPath GPDdocAvailability/GPDheader/refDoc/attachment/binaryObject) 0-1
@characterSet	the character set of the binary object (examples UTF-8, UTF-16, Windows-1252, ISO-8859-7,...) - base type: normalizedString, (XPath GPDdocAvailability/GPDAbody/GDPAitem/refDoc/attachment/binaryObject/@characterSet) [Optional] (XPath GPDdocAvailability/GPDAbody/GDPAitem/attachment/binaryObject/@characterSet) [Optional] (XPath GPDdocAvailability/GPDheader/refDoc/attachment/binaryObject/@characterSet) [Optional]
characterSetCode	the character set of an external document (examples UTF-8, UTF-16, Windows-1252, ISO-8859-7,...) - base type: normalizedString, (XPath GPDdocAvailability/GPDheader/refDoc/attachment/externalReference/characterSetCode) 0-1 (XPath GPDdocAvailability/GPDAbody/GDPAitem/refDoc/attachment/externalReference/characterSetCode) 0-1 (XPath GPDdocAvailability/GPDAbody/GDPAitem/attachment/externalReference/characterSetCode) 0-1
city	name of the city (town, village)

	<p>- base type: string, max length: 40, (XPath GPDdocAvailability/GPDAbody/GDPAitem/issuerParty/city) 0-1 (XPath GPDdocAvailability/GPDheader/senderParty/city) 0-1 (XPath GPDdocAvailability/GPDAbody/GDPAitem/signatureInformation/signatoryParty/city) 0-1</p>
@codeList	<p>it specifies the URL where the list of codes used to make an instance of the element can be found</p> <p>- base type: string, max length: 255, (XPath GPDdocAvailability/GPDheader/refDoc/season/@codeList) [Optional] - nota: <i>this attribute should be used either single or coupled with "listVersion"</i> (XPath GPDdocAvailability/GPDAbody/GDPAitem/note/@codeList) [Optional] - nota: <i>must be used to provide (URL) the list of codes used in "noteLabel"</i> (XPath GPDdocAvailability/GPDAbody/GDPAitem/refDoc/season/@codeList) [Optional] - nota: <i>this attribute should be used either single or coupled with "listVersion"</i></p>
country	<p>code of the nation</p> <p>- base type: string, cod. table: T10 http://www.ebiz.enea.it/moda-ml/repository/codelist/draft/gc_T10.xml (XPath GPDdocAvailability/GPDheader/senderParty/country) 0-1 (XPath GPDdocAvailability/GPDAbody/GDPAitem/issuerParty/country) 0-1 (XPath GPDdocAvailability/GPDAbody/GDPAitem/signatureInformation/signatoryParty/country) 0-1</p>
@dateForm	<p>format used for the date</p> <p>- base type: string, cod. table: NT29 http://www.ebiz.enea.it/moda-ml/repository/codelist/draft/gc_NT29.xml (XPath GPDdocAvailability/GPDAbody/GDPAitem/validityStart/@dateForm) [Optional] (XPath GPDdocAvailability/GPDAbody/GDPAitem/availabilityDateTime/@dateForm) [Required] (XPath GPDdocAvailability/GPDAbody/GDPAitem/docDate/@dateForm) [Optional] (XPath GPDdocAvailability/GPDheader/msgDate/@dateForm) [Optional] (XPath GPDdocAvailability/GPDAbody/GDPAitem/refDoc/docDate/@dateForm) [Optional] (XPath GPDdocAvailability/GPDheader/refDoc/docDate/@dateForm) [Optional] (XPath GPDdocAvailability/GPDAbody/GDPAitem/validityEnd/@dateForm) [Optional]</p>
dept	<p>name or code of a department</p> <p>- base type: string, max length: 40, (XPath GPDdocAvailability/GPDAbody/GDPAitem/issuerParty/dept) 0-1 (XPath GPDdocAvailability/GPDheader/senderParty/dept) 0-1 (XPath GPDdocAvailability/GPDAbody/GDPAitem/signatureInformation/signatoryParty/dept) 0-1</p>
description	<p>free text description. The content of the element must be unique, it might be translated and repeated into more languages (thus no more than one instance for each language).</p> <p>- base type: string, max length: 250, (XPath GPDdocAvailability/GPDAbody/GDPAitem/description) 0-unbounded - note: <i>Only one instance of this element for each different value of 'In' attribute (language)</i></p>
docDate	<p>date of issue of the referenced document, according to one of the patterns YYYY-MM-DD, YYYY-MM-DD:HH-MM or YYYY-WW.</p> <p>- base type: string, (XPath GPDdocAvailability/GPDAbody/GDPAitem/docDate) 1-1 (XPath GPDdocAvailability/GPDheader/refDoc/docDate) 0-1 (XPath GPDdocAvailability/GPDAbody/GDPAitem/refDoc/docDate) 0-1</p>
docID	<p>identification number of the referenced document</p> <p>- base type: string, max length: 80, (XPath GPDdocAvailability/GPDAbody/GDPAitem/refDoc/docID) 1-2 Best Practice (XPath GPDdocAvailability/GPDAbody/GDPAitem/docID) 1-1 (XPath GPDdocAvailability/GPDheader/refDoc/docID) 1-2 Best Practice</p>
@docType	<p>type or class to which the referenced document belongs</p> <p>- base type: string, cod. table: T21 http://www.ebiz.enea.it/moda-ml/repository/codelist/draft/gc_T21.xml</p>

	(XPath GPDdocAvailability/GPDheader/refDoc/@docType) [Required] (XPath GPDdocAvailability/GPDAbody/GDPAitem/refDoc/@docType) [Required]
@email	electronic mail address of the contact person within a Party - base type: string, max length: 250, (XPath GPDdocAvailability/GPDAbody/GDPAitem/issuerParty/person/@email) [Optional] (XPath GPDdocAvailability/GPDAbody/GDPAitem/signatureInformation/signatoryParty/person/@email) [Optional] (XPath GPDdocAvailability/GPDheader/senderParty/person/@email) [Optional]
@encoding	specifies the decoding algorithm of the binary object - base type: normalizedString, (XPath GPDdocAvailability/GPDheader/refDoc/attachment/binaryObject/@encoding) [Optional] (XPath GPDdocAvailability/GPDAbody/GDPAitem/attachment/binaryObject/@encoding) [Optional] (XPath GPDdocAvailability/GPDAbody/GDPAitem/refDoc/attachment/binaryObject/@encoding) [Optional]
encodingCode	the encoding/decoding algorithm used with the external object (example is 'base64Binary') - base type: normalizedString, (XPath GPDdocAvailability/GPDAbody/GDPAitem/attachment/externalReference/encodingCode) 0-1 (XPath GPDdocAvailability/GPDAbody/GDPAitem/refDoc/attachment/externalReference/encodingCode) 0-1 (XPath GPDdocAvailability/GPDheader/refDoc/attachment/externalReference/encodingCode) 0-1
@fax	fax number of the contact person within a Party - base type: string, max length: 35, (XPath GPDdocAvailability/GPDAbody/GDPAitem/signatureInformation/signatoryParty/person/@fax) [Optional] (XPath GPDdocAvailability/GPDAbody/GDPAitem/issuerParty/person/@fax) [Optional] (XPath GPDdocAvailability/GPDheader/senderParty/person/@fax) [Optional]
fileName	unique identifier (name) of the file - base type: string, max length: 255, (XPath GPDdocAvailability/GPDheader/refDoc/attachment/fileName) 0-1 (XPath GPDdocAvailability/GPDAbody/GDPAitem/attachment/fileName) 0-1 (XPath GPDdocAvailability/GPDAbody/GDPAitem/refDoc/attachment/fileName) 0-1
@format	the format of the binary content (examples xml, pdf, doc,...) - base type: string, (XPath GPDdocAvailability/GPDAbody/GDPAitem/attachment/binaryObject/@format) [Optional] (XPath GPDdocAvailability/GPDAbody/GDPAitem/refDoc/attachment/binaryObject/@format) [Optional] (XPath GPDdocAvailability/GPDheader/refDoc/attachment/binaryObject/@format) [Optional]
formatCode	the format of the external object (examples xml, pdf, doc,...) - base type: normalizedString, (XPath GPDdocAvailability/GPDAbody/GDPAitem/attachment/externalReference/formatCode) 0-1 (XPath GPDdocAvailability/GPDheader/refDoc/attachment/externalReference/formatCode) 0-1 (XPath GPDdocAvailability/GPDAbody/GDPAitem/refDoc/attachment/externalReference/formatCode) 0-1
@geoRefSystem	georeference system adopted for the coordinate (in example wgs84 with decimal degree or degree with minute and seconds) - base type: string, (XPath GPDdocAvailability/GPDAbody/GDPAitem/issuerParty/geoCoordinates/@geoRefSystem) [Optional] (XPath GPDdocAvailability/GPDheader/senderParty/geoCoordinates/@geoRefSystem) [Optional]

	(XPath GPDdocAvailability/GPDAbody/GDPAitem/signatureInformation/signatoryParty/ geoCoordinates/@geoRefSystem) [Optional]
hashFootprint	footprint obtained by applying an hashing algorithym - base type: string, max length: 80, (XPath GPDdocAvailability/GPDAbody/GDPAitem/refDoc/ attachment/hashFootprint) 0-1 (XPath GPDdocAvailability/GPDAbody/GDPAitem/attachment/hashFootprint) 0-1 (XPath GPDdocAvailability/GPDheader/refDoc/attachment/hashFootprint) 0-1
@hashMethod	type of used hashing algorithym - base type: string, max length: 80, cod. table: NT333 http://www.ebiz.enea.it/moda-ml/repository/codelist/draft/gc_NT333.xml (XPath GPDdocAvailability/GPDAbody/GDPAitem/refDoc/ attachment/hashFootprint/@hashMethod) [Required] (XPath GPDdocAvailability/GPDAbody/GDPAitem/attachment/ hashFootprint/@hashMethod) [Required] (XPath GPDdocAvailability/GPDheader/refDoc/attachment/ hashFootprint/@hashMethod) [Required]
id	primary identification code of a Party; it is recommended to use an EORI number (with @numberingOrg= "EO") or the format: nation code (ISO 3166) + national tax code (i.e. VAT identification number) with @numberingOrg= "MF" - base type: string, max length: 15, (XPath GPDdocAvailability/GPDheader/senderParty/id) 1-1 (XPath GPDdocAvailability/GPDAbody/GDPAitem/issuerParty/id) 0-1 (XPath GPDdocAvailability/GPDAbody/GDPAitem/signatureInformation/signatoryParty/i d) 0-1
issuerAccreditationInfo	accrediting information of the issuer of the document - base type: string, (XPath GPDdocAvailability/GPDAbody/GDPAitem/issuerParty/issuerAccreditationInfo) 0-1
@isURL	it indicates if the referred element is an URL (true) or not (false) - base type: boolean, (XPath GPDdocAvailability/GPDAbody/GDPAitem/attachment/ blockChainReference/uri/@isURL) [Optional] [Default= true] - nota: <i>usage of URLs is recommended</i> (XPath GPDdocAvailability/GPDheader/refDoc/attachment/ externalReference/uri/@isURL) [Optional] [Default= true] - nota: <i>usage of URLs is recommended</i> (XPath GPDdocAvailability/GPDAbody/GDPAitem/refDoc/ attachment/externalReference/uri/@isURL) [Optional] [Default= true] - nota: <i>usage of URLs is recommended</i> (XPath GPDdocAvailability/GPDheader/refDoc/attachment/ blockChainReference/uri/@isURL) [Optional] [Default= true] - nota: <i>usage of URLs is recommended</i> (XPath GPDdocAvailability/GPDAbody/GDPAitem/refDoc/ attachment/blockChainReference/uri/@isURL) [Optional] [Default= true] - nota: <i>usage of URLs is recommended</i> (XPath GPDdocAvailability/GPDAbody/GDPAitem/attachment/ externalReference/uri/@isURL) [Optional] [Default= true] - nota: <i>usage of URLs is recommended</i>
itemID	number of the line/item of the referenced document - base type: string, max length: 40, (XPath GPDdocAvailability/GPDAbody/GDPAitem/refDoc/itemID) 0-1 (XPath GPDdocAvailability/GPDheader/refDoc/itemID) 0-1
legalName	legal name - base type: string, max length: 250, (XPath GPDdocAvailability/GPDAbody/GDPAitem/issuerParty/legalName) 0-1 (XPath GPDdocAvailability/GPDheader/senderParty/legalName) 0-1 (XPath GPDdocAvailability/GPDAbody/GDPAitem/signatureInformation/signatoryParty/l egalName) 0-1
@listName	the name of the list of codes used to make an instance of the element (it might be thou ght as descriptive element, i.e. 'fabric printing technologies', or not, i.e. "T264") - base type: string, max length: 40,

	<p>(XPath GPDdocAvailability/GPDheader/refDoc/season/@listName) [Optional] - nota: <i>this attribute should always be used coupled with "numberingOrg"</i> (XPath GPDdocAvailability/GPDAbody/GDPAitem/refDoc/season/@listName) [Optional] - nota: <i>this attribute should always be used coupled with "numberingOrg"</i></p>
@listVersion	<p>it specifies the version of the list of codes used to make an instance of the element - base type: string, max length: 6, (XPath GPDdocAvailability/GPDAbody/GDPAitem/refDoc/season/@listVersion) [Optional] - nota: <i>this attribute should always be used coupled with "numberingOrg" and "listName"</i> (XPath GPDdocAvailability/GPDheader/refDoc/season/@listVersion) [Optional] - nota: <i>this attribute should always be used coupled with "numberingOrg" and "listName"</i></p>
@ln	<p>Language code. - base type: string, cod. table: NT60 http://www.ebiz.enea.it/moda-ml/repository/codelist/draft/gc_NT60.xml (XPath GPDdocAvailability/GPDAbody/GDPAitem/title/@ln) [Optional] (XPath GPDdocAvailability/GPDAbody/GDPAitem/description/@ln) [Optional]</p>
@mime	<p>the mime type of the binary object - base type: normalizedString, (XPath GPDdocAvailability/GPDAbody/GDPAitem/attachment/binaryObject/@mime) [Optional] (XPath GPDdocAvailability/GPDAbody/GDPAitem/refDoc/attachment/binaryObject/@mime) [Optional] (XPath GPDdocAvailability/GPDheader/refDoc/attachment/binaryObject/@mime) [Optional]</p>
mimeCode	<p>mime type of the external object - base type: normalizedString, (XPath GPDdocAvailability/GPDAbody/GDPAitem/attachment/externalReference/mimeCode) 0-1 Best Practice (XPath GPDdocAvailability/GPDheader/refDoc/attachment/externalReference/mimeCode) 0-1 Best Practice (XPath GPDdocAvailability/GPDAbody/GDPAitem/refDoc/attachment/externalReference/mimeCode) 0-1 Best Practice</p>
msgDate	<p>date of issue of the present message (xml document), according to one of the patterns YYYY-MM-DD, YYYY-MM-DD:HH-MM or YYYY-WW. - base type: string, (XPath GPDdocAvailability/GPDheader/msgDate) 1-1</p>
@msgfunction	<p>function performed by the present message with regards to the transmission - base type: string, cod. table: NT18 http://www.ebiz.enea.it/moda-ml/repository/codelist/draft/gc_NT18.xml (XPath GPDdocAvailability/@msgfunction) [Optional]</p>
msgN	<p>identification number given to the message (xml document) by its issuer. In case of more despatches of the same business document, it changes. - base type: string, max length: 35, (XPath GPDdocAvailability/GPDheader/msgN) 1-1</p>
note	<p>free text or structured (computer processing) note. For note structuring use the attributes "noteLabel" and "codelist" - base type: string, max length: 350, (XPath GPDdocAvailability/GPDAbody/GDPAitem/note) 0-99</p>
@noteLabel	<p>subject qualifier of a note - base type: string, max length: 35, (XPath GPDdocAvailability/GPDAbody/GDPAitem/note/@noteLabel) [Optional] - nota: <i>must be used to qualify the subject of the note</i></p>
@numberingOrg	<p>code specifying the organisation who has created or owns the coding or numbering system - base type: string, cod. table: NT6 http://www.ebiz.enea.it/moda-ml/repository/codelist/draft/gc_NT6.xml (XPath GPDdocAvailability/GPDAbody/GDPAitem/issuerParty/id/@numberingOrg) [Optional] (XPath GPDdocAvailability/GPDheader/senderParty/id/@numberingOrg) [Optional] (XPath GPDdocAvailability/GPDAbody/GDPAitem/signatureInformation/signatoryParty/id/@numberingOrg) [Optional] (XPath GPDdocAvailability/GPDAbody/GDPAitem/note/@numberingOrg) [Optional]</p>

	<p>- nota: <i>must be used to specify the organization that created the list of codes used in "noteLabel"</i> (XPath GPDdocAvailability/GPDheader/refDoc/docID/@numberingOrg) [Optional]</p> <p>- nota: <i>here can be specified whose document numbering is used (e.g.: Client, Suppliers, ...)</i> (XPath GPDdocAvailability/GPDAbody/GDPAitem/docID/@numberingOrg) [Optional]</p> <p>- nota: <i>here can be specified whose document numbering is used (e.g.: Client, Suppliers, ...)</i> (XPath GPDdocAvailability/GPDAbody/GDPAitem/refDoc/docID/@numberingOrg) [Optional]</p> <p>- nota: <i>here can be specified whose document numbering is used (e.g.: Client, Suppliers, ...)</i> (XPath GPDdocAvailability/GPDAbody/GDPAitem/refDoc/attachment/fileName/@numberingOrg) [Optional]</p> <p>(XPath GPDdocAvailability/GPDheader/refDoc/season/@numberingOrg) [Optional]</p> <p>- nota: <i>this attribute should be used either single or coupled with "listName" and "listVersion"</i> (XPath GPDdocAvailability/GPDAbody/GDPAitem/refDoc/season/@numberingOrg) [Optional]</p> <p>- nota: <i>this attribute should be used either single or coupled with "listName" and "listVersion"</i> (XPath GPDdocAvailability/GPDAbody/GDPAitem/attachment/fileName/@numberingOrg) [Optional]</p> <p>(XPath GPDdocAvailability/GPDheader/refDoc/attachment/fileName/@numberingOrg) [Optional]</p>
objectID	<p>Object identifier</p> <p>- base type: string, (XPath GPDdocAvailability/GPDAbody/GDPAitem/tracedObject/objectInstanceIdentification/objectID) 1-9</p> <p>- note: <i>multiple values of objectID are allowed for different representations of the same object that must differ for the value of schemeID. In traceability transactions there must be at least the UNIQUE code assigned by the platform (e.g. TRN)</i></p>
@objectInstanceTypeCode	<p>code that identifies the type of object instance</p> <p>- base type: string, cod. table: NT202 http://www.ebiz.enea.it/moda-ml/repository/codelist/draft/gc_NT202.xml (XPath GPDdocAvailability/GPDAbody/GDPAitem/tracedObject/@objectInstanceTypeCode) [Required]</p> <p>(XPath GPDdocAvailability/GPDAbody/GDPAitem/tracedObject/objectInstanceIdentification/@objectInstanceTypeCode) [Required]</p>
objectTypeCode	<p>code that identifies the type of object</p> <p>- base type: string, cod. table: T302 http://www.ebiz.enea.it/moda-ml/repository/codelist/draft/gc_T302.xml (XPath GPDdocAvailability/GPDAbody/GDPAitem/tracedObject/objectTypeCode) 1-1</p>
person	<p>name of a person (e.g. contact person within an organization)</p> <p>- base type: string, max length: 40, (XPath GPDdocAvailability/GPDAbody/GDPAitem/issuerParty/person) 0-1 (XPath GPDdocAvailability/GPDAbody/GDPAitem/signatureInformation/signatoryParty/person) 0-1 (XPath GPDdocAvailability/GPDheader/senderParty/person) 0-1</p>
@phone	<p>phone number of the contact person within a Party</p> <p>- base type: string, max length: 35, (XPath GPDdocAvailability/GPDAbody/GDPAitem/signatureInformation/signatoryParty/person/@phone) [Optional] (XPath GPDdocAvailability/GPDAbody/GDPAitem/issuerParty/person/@phone) [Optional] (XPath GPDdocAvailability/GPDheader/senderParty/person/@phone) [Optional]</p>
postCode	<p>code defining the postal zone</p> <p>- base type: string, max length: 10, (XPath GPDdocAvailability/GPDheader/senderParty/postCode) 0-1 (XPath GPDdocAvailability/GPDAbody/GDPAitem/issuerParty/postCode) 0-1 (XPath GPDdocAvailability/GPDAbody/GDPAitem/signatureInformation/signatoryParty/postCode) 0-1</p>
qty	<p>net quantity of the article or object correlated, qualified by the function of the document (ordering, delivering, ..) and by the context</p>

	<p>- base type: decimal, min inclusive: 0, fraction digits: 2, (XPath GPDdocAvailability/GPDAbody/GDPAitem/tracedObject/productIDandQty/qty) 0-2</p> <p>- note: quantity of the product, identified by uniqueProductID. This element can have two instances only if the units of measure are different.</p>
@role	<p>Third Party role qualifier</p> <p>- base type: string, cod. table: NT2 http://www.ebiz.enea.it/moda-ml/repository/codelist/draft/gc_NT2.xml (XPath GPDdocAvailability/GPDheader/senderParty/@role) [Optional]</p> <p>- nota: The use of this attribute is mandatory when the element to which it is associated has TRCHeader as its parent.</p>
@schemeID	<p>identifier of an identification scheme</p> <p>- base type: string, (XPath GPDdocAvailability/GPDAbody/GDPAitem/tracedObject/productIDandQty/uniqueProductID/@schemeID) [Required] (XPath GPDdocAvailability/GPDAbody/GDPAitem/refDoc/attachment/hashFootprint/@schemeID) [Optional]</p> <p>- nota: specify for which system this hash footprint might be used as identifier (for example HDFS system..) (XPath GPDdocAvailability/GPDAbody/GDPAitem/attachment/hashFootprint/@schemeID) [Optional]</p> <p>- nota: specify for which system this hash footprint might be used as identifier (for example HDFS system..) (XPath GPDdocAvailability/GPDheader/refDoc/attachment/hashFootprint/@schemeID) [Optional]</p> <p>- nota: specify for which system this hash footprint might be used as identifier (for example HDFS system..) (XPath GPDdocAvailability/GPDAbody/GDPAitem/tracedObject/objectInstanceIdentification/objectID/@schemeID) [Required]</p>
season	<p>sale season; defined as: season (1 crt) + year (4 crt) - season: S/S=1 AW=2 Spring=3 Summer=4 Autumn=5 Winter=6: for more than four seasons use alphabetic sequence: 1st season=A 2nd season=B etc.etc.</p> <p>- base type: string, max length: 15, (XPath GPDdocAvailability/GPDAbody/GDPAitem/refDoc/season) 0-1</p> <p>- note: here indicates the season to which the referenced document belongs (XPath GPDdocAvailability/GPDheader/refDoc/season) 0-1</p> <p>- note: here indicates the season to which the referenced document belongs</p>
@sender	<p>qualifier that specifies the Party issuing of the document</p> <p>- base type: boolean, (XPath GPDdocAvailability/GPDheader/senderParty/@sender) [Optional]</p> <p>- nota: This attribute is mandatory when the STYLESHEET must be used.</p>
signatureTypeCode	<p>indicator of existing and type of signature</p> <p>- base type: string, (XPath GPDdocAvailability/GPDAbody/GDPAitem/signatureInformation/signatureTypeCode) 1-1</p>
street	<p>street and building number identifying a location</p> <p>- base type: string, max length: 80, (XPath GPDdocAvailability/GPDAbody/GDPAitem/signatureInformation/signatoryParty/street) 0-1 (XPath GPDdocAvailability/GPDAbody/GDPAitem/issuerParty/street) 0-1 (XPath GPDdocAvailability/GPDheader/senderParty/street) 0-1</p>
subCountry	<p>short name or code of the sub-country entity</p> <p>- base type: string, max length: 9, (XPath GPDdocAvailability/GPDheader/senderParty/subCountry) 0-1 (XPath GPDdocAvailability/GPDAbody/GDPAitem/signatureInformation/signatoryParty/subCountry) 0-1 (XPath GPDdocAvailability/GPDAbody/GDPAitem/issuerParty/subCountry) 0-1</p>
subDept	<p>name or code of a department</p> <p>- base type: string, max length: 40, (XPath GPDdocAvailability/GPDheader/senderParty/subDept) 0-1 (XPath GPDdocAvailability/GPDAbody/GDPAitem/issuerParty/subDept) 0-1</p>

	(XPath GPDdocAvailability/GPDAbody/GDPAitem/signatureInformation/signatoryParty/ subDept) 0-1
title	document title - base type: string, (XPath GPDdocAvailability/GPDAbody/GDPAitem/title) 0-unbounded - note: <i>Only one instance of this element for each different value of 'In' attribute (language)</i>
transactionReceipt	transaction receipt on blockchain - base type: string, max length: 80, (XPath GPDdocAvailability/GPDAbody/GDPAitem/attachment/ blockChainReference/transactionReceipt) 1-9 (XPath GPDdocAvailability/GPDheader/refDoc/attachment/ blockChainReference/transactionReceipt) 1-9 (XPath GPDdocAvailability/GPDAbody/GDPAitem/refDoc/ attachment/blockChainReference/transactionReceipt) 1-9
@uid	unique element identifier within the xml document - base type: string, (XPath GPDdocAvailability/GPDheader/refDoc/attachment/@uid) [Optional] (XPath GPDdocAvailability/GPDAbody/GDPAitem/attachment/@uid) [Optional] (XPath GPDdocAvailability/GPDAbody/GDPAitem/refDoc/ attachment/@uid) [Optional]
@um	specification of the unit of measure - base type: string, cod. table: NT7 http://www.ebiz.enea.it/moda-ml/repository/codelist/draft/gc_NT7.xml (XPath GPDdocAvailability/GPDAbody/GDPAitem/signatureInformation/signatoryParty/ geoCoordinates/@um) [Optional] [Default= DEGD] - nota: <i>when not specified assume decimal DEGREES</i> (XPath GPDdocAvailability/GPDheader/senderParty/ geoCoordinates/@um) [Optional] [Default= DEGD] - nota: <i>when not specified assume decimal DEGREES</i> (XPath GPDdocAvailability/GPDAbody/GDPAitem/issuerParty/ geoCoordinates/@um) [Optional] [Default= DEGD] - nota: <i>when not specified assume decimal DEGREES</i> (XPath GPDdocAvailability/GPDAbody/GDPAitem/tracedObject/ productIDandQty/qty/@um) [Required]
uniqueProductID	Unique product identifier. It identifies the product completely, differentiating any variants, sizes, colors, etc. It should be unique throughout the whole value chain. (It can be the GTIN) - base type: string, max length: 80, (XPath GPDdocAvailability/GPDAbody/GDPAitem/tracedObject/ productIDandQty/uniqueProductID) 1-1
uri	Uniform Resource Identifier (URI) that identifies the external object as an Internet resource - base type: normalizedString, (XPath GPDdocAvailability/GPDheader/refDoc/attachment/ externalReference/uri) 1-1 (XPath GPDdocAvailability/GPDAbody/GDPAitem/refDoc/ attachment/blockChainReference/uri) 1-1 - note: <i>reference to the used blockchain (example: url https://etherscan.io/ of ethereum)</i> (XPath GPDdocAvailability/GPDheader/refDoc/attachment/ blockChainReference/uri) 1-1 - note: <i>reference to the used blockchain (example: url https://etherscan.io/ of ethereum)</i> (XPath GPDdocAvailability/GPDAbody/GDPAitem/attachment/ blockChainReference/uri) 1-1 - note: <i>reference to the used blockchain (example: url https://etherscan.io/ of ethereum)</i> (XPath GPDdocAvailability/GPDAbody/GDPAitem/refDoc/ attachment/externalReference/uri) 1-1 (XPath GPDdocAvailability/GPDAbody/GDPAitem/attachment/ externalReference/uri) 1-1
@useProfile	use profile to which the present document is compliant if it was agreed by the parties. It

	<p>is suggested a URI with reference to the firms or the URL of the profile.</p> <ul style="list-style-type: none"> - base type: string, <p>(XPath GPDdocAvailability/@useProfile) [Optional]</p>
validityEnd	<p>date by which the validity ends, according to one of the patterns YYYY-MM-DD, YYYY-MM-DD:HH-MM or YYYY-WW.</p> <ul style="list-style-type: none"> - base type: string, <p>(XPath GPDdocAvailability/GPDAbody/GDPAitem/validityEnd) 0-1</p>
validityStart	<p>date by which the validity starts, according to one of the patterns YYYY-MM-DD, YYYY-MM-DD:HH-MM or YYYY-WW.</p> <ul style="list-style-type: none"> - base type: string, <p>(XPath GPDdocAvailability/GPDAbody/GDPAitem/validityStart) 0-1</p>
@version	<p>Dictionary version from which the instance has been created</p> <ul style="list-style-type: none"> - base type: string, cod. table: NT100 <p>http://www.ebiz.enea.it/moda-ml/repository/codelist/draft/gc_NT100.xml</p> <p>(XPath GPDdocAvailability/@version) [Optional] [Default= draft]</p>
xGeoCoord	<p>geographical coordinate x , corresponding to latitude</p> <ul style="list-style-type: none"> - base type: decimal, <p>(XPath GPDdocAvailability/GPDAbody/GDPAitem/issuerParty/geoCoordinates/xGeoCoord) 1-1</p> <p>(XPath GPDdocAvailability/GPDAbody/GDPAitem/signatureInformation/signatoryParty/geoCoordinates/xGeoCoord) 1-1</p> <p>(XPath GPDdocAvailability/GPDheader/senderParty/geoCoordinates/xGeoCoord) 1-1</p>
yGeoCoord	<p>geographical coordinate y , corresponding to longitude</p> <ul style="list-style-type: none"> - base type: decimal, <p>(XPath GPDdocAvailability/GPDheader/senderParty/geoCoordinates/yGeoCoord) 1-1</p> <p>(XPath GPDdocAvailability/GPDAbody/GDPAitem/issuerParty/geoCoordinates/yGeoCoord) 1-1</p> <p>(XPath GPDdocAvailability/GPDAbody/GDPAitem/signatureInformation/signatoryParty/geoCoordinates/yGeoCoord) 1-1</p>
zGeoCoord	<p>geographical coordinate z , corresponding to altitude</p> <ul style="list-style-type: none"> - base type: decimal, <p>(XPath GPDdocAvailability/GPDheader/senderParty/geoCoordinates/zGeoCoord) 0-1</p> <ul style="list-style-type: none"> - note: <i>altitude might be omitted</i> <p>(XPath GPDdocAvailability/GPDAbody/GDPAitem/signatureInformation/signatoryParty/geoCoordinates/zGeoCoord) 0-1</p> <ul style="list-style-type: none"> - note: <i>altitude might be omitted</i> <p>(XPath GPDdocAvailability/GPDAbody/GDPAitem/issuerParty/geoCoordinates/zGeoCoord) 0-1</p> <ul style="list-style-type: none"> - note: <i>altitude might be omitted</i>

2.3 Suggested best practices

GPDocAvailability/GPDABody/GDPAitem/refDoc/docID (identification number of the referenced document)

numberingOrg indicates the role that produced the document identifier (it is allowed to declare two different ones -e.g. customer and supplier - with two docID with different numberingOrg

GPDocAvailability/GPDheader/refDoc/docID (identification number of the referenced document)

numberingOrg indicates the role that produced the document identifier (it is allowed to declare two different ones -e.g. customer and supplier - with two docID with different numberingOrg

**GPDocAvailability/GPDABody/GDPAitem/attachment/
externalReference/mimeCode (mime type of the external object)**

Use coding from IANA <http://www.iana.org/assignments/media-types/media-types.xml>

**GPDocAvailability/GPDheader/refDoc/attachment/
externalReference/mimeCode (mime type of the external object)**

Use coding from IANA <http://www.iana.org/assignments/media-types/media-types.xml>

**GPDocAvailability/GPDABody/GDPAitem/refDoc/
attachment/externalReference/mimeCode (mime type of the external object)**

Use coding from IANA <http://www.iana.org/assignments/media-types/media-types.xml>

2.4 Enumeration tables

List of enumeration tables used in the XML document. You can find all the tables with the corresponding codes at:
<http://www.ebiz.enea.it/eBIZ/imple/eBIZTCU-draft.asp?lingua=en&pag=6>

NT100 - eBIZ TCFUpstream version
NT18 - message function
NT2 - third party qualifier
NT202 - Type of the object Instance
NT29 - format of a date
NT333 - type of hashing algorithm
NT6 - coding system owner/issuer
NT60 - language, codes from ISO 639-1 (subset)
NT7 - unit of measure
T10 - ISO3166 - Country
T21 - type of document
T302 - type of object

(the most relevant tables are detailed in the following Annexes too)

ACKNOWLEDGEMENT



This action is part of the TRICK project, which has received funding from Horizon 2020 research and innovation programme under grant agreement No. 958352 of the European Union.

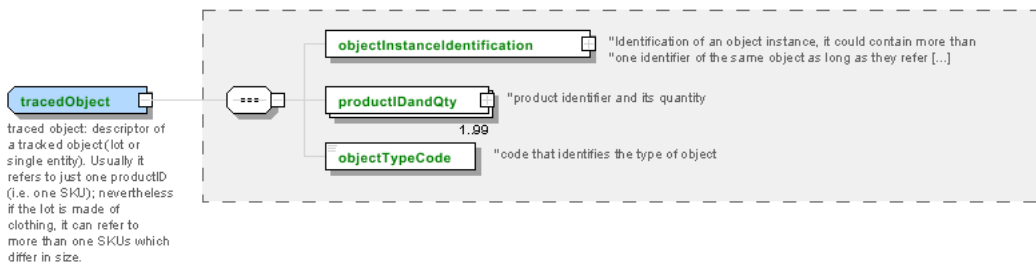
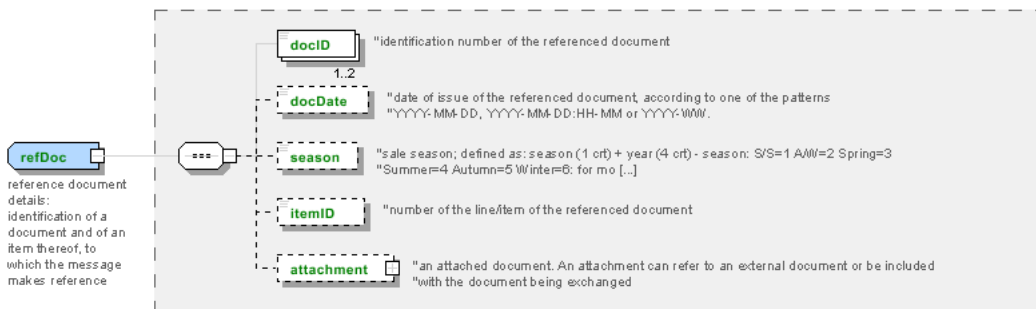
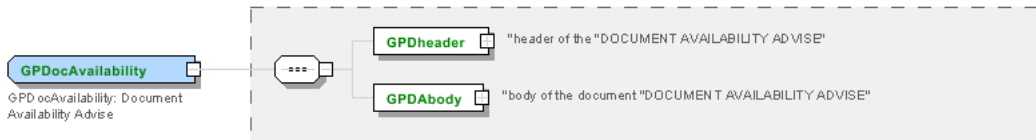
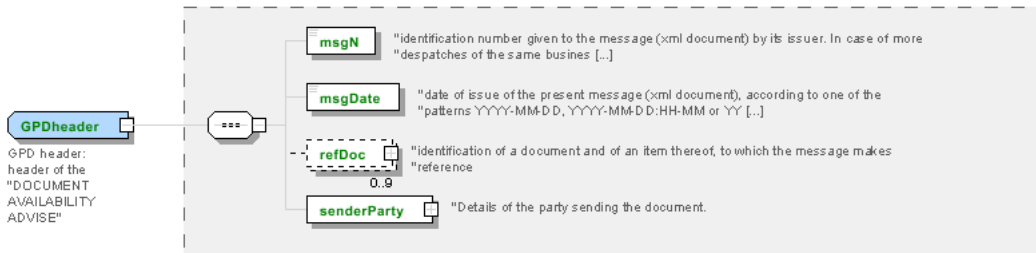
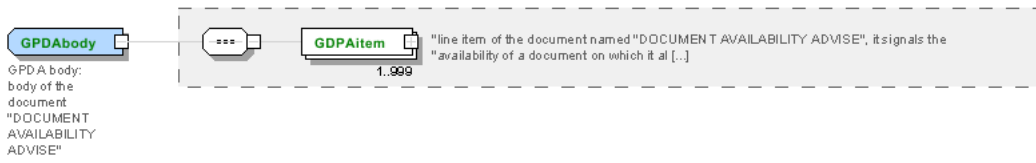
DISCLAIMER

The content of this document represents the views of the authors only and is their sole responsibility; it cannot be considered to reflect the views of the European Commission or any other body of the European Union.

The European Commission does not accept any responsibility for use that may be made of the information it contains.

Annex A

Representative images of the principal complex elements' structure.



Annex B

NT100 - eBIZ TCFUpstream version

dictionary version

Agency name: eBIZ

Decoding table: NT100

File codes list (Generic code): http://www.ebiz.enea.it/moda-ml/repository/codelist/draft/gc_NT100.xml

Code	Description	Adoption note	Date of insertion
2013-1	v2013-1		01/07/2013
2018-1	v2018-1		04/11/2018
draft	draft		08/09/2017

NT18 - message function

function performed by the present message with regards to the transmission

Agency name: eBIZ

Decoding table: NT18

File codes list (Generic code): http://www.ebiz.enea.it/moda-ml/repository/codelist/draft/gc_NT18.xml

Code	Description	Adoption note	Date of insertion
CA	delete this document		01/07/2013
CP	copy		
OR	original		
RC	re-transmission for data correction		
RT	re-transmission		

NT2 - third party qualifier

Third Party role qualifier

Agency name: eBIZ

Decoding table: NT2

File codes list (Generic code): http://www.ebiz.enea.it/moda-ml/repository/codelist/draft/gc_NT2.xml

Code	Description	Adoption note	Date of insertion
AG	Sales Agent		
AU	Auditor		08/04/2019
BU	Buyer		13/06/2022

CE	Certification authority		08/04/2019
CM	Commissioner		13/06/2022
CO	Quality Controller		
CU	Customs authority		13/06/2022
DC	Response to		
DF	Invoicee		
DI	Copy to (CC)		28/10/2014
DM	Consignee		
DP	Consignment address (Delivery Party)		
EX	Expert		13/06/2022
IM	Importer		
OR	Originator		10/09/2014
SC	Sub contractor		10/04/2019
SM	Service/ePlatform manager		08/04/2019
SP	Forwarder		
SU	Supplier		13/06/2022
TL	Test or analysis laboratory		13/06/2022
TX	Tax Representative		

NT202 - Type of the object Instance

indicates the type of the object Instance

Agency name: eBIZ for TRICK

Decoding table: NT202

File codes list (Generic code): http://www.ebiz.enea.it/moda-ml/repository/codelist/draft/gc_NT202.xml

Code	Description	Adoption note	Date of insertion
IST	an individual instance of the object		13/06/2022
LOT	lot or batch of objects		13/06/2022

NT29 - format of a date

format used for the date

Agency name: eBIZ

Decoding table: NT29

File codes list (Generic code): http://www.ebiz.enea.it/moda-ml/repository/codelist/draft/gc_NT29.xml

Code	Description	Adoption note	Date of insertion
------	-------------	---------------	-------------------

D	YYYY-MM-DD		
M	YYYY-MM-DD:HH-MM (date and time)		
S	AAAA-MM-GG:HH-MM-SS (date and time with seconds)		13/06/2022
W	YYYY-WW		

NT333 - type of hashing algorithm

type of hashing algorithm

Decoding table: NT333

File codes list (Generic code): http://www.ebiz.enea.it/moda-ml/repository/codelist/draft/gc_NT333.xml

Code	Description	Adoption note	Date of insertion
ADLER32	ADLER32		26/05/2023
HMAC	HMAC		26/05/2023
MD2	MD2		26/05/2023
MD4	MD4		26/05/2023
MD5	MD5		26/05/2023
MDC-2	MDC-2		26/05/2023
PANAMA	PANAMA		26/05/2023
RIPEMD-160	RIPEMD-160		26/05/2023
SHA-1	SHA-1		26/05/2023
SHA-2 256	SHA-2 256		26/05/2023
SHA-2 384	SHA-2 384		26/05/2023
SHA-2 512	SHA-2 512		26/05/2023
TIGER	TIGER		26/05/2023

NT6 - coding system owner/issuer

code specifying the organisation who has created or owns the registers of the present coding or numbering system

Agency name: eBIZ

Decoding table: NT6

File codes list (Generic code): http://www.ebiz.enea.it/moda-ml/repository/codelist/draft/gc_NT6.xml

Code	Description	Adoption note	Date of insertion
CBR	National customs brokers registry		12/06/2023
CL	Customer/buyer		
CO	Quality Controller		
DU	D-U-N-S registry (Data Universal Numbering System)		04/05/2023

EB	eBIZ	replaces 'ML'	18/03/2019
EN	GS1 (ex-EAN International)		
EO	Registro EORI (Economic Operators Registration and Identification number)		04/03/2023
ES	e-Stockflow	DEPRECATED	
FO	Supplier		
GS	GS1		01/07/2013
MF	national taxation authority (i.e. VAT codes registry)		
ML	Moda-ML	DEPRECATED	
PL	Application Platform		13/06/2022
REX	Registered Exporter system (REX)		19/05/2023
SP	Service Provider		
SU	Enterprise Identification Number UID	Only switzerland	04/03/2023

NT60 - language, codes from ISO 639-1 (subset)

Agency name: eBIZ / ISO

Decoding table: NT60

File codes list (Generic code): http://www.ebiz.enea.it/moda-ml/repository/codelist/draft/gc_NT60.xml

Code	Description	Adoption note	Date of insertion
af	Afrikaans		31/01/2019
ar	Arabic		31/01/2019
be	Belarusian		31/01/2019
bg	Bulgarian		31/01/2019
bn	Bengali		31/01/2019
bo	Tibetan		31/01/2019
bs	Bosnian		31/01/2019
ca	Catalan, Valencian		31/01/2019
cs	Czech		31/01/2019
da	Danish		31/01/2019
de	German		31/01/2019
el	Greek, Modern (1453-)		31/01/2019
en	English		31/01/2019
eo	Esperanto		31/01/2019
es	Spanish, Castilian		31/01/2019
et	Estonian		31/01/2019
eu	Basque		31/01/2019
F	Female		15/04/2019

fa	Persian		31/01/2019
fi	Finnish		31/01/2019
fr	French		31/01/2019
ga	Irish		31/01/2019
gd	Gaelic, Scottish Gaelic		31/01/2019
gn	Guarani		31/01/2019
he	Hebrew		31/01/2019
hr	Croatian		31/01/2019
ht	Haitian, Haitian Creole		31/01/2019
hu	Hungarian		31/01/2019
hy	Armenian		31/01/2019
ia	Interlingua (International Auxiliary Language Association)		31/01/2019
id	Indonesian		31/01/2019
is	Icelandic		31/01/2019
it	Italian		31/01/2019
ja	Japanese		31/01/2019
jv	Javanese		31/01/2019
ka	Georgian		31/01/2019
km	Central Khmer		31/01/2019
ko	Korean		31/01/2019
ku	Kurdish		31/01/2019
lb	Luxembourgish, Letzeburgesch		31/01/2019
lo	Lao		31/01/2019
lt	Lithuanian		31/01/2019
lv	Latvian		31/01/2019
mg	Malagasy		31/01/2019
mk	Macedonian		31/01/2019
mn	Mongolian		31/01/2019
mt	Maltese		31/01/2019
nl	Dutch, Flemish		31/01/2019
no	Norwegian		31/01/2019
pl	Polish		31/01/2019
pt	Portuguese		31/01/2019
ro	Romanian, Moldavian, Moldovan		31/01/2019
ru	Russian		31/01/2019
se	Northern Sami		31/01/2019
sk	Slovak		31/01/2019
sl	Slovenian		31/01/2019

sm	Samoan		31/01/2019
so	Somali		31/01/2019
sq	Albanian		31/01/2019
sr	Serbian		31/01/2019
sv	Swedish		31/01/2019
sw	Swahili		31/01/2019
ta	Tamil		31/01/2019
th	Thai		31/01/2019
tr	Turkish		31/01/2019
uk	Ukrainian		31/01/2019
ur	Urdu		31/01/2019
uz	Uzbek		31/01/2019
vi	Vietnamese		31/01/2019
zh	Chinese		31/01/2019

NT7 - unit of measure

specification of the unit of measure, it is a sub set of table Unit of Measure Code - UN/ECE REC 20 delivered by United Nations Economic Commission for Europe (UN/ECE)

Agency name: eBIZ / UN/ECE

Decoding table: NT7

File codes list (Generic code): http://www.ebiz.enea.it/moda-ml/repository/codelist/draft/gc_NT7.xml

Other link: <http://docs.oasis-open.org/ubl/os-UBL-2.1/cl/gc/default/UnitOfMeasureCode-2.1.gc#>

Code	Description	Adoption note	Date of insertion
CMK	square centimetre		20/12/2017
CMQ	cubic centimetre		20/12/2017
CMT	centimetre		
CNE	centiNewton		
CO2TON	ton of CO2		10/09/2014
COUPLES	couples		
DAY	day		22/08/2022
DEGD	decimal degrees		04/07/2022
DEGMS	degrees with minutes and seconds		01/07/2022
DMQ	cubic decimetre		
E37	pixel		11/04/2018
GRM	gram		
HUR	hour		
INH	inch		

KGM	kilogram		
KMT	kilometer		
KWH	kilowatthours		10/09/2014
LBR	pound		
MCG	microgram		23/08/2022
MG	milligram		23/08/2022
MIN	minute		
MMK	square millimetre		20/12/2017
MONTH	month		22/08/2022
MSEC	millisecond (time)		22/08/2022
MTK	square metre		20/12/2017
MTQ	cubic metre		
MTR	metre		
NMB	numero		
ONZ	ounce		
P1	percent		
PPM	parts per milion		
PZ	piece		
RPM	rounds per metre		
SEC	second (time)		22/08/2022
YEAR	year		22/08/2022
YRD	yard		

T10 - ISO3166 - Country

code of the nation

Agency name: ISO

Decoding table: T10

File codes list (Generic code): http://www.ebiz.enea.it/moda-ml/repository/codelist/draft/gc_T10.xml

Table not printed: there are 240 elements, more than the maximum specified for printing: 99.

T21 - type of document

type or class to which the referenced document belongs

Agency name: eBIZ

Decoding table: T21

File codes list (Generic code): http://www.ebiz.enea.it/moda-ml/repository/codelist/draft/gc_T21.xml

Code	Description	Adoption note	Date of insertion
BIL	Bill of lading		07/03/2023
BOR	Blanket order		01/02/2018
CAT	Price catalogue - tech sheet		
CEO	Certificate of origin		13/04/2018
CER	Certificate		13/04/2018
CMR	CMR consignment note		07/03/2023
COC	Colour card		
CRN	Credit note		08/09/2017
CTO	Checking order		01/07/2013
CTR	Contract		
CXF	CxF3 file		01/07/2013
DAD	Darn order		
DDT	Delivery note (transport document)		
DEA	Despatch advise		
DER	Despatch request		
DR	Document Request		02/12/2014
EAD	Export Accompanying Document	adopted by European customs	12/05/2023
ECMR	electronic CMR consignment note		07/03/2023
ECUS	EXPORT Custom Declaration		07/03/2023
FOR	Forecast		02/12/2014
GSO	Garment stock offer		
GSX	Garment stock offer change		
ICUS	IMPORT Custom Declaration		07/03/2023
INV	Invoice		
KCC	Knitting-Clothing Commission Order		02/12/2014
KCI	Garment in Work Inventory Report		02/12/2014
LCA	LCA study		28/08/2022
LCAD	LCA study dataset		28/08/2022
M2M	Made to Measure Production Order		02/12/2014
MAS	Master marker		
MCI	Visual merchandising instruction		13/04/2018
OCH	Order change		
OFF	Offer		
ORD	Purchase order		
ORP	Order response		
OSR	order status request		

OSS	Offer status		02/12/2014
OST	Order status		
OUR	our reference		
PCO	Preferential certificate of origin		07/03/2023
PEF	PEF study		28/08/2022
PEFD	PEF study dataset		28/08/2022
PEFP	PEF environmental profile		07/03/2023
QR	Quality Report		02/12/2014
RAI	Raw Material in Work Inventory Report		02/12/2014
RDC	Raw dyeing commission order		
RDH	Raw dyeing order change		
RDR	Raw dyeing order response		
REA	Receiving advise		
REQ	Request for Offer		
RET	Return		02/12/2014
RSC	Spinning commission order		
RSH	Spinning order change		
RSR	Spinning order response		
SAD	Single Administrative Document	adopted by European customs	12/05/2023
SCL	Process sheet		
SDE	Self-declaration		07/03/2023
SDS	SDS - Safety data sheet		07/03/2023
SLCA	S-LCA Study		07/03/2023
SLCAD	S-LCA Study documentation		07/03/2023
TFC	Textile dyeing-finishing commission order		
TFX	Textile Dyeing-Finishing Order Change		02/12/2014
TPC	Textile printing commission order		
TPX	Textile Printing Order Change		02/12/2014
TWI	Textile in work inventory		
VMI	visual merchandising instructions		01/02/2018
WAC	Warping commission order		
WAYB	Waybill		07/03/2023
WEC	Weaving commission order		
YDC	Yarn dyeing commission order		
YDH	Yarn dyeing order change		
YDR	Yarn dyeing order response		
YTC	Twisting commission order		
YWI	Yarn in work inventory		

T302 - type of object

indicates the type of object. Indicates the nature of a traceable object (for example a truck load).

Agency name: eBIZ for TRICK

Decoding table: T302

File codes list (Generic code): http://www.ebiz.enea.it/moda-ml/repository/codelist/draft/gc_T302.xml

Code	Description	Adoption note	Date of insertion
ACCE	accessory		13/06/2022
CFBR	fiber (combed)		01/09/2022
FABR	fabric (finished) (non knitted)	after any finishing or dyeing or darning	01/09/2022
FIL	filament		01/09/2022
GARM	garment (finished)	garment ready fo use (sales, rent or anything else)	13/06/2022
GRCO	garment component		13/06/2022
KNFA	knitted fabric (finished)		01/09/2022
LFIB	lose fibers		01/09/2022
PFBR	fiber (processed)		01/07/2022
POLY	polymer		04/09/2022
PPFB	fiber (preprocessed)	might include washed fiber or dyed	01/09/2022
RAFA	fabric (non knitted) (raw)		01/09/2022
RAFI	fiber (raw)	before any kind of treatment or preprocessing	01/09/2022
RAGA	garment (unfinished)		01/09/2022
RAKF	knitted fabric (unfinished)		01/09/2022
RAYA	yarn (unfinished)		13/06/2022
TOPS	tops		23/03/2023
TRIM	trimming		01/09/2022
WACC	waste accessories		01/09/2022
WFFP	waste fabric from fabric production		01/09/2022
WFGP	waste fabric from garment production		01/09/2022
WFYP	waste fibre from yarn production		01/09/2022
WGGP	waste garment from garment production		01/09/2022
WPAC	waste accessories (Post-Consumer)		01/09/2022
WPFB	waste fabric (Post-Consumer)		01/09/2022
WPGR	waste garment (Post-Consumer)		01/09/2022
WPTR	waste trimming (Post-Consumer)		01/09/2022
WTRM	waste trimming		01/09/2022
WYFP	waste yarn from fabric production		01/09/2022

WYYP	waste yarn from yarn production		01/09/2022
YARN	yarn (finished)		13/06/2022