



<http://www.ebiz-tcf.eu>

DRAFT

Extract from IMPLEMENTATION GUIDE
TRANSACTION "HEALTH PROTECTION INFORMATION"

Version: draft

Date of release: 9/10/2022

Document code: TRC008e

technical Documentation: <http://www.ebiz.enea.it>

XML Schemas repository: <http://www.ebiz.enea.it/moda-ml/repository/schema/draft/default.asp>

Guides repository: <http://www.ebiz.enea.it/moda-ml/repository/guide/draft/default.asp>

Guide filename: TRC008-eBIZ-HealthProtectionInformation.pdf

0. PREMISE

This document contains a proposal for the updating and extension of eBIZ specifications starting from the eBIZ version 2018. Under the name of 'Draft version' it is reported the result of an extensive work of analysis and consultation aimed at developing and maintaining eBIZ specifications.

In particular, the content of this proposal is the result of various activities, mainly those carried out within the framework of the **TRICK project** funded by the European Commission: grant agreement 958352, call H2020-LOW-CARBON-CIRCULAR-INDUSTRIES-2020 / H2020-LCCI-2020-EASME-twostage.

The technical contents are backwards compatible with the latest official published version, with the exclusion of the totally new concepts added explicitly for the version that are thought as incremental evolution of the knowledge base.

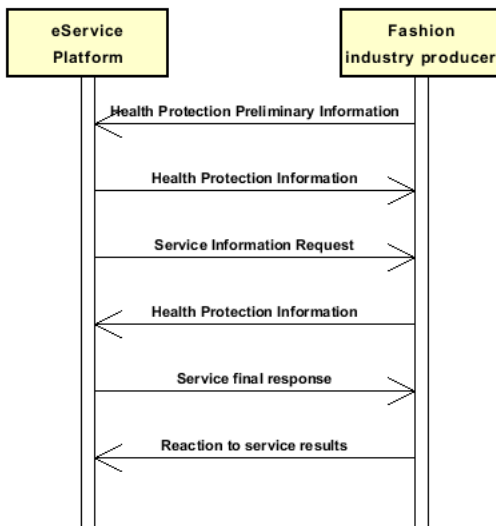
1. BUSINESS DESCRIPTION

1.1 Scope

This guide aims to illustrate the standard XML format of the document type "Health Protection Information", providing instructions for its use in the context of a TRANSPARENCY SYSTEM involving Fashion Manufacturers, their customers, third parties and in case customs authorities, eBusiness and eCommerce platforms. All the rules necessary for the construction and validation of the document are expressed through a specific XML schema, which is presented in detail in the paragraph "Implementation Guide".

1.2. Possible scenario

S4.1 Health Protection service execution



2. IMPLEMENTATION GUIDE

2.1 General structure of XML document

All the business data that can be exchanged through this class of documents are shown in the following "document structure", that provides a simplified vision of the Schema.

In particular:

- the two numbers following each element define its "cardinality" (minimum and maximum number of occurrences); the minimum equal zero indicates that the element is optional, the minimum greater than zero indicates that is mandatory;
- the bold character denotes the complex elements (aggregates of simple elements) that were built for the sake of functionality and re-usability of some complex informations sets. The child elements in each parent element are easily spotted as "indented";
- the symbol "@" denotes an attribute of the preceding element; here "the usage indicator (optional, required, ...)" is shown in square brackets.

Structure

HPInformationSupply

@version [Optional] [Default= 2018-1]

@useProfile [Optional]

@disclosureLevel [Optional]

@storageAction [Optional]

SRVheader 1-1

msgID 0-1

msgDate 0-1

@dateForm [Optional]

senderParty 1-1

@role [Optional]

@sender [Optional]

id 1-1

@numberingOrg [Optional]

legalName 0-1

dept 0-1

subDept 0-1

person 0-1

@email [Optional]

@phone [Optional]

@fax [Optional]

street 0-1

city 0-1

subCountry 0-1

country 0-1

postCode 0-1

geoCoordinates 0-1

@um [Optional] [Default= DEGD]

@geoReferenceSystem [Optional]

xGeoCoord 1-1

yGeoCoord 1-1

zGeoCoord 0-0

receiverParty 1-1

@role [Optional]

@sender [Optional]

id 1-1

@numberingOrg [Optional]

legalName 0-1

dept 0-1

subDept 0-1

person 0-1

@email [Optional]

@phone [Optional]

@fax [Optional]

street 0-1

city 0-1

subCountry 0-1

country 0-1

postCode 0-1

- | | | **geoCoordinates 0-1**
- | | | | @um [Optional] [Default= DEGD]
- | | | | @geoReferenceSystem [Optional]
- | | | | | xGeoCoord 1-1
- | | | | | yGeoCoord 1-1
- | | | | | zGeoCoord 0-0
- | | | **platformServiceRef 1-1**
- | | | | platformService 1-1
- | | | | | @schemeID [Optional]
- | | | | | serviceTicketIdentifierID 0-1
- | | | | | serviceRequestedAction 1-1

| **transparencyProductSimplifiedForHealth 1-unbounded**

- | | @disclosureLevel [Optional]
- | | @storageAction [Optional]

| | **ProductIdentification 1-1**

- | | | uniqueProductID 1-1
- | | | | @schemeID [Required]
- | | | | objectTypeCode 1-1
- | | | | description 0-9
- | | | | | @ln [Optional]

- choose -

| | **rawCode 0-2**

- | | | @numberingOrg [Optional]
- | | | | art 1-1
- | | | | | @numberingOrg [Optional]
- | | | | | @codeList [Optional]
- | | | | | @listName [Optional]
- | | | | | @listVersion [Optional]
- | | | | color 0-1
- | | | | | @numberingOrg [Optional]
- | | | | | @codeList [Optional]
- | | | | | @listName [Optional]
- | | | | | @listVersion [Optional]
- | | | | added 0-9
- | | | | | @numberingOrg [Optional]
- | | | | | @addType [Optional]
- | | | | | description 0-unbounded
- | | | | | @ln [Optional]

- or -

| | **yarnCode 0-2**

- | | | @numberingOrg [Optional] [Default= CL]
- | | | | art 1-1
- | | | | | @numberingOrg [Optional]
- | | | | | @codeList [Optional]
- | | | | | @listName [Optional]
- | | | | | @listVersion [Optional]
- | | | | color 0-1
- | | | | | @numberingOrg [Optional]
- | | | | | @codeList [Optional]
- | | | | | @listName [Optional]
- | | | | | @listVersion [Optional]
- | | | | added 0-9
- | | | | | @numberingOrg [Optional]
- | | | | | @addType [Optional]
- | | | | | description 0-unbounded
- | | | | | @ln [Optional]

- or -

| | **texCode 0-2**

- | | | @numberingOrg [Optional]
- | | | | art 1-1
- | | | | | @numberingOrg [Optional]
- | | | | | @codeList [Optional]
- | | | | | @listName [Optional]
- | | | | | @listVersion [Optional]
- | | | | pattern 0-1
- | | | | | @numberingOrg [Optional]
- | | | | | @codeList [Optional]

| | | @listName [Optional]
| | | @listVersion [Optional]
| | | color 0-1
| | | @numberingOrg [Optional]
| | | @codeList [Optional]
| | | @listName [Optional]
| | | @listVersion [Optional]
| | | added 0-9
| | | @numberingOrg [Optional]
| | | @addType [Optional]
| | | description 0-unbounded
| | | @ln [Optional]

- or -

| | | **acsCode 1-2**
| | | @numberingOrg [Optional]
| | | art 1-1
| | | @numberingOrg [Optional]
| | | @codeList [Optional]
| | | @listName [Optional]
| | | @listVersion [Optional]
| | | pattern 0-1
| | | @numberingOrg [Optional]
| | | @codeList [Optional]
| | | @listName [Optional]
| | | @listVersion [Optional]
| | | color 0-1
| | | @numberingOrg [Optional]
| | | @codeList [Optional]
| | | @listName [Optional]
| | | @listVersion [Optional]
| | | added 0-9
| | | @numberingOrg [Optional]
| | | @addType [Optional]
| | | description 0-unbounded
| | | @ln [Optional]

- or -

| | | **garmentPartCode 0-2**
| | | @numberingOrg [Optional]
| | | gPart 1-1
| | | mod 1-1
| | | @numberingOrg [Optional]
| | | @codeList [Optional]
| | | @listName [Optional]
| | | @listVersion [Optional]
| | | fabric 0-1
| | | @numberingOrg [Optional]
| | | @codeList [Optional]
| | | @listName [Optional]
| | | @listVersion [Optional]
| | | color 0-1
| | | @numberingOrg [Optional]
| | | @codeList [Optional]
| | | @listName [Optional]
| | | @listVersion [Optional]
| | | added 0-19
| | | @numberingOrg [Optional]
| | | @addType [Optional]
| | | size 0-1
| | | @numberingOrg [Optional]
| | | @codeList [Optional]
| | | @listName [Optional]
| | | @listVersion [Optional]
| | | description 0-unbounded
| | | @ln [Optional]

- or -

| | | **garmentCode 0-2**
| | | @numberingOrg [Optional]
- choose -

```

| | | | garmentCodeB 1-1
| | | | @numberingOrg [Optional]
| | | | | mod 1-1
| | | | | @numberingOrg [Optional]
| | | | | @codeList [Optional]
| | | | | @listName [Optional]
| | | | | @listVersion [Optional]
| | | | fabric 0-1
| | | | | @numberingOrg [Optional]
| | | | | @codeList [Optional]
| | | | | @listName [Optional]
| | | | | @listVersion [Optional]
| | | | color 0-1
| | | | | @numberingOrg [Optional]
| | | | | @codeList [Optional]
| | | | | @listName [Optional]
| | | | | @listVersion [Optional]
| | | | garmentVariant 0-9
| | | | | variantType 1-1
| | | | | | @numberingOrg [Optional]
| | | | | | @codeList [Optional]
| | | | | | @listName [Optional]
| | | | | | @listVersion [Optional]
| | | | | variantCode 1-1
| | | | | | @numberingOrg [Optional]
| | | | | | @codeList [Optional]
| | | | | | @listName [Optional]
| | | | | | @listVersion [Optional]
| | | | drop 0-1
| | | | | @numberingOrg [Optional]
| | | | | @codeList [Optional]
| | | | | @listName [Optional]
| | | | | @listVersion [Optional]
| | | | size 0-1
| | | | | @numberingOrg [Optional]
| | | | | @codeList [Optional]
| | | | | @listName [Optional]
| | | | | @listVersion [Optional]
| | | | artGroup 0-1
| | | | | @numberingOrg [Optional]
| | | | | @codeList [Optional]
| | | | | @listName [Optional]
| | | | | @listVersion [Optional]
| | | | added 0-9
| | | | | @numberingOrg [Optional]
| | | | | @addType [Optional]
| | | | description 0-unbounded
| | | | | @ln [Optional]
| | | | - or -
| | | | garmentCodeA 1-1
| | | | | art 1-1
| | | | | | @numberingOrg [Optional]
| | | | | | @codeList [Optional]
| | | | | | @listName [Optional]
| | | | | | @listVersion [Optional]
| | | | | description 0-unbounded
| | | | | @ln [Optional]
| | | | - end choose -
| | | | - end choose -
| | | | note 0-99
| | | | | @numberingOrg [Optional]
| | | | | @codeList [Optional]
| | | | | @noteLabel [Optional]
| | | | productCompos 1-1
| | | | | percCompos 1-99
| | | | | @fibre [Required]
| | | | | @materialSource [Optional]
| | | | | @recyclingProcessMethod [Optional]

```

```

| | @percSourcesRenewable [Optional]
| processStepsList 1-1
| @limitedByDisclosureIndicator [Optional]
| @exhaustiveInformation [Required]
| @disclosureLevel [Required]
| @storageAction [Required]
| | processStep 1-unbounded
| | @progr [Required]
| | @internallyPerformed [Optional]
| | | processStepID 1-1
| | | manufacturingOperation 1-1
| | | description 0-9
| | | @ln [Optional]
| | | activityLocation 0-99
| | | @part [Optional] [Default= 100]
| | | | location 0-1
| | | | @LRI [Optional]
| | | | legalName 0-1
| | | | dept 0-1
| | | | subDept 0-1
| | | | person 0-1
| | | | @email [Optional]
| | | | @phone [Optional]
| | | | @fax [Optional]
| | | | street 0-1
| | | | city 0-1
| | | | subCountry 0-1
| | | | country 0-1
| | | | postCode 0-1
| | | | geoCoordinates 0-1
| | | | @um [Optional] [Default= DEGD]
| | | | @geoReferenceSystem [Optional]
| | | | | xGeoCoord 1-1
| | | | | yGeoCoord 1-1
| | | | | zGeoCoord 0-0
| | | note 0-99
| | | @numberingOrg [Optional]
| | | @codeList [Optional]
| | | @noteLabel [Optional]
| certificate 0-99
| @docStatusCode [Required]
| @docValidity [Required]
| | docID 1-1
| | | @numberingOrg [Optional]
| | certificateID 1-1
| | | @schemeID [Optional]
| | certificationStandardName 1-1
| | | @standardOwner [Required]
| | docDate 1-1
| | | @dateForm [Optional]
| | title 0-unbounded
| | | @ln [Optional]
| | description 0-unbounded
| | | @ln [Optional]
| | validityStart 0-1
| | | @dateForm [Optional]
| | validityEnd 0-1
| | | @dateForm [Optional]
| | validityExtensionDate 0-1
| | | @dateForm [Optional]
| | sustainabilityCharacteristicText 0-99
| | | @ln [Optional]
| | issuerParty 1-1
| | | id 0-1
| | | | @numberingOrg [Optional]
| | | legalName 0-1
| | | dept 0-1
| | | subDept 0-1

```

```

| person 0-1
|   @email [Optional]
|   @phone [Optional]
|   @fax [Optional]
| street 0-1
| city 0-1
| subCountry 0-1
| country 0-1
| postCode 0-1
| geoCoordinates 0-1
|   @um [Optional] [Default= DEGD]
|   @geoReferenceSystem [Optional]
|     xGeoCoord 1-1
|     yGeoCoord 1-1
|     zGeoCoord 0-0
| issuerAccreditationInfo 0-1
| certifiedParty 1-1
|   id 0-1
|   @numberingOrg [Optional]
|   legalName 0-1
|   dept 0-1
|   subDept 0-1
|   person 0-1
|     @email [Optional]
|     @phone [Optional]
|     @fax [Optional]
|   street 0-1
|   city 0-1
|   subCountry 0-1
|   country 0-1
|   postCode 0-1
|   geoCoordinates 0-1
|     @um [Optional] [Default= DEGD]
|     @geoReferenceSystem [Optional]
|       xGeoCoord 1-1
|       yGeoCoord 1-1
|       zGeoCoord 0-0
| certifiedEntity 0-unbounded
|   entityID 1-3
|   @schemeID [Required]
|   entityTypeCode 1-1
|   description 0-9
|   @ln [Optional]
| attachment 0-1
|   @uid [Optional]
|   fileName 0-1
|   @numberingOrg [Optional]
|   binaryObject 0-1
|   @format [Optional]
|   @mime [Optional]
|   @encoding [Optional]
|   @characterSet [Optional]
|   externalReference 0-99
|     uri 1-1
|     @isURL [Optional] [Default= true]
|     mimeTypeCode 0-1
|     formatCode 0-1
|     encodingCode 0-1
|     characterSetCode 0-1
| note 0-99
|   @numberingOrg [Optional]
|   @codeList [Optional]
|   @noteLabel [Optional]
| selfAssertion 0-99
|   @disclosureLevel [Optional]
|   @docStatusCode [Optional]
|   sustainabilityCharacteristicText 0-99
|   @ln [Optional]

```


| assertionCategory 1-1
 | description 1-99
 | @ln [Optional]
 | **issuerParty 1-1**
 | | id 0-1
 | | | @numberingOrg [Optional]
 | | legalName 0-1
 | | dept 0-1
 | | subDept 0-1
 | | person 0-1
 | | | @email [Optional]
 | | | @phone [Optional]
 | | | @fax [Optional]
 | | street 0-1
 | | city 0-1
 | | subCountry 0-1
 | | country 0-1
 | | postCode 0-1
 | | **geoCoordinates 0-1**
 | | | @um [Optional] [Default= DEGD]
 | | | @geoReferenceSystem [Optional]
 | | | | xGeoCoord 1-1
 | | | | yGeoCoord 1-1
 | | | | zGeoCoord 0-0
 | | issuerAccreditationInfo 0-1
 | **externalRefDoc 0-99**
 | | docID 1-1
 | | | @numberingOrg [Optional]
 | | docDate 0-1
 | | | @dateForm [Optional]
 | | title 0-unbounded
 | | | @ln [Optional]
 | | description 0-unbounded
 | | | @ln [Optional]
 | | validityStart 0-1
 | | | @dateForm [Optional]
 | | validityEnd 0-1
 | | | @dateForm [Optional]
 | | documentType 0-1
 | | **issuerParty 0-1**
 | | | id 0-1
 | | | | @numberingOrg [Optional]
 | | | legalName 0-1
 | | | dept 0-1
 | | | subDept 0-1
 | | | person 0-1
 | | | | @email [Optional]
 | | | | @phone [Optional]
 | | | | @fax [Optional]
 | | | street 0-1
 | | | city 0-1
 | | | subCountry 0-1
 | | | country 0-1
 | | | postCode 0-1
 | | | **geoCoordinates 0-1**
 | | | | @um [Optional] [Default= DEGD]
 | | | | @geoReferenceSystem [Optional]
 | | | | | xGeoCoord 1-1
 | | | | | yGeoCoord 1-1
 | | | | | zGeoCoord 0-0
 | | | issuerAccreditationInfo 0-1
 | | **signatureInformation 0-1**
 | | | signatureTypeCode 1-1
 | | | **signatoryParty 0-unbounded**
 | | | | id 0-1
 | | | | | @numberingOrg [Optional]
 | | | | legalName 0-1
 | | | | dept 0-1

```

| | | | | subDept 0-1
| | | | | person 0-1
| | | | |   @email [Optional]
| | | | |   @phone [Optional]
| | | | |   @fax [Optional]
| | | | | street 0-1
| | | | | city 0-1
| | | | | subCountry 0-1
| | | | | country 0-1
| | | | | postCode 0-1
| | | | | geoCoordinates 0-1
| | | | |   @um [Optional] [Default= DEGD]
| | | | |   @geoReferenceSystem [Optional]
| | | | |     xGeoCoord 1-1
| | | | |     yGeoCoord 1-1
| | | | |     zGeoCoord 0-0
| | | | | attachment 0-1
| | | | |   @uid [Optional]
| | | | |   fileName 0-1
| | | | |     @numberingOrg [Optional]
| | | | |   binaryObject 0-1
| | | | |     @format [Optional]
| | | | |     @mime [Optional]
| | | | |     @encoding [Optional]
| | | | |     @characterSet [Optional]
| | | | |   externalReference 0-99
| | | | |     uri 1-1
| | | | |       @isURL [Optional] [Default= true]
| | | | |     mimeTypeCode 0-1
| | | | |     formatCode 0-1
| | | | |     encodingCode 0-1
| | | | |     characterSetCode 0-1
| | | | | note 0-99
| | | | |   @numberingOrg [Optional]
| | | | |   @codeList [Optional]
| | | | |   @noteLabel [Optional]
| | | | | validityStart 0-1
| | | | |   @dateForm [Optional]
| | | | | validityEnd 0-1
| | | | |   @dateForm [Optional]
| | | | | validityExtensionDate 0-1
| | | | |   @dateForm [Optional]
| | | | | assessmentStudyDocument 0-9
| | | | |   @disclosureLevel [Optional]
| | | | |   @studyDataset [Required]
| | | | |   productComponent 0-99
| | | | |     @internallyPerformed [Required]
| | | | |     uniqueProductID 1-1
| | | | |     @schemeID [Required]
| | | | | - choose -
| | | | |   rawCode 0-2
| | | | |     @numberingOrg [Optional]
| | | | |     art 1-1
| | | | |       @numberingOrg [Optional]
| | | | |       @codeList [Optional]
| | | | |       @listName [Optional]
| | | | |       @listVersion [Optional]
| | | | |     color 0-1
| | | | |       @numberingOrg [Optional]
| | | | |       @codeList [Optional]
| | | | |       @listName [Optional]
| | | | |       @listVersion [Optional]
| | | | |     added 0-9
| | | | |       @numberingOrg [Optional]
| | | | |       @addType [Optional]
| | | | |     description 0-unbounded
| | | | |     @ln [Optional]
| | | | | - or -

```

yarnCode 0-2
 @numberingOrg [Optional] [Default= CL]
 | art 1-1
 | @numberingOrg [Optional]
 | @codeList [Optional]
 | @listName [Optional]
 | @listVersion [Optional]
 | color 0-1
 | @numberingOrg [Optional]
 | @codeList [Optional]
 | @listName [Optional]
 | @listVersion [Optional]
 | added 0-9
 | @numberingOrg [Optional]
 | @addType [Optional]
 | description 0-unbounded
 | @ln [Optional]

- or -

texCode 0-2
 @numberingOrg [Optional]
 | art 1-1
 | @numberingOrg [Optional]
 | @codeList [Optional]
 | @listName [Optional]
 | @listVersion [Optional]
 | pattern 0-1
 | @numberingOrg [Optional]
 | @codeList [Optional]
 | @listName [Optional]
 | @listVersion [Optional]
 | color 0-1
 | @numberingOrg [Optional]
 | @codeList [Optional]
 | @listName [Optional]
 | @listVersion [Optional]
 | added 0-9
 | @numberingOrg [Optional]
 | @addType [Optional]
 | description 0-unbounded
 | @ln [Optional]

- or -

acsCode 0-2
 @numberingOrg [Optional]
 | art 1-1
 | @numberingOrg [Optional]
 | @codeList [Optional]
 | @listName [Optional]
 | @listVersion [Optional]
 | pattern 0-1
 | @numberingOrg [Optional]
 | @codeList [Optional]
 | @listName [Optional]
 | @listVersion [Optional]
 | color 0-1
 | @numberingOrg [Optional]
 | @codeList [Optional]
 | @listName [Optional]
 | @listVersion [Optional]
 | added 0-9
 | @numberingOrg [Optional]
 | @addType [Optional]
 | description 0-unbounded
 | @ln [Optional]

- or -

garmentPartCode 0-2
 @numberingOrg [Optional]
 | gPart 1-1
 | mod 1-1

```

| | | | @numberingOrg [Optional]
| | | | @codeList [Optional]
| | | | @listName [Optional]
| | | | @listVersion [Optional]
| | | | fabric 0-1
| | | | @numberingOrg [Optional]
| | | | @codeList [Optional]
| | | | @listName [Optional]
| | | | @listVersion [Optional]
| | | | color 0-1
| | | | @numberingOrg [Optional]
| | | | @codeList [Optional]
| | | | @listName [Optional]
| | | | @listVersion [Optional]
| | | | added 0-19
| | | | @numberingOrg [Optional]
| | | | @addType [Optional]
| | | | size 0-1
| | | | @numberingOrg [Optional]
| | | | @codeList [Optional]
| | | | @listName [Optional]
| | | | @listVersion [Optional]
| | | | description 0-unbounded
| | | | @ln [Optional]

```

- or -

```

| | | | garmentCode 0-2
| | | | @numberingOrg [Optional]

```

- choose -

```

| | | | garmentCodeB 1-1
| | | | @numberingOrg [Optional]
| | | | mod 1-1
| | | | @numberingOrg [Optional]
| | | | @codeList [Optional]
| | | | @listName [Optional]
| | | | @listVersion [Optional]
| | | | fabric 0-1
| | | | @numberingOrg [Optional]
| | | | @codeList [Optional]
| | | | @listName [Optional]
| | | | @listVersion [Optional]
| | | | color 0-1
| | | | @numberingOrg [Optional]
| | | | @codeList [Optional]
| | | | @listName [Optional]
| | | | @listVersion [Optional]
| | | | garmentVariant 0-9
| | | | variantType 1-1
| | | | @numberingOrg [Optional]
| | | | @codeList [Optional]
| | | | @listName [Optional]
| | | | @listVersion [Optional]
| | | | variantCode 1-1
| | | | @numberingOrg [Optional]
| | | | @codeList [Optional]
| | | | @listName [Optional]
| | | | @listVersion [Optional]
| | | | drop 0-1
| | | | @numberingOrg [Optional]
| | | | @codeList [Optional]
| | | | @listName [Optional]
| | | | @listVersion [Optional]
| | | | size 0-1
| | | | @numberingOrg [Optional]
| | | | @codeList [Optional]
| | | | @listName [Optional]
| | | | @listVersion [Optional]
| | | | artGroup 0-1
| | | | @numberingOrg [Optional]

```

```

| | | | | @codeList [Optional]
| | | | | @listName [Optional]
| | | | | @listVersion [Optional]
| | | | | added 0-9
| | | | | @numberingOrg [Optional]
| | | | | @addType [Optional]
| | | | | description 0-unbounded
| | | | | @ln [Optional]
| | | | - or -
| | | | | garmentCodeA 1-1
| | | | | art 1-1
| | | | | @numberingOrg [Optional]
| | | | | @codeList [Optional]
| | | | | @listName [Optional]
| | | | | @listVersion [Optional]
| | | | | description 0-unbounded
| | | | | @ln [Optional]
| | | | - end choose -
| | | | - end choose -
| | | | | refDoc 0-9
| | | | | @docType [Required]
| | | | | docID 1-2
| | | | | @numberingOrg [Optional]
| | | | | docDate 0-1
| | | | | @dateForm [Optional]
| | | | | season 0-1
| | | | | @numberingOrg [Optional]
| | | | | @codeList [Optional]
| | | | | @listName [Optional]
| | | | | @listVersion [Optional]
| | | | | itemID 0-1
| | | | | attachment 0-1
| | | | | @uid [Optional]
| | | | | fileName 0-1
| | | | | @numberingOrg [Optional]
| | | | | binaryObject 0-1
| | | | | @format [Optional]
| | | | | @mime [Optional]
| | | | | @encoding [Optional]
| | | | | @characterSet [Optional]
| | | | | externalReference 0-99
| | | | | uri 1-1
| | | | | @isURL [Optional] [Default= true]
| | | | | mimeTypeCode 0-1
| | | | | formatCode 0-1
| | | | | encodingCode 0-1
| | | | | characterSetCode 0-1
| | | | | certificate 0-9
| | | | | @docStatusCode [Required]
| | | | | @docValidity [Required]
| | | | | docID 1-1
| | | | | @numberingOrg [Optional]
| | | | | certificateID 1-1
| | | | | @schemeID [Optional]
| | | | | certificationStandardName 1-1
| | | | | @standardOwner [Required]
| | | | | docDate 1-1
| | | | | @dateForm [Optional]
| | | | | title 0-unbounded
| | | | | @ln [Optional]
| | | | | description 0-unbounded
| | | | | @ln [Optional]
| | | | | validityStart 0-1
| | | | | @dateForm [Optional]
| | | | | validityEnd 0-1
| | | | | @dateForm [Optional]
| | | | | validityExtensionDate 0-1
| | | | | @dateForm [Optional]

```

sustainabilityCharacteristicText 0-99
 @In [Optional]

issuerParty 1-1

- | id 0-1
- | @numberingOrg [Optional]
- | legalName 0-1
- | dept 0-1
- | subDept 0-1
- | person 0-1
- | @email [Optional]
- | @phone [Optional]
- | @fax [Optional]
- | street 0-1
- | city 0-1
- | subCountry 0-1
- | country 0-1
- | postCode 0-1
- | **geoCoordinates 0-1**
- | @um [Optional] [Default= DEGD]
- | @geoReferenceSystem [Optional]
- | | xGeoCoord 1-1
- | | yGeoCoord 1-1
- | | zGeoCoord 0-0
- | issuerAccreditationInfo 0-1

certifiedParty 1-1

- | id 0-1
- | @numberingOrg [Optional]
- | legalName 0-1
- | dept 0-1
- | subDept 0-1
- | person 0-1
- | @email [Optional]
- | @phone [Optional]
- | @fax [Optional]
- | street 0-1
- | city 0-1
- | subCountry 0-1
- | country 0-1
- | postCode 0-1
- | **geoCoordinates 0-1**
- | @um [Optional] [Default= DEGD]
- | @geoReferenceSystem [Optional]
- | | xGeoCoord 1-1
- | | yGeoCoord 1-1
- | | zGeoCoord 0-0

certifiedEntity 0-unbounded

- | entityID 1-3
- | @schemeID [Required]
- | entityTypeCode 1-1
- | description 0-9
- | @In [Optional]

attachment 0-1

- | @uid [Optional]
- | fileName 0-1
- | @numberingOrg [Optional]
- | binaryObject 0-1
- | @format [Optional]
- | @mime [Optional]
- | @encoding [Optional]
- | @characterSet [Optional]

externalReference 0-99

- | uri 1-1
- | @isURL [Optional] [Default= true]
- | mimeTypeCode 0-1
- | formatCode 0-1
- | encodingCode 0-1
- | characterSetCode 0-1

note 0-99

| @numberingOrg [Optional]
 | @codeList [Optional]
 | @noteLabel [Optional]
selfAssertion 0-99
 | @disclosureLevel [Optional]
 | @docStatusCode [Optional]
 | sustainabilityCharacteristicText 0-99
 | @In [Optional]
 | assertionCategory 1-1
 | description 1-99
 | @In [Optional]
issuerParty 1-1
 | id 0-1
 | @numberingOrg [Optional]
 | legalName 0-1
 | dept 0-1
 | subDept 0-1
 | person 0-1
 | @email [Optional]
 | @phone [Optional]
 | @fax [Optional]
 | street 0-1
 | city 0-1
 | subCountry 0-1
 | country 0-1
 | postCode 0-1
geoCoordinates 0-1
 | @um [Optional] [Default= DEGD]
 | @geoReferenceSystem [Optional]
 | xGeoCoord 1-1
 | yGeoCoord 1-1
 | zGeoCoord 0-0
 | issuerAccreditationInfo 0-1
externalRefDoc 0-99
 | docID 1-1
 | @numberingOrg [Optional]
 | docDate 0-1
 | @dateForm [Optional]
 | title 0-unbounded
 | @In [Optional]
 | description 0-unbounded
 | @In [Optional]
 | validityStart 0-1
 | @dateForm [Optional]
 | validityEnd 0-1
 | @dateForm [Optional]
 | documentType 0-1
issuerParty 0-1
 | id 0-1
 | @numberingOrg [Optional]
 | legalName 0-1
 | dept 0-1
 | subDept 0-1
 | person 0-1
 | @email [Optional]
 | @phone [Optional]
 | @fax [Optional]
 | street 0-1
 | city 0-1
 | subCountry 0-1
 | country 0-1
 | postCode 0-1
geoCoordinates 0-1
 | @um [Optional] [Default= DEGD]
 | @geoReferenceSystem [Optional]
 | xGeoCoord 1-1
 | yGeoCoord 1-1
 | zGeoCoord 0-0

```

| issuerAccreditationInfo 0-1
| signatureInformation 0-1
| signatureTypeCode 1-1
| signatoryParty 0-unbounded
| id 0-1
|   @numberingOrg [Optional]
|   legalName 0-1
|   dept 0-1
|   subDept 0-1
|   person 0-1
|   @email [Optional]
|   @phone [Optional]
|   @fax [Optional]
|   street 0-1
|   city 0-1
|   subCountry 0-1
|   country 0-1
|   postCode 0-1
|   geoCoordinates 0-1
|     @um [Optional] [Default= DEGD]
|     @geoReferenceSystem [Optional]
|       xGeoCoord 1-1
|       yGeoCoord 1-1
|       zGeoCoord 0-0
| attachment 0-1
| @uid [Optional]
|   fileName 0-1
|   @numberingOrg [Optional]
|   binaryObject 0-1
|   @format [Optional]
|   @mime [Optional]
|   @encoding [Optional]
|   @characterSet [Optional]
| externalReference 0-99
|   uri 1-1
|   @isURL [Optional] [Default= true]
|   mimeTypeCode 0-1
|   formatCode 0-1
|   encodingCode 0-1
|   characterSetCode 0-1
| note 0-99
|   @numberingOrg [Optional]
|   @codeList [Optional]
|   @noteLabel [Optional]
| validityStart 0-1
|   @dateForm [Optional]
| validityEnd 0-1
|   @dateForm [Optional]
| validityExtensionDate 0-1
|   @dateForm [Optional]
| objectTypeCode 0-1
| qty 0-2
| @um [Required]
| supplier 0-9
| @logo [Optional]
| @sender [Optional]
| id 1-1
|   @numberingOrg [Optional]
|   additionalIdentifier 0-9
|   @numberingOrg [Optional]
|   @idQualifier [Optional]
|   legalName 0-1
|   dept 0-1
|   subDept 0-1
|   person 0-1
|   @email [Optional]
|   @phone [Optional]
|   @fax [Optional]

```



```

| | | | street 0-1
| | | | city 0-1
| | | | subCountry 0-1
| | | | country 0-1
| | | | postCode 0-1
| | | | geoCoordinates 0-1
| | | |   @um [Optional] [Default= DEGD]
| | | |   @geoReferenceSystem [Optional]
| | | |     xGeoCoord 1-1
| | | |     yGeoCoord 1-1
| | | |     zGeoCoord 0-0
| | | | externalRefDoc 1-9
| | | |   docID 1-1
| | | |     @numberingOrg [Optional]
| | | |   docDate 0-1
| | | |     @dateForm [Optional]
| | | |   title 0-unbounded
| | | |     @ln [Optional]
| | | |   description 0-unbounded
| | | |     @ln [Optional]
| | | |   validityStart 0-1
| | | |     @dateForm [Optional]
| | | |   validityEnd 0-1
| | | |     @dateForm [Optional]
| | | |   documentType 0-1
| | | | issuerParty 0-1
| | | |   id 0-1
| | | |     @numberingOrg [Optional]
| | | |   legalName 0-1
| | | |   dept 0-1
| | | |   subDept 0-1
| | | |   person 0-1
| | | |     @email [Optional]
| | | |     @phone [Optional]
| | | |     @fax [Optional]
| | | |   street 0-1
| | | |   city 0-1
| | | |   subCountry 0-1
| | | |   country 0-1
| | | |   postCode 0-1
| | | |   geoCoordinates 0-1
| | | |     @um [Optional] [Default= DEGD]
| | | |     @geoReferenceSystem [Optional]
| | | |       xGeoCoord 1-1
| | | |       yGeoCoord 1-1
| | | |       zGeoCoord 0-0
| | | |   issuerAccreditationInfo 0-1
| | | | signatureInformation 0-1
| | | |   signatureTypeCode 1-1
| | | |   signatoryParty 0-unbounded
| | | |     id 0-1
| | | |       @numberingOrg [Optional]
| | | |     legalName 0-1
| | | |     dept 0-1
| | | |     subDept 0-1
| | | |     person 0-1
| | | |       @email [Optional]
| | | |       @phone [Optional]
| | | |       @fax [Optional]
| | | |     street 0-1
| | | |     city 0-1
| | | |     subCountry 0-1
| | | |     country 0-1
| | | |     postCode 0-1
| | | |     geoCoordinates 0-1
| | | |       @um [Optional] [Default= DEGD]
| | | |       @geoReferenceSystem [Optional]
| | | |         xGeoCoord 1-1

```

```

| | | | yGeoCoord 1-1
| | | | zGeoCoord 0-0
| | | | attachment 0-1
| | | | @uid [Optional]
| | | | | fileName 0-1
| | | | | @numberingOrg [Optional]
| | | | | binaryObject 0-1
| | | | | @format [Optional]
| | | | | @mime [Optional]
| | | | | @encoding [Optional]
| | | | | @characterSet [Optional]
| | | | | externalReference 0-99
| | | | | | uri 1-1
| | | | | | @isURL [Optional] [Default= true]
| | | | | | mimeTypeCode 0-1
| | | | | | formatCode 0-1
| | | | | | encodingCode 0-1
| | | | | | characterSetCode 0-1
| | | | | note 0-99
| | | | | @numberingOrg [Optional]
| | | | | @codeList [Optional]
| | | | | @noteLabel [Optional]
| | | | note 0-9
| | | | @numberingOrg [Optional]
| | | | @codeList [Optional]
| | | | @noteLabel [Optional]
| | | | billOfTreatmentsForHealth 0-1
| | | | @limitedByDisclosureIndicator [Optional]
| | | | @exhaustiveInformation [Required]
| | | | @disclosureLevel [Required]
| | | | @storageAction [Required]
| | | | | treatmentDescriptorForHealth 1-99
| | | | | @internallyPerformed [Required]
| | | | | | manufacturingOperation 1-1
| | | | | | machineryName 1-1
| | | | | | description 0-99
| | | | | | @ln [Optional]
| | | | | | certificate 0-9
| | | | | | @docStatusCode [Required]
| | | | | | @docValidity [Required]
| | | | | | | docID 1-1
| | | | | | | @numberingOrg [Optional]
| | | | | | | certificateID 1-1
| | | | | | | @schemeID [Optional]
| | | | | | | certificationStandardName 1-1
| | | | | | | @standardOwner [Required]
| | | | | | | docDate 1-1
| | | | | | | @dateForm [Optional]
| | | | | | | title 0-unbounded
| | | | | | | @ln [Optional]
| | | | | | | description 0-unbounded
| | | | | | | @ln [Optional]
| | | | | | | validityStart 0-1
| | | | | | | @dateForm [Optional]
| | | | | | | validityEnd 0-1
| | | | | | | @dateForm [Optional]
| | | | | | | validityExtensionDate 0-1
| | | | | | | @dateForm [Optional]
| | | | | | | sustainabilityCharacteristicText 0-99
| | | | | | | @ln [Optional]
| | | | | | | issuerParty 1-1
| | | | | | | | id 0-1
| | | | | | | | @numberingOrg [Optional]
| | | | | | | | legalName 0-1
| | | | | | | | dept 0-1
| | | | | | | | subDept 0-1
| | | | | | | | person 0-1
| | | | | | | | @email [Optional]

```

| @phone [Optional]
 | @fax [Optional]
 | street 0-1
 | city 0-1
 | subCountry 0-1
 | country 0-1
 | postCode 0-1
 | **geoCoordinates 0-1**
 | @um [Optional] [Default= DEGD]
 | @geoReferenceSystem [Optional]
 | | xGeoCoord 1-1
 | | yGeoCoord 1-1
 | | zGeoCoord 0-0
 | issuerAccreditationInfo 0-1
 | **certifiedParty 1-1**
 | id 0-1
 | @numberingOrg [Optional]
 | legalName 0-1
 | dept 0-1
 | subDept 0-1
 | person 0-1
 | @email [Optional]
 | @phone [Optional]
 | @fax [Optional]
 | street 0-1
 | city 0-1
 | subCountry 0-1
 | country 0-1
 | postCode 0-1
 | **geoCoordinates 0-1**
 | @um [Optional] [Default= DEGD]
 | @geoReferenceSystem [Optional]
 | | xGeoCoord 1-1
 | | yGeoCoord 1-1
 | | zGeoCoord 0-0
 | **certifiedEntity 0-unbounded**
 | entityID 1-3
 | @schemeID [Required]
 | entityTypeCode 1-1
 | description 0-9
 | @ln [Optional]
 | **attachment 0-1**
 | @uid [Optional]
 | fileName 0-1
 | @numberingOrg [Optional]
 | binaryObject 0-1
 | @format [Optional]
 | @mime [Optional]
 | @encoding [Optional]
 | @characterSet [Optional]
 | **externalReference 0-99**
 | | uri 1-1
 | | @isURL [Optional] [Default= true]
 | | mimeTypeCode 0-1
 | | formatCode 0-1
 | | encodingCode 0-1
 | | characterSetCode 0-1
 | note 0-99
 | @numberingOrg [Optional]
 | @codeList [Optional]
 | @noteLabel [Optional]
 | **selfAssertion 0-99**
 | @disclosureLevel [Optional]
 | @docStatusCode [Optional]
 | sustainabilityCharacteristicText 0-99
 | @ln [Optional]
 | assertionCategory 1-1
 | description 1-99

```

| @In [Optional]
| issuerParty 1-1
|   id 0-1
|   @numberingOrg [Optional]
|   legalName 0-1
|   dept 0-1
|   subDept 0-1
|   person 0-1
|   @email [Optional]
|   @phone [Optional]
|   @fax [Optional]
|   street 0-1
|   city 0-1
|   subCountry 0-1
|   country 0-1
|   postCode 0-1
|   geoCoordinates 0-1
|   @um [Optional] [Default= DEGD]
|   @geoReferenceSystem [Optional]
|     xGeoCoord 1-1
|     yGeoCoord 1-1
|     zGeoCoord 0-0
|   issuerAccreditationInfo 0-1
| externalRefDoc 0-99
|   docID 1-1
|   @numberingOrg [Optional]
|   docDate 0-1
|   @dateForm [Optional]
|   title 0-unbounded
|   @In [Optional]
|   description 0-unbounded
|   @In [Optional]
|   validityStart 0-1
|   @dateForm [Optional]
|   validityEnd 0-1
|   @dateForm [Optional]
|   documentType 0-1
|   issuerParty 0-1
|     id 0-1
|     @numberingOrg [Optional]
|     legalName 0-1
|     dept 0-1
|     subDept 0-1
|     person 0-1
|     @email [Optional]
|     @phone [Optional]
|     @fax [Optional]
|     street 0-1
|     city 0-1
|     subCountry 0-1
|     country 0-1
|     postCode 0-1
|     geoCoordinates 0-1
|     @um [Optional] [Default= DEGD]
|     @geoReferenceSystem [Optional]
|       xGeoCoord 1-1
|       yGeoCoord 1-1
|       zGeoCoord 0-0
|     issuerAccreditationInfo 0-1
|   signatureInformation 0-1
|     signatureTypeCode 1-1
|     signatoryParty 0-unbounded
|       id 0-1
|       @numberingOrg [Optional]
|       legalName 0-1
|       dept 0-1
|       subDept 0-1
|       person 0-1

```

- | | | | | @email [Optional]
- | | | | | @phone [Optional]
- | | | | | @fax [Optional]
- | | | | | street 0-1
- | | | | | city 0-1
- | | | | | subCountry 0-1
- | | | | | country 0-1
- | | | | | postCode 0-1
- | | | | | **geoCoordinates 0-1**
- | | | | | @um [Optional] [Default= DEGD]
- | | | | | @geoReferenceSystem [Optional]
 - | | | | | | xGeoCoord 1-1
 - | | | | | | yGeoCoord 1-1
 - | | | | | | zGeoCoord 0-0
- | | | | | **attachment 0-1**
- | | | | | @uid [Optional]
 - | | | | | | fileName 0-1
 - | | | | | | @numberingOrg [Optional]
 - | | | | | | binaryObject 0-1
 - | | | | | | @format [Optional]
 - | | | | | | @mime [Optional]
 - | | | | | | @encoding [Optional]
 - | | | | | | @characterSet [Optional]
- | | | | | **externalReference 0-99**
 - | | | | | | uri 1-1
 - | | | | | | @isURL [Optional] [Default= true]
 - | | | | | | mimeTypeCode 0-1
 - | | | | | | formatCode 0-1
 - | | | | | | encodingCode 0-1
 - | | | | | | characterSetCode 0-1
- | | | | | note 0-99
 - | | | | | | @numberingOrg [Optional]
 - | | | | | | @codeList [Optional]
 - | | | | | | @noteLabel [Optional]
- | | | | | validityStart 0-1
 - | | | | | | @dateForm [Optional]
- | | | | | validityEnd 0-1
 - | | | | | | @dateForm [Optional]
- | | | | | validityExtensionDate 0-1
 - | | | | | | @dateForm [Optional]
- | | | | | **billOfChemical 0-1**
 - | | | | | | @limitedByDisclosureIndicator [Optional]
 - | | | | | | @exhaustiveInformation [Required]
 - | | | | | | @disclosureLevel [Required]
 - | | | | | | @storageAction [Required]
 - | | | | | | | referenceProductQuantity 0-1
 - | | | | | | | @um [Required]
- | | | | | **dyesDescriptor 0-unbounded**
 - | | | | | | dyesCategory 1-1
 - | | | | | | description 0-99
 - | | | | | | | @ln [Optional]
 - | | | | | | note 0-9
 - | | | | | | | @numberingOrg [Optional]
 - | | | | | | | @codeList [Optional]
 - | | | | | | | @noteLabel [Optional]
- | | | | | **chemicalItem 0-unbounded**
 - | | | | | | CASCode 1-1
 - | | | | | | description 1-9
 - | | | | | | | @ln [Optional]
- | | | | | **SDSDoc 0-1**
 - | | | | | | CASCode 1-1
 - | | | | | | **attachment 1-1**
 - | | | | | | | @uid [Optional]
 - | | | | | | | | fileName 0-1
 - | | | | | | | | @numberingOrg [Optional]
 - | | | | | | | | binaryObject 0-1
 - | | | | | | | | @format [Optional]
 - | | | | | | | | @mime [Optional]

```

| | | | | | | | | | @encoding [Optional]
| | | | | | | | | | @characterSet [Optional]
| | | | | | | | | | externalReference 0-99
| | | | | | | | | | | uri 1-1
| | | | | | | | | | | @isURL [Optional] [Default= true]
| | | | | | | | | | | mimeTypeCode 0-1
| | | | | | | | | | | formatCode 0-1
| | | | | | | | | | | encodingCode 0-1
| | | | | | | | | | | characterSetCode 0-1
| | | | | | | | | | | note 0-9
| | | | | | | | | | | | @numberingOrg [Optional]
| | | | | | | | | | | | @codeList [Optional]
| | | | | | | | | | | | @noteLabel [Optional]
| | | | | | | | | | | note 0-9
| | | | | | | | | | | | @numberingOrg [Optional]
| | | | | | | | | | | | @codeList [Optional]
| | | | | | | | | | | | @noteLabel [Optional]
| | | | | | | | | | note 0-9
| | | | | | | | | | | @numberingOrg [Optional]
| | | | | | | | | | | @codeList [Optional]
| | | | | | | | | | | @noteLabel [Optional]
| | | | | | | | | | note 0-9
| | | | | | | | | | | @numberingOrg [Optional]
| | | | | | | | | | | @codeList [Optional]
| | | | | | | | | | | @noteLabel [Optional]

```

2.2 Detailed description of document elements

Following tables show all elements (complex and simple) used in this document. Description includes: 1) element's information: xml tag, name, brief description, data type and syntax constraints; 2) information about use of the element in a particular position in the document: xpath and possible associated notes.

2.2.1 Complex elements (Aggregate Business Information Entities)

Complex elements are those elements whose content is composed of other elements (childs).Complex elements are alphabetically ordered.

acsCode	full codification identifying an accessory product usually coupled with garment or other fashion product
activityLocation	data relating to a place where activities take places. (indicate at least element location or address and country) - base type: Nad,
assessmentStudyDocument	assessment study document. Might be related to a component or a product (for example a PEF study or LCA study). Might be needed dataset (in any format) or a report.
attachment	an attached document. An attachment can refer to an external document or be included with the document being exchanged
billOfChemical	bill of chemicals used to make the product. - base type: ,
billOfTreatmentsForHealth	list of the treatments necessary to make the product, simplified for health analysis
certificate	Reference and details relating to a document containing a certification issued by a third party who is entitled to issue it - base type: ,
certifiedEntity	The entity (organisation, process, product..) for which the certification is valid.
certifiedParty	identification and details of the party to whom the certificate has been issued - base type: Nad,
chemicalItem	indicates the presence of a chemical product and possibly its quantity
dyesDescriptor	dyes descriptor
externalRefDoc	external document, used to refer generic office documents (like pdf, docx, xls, for example shop window instructions) - base type: ,
externalReference	details about an external object, such as a document stored at a remote location
garmentCode	codification of the garment product
garmentCodeA	codification of the garment product- type A
garmentCodeB	codification of the garment product - type B
garmentPartCode	codification of the component or part of a fashion article
garmentVariant	garment product variant
geoCoordinates	geographical coordinates
issuerParty	Details of the party that issued the document. - base type: Nad,
platformServiceRef	service instruction and reference - base type: string,
processStep	single manufacturing operation needed to produce the product
processStepsList	List of manufacturing operations required to produce the product

productComponent	descriptor of one of the elements used to create the product, it indicates the codes of the component, the quantity for final product unit, supplier and any documentation
productCompos	Quantitative composition of a product
ProductIdentification	Identifies the product whose transparency and sustainability characteristics are reported
rawCode	full codification of a raw material
receiverParty	Details of the party receiving the document. - base type: Nad,
refDoc	identification of a document and of an item thereof, to which the message makes reference
SDSDoc	reference to SDS, Safety Data Sheet, associated to a chemical according to REACH regulation
selfAssertion	A self declared statement that issuer is able to support with detailed descriptions or documentation. It might comply with standards about assertions (it is the case for example of ISO14021 for environmental assertions).
senderParty	Details of the party sending the document. - base type: Nad,
signatoryParty	Details of the party that signed the document. - base type: Nad,
signatureInformation	information about the document signature
SRVheader	header of documents supporting ePlatform services
supplier	details of the Supplier (party that supplies the good or service that is object of the current collaborative process) - base type: Nad,
texCode	full codification of the textile product
transparencyProductSimplifiedForHealth	Description of transparency and sustainability features of a product simplified for Health Protection service
treatmentDescriptorForHealth	descriptor of the specific single production phase simplified for health analysis
yarnCode	full codification of a yarn product

2.2.2 Simple elements (Basic Business Information Entities)

Simple elements are those elements whose content is characterized by a data type plus a domain of possible values. Simple elements are alphabetically ordered.

added	additional code of the product (complementing the formers) - base type: string, max length: 80,
additionalIdentifier	additional identification code of a Party, for example customs registries or others - base type: string, max length: 15,
@addType	qualifier of the additional coding of a product - base type: string, cod. table: T44 http://www.ebiz.enea.it/moda-ml/repository/codelist/draft/gc_T44.xml
art	article number of the product - base type: string, max length: 80,
artGroup	code identifying a class of products - base type: string, max length: 40,
assertionCategory	assertion category, indicates the object of the assertion - base type: string, cod. table: NT323 http://www.ebiz.enea.it/moda-ml/repository/codelist/draft/gc_NT323.xml

binaryObject	a binary large object containing an attached document, Coding 'base64Binary' is recommended. - base type: base64Binary,
CASCode	CAS code of the chemical - base type: string, min length: 1, max length: 10, cod. table: NT314 http://www.ebiz.enea.it/moda-ml/repository/codelist/draft/gc_NT314.xml
certificateID	Identifier of the certificate assigned by the issuer - base type: string,
certificationStandardName	it indicates the specification that has been used as normative basis of the certificate. (examples: 'GRS–global recycling standard' or 'Standard 100 OEKO-TEX') - base type: string,
@characterSet	the character set of the binary object (examples UTF-8, UTF-16, Windows-1252, ISO-8859-7,..) - base type: normalizedString,
characterSetCode	the character set of an external document (examples UTF-8, UTF-16, Windows-1252, ISO-8859-7,..) - base type: normalizedString,
city	name of the city (town, village) - base type: string, max length: 40,
@codeList	it specifies the URL where the list of codes used to make an instance of the element can be found - base type: string, max length: 255,
color	colour number of the product, when not included in the model or fabric code - base type: string, max length: 15,
country	code of the nation - base type: string, cod. table: T10 http://www.ebiz.enea.it/moda-ml/repository/codelist/draft/gc_T10.xml
@dateForm	format used for the date - base type: string, cod. table: NT29 http://www.ebiz.enea.it/moda-ml/repository/codelist/draft/gc_NT29.xml
dept	name or code of a department - base type: string, max length: 40,
description	free text description. The content of the element must be unique, it might be translated and repeated into more languages (thus no more than one instance for each language). - base type: string, max length: 250,
@disclosureLevel	indicates the level of disclosure permitted for the information it is associated with - base type: decimal, cod. table: NT311 http://www.ebiz.enea.it/moda-ml/repository/codelist/draft/gc_NT311.xml
docDate	date of issue of the referenced document, according to one of the patterns YYYY-MM-DD, YYYY-MM-DD:HH-MM or YYYY-WW. - base type: string,
docID	identification number of the referenced document - base type: string, max length: 80,
@docStatusCode	current status of the document - base type: decimal, cod. table: NT313 http://www.ebiz.enea.it/moda-ml/repository/codelist/draft/gc_NT313.xml
@docType	type or class to which the referenced document belongs - base type: string, cod. table: T21 http://www.ebiz.enea.it/moda-ml/repository/codelist/draft/gc_T21.xml
documentType	type or class to which the document belongs - base type: string, cod. table: T21 http://www.ebiz.enea.it/moda-ml/repository/codelist/draft/gc_T21.xml
@docValidity	document current validity indicator

	- base type: boolean,
drop	drop number of the garment - base type: string, max length: 15,
dyesCategory	dyes category - base type: integer, cod. table: T312 http://www.ebiz.enea.it/moda-ml/repository/codelist/draft/gc_T312.xml
@email	electronic mail address of the contact person within a Party - base type: string, max length: 250,
@encoding	specifies the decoding algorithm of the binary object - base type: normalizedString,
encodingCode	the encoding/decoding algorithm used with the external object (example is 'base64Binary') - base type: normalizedString,
entityID	unique identification number assigned to an entity. - base type: string,
entityTypeCode	code that indicates the type of entity to which we refer - base type: string, cod. table: NT201 http://www.ebiz.enea.it/moda-ml/repository/codelist/draft/gc_NT201.xml
@exhaustiveInformation	indicates that the provided information is guaranteed as exhaustive (all the information are mentioned – with the only limitations due to the access rights-) or non-exhaustive (the list contains just some elements): value true=exhaustive - base type: boolean,
fabric	fabric number of the garment - base type: string, max length: 15,
@fax	fax number of the contact person within a Party - base type: string, max length: 35,
@fibre	type of fibre used in a textile product - base type: string, cod. table: T19 http://www.ebiz.enea.it/moda-ml/repository/codelist/draft/gc_T19.xml
fileName	unique identifier (name) of the file - base type: string, max length: 255,
@format	the format of the binary content (examples xml, pdf, doc,...) - base type: string,
formatCode	the format of the external object (examples xml, pdf, doc,...) - base type: normalizedString,
@geoReferenceSystem	georeference system adopted for the coordinate (in example wgs84 with decimal degree or degree with minute and seconds) - base type: string,
gPart	code specifying the type of component or part of a fashion product (sleeve, neck, ...) - base type: string, cod. table: T48 http://www.ebiz.enea.it/moda-ml/repository/codelist/draft/gc_T48.xml
id	primary identification code of a Party; it is recommended the format: nation code (ISO 3166) + VAT identification number (11 crt), with the qualifier "numberingOrg"= MF - base type: string, max length: 15,
@idQualifier	Qualification of the identifier. - base type: string,
@internallyPerformed	indicates that the operation is carried out internally (value TRUE) of the organization and not at a subcontractor or other subject (value FALSE) - base type: boolean,
issuerAccreditationInfo	accrediting information of the issuer of the document - base type: string,
@isURL	it indicates if the referred element is an URL (true) or not (false)

	- base type: boolean,
itemID	number of the line/item of the referenced document - base type: string, max length: 40,
legalName	legal name - base type: string, max length: 250,
@limitedByDisclosureIndicator	indicates whether the content has been restricted by the enforcement of accessibility rights (i.e. it may not be complete): true = restricted, false = not restricted - base type: boolean,
@listName	the name of the list of codes used to make an instance of the element (it might be thought as descriptive element, i.e. 'fabric printing technologies', or not, i.e. "T264") - base type: string, max length: 40,
@listVersion	it specifies the version of the list of codes used to make an instance of the element - base type: string, max length: 6,
@ln	Language code. - base type: string, cod. table: NT60 http://www.ebiz.enea.it/moda-ml/repository/codelist/draft/gc_NT60.xml
location	specification of a location - base type: string, max length: 40,
@logo	company logo (URL of the image jpeg or gif). It is recommended that the width of the image does not exceed 640 pixel. - base type: string, max length: 255,
@LRI	attribute usable to format a string according to a customized User rule (local rule) - base type: string, cod. table: NT3 http://www.ebiz.enea.it/moda-ml/repository/codelist/draft/gc_NT3.xml
machineryName	machinery name - base type: string, max length: 50,
manufacturingOperation	single manufacturing operation type - base type: string, cod. table: T305 http://www.ebiz.enea.it/moda-ml/repository/codelist/draft/gc_T305.xml
@materialSource	Indicates whether the material is virgin or comes from recycling or reuse processes - base type: string, cod. table: T306 http://www.ebiz.enea.it/moda-ml/repository/codelist/draft/gc_T306.xml
@mime	the mime type of the binary object - base type: normalizedString,
mimeCode	mime type of the external object - base type: normalizedString,
mod	model number of the garment - base type: string, max length: 15,
msgDate	date of issue of the present message (xml document), according to one of the patterns YYYY-MM-DD, YYYY-MM-DD:HH-MM or YYYY-WW. - base type: string,
msgID	key identifier of the business document in the information system of the issuing Party. In case of more despatches of the same business document, it is unchanged. - base type: string, max length: 35,
note	free text or structured (computer processing) note. For note structuring use the attributes "noteLabel" and "codelist" - base type: string, max length: 350,
@noteLabel	subject qualifier of a note - base type: string, max length: 35,
@numberingOrg	code specifying the organisation who has created or owns the coding or numbering system - base type: string, cod. table: NT6 http://www.ebiz.enea.it/moda-ml/repository/codelist/draft/gc_NT6.xml

objectTypeCode	code that identifies the type of object - base type: string, cod. table: T302 http://www.ebiz.enea.it/moda-ml/repository/codelist/draft/gc_T302.xml
@part	percent fraction - base type: decimal, min inclusive: 1, max inclusive: 100, fraction digits: 2,
pattern	pattern/design number of the product, when not included in the article code - base type: string, max length: 15,
percCompos	fiber rate in the product composition - base type: decimal, min inclusive: 0, max inclusive: 100, fraction digits: 2,
@percSourcesRenewable	indicates the percentage of renewable sources - base type: decimal,
person	name of a person (e.g. contact person within an organization) - base type: string, max length: 40,
@phone	phone number of the contact person within a Party - base type: string, max length: 35,
platformService	available service - base type: string, cod. table: TRK01 http://www.ebiz.enea.it/moda-ml/repository/codelist/draft/gc_TRK01.xml
postCode	code defining the postal zone - base type: string, max length: 10,
processStepID	internal identifier of the single manufacturing operation needed to produce the product - base type: string,
@progr	progressive number in the sequence - base type: positiveInteger, min inclusive: 1,
qty	net quantity of the article or object correlated, qualified by the function of the document (ordering, delivering, ..) and by the context - base type: decimal, min inclusive: 0, fraction digits: 2,
@recyclingProcessMethod	recycling process method - base type: string, cod. table: T307 http://www.ebiz.enea.it/moda-ml/repository/codelist/draft/gc_T307.xml
referenceProductQuantity	reference net quantity of the item - base type: decimal, min inclusive: 0, fraction digits: 2,
@role	Third Party role qualifier - base type: string, cod. table: NT2 http://www.ebiz.enea.it/moda-ml/repository/codelist/draft/gc_NT2.xml
@schemeID	identifier of an identification scheme - base type: string,
season	sale season; defined as: season (1 crt) + year (4 crt) - season: S/S=1 A/W=2 Spring=3 Summer=4 Autumn=5 Winter=6: for more than four seasons use alphabetic sequence: 1st season=A 2nd season=B etc.etc. - base type: string, max length: 15,
@sender	qualifier that specifies the Party issuing of the document - base type: boolean,
serviceRequestedAction	requested service action - base type: string, cod. table: TRK02 http://www.ebiz.enea.it/moda-ml/repository/codelist/draft/gc_TRK02.xml
serviceTicketIdentifierID	service ticket identifier - base type: string,
signatureTypeCode	indicator of existing and type of signature - base type: string,
size	size number of a fashion product (knitwear, clothing, ..) - base type: string, max length: 15,

@standardOwner	standard owner is the organisation that owns and manages the standard specifications (for example Textile exchange or OEKO-TEX) - base type: string,
@storageAction	indicates how to insert the information to which it refers into an archive, also specifying what should happen to the pre-existing information. - base type: string, cod. table: NT312 http://www.ebiz.enea.it/moda-ml/repository/codelist/draft/gc_NT312.xml
street	street and building number identifying a location - base type: string, max length: 80,
@studyDataset	indicates when the element is a dataset (to be managed as a blob) (value TRUE) and not a report (value FALSE) - base type: boolean,
subCountry	short name or code of the sub-country entity - base type: string, max length: 9,
subDept	name or code of a department - base type: string, max length: 40,
sustainabilityCharacteristicText	text that describes a single sustainability characteristic (for example a claim). The content of the element must be unique, it might be translated and repeated into more languages (thus no more than one instance for each language). - base type: string, min length: 1,
title	document title - base type: string,
@uid	unique element identifier within the xml document - base type: string,
@um	specification of the unit of measure - base type: string, cod. table: NT7 http://www.ebiz.enea.it/moda-ml/repository/codelist/draft/gc_NT7.xml
uniqueProductID	Unique product identifier. It identifies the product completely, differentiating any variants, sizes, colors, etc. It should be unique throughout the whole value chain. (It can be the GTIN) - base type: string, max length: 80,
uri	Uniform Resource Identifier (URI) that identifies the external object as an Internet resource - base type: normalizedString,
@useProfile	use profile to which the present document is compliant if it was agreed by the parties. It is suggested a URI with reference to the firms or the URL of the profile. - base type: string,
validityEnd	date by which the validity ends, according to one of the patterns YYYY-MM-DD, YYYY-MM-DD:HH-MM or YYYY-WW. - base type: string,
validityExtensionDate	end date of validity resulting from extension, according to one of the patterns YYYY-MM-DD, YYYY-MM-DD:HH-MM or YYYY-WW. - base type: string,
validityStart	date by which the validity starts, according to one of the patterns YYYY-MM-DD, YYYY-MM-DD:HH-MM or YYYY-WW. - base type: string,
variantCode	Code of variant used for fashion product. - base type: string,
variantType	Type of variant used for fashion product (examples: 'treatment', 'washing type', 'size class',...) - base type: string,
@version	Dictionary version from which the instance has been created - base type: string, cod. table: NT100 http://www.ebiz.enea.it/moda-ml/repository/codelist/draft/gc_NT100.xml

xGeoCoord	geographical coordinate x , corresponding to latitude - base type: decimal,
yGeoCoord	geographical coordinate y , corresponding to longitude - base type: decimal,
zGeoCoord	geographical coordinate z , corresponding to altitude - base type: decimal,

2.3 Suggested best practices

HPInformationSupply/transparencyProductSimplifiedForHealth/assessmentStudyDocument/productComponent/refDoc/docID (identification number of the referenced document)

numberingOrg indicates the role that produced the document identifier (it is allowed to declare two different ones -e.g. customer and supplier - with two docID with different numberingOrg

HPInformationSupply/transparencyProductSimplifiedForHealth/selfAssertion/externalRefDoc/attachment/externalReference/mimeType (mime type of the external object)

Use coding from IANA <http://www.iana.org/assignments/media-types/media-types.xml>

HPInformationSupply/transparencyProductSimplifiedForHealth/billOfTreatmentsForHealth/treatmentDescriptorForHealth/billOfChemical/chemicalItem/SDSDoc/attachment/externalReference/mimeType (mime type of the external object)

Use coding from IANA <http://www.iana.org/assignments/media-types/media-types.xml>

HPInformationSupply/transparencyProductSimplifiedForHealth/assessmentStudyDocument/externalRefDoc/attachment/externalReference/mimeType (mime type of the external object)

Use coding from IANA <http://www.iana.org/assignments/media-types/media-types.xml>

HPInformationSupply/transparencyProductSimplifiedForHealth/billOfTreatmentsForHealth/treatmentDescriptorForHealth/certificate/attachment/externalReference/mimeType (mime type of the external object)

Use coding from IANA <http://www.iana.org/assignments/media-types/media-types.xml>

HPInformationSupply/transparencyProductSimplifiedForHealth/assessmentStudyDocument/productComponent/refDoc/attachment/externalReference/mimeType (mime type of the external object)

Use coding from IANA <http://www.iana.org/assignments/media-types/media-types.xml>

HPInformationSupply/transparencyProductSimplifiedForHealth/assessmentStudyDocument/productComponent/certificate/attachment/externalReference/mimeType (mime type of the external object)

Use coding from IANA <http://www.iana.org/assignments/media-types/media-types.xml>

HPInformationSupply/transparencyProductSimplifiedForHealth/certificate/attachment/externalReference/mimeType (mime type of the external object)

Use coding from IANA <http://www.iana.org/assignments/media-types/media-types.xml>

HPInformationSupply/transparencyProductSimplifiedForHealth/assessmentStudyDocument/productComponent/selfAssertion/externalRefDoc/attachment/externalReference/mimeType (mime type of the external object)

Use coding from IANA <http://www.iana.org/assignments/media-types/media-types.xml>

HPInformationSupply/transparencyProductSimplifiedForHealth/billOfTreatmentsForHealth/treatmentDescriptorForHealth/selfAssertion/externalRefDoc/attachment/externalReference/mimeType (mime type of the external object)

al object)

Use coding from IANA <http://www.iana.org/assignments/media-types/media-types.xml>

HPIInformationSupply/transparencyProductSimplifiedForHealth/billOfTreatmentsForHealth/treatmentDescriptorForHealth/billOfChemical/referenceProductQuantity (reference net quantity of the item)

Ignore referenceProductQuantity in the case of list of facilities

2.4 Enumeration tables

List of enumeration tables used in the XML document. You can find all the tables with the corresponding codes at:
<http://www.ebiz.enea.it/eBIZ/imple/eBIZTCU-draft.asp?lingua=en&pag=6>

NT100 - eBIZ TCFUpstream version
NT2 - third party qualifier
NT201 - entity type
NT29 - format of a date
NT3 - data format
NT311 - information disclosure level
NT312 - storage action
NT313 - status of the document
NT314 - REACH codes
NT323 - category of the object of a declaration
NT6 - coding system owner/issuer
NT60 - language, codes from ISO 639-1 (subset)
NT7 - unit of measure
T10 - ISO3166 - Country
T19 - fibre type
T21 - type of document
T302 - type of object
T305 - table of manufacturing operation types
T306 - material circularity attribute
T307 - recycling process method
T312 - dye Category
T44 - additional code type
T48 - garment part type
TRK01 - list of available services
TRK02 - list of services functions

ACKNOWLEDGEMENT



This action is part of the TRICK project, which has received funding from Horizon 2020 research and innovation programme under grant agreement No. 958352 of the European Union.

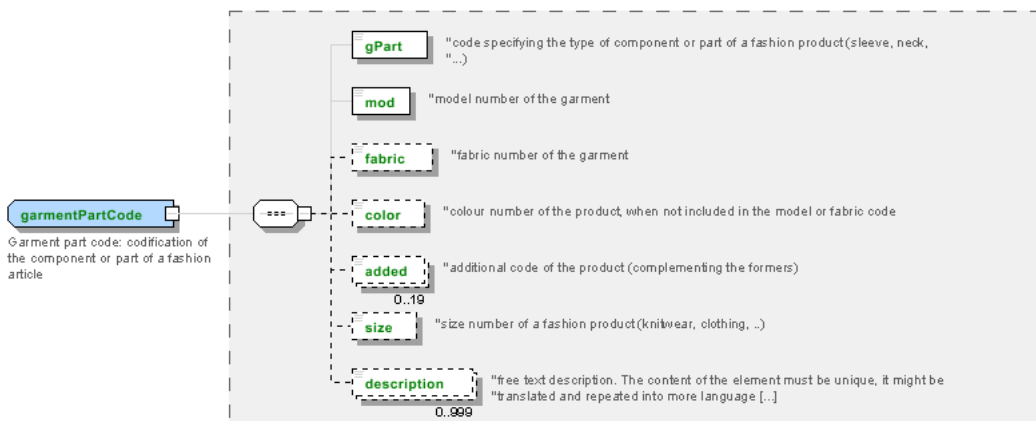
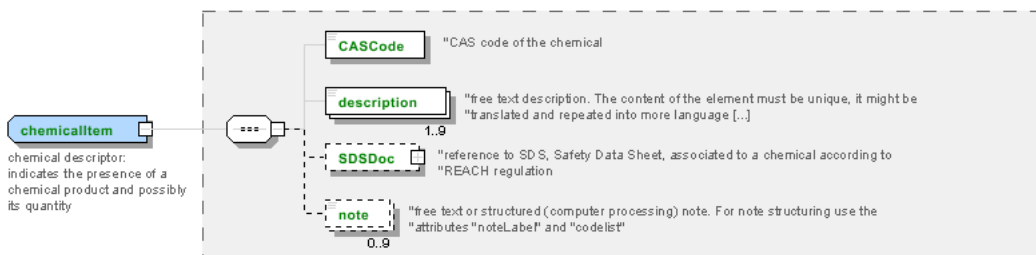
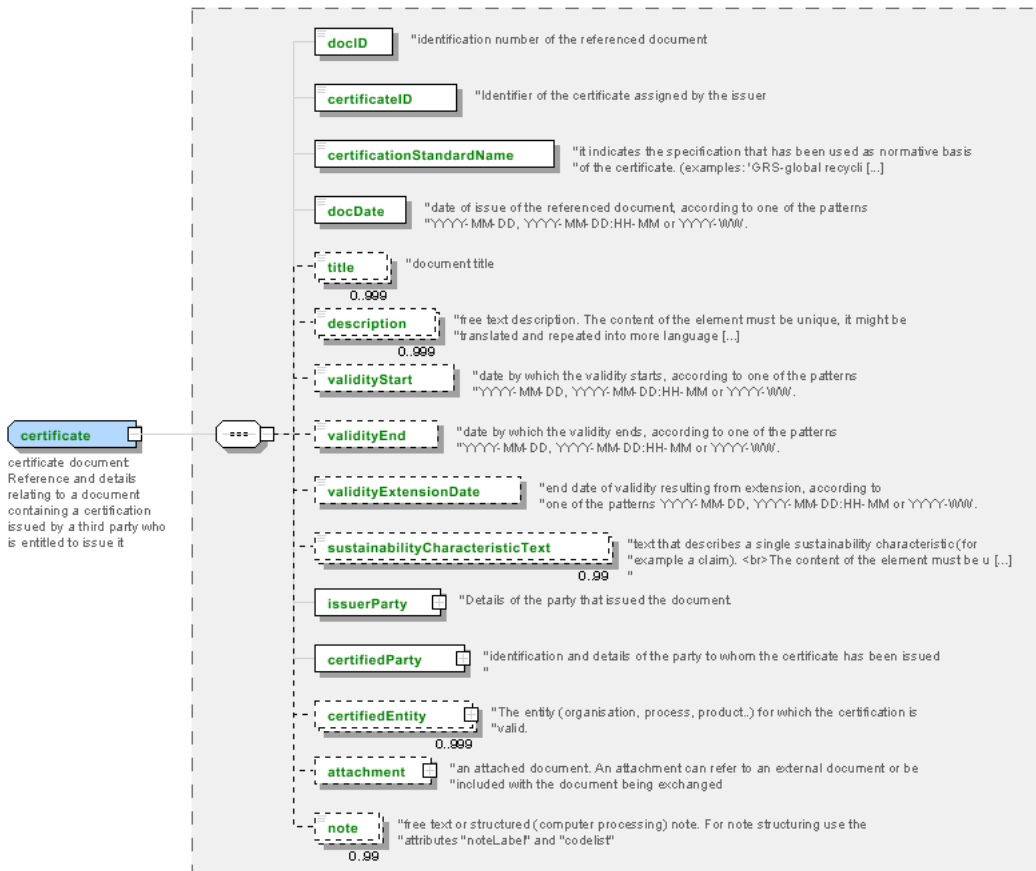
DISCLAIMER

The content of this document represents the views of the authors only and is their sole responsibility; it cannot be considered to reflect the views of the European Commission or any other body of the European Union.

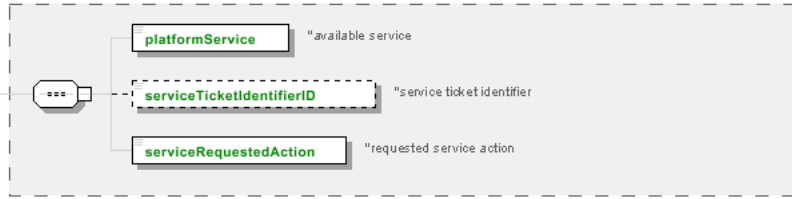
The European Commission does not accept any responsibility for use that may be made of the information it contains.

Annex A

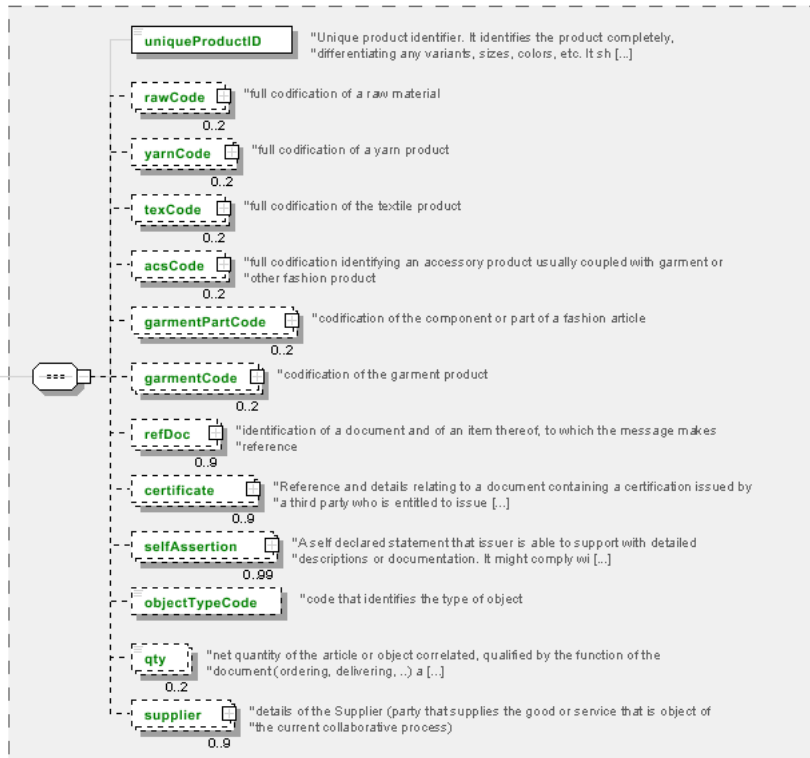
Representative images of the principal complex elements' structure.



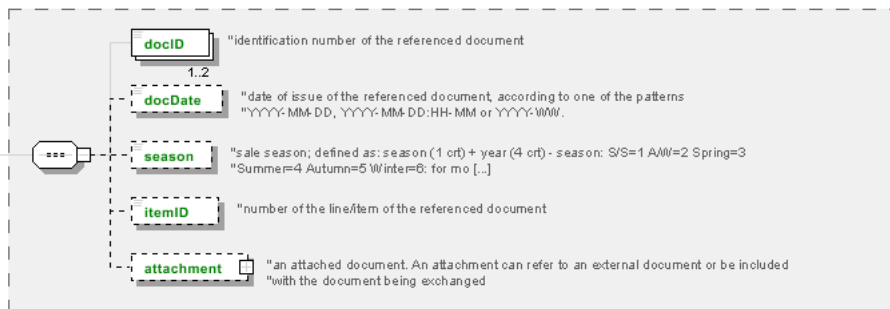
platformServiceRef
platform service reference: service instruction and reference



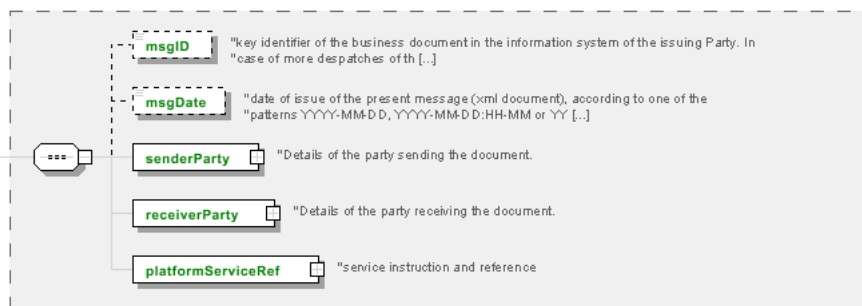
productComponent
product component: descriptor of one of the elements used to create the product, it indicates the codes of the component, the quantity for final product unit, supplier and any documentation



refDoc
reference document details: identification of a document and of an item thereof, to which the message makes reference

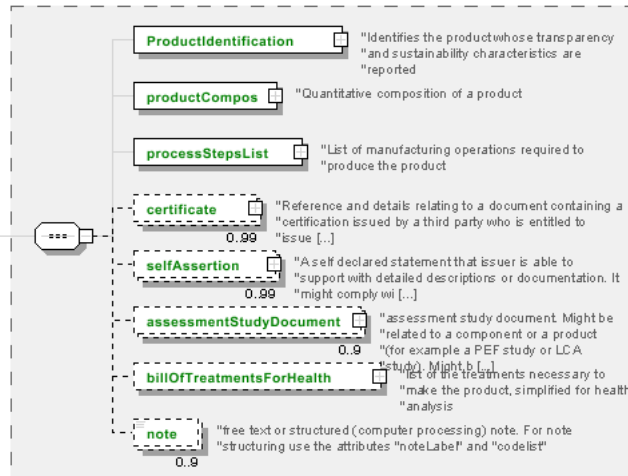


SRVheader
SRV header: header of documents supporting ePlatform services



transparencyProductSimplifiedForHealth

transparency product simplified for Health: Description of transparency and sustainability features of a product simplified for Health Protection service



treatmentDescriptorForHealth

treatment descriptor for health: descriptor of the specific single production phase simplified for health analysis

