



<http://www.ebiz-tcf.eu>

DRAFT

IMPLEMENTATION GUIDE
TRANSACTION "INDICATORS DECLARATION"

Version: draft

Date of release: 26/6/2023

Document code: TRC015

technical Documentation: <http://www.ebiz.enea.it>

XML Schemas repository: <http://www.ebiz.enea.it/moda-ml/repository/schema/draft/default.asp>

Guides repository: <http://www.ebiz.enea.it/moda-ml/repository/guide/draft/default.asp>

Guide filename: TRC015-eBIZ-IndicatorsDeclaration.pdf

0. PREMISE

This document contains a proposal for the updating and extension of eBIZ specifications starting from the eBIZ version 2018. Under the name of 'Draft version' it is reported the result of an extensive work of analysis and consultation aimed at developing and maintaining eBIZ specifications.

In particular, the content of this proposal is the result of various activities, mainly those carried out within the framework of the **TRICK project** funded by the European Commission: grant agreement 958352, call H2020-LOW-CARBON-CIRCULAR-INDUSTRIES-2020 / H2020-LCCI-2020-EASME-twostage.

The technical contents are backwards compatible with the latest official published version, with the exclusion of the totally new concepts added explicitly for the version that are thought as incremental evolution of the knowledge base.

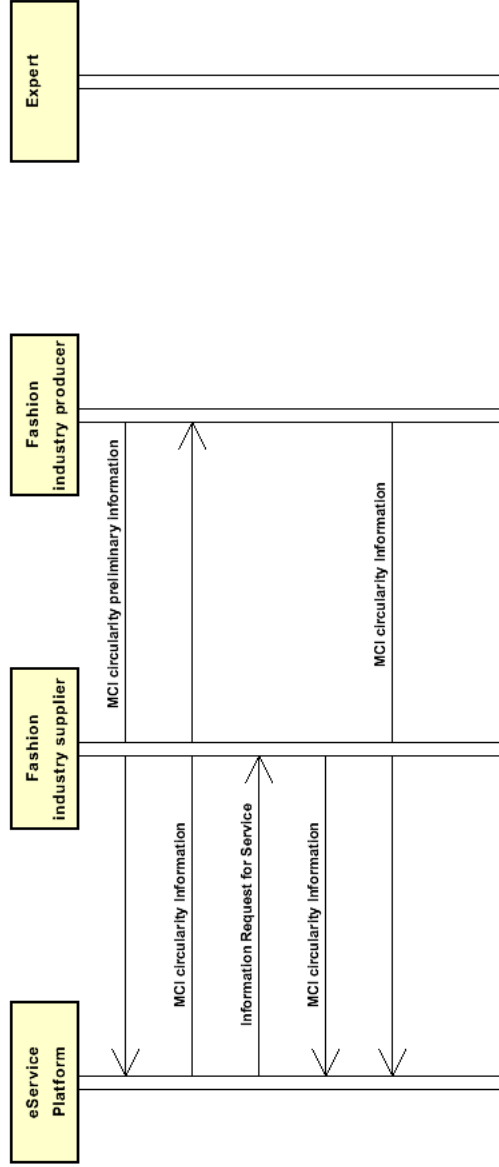
1. BUSINESS DESCRIPTION

1.1 Scope

This guide aims to illustrate the standard XML format of the document type that declares a list of indicators calculated by a service, providing instructions for its use in the context of a TRANSPARENCY SYSTEM involving Fashion Manufacturers, their customers, third parties and in case customs authorities, eBusiness and eCommerce platforms. All the rules necessary for the construction and validation of the document are expressed through a specific XML schema, which is presented in detail in the paragraph "Implementation Guide".

1.2. Possible scenario

S2.1 Material Circularity Assessment service execution



2. IMPLEMENTATION GUIDE

2.1 General structure of XML document

All the business data that can be exchanged through this class of documents are shown in the following "document structure", that provides a simplified vision of the Schema.

In particular:

- the two numbers following each element define its "cardinality" (minimum and maximum number of occurrences); the minimum equal zero indicates that the element is optional, the minimum greater than zero indicates that is mandatory;
- the bold character denotes the complex elements (aggregates of simple elements) that were built for the sake of functionality and re-usability of some complex informations sets. The child elements in each parent element are easily spotted as "indented";
- the symbol "@" denotes an attribute of the preceding element; here "the usage indicator (optional, required, ...)" is shown in square brackets.

Structure

SRVIndicatorsDeclaration

@version [Optional] [Default= draft]

@useProfile [Optional]

```
| SRVheader 1-1
| | msgID 0-1
| | msgDate 0-1
| | @dateForm [Optional]
| | senderParty 1-1
| | @role [Optional]
| | @sender [Optional]
| | | id 1-1
| | | | @numberingOrg [Optional]
| | | legalName 0-1
| | | dept 0-1
| | | subDept 0-1
| | | person 0-1
| | | | @email [Optional]
| | | | @phone [Optional]
| | | | @fax [Optional]
| | | street 0-1
| | | city 0-1
| | | subCountry 0-1
| | | country 0-1
| | | postCode 0-1
| | | geoCoordinates 0-1
| | | | @um [Optional] [Default= DEGD]
| | | | @geoRefSystem [Optional]
| | | | | xGeoCoord 1-1
| | | | | yGeoCoord 1-1
| | | | | zGeoCoord 0-1
| | receiverParty 1-1
| | @role [Optional]
| | @sender [Optional]
| | | id 1-1
| | | | @numberingOrg [Optional]
| | | legalName 0-1
| | | dept 0-1
| | | subDept 0-1
| | | person 0-1
| | | | @email [Optional]
| | | | @phone [Optional]
| | | | @fax [Optional]
| | | street 0-1
| | | city 0-1
| | | subCountry 0-1
| | | country 0-1
| | | postCode 0-1
| | | geoCoordinates 0-1
| | | | @um [Optional] [Default= DEGD]
```

```

| | | @geoRefSystem [Optional]
| | | | xGeoCoord 1-1
| | | | yGeoCoord 1-1
| | | | zGeoCoord 0-1
| | platformServiceReference 1-1
| | | platformServiceCode 1-1
| | | | @codeList [Optional]
| | | | serviceTicketID 0-1
| | | | serviceRequestedAction 1-1
| | | | @codeList [Optional]
|
| sustainabilityIndicatorsGroup 0-9
| | @disclosureLevel [Optional]
| | | sustainabilityIndicatorsGroupName 1-1
| | | sustainabilityIndicatorMethodology 1-1
| | | methodologicalNote 0-99
| | | | @ln [Optional]
| | sustainabilityIndicator 0-99
| | | @disclosureLevel []
| | | @indicatorStatusCode [Required]
| | | @validationMethod [Optional]
| | | | sustainabilityIndicatorName 1-1
| | | | sustainabilityIndicatorValue 0-1
| | | | issuerParty 0-1
| | | | | id 0-1
| | | | | | @numberingOrg [Optional]
| | | | | | legalName 0-1
| | | | | | dept 0-1
| | | | | | subDept 0-1
| | | | | | person 0-1
| | | | | | | @email [Optional]
| | | | | | | @phone [Optional]
| | | | | | | @fax [Optional]
| | | | | | street 0-1
| | | | | | city 0-1
| | | | | | subCountry 0-1
| | | | | | country 0-1
| | | | | | postCode 0-1
| | | | | | geoCoordinates 0-1
| | | | | | | @um [Optional] [Default= DEGD]
| | | | | | | @geoRefSystem [Optional]
| | | | | | | | xGeoCoord 1-1
| | | | | | | | yGeoCoord 1-1
| | | | | | | | zGeoCoord 0-1
| | | | | issuerAccreditationInfo 0-1
| | | | reviewerParty 0-1
| | | | | id 1-1
| | | | | | @numberingOrg [Optional]
| | | | | | legalName 0-1
| | | | | | dept 0-1
| | | | | | subDept 0-1
| | | | | | person 0-1
| | | | | | | @email [Optional]
| | | | | | | @phone [Optional]
| | | | | | | @fax [Optional]
| | | | | | street 0-1
| | | | | | city 0-1
| | | | | | subCountry 0-1
| | | | | | country 0-1
| | | | | | postCode 0-1
| | | | | | geoCoordinates 0-1
| | | | | | | @um [Optional] [Default= DEGD]
| | | | | | | @geoRefSystem [Optional]
| | | | | | | | xGeoCoord 1-1
| | | | | | | | yGeoCoord 1-1
| | | | | | | | zGeoCoord 0-1
| | | note 0-9
| | | | @numberingOrg [Optional]

```

```

| | | @codeList [Optional]
| | | @noteLabel [Optional]
- choose -
| | assessmentStudyDocument 0-9
| | @disclosureLevel [Optional]
| | @docStatusCode [Optional]
| | @isStudyDataset [Required]
| | docID 0-1
| | | @numberingOrg [Optional]
| | docDate 0-1
| | | @dateForm [Optional]
| | ProductIdentification 0-99
| | | uniqueProductID 1-1
| | | | @schemeID [Required]
| | | | objectTypeCode 1-1
| | | | description 0-9
| | | | @ln [Optional]
- choose -
| | | rawCode 0-2
| | | | @numberingOrg [Optional]
| | | | | art 1-1
| | | | | | @numberingOrg [Optional]
| | | | | | @codeList [Optional]
| | | | | | @listName [Optional]
| | | | | | @listVersion [Optional]
| | | | | color 0-1
| | | | | | @numberingOrg [Optional]
| | | | | | @codeList [Optional]
| | | | | | @listName [Optional]
| | | | | | @listVersion [Optional]
| | | | | added 0-9
| | | | | | @numberingOrg [Optional]
| | | | | | @addType [Optional]
| | | | | description 0-unbounded
| | | | | @ln [Optional]
- or -
| | | yarnCode 0-2
| | | | @numberingOrg [Optional] [Default= CL]
| | | | | art 1-1
| | | | | | @numberingOrg [Optional]
| | | | | | @codeList [Optional]
| | | | | | @listName [Optional]
| | | | | | @listVersion [Optional]
| | | | | color 0-1
| | | | | | @numberingOrg [Optional]
| | | | | | @codeList [Optional]
| | | | | | @listName [Optional]
| | | | | | @listVersion [Optional]
| | | | | added 0-9
| | | | | | @numberingOrg [Optional]
| | | | | | @addType [Optional]
| | | | | description 0-unbounded
| | | | | @ln [Optional]
- or -
| | | texCode 0-2
| | | | @numberingOrg [Optional]
| | | | | art 1-1
| | | | | | @numberingOrg [Optional]
| | | | | | @codeList [Optional]
| | | | | | @listName [Optional]
| | | | | | @listVersion [Optional]
| | | | | pattern 0-1
| | | | | | @numberingOrg [Optional]
| | | | | | @codeList [Optional]
| | | | | | @listName [Optional]
| | | | | | @listVersion [Optional]
| | | | | color 0-1
| | | | | | @numberingOrg [Optional]

```

				@codeList [Optional] @listName [Optional] @listVersion [Optional] added 0-9 @numberingOrg [Optional] @addType [Optional] description 0-unbounded @ln [Optional]
			- or -	
				acsCode 1-2 @numberingOrg [Optional] art 1-1 @numberingOrg [Optional] @codeList [Optional] @listName [Optional] @listVersion [Optional] pattern 0-1 @numberingOrg [Optional] @codeList [Optional] @listName [Optional] @listVersion [Optional] color 0-1 @numberingOrg [Optional] @codeList [Optional] @listName [Optional] @listVersion [Optional] added 0-9 @numberingOrg [Optional] @addType [Optional] description 0-unbounded @ln [Optional]
			- or -	
				garmentPartCode 0-2 @numberingOrg [Optional] gPart 1-1 mod 1-1 @numberingOrg [Optional] @codeList [Optional] @listName [Optional] @listVersion [Optional] fabric 0-1 @numberingOrg [Optional] @codeList [Optional] @listName [Optional] @listVersion [Optional] color 0-1 @numberingOrg [Optional] @codeList [Optional] @listName [Optional] @listVersion [Optional] added 0-19 @numberingOrg [Optional] @addType [Optional] size 0-1 @numberingOrg [Optional] @codeList [Optional] @listName [Optional] @listVersion [Optional] description 0-unbounded @ln [Optional]
			- or -	
				garmentCode 0-2 @numberingOrg [Optional]
			- choose -	
				garmentCodeB 1-1 @numberingOrg [Optional] mod 1-1 @numberingOrg [Optional]

```

| | | | | @codeList [Optional]
| | | | | @listName [Optional]
| | | | | @listVersion [Optional]
| | | | | fabric 0-1
| | | | | @numberingOrg [Optional]
| | | | | @codeList [Optional]
| | | | | @listName [Optional]
| | | | | @listVersion [Optional]
| | | | | color 0-1
| | | | | @numberingOrg [Optional]
| | | | | @codeList [Optional]
| | | | | @listName [Optional]
| | | | | @listVersion [Optional]
| | | | | garmentVariant 0-9
| | | | | | variantType 1-1
| | | | | | @numberingOrg [Optional]
| | | | | | @codeList [Optional]
| | | | | | @listName [Optional]
| | | | | | @listVersion [Optional]
| | | | | | variantCode 1-1
| | | | | | @numberingOrg [Optional]
| | | | | | @codeList [Optional]
| | | | | | @listName [Optional]
| | | | | | @listVersion [Optional]
| | | | | drop 0-1
| | | | | @numberingOrg [Optional]
| | | | | @codeList [Optional]
| | | | | @listName [Optional]
| | | | | @listVersion [Optional]
| | | | | size 0-1
| | | | | @numberingOrg [Optional]
| | | | | @codeList [Optional]
| | | | | @listName [Optional]
| | | | | @listVersion [Optional]
| | | | | artGroup 0-1
| | | | | @numberingOrg [Optional]
| | | | | @codeList [Optional]
| | | | | @listName [Optional]
| | | | | @listVersion [Optional]
| | | | | added 0-9
| | | | | @numberingOrg [Optional]
| | | | | @addType [Optional]
| | | | | description 0-unbounded
| | | | | @ln [Optional]
| | | | | - or -
| | | | | garmentCodeA 1-1
| | | | | | art 1-1
| | | | | | @numberingOrg [Optional]
| | | | | | @codeList [Optional]
| | | | | | @listName [Optional]
| | | | | | @listVersion [Optional]
| | | | | | description 0-unbounded
| | | | | | @ln [Optional]
| | | | | - end choose -
| | | | | - end choose -
| | | | | | note 0-99
| | | | | | @numberingOrg [Optional]
| | | | | | @codeList [Optional]
| | | | | | @noteLabel [Optional]
| | | | | year 0-1
| | | | | title 0-unbounded
| | | | | @ln [Optional]
| | | | | description 0-unbounded
| | | | | @ln [Optional]
| | | | | publishableAbstract 0-99
| | | | | @ln [Optional]
| | | | | author 0-1
| | | | | @email [Optional]

```



```

| @phone [Optional]
| @fax [Optional]
| reviewerParty 0-9
|   | id 1-1
|   |   | @numberingOrg [Optional]
|   |   | legalName 0-1
|   |   | dept 0-1
|   |   | subDept 0-1
|   |   | person 0-1
|   |   | @email [Optional]
|   |   | @phone [Optional]
|   |   | @fax [Optional]
|   |   | street 0-1
|   |   | city 0-1
|   |   | subCountry 0-1
|   |   | country 0-1
|   |   | postCode 0-1
|   |   | geoCoordinates 0-1
|   |   |   | @um [Optional] [Default= DEGD]
|   |   |   | @geoRefSystem [Optional]
|   |   |   |   | xGeoCoord 1-1
|   |   |   |   | yGeoCoord 1-1
|   |   |   |   | zGeoCoord 0-1
|   | reviewDate 0-1
|   | @dateForm [Optional]
|   | issuerParty 0-1
|   |   | id 0-1
|   |   |   | @numberingOrg [Optional]
|   |   |   | legalName 0-1
|   |   |   | dept 0-1
|   |   |   | subDept 0-1
|   |   |   | person 0-1
|   |   |   | @email [Optional]
|   |   |   | @phone [Optional]
|   |   |   | @fax [Optional]
|   |   |   | street 0-1
|   |   |   | city 0-1
|   |   |   | subCountry 0-1
|   |   |   | country 0-1
|   |   |   | postCode 0-1
|   |   |   | geoCoordinates 0-1
|   |   |   |   | @um [Optional] [Default= DEGD]
|   |   |   |   | @geoRefSystem [Optional]
|   |   |   |   |   | xGeoCoord 1-1
|   |   |   |   |   | yGeoCoord 1-1
|   |   |   |   |   | zGeoCoord 0-1
|   |   | issuerAccreditationInfo 0-1
|   | validityStart 0-1
|   | @dateForm [Optional]
|   | validityEnd 0-1
|   | @dateForm [Optional]
|   | signatureInformation 0-1
|   |   | signatureTypeCode 1-1
|   |   | signatoryParty 0-unbounded
|   |   |   | id 0-1
|   |   |   |   | @numberingOrg [Optional]
|   |   |   |   | legalName 0-1
|   |   |   |   | dept 0-1
|   |   |   |   | subDept 0-1
|   |   |   |   | person 0-1
|   |   |   |   | @email [Optional]
|   |   |   |   | @phone [Optional]
|   |   |   |   | @fax [Optional]
|   |   |   |   | street 0-1
|   |   |   |   | city 0-1
|   |   |   |   | subCountry 0-1
|   |   |   |   | country 0-1
|   |   |   |   | postCode 0-1

```

- | | | | **geoCoordinates 0-1**
- | | | | | @um [Optional] [Default= DEGD]
- | | | | | @geoRefSystem [Optional]
- | | | | | | xGeoCoord 1-1
- | | | | | | yGeoCoord 1-1
- | | | | | | zGeoCoord 0-1
- | | | | **attachment 0-1**
- | | | | | @uid [Optional]
- | | | | | | fileName 0-1
- | | | | | | | @numberingOrg [Optional]
- | | | | | | binaryObject 0-1
- | | | | | | | @format [Optional]
- | | | | | | | @mime [Optional]
- | | | | | | | @encoding [Optional]
- | | | | | | | @characterSet [Optional]
- | | | | | **externalReference 0-99**
- | | | | | | uri 1-1
- | | | | | | | @isURL [Optional] [Default= true]
- | | | | | | | mimeTypeCode 0-1
- | | | | | | | formatCode 0-1
- | | | | | | | encodingCode 0-1
- | | | | | | | characterSetCode 0-1
- | | | | | | hashFootprint 0-1
- | | | | | | | @schemeID [Optional]
- | | | | | | | @hashMethod [Required]
- | | | | | | **blockChainReference 0-9**
- | | | | | | | uri 1-1
- | | | | | | | | @isURL [Optional] [Default= true]
- | | | | | | | | transactionReceipt 1-9
- | | | | | note 0-99
- | | | | | | @numberingOrg [Optional]
- | | | | | | @codeList [Optional]
- | | | | | | @noteLabel [Optional]

- or -

- | | | | **PEFStudyDocument 0-9**
- | | | | | @disclosureLevel [Optional]
- | | | | | @docStatusCode [Optional]
- | | | | | @isStudyDataset [Required]
- | | | | | | docID 0-1
- | | | | | | | @numberingOrg [Optional]
- | | | | | | | docDate 0-1
- | | | | | | | @dateForm [Optional]
- | | | | | | PEFLifeCyclePhase 0-6
- | | | | | | **ProductIdentification 0-99**
- | | | | | | | uniqueProductID 1-1
- | | | | | | | | @schemeID [Required]
- | | | | | | | | objectTypeCode 1-1
- | | | | | | | | description 0-9
- | | | | | | | | @ln [Optional]

- choose -

- | | | | | **rawCode 0-2**
- | | | | | | @numberingOrg [Optional]
- | | | | | | | art 1-1
- | | | | | | | | @numberingOrg [Optional]
- | | | | | | | | @codeList [Optional]
- | | | | | | | | @listName [Optional]
- | | | | | | | | @listVersion [Optional]
- | | | | | | | | color 0-1
- | | | | | | | | | @numberingOrg [Optional]
- | | | | | | | | | @codeList [Optional]
- | | | | | | | | | @listName [Optional]
- | | | | | | | | | @listVersion [Optional]
- | | | | | | | | added 0-9
- | | | | | | | | | @numberingOrg [Optional]
- | | | | | | | | | @addType [Optional]
- | | | | | | | | | description 0-unbounded
- | | | | | | | | | @ln [Optional]

- or -

yarnCode 0-2
 @numberingOrg [Optional] [Default= CL]
 | art 1-1
 | @numberingOrg [Optional]
 | @codeList [Optional]
 | @listName [Optional]
 | @listVersion [Optional]
 | color 0-1
 | @numberingOrg [Optional]
 | @codeList [Optional]
 | @listName [Optional]
 | @listVersion [Optional]
 | added 0-9
 | @numberingOrg [Optional]
 | @addType [Optional]
 | description 0-unbounded
 | @ln [Optional]

- or -

texCode 0-2
 @numberingOrg [Optional]
 | art 1-1
 | @numberingOrg [Optional]
 | @codeList [Optional]
 | @listName [Optional]
 | @listVersion [Optional]
 | pattern 0-1
 | @numberingOrg [Optional]
 | @codeList [Optional]
 | @listName [Optional]
 | @listVersion [Optional]
 | color 0-1
 | @numberingOrg [Optional]
 | @codeList [Optional]
 | @listName [Optional]
 | @listVersion [Optional]
 | added 0-9
 | @numberingOrg [Optional]
 | @addType [Optional]
 | description 0-unbounded
 | @ln [Optional]

- or -

acsCode 1-2
 @numberingOrg [Optional]
 | art 1-1
 | @numberingOrg [Optional]
 | @codeList [Optional]
 | @listName [Optional]
 | @listVersion [Optional]
 | pattern 0-1
 | @numberingOrg [Optional]
 | @codeList [Optional]
 | @listName [Optional]
 | @listVersion [Optional]
 | color 0-1
 | @numberingOrg [Optional]
 | @codeList [Optional]
 | @listName [Optional]
 | @listVersion [Optional]
 | added 0-9
 | @numberingOrg [Optional]
 | @addType [Optional]
 | description 0-unbounded
 | @ln [Optional]

- or -

garmentPartCode 0-2
 @numberingOrg [Optional]
 | gPart 1-1
 | mod 1-1

```

| | | | @numberingOrg [Optional]
| | | | @codeList [Optional]
| | | | @listName [Optional]
| | | | @listVersion [Optional]
| | | | fabric 0-1
| | | | @numberingOrg [Optional]
| | | | @codeList [Optional]
| | | | @listName [Optional]
| | | | @listVersion [Optional]
| | | | color 0-1
| | | | @numberingOrg [Optional]
| | | | @codeList [Optional]
| | | | @listName [Optional]
| | | | @listVersion [Optional]
| | | | added 0-19
| | | | @numberingOrg [Optional]
| | | | @addType [Optional]
| | | | size 0-1
| | | | @numberingOrg [Optional]
| | | | @codeList [Optional]
| | | | @listName [Optional]
| | | | @listVersion [Optional]
| | | | description 0-unbounded
| | | | @ln [Optional]

```

- or -

```

| | | | garmentCode 0-2
| | | | @numberingOrg [Optional]

```

- choose -

```

| | | | garmentCodeB 1-1
| | | | @numberingOrg [Optional]
| | | | mod 1-1
| | | | @numberingOrg [Optional]
| | | | @codeList [Optional]
| | | | @listName [Optional]
| | | | @listVersion [Optional]
| | | | fabric 0-1
| | | | @numberingOrg [Optional]
| | | | @codeList [Optional]
| | | | @listName [Optional]
| | | | @listVersion [Optional]
| | | | color 0-1
| | | | @numberingOrg [Optional]
| | | | @codeList [Optional]
| | | | @listName [Optional]
| | | | @listVersion [Optional]
| | | | garmentVariant 0-9
| | | | variantType 1-1
| | | | @numberingOrg [Optional]
| | | | @codeList [Optional]
| | | | @listName [Optional]
| | | | @listVersion [Optional]
| | | | variantCode 1-1
| | | | @numberingOrg [Optional]
| | | | @codeList [Optional]
| | | | @listName [Optional]
| | | | @listVersion [Optional]
| | | | drop 0-1
| | | | @numberingOrg [Optional]
| | | | @codeList [Optional]
| | | | @listName [Optional]
| | | | @listVersion [Optional]
| | | | size 0-1
| | | | @numberingOrg [Optional]
| | | | @codeList [Optional]
| | | | @listName [Optional]
| | | | @listVersion [Optional]
| | | | artGroup 0-1
| | | | @numberingOrg [Optional]

```

```

| | | | | @codeList [Optional]
| | | | | @listName [Optional]
| | | | | @listVersion [Optional]
| | | | | added 0-9
| | | | | @numberingOrg [Optional]
| | | | | @addType [Optional]
| | | | | description 0-unbounded
| | | | | @ln [Optional]

```

- or -

```

| | | | | garmentCodeA 1-1
| | | | | art 1-1
| | | | | @numberingOrg [Optional]
| | | | | @codeList [Optional]
| | | | | @listName [Optional]
| | | | | @listVersion [Optional]
| | | | | description 0-unbounded
| | | | | @ln [Optional]

```

- end choose -

- end choose -

```

| | | | | note 0-99
| | | | | @numberingOrg [Optional]
| | | | | @codeList [Optional]
| | | | | @noteLabel [Optional]
| | | | | year 0-1
| | | | | title 0-unbounded
| | | | | @ln [Optional]
| | | | | description 0-unbounded
| | | | | @ln [Optional]
| | | | | publishableAbstract 0-99
| | | | | @ln [Optional]
| | | | | author 0-1
| | | | | @email [Optional]
| | | | | @phone [Optional]
| | | | | @fax [Optional]
| | | | | reviewerParty 0-9
| | | | | id 1-1
| | | | | @numberingOrg [Optional]
| | | | | legalName 0-1
| | | | | dept 0-1
| | | | | subDept 0-1
| | | | | person 0-1
| | | | | @email [Optional]
| | | | | @phone [Optional]
| | | | | @fax [Optional]
| | | | | street 0-1
| | | | | city 0-1
| | | | | subCountry 0-1
| | | | | country 0-1
| | | | | postCode 0-1
| | | | | geoCoordinates 0-1
| | | | | @um [Optional] [Default= DEGD]
| | | | | @geoRefSystem [Optional]
| | | | | | xGeoCoord 1-1
| | | | | | yGeoCoord 1-1
| | | | | | zGeoCoord 0-1
| | | | | reviewDate 0-1
| | | | | @dateForm [Optional]
| | | | | issuerParty 0-1
| | | | | id 0-1
| | | | | @numberingOrg [Optional]
| | | | | legalName 0-1
| | | | | dept 0-1
| | | | | subDept 0-1
| | | | | person 0-1
| | | | | @email [Optional]
| | | | | @phone [Optional]
| | | | | @fax [Optional]
| | | | | street 0-1

```

- | city 0-1
- | subCountry 0-1
- | country 0-1
- | postCode 0-1
- | **geoCoordinates 0-1**
- | | @um [Optional] [Default= DEGD]
- | | @geoRefSystem [Optional]
- | | | xGeoCoord 1-1
- | | | yGeoCoord 1-1
- | | | zGeoCoord 0-1
- | issuerAccreditationInfo 0-1
- validityStart 0-1
- | @dateForm [Optional]
- validityEnd 0-1
- | @dateForm [Optional]
- | **signatureInformation 0-1**
- | | signatureTypeCode 1-1
- | | **signatoryParty 0-unbounded**
- | | | id 0-1
- | | | | @numberingOrg [Optional]
- | | | legalName 0-1
- | | | dept 0-1
- | | | subDept 0-1
- | | | person 0-1
- | | | | @email [Optional]
- | | | | @phone [Optional]
- | | | | @fax [Optional]
- | | | street 0-1
- | | | city 0-1
- | | | subCountry 0-1
- | | | country 0-1
- | | | postCode 0-1
- | | | **geoCoordinates 0-1**
- | | | | @um [Optional] [Default= DEGD]
- | | | | @geoRefSystem [Optional]
- | | | | | xGeoCoord 1-1
- | | | | | yGeoCoord 1-1
- | | | | | zGeoCoord 0-1
- functionalUnitDescription 0-99
- | @ln [Optional]
- systemBoundariesDescription 0-99
- | @ln [Optional]
- limitationsDescription 0-99
- | @ln [Optional]
- allocationsDescription 0-99
- | @ln [Optional]
- dataQualityDescription 0-99
- | @ln [Optional]
- | **attachment 0-1**
- | | @uid [Optional]
- | | | fileName 0-1
- | | | | @numberingOrg [Optional]
- | | | binaryObject 0-1
- | | | | @format [Optional]
- | | | | @mime [Optional]
- | | | | @encoding [Optional]
- | | | | @characterSet [Optional]
- | | | **externalReference 0-99**
- | | | | uri 1-1
- | | | | | @isURL [Optional] [Default= true]
- | | | | mimeTypeCode 0-1
- | | | | formatCode 0-1
- | | | | encodingCode 0-1
- | | | | characterSetCode 0-1
- | hashFootprint 0-1
- | | @schemeID [Optional]
- | | @hashMethod [Required]
- | **blockChainReference 0-9**

```

| | | | uri 1-1
| | | | @isURL [Optional] [Default= true]
| | | | transactionReceipt 1-9
| | | | note 0-99
| | | | @numberingOrg [Optional]
| | | | @codeList [Optional]
| | | | @noteLabel [Optional]
- end choose -
| | externalRefDoc 0-9
| | | | docID 1-1
| | | | @numberingOrg [Optional]
| | | | docDate 0-1
| | | | @dateForm [Optional]
| | | | title 0-unbounded
| | | | @ln [Optional]
| | | | description 0-unbounded
| | | | @ln [Optional]
| | | | validityStart 0-1
| | | | @dateForm [Optional]
| | | | validityEnd 0-1
| | | | @dateForm [Optional]
| | | | documentType 0-1
| | | | issuerParty 0-1
| | | | | | id 0-1
| | | | | | @numberingOrg [Optional]
| | | | | | legalName 0-1
| | | | | | dept 0-1
| | | | | | subDept 0-1
| | | | | | person 0-1
| | | | | | @email [Optional]
| | | | | | @phone [Optional]
| | | | | | @fax [Optional]
| | | | | | street 0-1
| | | | | | city 0-1
| | | | | | subCountry 0-1
| | | | | | country 0-1
| | | | | | postCode 0-1
| | | | | | geoCoordinates 0-1
| | | | | | @um [Optional] [Default= DEGD]
| | | | | | @geoRefSystem [Optional]
| | | | | | | | xGeoCoord 1-1
| | | | | | | | yGeoCoord 1-1
| | | | | | | | zGeoCoord 0-1
| | | | | | issuerAccreditationInfo 0-1
| | | | | | signatureInformation 0-1
| | | | | | | | signatureTypeCode 1-1
| | | | | | | | signatoryParty 0-unbounded
| | | | | | | | | | id 0-1
| | | | | | | | | | @numberingOrg [Optional]
| | | | | | | | | | legalName 0-1
| | | | | | | | | | dept 0-1
| | | | | | | | | | subDept 0-1
| | | | | | | | | | person 0-1
| | | | | | | | | | @email [Optional]
| | | | | | | | | | @phone [Optional]
| | | | | | | | | | @fax [Optional]
| | | | | | | | | | street 0-1
| | | | | | | | | | city 0-1
| | | | | | | | | | subCountry 0-1
| | | | | | | | | | country 0-1
| | | | | | | | | | postCode 0-1
| | | | | | | | | | geoCoordinates 0-1
| | | | | | | | | | @um [Optional] [Default= DEGD]
| | | | | | | | | | @geoRefSystem [Optional]
| | | | | | | | | | | | xGeoCoord 1-1
| | | | | | | | | | | | yGeoCoord 1-1
| | | | | | | | | | | | zGeoCoord 0-1
| | | | | | | | | | attachment 0-1

```

```

| | | @uid [Optional]
| | | | fileName 0-1
| | | | | @numberingOrg [Optional]
| | | | binaryObject 0-1
| | | | | @format [Optional]
| | | | | @mime [Optional]
| | | | | @encoding [Optional]
| | | | | @characterSet [Optional]
| | | | | externalReference 0-99
| | | | | | uri 1-1
| | | | | | | @isURL [Optional] [Default= true]
| | | | | | | mimeTypeCode 0-1
| | | | | | | formatCode 0-1
| | | | | | | encodingCode 0-1
| | | | | | | characterSetCode 0-1
| | | | | hashFootprint 0-1
| | | | | | @schemeID [Optional]
| | | | | | @hashMethod [Required]
| | | | | | blockChainReference 0-9
| | | | | | | uri 1-1
| | | | | | | | @isURL [Optional] [Default= true]
| | | | | | | | transactionReceipt 1-9
| | | | note 0-99
| | | | | @numberingOrg [Optional]
| | | | | | @codeList [Optional]
| | | | | | @noteLabel [Optional]
| | | note 0-1
| | | | @numberingOrg [Optional]
| | | | | @codeList [Optional]
| | | | | @noteLabel [Optional]

| | note 0-9
| | | @numberingOrg [Optional]
| | | | @codeList [Optional]
| | | | @noteLabel [Optional]

```


2.2 Detailed description of document elements

Following tables show all elements (complex and simple) used in this document. Description includes: 1) element's information: xml tag, name, brief description, data type and syntax constraints; 2) information about use of the element in a particular position in the document: xpath and possible associated notes.

2.2.1 Complex elements (Aggregate Business Information Entities)

Complex elements are those elements whose content is composed of other elements (childs).Complex elements are alphabetically ordered.

acsCode	<p>full codification identifying an accessory product usually coupled with garment or other fashion product (XPath SRVIndicatorsDeclaration/sustainabilityIndicatorsGroup/PEFStudyDocument/ProductIdentification/acsCode) 1-2 - note: <i>this element can have two instances only if the numbering organisations are different</i> (XPath SRVIndicatorsDeclaration/sustainabilityIndicatorsGroup/assessmentStudyDocument/ProductIdentification/acsCode) 1-2 - note: <i>this element can have two instances only if the numbering organisations are different</i></p>
assessmentStudyDocument	<p>resulting study document (e.g. an LCA study). It can be related to a component or a product. It can be a dataset (in any format) or a report according to isStudyDataset flag). In the case of PEF study, prefer PEFStudyDocument if possible. - base type: , (XPath SRVIndicatorsDeclaration/sustainabilityIndicatorsGroup/assessmentStudyDocument) 0-9</p>
attachment	<p>an attached document. An attachment can refer to an external document or be included with the document being exchanged (XPath SRVIndicatorsDeclaration/sustainabilityIndicatorsGroup/externalRefDoc/attachment) 0-1 - note: <i>indicates where to find the document or contains it as a binary object (the second option is not recommended for practical reasons)</i> (XPath SRVIndicatorsDeclaration/sustainabilityIndicatorsGroup/assessmentStudyDocument/attachment) 0-1 - note: <i>indicates where to find the document or contains it as a binary object (the second option is not recommended for practical reasons)</i> (XPath SRVIndicatorsDeclaration/sustainabilityIndicatorsGroup/PEFStudyDocument/attachment) 0-1 - note: <i>indicates where to find the document or contains it as a binary object (the second option is not recommended for practical reasons)</i></p>
blockChainReference	<p>blockchain reference - base type: string, max length: 80, (XPath SRVIndicatorsDeclaration/sustainabilityIndicatorsGroup/assessmentStudyDocument/attachment/blockChainReference) 0-9 (XPath SRVIndicatorsDeclaration/sustainabilityIndicatorsGroup/externalRefDoc/attachment/blockChainReference) 0-9 (XPath SRVIndicatorsDeclaration/sustainabilityIndicatorsGroup/PEFStudyDocument/attachment/blockChainReference) 0-9</p>
externalRefDoc	<p>external document, used to refer generic office documents (like pdf, docx, xls, for example shop window instructions) - base type: , (XPath SRVIndicatorsDeclaration/sustainabilityIndicatorsGroup/externalRefDoc) 0-9 B</p>

	<p>est Practice - note: <i>supporting documentation (study evidence). Anything else than the study document (supporting documentation, public reporting, brochure..)</i></p>
externalReference	<p>details about an external object, such as a document stored at a remote location (XPath SRVIndicatorsDeclaration/sustainabilityIndicatorsGroup/PEFStudyDocument/attachment/externalReference) 0-99 (XPath SRVIndicatorsDeclaration/sustainabilityIndicatorsGroup/externalRefDoc/attachment/externalReference) 0-99 (XPath SRVIndicatorsDeclaration/sustainabilityIndicatorsGroup/assessmentStudyDocument/attachment/externalReference) 0-99</p>
garmentCode	<p>codification of the garment product (XPath SRVIndicatorsDeclaration/sustainabilityIndicatorsGroup/PEFStudyDocument/ProductIdentification/garmentCode) 0-2 - note: <i>this element can have two instances only if the numbering organisations are different</i> (XPath SRVIndicatorsDeclaration/sustainabilityIndicatorsGroup/assessmentStudyDocument/ProductIdentification/garmentCode) 0-2 - note: <i>this element can have two instances only if the numbering organisations are different</i></p>
garmentCodeA	<p>codification of the garment product- type A (XPath SRVIndicatorsDeclaration/sustainabilityIndicatorsGroup/assessmentStudyDocument/ProductIdentification/garmentCode/garmentCodeA) 1-1 - note: <i>here the barcode EAN-13 or EAN-8 should be specified</i> (XPath SRVIndicatorsDeclaration/sustainabilityIndicatorsGroup/PEFStudyDocument/ProductIdentification/garmentCode/garmentCodeA) 1-1 - note: <i>here the barcode EAN-13 or EAN-8 should be specified</i></p>
garmentCodeB	<p>codification of the garment product - type B (XPath SRVIndicatorsDeclaration/sustainabilityIndicatorsGroup/PEFStudyDocument/ProductIdentification/garmentCode/garmentCodeB) 1-1 (XPath SRVIndicatorsDeclaration/sustainabilityIndicatorsGroup/assessmentStudyDocument/ProductIdentification/garmentCode/garmentCodeB) 1-1</p>
garmentPartCode	<p>codification of the component or part of a fashion article (XPath SRVIndicatorsDeclaration/sustainabilityIndicatorsGroup/PEFStudyDocument/ProductIdentification/garmentPartCode) 0-2 - note: <i>this element can have two instances only if the numbering organisations are different</i> (XPath SRVIndicatorsDeclaration/sustainabilityIndicatorsGroup/assessmentStudyDocument/ProductIdentification/garmentPartCode) 0-2 - note: <i>this element can have two instances only if the numbering organisations are different</i></p>
garmentVariant	<p>garment product variant (XPath SRVIndicatorsDeclaration/sustainabilityIndicatorsGroup/PEFStudyDocument/ProductIdentification/garmentCode/garmentCodeB/garmentVariant) 0-9 (XPath SRVIndicatorsDeclaration/sustainabilityIndicatorsGroup/assessmentStudyDocument/ProductIdentification/garmentCode/garmentCodeB/garmentVariant) 0-9</p>
geoCoordinates	<p>geographical coordinates (XPath SRVIndicatorsDeclaration/sustainabilityIndicatorsGroup/assessmentStudyDocument/issuerParty/geoCoordinates) 0-1 (XPath SRVIndicatorsDeclaration/sustainabilityIndicatorsGroup/PEFStudyDocument/signatureInformation/signatoryParty/geoCoordinates) 0-1</p>

	<p>(XPath SRVIndicatorsDeclaration/SRVheader/receiverParty/geoCoordinates) 0-1 (XPath SRVIndicatorsDeclaration/sustainabilityIndicatorsGroup/sustainabilityIndicator/issuerParty/geoCoordinates) 0-1 (XPath SRVIndicatorsDeclaration/sustainabilityIndicatorsGroup/externalRefDoc/signatureInformation/signatoryParty/geoCoordinates) 0-1 (XPath SRVIndicatorsDeclaration/sustainabilityIndicatorsGroup/PEFStudyDocument/reviewerParty/geoCoordinates) 0-1 (XPath SRVIndicatorsDeclaration/sustainabilityIndicatorsGroup/assessmentStudyDocument/reviewerParty/geoCoordinates) 0-1 (XPath SRVIndicatorsDeclaration/sustainabilityIndicatorsGroup/assessmentStudyDocument/signatureInformation/signatoryParty/geoCoordinates) 0-1 (XPath SRVIndicatorsDeclaration/sustainabilityIndicatorsGroup/sustainabilityIndicator/reviewerParty/geoCoordinates) 0-1 (XPath SRVIndicatorsDeclaration/sustainabilityIndicatorsGroup/externalRefDoc/issuerParty/geoCoordinates) 0-1 (XPath SRVIndicatorsDeclaration/SRVheader/senderParty/geoCoordinates) 0-1 (XPath SRVIndicatorsDeclaration/sustainabilityIndicatorsGroup/PEFStudyDocument/issuerParty/geoCoordinates) 0-1</p>
issuerParty	<p>Details of the party that issued the document. - base type: Nad, (XPath SRVIndicatorsDeclaration/sustainabilityIndicatorsGroup/externalRefDoc/issuerParty) 0-1 (XPath SRVIndicatorsDeclaration/sustainabilityIndicatorsGroup/assessmentStudyDocument/issuerParty) 0-1 (XPath SRVIndicatorsDeclaration/sustainabilityIndicatorsGroup/sustainabilityIndicator/issuerParty) 0-1 - note: <i>the subject (person or organisation) that calculated the indicator value</i> (XPath SRVIndicatorsDeclaration/sustainabilityIndicatorsGroup/PEFStudyDocument/issuerParty) 0-1</p>
PEFStudyDocument	<p>PEF study document (it could be both the dataset saved by an analysis tool and the resulting report drawn up by an expert, it depends on the isStudyDataset flag) - base type: , (XPath SRVIndicatorsDeclaration/sustainabilityIndicatorsGroup/PEFStudyDocument) 0-9</p>
platformServiceReference	<p>service instruction and reference - base type: string, (XPath SRVIndicatorsDeclaration/SRVheader/platformServiceReference) 1-1</p>
ProductIdentification	<p>Identifies the product whose transparency and sustainability characteristics are reported (XPath SRVIndicatorsDeclaration/sustainabilityIndicatorsGroup/assessmentStudyDocument/ProductIdentification) 0-99 - note: <i>indicate the product(s) to whom this study is related</i> (XPath SRVIndicatorsDeclaration/sustainabilityIndicatorsGroup/PEFStudyDocument/ProductIdentification) 0-99 - note: <i>indicate the product(s) to whom this study is related</i></p>
rawCode	<p>full codification of a raw material (XPath SRVIndicatorsDeclaration/sustainabilityIndicatorsGroup/assessmentStudyDocument/ProductIdentification/rawCode) 0-2 - note: <i>this element can have two instances only if the numbering organisations are different</i></p>

	(XPath SRVIndicatorsDeclaration/sustainabilityIndicatorsGroup/PEFStudyDocument/ProductIdentification/rawCode) 0-2 - note: <i>this element can have two instances only if the numbering organisations are different</i>
receiverParty	Details of the party receiving the document. - base type: Nad, (XPath SRVIndicatorsDeclaration/SRVheader/receiverParty) 1-1
reviewerParty	Details of the party that reviewed the conformance of the adopted methodology. - base type: Nad, (XPath SRVIndicatorsDeclaration/sustainabilityIndicatorsGroup/PEFStudyDocument/reviewerParty) 0-9 (XPath SRVIndicatorsDeclaration/sustainabilityIndicatorsGroup/sustainabilityIndicator/reviewerParty) 0-1 (XPath SRVIndicatorsDeclaration/sustainabilityIndicatorsGroup/assessmentStudyDocument/reviewerParty) 0-9
senderParty	Details of the party sending the document. - base type: Nad, (XPath SRVIndicatorsDeclaration/SRVheader/senderParty) 1-1
signatoryParty	Details of the party that signed the document. - base type: Nad, (XPath SRVIndicatorsDeclaration/sustainabilityIndicatorsGroup/PEFStudyDocument/signatureInformation/signatoryParty) 0-unbounded (XPath SRVIndicatorsDeclaration/sustainabilityIndicatorsGroup/externalRefDoc/signatureInformation/signatoryParty) 0-unbounded (XPath SRVIndicatorsDeclaration/sustainabilityIndicatorsGroup/assessmentStudyDocument/signatureInformation/signatoryParty) 0-unbounded
signatureInformation	information about the document signature (XPath SRVIndicatorsDeclaration/sustainabilityIndicatorsGroup/PEFStudyDocument/signatureInformation) 0-1 (XPath SRVIndicatorsDeclaration/sustainabilityIndicatorsGroup/assessmentStudyDocument/signatureInformation) 0-1 (XPath SRVIndicatorsDeclaration/sustainabilityIndicatorsGroup/externalRefDoc/signatureInformation) 0-1
SRVheader	header of documents supporting ePlatform services (XPath SRVIndicatorsDeclaration/SRVheader) 1-1
sustainabilityIndicator	set of data related to a sustainability indicator (XPath SRVIndicatorsDeclaration/sustainabilityIndicatorsGroup/sustainabilityIndicator) 0-99
sustainabilityIndicatorsGroup	group of sustainability indicators (resulting from the same study or activity) The values of a group should come from the same methodology (sustainabilityIndicatorMethodology value), if different, prefer different groups. max length: 250, (XPath SRVIndicatorsDeclaration/sustainabilityIndicatorsGroup) 0-9 - note: <i>group of indicators resulting from a study</i>
texCode	full codification of the textile product (XPath SRVIndicatorsDeclaration/sustainabilityIndicatorsGroup/assessmentStudyDocument/ProductIdentification/texCode) 0-2 - note: <i>this element can have two instances only if the numbering organisations are different</i> (XPath SRVIndicatorsDeclaration/sustainabilityIndicatorsGroup/PEFStudyDocument/P

	<p>roductIdentification/texCode) 0-2 - note: <i>this element can have two instances only if the numbering organisations are different</i></p>
yarnCode	<p>full codification of a yarn product (XPath SRVIndicatorsDeclaration/sustainabilityIndicatorsGroup/assessmentStudyDocument/ProductIdentification/yarnCode) 0-2 - note: <i>this element can have two instances only if the numbering organisations are different</i> (XPath SRVIndicatorsDeclaration/sustainabilityIndicatorsGroup/PEFStudyDocument/ProductIdentification/yarnCode) 0-2 - note: <i>this element can have two instances only if the numbering organisations are different</i></p>

2.2.2 Simple elements (Basic Business Information Entities)

Simple elements are those elements whose content is characterized by a data type plus a domain of possible values. Simple elements are alphabetically ordered.

added	<p>additional code of the product (complementing the formers) - base type: string, max length: 80, (XPath SRVIndicatorsDeclaration/sustainabilityIndicatorsGroup/assessmentStudyDocument/ProductIdentification/texCode/added) 0-9 - note: <i>here an additional codification (see table T44) can be specified</i> (XPath SRVIndicatorsDeclaration/sustainabilityIndicatorsGroup/PEFStudyDocument/ProductIdentification/rawCode/added) 0-9 (XPath SRVIndicatorsDeclaration/sustainabilityIndicatorsGroup/PEFStudyDocument/ProductIdentification/acsCode/added) 0-9 - note: <i>here an additional codification (see table T44) can be specified</i> (XPath SRVIndicatorsDeclaration/sustainabilityIndicatorsGroup/assessmentStudyDocument/ProductIdentification/garmentCode/garmentCodeB/added) 0-9 (XPath SRVIndicatorsDeclaration/sustainabilityIndicatorsGroup/PEFStudyDocument/ProductIdentification/texCode/added) 0-9 - note: <i>here an additional codification (see table T44) can be specified</i> (XPath SRVIndicatorsDeclaration/sustainabilityIndicatorsGroup/assessmentStudyDocument/ProductIdentification/acsCode/added) 0-9 - note: <i>here an additional codification (see table T44) can be specified</i> (XPath SRVIndicatorsDeclaration/sustainabilityIndicatorsGroup/assessmentStudyDocument/ProductIdentification/yarnCode/added) 0-9 - note: <i>here an additional codification (see table T44) can be specified</i> (XPath SRVIndicatorsDeclaration/sustainabilityIndicatorsGroup/PEFStudyDocument/ProductIdentification/garmentCode/garmentCodeB/added) 0-9 (XPath SRVIndicatorsDeclaration/sustainabilityIndicatorsGroup/assessmentStudyDocument/ProductIdentification/garmentPartCode/added) 0-19 (XPath SRVIndicatorsDeclaration/sustainabilityIndicatorsGroup/PEFStudyDocument/ProductIdentification/garmentPartCode/added) 0-19 (XPath SRVIndicatorsDeclaration/sustainabilityIndicatorsGroup/assessmentStudyDocument/ProductIdentification/rawCode/added) 0-9 (XPath SRVIndicatorsDeclaration/sustainabilityIndicatorsGroup/PEFStudyDocument/ProductIdentification/yarnCode/added) 0-9 - note: <i>here an additional codification (see table T44) can be specified</i></p>
@addType	<p>qualifier of the additional coding of a product</p>

	<p>- base type: string, cod. table: T44 http://www.ebiz.enea.it/moda-ml/repository/codelist/draft/gc_T44.xml (XPath SRVIndicatorsDeclaration/sustainabilityIndicatorsGroup/PEFStudyDocument/ProductIdentification/texCode/added/@addType) [Optional]</p> <p>- nota: <i>addType</i> allows the clarification of the meaning of the added element content; it is strongly suggested to use it always. (XPath SRVIndicatorsDeclaration/sustainabilityIndicatorsGroup/assessmentStudyDocument/ProductIdentification/garmentPartCode/added/@addType) [Optional]</p> <p>- nota: <i>addType</i> allows the clarification of the meaning of the added element content; it is strongly suggested to use it always. (XPath SRVIndicatorsDeclaration/sustainabilityIndicatorsGroup/assessmentStudyDocument/ProductIdentification/garmentCode/garmentCodeB/added/@addType) [Optional]</p> <p>- nota: <i>addType</i> allows the clarification of the meaning of the added element content; it is strongly suggested to use it always. (XPath SRVIndicatorsDeclaration/sustainabilityIndicatorsGroup/assessmentStudyDocument/ProductIdentification/yarnCode/added/@addType) [Optional]</p> <p>- nota: <i>addType</i> allows the clarification of the meaning of the added element content; it is strongly suggested to use it always. (XPath SRVIndicatorsDeclaration/sustainabilityIndicatorsGroup/PEFStudyDocument/ProductIdentification/rawCode/added/@addType) [Optional]</p> <p>- nota: <i>addType</i> allows the clarification of the meaning of the added element content; it is strongly suggested to use it always. (XPath SRVIndicatorsDeclaration/sustainabilityIndicatorsGroup/PEFStudyDocument/ProductIdentification/acsCode/added/@addType) [Optional]</p> <p>- nota: <i>addType</i> allows the clarification of the meaning of the added element content; it is strongly suggested to use it always. (XPath SRVIndicatorsDeclaration/sustainabilityIndicatorsGroup/assessmentStudyDocument/ProductIdentification/texCode/added/@addType) [Optional]</p> <p>- nota: <i>addType</i> allows the clarification of the meaning of the added element content; it is strongly suggested to use it always. (XPath SRVIndicatorsDeclaration/sustainabilityIndicatorsGroup/PEFStudyDocument/ProductIdentification/yarnCode/added/@addType) [Optional]</p> <p>- nota: <i>addType</i> allows the clarification of the meaning of the added element content; it is strongly suggested to use it always. (XPath SRVIndicatorsDeclaration/sustainabilityIndicatorsGroup/assessmentStudyDocument/ProductIdentification/rawCode/added/@addType) [Optional]</p> <p>- nota: <i>addType</i> allows the clarification of the meaning of the added element content; it is strongly suggested to use it always. (XPath SRVIndicatorsDeclaration/sustainabilityIndicatorsGroup/PEFStudyDocument/ProductIdentification/garmentPartCode/added/@addType) [Optional]</p> <p>- nota: <i>addType</i> allows the clarification of the meaning of the added element content; it is strongly suggested to use it always. (XPath SRVIndicatorsDeclaration/sustainabilityIndicatorsGroup/PEFStudyDocument/ProductIdentification/garmentCode/garmentCodeB/added/@addType) [Optional]</p> <p>- nota: <i>addType</i> allows the clarification of the meaning of the added element content; it is strongly suggested to use it always. (XPath SRVIndicatorsDeclaration/sustainabilityIndicatorsGroup/assessmentStudyDocument/ProductIdentification/acsCode/added/@addType) [Optional]</p> <p>- nota: <i>addType</i> allows the clarification of the meaning of the added element content; it is strongly suggested to use it always.</p>
allocationsDescription	<p>description of the allocations in the study - base type: string, (XPath SRVIndicatorsDeclaration/sustainabilityIndicatorsGroup/PEFStudyDocument/allocationsDescription) 0-99</p> <p>- note: <i>Only one instance of this element for each different value of 'ln' attribute (langu</i></p>

	age)
art	<p>article number of the product - base type: string, max length: 80, (XPath SRVIndicatorsDeclaration/sustainabilityIndicatorsGroup/PEFStudyDocument/ProductIdentification/yarnCode/art) 1-1 (XPath SRVIndicatorsDeclaration/sustainabilityIndicatorsGroup/assessmentStudyDocument/ProductIdentification/garmentCode/garmentCodeA/art) 1-1 (XPath SRVIndicatorsDeclaration/sustainabilityIndicatorsGroup/assessmentStudyDocument/ProductIdentification/rawCode/art) 1-1 (XPath SRVIndicatorsDeclaration/sustainabilityIndicatorsGroup/assessmentStudyDocument/ProductIdentification/yarnCode/art) 1-1 (XPath SRVIndicatorsDeclaration/sustainabilityIndicatorsGroup/PEFStudyDocument/ProductIdentification/garmentCode/garmentCodeA/art) 1-1 (XPath SRVIndicatorsDeclaration/sustainabilityIndicatorsGroup/assessmentStudyDocument/ProductIdentification/acsCode/art) 1-1 (XPath SRVIndicatorsDeclaration/sustainabilityIndicatorsGroup/PEFStudyDocument/ProductIdentification/rawCode/art) 1-1 (XPath SRVIndicatorsDeclaration/sustainabilityIndicatorsGroup/PEFStudyDocument/ProductIdentification/acsCode/art) 1-1 (XPath SRVIndicatorsDeclaration/sustainabilityIndicatorsGroup/PEFStudyDocument/ProductIdentification/texCode/art) 1-1 - note: can be used either for the base-article (excluding pattern/colour) or for the SKU (XPath SRVIndicatorsDeclaration/sustainabilityIndicatorsGroup/assessmentStudyDocument/ProductIdentification/texCode/art) 1-1 - note: can be used either for the base-article (excluding pattern/colour) or for the SKU</p>
artGroup	<p>code identifying a class of products - base type: string, max length: 40, (XPath SRVIndicatorsDeclaration/sustainabilityIndicatorsGroup/PEFStudyDocument/ProductIdentification/garmentCode/garmentCodeB/artGroup) 0-1 (XPath SRVIndicatorsDeclaration/sustainabilityIndicatorsGroup/assessmentStudyDocument/ProductIdentification/garmentCode/garmentCodeB/artGroup) 0-1</p>
author	<p>textual indication of the authors, one or more - base type: string, max length: 40, (XPath SRVIndicatorsDeclaration/sustainabilityIndicatorsGroup/assessmentStudyDocument/author) 0-1 (XPath SRVIndicatorsDeclaration/sustainabilityIndicatorsGroup/PEFStudyDocument/author) 0-1</p>
binaryObject	<p>a binary large object containing an attached document, Coding 'base64Binary' is recommended. - base type: base64Binary, (XPath SRVIndicatorsDeclaration/sustainabilityIndicatorsGroup/assessmentStudyDocument/attachment/binaryObject) 0-1 (XPath SRVIndicatorsDeclaration/sustainabilityIndicatorsGroup/externalRefDoc/attachment/binaryObject) 0-1 (XPath SRVIndicatorsDeclaration/sustainabilityIndicatorsGroup/PEFStudyDocument/attachment/binaryObject) 0-1</p>
@characterSet	<p>the character set of the binary object (examples UTF-8, UTF-16, Windows-1252, ISO-8859-7,..) - base type: normalizedString,</p>

	<p>(XPath SRVIndicatorsDeclaration/sustainabilityIndicatorsGroup/assessmentStudyDocument/attachment/binaryObject/@characterSet) [Optional]</p> <p>(XPath SRVIndicatorsDeclaration/sustainabilityIndicatorsGroup/PEFStudyDocument/attachment/binaryObject/@characterSet) [Optional]</p> <p>(XPath SRVIndicatorsDeclaration/sustainabilityIndicatorsGroup/externalRefDoc/attachment/binaryObject/@characterSet) [Optional]</p>
characterSetCode	<p>the character set of an external document (examples UTF-8, UTF-16, Windows-1252, ISO-8859-7,..)</p> <p>- base type: normalizedString,</p> <p>(XPath SRVIndicatorsDeclaration/sustainabilityIndicatorsGroup/externalRefDoc/attachment/externalReference/characterSetCode) 0-1</p> <p>(XPath SRVIndicatorsDeclaration/sustainabilityIndicatorsGroup/assessmentStudyDocument/attachment/externalReference/characterSetCode) 0-1</p> <p>(XPath SRVIndicatorsDeclaration/sustainabilityIndicatorsGroup/PEFStudyDocument/attachment/externalReference/characterSetCode) 0-1</p>
city	<p>name of the city (town, village)</p> <p>- base type: string, max length: 40,</p> <p>(XPath SRVIndicatorsDeclaration/sustainabilityIndicatorsGroup/externalRefDoc/issuerParty/city) 0-1</p> <p>(XPath SRVIndicatorsDeclaration/SRVheader/senderParty/city) 0-1</p> <p>(XPath SRVIndicatorsDeclaration/SRVheader/receiverParty/city) 0-1</p> <p>(XPath SRVIndicatorsDeclaration/sustainabilityIndicatorsGroup/sustainabilityIndicator/issuerParty/city) 0-1</p> <p>(XPath SRVIndicatorsDeclaration/sustainabilityIndicatorsGroup/sustainabilityIndicator/reviewerParty/city) 0-1</p> <p>(XPath SRVIndicatorsDeclaration/sustainabilityIndicatorsGroup/assessmentStudyDocument/issuerParty/city) 0-1</p> <p>(XPath SRVIndicatorsDeclaration/sustainabilityIndicatorsGroup/PEFStudyDocument/reviewerParty/city) 0-1</p> <p>(XPath SRVIndicatorsDeclaration/sustainabilityIndicatorsGroup/assessmentStudyDocument/signatureInformation/signatoryParty/city) 0-1</p> <p>(XPath SRVIndicatorsDeclaration/sustainabilityIndicatorsGroup/PEFStudyDocument/issuerParty/city) 0-1</p> <p>(XPath SRVIndicatorsDeclaration/sustainabilityIndicatorsGroup/externalRefDoc/signatureInformation/signatoryParty/city) 0-1</p> <p>(XPath SRVIndicatorsDeclaration/sustainabilityIndicatorsGroup/PEFStudyDocument/signatureInformation/signatoryParty/city) 0-1</p> <p>(XPath SRVIndicatorsDeclaration/sustainabilityIndicatorsGroup/assessmentStudyDocument/reviewerParty/city) 0-1</p>
@codeList	<p>it specifies the URL where the list of codes used to make an instance of the element can be found</p> <p>- base type: string, max length: 255,</p> <p>(XPath SRVIndicatorsDeclaration/sustainabilityIndicatorsGroup/PEFStudyDocument/ProductIdentification/garmentCode/garmentCodeB/fabric/@codeList) [Optional]</p> <p>- nota: <i>at least one out of this attribute and "numberingOrg" should be set</i></p> <p>(XPath SRVIndicatorsDeclaration/sustainabilityIndicatorsGroup/assessmentStudyDocument/ProductIdentification/acsCode/color/@codeList) [Optional]</p> <p>- nota: <i>this attribute should be used either single or coupled with "listName" and "listVersion"</i></p> <p>(XPath</p>

	<p>SRVIndicatorsDeclaration/sustainabilityIndicatorsGroup/assessmentStudyDocument/ProductIdentification/texCode/color/@codeList) [Optional] - nota: <i>this attribute should be used either single or coupled with "listName" and "listVersion"</i> (XPath)</p> <p>SRVIndicatorsDeclaration/sustainabilityIndicatorsGroup/PEFStudyDocument/ProductIdentification/garmentCode/garmentCodeB/drop/@codeList) [Optional] (XPath)</p> <p>SRVIndicatorsDeclaration/sustainabilityIndicatorsGroup/PEFStudyDocument/ProductIdentification/note/@codeList) [Optional] - nota: <i>must be used to provide (URL) the list of codes used in "noteLabel"</i> (XPath)</p> <p>SRVIndicatorsDeclaration/sustainabilityIndicatorsGroup/assessmentStudyDocument/ProductIdentification/acsCode/art/@codeList) [Optional] - nota: <i>at least one out of this attribute and "numberingOrg" should be set</i> (XPath)</p> <p>SRVIndicatorsDeclaration/sustainabilityIndicatorsGroup/PEFStudyDocument/ProductIdentification/garmentCode/garmentCodeB/garmentVariant/variantType/@codeList) [Optional] - nota: <i>always at least one out of this attribute and "numberingOrg" should be set</i> (XPath)</p> <p>SRVIndicatorsDeclaration/SRVheader/platformServiceReference/platformServiceCode/@codeList) [Optional] - nota: <i>indicate the URL of the platform supplying the service</i> (XPath)</p> <p>SRVIndicatorsDeclaration/sustainabilityIndicatorsGroup/assessmentStudyDocument/ProductIdentification/texCode/art/@codeList) [Optional] - nota: <i>at least one out of this attribute and "numberingOrg" should be set</i> (XPath)</p> <p>SRVIndicatorsDeclaration/sustainabilityIndicatorsGroup/assessmentStudyDocument/ProductIdentification/acsCode/pattern/@codeList) [Optional] - nota: <i>at least one out of this attribute and "numberingOrg" should be set</i> (XPath)</p> <p>SRVIndicatorsDeclaration/sustainabilityIndicatorsGroup/PEFStudyDocument/ProductIdentification/garmentCode/garmentCodeB/garmentVariant/variantCode/@codeList) [Optional] - nota: <i>at least one out of this attribute and "numberingOrg" should be set</i> (XPath)</p> <p>SRVIndicatorsDeclaration/sustainabilityIndicatorsGroup/assessmentStudyDocument/ProductIdentification/yarnCode/color/@codeList) [Optional] - nota: <i>this attribute should be used either single or coupled with "listName" and "listVersion"</i> (XPath)</p> <p>SRVIndicatorsDeclaration/sustainabilityIndicatorsGroup/PEFStudyDocument/ProductIdentification/garmentCode/garmentCodeB/size/@codeList) [Optional] (XPath)</p> <p>SRVIndicatorsDeclaration/sustainabilityIndicatorsGroup/assessmentStudyDocument/ProductIdentification/garmentCode/garmentCodeB/size/@codeList) [Optional] (XPath)</p> <p>SRVIndicatorsDeclaration/sustainabilityIndicatorsGroup/assessmentStudyDocument/ProductIdentification/texCode/pattern/@codeList) [Optional] - nota: <i>at least one out of this attribute and "numberingOrg" should be set</i> (XPath)</p> <p>SRVIndicatorsDeclaration/SRVheader/platformServiceReference/serviceRequestedAction/@codeList) [Optional] - nota: <i>Insert URL codelist of the platform services actions available.</i> (XPath)</p> <p>SRVIndicatorsDeclaration/sustainabilityIndicatorsGroup/assessmentStudyDocument/ProductIdentification/yarnCode/art/@codeList) [Optional] - nota: <i>at least one out of this attribute and "numberingOrg" should be set</i> (XPath)</p> <p>SRVIndicatorsDeclaration/sustainabilityIndicatorsGroup/PEFStudyDocument/ProductIdentification/garmentCode/garmentCodeB/artGroup/@codeList) [Optional] - nota: <i>at least one out of this attribute and "numberingOrg" should be set</i> (XPath)</p> <p>SRVIndicatorsDeclaration/sustainabilityIndicatorsGroup/PEFStudyDocument/ProductIdentification/garmentCode/garmentCodeB/color/@codeList) [Optional] - nota: <i>this attribute should be used either single or coupled with "listName" and "listVersion"</i> (XPath)</p>
--	---

	<p>SRVIndicatorsDeclaration/sustainabilityIndicatorsGroup/note/@codeList) [Optional]</p> <p>- nota: <i>must be used to provide (URL) the list of codes used in "noteLabel"</i></p> <p>(XPath)</p> <p>SRVIndicatorsDeclaration/sustainabilityIndicatorsGroup/assessmentStudyDocument/ProductIdentification/garmentCode/garmentCodeB/fabric/@codeList) [Optional]</p> <p>- nota: <i>at least one out of this attribute and "numberingOrg" should be set</i></p> <p>(XPath)</p> <p>SRVIndicatorsDeclaration/sustainabilityIndicatorsGroup/assessmentStudyDocument/ProductIdentification/garmentCode/garmentCodeB/color/@codeList) [Optional]</p> <p>- nota: <i>this attribute should be used either single or coupled with "listName" and "listVersion"</i></p> <p>(XPath)</p> <p>SRVIndicatorsDeclaration/sustainabilityIndicatorsGroup/PEFStudyDocument/ProductIdentification/rawCode/art/@codeList) [Optional]</p> <p>- nota: <i>at least one out of this attribute and "numberingOrg" should be set</i></p> <p>(XPath)</p> <p>SRVIndicatorsDeclaration/sustainabilityIndicatorsGroup/PEFStudyDocument/ProductIdentification/acsCode/art/@codeList) [Optional]</p> <p>- nota: <i>at least one out of this attribute and "numberingOrg" should be set</i></p> <p>(XPath)</p> <p>SRVIndicatorsDeclaration/sustainabilityIndicatorsGroup/assessmentStudyDocument/ProductIdentification/garmentCode/garmentCodeB/mod/@codeList) [Optional]</p> <p>- nota: <i>at least one out of this attribute and "numberingOrg" should be set</i></p> <p>(XPath)</p> <p>SRVIndicatorsDeclaration/sustainabilityIndicatorsGroup/PEFStudyDocument/ProductIdentification/acsCode/color/@codeList) [Optional]</p> <p>- nota: <i>this attribute should be used either single or coupled with "listName" and "listVersion"</i></p> <p>(XPath)</p> <p>SRVIndicatorsDeclaration/sustainabilityIndicatorsGroup/PEFStudyDocument/ProductIdentification/acsCode/pattern/@codeList) [Optional]</p> <p>- nota: <i>at least one out of this attribute and "numberingOrg" should be set</i></p> <p>(XPath)</p> <p>SRVIndicatorsDeclaration/sustainabilityIndicatorsGroup/PEFStudyDocument/ProductIdentification/garmentCode/garmentCodeA/art/@codeList) [Optional]</p> <p>- nota: <i>at least one out of this attribute and "numberingOrg" should be set</i></p> <p>(XPath)</p> <p>SRVIndicatorsDeclaration/sustainabilityIndicatorsGroup/PEFStudyDocument/ProductIdentification/texCode/art/@codeList) [Optional]</p> <p>- nota: <i>at least one out of this attribute and "numberingOrg" should be set</i></p> <p>(XPath)</p> <p>SRVIndicatorsDeclaration/sustainabilityIndicatorsGroup/PEFStudyDocument/note/@codeList) [Optional]</p> <p>- nota: <i>must be used to provide (URL) the list of codes used in "noteLabel"</i></p> <p>(XPath)</p> <p>SRVIndicatorsDeclaration/sustainabilityIndicatorsGroup/assessmentStudyDocument/ProductIdentification/garmentCode/garmentCodeB/garmentVariant/variantCode/@codeList) [Optional]</p> <p>- nota: <i>at least one out of this attribute and "numberingOrg" should be set</i></p> <p>(XPath)</p> <p>SRVIndicatorsDeclaration/sustainabilityIndicatorsGroup/PEFStudyDocument/ProductIdentification/rawCode/color/@codeList) [Optional]</p> <p>- nota: <i>this attribute should be used either single or coupled with "listName" and "listVersion"</i></p> <p>(XPath)</p> <p>SRVIndicatorsDeclaration/sustainabilityIndicatorsGroup/PEFStudyDocument/ProductIdentification/texCode/pattern/@codeList) [Optional]</p> <p>- nota: <i>at least one out of this attribute and "numberingOrg" should be set</i></p> <p>(XPath)</p> <p>SRVIndicatorsDeclaration/sustainabilityIndicatorsGroup/PEFStudyDocument/ProductIdentification/texCode/color/@codeList) [Optional]</p> <p>- nota: <i>this attribute should be used either single or coupled with "listName" and "listVersion"</i></p> <p>(XPath)</p> <p>SRVIndicatorsDeclaration/sustainabilityIndicatorsGroup/assessmentStudyDocument/ProductIdentification/garmentCode/garmentCodeB/artGroup/@codeList) [Optional]</p> <p>- nota: <i>at least one out of this attribute and "numberingOrg" should be set</i></p> <p>(XPath)</p>
--	--

	<p>SRVIndicatorsDeclaration/sustainabilityIndicatorsGroup/assessmentStudyDocument/ProductIdentification/garmentCode/garmentCodeB/garmentVariant/variantType/@codeList) [Optional] - nota: <i>always at least one out of this attribute and "numberingOrg" should be set</i> (XPath SRVIndicatorsDeclaration/note/@codeList) [Optional] - nota: <i>must be used to provide (URL) the list of codes used in "noteLabel"</i> (XPath</p> <p>SRVIndicatorsDeclaration/sustainabilityIndicatorsGroup/externalRefDoc/note/@codeList) [Optional] - nota: <i>must be used to provide (URL) the list of codes used in "noteLabel"</i> (XPath</p> <p>SRVIndicatorsDeclaration/sustainabilityIndicatorsGroup/assessmentStudyDocument/ProductIdentification/garmentPartCode/color/@codeList) [Optional] - nota: <i>this attribute should be used either single or coupled with "listName" and "listVersion"</i> (XPath</p> <p>SRVIndicatorsDeclaration/sustainabilityIndicatorsGroup/PEFStudyDocument/ProductIdentification/garmentPartCode/size/@codeList) [Optional] (XPath</p> <p>SRVIndicatorsDeclaration/sustainabilityIndicatorsGroup/PEFStudyDocument/ProductIdentification/yarnCode/art/@codeList) [Optional] - nota: <i>at least one out of this attribute and "numberingOrg" should be set</i> (XPath</p> <p>SRVIndicatorsDeclaration/sustainabilityIndicatorsGroup/assessmentStudyDocument/note/@codeList) [Optional] - nota: <i>must be used to provide (URL) the list of codes used in "noteLabel"</i> (XPath</p> <p>SRVIndicatorsDeclaration/sustainabilityIndicatorsGroup/assessmentStudyDocument/ProductIdentification/garmentPartCode/fabric/@codeList) [Optional] - nota: <i>at least one out of this attribute and "numberingOrg" should be set</i> (XPath</p> <p>SRVIndicatorsDeclaration/sustainabilityIndicatorsGroup/assessmentStudyDocument/ProductIdentification/garmentPartCode/mod/@codeList) [Optional] - nota: <i>at least one out of this attribute and "numberingOrg" should be set</i> (XPath</p> <p>SRVIndicatorsDeclaration/sustainabilityIndicatorsGroup/assessmentStudyDocument/ProductIdentification/rawCode/color/@codeList) [Optional] - nota: <i>this attribute should be used either single or coupled with "listName" and "listVersion"</i> (XPath</p> <p>SRVIndicatorsDeclaration/sustainabilityIndicatorsGroup/assessmentStudyDocument/ProductIdentification/rawCode/art/@codeList) [Optional] - nota: <i>at least one out of this attribute and "numberingOrg" should be set</i> (XPath</p> <p>SRVIndicatorsDeclaration/sustainabilityIndicatorsGroup/PEFStudyDocument/ProductIdentification/garmentCode/garmentCodeB/mod/@codeList) [Optional] - nota: <i>at least one out of this attribute and "numberingOrg" should be set</i> (XPath</p> <p>SRVIndicatorsDeclaration/sustainabilityIndicatorsGroup/PEFStudyDocument/ProductIdentification/garmentPartCode/mod/@codeList) [Optional] - nota: <i>at least one out of this attribute and "numberingOrg" should be set</i> (XPath</p> <p>SRVIndicatorsDeclaration/sustainabilityIndicatorsGroup/sustainabilityIndicator/note/@codeList) [Optional] - nota: <i>must be used to provide (URL) the list of codes used in "noteLabel"</i> (XPath</p> <p>SRVIndicatorsDeclaration/sustainabilityIndicatorsGroup/assessmentStudyDocument/ProductIdentification/garmentCode/garmentCodeA/art/@codeList) [Optional] - nota: <i>at least one out of this attribute and "numberingOrg" should be set</i> (XPath</p> <p>SRVIndicatorsDeclaration/sustainabilityIndicatorsGroup/assessmentStudyDocument/ProductIdentification/note/@codeList) [Optional] - nota: <i>must be used to provide (URL) the list of codes used in "noteLabel"</i> (XPath</p> <p>SRVIndicatorsDeclaration/sustainabilityIndicatorsGroup/assessmentStudyDocument/ProductIdentification/garmentCode/garmentCodeB/drop/@codeList) [Optional] (XPath</p> <p>SRVIndicatorsDeclaration/sustainabilityIndicatorsGroup/PEFStudyDocument/ProductIdentification/yarnCode/color/@codeList) [Optional] - nota: <i>this attribute should be used either single or coupled with "listName" and "listVersion"</i></p>
--	---

	<p><i>rsion"</i> (XPath SRVIndicatorsDeclaration/sustainabilityIndicatorsGroup/PEFStudyDocument/ProductIdentification/garmentPartCode/color/@codeList) [Optional] - nota: <i>this attribute should be used either single or coupled with "listName" and "listVersion"</i> (XPath SRVIndicatorsDeclaration/sustainabilityIndicatorsGroup/assessmentStudyDocument/ProductIdentification/garmentPartCode/size/@codeList) [Optional] (XPath SRVIndicatorsDeclaration/sustainabilityIndicatorsGroup/PEFStudyDocument/ProductIdentification/garmentPartCode/fabric/@codeList) [Optional] - nota: <i>at least one out of this attribute and "numberingOrg" should be set</i></p>
color	<p>colour number of the product, when not included in the model or fabric code - base type: string, max length: 15, (XPath SRVIndicatorsDeclaration/sustainabilityIndicatorsGroup/PEFStudyDocument/ProductIdentification/texCode/color) 0-1 (XPath SRVIndicatorsDeclaration/sustainabilityIndicatorsGroup/assessmentStudyDocument/ProductIdentification/garmentCode/garmentCodeB/color) 0-1 (XPath SRVIndicatorsDeclaration/sustainabilityIndicatorsGroup/PEFStudyDocument/ProductIdentification/rawCode/color) 0-1 (XPath SRVIndicatorsDeclaration/sustainabilityIndicatorsGroup/PEFStudyDocument/ProductIdentification/yarnCode/color) 0-1 (XPath SRVIndicatorsDeclaration/sustainabilityIndicatorsGroup/PEFStudyDocument/ProductIdentification/acsCode/color) 0-1 (XPath SRVIndicatorsDeclaration/sustainabilityIndicatorsGroup/PEFStudyDocument/ProductIdentification/garmentCode/garmentCodeB/color) 0-1 (XPath SRVIndicatorsDeclaration/sustainabilityIndicatorsGroup/assessmentStudyDocument/ProductIdentification/acsCode/color) 0-1 (XPath SRVIndicatorsDeclaration/sustainabilityIndicatorsGroup/PEFStudyDocument/ProductIdentification/garmentPartCode/color) 0-1 - note: <i>when a garment component, it should be the code assigned to the garment article</i> (XPath SRVIndicatorsDeclaration/sustainabilityIndicatorsGroup/assessmentStudyDocument/ProductIdentification/garmentPartCode/color) 0-1 - note: <i>when a garment component, it should be the code assigned to the garment article</i> (XPath SRVIndicatorsDeclaration/sustainabilityIndicatorsGroup/assessmentStudyDocument/ProductIdentification/texCode/color) 0-1 (XPath SRVIndicatorsDeclaration/sustainabilityIndicatorsGroup/assessmentStudyDocument/ProductIdentification/yarnCode/color) 0-1 (XPath SRVIndicatorsDeclaration/sustainabilityIndicatorsGroup/assessmentStudyDocument/ProductIdentification/rawCode/color) 0-1</p>
country	<p>code of the nation - base type: string, cod. table: T10 http://www.ebiz.enea.it/moda-ml/repository/codelist/draft/gc_T10.xml (XPath SRVIndicatorsDeclaration/sustainabilityIndicatorsGroup/PEFStudyDocument/ReviewerParty/country) 0-1 (XPath SRVIndicatorsDeclaration/SRVheader/receiverParty/country) 0-1 (XPath SRVIndicatorsDeclaration/sustainabilityIndicatorsGroup/externalRefDoc/issuerParty/country) 0-1 (XPath SRVIndicatorsDeclaration/sustainabilityIndicatorsGroup/PEFStudyDocument/signatureInformation/signatoryParty/country) 0-1 (XPath</p>

	<p>SRVIndicatorsDeclaration/sustainabilityIndicatorsGroup/PEFStudyDocument/issuerParty/country) 0-1 (XPath</p> <p>SRVIndicatorsDeclaration/sustainabilityIndicatorsGroup/sustainabilityIndicator/issuerParty/country) 0-1 (XPath</p> <p>SRVIndicatorsDeclaration/sustainabilityIndicatorsGroup/sustainabilityIndicator/reviewerParty/country) 0-1 (XPath</p> <p>SRVIndicatorsDeclaration/sustainabilityIndicatorsGroup/assessmentStudyDocument/reviewerParty/country) 0-1 (XPath</p> <p>SRVIndicatorsDeclaration/sustainabilityIndicatorsGroup/assessmentStudyDocument/signatureInformation/signatoryParty/country) 0-1 (XPath</p> <p>SRVIndicatorsDeclaration/sustainabilityIndicatorsGroup/assessmentStudyDocument/issuerParty/country) 0-1 (XPath</p> <p>SRVIndicatorsDeclaration/sustainabilityIndicatorsGroup/externalRefDoc/signatureInformation/signatoryParty/country) 0-1 (XPath SRVIndicatorsDeclaration/SRVheader/senderParty/country) 0-1</p>
dataQualityDescription	<p>description of the data quality in the study - base type: string, (XPath</p> <p>SRVIndicatorsDeclaration/sustainabilityIndicatorsGroup/PEFStudyDocument/dataQualityDescription) 0-99</p> <p>- note: <i>Only one instance of this element for each different value of 'ln' attribute (language)</i></p>
@dateForm	<p>format used for the date - base type: string, cod. table: NT29 http://www.ebiz.enea.it/moda-ml/repository/codelist/draft/gc_NT29.xml (XPath</p> <p>SRVIndicatorsDeclaration/sustainabilityIndicatorsGroup/assessmentStudyDocument/docDate/@dateForm) [Optional] (XPath</p> <p>SRVIndicatorsDeclaration/sustainabilityIndicatorsGroup/PEFStudyDocument/validityEnd/@dateForm) [Optional] (XPath</p> <p>SRVIndicatorsDeclaration/sustainabilityIndicatorsGroup/assessmentStudyDocument/validityStart/@dateForm) [Optional] (XPath</p> <p>SRVIndicatorsDeclaration/sustainabilityIndicatorsGroup/PEFStudyDocument/validityStart/@dateForm) [Optional] (XPath</p> <p>SRVIndicatorsDeclaration/sustainabilityIndicatorsGroup/assessmentStudyDocument/validityEnd/@dateForm) [Optional] (XPath SRVIndicatorsDeclaration/SRVheader/msgDate/@dateForm) [Optional] (XPath</p> <p>SRVIndicatorsDeclaration/sustainabilityIndicatorsGroup/externalRefDoc/validityStart/@dateForm) [Optional] (XPath</p> <p>SRVIndicatorsDeclaration/sustainabilityIndicatorsGroup/externalRefDoc/validityEnd/@dateForm) [Optional] (XPath</p> <p>SRVIndicatorsDeclaration/sustainabilityIndicatorsGroup/assessmentStudyDocument/reviewDate/@dateForm) [Optional] (XPath</p> <p>SRVIndicatorsDeclaration/sustainabilityIndicatorsGroup/PEFStudyDocument/docDate/@dateForm) [Optional] (XPath</p> <p>SRVIndicatorsDeclaration/sustainabilityIndicatorsGroup/externalRefDoc/docDate/@dateForm) [Optional] (XPath</p> <p>SRVIndicatorsDeclaration/sustainabilityIndicatorsGroup/PEFStudyDocument/reviewDate/@dateForm) [Optional]</p>
dept	<p>name or code of a department - base type: string, max length: 40, (XPath</p>

	<p>SRVIndicatorsDeclaration/sustainabilityIndicatorsGroup/assessmentStudyDocument/reviewerParty/dept) 0-1 (XPath</p> <p>SRVIndicatorsDeclaration/sustainabilityIndicatorsGroup/PEFStudyDocument/reviewerParty/dept) 0-1 (XPath</p> <p>SRVIndicatorsDeclaration/sustainabilityIndicatorsGroup/PEFStudyDocument/signatureInformation/signatoryParty/dept) 0-1 (XPath</p> <p>SRVIndicatorsDeclaration/sustainabilityIndicatorsGroup/externalRefDoc/issuerParty/dept) 0-1 (XPath</p> <p>SRVIndicatorsDeclaration/sustainabilityIndicatorsGroup/externalRefDoc/signatureInformation/signatoryParty/dept) 0-1 (XPath SRVIndicatorsDeclaration/SRVheader/receiverParty/dept) 0-1 (XPath</p> <p>SRVIndicatorsDeclaration/sustainabilityIndicatorsGroup/sustainabilityIndicator/reviewerParty/dept) 0-1 (XPath</p> <p>SRVIndicatorsDeclaration/sustainabilityIndicatorsGroup/sustainabilityIndicator/issuerParty/dept) 0-1 (XPath</p> <p>SRVIndicatorsDeclaration/sustainabilityIndicatorsGroup/PEFStudyDocument/issuerParty/dept) 0-1 (XPath SRVIndicatorsDeclaration/SRVheader/senderParty/dept) 0-1 (XPath</p> <p>SRVIndicatorsDeclaration/sustainabilityIndicatorsGroup/assessmentStudyDocument/issuerParty/dept) 0-1 (XPath</p> <p>SRVIndicatorsDeclaration/sustainabilityIndicatorsGroup/assessmentStudyDocument/signatureInformation/signatoryParty/dept) 0-1</p>
description	<p>free text description. The content of the element must be unique, it might be translated and repeated into more languages (thus no more than one instance for each language).</p> <p>- base type: string, max length: 250, (XPath</p> <p>SRVIndicatorsDeclaration/sustainabilityIndicatorsGroup/PEFStudyDocument/ProductIdentification/rawCode/description) 0-unbounded - note: <i>Raw material description</i> (XPath</p> <p>SRVIndicatorsDeclaration/sustainabilityIndicatorsGroup/PEFStudyDocument/ProductIdentification/texCode/description) 0-unbounded - note: <i>Product description</i> (XPath</p> <p>SRVIndicatorsDeclaration/sustainabilityIndicatorsGroup/PEFStudyDocument/ProductIdentification/yarnCode/description) 0-unbounded - note: <i>Product description</i> (XPath</p> <p>SRVIndicatorsDeclaration/sustainabilityIndicatorsGroup/externalRefDoc/description) 0-unbounded - note: <i>Only one instance of this element for each different value of 'In' attribute (language)</i> (XPath</p> <p>SRVIndicatorsDeclaration/sustainabilityIndicatorsGroup/PEFStudyDocument/ProductIdentification/garmentCode/garmentCodeB/description) 0-unbounded - note: <i>Product description</i> (XPath</p> <p>SRVIndicatorsDeclaration/sustainabilityIndicatorsGroup/PEFStudyDocument/description) 0-unbounded - note: <i>Only one instance of this element for each different value of 'In' attribute (language)</i> (XPath</p> <p>SRVIndicatorsDeclaration/sustainabilityIndicatorsGroup/assessmentStudyDocument/ProductIdentification/texCode/description) 0-unbounded - note: <i>Product description</i> (XPath</p> <p>SRVIndicatorsDeclaration/sustainabilityIndicatorsGroup/PEFStudyDocument/ProductIdentification/garmentCode/garmentCodeA/description) 0-unbounded - note: <i>Product description</i></p>

	<p>(XPath SRVIndicatorsDeclaration/sustainabilityIndicatorsGroup/assessmentStudyDocument/description) 0-unbounded - note: Only one instance of this element for each different value of 'In' attribute (language)</p> <p>(XPath SRVIndicatorsDeclaration/sustainabilityIndicatorsGroup/assessmentStudyDocument/ProductIdentification/yarnCode/description) 0-unbounded - note: Product description</p> <p>(XPath SRVIndicatorsDeclaration/sustainabilityIndicatorsGroup/assessmentStudyDocument/ProductIdentification/garmentCode/garmentCodeB/description) 0-unbounded - note: Product description</p> <p>(XPath SRVIndicatorsDeclaration/sustainabilityIndicatorsGroup/assessmentStudyDocument/ProductIdentification/garmentCode/garmentCodeA/description) 0-unbounded - note: Product description</p> <p>(XPath SRVIndicatorsDeclaration/sustainabilityIndicatorsGroup/PEFStudyDocument/ProductIdentification/description) 0-9 - note: Only one instance of this element for each different value of 'In' attribute (language)</p> <p>(XPath SRVIndicatorsDeclaration/sustainabilityIndicatorsGroup/assessmentStudyDocument/ProductIdentification/acsCode/description) 0-unbounded - note: Product description</p> <p>(XPath SRVIndicatorsDeclaration/sustainabilityIndicatorsGroup/PEFStudyDocument/ProductIdentification/acsCode/description) 0-unbounded - note: Product description</p> <p>(XPath SRVIndicatorsDeclaration/sustainabilityIndicatorsGroup/assessmentStudyDocument/ProductIdentification/garmentPartCode/description) 0-unbounded - note: Product part description</p> <p>(XPath SRVIndicatorsDeclaration/sustainabilityIndicatorsGroup/assessmentStudyDocument/ProductIdentification/rawCode/description) 0-unbounded - note: Raw material description</p> <p>(XPath SRVIndicatorsDeclaration/sustainabilityIndicatorsGroup/assessmentStudyDocument/ProductIdentification/description) 0-9 - note: Only one instance of this element for each different value of 'In' attribute (language)</p> <p>(XPath SRVIndicatorsDeclaration/sustainabilityIndicatorsGroup/PEFStudyDocument/ProductIdentification/garmentPartCode/description) 0-unbounded - note: Product part description</p>
@disclosureLevel	<p>indicates the level of disclosure permitted for the information it is associated with - base type: decimal, cod. table: NT311 http://www.ebiz.enea.it/moda-ml/repository/codelist/draft/gc_NT311.xml</p> <p>(XPath SRVIndicatorsDeclaration/sustainabilityIndicatorsGroup/sustainabilityIndicator/@disclosureLevel) []</p> <p>(XPath SRVIndicatorsDeclaration/sustainabilityIndicatorsGroup/@disclosureLevel) [Optional]</p> <p>(XPath SRVIndicatorsDeclaration/sustainabilityIndicatorsGroup/PEFStudyDocument/@disclosureLevel) [Optional]</p> <p>(XPath SRVIndicatorsDeclaration/sustainabilityIndicatorsGroup/assessmentStudyDocument/@disclosureLevel) [Optional]</p>
docDate	<p>date of issue of the referenced document, according to one of the patterns YYYY-MM-DD, YYYY-MM-DD:HH-MM or YYYY-WW. - base type: string,</p> <p>(XPath SRVIndicatorsDeclaration/sustainabilityIndicatorsGroup/externalRefDoc/docDate) 0-1</p>

	<p>(XPath SRVIndicatorsDeclaration/sustainabilityIndicatorsGroup/assessmentStudyDocument/docDate) 0-1</p> <p>(XPath SRVIndicatorsDeclaration/sustainabilityIndicatorsGroup/PEFStudyDocument/docDate) 0-1</p>
docID	<p>identification number of the referenced document</p> <p>- base type: string, max length: 80,</p> <p>(XPath SRVIndicatorsDeclaration/sustainabilityIndicatorsGroup/externalRefDoc/docID) 1-1</p> <p>(XPath SRVIndicatorsDeclaration/sustainabilityIndicatorsGroup/PEFStudyDocument/docID) 0-1</p> <p>(XPath SRVIndicatorsDeclaration/sustainabilityIndicatorsGroup/assessmentStudyDocument/docID) 0-1</p>
@docStatusCode	<p>current status of the document</p> <p>- base type: decimal, cod. table: NT313</p> <p>http://www.ebiz.enea.it/moda-ml/repository/codelist/draft/gc_NT313.xml</p> <p>(XPath SRVIndicatorsDeclaration/sustainabilityIndicatorsGroup/assessmentStudyDocument/@docStatusCode) [Optional]</p> <p>(XPath SRVIndicatorsDeclaration/sustainabilityIndicatorsGroup/PEFStudyDocument/@docStatusCode) [Optional]</p>
documentType	<p>type or class to which the document belongs</p> <p>- base type: string, cod. table: T21</p> <p>http://www.ebiz.enea.it/moda-ml/repository/codelist/draft/gc_T21.xml</p> <p>(XPath SRVIndicatorsDeclaration/sustainabilityIndicatorsGroup/externalRefDoc/documentType) 0-1</p>
drop	<p>drop number of the garment</p> <p>- base type: string, max length: 15,</p> <p>(XPath SRVIndicatorsDeclaration/sustainabilityIndicatorsGroup/assessmentStudyDocument/ProductIdentification/garmentCode/garmentCodeB/drop) 0-1</p> <p>- note: <i>Fill this element if the drop is the same for all the sizes of the model. Otherway specify it within the csRange element</i></p> <p>(XPath SRVIndicatorsDeclaration/sustainabilityIndicatorsGroup/PEFStudyDocument/ProductIdentification/garmentCode/garmentCodeB/drop) 0-1</p> <p>- note: <i>Fill this element if the drop is the same for all the sizes of the model. Otherway specify it within the csRange element</i></p>
@email	<p>electronic mail address of the contact person within a Party</p> <p>- base type: string, max length: 250,</p> <p>(XPath SRVIndicatorsDeclaration/sustainabilityIndicatorsGroup/PEFStudyDocument/issuerParty/person/@email) [Optional]</p> <p>(XPath SRVIndicatorsDeclaration/sustainabilityIndicatorsGroup/externalRefDoc/issuerParty/person/@email) [Optional]</p> <p>(XPath SRVIndicatorsDeclaration/SRVheader/receiverParty/person/@email) [Optional]</p> <p>(XPath SRVIndicatorsDeclaration/sustainabilityIndicatorsGroup/externalRefDoc/signatureInformation/signatoryParty/person/@email) [Optional]</p> <p>(XPath SRVIndicatorsDeclaration/sustainabilityIndicatorsGroup/PEFStudyDocument/author/@email) [Optional]</p> <p>(XPath SRVIndicatorsDeclaration/SRVheader/senderParty/person/@email) [Optional]</p> <p>(XPath SRVIndicatorsDeclaration/sustainabilityIndicatorsGroup/assessmentStudyDocument/signatureInformation/signatoryParty/person/@email) [Optional]</p> <p>(XPath</p>

	<p>SRVIndicatorsDeclaration/sustainabilityIndicatorsGroup/assessmentStudyDocument/issuerParty/person/@email) [Optional] (XPath</p> <p>SRVIndicatorsDeclaration/sustainabilityIndicatorsGroup/assessmentStudyDocument/reviewerParty/person/@email) [Optional] (XPath</p> <p>SRVIndicatorsDeclaration/sustainabilityIndicatorsGroup/PEFStudyDocument/reviewerParty/person/@email) [Optional] (XPath</p> <p>SRVIndicatorsDeclaration/sustainabilityIndicatorsGroup/sustainabilityIndicator/reviewerParty/person/@email) [Optional] (XPath</p> <p>SRVIndicatorsDeclaration/sustainabilityIndicatorsGroup/PEFStudyDocument/signatureInformation/signatoryParty/person/@email) [Optional] (XPath</p> <p>SRVIndicatorsDeclaration/sustainabilityIndicatorsGroup/assessmentStudyDocument/author/@email) [Optional] (XPath</p> <p>SRVIndicatorsDeclaration/sustainabilityIndicatorsGroup/sustainabilityIndicator/issuerParty/person/@email) [Optional]</p>
@encoding	<p>specifies the decoding algorithm of the binary object - base type: normalizedString, (XPath</p> <p>SRVIndicatorsDeclaration/sustainabilityIndicatorsGroup/assessmentStudyDocument/attachment/binaryObject/@encoding) [Optional] (XPath</p> <p>SRVIndicatorsDeclaration/sustainabilityIndicatorsGroup/externalRefDoc/attachment/binaryObject/@encoding) [Optional] (XPath</p> <p>SRVIndicatorsDeclaration/sustainabilityIndicatorsGroup/PEFStudyDocument/attachment/binaryObject/@encoding) [Optional]</p>
encodingCode	<p>the encoding/decoding algorithm used with the external object (example is 'base64Binary') - base type: normalizedString, (XPath</p> <p>SRVIndicatorsDeclaration/sustainabilityIndicatorsGroup/PEFStudyDocument/attachment/externalReference/encodingCode) 0-1 (XPath</p> <p>SRVIndicatorsDeclaration/sustainabilityIndicatorsGroup/assessmentStudyDocument/attachment/externalReference/encodingCode) 0-1 (XPath</p> <p>SRVIndicatorsDeclaration/sustainabilityIndicatorsGroup/externalRefDoc/attachment/externalReference/encodingCode) 0-1</p>
fabric	<p>fabric number of the garment - base type: string, max length: 15, (XPath</p> <p>SRVIndicatorsDeclaration/sustainabilityIndicatorsGroup/PEFStudyDocument/ProductIdentification/garmentPartCode/fabric) 0-1</p> <p>- note: <i>when a garment component, it should be the code assigned to the garment article</i> (XPath</p> <p>SRVIndicatorsDeclaration/sustainabilityIndicatorsGroup/assessmentStudyDocument/ProductIdentification/garmentPartCode/fabric) 0-1</p> <p>- note: <i>when a garment component, it should be the code assigned to the garment article</i> (XPath</p> <p>SRVIndicatorsDeclaration/sustainabilityIndicatorsGroup/assessmentStudyDocument/ProductIdentification/garmentCode/garmentCodeB/fabric) 0-1 (XPath</p> <p>SRVIndicatorsDeclaration/sustainabilityIndicatorsGroup/PEFStudyDocument/ProductIdentification/garmentCode/garmentCodeB/fabric) 0-1</p>
@fax	<p>fax number of the contact person within a Party - base type: string, max length: 35, (XPath</p> <p>SRVIndicatorsDeclaration/sustainabilityIndicatorsGroup/PEFStudyDocument/reviewerParty/person/@fax) [Optional] (XPath</p>

	<p>SRVIndicatorsDeclaration/sustainabilityIndicatorsGroup/PEFStudyDocument/signatureInformation/signatoryParty/person/@fax) [Optional] (XPath</p> <p>SRVIndicatorsDeclaration/sustainabilityIndicatorsGroup/externalRefDoc/signatureInformation/signatoryParty/person/@fax) [Optional] (XPath</p> <p>SRVIndicatorsDeclaration/sustainabilityIndicatorsGroup/sustainabilityIndicator/reviewerParty/person/@fax) [Optional] (XPath</p> <p>SRVIndicatorsDeclaration/sustainabilityIndicatorsGroup/assessmentStudyDocument/author/@fax) [Optional] (XPath</p> <p>SRVIndicatorsDeclaration/sustainabilityIndicatorsGroup/assessmentStudyDocument/reviewerParty/person/@fax) [Optional] (XPath</p> <p>SRVIndicatorsDeclaration/sustainabilityIndicatorsGroup/PEFStudyDocument/author/@fax) [Optional] (XPath SRVIndicatorsDeclaration/SRVheader/senderParty/person/@fax) [Optional] (XPath</p> <p>SRVIndicatorsDeclaration/sustainabilityIndicatorsGroup/sustainabilityIndicator/issuerParty/person/@fax) [Optional] (XPath</p> <p>SRVIndicatorsDeclaration/sustainabilityIndicatorsGroup/PEFStudyDocument/issuerParty/person/@fax) [Optional] (XPath</p> <p>SRVIndicatorsDeclaration/sustainabilityIndicatorsGroup/externalRefDoc/issuerParty/person/@fax) [Optional] (XPath</p> <p>SRVIndicatorsDeclaration/sustainabilityIndicatorsGroup/assessmentStudyDocument/issuerParty/person/@fax) [Optional] (XPath SRVIndicatorsDeclaration/SRVheader/receiverParty/person/@fax) [Optional] (XPath</p> <p>SRVIndicatorsDeclaration/sustainabilityIndicatorsGroup/assessmentStudyDocument/signatureInformation/signatoryParty/person/@fax) [Optional]</p>
fileName	<p>unique identifier (name) of the file - base type: string, max length: 255, (XPath</p> <p>SRVIndicatorsDeclaration/sustainabilityIndicatorsGroup/externalRefDoc/attachment/fileName) 0-1 (XPath</p> <p>SRVIndicatorsDeclaration/sustainabilityIndicatorsGroup/assessmentStudyDocument/attachment/fileName) 0-1 (XPath</p> <p>SRVIndicatorsDeclaration/sustainabilityIndicatorsGroup/PEFStudyDocument/attachment/fileName) 0-1</p>
@format	<p>the format of the binary content (examples xml, pdf, doc,...) - base type: string, (XPath</p> <p>SRVIndicatorsDeclaration/sustainabilityIndicatorsGroup/externalRefDoc/attachment/binaryObject/@format) [Optional] (XPath</p> <p>SRVIndicatorsDeclaration/sustainabilityIndicatorsGroup/assessmentStudyDocument/attachment/binaryObject/@format) [Optional] (XPath</p> <p>SRVIndicatorsDeclaration/sustainabilityIndicatorsGroup/PEFStudyDocument/attachment/binaryObject/@format) [Optional]</p>
formatCode	<p>the format of the external object (examples xml, pdf, doc,...) - base type: normalizedString, (XPath</p> <p>SRVIndicatorsDeclaration/sustainabilityIndicatorsGroup/externalRefDoc/attachment/externalReference/formatCode) 0-1 (XPath</p> <p>SRVIndicatorsDeclaration/sustainabilityIndicatorsGroup/assessmentStudyDocument/attachment/externalReference/formatCode) 0-1 (XPath</p> <p>SRVIndicatorsDeclaration/sustainabilityIndicatorsGroup/PEFStudyDocument/at</p>

	achment/externalReference/formatCode) 0-1
functionalUnitDescription	<p>description of the functional unit object of the study</p> <p>- base type: string, (XPath SRVIndicatorsDeclaration/sustainabilityIndicatorsGroup/PEFStudyDocument/functionalUnitDescription) 0-99</p> <p>- note: <i>Only one instance of this element for each different value of 'In' attribute (language)</i></p>
@geoRefSystem	<p>georeference system adopted for the coordinate (in example wgs84 with decimal degree o degree with minute and seconds)</p> <p>- base type: string, (XPath SRVIndicatorsDeclaration/sustainabilityIndicatorsGroup/assessmentStudyDocument/issuerParty/geoCoordinates/@geoRefSystem) [Optional] (XPath SRVIndicatorsDeclaration/sustainabilityIndicatorsGroup/assessmentStudyDocument/reviewerParty/geoCoordinates/@geoRefSystem) [Optional] (XPath SRVIndicatorsDeclaration/sustainabilityIndicatorsGroup/sustainabilityIndicator/issuerParty/geoCoordinates/@geoRefSystem) [Optional] (XPath SRVIndicatorsDeclaration/sustainabilityIndicatorsGroup/PEFStudyDocument/issuerParty/geoCoordinates/@geoRefSystem) [Optional] (XPath SRVIndicatorsDeclaration/sustainabilityIndicatorsGroup/externalRefDoc/issuerParty/geoCoordinates/@geoRefSystem) [Optional] (XPath SRVIndicatorsDeclaration/sustainabilityIndicatorsGroup/PEFStudyDocument/reviewerParty/geoCoordinates/@geoRefSystem) [Optional] (XPath SRVIndicatorsDeclaration/SRVheader/receiverParty/geoCoordinates/@geoRefSystem) [Optional] (XPath SRVIndicatorsDeclaration/sustainabilityIndicatorsGroup/PEFStudyDocument/signatureInformation/signatoryParty/geoCoordinates/@geoRefSystem) [Optional] (XPath SRVIndicatorsDeclaration/SRVheader/senderParty/geoCoordinates/@geoRefSystem) [Optional] (XPath SRVIndicatorsDeclaration/sustainabilityIndicatorsGroup/sustainabilityIndicator/reviewerParty/geoCoordinates/@geoRefSystem) [Optional] (XPath SRVIndicatorsDeclaration/sustainabilityIndicatorsGroup/externalRefDoc/signatureInformation/signatoryParty/geoCoordinates/@geoRefSystem) [Optional] (XPath SRVIndicatorsDeclaration/sustainabilityIndicatorsGroup/assessmentStudyDocument/signatureInformation/signatoryParty/geoCoordinates/@geoRefSystem) [Optional]</p>
gPart	<p>code specifying the type of component or part of a fashion product (sleeve, neck, ...)</p> <p>- base type: string, cod. table: T48 http://www.ebiz.enea.it/moda-ml/repository/codelist/draft/gc_T48.xml (XPath SRVIndicatorsDeclaration/sustainabilityIndicatorsGroup/assessmentStudyDocument/ProductIdentification/garmentPartCode/gPart) 1-1 (XPath SRVIndicatorsDeclaration/sustainabilityIndicatorsGroup/PEFStudyDocument/ProductIdentification/garmentPartCode/gPart) 1-1</p>
hashFootprint	<p>footprint obtained by applying an hashing algorithm</p> <p>- base type: string, max length: 80, (XPath SRVIndicatorsDeclaration/sustainabilityIndicatorsGroup/externalRefDoc/attachment/hashFootprint) 0-1 (XPath SRVIndicatorsDeclaration/sustainabilityIndicatorsGroup/assessmentStudyDocument/attachment/hashFootprint) 0-1 (XPath SRVIndicatorsDeclaration/sustainabilityIndicatorsGroup/PEFStudyDocument/attachment/hashFootprint) 0-1</p>

@hashMethod	<p>type of used hashing algorithm - base type: string, max length: 80, cod. table: NT333 http://www.ebiz.enea.it/moda-ml/repository/codelist/draft/gc_NT333.xml (XPath SRVIndicatorsDeclaration/sustainabilityIndicatorsGroup/externalRefDoc/attachment/hashFootprint/@hashMethod) [Required] (XPath SRVIndicatorsDeclaration/sustainabilityIndicatorsGroup/PEFStudyDocument/attachment/hashFootprint/@hashMethod) [Required] (XPath SRVIndicatorsDeclaration/sustainabilityIndicatorsGroup/assessmentStudyDocument/attachment/hashFootprint/@hashMethod) [Required]</p>
id	<p>primary identification code of a Party; it is recommended to use an EORI number (with @numberingOrg= "EO") or the format: nation code (ISO 3166) + national tax code (i.e. VAT identification number) with @numberingOrg= "MF" - base type: string, max length: 15, (XPath SRVIndicatorsDeclaration/sustainabilityIndicatorsGroup/sustainabilityIndicator/reviewerParty/id) 1-1 (XPath SRVIndicatorsDeclaration/sustainabilityIndicatorsGroup/PEFStudyDocument/issuerParty/id) 0-1 (XPath SRVIndicatorsDeclaration/SRVheader/receiverParty/id) 1-1 (XPath SRVIndicatorsDeclaration/SRVheader/senderParty/id) 1-1 (XPath SRVIndicatorsDeclaration/sustainabilityIndicatorsGroup/sustainabilityIndicator/issuerParty/id) 0-1 (XPath SRVIndicatorsDeclaration/sustainabilityIndicatorsGroup/externalRefDoc/signatureInformation/signatoryParty/id) 0-1 (XPath SRVIndicatorsDeclaration/sustainabilityIndicatorsGroup/PEFStudyDocument/reviewerParty/id) 1-1 (XPath SRVIndicatorsDeclaration/sustainabilityIndicatorsGroup/externalRefDoc/issuerParty/id) 0-1 (XPath SRVIndicatorsDeclaration/sustainabilityIndicatorsGroup/PEFStudyDocument/signatureInformation/signatoryParty/id) 0-1 (XPath SRVIndicatorsDeclaration/sustainabilityIndicatorsGroup/assessmentStudyDocument/signatureInformation/signatoryParty/id) 0-1 (XPath SRVIndicatorsDeclaration/sustainabilityIndicatorsGroup/assessmentStudyDocument/issuerParty/id) 0-1 (XPath SRVIndicatorsDeclaration/sustainabilityIndicatorsGroup/assessmentStudyDocument/reviewerParty/id) 1-1</p>
@indicatorStatusCode	<p>current status of the indicator value - base type: decimal, cod. table: NT313 http://www.ebiz.enea.it/moda-ml/repository/codelist/draft/gc_NT313.xml (XPath SRVIndicatorsDeclaration/sustainabilityIndicatorsGroup/sustainabilityIndicator/@indicatorStatusCode) [Required]</p>
@isStudyDataset	<p>if 'true' the element to which it is associated is the dataset of a study to be treated as a binary dataset, otherwise it is a report - base type: boolean, (XPath SRVIndicatorsDeclaration/sustainabilityIndicatorsGroup/PEFStudyDocument/@isStudyDataset) [Required] (XPath SRVIndicatorsDeclaration/sustainabilityIndicatorsGroup/assessmentStudyDocument/@isStudyDataset) [Required]</p>
issuerAccreditationInfo	<p>accrediting information of the issuer of the document - base type: string, (XPath SRVIndicatorsDeclaration/sustainabilityIndicatorsGroup/PEFStudyDocument/iss</p>

	<p>ssuerParty/issuerAccreditationInfo) 0-1 (XPath SRVIndicatorsDeclaration/sustainabilityIndicatorsGroup/sustainabilityIndicator/i ssuerParty/issuerAccreditationInfo) 0-1 (XPath SRVIndicatorsDeclaration/sustainabilityIndicatorsGroup/externalRefDoc/issuer Party/issuerAccreditationInfo) 0-1 (XPath SRVIndicatorsDeclaration/sustainabilityIndicatorsGroup/assessmentStudyDoc ument/issuerParty/issuerAccreditationInfo) 0-1</p>
@isURL	<p>it indicates if the referred element is an URL (true) or not (false) - base type: boolean, (XPath SRVIndicatorsDeclaration/sustainabilityIndicatorsGroup/externalRefDoc/attach ment/blockChainReference/uri/@isURL) [Optional] [Default= true] - nota: <i>usage of URLs is recommended</i> (XPath SRVIndicatorsDeclaration/sustainabilityIndicatorsGroup/PEFStudyDocument/at tachment/externalReference/uri/@isURL) [Optional] [Default= true] - nota: <i>usage of URLs is recommended</i> (XPath SRVIndicatorsDeclaration/sustainabilityIndicatorsGroup/PEFStudyDocument/at tachment/blockChainReference/uri/@isURL) [Optional] [Default= true] - nota: <i>usage of URLs is recommended</i> (XPath SRVIndicatorsDeclaration/sustainabilityIndicatorsGroup/assessmentStudyDoc ument/attachment/blockChainReference/uri/@isURL) [Optional] [Default= true] - nota: <i>usage of URLs is recommended</i> (XPath SRVIndicatorsDeclaration/sustainabilityIndicatorsGroup/externalRefDoc/attach ment/externalReference/uri/@isURL) [Optional] [Default= true] - nota: <i>usage of URLs is recommended</i> (XPath SRVIndicatorsDeclaration/sustainabilityIndicatorsGroup/assessmentStudyDoc ument/attachment/externalReference/uri/@isURL) [Optional] [Default= true] - nota: <i>usage of URLs is recommended</i></p>
legalName	<p>legal name - base type: string, max length: 250, (XPath SRVIndicatorsDeclaration/SRVheader/receiverParty/legalName) 0-1 (XPath SRVIndicatorsDeclaration/sustainabilityIndicatorsGroup/externalRefDoc/signat ureInformation/signatoryParty/legalName) 0-1 (XPath SRVIndicatorsDeclaration/sustainabilityIndicatorsGroup/PEFStudyDocument/r eviewerParty/legalName) 0-1 (XPath SRVIndicatorsDeclaration/SRVheader/senderParty/legalName) 0-1 (XPath SRVIndicatorsDeclaration/sustainabilityIndicatorsGroup/PEFStudyDocument/si gnatureInformation/signatoryParty/legalName) 0-1 (XPath SRVIndicatorsDeclaration/sustainabilityIndicatorsGroup/assessmentStudyDoc ument/issuerParty/legalName) 0-1 (XPath SRVIndicatorsDeclaration/sustainabilityIndicatorsGroup/PEFStudyDocument/is suerParty/legalName) 0-1 (XPath SRVIndicatorsDeclaration/sustainabilityIndicatorsGroup/sustainabilityIndicator/r eviewerParty/legalName) 0-1 (XPath SRVIndicatorsDeclaration/sustainabilityIndicatorsGroup/assessmentStudyDoc ument/reviewerParty/legalName) 0-1 (XPath SRVIndicatorsDeclaration/sustainabilityIndicatorsGroup/externalRefDoc/issuer Party/legalName) 0-1 (XPath SRVIndicatorsDeclaration/sustainabilityIndicatorsGroup/sustainabilityIndicator/i ssuerParty/legalName) 0-1 (XPath SRVIndicatorsDeclaration/sustainabilityIndicatorsGroup/assessmentStudyDoc</p>

	ument/signatureInformation/signatoryParty/legalName) 0-1
limitationsDescription	<p>description of the limitations of the study</p> <ul style="list-style-type: none"> - base type: string, <p>(XPath SRVIndicatorsDeclaration/sustainabilityIndicatorsGroup/PEFStudyDocument/li mitationsDescription) 0-99</p> <ul style="list-style-type: none"> - note: <i>Only one instance of this element for each different value of 'ln' attribute (language)</i>
@listName	<p>the name of the list of codes used to make an instance of the element (it might be thought as descriptive element, i.e. 'fabric printing technologies', or not, i.e. "T264")</p> <ul style="list-style-type: none"> - base type: string, max length: 40, <p>(XPath SRVIndicatorsDeclaration/sustainabilityIndicatorsGroup/assessmentStudyDoc ument/ProductIdentification/garmentCode/garmentCodeA/art/@listName) [Optional]</p> <ul style="list-style-type: none"> - nota: <i>this attribute should always be used coupled with "numberingOrg"</i> <p>(XPath SRVIndicatorsDeclaration/sustainabilityIndicatorsGroup/assessmentStudyDoc ument/ProductIdentification/garmentCode/garmentCodeB/size/@listName) [Optional]</p> <ul style="list-style-type: none"> - nota: <i>this attribute should always be used coupled with "numberingOrg"</i> <p>(XPath SRVIndicatorsDeclaration/sustainabilityIndicatorsGroup/assessmentStudyDoc ument/ProductIdentification/garmentCode/garmentCodeB/garmentVariant/variantType/ @listName) [Optional]</p> <ul style="list-style-type: none"> - nota: <i>this attribute should always be used coupled with "numberingOrg"</i> <p>(XPath SRVIndicatorsDeclaration/sustainabilityIndicatorsGroup/PEFStudyDocument/P roductIdentification/garmentPartCode/fabric/@listName) [Optional]</p> <ul style="list-style-type: none"> - nota: <i>this attribute should always be used coupled with "numberingOrg"</i> <p>(XPath SRVIndicatorsDeclaration/sustainabilityIndicatorsGroup/PEFStudyDocument/P roductIdentification/garmentPartCode/mod/@listName) [Optional]</p> <ul style="list-style-type: none"> - nota: <i>this attribute should always be used coupled with "numberingOrg"</i> <p>(XPath SRVIndicatorsDeclaration/sustainabilityIndicatorsGroup/PEFStudyDocument/P roductIdentification/garmentPartCode/color/@listName) [Optional]</p> <ul style="list-style-type: none"> - nota: <i>this attribute should always be used coupled with "numberingOrg"</i> <p>(XPath SRVIndicatorsDeclaration/sustainabilityIndicatorsGroup/assessmentStudyDoc ument/ProductIdentification/garmentPartCode/color/@listName) [Optional]</p> <ul style="list-style-type: none"> - nota: <i>this attribute should always be used coupled with "numberingOrg"</i> <p>(XPath SRVIndicatorsDeclaration/sustainabilityIndicatorsGroup/PEFStudyDocument/P roductIdentification/rawCode/art/@listName) [Optional]</p> <ul style="list-style-type: none"> - nota: <i>this attribute should always be used coupled with "numberingOrg"</i> <p>(XPath SRVIndicatorsDeclaration/sustainabilityIndicatorsGroup/PEFStudyDocument/P roductIdentification/texCode/art/@listName) [Optional]</p> <ul style="list-style-type: none"> - nota: <i>this attribute should always be used coupled with "numberingOrg"</i> <p>(XPath SRVIndicatorsDeclaration/sustainabilityIndicatorsGroup/PEFStudyDocument/P roductIdentification/texCode/pattern/@listName) [Optional]</p> <ul style="list-style-type: none"> - nota: <i>this attribute should always be used coupled with "numberingOrg"</i> <p>(XPath SRVIndicatorsDeclaration/sustainabilityIndicatorsGroup/assessmentStudyDoc ument/ProductIdentification/rawCode/color/@listName) [Optional]</p> <ul style="list-style-type: none"> - nota: <i>this attribute should always be used coupled with "numberingOrg"</i> <p>(XPath SRVIndicatorsDeclaration/sustainabilityIndicatorsGroup/assessmentStudyDoc ument/ProductIdentification/garmentPartCode/size/@listName) [Optional]</p> <ul style="list-style-type: none"> - nota: <i>this attribute should always be used coupled with "numberingOrg"</i> <p>(XPath SRVIndicatorsDeclaration/sustainabilityIndicatorsGroup/assessmentStudyDoc ument/ProductIdentification/garmentCode/garmentCodeB/fabric/@listName) [Optional]</p> <ul style="list-style-type: none"> - nota: <i>this attribute should always be used coupled with "numberingOrg"</i> <p>(XPath SRVIndicatorsDeclaration/sustainabilityIndicatorsGroup/assessmentStudyDoc ument/ProductIdentification/texCode/art/@listName) [Optional]</p> <ul style="list-style-type: none"> - nota: <i>this attribute should always be used coupled with "numberingOrg"</i>

	<p>(XPath SRVIndicatorsDeclaration/sustainabilityIndicatorsGroup/assessmentStudyDocument/ProductIdentification/garmentCode/garmentCodeB/mod/@listName) [Optional] - nota: <i>this attribute should always be used coupled with “numberingOrg”</i></p> <p>(XPath SRVIndicatorsDeclaration/sustainabilityIndicatorsGroup/PEFStudyDocument/ProductIdentification/acsCode/color/@listName) [Optional] - nota: <i>this attribute should always be used coupled with “numberingOrg”</i></p> <p>(XPath SRVIndicatorsDeclaration/sustainabilityIndicatorsGroup/assessmentStudyDocument/ProductIdentification/garmentCode/garmentCodeB/artGroup/@listName) [Optional] - nota: <i>this attribute should always be used coupled with “numberingOrg”</i></p> <p>(XPath SRVIndicatorsDeclaration/sustainabilityIndicatorsGroup/assessmentStudyDocument/ProductIdentification/texCode/color/@listName) [Optional] - nota: <i>this attribute should always be used coupled with “numberingOrg”</i></p> <p>(XPath SRVIndicatorsDeclaration/sustainabilityIndicatorsGroup/assessmentStudyDocument/ProductIdentification/rawCode/art/@listName) [Optional] - nota: <i>this attribute should always be used coupled with “numberingOrg”</i></p> <p>(XPath SRVIndicatorsDeclaration/sustainabilityIndicatorsGroup/PEFStudyDocument/ProductIdentification/acsCode/art/@listName) [Optional] - nota: <i>this attribute should always be used coupled with “numberingOrg”</i></p> <p>(XPath SRVIndicatorsDeclaration/sustainabilityIndicatorsGroup/PEFStudyDocument/ProductIdentification/garmentCode/garmentCodeA/art/@listName) [Optional] - nota: <i>this attribute should always be used coupled with “numberingOrg”</i></p> <p>(XPath SRVIndicatorsDeclaration/sustainabilityIndicatorsGroup/PEFStudyDocument/ProductIdentification/rawCode/color/@listName) [Optional] - nota: <i>this attribute should always be used coupled with “numberingOrg”</i></p> <p>(XPath SRVIndicatorsDeclaration/sustainabilityIndicatorsGroup/PEFStudyDocument/ProductIdentification/acsCode/pattern/@listName) [Optional] - nota: <i>this attribute should always be used coupled with “numberingOrg”</i></p> <p>(XPath SRVIndicatorsDeclaration/sustainabilityIndicatorsGroup/PEFStudyDocument/ProductIdentification/texCode/color/@listName) [Optional] - nota: <i>this attribute should always be used coupled with “numberingOrg”</i></p> <p>(XPath SRVIndicatorsDeclaration/sustainabilityIndicatorsGroup/assessmentStudyDocument/ProductIdentification/acsCode/pattern/@listName) [Optional] - nota: <i>this attribute should always be used coupled with “numberingOrg”</i></p> <p>(XPath SRVIndicatorsDeclaration/sustainabilityIndicatorsGroup/assessmentStudyDocument/ProductIdentification/yarnCode/color/@listName) [Optional] - nota: <i>this attribute should always be used coupled with “numberingOrg”</i></p> <p>(XPath SRVIndicatorsDeclaration/sustainabilityIndicatorsGroup/PEFStudyDocument/ProductIdentification/garmentCode/garmentCodeB/color/@listName) [Optional] - nota: <i>this attribute should always be used coupled with “numberingOrg”</i></p> <p>(XPath SRVIndicatorsDeclaration/sustainabilityIndicatorsGroup/PEFStudyDocument/ProductIdentification/garmentCode/garmentCodeB/fabric/@listName) [Optional] - nota: <i>this attribute should always be used coupled with “numberingOrg”</i></p> <p>(XPath SRVIndicatorsDeclaration/sustainabilityIndicatorsGroup/assessmentStudyDocument/ProductIdentification/garmentCode/garmentCodeB/drop/@listName) [Optional] - nota: <i>this attribute should always be used coupled with “numberingOrg”</i></p> <p>(XPath SRVIndicatorsDeclaration/sustainabilityIndicatorsGroup/PEFStudyDocument/ProductIdentification/yarnCode/color/@listName) [Optional] - nota: <i>this attribute should always be used coupled with “numberingOrg”</i></p> <p>(XPath SRVIndicatorsDeclaration/sustainabilityIndicatorsGroup/PEFStudyDocument/ProductIdentification/garmentCode/garmentCodeB/size/@listName) [Optional] - nota: <i>this attribute should always be used coupled with “numberingOrg”</i></p> <p>(XPath</p>
--	---

	<p>SRVIndicatorsDeclaration/sustainabilityIndicatorsGroup/assessmentStudyDocument/ProductIdentification/texCode/pattern/@listName) [Optional] - nota: <i>this attribute should always be used coupled with “numberingOrg”</i> (XPath)</p> <p>SRVIndicatorsDeclaration/sustainabilityIndicatorsGroup/assessmentStudyDocument/ProductIdentification/acsCode/color/@listName) [Optional] - nota: <i>this attribute should always be used coupled with “numberingOrg”</i> (XPath)</p> <p>SRVIndicatorsDeclaration/sustainabilityIndicatorsGroup/PEFStudyDocument/ProductIdentification/garmentCode/garmentCodeB/garmentVariant/variantCode/@listName) [Optional] - nota: <i>this attribute should always be used coupled with “numberingOrg”</i> (XPath)</p> <p>SRVIndicatorsDeclaration/sustainabilityIndicatorsGroup/PEFStudyDocument/ProductIdentification/garmentCode/garmentCodeB/garmentVariant/variantType/@listName) [Optional] - nota: <i>this attribute should always be used coupled with “numberingOrg”</i> (XPath)</p> <p>SRVIndicatorsDeclaration/sustainabilityIndicatorsGroup/PEFStudyDocument/ProductIdentification/garmentCode/garmentCodeB/drop/@listName) [Optional] - nota: <i>this attribute should always be used coupled with “numberingOrg”</i> (XPath)</p> <p>SRVIndicatorsDeclaration/sustainabilityIndicatorsGroup/assessmentStudyDocument/ProductIdentification/garmentCode/garmentCodeB/garmentVariant/variantCode/@listName) [Optional] - nota: <i>this attribute should always be used coupled with “numberingOrg”</i> (XPath)</p> <p>SRVIndicatorsDeclaration/sustainabilityIndicatorsGroup/assessmentStudyDocument/ProductIdentification/garmentCode/garmentCodeB/color/@listName) [Optional] - nota: <i>this attribute should always be used coupled with “numberingOrg”</i> (XPath)</p> <p>SRVIndicatorsDeclaration/sustainabilityIndicatorsGroup/assessmentStudyDocument/ProductIdentification/yarnCode/art/@listName) [Optional] - nota: <i>this attribute should always be used coupled with “numberingOrg”</i> (XPath)</p> <p>SRVIndicatorsDeclaration/sustainabilityIndicatorsGroup/assessmentStudyDocument/ProductIdentification/acsCode/art/@listName) [Optional] - nota: <i>this attribute should always be used coupled with “numberingOrg”</i> (XPath)</p> <p>SRVIndicatorsDeclaration/sustainabilityIndicatorsGroup/PEFStudyDocument/ProductIdentification/garmentPartCode/size/@listName) [Optional] - nota: <i>this attribute should always be used coupled with “numberingOrg”</i> (XPath)</p> <p>SRVIndicatorsDeclaration/sustainabilityIndicatorsGroup/PEFStudyDocument/ProductIdentification/garmentCode/garmentCodeB/artGroup/@listName) [Optional] - nota: <i>this attribute should always be used coupled with “numberingOrg”</i> (XPath)</p> <p>SRVIndicatorsDeclaration/sustainabilityIndicatorsGroup/PEFStudyDocument/ProductIdentification/yarnCode/art/@listName) [Optional] - nota: <i>this attribute should always be used coupled with “numberingOrg”</i> (XPath)</p> <p>SRVIndicatorsDeclaration/sustainabilityIndicatorsGroup/PEFStudyDocument/ProductIdentification/garmentCode/garmentCodeB/mod/@listName) [Optional] - nota: <i>this attribute should always be used coupled with “numberingOrg”</i> (XPath)</p> <p>SRVIndicatorsDeclaration/sustainabilityIndicatorsGroup/assessmentStudyDocument/ProductIdentification/garmentPartCode/fabric/@listName) [Optional] - nota: <i>this attribute should always be used coupled with “numberingOrg”</i> (XPath)</p> <p>SRVIndicatorsDeclaration/sustainabilityIndicatorsGroup/assessmentStudyDocument/ProductIdentification/garmentPartCode/mod/@listName) [Optional] - nota: <i>this attribute should always be used coupled with “numberingOrg”</i></p>
<p>@listVersion</p>	<p>it specifies the version of the list of codes used to make an instance of the element - base type: string, max length: 6, (XPath)</p> <p>SRVIndicatorsDeclaration/sustainabilityIndicatorsGroup/assessmentStudyDocument/ProductIdentification/garmentCode/garmentCodeB/artGroup/@listVersion) [Optional] - nota: <i>this attribute should always be used coupled with “numberingOrg” and “listName”</i></p>

e”
(XPath
SRVIndicatorsDeclaration/sustainabilityIndicatorsGroup/assessmentStudyDocument/ProductIdentification/garmentCode/garmentCodeB/garmentVariant/variantType/@listVersion) [Optional]
- nota: *this attribute should always be used coupled with “numberingOrg” and “listName”*

e”
(XPath
SRVIndicatorsDeclaration/sustainabilityIndicatorsGroup/PEFStudyDocument/ProductIdentification/rawCode/art/@listVersion) [Optional]
- nota: *this attribute should always be used coupled with “numberingOrg” and “listName”*

e”
(XPath
SRVIndicatorsDeclaration/sustainabilityIndicatorsGroup/assessmentStudyDocument/ProductIdentification/garmentCode/garmentCodeB/color/@listVersion) [Optional]
- nota: *this attribute should always be used coupled with “numberingOrg” and “listName”*

e”
(XPath
SRVIndicatorsDeclaration/sustainabilityIndicatorsGroup/assessmentStudyDocument/ProductIdentification/yarnCode/art/@listVersion) [Optional]
- nota: *this attribute should always be used coupled with “numberingOrg” and “listName”*

e”
(XPath
SRVIndicatorsDeclaration/sustainabilityIndicatorsGroup/PEFStudyDocument/ProductIdentification/texCode/color/@listVersion) [Optional]
- nota: *this attribute should always be used coupled with “numberingOrg” and “listName”*

e”
(XPath
SRVIndicatorsDeclaration/sustainabilityIndicatorsGroup/assessmentStudyDocument/ProductIdentification/texCode/pattern/@listVersion) [Optional]
- nota: *this attribute should always be used coupled with “numberingOrg” and “listName”*

e”
(XPath
SRVIndicatorsDeclaration/sustainabilityIndicatorsGroup/PEFStudyDocument/ProductIdentification/yarnCode/color/@listVersion) [Optional]
- nota: *this attribute should always be used coupled with “numberingOrg” and “listName”*

e”
(XPath
SRVIndicatorsDeclaration/sustainabilityIndicatorsGroup/assessmentStudyDocument/ProductIdentification/garmentCode/garmentCodeB/size/@listVersion) [Optional]
- nota: *this attribute should always be used coupled with “numberingOrg” and “listName”*

e”
(XPath
SRVIndicatorsDeclaration/sustainabilityIndicatorsGroup/assessmentStudyDocument/ProductIdentification/garmentCode/garmentCodeB/fabric/@listVersion) [Optional]
- nota: *this attribute should always be used coupled with “numberingOrg” and “listName”*

e”
(XPath
SRVIndicatorsDeclaration/sustainabilityIndicatorsGroup/assessmentStudyDocument/ProductIdentification/garmentCode/garmentCodeB/drop/@listVersion) [Optional]
- nota: *this attribute should always be used coupled with “numberingOrg” and “listName”*

e”
(XPath
SRVIndicatorsDeclaration/sustainabilityIndicatorsGroup/assessmentStudyDocument/ProductIdentification/yarnCode/color/@listVersion) [Optional]
- nota: *this attribute should always be used coupled with “numberingOrg” and “listName”*

e”
(XPath
SRVIndicatorsDeclaration/sustainabilityIndicatorsGroup/assessmentStudyDocument/ProductIdentification/garmentCode/garmentCodeB/garmentVariant/variantCode/@listVersion) [Optional]
- nota: *this attribute should always be used coupled with “numberingOrg” and “listName”*

e”
(XPath
SRVIndicatorsDeclaration/sustainabilityIndicatorsGroup/PEFStudyDocument/ProductIdentification/rawCode/color/@listVersion) [Optional]

- nota: *this attribute should always be used coupled with “numberingOrg” and “listName”*
 (XPath
 SRVIndicatorsDeclaration/sustainabilityIndicatorsGroup/PEFStudyDocument/ProductIdentification/yarnCode/art/@listVersion) [Optional]

- nota: *this attribute should always be used coupled with “numberingOrg” and “listName”*
 (XPath
 SRVIndicatorsDeclaration/sustainabilityIndicatorsGroup/assessmentStudyDocument/ProductIdentification/garmentPartCode/mod/@listVersion) [Optional]

- nota: *this attribute should always be used coupled with “numberingOrg” and “listName”*
 (XPath
 SRVIndicatorsDeclaration/sustainabilityIndicatorsGroup/PEFStudyDocument/ProductIdentification/garmentCode/garmentCodeB/mod/@listVersion) [Optional]

- nota: *this attribute should always be used coupled with “numberingOrg” and “listName”*
 (XPath
 SRVIndicatorsDeclaration/sustainabilityIndicatorsGroup/PEFStudyDocument/ProductIdentification/garmentCode/garmentCodeB/size/@listVersion) [Optional]

- nota: *this attribute should always be used coupled with “numberingOrg” and “listName”*
 (XPath
 SRVIndicatorsDeclaration/sustainabilityIndicatorsGroup/PEFStudyDocument/ProductIdentification/garmentCode/garmentCodeB/artGroup/@listVersion) [Optional]

- nota: *this attribute should always be used coupled with “numberingOrg” and “listName”*
 (XPath
 SRVIndicatorsDeclaration/sustainabilityIndicatorsGroup/assessmentStudyDocument/ProductIdentification/garmentPartCode/fabric/@listVersion) [Optional]

- nota: *this attribute should always be used coupled with “numberingOrg” and “listName”*
 (XPath
 SRVIndicatorsDeclaration/sustainabilityIndicatorsGroup/PEFStudyDocument/ProductIdentification/garmentPartCode/size/@listVersion) [Optional]

- nota: *this attribute should always be used coupled with “numberingOrg” and “listName”*
 (XPath
 SRVIndicatorsDeclaration/sustainabilityIndicatorsGroup/PEFStudyDocument/ProductIdentification/texCode/pattern/@listVersion) [Optional]

- nota: *this attribute should always be used coupled with “numberingOrg” and “listName”*
 (XPath
 SRVIndicatorsDeclaration/sustainabilityIndicatorsGroup/PEFStudyDocument/ProductIdentification/garmentCode/garmentCodeB/fabric/@listVersion) [Optional]

- nota: *this attribute should always be used coupled with “numberingOrg” and “listName”*
 (XPath
 SRVIndicatorsDeclaration/sustainabilityIndicatorsGroup/assessmentStudyDocument/ProductIdentification/acsCode/color/@listVersion) [Optional]

- nota: *this attribute should always be used coupled with “numberingOrg” and “listName”*
 (XPath
 SRVIndicatorsDeclaration/sustainabilityIndicatorsGroup/PEFStudyDocument/ProductIdentification/garmentCode/garmentCodeB/garmentVariant/variantType/@listVersion) [Optional]

- nota: *this attribute should always be used coupled with “numberingOrg” and “listName”*
 (XPath
 SRVIndicatorsDeclaration/sustainabilityIndicatorsGroup/PEFStudyDocument/ProductIdentification/garmentCode/garmentCodeB/garmentVariant/variantCode/@listVersion) [Optional]

- nota: *this attribute should always be used coupled with “numberingOrg” and “listName”*
 (XPath
 SRVIndicatorsDeclaration/sustainabilityIndicatorsGroup/assessmentStudyDocument/ProductIdentification/acsCode/pattern/@listVersion) [Optional]

	<p>(XPath SRVIndicatorsDeclaration/sustainabilityIndicatorsGroup/assessmentStudyDocument/ProductIdentification/texCode/art/@listVersion) [Optional] - nota: <i>this attribute should always be used coupled with “numberingOrg” and “listName”</i></p> <p>(XPath SRVIndicatorsDeclaration/sustainabilityIndicatorsGroup/PEFStudyDocument/ProductIdentification/garmentCode/garmentCodeB/color/@listVersion) [Optional] - nota: <i>this attribute should always be used coupled with “numberingOrg” and “listName”</i></p> <p>(XPath SRVIndicatorsDeclaration/sustainabilityIndicatorsGroup/PEFStudyDocument/ProductIdentification/garmentCode/garmentCodeB/drop/@listVersion) [Optional] - nota: <i>this attribute should always be used coupled with “numberingOrg” and “listName”</i></p> <p>(XPath SRVIndicatorsDeclaration/sustainabilityIndicatorsGroup/assessmentStudyDocument/ProductIdentification/acsCode/art/@listVersion) [Optional] - nota: <i>this attribute should always be used coupled with “numberingOrg” and “listName”</i></p> <p>(XPath SRVIndicatorsDeclaration/sustainabilityIndicatorsGroup/assessmentStudyDocument/ProductIdentification/rawCode/art/@listVersion) [Optional] - nota: <i>this attribute should always be used coupled with “numberingOrg” and “listName”</i></p> <p>(XPath SRVIndicatorsDeclaration/sustainabilityIndicatorsGroup/PEFStudyDocument/ProductIdentification/acsCode/pattern/@listVersion) [Optional] - nota: <i>this attribute should always be used coupled with “numberingOrg” and “listName”</i></p> <p>(XPath SRVIndicatorsDeclaration/sustainabilityIndicatorsGroup/PEFStudyDocument/ProductIdentification/acsCode/color/@listVersion) [Optional] - nota: <i>this attribute should always be used coupled with “numberingOrg” and “listName”</i></p> <p>(XPath SRVIndicatorsDeclaration/sustainabilityIndicatorsGroup/assessmentStudyDocument/ProductIdentification/garmentCode/garmentCodeA/art/@listVersion) [Optional] - nota: <i>this attribute should always be used coupled with “numberingOrg” and “listName”</i></p> <p>(XPath SRVIndicatorsDeclaration/sustainabilityIndicatorsGroup/PEFStudyDocument/ProductIdentification/acsCode/art/@listVersion) [Optional] - nota: <i>this attribute should always be used coupled with “numberingOrg” and “listName”</i></p> <p>(XPath SRVIndicatorsDeclaration/sustainabilityIndicatorsGroup/assessmentStudyDocument/ProductIdentification/rawCode/color/@listVersion) [Optional] - nota: <i>this attribute should always be used coupled with “numberingOrg” and “listName”</i></p> <p>(XPath SRVIndicatorsDeclaration/sustainabilityIndicatorsGroup/assessmentStudyDocument/ProductIdentification/garmentCode/garmentCodeB/mod/@listVersion) [Optional] - nota: <i>this attribute should always be used coupled with “numberingOrg” and “listName”</i></p> <p>(XPath SRVIndicatorsDeclaration/sustainabilityIndicatorsGroup/PEFStudyDocument/ProductIdentification/texCode/art/@listVersion) [Optional] - nota: <i>this attribute should always be used coupled with “numberingOrg” and “listName”</i></p> <p>(XPath SRVIndicatorsDeclaration/sustainabilityIndicatorsGroup/PEFStudyDocument/ProductIdentification/garmentPartCode/fabric/@listVersion) [Optional] - nota: <i>this attribute should always be used coupled with “numberingOrg” and “listName”</i></p> <p>(XPath SRVIndicatorsDeclaration/sustainabilityIndicatorsGroup/assessmentStudyDocument/ProductIdentification/garmentPartCode/color/@listVersion) [Optional]</p>
--	--

	<p>- nota: <i>this attribute should always be used coupled with “numberingOrg” and “listName”</i> (XPath SRVIndicatorsDeclaration/sustainabilityIndicatorsGroup/PEFStudyDocument/ProductIdentification/garmentPartCode/color/@listVersion) [Optional]</p> <p>- nota: <i>this attribute should always be used coupled with “numberingOrg” and “listName”</i> (XPath SRVIndicatorsDeclaration/sustainabilityIndicatorsGroup/PEFStudyDocument/ProductIdentification/garmentPartCode/mod/@listVersion) [Optional]</p> <p>- nota: <i>this attribute should always be used coupled with “numberingOrg” and “listName”</i> (XPath SRVIndicatorsDeclaration/sustainabilityIndicatorsGroup/assessmentStudyDocument/ProductIdentification/texCode/color/@listVersion) [Optional]</p> <p>- nota: <i>this attribute should always be used coupled with “numberingOrg” and “listName”</i> (XPath SRVIndicatorsDeclaration/sustainabilityIndicatorsGroup/PEFStudyDocument/ProductIdentification/garmentCode/garmentCodeA/art/@listVersion) [Optional]</p> <p>- nota: <i>this attribute should always be used coupled with “numberingOrg” and “listName”</i> (XPath SRVIndicatorsDeclaration/sustainabilityIndicatorsGroup/assessmentStudyDocument/ProductIdentification/garmentPartCode/size/@listVersion) [Optional]</p> <p>- nota: <i>this attribute should always be used coupled with “numberingOrg” and “listName”</i> e”</p>
@ln	<p>Language code. - base type: string, cod. table: NT60 http://www.ebiz.enea.it/moda-ml/repository/codelist/draft/gc_NT60.xml (XPath SRVIndicatorsDeclaration/sustainabilityIndicatorsGroup/assessmentStudyDocument/ProductIdentification/texCode/description/@ln) [Optional]</p> <p>(XPath SRVIndicatorsDeclaration/sustainabilityIndicatorsGroup/assessmentStudyDocument/ProductIdentification/garmentPartCode/description/@ln) [Optional]</p> <p>(XPath SRVIndicatorsDeclaration/sustainabilityIndicatorsGroup/PEFStudyDocument/ProductIdentification/garmentCode/garmentCodeB/description/@ln) [Optional]</p> <p>(XPath SRVIndicatorsDeclaration/sustainabilityIndicatorsGroup/assessmentStudyDocument/ProductIdentification/acsCode/description/@ln) [Optional]</p> <p>(XPath SRVIndicatorsDeclaration/sustainabilityIndicatorsGroup/PEFStudyDocument/ProductIdentification/garmentPartCode/description/@ln) [Optional]</p> <p>(XPath SRVIndicatorsDeclaration/sustainabilityIndicatorsGroup/PEFStudyDocument/ProductIdentification/acsCode/description/@ln) [Optional]</p> <p>(XPath SRVIndicatorsDeclaration/sustainabilityIndicatorsGroup/PEFStudyDocument/publishableAbstract/@ln) [Optional]</p> <p>(XPath SRVIndicatorsDeclaration/sustainabilityIndicatorsGroup/PEFStudyDocument/ProductIdentification/texCode/description/@ln) [Optional]</p> <p>(XPath SRVIndicatorsDeclaration/sustainabilityIndicatorsGroup/PEFStudyDocument/description/@ln) [Optional]</p> <p>(XPath SRVIndicatorsDeclaration/sustainabilityIndicatorsGroup/PEFStudyDocument/ProductIdentification/garmentCode/garmentCodeA/description/@ln) [Optional]</p> <p>(XPath SRVIndicatorsDeclaration/sustainabilityIndicatorsGroup/PEFStudyDocument/title/@ln) [Optional]</p> <p>(XPath SRVIndicatorsDeclaration/sustainabilityIndicatorsGroup/assessmentStudyDocument/title/@ln) [Optional]</p> <p>(XPath SRVIndicatorsDeclaration/sustainabilityIndicatorsGroup/assessmentStudyDocument/description/@ln) [Optional]</p>

	<p>(XPath SRVIndicatorsDeclaration/sustainabilityIndicatorsGroup/assessmentStudyDocument/publishableAbstract/@In) [Optional]</p> <p>(XPath SRVIndicatorsDeclaration/sustainabilityIndicatorsGroup/assessmentStudyDocument/ProductIdentification/description/@In) [Optional]</p> <p>(XPath SRVIndicatorsDeclaration/sustainabilityIndicatorsGroup/assessmentStudyDocument/ProductIdentification/garmentCode/garmentCodeB/description/@In) [Optional]</p> <p>(XPath SRVIndicatorsDeclaration/sustainabilityIndicatorsGroup/PEFStudyDocument/ProductIdentification/description/@In) [Optional]</p> <p>(XPath SRVIndicatorsDeclaration/sustainabilityIndicatorsGroup/assessmentStudyDocument/ProductIdentification/garmentCode/garmentCodeA/description/@In) [Optional]</p> <p>(XPath SRVIndicatorsDeclaration/sustainabilityIndicatorsGroup/PEFStudyDocument/functionalUnitDescription/@In) [Optional]</p> <p>(XPath SRVIndicatorsDeclaration/sustainabilityIndicatorsGroup/methodologicalNote/@In) [Optional]</p> <p>(XPath SRVIndicatorsDeclaration/sustainabilityIndicatorsGroup/externalRefDoc/description/@In) [Optional]</p> <p>(XPath SRVIndicatorsDeclaration/sustainabilityIndicatorsGroup/externalRefDoc/title/@In) [Optional]</p> <p>(XPath SRVIndicatorsDeclaration/sustainabilityIndicatorsGroup/PEFStudyDocument/dataQualityDescription/@In) [Optional]</p> <p>(XPath SRVIndicatorsDeclaration/sustainabilityIndicatorsGroup/PEFStudyDocument/systemBoundariesDescription/@In) [Optional]</p> <p>(XPath SRVIndicatorsDeclaration/sustainabilityIndicatorsGroup/PEFStudyDocument/limitationsDescription/@In) [Optional]</p> <p>(XPath SRVIndicatorsDeclaration/sustainabilityIndicatorsGroup/PEFStudyDocument/allLocationsDescription/@In) [Optional]</p> <p>(XPath SRVIndicatorsDeclaration/sustainabilityIndicatorsGroup/PEFStudyDocument/ProductIdentification/rawCode/description/@In) [Optional]</p> <p>(XPath SRVIndicatorsDeclaration/sustainabilityIndicatorsGroup/assessmentStudyDocument/ProductIdentification/rawCode/description/@In) [Optional]</p> <p>(XPath SRVIndicatorsDeclaration/sustainabilityIndicatorsGroup/assessmentStudyDocument/ProductIdentification/yarnCode/description/@In) [Optional]</p> <p>(XPath SRVIndicatorsDeclaration/sustainabilityIndicatorsGroup/PEFStudyDocument/ProductIdentification/yarnCode/description/@In) [Optional]</p>
methodologicalNote	<p>the methodological note describes the methodology followed to obtain the indicator or indicators, the reference functional units, the boundaries of the system. Usually it is a "public" text as well as the indicators.</p> <p>- base type: string,</p> <p>(XPath SRVIndicatorsDeclaration/sustainabilityIndicatorsGroup/methodologicalNote) 0 -99</p> <p>- note: <i>Only one instance of this element for each different value of 'In' attribute (language)</i></p>
@mime	<p>the mime type of the binary object</p> <p>- base type: normalizedString,</p> <p>(XPath SRVIndicatorsDeclaration/sustainabilityIndicatorsGroup/externalRefDoc/attachment/binaryObject/@mime) [Optional]</p> <p>(XPath SRVIndicatorsDeclaration/sustainabilityIndicatorsGroup/PEFStudyDocument/attachment/binaryObject/@mime) [Optional]</p> <p>(XPath</p>

	SRVIndicatorsDeclaration/sustainabilityIndicatorsGroup/assessmentStudyDocument/attachment/binaryObject/@mime) [Optional]
mimeCode	<p>mime type of the external object</p> <p>- base type: normalizedString, (XPath SRVIndicatorsDeclaration/sustainabilityIndicatorsGroup/externalRefDoc/attachment/externalReference/mimeCode) 0-1 Best Practice</p> <p>(XPath SRVIndicatorsDeclaration/sustainabilityIndicatorsGroup/PEFStudyDocument/attachment/externalReference/mimeCode) 0-1 Best Practice</p> <p>(XPath SRVIndicatorsDeclaration/sustainabilityIndicatorsGroup/assessmentStudyDocument/attachment/externalReference/mimeCode) 0-1 Best Practice</p>
mod	<p>model number of the garment</p> <p>- base type: string, max length: 15, (XPath SRVIndicatorsDeclaration/sustainabilityIndicatorsGroup/PEFStudyDocument/ProductIdentification/garmentCode/garmentCodeB/mod) 1-1</p> <p>(XPath SRVIndicatorsDeclaration/sustainabilityIndicatorsGroup/assessmentStudyDocument/ProductIdentification/garmentPartCode/mod) 1-1</p> <p>- note: when a garment component, it should be the code assigned to the garment article (XPath SRVIndicatorsDeclaration/sustainabilityIndicatorsGroup/PEFStudyDocument/ProductIdentification/garmentPartCode/mod) 1-1</p> <p>- note: when a garment component, it should be the code assigned to the garment article (XPath SRVIndicatorsDeclaration/sustainabilityIndicatorsGroup/assessmentStudyDocument/ProductIdentification/garmentCode/garmentCodeB/mod) 1-1</p>
msgDate	<p>date of issue of the present message (xml document), according to one of the patterns YYYY-MM-DD, YYYY-MM-DD:HH-MM or YYYY-WW.</p> <p>- base type: string, (XPath SRVIndicatorsDeclaration/SRVheader/msgDate) 0-1</p>
msgID	<p>key identifier of the business document in the information system of the issuing Party. In case of more despatches of the same business document, it is unchanged.</p> <p>- base type: string, max length: 35, (XPath SRVIndicatorsDeclaration/SRVheader/msgID) 0-1</p>
note	<p>free text or structured (computer processing) note. For note structuring use the attributes "noteLabel" and "codelist"</p> <p>- base type: string, max length: 350, (XPath SRVIndicatorsDeclaration/sustainabilityIndicatorsGroup/assessmentStudyDocument/note) 0-99</p> <p>(XPath SRVIndicatorsDeclaration/sustainabilityIndicatorsGroup/externalRefDoc/note) 0-99</p> <p>(XPath SRVIndicatorsDeclaration/sustainabilityIndicatorsGroup/sustainabilityIndicator/note) 0-9</p> <p>(XPath SRVIndicatorsDeclaration/sustainabilityIndicatorsGroup/assessmentStudyDocument/ProductIdentification/note) 0-99</p> <p>(XPath SRVIndicatorsDeclaration/sustainabilityIndicatorsGroup/PEFStudyDocument/ProductIdentification/note) 0-99</p> <p>(XPath SRVIndicatorsDeclaration/note) 0-9</p> <p>(XPath SRVIndicatorsDeclaration/sustainabilityIndicatorsGroup/PEFStudyDocument/note) 0-99</p> <p>(XPath SRVIndicatorsDeclaration/sustainabilityIndicatorsGroup/note) 0-1</p>
@noteLabel	<p>subject qualifier of a note</p> <p>- base type: string, max length: 35,</p>

	<p>(XPath SRVIndicatorsDeclaration/sustainabilityIndicatorsGroup/note/@noteLabel) [Optional]</p> <p>- nota: <i>must be used to qualify the subject of the note</i></p> <p>(XPath SRVIndicatorsDeclaration/sustainabilityIndicatorsGroup/externalRefDoc/note/@noteLabel) [Optional]</p> <p>- nota: <i>must be used to qualify the subject of the note</i> (XPath SRVIndicatorsDeclaration/note/@noteLabel) [Optional]</p> <p>- nota: <i>must be used to qualify the subject of the note</i></p> <p>(XPath SRVIndicatorsDeclaration/sustainabilityIndicatorsGroup/PEFStudyDocument/ProductIdentification/note/@noteLabel) [Optional]</p> <p>- nota: <i>must be used to qualify the subject of the note</i></p> <p>(XPath SRVIndicatorsDeclaration/sustainabilityIndicatorsGroup/assessmentStudyDocument/ProductIdentification/note/@noteLabel) [Optional]</p> <p>- nota: <i>must be used to qualify the subject of the note</i></p> <p>(XPath SRVIndicatorsDeclaration/sustainabilityIndicatorsGroup/PEFStudyDocument/note/@noteLabel) [Optional]</p> <p>- nota: <i>must be used to qualify the subject of the note</i></p> <p>(XPath SRVIndicatorsDeclaration/sustainabilityIndicatorsGroup/sustainabilityIndicator/note/@noteLabel) [Optional]</p> <p>- nota: <i>must be used to qualify the subject of the note</i></p> <p>(XPath SRVIndicatorsDeclaration/sustainabilityIndicatorsGroup/assessmentStudyDocument/note/@noteLabel) [Optional]</p> <p>- nota: <i>must be used to qualify the subject of the note</i></p>
@numberingOrg	<p>code specifying the organisation who has created or owns the coding or numbering system</p> <p>- base type: string, cod. table: NT6 http://www.ebiz.enea.it/moda-ml/repository/codelist/draft/gc_NT6.xml (XPath SRVIndicatorsDeclaration/note/@numberingOrg) [Optional]</p> <p>- nota: <i>must be used to specify the organization that created the list of codes used in "noteLabel"</i></p> <p>(XPath SRVIndicatorsDeclaration/sustainabilityIndicatorsGroup/assessmentStudyDocument/ProductIdentification/acsCode/pattern/@numberingOrg) [Optional]</p> <p>- nota: <i>this attribute should be used either single or coupled with "listName" and "listVersion"</i></p> <p>(XPath SRVIndicatorsDeclaration/sustainabilityIndicatorsGroup/PEFStudyDocument/ProductIdentification/garmentCode/garmentCodeB/artGroup/@numberingOrg) [Optional]</p> <p>- nota: <i>this attribute should be used either single or coupled with "listName" and "listVersion"</i></p> <p>(XPath SRVIndicatorsDeclaration/sustainabilityIndicatorsGroup/externalRefDoc/attachment/fileName/@numberingOrg) [Optional]</p> <p>(XPath SRVIndicatorsDeclaration/sustainabilityIndicatorsGroup/note/@numberingOrg) [Optional]</p> <p>- nota: <i>must be used to specify the organization that created the list of codes used in "noteLabel"</i></p> <p>(XPath SRVIndicatorsDeclaration/sustainabilityIndicatorsGroup/PEFStudyDocument/ProductIdentification/garmentCode/garmentCodeB/size/@numberingOrg) [Optional]</p> <p>- nota: <i>this attribute should be used either single or coupled with "listName" and "listVersion"</i></p> <p>(XPath SRVIndicatorsDeclaration/sustainabilityIndicatorsGroup/externalRefDoc/note/@numberingOrg) [Optional]</p> <p>- nota: <i>must be used to specify the organization that created the list of codes used in "noteLabel"</i></p> <p>(XPath SRVIndicatorsDeclaration/SRVheader/senderParty/id/@numberingOrg) [Optional]</p> <p>(XPath SRVIndicatorsDeclaration/sustainabilityIndicatorsGroup/assessmentStudyDoc</p>

	<p>ument/ProductIdentification/acsCode/color/@numberingOrg) [Optional] - nota: <i>this attribute should be used either single or coupled with "listName" and "listVersion"</i> (XPath SRVIndicatorsDeclaration/sustainabilityIndicatorsGroup/externalRefDoc/issuerParty/id/@numberingOrg) [Optional] (XPath SRVIndicatorsDeclaration/sustainabilityIndicatorsGroup/externalRefDoc/signatureInformation/signatoryParty/id/@numberingOrg) [Optional] (XPath SRVIndicatorsDeclaration/SRVheader/receiverParty/id/@numberingOrg) [Optional] (XPath SRVIndicatorsDeclaration/sustainabilityIndicatorsGroup/PEFStudyDocument/ProductIdentification/garmentCode/garmentCodeB/drop/@numberingOrg) [Optional] - nota: <i>this attribute should be used either single or coupled with "listName" and "listVersion"</i> (XPath SRVIndicatorsDeclaration/sustainabilityIndicatorsGroup/assessmentStudyDocument/ProductIdentification/texCode/color/@numberingOrg) [Optional] - nota: <i>this attribute should be used either single or coupled with "listName" and "listVersion"</i> (XPath SRVIndicatorsDeclaration/sustainabilityIndicatorsGroup/assessmentStudyDocument/ProductIdentification/yarnCode/@numberingOrg) [Optional] [Default= CL] (XPath SRVIndicatorsDeclaration/sustainabilityIndicatorsGroup/assessmentStudyDocument/ProductIdentification/yarnCode/art/@numberingOrg) [Optional] - nota: <i>this attribute should be used either single or coupled with "listName" and "listVersion"</i> (XPath SRVIndicatorsDeclaration/sustainabilityIndicatorsGroup/assessmentStudyDocument/ProductIdentification/rawCode/added/@numberingOrg) [Optional] - nota: <i>this attribute should be used either single or coupled with "listName" and "listVersion"</i> (XPath SRVIndicatorsDeclaration/sustainabilityIndicatorsGroup/assessmentStudyDocument/ProductIdentification/rawCode/@numberingOrg) [Optional] (XPath SRVIndicatorsDeclaration/sustainabilityIndicatorsGroup/assessmentStudyDocument/ProductIdentification/rawCode/art/@numberingOrg) [Optional] - nota: <i>this attribute should be used either single or coupled with "listName" and "listVersion"</i> (XPath SRVIndicatorsDeclaration/sustainabilityIndicatorsGroup/assessmentStudyDocument/ProductIdentification/rawCode/color/@numberingOrg) [Optional] - nota: <i>this attribute should be used either single or coupled with "listName" and "listVersion"</i> (XPath SRVIndicatorsDeclaration/sustainabilityIndicatorsGroup/assessmentStudyDocument/ProductIdentification/texCode/art/@numberingOrg) [Optional] - nota: <i>this attribute should be used either single or coupled with "listName" and "listVersion"</i> (XPath SRVIndicatorsDeclaration/sustainabilityIndicatorsGroup/assessmentStudyDocument/ProductIdentification/texCode/pattern/@numberingOrg) [Optional] - nota: <i>this attribute should be used either single or coupled with "listName" and "listVersion"</i> (XPath SRVIndicatorsDeclaration/sustainabilityIndicatorsGroup/PEFStudyDocument/reviewerParty/id/@numberingOrg) [Optional] (XPath SRVIndicatorsDeclaration/sustainabilityIndicatorsGroup/assessmentStudyDocument/ProductIdentification/texCode/@numberingOrg) [Optional] (XPath SRVIndicatorsDeclaration/sustainabilityIndicatorsGroup/PEFStudyDocument/issuerParty/id/@numberingOrg) [Optional] (XPath SRVIndicatorsDeclaration/sustainabilityIndicatorsGroup/assessmentStudyDocument/ProductIdentification/yarnCode/color/@numberingOrg) [Optional] - nota: <i>this attribute should be used either single or coupled with "listName" and "listVersion"</i></p>
--	--

	<p><i>rsion</i> (XPath SRVIndicatorsDeclaration/sustainabilityIndicatorsGroup/assessmentStudyDocument/ProductIdentification/yarnCode/added/@numberingOrg) [Optional] - nota: <i>this attribute should be used either single or coupled with "listName" and "listVersion"</i></p> <p><i>rsion</i> (XPath SRVIndicatorsDeclaration/sustainabilityIndicatorsGroup/sustainabilityIndicator/eviewerParty/id/@numberingOrg) [Optional] (XPath SRVIndicatorsDeclaration/sustainabilityIndicatorsGroup/assessmentStudyDocument/ProductIdentification/acsCode/art/@numberingOrg) [Optional] - nota: <i>this attribute should be used either single or coupled with "listName" and "listVersion"</i></p> <p><i>rsion</i> (XPath SRVIndicatorsDeclaration/sustainabilityIndicatorsGroup/PEFStudyDocument/attachment/fileName/@numberingOrg) [Optional] (XPath SRVIndicatorsDeclaration/sustainabilityIndicatorsGroup/PEFStudyDocument/ProductIdentification/garmentCode/garmentCodeB/added/@numberingOrg) [Optional] - nota: <i>this attribute should be used either single or coupled with "listName" and "listVersion"</i></p> <p><i>rsion</i> (XPath SRVIndicatorsDeclaration/sustainabilityIndicatorsGroup/sustainabilityIndicator/issuerParty/id/@numberingOrg) [Optional] (XPath SRVIndicatorsDeclaration/sustainabilityIndicatorsGroup/externalRefDoc/docID/@numberingOrg) [Optional] - nota: <i>here can be specified whose document numbering is used (e.g.: Client, Supplier, ..)</i></p> <p><i>rsion</i> (XPath SRVIndicatorsDeclaration/sustainabilityIndicatorsGroup/PEFStudyDocument/note/@numberingOrg) [Optional] - nota: <i>must be used to specify the organization that created the list of codes used in "noteLabel"</i></p> <p><i>rsion</i> (XPath SRVIndicatorsDeclaration/sustainabilityIndicatorsGroup/assessmentStudyDocument/docID/@numberingOrg) [Optional] - nota: <i>here can be specified whose document numbering is used (e.g.: Client, Supplier, ..)</i></p> <p><i>rsion</i> (XPath SRVIndicatorsDeclaration/sustainabilityIndicatorsGroup/PEFStudyDocument/signatureInformation/signatoryParty/id/@numberingOrg) [Optional] (XPath SRVIndicatorsDeclaration/sustainabilityIndicatorsGroup/PEFStudyDocument/ProductIdentification/note/@numberingOrg) [Optional] - nota: <i>must be used to specify the organization that created the list of codes used in "noteLabel"</i></p> <p><i>rsion</i> (XPath SRVIndicatorsDeclaration/sustainabilityIndicatorsGroup/sustainabilityIndicator/note/@numberingOrg) [Optional] - nota: <i>must be used to specify the organization that created the list of codes used in "noteLabel"</i></p> <p><i>rsion</i> (XPath SRVIndicatorsDeclaration/sustainabilityIndicatorsGroup/assessmentStudyDocument/ProductIdentification/acsCode/@numberingOrg) [Optional] (XPath SRVIndicatorsDeclaration/sustainabilityIndicatorsGroup/PEFStudyDocument/ProductIdentification/garmentCode/garmentCodeA/art/@numberingOrg) [Optional] - nota: <i>this attribute should be used either single or coupled with "listName" and "listVersion"</i></p> <p><i>rsion</i> (XPath SRVIndicatorsDeclaration/sustainabilityIndicatorsGroup/assessmentStudyDocument/ProductIdentification/texCode/added/@numberingOrg) [Optional] - nota: <i>this attribute should be used either single or coupled with "listName" and "listVersion"</i></p> <p><i>rsion</i> (XPath SRVIndicatorsDeclaration/sustainabilityIndicatorsGroup/PEFStudyDocument/ProductIdentification/texCode/color/@numberingOrg) [Optional] - nota: <i>this attribute should be used either single or coupled with "listName" and "listVersion"</i></p>
--	--

	<p><i>rsion"</i> (XPath SRVIndicatorsDeclaration/sustainabilityIndicatorsGroup/assessmentStudyDocument/signatureInformation/signatoryParty/id/@numberingOrg) [Optional]</p> <p>(XPath SRVIndicatorsDeclaration/sustainabilityIndicatorsGroup/PEFStudyDocument/ProductIdentification/texCode/added/@numberingOrg) [Optional] - nota: <i>this attribute should be used either single or coupled with "listName" and "listVersion"</i></p> <p>(XPath SRVIndicatorsDeclaration/sustainabilityIndicatorsGroup/assessmentStudyDocument/ProductIdentification/garmentCode/garmentCodeB/garmentVariant/variantType/@numberingOrg) [Optional] - nota: <i>this attribute should be used either single or coupled with "listName" and "listVersion"</i></p> <p>(XPath SRVIndicatorsDeclaration/sustainabilityIndicatorsGroup/assessmentStudyDocument/attachment/fileName/@numberingOrg) [Optional]</p> <p>(XPath SRVIndicatorsDeclaration/sustainabilityIndicatorsGroup/PEFStudyDocument/ProductIdentification/texCode/art/@numberingOrg) [Optional] - nota: <i>this attribute should be used either single or coupled with "listName" and "listVersion"</i></p> <p>(XPath SRVIndicatorsDeclaration/sustainabilityIndicatorsGroup/PEFStudyDocument/ProductIdentification/texCode/pattern/@numberingOrg) [Optional] - nota: <i>this attribute should be used either single or coupled with "listName" and "listVersion"</i></p> <p>(XPath SRVIndicatorsDeclaration/sustainabilityIndicatorsGroup/assessmentStudyDocument/ProductIdentification/garmentCode/garmentCodeB/color/@numberingOrg) [Optional] - nota: <i>this attribute should be used either single or coupled with "listName" and "listVersion"</i></p> <p>(XPath SRVIndicatorsDeclaration/sustainabilityIndicatorsGroup/PEFStudyDocument/docID/@numberingOrg) [Optional] - nota: <i>here can be specified whose document numbering is used (e.g.: Client, Supplier, ..)</i></p> <p>(XPath SRVIndicatorsDeclaration/sustainabilityIndicatorsGroup/PEFStudyDocument/ProductIdentification/acsCode/pattern/@numberingOrg) [Optional] - nota: <i>this attribute should be used either single or coupled with "listName" and "listVersion"</i></p> <p>(XPath SRVIndicatorsDeclaration/sustainabilityIndicatorsGroup/PEFStudyDocument/ProductIdentification/acsCode/color/@numberingOrg) [Optional] - nota: <i>this attribute should be used either single or coupled with "listName" and "listVersion"</i></p> <p>(XPath SRVIndicatorsDeclaration/sustainabilityIndicatorsGroup/assessmentStudyDocument/ProductIdentification/garmentCode/garmentCodeB/fabric/@numberingOrg) [Optional] - nota: <i>this attribute should be used either single or coupled with "listName" and "listVersion"</i></p> <p>(XPath SRVIndicatorsDeclaration/sustainabilityIndicatorsGroup/PEFStudyDocument/ProductIdentification/acsCode/@numberingOrg) [Optional]</p> <p>(XPath SRVIndicatorsDeclaration/sustainabilityIndicatorsGroup/assessmentStudyDocument/ProductIdentification/note/@numberingOrg) [Optional] - nota: <i>must be used to specify the organization that created the list of codes used in "noteLabel"</i></p> <p>(XPath SRVIndicatorsDeclaration/sustainabilityIndicatorsGroup/PEFStudyDocument/ProductIdentification/acsCode/art/@numberingOrg) [Optional] - nota: <i>this attribute should be used either single or coupled with "listName" and "listVersion"</i></p> <p>(XPath</p>
--	--

	<p>SRVIndicatorsDeclaration/sustainabilityIndicatorsGroup/PEFStudyDocument/ProductIdentification/yarnCode/color/@numberingOrg) [Optional] - nota: <i>this attribute should be used either single or coupled with "listName" and "listVersion"</i> (XPath)</p> <p>SRVIndicatorsDeclaration/sustainabilityIndicatorsGroup/PEFStudyDocument/ProductIdentification/rawCode/added/@numberingOrg) [Optional] - nota: <i>this attribute should be used either single or coupled with "listName" and "listVersion"</i> (XPath)</p> <p>SRVIndicatorsDeclaration/sustainabilityIndicatorsGroup/PEFStudyDocument/ProductIdentification/rawCode/color/@numberingOrg) [Optional] - nota: <i>this attribute should be used either single or coupled with "listName" and "listVersion"</i> (XPath)</p> <p>SRVIndicatorsDeclaration/sustainabilityIndicatorsGroup/PEFStudyDocument/ProductIdentification/yarnCode/art/@numberingOrg) [Optional] - nota: <i>this attribute should be used either single or coupled with "listName" and "listVersion"</i> (XPath)</p> <p>SRVIndicatorsDeclaration/sustainabilityIndicatorsGroup/assessmentStudyDocument/ProductIdentification/garmentCode/garmentCodeB/artGroup/@numberingOrg) [Optional] - nota: <i>this attribute should be used either single or coupled with "listName" and "listVersion"</i> (XPath)</p> <p>SRVIndicatorsDeclaration/sustainabilityIndicatorsGroup/PEFStudyDocument/ProductIdentification/yarnCode/@numberingOrg) [Optional] [Default= CL] (XPath)</p> <p>SRVIndicatorsDeclaration/sustainabilityIndicatorsGroup/assessmentStudyDocument/ProductIdentification/garmentCode/garmentCodeB/size/@numberingOrg) [Optional] - nota: <i>this attribute should be used either single or coupled with "listName" and "listVersion"</i> (XPath)</p> <p>SRVIndicatorsDeclaration/sustainabilityIndicatorsGroup/assessmentStudyDocument/ProductIdentification/garmentCode/garmentCodeB/added/@numberingOrg) [Optional] - nota: <i>this attribute should be used either single or coupled with "listName" and "listVersion"</i> (XPath)</p> <p>SRVIndicatorsDeclaration/sustainabilityIndicatorsGroup/PEFStudyDocument/ProductIdentification/rawCode/@numberingOrg) [Optional] (XPath)</p> <p>SRVIndicatorsDeclaration/sustainabilityIndicatorsGroup/assessmentStudyDocument/ProductIdentification/garmentCode/garmentCodeB/garmentVariant/variantCode/@numberingOrg) [Optional] - nota: <i>this attribute should be used either single or coupled with "listName" and "listVersion"</i> (XPath)</p> <p>SRVIndicatorsDeclaration/sustainabilityIndicatorsGroup/PEFStudyDocument/ProductIdentification/texCode/@numberingOrg) [Optional] (XPath)</p> <p>SRVIndicatorsDeclaration/sustainabilityIndicatorsGroup/PEFStudyDocument/ProductIdentification/yarnCode/added/@numberingOrg) [Optional] - nota: <i>this attribute should be used either single or coupled with "listName" and "listVersion"</i> (XPath)</p> <p>SRVIndicatorsDeclaration/sustainabilityIndicatorsGroup/PEFStudyDocument/ProductIdentification/rawCode/art/@numberingOrg) [Optional] - nota: <i>this attribute should be used either single or coupled with "listName" and "listVersion"</i> (XPath)</p> <p>SRVIndicatorsDeclaration/sustainabilityIndicatorsGroup/assessmentStudyDocument/ProductIdentification/garmentCode/garmentCodeB/drop/@numberingOrg) [Optional] - nota: <i>this attribute should be used either single or coupled with "listName" and "listVersion"</i> (XPath)</p>
--	--

	<p>SRVIndicatorsDeclaration/sustainabilityIndicatorsGroup/assessmentStudyDocument/ProductIdentification/garmentCode/garmentCodeA/art/@numberingOrg) [Optional] - nota: <i>this attribute should be used either single or coupled with "listName" and "listVersion"</i> (XPath)</p> <p>SRVIndicatorsDeclaration/sustainabilityIndicatorsGroup/PEFStudyDocument/ProductIdentification/garmentCode/garmentCodeB/garmentVariant/variantCode/@numberingOrg) [Optional] - nota: <i>this attribute should be used either single or coupled with "listName" and "listVersion"</i> (XPath)</p> <p>SRVIndicatorsDeclaration/sustainabilityIndicatorsGroup/assessmentStudyDocument/note/@numberingOrg) [Optional] - nota: <i>must be used to specify the organization that created the list of codes used in "noteLabel"</i> (XPath)</p> <p>SRVIndicatorsDeclaration/sustainabilityIndicatorsGroup/PEFStudyDocument/ProductIdentification/garmentCode/garmentCodeB/garmentVariant/variantType/@numberingOrg) [Optional] - nota: <i>this attribute should be used either single or coupled with "listName" and "listVersion"</i> (XPath)</p> <p>SRVIndicatorsDeclaration/sustainabilityIndicatorsGroup/PEFStudyDocument/ProductIdentification/garmentCode/garmentCodeB/fabric/@numberingOrg) [Optional] - nota: <i>this attribute should be used either single or coupled with "listName" and "listVersion"</i> (XPath)</p> <p>SRVIndicatorsDeclaration/sustainabilityIndicatorsGroup/PEFStudyDocument/ProductIdentification/garmentPartCode/color/@numberingOrg) [Optional] - nota: <i>this attribute should be used either single or coupled with "listName" and "listVersion"</i> (XPath)</p> <p>SRVIndicatorsDeclaration/sustainabilityIndicatorsGroup/PEFStudyDocument/ProductIdentification/garmentPartCode/added/@numberingOrg) [Optional] - nota: <i>this attribute should be used either single or coupled with "listName" and "listVersion"</i> (XPath)</p> <p>SRVIndicatorsDeclaration/sustainabilityIndicatorsGroup/assessmentStudyDocument/ProductIdentification/garmentPartCode/color/@numberingOrg) [Optional] - nota: <i>this attribute should be used either single or coupled with "listName" and "listVersion"</i> (XPath)</p> <p>SRVIndicatorsDeclaration/sustainabilityIndicatorsGroup/PEFStudyDocument/ProductIdentification/garmentCode/@numberingOrg) [Optional] (XPath)</p> <p>SRVIndicatorsDeclaration/sustainabilityIndicatorsGroup/PEFStudyDocument/ProductIdentification/garmentCode/garmentCodeB/mod/@numberingOrg) [Optional] (XPath)</p> <p>SRVIndicatorsDeclaration/sustainabilityIndicatorsGroup/PEFStudyDocument/ProductIdentification/garmentCode/garmentCodeB/@numberingOrg) [Optional] (XPath)</p> <p>SRVIndicatorsDeclaration/sustainabilityIndicatorsGroup/assessmentStudyDocument/ProductIdentification/garmentPartCode/mod/@numberingOrg) [Optional] (XPath)</p> <p>SRVIndicatorsDeclaration/sustainabilityIndicatorsGroup/assessmentStudyDocument/reviewerParty/id/@numberingOrg) [Optional] (XPath)</p> <p>SRVIndicatorsDeclaration/sustainabilityIndicatorsGroup/PEFStudyDocument/ProductIdentification/garmentPartCode/size/@numberingOrg) [Optional] - nota: <i>this attribute should be used either single or coupled with "listName" and "listVersion"</i> (XPath)</p> <p>SRVIndicatorsDeclaration/sustainabilityIndicatorsGroup/assessmentStudyDocument/ProductIdentification/garmentPartCode/fabric/@numberingOrg) [Optional] - nota: <i>this attribute should be used either single or coupled with "listName" and "listVersion"</i> (XPath)</p> <p>SRVIndicatorsDeclaration/sustainabilityIndicatorsGroup/assessmentStudyDoc</p>
--	--

	<p>ument/ProductIdentification/garmentCode/@numberingOrg) [Optional] (XPath</p> <p>SRVIndicatorsDeclaration/sustainabilityIndicatorsGroup/PEFStudyDocument/ProductIdentification/garmentPartCode/@numberingOrg) [Optional] (XPath</p> <p>SRVIndicatorsDeclaration/sustainabilityIndicatorsGroup/PEFStudyDocument/ProductIdentification/garmentPartCode/mod/@numberingOrg) [Optional] (XPath</p> <p>SRVIndicatorsDeclaration/sustainabilityIndicatorsGroup/assessmentStudyDocument/ProductIdentification/acsCode/added/@numberingOrg) [Optional] - nota: <i>this attribute should be used either single or coupled with "listName" and "listVersion"</i> (XPath</p> <p>SRVIndicatorsDeclaration/sustainabilityIndicatorsGroup/assessmentStudyDocument/ProductIdentification/garmentCode/garmentCodeB/mod/@numberingOrg) [Optional] (XPath</p> <p>SRVIndicatorsDeclaration/sustainabilityIndicatorsGroup/PEFStudyDocument/ProductIdentification/acsCode/added/@numberingOrg) [Optional] - nota: <i>this attribute should be used either single or coupled with "listName" and "listVersion"</i> (XPath</p> <p>SRVIndicatorsDeclaration/sustainabilityIndicatorsGroup/assessmentStudyDocument/ProductIdentification/garmentCode/garmentCodeB/@numberingOrg) [Optional] (XPath</p> <p>SRVIndicatorsDeclaration/sustainabilityIndicatorsGroup/assessmentStudyDocument/issuerParty/id/@numberingOrg) [Optional] (XPath</p> <p>SRVIndicatorsDeclaration/sustainabilityIndicatorsGroup/assessmentStudyDocument/ProductIdentification/garmentPartCode/added/@numberingOrg) [Optional] - nota: <i>this attribute should be used either single or coupled with "listName" and "listVersion"</i> (XPath</p> <p>SRVIndicatorsDeclaration/sustainabilityIndicatorsGroup/PEFStudyDocument/ProductIdentification/garmentCode/garmentCodeB/color/@numberingOrg) [Optional] - nota: <i>this attribute should be used either single or coupled with "listName" and "listVersion"</i> (XPath</p> <p>SRVIndicatorsDeclaration/sustainabilityIndicatorsGroup/assessmentStudyDocument/ProductIdentification/garmentPartCode/size/@numberingOrg) [Optional] - nota: <i>this attribute should be used either single or coupled with "listName" and "listVersion"</i> (XPath</p> <p>SRVIndicatorsDeclaration/sustainabilityIndicatorsGroup/assessmentStudyDocument/ProductIdentification/garmentPartCode/@numberingOrg) [Optional] (XPath</p> <p>SRVIndicatorsDeclaration/sustainabilityIndicatorsGroup/PEFStudyDocument/ProductIdentification/garmentPartCode/fabric/@numberingOrg) [Optional] - nota: <i>this attribute should be used either single or coupled with "listName" and "listVersion"</i></p>
objectTypeCode	<p>code that identifies the type of object - base type: string, cod. table: T302 http://www.ebiz.enea.it/moda-ml/repository/codelist/draft/gc_T302.xml (XPath</p> <p>SRVIndicatorsDeclaration/sustainabilityIndicatorsGroup/PEFStudyDocument/ProductIdentification/objectTypeCode) 1-1 (XPath</p> <p>SRVIndicatorsDeclaration/sustainabilityIndicatorsGroup/assessmentStudyDocument/ProductIdentification/objectTypeCode) 1-1</p>
pattern	<p>pattern/design number of the product, when not included in the article code - base type: string, max length: 15, (XPath</p> <p>SRVIndicatorsDeclaration/sustainabilityIndicatorsGroup/assessmentStudyDocument/ProductIdentification/texCode/pattern) 0-1 (XPath</p> <p>SRVIndicatorsDeclaration/sustainabilityIndicatorsGroup/PEFStudyDocument/ProductIdentification/acsCode/pattern) 0-1 (XPath</p>

	<p>SRVIndicatorsDeclaration/sustainabilityIndicatorsGroup/PEFStudyDocument/ProductIdentification/texCode/pattern) 0-1 (XPath</p> <p>SRVIndicatorsDeclaration/sustainabilityIndicatorsGroup/assessmentStudyDocument/ProductIdentification/acsCode/pattern) 0-1</p>
PEFLifeCyclePhase	<p>PEF life cycle phase (it is a first level grouping of the activities analysed by the PEF; each group includes more manufacturing operation or other activities like 'distribution') - base type: string, cod. table: T308 http://www.ebiz.enea.it/moda-ml/repository/codelist/draft/gc_T308.xml (XPath</p> <p>SRVIndicatorsDeclaration/sustainabilityIndicatorsGroup/PEFStudyDocument/PEFLifeCyclePhase) 0-6 - note: <i>indicates to which life cycle phases the study is addressed; when omitted it is intended the whole life cycle.</i></p>
person	<p>name of a person (e.g. contact person within an organization) - base type: string, max length: 40, (XPath</p> <p>SRVIndicatorsDeclaration/sustainabilityIndicatorsGroup/PEFStudyDocument/issuerParty/person) 0-1 (XPath</p> <p>SRVIndicatorsDeclaration/sustainabilityIndicatorsGroup/sustainabilityIndicator/reviewerParty/person) 0-1 (XPath</p> <p>SRVIndicatorsDeclaration/sustainabilityIndicatorsGroup/assessmentStudyDocument/reviewerParty/person) 0-1 (XPath SRVIndicatorsDeclaration/SRVheader/senderParty/person) 0-1 (XPath</p> <p>SRVIndicatorsDeclaration/sustainabilityIndicatorsGroup/PEFStudyDocument/signatureInformation/signatoryParty/person) 0-1 (XPath</p> <p>SRVIndicatorsDeclaration/sustainabilityIndicatorsGroup/assessmentStudyDocument/signatureInformation/signatoryParty/person) 0-1 (XPath</p> <p>SRVIndicatorsDeclaration/sustainabilityIndicatorsGroup/assessmentStudyDocument/issuerParty/person) 0-1 (XPath</p> <p>SRVIndicatorsDeclaration/sustainabilityIndicatorsGroup/PEFStudyDocument/reviewerParty/person) 0-1 (XPath</p> <p>SRVIndicatorsDeclaration/sustainabilityIndicatorsGroup/externalRefDoc/signatureInformation/signatoryParty/person) 0-1 (XPath</p> <p>SRVIndicatorsDeclaration/sustainabilityIndicatorsGroup/externalRefDoc/issuerParty/person) 0-1 (XPath SRVIndicatorsDeclaration/SRVheader/receiverParty/person) 0-1 (XPath</p> <p>SRVIndicatorsDeclaration/sustainabilityIndicatorsGroup/sustainabilityIndicator/issuerParty/person) 0-1</p>
@phone	<p>phone number of the contact person within a Party - base type: string, max length: 35, (XPath</p> <p>SRVIndicatorsDeclaration/sustainabilityIndicatorsGroup/assessmentStudyDocument/signatureInformation/signatoryParty/person/@phone) [Optional] (XPath SRVIndicatorsDeclaration/SRVheader/senderParty/person/@phone) [Optional] (XPath</p> <p>SRVIndicatorsDeclaration/sustainabilityIndicatorsGroup/sustainabilityIndicator/reviewerParty/person/@phone) [Optional] (XPath</p> <p>SRVIndicatorsDeclaration/sustainabilityIndicatorsGroup/PEFStudyDocument/reviewerParty/person/@phone) [Optional] (XPath</p> <p>SRVIndicatorsDeclaration/sustainabilityIndicatorsGroup/PEFStudyDocument/signatureInformation/signatoryParty/person/@phone) [Optional] (XPath</p> <p>SRVIndicatorsDeclaration/sustainabilityIndicatorsGroup/assessmentStudyDocument/author/@phone) [Optional] (XPath</p>

	<p>SRVIndicatorsDeclaration/sustainabilityIndicatorsGroup/assessmentStudyDocument/issuerParty/person/@phone) [Optional] (XPath</p> <p>SRVIndicatorsDeclaration/sustainabilityIndicatorsGroup/PEFStudyDocument/author/@phone) [Optional] (XPath</p> <p>SRVIndicatorsDeclaration/sustainabilityIndicatorsGroup/assessmentStudyDocument/reviewerParty/person/@phone) [Optional] (XPath</p> <p>SRVIndicatorsDeclaration/sustainabilityIndicatorsGroup/externalRefDoc/issuerParty/person/@phone) [Optional] (XPath</p> <p>SRVIndicatorsDeclaration/sustainabilityIndicatorsGroup/sustainabilityIndicator/issuerParty/person/@phone) [Optional] (XPath SRVIndicatorsDeclaration/SRVheader/receiverParty/person/@phone) [Optional] (XPath</p> <p>SRVIndicatorsDeclaration/sustainabilityIndicatorsGroup/PEFStudyDocument/issuerParty/person/@phone) [Optional] (XPath</p> <p>SRVIndicatorsDeclaration/sustainabilityIndicatorsGroup/externalRefDoc/signatureInformation/signatoryParty/person/@phone) [Optional]</p>
platformServiceCode	<p>code of the available service - base type: string, cod. table: TRK01 http://www.ebiz.enea.it/moda-ml/repository/codelist/draft/gc_TRK01.xml (XPath</p> <p>SRVIndicatorsDeclaration/SRVheader/platformServiceReference/platformServiceCode) 1-1</p>
postCode	<p>code defining the postal zone - base type: string, max length: 10, (XPath</p> <p>SRVIndicatorsDeclaration/sustainabilityIndicatorsGroup/externalRefDoc/signatureInformation/signatoryParty/postCode) 0-1 (XPath</p> <p>SRVIndicatorsDeclaration/sustainabilityIndicatorsGroup/sustainabilityIndicator/reviewerParty/postCode) 0-1 (XPath SRVIndicatorsDeclaration/SRVheader/senderParty/postCode) 0-1 (XPath</p> <p>SRVIndicatorsDeclaration/sustainabilityIndicatorsGroup/externalRefDoc/issuerParty/postCode) 0-1 (XPath</p> <p>SRVIndicatorsDeclaration/sustainabilityIndicatorsGroup/PEFStudyDocument/signatureInformation/signatoryParty/postCode) 0-1 (XPath</p> <p>SRVIndicatorsDeclaration/sustainabilityIndicatorsGroup/sustainabilityIndicator/issuerParty/postCode) 0-1 (XPath</p> <p>SRVIndicatorsDeclaration/sustainabilityIndicatorsGroup/assessmentStudyDocument/reviewerParty/postCode) 0-1 (XPath</p> <p>SRVIndicatorsDeclaration/sustainabilityIndicatorsGroup/assessmentStudyDocument/signatureInformation/signatoryParty/postCode) 0-1 (XPath</p> <p>SRVIndicatorsDeclaration/sustainabilityIndicatorsGroup/PEFStudyDocument/reviewerParty/postCode) 0-1 (XPath</p> <p>SRVIndicatorsDeclaration/sustainabilityIndicatorsGroup/PEFStudyDocument/issuerParty/postCode) 0-1 (XPath</p> <p>SRVIndicatorsDeclaration/sustainabilityIndicatorsGroup/assessmentStudyDocument/issuerParty/postCode) 0-1 (XPath SRVIndicatorsDeclaration/SRVheader/receiverParty/postCode) 0-1</p>
publishableAbstract	<p>publishable abstract of the study - base type: string, (XPath</p> <p>SRVIndicatorsDeclaration/sustainabilityIndicatorsGroup/assessmentStudyDocument/publishableAbstract) 0-99 - note: <i>Only one instance of this element for each different value of 'In' attribute (language</i></p>

	<p>age) (XPath SRVIndicatorsDeclaration/sustainabilityIndicatorsGroup/PEFStudyDocument/publishableAbstract) 0-99 - note: Only one instance of this element for each different value of 'In' attribute (language)</p>
reviewDate	<p>date of accomplishment of the document review, according to one of the patterns YYYY-MM-DD, YYYY-MM-DD:HH-MM or YYYY-WW. - base type: string, (XPath SRVIndicatorsDeclaration/sustainabilityIndicatorsGroup/assessmentStudyDocument/reviewDate) 0-1 (XPath SRVIndicatorsDeclaration/sustainabilityIndicatorsGroup/PEFStudyDocument/reviewDate) 0-1</p>
@role	<p>Third Party role qualifier - base type: string, cod. table: NT2 http://www.ebiz.enea.it/moda-ml/repository/codelist/draft/gc_NT2.xml (XPath SRVIndicatorsDeclaration/SRVheader/senderParty/@role) [Optional] - nota: The use of this attribute is mandatory when the element to which it is associated has TRCHeader as its parent. (XPath SRVIndicatorsDeclaration/SRVheader/receiverParty/@role) [Optional] - nota: The use of this attribute is mandatory when the element to which it is associated has TRCHeader as its parent.</p>
@schemeID	<p>identifier of an identification scheme - base type: string, (XPath SRVIndicatorsDeclaration/sustainabilityIndicatorsGroup/PEFStudyDocument/attachment/hashFootprint/@schemeID) [Optional] - nota: specify for which system this hash footprint might be used as identifier (for example HDFS system..) (XPath SRVIndicatorsDeclaration/sustainabilityIndicatorsGroup/assessmentStudyDocument/attachment/hashFootprint/@schemeID) [Optional] - nota: specify for which system this hash footprint might be used as identifier (for example HDFS system..) (XPath SRVIndicatorsDeclaration/sustainabilityIndicatorsGroup/PEFStudyDocument/ProductIdentification/uniqueProductID/@schemeID) [Required] (XPath SRVIndicatorsDeclaration/sustainabilityIndicatorsGroup/externalRefDoc/attachment/hashFootprint/@schemeID) [Optional] - nota: specify for which system this hash footprint might be used as identifier (for example HDFS system..) (XPath SRVIndicatorsDeclaration/sustainabilityIndicatorsGroup/assessmentStudyDocument/ProductIdentification/uniqueProductID/@schemeID) [Required]</p>
@sender	<p>qualifier that specifies the Party issuing of the document - base type: boolean, (XPath SRVIndicatorsDeclaration/SRVheader/receiverParty/@sender) [Optional] - nota: This attribute is mandatory when the STYLESHEET must be used. (XPath SRVIndicatorsDeclaration/SRVheader/senderParty/@sender) [Optional] - nota: This attribute is mandatory when the STYLESHEET must be used.</p>
serviceRequestedAction	<p>requested service action - base type: string, cod. table: TRK02 http://www.ebiz.enea.it/moda-ml/repository/codelist/draft/gc_TRK02.xml (XPath SRVIndicatorsDeclaration/SRVheader/platformServiceReference/serviceRequestedAction) 1-1</p>
serviceTicketID	<p>service ticket identifier - base type: string, (XPath SRVIndicatorsDeclaration/SRVheader/platformServiceReference/serviceTicketID) 0-1 - note: mandatory after activation</p>

signatureTypeCode	<p>indicator of existing and type of signature - base type: string, (XPath SRVIndicatorsDeclaration/sustainabilityIndicatorsGroup/PEFStudyDocument/signatureInformation/signatureTypeCode) 1-1 (XPath SRVIndicatorsDeclaration/sustainabilityIndicatorsGroup/externalRefDoc/signatureInformation/signatureTypeCode) 1-1 (XPath SRVIndicatorsDeclaration/sustainabilityIndicatorsGroup/assessmentStudyDocument/signatureInformation/signatureTypeCode) 1-1</p>
size	<p>size number of a fashion product (knitwear, clothing, ..) - base type: string, max length: 15, (XPath SRVIndicatorsDeclaration/sustainabilityIndicatorsGroup/PEFStudyDocument/ProductIdentification/garmentCode/garmentCodeB/size) 0-1 (XPath SRVIndicatorsDeclaration/sustainabilityIndicatorsGroup/PEFStudyDocument/ProductIdentification/garmentPartCode/size) 0-1 (XPath SRVIndicatorsDeclaration/sustainabilityIndicatorsGroup/assessmentStudyDocument/ProductIdentification/garmentCode/garmentCodeB/size) 0-1 (XPath SRVIndicatorsDeclaration/sustainabilityIndicatorsGroup/assessmentStudyDocument/ProductIdentification/garmentPartCode/size) 0-1</p>
street	<p>street and building number identifying a location - base type: string, max length: 80, (XPath SRVIndicatorsDeclaration/sustainabilityIndicatorsGroup/PEFStudyDocument/reviewerParty/street) 0-1 (XPath SRVIndicatorsDeclaration/sustainabilityIndicatorsGroup/assessmentStudyDocument/issuerParty/street) 0-1 (XPath SRVIndicatorsDeclaration/SRVheader/receiverParty/street) 0-1 (XPath SRVIndicatorsDeclaration/sustainabilityIndicatorsGroup/PEFStudyDocument/signatureInformation/signatoryParty/street) 0-1 (XPath SRVIndicatorsDeclaration/sustainabilityIndicatorsGroup/PEFStudyDocument/issuerParty/street) 0-1 (XPath SRVIndicatorsDeclaration/sustainabilityIndicatorsGroup/sustainabilityIndicator/issuerParty/street) 0-1 (XPath SRVIndicatorsDeclaration/sustainabilityIndicatorsGroup/externalRefDoc/signatureInformation/signatoryParty/street) 0-1 (XPath SRVIndicatorsDeclaration/sustainabilityIndicatorsGroup/externalRefDoc/issuerParty/street) 0-1 (XPath SRVIndicatorsDeclaration/sustainabilityIndicatorsGroup/sustainabilityIndicator/reviewerParty/street) 0-1 (XPath SRVIndicatorsDeclaration/sustainabilityIndicatorsGroup/assessmentStudyDocument/signatureInformation/signatoryParty/street) 0-1 (XPath SRVIndicatorsDeclaration/SRVheader/senderParty/street) 0-1 (XPath SRVIndicatorsDeclaration/sustainabilityIndicatorsGroup/assessmentStudyDocument/reviewerParty/street) 0-1</p>
subCountry	<p>short name or code of the sub-country entity - base type: string, max length: 9, (XPath SRVIndicatorsDeclaration/sustainabilityIndicatorsGroup/sustainabilityIndicator/issuerParty/subCountry) 0-1 (XPath SRVIndicatorsDeclaration/sustainabilityIndicatorsGroup/externalRefDoc/issuerParty/subCountry) 0-1 (XPath</p>

	<p>SRVIndicatorsDeclaration/sustainabilityIndicatorsGroup/PEFStudyDocument/signatureInformation/signatoryParty/subCountry) 0-1 (XPath SRVIndicatorsDeclaration/SRVheader/receiverParty/subCountry) 0-1 (XPath</p> <p>SRVIndicatorsDeclaration/sustainabilityIndicatorsGroup/PEFStudyDocument/reviewerParty/subCountry) 0-1 (XPath</p> <p>SRVIndicatorsDeclaration/sustainabilityIndicatorsGroup/assessmentStudyDocument/issuerParty/subCountry) 0-1 (XPath</p> <p>SRVIndicatorsDeclaration/sustainabilityIndicatorsGroup/externalRefDoc/signatureInformation/signatoryParty/subCountry) 0-1 (XPath SRVIndicatorsDeclaration/SRVheader/senderParty/subCountry) 0-1 (XPath</p> <p>SRVIndicatorsDeclaration/sustainabilityIndicatorsGroup/assessmentStudyDocument/signatureInformation/signatoryParty/subCountry) 0-1 (XPath</p> <p>SRVIndicatorsDeclaration/sustainabilityIndicatorsGroup/sustainabilityIndicator/reviewerParty/subCountry) 0-1 (XPath</p> <p>SRVIndicatorsDeclaration/sustainabilityIndicatorsGroup/PEFStudyDocument/issuerParty/subCountry) 0-1 (XPath</p> <p>SRVIndicatorsDeclaration/sustainabilityIndicatorsGroup/assessmentStudyDocument/reviewerParty/subCountry) 0-1</p>
subDept	<p>name or code of a department - base type: string, max length: 40, (XPath</p> <p>SRVIndicatorsDeclaration/sustainabilityIndicatorsGroup/PEFStudyDocument/reviewerParty/subDept) 0-1 (XPath</p> <p>SRVIndicatorsDeclaration/sustainabilityIndicatorsGroup/sustainabilityIndicator/reviewerParty/subDept) 0-1 (XPath</p> <p>SRVIndicatorsDeclaration/sustainabilityIndicatorsGroup/assessmentStudyDocument/reviewerParty/subDept) 0-1 (XPath</p> <p>SRVIndicatorsDeclaration/sustainabilityIndicatorsGroup/PEFStudyDocument/signatureInformation/signatoryParty/subDept) 0-1 (XPath SRVIndicatorsDeclaration/SRVheader/senderParty/subDept) 0-1 (XPath</p> <p>SRVIndicatorsDeclaration/sustainabilityIndicatorsGroup/externalRefDoc/issuerParty/subDept) 0-1 (XPath</p> <p>SRVIndicatorsDeclaration/sustainabilityIndicatorsGroup/assessmentStudyDocument/issuerParty/subDept) 0-1 (XPath</p> <p>SRVIndicatorsDeclaration/sustainabilityIndicatorsGroup/assessmentStudyDocument/signatureInformation/signatoryParty/subDept) 0-1 (XPath</p> <p>SRVIndicatorsDeclaration/sustainabilityIndicatorsGroup/externalRefDoc/signatureInformation/signatoryParty/subDept) 0-1 (XPath</p> <p>SRVIndicatorsDeclaration/sustainabilityIndicatorsGroup/sustainabilityIndicator/issuerParty/subDept) 0-1 (XPath</p> <p>SRVIndicatorsDeclaration/sustainabilityIndicatorsGroup/PEFStudyDocument/issuerParty/subDept) 0-1 (XPath SRVIndicatorsDeclaration/SRVheader/receiverParty/subDept) 0-1</p>
sustainabilityIndicatorMethodology	<p>methodology for sustainability indicator calculation - base type: string, cod. table: NT328 http://www.ebiz.enea.it/moda-ml/repository/codelist/draft/gc_NT328.xml (XPath</p> <p>SRVIndicatorsDeclaration/sustainabilityIndicatorsGroup/sustainabilityIndicatorMethodology) 1-1</p>
sustainabilityIndicatorName	<p>name of the sustainability indicator - base type: string, cod. table: NT327 http://www.ebiz.enea.it/moda-ml/repository/codelist/draft/gc_NT327.xml</p>

	(XPath SRVIndicatorsDeclaration/sustainabilityIndicatorsGroup/sustainabilityIndicator/ sustainabilityIndicatorName) 1-1
sustainabilityIndicatorsGroupName	name of the group of sustainability indicators (short description allowed) - base type: string, max length: 250, (XPath SRVIndicatorsDeclaration/sustainabilityIndicatorsGroup/sustainabilityIndicators GroupName) 1-1
sustainabilityIndicatorValue	value of sustainability indicator (unit of measure included in the definition of the type of indicator) (XPath SRVIndicatorsDeclaration/sustainabilityIndicatorsGroup/sustainabilityIndicator/ sustainabilityIndicatorValue) 0-1
systemBoundariesDescription	description of the system boundaries of the studied system - base type: string, (XPath SRVIndicatorsDeclaration/sustainabilityIndicatorsGroup/PEFStudyDocument/s ystemBoundariesDescription) 0-99 - note: <i>Only one instance of this element for each different value of 'ln' attribute (langu age)</i>
title	document title - base type: string, (XPath SRVIndicatorsDeclaration/sustainabilityIndicatorsGroup/externalRefDoc/title) 0 -unbounded - note: <i>Only one instance of this element for each different value of 'ln' attribute (langu age)</i> (XPath SRVIndicatorsDeclaration/sustainabilityIndicatorsGroup/PEFStudyDocument/tit le) 0-unbounded - note: <i>Only one instance of this element for each different value of 'ln' attribute (langu age)</i> (XPath SRVIndicatorsDeclaration/sustainabilityIndicatorsGroup/assessmentStudyDoc ument/title) 0-unbounded - note: <i>Only one instance of this element for each different value of 'ln' attribute (langu age)</i>
transactionReceipt	transaction receipt on blockchain - base type: string, max length: 80, (XPath SRVIndicatorsDeclaration/sustainabilityIndicatorsGroup/assessmentStudyDoc ument/attachment/blockChainReference/transactionReceipt) 1-9 (XPath SRVIndicatorsDeclaration/sustainabilityIndicatorsGroup/PEFStudyDocument/at tachment/blockChainReference/transactionReceipt) 1-9 (XPath SRVIndicatorsDeclaration/sustainabilityIndicatorsGroup/externalRefDoc/attach ment/blockChainReference/transactionReceipt) 1-9
@uid	unique element identifier within the xml document - base type: string, (XPath SRVIndicatorsDeclaration/sustainabilityIndicatorsGroup/assessmentStudyDoc ument/attachment/@uid) [Optional] (XPath SRVIndicatorsDeclaration/sustainabilityIndicatorsGroup/externalRefDoc/attach ment/@uid) [Optional] (XPath SRVIndicatorsDeclaration/sustainabilityIndicatorsGroup/PEFStudyDocument/at tachment/@uid) [Optional]
@um	specification of the unit of measure - base type: string, cod. table: NT7 http://www.ebiz.enea.it/moda-ml/repository/codelist/draft/gc_NT7.xml (XPath SRVIndicatorsDeclaration/sustainabilityIndicatorsGroup/assessmentStudyDoc

	<p>ument/issuerParty/geoCoordinates/@um) [Optional] [Default= DEGD] - nota: when not specified assume decimal DEGREES (XPath SRVIndicatorsDeclaration/sustainabilityIndicatorsGroup/externalRefDoc/signatureInformation/signatoryParty/geoCoordinates/@um) [Optional] [Default= DEGD] - nota: when not specified assume decimal DEGREES (XPath SRVIndicatorsDeclaration/sustainabilityIndicatorsGroup/externalRefDoc/issuerParty/geoCoordinates/@um) [Optional] [Default= DEGD] - nota: when not specified assume decimal DEGREES (XPath SRVIndicatorsDeclaration/SRVheader/senderParty/geoCoordinates/@um) [Optional] [Default= DEGD] - nota: when not specified assume decimal DEGREES (XPath SRVIndicatorsDeclaration/SRVheader/receiverParty/geoCoordinates/@um) [Optional] [Default= DEGD] - nota: when not specified assume decimal DEGREES (XPath SRVIndicatorsDeclaration/sustainabilityIndicatorsGroup/PEFStudyDocument/reviewerParty/geoCoordinates/@um) [Optional] [Default= DEGD] - nota: when not specified assume decimal DEGREES (XPath SRVIndicatorsDeclaration/sustainabilityIndicatorsGroup/PEFStudyDocument/issuerParty/geoCoordinates/@um) [Optional] [Default= DEGD] - nota: when not specified assume decimal DEGREES (XPath SRVIndicatorsDeclaration/sustainabilityIndicatorsGroup/sustainabilityIndicator/reviewerParty/geoCoordinates/@um) [Optional] [Default= DEGD] - nota: when not specified assume decimal DEGREES (XPath SRVIndicatorsDeclaration/sustainabilityIndicatorsGroup/assessmentStudyDocument/reviewerParty/geoCoordinates/@um) [Optional] [Default= DEGD] - nota: when not specified assume decimal DEGREES (XPath SRVIndicatorsDeclaration/sustainabilityIndicatorsGroup/sustainabilityIndicator/issuerParty/geoCoordinates/@um) [Optional] [Default= DEGD] - nota: when not specified assume decimal DEGREES (XPath SRVIndicatorsDeclaration/sustainabilityIndicatorsGroup/assessmentStudyDocument/signatureInformation/signatoryParty/geoCoordinates/@um) [Optional] [Default= DEGD] - nota: when not specified assume decimal DEGREES (XPath SRVIndicatorsDeclaration/sustainabilityIndicatorsGroup/PEFStudyDocument/signatureInformation/signatoryParty/geoCoordinates/@um) [Optional] [Default= DEGD] - nota: when not specified assume decimal DEGREES</p>
uniqueProductID	<p>Unique product identifier. It identifies the product completely, differentiating any variants, sizes, colors, etc. It should be unique throughout the whole value chain. (It can be the GTIN) - base type: string, max length: 80, (XPath SRVIndicatorsDeclaration/sustainabilityIndicatorsGroup/assessmentStudyDocument/ProductIdentification/uniqueProductID) 1-1 (XPath SRVIndicatorsDeclaration/sustainabilityIndicatorsGroup/PEFStudyDocument/ProductIdentification/uniqueProductID) 1-1</p>
uri	<p>Uniform Resource Identifier (URI) that identifies the external object as an Internet resource - base type: normalizedString, (XPath SRVIndicatorsDeclaration/sustainabilityIndicatorsGroup/externalRefDoc/attachment/externalReference/uri) 1-1 (XPath SRVIndicatorsDeclaration/sustainabilityIndicatorsGroup/PEFStudyDocument/attachment/blockChainReference/uri) 1-1 - note: reference to the used blockchain (example: url https://etherscan.io/ of ethereum) (XPath SRVIndicatorsDeclaration/sustainabilityIndicatorsGroup/PEFStudyDocument/attachment/blockChainReference/uri) 1-1</p>

	<p>achment/externalReference/uri) 1-1 (XPath SRVIndicatorsDeclaration/sustainabilityIndicatorsGroup/externalRefDoc/attachment/blockChainReference/uri) 1-1 - note: reference to the used blockchain (example: url https://etherscan.io/ of ethereum) (XPath SRVIndicatorsDeclaration/sustainabilityIndicatorsGroup/assessmentStudyDocument/attachment/blockChainReference/uri) 1-1 - note: reference to the used blockchain (example: url https://etherscan.io/ of ethereum) (XPath SRVIndicatorsDeclaration/sustainabilityIndicatorsGroup/assessmentStudyDocument/attachment/externalReference/uri) 1-1</p>
@useProfile	<p>use profile to which the present document is compliant if it was agreed by the parties. It is suggested a URI with reference to the firms or the URL of the profile. - base type: string, (XPath SRVIndicatorsDeclaration/@useProfile) [Optional]</p>
@validationMethod	<p>type of method used to validate the quantity to which it refers. For example, it indicates whether it was measured in the field, estimated indirectly, approved by an expert or taken from the literature - base type: string, cod. table: NT329 http://www.ebiz.enea.it/moda-ml/repository/codelist/draft/gc_NT329.xml (XPath SRVIndicatorsDeclaration/sustainabilityIndicatorsGroup/sustainabilityIndicator/@validationMethod) [Optional] - nota: <i>Optional but recommended</i></p>
validityEnd	<p>date by which the validity ends, according to one of the patterns YYYY-MM-DD, YYYY-MM-DD:HH-MM or YYYY-WW. - base type: string, (XPath SRVIndicatorsDeclaration/sustainabilityIndicatorsGroup/externalRefDoc/validityEnd) 0-1 (XPath SRVIndicatorsDeclaration/sustainabilityIndicatorsGroup/assessmentStudyDocument/validityEnd) 0-1 (XPath SRVIndicatorsDeclaration/sustainabilityIndicatorsGroup/PEFStudyDocument/validityEnd) 0-1</p>
validityStart	<p>date by which the validity starts, according to one of the patterns YYYY-MM-DD, YYYY-MM-DD:HH-MM or YYYY-WW. - base type: string, (XPath SRVIndicatorsDeclaration/sustainabilityIndicatorsGroup/externalRefDoc/validityStart) 0-1 (XPath SRVIndicatorsDeclaration/sustainabilityIndicatorsGroup/PEFStudyDocument/validityStart) 0-1 (XPath SRVIndicatorsDeclaration/sustainabilityIndicatorsGroup/assessmentStudyDocument/validityStart) 0-1</p>
variantCode	<p>Code of variant used for fashion product. - base type: string, (XPath SRVIndicatorsDeclaration/sustainabilityIndicatorsGroup/assessmentStudyDocument/ProductIdentification/garmentCode/garmentCodeB/garmentVariant/variantCode) 1-1 (XPath SRVIndicatorsDeclaration/sustainabilityIndicatorsGroup/PEFStudyDocument/ProductIdentification/garmentCode/garmentCodeB/garmentVariant/variantCode) 1-1</p>
variantType	<p>Type of variant used for fashion product (examples: 'treatment', 'washing type', 'size class',...) - base type: string, (XPath SRVIndicatorsDeclaration/sustainabilityIndicatorsGroup/PEFStudyDocument/P</p>

	<p>productIdentification/garmentCode/garmentCodeB/garmentVariant/variantType) 1-1 (XPath SRVIndicatorsDeclaration/sustainabilityIndicatorsGroup/assessmentStudyDocument/ProductIdentification/garmentCode/garmentCodeB/garmentVariant/variantType)) 1-1</p>
@version	<p>Dictionary version from which the instance has been created - base type: string, cod. table: NT100 http://www.ebiz.enea.it/moda-ml/repository/codelist/draft/gc_NT100.xml (XPath SRVIndicatorsDeclaration/@version) [Optional] [Default= draft]</p>
xGeoCoord	<p>geographical coordinate x , corresponding to latitude - base type: decimal, (XPath SRVIndicatorsDeclaration/SRVheader/senderParty/geoCoordinates/xGeoCoord) 1-1 (XPath SRVIndicatorsDeclaration/sustainabilityIndicatorsGroup/PEFStudyDocument/issuerParty/geoCoordinates/xGeoCoord) 1-1 (XPath SRVIndicatorsDeclaration/SRVheader/receiverParty/geoCoordinates/xGeoCoord) 1-1 (XPath SRVIndicatorsDeclaration/sustainabilityIndicatorsGroup/externalRefDoc/issuerParty/geoCoordinates/xGeoCoord) 1-1 (XPath SRVIndicatorsDeclaration/sustainabilityIndicatorsGroup/PEFStudyDocument/signatureInformation/signatoryParty/geoCoordinates/xGeoCoord) 1-1 (XPath SRVIndicatorsDeclaration/sustainabilityIndicatorsGroup/sustainabilityIndicator/reviewerParty/geoCoordinates/xGeoCoord) 1-1 (XPath SRVIndicatorsDeclaration/sustainabilityIndicatorsGroup/externalRefDoc/signatureInformation/signatoryParty/geoCoordinates/xGeoCoord) 1-1 (XPath SRVIndicatorsDeclaration/sustainabilityIndicatorsGroup/sustainabilityIndicator/issuerParty/geoCoordinates/xGeoCoord) 1-1 (XPath SRVIndicatorsDeclaration/sustainabilityIndicatorsGroup/assessmentStudyDocument/reviewerParty/geoCoordinates/xGeoCoord) 1-1 (XPath SRVIndicatorsDeclaration/sustainabilityIndicatorsGroup/assessmentStudyDocument/issuerParty/geoCoordinates/xGeoCoord) 1-1 (XPath SRVIndicatorsDeclaration/sustainabilityIndicatorsGroup/assessmentStudyDocument/signatureInformation/signatoryParty/geoCoordinates/xGeoCoord) 1-1 (XPath SRVIndicatorsDeclaration/sustainabilityIndicatorsGroup/PEFStudyDocument/reviewerParty/geoCoordinates/xGeoCoord) 1-1</p>
year	<p>reference year - base type: integer, min inclusive: 1800, max inclusive: 2100, (XPath SRVIndicatorsDeclaration/sustainabilityIndicatorsGroup/PEFStudyDocument/year) 0-1 - note: <i>indicate the year to whom the study is referred</i> (XPath SRVIndicatorsDeclaration/sustainabilityIndicatorsGroup/assessmentStudyDocument/year) 0-1 - note: <i>indicate the year to whom the study is referred</i></p>
yGeoCoord	<p>geographical coordinate y , corresponding to longitude - base type: decimal, (XPath SRVIndicatorsDeclaration/sustainabilityIndicatorsGroup/PEFStudyDocument/reviewerParty/geoCoordinates/yGeoCoord) 1-1 (XPath SRVIndicatorsDeclaration/sustainabilityIndicatorsGroup/assessmentStudyDocument/issuerParty/geoCoordinates/yGeoCoord) 1-1 (XPath SRVIndicatorsDeclaration/sustainabilityIndicatorsGroup/PEFStudyDocument/issuerParty/geoCoordinates/yGeoCoord) 1-1 (XPath</p>

	<p>SRVIndicatorsDeclaration/sustainabilityIndicatorsGroup/assessmentStudyDocument/signatureInformation/signatoryParty/geoCoordinates/yGeoCoord) 1-1 (XPath</p> <p>SRVIndicatorsDeclaration/sustainabilityIndicatorsGroup/externalRefDoc/issuerParty/geoCoordinates/yGeoCoord) 1-1 (XPath</p> <p>SRVIndicatorsDeclaration/sustainabilityIndicatorsGroup/sustainabilityIndicator/reviewerParty/geoCoordinates/yGeoCoord) 1-1 (XPath</p> <p>SRVIndicatorsDeclaration/sustainabilityIndicatorsGroup/externalRefDoc/signatureInformation/signatoryParty/geoCoordinates/yGeoCoord) 1-1 (XPath</p> <p>SRVIndicatorsDeclaration/sustainabilityIndicatorsGroup/sustainabilityIndicator/issuerParty/geoCoordinates/yGeoCoord) 1-1 (XPath SRVIndicatorsDeclaration/SRVheader/receiverParty/geoCoordinates/yGeoCoord) 1-1 (XPath</p> <p>SRVIndicatorsDeclaration/sustainabilityIndicatorsGroup/assessmentStudyDocument/reviewerParty/geoCoordinates/yGeoCoord) 1-1 (XPath</p> <p>SRVIndicatorsDeclaration/sustainabilityIndicatorsGroup/PEFStudyDocument/signatureInformation/signatoryParty/geoCoordinates/yGeoCoord) 1-1 (XPath SRVIndicatorsDeclaration/SRVheader/senderParty/geoCoordinates/yGeoCoord) 1-1</p>
zGeoCoord	<p>geographical coordinate z , corresponding to altitude - base type: decimal, (XPath</p> <p>SRVIndicatorsDeclaration/sustainabilityIndicatorsGroup/assessmentStudyDocument/signatureInformation/signatoryParty/geoCoordinates/zGeoCoord) 0-1 - note: <i>altitude might be omitted</i> (XPath SRVIndicatorsDeclaration/SRVheader/receiverParty/geoCoordinates/zGeoCoord) 0-1 - note: <i>altitude might be omitted</i> (XPath</p> <p>SRVIndicatorsDeclaration/sustainabilityIndicatorsGroup/assessmentStudyDocument/issuerParty/geoCoordinates/zGeoCoord) 0-1 - note: <i>altitude might be omitted</i> (XPath</p> <p>SRVIndicatorsDeclaration/sustainabilityIndicatorsGroup/externalRefDoc/issuerParty/geoCoordinates/zGeoCoord) 0-1 - note: <i>altitude might be omitted</i> (XPath</p> <p>SRVIndicatorsDeclaration/sustainabilityIndicatorsGroup/assessmentStudyDocument/reviewerParty/geoCoordinates/zGeoCoord) 0-1 - note: <i>altitude might be omitted</i> (XPath</p> <p>SRVIndicatorsDeclaration/sustainabilityIndicatorsGroup/PEFStudyDocument/reviewerParty/geoCoordinates/zGeoCoord) 0-1 - note: <i>altitude might be omitted</i> (XPath</p> <p>SRVIndicatorsDeclaration/sustainabilityIndicatorsGroup/sustainabilityIndicator/reviewerParty/geoCoordinates/zGeoCoord) 0-1 - note: <i>altitude might be omitted</i> (XPath</p> <p>SRVIndicatorsDeclaration/sustainabilityIndicatorsGroup/PEFStudyDocument/issuerParty/geoCoordinates/zGeoCoord) 0-1 - note: <i>altitude might be omitted</i> (XPath</p> <p>SRVIndicatorsDeclaration/sustainabilityIndicatorsGroup/PEFStudyDocument/signatureInformation/signatoryParty/geoCoordinates/zGeoCoord) 0-1 - note: <i>altitude might be omitted</i> (XPath</p> <p>SRVIndicatorsDeclaration/sustainabilityIndicatorsGroup/sustainabilityIndicator/issuerParty/geoCoordinates/zGeoCoord) 0-1 - note: <i>altitude might be omitted</i> (XPath</p> <p>SRVIndicatorsDeclaration/sustainabilityIndicatorsGroup/externalRefDoc/signatureInformation/signatoryParty/geoCoordinates/zGeoCoord) 0-1 - note: <i>altitude might be omitted</i></p>

	(XPath SRVIndicatorsDeclaration/SRVheader/senderParty/ geoCoordinates/zGeoCoord) 0-1 - note: <i>altitude might be omitted</i>
--	---

2.3 Suggested best practices

SRVIndicatorsDeclaration/sustainabilityIndicatorsGroup/externalRefDoc (external document, used to refer generic office documents (like pdf, docx, xls, for example shop window instructions))

Usually only the reference to the supporting study is reported and not its content which is confidential.

SRVIndicatorsDeclaration/sustainabilityIndicatorsGroup/externalRefDoc/attachment/externalReference/mimeTypeCode (mime type of the external object)

Use coding from IANA <http://www.iana.org/assignments/media-types/media-types.xml>

SRVIndicatorsDeclaration/sustainabilityIndicatorsGroup/PEFStudyDocument/attachment/externalReference/mimeTypeCode (mime type of the external object)

Use coding from IANA <http://www.iana.org/assignments/media-types/media-types.xml>

SRVIndicatorsDeclaration/sustainabilityIndicatorsGroup/assessmentStudyDocument/attachment/externalReference/mimeTypeCode (mime type of the external object)

Use coding from IANA <http://www.iana.org/assignments/media-types/media-types.xml>

2.4 Enumeration tables

List of enumeration tables used in the XML document. You can find all the tables with the corresponding codes at:
<http://www.ebiz.enea.it/eBIZ/imple/eBIZTCU-draft.asp?lingua=en&pag=6>

NT100 - eBIZ TCFUpstream version
NT2 - third party qualifier
NT29 - format of a date
NT311 - information disclosure level
NT313 - status of the document
NT327 - Category of sustainability indicators
NT328 - Metodology for sustainability indicators calculation
NT329 - type of validation method of the value
NT333 - type of hashing algorith
NT6 - coding system owner/issuer
NT60 - language, codes from ISO 639-1 (subset)
NT7 - unit of measure
T10 - ISO3166 - Country
T21 - type of document
T302 - type of object
T308 - table of macro groups of manufacturing operations for the PEF
T44 - additional code type
T48 - garment part type
TRK01 - list of available services
TRK02 - list of services functions

(the most relevant tables are detailed in the following Annexes too)

ACKNOWLEDGEMENT



This action is part of the TRICK project, which has received funding from Horizon 2020 research and innovation programme under grant agreement No. 958352 of the European Union.

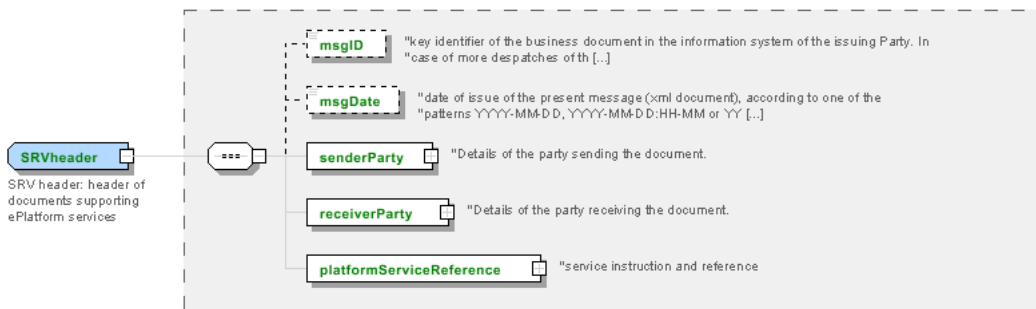
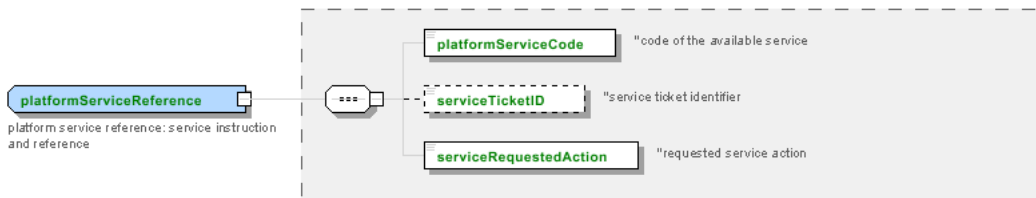
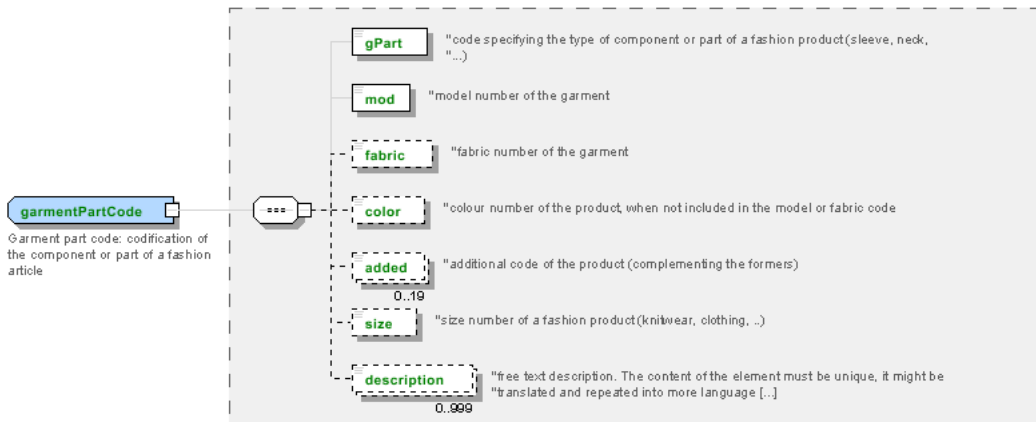
DISCLAIMER

The content of this document represents the views of the authors only and is their sole responsibility; it cannot be considered to reflect the views of the European Commission or any other body of the European Union.

The European Commission does not accept any responsibility for use that may be made of the information it contains.

Annex A

Representative images of the principal complex elements' structure.



Annex B

NT100 - eBIZ TCFUpstream version

dictionary version

Agency name: eBIZ

Decoding table: NT100

File codes list (Generic code): http://www.ebiz.enea.it/moda-ml/repository/codelist/draft/gc_NT100.xml

Code	Description	Adoption note	Date of insertion
2013-1	v2013-1		01/07/2013
2018-1	v2018-1		04/11/2018
draft	draft		08/09/2017

NT2 - third party qualifier

Third Party role qualifier

Agency name: eBIZ

Decoding table: NT2

File codes list (Generic code): http://www.ebiz.enea.it/moda-ml/repository/codelist/draft/gc_NT2.xml

Code	Description	Adoption note	Date of insertion
AG	Sales Agent		
AU	Auditor		08/04/2019
BU	Buyer		13/06/2022
CE	Certification authority		08/04/2019
CM	Commissioner		13/06/2022
CO	Quality Controller		
CU	Customs authority		13/06/2022
DC	Response to		
DF	Invoicee		
DI	Copy to (CC)		28/10/2014
DM	Consignee		
DP	Consignment address (Delivery Party)		
EX	Expert		13/06/2022
IM	Importer		
OR	Originator		10/09/2014
SC	Sub contractor		10/04/2019
SM	Service/ePlatform manager		08/04/2019

SP	Forwarder		
SU	Supplier		13/06/2022
TL	Test or analysis laboratory		13/06/2022
TX	Tax Representative		

NT29 - format of a date

format used for the date

Agency name: eBIZ

Decoding table: NT29

File codes list (Generic code): http://www.ebiz.enea.it/moda-ml/repository/codelist/draft/gc_NT29.xml

Code	Description	Adoption note	Date of insertion
D	YYYY-MM-DD		
M	YYYY-MM-DD:HH-MM (date and time)		
S	AAAA-MM-GG:HH-MM-SS (date and time with seconds)		13/06/2022
W	YYYY-WW		

NT311 - information disclosure level

Agency name: eBIZ for TRICK

Decoding table: NT311

File codes list (Generic code): http://www.ebiz.enea.it/moda-ml/repository/codelist/draft/gc_NT311.xml

Code	Description	Adoption note	Date of insertion
1	public		22/07/2022
2	disclosed to any partner(s) involved in the activity		22/07/2022
3	disclosed to specific category of partner involved in the activity		22/07/2022
4	disclosed upon an explicit authorisation		22/07/2022
9	fully confidential		22/07/2022

NT313 - status of the document

subset of the values from the United Nations Code List (UNCL) 4405 code list from UNCEFACT

Agency name: eBIZ for TRICK (elaboration on UNECE)

Decoding table: NT313

File codes list (Generic code): http://www.ebiz.enea.it/moda-ml/repository/codelist/draft/gc_NT313.xml

Other link: <https://service.unece.org/trade/untdid/d21b/tred/tred4405.htm#>

Code	Description	Adoption note	Date of insertion
112	Incomplete		22/07/2022
21	Temporary		22/07/2022
39	Approved		22/07/2022
40	Withdrawn		22/07/2022
41	Rejected		22/07/2022
45	No status		22/07/2022
67	Preliminary		22/07/2022
70	Issued		22/07/2022
73	Confirmed (by reviewer)		30/08/2022
74	Expiry date exceeded		22/07/2022
97	Pending		22/07/2022

NT327 - Category of sustainability indicators

Impact indicators of different types (PEF, SA8000, ...)

Agency name: eBIZ

Decoding table: NT327

File codes list (Generic code): http://www.ebiz.enea.it/moda-ml/repository/codelist/draft/gc_NT327.xml

Code	Description	Adoption note	Date of insertion
PEF-ACD	Acidification	mol H+ eq	11/10/2022
PEF-CC	Climate change	kg CO2 equivalent	11/10/2022
PEF-ECW	Ecotoxicity for fresh water	CTUe	11/10/2022
PEF-EUM	Eutrophication – marine	kg N equivalent	11/10/2022
PEF-EUT	Eutrophication – terrestrial	mol N eq	11/10/2022
PEF-EUW	Eutrophication – fresh water	kg P equivalent	11/10/2022
PEF-HTC	Human Toxicity - cancer effects	CTUh (Comparative Toxic Unit for humans)	11/10/2022
PEF-HTN	Human Toxicity – non-cancer effects	CTUh (Comparative Toxic Unit for humans)	11/10/2022
PEF-IOR	Ionising Radiation	kg U235 equivalent (to air)	11/10/2022
PEF-LND	Land use	Kg (deficit)	11/10/2022
PEF-OD	Ozone Depletion	kg CFC-11 equivalent	11/10/2022
PEF-PM	Particulate Matter	kg PM2.5 equivalent	11/10/2022
PEF-POZ	Photochemical Ozone Formation	kg NMVOC equivalent	11/10/2022
PEF-RUF	Resource use, fossils	kg antimony (Sb) equivalent	11/10/2022
PEF-RUM	Resource use, minerals and metals	kg antimony (Sb) equivalent	11/10/2022
PEF-WAS	Water use	m3 water	11/10/2022

TR-MCI	Manufacturing Circularity indicator	By DITF, to be revised	11/10/2022
TR-SA8	TRICK SA8000 indicator	By SINTEF, to be revised	11/10/2022

NT328 - Metodology for sustainability indicators calculation

Methodologies for sustainability indicators calculation (PEF, others...)

Agency name: eBIZ

Decoding table: NT328

File codes list (Generic code): http://www.ebiz.enea.it/moda-ml/repository/codelist/draft/gc_NT328.xml

Code	Description	Adoption note	Date of insertion
MCI	Material Circularity Indicator calculation according to MCI in TRICK		11/10/2022
PEF	PEF impacts categories		11/10/2022
PEF-CR	PEF impacts categories according to Category Rules		14/05/2023
TR-SA8	SA8000 indicator calculation according to TRICK	By SINTEF, to be revised	11/10/2022

NT329 - type of validation method of the value

indicates the type of method used to validation and calculate the quantity to which it refers; used to express the data faithfulness

Agency name: eBIZ

Decoding table: NT329

File codes list (Generic code): http://www.ebiz.enea.it/moda-ml/repository/codelist/draft/gc_NT329.xml

Code	Description	Adoption note	Date of insertion
CER	third party certification		11/06/2023
EST	estimate		12/05/2023
EXP	confirmed by an expert		19/05/2023
LAB	laboratory test		11/06/2023
LIT	literature	refer to a literature analysis outcome	12/05/2023
MON	monitoring	refer to continuous measurement in field	12/05/2023
REV	confirmed by review		11/06/2023
SAM	sampling	refer to a sample measurement in field	12/05/2023
SUP	supplier declaration		11/06/2023

NT333 - type of hashing algorithm

type of hashing algorithm

Decoding table: NT333

File codes list (Generic code): http://www.ebiz.enea.it/moda-ml/repository/codelist/draft/gc_NT333.xml

Code	Description	Adoption note	Date of insertion
ADLER32	ADLER32		26/05/2023
HMAC	HMAC		26/05/2023
MD2	MD2		26/05/2023
MD4	MD4		26/05/2023
MD5	MD5		26/05/2023
MDC-2	MDC-2		26/05/2023
PANAMA	PANAMA		26/05/2023
RIPEMD-160	RIPEMD-160		26/05/2023
SHA-1	SHA-1		26/05/2023
SHA-2 256	SHA-2 256		26/05/2023
SHA-2 384	SHA-2 384		26/05/2023
SHA-2 512	SHA-2 512		26/05/2023
TIGER	TIGER		26/05/2023

NT6 - coding system owner/issuer

code specifying the organisation who has created or owns the registers of the present coding or numbering system

Agency name: eBIZ

Decoding table: NT6

File codes list (Generic code): http://www.ebiz.enea.it/moda-ml/repository/codelist/draft/gc_NT6.xml

Code	Description	Adoption note	Date of insertion
CBR	National customs brokers registry		12/06/2023
CL	Customer/buyer		
CO	Quality Controller		
DU	D-U-N-S registry (Data Universal Numbering System)		04/05/2023
EB	eBIZ	replaces 'ML'	18/03/2019
EN	GS1 (ex-EAN International)		
EO	Registro EORI (Economic Operators Registration and Identification number)		04/03/2023
ES	e-Stockflow	DEPRECATED	
FO	Supplier		
GS	GS1		01/07/2013
MF	national taxation authority (i.e. VAT codes registry)		
ML	Moda-ML	DEPRECATED	
PL	Application Platform		13/06/2022

REX	Registered Exporter system (REX)		19/05/2023
SP	Service Provider		
SU	Enterprise Identification Number UID	Only switzerland	04/03/2023

NT60 - language, codes from ISO 639-1 (subset)

Agency name: eBIZ / ISO

Decoding table: NT60

File codes list (Generic code): http://www.ebiz.enea.it/moda-ml/repository/codelist/draft/gc_NT60.xml

Code	Description	Adoption note	Date of insertion
af	Afrikaans		31/01/2019
ar	Arabic		31/01/2019
be	Belarusian		31/01/2019
bg	Bulgarian		31/01/2019
bn	Bengali		31/01/2019
bo	Tibetan		31/01/2019
bs	Bosnian		31/01/2019
ca	Catalan, Valencian		31/01/2019
cs	Czech		31/01/2019
da	Danish		31/01/2019
de	German		31/01/2019
el	Greek, Modern (1453-)		31/01/2019
en	English		31/01/2019
eo	Esperanto		31/01/2019
es	Spanish, Castilian		31/01/2019
et	Estonian		31/01/2019
eu	Basque		31/01/2019
F	Female		15/04/2019
fa	Persian		31/01/2019
fi	Finnish		31/01/2019
fr	French		31/01/2019
ga	Irish		31/01/2019
gd	Gaelic, Scottish Gaelic		31/01/2019
gn	Guarani		31/01/2019
he	Hebrew		31/01/2019
hr	Croatian		31/01/2019
ht	Haitian, Haitian Creole		31/01/2019

hu	Hungarian		31/01/2019
hy	Armenian		31/01/2019
ia	Interlingua (International Auxiliary Language Association)		31/01/2019
id	Indonesian		31/01/2019
is	Icelandic		31/01/2019
it	Italian		31/01/2019
ja	Japanese		31/01/2019
jv	Javanese		31/01/2019
ka	Georgian		31/01/2019
km	Central Khmer		31/01/2019
ko	Korean		31/01/2019
ku	Kurdish		31/01/2019
lb	Luxembourgish, Letzeburgesch		31/01/2019
lo	Lao		31/01/2019
lt	Lithuanian		31/01/2019
lv	Latvian		31/01/2019
mg	Malagasy		31/01/2019
mk	Macedonian		31/01/2019
mn	Mongolian		31/01/2019
mt	Maltese		31/01/2019
nl	Dutch, Flemish		31/01/2019
no	Norwegian		31/01/2019
pl	Polish		31/01/2019
pt	Portuguese		31/01/2019
ro	Romanian, Moldavian, Moldovan		31/01/2019
ru	Russian		31/01/2019
se	Northern Sami		31/01/2019
sk	Slovak		31/01/2019
sl	Slovenian		31/01/2019
sm	Samoan		31/01/2019
so	Somali		31/01/2019
sq	Albanian		31/01/2019
sr	Serbian		31/01/2019
sv	Swedish		31/01/2019
sw	Swahili		31/01/2019
ta	Tamil		31/01/2019
th	Thai		31/01/2019
tr	Turkish		31/01/2019

uk	Ukrainian		31/01/2019
ur	Urdu		31/01/2019
uz	Uzbek		31/01/2019
vi	Vietnamese		31/01/2019
zh	Chinese		31/01/2019

NT7 - unit of measure

specification of the unit of measure, it is a sub set of table Unit of Measure Code - UN/ECE REC 20 delivered by United Nations Economic Commission for Europe (UN/ECE)

Agency name: eBIZ / UN/ECE

Decoding table: NT7

File codes list (Generic code): http://www.ebiz.enea.it/moda-ml/repository/codelist/draft/gc_NT7.xml

Other link: <http://docs.oasis-open.org/ubl/os-UBL-2.1/cl/gc/default/UnitOfMeasureCode-2.1.gc#>

Code	Description	Adoption note	Date of insertion
CMK	square centimetre		20/12/2017
CMQ	cubic centimetre		20/12/2017
CMT	centimetre		
CNE	centiNewton		
CO2TON	ton of CO2		10/09/2014
COUPLES	couples		
DAY	day		22/08/2022
DEGD	decimal degrees		04/07/2022
DEGMS	degrees with minutes and seconds		01/07/2022
DMQ	cubic decimetre		
E37	pixel		11/04/2018
GRM	gram		
HUR	hour		
INH	inch		
KGM	kilogram		
KMT	kilometer		
KWH	kilowatthours		10/09/2014
LBR	pound		
MCG	microgram		23/08/2022
MG	milligram		23/08/2022
MIN	minute		
MMK	square millimetre		20/12/2017
MONTH	month		22/08/2022

MSEC	millisecond (time)		22/08/2022
MTK	square metre		20/12/2017
MTQ	cubic metre		
MTR	metre		
NMB	numero		
ONZ	ounce		
P1	percent		
PPM	parts per milion		
PZ	piece		
RPM	rounds per metre		
SEC	second (time)		22/08/2022
YEAR	year		22/08/2022
YRD	yard		

T10 - ISO3166 - Country

code of the nation

Agency name: ISO

Decoding table: T10

File codes list (Generic code): http://www.ebiz.enea.it/moda-ml/repository/codelist/draft/gc_T10.xml

Table not printed: there are 240 elements, more than the maximum specified for printing: 99.

T21 - type of document

type or class to which the referenced document belongs

Agency name: eBIZ

Decoding table: T21

File codes list (Generic code): http://www.ebiz.enea.it/moda-ml/repository/codelist/draft/gc_T21.xml

Code	Description	Adoption note	Date of insertion
BIL	Bill of lading		07/03/2023
BOR	Blanket order		01/02/2018
CAT	Price catalogue - tech sheet		
CEO	Certificate of origin		13/04/2018
CER	Certificate		13/04/2018
CMR	CMR consignment note		07/03/2023
COC	Colour card		
CRN	Credit note		08/09/2017

CTO	Checking order		01/07/2013
CTR	Contract		
CXF	CxF3 file		01/07/2013
DAD	Darn order		
DDT	Delivery note (transport document)		
DEA	Despatch advise		
DER	Despatch request		
DR	Document Request		02/12/2014
EAD	Export Accompanying Document	adopted by European customs	12/05/2023
ECMR	electronic CMR consignment note		07/03/2023
ECUS	EXPORT Custom Declaration		07/03/2023
FOR	Forecast		02/12/2014
GSO	Garment stock offer		
GSX	Garment stock offer change		
ICUS	IMPORT Custom Declaration		07/03/2023
INV	Invoice		
KCC	Knitting-Clothing Commission Order		02/12/2014
KCI	Garment in Work Inventory Report		02/12/2014
LCA	LCA study		28/08/2022
LCAD	LCA study dataset		28/08/2022
M2M	Made to Measure Production Order		02/12/2014
MAS	Master marker		
MCI	Visual merchandising instruction		13/04/2018
OCH	Order change		
OFF	Offer		
ORD	Purchase order		
ORP	Order response		
OSR	order status request		
OSS	Offer status		02/12/2014
OST	Order status		
OUR	our reference		
PCO	Preferential certificate of origin		07/03/2023
PEF	PEF study		28/08/2022
PEFD	PEF study dataset		28/08/2022
PEFP	PEF environmental profile		07/03/2023
QR	Quality Report		02/12/2014
RAI	Raw Material in Work Inventory Report		02/12/2014
RDC	Raw dyeing commission order		

RDH	Raw dyeing order change		
RDR	Raw dyeing order response		
REA	Receiving advise		
REQ	Request for Offer		
RET	Return		02/12/2014
RSC	Spinning commission order		
RSH	Spinning order change		
RSR	Spinning order response		
SAD	Single Administrative Document	adopted by European customs	12/05/2023
SCL	Process sheet		
SDE	Self-declaration		07/03/2023
SDS	SDS - Safety data sheet		07/03/2023
SLCA	S-LCA Study		07/03/2023
SLCAD	S-LCA Study documentation		07/03/2023
TFC	Textile dyeing-finishing commission order		
TFX	Textile Dyeing-Finishing Order Change		02/12/2014
TPC	Textile printing commission order		
TPX	Textile Printing Order Change		02/12/2014
TWI	Textile in work inventory		
VMI	visual merchandising instructions		01/02/2018
WAC	Warping commission order		
WAYB	Waybill		07/03/2023
WEC	Weaving commission order		
YDC	Yarn dyeing commission order		
YDH	Yarn dyeing order change		
YDR	Yarn dyeing order response		
YTC	Twisting commission order		
YWI	Yarn in work inventory		

T302 - type of object

indicates the type of object. Indicates the nature of a traceable object (for example a truck load).

Agency name: eBIZ for TRICK

Decoding table: T302

File codes list (Generic code): http://www.ebiz.enea.it/moda-ml/repository/codelist/draft/gc_T302.xml

Code	Description	Adoption note	Date of insertion
ACCE	accessory		13/06/2022

CFBR	fiber (combed)		01/09/2022
FABR	fabric (finished) (non knitted)	after any finishing or dyeing or darning	01/09/2022
FIL	filament		01/09/2022
GARM	garment (finished)	garment ready fo use (sales, rent or anything else)	13/06/2022
GRCO	garment component		13/06/2022
KNFA	knitted fabric (finished)		01/09/2022
LFIB	lose fibers		01/09/2022
PFBR	fiber (processed)		01/07/2022
POLY	polymer		04/09/2022
PPFB	fiber (preprocessed)	might include washed fiber or dyed	01/09/2022
RAFA	fabric (non knitted) (raw)		01/09/2022
RAFI	fiber (raw)	before any kind of treatment or preprocessing	01/09/2022
RAGA	garment (unfinished)		01/09/2022
RAKF	knitted fabric (unfinished)		01/09/2022
RAYA	yarn (unfinished)		13/06/2022
TOPS	tops		23/03/2023
TRIM	trimming		01/09/2022
WACC	waste accessories		01/09/2022
WFFP	waste fabric from fabric production		01/09/2022
WFGP	waste fabric from garment production		01/09/2022
WFYP	waste fibre from yarn production		01/09/2022
WGGP	waste garment from garment production		01/09/2022
WPAC	waste accessories (Post-Consumer)		01/09/2022
WPFB	waste fabric (Post-Consumer)		01/09/2022
WPGR	waste garment (Post-Consumer)		01/09/2022
WPTR	waste trimming (Post-Consumer)		01/09/2022
WTRM	waste trimming		01/09/2022
WYFP	waste yarn from fabric production		01/09/2022
WYYP	waste yarn from yarn production		01/09/2022
YARN	yarn (finished)		13/06/2022

T308 - table of macro groups of manufacturing operations for the PEF

Used for primary information collection for PEF analysis

Agency name: eBIZ for TRICK

Decoding table: T308

File codes list (Generic code): http://www.ebiz.enea.it/moda-ml/repository/codelist/draft/gc_T308.xml

Code	Description	Adoption note	Date of insertion
0.1	Animal fibres production		22/08/2022
0.2	Plant fibres production		22/08/2022
0.3	Production man-made filaments and fibres		22/08/2022
1	Yarn manufacture		22/08/2022
2	Fabric manufacture		22/08/2022
3	Finishing and Dyeing		22/08/2022
4	Clothing and accessories manufacture		22/08/2022
5	Distribution		02/09/2022
6	Usage		22/08/2022
7	End of life collection		22/08/2022
8	Recycling		22/08/2022

T44 - additional code type

qualifier of the additional coding of a product

Agency name: eBIZ

Decoding table: T44

File codes list (Generic code): http://www.ebiz.enea.it/moda-ml/repository/codelist/draft/gc_T44.xml

Code	Description	Adoption note	Date of insertion
CC	colour card		
CL	sales collection		
CO	company identification code		08/09/2017
DY	dye number		
LT	lot number		
MDI	Made in		08/09/2017
MS	manufacturing state		
PKG	packaging		09/09/2014
PL	product line		
RGB	RGB value		
SE	selvedge code		

T48 - garment part type

code specifying the type of component or part of a garment (sleeve, neck, ...)

Agency name: eBIZ

Decoding table: T48

File codes list (Generic code): http://www.ebiz.enea.it/moda-ml/repository/codelist/draft/gc_T48.xml

Code	Description	Adoption note	Date of insertion
BB	bottom back		01/08/2018
BF	bottom fore/front		01/08/2018
CO	collar		01/08/2018
CU	cuff		01/08/2018
DV	fore		
EM	embroidery		01/08/2018
OC	other component		01/08/2018
PO	pocket		01/08/2018
SC	back		
SL	sleeve		01/08/2018
TB	top back		01/08/2018
TF	top fore/front		01/08/2018

TRK01 - list of available services

Agency name: TRICK project

Decoding table: TRK01

File codes list (Generic code): http://www.ebiz.enea.it/moda-ml/repository/codelist/draft/gc_TRK01.xml

Code	Description	Adoption note	Date of insertion
0	Traceability		07/09/2022
1	PCO, Preferential Origin certification		07/09/2022
2	Circular Manufacturing assessment		07/09/2022
3	PEF and environmental footprint		07/09/2022
4	Health protection assessment		07/09/2022
5	Social and Ethical protection assessment		07/09/2022

TRK02 - list of services functions

Agency name: TRICK project

Decoding table: TRK02

File codes list (Generic code): http://www.ebiz.enea.it/moda-ml/repository/codelist/draft/gc_TRK02.xml

Code	Description	Adoption note	Date of insertion
activate	service activation		07/09/2022
execution	service execution		07/09/2022

getinfo	getting information from the service		07/09/2022
proposedreport	proposal for the final report		07/09/2022
reportapproval	final report approved		07/09/2022
reportrejected	final report rejected		07/09/2022
setinfo	uploading information to the service		07/09/2022