



<http://www.ebiz-tcf.eu>

DRAFT

Extract from IMPLEMENTATION GUIDE  
TRANSACTION "PCO EXPORT SHIPPING MANIFESTO"

Version: draft

Date of release: 4/9/2023

Document code: TRC016e

technical Documentation: <http://www.ebiz.enea.it>

XML Schemas repository: <http://www.ebiz.enea.it/moda-ml/repository/schema/draft/default.asp>

Guides repository: <http://www.ebiz.enea.it/moda-ml/repository/guide/draft/default.asp>

Guide filename: TRC016-eBIZ-PcoExportShippingManifesto.pdf

## 0. PREMISE

This document contains a proposal for the updating and extension of eBIZ specifications starting from the eBIZ version 2018. Under the name of 'Draft version' it is reported the result of an extensive work of analysis and consultation aimed at developing and maintaining eBIZ specifications.

In particular, the content of this proposal is the result of various activities, mainly those carried out within the framework of the **TRICK project** funded by the European Commission: grant agreement 958352, call H2020-LOW-CARBON-CIRCULAR-INDUSTRIES-2020 / H2020-LCCI-2020-EASME-twostage.

The technical contents are backwards compatible with the latest official published version, with the exclusion of the totally new concepts added explicitly for the version that are thought as incremental evolution of the knowledge base.

## 1. BUSINESS DESCRIPTION

### 1.1 Scope

This guide aims to illustrate to fashion companies the standard XML format of the document type "Shipping dossier manifesto, providing instructions for its use in the context of a TRACEABILITY SYSTEM involving Fashion Manufacturers, their customers, third parties and in case customs authorities, eBusiness and eCommerce platforms. All the rules necessary for the construction and validation of the document are expressed through a specific XML schema, which is presented in detail in the paragraph "Implementation Guide".

### 1.2 Generalities

This document has the purpose of summarizing the list of documents associated with a particular customs declaration and relative invoice; the documents are referenced so that they can be traced uniquely; the manifest and the dossier are also associated with the codes of the platform that collects the dossier materials.

div> This document has a double function:

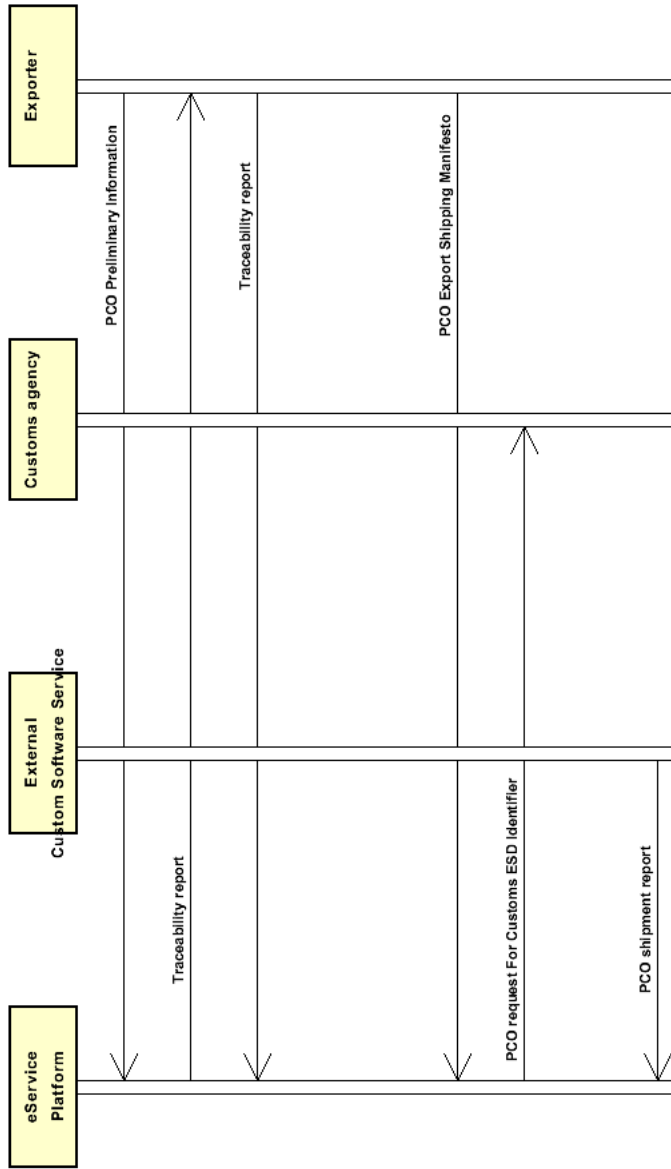
- can be used to RETIEVE or SEND the complete dossier from the platform

Or

- it can be used to NOTIFY to a partner (for exae customer of a job) or to the traceability system an update of the dossier with new documents

### 1.3. Possible scenario

S1.1 PCO service execution



## 2. IMPLEMENTATION GUIDE

### 2.1 General structure of XML document

All the business data that can be exchanged through this class of documents are shown in the following "document structure", that provides a simplified vision of the Schema.

In particular:

- the two numbers following each element define its "cardinality" (minimum and maximum number of occurrences); the minimum equal zero indicates that the element is optional, the minimum greater than zero indicates that is mandatory;
- the bold character denotes the complex elements (aggregates of simple elements) that were built for the sake of functionality and re-usability of some complex informations sets. The child elements in each parent element are easily spotted as "indented";
- the symbol "@" denotes an attribute of the preceding element; here "the usage indicator (optional, required, ...) is shown in square brackets.

### Structure

#### **PCOExportShippingManifesto**

@version [Optional] [Default= draft]

@useProfile [Optional]

| msgN 1-1

| ESMId 1-1

| @schemeID [Optional]

| msgDate 1-1

| @dateForm [Optional]

#### | **issuerParty 1-1**

| | id 0-1

| | @numberingOrg [Optional]

| | legalName 0-1

| | dept 0-1

| | subDept 0-1

| | person 0-1

| | @email [Optional]

| | @phone [Optional]

| | @fax [Optional]

| | street 0-1

| | city 0-1

| | subCountry 0-1

| | country 0-1

| | postCode 0-1

#### | | **geoCoordinates 0-1**

| | @um [Optional] [Default= DEGD]

| | @geoRefSystem [Optional]

| | | xGeoCoord 1-1

| | | yGeoCoord 1-1

| | | zGeoCoord 0-1

| | issuerAccreditationInfo 0-1

| ESDId 1-1

| @schemeID [Optional]

#### | **invoiceDoc 1-99**

| | docID 1-1

| | @numberingOrg [Optional]

| | docDate 1-1

| | @dateForm [Optional]

| | title 0-unbounded

| | @ln [Optional]

| | description 0-unbounded

| | @ln [Optional]

| | validityStart 0-1

| | @dateForm [Optional]

| | validityEnd 0-1

- | @dateForm [Optional]
- | **attachment 0-1**
- | @uid [Optional]
- | | fileName 0-1
- | | @numberingOrg [Optional]
- | | binaryObject 0-1
- | | @format [Optional]
- | | @mime [Optional]
- | | @encoding [Optional]
- | | @characterSet [Optional]
- | | **externalReference 0-99**
- | | | uri 1-1
- | | | | @isURL [Optional] [Default= true]
- | | | | mimeTypeCode 0-1
- | | | | formatCode 0-1
- | | | | encodingCode 0-1
- | | | | characterSetCode 0-1
- | | | hashFootprint 0-1
- | | | @schemeID [Optional]
- | | | @hashMethod [Required]
- | | | **blockChainReference 0-9**
- | | | | uri 1-1
- | | | | | @isURL [Optional] [Default= true]
- | | | | transactionReceipt 1-9
- | | note 0-99
- | | @numberingOrg [Optional]
- | | @codeList [Optional]
- | | @noteLabel [Optional]

| **tracedObjectRef 1-unbounded**

- | | **objectInstanceIdentification 1-1**
- | | | @objectInstanceTypeCode [Required]
- | | | objectID 1-9
- | | | @schemeID [Required]
- | | TRRN 1-1
- | | | @schemeID [Optional]
- | | **TRDInfo 1-1**
- | | | TRDN 1-1
- | | | | @schemeID [Optional]
- | | | uri 1-1
- | | | | @isURL [Optional] [Default= true]
- | | | hashFootprint 1-1
- | | | | @schemeID [Optional]
- | | | | @hashMethod [Required]
- | | | **blockChainReference 0-9**
- | | | | uri 1-1
- | | | | | @isURL [Optional] [Default= true]
- | | | | transactionReceipt 1-9

| **externalRefDoc 0-99**

- | | docID 1-1
- | | | @numberingOrg [Optional]
- | | docDate 0-1
- | | | @dateForm [Optional]
- | | title 0-unbounded
- | | | @ln [Optional]
- | | description 0-unbounded
- | | | @ln [Optional]
- | | validityStart 0-1
- | | | @dateForm [Optional]
- | | validityEnd 0-1
- | | | @dateForm [Optional]
- | | documentType 0-1
- | | **issuerParty 0-1**
- | | | id 0-1
- | | | | @numberingOrg [Optional]
- | | | legalName 0-1
- | | | dept 0-1

```

| subDept 0-1
| person 0-1
|   @email [Optional]
|   @phone [Optional]
|   @fax [Optional]
| street 0-1
| city 0-1
| subCountry 0-1
| country 0-1
| postCode 0-1
| geoCoordinates 0-1
|   @um [Optional] [Default= DEGD]
|   @geoRefSystem [Optional]
|     xGeoCoord 1-1
|     yGeoCoord 1-1
|     zGeoCoord 0-1
| issuerAccreditationInfo 0-1
| signatureInformation 0-1
| signatureTypeCode 1-1
| signatoryParty 0-unbounded
|   id 0-1
|   @numberingOrg [Optional]
|   legalName 0-1
|   dept 0-1
|   subDept 0-1
|   person 0-1
|   @email [Optional]
|   @phone [Optional]
|   @fax [Optional]
|   street 0-1
|   city 0-1
|   subCountry 0-1
|   country 0-1
|   postCode 0-1
|   geoCoordinates 0-1
|     @um [Optional] [Default= DEGD]
|     @geoRefSystem [Optional]
|       xGeoCoord 1-1
|       yGeoCoord 1-1
|       zGeoCoord 0-1
| attachment 0-1
| @uid [Optional]
| fileName 0-1
|   @numberingOrg [Optional]
| binaryObject 0-1
|   @format [Optional]
|   @mime [Optional]
|   @encoding [Optional]
|   @characterSet [Optional]
| externalReference 0-99
|   uri 1-1
|   @isURL [Optional] [Default= true]
|   mimeTypeCode 0-1
|   formatCode 0-1
|   encodingCode 0-1
|   characterSetCode 0-1
| hashFootprint 0-1
|   @schemeID [Optional]
|   @hashMethod [Required]
| blockChainReference 0-9
|   uri 1-1
|   @isURL [Optional] [Default= true]
|   transactionReceipt 1-9
| note 0-99
| @numberingOrg [Optional]
| @codeList [Optional]
| @noteLabel [Optional]

```

| note 0-9  
| @numberingOrg [Optional]  
| @codeList [Optional]  
| @noteLabel [Optional]

## 2.2 Detailed description of document elements

Following tables show all elements (complex and simple) used in this document. Description includes: 1) element's information: xml tag, name, brief description, 2) data type and syntax constraints, 3) information about usage of the element in a particular position in the document: aggregation notes..

### 2.2.1 Complex elements (Aggregate Business Information Entities)

Complex elements are those elements whose content is composed of other elements (childs).Complex elements are alphabetically ordered.

<b>attachment</b>	<p>an attached document. An attachment can refer to an external document or be included with the document being exchanged</p> <p><b>XPath PCOExportShippingManifesto/invoiceDoc/attachment: 0-1</b></p> <p>- note for this position: <i>indicates where to find the document or contains it as a binary object (the second option is not recommended for practical reasons)</i></p> <p><b>XPath PCOExportShippingManifesto/externalRefDoc/attachment: 0-1</b></p> <p>- note for this position: <i>indicates where to find the document or contains it as a binary object (the second option is not recommended for practical reasons)</i></p>
<b>blockChainReference</b>	<p>blockchain reference</p> <p>- base type: string, max length: 80,</p> <p><b>XPath PCOExportShippingManifesto/tracedObjectRef/TRDInfo/blockChainReference: 0-9</b></p> <p>- note for this position: <i>blockchain references related to the Traceability Dossier (TRD)</i></p>
<b>externalRefDoc</b>	<p>external document, used to refer generic office documents (like pdf, docx, xls, for example shop window instructions)</p> <p>- base type: ,</p> <p><b>XPath PCOExportShippingManifesto/externalRefDoc: 0-99</b></p> <p>- note for this position: <i>Example: packing lists, shipment documentation, any other file of the dossier not contained in the TRDs (In the 'attachment' element it is mandatory to fill the 'binaryObject' element AND/OR the 'external reference/uri' and 'hashfootprint' elements)</i></p>
<b>externalReference</b>	<p>details about an external object, such as a document stored at a remote location</p>
<b>geoCoordinates</b>	<p>geographical coordinates</p>
<b>invoiceDoc</b>	<p>file of an invoice or reference to it. In the 'attachment' element it is mandatory to fill the 'binaryObject' element AND/OR the 'external reference/uri' and 'hashfootprint' elements</p> <p>- base type: ,</p> <p><b>XPath PCOExportShippingManifesto/invoiceDoc: 1-99</b></p> <p>- note for this position: <i>invoice to which the shipment is associated. It can be repeated if multiple invoices are associated with the shipment.</i></p>
<b>issuerParty</b>	<p>Details of the party that issued the document.</p> <p>- base type: Nad,</p>
<b>objectInstanceIdentification</b>	<p>Identification of an object instance, it could contain more than one identifier of the same object as long as they refer to different identification schemes</p> <p><b>XPath PCOExportShippingManifesto/tracedObjectRef/objectInstanceIdentification: 1-1</b></p> <p>- note for this position: <i>this is the traceability number (TRN), it is the identifier of the physical traced object (lot or instance)</i></p>
<b>signatoryParty</b>	<p>Details of the party that signed the document.</p> <p>- base type: Nad,</p>
<b>signatureInformation</b>	<p>information about the document signature</p>
<b>tracedObjectRef</b>	<p>reference to the traceability documentation (Traceability Report and related dossier) about ONE traced product instance or lot.</p>
<b>TRDInfo</b>	<p>Descriptor of a Dossier relating to a Traceability Report (group of files, zip for example, containing the report plus related documentation)</p>



## 2.2.2 Simple elements (Basic Business Information Entities)

Simple elements are those elements whose content is characterized by a data type plus a domain of possible values. Simple elements are alphabetically ordered.

binaryObject	a binary large object containing an attached document, Coding 'base64Binary' is recommended. - base type: base64Binary,
@characterSet	the character set of the binary object (examples UTF-8, UTF-16, Windows-1252, ISO-8859-7,..) - base type: normalizedString,
characterSetCode	the character set of an external document (examples UTF-8, UTF-16, Windows-1252, ISO-8859-7,..) - base type: normalizedString,
city	name of the city (town, village) - base type: string, max length: 40,
@codeList	it specifies the URL where the list of codes used to make an instance of the element can be found - base type: string, max length: 255, <b>XPath PCOExportShippingManifesto/note/@codeList: [Optional]</b> - note for this position: <i>must be used to provide (URL) the list of codes used in "noteLabel"</i> <b>XPath PCOExportShippingManifesto/externalRefDoc/note/@codeList: [Optional]</b> - note for this position: <i>must be used to provide (URL) the list of codes used in "noteLabel"</i> <b>XPath PCOExportShippingManifesto/invoiceDoc/note/@codeList: [Optional]</b> - note for this position: <i>must be used to provide (URL) the list of codes used in "noteLabel"</i>
country	code of the nation - base type: string, cod. table: T10 <a href="http://www.ebiz.enea.it/moda-ml/repository/codelist/draft/gc_T10.xml">http://www.ebiz.enea.it/moda-ml/repository/codelist/draft/gc_T10.xml</a>
@dateForm	format used for the date - base type: string, cod. table: NT29 <a href="http://www.ebiz.enea.it/moda-ml/repository/codelist/draft/gc_NT29.xml">http://www.ebiz.enea.it/moda-ml/repository/codelist/draft/gc_NT29.xml</a>
dept	name or code of a department - base type: string, max length: 40,
description	free text description. The content of the element must be unique, it might be translated and repeated into more languages (thus no more than one instance for each language). - base type: string, max length: 250, <b>XPath PCOExportShippingManifesto/externalRefDoc/description: 0-unbounded</b> - note for this position: <i>Only one instance of this element for each different value of 'ln' attribute (language)</i> <b>XPath PCOExportShippingManifesto/invoiceDoc/description: 0-unbounded</b> - note for this position: <i>Only one instance of this element for each different value of 'ln' attribute (language)</i>
docDate	date of issue of the referenced document, according to one of the patterns YYYY-MM-DD, YYYY-MM-DD:HH-MM or YYYY-WW. - base type: string,
docID	identification number of the referenced document - base type: string, max length: 80,
documentType	type or class to which the document belongs - base type: string, cod. table: T21 <a href="http://www.ebiz.enea.it/moda-ml/repository/codelist/draft/gc_T21.xml">http://www.ebiz.enea.it/moda-ml/repository/codelist/draft/gc_T21.xml</a>
@email	electronic mail address of the contact person within a Party - base type: string, max length: 250,
@encoding	specifies the decoding algorithm of the binary object - base type: normalizedString,

encodingCode	the encoding/decoding algorithm used with the external object (example is 'base64Binary') - base type: normalizedString,
ESDIId	Identifier of the export shipping dossier submitted to a customs agency and associated to a customs declaration - base type: string, XPath PCOExportShippingManifesto/ESDIId: 1-1 - note for this position: <i>it is the identifier of the dossier containing the manifesto and which is described by the manifesto</i>
ESMId	Identifier of a Export Shipping Manifesto assigned by the manifesto issuer - base type: string,
@fax	fax number of the contact person within a Party - base type: string, max length: 35,
fileName	unique identifier (name) of the file - base type: string, max length: 255,
@format	the format of the binary content (examples xml, pdf, doc,...) - base type: string,
formatCode	the format of the external object (examples xml, pdf, doc,...) - base type: normalizedString,
@geoRefSystem	georeference system adopted for the coordinate (in example wgs84 with decimal degree or degree with minute and seconds) - base type: string,
hashFootprint	footprint obtained by applying an hashing algorithm - base type: string, max length: 1024, XPath PCOExportShippingManifesto/tracedObjectRef/TRDInfo/hashFootprint: 1-1 - note for this position: <i>the hash must be related to the whole Traceability Dossier (TRD)</i>
@hashMethod	type of used hashing algorithm - base type: string, max length: 80, cod. table: NT333 <a href="http://www.ebiz.enea.it/moda-ml/repository/codelist/draft/gc_NT333.xml">http://www.ebiz.enea.it/moda-ml/repository/codelist/draft/gc_NT333.xml</a>
id	primary identification code of a Party; it is recommended to use an EORI number (with @numberingOrg= "EO") or the format: nation code (ISO 3166) + national tax code (i.e. VAT identification number ) with @numberingOrg= "MF" - base type: string, max length: 15,
issuerAccreditationInfo	accrediting information of the issuer of the document - base type: string,
@isURL	it indicates if the referred element is an URL (true) or not (false) - base type: boolean, XPath PCOExportShippingManifesto/tracedObjectRef/TRDInfo/blockChainReference/uri/@isURL: [Optional] [Default= true] - note for this position: <i>usage of URLs is recommended</i> XPath PCOExportShippingManifesto/externalRefDoc/attachment/externalReference/uri/@isURL: [Optional] [Default= true] - note for this position: <i>usage of URLs is recommended</i> XPath PCOExportShippingManifesto/invoiceDoc/attachment/externalReference/uri/@isURL: [Optional] [Default= true] - note for this position: <i>usage of URLs is recommended</i> XPath PCOExportShippingManifesto/externalRefDoc/attachment/blockChainReference/uri/@isURL: [Optional] [Default= true] - note for this position: <i>usage of URLs is recommended</i> XPath PCOExportShippingManifesto/invoiceDoc/attachment/blockChainReference/uri/@isURL: [Optional] [Default= true] - note for this position: <i>usage of URLs is recommended</i> XPath PCOExportShippingManifesto/tracedObjectRef/TRDInfo/uri/@isURL: [Optional] [Default= true] - note for this position: <i>usage of URLs is recommended</i>
legalName	legal name - base type: string, max length: 250,

@ln	Language code. - base type: string, cod. table: NT60 <a href="http://www.ebiz.enea.it/moda-ml/repository/codelist/draft/gc_NT60.xml">http://www.ebiz.enea.it/moda-ml/repository/codelist/draft/gc_NT60.xml</a>
@mime	the mime type of the binary object - base type: normalizedString,
mimeCode	mime type of the external object - base type: normalizedString,
msgDate	date of issue of the present message (xml document), according to one of the patterns YYYY-MM-DD, YYYY-MM-DD:HH-MM or YYYY-WWW. - base type: string,
msgN	identification number given to the message (xml document) by its issuer. In case of more despatches of the same business document, it changes. - base type: string, max length: 35,
note	free text or structured (computer processing) note. For note structuring use the attributes "noteLabel" and "codelist" - base type: string, max length: 350,
@noteLabel	subject qualifier of a note - base type: string, max length: 35, XPath PCOExportShippingManifesto/externalRefDoc/note/@noteLabel: [Optional] - note for this position: <i>must be used to qualify the subject of the note</i> XPath PCOExportShippingManifesto/invoiceDoc/note/@noteLabel: [Optional] - note for this position: <i>must be used to qualify the subject of the note</i> XPath PCOExportShippingManifesto/note/@noteLabel: [Optional] - note for this position: <i>must be used to qualify the subject of the note</i>
@numberingOrg	code specifying the organisation who has created or owns the coding or numbering system - base type: string, cod. table: NT6 <a href="http://www.ebiz.enea.it/moda-ml/repository/codelist/draft/gc_NT6.xml">http://www.ebiz.enea.it/moda-ml/repository/codelist/draft/gc_NT6.xml</a> XPath PCOExportShippingManifesto/externalRefDoc/note/@numberingOrg: [Optional] - note for this position: <i>must be used to specify the organization that created the list of codes used in "noteLabel"</i> XPath PCOExportShippingManifesto/invoiceDoc/docID/@numberingOrg: [Optional] - note for this position: <i>here can be specified whose document numbering is used (e.g. : Client, Supplier, ..)</i> XPath PCOExportShippingManifesto/note/@numberingOrg: [Optional] - note for this position: <i>must be used to specify the organization that created the list of codes used in "noteLabel"</i> XPath PCOExportShippingManifesto/invoiceDoc/note/@numberingOrg: [Optional] - note for this position: <i>must be used to specify the organization that created the list of codes used in "noteLabel"</i> XPath PCOExportShippingManifesto/externalRefDoc/docID/@numberingOrg: [Optional] - note for this position: <i>here can be specified whose document numbering is used (e.g. : Client, Supplier, ..)</i>
objectID	Object identifier - base type: string, XPath PCOExportShippingManifesto/tracedObjectRef/objectInstanceIdentification/objectID: 1-9 - note for this position: <i>multiple values of objectID are allowed for different representations of the same object that must differ for the value of schemeID. In traceability transactions there must be at least the UNIQUE code assigned by the platform (e.g. TRN)</i>
@objectInstanceTypeCode	code that identifies the type of object instance - base type: string, cod. table: NT202 <a href="http://www.ebiz.enea.it/moda-ml/repository/codelist/draft/gc_NT202.xml">http://www.ebiz.enea.it/moda-ml/repository/codelist/draft/gc_NT202.xml</a>
person	name of a person (e.g. contact person within an organization) - base type: string, max length: 40,
@phone	phone number of the contact person within a Party - base type: string, max length: 35,
postCode	code defining the postal zone - base type: string, max length: 10,

@schemeID	<p>identifier of an identification scheme</p> <ul style="list-style-type: none"> <li>- base type: string,</li> <li>XPath PCOExportShippingManifesto/externalRefDoc/attachment/hashFootprint/@schemeID: [Optional]</li> <li>- note for this position: <i>specify for which system this hash footprint might be used as identifier (for example HDFS system..)</i></li> <li>XPath PCOExportShippingManifesto/tracedObjectRef/TRRN/@schemeID: [Optional]</li> <li>- note for this position: <i>Indicate the issuer of the number, for example "TRICK"</i></li> <li>XPath PCOExportShippingManifesto/invoiceDoc/attachment/hashFootprint/@schemeID: [Optional]</li> <li>- note for this position: <i>specify for which system this hash footprint might be used as identifier (for example HDFS system..)</i></li> <li>XPath PCOExportShippingManifesto/tracedObjectRef/TRDInfo/hashFootprint/@schemeID: [Optional]</li> <li>- note for this position: <i>specify for which system this hash footprint might be used as identifier (for example HDFS system..)</i></li> </ul>
signatureTypeCode	<p>indicator of existing and type of signature</p> <ul style="list-style-type: none"> <li>- base type: string,</li> </ul>
street	<p>street and building number identifying a location</p> <ul style="list-style-type: none"> <li>- base type: string, max length: 80,</li> </ul>
subCountry	<p>short name or code of the sub-country entity</p> <ul style="list-style-type: none"> <li>- base type: string, max length: 9,</li> </ul>
subDept	<p>name or code of a department</p> <ul style="list-style-type: none"> <li>- base type: string, max length: 40,</li> </ul>
title	<p>document title</p> <ul style="list-style-type: none"> <li>- base type: string,</li> <li>XPath PCOExportShippingManifesto/externalRefDoc/title: 0-unbounded</li> <li>- note for this position: <i>Only one instance of this element for each different value of 'ln' attribute (language)</i></li> <li>XPath PCOExportShippingManifesto/invoiceDoc/title: 0-unbounded</li> <li>- note for this position: <i>Only one instance of this element for each different value of 'ln' attribute (language)</i></li> </ul>
transactionReceipt	<p>transaction receipt on blockchain</p> <ul style="list-style-type: none"> <li>- base type: string, max length: 1024,</li> </ul>
TRDN	<p>Identifier of a Dossier relating to a Traceability Report (group of files, zip for example, containing the report plus related documentation)</p> <ul style="list-style-type: none"> <li>- base type: string,</li> </ul>
TRRN	<p>Identifier of a traceability report (refer to the msgld of the report)</p> <ul style="list-style-type: none"> <li>- base type: string,</li> </ul>
@uid	<p>unique element identifier within the xml document</p> <ul style="list-style-type: none"> <li>- base type: string,</li> </ul>
@um	<p>specification of the unit of measure</p> <ul style="list-style-type: none"> <li>- base type: string, cod. table: NT7</li> <li><a href="http://www.ebiz.enea.it/moda-ml/repository/codelist/draft/gc_NT7.xml">http://www.ebiz.enea.it/moda-ml/repository/codelist/draft/gc_NT7.xml</a></li> <li>XPath PCOExportShippingManifesto/externalRefDoc/issuerParty/geoCoordinates/@um: [Optional] [Default= DEGD]</li> <li>- note for this position: <i>when not specified assume decimal DEGREES</i></li> <li>XPath PCOExportShippingManifesto/issuerParty/geoCoordinates/@um: [Optional] [Default= DEGD]</li> <li>- note for this position: <i>when not specified assume decimal DEGREES</i></li> <li>XPath PCOExportShippingManifesto/externalRefDoc/signatureInformation/signatoryParty/geoCoordinates/@um: [Optional] [Default= DEGD]</li> <li>- note for this position: <i>when not specified assume decimal DEGREES</i></li> </ul>
uri	<p>Uniform Resource Identifier (URI) that identifies the external object as an Internet resource</p> <ul style="list-style-type: none"> <li>- base type: normalizedString,</li> <li>XPath PCOExportShippingManifesto/invoiceDoc/attachment/blockChainReference/uri: 1-1</li> </ul>

	<p>- note for this position: <i>reference to the used blockchain ( example: url https://etherscan.io/ of ethereum)</i>  XPath PCOExportShippingManifesto/tracedObjectRef/TRDInfo/uri: 1-1</p> <p>- note for this position: <i>the uri should be an URL in order to retrieve the file (@isUrl=true)</i>  XPath PCOExportShippingManifesto/externalRefDoc/attachment/blockChainReference/uri: 1-1</p> <p>- note for this position: <i>reference to the used blockchain ( example: url https://etherscan.io/ of ethereum)</i>  XPath PCOExportShippingManifesto/tracedObjectRef/TRDInfo/blockChainReference/uri: 1-1</p> <p>- note for this position: <i>reference to the used blockchain ( example: url https://etherscan.io/ of ethereum)</i></p>
@useProfile	<p>use profile to which the present document is compliant if it was agreed by the parties. It is suggested a URI with reference to the firms or the URL of the profile.</p> <p>- base type: string,</p>
validityEnd	<p>date by which the validity ends, according to one of the patterns YYYY-MM-DD, YYYY-MM-DD:HH-MM or YYYY-WW.</p> <p>- base type: string,</p>
validityStart	<p>date by which the validity starts, according to one of the patterns YYYY-MM-DD, YYYY-MM-DD:HH-MM or YYYY-WW.</p> <p>- base type: string,</p>
@version	<p>Dictionary version from which the instance has been created</p> <p>- base type: string, cod. table: NT100  <a href="http://www.ebiz.enea.it/moda-ml/repository/codelist/draft/gc_NT100.xml">http://www.ebiz.enea.it/moda-ml/repository/codelist/draft/gc_NT100.xml</a></p>
xGeoCoord	<p>geographical coordinate x , corresponding to latitude</p> <p>- base type: decimal,</p>
yGeoCoord	<p>geographical coordinate y , corresponding to longitude</p> <p>- base type: decimal,</p>
zGeoCoord	<p>geographical coordinate z , corresponding to altitude</p> <p>- base type: decimal,  XPath PCOExportShippingManifesto/externalRefDoc/signatureInformation/signatoryParty/geoCoordinates/zGeoCoord: 0-1</p> <p>- note for this position: <i>altitude might be omitted</i>  XPath PCOExportShippingManifesto/externalRefDoc/issuerParty/geoCoordinates/zGeoCoord: 0-1</p> <p>- note for this position: <i>altitude might be omitted</i>  XPath PCOExportShippingManifesto/issuerParty/geoCoordinates/zGeoCoord: 0-1</p> <p>- note for this position: <i>altitude might be omitted</i></p>

## 2.3 Suggested best practices

**PCOExportShippingManifesto/externalRefDoc/  
attachment/externalReference/mimeCode (mime type of the external object)**

Use coding from IANA <http://www.iana.org/assignments/media-types/media-types.xml>

**PCOExportShippingManifesto/invoiceDoc/attachment/  
externalReference/mimeCode (mime type of the external object)**

Use coding from IANA <http://www.iana.org/assignments/media-types/media-types.xml>

## 2.4 Enumeration tables

List of enumeration tables used in the XML document. You can find all the tables with the corresponding codes at:  
<http://www.ebiz.enea.it/eBIZ/imple/eBIZTCU-draft.asp?lingua=en&pag=6>

NT100 - eBIZ TCFUpstream version  
NT202 - Type of the object Instance  
NT29 - format of a date  
NT333 - type of hashing algorithm  
NT6 - coding system owner/issuer  
NT60 - language, codes from ISO 639-1 (subset)  
NT7 - unit of measure  
T10 - ISO3166 - Country  
T21 - type of document

## ACKNOWLEDGEMENT



This action is part of the TRICK project, which has received funding from Horizon 2020 research and innovation programme under grant agreement No. 958352 of the European Union.

## DISCLAIMER

The content of this document represents the views of the authors only and is their sole responsibility; it cannot be considered to reflect the views of the European Commission or any other body of the European Union.

The European Commission does not accept any responsibility for use that may be made of the information it contains.





